





## Language Arts Educator To Explain New Approach

A distinguished author and developer of a revolutionary system of education, Miss Mae Carden, of Glen Rock, N.J., will speak in Pampa at 8 p.m. Thursday under auspices of St. Matthew's Episcopal Day School.

The school has adopted the Carden method in its entire range of classes from kindergarten through the sixth grade. Rev. William E. West, rector of St. Matthew's Episcopal Church, said purpose of the public meeting to be held in the Episcopal Parish House is to give Pampa citizens interested in education an opportunity to hear Miss Carden and to ask questions concerning her new educational approach.

In further discussion of the Carden system and Miss Carden's visit to Pampa, the Rev. West, issued this statement:

"The foundation of the Carden method is the unlocking of words into syllables for the beginning as well as the advanced student. Rather than showing a picture of an object and then having the word in print, the opposite method is used. The words chosen are from the town experiences of the student and these real experiences develop mental imagery which is of more value in the learning process than mere recognition. Comprehension is checked by asking various questions about the word and additional learning takes place from the discussion which ensues.

"For example, the word 'cave' might be chosen. It is unlocked or divided into its parts and each letter is sounded. Then comprehension is checked by having several pupils tell experiences about caves they have dug, visited, seen in pictures or about which they have heard stories. The additional learning value of such a method adds much to the education of the child.

"The foundation of the Carden method is enunciation where words are pronounced phonetically. Good reading results quickly, rhythmically, and sequentially. Recall is another foundation of this method which produces much better results than mere rereading a sentence or chapter.

"The names and sounds of

## Scouters Urged To Assist in Fixing Booths

Adult scouts of the Santa Fe District are urged to give their assistance in the building of booths tonight for the Boy Scout Exposition Saturday.

Work will begin at 7 p.m. and is expected to be completed in this one session. Booths will be marked off and erected for pack, troops, and posts setting up displays for the show which will run from 2 to 9 p.m. Saturday.

The exposition will be in the Corneliuss Building, 315 W. Foster; across from the LaVista Theatre. Tickets sold by scouts that have an earlier date, and different location for the show are good, and the public is invited to attend to see "Scouts in Action."

## Joseph E. Reid Become Fourth In School Race

Joseph E. Reid, candidate for school trustee in the April 4 election today issued the following statement in connection with his candidacy:

"The primary reason for my seeking election to the school board of the Pampa Independent School District is that I have a most sincere interest in the quality of our education and in the maximum utilization of the funds available for education. Reasons other than these would not seem to be very sound. At this time I have no reason to believe that these functions are not being handled satisfactorily. In addition there seems to be a very effective relationship between the board as the policy making body and the superintendent of schools as the chief administrator.

"I will also have children in the public school system this year but this is of secondary importance since enrollment totals some 6,000 students and



JOSEPH E. REID  
... school candidate

all of the parents have a legitimate interest from that viewpoint. In addition to the 6,000 students there are about 400 employees (including 290 professional people trained in teaching and administration, eight elementary schools, three junior high schools, and one high school all operating on a yearly budget of \$2,600,000. This is a large enterprise which carries a tremendous responsibility.

"The foregoing clearly establishes the need for conservative and responsible leadership on the school board. I feel that I can make a contribution toward continuing our well-balanced program of scholastic endeavor and extra-curricular activities.

"Another factor that motivates me to seek this office is that I feel the voters should have as much of a choice as possible for such an important post. As of Monday, March 2, only two other candidates had filed. This election deserves the attention of all voters as the education of our children should be entrusted only to the best qualified people who have a desire to service.

"I shall be pleased to discuss my background, my reasons for seeking election, and my position on any issues which may arise with any voter who cares to contact me."

EDITOR'S NOTE — With the filing Monday of E. E. Shelhamer as a candidate, there are now four candidates in the race. The other two are John Gikas, seeking reelection, and Bill McDonald, Celanese employe.

## Art Smalley New Rotary President

Art L. Smalley Jr. is the new president of the Pampa Rotary Club.

Smalley, who resides at 1720 N. Russell is employed by the Celanese Corp. He will take office the first Wednesday in July.

Present President, Cameron Marsh will serve as vice president.

New directors elected to serve during the 1964-65 year are Bill Atkinson and David Tucker.

Holdover directors include Loyal Davies, Lee Fraser, Art Holland and Gordon Lyons.

## Mainly About People

Private Rummage Sale, March 4th, 321 S. Cuyler.

The Majorie Hill Group of the First Christian C.W.F. will meet tomorrow in the church kitchen at 10 a.m. Following the clean-up campaign, a luncheon will be served and the program for the day will begin at 1:30 p.m. 1960 El Camino. 4-6232. After 5:30 p.m.

A Patrons Tea will be conducted at Lovett Memorial Library at 7:45 p.m. today by the Treble Clef Club of Pampa. Members and patrons of the group are invited to attend.

Gas stoves repaired, 4-2488.

Need aprons or housedresses four hundred yards of Quadriqua cloth on for 33 cents a yard. Also 100 per cent wool skirt lengths, \$1.93, wool jumper lengths, \$2.55. Singer Sewing and Fabric Center, 214 N. Cuyler.

The American Legion Auxiliary will meet Thursday at 7:30 p.m. in the home of Mrs. Joe Shelton, 2121 Williston.

Lions Club Minstrel Rehearsals at 7:30 p.m. Tuesday, Thursday in Pampa High basement. All interested in having a good time and enjoy working in this Minstrel please attend.

The City Council of Clubs will meet Thursday in the City Club Room at 9:30 a.m. Mrs. Fidelia Yoder will be in charge of the program which will include two violin solos by Mrs. John Price; a piano solo by Mrs. Paul Reimer, and a vocal solo by Mrs. Jack Riley, accompanied by Mrs. Lois Fagan.

## NEW WAY TO BE SUDDENLY SLIM

Los Angeles—Are you a woman whose figure is on the good side but might look perfect? You'll be thrilled by the new easy way science has discovered for you to become Suddenly Slim. If you're more than 15 pounds overweight, then this idea is not for you. If your weight problem falls within this range, then you can realize a new, smoother figure today, without diet or exercise.

Suddenly Slim is an all-new kind of 4-oz. girdle constructed of science fibers. One startling innovation is the sheer nylon front panel. This is permanently stiffened by a science process and cannot give or sag. It's surrounded by a slimming action border. A featherstitched panel down each side of this girdle will contour your hips if they are a problem.

The girdle itself is of a "wonder" Lycra spandex blend. It's a new power net consisting of nylon, acetate and spandex. It feels like nothing on but has such slimming strength, it gives your figure everything that's possible with a foundation.

"Suddenly Slim" is in both girdle and panty versions, is the peak achievement of the California designer-genius, Olga. They are available in our area at

WRIGHT FASHIONS  
222 N. Cuyler MO 4-633  
Adv.

## Obituaries

**Mrs. Euple Hardin**  
Funeral services for Mrs. Euple Hardin were to have been conducted at 2 p.m. today in the Wells Street Church of Christ. (The News had previously reported the funeral was to be yesterday.) Quinton Gage, Bethany, Okla., and Lester Hathaway, minister of the Mobeetie Church of Christ, officiated. Burial was in Memory Gardens.

Pallbearers were Waylon Hughes, Lovell Hughes, Joe Martin, Danny Martin, Ronnie Bogle, Charles Bogle, David Steele and Duane Steele.

**Mrs. Lewis Jones**  
Rosary will be said for Mrs. Lewis Jones at 7:30 p.m. tonight in the Duenkel-Carmichael Funeral Chapel.

Requiem high mass will be said at 10 a.m. tomorrow in St. Vincent De Paul Catholic Church by Father Richard Lang. Burial will be in Fairview Cemetery.

Mrs. Jones died yesterday at 10:30 a.m. She had lived at 1108 E. Browning.

Survivors included her husband, Lewis (Doc) Jones; two daughters, Mrs. E. B. Ask, Pampa, and Mrs. R. A. Kennedy, El Paso, one son Jack Jones, Los Alamos, N.M.; 11 grandchildren; and three sisters, Mrs. R. A. Zeimer, Fox, Okla., Mrs. A. B. Sutphin, Seminole, Okla., and Mrs. E. S. Graves, Duncan, Okla.

## Stock Market

The following quotations show the range within which these securities could have been traded at the time of compilation.

Franklin Life	97 1/2	98 1/2
Gen'l Life Fla.	97 1/2	98 1/2
Gen'l Life Ind.	97 1/2	98 1/2
Nat'l. Life	97 1/2	98 1/2
Nat'l. Life Ind.	24 1/2	25 1/2
Nat'l. Life Ins.	33	34
Jefferson-Stan.	33	34
Northwestern	42	43 1/2
W. West. Life	181	182 1/2
W. West. Life	153	154 1/2
W. West. Life	40	41 1/2
W. West. Life	20 1/2	21 1/2
Pioneer Nat'l. Ins.	15 1/2	16 1/2
W. West. Invest.	13	13 1/2

The following 10:30 N.Y. stock market quotations are furnished by the Pampa office of Schroeder Bernert Hickman, Inc.

American Can	45 1/2
American Tel. & Tel.	14 1/2
American Tobacco	28 1/2
Anacosta	49 1/2
Bethlehem Steel	25 1/2
Chrysler	42 1/2
Celanese	41
Deere	25 1/2
Eastman-Kodak	125
Ford	54
General Electric	65 1/2
General Motors	60 1/2
Goodyear	24 1/2
IBM	50 1/2
Montgomery Ward	27 1/2
Pepper's	46
Phillips	46 1/2
R. J. Reynolds	40
Sears Roebuck	10 1/2
Standard Oil of New Jersey	62 1/2
Stamrock Oil	24 1/2
Southwest Public Service	30
Texas	23 1/2
U. S. Steel	37 1/2
Westinghouse	34 1/2

## ROAD DEATHS RISE

CHICAGO (UPI) — Deaths on the nation's roads and highways continued to occur at a record pace during January, the National Safety Council said Monday.

January traffic fatalities totaled 3,250 — a record for the month and an increase of 20 per cent over January 1963.

**Helps You Overcome FALSE TEETH Looseness and Worry**

No longer be annoyed or feel ill because of loose, wobbly false teeth. FASTEETH, an improved adhesive (non-acid, powder, applied on your plates holds them firm so they feel more comfortable. Avoid water-removal caused by loose plates. Get FASTEETH at any drug store.

# FITE FOOD MKT.

1333 N. Hobart MO 4-4092 or MO 4-8842

We Give PAMPA PROGRESS THRIFT STAMPS

OPEN SUNDAY Wednesday With \$2.50 Purchase or More

T-BONE STEAK Fite's Own Feed Lot Beef	93 <sup>c</sup> lb	SIRLOIN STEAK Fite's Own Feed Lot Beef	89 <sup>c</sup> lb	PORK CHOPS Center Cut Fresh	69 <sup>c</sup> lb
Ground BEEF Fresh Lean	39 <sup>c</sup> lb	CALF LIVER Fresh	39 <sup>c</sup> lb	Pork Loin Roast Fresh Lean	45 <sup>c</sup> lb

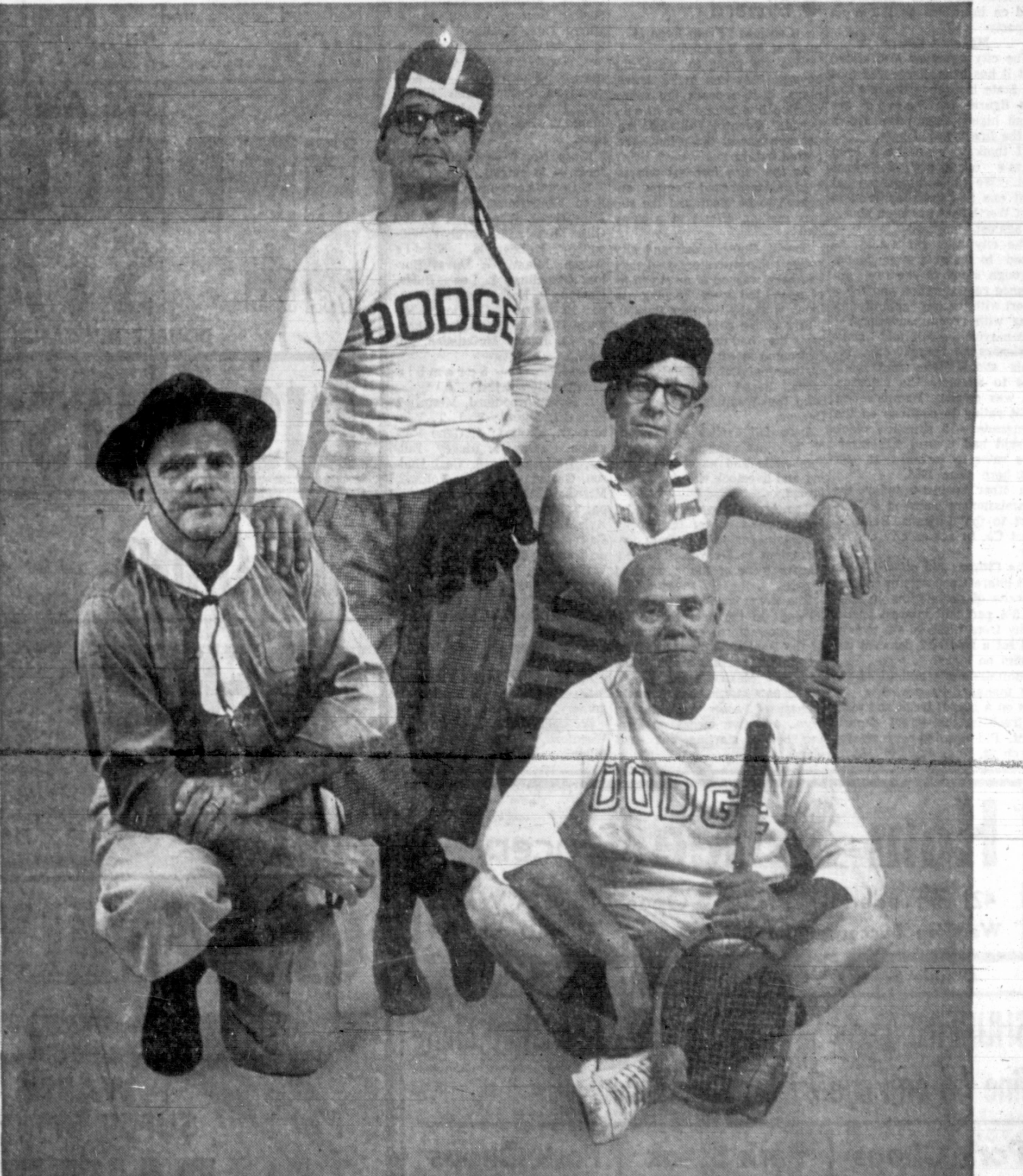
Fite's Own Fed, Feed Lot Beef • Cut • Wrapped • Quick Frozen

**BEEF** For Your Half Freezer **42<sup>c</sup>** Hind-quarters **52<sup>c</sup>** PLUS 5c LB. FOR PROCESSING

• 120 Days in Feed Lot • Fed 24 Hours Daily • Check Our 3 Month Pay Plan

SEE OUR SHURFINE AD ON PAGE 2

Shurfine, Reg. Pkgs. Cake Mixes White, Yellow, Spice, Devil's Food	4 for \$1.00	Borden's ICE CREAM Reg. or King Size	1/2 gal. 69 <sup>c</sup>
Large Eggs Grade A Nest Fresh Doz.	43 <sup>c</sup>	DR. PEPPER Shurfine	6 btl. ctn. 39 <sup>c</sup> plus dep.
U.S. No. 1 Russet POTATOES 10 lb. bag	55 <sup>c</sup>	SHURFINE CRACKERS Sunshine-1-Lb. Pkg.	1 lb. bag 19 <sup>c</sup>
Banquet Frozen FRUIT PIES Cherry, Peach Apple Fam. Size	29 <sup>c</sup>	SHURFINE CARROTS 2 cello.pks.	19 <sup>c</sup>
		Fresh, Tender TOMATOES Cell Pkg.	25 <sup>c</sup>
		Sparetime Frozen POT PIES Chicken, Turkey, Beef	2 for 29 <sup>c</sup>
		Eat More Frozen Barbecued Beef 1-lb. pkg.	69 <sup>c</sup>



## help send the Dodge Boys to camp!

(they're selling every car they have at a sacrifice)

They're ready, but their counselor won't let them go until they sell every 1964 Dodge, 880 and Compact they've got. The Dodge Boys pledge? Top dollar on your old car, low, long-term financing and non-retractable service promises! What does this get them? More sales! Up 22% so far this year above all other Southwest car sale increases. Paint a smile on their pinched little faces — buy Dodge for '64!

Contest

(Continued from Page 1)

Results of Monday afternoon's Junior Livestock Show, cattle division, follows:

Class No. 1 — Heavy Angus — 12 entries.

- 1. Becky Martin, Panhandle; 2. Dale Githens, Perryton; 3. Leonard Taylor, Pampa; 4. Nancy Paris, Miami; 5. Eddie Hodges, Mobeetie; 6. Dale Galimore, Pampa; 7. Glenda Hodges, Mobeetie; 8. Larry Swink, Perryton; 9. Bartley McLean, Pampa; 10. Bobby Githens, Perryton; 11. Bill Ridgeway, Mobeetie; 12. Joe Kelley, Mobeetie.

Class No. 3 — Light Angus — 11 entries.

- 1. Larry Dale Brown, Groom; 2. Butch Thompson, Miami; 4. Martha Paris, Miami; 4. Priscilla Swink, Perryton; 5. Shawn O'Neal, Panhandle; 6. Patrice O'Neal, Panhandle; 7. Tjden Moore, Miami; 8. Toni Willoughby, McLean; 9. Debbie Thompson, Miami; 10. Kay Judice, Perryton; 11. Doug Rives, Twitty.

Class No. 4 — Heavy Herefords — 12 entries.

- 1. Max Montgomery, Canadian; 2. Calvin Sechrist, Wheeler; 3. Laurel Maddox, Miami; 4. Rocky Woodford, Miami; 5. Richard Sechrist, Wheeler; 6. Terry McCasland; 7. Phil Slack, Perryton; 8. Kenneth Fields, Shamrock; 9. Douglas Talley, Miami; 10. Wendell Hardin, Higgins; 11. Gary Lister, Miami; 12. Gerald Gibson, Perryton.

Class No. 5 — Medium Herefords — 12 entries.

- 1. James Baggerman, Pampa; 2. Jakey Hess, McLean; 3. Cheryl Maddox, Miami; 4. Shelby Burton, Canadian; 5. Harry Tate, McLean; 6. Steve Hale, Miami; 7. Billy Don Rives, Twitty; 8. Ken Gill, Miami; 9. Champ Davis, Shamrock; 10. Charles Tyler, Pampa; 11. Stanley Swires, Canadian; 12. Bill Houchin, Canadian.

Class No. 6 — Light Herefords — 12 entries.

- 1. Clyde Ketchum, Conway; 2. Fred Vanderburg, Pampa; 3. Mike Goad, Wheeler; 4. Kathy Gill, Miami; 5. Carolyn Willoughby, McLean; 6. Eddie Wilson, Miami; 7. Duval Burton, Canadian; 8. Lee Pulse, Pampa; 9. Kathy Taylor, Pampa; 10. Jerry McCuiston, Miami; 11. Bill McCray, Panhandle; 12. Jimmy McCuiston, Miami.

Class No. 7 — Scramble Calves — 15 entries.

- 1. Rocky Woodford, Miami; 2. Ken Gil, Miami; 3. J. T. Winters Jr., Pampa; 4. Gene Ferguson, Pampa; 5. Rickey Butler, White Deer; 6. Carl Hudson, Groom; 7. Johnny Holland, Miami; 8. Dannie Miller, Pampa; 9. Russell Head, Pampa; 10. Kyle Black, Groom; 11. David Bowers, Miami; 12. Kerry Roper, Pampa; 13. LeRoy Haiduk, White Deer; 14. Bobby Brooks, Groom; 15. Charles Coffee, Miami.

Breed Winners

Angus — Becky Martin, Panhandle; Larry Dale Brown, Groom.

Hereford — James Baggerman, Pampa; Max Montgomery, Canadian.

Scramble Calves — Rocky Woodford, Miami; Ken Gill, Miami.

Court News

Probation Revoked After DWI Arrest

District Judge Lewis M. Goodrich today revoked the probation of Willie Lee Aaron, 703 E. Frederic, and sentenced him to five years in the state penitentiary at Huntsville.

Aaron was arrested Sunday by Pampa police on a second offense charge of driving while intoxicated. Police said Aaron was under a 5-year probationary DWI sentence imposed in 1962.

Dist. Atty. Bill Waters asked the court today to act on the probation violation.

\$300 Theft Reported From Parked Truck

John Snuggs, 705 Powell, reported to police that someone stole \$300 worth of articles from his pickup truck while it was parked last night near the Garden Lanes bowling alleys. The thieves took a spare tire and wheel, two tool boxes containing 50 to 60 electrical tubes for juke boxes, and another tool box with assorted repair parts and tools.

Insurance

(Continued from Page 1)

more than a score of fire hazards in run-down buildings that he said existed in all sections of the city.

City Manager Schmitzer said fire officials here had discovered that there is a possibility Pampa is not getting credit for all fire insurance premiums paid on insurance on Pampa property.

Mistakes Likely

The city manager also stated that it has been discovered that the State Insurance Board's fire loss figures for Pampa are much higher than those shown by the fire marshal here.

"I think there have been some mistakes," Schmitzer said. "We have discovered at least one fire that happened in Fort Worth that has been charged against Pampa."

The city manager said he hoped to be able to conduct a thorough study of the fire insurance rate situation and file a report with the city commission along with recommendations.

Ex-mayor Sidwell told commissioners he thought city officials should take immediate steps to alleviate the situation that was causing Pampa's fire credit rating to continue on the downgrade — a situation which he said had caused fire insurance rates to increase 30 per cent here since 1955.

In other business today the commissioners awarded a contract to the Citizens Bank & Trust Co. to act as city depository.

The Citizens bid offered 4 per cent interest per annum on time deposits of six months or longer, 3½ per cent interest on deposits from three to six months and set a rate of 3 per cent per annum on loans.

Commissioners authorized the city manager to advertise for bids on a gravel truck and pickup truck for the street department. Bid opening was set for March 24.

Johnny M. Taubee, 521 Somerville, operating vehicle without license, guilty, fined \$21.

Billy Orr, 418 N. Christy, operating vehicle with expired operator's license, guilty, fined \$20.

Warren W. Pettit, 804 E. Locust, muffler violation, guilty, fined \$15.

Alfred A. Ash, 514 S. Barnes, operating vehicle without proper registration, guilty, fined \$5.

Jerry C. Trolinger, 521 N. Nelson, operating vehicle with one headlight, guilty, fined \$5.

Louis E. McConnell, 1701 Wiliston, failure to yield right-of-way, guilty, fined \$13.

Jerry L. Hale, 803 W. Foster, running stop sign, guilty, fined \$10.

Mrs. Ann Rapstine, 1328 S. Hobart, running stop sign, guilty, fined \$10.

Jaei N. Stockton, Star Rt. 2, Pampa, unsafe start from parked position, guilty, fined \$13.

Josephine Edwards, 314 N. Gray, failure to yield right-of-way, nolo contendere plea, fined \$13.

Ronnie L. Smith, 925 E. Brown, operating unregistered motor vehicle, guilty, fined \$5.

Theodore A. Kane, 20, Corvallis, Oregon; Kenneth R. Brown, 17, of 804 N. Dwight, and Billy D. Cook, 19, Skellytown, each was fined \$25 and costs on charges of minors in possession of alcoholic beverage.

Blizzard

(Continued from Page 1)

most of the Panhandle.

"We are going to warn the boys so they can make travel plans, if it appears the snows develop into a real serious threat," Quentin Williams, superintendent of the show, reported today.

As the snow forecast was issued, skies around Pampa appeared to be clear and the sun was making efforts at a shiny day.

Sheriff Rufe Jordan and city police radio operators said they had been warned of no storm as of noon, but were keeping in touch with the Weather Bureau.

City police said the only reports they had on the snow forecast came in early morning Department of Public Safety messages, based on information from the Weather Bureau at Denver.

Snow fell earlier at Clayton, N. M., just west of the Texas Panhandle and hazardous driving and livestock warnings were issued.

The Arctic spawned a cold front moved out of the Rocky Mountain region and from information in Denver, its icy fingers were of the giant-sized type.

The storm would come almost 30 days to the date that a 16-inch snow storm crippled most of the Panhandle area and killed some 12 persons in the Texas and New Mexico area.

The new storm laid down 11 inches of snow on Lander, Wyo., and five inches on Denver before starting out eastward.

# WARD'S GROCERY

WE FEATURE USDA CHOICE BEEF—UNCONDITIONALLY GUARANTEED

U.S.D.A. GOOD

Round Steak 79¢ Lb.

U.S.D.A. GOOD

Rump Roast 59¢

FRYERS A Grade 29¢ Lb.

Beef Liver 19¢ lb. Barbecue 69¢ lb.  
Nutwood Sugar Cured BACON 2 lbs. 89¢ Hot Boneless

WE ARE NOW GIVING



## BUCCANEER STAMPS

DOUBLE BUCCANEER STAMPS ON WEDNESDAY

BISCUITS Meads 6 FOR 39¢

MELLORINE 1/2 gal. 3 FOR \$1.00

COFFEE Kimbell's 69¢ lb. Can

JELL-O Assorted Flavors 2 FOR 15¢

CAKE MIX Reg. Pkg. Cinch 19¢

BUDGET BALANCING PRICES!

BEETS 303 Can Sliced 3 FOR 35¢

OLEO 13¢

FLOUR Kimbell's 5 Lb. Bag 39¢

BLEACH Kalex 1/2 gal. 29¢

PUDDING My-T-Fine 2 FOR 15¢

PEACHES Miss Georgia 2 1/2 4 FOR 89¢

APPLE SAUCE Apple Boy 303 Can 13¢

Mortons POT PIES Turkey Chicken or Beef 3 FOR 49¢

GARDEN-FRESH PRODUCE U.S. N. 1 Russett POTATOES 10 Lb. Bag 43¢ Red Delicious APPLES lb. 15¢

WARD'S SUPER SPECIAL BAKERITE SHORTEING 19¢

With \$7.50 or More Purchase Excluding Cigarettes

502 W. Francis

Open 7:30-9:00 Weekdays — 8 to 8 Sundays

MO 9-9641

## Hom & Gee Grocery

421 E. Frederic Open 7 Days A Week We Give Buccaneer Stamps MO 4-8531

Double Stamps Wed. With \$2.50 Or More Purchase

SHURFINE Early Saving Sale Continues. Shop Shurfine Ad on Page 2 in Today's Paper.

Pork Chops Center Cut 59¢ lb.	Pork Steak Lean 39¢ lb.	Pork Chops First Cut 39¢ lb.
Choice Beef Sirloin or T-Bone Steak 79¢ lb.	Quality Bacon 2 lbs 79¢	
Fresh Ground Beef 4 lbs. \$1	Pork Sausage 3 lbs. \$1	

We Feature U.S.D.A. Good or Blue Ribbon Beef BEEF Half Beef 45¢ lb. Hind Qtr. 55¢ lb. Easy Payment Plan NO EXTRA CHARGE FOR PROCESSING



"Better Food For Less"  
**IDEAL**  
FOOD STORES

# Hurry Up SPRING Let's Get Back Outdoors!

Folks are "Ready as the Robin" for another glorious outdoor season! Ideal is ready too, with everything needed to sustain gracious outdoor living.



WATCH FOR OUR SPECIAL SALE CIRCULAR  
AT YOUR HOME THIS WEEK FOR EXCITING  
CASH SAVINGS!

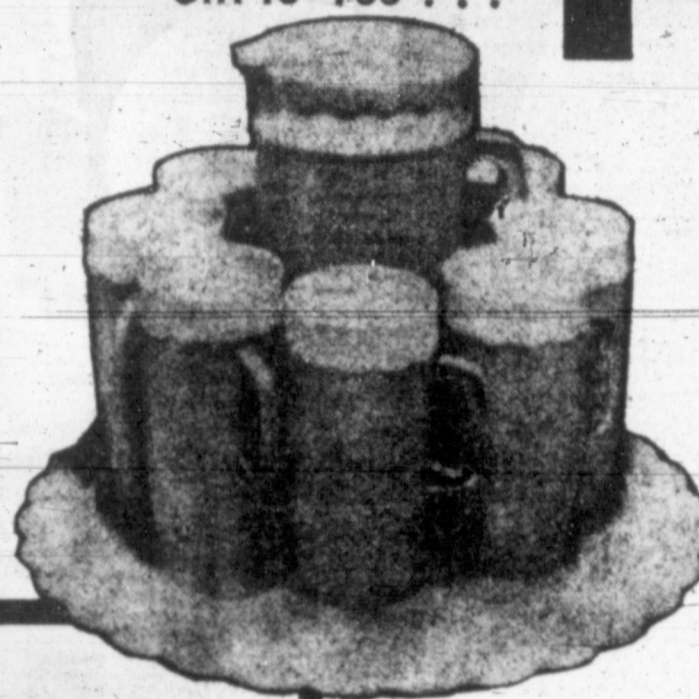
ENRICHED...  
**Gold Medal  
FLOUR**  
KITCHEN TESTED  
**5<sup>-lb. Bag</sup> 49¢**

DEL MONTE  
**Chunk Style  
TUNA**  
LIGHT MEAT  
**6½ oz. can 29¢**

Our "Outdoor  
Season"  
Gift to You...

# FREE

16-OZ. THERMO PLASTIC  
**Beverage Mug**

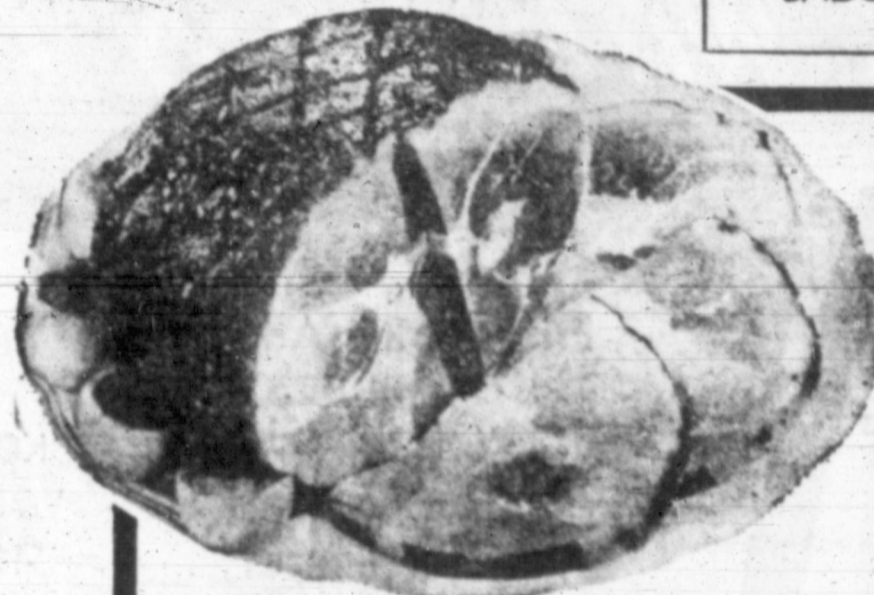


With Coupon From Our Special Sale Circular  
Delivered To Your Home This Week

Build a complete Thermo Beverage Set at a fraction of its true value! Select an item each week including 8 beverage mugs, 2-qt. insulated pitcher and matching hostess tray that doubles as an Hors d'Oeuvre dish and snack tray. See them on display at Ideal.

LONG GRAIN  
**Watermaid Rice** 2-lb. Pkg. **37¢**  
WOODBURY  
**Facial Soap** 2 BATH SIZE **26¢**

KING SIZE...PEPSODENT  
**TOOTHPASTE**  
SPECIAL LABEL **59¢**



CUDAHY PURITAN  
**COOKED  
HAM**

<b>SELECTED CENTER SLICES</b> For Baking or Frying <b>Lb. 89¢</b>	<b>WHOLE HAMS</b> 14 To 18 Lb. Average <b>Lb. 49¢</b>	<b>SELECTED BUTT PORTION</b> Fully Cooked <b>Lb. 49¢</b>	<b>SELECTED SHANK PORTION</b> Fully Cooked <b>Lb. 39¢</b>
---	---	--	---

Ideal Thick Cut <b>Sliced Bacon</b> 2-lb. Pkg. <b>98¢</b>	Gorton's Breaded <b>Fish Sticks</b> 1-lb. Pkg. <b>59¢</b>	U.S.D.A. Grade "A" Beltsville <b>YOUNG TURKEYS</b> 6 to 10-Lb. Average Lb. <b>49¢</b>
Bar-S Chopped <b>Smoked Beef</b> Pkg. <b>39¢</b>	Gorton's <b>Breaded Shrimp</b> 8-Oz. Pkg. <b>49¢</b>	Swift's Premium All-Meat <b>Skinless Franks</b> 1-Lb. Pkg. <b>49¢</b>
Blue Marrow Frozen <b>Quick Fix g Siks.</b> Pkg. <b>79¢</b>	Fresh from our Delicatessen <b>Potato Salad</b> Lb. <b>29¢</b>	<b>Baked Beans</b> Lb. <b>25¢</b>
Swift's Full Cream <b>Longhorn Cheese</b> lb. <b>49¢</b>		

BANQUET FROZEN  
**FRUIT  
PIES**  
**3 20-oz. Pkgs. 1.00**

MICHIGAN  
**PEAT  
MOSS**  
100-lb. Bag **1.69**

ALL VARIETIES  
**BANQUET  
DINNERS**  
11-oz. Pkg. **39¢**

CANTON GREEN PLASTIC  
**GARDEN  
HOSE**  
12 YEAR GUARANTEE  
½-IN. DIAM. 50 FT. LONG  
EA. **1.77**

Prices Effective  
Thru Saturday  
March 7, 1964

BRASS SPRAY...  
**Nozzles EA 77¢**

**GOLDEN RIPE!** TROPICAL TREAT



**BANANAS**  
Add a touch of  
Spring with a  
fresh fruit salad.  
**10¢**



FAMOUS DEL MONTE  
**TOMATO  
JUICE**

Colorado  
**RED POTATOES**  
**20<sup>-lb. Bag</sup> 59¢**



**4 46-oz. cans 1.00**

Get Your Extra Bonus In GUNN BROS. STAMS — The Leading Stamp in the Southwest!!!



**JUST STRINGING ALONG**—Being a marionette hasn't prevented this life-sized fellow from enjoying a strictly human pleasure—dancing with a pretty girl. The puppet is part of display at the British Toy Trade's annual fair in Brighton, England.

## Government to Issue Consumer Price List

By WILLIAM J. EATON — Despite changes made in WASHINGTON (UPI) — The government will unveil this week a streamlined consumer price index that is expected to give a more accurate measurement of ups and downs in living costs.

The index, one of the most reliable barometers of inflation, will be published in "new" and "old" versions for six months to ease the transition for its many users. It is the product of a \$5 million, three-year reworking designed to make the Labor Department's most vital statistic reflect the latest changes in American buying habits.

### Price More Goods

More goods and services purchased by the average city worker will be priced in compiling the index. Stores in suburbs, super-markets, and discount houses will be stressed in the price-checking. Cities in all 50 states, including Alaska and Hawaii, will be covered. The index reflects changes in prices paid for such varied items as baby food, whisky, parking fees and funerals. The wages of an estimated 2 million workers are geared to it under "escalator" clauses in labor-management contracts.

Methods of computing the figure, Labor Department experts predicted there would be little, if any, difference in the result for the January index compared to the old method.

The Bureau of Labor Statistics announced last month that the index stood at 107.6 per cent of average 1957-59 prices—a record high. This meant that it costs \$10.76 to buy the same goods and services that sold for \$10 about five years ago.

### More Changes

The revision, however, eventually may result in more changes in the figure. There is less emphasis now, for example on food and greater weight on prices of housing and transportation.

These shifts were made following spending surveys by the Labor Department to find out how Americans had changed their buying habits during the past decade.

Thus, although the 1957-59 base period is the same, the index figure could be quite different. Food prices always have been active, moving up or down rapidly from month to month. The costs of services, such as housing and transportation, have been rising steadily but at a slower rate.

## Television Programs

### Channel 4 KGNC-TV, TUESDAY NBC

8:00 The Match Game	8:30 News	9:00 Richard Boone
8:30 News	8:58 News	9:30 Telephone Hour
8:58 Make Room for Daddy	9:15 Weather	10:00 News Report
9:00 Cartoon Magic	9:25 Sports	10:15 Weather
9:30 Fractured Filches	9:55 Mr. Novak	10:25 Sports
	10:30 Battle Line	10:35 Tonight Show

### CHANNEL 4 WEDNESDAY

8:45 Morning	9:35 Word For Word	11:10 Weather
9:00 News	10:05 Concentration	11:30 Ruth Brent
9:30 Weather	10:35 Missing Links	11:35 Burns & Allen
1:30 Farming Today	11:05 Your First Impression	1:00 Let's Make A Deal
9:50 Cartoon Magic	11:45 Truth or Consequences	1:35 NBC News
9:55 King & Odie	11:55 CBS News	1:35 The Doctors
9:55 Jay & The Beans	12:00 News	1:35 Lovell Young
9:55 News NBC		1:35 You Don't Say

### Channel 7 KVV-TV, TUESDAY ABC

8:30 Mater Adams	8:55 Local News	9:00 Greatest Show on Earth
8:55 Kiffman	9:15 Don Cochran	9:30 The Fugitive
9:00 Dave Gray	9:35 Combat	10:00 Local News
9:00 Sea Hunt		10:15 Weather
9:25 Leave It to Beaver	10:00 McHale Navy	10:25 Movie

### CHANNEL 7 WEDNESDAY

8:30 Jack Lalanne	11:35 Father Knows Best	11:45 The Charlie Rose Show
8:55 Price Is Right	12:05 Tennessee Ernie Ford	1:30 Day in Court
10:25 Seven Keys	12:30 Texas Ernie	1:35 Lisa Howard
	12:45 Weather	1:35 General Hospital
		2:00 Queen for a Day

### Channel 10 KFPA-TV, TUESDAY CBS

8:00 The Secret Storm	8:30 Weather	10:00 News-Jim Pratt
8:30 Soldier of Fortune	8:55 Lawman	10:15 Weather Report
8:55 Freddie the Fireman	9:00 Red Skelton	10:25 KFPA-TV Editorial
9:00 Superman	9:05 Petticoat Junction	10:35 The Flicker
9:30 Walter Conkita	9:30 Jack Benny	11:00 News Report
9:55 News Report	9:55 Gary Moore	11:05 150 Flicker

### CHANNEL 10 WEDNESDAY

8:30 Thought for the Day	8:55 Capt. Kangaroo	11:00 Electronic News Report
9:00 Little College	9:00 Freddie the Fireman	11:15 Weather Report
9:30 News	9:30 I Love Lucy	11:20 Jack Tinkle
9:55 News	10:00 The McGees	11:30 As the World Turns
10:00 TV-10 Editorial	10:30 Pete and Gladys	1:00 Password
10:15 Weather Cast	11:00 Love of Life	1:00 House Party
10:30 World of Sports	11:30 Search For Tomorrow	1:35 The Tall Truth
10:35 News The Fireman	11:45 The Guiding Light	2:00 Edge of Night



# PRICES ARE

FRONTIER STAMPS WITH EVERY PURCHASE

**BAKERITE**  
SHORTENING  
3 lb. CAN  
**49¢**

**BAKE-RITE**  
PURE SHORTENING

STORE HOURS 8 am-8 pm

**CATSUP**

HUNT'S  
14-OZ.  
BOTTLE

MONDAY  
THRU  
SATURDAY  
**12 1/2¢**

Prices in this Ad Effective Tuesday, Wednesday, Thursday, Friday

**CORN FLOUR COFFEE**

KOUNTY KIS  
WHOLE KERN  
12-OZ. CAN **1**

FOOD CLUB  
UNCONDITION  
GUARANTEE  
5-LB. BAG **3**

FOLGERS  
DRIP OR  
REG.  
1-LB. CAN **5**

We Reserve The Right to Limit Quantities

**FACIAL TISSUES**

SCOTTIES  
400 COUNT BOX

**22¢**

**BANANAS**

GOLDEN RIPE

2 LBS. **19¢**

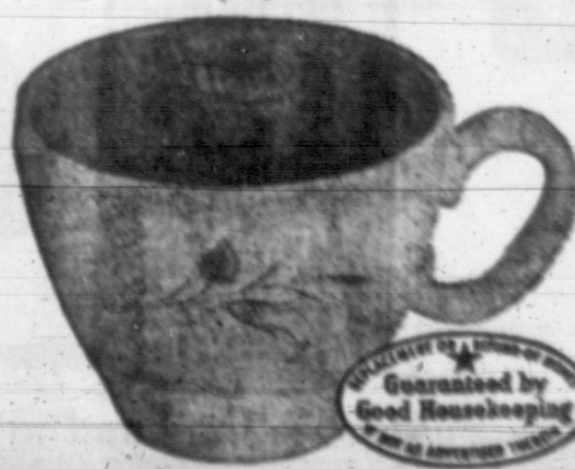
**GRAPEFRUIT**

FLORIDA INDIAN RIVER OR RUBY REDS

2 lbs. **23¢**

**NOW THRU WEDNESDAY**

ANOTHER CHANCE TO GET YOUR "AUTUMN HARVEST" DINNERWARE



**CUP 9¢**

EACH ONLY-

WITH EACH 5.00 PURCHASE

**FURR'S LEADS WITH LOW PRICES EVERY DAY COMPARE!**

My-T-Fine Assorted Pudding 4-oz. Box

**10¢**

**FURR'S**  
SUPER

SUPERMARKET IN PAMPA ANNOUNCES!

200000



REDUCED!

SALE - DOUBLE on WEDNESDAY WITH \$2.50 PURCHASE OR MORE

Monday, March 3 and 4

WE CAN'T LIST ALL OUR LOW PRICES... SO... WE INVITE YOU TO VISIT FURR'S SUPER MARKET, 1420 NORTH HOBART IN PAMPA SO THAT YOU WILL KNOW ALL PRICES ARE LOW... ON NATIONAL BRANDS, TOO. COMPARE!

10¢

39¢

59¢

Dartmouth MELLORINE 1/2 Gal. 29¢

TIDE GIANT BOX WITH \$5.00 PURCHASE OR MORE 49¢ INCLUDE SPECIAL 10¢ OFF LABEL

BABY FOOD 10¢

GERBER STRAINED JAR

FOR 88¢

Eggs

Nest Fresh Grade A Med. Doz.

39¢

PEACHES

HUNTS OR GAYLORD SLICED OR HALVES NO. 2 1/2 CAN

23¢

Oleo

Western Ranch

12 1/2¢ lb

SALMON

Lily Pink Tall Can

49¢



We Reserve the Right To Limit Quantities

FRESH DRESSED FRYERS 29¢ LB.

U.S.D.A. GRADE A WHOLE

SLICED BACON 49¢ lb

Hickory Sweet

SAUSAGE 98¢ 4 lb. bag

PORKEY COUNTRY STYLE

STEAKS 79¢

TOWN AND COUNTRY NO WASTE NO BONE QUICK AND EASY 20 OZ. PKG.

SHRIMP 39¢ ea

OCEAN BREEZE BREADED 10-OZ. PACKAGE

FURR'S SUPERMARKETS



ROYAL ROMANCES—A flurry of betrothals, engagements and renunciations has put at least some of the world's royalty into the headlines in recent days. Princess Anne-Marie of Denmark (top, left) will reportedly convert to the Greek Orthodox faith of her betrothed, Crown Prince Constantine of Greece (top, right) and renounce her right of succession to the Danish throne. And in Japan, Prince Yoshi, 28, (bottom, left) second son of Emperor Hirohito, will marry Hanako Tsugaru, 23, (bottom, right) sometime after the Olympic Games in October. The announcements follow that of Holland's Princess Irene, who has renounced her Protestant faith and her right of succession and will marry Prince Carlos de Borbon y Parma of Spain, a Catholic.

Catholic Group OKs U.S. War on Poverty

WASHINGTON (UPI) — The Social Action Department of the National Catholic Welfare Conference (NCWC) has strongly supported a national war on poverty. The Catholic agency said it was offensive to Christian conscience that 35 million Americans are poor "in the midst of plenty." It did not refer specifically to the administration program which President Johnson is expected to send to Congress soon. But the NCWC said that there is need for both public and private action to help American families genuinely poor. The NCWC report said the elimination of poverty should be and involvement for every church member. "While we give wholehearted support to civic projects for the relief of poverty, we do not feel that our Christian duties end with such endorsement," it said. "It is not enough to vote for sound policies, to pay taxes, and to contribute to charity. The dedicated Christian must be always ready to give of himself. In older and simpler societies, it was fairly easy for any person who wanted to help his neighbor to know what was needed. Today it is possible to live in our suburbs, rush to work without really seeing our city surroundings, and never even know what life is like for 35 million fellow Americans who live in poverty."

13th In Line for Throne Born to British Princess

LONDON (UPI) — Princess Marina of Greece, was with Alexandra, vivacious and popular cousin of Queen Elizabeth II, gave birth to a son Saturday. Delivery for the 27-year-old princess was reported to have been "difficult." Doctors said mother and child — 13th in line for the throne — are doing fine. Weight of the baby was not announced. He will be named later. The joyful father, Scottish businessman Angus Ogilvy, 35, who had been hovering around anxiously for the past two weeks, immediately telephoned his good news to the queen. He brought flowers to his bride, ordered champagne to celebrate the birth, telephoned Queen Mother Elizabeth and Princess Margaret and fired off cables to his wife's two brothers, the Duke of Kent and Prince Michael, both serving with their regiments in Germany. The new son, though 13th in line to the throne, will be plain "master" since his father has no title. But he will not remain 13th long. Because of an unprecedented rash of royal births, he will be 15th in line. Queen Elizabeth is expecting her fourth child sometime next month. Her sister, Princess Margaret, expects her second in April, and the Duchess of Kent, Alexandra's sister-in-law, is due to have her second in May. Alexandra, a darling of the British public, gave birth at suburban residence where she and Ogilvy moved shortly after they were married in Westminster Abbey last April 24. Alexandra's mother, Princess

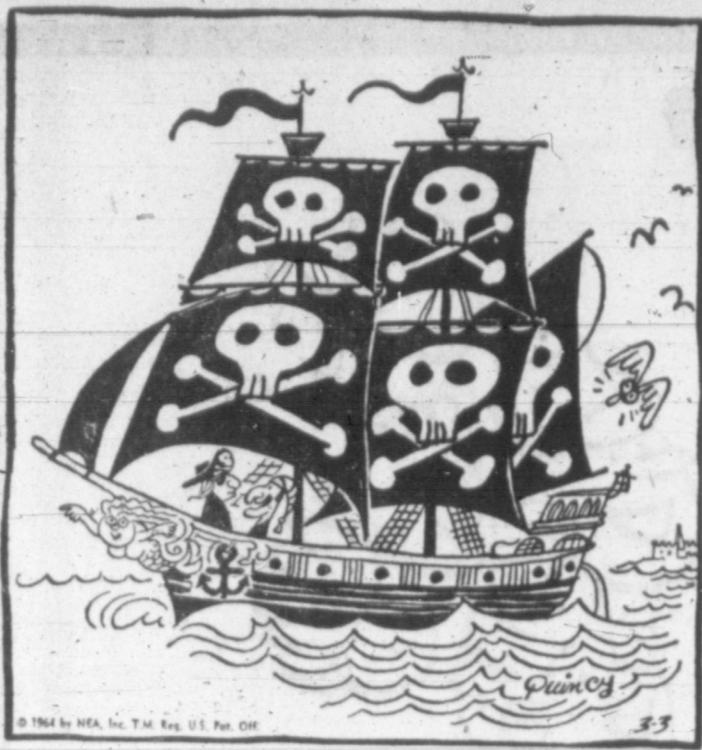
Youth Center Calendar

- TUESDAY 5:00 — Travis vs. St. Vincent 6:00 — Horace Mann vs. Austin 7:00 — St. Johns vs. Baker 8:00 — Winner of Houston vs. Lamar vs. Wilson WEDNESDAY 3:00 — Open; gym open activity 4:00 — Adv. beginners; HI School trampolining 5:00 — Intermediate lessons 6:00 — Swim team workout 7:00 — All Ages Swim; White Deer vs. Panhandle Packing 8:30 — Celanus vs. First National THURSDAY 3:00 — Open; gym open activity 4:00 — Adv. Beginners; grade school trampolining 5:00 — Intermediate lessons; Grade Tournament Winners (semi-finals) 6:00 — Swim Team workout; Grade Tournament Winners (semi-finals) 7:00 — Family Swim and trampolining; Judo Meeting 8:30 — All Ages swim FRIDAY 3:00 — Open; gym open activity; Women's Beginner swim class 4:00 — Adv. Beginners lessons 5:00 — Intermediate lessons 6:00 — Swim team workout 7:00 — All Ages Swim; Pampa Jaycees vs. Wards 8:30 — Motor Supply vs. S. W. Public Service SATURDAY 9:00 — Open; Gym Open Activity; Swim Team Workout 11:00 — All Ages Swim 12:00 — Close for Lunch 1:00 — All Ages Swim; Gym Open Activity 2:00 — Grade School Tournament (Finals) 5:00 — Close 7:30 — Calico Capers Square Dancing SUNDAY 2:00 — Open; All Ages Swim; Gym Open Activity 5:00 — Close

POSSIBLE LEGISLATION WASHINGTON (UPI) — Sen. John L. McClellan, D-Ark., says he is thinking about proposing legislation to make it unlawful to belong to a secret criminal organization. McClellan, whose Senate investigations subcommittee held hearings on the "Costa Nostra" criminal society, said Sunday no present law covered membership in an organization dedicated to crime as means of livelihood. REPORT JOB INCREASE COLOGNE, Germany (UPI) — The West-Germany-Industry Institute reported Saturday that employment increased by 31,000 last year to a total of 21.7 million.

OUT OUR WAY

J. R. Williams



"We're outside the legal three-mile limit, Cap'n Kidd—can the men play poker for money now?"

OUR BOARDING HOUSE

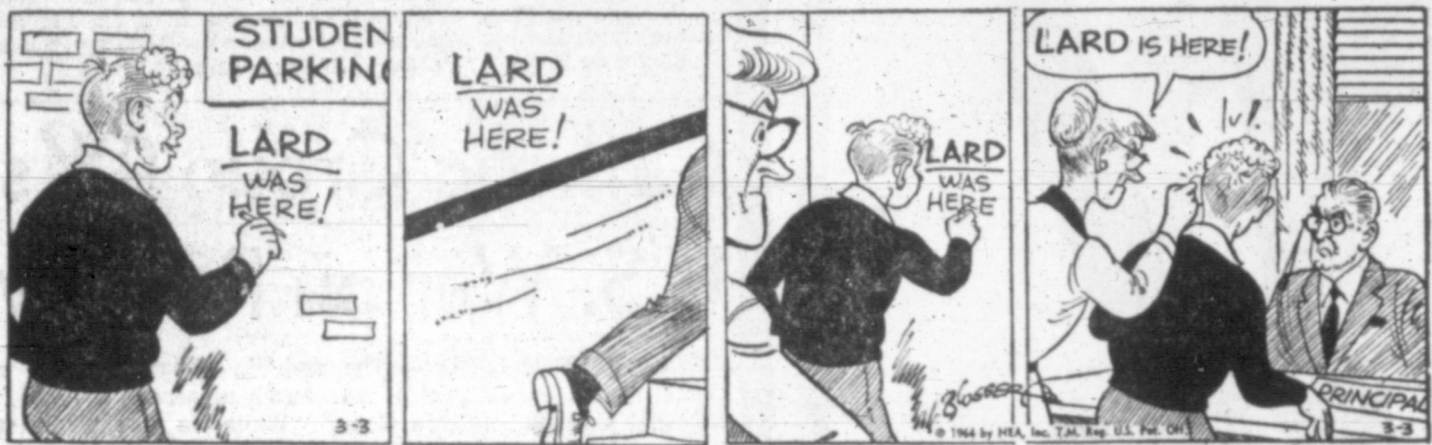
With Major Hoople

BLITZ BROTHERS

by SAKREN



Freckles



The Berrys



Bugs Bunny



Short Ribs



Captain Easy



Jackson Twins



Morty Meekle



Blondie



Alley Oop



Bonnie



Ben Casey



Mickey Finn



Priscilla's Pop



Dixie Dugan



Joe Palooka





# Hot Line' Between Washington, Moscow Warms up on the Hour

By DONALD H. MAY  
WASHINGTON (UPI)—Once every hour, seven days a week, terse messages crackles over the lines between Washington and Moscow.

It is gibberish. It may say "quick brown fox jumped over the lazy dog's back." It may be a line from a musty technical journal or a scrap of classical Russian literature.

One hour the meaningless message goes from West to East; the next, East to West, upon hour, week upon week, month upon month. And "meaningless" may not be the right word.

The messages are test transmissions of the "hot line" Russia and the United States set last year to communicate the moments before—and hopefully to forestall—mutual nuclear destruction.

They reflect much about U.S.-Soviet relations—mistrust, fearful power, the unattainability of real disarmament, the nibbling efforts to achieve some protection from power.

In 18 years of negotiations Russia and the United States have achieved no agreement for even a modicum of real disarmament. They have achieved four agreements for steps designed to whittle away at the risk of war.

**Ban Antarctic Testing**  
The first was the Antarctic Treaty of 1959, which banned military operations including nuclear weapons and nuclear tests from the Antarctic continent and provided for inspection against cheating. Early this year the United States conducted the first inspection of

Russian Antarctic scientific bases under the treaty.

The second agreement, in June, 1963, was the hot line agreement. It grew out of a long deadlock in Geneva disarmament negotiations, after the Russians, in April, 1963, suddenly agreed to discuss "collateral measures."

It also stemmed from the October, 1962, Cuba-missile crisis in which Russia and the United States stared into the abyss of war and had to exchange messages by press wires because diplomatic channels were too slow.

The third, in July, 1963, was the limited nuclear test ban agreement, finally signed in August. It banned nuclear testing in the atmosphere, under water and in space—all areas where tests can be detected from afar without inspection on Soviet soil, to which Russia objects.

The fourth, last October, was a U.S.-Soviet agreement which made possible a United Nations resolution calling on all nations to refrain from placing weapons of mass destruction in outer space.

**Has Hollow Ring**  
This last had a hollow ring inasmuch as military experts say it is impractical at present to try to put nuclear weapons into orbit. But the Russians wanted it—perhaps to demonstrate a mood of cooperation. U.S. officials felt violations could be fairly readily detected. They also felt that maybe it was good that both countries agreed not to do something neither intended to do. Otherwise, in their rivalry, they might both try to do it for fear the other would first.

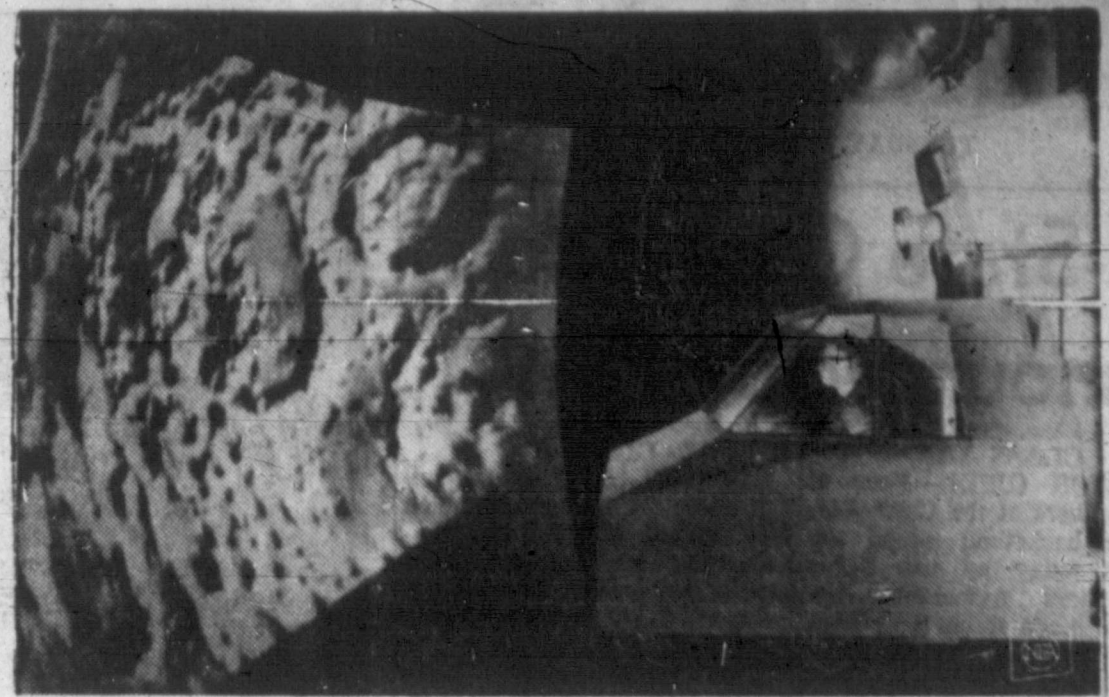
All four agreements have elements in common. They are small steps—in some ways only psychological. None required either side to change its major, entrenched positions.

The Russians, in the limited test ban, did not have to accept inspection on Soviet soil—which they call "espionage." The inspection in the Antarctic involves only scientific bases. In none of the agreements did the United States accept from Russia

## LAUNCH SATELLITE

VANDENBERG AFB, Calif. (UPI)—The Air Force launched another secret satellite toward polar orbit Thursday night, the fourth major space shot from this West Coast base this week.

Although the Air Force declined to disclose details of the shot, in keeping with Defense Department policy, officials did say a Thor-Agena booster combination was used as the launch



MAN AND THE MOON—With image of the moon before him, trainee flies space flight trainer to determine just what a man can and cannot do in controlling spacecraft during an actual mission. The Boeing Company of Seattle, Wash., designed the training machine, which uses closed-circuit television to project images of the moon on a curved screen.

apparent in recent months. Khrushchev has referred to it as arms reduction by "mutual example."

High officials here, though they have not talked of it publicly, have called it "arms control by coincidence of policy."

For example, the United States, announced on Jan. 8 that because expected requirements are being amply met the atomic energy commission is cutting down its production of fissionable materials for nuclear weapons. President Johnson called on Russia to do the same.

**Now Your Money Earns More At First Federal**

**4 1/2%**  
Anticipated Dividends

**Paid Quarterly**

Save by the 10th—Earn from the 1st

*First* **FEDERAL**

Savings & Loan Association

of Amarillo

In Pampa See—

Ray or Kirk Duncan MO 5-5757

Intriguing  
**SHADOW VALLEY**

**AURORA**

**WEDGEFIELD**

Beautifully Textured Carpets By  
Wunda Weave in enduring nylon

**YOUR CHOICE**

**7.50** Sq Yd.



From the Convention Group of Luxury Carpets  
at Fractional Prices... by Wunda Weave.

Your Exclusive Wunda Weave Dealer  
In The Top O' Texas Area

**Texas Furniture Company**

Quality Home Furnishings

**SIRLOIN STEAK**

U.S.D.A. Good Beef

**69¢** lb

**PORK ROAST**

Fresh, Lean, Shoulder

**29¢** lb

**BACON**

Rath's or Armour's Star

**1 49¢** L P B K G

**FRYERS 23¢** lb.

Fresh Dressed, U.S. Inspected

Kimbell's

**COCOA**

1/2 lb. pkg. **25¢**

Morton's Frozen

**CREAM PIES**

Assorted Flavors Family Size **29¢**

Gladiola

**FLOUR**

10 lb. bag **89¢**

Jewel or Flair

**SHORTENING**

3 lbs. **49¢**

Nestle's Reg. 5c

**CANDY BARS**

10 for **29¢**

**CHILI with beans**

Ellis No. 300 Can **19¢**

**COOKIES**

Creme Filled Reg. 59c **39¢**

**OLEO**

All Sweet **23¢** lb

**HOT SAUCE**

Diamond 6-oz. Bot. **10¢**

**Peanut Butter**

Swift's 16-oz. Jar **29¢**

**DETERGENT**

Ajax Reg. Size **25¢**

**MILK**

Kimbell's Tall Can **10¢**

**CABBAGE**

Fresh Green **5¢** lb.

Red Rome **APPLES**

4 lb. bag **49¢**

TEXAS **GRAPEFRUIT**

Ruby Red **10¢** lb.

TUBE **TOMATOES**

**19¢** each









**On the Record**

**HOSPITAL NOTES  
SATURDAY**

**Admissions**

Mrs. Mary Edgeline Slater, 320 Doyle  
Mrs. Annie Brown, 400 Roberta  
Mrs. Faye Hadley, Gruver  
A. G. Adams, White Deer  
Marla Snodgrass, Skellytown  
Sammy Ray Condo, Pampa  
Baby Girl Slater, 320 Doyle  
Mrs. Hazel Parks, Wheeler

**Dismissal**

Mrs. Patricia Brown, Pampa  
David Hawkins, 601 Lowry  
Mrs. Barbara Johnson, 332 Lefors

Mrs. Elsie Loveland, Guymon  
Mrs. Louisa Luna, Lefors  
Mrs. Ethel Robinson, 411 Hill  
Kenneth Ray, 716 W. Brown  
Ralph Sloan, 711 E. Browning  
Robert J. Williams, Berger  
Mrs. Marquita Paulsell, Berger

Mrs. Edna McCowan, Berger  
Mrs. Jenelle Davis, Berger  
Mrs. Dorothy McFarland, 421 Noida

Mrs. Cleora Stone, Pampa  
Mrs. Lavenna Pannell, Canyon

Baby Boy Pannell, Canyon  
Mrs. Alouise Martin, White Deer

Baby Boy Martin, White Deer  
Mrs. Linda Moore, 1001 N. Sawyer

Baby Boy Moore, 1001 N. Sawyer

Mrs. Orlie Eubanks, Pampa  
Billy Leonard, 1117 Sirroco  
Jack Peoples, Pampa  
David Gates, Spearman  
Mrs. Beatrice Matney, 817 W. Kinsmill

Mrs. Irlie Parks, Panhandle  
David Tucker, Phillips  
Mrs. Samantha Henderson, Lefors

Mrs. Mildred Miller, Shawnee, Okla.

Cuy Pharis, 2615 Navajo  
Erroy Crockett, McLean

Mrs. Jenna V. Gumbey, Spearman

Mrs. Joan Yeager, 1136 Sirroco

Kathleen Kotara, Panhandle  
Virgil Jamison Jr., Wheeler  
Mrs. Patsy Minkick, Miami  
Baby Boy Minkick, Miami  
Mrs. Jerry Steyer, 2312 Navajo

Mrs. Phyllis Mitchell, 2232 Pinewood

**CONGRATULATIONS:**  
To Mr. and Mrs. Wayne Slater, 320 Doyle, on the birth of a girl at 6:03 p.m., weighing 7 lbs., 12 ozs.

**SUNDAY**

**Admissions**

Mrs. Shirley Hollowell, 1609 Mary Ellen  
Mrs. Trudy Phelps, 1701 Coffee

Baby Boy Hollowell, 1609 Mary Ellen  
Mrs. Annice Watt, 625 N. Sumner

Mrs. Hazel Coffin, Pampa  
Baby Girl Phelos, 1701 Coffee  
Lloyd Wells, Skellytown  
Wilbur C. Cotner, 808 E. Francis

Billy J. Stephens, 712 Dean Drive  
W. Keet Bickerstaff, Panhandle

Mrs. Jessie L. Elliott, Skellytown

Mrs. Claudia Smith, Berger  
Mrs. Rae Lefebvre, 728 N. Wells

Jack Curnutt, Berger  
Terry Lynn Arnold, Pampa  
Mrs. Angella Garcia, Pampa  
Miss Jo Alice Mihaliski, Pampa

Roy L. Cargill, 105 N. Hobart  
Mrs. Etta McCowan, Berger

**Dismissals**  
James H. Roper, 321 Miami  
John N. Plaster, 1010 Charles  
Stanley Beck, White Deer  
Mrs. Ann Taylor & Baby Boy, 2142 Aspen

Phillip Ray Archer, Hugoton, Kans.

Mrs. Marilyn Trolinger & Baby Boy, 1808 N. Wells  
Donna Sue Cope, Berger  
Marvin Todd, Lefors  
Mrs. Sandra Franks, 2212 N. Christy

Mrs. Margaret Weller, Groom  
Mrs. Mary McCracken, McLean

Mrs. Pearl Scarberry, 817 S. Barnes

Jack Barton, Mobeetie  
Mrs. Roxie Dupius, White Deer

**CONGRATULATIONS:**  
To Mr. and Mrs. Bobby Hollowell, 1609 Mary Ellen, on the birth of a boy at 2:39 p.m., weighing 7 lbs., 2 ozs.

To Mr. and Mrs. C. J. Phelps, 1701 Coffee, on the birth of a girl at 2:49 p.m., weighing 6 lbs., 6 ozs.

**FIRE KILLS TWO**  
VIENNA (UPI) — The bodies of two workers were recovered Saturday after fire destroyed a big refrigerator warehouse. Authorities said the blaze, which started Friday, was ignited by sparks from welding equipment.



JOHNSON AND JOHNSON  
**COTTON BALLS 29<sup>c</sup>**  
260 Count Reg. 69c Gibson's Discount Price

GIBSON  
**RUBBING ALCOHOL**  
1 pint **7<sup>c</sup>**

**WIN \$150<sup>00</sup>**  
Absolutely without obligation. No purchase necessary, just stop in and ask for free drawing slip. New contest every week. In the event no one wins \$50.00 per week will be added until the money is won. The jack-pot then returns to \$100.00. The drawing will be held at 8:00 p.m. every Thursday. You must be present to win...

Helene Curtis  
**HAIR SPRAY**  
13-oz. Reg. \$1.85  
**GIBSON'S DISC. PRICE \$1<sup>27</sup>**

Lady Ester  
**FACE CREAM**  
Reg. 98c  
**GIBSON'S DISC. PRICE 67<sup>c</sup>**

Gillette  
**FOAMY**  
11-oz. Reg. 98c  
**GIBSON'S DISC. PRICE 69<sup>c</sup>**

14 oz.  
**EASY OFF**  
Reg. 59c  
**GIBSON'S DISC. PRICE 43<sup>c</sup>**

Remington Automatic  
Mod. 1100  
**SHOT GUN**  
Gas Operated 12 Ga.  
28 Inch. Mod. Vent Rib  
Reg. \$174.95  
**GIBSON'S DISC. PRICE \$123<sup>97</sup>**

**CLAMP ON AUTO MIRROR** \$2<sup>17</sup>  
REG. \$8.95  
**GIBSON'S DISC. PRICE**

**Spark Plugs** 97<sup>c</sup>  
GIBSON'S DISC. PRICE  
Set of 8

**TUNE UP KIT** \$6<sup>97</sup>  
Compression Tester, Timing Light, Remote starter, Vacuum tester, Reg. \$14.95  
**GIBSON'S DISC. PRICE**

**FOAM PILLOWS**  
Reg. 1.95  
**GIBSON'S DISC. PRICE 2 FOR \$1<sup>57</sup>**

Reg. 9.95  
**BLANKET SLEEPER**  
**GIBSON'S DISC. PRICE \$3.97**

BILL PACK  
**BILLFOLD**  
ASSORTED COLORS  
Reg. \$4.00  
**GIBSON'S DISC. PRICE \$2<sup>47</sup>**

DOMINON  
**ELECTRIC TOOTHBRUSH**  
With 6 Heads  
No. 2701, Reg. 19.95  
**GIBSON'S DISC. PRICE \$11<sup>97</sup>**

Reg. 9.95 Hawthorne  
**Baseball Glove** \$4<sup>97</sup>  
GIBSON'S DISC. PRICE

**TENNIS RACKET**  
Reg. 3.97  
**GIBSON'S DISC. PRICE \$1.97**

Hoppe's 3-oz. Can  
**GUN OIL** 21<sup>c</sup>  
GIBSON'S DISC. PRICE

Zebco 202  
**ROD & REEL**  
Reg. 11.90  
**GIBSON'S DISC. PRICE \$4<sup>97</sup>**

PRICES GOOD TUESDAY AND WEDNESDAY

OPEN DAILY 9 AM--9 PM CLOSED SUN.  
**GIBSON'S DISCOUNT CENTER**  
AND **DISCOUNT PHARMACY**  
"Where You Always Buy The Best For Less"  
2211 Perryton Highway Pampa, Texas