



"There are three friendships which are advantageous: friendship with the upright, with the sincere, and with the man of much observation. — Friendship with the man of specious airs, with the insinuating soft, and with the glib-tongue, these are injurious." — Confucius

The Pampa Daily News

Serving The Top O' Texas 55 Years

WEATHER
(Direct From Amarillo Weather Bureau)
PAMPA AND VICINITY — Fair this afternoon and Wednesday. High for today in the mid 30's. Low for tonight in the upper teens. High for Wednesday in the mid 40s.

VOL. 55 — NO. 285

Circulation Certified by ABC Audit

THE PAMPA DAILY NEWS, TUESDAY, FEBRUARY 12, 1963

(12 PAGES TODAY)

Week Days 54
Sundays 134



CAR-TRAIN IMPACT — Two youths were injured in this car last night when a Rock Island locomotive struck the automobile on the rear fender (where arrow points), knocking the car 50 feet down the tracks. Robert McDonald, 18, the driver, and Dora Cunningham, 15, were injured in the collision. McDonald is in critical condition in St. Anthony's Hospital, Amarillo, and Miss Cunningham is in satisfactory condition in the Groom Hospital. (Photo courtesy McLean News)

Two Area Youths Hurt In Accident

Two youths barely escaped death last night in a car-train accident in the city limits of McLean, but the driver of the car, Robert Lewis McDonald, 18, remains in critical condition in St. Anthony's Hospital, Amarillo.

The two McLean residents were injured as their car was clipped on the rear fender by the east-bound Rock Island locomotive after the automobile had already passed across the tracks.

McDonald was rushed to St. Anthony's Hospital in critical condition following the accident.

Dora Cunningham, 15, residing with McDonald, received bruises, lacerations and other injuries in the accident. She was taken to the Groom Hospital for treatment following the accident. She was reported in satisfactory condition today.

R. C. Parker, Texas Highway Patrolman, investigated the accident. Parker stated that the driver of the car apparently didn't see the train.

At the intersection where the accident occurred, there is a regular railroad crossing sign, but no blinking or flashing lights, according to Parker.

Charles Henderson, another highway patrolman, helped Parker investigate the accident.

The automobile was virtually demolished. It was knocked approximately 50 feet east of the intersection.



JOE FISCHER
... heads Key Clubbers

Joe Fischer Jr. New President Of Key Club

The Pampa Key Club named Joe Fischer Jr. as its president for the new year, June 1, 1963, through May 31, 1964, in their regular weekly meeting this morning.

Young Fischer, son of Mr. and Mrs. Joe Fischer Sr., will be a senior when he officially takes office and is a two-year member of the club.

The 75-member boys service organization, sponsored jointly by the two local Kiwanis Clubs, and Pampa High School, sets a fast pace in its constant program of school, community and church activities.

Not only is it a leader among the more than 2,500 clubs in Key Club International, but ranks high in work accomplished even among Pampa's adult service groups.

Key Club's Annual Leadership Banquet, Pampa Pilgrimage, Welcome To School Activities, Teacher Appreciation Day, and Press Box service during football season are widely known and often imitated.

Joining Fischer on the Board of Directors will be Barry Peterson, son of Mr. and Mrs. J. C. Daniels; 2620 Duncan, vice president; San Williams, son of Dr. and Mrs. Ed Williams, 1204 Charles, secretary; Larry Hollis, son of Mr. and Mrs. B. F. Hollis, 425 Rieder, treasurer; Hank Henry, son of Mr. and Mrs. Norman C. Henry, 2314 Mary Ellen, senior director; and David McDaniel, son of Dr. and Mrs. McDaniel, 1401 Charles, junior director.

The sophomore director will be elected by the club in September, after present freshman have joined the club during the summer and early fall.

Membership in Key Club is open to any boy in the 10th, 11th and 12th grades. It is a club of application, and not of invitation. The only limiting factors are two. First, the boy must have a passing average, and the club limits its membership total in its by-laws.

(See FISCHER, Page 2)

13 States Are Hit By Wave Of Asian Flu

By United Press International

Asian flu has struck at least 13 states in the East and Midwest but the U.S. Public Health Service (PHS) says the outbreak probably will be less serious than the 1957 and 1960 epidemics.

An accompanying wave of pneumonia and ordinary influenza, however, has swept much of the country, taking 120 lives in New York City, putting hundreds in hospitals in Denver, Colo., and keeping thousands from school and work elsewhere.

The PHS says the Asian flu outbreak arrived in mid-January—about six weeks later than expected—and if it followed the usual pattern it would " peter out pretty fast" in March.

A PHS spokesman said the death rate has been well below the levels of the 1957 and 1960 epidemics, but the over-all pneumonia-influenza death rate in 108 cities has been higher than normal the past four weeks.

"It always is when there is Asian flu around," the spokesman said.

The two most recent outbreaks of Asian flu were in Kansas City, Kan., two weeks ago, and at Great Lakes Naval Training Station, north of Chicago, last week.

Outbreaks of Asian flu also have been confirmed in Maine, Vermont, Delaware, Maryland, Virginia, North Carolina, South Carolina and Georgia, the PHS said.

The spokesman said there has been "no spectacular general rise" in the number of verified cases of the so-called Asian strain of influenza, but said "there's a lot of sickness. There's no doubt about that."

The Washington state health department predicted a series of outbreaks of Asian flu within the next two weeks and said absenteeism in schools would climb 20 to 30 per cent.

By City Commission

Contract Is OK'd On Tax Service

Approval of a tax service contract between the City of Pampa and Gray County was approved at last night's meeting of the City Commission.

The contract provides a means whereby the County Tax Assessor-Collector can utilize city assessments and prevents identical work being done by both taxing organizations.

Three ordinances were approved on third and final reading, numbers 589, 590 and 591. Ordinance 589 provides a four-way stop sign at the intersection of Browning and Starkweather Streets. Ordinance 590 pertains to the elimination of parking in a small area on N. Cuyler Street. Ordinance 591 pertains to the paving of S. Barnes Street.

In other action, the commission tabled discussion of methods to cut an average of \$12,500 monthly from the budget, the city manager was instructed not to make his recommendations to the Commission available to news media prior to their study by the commission.

The status of the City Health Department was discussed and it was reported by City Manager Harold Schmitzer that it is an inadequate organization, and the role of the County Juvenile Officer was discussed.

Schmitzer gave a report from the water department which showed a net decrease of 106 meters for the city since January 1 of last year. That includes an increase of eight meters outside the city limits and a decrease of 114 inside the city limits.

Mayor E. C. Sidwell reported that the electric utility has reported a decrease of 172 units inside the city limits and 44 just adjacent to the city for a total decrease of 216 units in the last year.

He added that the gas utility showed a net decrease of 45 units with a decrease of 50 inside the city limits and an increase of five adjacent to the city. He said the telephone utility showed a net increase of 215 units with an increase of 328 customers inside the city limits while losing 11 outside the city limits.

City water meters on January 1, 1963, totaled 7,648 while a year previous they numbered 7,762 for a net decrease of 114 inside the city.

Also discussed last night were the petitions presented to the commission before the January 31st Charter Amendment Election. City Attorney Bob Gordon said they must be acted upon and should be during the month of February to provide time to call a Charter Amendment election to coincide with the city election April 2nd if the petitions fulfill legal requirements.

Revolutionaries In Firm Control Of Iraq Now

BEIRUT, Lebanon (UPI)—Provisional President Col. Abdul Salam Aref and his pro-Nasser military supporters today appeared in firm control of Iraq despite stubborn Communist resistance.

The list of countries granting recognition to the five-day-old rebel government in Baghdad grew by the hour. The United States, Great Britain and the Soviet Union were among those to recognize it Monday.

Travelers reaching here Monday night told of scattered fighting in the Iraqi capital with troops and students pressing house-to-house searches for diamond pockets of Communist opponents.

The reports said, however, the resistance was being crushed.

Other reports said shooting and fighting continued all day Monday in the streets of Basra, the oil terminal port on the Persian Gulf 200 miles southeast of Baghdad. Sporadic firing also was reported heard in Baghdad.

At Basra, the reports said police and troops opened fire on "communists" and demonstrators who supported the executed premier.

Basra authorities clamped a 5 p.m. to 5 a.m. curfew on the city. Despite the shooting, harbor traffic was slowly returning to normal with tankers moving again after a four-day halt, according to the reports.

Sen. John Sherman Cooper, R-Ky., has called for resumption of the U.S. blockade of Cuba if diplomacy fails to get Russian troops off the island.

The former ambassador to India said Monday he was confident President Kennedy would use "diplomatic means" to have Premier Nikita Khrushchev order the troops back to the Soviet Union.

But Cooper told the Senate that if these negotiations fail, the President, supported by Congress, should take the same firm measures that he took last fall.

If it comes from a hardware store we have it. Lewis Howe. Adv.

Attorney Says No Appeal Planned In Recall Case

In view of the time limitations, there is presently no plan to appeal yesterday's decision of the Seventh Court of Civil Appeals in Pampa's recall case.

That was the statement today of Burger Attorney Walter Norman, representing the five plaintiffs in the case. Herman Whately, A. C. Troop, Claude Wilson, W. C. Fry and A. W. Lunsford, all of Pampa.

A 31st District Court decision of last April 13 ordering an election for the recall of Pampa City Commissioners L. P. Fort, Leon Holmes and Lloyd Simpson was reversed in the ruling handed down by the Amarillo tribunal yesterday.

The court ruled that District Judge Lewis M. Goodrich was in error when he ordered the recall election.

The five plaintiffs in the case had sought a mandamus order in district court to have the city commission call the election after it had refused to do so on the grounds that petitions for the recall were not proper under the city charter.

When Judge Goodrich ruled in their favor the case was carried up to the Court of Civil Appeals by Atty. Clayton Heare of Amarillo, representing the commission.

Yesterday's ruling was based on Heare's contention that the city charter was at fault because of failure to change the provision for recall of elective officers when the charter was amended.

In effect, the ruling was that the petitions for recall of the ward commissioners should have contained 30 per cent of the signatures of voters in the last regular election instead of just 30 per cent of those who voted in each ward.

Senate Eyes Amendment For State Medicare Plan

By City Commission

Contract Is OK'd On Tax Service

Approval of a tax service contract between the City of Pampa and Gray County was approved at last night's meeting of the City Commission.

The contract provides a means whereby the County Tax Assessor-Collector can utilize city assessments and prevents identical work being done by both taxing organizations.

Three ordinances were approved on third and final reading, numbers 589, 590 and 591. Ordinance 589 provides a four-way stop sign at the intersection of Browning and Starkweather Streets. Ordinance 590 pertains to the elimination of parking in a small area on N. Cuyler Street. Ordinance 591 pertains to the paving of S. Barnes Street.

In other action, the commission tabled discussion of methods to cut an average of \$12,500 monthly from the budget, the city manager was instructed not to make his recommendations to the Commission available to news media prior to their study by the commission.

The status of the City Health Department was discussed and it was reported by City Manager Harold Schmitzer that it is an inadequate organization, and the role of the County Juvenile Officer was discussed.

Schmitzer gave a report from the water department which showed a net decrease of 106 meters for the city since January 1 of last year. That includes an increase of eight meters outside the city limits and a decrease of 114 inside the city limits.

Mayor E. C. Sidwell reported that the electric utility has reported a decrease of 172 units inside the city limits and 44 just adjacent to the city for a total decrease of 216 units in the last year.

He added that the gas utility showed a net decrease of 45 units with a decrease of 50 inside the city limits and an increase of five adjacent to the city. He said the telephone utility showed a net increase of 215 units with an increase of 328 customers inside the city limits while losing 11 outside the city limits.

City water meters on January 1, 1963, totaled 7,648 while a year previous they numbered 7,762 for a net decrease of 114 inside the city.

Also discussed last night were the petitions presented to the commission before the January 31st Charter Amendment Election. City Attorney Bob Gordon said they must be acted upon and should be during the month of February to provide time to call a Charter Amendment election to coincide with the city election April 2nd if the petitions fulfill legal requirements.

Dispatches Cite Defections Of Soviets In Cuba

NEW YORK (UPI)—Dispatches from Western diplomatic sources in Havana today cited insistent reports in the Cuban capital of defections in Soviet military ranks there.

Fourteen Soviet soldiers were reported to have gone "over the hill" and to be currently hiding in the Las Villas Province Escambray Mountains.

(In Washington, the Defense Department denied Havana reports that one to three Soviet "technicians" had taken refuge in the U.S. naval base at Guantanamo. None has attempted to do so "to our knowledge," a department spokesman said.

Other intelligence sources said there had been some friction between Soviet occupation forces and Cuban troops.)

Committee Hearing Slated On Proposal

AUSTIN (UPI)—Lawmakers started laying the ground work today for a constitutional amendment to let voters decide if Texas should have its own medicare plan for the aged.

The proposal, sponsored by Sens. William Moore of Bryan and William Patman of Ganado, was set for hearing by the Senate Constitutional Amendments Committee.

If passed by the legislature and approved by voters, lawmakers could establish a program to pay medical expenses for persons over 65 who are not on old age assistance and who are unable to care for themselves. The measure would permit Texas to accept federal medicare benefits. State funds would be limited to matching federal funds.

Tax Hearing Set

The House Revenue and Taxation Committee scheduled hearings on bills to exempt airplanes from the state's 5-cent gasoline tax, and to place a \$10-a-table occupation tax on billiard tables.

A bill by Rep. Bob Hughes of Dallas would exempt any person buying gasoline in Texas for exclusive use in an airplane from the 5-cent state excise tax.

Tax for Highways

Hughes contends the gasoline tax was imposed to finance the state highway system, and since airplanes do not use the highway system, they should be exempted from the tax.

It was pointed out that farmers who purchase gasoline for exclusive use on their farms—that is, where the vehicle being used never gets on the state highway system—currently are exempted from the 5-cent per gallon tax.

Hearings scheduled by Senate committees included constitutional amendments to provide medicine and medical care for certain needy people, and to provide for annual sessions of the legislature.

The assistance provisions were introduced by Sens. Martin Dies of Lufkin, William Moore of Bryan and Bill Patman of Ganado.

Open Hearings Proposed

The House State Affairs Committee passed and sent to the Senate a bill to provide for open hearings on proposed constitutional amendments.

Still No Info On Tanker

JACKSONVILLE, Fla. (UPI)—The Coast Guard today planned to search as close to Cuba as possible for a tanker which mysteriously disappeared nine days ago on a voyage from Texas to Virginia.

The fifth day of searching ended Monday night with no trace of the Marine Sulphur Queen and its 29 crewmembers.

"God knows where the tanker is now," said an officer at the search center here.

"We are undoubtedly looking for the remains of a sea disaster," he said. "It could have blown up, or broken up and sunk without a survivor, or maybe it was hijacked."

A Coast Guard spokesman at Portsmouth, Va., said, "We are reasonably well convinced the tanker is not afloat along the Atlantic Seaboard."

The spokesman said Miami-based planes today would search south of Florida and as close as possible to Cuba without violating Cuban territorial space.

The Cuban government has told State Department officials in Washington that if it learns anything about the missing tanker the information will be passed along to the United States.

The 524-foot Marine Sulphur Queen, built during World War II, left Beaumont, Tex., Feb. 2 on a 2,000-mile trip to Norfolk, Va., with a cargo of molten sulphur in specially heated, heavily insulated tanks.

Ten of the T-2 tankers built in the 1940s have broken in two. The latest, the Pine Ridge snapped like a match off Cape Hatteras in 1966 with the loss of seven lives. The government started recovering bracing straps on the hulls and decks of the old ships.

Cmdr William Rea, a Coast Guard safety officer in Washington, said the Sulphur Queen had been given an inspection and granted a certificate for seaworthiness within the past two years. It had undergone dry dock repairs within the past 18 months.

Rea was asked if the tanker could have broken up in the heavy seas that it might have encountered.

(See TANKER, Page 2)

Attorney Says No Appeal Planned In Recall Case

In view of the time limitations, there is presently no plan to appeal yesterday's decision of the Seventh Court of Civil Appeals in Pampa's recall case.

That was the statement today of Burger Attorney Walter Norman, representing the five plaintiffs in the case. Herman Whately, A. C. Troop, Claude Wilson, W. C. Fry and A. W. Lunsford, all of Pampa.

A 31st District Court decision of last April 13 ordering an election for the recall of Pampa City Commissioners L. P. Fort, Leon Holmes and Lloyd Simpson was reversed in the ruling handed down by the Amarillo tribunal yesterday.

The court ruled that District Judge Lewis M. Goodrich was in error when he ordered the recall election.

The five plaintiffs in the case had sought a mandamus order in district court to have the city commission call the election after it had refused to do so on the grounds that petitions for the recall were not proper under the city charter.

When Judge Goodrich ruled in their favor the case was carried up to the Court of Civil Appeals by Atty. Clayton Heare of Amarillo, representing the commission.

Yesterday's ruling was based on Heare's contention that the city charter was at fault because of failure to change the provision for recall of elective officers when the charter was amended.

In effect, the ruling was that the petitions for recall of the ward commissioners should have contained 30 per cent of the signatures of voters in the last regular election instead of just 30 per cent of those who voted in each ward.

CoC Drive For Members Starts After Luncheon

Some 130 Pampans kicked off the Pampa Chamber of Commerce membership campaign yesterday at a luncheon in Coronado Inn featuring individual Chukar Partridge, contributed by an Amarillo man, Charles Gunn, a Pampa enthusiast and former resident.

Ralph Duncan, of the West Texas Chamber of Commerce organization, Abilene, was the keynote speaker and challenged the workers present to get out and get new memberships in the chamber with an air of enthusiasm about their work.

Twenty-six teams of five men each are out working now on CoC memberships with a prize of a fat beef from the Top O' Texas Junior Livestock Show awaiting the first place team (awarded on a point basis) and a fat pig awaiting the second place team. Third place prize is a chicken and the "booby prize" is a goat for the last place team.

Goal of the campaign is \$40,000 in memberships, to finance the chamber's budget for the current fiscal year.

Loyal Davies, finance officer of the chamber, is heading up the drive, which will run through Feb. 22.

The first check-in coffee for workers has been set for 10 a.m. Wednesday at the CoC office in the Hughes Building. There will be free coffee and doughnuts for the team members.

Other check-in times are at 10 a.m. Friday, Feb. 15; 10 a.m. Tuesday, Feb. 19; 10 a.m. Thursday, Feb. 21; and the final check-in at 5 p.m. Friday, Feb. 22.

Lincoln Day Dinner Set Here Tonight

Wes Izard, Amarillo newspaper editor and radio commentator, will be the principal speaker at a Lincoln Day banquet to be held in the Pampa Country Club tonight under sponsorship of the Gray County Republican Executive Committee.

Mrs. Iva Willis of Pampa, who formerly lived under Communist rule in Yugoslavia, also will be on the program.

Joe Cree, Pampa insurance executive, will serve as master of ceremonies at the banquet, which is scheduled for 7 p.m.

Clayton Husted, chairman of the Gray County G.O.P. committee, said today some 150 to 175 persons are expected to attend.

Solon Asks Blockade Renewal

WASHINGTON (UPI)—Sen. John Sherman Cooper, R-Ky., has called for resumption of the U.S. blockade of Cuba if diplomacy fails to get Russian troops off the island.

The former ambassador to India said Monday he was confident President Kennedy would use "diplomatic means" to have Premier Nikita Khrushchev order the troops back to the Soviet Union.

But Cooper told the Senate that if these negotiations fail, the President, supported by Congress, should take the same firm measures that he took last fall.

If it comes from a hardware store we have it. Lewis Howe. Adv.

Cuba policy, said "the feeling persists that there is a mighty military machine in the hands of Castro and that sooner or later this menace must be dealt with."

Rep. Ed Foreman, R-Tex., said Cuba was making moves to set up armed camps in other Latin American countries. Two ships steamed out of the Cuban port of Mariel last week "loaded with arms destined for British Guiana," and guerrilla hands also have been sent into Venezuela, he said.

Charges Politics

Senate Democratic Whip Hubert H. Humphrey, Minn., said it was important that unsubstantiated charges "do not find their way into this chamber or into the media of public communication."

Senate Democratic Leader Mike Mansfield, Mont., called for less "partisan politics" and more interest in "the national need to be constructive and to come forward with the kind of assistance which any president needs at any crucial period in our history."

Mansfield said New York Gov. Nelson Rockefeller, who criticized U.S. policy on Cuba in a weekend speech, "has in his own back yard, so to speak, in New York City, a microcosm of the immense problems of poverty, human neglect and inequity which are at the root of the ills of Latin America."

Senate Democratic Whip Hubert H. Humphrey, Minn., said it was important that unsubstantiated charges "do not find their way into this chamber or into the media of public communication."

Deputy To Return Man On Charge

Deputy James Bowers of the Gray County sheriff's department, will leave for Fort Smith, Ark., tomorrow to bring back William O. Gurley, 24, former Pampa, wanted here on two counts of burglary.

Sheriff Rufe Jordan said Gurley has been charged in connection with burglaries here last July at the Killarney Night Club and the Harold Barrett Ford Co.

Gurley was picked up by Fort Smith police on a vagrancy charge, Sheriff Jordan said, and was identified as being wanted here on the burglary charges.

The sheriff also said that 22-year-old Kenneth White of Dumas is being held in Sacramento, Calif., for return to Pampa on a charge of swindling with a worthless check.

The check, Jordan said, was for \$278 and was passed at the I.G.A. Food Store in Pampa.

The sheriff's office also stated that it is working through the office of the Secretary of Navy in an attempt to obtain custody of J. C. Davis of Pampa who faces four burglary indictments in Gray County. Davis, 18, is stationed with the Navy at Long Beach, Calif., Sheriff Jordan said.

Fischer

(Continued From Page 1)
laws. Present limits are set at 75 boys, with no more than 40 per cent or 30 members, from any one grade. President-Elect Fischer said this morning that he would recommend an increase in membership for next year, due to a waiting list of applicants this year. He said club by-laws had been amended each year for the last three years, raising limits from 40 to 50; 50 to 60; and, this year, from 60 to 75. Fischer did not indicate how much increase he would recommend to his board for club vote, but did say that all such actions are subject to the approval of the principal.

In anticipation of the responsibilities his new office brings, Fischer said, "There are still almost four months of work in the current year. Our flag program, Teacher Appreciation Day, Career Clinic aid, District Convention and Annual Banquet are yet to be completed. I don't feel it is the right time for making specific statements or plans for a new year. The boys elected to the board are all top young men, and I expect a good year. Frankly, I'm not exactly sure just what has hit me. I expect to wake up one morning and discover that I made a big mistake in accepting this assignment. It is an honor, and a challenge. My only concern is whether I'm big enough for it."

The Annual Installation Banquet and Sweetheart's Ball will be held on Saturday, May 4. The new Board will be officially installed at that time, and will take charge of the Club on the first day of June.

Scout Film Is Shown To Club

Eagle Scouts Larry Vesile and Sam Waters were guests last night of the Top o' Texas Kiwanis meeting, held in the Quivira Room at the Coronado Inn. They showed a movie of the history and activities of Philmont Scout Ranch in Cimarron, N. M.

Philmont is a sprawling 127,000 acre ranch for Scouting activities. Sam Waters was the narrator.

The program was introduced by Paul Musgrave, program chairman.

Gene Gates was inducted into the club by John McCausland. Wesley Lewis was present as a guest of Dr. T. J. Wright and Bill Fannon, a member of the downtown Kiwanis club, was also a guest.

Debbie Is Looking For Lost 'Duke'

Debbie's "Duke" is missing. Duke is a year-old Brittan Spaniel, with reddish spots and "great, big green eyes," according to Debbie Sullins, 2131 Christine. "He has a red collar and a license tag, too."

When Debbie returned home from school last Friday, the backyard gate of her home was open and Duke was gone. The unlocked gate posed a mystery for Debbie for it has to be unlatched from the outside.

You become fond of a family pet you've cared for, romped with and loved for over the years. Debbie would like to have him back, especially in time for "Duke's" birthday next month.

Tanker

(Continued From Page 1)
encountered as it started swinging north along the coast.

"It is a possibility," he said. There was speculation the vessel may have headed out to sea to avoid the storm.

But there was no radio contact and the ship carried emergency radio and power equipment, in the case of trouble with its regular sending equipment. After a Feb. 3 message from near Key West there was nothing.

What would happen if the tanker came apart at the seams and the hot sulphur and seawater?

"The ship would go up like an atom bomb," one Coast Guard officer said. The owners of the ship said the molten sulphur was as safe as most cargoes, and not as tricky as the gasoline carried by scores of tankers from Texas to eastern ports.

HEADS EXCHANGE

NEW YORK (UPI) — Edwin Posner was re-elected chairman of the American Stock Exchange at the organization's annual election Monday.

Ex-Rector Of Local Church Is Honored

Chaplain (Major) Porter Brooks, former Rector of St. Matthew's Episcopal Church here, was recently awarded a letter of appreciation coming from the office of the Commanding General, VII Corps, U. S. Army.

The letter, signed by Chaplain Paul Pease, Project Officer of the VII Corps, said, "I wish to take this opportunity to express sincere appreciation for the services you performed as an interpreter and coordinator of religious and cultural activities at the International Protestant Military Church Rally in Ulm, Germany. Your genuine interest and broad experience in the field of religious and cultural activities contributed greatly to the successful conclusion of the rally. In this first meeting of Protestant personnel from NATO nations, you have, through your hard work and effort, strengthened and extended the Kingdom of God."

Red Cross Has Board Meet Today

The Gray County Red Cross Board met this morning at 7 with 16 members in attendance at the Coronado Inn with E. B. Penberton, chairman, presiding.

Rev. Jack Parker, chairman of the Public Information committee, told of the National Convention May 14 in Philadelphia, Pa. The Red Cross celebrates its 100th Anniversary this year.

Mrs. Lynn Boyd, Gray Lady Chairman, reported that 32 Gray Ladies gave 384 hours during the month of January in local hospitals and in the homes of shut-ins.

Melvin Jayroe, Fund Chairman reported that the first payment from the United Fund had been received. He stated that although the quota will not be reached this year, each person who was not contacted during the UF drive may contribute to the Red Cross during the month of March.

L. C. Davis, Educational Relations chairman, reported that the Stephen F. Austin School had completed its International Art Exhibit and it will be sent to the National Red Cross.

Tray favors and mats for Valentines Day were made by the Travis School and tray mats will be made by Horace Mann Junior Red Cross. These favors will be sent to the Amarillo Air Force Base Hospital.

Mrs. Shotwell reported on the State Executive Conference held in Dallas last month.

She spoke of a new program for Gray Ladies that had been tried in the McKinney Red Cross and that these Gray Ladies worked in the schools as aids to the School Nurses assisting with child care while children were in schools.

Paleontologist Is Speaker For Chemical Group

Jack T. Hughes, associate professor of geology at West Texas State College, will be the speaker at a meeting of the Panhandle Plains Section of the American Chemical Society Saturday night at Sutphen's Barbecue in Phillips. His subject will be "The Paleontology of the Texas Panhandle." The dinner is scheduled for 7 p.m. and the business meeting at 8 p.m.

Hughes also is curator of paleontology at the Panhandle Plains Historical Museum in Canyon. "New finds are being added to the collection there almost daily," James Word, program chairman, said. "It will be a wonderful opportunity to learn from Mr. Hughes about our wonderful heritage here in the Panhandle."



Valentine Foods at Low Prices!
FURR'S SUPER MARKETS

YOU GET LOW PRICES PLUS DOUBLE FRONTIER STAMPS WEDNESDAY
With \$2.50 Purchase or More

TIDE
Giant Box **67¢**

CORN
Whole Kernel 303 Can **12 1/2¢**

GREEN BEANS Food Club Fancy Cut NO. 303 Can **3 FOR 49¢**

SHORTENING ELNA 3 LB CAN **49¢**

MELLORINE DARTMOUTH ASST. FLAVORS 1/2 GAL. **29¢**

MAYONNAISE FOOD CLUB QUART **59¢**

COCA COLA Reg. 6 Btl. Carton Plus Deposit **29¢**

FRYERS U.S.D.A. Insp. Grade A Whole **29¢ lb**

BACON Top O' Texas **2 LB 98¢**

Round Steak Fancy Baby Beef **89¢ lb**

Calf Liver Young Tender, serve liver with bacon **45¢ lb**

Franks Top O' Texas **1 Lb. 49¢**

Shrimp Goldhill Breaded **8 oz. pkg. 39¢**



POTATOES
Colorado Utilities **59¢**
25-Lb. Bag
OLD MEXICO CRYSTAL WAX

Onions... 2 LBS 25¢

EGGS
Furr's Grade A Medium dozen **45¢**

ICE CREAM
Family Pack 1/2 gal. **49¢**

FRUIT PIES
Banquet Fresh Frozen Apple, Peach or Cherry each **25¢**

BABY FOOD
Gerbers or Heinz Strained 3 Jars **29¢**

COFFEE
Maryland Club or Maxwell House **59¢ lb**

PINTO BEANS
Arrow 4 lb. cello bag **39¢**

GENERAL MERCHANDISE

VITAMINS

VALIANT MULTIPLE REG. \$1.59 **93¢**

Powdered Valiant 79c Reg. **39¢**

CALORIE CONTROL Liquid Valiant, Ct. 6 Cans **1 19¢**

CALORIE CONTROL ALL WINTER SOFT GOODS **25% OFF**



MOST ECONOMICAL WAY TO TRAVEL

Riding the TRAIN is Fun!

ROUND TRIP CHAIR CAR FARE From AMARILLO To

Fort Worth	\$18.20
Dallas	20.05
Colorado Springs	21.40
Denver	25.50

Phone for Reservations

Burlington Route FORT WORTH AND DENVER RY.

201 West Brown St. MO 4-4731

MORE PEOPLE SAVE GUNN BROS. STAMPS FOR BEAUTIFUL GIFTS!

VISIT OUR **REDEMPTION CENTER**

318 N. CUYLER



'Field Assen At H

Plans for Service ass at the Pam Council me assembly w Wednesday jum and w cussion an dents, Luis Spain, Tur Turkey an from Ama handle Hig

Student pointed to Chamber of for Chamb Altrusa Cl Career Cl Students w 8:45 a.m. schedules; rected to house for Seniors fr White Dec been invit Career Cl

Commit to assist win Alber WILLI ere, park are comm Mitchell a ing comm

Deadline mitted for is Feb. 22 have been Chase, Ha juniors, a more. Ele dent body March 6 juniors el Two sop liams and elected de Texas As Councils in Abilene High Sch Turan-Sol the newly president also atten

Willis Set

Funeral Willis wi Wednesda Church o pastor, of Mr. W E. Scott, arrival a pital at l He wa Granbury from We todian in the city 1959, he self as a man.

Survive the hom Dayton three gr Pallbe geart, M herty, R Robert I Ruben M Intern Cemetery Duenkel Home.

The P States st President

'Field Service' Assembly Is Set At High School

Plans for the American Field Service assembly were completed at the Pampa High School Student Council meeting this morning. The assembly will be held at 9:30 a.m. Wednesday in the school auditorium and will feature a panel discussion among Pampa's AFS students, Luisa Prieto of Madrid Spain, Turan Solyez of Istanbul, Turkey and three AFS students from Amarillo, Tascosa and Pampa High Schools.

Student committees were appointed to assist the Pampa Chamber of Commerce, the Junior Chamber of Commerce and the Altrusa Club with the annual Career Clinic to be held Feb. 20. Students will go to homerooms at 8:45 a.m. and pick up clinic schedules; they will then be directed to the Harvester Fieldhouse for a 9 a.m. assembly. Seniors from Lefors, Miami and White Deer High Schools have been invited to participate in the Career Clinic.

Committee chairmen appointed to assist with the clinic are Edwin Albers, Robert Pullen, stage; Williams and Richard Fatheree, parking, all sophomore boys are committee members; Johnlyn Mitchell and Don Sears, welcoming committee.

Deadline for petitions to be submitted for student body president is Feb. 22. To date, four petitions have been submitted: Carole Chase, Hank Henry, Don Rexroad, juniors, and Sen. Williams, sophomore. Election of next year's student body president will be held March 6 with only sophomores and juniors eligible to vote.

Two sophomore boys, San Williams and Richard Fatheree were elected delegates to attend the Texas Association of Student Councils to be held March 21-23 in Abilene in the Abilene-Cooper High School. Luisa Prieto, and Turan Solyez, AFS students and the newly-elected student body president and vice president will also attend.

Willis Service Set Wednesday

Funeral services for Robert Willis will be held at 2:30 p.m. Wednesday in the Calvary Baptist Church with the Rev. Orval See, pastor, officiating.

Mr. Willis, who resided at 1020 E. Scott, was pronounced dead on arrival at Highland General Hospital at 10:15 a.m. Monday.

He was born Nov. 19, 1906 in Granbury and moved to Pampa from Wellington in 1922. For a time he was employed as a custodian in a local school and for the city from 1947 until 1959. Since 1959, he was in business for himself as a tree surgeon and yardman.

Survivors are his wife, Ella of the home; one daughter, Mrs. Dayton Drack of Otis, Kan. and three grandchildren.

Palbearers are Merle Weingart, M. C. Dorman, George Flaherty, R. B. Cook, J. B. Crocker, Robert Riddell, Clyde White and Ruben May.

Interment will be in Fairview Cemetery under the direction of Duengel - Carmichael Funeral Home.

The President of the United States should be addressed as Mr. President or Sir.

Municipal Court Docket

Gene P. Guinn, 1129 Seneca, speeding 50 mph in 30 mph zone, guilty, fined \$15.

Donald J. Appleton, Elk City, Okla., permitting illegal use of driver's license by lending to another person, guilty, fined \$30.

Robert W. Summar, 1147 Clark muffer violation, guilty, fined \$10.

Coleman L. Weddington, 1231 E. Francis, speeding 60 mph in 30 mph zone, guilty, fined \$25.

Robert L. Malone, 1428 E. Francis, speeding 60 mph in 30 mph zone, guilty, fined \$25.

Norman W. Green Jr., 1127 Farley, loud and excessive noise with motor vehicle, guilty, fined \$10.

Howard L. Jobe, 507 N. Cuyler intoxication, guilty, fined \$10.

Wilma Voss, 1013 Neal Rd., intoxication, guilty, fined \$20.

Mainly - - About People - -

The News invites readers to phone in or mail items about the comings and goings of themselves or friends for inclusion in this column.

Indicates paid advertising.

Mrs. Janiece Carpenter, daughter of Mr. and Mrs. Clyde Magee, McLean, received her bachelor of science degree recently from Western Michigan University in Kalamazoo, Mich. Mrs. Carpenter was awarded the BS degree with a major in elementary education, and also received a speech correction certificate. Immediately following her graduation from Western Michigan, Mrs. Carpenter was employed to start a speech therapy department in the Allagan, Mich., school system. A 1938 graduate of McLean High School, Mrs. Carpenter attended Texas Christian University before entering the Michigan University. Mrs. Magee attended the graduation exercises.

Cotton's Cafeteria in White Deer now open. Specializing in Barbecue. Operated by Cotton and Mildred Nelson.

Mrs. Fay Martin, 519 E. Kingsmill, who has been a patient in a local hospital has been transferred to Amarillo for further treatment.

If you have seen my doggie please call 4-8819. Britian Spaniel - White with redish spots, red collar with tags.

Circle meetings of the Central Baptist Church Women's Missionary Society will be held in the following homes on Wednesday at 9:30 a.m.: Sara Beth Short with Mrs. Charles Smith, 1215 S. Finley; Lavonia Duck with Mrs. R. C. Brown, south of the city; Lillie Mae Hundley with Mrs. Jerry Edger, 404 Lowry; Kezzie Mae Seagrave with Mrs. L. R. Tyson, 600 Bradley Drive; Hazel Snyder with Mrs. Jim Johnston, 2313 Mary Ellen; Callie Thomas with Mrs. T. O. Upshaw, 1700 Chestnut; Milton Leach Jr. with Mrs. B. R. Parrish, 1136 Cinderella.

Hub Caps Stolen

Jack Chisum, 620 Bradley Dr., reported to police today that the two hub caps were stolen from his car while it was parked last night in the driveway at his home.

Sir Walter Raleigh, an English courtier of Queen Elizabeth's time, paved the way for the settlement of America.

Cancer Memorial Fund Maintained By County Unit

There have been many recent requests for information concerning the Memorial Program of the American Cancer Society, reports Sain Begert, chairman of Memorial Funds of the local County Unit.

"When one of your friends contacts cancer and dies of this dreaded disease there is no better way to honor him than to strike back at the disease which took this valid life. A memorial contribution will not only express the depth of your concern, but will be used wisely through research, education, and service to put an end to this disease," Cancer Society officials said.

"When the occasion arises, we hope you will choose this dignified and practical way of expressing your sympathy by sending a memorial contribution to your local Cancer Society. These may be sent either to Paul Keim at the First

Rev. Ray Will Be Speaker In Special Services

A local minister, J. D. Ray, missionary to Anchorage, Alaska, is back home in Pampa for a few weeks' visit with his parents, the John Rays of Pampa and other relatives.

He will be the speaker at the special services at the Kingsmill Community Church. The services will start Wednesday night and run through Sunday night, Feb. 17, at 7:45 p.m. each day. Rev. Ray has been in Alaska for the past ten years, and has been instrumental in seeing a church built in Spenard, Alaska, a suburb of Anchorage, Alaska.

"Rev. Ray is an inspiring speaker, and will bring soul-stirring, spirit-filled messages. The public is invited to come and hear these messages," said Rev. E. K. Cornell, pastor.

National Bank, Pampa, or to Mrs. Rufe Jordan at the County Court House. The family of the deceased will be notified of your contribution," they added.

Senate

(Continued From Page 1)

floor for debate Monday night an amended proposal of Rep. Chet Brooks' bill to provide all governmental agencies and boards supported by public funds or spending such funds shall be open to the public.

The Senate Jurisprudence Committee approved a bill by Sen. Murray Watson of Mart to allow individual ownership of apartment units, or authorizing "condominiums."

A thought for the day—Theodore Roosevelt said: "The first requisite of a good citizen in this republic of ours is that he shall be able and willing to pull his own weight."

Kiwanis Club Is Established At Nassau, Bahamas

Malcolm Douglass, president of the Downtown Kiwanis Club, reported today that he had received notice that the first Kiwanis Club to be established outside continental North America has been chartered at Nassau in the Bahamas.

The charter, Douglass said, was presented in the presence of some 300 persons by Franklin W. Summerhays, immediate past governor of the Ontario - Quebec Maritime Kiwanis District, which sponsored the new Nassau club.

Principal speaker at the charter presentation was Merle H. Tucker of Gallup, N. M., president of Kiwanis International.

55TH YEAR

THE PAMPA DAILY NEWS
TUESDAY, FEBRUARY 12, 1958

3

County Names Bank Depository

Gray County Commissioners gathered yesterday for a routine monthly meeting in the Court House and approved a bid by the First National Bank as the county depository of approximately \$1 million for two more years.

The bank bid a four per cent payment for time deposits over

one year; 3½ per cent for six months and 1 per cent for less than 30 days.

The Royal Standard Flag is flown from Buckingham Palace in London when the Royalty is in residence.

Attn. Business men:
Enjoy the convenience of a distinguished downtown metropolitan hotel next time business takes you to Dallas...at rates as low as \$6!

FREE IN-AND-OUT PARKING FOR REGISTERED GUESTS

HOTEL **Adolphus** DALLAS TEXAS
RI 7-6411 • TWX DL511 • COMMERCE, MAIN & AKARD

CLINT'S ZERO LOCKER

WHITE DEER
WE FEED OUR OWN LIVESTOCK
GRAIN FED BEEF

Double Wrapped, Quick Frozen
Your Name On Every Package
READY FOR YOUR FREEZER

49¢ lb

FOOD BARGAIN DAYS



Pinkney's Pure Pork

SAUSAGE

2 lb. bag **59¢**

Cut-Wrapped & Frozen **1/2 Beef 51¢**

Chunk Style All Meat **BOLOGNA 39¢**

Kounty Kist 12-oz. **CORN 10¢**

Sturgeon Bay 303 Can **CHERRIES 15¢**
White Swan 300 Can **HOMINY 9¢**
Northern Roll **WAX PAPER 19¢**
Borden's **BISCUITS 3 For 19¢**

Gt. Tide **59¢**
With Mystery Coupon

Mountain Pass **TOMATOES 3 FOR 29¢**
Can

Western Gold 2½ Can **PORK & BEANS 19¢**
6-oz. Winter Gold Frozen **Orange Juice 2 FOR 39¢**

White Swan 2½ Can **PEACHES 3 FOR 69¢**

PRODUCE
U.S. No. 1 Red **Potatoes 10 lbs. 29¢**
Crisp Green **Onions Large Bunch 5¢**

SALMON 59¢
Honey Boy
Tall Can

Solid Head **CABBAGE 9¢ lb**
Sunkist **Oranges 2 lbs. 33¢**

SHORTENING
Jewel or Flair **3 LB 49¢**

APPLE SAUCE
Apple Boy 303 Can **2 FOR 25¢**

Nest Fresh Eggs
Large Dozen **49¢**

PANCAKE MIX
Betty Crocker 42-oz. **39¢**

Gold Medal **FLOUR 5 LB** With \$7.50 Purchase EXC. CIGARETTES **5¢** Toilet Tissue A-1 Roll **5¢**



WE RESERVE THE RIGHT TO LIMIT QUANTITIES

B U D D Y ' S

SUPER MARKETS

DOUBLE GOLD BOND STAMPS EACH WED. WITH \$2.50 PUR.

NOTICE!

JOHN'S PHARMACY HAS MOVED

From 2104 Perryton Parkway

TO

1600 N. HOBART SPECIAL!

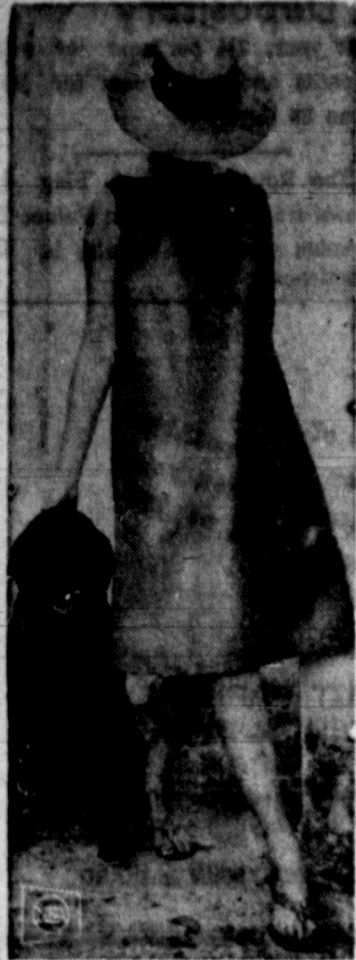
All Valentine Candy And Hearts

25% OFF

JOHN'S PHARMACY

1600 N. Hobart

MO 4-6885



NEW SHAPE?—This voluminous sun dress with low patch pockets and straightaway lines was spotted in Bermuda this winter.

Quotes In The News

By United Press International
CAIRO — The United Arab Republic newspaper Al-Ahram, quoting Iraqi Premier Abdel Karim Kassem as he was dragged off for trial and execution by revolutionaries:
"I am Iraq's sole faithful leader."

LONDON — An Irish airline stewardess on "jet tummy," a swelling caused by changed pressures on high-altitude transatlantic flights:
"Some girls can't bear the pain and I have known some to slip off their girdles in the galley in the back of the plane halfway between London and New York."

KNOXVILLE, Tenn. — William Watkins, an Alcohol Tax Unit agent, on the production of moonshine liquor in the Tennessee mountains:
"We believe most of it goes out of the state. They bottle it in half-gallon fruit jars, and there's a terrific market for it in the northern states."

Read the News Classified Ads



TOASTMASTERS TROPHY WINNERS—During the past five meetings of the Pampa Toastmasters Club some very interesting subjects have been covered by the speakers. With four speakers each evening, each one with a different subject, it is sometimes difficult to pick a winner, but for the past five meetings the above men were voted the best. From left, with dates as winners: Dave Osborne, Jan. 28; Harry Mitchell, last week's winner, presenting trophy to Dub Morgan, last night's winner; Don Stephens, Jan. 21; and Bill Dixon, Jan. 14 winner. (Daily News Photo)

Toastmasters Name Last Five Winners

The weekly meeting of the Pampa Toastmasters Club last night went off in fine style when club president Dub Morgan opened the meeting with a few quips about past speakers' performances, leading up to the speakers of the evening.

He turned the meeting over to Bob Sybert, who in turn relinquished the lectern to Lloyd Kuntz, Topic Master for the evening.

After table topics and a short business meeting, Toastmaster Sybert introduced the speakers, Bob Allen, Dub Morgan, Jim Darnell

and Jim Moring. Speech evaluators were Buzz Roberts, Harry Mitchell, Bob Fitzgerald and Lloyd Laramore.

Last night's winner, Dub Morgan, gave a concise speech on individual responsibility, which covered a multitude of items we expect, with little given in return, and brought out the individual responsibility of the Boy Scout of a troop, on a camping trip, who sleeps in the open if he doesn't pitch his tent; who must cook if he eats, etc.

Comparisons were explained of what the youngster is taught in individual responsibility, and how it teaches him at an early age to accept responsibility when an adult.

Mitchell won the speaker's trophy last week by his excellent choice of subject and the actual delivery. His subject was, "Modern Witch Hunting" which he very cleverly started back 200 years ago, explaining that in one European country there were 173 crimes punishable by death, including witchcraft, and said that all were taken from the list but four, still including witchcraft, by authorities. He went on to explain that even in the United States witchcraft had been practiced, and said that with the death penalty finally being lifted from the crime, that the practice seemed to disappear.

The general evaluator for last night's meeting was Don Stephens who gave evaluation and criticism in a commendable manner. Guests for the meeting were C. E. Boyett and Harris Kimbrough, both of Pampa, who stated their enthusiasm for the club after their first visit. Both showed interest in joining and will return next week. Toastmasters is a club open for anyone desiring to improve their speaking ability and for meeting the public. Those who desire to know more about Toastmasters are invited to call club secretary Bill Dixon at 4-6923 or Bob Ferguson at 4-2525.

Quirks In The News

MASTER OF THE HOUSE
NEW BRITAIN, Conn. (UPI)—Lawrence J. Davidson, a Republican, and Adrienne Krasnoff, a Democrat, were married Sunday but there'll be no political beefs in their home.

AND NO POTATOES
ROBINSON, Ill. (UPI) — The menu at the seventh annual wild game supper of the Squint and Finch Hunting Club Sunday night included:

Southern baked opossum, tender young sweet over-baked mallard duck, breast of dove, wild ring-tail racoon, rare hare, saute rabbits and ground hog.

SOUND AND FURY
LONDON (UPI) — A featured work at Sunday night's concert

in Albert Hall was Malcolm Arnold's "Grand Overture for Three Vacuum Cleaners, a Floor Polisher, Three Rifles and a Fog Horn."

ONE MORE TO GO
CAMDEN, Maine (UPI) — Oscar Grinnell, 55, went water skiing Sunday in Camden Harbor wearing a thermal rescue suit

and a life preserver even though the temperature was 32 degrees. Grinnell needs only next month's trip to complete his goal of skiing in each of 12 consecutive months in Maine waters.

Lotsa Lumber
BATON ROUGE, La. (UPI) — Louisiana's annual sawtimber growth is more than 2,809,000,000 board feet, equally divided between pine and hardwood.

K-TEX TEXACO SERVICE
Gives Double Gunn Bros. Stamps
Each & Every Day

FREE! Pint Upperlube With Cash Fillup
Passenger Car Wash & Grease \$2.50

K-TEX TEXACO SERVICE
Alcock Price Road

ONLY 4 MORE DAYS

Gilbert's

FINAL WINTER CLEARANCE

FITE FOOD MKT.

We Give **PAMPA PROGRESS THRIFT STAMPS**
DOUBLE STAMPS
Wednesday With 2.50 Purchase or More

1333 N. Hobart
MO 4-4092 or 4-8842

<p>ROUND STEAK Fite's Own Fed Feed Lot Beef 85¢/lb</p>	<p>GROUND BEEF Fresh Lean 45¢/lb</p>	<p>PORK CHOPS Center Cut Fresh, Lean 69¢/lb</p>
<p>BACON Wilson's Certified 1-Lb. Pkg. Sliced 49¢</p>	<p>CALF LIVER Fresh 39¢/lb</p>	<p>Pork Loin Roast Lean Tender 49¢/lb</p>

Fite's Own Fed, Feed Lot Beef • Cut • Wrapped • Quick Frozen

BEEF For Your FREEZER **47¢/lb** **57¢/lb**

130 DAYS IN FEED LOT • INVESTIGATE OUR 3 MONTH PAYMENT PLAN • FED 24 HOURS A DAY

<p>COFFEE Maryland Club 2 Lb. Bag \$1.10</p> <p>Ice Cream Borden's 1/2 Gal. 69¢</p> <p>NAPKINS Northern 80 Ct. Pkgs. 2 For 25¢</p>	<p>Chocolate Syrup 19¢</p> <p>Hydrox Cookies 1-Lb. Bag 39¢</p> <p>CHILI No. 2 can 59¢</p> <p>FLOUR Pillsbury 5 lb. bag 47¢</p> <p>Sugar 5 lb. bag 53¢</p> <p>CRACKERS 1-lb. box 19¢</p> <p>Fig Newtons 1-lb. bag 33¢</p> <p>OLEO Shurfresh 2 lbs. 29¢</p> <p>TREET Armours 12-oz. can 39¢</p>	<p>TIDE Giant Box 69¢</p> <p>TISSUE Delsey 4 Reg. Rolls 45¢</p> <p>Grade A Eggs Nest Fresh Large Doz. 47¢</p> <p>COCOA Hershey's 8-oz. Can 25¢</p> <p>ANGEL FOOD CAKES Tender Crust Reg. 49c 29¢</p>
<p>RED POTATOES U.S. No. 1 10 Lb. Bag 39c</p> <p>ORANGE JUICE Shurfresh Frozen 12-oz. can 39c</p>	<p>GRAPEFRUIT Ruby Red 2 Lbs. 25c</p> <p>GRAPE JUICE Welch's Frozen 12-oz. can 33c</p>	<p>BANANAS Yellow Ripe 2 Lbs. 25c</p> <p>PECAN PIES Regular Size 65c</p>

IT'S THE LAW
in Texas

HISTORY OF WILLS

Courts see that your intention or "will" as to property is carried out after you die. Before then you may revoke or change it any time.

The passing of property to heirs is one of man's oldest transactions. As far back as the Egyptian, Assyrian and Jewish civilizations, we have wills written and witnessed on papyrus, clay tablets, etc. In one will an early testator left some of his property to his wife and named a guardian for his children. The Hammurabi code (2100 B.C.) permitted a father by deed to favor his son.

Under early Roman law the head of a house could tell the patrician assembly his wishes, but later Roman law favored a written will to keep the testator's plans secret until death. It also favored having a firm record of his wishes, not resting on memory.

By 2100 A.D. England, where we got our law of wills, was quite well advanced. The church courts (like our probate courts) supervised disposition of property according to a "testament" of how the testator wanted his property to go.

Church courts supervised personal property (movables like armor or personal effects); land was passed on by wills which the king's court handled. Hence today we speak of "last will and testament" since English courts came to pass on both real and personal property, so that one court could handle the whole estate.

English church courts had "executors" who carried out one's testament. To die "intestate" (without a testament) was almost like dying unconfessed. Sometimes the church in the interests of a man's soul could give some of the man's goods to others besides his family. Then, as now, some property had to be left to the surviving wife and children.

By the time of the American Colonies, the laws were well settled, and law courts, rather than church courts, administered and distributed estates here.

VALENTINE VALUES

Biscuits 12 For **\$1**

Frozen Whiting Fish 29¢/lb

Tamales Ellis No. 2 Size 3 For **\$1**

Catsup Shurfine 14-oz. Btl 5 For **\$1**

COFFEE Shurfine Lb. **49¢**

Salmon Honey Boy Tail Can **59¢**

Pinto Beans 5 lbs. **49¢**

Bananas Golden 2 1/2 **25¢**

Carrots Lb. Bag **10¢**

POTATOES RED 25 Lb. Sack **69¢**

CAKE MIX Sliced Wicklow **2 lbs. 79¢**

BACON Small Fresh Pork **39¢/lb**

Spare Ribs Pure Pork Home Made **\$1.00**

Sausage 3 lbs. **\$1.00**

PORK CHOPS Lean Center Cut **59¢/lb**

FLOUR Shurfine 10 Lb. Bag **75¢**

Sandwiches Ham 10¢/each

OLEO Shurfresh Lb. Ctns. 3 For **50¢**

MILK Shurfine Tail Can **8 For \$1**

SOUP Campbell's Tall Can **10¢**

Cheese Spread Shurfresh 2-Lb. **69¢**

Waffle Syrup Shurfine Qt. **43¢**

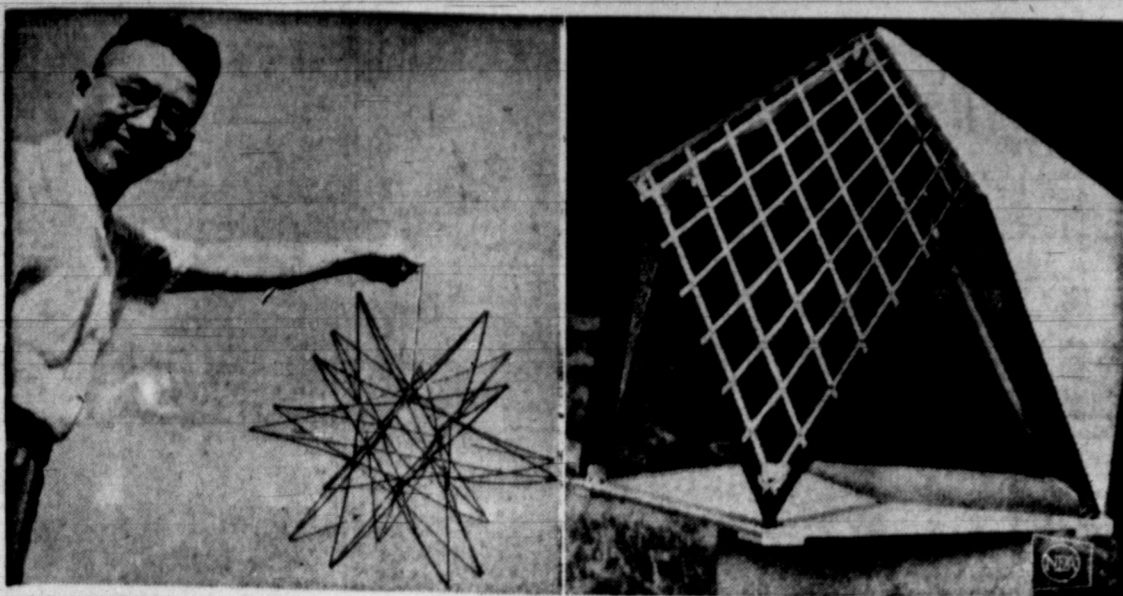
Grape Jam Shurfine 18-oz. **3 For \$1**

SIRLOIN STEAK Swansdown Any Flavor **4 For \$1**

MITCHELL'S Grocery
638 S. CUYLER

Quantity Rights Reserved

CHRIS...
ROBIN...
MRS...
RUSSELL...
LLOYD...
MRS...
BROWN...
MRS...
KENN...
J. C...
C. W...
LESLIE...
PAM...
NER...
MRS...
NUT...
PAUL...
MRS...
MRS...
MRS...
TOWN...
MRS...
CHRISTY...
ANGE...
BABY...
MRS...
NOW...
BABY...
H. O...
MRS...
MRS...
CIS...
R. T...
MRS...
BABY...
DRIVE...
MRS...
VIS...
MRS...
PA...
MRS...
MRS...
FRANCIS...
BABY...
MRS...
GUY...
MRS...
BABY...
MRS...
CHARLES...
EARL...
BABY...
MRS...
KENN...
MRS...
MRS...
MRS...
MRS...
MRS...
MRS...
LILLIE...
TOWN...
MRS...
EDDIE...
BABY...
MRS...
RICH...
MRS...
HISTON...
MRS...
LON...
R. F...
MRS...
MRS...
ELLA...
ROGER...
CAROL...
MARC...
K. L...
H. B...
BOY...
J. C...
MRS...
MRS...
BARBA...
GRANV...
A. L...
MRS...
WELLS...
L. G...
MRS...
CARL...
CONGR...
TO M...
HAZEL...
\$1.15...
TO M...
GIRL...
14 oz...
TO M...
225 N...
BOY...
11 oz...
TO M...



FROM STAR TO STABLE—U.S. Agriculture Dept. research engineer H. C. Liu, left, holds a large 20-ray star he made for his family's Christmas tree. The star, known geometrically as a radiating icosahedron, gave Liu the idea for a new kind of farm building. The shape of the building is a modified icosahedron, shown in a model, right. It's constructed by bolting five diamond-shaped panels to a pentagonal base. The frame is filled in with a flexible latticework, then covered with a spray-on plastic material and finished with a weather-resistant coating. The covering adds little weight to the structure, as a regular roof would, and increases its strength as a conventional roof would not. Such buildings would be useful for storage bins, livestock shelters or dwellings.

On The Record

HIGHLAND GENERAL HOSPITAL NOTES SATURDAY

Admissions
Christel Atchley, Lefors
Robin Hutcheson, 306 Rider
Mrs. Margaret Barnhill, 424 N. Russell
Lloyd Burnett, McLean
Mrs. Marjorie Nail, 1007 E. Browning
Mrs. Ethel Hendricks, Lefors
Kenneth Minter, Lefors
Dismissals
J. C. Jernigan, Lefors
C. W. Spence, Skellytown
Leslie Mize, 819 Talley
Pamela McCabe, 1943 N. Sumner
Mrs. Blanche Deal, 2144 Chestnut
Paula Kretzmeier, Pampa
Mrs. Marie Batman, Pampa
Mrs. Dorothy Nelson, Borger
Mrs. Eileen Thomas, Skellytown
Mrs. Pauline Jones, 1817 N. Christy
Angel Bunton, 506 Harlem
Baby boy Bunton, 504 Harlem
Mrs. Gladys Peace, 932 E. Brunow
Baby girl Peace, 932 E. Brunow
H. O. Hightower, Pampa
Mrs. Fern Hinds, Pampa
Mrs. Marie Moore, 316 W. Francis
R. T. Ayres, McLean
Mrs. Grace Harrington, McLean
Baby Lisa Watkins, 1037 Prairie Drive
Mrs. Mildred Kirkland, 506 Davis
Mrs. Ruby Lee Smithers, Pampa
Mrs. Jerry Reading, Panhandle
Mrs. Vertie Wyckoff, 909 E. Francis

SUNDAY Admissions

Baby boy Hall, 1101 Cinderella
Mrs. Jessie Dale Cox, 320 Albert
Guy Pharis, 1113 Terry Road
Mrs. Elizabeth Boyd, 522 Hazel
Baby girl Boyd, 522 Hazel
Mrs. Margaret Talley, 1024 Charles
Earl Mathis, 606 E. Craven
Baby girl Cox, 320 Albert
Mrs. Lola Vaughn, Wheeler
Mrs. Billie Jo Ratliff, Miami
Kenneth Killingsworth, Twitty
Mrs. Carole Watson, Lefors
Mrs. Juanita Snow, 510 N. West
Mrs. Elaine Hicks, 2225 N. Zimmers
Mrs. Virginia Farrell, Panhandle
Lillie Jane Simmons, Skellytown
Mrs. Marie Long, Morse, Texas
Eddie L. Beakley, Borger
Baby boy Hicks, 2225 N. Zimmers
Richard Mancreif, Borger
Mrs. Alvena Williams, 2232 Wiliston
Mrs. Patricia White, 1157 Huff
Lon L. Spaulding, 1909 N. Banks
R. F. Ewing, 529 N. Hobart
Mrs. Bessie Prichard, Lefors
Mrs. Sandra Hall, 1101 Cinderella

Dismissals

Rogert Ray, 613 N. Roberta
Carol Davis, 1108 S. Wells
Marc Ginn, Pampa
K. L. Yager, 209 Tignor
Mrs. Marion Cunningham & boy, Pampa
H. B. Prather, Sunray
J. C. Hooker, Claude
Mrs. Iva Wells, Skellytown
Mrs. Beulah Barnett, 508 Doyle
Barbara Osborne, White Deer
Granvil Roland, 512 Elm
A. L. Layne, 1610 Coffee
Mrs. Vivian Morrell, 1028 S. Wells
L. G. Culbertson, White Deer
Mrs. Mary Staley, Skellytown
Carl Staley, Skellytown

CONGRATULATIONS
To Mr. and Mrs. Dean Boyd, 522 Hazel St., on the birth of a girl at 8:15 a.m., weighing 7 lbs. 9 ozs.
To Mr. and Mrs. Sammy Cox Jr., 320 Albert on the birth of a girl at 1:35 p.m., weighing 5 lbs. 14 ozs.
To Mr. and Mrs. Johnny Hicks, 2225 N. Zimmers, on the birth of a boy at 8:31 p.m., weighing 6 lbs. 11 ozs.
To Mr. and Mrs. Norris Hall,

MONDAY Admissions

Mrs. Ann Chambers, 2306 Charles
Baby Girl Chambers, 2306 Charles
Mrs. Marguerite Grady, 2421 Duncan
Baby White, 1157 Huff Road
Mrs. Lois Savage, 430 N. Davis
Baby Girl Savage, 430 N. Davis
Earl Williams, Ft. Sumner, N.M.
J. W. Gist, 1053 Huff Road
Miss Addie Fern Lick, White Deer
Joe M. Keel, 1210 S. Hobart
Miss Letha Fennell, Skellytown
Terry Pulse, 1133 Neel Road
Jamie Jo Hendricks, Jol. N.M.
George Gilreath, McLean
Mrs. Mattie Thompson, Twitty
Mrs. Evelyn Nicholson, White Deer
Mrs. Alma Davis, Stinnett
Mrs. Belle Rochelle, 925 Ripley
Mrs. Lacey Eddins, Skellytown
Mrs. Jonne Davis, 935 Sumner
Donny Paul Swinford, 1023 Prairie Dr.

Timothy Burk, 929 S. Wells
Layne Conner, 637 N. Nelson
Kathy McKay, 1211 S. Finley
Mrs. Joy Waddell, 2400 Rosewood
C. H. Adams, 431 Warren

Dismissals
Gayle Weiborn, 709 Lefors St.
Mrs. Betty Brown, 1157 Prairie Drive
Don Brown, 3005 Rosewood
Mrs. Lynette Keel, 1139 S. Banks
Deryl Robbins, Pampa
Kenneth Killingsworth, Twitty
Mrs. Marilee Elledge, 1020 S. Banks
Mrs. Marie Long, Morse, Tex.
Mrs. Jane Skinner, 1104 Sierra
Richard Muncreif, Borger

CONGRATULATIONS
To Mr. and Mrs. John Chambers, 2306 Charles, on the birth of a girl at 4:52 a.m., weighing 7 lbs. 2 oz.
To Mr. and Mrs. Guy Savage, 430 N. Davis, on the birth of a girl at 6:00 a.m., weighing 6 lbs. 15 oz.
Pizza Cheese Popular
NEW YORK (UPI)—The burgeoning popularity of pizza has shot up the consumption of Italian-type cheese. Sales of this type cheese has soared 40 per cent in five years to about 180 million pounds a year. Nearly 90 per cent of Italian-type cheeses are made in this country.

Television Programs

Channel 4 KGNC-TV, TUESDAY NBC

1:00 The Match Game
2:25 News
3:30 Make Room For
4:00 Today Show
4:00 Capt. Kid's Caroons
5:30 Window On The World
5:45 Huntley Brinkley
6:00 News
6:15 Weather
6:25 Sports
6:30 Laramie
7:30 Empire
8:30 Dick Powell Show
9:30 Ripcord
10:00 News
10:15 Weather
10:25 Sports
10:30 Tonight Show

CHANNEL 4 WEDNESDAY

6:00 Continental
6:30 Classroom
7:00 Today Show
8:00 Capt. Kid's Caroons
8:30 News
9:00 News
9:30 Play Your Hunch
10:00 The Price Is Right
11:30 Ruth Brent Show
12:35 Burns & Allen
1:00 Merv Griffin Show
1:35 News NBC
2:00 Loretta Young
2:30 Youngs Dr. Malone
11:00 You First Impression
11:30 Truth Or Consequence
11:55 News NBC-L
12:00 News
12:10 Weather

Channel 7 KVII-TV, TUESDAY ABO

1:00 Queen For A Day
1:30 Who Do You Trust
4:00 American Bandstand
4:30 Maverick
5:30 News
5:45 Weather
5:45 News
6:00 Sea Hunt
6:30 Combat
7:30 Hawaiian Eye
8:30 Untouchables
8:30 Death Playhouse
10:30 K-7 News
10:40 K-7 Weather
10:45 Life Line
10:50 Too Young To Know

CHANNEL 7 WEDNESDAY

8:00 Jack LaLanne
9:30 Early Show
11:00 Jane Wyman
11:30 Yours For A Song
12:00 Tennessee Ernie Ford
12:30 Father Knows Best
1:00 Charlie Keys Show
1:30 Ann Southern
2:00 Day In Court
2:25 Mid-Day Report
2:30 Seven Keys

Channel 10 KFPA-TV, TUESDAY CBS

1:00 The Secret Storm
1:30 Edge of Night
4:00 Freddie the Fishman
5:15 Superman
5:45 News
6:00 News Report
6:30 Weather
7:00 Password
7:00 Hennessey
7:30 Red Skeleton
8:30 Jack Benny
8:50 Garry Moore
10:00 News-Jim Pratt
10:15 Weather Report
10:25 KPFA-TV Editorial
10:30 Search For Tomorrow
11:00 CBS News
11:00 The Millionaire

CHANNEL 10 WEDNESDAY

6:25 Rural Reporter
6:30 College of the Air
7:00 Farm & Ranch News
7:30 World of Sports
7:30 ENCO Reporter
8:00 Capt. Kangaroo
8:00 Freddie the Fishman
8:30 I Love Lucy
10:00 The McCoys
10:30 Pete and Gladys
11:00 Love Of Life
11:25 CBS NEWS
11:30 Search For Tomorrow
11:45 The Guiding Light
12:00 News Jim Pratt
12:10 Weather
12:30 Farm & Ranch News & Markets
12:30 As The World Turns
1:00 Password
1:30 Art Linkletter's House Party
2:00 Tell The Truth
2:25 CBS News
2:30 The Millionaire

HELP THEM IN HIGH SCHOOL TO LEARN MORE-TO EARN MORE

THE GOLDEN HOME AND HIGH SCHOOL ENCYCLOPEDIA

BOOK ONE 49c | ALL OTHERS \$129 EACH | ACCEPT ONLY THE GENUINE GOLDEN HOME AND HIGH SCHOOL ENCYCLOPEDIA | SAFEWAY

WIN \$100.00 CASH!



Look Who's Winning \$100.00 At

SAFEWAY!

Low Discount Prices Plus Gunn Bros. Stamps at Safeway!

Mrs. M. B. Pollard
610 W. Foster

Mrs. Jack Ingram
1616 Terrace

CHERRIES

Town House 2 No. 303 Cans 25c

OLEO COLDBROOK COLORED

1-LB. PKG. 8c

TIDE NEW IMPROVED DETERGENT

GIANT BOX 39c

ROUND STEAK



U.S.D.A. Choice Mature Beef
lb. 89c

Sirloin Steak U.S.D.A. Choice Aged Mature Beef lb. 89c

Chuck Roast U.S.D.A. Choice Aged Mature Beef lb. 55c

Ground Beef Freshly Ground 3 lb. pkg. 98c

SLICED BACON Safeway or Armour Star 55c

T-BONE STEAK U.S.D.A. Choice lb. 98c

BACON SQUARES Hickory Smoked, Cello Wrapped lb. 29c

SLAB BACON Hickory Smoked Piece Or Whole 35c/lb

Campbell's Condensed Tomato Soup

MELROSE CRACKERS No. 1 Can For 23c 10c

WE GIVE GUNN BROS STAMPS

Town House Tomato Sauce

3 8-oz. Cans 25c

GARDEN FRESH PRODUCE

AVOCADOS

CALIFORNIA FUERTES

Each 9c

CENTRAL AMERICAN BANANAS

GOLDEN RIPE 12 1/2c

Kitchen Craft FLOUR 5-lb. Pkg. 43c

Heinz Tomato KETCHUP 14-oz. Bott. 25c

Town House Elberta PEACHES 4 No. 303 Cans 88c

Austex Plain Chili No. 300 Can 49c
Austex Beef Stew 24-oz. Can 57c
Dyanshine Shoe Polish Bott. 25c

WE GIVE GUNN BROS STAMPS

Cook Book Bread 1 1/2-lb. Loaf 29c
Ritz Crackers Nabisco 6-oz. Pkg. 39c
Hershey Dainties 3c ON 4-oz. 23c
Cocoa Mix 4c Off Label Hershey Instant 14-oz. Pkg. 41c
Pancake Mix Betty Crocker 42-oz. Pkg. 51c

KOTEX Sanitary Napkins Box of 12 37c
KLEENEX Facial Tissue 400-Ct. Box 23c
RINSE AWAY Hair Rinse Bott. \$1.00
SPAGHETTI American Beauty 17-oz. Box 21c

VO-5 HAIR CREME RINSE 15-oz. Bott. \$1.00 Plus 10c tax
LUSTRE CREME HAIR SPRAY Can 99c



Prices Good Thru Feb. 13th In Pampa Where You Get...

DOUBLE GUNN BROS STAMPS WEDNESDAY (with purchase of \$2.50 or more)

Foreign Commentary

By PHIL NEWSOM
UPI Foreign News Analyst
British Counterattack:

Watch for a possible sudden counterattack against French President Charles De Gaulle's veto of Britain's entry into the Common Market. Members of parliament from all three of Britain's major parties are convinced that cancellation of Princess Margaret's scheduled visit to Paris next month shows Prime Minister Harold Macmillan's deep anger at De Gaulle. "Charley Boy's got Mac's scottish temper up," one Conservative Party member of parliament said. Some Conservative members are

predicting that Macmillan quietly will seek the advice of Sir Winston Churchill for pointers on how to "put De Gaulle in his place." Since Churchill, along with the late President Franklin D. Roosevelt, was no wartime admirer of De Gaulle, Macmillan should get some enthusiastic suggestions as to where to place the needle. In taking any steps against De Gaulle, Macmillan is expected to work in close cooperation with the United States, Canada, other members of the commonwealth, and De Gaulle's own Common Market partners—all of whom would like to see Britain in the European economic grouping.

No agreement: There is little hope for an early nuclear test ban agreement at the East-West talks which resume in Geneva Feb. 12. The recent test ban probe in Washington which was terminated by the Soviets, after talks with the United States and Britain, gave no indication that the Russians are prepared to meet the West's insistence on effective arrangements against cheating. Furthermore, it looks as though the Russians now may want to mark time to see what happens in the problem — beset Western camp. French President Charles De Gaulle has spotlighted those difficulties with his go-it-alone policy for Europe. And Moscow may want to conduct a probing operation in Geneva to see just how deep this Western rift runs before making any commitment on tests, disarmament or other cold war issues.

Blessed Relief From ARTHRITIS

Without Drugs or Surgery

If you act promptly, an amazing illustrated new FREE book that may change your whole life will be rushed to you by return mail.

Send for it today — and discover why drugs give you only temporary relief. How to eliminate the cause of your aches and pains, without drugs and without surgery, a proven non-medical way. How to avoid years of needless agony and deformities that may cripple you for the rest of your life.

You owe it to yourself to send for this valuable FREE book without delay. No obligation. No agent will call. Write: The Ball Clinic, Dept. 3-2348-F, Excelsior Springs, Missouri. A postcard will do.

Atomic Sub:

The United States will find it neither quick nor easy to get permission for its Nautilus-type atomic-powered submarines to call at Japanese ports, despite official Japanese government friendliness to the idea. Formal permission right now is being delayed—ostensibly pending a study into precautions and compensation for accidents. But the Japanese people—meaning the voters—have a deep-seated revulsion against atomic weaponry of any sort that stems back to their experiences at Hiroshima and Nagasaki. Some people are arguing that the Nautilus, being a warship, and being atom-powered, is an atomic weapon—even though it doesn't carry nuclear warheads. The argument may sound silly, but the feeling is serious and the politicians know it.

Indian Worries:

Indian leftists are worried that their still-cherished neutralism will breathe its last and Soviet friendship will vanish if the United States and Britain provide the air cover that India lacks in the event of another Communist Chinese invasion. They cornered Prime Minister Jawaharlal Nehru on this recently, but he gave them no comfort. British and American air force officers are doing some worrying of their own — about the security risks involved if the West goes through with plans to build an early warning radar system for India. This equipment is top secret — and India not only has 100,000 Communists, but many boosters of the Soviet Union within the ruling Congress Party.

Hom & Gee Grocery

421 E. Frederic Open 7 Days A Week
We Give Buccaneer Stamps MO 4-8531

Double Buccaneer Stamps Wed With Every Purchase 2.50 or more

Bacon Quality Thick Sliced 2 lbs. 79¢	Fresh Ground Beef 4 Lbs \$1.00 Fresh Pork Sausage 3 lbs. \$1.00 Blue Ribbon Round Steak Lb. 89¢	Steak Prime Rib 69¢ lb Lean Meaty Pork Back Bone 45¢ lb Wright's Fiesta Chili Bricks 39¢ lb
Blue Ribbon Sirloin or T-Bone 79¢ lb	Pork Steak 39¢ lb	

We Feature U.S.D.A. Good or Blue Ribbon Beef
BEEF Half Beef **51¢ lb** Hind Qtr. **61¢ lb** Cut And Wrapped As You Like It
Also Frozen Vegetables, Sea Food and Fruit
All On Our REASONABLE PAYMENT PLAN

Campbell's Tomato Soup - can 10¢	Shurfine Salad Dressing qt. 39¢
Shurfine 14-oz. Bottle Catsup - 3 for 49¢	Roxy Dog Food 12 cans \$1.00

BISCUITS Shurfine 12 Cans \$1	Shurfresh Cheese Spread 69¢ 2-Lb. Loaf
--	--

OLEO Shurfine 6 Lbs. \$1	Shurfine Flour 10 Lbs. 69¢
Hershey COCOA 1/2 Lb. Can 29¢	

No. 2 Can Wolf's Chili 59¢	Shurfresh Crackers 1 lb. Box 19¢	Shurfine Coffee 49¢
-----------------------------------	---	----------------------------

BAKERITE 3-lb. 59¢	Shurfine 300 Can Pork & Beans 10¢
Shurfine Milk 8 tall cans \$1.00	200 Count Softin Soflin Napkins 29¢

Golden Ripe Bananas 2-Lbs. 25¢	Shurfine Cream Style CORN 303 Can 7⁹/₁₀ \$1
---------------------------------------	--

Idaho Russett Potatoes 10-lbs 49¢ lb	Northern Wax Paper Roll 19¢
Cauliflower Head 29¢	Shurfine Tomato Juice 46 oz can 25¢
	Austex No. 2 1/2 Can Tamales 3⁹/₁₀ \$1

FRYERS STEAK U.S.D.A. Grade A Whole **29¢ lb**
Swift's Premium Proten Beef **RIB 79¢ lb**
Picnics D. A. K. Brand 2 Lb. Can **\$1.49**
Danish, Boneless, Cooked, Guaranteed All Tender-Lean Meat

EAT BETTER
FOR LESS
Better Food For Less
IDEAL FOOD STORES
Western Maid 44 oz. Jar
WAFFLE SYRUP 39¢

COFFEE 59¢ LB.
Folgers All Grinds
\$100.00 WINNERS
INSTANT LUCKY MONEY
Lola Ward
Mrs. B. T. Adkins
Mrs. Jack Merchant
Mrs. W. H. Randolph
Mrs. D. May Wilson
Mrs. Alice Sharum
Mrs. E. E. Shultz
Many, many other Lucky Number Winners from \$1 to \$20.00

SUGAR 39¢
PURE CANE 5 Lb. Bag
HERSHEY'S CHOCOLATE DAINITIES 12-oz. Pkg. **44¢**
TEK Tooth Brushes 2 69¢ Brushes Only **79¢**

FLOUR 98¢
Gold Medal 10 Lb. Bag
Shelled Pecans 89¢
Ellis 10-oz. pkg.

PEAS 39¢
Del Monte 2 303 Cans
BEANS 39¢
Kuners Wax 2 303 Cans
HOLLAND DUTCH BREAD 21¢
Ideal Lb. Loaf

BRYLCREEM 89¢
King Size Plus Tube Tax
BUTTER 71¢ lb
Fairmont

BACON 89¢
2 LBS. IDEAL THICK SLICED Sweet, Mild

MARGARINE 10¢
Wilson's Lb. Ctn.

CRACKERS 19¢
Vista Saltine Lb. Box

CRISCO 69¢
Shortening 3 Lb. Can

Pancake Flour 35¢
Griddle King 3 Lb. Bag

Crushed Pineapple 27¢
Del Monte No. 2 Can

Green Beans 10¢
Raider, Cut 303 Can

Fruit Cocktail 39¢
Cock of the Walk 2 303 Cans

Pork & Beans 25¢
Campfire 3 303 Cans

Toilet Tissue 69¢
Lydia Grey 10 Roll Pkg.

CATSUP 35¢
Kuners 14-oz. Bottle
ORANGES 29¢
Large Size 2 LBS
Calif. Navel

Red Potatoes 39¢
ONIONS 10¢ lb
Med. Size 10 LBS BAG

ICE MILK 39¢
1/2 Gal.

CAKE MIX 39¢
2 Boxes

DOG FOOD 25¢
3 Tall Cans

GRAPE JELLY 1.00
4 FOR \$1.00
Ideal Pure 18-oz. Jar

OUR WAY J. R. Williams WHY MOTHERS GET GRAY

OUR ANCESTORS by Quincy "Sure, it's expensive, but your sweetheart will be disappointed if you don't remember her!"

OUR BOARDING HOUSE With Major Hoople BLITZ BROTHERS

by SAKREN

FRECKLES

ALTO SHOP

Bugs Bunny

COMIN' UP ELMER!

The Barrys

AW, DON'T BE MAD, DEAR...

Short Ribs

I'M ANXIOUS FOR YOU TO MEET THE BOYS.

Captain Easy

YOU MEAN YOU'RE LOCO ABOUT SOME DERN BARE, RUDY?

Jackson Twins

HER MARKS ARE DOWN... SHE'S EVEN FELT GUILTY ABOUT MISJUDGING LIETZL?

Morty Meekie

YOU KNOW WHAT I'M GOING TO BE WHEN I GROW UP? I'M GOING TO BE A GENIUS!

Blondie

BLONDIE LOOK AT THE WAY OUR DAUGHTER IS DRESSED TO GO OUT

Alley Oop

BUT NOW, O PRINCESS, YOUR KAMAR HAS BECOME AFRAID!

Bonnie

I GET DIZZY JUST LOOKING DOWN THE HILL!

Ben Casey

SO OUR THESIAN FRIENDS PUZZLE YOU BEN?

Mickey Finn

HE'S IN - A - AND GOIN' TOWARDS MAX!

Pricillo's Pop

WE HAD A LONG TALK! WE'RE NEVER GOING TO QUARREL AGAIN!

Dixie Dugan

SLAM!

Joe Plooka

HE LOST... DIDN'T HE? I NEVER WON A BIG ONE IN MY LIFE!



PIANO TALK — Among the members and guests attending the Pampa Music Teachers' Association luncheon meeting Tuesday in the Pampa Hotel were seated, left to right, Mmes. Dick Land, Charles Parr, W. H. Fuller, Calvin Whatley, Lois Fagan; standing, left to right, Mrs. Fidelia Yoder, Mrs. Gertrude McDaniel and Mrs. Elizabeth Morris, both of Amarillo and Tracy Cary.



Dear Abby
By Abigail Van Buren

DEAR ABBY: I am 20 and have been engaged to a boy my age for the past year. He plays in four bowling leagues and besides that he bowls jackpots after league twice a week. He never takes me anywhere except to the bowling alley and sometimes I have sat through twenty games a night. We set our wedding date for April, but the more I think of it the more I think he should settle down before we get married. All he wants to talk about is bowling. I wonder if you think he would be a good guy to marry?

SICK OF BOWLING
DEAR SICK: Marriage has enough problems without adding a 16-pound bowling ball to it. Your young man is much too bowling-lazy for marriage at the moment. Marry him only if you plan to start out with plenty of strikes against you.

DEAR ABBY: Suddenly one of my closest girl friends started acting very cool and distant to me. Twice I asked her what the trouble was. After two frigid "Nothings" I realized it was ME she was mad at. Her coolness continued so I finally apologized for anything I might have done wrong. I honestly haven't the faintest idea how I offended her. She continues to treat me like a stranger and I can't understand it as she has always been a very thoughtful and understanding person. What can I do to patch things up?

DEAR MISERABLE:—Nothing! You have overestimated the girl. No truly "thoughtful and under-

stood" person would suddenly give a friend the cold shoulder without telling her why and giving her a chance to defend herself.

filed by any holdover jealousies and hatreds from our common childhood, we like to imagine it, too. And so we prefer to believe that it is our youngster who has somehow mysteriously attracted our sister's antagonism.

This blindness is hard on children. They take criticisms from aunts and uncles seriously. Knowing nothing of the underground resentments that have never been worked out, they believe that their faults are entirely responsible. They are made to feel ashamed for arousing resentments that in fact have very little to do with them.

While all children are in some degree victimized by the unfinished emotional conflicts of their parents, we can spare them some of the ill effects by our awareness of these conflicts. We can at least say to the little daughter whose aunt has used her as a substitute target:

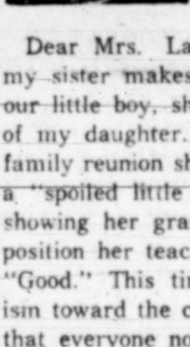
SOCIAL CALENDAR

- TUESDAY
2:30 — Civic Culture Club with Mrs. W. C. Scott, 1133 E. Kingsmill.
2:30 — Twentieth Century Forum Club with Mrs. Aubrey Steele, 1800 Grape.
2:30 — Varietas Study Club Friendship Tea, Lovett Memorial Library.
2:30 — El Progresso Club with Mrs. Harold Wright, 930 Christine.
7:00 — Twentieth Century Club, Husbands' Night Party, with Mrs. Fred Neslage, 2005 Charles.
7:30 — Business and Professional Women's Club, City Club Room.
7:30 — Pampa African Violet Society with Mrs. Cecel Holmes, 601 N. Somerville; Mrs. Charles Glison co-hostess.
7:30 — Texas Graduate Nurses Ass'n, District 23, Fashion Show-Dinner, Coronado Inn.
8:00 — Rho Eta Chapter, Beta Sigma Phi Sorority, Citizens' Hospitality Room.
8:00 — Women of the Moose, 401 E. Brown, Moose Hall.
THURSDAY
10:00 — Thursday Morning Duplicate Club, the Coronado Inn.
2:15 — Sam Houston PTA, school auditorium.
2:00 — B. M. Baker PTA, school auditorium.
2:15 — Horace Mann PTA, school auditorium.
2:15 — Woodrow Wilson PTA, Founders' Day Tea, school auditorium.
2:30 — Senior Citizens Center, Lovett Memorial Library.
6:30 — OES Gavel Club, covered-dish supper with Mrs. W. R. Morrison, 1609 Mary Ellen.
7:30 — Stephen F. Austin PTA, school auditorium.
7:30 — Lamar PTA, Fathers' Night, school auditorium.
7:30 — Travis PTA, Fathers' Night, school auditorium.
7:30 — Pampa Rebekah Lodge, IOOF Hall, 800 E. Foster.
FRIDAY
7:30 — Pampa Credit Women's Club, City Club Room.
SATURDAY
7:30 — Saturday Night Duplicate Club, Coronado Inn.

Amarillo Luncheon Guest Discusses "Teaching Of Bach" For Local Ass'n

Mrs. Gertrude McDaniel of Amarillo was guest speaker for the February meeting of the Pampa Music Teachers' Association held Tuesday in the Pampa Hotel Dining Room. She spoke to the group on the "Teaching Of Bach" and brought along many useful materials, which she discussed. Group discussion followed her talk. Also attending from Amarillo was Mrs. Elizabeth Morris, former State Music Teachers' Association president. Mrs. Morris extended a special invitation to Pampa teachers to meet with Amarillo teachers on April 23, when Dr. V. J. Kennedy, music consultant, will be guest speaker. Preceding the program, a business meeting was held in which plans were announced for a Valentine for each member.

Brunch to be held in the Citizens' Hospitality Room in March. Members were asked to bring music for a "Musical Rummage Sale." Assignments for five-minute talks on various phases of piano pedagogy were made. It was announced that the organ recital planned for April will be scheduled in March; further announcements will be made later. Members and guests attending were Mmes. Lillian Land, W. H. Fuller, Calvin Whatley, Lois Fagan, Hazel Wilson, Raymond Welch, Fidelia Yoder, Charles Parr and Mrs. Tracy Cary. Mrs. Whatley, hostess for the meeting, decorated the table with Valentine appointments including



The Mature Parent
Relative's Criticism
... Is Mis-Directed

By MRS. MURIEL LAWRENCE

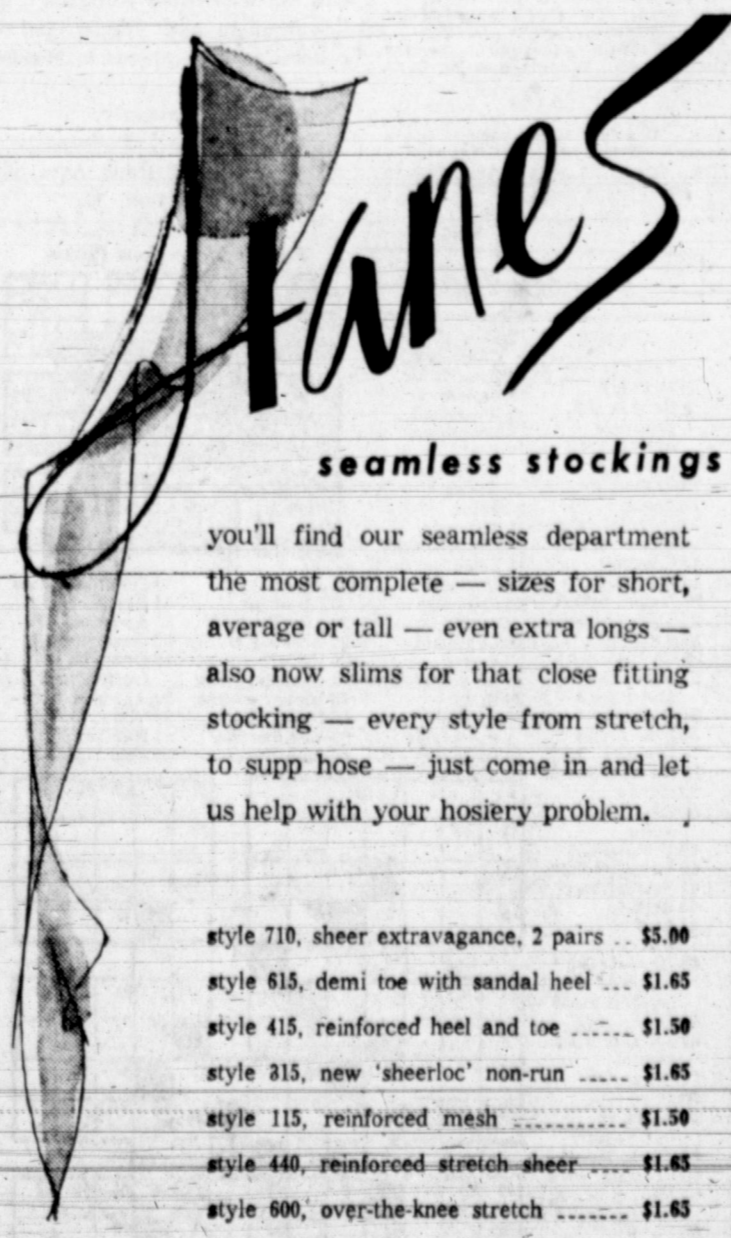
Dear Mrs. Lawrence: Though my sister makes a big fuss over our little boy, she is very critical of my daughter. During a recent family reunion she called the child a "spoiled little show-off" for showing her grandmother a composition her teacher had marked "Good." This time, her antagonism toward the child was so clear that everyone noticed it.

ANSWER: It's about time that her antagonism toward you became as clear. Our relatives are not always capable of open criticism of us. If our sister was taught that she owed us perfect love, any hate she felt for us as a child was driven underground, making her afraid of criticizing us openly and directly. But she was not taught she had

to love our child. So, when she feels jealousy of us for possessing a little girl who can claim family approval for her composition, it explodes in the form of attack on the "show-off" child. But it is really directed at us for claiming that envied approval through the child. We don't always like to see this kind of thing. Just as grown-up brothers and sisters like to imagine that affection for us is unde-



a perfect
valentine
gift
by —



seamless stockings
you'll find our seamless department the most complete — sizes for short, average or tall — even extra long — also now slims for that close fitting stocking — every style from stretch, to supp hose — just come in and let us help with your hosiery problem.

- style 710, sheer extravagance, 2 pairs . . . \$5.00
- style 615, demi toe with sandal heel . . . \$1.65
- style 415, reinforced heel and toe . . . \$1.50
- style 215, new 'sheerloc' non-run . . . \$1.65
- style 115, reinforced mesh . . . \$1.50
- style 440, reinforced stretch-sheer . . . \$1.65
- style 600, over-the-knee stretch . . . \$1.65

Dunlap's HEART STEALERS
NEWEST!
CHANEL
No 5 SPRAY PERFUME—SPRAY COLOGNE SET
A PLEASURE TO OWN
A TREASURE TO GIVE

ROUND STEAK
U.S.D.A. Good Beef
79c lb.

FOOD CENTER
Open Daily 8 A.M. To 8 P.M.
Open Saturday 8 A.M. to 9 P.M.
Open Sunday 8 a.m. To 7 p.m.
Prices Good at Both Stores
NO. 1—400 S. RUSSELL
NO. 2—105 N. HOBART

FRYERS
U.S. Inspected
Fresh Dressed
25c Lb.

CHICKEN DRUMSTICKS or THIGHS
29c lb.
BACON
Swift Premium
1-LB. 49c
PKG.

Winners Last Wednesday of \$25 Each:
Mrs. Herman Adams Mrs. Hazel Kilcrease
Hills Brothers COFFEE 1-lb. can 59c
Hi-Note TUNA 2 flat cans 29c
Northern Tissue 4 Reg. rolls 29c
Kimbell's NAPKINS 60 Count 10c
Kimbell's Giant Size DETERGENT 49c
MILK Kimbell's Tall Can 10c
COCOA Hershey's 1/2 Lb. 29c
MACARONI O-B-1-Lb. Bag Texas Size 19c

SPINACH Raider's 303 Can 10c
BLEACH Kalex Quart 10c
TOMATOES Diamond 303 Can 10c

TANGERINES Sweet Zip-Skin 29c
AVOCADOS Fancy 7c ea.
LETTUCE Tender Fresh 19c lb
SWEETIE PIES 12 In A Box 39c
Fluff Wright 3 lb. ctn. Shortening 39c
RED POTATOES 10 LBS 19c
RUBY RED GRAPEFRUIT 5c EACH
FRESNO HOT PEPPERS 39c lb

BENEATH THIS BANNER ARE THE WORLD'S BEST BARGAINS CLASSIFIED ADS

They'll Do It Every Time By Jimmy Hatlo. A cartoon illustration showing a man being pulled in multiple directions by various people, with speech bubbles and a caption: 'IT'S THE CHEAP JOINS WHO NEVER BUY WHO WANT TO PLAY HOME FREE...'

63 Laundry 63 92 Sleeping Rooms 92. Advertisements for laundry services and sleeping rooms, including 'PLAINS MAN MOTEL' and 'FURNISHED APARTMENTS'.

103 Real Estate For Sale 103. Real estate listings including 'Cree & Company Realtors' and 'John Lee Bell Realty Co.'.

120 Automobiles for Sale 120. Automobile listings including 'MAULDIN MOTOR CO.' and 'HAROLD BARRETT FORD CO.'.

NOTICE THE STATE OF TEXAS COUNTY OF GRAY. NOTICE is hereby given that a hearing will be held on the 16th day of February, 1963, at 10:00 a.m. in the County Court of the County of Pampa, Texas...

13 Business Opportunities 13. Advertisements for business opportunities including 'DEEP ROCK Station and Cafe' and 'FOR SALE'.

35 Plumbing & Heating 35. Advertisements for plumbing and heating services including 'ANDERSON PLUMBING CO.' and 'Thunderbird Carpet Company'.

69 Miscellaneous For Sale 69. Advertisements for miscellaneous items for sale including 'SHELVY J. RUFF' and 'WILLIS FURNITURE'.

VETERANS. Advertisements for veterans' services including 'DUNHAM HOMES' and 'J. E. Rice Real Estate'.

105 Lots 105. Advertisements for lots including '105A Cemetery Lots 105A' and '106 Business Property 106'.

124 Tires, Accessories 124. Advertisements for tires and accessories including 'WHY SPEND MONEY ON A DEAD ENGINE, BUY A RIVERSIDE'.

9 A.M. Classified Rates. A table listing rates for various types of classified advertisements.

22 Female Help Wanted 22. Advertisements for female help wanted including 'CAREER OPPORTUNITY' and 'BUTLER NURSERY'.

69 Miscellaneous For Sale 69. Advertisements for miscellaneous items for sale including 'ELECTROLUX CLEANERS' and 'PIANOS FOR RENT'.

98 Unfurnished Houses 98. Advertisements for unfurnished houses including 'DAILEY REALTY' and 'QUENTIN WILLIAMS REALTOR'.

103 Real Estate For Sale 103. Real estate listings including 'DAILEY REALTY' and 'QUENTIN WILLIAMS REALTOR'.

117 Body Shops 117. Advertisements for body shops including 'KIRBY Vacuum Cleaners' and 'HUGHES DEVELOPMENT CO.'.

125 Boats & Accessories 125. Advertisements for boats and accessories including 'OGDEN & SON' and 'KIRBY Vacuum Cleaners'.

AUCTION SALE. TUESDAY, FEBRUARY 12, 7:30 P.M. PRICE ROAD AUCTION. ALL KINDS OF FURNITURE & APPLIANCES.

TO BUY SELL RENT HIRE. Place Your Ad by Phone MO 42525. HUGHES DEVELOPMENT CO. MO 4-2525.

Abundance In A World Of Want:

Strohm Explores Farm Mess

CHICAGO (NEA) — "Does it make any earthly sense in a world of want to threaten farmers with heavy fines if they produce too much food?"

With this challenging question, John Strohm, distinguished American reporter, editor and farmer, attacks "Our Crazy Food and Farm Problem" in an important series of articles in The Pampa News starting tomorrow.

Strohm traveled far and wide, in this country and abroad, for background. As an agriculture authority his help was sought by President Eisenhower, Secretary of Agriculture Benson and others. His knowledge of domestic farm problems is based on a study of farming in Russia, Red China, India, Egypt, Southeast Asia and Latin America.

The Newspaper Enterprise Assn. commissioned Strohm and his organization, with headquarters at Woodstock, Ill., to make a detailed survey of the world and U.S. farm-food problem and to report upon it with complete frankness. The result is a series of dispatch-



JOHN STROHM
... distinguished reporter

es which not only contain much new factual information but also reflect the informed views of John Strohm as to possible farm problem solutions.

These articles will undoubtedly be controversial, because the farm problem is one of the nation's most controversial issues. Strohm's findings and views are presented as a contribution to understanding by a man entitled to hearing. Comments have been solicited from persons of varied viewpoints and will be summarized at the end of Strohm's articles.

John Strohm has never shrunk from controversy.

In 1946 he cabled Josef Stalin and received permission to tour the great Russian farm belt, the first American reporter so authorized after World War II.

In 1958, at the height of the Quemoy-Matsu crisis, Strohm became the first accredited American newsman admitted to tour Red China. Strohm's dispatches on conditions behind the Iron Curtain and the Bamboo Curtain were both distributed by the Newspaper Enterprise Assn. The Red China exploit won the Sigma Delta Chi

award for distinguished foreign correspondence.

Strohm was born on a farm and lives at Woodstock, Ill., with his wife and six children. He owns farms in the state of Washington and Florida. He is the president of Publications, Inc., of Milwaukee, Wis., editor of the Ford Almanac and of National Wildlife Magazine and a contributing editor to the Reader's Digest. He was formerly editor of the Prairie Farmer and president of the American Agricultural Editors Association.

Valentine Gift Doesn't Have To Be Expensive

NEW YORK (UPI) — When Valentine Day comes—as it does Thursday—can Christmas bills be far behind?

For most John and Jane Does Christmas bills are, at least, somewhat behind.

We're trying to pay them on time, but as the trusty local credit spies can testify, we haven't completely cleared the slate yet.

Love, meanwhile, is supposed to be patient and understanding. But anyone involved in an affair of the heart expects a Valentine Day gift. It's the thought that counts. Never mind the anemic state of cash on hand. It's owed—for Christmas bills.

Just take the loose change that's burning a hole in your pocket and do your Valentine Day shopping at the five and ten. If the object of your love's as patient and understanding as love's supposed to be, she or he will understand that the thought's bigger than the gift.

This isn't preachment without practice. To show that it can be done, I made a quick cupid's trip through the local dime store.

You on the brink of bankruptcy will be joyful to know that a perfectly acceptable Valentine gift can be bought with just one cent. It's a little, almost-nothing Valentine that looks costlier than it cost. It says "I Love You" and it has some red ink on its heart shape.

For a dime you can buy shoe strings, lead pencils, two five-cent candy bars (sweets to the sweetest?) or a more lavish Valentine.

If your change almost amounts to a dollar, you can get a really big Valentine. It's two feet by six feet.

The size looked as though this Valentine would do to the postal department what snow, sleet, rain and other inclement weather couldn't. That is, deter the boys in blue from delivering it.

But Violet Hackim, home adviser of the dime store, said this huge sentimental card definitely will go through the mail.

In the bigger "little price" category, but suitable for cupid's day, are heart-shaped throw pillows, ashtrays and boudoir-picture frames.

If your heart's interest works through the stomach, go to the cookery department. Made to order for such maids: A heart-shaped cake tin—or a napkin holder of white-lace hearts.

You who would rather pin than eat the Valentine reminder might do best by heading into the jewelry department. For pennies—plus nickles, dimes and a few quarters—you can pick up heart lapel pins, heart-shaped rings and bracelets.

"These suggestions are for most of us," Miss Hackim said. "We have hearts as big as the ocean for those we love, and purses small as ponds." Amen.

Inspection Of Vehicles Only 21 Per Cent

"With the deadline for obtaining inspection stickers drawing near, only 21 per cent of the vehicles in Gray County have been inspected," Captain Alan Johnson, Motor Vehicle Inspection Supervisor of the Texas Department of Public Safety, said this week.

Unless the number of inspections is increased appreciably soon, long waiting lines will be forming—at inspection stations when the April 15 deadline approaches. "The authorized inspection stations are ready and capable of handling the inspection of Texas registered vehicles without delay if owners will not wait until just a few days before the deadline," Johnson said. "Any driver operating a vehicle registered in Texas, that is required to be inspected, on public roads after April 15 will be operating in violation of the law," he said.

Captain Johnson called attention to the fact that since the beginning of the inspection program, vehicles having a defect that was a causative factor in fatal accidents decreased from 13 per cent to 4 per cent. "The purpose of the Motor Vehicle Inspection Program is to discover any maladjustment which might become a link in a cycle of events leading to an accident and, by removing the link, prevent the accident," he pointed out.

"Old at 40, 50, 60?" Man, Get Wise! Pep Up

Thousands are peppy at 70! So, if you feel weak, low in energy, "old" at 40, 50 or 60, quit blaming it on age. If you want to feel younger, try Oxtrex Tonic. Tablets at once. All so for debility due just to rundown body's lack of iron, the "below-par" feeling you may call "being old". Put pep in both sexes. Try Oxtrex to feel peppy, years younger. 8-day get-acquainted size costs little. At all drug stores.

GOSPEL MEETINGS
FEB. 8 THROUGH FEB. 17

SERVICES
Week Days 7 p.m.
SUNDAY
Morn 10:30 — Eve. 6 pm

HEAR
Noted Boy Evangelist
Vaughn Pettigrew

SUN. FEB. 17
OLD TIME
GOSPEL SINGING

Wells St. Church of Christ
400 WELLS Wells St. at Browning

YOU CAN'T MISS WITH A MISS or MRS.

WHEN YOU GIVE A GIFT CERTIFICATE from **BEHRMAN'S**

GIFT CERTIFICATE
Behrman's
"Pampa's Fashion Gift Center"

Merchandise Amounting to _____ dollars

To _____

Presented by _____

Address _____ **Behrman's**

By _____



TALENT'S REWARD — Few actresses are busier than Geraldine Page. Above, is how she appeared in the just completed "Toys in the Attic," opposite Dean Martin. She has contracts to appear in seven other films.

Valentine's Day Gift Guide

Smith's QUALITY SHOES

For Your Favorite Valentine —

Texas Eagle
COWBOY BOOTS
— Fine Boots
Discontinued Patterns

\$5.99 Pr.

Wilson-Bell Drug
300 S. Cuyler MO 4-6868

Pangburn
VALENTINE CANDY
69c to \$8.50

New Shipment
Costume Jewelry
Coty, Valentine Perfume
Cologne & Powder Sets

Gold Tone Gifts

Heard-Jones Drug
110 N. Cuyler MO 4-7478

Fresh Shipment
PANGBURN VALENTINE CANDY

FABERGE COLOGNES

Hallmark Valentine Cards

Dunlap's Beauty Bar
Street Floor

Perfumes
by: Chanel
Germaine Monteil
Evyon
Givenchy
Charles of the Ritz
Hattie Carnegie

Wright FASHIONS Fine Feminine Fashions

FRAGRANCE
by **Estee Lauder**

\$2.50 To \$12

Malone Pharmacy
Hughes Bldg. Dan & Cecil Williams MO 4-4971

Whitmans and Pangburns
VALENTINE CANDY
CHANEL PERFUME
Whiting & Davis **JEWELRY**
STUFFED ANIMALS
For The Children
Gibson Cards

Richard Drug
Joe Tonley
Pampa's Synonym For Drugs

Always a favorite for Valentine's Day
Hearts Of Candy
by
● Russell Stover
● Pangburn

50c To \$10

Anthony's
C. N. ANTHONY CO.

Give Your Valentine A New
Dress
Her Choice of 3 Styles in
Luxurious Wamsutta Pima—
Poise Pima Cotton

9.95

Spring Into Summer Dresses
Junior — Misses —
Half Sizes
6.95