



"The deterioration of every government begins with the decay of the principles on which it was formed."
—Montesquieu

The Pampa Daily News

Serving The Top O' Texas 55 Years

THE PAMPA DAILY NEWS, THURSDAY, SEPTEMBER 27, 1962

WEATHER

(Direct From Amarillo Weather Bureau)
PAMPA AND VICINITY — Partly cloudy and warmer today and Friday. Low tonight, 57-61. High tomorrow, 72-82.

(20 PAGES TODAY)

Week Days 5c
Sundays 15c

55 — NO. 150

Circulation Certified by ABC Audit

Trainmen's Strike Barred By Judge

CHICAGO (UPI) — A federal district court judge today barred trainmen's strike against the 90-mile long Santa Fe Railway scheduled for 6 a. m. Friday. Judge William J. Campbell said there will be no strike. He ordered the Brotherhood of Railroad Trainmen, which had called the strike, and the railroad to maintain the status quo and to send their representatives to federal judge Joseph Sam Perry's court Monday for further arguments.

The BRT announced Wednesday would call out 3,000 employees on the Santa Fe's Eastern and Western lines—The segments between Chicago and Albuquerque, Sweetwater, Tex. The railroad, second longest in the nation, said such a walkout would shut its entire system. It asked Campbell to issue an injunction against the strike. Campbell refused to issue an injunction. He said the dispute was tied up with the controversy over herbedding which has boiled a threat of a strike against the nation's railroads.

The BRT and four other unions representing on-train rail employees have threatened to strike. The railroads put stringent anti-herbedding work rules in effect. Perry ruled summer that the railroads have the right to make the changes. The unions, claiming the changes would eliminate 80,000 jobs, appealed to the U. S. Circuit Court of Appeals, where the case rests.

Campbell referred the Santa Fe case to Perry because it is a matter to the nationwide herbedding dispute. Herbedding is a railroad practice for unnecessary jobs. The railroad has already triggered a telegraphers' strike which has shut the Chicago and North Western Railway, third longest in the nation, for almost a month. The railroad and the BRT are in Campbell's court to maintain the status quo. The case was postponed indefinitely pending the results of Monday's hearing.

The railroad said a BRT walkout could mean 40,000 employees out of work. The union said it did not call strike because the railroad had refused to negotiate demands made in 1956. The Santa Fe said the BRT had in May, 1961, to suspend negotiations on the particular rule demands pending the settlement of the similar conflict nationwide scale.

The dispute between the railroad and the five unions is now pending a hearing in the U. S. Circuit Court of Appeals.



HANDLE WITH CARE — Bill Robertson, assistant administrator of Highland General Hospital, is shown here placing some 30,000 doses of the Sabin Type I polio vaccine in refrigeration shortly after it arrived in Pampa yesterday for the county-wide inoculation project scheduled for Oct. 7. According to the Top O' Texas Medical Society and the Pampa Junior Chamber of Commerce, who are co-sponsoring the local program, a "test run" for all volunteer workers in the Oct. 7 project will be held at 2 p.m. Sunday in Travis Elementary school. Pre-registration forms for the free inoculation are available in nearly every downtown store. It is urged that persons receiving the vaccine fill out the forms and have them ready when they arrive at the clinic. (Daily News Photo)

Thousands Expected For Aerial Show Here

Thousands of persons from over the Top O' Texas area are expected to be at Perry LeFors Airport here Saturday afternoon for the Sky Show to be presented by the U. S. Air Force official aerial demonstration team. The Thunderbirds.

The six men of the Thunderbird Team will be honored at a dinner in the Starlight Room of Coronado Inn at 6 p.m. tomorrow. The dinner, open to the public, will be over in time for the Pampa-Dumas High School football game scheduled for 7:30 p.m. in Harvester Stadium. Reservations for the dinner should be made at the local Chamber of Commerce office.

On Saturday the Thunderbirds will return to Pampa for their Sky Show. They will fly in from Amarillo Air Force Base.



THUNDERBIRDS COMING — Shown here are the U.S. Air Force men, a major and five captains, comprising the Thunderbirds who will put on an official aerial demonstration over Perry LeFors Airport Saturday afternoon. Thousands are expected to attend the noonday barbecue and afternoon Air Show which also includes sky-diving and parachute jumping. In the center of the photo are the four Thunderbird jets in precision flight.

Worst Floods In Modern History Threatening Spain

323 Die, 420 Missing; Thousands Homeless

By ANTHONY NAVARRO
United Press International

BARCELONA, Spain (UPI) — New downpours threatened today to send the worst flood in modern Spanish history surging through Barcelona itself.

At least 323 persons were reported dead in cities and villages near Barcelona. Another 420 were missing and more than 1,000 believed injured. Thousands were homeless.

Authorities predicted all these figures would rise. They said the official missing persons figure included, only those reported by their families.

Many other bodies probably lay under the mud that covered the flood areas, officials said.

Unofficial estimates put property damage at more than \$25 million.

Rains Follow Drought

Barcelona escaped the full force of Wednesday's flood, which was caused by a torrential eight-inch rain following several months of drought.

The flood struck suddenly as Barcelona Province wound up the annual fair in honor of its patron saint, Our Lady of Mercy. The province is located in industrial northeast Spain, in the Catalan region.

Many of the inhabitants had been praying for rain to end the drought.

The floods struck after dark, trapping many persons while they slept in their homes. Barcelona police fished 23 bodies, still in nightclothes, from the city harbor. Many persons and farm animals were apparently swept into the Mediterranean Sea.

Rivers Overflow

Strong winds whipped the floodwaters as three rivers overflowed and swept away whole sections of towns without leaving a trace. The countryside southwest of Barcelona was a jumble of wreckage, uprooted trees and smashed houses.

Large areas of Barcelona were without light or power because the rains and wind knocked out several power centers and twisted high tension towers. Hospitals and clinics remained in operation by using portable generators, but many rescue efforts were called off for lack of light.

The towns of Sabadell, Tarrasa and Rubi were hardest hit. An entire section of Tarrasa was washed away, including building foundations, leaving only mud behind.

AIRLINE LOSES BID

WASHINGTON (UPI) — The Civil Aeronautics Board refused Wednesday to give new temporary operating authority to Imperial Airlines, owner of the plane that crashed at Richmond, Va., Nov. 8, 1961, killing 74 Army recruits aboard. Imperial's operating certificate was revoked after the accident.

Barnett In Huddle With Officials At Mississippi

OXFORD, Miss. (UPI) — Gov. Ross Barnett hurriedly returned to the University of Mississippi campus today and went into conferences with state and school officials in a building guarded by helmeted police carrying clubs and tear gas.

There was no immediate indication what brought Barnett back to this campus, made tense by Negro James Meredith's repeated attempts to enroll here.

U. S. marshals were reported pouring into town. There were unconfirmed reports that Meredith, believed to have spent the night in Memphis, might try again today to enter the school under a federal court order.

Barnett, who twice has personally rejected Meredith, arrived about 8 a.m. CST and went straight to the alumni house on the campus for talks with officials.

Campus Guarded

The building, and virtually the entire campus, was ringed with sheriffs, deputies, state police and local police. Many of them wore helmets and makeshift white armbands. Some had dogs.

U. S. Atty. Gen. Robert F. Kennedy said Wednesday night in Washington the government has no intention of backing down and again raised the possibility that federal troops might have to be sent here.

"We will use whatever is necessary to get the job done," Kennedy said.

Meredith, a 29-year-old Air

Force veteran, was met Wednesday at the main gate of the "Ole Miss" campus by Lt. Gov. Paul B. Johnson Jr. and a cordon of state troopers and plainclothesmen.

The Negro, escorted by U. S. marshals, was denied entrance to the campus by Johnson on the ground of "imminent breach of peace."

Chief U. S. Marshal James McShane made several attempts to push his way through the crowd of state authorities. The blue-clad troopers refused to budge and a five-minute pushing and shoving match resulted.

Johnson, acting on behalf of Gov. Ross Barnett, whose plane was grounded in Jackson because of poor weather, told McShane: "We will meet force with force."

The marshals and Meredith drove off and later flew to Memphis, Tenn., 80 miles north of here, where the Negro was believed to

have spent the night at the city's naval air station. Meredith was to fly to New Orleans today for a 3 p.m., EDT, news conference.

Barnett arrived by car at the 114-year-old campus about 15 minutes after Meredith and the marshals departed. He congratulated Johnson and the police for handling themselves "extremely well."

"I was a bit surprised that the federal authorities tried to push their way through," he said.

Issues Second Order

The U. S. Fifth Circuit Court of Appeals at New Orleans, which has ordered Barnett to appear Friday to show cause why he should not be cited for contempt for refusing to obey federal court orders, Wednesday night issued a similar order against Johnson. He was told to appear Saturday.

Six state troopers guarded Barnett's office door in Jackson, apparently to ward off anyone trying to serve a summons on the governor.

Senate Resumes Controversy Over Communist Propaganda In The Mail

WASHINGTON (UPI) — The Senate today planned to resume a controversy over the handling of communist propaganda sent through the mail.

It was the main snag in the path of passage of the federal pay

and postal rate increase bill.

Sen. Olin D. Johnston, D-S. C., floor manager for the bill, said he had plenty of votes to get approval of a billion-dollar pay hike for federal workers and a \$603 million increase in mail rates. The new rates would go into effect next Jan. 7.

Sen. Wayne Morse, D-Ore., admitted that his amendment to strike the proposed one-cent increase for first class stamps had little chance of success.

The Senate debated the communist mail issue until 7 p.m. Wednesday night, and on the first test refused to cut out a provision which calls for advance screening of communist-originated mail destined to American addresses.

Other congressional news:

Drugs: Eight Democrats urged the House to eliminate what they called a "destructive proviso" from a bill that would tighten federal controls on the sale and manufacture of drugs. The congressmen want an amendment eliminated that would require all drug advertising to carry a statement about possible side effects.

Posters: Rep. Hugh L. Carey, D-N.Y., launched a campaign against plastering campaign posters over fire hydrants and posts throughout the nation. Carey wrote a poem to denounce the practice, which said in part that he was tired of seeing "leering boasting faces from pedestals, boxes, curbs and bases."

President Is Armed To Deal With Cuba

WASHINGTON (UPI) — President Kennedy had full congressional backing today for whatever steps he considered necessary to deal with the Communist military buildup in Cuba, including use of U. S. troops.

The House completed congressional action on a fight-if-we-must resolution Wednesday. It cleared the House by a 284 to 7 vote. The Senate had passed it previously, 86 to 1. The few opponents contended the resolution was not strong enough.

The lopsided House vote did not indicate the strong criticism of Kennedy which preceded it. Many lawmakers, especially Republicans, said he was not being tough enough in handling the Cuban situation.

The President had few defenders, but one of them — Rep. Emanuel Celler, D-N.Y. — urged the American people to put their faith in Kennedy and ignore "the

papier mache generals."

Before sending the resolution to the White House, the House defeated, 251 to 140, a Republican effort to "strengthen" the proposal by declaring the Soviet military buildup in Cuba to be a clear violation of the Monroe doctrine.

Administration supporters said the tougher language was not needed.

In its final form, the resolution amounted to congressional approval of any steps Kennedy might take should the Soviet arms buildup in Cuba reach aggressive or offensive proportions.

The resolution was worded to serve notice on Russia and Fidel Castro's regime that the United States will tolerate no aggressive moves, or offensive buildup, threatening hemispheric security. Administration officials have taken the view that Soviet assistance to Cuba so far has been defensive in nature.

NAACP Chapter President And White Woman Are Found Dead

TRENTON, N.J. (UPI) — The head of the local chapter of the National Association for the Advancement of Colored People and a blonde white woman were found dead Wednesday night in the rear of the Negro dentist's office.

Police said poisoning might have been the cause of the deaths in what they tentatively labeled a murder-suicide or a suicide pact. An autopsy was begun by Deputy County-Physician Frank Communi.

The victims were Dr. Arthur L. Thomas Jr., 38, a civic leader, and Mrs. Mary Mucciarelli, 25, mother of three daughters aged 6, 4 and 2.

Mrs. Mucciarelli's husband,

Louis, reported his wife missing Monday. He said she had left home Saturday night for no apparent reason. The grief-stricken husband said they had been married seven years.

Thomas lived at 40 Cadwalader Terrace and Mrs. Mucciarelli at 609 Hoffman Ave., both Trenton.

Body On Couch

The blonde's body was found on a couch in the rear basement room of the office. The dentist's body lay nearby on the floor. Police said both bodies were fully clothed and that Mrs. Mucciarelli's arm bore what resembled needle marks.

Neither body bore any marks of violence, police said, but

Thomas had hemorrhaged around the nose and mouth. They said he was found wearing a gauze mask although he was not near a gas or oxygen unit which he used in his work.

No suicide notes were found at the scene.

The bodies were discovered about 7 p.m. by Dr. John F. Marshall who has an office next door to Thomas.

Becomes Concerned

Marshall said he was a good friend of Thomas and became concerned when he had not seen him during the latter part of the day although his late model Cadillac was parked outside. Marshall called police.

A preliminary police check showed that the woman died about six to eight hours before the bodies were discovered. Thomas had been dead about three hours, police said.

Thomas was married to the former Hermione Smith of Washington, D.C., and was the father of four daughters and one son—two children by a former wife and three by the second wife. A family spokesman said he had not been away from home recently.

Thomas, a World War II Army Air Corps veteran, was elected president of the local NAACP chapter last summer and headed a local Puerto Rican affairs committee.



DR. JOE DONALDSON
... CoC president

Dr. Donaldson Is Elected President Of Pampa's CoC

Dr. Joe Donaldson was elected president of the Pampa Chamber of Commerce for 1962-63 at a special called meeting of directors in the chamber conference room this forenoon.

Other officers elected to serve during the coming year were Aubrey Steele, vice president, and Loyal Davies, finance director.

This year's officers were Gordon Lyons, president; Lucian Young, vice president, and Aubrey Steele, finance director. Young recently moved out of the city and his office had not been filled.

The new chamber officials will be installed early in October and officially will take office at the chamber's annual banquet to be held in Robert E. Lee Junior High School on Thursday, Oct. 25.

Dr. Guy Newman, president of Howard Payne College at Brownwood, Texas, will be the speaker at the annual banquet.

Reception For Teachers Is Tonight

Pampa business and professional people have been invited to attend tonight's annual Teachers' Reception in the cafeteria of Robert E. Lee Jr. High School.

The affair, scheduled to start at 7:30 p.m., is sponsored jointly by the City PTA Council, Pampa Classroom Teachers' Association, and the Chamber of Commerce.

George Newberry, chairman of the chamber's public relations committee, will act as master of ceremonies.

The nearly 300 teachers in Pampa's public schools will be the guests of honor. Some 37 new teachers will be introduced by Jack Edmondson, school superintendent.

The address of welcome will be given by Mrs. Brantly Hudson, president of the City PTA Council and the response will be by Wendell Watson, president of the Pampa Classroom Teachers' Association.

Special entertainment will be furnished by Jerry Whitten, organist, and Mrs. John Price violinist.

Bill Tarpley will be in charge of door prizes to be awarded during the program.

If it comes from a hardware store we have it. Lewis Howe. Adv.

Foreign News Commentary

By PHIL NEWSOM

UPI Foreign News Analyst
Since 1958, Soviet Premier Khrushchev has been blowing hot and cold on Berlin.

Now there is a feeling that when Khrushchev says he will sign a separate peace treaty soon with the East Germans, thus threatening Allied supply lines to West Berlin, he may mean it.

Khrushchev long has been under pressure for such a treaty from the puppet East German regime of Walter Ulbricht, as more militant members of the Communist bloc to prove he can be tough toward the West despite his policy of peaceful coexistence.

There also has been the embarrassment he brought on himself by setting previous deadlines which passed without action in the face of firm Allied resistance.

Long-Time Efforts

Soviet efforts to get the Allies out of West Berlin actually date back to within a few months of the end of the war in 1945.

They reached one climax with the Berlin blockade of 1948, broken by a gigantic Allied airlift.

In 1958 came an ultimatum in which Khrushchev said he would turn Berlin access control over to the East Germans in six months unless agreement were reached on a separate treaty for East Germany.

In June 1961, he gave President Kennedy another six-month ultimatum, repeating the threats of 1958.

Now he says he will wait until after the November elections in the United States.

Throughout these years, the Allied answer has been the same. They are in Berlin by right of conquest and the Soviet Union will be expected to live up to its four-power commitments.

Even if Khrushchev does sign his separate East German treaty by the first of the year, there are no indications that he wants a general war now any more than he has in the past.

Nibbling Tactics

It could be that such a treaty would be a continuation of the nibbling tactics by which the have been attempting to wear away Allied rights in Berlin. In such a situation, Khrushchev could be expected to hem the East Germans with such restrictions as to prevent their being able to draw the Soviet Union into an unwanted conflict.

There also has been speculation that Communist Cuba, as a new element in the world situation, also enters the picture.

In this event, Khrushchev might use the threat of a move on Berlin to prevent similar U. S. action against the Castro regime.

The Almanac

By United Press International
Today is Thursday, Sept. 27, the 270th day of 1962 with 95 to follow.

The moon is approaching its new phase.

The morning star is Mars.
The evening stars are Venus, Jupiter and Saturn.

On this day in history:
In 1779, John Adams was appointed to negotiate peace terms with Great Britain.

In 1940, representatives of Germany, Italy and Japan signed the Tripartite Pact, a 10-year mutual assistance agreement, in Berlin.

In 1950, former heavyweight boxing champion Joe Louis was defeated by Ezzard Charles at Yankee Stadium in New York.

In 1961, Syria, in a revolt led by army officers, broke away from the United Arab Republic.

HAZLEWOOD'S Farm Dairy



FURR'S VEGETABLES! GARDEN FRESH



CARROTS

FRESH CLIP TOP
CELLO BAG

EACH
10¢



SAVE
FRONTIER STAMPS

Tomatoes

CALIF. LARGE
RED RIPE
BEAUTIES

2 LBS **29¢**

POTATOES

U.S. NO. 1
NEW CROP
RUSSETS

5 LBS **39¢**

APPLES

WASHINGTON
STATE
DELICIOUS

25¢ lb

Baby Food Gerber's Strained ... 3 Jars **29c**

Peaches Hunts Sliced or Halves No. 2 1/2 can **25c**

Peanut Butter Food Club Ref. Jar, 18-oz. **49c**

Ice Cream Family Pack ... 1/2 gal. **49c**

Dog Food Scrappy ... tall can **4 1/2 25c**

Tissue Zee ... 4 rolls **29c**



EGGS

FURR'S MEDIUM
GRADE A
DOZEN

35

OLEO

ELNA
IN QUARTERS
POUND

12 1/2

Coca Cola

REGULAR
6 BOTTLE
CARTON

19

MIRACLE WHIP

QUART

49¢

ORANGE JUICE

Dartmouth
Fresh Frozen
6-Oz. Can

12 1/2¢

CHERRIES

NORTHPORT
PITTED NO. 303 CAN
RED SOUR

15¢

MELLORINE Dartmouth ... 1/2 gal. **29c**

SALAD OIL Mrs. Tuckers ... 24-oz. bottle **39c**

FLOUR Pillsbury ... 10-lb. bag **98c**

BEEF STEW Autex ... No. 300 can **31c**

BISCUIT MIX Jiffy ... 40-oz. pkg. **39c**

SHOP FURR'S DRUG DEPARTMENT

COETS **39¢**

DRY SKIN CREAM Ponds ... 98c jar **83c**

TALCUM POWDER Cashmere 69c size **59c**

DEODORANT Mennens Spray ... 98c size **79c**

KLEENEX ... 400 count box **25c**

CLOSED SUNDAYS



CRISCO SHORTENING 3 LBS CAN **69**

We Reserve The Right To Limit Quantities

SHRIMP

GOLDHILL BRAND

BREADED
8-OZ.
PACKAGE

39¢



FRYERS Lb. **29**

U.S.D.A.
Grade A
Whole

GROUND BEEF All Fresh Beef **3 Lbs. For \$1.00**

PORK CHOPS Center Cut - Rib **69¢ lb**

SLICED BACON Hormel Dairy Brand **65¢ lb**

FRANKS Longhorn All Meat **49¢ lb**

Washington Window

By LYLE C. WILSON
 United Press International
 (WASHINGTON) (UPI) — The
 game came after only a pair
 of games to close the
 selection of the profes-
 sional coach of the year.
 The winner is a politician
 Stewart L. Udall, present-
 employed full time as interior

secretary in the Kennedy Cabinet.
 As a coach, Udall is unique. He
 has not appeared at any practice
 sessions of his team, the Wash-
 ington Redskins.
 It is not of record that Udall
 knows much, if anything, about
 football. It is known that he has
 not witnessed a Redskin game
 more recently than 1960, if then.

And Udall does not stand in awe
 of the big chief himself, Big Chief
 Redskin being George Preston
 Marshall, owner of the profes-
 sional football franchise in Wash-
 ington.
Unbeaten, So Far
 The record shows that Udall
 has chivied Marshall and the Red-
 skins into an unbeaten season, so
 far, plus a golden opportunity to
 collect gate money from thous-
 ands of fans who were beginning
 to forget that the Redskins still
 were playing in the National Foot-
 ball League.

It could only happen in
 Washington, D. C., of course, that
 a politician, merely by a commit-
 ment to civil rights, could turn a
 losing football team into a winner.
 The District of Columbia opened
 a big and beautiful new sports
 stadium in 1961. A magnificent
 layout built at great expense to-
 ward which the U. S. treasury
 contributed sparingly for some
 stadium apurtenances. Marshall
 promptly moved his Redskins into
 the new stadium, having previously
 been a tenant of the American
 League ball park, a cramped
 structure. Contracts were signed
 and all was well until Udall, as
 spokesman for the government's

share of stadium ownership, told
 Marshall that he would be evicted
 unless he dropped his color bar.
Forced Integration
 Marshall's Redskins were nota-
 ble in pro football as the squad
 that had no Negro players. Red-
 skin games were widely televised
 in Dixie and it may have been
 that Chief Redskin Marshall be-
 lieved the Southerners would pre-
 fer an all-white team as its very
 own.
 There was quite a hassle when
 Udall told Marshall to integrate,
 or else. Udall was backed by a
 Supreme Court decision which, in
 general terms, held that what the
 government subsidizes it also can
 control. So Udall said he would
 cancel Marshall's stadium con-
 tract if the Redskin color bar
 were maintained.

Marshall was given a season of
 grace—last season—with the un-
 derstanding that there would be
 a Negro on the Redskin squad
 this year. Marshall made a winter
 trade with the Cleveland Browns
 for Bobby Mitchell, a Negro scat-
 back with the open field running
 habits of a greased pig. Mitchell
 tied Dallas in the season's opener
 with three touchdowns. He beat

Mrs. Carl Homer and Mrs. Velma
 Evans and other relatives and
 friends.
 Mrs. Frances Durham of Mc-
 Lean visited her parents, Mr. and
 Mrs. Jim Littlefield and Kit Sun-
 day.
 Mr. and Mrs. Melvin Britten of
 Amarillo were Sunday visitors of
 their parents, Mrs. Josephine Brit-
 ten and Mr. and Mrs. Louie
 Jones, Eldon, Kristine, Rita Kay
 and William.
 Mr. and Mrs. Bill Shockley and
 daughter, Ann of Dumas, were
 week end visitors of his mother,
 Mrs. J. B. Shockley and his sis-
 ter, Miss Beulah Shockley.
 Mr. and Mrs. Don Alexander
 and children of Amarillo visited
 her parents, Mr. and Mrs. Ted
 Friemel and Diana Sunday.
 Mr. and Mrs. Doyle Beckham
 and children of Pampa were Sun-
 day guests of her parents, Mr.
 and Mrs. Claude Schaffer.
 Mr. and Mrs. Joe Furgerson
 and son of Amarillo spent Sun-
 day visiting her parents, Mr. and
 Mrs. Bert Bural and Renae
 Thompson.
 Mr. and Mrs. Gene Earl Steed
 and family of Perryton were week
 end visitors of his parents, Mr.
 and Mrs. Van Earl Steed.

Mrs. Bill Carney and other rela-
 tives and friends.
 Mr. and Mrs. R. M. Haynes
 and four children have moved to
 Albuquerque, N.M. after living
 in Groom for the past year.
CLASSIFIED ADS
GET RESULTS



HOW TO FIX A FLAT—This man is fixing a flat tire on a car with a machine. He turns a frozen lag screw of molded synthetic rubber into the tire. When the screw is pulled, the head is cut off and the tire inflated with air.

It's So Nice to Know You'll Be Waited On!

of many things you'll like about Malone's is the way our courteous people wait on you — promptly... patiently... fully. They're always ready, willing and anxious to give you every shopping assistance... to tell you about products... to help you buy wisely. Yet our superior service costs you nothing... given FREELY every time you shop here.

Miss Clairol, All Colors
Crema Formula 83¢

Brylcreem 73¢
 Large Tube Reg. 98¢

100 MYADEC CAPSULES 5.69
 Parke Davis Reg. 7.79

SAFFLOWER OIL CAPSULES 1.39
 100 For

RAYETTE AQUA NET 2 FOR \$1.49
 Hair Spray Reg. 2.00

GILLETTE SUPER BLUE BLADES 69¢
 15's Reg. \$1.00

SOMINEX 85¢
 Regular \$1.23

MASSENGILL 79¢
 Powder 6-oz. Reg. \$1.05

Mennen SPEED STICK 63¢
 Deodorant For Men Reg. 85¢

Old Spice After Shave Lotion 83¢
 Regular 1.25

FREE! Delivery Parking

MALONE PHARMACY
 (Walgreen Agency)
 1001 N. 1st St. PH 004-4971

Groom Personals
 Mrs. George Britten
 Daily News Correspondent

Miss Anna Mae Weller of Pampa visited her father, Mr. Ed Weller and other relatives and friends over the week end.
 Bob Brown of Amarillo spent the week end visiting his parents, Mr. and Mrs. Bill Brown and Judy.
 Mr. and Mrs. Laddie Kotara of White Deer visited their son, Mr. and Mrs. Jerry Kotara, Kemberly and Stephen Sunday.
 Mrs. and Mrs. Charles Acker and daughter, Judy Eileen of Nazareth visited her mother, Mrs. Josephine Britten and other relatives and friends Sunday.
 Mr. and Mrs. Richard Homer and children, Gayla, Kent and Gina of Pampa spent Sunday visiting their parents, Mr. and Mrs. Carl Homer and Mrs. Velma Evans and other relatives and friends.

SLAB BACON HICKORY SMOKED SLICED OR PIECED **45¢ LB.**

U.S.D.A. GOOD

Chuck Roast 45¢ LB.

GROUND BEEF 100% PURE LEAN 3 Lbs. 98¢

CHUCK STEAK U.S.D.A. GOOD 59¢ lb

ROUND STEAK U.S.D.A. GOOD ARM CUT 69¢ lb

CANNON BLANKETS \$3.98 EACH
 Full Bed Size

FREE OFFER
 Exciting, New **GOLD BOND GIFT BOOK!**

Exclusive Gift Calendar
 Exclusive Golden Tours
 Exclusive Toy Insert
 Exclusive Group Project Plan

PLUS 50 EXTRA GOLD BOND STAMPS
 ... to use toward the gift of your choice
 Redeem coupon on page 9

PRODUCE

TOMATOES 2 Lbs. 29¢
 Vine Ripe

BANANAS 10¢ lb
 Green Tip

Oleo Parkay 2 lbs. 49¢
 Reg. Ctn. Plus Dep. 19¢

Cokes

Del Monte Prune Juice Qt. 39¢

Del Monte Whole Tomatoes 2.49¢

Del Monte 303 Can Tomatoes 2.49¢

Del Monte Pears 3.39¢

Del Monte 303 Can Kraut 2.35¢

Del Monte W.K. Gold Corn 2.39¢

Del Monte 303 Can Fruit Cocktail 2.39¢

Del Monte Flat Crushed Pineapple 3.49¢

TOMATO JUICE DEL MONTE 46-OZ. 2 FOR 2.49¢

SPINACH DEL MONTE 303 CAN 3 FOR 3.39¢

PEAS DEL MONTE 303 CAN 2 FOR 2.39¢ | **PEACHES DEL MONTE 1/2 or Sliced 2 FOR 2.39¢**

BUTTERMILK KELLY'S 1/2 Gal. 35¢

DEL MONTE 12-oz. PINEAPPLE JUICE 3 FOR 3.39¢

My-T-Fine Asst. PUDDING Reg. Box 2 FOR 2.13¢

Del Monte 303 Can Cut GREEN BEANS 2 FOR 2.45¢

Dog Food Big Mike 3 FOR 3.19¢

Aunt Jemima CORN MEAL 5 lbs. 39¢

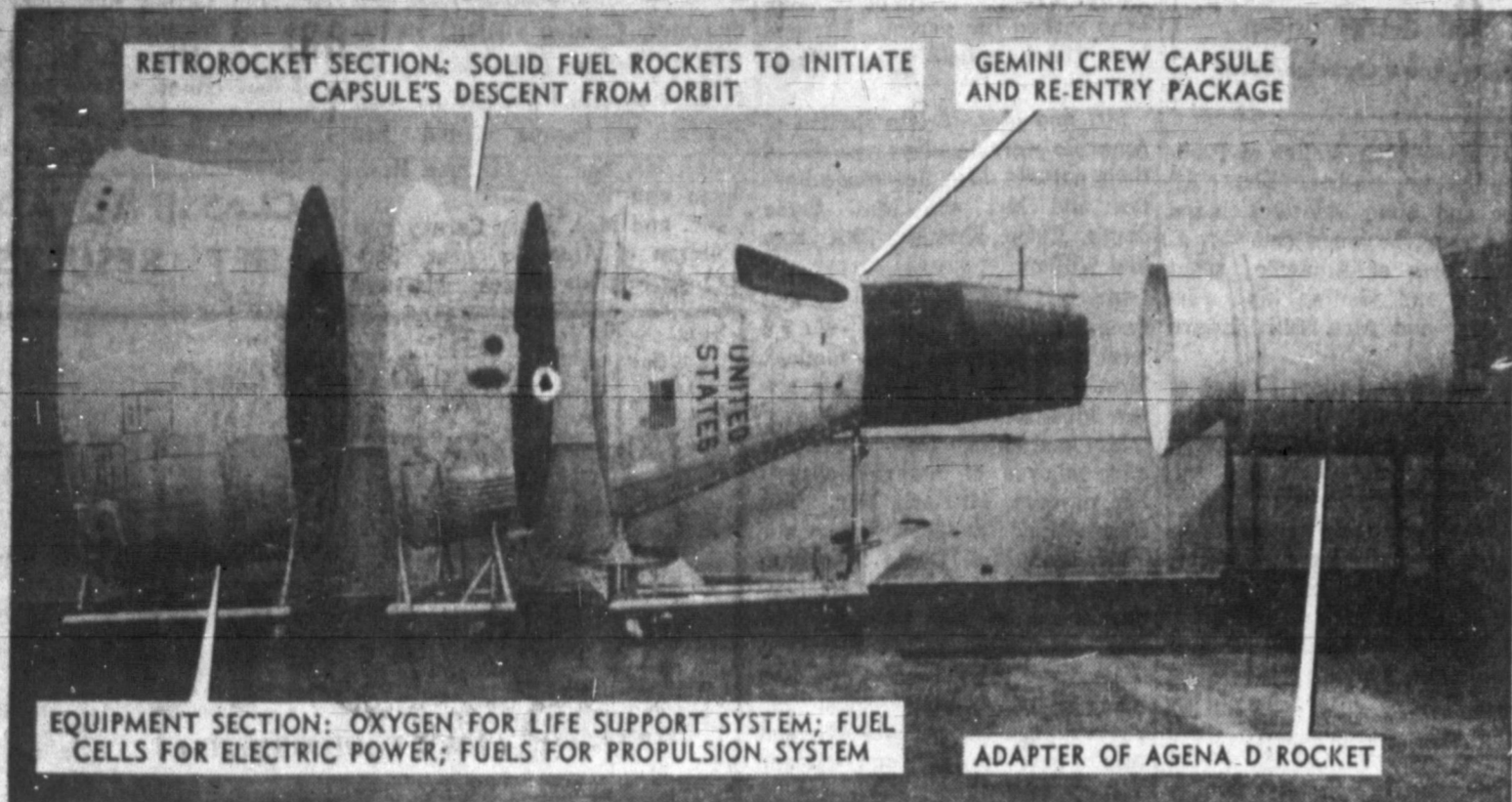
Duncan Hines CAKE MIX 3 FOR 3.89¢

B U D D Y ' S

SUPER MARKETS

WE RESERVE THE RIGHT TO LIMIT QUANTITIES

DOUBLE GOLD BOND STAMPS EACH WED. WITH \$2.50 PUR.



RETROCKET SECTION: SOLID FUEL ROCKETS TO INITIATE CAPSULE'S DESCENT FROM ORBIT
GEMINI CREW CAPSULE AND RE-ENTRY PACKAGE

EQUIPMENT SECTION: OXYGEN FOR LIFE SUPPORT SYSTEM; FUEL CELLS FOR ELECTRIC POWER; FUELS FOR PROPULSION SYSTEM
ADAPTER OF AGENA D ROCKET

SPACESHIP IN SECTIONS—A two-man Gemini capsule in mock-up is shown separated into its three major modules, or components, at the St. Louis plant of McDonnell Aircraft. Crew will ride in capsule during the entire flight. The equipment and retrorocket sections will be

jettisoned before re-entry into the atmosphere and return to earth. Agena D restartable rocket (its adapter is shown at right) will be orbited separately. One of the purposes of the Gemini program will be to practice rendezvous and docking technique with the Agena orbiting in space.

ONE OF THOSE DAYS
EXETER, England (UPI) — Workmen spent three hours erecting scaffolding around a house here Tuesday. Then someone told them, "The place you want is on the other side of the road."

ASSIGNS HIGHWAY FUNDS
WASHINGTON (UPI) — The Commerce Department apportioned \$2.6 billion Tuesday in federal aid to the states for the interstate highway system in fiscal 1964.

SETS OFF BIG BLAST
WASHINGTON (UPI) — Russia set off the second biggest atomic test of its current series Tuesday. The Atomic Energy Commission said it was slightly higher in yield than the multi-megaton test the

Russians detonated Sept. 26. The Uppsala Seismology Institute in Sweden said it was 30 megatons — equivalent to 30 million tons of TNT. Read the News Classified

CLINT'S ZERO LOCKER

GROC. AND MKT.

WHITE DEER, TEXAS PH. 883-4

CHOICE GRAIN FED HOME KILLED FREEZER BEEF

YOUR NAME ON EVERY PACKAGE

Quick Frozen
Double Wrapped
Cut To Your Specifications

READY FOR YOUR
49¢ Lb. FREEZER

LOCKERS FOR RENT BY MONTH OR YEAR — WE CUSTOM SLAUGHTER & PROCESS MON.-FRI.

CHOICE, TENDER SIRLOIN STEAK ... 79¢ CHOICE, TENDER CLUB STEAK ... 69¢ CHOICE, TENDER CHUCK ROAST ... 49¢ CHOICE, TENDER ARM STEAK ... 69¢ CHOICE, TENDER ARM ROAST ... 59¢	CHOICE, TENDER RUMP ROAST ... 69¢ CHOICE, TENDER PIKE'S PEAK ROAST 69¢ FRESH GROUND BEEF ... 45¢ HOME CURED HAMS ... 49¢ LEAN, TENDER PORK STEAK ... 59¢	POLISH SAUSAGE ... 69¢ FRESH, WHOLE HOG SAUSAGE ... 49¢ HOME CURED BACON ... 69¢ LEAN, TENDER PORK CHOPS ... 69¢ LEAN, TENDER PORK ROAST ... 49¢
Choice Tender ROUND STEAK 79¢	Choice Tender T-BONE STEAK 79¢	

It's The Law In Texas

WATCH IT! SCHOOL CHILDREN

Thousands of school children are now trooping back to school throughout Texas. Many of them will be transported by school buses. Most people are careful when approaching a school bus which may be standing beside the road or school to pick up school children or allow them to alight. However, we have already had some very bad accidents this year because a child or a motorist, or both, were careless at that very time.

Most Texans are aware of the law which requires a driver to come to a complete stop when overtaking from the rear a school bus which has stopped to receive or discharge school children. After stopping immediately behind the bus, he is then allowed by law to proceed past same at a speed "which is prudent, not exceeding ten (10) miles per hour, and with due caution for the safety of such children."

What many persons do not realize is that the very same rule applies when MEETING a stopped school bus. While everyone is interested in protecting our children, unthinking violators of this simple safety rule greatly outnumber those who comply. Failure to follow the law in this case

can lead to fine up to \$200.00 even when no accident occurs. Following an accident in which some child is injured or killed, the penalties are naturally much more serious. Although the above rule does not always apply when passing a stopped school bus in a business or residential district of a town, the necessity for extreme caution even in those locations is obvious.

When it comes to overtaking and passing moving vehicles, exercise of ordinary common sense will generally keep a driver within the law. For instance, when passing a car it is only common sense to proceed on past it a safe distance before cutting back to the right side of the highway. Also, any driver would realize the danger of increasing his speed while another is attempting to pass him.

In the same category is the prohibition against passing on the right under most ordinary conditions. Of course, you may legally pass on the right in a few specific instances, such as when the vehicle overtaken is making or about to make a left turn, or upon a one-way street with two or more lanes, or upon a four-lane highway. However, our traffic laws state

that even when passing on the right is allowed, it shall be done only under conditions permitting such movement in safety. And, in no event should such passing be accomplished by driving off the pavement or main-traveled portion of the roadway.

Familiar to all are the no-passing zones designated by yellow lines placed to one side of the center line on our highways. Not so well known are the restrictions against crossing the center line when approaching within 100 feet of or when traversing any intersection or railroad grade crossing.

A driver should never cross the center line of a highway when the left side of the road is not clearly visible and free of oncoming traffic. Generally speaking, when not engaged in passing another vehicle, one should not drive to the left of the roadway.

(This newsfeature, prepared by the State Bar of Texas, is written to inform — not to advise. No person should ever apply or interpret any law without the aid of an attorney who is fully advised concerning the facts involved, because a slight variance in facts may change the application of the law.)

Wall Street In Review

NEW YORK (UPI) — In the face of general internal market deterioration, James Dines of A. M. Kidder & Co. is embarking on a general policy of no new buying except in golds and silvers, with a properly placed stop-loss under all other long positions.

While it is true that any advance from now until the end of the year will be inhibited by tax-loss selling, by those "who want to get out even," and profit-taking in the six-month waiting period from the June lows, Dines says the public still has sufficient buying power available for stocks.

Bache & Co. says should any new upswing be characterized by relatively small volume it should be considered only temporary and would afford opportunities to switch out of those individual issues which have recently broken below important support levels.

MILLER GRO. & MARKET

We Give Buccaneer Stamps
Double On Wed.

2000 Alcock With 2.50 Purchase or More Ph MO 4-2761

FLAVOR WRIGHT

BACON 2 LBS 98¢

ALL MEAT

GROUND BEEF 3 LBS \$1.00

PORK LIVER Fresh Tender **19¢/lb**

Pork Back Bone Fresh Meaty **55¢/lb**

FOLGERS COFFEE 59¢ Lb.

Crackers Shurfresh **23¢/lb**

10-oz. Crtn. Plus Dep.

PEPSI-COLA 25¢

CANDY BARS HERSHEY'S 5c BARS **10 FOR 39¢**

Shurfresh **BISCUITS** 3 Cans **25¢**

Shurfresh Tattered Tom 2 1/2 cans **3 FOR \$1**

Favorite or Tendercrust **BREAD** **21¢**

Just Arrived **Large** Stock of Men's Winter Caps

Gerber's Strained **BABY FOOD** **10 FOR \$1**

HOM & GEE WEEK-END FOOD SPECIALS!

Mellorine Borden's 1/2 Gal. **39¢**

DOG FOOD 12 Cans **\$1.00**

Beef Stew 24 Oz. can **39¢**

Yellow, White or Devils Food **DUNCAN HINES** **3 Boxes \$1.00**

CAKE MIX **3 Boxes \$1.00**

TIDE REG. SIZE **29¢**

Shurfine Flour 10 Lb. Bag **69¢**

Krafts Miracle Whip qt. **49¢**

Jif 18-oz. jar Peanut Butter **59¢**

Austex 303 can Spa. & Meat Balls **19¢**

Imperial Pwd. or Brown Sugar 2 for **29¢**

OLEO Shurfresh 6 lbs. **\$1**

BISCUITS Shurfresh 12 cans **\$1**

COKES Reg. Size Ctn. **19¢**

Shurfine 303 can Tomatoes 5 cans **\$1**

Silver-Saver Sour or Dill Pickles qt. **25¢**

Johnsons Ass't Flavors Cookies 3 for **\$1**

Sunshine Hydrox Cookies Lb. pkg. **39¢**

Frozen Cherry, Apple Peach or Coconut Banquet Pies 3 for **89¢**

We Feature U.S.D.A. BEEF Half Beef **52¢/lb** Hind Qtr. **62¢/lb**

Good or Blue Ribbon For Home Freezers

Also Frozen Vegetables, Sea Food and Fruit All On Our REASONABLE PAYMENT PLAN

Blue Ribbon Sirloin or T-Bone Steak **89¢/lb** Quality **Bacon** 2 lbs. **99¢**

Northern **TISSUE** 29¢ 4 Roll Pkg.

Popsrite with free seasoning **Pop Corn** 29¢ 2 Lb. Pkg.

Crisco 3 Lb. **69¢**

Shurfine **COFFEE** 55¢

PRODUCE

Sweet **Potatoes** 10 Lb. Bag **49¢**

U.S. No. 1 White **Potatoes** 10 Lb. Bag **49¢**

Thompson Seedless **Grapes** 2 Lbs. **29¢**

ROAST Blue Ribbon Beef **ARM** Lb. **59¢**

CHOPS First Cut **PORK** Lb. **49¢**

Hom & Gee GRO.

421 E. Frederic MO 4-8531

Open 7 Days A Week For Your Convenience
Double Buccaneer Stamps Wed. with 2.50 Purchase or More

Save The Shurfine - Shurfresh Way

Fresh Ground Beef 4 lbs. \$1.00	Blue Ribbon Beef ROAST Lb. 59¢
Fresh Pork Sausage 3 lbs. \$1.00	ARM Lb. 59¢
Pork Steak 45¢/lb	CHUCK Lb. 49¢
First Cut PORK CHOPS 45¢/lb	

Not Paying Of Dividends Is Warming Up Soon

By JESSE BOGUE
UPI Financial Editor
NEW YORK (UPI)—In some of New York's biggest banks today, the staff and many up-to-date articles of machinery regarded with pleasure by a portion of the nation's 17 million shareholders: The distribution of dividend checks. One of the biggest disbursing agencies in the world for shareholders in privately-owned corporations are located here: They are the Chase Manhattan Bank, the Guaranty, First National Bankers Trust, and others. They are entrusted by many corporations with the job of issuing and distributing the payments assuming that there are dividends, that is, as the number of holders grew in the postwar years, so did the complexity of distributing the proper amounts to proper persons. The banks to employ electronic equipment for the job. In J. Shea, vice president in the trust department at the Chase Manhattan Bank, is in charge of a department which handles about a million checks a year. He has found that modern machinery reduces the chances of error and for examining every check is not always perfect, and its accuracy must be examined fully at every step. The machinery for the distribution into effect after the bank receives formal notice from the corporation, for which it is that directors have declared a dividend. A complete stockholder list, constantly corrected by the corporation, is furnished the bank. Computer tape records with the

Trespassers Get Reminder

With the approach of the hunting season, a reminder that railroads must prohibit trespassing on their property in the interest of safety is issued by R. W. Brewer, chief special agent for the Fort Worth and Denver Railway Company. Pointing out that hunting and fishing licenses do not convey the privilege of trespassing, Brewer said the ban is strictly enforced by all railroads in order to protect sportsmen and the public generally, and to prevent damage to railroad facilities, from careless use of firearms. Firing at game near telegraph, telephone and signal installations frequently results in gun shot damage to these facilities and could precipitate a major disaster on a busy rail system, since interruptions of signals and communications jeopardize the safety of train crews and passengers. Brewer stated, He also warned that trespassers run the risk of being trapped on tracks, or caught between rails and ties in the path of high-speed trains. For these reasons, he noted, it is important that the growing number of hunters and fishermen be cautioned that they are expected to observe the "no trespassing" signs along the railroads' right-of-way. LONG TIME PAYING LONDON (UPI) — Edward Davey, 50, ordered Tuesday to pay \$2,266 in back rent at \$1.40 a week, said it would take him 31 years. stockholders' names and addresses are prepared for use. Increasingly, dividend checks are of the punch-card variety as more automated machinery comes into use for routine operations of this kind.

INSTANT MONEY AT SAFEWAY!

OVER \$23,000 IN CASH PRIZES No purchase required

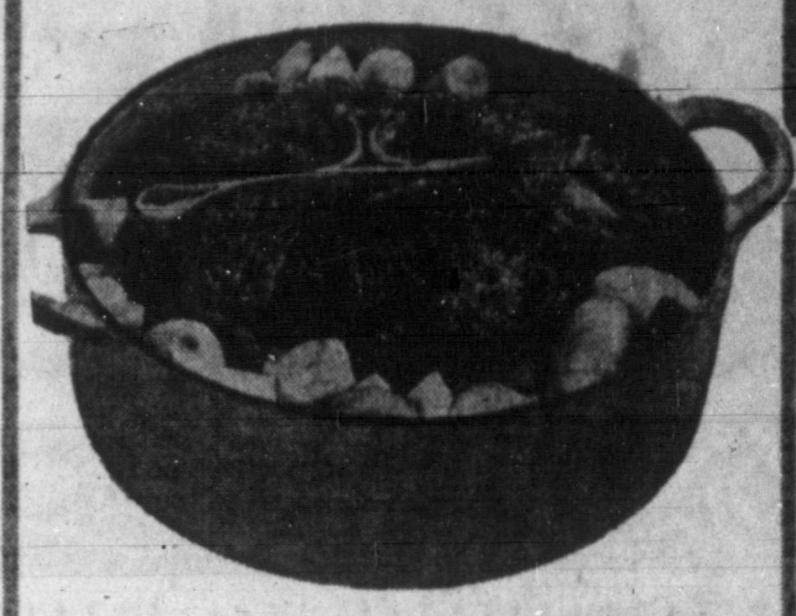


HERE'S ALL YOU DO— Pick up your "Instant Money" each time you visit your local Safeway Store! To determine the value of your "Instant Money," dip the card in water and rub the black circle. Present the card for redemption to your Safeway Store Manager. ALL PERSONS OVER 16 YEARS OLD ARE ELIGIBLE TO PLAY!

FREE! FAST! FUN!

NOTHING TO BUY! NOTHING TO SAVE!

This Week's BIG Meat Buy at SAFEWAY!



U.S.D.A. CHOICE AGED MATURE BEEF

ROAST 55¢

Juicy Tender Chuck Roast— Perfect for Sunday Dinner!

- STEAKS Blue Marrow Hereford Eat More Steaks 12-oz. Pkg. 69¢
- LIVER Tender Baby Beef Liver— Sliced for Frying or Broiling 1 lb. 39¢
- GROUND BEEF Safeway Extra Lean 1 lb. 49¢
- BEEF RIBS Lean and Meaty 1 lb. 29¢
- CHEESE Longhorn Full Cream 1 lb. 49¢

INSTANT MONEY AT SAFEWAY



MRS. GUSSIE ENGLI'W \$50.00 MRS. TROY HESTER \$100.00

- OTHER INSTANT MONEY WINNERS
- MRS. BOBBY THORNTON
 - MRS. VIRGIL HOLLOWELL
 - BERNICE HAYS
 - MARY ADAMS
 - MRS. M. C. MOORE
 - J. C. LARGENT
 - WILLIE YAHNE
 - MRS. MADRID
 - MRS. G. T. DAY
 - MRS. CARLOS GRISSOM
 - NICK KADINGO

HELP THEM IN HIGH SCHOOL TO LEARN MORE—TO EARN MORE



49¢ ALL OTHERS \$1.29 EACH ACCEPT ONLY THE GENUINE GOLDEN HOME AND HIGH SCHOOL ENCYCLOPEDIA SAFEWAY

Lower Your Total Food Bill With These Specials!

- Pineapple Dole Sliced Pineapple No. 1 1/2 Can 25¢
- Green Beans Gardenside Cut Beans 8 No. 303 Cans \$1.00
- Tomato Juice Hunt's 4 32-oz. Cans \$1.00
- PUNCH JOYETT ORANGE, GRAPE STRAWBERRY 3/4 GAL. Bottle 35¢
- Pie Cherries Town House 5 No. 303 Cans \$1.00

Ice Cream Party Pride Extra Rich Ice Cream Half Gal. Ctn. 59¢

MARGARINE Coldbrook Colored Handy Cubes— Don't Miss This Safeway Special! 2 1-lb. Ctns. for 29¢

Kitchen Craft WHITE FLOUR 5 lb. Pkg. 47¢ NU MADE Cottonseed OIL 24-oz. Botl. for 43¢

- IVORY SOAP 4 Bars 29¢
- IVORY SOAP 2 Med. Bars 21¢
- IVORY SOAP Large Bar 17¢
- SPIC & SPAN 16-oz. Pkg. 31¢
- JOY LIQUID 32-oz. Botl. 69¢
- IVORY LIQUID 22-oz. Botl. 69¢

- Salad Dressing No. 14-oz. Jar 45¢
- Detergent White Magic or Supurb 64-oz. Pkg. 59¢
- Tomatoes Hunt's 5 No. 300 Cans \$1.00
- Pineapple Juice 3 46-oz. Cans \$1.00
- Apple Sauce Highway 6 No. 303 Cans \$1.00
- Kotex Sanitary Napkins 48-Ct. Box \$1.59
- Folgers Coffee 1 lb. Can 65¢
- Folgers Coffee 1-lb. Can 1.29
- White Magic Liquid Cleaner 28-oz. Botl. 47¢
- Waffle Syrup Sleepy Hollow 24-oz. Botl. 55¢
- Apricot Del Monte Halves No. 303 Can 29¢
- Peaches Highway Brand No. 2 1/2 Can 25¢

Low Prices and Gunn Bros. Stamps at Safeway!

- TISSUE GERBERS NORTHERN BATHROOM 3c OFF 4 Rolls 26¢
- TISSUE GERBERS STRAINED BABY FOOD GLASS JAR 3 Jars 29¢
- SHORTENING VELKAY All Purpose Shortening 3-lb. Can 65¢
- GREEN BEANS Del Monte Cut 4 No. 303 Cans \$1.00

CHOW-CHOW FIXINS TOMATOES HOME GROWN VINE RIPE WE ALSO HAVE GREEN TOMATOES FOR CHOW-CHOW Lb. 19¢

BELL PEPPERS Fine For Stuffing or Chow-Chow Lb. 19¢

BELL PEPPERS RED CALIFORNIA AD COLOR TO SALADS or CHOW-CHOW 25¢

BELL PEPPERS HOT FRISNO HOT FOR CHOW-CHOW 29¢

CREAM CHEESE Philadelphia Cream Cheese 8-oz. pkg. 39¢



- IVORY FLAKES Mild, Gentle Soap Large Pkg. 35¢
- IVORY SNOW For Delicate Fabrics Large Pkg. 35¢
- OXYDOL 8-oz. Pkg. 81¢



1963 CHEVROLET IMPALA SPORT COUPE — The 1963 Chevrolet look is smart, new and beautifully luxurious, styled with the grace of America's most costly cars. Full-width grille, bumpers, hood, windshield, sculptured side panels and rear deck contours enhance the sleek new look. For added distinction the Impala Sport Coupe is available with an optional vinyl top that further contributes to its convertible look. The new Chevrolet line makes its public bow at Culberson Chevrolet, Inc., on Friday.

Global Meetings Boosting American Travel To Russia

MOSCOW (UPI) — American travelers have continued to visit the Soviet Union in increasing numbers despite the case of the auto traveler arrested last year as a spy and an official barrage of angry words about Berlin and other matters.

Exact figures of Western tourist travel to the Soviet Union will not be available until the end of the year. But the expert said it appears now as if British and French tourists may have declined somewhat, as compared to Americans.

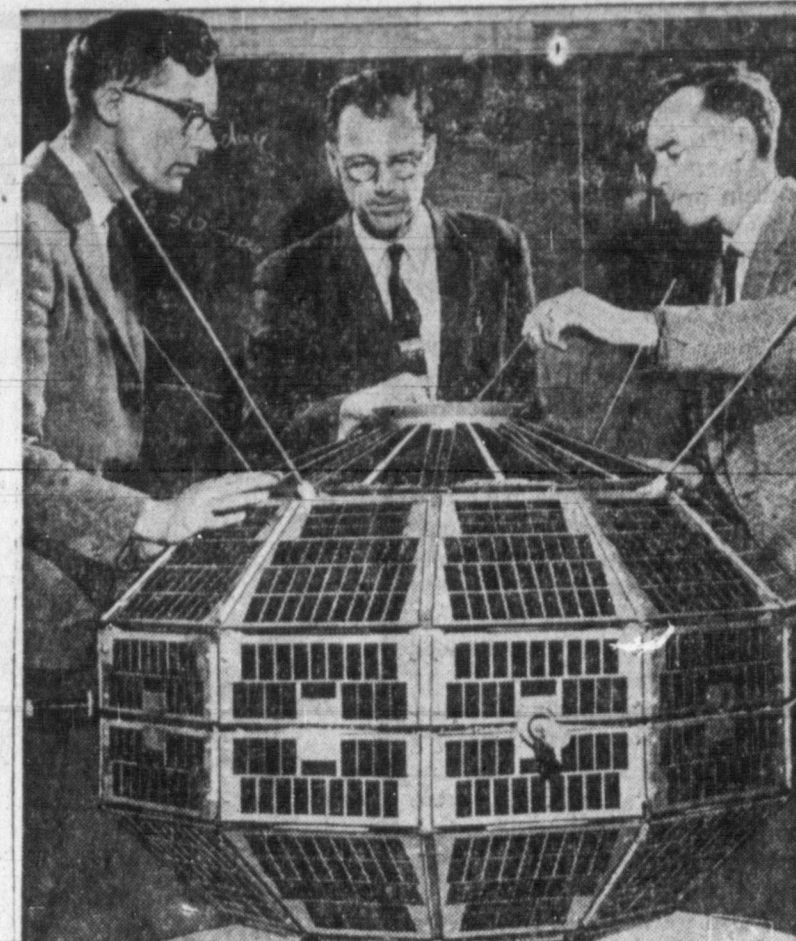
Foreign Commentary

By MICHAEL T. MALLOY
NEW DELHI (UPI) — It is certain now that India's gun-toting, Bible-quoting Naga tribesmen will soon have an autonomous state of their own on India's troubled northeast frontier.

lives and rupees makes statehood seem like a cheap price for New Delhi to pay for peace. The price seems cheaper still, because India won't really grant complete states' rights to the Nagas until the rebellion has been thoroughly stamped out and "normalcy" achieved.

It is hoped here, however, that more moderate Naga leaders will be able to use increased self-government as a lure for getting Phizo's followers out of their guerrilla hideouts in the rugged Naga hills.

A total of 1,500 Nagas, 350 Indian soldiers and 100 government officials have died in the bitter, little-publicized civil war. This is a conservative estimate, and Phizo claims that the death toll is closer to 75,000. Whatever the figure may be, it is likely to go higher unless the new state wins the confidence of the hostiles.



CANADIAN SATELLITE—Three Canadian scientists examine a model of the Alouette satellite. Also known as the S-27, it was designed and built by the Canadian Defence Research Board and will be launched by the U.S. National Aeronautics and Space Administration. Called a "topside sounder," it will probe the upper layers of the ionosphere or area of charged particles around the earth. Black squares on the model represent solar cells, which will generate electric power for the satellite. Visible at the middle are two of four antenna housings. Stored inside the satellite on reels, the antennas will be extended in space.

SLIGHT DETOUR
—HERRIN, Ill. (UPI) — An left a highway, here the night, tore down a hedge, a tree and a steel post set in concrete, but it circled around ducks on a lawn and went on the road.

CONFIRMS JUSTICE
WASHINGTON (UPI) — Senate Tuesday confirmed A. J. Goldberg as an associate justice of the Supreme Court, replacing Justice Felix Frankfurter who resigned because of health.

HI-POCKETS
AND WHEN MY NEWSPAPER RINGS THE DOORBELL O' COLLECTIVE DAY...
OUT POPS THIS ANNOUNCEMENT!
COLLECTION DAY, TODAY

These included four West Germans, two Dutchmen and an American student, William M. Makinen who was arrested in Kiev on July 27, 1961. No arrests have been announced this year.

commoation as the reason for the decision. Babkin said the situation regarding car travel to the Soviet Union has not changed.

IF YOU APPRECIATE QUALITY food shop here!

Shurfine MILK 3 Tall Cans 39¢
Shurfine SALT 2 Round Boxes 17¢

All Meat Sliced BOLOGNA 3 LBS \$1.00

Lean PORK STEAK 39¢ LB.
Sliced Beef Liver Lb. 29¢ | Hot Beef, No Bones Bar-B-Q Lb. 69¢

Seasoned Chuck Wagon Steak 69¢ lb.
PET DRY MILK 4 Qt. Size 36¢ 8 Qt. Size 59¢

Van Camps Pork & Beans 2 FOR 25¢
Kraft's French Dressing 23¢

Crown Peanut Butter 3 Lbs. 99¢
Shurfine 46-oz. Jar Pancake Syrup 39¢

Large Box 5c off label BREEZE 30

Red Potatoes 10-lb. Bag 39¢

Bananas 2 Lbs. 25¢
Celery 10¢

NEW for you...Free at BUDDY'S And All Other Gold Bond Stamp Merchants.

THE EXCITINGLY DIFFERENT GOLD BOND GIFT BOOK

EXCLUSIVE fold up GIFT CALENDAR with Anniversary, Birthday, and Gift Date Reminders.

Suddenly It's Yours... World's Greatest Gift Values from GOLD BOND, Largest International Stamp Company

- EXCLUSIVE Toy Book Insert
- EXCLUSIVE Group Project Plan for gifts for both you and your favorite organization with the same Gold Bond Stamps.
- EXCLUSIVE, Fabulous Golden Tours to Europe
- PLUS... see on display at our store this big, beautiful DeLuxe Edition Gold Bond WORLD IMPORT GIFT BOOK for hundreds of import gifts from foreign countries... yours EXCLUSIVELY for Gold Bond Stamps.

Today get your free Gold Bond Gift Book for gifts by America's finest manufacturers at (STORE NAME).

New Gold Bond Gift Book celebration offer of 50 FREE STAMPS...for you on page (9).

ROUGH BUSINESS

REDDITCH, England (UPI) — Twelve drivers started a stock car race here Tuesday.

One hit a tree, another spun into a field, three ended up in the wrong town and one disappeared altogether.



How many miles of vacation travel did you contribute to these statistics? The average vacation trip during 1961 was calculated at 276 miles, but more than one in five trips extended more than 1,000 miles in one direction. The nation's oil companies distributed a million of these travelers 175,000,000 road maps, in addition to those distributed by various states and motor clubs.

Goodbye To The 'Ugly American'; Americans Abroad Are Behaving

By RALPH VILLERS
United Press International

NEW YORK (UPI)—The much-maligned American traveler overseas has found a defender, and one who knows of what he speaks. Just back from Europe, Jayle C. Hall, observed:

"I was impressed with the difference in the way people (Americans) handle themselves in Europe today compared to 15 years ago. They are behaving more like good ambassadors."

Hall, who is chairman of the executive committee of People-to-People, was quite pleased with what he found, refuting, as it does, some of the "Ugly American" complex that has grown up about the behavior of traveling Americans in foreign lands. People-to-People, a non-

governmental, non-political and non-profit organization with headquarters in Kansas City, Mo., is the outgrowth of the movement started by President Dwight D. Eisenhower in 1956 to encourage contact between Americans and people overseas in the cause of better understanding and peace.

More plain Americans behaving as goodwill ambassadors on an individual basis is one of the principal People-to-People goals.

Some 350 Midwestern college students went to Europe this past summer — at their own expense

— as just such ambassador. The first stop was West Berlin, and then they split into groups large and small, traveling through 19 nations meeting other students and just the plain people. Two Kansas University boys hitchhiked, some went by car, others on motorcycles or bicycles. It all grew out of People-to-People on Campus, which started in Kansas and has spread to 600 schools.

There are just as many opportunities for individual travelers to meet and get to know the people of the countries they are

visiting — and it's really the only way to get the full flavor and enjoyment out of a foreign land.

Several European countries have "meet the people" programs such as Denmark. By giving the "Meet the Danes" program in Copenhagen a full 24 hours' notice, arrangements can be made to spend an evening with a Dane of a similar background and profession. The only requirement is willingness to spend the evening, not popping in for an hour and back out again.

Hall has a simple solution for visitors to a city or country

which does not have such a program.

"If you're a newspaperman, go to the newspaper office. If you're a bricklayer, look up a bricklayer. If you're a teacher, go to the schools. I think you'll get 99 per cent acceptance. And when you do, it's a pleasure both ways."

"I think the greatest thrill for the average American traveling abroad is to meet the people of the country they are traveling in."

Hall has some other advice for the traveler who wants the people of foreign lands to form a good impression of Americans:

"Learn to at least say 'thank you' in the language of the countries you are going to visit. I learned long ago, before People-to-People, that that's a good way to get close to them."

"And, when you want to sell a citizen of another country on America, just be truthful, be interested in his viewpoint, his religion don't be a braggart, don't try to be a big shot."

The campus People-to-People program this year was just a start of what Eisenhower and Hall hope for the future.

"It was a trial balloon this year, but it was accepted everywhere," Hall said. "Next year, for the first time, South America will be included."

He said People-to-People is planning on 10 times as many "student ambassadors" next year — a total of 3,500. People-to-People hopes to use the return charter planes to bring foreign students to this country.

Reminding that American students pay their own way, Hall noted that "when things are free, they are not always taken as seriously."

"Gen. Eisenhower has said he was convinced peoples of all coun-

tries wanted peace, and I certainly believe that," Hall said. "All they need is understanding to do something about it."

(Additional information on People-to-People, individual memberships and home town People-to-People councils can be obtained by writing: P. O. Box 1201 Kansas City, Mo.)



Mobeetie Personals

By MRS. G. B. DUNN

Mrs. Lester has been called to Topeka, Kan. to be at the bedside of her husband who had surgery in the Santa Fe Hospital there and had a relapse. Last report he was some better.

Mrs. Daisy Miller of Dallas visited the Woodford and Earl Williams. She is an Aunt of the Boys.

N. J. Tyson has been in the Highland General hospital for the past two weeks. He was dismissed Thursday and seems to be feeling fine.

Mr. and Mrs. Durham of Wheeler visited their daughter and husband, Mr. and Mrs. Walter Coward Saturday morning.

Mrs. Margaret Jeffus of Beaumont, California is visiting in the home of her sister-in-law Mrs. Tommie Tyson and other relatives.

Mr. and Mrs. Woodford Williams, Mr. and Mrs. Earl Williams and Mr. and Mrs. Mansel Williams attended funeral services in Delhi, Oklahoma Wednesday afternoon for Mrs. Florida Ford of Modesto, California, aunt of Earl and Woodford's.

Mrs. Al Sims was called to Tulsa, Oklahoma due to the serious illness of Woodrow Patrick a son-in-law. He passed away Friday and Mr. Sims and Mrs. Verne Lohberger attended the funeral services.

A group of the "Mobeetie Square Shooters" club were entertained by the Shamrock Topperettes on Tuesday night September 11. A delicious low-calorie salad supper was served to George Corse, Dorothy Mixon, Margaret Trout, Thelmas Harrison and Bessie Galmor. All reported a wonderful time.

C. E. Bryant, father of Mrs. Paul Maulsby underwent surgery Friday. He is in the Shattuck hospital at Shattuck, Oklahoma latest report was that he stood the operation fine and Mrs. Maulsby is staying with him.

The Mobeetie P.T.A. held a chuck wagon supper on the school grounds Thursday night September 13 and a crowd of around 150 attended. The supper was served chuck wagon style off of a wagon with the letters in black. 80 members or bust on it. The meal consisted of red beans, and ham hock, potatoe salad, tomatoes, relishes, pickles, onions, corn bread, peachobbler and tea or coffee. A sing song preceded the meal and a meeting afterward.

Mr. and Mrs. Mansel Williams left Sunday for school at Texas Tech at Lubbock after having spent several weeks with his parents, Mr. and Mrs. Woodford Williams.

Mr. and Mrs. Byron Simpson and Mrs. Winn Quarrels and daughter Paule visited in Abilene with Mr. and Mrs. Tiny Simpson over the week end.

Mr. and Mrs. Jerry Simpson and children of Pampa spent the week end in Mobeetie Jerry worked at his father's station while they were in Abilene.

Mrs. Almarine Sharp of Fort Worth visited with her sister, Mrs. Willie Ruth Hathaway last week.

Mr. and Mrs. Doc Trimble visited with Mr. and Mrs. Bill Eades over the week end in San Jon, N.M.

Visitors in the home of Mr. and Mrs. J. T. Wallis during the week end were Mr. and Mrs. Glen Vanlandingham of Amarillo and Mr. and Mrs. Audrey Wallis of

FORESEES GNP RISE

WASHINGTON (UPI) — The Council of Economic Advisers estimated Tuesday that the gross national product might go up by \$13 billion to \$17 billion if racial discrimination in employment is abolished.

It issued a statement on the subject which pointed out that the gross national product — the country's total production of goods and services — was \$552 billion at the end of June.

U.S.D.A. Good Beef

CHUCK ROAST

Pork Chops
Center Cut
Fresh, Lean
Lb. **69^c**

FOOD CENTER
400 S. RUSSELL MO 5-3452
OPEN 7 DAYS A WEEK DAILY 8-8; Saturday 8-9 p.m.
OPEN SUNDAY 8 A.M. TO 7 P. M.

Slab Bacon
Decker's
Lb. **39^c**

FRANKS
Top O' Texas Pic-Pak 2 1/2 Lb. Pkg.

89^c CHEESE
Clearfield, Dutch Loaf

59^c BOLOGNA 39^c
Wright Brand, Chunk Style

INSTANT COFFEE
Folger's 6-oz. Jar
79^c

PEANUT BUTTER Crown 3 Lb. Jar **89^c**
PORK & BEANS Kimbell's 3 303 Cans **29^c**
TOMATOES Diamond 303 Can **10^c**

MACKEREL Sweepstakes 303 Can **15^c**

TUNA Hi-Note, Reg. Can **15^c**

Morton's Frozen
Fruit Pies
● Cherry ● Apple
● Peach ● Coconut
Reg. Size **29^c**

Pumpkin Pie Filling Comstock, No. 2 can **15^c**
Pineapple - Grapefruit Drink 46-oz. can **25^c**
CHILI Gebhardt's Giant 30-oz. Family Size **69^c**

TIDE Large **27^c**

Peter Pan
CATSUP
14-oz. Bottle
15^c

POTATOES 10 LBS **39^c**
Carrots Crisp, Tender 2 PFKOSR **15^c**
Apples Delicious 17^c lb

APPLE SAUCE Kurer's 303 Can **15^c**
Lemons Sunkist 39^c Doz.
Tomatoes Vine Ripened 12 1/2^c lb





UP IN THE AIR—Costarring in the romantic comedy, "The Friendliest Girls in the World," are, left to right, Lois Nettleton, Karl Boehm, Pamela Tiffin and Dolores Hart. The film, being made in London, revolves around transatlantic airline stewardesses and the passengers in their lives.

Rebels Overthrow Yemen's Monarchy

ADEN (UPI)—Yemen radio reported today a revolutionary army has overthrown the monarchy. Other Arab broadcasts said the 36-year-old Imam (king) had been assassinated.

Yemen radio said the revolutionaries proclaimed a free republic after "getting rid of" Seif el Islam el Badr, who took over the throne only a week ago following the death of his father.

An unidentified Arab broadcast said flatly that the new king had been killed. The semi-official Arab news agency from Cairo said he was assassinated Wednesday night.

The radio station at Sanaa, the Yemenite capital, said the revolt broke out about 5 p.m. Wednesday. The new regime announced a curfew over the radio, and warned that anyone leaving his house after hours would be shot on sight.

There was no mention of whether the Imam was in Sanaa when the revolt broke out or at his palace at Taiz, where the old Imam was said to have died last week.

Cub Scout Pack Meeting Tonight

A meeting of the Woodrow Wilson PTA Pack 109 will be held at 7:15 p.m. today in the school gym.

The meeting will be conducted by the Santa Fe District Round Up Committee, George Etheridge chairman, for the purpose of enrolling new boys into the Cub Program.

All boys, 8, 9, and 10 years old, in any other district that missed the meeting at their school, are invited to attend with their parents, and they will be given the opportunity of joining the Cub Scout movement.

The Cub Scout program is an organization that is home centered, and trains the boy in physical fitness and to be leaders and followers.

Each month the Cubs have a theme that they work on at their weekly afternoon Den Meetings, and present at the monthly night Pack Meeting.

Hamburger Supper For Public Set By Band Boosters

Calvin Whately, president of the Pampa Band Boosters Club, announced today a Hamburger Supper for the public will be held from 5 to 7:30 p.m. Friday in the high school cafeteria.

Proceeds from the supper will be used to help pay expenses of the Harvester Band on their trip to Dallas Nov. 11, where they will perform during halftime of the New York Giants and Dallas Cowboys football game in Cotton Bowl Stadium.

The supper will be served in cafeteria style with the menu consisting of hamburgers, stew, soft drinks or coffee, potato chips, and homemade pie.

McLEAN PERSONALS

Recent visitors in the home of Mr. and Mrs. Kid McCoy were son Brady McCoy of Amarillo and her sister and brother-in-law, Mr. and Mrs. Lonnie Hood of Claude.

Mrs. Donald Beall of Park City, Utah is visiting her sister, Mrs. C. E. Cooke and other relatives here.

Lt. and Mrs. Harris Brinson and young son, Zachery, are now in Ft. Benning, Columbus, Ga. where he is stationed with the United States Armed Forces.

Nancy Meacham has enrolled as a freshman in Amarillo College.

Mr. and Mrs. Roy Willingham visited in El Paso last week with their son, Kenny, who is a student at Texas Western College.

Week end guests of Mr. and Mrs. C. O. Goodman were their daughter, Mrs. Bill Stroud and grandchildren Sharon, Janice, and Carolyn Stroud of Arlington. Visiting with the Godmans Saturday were Mr. and Mrs. Milton Skipper, Nicky, Shelia, Wayne, Pat and Monty, and Mrs. Kenneth Goodman Dennis and Deborah of Amarillo.

The McLean Band Boosters held their first meeting of the current school year Tuesday evening in the band hall. Parents of all band members, starting with the fifth grade, are eligible for membership in the organization.

Aerial Show

(Continued From Page 1) invitations to all schools in the Top O' Texas area, inviting them to attend the big air show Saturday afternoon.

The Thunderbirds — were activated in May of 1953 by our national defense establishment and given a many-fold global mission extensive in scope and far reaching in its world-wide significance.

Briefly, the team has been charged by the U.S. Government and the Chief of Staff of the United States Air Force with the task of "promoting a better understanding and appreciation of air power and to assist with the effective advancement of our national policy objectives."

Specifically, the Thunderbirds perform all over the world providing a suitable medium to:

First: Exhibit the United States Air Force technical and professional capabilities.

Second: Demonstrate the teamwork, coordination, discipline and precision flying ability that is required and vitally necessary for a highly effective combat-capable air power.

Third: Graphically illustrate and epitomize, through rapid and complete unit deployment, split-second timing of men and machines, long-range in-flight refueling, and an ever-ready state of preparedness, the flexibility and potential of all commands in the United States Air Force as a worldwide "Power for Peace."

Capacity crowds were in attendance at all of the 28 aerial demonstrations given during the tour. At many of the show sites officials have credited the team with drawing the largest crowds ever assembled in their cities.

The close of 1960 revealed that the Thunderbirds had thrilled more than 41,391,500 spectators in 31 different countries since the team's activation in 1953. The record books also indicate that they have flown more than 1,800,000 air miles, equivalent to 72 times around the world, in support of our Government and its national objectives in promoting

Mainly - - About People - -

The News invites readers to phone in or mail items about the comings and goings of themselves or friends for inclusion in this column.

* Indicates paid advertising

Pampa Boat and Ski Club will meet Friday at 7:30 p.m. in the Knights of Pythias Hall. Members of Pampa Little Theater will present a one-act comedy entitled "The Meeting Will Come To Order". Refreshments will be served during the social hour.

Due to a Religious Holiday, Behrman's will be closed all day Saturday. Please anticipate your week end needs so we may serve you Friday.

To be given away, 4 long hair kittens, MO 9-9339.*

J. S. Sparkman of Como, father of J. R. Sparkman of Lefors, died Wednesday in Como. Services will be held Friday in Como, according to Duenkel-Carmichael Funeral Home.

Faye Burkhardt is now associated with Louise's Beauty Shop, 1025 S. Banks, MO 4-6670.*

Rummage sale — 120 W. Foster, Thursday 1 to 5:30, Friday 8 to 5:30.*

Lay-A-Way now for Christmas with Pampa Progress Stamps at B&B Toyland and B&B Pharmacy.*

Hard Work Is Success Key Overseas

By JESSE BOGUE—UPI Financial Editor

NEW YORK (UPI)—He who resigns himself to taking off his coat and going to work is he with the best chance of selling overseas, a New England manufacturer said today.

It might be the Yankee background which helped Albert M. Creighton Jr., Harvard graduate and head of Devcon Corp., Danvers, Mass., understand that the seeing-is-believing type of salesmanship is necessary. New Englanders have a long background in round the world trade.

Creighton's company makes plastic steel, a epoxy repair material, and a dozen other repair and glue products. He has been overseas to work at sales there, has a plant in England, one in Japan. His company has its representatives in 84 foreign nations.

Small producers of useful materials can get into overseas trade, Creighton said. He said he felt they must at least try, and producers must go and see what is going on abroad.

"People abroad may have the idea that many of the claims we make for American-manufactured products are just so much boasting," he said. "But meeting people from the United States, talking to them, seeing them work with their products, makes a lot of difference."

Judging from his own experience, Creighton said, a visit overseas is sometimes the only way to overcome the reluctance of some governments, perhaps plagued by an unfavorable trade balance or desirous of building up their own industries, to allow imports of a new material.

A thought for the day: Ralph Waldo Emerson, the American essayist and poet, said: "Nothing can bring you peace but yourself."

Prowler Runs; Hub Cap Stolen

Someone tried to force entrance to her home by the front door last night, Mrs. Laverne Eddy, 2128 N. Christy, reported to police.

Mrs. Eddy said she finally turned on the porch light and the man ran. Then, she said, she loaded a shotgun to be prepared if he returned.

Lt. Bill Robinson, investigating officer, said he was unable to find any trace of the prowler during a search of the neighborhood.

Don Conley, 1032 Christine, reported to police that while his car was parked on the C&M parking lot, N. Somerville and W. Kingsmill, last night someone stole a hub cap.

Seale Supporters Slate Breakfast

The second breakfast meeting of Gray County Panhandle Citizens for Seale will be held in the Coronado Inn here at 7 a.m. Friday.

The Panhandle Citizens for Seale group is a Panhandle-wide organization that has banded together to help elect Jack Seale to Congress. C. J. Humphrey, Amarillo attorney, is chairman of the group.

Humphrey said, "Anyone in Gray County interested in sane and sensible government will be welcome at the breakfast meeting tomorrow."

Wes Izzard Will Be Club Speaker

Wes Izzard, Amarillo News columnist, will be the speaker at Friday's regular weekly meeting of the downtown Kiwanis Club in First Methodist Church.

The Amarillo Kiwanis Club is bringing a delegation to Pampa for an inter-club meeting and the two clubs will engage in a golf match at the Pampa Country following the luncheon.

Mrs. Craig's Rites Held

Funeral services for Mrs. Ottie E. Craig, sister of Mrs. Tom Cook, Pampa, were held at 2 p.m. Tuesday in Dalhart.

Mrs. Craig, 77, a former resident of Dalhart, died Sept. 22 in Albuquerque, N.M.

Services were conducted by the Rev. Frank Oglesby, pastor of the Lakeview Methodist Church, and interment was in the Memorial Park Cemetery under the direction of the Walker Funeral Home.

Survivors besides her sister in Pampa include her husband, Franklin D. Craig, of the home; two sons, Franklin B. and Roy C., both of Albuquerque; one brother, C. W. Hinson of Graham; another sister, Mrs. Myrtle Anderson of San Antonio; five grandchildren and five great-grandchildren; two nieces, Mrs. Marshall Folmar and Mrs. C. Russell McConnell, both of Pampa; one nephew, Leon Cook, Pampa; and a niece, Mrs. H. P. Barnard Jr. of White Deer.

Two Pampans In School At LCC

Two students from Pampa are among the student body of 394 that enrolled for the fall semester at Lubbock Christian College, Lubbock, according to E. R. Higgins, director of admissions. LCC is a Christian liberal arts junior college in its sixth year of operation.

The students from Pampa are Sharon Gayle Carmon, daughter of Mr. and Mrs. Evert Carmon, 2132 Mary Ellen, and Jimmy Don Shewmaker, son of Mr. and Mrs. O. F. Shewmaker.

Miss Carmon, a freshman at LCC, is a May graduate of Pampa High School, where she was second vice-president of Tri-Hi-Y and a member of the Spanish Club.

Shewmaker, a freshman music major, is president of the a cappella chorus, president of the Music Masters club, and vice president of Galaxy social club.

Scout Committee To Meet Tonight

The monthly meeting of the Santa Fe Boy Scout District Committee will be held at 7:30 o'clock tonight in the office of Southwestern Public Service, under the leadership of Art Smalley, district chairman.

The meeting is for Institutional Representatives and operating committee.

Items to be discussed and final plans made on are the Round Up, Boy Scout Camporee, District Scout Exposition, and Adult Scout Leaders Training University.

A nominating committee will also be appointed to present a slate of District Officers for the 1963 Scout year.

WASHINGTON

Luther L. Terry, surgeon general of the U.S. Public Health Service, warned that certain types of people should prepare for what looks like a bad winter for Asian flu.

Long experience shows that the greatest risks occur when influenza strikes persons over 45 years of age, pregnant women and those suffering from chronic illnesses.

Read the News Classified Ads

Read the News Classified Ads

Read the News Classified Ads

FITE FOOD MKT.

OPEN SUNDAY We Give PAMPA PROGRESS THRIFT STAMPS DOUBLE STAMPS 1333 N. Hobart MO 4-4092 or 4-8842 Wednesday With 2.50 Purchase or More

ROUND STEAK Fite's Own Fed Feed Lot Beef 98¢ lb	ARM ROAST Fite's Own Fed Feed Lot Beef 65¢ lb	CHUCK ROAST Fite's Own Fed Feed Lot Beef 59¢ lb
SIRLOIN STEAK Fite's Own Fed Feed Lot Beef 98¢ lb	STEW BEEF Lean Boneless 59¢ lb	CALF LIVER Fresh 39¢ lb

BEEF For Your FREEZER

150 DAYS IN FEED LOT • INVESTIGATE OUR 8 MONTH PAYMENT PLAN • FED 24 HOURS A DAY

Lady Borden's Ice Cream 5 Pints \$1	American Beauty, Reg. Pkg. Macaroni & Cheese Dinner 2 FOR 33¢	CRISCO 3 Lb. 75¢
Gerber's Strained Baby Food 10 reg. jars \$1	Nestle's QUICK Family Size 79¢	Gold Medal FLOUR 5 Lb. 53¢
Regular or King Size Dr. Pepper 6 Bot. Ctn. 33¢ Plus Dep.	Hunt's Tomato Sauce reg. can 10¢	Wolf Brand 300 Can 49¢
KLEENEX 400 Count White, Yellow, Pink 25¢	Hunt's Whole New Potatoes 300 can 10¢	12 Assorted Flavors JELL-O 2 Reg. 15¢
TOKAY GRAPES 2 Lbs. 29¢	Teanap Napkins 80 count 17¢	Duncan Hines Early American Reg. Pkg. 33¢
FROZEN CAKES Papperidge Farm Reg. Size 59¢	ZEST Both Size Bar 19¢	Cake Mixes 33¢
BARTLETT PEARS 2 Lbs. 33¢	Wash Cloths Each 10¢	YAMS Porto Rican 10c Lb.
POT PIES Spare Time, Frozen, Chicken Turkey, Beef Reg. Size 15¢		GRAPE JUICE Welch's Frozen 12-oz. Can 33¢

Blake's COUNTRY STORE INC.

WE GIVE DOUBLE BUCCANEER STAMPS WITH \$2.50 PURCHASE WED.
Lefors Highway Ph MO 4-7471 Free Delivery

Choice Blue Ribbon ROUND or T-BONE 79¢ lb	Kraft's Qt. Jar Miracle Whip jar 49¢
Choice Blue Ribbon SIRLOIN 73¢ lb	Duncan Hines Reg. Size Cake Mixes 3 pkgs. \$1 00
All Meat BOLOGNA 39¢ lb	Campbell's Tomato Soup 10 cans \$1 00
Lean & Meaty Spare Ribs 39¢ lb	Assorted Colors Delsey Tissue 4 roll pk. 49¢
Slab or Sliced BACON 49¢ lb	16-oz. PEPSI-COLA 25¢ Plus Dep.
	GRADE "A" WHOLE MILK Full Gal. 69¢
	BORDEN'S ICE CREAM 5 Pts. \$1 00
	FOOD KING OLEO 8 Lb. \$1 00
	• PRODUCE •
	SWEET POTATOES Lg. Size 7¢ lb
	No. 1 Red POTATOES 10 Lb. Bag 39¢

Ep
O
This something molded both hearty a main enough your w Ham ing sala appetit days pare it in your rel time. G es, spr eggs. F suggest Sauce, dry mu ham's s
Year Spic
A CO From turn to fee Ale treat, f Cacao, i glasses of soft. Now, hearty from a is made can be l whenever treat.
Fine Strong Irish Slight Into a place tv fill glas hot coff tablespo top with Makes CO Cream Strong

Epicurean Sauce With Ordinary Milk Crystals



Ham Mousse with Epicurean Sauce is a hearty main dish.

This glamorous Ham Mousse is something out of the ordinary in molded salads. It's prepared with both meat and vegetables so it's hearty enough for your hubby as a main dish, yet fluffy and light enough to please the palates of your women's club.

Ham Mousse is a cool, refreshing salad that will perk up jaded appetites during these hot weather days. Best of all, you can prepare it the night before or early in the morning and pop it into your refrigerator until serving time. Garnish it with radish roses, sprigs of parsley and deviled eggs. For the accompaniment we suggest a piquant Epicurean Sauce, made with horseradish and dry mustard to highlight the ham's savory flavor.

The Mousse combines tasty ham with tangy prepared mustard, crunchy accents of chopped pickle, celery and onion and creamy smooth mayonnaise. The fluffy textured consistency we look for in a mousse is usually created by the addition of gelatin and stiffly beaten whipped cream. In this case, however, stiffly beaten nonfat dry milk transforms our gelatin dish into an elegant mousse. You simply sprinkle nonfat dry milk over water, whip it until it forms voluminous peaks and then fold it into the rest of the salad mixture before pouring into your salad mold.

HAM MOUSSE WITH EPICUREAN SAUCE
8-10 servings
Mold, 2½ quart

- 2 tablespoons (2 envelopes) unflavored gelatin
- ¼ cup cold water
- 1½ cups boiling water
- 4 cups ground cooked ham
- ½ cup finely chopped celery
- 1 cup finely chopped sweet pickle
- ½ cup (4 oz. can) chopped pimiento
- 2 tablespoons minced onion
- ½ cup dairy sour cream
- 2 teaspoons prepared mustard
- ½ teaspoon salt
- Dash cayenne pepper
- 2-3 cup instant nonfat dry milk

In small bowl of mixer, sprinkle gelatin on cold water to soften. Gradually stir in boiling water to dissolve; cool to jelly-like consistency. Mix ham, celery, pickle, pimiento, onion, sour cream, mustard, salt and pepper. Sprinkle nonfat dry milk on gelatin mixture; beat until stiff. Fold into ham mixture; pour into mold. Chill until firm. Serve with Epicurean Sauce.

EPICUREAN SAUCE
Yield: 3½ cups
½ cup instant nonfat dry milk
½ cup water
2 tablespoons lemon juice
1½ cups dairy sour cream
¼ cup prepared horseradish
1 tablespoon prepared mustard
2 teaspoons sugar
½ teaspoon salt
¼ teaspoon white pepper
In small bowl of mixer, beat nonfat dry milk with water and lemon juice until stiff. Combine remaining ingredients. Fold into beaten mixture. Chill well. Serve with Ham Mousse.

Food Page

Pancakes Flapped In Every Tent At Summer Roundup In Vermont

By GAYNOR MADDOX—Newspaper Enterprise Assn. Pancakes are part of every camper's life. So of course, at the Girl Scout Senior Roundup this year at Button Bay State Park in Vermont they flapped in every tent. Most of the scouts used a biscuit mix, but a group of northern California scouts made sourdough pancakes with typical western enthusiasm.

But if you want to make raised pancakes even though you lack a starter, use the regular active dry yeast available in all food stores. Or use a biscuit mix recipe plain or with camper variations.

SENIOR GIRL SCOUT PANCAKE BREAKFAST
Orange Juice
Pineapple Pancakes
Corn Syrup
Country Bacon
Hot Chocolate
RAISED PANCAKES
1½ cups milk
3 tablespoons sugar
1½ teaspoons salt
¼ cup corn oil
¼ cup warm, not hot, water
1 package active dry yeast
2 eggs, beaten

CAMPERCAKES
2 eggs
1½ cups milk
2 tablespoons corn syrup
2-3 cups biscuit mix
¼ cup corn oil
Combine eggs, milk and corn syrup. Add biscuit mix and blend until smooth. Fold in corn oil. Spoon onto medium hot griddle. When bubbles begin to break, turn to cook other side. Makes 10 to 20 cakes.

PINEAPPLE PANCAKES
Reduce milk to 1¼ cups and add one 8-ounce can crushed pineapple.

Scald milk; stir in sugar, salt and shortening. Cool to lukewarm. Measure water into a bowl. Sprinkle yeast over water and stir until dissolved. Add lukewarm milk mixture, eggs and flour. Beat until smooth. Cover with a cloth, let rise until doubled in bulk, about 50 minutes. Stir down. Spoon onto medium hot griddle and bake until bubbles begin to break; turn to other side. Makes 10 to 15 pancakes.

UNITED NATIONS—Ambassador Adlai E. Stevenson, in a policy address to the U.N. General Assembly:
"The (Soviet) pressures and harassments against West Berlin continue to rank as a most ominous threat to the peace of the world."

Read the News Classified Ads

Lippy Sauce Tops Economy Spaghetti

One smart way to stretch your food dollar is to watch for current reports of plentiful foods. Another is to learn the cuts of meat that are usually quite economically priced.

CORN BELT SPAGHETTI
4 pork shoulder steaks; cut ½ to ¾ inch thick
Lard or drippings
1 medium onion, chopped
1 clove garlic, minced
1 can (16 ounces) tomato paste
1 can (4 ounces) mushroom stems and pieces
¼ teaspoon cayenne pepper
2 teaspoons salt
½ teaspoon pepper
1 package (8 ounces) spaghetti

Brown pork steaks slowly on both sides in own fat or lard or drippings. Pour off drippings. Add onion, garlic, tomatoes, tomato paste, mushrooms and seasonings. Cover tightly and cook slowly 2½ hours. Before serving, remove bones from steaks and cut meat into 2-inch pieces. Cook spaghetti in boiling salted water until tender, about 10 minutes. Drain. Serve meat sauce over spaghetti. 4 to 6 servings.

Luncheon meat, sliced. American cheese and mustard is always a favorite.

Spareribs Perfect Cool Weather Fare

But for cool or cold weather fare, spareribs can be prepared in the oven in such a manner that they, too, can create for you a typical mental image. Such a recipe might be Spareribs—Cherry-Rice Stuffing. You might even be able to classify this sparerib specialty as a "sparerib sandwich."

SPARERIBS—CHERRY-RICE STUFFING
4 pounds spareribs
1 teaspoon salt
¼ teaspoon pepper
1 can (16 ounces) red, sour pitted cherries, drained
2 cups cooked rice
½ cup finely chopped celery
½ teaspoon salt
¼ cup brown sugar, firmly packed
1 egg, beaten
2-3 cup sugar
1 tablespoon cornstarch
2-3 cup cherry juice

Cut spareribs into pieces of approximately 2 rib each. Season with 1 teaspoon salt and ¼ teaspoon pepper. Mix together cherries, rice, celery, ½ teaspoon salt, sugar and egg. Spread one half of the sparerib pieces with stuffing, using about 1-3 cup for each. Cover with the remaining sparerib pieces, turning rib ends down. Place spareribs on a rack in an open roasting pan and roast in a moderate oven (350 degrees F.) for 1½ hours.

Mix together sugar and cornstarch. Add cherry juice and cook, stirring constantly, until thickened and clean. Spoon half the cherry glaze over the spareribs and continue cooking 15 minutes. Add the remaining glaze and cook for another 15 minutes or until glaze is set and meat is done. 6 to 8 servings.

Summer sausage, egg salad and lettuce go well together.

Advertisement FAT OVERWEIGHT

Available to you without a doctor's prescription, our drug called ODRINEX. You must lose ugly fat in 7 days or your money back. No strenuous exercise, laxatives, massage or taking of so-called reducing tablets, crackers or cookies or chewing gum. ODRINEX is a tiny tablet and easily swallowed. When you take ODRINEX, you still enjoy your meals, still eat the things you like, but you simply don't have the urge for extra portions, because ODRINEX depresses your appetite and decreases your desire for food. Your weight must come down, because as your own doctor will tell you, when you eat less, you weigh less. ODRINEX costs \$2.00 and is sold on this GUARANTEE: if not satisfied for any reason just return the package to your druggist and get your full money back. No questions asked. ODRINEX is sold with this guarantee by: Richard's Drug Store, 111 N. Guyler, Mail Order Filled.

Year-Around Warming Potation Has Spiced Base For Cold Weather Days

A COOL COFFEE BEAUTY
From that warming potation, we turn to a cooler one, the icy Coffee Alexander. This year-round treat, flavored with Creme de Cacao, is served in slim, graceful glasses and topped with a float of soft whipped cream.

Now, to the Coffee Grog—so hearty and hot, it must be sipped from a handled mug. The Grog is made with a spiced base which can be kept in the refrigerator for whenever you want a warming treat.

IRISH COFFEE
Fine granulated sugar
Strong black coffee
Irish whiskey
Slightly whipped cream
Into a warmed table wine glass, place two teaspoons of sugar and fill glass about two thirds with hot coffee. Mix. Add about two tablespoons of Irish whiskey and top with softly whipped cream. Makes 1 serving.

COFFEE ALEXANDER
Creme de Cacao
Strong, ice cold coffee

Whipped cream
Pour two tablespoons Creme de Cacao in bottom of table wine glass. Fill almost to top with strong, ice cold coffee. Mix. Float softly whipped cream on top. Makes 1 serving.

COFFEE GROG
Spiced Base:
2 tablespoons butter
½ lb. (½pkg.) firmly packed brown sugar
Few grains salt
¼ teaspoon cinnamon
¼ teaspoon nutmeg
¼ teaspoon allspice
¼ teaspoon cloves
Cream butter. Add sugar slowly, while creaming. Add salt and spices. Blend thoroughly. This spiced base can be kept indefinitely in a covered container in the refrigerator.

Grog:
Put 1 teaspoon spiced base mixture in each 6-ounce mug. Add a strip of lemon peel and another of orange peel. Measure in 3 tablespoons light rum and 2 tablespoons heavy cream.



Santa Fe

Ship and travel Santa Fe

... always on the move toward a better way!



FREE! 50 GOLD BOND STAMPS!

toward the gift of your choice in the new Gold Bond Gift Book



Gold Bond, the largest international stamp company, offers you the world's greatest selection of gift values. Clip and redeem valuable coupon below at any of these friendly Gold Bond merchants.

- PAMPA**
BUDDY'S SUPER MKT.
502 W. FRANCIS
HOBART STREET SKELLY
200 N. HOBART
- ENZY'S 66 SERVICE**
501 S. CUYLER
- MIAMI**
Bailey's Gro. & Mkt.
- ALLISON**
Rex Miller Grocery
Allison Butane & Equip.
- WHEELER**
Clay's I.G.A. Store
Albert's Shamrock Serv.
- Deluxe Cleaners
City Drug

Clip and redeem this valuable coupon at any of these friendly Gold Bond merchants:

50 FREE GOLD BOND STAMPS at any GOLD BOND MERCHANT displaying the Gold Bond sign.

NAME _____
ADDRESS _____
CITY _____ STATE _____
Coupon Expires October 6, 1962.

JIM'S MARKET FOOD

HOURS: DAILY 7 a.m.-11 p.m. SUNDAY 8 a.m.-11 p.m.

WE FEATURE U.S.D.A. CHOICE BEEF

JUMBO BOLOGNA 29¢ Lb.	GROUND BEEF 89¢ 3 Lbs.
PORK CHOPS 59¢ Lb.	

ONIONS 4¢ lb.	LEMONS 17¢ lb.
----------------------	-----------------------

Oxydol 29¢ BOX	COFFEE 57¢ lb.	Crisco 79¢ 3 LB. CAN
-----------------------	-----------------------	-----------------------------

DOG FOOD 10 cans 69¢	TISSUE 4 Roll Pkg. 39¢	Hair Spray Large \$2.00 99¢
-----------------------------	-------------------------------	------------------------------------

French's new Beef Sauce Btl. 23¢	Nu Grape Canned Pop Can 5¢
Diamond 12-oz. Btl. Catsup 15¢	Pinto Beans 2-Lb. Pkg. 19¢
Kimbell's Mustard 9-oz. Jar 10¢	Mission Cut Green Beans 303 can 12¢
Kozy Kitten Tall Can Cat Food 5¢	Del Monte 46-oz. Can Grapefruit Juice 31¢
Diamond Sliced Pineapple No. 2 Can 19¢	Kraft Miracle Whip Qt. Jar 49¢
Kimbell's 2½ Can Pork and Beans 19¢	Lanolin plus with egg Shampoo giant size 49¢
Del Monte Cream Style Golden Corn 2:33¢	Lanolin Plus Cream Rinse giant size 49¢
Kim 400 ct. Pkg. Facial Tissue 13¢	Diamond 303 Can Tomatoes 2:29¢
Our Darling Cut Spears Asparagus No. 1 Can 19¢	Jonhson's Pledge 7-oz. Can 79¢
Royal Pure 44-oz. Jar Strawberry Preserves 69¢	New Bath Size Choice bar 25¢
Del Monte Fancy Tuna can 21¢	Kimbell's Tea ¼ lb. box 19¢

Better Food For Less IDEAL FOOD STORES

DOUBLE GUNN BROS. STAMPS

FRIDAY AND SATURDAY
WITH \$2.50 PURCHASE OR MORE
AT YOUR 3 IDEAL FOOD STORES

FREE One Loaf IDEAL BREAD

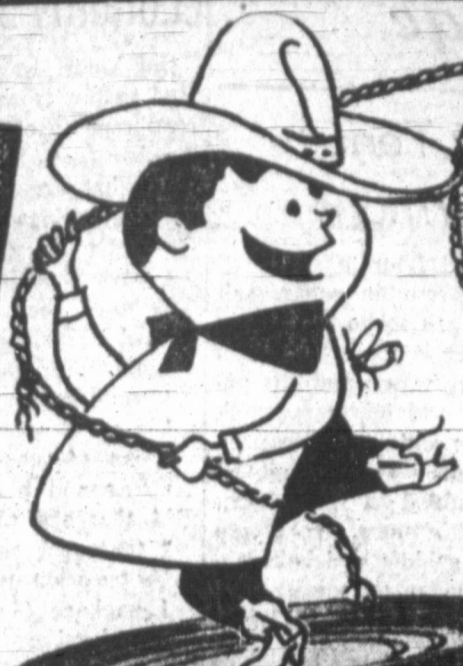
1-Lb. Loaf ... With Purchase
Of 2 At Regular Price!
OFFER EXPIRES OCT. 3RD
LIMIT ONE PER FAMILY

FREE One Pint Ctn. IDEAL FLAVORICH HALF and HALF

With Purchase 2-1/2 Gal. Ctns.
FLAVORICH MILK ... EXPIRES OCT. 3RD.
LIMIT ONE PER FAMILY!

FREE 1-Lb. Ctn. of Silver Bell MARGARINE

With Purchase 1/2 Gal. IDEAL
Flavorich Ice Cream!
Offer Expires Oct. 3RD
Limit One Per Family!



SHOP ALL
DEPARTMENTS
CLOSELY



Save during our Annual BIG FALL ROUND-UP SALE

ONE FULL WEEK
OF OUTSTANDING
SAVINGS!
FEATURING FAMOUS
DEL MONTE CANNED FOODS
MANY OTHER SPECIALS...
TO NUMEROUS TO MENTION

- PEACHES** Del Monte Sli. or Halves... Yellow Clings 4 No. 2 1/2 Cans \$1.00
- CATSUP** Del Monte Brand Tomato... SAVE! 4 20-Oz. Btls. \$1.00
- COCKTAIL** Del Monte Fancy Fruit 5 303 Cans \$1.00
- GRN. BEANS** Del Monte Cut Style 3 303 Cans 65c
- CORN** Del Monte Golden Cream or Whole Grain 4 303 Cans 69c
- PEAS** Del Monte Famous Sugar Sweet Peas. 4 303 Cans 79c
- PINEAPPLE** Del Monte Sliced CHUNK 3 No. 2 Cans \$1.00



SPECIAL 40% SAVING
Offer On Famous VOGUE
STAINLESS STEEL
COOKWARE

SPECIAL A WEEK FOR 5 WEEKS
SAVES YOU 40% ON EACH PIECE ... START
TODAY AND SAVE ON A COMPLETE SET!
THIS WEEK'S SPECIAL
Reg. \$3.50 1-Qt. Sauce Pan \$1.99
Reg. \$5.45 Tea Kettle \$2.99
COMPLETE SELECTION AT
OUR STORE!

POTATOES

Big Train-Load Sale!
\$1.98
COLO. RED McCLURES ... 100-LB. BAG

TOKAY GRAPES 10¢
ONIONS 3 LBS. 15¢
KRAUT CABBAGE 139¢

Frozen Food Features

Swansons Famous All Varieties
T V DINNERS Your Choice 49¢
Swansons Chicken Beef or Turkey
MEAT PIES 4 8-Oz. Pkgs. \$1.00
Banquet Apple, Peach or Cherry
FRUIT PIES 22-Oz. Pies 29¢

Save Economy Foods!

Coffee	FOLGERS	1-Lb. Can	59c
Tomatoes	High Plains	303 Can	10c
Crackers	Vista Seittines	1-Lb. Box	19c
Flour	Ideal Enriched	10-Lb. Bag	59c
Bakerite	Pure Shortening	3-Lb. Can	59c
Bleach	Nuway Brand	1/2 Gal. Jug	25c
Pinto Beans	No. 1 Grade	2-Lb. Bag	19c
Crackers	Sunshine Hi Ho	1-Lb. Pkg.	39c

FRYERS

Swifts Premium
CUT UP... PAN-READY
Tender Grown...
29¢ LB.

HAM

WILSON'S CORN-KING...
CANNED 5-LB. CAN \$3.99

BACON

IDEAL THICK SLICED...
2-LB. BOX \$1.09

SAUSAGE

VIRGINIA REEL WHOLE HOG 2 LBS. \$1.19

SAVE 5¢
ON 2 BARS ANY SIZE
dial SOAP

Cookies

Betty Crocker's Oatmeal or
Molasses .. 15-oz. 45c
Brownies 49c
Choc. Chip 47c

Cookie Coupon Celebration
NOW! 10¢ off coupon on back of every bag
SUPREME Pecan Sandies
Cocoanut Chocolate Drop Cookies
49c

Betty Crocker PIZZA MIX

LARGE PKG. 43c
Cinn. Rolls 35c

BAB-O DOG FOOD

RED HEART 1-LB. 2 CANS 29c

MAXWELL HOUSE Instant Coffee

6-oz Jar 98c 10-oz Jar 1.49
Snack Crackers NABISCO BRAND THINS... Pkg. Only 39c

CAKE MIX

Duncan Hines Dutch Topping 2 PKGS. FOR 89c

COFFEE

Maxwell House 2-LBS. CAN \$1.33

MARGARINE

Mazola Corn Oil 1-LB. CTN. 41c

BIF OR MOR

Luncheon Meats 2 12-OZ. CTNS. 89c

POTTED MEAT

Wilson's Brand NO. 1/4 CANS 10c

WHITE-RICE

Watermaid Finest 1-LB. BAG 19c

PRICES IN THIS AD EFFECTIVE THROUGH WED. OCT. 3
EXCEPT MEAT AND PRODUCE, GOOD ONLY THROUGH SAT. SEPT. 29TH

CLOSED SUNDAY So Our Employees May Attend Their Church

body Does Anything About The Weather' Is Just Not True Anymore

ATRICIA McCORMACK
ed Press International
YORK (UPI)—Sometime
this day, a couple of
souls will chat with you
the weather.
bound to say: "Everyone
bout it—but no one does
g about it."
you hear those words, be
ather rainy or fair, grab
ance to shine the egghead
explode the myth. Plenty's
done about the weather.
he National Science Foun-
in Washington, research

dealing with wind, rain and snow
falls into a class of studies head-
ed "weather modification."
It's a law, in fact, that scienti-
fic sleuths there "initiate and
support a program of study, re-
search, and evaluation in the
field of weather modification."
The mandate, Public Law 85-510
of July 11, 1958, has stirred so
much research that the founda-
tion recently issued a booklet on
weather modification.
Makes Some Progress
So far, no one has figured how
to make rain go away the guar-

anteed way the day a picnic's
scheduled. But there has been
progress.
Take hail. Present theory indi-
cates that hail can be suppressed
by cloud seeding.
"A large number of commer-
cial and experimental projects to
this end have been conducted in
the United States and Canada."
the foundation reports. "The
physics of hail formation must be
better understood before further
progress can be expected."
Weather modification activities
of the Department of Agriculture

include research concerning light-
ning—the largest single cause of
forest fires in the western United
States.
The research, known as Project
Skyfire, follows two main lines of
study:
—The study of the electrical
characteristics of lightning
storms in the northern rocky
mountain region.
—The evaluation of the effects,
if any, of cloud seeding on light-
ning occurrence.
"The first accomplishments
have been the developing of back-

ground information on the occur-
rence and movement of thunder-
storms... the foundation re-
ported.
Shows Less Lightning
The first season of evaluating
the effect of cloud seeding on
lightning showed less lightning on
days scientists tinkered with the
clouds.
Before scientists can draw defi-
nite conclusions, however, the re-
sults of several seasons of seed-
ing must be sifted.
Among weather modification
projects, the most spectacular
experiment concerns the dissipa-
tion of shallow ground fog.
The research, by the U.S.

Army for the Department of De-
fense, showed shallow ground fog
can be shocked out of sight.
Researchers stretched a wire
two to three feet above ground
over a shallow artificial fog layer
and charged it with 20 to 30
thousand volts.
NO ONE IS TALKING
MADRID (UPI) — Someone
swiped most of the ceramic ash-
trays stamped "Interpol Assem-
bly, Madrid, 1962" placed on ta-
bles in a secret assembly room
during this week's meeting of the
world's top policemen at an In-
terpol conference.
Interpol is not investigating.

55TH YEAR THE PAMPA DAILY NEWS THURSDAY, SEPTEMBER 27, 1962

DUE TO A RELIGIOUS HOLIDAY
-BEHRMAN'S-
WILL BE CLOSED SATURDAY
Please Anticipate Your Week-end Needs
So We May Serve You Friday.



'63 CHEVROLET IMPALA SPORT SEDAN

Tomorrow-GO JET-SMOOTH CHEVROLET for '63

Here's the Jet-smooth way to dress up your driveway, dress down rough roads. Cover this car's price tag and you might think it cost a thousand dollars more. It offers luxurious styling, extremely comfortable, spacious and silent interiors . . . plus ways to keep it looking and running like a new car when a lot of others have

IT'S EXCITING!

started to sag and sigh: a new way to flush and dry rocker panels under the doors of its Body by Fisher to guard against rusting . . . self-adjusting brakes to save you time and expense . . . Delcotron generator for longer battery life. If you ever wondered why Chevrolet leads its field, a drive in this '63 should answer all your questions.



GO CHEVY II for '63-IT'S EXCITING!

'63 CHEVY II NOVA SPORT COUPE



GO CORVAIR for '63-IT'S EXCITING!

'63 CORVAIR MONZA CONVERTIBLE

Hard as it may be to believe, this year's Chevy II is better, better than last year's and better than anything in its class. It shares all of the new car-saving easy-care features of the big Chevrolet and combines them with its own wonderful attributes of parkable size, four- or six-cylinder fuel economy and interiors that'd do justice to cars that cost twice as much as the '63 Chevy II with half the charm.



Change it? Calm yourself, nobody's going to mess with a winner like this one! We did add self-adjusting brakes and a more fully aluminized muffler; interiors are refined a bit, and you'll notice some trim changes. But the rest is pure untampered-with Corvair with all the over-the-road goodness that implies. Oh yes, we changed the rings around the taillights so all those people you pass will know you're driving a '63.

It's Chevy Showtime '63! See four entirely different kinds of cars at your Chevrolet Dealer's Showroom

CULBERSON CHEVROLET, INC.

212 N. Ballard

Pampa, Texas

MO 4-4666

Dear Abby.... 'Mistreated' Teenager Gets Good Training

By ABIGAIL VAN BUREN



DEAR ABBY: I am 15 and am having mother trouble. I am treated like a slave around the house. I have to do all the dishes and clean my room thoroughly every day. I am made to hang up all my clothes the minute I take them off. What are mothers for anyway? Once I decided not to do anything right, hoping my mother would get disgusted and do it herself, but she made me do it over again. Now I have to look after my little brothers because the doctor said my mother needs more rest. I have my school work to do and would like to get out of the house to be with my friends once in a while. My mother reads some letters out loud to me from your column. Please be on my side so I can read your answer to her.

DEAR SLAVE: I'm afraid this is another one your mother is going to read out loud to you. Anything you can do around the house to lighten your mother's burden, you should do willingly. You are getting excellent training in housekeeping, personal neatness and child care. Appreciate your mother and her efforts to make a tidy, well-organized young lady of you. You will never live long enough to repay her. And, unfortunately, neither will she.

DEAR ABBY: Our Daddy is in his second childhood. He is 51 and the woman he is dating is 28, and people are talking. We are two sisters, 24 and 27, both happily

married. Mamma died two years ago. We don't object to Daddy's seeking companionship, but don't you think he could find someone nearer his own age? Could he be mentally off? We are too embarrassed to discuss this with our pastor.

DEAR CONCERNED: Perhaps your Daddy is a "young" 51 and the woman he's dating is a mature 28. When two "grown-up" people are mutually attracted, age is only a number. Be glad your father isn't camping on your doorstep, moping and growing lonelier and more miserable with the years.

DEAR ABBY: I am 12 years old and all my life I have wanted to be a doctor. My only trouble is I can't stand the sight of blood. I get sick at my stomach just looking at the needle the doctor is going to give me a shot with. I can't bear to put a fish hook through a worm and I get weak in the knees when I watch my father clean fish. Does a person outgrow this feeling or do you think I ought to teach school?

DEAR BRUCE: You'll never know until you try. Take biology in school. If you can dissect a frog without getting jumpy, you've outgrown it.

Unload your problems on Abby. For a personal reply, send a self-addressed, stamped envelope to ABBY, care of this paper.



CHRISTMAS IN SEPTEMBER — Under the auspices of the Public Affairs Committee of the Altrusa Club of Pampa, members brought toys and bedding to the Monday night meeting, which were then taken to the Colored Day Nursery. Pictured above accepting the gifts from Mrs. Lalar Wilkerson of the Public Affairs Committee are Mrs. Adele Mitchell, nursery attendant and front row left to right, Beverly Johnson, Mary Ann Davis, Janet Oliver, Herbert Johnson; back row, left to right David Davis Jr., Vicky Davis and Delores Oliver. (Daily News Photo)

ASK THE DESIGNER by gail dug

Dear Gail: Would you please help me? I am 40 years of age, have never been married before. I intend to be married soon. I would like to be in white but hesitate because of my age. What do girls like myself wear on their wedding day? I am having a very small wedding.—Spinster of 40.

Dear "Spinster": While there is no reason really why you should not wear white, the small wedding, you're having automatically rules out the traditional-bridal gown and veil.

But I think you'll be very happy with the suggestions made by one of this country's top designers, Pauline Trigere. She says:

"Indeed, you may wear white if you prefer it to a pale pastel. But by all means, make it a tailored white. I would suggest a simple dress with jacket in heavy silk. For autumn, perhaps a mixture of silk and wool. Wear white silk pumps and a little hat made of white veiling.

"You'll find that you can wear such a costume on your honeymoon and after, too."

Dear Gail: Please tell me when to wear short or long gloves. When you go to a wedding, what length should you wear? Thank you for your help.—J. A. M.

Dear J. A. M.: Today, every well-dressed woman needs a wardrobe of gloves in all lengths

to give a finished look to costumes.

Advice on what to wear when — comes from Miss designer for Aris-Glov says:

"For the new, slightly sleeve, the four-button left right. This is generally a length—

"The forearm or eight-length, which comes to the is also suitable for day when crushed down with a 3/4-suit, coat or ensemble. This is also proper with a simple for an informal evening as be worn straight to the crushed slightly.

"Wrist length gloves and shorties look best after a semiformal dress. In weather, they are suitable hours.

"Proper glove lengths findings depend on the form the occasion. A formal wedding calls for a 12-but longer length, usually in w. At a less formal wedding, short white glove or an elon glove is suitable."

Please send your fashion lems to Gail Dugas in this paper. While she can answer each letter personally, ters of general interest w answered in this column.

Mrs. Martin Has Faith Circle Meet

The Faith Circle of the WSCS of St. Paul Methodist Church met Tuesday evening at 7:30 p.m. in the home of Mrs. Wilma Martin, 1133 Crane Rd.

Mrs. Joyce Newlin, chairman, presented the program on "Home Missions."

Refreshments of coffee and cake were served to Bobbie Foster, Jo Darce, Betty Tucker, Mrs. W. F. Gaines, Mrs. Don Stephens, Dorothy Moring, Bobby Combs, Joyce Newlin and the hostess.

On Oct. 18 at 7:30 p.m. in the City Club Room will be the date and time of the next meeting.

Southwesterners Plan Salad Fete

Plans were made for a salad supper in October by the Southwestern Bell Telephone Auxiliary which met in the City Club Room Thursday, at 7:30 p.m.

Refreshments were served by the hostesses Mrs. Charles Hollaway and Mrs. Fred Martin. Members present were. Mmes. E. B. Jackson, Bob French, Charles Hollaway, Marvin Young, J. A. Turner and Fred Martin.

The door prize was presented to Mrs. E. B. Jackson.

On Oct. 18 at 7:30 p.m. in the City Club Room will be the date and time of the next meeting.

Lee Parents Attend Classroom Routines

The annual Back-to-School program for Robert E. Lee Junior High was held on Sept. 20. Jack Nichols, principal, reported that around 600 people attended the event.

Parents and visitors were welcomed during the home room period. The devotion and invocation were given by David Cain, Mayor and Doug Altom, vice-mayor.

The membership chairman, Mrs. C. R. Howard, urged those present to pay their PTA membership fee and to obtain a subscription to the PTA publications. Parents followed their own chil-

Manners Make Friends



Sports shirts shouldn't be worn to church, to a restaurant, or to dinner in a private home.

Children's schedule with 11 minutes spent in each class.

Refreshments were served in the cafeteria with Mrs. J. W. Lemons and Mrs. A. L. Waggoner as hostesses.

DUE TO A RELIGIOUS HOLIDAY — BEHRMAN'S — WILL BE CLOSED SATURDAY

Please Anticipate Your Week-End Needs So We May Serve You Friday.

Read the News Classified Ads

SALE

Franciscan earthenware ...OPEN STOCK...

20% OFF

SEPT. 24 through OCT. 6

HERE'S YOUR CHANCE TO GET THE SERVING PIECES IN FRANCISCAN EARTHENWARE YOU'VE ALWAYS WANTED. BIG SAVINGS!

DESSERT ROSE COFFEE POT REG. 6.95—SPEC. 5.56

APPLE CANDLEHOLDERS REG. 3.90—SPEC. 3.12

DESSERT ROSE BUTTER DISH & LID REG. 3.95—SPEC. 3.16

APPLE CASSEROLE & LID REG. 8.95—SPEC. 7.16

DESSERT ROSE MUG REG. 1.95—SPEC. 1.56

McCarley's Jewelry Store

House of Fine Diamonds, Watches, Silver, Crystal, China and Luggage

106 N. Cuyler BO 4-8437

CAPRI MO 4-2569

TODAY FOR 7 WONDERFUL DAYS!

ADULTS NIGHTS & SUNDAYS 90c • ADULTS MATINEES 75c • KIDDIES ANYTIME 50c

3 PERFORMANCES DAILY: 2:00 P.M. — 5:00 P.M. — 8:00 P.M.
—EXCEPT SAT. & SUN. AT: 12:45 — 3:34 — 6:23 — 9:15

Warner Bros. is happy to spread the joy!

Meredith Willson's

the MUSIC MAN

is on the Screen!

THE MOST MARVELOUS MOVIE EVER MADE! FROM THE PLAY THAT KEPT PLAYING FOREVER!

STARRING ROBERT PRESTON • SHIRLEY JONES • BUDDY HACKETT
HERMIONE GINGOLD • PAUL FORD • MORTON D'ACOSTA

CO-STARRING Warner Bros. Records' SOUND TRACK ALBUM available now at your favorite dealer.

MUSIC SUPERVISED BY RAY HENDORF
SCREENPLAY BY MARION HARGROVE

TECHNIRAMA* TECHNICOLOR* PRESENTED BY WARNER BROS.

Hurry Look In Fall



Best fall sweaters take on the look of fur this year. Pinto pony and leopard (left) are printed in hand-screened patterns on soft American wool. Dalmatian print cardigan (right) is done in wool cardigan jac.

Bridge Club Has Master Point Play

Four players played the Howland at the Saturday Session of the Pampa Duplicate Club held in the Pampa Inn. Six tables participating. Winners were Mr. and Mrs. Lester Borger, first; Mr. and Mrs. P. V. Rowe, second; Mr. and Mrs. Frank Roach and Mrs. Warner, third; Mr. and Mrs. Richmond, Mrs. A. T. and Mrs. Ivan Noblitt, fourth.

Monday night session was North and South. Mrs. Frank Roach and Mrs. Greeley Warner, first; Mr. and Mrs. W. B. Murphy, second; Mrs. Haskell Maguire and Mrs. H. M. Luna, third; Mr. and Mrs. Harold Miller, fourth. Winners playing east and west were Mr. and Mrs. Don Forsha, first; Mrs. Bryon Hampton and Mrs. Vernon Ratzlow, second; Mrs. W. L. Hill and Mrs. Lois Stephens, third; Mr. and Mrs. Jim Nation, fourth.

SOCIAL CALENDAR

THURSDAY
2:30 — Senior Center Citizens Center, Sixth Anniversary Party, Lovett Memorial Library.
7:30 — Alpha Omicron Chapter, Epsilon Sigma Alpha Sorority, Luau Rush Party with Mrs. Jack Hunter, 2418 Christine.
FRIDAY
3:00 — International Tea, Altrusa Club International Affairs committee, Citizens' Bank and Trust Co.
It does no good to honk at a stalled motorist.

POTEXAS
DIAL MO 18781
Open 6:45
NOW-FRI.

TWO HIT FEATURES — COLOR
WM. HOLDEN • ELEANOR PARKER
"ESCAPE FROM FT. BRAVO"
ROBT. TAYLOR • AVA GARDNER
"RIDE VAQUERO"

LAVISTA
MO 4-4011

6 ADVENTURE-FILLED DAYS!
TODAY THRU WEDNESDAY
Open 6:45 P.M. Today — Fri. • 12:45 Sat.-Sun.
TODAY AT: 7:21 9:26

CLIMB ABOARD with your entire family
FOR THE MOST EXCITING ADVENTURE COMEDY OF THE YEAR

IRWIN ALLEN'S PRODUCTION OF
JULES VERNE'S "FIVE WEEKS IN A BALLOON"

RED BUTTONS
★ FABIAN
★ BARBARA EDEN
★ CEDRIC HARDWICKE
★ PETER LORRE
★ RICHARD HAYDN
★ BARBARA LUNA
★ BILLY GILBERT
★ HERBERT MARSHALL
as the Prime Minister

and introducing **CHESTER** THE "HUMAN CRAB"

Fun! Every mile of the way in uncharted Africa!

Thrills! From Zanzibar to Timbuktu to the fabulous Gold Coast!

MUSIC! Hear THE BROTHERS 4 and FABIAN sing the new hit tune "Five Weeks in a Balloon"

Directed and Staged by IRWIN ALLEN • CHARLES BENNETT, IRWIN ALLEN and ALBERT GAIL
CINEMASCOPE COLOR BY DE LUXE

Dunlap's FROM

Clearance! Dresses • Sportswear
Dresses and Sportswear that came in for late summer and early Fall! They must be moved out!

- DRESSES \$10**
Values to 19.95 in a group of Better Dresses reduced for clearance.
- PARTY PANTS \$5**
Values to 19.95, Party Pants in velvet, wool, silk blends. Sizes 10 and 12 only.
- Quilted Cotton Reg. \$1 yd. 1.98**
Assorted fancy Quilted Cotton Fabrics. Ideal for sport skirts.
- CORDUROY Reg. 69¢ yd. 98¢**
Narrow wale, washable, 36" Corduroy. Assorted colors.

MEN'S FALL SLACKS

Our entire stock of Men's Fall Dress Pants in plain or pleated fronts. All wools, wool and Dacron blends. Alterations Free.

- Reg. 12.95 **10.88**
- Reg. 14.95 **12.88**
- Reg. 16.95 **13.88**
- Reg. 18.95 **15.88**
- Reg. 19.95 **16.88**
- Reg. 22.95 **18.88**
- Reg. 24.95 **20.88**
- Reg. 35.00 **28.88**

- Lace Trimmed **PANTIES 88¢ pr.**
Dupont 100% Antron Panties, Lace Trim.
- Ladies **SWEATERS \$5.95**
A group of bulky Orion and wool flat knits in white and colors.

Botany Woolens \$2.99 Yd.

Famous Botany woolens while this quantity lasts! Reg. 3.98 and 4.98 fancy woolens reduced.

- Girls' **Sweaters 2 for \$3**
Reg. 2.98 Girls' Sweaters. These are slightly shopworn.
- Boys' **Slack Sets \$2**
Reg. 2.98 Flannel Shirt and Corduroy Longies. Completely washable. Sizes 4 to 8X.
- 60 Inch Woolens \$1.99 yd.**
Assorted Better woolens in plaids, flannels and other patterns. Only 300 yards left.
- MEN'S SWEAT SHIRTS \$1**
Zipper neck collar style. Fleece lined.
- BLANKETS \$3**
Reg. 4.98. Manufacturer's Closeout
- Laces and Trims 10¢**
Values to 79¢. Special purchase yd.
- WASH CLOTHS 12 FOR \$1**
Values to 15¢. Cannon quality
- Kitchen Towels 3 FOR 88¢**
Terry cloth prints. Bright colors
- Prints and Solids 59¢**
Dark prints made to sell for 1.29. White Rose Broadcloth
- Toss Pillows \$1**
Kapon filled. Reg. \$2, 15 colors
- Tailored Panels 99¢**
36 x 81. Woven side hem. Quick dry acetate
- Close Out Bedspreads \$4.99**
Lovely colors. Chenille, Dobby Spreads. Values to 7.95
- Tailored Bedspreads \$5.99**
Made to sell for 8.95. Quilted top. Flounce skirt
- Boys' Sweat Shirts \$1**
Reg. 1.99 Hooded. Assorted colors
- Boys' Continentals \$3**
Combed polished cotton. Sizes 6-16

BOOKS CLOSED
Buy now and take until November 10th to pay!
Prices Good Thurs., Fri., Sat.
We must reduce our inventory now to get ready for Christmas merchandise, which is beginning to come in. Shop every Dunlap's department now and save!

Girls' **CAR COATS \$3**
4.95 Value
Sizes 4 to 14 in Car Coats for children. Assorted colors and styles.

Girl's Fall **Dresses \$3**
Values to 4.95
One rack of reg. 3.99 and 4.99 new Fall Dresses in sizes 3-6x and 7 to 12. Drip dry cottons.

MARTEX Towels 99¢
If perfect these towels would sell for up to 1.98. Jumbo 25 x 48 size.

ELECTRIC BLANKETS
Reg. 19.95 **13.44**
Full or twin size. Automatic. Full 2-year replacement guarantee. Your choice of colors.

Over 2,000 Yards **Fall Cottons**
Reg. 59¢ **39¢**
Lovely Fall Cottons in dark prints to make up into pretty Dresses for Mother and Daughter.

Men's **Ski Sweaters \$5**
Beautiful colors in Orion ski patterns Sweaters. Your choice of colors. Small, medium, large.

FOOTBALL FRIDAY

Harvester Park

7:30 p. m.

Pampa HARVESTERS

—VS—

the Dumas DEMONS



1962 HARVESTERS Football Schedule

Sept. 19 - Pampa 19	El Paso 7
Sept. 22 - Pampa 12	Phillips 0
Sept. 28 Dumas	H 7:30 p.m.
*Oct. 5 Tascosa	H 7:30 p.m.
*Oct. 12 Monterey	T 7:30 p.m.
*Oct. 19 Amarillo	T 7:30 p.m.
Oct. 26 Open	
*Nov. 2 Palo Duro	H 7:30 p.m.
*Nov. 9 Lubbock	T 7:30 p.m.
*Nov. 16 Plainview	H 7:30 p.m.
*Nov. 24 Borger	T 2:00 p.m.

*Denotes Conference Games

We Are All For You Harvesters
To Dump The Demons This Friday
Night And Keep Up Your Winning
Ways!

WE'LL BE THERE

THESE HARVESTER BOOSTERS ARE BACKING YOU ALL THE WAY

MOODY FARMS FEED LOT
Capacity 4,506 Head
12 miles East of Pampa On Highway 152
MO 4-6693 or MO 5-5285

dick evans, inc.
Chemical Weed Control
Borger Highway MO 5-5700

JAY BROOKS ELECTRIC
Electrical Contractors - Lighting Fixtures
1101 Alcock MO 4-2585

WHITE STORES INC.
The Home Of Greater Values
109 S. Cuyler MO 4-3268

RADCLIFF SUPPLY CO.
Pampa, Borger, Amarillo
112 E. Brown MO 4-4651

FISHER PANHANDLE GRAIN
800 S. West MO 4-2541

SAFEWAY FOOD STORE
We give Gunn Bro. Stamps
900 Duncan MO 5-4261

SMITHS QUALITY SHOES
Rands Shoes For Men
287 N. Cuyler MO 5-3321

J. S. SKELLY FUEL CO.
Price Road MO 4-4002

F. W. WOOLWORTH CO.
280 N. Cuyler MO 4-6641

IDEAL FOOD STORES
No. 1: 401 N. Ballard
No. 2: 300 E. Brown
No. 3: 801 W. Francis

RICHARD DRUG
"Joe Tooley, Pampa's Synonym for Drugs"
111 N. Cuyler MO 5-5747

PAMPA HARDWARE CO.
Gym shoes and trunks, Sporting Equipment
130 N. Cuyler MO 4-2451

ROBERTA'S FLOWERS
Say It With Flowers, let them be ours
217 N. Ballard MO 4-3309

KYLES SHOES
The Home of City Club & Wesbro Shoes
121 N. Cuyler MO 9-9442

MALONE PHARMACY
"Prescriptions Our Specialty"
MO 4-4871 Hughes Building

DIXIE PARTS & SUPPLY
Complete Stock of Auto Parts
417 S. Cuyler MO 5-3771

CORONADO INN
Pampa's Most Exclusive Restaurant
MO 4-2506 1101 N. Hobart

FORDS SHAMROCK SERVICE STATION
Shamrock gas and oil for the best service
400 W. Foster MO 4-3771

FLEETWOOD'S TRUCK CENTER & CAFE
Open 24 Hours A Day—7 Days A Week
Delicious Mexican Food
Amarillo Highway & Price Road MO 4-7582

FIRESTONE STORES
120 N. Gray MO 4-3191

TEXAS FURNITURE COMPANY
Quality Home Furnishings
216 N. Cuyler MO 4-4628

FURR'S SUPER MARKETS
The Finest In Pampa
1420 N. Hobart MO 4-8161

HUGHES DEVELOPMENT CO.
North Crest
Hughes Bldg. MO 4-3211

YOUR LAUNDRY & DRY CLEANERS
Sanitone Dry Cleaning
801 E. Francis MO 4-2554

CONTRACTORS EQUIPMENT & SUPPLY
For Your Hole Hog Pump Liners
623 S. Cuyler MO 5-4218

PAMPA MILK COMPANY
Independent Distributor of Borden's Milk Products
601 S. Cuyler MO 4-4752

TARPLEY MUSIC COMPANY
118 N. Cuyler MO 4-4251

BUDDY'S SUPER MARKET
"Meats of Quality at a Saving"
Francis at Gray

WHITE HOUSE LUMBER
For all your building needs
Our everyday prices are lower
101 S. Ballard

OLLIE HARE'S MEN'S WEAR
220 N. Cuyler

SEARS, ROEBUCK AND CO.
Try our mail-order service
104 S. Cuyler

PAMPA OFFICE SUPPLY
Everything for the Office
211 N. Cuyler

SHELBY RUFF FURNITURE
Furniture bought and sold
812 S. Cuyler

CLAYTON FLORAL CO.
Say It With Flowers
410 E. Foster

BENTLEY'S
113 N. Cuyler

FANNON BUTANE SUPPLY
Butane and Propane Gas
809 W. Brown

IGA FOOD LINER
For The Best Steaks In Town
800 S. Cuyler

MI WARE
team. The
travels t
ers are ba
little dept
iam
Pr
MI (Spl) —
and Law
een "a lot
larly in the
their eight
Warriors.
team lost
opening gam
ame back
Tyrone, O
they had
Major L
Lead
American
& Club G
s, Bos 152
on, Chi 153
Was 148
n, KC 158
Balt 139
n, Balt 159
sn, NY 158
s, KC 155
er, K C 139
s, Minn 159
le: Mantle
g 322 but h
t bats)
National
is, LA 158
son, Cin 16
StL 153
il, StL 131
on, Mil 151
u, S F 147
n, Chi 147
nte, Pitt 14
ster, Phil 15
n, S F 12
Home
merican Leag
46: Cash.
Angels 37:
gentle, Orio
tional Leagu
46: H. A. a
son, Reds
Cepeda, Gi
33.
Runs B
merican Leag
s 121: Sieb
ito, Tigers
106: L. Th
tional Leag
ers 148:
Robinson, I
Graves 128:
Pit
merican Le
s 12-5: Don
ride, Ang
s 17-8: Ho
United P
Americ
York
nesota
Angeles
ago
oit
eland
imore
on
sas City
hington
Wednes
Angeles
ago 9 Bo
imore 3 K
sas City 6
York 9
only game
hursdays'
o games
Frid
sas City
imore at
cago at N
Ang. at
Only game
Nath
Angeles

Harvesters Are Underdogs Friday Night

Dumas Demons Are Heavier In The Line

The Dumas Demons, defending champions in the state of Texas for class AAA football teams, invade Pampa Friday night to do battle with Pampa's rejuvenated Harvesters.

The home team, sporting a glittering won 2, lost none record and leading the district in defense, will be a firm two-touchdown underdog in the contest.

Dumas opened the season against powerful Palo Duro (9-1 last season) and came off with a narrow 3-0 win via the field goal route. Then, last week, the squad tangled with District 3-AAAA's favorites, the Borger Bulldogs, and lost, 13-0.

For the first time this season, the Harvesters will be out-weighted in the line as the two teams take the field.

Watch this "weighty" forward wall Coach Bill Spann will open with Friday night:

At end, Ronnie Barnes, 190; end, Kelly Baker, 215; tackle, Kenneth Williams, 210; tackle, Donnie Schuman, 210; guard, Jerry Glover (no relation to Pampa's Jerry), 198; guard, Dickie Bales, 165; and center, Leon Kirkpatrick, 230.

Meanwhile, back on the Green and Gold Ranch, Coach Otis Holladay has announced four switches in the starting lineup. Three of the changes are in the backfield, though, as quarterback Kenney Hebert moves to tailback, tailback Jerry Glover moves to fullback; and Donny Ayers steps in at quarterback. In the line, Ricky Stewart will step into the starting offensive left end position. Ralph Palmer keeps his starting wingback post.

Other starters for the Harvesters will be John Brown at center, 205; guards will be Glen McCathern, 180, and Carl Clark, 215; tackles will be Keith Reimer, 210, and Dee Wright, 190; ends will be Howard Reed, 165, and Stewart, 150.

Starting in the backfield for the Demons will be quarterback Joe Parsons, 150; right halfback Joe Casas, 135; left halfback Norman Bonner, 152; and fullback Gary King, 178.

Coaching for the Harvesters besides Holladay will be Brown Smith, Ray Howard and Eural Ramsey. Their counterparts for Dumas are Gary Ward, Jerry Good, Tom Westbrook and Jimmy Thomason.

The Harvesters have been putting the polish on their winged-T offense in workouts this week, but an ample supply of defensive

Lavorante Still Has A 50-50 Chance

LOS ANGELES (UPI) — Doctors worked today to keep Alejandro Lavorante's temperature down to normal and gave the still-unconscious Argentine boxer a 50-50 chance of surviving brain damage resulting from hemorrhages suffered during a ring knockout six days ago.

Dr. DeWitt Fox predicted the handsome fighter probably would remain in a coma for a "prolonged" period, but would not give any estimate as to how long.

"It appears that the coma will be quite prolonged," he said on Wednesday.

The diagnosis dashed hopes that the 25-year-old South American would emerge in a day or so, as physicians previously had hoped.

Fox said Lavorante's temperature was being kept normal despite "a tendency to rise." The fighter was placed on a cooling blanket which circulates ice water. But pulse and respiration appeared normal, said Fox.

AGREE TO BOUT

BLACKPOOL, England (UPI) — Brian London of Britain and Von Clay of Philadelphia will meet in a 10-round heavyweight bout here Oct. 11. London defeated Howard King of Reno, Nev., at Blackpool last month.

SPORTS

The Pampa Daily News

55TH YEAR THURSDAY, SEPTEMBER 27, 1962 15

Longhorn Linebacker Says His Sub Is Best

By United Press International

University of Texas linebacker Pat Culpepper is a buzzsaw on the field. But he claims that his substitute will make "everyone forget ole Culpepper."

The substitute is sophomore linebacker Timmy Doerr. Both are from Cleburne, Tex.

"He'll really whack 'em," Culpepper says of Doerr. "Tim's really enthusiastic. He's ready to go to war."

Culpepper, a co-captain, has been "coaching" Doerr on the field, in the dormitory, at the dining table and during the summer. He told him to always be ready to go and he might get to play more. Last Saturday during Texas' 25-13 victory over Oregon Timmy was ready.

Mixup

"The coaches turned around one time after we got ahead late in the game and since Timmy was ready they sent him in," Culpepper said. "After two plays on defense, Texas got the ball. In the huddle he noticed that Bobby Nunis (offensive fullback specialist who replaces Doerr) was also hearing the play."

"Both Timmy and Nunis lined up at fullback. Nunis yelled for Doerr to leave the game but Timmy acted like he didn't hear and stayed right in place. Nunis then sprinted off the field and Doerr got in one extra play on offense."

The Longhorns meet Texas Tech Saturday in Lubbock in the first Southwest Conference tussle between two league teams. Four Texas players were on the doubtful list. They were left tackles Scott Appleton and Staley Faulkner, starting right end Sandy Sands and wingback Jim Hudson.

Tech stressed defensive play Wednesday in its workout. Center C. C. Willis of Bay City stood out in the drill.

Injuries Hurt Owls

Rice worked out in the mud preparing for Louisiana State at

Coaches Are Named For Local Boxers

Coaches and assistant coaches for the local boxing teams were named at a meeting of the Optimist Clubs Boxing Committee here last night.

Cliff Dunham, director of the boxing program, said, "We had a very successful meeting of the boxing coaches and committee for the Optimist Clubs teams last night. We named coaches and assistant coaches for the teams, except that we need one more man to take over as coach of a team."

Coaches named include Charles Snider, Don Riley, Rex Lee Jones, Virgil Flowers, Dave Hamlin, Gene Tollison, Ollie Wilhelm, Mickey White and Dickie Hopkins.

Registration will be held Saturday from 10 a.m. to 1 p.m., Dunham said. "We will set up the ring Sunday at 2 p.m. and start workouts at 4 p.m. Monday. There will be two teams here (the Boys Club) from 4 p.m. until 6 p.m. and two other teams from 6 p.m. until 8 p.m. We will work out Monday through Friday of each week," he said.

Dunham added that, "Anyone interested in helping with the boxing program is urged to contact me or be down at the workouts."

Colts Re-Hire Mgr. Harry Craft

LOS ANGELES (UPI)—Eighth place in Texas is comparable to finding water when drilling for oil. But it was good enough to save Harry Craft's job as manager of the Houston Colts.

Appointment of Craft to a new one-year term as manager was made before Wednesday night's game with Los Angeles at Dodger Stadium.

"We feel that Craft did an outstanding job this season with a ball club that was supposed to finish last," said general manager Paul Richards. "We certainly did better than most people thought we would, and credit should be given to Craft and his coaching staff."

Liston Flies Triumphant Home

CHICAGO (UPI)—Charles (Sonny) Liston, new heavyweight champion, flew home to Philadelphia today in the role of conquering hero; but he left behind a "big fight" tax muddle that may require weeks to clarify.

Big Sonny needed only two minutes and six seconds of the first round Tuesday night to wrest the heavyweight crown from Floyd Patterson in the ring's richest fight; but he won't be able to pick up any of his purse until the Internal Revenue Service releases it.

The government has slapped tax liens on the entire live gate of \$665,020, paid by the 23,197 spectators at Comiskey Park, and the estimated \$5,705,000 from theater television and other ancillaries.

Federal tax agents tied up the money so that total taxes could be collected for t-h-s y-e-a-r, if the courts approve, instead of spreading the collections over a period of 18 years, as the promoters wish.

Want Money Now

Officials of the Internal Revenue Service contend that all tax payments for any receipts connected with the fight must be paid for in 1962.

President Tom Bolan of Championship Sports, Inc.—The promoting organization — has started a series of conferences with a Chicago representative of the revenue service to see if some compromise can be reached to prevent "hardships" on ex-champion Patterson and others, who might have to give 80 per cent or more of their earnings to the government—in lump payments.

Bolan explained that all contracts for the fight were based on the probability the government would permit the 18-year spread of payments.

Accordingly, Graff, Reiner and Smith—who purchased the closed-circuit television rights and other ancillaries—guaranteed Championship Sports \$2 million against Championship Sports' 85 per cent of the ancillaries' receipts, to be paid over 18 years.

Same For Fighters

And Championship Sports, in turn, agreed to pay Patterson 45 per cent of the net live gate and 55 1/2 per cent of the promoters' receipts from the ancillaries—over 18 years.

Liston contends that he didn't know his guarantee of \$200,000 and probably purse of \$400,000 on a 12 1/2 per cent-of-all basis, was to be spread out. "I thought I was getting it all now," he says.

At Los Angeles, Bruce Hochman — tax attorney for Graff, Reiner and Smith—said the firm was "not unduly concerned" about the tax liens. He explained, "We will sit down with the government and resolve the question."

Meanwhile, Liston assured a press conference Wednesday that he will keep his word and his contract by giving Patterson a return shot at the title whenever Floyd wishes it.

Owl Cut Rate Liquors
 MO 5-5951 108 E. Craven
 USE OUR DRIVE-UP WINDOW

Ohio State, Alabama Are Favorites

NEW YORK (UPI) — Alabama and Ohio State, who finished 1-2 among the nation's top college football teams last season, are listed as heavy favorites for their engagements this weekend.

Alabama, which opened its season last week with a 35-0 victory over Georgia, is picked to defeat Tulane by at least 17 points. Ohio State is a 20-point choice for its season opener against North Carolina.

Oklahoma, fresh from its 7-3 triumph over Syracuse, is only a 1-point pick over Notre Dame in their nationally televised "Game of the Week." The Irish, who will be making their 1962 debut, have lost only two openers since 1900.

The point "spread" on other major games:

East — Boston College 1 over Villanova, Army 4 over Syracuse, Penn State 19 over the Air Force.

South — Georgia and Vanderbilt even, Clemson 4 over North Carolina St., Georgia Tech 5 over Florida, Tennessee 6 over Auburn, Miami (Fla.) 7 over Texas Christian, Duke 10 over South Carolina, Maryland 11 over Wake Forest, Louisiana State 14 over Rice, Mississippi 17 over Kentucky.

Midwest — Minnesota 1 over Missouri, Michigan 11 over Nebraska, Iowa 12 over Oregon State.

Southwest — Pitt 1 over Baylor, Texas A & M 2 over Houston, Southern California 11 over Southern Methodist.

West — Oregon 8 over Utah, Washington 15 over Illinois, Michigan State 13 over Stanford.

JOINS ALL-STARS

NEW YORK (UPI) — Dave Debusschere, former University of Detroit star, has been added to the roster of the College All-Stars who meet the New York Knickerbockers in a benefit basketball game at Madison Square Garden, Oct. 12. Debusschere currently is a pitcher with the Chicago White Sox.

The Major League Roundup

National League

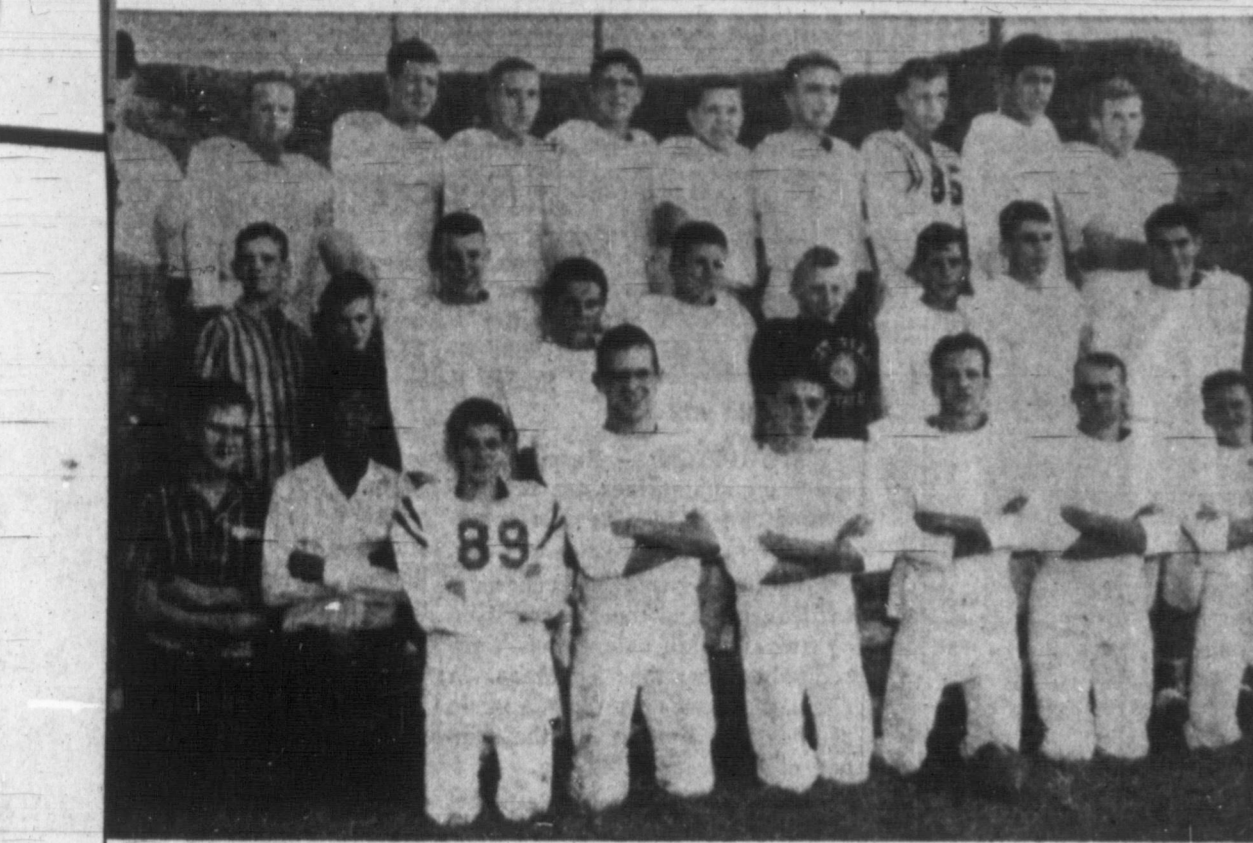
Los Angeles 156 638 118 221 .346
 Cincinnati 160 603 132 206 .342
 St. Louis 155 599 91 195 .326
 Milwaukee 131 415 55 135 .325
 Pittsburgh 155 587 127 191 .323
 San Francisco 147 546 94 173 .317
 Philadelphia 143 520 70 163 .313
 Houston 144 518 96 168 .312
 New York 150 540 83 167 .309
 Chicago 124 463 72 143 .309

Home Runs

Killebrew — Killbrew, 46; Cash, Tigers 38; Wag-
 Angers 37; Colavito, Tigers
 gentile, Orioles 33.

Pitching

Stigman, 12-5; Donovan, Indians 20-9;
 ride, Angels 11-5; Ford,
 17-8; Herbert, White Sox



MI WARRIORS — Here's a team picture of the Miami Warriors, eight-man football team. The squad is "young but progressing," according to coach Bill Hines. The team travels to Balko, Okla., this Friday and to Lakeview for next week's game. Five players are back from last year's squad, giving the team a good nucleus, but still, "we've got a little depth," the coach said. (News Photo)

Miami 8-Man Team 'Inexperienced but Progressing'; Plays Balko Next

MI (Spl) — Coaches Bill Hines and Lawrence Overcast see "a lot of progress," particularly in the line, so far this year in their eight-man team, the Warriors.

The team lost to Boys Ranch in the opening game of the season last week to Tyrone, Okla., 26-12, and they had four touchdowns called back and four extra points.

The Warriors had five starters back from last year's team when drills opened this year, Mickey Kivlehen, tailback; Jim Flowers, wingback; Mark Arrington, end; Harold Coffee, tackle; and Joe Holland, guard. Coffee and Holland are juniors this term and the rest are seniors.

The team switched to 11-man football for the Boys Ranch game but has settled back now into the more familiar eight-man lineup.

Coach Hines said his line has "little depth but it is tough. Coffee and Holland are doing a fine job in the line and so is Jim Gill at center. They're inexperienced but making good progress in that line."

Hines is a graduate of Oklahoma University and Overcast is a West Texas State College product.

In addition to the returning starters, named above, squad members include Gill at center, another senior; junior end Roy Bean, jun-

Major League Leaders

American League

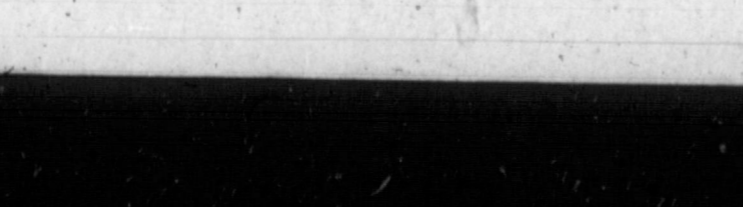
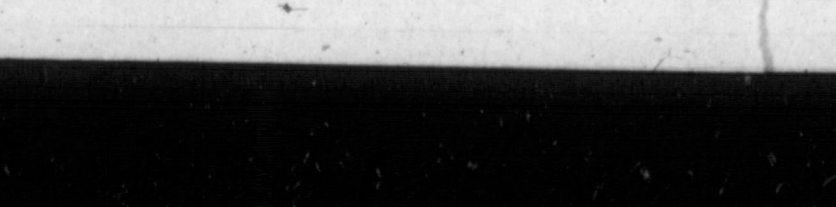
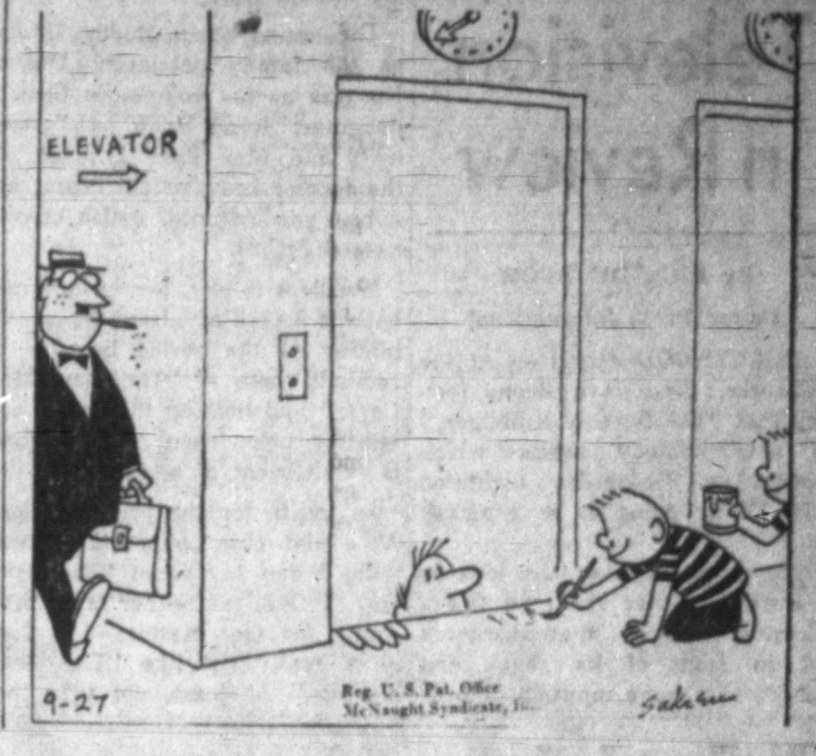
Club G. AB R. H. Pct.
 Boston 152 562 80 183 .326
 Chicago 153 589 86 183 .311
 Kansas City 148 535 72 166 .310
 New York 158 591 113 181 .306
 Baltimore 139 416 47 127 .305
 Detroit 159 625 78 190 .304
 Minnesota 158 633 98 206 .302
 Cleveland 155 639 89 193 .302
 St. Louis 139 479 48 144 .301
 Milwaukee 156 612 93 182 .297
 Philadelphia 132 463 70 177 .297

National League

Los Angeles 156 638 118 221 .346
 Cincinnati 160 603 132 206 .342
 St. Louis 155 599 91 195 .326
 Milwaukee 131 415 55 135 .325
 Pittsburgh 155 587 127 191 .323
 San Francisco 147 546 94 173 .317
 Philadelphia 143 520 70 163 .313
 Houston 144 518 96 168 .312
 New York 150 540 83 167 .309
 Chicago 124 463 72 143 .309

Standings

League	Team	W.	L.	Pct.	GB
American League	York	94	65	.591	
	Minnesota	88	71	.553	
	Los Angeles	85	73	.538	8 1/2
	Chicago	84	75	.528	10
	St. Louis	82	76	.519	11 1/2
	Philadelphia	77	81	.487	16 1/2
	San Francisco	77	82	.484	17
	Cincinnati	75	83	.475	18 1/2
	Washington	72	87	.453	22
	Pittsburgh	59	99	.373	34 1/2
National League	Los Angeles	99	59	.627	
	Cincinnati	96	64	.600	6
	Pittsburgh	91	67	.541	10
	Milwaukee	85	74	.535	16 1/2
	Philadelphia	80	78	.506	21
	St. Louis	80	78	.506	21
	Houston	62	94	.397	38
	Chicago	57	101	.361	44
	New York	39	118	.248	61 1/2
	Wednesday's Results				
Pittsburgh 1 Cin. 0, 11 inn., night					
Philadelphia 6 Chicago 5					
San Francisco 6 St. Louis 3					
Los Angeles 13 Houston 1, night					
Milwaukee 6 New York 3, night					
Thursday's Probable Pitchers					
Philadelphia at Chicago — Bennett (8-9) vs. Koonce (10-9).					
St. Louis at San Francisco — Washburn (11-9) vs. O'Dell (19-13).					
Houston at Los Angeles (night) — Johnson (7-15) vs. Williams (13-12) or Koufax (14-6).					
(Only games scheduled)					
Friday's Games					
San Francisco at Detroit					
Minnesota at Minnesota					
Chicago at New York, night					
Ang. at Cleve., 2, two-night					
Only games scheduled					
National League					
W. L. Pct. GB					
Los Angeles 101 57 .638					



Television In Review

By RICK DU BROW

United Press International

HOLLYWOOD (UPI) — At the networks, there is a strong feeling that "The Beverly Hillsbillies," a new comedy series, which showed up Wednesday night on CBS-TV, is going to be a smash hit.

The title describes the idea in a nutshell: It is about an Ozark Mountain family that discovers oil in front of its shack and moves to a huge mansion in Beverly Hills, Calif., home of money and movie stars.

The series stars Buddy Ebsen as the family patriarch; Donna Douglas as his voluptuous blonde daughter; Irene Ryan as "granny"; and Max Baer Jr., son of the former heavyweight boxer, as a big, good-natured, oafish cousin named Jethro.

Needless to say, the advertising boys are thrilled about the possibilities of the series because it reminds them of "The Real McCoys;" and nothing thrills an advertiser more than a show that is reminiscent of another hit.

So much for the preliminaries. As a flat observation, the nicest thing I can say about "The Beverly Hillsbillies" — or any program, for that matter — is that it is really not like "The Real McCoys." At least, not yet. The series stars Buddy Ebsen as the family patriarch; Donna Douglas as his voluptuous blonde daughter; Irene Ryan as "granny"; and Max Baer Jr., son of the former heavyweight boxer, as a big, good-natured, oafish cousin named Jethro.

Television Programs

Table listing television programs for Channel 4 (KGNC-TV), Channel 7 (KVII-TV), and Channel 10 (KFDA-TV) on Thursday and Friday nights.

55TH YEAR

McCoy's are a civilized rural clan; these new Hillbillies make L'I Abner and his mob look like a bunch of sophisticates. Samples: —Miss Douglas, carrying an unconscious, cuffed oilman into the shack, asks Ebsen: "Can I keep him, Pa?" —Ebsen, who doesn't know the value of oil until he's told about it, and doesn't realize he's a rich man, tells a cousin he's been offered a "new kind of dollars... million."

Well, all right. This is a cold-blooded commercial series, to cash in on some salable types, but there's nothing wrong with that if it's done well; and many times, it is. For example, the rollicking banjo music that weaves in and out is delightful. The cast is expert and attractive. The writer-creator, Paul Henning, who penned comedy for George Burns and Gracie Allen for a decade, knows his business.

Thus, while things sometimes seem forced on "Hillbillies," it is also often fast and funny and fairly acceptable broad farce, though I wouldn't advise you to call off a good poker game because of it. To succeed, the "Hillbillies" must compete against tough shows: Perry Como and the new "Going My Way" series with Gene Kelly.

The Channel Swim: Rod Steiger guests on ABC-TV's "Ben Casey" Oct. 15. James Mason stars on CBS-TV's Alfred Hitchcock show Oct. 18. New York Yankee slugger Mickey Mantle discusses baseball's World Series on the "Today" program Friday on NBC-TV. English novelist C. P. Snow appears on CBS-TV's "Calendar" Friday; West Berlin Mayor Willy Brandt visits the same show Monday. Thelma Ritter will star on ABC-TV's "Wagon Train" Oct. 3 instead of Oct. 10. Soupy Sales is featured on NBC-TV's "Ensign O'Toole" Oct. 21. Jeffrey Hunter plays a tank commander Oct. 16 on ABC-TV's "Combat"; Andy Griffith is celebrity guest Monday on "I've Got a Secret" on CBS-TV, with Victor Borge turning up Oct. 8. Joan Fontaine is a panelist on the daytime "To Tell the Truth" on the same network all next week.

Read the News Classified Ads



ALL IN THE FAMILY—It was a family affair when Soviet Premier Nikita Khrushchev visited the Russian resort area on the Black Sea near Yalta recently. From left are: Alexander Adzhubei, the premier's son-in-law; Khrushchev; his daughter, Mrs. Rada Adzhubei; her two sons, Ivan and Nikita; and the premier's wife, Nina Petrovna. Partially hidden by his mother is Sergei Khrushchev, in sport shirt. Other gentleman is V. Vinogradoff, new Russia ambassador to Japan. Photo, caption material from official Soviet source.

On The Record

HIGHLAND GENERAL HOSPITAL NOTES

Admissions: Baby Girl Keas, 1201 N. Russell; Bill Tom Chitwood, 609 Texas; Debra Kay Lamer, 1813 Coffee; Mrs. Elvira Spraberry, 341 Miami; Mrs. Kay Crouch, 418 Juniper; W. E. Edwards, 201 E. Francis; Mrs. Nan Coffman, 2000 Hamilton; Mrs. Barbara Scroggs, Pampa; Mrs. Abbie Thompson, 718 E. Craven; Mrs. Addie Callan, 711 Sloan; Mrs. Esther Stephenson, Claude; Mrs. Mary Thornburg, White Deer; Baby Boy Crouch, 418 Juniper.

Dog Show Is A Real Experience

By PATRICIA MCCORMACK NEW YORK (UPI)—For peace, quiet and comedy, go to a dog show some autumn afternoon. But when you feel a laugh coming on, practice preventive medicine. Turn your head away from the dog handlers caught up in the very serious business of exhibiting Fido's fine points. While watching them show off man's best friends, you're liable to pick up some incidental intelligence. The other day, for example, attending the very first dog show of my life, I learned the Civil War isn't over. It's gone to the dogs. The skirmish between Rebel and Yank took place at a show in Connecticut, a Yankee stronghold if ever there was one. "I do declare, suh," a matron recently transplanted from Rebel land declared. She addressed a judge who had just declared her boxer bitch less fit than one from the North. "But, suh, will you all tell me, just what is wrong with mah dawgs." "We like 'em lean in the North," he said. "That bitch of yours is overweight." Keeping her southern ladyhood at the low-boiling point, the matron explained politely that the pup won silver in boxer shows south of the Mason-Dixon Line recently. "In Texas, suh," she said, "we don't believe in starving our dawgs." Dressing tent quiet prevails throughout a dog show. The handlers, seeming sworn to secrecy, don't talk to one another. Friends of handlers don't chew the fat. Who knows, they might be talking to a friend of a competing dog! Other glimpses of a dog show: —Most of the handlers and owners of Great Danes are frail types. —The tiny dogs invariably handle the handlers of the weighty type. —To prevent mix-ups, there are separate exercise runs: one for bitches and the other for dogs. —When one is showing a dog, one gets a four-to-five-inch-wide band with one's dog's number on one side, and on the other side, a message: "Fed by Fortified Biscuits" or whatever dog food maker supplied the bands. One gets the impression that the handlers, wearing the things, eat dog food.

Legal Publication

NOTICE TO CREDITORS. STATEMENT REQUIRED BY THE ACT OF AUGUST 24, 1912, AS AMENDED BY THE ACTS OF MARCH 3, 1933, JULY 2, 1946 AND JUNE 11, 1950 (74 STAT. 289) SHOWING THE CIRCULATION OF THE PAMPA DAILY NEWS published daily except Saturdays at Pampa, Texas for September 27, 1952.

STATEMENT REQUIRED BY THE ACT OF AUGUST 24, 1912, AS AMENDED BY THE ACTS OF MARCH 3, 1933, JULY 2, 1946 AND JUNE 11, 1950 (74 STAT. 289) SHOWING THE CIRCULATION OF THE PAMPA DAILY NEWS published daily except Saturdays at Pampa, Texas for September 27, 1952.

9 A.M. In the Daily Deadline

For Classified Ads Saturday for Sun, Mon, Tues, Wed, Thurs, Fri, Sat. Headline for Ad Cancellation, Mainly About People Ads will be taken up at 9 A.M. Monday, Sept. 29, 1952. Classified Rates: 1 Day - 85c per line; 2 Days - 1.50 per line per day; 3 Days - 2.25 per line per day; 4 Days - 2.80 per line per day; 5 Days - 3.25 per line per day; 6 Days - 3.65 per line per day; 7 Days - 4.00 per line per day; 8 Days - 4.30 per line per day; 9 Days - 4.55 per line per day; 10 Days - 4.75 per line per day; 11 Days - 4.95 per line per day; 12 Days - 5.10 per line per day; 13 Days - 5.25 per line per day; 14 Days - 5.40 per line per day; 15 Days - 5.55 per line per day; 16 Days - 5.70 per line per day; 17 Days - 5.85 per line per day; 18 Days - 6.00 per line per day; 19 Days - 6.15 per line per day; 20 Days - 6.30 per line per day; 21 Days - 6.45 per line per day; 22 Days - 6.60 per line per day; 23 Days - 6.75 per line per day; 24 Days - 6.90 per line per day; 25 Days - 7.05 per line per day; 26 Days - 7.20 per line per day; 27 Days - 7.35 per line per day; 28 Days - 7.50 per line per day; 29 Days - 7.65 per line per day; 30 Days - 7.80 per line per day; 31 Days - 7.95 per line per day; 32 Days - 8.10 per line per day; 33 Days - 8.25 per line per day; 34 Days - 8.40 per line per day; 35 Days - 8.55 per line per day; 36 Days - 8.70 per line per day; 37 Days - 8.85 per line per day; 38 Days - 9.00 per line per day; 39 Days - 9.15 per line per day; 40 Days - 9.30 per line per day; 41 Days - 9.45 per line per day; 42 Days - 9.60 per line per day; 43 Days - 9.75 per line per day; 44 Days - 9.90 per line per day; 45 Days - 10.05 per line per day; 46 Days - 10.20 per line per day; 47 Days - 10.35 per line per day; 48 Days - 10.50 per line per day; 49 Days - 10.65 per line per day; 50 Days - 10.80 per line per day; 51 Days - 10.95 per line per day; 52 Days - 11.10 per line per day; 53 Days - 11.25 per line per day; 54 Days - 11.40 per line per day; 55 Days - 11.55 per line per day; 56 Days - 11.70 per line per day; 57 Days - 11.85 per line per day; 58 Days - 12.00 per line per day; 59 Days - 12.15 per line per day; 60 Days - 12.30 per line per day; 61 Days - 12.45 per line per day; 62 Days - 12.60 per line per day; 63 Days - 12.75 per line per day; 64 Days - 12.90 per line per day; 65 Days - 13.05 per line per day; 66 Days - 13.20 per line per day; 67 Days - 13.35 per line per day; 68 Days - 13.50 per line per day; 69 Days - 13.65 per line per day; 70 Days - 13.80 per line per day; 71 Days - 13.95 per line per day; 72 Days - 14.10 per line per day; 73 Days - 14.25 per line per day; 74 Days - 14.40 per line per day; 75 Days - 14.55 per line per day; 76 Days - 14.70 per line per day; 77 Days - 14.85 per line per day; 78 Days - 15.00 per line per day; 79 Days - 15.15 per line per day; 80 Days - 15.30 per line per day; 81 Days - 15.45 per line per day; 82 Days - 15.60 per line per day; 83 Days - 15.75 per line per day; 84 Days - 15.90 per line per day; 85 Days - 16.05 per line per day; 86 Days - 16.20 per line per day; 87 Days - 16.35 per line per day; 88 Days - 16.50 per line per day; 89 Days - 16.65 per line per day; 90 Days - 16.80 per line per day; 91 Days - 16.95 per line per day; 92 Days - 17.10 per line per day; 93 Days - 17.25 per line per day; 94 Days - 17.40 per line per day; 95 Days - 17.55 per line per day; 96 Days - 17.70 per line per day; 97 Days - 17.85 per line per day; 98 Days - 18.00 per line per day; 99 Days - 18.15 per line per day; 100 Days - 18.30 per line per day.

Legal Publication

ESTATE OF JAMES BURLEY NIPP, Deceased. JOY HANICIE NIPP, Independent Executor. IN THE COUNTY COURT GRAY COUNTY TEXAS NOTICE TO CREDITORS. Notice is hereby given that original letters testamentary upon the estate of James Burley Nipp were issued to me, the undersigned, on the 17th day of September 1952, in the proceedings indicated below by my signature hereto, which is still pending, and that I now hold such letters. All persons having claims against the estate of James Burley Nipp, deceased, which are being administered in the County of Gray, are hereby required to present the same to me, or to the undersigned, at my residence at Box 218, Pampa, Gray, County Texas, on or before the 27th day of October 1952. Dated this 17th day of September 1952. Joy Juanice Nipp, Independent Executor of the estate of James Burley Nipp, Deceased.

Legal Publication

ESTATE OF MRS. ORA DAVIS, Deceased. FRANK L. DAVIS, Independent Executor. IN THE COUNTY COURT OF GRAY COUNTY TEXAS NOTICE TO CREDITORS. Notice is hereby given that original letters testamentary upon the estate of Mrs. Ora Davis were issued to me, the undersigned, on the 10th day of September 1952, in the proceeding indicated below by my signature hereto, which is still pending, and that I now hold such letters. All persons having claims against the estate of Mrs. Ora Davis, deceased, which are being administered in the County of Gray, are hereby required to present the same to me, or to the undersigned, at my residence at Box 218, Pampa, Gray County, Texas, on or before the 27th day of October 1952. Dated this 10th day of September 1952. Frank L. Davis, Independent Executor of the estate of Mrs. Ora Davis, deceased. Sept 13, 20, 27, Oct. 4

Advertisement for Anderson Plumbing Company. "YOU CAN RELY ON ANDERSON PLUMBING COMPANY MO 5-2251". Lists various services like Radios, Sewing Machines, and more.

Large advertisement for The Pampa Daily News. "The Pampa Daily News BACK TO SCHOOL SPECIAL! SUBSCRIPTION You Can Enjoy Your Home-Town Paper While Away At School.... ONE SCHOOL YEAR ONLY ANYWHERE BY MAIL \$6.95 (Plus Sales Tax) SERVICE MEN ANYWHERE BY MAIL \$6.95 (plus sales tax) It's easy to keep in touch with your hometown activities while you are away at school with The Pampa Daily News brought to you daily by the postman. It's just like a letter from home every day and a real savings to you. CLIP AND MAIL THIS COUPON TODAY! THE PAMPA DAILY NEWS, DATE 19 PAMPA, TEXAS SCHOOL SPECIAL \$7.09 2% Sale Tax included NAME ADDRESS CITY STATE SEND BILL TO NAME ADDRESS CITY STATE

ipment 55
inch M-12 with
war take off

to Eat 57
South
re. MO 5-3543
s battery rails
s and deliver

In the Park
load of Moun
nd red white
erson's Veg
Side of Street

oods 58
le all kinds of
Addington's
4-2161.

nted 60A
a to serve you

62
ny home-11-26
rily. MO 5-

mixed piece
Washing 5c lb.
MO.

oods 68
URE CO.
MO 4-4622

Washers
MIS
Furniture
MO 4-4748

used furn-
TURE
WILKIN
MO 4-4622

3 B
NARD
LUMBER
MO 4-6521
FOR LESS
1 1/2 1/2

Annex
MO 4-4622

RNITURE
pets for less
MO 4-4511

RUFF
road
MO 5-5348

ON'S
HART
3 room-group
It happen
MO 5-3121

For Sale 69
with inter-
Call 1400. Call
362.

ane System
ounted on 49
W. Kings-

Covers
Your Covers.
RES

vering
ide for hay-
side storage
make tarpau-
lins for any
WNING
MO 4-8541

RICH
D 4-3151

Store
MO 4-7488

ET
Less
ole House

RNITURE
MO 4-4411

ments 70

RENT
month
Our
Plan"
SIC CO.
MO 4-4251

ANOS
in Spinnet pl-
Convenient
plan.

alon
MO 4-6572

id Hospital
ipinet Bald-
1-5524.

DOL
N SALE
dramatically
and finished
in. Story &
4 Cables. All
rand names.
ane Plan.

MART
S-2001

80
nth old fe-
Poole. \$50.

oston Build-
the pupinet
ent of Ter-
arium 2314

81
sals. Will
ne. 4-2047.

ip. 84
riter, add-
by the
i-City Or-
smill. MO

table type-
Remington
w as \$10.55
KING CO.
MO 4-6771

s 92
vate bath,
red, gent-
e.

ents 93
I N. Sum-
er clean,
location,
2195.
nent. an-
r. Couple
Pets. 1007

95 Furnished Apartments 93
NICE 2 bedroom garage apartment with garage and TV set. Call MO 5-4677.
3 ROOM Apartment, large closet, stainless steel, \$85.00 per week. Adults. 515 S. Somerville.
2 ROOM Furnished Apartment, T.V. antenna, children accepted. Bills paid. Connolly Apartments, 722 W. Kingsmill. MO 5-3657.
3 and 4 ROOM Furnished apartments, central heat and refrigerated air. 425 N. Ballard 1 p.m. to 8 p.m. Call White Deer 553-5231.
BRIGHT, cheerful, nearly new, lots of extras, moderately priced for one person. MO 4-2812, 1226 E. Harvester.
LARGE Clean 3 room, private bath, garage, antenna, bills paid, adults only. Call MO 4-4959.

96 Unfurnished Apartments 96
3 ROOM clean unfurnished apartment, private bath, automatic furnace heat, 2 walk-in closets, garage, fenced all bills paid. Call MO 4-2986.
ONE and TWO bedroom apartments, water and gas paid. New Carpet, 1200 block Coffee street MO 4-7276 or 5-1751.
3 ROOM Unfurnished apartment. Private bath, private entrance, utilities paid. MO 4-4452.

97 Furnished Houses 97
3 ROOM small furnished house, to woman or man. \$7.50 per week. 517 N. West. MO 4-5619.
2 BEDROOM furnished house, prefer adults. MO 4-8901 or 4-7541.
3 ROOM HOUSE, bills paid, 818 Campbell. MO 4-6647.
3 BEDROOM furnished house. Inquire 346 Malone. MO 5-2446.
3 ROOM modern furnished house. Inquire 521 E. Somerville. MO 4-3300.
3 ROOM furnished, bills paid, rear of 1011 Christine.
LARGE 2 bedroom house, outside city limits, water bill paid, cheap rent. Call MO 4-4260.
3 ROOMS with shower, nicely furnished, air conditioner, one person preferred. \$15 per month. 4-3106, or 5-4114.
3 ROOM with garage, fenced yard, with pavement. 445 1/2 month. 709 N. Dwight, or call MO 5-9479.

98 Unfurnished Houses 98
FOR RENT: 3 bedroom and attached garage, 1 1/2 baths, fenced back yard. 270 Hamilton. \$10 per month. Call MO 5-2211.
3 BEDROOM house at 518 Doucette, floor furnace, plumbed for water, \$55 a month you pay bills. Inquire 401 Lowry 4-7681.
3 Bedroom house, 420 N. Gray, wired for washer and dryer, garage and antenna. 4-2031-Jess Hatcher.
NICE 2 bedroom home at 2420 Charles, carpet, built-in \$100 per month. Phone 4-2867.
LARGE 3 Bedroom unfurnished garage, 3 blocks of grade school. \$10. MO 4-2922.
CLEAN Modern 5 room house with attached garage and utility porch, recently redecorated, \$65 per month, you pay bills. Call 5-4580 after 5 or week-ends.
3 BEDROOM house, utility room and storage room, curtains and antenna, no bills paid MO 4-7659.

99 Miscellaneous Rentals 99
OFFICE Space for rent, 113 S. Ballard. MO 4-2607 after 5:00.

102 Bus. Rental Property 102
1200 square feet; concrete block office and warehouse building on Price Road MO 4-2607.

103 Real Estate For Sale 103
312 FIR: 4 bedroom, 2 1/2 baths, double garage, full basement, electric kitchen, carpeted. Call MO 4-8566.
FOR SALE: Leased commercial building, 50'x100'. Good return on investment. Phone 4-2152.
FOR SALE: 3 bedroom, 1 1/2 baths, utility room, fenced, carpeted, 2226 Williston MO 4-4200.
FOR SALE: 2 bedroom house, plumbed for washer, fenced yard. Priced for quick sale. 428 Graham, Call MO 4-7645.
LOW EQUITY: 3 bedroom, 2 full baths, cook-top and oven, dishwasher, garage 1220 Duncan MO 4-2818.
3 BEDROOM Brick home: Built-in range and oven, 4 1/2% loan. 2129 N. Banks phone 5-2216.
BY OWNER: Equally in redecorated 3 bedroom and patio 1820 N. Wells MO 5-8660.
OWNER: 5 room house plus 3 room apartment, good location. Small down payment, owner will carry loan. No loan expense. MO 4-6288.
FOR SALE by owner, nice 2 bedroom, newly decorated, 1 block of Woodrow Wilson School, will carry loan, 922 E. Taylor St. Call VI 4-2922.

H. W. WATERS
REAL ESTATE BROKERS
AND INSURANCE AGENT
123 E. Kingsmill MO 4-4451

Joe Fischer REALTOR
MEMBER OF MLS
Joe Fischer MO 5-9491
Evelyn Hooper MO 5-8264
Howard Price MO 4-4200

Pia Lanhandle INSURANCE AGENCY
REAL ESTATE
MO 5-5737

Jim Brown MO 4-9164
Helen Grimes MO 4-8758
Kay Fancher MO 4-7118

Repossessed Model 95 Pontiac Firebird, like new, \$75.00. Used Tested Guaranteed Frigidaire Electric Range, 2 ovens in one, separate controls, deep well. \$110.00

CROSSMAN APPL. CO.
523 W. Foster MO 4-6581

103 Real Estate For Sale 103
W. M. LANE REALTY
4-3641 Res. MO 5-8664
Ford Heaters MO 4-2329
FOR SALE or LEASE: 1960 N. Wells, 3 bedroom, real nice. Close to school. MO 4-4111 & 4-7558
OWNER transferred. Will sell and finance a room with double garage, apartment, extra. Ideal for schools and downtown. Tony Welker 621 N. Frost.
EQUITY For sale - 3 bedroom & den, 1 1/2 bath, central heat & air, disposal & dishwasher, living room and hall carpeted, drapes, chain link fence, 1 block of grade school, 4 1/2% loan, payments \$56.00, 1101 Terry Road. Phone MO 4-4334.

Real Estate Loans
F.H.A. And Conventional
Cree & Company Realty
Betty Jackson MO 4-2702
James Dalton MO 4-4354
NEAR HIGH SCHOOL - Large 3 bedroom, separate dining room, carpets on corner lot, priced \$11,000. Call MO 5-4929.

JOHN LEE BELL Realty Co.
MO 5-5657
MARY CLYBURN MO 4-7959

30 Years In The Panhandle
4 BEDROOM frame home with garage attached, store located 1228 North Charles street, near high school, 1 1/2 baths, some carpet and drapes, fenced yard and covered patio, about 1,500 square feet of living area. Priced \$14,000. Terms. Might lease for one year rental contract, at \$125.00 per month. Call Bill.
3 BEDROOM frame home with double garage and fenced yard located North Charles street, 1 1/2 baths, dining room, some carpet and drapes, big kitchen, nice and clean. Priced \$15,000 F.H.A. value. Move-in new F.H.A. loan for about \$52.00. Monthly payments on 30 years 5 1/2-5% interest would be about \$110. Call Yvonne 4-3524.
4 BEDROOM two story permanent home with attached garage located 902 East Francis street, dining room, garage and store room on back of lot. Priced \$8,500. Might take small house free and clear in on trade. Call Peggy 4-8613.

5 BEDROOM frame home with garage located on lot on North Duncan street. 2 full baths, dining room, den or 6th bedroom, some carpet, nice and clean. Priced \$8,000. Terms.
2 BEDROOM frame home with double garage located Williston street. Has basement under garage, fenced yard, some carpet & drapes, central heat, corner lot, den. Priced \$12,500. Buy equity for \$1,000 or what would you give on trade. Monthly payments 28 year loan \$101.00. Call Betty 4-8226.

TRAILER PARK - Lot size 225 feet by 130 feet, wired and plumbed for 14 trailer spaces, park in middle of court with lots of trees, one duplex, and work shop building, and room for one more trailer space. Located 621 South Russell street. Priced \$8,500. Terms.

TRAILER SALES
NEW AND USED TRAILERS
Bank Rates
W. Highway 60 Ph. MO 4-3250

MOVE UP TO BETTER LIVING!
FREE Wall-To-Wall **CARPETING**
COMPLETELY INSTALLED IN THE LIVING ROOM OF ANY HOUSE YOU BUY OR LEASE THIS WEEK
It's Easy To Buy! Total Move-In Costs
\$25
ON 2, 3, 4 AND 5 BEDROOM HOMES
Monthly Payments
As Low As **\$54.80** incl. Int. & Taxes
RENT from **\$59.50**
DUPLEXES
2 BEDROOMS
MONTHLY PAYMENT
Whole Duplex **\$94.50** incl. ins. & Taxes
1/2 Duplex **\$47.50** incl. ins. & Taxes
Monthly Rent \$55.00
FREE!
MOVING IF HUGHES SELLS OR RENTS TO YOU WE WILL MOVE YOU IN FREE TO YOUR NEW LOCATION
HUGHES DEVELOPMENT CO.
MO 9-8342 or MO 4-3211
Jack Boe or Paul Corotis

116 Auto Repair Garages 116
F. A. HUKILL
AUTO BRAKE & ELECTRIC MO 4-6111
109 S. Ward
MUFFLERS
Life time warranty mufflers installed in minutes at competitive prices at
ARA SHOP
511 W. Foster MO 4-8445
Bill Lee Mgr.

117 Body Shops 117
CALVIN FOLLIS
Paint and Body Shop
1400 Block Frederic MO 4-6620
TOP OF TEXAS AUTO SALVAGE
Body work, Garage Service
Lefors Hi-Way MO 4-3413
FORD'S BODY SHOP
Car Painting - Body Work
111 N. Frost MO 4-4619

120 Automobiles For Sale 120
MOTOR MART
MO 4-2181 1516 N. Hobart

120 Automobiles For Sale 120
TAKE UP Payments of \$48.25 on 1962 Volkswagens. Will take older car or pick-up for equity. Call 4-3218 between 8 and 5:30, 1128 Varson Drive.
1954 Plymouth "Fury" hardtop, large engine, dual carburetor, air-conditioned, all power, perfect condition. Would consider small late model trailer on trade. Call MO 4-3269.
FOR SALE: 1958 Studebaker pick-up, V8, overdrive, 12,000 miles, extra clean. Priced low, some trade MO 4-3221 or 4-804.
1959 Chevrolet 1/2 ton Pick-up, 8 cylinder, 3 speed low wheel base. Price \$1,950.
1959 RAMBLER Super 4 door, automatic transmission 4 cyl. radio, heater, solid red. local owner. Like new.
TRIPLE AAA MOTORS
511 W. Wilks Ph. MO 5-2016
FOR Rent or Sale: Seattle Sportsman and Mobil Scout travel trailers.
EWING MOTOR COMPANY
1200 Alcock MO 4-5743

120 Automobiles For Sale 120
CULBERSON CHEVROLET
515 W. Foster MO 4-4688
FOR SALE: 1960 Volkswagens. See at 2121 N. Sumner MO 5-4310.
HAROLD BARRETT FORD CO.
701 W. Brown MO 4-6404
MCANDREW PONTIAC
890 W. Kingsmill MO 4-5371
1954 Plymouth, Fordor, V-4 standard, air conditioned, extra nice. MO 5-3306 after 5:30 p.m.
TEX EVANS BUICK-RAMBLER INC.
BUICK-RAMBLER - GMC - OLDS
123 N. Gray MO 4-4877
GIBSON MOTOR CO.
NEW AND USED CARS
200 E. Brown MO 4-8418
C. C. MEAD Used cars and garage. We buy, sell and service all makes. Trailers and tow bars for rent. 218 E. Brown, MO 4-4761
MAULDIN MOTOR CO.
Authorized Studebaker Dealer
745 W. Brown MO 5-2947
1952 Chevrolet Pick-up, in good mechanical condition with new tires. Can be seen at Dick's Chevrolet Station, North Hobart.

121 Trucks, Machinery 121A
International Harvester SALES SERVICE
Price Road MO 4-7468
Terms-Cash-Trade

122 Boats & Accessories 125
16 foot boat with trailer and 25 HP Evinrude, with starter and generator. Would consider late model trailer on trade. Call MO 4-3350.
FOR SALE: 14 foot boat with 40 HP Evinrude electric motor, has trailer. 517 S. Schneider.
REPAIRING and painting fiber glass and plastic supplies. Casey Boat Shop, 329 McCullough, MO 4-2451.

124 Tires, Accessories 124
REBUILT AUTOMATIC TRANSMISSIONS
10% down and balance in 18 months
Expert Installation
By Competent Workmen
Montgomery Ward
217 N. Cuyler MO 4-3251

126A Scrap Metal 126A
BEST PRICES FOR SCRAP
C. C. Matheny Tires & Salvage
515 W. Foster MO 4-2531

*** KIRBY**
Vacuum Cleaners
USED CLEANERS... \$6 up
Repossessed Kirby. Take up Payments. We service all makes.
1212 E. Cuyler MO 4-2531

FORDS FOR 1963

"THE MOST CARE-FREE CARS ON THE ROAD"

SHOWING FRIDAY AND SATURDAY



BE SURE TO REGISTER FRIDAY & SATURDAY

FOR THE

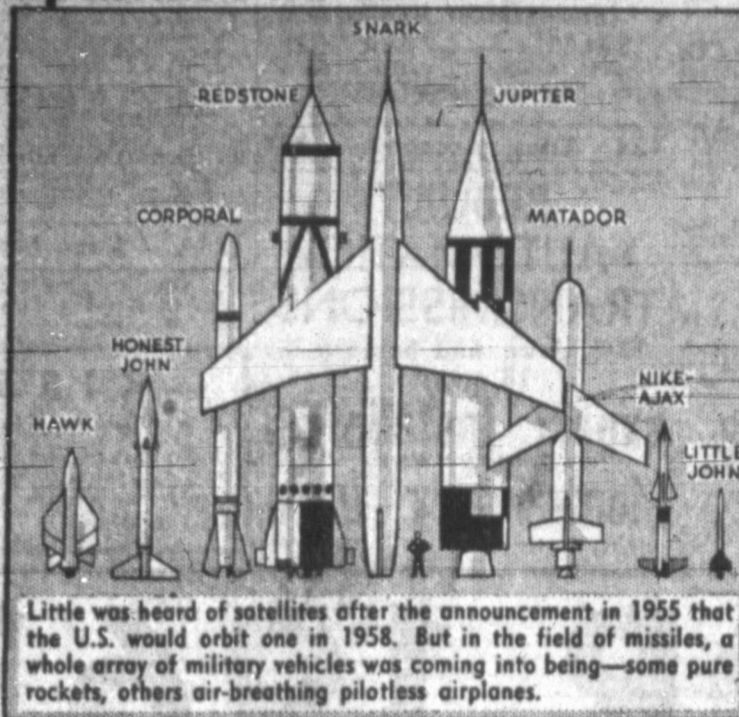
MANY FABULOUS PRIZES TO BE GIVEN AWAY

HAROLD BARRETT FORD Inc.

"BEFORE YOU BUY GIVE US A TRY"

701 W. BROWN MO 4-8404

Sputnik Plus Five



Little was heard of satellites after the announcement in 1955 that the U.S. would orbit one in 1958. But in the field of missiles, a whole array of military vehicles was coming into being—some pure rockets, others air-breathing pilotless airplanes.

(2) Red Star Rising



Russian claim in August 1957 that they had perfected an intercontinental ballistic missile (5,000-mile range) brought the chilling realization that they might be ahead of us. Experts studied pictures of Red Square parades for hints of Soviet rocket progress.

By Don Oakley and Ralph Lane



On Oct. 4, 1957, however, proof came in a shot truly heard round the world—the orbiting of Sputnik I. Its surprising weight of 184 pounds was far ahead of anything contemplated in America's Vanguard Project.

Timing Of Defoliant Use Important Factor

As the High Plains cotton harvest gets into full swing many growers will be thinking about the use of defoliants and desiccants to prepare cotton for machine harvesting, according to Foster Whaley, county agricultural agent. Timing the use of these materials can make or lose money for cotton growers, he stated.

Older, mature cotton frequently can be prepared for machine stripping or picking before frost. Experience has shown that the proper use of harvest-aid chemicals permits earlier harvest of mature cotton before exposure to weather damage reduces the grade or actual field losses due to bad weather occur.

Late cotton (June planting) on the other hand still will need all the time for maturity it can get and defoliation by frost will be more profitable. Too early, trigger-happy defoliation reduces the yields and lowers the quality. This is where "waste" and low micronaire cottons can injure the reputation of a cotton producing area. Also green bolls at the gin present numerous problems. Green short fibers reduce the quality. Green wet fiber from green bolls clogs up and sticks to ginning saws thus causing a chain reaction in reducing quality.

Plant conditions, weather conditions and other factors vary from one year to the next. Each grower will need to evaluate the situation and decide if defoliation will pay. Here are some guidelines that will be helpful:

1. Condition of the plant - Best results are obtained with mature cotton with a heavy boll load, where the irrigation cut off date is followed, leaf moisture is normal, and growth about stopped.
2. Timing - Research at Lubbock and throughout the cotton belt has shown that 80 per cent of the cotton bolls should be open before a true defoliant is applied and more than 60 per cent (pre-

ferably 80 per cent) open before a desiccant is applied. Harvest-aid materials thus applied have not been observed to reduce yields or lower fiber quality. Top bolls that are expected to mature should be 30 to 35 days old, at least, at time of application, full size, firm when pressed between thumb and forefinger and can't be sliced with a knife.

3. Weather conditions - Cool weather slows up defoliation. When night temperatures are constantly below 50 degrees Fahrenheit and day temperatures under 70 degrees Fahrenheit.

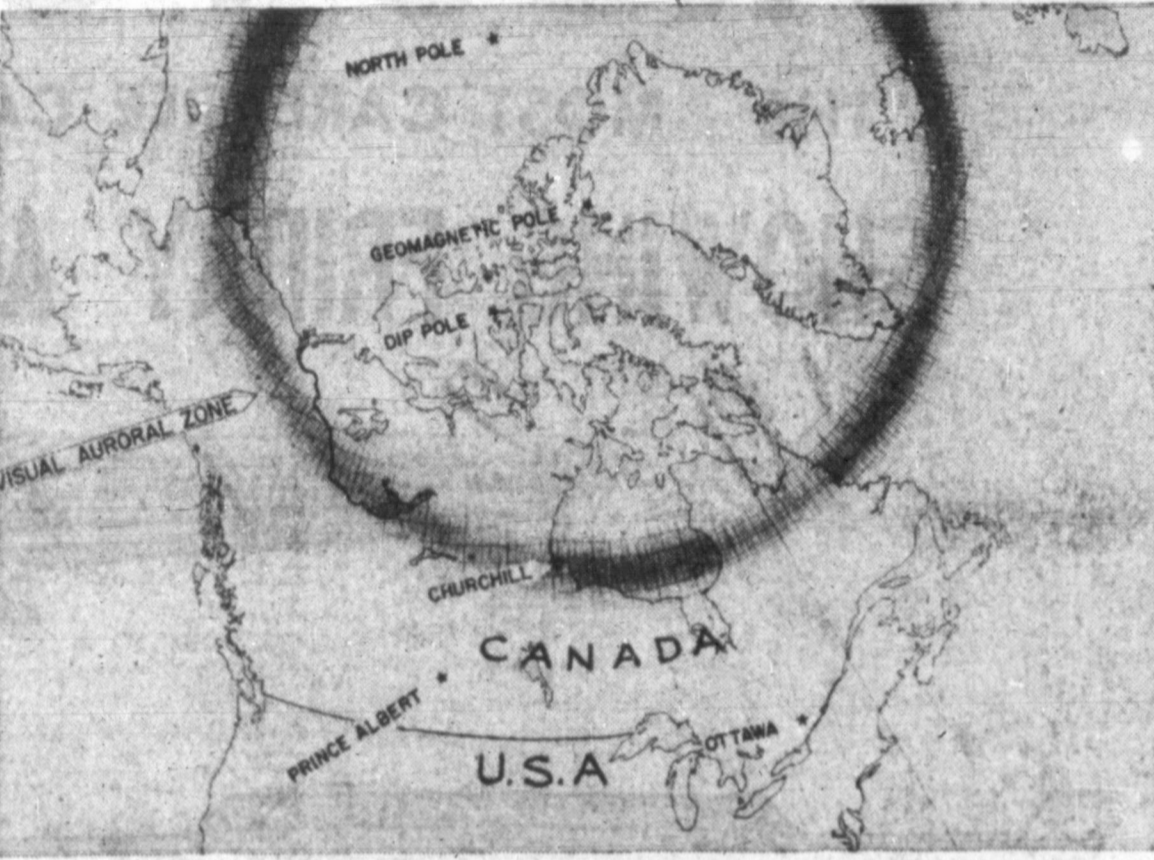
4. Is maturity speeded up by defoliants? No. For all practical purposes maturity of the cotton fiber stops when defoliants or desiccants are applied. The degree depends on coverage obtained. Bolls have been observed to open sooner in treated cotton than in untreated fields, but fiber from the treated cotton was not more mature. Some growers have found that if frost has not occurred by October 20 and if plant and weather conditions are normal, that defoliation or desiccation about two weeks before the average first frost date, usually the first week in November, can be considered. This places the cotton in a dehydrated condition at time of the first frost and permits earlier stripping after frost.

A copy of L-145, Cotton Defoliation Guide for Texas, is available at the County Agricultural Agent's office.

NOW YOU KNOW

By United Press International
Ancient Egyptian dice found in the ruins of Thebes, indicate that, even in those days, some of the cubes were "loaded" to make cheating easier, according to Collier's Encyclopedia.

Read the News Classified Ads



ATTACKING THE IONOSPHERE—In a joint undertaking, the U.S. and Canada will orbit the first "topside sounder," or satellite probe of the ionosphere. Called the Alouette or S-27, the Canadian-built, American-launched satellite will investigate the area of charged particles surrounding the earth which reflects shortwave radio signals. Other well-known phenomena of the ionosphere are the auroras, which appear chiefly in the zone shown on map above. North Pole on map is the geographic pole; Dip Pole is the magnetic pole, to which compass needles point; Geomagnetic Pole is point where lines of the earth's magnetic field converge. The Alouette will be Canada's first satellite.

Quotes In The News

By United Press International
LONDON—A spokesman for the American Embassy, explaining why British right-wing leader Sir Oswald Mosley has been granted a visa to speak in the United States:
"There was no reason not to grant him one. He's committed no crime."

NEW ORLEANS—Federal Judge Joseph C. Hutcheson Jr. of Houston, Tex., taking a dim view of Mississippi Gov. Ross Barnett's efforts to defy a federal court order in the James Meredith case:
"In our state (Texas), when a governor refuses to comply with a court order, we impeach him, not praise him."

LOWEST PRICE EVER!

PITTSBURGH WALLHIDE®

RUBBERIZED WALL PAINT

Regularly \$5.20 Gal. NOW \$4.98 Gal.

WHITE AND READY MIXED COLORS

Similar reductions on more than 1000 MAESTRO® Custom Colors

Regularly \$2.02 NOW \$1.59 1 QT.

LIMITED TIME ONLY!

- SCRUBBABLE
- NO PRIMER NEEDED
- EASY TO APPLY WITH BRUSH OR ROLLER
- NO LAP OR BRUSH MARKS
- NO PAINTY ODOR

5" HIGH GLASS BLOCK BANK

Even the children love to watch your loose change grow into dollars. Get a bank for that special fund.

39¢

4" PAINT BRUSH

It's easier to paint with a good brush and you'll save money, too. Durable 2 1/2" Nylon bristles. Excellent for interior or exterior painting.

\$1.69

PITTSBURGH PAINTS

PITTSBURGH PLATE GLASS CO.

112 N. Somerville MO 5-3111

HEADQUARTERS FOR PAINT, BRUSHES, GLASS AND MIRRORS

House Consent On Treaties Is Goal Of Rogers

Rep. Walter Rogers (D-Texas) this week proposed an amendment to the Constitution requiring the advice and consent of the House of Representatives in the making of treaties.

Under Section 2 of Article II of the Constitution, the President is granted power to make treaties provided two-thirds of the Senators present concur.

The Rogers amendment would call for further consideration by also requiring ratification of a treaty by a simple majority of the House of Representatives.

"Such provision would more properly reflect the will of the people," Rogers said, "and would place the responsibility for treaties directly with their duly elected representatives where it should rest."

Aside from the "additional and much-needed safeguard" the Rogers amendment seeks to provide, the Texas Congressman emphasized the value of his amendment in settling the dispute created by the so-called "Bricker Amendment" with relation to the scope of treaties.

No Increase In Price Of Chevrolets

DETROIT (UPI)—There will be no increase in the factory list prices of 1963 model Chevrolet cars over the 1962 models "despite significant product improvements," it was announced.

Semon-E. Knudsen, General Motors vice president and Chevrolet general manager, said the new models "incorporate styling and mechanical advances plus addition as standard equipment

of several items formerly offered as extra-cost options."

Among the improvements listed were smog-prevent crankcase ventilation systems, all models, permanent anti-freeze on all water cooled models, a back-up lights on the Chevy Nova models.

Chevrolet paced the automot industry this boom year, selling more than 1.5 million cars ready in 1962. Sales at the end of the Sept. 20 selling period were 39 per cent above the same period in 1961.

Warranties for all 1963 model General Motors cars have been extended to 24 months or 24,000 miles.

PIZZA CASA

(Next To Safeway)

TRY OUR PIZZA FOR A COMPLETE MEAL BEFORE OR AFTER THE FOOTBALL GAME.

14" Pepperoni \$1.80

922 N. DUNCAN 4-4439

Heard-Jones DRUG

110 N. CUYLER SAVE AT HEARD & JONES PHONE MO 4-7478

PRICES GOOD THURS, FRI & SAT.

We Carry a Complete Line of Faberge Colognes & Cosmetics

2.95 To Fit Most Heads	FOOTBALL HELMETS	\$1.99	9.95 KING SIZE ALL METAL SNACK TABLE	4.99
Endee Margarine	Reg. \$1.00	79c	JUMBO FOLDING TUBULAR LEGS WITH SAFE RUBBER TIPS	4.99
12.95 Complete	2-TRANSISTOR RADIO	\$4.88		
2.98	Kessamin Tablets	To Lose Weight \$1.99		

PROMPT PRESCRIPTION SERVICE

at HEARD-JONES Call 4-7470 for FREE Prescription Delivery

98c Vaseline	Hair Tonic	69¢
400's Angel Skin	Facial Tissue	6¢
2.95 Adorn	Hair Spray	1.25
69c 4 Way	Cold Tablets	44¢

Cut Rite Wax Paper	Reg. 35c Val.	21¢
CREST Tooth Paste	83c Value	59¢
BUFFERIN	60 Tablets Regular 89c	54¢

\$5.95 BEXEL Special Formula Vitamins	1.50 Revlon Color Up Hair Creme Rinse	75¢	7.95 Perma Pleat Vinyl Folding Doors	4.88
\$3.99	\$1.00 Mennens Spray Deodorant	69¢		
	98c Halo Shampoo	69¢		
	1.19 Can Metrecal Powder	88¢		

A Stimulant For Kidneys	DeWitts Pills	Reg. 59c	39¢	89c Largest Jar METHOLATUM	66¢
4.95 — 100 Tablets	Poly-Vi-Sol Chewable Vitamins	2.99	2.50 Largest Jar Massengill Powder	1.99	
6.95 DeVILBISS Vaporizer	\$4.88	2.00 Size Home Permanent TONI	\$1.29	By Parker Brothers, Reg. 2.50	1.99
1.29	24 x 36 Throw Rugs	88c	1.98 Bamboo Yellow Bowl Pipes	99c	

LEVINE'S FRIDAY SPECIAL

LEVINE'S FINE PINWALE CORDUROY

- 12 NEW FALL COLORS
- 36-39" WIDE
- MACHINE WASHABLE
- WORTH 99c YARD IF FULL BOLTS

39¢

CHILDREN'S CORDUROY PLAYWEAR

- CRAWLERS
- SLACKS
- PANTS
- 6 COLORS
- MACHINE WASHABLE

99¢

LEVINE'S DOWN STAIRS STORE

OUR FRE... NEWSPA... 55 - N... SAFE, J... away in... the left... Epperson... Rancher... bottom... safe... M... five - d... a 400 - F... proximate... cks and... y Sunday... npa safe... ended... en they w... person rat... Pampa... city and c... nnonned t... er 12 o'cl... en Eppers... nd a safe... miles so... fe told of... em... Killed... LONDON... tion said... ved con... am of Ye... niy were... mbarbed... iz... Prince Sei... ing in fr... imed him... place his... would r... untry to... bels... There was... news fro... port from... 50... After... At R... Some 350... nual Teac... Robert E... hool last... One of th... program wa... in and hor... ley, art te... High Sch... ember of... hool syste... Last night... red joint... nunci, Pa... Associa... Commer... George N... e public v... e chamber... nonies. Th... as given... n, preside... nunci, Wa... TA... A musica... nted by... and Mr... list... Door priz... siness an... are distrib... th, man... Commer... pree pres... Thirty-sev... e Pampa... ar were... mondson... hools...