



"Faith is the daring of the soul to go farther than it can see." —William N. Clarke

# The Pampa Daily News

Serving The Top O' Texas 54 Years

## WEATHER

(Direct from Amarillo Weather Station)

PAMPA AND VICINITY — Cloudy to partly cloudy through Tuesday with possible light rain late Tuesday. Low tonight 28. High Tuesday 50 to 54.

VOL. 30 — NO. 107

CIRCULATION CERTIFIED BY ABC AUDIT

THE PAMPA DAILY NEWS, MONDAY, NOVEMBER 20, 1961

(16 PAGES TODAY)

Weekdays 50  
Sundays 15¢



**BABY KENNEDY** — John F. Kennedy Jr. cuddles up to mother, the nation's First Lady, for an official photo for his first birthday, Saturday, Nov. 25.

## Woman Balloonist Stirs Fears Of U.S. Air Agency

HIGGINS, Tex. (UPI)—Federal Aviation Authority officials apparently were concerned today that the balloon carrying Mrs. Alford Wolf, 36, might rise high enough to interfere with commercial airline traffic.

## Police To Quiz Stabbing Victim

A rejected suitor was recovering in Highland hospital today from a stab wound in the chest which Christine Walker, 317 Elm St., told police she inflicted when George Oliver, 33, Pampa, broke into her home shortly after 3 o'clock Sunday morning.

## Yule Decorations Adorn City Streets

Just 28 more shopping days until Christmas and—Pampa had taken on the Christmas look today with the sparkling yule decorations installed on downtown streets Sunday by the Pampa Jaycees.

## Attorney Giesler Leaves Hospital

HOLLYWOOD (UPI)—Attorney Jerry Giesler has been released from the hospital after about a month's confinement following a heart attack.

# U. S. Reds Plan To Defy Law

## Commiss Tighten Berlin Wall

### Reds Ready Tank Traps Along Line

BERLIN (UPI)—East German Communists working through the night under searchlights reinforced the wall dividing East and West Berlin today and installed tank traps at strategic points.

The feverish activity appeared to be the Communist answer to a demand by West German Chancellor Konrad Adenauer that the wall must come down as part of any East-West settlement on Berlin.

With Adenauer and Gen. Lucius D. Clay, President Kennedy's personal representative in Berlin, both in Washington to confer with the President, the Communists made their wall stronger.

At several points along the wall the Reds dug trenches and rammed steel bars into the streets as anti-tank measures.

At the height of the Berlin crisis last month American tanks appeared at the Friedrichstrasse crossing points with bulldozer blades mounted on them.

The Communists continued to permit Allied traffic to cross into East Berlin through the Friedrichstrasse crossing point.

## Panhandle Area Mercury Drops

By United Press International  
Temperatures dropped as low as 21 degrees in the Texas-Panhandle early today, while a heavy layer of clouds covered most of the state.

## City Commission To Meet Tuesday

Only routine business is scheduled for Tuesday's regular meeting of the Pampa City Commission, according to City Manager John Koontz.

## Rockefeller's Fate Not Known

### Girl Tells About Five Sea Deaths

MIAMI (UPI)—Terry Jo Duperrault said she saw her mother and brother lying in a pool of blood on the floor of the cabin of the sailboat Bluebelle before it sank.

The 11-year-old child, only one surviving the sinking of the Bluebelle after the suicide of its skipper Julian A. Harvey, said that Harvey abandoned her on the 60-foot ketch with the rest of her family and his own wife.

The story told by the girl was revealed at a news conference by Coast Guard Capt. R. F. Barber. Terry Jo talked to the investigators Sunday in her hospital room.

The Bluebelle sank Nov. 12. One day later Harvey, 48, a retired Air Force lieutenant colonel and seafaring adventurer, was picked up by a tanker which spotted him in a dinghy.

Three days later Terry Jo was found in the life raft and the next day Harvey killed himself in a Miami motel, slashing his wrist and throat with a razor.

Harvey said the Bluebelle had caught fire and sunk and he was unable to save any of the others.

But Barber today gave the story of the little girl, the only one left of the five members of the family of John Duperrault of Green Bay, Wis.

The girl said positively that she did not see or smell any fire at any time, Barber revealed today. (See DEATHS, Page 6)

## Army's Draft Call Ignored By Virginian

RICHMOND, Va. (UPI)—George Gresham has decided to disregard the Army's request that he report to a local armed forces center.

Gresham got a letter last week saying Army records indicated he has an "unfulfilled military obligation." The Army told him to show cause why he shouldn't be assigned to a ready reserve unit.

"I'm in good health and could dance a jig anytime," he said. "But I don't reckon they'd want me anyhow."

Gresham is 80.

Dutch ships and planes intensified their search today for Michael Rockefeller following reports his companion on a scientific expedition had been rescued in the area of New Guinea since Saturday.

Wassink told his rescuers young Rockefeller left the native boat in which they were drifting early Sunday after improvising a raft from empty fuel cans. He headed for a native village at the mouth of the Islands River.

New York Gov. Nelson A. Rockefeller arrived in San Francisco early today en route to the South Pacific to join the search for his adventurous son, Michael, reportedly adrift in the native canoe.

The unshaven Republican leader appeared pale and worried as he stepped from a plane at San Francisco International Airport at 4:45 a.m. CST.

"I doubt if I can help in the actual search," Rockefeller said. "But we hope to find our son well and healthy."

## Governor Of New York Starts For New Guinea To Aid Search For Son

By United Press International  
Dutch ships and planes intensified their search today for Michael Rockefeller following reports his companion on a scientific expedition had been rescued in the area of New Guinea since Saturday.

Wassink told his rescuers young Rockefeller left the native boat in which they were drifting early Sunday after improvising a raft from empty fuel cans. He headed for a native village at the mouth of the Islands River.

New York Gov. Nelson A. Rockefeller arrived in San Francisco early today en route to the South Pacific to join the search for his adventurous son, Michael, reportedly adrift in the native canoe.

The unshaven Republican leader appeared pale and worried as he stepped from a plane at San Francisco International Airport at 4:45 a.m. CST.

"I doubt if I can help in the actual search," Rockefeller said. "But we hope to find our son well and healthy."

He left immediately for a nearby hotel for a few hours rest and time to plan the next leg of his journey. The governor said he had booked passage for his party of five on two flights—a Pan American World Airways flight leaving at noon and another airlines flight leaving at 10:30 p.m. CST.

Rockefeller said he would decide later whether to take Pan American via Tokyo or fly directly to Australia via Qantas.

Michael, 23, and at least one Dutch companion were last reported seen drifting out into the Arafura Sea off the swampy and forest-clogged south coast of Dutch New Guinea, a largely unexplored land of former headhunting natives whom time has passed by.

A dispatch from Hollandia, capital of the Dutch colony, said Rockefeller and "some Dutch companions" were believed to have been caught in treacherous currents and swept out to sea while descending the Eilanden River in a native boat.

## Court Fight Looms Over Signup Act

WASHINGTON (UPI)—The U.S. Communist party must register as a tool of the Soviet Union by midnight tonight or face an avalanche of government legal action.

Atty. Gen. Robert F. Kennedy said over the weekend the party had notified the Justice Department it would ignore the deadline for registration under the 1960 Internal Security Act.

Thus the Justice Department expects another long round of legal fighting with the Communists. But it has not yet been decided how or when the battle will start.

The law, which Kennedy reiterated he would enforce, requires the party to register with the Justice Department, turn over the names and addresses of its officers and file a financial accounting and a list of its printing presses.

Kennedy told reporters that no decision has been made on what the government will do first. The question of when to do it has been complicated by other facets of the law.

If the party itself does not register, the law then requires that the party leaders register by midnight Nov. 30. If they fail to register, the burden then shifts to the entire membership, estimated at 10,000, which would have to register by Dec. 20.

The government could, if it wished, seek an indictment this week against the party if it fails to register. But some persons have argued that the government would have a stronger case if it permits the full 30-day period to elapse before launching action.

Failure to comply with the law subjects the party, its leaders and the membership to fines of \$10,000 a day for every day they fail to register. In addition, the individuals would be liable to five years in prison for every day they fail to register.

## JFK To Meet Adenauer Today

WASHINGTON (UPI)—President Kennedy and West German Chancellor Konrad Adenauer today begin a series of talks on the Berlin crisis.

Their late afternoon meeting at the White House was to be followed by two more sessions Tuesday and a windup conference Wednesday morning. Adenauer leaves Wednesday evening to return to Germany.

## Trujillo Family Lands In U.S.

CIUDAD TRUJILLO (UPI)—President Joaquin Balaguer, supported by a show of U.S. planes and warships ousted members of the Trujillo family from the Dominican Republic today and assumed command of the armed forces himself.

Hector and Jose Arismendi Trujillo, brothers of Generalissimo Rafael Trujillo Sr., who was assassinated May 30 after three decades of dictatorship, flew to the United States at midnight along with 27 other aides and members of their families.

The generalissimo's son, Rafael Jr., or Ramfis, already had left the island and was reported at sea in his yacht, Angelita.

(The plane carrying the Trujillos arrived at Ft. Lauderdale, Fla., at 3:10 a.m. CST and the 29 passengers were hustled off under heavy security guard.)

Balaguer acted quickly and decisively to fill any power vacuum that might touch off a civil war. He assumed command of the Dominican army, navy and air force under emergency powers.

Opposition groups which had been clamoring for a new government while any members of the Trujillo family were on the island, issued unusual expressions of support for Balaguer in the crisis even though he had assumed the presidency under the Trujillo regime.

Balaguer's hand was strengthened when 15 U.S. warships sailed into waters off the Dominican coast and 12 U.S. jets roared over the capital Sunday. Secretary of State Dean Rusk had made it clear Saturday the United States would not permit the Trujillos to regain control of the Caribbean republic.

The capital's streets and gathering places were deserted Sunday night except for crowds at the harbor watching the American ships offshore. Earlier Sunday two youths were shot and wounded during an anti-government demonstration.

Unmarried and the youngest of the five Rockefeller children, Michael had stayed behind when a (See GOVERNOR, Page 6)

Unmarried and the youngest of the five Rockefeller children, Michael had stayed behind when a (See GOVERNOR, Page 6)

Unmarried and the youngest of the five Rockefeller children, Michael had stayed behind when a (See GOVERNOR, Page 6)

Unmarried and the youngest of the five Rockefeller children, Michael had stayed behind when a (See GOVERNOR, Page 6)

Unmarried and the youngest of the five Rockefeller children, Michael had stayed behind when a (See GOVERNOR, Page 6)

Unmarried and the youngest of the five Rockefeller children, Michael had stayed behind when a (See GOVERNOR, Page 6)

Unmarried and the youngest of the five Rockefeller children, Michael had stayed behind when a (See GOVERNOR, Page 6)

## Reports Awaited In Fund Drive

No new figures were available today in the Pampa-Lefors United Fund Drive.

George Newberry, general campaign chairman, said the Saturday total of \$51,161 probably will take a jump when new reports are scheduled to be filed Tuesday. The fund still is some \$17,000 short of the \$68,746 goal.



**NEW TYPE FALLOUT SHELTER** — Carrying umbrellas on a fine, sunny afternoon is a form of protest by these women of Seoul, South Korea, against nuclear tests by the U.S.S.R. Over 30,000 staged an anti-Soviet rally, of which the above protest was a part.

## Evolution Law Repeal Sought

KNOXVILLE, Tenn. (UPI)—The Tennessee Unitarian Conference Sunday adopted a resolution calling for repeal of the law forbidding teaching of evolution in Tennessee schools.

John Scopes, a teacher at Dayton, Tenn., was convicted of violating the law in the "monkey trial" of 1925, which attracted national attention.

### U.S. To Exhibit Wares At Four Fairs In Africa

WASHINGTON (UPI) — The United States is placing "greatest importance" on winning friends and business in Africa through increased trade ties.

The Commerce Department underscored this by its decision to participate in five African trade fairs next year.

"The Sino-Soviet bloc is steadily increasing its efforts at economic and political penetration in this vast continent," L. Edward Scriven, director of the department's International Business Operations, said. "It is significant that, in his effort, the Communist bloc is making increasing use of trade fairs and 'cultural' expositions to achieve their objectives."

The United States expects to participate in fairs in Libya, Morocco, United Arab Republic, Nigeria and the Federation of Rhodesia and Nyasaland.

The first exhibition in West Africa is scheduled to open Nov. 24 in Accra, Ghana.

Assistant Secretary of Commerce for International Affairs Rowland Burnstam, commenting on the exhibition in Ghana, said: "Of course we want their business, but more important, we want their friendship."

He said "all of these new nations have a passionate yearning for social and economic progress" and are looking increasingly to the United States and other advanced nations for help.

U.S. officials contend much of this help should be through private capital investment and increased trade.

The Commerce Department is cautious about predicting U.S. African trade.

"Overall prospects in the next decade range from grey to very bright," a department report said. "Tomorrow's Africa should be viewed not as a single market but as an infinite number of markets—some expanding, some remaining static, and many others as yet undeveloped."

### Investment Firm Shifts Officers

Southwestern Investment Company's Board of Directors made four officer changes and declared the regular quarterly dividend at the first quarter meeting in Amarillo.

R. Earl O'Keefe was elected chairman of the board and chief executive officer of the company. S. Wayne O'Keefe was named vice chairman of the board. Newly elected S.I.C. President is Maurice C. Finley, who observed his twentieth year with the Company last July 1. L. L. Cummings, Secretary and Controller, has assumed new, additional duties concurrent with his election to treasurer. All other officers were re-elected.

Directors voted the regular 12 1/2 cent quarterly dividend on outstanding common stock, and dividends at regular rates on all issues of preferred stocks. All dividends are payable Dec 1, 1961 to stockholders of record Nov. 17.

### FOR WORK



### OR PLAY!



Haul a big 1,150 lbs. of cargo. Carry 6 adults through mud or sand on a hunting or fishing trip. Combine business and pleasure in one versatile vehicle—your 4-wheel drive 'Jeep' Utility Wagon! It's been used, tested and abused tested. COME IN FOR A TEST-DRIVE TODAY!

**Jeep**  
UTILITY WAGON

McWilliams Motor Co.  
411 S. Guyler, Pampa, Texas



# delicious turkey BEST at FURR'S

PALO DURO YOUNG

## TURKEYS

TOMS  
20-24  
Lb avg  
LB

# 29c

## TURKEYS

12 lbs. and up

# 33c

LARGE BAKING

Top O' Texas

## HENS

lb.

# 29c

## HAMS

SHANK  
HALF OR  
WHOLE

# 39c

Swift Premium  
**BACON**

lb.

# 59c

**DUCKS**

Lb

# 49c

**GEESE**

Lb.

# 59c

SAVE • SAVE • SAVE • SAVE • SAVE • SAVE • SAVE

DURKEE'S

## COCONUT

4-oz. Pkg.

# 5c

ELNA

## SHORTENING

3-lb. Can

# 59c

FOOD CLUB

## PUMPKIN

No. 303 Can

# 10c

## CRANBERRY SAUCE

FOOD CLUB  
NO 303  
CAN

# 15c

## FRUIT COCKTAIL

DELMONTE, IN  
HEAVY SYRUP  
NO. 303 CAN

# 19c

## SHELLED PECANS

AZAR  
PIECES, 10-OZ  
PKG.

# 55c

## FLOUR

FOOD CLUB

5-LB  
BAG

# 39c



## DATES

PARK  
ROW  
PITTED  
8-OZ PKG.

# 19c

## TISSUE

DELSEY  
4 ROLL  
PACKAGE

# 45c

COMPARE FURR'S LOW PRICES! - THEN SAVE

Towies Stuffed, 7.3-4 oz.

OLIVES

# 39c

a Brown Old Fashioned, Qt

PICKLES

# 39c

Elna, 303 Can

PEARS

# 25c

Food Club Sliced, 303 Can

BEETS

# 15c

Red Label, Pt.

KARO SYRUP

# 27c

Mountain Pass

TOMATO SAUCE

# 3 for 25c

Borden's

SOUR CREAM

# 29c

Butternut, 1 1/2 lb. Loaf

BREAD

# 29c

Maryland Club, Lb. Can

COFFEE

# 67c

Med. Ripe, 303 Can

RIPE OLIVES

# 29c



DOUBLE FRONTIER STAMPS ON WEDNESDAY WITH \$2.50 PURCHASE OR MORE



FRESH FROZEN FOODS

## CAKES

COLONIAL  
FRESH, FROZEN  
26-OZ

# 89c

MORTON'S FRESH FROZEN

## PUMPKIN

OR

## MINCE PIES

3 for \$1.00

## CELERY

GREEN & CRISP  
STALK

# 7 1/2c

## ONIONS

COLORADO SPANISH  
SWEET, YELLOW

# 2-LBS. 14c

Indian Trail, Cello Pkg.  
**CRANBERRIES**

Lb Pkg. 12 1/2c

For Turkey Dressing  
**CHESTNUTS**

# 19c

All Varieties

**NUTS**

Lb.

# 49c

Purple Top Bulk

**TURNIPS**

lb.

# 10c

Calif. New Crop Navels

**ORANGES**

lb.

# 19c

Natures Healthful Citrus Helps keep colds away—juice of one a day

**LEMONS**

lb.

# 19c

Colorado Red Romes

**APPLES**

lb.

# 12 1/2c

Calif. Large Size Bull Nose

**BELL PEPPERS**

lb.

# 19c

ELNA

## OLEO

2 LBS

# 29c

# FURR'S

SUPER MARKETS

### Television Programs

Channel 4 / KGNC-TV, MONDAY ABC

6:00 Continental Classroom	12:25 Women's World	6:15 Weather
7:00 Today Show	1:00 Jan Murray	6:25 Sports
8:00 Capt. Kidd's Car-toons	1:30 Loretta Young	6:50 Joey Bishop
9:00 Say When	2:00 Young Dr. Malos	7:00 National Velvet
9:30 Play Your Hunch	2:30 From These Roots	7:30 The Price Is Right
10:00 The Price Is Right	3:00 Make Room For Daddy	8:00 57th Precinct
10:30 Concentration	3:30 News NBC	9:00 Thriller
11:00 Truth or Consequence	4:00 Capt. Kidd's Car-toons	10:15 Weather
11:30 It Could Be You	5:45 Huntley - Brinkley	10:25 Sports
12:00 News	6:00 News	10:30 Jack Paar Show
12:15 Weather		12:00 Sign Off

Channel 7 / KVII-TV, MONDAY ABC

10:30 Fun-A-Poppin	3:00 Queen For A Day	7:30 Rifleman
11:30 The Texan	3:30 Who Do You Trust	8:00 Surtis Six
12:00 Love That Bob	4:00 American Bandstand	8:30 Ben Casey
12:30 Camouflage	4:30 From This Day Forward	10:00 Tallahassee 2000
1:00 Make A Face	5:00 Bud Wilkinson	10:30 K-7 News & Weather
1:30 Day In Court	6:00 Cheyenne	10:45 Mike Hammer
1:55 Mid-Day Report		
2:30 Betty Mac Show		
3:00 Number Please		
3:30 Seven Keys		

Channel 10 / KFDD-TV, MONDAY CBS

6:30 Ministerial Alliance	12:20 Farm & Ranch News & Markets	6:00 Weather - Dan True
7:00 Sunrise Classroom	12:30 As The World Turns	6:10 News - Ralph Wayne
7:30 Jack Tomkins	1:00 Amos & Andy	6:30 To Tell The Truth
7:50 It Happened Last Night	1:30 At Linkletter's House Party	7:00 Pete and Gladys
8:00 Capt. Kangaroo	2:00 The Millionaire	7:30 Window On Main Street
8:30 The Jack LaLanne Show	2:30 The Verdict Is Yours	8:00 Sanny Thomas
9:00 Love Lucy	3:00 CBS News	8:30 Andy Griffith
9:30 Video Village	3:30 The Brighter Day	9:00 Hennessey
10:00 Surprise Package	3:55 Secret Storm	9:30 The Girl A Secret
10:30 CBS News	4:00 The Edge Of Night	10:00 Weather - Dan True
11:00 Love Of Life	4:30 Search For Tomorrow	10:15 News - Ralph Wayne
11:30 Search For Tomorrow	5:00 Yogi Berra	10:25 Death Valley Days
12:00 The Guiding Light	5:30 Dick Tracy	10:50 Reunion In France
12:30 Dan True Weather	5:45 Douglas Edwards	11:00 Sign Off
12:55 News		

Channel 4 / KGNC-TV, TUESDAY NBC

6:00 Continental Classroom	12:15 Weather	5:45 Huntley - Brinkley
7:00 Today Show	1:00 Jan Murray Show	6:15 Weather
8:00 Capt. Kidd's Car-toons	1:30 Loretta Young	6:25 Sports
9:00 Say When	2:00 Young Doctor Malone	6:50 Laramie
9:30 Play Your Hunch	2:30 From These Roots	7:00 Dick Powell Show
10:00 The Price Is Right	3:00 Mike Rison For	7:30 Cain's Hundred
10:30 Concentration	3:30 News NBC	8:00 News
11:00 Truth or Consequence	4:00 Her's Hollywood	10:15 Weather
11:30 It Could Be You	4:30 Capt. Kidd's Car-toons	10:25 Sports
12:00 News	4:00 Capt. Kidd's Car-toons	10:30 Jack Paar Show
12:15 Weather		12:00 Sign Off

Channel 7 / KVII-TV, TUESDAY ABC

10:30 Fun-A-Poppin	3:30 Seven Keys	7:30 Calvin & The Colonel
11:30 The Texan	3:55 Queen For A Day	8:00 The New Breed
12:00 Love That Bob	4:30 Journey Into Fear	8:30 Old Fashioned Thanksgiving
12:30 Camouflage	5:00 Tomstones Territory	10:00 Miami Undercover
1:00 Make A Face	6:30 The Bugs Bunny Show	10:30 K-7 News & Weather
1:30 Day In Court	7:00 Bachelor Father	10:45 This Man Dawson
1:55 Mid-Day Report		
2:30 Betty Mac Show		
3:00 Number Please		

Channel 10 / KFDD-TV, TUESDAY CBS

6:30 Ministerial Alliance	12:10 News	5:30 Dick Tracy
7:00 Sunrise Classroom	12:20 Farm & Ranch News & Markets	5:45 Douglas Edwards
7:30 Jack Tomkins	12:30 As The World Turns	6:00 Weather - Dan True
7:50 It Happened Last Night	1:00 Amos & Andy	6:10 News - Ralph Wayne
8:00 Capt. Kangaroo	1:30 At Linkletter's House Party	6:30 Marshal Dillon
8:30 The Jack LaLanne Show	2:00 The Millionaire	7:00 Dick Van Dike
9:00 Love Lucy	2:30 The Verdict Is Yours	7:30 Doherty Gillis
9:30 Video Village	3:00 CBS News	8:00 The Starliner
10:00 Surprise Package	3:30 The Brighter Day	8:30 Gary Moore Show
10:30 CBS News	3:55 Secret Storm	9:00 Weather - Dan True
11:00 Love Of Life	4:00 The Edge Of Night	10:15 News - Ralph Wayne
11:30 Search For Tomorrow	4:30 Search For Tomorrow	10:25 Sheriff Of Cochise
12:00 The Guiding Light	5:00 Quick Draw McGraw	10:55 The Philadelphia Story
12:30 Dan True Weather		

### Washington Window

By LYLE C. WILSON

WASHINGTON (UPI)—"Tomorrow's Illiterates" is the title of a just-published book that should shake and rattle the roof trees of homes that shelter little children.

This book was published by Little, Brown and Co., for the Council on Basic Education. It tells what hit U. S. education and why. It names names, invites combat. Every Parent-Teachers Association in the United States should make "Tomorrow's Illiterates" required reading for all members.

It is likely, thereafter, that teachers would cease speaking to parents and that parents would cease speaking to teachers.

This book deals with the teaching of reading in the lower grades. It finds guilty the U. S. educational system in general and the early grade teachers individually on serious charges. The system and the teachers' stand charged with converting the little kids who pass through first, second and third grades into dolts who cannot read. This book asserts that there has been:

"A national failure in reading instruction which we (the authors) see as the single major cause of the deterioration of our educational system."

Three authors hold responsible for this situation a variety of individuals and institutions. They include, the U. S. Office of Education, teachers' colleges, James K. Conant, former president of Harvard University, textbook publishers whose interests are vested in no change, the system of progressive education, John Dewey

and his satellite saints of pedagogy, and others.

As for the early grade teachers, themselves, they simply are carrying on in the tradition imposed upon them. Some selected quotations from "Tomorrow's Illiterates" will convey some of its ideas:

"It is clear that we not only have a national reading problem of appalling seriousness but also that it is completely unnecessary.

"It is entirely due to the methods of reading instruction generally followed in our public schools.

"The (teaching) system, the texts, the theory are, in official school-of-education circles, today about what they were in 1925.

"The system has spread over the country taking the hinterland in the (1930s). It has produced a disastrous retardation not only in reading but also of education in general.

"Considerably more than half, probably 75 per cent, of our young people do not read as they could. At least 35 per cent of them are very seriously retarded."

The New York Times reported in the last week of October on a study made by Dr. Arthur S. Trace Jr., of John Carroll University, Cleveland, Ohio.

Dr. Trace said fourth grade Russian children use books with a vocabulary of about 10,000 words. Fourth grade Americans have readers with vocabularies of fewer than 1,800 words.

"Tomorrow's Illiterates" is a 556-page bomb blast at U. S. educational practices. It should arouse great controversy.

Easternmost town in the United States is Lubec, Maine.

### WANTED! MEN-WOMEN

from ages 18 to 52. Prepare now for U. S. Civil Service job openings in this area during the next 12 months.

Government positions pay as high as \$45.00 a month to start. They provide much greater security than private employment and excellent opportunity for advancement. Many positions require little or no specialized education or experience.

But to get one of these jobs, you must pass a test. The competition is keen and in many cases only one out of five pass.

Lincoln Service helps thousands prepare for these tests every year. It is one of the largest and fastest growing privately owned schools of its kind and is not connected with the government.

For FREE information on Government jobs, including list of positions and salaries, fill out coupon and mail at once - TODAY. You will also get full details on how you can qualify yourself to pass these tests.

Don't delay - act NOW!

LINCOLN SERVICE, Dept. 44  
Pekin, Illinois

I am very much interested. Please send me absolutely FREE (1) A list of U. S. Government positions and salaries; (2) information on how to qualify for a U. S. Government job.

Name \_\_\_\_\_  
Address \_\_\_\_\_  
City \_\_\_\_\_  
Give Exact Directions to Your Home \_\_\_\_\_

# BEST DRESSED BIRDS

IN TOWN!

LEAN BOSTON BUTTS | USDA GOOD BEEF

Pork Roast Lb. **39¢** | Chuck Roast lb **45¢**

## TURKEYS TOMS HENS

PLUMP TENDER ROASTING

SWIFT'S 14 To 20 Lb. **25¢**  
LB. **35¢**

WHITE SWAN OR OCEAN SPRAY **19¢**  
NO 303 CAN

HIPOLITE 16-OZ JAR **19¢**

Bakerite... 3 Lb. Can **69¢**

OPEN ALL DAY THANKSGIVING DAY

COCONUT Durkees 14-oz. Box **39¢**

OLEO Banner 2 1-lb. ctns. **29¢**

PECANS Rio Grande 12-oz. Pkg. **79¢**

PUMPKIN White Swan 300 Can **10¢**

Mince Meat White Swan 9-oz. Pkg. **19¢**

FLOUR Pure Snow 25 lb. Bag **\$1.69**

Suzanne's Parkerhouse Rolls Pkg. of 24 **19¢**

Banquet, Lg. 22-oz. Mince Meat or Pumpkin Pies **39¢**

Snow Crop 10-oz Pkg. ASPARAGUS SPEARS **45¢**

Snow Crop 10-oz Pkg. BROCCOLI SPEARS **27¢**

## CELERY

Large Stalk Each **12 1/2¢**

FRESH CRANBERRIES 1-lb. cello **27¢**

FRESH COCONUTS Each **15¢**

## APPLES

WINESAP LB. **15¢**

Hunt's New No. 300 POTATOES 3 for **35¢**

Contradina Spiced, No. 2 1/2 Can Whole Peaches **19¢**

Hershey 6-oz Pkg. CHOCOLATE CHIPS **23¢**

# BUDDY'S SUPER MARKETS

WE RESERVE THE RIGHT TO LIMIT QUANTITIES

Open 7 Days A Week 7:30 A. M. to 9 P. M. SUNDAY 7:30 to 8:00

Del Monte Whole 303 Can Green Beans **29¢**

Wapco, No 303 Can Sweet Potatoes **19¢**

Del Monte No. 1 Can Crushed Pineapple **19¢**



# THANKSGIVING

## TURKEYS

Palo Duro Brand  
Broadbreasted  
Young Tom Turkeys  
14 to 20-lb. Average

lb. **29<sup>c</sup>**

**FRESH OYSTERS**  
Kirkpatrick  
Small Frozen  
12-oz. Can ea. **79c**

**Turkeys** Palo Duro Hen  
Turkeys—12 lbs.  
And up— lb. **33<sup>c</sup>**

Other Meat Values

**Hens** Fresh Frozen  
Baking Hens  
4 to 6 lbs. Avg. lb. **29<sup>c</sup>**

**Hams** Samuels Bone-  
less, Waste Free  
3-lb. Can ea. **\$1<sup>98</sup>**

### Ocean Spray Cranberry SAUCE



What's Turkey  
Or Ham Without  
Cranberry Sauce?

No. 300  
Can **19<sup>c</sup>**

**Mince Meat** None Such  
For Pies 28-oz. Jar **53c**

**Cherries** Orchard Queen  
Maraschino 12-oz. Jar **3<sup>o</sup> \$1**

**Cashew Nuts** Nut Shell  
Whole 12-oz. Can **89c**

**Hip-O-Lite** Marshmallow  
Cream Pt. **19c**

**Dainties** Hershey's  
3x Off Label 12-oz. Pkg. **39c**

**Preserves** Empress  
Strawberry 20-oz. Jar **45c**

**Potato Chips** Morton's Lg. Pkg. **39c**

**Onion Soup** Lipton's 2 Pkgs. **35c**

**Sour Cream** Lucerne  
Quality 8-oz. Can. **25c**

**Stuffin Mix** Pepperidge  
Farms 7 1/2-oz. Pkg. **29c**

Don't Miss These Values!

**Cauliflower** Bel-Air  
Frozen 10-oz. Pkg. **23c**

**Asparagus** Bel-Air 8-oz. Pkg. **39c**

**Strawberries** Bel-Air  
Whole 16-oz. Pkg. **49c**

**Brussels Sprouts** Bel-Air 8-oz. Pkg. **25c**

**Apple Rings** Rustic  
Brand 14-oz. Can **33c**

**Cherub Milk** Canned  
Milk 7 Tall  
Cans **\$1**

**Oysters** Sea Trader  
Brand 3 8-oz.  
Cans **\$1**

**Pineapple** Dale Chunk  
or Spiced 4 No. 211  
Cans **\$1**

**Oranges** Town House  
Mandarin Slices 4 11-oz.  
Cans **\$1**

**Grape Jelly** Empress 3 20-oz.  
Jars **\$1**

**JELL WELL**  
Assorted Gelatin  
5 3-oz. Pkgs. **25c**

**ORANGE JUICE**  
QT. BOTTLE ONLY  
Tropicana  
California  
PURE  
FRESH **39<sup>c</sup>**

Save On These Thanksgiving Specials!

**Juice** Hunt's Brand Fine  
Quality Thick Tomato  
Juice— 4 46-oz. Cans **\$1**

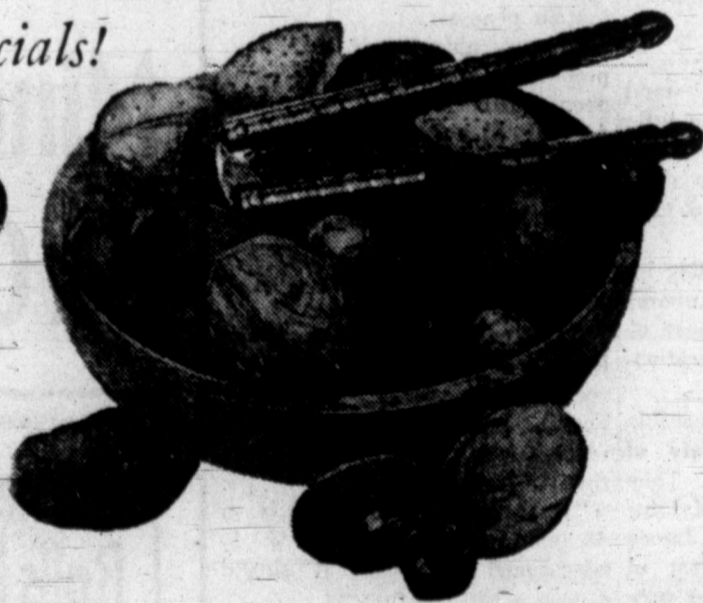
**Beans** Del Monte Famous  
Whole Green Beans  
Low Price— 4 No. 303  
Cans For **\$1**

**Peaches** Town House  
Elberta 3 No. 2 1/2  
Cans For **\$1**

**Cocktail** Del Monte  
Mixed Fruit 5 No. 303  
Cans For **\$1**

**Potatoes** Town House  
Sweet— 4 No. 3  
Cans For **\$1**

**NUTS**  
New Crop  
• Pecans  
• Walnuts  
• Filberts  
• Brazils  
• Almonds  
lb. **39<sup>c</sup>**



Other Produce Values

**Cranberries** Ocean Spray  
1 POUND BOX lb. **19c**

**Delicious Apples** Wash. State  
Extra Fancy lb. **21c**

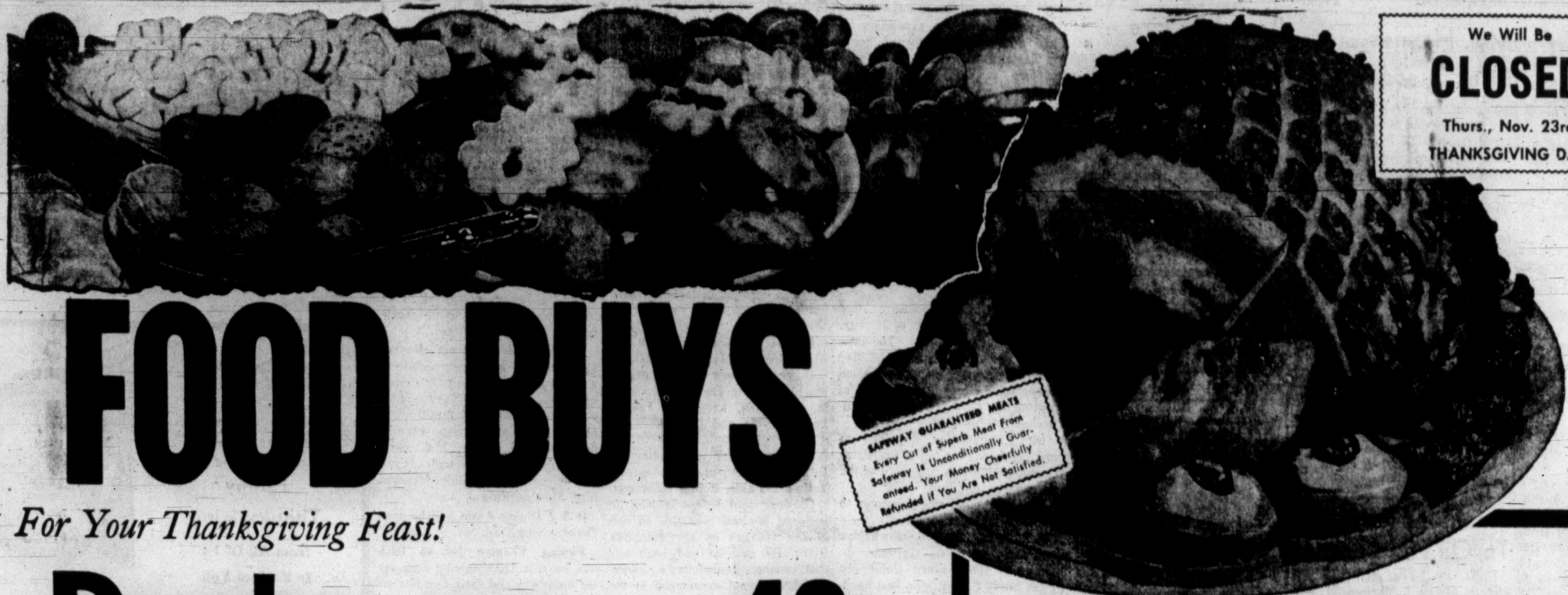
**Navel Oranges** Texas  
New Crop 2 lbs. **25c**

**Sweet Potatoes** Portales  
Maryland 2 lbs. **25c**



**GREEN ONIONS**  
Arizona Garden  
Fresh—A Must  
For Your Salad 3 Large  
Bunches For **10<sup>c</sup>**

**SAFEWAY**  
Store Hours: Mon., Tues., Thurs., Fri. 8:30 a.m. — 6:30 p.m. Wed & Sat. 8:30 a.m. 7 p.m.



We Will Be  
**CLOSED**  
Thurs., Nov. 23rd  
THANKSGIVING DAY

# FOOD BUYS

For Your Thanksgiving Feast!

**Ducks** Manor House Brand Long Island Ducks 4 to 5-lbs. Average **lb. 49<sup>c</sup>**  
**Bacon** Glovers Ranch Style—Hickory Smoked Thick Sliced **2 lb. Pkg. 98<sup>c</sup>**

Lucerne Bonus Quality  
**EGG NOG**  
Don't Miss This Special Low Price On Lucerne Fine Quality Egg Nog  
**55<sup>c</sup>**  
Non-Alcoholic **Full Quart**

SAFeway GUARANTEES MEATS  
Every Cut of Superior Meat From Safeway Is Unconditionally Guaranteed. Your Money Cheerfully Refunded if You Are Not Satisfied.

**HAMS**  
Swift Premium Smoked 14 to 18 Pound Hams Whole or Shank Half **lb. 39<sup>c</sup>**  
**Hams** Swift Premium Smoked Hams Butt Ends **lb. 43<sup>c</sup>**

Special Reduced Prices!

Your Dollar Buys More at Your Safeway Store!

**Green Peas** Del Monte Early Garden No. 303 Can **19<sup>c</sup>**  
**Pumpkin** Kuners Brand Fine Quality Buy Now and Save No. 303 Can **10<sup>c</sup>**  
**Shrimp** Sea Trader Brand Medium Sized Shrimp Buy Now— 5-oz. Can **39<sup>c</sup>**  
**Crisco** Fine Quality Shortening Special 5c Off Label Buy Now at Safeway 3-lb. Can **79<sup>c</sup>**  
**Cake Mix** Radiant Brand Fruit Cake Mix Reg. 63c 1-lb. Pkg. **49<sup>c</sup>**  
**Coffee** Edward's Fresh Coffee Safeway Guaranteed Product—All Grinds 1-lb. Can **57<sup>c</sup>**

**CIDER** Town House Fine Quality Apple Cider Low Price at Safeway 1/2-Gal. Jug **49<sup>c</sup>**  
**PECANS** Pecan Pieces For Making Cakes, Cookies or Candy 12-oz. Pkg. **65<sup>c</sup>**  
**PIES** Bel-Air Premium Quality Frozen Pumpkin Pies Buy Several at This Price 3 24-oz. Pies **\$1**  
**PEACHES** Hemet Brand Spiced 5 No. 2 1/2 Cans **\$1**

**FRESH COFFEE** Maryland Club 1/2 lb. **67<sup>c</sup>**  
**ASPARAGUS** Green Giant No. 300 Can **49<sup>c</sup>**  
**NIBLETS CORN** 12-oz. Can **19<sup>c</sup>**  
**PEAS & ONIONS** Green Giant No. 303 Can **29<sup>c</sup>**  
**ROASTERS** Small Enamel Each **99<sup>c</sup>**  
**ROASTERS** Large Enamel Each **\$1.99**  
**REYNOLDS FOIL** Heavy Duty Roll **69<sup>c</sup>**  
**WHITE FLOUR** Kitchen Craft 5 lb. Bag **45<sup>c</sup>**  
**C & H SUGAR** Powdered or Brown 2 1-lb. Pkg. **29<sup>c</sup>**  
**CANE SUGAR** C&H Sugar 10 lb. Bag **98<sup>c</sup>**



**Mince Pies**

LUCERNE  
**Ice Cream** Smooth, Rich and Creamy Half Gallon **59<sup>c</sup>**  
**Mince Pies** Bel-Air Frozen 24-oz. Pie **49<sup>c</sup>**

**EGGS**  
BREAKFAST GEM GRADE A Medium **3 Dozen Only \$1**

**COTTAGE CHEESE** LUCERNE QUALITY 2 LB. CARTON **49<sup>c</sup>**  
No. 1 Can Crushed Dole Pineapple **19<sup>c</sup>**

**Kleenex Napkins** 50-Ct. Pkg. **25<sup>c</sup>**  
**Tide Detergent** 3c Off Label 61. Size **69<sup>c</sup>**  
**Scamper Liquid** Detergent 10c Off Label 22-oz. Btl. **49<sup>c</sup>**  
**White Magic** Detergent 61. Size **59<sup>c</sup>**

Prices in This Ad Are Good Through Nov. 22nd at Safeway in Pampa



**SAFEWAY**

We Reserve The Right To Limit Quantities

### Target: Austin Will Be Shown Study Course

PTA City Council will conclude series of six study courses on Civil Defense with the showing of a film "Target: Austin" on Tuesday morning in Lamar school, according to Mrs. George Cree Jr., City Council PTA president.

The meeting will begin at 9:30 a. m. and conclude at 11:30. A nursery will be provided for preschool children, whose mothers attend the meeting. Mrs. Bryan Luck, Lamar unit president, has announced.

The 20-minute film is based on what could happen if an atomic bomb fell near Austin. It was produced by Cactus Pryor and is on KTBC-TV staff in Austin.

The film has received one of our public service awards from National Association of Civil Defense and has been viewed all over the state," according to J. Kellam, general manager of the KTBC station.

Mrs. J. A. Watson of Amarillo, who has been instructing previous courses, will conduct the final course.

Read the News Classified Ads

### Mrs. Haynes Rites Tuesday

Funeral services for Mrs. Harvey Haynes, an aunt of Mrs. Wood Osborne of Pampa, will be held at 2 p. m. Tuesday in the Shiloh Baptist Church with interment in the Shiloh Cemetery located near Henderson.

Mrs. Haynes, a former resident in Pampa, died at 3:30 p. m. Sunday in New London at the age of 86. She was a member of the First Baptist Church. Her husband preceded her in death in December, 1927.

She is survived by two daughters, Mrs. W. A. Taylor of Henderson and Mrs. Lloyd Phillips of Baytown; one sister, Miss Susie Parker of Henderson; three brothers, J. T. Parker of Minden, Wiley A. Parker of Dallas and A. H. Parker of Houston.

Mrs. Haynes had been in ill health for several months.

### Accident Fatal To Oil Field Man

ELECTRA, Tex. (UPI) — The body of Melvin L. Shahan, 37, was found Sunday night near a pump he was tending.

Joe Alcott, foreman of the oil lease on which Shahan worked, said it appeared Shahan was caught in the fly wheel of the pump and crushed to death.

### Rural Residence Razed By Fire

A wood frame two-story house and contents owned by J. C. Sellivon, six miles east of the city was destroyed by flames early today.

Pampa firemen received the call at 9:48 a. m. when a worker at the Celanese Chemical Plant, five miles east of the city, sighted the fire.

Sellivon told firemen he was outside the house tending to stock when the fire broke out.

He said a gas heater might have started the fire.

Firemen said when they arrived at the scene they were unable to save it.



Kids aren't afraid of a bath. If they were, they wouldn't fight it so much.

TRY A  
CLASSIFIED AD

### Gov. Rockefeller

(Continued From Page 1)  
Harvard University expedition he had accompanied returned home in September. He had wanted to explore and collect native artwork.

Dutch naval and air units were immediately ordered into the search for the heir to the Rockefeller oil, real estate and banking fortune.

Gov. Rockefeller was in seclusion at his estate near Tarrytown, N. Y., following the announcement of his impending divorce when he received word from Dutch officials that his son was missing.

The surprise disclosure that Rockefeller's marriage of 31 years to the former Mary Todhunter Clark would be terminated had been made only Friday and raised speculation about his chances of getting the GOP presidential nomination in 1964.

Mrs. Rockefeller remained at another house on the Westchester County estate awaiting word of the search for her son.

Accompanying the governor to the Pacific was Michael's twin sister, Mrs. Mary Strawbridge and Dr. Robert G. Gardner, director of the Harvard University Film Study Center, who had headed the expedition which originally took young Rockefeller to New Guinea.

Also in the party were Berent Friele, a director of the International Basic Economy Corp. and a close personal friend of Rockefeller.

### J. E. Kee Rites Set

Funeral services for J. E. (Bud) Kee, 73, formerly of McLean, will be held at 2 p. m. Tuesday in the Church of Christ in Westminster. The body will be brought to McLean for graveside services in Hillcrest Cemetery at 2 p. m. Wednesday.

Mr. Kee died Sunday at 5 a. m. in a hospital in McKinney from leukemia.

He moved to McLean in 1926 and was engaged in farming there until 1936, when he moved to Westminster.

Mr. McKee was the uncle of Mrs. George Baker of Pampa.

Other survivors are one daughter, Melba Ingram; seven sons, R. B. Louis, Leonard, John, Leon, Orville and Darrell.

McKee, New York state police Lt. Edward Galvin, and the governor's press aide, Robert McManus, Gardner said before leaving he believed Michael was safe in one of the villages on the Eilanden River. He said he had been told that young Rockefeller's canoe had been found overturned in the water and theorized it had been carried out by the tide from where Michael had pulled it ashore.

The pronghorn antelope can outrun a man when it is only four days old.

### Mainly - - About People - -

The News invites readers to phone in or mail items about the coming and going of themselves or friends for inclusion in this column.

\* Indicates paid advertising

Richard L. Horttor, 21 year old son of Mr. and Mrs. Earl W. Horttor, 2408 Rosewood Lane, was recently initiated into the Beta Theta Chapter of Eta Kappa Nu, a national electrical engineering honor society at the Massachusetts Institute of Technology, Cambridge, Mass.

Mr. and Mrs. Harvey Downs, 914 Christine, have returned from a hunting trip to Truth Or Consequences, N. Mex. They also visited their son and family, Mr. and Mrs. Orval Johnson; their daughter and family, Mr. and Mrs. Gale Thomas, and Mrs. Downs' sister and family, Mr. and Mrs. Sparkie Rider.

O & Z Dining Room will be open Thanksgiving Day, 306 N. Cuyler.

Pampa Chapter No. 65 OES will have a Thanksgiving banquet for members and their families on Tuesday at 6:30 p. m. at 420 W. Kingsmill. Members are asked to please bring either a salad, vegetables or a dessert.

For Christmas gifts redeem your Pampa Progress Stamp books at B&B Pharmacy NO. 1 and B&B Toyland, Ballard at Bowning.

Miss Anna Jo Watson who was an American Field Service student to Germany last summer will be guest speaker at the Pampa American Association of University Women's dinner meeting Tuesday at 7 p. m. in the Coronado Inn. Miss Watson is the daughter of Mr. and Mrs. Wendell Watson, 1100 Terry Road.

Top O' Texas Volkswagen Club will meet tonight at 7:30 in the home of Dr. Joe Pieratt, 930 N. Nelson. Guest speaker will be David Kirk, service manager for the German Car Co. in Amarillo. All club members and guests are invited.

Alcoholics Anonymous Closed meeting Tuesday 7:30 p. m. 214 1/2 North Cuyler.

Mr. and Mrs. Roe Y. Rogers 1226 E. Harvester, are the parents of a daughter, Sandra Kay, born Saturday at 5:30 p. m. weighing 7 1/2 lbs. She is also welcomed by a brother, Jody; maternal grandparents, Mr. and Mrs. T. J. Worrell, 1707 Christine; and a paternal grandmother, Mrs. Corene Rogers of Las Cruces, N.M. Mrs. Rogers is the former Patsy Ruth Worrell.

The meeting place for the Red Cross sponsored first aid classes has been changed from the county court room to the Red Cross office, basement of city hall, according to an announcement by Mrs. Libby Shotwell, Red-Cross executive secretary. Part one and two will be held from 7 to 9 p. m. tonight with Gordon Taylor, instructing. The lessons will be held through Wednesday and will begin again, Monday November 27.

Pampa residents attending the funeral of House Speaker Sam Rayburn Saturday in Bonham, were: Mr. and Mrs. R. G. Hughes, Paul Crossman, J. L. Thompson and Ott Shewmaker.

in his hand which she thought was a pail or a bucket. He said to her in an angry voice "get down there," and pushed or shoved her down stairs.

"She said she heard sloshing noises and thought the captain might be washing off the deck." A short time later the captain came into her room with something in his hand which she thinks could have been a rifle. She said she knew there was a rifle on board.

The girl said she heard "hammering or bumping" on the ship. She said the water was rising in the cabin and when it reached the level of her mattress, she got up and climbed the stairway again in the main deck.

"She noticed the 10-foot dinghy in the water alongside and she thought it was tied to the Blue-belle. She saw Harvey and asked him, 'is the boat sinking?' He replied 'yes.'"

Barber said the girl told them that as she stood on the deck with Harvey they saw the dinghy had gotten loose and was floating away. She said Harvey jumped overboard toward the dinghy.

"That was the last she saw of Harvey as he disappeared in the darkness," Barber said.

Horseflies often carry anthrax, an infectious disease attacking cattle and men.

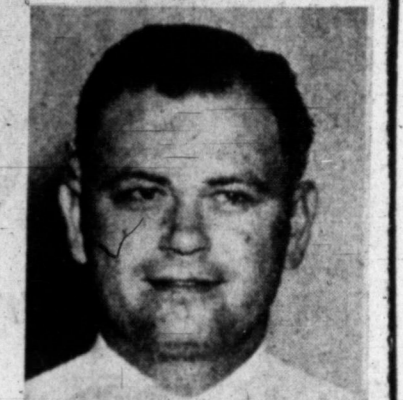
"She noticed the 10-foot dinghy in the water alongside and she thought it was tied to the Blue-belle. She saw Harvey and asked him, 'is the boat sinking?' He replied 'yes.'"

Barber said the girl told them that as she stood on the deck with Harvey they saw the dinghy had gotten loose and was floating away. She said Harvey jumped overboard toward the dinghy.

"That was the last she saw of Harvey as he disappeared in the darkness," Barber said.

Horseflies often carry anthrax, an infectious disease attacking cattle and men.

**BLAKE  
SAYS:**  
Happy  
Thanksgiving  
from All Of Us  
to Each Of You



## A THANKSGIVING TRADITION

our fine selection of holiday foods

<p><b>HAMS</b> Butt End or Shank End <b>39¢</b> lb.</p> <p>U.S.D.A. Good <b>Arm Roast</b> ..... <b>43¢</b> lb.</p> <p>Fresh <b>Ground Beef</b> ... 4 lbs. <b>\$1.00</b></p>	<p><b>TURKEYS</b> ARE THE BEST HENS 9 to 14 Lbs <b>37¢</b> lb.</p> <p>TOMS 14 Lbs. UP <b>33¢</b> lb.</p> <p>U.S.D.A. Good <b>Round Sirloin or T-Bone Steak</b> ..... <b>79¢</b> lb.</p> <p>Quality or Cudahy Thick Sliced <b>BACON</b> ..... 2 Lbs. <b>89¢</b></p>	<p><b>YOUNG BLOOD ROASTING HENS</b> 5 LB. <b>39¢</b> LB. AVG. <b>39¢</b> Lb.</p> <p><b>SHURFRESH OLEO</b> 6 Lbs. <b>\$1.00</b></p> <p><b>SHURFRESH BISCUITS</b> 12 Cans <b>\$1.00</b></p>
<p><b>VEGETABLES</b> U.S. No. 1 White <b>POTATOES</b> 10-Lb. Bag <b>49¢</b></p> <p>Ocean Spray <b>CRANBERRIES</b> ... Lb Box <b>23¢</b></p> <p>Texas Ruby Red <b>Grapefruit</b> ..... 5 Lb. Bag <b>29¢</b></p> <p><b>CELERY</b> ..... 7 1/2 Lb. <b>79¢</b></p> <p><b>Yellow Onions</b> ..... 5c Lb.</p>	<p>Shurfine, 3-Lb. Can <b>Shortening</b> ..... <b>69¢</b></p> <p>Pacific Pearl, 10-oz Can <b>Oysters</b> ..... <b>49¢</b></p> <p>Shurfine, 300 Can <b>Pumpkin</b> ..... <b>10¢</b></p> <p><b>SHURFRESH PINEAPPLE</b> Sliced No. 1 Can <b>15¢</b></p> <p><b>PURE CANE SUGAR</b> 5 Lb. Bag <b>49¢</b></p>	<p>Shurfine, Sli or Halves, No. 2 1/2 can <b>4 FOR \$1</b></p> <p>Shurfine, 303 Can <b>Sweet Peas</b> ..... <b>2 FOR 35¢</b></p> <p>2 1/4-oz Box <b>Dream Whip</b> ..... <b>19¢</b></p>
<p>Tender Crust Brown &amp; Serve <b>Rolls</b> ..... 2 Pkgs. <b>49¢</b></p> <p>Shurfine, 303 Can <b>Beans &amp; Potatoes</b> ..... <b>2 FOR 35¢</b></p> <p>Shurfine, 300 Can <b>Asparagus</b> ..... <b>2 FOR 49¢</b></p> <p>Shurfine, Q. <b>Salad Dressing</b> ..... <b>39¢</b></p> <p>Shurfine, 300 <b>Cranberry Sauce</b> ..... <b>19¢</b></p>	<p>Softin <b>Napkins</b> ..... Pkg. <b>10¢</b></p> <p>Duncan Hines, Deluxe <b>Cake Mix</b> ..... <b>3 FOR 89¢</b></p> <p>Bond 8-oz Pkg. <b>Stuffing Mix</b> ..... <b>19¢</b></p> <p>Shurfine <b>Milk</b> ..... 7 Tall Cans <b>\$1.00</b></p> <p>1-Lb. Box Powdered Or Brown Sugar <b>2 FOR 25¢</b></p>	<p><b>• FROZEN FOODS •</b></p> <p>Banquet, Apple Peach, Cherry or Pumpkin, 22-oz <b>3 FOR \$1.00</b></p> <p>Shurfine, 6-oz Can <b>ORANGE JUICE</b> ..... <b>6 FOR \$1.00</b></p> <p>Shurfine, 10-oz Pkg. <b>STRAWBERRIES</b> ..... <b>5 FOR \$1.00</b></p> <p>King Size Plus Dep. <b>Cokes</b> ..... <b>29¢</b></p> <p>Shelled, 12-oz Pkg. <b>Pecans</b> ..... <b>79¢</b></p> <p>Heavy Duty 18" 25 Ft. Roll <b>Alcoa Foil</b> ..... Roll <b>69¢</b></p> <p>Shurfine, 9-oz Pkg. <b>Mince Meat</b> ..... <b>19¢</b></p> <p>Shurfine <b>Flour</b> ..... 10 lb. bag <b>69¢</b></p>

**SHURFINE COFFEE**  
1-Lb. Can  
**49¢**

**Hom & Gee Grocery**

421 EAST FREDERIC      OPEN 7 DAYS A WEEK      PHONE MO 4-8531

Double Buccaneer Stamps Wed With Every Purchase 2.50 or More

**GRADE A LARGE EGGS**  
Dozen  
**49¢**

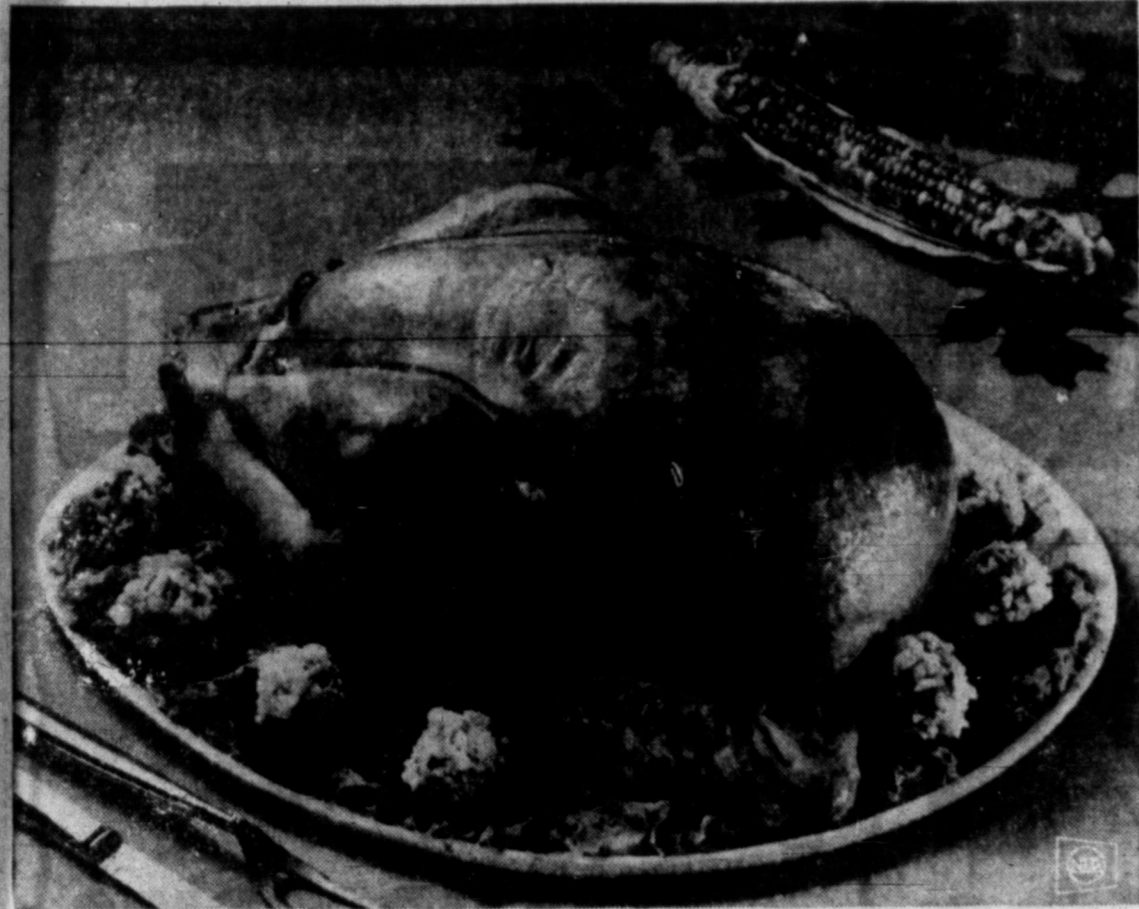
**HAZLEWOOD'S Farm Dairy**

Pasteurized • Homogenized

**Pure • Whole MILK**

'Nothing Removed'

<p>Choice Blue Ribbon <b>Round Steak</b> ..... Lb. <b>69¢</b></p> <p>Large <b>Hens</b> ..... Lb. <b>39¢</b></p> <p>Cudahy <b>Bacon</b> ..... 2-lb. pkg. <b>89¢</b></p> <p>Fully Cooked Baked <b>Hams</b> ..... 1/2 or whole Lb. <b>59¢</b></p> <p>All Meat <b>Bologna</b> ..... Lb. <b>39¢</b></p> <p>Tender Crust <b>BREAD</b> ..... 2 for <b>39¢</b></p> <p>Tender Crust Brown &amp; Serve <b>ROLLS</b> ..... each <b>19¢</b></p> <p>Shurfine, Lb. Can <b>COFFEE</b> ..... Lb. <b>49¢</b></p> <p>Shurfine, Qt. Jar <b>SYRUP</b> ..... 2 for <b>79¢</b></p> <p>Medolake, Lb. Box <b>MARGARINE</b> ..... 5 for <b>\$1.00</b></p> <p>Banquet, Cherry, Apple, Peach, Mince <b>Family Size Pies</b> ..... 29¢ ea.</p> <p>Shurfine, Qt. Jar <b>SALAD DRESSING</b> ..... <b>39¢</b></p> <p>Shurfine, 6-oz Frozen <b>ORANGE JUICE</b> ..... 5 for <b>\$1.00</b></p> <p>Shurfine, 300 Can <b>Cranberry Sauce</b> ..... 5 for <b>\$1.00</b></p> <p>Shurfine, 303 Can Cut Green <b>BEANS</b> ..... 5 for <b>\$1.00</b></p> <p>Shurfine 300 Can <b>PUMPKIN</b> ..... can <b>10¢</b></p> <p>Fresh Stalk <b>CELERY</b> ..... ea. <b>9¢</b></p> <p>Colo. Yellow <b>ONIONS</b> ..... lb. <b>5¢</b></p> <p>New Mexico <b>SWEET POTATOES</b> lb. <b>8¢</b></p>	<p><b>WE GIVE BUCCANEER STAMPS DOUBLE STAMPS ON WEDNESDAY</b></p> <p style="text-align: center;"><b>BLAKE'S COUNTRY STORE</b></p> <p>Free Delivery MO 4-3401      Buccaneer Stamps Lefors Hi-Way</p>
--	--



TRADITIONAL Thanksgiving turkey, plump with appetizing goodness, is accompanied by griblet snow birds served on sliced apple rings. A fitting garnish for the lordly bird.

## Tender Turkey Graces America's Family Table

By GAYNOR MADDOX  
Newspaper Enterprise Assn.  
For the great American feast of Thanksgiving, garnish the lordly turkey with griblet snowballs atop spiced apple rings. The turkey will swell with pride.

**GIBLET-SNOWBALL GARNISH**  
(Makes 8 garnishes)  
2 hard-cooked eggs  
2 cups diced cooked turkey griblets and neck meat  
1/2 cup soft butter or margarine  
1/4 cup lemon juice  
1/4 cup catsup  
1/4 cup mayonnaise or salad dressing  
2 tablespoons prepared horseradish  
1 teaspoon dry mustard  
8 spiced apple rings  
Leaf lettuce

Remove yolks from hardcooked eggs and finely chop whites. Add yolks to remaining ingredients and place all in electric blender. Blend several minutes until a smooth, thick consistency is obtained. (If blender is not available, put griblets through meat grinder twice; then beat all ingredients together until smooth.) Store, covered, in refrigerator

several hours to mellow. Shape into 8 balls and roll in the chopped egg whites. Place each atop a spiced apple ring on bed of leaf lettuce to garnish turkey platter.

Want a few hints on how to roast your turkey? The experienced turkey cooking experts of the Poultry and Egg National Board give these tested and approved instructions:

**TO ROAST**  
1. Preheat oven to 325 degrees F. (slow).  
2. Rinse bird with cold water, drain and pat dry. Rub cavity of bird lightly with salt. Do not salt, if stuffed.  
3. Fill wishbone area (neck) with stuffing, if used. Fasten neck skin to back with skewer. Fill cavity lightly; if stuffing is used, push drumsticks under band of skin at tail; or tie them to tail.  
4. Place turkey on rack in shallow roasting pan. Brush skin with fat. Place in preheated oven. If desired, baste or brush occasionally with pan drippings — especially any dry areas. When turkey is 2/3 done, cut cord or band

of skin at drumsticks.  
5. Continue roasting until done. To test doneness, a roast meat thermometer placed in center of the thickest breast muscle should register 190 to 195 degrees F. If stuffing is used, it should register 165 degrees F. at the same time. Turkey is done when meat at thickest part of drumstick feels very soft when pressed between protected fingers.

**MEAT-STUFFED POTATOES**  
Slice tops off baked potatoes and remove the centers. Mash with milk and season with salt, pepper, paprika and butter or margarine. Mix with chopped, cooked meat. Refill shells, dot with butter or margarine and return to the oven to brown.

**AIDS TO CARVER**  
You can aid the carver when a roast is the center of attention on the dinner-table. One helpful hint is not to over-garnish the platter. Give the carver as much room as possible for his task. Remember to keep carving knives well sharpened.

## New Figure-Whipped Butter Offers One Half Calories Of Whipped Butter

A new Figure-Whipped-Butter, with only one-half the calories of a comparable serving of non-whipped butter, is now being introduced nationally by the Meadow Gold Dairy Division of Beatrice Foods Co., after successful market testing in the Chicago area.

An innovation in the butter industry, the new Figure-Whipped-Butter is printed in newly designed, arched swirl sticks and is the only 100 per cent whipped butter now on the market. An eight-ounce package of four sticks has the same volume as one pound of regular butter, yet only one-half the calories of the same sized serving of non-whipped butter.

Easy spreadability and quick-melting qualities are among the advantages of the new butter cited by F. C. Salter, general manager of butter and cream procurement for Meadow Gold. These factors release the new product's pure butter flavor more rapidly.

Even when used immediately after taken from the refrigerator, the whipped butter spreads evenly on breads and vegetables, melts faster on hot foods and provides a creamy coating without

soaking in or running off. Salter says.

The distinctive design of the new butter sticks represents a radical change from the familiar one-quarter pound square sticks of conventional butter. Although they are the same size as standard butter sticks, the Meadow sticks are oval in shape with scalloped or arched tops. The bottom of the stick is flat for easy handling and serving.

To serve, simply remove the

## Ginger 'N Mustard Irresistible Sauce

Far East Barbecue Sauce, tangy with ginger and mustard, is a sweet-pungent sauce that lends glamour to chicken, spareribs, or frankfurters. Brush it on the meat during cooking period.

**FAR EAST BARBECUE SAUCE**  
1/2 cup prepared mustard  
1/2 cup unsulphured molasses  
1/4 cup soy sauce  
1/4 cup vinegar  
1 can (8 ounces) crushed pineapple  
1/4 teaspoon ground ginger  
Blend together mustard and molasses in a saucepan. Stir in remaining ingredients; mix well. Bring to a boil. Pour into desired jar; cover tightly.

**YIELD:** 2 1/2 cups sauce, or enough for 3 broiler-fryer chickens, or 2 dozen hamburgers.

The hedgehog is the European porcupine.

**IT'S LOVE AT FIRST BITE**

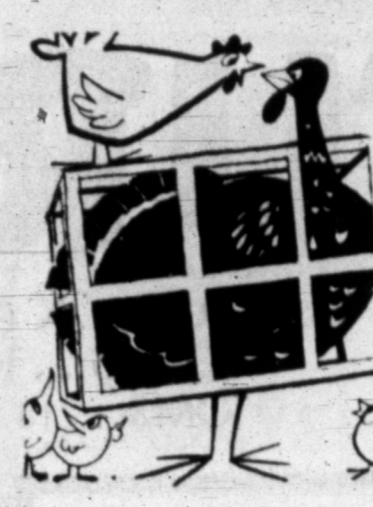
**FULL-FLAVORED, UM-M-M TASTY**



**Q. What is the name of this cut of meat?**  
A. Beef Short Ribs.

**Q. Where do they come from and how are they identified?**  
A. They are cut from the end of ribs and contain a section of fat rib bone and alternating layers of fat and lean.

**Q. How are they prepared?**  
A. By braising. Brown the short ribs on all sides in their own fat. Pour off the drippings. Season and add a small amount of liquid. Cover tightly and cook slowly until tender, 1 1/2 to 2 1/2 hours. They may also be cooked in liquid.



## POULTRY SPECIALS

There's more to buying a turkey than price. Our turkeys are selected from the first birds raised on a leading poultry ranch... There's more meat per pound, less waste and finer flavor. That's because their growth is scientifically controlled through quality feed rations... Shop. Compare. You'll buy from us.

## MITCHELL'S

<b>TURKEYS</b>	Tom's 18 To 24-Lbs.	<b>29¢</b> lb
<b>HAMS</b>	Small Lean 1/2 or Whole	<b>43¢</b> lb
<b>PORK ROAST</b>		<b>35¢</b> lb
<b>HENS</b>	FRESH DRESSED	<b>29¢</b> lb

<b>CLUB STEAK</b>	lean, tender	<b>69¢</b> lb
<b>BACON</b>	Quality or Korn Kist	<b>2 lbs. 89¢</b>

<b>PIES</b>	MINCE OR PUMPKIN	<b>2 for 79¢</b>
-------------	------------------	------------------

Maryland Club  
**Coffee**  
LB. CAN **59¢**

Bonds  
Stuffing Mix  
BAG **19¢**

Shurfresh  
**OLEO**  
2 lbs. **33¢**

Salad Fixin's  
**CELERY STALK** **10¢**  
Ocean Spray  
**CRANBERRIES** **35¢**  
2 boxes

**GRAPEFRUIT**  
**3** 5 LB. BAGS **\$1.00**

Krafts, PARKAY	lb.	23c
Shurfresh, 303		
FRUIT COCKTAIL	can	19c
Mammy		
FRUIT CAKE	2 1/2 lbs.	98c
Shurfresh		
FLOUR	10 lb. bag	69c

Shurfresh  
**COFFEE** **49¢** lb  
5c Off Deal  
**CRISCO** **3** LBS **79¢**

SHELLED Pecans **98¢**  
I LB PKG.

Brown & Serve Rolls ... **4 For \$1**

Hunts PEACHES ... 4 cans **\$1.00**

Shurfresh CRACKERS ... lb. box **19c**

Imperial, 1-Lb. Box POWDERED SUGAR ... **2 for 25c**

Libby's, 303 Can PUMPKIN ... **2 for 25c**

Shurfresh, 303 Can  
**Cranberry SAUCE**  
**39¢**

Shurfresh STUFFED OLIVES ... **2 for 89¢**

BAKERS  
**COCOANUT**  
SMALL PKG. **21¢** LARGE PKG. **31¢**

**MITCHELL'S Grocery**  
638 S. Cuyler  
BUCCANEER Saving Stamp  
DOUBLE ON WEDNESDAY  
PH. MO 5-5451

Folgers <b>COFFEE</b> .. Lb. <b>59¢</b>	Shelled, Lg. 12-oz Pkg. <b>PECANS</b> <b>69¢</b>
Favorite Lg. Loaf <b>BREAD</b> ..... <b>19¢</b>	Shurfresh <b>Crackers</b> .1-Lb <b>19¢</b>
1/2 Lb. Loaf Shurfresh, 300 Cans <b>CRANBERRY SAUCE</b> ..... 5 <b>\$1.00</b>	Borden's 1/2 Pt. <b>WHIPPING CREAM</b> ..... <b>35¢</b>
Gerbers Strained 12 Cans <b>BABY FOOD</b> ..... <b>\$1.00</b>	Borden's 1/2 Pt. <b>SOUR CREAM</b> ..... <b>25¢</b> lb
Food King 3-Lb. <b>SHORTENING</b> <b>59¢</b>	Tender Crust brown & serve <b>ROLLS</b> <b>39¢</b>
Fresh Pork Shoulder, Picnic Cut <b>ROAST</b> <b>29¢</b>	
Sunray or Wright, 12-14 Lb. Avg. <b>HAMS</b> <b>49¢</b> lb	Whole <b>49¢</b> lb
Finest Young Hens <b>TURKEYS</b> <b>39¢</b> lb	8 to 14-lb <b>39¢</b> lb
Cudahys or Nutwood <b>BACON</b> ..... <b>89¢</b>	2 Lbs. <b>89¢</b>
Fresh <b>Cranberries</b> <b>25¢</b>	Tokay <b>GRAPES</b> <b>19¢</b> lb
Fresh Crisp <b>Celery Lg. Stalk</b> <b>9¢</b>	Washington Fancy Red <b>Delicious Apples</b> ..... <b>19¢</b>

**MILLER GRO. & MARKET**  
We Give Buccaneer Stamps  
Double On Wed.  
2000 Alcock With 2.50 Purchase or More Ph MO 4-2761

We Give  
**Pampa Progress Thrift Stamps**  
...The Stamps You Spend Like Money!  
Each Pampa Progress Stamp Book Is Worth 1.00  
On Any Item Offered by Participating Merchant

Fite Food Market  
Smith's Quality Shoes  
Pampa Hardware Co.  
B & B Pharmacy No. 1  
B & B Toyland  
Lin's Cleaners  
Roberta's Flowers  
Hi-Land Pharmacy

We Give  
**Pampa Progress Thrift Stamps**

Closed All Day  
Thanksgiving Day  
Nov. 23rd.

Shop IDEAL . . . the store with the . . .

# Festive Touch

"Better Food For Less"

# IDEAL

FOOD STORES



ADD A "FESTIVE TOUCH" TO YOUR THANKSGIVING TABLE . . . AND ADD DOLLARS TO YOUR HOLIDAY BUDGET WITH THESE FESTIVE FOOD FEATURES!

# TURKEYS

GRADE "A" FANCY  
YOUNG... TENDER  
TOMS... 18 to 24 lbs.

# LB. 29

Serve with Turkey or Ham

## TURKEYS

Swift's Prem  
Butterball  
**HENS** 37¢  
12 to 16 Lb. Avg.

Swift's Premium  
**BELTSVILLE** 49¢  
Small Grown  
5 to 9-Lb. Avg.

IDEAL SEASONED  
**Stuffin' Bread** 1-Lb. Loaf 19¢

## HAMS

Cudahy's Puritan...  
Sugar Cured...  
Hickory Smoked...  
12 to 14 Lbs. Avg.  
WHOLE Or  
Shank Half Lb. **49¢**

IDEAL THICK SLICED  
**BACON** 2 Lb. Pkg. 98¢

SWIFT'S CLOTH BAG... BROOKFIELD  
**SAUSAGE** 2 Lb. Bag 69¢

## FREE 1-Lb. Bag . . . Fresh . . . Ocean Spray CRANBERRIES



with the purchase of  
any Thanksgiving  
**TURKEY**  
THIS OFFER GOOD AT IDEAL  
UNTIL THANKSGIVING

**CRANBERRIES** Ocean Spray Strained or Whole 2 300 Cans 39¢  
**PUMPKIN** Del Monte Brand Fancy... SAVE! 2 303 Cans 23¢  
**FRUIT COCKTAIL** Cock of the Walk Brand 3 303 Cans 59¢  
**CRISCO** 3-lb. can 5c Off Deal **79¢**

# CELERY

Tender Crisp . . .  
Pascal . . . for the  
Festive Touch. **2** Stalks Only **15¢**

**YAMS** Golden Sweet Potatoes **3** Lb. **29¢**

MEDIUM SIZED YELLOW **ONIONS** 2 LB. 13¢  
FANCY JONATHAN **APPLES** 4 LBS. 39¢

Ocean Spray **FRESH CRANBERRIES**  
2 1-Lb. BAGS 29¢  
The Natural Mate For Every Meat

FESTIVE FOODS FROM IDEAL BAKERY

New Tem-Tea  
**Dinner Rolls** Doz. 25¢  
IDEAL Fresh Baked  
**Dinner Rolls** Doz. 16¢  
IDEAL Brown & Serve  
**Dinner Rolls** 2 Pkg. 29¢  
IDEAL PARKER HOUSE  
**Rolls** of 9 19¢  
IDEAL Enriched  
**BREAD**  
2 1-Lb. Loafs 29¢  
Jumbo Loaf 19¢

West Field, 24-oz Bottle  
**GRAPE JUICE** 29¢  
Miracle Whip  
**SALAD DRESSING** Qt. 49¢  
Cranberry, Ideal Flavorich  
**SHERBERT** 1/2 Gal 69¢  
Maryland Club  
**COFFEE** Lb 67¢  
Del Monte Whole 303 Cans  
**GREEN BEANS** 27¢  
Gold Medal, 10c Off Deal  
**FLOUR** 10-Lb Bag 89¢  
All Flavors  
**JELL-O** 3 Pkgs. 25¢  
Del Monte Crushed, No. 2 Can  
**PINEAPPLE** 33¢  
Cane or Beet  
**SUGAR** 10-lb Bag 95¢  
Easey Off, Large Jar  
**OVEN CLEANER** 59¢

## ICE CREAM

IDEAL Tasty Brand 1/2 Gal. Ctn. 49¢

IDEAL FLAVOR RICH... Holiday Fiesta  
**ICE CREAM** 1/2-Gal. Ctn. 79¢

IDEAL . . . Rich and Creamy  
**Egg Nog** Qt. Ctn. 55¢

Eagle Brand  
**MILK** Can 33¢

BORDO . . . Pitted  
**Dates** 1-Lb. Pkg. 43¢

FLYING K GRADE A LARGE  
**EGGS** Doz. 47¢

KLEENEX BRAND

**Table Napkins**

IDEAL For Your Thanksgiving Table

Lg. Box **27¢**

★ BRAND

**Aluminum Foil**

For Your Turkey Baking . . .

18-Inch Roll

**69¢**

Savings for your holiday meals . . .

Fairmont **Butter** 1-lb 69¢  
Garden King Sweet Whole **Pickles** Qt. Jar 39¢  
Pepperidge **Stuffin Mix** Pkg. 29¢  
Non Such, 3 oz. pkg. **Mince Meat** Pkg. 27¢  
New Large 1 1/2 pt. bottle **Wesson Oil** 49¢  
Dotty **Biscuits** 3 Cans 23¢  
8 oz. pkg. **Dream Whip** 25¢  
Durkee, 1lb off deal **Coconut** 53¢  
Pillsbury Crescent can **Dinner Rolls** 29¢  
King or regular, 8 hot. ctn. plus dep. **Cokes** 29¢  
Spiced, 14 oz. jar **Apple Rings** 39¢

## IDEAL FEATURES FOR THE FESTIVE SEASON . . . PECANS



SHELLED NUT MEATS 12-Oz. Bag 65¢

TOM SCOTT SALTED **Mixed Nuts** 13-Oz. Can 69¢

KRAFT CHEESE, . . . Ass'd Flavors **Ready Dip** 8-Oz. Pkg. 49¢

KRAFT CHEESE, Ass'd. Flavors **Party Snacks** 4-Oz. Pkg. 25¢

KRAFT HOSTESS **Cream Cheese** 5-Oz. Pk 37¢

BETTY CROCKER PIE **Crust Mix** 28-Oz. Box 43¢

BETTY CROCKER, BLUEBERRY **Muffin Mix** Large Pkg. 39¢



**BISQUICK** 40-Oz. Pkg. 43¢

80-Oz. Pkg. 69¢

**Cove Oysters**

DRESS UP TURKEY DRESSING-WITH BLUE PLATE OYSTERS

8-Oz. Can **39¢**

Lindsay Select . . . Ripe **Olives**

Tall Can **29¢**

This Add Good  
Mon. Through Wed.



# Today's Youth Found Growing 'New Force'

**EDITOR'S NOTE:** Are America's young people becoming increasing by conservative and conformist? Such is the opinion expressed recently by a former counsel for the Peace Corps. United Press International asked 40 educators—university and high school—across the nation if they agreed. The following dispatch reports their views.

By JACK V. FOX

The young people of the United States today are in a serious mood. They are more sophisticated politically by far than their counterparts of a generation ago, and they are much more realistic.

The comparative economic security of recent years has resulted in less outward and emotional rebelliousness than during the New Deal days. There is accep-

**IT'S LOVE AT FIRST BITE**



FULL OF TASTEWORTHY FOOD-VALUE

tance of the "organization man" status. But basically they are moving away from the passivity of the "silent 50s" and are showing signs of being an energetic new force in American society.

That is the consensus of a poll taken by UPI among 40 educators—university professors and deans, high school principals and teachers—reacting to the recent challenge of Morris B. Baram, former counsel for the Peace Corps. Abram said college and high school youths were becoming conservative and conformist and had little or no objection to censorship, to wire-tapping or to third-degree police methods.

A few educators agree with Abram. But the overwhelming majority disagreed. Their view was summed up succinctly by James C. McLeod, dean of students at Northwestern University, Chicago. "I don't think in any generation have I seen more enthusiasm for departure from the conservative and conformist outlook than in the present generation of college students," said McLeod.

"Today's students are more conscious of the world around them, more cognizant of the problems and more concerned about them," commented Dr. Frank Duddy, president of Westminster College, Salt Lake City.

"I think your young people of

today have much more belief in themselves. I think they are less conformist than they were five years ago. There is no jazz hoopla about them today.

"It seems to me they are aware that changes need to be made and where they need to be made. These kids are nobody's fools. They tend to work organizationally today more than they did in the 30s."

A number of educators questioned what Abram meant by "conservative."

"There is no question of the increase of political conservatism," said Dr. Adolph Gruger, dean of men at UCLA. "We have thrice the number of Young Republicans on the campus as Young Democrats and there is a definite movement behind Goldwater."

"But to equate this to mean they are conformists and willing to submit to such as censorship is impossible. Today's students are absolutely not conformists. If anything, we have a revival of rugged individualism."

One of the few who agreed almost completely with Abram was Dr. Norman Zucker, professor of political science, Northeastern University, Boston. Said Zucker:

"This trend is explicable by view of the fact that the political forces facing the youth of today are overpowering. These forces are so overpowering that present day students are unable to comprehend what is going on and, furthermore, do not want to comprehend or accept the world and its complexities."

Here are some comments from high schools:

Gordon A. Bailey, principal, Austin, Tex.:

"They have more interest in what's going on than we give them credit for. Maybe there aren't public demonstrations, but those aren't the mark of an inquiring mind."

Hymen Alpern, principal, New York City:

"Many of our students are willing to conform to the standards

set by society, but this represents no change in their attitude over the years. Perhaps this characteristic is more noticeable today because the children now come from families that are more financially secure."

Harry Nicholson, principal, Denver, Colo.:

"If the world thinks the high school and college students are conservative and conformist, adults are looking at the youth through conforming and conservative eyes. Adults get a misconception that youth is apathetic because adults don't take time to sit down and find out what students are thinking."

Ralph Backman, principal, Salt Lake City:

"I have noticed that the general behavior in school this year is one of sober conformity. They're greatly concerned about the world. I would say the times have had a sobering effect on teen-agers to a great extent."

A striking difference was noted in responses from different parts of the country.

Said Dr. Walter DeJaplane, dean of the School of Arts and Sciences at Southern Methodist University, Dallas:

"Students in this part of the country seem to be more interested in the football game or the dance than academic activities. Students here tend to be conservative. Their parents seem to give them everything so why should they want anything more. They seem to be less creative than they were."

On the other hand, Thaddeus Eymour, dean of Dartmouth College, says:

"In recent years I have been aware of an emerging conscience among our young people and a growing commitment to service. There are heartening signs in the 1960s that the silent generation of the 1950s is beginning to speak and act."

Robert Baram, assistant professor of journalism, Boston University, says Abram is more right than wrong.

# Hurricane-Swept Towns On Coast Busy Rebuilding

HOUSTON (UPI) — During the two months since Hurricane Carla hit the Texas coast, scores of communities directly affected by the storm have begun to rebuild and make plans against the eventuality of a similar disaster in the future.

Property losses from the vicious storm that struck the middle coast last Sept. 11 were estimated at between \$100 and 300 millions. At least 35 Texans were killed

by the effects of the hurricane and accompanying tornadoes and high water.

Insurance adjusters, in preliminary estimates, said that \$80 million worth of insured property had been lost.

A bright result of the storm showed up when numerous communities beefed up their civil defense organizations. Remembering the orderly evacuation of an estimated 500,000 persons from the storm-threatened regions, city and county officials have shown an expanded respect for the civil defense setup.

At Galveston, the county voted its civil defense an increased budget, provided office space in the

54th  
VEAB

THE PAMPA DAILY NEWS  
MONDAY, NOVEMBER 20, 1961

9

courthouse for the first time and began to integrate it more closely with county and city emergency departments.

In southern Jefferson County, where Port Arthur alone evacuated 50,000 residents in the face of the hurricane, an accelerated flood control program is underway with a vote to merge two major drainage districts set for next week.

## Does BLADDER IRRITATION MAKE YOU NERVOUS?

After 33 common kinds of bladder irritations often occur and may make you tense and nervous from too frequent, burning or itching urination both day and night. Secondly, you may lose sleep and suffer from headache, backache and feel old, tired, depressed, in swift irritation. CYSTEX usually brings fast, relaxing, soothing, burning-irritating action in minutes, acid urine and gives analgesic pain relief. Get CYSTEX at drugstore. Cheer up and feel better fast.

HEATING SERVICE  
PROMPT—EFFICIENT  
ALL TYPES

H. GUY KERBOW CO. MO 4-6171

# FITE FOOD MKT.

We Give Your Choice of:  
**OPEN SUNDAYS** PAMPA PROGRESS THRIFT STAMPS BUCCANEER STAMPS 1333 N. Hobart STORE MO 4-4092 OFFICE MO 4-8842  
DOUBLE STAMPS  
Wednesday With 2.50 Purchase or More

FITE FEATURES ONLY CHOICE GRAIN FED BEEF

Happy Thanksgiving — We Will Be Closed Thanksgiving Day  
So Our Associates Can Enjoy The Holiday With Their Families.

Fite's Has A Big Supply Of:

Tender, Fresh Dressed Quick-Frozen

Wright's Delight, Sun Ray, Top O' Texas Tenderized

## TURKEYS

## HAMS

Lean, Tender PORK LOIN ROAST	49¢ lb	Fite's Own, Feed Lot, Fed Beef SIRLOIN STEAK	89¢ lb
Fite's Own, Feed Lot, Fed Beef ROUND STEAK	85¢ lb	Fite's Own, Feed Lot, Fed Beef T-BONE STEAK	95¢ lb

COMPARE OUR LOW MARKET PRICES ON FEED LOT FED BEEF  
We Are Equipped To Process, Wrap, Freeze Beef-Pork For Your Freezer

PECANS Wunder Brand 12-oz Pkg.	65¢	Sun Maid, Golden Raisins 15-oz. Box	25c	Gold Medal FLOUR 5 lb. bag	45¢
Durkee's Snow-Flake COCOANUT 5-oz Pkg. 14-oz Pkg.	5c 39c	Hemet, No. 2 1/2 Can Spiced Peaches	19c	MARSHMALLOW CREME Hip-O-Lite Pint Jar	19¢
COFFEE Maryland Club 1-LB CAN	59¢	Kounty Kist, Whole Kernel Corn 2 12-oz. cans	29c	Shurfresh OLEO 2 lbs.	33¢
ANGEL FOOD CAKES Reg. 49c	29¢	Brown & Serve Rolls Tender Crust 2 Reg. Pkgs.	39c	STUFFING MIX Pepperidge Farm Reg. Pkg.	25¢
CRISCO 3 Lb. Can	79c	Shurfine 2 1/2 Can Fruit Cocktail	29c	SHURFINE CRANBERRY SAUCE 2 300 cans	35¢
MIRACLE WHIP Kraft's Quart	49¢	Brown Whole, Vertical Green Beans	19c	SEMI-SWEET CHOCOLATE Nestles 12-oz.	35¢
Curtiss Miniature Marshmallows 2 Reg. Pkgs.	29c	Powdered Or Brown Sugar 2 1-lb. boxes	25¢	Ice Cream Glazier Club 1/2 Gal.	49¢
CRANBERRIES Ocean Spray 1-Lb. Pkg.	19c	Shurfine Milk Evaporated 2 tall cans	25c	PASCAL CELERY Fresh, Tender Stalk	10c
GRAPE JUICE Welch's Frozen 12-oz Can	33¢	Shurfine, 5-oz Jar Instant Coffee Pure Cane	69c	MEAD'S ROLLS Frozen 24 Ct. Pkg.	23¢
		Sugar 5-lb. bag	49¢		
		Reg. Roll Reynolds Foil	27c		
		Kleenex Napkins 50 count	23c		
		Delsey Tissue 4 reg. rolls	45c		
		SWEET POTATOES Maryland Lb.	10c		
		PUMPKIN PIE Simple Simon Frozen Family Size	39¢		

## On The Record

### HIGHLAND GENERAL HOSPITAL NOTES

#### SATURDAY Admissions

Willey McIntire, 1719 Evergreen  
Jan McIntire, 1719 Evergreen  
Junan McCabe, 1943 N. Sumner  
Mrs. Clyde Willis, 1312 N. Starkweather  
Judith Uzzle, Mobeetie  
Mrs. Estelle Cates, Lefors  
Mrs. Patsy Rogers, 1226 E. Harvester  
Mrs. Jerry Langford, Panhandle  
Mrs. Lee Doris Skoog, 710 N. Somerville  
Mrs. June Hardin, Perryton  
Eric R. Goode, Lefors  
Tina Goode, Midland  
Ray Robertson, 424 Doyle

#### Dismissals

### Jerry Wayne Stevens, Panhandle

C. M. McKiney, Groom.  
Mrs. Carrie Slossum, 745 E. Albert  
Jimmy Lopez, White Deer  
Peggy Beavers, 1250 S. Barnes  
Baby Roger Smith, 518 N. Wells  
Mrs. Idell Fisher, 1108 S. Faulkner  
Shirlene Romines, 1412 Bond  
Mrs. Nelda Conner, 448 Graham  
Frank Palminter Jr., Pampa  
Mrs. Allene Turnbo, 728 Bradley Dr.  
Mrs. Elena Gilliam, Spearman  
Mrs. Vivian Hutson, Skellytown  
Mrs. Allene Ritter, Groom  
B. L. Mays, McLean  
Mrs. Florence Guthrie, Pampa  
Ed Brock, Lefors  
Ralph Broadbent, 837 Brunow  
Mrs. Eula Johnson, Mobeetie  
Mrs. Ruby Keeton, Pampa  
Nona Reid, White Deer

### CONGRATULATIONS

To Mr. and Mrs. Joe Rogers, 1226 E. Harvester, on the birth of a girl at 5:34 p.m., weighing 7 lbs., 4 ozs.  
To Mr. and Mrs. W. A. Skoog, 710 N. Somerville on the birth of a girl at 4 p.m., weighing 8 lbs., 11 ozs.

### SUNDAY Admissions

George Oliver, 1034 S. Gray  
John Cummings, Borger  
B. L. Mays, McLean  
Mrs. Lafert Pratt, Panhandle  
Mrs. Pearl Wiginton, Panhandle  
Mrs. Pauline Herd, Pampa  
Mrs. Ann Merrell, Canadian  
Mrs. Melba West, White Deer  
J. L. Walton, 405 N. Dwight  
Mrs. Ruth Snapp, 1104 Crane Rd.  
Anita Willett, 325 N. Wells  
Roy McMillen, 1325 Duncan  
Mrs. Mary Brewer, 736 Bradley Dr.  
Billy Quarles, 620 N. Hazel  
Roddy Porter, 1616 N. Hobart

### Dismissals

Wiley & Jan McIntire, 1719 Evergreen

Mrs. Clara Drake, Stinnett  
Mrs. Loreta Sims, Borger  
Mrs. Laura Mae Tinkler, Kellerville  
Mrs. Lora Riley, Shamrock  
Mrs. Suna Miller, Phillips  
Gene Barber, 1807 N. Sumner  
Robert G. Herring, 919 E. Albert  
Eric R. Goode, Lefors.  
Tina Goode, Midland

### CONGRATULATIONS

To Mr. and Mrs. W. C. Langford, Panhandle, on the birth of a boy at 9:52 a.m., weighing 7 lbs., 13 ozs.

Read the News Classified Ads

**This Weeks SPECIAL**  
Good Tues., Wed., Thurs.  
Nov. 21, 22, 23

**Steak Sandwich**  
SERVED WITH MAYONNAISE LETTUCE AND TOMATOES  
REG. 45c

**29c**

**BANANA SPLIT**  
Reg. 45c **29c**

**Caldwell's Drive Inn**  
220 North Hobart MO 4-2601



PARK THIS MAGNIFICENT OLDSMOBILE IN YOUR DRIVE AND  
**LISTEN TO THE NEIGHBORS TALK!**

Oldsmobile's elegant Ninety-Eight is the smart conversation piece wherever it goes! And with good reason! For here is the distinctive style that's dramatically new... the pace-setting 330-horsepower Skyrocket performance that's exclusively Olds! Plus a new measure of quality and reliability that makes every Oldsmobile a car of superiority! Better visit your Oldsmobile Quality Dealer now. Drive the car that's creating favorable comments—and enthusiastic customers—all over town!

*Ninety-Eight* by OLDSMOBILE  
There's "SOMETHING EXTRA" about owning an OLDS!  
SEE YOUR LOCAL AUTHORIZED OLDSMOBILE QUALITY DEALER  
**TOM ROSE MOTORS 121 N. BALLARD**  
TUNE IN EVERY TUESDAY! DON'T MISS "THE GARRY MOORE SHOW" • CBS-TV

# Easy To Make Straight Tubular Jersey Skirt

By MARY BROOKS PICKEN  
Newspaper Enterprise Assn.

Several requests have come to this column, asking if a straight skirt can be made of tubular jersey. My answer is yes, lovely skirts can be made of 60-inch tubular jersey, and ever so easy, too.

Choose the jersey color you like, one that will be right for your blouses, sweaters or jackets. Buy the skirt length plus 4 inches (3/4 to 1 yard, usually).

Straighten fabric at both ends. Fold in half lengthwise. Notch for center-back and center-front. Place notches together and lay fabric flat with one fold toward you. Measure skirt length plus 1/2 inch; chalk line straight across for a 4-inch hem.

Take a piece of 1-inch wide belting, waist size plus 1 1/2 inches. Place pin 1/4 inch in from each end of belting; divide belt in-between into four units, with pins placed the narrow-way. Pin belting to top of skirt, match-



Tubular jersey skirt.

ing pins to center-front and center-back.

Lay 2-inch box pleats on either side of center-front, as at A. Lay a second and a third pleat on each side as shown.

Lay an inverted pleat in center-back as shown, making it deep

enough so that top of skirt fits tape.

Pin pleats, easing jersey onto the belting.

When pleats are even, all fullness held in easily, stitch jersey to belting around top of skirt. Turn belting to wrong side; cover raw edge of jersey with seam binding, then stitch top of skirt 1/4-inch from the turn.

For placket, cut down 7 inches from A on right-hand side where belting ends. Make a narrow machine hem on both sides of opening. Tack bottom ends of placket securely.

Stitch slowly and stretch jersey away from the belt line so that jersey will not crowd in front of pressure foot. Press.

Use two hooks and eyes to fasten waistband and one or two small snaps on placket to prevent gaping.

Put on skirt. Check length. Turn raw edge over 1/4 inch, and stitch. Then slip-stitch hem in position.

You can pink the top edge of the hem, then simply slip stitch edge to place.

Dear Mrs. Picken: My daughter, 11, is 5 feet 3, has a 34 bust, 30-inch waist, and 40-inch hip. I cannot fit her in a child's size—L, M, F.

Dear L. M. F.: Try a misses' or ladies' size in a 16. Fold the bust of the pattern in to make the line straighter — evidently the major difference would be there.

Allow 1/2 inch on the underarm seams of the skirt to provide for size-40 hip. So often children's and mothers' patterns are styled the same.

You may have to straighten the underarm seam both in bodice and skirt to make waist large enough for you daughter.

Let me know, please, how this works out.



Detail for skirt.

## SOCIAL CALENDAR

- MONDAY**
- 7:30 — Unit III, Pampa Garden Club with Mrs. Owen Gee, 1608 Williston.
  - 7:00 — Pampa Little Theater, 612 W. Browning.
  - 7:30 — Pampa Duplicate Bridge Club, the Coronado Inn.
  - 7:30 — Pythian Sisters, Castle Hall, 317 N. Nelson.
  - 7:30 — Wesleyan Service Guild, First Methodist Church in the church parlor.
  - 8:30 — Upsilon Chapter, Beta Sigma Phi Sorority, City Club Room.
- TUESDAY**
- 9:30 — PTA City Council Civil Defense Study Course, Lamar School.
  - 9:30 — Eunice Leach Circle, Hobart Street Baptist, with Mrs. E. J. Moxley, 113 S. Wells.
  - 9:30 — Valeria Sherard Circle, Hobart Street Baptist, with Mrs. D. L. Keeton, 723 N. Banks.
  - 9:30 — Francis Knight Circle, Hobart Street Baptist with Mrs. Carroll Smith, 923 1/2 S. Hobart.
  - 9:30 — Goodwill Home Demonstration Club with Mrs. A. P. Coombes, 1230 E. Fredric.
  - 2:30 — Twentieth Century Cottillion with Mrs. John Hess, 2326 Mary Ellen.
  - 2:30 — Twentieth Century Allegro with Mrs. Evert Duncan, 2112 Charles.
  - 2:45 — Parent Education Club with Mrs. Elmer D. Wilson, 1300 Williston.
  - 6:00 — Order of the Rainbow For Girls, Masonic Hall.
  - 7:30 — Barrett Baptist Chapel Women's Missionary Union in the chapel.
  - 7:30 — American Association of University Women, dinner meeting, in the Coronado Inn.
  - 7:30 — DMF Auxiliary, Cities Service Gas, Recreation Hall.
  - 7:30 — Royal Neighbor Lodge, Carpenter's Hall, West Foster.
  - 7:30 — Pampa Rose Society with Dr. and Mrs. Weldon Adair, Mr. and Mrs. Cecil Collum as hosts.
  - 8:00 — Order of the Eastern Star, Masonic Temple.
  - 8:00 — St. Matthews Episcopal Altar Guild, parish hall.
  - 8:00 — St. Vincent dePaul Altar Society.
- WEDNESDAY**
- 9:30 — Winnie Trent Circle, First Baptist with Mrs. O. V. Burton, 1012 Buckler.
  - 10:00 — Thursday Morning Duplicate Club, Quivira Room, the Coronado Inn.

### Dear Abby... "Pump" Friend For Real Reason

By ABIGAIL VAN BUREN

DEAR ABBY: I have been going with this man for four years, and he just won't marry me. He is 28 and I am 24. He doesn't see anyone besides me. His excuse is that he doesn't have enough money saved, which is ridiculous. He and another man own and operate a filling station in partnership. He lives at home, and saves like a miser. The last time he showed me his bank book he had \$5200 saved. Isn't this plenty to get married on?

**TIRED OF WAITING**

DEAR TIED: Yes. Your friend is stalling. Pump him for the "real" reason.

DEAR ABBY: I am married to a man who is very cold and silent to me unless he has a few drinks in him. Then he gets warm and sweet and says the nicest things to me. He is not an alcoholic. In fact, he doesn't really like the taste of liquor, but I know if I want any affection or kindness from him I have a better chance if I pour him a drink. Do you think I am making a mistake by encouraging him to have a little drink or two a couple of times a week? The doctor said it won't hurt him. I don't want to make a drinker out of him, but he is so much nicer drunk.

**NEEDING LOVE**

DEAR NEEDING: No one is "nicer" drunk. Ask your doctor how you can accomplish the same effect without putting your husband's brain to sleep.

DEAR ABBY: I don't suppose many men write to you, but here's a letter from a man who would like to know what to do with an 18-year-old daughter who is strong, healthy and lazy with a capital "L." Her mother can be breaking her back with housework, but this daughter looks right through her. She has never once offered to help with anything. She acts like she is a royal princess who has nothing to do but entertain herself. It burns me up to witness this the few hours I am at home. How can 'this be corrected?

**BURNED FATHER**

DEAR FATHER: Your royal "princess" was not trained by her mother (or anyone else) to get

### Senior Center Corner

By MRS. O. A. WAGNER  
Senior Citizens Center

We had a fair turnout at Senior Center on Thursday. Fifty-nine brave souls ignored the weather and came down for an afternoon of games and fellowship.

The El Progresso Study Club was hostess with Mrs. Harold Wright as chairman.

There will be no meeting at the Center next week, as it will meet as usual the following Thursday on Nov. 30.

Mrs. Francis Debrouhau, who we reported last week as being in Worley Hospital, had fallen and broken her hip. She was taken the next day to St. Anthony Hospital in Amarillo to a bone specialist. She is reported to be getting along all right. It was suggested that we give her a card shower.

Mrs. Bessie Sowell, who came here recently from El Paso to make her home, has found a nice apartment on Yeager and is getting settled nicely. It was nice

to have her with us again on Thursday at the center.

Mr. and Mrs. Jay Evan had as their houseguest last weekend, Mr. Evans' brother, Otis Evans of Sentinel, Okla.

Mr. and Mrs. J. C. Moseley visited from Tuesday until Thursday with their son and family in Gage, Okla.

Mr. and Mrs. R. H. Caillouette of Elk City, Okla. were Saturday guests of Mrs. C. G. Miller and son, Bill.

Mr. Charles DeMoss was reported ill in Highland General Hospital with pneumonia. He is recovering nicely and is expected to be home in a few days.

As this is being written (on Saturday), it is with deep regret that we have learned of the death of N. T. Appleton. He will be missed by his many friends at Senior Center.

Ira Frazer of San Bruno, Calif. is visiting with his son and family, Henry Frazer. He told us of his visit to the Senior Citizens Center in San Bruno.

Mrs. Lillian Brunelle told us of her visit to Senior Center, when she visited her daughter in Dedham, Mass. this fall.

Mrs. Katie Vincent accompanied her daughter and husband, Mr. and Mrs. N. Dudley Steele to Lubbock recently for the homecoming ceremonies. The Steele's daughter is student at Texas Technological College. Another granddaughter, Miss Nancy Vincent of Roth joined them there.

Mrs. H. M. Norris and C. E. Sidwell won the door prize at the party on Thursday.

Let us all pray for peace. See you in two weeks, Mrs. Wagner.

## Worthwhile Makes Pillows For Red Cross At Meeting

Worthwhile Home Demonstration Club met Friday for an all-day meeting in the home of Mrs. Boyd Brown, east of the city.

A covered-dish luncheon was served during the noon hour.

The day was spent making pillows for the Red Cross. During the day 70 pillows and 25 pillow cases were completed.

During the business meeting, it was announced that the Gray County Council party was to have been held in the Courthouse Annex on Nov. 18 at 7 p.m.

A round-table discussion was held relating to leather-craft. A paper was read on the Peace Gardens, which is located between Canaan and North Dakota.

Members attending were Mmes. N. B. Cude, N. L. Welton, Shelby Hood, Lester Reynolds, L. M. Bryant, O. A. Wagner, Pearl Ferguson, Bill Kennedy, Roy Tinsley, Boyd Brown, Miss Yvonne Reynolds.

**Thanksgiving Fete Planned By B&PW**

Business and Professional Women's Club met Tuesday evening at 7:30 p.m. in the City Club Room with Mrs. Elmer Tinnin, president, in charge of the business meeting.

Plans were discussed for a Thanksgiving banquet to be held Tuesday at 7 p.m. in the City Club Room with Travis C. Lively as guest speaker.

All members are urged to attend and guests will be welcomed. Reservations should be made with Mrs. Helen Knox, MO4-7302 by Monday.

Mrs. Mack Harmon requested that all members turn in their money for the Christmas Activities Fund as soon as possible. B&PW Club is collecting funds for the Christmas decorations to be put up this weekend.

Members approved the suggestion to enter a float in the Santa Day Parade to be held Dec. 1.

Following the business meeting, Mrs. Knox introduced Mrs. Don George as the evening's guest speaker. Mrs. George discussed the swimming classes she had taught for the handicapped children, which had an enrollment of 25 children.

Meeting closed with Mrs. Bess White giving the club collect.

### IT'S LOVE AT FIRST BITE

FULL OF TASTEWORTHY FOOD VALUE

We will provide over \$100,000,000 FOR THE HOLIDAYS

## BORROW THE MONEY YOU NEED ON YOUR SIGNATURE

PHONE TODAY — We want you to be one of our 250,000 Holiday Customers — Just call us and let us know how much money you want for the holidays. Arrange your loan by phone in the morning — get your money later. Same-day service. No red tape. No embarrassment. Our affiliated companies have over 100 million dollars just for the holidays. Arrange for your share now and have a happy holiday.

BORROW UP TO \$1000	
CASH YOU GET	MONTHLY PAYMENTS
\$ 319.06	\$15.00
\$ 425.75	\$20.00
\$ 574.91	\$27.00
\$1000.65	\$47.00

United Finance and Thrift Corporation is supervised and examined by the State Banking Department.

**UNITED FINANCE AND THRIFT**

AMARILLO 508 Polk Street DRake 4-1663  
BORGER 610 North Main Street BRoadway 3-7578  
PAMPA 116 West Foster Street MOhawk 4-2501

A Friendly Hand When You Need It

## Ruth Millett

### Throw-Away Clothing

#### Spoils Shopping Fun

Ward Cannel keeps his regular readers (of which I am one) right up to the minute on what's going on where we're not looking. Recently, the Newspaper Enterprise Assn. writer gave us a run-down on what's happening in the relatively new field of disposable clothes — the kind you wear once or twice or three times, and then throw away.

It seems these disposable clothes are working out fine in plants, laboratories and even in some hospitals. But I doubt that disposable clothes will ever take up much room in a woman's wardrobe.

Why, buying clothes to be thrown away after a few wearings would take all the excitement and challenge out of shopping!

When a woman shops, she is betting on her fashion sense to guide her to a wise choice. With a calculating eye, she turns down one dress because she is sure a particular style is on its way out; another, because she thinks the color is so good this season she'll hate it next year. She rejects still another because it has been mass produced to such an extent that wearing it would be like wearing a uniform.

These are the "finds" women brag about to each other — the treasures that long and careful "looking" now and then unearth.

These are the clothes that reassure a woman that she has real fashion sense and is a smart shopper, besides.

In a recent fashion magazine, a group of women (all with enough money to wear a Dior only once if they wanted to), posed in favorite "finds" they were still wearing after 5, 10, or even 20 years.

But throw-away clothes would take all the challenge out of shopping. No more real finds, no more guesses, not even any more costly-mistakes to make clothes buying an exciting gamble!

Read the News Classified Ads

## TEXAS FURNITURE COMPANY

### QUALITY HOME FURNISHINGS

#### The Finest In Carpets

By Lees Bigelow Firth Berven

CALL MO 4-4623 FOR OUR CARPET MOBILE AT NO OBLIGATION

## Woman's World

DORIS E. WILSON  
women's page editor

## Thanksgiving Baskets For Shut-Ins Planned During Mission Study Meets

Women's Missionary Society of Calvary Baptist Church recently held circle meetings with the following reports:

**LEOLA RAGLAND CIRCLE** met in the home of Mrs. C. R. McGahen for mission study. Mrs. C. E. Humphries led opening prayer and gave the devotion. Mrs. Jack Robertson, Mrs. Robert Willis and Mrs. McGahen participated in the program "Hands Across The Sea." Mrs. Orval See offered closing prayer. Refreshments were served during the social hour. Nine members were present.

**FLORENCE PINKSTON CIRCLE** met in the home of Mrs. L. A. Laverty for Bible study, with Mrs. Charles McGahen teaching the lesson. Mrs. Robert Reddell led the opening prayer. During a brief business meeting, conducted by Mrs. McGahen, plans were made for a Thanksgiving basket to be given to shut-ins. One new member was welcomed and six members were present.

**ELIZABETH CIRCLE** met in the home of Mrs. C. Davis for Bible study with Mrs. R. R. Hawkins as teacher. An offering was taken for the nursery and plans were made for Thanksgiving baskets. Attending were Mmes. Hawkins, Clyde Dorman, J. M. Foster, A. Griffin, Ben Cates and Floyd Haught, A. W. Lunsford.

**THE NIGHT CIRCLE** met in the sanctuary for a Royal Service program opening with prayer by Mrs. Graham Reeves. A skit was presented by Mrs. Reeves and Mrs. Floyd Haught with Mmes. Orval See, Austin Ruddick, Viola Mathews, Micky White and Hood Earp participating. Others present were Mmes. J. B. Crocker, circle chairman, B. W. Mitchell and A. Sharp, who dismissed the group with prayer. Refreshments were served during the social hour.

**THE TRAINING CIRCLE** met in the home of Mrs. Orvan-Brewer with Mrs. Lindon Sanders in charge of the program. Plans were made for a Thanksgiving basket for shut-ins. Refreshments were served during the social hour.

It was announced that the WMU was to meet at the church on Wednesday for a visitation program for the church revival.

## NO SUBSTITUTE

by Janet Henry

Recorded Once-upon-a-times, And Sing-a-songs, and nursery rhymes Are more articulate, perhaps, But record players have no laps

## ENJOY Dining Out OFTEN

### TUESDAY IS FAMILY DAY

#### AT CALDWELL'S BUFFETERIA

ALL YOU CAN EAT

NOON OR EVENING

# 90c

Hours 11 a.m. to 2 p.m. to 8

MAKE IT A FAMILY AFFAIR

CHOICE OF: 4 Meats, 4 Vegetables, 8 Salads, 4 Desserts

## CALDWELL'S BUFFETERIA

2014 NORTH HOBART

---

## EXODUS

OTTO PREMINGER PRESENTS PAUL NEWMAN/EVA MARIE SAINT RALPH RICHARDSON/PETER LAWFORD LEE J. COBB/SAL MINEO/JOHN DEREK JILL HAWORTH

---

## CAPRI

MO 4-2569

Open 1:45 — Now-Wed. 5th BIG DAY AT: 1:50 4:24 6:18 9:32

In the high-adventure tradition! SPENCER TRACY and FRANK SINATRA in the BEATLES color-RED KILMER production

MERVYN LLOYD - FRED KOHLMAR

Cartoon & News

**FOOD CENTER**  
400 S. RUSSELL MO 5-3452

OPEN 7 DAYS A WEEK DAILY 8-8; Saturday 8-9 p.m.

# HAMS

**39<sup>c</sup>**  
Lb.

Wright Brand — Shank Half or Whole

## HOLIDAY FOOD SPECIALS!

**FRYERS**

**19<sup>c</sup>**  
Lb.

**GROUND BEEF**

**3**

LBS

**\$1**

**ROUND STEAK**

**79<sup>c</sup>**  
Lb.

Fresh Dressed, U.S. Inspected

Fresh, Lean

USDA Good Beef

U.S.D.A. Grade A

# Turkeys

BROAD BREASTED

BRONZE

HENS: 12-14 Lbs.

TOMS: From 20 Lbs.

**29<sup>c</sup>**  
Lb.

WE WILL BE OPEN  
THANKSGIVING DAY

THESE SPECIALS GOOD  
ALL THIS WEEK!

**EGGS**

LARGE

Elmer's Economy

Doz. **39<sup>c</sup>**

**SHORTENING**

Fluff-Wright

**3** Lb. **49<sup>c</sup>**  
Ctn.

**CRANBERRY SAUCE**

Ocean **2** 303 **37<sup>c</sup>**  
Spray Cans

**SOLID OLEO**

Diamond **2** LBS **25<sup>c</sup>**

**CRANBERRIES**

FRESH

1-Lb. Pkg.

**27<sup>c</sup>**

**SWEET POTATOES**

Maryland

**9<sup>c</sup>**  
Lb.

**ORANGES**

Calif. Sunkist

**21<sup>c</sup>**  
Lb.

**POWDERED SUGAR**

**2** 1-Lb. **25<sup>c</sup>**  
Pkgs.

**BROWN-SERVE ROLLS**

Freshe **2** Reg. **39<sup>c</sup>**  
Pkgs.

Ellis Shelled  
**PECAN HALVES**  
12-oz Pkg.

**69<sup>c</sup>**

Hunt's  
**FRUIT COCKTAIL**  
303 Can

**19<sup>c</sup>**

**WHIPPING CREAM**

Kelley's Half Pint

**29<sup>c</sup>**

**ALUMINUM FOIL**

Lone Star 25 ft. Roll

**25<sup>c</sup>**

**DELICIOUS APPLES**

Washington **5** Lb. Bag **49<sup>c</sup>**

**LETTUCE**

Tender, Fresh, Crisp,

**10<sup>c</sup>** Large Head

**CELERY**

Pascal, Tender, Fresh

**12<sup>c</sup>** Stalk

**BANANAS**

Yellow, Ripe, Fresh, Firm **2** Lbs. **29<sup>c</sup>**

Hershey  
**COCOA**  
1/2 Lb.

**29<sup>c</sup>**

Del Monte  
**Pumpkin**  
303 Can

**10<sup>c</sup>**

**SALAD DRESSING**

Best Maid Quart Jar

**29<sup>c</sup>**

Kimbell's  
**FLOUR**

**5** Lbs. **29<sup>c</sup>**

OUT OUR WAY

J. R. Williams



Freckles



OUR BOARDING HOUSE

With Major Hoopie



All In A Lifetime



Potts



The Berrys



Short Ribs



Wash Tubbs



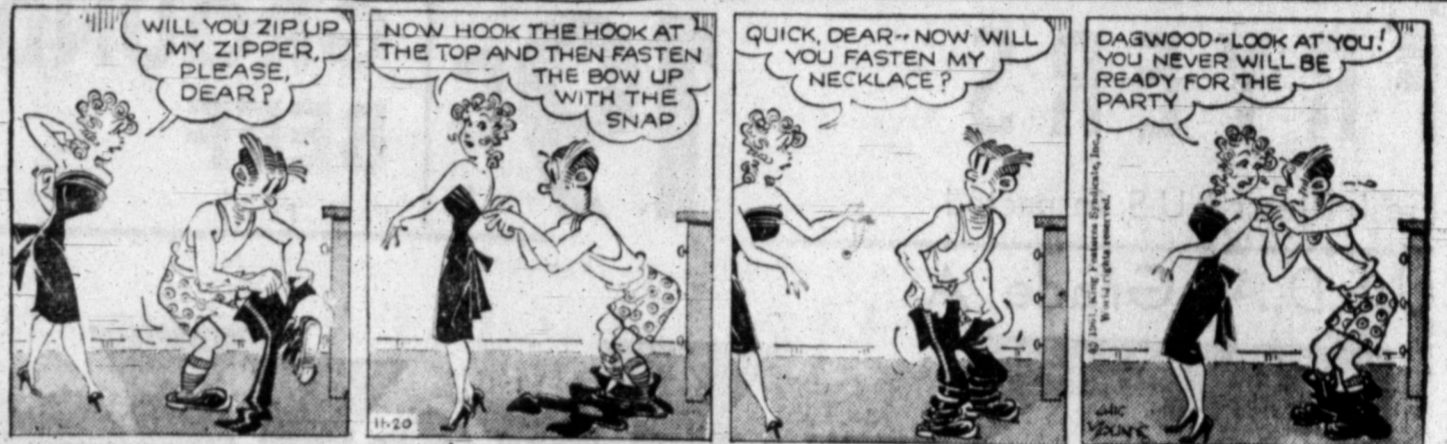
Jackson Twins



Marty Meekie



Blondie



Alley Oop



Bonnie



Martha Wayne



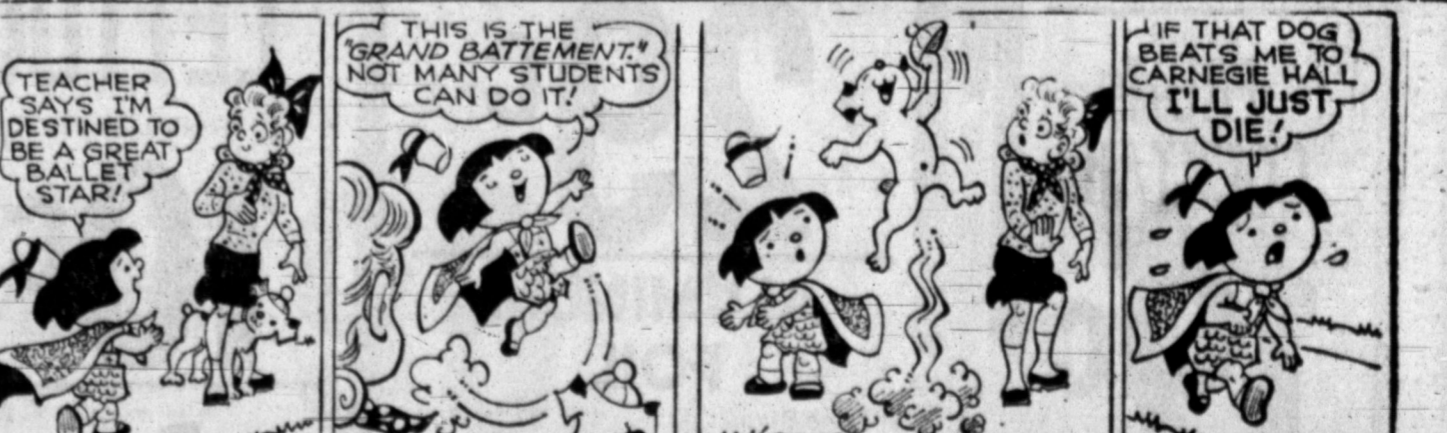
Mickey Finn



Dixie Dugan



Pricilla's Pop



Joe Palooka









# Area Drilling Intentions

**INTENTIONS TO DRILL**  
Carson County  
(West Panhandle Red Cave)  
Cities Service Gas Producing Co. — S. B. Burnett No. 4-R — 1320 fr. S & E lines of Sec. 80, 5, I&GN, PD 2000  
Cities Service Gas Producing Co. — S. B. Burnett No. 3-R — 1580 fr. S & E lines of Sec. 83, 5, I&GN, PD 1700  
(Panhandle)  
Gulf Oil Corp. — S. B. Burnett "B" No. 2 — 990 fr. S & W lines of Sec. 131, 5, I&GN, PD 3300  
H. F. Sears — Bivins No. 1-15 — 1748 fr. E & 1648 fr. S lines of Sec. 15, Y-2, TTRR, PD 3400, amended

(West Panhandle)  
Cities Service Gas Producing Co. — S. B. Burnett No. 5-R — 1980 fr. N & 660 fr. E lines of Sec. 78, Bk 5, I&GN, PD 1750  
Gray County (Panhandle)  
John W. Adams — Christopher No. 1 — 330 fr. N & 1650 fr. E lines of Sec. 9, H. A. W. Wallace Survey, PD 3200  
R. P. Fuller — Johnson 'A' No. 1 — 330 fr. N & 450 fr. W lines of Sec. 178, E, D&PRR, PD 2940  
Wilcox Oil Co. — Combs No. 95 — 330 fr. S & 1800 fr. S lines of Sec. 59, J, I&GN, PD 3150  
Ross Petroleum, Inc. — Johnson Estate No. 2 — 330 fr. N & W lines of Sec. 66, HD, D&P, PD 2770

**Hutchinson County:**  
(West Panhandle)  
Phillips Petroleum Co. — Tate "A" No. 1 — 330 fr. N & 1800 fr. E lines of Sec. 17, X-03, H&OB, PD 3000  
Cree — Sears — Bivins No. 2 — 85 fr. W & 5084 fr. S lines of Sec. 84, 46, H&TC, PD 3000  
(Panhandle)  
H. F. Sears — Bivins No. 4-54 — 2970 fr. S & 1140 fr. E lines of Sec. 84, 46, H&TC, PD 3200, amended  
H. F. Sears — Bivins No. 2-84 — 3600 fr. S & 610 fr. W lines of Sec. 84, 46, H&TC, PD 3200, amended  
Petroleum Exploration, Inc. — State Lease No. 5 — lying at a point 2440 S & 1992 E of NE-cor. Sec. 16, 47, H&TC, PD 2250  
Petroleum Exploration, Inc. — State "A" No. 1 — located at a point 19,855 S & of SW cor. Sec. 57, & 1650 W of same, PD 2750 (Canadian Riverbed), 46 H&TC  
Petroleum Exploration, Inc. — State "A" No. 2 — located at a point 11,515 fr. S & 1650 W of SW cor. of Sec. 57, 46, H&TC, Canadian Riverbed, PD 2750  
Petroleum Exploration, Inc. — State "A" No. 3 — located at a point 11,515 fr. S & 1650 W of SW cor. of Sec. 57, 46, H&TC, Canadian Riverbed, PD 2750  
Petroleum Exploration, Inc. — State "A" No. 4 — located 12,920 fr. the most sly. point S W cor. Sec. 57 and 1650 W, Bk. 46, H&TC, in Canadian Riverbed, PD 2750

**Pan-Am Names Superintendent**  
OKLAHOMA CITY — Edward C. Woodall has been appointed area superintendent for Pan American Petroleum Corporation's Pampa, Texas area, according to an announcement by Geo. W. Clarke, the company's vice president and division manager.  
Woodall attended Walters, Okla. high school, Cameron A. & M. College at Lawton, Okla. and holds a degree in mechanical engineering from Oklahoma State University.  
He was employed by Pan American in June, 1954 as a petroleum engineer at Duncan, Okla. Later, he served in various engineering and management capacities at the company's locations in Ellinwood, Kansas, and Duncan, and Oklahoma City.  
Woodall is a member of the American Petroleum Institute, Mr. and Mrs. Woodall and their three children will move to Pampa the first of the year.  
The move will be effective December 1. Woodall will replace




Edward C. Woodall ... Coming To Pampa  
Ralph Ludwick who is being transferred to the company's Pine Island area at Vivian, La., as superintendent.

**WATCH FOR THE**




**THANKSGIVING MENU IN TUESDAY'S PAMPA NEWS**

**\$22 DIVIDEND**



**THAT'S HIS. WHAT'S YOURS?**  
State Farm has increased its dividend rate in Texas, making the actual net cost of State Farm car insurance 17% lower than that of most other companies! See how you may benefit with State Farm—world's largest car insurer. Call me today!

**Harry V. Gordon**  
1105 1/2 Alcock MO 4-3861



**STATE FARM**  
NATIONAL AUTOMOBILE INSURANCE COMPANY  
11900 PRESTON ROAD • DALLAS 20, TEXAS

**COMPLETIONS**  
Gray County (Panhandle)  
Wilcox Oil Co. — Combs No. 93 — Sec. 60, Bk 3, I&GN, com. 10-27-61, TP 2817, TD 3047, GOR 1250 pot. 51 BOPD  
Gloan Oil & Gas Co. — Ruby Sackerr No. 15 — Sec. 148, e I&GN, com. 10-4-61, TP 3255, GOR 435, pot. 24.60 BOPD, TD 3345  
(East Panhandle)  
Texaco Inc. — McLarty-Lester "B" No. 15 — Sec. 1, ACH&B, com. 10-12-61, perf. 2121-32, TD 2360, PBD 2342, pot. 1700 MCFD  
Texaco Inc. — M. B. Davis No. 35 — Sec. 9, 1, ACH&B, com. 10-14-61, perf. 2256-2381, TD 2450, PBD 2435, pot. 2100 MCFD  
Texaco Inc. — A. Chapman "A" NCB-1 No. 46 — Sec. 8, J. Davidson Survey, com. 10-12-61, perf. 2265-2281, TD 2285, PB 2231, pot. 3700 MCFD  
Texaco Inc. — McLarty-Lester "B" No. 14 — Sec. 1, J. M. Rose Sur., com. 9-30-61, perf. 2351-2469, TD 2525, PB 2516, pot. 3200 MCFD  
(Dude Wilson Upper Morrow-Oil)  
Humble Oil & Refining Co. — B. P. Graham No. 2 — Sec. 745,

Blk. 43, H&GN, com. 11-7-61, GOR 960, pot. 224 BOPD, perf. 8080-87  
(RHF Morrow)  
Alma Oringerderrf No. 4 — Sec. 25, 44, G. Anderson Sur., com. 11-7-61, TP 8046, TD 8116, GOR 500, pot. 480 BOPD  
Alma Oringerderrf — Eaton Oringerderrf No. 44 — Sec. 25, 44, G. Anderson Sur., com. 10-10-61, GOR 550, pot. 260 BOPD, TP 8072, TD 8150  
(Horizon Cleveland)  
Alma Oringerderrf — Eaton Oringerderrf No. 3-UT — Sec. 25, 44, G. Anderson, GOR 650, pot. 190 BOPD, TP 8702, TD 8150  
(Ellis Ranch Keyes)  
Shamrock Oil & Gas Corp. — Carl Ellis "F" No. 2-LT — Sec. 743, 43, H&TC, com. 8-5-61, perf. 8128-37, TD 9010, pot. 1700 MCFD  
Carson County (West Panhandle)  
Consolidated Gas & Equipment Co. of America — Trayler No. 2 — Sec. 74, 7, I&GN, com. 9-24-61, perf. 2986-3027, TD 3844, pot. 7600 MCFD  
Consolidated Gas & Equipment Co. — Wallace No. 1 — Sec. 95, 7, H&GN, perf. 2990-3033, TD 3150, pot. 395 MCFD  
(West Panhandle Red Cave)  
Colorado Interstate Gas Co. — Poling 1-R — Sec. 12, Y-2, TT&RR, com. 10-23-61, perf. 1715-1755, TD 1975, PB 1784, pot. 2650  
Potter County (West Panhandle Red Cave)  
Colorado Interstate Gas Co. — Warrick No. 12 — Sec. 16, Y-2, TT&RR, com. 10-23-61, perf. 1506-1532, TD 1740, PB 1560, pot. 6500  
Hutchinson County (West Panhandle Red Cave)  
Colorado Interstate Gas Co. — Bost No. 1-R — Sec. 10-Y-2, TT&RR, com. 10-25-61, perf. 1647-1671, TD 1915, PB 1721, pot. 1250  
Colorado Interstate Gas Co. — Bivins No. 7-R — Sec. 11, F-2, GB&CNG, com. 10-23-61, perf. 1628-1668, TD 1894, PB 1688, pot. 4800  
Colorado Interstate Gas Co. — Bost No. 2-R — Sec. 6, Y-2, TT&RR, com. 10-23-61, perf. 1558-1593, TD 1806, PB 1611, pot. 4800 MCFD  
Colorado Interstate Gas Co. — Bost No. 3-R — Sec. 9, Y-2, TT&RR, com. 10-25-61, perf. 1606-1642, TD 1869, PB 1673, pot. 1800 MCFD  
(Panhandle)  
J. M. Huber Corp. — State "AC" No. 45 — Sec. N of 66, N of 46, H&TC, com. 10-24-61, TP 2485, GOR 4942, pot. 24 BOPD, TD 2773  
J. M. Huber Corp. — State

**ECONOMY MINDED SPECIALS**  
Good November 20 Thru the 25

**WASH AND LUBRICATION** \$2.98

**GULF 670 X 15, BLK, TT Mud & Snow Tire** \$11.66 Plus Tax

**12 MO. GUAR. GULF TRAFFIC BATTERIES** \$9.95

Installed, Gulf Perm. Type  
**Anti-Freeze** \$1.59 Gal.

Good Gulf Gasoline	21.9 Plus Tax	No Nox	25.9 Plus Tax
Gulf Crest Gasoline	27.9 Plus Tax		

**GENE'S GULF SERVICE**  
422 W. FOSTER MO 4-2412  
Call For Delivery — MO 4-2412  
H. E. "GENE" WINEGART, OWNER  
BILL WOODRUFF, SERVICE MANAGER

**SECURITY FEDERAL**  
makes **PAYING** for your new home as easy as **LIVING** in it!

Home ownership is happier for thousands of people because of wisely-planned loans from this association! Our experts design a loan with sensible payments, scaled to your income... give you competitive rates, lowest closing costs possible, liberal prepayment privileges. If you're planning to buy or build, let us plan your loan. Come in for a talk... you're always welcome!

**SECURITY FEDERAL SAVINGS & LOAN ASSOCIATION**  
ALBURY L. STEELE, Executive Vice President-Secretary  
MEMBER: FEDERAL SAVINGS & LOAN INSURANCE CORPORATION  
FEDERAL HOME LOAN BANK SYSTEM  
WEST FRANCIS AND GRAY STREETS

4% ANNUAL DIVIDEND

**WHITE'S** SOUTHWEST GREATEST DISCOUNT CENTERS

**You Can't Afford to Miss... THANKSGIVING DAY ENTERTAINMENT!**

**OLYMPIC 3-in-1 COMBINATION**  
★ Giant Screen Hand Wired TV  
★ Extra Powerful, Clear-tone AM Radio  
★ 4-speed Automatic Record Player Equipped for Stereo!

**299.99\*** Easy Monthly Terms  
\*with operating trade

**all Wood Cabinet**

**NEW! FROM PHONOLA... DELUXE MULTI-SPEAKER STEREO**  
• PLAYS ALL FOUR SIZES AUTOMATICALLY  
• SPEAKERS ARE DETACHABLE  
• COMPACT • PORTABLE • LIGHTWEIGHT

**6-TRANSISTOR Portable Radio** with battery, earphone carrying case!  
**19.99** \$1.25 Wkly.

**2 Separate Speakers Included**  
**99.95** \$1.25 WKLY.

**WHITE'S** Southwest Greatest Discount Centers  
STORE HOURS 9 A.M. TO 6 P.M. PAMPA, TEXAS