



**On The Record**

**HIGHLAND GENERAL HOSPITAL NOTES**

**MONDAY Admissions**  
Pat Girouard, 2706 Chestnut  
James Earl Ray, 1915 Coffee  
Mrs. Rosie Kirkin, 1228 S. Barnes  
E. B. Montgomery, Panhandle  
Miss Annie Risner, Wheeler  
Mrs. Willie Hall, 1021 E. Brown-  
ing  
Mrs. Viola Harbert, Guymon,  
Oklahoma  
Mrs. Mary Brownrigg, Borger  
M. J. Warner, Lefors  
Mrs. Nettie Reames, Philview  
Mrs. Edith Malone, 926 S. Reid  
Boyd Stephens, Pampa  
Mrs. Verna Sirmans, 430 Naida  
G. W. Carlisle, 1215 S. Finley  
Rex Green, Pampa  
C. F. Poarch, Pampa  
Mrs. Mary Lou Duenkel, 321 N. Frost

**4-H Scholarship Awards Revealed**

CHICAGO (UPI)—Winners of 400 scholarships announced at the National 4-H Club Congress included:  
Clothing program (sponsored by Coats and Clark Inc.)—Nancy Pyeatt, 18, rural Tulia, Tex.  
Scholarship awards program (sponsored by Santa Fe Railway system)—Suzi Thigpen, 16, rural Lake Arthur, N. M.; Nita Re Parker, 18, rural Tucumcari, N. M.; Joyce Wilson, 19, rural Paducah, Tex.; Linda Rosenkranz, 18, Bryan, Tex.; Richard Chitwood, 16, rural Mulshoe, Tex.; Robert S. Cohen 17, rural Llano, Tex.

Jack Robinson, 1945 Neel Red.  
Mrs. Sally B. Huff, Pampa  
Mrs. Jane Brown, 2607 Navajo Rd.  
Mrs. La Deanne Carter, Panhandle

**Dismissals**  
Tommy Woodward, 1110 Alcock  
Mrs. Darlene Brumley, 1013 Darby  
Mrs. Lois Turner, 604 S. Reid  
Mrs. Charlene Lowy, 310 N. Rose

Carol Wana Moore, 908 S. Sumner  
Mrs. Mary Cauthorn, 1101 E. Darby  
Roy McMillen, 1325 Duncan  
Mrs. Maggie White, 1008 Twiford  
William Dodd, 2123 Williston  
Mrs. Doris Bender, Panhandle  
Mrs. Anne Merrell, Canadian  
Mrs. Mary Ida Couch, 1812 N. Russell  
Mrs. Thelma Proctor, 513 Maple  
Mrs. Atha Belle Lee, Pampa  
Mrs. Lois Hudson, Briscoe

**Record Claimed In Engine Change**

AUSTIN (UPI)—A Bergstrom Air Force base maintenance crew claims a new world record of one hour, 35 minutes in completing an engine change on a B52 bomber. The six-man crew said they have broken the record claimed by a Biggs Air Force Base, El Paso, crew of one hour, 58 minutes.

**John C. Phillips Enters Candidacy For Appeals Court**

AUSTIN (UPI)—Former Asst. Atty. Gen. John C. Phillips, 44, of Austin, announced today as a candidate for associate justice of the Third Court of Civil Appeals. Phillips, a native of San Antonio, has been an assistant attorney general, trial examiner for the Railroad Commission, briefing attorney for the State Supreme Court, and an FBI agent. He is a graduate of the University of Texas. State Insurance Board chairman Thomas C. Ferguson announced Nov. 3 he will run also for the Third Court of Civil Appeals. The post both men seek was resigned by Associate Justice Raymond Gray, and C. K. Richards was appointed to the interim vacancy, Richards said he would run when the post comes up for election.

**Adenauer Cancels Trip To France**

BONN (UPI)—Influenza forced 85-year-old West German Chancellor Konrad Adenauer yesterday to cancel his scheduled trip to Paris Thursday for talks with French President Charles de Gaulle. A spokesman said the visit "has been canceled for the time being." Earlier, a government spokesman said Adenauer's condition "continues to be satisfactory" but that he would have to remain at home "for several more days."

**Do FALSE TEETH Rock, Slide or Slip?**

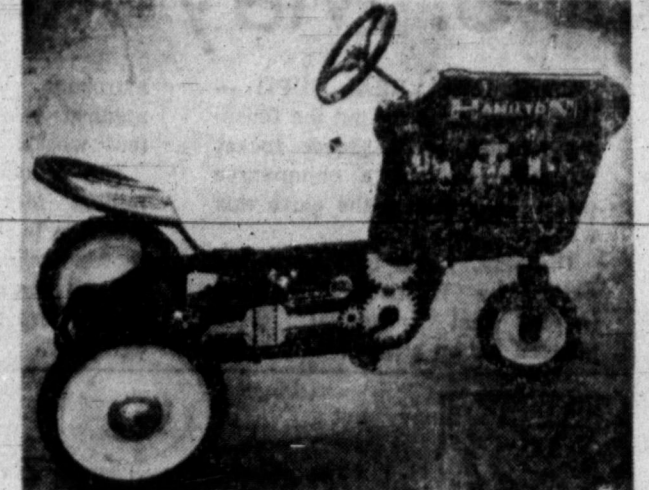
FASTEETH, an improved powder to be sprinkled on upper or lower plates, holds false teeth more firmly in place. Do not slide, slip or rock. No gummy, gooey, pasty taste or feeling. FASTEETH is alkaline (non-acid). Does not sour checks "plate odor breath". Get FASTEETH at drug counters everywhere.

**FURR'S HAS "SOMETHING GOING" IN ITS LAY-A-WAY PLAN**



**SAVE WITH LOW PRICES ON ALL HOLIDAY GIFTS AT FURR'S**

Teenage Doll Suggested Retail \$12.95 **\$7.97**



**TRACTORS \$15.95**  
Chain Drive, Large Rubber Tires.



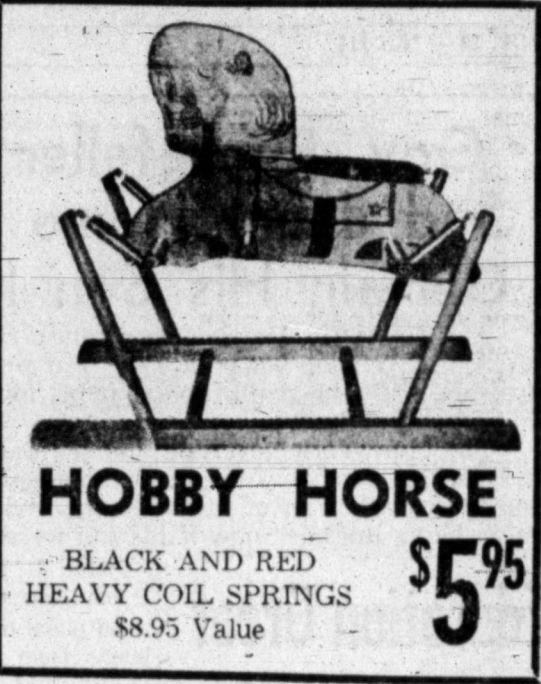
**Double Frontier Stamps on Wednesday**  
With \$2.50 Purchase or More

**TRUCKS**  
Metal Military \$1.98  
Search Light Sug. Retail \$3.98

**SEE OUR WONDERLAND OF TOYS!**

Duncan Hines, 15-oz Pkg. **45c**  
Angel Food Cake Mix **10c**  
Campbell's, Can **10c**  
Tomato Soup

3 lb Can Includes 10c off **69c**  
**SNOWDRIFT**  
Mrs. Tuckers, 24-oz Bottle **43c**  
**SALAD OIL**



**HOBBY HORSE \$5.95**  
BLACK AND RED HEAVY COIL SPRINGS \$8.95 Value



**TRICYCLE \$17.47**  
WISHBONE FRAME BALL BEARING WHEELS CAR STYLE FENDERS, 12-IN.

**CRACKERS**  
**GELATIN**  
**PEACHES**

Bremner 1-Lb Box **19c**  
ROYAL, ASSORTED FLAVORS, PKG. **5c**  
HUNT'S, IN HEAVY SYRUP, SLICED OR HALVES NO 2 1/2 CAN **25c**

**Tissue** A-1 4-ROLL PKG. **25c**  
**Sugar** IMPERIAL PURE CANE 5-LB. BAG **45c**  
**Flour** ELNA 5-LB. BAG **29c**  
**Chili** IRELAND NO. 2 CAN **49c**

**Pinto Beans** 1-LB CELLO BAG **12 1/2c**

**Coca Cola** REG 6 BTL CTN **19c**

**BELL PEPPERS** Large Size For Stuffing **3c**  
**AVOCADOS** Large Size For Salads, Calavo's **15c** ea.  
**Pecans** New Crop **39c/lb**  
**Walnuts** New Crop Baby **39c/lb**

Bar-T Ranch, No. 2 1/2 size **33c**  
**PEARS**  
No. 300 can **2 for 29c**  
**Ranch Style Beans**  
Food Club, 1 lb. cello **35c**  
**PRUNES**  
Meadolake includes 5c off **25c**  
**MARGARINE** Lb.

Luzianne, lb., 18c off **52c**  
**COFFEE**  
Top Frost Premium Quality, 1/2 gallon **69c**  
**ICE CREAM**  
Family Pack, 1/2 gal. **49c**  
**ICE CREAM**  
Giant pkg. 16c off **69c**  
**Rinsol Blue**

**ROUND STEAK** U.S.D.A. CHOICE BEEF **79c/lb**  
**SIRLOIN STEAK** U.S.D.A. CHOICE BEEF **79c/lb**  
**T-BONE STEAK** U.S.D.A. CHOICE BEEF **89c/lb**  
**GROUND BEEF** 3 Lb. **98c**  
**BACON** Swifts Premium Sliced **59c**

**Doll Buggies** While They Last **1/2 Price**  
**FURR'S SUPER MARKETS**

**Hom & Gee Grocery**  
421 EAST FREDERIC OPEN 7 DAYS A WEEK PHONE MO 4-8531

**Double Buccaneer Stamps Wed** With Every Purchase 2.50 or More

Quality Thick Sliced Bacon 2 lbs. <b>89c</b>	Fresh Ground Beef 4 lbs. <b>\$1.00</b>
Fresh Pork Roast <b>35c/lb</b>	Butt End or Shank End H A M <b>39c/lb</b>
Blue Ribbon Beef Round, Sirloin or T-Bone Steak <b>79c/lb</b>	
Fresh Pork Steak <b>39c/lb</b>	Blue Ribbon Beef Prime Rib Steak <b>59c/lb</b>
Folgers Coffee 1-lb. can <b>59c</b>	Fluff Wright Shortening 3-lb. carton <b>49c</b>
Campbell's Tomato Soup can <b>10c</b>	Shurfine, 12-oz Luncheon Meat 3 for <b>\$1.00</b>
Shurfresh, Lb. Box CRACKERS <b>25c</b>	Shurfine Vienna Sausage 5 For <b>\$1.00</b>
Pinto Beans 4 lb bag <b>49c</b>	Western Maid Pickles 56-oz Jar <b>59c</b>
Reg size ctn Only <b>19c</b> COKES Plus Dep.	U.S. No. 1 White Potatoes 10-lb. bag <b>49c</b>
Shurfine CATSUP <b>\$1.00</b> 5-14-oz btl	Texas Ruby Red Grapefruit 5-lb. bag <b>29c</b>
Shurfine, With Beans, 300 Can Chili Con Carne <b>19c</b>	Texas Sweet Oranges 5-lb. bag <b>29c</b>
Durkees Snow Flake, 14-oz Pkg. COCONUT <b>49c</b>	Shurfine, 303 Can Fruit Cocktail 5 For <b>\$1.00</b>
Shurfine, Qt. WAFFLE SYRUP <b>39c</b>	Delsey TISSUE 4 Roll Pkg. <b>49c</b>
Shurfine, 303 Can Beans & Potatoes 2 For <b>29c</b>	Shurfresh COOKIES 2 Lb. Pkg. <b>49c</b>
Pure Cane SUGAR 5 Lb. Bag <b>49c</b>	Shurfine FLOUR 10 Lb Bag <b>69c</b>
	Jorden's Glacier Club CE CREAM 1/2 Gal <b>49c</b>



Sweet Treat in Heavy Syrup, 303 Can **19c**  
**PINEAPPLE**  
Westfield, 32-oz Can **3 FOR 69c**  
**GRAPE DRINK**  
Del Monte Red Sockeye, 300 Can **89c**  
Elna, Lb. OLEO **2 FOR 29c**  
Zee, 80 Count Pkg. NAPKINS **12 1/2c**  
Elna, 300 Can PORK & BEANS **3 FOR 25c**  
Hydrox, 16-oz Bag COOKIES **49c**  
Kings Kennel, 5-lb Bag DOG FOOD **59c**  
Maryland Club, Lb. COFFEE **67c**  
Food Club, 32-oz Bottle APPLE JUICE **29c**

### GOP Meetings Slated Tonight

Republican activities for this week call for three meetings in Pampa within the next day or two, according to Mrs. Warren Fatheree, G. O. P. committee woman for the 31st senatorial district.

Two of the sessions are scheduled for tonight.

There will be a meeting of the Young Republican Club at 7:30 p.m. today in the county courtroom of Gray County Courthouse.

Another session scheduled for 7:30 p.m. today will be the meeting of the Gray County Republican Executive Committee, called by Clayton Husted, county chairman.

Among those attending the executive committee meet will be Husted, Mrs. Fatheree, Mrs. G. N. McDaniel of Borger, vice chairman of the state executive committee; Mrs. James T. Brown, Gray County vice chairman, and all precinct chairmen in the county.

Democrats and Republicans alike have been invited to attend the meeting at 7:30 p.m. Wednesday in Coronado Inn when Bill Hayes of Temple, G.O.P. candidate for lieutenant governor of Texas, will speak.

According to Mrs. Fatheree, tomorrow night's meeting will be open to Democrats and Republicans alike who are opposed to socialist trends in government.

"This is not a one-party meeting," Mrs. Fatheree said. "We want all persons interested in good government to attend tomorrow night and hear what Mr. Hayes has to say."

### State Republican Solon Takes Oath

AUSTIN (UPI)— Republican Kenneth Kohler of Amarillo took the oath of office as a state representative today, pledging a legislative drive to cut spending and taxes.

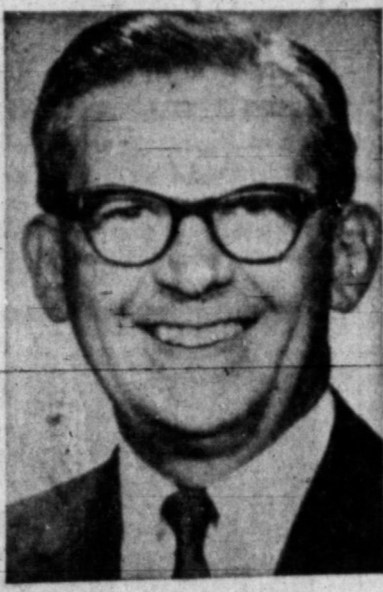
He is the first GOP state representative since 1951.

Kohler, 31, won a Nov. 18 special election in Potter County to fill the House vacancy created by the death of Rep. J. Edgar Wilson.

### Campus Canines

ST. LOUIS (UPI) — Two dogs Washington University here.

University safety and security police acquired "Rusty," a German shepherd, and "Fang," an Alaskan sled dog to help patrol the campus.



**CANDIDATE TO SPEAK**— Voters of all political beliefs are invited to a public meeting in Coronado Inn's Starlight Room at 7:30 p.m. Wednesday when Bill Hayes, above, candidate for lieutenant governor of Texas will be the principal speaker. Hayes, a conservative, says he is finding, as he travels through Texas, "a ground swell of resentment against operation of the state's business by professional politicians." Hayes is a Bell County businessman and is vice president of the Continental Belton Co. of Temple.

### Santa Was Once Thin Old Man

NEW YORK (UPI) — In the latter years of the last century, Santa Claus was a thin man. Christmas trees were always green and sleigh rides and hanging stockings round the fireplace were major ingredients of Christmas.

The symbolism of the festival included animals romping in snow-covered forests; children kneeling in prayer at bedtime; and the star of the east glowing splendidly above the three kings. Nostalgically, this is the "Christmas of old" which many Americans remember from their childhood. Fond memories of the Christmases gone by often are some of the most heart-warming of the season.

The nostalgia and scenes of childhood are captured better than ever this year on Christmas cards that reflect the lavish Christmases of grandmother's day. The Christmas cards are actually patterned after the three-dimensional fold-out valentines of the late 1800's.

They serve not only as greetings, but also as home decorations for the friends who receive your cards.

### Country Youths At 4-H Meeting Declared Suave

By DONALD ZOCHERT  
CHICAGO (UPI) — Country youths from throughout the land visited Chicago today for another national 4-H Club Congress and there wasn't a hayseed among them.

Anybody searching for a cartoonist's conception of a country-type teen-ager would be disappointed — The 4-H crowd is as suave as you'll find in any suburban drug store.

As a matter of record, some of them frequent suburban drug stores, for the 4-H no longer is confined to the gravel roads.

The five-day annual meeting, which opened Sunday, will be packed with national award presentations, tours, discussions, concerts and visits to the international livestock show.

The clubs, which originated early in this century as corn clubs for boys and canning clubs for girls, were created to bring new practices into homes and on to farms. But today only half of the 2,300,000 4-H members live on farms, and home-making and farming innovations are secondary to the overall development of young people.

The movement into urban and non-farm areas is indicated by the nearly 1,000 4-H youngsters who live in Chicago.

Each member engages in one or more "projects," as varied as home economics, tractor care, public speaking, concert music, home improvement, beef raising, bread baking and entomology. National awards in 28 different areas will be presented during the congress. The awards usually are in the form of scholarships.

Dr. Kenneth D. Wells, president of Freedoms Foundation, spoke Sunday on "how is your patriotism?" and Brooks Hays, assistant secretary of state, was on the program today with a talk on foreign policy.

The congress will be highlighted by the annual visit to the International Livestock Show, at which many 4-H youngsters will be showing animals. A banquet and farewell party will bring the meet to a close Thursday.

Public health nursing began in the United States in 1877, according to the Encyclopedia Britannica.

## STAR-STUDED



☆☆☆☆ ALWAYS THE BEST FOOD FOR LESS!

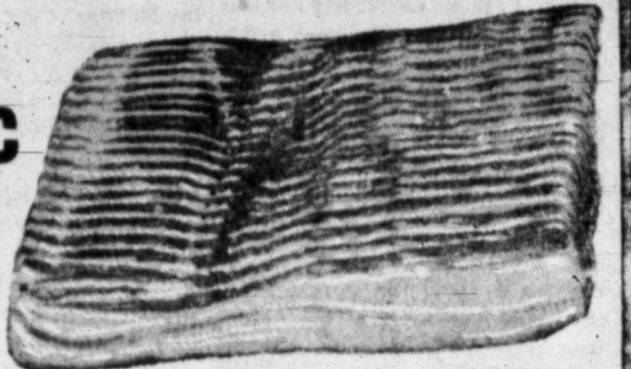
PANHANDLE QUALITY

# BACON

2-Lb.

Pkg.

# 89¢



Wise Homemakers Always Shop Where They Get The Added Bonus Of **DOUBLE THRIFT STAMPS** **DOUBLE ON WED.** with \$2.50 Purchase or More

## Ground Beef

Fresh All Meat

# 3 Lbs. 89¢

## Round Steak

U.S.D.A. Good Beef Lb.

# 79¢



Western Maid **PICKLES** 1/2-gal. Jar **55¢**

Campbell's, Reg. Can **TOMATO SOUP** 3 for **33¢**

Lean Meaty Beef, **SHORT RIBS** **19¢/lb**

Lean, Boneless Beef **STEW MEAT** **59¢/lb**

# PRESERVES CHERRIES

Bama Peach **33¢**  
18-oz Jar

STURGEON BAY **19¢**  
303 CAN

MEAD'S SPECIAL

## BREAD

Large 1 1/2 Lb. Loaf **18¢**

Imperial Pure Cane

## SUGAR

10 Lb. Bag **98¢**

DURKEE'S

## COCONUT

Big 14-oz. Pkg. **39¢**

Mountain Pass

## Tomatoes

No 303 Can **11¢**

Tea Flake, Box **Crackers** Lb. **23¢** | White Swan Tall Can **MILK** 3 for **39¢** | Asst. Flavors **Jell-o** 3 reg. boxes **25¢**

# COCA-COLA

Reg. 6 Bottle Ctn. Plus Deposit **19¢**

# LUNCHEON MEAT

Oscar Mayer 12-oz Can **39¢**

## FARM-FRESH VEGETABLES

## POTATOES

10 LB. BAG RUSSETTS **29¢**

Large Paper Shell **PECANS** Lb. **33¢**

### FROZEN FOOD

Western Wonder, 10-oz Pkgs. **STRAWBERRIES** 5 for **99¢**

Eat More, 12-oz Pkg. **HEREFORD STEAKS** **59¢**

Ore, Ida, 16-oz Pkg. **TATER TOTS** **29¢**

# BUDDY'S SUPER MARKETS

WE RESERVE THE RIGHT TO LIMIT QUANTITIES.  
Open 7 Days A Week 7:30 A. M. to 9 P. M.  
SUNDAY 7:30 to 8:00



1962 Rambler American Deluxe 2-Door Sedan

## Do you know? You can buy this beautiful RAMBLER SEDAN

with Automatic-Clutch Transmission—new E-Stick no-clutch-pedal driving, stick-shift economy,

and Double-Safety Brake System with separate front and rear systems—if one is damaged, the other works,

and Ceramic-Armored Muffler and Tailpipe Either will be replaced free for original owner, in case of rust out, by a Rambler dealer, collision damage excepted,

and big, longer lasting 15-inch tires . . . and a two-year battery . . . and Deep-Dip rustproofing . . . and counter-balanced hood

for less than the lowest priced Falcon or Corvair with none of these!

AMERICA'S LOWEST PRICED CAR

Rambler American Deluxe Two-Door Sedan, above, is priced well below any other U.S. car. In fact, all '62 Rambler prices are lower than '61.

\*Price comparisons based on manufacturers' suggested factory-delivered prices for lowest priced two-door sedans.

# RAMBLER

World Standard of Compact Car Excellence

TEX EVANS RAMBLER INC. • 123 N. Gray

A good man to do business with for your new car or a Select used car





### STORE HOURS

Mon, Tues. 8:30 - 6:30  
Wed. 8:30 - 7:00  
Thur, Fri. 8:30-6:30  
Sat. 8:30 - 7:00  
Prices Good Through Nov. 29th In PAMPA

Treat your favorite man to the All-American favorite, at these low prices!

# STEAK SALE!

U.S.D.A. CHOICE HEAVY BEEF SUPERB STEAK

USDA CHOICE  
HEAVY BEEF  
SUPERB STEAK,

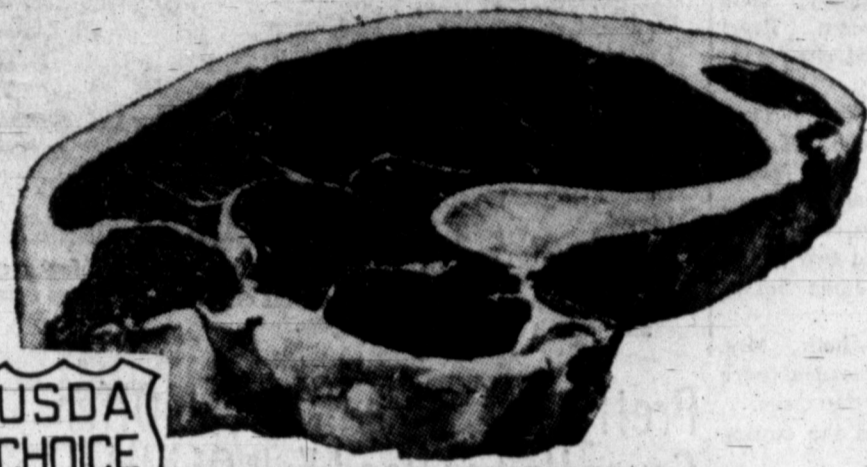
lb. **69<sup>c</sup>**

USDA CHOICE  
HEAVY BEEF  
SUPERB STEAK

lb. **79<sup>c</sup>**

USDA CHOICE  
HEAVY BEEF  
SUPERB STEAK

lb. **89<sup>c</sup>**



USDA CHOICE

## SIRLOIN

lb. **89<sup>c</sup>**

**SAFEGWAY MEATS ARE GUARANTEED**  
Every Cut of Safeway Meat is Unconditionally Guaranteed - Your money will cheerfully be refunded if you are not satisfied.

## RIB ROUND T-BONE

U.S.D.A. Choice Heavy Mature Beef-Superb Steak

Other Meat Bargains

**Chuck Roast** U. S. Choice Beef lb. **43c** **Ground Beef** Extra Lean Safeway lb. **39c**  
**Arm Roast** U. S. Choice Beef lb. **49c** **Sliced Bacon** 1st Grade Mohawk lb. **49c**

## GRADE 'A' EGGS

## Salad Dressing

## SHORTENING

BREAKFAST GEM MEDIUM DOZEN ONLY **39<sup>c</sup>**

SUZAN QUART JAR ONLY **29<sup>c</sup>**

VELKAY QUALITY 3 LB. CAN ONLY **59<sup>c</sup>**

Save On These Specials!

**Notebook Paper** Nifty-Pack TV Special (90c val) pkg. **39c**  
**Facial Tissue** Dooskin 5 400 ct. Pkgs. **1<sup>1</sup>**  
**Highway Catsup** 4 20-oz. Btls. **1<sup>1</sup>**  
**Preserves** Empress Plum, Grape and Apricot-Pineapple—Save 16c 4 10-oz. Jars **1<sup>1</sup>**  
**Green Beans** Gardenside Cut—Save 8c 8 No. 303 Cans **1<sup>1</sup>**

KITCHEN CRAFT **FLOUR** 5 LB BAG **29<sup>c</sup>**

Shop Safeway And Save!  
**Lucerne Buttermilk** 1/2-gal. Ctn. **39c**  
**Shady Lane Butter** 1-lb. Ctn. **69c**  
**Cottage Cheese** Lucerne 2-lb. Ctn. **49c**  
**White Magic Detergent** Gt. Pkg. **59c**  
**Brocade Liquid** 22-oz. Btl. **39c**  
**White Magic Bleach** 1/2-gal. Btl. **25c**

**Crest Toothpaste** Reg. Size 33c **39<sup>c</sup>**

You Save More At Safeway!  
**Lucerne Dry Milk** 8-qt. Pkg. **69c**  
**LaChoy Chop Suey** No. 303 Can **59c**  
**Dried Prunes** Town House 1-lb. Pkg. **35c**  
**Instant Coffee** Airway 25c Off 12-oz. Jar **1<sup>00</sup>**  
**Edwards Coffee** All Grinds 1-lb. Can **59c**  
**Pinto Beans** Big Chief 2-lb. Pkg. **27c**

Your Dollar Buys More At Your Safeway Store

## CORN TUNA COOKIES DOG FOOD

Mayfield Cream Style Golden Corn Buy Now — Save 45c **10** NO. 303 CANS FOR **1<sup>1</sup>**  
Sea Trader Light\* Meat Chunk Style **4** 6 1/2 OZ. CANS FOR **1<sup>1</sup>**  
Melrose Sugar Oatmeal, Lemon or Coconut **4** 13 1/4 OZ. PKGS. FOR **1<sup>1</sup>**  
Pooch Reg. or Liver Flavored **14** TALL CANS FOR **1<sup>1</sup>**

Fresh Fruits and Vegetables **POTATOES**

Colorado Russets All Purpose Potatoes **GREEN CABBAGE** 25-LB BAG **69<sup>c</sup>**

**3<sup>c</sup>**

**CREAM SOUR** 8-oz. **29c**

**Delicious Apples** Wash. State lb. **21<sup>c</sup>**  
**Orange Juice** Pure Calif. qt. **49<sup>c</sup>**  
**Grapefruit** Ruby Red or White Seedless 2 lbs. **25<sup>c</sup>**

<b>IVORY</b> Liquid 12-oz. Btl. <b>39c</b>	<b>MR. CLEAN</b> Cleanser 28-oz. Btl. <b>69c</b>	<b>IVORY</b> Snow Large Pkg. <b>35c</b>	<b>IVORY</b> Flakes Large Pkg. <b>35c</b>
<b>JOY</b> Liquid 12-oz. Btl. <b>39c</b>	<b>DUZ</b> Detergent Large Pkg. <b>59c</b>	<b>DOWNY</b> Softener Rinse 17-oz. Pkg. <b>45c</b>	<b>COFFEE</b> Maryland Club All Grinds 1-lb. can <b>63c</b>

**PLEASE HELP FIGHT MUSCULAR DYSTROPHY**

MUSCULAR DYSTROPHY ASSOCIATIONS OF AMERICA, INC., 1790 Broadway, New York 15, New York • JU 6-0902

**DOUBLE GUNN BROS. STAMPS WEDNESDAY**  
(with purchase of \$2.50 or more)



# SAFEGWAY

We Reserve The Right To Limit Quantities





J. R. Williams

OUT OUR WAY



OUR BOARDING HOUSE With Major Hoops



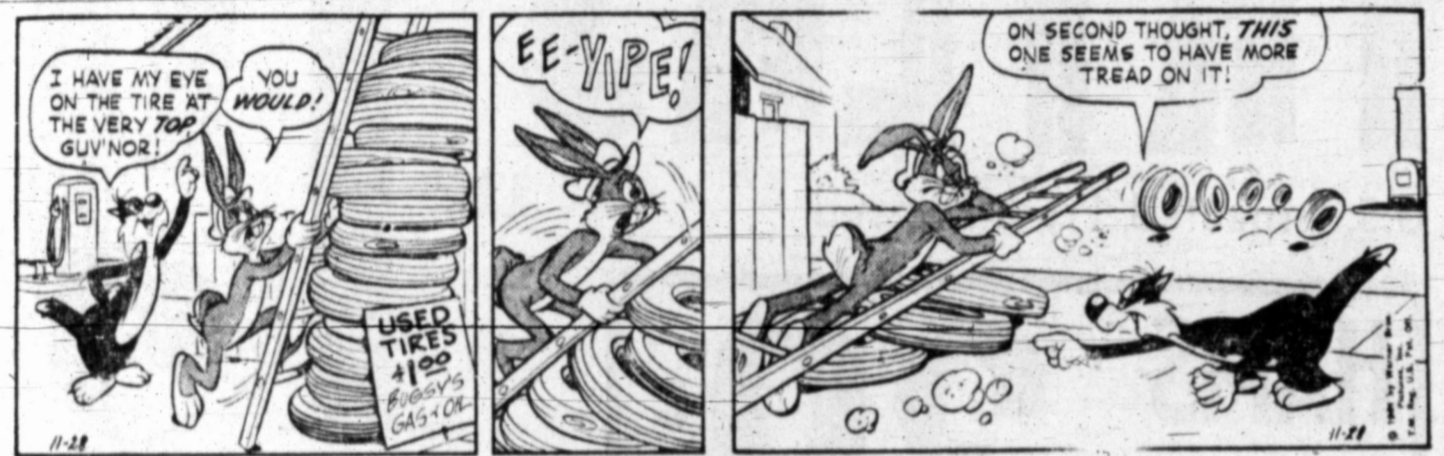
All In A Lifetime



Potts



Bugs Bunny



Th-9 Berrys



Short Ribs



Wash Tubbs



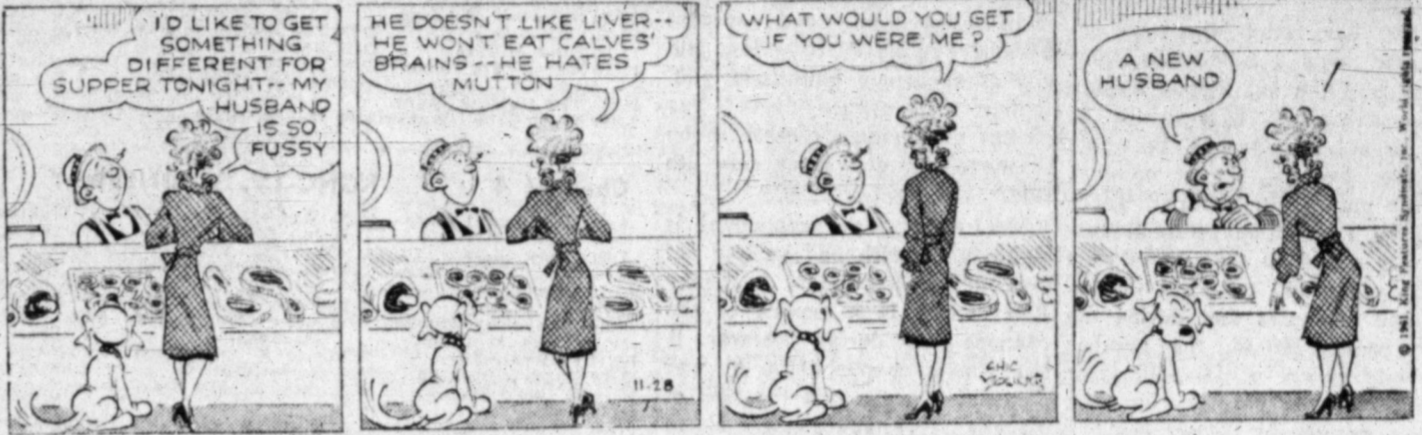
Jackson Twins



Morty Meekle



Blondie



Alley Oop



Bonnie



Martha Wayne



Mickey Finn



Dixie Dugan



Pricilla's Pop



Joe Palooka



By Def bany' and I on Assor elon 7:11 E: came mous 83 of ballo tee. I also three 81 no The more Hondo my I Kacht The includ Verno Eldori Forne Ronny and b Daisei Whit junior outfit. All their l ins in Wint the st five 1 te-m's Arnc one o was 1 se-on Only w-e (Popp 220). pounds pounds The with 1 END 83 and 45 TAC Mt. V Forney GU 81, an don. 5 CEN Rio H -BAC ny. 83, setta, Hondo. END Wink, ver. 3 TAC SV Pr Fin By I Five ball T Saturday Monda whipper Texa Southern mation imitat Rhonie TCU still h nerve workou The l finemer and two game, drill wi Left shoulde twisted the pai Horned trainer Gannon John H Baylor duty ag Rice, the Blu sas, we End C George with in Bavio hopeful, 46-m'nu emphas travel l the Owl Coach team n game 1 Minter halfbac since th October







PLACE YOUR CLASSIFIED ADS BY CALLING MO 4-2525

9 A.M. In the Daily Deadline for Classified Ads Saturday for Sun. edition 12 noon. This is also the deadline for ad cancellation.

\$25.00 TOTAL MOVE-IN NEW HOMES No Payment Till March 1st

Special Notices 5 22 Female Help Wanted 22 39 Painting 39 68 Household Goods 68 79 Horses 79

WANTED: BOYS TO SELL PAPERS IN DOWNTOWN PAMPA MONDAY EVENING 8:30 TO 6 P.M. REPORT TO THE ROUTE ROOM AT Pampa Daily News

It Pays To Read The Pampa Daily News

DAVID HUNTER INTERIOR AND EXTERIOR PAINTING Taping Texturing Painting MO 4-2502

WEST TEXAS REPAIR MO 9-9591 For All Repairs on Large or Small Appliances, TV's and Antennas. Reasonable Prices

HAWKINS RADIO & TV LAB Service on all makes TV Radio, car radios, 2-way radios, Hi-Fi, stereo, and TV antennas.

DAVID HUNTER INTERIOR AND EXTERIOR PAINTING Taping Texturing Painting MO 4-2502

WEST TEXAS REPAIR MO 9-9591 For All Repairs on Large or Small Appliances, TV's and Antennas. Reasonable Prices

HAWKINS RADIO & TV LAB Service on all makes TV Radio, car radios, 2-way radios, Hi-Fi, stereo, and TV antennas.

DAVID HUNTER INTERIOR AND EXTERIOR PAINTING Taping Texturing Painting MO 4-2502

WEST TEXAS REPAIR MO 9-9591 For All Repairs on Large or Small Appliances, TV's and Antennas. Reasonable Prices

HAWKINS RADIO & TV LAB Service on all makes TV Radio, car radios, 2-way radios, Hi-Fi, stereo, and TV antennas.

DAVID HUNTER INTERIOR AND EXTERIOR PAINTING Taping Texturing Painting MO 4-2502

WEST TEXAS REPAIR MO 9-9591 For All Repairs on Large or Small Appliances, TV's and Antennas. Reasonable Prices

HAWKINS RADIO & TV LAB Service on all makes TV Radio, car radios, 2-way radios, Hi-Fi, stereo, and TV antennas.

DAVID HUNTER INTERIOR AND EXTERIOR PAINTING Taping Texturing Painting MO 4-2502

WEST TEXAS REPAIR MO 9-9591 For All Repairs on Large or Small Appliances, TV's and Antennas. Reasonable Prices

HAWKINS RADIO & TV LAB Service on all makes TV Radio, car radios, 2-way radios, Hi-Fi, stereo, and TV antennas.

DAVID HUNTER INTERIOR AND EXTERIOR PAINTING Taping Texturing Painting MO 4-2502

WEST TEXAS REPAIR MO 9-9591 For All Repairs on Large or Small Appliances, TV's and Antennas. Reasonable Prices

HAWKINS RADIO & TV LAB Service on all makes TV Radio, car radios, 2-way radios, Hi-Fi, stereo, and TV antennas.

DAVID HUNTER INTERIOR AND EXTERIOR PAINTING Taping Texturing Painting MO 4-2502

WEST TEXAS REPAIR MO 9-9591 For All Repairs on Large or Small Appliances, TV's and Antennas. Reasonable Prices

HAWKINS RADIO & TV LAB Service on all makes TV Radio, car radios, 2-way radios, Hi-Fi, stereo, and TV antennas.

Christmas GIFT GUIDE FOR CHILDREN FOR EVERYONE FOR HER FOR HIM VIRGIL'S BIKE SHOP SEARS-ROEBUCK & CO. WESTERN AUTO DUNLAP'S OF PAMPA KYLE'S SHOE STORE PHOTO ARTS STUDIO GOLDEN OPPORTUNITY Pampa College of Hairdressing CAPRI & LAVISTA RICHARD DRUG LEVINE'S SASSER SHOE SHOP DUNLAP'S OF PAMPA PANHANDLE ICE COMPANY C&M TV & FURNITURE

Christmas GIFT GUIDE FOR CHILDREN FOR EVERYONE FOR HER FOR HIM VIRGIL'S BIKE SHOP SEARS-ROEBUCK & CO. WESTERN AUTO DUNLAP'S OF PAMPA KYLE'S SHOE STORE PHOTO ARTS STUDIO GOLDEN OPPORTUNITY Pampa College of Hairdressing CAPRI & LAVISTA RICHARD DRUG LEVINE'S SASSER SHOE SHOP DUNLAP'S OF PAMPA PANHANDLE ICE COMPANY C&M TV & FURNITURE

Christmas GIFT GUIDE FOR CHILDREN FOR EVERYONE FOR HER FOR HIM VIRGIL'S BIKE SHOP SEARS-ROEBUCK & CO. WESTERN AUTO DUNLAP'S OF PAMPA KYLE'S SHOE STORE PHOTO ARTS STUDIO GOLDEN OPPORTUNITY Pampa College of Hairdressing CAPRI & LAVISTA RICHARD DRUG LEVINE'S SASSER SHOE SHOP DUNLAP'S OF PAMPA PANHANDLE ICE COMPANY C&M TV & FURNITURE

Christmas GIFT GUIDE FOR CHILDREN FOR EVERYONE FOR HER FOR HIM VIRGIL'S BIKE SHOP SEARS-ROEBUCK & CO. WESTERN AUTO DUNLAP'S OF PAMPA KYLE'S SHOE STORE PHOTO ARTS STUDIO GOLDEN OPPORTUNITY Pampa College of Hairdressing CAPRI & LAVISTA RICHARD DRUG LEVINE'S SASSER SHOE SHOP DUNLAP'S OF PAMPA PANHANDLE ICE COMPANY C&M TV & FURNITURE

Christmas GIFT GUIDE FOR CHILDREN FOR EVERYONE FOR HER FOR HIM VIRGIL'S BIKE SHOP SEARS-ROEBUCK & CO. WESTERN AUTO DUNLAP'S OF PAMPA KYLE'S SHOE STORE PHOTO ARTS STUDIO GOLDEN OPPORTUNITY Pampa College of Hairdressing CAPRI & LAVISTA RICHARD DRUG LEVINE'S SASSER SHOE SHOP DUNLAP'S OF PAMPA PANHANDLE ICE COMPANY C&M TV & FURNITURE

BE SURE TO VISIT WITH US THIS WEEK! OPEN EVERYDAY & EVENING MAIN OFFICE CALL MO 4-3442 - SALES OFFICE MO 5-6418 - COL DICK BAYLESS

### Eichmann Soon To Hear Verdict In Crimes Case

JERUSALEM (UPI)—A three-judge Israeli court will reconvene December 11 to deliver its verdict in the case of Adolf Eichmann, charged with crimes against the Jewish people and against humanity for the atrocities of Nazi Germany.

It is expected to take three days for the judges, reading in relays, to present their decision on each of the 15 counts against the former Gestapo officer. Twelve counts carry a possible death penalty on conviction.

Through the reading, Eichmann, who was for 15 years a fugitive, will be seated again in the same bullet-proof glass box he occupied during five months of trial sessions which ended Aug. 15.

Because of the unusual conditions of this extraordinary trial, a small group of men and women will learn the verdict in advance of the defendant. The translators, charged with rendering the 250-page decision in English, French, Spanish and German before the court meets, will be held under heavy police guard in a local hotel for the several days required to complete their work.

Eichmann will be returned to his cell in the improvised Jerusalem court building from Jalami prison near Haifa.

#### Legal Publication

U. S. Treasury Department - Internal Revenue Service - NOTICE OF PUBLIC AUCTION SALE - November 28, 1961 Pursuant to authority contained in Section 4321 of the Internal Revenue Code, the following described property has been seized for nonpayment of delinquent internal revenue taxes due from James L. and Hattie Reddell, 2425 Williston, Pampa, Texas. The property will be sold in accordance with the provisions of Section 6329 of the Internal Revenue Code, and the regulations thereunder, at public auction on the 11th day of December, 1961, at 10:00 A.M. at Rooms 303, Combs-Worley Building, Pampa, Texas.

Description of property: All of James L. Reddell's right, title and interest in and to the partnership of Groninger & King-Contractors, Box 1281, Pampa, Texas - general contractors, principally engaged in Oil Field Construction, Refinery Construction, Tank Farms Construction and General Oil Field Work.

Only the right, title and interest of James L. and Hattie Reddell in and to the property will be offered for sale.

The terms of payment will be payment in full upon acceptance of the highest bid. For further information, contact J. Winston Hughes, 1414 W. 8th, Amarillo, Texas. Telephone DR 2-6516.

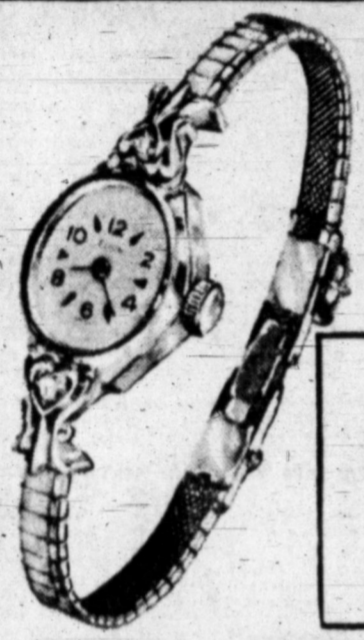


**HISTORIC LANDMARK**—Grouseland, home of President William Henry Harrison when he was governor of the Indiana Territory at Vincennes, Ind., has been designated a national historic landmark by the Department of Interior. Built in 1803-04, the mansion was the first brick building west of the Alleghenies. It is owned and maintained by Francis Vigo Chapter, Daughters of American Revolution.

Speed of sound in air increases temperature it is about 344 miles with the temperature, but at room per second.

COMPARE ANYWHERE!

**Zale's HAS YOUR BEST ELGIN BUY!**



- 17 jewels
- 2 diamonds
- fashion band
- white or yellow

**SALE PRICED \$29.95** plus tax  
**BUDGET TERMS**

SEE OUR STOCK OF NATIONALLY ADVERTISED WATCHES - LONGINES • HAMILTON • ELGIN • BULOVA

AT ZALE'S LOW "NEVER TO BE UNDERSOLD" PRICES!

**ZALE'S JEWELERS**

OPEN NITES TIL 9 P.M.

107 N. Cuyler MO 4-3377

## WE'RE OPENING NEW FRONTIERS IN LOWER PRICES

THE COUNT DOWN HAS STARTED Thursday 8:00 a.m. IS BLAST OFF TIME

DON'T MISS OUR AD IN Tomorrow's Pampa Daily News



TELEVISION • APPLIANCES • FURNITURE 125 N. SOMERVILLE MO 4-3511

## here's OUR ANSWER TO hearty APPETITES

Mayflower Golden  
**CORN**  
Cream or whole grain 303 cans  
**2 FOR 25¢**

**FREE JELL-O**

1 Pkg., Your Choice  
With Purchase of a 11-oz. Can of Empress Mandarin Oranges for 27c  
Serve A Holiday Jello-O Salad And Save

IDEAL TASTY  
**ICE MILK**  
1/2 Gal. Ctn. **39¢**

**BACON** IDEAL SLICED Mild & Sweet LB **49¢**

**Sausage** Swift's Brookfield Pure Pork 2-Lb. Roll Ea. **69¢**

**Pork Chops** Lean Center Rib Cuts **69¢/lb**

**Pork Roast** Fresh Loin End Lb. **49¢/lb**

**Pork Chops** Lean First Cuts **45¢/lb**

**FREE**

1 Ctn. Reg. Cokes When You Buy

1 Ctn. Reg. Pl. Dep. **39¢**

**TOMATO SOUP PRESERVES**

Campbell's Reg. Can **3 FOR 29¢**

"Mix or Match" Western Maid 18-oz Jars **3 FOR \$1.00**

Del-Monte Seedless **RAISINS** 15-oz Pkg. **25¢**

Perfect "Quick Meal" Serve Pancakes  
**PANCAKE FLOUR** Griddle King 3 Lb. Bag **35c**  
**PANCAKE SYRUP** Western Maid 44-oz. Jar **35c**

Jack Sprat Tall Cans **MILK** **2 FOR 25¢**

Kraft's, 2 yb Loaf **Velveeta Cheese** 79c  
Ideal **Flour** 10-lb. bag 69c  
Tom Scott, 14-oz Can **Party Peanuts** 59c

Nu-Way **Belach** Gal. 53c  
Carey Reg. or Iodized **Salt** 26-oz. ctn. 10c  
Vicks, Reg. Size **Vaporub** 39c

Hunt's Spiced, No. 2 1/2 Can **Peaches** 3 for 69c  
Gunn's, Cut 303 Cans **Green Beans** 5 for \$1.00  
Anaseptic, 59c Size **Listerine** 49c

Lay-A-Way Toys Now... \$1.00 Holds Your Purchase Til Dec. 15

**TOMATOES PORK & BEANS**

Mayflower Brand 303 Can **10¢**

Van Camp No. 2 Cans **2 FOR 33¢**

**TURNIPS** Purple Top **5¢/lb**

**APPLES** Wash., Fancy, Red. Del. **2 lbs. 29¢**

Good Red **POTATOES** 25-lb. Bag **59¢**

"Better Food For Less" **IDEAL FOOD STORES**

NO. 1 401 N. Ballard  
NO. 2 300 East Brown  
NO. 3 801 West Francis