



# Thousands Flee Ammonia Explosion Area



## The Pampa Daily News

Serving The Top O' Texas 54 Years

THE PAMPA DAILY NEWS, TUESDAY, AUGUST 1, 1961

(12 PAGES TODAY)

VOL. 30 - NO. 93



**HOW THE OTHER HALF LIVES** — An unusual group visited Pampa yesterday. They were youngsters from New York City who had never before been more than 100 miles away from the Big Town. They were out to learn how the "other half" lived. Pampa was included on their bus tour of the west. They visited the Combs-Worley ranch and got a vivid glimpse of ranch life, a new and strange experience to them. Two of the youngsters are shown getting close to some fine ranch horses. Clayton Mathias, ranch worker, is in the saddle. One young man drinks out of his hands, just like in the old days. Others look, at a safe distance, at a fine Hereford bull. The bull doesn't look at them. He frowns at the photographer. It was all typically American and an enjoyable occasion, the youngsters said. (Daily News Photo)

### City Budget Hike Looms; Cut In Taxes Announced

Pampa's proposed city budget for the 1961-62 fiscal year is \$1,654,934. The total estimated revenue for the fiscal year is \$1,571,896 and for the current fiscal year, totals \$1,447,239, an increase of \$7,509 over the current fiscal year. The budget for the fiscal year is \$1,654,934. The total estimated revenue for the fiscal year is \$1,571,896 and for the current fiscal year, totals \$1,447,239, an increase of \$7,509 over the current fiscal year. The budget for the fiscal year is \$1,654,934. The total estimated revenue for the fiscal year is \$1,571,896 and for the current fiscal year, totals \$1,447,239, an increase of \$7,509 over the current fiscal year.

### Illinois Towns Threatened But Deaths Averted

CREVE COEUR, Ill. (UPI) — Deadly ammonia fumes poured out of a ruptured barge pipeline across 12 square miles today and routed an estimated 10,000 persons from their homes before dawn. Police and civil defense teams evacuated residents of Creve Coeur and three surrounding north-central Illinois towns. Hospital staffs in two counties treated more than a score of injured.

### City To Examine Planning Report Contract Break

Mayor E. C. Sidwell today asked City Attorney Bob Gordon to look into the legal aspects of breaking an existing contract between the city and the developer of a new housing project. The contract, which was for a 20-year period, was for the construction of a new housing project. The contract, which was for a 20-year period, was for the construction of a new housing project.

### Stronger Pampa Traffic Safety Program Urged

Pampa city officials were told prepared by the National Safety Council in the form of an analysis in the city commission room at City Hall that the city's traffic safety program needs strengthening.

### General Sales Levy Approved By Committee

AUSTIN (UPI)—A \$357 million tax package, based upon \$309 million in sales taxes, was recommended today by the Senate State Affairs Committee.

### Space Platform 2 Wounded As Man Tries To Seize Airliner

CAPE CANAVERAL (UPI) — The scheduled launching of a Ranger 1 deep space satellite was postponed today for the fourth time. The fantastic experimental rocket, at passengers and crew already were in the air, was launched at 10:05 a.m. today. The launch was postponed because of technical difficulties on the ground support equipment.

### Market Program Divides Britons

LONDON (UPI) — Britons divided today over their government's decision to forsake the pound's traditional role as a free market program. The decision was made by the government to control the pound's value and to restrict the flow of goods and services.

### Policy Warning Sent President By Khrushchev

WASHINGTON (UPI) — Soviet Premier Nikita S. Khrushchev warned President Kennedy that the Soviet Union was prepared to take a tougher attitude on the part of the United States.

### Pampa Director Slates Practice For Rodeo Band

Pampa City School band director, Eugene Unger, has a band of 15 members. He is planning to have a practice session for the band in the near future.

### Record Pacetime Budget Approved

WASHINGTON (UPI) — The Senate Appropriations Committee today approved a record pacetime budget for the fiscal year 1962.

### Clear To Partly Cloudy Skies Due

Clear to partly cloudy skies are expected for the remainder of the week. The weather is expected to be pleasant and clear.

### Complete broke service, wheels

Complete broke service, wheels and tires were replaced on a vehicle. The work was done by a mechanic in the city.

### Complete broke service, wheels

Complete broke service, wheels and tires were replaced on a vehicle. The work was done by a mechanic in the city.

### Complete broke service, wheels

Complete broke service, wheels and tires were replaced on a vehicle. The work was done by a mechanic in the city.

### Complete broke service, wheels

Complete broke service, wheels and tires were replaced on a vehicle. The work was done by a mechanic in the city.

### Complete broke service, wheels

Complete broke service, wheels and tires were replaced on a vehicle. The work was done by a mechanic in the city.

### Complete broke service, wheels

Complete broke service, wheels and tires were replaced on a vehicle. The work was done by a mechanic in the city.

Moving? Call 46887 — Bruce H. 1960. The report came from a source who is not identified. (See TRAFFIC, Page 4)

# Jack Paar Show Declared Cued By Shakespeare

By FRED DANZIG

NEW YORK (UPI)—The history books tell us that NBC-TV's mid-night mish-mosh, "The Jack Paar Show," began its fifth year last night. Don't believe them.

According to my diligent research staff, the Paar show has just gone into its 300th season. It seems that Paar's format was spelled out in remarkable detail in a play called "Hamlet," written by a show-packager named Will Shakespeare and first published on July 26, 1602.

The connection between "Hamlet" and Paar explains why Paar, the 20th century's Hamlet of humor, has become known for his intense soliloquies and the public unravelling of his innermost thoughts. My researchers believe Paar, in studying "Hamlet," derived from it messages that no other reader could grasp. And all he has done is put Shakespeare's format into action.

Example: What is Paar's nightly procession of actors, comedians and glamor girls but the materialization of Hamlet's prediction that "he that plays the King shall be welcome (Alex. King, of course) the humorous man shall end his part in peace, the clown shall make those laugh . . . and the lady shall say her mind freely."

In suggesting an approach to double-entendre, Shakespeare told Paar: "Good Hamlet, cast thy nighted color off."

"Hamlet" also told Paar the best time for a show of this sort, as the hero said, "Upon the platform put the strong law on him; he's few days visit with his mother, form, twist 11 and 12, I'll visit

## GROOM PERSONALS

By MRS. GEORGE BRITTEN  
Daily News Correspondent

Mr. and Mrs. Earl Barker and with their daughter and family, children, Schellon, Carla, and Lynn Mr. and Mrs. Douglas Black at have returned from their vacation Del Norte, Colo.

Larry and Brant Stevens are visiting their aunt and uncle, Mr. Amarillo are spending their vacation visiting their parents, Mr. and Mrs. Joe Britten and Maurice Lynn, Bryan and Marva Ann

The Rev. Walter Davis, pastor of the Groom Baptist Church is serving as pastor at PanFork camp this week. Others attending the Baptist encampment at PanFork this week are Mrs. Marie Davis, Denise and Joan, Donna Marie Smith, Nina Snyder and Lynn Watson.

Dr. and Mrs. John V. London and sons, Johnny and Jack returned home Wednesday from a visit to La.

Mr. Clyde Morrow, of Walla Walla, Wash., is visiting his daughter and family, Mr. and Mrs. Shorty Ham and his son and family, Mr. and Mrs. Marvin Morrow.

Marvin Koetting returned home Tuesday from S. D. where he has been doing custom harvesting.

Miss Glynda Harrell returned to Lubbock Sunday afternoon to resume classes at Texas Tech, where she is enrolled for the second semester of the summer term.

Mr. and Mrs. Kenneth Miller and daughter, Melody moved to Friona Monday where Mr. and Mrs. Miller will teach in the Friona Schools.

Mrs. Homer Martin and granddaughter, Lynell Witt, left Monday evening by train for Deer Park, Wash., to visit Mrs. Martindale's daughter and family, Mr. and Mrs. O. M. Kimmell.

Joe Koetting, who is serving with the U.S. Navy in San Diego, Calif., arrived home Sunday for a few days visit with his mother, Mrs. Lena Koetting.



Minute Maid Fresh Frozen  
Fresh Frozen Foods—Convenient—Economical  
**ORANGE JUICE** 6-oz. Can \$1.00  
5 For . . .

Top Frost, Fresh Frozen  
**Okra** 10-oz. Pkg. \$1.00  
6 For

Double Frontier  
Stamps . . . Wed.

With \$2.50 Purchase or More

# DOLLAR SALE!

YOU CAN'T BEAT FURR'S LOW PRICES!!

**FRUIT COCKTAIL**

Food Club  
In Heavy  
Syrup  
No 2 1/2 Can **3 For \$1.00**

**LEMONADE**

SEALTEST 1/2 GAL. **3 For \$1.00**

**PEACHES**

In Heavy Bar-T Syrup Ranch, No 2 1/2 can **4 For \$1.00**

**TUNA**

CARNATION 3-4 CAN **3 For \$1.00**

**SUGAR**

Imperial Pure Cane 10 Lb. Bag **77¢**

**OLEO**

Elna In .Qtrs. LB. **9¢**

**FLOUR**

FOOD CLUB 5-LB **39¢**

**COFFEE**

MARYLAND CLUB, ALL GRINDS 1-LB CAN **59¢**

Food Club Assorted favors  
**CAKE MIX**  
Package **3 for \$1**

- Zestee **STRAWBERRY PRESERVES** 18 oz. Jar **3 for \$1**
- Food Club **TOMATO JUICE** 46 oz Can **4 for \$1**
- Food Club Cut Spears **ASPARAGUS** No 300 Can **4 for \$1**
- Hi-C Assorted Flavors **DRINKS** 46 oz Can **3 for \$1**
- Food Club Solid Pack **TOMATOES** No 303 Can **5 for \$1**
- Food Club In Heavy Syrup **PEARS** No 303 Can **4 for \$1**
- Kins Kennel **DOG FOOD** No 300-Can **8 for \$1**
- Butternut **BREAD** 1/2 Lb. Loaf **19¢**
- Family Pack Asst. Flavors **ICE CREAM** 1/2 gallon **49¢**

Wire Selections In Furr's General Merchandise

**PLASTIC PITCHER**

64-Oz. With Pour Spout Reg. 98¢ **2 For \$1.00**

- HERSHEY SYRUP** 16 oz can **5 for \$1**
- Food Club **APPLE JUICE** 46 oz Can **3 for \$1**
- Food Club Cut **GREEN BEANS** No 303 Can **5 for \$1**

SET OF 4 **PLASTIC HANGERS** 2 sets \$1  
Large Size Heavy Washable, Reg. 7.77 **FOLDING COT** \$5.00  
Set of 24 Bamboo Pattern reg. \$6 **ICE TEA GLASSES** 6 for \$1  
Secure 12" Regular **SANITARY NAPKINS** 4 for \$1

**ROUND STEAK**  
U.S.D.A. Graded Choice Heavy Grain Fed Beef **Lb. 79¢**

**Sirloin Steak** USDA Graded Choice Heavy Grain Fed Beef **79¢**

**T-Bone Steak** USDA Graded Choice Heavy Grain Fed Beef **98¢**

**BACON** 1-lb. pkg. **49¢**

**SHRIMP** 1-lb. pkg. **98¢**

**SHORT RIBS** lb. **23¢**

**LIVER** lb. **39¢**

**PECOS CANTALOUPE**  
**5 FOR \$1.00**

U.S. NO. 1 CALIF LONG WHITES **POTATOES**  
10 Lb. Bag **59¢**

**Hom & Gee Grocery**  
421 EAST FREDERIC OPEN 7 DAYS A WEEK PHONE MO 4-8531

**Double Buccaneer Stamps Wed** With Every 2.50 or More Purchase

Blue Ribbon Beef  
**Round, Sirloin or T-Bone Steak 79¢ lb**

Fresh Ground Beef 4 Lbs. \$1.00 Quality, Thick Sliced BACON 2 Lbs. 79¢

Lean Pork <b>STEAK</b> 39¢ lb	Pic-A-Pak <b>WIENERS</b> 3 Lbs. \$1.00	Fresh All Pork <b>SAUSAGE</b> 3 Lbs. \$1.00
-------------------------------------	--	---

**CENTER SLICED HAM** lb. 79¢

**2 large loaves 39¢**  
Food King OLEO 6 for \$1.00  
Shurfresh BISCUITS 12 cans \$1.00

Borden's **MELLORINE** 1/2 gal. **29¢**

Ark Elberta **Peaches** 2 Lbs. **25¢**

Calif. White, No 1 **Potatoes** 10-lb. bag **49¢**

Fresh Crisp **Lettuce** 2 Heads **29¢**

Reg. Size Box <b>TIDE</b> 29¢	Northern 100 Ft. Roll <b>WAX PAPER</b> 19¢	Soflin 400 Count <b>Kleenex</b> 2 for 39¢
Camay, Reg. Bars Face <b>SooP</b> 3 For 29¢	Shurfine, W. Green 303 Can <b>Beans</b> 2 for 45¢	Northern Rolls <b>Tissue</b> 4 for 29¢

Aunt Jemima, Bag <b>CORN MEAL</b> 5Lb <b>39¢</b>	Shurfine, 3 Lb Can <b>Shortening</b> <b>69¢</b>
Shurfine, 300 Size <b>Pork &amp; Beans</b> 5 Cans <b>49¢</b>	Shurfine, 14-oz Bottle <b>CATSUP</b> 2 For <b>39¢</b>
Shurfine, Qt. Jar <b>Salt Dressing</b> <b>39¢</b>	Canada Dry, Asst. Flavors <b>Soda Pop pl dep</b> 2 for <b>25¢</b>
Shurfine, 2 1/2 Gall <b>Peaches</b> 4 For <b>\$1.00</b>	Shurfine, 12 oz Can <b>Lunchmeat</b> 3 For <b>\$1.00</b>
Grade A Large <b>EGGS</b> Doz <b>49¢</b>	Maxwell House 1b. Can <b>COFFEE</b> <b>59¢</b>
Shurfine, 5Lb. <b>49¢</b>	Shurfine, Bag <b>FLOUR</b> 5Lb. <b>35¢</b>

OUR ANCESTORS

by Quincy



"I can't get a decent rare steak since you discovered the use of fire!"

Kansan Crowned Top Cowboy At Wyoming Show

CHEYENNE, Wyo. (UPI)—Sonny Worrell of Fredonia, Kan., has been crowned top cowboy of the 65th annual Cheyenne Frontier Days Rodeo.

Worrell picked up \$4,310 prize money, including his first place in calf roping and sixth in steer roping.

A record \$90,000 in prize money was distributed to 415 competing cowboys, also a record.

Clark McEntire of Kiowa, Okla., took show honors in the steer roping event with a three-time total of 65.8 seconds. He won \$1,427.

Dewey Dunaway of Majave, Calif., totaled 35.2 seconds in bulldogging three steers to win first place in the event and \$1,340.

Kenny McLean of Oak Falls, Kan., amassed 541 points in the professional saddle bronc riding event to win \$980 top money.

On the amateur side of the saddle bronc riding, Bill Smith of Cody, Wyo., captured top billing with 337 points. He won \$292 prize money.

Bob Cullison of Hyattville, Wyo., kept the rodeo's bareback bronc riding title at home by totaling 539 points in three rides for \$1,055.

Del Hataway of Snyder, Tex., won the bull riding event with a three-ride total of 525 points and earned \$1,166.

Housing Project Starts In Mexico

MEXICO CITY (UPI)—The National Housing Institute has begun construction of popular housing at the nearby industrial center of Tlalpan, with a total planned investment of \$3,600,000 (U. S.) it was learned today.

Zinc Plant Move Opens In Mexico

TORRON, Mexico (UPI)—Local business circles have launched efforts to have the proposed zinc refining plant scheduled to be constructed at Saltillo, capital of Coahuila state, moved to this Coahuila community.

The housing project will include 1,340 single-family dwellings and nine multi-family developments. The latter will be "condominio" type, meaning that individual living units will be sold to occupants

The Compania Mexicana Penoles mining firm this year announced plans for establishing such a plant at Saltillo.

instead of rented as in other similar government units.

# FRYERS

Lb. 19c

Swifts' Finest And Freshest USDA Inspected



Double Stamps On Wednesday With \$2.50 Purchase or More.

LIVER

Baby Beef Lb.

A Delicious Healthful Food

19c

FRANKS

Economy Pack

259c

Grain Fed U.S.D.A.

ROUND STEAK 69c/lb

Boneless, Good Served Hot or Cold

ROLLED ROAST 39c/lb

For Your Home Freezer

Steak, Roast and Ground Beef 25 Lb. Pkg. \$11.95

FREE

MEADS SPECIAL BREAD

1 1/2-Lb. Loaf With \$2.50 Purchase or More

Buddys Fine Fresh Produce

WATERMELONS

Charleston Gray Large Size

Each 49c

Large Head

LETTUCE

each 15c

Calif Vine Ripe

TOAMTOES

Lb. 19c

BAKERITE

3-Lb. Can 59c

Reg. Tall Can Campbells

TOMATO SOUP

10c

Cantadina Elberta 2 1/2 Can

PEACHES

19c

Light Crust

FLOUR

5Lb. bag

39c

Delmonte No 303 Can

FRUIT COCKTAIL

3 For

69c

Mary Lou No. 303 Can

SPINACH

10c

White Swan

PINTO BEANS

4-lb. pkg.

39c

White Swan Refrg Jar 16 oz

MUSTARD

Pure

19c

Cupt Rite 125' Roll

WAX PAPER

25c

SUNSHINE

CRACKERS

1-lb. box

19c

400 Count Box

KLEENEX

20c

Elmers Economy Lg Size

EGGS

Doz.

39c

MELLORINE

BORDENS OR LANES

1/2 Gal.

29c

Van Camps No 300 Can

Pork & eBans 3 For

35c

Reg. Box Cinchs

Cake Mix

19c

World NO 211

Pineapple Juice

10c

Kal Kan, Flat Can

Cat Food

Each

9c

Cue Reg. Bit

Barbecue Sauce

23c

Maxwell House Instant

Coffee

6-oz. 98c

FROZEN FOODS

FRUIT PIES

Suzane's Peach Apple Cherry

Lg. Size Each

19c

PARKER HOUSE ROLLS

pkg. 19c



OPEN 7 DAYS A WEEK—7:30 A.M. to 9 P.M. Sunday 7:30 to 8:00  
WE RESERVE THE RIGHT TO LIMIT QUANTITIES

SURE-JELL 2 Pkgs. 29c



638 S. Cuyler  
BUCCANEER  
Saving Stamp  
DOUBLE ON WEDNESDAY  
PH. MO 5-5451

VINE RIPE

TOMATOES

Lb. 7 1/2c

FRESH EARS CORN

Dozen

49c

Calif. Kentucky Wonder GREEN BEANS

lb. 19c

FOLGERS

COFFEE

1-lb. can

59c

GOLD MEDAL

FLOUR

10-lb. bag

89c

MEAT SPECIALS

Swift Premium Canned

PICNICS 3 lbs. \$1.89

U.S.D.A. Club

STEAK lb. 59c

Top Hand

Sausage 2 lbs. 39c

Lean Tender

CUTLETS lb. 89c

Picnic

FRANKS 3 lbs. 89c

FLUFF-WRIGHT PURE

SHORTENING

Carton 49c

SHURFINE

GRAPE JELLY 3

20-oz. Jars 99c

ARMOURS

Vienna Sausage

5 cans \$1.00

VAN CAMP

PORK & BEANS

300 size can 10c

ELM DALE

VINEGAR

Gallon 59c

SHURFINE

MILK

2 Tall cans 25c



**PAMPA GETS TRAFFIC REPORT** — Cecil McNeil of the Amarillo Highway Patrol Division is shown, left, talking with Police Chief Jim Conner, center, and City Manager John Kooztz just before yesterday afternoon's annual Traffic Safety Analysis meeting in City Hall. McNeil gave city officials the National Safety Council's analysis of Pampa's need for improvement in traffic safety procedures. (Daily News Photo)

**Traffic**

(Continued From Page 1)

status be checked against recommended status.

The report commended the judge of the corporation court for filing the 1950 inventory for Pampa and voluntarily submitting the court's performance for analysis and comment.

In connection with traffic courts in Pampa, the analysis summary had this to say:

"The following suggestions are based solely on the information submitted by the court to the American Bar Association in this inventory. There has been no independent investigation of the performance of the court and none was contemplated.

"General Information. The Justice of the Peace No. 1 and Justice of the Peace No. 2 courts in Pampa reported as having jurisdiction in traffic cases, are not courts of record. The 1949 report of the Enforcement Committee of the President's Highway Safety Conference recommends that courts with jurisdiction in traffic cases be courts of record.

"The Traffic Court Inventory listed Justice of the Peace No. 1 and Justice of the Peace No. 2 as also having jurisdiction over traffic cases in your city. No inventory to cover these courts was received. The analysis for your city is incomplete as a result of the other courts failing to file their inventory."

In connection with Pampa's traffic courts, the National Safety Council made the following recommendations:

1. That courts with jurisdiction in traffic cases be courts of record.

2. That each court having jurisdiction over traffic cases within the reporting city file a separate Traffic Court Inventory.

3. That jail penalties for conviction of operating while under suspension or revocation of drivers license should be imposed.

4. That a school for traffic violators be available for referral of defendants by the court.

5. That a traffic court violations bureau be established under the exclusive jurisdiction of the court.

And, then the analysis, said: "No attempt has been made in this analysis to commend the judge, prosecutor, and the other court personnel on the many other activities performed in accordance with national standards. The objective has been only to point out other areas that should receive attention during the period subsequent to the inventory.

One of the chief recommendations made was for the organization of an official city-wide traffic safety program. This, it was suggested, should be done by a coordinating committee made up of city officials with the city's chief executive serving as the active chairman.

City officials in attendance at yesterday's meeting included:

In attendance at the meeting were Mayor E. C. Sidwell, City Manager John Kooztz, Police Chief Jim Conner, City Commissioners Lloyd Simpson and Newt Secrest.

**Chiropodist Opens Office**

Dr. Frank M. Hatcher, foot specialist from Borger, has opened a branch office in Pampa at 819 W. Francis.

A graduate of Oklahoma State University and the Chicago College of Chiropody, Hatcher specializes in foot surgery and foot orthopedics.

Office hours in Pampa are from 9 a.m. to 5 p.m. on Tuesday, Thursday and Saturday.

**Mainly -- About People --**

The News invites readers to phone in or mail items about the comings and goings of themselves or friends for inclusion in this column. \* Indicates paid advertising.

**Boys' School Clothes, Sizes 3-20.** Fords Boys Wear 110 E. Francis, MO 4-7322.

**Mrs. Myron Dorman, national flower show judge, will conduct a class "Color In Flower Arrangement" on Thursday at 2 p.m. in the First National Bank Coffee Shop, upstairs. This is the fifth in a series of eight classes sponsored during the summer months by the Pampa Garden Club. Anyone interested is invited with no class fee involved.**

**Now is your Chance! — Get these books you've been wanting for school or reading, Novels, Biographies, Texts, paper-backs and used bric-a-brac, clothing, plants etc. Unusual gifts from Old Virginia. — Williamsburg place-mats, Cook-books, Flower arranging stamp collecting, come see! All proceeds, for Library, Fri.-Sat. Aug. 4-5 8 a.m. — 6 p.m. 1st National Bank Annex.**

**Eat at Pizza Inn MO 3-4322. Blackeyed peas, ready to pick, limited supply, beets and green beans, orders taken on okra and cucumbers. Benton Farm, MO 4-7095.**

**National Cash register Cafe or drug store type double totalizer less than one year old. Discount price. Phone MO 4-2611 or 4-2617.**

**College Students interested in cutting your study time in half? The Harvard Speed Reading Course offered during August will be previewed Tuesday August 1st 7:00 p.m. Lovett Library MO 5-2993.**

**American Legion Auxiliary will meet Thursday at 7:30 p.m. in the home of Mrs. Lyle K. Stout, 719 N. Somerville. The program will be colored slides of the European trip taken this Spring by Mrs. Vea Lard and Mrs. Ruth Sewell.**

**Check Case Fine, Jail Term Meted**

Foy M. Johnson, 4119 Libacom, Amarillo, was fined \$5 and costs and sentenced to 30 days in jail yesterday when he pleaded guilty in county court on a charge of swindling with worthless check. Restitution was made on a \$24.87 check given to the Black Gold Motel.

**TOURS IRON CURTAIN VIENNA (UPI) — President Kwame Nkrumah of Ghana arrived Monday in Prague for the fourth Iron Curtain capital on his current tour of Europe. He previously visited Moscow, Warsaw and Budapest.**

**Call To Reserve Units Exoected In Two Months**

WASHINGTON (UPI) — Mobilization of the first military reserve units under President Kennedy's preparedness plan may be ordered in about two months, authorities said today.

They said some units may be notified this month to be on alert for possible call-up. But they doubted any actually would be on active duty before the end of September.

Kennedy has indicated Air Force units would get the first calls. The door was opened to call-up of as many as 250,000 members of organized reserve forces and the National Guard when the House gave final congressional approval Monday to a measure giving Kennedy mobilization authority he requested. The vote was 403-2.

Besides the summoning of reserve units and selected individuals to active duty for as much as 12 months, the resolution empowered the Chief Executive to extend for a year the tours of duty of men now in service.

It further authorized the administration to extend the annual training periods of some reserve units beyond the normal two weeks. Two- to four-week extensions are contemplated.

While the administration sought the mobilization power urgently, Defense Secretary Robert S. McNamara promised to use it sparingly. So far, it was reported, no notifications have gone to state governors concerning National Guard units that should be on alert.

**Budget**

(Continued From Page 1)

on the city tax rate from \$1.50 to \$1.45 per hundred dollars valuation. This reduction is made in the interest and sinking fund portion of the tax rate which is being cut from 50 cents to 45 cents.

"We should be encouraged by the splendid cooperation and teamwork that exist among city employees and I am sure they will put forth every effort to make this budget effective in the performance of their duties," City Manager Kooztz said.

The city manager also pointed out in his budget report that "we have had much less turnover in personnel since adding the Texas Municipal Retirement System."

**Swimming Class For Exceptional Children Popular**

The Exceptional Children swimming therapy class held each Thursday evening at the Pampa Youth and Community Center from 6-7 p.m. continues to be popular. The classes are designed to meet a therapeutic need and give the participants a chance to become accustomed to the water and learn to swim.

The class is under the direction and supervision of Mrs. Marion George and Mrs. Lela Beckham, who have been trained for this type of work. Their time is donated. Assisting Mrs. George and Mrs. Beckham are members of the Pampa Key Club. These boys have also given freely of their time to the class. The class has averaged about 20 participants each session with approximately eight Key Club members assisting. The class is open to anyone free of charge and membership in the Youth and Community Center is not necessary for participation.

Information concerning the class may be obtained by calling Mrs. Jack Sloan at MO4-2043 or by attending the class on Thursday evening at the Youth and Community Center.

Read the News Classified Ads

**Mrs. Tate Rites Today**

Interment rites for Mrs. Virginia Ruth Tate of Amarillo, former Pampan, were to have been held at 3 p.m. today in the Southside Church of Christ in Amarillo with graveside rites to follow in Fairview Cemetery here.

Mrs. Tate died yesterday at 3:30 p.m. in Northwest Texas Hospital after an illness of several weeks. Mrs. Tate, the former Virginia Washington, was born in Watonga, Okla. on Dec. 4, 1921. She moved to Pampa in 1926; attended schools here and was graduated from Pampa High School. On Aug. 1, 1945, she was married to Marvin G. Tate, who survives.

In addition to her husband, she is survived by two sons, Larry and Gary; her parents, Mr. and Mrs. James Washington Sr. and Billy Washington; two sisters, Mrs. Donna Sims, and Mrs. Clara Imel, all of Pampa. Pallbearers will be Jess Nix, Hal Houston, Don Headerson of Amarillo, Mid Percy, Jim Cleveland, Edd Littlefield of Odessa, and Jack L. Mackey.

**WON'T MEET PRESS**

WASHINGTON (UPI) — President Kennedy will not hold a news conference this week. His last news conference was two weeks ago.

**State Labor President Winner In Initial Votes At Convention**

GALVESTON (UPI)—Fred H. Schmidt, secretary-treasurer of the Texas State AFL-CIO, said today he felt he had no chance of unseating president H. S. (Hank) Brown at the labor convention.

Schmidt, who had said he would resign his secretary-treasurer post if he did not win the election to president, was beaten in two preliminary votes Monday.

The Brown-controlled credentials committee seated delegates from 18 locals and two central committees who were delinquent in payment of dues to the state organization. A token payment was accepted and the delegates seated over the protests of Schmidt and his backers.

"The vote was theft," Schmidt charged. "We can't win now because of this packing, but we will play our hand out."

Two hours of debating on the floor at Moody Center was followed by two lopsided votes favoring Brown. The credentials fight took place at the afternoon session Monday.

**\$25 Fine Meted In Driving Case**

Charles Richardson Jr., 810 S. Reid, was fined \$25 and costs today in William J. Craig's county court when he pleaded guilty on a charge of driving while his license was suspended.

**Mexican Catholics Mark Anniversary**

MEXICO CITY (UPI)—The 150th anniversary of the execution of Roman Catholic priest Miguel Hidalgo, father of Mexico's independence from Spain, was celebrated in cities throughout Mexico Sunday.

**Mine Union Loses Damage Suit Plea**

KNOXVILLE, Tenn. (UPI) — A federal judge Monday denied a motion for a new trial for the United Mine Workers Union, under court order to pay \$270,000 damages in a conspiracy conviction.

The anti-trust conviction came last spring at the climax of a suit brought by Phillips Bros. Coal Co. of Scott County, Tenn.

# FRYERS 10¢

Fresh, Dressed, U.S. Inspected lb.

**SHORT RIBS**  
Lean, Meaty  
Lb. **29¢**

**FOOD CENTER**  
400 S. RUSSELL MO 5-3452  
OPEN SUNDAYS  
OPEN Daily 8 a.m. to 8 p.m.  
OPEN Saturday 8 a.m. to 9 p.m.

**BACON** 2 Lbs. **89¢**  
Wrights, taste-Wright

**SUGAR** 5 Lbs. **39¢**

**Orange Drink** 10¢  
Hi-C, 12-oz Can

**ASPERIN** 49¢  
St. Joseph  
Reg. 39c, Bottle of 100

**COFFEE** Folger's 1-lb. can **59¢**

**CREME COOKIES** 39¢  
Fireside, 1½ Lb Pkg.  
Chocolate or Vanilla

**NAPKINS** 10¢  
Charmin  
Table Naps  
50 Count

**RED POTATOES** U.S. No. 1 10 Lbs. **29¢**

**CABBAGE** Solid, Firm **7 1/2¢ lb**

**TOMATOES** Vine Ripened, Home Grown **10¢ lb**

**Kimbell's Biscuits**  
12 Reg. \$1.00 Cans

**CHEESE** 2 lb. pkg. **69¢**  
Pabst-ette

**FLOUR** 10 Lbs **59¢**

**Black Pepper** 10¢  
Arrow, 1-Oz.

**PEPSI COLA** 19¢  
Regular Size  
6 Bot. Ctn.  
Plus Deposit

**INSTANT COFFEE** 99¢  
6-oz Jar

**APPLE JELLY** 29¢  
Kraft's 18-oz Tumbler

**SARDINES** 10¢  
Maine In Oil Flat Can

**PINTO BEANS** 2 Lbs. **19¢**

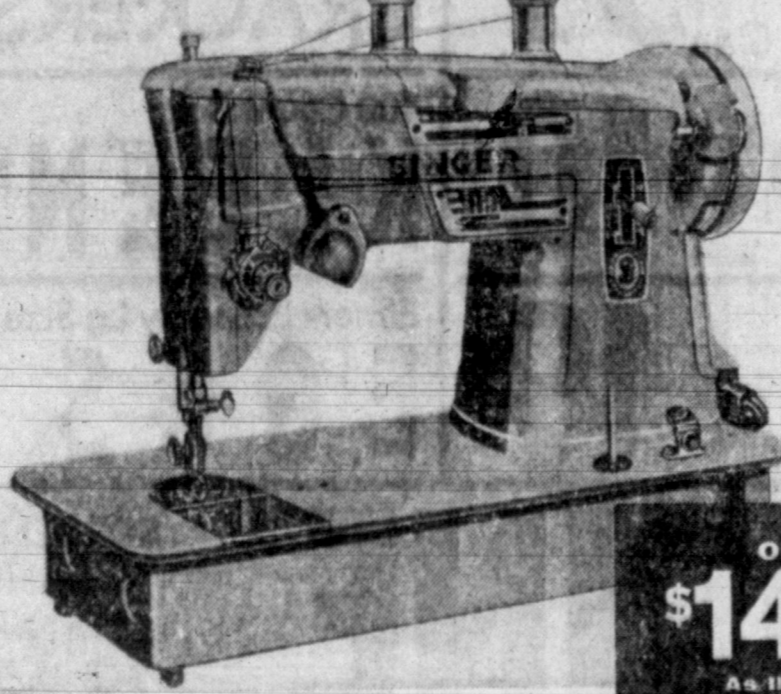
**Yellow Onions** Lb. **7¢**

**Crisp Lettuce** Large Head **15¢**

**BANANAS** Yellow, Ripe, Central America! **15¢ lb**

**SINGER**

**NEW STYLE-O-MATIC ZIGZAG MACHINE**



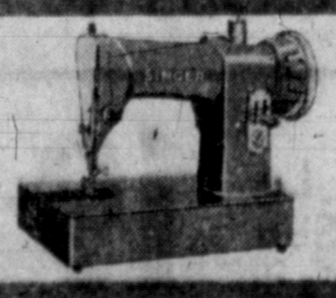
ONLY **\$149.50**  
As Illustrated

**TRY THE PICK-UP TEST ON THIS TRULY PORTABLE ZIGZAG MACHINE**

Compare its weight with other-make zigzag machines — the cast aluminum head makes it 20 pounds lighter than most. You'll be happy, too, with its beautiful decorative patterns, dependable straight stitching — use it to make buttonholes & monograms without attachments. Only \$1.55 per week on our Easy Budget Plan.

**SALE YOUNG BUDGET**

Straight stitch machine with graduated tension and stitch control, handy backstitch lever. Reduced to **\$79.50**



**SINGER SEWING CENTERS**  
HEADQUARTERS FOR ALL YOUR SEWING AND FLOOR CARE NEEDS  
(Listed in your phone book under SINGER SEWING MACHINE CO.)

Limited stock — see them today at your **214 N. Cuyler MO 4-6941**



# DOLLAR DAYS

at **SAFEWAY** *Featuring Famous KUNER'S CANNED FOODS!*

- |  |                                      |            |  |  |             |
|--|--------------------------------------|------------|--|--|-------------|
| <b>CORN</b> <small>Kuner's Cream Style Golden—You SAVE 26c</small> | <b>6</b> <small>No. 303 Cans</small> | <b>\$1</b> | <b>JUICE</b> <small>Kuner's Tomato Juice—Buy 4 Cans And SAVE 40c</small> | <b>4</b> <small>46-oz. Cans</small>    | <b>\$1</b>  |
| <b>SAUCE</b> <small>Town House Apple Sauce—You SAVE 14c</small>    | <b>6</b> <small>No. 303 Cans</small> | <b>\$1</b> | <b>PUNCH</b> <small>Hawaiian Delicious Punch—You SAVE 17c</small>        | <b>3</b> <small>46-oz. Cans</small>    | <b>\$1</b>  |
| <b>APPLES</b> <small>Comstock Sliced Apples—You Save 35c</small>   | <b>5</b> <small>No. 2 Cans</small>   | <b>\$1</b> | <b>BEANS</b> <small>Kuner's Cut Green Beans—SAVE 15c</small>             | <b>5</b> <small>No. 303 Cans</small>   | <b>\$1</b>  |
| <b>CATSUP</b> <small>Kuner's SAVE 10c</small>                      | <b>5</b> <small>14-oz. Bolls</small> | <b>\$1</b> | <b>SAUSAGE</b> <small>Oscar Mayer Vienna</small>                         | <b>5</b> <small>4-oz. Cans</small>     | <b>\$1</b>  |
| <b>BEANS</b> <small>Kuner's Whole Green Beans</small>              | <b>4</b> <small>No. 303 Cans</small> | <b>\$1</b> | <b>CHUNK TUNA</b> <small>Sea Trader</small>                              | <b>4</b> <small>5 1/2-oz. Cans</small> | <b>\$1</b>  |
| <b>CHEESE</b> <small>Dutch Mill Sliced Reg. 3 for \$1.00</small>   | <b>4</b> <small>8-oz. Pkgs</small>   | <b>\$1</b> | <b>DOG FOOD</b> <small>Pooch Dry Dog Food</small>                        | <b>10</b> <small>lb. Pkg</small>       | <b>\$1</b>  |
| <b>JUICE</b> <small>Dole Pineapple Buy New and SAVE 5c</small>     | <b>3</b> <small>46-oz. Cans</small>  | <b>\$1</b> | <b>Luncheon Meat</b> <small>Oscar Mayer</small>                          | <b>12-oz. Can</b>                      | <b>39c</b>  |
|  |                                      |            | <b>TOMATOES</b> <small>Kuner's Fancy Quality Buy 6 and Save 17c</small>  | <b>6</b> <small>No. 303 Cans</small>   | <b>1 00</b> |

C&H Pure Cane  
**SUGAR** **5** Lb. Bag **29<sup>c</sup>**  
With Purchase of \$5.00 or Over

Van Camps—300 Size Can  
**PORK 'N BEANS** **10<sup>c</sup>**

Harvest Blossom  
**FLOUR** **59<sup>c</sup>**  
10-Lb. Bag

**CRISCO** **79<sup>c</sup>**  
3-Lb. Can  
(4c OF LABEL)

Prices in This Ad Are Good Thru Wed., Aug. 2nd in Pampa  
WE RESERVE THE RIGHT TO LIMIT QUANTITIES

## MIX or MATCH FROZEN FOOD BUYS

- |  |  |
|--|--|
| Bel-air Okra <small>Premium Quality 10-oz. Pkg.</small>    | Bel-air Broccoli <small>Tender Spears 10-oz. Pkg.</small>    |
| Bel-air Beans <small>Green French Style 9-oz. Pkg.</small> | Bel-air Broccoli <small>Chopped Broccoli 10-oz. Pkg.</small> |
| Bel-air Beans <small>Cut Green 9-oz. Pkg.</small>          | Bel-air Cauliflower <small>10-oz. Pkg.</small>               |

You Can Buy All of One Kind or Mix Them Up as You Like. You Save Either Way!  
**5** Pkgs. for **\$1 00**

- |  |            |
|--|------------|
| <b>GRADE 'A' EGGS</b> <small>Large Breakfast Gems Doz.</small>         | <b>49c</b> |
| <b>COTTAGE CHEESE</b> <small>Lucerne 2-lb. Pkg.</small>                | <b>49c</b> |
| <b>LUCERNE SHERBET</b> <small>Reg. 69c SAVE 10c 1/2 Gal. Can.</small>  | <b>59c</b> |
| <b>SWEET PICKLES</b> <small>Zippy Whole SAVE 6c 27-oz. Jar</small>     | <b>39c</b> |
| <b>ORANGE MARMALADE</b> <small>Em-press 20-oz. Jar</small>             | <b>39c</b> |
| <b>LIPTON'S TEA</b> <small>Reg. 43c Value—SAVE 4c 1/2 lb. Pkg.</small> | <b>39c</b> |

*Safeway Guaranteed Meats at Special Reduced Prices and Gunn Bros. Stamps Too!*

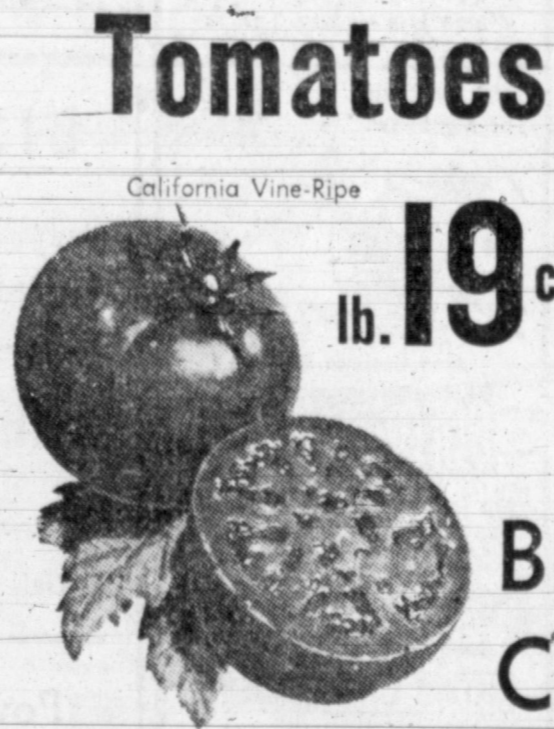


**PORK ROAST**  
Fresh Pork Shoulder—Lean Picnic Cuts Here's a Treat for Sunday Dinner Stock Your Freezer at This Low Special Price!  
**25<sup>c</sup>** lb.

- |  |                           |
|--|---------------------------|
| <b>PORK STEAK</b> <small>Fresh Pork Lean Semi-Boneless</small>           | <b>35<sup>c</sup></b> lb. |
| <b>CHUCK ROAST</b> <small>U.S.D.A. Good Grades Aged Mature Beef</small>  | <b>39<sup>c</sup></b> lb. |
| <b>ROUND STEAK</b> <small>U.S.D.A. Good Grades Aged Matured Beef</small> | <b>79<sup>c</sup></b> lb. |

- |   |                |
|---|----------------|
| <b>SIRLOIN STEAK</b> <small>U.S.D.A. Good aged best</small> | <b>lb. 89c</b> |
| <b>T-BONE STEAK</b> <small>U.S.D.A. Good aged best</small>  | <b>lb. 98c</b> |
| <b>Smoked Jowl</b>  | <b>Lb. 29c</b> |

*Safeway's finest array of fruits and vegetables!*



**Tomatoes** California Vine-Ripe  
**19<sup>c</sup>** lb.

**CORN** California Golden Bantam Large Well Filled Ears  
**5<sup>c</sup>** Each



**BELL PEPPERS** California Large Size **10c** lb.  
**CUCUMBERS** California Long Green Slicers **5<sup>c</sup>** Ea.

- |  |            |
|--|------------|
| Salvo Detergent <small>Tablets 12-Ct. Pkg.</small> | <b>45c</b> |
| Snowdrift Shortening <small>3-lb. Can</small>      | <b>89c</b> |

**TV TOSS PILLOWS** Reg. \$1 Value  
**79c**



**THIS COUPON GOOD FOR 20c**  
Toward the Purchase of a One-Pound Can of Luizanne Coffee at Safeway  
Reg. 73c Value — With This Coupon 53c  
Limit One Coupon Per Family. Coupon Void After August 5th 1961

SAFEWAY IS NOW OPEN EVERY SUNDAY 10:00 A.M. TILL 6:00 P.M.

# Refinishing Of Antiques Requires Rare Technique



Refinishing a second-hand chest includes removing the dirt and tarnish from old brass hardware. Hardware on chest is scrubbed with a salt-vinegar solution, then suds and water.

Sharpen your eye, polish up your dicker technique; it's time to join the bargain hunters on safari through the quaint shops, secondhand stores and farmhouses in the hinterlands. Maybe we won't bag a prime antique bought for a song from some unsuspecting soul. Such prizes are exceedingly rare because unsuspecting owners of genuine antiques have become rare.

Many of us will return with a worn and dusty something-or-other which we can lovingly refinish and brag about through the winter. And there will be those of us who will trail home with a crumbling what-you-may-call-it, smuggle it into the basement and wonder what in heck to do with it.

In the interests of better hunting and worthier prizes I pass along advice and tips from Gordon Obrig, furniture authority, cabinet maker and teacher of Greenwich Conn. In our interview by letter, Obrig advised that before buying secondhand furniture we assure ourselves that it will fit into a decorative scheme of a particular room and that it will serve a specific need.

Before buying a cabinet, for example, decide what you want to store in it and whether it is adequate for that purpose. Test to see if it is workable or in-repairable condition.

If wood frames or wood pieces are scratched, here is a refurbing tip. Use a mixture of one third each of white vinegar, turpentine and boiled linseed oil. Shake the mixture in a bottle, rub it over

the scratched wood with a lint-free rag. Polish with a clean, lint-free rag.

The turpentine and linseed oil remove dirt while the acid in the vinegar helps to close up scratches and polish the wood, Obrig says. Greasy residue from turpentine can be removed by washing with soap and water.

Often the old brass or brass-finish hardware on a secondhand piece can be restored with out sacrificing the antique tried. I tried Obrig's suggestion on some old brass doorknobs and hingeplates with good results.

To clean, combine vinegar and salt in a ceramic dish and brush this mixture on the hardware with a soft brush. Then suds, rinse and dry the hardware.

An alternate and somewhat gentler method is to soak brass hardware in a solution of washing soda and warm water to loosen and release the dirt. Then wash with soap and water and allow to dry completely. In either case, take the screws out first and oil them before using them again.

Another Obrig recommendation I found valuable (or hope to if I locate the right table) has to do with badly stained or discolored marble tops. Rather than attempt to restore it yourself, he says, reverse the marble and have the under surface ground and polished with professional equipment at a marble yard.

Protect the new surface by applying a coat of beeswax which has been melted over hot water (watch your step for safety's sake) and then mix with enough natural (not synthetic) turpentine to make it the consistency of thin cream. Apply hot or cold, let dry for a couple of hours then polish with a soft cloth.

## Dear Abby... Mom Should Step In Ere Daughter Steps Out

By ABIGAIL VAN BUREN

DEAR ABBY: This is not a personal problem, but a public one. What do you think should be done about the present trend of make-up and attire for our adolescent girls? I refer to girls from 14 to 18, who come from good families, but go around looking like streetwalkers. They load on the make-up and wear their hair in sophisticated styles to make themselves look older. And their clothes are disgustingly tight and short. Or they are half-naked. Don't you think the Law should step in, since this kind of appearance appeals to the baser instincts of man and increases the crime rate?

MRS-CITIZEN  
DEAR CITIZEN: Unless these girls sneak out of their homes in such get-ups, the blame should be placed squarely on the shoulder of their mothers who, in their well-meaning eagerness to make their daughters "popular" and "happy," encourage them to appear 20 when they are only 15. This is a matter for parental discipline, not law.

DEAR ABBY: This may seem crazy to you, but it hurts me very much. My husband keeps telling me about the many love affairs he had with other girls before he met me. I think the past should be forgotten, but I would like to teach him a lesson. I don't have any past to talk about, but do you think if I made up a few stories as good as his it would shut him up?

NO PAST  
DEAR NO: Men who were really successful with the ladies do not feel the need to boast about it. Tell your husband you would rather not hear about his escapades, and don't make up any whoppers as toppers.

DEAR ABBY: This afternoon I



attended a bridal shower. Each guest brought a gift for the bride. The afternoon was spent in playing bridge. I won the prize, which was a lovely pair of tea towels. Naturally, I was delighted.

This evening I received telephone calls from three women who had attended the same shower. They informed me that I had committed a breach of etiquette in taking home my prize. They said it was the "custom" to give the bride all prizes won at a bridal shower. Is this true? I have never heard anything so ridiculous.

FLABBERGASTED  
DEAR FLABBERGASTED: In a few isolated communities this IS indeed the "custom." But it doesn't make much sense to me either.

Everybody has a problem. What's yours? For a personal reply, write to Abby in care of this paper. Enclose a stamped, self-addressed envelope.

For Abby's booklet, "How To Have A Lovely Wedding," send 50 cents to Abby, Box 3365, Beverly Hills, Calif.



LITTLE LIZ  
There's nothing like a new illness to make a guy pay up an old doctor bill.

STARCH 'EM LATER  
To avoid silverfish, liners should be laundered, but not starched, before storage.

## Impart Own Personality In Room Accessories To Set Off Your Look

NEW YORK — Make a new headboard with paint and props, add a few accessories to set off your look, and end up with great new fall room mates.

That's the suggestion for teenage girls from the August issue of Seventeen Magazine, which points out that away-to-schoolers and stay-at-homeers alike can impart their personalities to their rooms.

First step in your penny bank-decorating is the headboard. You might find an old Spanish grille or gate rusting away in a secondhand shop, scrub it up, spray it a leafy green and make it a lacy focal point for a very feminine, formal bedroom. To set it off, choose a dazle of sunny yellow go-togethers.

If flowers suit your fancy, pick your favorite blooms from heavy giftwrap paper, cutting carefully around each bud and blossom, and create a "headboard tree." Decide what shape you want them to grow in, lightly trace an outline on the wall and paste your flowers inside; join with stems of washable paint.

Another possibility is to sew a headboard of eye-catching felt pockets that hold personal treasures. Just fold pieces of felt in half to form squares; sew sides and trim. Stitch securely to long bands of felt and hand on with giant brass cup hooks. For colonial polish, dig up an American eagle at a secondhand shop and hang it above the felt strips.

If you yearn for a Coffeehouse in your bedroom, create a keynote with a picture made from hot-iron Bondex tape pressed on felt. Hang it over your bed and carry out the modern theme with a vividly striped spread.

All kinds of other things can be made to be headboards. Browse around for old shutters, beautifully carved wooden backs from old love seats, ye olde shoppe signs, a wagon wheel — sawed in half, sprayed daisy-yellow. Or cover your old headboard with bright-colored felt or paint it a soft la-

## Mrs. Brown Has SS Class Meeting

GROOM (Spl) — The Home Builders Sunday School Class of the Baptist Church met at the home of Mrs. Fred Brown recently for a monthly meeting.

Attending were Mmes. Jack Bivens, Bill Burgin, Bud Brown, Danny Ashfor, Carol Brewer, Bobby Cornett, Donald Ritter, Leroy Mashburn, Andy Brown, Danna Howerton, R. A. Snyder and the hostess, Mrs. Fred Brown.

## Gabettes Have Social Meeting

GROOM (Spl) — The Gabettes Club met in the Community Club House recently with Mrs. Bob Clayton and Mrs. L. C. Jones as hostesses.

Refreshments were served to Mmes. W. C. Whatley, Paul Homer, C. J. Roberts, Billy Cornett, Ray Britten, Leroy Frederiksen, guests and to the following members: Mmes. Charles Banks, Glynn Harrell, Ernest Lamberson, Carl Homer, Lee Crowell, Robert Milton, Mike Homer, John Witt, Joe Davis, Bill West, Herbert H. Hunt, Walter Garmon, Austin Crowell, Ted Friemel, Ruby Lee Jones, Ruby Denton, Miss Beulah Shockley and the hostesses.

Game of pinocle were played with Mrs. Mike Homer taking high score and Mrs. Leroy Frederiksen low score.

## Groom 4H Club In Dress Revue

A 4H dress revue was held at Panhandle recently attended by several 4-H club members from Groom. Groom girls attending and modeling the garments they have made this summer included Patricia Hunt, who received second place for her blouse entry and Jane Hudson who won second place on a skirt she had made.

Other members were Janice Britten, Pam and Karen Ollinger, Twila Wade, Tanja Weatherly, Dandra Kotara and Carolyn Brooks.

Mmes. Sam Kotara, Kenneth Hunt, John Brooks, and W. H. Ollinger, local 4-H leaders, Mrs. Eldon Hudson and Mrs. Leroy Weatherly accompanied the girls to Panhandle.

## Talk For Teens

If you're bored, it's your own fault. When you start feeling that what you're doing is no longer important to you, change to something different.

Don't wait for someone to lead you into the change. You can handle it yourself.

Learn more games and learn them well.

Switch to reading. Read more and better books: Turn yourself into a sparkling conversationalist. Keeping alive many interests will in turn make you alive and interesting to others. Try it.

## Makes Friends Manners



Be a gentleman in restaurants when traveling — dress appropriately.

Worry of FALSE TEETH Slipping or Irritating? Don't be embarrassed by loose false teeth slipping, dropping or wobbling when you eat, talk or laugh. Just sprinkle a little FASTETH on your plates. This pleasant powder gives a remarkable sense of added comfort and security by holding plates more firmly. No gummy, goopy, pasty taste or feeling. It's alkaline (non-acid). Get FASTETH at any drug counter.

## MATURE PARENT

MRS. MURIEL LAWRENCE  
Newspaper Enterprise Assn.

Dear Mrs. Lawrence:  
You like modern kids so much I wish you had mine. Tie this. Last fall I bought my 14-year-old girl a winter coat. She chose it. Nothing would do but that she should have an off-white, fuzzy number — she found on a rack. I warned her that it would shed and soil easily. No, she had to have it. Now I'm told that she'll die before she wears it again next winter. As a kid myself, I wore a winter coat three years...

ANSWER: But your mother didn't just stand around while you chose one she knew wouldn't wear for three years.

Why did you permit this purchase?  
Now I am going to tell you what I would do in your place. I would face my own irresponsibility in allowing my daughter to make a decision she hadn't the experience to make. I would accept the consequences of that irresponsibility.

Instead of trying to force her to wear this coat next winter, of fussing at her mistaken choice, I would agree to buy her a new one — and this time claim the decision on its practicality.

We teach responsibility to children by demonstrating it.

Many of us don't. We let Johnny order a rich ice cream sundae — and then say "I told you so" when he gets sick in the bus going home. We let him evade his homework — and then blow up when he brings home a failing mark. We let a daughter buy a coat that we know is impractical — and then accuse her of extravagance when she comes around to agree with what we knew.

What is it but irresponsibility in us that stands by when bad decisions are made — and then goes all virtuous and indignant when we are involved in the bad results? "Permissiveness" — that starry-eyed doctrine of child training — has provided American parents with a lovely lazy holiday from responsibility. It's got us off the hook of caring about what happens, of the hard job of judging a child's capacities for ourselves, of incurring disagreeable resentments at a firm and lonely "No." It's time the vacation was over.

Because children can be given too many decisions. They can be allowed to make so many bad ones that they become afraid of decision. In adolescence and early adulthood, they can start running away from responsibility that has been made too punishing, too humiliating by over-responsible childhoods.

# Hobbies And Interests Keynote Neckwear



Buying him a tie is easier these days with a new selection of hobby and professional ties.

HELEN HENNESSY  
Newspaper Enterprise Assn.  
When a woman selects a man's tie, he must hide in a corner when he wears it — so goes a tired cliché. But one new group of designer ties will prove the old saying to be false.

If you know a man well enough to be familiar with his interests and hobbies, these ties are a sure bet to win his approval.

It has been said that a man sometimes wears his heart on his sleeve. Well, today he can produce a more visible clue to what he's really like by wearing his hobby on his tie. Doctor, lawyer, golfer, angler, photographer, even gambler, they've all been included.

For example, no motorist could resist either of the two ties designed especially for him. One deals with sports cars in which a miniature Jaguar, a Porsche, and a Mercedes Benz race over the frontispiece. The other features antique cars — a Model-T Ford, a Stutz Bearcat and a Stanley Steam-

er. Not even the stock market is neglected. The ticker tape is very much in evidence, as is the bull and the bear, with the inevitable graph completing the design.

smoking-frying pan and barbecue accessories.

Color plays an important role in these designs. There is a wide range of blues, tans, greens, black and white and an interesting silver tone, as well as Mara maroon, an original red.

TOP OF TEXAS  
DIAL MO 4-8731  
Open 7:30 — Tonight Only

65¢ CAR NIGHT  
Yvonne Decarlo  
"Border River"

COLOR WIDE SCREEN  
LAVISTA  
MO 4-4011  
Open 1:45 — Last 2 Days  
AT: 2:30 — 4:45 — 7:04 — 9:23

Ed Sullivan  
"This Is Really The Big Show!"

THE BIG BROTHER  
Also Cartoon & News

COLOR WIDE SCREEN  
CAPRI  
COOLED BY REFRIGERATION  
Open 1:45 — Last 3 Days

NATURE ENTERTAINMENT  
At: 1:45 4:21 6:57 9:33  
—Starring—  
Claudette Colbert  
Troy Donahue  
Karl Malden

His name is PARRISH  
More than a boy...not yet a man!

TECHNICOLOR®  
From WARNER BROS.  
Also Cartoon & News

# FITE FOOD MKT.

We Give Your Choice of:  
PAMPA PROGRESS THRIFF STAMPS BUCCANEER STAMPS  
DOUBLE STAMPS  
Wednesday With 2.50 Purchase or More  
1333 N. Hobart STORE MO 4-4092 OFFICE MO 4-8842

FITE FEATURES ONLY U.S.D.A. CHOICE GRAIN FED BEEF

Top O' Texas, All Meat		Fite's Own, Home Made Boneless	
WEINERS	49¢ lb	Barbecued Beef	59¢ lb
Lean, Meaty		Fresh	
BEEF RIBS	25¢ lb	CALF LIVER	39¢ lb

COMPARE OUR LOW MARKET PRICES ON FEED LOT FED BEEF  
We Are Equipped To Process, Wrap, Freeze Beef-Pork For Your Freezer

COFFEE	Lipton's	TEA	1/4-lb. pkg.	35c	Shurfine Tattered Tom	PEACHES	
Folger's	Liquid	Metrecal	6 pak. ctn.	\$1.59	2 Cans	35c	
1-Lb. Can	59¢	CRISCO	3 lb. can	79c	Shasta Pop	19¢	
BISCUITS	Shurfresh	FLOUR	5 lb. bag	49c	All Flavors	28-oz Bottle	
5¢	Reg. Can	Oreo Creme Cookies	1-lb. pkg.	43c	OLEO	2 Lbs.	35c
MELLORINE	Northern Tissue	4 reg. rolls	29c	TUNA	23¢		
29¢	Reynolds, Reg. Roll	Aluminum Foil	27c	Shurfine	Reg. Can		
Borden's	Supreme	Crackers	1-lb. box	25c	Dan River Fall Patterns	COTTON FABRICS	
1/2 Gal.	White • Yellow • Pink • Aqua	Kleenex	400 count	23c	4 yds.	\$2.49	
Powdered Or	Soffin	Towels	2 reg. rolls	29c	LEMONS	Sunkist	10c
Brown Sugar					2 Lbs.		
2 1-lb. Boxes							
25c							

U.S. No. 1	Crisp, Tender, Fresh		
RUSSET POTATOES	LETTUCE	LEMONS	
10 Lb. Bag	2 Lbs.	Lb.	10c
49c	25c		
TV DINNERS	VEAL CUTLETS	TURNOVERS	
Swanson Frozen	East-More, Breaded Frozen	Frozen, Reg. Size	
Reg. Pkg.	18-oz. Pkg.	Pepperidge Farm	
49c	69c	49c	

# Washington Window

By LYLE C. WILSON  
 WASHINGTON (UPI) — The most important dollar ever inherited by John Fitzgerald Kennedy 65 cents. That is the way it has been the U. S. buck bequeathed to him by the Eisenhower administration.

That dollar was a beat up bit of paper which had been inherited by Dwight D. Eisenhower from Harry S. Truman. HSI got it from FDR.

To understand the importance of this presidential dollar, it is necessary to agree on the moment of time when this dollar was in good health and capable of buying 100 cents worth of goods and services. The U. S. Senate Finance Committee fixes this moment of time in the year 1939. This is an arbitrary choice but a good one.

It puts the dollar to the severe test of the past 22 years. So it is that FDR in 1939 had in his wallet a U.S. dollar worth 100 cents. Harry S. Truman inherited that dollar along with the presidency in 1945. It had shrunk by then in value to less than 79 cents.

Conservative minded citizens became alarmed. Everybody's dollar had shrunk in pace with the dollar in FDR's pocket.

When Harry S. Truman handed the presidential dollar on to Dwight D. Eisenhower that U. S. buck was worth about 52 cents. FDR and Truman were big spenders. Each had a war in his lap, however, and much of the dollar-busting deficit spending sponsored by those two presidents was for survival defense.

Eisenhower was a big time spender, too, and he did not stop the rotting of the U.S. dollar.

Eisenhower slowed the disease, however, and handed over to John F. Kennedy a dollar worth about 65 cents. That is the way it has been.

FDR's healthy 1939 dollar is gravely ill. The illness has developed in step with a long and almost uninterrupted series of deficit years in the operation of the U. S. government. These deficits require enormous borrowing to pay government bills. There has been a relentless growth of the national debt toward \$300 billions, an incomprehensible figure.

This deficit spending seems to have been bad medicine for the ailing U. S. dollar. President Kennedy and Secretary of Treasury C. Douglas Dillon evidently believe this is good medicine. They will dose the dollar with a \$7 billion deficit this year. The President needs a great lot of new defense money and he plans to borrow that and to borrow more for other purposes.

He may ask for higher taxes next January. But he is not talking in terms of cutting government costs and preventing deficit spending by economy in non-defense areas. Those are politically sensitive areas, untouchable except at great political risk.

The facts of simple arithmetic suggest something which should jolt all deficit spenders, past and present. From 1939-61 inclusive the dollar lost purchasing power at the rate of 2.4 cents a year. At that rate, if Kennedy served two terms, he would pass on to the next president a dollar worth about 27 cents. Two-bit dollar, here we come!

## On The Record

### HIGHLAND GENERAL HOSPITAL NOTES

Admissions  
 Mrs. Mona Dell Smith, White Deer  
 Mrs. Frances Winters, 935 S. Sumner  
 Mrs. Lucy Taylor, 116 W. Tuke  
 L. R. Rash, Pampa  
 Angelia Roush, 1009 Huff Rd.  
 Don Whitney, 129 S. Dwight  
 Mrs. Helen Prater, 631 Yeager  
 Mrs. Winnie Wilson, Wheeler  
 Mrs. Maude Trusty, Lefors

Mrs. Christina Byerly, 1324 N. Starkweather  
 John Howell, 1009 Neel d.  
 Mrs. Naomi Nelson, 2220 Hamilton  
 Roy Daniels, Borger  
 Sherrill Sanders, Lefors  
 Mrs. Margie Grayson, White Deer  
 Mrs. Margaret Shankle, Panhandle  
 Dale Hemphill, Pampa  
 Mrs. Jane Loving, Panhandle  
 Mrs. Billie Ann Phillips, 716 N. Christy

Mrs. Leah Maddox, Hedley  
 Mrs. Gayle Orr, Stinnett  
 Miss Barbara Smiley, Pampa  
 Lonnie M. Harmon, 1100 Varvon Drive  
 C. W. Couch, 1036 S. Faulkner  
 Dismissals  
 Mrs. Jean Prather, City  
 Gary Mills, 233 Miami  
 Mrs. Edith Malone, 925 S. Reid  
 Miss Juanita McCool, Pampa  
 Baby Teresa Hale, 615 E. Campbell  
 Elmer Wheeler Jr., 1229 E. Foster  
 Mrs. Marilyn Mcanally, 842 S. Banks  
 Mrs. Leoneda Hemken, 1013 E. Kingsmill  
 Baby Janet Kidd, 1117 Neel Rd.  
 G. E. Nichols, Pampa  
 Carroll Russell, Skellytown  
 Mrs. Mary Jo McGowan, Lefors  
 J. O. McCracken, Pampa  
 Mrs. Frances Marie Winters, 935 S. Sumner  
 Mrs. Mary Whittle, 919 E. Francis

## Woman Arrested At Sweetwater On Fraud Count

SWEETWATER (UPI) — The FBI has announced the arrest of Miss Evelyn Lohmann, 54, an official of the Sweetwater Federal Savings and Loan Association, on a charge of juggling the books to cover an apparent embezzlement of \$3,757.

Miss Lohmann, secretary-treasurer and a director of the association, was on vacation when the shortage was discovered. She was arrested late Sunday at her home by federal agents.

She was taken before U.S. Commissioner Gladys Walls at Abilene, arraigned and released on \$25,000 bond.

Curtis O. Lynam, special agent in charge of the Dallas FBI office, said there may be more missing funds. He said the extent of the irregularities at the company are now being checked by examiners from the FBI and from the Federal Home Loan Bank Board.

Lynam stressed that deposits at the firm are insured up to \$10,000.

Miss Lohmann was specifically charged with making false entry in the amount of \$3,757 in violation of a federal reserve act.

Officials at the company declined to comment about the shortage. Friends of Miss Lohmann were shocked and could give no immediate explanation.

Lynam said she is single, lives alone in Sweetwater, and is not known to live or dress extravagantly.

## Guardsmen Enter Their Final Week At Summer Camp

NORTH FORT HOOD, Tex. (UPI) — The 36th Infantry Division of the Texas National Guard opened its final week of summer combat training with an impressive display of firepower.

The division went back into the field Sunday after a 24-hour rest and Saturday's annual Governor's Day review.

Maj. Gen. Carl L. Phinney, division commander, said that Gen. Herbert B. Powell, commanding general of the United States Continental Army, plans to inspect the division Tuesday.

## CONGRATULATIONS

To Mr. and Mrs. W. B. Holland, 1328 Garland, on the birth of a boy at 5:40 a.m. weighing 8 lbs. 12 1/2 oz.

To Mr. and Mrs. Charles Smith, White Deer, on the birth of a girl at 6:01 a.m. weighing 7 lbs.

To Mr. and Mrs. Thomas Richardson, Cortez, Colo., on the birth of a boy at 6:40 a.m. weighing 7 lbs.

To Mr. and Mrs. Thomas Kelly, 1104 S. Hobart, on the birth of a boy at 7:51 a.m. weighing 6 lbs. 9 oz.

To Mr. and Mrs. Jimmy Samples, 409 Crest, on the birth of a boy at 8:03 a.m. weighing 6 lbs. 11 oz.

To Mr. and Mrs. E. D. Taylor, 116 W. Tuke, on the birth of a boy at 9:27 a.m. weighing 7 lbs. 11 oz.

BOWS OUT  
 GOLDSBORO, N.C. (UPI) — Weekly newspaper editor Paul Barwick was forced to withdraw Monday night from the race for North Carolina Agriculture commissioner because he overlooked one detail—he's not a farmer.

Barwick said he considered buying a farm to comply with the requirement for office but decided it would be "making mockery of the law."

# CUT FOOD COSTS!

DOTTIE LEE SWEET or BUTTERMILK BISCUIT Can 5<sup>c</sup>

GOLD MEDAL FLOUR 5-Lb. Bag 43<sup>c</sup>

Dennis Whole Cooked Chicken 46-oz. Can 89<sup>c</sup>

Ranch Style BEANS 2 300 Cans 27<sup>c</sup>

Cock of Walk Fruit Cocktail 2 303 Cans 39<sup>c</sup>

School Days P'nut Butter 18-oz. Jar 53<sup>c</sup>

Delmonte Prune Juice Qt. Bottle 49<sup>c</sup>

Apple Day Apple Sauce 2 303 Cans 5<sup>c</sup>

Get Your Free Western Ware Piece This Week With A \$10.00 Purchase or more at Ideal

U.S.D.A. GRADE A FRYERS FRESH DRESSED EXTRA FANCY Lb. 25<sup>c</sup>

SWIFT'S PRO-TEN ROUND STEAK Lb. 79<sup>c</sup>

Fresh Ground All Meat HAMBURGER 89<sup>c</sup> 3 Lb. Pkg.

IDEAL INVITES COMPARISON OF PRICES

Double Gunn Bros. Stamps Wednesday With Every 2.50 or More Purchase

STORE HOURS WEEKDAYS 8:30 To 7:00 SATURDAYS 8:30 To 7:30 Closed Sundays

ALL BRANDS CIGARETTES Reg. Size 2.55ctn. King or Filter 2..65ctn

BAKERITE

Wilson's Lb Can 59<sup>c</sup>

SOS PADS Giant Box 39<sup>c</sup>

GREEN BEANS

Allen's Cut 303 Can 10<sup>c</sup>

Ideal Liquid Big 32-oz Can DETERGENT 29<sup>c</sup>

COFFEE

Folgers Lb. 59<sup>c</sup>

Nu-Way BLEACH 1/2 Gal. 29<sup>c</sup>

Ideal Prepared Full Quart Jar MUSTARD 25c

Carey's Iodized or Plain SALT Box 10c

Gravy Train, 5 Lb Bag DOG FOOD 69<sup>c</sup>



La Grande NECTARINES Lb. 19<sup>c</sup>

Blue Plate, No 3 Can Swt. Potatoes 2 For 49<sup>c</sup>

Western-Maid, 6 Flavors PRESERVES 3 18 Oz Jars \$1.00

Grape, Orange, Pineapple-Grapefruit HI-C DRINKS 3 46 Oz Cans 89<sup>c</sup>

Solid Green CABBAGE Lb. 5<sup>c</sup>

Maxwell House Instant COFFEE 6-oz. Jar 89<sup>c</sup>

Ashley's Tomatoes 2 303 Cans 25c

Bell PEPPERS Lb. 19<sup>c</sup>

PEN-JELL 2 Pkgs. 29c

ASPIRIN Hy Grade, Bottle of 100 19c

Bubble Bath Joy Suds Carton 19c

Meat Pies Banquet Frozen 4 for 79c

TEA Lipton's 1/4-Lb. Pkg. 39c



NO. 1 401 N. Ballard  
NO. 2 300 East Brown  
NO. 3 801 West Francis

TRY A PAMPA NEWS CLASSIFIED AD



All In A Lifetime



OUR BOARDING HOUSE With Major Hoople



OUT OUR WAY J. R. Williams



Potts



The Berrys



Bugs Bunny



Short Ribs



Wash Tubbs



Jackson Twins



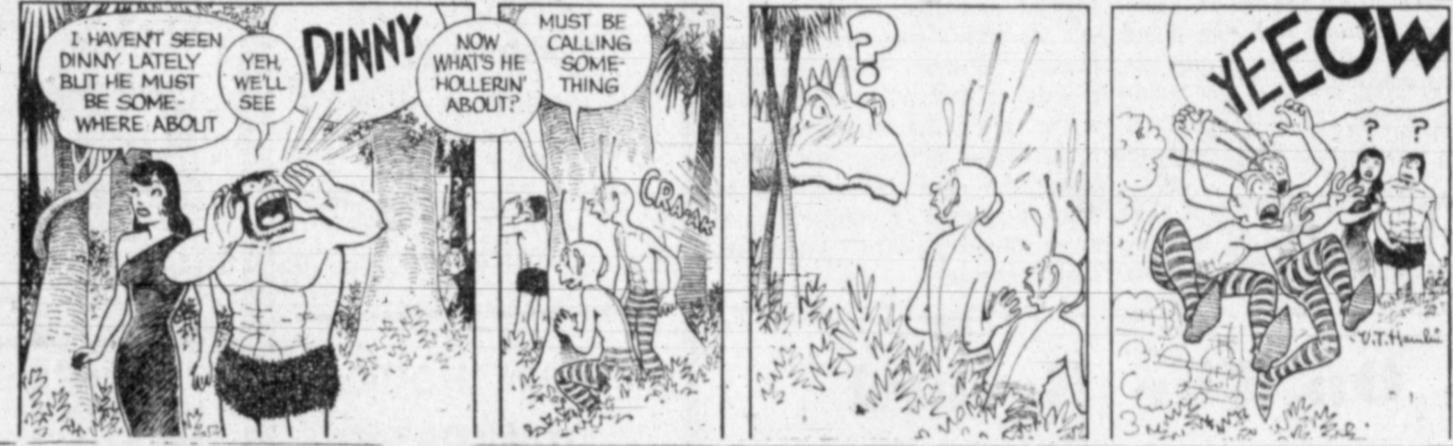
Morty Mesmer



Blondie



Alley Oop



Bonnie



Martha Wayne



Mickey Finn



Dixie Dugan



Pricilla's Pop



Joe Palooka



Pom Star Little

Panel out 16 b... en hits... All Stars... Thus Pa... represent... tional pla... locals wil... League t... p.m. at P... is a doubl... City (Abil... tournament... will meet... game at... Arthur's... straight t... He defea... 14-3, and... last night... has sent... via the s... innings... He got... In the fi... fanning t... and three... bases loa... But ba... for the l... collected... two of th... Oler, Jim... Doug Se... account... ers, both... Seven l... med out... gal, but... Pigg got... home ru... Panama... opening... Brown's... homer to... gin to o... the winn... fourth t... three si... Littlefi... alterwar... slammed... eight... Two... eight r... whiled P... ance ru...

La D

HAVE Fourth... Santa Stanfor... as char... Pennsyl... ment...

Dougl... at the top... ling of... had up... Kinley... Wimble... Bell, w... national... ships... Dougl... triumph... utes... six ga... was en... his car... target... Doug... cessful... oppone... with r...

The... to the... ley, S... Ralstor... who d... Seixas... 7-5...

Mari... tonio, North... the mi... ing Ci... ea, Ca... Jolla...

NB, List

PRO... Sonny... center... ly out... social... replace... Henry... List... elimi... nite s... Penn... missi... law... an ar... autom... sonal... Ton... the N... "List... rating... state...

# Pony League Stars Beat Littlefield

Pampa hurler Jim Arthur struck out 16 batters while scattering seven hits as the Pampa Pony League All Stars trounced the Littlefield All Stars 8-3 last night.

Thus Pampa earns the right to represent this district in the sectional play-offs at Lubbock. The locals will play Lubbock Southern League tomorrow night at 8:30 p.m. at Klap Park. The tourney is a double elimination series. Key City (Abilene) and Pecos, the tournament's other two teams, will meet prior to the Pampa game at 5:30 p.m.

Arthur's victory was his fourth straight triumph in the play-offs. He defeated Berger 4-3, Childress 14-3, and Littlefield twice 3-2 and last night. The strong right-hander has sent 54 hitters from the plate via the strike-out route in just 22 innings.

He got out of two tough jams in the fifth and sixth inning by fanning two batters in the fifth and three in the sixth with the bases loaded each time.

But batting stars were plentiful for the locals. Five Pampa hitters collected a pair of hits each with two of them being homers. Ronnie Oler, Jimmy Brown, Max Taylor, Doug Seages, and Herman Waite accounted for the 10 Pampa safes. Oler and Brown hit the homers, both in the first inning.

Seven Littlefield players slammed out one hit each for their total, but Ronald Sitton and Gary Pigg got the big blows with a home run each.

Pampa scored twice in the opening frame on Oler's and Brown's circuit blasts. Sitton's homer for Littlefield cut the margin to one run in the third. But the winners bounced back in the fourth to tally two more runs on three singles and a walk.

Littlefield threatened three times afterwards, but each time Arthur slammed the door shut and stranded eight base runners.

Two hits, a walk, the losers' eighth errors, and a wild pitch enabled Pampa to score three insurance runs in the seventh.

# Lawn Title Decided

HAVERFORD, Pa. (UPI) — Fourth-seeded Jon Douglas of Santa Monica, Calif., former Stanford quarterback, ruled today as champion of the 62nd annual Pennsylvania lawn tennis tournament.

Douglas won the crown Monday at the Merion Cricket Club by toppling 19-year-old Frank Froehling of Coral Gables, Fla., who had upset top-seeded Chuck McKinley, U.S. Davis Cupper and Wimbledon runner-up, and Donald Bell, who finished second in the national clay court championships.

Douglas gained a 6-2, 6-3, 6-1 triumph in one hour and 10 minutes as Froehling captured only six games. The 4-foot-4 Froehling was erratic in forecourt play and his cannon-ball service was off target.

Douglas, 24, concentrated successfully on the backhand of his opponent, scoring many points with running shots.

The doubles championship went to the Davis Cup duo of McKinley, St. Ann, Mo., and Dennis Ralston of Bakersfield, Calif., who defeated Douglas and Vic Seixas of Philadelphia, 13-11, 6-1, 7-5.

Marilyn Montgomery, San Antonio, Tex., and Al Driscoll, North Hollywood, Calif., captured the mixed doubles title by defeating Carole Caldwell, Santa Monica, Calif., and William Bond, La Jolla, Calif., 6-4, 6-4.

# NBA Ratings Drop Liston From Rank

PROVIDENCE, R. I. (UPI) — Sonny Liston, top heavyweight contender, was dropped completely out of the National Boxing Association's ratings today and was replaced at the No. 1 position by Henry Cooper of England.

Liston of Philadelphia was eliminated because of his indefinite suspension on July 15 by the Pennsylvania State Athletic Commission for two brushes with the law — an arrest for loitering and an arrest for stopping a woman's automobile while allegedly impersonating a policeman.

Tony Petronella, chairman of the NBA rating committee, said, "Liston will be returned to the ratings if and when he is reinstated in Pennsylvania."

# SPORTS

54th YEAR TUESDAY, AUGUST 1, 1961

# Jerry Barber Playoff Winner In PGA Open

CHICAGO (UPI) — A "fader" golf course with "honest" greens meant the biggest paycheck of his career for affable Jerry Barber.

Barber, a mite of a player 5 feet 5 inches tall and 135 pounds became the oldest PGA champion ever Monday when he defeated Don January by one stroke, 67 to 68, in an 18-hole playoff on the North Course of Olympia Fields Country Club.

The result, coming because Barber knocked three strokes off par on the last seven holes to overcome a two-stroke deficit, gave the 45-year-old Los Angeles pro, father of five children, his biggest payday, a berth on the Ryder Cup team, and untold dollars from future exhibitions as a champion.

"This was a faders' golf course," he said. "That's why a lot of your big name players didn't do well. They all hook. I looked at it when I first got here, and hookers can't play well on it.

"It might have looked like I sliced. Well, I did some, but a lot of them were faders, the kind of shots you need to win on this course.

"Then the greens were honest. They weren't dishonest, like a lot of those we play. They aren't fast or slow, but they put honest. If it looks like the ball will break to the left, it will break to the left. If it looks like it'll break to the right, it breaks to the right."

Barber's victory was one of the greatest comebacks of golf. He trailed January by four strokes with three holes to play in the final round and made it up.

January lost the playoff on the last green. He drove into a trap, then hit a trap with his second. But he missed a 10-foot putt for a par which would have extended the match.

Barber, also in a trap with his drive, said the match turned on his shot from the sand. "It was 183 yards from the back edge of that trap to the center of the green," he said.

He used a three iron, picked the shot off cleanly, and it stopped 18 feet from the flag. He got down in two easily, for victory.

The win gave Barber official earnings of \$17,378 this year with his eighth tournament triumph in 12 years as a pro.

January, 31, won second money of \$5,500 to increase his earnings this year to \$24,108.87. He has won three tournaments in five years as a pro.

Barber, also in a trap with his drive, said the match turned on his shot from the sand. "It was 183 yards from the back edge of that trap to the center of the green," he said.

He used a three iron, picked the shot off cleanly, and it stopped 18 feet from the flag. He got down in two easily, for victory.

The win gave Barber official earnings of \$17,378 this year with his eighth tournament triumph in 12 years as a pro.

January, 31, won second money of \$5,500 to increase his earnings this year to \$24,108.87. He has won three tournaments in five years as a pro.



PGA PICNIC — Lunchtime found golfers Don Fairfield, Paul Harney and Jack Burke, left to right, gathered under a shade tree enjoying a picnic lunch at the Olympia Fields Country Club, near Chicago. The professionals were competing in the PGA Tournament.

# Rawls Loses To Protege

MINNEAPOLIS, Minn. (UPI) — Young Judy Kimball heads for her home in Iowa today with the diploma in her golf bag.

The professional golfing neophyte won her first tour victory Monday by beating the gal who helped her decide to turn pro. Miss Kimball nabbed the \$7,500 American Women's Open Golf championship, shooting two strokes better than veteran Betsy Rawls, Spartanburg, S. C.

"It was Betsy who advised me last year to spend some time with her teacher in Texas," Miss Kimball said. "Since turning pro last November, I have learned a great deal from Betsy."

Miss Kimball put her newly found knowledge to work Monday and held up under pressure to grab the \$1,247 first prize.

Miss Rawls put the pressure on her playing partner by firing a three-under-par 35 for the first nine holes of the final round. The pace cut Miss Kimball's lead to two strokes, but the Sioux City, Iowa, native played steady golf over the final nine to finish with a 74 against Miss Rawl's 73. The winner posted a 72-hole score of 295.

Mickey Wright, San Diego, Calif., who was only one stroke back after 54 holes, finished third at 300. Barbara Romack, Sacramento, Calif., was fourth at 303. Defending champion Patty Berg, Minneapolis, finished tenth with 308.

# Buff's Get By Dallas

By United Press International

The Louisville Colonels pulled to within 1 1/2 games of the idle Indianapolis Indians in the American Association Monday night by beating third-place Denver 6-2 at Louisville.

Houston trounced Dallas-Fort Worth 9-0 in the two-hit pitching of Al Lary in an errorless game. Indianapolis at Omaha was rained out.

An 11-hit Louisville attack was aided by four Denver errors. Catcher Bob Uecker homered for the winners. Winning pitcher Hank Fischer gave up single Denver runs in the first and third inning. Reliever Connie Grob took over in the seventh. Ed Donnelly who was relieved in the fifth, was the loser.

# Jaipur Wins At Saratoga

By United Press International

George D. Widener's Jaipur is showing early signs of becoming one of the swiftest thoroughbreds in 2-year-old circles.

Jaipur, splashing through the mud at Saratoga's opener on Monday, won the \$29,850 Flash Stakes with a clocking of 1:04 1-5 for 5 1/2 furlongs.

There is some speculation that the chestnut son of Nasrullah could have cracked the 1:03 2-5 track record set by Tea Olive in 1946 if the strip had been fast.

Jaipur, who won his first career start by six lengths, beat Sunrise County by 3 1/2 lengths in the Flash to make it two for two. The colt paid \$3.50 for \$2.

At Monmouth Park, Whippleton, a 2 1/2 year old, won his third straight this year in the featured Arborist Purse. Sammy Boulmetis rode Whippleton to a 2 1/2 length decision over Tuscan Spy. The winner returned \$2.80 and was timed in 1:09 1-5 for the six-furlong sprint.

Sir Tom \$6.60 rallied in the stretch to score a 3/4 length victory over Marcy Miss in Rockingham Park's featured event. Sir Tom stepped six furlongs in 1:10 4-5.

Equifun, who finished 13th her last time out, won the \$10,000 Chicago Tribune Charities Handicap at Arlington. The chestnut mare paid \$42.40 for her triumph over Roman Colonel after traveling six furlongs in 1:11 flat.

Azure's Orphan (\$8.00) won the feature at Del Mar.

# Tardy Pigskin Player Fined

NORTHFIELD (UPI) — Wayne Hansen, veteran linebacker, reported Monday to the training camp of the Dallas Cowboys of the National Football League and was fined \$1,200 for being 12 days late.

Hansen, delayed in El Paso by a business deal, was docked \$100 for each day he missed.

Four rookies and one veteran were cut from the team Monday, trimming the squad to 56 players.

Rookies dropped were quarterback Jerry Morgan, Iowa State Teachers, offensive end Chuck Marshall, Oregon State, defensive halfback Jerry Steffen of Colorado and offensive guard Roger Mletz of the University of Southern California.

The veteran was Ray Fisher, 250-pound defensive tackle, who missed last year's games with a knee injury.

The Cowboys play their first game at Sioux Falls, S.D. against the new Minnesota Vikings.

### STANDINGS

By United Press International

American League	W.	L.	Pct.	GB
New York	65	36	.644	
Detroit	64	38	.628	1 1/2
Baltimore	58	46	.558	8 1/2
Cleveland	55	49	.529	11 1/2
Chicago	51	53	.490	15 1/2
Boston	47	58	.446	20
Washington	45	58	.436	22
Minnesota	45	58	.436	22
Los Angeles	45	57	.441	20 1/2
Kansas City	37	63	.370	27 1/2

Monday's Games  
All-Star Game

Tuesday's Games  
No games scheduled

Wednesday's Games  
Chicago at Cleveland 2 twi-nite  
Minnesota at Baltimore, night  
Kansas City at New York 2  
Washington at Detroit 2, twi-nite  
only games scheduled

National League

W.	L.	Pct.	GB	
Los Angeles	62	38	.620	
Cincinnati	63	40	.612	1/2
San Francisco	54	46	.540	8
Milwaukee	50	48	.510	11
Pittsburgh	45	48	.484	13 1/2
St. Louis	47	52	.473	14 1/2
Chicago	43	56	.434	18 1/2
Philadelphia	30	66	.313	30

Monday's Games  
All-Star Game

Tuesday's Games  
No games scheduled

Wednesday's Games  
Philadelphia at Cincinnati, night  
Pittsburgh at St. Louis, night  
Milwaukee at Chicago  
St. Francisco at Los Angeles, night

Texas League

W.	L.	Pct.	GB	
Amarillo	67	36	.650	
Tulsa	64	40	.615	3 1/2
San Antonio	56	45	.559	10 1/2
Victoria	50	53	.485	17
Austin	31	55	.361	27 1/2
Ardmore	48	59	.449	21

Monday's Results  
No games scheduled

Today's Schedule  
Tulsa at Amarillo (2)  
Victoria at Ardmore  
Austin at San Antonio

# Young Emile Griffith Seen As Great Boxer

NEW YORK (UPI) — At 22, son Square Garden and asked welterweight champion Emile Griffith is at least four years from his peak, but co-manager Gil Clancy predicted confidently today he will become "the greatest fighter of the 1960s."

Emile has such great potential, Clancy said, that "when New Year's 1970 is rung in, boxing men everywhere will admit he was the greatest of all during the 1960s decade."

If that be true, a reporter asked dark-haired 39-year-old Clancy, how come Griffith failed to knock out middleweight Yama Bahama last Saturday night at Madison Square Garden when he had Yama on rubber legs in the seventh round.

"Because Griffith is still green," his co-pilot replied, "although he's the undisputed 147-pound champion of the world. Remember, that was only his 27th professional fight. He became too eager—too excited—and began missing the target."

However, Emile did outpoint his crafty, experienced opponent by a wide margin, despite Bahama's holding tactics, for his eighth straight victory.

Clancy, a Brooklyn high school teacher and a parks department boxing instructor, claims Griffith will be the "ring marvel" of the 1960s because "he has the body, the reflexes, the punch, the ruggedness and the intelligence to be a composite of many great fighters."

Among the hundreds of boys he has taught boxing, instructor Gil explained, Griffith was the first who could pick up the various weapons of great fighters of the past and use them like they did—the left jab of Joe Louis, the left hook of Jack Dempsey, the right uppercut of Jack Johnson, the lightning combinations of Marcel Cerdan, the body-punching of Tony Zale, the footwork of Sugar Ray Robinson, and so on.

"Emile is as good now as Ray Robinson was when he had 27 professional bouts," Clancy continued. "And because of his compact build, he's a lot more rugged. Moreover, he doesn't cut in his 27 fights, he got only one little nick on his cheek—like a shaving scratch."

Another important reason why Griffith—a woman's hat designer—will be great is because he loves to fight, his co-manager emphasized.

"While I was at the beach Monball Association today announced they have scheduled two more exhibition games. They meet the Cincinnati Royals in Detroit Oct. 17 and the Syracuse Nats at Hartford, Conn., Oct. 15, did? He went right over to Mad-

# Major League Leaders

Player & Club	G	AB	R	H	Pct.
Clemente Pitt	91	367	66	132	.360
Robinson Cincinnati	102	368	86	125	.340
Hoak Pitt	87	295	46	99	.336
Moon NY	84	278	49	91	.327
Aaron Mil	98	381	76	124	.325
Altman Chi	84	314	50	102	.325
Cepeda SF	99	388	65	125	.322
Boyer St. L.	98	380	73	122	.321
Gonzalez Phil	78	253	39	81	.320
Pinzon Cincinnati	103	412	65	131	.318
Mays SF	10	381	92	131	.318

American League

Cash Det	101	344	80	122	.365
Howard NY	73	248	35	87	.351
Piersall Cleve	85	339	56	116	.342
Mantle NY	100	343	91	113	.329
Gentile Balt	91	296	63	96	.322
Brandt Balt	84	319	60	101	.317
Green Wash	79	232	36	73	.315
Killebrew Minn	91	331	66	104	.314
Kaline Det	96	383	82	119	.311
Sievers Chi	89	318	64	99	.311

Home Runs

National League — Robinson, Reds 32; Cepeda, Giants 29; Mays, Giants 29; Aaron, Braves 26; Mathews, Braves 22.

American League — Maris, Yanks 40; Mantle, Yanks 39; Killebrew, Twins 32; Colavito, Tigers 29; Gentile, Orioles 27; Cash, Tigers 27.

Runs Batted In

National League — Robinson, Reds 93; Cepeda, Giants 93; Aaron, Braves 81; Mays, Giants 80; Freeze, Reds 85.

American League — Maris, Yanks 97; Gentile, Orioles 94; Mantle, Yanks 92; Cash, Tigers 92; Colavito, Tigers 90.

Pitching

National League — Podres, Dodgers 13-2; Perranoski, Dodgers 6-2; Miller, Giants 8-3; Purkey, Reds 13-5; Jay, Reds 14-6.

American League — Ford, Yanks 19-2; Schwall, Red Sox 11-2; Mottishaw, Tigers 10-2; Latman, Indians 9-2; Wynn, White Sox 8-2.

# Tulsa Oilers Meet Amarillo For Lead

By United Press International

The Tulsa Oilers, battling Amarillo for the Texas League lead, have a chance to cut the Gold Sox' edge to a game and a half tonight.

The Oilers play a doubleheader at Amarillo as the circuit swings back into action after Pan-American Association play with the Mexican League.

Going into tonight's games, Amarillo leads Tulsa by 3 1/2 games. San Antonio, in third place, is 10 1/2 games out.

In other action, Austin plays a single game at San Antonio and Victoria plays one at Ardmore. There were no games last night.

# Colt Tournament Held At McAllen

MCALLEN (UPI) — The International Colt League's Divisional tournament begins Wednesday night at McAllen when the Elks Lodge of San Antonio team meets the Juarez, Mexico all-stars.

The Monterrey, Mexico Colt League all-stars and a northwest Houston team will play Thursday night.

# KILL CRABGRASS

"Eveready" Crabgrass Killer controls crabgrass, kills chickweed, but won't injure desirable lawn grasses when used according to instructions!

Pampa Hardware Co.  
126 N. Cuyler, MO 4-2451

## STAG NIGHT

TONIGHT

## ELKS LODGE

MEMBERS & GUESTS

# Stu Handcuffs Junior Circuit

BOSTON (UPI) — The 1-1 rain-soaked tie in 1961's second All-Star Game may have sounded the death knell for the two-year inter-league games program started three years ago.

"They now have enough money in their pension fund," said Frank Scott, agent for the players. Scott refused to predict what the players would recommend but several of them have changed their minds since last spring and it may be that the unsatisfactory finish of Monday's game might be the factor that will turn the players against the present format.

Actually, no one, especially the 31,851 fans in Fenway Park, liked the final outcome. Some were critical of the umpires in waiting less than a half-hour before calling the game. But Ford Frick had instructed them not to wait more than 30 minutes and not to resume play if the field were soft.

But the player who preserved the tie for his team was Stu Miller, the junk-ball right-hander of the San Francisco Giants, who was winning hurler in the first All-Star Game.

This time it looked like he was going to be the loser, for Al Kaline of the Tigers opened the bottom of the ninth with a single as the rain, which had started falling in the eighth inning, came down harder and harder.

Miller struck out New York Yankee slugger Mickey Mantle and while pitching to another Yankee hitting star, Elston Howard, Kaline stole second.

Unperturbed, Miller, with his assortment of change-ups and sneaky fast balls, proceeded to strike out Howard.

Trying to beat the rain, Richards sent Roy Sievers, the long-ball hitting first baseman of the Chicago White Sox, up to hit for his teammate, shortstop Luis Aparicio. Sievers worked the count to three and two and also struck out. The umpires then called time and after a 22-minute wait called the game.

Pitching dominated the game. The National League had five hits, only one of them for extra bases, a double by Bill White, the St. Louis Cardinals' first baseman who drove in the tying run later in the game. The American League got only four hits, but one of them was a home run by Rocky Colavito of the Detroit Tigers. It came in the first inning off Bob Purkey, the 33-game winner of the Cincinnati Reds. It was a lofted fly ball that just cleared the short left field wall.

After that bow, the American League never mounted a serious threat until the ninth inning.

Jim Bunning, the Detroit Tigers

right-hander who started for the American League, pitched three perfect innings, making it five for the year as he also retired the six men he faced in the San Francisco game.

All of the National League hits came off Don Schwall, the rookie right-hander of the Boston Red Sox who has won 11 games.

The Nationals tied the game in the sixth.

With one out, Mathews walked. Mays flied out and with two strikes on him, Orlando Cepeda of the Giants was hit by a pitched ball.

Then came the play which long will be discussed when the second All-Star Game of 1961 is brought up.

Shortstop Eddie Kasko of the Cincinnati Reds hit a high bounding ball to short. Aparicio waited for the ball to come to him and when he got it, it was too late to throw to any base and the bases were loaded.

Richards agreed with most observers that Aparicio should have changed the ball. The feeling was general that had he done so he could have gotten Kasko at first.

Then White rifled a shot which Schwall deflected, Aparicio making a good stop of the hard-hit grounder back of second base.

But by that time Mathews had scored with the tying run and there was no play at any base.

Schwall then retired Bolling, but the damage had been done.

# Young Emile Griffith Seen As Great Boxer

NEW YORK (UPI) — At 22, son Square Garden and asked welterweight champion Emile Griffith is at least four years from his peak, but co-manager Gil Clancy predicted confidently today he will become "the greatest fighter of the 1960s."

Emile has such great potential, Clancy said, that "when New Year's 1970 is rung in, boxing men everywhere will admit he was the greatest of all during the 1960s decade."

If that be true, a reporter asked dark-haired 39-year-old Clancy, how come Griffith failed to knock out middleweight Yama Bahama last Saturday night at Madison Square Garden when he had Yama on rubber legs in the seventh round.

"Because Griffith is still green," his co-pilot replied, "although he's the undisputed 147-pound champion of the world. Remember, that was only his 27th professional fight. He became too eager—too excited—and began missing the target."

However, Emile did outpoint his crafty, experienced opponent by a wide margin, despite Bahama's holding tactics, for his eighth straight victory.

Clancy, a Brooklyn high school teacher and a parks department boxing instructor, claims Griffith will be the "ring marvel" of the 1960s because "he has the body, the reflexes, the punch, the ruggedness and the intelligence to be a composite of many great fighters."

Among the hundreds of boys he has taught boxing, instructor Gil explained, Griffith was the first who could pick up the various weapons of great fighters of the past and use them like they did—the left jab of Joe Louis, the left hook of Jack Dempsey, the right uppercut of Jack Johnson, the lightning combinations of Marcel Cerdan, the body-punching of Tony Zale, the footwork of Sugar Ray Robinson, and so on.

"Emile is as good now as Ray Robinson was when he had 27 professional bouts," Clancy continued. "And because of his compact build, he's a lot more rugged. Moreover, he doesn't cut in his 27 fights, he got only one little nick on his cheek—like a shaving scratch."

Another important reason why Griffith—a woman's hat designer—will be great is because he loves to fight, his co-manager emphasized.

"While I was at the beach Monball Association today announced they have scheduled two more exhibition games. They meet the Cincinnati Royals in Detroit Oct. 17 and the Syracuse Nats at Hartford, Conn., Oct. 15, did? He went right over to Mad-

# Houston Reviews Intrasquad Tilt

HOUSTON (UPI) — The Houston Oilers Monday reviewed films of Saturday's intra-squad scrimmage and learned that defensive back Gene Jones, injured in the drill, will be out of action for at least a month with a separated shoulder.

Jones will not make the trip when the American Football League champion Oilers move their training camp to Hawaii next week.

Three other injured players were expected to be back in action this Sunday in an exhibition game with the San Diego Chargers in San Diego.

# Major League Leaders

Player & Club	G	AB	R	H	Pct.
Clemente Pitt	91	367	66	132	.360
Robinson Cincinnati	102	368	86	125	.340
Hoak Pitt	87	295	46	99	.336
Moon NY	84	278	49	91	.327
Aaron Mil	98	381	76	124	.325
Altman Chi	84	314	50	102	.325
Cepeda SF	99	388	65	125	.322
Boyer St. L.	98	380	73	122	.321
Gonzalez Phil	78	253	39	81	.320
Pinzon Cincinnati	103	412	65	131	.318
Mays SF	10	381	92	131	.318

American League

Cash Det	101	344	80	122	.365
Howard NY	73	248	35	87	.351
Piersall Cleve	85	339	56	116	.342
Mantle NY	100	343	91	113	.329
Gentile Balt	91	296	63	96	.322
Brandt Balt	84	319	60	101	.317
Green Wash	79	232	36	73	.315
Killebrew Minn	91	331	66	104	.314
Kaline Det	96	383	82	119	.311
Sievers Chi	89	318	64	99	.311

Home Runs

National League — Robinson, Reds 32; Cepeda, Giants 29; Mays, Giants 29; Aaron, Braves 26; Mathews, Braves 22.

American League — Maris, Yanks 40; Mantle, Yanks 39; Killebrew, Twins 32; Colavito, Tigers 29; Gentile, Orioles 27; Cash, Tigers 27.

Runs Batted In

National League — Robinson, Reds 93; Cepeda, Giants 93; Aaron, Braves 81; Mays, Giants 80; Freeze, Reds 85.

American League — Maris, Yanks 97; Gentile, Orioles 94; Mantle, Yanks 92; Cash, Tigers 92; Colavito, Tigers 90.

Pitching

National League — Podres, Dodgers 13-2; Perranoski, Dodgers 6-2; Miller, Giants 8-3; Purkey, Reds 13-5; Jay, Reds 14-6.

American League — Ford, Yanks 19-2; Schwall, Red Sox 11-2; Mottishaw, Tigers 10-2; Latman, Indians 9-2; Wynn, White Sox 8-2.

# Houston Reviews Intrasquad Tilt

HOUSTON (UPI) — The Houston Oilers Monday reviewed films of Saturday's intra-squad scrimmage and learned that defensive back Gene Jones, injured in the drill, will be out of action for at least a month with a separated shoulder.

Jones will not make the trip when the American Football League champion Oilers move their training camp to Hawaii next week.

Three other injured players were expected to be back in action this Sunday in an exhibition game with the San Diego Chargers in San Diego.

# Colt Tournament Held At McAllen

MCALLEN (UPI) — The International Colt League's Divisional tournament begins Wednesday night at McAllen when the Elks Lodge of San Antonio team meets the Juarez, Mexico all-stars.

# The Pampa Daily News

AN INDEPENDENT FREEDOM NEWSPAPER

We believe that all men are equally endowed by their Creator, and not by any government, with the gift of freedom, and that it is every man's duty to God to preserve his own liberty and respect the liberty of others. Freedom is self-control, no more, no less.

To discharge this responsibility, free men, to the best of their ability, must understand and apply to daily living the great moral guides expressed in the Ten Commandments, the Golden Rule and the Declaration of Independence.

This newspaper is dedicated to furnishing information to our readers so that they can better promote and preserve their own freedom and encourage others to see its blessings. For only when man understands Freedom and is free to control himself and all he produces, can he develop to his utmost capabilities in harmony with the above moral principles.

**SUBSCRIPTION RATES**  
By Carrier in Pampa, 45¢ per week. Paid in advance (at office) \$4.50 per 3 months, \$9.10 per 6 months, \$18.20 per year. By mail \$10.00 per year in retail trading zone, \$15.00 per year outside retail trading zone, \$1.25 per month. Price for single copy 5¢ daily, 15¢ Sunday. No mail orders accepted in localities served by carrier. Published daily except Saturday by the Pampa Daily News, Atchison at Somerville, Pampa, Texas. Phone MO 4-3235. All departments. Entered as second class matter under the act of March 3, 1879.

## Plush Living For Wink

The value of the following story in the evidence it amasses that present political principles are hopelessly immoral and impractical.

It isn't the waste and the stupidity in the instant case that really matters. It's the gross incompetence and folly of a policy in the hands of share-the-wealth schemers, who seek to divide your money and re-distribute it, in order to reduce you to obedience when you are broke.

Down on the dusty western plains of our grand state is a county called Winkler and a town called Wink. It's near the New Mexico border.

Wink was at one time an oil boom town. It flourished with 20,000 citizens actively engaged in pumping black gold from beneath the surface of the earth.

This former boom-town of 20,000 has been reduced to a total population of a few weeks ago, numbering just 1,863. And the only reason this fragment of a bustling city remains is because they hate to admit there is no more reason to stay on. The oil is gone. And Wink, a ghost town in fact, should be permitted to close its red-rimmed eyes.

But the city fathers who own most of the property, don't want to take the loss which would ensue to them personally if they had to abandon their holdings. Therefore, thru the federal "get-rich-quick" agencies in Washington, they hope to cause all the rest of the people of the nation to underwrite their losses. Worst of it is, it appears likely that the deal will come off.

There's a dandy little device dreamed up by the socialist element in Washington called "urban renewal."

Of course, quite a few cities have held out their itching palms to get the "federal aid" promised at the expense of others. And Wink held out its palm along with the rest of those who did.

So hungry are the urban renewalites for love and acceptance, that Wink's request for urban renewal was favorably considered. And

now we learn that in that dusty, forelorn and forgotten place, the federal government is planning to pour more than a million dollars. The "loan" which will, of course, never be repaid, amounts to \$1,034 for every man, woman and child in Wink.

Already the urban renewal people have sent \$427,451 to Wink. And the town is going to be reconstructed so that when the ghosts do come to settle, they'll have modern and comfortable accommodations.

How did this monstrous stupidity come into being?

It began in the mind of E. E. Brackens, mayor, when he realized that the town he serves without pay was in its death throes. As the Houston Chronicle reports it: "It depressed him to walk the streets and listen to the wind whining thru the cracks in the decaying, vacant buildings and the wooden stores where the only 'customers' are the snakes and denizens of the desert."

J. T. Rutherford, a congressman from nearby Odessa, led the raid on the Washington treasury. As the urban renewal agency began to take interest, the citizens in Wink went wild and passed a \$500,000 bond issue to improve their schools. It passed some zoning laws and some laws to control subdivision and a new building code.

Now the Federal Housing Administration is going to build some new housing projects (\$211,000). 72 families will be moved out of their homes into the new "low rent" units to justify their existence.

Yes, sir, Wink is all ready to bloom again. Everything is there but the excuse to keep it alive. Everything is there, except the people.

Raymond Garr, vice president of Winkler County State Bank, has said: "Wink may always be a dead town, but it is now, even with the money. But I guess we can hope."

So hope, and your money, will be employed to build what may turn into the plushiest ghost town on record. Surely, no one can object to the idea of providing plush living for the ghost of America's freedom and independence.

## The Doctor Says:

By Dr. HAROLD T. HYMAN

Q—You keep writing that baldness in women is due to the use of permanents, dyes and other cosmetics. How about the prevalence of baldness in man? I doubt that many of these "noble creatures" spend much time in beauty salons.

A—Correction, if you please. I did not state that cosmetics, etc. were the only causes for hair loss in women. There are many other causes, such as prolonged illness, low thyroid function, senility, ringworm infections, exposure to radiation and poisoning with chemicals such as the thallium that's an important ingredient in anti-killers.

My statement referred to the increasing incidence of hair thinning and hair loss in women. As to the baldness of those of us you call "noble creatures," it's usually congenital in my experience. Time after time you see the son's hairline recede just as his father's did before him. And at about the same time. We can't all of us have manes like our President. Some of us have to settle for the Yul Brynner look.

Q—From reading about our astronauts, the thought came to my mind that artificial weightlessness might be worth trying in the care of patients with severe burns and similar problems. Even by just lowering the pull of gravity to some degree, it might be possible to help in the healing of these painful wounds. Do you know if studies are being conducted in this field?

A—I don't know. But if they're not, they should be. This sounds like a brilliant idea. Why don't you communicate it to the director of the National Aeronautics Space Administration (NASA) in care of your congressman or senator, Washington, D. C.?

Q—I recently underwent surgery for an ectopic pregnancy. I had an internal hemorrhage that was nearly fatal because I didn't know enough about this condition to realize what was happening to me. Don't you think it would be beneficial if you wrote of this condition so that others might be spared what I went through?

A—Thank you for the suggestion. An ectopic (outside) pregnancy occurs when the fertilized eggs fail to complete its momentous journey from the ovary (situated on the right or left side) to the centrally placed uterus (womb).

Most often, the ectopic pregnancy occurs in the fallopian tube (tubal pregnancy). The tube is a narrow channel through which the egg must travel on its way to the womb. It has a thin wall and is unable to accommodate itself to the growth demands of the developing embryo. When its walls are stretched to the limits of their capacities, they burst just as a balloon does when it's blown to the limits of its capacities.

That's when the prospective mother suffers agonizing pain and the condition of shock that's due to the accompanying internal hemorrhage.

Of prime importance is prevention of this life-threatening accident. This is accomplished by examination as soon as conception is suspected and before the prospective mother herself has any symptoms that suggest the disturbance, or, if this important examination is omitted, by discomfort or pain in the side before tubal rupture takes place.

into use so that any remaining vulnerability to unionism would diminish.

The Wall Street Journal reveals that there's a new kind of tomato picker on the market, a clumsy, expensive device which can pick tomatoes or other "stoop" crops and one of these can do the job of five men.

Other types of mechanical pickers are being devised, spurred by the demand from farmers who want to eliminate the risks always involved in dealing with recalcitrant migrant labor or with the labor goons who can, in a single week, destroy a whole year's effort by refusing to pick when fruit is prime.

Thanks to the massive effort of the unions, it now appears that once more the obvious result of union activity is still more obvious unemployment. Unions cause it in many ways, but out in California the unemployment problem can be visibly traced to union activity by nearly everyone.

(Perhaps union members will learn by this process even if the labor bosses don't. The market place does not respond readily to force. When unions use force, the reaction is fewer jobs for fewer people.)

Oh, well, don't say we didn't point this out to you. If you continue to pay dues to a union, you have only yourself to blame.

## The Old Desert Troublemaker



ROBERT S. ALLEN

WASHINGTON — There is a strong possibility that President Kennedy and Premier Khrushchev may soon have another face-to-face confrontation — at the UN General Assembly that convenes September 19.

Both the President and Khrushchev already have indicated intention to attend.

Secretary Dean Rusk has discussed that with Secretary General Dag Hammarskjold. And so have Soviet diplomats. None have said positively that Kennedy and Khrushchev will come, but they have implied that.

This General Assembly may turn out to be another world summit meeting.

Other leading heads of government are planning to be on hand; foremost among them Prime Minister Macmillan, Prime Minister Nehru, Marshal Tito, and probably Presidents Nasser and Sukarno.

Nehru and Tito are known to be urging the heads of all African and Asian nations to attend this UN session.

The President's personal participation is being urged by Secretary Rusk on several grounds.

That it would enable the President to present directly to other world leaders this country's position on the war-threatening Berlin crisis, nuclear testing and disarmament. Also to take the initiative in pressing negotiations on Berlin.

Rusk is strongly stressing that the 1948-49 blockade of the German metropolis was ended by negotiations at the UN in New York.

Also being advocated by Rusk is that the U.S. sponsor a resolution calling for the "self determination" of all of Berlin by means of a UN-supervised vote of the entire population.

It is Rusk's belief such a move would put the Soviet bloc on the spot.

The resolution is virtually certain to win the support of neutralist and uncommitted nations, particularly those that have recently gained their independence. On the other hand, Khrushchev and his cohorts are sure to vehemently oppose a "self determination" ballot because they know it will go overwhelmingly against them.

GRIM WARNING — Assistant Senate Democratic Leader Hubert Humphrey, Minn., a ranking member of the Foreign Relations Committee who recently visited Berlin and NATO headquarters, is vigorously supporting Secretary Rusk's stand.

In one respect, Humphrey is going even further. He is recommending that the President call for a special session of the General Assembly.

On the basis of what Humphrey learned in Europe, he is convinced that not only will Khrushchev attend the September meeting, but he is preparing to use it for a virulent campaign against the West in general and the U.S. in particular.

In a special report to the President, Humphrey warned: "We must expect Khrushchev to accuse us of scuttling disarmament, to attack our proposals to control nuclear testing; in fact, to wage unrelenting war on the United Nations itself, particularly upon the administrative establishment of the UN — the Secretariat."

"We can also expect more trouble on the Cuban issue, and definitely a lot more trouble concerning Africa, where Khrushchev will again seek to inject Soviet power in the Congo by abusing the UN

## Hankering



By HENRY McELMORE

ROME, Italy — As every traveler in Europe knows, or should know, the Michelin Guide is the Bible of where to eat on the Continent.

The tire company wears out thousands of its product each year to send food experts all over Europe. Their job is to test the meals in hundreds of restaurants and hotels, and report their findings.

Ratings are by stars — there are only a very few four-star restaurants in all the world — with one star the lowest rank. Comparatively few restaurants ever achieve one star. For proof, there isn't a restaurant in all of London that Michelin thinks deserves their lowest order of merit.

The Michelin men are as secret as undercover agents, as knowing as a great chef, and as demanding of excellence as a count Curyusky. They rate not only the food, but the service, the decor, the wines, and right on down to the landscaping. Nothing escapes their critical eye.

Until a few years ago the Michelin Guide was limited to France, under the microscope, and I'm sorry. I wish the Michelin tasters had stayed in France.

Not that I don't use the Guide. Almost everyone does, especially motorists who often find themselves in out-of-the-way spots at eating time, and turn to Michelin to see what the city, town, or hamlet offers.

One of the reasons why I don't like the Guide is that it destroys the sense of discovery. Nothing gives more satisfaction to a man than to discover — or think he has — a fine, small, obscure eating place, where the food is wonderful and the price is right.

It sets him up for weeks, and he watches his conversation with friends lest he give away the name and location of the place. He wants to keep it for his very own.

Michelin puts and end to all this. More than once I have happened across a little restaurant with wonderful food and a bill to match, only to look in Michelin and discover that one of its sleuths had been there before me and awarded it a star or, if not a star, a crossed knife and fork symbol, which denotes "fine for its kind."

In the reverse, Michelin also makes a man question his judgment on fine food. Again, more than once I have left a "discovery" singing its praises, only to turn to Michelin and see it listed without any symbol at all — just another place to get filled up. The Michelin man had been there before me and turned thumbs down on the food, the service, and everything else.

In his eyes, my wonderful little find was a place where a man would eat only if the gas tank was dry, and the next restaurant was more than walking distance away.

## ALL FOR NAUGHT

VALLEY STREAM, N.Y. (UPI) — It was a \$75,000 job — not worth a cent.

That is how police today rated the efforts of three holdup men who forced a bank messenger into their car Monday, snatched a deposit bag from his hands, trussed him up and dumped him from the car several blocks away.

The bag contained checks that were worth \$75,000 — before they had been canceled.

## Actress

- 1 Actress — 5 Intoxicated
- 2 Midge — 6 Lit layer
- 3 She is seen in — 7 Snoozes
- 4 — singer on video — 8 Goddess
- 5 Her TV name is — 9 Staff of life
- 6 — Hollister in this series — 10 Oriental coins
- 7 Notion — 11 Trappers
- 8 Eggs — 12 Loftiness
- 9 Car part — 13 Girl's name
- 10 For fear that — 14 Redactor
- 11 Fiber knots — 15 Irish fuel
- 12 Partridge — 16 National
- 13 Roof final — 17 Reluctant
- 14 Peaster — 18 Dispatcher
- 15 German article — 19 New York city
- 16 Russian ruler — 20 Langshins
- 17 Pinnocchio term — 21 Snare
- 18 Lateral part — 22 Blackbird
- 19 Falsehood — 23 31 high note
- 20 Blackbird — 24 Solon
- 21 31 high note — 25 Son of Seth
- 22 Solon — 26 Above
- 23 Son of Seth — 27 Detail of men
- 24 Above — 28 Superfluous
- 25 Detail of men — 29 Camp
- 26 Superfluous — 30 Puritan fairy
- 27 Camp — 31 Feminine name
- 28 Puritan fairy — 32 Indolent
- 29 Feminine name — 33 Directions
- 30 Indolent — 34 Feline animal
- 31 Directions — 35 Rote fax
- 32 Feline animal — 36 Dirk
- 33 Rote fax — 37 Native metal
- 34 Dirk — 38 Formerly
- 35 Native metal — 39 Formerly
- 36 Formerly — 40 DOWN
- 37 Formerly — 41 Stratagem
- 38 DOWN — 42 Rustian ruler
- 39 Stratagem — 43 Pinnocchio
- 40 Rustian ruler — 44 Snare
- 41 Pinnocchio — 45 Lateral part
- 42 Snare — 46 Falsehood
- 43 Lateral part — 47 Blackbird
- 44 Falsehood — 48 31 high note
- 45 Blackbird — 49 Solon
- 46 31 high note — 50 Son of Seth
- 47 Solon — 51 Above
- 48 Son of Seth — 52 Detail of men
- 49 Above — 53 Superfluous
- 50 Detail of men — 54 Camp
- 51 Superfluous — 55 Puritan fairy
- 52 Camp — 56 Feminine name
- 53 Puritan fairy — 57 Indolent
- 54 Feminine name — 58 Directions
- 55 Indolent — 59 Feline animal
- 56 Directions — 60 Rote fax
- 57 Feline animal — 61 Dirk
- 58 Rote fax — 62 Native metal
- 59 Dirk — 63 Formerly
- 60 Native metal — 64 Formerly
- 61 Formerly — 65 DOWN
- 62 Formerly — 66 Stratagem
- 63 DOWN — 67 Rustian ruler
- 64 Stratagem — 68 Pinnocchio
- 65 Rustian ruler — 69 Snare
- 66 Pinnocchio — 70 Lateral part
- 67 Snare — 71 Falsehood
- 68 Lateral part — 72 Blackbird
- 69 Falsehood — 73 31 high note
- 70 Blackbird — 74 Solon
- 71 31 high note — 75 Son of Seth
- 72 Solon — 76 Above
- 73 Son of Seth — 77 Detail of men
- 74 Above — 78 Superfluous
- 75 Detail of men — 79 Camp
- 76 Superfluous — 80 Puritan fairy
- 77 Camp — 81 Feminine name
- 78 Puritan fairy — 82 Indolent
- 79 Feminine name — 83 Directions
- 80 Indolent — 84 Feline animal
- 81 Directions — 85 Rote fax
- 82 Feline animal — 86 Dirk
- 83 Rote fax — 87 Native metal
- 84 Dirk — 88 Formerly
- 85 Native metal — 89 Formerly
- 86 Formerly — 90 DOWN
- 87 Formerly — 91 Stratagem
- 88 DOWN — 92 Rustian ruler
- 89 Stratagem — 93 Pinnocchio
- 90 Rustian ruler — 94 Snare
- 91 Pinnocchio — 95 Lateral part
- 92 Snare — 96 Falsehood
- 93 Lateral part — 97 Blackbird
- 94 Falsehood — 98 31 high note
- 95 Blackbird — 99 Solon
- 96 31 high note — 100 Son of Seth
- 97 Solon — 101 Above
- 98 Son of Seth — 102 Detail of men
- 99 Above — 103 Superfluous
- 100 Detail of men — 104 Camp
- 101 Superfluous — 105 Puritan fairy
- 102 Camp — 106 Feminine name
- 103 Puritan fairy — 107 Indolent
- 104 Feminine name — 108 Directions
- 105 Indolent — 109 Feline animal
- 106 Directions — 110 Rote fax
- 107 Feline animal — 111 Dirk
- 108 Rote fax — 112 Native metal
- 109 Dirk — 113 Formerly
- 110 Native metal — 114 Formerly
- 111 Formerly — 115 DOWN
- 112 Formerly — 116 Stratagem
- 113 DOWN — 117 Rustian ruler
- 114 Stratagem — 118 Pinnocchio
- 115 Rustian ruler — 119 Snare
- 116 Pinnocchio — 120 Lateral part
- 117 Snare — 121 Falsehood
- 118 Lateral part — 122 Blackbird
- 119 Falsehood — 123 31 high note
- 120 Blackbird — 124 Solon
- 121 31 high note — 125 Son of Seth
- 122 Solon — 126 Above
- 123 Son of Seth — 127 Detail of men
- 124 Above — 128 Superfluous
- 125 Detail of men — 129 Camp
- 126 Superfluous — 130 Puritan fairy
- 127 Camp — 131 Feminine name
- 128 Puritan fairy — 132 Indolent
- 129 Feminine name — 133 Directions
- 130 Indolent — 134 Feline animal
- 131 Directions — 135 Rote fax
- 132 Feline animal — 136 Dirk
- 133 Rote fax — 137 Native metal
- 134 Dirk — 138 Formerly
- 135 Native metal — 139 Formerly
- 136 Formerly — 140 DOWN
- 137 Formerly — 141 Stratagem
- 138 DOWN — 142 Rustian ruler
- 139 Stratagem — 143 Pinnocchio
- 140 Rustian ruler — 144 Snare
- 141 Pinnocchio — 145 Lateral part
- 142 Snare — 146 Falsehood
- 143 Lateral part — 147 Blackbird
- 144 Falsehood — 148 31 high note
- 145 Blackbird — 149 Solon
- 146 31 high note — 150 Son of Seth
- 147 Solon — 151 Above
- 148 Son of Seth — 152 Detail of men
- 149 Above — 153 Superfluous
- 150 Detail of men — 154 Camp
- 151 Superfluous — 155 Puritan fairy
- 152 Camp — 156 Feminine name
- 153 Puritan fairy — 157 Indolent
- 154 Feminine name — 158 Directions
- 155 Indolent — 159 Feline animal
- 156 Directions — 160 Rote fax
- 157 Feline animal — 161 Dirk
- 158 Rote fax — 162 Native metal
- 159 Dirk — 163 Formerly
- 160 Native metal — 164 Formerly
- 161 Formerly — 165 DOWN
- 162 Formerly — 166 Stratagem
- 163 DOWN — 167 Rustian ruler
- 164 Stratagem — 168 Pinnocchio
- 165 Rustian ruler — 169 Snare
- 166 Pinnocchio — 170 Lateral part
- 167 Snare — 171 Falsehood
- 168 Lateral part — 172 Blackbird
- 169 Falsehood — 173 31 high note
- 170 Blackbird — 174 Solon
- 171 31 high note — 175 Son of Seth
- 172 Solon — 176 Above
- 173 Son of Seth — 177 Detail of men
- 174 Above — 178 Superfluous
- 175 Detail of men — 179 Camp
- 176 Superfluous — 180 Puritan fairy
- 177 Camp — 181 Feminine name
- 178 Puritan fairy — 182 Indolent
- 179 Feminine name — 183 Directions
- 180 Indolent — 184 Feline animal
- 181 Directions — 185 Rote fax
- 182 Feline animal — 186 Dirk
- 183 Rote fax — 187 Native metal
- 184 Dirk — 188 Formerly
- 185 Native metal — 189 Formerly
- 186 Formerly — 190 DOWN
- 187 Formerly — 191 Stratagem
- 188 DOWN — 192 Rustian ruler
- 189 Stratagem — 193 Pinnocchio
- 190 Rustian ruler — 194 Snare
- 191 Pinnocchio — 195 Lateral part
- 192 Snare — 196 Falsehood
- 193 Lateral part — 197 Blackbird
- 194 Falsehood — 198 31 high note
- 195 Blackbird — 199 Solon
- 196 31 high note — 200 Son of Seth
- 197 Solon — 201 Above
- 198 Son of Seth — 202 Detail of men
- 199 Above — 203 Superfluous
- 200 Detail of men — 204 Camp
- 201 Superfluous — 205 Puritan fairy
- 202 Camp — 206 Feminine name
- 203 Puritan fairy — 207 Indolent
- 204 Feminine name — 208 Directions
- 205 Indolent — 209 Feline animal
- 206 Directions — 210 Rote fax
- 207 Feline animal — 211 Dirk
- 208 Rote fax — 212 Native metal
- 209 Dirk — 213 Formerly
- 210 Native metal — 214 Formerly
- 211 Formerly — 215 DOWN
- 212 Formerly — 216 Stratagem
- 213 DOWN — 217 Rustian ruler
- 214 Stratagem — 218 Pinnocchio
- 215 Rustian ruler — 219 Snare
- 216 Pinnocchio — 220 Lateral part
- 217 Snare — 221 Falsehood
- 218 Lateral part — 222 Blackbird
- 219 Falsehood — 223 31 high note
- 220 Blackbird — 224 Solon
- 221 31 high note — 225 Son of Seth
- 222 Solon — 226 Above
- 223 Son of Seth — 227 Detail of men
- 224 Above — 228 Superfluous
- 225 Detail of men — 229 Camp
- 226 Superfluous — 230 Puritan fairy
- 227 Camp — 231 Feminine name
- 228 Puritan fairy — 232 Indolent
- 229 Feminine name — 233 Directions
- 230 Indolent — 234 Feline animal
- 231 Directions — 235 Rote fax
- 232 Feline animal — 236 Dirk
- 233 Rote fax — 237 Native metal
- 234 Dirk — 238 Formerly
- 235 Native metal — 239 Formerly
- 236 Formerly — 240 DOWN
- 237 Formerly — 241 Stratagem
- 238 DOWN — 242 Rustian ruler
- 239 Stratagem — 243 Pinnocchio
- 240 Rustian ruler — 244 Snare
- 241 Pinnocchio — 245 Lateral part
- 242 Snare — 246 Falsehood
- 243 Lateral part — 247 Blackbird
- 244 Falsehood — 248 31 high note
- 245 Blackbird — 249 Solon
- 246 31 high note — 250 Son of Seth
- 247 Solon — 251 Above
- 248 Son of Seth — 252 Detail of men
- 249 Above — 253 Superfluous
- 250 Detail of men — 254 Camp
- 251 Superfluous — 255 Puritan fairy
- 252 Camp — 256 Feminine name
- 253 Puritan fairy — 257 Indolent
- 254 Feminine name — 258 Directions
- 255 Indolent — 259 Feline animal
- 256 Directions — 260 Rote fax
- 257 Feline animal — 261 Dirk
- 258 Rote fax — 262 Native metal
- 259 Dirk — 263 Formerly
- 260 Native metal — 264 Formerly
- 261 Formerly — 265 DOWN
- 262 Formerly — 266 Stratagem
- 263 DOWN — 267 Rustian ruler
- 264 Stratagem — 268 Pinnocchio
- 265 Rustian ruler — 269 Snare
- 266 Pinnocchio — 270 Lateral part
- 267 Snare — 271 Falsehood
- 268 Lateral part — 272 Blackbird
- 269 Falsehood — 273 31 high note
- 270 Blackbird — 274 Solon
- 271 31 high note — 275 Son of Seth
- 272 Solon — 276 Above
- 273 Son of Seth — 277 Detail of men
- 274 Above — 278 Superfluous
- 275 Detail of men — 279 Camp
- 276 Superfluous — 280 Puritan fairy
- 277 Camp — 281 Feminine name
- 278 Puritan fairy — 282 Indolent
- 279 Feminine name — 283 Directions
- 280 Indolent — 284 Feline animal
- 281 Directions — 285 Rote fax
- 282 Feline animal — 286 Dirk
- 283 Rote fax — 287 Native metal
- 284 Dirk — 288 Formerly
- 285 Native metal — 289 Formerly
- 286 Formerly — 290 DOWN
- 287 Formerly — 291 Stratagem
- 288 DOWN — 292 Rustian ruler
- 289 Stratagem — 293 Pinnocchio
- 290 Rustian ruler — 294 Snare
- 291 Pinnocchio — 295 Lateral part
- 292 Snare — 296 Falsehood
- 293 Lateral part — 297 Blackbird
- 294 Falsehood — 298 31 high note
- 295 Blackbird — 299 Solon
- 296 31 high note — 300 Son of Seth
- 297 Solon — 301 Above
- 298 Son of Seth — 302 Detail of men
- 299 Above — 303 Superfluous
- 300 Detail of men — 304 Camp
- 301 Superfluous — 305 Puritan fairy
- 302 Camp — 306 Feminine name
- 303 Puritan fairy — 307 Indolent
- 304 Feminine name — 308 Directions
- 305 Indolent — 309 Feline animal
- 306 Directions — 310 Rote fax
- 307 Feline animal — 311 Dirk
- 308 Rote fax — 312 Native metal
- 309 Dirk — 313 Formerly
- 310 Native metal — 314 Formerly
- 311 Formerly — 315 DOWN
- 312 Formerly — 316 Stratagem
- 313 DOWN — 317 Rustian ruler
- 314 Stratagem — 318 Pinnocchio
- 315 Rustian ruler — 319 Snare
- 316 Pinnocchio — 320 Lateral part
- 317 Snare — 321 Falsehood
- 318 Lateral part — 322 Blackbird
- 319 Falsehood — 323 31 high note
- 320 Blackbird — 324 Solon
- 321 31 high note — 325 Son of Seth
- 322 Solon — 326 Above
- 323 Son of Seth — 327 Detail of men
- 324 Above — 328 Superfluous
- 325 Detail of men — 329 Camp
- 326 Superfluous — 330 Puritan fairy
- 327 Camp — 331 Feminine name
- 328 Puritan fairy — 332 Indolent
- 329 Feminine name — 333 Directions
- 330 Indolent — 334 Feline animal
- 331 Directions — 335 Rote fax
- 332 Feline animal — 336 Dirk
- 333 Rote fax — 337 Native metal
- 334 Dirk — 338 Formerly
- 335 Native metal — 339 Formerly
- 336 Formerly — 340 DOWN
- 337 Formerly — 341 Stratagem
- 338 DOWN — 342 Rustian ruler
-

**AIRLINES NEEDS**

Young men and women. The airlines are calling on us for more personnel than we can supply. All our applicants must be native born. Also vacancies due to marriage etc. must be filled. Public contact duties. 42 reserves. 1000 communications passenger agents and hostesses. High school graduates 17 to 35. hours if you can qualify. Write today (sitting address, age, education, phone and hours you work) to P.O. Box 1024, Amarillo, Texas. Weaver Airlines Personnel Training.

**18 Beauty Shops 18**

819 COLDWAVE HAIR CUTTING 45  
BEVERLY BRADLEY HAIR CUTTING 45  
912 S. Finley MO 4-5581  
STAMMER'S Special! Hair Cuts \$1.00  
Eva's Beauty Shop. 300 Yeager, MO 4-5211.

**19 Situation Wanted 19**

Would like to have lawn to mow MO 4-5273

**21 Male Help Wanted 21**

AIRLINE NEEDS Passenger agents, 404 class

**22 Female Help Wanted 22**

WANTED lady over 30 years old for kitchen work paid vacation. varied other benefits. evening shift. Apply Hill-Land Drive-In.

**23 Male & Female Help 23**

MAN OR Woman to manage and sell in shoe department at LeVines. Excellent opportunity for live wire, all company benefits, experience preferred. Willing to train. Apply in person at LeVines Department Store.

**25 Salesmen Wanted 25**

WANTED: 8 girls or boys to work for part tuition at Pampa College of Hair Dressing. Light duties. 715 W. Foster.

**30 Sewing 30**

BELTS, BUTTONS, Button holes, Alterations Scott Saw Shop. 1420 Market, MO 4-5228

**31 Appliance Repair 31**

WEST TEXAS REPAIR MO 9-9591  
For All Repairs on Large or Small Appliances, TV's and Antennas. Reasonable Prices 306 W. Foster

**TRY A CLASSIFIED AD**

Highland Homes  
New-Exciting  
3 Bedroom  
Bath & 1/2  
Architect Designed  
1962 MODELS  
Vets - No Down Payment (Limited Time Only)  
78 Moves You In  
FHA - New Low Interest Rate - 35 Year Loans - Only  
3% Down - Payments as low as  
\$80.00  
Office - 1805 N. Christy

**WHILE THEY LAST! \$250**

Total Move-In Cost  
1109 Terry  
1132 Juniper  
1137 Vernon  
1025 Neel  
412 Graham  
Call Paul Corbins At 9-9342 or 4-3823  
For Additional Information

**HUGHES Development Company**

**OPEN Day And Night**

SEE OR CALL COL. DICK BAYLESS MO 5-5410

**Auction Sale August 1 Tuesday 8:00 P.M.**

ICE BOX  
BEDROOM SUITES  
DINETTS  
LIVINGROOM SUITES  
BOX SPRINGS MATTRESS  
APARTMENT RANGE

END TABLES  
COFFEE TABLES  
T.V. TABLES  
LAMPS  
REBUILT MATTRESS  
1-2 WHEEL TRAILER  
POWER MOWER

We buy used furniture or anything of value - MO 4-6109

**ALL BRICK HOMES**

3 BEDROOMS  
1 BATH  
HARDWOOD FLOORS  
DUAL CLOSETS  
MESA VILLA PARK  
2615 NAVAJO MO 9-2711

**Quality Construction**

Commercial  
Residential  
Remodeling  
Let Us bid on Your Work  
WILLIAMS BUILDERS INC.  
MO 4-2523 MO 9-2986

**HAVE YOU OUTGROWN YOUR HOME?**

DON'T MOVE! IMPROVE  
"HAVE A NEW HOME AT THE SAME ADDRESS"

**NOW'S THE TIME!**

REPAIR-IMPROVE YOUR HOME

Title 1 Loans, No Down Payment, 60 Months To Pay  
Let Us Help You, With Any Of Your Building or Repair Needs, A Complete Job or Material

**PAMPA HOME IMPROVEMENT & BUILDING SUPPLY**

1401 N. Banks MO 4-6848

**31 Appliance Repair 31**

ELECTRIC Appliance Repair. Coffee makers, toasters, Vaffle irons. One day Service. Virginia's Bike shop, 326 N. Cuyler, MO 4-5233

**32A General Service 32A**

TOOL for rent. Plumbing, electrical, painting, roofing, etc. Many others. MO 4-5245. 326 N. Cuyler, Tex. Restaurant.

**32B Upholstering 32B**

FOR all types of concrete work, see S. J. Gibby, 533 S. Summer MO 4-3422.

**33 Spraying 33**

TRIPLEX - citrus spray, sprayer. Free estimates. W. R. Mitchell, MO 4-5273

**34 Radio Lab 34**

WING'S ANTENNA, TV SERVICE  
NEW AND USED ANTENNAS, HI-FI, Stereo, and TV Antennas installed.  
HI-FI, Barthes MO 4-3007

**36 Appliances 36**

DEE MOORE'S TV SHOP  
NEW AND USED ANTENNAS, HI-FI, Stereo, and TV Antennas installed.  
HI-FI, Barthes MO 4-3007

**38 Paper Hanging 38**

PAINTING and Paper Hanging. All work guaranteed. W. R. Dwyer, 600 N. Dwight, MO 4-5211

**39 Painting 39**

DAVID HUNTER  
INTERIOR AND exterior Decoration. All work guaranteed. W. R. Dwyer, 600 N. Dwight, MO 4-5211

**40-A Hauling Moving 40-A**

DAVID HUNTER  
INTERIOR AND exterior Decoration. All work guaranteed. W. R. Dwyer, 600 N. Dwight, MO 4-5211

**41 Child Care 41**

PAMPA Day Nursery, 320 N. Somerville. Subsidized care and play. Daily or hourly. Balanced meals. MO 5-2352 or after 6:00 MO 9-9755

**41A Convalescent Home 41A**

HOUSE DOCTOR. Newly decorated. Phone 4111. Panhandle, Texas MO 4-5228

**42A Carpenter Work 42A**

BUILDING contractor. Jobs old new. Large or small. 3544 E. Highway 101. Commercial or residential. T. L. Toosey, MO 4-5293 or 923 N. Dwight, MO 4-5211

**43A Carpet Service 43A**

CARPET CLEANING  
C. M. Baumgardner MO 4-5191

**43 Laundry 43**

WILLIS FURNITURE  
WE BUY & SELL CLEAN USED FURNITURE  
1215 W. Whiting, Frank Parsley 4-5351

**44 Miscellaneous For Sale 44**

FOR SALE: all steel buildings - 20' x 24' \$200, 24' x 30' \$300, 30' x 40' \$400, 36' x 48' \$500, 42' x 60' \$600, 48' x 72' \$700, 54' x 84' \$800, 60' x 96' \$900, 66' x 108' \$1000, 72' x 120' \$1100, 78' x 132' \$1200, 84' x 144' \$1300, 90' x 156' \$1400, 96' x 168' \$1500, 102' x 180' \$1600, 108' x 192' \$1700, 114' x 204' \$1800, 120' x 216' \$1900, 126' x 228' \$2000, 132' x 240' \$2100, 138' x 252' \$2200, 144' x 264' \$2300, 150' x 276' \$2400, 156' x 288' \$2500, 162' x 300' \$2600, 168' x 312' \$2700, 174' x 324' \$2800, 180' x 336' \$2900, 186' x 348' \$3000, 192' x 360' \$3100, 198' x 372' \$3200, 204' x 384' \$3300, 210' x 396' \$3400, 216' x 408' \$3500, 222' x 420' \$3600, 228' x 432' \$3700, 234' x 444' \$3800, 240' x 456' \$3900, 246' x 468' \$4000, 252' x 480' \$4100, 258' x 492' \$4200, 264' x 504' \$4300, 270' x 516' \$4400, 276' x 528' \$4500, 282' x 540' \$4600, 288' x 552' \$4700, 294' x 564' \$4800, 300' x 576' \$4900, 306' x 588' \$5000, 312' x 600' \$5100, 318' x 612' \$5200, 324' x 624' \$5300, 330' x 636' \$5400, 336' x 648' \$5500, 342' x 660' \$5600, 348' x 672' \$5700, 354' x 684' \$5800, 360' x 696' \$5900, 366' x 708' \$6000, 372' x 720' \$6100, 378' x 732' \$6200, 384' x 744' \$6300, 390' x 756' \$6400, 396' x 768' \$6500, 402' x 780' \$6600, 408' x 792' \$6700, 414' x 804' \$6800, 420' x 816' \$6900, 426' x 828' \$7000, 432' x 840' \$7100, 438' x 852' \$7200, 444' x 864' \$7300, 450' x 876' \$7400, 456' x 888' \$7500, 462' x 900' \$7600, 468' x 912' \$7700, 474' x 924' \$7800, 480' x 936' \$7900, 486' x 948' \$8000, 492' x 960' \$8100, 498' x 972' \$8200, 504' x 984' \$8300, 510' x 996' \$8400, 516' x 1008' \$8500, 522' x 1020' \$8600, 528' x 1032' \$8700, 534' x 1044' \$8800, 540' x 1056' \$8900, 546' x 1068' \$9000, 552' x 1080' \$9100, 558' x 1092' \$9200, 564' x 1104' \$9300, 570' x 1116' \$9400, 576' x 1128' \$9500, 582' x 1140' \$9600, 588' x 1152' \$9700, 594' x 1164' \$9800, 600' x 1176' \$9900, 606' x 1188' \$10000, 612' x 1200' \$10100, 618' x 1212' \$10200, 624' x 1224' \$10300, 630' x 1236' \$10400, 636' x 1248' \$10500, 642' x 1260' \$10600, 648' x 1272' \$10700, 654' x 1284' \$10800, 660' x 1296' \$10900, 666' x 1308' \$11000, 672' x 1320' \$11100, 678' x 1332' \$11200, 684' x 1344' \$11300, 690' x 1356' \$11400, 696' x 1368' \$11500, 702' x 1380' \$11600, 708' x 1392' \$11700, 714' x 1404' \$11800, 720' x 1416' \$11900, 726' x 1428' \$12000, 732' x 1440' \$12100, 738' x 1452' \$12200, 744' x 1464' \$12300, 750' x 1476' \$12400, 756' x 1488' \$12500, 762' x 1500' \$12600, 768' x 1512' \$12700, 774' x 1524' \$12800, 780' x 1536' \$12900, 786' x 1548' \$13000, 792' x 1560' \$13100, 798' x 1572' \$13200, 804' x 1584' \$13300, 810' x 1596' \$13400, 816' x 1608' \$13500, 822' x 1620' \$13600, 828' x 1632' \$13700, 834' x 1644' \$13800, 840' x 1656' \$13900, 846' x 1668' \$14000, 852' x 1680' \$14100, 858' x 1692' \$14200, 864' x 1704' \$14300, 870' x 1716' \$14400, 876' x 1728' \$14500, 882' x 1740' \$14600, 888' x 1752' \$14700, 894' x 1764' \$14800, 900' x 1776' \$14900, 906' x 1788' \$15000, 912' x 1800' \$15100, 918' x 1812' \$15200, 924' x 1824' \$15300, 930' x 1836' \$15400, 936' x 1848' \$15500, 942' x 1860' \$15600, 948' x 1872' \$15700, 954' x 1884' \$15800, 960' x 1896' \$15900, 966' x 1908' \$16000, 972' x 1920' \$16100, 978' x 1932' \$16200, 984' x 1944' \$16300, 990' x 1956' \$16400, 996' x 1968' \$16500, 1002' x 1980' \$16600, 1008' x 1992' \$16700, 1014' x 2004' \$16800, 1020' x 2016' \$16900, 1026' x 2028' \$17000, 1032' x 2040' \$17100, 1038' x 2052' \$17200, 1044' x 2064' \$17300, 1050' x 2076' \$17400, 1056' x 2088' \$17500, 1062' x 2100' \$17600, 1068' x 2112' \$17700, 1074' x 2124' \$17800, 1080' x 2136' \$17900, 1086' x 2148' \$18000, 1092' x 2160' \$18100, 1098' x 2172' \$18200, 1104' x 2184' \$18300, 1110' x 2196' \$18400, 1116' x 2208' \$18500, 1122' x 2220' \$18600, 1128' x 2232' \$18700, 1134' x 2244' \$18800, 1140' x 2256' \$18900, 1146' x 2268' \$19000, 1152' x 2280' \$19100, 1158' x 2292' \$19200, 1164' x 2304' \$19300, 1170' x 2316' \$19400, 1176' x 2328' \$19500, 1182' x 2340' \$19600, 1188' x 2352' \$19700, 1194' x 2364' \$19800, 1200' x 2376' \$19900, 1206' x 2388' \$20000, 1212' x 2400' \$20100, 1218' x 2412' \$20200, 1224' x 2424' \$20300, 1230' x 2436' \$20400, 1236' x 2448' \$20500, 1242' x 2460' \$20600, 1248' x 2472' \$20700, 1254' x 2484' \$20800, 1260' x 2496' \$20900, 1266' x 2508' \$21000, 1272' x 2520' \$21100, 1278' x 2532' \$21200, 1284' x 2544' \$21300, 1290' x 2556' \$21400, 1296' x 2568' \$21500, 1302' x 2580' \$21600, 1308' x 2592' \$21700, 1314' x 2604' \$21800, 1320' x 2616' \$21900, 1326' x 2628' \$22000, 1332' x 2640' \$22100, 1338' x 2652' \$22200, 1344' x 2664' \$22300, 1350' x 2676' \$22400, 1356' x 2688' \$22500, 1362' x 2700' \$22600, 1368' x 2712' \$22700, 1374' x 2724' \$22800, 1380' x 2736' \$22900, 1386' x 2748' \$23000, 1392' x 2760' \$23100, 1398' x 2772' \$23200, 1404' x 2784' \$23300, 1410' x 2796' \$23400, 1416' x 2808' \$23500, 1422' x 2820' \$23600, 1428' x 2832' \$23700, 1434' x 2844' \$23800, 1440' x 2856' \$23900, 1446' x 2868' \$24000, 1452' x 2880' \$24100, 1458' x 2892' \$24200, 1464' x 2904' \$24300, 1470' x 2916' \$24400, 1476' x 2928' \$24500, 1482' x 2940' \$24600, 1488' x 2952' \$24700, 1494' x 2964' \$24800, 1500' x 2976' \$24900, 1506' x 2988' \$25000, 1512' x 3000' \$25100, 1518' x 3012' \$25200, 1524' x 3024' \$25300, 1530' x 3036' \$25400, 1536' x 3048' \$25500, 1542' x 3060' \$25600, 1548' x 3072' \$25700, 1554' x 3084' \$25800, 1560' x 3096' \$25900, 1566' x 3108' \$26000, 1572' x 3120' \$26100, 1578' x 3132' \$26200, 1584' x 3144' \$26300, 1590' x 3156' \$26400, 1596' x 3168' \$26500, 1602' x 3180' \$26600, 1608' x 3192' \$26700, 1614' x 3204' \$26800, 1620' x 3216' \$26900, 1626' x 3228' \$27000, 1632' x 3240' \$27100, 1638' x 3252' \$27200, 1644' x 3264' \$27300, 1650' x 3276' \$27400, 1656' x 3288' \$27500, 1662' x 3300' \$27600, 1668' x 3312' \$27700, 1674' x 3324' \$27800, 1680' x 3336' \$27900, 1686' x 3348' \$28000, 1692' x 3360' \$28100, 1698' x 3372' \$28200, 1704' x 3384' \$28300, 1710' x 3396' \$28400, 1716' x 3408' \$28500, 1722' x 3420' \$28600, 1728' x 3432' \$28700, 1734' x 3444' \$28800, 1740' x 3456' \$28900, 1746' x 3468' \$29000, 1752' x 3480' \$29100, 1758' x 3492' \$29200, 1764' x 3504' \$29300, 1770' x 3516' \$29400, 1776' x 3528' \$29500, 1782' x 3540' \$29600, 1788' x 3552' \$29700, 1794' x 3564' \$29800, 1800' x 3576' \$29900, 1806' x 3588' \$30000, 1812' x 3600' \$30100, 1818' x 3612' \$30200, 1824' x 3624' \$30300, 1830' x 3636' \$30400, 1836' x 3648' \$30500, 1842' x 3660' \$30600, 1848' x 3672' \$30700, 1854' x 3684' \$30800, 1860' x 3696' \$30900, 1866' x 3708' \$31000, 1872' x 3720' \$31100, 1878' x 3732' \$31200, 1884' x 3744' \$31300, 1890' x 3756' \$31400, 1896' x 3768' \$31500, 1902' x 3780' \$31600, 1908' x 3792' \$31700, 1914' x 3804' \$31800, 1920' x 3816' \$31900, 1926' x 3828' \$32000, 1932' x 3840' \$32100, 1938' x 3852' \$32200, 1944' x 3864' \$32300, 1950' x 3876' \$32400, 1956' x 3888' \$32500, 1962' x 3900' \$32600, 1968' x 3912' \$32700, 1974' x 3924' \$32800, 1980' x 3936' \$32900, 1986' x 3948' \$33000, 1992' x 3960' \$33100, 1998' x 3972' \$33200, 2004' x 3984' \$33300, 2010' x 3996' \$33400, 2016' x 4008' \$33500, 2022' x 4020' \$33600, 2028' x 4032' \$33700, 2034' x 4044' \$33800, 2040' x 4056' \$33900, 2046' x 4068' \$34000, 2052' x 4080' \$34100, 2058' x 4092' \$34200, 2064' x 4104' \$34300, 2070' x 4116' \$34400, 2076' x 4128' \$34500, 2082' x 4140' \$34600, 2088' x 4152' \$34700, 2094' x 4164' \$34800, 2100' x 4176' \$34900, 2106' x 4188' \$35000, 2112' x 4200' \$35100, 2118' x 4212' \$35200, 2124' x 4224' \$35300, 2130' x 4236' \$35400, 2136' x 4248' \$35500, 2142' x 4260' \$35600, 2148' x 4272' \$35700, 2154' x 4284' \$35800, 2160' x 4296' \$35900, 2166' x 4308' \$36000, 2172' x 4320' \$36100, 2178' x 4332' \$36200, 2184' x 4344' \$36300, 2190' x 4356' \$36400, 2196' x 4368' \$36500, 2202' x 4380' \$36600, 2208' x 4392' \$36700, 2214' x 4404' \$36800, 2220' x 4416' \$36900, 2226' x 4428' \$37000, 2232' x 4440' \$37100, 2238' x 4452' \$37200, 2244' x 4464' \$37300, 2250' x 4476' \$37400, 2256' x 4488' \$37500, 2262' x 4500' \$37600, 2268' x 4512' \$37700, 2274' x 4524' \$37800, 2280' x 4536' \$37900, 2286' x 4548' \$38000, 2292' x 4560' \$38100, 2298' x 4572' \$38200, 2304' x 4584' \$38300, 2310' x 4596' \$38400, 2316' x 4608' \$38500, 2322' x 4620' \$38600, 2328' x 4632' \$38700, 2334' x 4644' \$38800, 2340' x 4656' \$38900, 2346' x 4668' \$39000, 2352' x 4680' \$39100, 2358' x 4692' \$39200, 2364' x 4704' \$39300, 2370' x 4716' \$39400, 2376' x 4728' \$39500, 2382' x 4740' \$39600, 2388' x 4752' \$39700, 2394' x 4764' \$39800, 2400' x 4776' \$39900, 2406' x 4788' \$40000, 2412' x 4800' \$40100, 2418' x 4812' \$40200, 2424' x 4824' \$40300, 2430' x 4836' \$40400, 2436' x 4848' \$40500, 2442' x 4860' \$40600, 2448' x 4872' \$40700, 2454' x 4884' \$40800, 2460' x 4896' \$40900, 2466' x 4908' \$41000, 2472' x 4920' \$41100, 2478' x 4932' \$41200, 2484' x 4944' \$41300, 2490' x 4956' \$41400, 2496' x 4968' \$41500, 2502' x 4980' \$41600, 2508' x 4992' \$41700, 2514' x 5004' \$41800, 2520' x 5016' \$41900, 2526' x 5028' \$42000, 2532' x 5040' \$42100, 2538' x 5052' \$42200, 2544' x 5064'

### Television Programs

Channel	Program	Time	Station
Channel 4	8:00 Today	11:25 Women World	NBS
	8:00 Kapt. Kidd's	1:00 Jan Murray	
	8:30 Play Your Hunch	1:30 Loretta Young	
	9:00 Price Is Right	2:00 Young Dr. Malone	
	10:30 Concentration	2:30 From These Ris	
	11:00 Truth or Consp.	3:00 Make Room For	
	11:30 NBC News	4:00 Kapt. Kidd's	
	12:00 News	4:30 Here's Hollywood	
	12:15 Weather	5:00 Kapt. Kidd's	
	12:30 News	5:45 Huntley-Brink	
Channel 7	10:30 Puns-a-Poppin	8:00 Stargazer West	ABC
	11:00 Gale Storm	8:30 Amer. Bandstand	
	11:30 Love That Bob	9:00 Rocky & Friends	
	12:00 Camouflage	9:30 Stroke & Arrive	
	12:30 Number Please	9:50 Bugs Bunny	
	1:00 The Big Show	9:50 Rifleman	
	1:30 Seven Keys	10:00 News	
	2:00 Queen for a Day	10:30 Jack Parr	
	2:30 News	10:50 Weather	
	2:45 Weather	11:00 News	
Channel 10	8:30 Cartoon time	12:10 News	CBS
	9:00 Farm Report	12:20 Markets	
	9:30 It's Happening	12:30 As World Turns	
	9:30 Jack La Laine	1:00 Face The Facts	
	10:00 Double Exposure	1:30 House Party	
	10:30 Surprise Pkg.	2:00 Verdict Is Yours	
	11:00 Love of Life	2:30 Brighter Day	
	11:30 Search for Tomorrow	3:00 Secret Storm	
	11:45 Guiding Light	3:30 Edge of Night	
	12:00 Dan True Weath.	4:00 Giant Kide Mat.	
Channel 4	7:00 Today	12:25 Women World	NBC
	8:00 Kapt. Kidd's	1:00 Jan Murray	
	8:30 Play Your Hunch	1:30 Loretta Young	
	9:00 Price Is Right	2:00 Young Dr. Malone	
	10:30 Concentration	2:30 From These Ris	
	11:00 Truth or Consp.	3:00 Make Room For	
	11:30 NBC News	4:00 Kapt. Kidd's	
	12:00 News	4:30 Here's Hollywood	
	12:15 Weather	5:00 Kapt. Kidd's	
	12:30 News	5:45 Huntley-Brinkley	
Channel 7	10:30 Puns-a-Poppin	8:00 Hawaiian Eye	ABC
	11:00 Gale Storm	8:30 Trust	
	11:30 Love That Bob	8:30 Amer. Bandstand	
	12:00 Camouflage	9:00 Lone Ranger	
	12:30 Number Please	9:30 This Man Dawson	
	1:00 The Big Show	9:30 Hong Kong	
	1:30 Seven Keys	10:00 Ozzie & Harriet	
	2:00 News	10:30 Queen For a Day	
	2:30 News	11:00 Secret Storm	
	2:45 Weather	11:30 Edge of Night	
Channel 10	8:30 Cartoon time	12:20 Markets	CBS
	9:00 Farm Report	12:30 As World Turns	
	9:30 It's Happening	1:00 Face The Facts	
	9:30 Jack La Laine	1:30 House Party	
	10:00 Double Exposure	2:00 Verdict Is Yours	
	10:30 Surprise Pkg.	2:30 Brighter Day	
	11:00 Love of Life	3:00 Secret Storm	
	11:30 Search for Tomorrow	3:30 Edge of Night	
	11:45 Guiding Light	4:00 Giant Kide Mat.	
	12:00 Dan True Weath.	4:30 Amos & Andy	

### Earnings Gains Anticipated For Aircraft Firms

NEW YORK (UPI) — Aircraft company earnings should be moderately up in 1961 and will begin to rise sharply next year as defense deliveries accelerate and the wave of write-off on unprofitable commercial contracts subsides, according to the Value Line Investment Survey.

The real growth in aircraft, it said, is the space program where appropriations are expected to balloon from \$1.8 billion in fiscal 1962 to \$5 billion annually by the mid-sixties.

Martin Gilbert of Van Alstyne, Noel & Co. says the list may have to absorb some additional shocks because of international developments but remains of the opinion that any resulting setbacks will find buyers eagerly adding to their stock positions.

A clearly defined recovery trend is under way in the rubber industry and marked progress is in prospect for the second half, according to Thomson & McKinnon.

Joseph E. Granville of E. F. Hutton & Co. says the boost in the British bank rate from 5 to 7 per cent had the effect of switching speculative interests out of the bond market and into the stock market, one of the many expected supports the stock market is now probably going to benefit from.

### Export Increase Shown By Mexico

MEXICO CITY (UPI) — Mexico's total exports for the first four months of this year reached a dollar value of 230,480,000, which was more than \$44 million (U.S.) over the figure for the same period of 1960, it was reported today.

### Foreign Commentary

By PHIL NEWSOM  
UPI Foreign News Analyst

The current position of the United States between France and Tunisia on the issue of Bizerte bears certain resemblances to a state of affairs existing in late October and early November of 1956.

On Oct. 31, 1956, French and British bombers began attacking Egypt in the first phase of a campaign to recapture the nationalized Suez Canal.

The attack came as an unpleasant surprise to the United States, which made no secret of its irritation over the fact that its two most important European allies would plan such an operation behind its back. The United States immediately disavowed any part in it.

On Nov. 5, Soviet notes arrived in Washington, London and Paris. The notes to London and Paris were menacing.

On Nov. 6, Britain and France ordered a cease-fire in Egypt. For them it had been a debacle, and the United States' attitude had been the decisive factor. Reaction again was bitter.

French Foreign Minister Christian Pineau attacked U. S. support of President Abdel Gamal Nasser of Egypt but added significantly:

"Whatever our bitterness, we cannot renounce American friendship or the Atlantic Alliance, which is our only safeguard against sharing the fate of Hungary."

How the British and French governments would have reacted under a Macmillan or a de Gaulle can only be a matter of speculation.

But it is certain that the then British prime minister, Anthony Eden already was an ill man. France was going through the series of government downfalls which eventually led to emergence of de Gaulle.

Today, in another conflict involv-

ing the Mediterranean and the Moslem world, both France and Tunisia demand U. S. support.

There is another similarity. At the time of the Suez conflict France drew nine-tenths of its oil from the Middle East through the Suez Canal. Today, a pipeline from the French Sahara fields carries French oil through Tunisia. It is part of the grand industrial complex planned by De Gaulle to embrace Tunisia, Algeria and Morocco.

As for President Bourguiba who temporized on Bizerte in order to get French troops out of the remainder of Tunisia in 1958, his timing was off. He threatens now to abandon the West and go all out for pan-Arabism. For his change, he blames the United States.

### Duty-Free Goods Allowance Cut

WASHINGTON (UPI) — THE House passed by voice vote yesterday and sent to the White House legislation that would cut to \$100 a person the present \$500 duty-free allowance on foreign goods brought back by American tourists.

The lower limit will take effect 30 days after the President signs the bill. It will remain in force until July 1, 1963.

There will be only one exception. Tourists in the Caribbean will be given a \$200 allowance, provided that at least \$100 worth of the goods is purchased in the Virgin Islands.

President Kennedy had requested that the allowance be cut to \$100 without any exceptions to discourage spending abroad by American tourists. It was part of his program to retard the flow of American gold abroad.

### Texas Visit Prompts Writer's Tall Story

By DICK WEST  
WASHINGTON (UPI) — Each time that I go back to my native state of Texas, I experience a curious sort of brain seizure that causes me to fancy that I am on

### Farm Imports Trade Showing Little Change

WASHINGTON (UPI) — The United States long has been the world's largest exporter, or seller, of agricultural products. Also, it is second only to the United Kingdom as the leading importer, or buyer, of farm output.

In 1960, U.S. agricultural imports totaled a whopping \$3,825,000,000. Even so, imports last year were the lowest in 11 years.

Despite this decline, the pattern of U.S. farm import trade has changed little in the last decade.

If 1950, the 10 leading imports, in order were coffee, rubber, wool, sugar, cocoa beans, hides and skins, copra and coconut oil, tobacco, live cattle and fibers. In 1960, in order of value, imports were coffee, sugar, rubber, wool, beef and veal, cocoa beans, tobacco, copra and coconut oil, bananas and nuts, hides and skins, live cattle, and fibers didn't make the 1960 list of leading imports.

The United States buys more coffee than any other single farm commodity. In 1950, the coffee bill was \$1,091,000,000. Last year it was \$1,003,000,000. This does not mean that less coffee was imported last year, but merely that prices were down from 1950. In fact, in 1950 Americans consumed 18.4 million bags of coffee, whereas in 1960 they upped their consumption to 22.1 million bags.

Wool shows a big drop in value. In 1950, wool imports cost \$427 million. Last year they cost \$196 million. Synthetics are partly the reason. Much less wool is being used in carpets than formerly and apparel wool is way down.

Sugar, in No. 4 place in 1950, jumped to No. 20 in 1960 with a \$125 million rise in value. The quantity was about the same for both years.

Beef and veal made its introduction to the list of 10 leading imports for two reasons. Americans started barbecuing, with the result that consumption of hamburgers, hot dogs and such skyrocketed. At the same time, the U.S. cattle cycle reached the point where farmers were slaughtering the type of cattle that produces manufacturing beef. Currently the United States buys most of this manufacturing beef from Australia and New Zealand. In 1950, the big supplier was Argentina.

Hides and skins have moved downward because of sharply increased domestic production and sharply decreased domestic consumption. Manufacturers have found substitutes for leather.

the verge of writing the great American novel.

When an attack first hits me, I stagger over to the nearest typewriter and bat out several reams of what seems at the moment to be sure-fire best-seller fiction.

This week, for instance, I returned from a vacation trip to the cow-country bearing a manuscript I had put together under the illusion that I was walking in the footsteps of Edna Ferber.

It was Miss Ferber, you'll recall, who authored an opus of life "Giant." In doing so, she endeared herself to Texans in the way that Gen. Sherman endeared himself to Georgia.

The novel that I started to write during my vacation was patterned after the Ferber book, but it took a somewhat different approach to Texas. I called it "Pigmy."

In essence, "Pigmy" was to be the life story of Nosmo J. Circingle, a native Texan who was born with a monumental character defect. He didn't like to brag.

"What's the matter with you, son?" little Nosmo's mother said to him when, as a child, he began to behave with unbecoming modesty. "Are you sick, or something?"

"No, mother," he replied, shamefaced. "I feel okay. It's just that I don't see much around here to brag about."

Nosmo's parents immediately took him to Dallas to have his eyes examined. His vision was 20-20. Then they took him to Houston to have his head examined. But nothing could be done.

Nosmo was pathologically unboastful.

As he grew older, Nosmo began to develop other traits that gave his parents concern. This time they took him to San Antonio to be examined. That was when they discovered to their horror that he was allergic to beefsteak.

By the time that Nosmo reached adolescence, he was a total failure as a Texan. He didn't even care about becoming a millionaire.

"Why don't you go out and discover an oil field like the rest of the boys?" his anxious father would say.

"I guess it's because I don't like to be around oil," Nosmo would reply.

"And why not, pray tell?" "It's too oily," Nosmo would explain.

In manhood, Nosmo was virtually an outcast. While driving, he seldom exceeded the speed limit and his car didn't even have air conditioning. The crowning blow to his friends and relatives came when he married a girl who had never heard of Neiman-Marcus.

That was as far as I got in my novel. Time ran out and I had to return to Washington.


Back here in the East, with a bit more shade on my brow, I can see, upon reading over the manuscript, that I was deluding myself while in Texas. The brain seizure that I thought was inspiration was merely sunstroke.

**REMEMBER HOW GREAT CIGARETTES USED TO TASTE? LUCKIES STILL DO**

# LUCKIES DON'T SKIMP

*They're so round, so firm, so fully packed—so free and easy on the draw. They're fully packed with fine tobacco. They're firmer than any other regular cigarette. And Luckies smoke longer.*

**THAT'S WHY THEY TASTE SO GREAT.**



**Get Texas-size taste ★ Get Luckies today!**

© THE AMERICAN TOBACCO CO.

LEVINE'S **CALLING!**  
**SCHOOL OPENS SOON...!**

Girl Plaid Gingham School DRESSES 99c

- SIZES: 7-14
- Woven Plaid GINGHAMS
- SANFORIZED FABRICS



1 POUND SHREDDED **FOAM RUBBER** 49c

- SNOW WHITE
- SOFT AND FLUFFY

CHICKEN FEATHER **PILLOWS** 88c

- JUMBO SIZE
- STRIPED TIGK
- SOFT & PLUMP

CORDANA SQUARE **Jumbo Pillows** \$1.59

- Button Center
- Lovely Colors
- Foam Filled

GIRL'S BETTER **PLAYWEAR** 77c

- Large Selections
- NEW FABRICS
- VALUES TO \$1.99

IDEAL FOR BACK-TO-SCHOOL SEWING

Checks • Plaids • Gingham

- 10 New Woven Check Colors
- All Crease Resistant

Actual Value 79c **29c** YD.

GIRL'S BACK-TO-SCHOOL **Cotton Blouses** \$1.00

- Whites & Colors
- Sizes: 3-6X, 7-14
- Wash N' Wear

LUXURY PLUSH FILE **VELVETEEN** 99c

- Economy Lengths
- Luxury Quality
- Fall Colors

SEW AND SAVE — 2 1/2 YARD **SKIRT LENGTHS** \$1.59

- Border Prints
- New Fabrics
- Large Selection

BOY'S STURDY **BLUE JEANS** \$1.69

- 10 Oz Weight
- Double Knee
- Sizes: 4 to 14

FAMOUS BRAND PERCALE **SHEETS** \$1.99

- FULL OR TWIN SIZE
- REG. \$2.99 IF PERFECT
- FULL AND TWIN SIZE
- NOW ONLY



STOCK OF LADIES CLEAN UP SALE—ENTIRE SUMMER **SHOES**

VALS. TO \$6.99 **\$2**

- HEELS
- PUMPS
- WEDGES
- FLATS
- WHITES
- COLORS

BOYS' SPORT SHIRTS **SHORT SLEEVES** \$1.59

- VALUES TO \$2.99

Ladies' Western Jeans **GOOD FITTING** \$3.99

- SIZES 10-18

WESTERN SHIRTS **MEN'S & LADIES** \$3.99

- SPECIAL PURCHASE

MEN'S STRAW HATS **WESTERN STYLE** \$1.99

- WIDE BRIMS

LEVINE'S