



"The first great gift we can bestow on others is a good example." —Morell

# The Pampa Daily News

Serving The Top O' Texas 53 Years

## WEATHER

TOP O' TEXAS — Clear to partly cloudy and a little warmer Friday. Cooler Panhandle tonight. Low tonight around 46, high Friday 66.

OL 28 — NO. 182

CIRCULATION CERTIFIED BY ABC AUDIT

THE PAMPA DAILY NEWS, THURSDAY, OCTOBER 27, 1960

(20 PAGES TODAY)

Week Days 84  
Sundays 116

## Opinion Of J.S. Took Global Dive

WASHINGTON (UPI) — Two newspapers reported today that a government survey showed public opinion of the United States as a world power declined in Britain and France after the May summit lapse.

The dispatches were published in the New York Times and Washington Post and Times Herald amid angry Democratic criticism of the White House for refusing to make public a secret U.S. Information Agency (USIA) poll referred to indicate U.S. prestige abroad has dropped.

The Times and the Post said a USIA study prepared in June and an overwhelming majority of those questioned in Britain and France felt Russia was ahead of the United States in space progress. The Times said the study also showed a majority felt the Soviet Union was the world's longest military power.

The newspaper dispatches were certain to fan the already blazing presidential campaign dispute over America's standing abroad. Democratic candidate John F. Kennedy claims U.S. prestige has dropped during the Eisenhower administration. GOP nominee Richard M. Nixon, backed by President Eisenhower, asserts it never has been higher.

The Times and the Post said the USIA study showed that although favorable public opinion toward the United States and President Eisenhower had dropped during the summit failure, this country still is supported over the Soviet Union.

The newspapers said the survey indicated a decline in faith in America's ability as a world leader.

"Particularly in Great Britain, current confidence is low in America's capacity for leadership in dealing with present world problems," the Times quoted the report as stating.



### NOBEL FOR LITERATURE

— The Swedish Academy of Letters announced in Stockholm that French poet Alexis St. Leger, better known under his pen name "St. John Perse," won the 1960 Nobel literature prize. Prize was awarded for the "soaring flight and imagination of his poetry, which in a visionary fashion reflects the condition of our time." Included in the prize is a cash award of \$43,625.

## Disarmament Starting Point Is Sought By U.N.

### Move Is Proposed By India

By BRUCE W. MUNN  
United Press International

UNITED NATIONS, N.Y. (UPI) — Indian Defense Minister V. K. Krishna Menon sought today to find a new starting point for East-West negotiations on disarmament in behind-the-scenes talks with the United States and Russia.



KEY TO THE CITY — Miss Rise Stevens and her accompanist, James Shomate, left, were presented the key to the city by Mayor Ed Myatt yesterday afternoon in Miss Stevens' suite in the Coronado Inn. Miss Stevens is to appear in a semi-classical and operatic concert at eight this evening in Pampa Junior High auditorium under the auspices of the Community Concert Association. (Daily News Photo)

## Nixon Has Strength In Midwest

### Has Been GOP Trouble Spot

By RAYMOND LAHR  
United Press International

WASHINGTON (UPI) — Campaign assessments from both Republicans and Democrats indicate that Vice-President Richard M. Nixon is relatively stronger and Sen. John F. Kennedy weaker in the Farm Belt, which has been a GOP trouble spot for several years.

These ratings put Nixon now ahead in Iowa, Kansas, Nebraska, Oklahoma, South Dakota and North Dakota.

On the fringes of that area, Republicans count Nixon ahead in Minnesota, Wisconsin, Illinois and Colorado—but concede these states will be more closely contested. Democratic assessments put Kennedy ahead in some of these states or call the outcome in doubt.

President Eisenhower carried all of these states in 1952 and 1956 but his vote and that of the Republican ticket suffered in many of the rural areas, which were rebellious over administration farm policy.

Democrats made more conspicuous gains in the mid-term elections of 1958 when they picked up additional congressional seats in once normally Republican farm territory.

The GOP is particularly interested in the Middle West in its drive to cut into the heavy Democratic majorities in Congress. In the Mississippi Valley states along with Indiana, which shifted six House seats from the GOP to the Democrats in 1958, Republicans rate their chances good to pick up more than a dozen House seats.

However, the same region contains two of the most vulnerable Republican Senate seats—in Iowa and Colorado—which are at stake this year.

Democratic alarms sounded in Minnesota this week after a poll indicated that Democratic Sen. Hubert H. Humphrey had lost most of what once appeared to be an insurmountable lead in his bid for a third term.

## Irish Playwright Breaks Promise

NEW YORK (UPI) — Touseled-haired Brendan Behan, the celebrated Irish playwright and sometimes pub crawler, broke his promise to behave Wednesday night.

Behan, after an afternoon of quaffing champagne from a water tumbler, invaded the Cort Theatre where his play "The Hostage" has become a Broadway hit, stalked down the aisle, heckled the actors, sang a song and made a speech praising America, the cast and his play.

The audience clapped and cheered.

## El Salvador Eases Plight Of Prisoners

SAN SALVADOR (UPI) — El Salvador's new ruling junta promised the people "absolute liberty" today, saying political prisoners will be freed and refugees invited to return home.

Political observers said the tendency of the junta—three army officers, an engineer and two attorneys—appears to be left-wing but not extremist. Local press reports quoted a junta spokesman as saying it definitely would not copy the tactics of Fidel Castro's Cuban regime.

The junta overthrew President Jose M. Lemus in a bloodless coup d'etat at dawn Wednesday. Lemus was said to have fled to Guatemala.

(In Honduras, Salvadorean refugees rejoicing over Lemus' fall mingled cheers for Castro and shouts of "Central America, Yes! Yankees, no!" with their singing of the Salvadorean national anthem.)

The only member of the new government who had held a high

civilian post previously was Lt. Col. Miguel A. Castillo. He served first as director of national communications and then as chief of customs police under Lemus. He still held the customs post at the time of Wednesday's coup.

Other members of the junta were Col. Cesar Yanes Urias, Capt.-Maj. Ruben A. Rossiles, engineer Fabio Castillo and attorneys Rene Fortin Magana and Ricardo Falla Caceres.

(Reports reaching the United States described the junta members as young, moderate leftists who overthrew Lemus to forestall a possible extremist uprising.)

For two months before the coup, El Salvador had been living under a "state of siege"—modified martial law—imposed by Lemus to put a stop to street rioting by students and other political leftists.

Let us show you how to get more miles from your tires. Our address is 411 S. Cuyler, Pampa Safety Lane, MO 8-3771. Adv.

## Wreck Sends 6 To Hospital

A Pampa teenager's auto and an oilfield winch truck collided in Lefors last night sending the six passengers in the auto to Highland General Hospital.

One of the three doctors on the case said the youngsters were en route to a prayer meeting.

The physicians said this morning that their patients, excepting Elicea Hatcher of Lefors, are in satisfactory condition.

Miss Hatcher suffered a broken pelvis and other lesser hurts and will be hospitalized for at least a month, her doctor reported.

Others hospitalized are: Bernice Hatcher, twin sister of the first named girl, suffered bruises and several lacerations; Dwayne Ferguson of 309 Tukey owner of the car, received fractures of the jaw and hand and a slight concussion; J. L. Ferguson, brother of the car owner, received a mild concussion; Charles E. Coons of Lefors, who had facial lacerations and bruises, and Rosalie Hollowell of Pampa, who received cuts and bruises.

Investigating officers said the truck, driven by Doug Elkins of Lefors, spun off the road and struck the side of an apartment house, after the crash.

The truck driver received a slight head cut but did not require hospital attention.

The Highway Patrol is continuing the investigation.

## Oil Import Reduction Proposed

WASHINGTON (UPI) — The Interior Department said today it had proposed that foreign oil imports, except residual fuel oil, be cut by 60,000 barrels a day, effective Jan. 1, in the area east of the Rocky Mountains.

Covered would be both crude oil and finished and unfinished products.

Undersecretary Elmer Bennett said the cut would require a presidential proclamation before it could become effective. This is expected in the near future.

## Show Content Discussed In Pay TV Hearings

WASHINGTON (UPI) — Movie theater owners switched their line of questioning today at the government's pay TV hearing from sex to money.

The theater owners, main opponents of a proposed three-year pay TV test in Hartford, Conn., said they would delve deeper into what it would cost the public to buy the televised programs.

The opponents touched briefly on cost during Wednesday's hearings which was devoted in large part to whether movies with sex scenes and four-letter words should be shown on pay TV. The pay-TV promoters said they wouldn't.

The FCC is holding hearings to decide whether to grant a permit to RKO General, Inc., and Zenith

## NY Times Comes Out For Demos

NEW YORK (UPI) — The New York Times today endorsed Sen. John F. Kennedy for president.

The Times, which supported President Eisenhower in 1952 and 1956, said in an editorial in today's edition the two chief reasons it selected Kennedy were "a matter of foreign policy" and "the present political situation here at home."

The Times, "speaking as an independent newspaper," said there was a "large measure of agreement" on foreign policy between the two candidates which "guarantees the continuity of the main lines of American policy and offers welcome assurance to our NATO allies and to the small nations which look to us for support."

"As for Quemoy and Matsu," the editorial said, "it is unfortunate that this issue has been brought into the campaign. When questioned about it, both candidates ought to have stood on the policy expressed by Congress, a policy to which both of them have wisely retreated."

"Sen. Kennedy's approach in this as in other matters of foreign policy, except for his momentary blunder suggesting intervention in Cuba, a position from which he quickly retreated, seems to us to be more reasoned, less emotional, more flexible, less doctrinaire, more imaginative, less negative than that of" Vice President Richard M. Nixon.

## Chicago Paper Endorses GOP

CHICAGO (UPI) — Chicago's American Wednesday endorsed the presidential ticket of Vice President Richard M. Nixon and Henry Cabot Lodge.

"Having assessed the qualifications of the four candidates, it seems clear to us that the country will best be served by electing Nixon and Lodge," the American said in an editorial.

"In foreign affairs, they are far better equipped by experience to deal with the dangerous struggle against communism in the years ahead."

## United Fund At Halfway Mark

The Pampa-Lefors United Fund campaign reached \$38,642.81 today, some \$30,000 short of the \$68,746 goal sought prior to the deadline which was set earlier for Oct. 31.

The goal is expected to be reached, but not before sometime later in November or early December, fund officials said.

## U.S. Affirms Stand On Base

WASHINGTON (UPI) — The United States would fight if Fidel Castro tried to seize America's huge Guantanamo naval base in Cuba, a high administration official has reaffirmed.

The administration believes Cuban Premier Castro has no intention of trying to cancel the treaty allowing the United States to use the base, lest American intervention topple his regime, the official said.

The administration repeatedly has said it will not give up the \$70 million Caribbean outpost since Castro first threatened to renounce the 1903 treaty which gives the United States control over Guantanamo.

## Negro Leader King Ordered Freed To Appeal

DECATUR, Ga. (UPI) — Integration leader Martin Luther King Jr., was ordered released from the Georgia state prison on \$2,000 bond today while he appeals a four-month sentence on a revoked probation traffic term.

Judge J. Oscar Mitchell granted King's release one day after he was removed from a DeKalb County public works camp to the state prison at Reidsville, Ga.

## Pledge To UN By Mobutu On Congo Troops

LEOPOLDVILLE (UPI) — Congolese troops pulled out of most of their positions in the city and returned to barracks on the outskirts today under Col. Joseph Mobutu's promise to the United Nations.

The U.N. command has reported to Secretary-General Dag Hammarskjold that there appeared to be a concerted effort by Belgians to regain power in the Congo, authoritative sources said.

Some of Mobutu's troops remained at strategic points. They included a cordon of soldiers ringing ousted Premier Patrice Lumumba's residence. The United Nations did not object to the guard.

Troops who had been roaming the city searching for arms allegedly hidden by Lumumba's supporters vanished, and others pulled out of police stations they had been occupying since last Saturday.

## RC Delegates To Convention

Four members of the Pampa Red Cross Chapter were to leave at 3 p.m. today to join 300 other delegates at the fifth annual Texas Red Cross State Conference in Waco, which runs tomorrow and Saturday.

Representing Pampa will be A. J. Carubbi Jr., chapter chairman, Mrs. Libby Shotwell, executive secretary, Mrs. James Lewis, Gray Lady, and Miss Mickey Ashby, junior Red Cross delegate from Pampa High School.

Featured speakers at the conference will be Chester H. Lauck, executive assistant, Continental Oil Company and Dr. Leon Hill, Amarillo clergyman.

## In A Hurry Carnesville, Ga. (UPI) — Franklin County Ordinary Grady Crowe cocked his shotgun Wednesday and called police when he heard a window pane break in his home.

The "intruders" were an eloping couple who wanted Crowe to perform a marriage ceremony.

# Hero's Son Picks Army As Career

WEST POINT, N.Y. (UPI) — Colin Kelly III, a red head with a chipped front tooth and smiling brown eyes, has made it past a rough plebe year at the U.S. Military Academy. Now, he says, he is definitely set on an Army career.

The 20-year-old cadet, son of the first-acclaimed hero of World War II who was shot down four days after Pearl Harbor, has done it all on his own so far—and that is obviously the way he wants it.

The late Franklin D. Roosevelt personally requested a West Point appointment for Colin. He did so when the boy was only 19 months old after his bomber pilot father, Colin Kelly II, died in a first successful strikeback at the Japanese war fleet.

But young Colin took competitive exams to get into the academy on merits instead. Since then, he has been hitting the books hard because he is not a brilliant student, and taking knocks in sports and field training because he is a slim six-footer of 152 pounds.

"Nobody likes the plebe year," Colin said between classes last week. "But by now you wake up and see the sense of things and how they are falling into place."

West Point officials say young Kelly was treated as just another cadet and underwent the strict disciplining from upper classmen.

Kelly ranked scholastically 371st out of a first-year class of about 600. He plays right halfback on the varsity soccer team and sings with the glee club and Protestant chapel choir.

He has a girl, Susie Cooper, of Denton, Md. They met when he attended the West Town School outside his family's home in Chester Heights, Pa. Colin ducks whether they intend to get married, but adds quickly: "It's serious."

Colin says his vision is not quite good enough for him ever to be a flier. But he adds candidly that he never was particularly interested in flying. His mother, he says, never pushed him in any way about going to West Point. "She told me to do what I wanted," he says.

The young man talked quietly and calmly about his father's wartime death. He knows the legend of Colin Kelly has been somewhat distorted and refers particularly to first reports his father dived the plane into the smokestack of a Japanese warship.

"The way we were told, this is what happened," he says.

"They flew out of Henderson Field in the Philippines in search of an aircraft carrier and found a battleship. They dropped their bombs—three was all the B17 could carry. Then they had to leave because they had company from Jap Zeros.

"The ship was listing when they left. They were hit. He steadied the plane while the rest of the crew bailed out. We don't know why he didn't bail out, but the plane cracked up and he wasn't recovered."

Colin's mother Marion remarried a Pennsylvania businessman and the boy has grown up very close to their three children—two boys and a girl. He recalled the older stepbrother's age of 18 because the boy just got his driver's license.

A superior officer described young Kelly as a "fine young man."

"He is less aggressive in manner than some who lean toward a military career," he said. "He is well-liked and modest—and his modesty is completely sincere. He'll do all right."

## Actor Acquitted Of Cruelty Charge

HOLLYWOOD (UPI) — Movie actor Tab Hunter was free today, having been acquitted of charges of beating and kicking his dog "Fritz," a Weimaraner.

"I knew in my heart I was right," Hunter said, as well-wishers and autograph seekers, one of the latter a jury member, crowded around the handsome blond actor Tuesday after his 11-day trial in nearby Glendale.

"Thank God it turned out the way it did," he said. "But, you never know."

Asked if he felt the trial might hurt his TV show, he replied, "A lot of people are quick to believe the worst and I'm sorry for them."

It was Hunter's neighbors who blew the whistle on him and told authorities he was cruel to Fritz.

# GOODIES FOR TRICK OR TREAT AT SHARP SAVINGS!

FOLGER'S, All Grinds, L.B.

Coffee **69c**

3-LB. Can, Includes 4c off

Crisco **75c**

Fod Club or Gladiola, 5 lb. bag

Flour **39c**

JOLLY TIME YELLOW OR WHITE

POP CORN ..... giant 20 oz. can 29c

FAMILY PACK ICE CREAM ..... 1/2 gallon 59c

SUPREME CRACKERS ..... 1 lb. box 25c

BAR T RANCH Yellow Cling Sliced PEACHES ..... No. 2 1/2 can 25c

HILLS BROS. All Grinds COFFEE ..... lb. 69c

NU SOFT FABRIC SOFTENER ..... 16 oz. jar 47c

ELNA IN QUARTERS OLEO ..... lb. 15c

### FRESH FROZEN ITEMS

STRAWBERRIES

Fresh Frozen Grove Sliced 10 oz. pkg.

2 FOR **35c**

REDDI-WIP

WHIP CREAM PRESSURIZED CAN

**39c**

WAFFLES

FRESH FROZEN DOWNY FLAKE PACKAGE

**10c**

RED HEART'S, Giant 26 oz.

DOG FOOD

19c | TIDE

**68c**

WE RESERVE THE RIGHT TO LIMIT QUANTITIES

**HOE DOWN Meat Sale**

BATH BLACK HAWK HICKORY SMOKED HAM 3 lb. can **\$2.98**

BATH BACON 59c

BATH FRANKS 49c

Food Club BISCUITS 3 for 25c

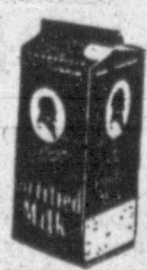
BATH DANTEES 69c

U.S.D.A. CHOICE BEEF LOIN STEAK **89c** lb

U.S.D.A. CHOICE BEEF CHUCK ROAST **49c** lb

U.S.D.A. CHOICE BEEF SHORT RIBS **19c** lb

### BEST BUYS—BORDEN'S-WISE



BUTTERMILK

BORDEN'S 1/2 GALLON... **39c**

BORDEN'S 12 oz. container

COTTAGE CHEESE **25c**

BORDEN'S, 1/2 gallon

SKIM MILK..... **29c**

BORDEN'S, 8 oz. carton

SOUR CREAM..... **25c**



# FURR'S

SUPER MARKETS

## BUBBLE GUM

FLEER'S 80 COUNT PKG. **39c**

HERSHEYS KISSES 11 oz. pkg. 39c

BETTY CROCKER BROWNIE MIX pkg. 29c

KRAFT CARAMELS 1 lb. pkg. 39c

Trick or Treat, with Mask CANDY 8 oz. pkg. **29c**

-Be Ready When The Spooks Come Calling!

VI-DAYLIN Vitamins reg. 3.99 **2.66**

POISE-SHORTY Bath Oil full qt. **98c**

BOYERS HA Hair Arranger 98c reg. **79c**

LANOLIN PLUS Shampoo 2.25 size **99c**

## TOMATO JUICE

HUNT'S 46 OZ. CAN **25c**

BUBBLE GUM Leaf Pal 100 ct. pkg **49c**

### Fresh From The Farm — Fruits & Vegetables

# TOMATOES

FRESH CELLO PKG. **19c**

TEXAS, New Crop Oranges or Grapefruit 5 lb. bag **59c**

COCOANUTS 15c | APPLES EXTRA FANCY, GOLDEN, DELICIOUS, LB. 15c | POTATOES U.S. No. 1 Colorado REDS 5 LBS. **29c**

DOUBLE Frontier Stamps  
On Wednesday With \$2.50 Purchase or More



**FOR NIXON** — John Wayne, in San Antonio for the premier of his movie, "The Alamo," revealed himself as a Richard Nixon booster for the presidency. Wayne deplored talk of Democrats who proclaim a loss of U.S. prestige. Asked if he would hold a Nixon sign, Wayne replied, "I would be happy to."

### Foreign Commentary

By PHIL NEWSOM  
UPI Foreign Editor

Red China is still a long way from getting a seat in the United Nations.

Pandit Nehru's prediction that the Peiping regime will gain admission the next time the issue comes up is premature.

It is not likely that the United States will soon have to heed the advice of Richard M. Nixon and Henry Cabot Lodge and use its veto to keep out the Chinese Communists.

That is the considered opinion of U.N. experts and qualified diplomats at the world headquarters. It is true that on Oct. 8, the General Assembly upheld by the slimmest margin in 10 years—an edge of only eight votes—the United States' motion to shelve any action on whether to oust Nationalist China and give its seat to the Chinese Communists.

### Actor Acquitted Of Cruelty Charge

WASHINGTON (UPI) — President Eisenhower, just back from a cross-country speaking tour, prepared today to launch an oratorical campaign barrage in behalf of GOP presidential nominee Richard M. Nixon.

The Chief Executive returned Tuesday from a nine-day, "non-political" trip in which he refrained from openly plugging for Nixon. But he still got in a few veiled digs at Democratic candidate John F. Kennedy.

Eisenhower will make a nationwide television speech Friday night from Philadelphia in support of Nixon. He will appear next Wednesday — six days before the election—with Nixon and GOP vice-presidential nominee Henry Cabot Lodge at a rally in the New York Coliseum.

Although these were the President's only scheduled appearances before the Nov. 8 balloting, there was speculation he might arrange additional speeches on behalf of the Nixon-Lodge ticket.

In a telegram Tuesday to the Montgomery County, Pa., Nixon-for-President Club accepting the Philadelphia engagement, Eisenhower said he would use the occasion to "try to clear the air" on the importance of the election and "on the choice our fellow citizens must make."

But that 42 to 34 vote, was on the issue of whether the assembly would accept the China representation issue for debate.

The experts are certain that in such a debate, many countries which believe the issue should be given a thorough airing would vote against actually seating the Peiping regime.

It is also the prevailing opinion that a simple majority of the assembly's 99 members would not be enough to give the seat to Red China. Most experts hold that a two-thirds vote would be required.

It is not possible to state a flat rule on the majority required. A prime axiom of the United Nations is that each of its major organs is master of its own procedure. Therefore, it is conceivable that the assembly could decide to determine the issue by a simple majority. But most authorities through this unlikely.

There is a different situation in the Security Council. Like the assembly and the other U.N. organs, it can decide for itself disputes concerning credentials of rival governments—which is what the China representation issue boils down to.

But council rules require that any action by that body must have seven affirmative votes from the membership of 11. It is unlikely, in view of the council membership for next year, or in the near future, that seven votes could be mustered to bring in Red China.

Unless there are seven affirmative votes, the negative vote of a big power is not counted as a veto. Under this rule, the United States has maintained its clean record of never having cast a veto.

Nationalist China is one of the veto powers, but a member cannot vote on an issue involving itself.

### LITTLE LIZ



If our standard of living goes much higher, no one will be able to afford it.

## Buddy's Baby Beef-Orama!

Cudahy's Nutwood

**Bacon** 2 lb. Pkg. **89<sup>c</sup>**

**ROLLED ROAST** lb. **39<sup>c</sup>**

**GROUND BEEF** 3 lbs. **89<sup>c</sup>**

**SIRLOIN STEAK** lb. **59<sup>c</sup>**

**ROUND STEAK** LB. **69<sup>c</sup>**

**ARM ROAST** LB. **35<sup>c</sup>**

**MIGHTY GOOD EATING!!** **TENDER! JUICY! LEAN!**

**CHUCK ROAST** lb. **35<sup>c</sup>**

**these FOOD BUYS hit the SPOT** M-M-M-M-M-M-M-M

**ENGLISHEANS** 303 can **10<sup>c</sup>**



**DEL MONTE PUMPKIN** 303 CAN **12<sup>c</sup>**

**NORTHERN TISSUE** 4 ROLL **29<sup>c</sup>**

**DIAMOND TOMATOES** 303 CAN **10<sup>c</sup>**

**KIMBELL STUFFED OLIVES** 12 oz. Refrigerator Jar **39<sup>c</sup>**

**Fresh Country Pullets**  
**EGGS** DOZEN **39<sup>c</sup>**

- Del Monte Crushed Pineapple ... 3 for **39<sup>c</sup>**
- White Swan garden fresh 303 Peas ... 3 for **49<sup>c</sup>**
- Del Monte 14 oz. bottle Catsup ... **17<sup>c</sup>**
- 2 lb. bag Pinto Beans ... **19<sup>c</sup>**
- KIM Dog Food ... 6 cans **33<sup>c</sup>**
- Assorted Flavors Jell-O ... 2 for **15<sup>c</sup>**
- Gold Medal Flour ... 10 lb. bag **97<sup>c</sup>**

- Kimbell pure 18 oz. jar Apple Jelly ... **25<sup>c</sup>**
- Wapeo cut, 303 can Sweet Potatoes ... **17<sup>c</sup>**
- Duncan Hines Cake Mixes 2 pkgs Giant Size ... **69<sup>c</sup>**
- Tide ... 5c off **68<sup>c</sup>**
- Cut 'Rite 125 ft. Wax Paper ... **27<sup>c</sup>**
- Kougly Kist 12 oz. can Corn ... 2 for **25<sup>c</sup>**
- White Swan Coffee ... lb. can **65<sup>c</sup>**

### GOLDSMITH ...



**PUREX** 1/2 gallon **33<sup>c</sup>**

**FLOUR** 25 LB. BAG **\$1.79**

**Buddy's SUPER MARKETS**  
OPEN 7 DAYS A WEEK—7:30 A.M. to 9 P.M. Sunday 7:30 to 8:00  
WE RESERVE THE RIGHT TO LIMIT QUANTITIES

### FRESH AS SPRING! Fruits and Vegetables

**POTATOES**  
U.S. No. 1 RED 10 lbs. **39<sup>c</sup>**

**ONIONS**  
SWEET YELLOW 3 lbs. **19<sup>c</sup>**

Washington Red Delicious APPLES lb. **19<sup>c</sup>**

California Flame Tokay GRAPES lb. **12 1/2<sup>c</sup>**

Choice Tender Celery Hearts . pkg. **19<sup>c</sup>**

Visit Buddy's Produce Department For New Crop Walnuts, Pecans, Almonds, Mixed Nuts, Dates and Pumpkin. New Crop California, Washington and Texas Fruits.



**SAFEWAY**

You're on your way to a wonderful time with...

# Halloween Fun-Foods

Roxbury Trick or Treat Candies!  
Butterscotch Balls, Lemon Drops,  
Chicken Bones or Party Mints—  
Your Choice

4 Pkgs. \$1.00

**CANDY BARS**

Your Choice of  
Hersheys, Baby  
Ruth, Milky  
Way, etc. ---  
Each

**3c**

Halloween is fun time... and for your Halloween fun Safeway is featuring all the party foods you ever heard of. You'll love our big selection. So will the "ghosts and goblins" who come calling on you. And you're on your way to wonderful savings, too, when you shop Safeway!

**FREE!**

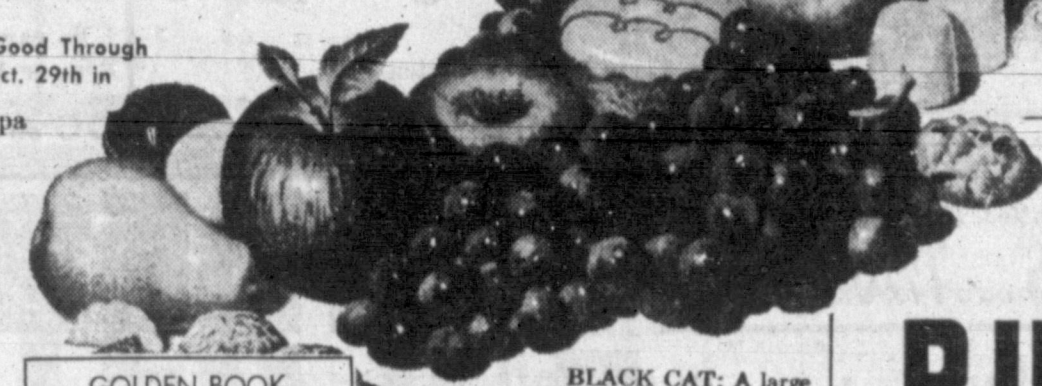
A Halloween Mask Free  
With the Purchase of a  
Quart of Lucerne  
**CHOCOLATE MILK**  
Qt. 25c You Get a Mask Free!



Treat the Kiddies With These "Goodies"!

- CRACKER JACKS 4 Boxes 29c
- CAMEL-KIDDIE POPS Camel 50-Ct. Pkgs. 39c
- SALT WATER TAFFY Camel 100-Ct. Brand Pkgs. 69c
- BUTTERSCOTCH BALLS Camel 30-Ct. Brand Pkgs. 29c
- MARSHMALLOWS Fluffiest 1lb. Pkg. 25c

Prices Are Good Through  
Saturday, Oct. 29th in  
Pampa



**GOLDEN BOOK  
ENCYCLOPEDIA**  
For Young People  
Volume No. 9 **99c**



**BLACK CAT:** A large scoop of chocolate ice cream for the body and a smaller scoop for the head. Use candy corn for ears, raisins for eyes, shredded coconut for whiskers.

Always Fresh—Safeway's  
Fruits and Vegetables!

## PUMPKINS

Large Size  
Pumpkins for  
Making Jack o'  
Lanterns

**5c**  
lb.

— Other Produce Specials —

- Delicious Apples Washington Red Extra Fancy Apples lb. 23c
- Celery Hearts California Fresh Pascal Celery Pkg. 29c
- NO. 1 POTATOES**
- Colorado Red McClure All Purpose Potatoes lb. Bag **49c**

Don't Miss These Halloween Specials!

**Fruit Bars** Sunkist Orange Frozen Bars 6-Ct. Pkg. **39c**

**Apple Cider** Town House Brand Qt. Botl. **25c**

**Eskimo Pies** or Toasted Almond Bars 6-Ct. Pkg. **39c**

**Fruit Pies** Bel-Air Frozen Apple, Cherry or Peach 3 24-oz. Pies **1.00**

**Pot Pies** Manorhouse Frozen Beef, Chicken or Turkey **4 for \$1.00**

**JELLO**

Assorted Flavors  
2 3-oz. Pkgs. **15c**

Lucerne Party Pride

**ICE CREAM**  
1/2-Gal. Cn. **59c**

Gladiola

**FLOUR**  
5 lb. Pkg. **49c**  
10 lb. Pkg. **97c**

Safeway Guaranteed Meats — Always Best  
Special Meat Buys This Week at Safeway!

## COFFEE

Edwards Rich Flavor lb. Can **59c**  
Folger's Mountain Grown lb. Can **69c**

## RAISINS

Town House Special Price! 2 lb. Pkg. **39c**

## BUTTERMILK

LUCERNE Bonus Quality Special Price! 1/2 gal. ctn. **39c**

## Cottage Cheese

Lucerne Creamed Large or Small Curd. 2 lb. pkg. **49c**

## KLEENEX TISSUE

200 COUNT WHITE or COLORED FACIAL TISSUE EACH **10c**

## NORTHERN TISSUE

BATHROOM TISSUE—Special Price! 4 rolls **29c**

## LAC MIX

Dry Milk 8 qt. pkg. **59c**  
12 qt. pkg. **79c**

## POOCH

Dog Food Tall lb. can **5c**



WILSON'S Crisprite Sliced

**BACON**  
lb. pkg. **49c**

## PORK ROAST

Fresh Picnic Lean Boston Cuts, Whole or Shank Half  
Don't Miss—This Safeway Special!  
lb. **29c**

- TOM TURKEYS Palo Duro Freshly Frozen 16 lbs. & Over lb. **43c**
- HEN TURKEYS Palo Duro Freshly Frozen 12 to 14 lbs. lb. **49c**
- PORK STEAK Lean Tender Fresh Pack Steaks for Frying lb. **39c**
- BABY BEEF LIVER Sliced for Frying lb. **39c**
- SLICED BACON Wilson's Crisprite Lean Bacon lb. Pkg. **49c**

- LIBBY'S PUMPKIN Fancy Pie Pumpkin 2 303 cans **25c**
- APPLE CIDER Martinelli, Special Price 1/2 Gal. Bot. **79c**
- MINCE MEAT Little Cook Brand 9 oz. box **29c**



**SAFEWAY**

IT'S **TWINNS** \*  
FOR MR. & MRS. SHURFINE SAM

NOW DURING THE **Shurfine CARNIVAL of 1960**

OCTOBER 27th Through **NOV. 5th**

\*DOUBLE VALUES ON EVERYTHING

10  
Big Days  
of Savings

**SHURFRESH OLEO**  
1 lb. ctn. \$1

SHURFINE, in paper bag  
**FLOUR**  
5 lbs. 29¢

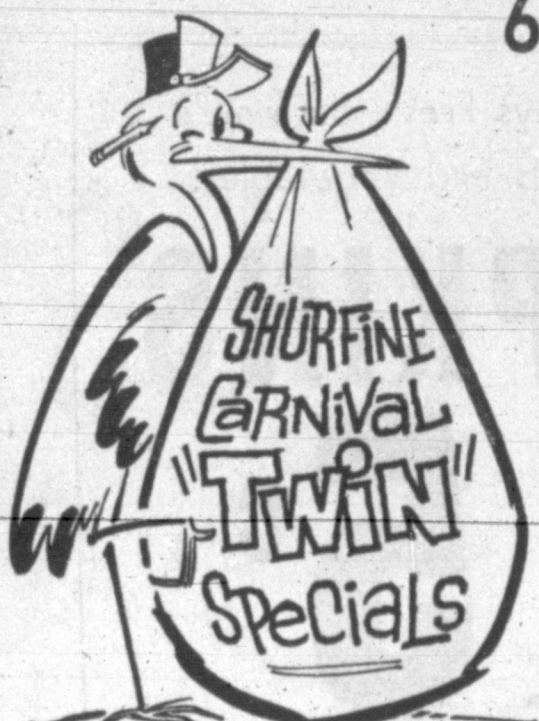
In Flour Print or Cotton Bag  
25 lb bag 1.69

**FREE**  
Hostess Apron  
With Purchase of  
SHURFINE  
**COFFEE**

1 lb. can  
Reg. or Drip  
5c off label

SHURFINE  
Red, Sour Pitted  
**CHERRIES**

4 303 cans \$1



Shurfine Chunk  
6 1/2 oz. can  
**TUNA**  
4 cans \$1

Shurfine Tall Can  
Evaporated  
**MILK**  
8 FOR \$1

Shurfine Cut  
Blue Lake  
303 cans  
**GREEN BEANS**  
5 FOR \$1

Shurfine Whole Kernel or  
Cream Style  
303 cans  
**CORN**  
6 FOR \$1

Shurfine Stuffed, Thrown, Manzella  
**OLIVES** ... 7 1/2 oz. jar 43c

GRAPE  
**Jelly** 2-10 oz. glasses 45c

SHURFINE quart  
**Waffle Syrup** ... 43c

SHURFINE quart  
**Salad Dressing** ... 39c

SHURFINE  
**TOMATOES**  
5 303 cans \$1

Shurfine Halves, Inspected, No. 303 cans  
**APRICOTS** ... 5 for \$1.00

SHURFINE 303 cans  
**FRUIT COCKTAIL** ... 5 for \$1.00

Shurfine Halves, Bartlett, No. 303 cans  
**PEARS** ... 4 for \$1.00

Shurfine, Crushed, No. 2 cans  
**PINEAPPLE** ... 2 for 59c

Shurfine 46 oz. cans, Fancy  
**TOMATO JUICE** ... 2 for 59c

Shurfine Fancy, 303 cans  
**Beans & Potatoes** ... 6 for \$1.00

Shurfine, Sliced, 303 cans  
**BEETS** ... 7 for \$1.00

Shurfine, 303 cans  
**SPINACH** ... 7 for \$1.00

Shurfine, 303 cans  
**HOMINY** ... 10 for \$1.00

Shurfine, Fresh Shelled, No. 300 cans  
**Blackeye Peas** ... 8 for \$1.00

**FREE \$10.00 in Buccaneer Stamps**

This coupon is worth 100 FREE BONUS BUCCANEER STAMPS when fully completed and presented with a purchase of \$5.00 or more at your Buccaneer Affiliated Food Store.

Name \_\_\_\_\_  
Address \_\_\_\_\_  
City \_\_\_\_\_ Ph. \_\_\_\_\_

Sorry, Limit: 1 Coupon per Family, Good Oct. 27-Nov. 5

**Strawberry Preserves** \$1  
Shurfine Pure, 12-oz. jars 3 for

**SALAD OIL** | Roxey Dog Food  
Shurfine Quart 49c | 12 toll cans 1.00

Shurfine Fresh Pack  
**Pickle Chips** ... 4-16 oz. jars \$1

**APPLE BUTTER** \$1  
Shurfine 28 oz. jar 4 for

Shurfine  
**Shortening**  
3 lb. can 65c

**Cranberry Sauce** \$1  
Shurfine Strained, 300 can 5 for

**PEACHES** \$1  
Shurfine No. 2 1/2 cans, sliced or Halves, Yellow Cling 4 for

**Asparagus Spears** \$1  
Shurfine 300 cans All Green Cut 4 for

**Pork & Beans** \$1  
Shurfine No. 300 cans 9 for

A SHURFINE CARNIVAL  
**SPECIAL**  
SHURFINE  
**CATSUP**  
5 FOR \$1

Shurfine Early Harvest, 303 cans  
**PEAS** ... 5 for \$1.00

Shurfine Whole Irish, 303 cans  
**POTATOES** ... 8 for \$1.00

Shurfine, No. 2 can, 2 Small Whole  
**Sweet Potatoes** ... 4 for \$1.00

Shurfine, No. 2 1/2 cans  
**PUMPKIN** ... 2 for 39c

Shurfine, 303 cans  
**Sauer Kraut** ... 6 for \$1.00

Shurfine, 8 oz. cans  
**Tomato Sauce** ... 12 for \$1.00

**Blake's Country Store**  
We Give Buccaneer Stamps  
South of City, Lefors Hi-wy. MO 4-3401

**Hom & Gee Grocery**  
We Give Buccaneer Stamps  
421 E. Frederic MO 4-8531

**Leland's Grocery & Mkt.**  
We Give S & H Green Stamps  
400 N. Cuyler MO 4-2921

**Mitchell's Grocery & Mkt.**  
We Give Buccaneer Stamps  
638 S. Cuyler MO 5-5451

**Fite Food Market**  
We Give Buccaneer Stamps  
1333 N. Hobart MO 4-4092

**Jay's Grocery Mkt.**  
We Give Buccaneer Stamps  
915 W. Wilks MO 4-2801

**Miller Grocery & Mkt.**  
We Give Buccaneer Stamps  
2000 Alcock MO 4-2761

**Shirley's Grocery & Mkt.**  
MO 4-6911

# FRYERS

Freshed Dressed  
U. S. Inspected  
lb.

# 27<sup>c</sup>

## Gigantic 99<sup>c</sup> SALE




Swift's Premium  
**BACON**  
Sliced—1 lb. pkg.  
**49<sup>c</sup>**



U.S.D.A. Good  
**ROUND STEAK**  
lb. **69<sup>c</sup>**

WRIGHT BRAND  
Taste Wright  
**FRANKS**

2 lb. pkg. **69<sup>c</sup>**

KRAFT VELVEETA  
**CHEESE**

2 lb. pkg. **79<sup>c</sup>**

Sample a bite before you buy—  
Eat more Hereford frzn. breaded  
**Veal CUTLETS**  
6 Large Cutlets **79<sup>c</sup>**

Lean Streaked  
**SALT PORK**  
**29<sup>c</sup>** LB.

# FOOD CENTER

Open 7 Days A Week

STORE HOURS  
DAILY 8 A.M.—8 P.M. / SATURDAY 8 A.M.—9 P.M.

400 S. RUSSELL  
MO 5-3452

Mountain Pass, 8 oz. can  
Tomato Sauce ..... 14 for 99<sup>c</sup>

Kim, Tall Can  
Dog Food ..... 14 for 99<sup>c</sup>

Mead's  
**BROWN-SERVE ROLLS**  
2 reg. pkgs. **49<sup>c</sup>**

Hunt's  
**PEACHES**

6 303 cans **99<sup>c</sup>**

Kimbell's  
**OLEO**

6 lbs. **99<sup>c</sup>**

Diamond 300 size  
**BLACK EYE PEAS**  
11 FOR **99<sup>c</sup>**

Kimbell's 300 size  
**Pork & Beans**  
11 FOR **99<sup>c</sup>**

**COKES**  
Reg. or King Size

6 Bottle **29<sup>c</sup>**  
Plus Deposit

Pecan Valley, Cut, 303 cans  
**GREEN BEANS** ..... 10 for 99<sup>c</sup>

Kimbell's White or Yellow, 303 cans  
**HOMINY** ..... 11 for 99<sup>c</sup>

Hunt's, 300 cans  
**SPINACH** ..... 9 for 99<sup>c</sup>

In Oil, Reg. cans  
**SARDINES** ..... 10 for 99<sup>c</sup>

Griffin, 300 cans  
**CHILI BEANS** ..... 11 for 99<sup>c</sup>

Diamond, 12 oz. bottles  
**CATSUP** ..... 7 for 99<sup>c</sup>

Raider, Cream Style, 303 cans  
**CORN** ..... 9 for 99<sup>c</sup>

Hunt's Quart Size  
**TOMATO JUICE**  
5 for **99<sup>c</sup>**

ZESTEE Pure  
**STRAWBERRY PRESERVES**  
3 18-oz. jars **99<sup>c</sup>**

**DRIED APRICOTS**  
3 8 oz. pkgs. **99<sup>c</sup>**

Kimbell's  
**SHORTENING**  
3 **53<sup>c</sup>**  
LB. can

Kimbell's  
**COFFEE**  
2 **\$1<sup>15</sup>**  
LB. can



Gladiola, Reg. Boxes  
**CAKE MIXES**  
4 Boxes **99<sup>c</sup>**



Simple Simon  
Frozen  
**PIES**  
LARGE 1 1/2 lb.  
• Peach • Apple • Cherry  
3 FOR **99<sup>c</sup>**

# FREE

**COKES and ICE CREAM**  
Served All Day Friday and Saturday

Diamond 303 cans  
**TOMATOES**  
8 CANS **99<sup>c</sup>**

**ENCHILADA PATIO MEXICAN DINNERS**  
Reg. 59<sup>c</sup> **39<sup>c</sup>**

FANCY  
**TOMATOES** 2 lbs **25<sup>c</sup>**

Fresh, Firm, Tokay  
**GRAPES** lb. **10<sup>c</sup>**

Texas Crisp  
**Green Beans** lb. **19<sup>c</sup>**

Fresh, Tender Head  
**LETTUCE** lb. **7<sup>c</sup>**

Firm, Large, Solid Head  
**CABBAGE** lb. **4<sup>c</sup>**

U.S. No. 1 Red  
**POTATOES** 10 lbs. **29<sup>c</sup>**

10-oz., Extra Heavy  
**CANVAS WORK GLOVES**  
3 pairs **99<sup>c</sup>**

SWIFT'S  
**MELLORINE**  
3 1/2 gal. **99<sup>c</sup>**

**PINTO BEANS**  
4 lb. bag **39<sup>c</sup>**

Texas Ruby Red  
**Grapefruit**

2 FOR **19<sup>c</sup>**

Yellow, Ripe, Large

**Bananas**  
**10<sup>c</sup>** lb

BREMNER  
**CRACKERS** 5 1-lb. boxes **99<sup>c</sup>**







**ROSES FOR PRESIDENT** — President Eisenhower last week flashed a broad smile as he received a bouquet of yellow Texas roses from two official welcomers, Debbie Foster, center, and Susie Padilla as he arrived at Laughlin Air Force Base near Del Rio, Tex. The President met with Mexican President Lopez Mateos in Acuna, Mexico, at a later hour.

**Walter Rogers Reports**

**Continuing Discussion On History Of FCC**

Something more than Warren's normalcy began to enter American homes in the 1920s. It was radio, a delightfully new, thoroughly enchanting medium of communication destined within a few short years to revolutionize the nation's entertainment and education. With the aid of a simple dial set and a pair of earphones, the early listener could enjoy a variety of sounds broadcast from many cases, by business or national institutions within the community. The idea of a station independent within the community was a later development.

Progress to do something, and in 1927 the Dill-White Radio Act was passed. This law established the Federal Radio Commission, which was to exert regulatory power in terms of licensing and personnel of the stations as well as frequency allocation and control of power. When this Commission came into being, there were 732 stations on the air. About 150 of them surrendered their licenses under the new rules and regulations of the law, and the Commission then devoted much of its time to straightening out those who were left. Soon after Franklin Roosevelt assumed office in 1933, it was decided to combine the regulation of all communications in a single body. This would include not only radio, but telegraph, and — later — television as well. Some aspects of communications regulation had been administered by the Interstate Commerce Commission after its formation in 1887. But the new Federal Communications Commission, which replaced the Radio Commission in 1934, accepted responsibility for applying the law to all forms of electrical communication.

**Wheeler News**

By MRS. RENA SIVAGE  
Daily News Correspondent

Virginia Davidson Dale Bower and Jimmy Hill of Canyon Amarillo respectively, spent weekend here with their parents, Mr. and Mrs. George Davidson, Mr. and Mrs. Monk Bowerman and Mr. and Mrs. Harold

Mrs. Margaret Weatherly and family, motored to Guymon, Okla. Thursday and brought her mother, Clarence Holdeman and sister, Mrs. Audie Atherton and baby daughter home with her.

Sheriff Bus Dorman was in Amarillo Saturday to attend the funeral of his cousin, George B. Dorman.

Mrs. Lorene Tucker spent Tuesday here with her mother, Mrs. O. Johnson.

Mrs. Billie Ruth Wainright and children of Amarillo, recently visited the maternal grandparents, Mr. and Mrs. Monk Bowerman and daughter.

Mr. and Mrs. Jess Keller of Pampa, Okla. spent Sunday with Mr. and Mrs. Harold Sivage.

Mr. and Mrs. Haskell Weatherly of Amarillo, spent the weekend with Mr. and Mrs. Loyd Wayne Weatherly.

Mr. and Mrs. George Davidson spent Sunday afternoon with her parents, Mr. and Mrs. J. D. Ruthford Sr.

Mr. and Mrs. Harold Sivage left Wednesday for Dallas where they will attend the March of Dimes convention. Mrs. Sivage is Wheeler County Chairman of the March of Dimes.

Mr. Guy Hardin of Shamrock, visited Wheeler Monday.

Mr. and Mrs. Jim Risner, are on two week vacation.

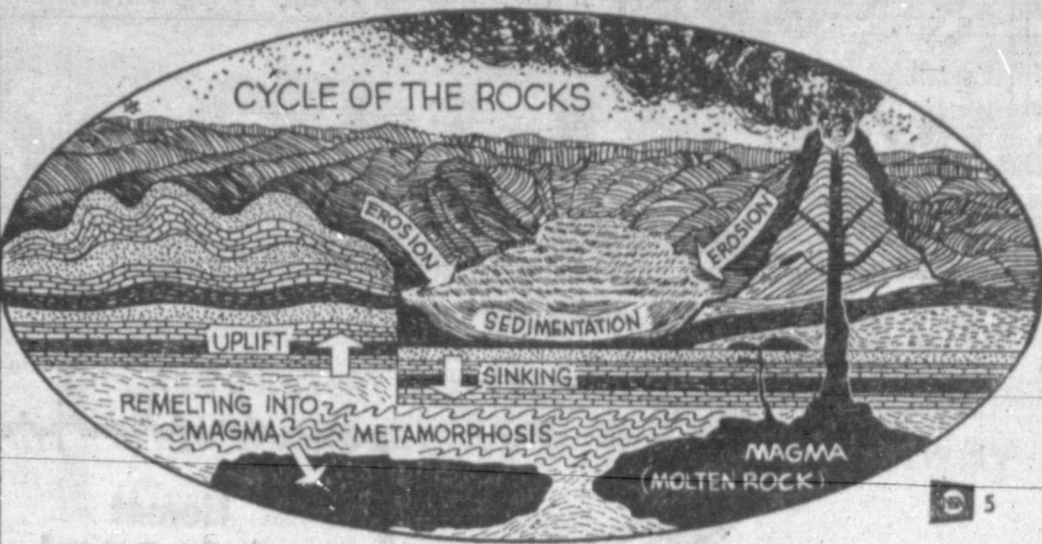
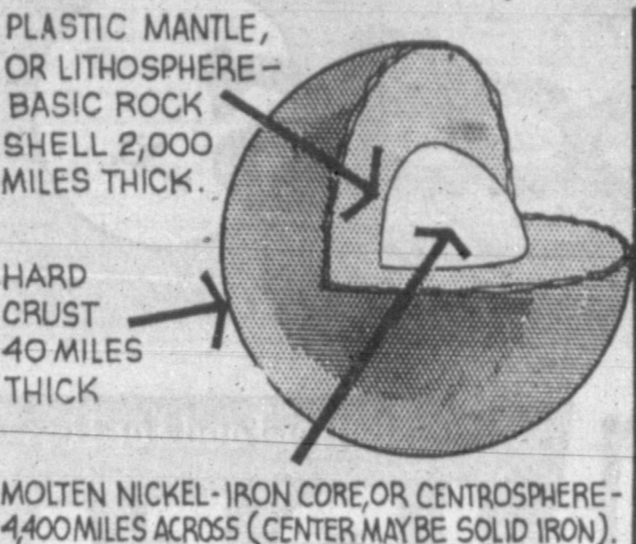
**LINKS CALLED FOR**

MEMPHIS, Tenn. (UPI)—Nightclub entertainer Thomas Mack, 20, was fined \$26 and sentenced Wednesday for accidently shooting out a \$60 hotel room mirror while practicing his art draw.

WALTER ROGERS  
Member of Congress

**Earth, Stars and Man (5) Shaping of the Earth**

by Don Oakley and John Lane



Though men have peered billions of light years into space, they have penetrated only a tiny distance into the planet that is their home. But slowly over the years, chiefly through the use of seismographs and the study of earthquake waves, a reasonably certain picture of the structure of the earth has emerged. The globe consists of a heavy core of molten rock under tremendous pressure. Around this is a plastic, fairly uniform mantle of rock. Finally, an eggshell-thin crust. It is on this crust, three-fourths covered with water and wrapped with a thin blanket of atmosphere, that man lives and has built his complex modern civilization. And it is from

this crust that he mines the resources that make that civilization possible. Also, it is on the crust that geologists read the records of the great changes the earth has undergone since it was formed. They see a cycle of erosion and rebuilding that began at the beginning and will continue as long as the world has water and air. As soon as the first land masses of molten rock (magma) cooled, rain and wind began to break them down, leaching out minerals and concentrating them in deposits. Rivers carried sediments to the seas where their accumulated weight pressed them into stone. More pressure sometimes turned them into a class of rock called metamorphic—for instance, limestone into marble.

Eventually, great areas were lifted from the sea by the restless crust and eroded again. Other times more weight and pressure were added until the stratified rocks were fused into magma again. The cycle is infinitely slow, and may be halted and reversed many times. But it goes on. Nineteenth-century geologists knew that the thousands of feet of sediments that have been laid down since the earth's beginning took untold ages. But they could only guess at the age of the earth. It was not until the 20th century that men found a cosmic clock that had been running since earth's time began—a clock they could read in the rocks.

NEXT: The Age of the Earth

TRY A  
PAMPA NEWS  
CLASSIFIED  
AD

**Pick the one you want in one easy stop AT YOUR CHEVROLET DEALER'S**

It's the greatest show on worth—30 crisp new models making up the most varied assortment of cars ever offered under one roof. Almost any shape and size of car you might want—at the kind of price that'll make you want it all the more. There's a whole crew of low, low-priced new '61 Chevy Corvairs, including wonderful new wagons unlike any ever built before in the land. New Biscaynes—the lowest priced full-sized Chevrolets. Beautifully sensible Bel Airs. Elegant Impalas. And America's only authentic sports car—the incomparable Corvette. Drop into your Chevrolet dealer's and choose your '61 car the easy way—in one convenient stop!

 <b>Chevy Impalas</b> Impala 4-Door Sport Sedan—Fresh elegance in the most elegant Chevrolets of all. Notice the trim line.	 Impala 2-Door Sedan—A new model for '61—now you can choose from a full line of five sumptuous Impalas.	 Impala Convertible—Wide open for fun—with roomy new interior dimensions, too.	 Impala 2-Door Sport Coupe—Like all Chevrolets, it's easier to get in and out of. Door openings are a half-foot wider.
 Impala 4-Door Sedan—Leading height of that new trunk has been lowered 10.5 inches to bumper level.	 <b>Bel Air 2-Door Sedan</b> —Priced just above the thriftest full-sized Chevrolets, Bel Airs bring beauty that's useful.	 Bel Air 2-Door Sport Coupe—All new Chevrolets are available with a wide choice of engine transmission combinations.	 Bel Air 4-Door Sedan—You get higher, more comfortable seats in all Chevrolets—plus generous head room.
 Bel Air 4-Door Sport Sedan—Sensible new size of Body by Fisher ups front door entrance height nearly 2".	 <b>Biscayne 2-Door Sedan</b> —A full measure of Chevy room and quality, priced with cars that give you a lot less.	 Biscayne Utility Sedan—With no rear seat, here's versatile, economical transportation for people and cargo.	 Biscayne 4-Door Sedan—Stack the family's luggage 15% higher in Chevrolet's new deep-well trunk.
 <b>Chevy Station Wagons</b>	 Nomad 4-Door 9-Passenger Station Wagon—Chevy's most luxurious wagon—one of three 9-passenger models.	 Parkwood 4-Door 6-Passenger Station Wagon—The tailgate opening to its cave-size cargo area is nearly 5 ft. across.	 Parkwood 4-Door 3-Passenger Station Wagon—featuring power-operated rear window.
 Brookwood 4-Door 6-Passenger Station Wagon—Lowest priced full-sized station wagon in the Chevy line.	 Brookwood 4-Door 9-Passenger Station Wagon—One of six handsome, full-sized, easier loading Chevy wagons for '61.	 <b>Corvair 700 Club Coupe</b> —One of six new Corvair models with more space, spunk and savings for '61.	 Corvair 500 Club Coupe—Corvair is still the only U.S. built car that never needs water or antifreeze.
 Corvair 700 4-Door Sedan—All Corvair coupes and sedans give you 12% more luggage space under the hood.	 Corvair 500 4-Door Sedan—Roomy interior and practically flat floor allow six people to sit comfortably.	 Corvair Lakewood 700 Station Wagon—America's newest wagon—with a lockable trunk up front.	 Corvair Lakewood 500 Station Wagon—With light-steering and sure-footed traction of Corvair's rear engine.
 Monza 900 Club Coupe—Handsome interior features sporty bucket seats, 4-speed transmission offered at extra cost.	 Greenbrier De Luxe Sports Wagon—With 175.5 cubic feet of storage space... up to twice as much as other wagons.	 Greenbrier Sports Wagon—About the only thing it won't hold is antifreeze. (3rd seat shown is an extra-cost option)	 <b>Corvette</b> —A winging new shape and new engineering refinements for America's only authentic sports car.

Two Chevrolet models designed especially for business use are not shown.

See the greatest show on worth at your Chevrolet dealer's

**CULBERSON CHEVROLET, INC.**

212 N. Ballard

Pampa

MO 4-4666

# Trick or Treat Fun Foods

for HALLOWEEN

Bordo Pitted  
**DATES** 1-Lb. Pkg. **43c**

Radiant Fruit Cake  
**MIX** 1-Lb. Pkg. **49c**

Planters Cocktail  
**PEANUTS** 8-oz. Can **39c**

CHECK IDEAL FOR COMPLETE STOCKS OF TRICK OR TREAT ITEMS—

Hemet  
Whole Spiced  
**PEACHES**

**4** No. 2 1/2 Cans **\$1**

Better Food For Less

## IDEAL FOOD STORES

DEL MONTE  
**PUMPKIN** 2 303 Cans **25c**

FOLGER'S  
**COFFEE** lb. **69c**

MIRACLE  
**WHIP** Qt. Jar **49c**

Ideal's Fresh from the Oven

**DONUTS**  
Large Glazed Cake - Pkg. of 8  
Doz. **49c** **25c**

BETTY CROCKER  
**BROWNIE MIX**  
16-oz. Pkg. **33c**

MY-T-GOOD BROKEN  
**GULF OYSTERS**  
8-oz. Can **29c**

**HAWAIIAN PUNCH**  
REAL FRUIT JUICE PUNCH

REGULAR OR GOLDEN

**3** 46-oz. Cans **\$1.00**

**GOLD MEDAL FLOUR** **89c**  
25-Lb. Bag \$1.98 10-Lb. Bag

FOR "TRICK OR TREAT"  
**APPLES**  
COLO. ORCHARD RUN JONATHAN  
**\$2.89**  
BUSHEL CTN.

MOTTS  
FRESH SWEET  
**CIDER**  
1/2 Gal. Jug **55c**  
Gal. Jug **98c**

Sunshine Hi Ho  
**CRACKERS** 1-Lb. Box **33c**

Premium Saltine  
**CRACKERS** 1-Lb. Box **25c**

WESSON  
**OIL** Qt. Btl. **49c**

WATERMAID  
**RICE** 2 Lb. Pkg. **35c**

U.S. No.1 COLO. JONATHAN  
**APPLES**  
4 LBS. **39c** 2 1/2 in. RING FACED **\$3.69** BU.

U.S. No.1 RED DELICIOUS  
**APPLES**  
4 LBS. **49c** 2 1/2 in. RING FACED **\$4.79** BU.

U.S. No.1 RUSSET  
**POTATOES**  
10 LBS. POLY BAG **59c**

LONG SLENDER  
**CARROTS**  
2 1-LB. BAGS **17c**

DOESKIN EXTRA SOFT  
**FACIAL TISSUES**  
4 Pkgs. Of 400 **\$1.00**

Hershey's Instant  
**COCOA Mix**  
1-Lb. 43c 2-Lb. 6-oz. 89c

Hershey's Fortified  
**CHOC. SYRUP**  
22-oz. Can **49c**

SIMPLE SIMON  
PEACH APPLE OR CHERRY  
**PIES**  
3 Size 24-oz. **\$1.00**

# FRYERS

FANCY GRADE "A" WHOLE

**35** LB.

**BACON** IDEAL THICK SLICED 2 LB. Pkg. **98c**

**BEEF** LEAN FRESH GROUND **49c** LB.

**BEEF** SHORT RIBS **29c** LB.

**PORK CHOPS** LEAN FIRST CUTS **49c** LB.

SAVE ON ELLIS FOOD PRODUCTS

LGE. LIMA BEANS 300 Can <b>10c</b>	SHORT RIBS OF BEEF 300 Can <b>39c</b>
WHITE BEANS AND HAM 300 Can <b>27c</b>	BEEF STEW 1 1/2 lb. Can <b>49c</b>
LIMA BEANS AND HAM 300 Can <b>33c</b>	PLAIN BRICK STYLE CHILI 300 Can <b>39c</b>
CORN MEAL MUSH 300 Can <b>10c</b>	CHILI With Beans 300 Can <b>29c</b>
SPAGHETTI AND MEAT BALLS 300 Can <b>27c</b>	JUMBO TAMALES No. 2 1/2 Can <b>35c</b>

Ranch Style  
**BEANS** 2 300 Cans **27c**

Van Camp  
**BEANEE WEENIES**  
12-oz. Can **25c**

Van Camp  
**VIENNA SAUSAGE**  
2 4-oz. Cans **39c**

Underwood's  
**DEVILED HAM**  
4 1/2-oz. Can **35c**

IDEAL TASTY  
**ICE CREAM** 1/2 Gal. **59c**

FINEST QUALITY STAINLESS STEEL  
**KITCHEN TOOLS**

HANDLES OF GENUINE Agatewood "THE WOOD ETHERNAL"

EXTRA HEAVY GAUGE FULL MIRRORED POLISHED STAINLESS STEEL

A REAL BUY FOR THE PRICE

**49c**

THIS WEEK'S FEATURE ONLY **49c** WITH \$5.00 PURCHASE

TRUSHAY  
**LOTION**  
Lge. Size **49c**  
PLUS TAX

New toothpaste  
with HEXACHLOROPHENE  
**Stripe**  
destroys mouth odor and decay bacteria  
**31c** **69c**

HEADACHE?  
**BAYER ASPIRIN**  
LESS THAN 1/4 A TABLET  
60 TABLETS  
**39c**



Dear Abby...

Mom Advised To Help Son With Science

ABIGAIL VAN BUREN



DEAR ABBY: This problem is not mine. It is the problem of a man who is as devoted and decent as they come. His wife told him four months ago that she was carrying another man's child. They have two of their own. Surely a man can't be expected to support another man's child? He has considered divorcing her, but that would mean separation from his own two children unless he publicly declared their mother unfit to raise them. Where would that get him? Is there any way out of this, Abby? I am more than casually interested in this man because he is my son.

DEAR ABBY: I am 13, fairly attractive and well-liked. I just found out that I am going to have to have braces. How can I look nice with a mouthful of hardware? "TIN GRIN"

Grace Class Has Luncheon Meeting

Grace Class of the First Baptist Church met in the church parlor for a luncheon recently with opening prayer led by Mrs. Mack Harmon.

Lefors Home Demonstration Club Sets Day For Noting Park Opening

LEFORS (Sp) — Lefors Home Demonstration Club met with Mrs. Walter Elliott in her home, recently.

St. Vincent Plans Fun Night Friday

The annual Fun Night of St. Vincent de Paul school will be held on Friday, beginning at 6:30 p.m.

DEAR ABBY: What does a man do when his wife never goes to church with him and the children? She likes to sleep late on Sunday morning and I haven't the heart to wake her. People ask me if she is sick or out of town. It is very embarrassing. When I ask her please to go to church, she says she doesn't have to go to church to save her soul. How can I get her to go?

DEAR EMBARRASSED: If she won't go to save her soul, maybe she'll go to save your face. Try a little tenderness.

CONFIDENTIAL TO "IGNORANT AND ASHAMED": Your question is one that troubles many people... and it is nothing to be ashamed of. I cannot print the answer in my column, but will mail you a personal reply if you will send me a self-addressed, stamped envelope.

Women's Activities

DORIS E. WILSON Daily News Women's Editor

Lefors Home Demonstration Club Sets Day For Noting Park Opening

LEFORS (Sp) — Lefors Home Demonstration Club met with Mrs. Walter Elliott in her home, recently.

Mrs. Shelby Hood HD Club Hostess

Mrs. Shelby Hood, south of the city, was hostess to the Worthwhile Home Demonstration Club on Friday afternoon at 2:30 in her home.

Mrs. Junior Taylor Honored With Post Nuptial Shower By Friends

LEFORS (Sp) — Mrs. Junior Taylor, nee Ann Stubblefield, was guest of honor at a post-nuptial wedding shower, given recently, in the civic center.



LITTLE LIZ

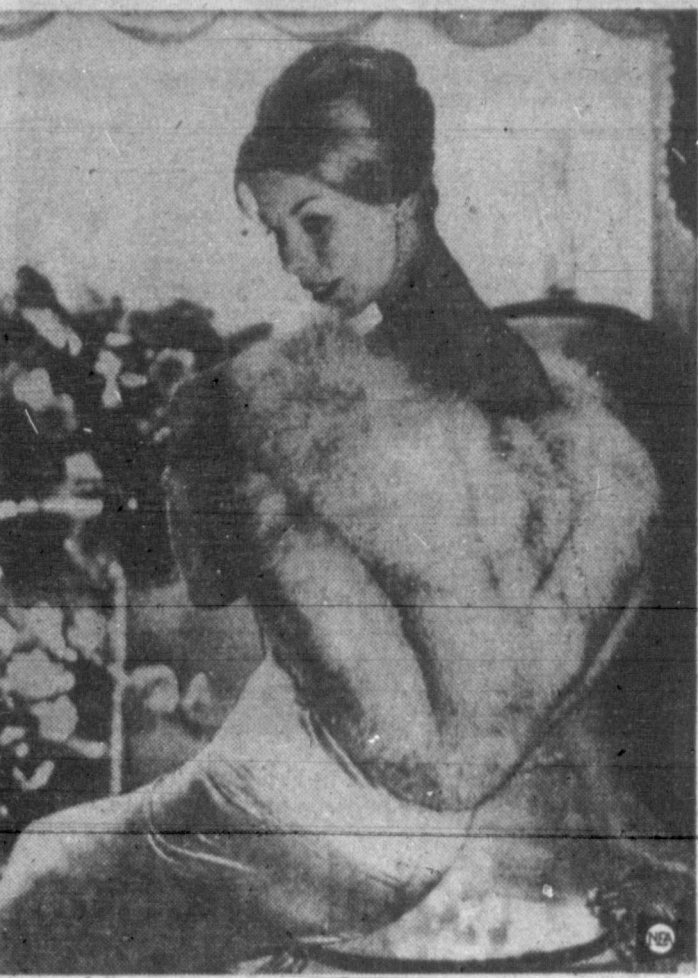
A small town is a place where people know the reason before a fellow can explain.



Fluffy, flattering furs are getting a big fashion play for winter. The furs shown here are all Saga Norwegian blue fox, each given a different handling by a top designer.



in taupe brocade, has stand-away collar of the fox. The chevron capelet (right) offers tiers of sheer flattery.



Simple line and solid colors are perfect with these furs. Keep jewelry and furs to a minimum. These furs provide enough drama on their own.

Fluffy Furs Take Fashion's Limelight

NEW YORK—(NEA)—This is a year when furs are for everybody, not just for the chosen few. The woman who yearns for a fur can have it and within her price range.

fur and fabric coats lined with fur. This teaming of two furs has been handled so skillfully that there is never a bulky look.

trim on a daytime or theater suit. For you, it's best confined to wide-away collar so that you are not topheavy with fur.

Film Strip Shown At Club Meeting

WHEELER (Sp) — Mrs. George Taylor and Mrs. M. McIlhenny were hostesses for the club meeting in the Home Economics Cottage.

Mrs. Robinson Is TEL Hostess

GROOM (Sp) The TEL Sunday School Class of Baptist Church met recently in the home of Mrs. Pearl Robinson in Panhandle for a covered-dish luncheon.

Auxiliary Votes UF Contribution

Southwestern Bell Auxiliary entertained with a Halloween Party on Saturday evening in the City Club Room with guests attending in costume.

Mrs. C. Hodges WCS Hostess

WHEELER (Sp) — WCS of the First Methodist Church met recently in the Church Fellowship Hall with Mrs. Clyde Hodges as hostess.

The Willards Note 50th Wedding Date

WHEELER (Sp) — Mr. and Mrs. J. E. Willard celebrated their 50th wedding anniversary on Oct. 3 with a reception in their home from two until five o'clock.

Christian Beliefs Studied By Guild

MIAMI (Sp) — Wesleyan Service Guild met recently in the Church Fellowship Hall, with Mrs. Royce Bailey as hostess.

YOU ARE INVITED

To Hear Rev. J. A. Philpot FROM Odessa, Texas Revival Meeting Calvary Baptist Church 824 S. BARNES

SALE SUEDE DRESS SHOES Values To 14.95 \$10.80 Pr. AND ALL Suede Shoes On Sale \$10.80 One Pair of Ladies' Hosiery FREE

UNDER A STRAIN? THOMPSON SHOP 825 N. Hobart MO 4-6809 Drive-In Window Free Delivery

From HAZLEWOOD'S Farm Dairy hazlewood Seal of Quality Pasteurized - Homogenized Pure - Whole MILK 'Nothing Removed'

MONTH-END SPECIALS! SCHOOL SHOES CONNIE SPORT OXFORDS \$4.99 pr. "CRUSH" \$6.99 pr. PENNY LOAFERS \$6.99 pr. Hub's Booterie Latest in Women's Shoe Fashions

Step Out In Style

By SUE BURNETT The costume you select day after day! Young, sew-simple sheath that is lovely worn solo. Combine with jacket for street wear.

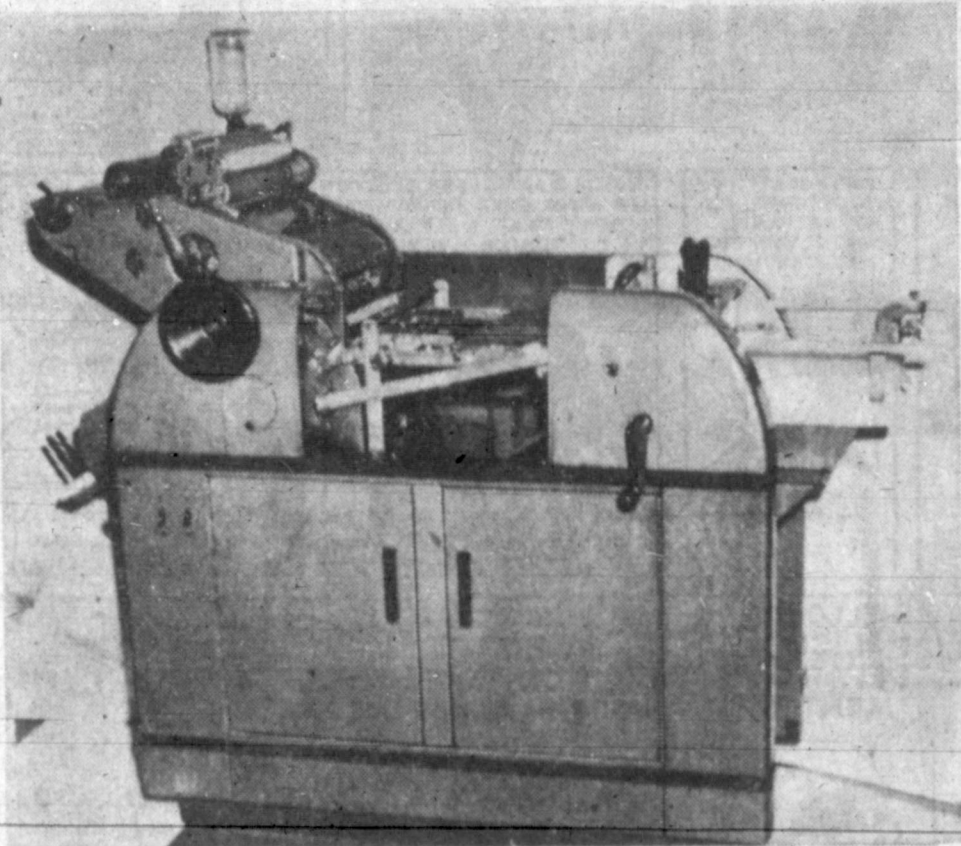


To order, send 35 cents in coin to: SUE BURNETT Pampa Daily News 372 W. Quincy Street Chicago 6, Ill.

MONTH-END SPECIALS! SCHOOL SHOES CONNIE SPORT OXFORDS \$4.99 pr. "CRUSH" \$6.99 pr. PENNY LOAFERS \$6.99 pr. Hub's Booterie Latest in Women's Shoe Fashions

# NOW AVAILABLE..... ONE DAY SERVICE

ON MANY\* OF YOUR PRINTING NEEDS



Press Designed To Handle One Day Service

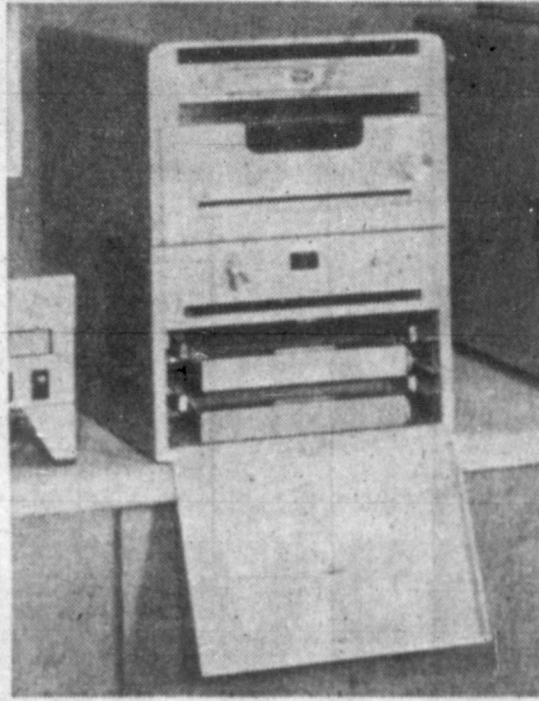


Plate Making Equipment Which  
Makes One Day Service Possible



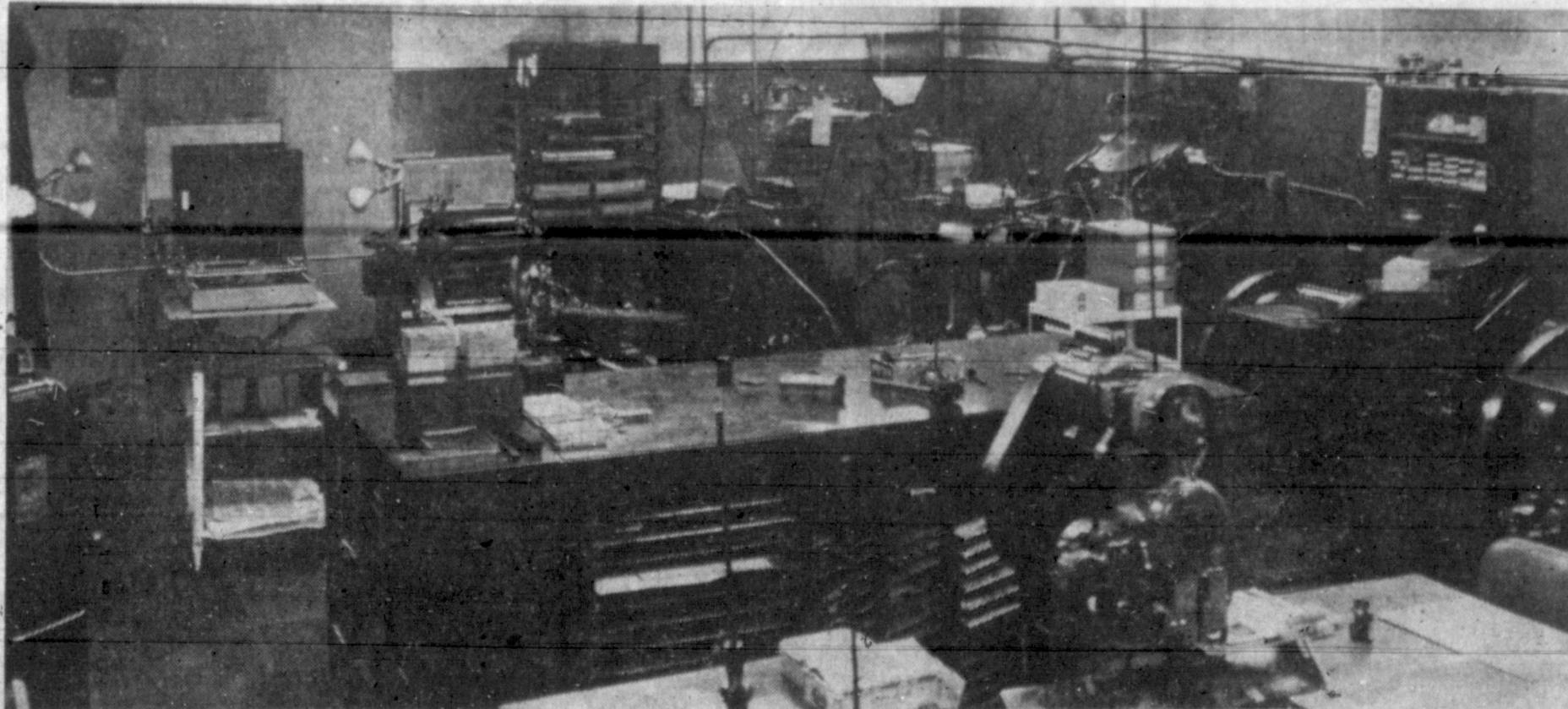
Specially Designed Camera For Copying  
Originals As Large As 17"x22".

## ALSO-SINGLE PHOTO COPIES WHILE YOU WAIT !!

We Can Make Single Photo Copies (black on white) of Birth Certificates, Marriage Licenses, Titles, Deeds, or Other Documents WHILE - YOU - WAIT.

We Are Equipped To Handle All Types Of Printing And Lithographing

- Letterheads ● Invoices ● Envelopes ● Statements ● Publications ● Labels ● All Kinds of Ruled Forms ● Tags ● Business Cards ● Wedding Invitations ● Brochures ● Programs
- Window Cards ● Handbills



Showing Part Of Our Job Printing Equipment Designed To Handle ALL Of Your Printing Needs.

## XEROGRAPHY

(ZEE-ROG-RA-FEE)

THE MODERN MIRACLE  
OF DUPLICATING...!

- Form Letters
- Bulletins
- Drawings
- Charts
- Graphs
- Price Lists
- Instructions
- Notices
- Reports
- Tracings
- Specifications
- Floor Plans
- Stock Lists
- Schedules
- Progress Reports
- Manuals
- Catalog Pages
- Sales Letters
- Minutes of Meetings
- Inter-Office Memos
- Questionnaires
- Legal Briefs
- Anything Written
- Anything Drawn
- Anything Typed

XEROX (zee-rox) is a medium of reproducing copies of almost anything written, printed, typed or drawn that can be produced on sheets of paper up to 8 1/2" x 14". It is designed to reproduce single or multiple copies very rapidly and very economically.

Your original copy up to 17"x22" can be reduced in size by 50% (to 8 1/2"x11"). Small documents may be enlarged as much as 150%, within the confines of the 8 1/2"x13" XeroX plate.

Any quantity available-1-20-50-100-1000 or 5000-and up or in between, can be produced quickly and cheaply.

Come in or phone, for quotations on your printing needs.

\* Up to 8 1/2"x14" Reproductions of Your Original Copy On 16 lb. or 20 lb. paper Printed in Black Ink. This Special Process Does Not Allow Sheets To Be Numbered, Perforated, etc.

# PAMPA NEWS — JOB SHOP

PHONE MO 4-2525

BOB FUGATE, Mgr.

All In A Lifetime



The Berrys



Potts



Bugs Bunny



Short Ribs



Wash Tubbs



Jackson Twins



Morty Meakle



OUR BOARDING HOUSE With Major Hoople



OUT OUR WAY J. R. Williams



Blondie



Alley Oop



Bonnie



Martha Wayne



Mickey Finn



Dixie Dugan



Priscilla's Pop



Joe Paroo





# Let's Go To The FOOTBALL GAME THIS FRIDAY Harvester Stadium

## 7:30 p. m.

# PAMPA HARVESTERS -vs- PALO DURO DONS



BE THERE WHEN  
THE WHISTLE BLOWS  
GET YOUR TICKETS EARLY!



Let's Show This  
Scrappy Bunch Of  
Boys We're Really  
Behind 'Em

<b>DUNLAP'S</b> Friendly Men's Wear 119 N. Cuyler MO 4-7417	<b>PAMPA SAFETY LANE</b> Drive a safe car 411 S. Cuyler MO 5-3771	<b>GRONINGER &amp; KING CONTRACTORS</b> General Oil Field Contractors E. Frederic MO 4-4691	<b>B &amp; B PHARMACY</b> Now 2 locations to serve you No. 1 Ballard at Browning No. 2 403 S. Cuyler MO 5-3788 MO 4-6424
<b>CULBERSON CHEVROLET INC.</b> Your Authorized Chevrolet Dealer 213 N. Ballard MO 4-4666	<b>SAFeway FOOD STORE</b> We give Gunn-Bro. Stamps 300 Duncan MO 5-4261	<b>TOP O' TEXAS AUTO SALVAGE</b> All Types of used Auto Parts Lefors Highway 1411 S. Barnes MO 4-5413	<b>FISHER PANHANDLE GRAIN</b> 400 S. West MO 4-3541
<b>FIRESTONE STORES</b> 117 S. Cuyler MO 4-3191	<b>RADCLIFF SUPPLY CO.</b> The Unusual Stores Pampa, Borger, Amarillo 112 E. Brown MO 4-4651	<b>HEARD-JONES, formerly Cretney's DRUG STORE</b> A Complete Drug Store 210 N. Cuyler MO 4-7478	<b>TEXAS PIPE &amp; METAL</b> 854 S. Russell MO 4-2181
<b>IGA FOOD LINER</b> For the Best Steaks in Town 300 S. Cuyler MO 5-9941	<b>PARKER MOTOR COMPANY</b> Dodge and Chrysler 301 S. Cuyler MO 4-2548	<b>SHELBY RUFF FURNITURE</b> Furniture bought and sold 612 S. Cuyler MO 5-5548	<b>MALONE PHARMACY</b> "Prescriptions Our Specialty" Hughes Building MO 4-4971
<b>THE ELECTRIC SUPPLY</b> Electric Supplies & Equipment 334 W. Foster MO 4-6893	<b>M. E. MOSES CO.</b> Complete Variety Store 105 N. Cuyler MO 5-5621	<b>IDEAL FOOD STORES</b> No. 1: 401 N. Ballard No. 2 Now Open: 306 E. Brown No. 3: 801 W. Francis	<b>BUDDY'S SUPER MARKET</b> "Meats of Quality at a Saving" 218 N. Cuyler MO 5-9541
<b>LEWIS HARDWARE</b> If it comes from a hardware store, we have it 222 S. Cuyler MO 5-9851	<b>FURR'S SUPER MARKETS</b> The Finest in Pampa 1420 N. Hobart MO 4-8161	<b>PAMPA OFFICE SUPPLY</b> Everything for the Office 211 N. Cuyler MO 4-3353	<b>PAMPA MILK COMPANY</b> Independent Distributor of Borden's Milk Products 601 S. Cuyler MO 4-8752
<b>PAMPA WHEEL ALIGNMENT SERVICE</b> D. L. Sanders - D. H. Caswell Authorized Bear Service - We have 1961 Safety Stickers 114 S. Frost MO 5-2051	<b>KISSEE FORD CO.</b> Your Authorized Ford Dealer 701 W. Brown MO 4-8404	<b>BENTLEY'S</b> 113 N. Cuyler MO 5-3715	<b>WHITE HOUSE LUMBER</b> For all your building needs Our everyday prices are lower 101 S. Ballard MO 4-3291
<b>ROBERTA'S FLOWERS</b> Say It With Flowers. Let Them Be Ours 217 N. Ballard MO 4-3500	<b>DARBY &amp; HUKILL</b> Automotive Electric, 1961 Safety Stickers 215 W. Foster MO 4-4111	<b>RICHARD DRUG</b> "Pampa's Synonym for Drugs" 111 N. Cuyler MO 5-3747	<b>PAMPA HOTEL</b> Try our charcoal grilled foods 221 S. Russell MO 4-2577
<b>SEARS-ROEBUCK &amp; CO.</b> Try our mail-order service 104 S. Cuyler MO 4-3361	<b>DES MOORE TIN SHOP</b> for your heating and air conditioning 220 W. Kingsmill MO 5-3071	<b>WESTERN AUTO ASSOCIATE STORE</b> Satisfaction Guaranteed or Your Money Back 306 S. Cuyler MO 4-7488	<b>KYLES SHOES</b> Home of Wesboro Shoes for men 121 N. Cuyler MO 5-5442
<b>PAMPA HARDWARE CO.</b> Gym shoes and trunks, Sporting Equipment 120 N. Cuyler MO 4-2451	<b>TEXAS FURNITURE COMPANY</b> Quality Home Furnishings 210 N. Cuyler MO 4-4623	<b>WRIGHT FASHIONS</b> On Pampa's Fashion Corner 222 N. Cuyler MO 4-4632	<b>FORDS SHAMROCK SERVICE STATION</b> Shamrock gas and oil for the best service 400 W. Foster MO 4-2771





Picket Line Prognostication

Sharon Haralson, Magnolia con- signee and president of the Har- vester Quarterback Club, and Ja- mes Evans, of Tex Evans Buick Co., try their hand at prognosti- cating today and have a rugged 40- game pick in front of them.

Table with columns for Games, Sharon Haralson, James Evans, and Art Mayhew. Lists various schools and locations like Palo Duro at Pampa, Amarillo at Tascosa, etc.



HUNTING PREVIEW — Ralph Zahner, with the Connecticut hunting season only 30 minutes old, goes into action with trusty shotgun. Envious Texas duck hunters have to wait until Nov. 11 for the season to open in the state.

Cleroux Makes Short Work Of Turman In Montreal

MONTREAL (UPI) — Bob Cleroux, 22, the rough and tumble Canadian ranked eighth in world heavyweight circles, made short work Wednesday night of unranked Buddy Turman of Tyler, Tex., the only man who has beaten him as a professional. Referee Buddy Leitham counted Turman out at 53 seconds of the second round. It was the 23rd victory and the 19th knockout for Cleroux, who has lost only once and fought another to a draw. The loss came at the hands of Turman. The older Texas fighter won a split decision 16 months ago at Madison Square Garden in New York.

Skelly says: You START OR WE PAY. Go to Your Skelly Dealer Now! Get Your Bonded Starting Certificate. Includes an illustration of a car.

Pampa Hopes To Upset Lee

Lee Junior High and Pampa Junior High seventh graders renew old acquaintances at 4 p.m. tomorrow when the two teams — at opposite ends of the won-lost pole — meet in their final game of the year at the practice field west of Harvester Park.

The junior Rebels have won all four games this year, their most recent victim being Phillips, 62-0, last week, while Pampa has gone down four straight times.

In the first meeting between the two teams this year, Lee came off with a 24-0 win but the game may be closer this time, due to front-line injuries to Lee players.

Center Steve Martin, spark in the Phillips victory, broke his arm playing touch football last Sunday and will be replaced by Vaughn Taylor. Coach Joe Perryman feels that Martin is the key to Lee's frontline efforts, and may be missed sorely.

Pampa Coach Frank Craig also had several boys injured and hoped that most of his squad would be fit for the game tomorrow. Perryman cited hard blocking and tackling as the difference in his team's record. "The wins haven't come easy," Perryman said, "but our boys have had the determination to win all season and we'll be going for an unbeaten season."

Lee's attack will be built around Halfback Lewis Meers, Fullback Larry Daniels, Halfback Gary Crossland and Quarterback Kenneth McWilliams.

In the line, Perryman probably will start Terry Bird, right end, Wayne Hill, right guard; Bill Quarrells, right tackle; Vaughn, center; Larry Eckrodt, left guard; Jimmy Robertson, left tackle; and Nolan Ellis, left end. (26)

Pampa hopes to spoil Lee's perfect season with a quarter of backs which will include Darrell Henson at quarterback, Charles Smart and Donnie Bennett at halfbacks and Jim Williams at fullback.

In the line, Craig probably will start Randy Whitten and Larry Bradshaw at ends; Charles Pulse and Travis Winegart at tackles; Ernest Frazier and Larry Bowerman at guards; and Rocky Blair at center.

GERMANS WIN ELIMINATION BELFAST, Northern Ireland (UPI) — West Germany beat Northern Ireland, 4-3, Wednesday in a World Cup soccer football elimination game.

RIDES THREE WINNERS CAMDEN, N.J. (UPI) — Johnny Sellers, leading jockey at the Garden State meeting, rode three more winners Wednesday.

Borger Paces Most Categories

Pampa Keeps Pass Defense Lead

Pampa's Harvesters, though idle latest District 3-4A statistics re- last week, retained their pass de- fease leadership, according to the Pampa has allowed 97 yards in

three games for a 32.3 average, approximately 14 yards per-game average better than Palo Duro which ranks second with 46.5 average in four games (188 yards).

Borger regained its lead in total offense with 1,370 yards and a potent 342.5 per game average while Amarillo dropped to second with 1,021 yards and a 340.3 average.

Palo Duro, Pampa's foe Friday night, ranks sixth in total offense (904), third in passing (271), second in punting (12 for a 38.5 average) and have the third best passer in Danny Splawn who has completed 8 of 18 for 147 yards.

Table with columns for Games, Yds., Avg., and individual statistics for offense and defense across various teams and players.

BOWLING

HARVESTER MEN'S LEAGUE

Table showing bowling league results for Cabot Ord., King Ins., Richard Drug, Hughes Inv., Allen Serv., Kennedy Jry., Jays Gro., W & H Hogan, Cabot Mac, Local O.C.A.W., and Pampa News.

Table showing bowling league results for Pampa News, Franks Rock, Galt Ins., Motor Inn, and Franks Exp.

Table showing bowling league results for High Team Game, Jerry Gro, High Team Series, Cabot Ord, and dual game results.

Table showing bowling league results for dual game results between W & H Hogan and Franks Exp.

Large table with columns for Games, Yds., Avg., and individual statistics for offense and defense across various teams and players.

Dunlap's SPECIALS STOCK REDUCTION SALE OF MEN'S SUITS. Includes prices for suits (e.g., Reg. \$65 and 69.95 NOW 59.88), slacks (2 for \$29), sweaters (\$5.99), and sport shirts (\$4.99). Features an illustration of a man in a suit.

Service Liquor Stores advertisement. Two locations: 800 W. Foster, John Clark, Mgr. and 328 E. Frederic, Marion Summers, Mgr. Features the slogan "If It's In Pampa, We Have It" and lists services like delivery, glassware, bar supplies, and packaged ice.



**Situation Wanted 19**  
**Female Help Wanted 22**  
**Salesmen Wanted 25**  
**Sewing 30**  
**Appliance Repair 31**  
**WEST TEXAS REPAIR**  
**Radio Lab 34**  
**Hawkins Radio & TV Lab**  
**Gene & Don's T.V.**  
**C&M TELEVISION**  
**UNITED TELEVISION**  
**Appliances 36**  
**C & S Appliance & TV Co.**  
**GRAHAM'S TV, APPLIANCE & FURNITURE**  
**Paper Hanging 38**  
**Painting 39**  
**Transfer & Storage 40**  
**DAVID HUNTER**  
**HOULDAUL Moving 40A**  
**Child Care 41**  
**CONVASCENT HOME 41A**  
**Carpet Service 43A**  
**Flowing, Yard Work 47**  
**Cess Pools, Tanks 49**  
**Building Supplies 50**  
**HOUSTON LUMBER CO.**  
**FOX RIG & LUMBER CO.**  
**Good Things to Eat 57**  
**NOLAND'S TURKEYS**  
**Laundry 63**  
**Rug Cleaning 63A**  
**Upholstery, Repair 66**

**Household Goods 68**  
**SHELBY J. RUFF**  
**ARMSTRONG or Gold Seal Flat base**  
**NEW PORTABLE Crib, were \$24.50**  
**RECLINING CHAIRS \$49.50 to \$109.50**  
**Used Kalvinator automatic washer**  
**ROD McDONALD FURNITURE**  
**C & M TV & FURNITURE**  
**NEWTON FURNITURE STORE**  
**TEXAS FURNITURE CO.**  
**69 Miscellaneous for Sale 69**  
**MAHOGANY STORE**  
**97 Furnished Houses 97**  
**AUCTION SALE**  
**Thompson's United Rent-Alls**  
**PANOS**  
**WILSON PIANO SALON**  
**RENT A NEW PIANO**  
**MYERS MUSIC MART, INC.**  
**Tarpley Music Company**  
**71 Bicycles 71**  
**73 Flowers, Bulbs 73**  
**78 Livestock 78**  
**79 Horses 79**  
**80 Pets 80**  
**92 Sleeping Rooms 92**  
**98 Unfurnished Houses 98**

**103 Real Estate For Sale 103**  
**HILLCREST HOMES**  
**NATIONAL HOMES**  
**102 Bus, Rental Property 102**  
**RESIDENTIAL**  
**INVESTMENT**  
**FARM**  
**QUENTIN WILLIAMS REALTOR**  
**BEN H. WILLIAMS REALTOR**  
**PERRY O. GAUT REAL ESTATE**  
**J. E. Rice Real Estate**  
**103 Real Estate For Sale 103**  
**HILLCREST HOMES**  
**NATIONAL HOMES**  
**102 Bus, Rental Property 102**  
**RESIDENTIAL**  
**INVESTMENT**  
**FARM**  
**QUENTIN WILLIAMS REALTOR**  
**BEN H. WILLIAMS REALTOR**  
**PERRY O. GAUT REAL ESTATE**  
**J. E. Rice Real Estate**

**103 Real Estate For Sale 103**  
**HILLCREST HOMES**  
**NATIONAL HOMES**  
**102 Bus, Rental Property 102**  
**RESIDENTIAL**  
**INVESTMENT**  
**FARM**  
**QUENTIN WILLIAMS REALTOR**  
**BEN H. WILLIAMS REALTOR**  
**PERRY O. GAUT REAL ESTATE**  
**J. E. Rice Real Estate**  
**103 Real Estate For Sale 103**  
**HILLCREST HOMES**  
**NATIONAL HOMES**  
**102 Bus, Rental Property 102**  
**RESIDENTIAL**  
**INVESTMENT**  
**FARM**  
**QUENTIN WILLIAMS REALTOR**  
**BEN H. WILLIAMS REALTOR**  
**PERRY O. GAUT REAL ESTATE**  
**J. E. Rice Real Estate**

**114 Trailer Houses 114**  
**BEST TRAILER SALES**  
**116 Auto Repair Garages 116**  
**KISSEE FORD CO.**  
**117 Body Shops 117**  
**FORD'S BODY SHOP**  
**120 Automobiles 120**  
**124 Tires, Accessories 124**  
**REBUILT MOTORS**  
**Expert Installation Montgomery Ward**  
**125 Boats & Accessories 125**

**Joelischer REALTOR**  
 Office 111 E. Kingmill MO 4-5491  
 Dale "Bud" ..... MO 4-5874  
 A. L. Patrick ..... MO 4-4988  
 Howard Price ..... MO 4-5354  
**C. H. MUNDY, Realtor**  
 105 N. Wynne  
 MO 4-2781  
**W. M. LANE REALTY**  
 318 W. Foster Ph. 4-3611 or 4-3874  
 Dale "Bud" ..... MO 4-5874  
 A. L. Patrick ..... MO 4-4988  
 Howard Price ..... MO 4-5354  
**C. A. HUFF**  
 REAL ESTATE & RENTALS  
 VIVIAN HUFF MO 4-6522 or 4-5715  
**H. W. WATERS**  
 REAL ESTATE BROKER  
 117 E. Kingmill MO 4-4681  
**Booth & Patrick Real Estate**  
 MO 4-2923  
**111 Out of Town Property 111**  
**113 Property to be Moved 113**  
**Highland Homes**  
 pampa's leading quality home builder combs-worley bldg. mo 4-3442  
 101 S. Ballard Ph. 4-2291  
 FOR SALE: By owner. Brick 3 bedroom. E. Fraser. MO 9-9435.

**BUICK BETTER BUY USED CARS**  
 1956 OLDSMOBILE 88 4 door, air conditioned, radio, heater \$995  
 1956 MERCURY 4 door, air conditioned, power steering, and brakes \$895  
 1953 DODGE V-8, 4 door, good tires \$250  
 1951 BUICK Super, 2 door hard top \$145  
 1951 PLYMOUTH 2 door, hard top \$75  
 123 N. Gray MO 4-4677  
**Tex Evans Buick Rambler Inc.**

**WINTER IS HERE!**  
**GET YOUR ANTI-FREEZE AT REED'S SERVICE STATION**  
 914 E. FREDERIC  

SUPER PYRO GAL.	= 69¢	Installed
PYRO GAL.	\$1.69	& Checked
PRESTONE GAL.	\$1.79	All Winter

**ALL MAJOR OIL 35c qt. LESS**  
**OIL CHANGED 35c qt. BY THE CASE**  
 GET THE BEST FOR LESS! GO REED AND SAVE  
**REED'S SERVICE STATION**  
 914 E. FREDERIC

**ONLY NORTH Crest OFFERS**  
 Fully Carpeted Houses  
 VA Loans With Move-In Cost As Low As \$140.00.  
 FHA Loans With Move-In Costs As Low As \$425.00.  
 Do-It-Yourself Program whereby you can paint the interior and exterior of your house and apply on your down payment.  
 Move in now—No monthly payments until January, 1961  
**3 Bedroom Houses \$9,900 As Low As**  
 Monthly Payments As Low As \$73.30  
 Brick Homes Priced From \$12,100 & Up  
 Built-In Oven & Cook-Top  
 Refrigerated Air Conditioned Optional  
 You Can Trade In Your Old House On A NEW HUGHES HOME  
 See Paul Coronis at 929 Terry Road (Hughes Medallion Home)  
 North Crest for Complete Details and Plan Selection  
**HUGHES Development Company**  
 MO 9-9342 North Crest Sales Office  
 PAUL CORONIS SALES MANAGER 929 Terry Road

Television Programs

Channel 4 KGNC-TV, THURSDAY NBC
Channel 7 KVII-TV, THURSDAY ABC
Channel 10 KFDD-TV, THURSDAY CBS
Program listings for various channels including shows like 'Today', 'The Texas', and 'Mopli'.



COMFORTING HAND — Mrs. Robert Heaston, left, reaches for her mother's comforting hand after learning her two daughters, Bobbie, 6, and Bonnie, 3, were burned to death while she was working at a restaurant in Memphis, Tenn. Her husband and their son were at wrestling matches when the tragedy occurred.

QUICK CONVENIENT LOANS
Auto • Furniture • Appliances
FOR CASH ANYTIME — CIG EVERY TIME!
COSMOPOLITAN INVESTMENT CO.
300 W. Foster ASK FOR H. R. KARST MO 4-8454

Channel 4 KGNC-TV, FRIDAY NBC
Channel 7 KVII-TV, FRIDAY ABC
Channel 10 KFDD-TV, FRIDAY CBS
Program listings for Friday evening shows.

DROP COLOR BAN
ST. LOUIS, Mo. (UPI)—Six owners of prominent St. Louis cafeterias agreed Wednesday to serve Negroes. Many downtown St. Louis restaurants have been serving Negroes for some time.

Rocky Mountain Electoral Votes Actively Sought By Both Camps

By DAN DOHERTY
United Press International
Democrats and Republicans alike are wooing the sparsely populated Rocky Mountain states as never before in this election year.
In all, the Mountain States have (but 21 electoral votes—just one more for the combined states of Colorado, Utah, New Mexico, Wyoming and Montana than for the single state of Michigan.
But this year's election promises to be a close one and as Robert Kennedy, manager of his brother's campaign put it, "No state is expendable." Republican spokesmen would no doubt agree with him.

Financial Review
NEW YORK (UPI) — Despite the discouraging near term prospects of the steel industry, National Steel Co. still is regarded as an outstanding holding for long-pull purposes by the Alexander Hamilton Institute.
National's vigorous expansion program into rich market areas is expected to provide even greater insurance against the cyclical factors constantly facing the steel industry, the institute says.

EVERYONE WELCOME
PANCAKE SUPPER
Pancakes—Sausage—Bacon—Milk—Coffee
Tuesday, Nov. 1, 6:00 to 8:30 p.m.
At The MOOSE LODGE-401 E. BROWN
ALL YOU CAN EAT
ADULTS \$1.00—CHILDREN 50c
Sponsored By—Boy Scout Troop 108
Tickets Available at B&B Pharmacy No. 2 or at the Door

NOW 2 LOCATIONS TO BETTER SERVE YOU
NO. 1 BALLARD ST. AT BROWNING NO. 2 403 S. Cuyler
These Prices Good At Both Stores Thru Sat.
ALKA SELTZER REG. 65c 39c
FLASH LIGHT REG. \$1.00 49c Less Battery
KING SIZE TUBE BRYLCREEM REG. 89c 59c
MENNEN'S SOFT STROKE SHAVE BOMB REG. 79c 39c
PLAID SPORTIE BLANKET 45" x 72" Washable Plastic Carrying Case REGULAR \$5.98 SALE PRICE \$4.49
FOUNTAIN SPECIAL Chocolate Sundae 19c
BATH OIL Reg. \$1.49 2 for \$1.49
COMETTE SEAMLESS NYLON HOSE Reg. 1.39 98c
BROWNIE TWIN 20 Camera Outfit Reg. 16.95 \$10.95
FREE DELIVERY Competent Trained Pharmacist On Duty at all Times
24 HOUR FILM SERVICE One 5x7 Enlargement Free With Each Roll Processed
B&B PHARMACY
No. 1 BALLARD AT BROWNING "We Give S&H GREEN STAMPS"
MO 5-5788 NO. 2 403 SOUTH CUYLER "We Give BUCCANEER STAMPS"
MO 4-8424
DOUBLE STAMPS ON ALL PRESCRIPTIONS

Cadillac
First of a thousand happy hours!
Forgive him if he takes the long way home today. For the temptation is always great when the day is fine—and the car is Cadillac—and the name on the title is yours.
The first thing he senses, as he glides out onto the boulevard, is comfort. The car is so generous in its interior dimensions that he can really relax.
And what a wonderful outlook he has on the world about him! Wherever he looks, he finds himself surrounded by a panorama of vision.
Then, as the miles float by, the car's brilliance in motion begins to unfold.
Cadillac's improved power steering, he finds, has taken the last degree of effort out of handling. Its great new engine is a veritable symphony of con-
trolled power and precision. And its new ride is smooth and quiet almost beyond belief.
And the wonder of it is that, if he is like most owners, he'll enjoy more than a thousand such delightful hours before a single year has passed.
In fact, it is doubtful that, in all the world of possessions, there is another that provides its owner such lasting pleasure—in such constant measure—as a new Cadillac car.
Have you thought of someday adding a Cadillac to your happiness?
This is the perfect season—and an early order will assure you a full year with the current model. Reason enough, we'd say, to visit your authorized Cadillac dealer tomorrow.
VISIT YOUR LOCAL AUTHORIZED CADILLAC DEALER
TOM ROSE MOTORS
121 N. Ballard MO 4-3233

News Briefs
HALTS OIL SHIPMENT
PORT OF SPAIN, Trin (UPI)—The Shell and Texaco companies have suspended shipments from here to the Dominican Republic. They took action after Venezuelan trade unionists warned Venezuela to ship no more crude oil here if Dominican sales continued.
AID ILLEGAL PARKERS
SAN FRANCISCO (UPI)—Judge Albert A. Axelrod granted Wednesday the city request for an injunction against parking charges, declaring the \$10.25 fee was "outrageous." He has been helping illegal parkers out by dismissing their cases against them.
CLASSIFIED AD GET RESULTS