

PUT YOUR WIFE WISE

... to the importance of our auto service and there'll be no more squabble when she drives. Let her bring the car here for its regular servicing.

PLAINS MOTOR CO.

113 N. Frost Phone 580

Market Briefs

WALL STREET
NEW YORK, March 18 (AP)—The recovery swing continued in today's stock market with war-related issues receiving the principal play. Assorted copper, steel, rail and industrial were in front from the start although many pivots exhibited considerable indifference. Some aircraft lost much of their buoyancy but air transports were lively. The pace was faster and prices held in the forenoon. Thereafter extreme gains running to 2 points or so were reduced in most cases and a smattering of minus signs appeared at the close. Although slowdowns eventuated

after midday, transfers for the full proceedings held to around 300,000 shares. Exceptions to the comeback included Pepsi-Cola, which touched bottom for the year, Dress Industries, United Aircraft, Electric Power and Light and Union Pacific.

NEW YORK STOCK LIST
By The Associated Press

Am. Air	201	88	87	94
Am. T&T	32	145 1/2	143 1/2	145 1/2
Am. Woolen	28	49 1/2	47 1/2	49 1/2
Anacosta	26	27 1/2	27 1/2	27 1/2
AT&SF	20	35 1/2	34 1/2	34 1/2
Aero. Mfg.	12	2 1/2	2 1/2	2 1/2
Beth Steel	65	32 1/2	31 1/2	31 1/2
Branch	25	2 1/2	2 1/2	2 1/2
Chrysler	49	53 1/2	51 1/2	53 1/2
Cont. Mot.	18	6 1/2	6 1/2	6 1/2
Cont. Oil Del.	15	58 1/2	57 1/2	57 1/2
Curcio Wt.	200	6 1/2	6 1/2	6 1/2
Freight Sulph	3	35	34 1/2	34 1/2
Gen. Mfg.	24	22 1/2	21 1/2	21 1/2
Gen. S. & W.	21	51 1/2	51 1/2	51 1/2
Goodrich	7	48	47 1/2	47 1/2
Greyhound	33	19 1/2	19 1/2	19 1/2
Gulf Oil	47	62 1/2	62 1/2	62 1/2
Houston Oil	20	24	23 1/2	23 1/2
Int. Harv.	20	24	23 1/2	23 1/2
KCS	4	37 1/2	36 1/2	36 1/2
Lockheed	75	19 1/2	18 1/2	18 1/2
M. & E.	10	24 1/2	24 1/2	24 1/2
Mont. Ward	38	50	48 1/2	48 1/2
Nat. Gypsum	15	14 1/2	13 1/2	13 1/2
Ray	12	19 1/2	19 1/2	19 1/2
Sinclair	58	17 1/2	17 1/2	17 1/2
Socony Vac.	44	45 1/2	47 1/2	47 1/2
Soc. Pac	22	58 1/2	57 1/2	57 1/2
SO Cal	22	58 1/2	57 1/2	57 1/2
SO Ind.	27	29 1/2	28 1/2	28 1/2
SO N. I.	38	72 1/2	71 1/2	71 1/2
Tex. Co.	18	53 1/2	53 1/2	53 1/2
Tex. Gulf Prod.	6	15 1/2	15 1/2	15 1/2
Tex. Gulf Sulph	5	55 1/2	54 1/2	54 1/2
Tex. Pac. C&O	17	43 1/2	43 1/2	43 1/2
Wid. Wat. A. O.	32	29 1/2	28 1/2	28 1/2
US Rubber	5	39 1/2	39 1/2	39 1/2
US Steel	5	29 1/2	29 1/2	29 1/2
W. T. Co.	7	20 1/2	20 1/2	20 1/2
Woolworth	5	44 1/2	44 1/2	44 1/2

1200-1300 lb averages 30.00; several loads top good to choice 25.50-29.50; including 800 lb yearlings at 23.00; good fed steers 25.00-28.00; medium to low good heifers 22.00-25.25; good cows scarce, sold head to 22.00; common and medium 17.25-20.50; canners and cutters 12.50-17.00; practical vealer top 25.00. Hogs 1400; fairly active, uneven, steady to 50 higher; most advance on heavies; top 24.00; good and choice 170-248 lb 23.25-24.00; 250-270 lb 21.00-22.00; 280-315 lb 19.75-20.75; sows 17.50-18.50. FORT WORTH LIVESTOCK FORT WORTH, March 18 (AP)—Cattle 850; calves 250; active and fully steady; good and choice slaughter steers, yearlings and heifers 25.00-28.50; common to medium kinds 18.00-24.00; fat cows 13.00-21.00; canners and cutters 12.00-17.00; bulls 21.00-22.00; good fat calves 24.50-27.00; common to medium calves 13.00-23.00; culls 15.00-17.50; stocker and feeder calves, yearlings and steers 28.00-28.50; one load of mixed steers and heifer calves 26.00; stocker cows 16.00-20.00. Hogs 1200; hutchers steady to 25 higher; sows and pigs unchanged; top 22.00 paid for good and choice; 180-250 lb hogs; few good 230-400 lb 22.00-22.50; good and choice 130-175 lb 19.00-22.15; sows mostly 16.25-17.00; few to 17.50; stocker pigs 11.00-17.00. ALL-STAR PAY-OFF Total attendance at major league all-star baseball games, including the one in 1947, reached 572,578 and the total receipts so far have amounted to \$913,293. Sanctum sanctorum, a Latin expression, means holy of holies.

there ain't no money

pardon our grammar. what we mean is that it just seems that way just after march 15th. we really do know our conjugation, tho... 'i've got no money, you've got no money, she's got no money' so what are we going to do... let the girl wear a gunny sack? no, if bentley's can help it she won't. just look at this special for saturday.

suits

we had to look hard for something in new spring suits to put on this rack. regularly \$9.95 to 69.95. You'll be agreeably surprised.

\$33

dresses

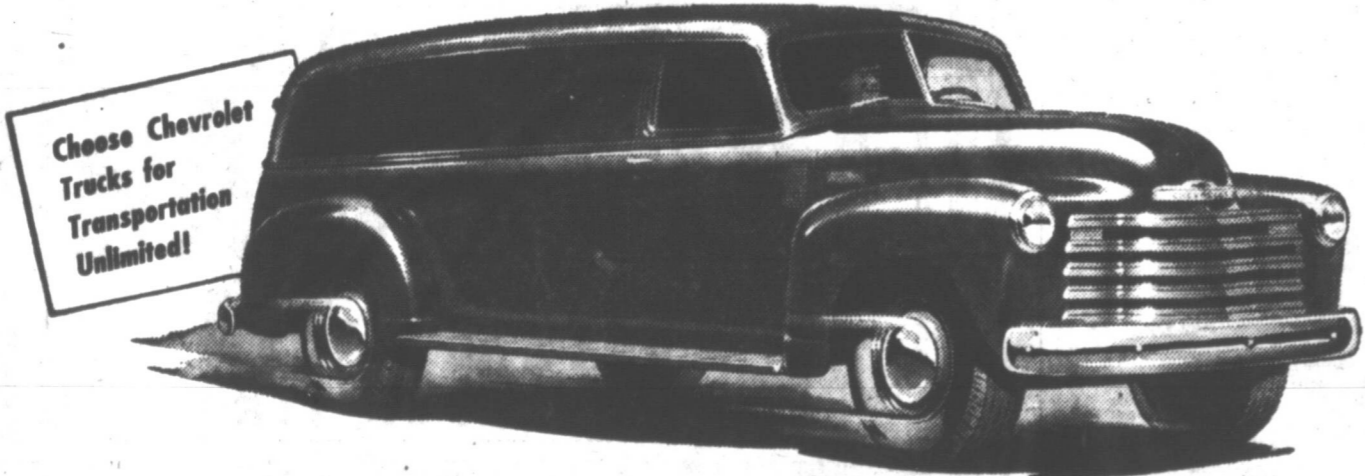
selected short and long sleeve crepes from our early spring arrivals, print and solids included. regularly to 29.95.

\$13



CHEVROLET

Advance-Design Trucks



LOWEST IN PRICE

Only Chevrolet Advance-Design trucks have these now and finer features!

NEW CHEVROLET 4-SPEED SYNCHRO-MESH TRUCK TRANSMISSION in heavy-duty models that assures new operating ease and efficiency.

NEW STEERING COLUMN GEARSHIFT CONTROL in models with 3-speed transmissions provides greater driving ease and convenience.

NEW FOOT-OPERATED PARKING BRAKE providing clear floor area, safety and efficiency in models with 3-speed transmissions.

SPINDLED REAR-AXLE SHAFT ATTACHMENT TO WHEEL HUB of greater strength and durability in heavy duty models.

NEW IMPROVED VALVE-IN-HEAD ENGINE has greater durability and operating efficiency.

THE CAB THAT "BREATHES"—Fresh-air heated in cold weather—is drawn in and used air forced out!

Plus • Unifield, all-steel cab construction • New, heavier springs • Full-floating hypoid rear axle • Specially designed brakes • • Ball-bearing steering • Wide base wheels • and many others!

CHEVROLET and ONLY Chevrolet IS FIRST!

CULBERSON CHEVROLET CO.

Phone 306

212 N. Ballard

It's Anthony's Brand New Spring Secretary BAG

\$2.98



- Plastic Patents
- Simulated Leathers
- Suede Cloths



Every Imaginable Color



- Completely Fitted
- Cigarette Case
- Pencil Pad
- Mirror
- Comb

Anthony's

Pampa, Texas

Anthony's EASTER PARADE



Anthony's NOW Have the Spring And Summer Suit You Want!

All Wool Worsteds

\$42.50

"Year-rounders," our customers call our New Bryan Hall spring suits. The weight and hard finish patterns and colors of the All Wool Worsteds makes these suits practical for four seasons wear. Wrinkle resistant and they hold a crease ever so long. Regulars, Shorts, Longs.

Sizes 35 to 44



Wear SLACKS

Around the Clock

Pleats - Plain - Fancies - Solids

All Wool Worsteds

\$5.90 to \$10.90

All Wool Worsteds that are right for wear now and into summer. Conservative patterns and solids for business wear and bolder patterns for leisure or casual wear. Wrinkle resisting, crease retaining finishes.

Anthony's

Pampa, Texas

12,000 Farm Hands 'Lost'

WASHINGTON —(AP)— Uncle Sam is looking for about 12,000 "lost" farm hands. They were among more than 500,000 agricultural workers brought in from Mexico and the West Indies during the war and since to help meet a farm worker shortage.

Recruited under the direction of their respective governments, they were given permits to enter this country for only a specified period of time. And they were supposed to return to their respective countries after the harvesting season.


So far neither the Agriculture Department nor the Immigration Service has been able to find the 12,000. Most of those missing are from Mexico.

J. H. Lambe, Agriculture Department labor officer, said it is possible that some may have returned to their countries without being checked out by government agencies.

VETERINARY MEDICINE

Practice of veterinary medicine and surgery originated in France to save horses injured in war, according to the Encyclopedia Britannica.

Headquarters for Livestock Supplies! Authorized Dealer



FRANKLIN
Vaccines and Supplies for Cattle, Sheep, Hogs, Horses and Poultry
CRETNEY



P.G.C. Laying Mash

P. G. C. LAYING MASH contains a wide variety of High-Quality feed ingredients supplying all essential proteins, vitamins, minerals, and other important food elements to help increase egg production and maintain the vitality of the laying hens.

Eggs produced on P. G. C. FEEDS are high in vitamins and food value.

See Your P.G.C. Dealer!
Gray County Feed & Hatchery
854 W. Foster Phone 1161

Blizzard Causes Small Losses

By the Associated Press

The late winter blizzard last week cost Texas ranchers a negligible amount of livestock killed. Some cattle were frozen to death. Heaviest loss reported was in Hutchinson County, near the tip of the Panhandle, where an estimated 500 cattle died.

In Ochiltree County, on the Oklahoma line northeast of Hutchinson County, ranchers found that calves, first thought lost, had merely drifted with the storm.

At Amarillo, in Potter County, southwest of Ochiltree County, Farm Agent Art Bradley said that losses in that county were confined to a calf here and there, born during the storm. The loss was negligible, he said.

The cold winds proved damaging to herds as far south as Fredericksburg, Gillespie county, in the heart of the mohair sheep country. Freshly shorn goats and young kids, and sheep and lambs died in the bitter cold.

Losses, however, were spotted. Most flocks found shelter in barns and sheds, where they weathered the storms.

Citrus Harvest Slow

WESLACO, Tex. —(AP)— Rio Grande Valley citrus growers are not getting their fruit off their trees as quickly as they did last year.

The U. S. Market News Service says the valley has harvested 60 percent of its orange crop and 48 percent of its grapefruit. Last year at this time, 70 percent of the oranges and 64 percent of the grapefruit were on their way to market.

We recap and vulcanize all size passenger car and truck tires. Also repair all size tractor tires.

CENTRAL TIRE WORKS
107 W. Foster Phone 2410

Roberts Farms Use Grass for Conservation

Conservation programs centered around grass plantings hold the spotlight in a report from the Roberts County Soil Conservation District.

S. N. Carnahan is carrying out a conservation plan on his place on the south side of Miami. The upper part of a small cultivated field will be planted to Weeping Love Grass. This grass will be planted in three foot rows in order that it can be cultivated for increased seed production. It will be planted the last part of this month or early April.

The rest of the field will be protected by diversions emptying into a small draw which will be protected by several spreader dams; and will be planted to western wheat grass. This grass will be planted in April with cats as a cover crop.

Bert Walsh is preparing about twenty acres of land on his place west of Miami for a demonstration planting of yellow bluestem and blue panic grass. He will kill a volunteer stand of wheat by light cultivation, then harrow or drag the ground to form a firm seed bed. The grass will be planted in rows on the contour. This seed is furnished by the Soil Conservation Service in an effort to get new kinds of grass started in this area.

Tom O'Laughlin is constructing a combination stock water reservoir, and erosion control dam on his place. The creek was cutting into a steep hill causing a good sized cliff. The dam was so located that it will prevent the water from striking the bottom of the cliff and give it a chance to heal over.

Cattle Raisers Hold Convention

EL PASO, Tex. —(AP)— Members of the Texas and Southwestern Cattle Raisers' Association converged on El Paso Wednesday to attend the association's 71st annual convention.

One of the prime interests of the 1,600 delegates was the foot and mouth disease, subject of more than one convention talk.

Gov. Beauford Jester was on the program.

A pre-conference meeting of the board of directors was held Tuesday. A cocktail party and buffet dinner was held Tuesday night.

An El Paso department store held a fashion show yesterday for wives of the visitors.

President of the association is C. E. Weymouth of Amarillo.

Neap tides are low tides in the beginning of the second and fourth quarters of the moon.



FRANKLIN BACTERINS
for Cattle, Sheep, Hogs, Horses and Poultry
PRESCRIPTION LABORATORY
119 W. Kingsmill Phone 1929

Top o' Texas FARM NEWS

PAGE 4 Pampa News, Friday, March 19, 1948

Spring Will Be a Little Late This Year... But 'All at Once'

By LOUIS FRANK Extension Editor

Texas A & M Oldtimers call this the coldest and latest spring on record.

Officially the first day of spring is March 21, but Texans never pay much attention to the calendar.

As far as most Texans are concerned, spring starts when it feels like spring, and the signs of spring are different in the various sections of the state. For that matter spring comes at different times for different people, even though they may be living in the same town or even in the same house.

Down in the Rio Grande Valley spring usually starts around January 15. Others say it's spring-time down there when the mesquite leaves out or when the nuttall blooms.

A man in Wharton county says it's spring when he can take the chains off his car and drive from his place to the highway without bogging down.

Hornfries mean spring in parts of West Texas, but other people out there go by the time the tobosa grass puts out its first new shoots.

There is a considerable school of thought in East Texas that holds that spring starts when the white perch begin biting.

Around Lubbock they watch for the Chinese elms to bud out, and up in the Panhandle it's when the winter wheat "kicks off."

A lot of people figure it's spring when they get the urge to shed their coats and put some garden seed in the ground.

Spring is when hens start laying; cows give more milk. Spring is corn planting time; it's when the wildflowers start blooming.

Whenever spring comes for you most years, it's way late this time. Almost two months late in the Rio Grande Valley and a month behind along the Gulf Coast and most of South Texas.

The weather people say that usually spring moves northward across Texas at the rate of about 20 miles a day.

In theory you could start walking north from Brownsville around the first of February and saunter along until you got to Dalhart about three months later, and every day for 90 days would be the first day of spring for you.

Every day for 90 days you'd see the first buds leaf out on the trees and hear the first birds sing. You'd probably get pretty tired of it, too.

Anyhow that won't work out this year. Spring — when it finally comes — is going to burst out all over the place. It's going to be spring this year at Waco about the same time as in Harlingen, and in Lubbock about as soon as at Brownwood and Abilene.

The oldtimers always said a long, hard, wet winter meant bumper crops next fall. Science pretty well backs them up, too. A long wet winter puts a "good" season in the ground with plenty of subsoil moisture, and a long spell of cold weather means that lots of bugs fail to make it through the winter.

Booker T. Washington was the first president of Tuskegee Institute.

3 Cotton Meets Are Scheduled

COLLEGE STATION, Tex. —(AP)— Three widely separated Texas towns have been selected for meetings on various cotton programs.

One will be held at Sinton on March 23, another at Taylor on March 22, and the third at Lubbock on April 10.

The meeting at Sinton will feature "The World Cotton Outlook" by Read Dunn of Memphis, Tenn., director of foreign trade division, National Cotton Council of America.

The meeting in Taylor will include motion pictures on some of the most recent developments in American cotton production and marketing.

In Lubbock speakers include C. Spencer, agricultural director of Texas Cottonseed Crushers' Association, Dallas; Don L. Jones, superintendent of Texas Experiment Substation in Lubbock; and W. W. Fortenberry, ginmer and farmer of Monroe.

East Texas Crops Swamped With Rain

AUSTIN, Tex. —(AP)— There has been too much rain in some parts of Texas, too little in others, for crops.

This was the conclusion of the United States Department of Agriculture in its weekly farm-ranch survey.

Additional moisture in the north and east held field work at a standstill. It benefited small grains. An area of deficient subsoil moisture persists in the southwest, west and southern High Plains. Soil moisture is excessive in East Texas.

"A period of warm, dry weather is now needed in most parts of the state to permit field work, hasten growth of pastures, and stimulate growth of small grains," the USDA commented.

Wheat in the northwest districts was cut back and growth retarded by low temperatures but the freeze damage appeared light. Additional snow moisture north of Amarillo was beneficial. All small grains in the north central counties were doing well.

Planting feed growth was retarded by cool weather. The extreme cold in the Panhandle caused some shrinkage, but elsewhere livestock was showing improvements.

Onion Harvest Is Delayed

LAREDO, Tex. —(AP)— The warm weather which followed the 28-degree freeze of last week allayed damaging effects to the bermuda onion crop of the Laredo area, it was indicated.

The onion crop was scheduled to be ready for harvest beginning about April 10, but now will be set back another week, according to A. F. Muller, local onion grower, who said onions had suffered no great damage from the cold weather.

Cantaloupes, cucumbers, beans and other tender spring vegetables were practically wiped out by this severe weather, it was reported.

Treating Seed Is Cheap Crop Insurance

TOPEKA, Kans. — Treating seed with fungicides that protect against yield-cripping plant diseases is the cheapest crop insurance for farmers, writes Albert M. Harvey in Capper's Farmer.

"Most of this country's big money crops are susceptible to seed-borne diseases," says the story in the March issue of the farm magazine, "which include the costly smuts, root rots and seedling blights of grains; damping-off of small seedlings such as those of vegetables and flowers; scab and Rhizoctonia of potatoes, and various others."

The story says the Kansas Wheat Improvement Association found stinking smut damage of wheat 4 times as great in 1947 as 2 years earlier. When this prospect was laid before flour millers, they raised money for 3 portable outfits to clean and treat seed.

"County farm bureaus in Kansas took over the truck-mounted machines. They charged 10 to 15 cents a bushel for cleaning and treating at the owner's farm. The Kansas machines treated 373,000 bushels of seed in 1947. Similar outfits operated on a smaller scale in Texas and Nebraska last year.

"There is a great need for methods like this that make treating seed more convenient," the story points out. "Portable outfits make it easy for a farmer to sow clean seed that has been treated to control crop disease. Their use might be expanded by farm bureaus or other groups in a county getting them and hiring operators. Or private owners could buy and operate the mobile units."

"Many fungicides are put out by reliable manufacturers, and local county agricultural agents can furnish information on using them, and suggestions for seed treating machines which are easy to make. At present crop prices it takes only 3 or 4 pounds of additional yield an acre to pay for treating."

Japan Needs Cotton

TOKYO —(AP)— An Allied Headquarters source Wednesday denied that Japan's textile mills are about to close for lack of cotton, but he said an increased supply is needed.

Lake Geneva on the border between Switzerland and France is sometimes called Lake Leman.



Night Coughs
due to colds... eased without "dozing"
RUB ON VICK'S VAPORS



HAROLD WRIGHT Insurance Agency
"Right Service"
107 E. Foster Phone 1504



BRUMMET FURNITURE CO.
Quality Household Furnishings
"Where Your Dollar Goes Furthest!"
805 S. Cuyler Phone 2060

Just Received a Fresh Stock of **ROSE BUSHES**

All Varieties—Each **59c**

F. W. Woolworth Co.
105 S. Cuyler Phone 642

CONGRATULATIONS!

To the **Paul Crossman Refrigeration Company**

ON THEIR FORMAL OPENING

SATURDAY, MARCH 20TH

WE ARE PROUD OF HAVING HAD THE PRIVILEGE OF INSTALLING YOUR NEW AND BEAUTIFUL STORE FRONT.

Thompson Glass & Paint Co.
117 W. Foster Phone 1079

CONGRATULATIONS!

To the **PAUL CROSSMAN REFRIGERATION CO.**

On their official opening Saturday, March 20th. A beautiful redecorating and remodeling job in which we are proud to share.

Remember their floors were covered by our products.

Monarch Hardware Co.
W. E. (Bill) Ballard, Mgr.
113 W. Kingsmill Phone 200 - 201

ANNOUNCING...

Our Annual Money-Saving

ICE COUPON BOOK SALE

Beginning April 20th and Ending April 6th Our Special Annual Cash Discount Will Be in Effect.

Anticipate Your Years Needs & Save

Buy Your Year's Supply of Ice Books at 10% Discount

Get Your Ice Coupon Books From Your Ice Service Man or Phone Us.

PHONE 184

PAMPA ICE MANUFACTURING CO.
449 W. Foster Phone 184

NEW Star in the Field



HOLSUM
Good Bread

• a new loaf!
• a new dress!

HOLSUM
is Good Bread

No magic formula! Just good bread as perfect as modern Bakery science can make it.

Every loaf speaks for the careful handling, the pure ingredients and the sanitary surroundings and cleanliness with which the NEW HOLSUM BREAD is baked.

Buy a loaf of this new HOLSUM bread. Easily identified by the red stars and blue stripes of its waxed paper wrapper.

in every neighborhood where good food is sold!
baked by
CHAS. NEWMAN BAKING CO.

YOU GET THE TOP DOLLAR TRADE-IN FOR YOUR OLD TIRES

ON **B. F. Goodrich Silvertowns**

Our big trade-in allowance brings the net cost of new tires way down. You get a "Top Dollar Trade-In" for your old tires when you put new B. F. Goodrich Silvertowns on your car.

The new B. F. Goodrich Silvertown turns in performance you can trust. The wide tread gives you faster stopping and better, longer, more even wear. Stronger cords and more of them give you a tire body that resists road shocks and blowouts even at high speed.

BUY NOW!
Costs less Per Mile than Prewar—Lower in Price than a Year Ago!

14.95
1.50 DOWN—1.25 A WEEK PUTS A NEW 6.00-16 TIRE ON YOUR CAR

Research Keeps B.F. Goodrich FIRST IN RUBBER

K. C. WATKINS, Mgr.
108 S. Cuyler Phone 211

B.F. Goodrich FIRST IN RUBBER

Leaves From a Correspondent's Life Note Book

By HAL BOYLES

WASHINGTON—Paying income taxes is getting so painless now that nobody complains about them much any more—except taxpayers.

And all they object to generally is that it costs them money. And what is money today? Money? One son of Erin, after studying the calendar, decided the whole tax program was a foreign plot against the Irish.

"I think it's a darn shame we have to pay all this money by March 15th," he wrote the Bureau of Internal Revenue. "It's nothing

but British propaganda to spoil our St. Patrick's Day celebration." He was among the fewer than one in ten thousand taxpayers who sit down with pen in hand each March to gripe at the tax collectors.

There used to be more beefing and quibbling. It has been cut down by the new short tax forms and the system of withholding payments which removes the money from the taxpayer before he even sees it.

This year there were few midnight lines of frantic citizens. "To avoid overtime costs we closed most offices at the regular time and saved \$250,000 in overtime pay," said a man at the bureau here.

He added that the biggest nuisances to the collectors were taxpayers who forgot to sign their returns and those who tried to reduce their payments by fudging on Uncle Sam's definition of dependents.

Some have tried to write off as dependents their girl friends, their household pets—or even a tapeworm. One listed three fathers—his own and those of his two wives. Another put down his mother-in-law as "a discrepancy."

One old lady became angry because a collector refused to accept her "Bill" as a dependent after the collector discovered that "Bill" was a mule retired to pasture.

"I listed him for the last two years and nobody raised a fuss before," she complained.

Another woman insisted she had two dependent daughters called "Mabel."

"They were twins," she said, "and they looked so much alike we just decided to name them both Mabel."

The bureau gallantly bowed to this invincible maternal logic.

It is difficult to hurt a new inquisit at the tax collectors. With cheery good humor the bureau has made a scrapbook of the prize

Princess Lengthens Hem

LONDON—Princess Margaret has lengthened her skirts.

Last month cameramen photographed her wearing a cloth coat trimmed with three bands near the hem.

A new picture shows the same coat with four bands around the hem and another inch or so covering the calf.

Puppets worked by strings are marionettes.

One man enclosed half a shirt with a partial tax payment and said, "I'll send you the rest of the money and the other half of my shirt as soon as I can."

Another, who asked for a \$60 refund and was awarded \$90, wrote dazedly: "I am now 65 years of age. At last I believe in Santa Claus."

On The Radio

TONIGHT ON NETWORKS

NBC—7 Paul Lavalle Melody; 7:30 Can You Top This; 8:30 Waltz Time; 9 Mystery Theater; 9:45 Gael Sullivan on "The Foxhole Vote Wants Action."

CBS—6:15 Jack Smith Songs; 7:30 Danny Thomas Show; 8 Morgan-Amesche-Laufford; 8:30 Ozzie and Harriet; 9:30 Spike Jones Revue.

ABC—7 The Pat Man; 7:30 This is FBI; 8 Break the Bank; 9 Fight Lee Savold vs. Gino Buonvini.

MBS—7 Burt Ives and Andy Russell; 7:30 Leave It to the Girls; 8:30 Information Please; Harold Stassen and Ray Milland; 9 Meet The Press; Sen. Russell of Ga.; 10:15 Sen. Baldwin and W. C. Doherty on "Increase Pay for Postal Employees."

SATURDAY ON NETWORKS

NBC—11:30 a.m. Coffee with Congress; new time; 1 Springfield, Mass. Symphony; 1:30 Toscanini and NBC Symphony; 7:30 Truth or—3:30 Grand Ole Opry—CBS 12:30 County Fair Quiz; 2:30 Cross Section on Housing; 4 Philadelphia; 6 Mr. Ace and Jane; 10:15 Banker's Mile at Chicago Daily News Relay—ABC 10 a.m. Abbott and Costello; 12:30 p.m. Our Town, Charleston, S. C.; 2:30 ABC Symphony, new series; 6:30 Challenge of

Legal Records

MARRIAGE LICENSE

A marriage license was issued yesterday in the office of County Clerk Charlie Thut to W. R. Morrison and Edna Hamilton.

REALTY TRANSFERS

T. L. Certain and wife, Mary Frances Certain, to James D. Hunt and wife, Eunice Hunt, lot 7 in block 2, Channing Addition.

Clint Thompson and wife, June L. Thompson, to George L. Collins and wife, Cleo Collins, lot 15, block 1, Gordon Addition.

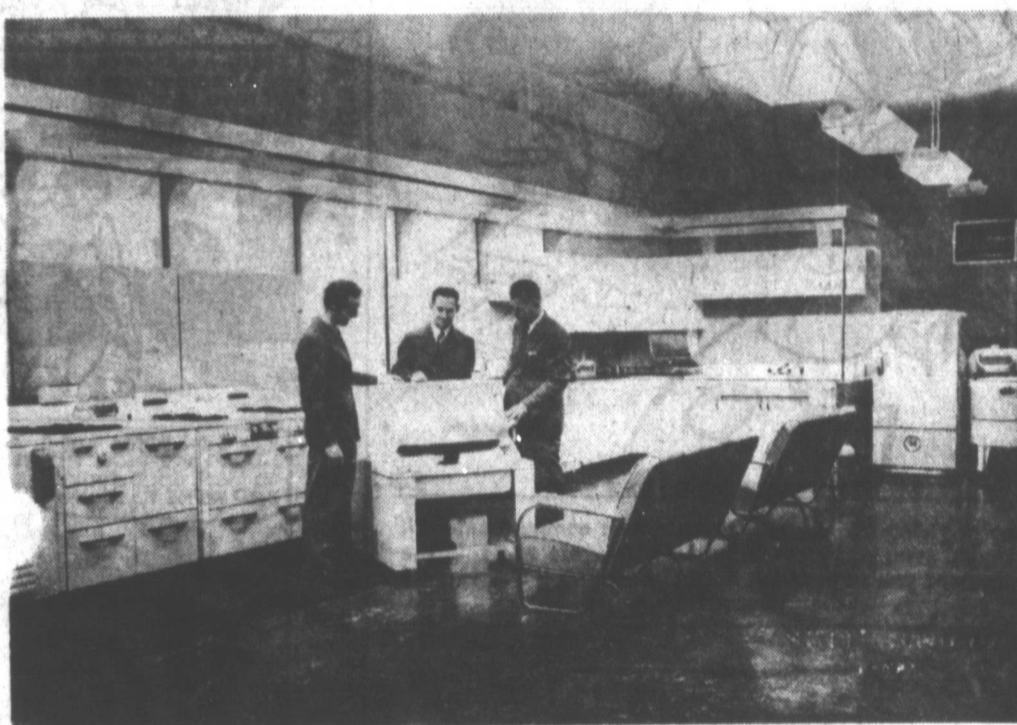
Tukon; 8 Gang Busters—MBS 11:30 Pro Arte Quartet; 2:30 Sports Parade; 3:30 Norway University Choir; 4:30 (repeat 5:30) True or False; 7 Twenty Questions; 8:30 Name of Song Quiz.

C. P. A. stands for certified public accountant.

WE REOPEN!

AFTER COMPLETELY REMODELING AND REDECORATING OUR STORE WE ARE HAPPY TO ANNOUNCE OUR REOPENING SATURDAY, MARCH 20th COME IN AND VISIT WITH US!

It has always been our policy to make accessible to our customers the very best of products obtainable. In the war years when merchandise was not available, we could only give you service. Our motto then was to supply you with the very best service. We still offer that service. We are happy and proud to be in the position now to offer appliances. You have only to see and inspect these in our store to satisfy yourself that our products are the finest.



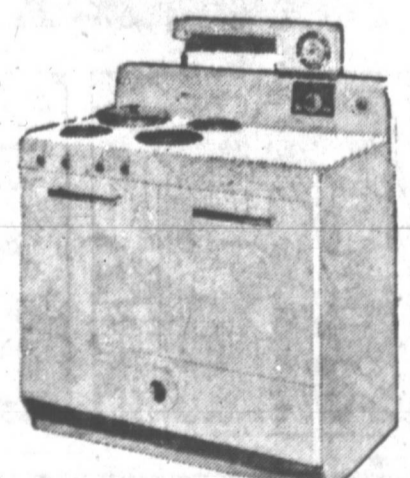
The cleaner of cleaners...

Hoover

Let us show you the Great Name in cleaners ... Hoover. Women prefer Hoover 2 to 1 over any other make because Hoover's exclusive triple-action cleaning—it beats...as it sweeps...as it cleans—saves time and strength, keeps rugs and rooms bright and clean.

Come in or phone for a home demonstration...no obligation.

WE HAVE A COMPLETE LINE OF FRIGIDAIRE RANGES. OUR PERSONNEL WILL BE GLAD TO GIVE YOU COMPLETE INFORMATION. THESE RANGES ARE OF THE NEW MODERN DESIGN AND THE PERFECT RANGE TO PLEASE THE MOST EXACTING HOUSEWIFE.



BE SURE TO PARTICIPATE IN THE RADIO QUIZ PROGRAMS BROADCAST DIRECT FROM OUR STORE AT THE FOLLOWING TIMES:

- 9:30 A. M.
- 11:45 A. M.
- 2:30 P. M.
- 4:45 P. M.

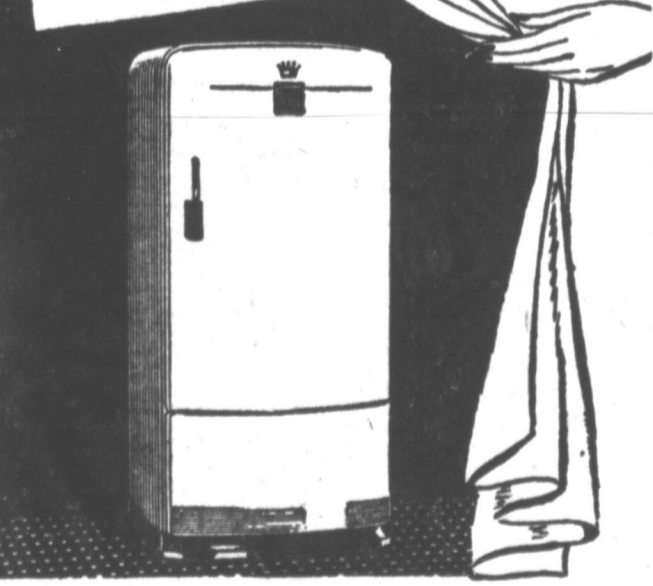
VALUABLE PRIZES WILL BE AWARDED. PLAN TO BE THERE, OR LISTEN TO KPDN.

An Announcement... AND AN INVITATION

PAUL CROSSMAN REFRIGERATION CO.

Frigidaire Dealer

Authorized by Frigidaire, world's largest refrigerator manufacturer, to sell famous Frigidaire refrigerators.



Come in and see the Favorite... See FRIGIDAIRE! Now on Display

It's here—one of the first new Frigidaire refrigerators. See all the features that make Frigidaire America's favorite refrigerator! Orders will be filled as quickly as supply permits.

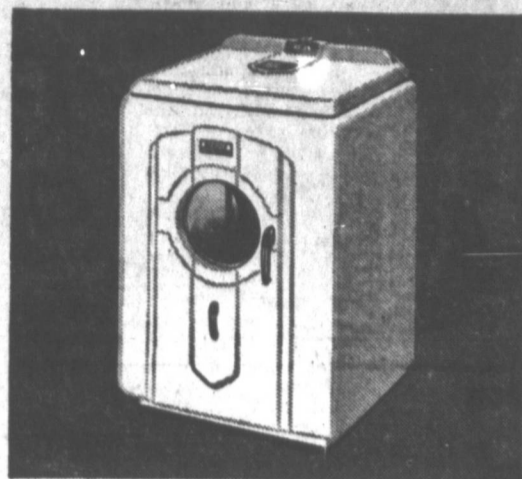


Paul Crossman Refrigeration Co.

112 W. FOSTER PHONE 2110

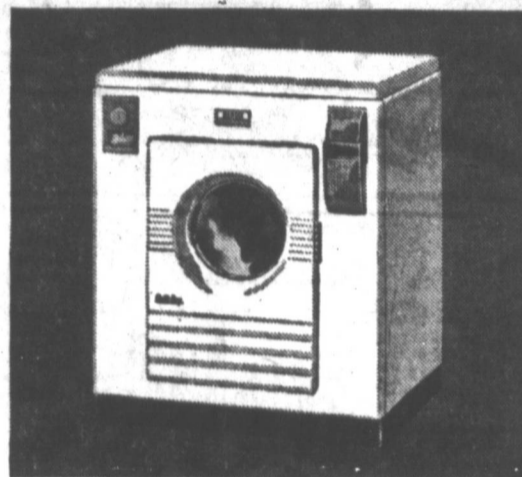
NOW ON DISPLAY! AVAILABLE FOR DELIVERY NOW! THE BENDIX WASHER

that does all of the work all by itself. Just set the dial, add soap. Your clothes are washed sparkling clean and your hands need never touch water.



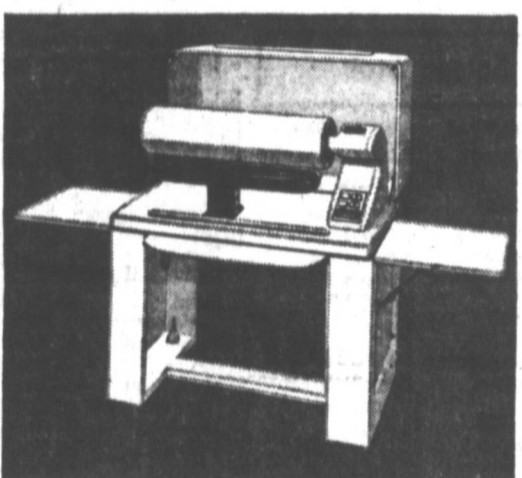
THE BENDIX DRYER

saves time. It enables you to dry clothes while you are washing the next load—regardless of the weather—and absolutely without work.



THE BENDIX IRONER

has many more work-saving features. With no other ironer can you get beautiful, professional results so quickly and easily.

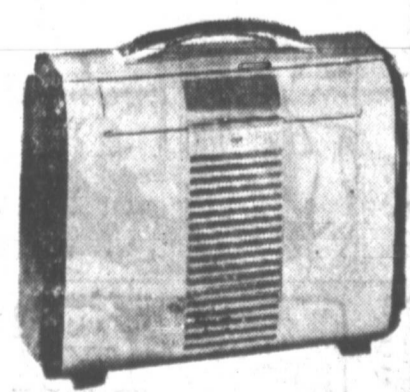
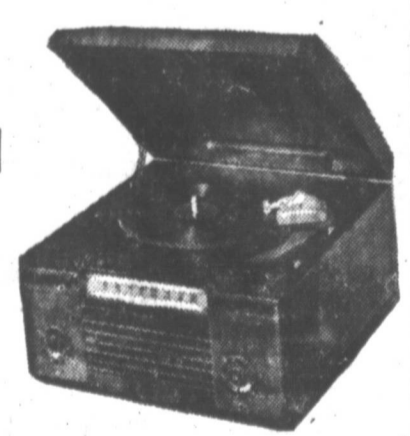


PAUL CROSSMAN Refrigeration Co.

112 W. Foster Phone 2110

SEE OUR COMPLETE LINE OF RCA VICTOR RADIOS

NEW AND MODERN A MODEL TO FIT THE NEEDS AND BUDGET OF EVERY HOME!



PAUL CROSSMAN Refrigeration Co.

112 W. Foster Phone 2110

CUT OUR WAY

BY J. B. WILLIAMS

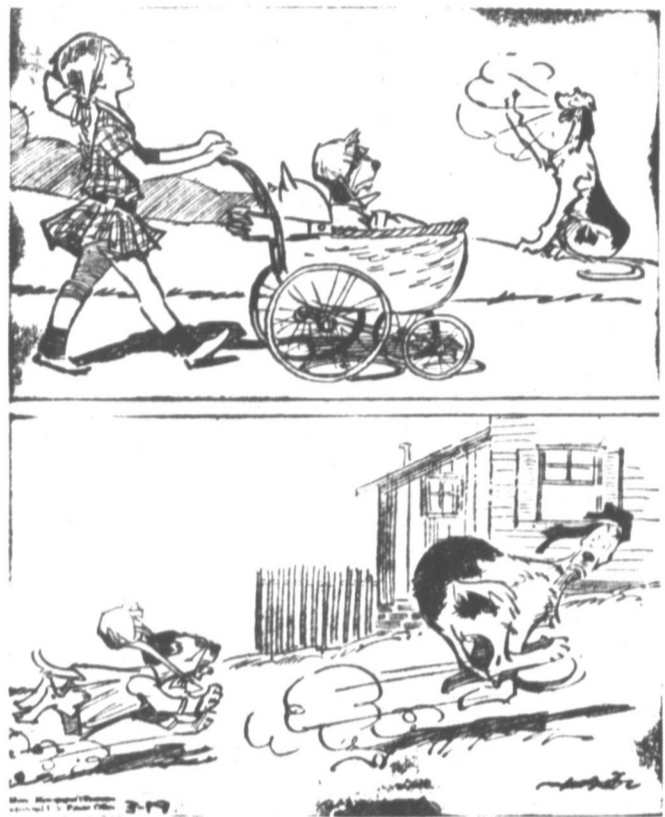


OUR BOARDING HOUSE



BY GALBRAITH

VAPOLEON



They're giving billions to Europe to halt communism—I'll bet they'd send you a tax refund if you wrote and told the government you're thinking about becoming a Communist yourself!

Screen Star

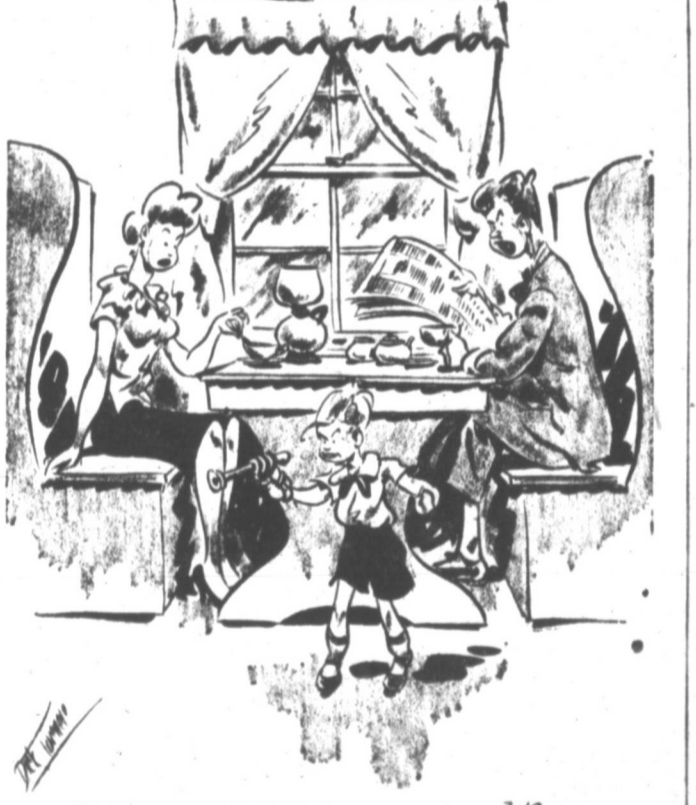
- Horizontal: 17 Pictured, 13 Interstice, 14 Expunger, 15 Knowledge, 16 He is a movie actor, 19 Ancient, 20 Compass point, 21 Furrowed, 23 Dry, 24 Palm lily, 25 East (ab.), 26 Hypothetical force, 28 Diminutive suffix, 29 Frighten, 31 Soothe, 33 Boy, 34 Cravat, 35 Roof material, 37 Declaim, 40 Preposition, 41 Comparative suffix, 42 Railway (ab.), 43 Hour (ab.), 44 One-spot, 46 Feels, 51 Fish part, 52 Speed contest, 54 Plant part, 55 Row, 56 Russian warehouses, 58 Apes, 60 Chancel seat, 61 Most recent.

Answer to Previous Puzzle



CARNIVAL

BY DICK TURNER

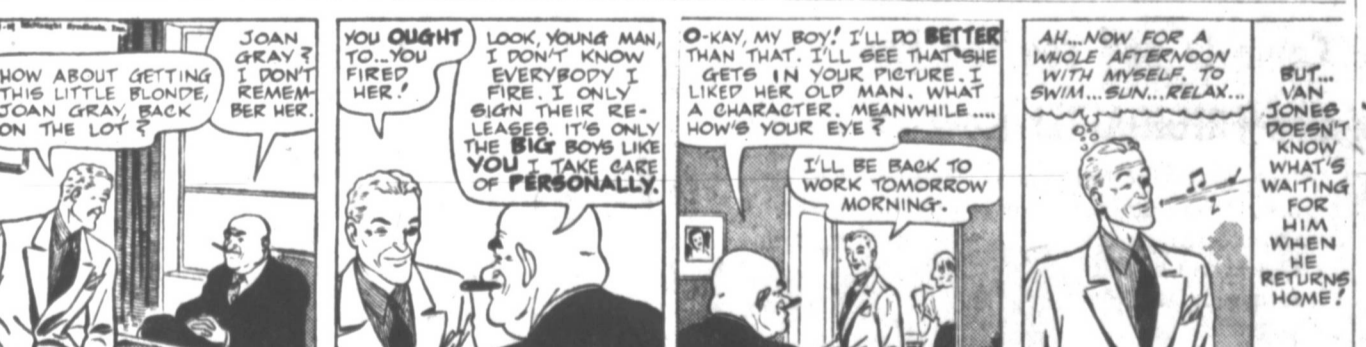


Kids don't realize what parents suffer for them! Think of all the weird breakfasts we ate just so he'd have enough boxtops to send for that gadget!

Mutt & Jeff



Hollywood Johnnie



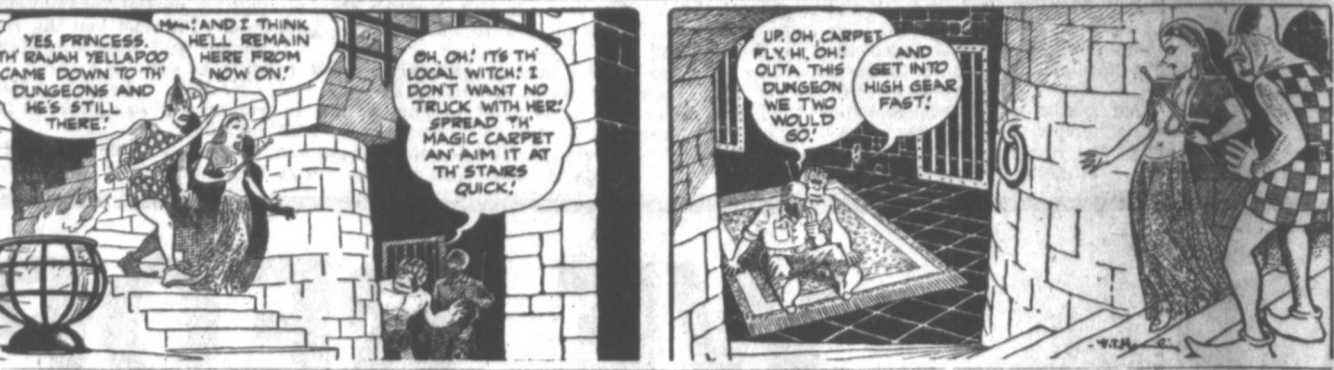
Priscilla's Pop



L'il Abner



Alley Oop



Blondie



Wash Tubbs



Red Ryder



Boots



Freckles



Vic Flint



Mickey Finn



Penny



Job Dir... at 2... trick... style... Att... Mess... man... and... Curt... Mrs... Linda... Hol... at... 10... a... WEB... MR... Ever... I... EN... even... We... 8:45... 123... J... T... Pho... Tu... Col... Blu... The... co... lac... Siz... size

John Henning Is Dinner Honoree

John Henning was honored with a surprise birthday dinner party at his home on March 11. Decorations carried out the St. Patrick's Day motif. The dinner was served buffet style after which gifts were presented to the honoree and "42" was played. Attending the party were Messrs. and Misses. Randy Holtman, Ray Beezley, Jack Criss and sons, Jackie and Terry Lee, Curtis Graham and son, Bobby, Mrs. J. P. Butler and Judy, and Mrs. Henning and Andy and Linda.

Holy Souls Church

There will be special services at Holy Souls Church during Lent. SUNDAY MASSES: 6, 8, 10, and 11:30 a. m. WEEKDAYS: 6:45 and 8 a. m. MIRACULOUS MEDAL NOVENA: Every Sunday night at 7:30. LENTEN DEVOTIONS: Sunday evenings - 7:30 Wednesday evenings - 7:30 Stations of the Cross, Friday: 8:45 p. m. and again at 7:30 p. m.

PORTRAITS
KODAKS—COMMERCIALS
Smith's Studio
132 W. Foster Phone 1510

JEFF D. BEARDEN
Representing
THE FRANKLIN LIFE INSURANCE CO.
Phone 47 Pampa, Texas

The Social Calendar

SUNDAY
5:30 Palm Sunday Vesper Concert by Mrs. H. A. Yoder and First Presbyterian Church Choir at church. Public is invited.

TUESDAY
2:00 Hopkins Home Demonstration Club with Mrs. R. W. Orr.
2:30 Twentieth Century Forum with Mrs. Frank Kelley, 504 Magnolia.
2:30 Twentieth Century Club with Mrs. R. J. Hagan, 1208 Christine.
2:30 Twentieth Century Culture Club with Mrs. E. G. Wedgeworth, 1135 Terrace.
2:30 WPCS of Lefors Methodist Church in church.
2:30 El Progresso Club with Mrs. Edgar W. Henshaw, 315 N. Ward.
7:30 Business and Professional Women's Club in City Club Rooms.
7:30 Theta Rho Girls Club in IOOF Hall.

WEDNESDAY
2:00 First Methodist Church WPCS Executive Board meeting in the church followed by organ recital by Mrs. G. L. Danner at 2:15 and general meeting at 2:30.
2:30 Women's Council of First Christian Church Group 1 with Mrs. Charles Madstra, 1015 E. Fisher; Group 2 with Mrs. D. J. Pison; 1021; E. Browning; Group 3 with Mrs. Morris Enloe, 541 Hughes; Group 4 with Mrs. Charles Ochiltree, five miles from city limits on Lefors Highway.
6:30 Dinner in St. Matthew's Episcopal Mission.
7:30 Forum Class of First Presbyterian Church dinner in church basement. Nursery will be provided.
THURSDAY
7:30 Rebekah Lodge in IOOF Hall.
Two series of sermons will be preached during the Lenten season. The Sunday night series—"The Passion and Death of the Redeemer of the World"—will be preached by the Rev. O. W. Meyer. The Wednesday night series—"God's Law of Obedience"—will be preached by the Rev. Francis Kunz, C. M.
All services open to the public.

The Woman's Page

Pampa News, Friday, March 19, 1948 PAGE 7

Former Librarian Is Luncheon Honoree

Mrs. E. E. Finley was hostess at a luncheon at the Schneider Hotel Wednesday noon in honor of Mrs. Evelyn Todd, former librarian of the Pampa Public Library. Mrs. Lillian Snow, present librarian, and the members of the Library Board were present. Mrs. Todd resigned her position a short time ago after serving nearly 20 years. She was in Pampa this week for a visit, but she is now living in Alva, Okla.

Sortority Meets With Mrs. Lane

Beta Sigma Phi held its regular meeting last Monday evening in the home of Mrs. McHenry Lane. Mrs. Travis Lively, Jr., was co-hostess. Miss Mary E. New who was in charge of the program gave a paper on the lives of many playwrights and actresses. One author, which was of particular interest was Eugene O'Neill. His last play, "The Ice Man Cometh," was discussed. The next meeting was announced for April 5 in the City Club Rooms.

PALM SUNDAY CONCERT
On Sunday afternoon at 5 o'clock in the First Presbyterian Church a Palm Sunday Vesper Concert will be presented by the choir and Mrs. H. A. Yoder, organist. Anthems pertaining to the Easter season will be sung by the choir and a ladies trio will sing. Mrs. Yoder will play several organ solos. The public is invited to attend the concert.

HOW COULD ASPIRIN BE PURER

You can rely on this famous name for aspirin as pure as money can buy. Why accept less.

St. Joseph ASPIRIN
WORLD'S LARGEST SELLER AT 10¢

Mrs. Roy Sullivan Is Class Hostess

Mrs. Roy Sullivan, 909 N. Somerville, was hostess to the Business and Professional Women's Class of the First Baptist Church on Monday evening, March 8. Miss Esie Seawright, in charge of the program, introduced Mrs. McHenry Lane who reviewed the book, "Peace of Mind." Refreshments of spiced tea and cakes were served from a table centered with an arrangement of spring flowers.

About thirty ladies were present including as guests, Mesdames J. V. Young, C. E. High, H. H. Hicks, Hueyln Laycock, M. E. Lamb, Mary Bossay, Bill Bennink, and Misses Bernice Larsh, Mary Reeve, Dean Dozier, Anna Belle Cox, and Myra Millard.

Larry Dan Houston Has Birthday Party

Mrs. Glenn Houston entertained with a birthday party on St. Patrick's Day for her son, Larry Dan, who was five years old. The room was decorated with green and white crepe paper and toy balloons. After games and various entertainments the honoree opened gifts from his little friends. Pink birthday cake and ice cream were served, and miniature Easter baskets and candies presented to each guest. Attending were Bobby and Teddy Cain, Mike and Carolyn King, Lloyd Carruth, Judith and Johnnie Ellis, Glenda Davlene Houston, Mrs. Gibson and Mrs. Marion Carruth who assisted the hostess.

SUNDAY SCHOOL LESSON
WHAT IS THE KINGDOM OF GOD?
(Scripture: Luke 4:16-20; Mark 4:26-29; Luke 17:20-21; Romans 14:7)
By WILLIAM E. GILROY, D. D.
If we use the Lord's Prayer daily, we pray to God not only for our daily bread, but also that His Kingdom may come.

What does it mean to pray, "Thy kingdom come?" Jesus himself defined it in the accompanying petition, "Thy will be done in earth as it is in heaven."

Kingdom, whether it be earthly or heavenly, implies sovereignty, loyalty and obedience. When a king's subjects are no longer loyal, and when they no longer obey his laws and commands, his kingship is in name only and he is due for a fall.

So it is that Jesus makes the very foundation of God's kingdom over man's obedience to God's commands. These commands are two: To love God with all the heart, soul, mind and strength and to love one's neighbor as one's self.

Jesus said, "The kingdom of God is within you." Whether He meant that it is inward, taking its rise in the hearts of men, or that it had come and was in the midst of those to whom He spoke, the effect of His words is the same. The Kingdom of God is here and now, and when we pray for its "coming," it is in the sense that it may come in the hearts of all over the whole world. For the kingdom of God will not come in its fullness until the will of God is done in earth as it is done in heaven.

That the kingdom of God is social in its nature and effects seems so clear from the passages for our lesson, that it is strange that anyone should question it. It is not a matter only of individual character and righteousness. A kingdom implies subjects, relationships and responsibilities. "We are members, one of another."

But the kingdom of God has its foundation in character even if it does not end there. The notion that humanity and our world can be made better by laws and outward adjustments that do not make men themselves better has little warrant either in the Bible or in common sense.

But this does not mean that laws and outward adjustments are not necessary. They are expressions of purpose, necessary for regulation and restraint of antisocial forces. But their ultimate test is, Are they helping to create a better humanity? Are they bringing us nearer to the answer to the prayer, "Thy kingdom come?"

Plans for Convention Of TFWC District 7 Are Being Perfected

Detailed plans were being worked out for the District 7 Convention of the Texas Federation of Women's Club to meet in Pampa April 5, 6 and 7. The first official session will be a dinner meeting of the Executive Board on the evening of April 5. The general sessions will start on the morning of April 6.

During the convention Pampa will be host to representatives of more than 160 women's clubs from 49 counties. The ladies in charge of arrangements and publicity are asking The News to make an appeal for housing for the delegates who will be in the city for the meetings.

Anyone who can take care of one or more house guests on April 6 and 7 is asked to call Mrs. Robert Sanford (988-W) or Mrs. Rufe Jordan (2287). Any hostess may specify whom she wishes to entertain if she has special friends coming from another city.

Merten HD Club Has Program on Shrubs

Mrs. Frank Bailey was hostess last Tuesday afternoon to members of the Merten Home Demonstration Club. Mrs. A. Swafford, vice president, conducted the business and Mrs. E. K. Ethridge led in a brief recreation period. Each member answered to roll call by giving a gardening hint. The club voted to donate \$10 to the Red Cross. A party for husbands was planned to be held soon in the home of Mr. C. L. Cudney. The program for the day was on planting of shrubs. Mrs. Florence Warriner gave a short talk on soil preparation and testing.

Mrs. C. A. Jones gave a talk on the selection of shrubs and where to plant them. She said that March and April are the best months to plant shrubs and stated that they did not require much water the first year. The speaker named some of the shrubs that should do well in the Panhandle area. For those best adapted for door stop plantings she named coral berry, winter jasmine, fern spires, dusty miller, flowering almond, yucca, and fern spires.

The high shrubs which she named were bridal wreath, holly, lantana, mock orange, forsythia, bush honeysuckle and mahonia. Refreshments were served after the formal program. Visitors at the meeting were Mrs. Cecil Chisum, Mrs. Herb Stone, and two children. The next meeting was announced for April 6 to be held in the home of Mrs. T. G. Groves.

Ambergris is used in the making of perfumes.

CHRISTIAN SCIENCE
"Matter" is the subject of the Lesson-Sermon which will be read in all Churches of Christ, Scientist, on Sunday, March 21, 1948.
The Golden Text is: "Love not the world, neither the things that are in the world. If any man love the world, the love of the Father is not in him." (1 John 2:15).
Among the citations which comprise the Lesson-Sermon is the following from the Bible: "Vanity of vanities, saith the Preacher, vanity of vanities; all is vanity." (Ecclesiastes 1:2).

PLANNING TO BUILD?
Commercial and Residential Buildings of All Types
Designed and Supervised
WALDON E. MOORE
STRUCTURAL ENGINEER
512 W. Kingsmill Phone 1705

The Fundamental Baptist Church
Meeting At The Carpenter's Hall
706 West Foster

Bible School 10:15 A. M., Studying Galatians
Preaching 11 A. M.—"The Victory of Faith"
Bible Study 3 P. M.—Sixth Chapter Genesis
Evangelistic Service 7:30 P. M.
Tuesday at the Tent on Miami Hiway 7:30 P. M.

A warm welcome awaits you here.
H. M. Hutchinson, Pastor

Our Easter Lovelies
ON PARADE

Beautiful
LINGERIE

PETTICOATS \$1.99 UP

SLIPS \$2.99 UP

GOWNS \$3.99 UP

Colors—White, Rose, Blue, Maize and black. The new look in petticoats. Extravagantly lace ruffled bottoms. Sizes—Waistband sizes 24 to 32.

Colors—White, Tearose, Blue, Maize, and black. Sizes—Missy 32 to 44—Generously ruffled lace trim bottoms and lace Coctails. Multifilament Crepe and Satin—

Colors—Blue, Tearose, Maize & White. Sizes—32 to 40. Lavishly lace trim, Multifilament Crepe and Satin, in Heavenly pastel colors.

FRANKLIN'S
109 N. CUYLER

GET YOUR EASTER DRY CLEANING DONE EARLY!

Try Our Famous Sanitone Service!

- Spots and Stains disappear like magic
- Dull colors are brought back to life
- Clothes are pressed to perfection
- Fresh as spring itself

The not-so-new items in your Easter wardrobe need not worry you. Use our Sanitone Service. You'll be amazed at the results. Call us now and beat the Easter rush.

DeLuxe DRY CLEANERS
315 W. Kingsmill Phone 616

SPECIAL HOLY WEEK SERVICES
Beginning Palm Sunday, March 21st
Closing Easter Sunday, March 28th

DR. HAROLD G. COOKE
President McMurry College, Abilene, Texas

WILL SPEAK AT ALL SERVICES
(Week Day Services, 7:30 P. M. Only)

We are planning a great day in our Church School on Palm Sunday. A cordial invitation is extended to come and worship with us at 9:45 a. m.

Dr. Cooke will speak at both morning and evening services—Palm Sunday.

First Methodist Church
CLYDE SMITH, Pastor

Montgomery Ward

Tire Prices Slashed!

Wards Premium Quality Tires!

Size	New Price*	Former Price*
6.00-16	12.35	13.75
6.25/6.50-16	15.00	16.65
6.50-15	14.70	16.35
7.00-15	16.85	18.70
7.00-16	17.25	19.15

*Federal Tax Extra

12³⁵ 6.00-16 Size Formerly 13.75
Fed. Tax Extra Whitewalls Also Reduced

Lowest Tire Prices in 6 Years! Prices cut up to 20%! Every passenger tire reduced! Yes, Wards premium quality Deluxe Tires at a New Low Price! Come in NOW! Get greater tire value than ever before! Buy a set of Wards Deluxe Riverside Tires NOW and SAVE!

EVERY PASSENGER TIRE IN STOCK REDUCED!

Common Ground

We Have Nothing to Remember, So Far

TOP O' TEXAS NEWS

Incident Brings Up Curious Question
An example of union philosophy and thinking is well exemplified in a recent incident that occurred in Orange County, California.

Fair Enough by Westbrook Pegler

To create a background of facts and personalities behind Henry Wallace's wacky association with Nicholas Roerich, the squint-eyed Russian medicine-man with the Fu Manchu whiskers, I refer to a rare publication.
It is entitled "Message of 1929," a little book from the Roerich Museum Press.

Common Ground

labor Leaders Will Not Debate
In January, I commented on labor union economics. The article was in reference to the CIO bulletin of December, bewailing profits and contending that excessive profits of corporations were the cause of inflation.



NATIONAL WHIRLIGIG news behind the news

By RAY TUCKER
an aggressive, determined individual, had become disgusted with the state of the Generalissimo's military establishment. He demanded the right to take full command of China's armed forces, which meant virtual control of the Chungking government.

Mobeetie

MOBEETIE (Special)—Mr. and Mrs. G. H. Hoving of Amarillo spent last weekend with their parents, Mr. and Mrs. W. B. Robinson.
Mr. and Mrs. L. M. Scribner and Mr. and Mrs. Lonnie Powell visited the women's parents, Mr. and Mrs. A. D. Alexander, last weekend.

In Hollywood

By ERSKINE JOHNSON
NEA Staff Correspondent
HOLLYWOOD (NEA)—Exclusively yours: M-G-M is quietly trying to lure Vivian Vance to co-star with Clark Gable in "Angel's Flight."
. . . It's a good bet that Dick Powell will get the lead in the U. I. film about the French Foreign Legion, "Rogue's Regiment."
. . . The Joan Crawford-Greg Baurer romance must be history. He was with Audrey Young at Ciro's. . . . More evidence that Howard Hughes is about to buy a large chunk of RKO stock. He went on a midnight tour of the lot.

Incident Brings Up Curious Question

An example of union philosophy and thinking is well exemplified in a recent incident that occurred in Orange County, California. It seems that the newspaper facilities in Long Beach were put out of action when a conduit exploded and short-circuited power lines.

SO THEY SAY

"If the United Nations fails to enforce its decisions, or the great powers fail to back up those decisions, the United Nations will sink into insignificance as did the League of Nations."
—Sen. Robert A. Taft (R) of Ohio.

Common Ground

Always disbelieve the picturesque stories that you read about the lavish, impulsive generosity of those winsome underworld cutthroats.
Well, look where we are! Tomorrow is another day.

NATIONAL WHIRLIGIG

By RAY TUCKER
an aggressive, determined individual, had become disgusted with the state of the Generalissimo's military establishment. He demanded the right to take full command of China's armed forces, which meant virtual control of the Chungking government.

Mobeetie

MOBEETIE (Special)—Mr. and Mrs. G. H. Hoving of Amarillo spent last weekend with their parents, Mr. and Mrs. W. B. Robinson.
Mr. and Mrs. L. M. Scribner and Mr. and Mrs. Lonnie Powell visited the women's parents, Mr. and Mrs. A. D. Alexander, last weekend.

In Hollywood

By ERSKINE JOHNSON
NEA Staff Correspondent
HOLLYWOOD (NEA)—Exclusively yours: M-G-M is quietly trying to lure Vivian Vance to co-star with Clark Gable in "Angel's Flight."
. . . It's a good bet that Dick Powell will get the lead in the U. I. film about the French Foreign Legion, "Rogue's Regiment."
. . . The Joan Crawford-Greg Baurer romance must be history. He was with Audrey Young at Ciro's. . . . More evidence that Howard Hughes is about to buy a large chunk of RKO stock. He went on a midnight tour of the lot.

Gracie Reports

By GRACIE ALLEN
In a recent farm-census report, I noticed that Los Angeles County is the richest in the United States in farm and milk products, and I can't say I'm surprised.
Hollywood has been shooting so many outdoor ranch and farm pictures lately that I imagine a lot of cows must have rushed to Hollywood to get in on the gravy and they have a two-way income here, too. Cows have been known to be worked on by the milker and the makeup man at the same time, so they could hurry right over to a motion-picture lot to take part in a western.

Mexico Lowers Immigrant Fees

MEXICO CITY (AP)—Mexican immigration fees have been lowered.
Tourist restrictions were abolished by the Department of the Interior after two months of protests.
Publication in the Diario Oficial made effective regulations that put tourists on their old basis of a \$2.10 fee.
A law, Jan. 1, retained that charge but applied rates up to \$40 for hunters, fishermen and others. All special fees are cancelled provided the visitors are not paid for what they do.

QUICKIES

By Ken Reynolds
"Alvin insisted on buying this house when the News Want Ad said it had a recreation room—like he goes down there and play he's BOSS!"

AS LONG AS I LIVE

By Ione Sandberg Shriver
© BY IONE SANDBERG SHRIVER. DISTRIBUTED BY NEA SERVICE, INC.
THE STORY: Ann Bancroft is in bed with a sick headache. After Rush, her husband, brings up her snapper and pampers her a bit, Ann decides she must have been convinced herself someone in her own household wanted to succeed her. Because she had a sneaking suspicion on the sales of her new snapper, she decided to check up on the matter.
Because the swinging bridge over the river in the garden had collapsed, killing Luke the gardener, Ann had a hunch she had been framed from a close neighbor. Ann had a sneaking suspicion on the sales of her new snapper, she decided to check up on the matter.

Mopsy

By Gladys Parker
I WHEN THEY'D GET TO THE STORES, I'D READ EVERY ONE OF THESE LITTLE URNS DOWN.

AS LONG AS I LIVE

By Ione Sandberg Shriver
© BY IONE SANDBERG SHRIVER. DISTRIBUTED BY NEA SERVICE, INC.
THE STORY: Ann Bancroft is in bed with a sick headache. After Rush, her husband, brings up her snapper and pampers her a bit, Ann decides she must have been convinced herself someone in her own household wanted to succeed her. Because she had a sneaking suspicion on the sales of her new snapper, she decided to check up on the matter.

OCEANIA'S ISLANDS

Oceania includes islands in the southern Pacific ocean that are neither Asiatic nor American. These include Malaysia, Australasia, and Polynesia.

UNNOTICED STORY

One of the biggest news stories to come out of Washington in some time went almost unheeded.
It was the announcement that a House Judiciary subcommittee unanimously appointed a constitutional amendment calling for the election of President and Vice President of the United States by popular ballot instead of via the electoral college.
The proposal was authored by a fortuitous Texan, Rep. Gossett, who correctly blamed the electoral college system for the present stranglehold on both political parties by highly organized racial minorities in the half dozen big pivotal states.
The proposal that the two highest officials of the government be elected by popular ballot is by no means new. It has been championed frequently in the past. It was only a subcommittee which approved it, but conditions in 1944 are such that the measure is sure to meet with a great clamor of popular support in both parties.

FUNNY BUSINESS

By HERSHBERGER
"Resolved that any labor union that interferes with a free market for labor by strikes or threats of strikes by seniority by limiting apprentices, by making work, or by setting the number of units that may be produced for a given amount of money is in perfect harmony with the Ten Commandments."
"Resolved that any labor union that interferes with a free market for labor by strikes or threats of strikes by seniority by limiting apprentices, by making work, or by setting the number of units that may be produced for a given amount of money is in perfect harmony with the Ten Commandments."
"Resolved that any labor union that interferes with a free market for labor by strikes or threats of strikes by seniority by limiting apprentices, by making work, or by setting the number of units that may be produced for a given amount of money is in perfect harmony with the Ten Commandments."

AS LONG AS I LIVE

By Ione Sandberg Shriver
© BY IONE SANDBERG SHRIVER. DISTRIBUTED BY NEA SERVICE, INC.
THE STORY: Ann Bancroft is in bed with a sick headache. After Rush, her husband, brings up her snapper and pampers her a bit, Ann decides she must have been convinced herself someone in her own household wanted to succeed her. Because she had a sneaking suspicion on the sales of her new snapper, she decided to check up on the matter.

Mopsy

By Gladys Parker
I WHEN THEY'D GET TO THE STORES, I'D READ EVERY ONE OF THESE LITTLE URNS DOWN.

AS LONG AS I LIVE

By Ione Sandberg Shriver
© BY IONE SANDBERG SHRIVER. DISTRIBUTED BY NEA SERVICE, INC.
THE STORY: Ann Bancroft is in bed with a sick headache. After Rush, her husband, brings up her snapper and pampers her a bit, Ann decides she must have been convinced herself someone in her own household wanted to succeed her. Because she had a sneaking suspicion on the sales of her new snapper, she decided to check up on the matter.

New Storage Plant Opened

Open house Saturday has been announced for Poole's Cold Storage and Frozen Food Lockers, 320 E. Brown. The new business was established by James A. Poole.

Coffee and doughnuts will be served all day to those who visit the new business, it was said. On that day, beef or pork quarters for halves will be available at wholesale price.

There are about 3,000 square feet of floor space in the building. A total of 350 lockers has been installed, and in time that number is to be increased to 600 or 700, the operator announced.

Read the News Classified Ads

Rio Grande Town May Be Moved

WASHINGTON —(AP)—The entire Texas town of Zapata on the Rio Grande may have to be moved to higher ground with the construction of Falcon Dam, attorney Robert Lee Bobbitt, Laredo, said.

Bobbitt, representing the commissioners of Zapata County, discussed the matter with Secretary of Interior Krug.

Zapata is the largest of several communities near the shoreline in the area to be covered by waters which will back up behind the Rio Grande dam, Bobbitt said. Work on the dam is to begin soon.

Many mountain lakes are created by landslides which dam streams.

CC Underwrites Early Purchase of Grass Seed Drill

A vote to underwrite the expense of a grass seed drill to be used by the Gray County Soil Conservation District was passed at a called meeting of the Chamber of Commerce Board of Directors this morning.

The action was taken after Quentin Williams, supervisor of the Gray County District, appeared before the board seeking aid in behalf of the newly created soil conservation program.

The machine will be used by farmers and ranchers of this district in the reseeded of grasslands for fall and summer pastures.

Williams estimated that within the next three or four years there would be 20,000 acres of reseeded land in this district.

The board recommended that the city exercise its priority to secure airfield lights and cable for the Pampa Army Air Field for use at the municipal airport. The board made this recommendation after a report by City Manager Steve Matthews stated that the equipment could be secured without cost to the city.

SCOUTERS MEET

About 40 Scout masters and troop committeemen from Gray and Carson Counties attended the regular monthly Scouters Roundtable in the Palm Room in the City Hall last night.

The meeting was conducted similar to a regular troop meeting, and suggestions were given for troop activities for the remainder of the month.

Political Calendar

The Pampa News has been authorized to present the names of the following citizens as Candidates for office subject to the action of the Democratic voters in their primary election on Saturday, July 24, 1948.

For County Sheriff:
JEFF GUTHRIE

For State Representative:
122nd District—
G. W. McILHANY
CARL B. MORRIS
VINCENT KERSEY

For District Clerk:
DEE PATTERSON

For County Judge:
BRUCE L. PARKER
JOHN O. PITTS

For County Clerk:
CHARLIE THUT

For County Tax Assessor and Collector:
F. E. LEECH

For County Treasurer:
OLA GREGORY

For County Attorney:
B. S. VIA
G. H. KYLE

For County Commissioner:
Precinct 1—
ALVA G. KING
JOE K. CLARKE
W. C. "Hank" BREINING

For County Commissioner:
Precinct 2—
NAT LUNSFORD
Z. H. (Pop) MUNDY
CLYDE ORGAN
E. C. SCHAFER
W. A. NOLAND
CARL BOSTON
J. W. "Bill" GRAHAM
BERTIE VAUGHT
IRVIN W. COLE

For Constable:
Precinct 1—
C. S. CLENDENEN
D. L. DAY

For Constable:
Precinct 2—
C. M. TUCKER
W. F. "Bill" LANGLEY
EARL LEWIS

For Justice of the Peace,
Precinct 1:
E. A. VANCE

mainly About People

Dr. and Mrs. W. R. Ballard attended the monthly meeting of the Amarillo Osteopathic Hospital staff and auxiliary held Wednesday at a private home in Amarillo.

Large cotton flour bags 28c each, excellent for tea towels and aprons for sale at Pampa Baking Co.

Mrs. A. W. Babione underwent minor surgery Thursday and is a patient in Pampa Hospital.

Josephine (Jo) Young, formerly of Behman's is now at Bentley's. She invites old friends and customers to visit her there.

Eula Marie Meers, a student at Texas Christian University, came home from Ft. Worth to attend the funeral of her grandfather, Mr. A. N. Meadows.

Elderly couple needs 3 room furnished apartment. Best of references. Call Classified Dept. Pampa News.

Mrs. L. Z. Rhodes of Shellytown was a Pampa visitor today.

Fuller Brushes? Call Bates P1885. Special Wed nite dance to string band. Open every day except Sun. Cold beer. Dancing Sie's Barn.

Jeanine Conyers, a Pampa girl who is a student at TSCW, Denton, spent last weekend with Eula Marie Meers in Ft. Worth.

With the return of spring comes now the return of Pinky Powell's Orchestra. Dance March 20th and every Sat. nite, with Pinky and his modern brass band. Adm. 75c per person. No table charges. Southern Club.

W. L. Boyles and Jack Nimmo were Dallas visitors yesterday. Jewell Range for sale. Ph. 9545.

Cadet E. M. Keller, Jr., 1905 Ripley, of Kemper Military School, Boonville, Mo., is home on a four-day spring furlough. He will return to Kemper on Monday.

Mrs. Joe Humphrey and daughter, Linda Lou, will leave Saturday to join Mr. Humphrey in Florence, Kans. Also making the trip are Mr. and Mrs. Earl Miller and children, Mickey Joe and Linda Mae. The Millers will return on Sunday.

The Bell Home Demonstration Club's monthly party will be held at Bell School Saturday evening at 8 o'clock. The party is for the families of members.

H. C. Furrer underwent an operation in Worley Hospital last Friday. He is improving nicely and was moved to the E. C. Schaffer home on Thursday.

Mr. and Mrs. Glen Crouse are the parents of a 6 lb. 14 1/2 oz. son, born March 17. The boy's grandparents are Mr. and Mrs. E. M. Crouse and Mr. and Mrs. B. R. Nuckols.

O'DANIEL

(Continued from Page 1)

lins is a little hasty in calling for my defeat.

"I recognize his right to declare his support for any candidate who has announced, but it seems to me that there must be some unseen impelling motive to cause a person to ask for the defeat of a man who has not yet entered the race.

"Although I have not announced as a candidate for reelection, I am still serving as United States senator, and therefore, must say that any statement to the effect that I am or have been an isolationist, as charged by Mr. Collins, is untrue.

"The charge cannot in any way be substantiated by my voting record. I have voted to support President Roosevelt and President Truman on every war measure they requested. I voted for our entry into the United Nations and have consistently favored our nation taking a leading role in world affairs.

"Only yesterday I commented favorably upon President's recommendations to use armed force to protect the rights of smaller nations against the aggressor Stalin as the only effective means of maintaining peace in this world."

Collins said in his statement: "O'Daniel's position in the United States Senate has much to do with our foreign relations and he has repeatedly shown he is an isolationist in an extreme sense."

FINNS

(Continued from Page 1)

committees" which helped to terrorize Czech Democrats and overthrow the Czech government? They have already started to organize factory use armed force to support a Russian pact. They have already been rebuked by leaders of other parties for trying to "provoke unrest."

On the bright side for integral peace in Finland is the small size of Finland's Communist Party: only something between 28,000 and 45,000 in a population of 3,775,000.

WALLACE

(Continued from Page 1)

for-president drive got underway. Telegrams to chairmen of both the Republican and Democratic National Committees called for support of the former Army chief of staff as a unity nominee. They went out from headquarters of the "National Committee for Eisenhower and Unity" set up in New York by a group headed by Attorney Paul Stockhammer.

FINNE ON DWI

Orville R. Coursey was fined \$100 and costs this morning in County Court on a charge of driving while intoxicated.

CONTROVERSY

(Continued from Page 1)

flight to the Governor's Safety Conference in Dallas in order to officiate in the final arbitration, had ordered that unless the dispute was settled immediately, he would withdraw the affiliation and accreditation status of the Fort Neches Independent School District.

Father of Pampan Dies at Canyon

Randall County Judge A. H. Hunt, 76, father of D. A. Hunt of Pampa, died at Canyon at 8 p.m. last night.

Judge Hunt, in ill health for several years, had been in a critical condition during the past week. He was stricken with a heart attack as he visited his wife who is in a Canyon hospital.

SELECTEES

(Continued from Page 1)

posals and policies were under fresh attack from his fired cabinet member, Henry A. Wallace.

In a radio address last night, Wallace.

In a radio address last night, Wallace charged that the Truman doctrine of supporting Communist threats to countries is being extended "to the point where it threatens the life of every human being in the world."

He complained that St. Patrick's Day speeches—Mr. Truman's included—were "hysteria-breeding."

The third party presidential candidate demanded to know "why have we reached this crisis in world affairs?"

Some Republicans said they want to know that, too. But they were careful not to side with Wallace. And almost none of them, including Truman, would comment on the former vice president's charges.

SCHOOL MAN NEEDED

DONNA—(AP)—Donna today needed a new school superintendent.

Forrest Country superintendent for six years and faculty member for 18, quit yesterday.

Drafting Supplies

Ozolid Prints
Slide Rules
M. N. T. Blue
M. N. T. Print Co.
512 W. Kingsmill Phone 1705

Wm. T. Fraser & Co.

The INSURANCE Men
Automobile, Compensation, Fire and Liability Insurance
112 W. Kingsmill Phone 1044

FIRE EXTINGUISHERS

CO2-CARBON DIOXIDE RECHARGING SERVICE
519 S. Cuyler Phone 1224
Radcliff Bros. Electric Co.

CONTRIBUTION

Funeral services for Saturday or Hunt of Pampa; and a daughter, Sunday are pending.

Judge Hunt, a native of East Texas, lived in Wheeler from 1919 to 1927. He had lived at Canyon since 1927.

Survivors include his wife; six sons, T. H. M. G. and A. E. Hunt of Portales; H. L. Hunt of Dallas; N. M. Hunt of Amarillo; and D. A. Hunt of Pampa.

GET Liberal Trade-in ALLOWANCES

For your Tires and Batteries at
KITCHEN'S OK TIRE SHOP
300 W. Kingsmill Phone 1254

Pratt & Lambert Paints and Varnishes

Seidlitz Paints and Varnishes
Unitized Wallpaper
Kemtone Gal. \$2.95
Call us for reliable painters and paperhangers.
HOME BUILDERS SUPPLY
312 W. Foster Phone 1414

Congratulations To Poole's

On Their New Cold Storage And Frozen Food Locker

We are proud to have been selected to do all the electrical wiring and furnish the fixtures for this new plant.

Free Estimates On All Electrical Contracting Gladly Given

Plains Electric Co.

1124 Alcock Phone 414

Our Sincere Congratulations To POOLE'S COLD STORAGE And FROZEN FOOD LOCKERS

We are proud of having had the privilege of supplying all building material for this fine new Pampa firm.

Lynn Boyd Lumber Yard

805 S. Cuyler Phone 900

We Invite You To Our ...


OPEN HOUSE

SATURDAY, MARCH 20TH

You are cordially invited to see our new large, modern

LOCKER PLANT

Our Rental Service makes locker savings available to everyone.



COFFEE AND DOUGHNUTS SERVED ALL DAY
MEATS AVAILABLE AT WHOLESALE PRICE ON QUARTERS AND HALVES... BEEF OR PORK

POOLE'S

COLD STORAGE AND FROZEN FOOD LOCKERS
320 E. Brown TELEPHONE 9523

FINNS

(Continued from Page 1)

committees" which helped to terrorize Czech Democrats and overthrow the Czech government? They have already started to organize factory use armed force to support a Russian pact. They have already been rebuked by leaders of other parties for trying to "provoke unrest."

On the bright side for integral peace in Finland is the small size of Finland's Communist Party: only something between 28,000 and 45,000 in a population of 3,775,000.

WALLACE

(Continued from Page 1)

for-president drive got underway. Telegrams to chairmen of both the Republican and Democratic National Committees called for support of the former Army chief of staff as a unity nominee. They went out from headquarters of the "National Committee for Eisenhower and Unity" set up in New York by a group headed by Attorney Paul Stockhammer.

FINNE ON DWI

Orville R. Coursey was fined \$100 and costs this morning in County Court on a charge of driving while intoxicated.

Drafting Supplies

Ozolid Prints
Slide Rules
M. N. T. Blue
M. N. T. Print Co.
512 W. Kingsmill Phone 1705

Wm. T. Fraser & Co.

The INSURANCE Men
Automobile, Compensation, Fire and Liability Insurance
112 W. Kingsmill Phone 1044

FIRE EXTINGUISHERS

CO2-CARBON DIOXIDE RECHARGING SERVICE
519 S. Cuyler Phone 1224
Radcliff Bros. Electric Co.

Every Fall and Spring, fast-flying V's of wild geese migrate "ahead" of the weather. In some mysterious way, they pre-empt each change of season.



Poll-Parrot Shoes are Pre-Tested, Too

By letting active, healthy children actually try out all new designs, Poll-Parrot craftsmen learn where extra strength is needed... how to make leather hold its shape longer... how to give your budget a break, by building longer lasting quality. Come in today and see our many styles.



PRE-TESTED
Poll-Parrot SHOES FOR BOYS AND GIRLS
\$5.95

Smith's Quality Shoes

307 N. Cuyler Phone 1440

114,502 WATCHES SOLD AT ZALE'S LAST YEAR

THESE ARE THE FACTS:

We, at Zale's, do our best to give you the most quality and value for your money. And to prove it, our watch business last year was the biggest in our history. We sold 114,502 fine jeweled watches. That is the reason we say with complete confidence that Zale's is the watch store of the Southwest and Middle West. And remember, any watch bought in one Zale store can be serviced in any of the 26 Zale stores. See our large selection, then choose the watch your heart desires.

CONVENIENT WEEKLY OR MONTHLY TERMS
Never An Interest Or Carrying Charge



BAYLOR WATCHES
Choice \$19.75

Smart Baylor watches designed to please both men and women. Guaranteed 17-jewel movement, rolled gold plated, expansion bands. A real Zale value.

MAIL ORDERS PROMPTLY FILLED

4 Ways to Buy—
CASH
LAY-AWAY
CHARGE
OPEN ACCOUNT

AUTOMATIC BAYLOR

You'll like the service features in this 17-jewel self-winding, moisture-resistant Baylor watch. Anti-magnetic, stainless steel case, sweep-second hand. Designed to take hard usage, yet give excellent service. \$37.50

17-Jewel BULOVA \$37.50
17-Jewel WALTHAM \$55.00
17-Jewel Elgin DeLuxe \$50.00
17-Jewel GRUEN \$42.50
1-Diamond 14K Gold BAYLOR \$88.50
14K 17-Jewel BAYLOR \$71.50
17-Jewel Elgin DeLuxe \$50.00
1-Diamond BAYLOR \$88.75
17-Jewel WALTHAM \$68.50

Expensive WATCH BANDS
PRICES INCLUDE FEDERAL TAX

DIAMOND IMPORTERS
ZALE'S Jewelers
107 N. Cuyler