



"There is so much good in the worst of us, and so much bad in the best of us, that it hardly behooves any of us to talk about the rest of us." —Anonymous

The Pampa Daily News

WEATHER
TOP OF TEXAS: Fair and continued very cold through Wednesday. Low 5, High 32.

DL 28—NO. 220

Circulation Certified by ABC Audit

PAMPA, TEXAS, TUESDAY, FEBRUARY 23, 1960

(12 PAGES TODAY)

Weekdays 46
Sundays 154

Athletic Director's Name Named

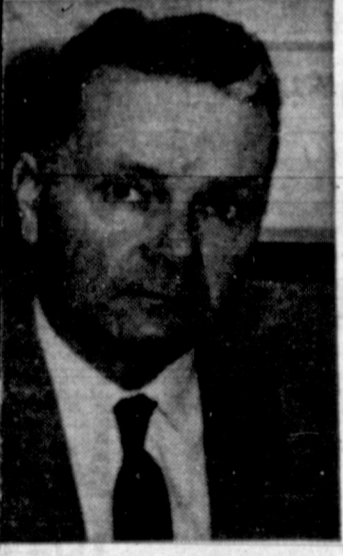
Qual Job Goes to Edmondson



L. J. EDMONDSON
Asst. Supt.

A pair of promotions in the Pampa schools system was a major item on the agenda of the board of education's meeting yesterday afternoon at 4 p.m. in Pampa Junior High School.

Jack Edmondson, high school principal, was named to the newly created post of assistant superintendent of schools and athletic director.



CAMERON MARSH
High School Principal

His former position will be filled by Cameron Marsh, principal of Pampa Junior High School, person to fill Marsh's job will be named later.

The action was no surprise move, it had been discussed at previous gatherings of board members.

The new position may or may not be a permanent one. Members took the action, it came out at a meeting, for the purpose of breaking in a replacement for superintendent Knox Kinard, who will in a few months reach the mandatory retirement age of 65.

Members agreed that if during the tenure of Edmondson a need for a permanent assistant athletic director was apparent, then the position might well be made permanent. The athletic director's duties were added to the job because it was felt by a majority of members that the appointments would have sufficient time to devote to athletic affairs and that such a post is needed.

Ike Leaves Puerto Rico, To Visit Brazil

Japan's Royal Princess Gives Birth To Boy

TOKYO (UPI)—Crown Princess Michiko today gave birth to a boy who may one day ascend the chrysanthemum throne as the 128th emperor of Japan.

The "Cinderella" princess, a 25-year-old commoner who won the heart of Crown Prince Akihito in a romance that began on the tennis courts at Karuzaiwa, gave birth to her first child nine days before the imperial doctors had predicted.

Michiko suffered "severe labor pains" for several hours prior to the birth. She had a "spontaneous natural delivery" 23 minutes after entering the delivery room.

Bills, Purchasing Questioned

Policy Muddle At School Board Meet

The absence of a clear-cut purchasing policy, among other things was discussed at yesterday's meeting of the Pampa Board of Education when member Elmer Wilson broached the subject of bid-taking on school purchases. The questioning among members took place in the closing minutes of the meeting.

Wilson got around to the purchasing subject after he wondered out loud why minutes of the board meetings always stated that, in his words, "payment of bills was approved."

Talks Slated With Brazil's President

RAMEY AFB, Puerto Rico (UPI)—President Eisenhower left Puerto Rico by jet airliner today en route to Brasilia, the modernistic new capital of Brazil, where he and President Juscelino Kubitschek will seek means of curbing the Communist menace in Latin America.

The two nations planned to issue a second "Declaration of Brasilia" today calling for inter-American economic and other cooperation as the best means of meeting these Red threats.



PASHA SPEAKS — Glubb Pasha, who has been described as "legendary a figure in the Arab world as T. E. Lawrence," is greeted by Pampa developer C. P. Buckler, left, before his address last night at the Knife and Fork Club. The two men are standing before a map of countries the General used to illustrate his talk to the group. (See story on Page 5). (Daily News Photo)

Coronado Inn Now Officially In City

By CHARLIE CROSS
Daily News Staff Writer

Probably the most controversial issue ever to come before a city commission was again hotly discussed in the commission meeting today.

The question of whether to admit the Coronado Inn into the city limits, which has been the subject of fiery arguments for the past three weeks, and was tabled once for further consideration, was passed on third and final reading today to officially receive the hotel into the city limits.

33 Arrested In Richmond

RICHMOND, Va. (UPI)—Police arrested 33 Negroes who tried to enter a fancy tea room in Richmond's largest department store Monday.

Sixty or more others were standing in line to be arrested when a Negro professor told them to leave because "we feel we already have a case."

At Durham, N.C., Negro leaders announced resumption of their campaign to integrate lunch counters of dime, drug and department stores. The Rev. Douglas Moore released a resolution saying, "We will use whatever and whenever practical methods of protest associated with picketing, boycotting and further lawful and peaceful means."

Four Fliers Are Rescued After Storm

HELENA, Mont. (UPI)—A single-engine four-seater plane took off from Great Falls, Mont., and headed southwest for the Gray spots of Las Vegas, Nev.

Ernest J. McCabe Jr., 41, a lawyer and veteran pilot of World War II, was at the controls. His buddy, Jack Flynn, 38, also a pilot, sat next to him.

Seated behind them, chatting gaily about getting away from the cold Montana winter, were their wives, Ellen McCabe and Florence Flynn.

Pampans To Attend 'Aircade'

Nine Pampa businessmen will attend the fourth annual Aircade For Congressional Action, Friday at the Texas Hotel in Fort Worth.

The Aircade is a series of meetings designed to give businessmen a better understanding of the issues facing this session of Congress, especially those affecting business.

Civil Rights Case To Supreme Court

WASHINGTON (UPI)—The Supreme Court picked up the civil rights debate today on its return to the bench following four weeks off for opinion writing.

The justices hand down their decisions at 12 noon e.s.t. They then were scheduled to hear two hours of argument on whether 1,277 Negroes should be restored to the voting rolls of Washington Parish, La.

Hotel Fire Kills Seven

OMAHA, Neb. (UPI)—At least seven persons were killed early today when a three-alarm fire swept through a small hotel near the warehouse district here.

Firemen said seven bodies had been taken from the three-story brick building, four persons were hospitalized, and one occupant was reported missing.

Candidate Withdraws

Bud Wells, candidate for constable, Pct. 1, Lefors has withdrawn his candidacy for that office.

Wells, in a statement to the Daily News, said he has been employed by the Pampa Fire Department, and must move from the precinct.

Finch Trial DA To Close Case Today

LOS ANGELES (UPI)—Tough prosecutor Clifford Crail sends the Finch-Tregoff murder trial to its climax today by opening final arguments aimed at putting the surgeon and his young mistress in the gas chamber.

Crail, a doom-voiced veteran of the district attorney's office, has announced he will seek the death penalty for handsome Dr. R. Bernard Finch, 42, and Carole Tregoff, 23. They are accused of the July 18 gunshot slaying of Finch's wife Barbara Jean.

Bergman's Daughter Is Married

SAN FRANCISCO (UPI)—Actress Ingrid Bergman's daughter went back to classes at Mills College today and her husband of less than 48 hours returned to his job with an electronics firm.

Jennie Ann (Pia) Lindstrom, 21, and Fuller E. Callaway III, 28, revealed Monday they were married "on the spur of the moment" Sunday night in the county jail at Elko, Nev.

Train, Truck In Collision

WASHBURN, Tex. (UPI)—A speeding freight train smashed a truck at a crossing near Washburn Monday, killing Margaret Jean Ford, 17, of Dallas and critically injuring her companion.

Floyd James Cannaday, 30, of Mesquite, was hospitalized in critical condition at Northwest Texas Hospital in Amarillo, 12 miles south of here. He was driving the truck.

Bergman's Daughter Is Married

SAN FRANCISCO (UPI)—Actress Ingrid Bergman's daughter went back to classes at Mills College today and her husband of less than 48 hours returned to his job with an electronics firm.

Jennie Ann (Pia) Lindstrom, 21, and Fuller E. Callaway III, 28, revealed Monday they were married "on the spur of the moment" Sunday night in the county jail at Elko, Nev.

Train, Truck In Collision

WASHBURN, Tex. (UPI)—A speeding freight train smashed a truck at a crossing near Washburn Monday, killing Margaret Jean Ford, 17, of Dallas and critically injuring her companion.

Floyd James Cannaday, 30, of Mesquite, was hospitalized in critical condition at Northwest Texas Hospital in Amarillo, 12 miles south of here. He was driving the truck.

Hotel Fire Kills Seven

OMAHA, Neb. (UPI)—At least seven persons were killed early today when a three-alarm fire swept through a small hotel near the warehouse district here.

Firemen said seven bodies had been taken from the three-story brick building, four persons were hospitalized, and one occupant was reported missing.

Candidate Withdraws

Bud Wells, candidate for constable, Pct. 1, Lefors has withdrawn his candidacy for that office.

Wells, in a statement to the Daily News, said he has been employed by the Pampa Fire Department, and must move from the precinct.

Hotel Fire Kills Seven

OMAHA, Neb. (UPI)—At least seven persons were killed early today when a three-alarm fire swept through a small hotel near the warehouse district here.

Firemen said seven bodies had been taken from the three-story brick building, four persons were hospitalized, and one occupant was reported missing.

Candidate Withdraws

Bud Wells, candidate for constable, Pct. 1, Lefors has withdrawn his candidacy for that office.

Wells, in a statement to the Daily News, said he has been employed by the Pampa Fire Department, and must move from the precinct.

Hotel Fire Kills Seven

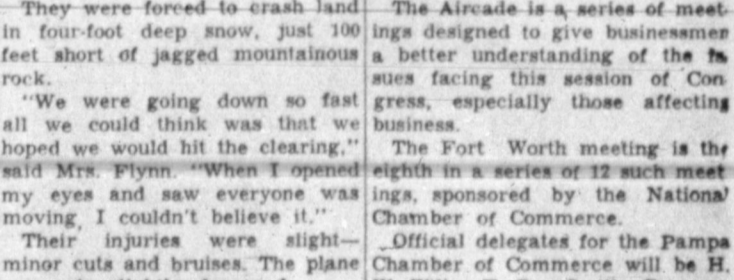
OMAHA, Neb. (UPI)—At least seven persons were killed early today when a three-alarm fire swept through a small hotel near the warehouse district here.

Firemen said seven bodies had been taken from the three-story brick building, four persons were hospitalized, and one occupant was reported missing.

Candidate Withdraws

Bud Wells, candidate for constable, Pct. 1, Lefors has withdrawn his candidacy for that office.

Wells, in a statement to the Daily News, said he has been employed by the Pampa Fire Department, and must move from the precinct.



KIWANIANS — 23 members of the Pampa Kiwanis Club prepare to embark on a trip to Norman, Oklahoma, by bus. The men, all members of the downtown Kiwanis club, made the trip to Norman to hear the Governor of Kiwanis International in a speech last night before Kiwanians from Division 6 of the organization. (Daily News Photo)

Television Programs

TUESDAY	WEDNESDAY
KGNB-TV Channel 4	KGNB-TV Channel 4
6:00 Continental Classroom	6:30 Continental Classroom
7:00 Today	7:00 Today
9:00 Dough-De-Mi	9:00 Dough-De-Mi
9:30 Play Your Hunch	9:30 Play Your Hunch
10:00 The Price Is Right	10:00 The Price Is Right
10:30 Concentration	10:30 Concentration
11:00 Truth or Consequences	11:00 Truth or Consequences
11:30 It Could Be You	11:30 It Could Be You
12:00 News & Weather	12:00 News & Weather
12:25 New Ideas	12:25 New Ideas
12:30 Ding Dong School	12:30 Ding Dong School
1:00 Queen for a Day	1:00 Queen for a Day
1:30 Loretta Young	1:30 Loretta Young
2:00 Young Dr. Malone	2:00 Young Dr. Malone
2:30 From These Roots	2:30 From These Roots
3:00 The Thin Man	3:00 The Thin Man
3:30 Yancy Derringer	3:30 Yancy Derringer
4:00 Ghost and Mrs. Muir	4:00 Late George Apley
5:45 NBC News	5:45 NBC News
6:00 News	6:00 Local News, Spts, Weather
6:15 Sports	6:30 Wagon Train
6:30 Weather	7:30 Price Is Right
6:50 Laramie	8:00 Perry Como
7:30 Wichita Town	9:00 Pontiac Star Parade
8:00 Meet McGraw	10:00 News
8:30 Arthur Murray	10:15 Scoreboard
9:00 M-Squad	10:20 Weather
9:30 Lock Up	10:30 Jack Paar
10:00 News	
10:15 Scoreboard	Channel 18
10:20 Weather	KFDA-TV
10:30 Jack Paar Show	6:30 Sunrise Classroom
11:00 Sign Off	7:00 It Happened Last Night
	7:45 Little Rascals
KFDA-TV	8:15 Captain Kangaroo
Channel 18	9:00 Jack La Lann
6:30 Sunrise Classroom	9:30 On The Go
7:00 It Happened Last Night	10:00 I Love Lucy
7:45 Little Rascals	10:30 December Bride
8:15 Captain Kangaroo	11:00 Love of Life
8:50 Jack La Lann	11:30 Search for Tomorrow
9:30 On The Go	11:45 Guiding Light
10:00 I Love Lucy	12:00 Comedy Theatre
10:30 December Bride	12:30 As The World Turns
11:00 Love of Life	1:00 Four Star Playhouse
11:30 Search for Tomorrow	1:30 House Party
11:45 Guiding Light	2:00 The Millionaire
12:00 My Little Margie	2:30 Verdict Is Yours
12:30 As The World Turns	3:00 Brighter Day
1:00 Four Star Playhouse	3:15 Secret Storm
1:30 House Party	3:30 Edge of Night
2:00 Divorce Hearing	4:00 Giant Kids Matinee
2:30 Verdict Is Yours	5:30 News, Weather, Sports
3:00 Brighter Day	5:45 Drug Edwards
3:15 Secret Storm	6:00 Highway Patrol
3:30 The Edge of Night	6:30 Eyewitness to History
4:00 Giant Kids Matinee	7:00 Playhouse 99
4:30 Mickey & Amanda	8:30 I've Got A Secret
5:30 News, Spts., Weather	9:00 Circle Theatre
6:00 Highway Patrol	10:00 Movie
6:30 Brave Stallion	
7:00 Dennis O'Keefe	KVII-TV
7:30 Many Loves of Gillis	Channel 7
8:00 Tightrope	8:00 Cartoons
8:30 Red Skelton	10:00 Movie
9:00 Garry Moore	12:00 Restless Gun
10:00 June Allyson	12:30 Bob Cummings
10:30 Movie	1:00 About Faces
	1:30 Our Miss Brooks
KVII-TV	2:00 Your Day In Court
Channel 7	2:30 Gale Storm
8:00 Cartoons	3:00 Beat The Clock
10:00 Movie	3:30 Who Do You Trust?
12:00 Restless Gun	4:00 American Bandstand
12:30 Bob Cummings	5:30 My Friend Flicka
1:00 About Faces	6:00 African Patrol
1:30 Our Miss Brooks	6:30 Court of Last Resort
2:00 Your Day In Court	7:00 Charley Weaver Show
2:30 Oh Susannah	7:30 Ozie & Harriet
3:00 Beat The Clock	8:00 Hawaiian Eye
3:30 Who Do You Trust?	9:00 Sea Hunt
4:00 American Bandstand	9:30 The Rebel
4:30 Rin Tin Tin	10:00 News
5:00 Robin Hood	10:15 Sports
5:30 Bronco	10:25 Weather
6:00 Wyatt Earp	10:30 Fabulous Features
6:30 Rifleman	
7:00 Four Just Men	Four important New England
7:30 Alcoa Presents	rivers start in New Hampshire,
8:00 Keep Talking	Androscoogin, Connecticut, Mer-
9:00 News, Weather, Spts.	rimack and Saco.
10:00 Santa Fe Passage	
10:30 Nightcap News	

IT PAYS TO READ THE CLASSIFIED PAGE



FOR FAST EVACUATION—Research toward making modern airliners the safest method of transportation goes on continually. But when it is necessary to ditch a plane, this plastic evacuation chute is a life-saver. Inflatable in nine seconds, the chute is used on both land and water.

DOUBLE FRONTIER STAMPS ON WEDNESDAY
BEEF TO ME MEANS FURR'S BEEF - U.S.D.A. CHOICE, THAT IS



You can look far and wide . . . buy many descriptions of meats . . . but for those on which you can truly depend are to be found at Furr's Super Markets -- the U. S. Government Graded meats. Furr's features USDA Choice meats and guarantees every ounce it sells. Look no further than Furr's when it comes to dependable meats, meats that are table-trimmed, guaranteed & tasty to the last bite -- that's the description for meats at Furr's Super Markets!



CHUCK ROAST U.S.D.A. CHOICE BEEF LB. **43c**
SIRLOIN STEAK U.S.D.A. CHOICE BEEF LB. **89c**

Boneless Pre-diced STEW MEAT lb. 59c
Swifts Eversweet BACON lb. 39c
Fresh Ground Beef CHILI MEAT lb. 49c
Food Club BISCUITS 3 for 25c
Fresh Lean Tender Pork PORK CUTLETS lb. 69c
Phillidelphia, 8-oz. pkg. CREAM CHEESE 29c

WIN! WITH YOUR FURR'S BONAS PLAN CARD!
Just be sure to bring your card each time you make a purchase at Furr's. When your card is completely and correctly filled you are guaranteed a win of \$1.00! Other winnings may go as high as \$1,000.00!

FOR NATIONAL BRANDS OF ASSURED QUALITY, SHOP FURR'S! THE SELECTIONS ARE GREATER, PRICES ARE LOWER!

ORANGE JUICE Golden Gem Fresh Frozen 6-Oz. Can **2 FOR 25c**
INSTANT COFFEE Maryland Club 6-Oz. Jar **89c**
MIRACLE WHIP Kraft Quart **49c**
WAFFLE SYRUP Brer Rabbit 34-Oz. Bottle 6c Off Label **29c**

BREAD BUTTERNUT, 1 1/2 lb. loaf **19c**
GRAPE JELLY Kraft **35c**
CORN Kounty Kist Whole Kernel, 12 oz. can **12 1/2c**
GREEN BEANS Libby's Cut No. 303 can **19c**
POT PIES Spare Time Chicken, Beef or Turkey **19c**
Grapefruit Juice Top Frost Fresh Frozen, 6 oz. can **15c**

CRACKERS BREMNER 1-LB. BOX **19c**
TOMATO JUICE LIBBYS 46-oz. can **25c**
APPLES LOTUS, PIE SLICED NO. 2 CAN **19c**
MILK Pet or Carnation 2 TALL CANS FOR **27c**
COFFEE Maryland Club or Folgers, All Grinds lb. **69c**

WESSON OIL qt. **49c**
FOOD CLUB, CUT ALL GREEN NO. 300 CAN
ASPARAGUS **25c**
LIQUID DETERGENT, 22-OZ. CAN
TOPCO **49c**

Top Frost, Whole 10-oz. pkg. **OKRA** **19c**
Kraft, Includes 5c off label **French Dressing** qt. **34c**
King Size **VANISH** **39c**
Underwood's I-4 can **Deviled Ham** can **19c**
Kraft **MAYONNAISE** qt. **39c**
Food Club 14 qt. pkg. **Instant Milk** pkg **59c**

GENERAL MERCHANDISE
VAPOR RUB VICKS 89c SIZE **59c**
ALCOHOL pint **9c**
70c size pressure can Noxzema **SHAVING CREAM** **61c**
29c size Nestles **HAIR SET** **19c**
89c size Pepsodent **TOOTH BRUSH** **49c**
RECORDS **1.37**

ONIONS
U.S. NO. 1 CALIFORNIA **5c**
YELLOW LB.
RUTABAGAS Waxed, Medium Size Yellow Meat LB. **10c**
ORANGES California Sunkist Navel LB. **15c**
POTATOES US No. 1 Colorado Red 10 LB. BAG **49c**



House Is Also An Investment

By EDWARD COWAN
United Press International

WASHINGTON (UPI)—A house is not only a place to live or a family. It is also an investment for the owner. Many people who buy a house with a mortgage have little in the way of savings except for the equity they build up in the house. In time of emergency, the use of the house may determine how much money the family can have.

Sound and strictly enforced zoning regulations protect the residential character of a neighborhood, the article points out. So do properly drawn protective covenants.

Geographical position of a neighborhood is also something to consider when looking at a new house. Chances of deterioration are relatively small for heavily built up areas away from main traffic arteries. There is greater uncertainty about the future of a partially developed area, especially if it is not protected by zoning rules or covenants.

The article adds that "where heavy traffic streets pass directly through or on the boundaries of the neighborhood, there is a constant threat that land uses will be changed from residential to non-residential."

Also contributing heavily to stability of value are adequate schools, shopping facilities, churches, playgrounds, parks, community halls, libraries, hospitals and theaters, according to Albert.

Working against this "law of inflation" are other things. In a period of inflation the nominal dollar value of land or a house can be expected to increase. (Its real value will decline if its price fails to go up as much as the dollar is shrunk.)

Dr. a house may go up in value because of a general improvement in the neighborhood. Similarly, it may fall sharply in worth if the neighborhood deteriorates. Some of the neighborhood factors affecting property values are listed out by Sterling H. Albert in an article in the Appraisal Journal. A Milwaukee mortgage lender, Albert is a former underwriting supervisor for the Federal Housing Administration.

Prospects for stable or rising values are strongest for neighborhoods with stable populations or slow paths of urban growth, according to Albert. But "neighborhoods in the paths of city growth may be unstable if the absorption of new land is characterized by

imprudent land speculation; over-extension in real estate purchases and overdevelopment."

Likeness of property and houses supports stability of values, as a rule, Albert said. "Areas which contain structures of about the same age, price range and offering approximately similar accommodations usually have more attractiveness to the market than those having a variety of types and age groups."

Sound and strictly enforced zoning regulations protect the residential character of a neighborhood, the article points out. So do properly drawn protective covenants.

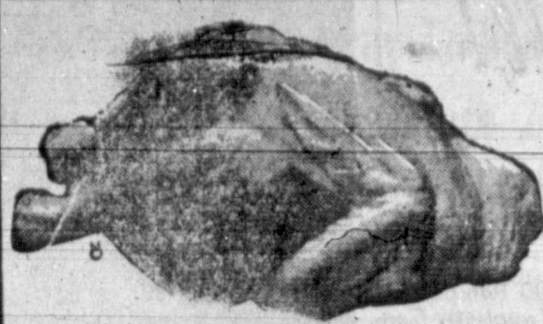
Geographical position of a neighborhood is also something to consider when looking at a new house. Chances of deterioration are relatively small for heavily built up areas away from main traffic arteries. There is greater uncertainty about the future of a partially developed area, especially if it is not protected by zoning rules or covenants.

The article adds that "where heavy traffic streets pass directly through or on the boundaries of the neighborhood, there is a constant threat that land uses will be changed from residential to non-residential."

Also contributing heavily to stability of value are adequate schools, shopping facilities, churches, playgrounds, parks, community halls, libraries, hospitals and theaters, according to Albert.

Working against this "law of inflation" are other things. In a period of inflation the nominal dollar value of land or a house can be expected to increase. (Its real value will decline if its price fails to go up as much as the dollar is shrunk.)

Dr. a house may go up in value because of a general improvement in the neighborhood. Similarly, it may fall sharply in worth if the neighborhood deteriorates. Some of the neighborhood factors affecting property values are listed out by Sterling H. Albert in an article in the Appraisal Journal. A Milwaukee mortgage lender, Albert is a former underwriting supervisor for the Federal Housing Administration.



U.S.D.A. Inspected Fresh Dressed

Fryers 27^c Lb.

Pinkney's Pure Pork

SAUSAGE 19^c
Cloth Bag Bag

Choice Lean Slices

PORK STEAK 39^c Lb.

HEAVY MATURE GRAIN FED BEEF
Club Steak .. lb. 69^c
Sirloin Steak lb. 69^c
Round Steak lb. 79^c
Chuck Steak lb. 59^c

FOOD SAVINGS

Top O' Texas
WEINERS
2 lbs. 59^c

Aunt Jamima Yellow or White
CORN MEAL
5 lb. bag ... 29^c

Assorted Colors
COMO TISSUE 5 roll pkg. 39^c

Gerbers
Baby Food 5 cans 39^c
Crisco 3 lb. can 74^c
Wapco Crushed Pineapple 303 can 19^c
Wapco Spinach 303 can 10^c
Gold Medal Flour 5 lb. sack 45^c
Supreme Crackers 1 lb. box 23^c
White Swan 303 Can Luncheon Peas 15^c
Sturgeon Bay Cherries 2-303 cans 35^c
Seedless White Grapefruit lge. size 9^c
Mustard Greens ... 2 bunches 19^c
U.S. No. 1 Russet Potatoes 10 lb. bag 69^c

Maryland Club
Coffee 69^c Lb.
Assorted Flavors
JELL-O EGGS
5^c 39^c DOZEN
Pkg.

NAPKINS
Northern 10^c
80 Count
Bama Apple Butter 29 oz. jar 25^c
Scotts-Lig 8 oz. 98c size Wax Cleaner 39^c
Borden's Mellorine 1/2 gallon 39^c
Purex 1/2 gallon 33^c
Large 48c Size M&M Candy 39^c
Carnation Milk 2 tall cans 27^c

Common Errors Made In Filing Income Tax Data

With income tax season in full swing, we asked H. B. Hamill, administrative officer of the Amelio IRS office, to furnish a list of the most common taxpayer errors in filing 1959 tax returns:

- (1) Many taxpayers are filing a separate Form 1040-A for each W-2 they received during the year. These taxpayers worked for several employers and do not realize that they should total their income and the tax withheld on one Form 1040-A.
- (2) Many returns are being filed that have not been signed. Some of these are joint returns that must be signed by both husband and wife.
- (3) Errors in arithmetic. This is an old complaint and many taxpayers are failing to check their arithmetic again this year.
- (4) Claiming a deduction for cigarette tax. Cigarette tax is not deductible in Texas.
- (5) Claiming no exemptions for self. The taxpayer is entitled to at least one exemption. A wife cannot file a separate return and fail to claim the exemption for herself in Texas since she must split the total family income with the husband under community property law. A school child is entitled to his or her own exemption in addition to the father claiming the exemption under a special provision of the law.
- (6) Failing to observe community property laws in Texas. Husband and wife must file a joint return or split the income under community property law in Texas. Taxpayers who move to Texas from other states find this provision hard to understand.
- (7) Many taxpayers are filing a Form 1040-A or Form 1040-W when interest income of more than \$200 requires that they file a Form 1040. These taxpayers should get a Form 1040 from the nearest post office, bank or Internal Revenue Service office and file the correct form.
- (8) Failure to list dependents. The names of the dependents must be listed in order to avoid delaying the refund.
- (9) Taxpayers using the Form 1040-W are reversing the entries on wages and taxes withheld. The 1040-W form is printed backwards from the 1040.
- (10) Many 1040-A's are being received showing only the taxpayer's name, the employing company or company, and the amount of tax withheld. No information on the amounts of wages received is listed. Other 1040-A's are being received where taxpayers who worked for more than one employer during the year failed to total their wages, amounts, and also the amounts of tax withheld. The taxpayer must list his wages and his employer's names or Internal Revenue will have to return his tax form to him to correct the error.

Unsightly TV Antennas Here To Stay!

NEW YORK (UPI)—Remember not too long ago when people were putting up antennas just to make it look as if they owned television sets which they didn't?

Those days are gone because practically everyone has a set. So now, the problem comes up of how to get rid of that unsightly antenna on the chimney before it blows down or has to be replaced.

There are two ways one might get rid of the old rig. One is to build the antenna into the "skid" or the house similar to the antennas on our supersonic military aircraft. The other is to have the antenna built into the set on the order of present day radio sets.

Arthur Dorne, president of Dorne and Margolin of Westbury, N.Y., admits these possibilities although his firm concentrates its attention on antennas for aircraft, missiles, and satellites.

Before World War II, airborne antennas were needed only for radio communication and were fairly simple.

"Today," says Dorne, "a typical fighter plane has a basic complement of communication and navigation equipment requiring seven or eight antennas."

"Most military aircraft have a lot more than that, such as radar antennas for gun firing. A fully equipped 'ferret' plane, designed to search out enemy radar and confound it, has as many as 80 additional antennas."

ACCIDENTALLY HANGS SELF

IRVING, Tex. (UPI) — Johnny W. Mangum, 30, accidentally hanged himself while playing with a chain in a tree in the backyard of his home Sunday. Justice of the Peace Glenn Davies said the boy, the son of Mr. and Mrs. R. D. Mangum, apparently slipped from a limb of the tree after looping the chain around his neck. He ruled the death accidental.

From—HAZLEWOOD'S Farm Dairy



Pasteurize - Homogenized
Pure - Whole MILK
"Nothing Removed"

Furr Food Store
Food Center
Boston Grocery
Hom & Gee
Miller's Grocery
Mitchell's Grocery
Braxton Grocery
Ideal Food Stores 1 & 3
Fite Food Market
Food Center

Gillette Blue 20's 89^c
Schick Injector Blades 20's 79^c
Metholatum 3 oz. jar 66^c
Modart Creme Rinse 69^c
Modart Style Hair Spray .. 1.09

Cashmere Bouquet Talcum 25^c
Gnt. 98c size Halo Shampoo 79^c
Silicar Lotion 79^c
Rubbing Alcohol pint 9^c
9 Oz. Lavaris 59c size 49^c

Notebook FILLER
'Lucky Star' 25c pkg. for 12 1/2^c
Pacquin 65c Size Hand Lotion 46^c
Co-ets 40's 25^c
Nestles 98c size Hair Spray 66^c
98c Size Coldene Liquid 79^c
12 oz. Huntsmen 43c size Hair Oil 29^c

Super Anahist 75^c
Aqua Velva Shave Lotion .. 49^c
Sutton Roll-On Deodorant .. 59^c
Ec. Adorn Hair Spray 1.89
Ec. Gleem Toothpaste 45^c

SHAMPOO Boys 65c size Hair Arranger 41^c
Modart 41^c
Creme 41^c

PEPSODENT FREE Flashlight 45^c
Ecom Size
CREST 35c Size ALKA SELTZER 22^c
Ecom. Size Scissors FREE



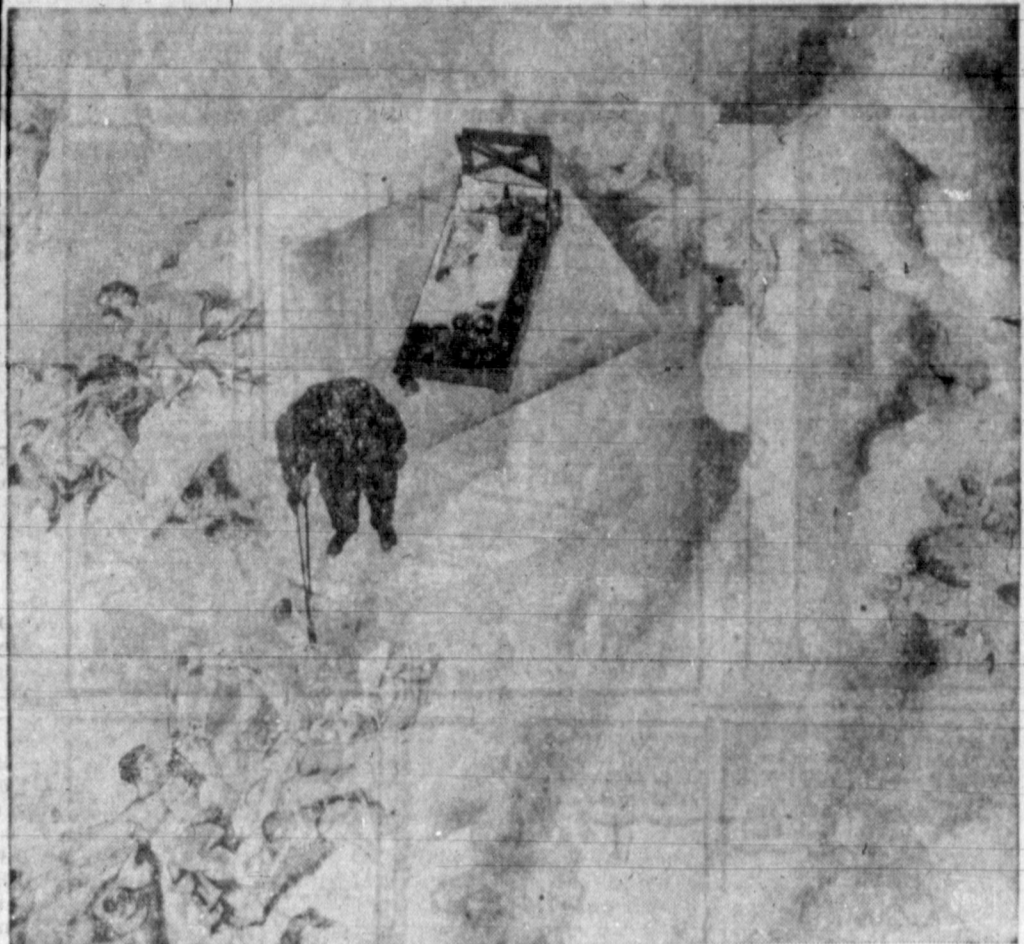
OPEN 7 DAYS A WEEK—7:30 A.M. to 9 P.M. Sunday 7:30 to 8:00
WE RESERVE THE RIGHT TO LIMIT QUANTITIES

Prell Liquid 79^c
Ronsonol Lighter Fuel 25^c
Creomulsion 59^c
Pepto Bismol 79^c
Brek Hair Set Mist 98^c

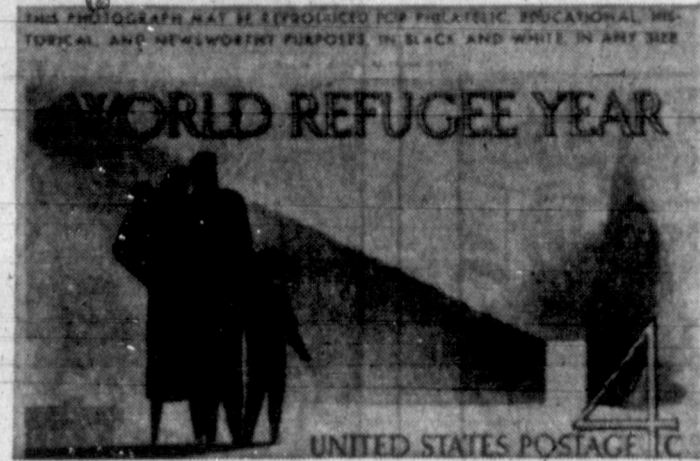
Dristan, 1.19 size Nasal Mist 98^c
Bayer's, 100's Aspirins 79c size 48^c
Mennen, 59c Size Baby Magic 49^c
W/Dispenser jar, 1.25 size Ec. Brylcreem 98^c
Nursing Units 19^c

ASPIRIN
Bayers Bottle of 100 48^c
2 oz. 98c size Iodine Gargle 77^c
New Fashion Quick Home Permanent 1.98
'Presit & Sealt' Envelopes 18^c
Envelopes 28^c
Package Stationary 38^c

Large selection of Lamps, reg. 9.95 — (While they last) 2 Books
Brass Base All purpose PLANTERS, while they last — 1.98 or 2-3 Book Buddys Stamps
Unbreakable bail or Dishwasher PLASTIC TUMBLER, 14 oz. 10c each
Famour Fancy Dazey Magnet (as advertised in life) CAN OPENERS, assorted colors — reg. 3.95 value 2.95
Too late for Football Season '59 — Too early for Football Season '60. We are stuck with these blankets — reg. 5.00 value 2.98
Lady Presco Ironing Board Cover—Your choice of color each 79^c



KEEPING HIS FEET ON THE CLOUDS—A Roman artist uses a brush as long as a walking stick while walking on the clouds he's painted. The huge work will be used as a backdrop for a performance of Verdi's opera "La Forza del Destino."



Commemorative Stamp Issue Concerns Refugees

The four-cent World Refugee Year commemorative stamp to be first placed on sale April 7 in Washington, D.C., will be dramatic in its approach, according to Pampa Postmaster O. K. Gaylor. Gaylor said the stamp will feature a family group facing down a long dark corridor toward a bright exit, thereby symbolizing escape from the drabness of want and oppression into the brightness of a new life. Printing will be in gray-black, with issuance in sheets of 50. Across the top of the stamp, in open Roman lettering is "World Refugee Year." In the extreme lower right, also in open face Roman, is the value "4 cents," preceded by "United States Postage." An initial printing order for 120 million has been placed. Gaylor said collectors desiring first-day cancellations of the stamps may send addressed envelopes, together with remittance to cover the cost of the stamps to be affixed, to the Postmaster, Washington 13, D.C. A close-fitting enclosure of postal card thickness should be placed in each envelope and the flap either turned in or sealed. Envelopes submitted should be of ordinary letter size and each must be properly addressed. An envelope must not be sent for the return of first-day covers and orders for covers must not include requests for uncanceled stamps. The outside envelope to the postmaster should be endorsed "First Day Covers 4-cent World Refugee Year Stamp." Collectors are cautioned to send "World Refugee Year" first day cover requests separately. Any orders containing requests for other issues will be returned by the postmaster at Washington.



HEAR - RINGS — Attractive earrings displayed in New York conceal a hearing aid. They come in scores of designs.

The saxophone was invented by Adolphe Sax, a Belgian.

INCOME TAX SERVICE
Evening or Week-End appointments welcome.
In Your Home or Mine
Bob Ratliff MO 5-8305

IPAA On Record Opposing Federal Industry Controls

By MAC SEBREE
United Press International
TULSA (UPI) — Uniformity in state proration laws is needed, but not at the price of federal regulation, the president of the Independent Petroleum Association of America said here last week. Alvin C. Hope of San Antonio, Tex., IPAA president, has been touring the Southwest beating the drum for serious oil industry consideration of what the IPAA considers "symptoms of ill health" of the petroleum industry. These symptoms include depressed oil prices, wages and the cost of steel — a vital oil industry material, lack of funds to find and develop new reserves, declining rates of return on investment, lowered crude oil production, mergers and reorganizations which have cost jobs, and the "flight of capital from the oil business." The Interstate Oil Compact Commission, meeting in Oklahoma City this week, authorized a special committee to study oil output allocation methods now used by member states. The delegates — including five state governors — upheld the IOCC's past position that each state should decide whether to have market demand proration. Hope said there has been much confusion over varying proration policies among the states, but he told newsmen that the "IPAA has always opposed a federal law forcing the states into conformity" on proration. "In fact, the IPAA strongly opposes further federal encroachment into the oil business, such as the controversial utility-type controls on the natural gas industry," he said. However, Hope said the industry has had to accept mandatory

Farms And Supermarkets Have Same Growth Pattern

By ELMER C. WALLER
UPI Financial Editor
NEW YORK (UPI) — The small farm is going the way of the corner grocery. Big farms are eating up the little ones. Big supermarkets are devouring the groceries. Claude W. Gifford, economist for the Farm Journal, bible of agriculture, drawing these comparisons, hastens to add that what ever one hears from Washington the farm economy is basically sound. In fact, he says, agriculture is the biggest industry in the nation with aggregate assets of 208 billion dollars, an annual business of 40 billion dollars, jobs for 25 million, equal to 40 per cent of the country's labor force. "The fact that the farm wife is buying more and more in supermarkets points up a significant economic parallel," says Gifford. "Farms and supermarkets are moving in the same direction — higher sales to an exploding population, with bigger units doing the bulk of the business." There are three million commercial farms in the United States that gross about 90 per cent of the income for all agriculture, says Gifford. And there are 74,000 supermarkets and supermarkets sharing about 80 per cent of all grocery store sales. The three million farms will gross about \$39,700,000,000 this year and the 74,000 big food stores, about \$8 billion dollars. Agriculture and food retailing have been consolidating numerous small units into bigger ones.

Ammonia increases maize, wheat yields



W. O. GROVES of Spearman, Tex. reports maize yield up to 97.5 bu. per acre with 100 lbs. ammonia.

"A pre-plant application of 100 pounds of Phillips 66 Ammonia helped make an average of 97.5 bushels of maize per acre. Wheat has averaged 41.3 bushels per acre following pre-plant application of 75 pounds ammonia," according to W. O. Groves, who farms 480 irrigated acres. "For several years Phillips 66 Ammonia has been used successfully. I'm stepping up my rate of application each year. Even on dryland wheat, in years with very little rain, Phillips Ammonia has produced up to 10 extra bushels per acre," he says. Thousands of Texas farmers are now using Phillips 66 Ammonia to help assure top net profits per acre — on irrigated or dryland fields. . . in wet or dry years. Actual field reports prove that Phillips 66 Ammonia (1) produces more high grade lint (2) increases sorghum grain yields (3) boosts wheat and small grain yields (4) stimulates pasture growth for more meat and milk. See your local Phillips 66 Agricultural Ammonia Distributor now. You can make more money this year with this 82% nitrogen fertilizer. It can be applied by you or your distributor.

PHILLIPS 66 AGRICULTURAL AMMONIA

The Sign of Better Ammonia Service
C. R. HOOVER OIL CO.
821 EAST BROWN MO 4-6666

U.S. Influence Up In Showcase Argentina

EDITOR'S NOTE: Here is the third of a series of articles by Francis L. McCarthy, U.S. Latin American editor for UPI, on the political and economic aspect of President Eisenhower's current four nation tour of South America.)

By FRANCIS L. MCCARTHY
United Press International
President Eisenhower will find U.S. influence in Argentina at record peak when he arrives in Buenos Aires Feb. 26 for a three-day state visit.

U. S. official and private bank loans of more than 229 million dollars in the past 13 months have made Argentina a show-case for Latin America in the matter of U.S.-assisted recovery.

U.S. investment volume in Argentina has risen sharply since President Arturo Frondizi gambled, successfully, in permitting foreign oil companies to participate in local exploration.

On the international political front, never has U.S. influence in Argentina been so strong. There are no serious differences between the two nations. Argentina would like to see restrictions on its beef exports to the U.S. relaxed, and this almost certainly will be discussed between the two presidents. So will continued, and increased, U.S. financial aid.

On the local political front, Eisenhower will arrive in Buenos Aires a month before the first

'Ancient' Fish Specimen Caught

TANANARIVE, Madagascar (UPI) — A coelacanth, a huge deep-sea fish once believed extinct, was captured alive Saturday night by fishermen in the vicinity of Moroni in the Comorian Islands, it was reported today. Several specimens of the fish have turned up during the past year. The Comorian coelacanth was being kept alive in a tank of water. The fishermen are bringing it here. Biologists consider the coelacanth the oldest of living creatures. It was one of the first forms of fish to appear in the shadowy era when life began on earth.

Judging from fossil remains and specimens recently captured, the fish has evolved very little since the time 300 to 350 million years ago when it first appeared.

BATTLEFIELD BRICK WORKS

TYKO (UPI) — The famed battlefield at Dien Bien Phu has been turned into a brick works according to the Communist North Viet Nam radio. Dien Bien Phu was swarmed over by the Communists May 7, 1954, after a siege of nearly two months.

ENLARGE AIRPORT

BERLIN (UPI) — East Germany's largest city, Leipzig, will be cut off from air travel soon because of an airport-enlarging project the East German news service ADN reported Monday night. The only airport for the city of 810,000 will be closed for more than three months by the project that begins March 14, ADN said.

Read The News Classified Ads.

News In Brief

JACK PAAR "UPSET" — Television star Jack Paar, enjoying a vacation after his tiff with the National Broadcasting Co., arrived here Sunday from Honolulu and immediately called for a doctor to treat him for an upset stomach. Paar and his wife planned to stay here until Thursday when they will go to Tokyo.

MANY DEFECTIVE SHOES — MOSCOW (UPI) — Of \$72,000 pairs of boots and shoes checked from a Moscow shop recently, nearly 50,000 "were found to be defective," the government newspaper Izvestia reported.

MAC CONTINUES IMPROVING — NEW YORK (UPI) — Gen. Douglas MacArthur has continued to show "normal improvement" after more than three weeks in Lenox Hill Hospital where he is being treated for a urological ailment, a 1st Army spokesman said Sunday.

TO HONOR SENATORS — WASHINGTON (UPI) — The American Good Government Society will present its annual George Washington awards April 30 to Sen. Barry Goldwater (R-Ariz.) and Rep. Graham A. Barden (D-N.C.).

TANKERS COLLIDE — PORT SAID (UPI) — A British and a French tanker, both empty, collided in the mist-shrouded Suez Canal Sunday while in a south-bound convoy. The British vessel suffered extensive damage to its stern but there were no injuries.

TOPOTEXAS
OPEN 6:15—SHOW 6:45
TONIGHT ONLY
50¢ CAR NIGHT
"MA and PA KETTLE ON VACATION"
CARTOON & NEWS

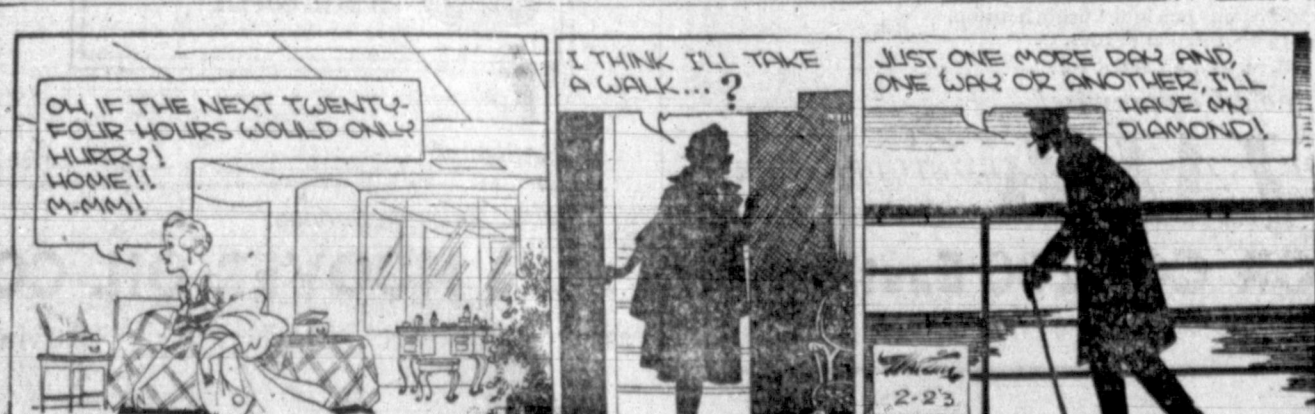
LAVISTA
MO 4-4011
Open 1:45-Regular Prices
LAST 2 DAYS

NOTICE
We suggest you see BRAMBLE BUSH without the kiddies, since they will not understand or appreciate the picture.

The Bramble Bush
WARNER BROS.
Richard Burton-Barbara Rush
Anglo-Technicolor
Produced by MILTON SPERLING • Directed by DANIEL PETRIC

EMPIRE CAFE
IS CLOSED TO
REMODEL
Re-Opening Sat., Feb. 27

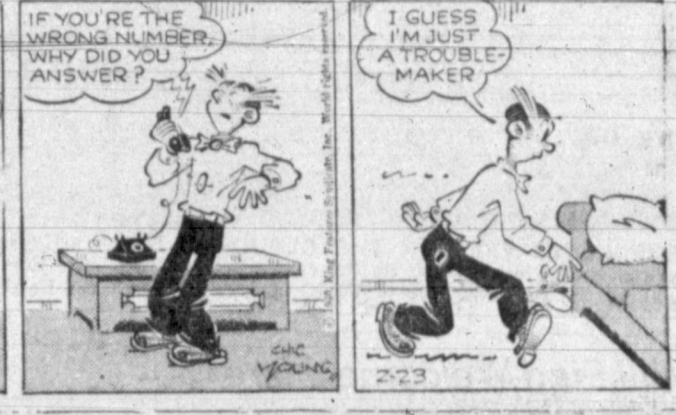
ONLY
Only is a strong word, but The Lark has earned it.
ONLY THE LARK, of all compacts, gives you a choice in all models of a 90 hp. six-cylinder engine or a doubly powerful V-8.
ONLY THE LARK, of all 6 passenger compacts, is less than 15 feet in length (it is shorter outside than all other compacts); but inside it combines larger-car head-shoulder-hip-leg room. (It is a true six passenger-in-comfort car.)
ONLY THE LARK, of all compacts, offers all these: automatic transmission, power steering and brakes, Twin TrACTION differential, 4-barrel carburetor, Hill Holder, air conditioning, reclining seats, padded dash and many other features.
ONLY THE LARK, of all compacts, offers you seven axle ratios. In The Lark alone you can select the best combination of transmission, power and axle ratio to meet your particular needs.
ONLY THE LARK, of all compacts, offers you a full choice of compact models: Convertible (only one in the field), hardtop, 2 and 4-door sedans, 2 and 4-door station wagons.
Visit your Studebaker Dealer today. See and drive...
The Compact Without Compromise!
THE LARK BY STUDEBAKER
GIBSON MOTOR CO., 200 East Brown
SEE THE STUDEBAKER TRUCKS—THEY'RE TOUGHER THAN THE JOB!



OUR BOARDING HOUSE with Major Hoopole



OUT OUR WAY J. R. Williams



Large advertisement on the right side of the page, featuring various text and graphics, including the word 'Samp' and 'ive'.



ACME INNERSPRING — This Acme 312 Coil Innerspring Mattress also has matching box springs. Acme Mattress Co. also carries a complete line of mattresses, springs, Hollywood and Foldaway beds, and features orthopedic and oversize mattresses. Stop in at 817 W. Foster, inspect their lines, and learn how you can save as much as 50 percent by having Acme rebuild or renovate your mattress.

Wall Street In Review

NEW YORK (UPI) — With inventory building proving a less potent stimulus than had been hoped, signs are being lowered on the extent of the 1960 business advance, reports the Value Line Investment Survey. "Now that the shortages of late 1959 have been corrected, consumers are showing no eagerness to buy, nor businessmen to stock goods." Value Line believes a more modest rate of increase, governed by the "consumption economy" thus seems in store for business this year. Even in the important area of capital spending, it adds, there appears to be no rise of boom proportions under way. "To some extent, this caution may be traced to the steep stock market decline of the past month, and its effect on businessmen's confidence — which, after all, is the controlling factor determining the pace of the economy."

Walter G. Bernthal of Flor, Bullard & Smyth wouldn't be surprised if present margin regulations were modified to give the market more liquidity.

Once a decline in steel output has gotten under way, it usually moves fast, Schroeder Boulton of Goodbody & Co., notes. From the standpoint of the investor, perhaps, the sooner the industry gets down to shipping only at the level of consumption the better, he adds.

Another Setback For Stocks

By ELMER C. WALER UPI Financial Editor
NEW YORK (UPI) — Stocks declined again during the past week, the fifth setback of the six weeks so far in 1960. The drop was held down by another sharp Tuesday rise and a rise on Friday, led by the leading chemicals. In the other three sessions losses ranged down from 7.34 points in the industrials on Monday. Volume fell off after a session of 2,350,000 shares on Monday, and the total for the week set a new low since last Oct. 16. Sales for the five sessions totaled 13,483,960 shares, a daily average of 2,696,792. Volume so far this year amounts to 91,491,531 shares, against 114,186,861 last year at this time.

At the close on Friday, the Dow Jones industrial average stood at 622.23 off 4.54 from the previous week and off 87.13 from the close of 1959; railroad 151.20 off 0.30 for the week and off 2.85 for the year; utility 85.47 off 0.26 on the week and 2.26 on the year; and 65 stocks 206.17 off 1.11 on the week and 13.35 on the year. Industrials have fared the worst so far this year. The loss in this group from the Jan. 5 close of 685.47, the all-time record high for this average, and the close Thursday of 618.57, low since Sept. 22, amounted to 66.90 points or 9.76 per cent. Wall Street furnished a variety of reasons for the market's behavior. One group held that the selling was based on nothing more than technical considerations. Another held that institutions were feeding out small quantities of blue chips and investing in bonds. Small traders who buy and sell odd-lots bought more stock than they sold. Dullness of the trading reflected a lack of real liquidating pressure. Big investors were keeping their holdings intact for the most part because of the high capital gains taxes they would have to pay on profits which have ac-

Acme Mattress Gives You Fast Comfort At Low Cost

Acme Mattress Co., 814 W. Foster, knocks days and dollars off a reconditioning job, giving you back a mattress that is a comfort at low cost. Same-day service is only one aspect of the service you get when you deal with Acme. Acme will rebuild your old mattress or convert it to an orthopedic mattress with equal speed. By adding cotton and a new covering, Acme gives you a mattress in which you'll never feel the springs. You can have your old mattress reconditioned for as little as \$10.50 or you can have it built into an innerspring for \$19.50. And, you can save \$30 on an orthopedic job. Acme is located in the low rent district where it can work under bargain conditions to you. They keep costs down and quality high by making the best use of the cotton in your old mattress. Very often, the cotton is of a higher quality than that in new mattresses and has only to be fluffed up to give you a mattress comfortable as a new one. To benefit from this service, you have only to call MO 4-6621 and a truck will be at your door. If you call in the morning, the mattress will be yours again by nightfall. Acme has been salvaging mattresses for the past 22 years. The modern machines and expert craftsmen do the job right. Some of the operations at Acme involve the roll edge, felted, renovating, tape edging and sewing, cutting and sterilizing. Acme will make you a cotton mattress in any size, and custom made mattresses are their specialty. Acme is the best place to get your roll away beds, bed springs and Hollywood sets. Here you will find up to the minute designs in mattress covering and 180 through 312 coil mattresses. Acme invites you to come in and have a look around.

Market data table with columns for NORTH (D), WEST, EAST, SOUTH, and various stock indices.

Advertisement for CULLIGAN soft water service, featuring a logo and contact information.

Advertisement for SOLVED-CARPET CLEANING PROBLEM, offering services for carpet cleaning and upholstery.

Advertisement for FORD'S BODY SHOP, specializing in body repair, auto painting, and glass installation.

Advertisement for HOLLIS ELECTRIC CO., providing commercial and residential wiring services.

Advertisement for Pampa Ice Co., featuring 'ICE BAG' products and contact information.

Advertisement for B & B PHARMACY, offering quality standards and various pharmaceuticals.

Advertisement for CULBERSON CHEVROLET, INC., featuring car services and contact information.

On The Record

- Highland General Hospital Admissions: Mrs. Linda Kellison, 710 W. Francis... Mrs. Joey Brister, 534 Lowry... Mrs. George Kilcrease, Odessa... Mrs. Ada Nacase, 521 Warren... Mrs. Robert Dorris, 509 N. Dwight... Mrs. Michael Jones, Pampa... Joe Sears, Pampa... Elmo Hudgins, 1124 S. Sumner... Mrs. M. H. Brook, Borger... Mrs. E. Henderson, Amarillo... Mrs. Mae Porter, 413 Carr... Mrs. Robbie Adams, 601 Tignor... Mrs. Skelia Kay Stalaker, 529 Jean... Mrs. Fred Medley, 727 Malone... Mrs. Joyce Reyher, 1108 Seneca Lane... Mrs. Lucille Harmon, White Deer... Mrs. A. B. McDonald, Pampa... Mrs. Mary McMahan, 736 E. Craven... Mrs. Mary Elms, 919 Lefors... Mrs. C. J. Merrick, Groom... Mrs. Pearl Richardson, 525 S. Cuyler... Mrs. Hattie Gattin, Pampa... Mrs. Opal Clay, 2313 Rosewood... Mrs. Roy L. Henderson, Lefors... Mrs. Rena Libby, Lefors... Mrs. Lorna Hickman, White Deer... Mrs. O. W. Tipton, Borger... Mrs. Paula Jean Richmond, 1141 Prairie Dr. Dr. Ricky Dean Hazler, 701 Sumner... Mrs. Troy Lee Grimes, 603 S. Gray... Mrs. Naomi Neal, 422 Maple... Mrs. Alfred Oxley Jr., 918 S. Sumner... Mrs. Shirley Crutchfield, White Deer... Mrs. William Martin, 405 N. Christy... Mrs. Karen Gee, Pampa... Mrs. Gladys Riley, 433 S. Gray... Mrs. Dorothy Arkins, Skellytown... Mrs. Gerald Cox, 621 E. Francis

Fun In Bed... "The Beat of Fun In Bed," and the like. Scully, born in New York 67 years ago, had the lower portion of his right leg removed in 1930—without anesthesia—and has had 17 or 18 operations on the leg since. Two years before that, he began writing a column called "Scully's Scrapbook," for Variety, and still is writing the column. Obviously unperturbed about his present heart condition, Scully roared with laughter as he spoke of another of his books, "Rogue's Gallery." "It's sort of a collection of profile sketches of famous people," he said. "But I took an unusual approach. I wrote about them as I think they will be viewed 100 years from now. "It was lots of fun; but since all of them didn't look too hot from that perspective, there was always the chance I'd get punched in the nose." Some of his other books include "Behind the Flying Saucers," in 1950; "Cowboy," which was made into a hit motion picture a year ago, and "Second Class Hero." During the final stages of the latter, Scully dictated 7,000 words to his wife in two days. He was knighted twice — the knighthood of St. Gregory by Pope Pius XII, and with the Order of Elizabeth, founded by Queen Isabella. "That makes me a more venerable knight than Winston Churchill," Scully said with a grin. "But he still writes longer books—and gets more royalties."

DIAPER DEGREE... FUKUOKA, Japan (UPI) — Asst. Prof. Sonoe Hiramatsu of Fukuoka Women's University has won her doctor's degree in medicine with a 10-year study of "diaper covers." ON OWN TIME... STOCKPORT, England (UPI) — Union officials Monday protested the suspension of eight apprentices for throwing snowballs through the windows of the Mirrieles, Bickerton and Day die cast engine works. The suspensions were illegal, the union officials said, because the incident occurred when the apprentices threw the snowballs on their own time. A naturalized American automatically forfeits his American citizenship when he lives outside the U.S. longer than five years.

Advertisement for SEAT COVER HEADQUARTERS, featuring a logo and contact information.

Advertisement for Central Tire Works, offering tire services and contact information.



MARINE SALE — Richard Gardner, marine department manager at Kisee Ford Co., 701 W. Brown, challenges anyone to beat the "deals" Kisee is offering on outboard motors, boats and supplies. Gardner says Kisee has the biggest stock of marine equipment including skis, automatic tow reels, lights and boat accessories in the panhandle. (Daily News Photo)

Largest Marine Stock In Pampa Handled By Kisee

Kisee Ford Co., 701 W. Brown, challenges anyone to beat the deals on outboard motors, boats, water skis, low-rope, lights or boat accessories during their gigantic marine sale, now in progress. Richard Gardner, marine department manager, said they are entering their second year in the marine business, and will continue to handle outstanding lines of all marine supplies. At Kisee Ford Co., you'll find Mercury and Scott motors; Red, Esquire, Glasspar, Texas and Sprayline boats; Husky, Road Runner, Concho and Mark III trailers. And, during their big sale, you get one off on water skis!!! Gardner said Kisee also handles complete lines of automatic skis, a new innovation in water skiing. You'll also find a complete line of Mercury outboard motor parts, they are in a position to serve them and other brands of outboard motors. Kisee Ford intends to enter the boat in several competitive sales this spring, because they were so successful last year in winning several prizes. The boat sale is a very capable handled by Gardner, who has had considerable experience in boats and outboard motors. Kisee Ford is giving away a foot sprayline boat during the sale. The boat will be awarded some lucky person on March 15. There is no obligation, and all you have to do to become eligible is to buy a new Ford Falcon or one of the other cars or pickups and your name. You do not have to buy a thing, just take a ride in a Ford and sign your name. See Ford just want to show the

Ailing Novelist Is A 'Guinea Pig' That Made Good... By KYLE THOMPSON United Press International... HOUSTON, Tex. (UPI) — Arthur Frank Scully has probably undergone more operations than he has written books in a 30-year fight for life, but he still finds time between hospital sessions to enjoy life. The big, eagle-beaked Scully has been through 40 surgical sessions during the past 30 years, and now is at Houston's Methodist Hospital awaiting what probably will be his 41st serious operation. Three months ago doctors at Palm Springs, Calif., where Scully and his attractive wife, Alice, live, discovered an aneurysm on his heart—a dangerous condition likened to the bubble that appears on an innertube just before it blows out. "I guess we must have consulted 20 specialists," Scully said. "And we got 20 different suggestions on where to go for treatment. "In every case, whenever we mentioned the name of Dr. (M.E.) DeBakey of Houston, they all agreed he was the very best in the world. So we came here." If surgery is necessary, Scully's operation will be performed by the world-famous Houston surgeon, who is one of the few doctors who tackle delicate heart operations. "I'm just a guinea pig that made good," Scully said. He was referring not only to his medical record, but to his success as an author. As a result of his hospital experiences, Scully's most popular books include "Cross My Heart" and a raft of humorous treatises entitled "Fun In Bed." "More

Advertisement for CONVENIENT DRIVE-IN BEVERAGE, featuring a logo and contact information.

Advertisement for ACME MATTRESS CO., featuring a logo and contact information.

Advertisement for THERMO-ROOF, featuring a logo and contact information.

READY-SET-GO FOR THESE FOOD SPECIALS!

At Ideal You Enjoy

- LOW, LOW PRICES
- MORE COURTEOUS SERVICE
- CLEANER STORES
- GREATER VARIETY
- CHOICE MEATS
- FRESHEST PRODUCE

PLUS THE ADDED SAVINGS OF

Gunn Bros. Stamps
Double Stamps
Wednesday
With 2.50 Purchase
or More

"Better Food For Less"

IDEAL

FOOD STORES

FLYING K GRADE "A" LARGE

EGGS

Dozen **39^c**

TUNA
HI-NOTE
2 6-oz.
Cans **25^c**

SUZAN

SALAD DRESSING

Quart Jar **29^c**

TRY IDEAL'S SWEET MILK
THE TASTIEST MILK IN TOWN

CAMPBELL'S

TOMATO SOUP

Can **10^c**


COLORADO RED

POTATOES

25 lb. bag **69^c**

LETTUCE

Lb. **10^c**



THE ANTISEPTIC — 59c Size

LISTERINE **49^c**

HAIR DRESS, 65c Size plus tax

BRYLCREAM **49^c**

Stokely's PING 5 qts. **1.00**

Musselman's 303 Can APPLE SAUCE 2 for **29^c**

Holiday Whole SWEET PICKLES qt. jar **39^c**

JELL-O 3 pkgs. **19^c**

Appian Way, 16 oz. pkg. PIZZA PIE MIX **33^c**

YOUR CHOICE

Dependable Brand
Baby Lima Beans
White or Yellow
Hominy
Spaghetti
Great North. Beans
Pinto Beans
Red Kidney Beans
Mexican Sty. Beans
Pork & Beans
Blackeye Peas

3 25^c

300 Size Cans

FOLGER'S

COFFEE

Lb. **69^c**

COKES **29^c**
6 Bottle Carton
(PLUS DEPOSIT)

BISCUITS **23^c**
DOTTY
3 cans

PINTO BEANS

2 lb. BAG **19^c**

POT PIES

Banquet, Frozen Beef, Chicken or Turkey

3 for 49^c

HOURS OPEN
Week Days: 8:30 a.m. - 7:30 p.m.
Saturday: 8:30 a.m. - 7:30 p.m.
CLOSED SUNDAY

SWEET TREAT CRUSHED, 300 CAN

Pineapple

2 CANS **29^c**

IDEAL SLICED CELLO

BACON

LB. **39^c**

VISTA

CRACKERS

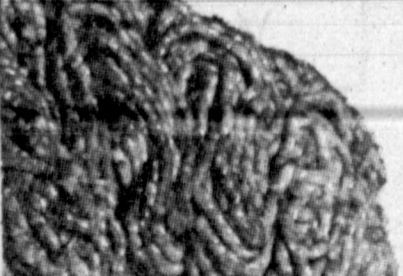
Lb. Box **19^c**

FRESH GROUND ALL BEEF

HAMBURGER

\$1.00

3 lbs.



SHORTENING

BAKERITE

3 lb. can **53^c**

OLEO SILVER BELL

DONALD DUCK FROZEN, 6-oz. cans

Orange Juice

2 for **39^c**

2 25^c

TISSUE

Northern White, Colored

3 FOR 23^c

TREET

ARMOUR'S

12-oz. Can **39^c**

BREAD

Ideal Enriched 1 1/2-Lb. LOAF **19^c**

U.S. CHOICE BEEF

SHORT RIBS

Lb. **29^c**

LEAN COUNTRY STYLE

Pork BACK BONE

Lb. **49^c**

YOUR F...
NEWS
L. 28-1
areer
In...
To
John Frank...
of the F...
ulpa, Okl...
aker at t...
-morning...
ool Caree...
if it isn't...
was Fra...
ing the fi...
Inspiration
invest...
erify
ause
WASHING...
ctors have...
mystery
ink airlin...
dynamic e...
ch-patte...
r deaths...
second...
ans unan...
vily insu...
wyer. r...
ard the N...
if any...
the DCB...
ami fight...
r Bolivia...
of the 2...
ere, of f...
ly was v...
ch about...
ckage...
chairman...
Civil Ae...
Senate...
oday that...
ation by...
dence of...
gred by...
vicinity...
Durfee als...
d more...
life and...
most all...
ing the p...
an incr...
B estimat...
most \$90...
At the tim...
s under t...
financial...
subcommi...
he Monr...
er the h...
timony r...
t evidenc...
bomber w...
Durfee sai...
ating the...
tion. A...
arges of...
ought as...
ped Fran...
house...
alls
WASHING...
telligence...
iles was...
stigators...
e chairma...
Staff did...
rence figu...
e strength...
Dulles w...
oped mee...
nce and...
e. Memb...
k him w...
ining, Je...
d not hav...
sured the...
p" had b...
Senate De...
B. Joh...
hoped D...
some co...
Dulles...
Sen. Stua...
Dulles...
telligence...
stians w...
was on la...
at and m...
icated or...
heavy l...
The some...
tion, w...
at and an...
early T...
The fire...
resulted...
oom. Th...
been de...
JECT N...
DALLAS...
Dallas...
of Tuesd...
Newsp...
as the...
the ag...
the ag...
ed for it...
had balk