











# Today's Crossword Puzzle

## The World Almanac® Crossword Puzzle

### ACROSS

- 1 Fair grade
- 4 Moslem countries
- 9 410, Roman
- 12 Western hemisphere
- 13 Non-clergy
- 14 Paddle
- 15 La. time
- 16 Not a winner
- 17 Birds — feather
- 18 Boat parts
- 20 Reddish brown
- 22 — and downs
- 24 Tea
- 25 Extend
- 29 Exclamation of relief
- 33 Period of 3 years
- 35 Asian women's quarters
- 36 Dollar bill
- 37 Series of four

### DOWN

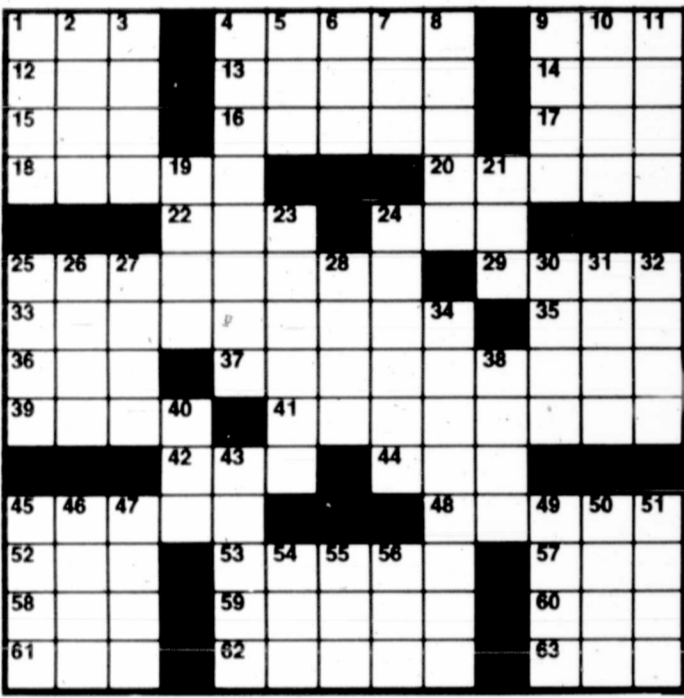
- 39 Abstract being
- 41 Hides
- 42 Grease
- 44 Rooster's mate
- 45 Young person
- 48 Not at all
- 52 Companion of 61 across
- 53 Dismiss forcibly
- 57 Elaborate poem
- 58 Wildebeest
- 59 Buenos —
- 60 New England cape
- 61 Joyful exclamation
- 62 Eats sparingly
- 63 Printer's measures

### Answer to Previous Puzzle

```

IDA ZITI ZION
XII ATON ETNA
IER NARK EATS
ASSAI EER LOA
DER DELI
ALYSSUM TACIT
ISA TGIF TITO
DACE SERF ZEN
ETHER SURGERY
TEEN GEE
IDS DOM ETUDE
COMB TERM FUM
ETAL ERIA OBI
SENT SEAN SST
    
```

- 3 Ancient Italian family
- 4 Squandered
- 5 — Paulo
- 6 Fleur-de —
- 7 Consumed food
- 8 Aromatic gum resin
- 9 Makes pigeon sounds
- 10 Crazy
- 11 Medical picture
- 19 Invite
- 21 Car assemblers' org.
- 23 Most sensible
- 24 Place of worship
- 25 Plains Indian
- 26 Vases
- 27 Knots
- 28 Mention
- 30 Cow!
- 31 Border
- 32 Manners
- 34 Masculinity
- 38 Crescent shape
- 40 Small lizard
- 43 Not behind
- 45 Exercise system
- 46 Mrs. Charles Chaplin
- 47 No
- 49 Viva — (by word of mouth)
- 50 Esau's country
- 51 Cincinnati ball club
- 54 12, Roman
- 55 Wrath
- 56 Permit to



(c) 1990 by NEA, Inc.



By Jerry Bittle



By Brant Parker and Johnny Hart



By Howie Schneider



By Johnny Hart

## Astro-Graph

by bernice bede osol

**GEMINI (May 21-June 20)** Give priority both today and tomorrow to matters that are meaningful to you financially. You're on a lucky role and good things could happen for you. Know where to look for romance and you'll find it. The Astro-Graph Matchmaker instantly reveals which signs are romantically perfect for you. Mail \$2 to Matchmaker, c/o this newspaper, P.O. Box 91428, Cleveland, OH 44111-3428.

**CANCER (June 21-July 22)** Conditions have taken a constructive turn and people who ignored you previously could now be ready to cooperate with you on a project of importance. Seek their support.

**LEO (July 23-Aug. 22)** Things could be coming your way at this time without having to put out too much effort. However, you should consider how much more can be accomplished if you open all the stops.

**VIRGO (Aug. 23-Sept. 22)** You have a unique faculty today for being able to help others sort out their affairs in a manner that could be equally beneficial for both them and yourself.

**LIBRA (Sept. 23-Oct. 23)** Something of significance you may accomplish today could produce dual benefits. The bonus portion, however, might not be obvious to you at first glance.

**SCORPIO (Oct. 24-Nov. 22)** This is a good day to put the finishing touches on an agreement you've been negotiating for some time. If there is parity in the arrangement, both parties will do very well.

**SAGITTARIUS (Nov. 23-Dec. 21)** A pleasant surprise could be in the offing for you at this time. Two situations that are already running rather well might begin to show additional improvements.

**CAPRICORN (Dec. 22-Jan. 19)** What you cannot do on your own today will have an excellent chance of being accomplished with the right type of partner. Seek out effective allies.

**AQUARIUS (Jan. 20-Feb. 19)** End results should please you today, provided you don't personally take measures to disrupt them. Hold tight and let events run their natural courses.

**PISCES (Feb. 20-March 20)** Friends are apt to discuss things with you today about which they are reluctant to speak in front of others. What you learn can be applied to further your own interests.

**ARIES (March 21-April 19)** Your prospects for enlarging your material base look very promising in this time frame. If you handle situations correctly, you could end up on the profit side of the ledger.

**TAURUS (April 20-May 20)** Today you should be able to perform very well in developments that require imaginative touches. Have faith in your ideas, even if they are unappreciated by associates.



By Tom Armstrong



By Brad Anderson



By Larry Wright



By Dave Graue



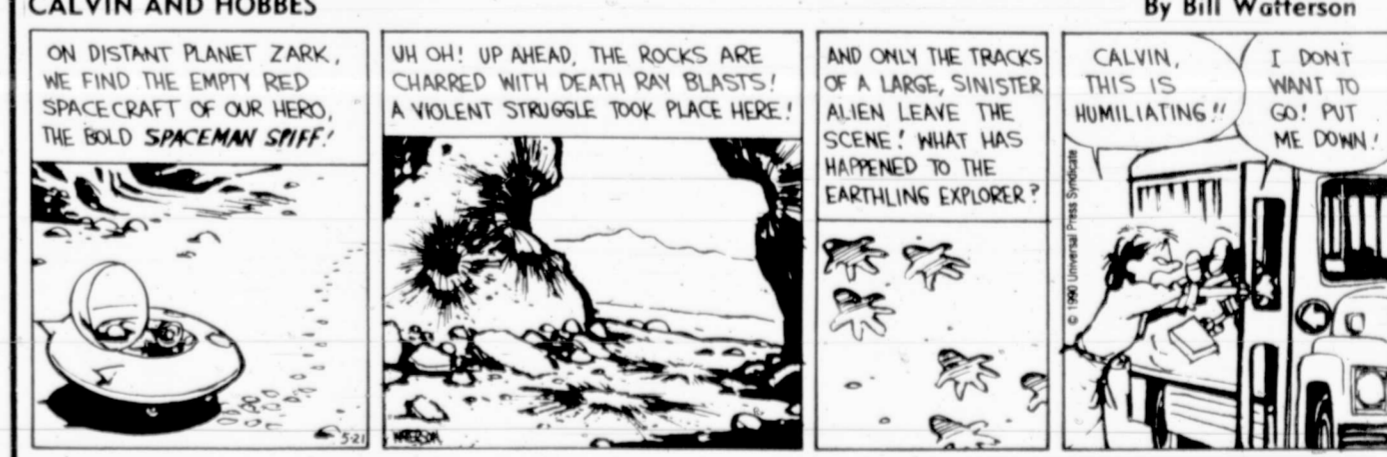
By Dick Cavalli



By Bruce Beattie



By Bill Keane



By Bill Watterson



By Art Sansom



By Bob Thaves



By Charles M. Schultz



By Jim Davis









# National Salvation Front appears headed for victory in Romania

BUCHAREST, Romania (AP) - Interim President Ion Iliescu's National Salvation Front, a group dominated by former Communists, appeared headed for a landslide victory in Romania's first free elections in more than half a century.

The first official returns showed Iliescu with a commanding lead in the presidential race, capturing 78 percent of 6,000 ballots counted in the western city of Timisoara.

The National Liberal Party's candidate, Radu Campeanu, was second with 15 percent. The National Peasant Party's Ion Ratiu was third with seven percent.

The counting began today, and final results were expected on Friday.

A West German exit poll of 16,000 voters - announced on nationwide TV while voters were still

casting ballots early today - showed Iliescu winning 83 percent of the votes nationwide. Campeanu was second with 11 percent, and Ratiu trailed with six percent.

The two opposition candidates alleged numerous instances of fraud in Sunday's balloting. Some foreign observers, however, said that although there were some irregularities, they were not significant enough to alter the outcome.

The Central Electoral Bureau estimated that at least 85 percent of Romania's 16.8 million eligible voters turned out to choose a president and 506 representatives to the two-chamber parliament.

The National Salvation Front, which has run Romania since the bloody December revolution that ousted dictator Nicolae Ceausescu, won a projected 66 percent of the vote for seats in parliament, said the West German poll. The

poll was conducted by the West German polling group INFAS at the invitation of the Romanian government.

In second place was the National Liberal Party with about 10 percent of the votes, the poll said. The party representing the country's 2-million Hungarian minority had 6 percent, the Ecological Movement had 5 percent, and the Peasant Party had 3.5 to 4 percent, according to the poll. No margin of error was given.

If the exit poll proves correct, the Front would be able to govern alone with a parliamentary majority, dashing the opposition parties' hopes of forcing Iliescu to form a coalition government.

Iliescu, a 60-year-old former Communist Party secretary who fell out of favor with Ceausescu, had no comment on the West German poll, the state news agen-

cy Rompress reported. But he praised citizens for their high turnout and calm behavior.

Campeanu and Ratiu - both of whom returned to Romania early this year after many years in exile - condemned the poll.

"I find the (projected) results exaggerated, monstrously so. They remind of the returns in Ceausescu's time," Campeanu told Rompress, referring to the big margins the former dictator claimed in previous rigged elections.

He added that he had received "information of very serious irregularities."

Some 500 foreign observers spread out through the country to monitor the elections.

"I'm very pleased so far with what I've seen," said New Mexico Gov. Garrey E. Carruthers, leader of the U.S. Presidential Observer Delegation.

## Pro-Moscow forces step up activities in Baltics

By BRIAN FRIEDMAN  
Associated Press Writer

MOSCOW (AP) - Pro-Moscow forces in the Baltic republic of Estonia staged what they called "political strikes" at several plants today, a spokesman for the strike committee said.

In the breakaway republic of Lithuania, lawmakers who rejected Mikhail S. Gorbachev's call to suspend their March 11 declaration of independence met in committees today to consider a counteroffer, a spokesman for the legislature said.

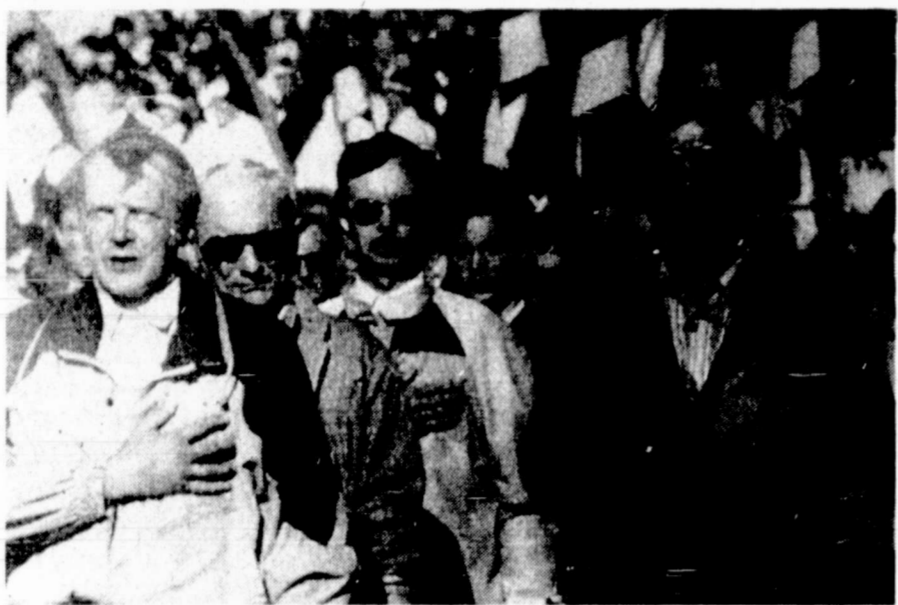
"There are strikes at several factories and plants," said Artur Koptyn, spokesman for the Russian Strike Committee in the Estonian capital of Tallinn. "It is not only Russians, but other nationalities as well."

Sixty-five percent of the republic's 1.8 million population is Estonian. Russians comprise 28 percent, with Ukrainians and Byelorussians making up the rest.

Koptyn said the strikers were holding meetings at the affected government-owned enterprises to coordinate activities of the various strike committees in the republic.

He said it was too early to say how widespread the work stoppage was, but that up to 50 enterprises could be involved.

The pro-Moscow forces in Estonia and Latvia have been stepping up their activities in the week since Gorbachev branded the secession campaigns in those republics unconstitutional.



Members of the newly created Estonian Home Guard take oaths Sunday in Tallinn, Estonia. The home guard was formed to protect public buildings.

On Sunday in the Latvian capital of Riga, 1,193 pro-Moscow delegates representing cities and rural areas gathered to form the Committee for the Defense of the Constitution and the Rights of Citizens of the U.S.S.R., the Tass news agency reported.

The group - mostly Russians and other ethnic minorities in the republic - said the Latvian parliament did not have the legal authority to declare independence earlier this month, Tass said.

It also criticized leaders of the pro-independence People's Front as not living up to their words concern-

ing the equality of all people. Russians and other minorities in all three Baltic republics complain that they are discriminated against as a result of the independence movements.

"We have been brought together by our common concern about the fate of Soviet power in Latvia," said Alfred Rubiks, first secretary of the Communist Party in the republic. He said the pro-Moscow Communist Party would "step up its activity" in the coming days.

According to Tass, the committee's aims include ensuring the operation of the Soviet constitution and the laws of the U.S.S.R. and Latvia,

to ensure social and legal protection of residents, and to consolidate social and political forces "recognizing the people's socialist choice and intending to renew socialism and the Soviet federation."

Gorbachev imposed an economic embargo on Lithuania following its declaration of independence, and on May 14 he decreed that Latvia's and Estonia's steps toward independence violated the constitution. He has not taken any punitive actions against those two republics.

On Tuesday, pro-Moscow forces in Latvia and Estonia tried to enter the parliament buildings of both republics, but they were turned back by police and pro-independence crowds.

Gorbachev's embargo on Lithuania, in effect for more than a month, has cut off all supplies of oil to the republic and nearly all supplies of natural gas, and has reduced supplies of other key raw materials. Thousands of people have been laid off as a result.

Over the weekend, Lithuanian lawmakers agreed to reject Gorbachev's demand that they suspend their declaration of independence because it would mean accepting Soviet control over Lithuania, said legislator Zigmantas Vaisvilas.

Parliament ordered a committee to work out other compromise proposals to offer Moscow, he said. Lawmakers were following the advice of Lithuanian Prime Minister Kazimiera Prunskiene, who met with Gorbachev Thursday night in Moscow.

## Hubble's 'first light' image reveals double star

By PAUL RECER  
AP Science Writer

GREENBELT, Md. (AP) - The first photo series from the Hubble Space Telescope was supposed to be just an engineering test, but it surprised scientists by revealing an unsuspected double star.

Hubble's inaugural photo sequence, taken from its orbit 381 miles above the Earth, showed bright, crisp stars against a black background, with much clearer images than seen in a picture taken by a ground-based telescope of the same part of the heavens.

"Fantastic," James Westphal, the principal scientist for the camera used in the first photo exercise, said Sunday. "We are just as pleased as punch at this point. Our image is significantly better than we were concerned that it might be."

Westphal said the Hubble pictures clearly show that an image which appeared in ground-based photos to be only a single star was, in fact, a rare binary star. The space telescope pictures showed two overlapping points of light, instead of a single blob as seen in a picture taken by a Chilean observatory.

"We didn't know it was a double star," said Westphal.

NASA officials had said Hubble's initial

images would be only "an engineering test" that was being used to meet the ceremonial requirements for the "first light" pictures that are traditional for a new telescope.

But a delighted Westphal said the pictures were worthy of serious study.

"Boy, we could get lots of science out of this right now," he said.

Lennard Fisk, the associate administrator for science at NASA, said the quality of the pictures proved the design and testing of the costly telescope. "I'm delighted," he said. "It's two times better than we thought it would be."

The quality of the photos brought cheers from National Aeronautics and Space Administration engineers who have had to solve a series of problems with the telescope since it was launched last month by a space shuttle.

Hubble's troubles have included a fouled antenna, a computer program that caused instruments to shut down, another computer program that contained a math error that affected pointing accuracy, and a satellite jitter that experts still find troublesome.

Jean Olivier, deputy project manager for the Hubble, said that the first light pictures are only a "coarse-focused" image of what the space telescope eventually will achieve. He said there still are weeks remaining in an elaborate focusing

checkout of the instruments.

"We're only about a fourth of the way through the whole focusing process," he said.

The planned scientific studies will not start until the engineers have completed the checkout, which may take months.

Eventually, Hubble is expected to produce pictures seven times clearer than the images captured on Sunday.

Engineers started the "first light" sequence before noon Sunday by sending programmed instructions to Hubble.

The telescope satellite moved to point directly at the target stars. Then a wide-angle camera opened its shutter for a one-second exposure and then for a 30-second exposure. The images from the camera were recorded on board as 10 million bits of data. At 1:49 p.m., the data were sent through a relay satellite to computers at the Goddard Space Flight Center.

While a crowd of engineers, scientists and journalists watched on television, Hubble engineers processed the data through a computer that assembled a photo.

The target for Hubble's first image was a star cluster called Theta Carina, a group of objects about 1,260 light-years from Earth. The target star field is visible from Earth only in the southern hemisphere.

## Report: Drug chief nominee lagged in prosecutions

By MICHAEL J. SNIFFEN  
Associated Press Writer

WASHINGTON (AP) - Los Angeles lagged behind other big cities in federal narcotics charges when Robert Bonner, now President Bush's choice to head the Drug Enforcement Administration, was U.S. attorney there, court records show.

Although the city regularly was near the top in the nation in federal drug arrests, it ranked far lower in the percentage of federal defendants charged with drug offenses during Bonner's tenure.

Throughout the period, the most common federal criminal charges in the nation were drug-related, but in Los Angeles the most common were fraud and embezzlement, according to a recent analysis of court records by a Syracuse University research group.

The study shows that Bonner's office brought a smaller percentage of drug charges than the national average for U.S. attorneys. Furthermore, he lagged behind a number of colleagues in big cities that had fewer drug arrests to begin with.

From the beginning of 1984 through the first half of 1987, 19 percent of federal criminal defendants in Los Angeles faced narcotics charges. Federal prosecutors nation-

wide charged 27 percent of their defendants with drug counts during those years, the researchers found in response to a request by The Associated Press last week.

The percentage of defendants charged with fraud and embezzlement in Los Angeles in those years ranged from 20 to 29.

Bonner, who is awaiting Senate action on his nomination, declined to be interviewed about his work in Los Angeles. He has been praised by drug agents for pursuing criminal charges in the 1985 kidnapping and murder in Mexico of DEA agent Enrique "Kiki" Camarena.

But by early this year, drug crime was so rampant in Los Angeles itself that the city was one of five areas designated by national drug policy chief William Bennett for extra federal aid.

In 1986, the DEA's Los Angeles office ranked third in the nation in drug arrests with 452, behind only New York with 1,066 and Miami with 861, according to DEA spokesman Joe Keefe.

By 1989, Bennett noted, DEA had 1,033 major drug investigations under way in Los Angeles, again behind only New York and Miami.

Bonner, 48, was U.S. attorney in Los Angeles from early 1984 until mid-1989 when he became a U.S. district judge there. Bush nominated

him for the DEA post May 11. Justice Department spokesman David Runkel praised his "extraordinary experience" in drug investigations.

The information about Bonner's record as a prosecutor was contained in a broader study by the non-profit Transactional Records Access Clearinghouse at Syracuse, using records from the Federal Judicial Center, a branch of the U.S. courts.

The Syracuse study was completed and sent to Attorney General Dick Thornburgh last October, long before Bonner was picked for the drug post.

The research originally covered 1980-1987. Last week, at the request of The Associated Press, co-authors David Burnham and Margaret Hanus DeFleur calculated the averages for the portion of those years in which Bonner was chief prosecutor.

Last year, Bonner's former chief assistant prosecutor, Gary Fees, said that the office had a heavy caseload of military purchasing fraud and savings and loan fraud - both efforts which he said had high priority from the Justice Department. Neither area, however, commanded the money, manpower or new legislation that Justice devoted to the fight against drugs.

Asked about the study, Justice spokeswoman Deborah Burstion-

Wade said, "Mr. Bonner is well respected by his peers and did an outstanding job for the attorney general and the department. We're certain that he will make an excellent head for DEA once he is confirmed."

She said she was not in a position to comment on the specific numbers.

### For Life Insurance check with State Farm

- Permanent Life.
- Term Life.
- Retirement, pension and group plans.
- Universal Life.

Harry V. Gordon  
Your Top O' Texas Agent  
North Side  
Coronado Center  
669-3861

Like a good neighbor, State Farm is there.



## SOFA SALE

BIG SELECTION  
RETAIL \$799 TO \$999

\$388  
AND  
\$488



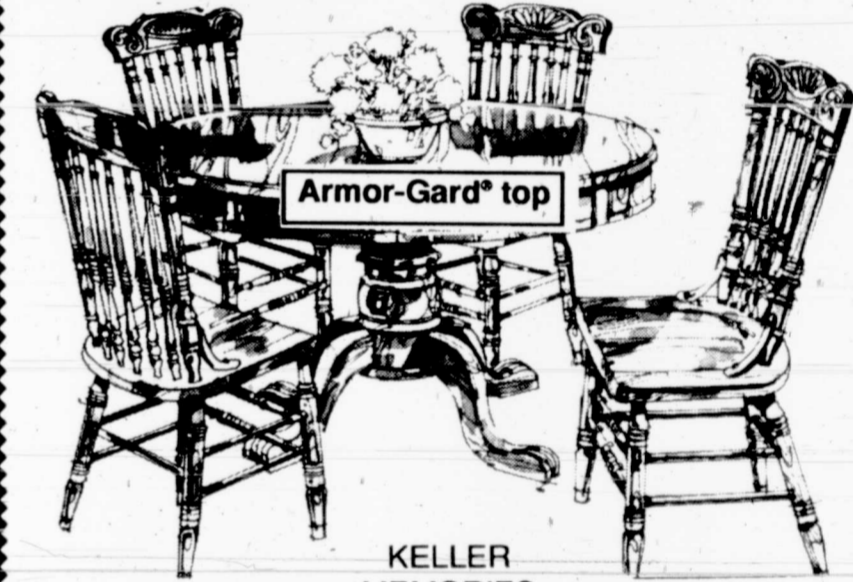
RETAIL \$499 AND \$599

### RECLINERS

LA-Z-BOY AND LANE

\$299 YOU SAVE \$200 TO \$300

HUGE SELECTION OF STYLES AND COLORS IN PLUSH VELVET FABRICS

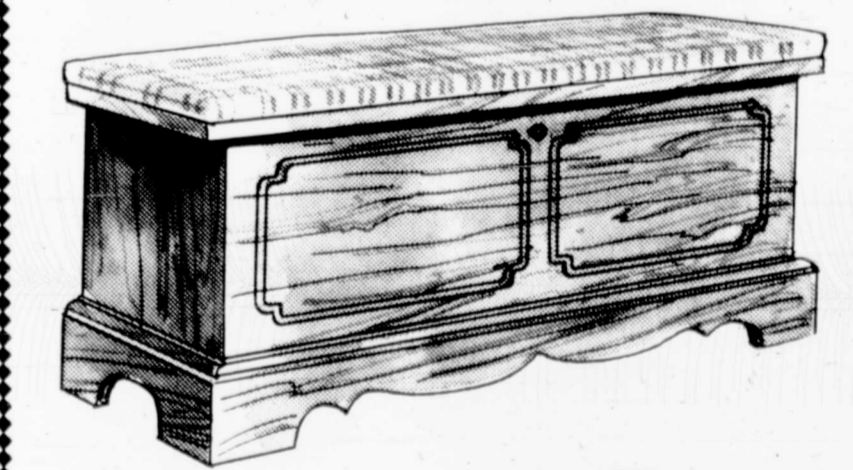


KELLER MEMORIES COLLECTION

SOLID OAK DINING ROOM  
48 INCH ROUND TABLE  
WITH 4 CHAIRS

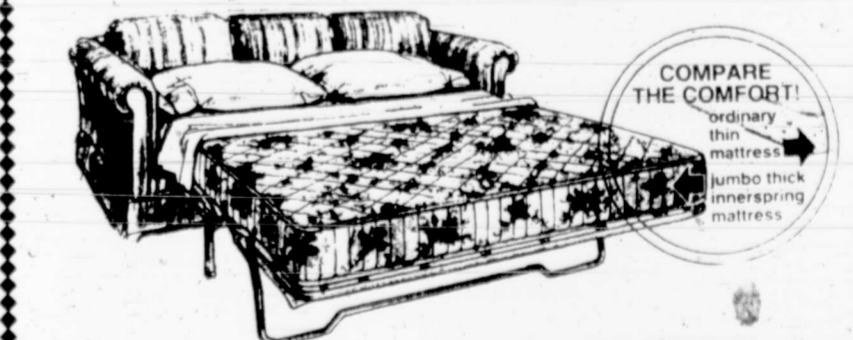
\$1288

RETAIL \$1695



CEDAR CHEST

LANE \$199



COMPARE THE COMFORT!  
Ordinary thin mattress  
jumbo thick innerspring mattress

RETAIL \$995 TO \$1295  
SLEEP SOFAS \$588 AND \$688

BEAUTIFUL COLLECTION OF STYLES IN TODAY'S BEST FABRICS AND COLORS.

Texas

90 DAYS NO INTEREST LAY-A-WAY REVOLVING CHARGE

OPEN 9:00 TO 5:30  
PHONE 665-1623

FURNITURE IN DOWNTOWN PAMPA SINCE 1932

Neighborhood Watch works!

For information, contact the Pampa Police Department