

Tornado Smacks St. Louis; 21 Dead

Fog, Floods, Dust, Snows Hold Nation In Treacherous Grip

320 Injured As Winds Hit 110 mph

By STAN MOCKLER
United Press International

ST. LOUIS (UPI)—A "sleeper" tornado with winds up to 130 miles an hour smashed into St. Louis early today, spreading death and destruction first at the southwest edge of the city and then in the central area.

At mid-morning 21 bodies were in the city morgue. Police reports said the death toll was expected to rise.

Hospitals reported more than 320 persons were injured. The two city hospitals treated and released 270 persons and kept another 55 for additional treatment.

In suburban Brentwood, the 300-foot transmitting tower of radio station KXLW was brought down by the winds.

Chief engineer Jim Mitchell of the station said the tower was built to withstand winds of 100 miles an hour. The tower sheared off part of the room Mitchell was standing in when it came down. "Two more feet and it would have got the five of us," Mitchell said.

Storm Warning Up

Another transmitting tower, that of television station KTVI, was flattened in southwest St. Louis and it crushed two residences and three parked cars when it fell. No one was injured.

At Kansas City, Donald House, supervisor of the U.S. severe storm warning center, said that severe storm warnings were out for the area, but "while a twister in the storm was not totally unexpected, we certainly didn't expect one of such intensity to drop on St. Louis."

The heaviest blows of the storm were rained on a T by 30 block area in the heart of the city. Bounded by Euclid on the west, Vandeventer to the east, Chouteau to the south and Natural Bridge to the north, it is a predominantly Negro neighborhood.

A rooming house was almost leveled and police and rescue workers worked feverishly by the light of emergency spotlights searching the ruins. A power failure put regular lighting facilities out of commission.

Many other rooming houses are in the area, from the 3900 block east to the 5000 block west, and from the 1600 block south to the 3700 block west. Most of them were damaged.

God knows how many people are trapped in those buildings," Deputy Fire Chief James Sauerwine said.

Hail Preceded Wind

Roosevelt Heister, a truck driver who lives across the street from the hardest hit rooming house at Delmar and Whittier, said he saw the interior of the building ripped out and deposited in the street.

"I was looking out the window when I first heard the storm," he said. "I saw the building go just before I ducked. Funny, the only sound I heard was the hail which came before the wind."

Despite wide-open store fronts and vulnerable dwellings, police said there was little looting. Two men were caught and handcuffed to a pole while police completed other duties but no others were apprehended.

The arena, site of the coming welterweight championship fight between Virgil Alkins and Don Jordan, was also heavily damaged. A lower in the front of the building, just a few blocks from KTVI, was brought down in a welter of bricks and stone.

Shocked and wide-eyed survivors roamed the debris-littered streets outside the shattered buildings.

Red-Cross Helps

Mrs. Alberta Williams watched in awe as police and firemen searched the rubble that had been the home of her neighbors.

"Somehow," she said, "I'm afraid to even speak loud when I'm so close to the dead."

The Red Cross moved quickly to the aid of the homeless.

Weather On Rampage As U.S. Suffers

A tornado smashed into St. Louis before dawn Tuesday, killing more than a score of persons and injuring hundreds more.

The twister erupted in a flurry of storm violence across the nation which included freezing rain, heavy snows, severe thunderstorms, fog, floods and dust storms.

Authorities reported at least 21 persons killed in the St. Louis tornado, which swooped out of a rain storm as the city slept. At least 300 persons were injured.

Hardest hit was the city's central section, only a mile from the downtown area. Police blocked off a 40-block-square area in the stricken section while searching for more possible victims and persons trapped in debris.

The St. Louis area also was hit by floodwaters triggered by heavy rains. The northern St. Louis County Community of St. Ann was inundated by floods from a rain-swollen creek. Water five feet deep slashed through some homes in the area.

Heavy rains also hit Pennsylvania and at Meadville, hard hit by recent floods, a main highway was closed due to high water. Rain in the Pittsburgh area measured more than 5/8 inch in a 24-hour period ended this morning.

Flooding also hit northwestern Ohio for the second time this season in the wake of heavy rains. The Blanchard River climbed 1 1/2 feet over flood stage at Findlay, Ohio, threatening downtown area residents. Three feet of water swamped the downtown section of Van Wert.

To the north, weathermen issued a special bulletin warning of heavy snow from northern Iowa and southern Minnesota across Wisconsin and into Michigan. Accumulations of four inches or more were expected, along with winds up to 40 miles an hour which could cause heavy drifting.

Elsewhere around the country, the weather situation included: Chicago, Detroit, Milwaukee, Kansas City and St. Louis among major cities to hit the skids under the pounding of rain and ice storms which began Sunday night. Hundreds of persons injured in falls on the ice, giant traffic jams commonplace, air transportation was crippled.

Fog in the south blamed for collision of two empty freighters in Mobile, Ala., Bay and sinking (See WEATHER, Page 2)



The Pampa Daily News

VOL. 56—NO. 261

Serving The Top of Texas 51 Years

(12 PAGES TODAY)

PAMPA, TEXAS, TUESDAY, FEBRUARY 10, 1959

'NATION NEEDS HIM'

Ike Prays For Return of Dulles

By STEWART HENSLEY
United Press International

WASHINGTON (UPI)—President Eisenhower today called on the American people to pray for the early return of Secretary of State John Foster Dulles to his job. The President said America needs him.

The President spoke at a news conference about a half hour after Dulles entered Walter Reed Army Hospital to undergo a hernia operation.

The President said that so far as he knew, Dulles' illness would not interfere with preparations for Western negotiations with Russia on Berlin, Germany and other European problems.

The President noted that no matter what type of negotiations are held with the Russians, some time will be necessary for preparations. He implied that he expects Dulles to be well by the time the meeting is held.

He said he believes Soviet Premier Nikita S. Khrushchev is more concerned with a heads-of-government meeting without an agenda. Such a summit meeting, the President added, would take even longer to prepare.

Eisenhower said there have been suggestions for a meeting with Russia at foreign ministers level and such a conference would take some time to prepare.

He said he believes Soviet Premier Nikita S. Khrushchev is more concerned with a heads-of-government meeting without an agenda. Such a summit meeting, the President added, would take



MONDAY EVENING WIND DAMAGE

A violent south wind reached twister proportions Monday evening tore the roof off the James Reeves henhouse (in foreground) and carried it nearly 90 feet into the side of the Reeves home (in background).

Hens, seen in front of the wrecked henhouse, were unscratched. Part of the roof landed in the Reeves driveway in the upper left of the photo. (Daily News Photo)

Coop Flattened By Small Twister Here

By MARVIN OLSEN
Daily News Staff Writer

What is believed to be a "twister" destroyed part of a chicken coop and tore down power lines Monday evening at the farm home of Mr. and Mrs. James A. Reeves, about five miles north of Pampa.

Mrs. Reeves, this morning told the Daily News, the chicken coop roof came off with an "awful noise" about 6:30 p.m. Electric power in the home was shut off 15 minutes earlier. A kitchen clock had stopped at 6:15.

The hen house roof, made of sheet metal with wooden beams, was carried in a great burst of wind about 90 feet into the side of the Reeves home.

One beam poked a hole in the kitchen wall and one window was shattered. Only damage inside the house was a light fixture in a bedroom.

Part of the hen house roof carried another 30 yards into the farmhouse driveway in front of the Reeves home.

Chickens inside the coop were unscratched, and in fact this morning were laying eggs in undamaged portions of the coop.

Three members of the Reeves family were home when the twister hit. Mrs. Reeves and her two boys Jim S. and Ted, and Mr. Reeves was at work away from the home.

Mrs. Reeves said the wind blew hard all Monday and was especially violent from 5 p.m. until late in the night. She said the wind at 5:30

"must have been a small twister." The Reeves lease the farm from Mr. and Mrs. Clarence Woods, residents of California, who have not yet been notified of the damage. It is believed insurance does not cover the loss.

After the power in the Reeves home was lost last night the Reeves family moved into the home of Mrs. Reeves' parents, Mr. and Mrs. Homer Taylor, who live nearby.

Elsewhere in Pampa Monday afternoon's high winds, rain and hail did little damage, except to several tree branches that were bent and broken.

A United Press International report Tuesday morning, that a plane flipped over at the Perry LePore field, was described as "negative." Tuesday morning, by field manager Claude Timmons.

"We had no plane damage whatsoever," Timmons said.

Timmons added that one plane was in the middle of the airstrip when rain and hail hit Monday afternoon. "But it wasn't even scratched."

Timmons did say however that he had heard a plane at Berger had been damaged during Monday afternoon's high winds.

WINDS HIGH IN SHAMROCK

SHAMROCK (SpI)—Winds up to 75 miles per hour roared through this city Monday evening and Monday night. Visibility was cut to one block and several television antennas were bent double.

One small chickenhouse was pushed over but damages were not heavy. A Boy Scout display tent, set up behind the First Methodist church, was also blown over.



WIND VICTIMS

Mr. and Mrs. James Reeves are not sure if insurance covered the damages wind did to their home and farmyard Monday evening. The Reeves lease the farm from a California couple. In the background is part of the henhouse roof. It blew nearly 90 feet into the side of their rural Pampa home. (Daily News Photo)

COLD WAR HEATS UP

Red Radio Quotes American Over 'Shooting' Incident

LONDON (UPI)—Moscow Radio quoted American newspaper editorials, today, in an attempt to back charges that the U.S. State Department accused Soviet airmen of shooting down an unarmed American plane to keep the cold war from thawing.

An English-language broadcast repeated earlier Soviet claims that the State Department's recording of Soviet pilots' conversations during the attack was a fake. It criticized the department for failing to make the recording public.

Soviet ambassador to Washington Mikhail Menshikov was invited by the State Department to hear the recording, but refused. The broadcast quoted the Wash-

ington Post and Times Herald as saying the State Department sought to stir up public and congressional indignation with its revelation. It said the New York Times thought the move was intended to aggravate Western-Soviet relations.

The New York Post was quoted as saying the U.S. government apparently took its action to drown out what Soviet Premier Nikita S. Khrushchev and Deputy Premier Anastas Mikoyan were saying about ending the cold war.

"What has been cited is enough to show that the State Department's maneuver was taken with malice aforethought," Moscow Radio added.

The broadcast also disputed saying the State Department had the recording a long time before it was released. It quoted United Press International interview with Rep. Wayne Hays (D-Ohio), a member of the House Foreign Affairs Committee, in which Hays said committee members did not know of the recording.

"There is nothing at all surprising in this," it added. "The fabrication was concocted only recently. The State Department never had such a recording and does not have one. That is why neither the House nor the Senate Foreign Affairs Committee was informed."

The broadcast quoted the Wash-

TV TOWER FALLING SOUNDED LIKE EXPRESS

(Editors' note: Jim Mitchell, chief engineer for radio station KNEW in St. Louis, was at the station when the tornado hit, knocking down the transmitting tower. This is his report of the event.)

By JIM MITCHELL
As Told To UPI

ST. LOUIS (UPI)—Two salesmen, the general manager, the janitor and I were on the second floor of the studio building because torrential rains had flooded the ground floor with 16 inches of water.

A noise like a train roar started up and we could hear the tower crash. It fell slicing off one corner of the building where the general manager's office is. Two more feet and it would have got the five of us.

But no one was hurt, luckily. One salesman's car parked outside was partly demolished. Our tower was 282 feet high and held by guy wires. It was flung and it would have got the five of us. It knocked us off the air, but we expect to be back on later today with an interim antenna.

If it comes from a Hardware Store, we have it, Lewis Wade. (Adv)



EMMETT DIGNAN
...ag. speaker

Dignan To Speak Here Tomorrow

Emmett J. Dignan, vice president of the United States National Bank, Denver, Colo., will speak at an Agricultural Day program Wednesday. County farmers have been invited to the Palm Room for an afternoon of speeches by agricultural experts. The program will begin at 2 p.m.

Other speakers will be Robert G. Cherry, Texas A & M agricultural economist; Dr. G. M. Watkins, A & M dean of agriculture; and Jack Barton, A & M soil and water specialist.

The meeting is sponsored by the Extension Service of Texas A & M College, Burlington Lines, the Pampa Chamber of Commerce and the Gray County Soil Conservation District.

After an address of welcome by Chamber President Warren Hays, A. K. Hepperly, Burlington Lines' agricultural agent, will introduce Dignan. Dignan will speak on the agricultural economy.

At 3 p.m. Cherry will discuss the "Agricultural Outlook for 1959." Dr. Watkins will speak at 3:40. His subject will be "What's New in Agricultural Research." At 4:10 Barton will speak on the "Great Plains Agricultural Program."

Mainly About People

*Indicates Paid Advertising

The Current Events class will meet at 7:30 p.m. today in Lovett Memorial Library. Warren Cochran, instructor, has announced. The topic for discussion will be "Soviet Russia in Relation to Berlin and West Germany." The class is sponsored by the Pampa Adult Education Group.

For Sale: 11 cu. ft. chest type G. E. freezer. Phone MO 9-9875 after 6 p.m.

Mr. and Mrs. W. E. Jarvis, 1900 Christine, left for Whitecourt today to attend the funeral of Mrs. P. M. Jarvis, Jarvis' mother.

A chili supper, sponsored by the Pampa Los Cressas Club, will take place in Holy Souls Parish Hall, 612 W. Buckler, Thursday. It will be held from 6:30 to 9 p.m. Tickets cost 75 cents.

Rummage Sale, sponsored by the Lefors Home Demonstration Club, will be held Friday and Saturday, Feb. 13th and 14th, 321 S. Cuyler.

The Eastern Star Study Club will meet with Mrs. Oscar Shearer, 409 N. Nelson, at 7:30 p.m. today.

Don DeRosen, area coordinator with the Texas State Heart Association, will speak to the Gray County Heart Association board meeting on Wednesday at 7:30 p.m. in Lovett Memorial Library. Cecil Tedrow and Ray E. Wilson left this morning by company plane for a twenty-four hour group of clients of the Schlumberger Well Survey Corp. home office and plant in Houston.

Rho Eta Chapter of Beta Sigma Phi Sorority will be hostess to the Thursday afternoon meeting of Senior Citizens in Lovett Memorial Library at 2:30, according to an announcement by Jay Flanagan, Altrusa Club Senior Center chairman.

Rowntree Rates As Marksman

FORT WORTH (Sp) Cadet Winston E. Rowntree, son of Mr. and Mrs. W. L. Rowntree, 900 N. Somerville, Pampa, has been awarded a marksmanship ribbon for qualification firing with the .22 caliber rifle with the Army ROTC Unit at Texas Christian University.

The award was made by Lt. Col. Eugene A. Watts, professor of military science and tactics.

Cadet Rowntree was awarded the ribbon at recent ceremonies conducted on the university's ROTC drill field. A freshman in the Army ROTC Unit at TCU, he studied individual weapons marksmanship and drill in his military courses during the fall term and is studying American military history during the spring semester which began Feb. 2

Dallas Speaker Will Appear Here

Louie Throgmorton of Dallas will speak at a joint banquet of the Top O' Texas and North Plains Hereford Breeders' Associations March 3. The joint banquet will be an event of this year's Top O' Texas Livestock Show.

The Hereford Breeders' banquet will be held at 7:30 p.m. in the First Methodist Church, following a Future Farmers of America banquet at 5 p.m. in the High School cafeteria. An exhibitors' barbecue will be held following the Junior Livestock Show. It will occur at 3 p.m. Monday at Recreation Park.

These and other announcements were made at a Monday meeting of the Agriculture and Livestock Committee, Pampa Chamber of Commerce. Arthur Rankin, chairman, presided. Committee assignments were made for the Top O' Texas Stock Show Mar. 2, 3, 4.

Raymond Maddox, G. L. Lumsford, Paul Bowers and Bill Dunn were assigned to the Building and Grounds Committee. Frank Carter

and Paul Crouch will handle trucking details. Bob Skaggs, Pampa High School vocational agriculture teacher, agreed to supervise cleaning of the grounds after the show.

A. B. Carruth will be responsible for a tractor and Clyde Carruth for a Sittling Committee. Jack Osborne will work with Clyde Carruth on details of the barbecue. Concessions will be handled by Ervin Cole.

Frank Carter agreed to find a night watchman for duty at the barn. Jim Smathers and J. E. Gunn will rig up a public address system and secure other properties.

Clyde Carruth and Bob Skaggs will be in charge of painting the sales ring.

Young Couple Pleads Guilty To Tire Theft

John T. Williams, 21, of Canadian, and 15-year-old Barbara Ann Baasa, 413 N. Faulkner, entered pleas of guilty in county court this morning to charges of theft.

Williams was fined \$50 and court costs and sentenced to ten days in jail. Miss Baasa was fined \$25 and costs and given a one-day jail term.

Williams and the Pampa woman were arrested early Monday morning when Williams' car ran a stop sign in Pampa.

Inside Williams' car police officers found several tires and wheels taken in recent weeks from a Pampa Salvage yard. Monday morning the pair admitted to five thefts, three of which were committed in Pampa in December.

Read The News Classified Ads.

VOTE FOR COURTESY

Friendliest -- Most Courteous -- Employee Awards

LET'S MAKE PAMPA THE FRIENDLIEST CITY IN TEXAS!

I vote for the following for the awards:
"Friendliest, Most Courteous" WOMAN EMPLOYEE—
Name _____
Place of Business _____
"Friendliest, Most Courteous" MAN EMPLOYEE—
Name _____
Place of Business _____

Clip out; fill in; and please mail the above to "Friendliest, Most Courteous" Employee Awards, at The Pampa Daily News, Pampa, Texas, or deposit in any one of the 4 ballot boxes located at Citizens Bank and Trust Co., First National Bank, Pampa Chamber of Commerce, or The Pampa Daily News—voting ends on Sunday, February 15. Announcement will be made in the February 22 edition of The News. Store owners or managers are not eligible. Vote as often as you wish; use only the award voting ballot which will be published daily in The News.

WEATHER

(Continued From Page 1)

in a plane crash partially attributed to the storm.

The band of freezing rain during the night stretched from southwest Kansas, through northern Missouri and southern Iowa, across northern Illinois and into southern Michigan and then across parts of Pennsylvania to the Atlantic Coast near Providence, R.I., and Boston.

In Chicago where freezing rain alternated with fog and slush, hospitals were crowded with persons seeking treatment for broken limbs suffered in falls or traffic accidents.

Wesley Memorial Hospital in Chicago treated "at least 30" cases of fractures and sprains Monday, and a spokesman at Edgewater Hospital said the rate of admissions was so high that if it keeps up "I don't know what we'll do for bed space."

Read The News Classified Ads.

Tornadoes near Welch, Okla., and Duenweg, Mo., caused property damage but no injuries.

High winds kick up dust storms in Texas Panhandle, cause five-car accident, blow down church under construction and overturn airplane.

Shows up to four inches bury sections of Midwest from South Dakota to Kansas and into western Iowa. Heavy snow warnings out for upper Midwest.

Few Casualties Reported

Only the West coast escaped the outbreaks of weather violence, which forecasters said resulted from a mixture of the basic storm ingredients—plenty of moisture and a collision of contrasting cold and warm air masses.

Although the storms were widespread and severe, only a relatively few casualties were blamed on the weather, including two in Illinois traffic accidents and one each in Iowa, Pennsylvania and Missouri. In Arizona, hit by a snowstorm, two men were killed

in a plane crash partially attributed to the storm.

The band of freezing rain during the night stretched from southwest Kansas, through northern Missouri and southern Iowa, across northern Illinois and into southern Michigan and then across parts of Pennsylvania to the Atlantic Coast near Providence, R.I., and Boston.

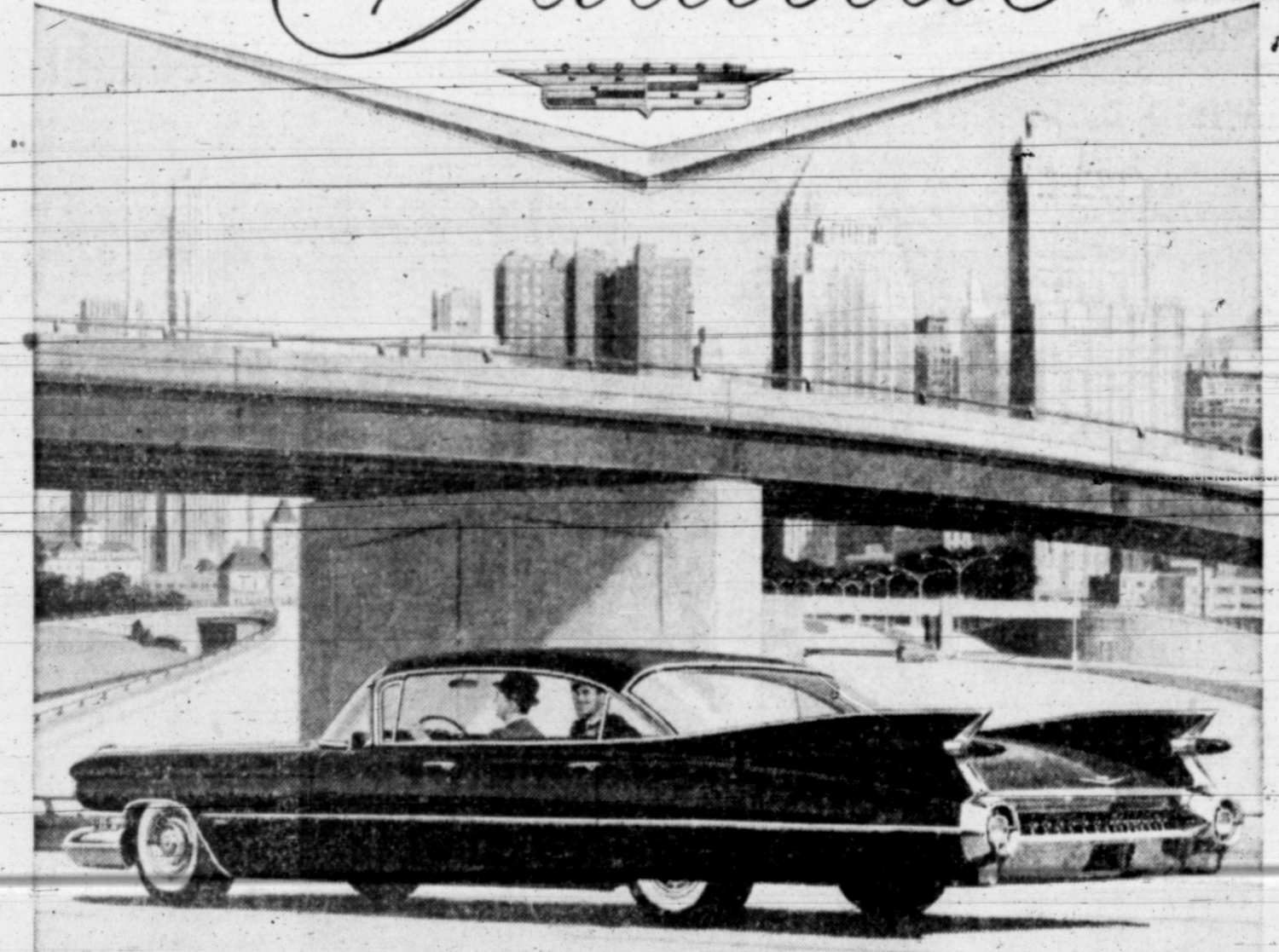
In Chicago where freezing rain alternated with fog and slush, hospitals were crowded with persons seeking treatment for broken limbs suffered in falls or traffic accidents.

Wesley Memorial Hospital in Chicago treated "at least 30" cases of fractures and sprains Monday, and a spokesman at Edgewater Hospital said the rate of admissions was so high that if it keeps up "I don't know what we'll do for bed space."

Read The News Classified Ads.

INCOME TAX SERVICE
In Your Home or Mine
BOB RATLIFF
1534 Hamilton MO 5-3305

Cadillac



Motordom's Most Convincing Hour!

Give us just a moment of your time and—in imagination—come with us now on a journey in a new 1959 Cadillac.

The car is waiting for you... the door is open... and the driver's seat is beckoning. Just slide in behind the wheel and pretend it's yours!

Here indeed is the most inspiring vantage point on any highway. You are supremely comfortable... vision is incredibly wide and clear... and you're surrounded by elegance and luxury.

Now turn the key in the ignition... judge the accelerator ever so gently... and you're off!

It's quite an experience to sit in command of this great motor car—where so many of the world's distinguished motorists sit—and watch the world sweep silently by.

Even the passing wind has been hushed to a whisper.

And driving itself? Just the gentlest touch of your hand on the wheel and the lightest pressure of your foot control every movement of the car.

And so it goes—through the intricacies of the city's traffic... down the broad sweep of the boulevard... and over the country byways.

You simply sit there—rested and relaxed—the perfect master of every driving situation.

Too good to be true? Well, the proof is no farther away than your nearest Cadillac dealership—and no longer than an hour in the finding.

Stop in soon—and discover for yourself why the most glorious miles in the world travel beneath the wheels of the 1959 Cadillac!

VISIT YOUR LOCAL AUTHORIZED CADILLAC DEALER

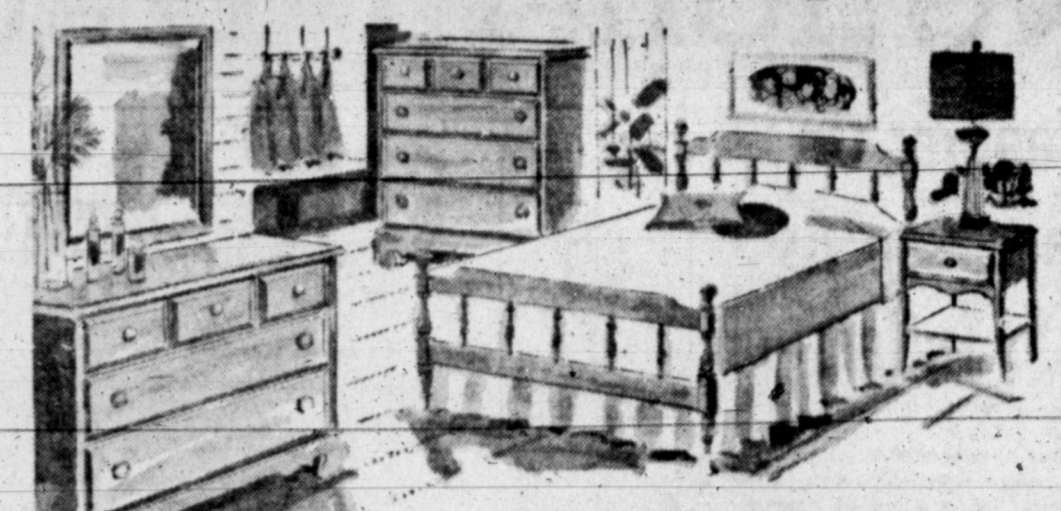
TOM ROSE MOTORS
833 WEST FOSTER STREET • PAMPA, TEXAS

Every Window of Every Cadillac is Safety Plate Glass

FEBRUARY IS BONUS MONTH

at WHITTINGTONS

BUY DURING FEBRUARY AND SAVE 25%



NO INTEREST OR CARRYING CHARGE ON CARPET OR FURNITURE

Danish Modern 2-Pc. Bedroom Suite

Triple dresser with dove tail construction center guide dust proof drawers. Beveled plate glass mirror and bookcase bed. **\$329⁵⁰**

FREE \$82⁵⁰ BONUS IN MERCHANDISE OF YOUR CHOICE

Solid Ash 2-Pc. Bedroom Suite

Double dresser with dust proof drawers and tilting plate glass mirror. Bookcase headboard in copper finish. **\$339⁹⁵**

FREE \$85⁰⁰ BONUS IN MERCHANDISE OF YOUR CHOICE

Solid Maple 2-Pc. Bedroom Suite

Double dresser with dust proof door and framed mirror. Bookcase headboard, early American finish. **\$199⁹⁵**

FREE \$50⁰⁰ BONUS IN MERCHANDISE OF YOUR CHOICE

2-Pc. Modern Bedroom Suite

Double dresser with tilting mirror, bookcase headboard in modern blonde finish. **\$169⁵⁰**

FREE \$42⁵⁰ BONUS IN MERCHANDISE OF YOUR CHOICE

Englander or A Brandt Sleeper Sofas

Heavy grade nylon cover in your choice of decorator colors. Opens into double bed with innerspring mattress. Seat cushions are foam rubber with zipper covers. **\$319.95**

Free \$80 Bonus

\$319⁹⁵

2-Pc. Flexsteel Living Room Suite

Guaranteed lifetime construction 100% Dupont Nylon cover, foam rubber construction in a choice of decorator colors. **\$349⁵⁰**

FREE \$87⁵⁰ BONUS IN MERCHANDISE OF YOUR CHOICE

2 Pc. Early American Living Room Suite

Wing back sofa and chair styled by "Town and Country." Tweed effect cover with foam rubber cushions. **\$349⁹⁵**

FREE \$87⁵⁰ BONUS IN MERCHANDISE OF YOUR CHOICE

Whittingtons "Low Prices Just Don't Happen" They Are Made FURNITURE MART

105 S. Cuyler Ph. MO 5-3121

Little Can Halt Ascent Of State Budgets And Tax Levies

EDITOR'S: Although the new federal budget is slightly lower, the trend of state spending—and state taxes—is markedly upward. Rising state budgets will offset reductions in the federal outlay. The situation across the land is rounded up in the following dispatch based on a survey by UPI bureaus in the states.

By **RAYMOND LAHR**
United Press International

WASHINGTON (UPI)—State budgets are going up like robust mountain climbers and so are state taxes.

In more than half of the 45 states whose legislatures met this year, new taxes or increases in present levies are possible or probable and in some cases certain.

In almost all states where governors have submitted budgets for the coming fiscal year or biennium, their budgets are higher than the last ones and many are at all-time highs. The same upward trend is expected in those still to come. An exception is Kansas.

Nelson A. Rockefeller of New York and Edmund G. Brown of California—the new governors of the two biggest states—each has given his Legislature a record budget in excess of two billion dollars for the next fiscal year. Rockefeller's included a fat tax package to raise \$277,000,000 and Brown asked for tax increases totaling \$256,000,000.

Borrow From Banks
In Michigan, Gov. G. Mennen Williams is beset by a financial crisis so severe that state universities were borrowing from banks which have now shut off further credit. He has asked for 140 million dollars a year of new revenue. Michigan expects to have a deficit of 110 million dollars by July 1.

The Indiana Legislature received its first billion dollar budget this year for the coming biennium but it can be handled with no new tax increases on top of those enacted two years ago. Virginia moved into the billion dollar budget class last year.

In New Jersey, Gov. Robert B. Meyner also presented a record budget but said it could be balanced without a tax increase.

Illinois and Pennsylvania legislators will receive budgets in the neighborhood of two billion dollars for the next biennium. Both are expected to include proposals to

increase the take from state sales taxes. Gov. David L. Lawrence of Pennsylvania thinks his state will need about 400 million dollars in new revenue for the two-year period.

Seek New Income Taxes
New or increased state income taxes, higher and/or broader sales taxes and increased excises on liquor and tobacco are the most widely proposed measures for raising new revenue.

Like the federal government, 10 states already withhold income taxes from paychecks. Rockefeller's and Williams' tax programs call for withholding taxes in New York and Michigan. The same proposals are getting attention in Minnesota and Massachusetts, where the Legislatures have rejected them in past years, and in North Carolina and South Carolina.

Massachusetts is in trouble too, with a 25 million dollar deficit expected this fiscal year. Gov. Foster Furcolo wants a withholding system to collect state income taxes and a new but limited sales tax of 3-per cent.

Other states where new or revised sales taxes in some form are getting attention include Arizona, Illinois, Missouri, Ohio, Pennsylvania, South Carolina, Vermont and Washington. Some Minnesota legislators want to levy a sales tax, but Gov. Orville L. Freeman wants to raise income taxes and excises on liquor and tobacco.

Maryland taxpayers got their bad news last year—a double dose of it. The state income tax was increased by 50 per cent, effective in 1958, and the sales tax was jumped from 2 per cent to 3 per cent, effective this Jan. 1.

Other states in which changes in income taxes are being considered include Alabama, Colorado, Idaho, South Carolina and Wisconsin. A new income tax may be proposed in Rhode Island, which now has a sales tax.

Gov. Albert D. Rossellini of Washington, which also depends now on a sales tax, wants a constitutional amendment to authorize an income tax. For the short run, however, Rossellini is asking for a sales tax and other revenue changes to yield about 135 million dollars over two years.

States Consider Taxes
States considering higher liquor or tobacco taxes include Colorado, Idaho, Illinois, Maine, Minnesota, Missouri, New York, Ohio,

South Carolina and Vermont. Some states are considering gasoline tax increases but in most cases the situation has not yet settled. Eight states raised gasoline taxes in the past two years.

In Kansas—an exception—Gov. George Docking's budget for the next fiscal year is about 7 million dollars lower than this year. He is asking for a new truck tax and for a reduction of the 2½ per cent sales tax to 2 per cent. The Legislature has not reacted favorably to either proposal.

Dental Tools Today Are Very Modern

Editor's Note: This is the second in a series of articles published by The Pampa Daily News in cooperation with the dentists of Pampa in observance of National Children's Dental Health Week February 8 to 14 and the centennial of the American Dental Association. Some recent developments in dentistry affecting children are discussed.

When Johnny goes off for his first visit to the dentist, he will be facing far less discomfort than his parents or grandparents did at the same age—both in terms of techniques that will prevent serious dental illness later and in terms of new equipment that will help to assure good dental health.

A dramatic advance in dentistry has been the development of high speed equipment designed to eliminate the vibration and pressure associated with the traditional instruments used for cavity preparation.

The new instruments operate at speeds ranging from 10,000 to above 300,000 revolutions per minute as compared with the traditional drill which rotates at about 6,000 revolutions per minute.

These new instruments are now being used in some dental offices in Pampa. Increased comfort of the patient and improved efficiency are purposes of the equipment. The amount of time a patient spends in the dental chair while teeth are prepared for fillings can be cut in

On The Record

HIGHLAND GENERAL HOSPITAL NOTES

Admissions
Mrs. Ruby Olsen, 558 S. Russell
Bruce Ginn Jr., Pampa
Mrs. Leta Waite, 418 Pitts
Pat Sims, 708 Bradley Dr.
Mrs. Margaret Hopkins, 2218 Williston

W. I. Cooper, Skellytown
Mrs. Zinnie Bailey, Wheeler
R. V. Archer, Letors
Fred W. Hueston, Pampa
Volly L. Hoff, Skellytown
Joan Payton, Pampa
Mrs. Cornelia Garrison, Pampa
Jimmy Freudenrick, 416 Letors
Kelly Irvin Brown, White Deer
Mrs. Bernice Reese, Berger
Charles Clark, Miami
Mrs. Neta McCoy, 1225 S. Sumner
Marion H. Nolan, Berger

DISMISSALS
Baby Forrest Taylor, 1113 Terry
Baby Dale Haynes, 324 Doyle
W. S. Marsh, 1204 Duncan
Mrs. Ruth Blumer, 1035 E. Kingsmill
Mrs. Velma Deering, 429 Graham
Mrs. Bernatha Dewees, 525 Red

half dental scientists point out. Generally, the equipment can be divided into three categories—standard high speed (10,000 to 30,000 revolutions per minute), super high speed (200,000 to 10,000), and ultra high speed (100,000 to 300,000).

For standard high speed, existing rotary equipment is accelerated and is used in all procedures for which the traditional rotary drill has been used.

For super-high speed, the dentist needs additional equipment for some operations.

For ultra high speed, either a turbine or a special belt-driven mechanism powers the drill. It replaces the bearing surfaces and gears of the more conventional equipment.

Tomorrow: Accidental Injuries to Teeth.

Men, Women! Old at 40, 50, 60! Want Pep? Want to Feel Years Younger?

Do you blame cellulite, wrinkles, sagging skin, thinning hair, and a little more gray on your temples? Thousands are amazed at what a little pep they can get with Oxy-Tone. Oxy-Tone has been scientifically proven to give you the pep you need to feel like a 40, 50, 60, or 70 year old again. Oxy-Tone is a natural, non-toxic, and safe product. It gives you the pep you need to feel like a 40, 50, 60, or 70 year old again. Oxy-Tone is a natural, non-toxic, and safe product. It gives you the pep you need to feel like a 40, 50, 60, or 70 year old again.

Der
Mrs. Betty Wright, 506 Okla.
homa
Mrs. Elnora Haynes, 620 N.
Dwight
Mrs. Ruth Weiborn, Letors
Mrs. Helen Schmieding, 2316
Rosewood
Mrs. Dolene Burrell, Pampa
Emmett McKee, 704 Roberta
Mrs. Alta Scott, Skellytown
Norman Carr, Pampa

Mrs. Billie Crawford, 220 N. 51st
Wells,
Roy Jones Jr., 2509 Rosewood
Darrell Smith, 321 Jean
Mrs. Marjorie Barnes, 1140
Neel Rd.
Mrs. Pearl Burney, 933 S. Wilcox
CONGRATULATIONS:
To Mr. and Mrs. Wayne Worley, 532 S. Russell, on the birth of a daughter at 2:14 p.m., weighing 7 lbs. 11 oz.
To Mr. and Mrs. H. L. Garrison, Pampa, on the birth of twin daughters at 6:09 and 6:14 p.m., each weighing 6 lbs. 11½ oz.
To Mr. and Mrs. Jerry Olson, er and a New York landmark, as the new home of the Institute of Fine Arts of New York University.

DEDICATE DUKE MANSION
NEW YORK (UPI)—The James B. Duke mansion, former residence of the tobacco manufacturer and a New York landmark, was dedicated Monday as the new home of the Institute of Fine Arts of New York University.

THE PAMPA DAILY NEWS
TUESDAY, FEBRUARY 10, 1959

IF YOU ARE
**SMART, SENSIBLE,
SPIRITED**
SEE THE CAR THAT'S THE SAME

LOOK AT THE **LARK** BY STUDEBAKER

Look and you'll see the one car of the day that's three feet shorter, with room for six inside. The one solid, serviceable car that's smartly styled (tidy, simple lines outside, fine appointments, pleated upholstery, pile carpeting inside—all so fashionable it's approved by Harper's Bazaar). Drive The Lark and discover the one low-priced, easy-on-the-purse-to-run car that's engineered for peak performance for miles and miles on a haulful of regular, low-cost gas.



CALL FOR A FUN DRIVE DEMONSTRATION TODAY AT
GIBSON MOTOR CO., 200 E. BROWN, PAMPA, TEXAS

HELP YOURSELF TO A HEARD OF VALUES!

SHORTENING—SPRY, FLUFFO,
SNOWDRIFT 3 LB Can **79c**

FESTIVAL, ASSORTED FLAVORS
MELLORINE 1/2 Gal. **29c**

DIXIE
Salmon Tall Can **35c**

Sunshine
Crackers 1-Lb. Box **19c**

DELSEY
TISSUE 2 Rolls **19c**

BIG MIKE
Dog Food 3 Cans **19c**

PORK LEAN Boston Butt
ROAST 35c lb

DOUBLE STAMPS
Wednesday with \$2.50 or More Purchase
POTATOES Pkg. **29c**

Buddy's New All-Purpose
DETERGENT Giant Box **65c**

FRESH
GROUND BEEF lb **39c**
CLUB STEAKS lb **79c**
CHUCK ROAST lb **49c**
ROUND STEAK lb **79c**
FRYERS armours lb **27c**
LEAN
PORK STEAK lb **49c**

Borden's Instant Whipped
POTATOES Pkg. **29c**

JEAN'S
ROLLS pkg. of 24 **19c**
Jesse Jewel Apple, Peach, Cherry
TURNOVERS 9-oz. pkg. **17c**
UNDERWOOD'S
BAR-B-QUE 1/2 CHICKEN **69c**

Buddy's Best
FLOUR 10 Lb. Sack **69c**

Elmer's Economy Large Size
EGGS 2 doz. **89c**
Hydrox 9 oz. pkg.
COOKIES 2 for **49c**
Concho—No. 303 Can
CUT GREEN BEANS 2 For **25c**
Wapco Sweet 303 can
Potatoes can **15c**
Wapco
BLEACH Qt. **15c**
Hip-O-Lite Marshmallow
CREME Pt. a/lr **23c**

BUDDY'S SUPER MARKETS
PRICES GOOD THRU WEDNESDAY
Quantity Rights Reserved

California
CABBAGE 2 Lbs. **15c**



KKI FOR MOD — Mrs. Fred Ammeter, party chairman for the March of Dimes Benefit...

Women's Activities

Doris E. Wilson Daily News Women's Editor

SOCIAL CALENDAR

- TUESDAY 2:30 — Civic Culture Club, Guest Day Tea, Lovett Library.

Altar Society Plans Membership Drive

The February meeting of the Holy Souls Altar Society was presided over by the president, Mrs. Lloyd Simpson.

TREBLE CLEF HAS FAMILY MUSICAL

Treble Clef Club met recently in City Club Room for a Family Night Musical featuring a "Music in the Home" program.

Treble Clef Has Family Musical

Treble Clef Club met recently in City Club Room for a Family Night Musical featuring a "Music in the Home" program.

MISS EVELYN MILAM TO BE PTA SPEAKER

Miss Evelyn Milam, counselor for Pampa High School, will be the speaker for the Horace Mann PTA meeting to be held Thursday at 2:15 in the school auditorium.

DEAR ABBY...

DEAR ABBY: My husband has a dirty mind. The Beauty Parlor I go to happens to be located in a hotel. He says he doesn't want me seen going in and out of the hotel (it is a perfectly respectable hotel) because it looks bad. Also, if I happen to catch a bus right away and get home early he suspects that I had someone drive me home. I have never done anything (or thought of doing anything) that would give him reason to think I was unfaithful. Am I the only one with a man like this? Why does he think these things? FAITHFUL



DEAR ABBY...

By Abigail Van Buren

DEAR ABBY: My husband has a dirty mind. The Beauty Parlor I go to happens to be located in a hotel. He says he doesn't want me seen going in and out of the hotel (it is a perfectly respectable hotel) because it looks bad. Also, if I happen to catch a bus right away and get home early he suspects that I had someone drive me home. I have never done anything (or thought of doing anything) that would give him reason to think I was unfaithful. Am I the only one with a man like this? Why does he think these things? FAITHFUL

DEAR ABBY: I am a mature, independent woman in the real estate business. I am interested in a man in the next town. When I call him to tell him I am driving down to see him he seems delighted and is always available. I pack a hot dinner and tuck in a bottle of wine and we have a wonderful spread by the countryside. I can't understand why he never calls me or comes here to see me. PUZZLED

DEAR ABBY: I would like to say to the woman who is afraid to have a child because she dreams that her baby will be born blind or crippled, my fears were similar to hers. When I was pregnant I prayed every night that my baby would be a healthy, normal child. God chose to send us a precious little boy who was born blind. He is almost 3 now and we have taken him to many doctors, but they can do nothing for him. I will not say that this was easy to accept, but we have done so, long ago, because it was God's will. Our son creates more problems than an ordinary child, but we wouldn't trade him for any other baby in the world. Things could be a lot worse, and in spite of everything we still feel that both our son and we are richly blessed.

DEAR UNDECIDED: Be friendly with ALL the girls. If this one girl realizes that she can't monopolize you, she will probably be friendlier with the other girls, too.

DEAR PUZZLED: Why should he? He never had it so good.

MISS EVELYN MILAM TO BE PTA SPEAKER

Miss Evelyn Milam, counselor for Pampa High School, will be the speaker for the Horace Mann PTA meeting to be held Thursday at 2:15 in the school auditorium.

"Isaiah Speaks" Mission Study For Women's Society Of Christian Service

CIRCLE ONE

Circle One of the First Methodist Church met with Mrs. Luther Pierson on Wednesday in a home, 1818 Christine. Mrs. Clarence Lutes, chairman, announced in the business session that the

DEAR ABBY: I am a girl who is 12 years old and my problem is my best girlfriend. She is a real cute girl and smart in school, but she doesn't want me to have any other friend but her. She cuts down every other girl I speak to. I have to take my choice between this one girl and all the rest. Please tell me what to do.

DEAR UNDECIDED: Be friendly with ALL the girls. If this one girl realizes that she can't monopolize you, she will probably be friendlier with the other girls, too.

DEAR PUZZLED: Why should he? He never had it so good.

MISS EVELYN MILAM TO BE PTA SPEAKER

Miss Evelyn Milam, counselor for Pampa High School, will be the speaker for the Horace Mann PTA meeting to be held Thursday at 2:15 in the school auditorium.

DEAR ABBY...

DEAR ABBY: I am a girl who is 12 years old and my problem is my best girlfriend. She is a real cute girl and smart in school, but she doesn't want me to have any other friend but her. She cuts down every other girl I speak to. I have to take my choice between this one girl and all the rest. Please tell me what to do.

CIRCLE FIVE Circle Five met in the church parlor with Mrs. W. E. Abernathy and W. A. Hardy as hostesses. Mrs. Price Dozier Sr. opened the meeting with prayer. Mrs. W. E. Abernathy, chairman, presided during the business meeting. An announcement was made of the sub district meeting of WSCS to be held Feb. 10 in St. Paul Methodist Church. Cards of appreciation were read from Mrs. A. C. Steeley and Mrs. H. F. Barnhart for remembrances sent them recently.

CIRCLE FOUR Mrs. W. Purviance and Mrs. W. L. Edminister were hostesses to Circle 4 in the home of Mrs. W. Purviance on Feb. 4, to continue the study of Isaiah. "Savior Like A Shepherd Used Us" was sung by the members. Mrs. H. R. Thompson gave the opening prayer. Mrs. Orion Carter, study leader, continued the study of Isaiah. A skit "Behold Your God" was given by Mrs. J. E. Kirchner and Mrs. W. E. Ewing. Mrs. F. L. Stallings and Mrs. Emmett Osborne sang, "Though Your Sin Be As Scarlet," accompanied by Mrs. W. R. Ewing. The meditation, "Faith," taken from Matthew Chapter 6:30 was given by Mrs. George Nelson. The meeting was closed with prayer by Mrs. Orion Carter.

Refreshments were served to the following, guests Mrs. F. L. Stallings, Mrs. Emmett Osborne and members Mmes. P. E. Yarbrough, S. E. Evans, Bob McCoy, Lola Harper, A. R. Killen, W. B. McArthur, R. W. Lane, George Nelson, Joe Shelton, Fred Cary, J. E. Kirchner, Ats Woods, Charley Woolsey, W. L. Edminister, R. D. Mrs. Winstan Bryant conducted Morris, H. R. Thompson, W. Purviance, Orion Carter, and W. R.

CIRCLE THREE Mmes. Jack Graham and C. R. Grimsley were hostesses Feb. 4 when Circle 3 met in the church parlor for its continued study on Isaiah with Mrs. Ed Williams as study leader. Prior to the study, Mrs. Winstan Bryant conducted the business session. Those in attendance were Mmes. Lynn Colville, Glenn Radcliff, Elmer Radcliff, Floyd Hicks, Cleo Hoyler, C. R. Grimsley, G. F. Branson, Bob Carmichael, James Wiley, W. W. Bryant and Jack Graham. The next meeting will be Feb. 18 with Mrs. Glenn Radcliff as hostess.

Members attending in addition to those already mentioned were Mmes. Chester Thompson, Gene Hall, J. M. Fitzgerald, Grundy Morrison and E. H. Yealy. A. F. Johnston will be hostess to the circle on Feb. 18.

CIRCLE TWO Mrs. J. C. McWilliams was hostess to Circle Two with Mrs. Carlton Nance assisting. Mrs. Charles Brauchle presided over the business meeting at which time, an offering was taken for the Wesley Community Center in Amarillo.

A News Letter reviewing the activities and accomplishments of the Women's Society of the First Methodist Church, Pampa, was read by Mrs. Edward Wiens. The meeting was turned over to Mrs. W. W. Adcock, program.

Emily T. Hicks, D.D.S. Announces Removal Of Office from Hughes Bldg. to 1716 North Hobart Practice Limited to Orthodontics.

CIRCLE FIVE Circle Five met in the church parlor with Mrs. W. E. Abernathy and W. A. Hardy as hostesses. Mrs. Price Dozier Sr. opened the meeting with prayer. Mrs. W. E. Abernathy, chairman, presided during the business meeting. An announcement was made of the sub district meeting of WSCS to be held Feb. 10 in St. Paul Methodist Church. Cards of appreciation were read from Mrs. A. C. Steeley and Mrs. H. F. Barnhart for remembrances sent them recently.

CIRCLE FOUR Mrs. W. Purviance and Mrs. W. L. Edminister were hostesses to Circle 4 in the home of Mrs. W. Purviance on Feb. 4, to continue the study of Isaiah. "Savior Like A Shepherd Used Us" was sung by the members. Mrs. H. R. Thompson gave the opening prayer. Mrs. Orion Carter, study leader, continued the study of Isaiah. A skit "Behold Your God" was given by Mrs. J. E. Kirchner and Mrs. W. E. Ewing. Mrs. F. L. Stallings and Mrs. Emmett Osborne sang, "Though Your Sin Be As Scarlet," accompanied by Mrs. W. R. Ewing. The meditation, "Faith," taken from Matthew Chapter 6:30 was given by Mrs. George Nelson. The meeting was closed with prayer by Mrs. Orion Carter.

Refreshments were served to the following, guests Mrs. F. L. Stallings, Mrs. Emmett Osborne and members Mmes. P. E. Yarbrough, S. E. Evans, Bob McCoy, Lola Harper, A. R. Killen, W. B. McArthur, R. W. Lane, George Nelson, Joe Shelton, Fred Cary, J. E. Kirchner, Ats Woods, Charley Woolsey, W. L. Edminister, R. D. Mrs. Winstan Bryant conducted Morris, H. R. Thompson, W. Purviance, Orion Carter, and W. R.

Members attending in addition to those already mentioned were Mmes. Chester Thompson, Gene Hall, J. M. Fitzgerald, Grundy Morrison and E. H. Yealy. A. F. Johnston will be hostess to the circle on Feb. 18.

CIRCLE TWO Mrs. J. C. McWilliams was hostess to Circle Two with Mrs. Carlton Nance assisting. Mrs. Charles Brauchle presided over the business meeting at which time, an offering was taken for the Wesley Community Center in Amarillo.

A News Letter reviewing the activities and accomplishments of the Women's Society of the First Methodist Church, Pampa, was read by Mrs. Edward Wiens. The meeting was turned over to Mrs. W. W. Adcock, program.

Emily T. Hicks, D.D.S. Announces Removal Of Office from Hughes Bldg. to 1716 North Hobart Practice Limited to Orthodontics.

Advertisement for White's Big Annual 1¢ Sale. Features 'YOUR MONEY BACK' and 'No Regular Monthly Payment 'til June'.

Advertisement for Leonard Refrigerator. Features '169.95' price, '52-LB. FROZEN FOOD CAPACITY', and 'HOLDS 7 BUSHELS'.

Advertisement for Leonard Automatic 2-Cycle Washer. Features '219.88' price, 'Magic-minute' dirt loosener, and '3-way clear water rinse for a BETTER wash'.

Advertisement for White's. Features 'THE HOME OF GREATER VALUES' and '109 S. Cuyler Pampa, MO 4-3268'.

Hom & Gee Grocery advertisement listing various products and prices: PORK CHOPS 59¢, Bacon 2 lb 79¢, Wienies 2 lb 69¢, PICNICS 3 Lb. \$1.69, Fresh Ground Beef 3 lb \$1.00, Pork Steaks 45¢, Salad Dressing 19¢, Carton Tomatoes 29¢, Cello Pkg. Carrots 10¢, Yellow Onions Lb. 10¢, Avocados Each 10¢, 10 Lb Red Potatoes 35¢, Pure Lard 45¢, TIDE 69¢, BISQUICK 2 1/2 lb box 39¢, Green BEANS 2 for 39¢, CORN 2 No. 303 cans 35¢, WOLF BRAND CHILI 300 can 45¢, Shurfresh BISCUITS 11 cans 1.00, Food King OLEO 6 lbs 1.00.

Little Liz advertisement featuring an image of a girl and the text 'Some folks have been married so many times, the only thing they could get out of Niagara Falls is to go over in a barrel.' Also includes 'LITTLE LIZ' logo.

Hazlewood's Farm Dairy advertisement for Milk. Features 'hazlewood' logo, 'Seal of Quality', and list of local retailers: Mitchell's, Furr's, Hom & Gee, Ideal 1 & 3, Miller's Food Store, Boston's Grocery, Food Center, Blake's Country Store.

Vertical text on the far right edge of the page, including 'S', 'ID', 'SA', 'Flor', 'Large', 'ALL N', 'PE', 'BUNTS', 'Ch', 'DUTCH', 'SU', 'SILV', 'A', 'M'.



Money Saving Buys!

Skimmed MILK **3** PACO Tall Cans **25^c**

Always Shop Ideal For
The Widest Variety
The Most Friendly
Service In Town!

Three Big Friendly
Stores To Serve YOU!
No. 1 401 N. Ballard
No. 2 306 S. Cuyler
No. 3 801 W. Francis

"Better Food For Less!"

IDEAL

FOOD STORES

STORE HOURS:
Week Days 8:30 to 7:00
Saturday 8:30 to 7:30

IDEAL TASTY ICE CREAM **1/2** Gal. **49^c**

DOUBLE
GUNN BROS STAMPS
EVERY Wednesday

SANTA ROSA PINEAPPLE JUICE 46-Oz. Can **25^c**

Starkist Chunk Style TUNA **6 1/2-Oz. Can 29^c**

California Sunkist Oranges Large Size Navel LB. **10^c**

Dolly Madison Red Pitted CHERRIES **2** No. 303 Cans **39^c**

Wolco Fresh—300 Cans BLACK EYE PEAS **2** for **23^c**

Florida Marsh Seedless GRAPEFRUIT Large 24 Size Lb. **7^c**

Allens Ready to Serve, with cheese or SPAGHETTI ... Tomato Sauce **10^c**

Large California AVOCADOES **2** FOR **25^c**

Carnation Instant DRY MILK 3-Quart Size **29^c**

Ashley's—46-Oz. Can TOMATO JUICE **25^c**

ALL NUT PEANUT BUTTER 32-Oz. Jar **69^c**

Tooth Paste IPANA **2** Giant Tubes **89^c**
You Save 17c

Woodbury's CREAM RINSE \$1.00 Size **49^c**
PLUS TAX

Cook Of The Walk—No. 2 1/2 Can FRUIT COCKTAIL **35^c**

BUNTE'S OLD FASHION Chocolate Drops 1 Lb., 11-Oz. Pkg. **59^c**

Suzan—Qt. Jar SALAD DRESSING **35^c**

DUTCH MAID Vanilla, Chocolate, Strawberry SUGAR WAFERS Lb. Pkg. **39^c**

6-Bottle Carton COKES **25^c**
Plus Dep.

Western Maid CHERRIE—18-Oz. Jars PRESERVES **3** For **\$1⁰⁰**

SILVER BELL Colored Quarters Margarine **2** LBS **29^c**

BACON Rath's Blackhawk From The Land Of Corn LB. **55^c**

Vista Pak CRACKERS Lb. Box **23^c**

Northern Jumbo ROLL PAPER TOWELS **27^c**

Hereford Fresh Frozen STEAKS 12-Oz. Pkg. **69^c**

Royal Gorge Whole DILL PICKLES Qt. Jar **25^c**

Panhandle Pure Pork SAUSAGE **2** Lb. Bag **53^c**

Fresh Pork Country Style BACK BONE L B **49^c**



Red Griggs the pipeline

If they can get past Wichita Falls and Odessa, the Harvesters will make their sixth trip to Austin in seven years...

The Odessa Bronchos, believe it or not, have a better record this year than the Harvesters. Both are undefeated but the Bronchos have played more games...

The Harvesters and the Bronchos will meet in the regional round if Pampa beats Wichita Falls in bi-district play. Wichita Falls shouldn't be quite as big a hurdle as Odessa...

Odessa Beats Taller Teams

Odessa is reported to have a time to wear the same size hat, scrappy, hustling ball club capable of beating many taller squads...

Fortunately, the Harvesters have always been able to get 'up' for their big game, and therefore their reason to believe that Coach McNeely won't be able to fire them up for Odessa...

Bufs Have Area Talent

Three familiar faces will be in the West Texas State lineup Wednesday night when the Bufs meet the Phillips 66 Oilers in Harvester Field House...

Farren, at the other extreme in height, is one of the three 6-5 players on the Buff roster. He has scored 100 points and has a 7.7 average...

Industrial League

Hoover Oil edged Shamrock Auto Supply Monday in an Industrial League game, 83-80. This was the next-to-last game of the season...

At the end of the season, first place, second place, and sportsmanship team trophies will be given. Ten individual trophies will also be awarded...

RING RESULTS

United Press International PARIS, France (UPI)—Alphonse Halimi, 120, Algeria, stopped Pierre Cossemyns, 120, Belgium...

WRESTLING Sat., Feb. 7 8:30 P.M. Top O' Texas Sportsman's Club MAIN EVENT TAG TEAM MATCH Iron Mike vs. Dory Funk Bulldog vs. Sonny Meyers

Pampa Can Clinch Tie For Title By Defeating Tascosa Tonight

Victory Would Keep Cagers Three Ahead, Three To Go

AMARILLO — Pampa's Harvesters can mathematically clinch a tie for the District 3-4A championship tonight by beating the Tascosa Rebels...

By winning, the Harvesters will hold a three-game lead over the second-place team or teams, with only three games remaining on the district schedule...

Tascosa took the worst Rebel licking since Gettysburg last month in Pampa, as the Harvesters walloped them 73-36. However, the Rebels have improved enough recently to give the runnerup teams some stiff competition...

Although the Rebels haven't won a district game, they have forced both Borger and Plainview to go all out for victories. Tascosa outshot Borger from the floor, but lost at the free throw line...



Harvesters 37 straight triumphs, 24 consecutive wins for the year, and an 11-0 district record. Coyle Winborn has been packing the Harvesters attack during the last four games...

Mark Layne has tallied 329 points, Bob Gindorf 245, and Charles Minor 238. Minor, out for two weeks recently because of a dislocated shoulder, has not yet regained full use of his right arm...

Old soldiers and Indians may fade away, but it looks as if the Pampa Harvesters never will. Going into the final two weeks of the season, their team shooting percentage is better than it was at the start, against weak teams...

IN UPI CAGE POLL KENTUCKY STAYS TOPS

NEW YORK (UPI)—Kentucky's lead over runner-up North Carolina was shaved just a trifle in the weekly United Press International major college basketball ratings announced today...

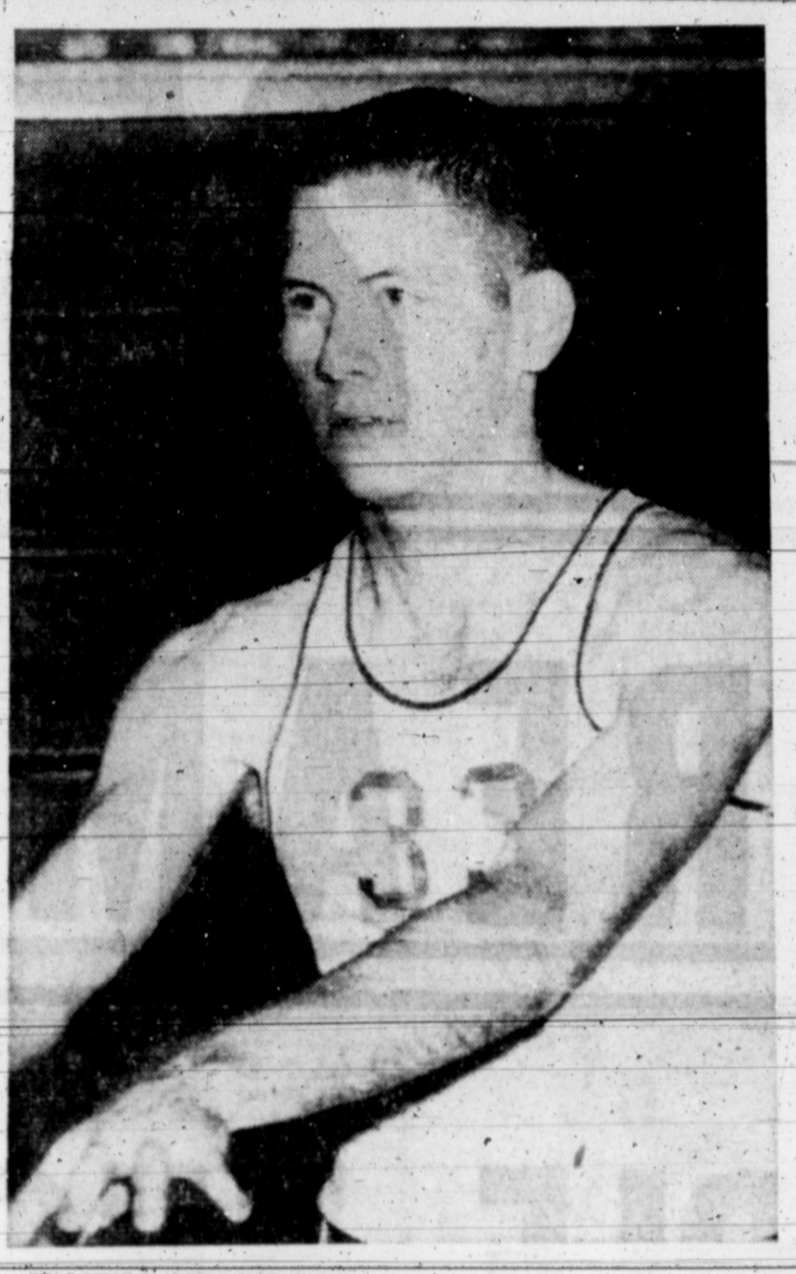
In fact, the only change among the nation's 'top 10' was made by Auburn, which moved up from seventh to sixth on the strength of its 28-game winning streak...



BUFF'S BIG MAN — Jim Farren, 6-5 senior from McLean, is the center for the West Texas Buffaloes, who will meet the Phillips 66 Oilers Wednesday in Harvester Field House...

OPEN BASEBALL CLINIC MOBILE, Ala. (UPI)—A group of major leaguers, led by Frank Bolling and Frank Lary of the Detroit Tigers, opened a baseball clinic for 600 Alabama and Mississippi youths Monday at a local park...

STAN SIGNS FOR \$100,000



WAIT'LL NEXT YEAR—Bill Wray, a junior, is one of boys Harvester Coach Clifton McNeely will depend on next year. Wray, a reserve forward, has scored five points and grabbed seven rebounds in limited action this year.

Harvesters Shoot For .510 Average

They're still hitting at an amazing .510 clip. At the free throw line, they're also hitting at a phenomenal average for a high school team...

Leading the Harvesters in all five shooting departments, is Coyle Winborn. The 6-4 forward leads the team in total points, with 419 field goals, with 162 free throws, with 95.7 field goal percentage, with 563 and free throw percentage, with 79.2.

Winborn, who has led the Harvesters in scoring in all of the last four games, also is tops in average points per game, with 16.5. Despite Winborn's seeming domination of the scoring, however, the Harvesters are a very well balanced team...

In the rebound department, the Harvesters also have great balance. Three of the starters have snagged more than 200 off the boards. Mack Layne leads with 216, followed by Coyle Winborn with 216. Bob Gindorf has captured 207.

In shooting percentage, the same three men are above the 500 mark. Winborn's 563 is followed by Gindorf's 527 and Layne's 520. Charles Minor and Craig Winborn are each hitting at a very respectable 47.9 clip.

From the free throw line, Gindorf is a close second to Winborn, with a 78.9 percentage. Charles Minor is also well above 700, with 89,769. Layne is firing 620 from the charity line, and Craig Winborn 617.

Table with 4 columns: Name, fg, ft, tp, avg. Lists players like Winborn, Layne, Minor, Gindorf, Timms, and their statistics.

Miller-Hood Pharmacy Better Prescription Service FREE DELIVERY 1122 Alcock MO 4-8469

MUSIAL WILL BE USED SPARINGLY BY CARDS

United Press International Stan Musial, it appeared today, will be rationed like war-scarce gasoline when the St. Louis Cardinals make their bid for a 1959 National League pennant.

The 38-year-old veteran star signed his second straight \$100,000-a-year contract Monday amid the customary flurry of grinding cameras, popping flash bulbs and predictions for the coming season.

Stan, who became the eighth major leaguer to reach the coveted plateau of 3,000 base hits last year, looked fit and ready for the coming campaign.

But General Manager Bing Devine revealed that he and field boss Solly Hemus had agreed to handle Musial like the precious diamond commodity he is, rather than play him into exhaustion.

Basketball Results

- East Iona 83 Bridgeport 78 Bates 65 New Hampshire 87 Niagara 85 Holy Cross 70 Villanova 80 St. Francis (Pa.) 69 Notre Dame 78 Army 60 Queens Coll. 88 Ft. Schuyler 56 South Beth-Cookman 83 Xavier (La.) 79 Tennessee 85 Mississippi 82 Auburn 93 Florida 71 Vanderbilt 64 Tulane 62 V. Madonna 79 Georgetown (Ky.) 68 Alabama 71 Georgia 65 Sietson 83 Rollins 71 Mississippi 62 Kentucky 58 Atlantic Christian 65 Elon 48 Baltimore U. 94 Gallaudet 59 Hampton Inst. 82 Va. Union 69 Furman 71 William & Mary 70 VMI 64 Davidson 60 Murray St. 96 Florida St. 71 Georgia Tech 64 LSU 83 Sewanee 77 Florida Southern 87 Midwest Drake 58 Iowa St. 57 Wisconsin 91 Purdue 66 DePaul 89 Marquette 80 Illinois 89 Indiana 83 Emporia St. 88 Omaha 75 Southwest Tex. Southern 98 Southern U. 91 St. Mary (Tex.) 79 Pan Amer. 52 Rice 66 Arkansas 62 Oklahoma 54 Nebraska 48 N. Tex. St. 62 Huston 56 West Coll. of Idaho 75 Pacific U. 54 Oregon 61 Washington St. 54 Seattle 88 Xavier (Ohio) 69 JUNIOR HIGH TOURNEY HELD CANADIAN (Sp) — The Canadian junior high school invitational basketball tournament was completed last Saturday night after being postponed from last week because of the weather.

Winner of the consolation award in the boys division was Wheeler, which defeated Higgins by a score of 22 to 20. The girls' consolation trophy also went to Wheeler with a 26 to 20 win over Canadian.

The first place trophy was presented to Miami in the boys division with a 29 to 18 victory over Canadian. The girls' team from Briscoe took first place with an 18 to 10 win over Miami.

Second place trophies were presented to the runnerup teams. Sportsmanship trophies were presented to the girls' team from Higgins and to the boys from Briscoe.

Other Signings The New York Yankees, meanwhile, continued their drive to turn up all batterymen before they time out for the club's opening workout next week. The latest to sign were pitchers Johnny Kucks and Dick Maas.

Kucks, who wound up with a mediocre 8-9 record last season, was believed to have received a slight pay cut while Maas, who had a combined 1-8 mark with Kansas City and the Yankees, reportedly drew a slight raise.

Other contract signings by clubs: Red Sox—Catcher Pete Daley and outfielder Marty Keough. Braves—Outfielders Al Spangler, Jim Scholfield, and Harry Hannebrink and pitcher Don Nottebart. Pirates—Infielders Kenny Hamlin, Dick Schofield, and Harry Bright. Athletics—Pitchers Jack Urban and Dick Tomasek. Dodgers—Pitcher Johnny Klippstein.

MONTEREY WINS LUNDBOCK — The Monterey Plainmen walloped the Palo Duro Dons here Monday, 62-44, in a District 3-4A basketball game. The Dons, whose shooting was very poor, are now 5-6 in loop play, and Monterey is 3-8.

To Better Serve You, We Have Moved! Our New Home Is: 303 West Brown Street Amarillo Highway No.60 PAMPA, TEXAS Phone MO 4-4791

Power-Transmission & Equipment Co., Inc. YOUR ALLIS-CHALMERS, BUDA ENGINE DEALER ALSO Distributors Of: Worthington Q.D. Sheaves—Goodyear Hose and Belts—Hasting Piston Rings—Diamond Roller Chain And Sprockets—Wix Oil Filters—Twin Disc Clutch Parts—Ensign Carburetors—Murphy Safety Controls.

LENTEN IDEAS



at FURR'S



TUNA CAN FOOD CLUB CHUNK **25¢**

SALMON Honey Boy Alaska Chum Tall Can **35¢**

CORN Elna Cream Style 303 Can **12½¢**

PEAS HUNTS 300 CANS **12½¢**

MILK CARNATION TALL CAN **12½¢**

FROZEN ROLLS MEADS 24 COUNT PKG. **19¢**

CRABMEAT Blue Plate 6 1/2 oz can **59c**

WESSON OIL QUART **57c**

TARTER SAUCE FOOD CLUB 8 oz Jar **25c**

PEANUT BUTTER Food Club 12 oz. Refrigerator Jar **39c**
KRAFT Spagheati Dinner pkg. **29c**
KRAFT 7 oz. PKG. Dinner 2 pkg. **35c**
ELNA 3 lb. CAN Shortening can **59c**
KRAFT JET PUFFED 10 oz PKG. Marshmallows pkg. **19c**

COOKIES Carol Creme Vanilla or Chocolate **29¢**

CAKEMIX Cinch, White, Spice, Yellow or Devil Food REG PKG. **19¢**

GREEN BEANS ELNA CUT No. 303 CAN **12½¢**

EGG NOODLES American Beauty Wide—8 Oz. Pkg. **17c**

TANG Instant Orange Drink—7 Oz. Jar **35c**

PRESERVES Zestex Pure Fruit Strawberry—12 Oz. Jar **25c**

RED SALMON Libby's Red Smoke Alaska—Tall Can **89c**

OLIVES Towie Stuffed 7 1/4-Oz. Jar **39c**

WE RESERVE THE RIGHT TO LIMIT QUANTITIES

FRYERS LB 29¢

SWIFT'S PREMIUM WHOLE. NONE BETTER AT ANY PRICE.

CHEESE Kraft's Elkhorn Full Cream **Lb. 39¢**

SHRIMP Dartmouth Breaded 10 oz pkg. **59¢**

Halibut Steak 12 oz pkg. **59c**
Salmon Steak 12 oz pkg. **69c**
WHITING, 1½-lb. pkg. **37c**
Raw Shrimp 12 oz. pkg. **89c**

PICKLED FISH
Booth's Cut Lunch, with onions—10½ Oz. Jar **59c**
Booth's Spicy—10½ Oz. Jar **69c**
Booth's Herring—8½ Oz. Jar **37c**
Booth's Herring Snacks—2½ Oz. Jar **49c**
Sill Bitar Booth's, in wine sauce—3½ Oz. Jar **79c**
Herring Snacks **79c**

Home Permanent Princess Pace \$2.00 Size **\$139**

Hair Spray Breck \$1.25 Size **89c**

RAZOR BLADES Schick, 20 Blades 83c Value **69c**

HAND CREAM Chapan's 60c Size **43c**

CUP SOAP Colgate **10c**

TOOTH POWDER Pepsodent 50c Size **39c**

DINNERS Macaroni and Cheese 20-Oz. Pkg. **39¢**

GARDEN FRESH PRODUCE

POTATOES U. S. No. Russet 10-Lb. Bag **43¢ Ea.**

APPLES Colo. Red Delicious 4 Lbs. **49c**



SAVE FRONTIER STAMPS



SAVE

WITH VALUABLE

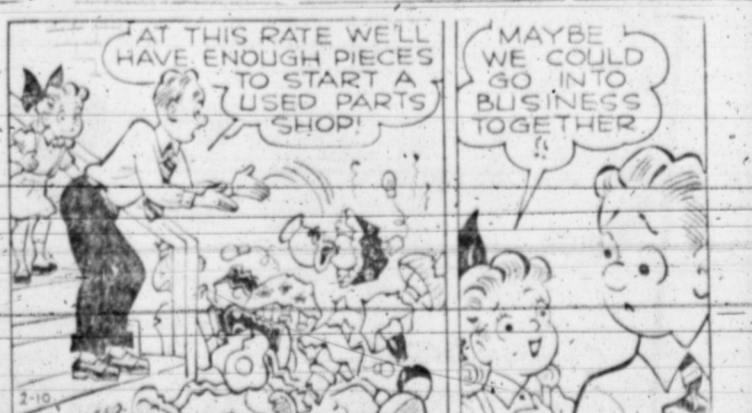
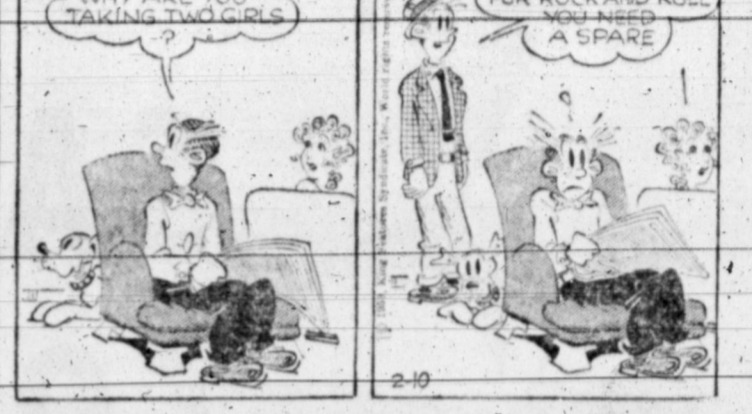
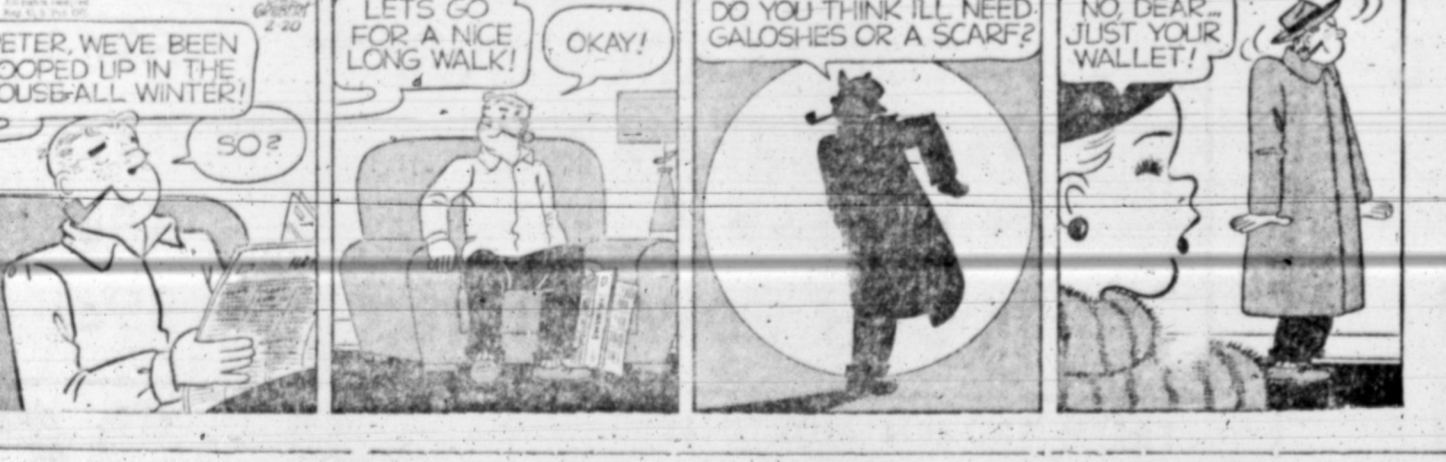
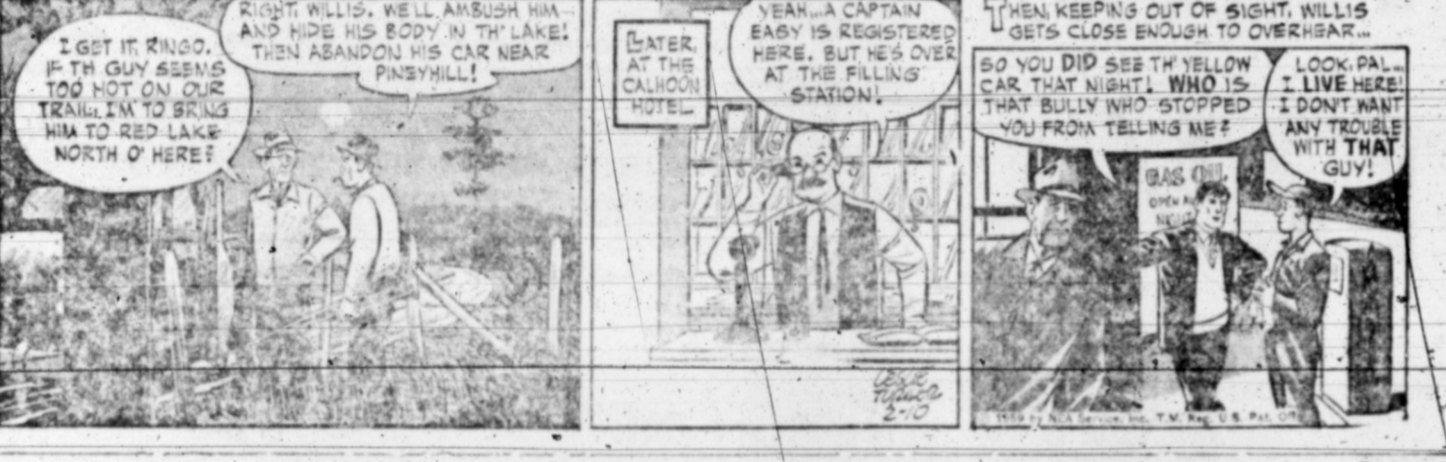
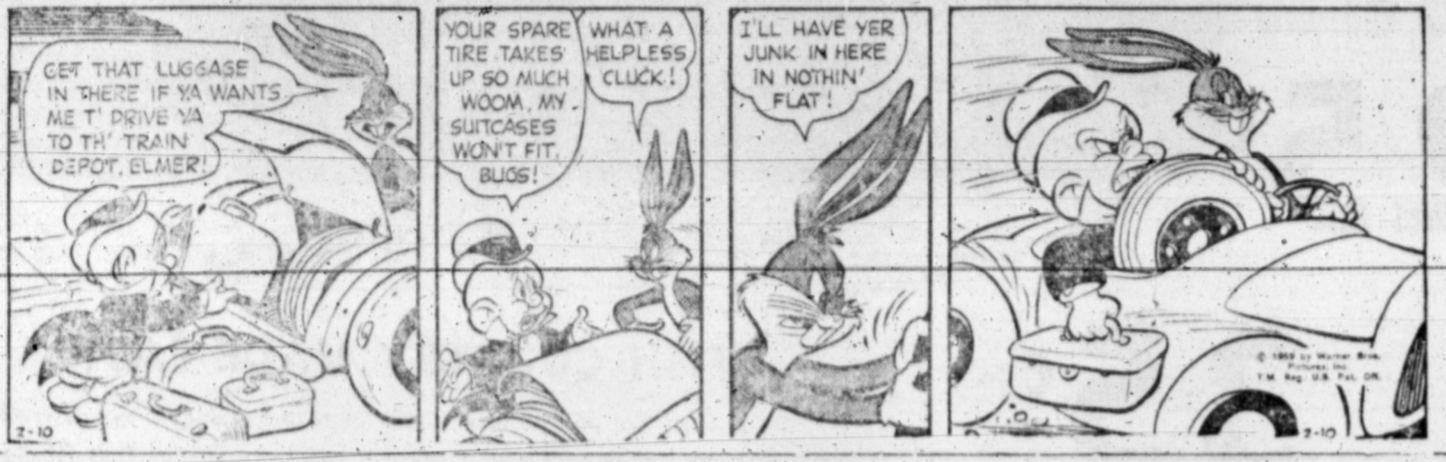
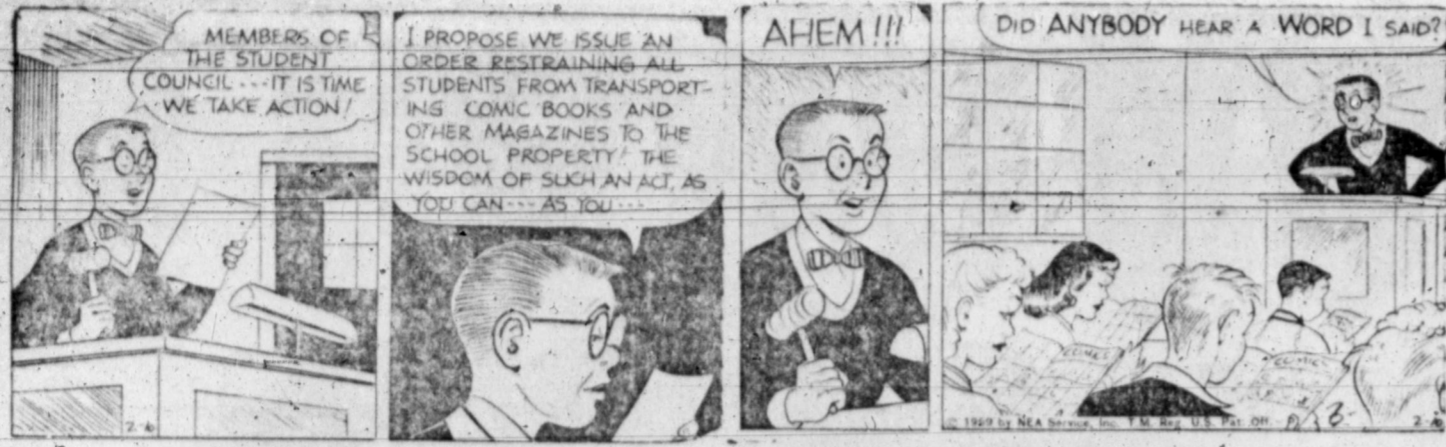
FRONTIER STAMPS

DOUBLE ON WEDNESDAY

WITH 2.50 PURCHASE

OR MORE

Freckles
Bugs Bunny
Boots
Wash Tubbs
Jackson Twins
Morty Meekle
The Berrys
Dixie Dugan
Susie Y. Smirn
OUR BOARDING HOUSE with Major Hoopie
OUT OUR WAY J. R. Williams
Blondie
Alley Oop
Bonnie
Martha Wayne
Micky Finn
Mutt and Jeff
Priscilla's Pop
Joe Palooka



11
12
13
14
15
16
17
18
19
20
21
22
23
24
25
26
27
28
29
30
31
32
33
34
35
36
37
38
39
40
41
42
43
44
45
46
47
48
49
50
51
52
53
54
55
56
57
58
59
60
61
62
63
64
65
66
67
68
69
70
71
72
73
74
75
76
77
78
79
80
81
82
83
84
85
86
87
88
89
90
91
92
93
94
95
96
97
98
99
100
101
102
103
104
105
106
107
108
109
110
111
112
113
114
115
116
117
118
119
120
121
122
123
124
125
126
127
128
129
130
131
132
133
134
135
136
137
138
139
140
141
142
143
144
145
146
147
148
149
150
151
152
153
154
155
156
157
158
159
160
161
162
163
164
165
166
167
168
169
170
171
172
173
174
175
176
177
178
179
180
181
182
183
184
185
186
187
188
189
190
191
192
193
194
195
196
197
198
199
200

TELEVISION PROGRAMS

TUESDAY

KGNC-TV Channel 4

7:00 Today
9:00 Dough-Re-Mi
9:30 Treasure Hunt
10:00 The Price Is Right
10:20 Concentration
11:00 Tic Tac Dough
11:30 It Could Be You
12:00 News
12:10 Weather
12:15 House of Carpets
12:20 New Ideas
12:30 Wonders of the World
12:35 Daily World
1:00 Truth or Consequences
1:30 Haggis Baggy
2:00 Young Dr. Malone
2:30 From These Roots
3:00 Queen For A Day
3:30 County Fair
4:00 Susie
4:30 Crossed Swords
5:45 NBC News
6:00 News
6:15 Sports
6:20 Weather
6:30 Dragnet
7:00 American Festival
8:00 George Burns
8:20 Bob Cummings
8:30 The Californians
9:30 Flight
10:00 News
10:10 Weather
10:30 Jack Parr Show
10:30 Sign Off

10:30 Concentration
11:00 Tic Tac Dough
11:30 It Could Be You
12:00 News
12:10 Weather
12:20 New Ideas
12:30 Curtain Time
12:35 Daily Word
1:00 Truth or Consequences
1:30 Haggis Baggy
2:00 Young Dr. Malone
2:30 From These Roots
3:00 Queen For A Day
3:30 County Fair
4:00 Susie
4:30 Betrayed Woman
5:45 NBC News
6:00 Local News
6:15 Sports
6:20 Weather
6:30 Wagon Train
7:30 Meet Mr. Lincoln
8:00 Milton Berle
8:30 Bat Masterson
9:00 Fred Astaire
10:00 News
10:20 Weather
10:30 Jack Parr
12:00 Sign Off

KVII-TV Channel 7

7:55 Good Morning
8:00 Fun-A-Poppin'
9:00 Shopper Show
11:00 Coffee Break
11:30 Peter Lind Hayes
12:30 Play Your Hunch
1:00 Liberate
1:30 The Shield
2:00 Your Day In Court
2:30 Music Bingo
3:00 Beat The Clock
3:30 Who Do You Trust?
4:00 American Bandstand
5:30 Mickey Mouse
6:00 All Aboard For Fun
6:30 Plymouth Walk Show
7:30 Ozzie & Harriet
8:00 Donna Reed
8:30 Frontier
9:00 Wednesday Fights
9:30 John Daly News
10:00 Night Court
10:30 Station West
10:30 Lincoln in Illinois
12:00 ONightcap News

KFDA-TV Channel 16

8:30 Sunrise Classroom
7:00 It Happened Last Night
8:00 Captain Kangaroo
8:45 CBS News
9:00 For Love or Money
9:30 Arthur Godfrey
10:00 I Love Lucy
10:30 Top Dollar
11:00 Love of Life
11:30 Search for Tomorrow
11:45 Guiding Light
12:00 Theatre Ten
12:30 As The World Turns
1:00 Jimmy Dean Show
1:30 House Party
2:00 Big Payoff
2:30 Verdict Is Yours
3:00 Brighter Day
3:15 Secret Storm
3:30 The Edge of Night
4:00 My Little Margie
4:30 Popeye
4:45 Doug Edwards
6:00 News, Ralph Wayne
6:15 World of Sports
6:25 Weather Today
6:30 Marry a Millionaire
7:00 This is Alice
7:30 To Tell The Truth
8:00 Secret Storm
8:30 Red Skelton
9:00 Garry Moore
10:00 News, Ralph Wayne
10:10 Weather
10:30 Gung Ho

KVII-TV Channel 7

7:55 Good Morning
8:00 Fun-A-Poppin'
9:00 Shopper Show
11:00 Coffee Break
11:30 Peter Lind Hayes
12:30 Play Your Hunch
1:00 The Shield
2:00 Your Day In Court
3:00 Beat The Clock
3:30 Who Do You Trust
4:00 American Bandstand
5:30 Adventure Time
6:00 All Aboard For Fun
6:30 Cheyenne
7:30 Wyatt Earp
8:00 Rifleman
8:30 26 Men
9:00 Alice Theatre
9:30 Badge 714
10:00 Night Court
10:30 Sea Devils
12:00 Nightcap News

WEDNESDAY

KFDA-TV Channel 16

8:30 Sunrise Classroom
7:00 It Happened Last Night
8:00 Captain Kangaroo
8:45 CBS News
9:00 For Love or Money
9:30 Arthur Godfrey
10:00 I Love Lucy
10:30 Top Dollar
11:00 Love of Life
11:30 Search for Tomorrow
11:45 Guiding Light
12:00 Theatre Ten
12:30 As The World Turns
1:00 Jimmy Dean Show
1:30 House Party
2:00 Big Payoff
2:30 Verdict Is Yours
3:00 Brighter Day
3:15 Secret Storm
3:30 The Edge of Night
4:00 My Little Margie
4:30 Popeye
4:45 Doug Edwards
6:00 News, Ralph Wayne
6:15 World of Sports
6:25 Weather Today
6:30 Jeff's-Collie
7:00 Keep Talking
7:30 Trackdown
8:30 I've Got A Secret
9:00 U.S. Steel Hour
10:00 News, Ralph Wayne
10:10 Weather
10:20 Tulsa
11:30 Sign Off

KGNC-TV Channel 4

7:00 Today
9:00 Dough-Re-Mi
9:30 Treasure Hunt
10:00 The Price Is Right
Dr. R. E. Thompson CHIROPRACTOR
Hours by Appointment
8 to 12-130 to 530
Fourteen Year
300 N. Ballard MO 4-7818



SHADES OF PAUL BUNYON'S 'BABE'—There's more to this huge replica of a Hereford steer than meets the eye. Named 'The Champ,' the 19-foot-long plastic steer has been featured in several national cattle shows and exhibitions.

Scientist Calls For New Approach To Universal Truth

By DELOS SMITH UPI Science Editor

NEW YORK (UPI)—A scientist urges humility on his fellows because 'science definitely is not capable either of explaining or solving all the problems of the human race, even if many scientists think it is.'

Scientists who believe science is the only method of solving problems are kidding themselves, they have a faith in science which science can't justify, said Prof. Ernest Van Den Haag, an anthropologist and sociologist at New York University.

When you apply only the scientific method to problems, you are assuming 'the common is so arranged that its total magnitude and contents cannot exceed the grasp of scientific method—that nothing can exist that cannot be known and proved scientifically.'

That assumption leads to the dilemma that unless values can be proved to be 'right,' the universe becomes valueless.

In addition, the death rate from all types of accidents in 1958 also hit a new low of 52.5 persons killed per 100,000 population.

Motor vehicle accidents were the biggest accidental killer, and home accidents were a second claimer, 27,000 lives.

The overall accident toll for last year was 91,000 killed and 9,100,000 injured. The financial loss was estimated at just under 12 billion dollars by the council.

'Actually, accidents cost Americans around \$11,900,000,000,' a council spokesman said.

man race. 'Happiness is hard to observe, impossible to calculate. Yet we act—as must act—as though we knew what action will lead to a net increase of happiness.' But we don't know.

Science cannot prove the 'truth' of this or other moral implications. 'One may well allow that there is such a truth, even though people disagree on where and how to find it,' Dr. Van Den Haag said.

He challenged the idea that 'perfect knowledge, goodness and wisdom; such as may be attributed to angels, would lead to agreement on ends and means and thus make government superfluous.' In the first place, he noted, angels are 'cast from the same mold.'

'They may have different preferences,' he said. 'Some, for instance, may wish to leave nature unimpoverished. Others, in concrete circumstances, might want to give up some natural beauty in favor of, say, electric power or housing developments.'

'No social science, indeed no knowledge at all, can decide which should be done, which is better, or even by what means the decision should be made. Yet decisions must be made all the time and we are not angels.'

WASHINGTON—Dr. Grayson Kirk, president of Columbia University on the importance of some life in character development.

'In these days when our national standards of taste are deplorable, when violence and sex and crime pursue their dreary nightly rounds across the television screens of our nation, our serious parents have a special responsibility to teach their children to develop discrimination.'

LONDON—George Lewins, father of twin boys that his ex wife allegedly put up for sale in Houston, Tex., on his efforts to regain custody of the boys.

WASHINGTON—Dr. Grayson Kirk, president of Columbia University on the importance of some life in character development.

'In these days when our national standards of taste are deplorable, when violence and sex and crime pursue their dreary nightly rounds across the television screens of our nation, our serious parents have a special responsibility to teach their children to develop discrimination.'

LONDON—George Lewins, father of twin boys that his ex wife allegedly put up for sale in Houston, Tex., on his efforts to regain custody of the boys.

'She flatly refused to send them, but I will fight for the return of my sons.'

BETHESDA, Md.—Dr. Sophia Lyon Fahs, 82, first woman ordained into the Unitarian ministry in 19 years, in criticizing the unconscious dishonesty that is hidden in much of what is taught children in Sunday school.

'The children deserve something better from us than we have given them.'

The Colorado Springs Aircade is the sixth of 12 meetings designed to acquaint business men with legislators, Feb. 17 in Colorado Springs, Colo. Cameron M. Vash, Don Cain, E. L. Henderson and Calvin Whitley will form the official delegation.

Marsh, chairman of the local Chamber's Legislative and National Affairs Committee, has arranged an Aircade program for the Chamber's Membership Meeting Feb. 23.

Khrushchev's Farm Target Deemed High

By GAYLORD P. GODWIN

WASHINGTON (UPI)—Nikita S. Khrushchev's goal of a 70 per cent increase in Soviet farm production in seven years evoked only mild interest and much disbelief in the Agriculture Department.

An expert in foreign agriculture said Khrushchev's whopping target should be swallowed 'With many grains of salt.'

The Soviet goal would be accomplished largely through increased yields per acre, not through increased acreage, according to a preview of Khrushchev's plan presented last November to the Communist Party, Khrushchev formally presented it in a speech to the Soviet Congress on Jan. 27.

If the Soviets do rely on yields alone, the overall yield increase on current acreage would be tremendous, it would be much larger than the overall increase registered by American agriculture in the last 10 years.

This country's overall crop yield rose 43 per cent from the 1947-49 base period through 1958. This was coupled with a production increase of 18 per cent in the same period. This included a big rise of 11 per cent last year.

Other expert sources took a similar position—that the prospects for continuation of the present level of interest rates seemed good.

The National Association of Real Estate Boards (NAREB), in its winter survey of the mortgage market, forecast 'a continuation of the relative stability that has characterized interest rates and the supply of loan money for conventional home mortgages since mid-summer, 1958.'

U. S. Housing Administrator Norman P. Mason said he thought interest rates have achieved 'a sort of plateau.'

The weight of expert opinion appears to lean towards a 'side-way' movement—continuation in the near future of the stable conditions of the past few weeks.

Magazine Reports Downtrend—Just what is the situation? Mason put it this way: 'It's not a bad time for getting a mortgage. Rates aren't as low as they were last spring but neither are they as high as they might be. You can arrange financing if you want to buy a home. But you don't find lenders chasing you the way they did last spring.'

Mortgage Interest Rates Level Off

By EDWARD COWAN United Press International

WASHINGTON (UPI)—Whether mortgage interest rates?

The weight of expert opinion appears to lean towards a 'side-way' movement—continuation in the near future of the stable conditions of the past few weeks.

U. S. Housing Administrator Norman P. Mason said he thought interest rates have achieved 'a sort of plateau.'

The National Association of Real Estate Boards (NAREB), in its winter survey of the mortgage market, forecast 'a continuation of the relative stability that has characterized interest rates and the supply of loan money for conventional home mortgages since mid-summer, 1958.'

U. S. Housing Administrator Norman P. Mason said he thought interest rates have achieved 'a sort of plateau.'

WASHINGTON (UPI)—When President Eisenhower was about to board his plane Sunday to return to Washington, he noticed a troop of Boy Scouts standing in the rain nearby.

The President walked over to the youngsters and in a hearty manner said 'Hello there, fellows, are you out camping?'

'No sir,' piped one freckled faced scout with rain streaming down his face, 'out swimming.'

WASHINGTON (UPI)—Nikita S. Khrushchev's goal of a 70 per cent increase in Soviet farm production in seven years evoked only mild interest and much disbelief in the Agriculture Department.

WASHINGTON (UPI)—Nikita S. Khrushchev's goal of a 70 per cent increase in Soviet farm production in seven years evoked only mild interest and much disbelief in the Agriculture Department.

Check Your TV Tubes FREE!

We Have Complete Stock of TV Tubes If Replacement Needed

Miller-Hood Pharmacy

1122 Alcock MO 4-8469

Check Your TV Tubes FREE!

We Have Complete Stock of TV Tubes If Replacement Needed

Miller-Hood Pharmacy

1122 Alcock MO 4-8469

Check Your TV Tubes FREE!

We Have Complete Stock of TV Tubes If Replacement Needed

Miller-Hood Pharmacy

Yellowstone the 'no-bite' Kentucky bourbon advertisement featuring a man drinking and a bottle of whiskey.

Oldsmobile advertisement featuring a car and the slogan 'That New Olds Feeling'.

LEVINE'S

LEVINE'S

LEVINE'S



LEVINE'S REMODELING SALE!

WE'VE GONE CRAZY!...SLASHING, SMASHING
PRICES DOWN TO ROCK-BOTTOM! SO, HURRY!
MEN'S NEW SPRING SUITS

FAMOUS PLOVER
NYLON BLEND
All First Quality
Guaranteed Washable
Free Alterations
New Spring Patterns
Compare With Suits At \$29.99
\$19.99

SHEETS
Decorators Colors
Machine Washable
Slight Irregulars
Full Size
White
Hemmed
\$1.48

BLANKETS
Decorators Colors
Machine Washable
Slight Irregulars
Full Size
\$2.99

DOORS
OPEN
WED.
9 a.m.
SHARP

SHOP FOR
MANY
UNADVERTISED
SPECIALS

MEN'S DRESS SLACKS
RAYON GABARDINE
SIZES 28 to 42
BROWN • BLUE
GREY • BLACK
SLIGHT IRREGULARS
\$5.98 VALUES
\$2.99

CLOSEOUT MEN'S
FAMOUS BRAND LONG SLEEVE
SPORT SHIRTS
Sizes: S, M, L
First Quality
Vals. to \$3.98
Layaway for \$1.
\$1.99

4 BIG DAYS OF SAVING!

<p>TRAINING PANTS 12 for \$100</p>	<p>WOW</p>	<p>Men's White HANDKERCHIEFS 10 for 59c</p>
<p>MEN'S SPORT SHIRTS SHORT SLEEVES SIZES, S-M-L 99c</p>	<p>LADIES' MILLINERY FINAL CLEARANCE FALL STOCK 77c</p>	<p>CORDUROY CRAWLERS INFANTS CHOICE OF COLORS 44c</p>
<p>MEN'S UNDERWEAR BRIEFS • T-SHIRTS UNDERSHIRTS 33c</p>	<p>CUFF LINK SETS SPECIAL PURCHASE REGULAR \$1.00 59c</p>	<p>BOYS' SLACKS WASH N' WEAR COTTONS • DRESS 99c</p>
<p>MEN'S DRESS HATS GENUINE FUR FELT FAMOUS BRAND \$5.00</p>	<p>ELECTRIC HOT PLATE CLOSE OUT REG. \$3.98 \$1.88</p>	<p>CANVAS GLOVES HEAVYWEIGHT KNIT CUFFS 19c</p>
<p>Leather Moccasins MEN'S AND BOYS SIZES 6-12 \$2.99</p>	<p>VIBRATOR PILLOWS CORDUROY COVER DECORATOR COLORS \$3.44</p>	<p>MEN'S WORK SOX FAMOUS PRO-LONG ANKLE LENGTH 9c</p>
<p>BOYS' CAR COATS DETACHABLE HOOD WOOL INTERLINED \$4.88</p>	<p>BATH MAT SETS CHENILLE 2 PC. SET 88c</p>	<p>Ladies' Chenille Robes FULL LENGTH VALUES TO \$5.98 \$2.44</p>
<p>LADIES FULL LENGTH COATS MILLIUM LINED 100% WOOL FABRICS BROKEN SIZES Vals. \$14.88 To \$29.99</p>	<p>FAMOUS BRAND SHOES CLOSE-OUT LADIES DRESS SHOES BROKEN SIZES Heels \$1.59 Wedges Flats</p>	<p>3 PIECE Lounge Set LOUNGE AND 2 CHAIRS TUBULAR ALUMINUM FRAME COLORFUL SARAN COVER MIX OR MATCH COLORS Layaway now for only \$1 \$19.99</p>

CLOSEOUT
BOYS' SHORT SLEEVE
SPORT SHIRTS
Buy now for Summer
Bright Plaids
Sizes: 6-16
Full Cut
Compare at \$1.59
88c

Ladies 60-15
Proportioned
NYLONS
New Spring Colors
33c

10,000 Yards New Spring
FABRICS
Special Close Out
Of Hunt's of Dallas
Values to 98c yard
38c



DON'T MISS
THESE VALUES -
IT'S THE SALE
OF THE YEAR!

LEVINE'S

LEVINE'S

LEVINE'S

LEVINE'S

LEVINE'S

LEVINE'S

LEVINE'S

LEVINE'S

LEVINE'S

LEVINE'S