

# The Pampa Daily News

WEATHER

Variable high cloudiness through Friday, colder tonight and Friday. High in upper 30s, low in low 20s. Yesterday's high, 66. Today's low, 33.

Serving The Top O' Texas 67 Years

VOL. 67—NO 256

Circulation Certified by ABC Audit

THE PAMPA DAILY NEWS THURSDAY, JANUARY 31, 1974

(20 Pages Today)

Weekdays 18c  
Sundays 10c

## Nixon Vows To Remain In Office

ON IMPEACHMENT

### House Committee Rejects April End For Inquiries

WASHINGTON (UPI) — The House Judiciary Committee today rejected an attempt to impose an April end to its inquiry into the possible impeachment of President Nixon.

The cutoff date three months from now had been offered as an amendment to a resolution the committee will send to the House next week to get "unqualified power" to obtain whatever materials it feels necessary.

In his State of the Union message Wednesday night, Nixon had told Congress "One year of Watergate is enough."

The amendment to put an April 30 deadline on the inquiry, offered by Rep. Robert McClory, R-Ill., lost by a 23-14 vote, with two of the 16 Republicans joining the 21 Democrats to defeat it in the committee's first public session.

McClory said there is nothing weighing more on the minds of the people than "when we are going to get this impeachment thing over with. There is no reason why we can't establish a date."

Rep. Tom Railsback, R-Ill., said "I for one would support an extension and others would as well" if the committee ran into a lack of cooperation by either the White House or the special prosecutor's office in making information available.

In his State of the Union address, Nixon pledged to cooperate with the committee "consistent with my responsibilities to the office of the Presidents of the future."

John M. Doar, the special counsel who wrote the resolu-

tion to get "unqualified power" said a portion in the resolution which said the committee can "require the attendance and testimony" of the President means that Nixon could be compelled to appear before the committee. "The powers are that broad," he said.

Rep. Jerome Waldie, D-Calif., asked Doar if there were any powers such as executive privilege which would enable Nixon to refuse to respond to a subpoena requiring him to appear before the committee. Doar replied, "My view is that the President would not be able to assert that kind of defense."

Rep. Jack Brooks, D-Tex., urged his colleagues to use the subpoena power. "We have full subpoena power, by God, let's exercise it," Brooks said.

After the committee approves the document, the House is to vote on it, probably next Tuesday or Wednesday.

Republicans said they could support it generally. Rep. Robert McClory, R-Ill., said it carried "a substantially bipartisan" tone.

Brooks objected to its legalistic language. He said redrafting, undertaken at his urging, had changed the language from "old Greek to old English," but he would prefer plain, everyday English that everyone could understand.

"The fewer words in there, the better," he said.

Anyway, he said, the committee will demonstrate its authority by using it.

Chairman Peter W. Rodino Jr., D-N.J., has set a target date of "late April or thereabouts" for a vote on whether to recommend articles of impeachment to the House, but has resisted being locked in to that date.

Republicans, who fear they have the most to lose by a dragged-out impeachment proceeding, want the subpoena resolution to require a report "on or before April 30" and say they would support an extension if lack of White House or other cooperation causes delays.

In his State of the Union address Wednesday, Nixon

promised: "I will cooperate with the committee... in any way that I consider consistent with my responsibilities." He said the only limitation would be that he could not do anything to "weaken the ability of the Presidents of the future."

The committee appeared united on the rest of the resolution drafted by special counsel Joan M. Doar, designed to give the committee unlimited he committee unlimited subpoena power for its impeachment inquiry.

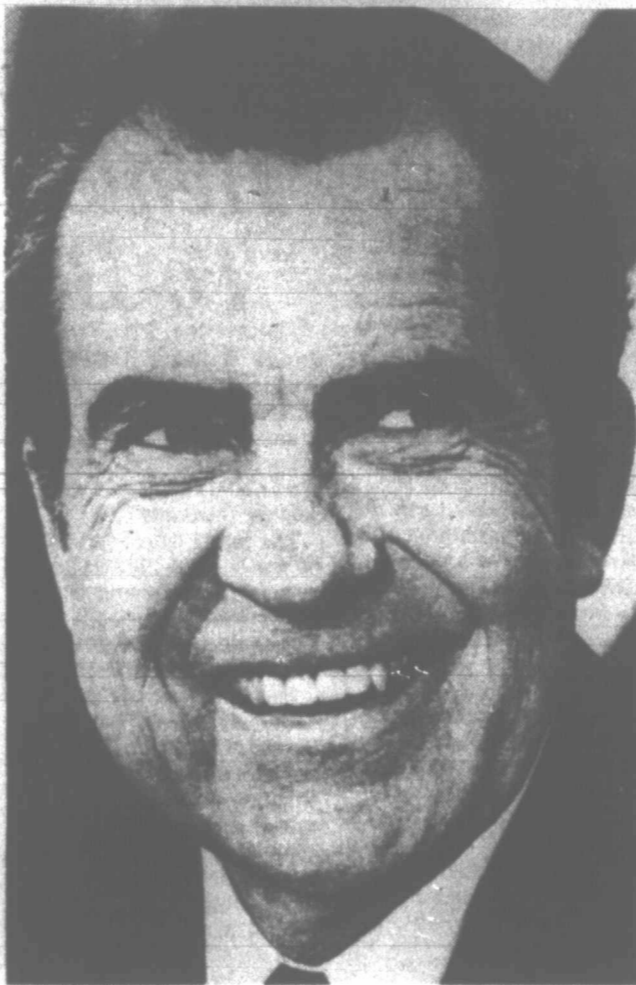
### Congressman Price Supports Nixon's Speech

The following is a statement released today by Republican Congressman Bob Price of Pampa concerning President Nixon's State of the Union address last night.

"The President outlined a series of achievements he hoped that Congress would obtain this year, and I believe that Congress can deal with the problems he outlined if it can turn its attention away from Watergate. I was encouraged that the President pledged his cooperation with the House Judiciary Committee, consistent with presidential responsibility.

"The President does have an historic and outstanding record of accomplishments in bringing our POW's (prisoners of war) home "on their feet and not on their knees" and in embarking upon what we all hope will be lasting world peace. I am gratified that the President spoke of the importance of maintaining a strong defense; that we will continue to have the funds to meet any challenge; and that he demanded a full accounting of our MIA's ('missing in action').

"I was also pleased to hear that he will be recommending a health care plan with emphasis on catastrophic coverage which will not require additional taxes and which will not be under strict federal control."



A HAPPY FACE — President Nixon beams after delivering his State of the Union address to members of Congress in a televised session Wednesday night. Nixon stressed his intentions to remain on the job despite the scandals which have clouded his administration.

WASHINGTON (UPI) — President Nixon declared that "one year of Watergate is enough" in his State of the Union address and challenged Congress instead to focus its attention on solving the energy crisis and inflation. He vowed to remain in office.

In a hard-hitting 45-minute speech to a joint session of Congress and a broadcast audience of millions of Americans Wednesday night, Nixon dramatically asserted his intention to remain in the Presidency despite inroads of the scandal on his administration.

"I want you to know that I have no intention whatever of walking away from the job that the people elected me to do," the President said as his Republican supporters loudly applauded in the House chamber.

Nixon also pledged to cooperate with the House Judiciary Committee's impeachment inquiry, but indicated that he may refuse to turn over White House documents and Watergate tapes on grounds of executive privilege.

"There is only one limitation," Nixon said. "I will follow the precedent that has been followed... by every president from George Washington of never doing anything that weakens the office of the president of the United States."

Surprise Announcement Made

Nixon's address also was highlighted by a surprise announcement that friendly Arab leaders had agreed to hold an "urgent meeting in the immediate future" to discuss lifting the embargo against oil shipments to the United States.

But he said resumption of the Middle East oil flow would only ease the crisis, and pressed Congress for swift approval of emergency legislation, including standby authority for gasoline rationing, to cope with long range shortages.

Predicting that the nation could "break the back of the energy crisis" in 1974, Nixon also vowed to do everything in his power to avoid gasoline rationing.

He termed energy the "highest priority" problem facing Congress but also dwelt heavily

on the "difficult period" the economy is passing through.

Inflation, he said, could be checked if Congress cooperates in holding down government spending. "There will be no recession in the United States," he promised.

Major Goals Outlined

In a separate 22,000-word document, Nixon outlined 10 major legislative goals for this year and disclosed that the federal budget for fiscal 1975 would total a record \$304.4 billion.

But he said no new tax increases would be sought to make up for an expected \$9.4 billion deficit for the year starting July 1.

The President appeared confident, although he stumbled over a few words and his hand motions were choppy. When he took his place at the podium, he was welcomed with a roar of prolonged applause.

At times, he read his speech in a perfunctory manner until the last few minutes when he ended his formal remarks and spoke extemporaneously on the "investigations of the so-called Watergate affair," the moment most of his audience appeared to be waiting for.

Hisses could be heard mixed with the applause when Nixon laid down the conditional terms of his cooperation with the Judiciary Committee.

Most Were Retreads

Most of his legislative proposals were retreads but he did unveil his long comprehensive, \$40 billion-a-year plan for national health insurance with private coverage to be financed mostly by employer-worker payroll premiums.

He appeared to be signaling his intention to fight over the health program by scathingly referring to Sen. Edward M. Kennedy's more encompassing plan as "the wrong approach" which would put health care "under the heavy hand of government" and cost \$80 billion to \$100 billion.

As for welfare reform, Nixon urged Congress "to join me in mounting a major new effort to replace the discredited present welfare system with one that works," but he failed to make any new concrete proposals to tackle the problem.

Nixon said spending for

national defense must increase. The Pentagon has asked for a \$92 billion in 1974, roughly a third of the total budget. The money, he said, "will be needed to assure the continued readiness of our military forces, to preserve the present force levels in the face of rising costs and to give us the military strength we must have if our security is to be maintained and if our initiatives for peace are to succeed."

Details in Writing

In his spoken address, he broad-brushed recommendations on improving education, transportation, the environment and communities, but approached them in more detail in his written document.

He disclosed that he had ordered a Cabinet-level review this year of both government and industry practices as they relate to invasion of privacy.

The proposal appeared to stem from the electronic eavesdropping equipment seized with the Watergate burglars and "the plumbers"—the secret surveillance group Nixon initiated to plug news leaks from within the administration that allegedly involved electronic eavesdropping.

Nixon also mentioned "abuses" in the 1972 election campaign and said he would recommend campaign reform and proposals to "clean up" the federal election process.

Living More Abundant

"Overall, Americans are living more abundantly than ever before today," he said.

"Despite this record of achievement, as we turn to the year ahead we hear once again the familiar voice of the perennial prophets of gloom telling us now that because of the need to fight inflation, because of the energy shortage, American may be headed for a recession," he said.

Nixon also made the following points:

—The Federal Government will spend \$10 billion in federal funds over the next five years to spur energy research and development.

—He will urge a \$2.3 billion outlay by Congress to give local officials new flexibility in federal community development funds.

### FOR TEXAS MOTORISTS

## License Plates' Deadlines Near

Feb. 1 and April 1: Two important dates for Texas motorists to remember.

On Feb. 1, tomorrow, in person motor vehicle registration begins at the Gray County tax office. April 1 is the deadline for Texas motorists to display their 1974 license plates.

Within this two-month period, 8.4 million motor vehicles must be registered to operate on Texas streets and highways. Again, as in recent years, the same rules for motor vehicle registration apply.

The motorist may register his vehicle in person at his county tax office by bringing in the entire handy three-part form he received in the mail from the Texas Highway Department. It takes only a few minutes to process the form, collect the fee and send the motorist on his way with new license plates.

Or, drivers can save themselves a trip downtown if they register by mail prior to March 1. Simply send in the complete three-part form, the registration fee plus one dollar for each vehicle to the tax assessor-collector in the county in which they live.

Gray County residents have to apply in person at the county courthouse. Tax Assessor-Collector Jack Back said today.

Cost of tags depends on the

weight of the vehicle. Weight costs are: 3,500 pounds or less, \$12.50; from 3,501 to 4,500 pounds, \$22.50; and from 4,501 to 6,000 pounds, \$30.30.

After March 1 it will be necessary to go to the county tax office or substation in person as 30 days are required for mail delivery. In any case, owners will find the procedure simplified by using the computerized forms.

With the form, a certificate of title and last year's registration receipt are not needed.

Whether applying by mail or in person—the important thing for the driver to remember is DO NOT SEPARATE THE THREE-PART APPLICATION FORM. The entire form must be mailed or taken to the county tax office or substation.

A stick-down strip showing the new license number is attached to all sections of the form. The tax office separates the form, returning part of it as a receipt for the owner.

Applications for license plates should be sent only to the local county tax office. Motorists should NOT send their payments to the Texas Highway Department because this will delay their registration.

Register early! Remember the deadline—midnight, April 1!

## Controls Dropped On Petrochemicals

WASHINGTON (UPI) — The Cost of Living Council has dropped price controls on tires and scarce petrochemical materials, while leaders of three major industries want all the government's wage and price controls to expire April 30 as scheduled.

John Dunlop, director of the council, said Wednesday the industry agreed to limit price increases for tires until just before the 1975 model cars come out. Dunlop said controls were dropped from petrochemical stocks because of shortages of the crude oil from which they are made.

The five largest tire companies—Goodyear, Firestone, B. F. Goodrich, Uniroyal and General—agreed to limit wholesale price increases to 5 percent and to hold retail hikes on prices of tires for small cars to 4 percent until Aug. 1.

"Granting this exemption to the tire industry should provide maximum operational flexibility and incentive to accelerate the shift of production to new

types of tires in heavy demand," Dunlop said, explaining that an increase in small car tire prices would be an incentive to raise production.

Petrochemical stocks, derived from crude oil, are used as raw material in the manufacture of tires, medicine, plastics, vinyl and other industrial, commercial and consumer products.

O. Pendleton Thomas, chairman of Goodrich, appeared before a Senate subcommittee on Production and Stabilization Wednesday opposing wage-price controls. "Controls," he said, "are discouraging and even making it impossible for business to invest in needed productive capacity and thus imposing a serious threat to the prospects of our nation's achieving long-term price stability."

Appearing with Thomas were George A. Stinson, chairman of National Steel Corp. and Robert S. Hatfield, chairman of Continental Can Co.



4-H KNITTING CLASS — Sally Brainard, 14-year-old daughter of Mr. and Mrs. E.H. Brainard, 2125 Mary Ellen, practices knitting while Mrs. Grady Grant, 1430 Williston, gives further instruction. Mrs. Grant, who has taught the subject for over seven years, will head a class of knitting and crocheting each Wednesday from 4-6 p.m. in the Flame Room of the Pioneer Natural Gas Building. Persons interested in enrolling in such a class should contact the County Agricultural Extension Service, 669-7429. (Photo by Bill Kincaid)

### Police Arrest Five Youths On Drug Charges

Four Pampa men and one girl were arrested yesterday at 3 p.m. at a residence in east Pampa for possession of suspected marijuana and for discharging firearms in the city limits.

Names of the five have not been released pending laboratory reports for verification of the substance found at the residence and the filing of formal charges by the district attorney.

Found in the house were 64 "baggies" of suspected marijuana valued at approximately \$900, police said.

Three Pampa policemen went to the residence in response to a complaint that a firearm was being discharged by persons at the residence. When they arrived at the scene, reports said, officers observed several people in the yard of the residence, one carrying a pistol.

Reports said the people then ran from the yard into the house and the officers followed. At that time the pistol was taken from one of the subjects.

Various narcotics paraphernalia and burned butts of suspected marijuana cigarettes were observed in the house and the residence was then searched, with the "baggies" being found, reports noted.

Shortly before press time today, formal charges had not as yet been filed in the case by District Attorney Guy Hardin, police sources said.

## County To Review Various Contracts

Gray County commissioners have 11 items on the agenda for their regular first of the month meeting tomorrow at 10 a.m. in the courthouse.

Various contracts are among the items to be considered at the meeting, including fire contracts with the city of McLean and the city of Pampa and a tax contract with Pampa. Commissioners will also consider granting permission for Packerland Packing Co. to cross a county road in Precinct Two with a railroad spur.

A request by the county school superintendent for the purchase of an audiometer to check county school children for hearing defects, to be made available to all schools in the county, will also be heard. The purchase price of

approximately \$452 will be made available from revenue sharing trust funds if the request is approved.

The First National Bank, as county depository, has requested that \$85,000 in hospital bonds and \$25,000 in airport bonds, which are pledged as collateral against the county's depository accounts, be released to the bank for redemption. The bank's collateral will be increased by its pledge of additional bonds, totaling \$619,000 listed in a letter to the county judge addressed Jan. 25.

An additional request to lease minerals in Gaines County (Gray County school lands) and authorization for the county judge to advertise for bids will also be discussed, as will a survey request on said lands and minerals.

Also to be studied is the low bid in the sum of \$837.80 from the general fund to the trustees of the American Legion Bldg. for the county Veterans Service Office.

In routine business, the commissioners will consider the payment of salaries and bills and time deposits and transfer of funds as recommended by the county auditor.

### Inside Today's News

|               |       |
|---------------|-------|
| Abby          | 6     |
| Classified    | 18-19 |
| Comics        | 18    |
| Crossword     | 12    |
| Editorial     | 12    |
| Food Page     | 2     |
| On the Record | 2     |
| Sports        | 16-17 |
| Women's News  | 6-7   |

### Earl Wilson

Supermarkets are very convenient — they permit a shopper to go broke in one store... "Instead of raising the price of postage," asks Taffy Tuttle, "why don't they just make the stamps smaller?"... Nothing improves your driving, says the cynic, like having two speeding convictions on your license... A nervous fellow worries that the country's in far worse shape than we think: "Every time I call Dial-a-Prayer I get a busy signal." (For more laughs see Earl Wilson on Page 18.)



## Pancake Day Deadline Gets An Extension

LIBERAL, Kan. — The deadline for entry in the Miss Flipper 1974 Silver Jubilee Scholarship Pageant has been extended to Feb. 16, according to Mrs. Steve Tucker, chairman for the sponsoring Alpha Rho Chapter of Beta Sigma Phi sorority.

Scholarship prizes for the two top winners were decided upon to replace former cash prizes, because most entrants are students and desire to continue their education.

Mrs. Tucker explained this in no way limits sponsorship to schools and business firms, civic organizations and individuals are urged to sponsor an entrant. Many local groups have indicated they would like to serve as sponsors, but in previous years few area girls have entered the contest.

Any single girl between 16 and 21 years old who will take part are asked to fill out the accompanying blank and return it to the Jaycee office in the Chamber of Commerce building in Liberal.

This year the talent requirement for the contest has been dropped. There is no entry fee. Rules and instructions are available from the Jaycee office or by writing Scholarship Pageant, Box 665, Liberal, Kan. 67901.

Miss Flipper will receive a \$500 scholarship, the Pancake Princess a \$200 scholarship; second, third and fourth runners-up will receive cash prizes of \$100, \$75, and \$50 respectively.

## ROCK MUSIC

United Press International Like about half the rest of the world, the first time I heard Gerry Rafferty singing "Stuck in the Middle with You," the first single from Stealer's Wheel, I thought it was something new from Bob Dylan.

Rafferty's nasal voice does resemble Dylan's, but when I found out the truth I took an immediate and irrational dislike to the group. It took me a long time before I admitted they really were pretty good.

In between their first album and their second, Stealer's Wheel dropped some folks and became a duo—Rafferty with co-vocalist Joe Egan. That second album is called "Ferguslie Park" (A&M SP-4419), and for it, Stealer's Wheel consist of Egan, Rafferty and 10 session musicians.

"It's not a particularly good way to go about establishing an identity as a band, but Rafferty and Egan apparently feel they can carry that load. And judging from the results they achieved on "Ferguslie Park," they may be right.

"It's a sort of concept album, concerned throughout with the ups and downs of a rock star manipulated by moneymen, then discarded. There are plenty more downs than ups, and more than a little bitterness shows in the lyrics.

"Five years ago, "Ferguslie Park" might have been considered some kind of rock masterpiece; the production is superb, playing virtually flawless, lyrics sufficiently "serious."

"In 1974, however, it comes off seeming rather backward-looking; a synthesis of 1960's concepts and styles, from Dylan to the Association, but especially the Beatles. That's not to say the idea isn't valid, but—it's been done.

"On the other hand, it's difficult to fault the music itself. Though Rafferty and Egan stay mostly on the mellow side, they can—and do—play rock 'n' roll. Best cuts on the album are "Star," which is startling in its resemblance to the "middle Beatles" harmonies and arrangements, and a tasty rocker called "Blind Faith."

"If we are to take Rafferty and Egan at their lyrical word, they must be pretty fed up with the hassles that seem unavoidable in becoming—and remaining—rock stars.

"Very few of those who have "made it" in even so limited a fashion as Stealer's Wheel, though, have been willing to attack the system so directly. Most musicians just accept the fact that 90 per cent of those around them are there not because they are friends, or even that they like the music, but because a great deal of money stands to be made. Bitter or not, Rafferty and Egan know what they're singing about.

"Despite its flaws, I like "Ferguslie Park." It is, in fact, the kind of record you could spend a long, pleasant time listening to love. Getting there is half the fun.

## VOICE OF BUSINESS

# Big Battle Fought For Railway Life

By ARCH BOOTH  
U.S. Chamber of Commerce  
WASHINGTON — Anyone who follows the affairs of the nation's railroads knows there is always a big fight over any proposal to abandon service on a particular line. Urban transit companies and airlines have the same problem.

As you can imagine, the collapse of the Penn Central raised the prospect of numerous abandonments, and a corresponding amount of dust.

Recently, the administrator of the Federal Railroad Administration, John W. Ingram, decided to personally inspect a few of the branch lines of Penn Central wanted to drop. He picked the Eastern Shore of Maryland to examine.

At first, he says, he was unable even to find the line he sought. Later, he returned with more detailed maps and a surveyor. His report is fascinating:

"We found that branch line, all right. At one place it was directly under a junk yard full of wrecked cars. At another point the highway department had covered the tracks with at least eight inches of pavement. And just off the road we found a six-inch-wide tree growing between the rails. That line had been completely forgotten, yet grown men were arguing before the Interstate Commerce Commission that that stretch of track was vital to the nation's economy."

### Who Done It

For people who like to search for villains, the cast of the foregoing tragi-comedy could be numbered in the thousands: Small-town politicians, railroad management, railroad unions, Congress, regulatory agencies—like the ICC—that go on blindly doing what they were set up to do, even though changed conditions make it no longer appropriate; and finally, our modern American penchant for protesting practically anything a corporation proposes.

In the case of the Northeast rail system, these "villains" now have a chance to redeem themselves.

It has been estimated that complete cessation of rail service over the former Penn Central lines and those of several other bankrupt Northeastern railroads would cause a four percent drop in the Gross National Product—the value of all the goods and services we produce in a year.

Such a drop would translate into hundreds, perhaps thousands, of bankruptcies and hundreds of thousands of lost jobs. Unthinkable.

So last year Congress established a quasi-governmental organization, the U.S. Railway Association, to sift through the ashes of the bankrupts and put together what valuable pieces remain into a new, private "Consolidated Rail Corporation."

Congress has provided \$50 million to keep the freight

moving in the meantime. Congress has also made \$1 billion available to be loaned to the new company, plus another \$500 million to be used for improving rail passenger service in the Northeast corridor.

If all goes well, the new corporation will be able to operate at a profit, attracting private capital, and needing no further subsidies from the taxpayer. But that will depend largely on how many of the old albatrosses are hung around its neck.

### A New Start?

Both the ICC and the Department of Transportation are supposed to study the question of what lines and services to retain in this region. Ultimately, Congress will make the final decision, based on their recommendations transmitted through the U.S.R.A.

If the new company is not allowed to streamline its route system, it will be no better off than the old Penn Central. That would be bad for the country, especially in these energy-short times. Based on actual operating experience, railroads haul about four times more ton-miles of freight per gallon of fuel than highway transportation. This same energy efficiency makes them the least polluting of all carriers.

Finally, the railroads haul 70 percent of the coal used domestically, and coal is our ace-in-the-hole in the energy crisis.

Fortunately, the railroads are alive and well just about everywhere but the Northeast. The industry set ton-mile records in 1972 and 1973, and expects to do still better in 1974, due largely to an anticipated increase in coal traffic.

Good for Eyes  
NEW YORK (UPI) — The current energy crisis is not entirely bad, the Society for Visual Care says. Cutbacks in fuel may have beneficial effects on the eyes.

Dr. Spencer Sherman, a New York City ophthalmologist and consultant to the society, said the resultant decrease in room temperature will make the eyes feel better. Cooler temperatures make the eyes retain more moisture. This leads to a lessening of smarting, burning, itching.

669-3311

### FORD'S BOYS WEAR

110 E. Francis 669-7322

## FINAL Clearance

Friday-Saturday-Monday

### Corduroy Slack Sale

Sizes 3-12, Students 25-30 Waist

|             |         |              |         |
|-------------|---------|--------------|---------|
| Reg. \$6.50 | Now \$4 | Reg. \$7.75  | Now \$5 |
| Reg. \$9.00 | Now \$6 | Reg. \$17.00 | Now \$9 |

|                              |                    |
|------------------------------|--------------------|
| <b>Sport Coats and Suits</b> | <b>Sweaters</b>    |
| <b>1/2 Price</b>             | <b>1/2 Price</b>   |
| <b>Car Coats</b>             | <b>Knit Shirts</b> |
| Reg. \$17, Now \$9           | \$2.00 Now \$1.50  |
| Reg. \$23, Now \$17.25       | \$3.00 Now \$2.25  |
|                              | \$7.00 Now \$5.25  |

**SPORT SHIRTS 1/2 Price**

Other Merchandise Greatly Reduced

- Casual Slacks • Belts
- Velour Shirts • Ties

## Dear Consumer

Dear Mrs. Knauer

By Virginia Knauer  
Special Assistant to the President and Director  
Office of Consumer Affairs  
Department of Health, Education and Welfare

While some of us grownups may be gloomy about the energy shortage, children seem to view it as a spirited challenge. Many have written to tell me about saving energy.

Here are a few excerpts from the letters. I hope they warm you as much as they warmed me.

Dear Mrs. Knauer,

I'm walking to the store, using less heat, using less lights and wearing warmer clothes.

Lemont

The way people should save energy is they should go 50 mph on the expressways. And they should watch less television. People don't need dishwashers, electric can openers, electric mixers, electric blankets. . . . People don't really need some electric appliances. I don't see nothing wrong with people power.

Moses

My family and I used candles at night sometimes. We have storm windows on the front and back doors. We put rugs at the doors. When we watch tv, we only have one light on and the tv.

Amy

I'm 13 years old and I'm concerned about the energy crisis. I would rather have a warm home than ride in a car. I ride my 10-speed bike almost everywhere and really enjoy it. Bike riding is also very healthy for you as well as for your country.

Marcy

Me and my mother have decided not to use our can opener so many times. I mean it isn't going to kill you if you use your hands. We have also decided to put as many clothes as possible in the washing machine at one time.

Armanda

I remind my father to set back the thermostat at night. I keep my blinds closed. I put some putty around the window. I keep the doors closed. Get out our heavy blankets and wear our heavy cloths in winter.

Irvin

The way our family is cutting down on fuel is to turn the heat down and wrap up in sweaters and things. And we are truly turning out most of the lights. I hope this will help some.

Lean

Turn down the cooking stove in your house. Don't let it burn and nothing in it.

Betty

We cut our furnish down at night and cut off our porch lights and we are going to put candles up.

Eugenia

## Sidebars



## FOR COLLEGE EDUCATION

# Canal Zone Family Sending Members To West Texas U.

AMARILLO — It is over two thousand miles from the steamy jungles of the Panama Canal Zone to the plains of the Golden Spread, but three members of a zone-based family have made the trip to get a college education, starting a unique tradition.

Of the St. John family, the first to leave Panama was Charles. He graduated in 1971 with a major in management. At present, he is about to complete a two-year tour with the Army armored corps.

Charles St. John was followed by Donald, who graduated last year with a business degree. He went on active duty after completing the four-year Reserve Officer's Training Corp program and also signed up for duty with the tankers.

That leads us to the nineteen-year-old James St. John, a sophomore business major. James, like his two brothers,

qualified for a four-year R.O.T.C. scholarship.

Although the older brothers chose the armored division of the Army, James has decided to try artillery when he completes his college and officer's training in 1976. He has got four years of active duty to look forward to when he gets his diploma.

There are two other brothers waiting in the wings, supposedly poised for the two thousand mile trip to Canyon when they graduate from Balboa High School in the Panama Canal Zone. They are 17-year-old Richard and 13-year-old Robert.

"I am pretty sure they will be coming here," James said recently. "All three of us have talked WT up pretty good around home."

The clan started migrating north of their near-equatorial home when their father Charles heard about WTSU from an

acquaintance. Charles St. John is a senior civilian employe of the military complex that administrates the Canal Zone.

The word-of-mouth advertising was strengthened when James was still in high school. "I remember a CBS cameraman telling me this was a good business school. That kind of settled it for me."

The element uranium was discovered in 1789.

Carmichael-Whitley  
Pampa's Leading FUNERAL DIRECTORS  
665-2323

## Heard-Jones DRUG

114 N. Cuyler 669-7478  
Specials Good Thru Saturday

|  |   |  |   |                  |                  |                    |                    |                   |   |   |  |                   |   |   |   |
|--|---|--|---|------------------|------------------|--------------------|--------------------|-------------------|---|---|--|-------------------|---|---|---|
| <p><b>BAYER ASPIRIN</b></p> <p>100 Tablets<br/>Reg. 1.17<br/><b>73c</b></p>  | <p><b>Ultra Ban 5000 Deodorant Spray</b></p> <p>14 Ounces<br/>Reg. 2.49<br/><b>\$1.27</b></p> | <p><b>Monster Multiple Vitamins</b></p> <p>100<br/>Reg. 3.39<br/><b>\$1.88</b></p>                         | <p><b>White Rain Shampoo</b></p> <p>7 Ounces<br/>Reg. 65c<br/><b>2 For 69c</b></p>                      |                  |                  |                    |                    |                   |   |   |  |                   |   |   |   |
| <p><b>PAMPERS DAYTIME</b></p> <p>30's<br/>2.45 Value<br/><b>\$1.44</b></p>   | <p><b>STRI-DEX MEDICATED PADS</b></p> <p>42's<br/>Reg. 98c<br/><b>49c</b></p>                 | <p><b>MISS CLAIROL HAIR COLOR</b></p> <p>Miss Clair Shampoo Formula<br/>Reg. 2.29<br/><b>\$1.57</b></p>    | <p><b>MACLEANS TOOTH PASTE</b></p> <p>6.75 Ounces<br/><b>63c</b></p>                                    |                  |                  |                    |                    |                   |   |   |  |                   |   |   |   |
| <p><b>FORD'S BOYS WEAR</b></p> <p>110 E. Francis 669-7322</p> <p><b>FINAL Clearance</b></p> <p>Friday-Saturday-Monday</p> <p><b>Corduroy Slack Sale</b></p> <p>Sizes 3-12, Students 25-30 Waist</p>  | <p><b>TRIAMINICIN COLD TABLETS</b></p> <p>24's<br/>Reg. 2.08<br/><b>88c</b></p>               | <p><b>PINE SOL</b></p> <p>Cleans Disinfects Deodorizes<br/>15 Ounces<br/>Reg. 79c<br/><b>2 for 79c</b></p> | <p><b>LIVING BIBLE</b></p> <p><b>\$7.77</b></p>   |                  |                  |                    |                    |                   |   |   |  |                   |   |   |   |
| <table border="1" style="width: 100%;"> <tr> <td>Reg. \$6.50</td> <td>Now \$4</td> <td>Reg. \$7.75</td> <td>Now \$5</td> </tr> <tr> <td>Reg. \$9.00</td> <td>Now \$6</td> <td>Reg. \$17.00</td> <td>Now \$9</td> </tr> </table>  | Reg. \$6.50   | Now \$4  | Reg. \$7.75   | Now \$5          | Reg. \$9.00      | Now \$6            | Reg. \$17.00       | Now \$9           | <p><b>PRESCRIPTIONS</b></p> <p>...A Phone Call Away</p> <p>A Friend At Hand...</p> <p>Your Health Is All That Matters To Us. When In An Emergency, A Prescription Is Needed, A Call From Your Doctor Gets It To You Fast...</p> <p>Emergency Prescriptions Call<br/>Bill Hite - Morlin Rose<br/>669-3107 669-3359</p> | <p><b>GRECIAN FORMULA 16 HAIR FORMULA</b></p> <p>Men's or Ladies<br/>Reg. \$2.19<br/>3.50<br/><b>\$2.19</b></p> | <p><b>MACLEANS TOOTH PASTE</b></p> <p>6.75 Ounces<br/><b>63c</b></p> |                   |   |   |   |
| Reg. \$6.50  | Now \$4   | Reg. \$7.75  | Now \$5   |                  |                  |                    |                    |                   |   |   |  |                   |   |   |   |
| Reg. \$9.00  | Now \$6   | Reg. \$17.00   | Now \$9   |                  |                  |                    |                    |                   |   |   |  |                   |   |   |   |
| <table border="1" style="width: 100%;"> <tr> <td><b>Sport Coats and Suits</b></td> <td><b>Sweaters</b></td> </tr> <tr> <td><b>1/2 Price</b></td> <td><b>1/2 Price</b></td> </tr> <tr> <td><b>Car Coats</b></td> <td><b>Knit Shirts</b></td> </tr> <tr> <td>Reg. \$17, Now \$9</td> <td>\$2.00 Now \$1.50</td> </tr> <tr> <td>Reg. \$23, Now \$17.25</td> <td>\$3.00 Now \$2.25</td> </tr> <tr> <td></td> <td>\$7.00 Now \$5.25</td> </tr> </table> | <b>Sport Coats and Suits</b>  | <b>Sweaters</b>  | <b>1/2 Price</b>  | <b>1/2 Price</b> | <b>Car Coats</b> | <b>Knit Shirts</b> | Reg. \$17, Now \$9 | \$2.00 Now \$1.50 | Reg. \$23, Now \$17.25  | \$3.00 Now \$2.25   |  | \$7.00 Now \$5.25 | <p><b>DRISTAN NASAL MIST</b></p> <p>Reg. 2.29<br/><b>\$1.47</b></p> | <p><b>REG. 114.50 Kodak XL 10 MOVIE CAMERA</b></p> <p>HOME MOVIES WITHOUT LIGHTS<br/><b>\$88.88</b></p> | <p><b>REG. 7.95 15 Capacity 8 TRACK TAPE CASES</b></p> <p><b>\$5.88</b></p> |
| <b>Sport Coats and Suits</b>   | <b>Sweaters</b>   |  |   |                  |                  |                    |                    |                   |   |   |  |                   |   |   |   |
| <b>1/2 Price</b>   | <b>1/2 Price</b>  |  |   |                  |                  |                    |                    |                   |   |   |  |                   |   |   |   |
| <b>Car Coats</b>   | <b>Knit Shirts</b>  |  |   |                  |                  |                    |                    |                   |   |   |  |                   |   |   |   |
| Reg. \$17, Now \$9   | \$2.00 Now \$1.50   |  |   |                  |                  |                    |                    |                   |   |   |  |                   |   |   |   |
| Reg. \$23, Now \$17.25   | \$3.00 Now \$2.25   |  |   |                  |                  |                    |                    |                   |   |   |  |                   |   |   |   |
|  | \$7.00 Now \$5.25   |  |   |                  |                  |                    |                    |                   |   |   |  |                   |   |   |   |
| <p><b>SPORT SHIRTS 1/2 Price</b></p> <p>Other Merchandise Greatly Reduced</p> <ul style="list-style-type: none"> <li>Casual Slacks • Belts</li> <li>Velour Shirts • Ties</li> </ul>  | <p><b>MISS BRECK Super Balsam HAIR CONDITIONER</b></p> <p>Reg. 1.79<br/><b>88c</b></p>        | <p><b>REG. 39.95 GE FM-AM PORTABLE RADIO</b></p> <p>TWO WAY POWER<br/><b>\$29.88</b></p>                   | <p><b>REG. 164.50 760 M CAROUSEL KODAK SLIDE PROJECTOR</b></p> <p><b>\$129.88</b></p>                   |                  |                  |                    |                    |                   |   |   |  |                   |   |   |   |
|  | <p><b>DRISTAN NASAL MIST</b></p> <p>Reg. 2.29<br/><b>\$1.47</b></p>                           | <p><b>REG. 114.50 Kodak XL 10 MOVIE CAMERA</b></p> <p>HOME MOVIES WITHOUT LIGHTS<br/><b>\$88.88</b></p>    | <p><b>REG. 7.95 15 Capacity 8 TRACK TAPE CASES</b></p> <p><b>\$5.88</b></p>                             |                  |                  |                    |                    |                   |   |   |  |                   |   |   |   |
|  | <p><b>DRISTAN NASAL MIST</b></p> <p>Reg. 2.29<br/><b>\$1.47</b></p>                           | <p><b>REG. 164.50 760 M CAROUSEL KODAK SLIDE PROJECTOR</b></p> <p><b>\$129.88</b></p>                      | <p><b>REG. 114.50 Kodak XL 10 MOVIE CAMERA</b></p> <p>HOME MOVIES WITHOUT LIGHTS<br/><b>\$88.88</b></p> |                  |                  |                    |                    |                   |   |   |  |                   |   |   |   |
|  | <p><b>DRISTAN NASAL MIST</b></p> <p>Reg. 2.29<br/><b>\$1.47</b></p>                           | <p><b>REG. 164.50 760 M CAROUSEL KODAK SLIDE PROJECTOR</b></p> <p><b>\$129.88</b></p>                      | <p><b>REG. 114.50 Kodak XL 10 MOVIE CAMERA</b></p> <p>HOME MOVIES WITHOUT LIGHTS<br/><b>\$88.88</b></p> |                  |                  |                    |                    |                   |   |   |  |                   |   |   |   |
|  | <p><b>DRISTAN NASAL MIST</b></p> <p>Reg. 2.29<br/><b>\$1.47</b></p>                           | <p><b>REG. 164.50 760 M CAROUSEL KODAK SLIDE PROJECTOR</b></p> <p><b>\$129.88</b></p>                      | <p><b>REG. 114.50 Kodak XL 10 MOVIE CAMERA</b></p> <p>HOME MOVIES WITHOUT LIGHTS<br/><b>\$88.88</b></p> |                  |                  |                    |                    |                   |   |   |  |                   |   |   |   |
|  | <p><b>DRISTAN NASAL MIST</b></p> <p>Reg. 2.29<br/><b>\$1.47</b></p>                           | <p><b>REG. 164.50 760 M CAROUSEL KODAK SLIDE PROJECTOR</b></p> <p><b>\$129.88</b></p>                      | <p><b>REG. 114.50 Kodak XL 10 MOVIE CAMERA</b></p> <p>HOME MOVIES WITHOUT LIGHTS<br/><b>\$88.88</b></p> |                  |                  |                    |                    |                   |   |   |  |                   |   |   |   |
|  | <p><b>DRISTAN NASAL MIST</b></p> <p>Reg. 2.29<br/><b>\$1.47</b></p>                           | <p><b>REG. 164.50 760 M CAROUSEL KODAK SLIDE PROJECTOR</b></p> <p><b>\$129.88</b></p>                      | <p><b>REG. 114.50 Kodak XL 10 MOVIE CAMERA</b></p> <p>HOME MOVIES WITHOUT LIGHTS<br/><b>\$88.88</b></p> |                  |                  |                    |                    |                   |   |   |  |                   |   |   |   |
|  | <p><b>DRISTAN NASAL MIST</b></p> <p>Reg. 2.29<br/><b>\$1.47</b></p>                           | <p><b>REG. 164.50 760 M CAROUSEL KODAK SLIDE PROJECTOR</b></p> <p><b>\$129.88</b></p>                      | <p><b>REG. 114.50 Kodak XL 10 MOVIE CAMERA</b></p> <p>HOME MOVIES WITHOUT LIGHTS<br/><b>\$88.88</b></p> |                  |                  |                    |                    |                   |   |   |  |                   |   |   |   |
|  | <p><b>DRISTAN NASAL MIST</b></p> <p>Reg. 2.29<br/><b>\$1.47</b></p>                           | <p><b>REG. 164.50 760 M CAROUSEL KODAK SLIDE PROJECTOR</b></p> <p><b>\$129.88</b></p>                      | <p><b>REG. 114.50 Kodak XL 10 MOVIE CAMERA</b></p> <p>HOME MOVIES WITHOUT LIGHTS<br/><b>\$88.88</b></p> |                  |                  |                    |                    |                   |   |   |  |                   |   |   |   |
|  | <p><b>DRISTAN NASAL MIST</b></p> <p>Reg. 2.29<br/><b>\$1.47</b></p>                           | <p><b>REG. 164.50 760 M CAROUSEL KODAK SLIDE PROJECTOR</b></p> <p><b>\$129.88</b></p>                      | <p><b>REG. 114.50 Kodak XL 10 MOVIE CAMERA</b></p> <p>HOME MOVIES WITHOUT LIGHTS<br/><b>\$88.88</b></p> |                  |                  |                    |                    |                   |   |   |  |                   |   |   |   |
|  | <p><b>DRISTAN NASAL MIST</b></p> <p>Reg. 2.29<br/><b>\$1.47</b></p>                           | <p><b>REG. 164.50 760 M CAROUSEL KODAK SLIDE PROJECTOR</b></p> <p><b>\$129.88</b></p>                      | <p><b>REG. 114.50 Kodak XL 10 MOVIE CAMERA</b></p> <p>HOME MOVIES WITHOUT LIGHTS<br/><b>\$88.88</b></p> |                  |                  |                    |                    |                   |   |   |  |                   |   |   |   |
|  | <p><b>DRISTAN NASAL MIST</b></p> <p>Reg. 2.29<br/><b>\$1.47</b></p>                           | <p><b>REG. 164.50 760 M CAROUSEL KODAK SLIDE PROJECTOR</b></p> <p><b>\$129.88</b></p>                      | <p><b>REG. 114.50 Kodak XL 10 MOVIE CAMERA</b></p> <p>HOME MOVIES WITHOUT LIGHTS<br/><b>\$88.88</b></p> |                  |                  |                    |                    |                   |   |   |  |                   |   |   |   |
|  | <p><b>DRISTAN NASAL MIST</b></p> <p>Reg. 2.29<br/><b>\$1.47</b></p>                           | <p><b>REG. 164.50 760 M CAROUSEL KODAK SLIDE PROJECTOR</b></p> <p><b>\$129.88</b></p>                      | <p><b>REG. 114.50 Kodak XL 10 MOVIE CAMERA</b></p> <p>HOME MOVIES WITHOUT LIGHTS<br/><b>\$88.88</b></p> |                  |                  |                    |                    |                   |   |   |  |                   |   |   |   |
|  | <p><b>DRISTAN NASAL MIST</b></p> <p>Reg. 2.29<br/><b>\$1.47</b></p>                           | <p><b>REG. 164.50 760 M CAROUSEL KODAK SLIDE PROJECTOR</b></p> <p><b>\$129.88</b></p>                      | <p><b>REG. 114.50 Kodak XL 10 MOVIE CAMERA</b></p> <p>HOME MOVIES WITHOUT LIGHTS<br/><b>\$88.88</b></p> |                  |                  |                    |                    |                   |   |   |  |                   |   |   |   |
|  | <p><b>DRISTAN NASAL MIST</b></p> <p>Reg. 2.29<br/><b>\$1.47</b></p>                           | <p><b>REG. 164.50 760 M CAROUSEL KODAK SLIDE PROJECTOR</b></p> <p><b>\$129.88</b></p>                      | <p><b>REG. 114.50 Kodak XL 10 MOVIE CAMERA</b></p> <p>HOME MOVIES WITHOUT LIGHTS<br/><b>\$88.88</b></p> |                  |                  |                    |                    |                   |   |   |  |                   |   |   |   |
|  | <p><b>DRISTAN NASAL MIST</b></p> <p>Reg. 2.29<br/><b>\$1.47</b></p>                           | <p><b>REG. 164.50 760 M CAROUSEL KODAK SLIDE PROJECTOR</b></p> <p><b>\$129.88</b></p>                      | <p><b>REG. 114.50 Kodak XL 10 MOVIE CAMERA</b></p> <p>HOME MOVIES WITHOUT LIGHTS<br/><b>\$88.88</b></p> |                  |                  |                    |                    |                   |   |   |  |                   |   |   |   |
|  | <p><b>DRISTAN NASAL MIST</b></p> <p>Reg. 2.29<br/><b>\$1.47</b></p>                           | <p><b>REG. 164.50 760 M CAROUSEL KODAK SLIDE PROJECTOR</b></p> <p><b>\$129.88</b></p>                      | <p><b>REG. 114.50 Kodak XL 10 MOVIE CAMERA</b></p> <p>HOME MOVIES WITHOUT LIGHTS<br/><b>\$88.88</b></p> |                  |                  |                    |                    |                   |   |   |  |                   |   |   |   |
|  | <p><b>DRISTAN NASAL MIST</b></p> <p>Reg. 2.29<br/><b>\$1.47</b></p>                           | <p><b>REG. 164.50 760 M CAROUSEL KODAK SLIDE PROJECTOR</b></p> <p><b>\$129.88</b></p>                      | <p><b>REG. 114.50 Kodak XL 10 MOVIE CAMERA</b></p> <p>HOME MOVIES WITHOUT LIGHTS<br/><b>\$88.88</b></p> |                  |                  |                    |                    |                   |   |   |  |                   |   |   |   |
|  | <p><b>DRISTAN NASAL MIST</b></p> <p>Reg. 2.29<br/><b>\$1.47</b></p>                           | <p><b>REG. 164.50 760 M CAROUSEL KODAK SLIDE PROJECTOR</b></p> <p><b>\$129.88</b></p>                      | <p><b>REG. 114.50 Kodak XL 10 MOVIE CAMERA</b></p> <p>HOME MOVIES WITHOUT LIGHTS<br/><b>\$88.88</b></p> |                  |                  |                    |                    |                   |   |   |  |                   |   |   |   |
|  | <p><b>DRISTAN NASAL MIST</b></p> <p>Reg. 2.29<br/><b>\$1.47</b></p>                           | <p><b>REG. 164.50 760 M CAROUSEL KODAK SLIDE PROJECTOR</b></p> <p><b>\$129.88</b></p>                      | <p><b>REG. 114.50 Kodak XL 10 MOVIE CAMERA</b></p> <p>HOME MOVIES WITHOUT LIGHTS<br/><b>\$88.88</b></p> |                  |                  |                    |                    |                   |   |   |  |                   |   |   |   |
|  | <p><b>DRISTAN NASAL MIST</b></p> <p>Reg. 2.29<br/><b>\$1.47</b></p>                           | <p><b>REG. 164.50 760 M CAROUSEL KODAK SLIDE PROJECTOR</b></p> <p><b>\$129.88</b></p>                      | <p><b>REG. 114.50 Kodak XL 10 MOVIE CAMERA</b></p> <p>HOME MOVIES WITHOUT LIGHTS<br/><b>\$88.88</b></p> |                  |                  |                    |                    |                   |   |   |  |                   |   |   |   |
|  | <p><b>DRISTAN NASAL MIST</b></p> <p>Reg. 2.29<br/><b>\$1.47</b></p>                           | <p><b>REG. 164.50 760 M CAROUSEL KODAK SLIDE PROJECTOR</b></p> <p><b>\$129.88</b></p>                      | <p><b>REG. 114.50 Kodak XL 10 MOVIE CAMERA</b></p> <p>HOME MOVIES WITHOUT LIGHTS<br/><b>\$88.88</b></p> |                  |                  |                    |                    |                   |   |   |  |                   |   |   |   |
|  | <p><b>DRISTAN NASAL MIST</b></p> <p>Reg. 2.29<br/><b>\$1.47</b></p>                           | <p><b>REG. 164.50 760 M CAROUSEL KODAK SLIDE PROJECTOR</b></p> <p><b>\$129.88</b></p>                      | <p><b>REG. 114.50 Kodak XL 10 MOVIE CAMERA</b></p> <p>HOME MOVIES WITHOUT LIGHTS<br/><b>\$88.88</b></p> |                  |                  |                    |                    |                   |   |   |  |                   |   |   |   |
|  | <p><b>DRISTAN NASAL MIST</b></p> <p>Reg. 2.29<br/><b>\$1.47</b></p>                           | <p><b>REG. 164.50 760 M CAROUSEL KODAK SLIDE PROJECTOR</b></p> <p><b>\$129.88</b></p>                      | <p><b>REG. 114.50 Kodak XL 10 MOVIE CAMERA</b></p> <p>HOME MOVIES WITHOUT LIGHTS<br/><b>\$88.88</b></p> |                  |                  |                    |                    |                   |   |   |  |                   |   |   |   |
|  | <p><b>DRISTAN NASAL MIST</b></p> <p>Reg. 2.29<br/><b>\$1.47</b></p>                           | <p><b>REG. 164.50 760 M CAROUSEL KODAK SLIDE PROJECTOR</b></p> <p><b>\$129.88</b></p>                      | <p><b>REG. 114.50 Kodak XL 10 MOVIE CAMERA</b></p> <p>HOME MOVIES WITHOUT LIGHTS<br/><b>\$8</b></p>     |                  |                  |                    |                    |                   |   |   |  |                   |   |   |   |

**New Forestry Technique**  
VANCOUVER, B. C. (UPI) — Canadian foresters are beginning to plant trees in scientifically selected, ecologically ideal areas as the new means of helping nature build better forests.

Edmond C. Packee, a forest ecologist with MacMillan Bloedel, Canada's largest forest products company, has classified biogeoclimatic zones of forest land on Vancouver island and adjacent mainland coast.

These zones are classified according to the plant forms, geography and climate of each region. Packee's maps define subzones for special tree species, including Douglas firs and hemlocks.

**BATTIN' AROUND**

**Bureaucrats Plant Suspicions On Crisis Oil**

By C.R. BATTEN  
Federal energy director William E. Simon says that there are growing public suspicions that the oil industry is deliberately creating the present fuel crisis.

What Simon does not say is that such suspicion is deliberately being planted by such federal bureaucrats as himself, various congressmen and other authoritarians who are using the energy crisis to increase their empires and power.

It seems that not only oil companies, but many other businesses are stockpiling fuel

oil and gasoline as fast as they can get it. Tank manufacturers are kept busy making storage tanks for customers seeking what one businessman has termed "business interruption insurance."

Every squirrel knows enough to lay away a supply of food for the winter, to tide them over the lean season until spring. But businessmen who have as much intelligence as a squirrel and are trying to do essentially the same thing are branded as unpatriotic swindlers.

The theory apparently is that such planning creates shortages. No thought is given

to the consumer goods that may continue to flow because some businessmen were able to accumulate enough fuel in advance to continue their operations through the crisis period.

So Simon has ordered a complete audit of prices, inventories and supplies of every oil refiner in the nation.

I expect that the audit will find that many companies have more fuel on hand than they did a year ago. I also predict that this finding will be used to justify more controls on the oil industry than before, and that the true reasons for higher

inventories will be hidden or glossed over without comment by the bureaucrats.

For those reasons will only confirm what a few writers have been saying all along — that the shortage has been created by governmental interference in the affairs of private business.

A reliable source has informed me of one oil company that must either reduce its refinery production of fuel, or begin to dump it on the ground, because its storage facilities will soon be filled to capacity. The company would like to sell more fuel — after all, that is

why it is in business.

But it cannot legally sell more because of the federal mandatory fuel allocation regulations. Except for certain priority users such as farmers, bulk purchasers can only buy a certain percentage of last year's consumption. This limits the company's markets. Regulations prevent the development of new markets.

Nebraska law forbids carrying a loaded shotgun in a vehicle on a public road. This includes shells in the magazine as well as those in the chamber.

**The Almanac**

By United Press International  
Today is Thursday, Jan. 31, the 31st day of 1974 with 334 to follow.

The moon is in its first quarter.

The morning star is Venus.

The evening stars are Mercury, Mars, Jupiter and Saturn.

Those born on this date are under the sign of Aquarius.

American entertainer Eddie Cantor was born on Jan. 31, 1892.

On this day in history:  
In 1950, President Harry Truman disclosed he had ordered development of the hydrogen (thermonuclear) bomb.

In 1950, Explorer I, the first U.S. earth satellite, was launched from the Cape Canaveral missile test center.

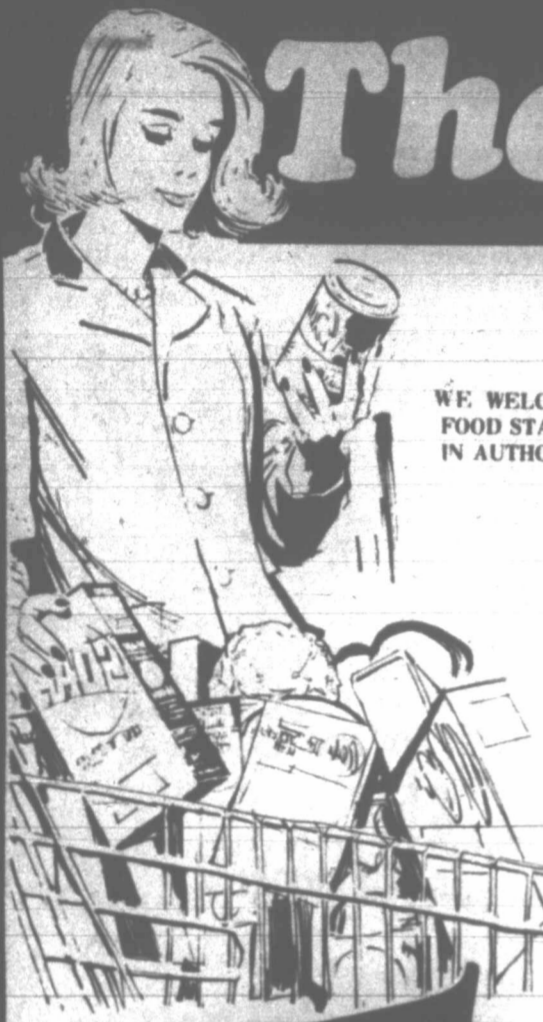
In 1961, Ham, a male chimpanzee, was rocketed into space in a test of the project Mercury capsule later to carry an American astronaut into orbit.

In 1971, with three astronauts aboard, the Apollo 14 spacecraft blasted off for the moon.

A thought for the day: U.S. novelist Christopher Morley said, "The enemies of the future are always the very nicest people."

Each Texas farmer produces enough food and fiber himself and more than 50 other persons, according to Texas state officials.

**The right price...right now...**



WE WELCOME FEDERAL FOOD STAMP CUSTOMERS IN AUTHORIZED COUNTIES.



**GREEN BEANS** GUNN BROS. STAMPS **6** 16-OZ. CANS **\$1**

**ELLIS CHILI WITH BEANS**  
2 15-OZ. CANS **88¢**  
ELLIS Jumbo Tamales 25-OZ. CANS **66¢**



**Saltine Crackers** CAMELOT BRAND LIMIT 2 BOXES WITH \$5 OR MORE PURCHASE 1-LB. BOX **32¢**  
**Tomato Soup** CAMPBELL'S UM-M-M GOOD! 6 12 1/2-OZ. CANS **83¢**

IDEAL FOOD STORES

PRICES EFFECTIVE THRU SATURDAY, FEB. 2, 1974. NONE SOLD TO DEALERS. LIMIT RIGHTS RESERVED.  
**Store Hours 7 AM to 11 PM Every Day**

IDEAL Thrif-T Dairy Foods  
**Low Fat Milk** 4-OZ. CANS **\$1.49**

DEL. WUNTS LIGHT  
**CHUNK TUNA** 2 6-OZ. CANS **88¢** LIMIT 4, PLEASE

DEL MONTE  
**TOMATO CATSUP** 4 14-OZ. BTL. **\$1** LIMIT 4 WITH \$5.00 OR MORE PURCHASE

ENRICHED  
**CAMELOT FLOUR** 5-LB. BAG **74¢** THRIF-T-PRICED

"NIGHT BLOSSOM" PATTERN, HEAVY GAUGE  
**STAINLESS STEEL TABLEWARE**  
this week's feature:  
**DINNER KNIFE**  
OUR VERY LOW PRICE  
... RIGHT NOW!  
**33¢**  
ONLY WITH EACH \$3 PURCHASE

CAMELOT MILD  
**Longhorn Cheese** 10-OZ. PKG. **56¢**  
FRESH, GRADE A  
**Medium Eggs** DOZ. **79¢**  
FRESH, GRADE A  
**Large Eggs** DOZ. **81¢**  
CAMELOT INDIVIDUALLY WRAPPED  
**American Slices** 16-OZ. PKG. **\$1.18**

VAN CAMP'S  
**Pork & Beans** 53-OZ. CAN **72¢**  
MILE HIGH  
**Whole Tomatoes** 16-OZ. CANS **4.93¢**  
DUNCAN HINES LAYER  
**Cake Mixes** 18-OZ. BOXES **83¢**  
PETER PAN CREAMY OR CRUNCHY  
**Peanut Butter** 28-OZ. JAR **\$1.08**  
RICH 'N CHIPS, C.C. BIGGS, CHOC. DROP  
**Keebler Cookies** 21-OZ. PKG. **95¢**  
SWISS MISS  
**Cocoa Mix** PKG. OF 14 **\$1.09**

MILE HIGH WHOLE KERNEL  
**Golden Corn** 16-OZ. CANS **5.98¢**  
HUNT'S  
**Fruit Cocktail** 15-OZ. CANS **3.83¢**  
WILDERNESS  
**Cherry Pie Mix** 21-OZ. CANS **\$1.13**  
KRAFT MINIATURE  
**Marshmallows** 10 1/2-OZ. PKGS. **3.67¢**  
PILLAR ROCK  
**Oyster Pieces** 4-OZ. CAN **53¢**  
STALEY'S  
**Pancake Syrup** 24-OZ. BTL. **73¢**

ARGO BRAND  
**Sweet Peas** 16-OZ. CANS **5.98¢**  
CAROLINA FREE IRREGULAR  
**Freestone Peaches** 29-OZ. CANS **3.51**  
MEADOWDALE  
**Pear Halves** 29-OZ. CANS **88¢**  
DIXIE 3-OZ. BATHROOM  
**Cup Refills** PKG. OF 100 **48¢**  
SAUCE CUBES DOG FOOD OR  
**Friskies Dinner** 25-LB. PKG. **\$5.29**  
DISPOSABLE DIAPERS  
**Pamper's Daytime** BOX OF 30 **\$1.52**

COUPON SAVINGS  
VALUABLE COUPON  
GOOD 50¢ OFF ON 3-LB. CAN OF FOLGER'S COFFEE  
LIMIT 1 WITH COUPON EXPIRES 2-2-74  
IDEAL FOODS  
VALUABLE COUPON  
FAMILY SIZE Dash Detergent WITH COUPON \$4.29  
WITHOUT THIS COUPON LIMIT 1 EXPIRES 2-2-74  
IDEAL FOODS  
VALUABLE COUPON  
32-OZ. BTL. Joy Liquid WITH COUPON 39¢  
WITHOUT COUPON 59¢ LIMIT 1 EXPIRES 2-2-74  
IDEAL FOODS

MEADOWDALE  
**Canned Biscuits** 5 8-OZ. CANS **53¢**  
MEADOWDALE  
**Quartered Margarine** 1-LB. CTN. **32¢**  
ALL FLAVORS  
**Fairmont Yogurt** 3 8-OZ. CTNS. **85¢**  
FAIRMONT SMALL OR LARGE CURD  
**Cottage Cheese** 24-OZ. CTN. **75¢**  
ROMAN MEAL  
**Canned Biscuits** 12-OZ. CAN **34¢**  
IDEAL  
**Buttermilk** QUART CTN. **31¢**

the right price...right here...on:  
**CHUN KING CHINESE NEW YEAR SPECIALS**  
CHICKEN, SHRIMP OR BEEF  
**Chow Mein** 42-OZ. CAN **99¢**  
CHUN KING  
**Soy Sauce** 10-OZ. BTL. **48¢**  
CHOW MEIN  
**Noodles** 9 1/2-OZ. CAN **58¢**  
CHUN KING CHOW MEIN  
**Noodles** 5-OZ. CAN **43¢**



# 'How Can You Have Your Earth, And Use It, Too?' Is A Question

LUBBOCK — "How can you have your earth, and use it, too?" is the question for the 21st Century.

The answer lies in careful land use practices. To prepare the people who will help develop that answer, Texas Tech University is inaugurating a program unique in Texas, offering the doctor of philosophy degree in land use planning, management and design.

The conditions which influence resource use are complex; and so are the effects of that usage. The new degree program, beginning with the fall semester 1974, will offer

training to deal with those conditions. It will put special emphasis on non-urban watershort environments.

The degree program will offer a broad range of subject matter to include the scope of complex conditions which influence resource use and its effects. Students will become resource managers, trained not as specialists, but rather to possess knowledge in many areas enabling them to blend together teams of specialists to solve resource development problems.

The program will be administered by the Graduate School of Texas Tech University

and will involve areas within the college of Agricultural Sciences, Arts and Sciences, Engineering, Business Administration and the School of Law.

"The new program has been developed under the concept that restoration and maintenance of the environment must be based principally on three things: an awareness of environmental conditions by the people and a willingness to improve them when necessary; legislation to help develop solutions to problems; and technical knowledge to solve environmental problems," said

Dr. J. Knox Jones Jr., dean of the Graduate School.

Advances in science and technology and a greater awareness of environmental problems have paralleled a rise in the standard of living and a dramatic increase in leisure time," said Jones. "As a result there is a demand on our resources for leisure activities as well as material gain, but we also have a moral responsibility to protect our delicate ecosystems."

"A special breed of administrator is needed, one who can manage resources to accomplish the sometimes incompatible economic,

political, personal and moral goals," he said.

According to the National Recreation and Parks Association, there is an immediate need for 200 people with this kind of training, Jones said, and this estimate was derived prior to the current energy crisis.

"With increased demand on resources as a result of the energy situation, that need has grown," said the dean.

People with broad-based training in the areas of land use planning, management and design can serve federal agencies, state governments, regional planning organizations

and special programs as advisors and consultants. Some also will find work in private consulting firms and as educators.

Students in the program at Texas Tech will hold a master's degree or its equivalent. Most are expected to come from the fields of agricultural science, biological and earth sciences, or environmental engineering.

Students from other disciplines will be encouraged to enroll in the program, but may require more background courses than those with major interests in the sciences and engineering, said Jones.

The program will begin with a

core of at least 36 hours of coursework designed to provide a knowledge base in areas including resource analysis, ecology, public administration, regional and human geography, public finance, land use planning law and water resources engineering.

Upon completion of core work, students will select an additional 18 hours of specialization in the general areas of public policy and administration, natural resource planning or resource utilization and management. These courses will be arranged on an individual basis in cooperation with an advisory

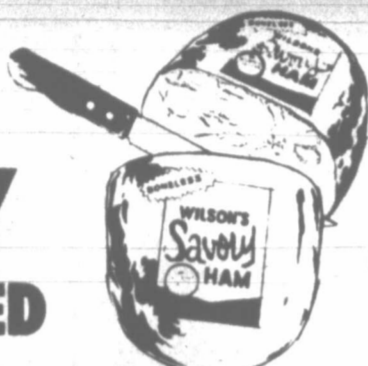
committee to meet the student's own goals. A minimum of 12 hours for the doctoral dissertation will complete the degree.

"The program's special emphasis in non-urban lands in semiarid and arid environments will, by definition, include small towns and cities as opposed to major metropolitan areas," Jones said. "Because of its location in the semiarid west, Texas Tech is uniquely suited to provide doctoral level training in land use planning, management and design with this emphasis."

There are 220 wineries in California.

## right here!

Wilson's  
**SAVORY FULLY-COOKED**



# BONELESS HAMS \$1.39

10 TO 14 LB. AVG.

HALF OR WHOLE....LB.



ASSORTED PORK LOIN  
**Pork Chops** QUARTER SLICED... 9 TO 11 CHOPS  
\$1.09 L.B.

FRESH FROZEN  
**WHITING FISH** PACKED IN 5-LB. BOXES  
29¢ L.B.

U.S.D.A. CHOICE BEEF  
**7-Bone Steaks** CHUCK CUTS LB \$1.09  
LEO'S ALL VARIETIES  
**Smoked Meats** 2 3-OZ. PKGS. 98¢

FAIRMONT DAIRY FAIR  
**Ice Milk** ALL FLAVORS 1/2-GAL. CTN. 63¢  
FAIRMONT TWIN POPS, FUDGE BARS OR  
**ICE MILK BARS** 2 PKGS. OF 6 58¢

Thrift-T Frozen Foods

SALISBURY STEAK, MEAT LOAF, TURKEY, CHICKEN OR CHOP BEEF...  
**Banquet Dinners** 11-OZ. PKG. 48¢  
WHY PAY MORE?

MEADOWDALE CHOPPED BROCCOLI OR  
**Broccoli Spears** 4 10-OZ. PKGS. \$1

MEADOWDALE FROZEN  
**Peas or Corn** 5 10-OZ. PKGS. \$1

TREE TOP  
**Apple Juice** 12-OZ. CAN 53¢

Thrift-T Low Prices

**Chef's Surprise** ADD-MEAT DINNERS FROM KRAFT BOX 54¢  
THRIFT-T PRICED

MACARONI AND CHEESE  
**Camelot Dinners** 4 7 1/2-OZ. BOXES 93¢

KUNER'S  
**Tomato Sauce** 9 8-OZ. CANS \$1

KRAFT  
**Italian Dressing** 16-OZ. BTL. 85¢

At Ideal, we say the right price is the lowest price that buys the quality foods you want!

Granted, prices aren't the same as early last year; and we know your groceries are more expensive today! But this year is different. And right now, right here, Ideal promises you the right prices on the right quality foods. Remember, a price is only as good as the food it buys!



ARMOUR'S PLUMP, MEATY

# Turkey Drumsticks.....Lb. 29¢

FOR A CHANGE OF PACE, WHY NOT HAVE THESE TONIGHT FOR DINNER?

ARMOUR  
**Skinless Franks** 12-OZ. PKG. 79¢  
OSCAR MAYER ALL MEAT OR ALL BEEF  
**Skinless Franks** 1-LB. PKG. \$1.39  
CAMELOT  
**Cheese Spread** 8-OZ. CTN. 69¢

WINCHESTER IMITATION  
**Chunk Bologna** L.B. 49¢  
WINCHESTER IMITATION  
**Sliced Bologna** L.B. 59¢  
BUTCHER BOY ASSORTED  
**Luncheon Meats** 4-OZ. PKG. 45¢

BLUE MORROW COOKED  
**BEEF PATTIES** Thrift-T Bulk Pack Priced L.B. 89¢

HICKORY SMOKED, SLAB CUT  
**Sliced Bacon** L.B. \$1.19

Thrift-T Health & Beauty

ANTISEPTIC MOUTHWASH  
**LISTERINE** 32 OZ. BTL. \$1.59  
WHY PAY MORE?

REGULAR OR UNSCENTED  
**Sure Deodorant** 4-OZ. CAN 68¢  
JOHNSON & JOHNSON  
**Baby Shampoo** 12-OZ. BTL. \$1.27  
POLIDENT  
**Denture Powder** 6 1/2-OZ. CAN 79¢

Delicatessen & Bakery

BARBECUED  
**Chicken** L.B. 98¢  
FRESH  
**Cole Slaw** PT. 49¢  
ASSORTED  
**Cookies** DOZ. 48¢  
ASSORTED  
**Cup Cakes** DOZ. 89¢

JUMBO SIZE CALIFORNIA  
**NAVEL ORANGES** 7 LBS. \$1.00

EXTRA FANCY WASHINGTON  
**Red Delicious Apples** OR  
**Washington D'Anjou Pears** 4 LBS. \$1.00

MIX 'EM OR MATCH 'EM

CRISP, GREEN SOLID HEADS:  
**Fresh Cabbage** L.B. 10¢  
RUBY RED  
**Grapefruit** 5-LB. BAG 79¢  
FLORIDA, FINE FOR BAKING  
**Acorn Squash** L.B. 19¢  
CRISP, TENDER  
**California Celery** LARGE STALK 29¢



A.A. may be answer to wife's drinking

By Abigail Van Buren

© 1974 by Chicago Tribune-H. V. News Synd., Inc.

DEAR ABBY: My wife loves to cook—with wine; that gives her an excuse to get into the wine bottle.

She's a school teacher, so her hours are shorter than mine. When I get home at 5:30 p.m. she's already had a snootful and is making dinner (with wine, of course) so by the time we sit down to dinner (with wine) she's already smashed.

After dinner she falls asleep in front of the TV. The next morning she wakes up bright and cheerful, and that evening it's the same story.

If we have no plans for the weekend, it's the same routine—only she starts earlier. If I suggest she lay off the wine, she becomes defensive and insists she can take it or leave it alone. [But she always takes it.]

Is she an alcoholic? And if she is, how can I help her? I hate to see a pretty, intelligent young woman grow ugly and dull before my eyes. Fortunately, we have no children, and with things as they are, I'm going to make sure we don't have any. In the meantime, how can you help someone who refuses to admit she needs help?

PATIENT HUSBAND

DEAR PATIENT: It's not easy. I think your wife is an alcoholic, but until she admits it, and takes steps to overcome it, no one can help her. Alas, the companion group to Alcoholics Anonymous, teaches the mates of alcoholics to cope with that problem. When you learn to handle it, you may get her to help herself. It's worth a try. They're in the phone book. Get going and good luck.

DEAR ABBY: Mine is a problem to end all problems. I am 35, and Ira is 41. We've been living together for two years and three months. We had a big fight last week, and I kicked him out. I told Sybil [my best friend] about kicking Ira out, and within three days Sybil and Ira were married! I didn't know a thing about it. Ira came to see me and I thought he came to make up with me because we made love. It was just like old times. I guess he couldn't get up the nerve to tell me about him and Sybil.

That night Sybil came over and said she and Ira were married. I didn't believe her and called her a liar. Anyway, the next day Ira came over and said it was true. He also said he was drunk when he married her, but he still loved me. I know this sounds crazy, but I love him, too. We belong together. Sybil told me that Ira really loved ME, and she didn't really want him, she just married him to make her boy friend jealous.

Abby, can Ira's marriage be annulled because he was drunk? We're back together again and want to be married soon as possible.

"POOPSIE"

DEAR POOPSIE: I don't know whether Ira's marriage can be annulled or not, but a lawyer can tell you. So see one!

DEAR ABBY: Why do mothers teach their daughters that when a boy brings them home from a date they should "thank" him for the lovely evening?

After all, it's the MAN who does the asking, and if the lady grants him the date, then HE should thank HER for the lovely evening.

I'm in disagreement with someone over this point and want your opinion.

N. C.

DEAR N. C.: A lady doesn't "grant" a gentleman a date in the same sense that a celebrity "grants" someone an interview, or the Pope grants someone an audience. She simply accepts his invitation. And if they both enjoyed themselves, they should thank each other!

WEDDING-ENGAGEMENT DEADLINE

The following deadlines and procedure on wedding stories will be as follows: For a wedding story to appear in a Sunday edition, information and picture must be turned in to the women's editor by 5 p.m. on the Monday BEFORE the wedding. All wedding stories submitted after that time will appear during the week. Engagement announcements must be submitted by 12 noon Wednesday to appear in Sunday's edition.

FRIDAY  
Menus

PUBLIC SCHOOLS  
Fish W-Tartar Sauce  
Buttered Whole Potatoes  
English Peas  
Hot Rolls - Butter  
Chocolate Pudding  
Milk

ST. VINCENT'S  
Fish Sticks  
Fried Potatoes  
Spinach  
Orange Juice  
Cinnamon Rolls  
Bread - Butter  
Milk

THURSDAY

|    |    |    |    |    |    |    |    |    |    |    |    |
|----|----|----|----|----|----|----|----|----|----|----|----|
| 1  | 2  | 3  | 4  | 5  | 6  | 7  | 8  | 9  | 10 | 11 | 12 |
| 13 | 14 | 15 | 16 | 17 | 18 | 19 | 20 | 21 | 22 | 23 | 24 |
| 25 | 26 | 27 | 28 | 29 | 30 | 31 |    |    |    |    |    |

7:00 p.m.—Weight Watchers of West Texas, St. Matthew's Parish Hall.  
8:00 p.m.—Rebekah Lodge, IOOF Hall, 800 E. Foster.  
8:00 p.m.—Circle L Square Dance Club, Lefors Civic Center.  
1:30 p.m.—Senior Citizen's Center, Lovett Library.

Why Grow Old?

By JOSEPHINE LOWMAN

Dieters Can Depend Upon Herbs For Seasoning Food



This is the eighth in a series of 15 articles in which Josephine Lowman, author of WHY GROW OLD? and leading authority on health and beauty, tells you exactly what to do to lose 20 pounds in eight weeks. You may want to save these menus and exercises to refer back to during the eight-week period.

Diamonds may be a girl's best friend but herbs are a dieter's best pal. If you have not experimented with these when seasoning food you will have a delightful surprise.

The idea of cutting out cream sauces and the usual generous amount of butter or margarine in order to lose overweight will no longer seem like punishment. In fact, practically all gourmet cooking depends, to a great extent, on herbs for flavor.

When you are planning your own slimming menus remember the following: Chili powder, cumin, cayenne pepper, ground allspice, cinnamon, nutmeg, curry powder, cloves, ginger, oregano, basil, bay, rosemary, thyme, tarragon, mint, paprika, celery

salt, drill, lemon salt, mustard and parsley flakes.

Also think of dry wine, chives, garlic onion, lemons, limes, tobasco sauce, corianda, Worcestershire, vinegar (wine and cider), catsup, onion flakes and horseradish.

Experiment with the different flavors. Reducing food does not have to be dull! For instance, have you tried a dash of nutmeg in your spinach, or corianda and wine sprinkled on a fish filet or a crushed leaf of savory in a stew or lemon juice on your broccoli?

It will also help my reducers if they will form the habit of freezing small single portions of food, especially of leftovers. Use individual aluminum pans, plastic containers or cooking bags. Mark each one. You might save several chicken livers, or three chunks of meat for a skewer, tuna fish salad mix, pieces of chicken or turkey for a sandwich or part of a casserole. This will make life easier for the dieter and is also economical.

When you wish, your family can have the same menus you have with a few changes. They

can have larger servings and seconds, cream on their cereal, sugar in their coffee, dressing and gravy with their chicken, whole milk, cream sauces, desserts and richer salad dressings. Stick to your herbs! It is easy to make a very good salad dressing using herbs as seasoning and tomato juice as a base.

**MENUS FOR TODAY**  
**BREAKFAST:** Cottage cheese (3 tablespoons), celery stick, two inch square cold ham, half tomato with parsley flakes. (This is a different breakfast—if you prefer have: ¼ grapefruit, 1 cup hot cereal with 1 cup skimmed milk, artificial flavoring.)  
**MID-DAY:** Chopped spinach with poached egg—sprinkle with grated parmesan cheese, grated carrot and lettuce salad with broiled dressing (+), baked apple with apricots in center. 1 cup skimmed milk.  
(+) Boiled dressing—¼ tsp. salt, 1 tsp. mustard, few grains Cayenne pepper, 2 Tbs. flour, 2 Tbs. butter, ¼ cup skim milk, 1 egg lightly beaten, ¼ cup vinegar. Cook in double boiler until mixture begins to thicken. Cook and store in covered jar in refrigerator. Makes about 1½ cups, about 15 calories per tablespoon.

**EVENING:** Skewered sea scallops (+), scalloped potatoes (+), mixed greens salad.  
(+) Toss ¼ pound scallops with salt, pepper and flour. String on skewers alternating each two scallops with a piece of bay leaf. Brush with butter or oil, roll in crumbs and herbs. Broil or barbecue 2 or 3 minutes on each side until scallops are springy.  
(++) Slice two medium potatoes and arrange in casserole with chopped onion, chopped parsley, salt and pepper in layers. Add one cup skim milk. Bake at 350 degrees for about 35-40 minutes.

**GROCERY LIST**  
1 grapefruit, orange juice, 3 apples, ½ cup cauliflower, 1 cucumber, 1 green pepper, carrot, spinach, 2 potatoes, green beans, mushrooms, celery, oatmeal, 1 egg, sour cream, skim milk, American cheese, small amount Roquefort or bleu cheese, 1 can vegetable soup, chili sauce, English muffin, 4 oz. lean steak, 4 oz. lean turkey or chicken.

"AT WIT'S END"

By ERMA BOMBECK

There are six words that make my flesh crawl. I don't even hang around for the rest of the sentence. As soon as I hear, "What kind of a mother would..."

"I split."  
We all start out like Mary Poppins. But somewhere along the line, the washer breaks down, the gerbils form a city, and you realize the high spot in your day is finding your comb in the toy box.

It's easy to be critical when you don't know the circumstances. For some of the most often-asked questions, I offer these answers.

"What kind of a mother would let a child go to church wearing a sweat shirt that reads, 'U.S. OLYMPIC DRINKING TEAM'?"

Answer: A mother who washes and irons eight days a week, who succumbs to pleas from her child to "Let me dress myself" and is at this moment knocking on the door of the convent begging for an application blank.

"What kind of a mother would let a child play with the produce?"

Answer: A mother who has one child in the cart eating a bar of soap, another one with a hand caught in the gum machine, a husband who is going around the block with his gauge on E, and who has two items too many for the Express Line.

"What kind of a mother would strap a baby into a car so that he can move only his head?"

Answer: A mother realistic enough to believe the old adage that "God couldn't be everywhere at once so he made two-year-olds."

"What kind of a mother would write a 15-cent check for school milk?"

Answer: A mother who is shrewd enough to hide her ball-point-in-the-oven.

"What kind of a mother would call the teacher to verify her son's request for \$6 for a workbook?"

Answer: The same mother who sent \$6 for the same workbook for the same child back in September, who is realistic enough to know there's a little larceny in every child.

Mothers aren't perfect. No one said they were. But what's wrong with collaring your own child once in a while and saying, "Kid, on a love scale of ten, today you're big zero."

"What kind of a woman would say, 'What kind of a mother would...'"

Possibly the woman who reads only the Ivory ads, watches the Brady Bunch, or has forgotten what it takes to survive "the best years of your life."

(Copyright 1974) (Field Enterprises, Inc.)



Wunder Pants by Olga

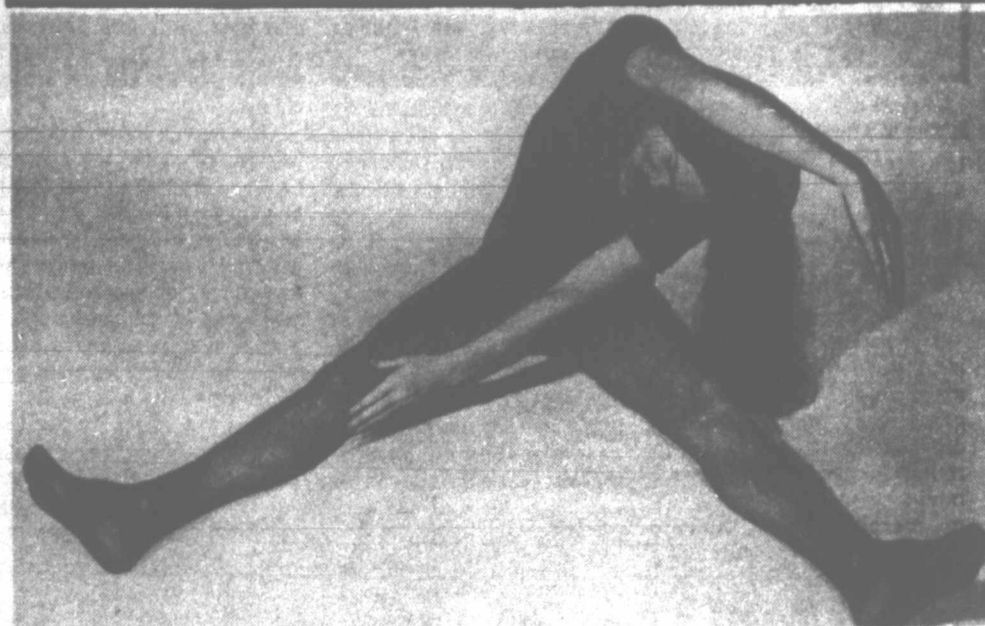
New Underpants Have a Purpose — To Tame Your Tummy

In Nude and White. Sizes S-M-L-XL \$5.50



The Women's Page

Pampa, Texas 67th Year Thursday, Jan. 31, 1974



WONDERFUL WAIST SLIMMER — This is a wonderful waist slimmer. Sit on the floor with your legs separated, knees straight. Place your left hand on your right knee as you curl your right arm over your head and try to touch your left knee. If you cannot touch, go as far as you can or until you feel the stretch. Return to starting position and repeat six times. This time place your right hand on your left knee and curl your left arm over your head, trying to touch your right knee. Repeat six times.



ALPHA IOTA CONCLAVE  
The Alpha Iota Conclave of Kappa Kappa Iota met recently at Southwestern Public Service for a demonstration by Ms. Mildred Prince, hostesses for the occasion were Mmes. Wanda Cardwell, Zita Prater, and Frances Duncan.

Several dishes with a Mexican flavor were prepared and served, as well as pie, punch, and coffee. Ms. Prince demonstrated the Radar Range by broiling a steak. She and her assistant were presented gifts in appreciation of their program. The door prize for the evening was won by Mrs. Nancy Coffee.

Present were those named above and Mmes. Priscilla Alexander, Mary Ann Best, Marjorie Boettner, Virginia Davis, Virginia Dewey, Sue Drinovsky, Patricia Farmer, Ramona Gruben, Ann Kirksey, Marlene Kyle, Jana Vinson, Nita Williams, Shirley Welch, Cynthia West, and Andrea Wyatt.

California's wine industry accounts for more than 70 per cent of the U.S. market.

SENSATIONAL SHOE SALE!

LADIES DRESS SHOES

Cobbler's - Vitality's One Fine Selection

\$10.80 Pr. or 2 \$20.00 Prs.

SCHOOL SHOES

Boys' - Girls' Saddle Oxfords, Oxfords - Big Group

\$10.80 Pr. or 2 \$20.00 Prs.

MEN'S SHOES

One Group - While They Last

\$10.80 Pr. or 2 \$20.00 Prs.

Kyle's Fine Shoes

The Home of Florsheim and Sand Shoes 109 N. Cuyler 669-9442

CLEARANCE SALE

DOUBLE KNIT

100% Polyester, 60" Wide Mach. Wash - Tumble Dry Designer's Lengths - Solids And Prints

\$1.00 Yd.

Stevens H2° Wool

70% Polyester 30% Wool - 52" Wide Mach. Wash 'N Dry Solids & Prints

\$2.44 Yd.

SPORTSWEAR FABRIC

100% Cottons, Polyester Blends, 45" Wide, Mach. Wash 'N Dry On Belts ..... 66¢ Yd.

NOTIONS

A Large Selection of Sewing Needles 17¢ each

Shirt and Blouse Fabric

Polyesters-Cottons 45" Wide-On Belts Mach Wash 'N Dry

2 Yds. For \$1

fabrica FABRIC CENTERS

MASTER CHARGE BANKAMERICARD STORE HOURS 9:30 a.m. to 6 p.m. 1329 N. Hobart Pampa, Texas USE OUR LAYAWAY

Hi-Land Fashions

1543 N. Hobart

WINTER FASHIONS SALE

ALL SALE MERCHANDISE

1/2 Price or Less!

- Ladies Sizes 6 to 16
- Boys Through Size 12
- Girls
- Infants

# KARPIN ON BRIDGE

By FRED KARPIN



Q. 1 - Neither side vulnerable. Sitting South, you hold:

♠J9652 ♥♠963 ♣A8654

The bidding has proceeded:

North East South West  
1♠ Dbl. ?

What do you bid?

A. Four spades. This is the ideal type of hand with which to make a pre-emptive raise to game in partner's suit, thus depriving the opponents of the rounds of bidding which they might need. Partner will not misinterpret your bid, for if you had you 10 or more points, you would have redoubled.

Q. 2 - Both sides vulnerable. As South, you hold:

♠AK7 ♥J63 ♠52 ♣Q10865

The bidding has proceeded:

North East South West  
1♠ Pass 2♣ Pass  
2♥ Pass ?

What do you bid?

A. Two spades. A bid of three spades instead would be overly-aggressive for when you bid two clubs (a new suit at the two-level) for when you bid two hearts (a new suit at the two-level); you guaranteed a minimum of 10 points. If opener cannot bid again over your two-spade call, your side does not belong in a game.

Q. 3 - Both sides vulnerable. As South, you hold:

♠AQ53 ♥AQ2 ♠AKJ7 ♣84

The bidding has proceeded:

South West North East  
1♥ Pass 1♠ Pass  
4♣ Pass 5♣ Pass ?

What do you bid?

A. Six spades. What partner has, you do not know, but when you jumped to four spades, you promised about 20 points. Actually, you have 21 points (counting distribution), an excellent fit in spades, and three controls (aces). If partner doesn't fulfill the slam, it will be his fault.

Q. 4 - Neither side vulnerable. Sitting South, you hold:

♠2 ♥9754 ♠AQ95 ♣Q1076

The bidding has proceeded:

South West North East  
1♥ Pass 1♠ Pass  
4♣ Pass 5♣ Pass ?

What do you bid?

A. Three hearts and not a "pass," because you have found a playable trump unit. In support of hearts you have a 10-point hand, with which you are entitled to a second response. It may well be that your side belongs in a game — and your raise will give partner the opportunity of making the final decision.

Q. 5 - Both sides vulnerable. Sitting South, you hold:

♠873 ♥A5 ♠942 ♣AKJ96

The bidding has proceeded:

South West North East  
1♠ 1♥ 1♠ 2♥  
Pass Pass 3♣ Pass ?

What do you bid?

A. Four spades. First, you cannot pass despite your minimum hand, since partner's jump rebid is forcing. And secondly, you shouldn't want to pass, since partner has a minimum of five spades and at least 13 points. Thus the points for a game are there, as is the ideal trump suit of 8 or more cards.

# Woman's Page

Pampa, Texas 67th Year Thursday, Jan. 31, 1974

## Observe Anniversary



Mr. and Mrs. C.A. Pixler, 826 E. Frederic, recently were honored with a reception celebrating their Golden Wedding Anniversary. About 100 friends and relatives honored them in attendance at the Fellowship Hall of the Calvary Baptist Church, Pampa. Charles and Clara Pixler were married Jan. 19, 1924, in Chickasha, Okla. They have one daughter, four grandchildren, and one great-grandchild. Hostesses for the event were Rev. and Mrs. Dave Adkins, Mr. and Mrs. Dan Zeigler, Mrs. Lucille McGahan, Mrs. Buddy Hapeman, Mrs. B.W. Mitchell, Mrs. Graham Reeves and Mrs. R.O. Clements.

## Church News

FIRST BAPTIST WOMEN  
The Zelma Northcutt Bible Study Group met Jan. 23 at 9:30 a.m. in the home of Mrs. Kenneth Box, 2330 Navajo.

Mrs. Ed Anderson is chairman of this group and she was in charge of the meeting.

The "Call to Prayer" was given by Mrs. Ross Buzzard and the opening prayer was given by Miss Claudia Everly.

The Bible lesson was taught from the book of John by Mrs. S.E. Waters. The next meeting of this group will be in the home of Mrs. Anderson, 1002 E. Francis, Feb. 27.

Four visitors welcomed were: Miss Everly, Mmes. Sam

Groom, J.V. Young, and Lillian Reeves.

One new member, Mrs. Paul Turner, joined the group.

Members attending were: Mmes. George Smith, Ed Cantrell, A.N. King, L.V. Hopp, Onis Price, E.E. Shelhamer, Buzzard, Waters, Anderson and Box.

Mrs. Sam Groomoffered the closing prayer.

The average American drank 406 eight-ounce glasses of soft drinks in 1972, one gallon more than the previous year and nearly one and one-half times the 1966 per capita consumption, according to the extension service of Cornell University.

## LIVE A LITTLE AT DAIRY QUEEN

Foot Long Dog and Fries **69¢**

Thursday-Friday-Saturday-Sunday  
FRISCO IS ALMOST HERE!

Watch For Opening Of New Dairy Queen  
1328 N. Hobart

Dairy Queen  
Under New Management  
1117 Alcock  
669-6761

## Just starting out?



### A home is the best thing to save for!



Sure, it's going to take money. So start saving now. Add to your savings account every payday. We'll add the power of compounded earnings to keep your money safely insured, easy to get — ready when you are.

| Annual Interest Rate | Date of deposit to date of withdrawal   | Annual Yield with Daily Compounding |
|----------------------|---|-------------------------------------|
| 5 1/4%               | Passbook Accounts                       | 5.39%                               |
| 5 3/4%               | 90-day notice Passbook Account          | 5.92%                               |
| 6 1/2%               | 1 to 2-year Certificate \$1,000 Minimum | 6.71%                               |
| 7 1/2%               | 4-year Certificate \$1,000 Minimum      | 7.78%                               |

Now, passbook accounts earn interest from the date of deposit to the date of withdrawal, with earnings paid on our regular quarterly crediting date.

West Francis at Gray — Pampa



The place for serious money

# SECURITY FEDERAL

## SAVINGS & LOAN ASSOCIATION



FRIDAY & SATURDAY

MEN'S SPORT COATS **\$12<sup>00</sup>**  
Reg. \$19.99  
10 Only

MAN'S JUMP SUIT **\$4<sup>88</sup>**  
Reg. \$12.99  
1 Small Only

MEN'S SUITS **\$38<sup>00</sup>**  
Reg. \$65.00  
2 Only, Size 50

MENS LAYERED LOOK SHIRTS **\$2<sup>88</sup>**  
Reg. \$5.99  
10 Only

MENS CUFFED CORDUROY LEVIS **\$6<sup>77</sup>**  
Reg. \$12.00  
Friday-Saturday Only

ALL GIRLS KNIT CAPS & GLOVES **1/2 price**  
Reduced

1 Group BOYS JACKETS **\$5<sup>00</sup>**  
Reg. to \$16.99  
Most Sizes

1 RACK LADIES DRESSES & PANT SUITS **\$3<sup>00</sup>**  
Reg. to \$16.99  
SAVE SAVE

2 PC. BATH MAT SETS **2-\$3**  
Reg. \$2.49

2 ONLY ROLL-ABOUT METAL STANDS **\$1<sup>88</sup>**  
Reg. \$6.00

1 TABLE WOMEN'S SHOES **\$2<sup>66</sup>**  
Reg. Val. To \$7.00

7 PRS. ONLY MEN'S 8" BOOTS **\$2<sup>88</sup>**  
Size 9 1/2 Only

1 ONLY BOYS 10 SPEED BIKE **\$57<sup>77</sup>**  
Reg. \$69.99  
As Is

1 ONLY BOYS HI RISE BIKE **\$28<sup>88</sup>**  
Reg. \$39.99  
Coaster Brake

DROP SIDE BABY BEDS **\$23<sup>88</sup>**  
Reg. \$30.00  
4 Only

BABY MATTRESS **\$6<sup>66</sup>**  
Reg. \$10.00  
5 Only

MISSES SHORTIE COAT & JACKETS **\$10<sup>88</sup>**  
Reg. to \$34.00  
10 Only, Small Sizes

8 ONLY LADIES ALL WEATHER COATS **\$13<sup>33</sup>**  
Reg. to \$26.00

8 ONLY MENS WINDBREAKERS **\$4<sup>96</sup>**  
Val. To \$12.99

LADIES WIGS **\$7<sup>97</sup>**  
Val. To \$13.88

LEVINE'S  
2207 Perryton Pkwy. Pampa

## carolyn's collections

By Carolyn Anderson

### COMPANY CHICKEN

Melt 1/2 sticks of butter in oven in a large pyrex dish. Salt, pepper and paprika eight chicken breast. Brown the chicken in the melted butter in the oven for about 15 minutes on high heat.

In the meantime, empty 2 cans of mushroom soup into a saucepan. Heat and dilute with 1 cup chicken broth (may use chicken bouillon cube). Add 4 tablespoons of sherry or equivalent of sherry flavoring.

Pour sauce over the browned chicken and cook at 350 degrees for 40 minutes longer.

This is wonderful served with rice. Spoon some of the sauce gravy over the rice also.

### MUSHROOM SAUCE

- 1/2 Cup Butter
- 1/2 Pound Sliced Mushrooms, or, 1 Large Can
- 1/2 Cup Flour
- 1 Pint Chicken Stock
- 2 Beaten Egg Yolks
- 1/2 Cup Cream
- 1/2 Teaspoon Salt
- 1/2 Teaspoon Paprika
- 1 1/2 Teaspoon Chopped Parsley
- 2 Teaspoons Lemon Juice

Melt 4 Tablespoons of the butter in saucepan and add sliced mushrooms. Cook over low heat 5 minutes. Place remaining butter in top of double boiler and add flour and mix well. Slowly add the chicken stock and stir and cook until thick and creamy. Beat egg yolks with the cream and add to the sauce. Add the mushrooms and remaining ingredients — the parsley last. Serve hot over the chicken ring.



# SAVE A BUNDLE DURING DOLLAR DAYS SALE

|                        |                          |                         |
|------------------------|--------------------------|-------------------------|
| <b>GRAPEFRUIT</b>      | TEXAS SWEET RUBY RED LB. | 13 <sup>c</sup>         |
| <b>LEMONS</b>          | CALIF. FANCY, LB.        | 29 <sup>c</sup>         |
| <b>TANGERINES</b>      | ARIZONAS FINEST LB.      | 5 FOR \$1 <sup>00</sup> |
| <b>ICEBERG LETTUCE</b> | CALIFORNIA LB.           | 15 <sup>c</sup>         |

| Delicatessen         |                         |
|----------------------|-------------------------|
| 1/2 FRIED CHICKEN    |                         |
| 1/2 PT. COLE SLAW    |                         |
| 1/2 LB. POTATO SALAD |                         |
| <b>ALL FOR ONLY</b>  | <b>\$1<sup>69</sup></b> |
| BAKED BEANS          | p. 69 <sup>c</sup>      |
| BANANA PUDDING       | p. 69 <sup>c</sup>      |

## SUPER DISCOUNT SPECIALS

**CRISCO**

**75<sup>c</sup>**

3 LB. CAN

WITH EACH FILLED GOLD BOND SUPER-DISCOUNT BOOKLET

**SUGAR**

**29<sup>c</sup>**

FOOD CLUB PURE CANE 5 LB. BAG

WITH EACH FILLED GOLD BOND SUPER-DISCOUNT BOOKLET

**BACON**

**49<sup>c</sup>**

FRONTIER SLICED LB.

WITH EACH FILLED GOLD BOND SUPER-DISCOUNT BOOKLET

**EGGS**

**25<sup>c</sup>**

FARM PAC GRADE A LARGE DOZ.

WITH EACH FILLED GOLD BOND SUPER-DISCOUNT BOOKLET

|                    |   |                         |
|--------------------|---|-------------------------|
| <b>ORANGES</b>     | CALIFORNIA NAVEL LB.                                | 5 FOR \$1 <sup>00</sup> |
| <b>APPLES</b>      | RED OR GOLDEN DELICIOUS OR RED ROME, LB.            | 28 <sup>c</sup>         |
| <b>CARROTS</b>     | 1 LB. CELLO BAG                                     | 18 <sup>c</sup>         |
| <b>BANANAS</b>     | CENTRAL AMERICAN GOLDEN RIPE, LB.                   | 13 <sup>c</sup>         |
| <b>CABBAGE</b>     | ARIZONAS FINEST, LB.                                | 10 <sup>c</sup>         |
| <b>TOMATOES</b>    | FANCY RED RIPE, LB.                                 | 29 <sup>c</sup>         |
| <b>TEA BAGS</b>    | FOOD CLUB 100 COUNT PACKAGE                         | 89 <sup>c</sup>         |
| <b>BEEF STEW</b>   | MORTON HOUSE 24 OZ. CAN                             | 79 <sup>c</sup>         |
| <b>FLOUR</b>       | FOOD CLUB 5 LB. BAG                                 | 79 <sup>c</sup>         |
| <b>DETERGENT</b>   | TOPCO WHITE OR BLUE GIANT BOX                       | 69 <sup>c</sup>         |
| <b>POTATOES</b>    | FOOD CLUB, SMALL WHOLE OR SLICED NO. 303 CAN        | 4 FOR \$1               |
| <b>GOLDEN CORN</b> | FOOD CLUB, WHOLE KERNEL OR CREAM STYLE, NO. 303 CAN | 3 FOR 69 <sup>c</sup>   |



|           |                   |  |           |
|-----------|-------------------|--|-----------|
| Top Frost | <b>POT PIES</b>   | Fresh Frozen, Beef, Turkey, Chicken, 8 Oz. | 4 For \$1 |
| Food Club | <b>GREENS</b>     | Mustard or Turnip, No. 303 Can             | 5 For \$1 |
| Food Club | <b>SWEET PEAS</b> | No. 303 Can                                | 4 For \$1 |

|                         |   |                 |
|-------------------------|---|-----------------|
| <b>TOMATOES</b>         | GAYLORD, NO. 303 CAN                              | 4 FOR \$1       |
| <b>CHILI WITH BEANS</b> | MORTON HOUSE 24 OZ. CAN                           | 69 <sup>c</sup> |
| <b>CORN FLAKES</b>      | FOOD CLUB 18 OZ. PACKAGE                          | 39 <sup>c</sup> |
| <b>AIR FRESHENER</b>    | TOPCO, ASST. SCENTS 7 OZ. CAN                     | 3 FOR \$1       |
| <b>JOY LIQUID</b>       | DETERGENT 13 <sup>c</sup> OFF LABEL 22 OZ. BOTTLE | 49 <sup>c</sup> |

**DINNERS**

FOOD CLUB ASST. REG. PKG. **49<sup>c</sup>**

**SAFEGUARD** DEODORANT BAR

6<sup>c</sup> OFF LABEL ASST. COLORS 2 BARS **52<sup>c</sup>**

**SHOP Furr's MIRACLE PRICES**

|                |  |                   |           |                                  |                 |             |                 |
|----------------|--|-------------------|-----------|----------------------------------|-----------------|-------------|-----------------|
| Weight Watcher | <b>Coffee Lightener</b> 40 Oz.           | \$1 <sup>02</sup> | Holy      | <b>Food Bags</b> .....Qt. 25 Ct. | 46 <sup>c</sup> | Gal. 25 Ct. | 46 <sup>c</sup> |
| Duncan Hines   | <b>Cake Mix</b> Asst. Flavors, Reg. Pkg. | 49 <sup>c</sup>   | Contadine | <b>Tomato Paste</b> 6 Oz. Can    | 20 <sup>c</sup> |             |                 |
| Maxwell House  | <b>Instant Coffee</b> 6 Oz.              | \$1 <sup>11</sup> | Contadine | <b>Tomato Sauce</b> 8 Oz. Can    | 12 <sup>c</sup> |             |                 |



### STORE HOURS

8 AM - 9 PM  
WEEKDAYS  
9 AM - 7 PM  
SUNDAYS

**NORTH  
HOBART  
AND  
DECATUR**



|                      |   |        |
|----------------------|---|--------|
| <b>ROUND STEAK</b>   | FURR'S PROTEN LB.                                   | \$1.29 |
| <b>SIRLOIN STEAK</b> | FURR'S PROTEN LB.                                   | \$1.29 |
| <b>RIB STEAK</b>     | FURR'S PROTEN LB.                                   | \$1.29 |
| <b>RANCH STEAK</b>   | FURR'S PROTEN SEVEN BONE LB.                        | \$1.19 |
| <b>CLUB STEAK</b>    | FURR'S PROTEN LB.                                   | \$1.49 |
| <b>FAMILY STEAK</b>  | BONELESS SHOULDER LB.                               | \$1.29 |
| <b>RUMP ROAST</b>    | FURR'S PROTEN LB.                                   | \$1.19 |
| <b>T-BONE STEAK</b>  | FURR'S PROTEN LB.                                   | \$1.59 |
| <b>SMOKED HAM</b>    | HICKORY WATER ADDED SHANK END LB. BUTT PORTION, LB. | .79¢   |

### HEN TURKEYS

TOP FROST OR LORD MARLIN  
USDA GRADE A  
14 LB.-16 LB.S, LB.

**65¢**  
**69¢**

10-12 LBS.  
LB.

|                               |                   |        |
|-------------------------------|-------------------|--------|
| Furr's Proten RIB ROAST       | lb.               | \$1.29 |
| Lean Cubes STEWING BEEF       | Furr's Proten lb. | \$1.23 |
| Turbot FISH FILLETS           | lb.               | 89¢    |
| Kapitan Krusty BREADED SHRIMP | 2 Pieces, 1 lb.   | \$1.49 |
| Top Frost FISH STICKS         | 1 lb. Pkg.        | 99¢    |
| Food Club FISH CAKES          | Bulk Pack, lb.    | 60¢    |
| Top Frost PERCH FILLETS       | 1 lb. Pkg.        | 99¢    |

## HEALTH & BEAUTY AIDS AND HOUSEHOLD HELPERS

### LOMA HOUSEHOLD PRODUCTS

...AT PRICES WE CAN'T OFFER AGAIN!

choice each **2:88**

JUMBO ROLL PAPER TOWEL HOLDER

"SEE-THRU" LETTUCE SAVER

2 QT. RECTANGULAR FOOD SAVER

GADGET & UTILITY DRAWER TRAY

BUSHEL LAUNDRY BASKET

BIG 15-QT. RECTANGULAR DISH PAN

11-QT. DIAMOND SHAPE WASTE BASKET

11-QT. NON-DECORATED WASTE BASKET

12-QT. ROUND WASTE BASKET

BIG 11-QT. HEAVY DUTY PAIL WITH FOUR SPOUT

choice each **2:100**

COLORS: AVOCADO, HARVEST GOLD, FLAME, WHITE



**KOTEX TAMPONS**  
REGULAR OR SUPER, BOX OF 40s  
**99¢**



**LISTERINE MOUTH WASH**  
20 OZ.  
**99¢**

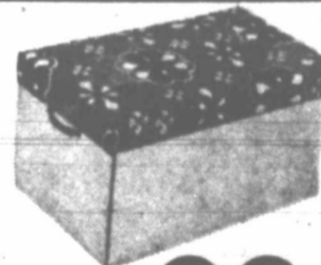


**BARREL WASTE BASKET**  
FESTIVAL 30 QT.  
THE EARLY AMERICAN  
LOOK NO. 3330 EACH  
**\$1.99**



**MAALOX LIQUID**  
12 OZ.  
**\$1.07**

**BIG STORAGE BOX**



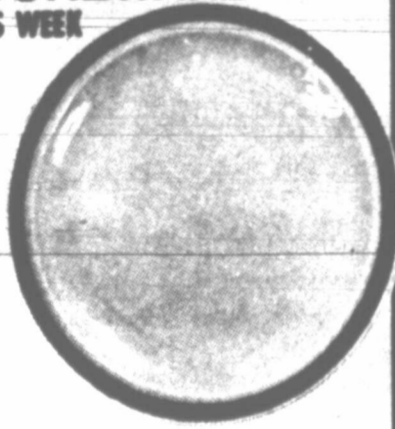
24 1/2" x 14 3/8" x 10 5/8" SIZE  
REINFORCED HANDLES, EA.  
**99¢**



**KITCHEN SINK SET**  
TRANSCO 5 PC. SET-EACH  
**\$1.99**

### TOPAZ STONWARE THIS WEEK

**SALAD PLATE**  
Regular Price 79¢  
**49¢**  
each  
START NOW - COLLECT A FULL SET



Safe in oven and dishwasher...and so smart!

### ORANGE JUICE TOP FROST

6 Oz. Can **25¢** 12 Oz. Can **49¢**  
16 Oz. Can **59¢**



**BROCCOLI** TOP FROST FRESH FROZEN SPEARS 10 OZ. PKG. **34¢**

**CORN** GAYLORD, GOLDEN FROZEN WHOLE KERNEL 24 OZ. PKG. **49¢**

**EGG BEATERS** FLEISHMANN'S PKG. **99¢**

### PATIO MEXICAN FOODS

|                              |   |        |
|------------------------------|---|--------|
| Weight Watchers Dinners      | Frozen Flounder, Perch, Sole, Turbot, or Filet of Fish, 18 Oz. Pkg. | \$1.13 |
| Night Hawk Top Chop't Steak  | 14 Oz. Pkg.   | \$1.75 |
| Night Hawk Charbroiled Steak | 7 Oz. Pkg.  | \$1.12 |
| BEEF TAMALES                 | 21 OZ.  | 92¢    |
| BEEF ENCHILADAS              | 8 COUNT   | 99¢    |
| TACOS                        | 6 COUNT   | 84¢    |
| CHEESE ENCHILADAS            | 2 COUNT   | 54¢    |
| BEEF ENCHILADAS              | 2 COUNT   | 54¢    |

#### CAN LINERS

HEFTY TRASH 20 CT. PKG. **\$1.41**

KITCHEN BAGS HEFTY TALL 15 CT. PKG. **69¢**



THIS COUPON ENTITLES YOU TO **SAVE 50¢ ON MAXWELL HOUSE INSTANT COFFEE**  
10 OZ. JAR WITH COUPON **\$1.31**  
WITHOUT COUPON **\$1.81**  
COUPON EXPIRES 2-2-74  
LIMIT ONE COUPON PER FAMILY



THIS COUPON ENTITLES YOU TO **SAVE 20¢ ON MAXWELL HOUSE COFFEE**  
1 LB. CAN WITH COUPON **95¢**  
WITHOUT COUPON **\$1.15**  
COUPON EXPIRES 2-2-74  
LIMIT ONE COUPON PER FAMILY

**PANTY HOSE**  
HOLE PROOF AMPLON NYLON, THE SIZE THAT WON'T QUIT.

2 SIZES FIT ALL 5 COLORS PAIR **59¢**

**KNEE HI HOSE**  
FOR LADIES SPRINGCREST 4 COLORS, ONE SIZE FITS ALL

REG. 69¢ PAIR **39¢**

**SHOP Furr's MIRACLE PRICES**



# THE MOTHER EARTH NEWS

...it tells you how

Here it is already... the middle of winter, and you never did get around to filling yourself a box of sand with which to de-ekid your paths and driveway. Naturally, you don't want anyone breaking his neck on the back steps... but you know that the same rock salt that does such a fine job on the slippery places now will still be lying in wait in the ground next spring when you want to plant morning glories by the porch.

Well, who needs rock salt, anyway? There are other materials that won't melt the ice for you, but will provide excellent traction underfoot and be kind to your soil too. Wood ashes, for instance. Or fine coal. Or plain old garden earth, if it isn't already frozen too hard to dig up. Or—if you're reduced to using a store-bought product—try cat litter. It has the advantage of not tracking into the house as much as some of the other non-skid substances... and you'll find that most of it will still be lying around on the walk (where you can sweep it up and save it for the next storm) after the ice is gone.

While you're sprinkling your footpaths, you'll want to fill a container with whatever material you use and put it in the back of your car or truck along with the extra snow shovel. Then, when your vehicle's wheels spin on ice, you can provide enough purchase to get going... and, since you're not using salt, you won't have corroded auto bodies or yellowed roadside flowers on your conscience.

If you invest in too much cat litter, by the way, it won't be wasted the following summer (even if your cat thinks indoor plumbing is for sissies). The absorbent clay takes up almost any kind of spill... like oil puddles on concrete, or hot bacon grease on the kitchen floor or the sort of accident that happens when you're house-training a pup (or a child). Just pour the litter over the mess, let the moisture absorb and sweep up the whole business (but don't put it in the toilet... cat litter gums up plumbing).



## The Woman's View

By GAY PAULEY  
UPI Women's Editor

**NEW YORK (UPI)** — England's Valentine Queen arrived on U.S. shores to announce that the British really are a bunch of romanticists at heart.

"Englishmen are a lot more sentimental than they're given credit for," said Sandra Higham, a willowy blonde from Blackpool, a resort city on the Irish Sea.

She brought along a batch of cards from manufacturers to show that a Britisher can be downright mushy at times. Many of the samples were satiny and flowery and the "I Love You" and other expressions of affection were right on there for all to read. Some of the more elaborate cards sell for as much as \$12 to \$15.

Mrs. Higham also brought some background on Valentine customs that developed in England, which "civilized" a pagan custom that began with the ancient Romans. Even so, it was centuries before the Christian Church would tolerate "pagan practices."

**An Annual Contest**  
Mrs. Higham was elected to represent her country's Greeting Card and Calendar Association, and to promote the industry on a year-round basis, in an annual contest run much like a selection of a Miss America. Except, there's no bathing suit competition.

The contest, she explained, is open to single girls or young marrieds up to the age of 25. The selections first are made at local and regional levels, then a finalist selected from them. Mrs. Higham is 22, wife of a taxi driver, mother of a 2-year-old boy, daughter of a hotel owner and when not promoting greeting cards is a fashion and photographer's model.

She researched the customs connected with the annual Feb. 14 celebration, when the British send more greetings than for any occasion other than Christmas. In England, the total of valentines will be about 23 million sent this year; in the United States, the figure is close to 2 billion.

**Her Future Husband**  
The British have a lot of superstitions, origins buried in antiquity. For instance, she said, in medieval England it was believed that if a young girl ate the white of a hard cooked egg on St. Valentine's Day and fastened five bay leaves to her pillow, then fell asleep without talking to anyone, she'd get a glimpse of her future husband.

Another holds that if on Valentine's Eve a lass puts the leaf of a dock tree in her shoe and it's still intact the next day, she will see the one whom one day she will marry.

In Elizabethan England, tradition held that young men tossed an apple or an orange, with a valentine attached, through the window of a girl not spoken for. If a young man refused the girl's request to be her valentine and her future husband, he had to make

amends by buying her silks and satins.

To this day, she said, "a lot of people send valentines unsigned by name but only as 'Guess who?' or some such. The more valentines a girl gets means the more people after her."

She's kept all the valentines her husband sent her—"and he always remembers me with flowers too," she said.

She brought along a batch of cards from manufacturers to show that a Britisher can be downright mushy at times. Many of the samples were satiny and flowery and the "I Love You" and other expressions of affection were right on there for all to read. Some of the more elaborate cards sell for as much as \$12 to \$15.

Mrs. Higham was elected to represent her country's Greeting Card and Calendar Association, and to promote the industry on a year-round basis, in an annual contest run much like a selection of a Miss America. Except, there's no bathing suit competition.

The contest, she explained, is open to single girls or young marrieds up to the age of 25. The selections first are made at local and regional levels, then a finalist selected from them. Mrs. Higham is 22, wife of a taxi driver, mother of a 2-year-old boy, daughter of a hotel owner and when not promoting greeting cards is a fashion and photographer's model.

She researched the customs connected with the annual Feb. 14 celebration, when the British send more greetings than for any occasion other than Christmas. In England, the total of valentines will be about 23 million sent this year; in the United States, the figure is close to 2 billion.

The British have a lot of superstitions, origins buried in antiquity. For instance, she said, in medieval England it was believed that if a young girl ate the white of a hard cooked egg on St. Valentine's Day and fastened five bay leaves to her pillow, then fell asleep without talking to anyone, she'd get a glimpse of her future husband.

Another holds that if on Valentine's Eve a lass puts the leaf of a dock tree in her shoe and it's still intact the next day, she will see the one whom one day she will marry.

In Elizabethan England, tradition held that young men tossed an apple or an orange, with a valentine attached, through the window of a girl not spoken for. If a young man refused the girl's request to be her valentine and her future husband, he had to make

# GIBSON'S DISCOUNT CENTER

Open 9 a.m. to 9 p.m. Closed Sundays

### TAPES

8 Track

| Retail | Gibson's | Sale |
|--------|----------|------|
| 9.98   | 7.97     | 6.97 |
| 7.98   | 6.37     | 5.77 |
| 6.98   | 5.57     | 4.49 |

### RECORDS

Always a favorite —

| RETAIL PRICE: | GIBSON'S PRICE: | SALE PRICE: |
|---------------|-----------------|-------------|
| \$1.98        | \$1.57          | \$1.17      |
| \$2.98        | \$2.17          | \$1.77      |
| \$3.98        | \$3.07          | \$2.09      |
| \$5.98        | \$4.67          | \$3.57      |
| \$6.98        | \$5.47          | \$4.27      |
| \$11.98       | \$8.77          | \$7.47      |

Polaroids SX-70 Camera  
**\$154<sup>99</sup>**  
Retail \$180<sup>00</sup>

## GIBSON'S

Have Not Changed Their STORE HOURS  
We Still Open at and Close at 9  
**CLOSED SUNDAY**

Ortho  
**Priming Paint**  
5 Oz. **89<sup>c</sup>**

**NORELCO**  
Flip-Top Shaver  
Ret. \$19.99  
**\$14<sup>99</sup>**

All  
**FOAM RUBBER** 1/4 Off G.D.P.

We Have Large Stock of  
**VALENTINE CANDY**  
Assorted Sizes

11 Piece  
**3/8" Drive Socket Set** \$8.99  
by Herbrand

**Taste Wright SAUSAGE**  
Pure Pork 3 Lbs. **\$1.89**

Econo-Ware  
**METAL BUCKET**  
Nok-10 **99<sup>c</sup>**

**OIL DRAIN PAN**  
**\$1.29**

THICK SLICED BACON  
**BACON**  
2 Lbs. **\$2.29**

Triple AAA  
**ROOT BEER** 39<sup>c</sup>  
1/2 Gal.

**Jell-O**  
Gelatin Dessert  
3 Oz. Box **10<sup>c</sup>**

**HORMEL Polish Sausage**  
12 Oz. **\$1.02**

**BAKER'S Coconut** 14 Oz. **59<sup>c</sup>**

**Nestle QUIK**  
2 Lb. Can **79<sup>c</sup>**

**Nestea Lemon Iced Tea Mix** 24 Oz. Jar **69<sup>c</sup>**

**Ellis PECANS Halves** 10 Oz. 1/2 kg. **\$1.23**

**IVORY LIQUID** 22 Oz. **59<sup>c</sup>**

**Ashley's**  
newest bargain:  
So great we can't keep it unmentionable

**MEN'S UNDERWEAR BY THE BUNDLE. SO YOU SAVE A BUNDLE.**

Top Drawer Special **FAMOUS-NAME T-SHIRTS OR BRIEFS**

Package of 6 **3.99**  
Made to sell for 6 for \$10.50.

**Ashley's**  
Little items affect price, not usability. That's why Ashley's guarantees satisfaction. Or your money back.

BankAmericard  
Master Charge  
Shop 9 a.m. to 9:30 p.m.  
110 N. Cuyler

MYCI 1/2 Oz Tube

**SELSU**  
The anti-dandruff cream shampoo we highly recommend

Proven effective, lathers beautifully—leaves hair soft, easy-to-manage **\$1**

**KO**  
2 Reg. o **7**

**WORRY CLINIC**

Maureen is involved in a medical "triangle" that is upsetting her husband. And may lead to lifelong tragedy for her child. So face the medical facts outlined below. And don't be tricked by buck-passing propaganda, like the thalidomide hullabaloo!



CASE Z-539: Maureen W., aged 26, is involved in a unique "triangle."  
 "Dr. Crane," her worried husband began, "Maureen is pregnant."

"And that would delight both of us, except for the fact she is an alcoholic!"  
 "So she is making a nervous wreck out of me, for I recently read that a couple of pediatricians in Seattle have warned alcoholic mothers about the possible deformities of their unborn babies."  
 "Isn't it dangerous for pregnant women to drink liquor, and even smoke cigarettes?"

**PREGNANCY DANGERS**

The answer is a resounding medical "Yes" to both those chemical effects on a developing embryo and fetus!

An uproar developed in Germany a few years ago because many expectant mothers were taking a certain tranquilizer.

And here is America its use was finally stopped by the Food and Drug Administration after 4,000 deformed babies were born to such tranquilizer mothers.

Yet 72,000 other defective babies were born that same year right here in America!

What caused these additional 72,000?

The thalidomide hullabaloo served as a neat propaganda "smoke screen" to divert attention from the fact that thousands of those pregnant wives were also smoking and drinking heavily.

In Germany, those pregnant women who were so jittery as to demand chemical tranquilizers from their doctors, were often guzzling liquor and chain smokers.

So thalidomide became the convenient "whipping boy."

Those medical experts at the University of Washington merely described what astute physicians have long noted.

Which is the higher incidence of deformities in babies born to alcoholic mothers.

And you laymen can see why such infants can be damaged in the womb by such foreign chemicals in the mother's blood stream.

For you have already been alerted to the damage that German Measles can do to a mother, especially during the first 3 months of her pregnancy.

Toxins (whether from alcohol, tobacco or a virus) can produce paralysis even in a grown man like former President F. D. Roosevelt.

Yet the delicate embryo in the womb has its arm buds sprouting before the embryo is no bigger than your little finger.

If alcohol can produce toxic delirium tremens in a grown man or woman, whose weight may be 150 to 200 pounds, think how suscep-

tible a 1-ounce embryo can be

The offspring of alcoholic mothers not only are often crippled, mentally defective and slowed in their growth even after birth, but the same is frequently true of babies born to smoking mothers!

For smoking women are far more prone to miscarriages, smaller infants, and a higher incidence of defects in their offspring!

Later this week I'll explain the psychological reason for Maureen's heavy use of alcohol.

But all you expectant mothers should lean over backwards to give your unborn babies a fair break in life!

Don't start them out as feeble-minded, or lacking an arm or leg, or with heart damage, paralyzed limbs, etc.

So send for my booklet "Facts About Pregnancy," enclosing a long stamped, return envelope, plus 25 cents.

(Always write to Dr. Crane in care of The Worry Clinic, 8440 S.W. 10th, Indian 47964. Enclose a long stamped, addressed envelope and 25 cents in return postage and printing costs when you send for one of his booklets.)

**Investment Chatter**

NEW YORK (UPI)—"At this juncture the market appears to be temporarily becalmed because of reticent buyers and already satisfied sellers," according to E. F. Hutton & Co. Inc. The absence of real technical deterioration during this stalemate suggests the market will make an upside breakout, the firm says. "However, since the common thread woven through the zig-zagging pattern of the past week or so has been light volume it is quite possible that the market's direction on the next pickup in volume will turn out to be the key clue," it adds.

Timings says the December market low did not represent a primary bottom and predicts "the early year rally will likely be followed by a second-quarter fall to a final low." The letter suggests this low may be reached by April or May. "Upside potential is so conspicuously lacking at the present time," it adds, "that we see no present hurry in becoming reinvested."

"The recent rise in bond rates, especially in corporate bond yields, has been widely ascribed to a surge in the volume of issues," according to First National City Bank. At the same time, the bank continues, rising inflation expectations may be a more important factor since skyrocketing prices already indicate bond rates will not show "the usual one to two percentage point recession declines."

**TAYLOR-LAUGHLIN DIST. CO. HAS LEASED THE THEATER**

**You've got:**

Due process, Mother's Day, supermarkets, air conditioning, the FBI, Medicare, AT&T, a 2-car garage, Congress, country clubs, state troopers, the Constitution, color television, and democracy



**They've got:**

**BILLY JACK**

Starring TOM LAUGHLIN - DELORES TAYLOR

Directed by CLARK HAYES. Screenplay by FRANK and TERESA CHRISTO. Produced by BARRY BOBE. Story by T. C. FRENCH. A National Student Film Corporation Production.

THEATRICAL RIGHTS BY CAPRI. ALL RIGHTS RESERVED. Please Patronize Independent.

**CAPRI** SHOWS 6:00, 8:00, 10:00  
 ADULTS 2.50 CH. 1.00

**GIBSON'S**  
 Not Changed  
**ORE HOURS!**  
 Open at 9 a.m.  
 Close at 9 p.m.  
**CLOSED**  
**SUNDAY**

**ICED TEA GLASSES**



Ea.

**17**

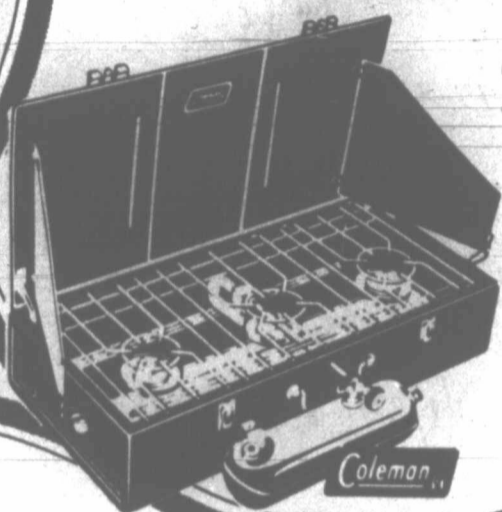
WHERE YOU ALWAYS BUY THE BEST FOR LESS  
**GIBSON'S DISCOUNT CENTER**

Open 9:00 A.M. To 9:00 P.M. — Closed Sundays

**PITCHERS**

**79**  
**BROOMS**  
**\$1.49**

**COLEMAN**  
**3 Burner**  
**STOVE**



**\$31.99**

No. 426D0499

**MYCITRACIN**  
 1/2 Oz. Tube **83c**

**GIBSON'S R pharmacy**  
 9-6896  
**PRESCRIPTIONS**

Prices Good Thru Feb. 2

**BURGESS BATTERIES**

Sizes "D" or "C"



**2 for 29c**

**WILSON VOLLEY BAL**

**\$3.19**

No. H5064

**SELSUN BLUE**

The anti-dandruff cream shampoo we highly recommend



Proven effective, lathers beautifully—leaves hair soft, easy-to-manage

**\$1.47**



**\$1.83**

**SCOTTS Liquid Gold** **\$1.19**  
 Aerosol 10 Oz. or Liquid 16 Oz.



**Breck Basic HAIR SPRAY**  
 13 Oz. **73c**

**Breck Shampoo or**



**Creme Rinse**  
 7 Oz. **57c**

Your Choice **57c**

**Pepsodent**

**Toothpaste**

**59c**

7 Oz.

**KOTEX**

24's Reg. or Super

**73c**



**Colgate INSTANT SHAVE CREAM**  
 11 Oz. **39c**

**Johnson PLEDGE**  
 14 Oz. **\$1.09**



**Williams Llectric Shave**

7 Oz.

**99c**

**NEW Face Guard**  
 4 Blades

**99c**

2 Pkgs.

**Excedrin**

**Excedrin**

100's

**\$1.09**

**LISTERINE**

**Antiseptic Throat Lozenges**

**49c**

18 Oz.

The Pampa Daily News A Watchful Newspaper EVER STRIVING FOR THE TOP O' TEXAS TO BE AN EVEN BETTER PLACE TO LIVE Our Capsule Policy The Pampa News is dedicated to furnishing information to our readers so that they can better promote and preserve their own freedom and encourage others to see its blessing...

Great Or Just Cheap?

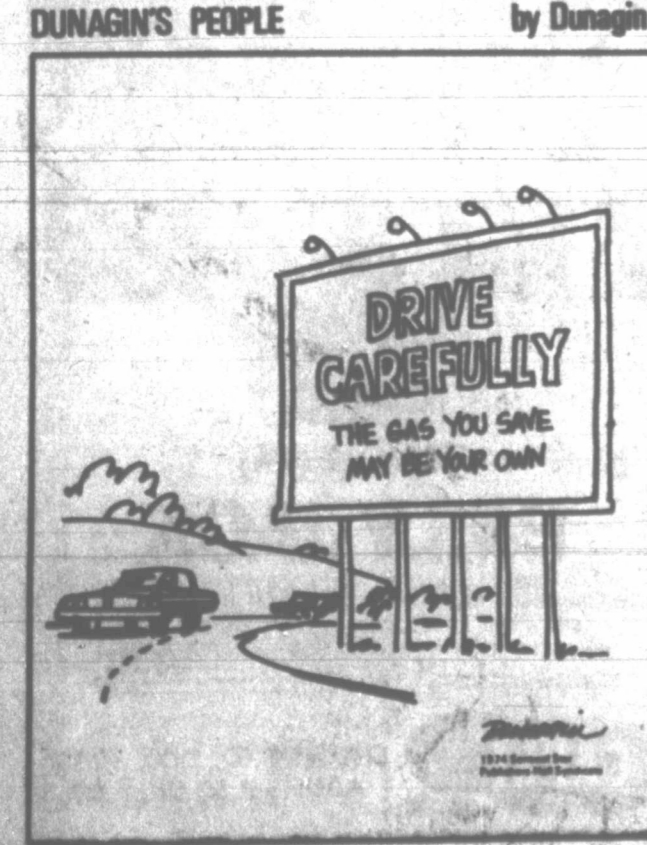
What we are witnessing on a day-by-day basis with respect to the confrontation between the oil industry and government bureaucracy is a repeat of what happened to the railroad industry under similar circumstances. The objective? The socialization (governmental takeover) of the selected industry...

A Cause For Pause

The purpose of a sight on a gun is so you hit what you shoot at. The purpose of military intelligence is so you can focus your power at the enemy's weakpoint or so you can prevent the enemy from focusing his power at your weakpoint...

THE CONSERVATIVE ADVOCATE Governor Of New Hampshire Kicks Over Political Traces

By WILLIAM A. RUSHER Authentic originals in politics are not so common that we can afford to overlook or fail to celebrate Governor Meldrim Thomson, Jr. of the sovereign State of New Hampshire...



who evidently thought he was confessing a weakness. 'I didn't come up through political chairs.' Once installed in the Governor's office, Thomson noted with gratification that the New Hampshire constitution endowed him with extensive powers as the state's 'supreme executive magistrate'...



1974. The Register and Tribune Syndicate. "Must you be so painfully to the point?"

INSIDE LABOR Neo-Radicalism Is Spreading New Violence Across Nation

By VICTOR RIESEL NEW YORK — There's little difference between sections of Buenos Aires and Brooklyn, the San Francisco Bay area and other U.S. cities. Yet, intellectual and physical terror stalks Argentina's cities in the wake of forays by militant groups spouting a revolutionary jargon, mocked and ignored just a few years ago...

PAUL HARVEY NEWS Changing Times: Now It's Fun And Games At Home

By PAUL HARVEY Christmas 1973 retail sales set records. The makers and sellers of toys and games and home-hobby equipment never had a bigger year. Economic question marks softened sales of vehicles...

Potomac Feer By JACK POSNER

Because of the gas shortage, King Tomahoe, Nixon's dog, will not ride in his chauffeured limousine. The military reportedly had spied on the White House. They wanted to copy the secret messages in Nixon's fortune cookies...

INSIDE WASHINGTON

House Due For Big Dose Of Committee Revisions

By ROBERT S. ALLEN WASHINGTON — The House of Representatives is due to get a big dose of its favorite medicine — reform — and already the squawking is loud and irate. A special committee is preparing to submit a number of specific proposals for far-reaching reorganization of the House's committees...

H. L. Hunt Writes

RED FACES ON RED BOSSES The Red bosses in the Kremlin are caught red faced and red handed in sensational expose of communist tyranny by famed Russian author Alexander I. Solzhenitsyn. Solzhenitsyn, in his book 'The Gulag Archipelago,' tells the truth about the fear, terror and wholesale murders which comprise the communist system...

Every communist government has maintained its rule by threats, and wholesale liquidation of its subjects. While those in the West who have pointed this out have often been defamed by the left-wing press which attempts to smear them as 'super-patriots,' it will be interesting to see how the press treats the Solzhenitsyn revelations...

Crossword By Eugene Sheffer

Crossword puzzle grid with clues: 1. Kind of note, 2. Swab, 3. Flatfish, 4. Hebrew measure, 5. Harem room, 6. Dies, 7. Throws away, 8. Dirk, 9. Vetch, 10. Short-napped, 11. Diddain, 12. Singer, 13. Doris, 14. Tree, 15. Lowest point, 16. Pedal, 17. Broad sashes, 18. Goal, 19. Mansard, 20. For one, 21. Whales and seals, 22. Deputy, 23. Pointed instrument, 24. Salute (abbr.), 25. Singer, 26. Lena, 27. Female sheep, 28. DOWN, 29. Fashion, 30. Arabian chieftain, 31. Hodge-podge, 32. Grampus, 33. Bel, 34. Excess of chances, 35. Dance step, 36. Fire, 37. River in Italy, 38. Boxer, 39. Observed, 40. Sandarac, 41. Compass reading, 42. Tarn, 43. Down, 44. Poet's name, 45. Fault vein, 46. Unique thing, 47. Electrical units, 48. Prong, 49. Expand, 50. Indian, 51. Questions, 52. Excavate, 53. United

Large crossword puzzle grid with numbers 1 through 53 indicating starting points for clues.

# PUBLIC NOTICE

## \$100,000

# FURNITURE STOCK LIQUIDATION

**Location: 1621 N. Hobart - Pampa, Texas**

**Time - Beginning Friday, Feb. 1st 9 a.m.**

**Sale Will End When Liquidation Is Completed**

## PURPOSE OF SALE

Home Interiors, your better living furniture store in Pampa, is now under new management. Ben and Sandra Sturgeon, owners, and Mary Sturgeon, manager, are liquidating their current inventory to make room for new merchandise already purchased and due to arrive any day.

**We Must Make Room. All Prices Drastically Reduced. Everything Goes. No Reasonable Offer Refused.**

As a "Better Living Furniture Store," Home Interiors joins with 1,000 furniture stores throughout the Midwest to give them purchasing power to enable them to sell fine furniture and carpet for less. Our board of directors has ordered a complete inventory liquidation .

To move \$100,000 worth of furniture in a short time we are having the most fantastic furniture sale ever in Pampa. Until we have reduced our inventory to make room for merchandise coming in we are going to sell furniture, bedding, lamps, dinettes and carpet at tremendous discounts. Some at cost - Some even below cost.

### ATTENTION!

If you are going to need furniture any time during the coming year,

**DON'T MISS THIS SALE!**

You will never see furniture prices like this again, so bring your pickup, station wagon or trailer and come prepared to buy!

Terms will be arranged. We want YOUR Business!

**Please! No Phone Orders  
During This Sale**

**Please! No Lay-Aways  
During This Sale**

**Please! No Exchanges or  
Refunds During This Sale**

**All Merchandise Must Be Picked  
Up or Will Be Delivered In  
Ten Days After Purchase**

Due to our drastic price reductions, there will be an extra charge if you wish us to deliver. Bring your truck or trailer. We'll help you load.

# HOME INTERIORS

1621 N. Hobart Pampa

Your Better  
Living Furniture  
Store

# Mainly About Skellytown 'Capital Assets' Articles Can Affect Income Taxes

By FANNIE COLEMAN  
Mr. and Mrs. John Kramer have returned home from Grange, Tex., where Mr. Kramer has been recuperating at the home of his daughter and family. Mr. and Mrs. Leon Terry. While there they were met by another daughter, Anna Marie Kramer from Anchorage, Alaska where she is a school teacher. Mr. and Mrs. Kramer and daughter Anna flew back to Skellytown and Anna spent four days with her parents before returning to Alaska.

Mr. and Mrs. Clarence Hoskins, accompanied by Mrs. Lillie Imel, spent several days recently in Durant, Okla., where the Hoskins visited relatives and Mrs. Imel visited her brother and wife, Mr. and Mrs. Robert Thompson.

Mr. and Mrs. James Welch are new residents, having moved here recently from Hedley. Mr. Welch is employed by Bob Andis on his ranch.

Mr. and Mrs. John Kenney were in Stinnett last Sunday where they spent the night with her sister and John's brother, Mr. and Mrs. Oscar Kenney.

Mr. and Mrs. Pete Forrester of Dumas are the proud parents of a baby girl born at 5:00 p.m. Saturday at the Dumas Memorial Hospital. The baby has been named Shannon Denise, and weighed 11 lbs., 3 oz.

Proud grandparents are Mr. and Mrs. Hoyt Taylor of Dumas and Mrs. Ruby Forrester, Skellytown. Great grandparents are Mr. and Mrs. Clint Freeman, Sr., White Deer, and Mr. and Mrs. Oscar Taylor, also of White Deer.

Mrs. Lillie Imel visited her aunt, Mrs. Annola Austin last week in Healdton, Okla.

The Ladies of the Church of Christ met last Tuesday morning at the church for their regular Bible study. The lesson was taught by Mrs. Mary Cousins. It centered around the subject, "From Treasures — To Judging" as spoken by Jesus in Matt. 6:19, Matt. 7:6. Those in attendance were Mmes. Bill Wood, Benny Woodward, D.C. McCarthy and Mr. and Mrs. Pete Cousins.

Mrs. Mable Boyd was honored last Monday evening with a surprise birthday party at her home. Refreshments of sandwiches, chips and a decorated birthday cake and punch were served to the honoree, Mable Boyd, Mrs. Ethel Hunt, Mrs. Ina Horst, Mrs. Eula Berry and Mrs. Pauline Jordan attended.

Mr. Frank Cook won \$150 on the Dialing for Dollars program last Thursday afternoon on KGNC Channel 4 in Amarillo.

Mr. L. H. Snapp and his daughter, Mrs. Vera Williams received word of the death of Mr. Snapp's sister, Mrs. Jean Field, Corey, Pa.

Mrs. Loretta Bryan has been dismissed from the Groom Memorial Hospital where she underwent major surgery two weeks ago.

Mr. and Mrs. Kenney Putman, Lubbock, and Mr. and Mrs. Robert Swearingin and family of Canadian were called here by the death of their aunt, Mrs. Elsie Weyrick. Services were held Thursday afternoon in the Carmichael - Whately Colonial Chapel in Pampa with Rev. Milton Thompson, pastor of the First Baptist Church of Skellytown officiating.

Mr. and Mrs. W. F. Truitt, Abbeville, Kan. and former residents were in town last Wednesday where they visited the Miles Pearstons and Mr. and Mrs. Bob Heaton.

Mr. and Mrs. Frank Hobson, Nashville, Tenn. spent the weekend with her mother, Mrs. Sadie Nelson, and husband, Ben.

Mr. and Mrs. Howard Pugh lost their garage and wash house last Friday at 5:30 a.m. by fire.

Mr. Lon Vaughn and his sister Mrs. Bess Looney, Borger, have returned home after a two week's vacation. They visited Mrs. Ruth Vaughn in Houston, and two nieces and their families, Mr. and Mrs. Lewis Bain and family, and Mrs. Elsie Pointer in Corpus Christi.

Mr. and Mrs. Carl McAdams and three sons of Farris, Okla. spent last weekend with her parents, Mr. and Mrs. J. M. Grange, and Carl's mother.

Mrs. Juanita McAdams, who is a patient in an Amarillo hospital. Mrs. Grange accompanied her daughter and family back to Farris for a few weeks' visit.

Mr. and Mrs. Wilbur Spain have returned home after spending several weeks in Ventura, Calif. with relatives.

Mr. and Mrs. Roy Paul Thurmond have purchased the Earl Looper brick home and will make it their home.

Mrs. Kate Enochs spent last Thursday and Friday with Mrs. Bertha Husted in Pampa.

Mr. and Mrs. John Chaney were in Madill, Okla. last Friday and Saturday where they visited John's mother, Mrs. Sue Chaney, and her daughters, Mrs. Mary Bailey, and Mrs. Sue Chaney accompanied them back home for an extended visit. Sunday guest in the Chaney home were Mrs. John Chaney, Jr. and children, Mr. and Mrs. Mike Chaney and daughter, Pampa, Mr. and Mrs. Wendell Hinton and children of Miami, and Mr. and Mrs. Homer Lester.

Mr. and Mrs. Clifford Coleman had as last Sunday dinner guests their daughter and family, Mr. and Mrs. Bill Smith and children, Pampa, Mr. and Mrs. Ross Coleman of Amarillo.

Skellytown has a new beauty shop "Marie." Its operators are Mrs. Bill Moreland and Mrs. Wanda DeWitt.

Editor's Note: This is the fourth of five articles providing guidelines on how to prepare, and perhaps save money on, your 1973 federal income tax. The material comes from the Commerce Clearing House of Chicago, an authority on tax law.

By United Press International  
Securities, household furnishings and a personal residence or automobile are "capital assets" to which a tax-saving capital gain and loss provision applies.

Gain on this kind of property is taxable as a capital gain which may be granted favorable treatment by the tax law. However, the use of loss on this kind of property to reduce the tax bill is subject to limitations.

Gain from a sale or exchange of property is income in the difference between the amount realized and the "adjusted" cost, or other basis, of the property. Gains on sales or exchanges of "capital assets" held for more than 6 months are given beneficial tax treatment.

If the asset was held for 6 months or less, any gain or loss is termed a short-term capital gain or loss. If the asset was held for more than 6 months, any gain or loss is a long-term gain or loss.

Long-Term Capital Gains  
A 50 percent deduction is allowed for the excess of a net

long-term capital gain over a net short-term capital loss.

The alternative tax computation in Part VI of Schedule D, Form 1040—the "capital gains tax"—has the effect of limiting the tax on each \$1 of the excess of net long-term capital gains over net short-term capital losses to a maximum of 35 cents.

The tax on each \$1 of the first \$50,000 (\$25,000 for a married taxpayer filing separately) of the excess is limited to 25 cents.

The benefits that a taxpayer with large capital gains may get through capital gains transactions may be reduced by the 10 per cent Minimum Tax. This tax is imposed on tax preference items, one of which is the amount allowable to an individual by 50 per cent capital gains deduction, even if he uses the alternative capital gains tax.

Whenever the ordinary income reaches a level where any part is in a bracket over 50 per cent, a computation should be made to determine whether the alternative tax results in a lower tax.

Losses of an individual from sales or exchanges of capital assets are deductible to the extent of capital gains plus up to \$1,000 of ordinary income. However, it takes \$2 of a long-term capital loss to offset \$1 of ordinary income. A short-

term capital loss or a long-term capital loss carryover from a pre-1970 year can nevertheless offset ordinary income up to the \$1,000 limit on a dollar-for-dollar basis.

Joint Returns  
After this \$1,000 is used up, any unused net capital losses remaining may be carried over indefinitely to future years until exhausted. A loss carryover is treated as long-term or short-term depending upon its origin.

The amount of a carryover of long-term capital loss sustained in a taxable year beginning in 1970 or thereafter does not include any part of the long-term loss that was used to offset ordinary income on a \$2 of loss for \$1 of deduction basis.

Where a husband and wife file joint returns, their capital gains and losses are combined in computing their tax. They may deduct no more than \$1,000 of capital loss from ordinary income on a joint return. On separate returns, each may deduct no more than \$500.

Widows, widowers and heads of households can take advantage of special income tax rules.

Widows or widowers can continue to pay the rates applying to joint returns for two years after their spouse's death.

Heads of households pay on a schedule of rates that are midway between those of an individual filing a separate

return and a married couple filing a joint return.

Maintains a Household  
An unmarried widow or widower whose spouse died in 1971 or 1972 and who maintains a household as the principal place of abode of a dependent child or stepchild will be taxed on the 1973 return at the same rates imposed on a married couple filing jointly, if at the time of the spouse's death, the couple was entitled to file a joint return.

An individual is a head of household if he or she is unmarried at the end of the year, is not a surviving spouse, and maintains a home for at least one child, including a stepchild, grandchild, foster child, or an adopted child, even though such child, if unmarried, is not a dependent, or any other related person for whom the qualifying individual is entitled to a deduction for an exemption, unless the deduction arises from a multiple support agreement. He or she must also furnish more than one-half of the cost of maintaining the household.

A taxpayer is also a head of household if he maintains for his mother or father, or both, a household which is their home even though the taxpayer lives elsewhere. However, the parent must have less than \$750 gross income, and the taxpayer must

have contributed over one-half of the parent's support.

A married individual who lives apart from his spouse during the entire tax year may qualify for head-of-household status if he files a separate income tax return, maintains a home for a dependent son, daughter, stepson, or stepdaughter, for the tax year and furnishes more than one-half of the cost of maintaining the household.

Generally, a married individual is not entitled to the head-of-household benefits. However, he or she can be a head of household if married to a non-resident alien or if

divorced or separated under a final decree at the close of the tax year. However, a person is considered married even though his or her spouse dies during the year.

Next: Child Care and Other Deductions  
Nixon's Wedding Gift  
MONTGOMERY, Ala. (UPI) — President and Mrs. Richard Nixon sent a porcelain figurine, "Boehm's Bird of Peace," as their wedding gift to Peggy Sue Wallace, one of Gov. George C. Wallace's daughters.

Wallace now has a Kennedy in the family with Mark Kennedy of Greenville, Ala. as his new son-in-law.



**S & J MART**  
600 E. FREDERIC  
PH. 669-3661

**GIVE YOURSELF A TREAT TODAY, GET ALL THE CHICKEN YOU CAN EAT FRIDAY AND SATURDAY ONLY**

\$2.10 Per Person, Tax. Incl.



**Piggy Wiggly Welcomes Federal Food Stamp Customers**




|   |  |  |   |
|---|--|--|---|
|  <p><b>Full Quarter Loin Sliced into Pork Chops</b><br/>3 to 4 Lb. Avg.<br/><b>95¢</b><br/>Lb.</p> | <p><b>Boston Butt ROAST</b></p> <p><b>89¢</b><br/>Lb.</p>  | <p>Prices good thru Feb. 2, 1974.</p>  <p><b>Fresh Spareribs</b><br/>3 Lb. Average<br/><b>97¢</b><br/>Lb.</p> |  <p><b>Ranch Style Sliced Bacon</b><br/><b>94¢</b><br/>Lb.</p> |
| <p><b>We Redeem Federal Food Stamps</b></p>   | <p><b>MEAT GUARANTEE</b><br/>We are so confident of the superior quality of our meats that we offer an extraordinary guarantee. You must be completely satisfied with all the meat you buy at Piggy Wiggly or your money will be cheerfully refunded... <b>DOUBLE!</b></p> | <p><b>Fresh Pork Steaks</b><br/><b>98¢</b><br/>Lb.</p>   | <p><b>Farmer Jones, Tender &amp; Juicy Franks</b><br/>12-oz. Pkg.<br/><b>75¢</b></p>  |

|   |  |  |   |
|---|--|--|---|
| <p>Piggy Wiggly</p> <p><b>Laundry Detergent</b><br/><b>49¢</b><br/>49-oz. Box</p> | <p>Betty Crocker, All Varieties</p> <p><b>Hamburger Helpers</b><br/><b>49¢</b><br/>7-oz. Box</p> | <p>Piggy Wiggly, California</p> <p><b>Whole Tomatoes</b><br/><b>4\$1</b><br/>16-oz. Cans</p> | <p>All Grinds</p> <p><b>Maxwell House Coffee</b><br/><b>79¢</b><br/>Lb. Can</p> <p>Limit one with \$7.50 or more purchase excluding cigarettes.</p> |
|---|--|--|---|

|   |  |  |  |
|---|--|--|--|
| <p>Effective</p> <p><b>Jergens Hand Lotion</b><br/><b>69¢</b><br/>10-oz. Btl.</p> | <p>Piggy Wiggly, Instant</p> <p><b>Potatoes Veg-All</b><br/>15-oz. Can <b>29¢</b></p> <p>Starbuck, Light</p> <p><b>Chunk Tuna</b><br/>6 1/2-oz. Can <b>51¢</b></p> <p>Piggy Wiggly, Cream of</p> <p><b>Chicken Soup</b><br/>10 1/2-oz. Can <b>20¢</b></p> <p>Delicious</p> <p><b>Ranch Style Beans</b><br/>15-oz. Can <b>22¢</b></p> | <p>Del Monte, Cut</p> <p><b>Green Beans</b><br/>16-oz. Can <b>31¢</b></p> <p>Del Monte</p> <p><b>Golden Corn</b><br/>17-oz. Can <b>27¢</b></p> <p>Piggy Wiggly</p> <p><b>Tomato Sauce</b><br/>8-oz. Can <b>11¢</b></p> <p>Piggy Wiggly, Creamy or Crunchy</p> <p><b>Peanut Butter</b><br/>16-oz. Jar <b>63¢</b></p> <p>Assorted Fruits &amp; Flavors</p> <p><b>Jello Gelatin</b><br/>3-oz. Desserts <b>13¢</b></p> | <p>Spicy Slow Dinner</p> <p><b>Alpo Dog Food</b><br/>14 1/2-oz. Can <b>34¢</b></p> <p>Pure Vegetable</p> <p><b>Crisco Oil</b><br/>24-oz. Btl. <b>86¢</b></p> <p>V-8</p> <p><b>Cocktail Juice</b><br/>46-oz. Can <b>53¢</b></p> |
|---|--|--|--|

|   |  |   |   |
|---|--|---|---|
| <p>Piggy Wiggly</p> <p><b>Liquid Bleach</b><br/><b>37¢</b><br/>Gal. Jug</p> | <p>Flavorful</p> <p><b>Heinz Ketchup</b><br/>qt. Btl. <b>59¢</b></p> | <p>Piggy Wiggly</p> <p><b>Brownie Mix</b><br/>16-oz. Box <b>39¢</b></p> | <p>Piggy Wiggly</p> <p><b>Buttermilk</b><br/>1/2-Gal. Ctn. <b>59¢</b></p> |
|---|--|---|---|

Mr. and Mrs. John Kenney were in Stinnett last Sunday where they spent the night with her sister and John's brother, Mr. and Mrs. Oscar Kenney.

Mr. and Mrs. Pete Forrester of Dumas are the proud parents of a baby girl born at 5:00 p.m. Saturday at the Dumas Memorial Hospital. The baby has been named Shannon Denise, and weighed 11 lbs., 3 oz.

Proud grandparents are Mr. and Mrs. Hoyt Taylor of Dumas and Mrs. Ruby Forrester, Skellytown. Great grandparents are Mr. and Mrs. Clint Freeman, Sr., White Deer, and Mr. and Mrs. Oscar Taylor, also of White Deer.

Mrs. Lillie Imel visited her aunt, Mrs. Annola Austin last week in Healdton, Okla.

The Ladies of the Church of Christ met last Tuesday morning at the church for their regular Bible study. The lesson was taught by Mrs. Mary Cousins. It centered around the subject, "From Treasures — To Judging" as spoken by Jesus in Matt. 6:19, Matt. 7:6. Those in attendance were Mmes. Bill Wood, Benny Woodward, D.C. McCarthy and Mr. and Mrs. Pete Cousins.

Mrs. Mable Boyd was honored last Monday evening with a surprise birthday party at her home. Refreshments of sandwiches, chips and a decorated birthday cake and punch were served to the honoree, Mable Boyd, Mrs. Ethel Hunt, Mrs. Ina Horst, Mrs. Eula Berry and Mrs. Pauline Jordan attended.

Mr. Frank Cook won \$150 on the Dialing for Dollars program last Thursday afternoon on KGNC Channel 4 in Amarillo.

Mr. L. H. Snapp and his daughter, Mrs. Vera Williams received word of the death of Mr. Snapp's sister, Mrs. Jean Field, Corey, Pa.

Mrs. Loretta Bryan has been dismissed from the Groom Memorial Hospital where she underwent major surgery two weeks ago.

Mr. and Mrs. Kenney Putman, Lubbock, and Mr. and Mrs. Robert Swearingin and family of Canadian were called here by the death of their aunt, Mrs. Elsie Weyrick. Services were held Thursday afternoon in the Carmichael - Whately Colonial Chapel in Pampa with Rev. Milton Thompson, pastor of the First Baptist Church of Skellytown officiating.

Mr. and Mrs. W. F. Truitt, Abbeville, Kan. and former residents were in town last Wednesday where they visited the Miles Pearstons and Mr. and Mrs. Bob Heaton.

Mr. and Mrs. Frank Hobson, Nashville, Tenn. spent the weekend with her mother, Mrs. Sadie Nelson, and husband, Ben.

Mr. and Mrs. Howard Pugh lost their garage and wash house last Friday at 5:30 a.m. by fire.

Mr. Lon Vaughn and his sister Mrs. Bess Looney, Borger, have returned home after a two week's vacation. They visited Mrs. Ruth Vaughn in Houston, and two nieces and their families, Mr. and Mrs. Lewis Bain and family, and Mrs. Elsie Pointer in Corpus Christi.

Mr. and Mrs. Carl McAdams and three sons of Farris, Okla. spent last weekend with her parents, Mr. and Mrs. J. M. Grange, and Carl's mother.

**Job Outlook Grim**  
STANFORD, Calif. (UPI) — The director of University relations at Stanford University predicts the current lack of jobs for college graduates may continue through the 1970's.

In a report to the Department of Health, Education and Welfare, Frank Newman and his task force noted that technology does create more jobs than it destroys but the jobs often call for less-skilled workers.

Newman said in the last few years, a recession and a slowdown in research and development funds has contributed to the decrease in demand for college-trained employees.

## The Lighter Side

By DICK WEST  
WASHINGTON (UPI) — The magazine Business Week reports that some companies now use "transactional analysis" to help solve personnel problems. This is too complex a topic to go into here in detail. But to oversimplify, transactional analysis is based on the theory that individuals at different times act out different roles. Therefore, communication with another individual can be improved by determining which role he is playing. The psychologist Eric Berne says individuals tend to play out life dramas usually based on fairy tales they heard as children. But another proponent of transactional analysis has found that many business executives play out adventure stories in their lives—the Lone Ranger, for example, or maybe Tarzan. It sounds consistent. This certainly sounds consistent with the executives I have known in the newspaper business. I once worked for a city editor who was Capt. Ahab right down to the harpoon he kept on his desk. Communication with him was fairly simple, as long as one said "Aye, aye, sir" and avoided shouting "Thar she blows!" But that is another story. Anyway, it occurred to me that if transactional analysis

works for businessmen, it also might be a useful tool in communicating with government executives.

Certainly it would be helpful to know what role President Nixon is playing out at the moment. This could give us a better line on whether he might resign, or be impeached. It may be, for example, that the President is playing the role of the little Dutch boy who sticks his finger in the dike.

He's "Casey at the Bat" But to the Congressmen seeking to impeach him he is "Casey at the Bat."

Secretary of State Henry Kissinger, I'm fairly sure, is playing out the role of "The Wizard of Oz." Puffs of purple smoke produce Arab-Israeli troop disengagements and other diplomatic miracles.

But others may have the impression that Kissinger is playing out the role of "Don Quixote." If he is unhorsed by the next windmill, their view will be confirmed.

Both could be wrong, of course. It might well turn out that Kissinger sees himself as "Peter Pan."

Of one role there is no doubt. Sen. Henry M. Jackson and co-investigators of the energy crisis obviously are Robin Hoods bent on taking from the rich, by way of an excess profits tax on oil.

## Organization Needed To Clean Up Cluttered House

NEW YORK (UPI) — A family should move every year or two — or live in the same house forever.

When you're on the go, you're not as likely to accumulate too many "things". Spend a lifetime in the same house and, eventually, someone else will

have to clean out your attic and basement.

These conclusions come as the result of a somewhat involved process, starting with a resolution to "do something" about a too-cluttered house.

The answer was obvious: dispose of the clutter.

The place to start, of course, was the basement storage room. Clean it out and there would be room for the more recent accumulations in the guest room, the study, nooks and crannies throughout the house. (Our attic is clear, uncluttered. It doesn't have a

full floor and must be reached by ladder.)

It was in the basement our theory of moving began to develop. Unearthed at the back of the store room, unopened, was a mover's carton marked "miscellaneous." Whatever the contents, it was clear they were unnecessary in our lives. We moved for the first, and only, time some 14 years ago.

We decided on the spot to make a clean sweep now, then go through the house each year as if we were moving. We worked out a logical plan. You may want to try it:

**Updating Inventory**  
A room at a time, remove everything that does not belong in that room — fifteen boxes of Christmas decorations from the guest room closet, for instance.

Weed out the remainder according to the rule of use: if you haven't used it in a year, dispose of it.

We decided on four allocations for disposal: things the youngsters (now married) might like; things that might bring a bit of a windfall profit at a garage sale; a collection for Goodwill or the Salvation Army; the scrap heap.

In the process, we would update an inventory of our possessions, with photographs of the most valuable items. Such an inventory is a must

for every family for insurance purposes. It is impossible to reconstruct the contents of a house accurately after loss takes place. It is easy, they say, to keep such an inventory current. All you have to do is list item, date of purchase, purchase price. But somehow our acquisitions always seemed to outpace our list-making abilities, especially the books and records, the linens...

**Planning Garage Sale**  
We did get the living and dining rooms in pretty good shape, and the guest room except for the Christmas things in the closet.

And we reorganized the basement store room. Most of the things the youngsters want are stored there, except for the Christmas things in the guest room. A service family, they're on the move every couple of years right now and can't take them on.

We also have set aside a few things for a garage sale. There's not quite enough, though, so we'll have to hang on until we accumulate a bigger stock.

A stack in the back hall is waiting to go to Goodwill. And there are a few boxes of books set aside for the next library book sale. Piled in the garage are some things we'll put out at the next town clean-up collection.

Now we're looking for cupboard space in the kitchen for that mover's box of "miscellaneous." It contained a fine assortment of cake decorating tools, cake pans in the form of a lamb, a Christmas tree and wedding bells, some timbale irons, an ice cream freezer and a stone crock for picklemaking. I haven't done those things in years and it just might be fun — after we finish the inventory.

By the way, we've opted to live in the same house forever. For us, it's too late for anything else.

## Television In Review

HOLLYWOOD (UPI) — ABC-TV is coming on fast as a major force in investigative television journalism.

A number of its prime-time documentaries have made people in the video industry take notice of the network's new eminence in this field.

For ABC-TV, smallest of television's three major commercial networks, this sudden eminence must be producing a healthy kind of feeling.

And no wonder—because for years ABC-TV was regarded as a distant third in its news and documentary competition with CBS-TV and NBC-TV.

ABC-TV did, indeed, have some splendid news coverage and documentary entries even when it trailed well behind the other networks.

**More Time to Devote**  
But NBC-TV and CBS-TV, being more established, were always more able to devote a larger amount of time and energy to public affairs broadcasts.

They had, and undoubtedly still have, bigger news staffs than their smaller competitor.

And they could afford to preempt more prime time entertainment programming than ABC-TV, which was struggling to survive.

In terms of prestige and productivity in news and documentary broadcasts, many people today instinctively probably still would regard ABC-TV as the third network.

But there is no question the competition is a lot closer than it used to be.

For instance, audiences for the nightly network half-hour newscasts once were considered just about wrapped up by CBS-TV and NBC-TV.

No more. ABC-TV's teaming of Harry Reasoner with Howard K. Smith has been a success, and has paid off handsomely in the ratings.

The chances are that the ratings would be even better if ABC-TV had as big a lineup of affiliate stations as the two other networks.

**Statistics are Impressive**  
So, considering this ABC-TV disadvantage in the affiliate lineup, the statistics for its nightly newscasts are even more impressive.

Prospects for more documentaries—perhaps in new weekly series—look it on the chin throughout the broadcasting industry when the government cut back network prime time hours.

Therefore a development like ABC-TV's new surge of investigative reporting in these key viewing hours is extremely welcome.

How long this commitment lasts depends on the same factors that affect prime time public affairs broadcasts on all commercial networks — funds, ratings, available time, public and critical reaction and corporate responsibility.

## TV Log

- 6:30  
4-Lucy Show  
7-To Tell The Truth  
10-What's My Line  
7:00  
4-In Search of Ancient Mysteries  
7-Chopper One  
10-The Waltons  
7:30  
7-Firehouse  
8:00  
4-Ironside  
7-Primal  
10--Movie--The Autobiography of Miss Jane Pittman  
9:00  
4-Music Country  
7-Streets of San Francisco  
10:00  
4,7,10-News  
10:30  
4-Johnny Carson  
10--Movie--The Burning Hills  
10:45  
7-Bonanza  
11:45  
7-Alan King in Search of Sex Appeal  
12:00  
4-Tomorrow

**1040 U.S. Individual Income Taxpayers Ask IRS**  
for 1973 January 1-December 31, 1974, or other taxable year.  
U.S. Treasury Department—Internal Revenue Service  
Last page  
Your son (Daughter)

This column of questions and answers on federal tax matters is provided by the local office of the U.S. Internal Revenue Service and is published as a public service to taxpayers. The column answers questions most frequently asked by taxpayers.

**Q. I had a lot of dental work done recently, and I asked my dentist to bill me after the first of the year. Can I still deduct these medical expenses on my 1973 return?**

**A. No.** Medical expenses may be deducted only in the year you pay them. Thus, if you want to claim a deduction for these dental expenses on your 1973 return, you will have to pay them before the end of 1973.

**Q. My employer gives all his employees a ham for Christmas. This is a tax-free gift, isn't it?**

**A. Yes.** If to promote good will, your employer makes a general distribution of hams, turkeys, or other items of merchandise of nominal value at Christmas time, the value of these gifts is not income and, therefore, not taxable. However, if your employer distributes cash, gift certificates, or similar items of readily convertible cash value, the value of such gifts is additional salary or wages.

**Q. What are some of the typical records that a taxpayer might use in operating a small business?**

**A. A typical recordkeeping system for a small business might include:** a daily summary of cash receipts, a monthly income journal, a check disbursements journal, a business checkbook, a depreciation record, and an employee compensation record. For more details, see IRS Publication 583, "Recordkeeping for a Small Business." It's available free from your nearest IRS office.

my travel expenses to come in for a job interview. In payment of these expenses taxable income to me?

**A. The amount you receive is income only to the extent that it exceeds your actual expenses.**

**Q. What are some of the typical records that a taxpayer might use in operating a small business?**

**A. A typical recordkeeping system for a small business might include:** a daily summary of cash receipts, a monthly income journal, a check disbursements journal, a business checkbook, a depreciation record, and an employee compensation record. For more details, see IRS Publication 583, "Recordkeeping for a Small Business." It's available free from your nearest IRS office.

# EVERYDAY VALU-PRICES



|                       |             |        |
|-----------------------|-------------|--------|
| Wafer Thin Meats      | 3-oz. Pkg.  | 45¢    |
| Codfish Sticks        | Lb.         | 79¢    |
| Fresh Pork Hocks      | Lb.         | 79¢    |
| Fresh Pork Roast      | Lb.         | \$1.09 |
| Boneless Pork Steak   | Lb.         | \$1.39 |
| Country-Style Sausage | Lb.         | 98¢    |
| Rib Pork Chops        | Lb.         | \$1.49 |
| Boneless Rump Roast   | Lb.         | \$1.49 |
| Eye of Round Roast    | Lb.         | \$1.99 |
| Cubed Round Steak     | Lb.         | \$1.49 |
| Stewing Beef          | Lb.         | \$1.29 |
| Ground Beef           | Lb.         | \$1.19 |
| Luncheon Meats        | 6-oz. Pkg.  | 55¢    |
| Hot Links             | Lb.         | 98¢    |
| Horn Cheese           | 10-oz. Pkg. | \$1.03 |
| Cheese Slices         | 6-oz. Pkg.  | 59¢    |

**Ruby Red Grapefruit**  
12¢

**Fresh Green Cabbage**  
10¢

**Sunkist, Navel Oranges**  
19¢

**Piggy Wiggly Canned Biscuits**  
10-Ct. Can  
10¢

**Tide Detergent**  
84-oz. Box  
\$1.19

**Piggy Wiggly Orange Juice**  
6-oz. Can  
5¢

**COCA COLA or Mr. Pibb**  
32 Oz. Bottles  
\$1.61

**Farmer Jones, Sweet Cream Fresh Butter**  
Lb. Ctn.  
89¢

**Piggy Wiggly Pancake Mix**  
2-Lb. Box  
53¢

**Piggy Wiggly Pancake Syrup**  
Qt. Btl.  
49¢

**Piggy Wiggly Frozen Vegetables**  
"Your Choice"  
Cut Corn, Turnip Greens, Cut Green Beans, Mixed Vegetables  
20-oz. Pkgs.  
89¢

**Piggy Wiggly Frozen Waffles**  
2 3-oz. Pkgs.  
25¢

**Piggy Wiggly Party Dips**  
9-oz. Can.  
39¢

**Piggy Wiggly Dog Food**  
25 Lb. Bag  
\$3.59

BATTLE SET WITH WFL

# NFL Concludes Longest Player Draft In 8 Years

NEW YORK (UPI) — The National Football League preliminaries are over and now the main event begins.

The National Football League concluded its longest college player draft in eight years

Wednesday and the battle lines are now drawn with the new World Football League.

The fledgling league held a preliminary draft of 72 collegians last week and the NFL picked its usual 442 players Tuesday and Wednesday in a 22-hour session. Included in that group were the three "name players" reportedly signed Monday by the WFL—UCLA running backs Kermit Johnson and James McAllister and Southern California guard Booker Brown.

All three reportedly signed with the Southern California franchise.

Now the battle to sign players begins and it could result in a renewal of the costly bidding

war that forced the AFL and NFL to merge in 1967.

**Giants Lock Up Hicks**

The New York Giants locked up Ohio State guard John Hicks, the Lineman of the Year, for three years and \$150,000 on Tuesday and Dallas reportedly is ready to announce the signing of No. 1 pick Ed Jones, the defensive tackle from Tennessee State. But it's wide open after that and the WFL soon will conclude its draft of collegians and NFL players whose options have expired.

The NFL clubs inched through the early rounds, fearful of errors in selecting a player already committed to the WFL, but Al Davis, one of the AFL firebrands in the war

days of 1960-66, finally fired the first shot.

Davis, once AFL commissioner and now the managing general partner of the Oakland Raiders, selected McAllister on the sixth round and Sid Gillman, another man instrumental in getting the AFL off the ground, quickly followed by taking Brown. Johnson went to San Francisco a round later.

Trading also was very light. The only major deal Wednesday saw the Pittsburgh Steelers send outspoken John Rower, their starting left cornerback, to Denver for a pair of draft choices.

**QB and Coach Reunited**  
Jack Milder, a former star wishbone quarterback at Ok-

lahoma, was reunited with his old college coach, Chuck Fairbanks, when Baltimore dealt the safetyman to New England. Fairbanks has hinted that he may use the wishbone in the pros in certain situations and Milder's acquisition may open the way.

The Patriots also dealt much-traveled linebacker Steve Kiner to Houston for a draft pick and Baltimore obtained running back George Nock from Washington for guard Cory Johnson and sent reserve linebacker Ed Mooney to Washington. The Redskins also purchased veteran wide receiver Joe Sweet from Los Angeles for a draft choice.

Two basketball players also

were drafted. Leonard Gray, Long Beach State's 6-8 center, went to San Francisco as a tight end on the 15th round and Brigham Young forward Doug Richards was picked by Dallas as a defensive back on the 14th. Massachusetts wide receiver Tim Berra, son of New York Mets' Manager Yogi Berra,

went to Baltimore on the last round.

Ken Dickerson, a defensive back from Tuskegee, was the last player picked in the 17-round draft.

UCLA had the most players selected—12—while Penn State, Colorado and Michigan each had 10 chosen.

## It Sims To Me...

By PAUL SIMS  
Sports Editor

Two of the five spring sports begin their 1974 schedules this weekend (Saturday) for Pampa — volleyball in Borger and golf with a practice match in the same Panhandle city.

The other spring sports — track (boys and girls), baseball, tennis and golf (boys and girls) — begin their spring seasons later.

Tennis begins Feb. 16 against Caprock in Amarillo, boys track begins Feb. 23 with the Plainview Invitational and girls golf and baseball start March 1 with a golf tournament in Pampa and a game in Altus, Okla.

Other opening dates and locations are March 15 in Sunray for girls track, March 16 in Pampa for junior high track and April 20 in Canyon for junior high golf.

### VOLEYBALL

Four strong spikers, all experienced players, will lead Pampa's volleyball team in an effort to repeat as district champions, a title won by Pampa a year ago.

"We'll be about as strong as we were last year. It's hard to get four good spikers but we have four good ones. They've been strong in practice," said volleyball coach Lynn Wolfe.

Those spikers are Lynn Richardson, Debbie Gray, Debbie Harris and junior Tanna Perry. Other players for Pampa's varsity are senior Debbie Fortin, setter; junior Jenn Harvey, setter, and senior Kathy Ellis, substitute setter. Misses Richardson, Gray, Harris and Fortin are third-year players.

Pampa, Borger, Hereford and Perryton will compete in Saturday's Borger tourney. Pampa will be favored to win first place in that event.

Pampa, although no predictions have been released, will also probably be the favorite to win district. Amarillo and Tascosa will be strong contenders for that title, according to Mrs. Wolfe.

### BOYS GOLF

Pampa and Borger played a practice round yesterday, but Saturday's practice round with the Borger team is the first listing on Pampa's 1974 golf schedule. No real competition will be involved in Saturday's play, only practice, says Pampa coach Deck Woldt.

The Abilene Invitational Feb. 9-9 will officially open Pampa's season.

Pampa's A-team is made up of juniors Wiley McIntire, Micky Lowe, Randy Watson and Joel Hickey and sophomore Scott White. Senior Randy Robertson is a contender for an A-team playing slot and his status will depend on how well the top five perform early in the season.

McIntire is the team's best golfer and probably most experienced, playing in numerous junior tournaments in the summer. "He's a pretty consistent player; he averages right around 80," said Woldt.

"I'm going to have to depend on the top five. We have no depth; we're not strong in our B-team, they're all young, except for Robertson."

Woldt predicts the order of finish in district play for the A-teams will be: 1. Tascosa, 2. Amarillo High, 3. Caprock, 4. Borger, 5. Pampa and 6. Palo Duro. "Tascosa has a little edge over Amarillo High," added Woldt.

\*\*\*

Pampa has a jump on Amarillo in at least one respect — girls track.

This will be the first year of competition for girls track as Pampa will be in a district which includes Borger, Canyon, Dumas, Hereford, Perryton and Plainview. Amarillo will not compete this year.

Betty Chamberlain will coach the Pampa team.

\*\*\*

Athletic director Ed Lehnick is back in Pampa after visiting Terrell, Arlington Lamar and a few other schools, examining the football programs of Jack Edwards, Ed Peach and Russell Coffee. The three are the top candidates for the Pampa job.

Edwards is head coach at Terrell, Peach is at Lamar and Coffee is offensive coordinator at TCU.

"I'd like to have a coach by our next school board meeting which is February 11," said Lehnick. Lehnick is finding candidates; the school board will be the one to approve any man Lehnick recommends.

## Dallas, Houston Selections

By United Press International  
The list of players selected by Texas' professional football teams:

### DALLAS

Round 1—Ed Jones, defensive end, Tennessee State; Charlie Young, running back, North Carolina State.

Round 3—Danny White, quarterback, Arizona State; Cal Patterson, linebacker, UCLA.

Round 4—Ken Hutcherson, linebacker, Livingston (Ala.) State; Andy Andrade, running back, Northern Michigan.

Round 5—John Kelsey, offensive tackle, Missouri.

Round 6—Jim Bright, defensive back, UCLA.

Round 7—Raymond Nester, linebacker, Michigan State.

Round 8—Mike Holt, defensive back, Michigan State.

Round 9—Bill Dulin, offensive tackle, J.C. Smith.

Round 10—Dennis Morgan, running back, Western Illinois.

Round 11—Harvey McGee, wide receiver, Southern Mississippi.

Round 12—Keith Bobo, quarterback, SMU.

Round 13—Fred Lima, kicker, Colorado.

Round 14—Doug Richards, defensive back, Brigham Young.

Round 15—Bruce Craft, tackle, Geneva (Pa.).

Round 16—Gene Killian, lineman, Tennessee.

Round 17—Lawrie Skolrood, tackle, North Dakota.

### HOUSTON

Round 4—Steve Manstedt, linebacker, Nebraska.

Round 6—Booker Brown, offensive guard, Southern California.

Round 7—Leonard Fairley, defensive back, Alcorn A&M.

Round 8—Mike McCoy, defensive back, Western Kentucky.

Round 11—Steve Taylor, center, Auburn.

Round 12—Rikky Browne, linebacker, Florida.

Round 13—Dan Dixon, guard, Boise State.

Round 15—Billy Johnson, wide receiver, Widener.

## Wyman, Several Texans Chosen

All-America center Bill Wyman of Texas, the 138th player picked in the NFL draft and only the second player from the Southwest Conference chosen, says he has no complaints.

"I'm satisfied with where I was picked," Wyman said Wednesday. "I'm real glad to hear it."

Wyman was picked in the sixth round by the New York Jets.

"I think the Jets have a good organization, Wyman said. "They are rebuilding right now. It's a good opportunity for me."

"They want me to play center. I'm going to New York Friday to look things over."

Wyman was the fifth Texas collegian picked in the draft and the first chosen in Wednesday's rounds. Andre Tillman, the Texas Tech tight end picked by Miami in the second round, was

the first Texan chosen in the draft.

Rice and Texas Christian each provided four players in the pro draft to lead Texas schools in that department.

Rice sent wide receiver Carl Swierc to Miami in the seventh round, wide receiver Edwin Collins to Baltimore in the 14th round, defensive back Bruce Henley to Pittsburgh in the 14th round and defensive back Preston Anderson to Cleveland in the 18th round.

TCU sent place kicker Berl Simmons to Minnesota in the

eight round, defensive tackle Charles Davis to Pittsburgh in the ninth round, quarterback Kent Marshall (drafted as a defensive back) to New Orleans in the 14th round and tackle Sid Bond to Philadelphia in the 15th round.

Southern Methodist and Texas-Arlington had three players drafted, Texas Tech, Texas, West Texas, Texas Southern and Southwest Texas had two players and Houston, Abilene Christian, Prairie View A&M, Texas-El Paso and Angelo State each sent one.

Players from Texas schools chosen in the NFL draft:

### FIRST ROUND

None chosen.

### SECOND ROUND

Andre Tillman, tight end, Texas Tech, by Miami.

### THIRD ROUND

Steve George, defensive tackle Houston, by St. Louis; Dexter Bussey, running back, Texas-Arlington, by Detroit.

### FOURTH ROUND

Richard Williams, wide receiver, Abilene Christian, by Cincinnati.

### FIFTH ROUND

None chosen.

### SIXTH ROUND

Bill Wyman, center, Texas, by New York Jets; Billy Pritchett, running back, West Texas State, by Cleveland; James Wolf, defensive end, Prairie View A&M, by Pittsburgh.

### SEVENTH ROUND

John Harvey, running back, Texas-Arlington, by Los Angeles; Carl Swierc, wide receiver, by Miami.

### EIGHTH ROUND

Alvin Maxson, running back, SMU, by New Orleans; Berl Simmons, place kicker, TCU, by Minnesota; Melvin Baker, wide receiver, Texas Southern, by Miami.

### NINTH ROUND

Harold Holton, offensive guard, Texas-El Paso, by Green

Bay; Charles Davis, defensive tackle, TCU, by Pittsburgh; Ed Johnson, defensive end, SMU, by Cincinnati.

### TENTH ROUND

Glen Gaspard, linebacker, Texas, by San Francisco.

### ELEVENTH ROUND

Harold Hart, running back, Texas Southern, by Oakland.

### TWELFTH ROUND

Carl Brown, wide receiver, West Texas State, by Kansas City; Noe Gonzalez, running back, Southwest Texas, by Oakland; Keith Bobo, quarterback, SMU, by Dallas.

### THIRTEENTH ROUND

Dennis Colvin, tackle, Southwest Texas, by New York Jets; Joe Barnes, running back, Texas Tech, by Chicago.

### FOURTEENTH ROUND

Ernie Collins, wide receiver, Rice, by Baltimore; Kent Marshall, defensive back, TCU, by New Orleans; Bruce Henley, defensive back, Rice, by Pittsburgh.

### FIFTEENTH ROUND

Sid Bond, tackle, TCU, by Philadelphia.

### SIXTEENTH ROUND

Preston Anderson, defensive back, Rice, by Cleveland.

### SEVENTEENTH ROUND

Craig Holland, quarterback, Texas-Arlington, by Chicago; Larry Moore, defensive end, Angelo State, by Pittsburgh.



16 Pampa, Texas 87th Year Thursday, Jan. 31, 1974

## ABA Declares War

SAN FRANCISCO (UPI) —

The American Basketball Association, its feathers ruffled when the rival National Basketball Association dragged its feet on an agreed merger, declared war today on the NBA.

The first step in its campaign to force a merger or break up the NBA's stranglehold on sites and players, was taken Wednesday when the ABA filed an antitrust suit in San Francisco Federal Court.

The suit asks \$300 million in damages and if successful could throw pro basketball into chaos.

"We are at war," said ABA attorney Frederick P. Purth, who filed the suit. "The NBA has not acted in good faith in seeking a merger, has been guilty of breach of contract, has repeatedly misled legislators and the public with fraudulent statements and has avoided a merger at every turn."

The two leagues signed an agreement in May 1971, which the ABA says bound the leagues to work together toward a merger and jointly urge Congress to pass legislation exempting such a merger from antitrust laws.

In its suit the ABA alleges the NBA has a monopoly on players and is seeking \$100 million, which would be trebled under the antitrust laws. It also has filed three alternative suits for \$100 million each, alleging breach of contract.

More important than the money damages, however, is the ABA's request for an injunction blocking the NBA from signing any college players for the next four years and preventing the older circuit from enforcing all its current contracts beyond their expiration date.

The ABA also seeks to

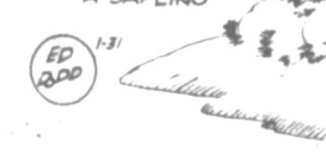
prevent the NBA from signing players to multiyear contracts and from exercising the option clause, which it is asking the court to declare illegal.

The moves in effect would make every NBA player a free agent upon expiration of his current contract. There are some who believe such a ruling would create chaos. ABA commissioner Mike Storen feels otherwise.

"It wouldn't be chaos," he said. "It would be a free and open market."

## Mark Trail's OUTDOOR TIPS

HERE IS A SIMPLE RIG FOR ICE FISHING THAT CAN BE MADE FROM A BAMBOO POLE, OR A SAPLING



## Red, Blue PJH Teams Play Dumas, Hereford

Pampa Junior High's Red teams host Dumas and Pampa Blue travels to Hereford to take on Stanton today in junior high basketball action.

Pampa Blue is undefeated (12-0) in conference play and in first place in the ninth grade. The Red team with a 9-3 mark is second in the standings. The Blue and Red eighth-grade teams are 7-5 and 6-12.

Tuesday, Pampa Red ninth-grade edged Canyon Purple

67-65, in Canyon. The score at the half was tied, 31-31, and Pampa held a 46-41 lead at the start of the fourth quarter.

Randy Britton scored 18 to lead Pampa, followed by Mark Ebancamp with 17. Jerry Franklin with 14 and Mike Lancaster with 10.

In the eighth-grade game, Canyon downed Pampa, 51-30. Kent Romines scored seven for the Pampans.

**SALE**

New Shipment of **INSULATED COVERALLS**

Sizes L-XL  
Now in Stock  
Reg. \$22.95

**\$19.95**

**Berkley Trilene Fish Line 40% Off**

**Pampa Tent & Awning**  
317 E. Brown (May 40) 645-8541

**MONTGOMERY WARD**

**Auto Service Keyed To Beat Energy Crunch**

**WHEEL ALIGNMENT AND BALANCE FRONT WHEELS**  
Correct uneven tire wear; poor steering. We'll align wheels; check caster, camber, and toe-in. **13<sup>88</sup>** MOST U.S. CARS

**WHEEL PACK/BRAKE ADJUSTMENT**  
Repack front wheels, inspect grease seals, adjust brakes, add Heavy Duty brake fluid if needed. **\$300** DISC BRAKES, PARTS EXTRA

**STATE INSPECTION**  
HAD YOUR CAR LUBRICATED LATELY?  
Helps make your car run smoothly, quietly. Bring your car to Wards Auto Service Center today! **1.49** MOST U.S. CARS

**STATE INSPECTION**  
Wards Auto service centers are authorized state inspection stations. Come in for yours today!

one of the most popular pictures of our time

**BILLY JACK**

**ONE WEEK ONLY! CAPRI**

**OLYMPIA STATE MORLEY**  
(Canyon) (Amarillo) (Borger)

**TWIN DI TASCOSA DI**  
(Amarillo) (Amarillo)

**NOW SHOWING THROUGH TUESDAY, FEB. 5**  
Call Theatre for Show Time



# Kuhn Hands Down Decision Against Dick Williams

By MILTON RICHMAN  
UPI Sports Editor  
NEW YORK (UPI) — Quietly and without any fuss, hoping maybe if the whole thing was ignored long enough it might go away, Bowie Kuhn finally has handed down a decision in the Charlie Finley-Dick Williams' tangle.

His decision does little or nothing to unravel it. All it possibly does is make Charlie Finley feel a little better because the last time he had anything at all to do with the baseball commissioner, he was hit with a fine and suspension.

This time Kuhn has ruled in Finley's favor and slapped down both Williams and the club he thought he was going to manage this year—the New York Yankees.

What Kuhn actually did in his decision, issued a few days back, was knock out a secret agreement between the Yankees and Williams.

The agreement was dated Dec. 12, 1973, signed by both Williams and Yankee President Gabe Paul, and drawn up under a number of assumptions.

Assumption No. 1 was that Dick Williams would accept the managership of the Yankees, which he did.

Assumption No. 2 was that Joe Cronin, the American League President at the time, would approve Williams' contract with the Yankees, which he didn't.

Assumption No. 3 was that after Williams' contract with the Yankees was approved, Finley would turn around and sue both, which he won't bother doing now because Bill Virdon,

and not Williams, is going to manage the Yankees.

At any rate, Williams and the Yankees had a separate agreement between them, one which might never have been made public were it not for the hearing Cronin conducted in Boston late last month before issuing his decision.

During that hearing, the Oakland club inquired whether Williams and the Yankees had entered into any separate agreement in addition to the standard contract they had signed.

They admitted they had. "We want to see it," said Charlie Finley's lawyer.

The agreement was produced.

It called for a number of unusual provisions and remains as something of a monument to the esteem in which the Yankees held and-or still hold Dick Williams as a manager.

In the agreement they said to Dick Williams: "We agree to indemnify, defend and save you harmless from (A) all judgments assessed against you by either the Commissioner of Baseball or the American League President arising or resulting from the execution of the contract..."

Of course, Dick Williams was obliged to meet a few provisions also, like accepting the counsel the Yankees would assign him, cooperate with such counsel and not disclose the terms of the agreement, which, in fact, he hasn't.

When the so-called Dec. 12th agreement was produced at the Boston hearing, however, Bowie Kuhn immediately got word of it and subsequently made his decision, copies of which he sent to Williams and Paul.

Elsewhere in the NBA, Boston beat Cleveland, 120-108, New York whipped Kansas City-Omaha, 106-96, Detroit downed Buffalo, 111-96, and Chicago defeated Capital, 103-94.

Jo Jo White's 27 points paced Boston past Cleveland. Veteran guard Lenny Wilkens led the Cavaliers' attack with 24 points. White had 21 of his points in the first half to carry Boston to a 63-55 lead.

obtained against you by the Oakland Athletics Division of Charles O. Finley & Co., Inc., or Charles O. Finley, (B) all legal fees and disbursements of counsel incurred by you in connection with any action or proceeding brought against you by Finley arising or resulting from the execution of the contract, and (C) all fines assessed against you by either the Commissioner of Baseball or the American League President arising or resulting from the execution of the contract..."

Of course, Dick Williams was obliged to meet a few provisions also, like accepting the counsel the Yankees would assign him, cooperate with such counsel and not disclose the terms of the agreement, which, in fact, he hasn't.

When the so-called Dec. 12th agreement was produced at the Boston hearing, however, Bowie Kuhn immediately got word of it and subsequently made his decision, copies of which he sent to Williams and Paul.

Elsewhere in the NBA, Boston beat Cleveland, 120-108, New York whipped Kansas City-Omaha, 106-96, Detroit downed Buffalo, 111-96, and Chicago defeated Capital, 103-94.

Jo Jo White's 27 points paced Boston past Cleveland. Veteran guard Lenny Wilkens led the Cavaliers' attack with 24 points. White had 21 of his points in the first half to carry Boston to a 63-55 lead.

"Having reviewed the Dec. 12th agreement, I'm satisfied it is unenforceable under our rules," said Kuhn. "It has been determined by President Cronin that Mr. Williams remains under contract to the Oakland club. Under these circumstances, it would be improper for the Yankees to pay, or to hold him harmless from, the expenses of any dispute he may have with the Oakland club, or to aid or to counsel him in any such dispute."

Indeed, it would be improper for the Yankees to have any contact or relationship with Mr. Williams so long as he remains under contract to the Oakland club. I will therefore expect the Yankees and Mr. Williams to conduct themselves accordingly. If there is any question about this ruling, I'm prepared

to meet with you and discuss it."

In view of Kuhn's decision, there is little way the Yanks could fire Bill Virdon after a few months or a year and then bring in Dick Williams as some have suggested unless perhaps Charlie Finley sells the Oakland club.

The decision really wasn't that hard to make. As a matter

of fact, it was an almost automatic one and explains a few things.

Like why the Yankees are now keeping their distance from Dick Williams. Like why when you mention Bowie Kuhn to him Dick Williams somehow doesn't say much. And like why Charlie Finley figures he has come out of all this the winner and still champ.

of fact, it was an almost automatic one and explains a few things.

Like why the Yankees are now keeping their distance from Dick Williams. Like why when you mention Bowie Kuhn to him Dick Williams somehow doesn't say much. And like why Charlie Finley figures he has come out of all this the winner and still champ.

## The Pampa Daily News SPORTS

### Golden State Nears 1st Place With Win

By United Press International  
The Golden State Warriors obviously believe a good offense is the best defense.

The Warriors, who beat the Buffalo Braves, 128-121, only 24 hours earlier, outlasted the Atlanta Hawks, 129-122, Wednesday night and moved within 1 1/2 games of the first-place Los Angeles Lakers in the National Basketball Association's Pacific Division.

Rick Barry, who tallied 30 points against Buffalo, was even better against the Hawks, finishing with 40, including 36 in the first three periods. When Barry cooled off, Jeff Mullins picked up the slack, collecting 14 of his 24 points in the last 12 minutes.

Barry's 20-point third period

pushed the Warriors to a nine-point lead going into the final stanza. The Hawks trailed by 15 with 10 minutes to play, but closed within three points before falling back again.

Pete Maravich was high for Atlanta with 33 points.

Elsewhere in the NBA, Boston beat Cleveland, 120-108, New York whipped Kansas City-Omaha, 106-96, Detroit downed Buffalo, 111-96, and Chicago defeated Capital, 103-94.

Jo Jo White's 27 points paced Boston past Cleveland. Veteran guard Lenny Wilkens led the Cavaliers' attack with 24 points. White had 21 of his points in the first half to carry Boston to a 63-55 lead.

### Rhinall nasal decongestants



### Trust In Your REXALL PHARMACIST

For Quality Products and Personal Service ... Your Good Health Is His Most Important Concern!

Texas State Welfare Prescriptions Welcome. City Wide Delivery.



OPEN 8 A.M. TO P.M. DAILY  
CLOSED SUNDAY

FOR EMERGENCY PRESCRIPTIONS CALL...

Bill Hite 669-3107

**Heard-Jones DRUG**

Merlin Rose 669-3559



## CLINGAN TIRES INC.

204 N. Ballard  
665-4671

B.F. GOODRICH-DAYTON-PIRELLI  
BANDAG RETREADING

Cinturato CN75 tubeless whitewall

| TIRE SIZE | Sale Price | FEDERAL EXC. TAX | CORRESPONDING BIAS PLY AND BIAS BELTED CONVENTIONAL SIZES**    |
|-----------|------------|------------------|--|
| 185-13    | \$38.63    | \$2.19           | 7.00/7.25/7.35/7.50-13, 185-13, D70-13, C78-13                 |
| 185-14    | \$38.63    | 2.27             | 6.50/6.95/7.00/7.35-14, D70-14, E70-14, C78-14, D78-14, E78-14 |
| 195-14    | \$41.81    | 2.62             | 7.50/7.75-14, F70-14, F78-14                                   |
| 205-14    | \$44.63    | 2.84             | 8.00/8.25-14, G70-14, G78-14                                   |
| 215-14    | \$49.88    | 3.01             | 8.50/8.55-14, H70-14, H78-14                                   |
| 185-15    | \$41.63    | 2.42             | 6.50/6.70/6.85/7.35-15, D70-15, E70-15, D78-15, E78-15, E60-15 |
| 195-15    | \$43.14    | 2.62             | 7.75-15, F70-15, F78-15, F60-15                                |
| 205-15    | \$48.38    | 2.83             | 7.10/8.15/8.25-15, G70-15, G78-15, G60-15                      |
| 215-15    | \$53.63    | 3.06             | 7.00/7.60/8.45-15, H70-15, H78-15                              |
| 225-15    | \$60.75    | 3.35             | 8.00/8.20/8.55/8.85/9.00-15, J70-15, K70-15, J78-15            |



25% OFF

**PIRELLI**  
CINTURATO CN75

**STEEL\*BELTED RADIAL TIRE**

\*Trac-Steel 21®

Cinturato CN75

Performance superiority

**HANDLING:** Comparable to the best radial tires on European cars. Gives most drivers a firmer feel of the wheel and a greater sense of car control.

**MILEAGE:** Guaranteed for 40,000<sup>†</sup> miles without usual rotation requirements. Will wear evenly with proper car maintenance, inflation pressures and balancing.

**STRENGTH:** Highly resistant to punctures and most other common road hazards. Greater protection against troublesome flats and dangerous breaks and bruises.

**DURABILITY:** Cool running and less susceptible to blowouts and tread separations. Can be driven long distances at sustained maximum speed limits.

**QUIET COMFORT:** No harshness. No hum. No vibration to disturb the smooth ride of luxury cars. Actually improves riding characteristics of many cars.

**ECONOMY:** Dollar advantages resulting from extra tread mileage and lower gasoline consumption more than offset slightly higher initial cost. Greater overall value.

2500 ODDS AND ENDS CLEARANCE 2500  
Any Size Listed, \$25.00, Each including F.E.T.

- 2-J78x15 Dayton Thorobred 2 plus 2 belted whitewalls
- 3-H78x15 Dayton Thorobred 2 plus 2 belted whitewalls
- 8-G78x15 BFG Custom Pursuit 4 ply nylon whitewalls
- 6-H78x15 BFG Custom Pursuit 4 ply nylon whitewalls
- 2-H78x15 BFG Silvertown HT 4 ply polyester whitewalls
- 4-H70x15 Avalon 4 ply polyester, raised letters
- 1-G78x15 Goodyear Polyglass changeover whitewalls
- 4-F60x15 BFG "Stamper" belted, raised letters

OFFICIAL VEHICLE INSPECTION STATION



## IT HAPPENED LAST NIGHT Crisis Bands People Together

By EARL WILSON  
NEW YORK — David Janssen delivered the cheerful opinion that the energy crisis has shown that the American people are capable of banding together and helping each other.

"We were asked to cut gas consumption 10 per cent but in some places we voluntarily cut 18 or 19 per cent," he said. "If I had a gas station, I'd say 'First come, first served.' I'd have closed up and gone home. But those gas station guys showed some style and tried to serve everybody."

Tall, handsome David has a character named Harry O., a retired detective living on the beach, doing some private-eyeing on the side, who sees good in the gas shortage.

"I'll ride the bus," declares Harry O. "Where else can you get this big a car for yourself, and a driver so you can doze off?" Also, instead of worrying about gas, he can get gassed.

It's in Janssen's special 2-hour ABC-TV suspense movie on Feb. 3, "Smile, Jimmy, You're Dead." It's his fifth pilot.

"If this one becomes a series, it'll give me four out of five — not bad." The three that clicked were "Richard Diamond, Detective," "The Fugitive,"

and "O'Hara, U.S. Treasury." One that didn't was with Carroll O'Connor.

Janssen never objects to being asked "whether I'm engaged, divorced, married or involved."

"You know," he said, having a drink at Gallagher's. "I've been going with Dany Greco. Right now we feel no need to march down the aisle. I suppose I will someday. You no longer get stoned out of the community for living together. There are more important things than just being married."

"Does Dany agree with that?" "I was crude enough to ask."

"She'd better," said Janssen. "or I'll rap her on the knuckles."

And I think I had better add, he smiled when he said it.

**THE MIDNIGHT EARL...**  
Carol Channing, after a triumphant "Lorelei" preview, was guest at a Dramatists Guild supper at "the Penthouse" on the 11th floor of the Sardi's Bldg. Few of the guests knew that this penthouse was the home of the late J.J. Shubert and that its front door is an art treasure because of its eroticism. Playwright Edward Albee voted to prevent the Dramatists Guild from accepting it, later explaining, "I hoped to get that door for my own collection."

Tina Russell of the poppic "Not Just Another Woman" confessed at a party at the English Pub that she's from Pennsylvania but she wouldn't say where. Her parents understand what sort of work she's doing "but the neighbors might not." Liz Taylor and Richard Burton are due here any day, changing planes to fly to Puerto Callarta, Mex. for three weeks ... Margaret Hamilton, the "wicked witch," is up for the Hermione Ginkgold role in the road company of "Little Night Music" ... Producer Richard Adler hopes to move "Pajama Game" to the Mark Hellinger or ANTA.

Satirist David Steinberg, who doesn't like President Nixon — nor David Eisenhower either ("I'm against the whole family") — told a packed house at Max's Kansas City that Watergate "is the torn underwear under America's tuxedo."

Gene Kelly saw "Raisin" and went backstage — to talk to the dancers, not the principals ... Bob Dylan turned down a \$2 million offer for film rights to her concert tour ... Jason Robards was asked how long his hit show, "A Moon For the

## TO YOUR GOOD HEALTH How Fast Does Ulcer Grow?

By G.C. THOSTESON, M.D.  
Dear Dr. Thosteson: How fast can a peptic ulcer grow? I had a thorough examination and the doctor said there was no ulcer, but three months later I had a perforated ulcer in the pylorus area. Please send me your booklet, "How to Heal Peptic Ulcers and Keep Them Healed," for which I enclose 25 cents and a stamped, self-addressed envelope.

—E.H.

Your situation is not so very unusual for an ulcer can develop very rapidly.

Often there may be symptoms suggesting an ulcer before the ulcer actually appears. For example, X-rays may show coarsened folds of the membrane but no actual ulceration.

There may be inflammation of the membrane which lines the stomach or duodenum (that would be gastritis or duodenitis), and if one could look directly at the membrane it would appear red and swollen but without an actual break in the membrane.

At this stage, there then can be erosion into the membrane, and when (or if) that occurs, the result is an ulcer. If the erosion continues through the muscle

wall, that is perforation, and that is of course, serious.

The rate at which this erosion progresses depends on the degree of irritation, which in turn depends upon several factors: the motility (movement) of the intestinal tract, the amount of acid, the question of whether diet is bland or adds to irritation of the area. And, frankly, there probably are other factors involved which are difficult to assess. But it is possible for the erosion to be rapid, and other patients have experienced the same thing.

Still another occurrence sometimes is misleading. An ulcer may exist and bleed somewhat — enough so clotted blood fills the rather shallow defect or ulcer. An X-ray at this particular moment may not show the ulcer because it is temporarily filled with the blood clot. Later, after scar tissue forms, the ulcer will be visible.

Hence whoever read your X-rays cannot be criticized if the ulcer was not at that time visible. If, indeed, that was what happened in your case.

In any event, it is well to remember that, with all the tests which have been devised, medicine is not a science of mathematical precision. Most of the time — yes, definite diagnoses are possible. But the human body is an immensely complicated thing, and one cannot always foresee every possible variation.

That's why the great physicians have a strong streak of humility, too. Medicine has come a long way from its rudimentary beginnings, but complete perfection is something nobody can guarantee.

Dear Dr. Thosteson: I was in a tuberculosis hospital for 10 months 13 years ago, weighed about 100 pounds when admitted, now weigh 120 and am 5-foot-2.

I am 65 and still working, very active, no medical problems that I know of. I do nightly exercises before retiring to keep from getting stiff and help keep my weight down. Would these exercises (some are push-ups) be harmful in an arrested case of tuberculosis or make it appear again?

—J.M.E.

Exercises won't make the disease return; they will keep your muscles in trim. No harm in continuing, just some good.

Dear Sir: As a point of information, is a prostate condition created by a nervous condition?

—I.S.

No.

To learn the major categories of prostate trouble — symptoms, treatment, how to speed recovery — write to Dr. Thosteson in care of Publishers - Hall Syndicate, 401 N. Wabash Avenue, Chicago, Ill. 60611, for his booklet, "The Pesky Prostate," enclosing 25 cents in coin and a long, self-addressed (use zip code), stamped envelope to cover cost of printing and handling.

Dr. Thosteson welcomes all reader mail, but regrets that, due to the tremendous volume received daily, he is unable to answer individual letters. Readers' questions are incorporated in his column whenever possible.



## Your Horoscope

By Jeane Dixon

**FRIDAY, FEBRUARY 8**  
Your birthday today: Opens a year of search for an ideal—not so much turning away from what you have, but building it up toward perfection. Relationships deserve your full attention, towards broader acceptance of others as they are rather than what you may want them to be. Today's natives frequently distinguish themselves in specialized fields, usually mental, but are not to be taken as a group sharing similar callings.

**Aries [March 21-April 19]:** Accent is on finances. The more prestigious the source of advice, the less likely it fits your personal case, so do your own thinking.

**Taurus [April 20-May 20]:** In this day of mixed influences, you are just as difficult to please as anybody. In vacation you have some initiative; just make sure you're being consistent.

**Gemini [May 21-June 20]:** There are factors at work outside your direct knowledge which are hard to evaluate. Time out for a brief thinking session brings better perspective.

**Cancer [June 21-July 22]:** Differences of opinion are normal, urgently demanding attention. You should adjust your own schedule and program to cater to your financial aims.

**Leo [July 23-Aug. 22]:** Much is made of slight lapses and discrepancies today. Exert your brightest charm

while following a very conservative course of action.

**Virgo [Aug. 23-Sept. 22]:** The interesting feature today is finding out that what you had in mind isn't quite what it seemed to be. Discretion leaves you much freer to function.

**Libra [Sept. 23-Oct. 22]:** Special caution with joint financial funds is indicated. In many public representations, there is less than meets the eye.

**Scorpio [Oct. 23-Nov. 21]:** Your tact and patience bring their own rewards, may appear to go unnoticed. Tomorrow everything has a completely different aspect and you wonder why.

**Sagittarius [Nov. 22-Dec. 21]:** If you want the job done right, do it yourself. If you can't attend to all of it yourself, try for a postponement until an easier time.

**Capricorn [Dec. 22-Jan. 19]:** Let well enough alone in nearby practical arrangements. This is not the time to commit yourself to experimental schemes or investment risks.

**Aquarius [Jan. 20-Feb. 18]:** Temptation to go ahead with home and vocational changes is strong but premature. Take special care with hazardous materials if you must handle them.

**Pisces [Feb. 19-March 20]:** You are on your own now, with little dependable news of subtle variations in the broad schedules of living. Take each minute as you get to it.

## BIG GEORGE!



**Old Fish**  
**MIAMI BEACH (UPI)** — A fish estimated to be 90 million years old is now on display at the Museum of Science.

The 14-foot-long specimen, known as the Xiphactinus, weighed about 1,000 pounds when it was alive. It swam in a sea which covered most of the midwestern United States during the late Mesozoic era.

**COMPARE BEAUTY**  
Quality and Price  
Brown Monument Works  
1025 S. Paulkner Pampa  
Vince Marker, Representative

**3 Personal**  
ALCOHOLIC ANONYMOUS and Al-Anon meet every Tuesday and Saturday at 4 p.m. 727 W. Browning. Welcome. Call 665-1242 anytime.

**ACTION GROUP** Alcoholic's Anonymous and Al-Anon meet Sunday 7 p.m. and Thursday 8 p.m. at 639 S. Barnes. Call 669-6165, 665-2884, 669-3525, 669-3873 or 665-1029.

**DRUGS ANONYMOUS** Self-help for youth with drug abuse problems. Patered after A.A. 665-1925 or 669-3673 anytime.

**4 Not Responsible**  
AS OF this date, January 29, 1974, I, James Ledbetter will be responsible for no debts other than those incurred by me.

Signed-James Ledbetter

**5 Special Notices**  
SPOTS BEFORE your eyes on your new carpet-removes them with Blue Lustre, Best Electric shampooer. 81. Pampa Hardware.

**TOP O TEXAS** Masonic Lodge No. 1281, Monday, January 29 and Tuesday, January 30, study and practice.

**PAMPA MASONIC** Lodge No. 968, Monday, February 5, study and practice. Tuesday, February 6, stated meeting. Very important meeting. Members please be present.

**LEGAL NOTICE**  
TO WHOM IT MAY CONCERN  
The Commissioners' Court of Gray County, Texas, will receive bids until 10:00 A.M. February 14, 1974, for all and gas lease on the following school lands (enclosed) located in Galveston County, Texas:

Block 1  
League 2  
Acres 200.00

Bids should be addressed to the County Judge of Gray County, P.O. Box 2106, Pampa, Texas.

The Commissioners' Court reserves the right to waive technicalities and reject any or all bids.

**DOR CAIN**  
County Judge  
Gray County, Texas

January 29, 81, 1974  
February 7, 1974

**2 Memorials**  
MONUMENTS, anything in Memorials. Lowest prices, best materials. 1111 S. Hobart. Fort Monument 665-5522.

# classified ads get the job done

Try One...It's Easy...Just Phone THE NEWS 669-2525 For Fast Results!

### 5 Special Notices

**TOP OF TEXAS** Scottish Rite Association meeting Friday, February 1, 7:30 p.m. at the Top of Texas Lodge. Election of officers.

**PAMPA COMMANDERY** No. 87 K. T. Annual inspection Monday, February 4, 1974. Dinner at 6:30 p.m. at Pampa Shrine Club. Meet in Pampa Lodge No. 904 at 7:30 p.m.

**WHY DO** hundreds of people shop **Pordable Fashions?** Because of the top lines of merchandise they handle. Because of the low prices they find. Because of the friendly service they receive before and after the sale. Shop **Pordable Fashions**, where hundreds of other satisfied customers shop. Your business is appreciated. Use your BankAmericard, Master Charge or our Layaway. "Drive A Little And Save A Lot."

**Pordable Fashions**  
Coronado Shopping Center 665-1471

### 10 Lost and Found

**LOST:** SMALL male Pomeranian, reddish brown named Tyke. 10 years old, needs special food and medication. Is family pet, but left without tags. 669-7739 or return to 2555 Aspen. Reward offered.

### 14B Appliance Repair

**CLARK'S WASHER SERVICE**  
Serving in Pampa 18 Years  
1121 Neel Road 665-4522

### 14D Carpentry

**RALPH BAXTER**  
CONTRACTOR AND BUILDER  
ADDITIONS - REMODELING  
PHONE 665-5346

ADDITIONS, REMODELING of all kinds. For free estimates call Jerry Reagan, 665-9747 or 665-3548.

**FOR ROOMS, Additions, Repairs,** Call R.R. Jeter Construction Company, 665-3561. If no answer 665-3794.

### 14J General Repair

**WEST TEXAS Shaver Repair.** "ONLY" Authorized Service. All makes repaired under warranty. 2122 N. Christy. 669-6818.

### 14N Painting

**DAVID HUNTER**  
PAINTING AND DECORATING  
ROOF SPRAYING. 665-2983

**PAINTING, CAULKING,** window repair and roof repair. Free estimates. 665-3486.

**BILL FORMAN'S** furniture refinishing, quality furniture refinishing for you. 665-4665.

### 14P Pest Control

**TERMITE AND Pest Control.** House leveling. Taylor Spraying Service. 669-9992

### 14S Plumbing & Heating

**Builders' Plumbing Supply**  
The Water Heater People  
535 S. Cuyler 665-3711

### 14T Radio & Television

**GENE & DON'S T.V.**  
Sylvania Sales and Service  
300 W. Foster 665-4481

**HAWKINS-EDDINS**  
APPLIANCE  
854 W. Foster 912 Kentucky

**JOHNSON HOME FURNISHINGS**  
MOTOROLA CURTAINS-MATHES  
Sales and Service  
406 S. Cuyler 665-3361

**GLENN'S TV SERVICE**  
RCA - ZENITH  
Authorized Service  
1312 N. Hobart 669-9721

**CAR RADIOS and Tape Players**  
Repaired After 6 - 665-5364  
961 Terry Road

### 14U Roofing

**ROOFING:** Hot Asphalt, shingles, shakes. All work guaranteed. Call collect Amarillo 574-5796.

### 14X Tax Service

**CIT INCOME Tax Service.** \$5.00 and up. 1412 N. Hobart. 665-8461.

**FOR QUOTE** refund, file early. Personal income tax return prepared in the privacy of your home. For information call 665-8145 after 4 p.m.

### 18 Beauty Shops

**PAMPA COLLEGE OF HAIRDRESSING**  
613 N. Hobart 665-3521

### 21 Help Wanted

**YOUNG MALE** trainee for cooking and kitchen work. Apply in person only. Kentucky Fried Chicken. 1591 N. Hobart.

**WANTED:** Good professional nursing personnel (R.N.'s) at Highland General Hospital, Pampa. 128 bed facility, fully accredited by J.C.A.H. and licensed by the Texas Hospital Association. Excellent salaries and fringe benefits. All shift openings. Apply: Director of Nursing Services, Highland General Hospital, Box 2217, Pampa, Texas 79065. 665-885-3721.

**BOOKKEEPER:** Accounts payable department. Must understand double entry bookkeeping. Good pay with company benefits. Apply in person. Wheatheart Feeders, Inc. 315 S. Main, Parytton, Texas. 665-6881.

### 21 Help Wanted

**EXECUTIVE SECRETARY:** Responsible position requiring highly intelligent self-motivated individual. Good memory a must. Excellent typing. Ability to use 10 key adding machine. Limited bookkeeping experience helpful. Tremendous future. Apply in person. Wheatheart Feeders, Inc. 315 S. Main, Parytton, Texas 79076. 625-6881.

**EXPERIENCED MECHANIC** Wanted. Must have SOLID work experience and references in gasoline and diesel equipment. Some hydraulic helpful. Apply to Crowe-Guidice, Inc. 201 Manhattan, Amarillo, Texas. 689-373-4595, Dub Ash.

**WANTED: MECHANIC** to repair small engines. Apply in person. Radcliff Electric Co., 519 S. Cuyler Street, Pampa.

### 48 Trees, Shrubbery, Plants

**DAVIS TREE SERVICE AND NURSERY:** PRUNING, TREE SPRAYING, FEEDING, TRIMMING AND REMOVAL. FREE ESTIMATES. J. DAVIS 665-5656.

**PAX EVERGREENS,** rosebushes, garden supplies, fertilizer, trees. **BUTLER NURSERY** Perryton Hi-Way & 28th 669-9681

**FOR ALL your gardening needs.** Specializing in tropical plants. Rice's, 1945 N. Hobart. 665-5851.

**LARGEST NURSERY** Selection in Pampa. Farm and Home Supply. Price Rd. 669-9623

### 50 Building Supplies

**Archies Aluminum Fab**  
Storm doors & storm windows  
461 E. Craven 665-8786

**Houston Lumber Co.**  
120 W. Foster 669-6881

**White House Lumber Co.**  
161 S. Ballard 669-3291

**Plastic Pipe Headquarters**  
Builders Plumbing Supply  
535 S. Cuyler 665-3711

**Pampa Lumber Co.**  
1301 S. Hobart 665-5781

### 59 Guns

**WESTERN MOTEL**  
Guns, ammo, reloading supplies. Scopes, mounts, etc.  
Open 8 AM-8 PM Every Day.

### 60 Household Goods

**WRIGHTS FURNITURE AND MACDONALD PLUMBING**  
513 S. Cuyler 669-6521

**Shelby J. Huff Furniture**  
2111 N. Hobart 665-3548

**TEXAS FURNITURE CO.**  
Nice collection of used furniture.  
210 N. Cuyler 665-1823

**Jess Graham Furniture**  
1415 N. Hobart 665-2222

**SEE the big furniture showroom at the old B&R furniture building.**

**LINDSEY FURNITURE MART**  
165 S. Cuyler 665-3121

**JOHNSON HOME FURNISHINGS**  
406 S. Cuyler 665-3361

**Elegant Furniture At Prices You Can Afford**  
**CHARLIE'S**  
Furniture and Carpet  
1304 N. Banks Ph. 665-4122

**69 Miscellaneous**  
GERT'S a gay girl-ready for whirl after cleaning carpets with Blue Lustre. Rent electric shampooer \$1. Pampa Glass & Paint.

**SADDLE SHOP.** Build, repair, clean, oil. See Ray at Sam's Shoe Service. 100 W. Francis.

**CAKES:** By Paula Stephens. Weddings, Birthdays, or special occasions. 665-2162 or 665-2168

**FIREWOOD, OAK and hickory,** 645 a cord, mossy 545 rick, elm and cotton-wood 535 rick. 665-4876 or 665-4637.

**SPECIAL KIRBY SALE**  
Unbelievable prices on all models. Phone 665-2894. 512 1/2 S. Cuyler. Bison Company.

**FREIGHT DAMAGED ELECTROPHONIC CONSOLE** stereos with picnic finish, mediterranean styling, AM-FM radio, built-in track tape player, 4 speed record changer, 4 speaker system. Regularly \$299.95. Damaged during shipment. Now only \$145 or \$10 monthly at Martin's Sound Center, Corner of Georgia and I-40, Amarillo.

**CUSTOM DRAPERIES,** shades, bedspreads 2 to 3 weeks delivery. Mrs. Berdona G. Neef, 669-6100 or 665-8663. 2419 Mary Ellen.

**FM CAR Tape Deck.** Like new. 800. 665-1735.

**CALL BILL M. Derr** at Jim McBroom Motors for a good deal. Service is Bill's middle name. 665-2338.

### 69 Miscellaneous

**FIREWOOD FOR Sale:** 650 a cord 4'x8" or rick 2'x8" at \$25. Will deliver. Call 578-2534 Sanford.

**GOOD USED lumber** for sale. Call 665-3486.

**FOR SALE:** Beauty shop equipment. Two complete units. 669-7707 or 665-9295.

**FOR SALE:** 337 block and heads. Bell housing, 3 speed standard transmission. Any or all together. 1187 Huff Road.

**28" ZENITH Color Console** television for sale. Good condition. 1187 Huff Road.

### 70 Musical Instruments

**New & Used Band Instruments**  
Rental Purchase Plan  
Tarpley Music Co.  
117 N. Cuyler 665-1251

**Lovely Piano & Organ Studio**  
Coronado Shopping Center  
669-3121

**FOR SALE in Pampa:** Nearly new spinet piano. Concert approved. Tremendous bargain. This is your chance to own a fine piano by assuming small payments. Write at once. McFarland Music Co., Elk City, Okla. 79644.

### 75 Feeds and Seeds

**ALFALFA CUBES,** Britt Hathaway. McLean. 778-2565.

### 77 Livestock

**DEAD STOCK Removal:** 7 days a week. Pampa Bi-Products. 665-9441.

### 80 Pets and Supplies

**SEE THE cuddly Pom-Poo puppies.** Hundreds of tropical fish. Underwater plants. Visit the Aquarium, 2314 Alcock.

**TURTLES, FEMALE Boston Terrier** Puppy, shots, 665. Grooming, 100%. Pampered Poodle Parlor, 109% W. Foster.

**POODLE GROOMING,** 665-5635.

### 84 Office Store Equipment

**RENT** latest model typewriters, adding machines or calculators by the day, week or month.

**TRI-CITY OFFICE SUPPLY,** 113 W. Kingsmill 665-5555

### 95 Furnished Apartments

**1 BEDROOM,** central heat and air. Bills paid. \$99 month. \$25 deposit. Q. Williams Realtor. 669-1522. 9 to 5 only.

**FOR RENT** furnished 3 room apartment. Water and gas paid. No pets. Call 665-8135.

**LARGE 3 room apartment.** Vented heat. No pets. Bills paid. Inquire 616 N. Somerville.

**FOR RENT:** Nice furnished 3 room apartment. Close in, reasonable. 665-1528.

**NICELY FURNISHED 3 room** apartment. No pets. 618 N. Frost. 669-9518.

**3 EXTRA LARGE rooms.** Well furnished. Private bath. TV. Bills paid. 669-3768 or inquire 519 N. Stark-weather.

### 97 Furnished Houses

**3 BEDROOM house,** 676 1/2 Bedroom house, 800 216 E. Campbell. Call 665-3254 or 665-5227.

**2 BEDROOM furnished house** for rent. Fenced yard. 665-8378.

**4 ROOM furnished house** for rent. 2 baths. fully carpeted. Garage. 665-8378.

**LARGE PARTIALLY** carpeted 3 bedroom, plumbed for washer. Electric and gas outlets in kitchen. Fenced back yard, garage, TV antennas and cable. Also furnished apartment. Set at 515 N. Stark-weather.

**3 BEDROOM unfurnished house.** Available February 1st. Inquire 1001 E. Foster after 5:30 p.m. weekdays.

**2 BEDROOM house.** Just redone. 409 E. Kingsmill. New shag carpet throughout, cleanest rent property. Neat but small. Couple type. \$56.99 deposit and \$109 monthly. Call any time. 669-3901.

### 102 Business Rental Property

**OFFICE SPACE** available. Pioneer Offices, 317 North Ballard. Apply at B&B Pharmacy, 665-5788.

### 103 Homes For Sale

**FOR SALE:** 942 S. Dwight. 2 bedroom home. 2 car garage. Almost furnished. Price \$3,500. MLS 482.

**Malcom Denson Realtor**  
MEMBER OF MLS PMA-VA  
Equal Housing Opportunity  
665-5622 Res. 665-5643

### NEW HOMES

**Houses With Everything**  
Top O' Texas Builders, Inc.  
Office John R. Conlin  
669-3542 665-5879

### 103 Homes For Sale

**W.M. LANE REALTY**  
Equal Housing Opportunity  
669-3641 Res. 665-9094

**Nice 2 and 3 Bedroom homes.** Carpeted, garage, fenced. Easy terms. E. Smith Realty  
2400 Rosewood 665-4535  
I.L. Dearen 669-2800  
Dick Bayless 665-8648  
Equal Housing Opportunity

**EAST FRASER,** 3 Bedroom, 1 1/2 baths, woodburner, refrigerator, air, 2200 square feet. 665-8515.

**FOR SALE:** 3 bedroom home. 668-8457.

**FOR SALE:** Small two bedroom home in Lefors. 207 W. 2nd. 833-2739. Lefors.

**3 BEDROOM, 1 1/2 baths,** living room, dining room, carpet, fenced back yard, double garage, corner lot. See at 2101 Hamilton or 669-7716 after 6 p.m. weekdays.

**NOW AVAILABLE** 2 bedroom, den, new carpet, fireplace in East Fryaser. Equity buy or new loan. 669-7164.

**3 BEDROOM, 1 1/2 baths,** brick. Equity and 5% per cent loan. 1913 Christy. 669-8107 for appointment.

**3 BEDROOM, double garage,** 1 1/2 baths, corner lot in North East. Being transferred, \$800 and assume loan. 3013 Rosewood, or call 665-8158.

### 104 Lots For Sale

**SPACES 1-4-7-8** of Lot No. 266 in Memory Gardens. \$100 a space. Call 273-7178 Borger.

### 110 Out Of Town Property

**TWO BEDROOM** home to be moved. Central heat, paneling, fully carpeted, electric built-ins with dishwasher. 646-2530 or 646-2542 Skellytown.

### 112 Farms and Ranches

**HEDLEY AREA**  
300 ACRES: 49 acre apple and peach orchard, 168 acre cotton and grain. 100 acre pasture, some sub-irrigated with pond and creek. Stock coral, metal tool shed, silo, well and house. All minerals with land. Orchard will make payments. Owner will finance. Ten percent down with eight percent interest. Write, Box 527, Lubbock, Texas 79408.

### 114 Trailer Houses

**Travel Trailer and Camper**  
**REPAIR PARTS**  
All Makes and Models  
**SUPERIOR SALES & RENTALS**  
1018 Alcock 665-3166

### 114A Trailer Parks

**TRAILER TOWN**  
425 Tignor 665-6597

**TRAILER SPACE** for rent. Hi-Land Mobile Park on W. Kentucky.

### 114B Mobile Homes

**FOR SALE:** Mobile home 12x64 tri-level. Chateau by New Way. Three bedrooms, two baths. Call 883-6852. Little Deer.

### 114C Campers

**HOSKINS CAMPER SALES**  
Campers and accessories also rentals. Skellytown.

**BUY NOW** and save on all trailers, campers, and motor homes. We have fuel tanks for all kinds of pickups. Bill's Custom Campers. 665-4315.

### Ewing Motor Company

1200 Alcock 665-5743

**CALL BILL M. Derr** at Jim McBroom Motors for a good deal. Service is Bill's middle name. 665-2338.

**New CL 350 Street Scrambler, Electric Start, 60 Plus Miles Per Gal. On Reg. Gas**  
.....\$899

**New CB 125 Super Sport Street, 90 Plus Miles Per Gal. Disc Brakes**  
.....\$599

**SHARP'S HONDA**  
800 W. Kingsmill  
665-4063

**HELP WANTED MEN**  
NO EXPERIENCE NECESSARY  
STARTING WAGES \$2.70 hr.  
ALSO NEED SECRETARY and ELECTRICIAN

**PACKERLAND PACKING CO.**  
PAMPA  
PH. 669-7471

### 114C Campers

**CAB OVER CAMPER SPECIAL**  
Price Reductions On All Campers  
**SUPERIOR SALES & RENTALS**  
1018 Alcock 665-3166

### 120 Autos For Sale

**HAROLD BARRETT FORD CO.**  
"Before You Buy Give Us A Try!"  
701 W. Brown 665-9494

### B&B AUTO CO.

807 W. Foster 665-2338

### CULBERSON-STOWERS

Chevrolet Inc.  
806 N. Hobart 665-1605

### PAMPA MOTOR CO. INC.

533 W. Foster 669-2371

### JIM MCBROOM MOTORS

807 W. Foster 665-2338

### CASH FOR USED CARS

**JONAS AUTO SALES**  
748 Brown 665-5991.

### TOM ROSE MOTORS

301 E. Foster 669-3233

### CADILLAC - OLDSMOBILE

**C.C. MEAD USED CARS**  
313 E. Brown

### C. L. FARMER AUTO CO.

Sales & Service  
623 W. Foster 665-2131

### INSPECTED USED tires

Guaranteed 12 months, 95 and up. Free mounting. Pirestone 120 N. Gray.

### PANHANDLE MOTOR CO.

805 W. Foster 669-9901

### Pampa Chrysler-Plymouth Dodge, Inc.

821 W. Wilks 665-5786

### WANTED: ANTIQUE CARS

At Western Motel

### S.I.C. AUTO LOANS

300 N. Ballard

### IMMEL AUTO-Cycle Shop

Pickup and delivery. Reasonable rate. Free estimates. Open 7 days a week. 669-6500 or 669-9522.

### 1974 FORD BRONCO, 4 wheel drive.

1946 JEEP, 4 wheel

**THIS PIZZA REALLY PASSES!  
 All about a Tuna pie "Full of Health"**

If you're savvy about nutrition you know how good tuna is! It's a complete protein food. In fact, its complete protein is comparable to lean beef. But this isn't the only reason it's an important main-dish food. Sure, it's convenient and economical and easy to use—and satisfying—even for demanding appetites. But, even more, it's great by itself and just as great with all kinds of foods and seasonings.



OUTSTANDING NEW "HEALTH" DISH FOR DINNER... Luscious tuna-vegetable-cheese filling is baked in a crunchy pastry crust of whole wheat flour, wheat germ and sunflower seeds. In terms of nutrition and flavor, it's terrific! Easy on the finances, too! Canned tuna does a lot for inexpensive "stretcher" foods.

A couple of cans of tuna packed in vegetable oil go a long way and add lots of pleasure when you use them imaginatively with other wholesome foods—especially whole grain "stretchables" and vegetables.

Here's an outstanding example of a healthful dish, attractive and interesting enough for gourmets and gluttons alike. It's called—fancifully—Tuna Pie Full of Health, a designation that suits it to a "T". It has a crisp, nut-like crust of brown rice, whole wheat flour, wheat germ and sunflower seeds, and a filling of tuna, broccoli, carrots, celery, Swiss cheese, eggs and milk. You bake the crust first and while it's cooling, you put together the filling, beat the eggs and milk together and mix in all the other ingredients. Then the pie goes into a 325°F. oven for about 1 hour, and when it emerges, you have a dish to be proud of!

**TUNA PIE FULL OF HEALTH**

**Crust:**  
 1 cup cooked brown rice  
 1 cup whole wheat flour  
 1/3 cup sunflower seeds  
 2 tablespoons wheat germ  
 1 teaspoon salt  
 1/8 teaspoon pepper  
 1/3 cup salad oil  
 1/3 cup milk

Mix cooked rice, flour, sunflower seeds, wheat germ, salt and pepper in a bowl. Stir in oil and milk. Roll out dough between two pieces of waxed paper to a 10-inch round. Remove top piece of waxed paper and turn pastry into a 9-inch pie plate. Remove second piece of waxed paper. Bake in a 400°F. oven for 20 to 25 minutes, until lightly browned. Cool.

**Filling:**  
 4 eggs  
 1 1/2 cups milk  
 2 cans (6 1/3 or 7 ounces each) tuna in vegetable oil  
 1 cup thawed frozen chopped broccoli  
 1/2 cup shredded Swiss cheese  
 1/3 cup chopped celery  
 1/3 cup chopped pared carrot  
 1 teaspoon salt  
 1/8 teaspoon pepper

Beat eggs with milk. Add tuna, broccoli, cheese, celery, carrot, salt and pepper; mix well. Turn into baked pie shell. Bake in 350°F. oven for 1 hour or until tip of knife inserted in center comes out clean. Let stand 10 minutes before serving.  
 YIELD: 6 servings.

The population density in the United States is 59 persons per square mile, compared to 250 per square mile in China; 720 in Japan, 819 in the Netherlands and 822 in Belgium.

More than 75 per cent of the recreation Americans participate in takes place close to home, after work, after school or on short trips, according to the National Automobile Club.



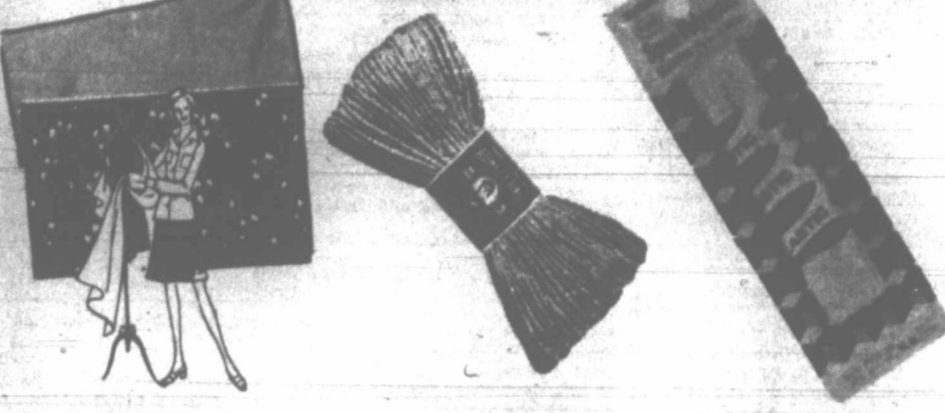
**Wink's Meat Market**  
 Quality Meats Are Our Specialty  
 400 N. Cuyler 669-2921  
 Open 8:00 a.m. to 6:30 p.m. Monday Through Saturday  
 All Our Meats Are U.S. Inspected and Graded

|  |                        |
|--|------------------------|
| <b>HALF BEEF</b><br>U.S.D.A. Choice<br>Cut, Wrapped, Frozen    | <b>95¢</b><br>.....lb. |
| <b>PORK LIVER</b><br>Sliced                                    | <b>29¢</b><br>.....lb. |
| <b>Backbone and Ribs</b><br>Country Style, Lots of Meat, Fresh | <b>79¢</b><br>.....lb. |
| <b>Pork Chops</b><br>Center Cut<br>Fresh<br>Tender             | <b>79¢</b><br>.....lb. |
| <b>PORK CHOPS</b><br>Lean Cut,<br>Fresh, Tender                | <b>89¢</b><br>.....lb. |
| <b>BOLOGNA</b><br>Wright's<br>All Meat<br>Market Sliced        | <b>89¢</b><br>.....lb. |

**DUCKWALL'S**



**HONEST Values**



**POLYESTER KNITS**  
 Choose double knits or warp knits in fancies or solids. 60" Width.  
**\$1.77** Yd.  
 Our Reg. \$2.98

**AUNT LYDIA'S RUG YARN**  
 Ideal for rugs, purses, slippers. 75% Rayon-25% Cotton. 70 yd. Skein.  
**27¢** Skein  
 Our Special Price

**POLYESTER ELASTIC**  
 Assorted widths from 1/8" to 1". Washable and dry cleanable. A good buy!  
**26¢** Pkg.  
 Our Reg. 50¢

**POLYESTER FIBER FILLING**  
 Perfect stuffing for toys, pillows.  
 1 lb. Bag  
**99¢** Bag  
 Our Reg. \$1.49

**AFGHAN-CAPE KITS**  
 Crochet a cape or afghan in ripple designs or fisherman knit. Kits contain Acrylic yarn that's machine washable, dryable.  
**\$4.77** Ea.  
 Our Reg. \$5.99

**BATH TOWELS**  
 Cotton terry towels. Colorful styles. Slightly irregular.  
**66¢** Ea.  
 Our Reg. 88¢

**BOXED CARDS**  
 Beautifully designed greeting cards to suit every occasion.  
**33¢** Box  
 Our Reg. 59¢

**CHARMIN NAPKINS**  
 Assorted Colors  
 60 in Pkg.  
**5 Pkgs. 49¢**  
 For  
 Our Reg. 2 Pkgs. for 29¢

**SCOTTIES TISSUES**  
 White or Colors  
 200 in Box  
**3 Boxes 96¢**  
 For  
 Our Reg. 40¢

**WASH CLOTHS**  
**9¢** Ea.  
 Our Reg. 15¢

**FLANNEL BACK TABLECOVERS**  
 Pretty vinyl tablecovers are easy-to-clean. Cotton flannel back protects table. 52" x 70".  
**\$1.96**  
 Our Reg. \$2.79

**HERSHEY'S PEANUTS**  
**HERSHEY-ETS** 16 oz.  
 OR  
**Candy Coated PEANUTS** 15 oz.  
 Your Choice  
**63¢** Pkg.  
 Our Reg. 93¢



**BABY RUTH or BUTTERFINGER CANDY BARS**  
 10 in Pkg.  
 Your Choice  
**31¢** Pkg.  
 Our Reg. 39¢



**STREET STREAKS**  
 Quick lock assembly. No paint or glue. Rebuild again and again.  
**\$1.77**  
 Our Reg. \$2.66

**320-Page COLOR BOOKS**  
 Giant size color books with pictures that beg to be colored!  
**2 97¢**  
 For

**YAHTZEE GAME**  
 A game of skill and chance, loaded with action and suspense!  
**\$1.27**  
 Our Reg. \$1.96

**STEEL SHELVES**  
 Rust resistant enamel finish. 3 adjustable shelves. Unassembled.  
 Model No. 3624  
**\$3.97**  
 Our Reg. \$5.95

**GARMENT RACK**  
 Heavy tubular steel  
 Hat shelf • Shoe rack  
 Easy to assemble  
 Model No. 9834W  
**\$3.97**  
 Our Reg. \$5.95

**METAL CHECK FILE**  
 Handy to use. 9" x 9" x 4 1/4".  
 Model No. 1499  
**\$1.88**  
 Our Reg. \$2.94

**Vinyl Coated Drip Dry Hangers**  
 Astd. Colors Set of 8  
**2.99¢**  
 Reg. 99¢

**METAL ROOM ACCESSORIES**  
 Beautifully co-ordinated grouping fits the modern decor. Useful and handsome! Heavy gauge welded steel in ebony finish.

- Telephone Table
- Utility Table
- Book Rack
- Magazine Rack

Your Choice  
**\$3.88** Ea.  
 Our Reg. \$5.95

