

## Cotton pickin' pest

### Weevil suddenly county concern

By RICK WHITE  
Managing Editor

One county agent is afraid some local farmers have cotton in their ears when it comes to heeding warnings about the boll weevil.

Producers are concerned that once again the government is dipping its hand into the farmers' pockets for unnecessary insurance against a danger they've never faced.

Even though members of the Plains Cotton Growers Association overwhelmingly (80 percent) approved the Enhanced Boll Weevil Eradication Plan in the spring, many are now grumbling about their share of the bill.

"It's a pretty hot issue right now," said James Brown, a PCG board member from Lariat. "A lot of people don't feel the problem is ours. They're tired of being taxed to death. There's always something coming up. They feel it's just another way to get money for something that has never been a problem, and more than likely, will never be one."

Said Jimmy Wedel, a organic cotton grower west of Muleshoe: "That's what we're struggling with. Are we spending money for something that nature will take care of, or are we spending money to protect our future?"

Even though the boll weevil has never been a problem in Bailey County, entomologist Brant Baugh warned that the threat is real.

"Mother Nature does a lot more than she gets credit for. My philosophy now is that I plant a little cotton for the bugs and a little cotton for me. Hopefully I get the bigger share."

—Organic farmer  
Jimmy Wedel

"Without something being done it will become all too real a monster up there," said Baugh, county agent for Bailey and Parmer counties. "A cold winter would be a great help. But it would not solve the problem."

However, Baugh warned that even if the High Plains do experience a cold winter, or even a series of cold winters, the next warm winter, the weevils would again appear if they are not eradicated.

Many farmers are under the impression that one cold winter will take care of the problem.

"If the boll weevil does get established, and if in-season applications become necessary, those guys will go out of business," Baugh said.

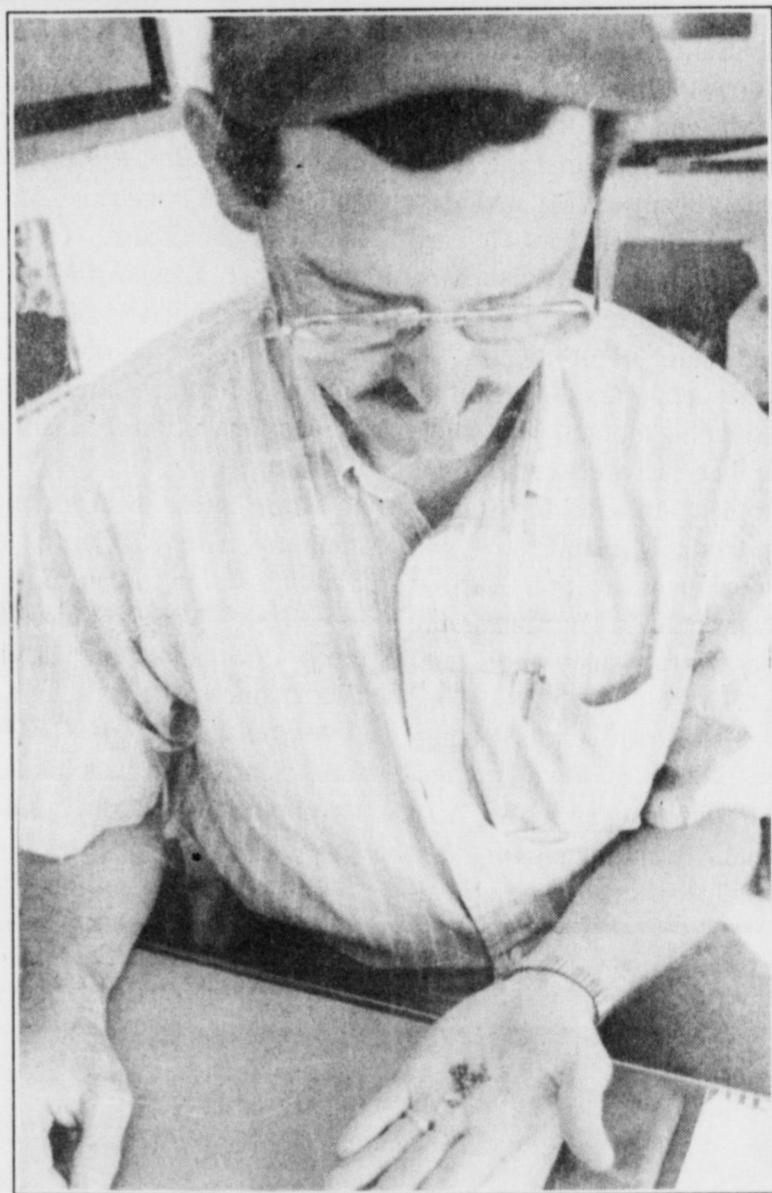
Experts say one of the reasons the High Plains has seen a tremendous increase in the

Continued on page 5



#### Concerned

Jimmy Wedel (above) is one of several Bailey County cotton producers concerned with the boll weevil's migration north. County agent Curtis Preston (right) looks at about a dozen weevils that were caught in traps placed around the county.



## Commissioners shift line items

By MARTHA TOLES FROST  
City Editor

During departmental reports at the Bailey County Commissioners Court Monday, Judge Marilyn Cox said the Texas Department of Health had contracted services to Texas Tech Health Sciences Center, effective Oct. 1 in Muleshoe.

Muleshoe Area Hospital Administrator Richard Murphy said Thursday that the action was taken without letting bids and without "direct communication" with the hospital district.

He said he first learned of the decision through an article in the *Lubbock Avalanche-Journal*.

Murphy, who has discussed the matter with Ben Benedict of Regional Outreach at Texas Tech Health Sciences Center, said he has not received a "satisfactory explanation" of the

move.

"I don't feel an appropriate approach was taken," said Murphy, who has not yet been informed of full plans by Texas Tech Health Sciences Center.

Murphy expects to negotiate with Benedict about several issues, including continued health care "appropriate for us (the hospital district) to deliver" to Muleshoe area residents.

Other items of discussion at the county commissioners' meeting were the following:

- Butch Vandiver was appointed to serve as a representative on the Board of Directors of Bailey County Appraisal District for a two-year term beginning Jan. 1, 1996.

- Don Carter was appointed representative and Hugh Young alternate on the South Plains 9-1-1 Advisory Committee. Carter and Young will

Continued on page 3

### Bailey County departmental line item transfers (Oct. 9)

#### Non-departmental

- Janitor supplies (line 332) — \$250.16 transferred from (line 453) repair of courthouse

#### District Court

- Water (447) for district judge's office — \$7.90 from (446) gas for heat in district judge's office

#### County Attorney

- Office supplies (310) — \$141.59 from (499) attorney's miscellaneous fund

#### Law Enforcement

- Water (447) (Law Enforcement Center) — \$27.10 from gas for heat (446) — LEC
- Repair and maintenance on radios (457) — \$11.40 from (456) repair and maintenance on cars
- Capital expenditures (570) radio & stove — \$1,128.45 from (452) repairs on jail & LEC

#### Health Services & Aging

- Office supplies (310) — \$11.41 from (499) health & aging miscellaneous fund

#### Extension Office

- Pickup repair (456) — \$157.16 from (452) building repair & maintenance

#### Precinct #3

- Telephone (420) — \$26.18 from (440) electricity

## Stockman Show offers latest in Ag products

By EMILE BENTON  
Special to the Journal

LUBBOCK — The Big Top came to the South Plains. No, not the circus, the 1995 Farmer-Stockman Show.

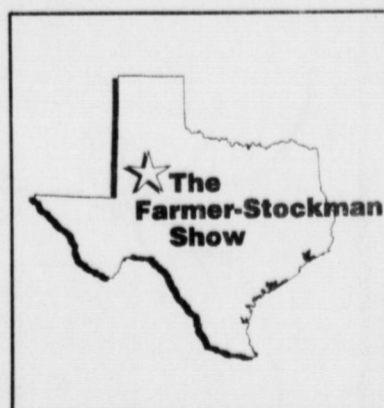
The show opened on Oct. 10, and ran through Oct. 12. It offered a variety of activities including: exhibition of equipment, livestock, antiques, crafts, cultivation demonstrations and much more.

This show draws farmers and stockman from across Texas, Oklahoma, and New Mexico.

"I'm from South Texas. I heard about the show for the last two years and have been wanting to come. This year I decided to come on up. It's a good show, and I've seen a lot," said Craig Lenhart, a farmer from Tivoli, TX.

There were exhibitors who have participated in the show before and some new attractions.

One of the latter was the



"Ride-N-Drive." It was a chance for participants to get hands-on experience without sales pressure.

Adults were able to test drive New Holland Genesis tractors ranging from 145 horsepower to 210 horsepower. John Deere had its 8000-series tractors available and ready to drive.

Another new attraction was the Info Plaza, which offered visitors a variety of activities.

There were demonstrations of working sheepdogs, displays of FFA agricultural me-

Continued on page 9

### Medicaid cuts projected in near future

AUSTIN — State Comptroller John Sharp determined that unfair funding formulas now pending in the U.S. Congress would cost Bailey County taxpayers between \$1.9 million and \$2.2 million in federal Medicaid cuts over the next seven years.

"This unacceptable legislation asks Bailey County taxpayers to subsidize the health care of people in other states," Sharp said. "It would send twice as much money to a senior citizen in New York as to a senior citizen in Bailey County."

"True block grants would help balance the federal budget and give states like Texas more flexibility," Sharp said. "But this proposed legislation isn't a block grant. It's a scheme to lock into place the unfair funding formulas of the past while giving distant bureaucrats in Washington as much control as ever over Texas programs."

Sharp released a county-by-county analysis of the different Medicaid funding formulas that have passed committees in both the U.S. House and U.S. Senate and will soon be resolved by a conference committee. His analysis shows that the House plan would cost Texas \$4.9 billion over the next seven years. The Senate version would cost Texas \$7.7 billion during the same period.

"These proposals offer  
Continued on page 2

## Around Muleshoe

### First Methodist to host workshop for caregivers

"Managing Alzheimers' Disease and Caregiver Stress" is the topic for a meeting in the parlor of the First United Methodist Church in Muleshoe, 507 W. Second, at 7 p.m. Oct. 19.

Leading the session will be Greg Joiner, a psychologist in training from the Texas Tech University Health Sciences Center.

Mary Lynn Bell of Muleshoe—an advocate of the rural education program—said, "Many rural families are conditioned to think Alzheimer's symptoms are just a product of growing older and don't seek help."

The rural education program teaches how to recognize symptoms, where to go for good medical care and ways to improve the patient's life.

"Family members and caregivers are of special concern

because the majority of Alzheimer's sufferers are cared for at home," Bell said.

### MHS senior parents holding meeting Tuesday

A meeting for the parents of Muleshoe High School seniors is scheduled for Tuesday, Oct. 17 at 7 p.m. in the high school cafeteria.

The purpose of the meeting is to discuss future plans for the senior class.

For more information call Terry Byers at 272-4468.

### Price being honored as Eagle Scout

A ceremony honoring Eagle Scout Kermit A. Price of Muleshoe Troop 620 will be held Saturday, Oct. 21 at 2:30 p.m. at the Muleshoe Heritage Center.

The public is invited.



Journal photo by Martha Toles Frost

### In high cotton

Maple Coop Gin Secretary Evelyn Davis (left) stands with Glenn Price of Morton beside the first reported bale of cotton ginned in Bailey County in 1995 (on Oct. 11 a little before 3 p.m.) Price planted HS26 Paymaster seed on irrigated land April 23. He sprayed with Prep Sept. 28 and Cyclone on Oct. 9. The bale weighed 540 lb. with 19.27% lint, 36.7% seed.

## Enochs News

By Mrs. J.D. Bayless

Mr. and Mrs. Cleo Hall from Show Low, AZ, came Saturday for a visit with her mother Ellen Bayless and his sister, Mr. and Mrs. J.E. Layton.

They will go to Wellman to visit his sister, Mrs. Oleta Burris. They will then go to Branson, MO.

Leland and Myrtle Finley of Odessa were also guests Sunday in the home of her mother with her sister, Cleo and Leta.

Mr. and Mrs. Dale Nichols met their daughter Paula Grant and children, Ashley and Chandler, at Friona Sunday evening after church to pick up the grandchildren to spend the week with them.

Mrs. Ethel Fagin of Lubbock visited her sisters, Mrs.

Inez Sanders and Mr. and Mrs. Morris Phillips last weekend.

Mr. and Mrs. Bill Key visited his sisters, in Littlefield, Friday. They are Mr. and Mrs. Homer Howard. Mrs. Howard went with them to visit Mrs. Juanita Butler and also got to visit with Steve Butler.

Mr. and Mrs. J.C. Snitker visited his mother, Mrs. Dicie Snitker, last weekend and his brother, Mr. and Mrs. Stanley Snitker at Midland.

Visitors at the Baptist Church Sunday morning were Cleo Hall, Ashley and Chandler Grant.

Mrs. Rose Nichols' youngest brother and wife, Roger and Deanna Sanderfer, from Saudia Arabia, came for a visit with his sisters and other rela-

tives.

Mr. and Mrs. Dale Nichols of Enochs, Ashley and Chandler of Amarillo, Ruby Pugh and Nancy Oldham of Midland, Clayton Oldham, Dennis and Barbara Brown of Morton and Landon Nichols of Muleshoe all met at the home of a sister, Verniece and E.D. Stevens in Morton for a family gathering.

Mrs. Louise McCall and daughter, Brenda George of Slaton, were in Enochs Saturday. They went to the cemetery and visited the Harvey Blackstones.

Visiting Mr. and Mrs. Goldman Stroud was his sister, Oma Gallasty from County Line, OK. A son-in-law of Shallowater, OK, brought her

for the visit.

Mr. and Mrs. Harvey Blackstone drove to Friona Sunday after church to visit their daughter and family, Nancy and James Peace and children, Jaclyn and Tyler.

Carolyn and children, visited her patents the Goldman Strouds Sunday afternoon and Cathy spent the night and Monday with her grandparents.

Mr. and Mrs. Pete Thomas returned home Monday, from a two week trip. They went through Dallas, visited his brother, Virgil and wife, Wanda in Memphis, TN.

## Medicaid

Continued from page 1

Texans a choice between a bad plan and an even worse plan," Sharp said. "Both would pass the responsibility and expense for health care down to local communities. Public hospitals and other health care providers would have to raise local taxes to make up the difference, and private hospitals that receive no local tax support would have to shift Medicaid patients to public hospitals—adding to the challenges already faced by these facilities."

According to the Comptroller, Medicaid contributes to the cost of care for 75 percent of all Texans in nursing homes, and nearly one-third of total Medicaid spending in the state goes to care for elderly men and women.

"What's going to happen to our parents and grandparents if this legislation passes?" Sharp asked. "As the number of elderly Texans grows, the money for their care will be sent to other states.

"What's going to happen to the hospitals where more than 45 percent of Texas babies are born? Our state population is growing at more than twice the national rate, yet Congress wants to cut our federal funds so that a handful of powerful Northeastern and Midwestern states can receive more — whether their populations are increasing or not."

Under both the House and Senate plans, Sharp said, states would be required to spend general revenue funds to receive federal dollars, much as they do now.

**Subscribe today!**  
Call  
**272-4536**

### Bailey County Journal USPS 040-200

Established March 31, 1963. Published by Triple S Publishing, Inc. Every Sunday at 304 W. Second, Box 448, Muleshoe, TX 79347.

Second Class Postage paid at Muleshoe, TX.

POSTMASTER: Send address changes to the Bailey County Journal, P.O. Box 449, Muleshoe, TX 79347.

We are qualified members of Panhandle Press Association, National Newspaper Association, West Texas Press Association and Texas Press Association

WEST TEXAS PRESS ASSOCIATION

PPA

Panhandle Press Association

**TA**

MEMBER 1995

TEXAS PRESS ASSOCIATION

Scot Stinnett, Publisher  
Lisa Stinnett, Vice-President/Comptroller  
Rick White, Editor  
Holly Millsap, Classifieds  
Pat Durben, Advertising

SUBSCRIPTIONS: Muleshoe Journal and Bailey County Journal  
By Carrier Yearly - \$15.00  
Bailey and surrounding counties: by mail - \$16.75  
Elsewhere - \$18.50  
Advertising Rate Cards on Application

© 1990

NNA  
NATIONAL NEWSPAPER ASSOCIATION

\*Advertisers should check their ad the first day of insertion. The Journals will not be liable for failure to publish an ad or for a typographical error or errors in publications except to the extent of the cost of the ad for the first day of insertion. Adjustment for errors will be limited to the cost of that portion of the ad where the error occurred.\*

MasterCard VISA Discover

314 Wheeler • Texico, NM

# OCTOBER Super Sale

## Special Groups

Resistol  
**BLACK GOLD HATS**  
**\$299<sup>95</sup>**  
*1st Quality - No Seconds*

Panhandle Slim & Justin  
**BOOTS**  
**\$99<sup>98</sup>**  
*1st Quality - No Seconds*

By Ostrich  
**SUPER ROPER**  
**\$149<sup>98</sup>**  
*1st Quality - No Seconds*

**4X BLACK HATS**  
**\$69<sup>98</sup>**

**7X BLACK & MIST**  
**\$125<sup>00</sup>**

**ALL OTHER HATS**  
**20% OFF**  
*1st Quality - No Seconds*

9:00 A.M. - 6:30 P.M. CDT  
• 482-3363  
• 1-800-748-2459

# SPECIAL PURCHASE

## 1995 Oldsmobile CUTLASS CIERAS & BUICK CENTURYS

Used Factory Program Cars

Your Choice Of

# 10

ONLY \$12,995

- Over 100 Quality Used Cars & Trucks To Choose From -  
Including 10 Blazers & Suburbans!

<p>90 Suburban Was \$13,995 Now Only <b>\$11,550</b></p>	<p>91 S-10 Blazer 4x4 Was \$13,995 Now Only <b>\$12,200</b></p>	<p>89 Suburban 4x4 Was \$14,995 Now Only <b>\$12,860</b></p>
<p>93 S-10 Blazer Was \$18,995 Now Only <b>\$17,260</b></p>	<p>89 Suburban 4x4 Was \$15,995 Now Only <b>\$13,340</b></p>	<p>94 S-10 Blazer 4-Door Was \$19,995 Now Only <b>\$18,220</b></p>

Bad Credit? No Credit? Bankruptcy? Divorce? Repo?  
We Can Help - Ask For Credit Man!

Hurry In - These Vehicles Will Be Sold Soon!

STREBECK

CHEVROLET PONTIAC GMC TRUCK  
AURORA Oldsmobile BUICK

**Clovis Highway • Portales, NM**  
(505) 356-3501 (505) 763-3501

The very best prices and service anywhere... We personally guarantee it!

## Bush declares Bailey County disaster area

AUSTIN — In response to a request from Gov. George W. Bush, the U.S. Secretary of Agriculture has designated Bailey County as a natural disaster area and has designated four contiguous disaster counties.

The declaration makes those counties eligible for assistance through the Consolidated Farm Service Agency (CFSA).

Gov. Bush's request came on the heels of damages and losses caused by hail, high winds and drought from May 25 through June 2.

The contiguous counties are Cochran, Hockley, Lamb and Parmer. The Consolidated Farm and Rural Development Act allows that contiguous counties in adjacent states can be included for assistance where eligible family farmers may qualify for emergency loan assistance for physical and production losses.

As a result, Curry and Roosevelt Counties in New Mexico also are included in the designation.

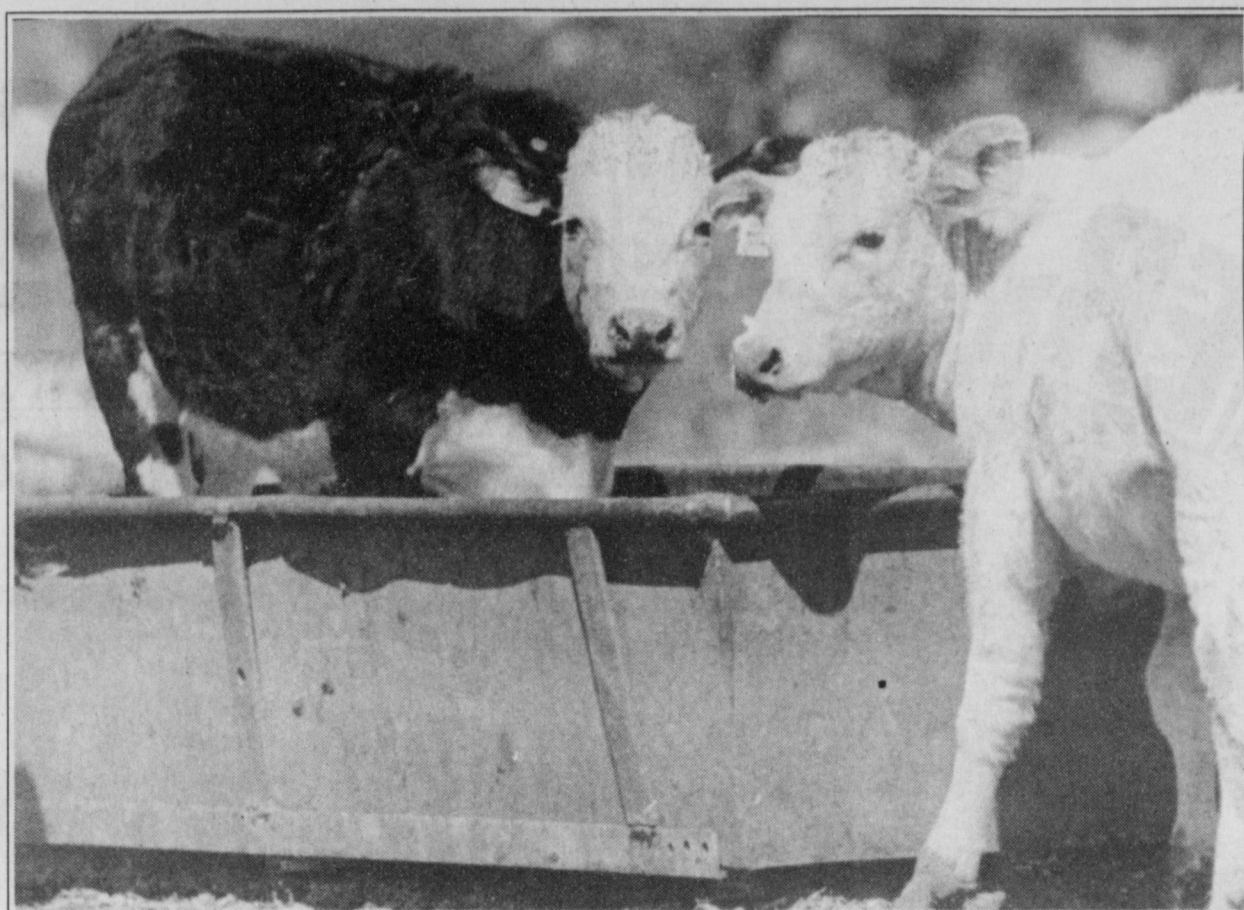
Family-size farm operators in both primary and contiguous counties eligible may be considered for low-interest emergency loans from CFSA.

Each application is considered on its own merits, taking into account the extent of losses, security available, repayment ability and other eligibility requirements.

CFSA will receive and process emergency loan applications through April 24, 1996, for physical and production losses related to this designation.

CFSA has a variety of farm-loan programs available, in addition to the emergency loan program, to assist eligible farmers to recover from periods of adversity.

Additional information is available through local CFSA county offices. In Bailey County, District 3, call Karen Byrd at (806) 272-4538.



Journal photo by Rick White

### Trough for two

A couple of steer calves on a ranch off the Friona Highway Thursday, including one who couldn't keep its hooves out of the food.

## Peanut Festival offers diversity

By MARTHA TOLES FROST  
City Editor

PORTALES — If you can't wait for the Summer Olympic Games in Atlanta 1996, try the Peanut Games at the Peanut Valley Festival Oct. 20-22.

Peanut butter, peanut brittle, peanuts in Cokes, peanut farmers and peanut fans—everybody but "Mr. Peanut"—will be there for a harvest celebration that yearly packs Eastern New Mexico University's Campus Union Building with food and craft booths, fun and entertainment.

The 22nd annual festival—celebrating the favorite food of a town sometimes known as "P-ville"—will be held in Portales while peanut harvest is in full swing.

The festival is a perfect opportunity for college students, townspeople and the agricultural community to interact and get acquainted.

Hours for the festival are 3 to 8 p.m. Friday, 10 a.m. to 7 p.m. Saturday and noon to 5 p.m. Sunday.

Starlight Swingers square dancers will perform in the CUB ballroom at 6 p.m. Fri-

day. The carnival begins Saturday morning and Sunday at noon.

A scholarship auction and peanut games will begin at noon Saturday. Also at noon Saturday, the Booher Family will perform various types of music in the ballroom.

The Peanut Food Fair is open to anyone with some cooking talent, and welcomes peanut lovers to participate.

Food entries will be taken on the spot in the Sandia Room in the CUB at ENMU between 1 and 2:30 p.m. Saturday, with no pre-entry form required.

Some sort of peanut must be used in every entry. Items will be judged in six categories—bread, cakes, candies, cookies, pies and decorated cakes—in both youth (age 20 and younger) and adult (over 20) divisions.

Awards will be presented at 4 p.m. on Saturday, followed by a comedy juggler act in the ballroom.

The annual local talent show will be held Sunday at 12:30 p.m., with singer Ed Stabler performing at 2 and 3:15 p.m.,

Mesa Highsteppers at 3 p.m. and the Southwest Chorus at 3:30 p.m.

The annual peanut festival is being sponsored by the Associated Students Activities Board and the Roosevelt County Chamber of Commerce.

Cellular Phones  
& Service on Plateau  
**NEWTON APPLIANCE**  
1202 W. American Blvd.  
272-3272

## Commissioners

Continued from page 1

serve three-year terms beginning this month.

• Commissioners voted to compensate county officials on a salary rather than fee basis, and ordered that all money which would otherwise be deposited in a salary fund, be deposited in the general fund.

• The county judge was authorized to approve payment of monthly utility bills and any payroll related items other than regular monthly salary. She also was authorized to advertise for bids to purchase a motor grader for Precinct 4.

• Commissioners approved the Tax Roll for 1995 and approved purchase of new patrol car.

• During departmental reports, EMS Director Jackey Wayne Burris reported a total of 36 calls, with \$10,678.05 billed and \$10,646.24 collected in September.

Ambulance calls averaged \$296.61 per call with 16 emergencies, 7 no transports and 13 transfers.

• Line item transfers within the county's departments were approved (see graphic).

## Impress the Boss!

BOSSSES WEEK  
Oct. 15-21

Send the FTD®  
Best Boss Bouquet



Decorator's Floral & Gifts  
616 S. 1st 272-4340

Having a garage sale?  
Advertise in the Journal!

## Home Folks Caring For Folks At Home.



## MULESHOE AREA HOME HEALTH

Agency

### Featured Patient

Ruth Black was married to the late Pete Black. They have 2 sons—Bobby Black of Muleshoe and Buddy Black of Dumas, TX. They have 8 grandchildren and 7 great-grandchildren. Ruth moved to Muleshoe in 1932 with her parents. She married in 1934.

Before owning their own business—Black Insurance, Ruth worked for Farm Bureau Insurance and then worked for McAdams Insurance Agency.

Ruth says it's wonderful that Muleshoe has an agency like Muleshoe Home Health Care. She receives excellent care at home which would not have been possible without them. She's doing much better now which is due to having the nurses come to her home. She appreciates having their help. The nurses have all been very nice to her.



Ruth Black

To receive Home Health Services Talk with your physician or talk with hospital personnel when you are hospitalized.

24 Hour #  
272-3346  
Local Nurse on call  
24 hours a day to  
offer prompt service.



We accept Medicare, Medicaid  
and Private Insurance

Affiliated with  
LUBBOCK METHODIST HOSPITAL SYSTEM

## We're Coming Home The Art Loft

Will Be Closed  
Oct. 14 thru Oct. 29th  
in order to move back to our  
original location

1529 West American Blvd.

Grand ReOpening  
Monday, Oct. 30th  
Followed by  
"Think Christmas Week"  
Starting Nov. 6th

806-272-3485

806-272-3863

SPONSORED BY

**Lowes**  
MARKETPLACE  
**GENE MESSER**

SOUTHWEST



**KLLL**

96.3 FM • 1590 AM

Drawing for Red Raider Ford Nov. 25

**REGISTER TO WIN!**

AT ALL AREA

**Lowes**

MARKETPLACE  
Pay-n-Save



**RED RAIDER FORD  
EXTENDED CAB PICKUP**

Must be 18 or older • No purchase necessary • Do not have to be present to win.

**Lowes**  
MARKETPLACE

**TRIPLE COUPONS UP TO 50¢**  
SEE STORE FOR DETAILS

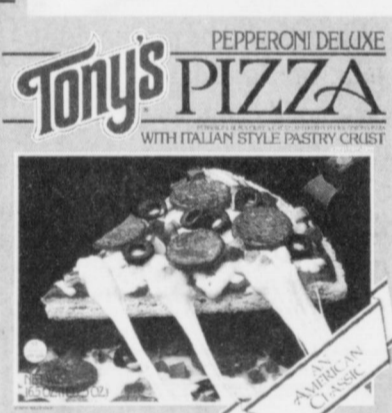
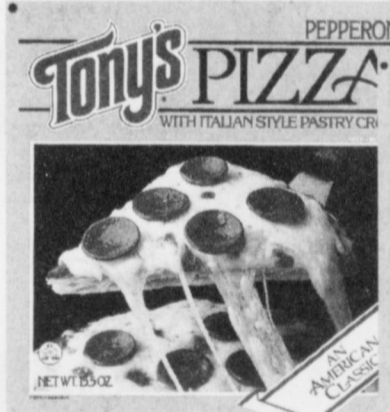


**BONELESS CHUCK ROAST 1.29 LB.**

**5LB. BAG POTATOES 3 BAGS FOR \$1**



Assorted Blue Bunny ICE CREAM **3.99** 5 QT. PAIL



ASSORTED ITALIAN PASTRY **TONY'S PIZZA 3 \$5** 12" PKGS FOR



**RUFFLES POTATO CHIPS** • FRENCH ONION • MESQUITE • REGULAR **1.79** REG. \$2.99 SIZE

**OPEN 7 DAYS A WEEK**

PRICES GOOD THRU 10/17/95

Discover, Novus, Visa, MasterCard  
Food Stamps and WIC Cards Accepted

**WESTERN UNION TRAVELERS EXPRESS MONEY ORDERS**  
We reserve the right to limit quantities • No Sale to Dealers

• 401 W. AMERICAN BLVD. 272-4585  
• 515 W. AMERICAN BLVD. 272-4406

**WINTER FUN IN RUIDOSO**



**FREE Weekend** at the Inn of the Mountain Gods in Ruidoso, NM **PLUS \$500 CASH!**

REGISTER AT ALL AREA **Lowes** MARKETPLACE Pay-n-Save



Must be 18 or older. No purchase necessary. Do not have to be present to win.

## Weevil

Continued from page 1

population of the boll weevil is a series of five mild winters in a row. Plus, the Conservation Reserve Program (CRP) grasslands provide a suitable cover for the boll weevil because even if the ground freezes, the weevils can survive in the thatch layer.

The average survival rate during a "normal" winter on the Plains is seven percent. Weevil survival during the winter in 1994-95 was 70 percent.

So instead of traveling from the fields off the caprock, weevils are actually being born on the High Plains.

The initial phase of the eradication plan, which covers approximately 2.4 million acres of cotton in 22 counties on the High Plains, started in late September.

The PCG has had a fall diapause plan for 30 years. Now they are enlarging it.

"The mortality rate has just exploded," PCG executive vice president Donald Johnson said. "For 30 years, we kept them off the Plains."

The plan calls for three years of fall diapause control, where selected fields with heavy boll weevil populations will be sprayed with malathion in an attempt to keep adults from wintering in the leaves and vegetation.

There will be no spraying in Bailey County this fall, and Baugh believes there will never will be, because the county is in the northwestern corner of the CPG eradication zone and the heaviest weevil populations are in the southeast.

The cost of the fall diapause spraying in 1995 is estimated at between \$13 to \$14 million, of which Bailey County producers are expected to pay a little more than \$90,000.

Funding comes from PCG members, at a base rate of \$1.25 per certified planted acre. The eradication zone is divided into three tiers.

The two zones southeast of Bailey County pay an additional surcharge of 3/4 of a cent per pound of cotton in the

central tier and 1 1/4 cent per pound in the southeastern tier.

Full eradication, with in-season spraying, will begin in 1998.

By that time, experts believe the number of boll weevils surviving the winter will be greatly reduced. Most experts believe there will never be any in-season spraying in Bailey County.

"I do know one thing," James said. "If the boll weevil does get here, we're going to be spending a whole lot more money spraying than we would through this method."

A by-product of the full eradication spraying is that it kills off the beneficial insects. And there is strong circumstantial evidence experts say that the army beatworm infestation that wiped out fields in the Concho Valley and Rio Grande Valley is directly linked to that area's eradication program.

A report from the state comptroller's office estimated that losses of at least \$209 million as the result of reduced yields and expenses incurred fending off armyworms, a pest that has never before has significantly affected Texas' cotton crop.

The army beatworm is a pest usually associated with Texas vegetable farmers.

Baugh said that Georgia experienced the same problem a few years ago, and after two years of devastating losses, the cotton crop yield increased 300 percent.

"They're asking us to spend a lot of money on something we're not even 100 percent sure

it works," said Wedel, who got into organic cotton farming because of a lifestyle choice and at the time a higher profit margin (which has since disappeared).

"Mother Nature does a lot more than she gets credit for. My philosophy now is that I plant a little cotton for the bugs and a little cotton for me. Hopefully I get the bigger share."



Journal photo by Martha Toles Frost

## Shake, paw'dner

Dillman Elementary first-grader Andrew Precure shakes hands with "Sparky the Fire Dog" during open house at the Muleshoe Volunteer Fire Department Thursday.

## Lazbuddie

Continued from page 14

he threw for 3,001 yards and 59 touchdowns in 14 games as the Longhorns reached the state semifinals.

Tim Lust led the Longhorns to a 10-0 record in Lazbuddie's first year of six-man in 1987, but they weren't eligible for the state playoffs. They've qualified every year since.

Lust played one year at Division II Angelo State.

But that's the exception, not the rule.

"That's a big problem with six-man football," Scisson said. "They're not going to come knocking on your door. We're going to have to knock on some doors."

Maybe St. Clair should take out an ad in the lost and found.

*Lost: A chance to play college football among the cotton fields of West Texas.*

*Found: A major-league arm and willing mind.*

## Tops News

TOPS Chapter No. 34 met at the Muleshoe Church of Christ on Thursday, Oct. 12, at 6:30 p.m. Leader Laverne James called the meeting to order. The TOPS Pledge was recited and the fellowship song was sung. James led the group in prayer.

Betty Jo Davis, weight recorder, called the roll with 18 members answering with the amount they lost or gained. Minutes were read by Aurora Mata, secretary, and were approved as read.

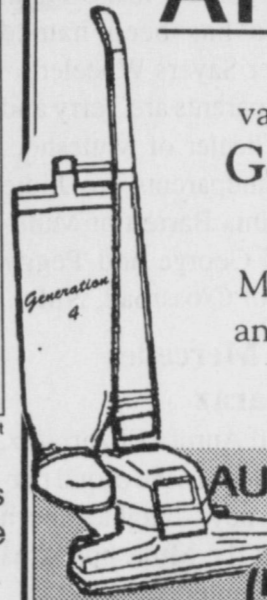
Best loser for the week was Noemi Sanchez. Evelene Harris was first runner-up. Evelene Harris is a true example for all who are on the road to better health. She received her 90 pound charm and has worked hard and learned to take off 90 pounds and keep it off. Congratulations.

Jewel Peeler was best loser last week and lost this week, so she proudly unwrapped a gift she picked from the elephant box.

## ATTENTION

Been thinking of buying a new vacuum? Take a look at the all new Generation 4 Kirby with Tech Drive.

Making your carpet cleaning easier and thorough. Call today to see the G-4 clean your carpet. No obligation or pressure sales.



**AUTHORIZED KIRBY DEALER**  
**STAN BAGBY**  
**(505) 356-3258**

Financing Available: 0 Down (O.A.C.)

# ALLSUP'S

EFFECTIVE OCT. 15-21, 1995

318 W. American Blvd. 272-4862

SAVE ON  
**Coca-Cola**  
6 pk. 12 oz. cans  
**\$2.39**



ALLSUP'S  
**SAUSAGE & BISCUIT**  
FOR ONLY

**79¢**



TOUCH OF GLASS  
**GLASS CLEANER**  
33 OZ.  
**\$1.59**

POST  
**TOASTIES CEREAL**  
18 OZ.

**\$1.99**



BAKED LAY'S®  
**POTATO CHIPS**  
REGULAR \$1.99  
**\$1.49**



FABULOUS  
**ALL PURPOSE CLEANER**  
33 OZ.  
**\$1.59**

COOKED FOOD SPECIAL  
OF THE WEEK  
ALLSUP'S CORN  
DOG & 20 OZ.  
N.R. COKE

**99¢**

COOKED FOOD FEATURE  
**JOHNNY'S RIB SANDWICH**

**99¢ EA.**

**SHOP & SAVE**  
AT ALLSUP'S CONVENIENCE STORES!

- ALLSUP'S SAUSAGE ON A STICK ..... EA. **99¢**
- LANCE "SALTED IN A SHELL" SPORTS PEANUTS... 8 OZ. **99¢**
- WISK WITH BLEACH DETERGENT ..14 LOAD BOX **\$3.99**
- "CHOC. CHIP, OATMEAL, SUGAR OR BUTTER" SUNNY COOKIES...2.5 OZ. **\$1.00**
- SHURFINE CRISPY RICE CEREAL.....13 OZ. **\$1.99**

**Subscribe Today!**

Call 272-4536 for more information

Have a nice day!

Let it Hail, Snow & Blow. Why Worry ... Why Paint?

## Steel Roofing & Siding

Gutter & Downspout • Storm Windows & Energy Efficient Replacement Windows

• Durable • Maintenance Free

**Energy Saving**

• Cooler in the Summer — Warmer in the Winter

• Premium Poly Shutters

• Dow Styrofoam Insulation

**"Quality You Can Depend On"**

**FREE ESTIMATES**

20 Year Warranty. Upgrade the Value of Your Home Today!

# Roper Construction

2204 Mabry Dr. • Clovis • 763-1717



The Muleshoe Journal & Bailey County Merchants

# Football Contest

## Weekly Prizes

1st - \$10  
2nd - \$7.50  
3rd - \$5

## GRAND PRIZE

# \$150

At The End Of The Season

**NFL PRIME TIME**

**ESPN**  
SUNDAY NIGHT NFL

**NFL on TNT**

Monday Prime Time

Inside the NFL on HBO

**Game Day**



ULTIMATE FOOTBALL CONTEST

WIN **\$1,000.00** WEEKLY

Clip along dotted line

WEEK 8 Games of Oct. 21 - 23	
16	
15	
14	
13	
12	
11	
10	
9	
8	
7	
6	
5	
4	
3	
2	
1	

### HOW TO PLAY

Select a winner from each of the week's games, listed below. Select in descending order of your CONFIDENCE in your choices. Win points at left for each correct selection toward possible total of 136 points. See complete rules below. You must be at least 8 (eight) years old to enter. To enter, clip along dotted line, then place game entry in POWER POINTS container at co-sponsor's retail outlet(s). Entrants must list name, address and phone number below.

**LIMIT:** You may enter only one coupon statewide per week.

**DEADLINE:** 2 P.M. FRIDAY

**TIEBREAKER 1**  Total points scored (both teams) in OILERS game.

**TIEBREAKER 2**  Total offensive yards (both teams) in this game.

### THIS WEEK'S GAMES

Minnesota at Green Bay	Atlanta at Tampa Bay
New Orleans at Carolina	Detroit at Washington
San Diego at Seattle	Indianapolis at Oakland
San Francisco at St. Louis	Buffalo at New England
Houston at Chicago	Rice at Texas Tech
Kansas City at Denver	Texas A&M at Baylor
Miami at N.Y. Jets	Virginia at Texas
Jacksonville at Cleveland	Tulane at TCU

136 TOTAL POINTS

Name \_\_\_\_\_  
Address \_\_\_\_\_  
City, State (zip) \_\_\_\_\_  
Day Phone ( ) \_\_\_\_\_  
Night Phone ( ) \_\_\_\_\_

Deposit Your Entries At...

Muleshoe Journal  
302 W. 2nd

### POWER POINTS OFFICIAL RULES

- Object of the game is to amass as many of the 136 possible points as you can. Simply review the week's schedule of games, listed on entry form, and decide which game you are surest of picking a winner in. Write the name of your projected winner on the 16-point line. If that team wins its game that week, you win 16 points. Write the name of your second-surest winner on the 15-point line, and so on down to the 1-point line, which game you figure to be a toss-up. Next, fill in Tiebreaker 1, the total points scored by both teams in the week's Cowboys or Oilers game. If this step fails to produce a winner, the judges will apply Tiebreaker 2, total offensive yardage from scrimmage in this game. If a winner still doesn't emerge, a drawing will be held among those contestants still tied. Decisions of the judges are final. The weekly winner of the contest will receive \$1,000.
- Any entry form that does not contain a legible name, address, etc., will be disqualified.
- Entries that fail to forecast a winner from each and every game will be disqualified, as will entries that fail to distinguish between the Jets and Giants of New York and, when necessary, between the Houston Oilers and the Houston Cougars.
- No points are awarded on tie games or in case any game is not played for any reason during its scheduled week.
- Entering POWER POINTS constitutes permission by contestant for his or her name and photograph to be used for news and reasonable promotional purposes at no charge.
- Employees of this newspaper and their immediate families are ineligible to participate.
- No purchase necessary. Facsimile game entry forms will be accepted and are available at all outlets of participating co-sponsors. Enter contest by dropping entry form into POWER POINTS container at participating co-sponsors.
- Weekly deadline for entry will be 2 p.m. Fridays except when noted otherwise on weekly entry form.
- Neither this newspaper nor any co-sponsor will be responsible for illegible entry forms or those lost, stolen or damaged in any way.
- Limit: one entry per person per week. Each entry must represent the original work of one entrant; "group" entries, "systems" or other attempts to enter multiple entries will be disqualified. Filling out extra forms and putting your friends' and relatives' names on them violates this rule. Any such entries are destroyed prior to grading.
- Contestants must have reached the age of eight (8) years by the Sunday of any week's play.

**CNN Sports**



**Leal's Sportscenter**

**CNN Sports**

**Muleshoe Coop Gin**  
272-4794

**Wilson Drilling Co.**  
West Highway 84 272-5521

**Terra International**  
Clovis Hwy 272-4203

**Muleshoe Feed Barn**

311 West American Blvd. 272-5626

**Lowe's Marketplace #33**

401 West American Blvd. 272-4585  
**Pay-N-Save #10**  
515 West American Blvd. 272-4406

**Leal's Restaurant**

1010 West American Blvd. 272-3294

**Bailey Gin Co.**

946-3397

**Bob Stovall Printing**

221 E. Ave. B 272-3373

**Decorators Floral & Gifts**

616 S. 1st 272-4340

**Western Drug Co.**

A Leader Drug Store  
114 Main Muleshoe, TX 272-3106  
For All Your Prescription Needs

**Scoggin Ag Center, Inc.**

1532 W. American Blvd. 272-4613

**Higginbotham-Bartlett Co.**



215 Main  
272-3351

**James Crane Tire Co.**

322 North First 272-4594

**Henry Insurance Agency**

111 W. Ave. B 272-4581

**Pizza Hut**

1412 American Blvd. 272-4213

# Bootmakers hang shingle

By MARTHA TOLES FROST  
City Editor

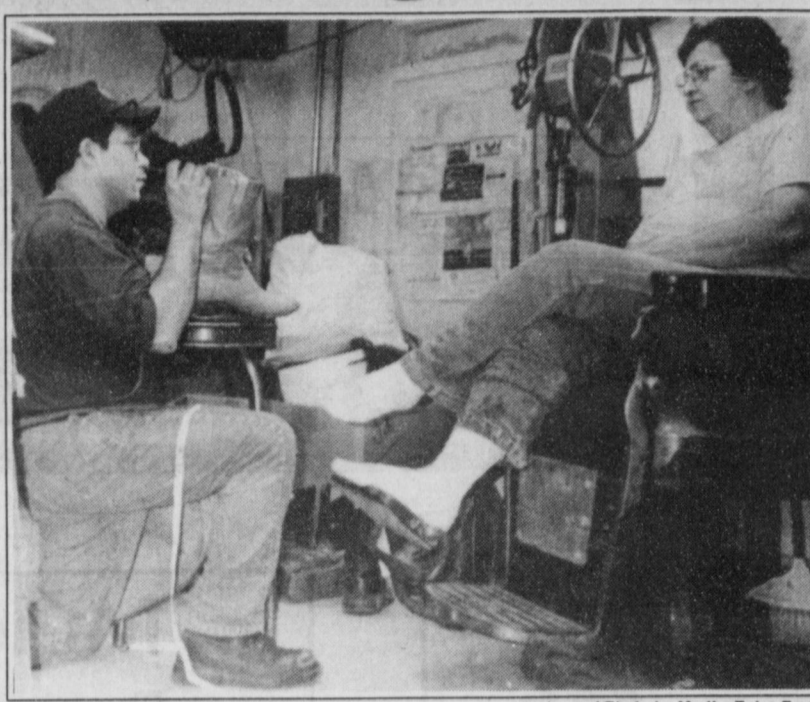
Richard Ellis and Marlin White—who have received certificates of completion from CT Chappell Boot School in St. Jo, Nebraska—are making and repairing boots at 111 South First St. in Muleshoe.

Calling themselves M & R Custom Boot Makers, Ellis and White measure boots to fit the quirks of individual feet—like special bumps or bunions, unique metatarsal configurations and special orthopedic needs.

Constructed to be leak proof from sand and water, their boots are made to last five years of hard wear. Heavy leather linings help protect the inside of the boots from sweat.

Customers have a choice of the style, detail, leather and color of their boots, which range from \$450 to \$600 a pair for a basic boot.

But Ellis and White are presently contracting boots for their first ten customers beginning at \$280 a pair, "for us to



Journal Photo by Martha Toles Frost

## If the shoe fits . . .

Richard Ellis (left) of M & S Custom Boot Makers, discusses style and construction choices with his first customer, Florence Pinette of Muleshoe. She selected water buffalo leather for the boots Ellis and Marlin White will craft for her.

gain experience," they said.

Ellis has been making and repairing boots for five months, and White has been in the business 12 years.

White said custom made boots differ from a "store

bought" pair because of the extra braces for strength, the sewed or wood-pegged construction rather than nails (used only in the heel cap), the individual choices in style and the exact fit.

## Nursing Home News

By Joy Stancell

Ruth McCarty visited Vera Engeling Wednesday and presented her with a beautiful bouquet of roses for her birthday on Oct. 14.

Leonard McCormick was honored by his family and friends, for his birthday Saturday at the Ave. D Church of Christ.

Velta Fyie visited Helen Tinsky at the care center Wednesday and gave her a special little pillow she had made.

On Thursday afternoon, Wennie Berry, Alda Odom and Mrs. Foster Walker came to play table games with the residents.

We invite you to come and visit us. We can always use volunteers to work in the beauty shop, play games on Thursdays and help host birthday parties or seasonal parties and entertain.

Mr. Hukill went out with Robert Hooten Tuesday.

Lora Dale and Rosa Sneed went out for church services at the First Assembly of God Sunday.

Friday afternoon, Mr. and Mrs. Harold Carpenter from the Oklahoma Lane area came for an old fashion sing-along and reminiscing.

Patricia Orozco's family visit her everyday.

Wednesday morning, Buster and Wanda Kittrell hosted coffee/spudnut time. Following this event, Buster and Lois Killingsworth lead us in a singing and devotional time. Tinnie McCormick and Jim Claunch participated in the activities.

Wednesday afternoon, Irene Splawn, Jean O'Brien, Holly Millsap, Ruby Garner and Mrs. Gibbs joined us for the sing-along puppet show with Glenda Jennings.

Sunday afternoon the Muleshoe Singers came for Gospel music and songs.

Bobby and Helen Free brought us a bale of hay for our Halloween decorations.

## Dress your Windows in Style


**70% off**  
Graber Crystalpleat Shades  
Double celled honeycomb.  
High insulation factor for winter.

Ask about special discount prices on all our other blinds.

**65% off** Graber Wood Perfect Blinds

**30% off** Seabrook Wallcovering  
Choose from hundreds of styles and patterns

**25% off** Instock borders and wallcoverings



**Interior Paint**

Satin Touch Acrylic Latex Semi-Gloss Enamel  
Reg 20.89 gal. **14<sup>89</sup>**

Satin Touch Acrylic Latex Eggshell Enamel  
Reg 20.89 gal. **14<sup>89</sup>**

Super Masque Interior Flat Acrylic Latex  
Reg 18.99 gal. **11<sup>99</sup>**

Protalk II Latex Semi-Gloss Enamel  
Reg 16.99 gal. **12<sup>95</sup>**

Coronado Vinyl Acryl Flat Wall  
Reg 67.90-5 gal. **39<sup>95</sup>**

Coronado Latex Eggshell Enamel  
Reg 17.49 gal. **12<sup>95</sup>**

Open 7:30 - 6:00 Monday-Friday 8:00 - 5:00 Saturday

**AUCUTT'S PAINT STORE**

5th & Pile, Clovis 769-2181

Sale ends October 21, 1995.

22nd Annual - 1995

# Peanut Valley Festival

ENMU Campus, Portales, NM  
Friday-Sunday, Oct. 20-22, 1995

SCHEDULE OF EVENTS:

**FRIDAY, OCT. 20**

3:00 pm 22nd ANNUAL PEANUT VALLEY FESTIVAL OPENS TO THE PUBLIC

6:00 pm Starlight Swingers (CUB Ballroom)

8:00 pm Festival closes for the day

**SATURDAY, OCT. 21**

8:00 am 3rd Annual Peanut Pedal Bike Tour begins (Greyhound Arena)

10:00 am Festival opens for the day  
Health Fair begins (College of Business Lobby)  
Carnival begins (CUB Patio)

12:00pm Peanut Games (CUB Patio)  
Activities Scholarship Auction (CUB Ballroom)

1:00 pm Entries accepted for the Food Fair

2:00 pm The Booher family performs (CUB Ballroom)

4:00 pm Peanut Food Contest prizes awarded

5:00 pm Comedian/Juggler Bill Fry performs (CUB Ballroom)

7:00 pm Festival closes for the day

**SUNDAY, OCT. 22**

12 noon Festival opens to the public

12:30 pm Peanut Valley Talent Show begins

2:00 pm Cowboy Ed Stalber performs (CUB Ballroom)


3:00 pm Mesa Highsteppers perform (CUB Ballroom)

3:15 pm Cowboy Ed Stalber performs (CUB Cafeteria)

3:30 pm Southwest Chorus performs (CUB Ballroom)

5:00 pm Festival Ends!

Sponsored by the Associated Students Activities Board and The Roosevelt County Chamber of Commerce.




**BIKE TOURS**

10 Miles 25 Miles  
50 Miles to Elida & Back  
70 Miles to Kenna & Back

**3rd Annual Portales Peanut Pedal**  
in conjunction with the 22nd Annual Peanut Valley Festival  
Saturday, Oct. 21, 1995 8:00 a.m. Greyhound Arena

A Tour for Bicycle "Nuts"  
Call 1-800-635-8036 or 356-8541 for more information.

Sponsored by the Portales Rotary Club



# LAST CHANCE

# NO DOWN PAYMENT

# LAYAWAY

NOW THROUGH OCT. 22ND

First Payment Due in 30 Days

**Levi's**

Men's Levi's® 501\* PREWASHED JEANS IN BLUE Limit 3 pair per customer ..... \$4 off

Men's Levi's® 501\* PREWASHED JEANS IN BLACK Limit 3 pair per customer ..... \$6 off

Men's Levi's® 501\* STONED WASHED JEANS Limit 3 pair per customer ..... \$6 off

Men's Levi's® 550\* RELAXED FIT JEANS Limit 3 pair per customer ..... \$6 off

Men's Levi's® 560\* LOOSE FIT JEANS Limit 3 pair per customer ..... \$6 off

Men's Levi's® 505\* PREWASHED JEANS Indigo blue ..... \$4 off

Men's Levi's® TEX TWILL\* DRESS JEANS Assorted colors ..... \$5 off

Men's Levi's® ESP\* STRETCH DENIM JEANS Indigo blue or black ..... \$6 off

Boys' 4-14, 26-30 & HUSKY LEVI'S® 550\* JEANS Indigo blue or black ..... \$5 off

## EVERY JEAN ON SALE EVERY DAY

**Lee**

Misses' & Jrs' Lee® 5-POCKET JEANS Sizes 8-18 and 3-13 ..... \$6 off

WOMEN'S LEE® DENIM JEANS Sizes 18-24 ..... \$6 off

Girls' 4-16 Lee® DENIM JEANS Sizes 4-6x and 7-16 ..... \$5 off

Men's Lee® PREWASHED JEANS Sizes 29-42 ..... \$5 off

Men's Lee® RELAXED FIT JEANS Sizes 29-42 ..... \$7 off

**Wrangler**

Men's WRANGLER® 13MWZ® & 936® DENIM JEANS IN BLUE 13MWZ in 29-42, 936 in 29-38 ..... \$4 off

Men's WRANGLER® 13MWZ® & 936® DENIM JEANS IN COLORS Sizes 29-38 ..... \$4 off

Boys' 4-14 & 25-30 WRANGLER® COWBOY CUT® JEANS Indigo blue or black ..... \$3 off

**chic**

Misses' & Jrs' Chic® DENIM JEANS Sizes 8-18 and 3-13 ..... \$7 off

Women's Chic® DENIM JEANS Sizes 18-24 ..... \$7 off

Girls' 2-16 Chic® DENIM JEANS Sizes 2-4T, 4-6x and 7-16 ..... \$4 off

**H.I.S.**  
JEANS THAT FIT YOUR LIFE

Boys' 2-16 H.I.S.® DENIM JEANS Sizes 2-4T, 4-7 and 8-16 ..... \$4 off

Men's H.I.S.® RELAXED FIT DENIM JEANS Sizes 29-38 ..... \$4 off

321 Main - Muleshoe 272-3478  
Monday-Saturday 9:30-7:00

**ANTHONY'S**

Red Ticket items already marked to reflect dollar off savings.

Call Muleshoe Journal today for home delivery! 272-4536



## Rotary News

The Muleshoe Rotary Club held its weekly meeting on Tuesday, at 12 noon at the Bailey County Civic Center. President Mike McDearmon opened the meeting by asking James Bell to pray for the group, followed by Larry Hall leading the Pledge of Allegiance.

Dan Lusk introduced his guest, Greg Key, who was in town from Amarillo assisting with maintenance efforts at Talk Station.

It was announced that David Tipps had requested to be categorized as non-active due to his taking over his father's business. The out of town time he will be spending will not allow proper attendance. We will all miss him.

Bill Moore reviewed a project currently underway at DeShazo called an Authentic Learning Experience. This involves running a bank, post office, and a store. The club voted on providing some money for the project as well as assisting with the painting needs on the structures.

Mike McDearmon provided the new business for the day. It appears that congratulations are in order for the McDearmon's. For additional details drop by and see him at the office.

Bill James was responsible for the program today. His program did not show up initially and as such the infamous Larry the PIG and Horse's Rear End trophy was presented to him. Just as we had completed the presentation, Don Locker showed up at the door ready to put on his talk.

It was a very interesting accounting of the trails and

## Back To Nature



# BAXTER BLACK

ON THE EDGE OF COMMON SENSE

Harold has been dismantling his feedlot. He built it in 1951 and eventually achieved a 30,000 head capacity.

You can imagine the accumulation of steel, rubber, railroad ties, nails, car bodies, pipe, chains, wire, horseshoes and baler twine.

He has completed most of the hauling off and is ripping the ground that has been packed like road bed. He's planted it to millet. He is returning the land to its natural state.

Harold's reason for razing the feedlot is, of course, urban encroachment. The land is too 'valuable' upon which to raise livestock.

In the next few years Harold's feedlot will become part of the city. Crisscrossed with tile, cable, wire, iron and asphalt.

It will be drilled, scraped, paved, disemboweled, pounded and polluted. Millions of tons of concrete, brick, timber, glass and iron will rest in or on old feed alleys and sick pens.

Oceans of sewage, mountains of refuse and purgatories of poison will work their way into the soil upon which the city is built. It will become the receptacle for the waste of human herds.

Ancient civilizations as mighty as ours have disappeared. All the remains of them are the ruins of the cities, the Aztec and Egyptian pyramids, the great walls, the foundations of majestic coliseums and castles.

But it is hard to find the ugly footprints of olden agriculture, as hog wallow, a horse corral, the trail to water, the milking shed, an irrigation canal, an overgrazed pasture, the chopped down woods. They seem to have vanished.

I think that is because, though agricultural production changes wide expanses of land, the

tribulations of building his kit plane. The project took him 1997 man-hours over a period of five years.

He has flown it as far away as Key West, Florida. He is currently working on another

wooden plane kit with plans for another large kit plane when it comes out. Curtis Shelburne was the Polio Plus winner for the week.

changes are not deep.

If you want to look at long lasting destruction of the environment, you need go no further than any major city.

If people were to abandon Washington, D.C., Atlanta, Chicago, Denver or San Francisco, how long would it take the earth to heal the scars left by man?

How many years after abandonment would we still see pieces of the Golden Gate Bridge, Denver International Airport or the Empire State building?

Hundreds? Thousands? Compare that to the time it would take a cleared pasture, a clear cut forest or a highly fertilized irrigated desert to return to its natural state.

It has always bothered me that a self-proclaimed environmental lobbyist can point from his high rise and accuse ag producers of destroying the environment. It's truly the pot calling the kettle 'non-green'.

Whether we live in town or in the country, we all play a part in the degradation of our environment. We eat the bounty of modern agriculture. We drive to and fro and we buy 2x4's.

By dismantling his feed-yard, Harold is doing more than most of us to allow the land to return to its natural state. However the next squatters on the property may leave a more long lasting legacy of destruction.

The earth is constantly trying to heal the scars on its skin. But we humans just keep pickin' at the scab.

Subscribe today!  
272-4536

## Stockmans

Continued from page 1

chanics projects, and the Texas Tech masked rider was available to pose for photographs with the show goers. Also appearing was a cowboy poet and a trick roper.

"This is a good, interesting show. I like the demonstrations of new equipment and ideas," said Martin Stafford, who farms near Loop, Texas.

"I have been here every year since they started, and I always take some idea or something home with me."

Field demonstrations give people visiting the show the opportunity to see new equip-

ment and products firsthand. There were daily demonstrations of hay harvesting, tillage, corn, sorghum and cotton harvesting. There were also exhibitions of cultivators, planters and specialty tools.

"Not only do I get to see new equipment, but I always see a lot of people I know out here. It helps to share some ideas, and talk to other producers," said C.D. Butchee of Seagraves, TX.

"I was here when they did the opening ceremonies two years ago, and I'll keep coming back."

## SPECIALS

- Monday - Grilled Chicken with Onion Rings
- Tuesday - BBQ Rib Sandwich & Texas Toothpicks
- Wednesday - Beans & Corn Bread
- Thursday - Hamburger & Fries
- Friday - Fish Plate

We Have A Breakfast Menu  
6:30a.m. - 11:00a.m.  
Birthday Rolls-most colors!

**T.J.'s Donuts** 328 S. Main Muleshoe

## 2nd Annual Ladies Day

Muleshoe Church of Christ - 2201 W. American Blvd.  
October 21, 1995

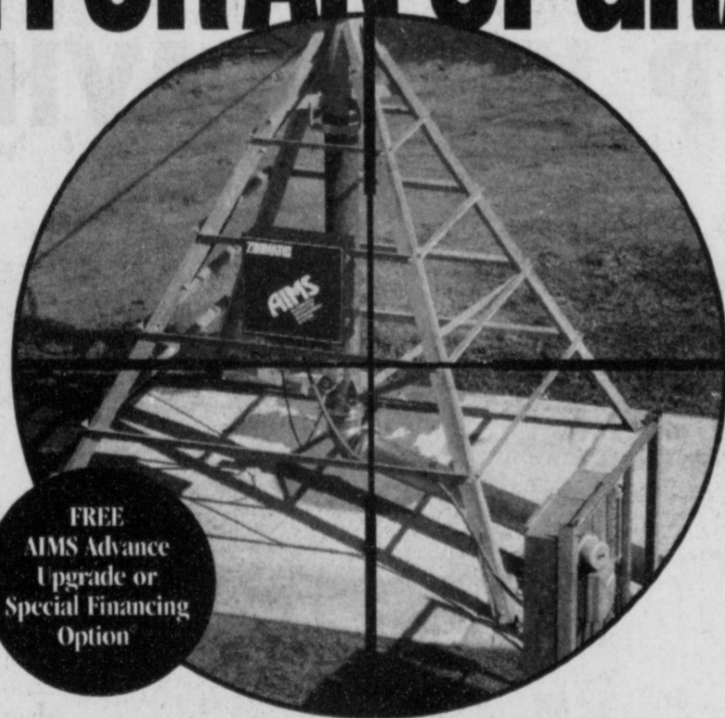
"Loving Life and Seeing Good Days"

Speaker: Martha Wharton

- 8:45 Registration "Breakfast"
- 9:15 Welcome, Singing, Introduce speaker
- 9:30 Martha "FREE TO CHOOSE"
- 10:30 Entertainment "Sweet Sound"
- 11:00 Martha "THE ELUSIVE BLESSING"
- 11:45 Break
- 12:00 Lunch Provided
- 1:00 Martha "THE IMPOSSIBLE MADE POSSIBLE"
- 1:45 Closing

WE ARE LOOKING FORWARD TO SEEING YOU AND HAVING A GREAT DAY OF FELLOWSHIP.

# AIM FOR AN UPGRADE

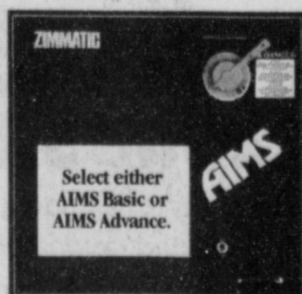


FREE AIMS Advance Upgrade or Special Financing Option

The exclusive design of Zimmatic's innovative panel system makes upgrades from AIMS Basic to AIMS Advance a cost-effective option.

### AIMS BASIC

This economical control panel features an easy-to-use display and a voltage monitoring circuit for instant electrical and alignment analysis.



### AIMS ADVANCE

This user-friendly, programmable control panel lets you develop programs that conserve water, reduce power consumption and increase yields.

- Purchase a Zimmatic irrigation system by October 31, 1995, and receive:
  - A Free AIMS Advance upgrade, or
  - 8.75% with 5% down—delayed first payment to January 1, 1997, or
  - 12 months interest free with 10% down.

\*For complete details on these offers, see your local Zimmatic dealer. Certain restrictions apply; subject to credit approval.

## Irrigation Pumps & Power, Inc.

Muleshoe, TX 79347  
272-4483 272-5597

**ZIMMATIC**  
Built To Be The Leader.

Muleshoe Chamber of Commerce & Agriculture Suggests That All Trick Or Treating Be Done On Saturday, Oct. 28, 1995

## -SATURDAY, OCT. 28-

The Events For The Day



### COSTUME CONTEST

- Funniest • Scariest
- Most Original
- Cash Prizes

5:00 - Register at Civic Center  
5:30 - Judging

## JOE'S BOOT SHOP

1st Moonlight Madness

- OPEN TIL 12:00 Midnight -

FREE ENTERTAINMENT  
8:00 p.m. - 10:00 p.m.

Bring your kids-Go Fishing Booth. Come Play Our "Columns" Of Cash" Winnings to be used at Auction Dec. 16

## PTA FALL FESTIVAL

Civic Center 6:00 p.m.-9:00 p.m.

### LIGHTED JACK O'LANTERN CONTEST

8:30 p.m. Judging at Mulelot

Have Jack O'Lanterns at Mulelot by 7:30 p.m.  
Age Groups 1-4, 5-8, 9-16, over 16-adult  
Best Overall In Age Groups - CASH PRIZES



## EMS HAUNTED HOUSE

Saturday, Oct. 28 9pm-12am  
Monday & Tuesday, Oct. 30 & 31 7pm-10pm  
Old Wiedebush Building  
Building donated by Jeri Wiedebush



Happy Halloween



### MIDS School Board Notes

The Board of Trustees had a relatively short agenda at Monday night's meeting with only three items of business.

First, the Trustees approved the 1995-96 tax roll as presented by the Bailey County Appraisal District. The total tax roll for the district is \$175,913,260.

The last two business items for the Trustees were the discussion of the Results Based Monitoring process and the discussion of the district's employment policy as affected by SB 1.

Results Based Monitoring (RBM) is a process designed by the Texas Education Agency to replace the onsite monitoring visits they have done in the past.

This year, MISD is participating in the RBM system in the areas of migrant education, special education, and accelerated education.

Using PEIMS (Public Education Information Management System) information and other reports submitted to the agency by the local district, TEA cited several areas of interest for evaluation by district personnel.

Discussion of the district's employment policy centered around the changes made necessary as a result of SB 1.

SB1 allows districts to choose a preferred method of employment. Adoption of the policy as discussed at this meeting will give hiring authority to the Superintendent

of schools for all non-certified personnel.

All certified personnel will be recommended by the Superintendent with hiring authority given to the Board of Trustees.

In informational reports, Superintendent Bill Moore informed the Trustees that advertisements have been made for the bid specifications for the weight room and tennis courts.

There is a very high interest level among contractors, and the district should have a competitive bid price for the projects.

The next meeting of the Board will be held at 7 p.m. on Oct. 22.

## Bovina Feeders



Inc.



806-825-2103

Will Buy Shelled Corn From Area Farmers

Call For Daily Quotes



#### Fun on the sidelines

At last Friday night's football game against Seminole here, Callie Hancock (left) assists Kailey Wiley (right) with a try at using Muleshoe Cheerleader Jamie Bohler's megaphone.

Journal Photo by Rick White

## Put Overnight Guests In Their Place.



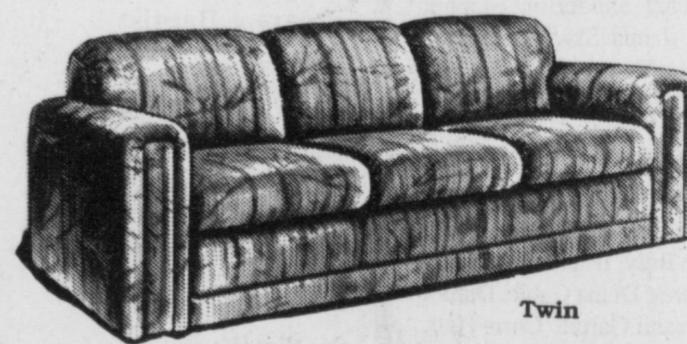
This week save 25% Or More on La-Z-Boy® Sleep Sofas!

Night and day, these are the ones! Choose from a dream of a selection that ranges from country to classic to contemporary! Each one designed to sit comfortably and sleep luxuriously with an innerspring mattress ...for a price that's very accommodating!

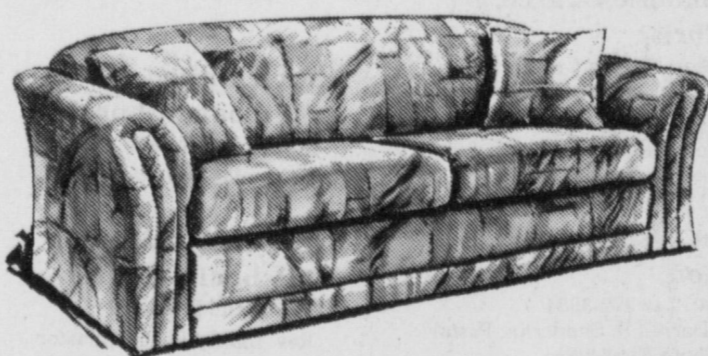
**LA-Z-BOY**



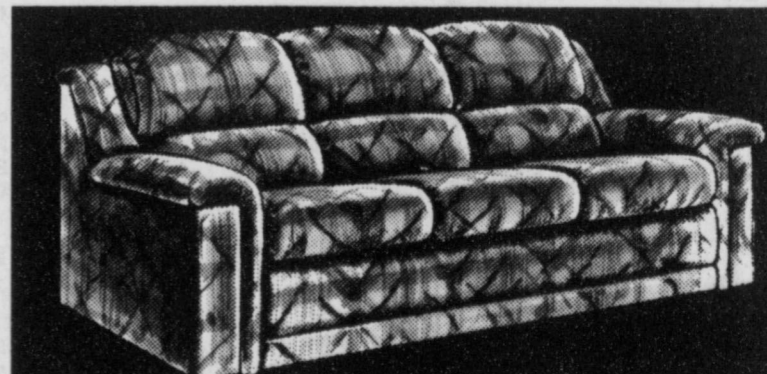
"Addison" 80.5" Simple, transitional beauty in a functional casual style. Features include a semi-attached pillow back, soft cushioning. **\$899**



"Sienna" 84.5" Clean, transitional style sofa with a West Coast influence. Features include a semi-attached pillow back, padded arms. **\$599**



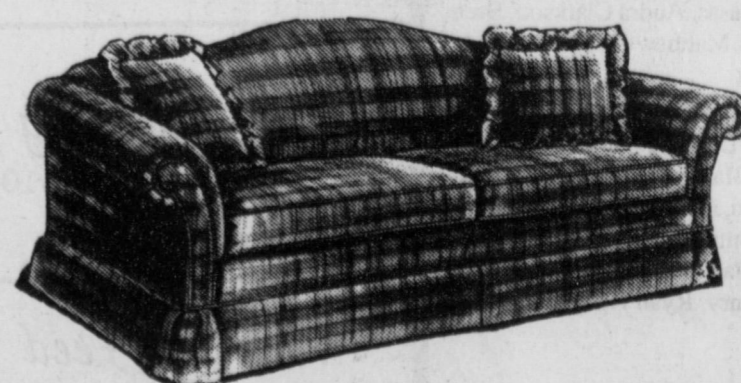
"Premiere" 83" Sleek styling that's perfect for contemporary decors. Features include flared arms, soft cushioning, matching corner pillows. **\$649**



"Northridge" Soft contouring makes this 84.5" sofa as pleasing to the eye as it is to the body! With a tall bustleback and plush pillow arms. **\$699**



"Legacy" 83" Classic style that offers comfort and convenience! Includes a camel back, kick-pleat skirt, rolled arms with welted trim. **\$699**



"Cumberland" 86.5" Nostalgic charm with a contoured camel back, sleigh arms, kick pleat skirt and two ruffled corner pillows. **\$699**

Your appetite is cheaper after 4 p.m.



Large Sandwiches 99¢ after 4 p.m.

Time is money. Especially after 4 p.m., when you can get a Big Mac®, a Quarter Pounder® with Cheese® or one of our other\*\* large sandwiches for a mere 99¢ each. Because while your appetite might be cheaper, we know it's not any smaller.

Have you had your break today?



1315 W. American Blvd. 272-3333

\*\*Details at participating stores

\*Wt. before cooking, 4 oz. (113.4 grams)

© 1995 McDonald's Corporation

Support the Muleshoe Mules!  
Attend all school activities!!

**CALTON**

Furniture  
507 E. 2nd Portales 359-1442  
"Where Highway 70 Divides"

**Help Wanted**

Farwell Convalescent center is looking for a certified Medication Aide for days, evenings, split shifts. Contact Sherrie (806) 481-9027. Good salary, benefits and retirement. 17s-tfc

New Administrator and DON at Morton Manor wants LVNs for weekends. 2-12 hours shifts or 2-16 hour shifts. Call Kathy or Francis, leave name and phone # 806-266-5862. 41s-3sun chg

**WILDLIFE/ CONSERVATION JOBS**

Game wardens, security, maintenance, etc. No exp. necessary. Now Hiring. For info call (219) 794-0010 ext. 9689, 8 a.m. to 10 p.m. 7 days 42s-3sun pd

Rawson-Koenig, Inc. PICKUP TOOL BOXES



**AMERICAN EQUIPMENT & TRAILER**  
3707 M.L.K. Jr. Blvd.-Lubbock, TX  
806-747-2991

**POSITION ANNOUNCEMENT**

Position Title: Computer Lab Teacher (Part-time)  
Opening Date: Oct. 9, 1995  
Closing Date: Oct. 30, 1995  
**Description of Duties:** Teach students (adults and youth) in computer-based education lab twenty hours weekly for basic skills training; maintain required paperwork for reporting purposes.  
**Education requirements:** Bachelors' Degree with teacher certification  
**Experience/Skills Requirements:** Classroom teaching experience with knowledge and/or capacity and willingness to use computer applications software, especially with regard to educational (Basic Skills) applications  
**Physical Requirements:** Capacity to communicate with students with mobility to interact amongst them individually.

How to Apply:  
Send Resumes and Letters of Application to:  
**South th Plains Community Action Association, Inc.**  
411 Austin/Post Sosuth Office Box 610  
Levelland, Texas 79336  
Attention: LaTrelle Good

South Plains Community Action Association, Inc. is an EEO employer, complies with ADA and is a drug-free workplace.

**Support  
the Mules and Lady Mules  
during the 1995-96  
athletic campaign!**

**Nieman Realty**

116 E. Ave. C George Nieman, Broker 272-5285 or 272-5286

**HIGH SCHOOL**  
JUST LISTED - 2-2-2 carport Mobile Home, Cent. Heat, built-ins, fenced yard, More!!! \$12K HS-1

**HIGHLAND AREA**  
2 Bdrm, 1 bath home, fenced yard. \$16,500!!! HL-4

VERY NICE 3-2-2 Brick, Cent. A&H, built-ins, fenced yd., spklr. sys., MUCH MORE!!! \$60's !!! HL-1

Nice 4-2-1 Brick, Cent. A&H, built-ins, fans, encl. patio, man. spklr sys., gas grill, st. bldg., fenced yd. \$60's!! HL-5

JUST LISTED 3-2-2 home, Cent. A&H, built-ins, fenced yd., corner lot. \$30's !!! HL-2

**LENAU ADDITION**  
NICE 3-2-1 carpaort Home, geothermal heat pump, fenced yd., storage bldg. \$27,500!!! L-3

Nice 2-1-1 Home, new interior paint, new carpet, fenced yd., storage bldg. MORE!!! \$20's!!! L-4

JUST LISTED - Nice 2-2-2 Brick, on corner lot, heat pump, fenced yard, storage bldg., MORE! \$40's !!! L-1

VERY NICE 3-2-1 Home, Heat Pump, storm windows & doors, extra insulation, nice carpet, spklr. sys. & MORE!!! \$30's!!!! L-2

**RURAL HOMES**  
2-2-2 Carport Mobile Home on hwy. close to town, 1.99 acres w barn and corrals!! \$30's!! HR-1

VERY NICE 3-2-2+2 Carport Brick Home on 2.5 acres on pavement, close to town, Hcat PUmp, built-ins, FP, MUCH MORE. \$70K !!! HR-3

**COUNTRY CLUB**  
JUST LISTED - VERY NICE 3-2 Brick, Cent. Heat, built-ins, FP, Clg. fans, cov. patio, fenced yd., cellar, stor. bldg., More !! \$60's CC4

2-1-1 carport home, wall furnace heat, nice carpet, storm shelter, storage bldg., fenced yd. MORE!!! \$20'S.

**ASK ABOUT OUR COMMERCIAL LISTINGS!!!**

COMMERCIAL-200+ Hwy. 84 frontage-Former Richland Hills Texaco, excellent business location. PRICED TO SELL!!!!!!

**WJHS  
honor  
students**

**6th Grade**  
Ricardo Aburto, Megan Barrett, Amanda Bell, Nikki Bonds, A.J. Buhman, Jessica Carpenter, Elizabeth Cas-torena, Mima Contreras, Salomon Esparza, Reyna Falcon, Nikki Felan, Carmen Flores, Kayla Glover, Jessica Gonzales, James Hancock, Jessica Hardt, Ashley Hartline, Terrell Herington, Olimpica Hernandez, Rendi Hodge, Candace Hutto, Michael Johnson and Brandi Jones.

Also Kayla Kelley, Elizabeth Lewis, Matthew Luna, Juan Madrid, Kristen Magby, Jeny Marquez, Ashley May, Suzanne Messenger, Brandon Mount, Pamela Munoz, Rachel Papa, Jennifer Rempe, Lincoln Riley, Stephanie Rojas, Raquel Salas, Rachel Sanderlin, Stephan Shelburne, Janna Skaggs, Mylissa Thompson, Yvette Villa, Laura Wood and Zacarias Yanis.

**7th Grade**  
Joe Adair, Adrienne Ashford, Letti Barrera, Zach Barrett, Tyler Black, Toni Bray, Brandon Broyles, Melissa Flores, Diana Gable, Daniel Garcia, Roxann Garcia, Chris Hall, Myndi Heathington, Jessica Hernandez, Tommie Hernandez, Jeffrey King, Stephanie Kirk, Jerry Lacefield, and Kourtnee Marr.

Also Landon Nichols, Jerrell Otwell, Michelle Parker, Westin Price, Daniel Ramirez, Drew Robinson, Bryce Thomason, Megan Tipps, Chyla Torres, Monica Toscano, Travis Tunnell, Russell Warren and Dan Williams.

**8th Grade**  
Christi Adrian, Melissa Aguirre, Jose Alarcon, Joseph Anguiano, Jennifer Barnes, James Barrett, Bobbie Benham, Kamal Bhakta, Clint Black, Landon Black, Lynsie Black, Bekki Bowen, Jeffrey Bruns, Sandra Casas, Audra Clarkson, Bret Clements, Matthew Conklin, and B.J. Copeland.

Also Kimberly Kickerson, Bryce Embry, Lindsey Field, Rosario Flores, Blake Gartin, Christopher Gatewood, Judd Glover, Rhett Green, Alisha Gutierrez, Kyle Hahn, Nick Hale, Lela Hancock, Phillip Hardt, Beau Henry, Ryan Hodde, and T.J. Hutto.

Also Amanda Jones, Leo Joyner, April Kelley, Toby Kitchens, Stacy Locker, Michael Lopez, Michelle Lopez, Elizabeth Lozano, Timothy Madrid, Stephanie Marlow, Vicki Martinez, Mitch Mason, John McClanahan, Barbara Morales, Ronnie Orozco, Angela Papa, Eric Posadas, Tyson Purdy, Ebony Russ, Amanda Sanderlin, Michelle Toscano, Jeremy Tosh, Leisha Wallace and Brandy Whitt.

**Inmaculate Conception Catholic Church**  
805 E. Hickory  
Father Joseph Augustine

**First Baptist Church**  
220 West Ave. E.  
Pastor, Stacey Conner

**Emmanuel Baptist Church**  
Iglesia Bautista Emmanuel  
107 East Third  
Isaias Cardenas, Pastor

**Trinity Baptist Church**  
314 E. Ave. B  
Pastor Robert Brown

**Circle Back Baptist Church**  
Intersection FM 3397 & FM 298  
Rev. Jessie Shaver  
946-3676

**Calvary Baptist Church**  
1733 W. Ave. C  
Pastor Ben Davis

**Progress Baptist Church**  
Progress, Texas

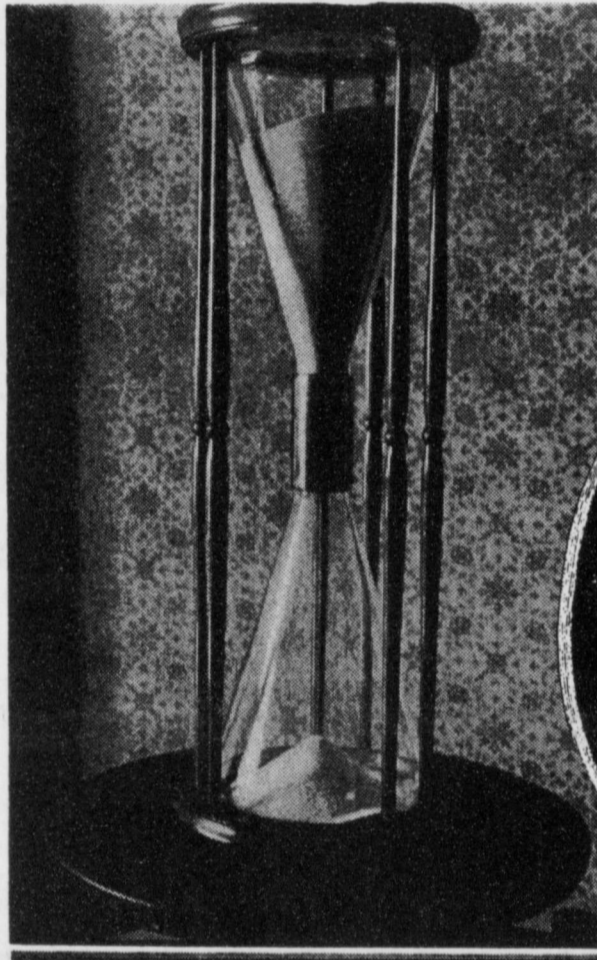
**Richland Hills Baptist Church**  
17th & West Ave. D  
Brad Gathright

**St. Matthews Baptist Church**  
Corner of West Boston & West Birch  
Pastor, Floyd R. Monroe

**Progress Second Baptist Church**  
1st and 3rd Sundays  
Rev. Arthur Hayes

**Primitive Baptist Church**  
621 South First  
Elder Cleveland Bass, Pastor

**1st Baptist Church**  
Lazbuddie, Tx.  
965-2126



**THE SANDS OF TIME**



Use Dr. Benjamin Franklin knew well the value of time. His brilliant career varied from inventor and writer to publisher and statesman. And he devoted the time to become proficient and highly successful in each. "Treasure each moment, guard it well and spend it wisely," he said.

Next to God's promise of Eternal Life, His gift of time is possibly man's greatest possession. In return for this priceless blessing He asked that man honor Him on the Sabbath. To spend a part of man's time in God's House. Begin tomorrow to repay Him for your life, for your Sands of Time. Go to the church of your choice and take your family.



**Lazbuddie Church of Christ**  
Minister, Nathan Crawford  
Sunday School 9:30 a.m.  
Morning Services 10:20 a.m.  
Evening Services 5:00 p.m.  
Wednesday Night 7:00 p.m.

**First United Methodist Church**  
507 W. 2nd Street  
Dr. James Bell, Pastor

**El Divino Salvador Methodist Church**  
E. 5th and E. Ave. D  
Rev. Libney Peneda, Pastor

**First Assembly of God**  
272-3017 or 272-3984  
Rev. Darrell R. Sanderlin, Pastor  
521 South First Street  
Sunday Services:  
9:45 & 11:00 a.m.  
6:30 p.m.  
Wednesday Services 7:30 p.m.

**Shepherd's Chapel of the Sacred Heart of Jesus Christ**  
Non-Denominational Spirit Filled Fellowship Worship:  
809 E. Fir, Muleshoe  
Rev. Manuel A. Cruz-Medina  
Sunday Services:  
9:00 a.m. - En Espanol - Devine Services  
11:00 a.m. - In English - Devine Services  
6:00 p.m. - In English - Devine Services  
The Doors Are open each day from 9 a.m. to 6 p.m. for whomever needs our Lord, Jesus Christ or to talk with the Pastor.

**St. John Luthern**  
Lariat, Texas  
Sunday School and Bible Classes 10:45 a.m.  
Church Services 9:30 a.m.  
Fellowship 10:30 a.m.  
Rev. Richard Greenthauer

**The Christian Center**  
Morton Hwy.  
Reydon Stanford  
272-5105

**New Covenant Church**  
Plainview Hwy  
Sunday School 9:00 a.m.  
Sunday 10:00 a.m.  
Wednesday 6:00 p.m.  
Phil Ensminger, Pastor

**Lazbuddie Methodist Church**  
965-2121  
G. Scott Richards, Pastor

**New Vision Church Of The Nazarene**  
814 W. Ave. C  
272-3622  
Pastor David R. McIntire

**Primera Iglesia Bautista**  
223 E. Ave. B  
Roy Martinez, Pastor

**"Iglesia Pentecostal Unida"**  
207 East Ave. G  
272-3636  
Pastor: Wenceslado Trevino

**Lariat Church of Christ**  
Sunday School 10:00 a.m.  
Worship 11:00 & 6:00  
Wednesday Services 7:00 p.m.  
Sam Billingsley, Minister

**Muleshoe Church of Christ**  
22nd & W. Amer. Blvd  
Sunday School 9:30 a.m.  
Morning Worship 10:20  
Evening Services 6 p.m.  
Wed. Night 7:30 p.m.

**16th & Ave. D Church of Christ**  
Sunday 10:30 a.m.  
Evening 6:00 p.m.  
Wednesday 7:30 p.m.  
Curtis Shelburne, Minister  
272-4619

<b>Western Drug</b> 114 Main 272-3106	<b>Decorator's Floral &amp; Gifts</b> 616 S. 1st 272-4340	<b>Irrigation Pumps &amp; Power</b> W. Hwy 84 272-4483	<b>Attend The Church Of Your Choice</b>
<b>Wes-Tex Feed Yards, Inc.</b> 272-7555	<b>First Bank</b> Member F.D.I.C. 202 South First 272-4515	<b>James Crane Tire Co.</b> 322 N. 1st 272-4594	<b>American Valley, Inc.</b> W. Hwy 84 272-4266
<b>Bailey Gin Co.</b> 946-3397	<b>Bobo Insurance Agency</b> 108 E. Ave. C 272-4264	<b>Bob Stovall Printing</b> 221 E. Ave. B. 272-3373	<b>5-Area Telephone Cooperative, Inc.</b> 302 Uvalde 272-5533





# Longhorn QB looking for a college reception

By RICK WHITE  
Managing Editor

**LAZBUDDIE** — Still growing at six-foot-two and 200 pounds, it's hard to imagine Justin St. Clair getting lost on a football field.

St. Clair is certainly visible as the quarterback of the Lazbuddie Longhorns. But the strong-armed junior is afraid his considerable talent will go unnoticed by college recruiters as he spends his Friday nights in the one-stop-sign towns that make up six-man football.

"I'm just kinda worried that I won't be seen," St. Clair said. "If I was a coach, I don't think I'd be looking down here either."

Lazbuddie coach Mark Scisson has little doubt St. Clair can play at the next level.

"He's definitely not a Division I prospect now," Scisson said. "But he could play at a Division II or NAIA school. By the time he graduates, who knows."

St. Clair has completed 64-of-108 passes (59.3 percent) for 1,195 yards, 15 touchdowns and three interceptions for the 3-2 Longhorns. Lazbuddie is averaging 50.3 points per game and has scored 80 twice.

Scisson knows a special talent when he sees one, having coached former recording-setting Longhorn pole vaulter Colby Miller, who happens to be St. Clair's cousin.

Miller earned a track scholarship to the University of Kansas after leading the Longhorns to the District 2-1A football title last fall and setting the



Journal photo by Rick White

### Airing it out

Lazbuddie's Justin St. Clair goes downfield during a recent practice. The junior is one of the top quarterbacks in six-man football, but thinks he might get overlooked when it comes to playing college ball.

Texas Class 1A pole vault record in the spring.

St. Clair was thrust into a starting roll last year when senior Matt Elliott was lost for the season after suffering a knee injury in a preseason scrimmage.

St. Clair struggled early as

Lazbuddie started out 1-4. When his knees stopped shaking, St. Clair steered the Longhorns to the district title (5-0) and into the second round of the playoffs. Along the way the Longhorns beat eventual state-champion Amherst.

"Last year, I was scared to

death," St. Clair said. "I fumbled the ball a bunch and I got sacked a lot. This year I've calmed down a lot and I can see the whole field."

St. Clair has a strong, accurate arm: the kind of arm that can shorten the field. He can throw the ball 70 yards in the

air.

Six-man football is played on a 40x80 yard field.

Now he's learning to harness it. In baseball terms, he's become a pitcher instead of a thrower.

"The coaches get on me to throw the shorter patterns," St. Clair said. "I tend to look downfield most of the time. I like to launch it."

He's also spreading the ball around.

"Last year it was the Colby Miller Show," Scisson said.

Five Longhorns have 10 or more catches, four have gained more than 200 yards.

Sophomore Brice Foster is St. Clair's favorite receiver with 18 catches for 243 yards and three touchdowns. Junior Lopez is averaging 29.3 yards on 10 catches.

Foster can attest to St. Clair's arm strength—he has the welts to prove it.

"At the first of the year, before we put on shoulder pads, our chests would be all red (from catching the ball)," Foster said.

St. Clair isn't one-dimensional anymore. He's added a second gear this year.

St. Clair, who also sees time at fullback in the Longhorns' tight set, has rushed for 348 yards and another eight touchdowns. He rushed for 219 yards and no touchdowns in 12 games last year.

"People have been teasing me all my life about being slow," said St. Clair, who wears size 14 shoes.

"Last year I ran track — and I hate track — but I think that helped a lot. This year I'm

### Profile

**Name:** Justin St. Clair  
**School:** Lazbuddie, District 2-1A six-man football  
**Class:** junior  
**Position:** quarterback/linebacker  
**Height:** 6-2  
**Weight:** 200 pounds  
**Team record:** 3-2  
**Season stats**  
**Passing:** 64-of-108 for 1,195 yards (239 yards per game), 15 TDs and 3 INTs  
**Rushing:** 348 yards and 8 TDs on 48 carries (7.3 yards per attempt)  
**Defense:** 94 tackles (25 solo) 2 INTs  
**Career stats**  
**Passing:** 168-of-305 for 2,892 yards, 35 TDs and 17 INTs  
**Rushing:** 567 yards and 15 TDs on 91 carries  
**Defense:** 145 tackles (41 solo) 2 INTs  
**Quote of note:** "I'm just kinda worried that I won't be seen," St. Clair said. "If I was a coach, I don't think I'd be looking down here either."

more of a threat than I was sitting back and throwing."

Scisson has a reputation for developing quarterbacks in his 11 years at Lazbuddie. Unlike a lot of other six-man teams, his passing game is very structured.

Brett Thomas was a two-time all-state selection in 1992-93 under Scisson, including a monster junior year in which

Continued on page 5

## Muleshoe nearly belittles Wildcats

By RICK WHITE  
Managing Editor

**LITTLEFIELD** — Muleshoe scared a few Cats here Friday night, and sent a message to the rest of the district — the Mules still have some kick left.

Littlefield won the game, 21-0, in the District 2-3A opener for both teams. But not before surviving a second-half scare when the winless Mules (0-6) drove deep inside Littlefield territory twice only to come up empty with the undefeated Wildcats (6-0) clinging to a 14-0 lead.

Michael Benton scored on a 11-yard run with less than three minutes left in the game following a Muleshoe turnover to seal the win.

"They played their tails off," Muleshoe head coach Randy Adair said. "According to the Harris poll, we didn't have a chance."

The Harris poll made the Mules a 48-point underdog.

Someone forgot to tell them.

Muleshoe outgained the potent Wildcat offense (37 points per game), 247-243, and held Benton to a season-low 84 yards. The all-state running back rushed for over 200 yards

and six touchdowns last week.

Muleshoe took the second-half kickoff and drove 55 yards to the Littlefield 17-yard line. Daniel Garbarino (8-of-16) for 85 yards in his second start) started the drive with a 16-yard play-action pass to tight end Jarrod Redwine and ran 29 yards to the Wildcat 33 on a bootleg on fourth-and-one.

But his fourth-down pass to Doug Fields came up three yards short and Littlefield took over at its 10.

On the next play, quarterback Danny Vargas' option pitch went awry, and Fields recover at the six. Three running plays netted a yard, and on fourth down, Matt Cox broke up a Garbarino pass intended for John Embry in the corner of the end zone.

Vargas punted out of his own end zone after Littlefield went three-and-out, and Muleshoe took over just inside Wildcat territory.

The Mules again looked to be threatening, but Garbarino was stripped of the ball at the 25 after a nine-yard gain.

"We drove into the red zone but we couldn't put it in," Adair said. "We told the kids before the game that they had to tackle and play perfect on offense.



Journal photo by Rick White

### Shouldering the burden

Muleshoe quarterback Daniel Garbarino tries to pull away from a Littlefield defender during the Mules' 21-0 road loss Friday night.

Well, we did tackle, we just didn't play perfect on offense."

Littlefield took a 7-0 lead late in the first quarter when Benton scored from 10 yards out to cap at 37-yard drive.

Jason Wright made it 14-0 late in the first half when he rocketed through the Mules defense on an inside reverse for a 15-yard touchdown. A 43-yard pass from Vargas to Nathaniel Williams was the key play in the 92-yard drive.

Muleshoe drove 48 yards to the Wildcat 26 before time ran out in the half.

Jake Adair led the Mules

with 83 yards on 23 carries, mostly between the tackles.

Fields, a sophomore, caught five passes for 49 yards and added 34 yards on five carries.

The Mules had nothing to lose, and played like it.

Muleshoe twice went for a first down on fourth-and-short, including inside their own 30 in the first quarter. They also ran a fake punt on fourth-and-16 at their own 23 in the first half.

The ball was snapped short to Garbarino, who flipped the ball to a wide open Fields for a

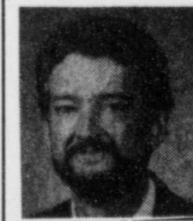
Continued on page 10

## Purple Aliens Spotted In Church Kitchen

Generating excitement can be tough!

I laughed at a cartoon I saw recently which pictured a perplexed church member reading the front page of a church bulletin entitled *The Stone Valley Church Enquirer*.

These were the headlines:



**Focus On Faith**  
Curtis Shelburne

*Purple Aliens Spotted in Church Kitchen / Is Church Elder Really Elvis? Church Records Say Yes! / Lose 20 Lbs. in 4 Weeks By Playing in Bell Choir!* The cartoon was captioned, "Attempts to make the church newsletter more exciting were getting out of hand." Indeed!

By the same token, a church growth "expert" was once asked what a struggling church could do to make its worship the sort of exciting event that would increase attendance and compete with the slickly-packaged TV services, sports events, recreational activities, etc., which conspire to draw away members. He replied that churches pretty much have to

start their worship and programs with something on par with a nuclear explosion and work their way up.

If he's right, most "average-sized" churches standing in the shadow of mega-churches have about as much chance as a Mom & Pop Five & Dime planted across the street from Walmart. We're in trouble because we can't afford much slick packaging, or many nuclear events either, for that matter.

What we can do is the same thing "good," faithful churches of all sizes have been doing well for centuries: We can point people to God's grace in a very personal way as we walk together genuinely sharing His love and genuinely sharing our lives.

By the way, did I mention that we have it on good authority that *Space Aliens from Mars Will Beam Elvis Down to One of Our Local Churches* this Sunday? It'd be a real shame to miss that!

I hope you'll be in worship this Sunday. The fact is that "where two or three are gathered together in His name," someone a lot more important than Elvis is in their midst.

But I'd still like to get a look at those purple aliens!

Curtis Shelburne is minister of the 16th & Avenue D Church of Christ in Muleshoe.