

The Pampa Daily News

WEATHER

Partly cloudy and warmer today, cooler Monday. High today near 60, low in mid-50s. High Monday in low 50s.

Serving The Top O' Texas 66 Years

Circulation Certified by ABC Audit

THE PAMPA DAILY NEWS SUNDAY, APRIL 1, 1973

(28 Pages Today)

Published by the Pampa Daily News, Inc.

Boycott Begins Today

By LOUISE COOK
Associated Press Writer
"All systems are go." That was the word on Saturday from one of the consumer groups sponsoring a nationwide meat boycott that begins Sunday despite newly imposed price ceilings on beef, lamb and pork.

After all other segments of the monopolistic food industry graft off big margins and assure themselves of a good profit.

The Colonial Stores supermarket chain in the Atlanta area said it would drop all meat advertising next week and substitute ads for "high protein, nonmeat items."

John Scott of Washington, D.C., master of the National Grange, said in Fayetteville, Ark., on Saturday that he thinks current farm prices are "fair for the first time in 20 years."

Clifford Wilson, chief of the services division at Ft. Knox, Ky., and the man responsible for supplying food to the 89 mess halls on the post said the cost of feeding a soldier three meals a day has risen from \$1.47 in January 1972 to \$1.94 today.



R.D. WILKERSON
...mayor



JAMES B. MAULE
...mayor



H.R. THOMPSON
...ward 1 council



WILLIAM TUKE
...ward 2 council



JOE B. CURTIS
...ward 2 council



LEO BRASWELL
...ward 3 council

Butz Forecasts Ceiling To End By Early Fall

WASHINGTON (AP) — The ceiling on meat prices imposed by President Nixon will probably be abolished by late summer or early fall and is not expected to be extended to cover other food products.

Secretary of Agriculture Earl L. Butz said Saturday. Butz also said current negoti-

ative reaction to high meat prices in the form of boycotts has worked to reduce prices at least temporarily. But he said he doubts the negative reaction by consumers will last.

Few Signs Of Boycott Locally

By RAY BAXTER
Only a few Pampans are going to boycott beef, but with them, it is not a token move but a very personal conviction that it might do some good.

These figures: If beef prices had advanced as fast as hourly pay, the cost would be \$60-60 per hundred. Compared to the cost of general medical care, \$179.69 per hundred.

I suddenly thought of the increases in cigarette prices through the years and I have never even slacked off, much less boycotted the tobacco people.

"Yes, I am going to buy beef. If I have to give up smoking, I am going to buy beef. I will try to buy it."

Asked his opinion of various groups' plans for a meat boycott beginning Sunday, Butz said, "The question is, do you really change your eating habits over the long term?"

TAKE YOUR PICK-The men pictured here are candidates for city office in Pampa's municipal election next Tuesday when voters will select a mayor and three city commissioners. They run the gamut from businessman to industrialists and a retired oil field worker.

Mayor, 3 Council Seats Await Voters Decision

By TEX DEWEES
Next Tuesday is the day Pampa voters go to the polls and make their choices of candidates who will conduct their municipal affairs for the next two years.

There will be three contested races. City electors will pick from two men in the mayor's race, two in the contest for Ward 2 councilman and two for Ward 3 councilman.

Wilkerson is a former school board member and recently resigned the Ward 2 post on the city commission to run for mayor. Maule is making his first bid for political office.

APRIL
S M T W T F S
1 2 3 4 5 6 7
8 9 10 11 12 13 14
15 16 17 18 19 20 21
22 23 24 25 26 27 28
29 30



APRIL SHOWERS-Preparing for the April showers, this month's calendar girl, Roxanna Roye, 16, awaits the flowers to bloom in May. The daughter of Mr. and Mrs. Bill Roye, 1109 Willow, Roxanna enjoys listening to music, dancing, and riding motorcycles. A student at Pampa High School, she plans to study cosmetology.

GOOD RESPONSE Adult Education Class Enrollment Held Open

Seventy-eight people, ranging in age from their teens to the sixties, enrolled in Adult Basic Education classes Thursday night.

Enrollment is being conducted at Baker Elementary School, where Principal Floyd Sackett is in charge of both enrollment and direction of classes.

Classes meet 7:30-9 p.m. each Tuesday and Thursday. A nursery is provided during these periods.

Children's Clinic Set

The 8th annual speech, hearing and vision clinic for pre-schoolers entering kindergarten and the first grade in the fall of 1973 is now set for Thursday, April 5, from 9 a.m. to 3 p.m. at the first Christian Church.

Mrs. Robert Fuxa, clinic chairman, is still accepting appointments. About 250 children have signed up to be tested to date either in groups or as individuals.

United Fund Announces New Directors, Officers

New directors and officers for the 1973-74 Pampa United Fund were announced at a recent meeting of the board of directors in City Hall.

E.L. Green, Jr. will serve as chairman of the board for the coming year. Other new officers are David Fathere, president; Milo Carlson, vice-president; and Arthel Gibson, treasurer.

Inside Today's News Pages

Aby	14
Classified	21
Comics	2
Crossword	1
Editorial	18
Farm Page	4
On the Record	2
Heavview Mirror	2
Sports	7-9
Women's News	11-17
Younger Generation	5

Nixon, Thieu To Talk

SAN CLEMENTE, Calif. (AP) — President Nixon is ready to offer assurances of moral and economic support to South Vietnamese President Nguyen Van Thieu in his two days of summit talks beginning Monday.

SAIGON (AP) — North Vietnam and the Viet Cong charged the U.S. and Saigon governments Saturday with a wide range of peace agreement violations which, they claim, threaten a complete breakdown of the two-month-old cease-fire.

But South Vietnam's President Nguyen Van Thieu, who flew off to the United States for a summit meeting with President Nixon, spoke on departure of "establishing a new era of peace."

Thieu, who goes on from the United States to Italy, Britain, South Korea and Taiwan, reportedly will seek pledges for billions of dollars of American aid to shore up his regime.

Pre-Easter Dollar Day Bargains Shop - Save...



There can be no political distribution of character and personality. Only personalities can create wealth but wealth cannot create personalities.
—Henry C. Lank

The Pampa Daily News

WEATHER

Partly cloudy and warmer today cooler Monday High today near 60 low in mid 30s High Monday in low 50s

Serving The Top Of Texas 66 Years

VOL. 66—NO. 311

Circulation Certified by ABC Audit

THE PAMPA DAILY NEWS—SUNDAY, APRIL 1, 1973

(28 Pages Today)

Weekdays 15c
Sundays 15c

Boycott Begins Today

BY LOUISE COOK
Associated Press Writer

All systems are go. That was the word on Saturday from one of the consumer groups sponsoring a nationwide meat boycott that begins Sunday despite newly imposed price ceilings on beef, lamb and pork.

Announcing that plan for the boycott were union leaders Carolyn H. Hill, chairman of the Atomic Energy Workers Union of America, and Robert E. Field, president of the United Brotherhood of Carpenters and Joiners of America.

The boycott was announced after the President has restricted the forces of government action but not prices, and after the high cost of meat has become a national issue.

after all other segments of the monopolistic food industry grab off big margins and assure themselves of a good profit.

NLU members withheld some live stock from market early last week because of lower hog and cattle prices, but agreed Friday to suspend their action temporarily. The action is being called off by President Nixon's Thursday executive order on price ceilings, which set a ceiling of 10 percent on the price of meat, but not on the price of live stock.

Meat prices, however, were reported to have risen 10 percent since the order was issued.

ing the meat boycott although it would be fatal because of the family's need to maintain a low carbohydrate diet. But she added, "I try to feed a family as per my price is almost impossible."

The Colonial States, a meat market chain in the Atlanta area, said it would drop its meat prices to meet the needs of the boycott.

A spokesman for the boycott said that the boycott is not a political statement.

mands for information about meat substitutes.

John Scott of Washington, D.C., master of the National Grange, said in Fayetteville, Ark., on Saturday that he thinks current farm prices are fair for the first time in 20 years.

Scott also said he thinks retail prices are fair. "We don't think food prices are out of line with wages and other prices, such as the cost of an automobile and other items," he said.

The rising cost of food has affected military as well as civilian life. Clifford Wilson, chief of the services division at Ft. Knox, Ky., and the man responsible for supplying food to the mess halls on the post said the cost of feeding a soldier three meals a day has risen from \$1.47 in January 1972 to \$1.93 today.

Wilson is trying to serve more hamburgers and chicken, but said some variety of meat is offered at every Army meal.

There are no meat substitutes here, he said.



R.D. WILKERSON
Mayor



JAMES B. MAULE
Mayor



H.R. THOMPSON
Ward 1 Council



WILLIAM LUKE
Ward 2 Council



JOE B. CURTIS
Ward 2 Council



LEO HASWELL
Ward 1 Council

Butz Forecasts Ceiling To End By Early Fall

WASHINGTON, AP—The rising meat prices will be temporary, Agriculture Secretary Earl Butz said Saturday.

Butz said that the price of meat will be high for a while, but that it will be temporary. He said that the price of meat will be high for a while, but that it will be temporary.

Butz said that the price of meat will be high for a while, but that it will be temporary. He said that the price of meat will be high for a while, but that it will be temporary.

Few Signs Of Boycott Locally

BY RAY BANTER

There were few signs of the nationwide meat boycott in Pampa today. Most of the meat stores in town were open and selling meat as usual.

At the Pampa Meat Market, a sign in the window said "Meat Sale" and the prices were lower than usual. The manager said that the sale was a response to the boycott.

At the Pampa Grocery, the meat counter was open and the prices were normal. The manager said that he was not aware of the boycott.

At the Pampa Supermarket, the meat counter was open and the prices were normal. The manager said that he was not aware of the boycott.

There were few signs of the nationwide meat boycott in Pampa today. Most of the meat stores in town were open and selling meat as usual.

At the Pampa Meat Market, a sign in the window said "Meat Sale" and the prices were lower than usual. The manager said that the sale was a response to the boycott.

At the Pampa Grocery, the meat counter was open and the prices were normal. The manager said that he was not aware of the boycott.

At the Pampa Supermarket, the meat counter was open and the prices were normal. The manager said that he was not aware of the boycott.

There were few signs of the nationwide meat boycott in Pampa today. Most of the meat stores in town were open and selling meat as usual.

At the Pampa Meat Market, a sign in the window said "Meat Sale" and the prices were lower than usual. The manager said that the sale was a response to the boycott.

At the Pampa Grocery, the meat counter was open and the prices were normal. The manager said that he was not aware of the boycott.

At the Pampa Supermarket, the meat counter was open and the prices were normal. The manager said that he was not aware of the boycott.

GOOD RESPONSE Adult Education Class Enrollment Held Open

The Pampa Adult Education Program is holding open enrollment for the 1973-74 school year. The program is open to all adults who are interested in learning.

The program offers a variety of courses, including English, mathematics, and history. The program is held at the Pampa Community Center.

For more information, contact the Pampa Adult Education Program at 123 Main Street, Pampa, Texas.

The Pampa Adult Education Program is holding open enrollment for the 1973-74 school year. The program is open to all adults who are interested in learning.

The program offers a variety of courses, including English, mathematics, and history. The program is held at the Pampa Community Center.

For more information, contact the Pampa Adult Education Program at 123 Main Street, Pampa, Texas.



APRIL SHOWERS—Preparing for the April showers, this month's calendar girl Roxanna Royce, 16, awaits the flowers to bloom in May. The daughter of Mr. and Mrs. Bill Royce, 1109 Willow, Roxanna enjoys listening to music, dancing, and riding motor cycles. A student at Pampa High School, she plans to study cosmetology.
Photo by Doug Abbott

Children's Clinic Set

A new children's clinic is being set up in Pampa. The clinic will provide medical care for children in the community.

The clinic will be located at the Pampa Community Center. It will be open to all children who are in need of medical care.

For more information, contact the Pampa Community Center at 123 Main Street, Pampa, Texas.

United Fund Announces New Directors, Officers

The Pampa United Fund has announced its new directors and officers for the 1973-74 year. The new board of directors includes...

The new officers are: President, Ed McCall; Vice President, Mrs. Dorothy Newkirk; Secretary, Fred Neslage; and Treasurer, Green...

Mayor, 3 Council Seats Await Voters Decision

Mayor R.D. Wilkerson and three council seats are up for election in Pampa's municipal election next Tuesday. Voters will select a mayor and three of the council members.

The candidates for mayor are James B. Maule and H.R. Thompson. The candidates for council are William Luke, Joe B. Curtis, and Leo Haswell.

The election will be held at the Pampa Community Center on Tuesday, April 3, 1973.

Reds Say US Aids Violations

The American Revolution Party (ARP) has accused the United States of aiding violations of international law. The party says that the US is providing military aid to the South Vietnamese government.

The ARP says that this aid is in violation of the Geneva Convention on the Law of the Sea and the Geneva Convention on the High Seas.

The party is calling for an end to US military aid to the South Vietnamese government.

Nixon, Thieu To Talk

President Richard Nixon and South Vietnamese President Nguyen Van Thieu are expected to have a telephone conversation today. The conversation is expected to be a routine one, discussing the current situation in Vietnam.

The two presidents have not spoken since their meeting in Saigon in December 1972. The conversation is expected to be a positive one, with both leaders expressing their commitment to the peace process in Vietnam.

Inside Today's News

Classified	71
Comics	8
Crossword	18
Editorial	18
Farm Page	1
On the Record	2
Rearview Mirror	18
Sports	7-9
Women's News	14-17
Younger Generation	5

Pre-Easter Dollar Day Bargains Shop - Save...

PTA Group Slates Panhandle Meeting

The Panhandle Parent-Teacher Association will hold its 18th annual convention at the Sheraton Hotel in Amarillo, April 27-29. The convention will be held in conjunction with the annual meeting of the Amarillo PTA. The convention will be held in conjunction with the annual meeting of the Amarillo PTA. The convention will be held in conjunction with the annual meeting of the Amarillo PTA.

Mrs. Max Lawson, Greater Amarillo PTA vice president for Harrison, Hutchinson and DeWitt Counties, Mrs. J. L. Farber, Pampa vice president for Armstrong, Gray, Carson and DeWitt Counties, Mrs. Ethel Chubbuck, Quilicura vice president for Ch. Brown, Hart and Brown Counties, Mrs. M. E. Compton, Pampa vice president for DeWitt, Hart and Brown Counties, and Mrs. E. J. Brown, Pampa vice president for DeWitt, Hart and Brown Counties, are the featured speakers.

Seal Support Request Given

A request for support of the Seal of the State of Texas was made by the Texas Seal Commission at a meeting of the Texas Seal Commission at a meeting of the Texas Seal Commission at a meeting of the Texas Seal Commission at a meeting of the Texas Seal Commission.

Mainly About People

Local news items including mentions of various community events, school activities, and local business news.

POWs Called Liars

BERNARD, Calif. — An Academy Award-winning movie, "The Deer Hunter," starring Robert De Niro, who stated they were being held in North Vietnamese prison camps, by rifles and tanks. He says he will make a movie about the Vietnam war and the POWs.

Chafin Talks To Kiwanis About Crisis

Other speakers at the meeting were Mrs. J. L. Farber, Pampa vice president for Armstrong, Gray, Carson and DeWitt Counties, Mrs. Ethel Chubbuck, Quilicura vice president for Ch. Brown, Hart and Brown Counties, Mrs. M. E. Compton, Pampa vice president for DeWitt, Hart and Brown Counties, and Mrs. E. J. Brown, Pampa vice president for DeWitt, Hart and Brown Counties.

Cattle Feeders Offering Protesters Partnership

AMARILLO—Texas cattle feeders are up tight about beef prices, which they claim are too low and the law of supply and demand. But rather than fight back with wild accusations, they're saying they have a plan to help the beef industry.

ICT Group Gets Honors At Contests

The Industrial Cooperative Training class of Pampa High School were well represented at the annual contest of the Industrial Cooperative Training Association.

Langham In New Position

Wesley Langham, former administrator at Highland General Hospital, has accepted the post of administrative assistant at Northwest Texas Hospital, Amarillo.

VD Awareness Month Called By Governor

AUSTIN, Tex. — Gov. Dolph Briscoe has proclaimed April as Venereal Disease Awareness Month in Texas.

Perryton Woman Named For Homemaker Award

PERRYTON — Mrs. Roy Green Jr. of Perryton was named winner of the 1973 Region 1 Texas Conservation Homemaker award recently.

Fish Fry Set Today

Men members of the First Methodist Church will host a fish fry today in conjunction with the annual church picnic.

County Slates Routine Agenda

The highest of the month agenda for the county commissioners court meeting Monday includes the payment of bills.

Obituaries

Obituary notices for several individuals, including Mrs. J. L. Farber and Mrs. Ethel Chubbuck.

Traffic Deaths Up

Local news item regarding an increase in traffic deaths.

On The Record

Local news items including mentions of various community events, school activities, and local business news.

Hagaman Gets GM Certificate

Local news item regarding a certificate awarded to Hagaman.

Ordination Service Set At Skellytown

Local news item regarding an ordination service set for Skellytown.

Demos Peaceful

Local news item regarding peaceful demonstrations.

EMPLOYEE CABOT MACHINERY DIVISION 35 YEARS PAMPA CITIZEN 44 YEARS

Advertisement for Leo Braswell, a candidate for re-election to the City Commission, Ward 3.

FREE Kodak Film

Advertisement for B & B Pharmacy offering free Kodak film.

Duenkel Funeral Director

Advertisement for Duenkel Funeral Director.

BONANZA CAP JOLLY PAMPA FLYING SERVICE

Advertisement for Bonanza Flying Service.

Today A MEDITATION For the NEW AGE

Advertisement for Carmichael & Whitley Funeral Directors.

Vertical text on the right edge of the page, including "W To CANYO peanuts comes t Universi Fine Ar Merrick musical A Carniv from the Lili, w evening Arts The French charme portra child-wr into the Grand Paris."

The Younger Generation

Men And Women Of Tomorrow



Timothy Woods, age 5, son of Mr. and Mrs. Woods, 1157 Varnon Drive



Vickie Young, age 5, daughter of Mr. and Mrs. John D. Young, 540 Crawford



Eddie Thompson, age 6, son of Jessie Stever, 535 S. Sommerville



Willie Prigett, age 6, son of Mr. and Mrs. Prigett, 506 Maple

Local Baylor Parents League To Meet

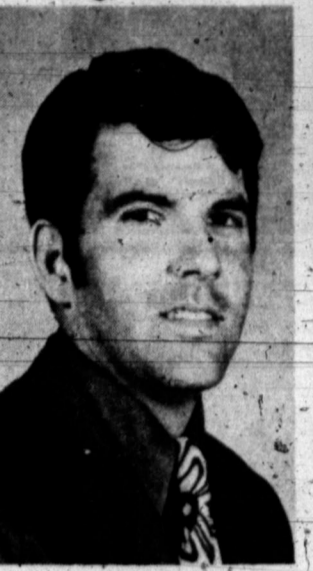
WACO — The Pampa area chapter of Baylor Parents League (BPL) will have its spring meeting at 7:30 p.m. Monday, April 2, in the Flame Room of Pioneer Natural Gas Co., 220 Ballard, Pampa.

Representing Baylor University will be Mrs. Jack Herring, BPL director; Larry Smith, coordinator of admissions counseling; Mrs. Mabel Warren, who assists Mrs. Herring in BPL activities; and El Phelps, Baylor development officer for the Pampa area.

Smith will present the program of special interest to prospective Baylor students and their parents. He will give information on entrance requirements, scholarships, financial aid, advanced placement, academic and social climates on campus and various other aspects of the university.

The program also will include a slide presentation of university life on the Waco campus.

A question-and-answer period for parents will be part of the program. All interested parents and young people from the area are invited to attend the

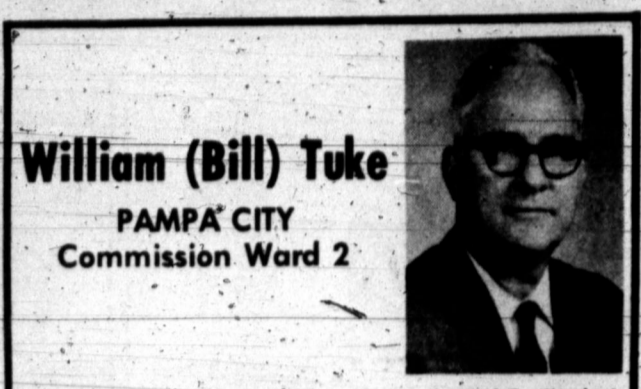


LARRY SMITH
admissions counselor



MRS. DAPHNE HERRING
Parents League director

communication link between parents and the university, informing parents of the traditions, present accomplishments and future goals of the university. It also acts as a channel of communication between administrators, faculty and students.



William (Bill) Tuke
PAMPA CITY
Commission Ward 2

Bill is Laboratory Superintendent for Calanese Chemical Co. Has been with Calanese for 27 years, in various assignments. Has 30 years experience in supervision and administration. Is treasurer and vestryman of St. Matthew's Episcopal Church. Treasurer of Pampa Fine Arts and Vice President of the Pampa Club.

Vote for BILL TUKE Paid Political Adv.

Top o' Texas DRIVE-IN
665-9781
OPEN 7:00 SHOW 7:30 AD 1.25

LAST HOUSE ON THE LEFT CAN A MOVIE GO TOO FAR?
To the Warden's daughter... a giant playpen!
1,000 CONVICTS AND A Woman!

CAPRI
SUN - OPEN 1:00 MON-TUES OPEN 7:00 SHOW 7:30 AD 1.25 - CH 5.0
WALT DISNEY PRODUCTIONS Presents

THE WORLD'S GREATEST ATHLETE
TECHNICOLOR

Preparers Must Meet Regulations

DALLAS — Anyone who prepares a federal income tax return for a fee is required to obtain his social security number or employer identification number on the returns he prepares. W.T. Coppinger, IRS district director for North Texas, said today.

This information is required on income tax returns for the first time this year. Coppinger said taxpayers should insist that a preparer sign the return and enter his address and social security number or employer identification number on the return.

The IRS added the requirement to the 1972 income tax return so that it can identify the tax returns filed out by a particular preparer.

The IRS is making a major effort again this year to identify unscrupulous income tax return preparers. IRS agents in Texas will observe the preparation of returns in the preparers' offices by posing as clients, Coppinger said.

The IRS is not condemning every return preparer. The industry as a whole provides an important service to the taxpaying public, Coppinger said.

A similar program which the IRS conducted last year revealed that many return preparers were counseling taxpayers to deliberately understate their income tax. He said the findings confirmed the need for a similar program this year.

Heard-Jones DRUG
114 N. Cuyler 669-7478
Specials Good Thru Saturday

JERGENS LOTION 20 Ounces 1.69 Value **\$1.00**
Colgate Instant SHAVE CREAM Reg. 79¢ **3 For \$1.00**
Excedrin EXCEDRIN TABLETS 36's Reg. 90¢ **2 For \$1.00**
Listerine Antiseptic 7 Ounces Reg. 85¢ **2 For \$1.00**
CREST TOOTHPASTE 5 Ounce Size **2 For \$1.00**

HAIR SPRAY Miss Breck or Max Factor Tried & True 13 Ounce Size
Values To 1.25 Your Choice **2 For \$1.00**
Kotex New Freedom FEMININE NAPKINS 53's Value 12's **4 Boxes \$1.00**
KLEENEX Towels Big Jumbo Roll Reg. 53¢ **4 Rolls \$1.00**

POLAROID FILM Type 108 Color **3.83**
CX 126-12 Kodak COLOR FILM 140 Value **95¢**
Sylvania BLUE DOT FLASHCUBES 12 Shots 1.65 Value **79¢**
Polaroid CAMERA Square Shooter No. 2 **\$1.99**
Neo-Vadrin VITAMIN C TABLETS 250 MG 100's Reg. 1.49 **2 For \$1.00**
TRIAMINICIN 24 TABLETS **\$1.00**
Wella Balsam Conditioning SHAMPOO 4 Ounces Reg. 1.10 **2 For \$1.00**

DELSEY TISSUE 8 Rolls **\$1.00**
PRESTO PORTABLE PROFESSIONAL HAIR DRYER Professional hair-care at home. Fast, thorough, gentle drying. Easy-open pushbutton case. Extra large hood for any hair style. Remote control, attractive travel case. Reg. 31.95 **19.99**
Wash Cloths Reg. 49¢ Fluffy Cotton **5 For \$1.00**
SPRINKLER Reg. 4.95 Rain Wave Oscillating **\$2.88**
ICE TEA MIX Reg. 97¢ Tender Leaf **2 For \$1.00**
ANTACID Reg. 1.69 12 Ounce Maalox **\$1.00**

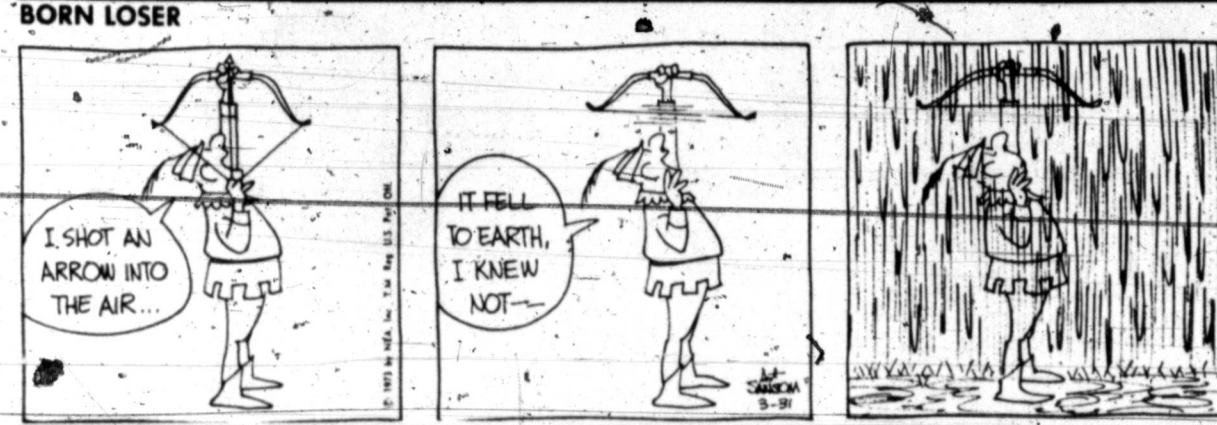
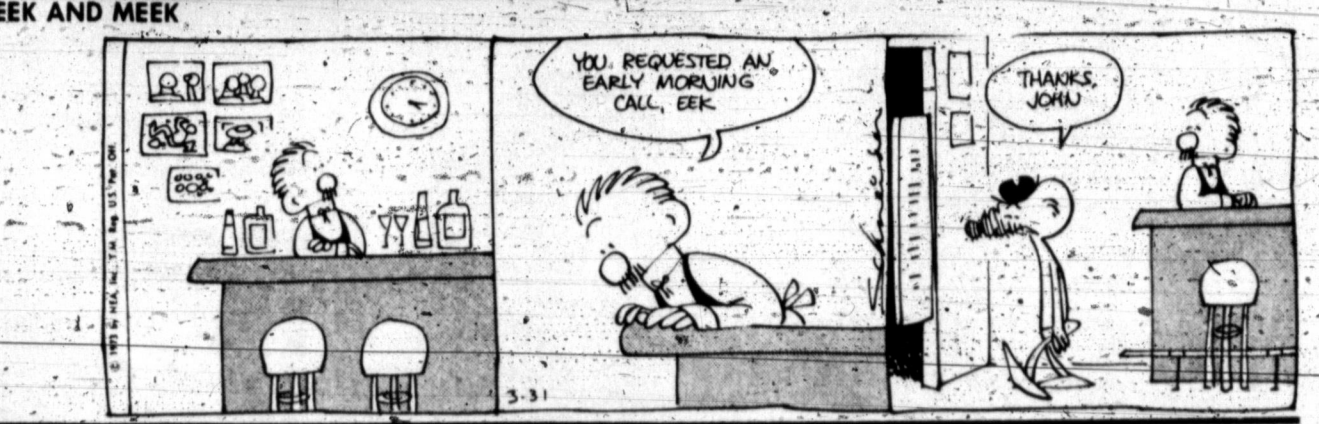
DUPONT LUCITE LATEX WALL PAINT 6.47 Gallon **\$7.47** Outside Gallon
PRESTO AUTOMATIC TOASTER Perfect toast in seconds — automatically! Color selector, hinged crumb tray. Gleaming chrome with woodgrain end panels. Compact for easy storage; also available in 4-slice model. Reg. 16.95 **10.88**

WELLA BALSAM INSTANT HAIR CONDITIONER 8 Ounces **\$1.00**
Day In... Day out Heard-Jones Drug Stores Maintain LOW PRICES ON PRESCRIPTIONS

Furr's cafeterias
OPEN DAILY and SUNDAY 11 a.m. - 2 p.m.; 5 p.m. to 8 p.m.
Child's Plate **75¢**
Banquet Rooms Available
Enjoy Piano Artistry Evenings at Furr's

SUNDAY MENU
MEATS
Beef Chop Suey over Hot Fluffy Rice **.95**
Roast Turkey with Old Fashioned Sage Dressing, Rich Giblet Gravy, Cranberry Sauce **.75**
VEGETABLES
Stuffed Baked Potato with Cheese Topping **.25**
Spinach with Bacon **.24**
SALADS
Merry Cherry Gelatin **.25**
Furr's Fresh Fruit Salad **.30**
DESSERTS
German Chocolate Cake with Coconut Pecan Icing **.35**
Pumpkin Chiffon Pie **.30**
MONDAY MENU
MEATS
Pork Chop Jardiniere **.95**
Deep Fat Fried Oysters with Fresh Fried Potatoes and Tangy Seafood Sauce **.88**
VEGETABLES
Cauliflower with Cheese Sauce **.30**
Apples with Raisins **.25**
SALADS
Cottage Cheese Garden Salad **.28**
Cherry Pineapple Nut Salad **.30**
DESSERTS
Chocolate Brownies with Fudge Icing **.20**
Pineapple Banana Pie with Whipped Cream **.30**

SHORT RIBS



Louisiana Tops Texas For Gas

By MAX H. SKELTON
AP Oil Writer
HOUSTON (AP) — Louisiana has replaced Texas as the nation's leading natural gas producing state.
This was the only major change in state rankings in the new reports on domestic oil and gas reserves as estimated by the American Petroleum Institute and the American Gas Association.
Steadily increasing production from Louisiana's offshore areas in recent years had made the change inevitable.
Louisiana produced 8.4 trillion cubic feet of gas in 1976, Texas 8.2 trillion. A year earlier, Texas output was 8.166 trillion, Louisiana 8.114 trillion.
Trends in both states are not encouraging, however, at a time of domestic supply shortages.
Louisiana boosted its natural gas production by 298 billion cubic feet last year but saw its proved reserves decline more than 3.6 trillion cubic feet.
Texas increased its gas output by 153 billion cubic feet but its reserves declined by 6.4 trillion cubic feet.
At the end of 1976, Louisiana had an estimated 74.9 trillion cubic feet of gas reserves, compared with 78.6 trillion a year earlier. 86.2 trillion at the end of 1967 and 71.9 trillion at the end of 1962.
Texas ended 1976 with reserves estimated at 95 trillion cubic feet, compared with 101.4 trillion a year earlier. \$125.4 trillion at the end of 1967 and 119.5 trillion at the end of 1962.
A decade ago, the two states held 70 per cent of domestic gas reserves and accounted for 69 per cent of the nation's production. Last year they had 72 per cent of domestic reserves and claimed 75 per cent of the nation's output.
Texas continues as the leading oil-producing state but Louisiana is narrowing the gap. Louisiana's crude production last year was equivalent to 61 per cent of that of Texas compared with only 46 per cent a decade earlier.
Like natural gas, however, the crude oil trends for both states are rather discouraging. Both states boosted production last year while operating at near maximum levels most of the year but crude reserves in both areas continued to decline.
Texas produced 1.258 billion barrels of crude. This was an increase of 76 million barrels but the state's proved reserves dropped to 12.144 billion barrels, 379 million below the year

Observer Questions Questionnaire Surveying

By C.R. BATTEN
This observer has had some small experience with public opinion surveys—questionnaires, or interviews that seek to determine what the general public thinks about certain subjects. Whether because of, or in spite of that small experience, he is skeptical of their results.
They can be easily manipulated to yield results favorable to those making the survey. In order to avoid built-in prejudices, the studies must be exceedingly well planned by experts in public opinion sampling, who should be independent of the sponsors and should be without inherent biases on the subjects being investigated.
Questions must be carefully planned, so as not to lead respondents to preconceived answers. Respondents, according to professional pollsters, should be carefully selected to provide a typical cross-section of the audience whose opinion is being sampled.
The survey should be made by trained interviewers who seek to avoid any built-in attitudes in their manner of questioning.
Telephone surveys and especially mail-in questionnaires are of doubtful validity. Those who use public opinion surveys should have some knowledge of how the studies are made, and of their statistical reliability.
On my desk is a brief report of an opinion survey that may be typical of many made by public agencies. The report is based on a questionnaire that was widely circulated in three newspapers in our town (Boulder, Colo.).

Today In History

By THE ASSOCIATED PRESS
Today is Sunday, April 1, the 91st day of 1977. There are 274 days left in the year. This is April Fools Day.
Today's highlight in history: On this date in 1939, Generalissimo Francisco Franco announced that the Spanish Civil War was over, and the United States recognized his government.
On this date in 1578, the English physician who first explained the circulation of blood, William Harvey, was born.
In 1789, the U.S. House of Representatives held its first full meeting, convening in New York City.
In 1918, the Royal Air Force was organized in Britain.
In 1937, Britain separated Burma from India, making it a separate crown colony.
In 1945, in the Pacific war, a U.S. naval armada of more than 1,400 ships began the invasion of Okinawa.
Ten years ago: A group of Cuban exiles who were planning to attack a Soviet tanker off Cuba were seized by British authorities in the Bahamas.

Drilling Intentions

INTENTIONS TO DRILL
Armstrong County
Wildcat, W.V. Harlow, Jr. Mattie Hedgecock No. 1, 355 ft. FS & 1,703 ft. FE lines of Sec. 110, G.E. A&C. PD 6,800 ft.
Carson County
Panhandle, Etchison & Gross Associates, Burnett, "L" No. 1, 330 ft. FN & 2,310 ft. FW lines of Sec. 85, S. I&GN. PD 3,170 ft. Re-enter.
Panhandle, Texas Oil & Gas Corp., Bivins No. 15, 1,980 ft. FE & 1,980 ft. FS lines of Sec. 11, Y-2, B&B. PD 3,200 ft.
Hansford County
Wildcat, Colorado Interstate Gas Co., Hart No. 1, 1,320 ft. FW & 1,320 ft. FN lines of Sec. 5, S-T, T&NO. PB 6,100 ft. Re-enter.
Hemphill County
Wildcat, Diamond Shamrock Corp., Lester B. Urschel "A" No. 1-66, 970 ft. FS & 2,195 ft. FW lines of Sec. 66, 1. G&M. PD 7,800 ft.
Canadian, SE (Douglas), Diamond Shamrock Corp., Billy Jarvis & Sons, Inc. et al No. 1-219, 567 ft. FS & 890 ft. FE lines of Sec. 219, C. G&MM&A. PD 7,600 ft.
Wildcat, El Paso Natural Gas Co., Fillingim No. 1, 1,000 ft. FE & 800 ft. FS lines of Sec. 9, A-1, H&GN. PD 2,150 ft.
Hutchinson County
Morse, S.W. (Brown Dolomite), McCulloch Oil Corp. of Texas, R. Wamble No. 2, 7, 470 ft. FS lines of Sec. 9, 1. BBB&C RR. PD 3,300 ft.

Vote for Curt B. Beck for Pampa School Board

April 7 — Polling Place:
Music Room of Pampa High School
Philosophy and Beliefs
Pampa School instruction should prepare the student as thoroughly as possible to assume his or her place in society, to go on to college, or to go on to vocational school.
Pampa has the climate, the finances, the teachers, and the schools to make our students equal to the best public school students in the country. This should be the number one goal of the School Board.
Although not a business, the Pampa School system should operate with expenses balanced against income. A good school system is an attraction for bringing much-needed new industry to Pampa.
Pampa should continue to attract and keep the best qualified personnel in our School District.
The School System should meet the challenge of bringing the under-achievers and the underprivileged into full membership in our society.
Education is a two way street between students and administration. I believe that if the school administration gives its best efforts to the students, it will receive the full co-operation of the students. School should be an exciting experience for the student.
Biography and Qualifications
Curt Beck has been a Pampa resident for over 25 years and is a native born Texan. He has 3 children in Pampa Schools, Curt and Ann in Robert E. Lee, Paul in Stephen F. Austin.
He has served or is serving Pampa Youth as Cubmaster (12 years), Scout Troop Committeeman (4 years), Webelos Cub Scout Den Leader (3 years).
He is a Registered Professional Engineer in Texas and such civic organizations as the Pampa Jaycees, Lions Club, Community Concert Association, Fine Arts Association, Toastmasters Club, American Institute of Chemical Engineers, American Chemical Society, Chamber of Commerce Environmental Committee.
He is Associate Director, Research and Development Department, Cabot Corporation, and has worked for Cabot over 25 years.
He is a registered Professional Engineer in Texas and other states.
He has served as an Educational Councilor on the Massachusetts Institute of Technology (MIT) Educational Advisory Council for ten years.
He is married and is an Elder in the Presbyterian Church. His wife is a Pampa Physician, Dr. W.P. Beck.
He is a graduate Chemical Engineer from MIT (Massachusetts Institute of Technology).

Drilling Intentions

INTENTIONS TO DRILL
Armstrong County
Wildcat, W.V. Harlow, Jr. Mattie Hedgecock No. 1, 355 ft. FS & 1,703 ft. FE lines of Sec. 110, G.E. A&C. PD 6,800 ft.
Carson County
Panhandle, Etchison & Gross Associates, Burnett, "L" No. 1, 330 ft. FN & 2,310 ft. FW lines of Sec. 85, S. I&GN. PD 3,170 ft. Re-enter.
Panhandle, Texas Oil & Gas Corp., Bivins No. 15, 1,980 ft. FE & 1,980 ft. FS lines of Sec. 11, Y-2, B&B. PD 3,200 ft.
Hansford County
Wildcat, Colorado Interstate Gas Co., Hart No. 1, 1,320 ft. FW & 1,320 ft. FN lines of Sec. 5, S-T, T&NO. PB 6,100 ft. Re-enter.
Hemphill County
Wildcat, Diamond Shamrock Corp., Lester B. Urschel "A" No. 1-66, 970 ft. FS & 2,195 ft. FW lines of Sec. 66, 1. G&M. PD 7,800 ft.
Canadian, SE (Douglas), Diamond Shamrock Corp., Billy Jarvis & Sons, Inc. et al No. 1-219, 567 ft. FS & 890 ft. FE lines of Sec. 219, C. G&MM&A. PD 7,600 ft.
Wildcat, El Paso Natural Gas Co., Fillingim No. 1, 1,000 ft. FE & 800 ft. FS lines of Sec. 9, A-1, H&GN. PD 2,150 ft.
Hutchinson County
Morse, S.W. (Brown Dolomite), McCulloch Oil Corp. of Texas, R. Wamble No. 2, 7, 470 ft. FS lines of Sec. 9, 1. BBB&C RR. PD 3,300 ft.

Vote for Curt B. Beck for Pampa School Board

April 7 — Polling Place:
Music Room of Pampa High School
Philosophy and Beliefs
Pampa School instruction should prepare the student as thoroughly as possible to assume his or her place in society, to go on to college, or to go on to vocational school.
Pampa has the climate, the finances, the teachers, and the schools to make our students equal to the best public school students in the country. This should be the number one goal of the School Board.
Although not a business, the Pampa School system should operate with expenses balanced against income. A good school system is an attraction for bringing much-needed new industry to Pampa.
Pampa should continue to attract and keep the best qualified personnel in our School District.
The School System should meet the challenge of bringing the under-achievers and the underprivileged into full membership in our society.
Education is a two way street between students and administration. I believe that if the school administration gives its best efforts to the students, it will receive the full co-operation of the students. School should be an exciting experience for the student.
Biography and Qualifications
Curt Beck has been a Pampa resident for over 25 years and is a native born Texan. He has 3 children in Pampa Schools, Curt and Ann in Robert E. Lee, Paul in Stephen F. Austin.
He has served or is serving Pampa Youth as Cubmaster (12 years), Scout Troop Committeeman (4 years), Webelos Cub Scout Den Leader (3 years).
He is a Registered Professional Engineer in Texas and such civic organizations as the Pampa Jaycees, Lions Club, Community Concert Association, Fine Arts Association, Toastmasters Club, American Institute of Chemical Engineers, American Chemical Society, Chamber of Commerce Environmental Committee.
He is Associate Director, Research and Development Department, Cabot Corporation, and has worked for Cabot over 25 years.
He is a registered Professional Engineer in Texas and other states.
He has served as an Educational Councilor on the Massachusetts Institute of Technology (MIT) Educational Advisory Council for ten years.
He is married and is an Elder in the Presbyterian Church. His wife is a Pampa Physician, Dr. W.P. Beck.
He is a graduate Chemical Engineer from MIT (Massachusetts Institute of Technology).

Rent An Adventure
Amazing What Formal Wear Can Do for a Guy
Get In on the After Six Action - Rent a Tux from Us Today
Bob Clements
FINE TAILORING and DRY CLEANING
Pampa Representative for MISTER DOYCE
1437 N. Hobart 665-5121

Vote for Curt B. Beck for Pampa School Board
April 7 — Polling Place:
Music Room of Pampa High School
Philosophy and Beliefs
Pampa School instruction should prepare the student as thoroughly as possible to assume his or her place in society, to go on to college, or to go on to vocational school.
Pampa has the climate, the finances, the teachers, and the schools to make our students equal to the best public school students in the country. This should be the number one goal of the School Board.
Although not a business, the Pampa School system should operate with expenses balanced against income. A good school system is an attraction for bringing much-needed new industry to Pampa.
Pampa should continue to attract and keep the best qualified personnel in our School District.
The School System should meet the challenge of bringing the under-achievers and the underprivileged into full membership in our society.
Education is a two way street between students and administration. I believe that if the school administration gives its best efforts to the students, it will receive the full co-operation of the students. School should be an exciting experience for the student.
Biography and Qualifications
Curt Beck has been a Pampa resident for over 25 years and is a native born Texan. He has 3 children in Pampa Schools, Curt and Ann in Robert E. Lee, Paul in Stephen F. Austin.
He has served or is serving Pampa Youth as Cubmaster (12 years), Scout Troop Committeeman (4 years), Webelos Cub Scout Den Leader (3 years).
He is a Registered Professional Engineer in Texas and such civic organizations as the Pampa Jaycees, Lions Club, Community Concert Association, Fine Arts Association, Toastmasters Club, American Institute of Chemical Engineers, American Chemical Society, Chamber of Commerce Environmental Committee.
He is Associate Director, Research and Development Department, Cabot Corporation, and has worked for Cabot over 25 years.
He is a registered Professional Engineer in Texas and other states.
He has served as an Educational Councilor on the Massachusetts Institute of Technology (MIT) Educational Advisory Council for ten years.
He is married and is an Elder in the Presbyterian Church. His wife is a Pampa Physician, Dr. W.P. Beck.
He is a graduate Chemical Engineer from MIT (Massachusetts Institute of Technology).

STARTS WED. APR. 18 thru SUN. APR. 22
5 Days Only **AMARILLO**
6 Exciting Performances
CIVIC CENTER COLISEUM
ORDER BY MAIL NOW!!
Performance Schedule
Wed. Thurs. Fri. & Sat. 8 PM
Matinees
Sat. and Sun. 2 PM
PRICES: \$2.50-\$3.00-\$3.50-\$4.00
All Seats Reserved
Special Youth Prices (18 yr. & under)
1/2 Regular Price For All Perfs.
Except Sat. 8 PM
TICKETS ON SALE AT CIVIC CENTER
12 Noon to 5:30 PM Daily
ICE CAPADES
Clip and Mail to: Ice Capades Box Office - Civic Center Coliseum P.O. Box 1971 Amarillo 79105
Enclosed in Check or Money Order in amount of \$ payable to: ICE CAPADES
for Adult Tickets at \$ each and Youth Tickets at \$
NAME: PHONE:
ADDRESS: CITY: STATE: ZIP:
1st Choice Day Date Time
2nd Choice Day Date Time
Enclose a self-addressed stamped envelope for prompt return of tickets.

WARD 3-DAY SALE!
FULLY-ASSEMBLED, ALL-STEEL WARDROBE OR DELUXE SHELF CABINET
YOUR CHOICE **29⁸⁸ EACH**
SAVE \$7 **36.99 STEEL WARDROBE** 63x36" wide. Magnetic-closing doors open to 19" deep interior - full-width hanging bar, hat shelf! Brown enamel-finished unit.
SAVE \$12 **41.95 UTILITY CABINET** 63x14x24" wide unit in appliance-coordinated colors; copper-tone, gold, avocado, white. Woodtone handles, 5 inner shelf spaces.
SPECIAL BUY!
8-DIGIT ELECTRONIC POCKET CALCULATOR
• Compact! Measures 3x5/4x1 1/8 in.
• Multiplies, divides, adds, subtracts.
Full-floating decimal for decimally correct answers. Multiplication and division constant for continuous calculations. "Time out" feature extends battery life. Batteries incl.
99⁹⁵

ZENITH HEARING AIDS
Mr. Horace Nazworth from Gabel Hearing Aids of Amarillo Will be at **HEARD-JONES REXALL DRUG**
WED. & THURS. Apr. 4 & 5
TEST-HEAR THE LATEST ASK ABOUT OUR 10-DAY TRIAL PLAN

MONTGOMERY WARD 3-DAY SALE!
FULLY-ASSEMBLED, ALL-STEEL WARDROBE OR DELUXE SHELF CABINET
YOUR CHOICE **29⁸⁸ EACH**
SAVE \$7 **36.99 STEEL WARDROBE** 63x36" wide. Magnetic-closing doors open to 19" deep interior - full-width hanging bar, hat shelf! Brown enamel-finished unit.
SAVE \$12 **41.95 UTILITY CABINET** 63x14x24" wide unit in appliance-coordinated colors; copper-tone, gold, avocado, white. Woodtone handles, 5 inner shelf spaces.

SPECIAL BUY!
8-DIGIT ELECTRONIC POCKET CALCULATOR
• Compact! Measures 3x5/4x1 1/8 in.
• Multiplies, divides, adds, subtracts.
Full-floating decimal for decimally correct answers. Multiplication and division constant for continuous calculations. "Time out" feature extends battery life. Batteries incl.
99⁹⁵

Couples Reveal Wedding Plans



Miss Donna Fife and Jerry George will wed June 16 in Central Baptist Church of Pampa. Her parents, Mr. and Mrs. J. B. Fife, 505 E. Kingsmill, are making the announcement. The prospective bridegroom is the son of Mr. and Mrs. Charles George, 1317 E. Foster. The bride-elect will graduate in the spring from Pampa High School. Her fiancé is a 1971 graduate of PHS, attended West Texas State University and is presently enrolled at Amarillo College. He is employed by Culligan in Amarillo. (Photo by Doug Abbott)



The engagement of Miss Patricia Eckert and Ken Weaver is being announced by her parents Mr. and Mrs. Fred O'Hara, 624 N. Sumner. The wedding will be solemnized in Foursquare Gospel Church of Pampa, June 2. Parents of the prospective bridegroom are Mr. and Mrs. Kenneth Weaver, 508 Doucette. Miss Eckert will be a 1973 graduate of Pampa High School. The bride-groom-to-be is a 1971 graduate of PHS and is presently employed at Culberson-Stowers Chevrolet.



Mr. and Mrs. Everett Maas, Deer Park, Tex., are announcing the engagement of their daughter, Lindy, to Randy Lyons, son of Mrs. Virginia Lyons and the late Mr. B. W. Lyons of Pampa. The bride-elect is a 1970 graduate of Deer Park High School and is a junior physical education major at the University of Houston. She is presently employed as a dental assistant in Pasadena. The prospective bridegroom is a 1968 graduate of Pampa High School. He has served two years in the U.S. Navy, spending one year in Viet Nam. He is employed by Louisiana Chemical Co. in Texas City as truck foreman. A May 18 wedding at Sharon Lutheran Church in Pasadena is being planned.

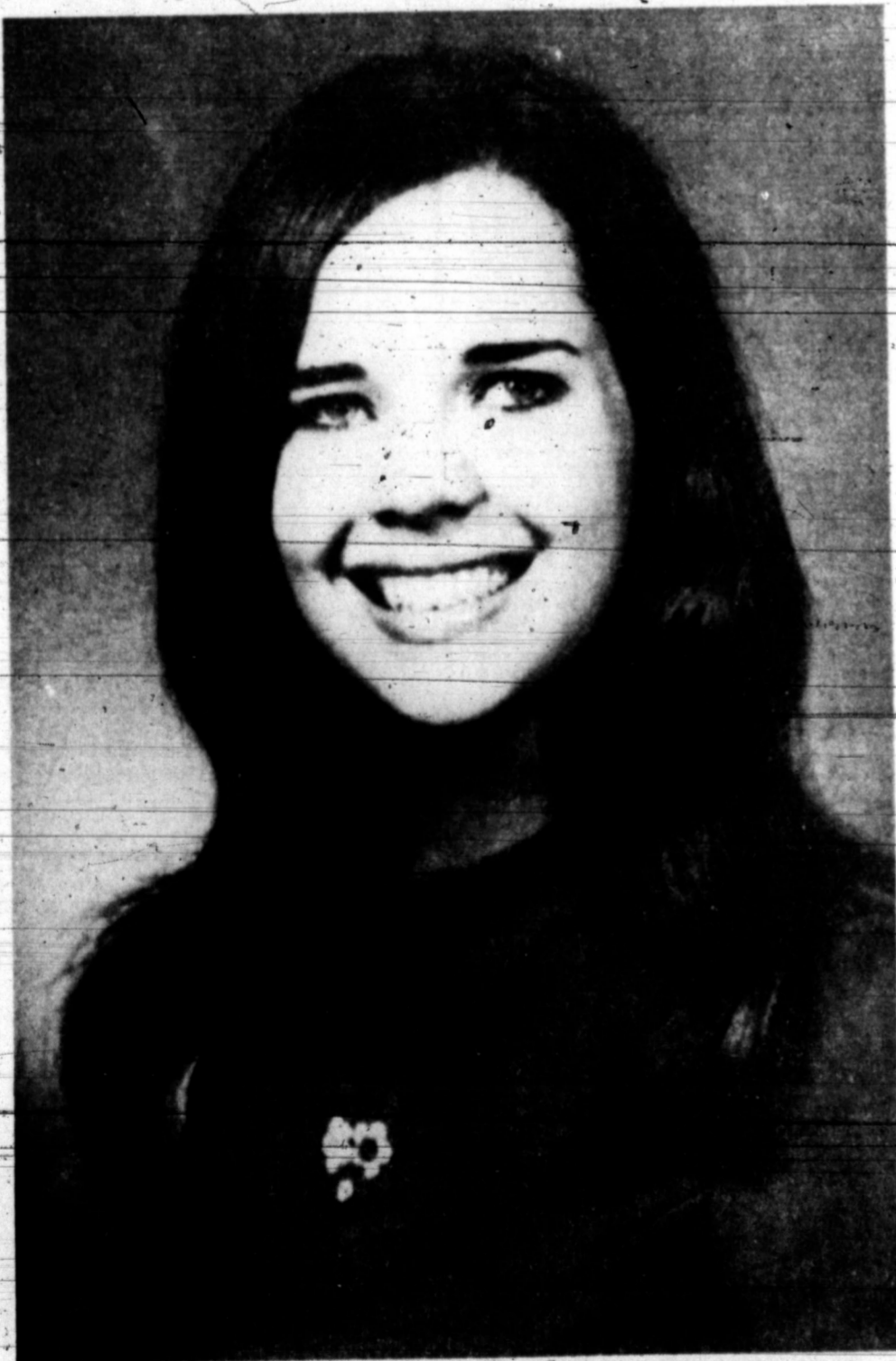
Bobbie Combs

Women's Editor

The Pampa Daily News

The Women's Page

Pampa, Texas 66th Year Sunday, April 1, 1973



The engagement of Miss Ruth Ann Nonenmacher of Hurst, Tex., and Randall Duane Hogan of Arlington, is being announced by her parents, Mr. and Mrs. William W. Nonenmacher of Ann Arbor, Mich. Parents of the prospective bridegroom are Mr. and Mrs. Calvin G. Hogan, 732 Bradley Dr., Pampa. The wedding is planned for July 26 in the Ann Arbor Church of Christ. The bride-elect is a graduate of Michigan-Christian Junior College and Harding College. She is currently teaching at the Fort Worth Christian Academy. Her fiancé was a 1966 graduate of Pampa Senior High, has completed service with the Navy, and graduated from Tarrant County Junior College. He is employed by Martin Sprocket and Gear in Arlington.



Mr. and Mrs. Travis Winegeart, Sr., of McLean are announcing the engagement of their daughter, Miss Janie Viola Winegeart, to Cleo Wayne Vick of Shamrock. Mr. and Mrs. Cleo Vick of Childress are parents of the prospective bridegroom-to-be. The wedding is scheduled for May 25 in the First Baptist Church of McLean. The bride-elect is a former-Rampa High School student and will graduate this spring from McLean High School. Her fiancé was a 1972 graduate of Shamrock High School. He is presently employed by a local station at Shamrock.



HOSTING PRESS COFFEE—The Pampa News hosted its annual Press Coffee Thursday at the Pampa Country Club, in preparation of the Woman's World edition, which will be published April 29. Presidents of various women's clubs and organizations in Pampa and the immediate area were represented. Presidents, who were unable to attend, are urged to contact The News office for further information. Hostesses for the event are shown in photo from left, Louise Fletcher, Betty Bassett, Linda Lamb, Aletha Davis and Bobbye Combs, Women's New Editor. (Photo By Doug Abbott)



PLANNING SENIOR PARTY—Shown in photo from left are Panhellenic members Donna Davis, Jane McDaniel and Devores Cross, who are making final preparations for a coke party honoring graduating senior girls who are planning to attend college. The event is scheduled for Sunday, April 2, at 3 p.m. in the home of Mrs. Richard Stowers. 2015 Charles. All area and local senior girls are cordially invited for the informative and casual party.

Area Meeting Of Teachers' Sorority

Mrs. Art Rankin, Mrs. Houston Price, and Mrs. Roy McMillan of Gamma Conclave were hostesses for a salad supper at Lovett Memorial Library recently. Beta Chi, Leifors, Alpha Iota and Gamma. Conclaves of Kappa Kappa Iota attended. Guests were welcomed by Mrs. John Tatum, Gamma president.

The highlight of the evening was a review of the book "Gee Whiz, I'm Old" given by Mrs. James Malone, who was introduced by Karen Slate of Alpha Iota. Following the program, brief business meetings were held by the individual conclaves.

The nomination committee, consisting of Mmes. Charles Meech, W. L. Parker, and L. B. Penick, presented a slate of officers for Gamma conclave for 1973-74. The following were elected: Mmes. Rubye Ruddick, president; W. L. Morris, president-elect; Truett Ross, vice president; Dan Johnson, secretary; Joe Davis, treasurer; Orin Hulsey, Lady of Bounty; Una Taylor, outrguard; Roy Sparkman, assisted by Herbert Coker and Truett Ross, Chronicler; John Tatum and Houston Price, executive board members.

The State Convention, which will be held in Arlington, April 27 and 28, and discussed Voting delegates to attend will be Mmes. L. B. Penick, state president-elect; Rubye Ruddick, Gamma president; W. L. Morris, president-elect; and B. G. Gordon, past state president. During the convention, Mrs. L. B. Penick will be installed as president of Delta State.

The next meeting will be April 23, 7 p.m. at the City Club Room, when the 1973-74 officers will be installed. Hostesses will be Mmes. W. L. Parker, B. G. Gordon and Jim Gelf. Those attending were Mmes. Ross, vice president; Dan Johnson, secretary; Joe Davis, treasurer; Orin Hulsey, Lady of Bounty; Una Taylor, outrguard; Roy Sparkman, assisted by Herbert Coker and Truett Ross, Chronicler; John Tatum and Houston Price, executive board members.

John L. Lantz, Merray Stroud, Howard Arther, Jerry Harris, and C. E. Fenne from Beta Chi.

Nancy Coffee, Shirley Welch, Nita Williams, Virginia Davis, Sherrie Haganson, Sue Dringovsky, Lamoyne Garrison, Ramona Hite, June Vinson, Marge Boettner, Jeannine Peurifoy, Virginia Dewey, Reba Hanks, Donna Anderson, Pat Farmer, Mary Ann Best, Karen Slate, Priscilla Alexander, and Wanda Cardwell from Alpha Iota.

Art Rankin, Houston Price, Roy McMillan, C. W. Stowell, John Tatum, L. B. Penick, Homer Bowers, Charles Meech, B. G. Gordon, W. E. Parker, Bernice M. Ward, Lot Hudson, W. L. Morris, F. R. Craig, D. L. Mackie, G. M. Walls, D. V. Biggers, Roy Sparkman, Dan Johnson, Rubye Ruddick, Herbert Coker, Joe Davis, Joe Di Cosimo, Truett Ross, and Una Taylor of Gamma.

Special guests were Mrs. James Malone and Mrs. Jack Van Bebbler.

Program On International Affairs Given To Club Women

The Twentieth Century Club met recently in the home of Mrs. Fred Neslage. Mrs. Rex Rose called the meeting to order. Mrs. Tom Wilkinson, leader of the day, led club members in the pledge to the American and the Texas flags.

Miss Elsie Cunningham, chairman of Community Improvement Committees named Mrs. Richard Stowers, Mrs. Gene Steele and Mrs. Rex Rose to serve on this committee.

Mrs. Jerry Bond, conservation chairman, announced that a tract had been planted in one of the National Forests, in the name of the Twentieth Century Club. She also told the ladies that Representative Eckhart has introduced a bill, which will if passed, preserve 100,000 acres of the "Big Buckle" as a natural forest preserve.

Mrs. Bob Andis, fine arts chairman, displayed copies of antique glass from the Metropolitan Museum.

Mrs. Tom Wilkinson introduced the program, which was on "International Affairs and Clubs." She told that soon

the General Federation would celebrate its diamond jubilee. The vision of the founding clubwomen knew no bounds. The objects of the clubs, which embraced all women's clubs, is to bring into communication with each other the various clubs throughout the world, in order that they may compare methods of work and become mutually helpful. The first club formed was the sorosis, in Bombay India.

In January of 1966 General Federation consisted of 156 clubs in 51 countries. Miss Cunningham presented a tape recording of women's opinions on the status of women in the world today. The consensus was drawn from women of many fields, such as a lawyer, playwright, economist, professor, anthropologist, member labor union, business woman, nurse and guide.

All agreed that women should educate themselves in all fields as they are needed. There are

infinite possibilities for women, in their new status, due to the efforts of their progenitors, particularly in the United States.

Mrs. Paul Harbaugh concluded the program with a panoramic glimpse of the projects, membership and accomplishments of the Federated Clubs in Europe, South America and Africa.

Slinky Calico

Downhome calico prints are being interestingly made into slinky, sophisticated evening clothes for an appealing contrast. A favorite style is the backless halter top and close-fitting long skirt.

Sock Interest

Brightly colored clunky clogs attract even more attention when worn with unusual socks. For the daring there are pastel argyle knee socks or shocking striped ankle socks.

"Natural" Falsies

Manufacturers are selling the "natural" look in false eyelashes. Instead of the blunt look of the old lashes, the newer ones feature a feathered, uneven look with each lash a different length.

Clutch Is Here

Worn over the shoulder or tucked under the arm, the envelope clutch, large and flat, is coming on strong for spring in bold plaids and soft pastels.

ANNOUNCING

The New Management Of The
RED KEYS STEAK HOUSE

Mr. & Mrs. H.C. Richardson

Mr. & Mrs. Richardson, owners of The Village Restaurant in Borger, Texas Invite Everyone To Come By and Enjoy The Same Great Food They Have Been Serving Over The Years in Borger.

SEE YOU SOON....

Club News

TEXAS DELTA ALPHA
Texas Delta Alpha chapter of Phi Sigma Delta Alpha met recently in the home of Mrs. Bob Baker. During the business meeting, conducted by the president, Mrs. B. F. Dorman, members elected the slate of officers presented by nominating committee chairman, Mrs. Lawrence Paronto, by acclamation.

Continuing the series on art appreciation Mrs. Tom Dunn presented a program on "The Fresco" as an art form. After an explanation of what a fresco is and the techniques

used by the artist to create them, she discussed two famous creators of frescos.

The Renaissance painter Michelangelo, was discussed because he is probably the greatest fresco painter ever and Diego Rivera, because his great talent caused a resurgence in mural painting in the thirties.

The other members in attendance were Mmes. Harry Cook, Chester Johnson, Lonnie Kenney, R. Mitchell, Bernard Organ, Hugh Peoples, Marvin Silyman, Fred Symonds and Felton Webb.

Our Weekly Column



by Louise Box

Pampa College of Hair Dressing

Guide TO Glamour

With today's hair coloring, naturalness is the keynote. It is no joke that only her hairdresser knows? No one can tell, and if they think they can, they're usually wrong. One of the obvious errors made by amateurs tinting their own hair is to think only of the hair coloring wanted—a professional beautician will take into consideration the color of the eyes, eyebrows and skin, for if these three don't blend, the hair will look artificial. Don't think that the hair must be the lightest shade of blonde or the darkest brown. Listen to the advice of your

stylist; she knows what shade of blonde, red or brown will make you the most attractive.

Now is the time, make your appointment for your Easter Hair Style!

"THIS IS YOUR PERSONAL INVITATION TO AN EXCITING CAREER".....PAMPA COLLEGE OF HAIR DRESSING teaches students many aspects of beauty with MODERN EQUIPMENT and BEAUTY ACCESSORIES.....NEW STUDENTS WELCOME.....

716 W. Foster 665-3521

Copyright, Standard Features



Dollar Day Special CAPES

Regular \$18.00
DOLLAR DAY ONLY \$16
100% Orlon-acrylic. Machine wash. One Size fits all. Red, white, beige, navy.

DRESSES

Many Spring Dresses in this Group

\$10 \$15 \$20 \$25

SPRING PANT SUITS

24⁹⁰ 29⁹⁰

SUITS

Many Polyesters in this Group

\$19 \$29 \$39 \$49

BLOUSES

Spring Colors Values to \$17

6⁹⁰ \$9 \$12

When Your Walks are More Than Just

Around the Block,

Do it the "Easy"

Way With

joyce

They're more than just good-looking—great-fitting casuals. They're naturals for the great outdoors—with their bouncy-crepe soles and bend-and-flex construction. Get out and go the "easy" way with our soft action-packed casuals.

Easy Stepper in black or white crinkle patent.

Free N' Easy in black, white, beige, navy, or red crinkle patent.

Sizes 10 1/2 and 11 \$19

6-11 5 1/2-11 4-11 5-8 1/2

Hub's Booterie
Latest in Women's Shoe Fashions

669-9291

109 W. Kingsmill



Your Horoscope

By Jeane Dixon

SUNDAY, APRIL 1
YOUR BIRTHDAY TODAY: Your sense of humor grows along with your native dignity thru this moderate year. Today's natives move restlessly; either in mental activity or physically, as athletes.
Aries [March 21-April 19]: Take the time to imagine where you would like to be a year from now, a month from now, a week from now.
Taurus [April 20-May 20]: Young people unwittingly offer fresh insight. Give relationships of all sorts a chance to come to balance, live and let live.
Gemini [May 21-June 20]: Don't be surprised that today has an austere and quiet quality. It's time you stopped for serious reflection and prayer.
Cancer [June 21-July 21]: Your feelings tend toward personal isolation. Meditation promises guidance, relief from long-building tension.
Leo [July 22-Aug. 22]: Material concerns shouldn't intrude today, but there is an excellent chance to determine how they affect your life.

MONDAY, APRIL 2
YOUR BIRTHDAY TODAY: Transition from theory to practice is this year's theme. Inspiration comes easily. Opportunities to convert property into cash must be carefully considered. Today's natives have an interest in speed and speculative hobbies.
Aries [March 21-April 19]: See today as a turning point, resolve old issues in simplest compromises. Invite participation of only those who are ready.
Taurus [April 20-May 20]: Be bright and positive, even though you may carry a burden. Haste is not the same as confident early diligence.
Gemini [May 21-June 20]: Correspondence from afar picks up. Your neighborhood buzzes with news. Family affairs become complex.
Cancer [June 21-July 21]: Explanations to family and close associates require great care and detail. Be outgoing and willing to share your feelings.
Leo [July 22-Aug. 22]: Today should go well. Be careful not to seem boastful. There are many things to do, you must set priorities.

Mrs. Prince Gives Program On Food For BPW Members

"Foods Around the World" was the theme of the program when the Pampa Business and Professional Women's Club met Tuesday evening, in the Southwestern Public Service Company's Reddy Room with Mrs. Mildred Prince, home advisor.
Mrs. Prince assisted by Mrs. Peaches Stephens of Borger demonstrated the radar oven and other electric appliances while she prepared a Pronto Mexican dinner and assorted dishes to round out the menu served to the group.
Mrs. D.C. Ash, president

WIN AT BRIDGE

NORTH 31		SOUTH (D)	
♠ 3	♥ Q765	♠ QJ86	♥ K1084
♦ AKQJ85	♣ 63	♦ 1072	♣ K7
WEST		EAST	
♠ A54	♥ K10972	♠ K7	♥ 92
♥ A3	♦ 3	♦ 1072	♣ AK1094
♦ 964	♠ A Q1094	♠ K7	♥ 92
♠ J852	♣ AK1094	♠ K7	♥ 92

Both vulnerable
West North-East South
Pass 1♦ 1♠ Pass
2♠ 3♦ Pass 3NT
Dbl Pass Pass Pass
Opening lead—♠ 2

By Oswald & James Jacoby

We wind up our IMP match with a hand that illustrates both luck and skill. At one table North decided to open with an irregular three-diamond call. Irregular because his hand was too good.
East refused to be shut out and bid three spades which West raised to four. Four spades was not an unreasonable contract for the East-West cards, but with the bid spade break and the misplaced king of clubs East had to play carefully to get out for two down.
This might not have been a bad result. At the other table North opened one diamond and South arrived at three no-trump on the bidding shown in the box.
West doubled and if the defense had attacked spades South might well have brought home nine tricks.
However, West didn't lead a spade. Obviously, East didn't have much strength for his vulnerable overcall. Hence, he almost surely held a two suiter.
What was his second suit? It couldn't be hearts because with a spade-heart two-suiter East would have shown this by a Michaels cue bid. Hence, his second suit was clubs.
West opened the deuce of clubs. East took his ace and returned the suit. After this start all South could do was to take his king of clubs and dummy's six diamonds.

W-CARD

West	North	East	South
♠ 3	♠ 1	♠ 2NT	♠ 2NT
♥ 4	♥ 5	♥ 5	♥ 6
♦ 5	♦ 6	♦ 7	♦ 7
♣ 6	♣ 7	♣ 7	♣ 7

You, South, hold:
♠ KJ3 ♥ KJ3 ♦ K1054 ♣ AK96
What do you do now?
A—Pass. Your partner has heard all your bids and has settled for six.
TODAY'S QUESTION
Again your partner has opened one diamond. This time you hold:
♠ K65 ♥ QJ54 ♦ A7 ♣ AK985
What do you respond?
Answer: Monday

Duties Of County Extension Agents

The Gray County Agent (Home Economics) is responsible for planning, implementing, and evaluating Extension educational programs in the county in accord with policies and procedures of the Texas A&M University, the United States Department of Agriculture, and the Gray County Commissioners' Court. The responsibilities of the County Extension Agent are performed in a professional manner through coordination and cooperation with other county staff members under the supervision of the District I Extension Agent (Home Economics).
In program planning the Extension Agents (Home Economics) are responsible for planning with the program building committee, the family living subcommittee, and the 4-H and youth subcommittee to gather information about the county situation and in analyzing and interpreting information as a basis for the development of long-range plans. The subcommittees develop specific plans to reach annual goals.
The County Extension Agent (Home Economics) is assigned leadership responsibilities in the following areas: Home Economics Programs, Family Clothing, Management Financial Resources, Family Stability, Family Health and Protection, Community Environment and Leadership, Aging, Housing Environment, Affirmative Action (Home Economics and 4-H), Mass Media, Home Demonstration Organization, and Trainer Agent.
The Asst. Extension Agent (Home Economics) has specific responsibilities in the following fields: 4-H Expansion, Contests, Projects (Home Economics), and Junior Leadership.

SHERRY D. HAGER supports ...



Sherry Hager, a university graduate, brings strong qualifications to the school board. She was worked in the city and state government, private business, and the Political Science Department of Tarleton State College. She is active in community programs including being Secretary of the Board of Genesis House and being on Executive Board of Austin PTA. She and her husband, the Reverend Martin Hager, have four children.

Sherry Hager cares about the future of Pampa. We feel that her qualifications and willingness can bring a new positive voice to the school board.

VOTE FOR SHERRY D. HAGER
ONLY THE BEST WILL DO FOR PAMPA
SCHOOL BOARD 3 YEAR TERM - APRIL 7
Pol. Adv. Pd. for by the friends of Sherry D. Hager

- only the highest standards of education
- efforts to provide students with an education that will enable them to assume responsible citizenship in a demanding age
- a school board responsive to the needs of students, teachers, and parents

Anthony's
NO FOOLIN'
APRIL DOLLAR DAYS
TWO BIG DAYS
MONDAY-APRIL 2
AND TUESDAY-APRIL 3
FANTASTIC PRICES ON ALL (BRAND NEW) SPRING MERCHANDISE
BEST BUYS IN TOWN-NO FOOLIN'!

60" 100% Polyester Solid and Yarn-Dyed KNITS
3.88 Value
\$2. Yd.
A great bargain assortment to choose in this group of double knits, and wrap knits of solid as well as yarn-dyed. I believe, match them easily for your new spring wardrobe.

100% Polyester DOUBLE KNIT
58/60" Reg. \$4.99
\$4 Yd.
Reg. \$3.99
\$3 Yd.
Go together coordinates in double knit. Three and four color fancy jacquards coordinated with yarn dyed solids. To make it easier for you to mix and match your choice of colors.

"Hush Hush" All sheer PANTY HOSE
Reg. \$1.00
2 PAIRS \$1.
All sheer, for complete comfort and the most "natural" look possible. In the exquisite newest colors. One size fits all. They stretch to fit your very own shape.

Polyester Men's Solids and Fancies SLACKS
Values to \$14.
\$10 PAIR
An assorted group of 100% polyester slacks in many solid colors and spring's newest patterns. Pick two or three. Sizes 29 to 42.

Special Group Mens Fashion JEANS
\$3 Pr.
Were Values To \$10. Sizes 28-36

Men's Short Sleeve Solids and Fancies SHIRTS
Values to 5.99
\$4.
Men's short sleeve polyester knit shirts in solid colors and fancies. A real value at \$4. Come early for the best selection. Men's regular sizes in most all colors.

Ladies' 100% Polyester Solid and Fancy Flare PULL-ON PANTS
Reg. 5.99
\$4. PAIR
Here's a great value for the ladies. 100% polyester pull-on flare leg pants in assorted colors and fancy prints. A great price, beautiful colors and a pant with great styling. Sizes 10 to 18.

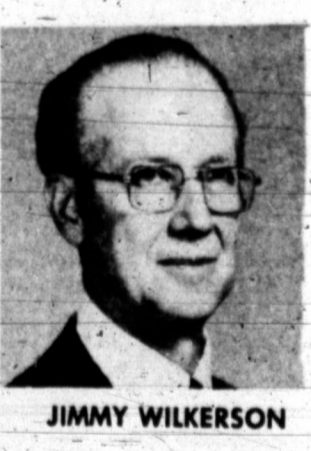
Short Sleeve and Sleeveless Cotton Crepe TUNIC TOPS
NOW ONLY
\$4.
Short sleeve and sleeveless tunic length tops, belted at the waist. Assorted lovely prints. Match them with the pants! A crepe-type finish for a little extra styling. Sizes 10 to 18.

Kodel® Polyester Baby Doll and Waltz Length PAJAMAS
Reg. 2.49
2 For \$3.
Little girls summer sleepwear. Baby doll and waltz length styles. Pretty little flims for pretty little girls. Flame retardant treated fabric of Kodel® polyester. In many pastel shades. Sizes 2T, 3T, 4T and 5 to 6X.

Boys Polyester Double Knit Pants
\$9. Values. Size 8 to 18
\$5.88
Suitable for sport or dress in navy, berry, brown, mushroom, in sizes 8 to 18. Slims and regulars.

Men's Solid or Fancy 100% Polyester SPORT COAT
Reg. \$35.
\$23.
Men's 100% Polyester sport coats in solid colors and fancies. A great value for only \$23. In the season's most fashionable colors. Start your new spring wardrobe today. Regular and long sizes.

Men's Solid or Fancy 100% Polyester SPORT COAT
Reg. \$35.
\$23.
Men's 100% Polyester sport coats in solid colors and fancies. A great value for only \$23. In the season's most fashionable colors. Start your new spring wardrobe today. Regular and long sizes.



VOTE APRIL 3 CITY ELECTION
R.D. (JIMMY) WILKERSON FOR MAYOR

OWNER BUILDERS PLUMBING CO.
PAST PRESIDENT PAMPA ROTARY CLUB
PAST PRESIDENT PAMPA SCHOOL BOARD
RECENT CITY COMMISSIONER WARD 2

PAMPA CITIZEN 27 YEARS

Paid Political Ad By Supporters of R.D. Wilkerson

VALIARIE COUPON
Save With **\$3** Coupon on Dress that retails for \$15 to \$25
SAVE!
Save With **\$5** Coupon on Dress that retails for \$25 to \$40

PRICES GOOD IN BOTH STORES
118 N. Cuyler Downtown Pampa
Coronado Shopping Center
Anthony's
C. R. ANTHONY CO.



25th ANNUAL EXHIBIT—The Pampa Art Club will sponsor its 25th Annual Arts and Crafts Exhibits, which will be open to the public from 5 to 8 p.m. Tuesday, April 13, and Wednesday, from 8:30 a.m. to 5 p.m. at Lovett Memorial Library. Members of the club, shown from left in photo are Mrs. Dewey Palmittier, Mrs. J. Gordon Lyons, Mrs. R. B. Collingsworth, and Mrs. J. G. Doggett.

Local Art Club Sponsors Exhibit

Pampa Art Club's 25th annual arts and crafts exhibits and Invitational Tea will be held Tuesday, April 3 from 2 until 5 p.m. at Lovett Memorial Library. The exhibit will be open to the public from 5 to 8 p.m. Tuesday

Upsilon Holds Officer Elections

Election of the new officers for the 1973-1974 sorority year was held during a recent business meeting of Upsilon Chapter of Beta Sigma Phi which was conducted by president, Jo Ann Simpson. The meeting was held in the Hospitality Room of Citizens Bank and Trust Company. The new officers for next year are Mrs. Harold Taylor, president; Mrs. Calvin McConnell, vice-president; Mrs. Dennis Wyatt, recording secretary; Mrs. Dwight Chase, corresponding secretary; Mrs. Danny Strawn, treasurer; and Mrs. Larry Daniels, extension officer. Installation of the new officers will be held later this spring.

Following the regular business meeting, the cultural program on "Nature" was presented by Mrs. Wilbur Walls in behalf of Mrs. Danny Strawn and Mrs. Carl O'Neal. Mrs. Walls showed movies taken by her and her husband while snow

skiing at Winter Park, Colo. Many scenes of the natural beauty of mountain country in wintertime were depicted in the films. Mrs. Larry Daniels and Mrs. Mike Clark, hostesses for the evening, served punch and white cake during the social hour. The cake was elaborately decorated with a spring bouquet of flowers and was the focal point of interest on the hostess table which was covered with a white cloth.

Members present for the meeting were Mrs. Jo Ann Simpson, Rodnie Winborne, Charles Ezell, Dennis Wyatt, Jewell Snider, Larry Daniels, Dean Wilson, Perry Moose, Norman Stone, Calvin McConnell, Mike Clark, Roger Cumpston, Carl O'Neal, Dwight Chase, Danny Strawn, Wilbur Walls, and Harold Taylor. Mrs. Leslie Stone attended the meeting as a guest from Rho Eta Chapter.

April 3, and Wednesday 8:30 a.m. to 5 p.m. Oil and watercolor paintings, china painting, copper, enameling, papier-mache, tile painting, tin and glass work, and other forms of art will be displayed. Each year the public school students interested in art, tour the show.

The Pampa Art Club has been organized since 1948 and has played a major role in the growth of art in the Pampa community. Members regularly hang paintings of art in Citizen's Bank and Coronado Hotel, which offer Pampa citizens an opportunity to see local artist work. The culmination of the year's

work, forms the spring show of the 29 member club. Officers of the Pampa Art Club are: Mrs. J. G. Doggett, president; Mrs. Larry Wall, vice-president; Mrs. Gordon Lyons, secretary-treasurer; Mrs. Ernest B. Wilkinson, reporter; Mrs. O. W. Applebury, librarian.

Chairman for spring show are Mrs. Vernon Hall, paintings; Mrs. Dewey Palmittier and Mrs. R. B. Collingsworth, arts and crafts; Mrs. D. E. Bolander, Invitational Tea; Other hostesses for the tea are Mrs. A. C. Cox, J. W. Flynn, James McCane, W. L. Waggoner and Ernest Wilkinson.

Scott-Murphy Engagement Told

Nuptial vows will be solemnized June 16 in Anson Church of Christ, Anson, Tex., for Miss Penny Scott and Mike Murphy, both of Dallas. Making the announcement are her parents Mr. and Mrs. Adrian E. Scott of Anson, Mr. and Mrs. James F. Murphy, 1618 Harvester, are parents of the bridegroom. The bride-elect is a senior nursing student at Texas Woman's University Nursing School in Dallas. Her fiancé is a graduate of Texas State Technical Institute with a B.T. in Electrical Power Distribution. He is presently employed by Texas Power and Light Co., as assistant district engineer in Richardson.

Club News

RHO ETA CHAPTER Phi was called to order recently by President, Mrs. Tommy Hill, in Citizens Bank Building for their bi-monthly meeting.

Mrs. Hill read a flyer from the state convention to be held in McAllen, Tex., in June. Mrs. John Grooters reported that the PAPA sale held recently was a big success.

Mrs. Jay Manning read letters of recommendation for the woman of the year. Members voted by secret ballot. The Woman of the Year Tea will be held April 15.

Mrs. Carlos Nunez was appointed to serve on the scholarship committee.

Guests present for this "model meeting" were Mrs. Richard Dorman, Danny Hoggatt, Stephen Dewey, Gene Drake, Gene Barrett and Miss Cynthia Bonner.

Hostess for the evening were Mrs. Larry Miller and Mrs. William Rich. A St. Patrick's motif was used in was used in table decorations and refreshments. Mrs. Gene Barrett won the door prize.

Mrs. Jay Manning and Mrs. Jerry Jones presented the program "The Art of Thinking

Members present were Mrs. Joe Boedeker, Gary Caldwell, Gary Clark, Randall Cross, John Grooters, Ken Hargrave, Tommy Hill, Richard Houseman, Jerry Jones, Dwaine Luke, Georgia Mack, Jay Manning, Larry Miller, Richard Morris, Carlos Nunez, Randall Phillips, William Rich, Les Stone, and Herman Vinson.

CHAPTER OS, PEO With Mrs. Danny King hostess, and Mrs. Robert LaFon, assisting as co-hostess. The Chapter OS, PEO met recently with Mrs. D. V. Burton presenting the lesson, "Queen for a Day."

The following members were present: Mrs. Mmes. Walton W. Bailey, Darrel Cameron, Hupp Clark, J. G. Crinklaw, W. R. Hayden, P. W. Harvey, C. E. Kneale, William J. Miller, Earl Parsons, Bruce Riehart, Wesley Simpson, Charles Walsh, Jr., T. J. Wright, King, Burton and LaFon, and a guest, Mrs. Carolyn Davis of Lubbock.

Spring Separates Separates are really separate this spring with all the pattern mixing. It's flowers teamed with stripes and geometric prints with polka dots.

2 Year Minimum Savings Certificates of \$5,000 or More

Earn at 6% Daily Compounded Rate

1 Year Minimum Savings Certificate of \$1,000 or More

Earn at 5 3/4% Daily Compounded Rate

To take advantage of these lower minimums, you must present your present certificate for the change.

Further information may be secured at any of our three offices.

SECURITY FEDERAL SAVINGS & LOAN ASSOCIATION
WEST FRANCIS AND GRAY STREETS PAMPA, TEXAS

* SAVINGS TO 70% * SAVE * WAREHOUSE CLOSE-OUTS * SAVE *

fabricic
FABRIC CENTERS

SALE OF THE YEAR FABRIC RIOT!

fabricic
FABRIC CENTERS

FABRICIC SAYS "THANK YOU" TO MORE THAN 500,000 SATISFIED CUSTOMERS

FANTASTIC SELECTION !!
DRESS AND SPORT FABRICS

A new shipment of over 3000 yards of this fabric group has just been received from our central warehouse. It includes soft knits, ply knit jerseys, otto tucks, loop-knit crepes, shirting stripes, scarf prints, nylon lingerie tricot, georgettes, woven suitings, brush denims, trigger solids, lace fabrics, woven chambrays, nub weaves, sport vinyls, many many more. All reduced from 30% to 70% for fast, fast clearance. Be here early for best selection.

66¢
YARD

3,000,000 YARDS DRASTICALLY REDUCED!

FINEST QUALITY - VALUES TO \$2.99 YD.

FASHION FABRICS

88¢
YARD

This big group of better fabrics includes many of the following items: polyester/cotton blend knits, 100% polyester single knits, wonder spun crepes, panne 'boucle' crepes, puckered crepe prints, rachel knits, ultra prints, solid polyester crepe, cotton sateen prints, cotton knits, acetate double knits, and others. 45" to 60" wide. All finest quality—all on bolts. Original values to \$2.99 yard!

fabricic
FABRIC CENTERS

* 700 STORE BUYING POWER * SPECIAL PURCHASES * SPECTACULAR SAVINGS *



Bone White Black \$14.99

Gattis Shoe Store

"We Give and Redeem Pampa Progress Stamps"
207 N. Cuyler Pampa 665-5321

MILL CONCESSIONS * SPECIAL PURCHASES * WAREHOUSE CLOSE-OUTS * 700 STORE POWER

* THREE MILLION YARDS REDUCED * FASHION FABRICS * SAVINGS TO 70% * FANTASTIC VALUES *



HELEN DUNN, Mrs. Lewis Hackley will receive the Jewel Pin award at the April meeting of Psi Chi Sigma Alpha. Shown with Mrs. Hackley, right, is her sponsor, Mrs. Joel Plunk.



HABITIST BYW
Skellytown—The BYW of the First Baptist Church met recently in the church library for Bible Study and special prayer meeting.
The meeting was opened with scripture and the prayer calendar by Mrs. Roy Tharmond.
Those attending were Mies Charles Adkison, Roy Lynn McChendon, Troy May Jimmy Davis, Roy Wells, Roy Charmond, Charles Matson, Gary Hinds, Jimmy Fox, Jimmy Watherly, and a new member, Mrs. Sammy Gideon.

LADIES BIBLE STUDY
Skellytown—The Ladies of the Church of Christ met recently for Bible study in the church with Mrs. Mary Cousins teaching, the lesson which was taken from the Guide Book "Harmony of The Gospel".
Sadie Lane gave the closing prayer.
Attending were Mies Hennie Woodward and daughter Daria, Sadie Lane, D.C. McCarthy, Bill Wood, Shirley Purcell and two boys Kenney and Mark, Claude Reid and Micki, and Mary Cousins.

WHERE YOU ALWAYS BUY THE BEST FOR LESS
GIBSON'S DISCOUNT CENTER
Open 9 am to 9 pm—Closed Sunday

SHAKESPEAR
Wonder-Troll Model 51
Electric Motor **\$29.97**
Reg. \$37.97

the refillable butane lighter with a gas gauge

Chrome Model **\$3.99**
Ret. \$5.95
Golden Model **\$4.49**
Ret. \$7.95

Scripto **vu-tane** telstar

Remington **MARK III**
Electric Shaver **\$23.99**

BRIAR
Smoking Pipes
Ret. \$1.98 **\$1.39**

FOAM
Minnow Bucket **44c**

Fisherman's Pride **FISH SCALE**
\$1.19
Reg. \$1.37

TENNIS BALLS
Wilson Reg. \$2.99 **\$2.49**

TROT LINE
by Seaway 100 Ft. No. TR148
\$1.29
Reg. \$1.67

DOLLAR DAY SALE
ALL LADIES' FANTASY SHOES
Values to \$14.99
\$10.80
One of Many Styles

Big Group — From Our Regular Stock
CHILDREN'S SHOES
Boys' and Girls' Values to \$10.99 Now, Only **2 Pr. \$5**

TWO-TONE by RAND Brown and White **\$12.80**

RAND BUCKLE STRAP White, Black, Brown **\$14.80**

Acme Dingo Boots **\$24.88**
\$29.99 Values

LADIES' HOSIERY
4-Fers Stockings Reg. \$2.49 **\$1.99**
2-Fers Panty Hose Reg. \$2.49 **\$1.99**

Kyle's Fine Shoes
The House of Footwear and Road Shows
109 N. Cuyler 669-9442

Polaroid SQUARE SHOOTER
Camera Retail \$35 **\$26.99**

Johnson **BABY POWDER**
9 Oz. **67c**
14 Oz. **87c**
24 Oz. **\$1.29**

Johnson & Johnson **Cotton Swabs**
400 Count **\$1.19**

CHARMIN Toilet Tissue
4 Rolls **39c**

Remington **MARK III**
Electric Shaver **\$23.99**

Polaroid SQUARE SHOOTER
Camera Retail \$35 **\$26.99**

Johnson **BABY POWDER**
9 Oz. **67c**
14 Oz. **87c**
24 Oz. **\$1.29**

Johnson & Johnson **Cotton Swabs**
400 Count **\$1.19**

CHARMIN Toilet Tissue
4 Rolls **39c**

Johnson Red Cross **Cotton Balls** **59c**
130's

6 Oz. Reg. 85c **MICRIN FREE**
When You Buy Johnson **DENTAL FLOSS** **79c**
1800 in., 50 Yd. Waxed or Unwaxed

HAIR SPRAY MISS BRECK
13 Oz. **2 For 99c**

Johnson **BABY SHAMPOO**
12 1/2 Oz. 16 Oz.

Bounty TOWELS 6 Rolls **\$1.00**
\$1.23 **\$1.43**

GIBSON'S **R pharmacy**
SAVE ON PRESCRIPTIONS

SPAGHETTI
FRANC AMERICA Spagh
times to run



POLLY'S POINTERS

How Can Kids, Cats
Use Same Sandbox?

By POLLY CRAMER

Polly's Problem

DEAR POLLY—I live on a farm with three pre-school children, a sandbox and five cats. Unfortunately the cats are "using" the sandbox so I am afraid to let the kids play in it for fear of worms. Please, someone tell me what I can do about this problem. The kids love the sand and we want to keep the cats as they keep the mice and rats under control.—KAY

DEAR POLLY—My Pet Peeve is with the people who make "invisible" zippers. I do wish they would come up with a neutral-colored tab so a single zipper could be used on practically any garment. The zipper itself is invisible so the colored tab is the only reason one is unable to re-use a perfectly good zipper.—MAY

DEAR POLLY—Regarding Ruby's letter concerning locked churches—I agree this is a deplorable situation that they have to be kept locked. I am a church secretary and also am interested in visiting different churches and cathedrals. In past years our church was always open during the daytime, but because of vandalism; petty stealing and just plain mischief causing extensive damage, we have been forced to lock our doors. Our church is kept open during the morning hours when the custodians are there but otherwise we are forced to lock the doors. Most of the trouble is caused by teen-agers and even younger boys. Until this type of thing stops I can see no other answer to the problem. It would, indeed, be a wonderful thing to be known as a nation of churches so we should all try to help with our influence on our own children.—RUTH

DEAR GIRLS—Among the many letters received concerning the necessity for locking church doors one from Mrs. R. L. C. ended as follows: "Until we have better behaviour from some of our citizens and more respect for the property of others this situation will remain."
—POLLY

DEAR POLLY—At one time or another we are all confronted with the problem of what to do with wet soiled facial tissues when no waste basket is convenient and we are out in public. I always carry a plastic sandwich bag in my purse and used tissues are slipped into the bag. This is great for church, etc.—
GENEVA

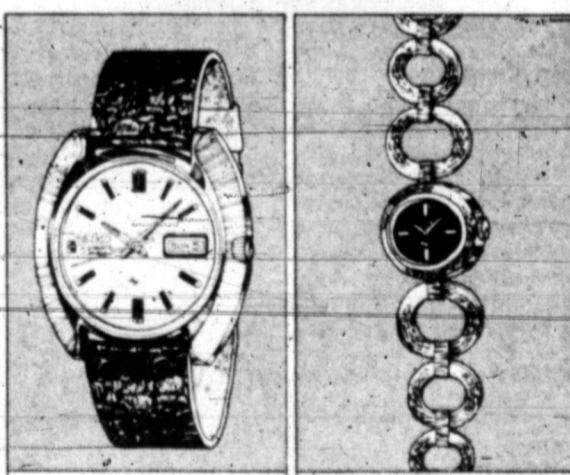


DEAR POLLY—For over 50 years I saved so much darned socks by rubbing a piece of paraffin wax over the toes and heels of all socks just after each washing. The shoes rub the wax instead of the socks and my husband wore socks for a year or two without getting holes.
—MRS. S. E.

(NEWSPAPER ENTERPRISE ASSN.)

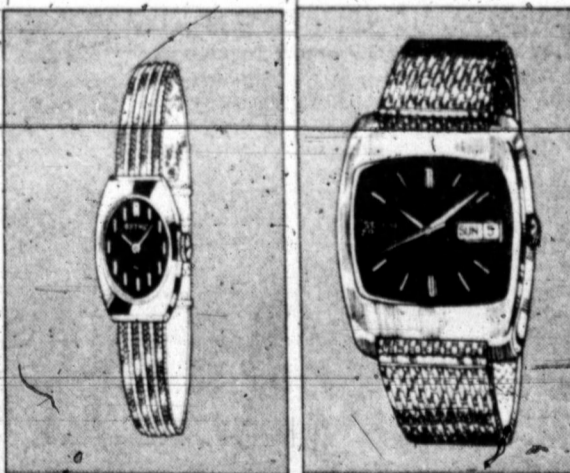
You will receive a dollar if Polly uses your favorite homemaking idea. Pet Peeve, Polly's Problem or solution to a problem. Write Polly in care of this newspaper.

SEIKO WATCHES WITH UP TO THE MINUTE STYLE AT SALES



Men's day-date automatic \$59.50

Ladies watch with chain bracelet \$79.50



Ladies bracelet watch \$59.50

Men's day-date automatic \$75.00

All with 17 jewels

Five convenient ways to buy:
Zales Revolving Charge • Zales Club Card Charge
BankAmericard • Master Charge • Layaway

ZALES

107 N. Cuyler Downtown Coronado Center

POSI-FIT Replacement Antenna Mast 99c by Roberk Reg. \$1.59

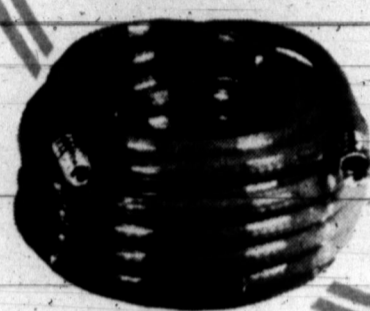
Shag Rakes \$1.89 Ziploc Bags 39c

RALLY CREAM WAX With Applicator 18 Oz. Reg. \$1.79 \$1.39



West Bend SHAPE PANS \$2.99 Qt. Size

50 FT. GARDEN HOSE



by Gering 3/4" x 50' \$2.99 Reg. \$4.19

LOMA Silverware Trays 39c

Porcelain Enamel Saucepan 3 Piece

NEW IMPROVED Pampers NOW! MORE ABSORBENT!



\$1.39

18 x 30 OVAL FRINGE

Shag Rug 89c

SPAGHETTI



Franco-American 6 15 Oz. Cans \$1.00

Pre Teen PANTY HOSE

One Size Fits All Fits 7 to 14

Coffee Off Black Navy

29c Pair



Prices Good Mon & Tues.

PURINA Turkey & Giblets and Chicken Liver CAT FOOD

2 Flavors Only



10 95% Cans \$1.00

PIMENTO SPREAD 49c 7 1/2 Oz.

BACON Hormel Black Label

LB. 99c

BESTMAID DILL PICKLES 39c 22 Oz.

LADY HOPE CHICKEN

3 Lb. Can 82c

Bologna 12 Oz.

69c

WHERE YOU ALWAYS BUY THE BEST FOR LESS
GIBSON'S DISCOUNT CENTER

Open 9 am 9 pm—Closed Sunday

Mike Heathcote Presents Altrusans With Study Of South Africa Homeland

Pampa Altrusa Club met recently at the Starlight Room of the Coronado Inn with 30 members and three guests present. Guests were Mrs. Harold Gregory of Houston, Terry Rhodes, White Deer, and guest speaker, Mike Heathcote of South Africa. Miss Evelyn Mason presided

at the meeting, which began with the Club Blessing followed by the Pledge of Allegiance to the flag. During the business session, a letter of thanks to the club was read from Thelma Moultrie, who is attending West Texas University on an Altrusa

scholarship. She is making good grades and is entering into many school activities. Verne Meador announced that the Borger Altrusa Club was having their Recognition Dinner April 3rd and reservations were taken at the meeting. For those who wished to attend. This dinner will be held at the First United Methodist Church at 7:30 p.m. and tickets will be \$4 each. The program was brought by the International Relations Committee with Ruth Sewell and Mrs. Mark Heath in charge of arrangements. Mrs. Marian Stroup introduced Terry Rhodes, who told of Mike Heathcote staying with the family in White Deer. Mike told the group of his home land in South Africa. His father and mother live on a ranch land and raise cattle and sheep. Since Mike has been in Texas, his family have moved to Johannesburg and are running a dairy farm at present. Mike showed films of wild animals found in South Africa, tribes and their huts, farm land, schools and dress worn by the native people. He told of the churches with Catholic, Episcopal, and Presbyterian schools. He said that other denominations were found there, too. After the films, Mike answered questions asked by the Altrusans and seemed happy in giving a study of his home land. Mrs. Marian Jamison urged all the Altrusans to go and see the film "A Time to Run" which will be shown in Pampa in April. Altrusa Views were given each member.

Club News

TX TOPS 255
Skellytown—TX Tops No. 255 of Skellytown met recently in the library with members being weighed in by Mrs. Juanita McCarthy, weight recorder. Mrs. Odell Hassler was crowned weekly queen for a loss of 5 lbs. the club lost a total of 13 1/2 lbs. The finance report was read by Mrs. Odell Hassler. Mrs. Fannie Coleman and Mrs. Odell Hassler both received charms for three months perfect attendance. New officers were nominated and elected for the coming year. New leader will be Odell Hassler; co-leader, Barbara Easley; weight recorder, Sadie Lane; secretary, Naomi Fox; treasurer, Jo Skaggs; and reporter, Fannie Coleman. The officers will be installed at the next meeting and will take their new offices at the following meeting on April 3.

Attending were: Mrs. Odell Hassler, Jo Skaggs, Gladys Simmons, Fannie Coleman, Cecile Grange, Sadie Lane, Pauline White and son Ronnie, Barbara Easley, Juanita McCarthy, Mary McCloud, Margaret Fox, and Naomi Fox.

HOME MAKERS CLUB
Skellytown—The Home Makers Club met recently in the home of Mrs. Eula Berry, hostess. The meeting opened with the Lord's Prayer in union. Mrs. Myrtle Gould served as president in absence of the president. The door prize and the game gift were both won by Mrs. Mable Boyd. Mrs. Ina Horst received a

ELECTRONIC TV ANTENNA

The electronic miracle turns your ordinary house wiring system into a SUPER POWER TV ANTENNA. Brings in every channel sharp and clear without an expensive roof antenna or unsightly "rabbit ears". Attaches in seconds. Plugs into nearest wall outlet. No more fuzzy images or jumping pictures... now you can have truly outstanding TV reception. Great for FM radios, too. Instructions included.

ORDER TODAY ONLY \$2.95 Plus 25¢ Mailing Fee

BOB BERGGREN, Box 575 Panhandle, Tex.



Xi Beta Chi Meets, Elects New Officers

Xi Beta Chi Chapter of Beta Sigma Phi met recently in the Hospitality Room of the Citizen Bank. Mrs. Dwaine Blakemore, president, called the meeting to order. Xi Beta Chi rush party will be held Friday March 30, at the Pam-Cel Hall, at 7 p.m. It will be a husband-wife party and bingo will be played. It will be a mystery supper. The girl of the year was voted on and will be presented at Founder's Day Luncheon, April 30, at 7 p.m. in the Terrace Room.

Influence People by Dale Carnegie. Hostesses were Mrs. David Hutto and Mrs. Don Carpenter. Members present were Mrs. Mmes. Bill Baten, Robert Benyshek, Dwaine Blakemore, Robert Brodgin, Darrell Danner, Sonny Golden, James

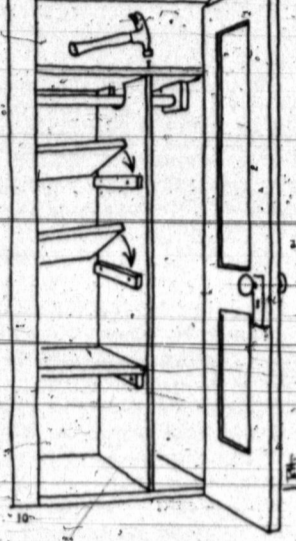
Lee, James Schaffer, Don Stafford, Benny Stout, and Price Smith.

Pants 'n' Halters
Spring's white linen pants, cuffed and worn with skinny belts, are brightened with colorful halter tops.

Convert Extra Space To A Cupboard

By BARBARA A. CURRY
(Tenth in a Series.)

Putting Up. There are two kinds of shelves—one that are supposed to look good and the ones that aren't. The shelves that aren't (or it doesn't matter) are inside cabinets and can be used to relieve overpopulation of staples and supplies. Many places, apartments particularly, go overboard on closets and are chintzy on kitchen cupboards. Other kitchens have a broom closet which can make a better, more efficient cupboard by installing narrow shelves for canned goods, cereals and miscellaneous groceries than it is for a mop and broom. The way to convert a broom closet depends on whether it's metal or wood. If it's metal it is usually free-standing, which means you can pull it out from the wall and get to the sides. Sometimes it will be attached to the wall with a couple of screws. Unscrew and the closet should come free with a little wrenching and screeching. Saw 1x2-inch lumber in lengths equal to the depth of the closet, minus a couple of inches, or to the depth you want the shelves to be. You don't want the shelves right up to the door, as it may not close properly. You will need two pieces of lumber to support each shelf. For full-depth shelves, saw 1/2-inch to 3/4-inch plywood to size for lesser depth, use 1-inch lumber in the width of your choice. To install shelves, measure equal distances down each side for the number of shelves you want. Drill two holes on each side of the cabinet for each shelf. Take one of the 1x2-inch wood lengths, hold it centered over the two holes inside the cupboard, and mark the wood through the holes. Remove and make starter holes in the wood with a hammer and nail. Put back in position and use a wood screw with a head bigger than the hole and a shank smaller than the hole. Screw the wood tightly in place. Then simply drop the shelves on



to support the runners and paint or cover with self-adhesive plastic. If the broom closet is wood, you can work from the inside, simply screwing the "shelf holders" into the sides. Watch the length of the screw so you don't go through any exposed sides. If the broom closet is a cubbyhole with a door set right in the plaster wall, you can use plaster nails to put up the 1x2-inch lengths of wood. Use this approach if you want to convert a larger closet for storage. You do the side-shelf holder routine with plaster nails. If the closet is fairly wide, you should put in a supporter in the back to keep the shelf from sagging from the weight of the items planned for it. When you're measuring the back, don't forget to figure out the width of side shelf holders. If you want a vertical partition, saw or have sawed 3/4-inch or 1-inch plywood to the depth of the shelves you want to the height from the floor to the existing top shelf. Since you want a tight fit, measure from the front and back for the distance between the shelf and the floor to be sure. The floor and the shelf are probably crooked. Nail or screw the side runners on this piece before you wedge it in. This wedging operation should take some hammer work to ensure a tight fit. Many closet floors are not wood, so you have to depend on this squeeze play to hold the plywood wall in place. This, plus nails down through the existing shelf into this vertical piece, will do it.

Show-Off Shelves. The most popular and versatile, and certainly the most practical shelf is the standard-bracket variety in either metal or wood. The standard is a raised vertical strip with evenly spaced holes or slots. The bracket locks into these openings at right angles to form a holder for wood or glass shelves. (NEWSPAPER ENTERPRISE ASSN.)

(NEXT: Wall Coverings.)

OKAY, I'LL DO IT MYSELF!

LEVINE DAYS

2 Days Only of Great Specials at Big Savings



Buy Now, Save More on Girls' Nylon Short Sets

REGULARLY 2.59

1.99

Crew or tank styled tops in stripes or solids with pull-on shorts to match. In red, navy, green or yellow. Sizes 4 to 12.



Big Selection of Men's Perma Press Sport Shirts

REGULARLY 2.99

1.99

Save \$1 on wrinkle free style made for dress or sport wear. Choose from bold patterns or neat prints of polyester / cotton. S-M-L-XL.



Misses' Easy Care Spring Blouses on Sale Now!

REG. 3.99 TO 6.99

2.99

Assorted pastel and white blouses in easy care blends. A great top for pants and skirts. Sizes 32 to 38.



Pre-Season Savings on Misses' Nylon Knit Tops

REGULARLY 2.50

1.99

Think summer and save on cool short sleeve styles in easy care solids, stripes and 2-tones. Pull-over or zip-front. S-M-L.

BIG GIRLS' PANTYHOSE SALE AT GREAT BIG SAVINGS NOW!

REGULARLY 1.99

1.49

Sizes A and B, fits up to 160 pounds. Save!

NOW! THREE PAIR OF MISSES' BRIEFS FOR LESS THAN \$1

REGULARLY 1.29

3 FOR 97¢

Smooth fit acetate tricot. Sizes 5-6-7.

LINEIN CLOSET CLOSEOUT! SOFT VELOUR WASHCLOTHS

REGULARLY 49¢

4 FOR 97¢

100% cotton terry. Slight imperfections. Save!

HANDY KITCHEN TOWELS OF SOFT COTTON TERRY VELOUR

REGULARLY 79¢

37¢

Fringed prints and florals. Imperfects. Save!



INFANTS' AND TODDLERS' EASY CARE SHORT SETS

REGULARLY 1.39

99¢

Shop for summer now at savings. Polyester / cotton. Sizes 9 to 18 mos., 2 to 4.

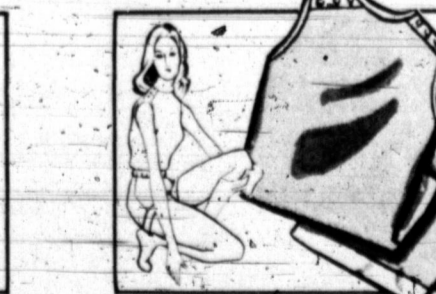


WOMEN'S DRESS OXFORDS STEP OFF BIG SAVINGS!

REGULARLY 4.99

3.88

Summer white or blue 3 eyelet tie style with tear drop cut-outs. Sizes 5 to 10.

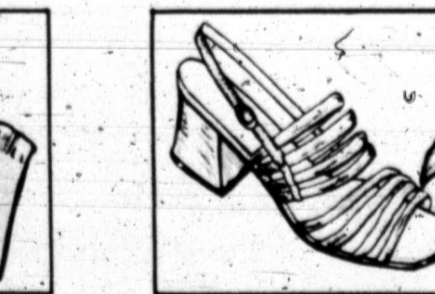


SUPER SAVINGS! MISSES' NYLON KNIT SHORT SETS

SPECIAL VALUE

4.99

Sleeveless tops and pull-on shorts in brights and pastels. Sizes S-M-L.




WOMEN'S SUMMER WHITE AND BRIGHT SANDAL SALE

REGULARLY 3.99

2.88

Hurry while selection lasts. Choose from strap or crossband style. 5 to 10.



PRE-SEASON AIR CONDITIONING SPECIAL! \$75 CASH REFUND

... direct from General Electric with the purchase of a new 1973 TA-E Executive central air conditioner. Special refund offer to homeowners with existing forced warm air heating systems who buy early. Offer valid from March 12, 1973 through April 30, 1973.

GE Executive unit features up to 20% fuel savings over comparable competitive air conditioners; staged airflow and quiet operation. Get ready for summer now, and earn your big refund direct from General Electric! Capacity range of 36,000-60,000 BTUH. Offer limited to 1973 Models TA-E1A only.

Call today for a free estimate **665-3711**

Builders Plumbing Supply Co.
Another Reason We're Number 1.

Layaway or Charge It... Either Way you Save! **Levines**

Weed Soup, Rice Mainstay Of Diet

By THE ASSOCIATED PRESS
Soup made from weeds and some vegetables, rice and occasionally a "hint" of meat made up the diet for American captives of the North Vietnamese and the Viet Cong.
At news conferences and in interviews Thursday the men told about the food they ate, several said the diet improved near the end of their captivity.
Lt. Col. Donald C. Waltman of Kellogg, Idaho, whose plane was shot down Sept. 19, 1966, said that for the first nine months of his captivity he ate only green weed soup and rice twice daily. He estimated he lost 85 pounds before treatment improved late in 1969.
"In the end we were getting enough food and exercise," said Waltman, an 18-year Air Force veteran whose son is a cadet at the Air Force Academy.
President Nixon, in his broadcast Thursday night, said he spoke to a POW who told him he was fed only twice a day — a piece of bread, a bowl of soup.
Army Maj. Floyd J. Thompson of New Milford, N.J., captured March 26, 1964, and the longest held POW, said that during the first years of his captivity the diet was mostly rice and bread with a "hint" of meat. Later, he said, "They gave us quite a bit of fish and meat — dog, cat, rat."
Air Force Capt. Joseph Mill-



THE WORDS OF CHRIST

BY DAVID POLING
"A man was going down

from Jerusalem to Jericho, and fell among robbers who stripped him and beat him, and departed, leaving him half dead. Now by chance a priest was going down that road; and when he saw him he passed by on the other side."
— Luke 10

The story of the Good Samaritan is one of the most popular in the New Testament. Jesus told this story in response to the question, "Who is my neighbor?" The drama of the story is simple and compelling.

Television And Radio

NEW YORK (AP) — CBS has announced that they will begin showing X-rated movies on the late show, says the assigned mimeographed form.
"Not so!" cries a chorus of top CBS television executives.
A church bulletin says the pastor recently observed that he felt it would not be long before X-rated movies appeared uncut on CBS. He has since learned that CBS is showing such movies already late at night when the children are in bed, or should be.
"That's not true," says CBS executives. But to no avail.
By the network's own count, at least 200,000 letters have come to CBS in a year, most of the writers saying they've "heard" or "learned" that CBS has or will show X-rated movies. All politely but firmly protest and oppose the idea.
"The puzzling thing is where they've heard it, because we aren't putting on any X-rated films and have no plans to."

Don't Answer!

SAN FRANCISCO (AP) — Richard Cory answered the phone and found himself on a direct line back to jail.
Cory, 28, who escaped on Tuesday from a prison work furlough program in San Jose, Calif., was in the crowded passenger terminal at San Francisco International Airport Thursday when he heard himself being paged by the airport telephone operator.
Making his way to a white courtesy telephone as requested, Cory was greeted by two airport policemen, who had placed the call after the FBI tipped them to Cory's whereabouts.

TV Log

- 6:30 7-Christopher Closeup
- 7:00 7-Encounter
- 7:30 7-Three Stooges
- 8:00 10-Young at Heart
- 8:30 4-Your Questions, Please
- 9:00 7-Gospel Jubilee
- 9:30 10-Old Time Gospel Hour
- 8:00 4-Day of Discovery
- 8:30 4-Life for Laymen
- 9:00 7-Revival Fires
- 9:30 10-Church Service - Baptist
- 9:00 4-Herald of Truth
- 9:30 7-Curiosity Shops
- 10:00 10-Rex Humbard
- 10:00 10-Oral Roberts
- 7:00 7-Bullwinkle
- 10:30 4-Your Questions, Please
- 11:00 7-Make a Wish
- 11:00 10-Face the Nation
- 11:00 4-Faith For Today
- 11:00 7-Daniel Boone
- 11:30 10-Learn and Live
- 11:30 4-NHL Action
- 12:00 10-Washington Debates
- 12:00 4-World Championship Tennis
- 12:30 10-Movie, TBA
- 12:30 7-Issues and Answers
- 1:00 7-NBA Playoffs
- 1:55 10-Art Direction
- 2:00 4-NHL Hockey
- 2:30 10-Jim Thomas Outdoors
- 3:15 10-CBS Sports Spectacular
- 3:15 7-Howard Cosell Sports Magazine
- 3:30 7-Auto Race
- 4:00 10-You Are There
- 4:30 4-Women's Golf
- 5:00 7-Call of the West
- 5:00 10-CBS Sports Illustrated
- 5:30 7-Here We Go Again
- 5:30 4-NBC News
- 6:00 7-A Touch of Grace
- 6:00 4-Wild Kingdom
- 6:30 7-10-News
- 6:30 4-World of Disney
- 7:00 7-Let's Make a Deal
- 7:00 10-Dick Van Dyke
- 7:00 7-FBI
- 7:30 10-MASH
- 7:30 4-McMillan and Wife
- 10:00 10-Mannix

7-Movie, Grand Slam
8:30 10-Barnaby Jones
9:00 4-Escape
9:30 4-Police Surgeon
10:00 10-Protectors
10:00 4-10-News
10:30 4-Inside Television
11:00 7-ABC News
11:00 10-Movie, "Stage Fright"
10:45 4-Movie, "The Purple Heart"
11:15 7-News
11:15 7-Movie, "Young Man With Ideas"

CBS officials say they insisted in heavy cuts before buying "The Damned" as part of a movie package from Warner Bros. They say those cuts were made and would have gotten the film an R rating for theatrical release.
The movie was chopped even further before CBS aired it. Out went some 36 minutes of controversial scenes involving incest, child molestation and a homosexual orgy.
Swofford says by the time his editors are through, films with an R rating (no one under 18 allowed in the theater unless accompanied by an adult) will be pared down to the equivalent of a PG (parental guidance suggested) or a G (general audience).

The bottle-nosed dolphins are warm-blooded, air-breathing mammals which have returned to the sea.

Susie is four. She can't walk or talk. She has a birth defect.
With your help we can help Susie.
Give to Easter Seals
March 1 - April 22

POWs Show Anguish, Courage

By THE ASSOCIATED PRESS
Here are highlights of comments by recently returned prisoners of war on their treatment by the North Vietnamese and the Viet Cong:
—Air Force Capt. Larry Chesley, of Burley, Idaho, captured on April 16, 1966: "One of the worst parts was the mental anguish of not knowing if you were going to be tortured and hearing the man outside say, 'Help me, Help me' and knowing there was nothing you could do except pray for him."
—Navy Capt. James A. Mulligan Jr. of Virginia Beach, Va., captured on March 20, 1966: "I was kept like an animal

in a cage. You've been to the zoo. Animals there can look through the bars. I didn't have any bars to look through. I didn't see the moon for years— maybe four or five. It's a very pretty sight."
—Navy Capt. Jeremiah A. Denton Jr. of Virginia Beach, Va., captured on July 18, 1965 and the first man off the first plane bringing prisoners from Hanoi: "I went through what any observer would call torture on 10 different occasions. For three days I had no food or water... seated on a stool... hand-cuffed. With the help of God, I felt no hunger or thirst."
—Air Force Col. Robinson Risner of Oklahoma City, Okla., captured on Sept. 16, 1965: "I made more than one antiwar propaganda page. I wrote what they told me to write after a torture session... I myself have screamed all night."
—Cmdr. Richard A. Stratton of Palo Alto, Calif., captured in January 1967 and shown at a Hanoi news conference, confessing alleged war crimes: "It is my intention to request that the State Department formally accuse certain members of the government of North Vietnam and the Communist military of war crimes. At the hands of the North Vietnamese I have been tortured. I have been beaten."
—Army Maj. Floyd J. Thompson of New Milford, N.J., captured in South Vietnam on March 26, 1964 and the longest held POW, discussing what kept him going: "God, country and the love of a good woman." On antiwar activists: "I think these people did more to prolong the war than anything else that happened."

VOTE FOR

Jim B. Maule

FOR Mayor April 3



Paid Pol. Ad. By Supporters of Jim B. Maule

Dollar Day

Shop Monday 10:00 am 'til 6:00 pm

Ladies Coffee Coats

Compare to 7.00 **4.88**

Permanent pressed blends, zippered fronts, short sleeves, with one pocket styles. Colorful prints S-M-L-XL. Blue solid with check trim. Sizes 12-16.

Special Print Pant Tops

Values to 18.00 **8.99**

Long sleeve, colorful prints or geometrics in polyester or blends. Mostly shirt styles. Sizes 10 thru 18.

Short Sleeve Dress Shirts

3 for 13.00

- Pastels
- Deep Tones
- White on White

Permanently pressed polyester and cotton blends. Short sleeve, single pocket dress shirts in collar sizes. 14 1/2 thru 17.

Special Group Ladies Pants

Were to 14.00 **6.99**

Choice of either polyester or nylon double knits. Pull-on style with stitched crease. Dark or light. Various 10 thru 18.

Ladies Nylon Gowns

Nylon tricot in lace or embroidery trims. Waltz lengths or full lengths. Compare to 10.95. Sizes S-M-L. **4.77**

Ladies' Bikini Briefs

A great collection of bikini briefs in 100% nylons, tricot stretch lace or novelties. Sizes S-M-L. **4.30**

Nudie Panty Hose

Sheer from waist to toe — our popular one size Nudie Panty hose in a selection of colors. **\$1.00**

Ladies Thong Sandals

Barefoot thongs in a selection of colors including white, black, navy, yellow, green, red or lilac. Sizes 5 to 10. **3.99**

Polyster Double Knits

A great collection of 100% polyester double knits in solids, crepe stitch, double or triple dyed jacquard as well as novelties. Choose now for Easter sewing. 38 to 62 inch widths. **1.77 - 2.77 - 3.99 - 5.99**

Mens Pants

Values to 16.00 **4.99**

Men's flare pants in belt loop model from famous Texas maker. Top pocket style in solid colors or neat window checks. Tonings of grey, green, gold, blue. Waist sizes 32 thru 40.

DUNLAPS

Pampa's Finest Department Store
Coronado Center.