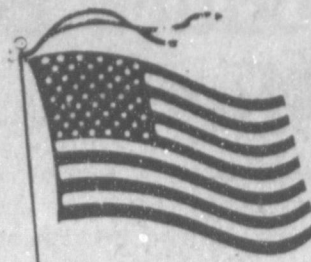


WEATHER



# BAILEY COUNTY JOURNAL

'The Community Of Opportunity-Where Water Makes The Difference'



Vol. 29, No. 5

16 PAGES TODAY

Published Every Sunday At Muleshoe, Bailey County, Texas 79347

Member 1989  
TEXAS PRESS  
ASSOCIATION

20¢

Sunday, February 4, 1990

## County Needs 6-8 Inches Moisture Soon

### around muleshoe

\*\*\*  
A general membership meeting of MulePlex Production Co. is scheduled for 6 p.m. on Friday, February 9, in the Muleshoe State Bank meeting room, according to Pat Prater, chairman.

All members of the MulePlex Production Co., and any other interested individuals are asked to attend, said Mrs. Prater.

\*\*\*  
Phil Langston, administrator of Muleshoe Area Medical Center, said a special meeting of the board of Muleshoe Area Hospital District is scheduled Tuesday, February 5 at 4 p.m.

The only item on the agenda is to review and take action on proposals for hospital casualty insurance.

\*\*\*  
Educator of the Week for Watson Junior High School is Margaret Gleason, a seventh grade reading teacher.

Principal Awards of the Week went to Cerferino Sierra, sixth grade; Jimmy Bonham, seventh grade and Angie Gable, eighth grade.

\*\*\*  
Artists of the Month at Watson Junior High School included: Bryan Box, first, with *The Hunter*; Joe Rodriguez, second, with *John Wayne as Rooster Cogburn*; and Candy Garcia, third, with *The Parakeet*.

\*\*\*  
Calvary Baptist Teens are selling *Great Valentine Cookies* again this year.

The cost is \$3.50 each and they are decorated and delivered within the city limits.

To place an order, contact any Calvary Baptist Teen or call 272-5319 or 272-4012.

The Teens say, "Thanks for helping us go to camp."

\*\*\*  
Harvey Bass notified *The Journal* that the next MAC drawing will be on the first Saturday in March, at the downtown location in Muleshoe.

\*\*\*  
The Muleshoe Eastern Star  
Cont. Page 6, Col. 3

## Parenting Workshop Slated At Dillman

A parenting workshop is scheduled for parents of students at Dillman Elementary. This workshop will focus on the importance of cooperation between parent and child and between parent and teacher.

The workshop will be on February 20 at the Dillman Elementary cafeteria. Coffee will be served at 9:15 a.m. with the workshop following from 9:30-10:30. All parents of Dillman Elementary students are encouraged to attend this parenting **Foshee Benefit**

### Fund Established For Medical Help

A special benefit fund has been set up for the Ronnie Foshee family at First National Bank, or Security State Bank in Littlefield.

Ronnie Foshee is the son-in-law of Mr. and Mrs. Junior Mills of Muleshoe. Foshee's wife, Linda, is a former manager of Perry's in Muleshoe, and his daughter, Sharon (Mrs. Preston) is a former secretary at the Muleshoe Chamber of Commerce and Agriculture.

Funds derived will be used to help defray medical expenses for cancer treatments for Ronnie Foshee.



RECEIVES SILVER SPADE AWARD--Frank Hazmell, right, district executive for the George White District of Boy Scouts, presented Betty Griswold, Cubmaster, and John Graves, Weblo leader, the Silver Spade Award. Graves received his award during the Pine Wood Derby held here Saturday and Mrs. Griswold received her award in Lubbock. Graves also received a Certificate of Appreciation for his services to the Boy Scouts of America. (Journal Photo)

## MulePlex Production Will Help Fire Department With Celebration

Several members of the MulePlex Production Co. met Friday evening with Muleshoe Fire Chief Donald Harrison, to discuss preliminary plans for the annual Mule Days Celebration.

Again this year, the Muleshoe Fire Department will be heading up the celebration, but will be assisted by MulePlex Production in presenting the growing celebration.

At this time, it is 'up in the air' as to where the celebration will be held.

Possible sites were discussed, and no definite location had been determined by the time the two hour meeting had ended.

This year, plans are for a "Six Flags or Silver Dollar City" atmosphere, and a number of types of booths and entertainment were discussed.

Two major locations discussed for the celebration included the old Muleshoe City Airport, where

the celebration was held last year, or possibly the Civic Center and Heritage Center area.

Darla Rhodes of MulePlex Production Co. had a list of ideas proposed for the celebration this year, and some of the possible activities include:

The possibility of an 'Old-Fashioned Tea House' at the Old Depot, operated by persons in period costumes;

An Old Time Medicine Man, selling black drops and elixir to the public;

A one-room school house; with a real teacher and real students acting out the proper era;

An Old Time Photographer who will be taking 'real' posed pictures;

The Boy Scouts with a Turkey Shoot and presenting history of the Scouting organization;

Booths featuring cotton candy, popcorn and peanuts;

A 'soda-water' booth;

A farrier booth, with mule shoes being made on a forge;

A quilting booth;

A sheep shearer booth;

A Muleshoe Souvenir booth;

A woodworking booth;

A booth selling freshly home made bread and cinnamon rolls;

A booth demonstrating lye

soap being made;

A 'Spit and Whittle' booth;

A Taffy booth;

A saddle making booth; and many others.

Possibilities for entertainment were Nick Black with his Magic Show; The West Texas Gun Fighters from 6-Flags;

The 4th Calvary Group from Lubbock;

The Gymnastic Kids;

The Anchor Brothers Band;

The Sandhills Quartet;

The Gospel Notes;

The Larry Buchanan Band;

Cont. Page 6, Col. 5

Students Planning

For TEAMS Test

Starting Tuesday

Muleshoe ISD will be administering the Texas Educational Assessment of Minimum Skills (TEAMS) test on February 6-8 to all students in grades 3, 5, 7 and 9.

The test will include reading, writing, and mathematics at all grade levels.

A reminder has been issued that the writing test will be administered on Tuesday, February 6, to every student in the above grade levels across the state of Texas.

Students who are absent on this day will not be able to make up the writing test this year.

All students in grades 3, 5, 7 and 9 are asked to be in school, if at all possible on the designated testing days.

Students who are well rested generally achieve better test results.

Results of the TEAMS will be provided to all parents, on an individual basis, when they are returned to MISD later in the school year.

Bailey County irrigators within the High Plains Underground Water Conservation District No. 1 will have to apply from two to eight inches of water to bring the five-foot root zone soil profile to field capacity before 1990 spring planting, according to soil moisture survey data released by the Water District and the USDA-Soil Conservation Service.

An area northwest of Mule-

## Jennyslippers College Night Next Week

Muleshoe's Jennyslippers will be sponsoring the third Student-Parents Night on February 12, in the Muleshoe High School cafeteria.

The purpose of the Student-Parents Night is to give information on ways to seek financial assistance for students to attend college. During the meeting, the parents will learn their role in the process.

While the seminar will be directed toward junior and senior students and their parents, the Jennyslippers said other students are welcome and will benefit from the meeting.

Some of the speakers will include Lynda Tinsley of West Texas State University; Dr. Ronny Barnes, Texas Tech University; Shirley Prothro, South Plains College; Leo Hatten, Eastern New Mexico University; Capt. Messer, Texas Tech Army R.O.T.C.; Cathy Wright, Stegall Opportunity Plan and Mattie Hicks, Nursing Instructor at South Plains College.

Another advantage is that adults may receive information on ways they can return to college.

The Jennyslippers said, "Plan now to attend this vital meeting on February 12 at 7 p.m. Let us help you get your foot in the door! Don't wait -- GO FOR IT."

## Liquor Tax Rebate Checks Received Here

State Comptroller Bob Bullock last Monday sent checks totaling \$11.1 million to 219 counties and 437 cities that collect sales tax on mixed drinks.

The checks represent the counties' and cities' share of the state's 12 percent mixed drink tax collected during October, November and December of 1989.

Under state law allowing the sale of mixed drinks, Texas cities and counties each receive a 12.5 percent share of the state tax collected on mixed drinks sold within their boundaries.

Bailey County received a check of \$673.21 on reported total county tax revenues of \$5,385.68. Muleshoe's share was also \$673.21 on the same reported city tax revenue.

For Cochran County, the 12.5 percent remittance check was \$94.47 on reported county tax revenues of \$755.72.

Littlefield received a check for \$389.59 on city tax revenues totaling \$3,116.72. Lamb County got a check for \$722.07 on reported tax revenues of \$5,776.52 for the current period.

For Parmer County, the rebate check was in the amount of \$61.91 on reported county tax revenues of \$495.24.

Under state law allowing the sale of mixed drinks, Texas cities and counties each receive a 12.5 percent share of the state tax collected on mixed drinks sold within their boundaries.

Bullock said that the state collected \$45.9 million in mixed drink taxes during the last three months of 1989, compared to \$43.6 million collected during the same months of 1988.

shoe will require from two to four inches of water to fill the soil profile. This area is located near the intersection of Fms 1731 and 1760, and continues northeast to near Progress. Soil moisture deficits from four to six inches are also found in this area and continue northeast toward the Bailey-Parmer County line.

The remaining northern portion of Bailey County within the Water District requires from four to six inches of water to bring the soil to field capacity.

In the southern portion of the county within the District, soil moisture deficits range from four to six inches near Goodland and Maple. Drier soil conditions were found in the Enochs area, where six to eight inches of soil moisture is needed for a full soil profile.

Soil moisture monitoring sites located in Bailey County corn fields showed an average 4.8 inches of plant-available soil moisture and a 4.2 inch deficit, says Mike Risinger, USDA-SCS Soil Scientist.

Irrigated and dryland cotton fields, grain sorghum fields, and wheat fields recorded soil moisture deficits of more than six inches. In these fields, less than three inches of stored soil moisture is available for plant Cont. Page 6, Col. 1

## Lady Mules, Mules Win Over Wildcats

On their way to a 69-45 victory over Littlefield Friday night, the Muleshoe Mules racked up an impressive game tally.

Leading scorer was Brian Bush with 18 points and 12 rebounds.

Brett Pylant had 15 points and one rebound.

Frank Precure had 11 points and nine rebounds; Rodney Reynolds had 11 points and one rebound.

Corley Hutton had seven points and four rebounds.

George Torres had six points and five rebounds; Clarence Lewis had one point and five rebounds; and Adrian Pineda had five rebounds.

Friday night, the Lady Mules defeated the Lady Wildcats from Littlefield, 62-33.

Last Tuesday night, the Mules were successful in their efforts to defeat the Friona Chieftains, and came home with a 69-64 victory.

Frank Precure had 26 points and 18 rebounds; Brian Bush, 17 points and 11 rebounds; Brett Pylant, 15 points and Colin Tanksley, seven points.

Coach Leon Hagerman said following the Friday night game, the Mules are 12-16 for the year and 4-4 in District action.

Tuesday night, the Mules and Lady Mules will travel to Dimmitt to take on the Bobcats and Lady Bobcats.



WOLVES DIVISION WINNERS--Brett Clements, right, not only received the first place trophy in the Wolves Division of the Pine Wood Derby. He also received the trophy for the best paint job. Jose Flores, center, won second place, and B. J. Copeland, left, came in third. (Journal Photo)

## Product Health Claims May Be Misleading

As consumers have become more concerned about health and nutrition, advertisers have become more imaginative in touting the health benefits of their products. But many of the health claims made for packaged foods, non-prescription drugs, "health" products and other consumer goods are exaggerated — and some are deliberately false.

The Attorney General's Consumer Protection Division has investigated many of these claims and, where warranted, gone to court to stop deceptive or misleading health claims. Some cases involve foods that, while otherwise nutritious, make claims that are unsupported by scientific evidence.

Some claims are outright hoaxes that are potentially dangerous to consumers. One product sold as a "cure" for cancer and AIDS was nothing more than a highly concentrated solution of hydrogen peroxide. Besides being falsely advertised as a "cure," the product could cause serious injury or even death if taken internally.

### READ THE CONTENTS, NOT THE ADS

Most foods must list the ingredients on the label by the common names. Nutrition information must be included on a food label when a manufacturer adds a nutrient or makes a nutrition claim. The nutrition label lists the number of calories, amount of sodium, etc.

Over-the-counter medications and remedies must also list their ingredients and include information about when and how to take the product, possible side effects or interactions with other drugs. Any product that makes a claim that it can mitigate, cure or prevent an ailment or disease must have U.S. Food and Drug Administration approval. If it does not, in most cases, it is an illegal drug.

### BEWARE OF HEALTH SCAMS

If a product promises a "quick and easy cure," claims to be effective for a wide range of ailments or uses words such as "miraculous," "secret," "exclusive" or "ancient," be suspicious — these are the tactics of snake-oil salesmen.

Remember, if these products could really cure cancer, AIDS, arthritis and other diseases, or if they could grow hair or stop the aging process, they would be front page news stories, not back page come-ons.

If you have a health problem, or think you might, consult a health professional (nurse, doctor, nutritionist, etc.) — not the claims of an advertisement. You put yourself in great danger if you postpone treatment while chasing the dream of a "sure cure."

### FOR MORE HELP

If you have a complaint about misleading health claims or any other consumer problem, call your nearest Consumer Protection Office in Austin, Dallas, El Paso, Houston, Lubbock, McAllen and San Antonio. The Attorney General's Office is the people's law firm. We're here to help you.

## Ornamental Plants May Have Injuries

Concerned homeowners need to know that the extent of freeze damage to many of their ornamental plants may not be known for some time, according to a landscape horticulturist with the Texas Agricultural Extension Service.

Dr. William C. Welch of College Station said the full extent of injury from cold may not become apparent until this summer.

"That's why it is important to reduce plant stress and wait until later to prune or fertilize," Welch said.

As a rule of thumb, he said injury is likely to be more severe on plants whose leaves did not fall off after a hard freeze.

Welch recommended the following procedures:

- Keep plants watered adequately. Most areas of the state are short on moisture, and this dry condition could contribute to more losses. Irrigating landscape plants in the winter, particularly

broadleaf evergreens, can help lessen effects of freezing temperatures.

- Although plants may appear to be in poor condition, don't do any pruning until late winter or early spring. Pruning now would stimulate new growth that would be at risk to later freeze damage. Prune and shape ornamentals only after the full extent of damage is known.

- Don't start fertilizing plants until they have begun active growth. Fertilizer use at this time may stimulate new growth, and the fertilizer salts may cause more injury to already stressed root systems.

- Look carefully for symptoms of disease and insect problems that might infect the freeze-damaged plant tissue. If problems are evident, contact your local county Extension Service agent who will help you submit tissue samples to the Plant Disease Diagnostic Laboratory at Texas A&M as quickly as

possible for identification and control recommendations. If plant stems appear to be water soaked, this is an indication of problems.

The lab's mailing address is Room 101, L. F. Peterson Building, Texas A&M University, College Station, Texas 77843-2132. Samples should be sent to the attention of Dr. Larry Barnes, Extension Service plant pathologist. Your county agent will package the samples for lab use.

**YOU**

make the difference

**Donate Blood**  
Friday,  
February 9th  
10 a.m. - 6 p.m.  
**United Blood Services**

### LIVING ROOM SUITES

- Sofa and Love Seat**  
Beautiful Soft Blue Azure Cover.  
..... NOW BOTH \$397
- 6 Pc. All Wood Den Group**  
Sofa, Rocker, Chair, Cocktail & 2 End Tables on Washed Pine.  
..... 1 Only \$647
- 3 Pc. With Sleeper Sofa**  
Beautiful Hi-back sleeper sofa in Brown's or Blue's with matching love seat and chair trimmed in Oak with Brass accents  
..... NOW \$987
- Corner Sectional**  
Rich Brown Sleeper Corner Table Love Seat and 2 Matching End Table's Also included round matching Cocktail Table  
..... NOW \$857
- Sofa and Chair**  
Your Choice of Brown or Blue-Overstuffed Load.  
..... NOW \$497

- Blue Print Cotton Sofa**  
With Matching Throw Pillows.  
..... NOW \$197
- Beautiful Solid Oak Desk**  
A Beautiful Addition to Any Home.  
..... \$277

- Solid Oak China Cabinet**  
Must See This One  
..... 1 Only \$597
- Quality Queen or Full Iron Bed**  
Headboard, Footboard, & Rails.  
..... NOW \$127

- Large All Wood Curio Cabinet**  
Dark Oak Finish.  
..... 2 ONLY \$177
- All Wood Admiral's Quarters**  
Includes Loft Bed-Trundle Bed-Chest and Bedding.  
..... NOW \$257

- Beautiful Solid Oak Hall Tree**  
With Mirrored Back-A Place For Your Hats and Umbrella's too.  
..... \$157
- Entertainment Centers**  
Holds Your TV and Stereo & VCR. Closed Door on Bottom.  
..... NOW \$77

- ### CHAIRS-ROCKERS
- Easy Chair**  
Comfortable Long Lasting Antron in Blue & Mauve with Oak Trim with Matching Ottoman.  
..... NOW BOTH \$197
  - Barrell Back Rocker-Swivel Rockers**  
Choice of Beautiful Velvet Covers.  
..... NOW \$87
  - Odd Chairs**  
Values to \$199  
..... 3 Left NOW \$97

### ODD-N-ENDS

- Brass Vanity with Stool**  
..... 1 Only At \$59
- Set of 3 Brass N Glass Cocktail Table**  
with 2 Ends-Etched Glass.  
..... 3 Sets ONLY \$97
- Entertainment Center with Glass Doors**  
For Your Stereo and VCR and 2 Drawers on Bottom.  
..... NOW \$167
- 7 Different Styles of Cocktail Tables**  
As Is - Close Outs.  
..... Values to \$219 \$77
- China Cabinet by Quality**  
All Wood.  
..... 1 Only \$297
- Cannon Ball Bed**  
Queen Size with Top of the Line 15 Year Bedding and Frame.  
..... \$397
- Bryohill China Cabinet**  
As Is.  
..... \$347
- Large Brass Finish Baker's Rack**  
Priced in the Box.  
..... \$19.97
- Bar Stools**  
30" High Back Bar Stools  
..... \$24.97
- Love Seat by Simmon's**  
Multi Tone Color  
..... 1 Only \$197
- Love Seat Sleeper**  
Love Seat opens to a Twin Size bed-Antron Cover  
..... NOW \$187

- Cheval Mirrors**  
Brass & Glass Adjustable Floor Mirrors.  
..... NOW \$67
- Solid Oak Entertainment Center**  
6 Ft. Tall  
..... 1 Only \$187

- ### New Item-Must See to Appreciate
- 9x12 Bound Carpets \$97
  - 12x12 Bound Carpets \$147
  - 12x15 Bound Carpets \$167

- 4x6 Fringed Oval Rugs ..... \$24.97
- 6x9 Fringed Oval Rugs ..... \$47
- 8x12 Fringed Oval Rugs ..... \$87

- Bassett Mirrors**  
Beautiful Framed Mirrors by This Leading Mfg.  
..... NOW \$18.88

- ### RECLINERS
- Action Recliner by Lane**  
Soft Blue Velvet  
..... \$247
  - Kiddie Recliner**  
..... 1 Only \$59
  - Barcalounger Recliner Rocking Recliner**  
Soft Blue.  
..... 1 Only \$187

- ### DINETTES
- 7 Pc. Semi Formal Dining Table**  
Table Has Formica Top - 6 All Wood Chairs with Padded Seat.  
..... \$297
  - Glass Octogan Dining Table**  
With 4 Brass Chairs-Some Assembly Required.  
..... \$97
  - 7 pc. Kitchen Set**  
Table has Formica Top with 6 padded chairs  
..... NOW \$187

We Just Finished Our Inventory And Look What We Found!

# Special Offer

**WHILE THEY LAST!**

## SATURDAY

Doors Open 9 A.M. Sharp till 5 P.M.  
Lots of 1 of A Kind Items  
Priced to 90!  
And 90 Day's Same As Cash Too!  
W/Approved Credit.

- ### BEDROOMS
- Large Bedroom Suite**  
Queen Ann Style Poster Bed Queen Size- Includes Triple Dresser, Mirror Chest, Poster Bed and Night Stand.  
..... NOW \$897
  - Also Available King Size...\$997
  - Black Lacquer Bedroom Set**  
Triple Dresser, Panel Mirror, 5 Drawer Chest- Full or Queen Headboard & Nite Stand  
..... NOW \$397
  - Mattress Set**  
Twin Size - 15 year warranty  
..... Both Pieces \$157

- ### MATTRESSES
- Mattress & Box Spring**  
Top of the Line-15 Year Pillow Top Mattress. Full Size  
..... \$297 Set
  - King Size Mattress Set**  
10 Year Warranty-King Koil.  
..... \$247 Set
  - Mattress & Foundation**  
5 Year. Queen Size.  
..... 2 Only \$97

- ### DINING ROOMS
- Broyhill 7 Pc. Dining Room Table**  
With 6 Upholstered Chairs.  
..... 1 Only \$567
  - Broyhill Table and Matching Hutch**  
Cherry Wood. Large Table, 2 Leaf with 6 Chairs and Matching China Cabinet.  
..... 1 Only NOW \$1397
  - 7 Pc. Dining Table by Sidix**  
Large Pedestal Table with 2 Cap. Chairs and 4 Side Chairs and 2 Seats.  
..... NOW \$647

# BARGAIN WORLD FURNITURE

318 Main - Clovis - 762-2304

**LIMITED TIME SPECIAL!**

Get 'em while they last!



YOUR CHOICE  
\$8.00

SS445  
BRASS SOFA SERVER



A steal at \$9.00

SS380  
LG. WOOD SOFA SERVER

- ### TERMS OF SALE
- Time Payment Plan
  - No Down Payment
  - Visa or Mastercard
  - Cash or Check
  - 90 Days Same as Cash
- All items priced U-haul-But delivery is available. All items must be removed from bldg.

## Nursing Home News

by: Joy Stancell

Friday afternoon we were delighted to have Leo and Francis Garcia from the Tigua Tribe to be our guest speakers. Leo expounded on the Tigua Indian culture. He showed and displayed pictures and artifacts after a meal of tortilla soup, Indian tacos, tamales, prepared by Francis Garcia and assisted by Mike Doyle, Rosa Lee Leyja, Mr. Garcia chanted while playing his drum and did some Indian dances. He later played some hymns on his harmonica.

Sunday the Progress Baptist Church came to sing and play gospel music.

Tuesday morning Louise Legg from Me Ma's came to give the residents ceramic lessons. Residents participating were Ora Roberts, Lois Ethridge, Effie Smith, Pearl Cox, Thelma Stearns, Emma Schuster, Martha Smaltz, Berniece Amerson, Clara Weaver, Stella Morgan, Rosemary Pool and Patsy Franklin.

Our special friend displayed her nativity scene as the residents gathered around for "Show and Tell" time Tuesday morning.

Rosa Lee Leyja visited with a group of the residents Monday morning in the day room.

Happy February birthday to Margaret Beard, Feb. 2, 1910; Thelma Stearns 2,6,1907; Inez Allgood 2,11,187; Rosemary Pool 2,15, 1936; Ruby McCamish 2,17, 1905; Pearl Cox 2,21, 1908; We are sure each one of them would enjoy a birthday card from you.

Among those visiting Ruby

Malone this week were Ruby Garner, Allie Sebring, Shelia Black, Chubby Douglas, Helen, Doris, Ruth, Jackie Blalock, Mrs. Brown, Roshell and boys, Florene Upchurch, Brenda and Dusty Turner of Hereford, Margaret Epting, Laverne James, Katie Roubeneck, Nettie Bratcher and Joyce Turnbow.

Stella Morgan spent a few days last week visiting in the home of her daughter, Elsie Williams.

Lois Ethridge returned to the HealthCare Center Saturday after visiting her son and daughter-in-law, Mr. and Mrs. Wayland Ethridge.

Willie Mae Graves took Oneita Wagon to the dentist Tuesday.

Glenda Dale took Ora Roberts out to have her picture made for the church pictorial Monday.

Rosemary Pool went out with her son, Mike Pool, Wednesday.

Margaret Atchison had a birthday last Friday. Among her visitors were her husband, her daughter, Joyce Shafer and grandson, Larry Shafer.

Berniece Amerson celebrated her birthday Saturday. She and her family gathered in the yellow dining room for birthday cake and punch.

We truly thank the volunteers who worked so hard in the beauty shop Wednesday. They shampooed and set 21 ladies hair. We salute you!

Glenda Jennings and Iva Carpenter came Wednesday afternoon to sing and play the piano for a sing-a-long. Special guest were Mae Davis, Irene Splawn, Holly Milsap, Lois Baldwin, and Erwin Nieman.

The effort to secure selfish advantages explains much of what is termed "politics."

## Courthouse News

**MARRIAGE LICENSE**  
Steven Paul Chance and Glenda Jane Friend, Muleshoe

**WARRANTY DEEDS**  
Linda N. Harbin and husband, Billy C. Harbin, Iris June Vinson and husband, Lewis P. Vinson, Wesley Willard Dement and wife, Margaret Mary Dement and Doris Lee Stephens and husband, Norman E. Stephens to Gordon E. Noble, Jr. and wife, Deborah Noble--All of Labor (17), League (175), Sutton County School Land, Bailey County, Texas.

Juan Fco. Garza and wife, Noemi Garcia to Jose Antonio Ramos and wife, Marie DeLaLuz Ramos--All of Lot Number (16), in Block Number (2), Highland Addition to the Town of Muleshoe, Bailey County, Texas.

John W. Smith and wife, Billie Joan Smith to Walter E. Schmidt and wife, L. Fani Schmidt--All of the Southerly 50 feet of Lot (8), Block (3), Riverside Addition to the Town of Muleshoe, Bailey County, Texas.

Robert Rader and wife, Fern Rader to Jim Pat Claunch and wife, Theresa Sue Claunch--TRACT One: All of Labor (17), in League (195), Foard County School Land in Bailey County, Texas.

TRACT TWO: All of Labor (23), in League (195), Foard County School Lands, Bailey County, Texas.

TRACT THREE: All of Labor 24, in League (195) Foard County School Land, Bailey County, Texas.

TRACT FOUR: All of Labor (25), in League (195), Foard County School Land, Bailey County, Texas.

TRACT FIVE: Parts of Labors (3), (4), and (5) in League (196) Lubbock County School Lands, Bailey County, Texas.

Betty Burelsmith to Robert C. Stovall, Jr. and wife, Eva Nell Stovall--All of Lots (66) and the West 15 feet of Lot (67, Richland Hills Addition to the Town of Muleshoe, Bailey County, Texas. Lannie Ray Marshall and wife, Cathy Marshall to DeWitt Tiller and wife, Betty Tiller--Labor 18, League No. 196, Lubbock County School Lands, Bailey County, Texas.

**COUNTY COURT**  
Michael L. Stiehl, DWI, \$300 Fine, One Year Probation  
Mark Winters, DWI \$300 Fine, One Year Probation  
Keith Dewitt Smith, DWLS \$300 Fine 72 Hours Jail  
Elias Delrosa Granados, DWI second offense \$600 Fine 60 Days Jail  
Elias Delrosa Granados, Work Release  
Emiliano Gonzalez, Jr. Possession of Volatile Chemical \$500 Fine  
Sharyon Rawlins Witt, motion to Dismiss  
Pablo Alvarez Gonzales, DWI \$300 Fine and Two Years Probation  
Robert DeLaRosa, Motion to Dismiss

Being born poor need not be a permanent handicap but only hard work will erase it.

Advertisements should check their ad the first day of insertion. The Journals will not be liable for failure to publish and ad for a typographical error or error in publication except in the extent of the cost of the ad for the first day insertion. Adjustments for errors will be limited to the cost of that portion of the ad where the error occurred.

**Bailey County Journal** USPS 940-200  
Established March 31, 1963. Published by Muleshoe Publishing Co., Inc. Every Sunday at 264 W. Second, Box 499, Muleshoe, Tx 79347. Second Class Postage paid at Muleshoe, Tx. 79347.

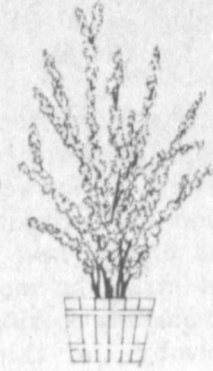
Member 1989  
**TEXAS PRESS ASSOCIATION**  
L.R. Hall, Publisher  
Sammy Hall, Vice President/Controller  
Clea Williams, News  
Evelene Harter, Society  
Betty Hillings, Advertising  
Dora Trosman, Classified  
SUBSCRIPTIONS  
Muleshoe Journal and Bailey County Journal  
Bailey and Surrounding Counties  
By Mail \$14.75  
Muleshoe Journal and Bailey County Journal  
Delivered By Mail \$16.50  
Muleshoe Journal and Bailey County Journal  
Yearly by Courier \$12.50  
Advertising Rate Card on Application  
"Advertisers should check their ad the first day of insertion. The Journals will not be liable for failure to publish and ad for a typographical error or error in publication except in the extent of the cost of the ad for the first day insertion. Adjustments for errors will be limited to the cost of that portion of the ad where the error occurred."

## Ben Franklin

Better quality for less

2104 W. Amer. Blvd. Mon.-Sat. Sun.  
272-3855 8 a.m.- 8 p.m. 12- 5 p.m.

### IT'S TIME TO PLANT!



Aithea-Double Red & Purple, Forsythia Gold, Honeysuckle Zabeli, Pussy Willows, Pink & Red Weigela

**Bushes**  
**\$3.99** each

Lombardy Poplar (5 per pkg.), Cottonless Cottonwood, Silver Maple, Fruitless Mulberry, Globe Willow, Weeping Willow



**Trees**  
**\$6.99** each

Jonathan Apple, Red Delicious, Yellow Delicious, Elberta Peach, Hale Haven Peach, Red Haven Peach

**Fruit Trees**  
**\$6.99** each



Crepe Myrtle (Pink-Purple-Red), Old Fashion Purple Lilac, Mock Orange

**Bushes**  
**\$4.99** each

Concord Grape - 2 per pkg.  
Thompson Seedless Grape 2 per pkg.  
Lawton Blackberries 5 per pkg.

**\$5.99** a package

Bing Cherry, Santa Rosa Plum, Dwarf Jonathan Apple, Dwarf Moorpark Apricot, Dwarf Elberta Peach

**Trees**  
**\$8.99** each

**Hyponex**  
Organic Peat \$2.99  
40 lb. bag.....2

Top Soil..... 40 lb. bag..... \$2.99  
Manure..... 40 lb. bag..... \$2.99  
Potting Soil..... 40 lb. bag..... \$3.99

Large Selection  
Ferry-Morse  
Seeds  
Seed Starter Trays \$2.99  
72 ct.  
1/2 mch, 50 ft.  
2 ply vinyl  
Garden Hose \$3.47

## True Value HARDWARE STORES

# Yard & Garden Helpers

**GREEN THUMB**  
**4.99**  
Lawn Food With Crabgrass Control stops weeds, establishes roots. 25-33

**GREEN THUMB**  
**18.88**  
Drop Spreader offers handle-mounted flow control. Perfect for fertilizer, seed. 43854

**GREEN THUMB**  
**29.88**  
Garden Cart is ready for lots of yard work with 6 1/2-cu. ft. heaped capacity, rugged frame, 20-in. wheels. 556-763

**LAWN CHIEF**  
3 HP **299.88**  
5 HP **399.88**  
5-HP Chain-Drive Tiller cuts 14 to 25-in. path. Adj. depth, sturdy handle. 53C

**LAWN CHIEF**  
**1688.00**  
14-HP 45-In. Ground-Engaging Lawn Tractor with an electric start Briggs & Stratton engine I/C engine. 800

**GREEN THUMB**  
**15.66**  
28-In. Lopper cuts crisply with Teflon-S<sup>®</sup>-coated blade and vinyl grips. 52751

**LAWN CHIEF**  
**199.95**  
3.5-HP, 22-In. Lawn Mower is self-propelled, with front-wheel cog drive, 8-in. wheels, fingertip drive control. 38

**LAWN CHIEF**  
**133.00**  
19-In. Electric Mower with high-amp motor, 7-in. high-impact wheels and flip-over handle that folds for storage. 259

**GREEN THUMB**  
**7.88**  
8-In. Pruning Shears have Power-Link<sup>®</sup> design. Teflon-S<sup>®</sup>-coated blade. 20571

**LAWN CHIEF**  
**199.88**  
3.5-HP, 21-In. Rear Bagging Mower has a fully-belted deck and high-lift blade. 81

**GREEN THUMB**  
**8.99**  
Grass Shears have stainless-steel carbide-edged blades that resist rust. 20562

**GREEN THUMB**  
**5.99**  
Liquid Fruit Tree Spray has four-way power to control insects and diseases. 321-7

**GREEN THUMB**  
**2.44**  
Pruning & Tree Wound Dressing helps heal and protect. 7 oz. 58274

# Fry & Cox, Inc.

401 S. 1st

Muleshoe

272-4511



# Turner, DeHoyus, Clements; Place First In Derby

Excitement and anticipation mounted as Bears, Tigers, Wolves and Weblos, all Boy Scouts, along with some adults raced their hand carved cars in the annual Pine Wood Derby Saturday afternoon, Jan. 27 in the High School Gymnasium.

First, second and third place trophies, provided by Five Area Telephone, were awarded in each of the Dens. Each of the boys racing a car received a ribbon.

Trophy winners in the Bears included: Jon Keith Turner, first; Jared Harp, second; and Gilbert Vela, third.

Tigers receiving trophies were: Rocky DeHoyus, first; Cade Hooten, second; and Brandon Broyles, third.

Other Tigers racing included: Jeffrey Shelburne, Chris Seymour, Dan Williams, Westin Price, Jeffrey King, Jack Pickering, Clif Wimberley, Christopher Vela, Ricky Colleandro and David Morris.

Trophy winners for the Wolves were: Brett Clements, first; Jose Florez, second; and B.J. Copeland, third.

Wolves racing in addition to the trophy winners were: Morgan Locker, Jeffery Snell, Chris Whalin, Chris Vaughn, Jeremy Kenemer, Dusty Otwell, Jonathan May, Gary Jones, Greyson Rennels, Laramie Wood, Judd Glover and Timothy Madrid.

Adam Graves received first place trophy in the Weblos, Christopher Shelburne received second place, and Luke Bruns, third.

Other Weblos racing were: Douglas Hoyt, Michael Thompson, Rodney Alanis, Brandon Beversdorf, Daymond Gossett, George Martinez, Kelly Hilton, James Cox, Gerado Loya, Corey Williams, Greg Pena, Jarrod Pickering, Aaron Purdy, Payton Rennels and Kermit Price.

Brett Clements received the award for the "Best Paint Job" and Tyson Purdy had the "Most Unique". In the adult division, Linda Tosh received the award for the "Best Paint Job."

In the Adult Division, Gary Hooten's car came in first; Joe Gear received second place and Kalem Puckett, third place. Other adults receiving ribbons were: Linda Tosh, Mike Richards, Arnold Price, John Graves, Terie Snell, and Mario DeHoyus.

Before the races got underway Pack 620 held a Pack meeting. During this meeting, Frank Hazmell, District Executive, presented the Silver Spade Award of the George White District to Betty Griswold, Cub Master; and John Graves, Weblo leader.

Badges were also presented to the Scouts and include: Den I. Tyson Purdy received the Wolf Badge and one Gold and three Silver Arrow Points. Bob Cat Badges were presented to: Judd Glover, Jonathan May, T.J. Hutto, Joseph Anquanio, B.J. Copeland and Dusty Elliott.

James Cox, Weblo, received the Readyman and Showmans Badge. Other Weblos receiving the Readyman Badge were: James Cox, Chris Shelburne, Douglas Hoyt, Luke Bruns, Michael Thompson, Kelly Helton, Cory Williams, Adam Graves, Rodney Alanis, George Martinez, Greg Pena, Jarrod Pickering, Payton Rennels, Brandon Beversdorf, Kermit Price, Gerado Loya and Aaron Purdy.



**TIGER TROPHY WINNERS**--Rocky DeHoyus (left) was the first place winner in the Tiger division at the recent Pine Wood Derby. Second place went to Cade Hooten, and Brandon Broyles was the third place trophy winner. These cars were hand-carved and painted by these boys. (Journal Photo)



**TROPHY WINNERS IN BEAR DIVISION**--(From left) Jon Keith Turner, first place; Jared Harp, second; and Gilbert Vela, third place in the annual Pine Wood Derby held recently. The boys hand-carved and painted these cars. (Journal Photo)

## Sitting Straight Lessens Chances Of Back Pain

When your mother told you to set up straight, she knew what she was talking about.

Sitting up straight is one of the ways to lessen the chances of back pain while increasing back strength, according to a free publication on back pain available from Baylor College of

Medicine in Houston.

Many people experience back pain at one time or another, but most recover within a month or two; however, for 65,000 Americans, back injuries in 1990 will result in chronic suffering and disability as well as in long-term medical care.

Here are some other tips to prevent back pain while sitting for prolonged periods, standing, sleeping and driving:-

--When sitting, puch your hips back in the chair with your thighs parallel to the floor.

--At work, use a firm, straight-backed chair that has armrests and padded support for your lower back. The chair should allow your feet to rest flat on the floor; if necessary, use a footrest.

--Avoid bending over your desk for extended periods.

--To avoid fatigue when standing, change your posture frequently by walking, bending or stretching. Keep your knees slightly bent, and shift your weight occasionally.

--Stand erect with your chin in, head up and back straight.

--Sleep on a firm mattress, or place a plywood board between the mattress and box springs.

--Sleep on your side with knees bent and a pillow between your knees or on your back with a pillow under your knees; avoid sleeping on your stomach.

--While driving, move the seat forward to keep your knees higher than your hips.

More information on back health and on chronic back pain is available in "Managing Back Pain," a free publication available by writing to "We Care for You," Baylor College of Medicine at P.O. Box 13567, Houston, Texas 77219, or calling 1-800-392-4444.

## Pudd Wiseman Celebrates

### Fiftieth Birthday

Pudd Wiseman was honored Saturday, January 20 with a "50th" birthday party in the fellowship hall of the Sudan Church of Christ building.

Hosting the event were his wife, Kay, and children, Wendy Branson, Randy and Rebecca Wiseman and Linda Wiseman.

The room was decorated with black balloons and various banners depicting the occasion. Lou Young, the honoree's sister, compiled a picture book starting with his earlier years unto the present. Calvin and Jane Wiseman also took various pictures.

Some of the entertainment was a reading of a poem by Mike McDonald and a skit by Wendy and Linda Wiseman about things that were older than their dad.

Among those registering were his mother-in-law and brother-in-law, Nell and Jack Gentry. Out of town guests included: Wendy and Allan Branson and Randy and Rebecca Wiseman, Tim Laing and Jamie Wooten, AIMS students of Lubbock and Linda Wiseman and John Kay of ACU in Abilene.

All of the guests took covered dishes and the traditional birthday cake was served for dessert.

## Hobby Club

The Muleshoe Hobby Club met Thursday, Feb. 1 in the Senior Citizens Complex with 13 members present. The meeting was called to order by Sammy Ethridge. The roll was called and 1990 dues were paid.

Members present included: Sammy Ethridge, Jane Williams, LaDema Wright, Glenda Morris, Laura Mae Stansell, Edith Fox, Blanche Awbrey, Frances Bruns, Kathren Hancock, Hazel Reeder, Mattie Benton, Myrtle Chambliss and Mabel Caldwell.

The group drew for hostesses and Jane Williams will be the hostess for the March 1st meeting.

The first covered dish luncheon will be on March 29.

Ms. Ethridge read a list of what groceries were 50 years ago "they sure have gone up" said Mattie Benton.

Ms. Wright drew the hostess gift, a hand painted jar.

Refreshments of coffee and cake or cookies, were served.

**You Gotta Look**  
A man seated on a park bench watched a chap about five wind what appeared to be his most prized possession—a dollar watch. "My, what a pretty watch," said the man. "does it tell you the time?" "No, sir," replied the little fellow, "you gotta look at it."

For Your  
Mary Kay  
Cosmetics  
Josie Flowers  
272-3865  
8 a.m. - 12 p.m.  
& after 6 p.m.

Anything  
That's RED Sale  
**10% OFF**  
All New RED  
Spring Merchandise!  
including:  
Nipon Boutique...Skry...  
&  
Alexander Campbell  
also...  
RED Justin Ropers & Hi-Ties...10% OFF  
All Ladies Winter Merchandise  
**50%-75% OFF**  
Rip's Ladies'  
Apparel  
IN TEXAS  
314 Wheeler  
1-800-748-2459  
482-3363  
Hours: 8:00 to 6:30 CST  
Monday thru Saturday  
We Accept  
VISA, DISCOVER  
MASTERCARD  
AMERICAN EXPRESS

## Methdosit Women Hold Joint Meeting

The United Methodist Women met in a joint meeting recently in the church parlor. Thelma Lewis, Thelma May and Mickey Nix were the hostesses for the meeting.

The meal consisted of soup, crackers, tea or coffee. Bro. Jim Hawthorne gave the opening prayer before the meal.

After the meal the group returned to the church parlor for the program and business.

Nell Lane, treasurer, conducted the pledge service. Pledge cards were presented to those present and attention was called to the "World Thanks" offering boxes, also the "Mile of Pennies" project for the district. She also gave a complete treasurer's report.

Caroline Hawthorne presented the program for self-denial and call to prayer. A collection for this was taken.

During the business session, the group voted to present the Montez family with a monetary gift due to the loss of their home by fire.

The next meeting for the WMU will be Feb. 5 at 10 a.m. and 7:30 p.m.

Those present were: Bro. and Mrs. Jim Hawthorne, Dorothy Dialse, Anne Black, Hazel Gaston, Eloese Curry, Grace Lopes, Laverne Harper, Rhoda Minyard, Ruth Newman, Jackie McAlpin, Frances Potter, Mary Smith, Ginia Nichols, Mary Olds,

Gill Rogers, Mary Tollett, Nell Lane, Margaret Smith, Bert Vereen, Patty Vincent, Onita Wallace, Mae White, Thelma May, Thelma Lewis, and Mickey Nix and Nellie Williams.

Mrs. F.M. Smith, district treasurer of the U.M.W. attended a district officers training held in Lubbock at the Oakwood Methodist Church Saturday, January 20.

Making plans for future prosperity is not the same thing as having cash in the bank.

The law should know no favorites; when this is the case, the law has no excuses to make.

**Celebrate**  
**Donate Blood**  
Friday, Feb. 9  
10 a.m.-6 p.m.  
Muleshoe State Bank  
United Blood Services

## Study Club

Muleshoe Study Club met Thursday, January 25 in the home of Mrs. Jewel Pool, who served refreshments to the following members: Mrs. Louise Agee, Mrs. Verda Nell Arnn, Mrs. Joylene Costen, Mrs. Fern Gilbreath, Mrs. Jesse Sanders, Mrs. Izetta Shain, and Mrs. Alma Turner. Two visitors, Mrs. Mickey Lewis and Miss Auerila Sanders were also present.

Miss Sanders gave the program on Federation. She gave a report on the club being organized in 1938, and becoming a federated club in 1939. Mrs. Lewis helped with the program, as she was one of the twenty charter members and also served as club president during those early years.

Mrs. Agee held a business meeting, with several club matters being discussed.

The group voted on a list of names for prospective members and the vote was unanimous in approval.

Plans were made for the next meeting to be held in the home of Mrs. Vivian White on Feb. 8 at 4 p.m. The program will be "Tips on Gardening."

*A Point To Ponder: "Be Cheerful of all the things you wear, a happy expression is the Most Important"*

**Celebrate**  
**Donate Blood**  
Friday,  
February 9th  
Muleshoe  
State  
Bank  
10 a.m. - 6 p.m.  
United  
Blood  
Services

**H&R Block**  
keeps up  
with the  
changes.  
We know the income tax laws and the forms inside and out. That's our business. Put us to work for you.  
**H&R BLOCK**  
America's Tax Team  
224 W. 2nd  
272-3332  
Weekdays 9-6  
Sat. 9-5

## HOMESTEAD EXEMPTIONS



### CAN LOWER THE PROPERTY TAXES ON YOUR HOME

#### A homestead Exemption

lowers the property taxes on your home by lowering its taxable value. For example, if your home is valued at \$50,000 and you receive a \$5,000 homestead exemption, your home will be taxed as if it were worth only \$45,000.

#### You qualify

for a homestead exemption if you owned your home on January 1 and used it as your primary residence on January 1. It doesn't matter whether your home is a house, a condominium or a mobile home.

#### Exemptions are available

to all homeowners on their school taxes. Additional exemptions are available to homeowners who are disabled or age 65 or over. Other exemptions may be offered to homeowners by school districts, counties, cities, and special districts. All taxing units offer exemptions to disabled veterans.

#### Apply to

your local appraisal district office at the address shown below for all exemptions you may qualify for. Application forms are available at this address.

If you received a homestead exemption on your present home in 1989 you won't need to apply again for 1990 unless the chief appraiser requires you to reapply.

However, if you passed your 65th birthday or became disabled before January 1, file a new application to receive the additional exemptions.

If you haven't received an exemption on your present home, or if you moved to a new home, make a new application for 1990.

#### The deadline

for applications is April 30, 1990. Contact your appraisal district before then if you need more time.

For more information, get a free copy of the pamphlet, *Taxpayers' Rights, remedies, Responsibilities*, at your appraisal district office or from the State Property Tax Board in Austin.

## Bailey County Appraisal District

104 E. Ave. C

272-5501

## Moisture Needed

Cont. From Page 1

use without supplemental irrigation and/or precipitation. Water District and USDA-SCS personnel take annual soil moisture readings by inserting neutron probes into aluminum access tubes at more than 230 monitoring sites across the District's service area. The annual soil moisture survey results are designed to inform irrigators about general soil moisture availability and deficit conditions across the Water District's 15-county service area. With this information, irrigators can estimate the amount of water they will need to apply during pre-plant irrigation to bring their soil to field capacity

without over-irrigating or under-irrigating. Soil moisture levels have traditionally been a good indicator of potential crop yields. If the soil profile is near field capacity at planting, the chances for good crop yields is greater. Rain gauge totals at the 22 Water District soil moisture monitoring sites in Bailey County averaged 16 inches of precipitation for 1989. Any precipitation and/or irrigation received between now and planting season will improve soil moisture conditions and improve crop yield prospects, reminded Ringer. For more information about

the pre-plant soil moisture survey, contact your local USDA-Soil Conservation Service field office or the High Plains Under-

ground Water Conservation District No. 1, 2930 Avenue Q, Lubbock, Texas 79405 or call (806) 762-0181.

## Parenting Workshop

Cont. From Page 1

reading. 3. Encourage your children to think about events. Ask your children to describe events; this makes them reflect upon experiences and helps them learn to give good descriptions and tell complete stories. These activities help your children learn about how stories are written and better understand what they are reading. 4. Read aloud to your children. Reading aloud is probably the single most important activity you can do to encourage your

children's success as readers. It is an especially important activity during preschool years. When you read lots of stories to your children, and look at lots of pictures with them, you are helping them build the store of knowledge they will use when they begin to read in school. The benefits of reading aloud are greatest when you encourage your children to participate in this activity by identifying letters and words and talking about the story and the meaning of words. 5. Provide your preschool children with writing materials. Writing is an important way for your children to learn about letters and words. Children are often very eager to learn how to write and you can encourage them by having paper and pencils or crayons in your home and helping them when they start drawing letters. Even when your children are too young to hold a pencil or crayon, you can use devices such as magnetic boards and letters to help them learn about letters and words.

## MulePlex Production

Cont. From Page 1

Complete with a 'Town Crier' to keep citizens up with what is going on at what time, and where. There's a possibility of the Kawahadi Indian Dancers from Amarillo being in Muleshoe for Friday night. Included will be the parade on Saturday morning; the annual Mule Rodeo and races; a model airplane show; meals prepared and served by the Muleshoe Fire Department; the Saturday night dance; the Mule Show on Sunday; the trail ride on Friday; and possibly other activities during the three day celebration. Harrison said the Muleshoe Fire Department will be discussing the celebration during their meeting on Wednesday night, February 7, and will decide what activities the Fire Department wishes to handle this year.

It was discussed during the meeting that all participants will be asked to dress in 'period' costumes, including derby hats, spats, and other old-fashioned clothing. Future meetings will see the celebration begin to 'firm up' as

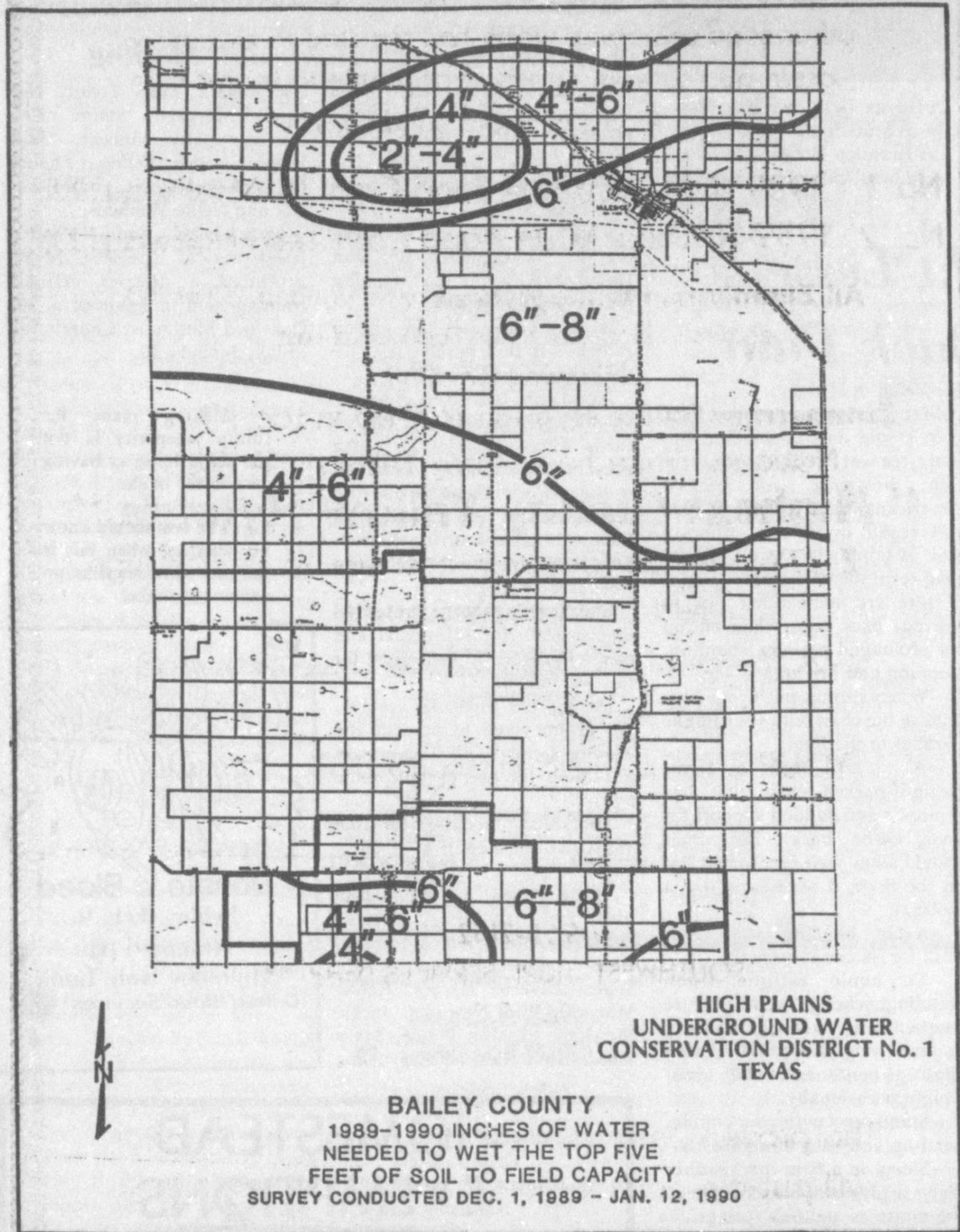
committees are formed and various entertainment and the booths are signed. Attending the Friday evening meeting at Muleshoe State Bank were Fire Chief Harrison; Pat Prater; Darla Rhodes; Patsy Chance; Nancy Kidd; Judy Watson and Clea Williams.

## BIBLE VERSE

"It is written, man shall not live by bread alone, but by every word that proceedeth out of the mouth of God."

1. Who spoke these words?
2. To whom were they addressed?
3. When did the conversation occur?
4. Where may it be found in the Bible?

Answers:  
1. Jesus.  
2. Satan.  
3. During Jesus' temptation, in the wilderness.  
4. Matthew 4:4.



## Muleshoe...

Cont. From Page 1

Chapter will sponsor a blood drive for United Blood Services on Friday, February 9, at the Muleshoe State Bank meeting room. Hours will be 10 a.m.-6 p.m.


The Muleshoe High School graduating class of 1980 is planning their 10-year reunion and are unable to locate mailing addresses for the following people:

- Bobby Bartholf, John Carrion, Gloria Castorena, Sally Castorena, Randy Isabell, Chriselda Lopez, Erminia Martinez, Curtis Millsap and David Patterson. Also, Beatrice Pedroza, Berma Ranjel, Gloria Recio, Jonnette Richards, Arthur Rojas, Ramiro Torres, Olivia Vasques, Tommy Edmundson and Daniel Atwood. If you know a way to locate any of the above people, please contact Shelley Turnbow at 272-5719 or Pam or James Atwood at 272-4833 after 5 p.m.

The ministry is not an easy profession, despite all the jokes to the contrary.

# VOTE

For  
**Bennie Claunch**  
County Commissioner  
Precinct 4  
**March 13**



*Bennie Has 30 Years Business Experience!*

*He is Qualified For The Job!*

*Pd. Pol. Adr.*

# Robert D. Green, Inc. PRICE MENU

PONTIAC	BUICK	GMC	OLDSMOBILE	CHEVROLET-GEO
1990 Bonneville-SE White 4 Dr Sedan Was \$20,459. <b>* Now \$17,725.</b>	1990 Electra-Park Avenue. Blue-Loaded-Sedan Was \$24,866 <b>* Now \$21,500.</b>	1989 1/2 Ton 4X4 SLE Pickup-Loaded Was \$17,796. <b>* Now \$14,800.</b>	1990 Cutlass Calais S Coupe-Blue-Quad 4-Loaded Was \$15,232. <b>* Now \$13,125.</b>	1990 Prizm-Demo Was \$12,066 <b>* Now \$10,499.</b>
1990 Bonneville-SE Red 4 Dr Sedan Was \$20,459. <b>* Now \$17,725.</b>	1990 Regal Limited Coupe Ruby Red-2 Dr.-Loaded Was \$18,129. <b>* Now \$15,350.</b>	1989 1/2 Ton 4X4 SLE Pickup-Loaded Was \$17,796. <b>* Now \$14,800.</b>	1990 Cutlass Supreme SL Maui Blue-4 Dr-Sedan Was \$18,362. <b>* Now \$16,310.</b>	1990 Beretta-GT 2 Dr. Loaded Was \$14,785. <b>* Now \$12,815.</b>
1990 Grand Am SE-Demo White 4 Dr Sedan Was \$16,340. <b>* Now \$14,750.</b>	1990 Century Limited Sedan Beige-4 Dr.-Loaded Was \$17,695. <b>* Now \$15,500.</b>	1989 3/4 Ton SLE Pickup Was \$16,815.35 <b>* Now \$13,995.</b>	1990 Ninety-Eight Regency White-Loaded-4 Dr Was \$23,756 <b>* Now \$21,250.</b>	1990 Corsica 4 Dr. Loaded Was \$14,345. <b>* Now \$12,325.</b>
1990 Grand Prix LE White-4 Dr-Sedan Was \$16,694. <b>* Now \$14,695</b>	1990 Electra Park Avenue White-4 Dr Sedan-Loaded Was \$24,761. <b>* Now \$21,750.</b>	1990 1/2 Ton 4X4 SLE Pickup-Loaded Was \$18,590. <b>* Now \$16,500.</b>	1990 Eighty-Eight Royale Blue-Loaded-4 Dr. Was \$19,891. <b>* Now \$17,750</b>	1990 Lumina 4 Dr Loaded Was \$15,764. <b>* Now \$13,781.</b>
<b>USED VEHICLES</b>				
1986 Ford Ranger Was \$8,995. <b>* Now \$7,995.</b>	1988 Suburban 4X4 Loaded-Low Mileage Was \$18,500. <b>* Now \$17,500.</b>	1990 1/2 Ton 4X4 SLE Suburban-Loaded Was \$25,761. <b>* Now \$22,750.</b>	1990 Ninety-Eight Regency Antelope-4 Dr-Brougham-Loaded Was \$24,579. <b>* Now \$22,695.</b>	1990 1/2 Ton Silverado Pickup-Loaded Was \$16,662 <b>* Now \$14,995.</b>
1987 Plymouth Voyager Mini-Van Low Mileage Was \$11,700. <b>* Now \$9,995.</b>	1988 3/4 Ton Suburban Loaded Was \$14,700. <b>* Now \$13,700.</b>	1990 Ext. Cab 1/2 Ton SLE Pickup-Loaded Was \$17,766. <b>* Now \$15,520.</b>	<b>GMC</b>	1990 1/2 Ton Silverado Pickup-Loaded Was \$16,662 <b>* Now \$14,995.</b>
1988 Nissan Sentra-4 Dr Was \$9,725. <b>* Now \$7,995.</b>	1986 Suburban 4X4 Loaded-Low Mileage Was \$13,500. <b>* Now \$12,500.</b>	1990 Ext. Cab Long Bed SLE 1/2 Ton Pickup-Loaded Was \$17,900. <b>* Now \$15,640.</b>	1990 1/2 Ton 4X4 SLE Suburban-Loaded Was \$21,966. <b>* Now \$21,995.</b>	1990 1/2 Ton Pickup-Chevyenne Was \$13,643. <b>* Now \$12,460.</b>
1985-Dodge-Ram Charger 4X4 Was \$8,995. <b>* Now \$7,950.</b>	1985 Chevrolet Celebrity-Nice Was \$5,250. <b>* Now \$4,500.</b>	1990 1/2 Ton 4X4 SLE Pickup-Loaded Was \$18,641.20 <b>* Now \$16,500.</b>	1990 1/2 Ton SLE Suburban 4X4-Loaded Was \$25,840. <b>* Now \$22,800</b>	1990 Ext. Cab 1/2 Ton Silverado Pickup-Loaded Was \$17,590. <b>* Now \$15,750.</b>
1986 Pontiac Sunbird-Nice Was \$6,450. <b>* Now \$5,395.</b>				1990 3/4 Ton Pickup-Scottsdale Was \$15,435.75 <b>* Now \$14,025.</b>

**GMAC FINANCING**  
COLLEGE GRADUATE PROGRAM  
FIRST TIME BUYER PROGRAM  
GMAC SMARTLEASE

**Geo**

**ROBERT D. GREEN, INC.**  
2400 W. AMERICAN BLVD.  
MULESHOE, TEXAS  
806-272-4588

# Sewing Changing To Fit Fashion Needs, Lifestyles

Whether short and sexy or long and sensuous, the fashion of the '90's reflects a renewed interest in personal style with flowing, body skimming fabrics that are draped, wrapped or tied. Softened skin-baring designs reminiscent of the '60's replace the sharp-edged tailored looks of the '80's. "The emphasis this year rests on '60's inspired unconstructed casual shapes that are much simpler to sew," says Caryl Svendsen of The Sewing Fashion Council. "Even a novice can easily create a chic look that reflects personal style."

As we enter a new decade, so does the art of sewing, which is changing to fit the fashion needs and lifestyles of the 90's. Today's sewing technology makes sewing easier, faster and uncomplicated. Home sergers offer seaming and finishing features that give garments a professional edge, and fabric stores offer designer patterns and fabrics as up-to-date as ready-to-wear fashions. "By the time spring's latest styles reach your favorite stores, you'll find the latest prints and patterns in your local fabric store," Svendsen explains.

Choosing the correct fabric is pivotal to the success of the finished garment. Feminine, flowing and textured, the fabrics composed of tri-blends of cotton,

rayon, linen or nylon, are mixing to create never-before-seen textures that offer improved performance, comfort and care characteristics. "Women are discovering that home sewing is not only easier than they dreamed, but provides infinite design possibilities," Svendsen adds.

Inspirational transparent fabrics, such as light weight rayon, chiffons, voiles, georgettes, crepe and gauzes propel the 90's romantic looks. The increased interest in stretch, underscores the importance of knitwear mixed with lycra and metallic yarns for summer sizzle in resurfaced '60's stylings. No longer used as an embellishment, lace becomes a basic fabric.

The new colors are as soft-focus as the fabrics. Pale neutrals of rose, wire, taupe, greige, green, lilac and dusty blue abound. Tropical and ethnic influences complete the pallet, encouraging the use of mustard, spiced brown, citron, jade, plum and navy blue. '60's psychedelic brights darken to form boysenberry, jungle green, sea blue and gold.

"Individual expression can be generated in a variety of prints ranging from pioneering Americana to primitive ethnics," Svendsen says. Garden florals,

animal prints, tapestry looks, windopane plaids, dots, jacquards, abstract geometrics, and marin motif and stripes continue to be strong.

The balance between simplicity of silhouette is offset by richness in fabric and detail. 'Spotlight trends contain lots of embellishments in gold as well as lace, coins, fringe, sequins and of course, gold buttons. The '90's has unleashed a new passion for personalized fashion with the emphasis on the woman behind the clothes

"You can easily update last season's wardrobe by adding

## Greenhouse?

The scientific community has in recent years sold governments on the theory that a steady warming of the atmosphere is taking place. Perhaps this is an accurate assessment. Who are newspaper editors to question egg-heads?

On the other hand, most of the country has experienced the coldest month in decades. In December low reading records were set all over the country, many lows being records over the past fifty years.

The whole month of December set records for continual cold in hundreds of localities in the Midwest, Southwest, East, Southeast and elsewhere. The official Weather Bureau forecast of warmer than average temperatures for December was horribly wrong.

In Florida the eighties have seen four hard freezes, more than in any recent decade.

One of life's oldest lesson's is that predicting weather is only a guess; that may be true about warming predictions.

## NEWS VIEWS

George Bush, President:  
"Our case is strong, our resolve is firm and our legal representatives are sound."

Richard Luger, Senator (R-Ind.):  
"The demand for more foreign aid at a time when the federal government is cutting back at home would not be well received."

your favorite lace, fringe or print as trim on skirts, jackets and pants," Ms. Svendsen suggests. New silhouettes to watch for are longer, unconstructed slouch jackets worn over shorts, trench coats or dusters covering short

slip or shift dresses, wide pajama pants topped by oversized shirts with peter pan collars and a vest, split skirts combined with wrap blouses and cropped jackets. jodhpurs worn with halter tops and safari jackets,

and knit tank tops paired with sarong skirts.

The Sewing Fashion Council offers this tip for women sewing their own Spring '90 fashions: look for patterns marked easy, simple or quick and count the number of pattern pieces in each garment. Remember, the fewer the pattern, the easier the



## ZIMMERMAN HYBRIDS



### " White Seed Corn Specialists "

We have more on-going white hybrid research than any other seed company; which has resulted in exceptional grain quality from hybrids adaptable to tough High Plains growing conditions

No. 1 1989 National White Food Corn Test: Halfway, TX.

No. 2 1989 National White Food Corn Test: Halfway, TX.

All Zimmerman White Hybrids ranked in top 20 of 80 entries in National White Food Corn Test: Halfway, TX. 1989

Zimmerman White Hybrids ranked in top 10 in National White Food Corn Tests since 1986.

### " Highest Quality Yellow Hybrids, "

Z-27Y: Top performer in ensilage tests with high yield grain harvestability.

Z-20Y: Excellent Food Grade Grain with high test weight.

YOUR ZIMMERMAN HYBRIDS DEALERS are:

SCOGGIN AG CENTER Muleshoe, TX.  
272-4613 1532 w. Amer. Blvd.

JERRY DON GLOVER Lazbuddie, TX.  
965-2162

SOUTHWEST AGRI-SERVICES Dodd, TX.  
965-2338

JIM ALLISON Muleshoe, TX.  
272-5291

The proven performance of Zimmerman Hybrids will put the odds in your favor at harvest time.

**Donate Blood**  
Friday, Feb. 9  
10 a.m.-6 p.m.  
Muleshoe State Bank  
United Blood Services

**HERE IT IS!**

**A&M's FEBRUARY INVENTORY SPECIALS**

Sale Prices Good Through Feb. 10th, 1990

**Sweatshirts or Sweatpants**

Lots of Colors To Choose From In Stock Items

Brands: Delta, Apparel, Hobie, Gopher, Active Wear

Now: **50% off**  
Reg. Priced From \$6.99 - \$19.99 (Caribe Brand Not Included)

**All Snow or Moon Boots On Sale**

Now From **\$9.99 & UP**

**From California Mfg. Co. Coats and Jackets**

Now: **40% off**

**All Ladies' and Men's Knit Sweaters**

Soft and Comfortable Wash and Wear Including Caribe Brand

Now **30% off**

**All Styles of Dusters Super Saving at:**

Reg. Priced From **\$40.99 - \$82.99**

**30% off**

**A&M FARM & RANCH SUPPLY**

2600 Mabry Dr. Clovis, N.M. 1-505-762-7717  
1601 S. Ave. D. Portales, N.M. 1-505-356-8543  
1302 W. American Blvd., Muleshoe, Texas 1-806-272-5571

We Take:  
• Visa  
• Mastercard  
• Discover

All Stores Open Monday-Saturday 7:30 A.M. - 6:00 P.M.  
Sundays 12:30-5:00 P.M.

# Congratulations

To The Three Way  
Livestock Show Winners



**BREED CHAMPION SPOT**--Chris Locke is shown here with his Breed Champion Spot pig at the Three Way Livestock Show. Chris is the son of Mr. and Mrs. Ferris Locke. (Journal Photo)



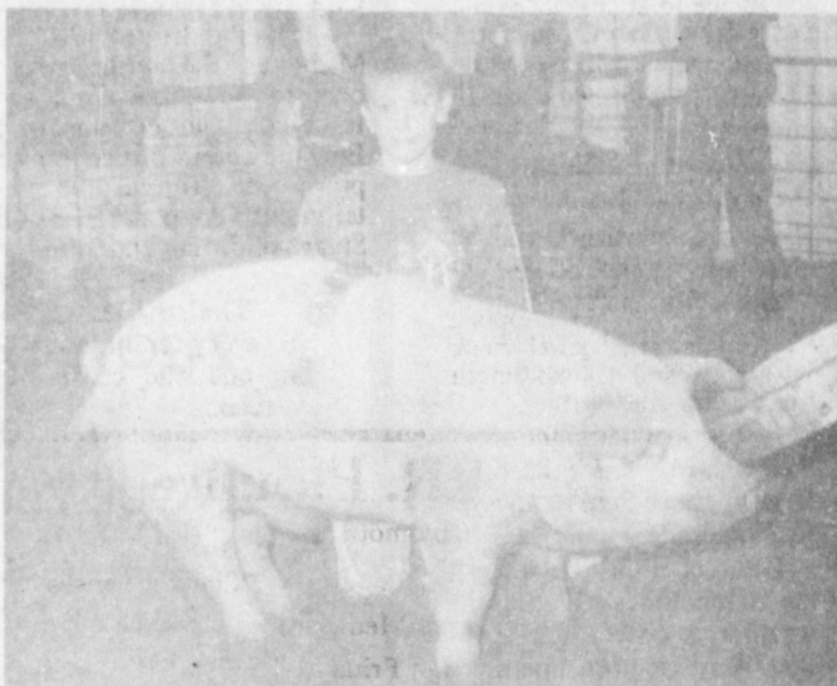
**BREED CHAMPION SOUTHDOWN**--Robin Tooley is shown with her brother's Breed Champion Southdown lamb at the Three Way Livestock Show last Saturday. Both Robin and Joshua are the children of Mr. and Mrs. Howard Tooley. (Journal Photo)



**RESERVE BREED CHAMPION BERKSHIRE**--Chad Welch is shown here with his Berkshire pig at the Three Way Livestock Show last Saturday. Chad is the son of Mr. and Mrs. Bill Welch. (Journal Photo)



**RESERVE BREED YORK**--Kyle Kindle exhibited his Heavyweight York pig to Reserve Breed honors at the Three Way Livestock Show last Saturday. Kyle is the son of Mr. and Mrs. James Kindle. (Journal Photo)



**BREED CHAMPION CHESTER WHITE**--Melanie McCaul is shown here with her Chester White pig at the Three Way Livestock Show. Melanie's pig took home the Breed Champion title in her class. Melanie is the daughter of Mr. and Mrs. Marvin McCaul. (Journal Photo)



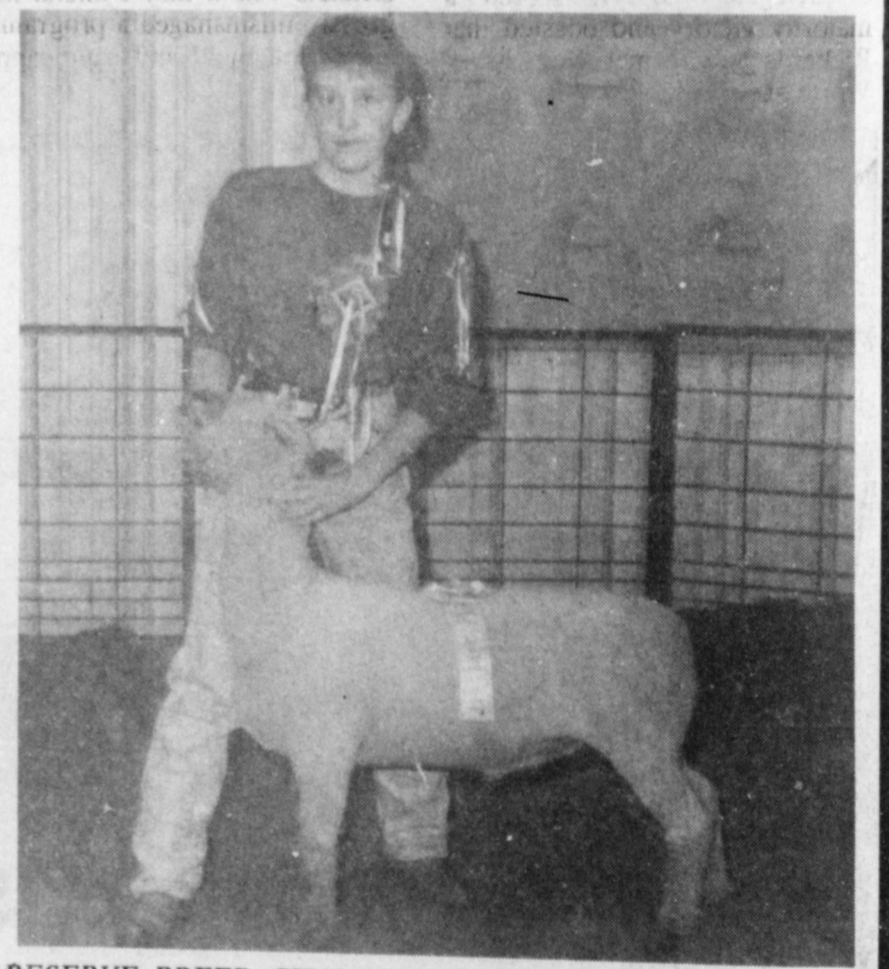
**RESERVE BREED CHAMPION CHESTER WHITE**--Marc Tucker is shown here with his Reserve Breed Champion Chester White at the Three Way Livestock Show. Marc is the son of Mr. and Mrs. Ernest Tucker. (Journal Photo)



**RESERVE BREED CHAMPION SUFFOLK**--Carrie Kindle exhibited her Lightweight Suffolk to Reserve Breed honors at the Three Way Livestock Show. Carrie is the daughter of Mr. and Mrs. James Kindle. (Journal Photo)



**RESERVE GRAND CHAMPION & BREED CHAMPION**--Daniel Reeves is shown with his prize-winning pig at the Three Way Livestock Show held last Saturday. Daniel's pig also won him the Breed Champion honors. Daniel is the son of Mr. and Mrs. Jack Reeves. (Journal Photo)



**RESERVE BREED CHAMPION**--Melanie McCaul, daughter of Mr. and Mrs. Marvin McCaul, showed her Southdown lamb to Reserve Breed honors at the Three Way Livestock Show. (Journal Photo)



Proudly Sponsored By The Following Civic-Minded Businesses:

- Sunmark Grain Co.-Bledsoe
- Cox Auto Supply Co.-Morton
- Steinle's IGA-Morton
- Higginbotham-Bartlett Co.-Morton
- Simpson Bookkeeping -Morton
- Viola's Restaurant
- Serv-All Thriftway
- Leal's Restaurant
- Sanders Fertilizer & Chemical Inc.-Morton



**STATE CAPITAL**



**HIGHLIGHTS**

By Lyndell Williams  
TEXAS PRESS ASSOCIATION

**AUSTIN**—The Texas AFL-CIO dominated the political stage last week, but adjourned its state convention without endorsing any candidates, a first in Texas history.

Now onlookers are watching to see if this odd move will make labor more of a power this election, or less.

According to labor union rules, members cannot campaign for a candidate after the convention endorses his/her opponent.

No endorsement this year means the entire delegation is not hitched to any candidate, or even any party, and can work for any campaign, except Mattox for governor.

Rules say they can't campaign for Mattox, since he sought and narrowly lost the official endorsement. Mattox supporters say they will ignore the rule.

Until now, labor has always endorsed a Democratic slate selected by labor's political committee and run up the flag pole for membership approval.

Realistically, when Texas AFL-CIO president Joe Gunn said he didn't want Democrats to take labor for granted, he wasn't thinking of switching parties.

But some Republicans made overtures, and the door is open if renegade organizations want to cross over.

**No Loaves At All**

The unusual convention results left two top candidates with half-a-loaf and most candidates with no official loaf at all:

■ State Treasurer Ann Richards claimed a moral victory in stopping Mattox short of the two-thirds needed for endorsement;

■ Mattox, who won 58 percent of delegate support, scored a majority victory and boasted that Richards and former Gov. Mark White are now reduced to a "stop

Mattox" mentality;

■ Potential backfire: Richards may be taking some back room heat, because Mattox and others blame her for closing down the convention before members could endorse Democratic stalwarts like Jim Hightower, Garry Mauro and John Sharp.

If enough union members defect to the GOP this year, the heat could turn into hits.

After Mattox lost the roll count vote, he said he was negotiating for "something less than endorsement," which the Richards faction squelched by rushing to adjourn the convention.

■ Among the losers: White's former aide John Odam and Harris County Treasurer Nikki Van Hightower, who had won the committee's approval for attorney general and treasurer, respectively.

■ Two gainers: San Antonio state Rep. Dan Morales, candidate for AG, who gets another shot at wooing union votes away from Odam; and Armando Guittierrez, candidate for treasurer against Van Hightower.

White's support showed him a minor player while Mattox and Richards fought it out, even though one pollster had White the frontrunner.

But if White makes the runoff and seeks a deal with the third place finisher, he won't have to hurdle animosity.

**Black Vote Victory**

Mattox scored a small victory in wooing black voters when death row inmate Clarence Brandley was released on bond from prison.

Civil rights activists have argued for years that Brandley, a black janitor convicted of rape-murder 10 years ago, was railroaded in a racist trial.

Before Christmas, an appeals court ordered a new trial for Brandley, but he languished in prison over the holidays until Mattox said he should go free on bail.

Coincidentally, on the day Brandley walked free, a Brandley co-worker and key witness in the trial was charged with sexually assaulting two young girls.

**Hobby, Lewis Rip Agency**

Lt. Gov. Bill Hobby and Speaker Gib Lewis had sharp criticism for state health department officials whom they contend have grossly mismanaged a program to aid seriously ill and handicapped children.

Robert Bernstein, State Health Commissioner, said an emergency \$12.5 million is needed or he'll have to reduce aid to thousands of youngsters.

Hobby told officials "to clean up their act and report back," and not to make cutbacks yet.

"They have mismanaged a major program in a reprehensible way," Hobby said.

"Year after year, the Legislature gets blackmailed by some agencies who do not use their budgeted funds properly," Lewis said.

**WTSU Merger Conflict**

West Texas State University regents chairman Boone Pickens and state higher education commissioner Kenneth Ashworth crossed purposes last week over merger of WTSU into larger system.

Pickens said he wanted the higher education board to approve a merger into the Texas A&M system, which they did later.

But Ashworth, seeking diversification, prefers a merger with Texas Tech University to keep A&M and the University of Texas from becoming the two, and two only, giants of higher education.

**Parks Official Quits**

Longtime Parks & Wildlife director Charles Travis resigned after 11 years with the agency.

Travis, 53, was first employed in state government 30 years ago in the governor's budget office.

**IN FASHION**

Spring and summer fashions offer a wide choice in style, fabric and trim. Trim, such as ribbons, sequins, braid and embroidery will appear on both day and evening frocks.

Bright and bold colors with white dots are a spring favorite. An attractive suit-dress, in this fabric, features a slim knee-length skirt topped with a split jewel neck collar and elbow-length sleeves.

**February, 1990**

*The trees stand wistful in the Square  
Wearing a half-expectant air;  
The sky is a slender silver bell  
That waits to sound the knell  
Of Winter*

--Anne Lawler

The name for the month of February comes from the Latin verb *februare*, which means to purify. The Romans traditionally held a festival at this time of year, in which women were purified, by the sacrifice of a goat. (Things were more simple then.)

In the United States February is the birthday month of the father of our country, George Washington, who was born in Virginia on the 22nd. It's also the birth anniversary of Abraham Lincoln who fought a war to hold the Union together, born in Kentucky on the 12th.

The Boys Scouts were chartered on the 8th, in 1910. The ninth president of the United States, William Henry Harrison, was born in Virginia on the 9th in 1773. On the 4th, in 1902, Charles Lindbergh was born in Detroit, Michigan.

He opposed U.S. entry into World War II but served his country after entry. On the 3rd, in 1894, the greatest painter in the nation's history, Norman Rockwell, was born in New York City.

On the 3rd, in 1907, James Michener, the writer, was also born in New York City. On the 1st Victor Herbert was born in England and in this country three prominent figures in entertainment were born; Clark Gable, Stuart Whitman and John Ford.

**The smartest person in every community is the one who knows how to relax.**

**Dr. A.R. Ploudre**

Optometrist

\*Family Vision Care

\*Contact Lenses

\*Texas Medicaid

Monday through Friday

Saturday,

Hours: 8:00 a.m. to 12 noon 1-5 p.m.

8 a.m.-12 noon

Credit Arrangements available upon prior approval.

(505) 762-2951

1515 Gidding St., Clovis

**Real Estate Foreclosure Auction**

For benefit of U.S. Small Business Administration

QUARTER SECTION BAILEY COUNTY LAND

DATE & TIME: March 6, 1990... (Tuesday)... 10:05 a.m.

SALE SITE: East door of Bailey County Courthouse... Muleshoe, Texas

LEGAL: All of SW ¼, Block 68, Block "Y", W.D. and F.W. Johnson's Subdivision No. 2, Bailey County, Texas

OWNER: Roy Lee Ryan, et ux Betty Jo Ryan

LOCATION: 4 ½ miles North of Muleshoe city limits on Hwy 214, then 2 miles East to SW corner of farm

DESCRIPTION: Good producing farm with 8" Gas & Electric Irrigation wells. Mostly level with slope on NE Corner has underground pipe and 4 room house.

**TERMS & CONDITIONS:**

Real Estate will be sold subject to all taxes to the highest bidder, for cash on day of sale. Title will be conveyed by Substitute Trustee's Deed. *Small Business Administration Reserves The Right To Bid.*

**PLEASE NOTE:**

Sale is being made without covenant or warranty, expressed or implied as to title, possession or encumbrances. Please have your attorney or title company inspect title before sale.

**Dick Watson Auctioneers**

P.O. Box 717, Olton, TX 79064  
Phone: (806) 285-2593  
License No. 6724



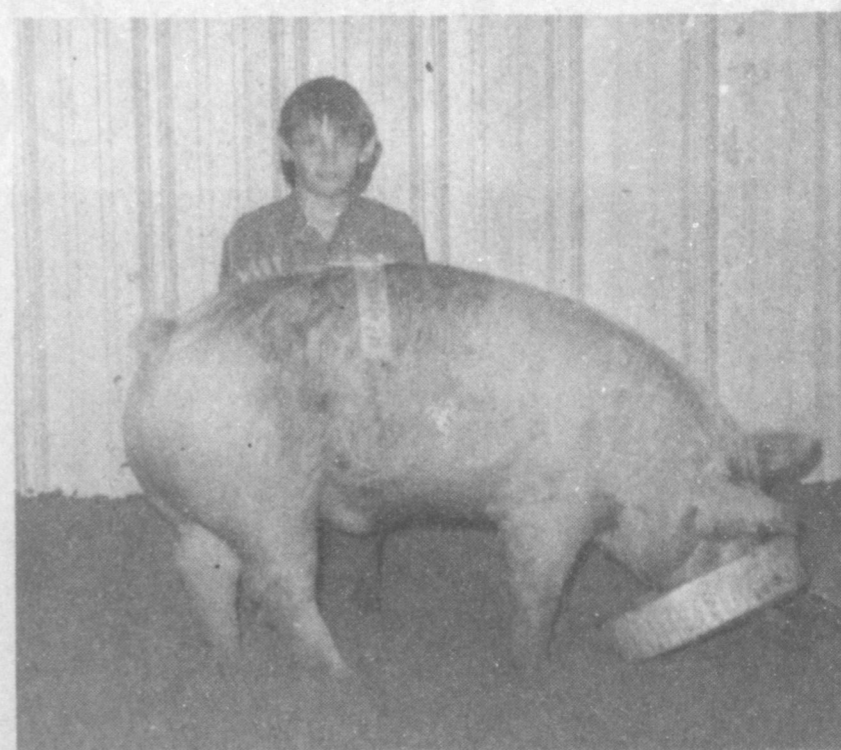
**BREED CHAMPION BERKSHIRE**--Joshua Tooley showed his Berkshire pig to Breed honors at the Three Way Livestock Show last Saturday. Joshua is the son of Mr. and Mrs. Howard Tooley. (Journal Photo)



**RESERVE BREED CHAMPION DUROC**--Keith Kindle is shown here with his heavyweight Duroc which won him the honors of Reserve Breed Champion at the Three Way Livestock Show. Keith is the son of Mr. and Mrs. Joey Kindle. (Journal Photo)



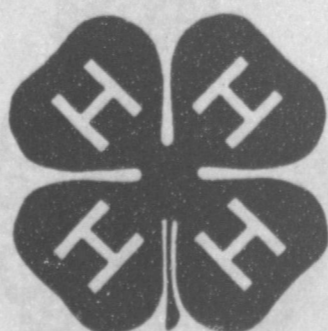
**BREED CHAMPION**--Larry Robertson, son of Mr. and Mrs. Darwin Robertson, exhibited his Fine Wool Cross to Breed honors at the Three Way Livestock Show. (Journal Photo)



**RESERVE BREED CHAMPION SPOT**--Russell Pollard, son of Mr. and Mrs. Terry Pollard, is shown here with his Reserve Breed Spot at the Three Way Livestock Show. (Journal Photo)



**RESERVE BREED CHAMPION**--Showing the Reserve Breed champion Fine Wool Cross lamb at the Three Way Livestock Show was Jonathan Bennett, grandson of Mr. and Mrs. Jack Lane. (Journal Photo)



**Farmers Co-Op  
Elevators**

## Letter To The Editor

Feb. 2, 1990

The Journal  
P.O. Drawer 449  
Muleshoe, Tx 79347

Dear Sirs:

I would like to inform you that one of your local insurance agents has achieved one of the highest honors awarded career agents with the Texas Farm Bureau. Mr. Rickey Barrett of the Bailey County Farm Bureau, has been designated a Master Agent for the year 1989. Texas Farm Bureau has over 650 licensed agents in the State of Texas, of which less than twenty agents received this designation. This recognition is based on sales in all lines of the insurance business; life, auto, and home insurance. This is the second year in a row that Rickey has achieved this honor. Congratulations are extended to Rickey and his agency manager, David Tipps, for their work with Farm Bureau members in Bailey County.

Sincerely,

Robert Wilborn,  
District Sales Manager  
Texas Farm Bureau Ins. Co.'s  
P.O. Box 53428  
Lubbock, Tx 79347

January 29, 1990

Dear Editor,

The Senior Companion Program staff want to take this opportunity to thank all the generous people in this community who helped make our Christmas celebration and recognition luncheon on December 18, 1989 such a success. As you will recall, we asked local businesses and community persons to help with their voluntary donations of cash or merchandise to fund our annual recognition event. We were overwhelmed with the willingness, of 98% of the people approached by our program, to help us out. We were able to give our volunteers the best celebration we've had in the

three years I have been Director of this program.

Briefly, I'd like to tell everyone about the gifts we were able to purchase for our volunteers with the money donated. We were able to buy each male volunteer 2 pairs of big, thick, thermal socks. For each of our female volunteers we purchased a pair of fuzzy, warm house shoes. In addition to these gifts, we also had merchandise donated by many businesses in each community of the eight county area served by our program. Examples of some of the gifts donated included many pairs of warm gloves for both men and women, gift certificates for meals from many of the restaurants, a mini-vacuum cleaner, candle holders, telephone amplifier, jewelry, turkeys, personalized checks, keychains, note pads, dominoes, hair shampoo and conditioner, cologne, coffee mugs, etc., etc. There were gifts too numerous to mention, all of which were given to our volunteers either as doorprizes which were drawn for--or as gifts to specific county volunteers as requested by the donors. We had a great time, and we had some very happy volunteers!

In your community, special thanks and recognition goes to the following persons and/or businesses, who gave so willingly to our program--and who contributed in a very big way to the success of our endeavor:

Lookin' Good and Old Corral.  
Sincerely,  
Sherry McMasters  
Director, Senior Companion Program

### Who Knows?

1. Who originated macaroni?
  2. Name a great inventor born February 11, 1847.
  3. Which state is called the Badger State?
  4. Who was the last French king?
  5. With what theory do you associate Sir Issac Newton?
- Answers:  
1. The Chinese.  
2. Thomas A. Edison.  
3. Wisconsin.  
4. Louis Philippe, 1830-48.  
5. The theory of gravitation.

## TALL Program Now Accepting Applications

The Texas Agricultural Lifetime Leadership (TALL) program designed to link modern agriculture with industry and other segments of society, is now open for applicants for its second class. The deadline for consideration is Feb. 15, said Dr. L. S. Pope, who coordinates the program for the Texas Agricultural Extension Service.

"TALL is designed to assist young men and women associated with agriculture in developing leadership skills," Pope said. The first class of 24 members visited 10 agricultural areas of Texas, as well as Washington, D. C., and northern Europe. During the two-year program, members were able to interact with more than 175 outstanding leaders, Pope said. A similar schedule is planned for Group II.

The basis for selection into TALL is evidence of leadership ability and desire to take on decision-making roles in Texas agriculture, Pope said. To enter, candidates must go through a rigorous selection process, including an interview.

TALL is sponsored largely from outside grants and scholarships, but participants must pay part of the cost. Members must be between the ages of 25 and 40 and be involved in an agricultural pursuit in Texas.

"Agricultural leaders must make some critical decisions in the years ahead," Pope said.

"They must be well-informed on key issues and must recognize the complex society in which we live. Also, they must be able to speak out and willing to address problems facing agriculture."

"It is important that they interact effectively with leaders outside of agriculture."

Candidates for the second class of TALL can obtain additional information from their local county Extension Service office, or write Dr. Pope at 242 Kleberg Center, Texas A&M University, College Station, Texas 77843.

A balanced life includes work, recreation, meditation and study.

The purpose of education is to teach people to think.

1990 Crop				
	Pool Cash Advance	Sale Flat	Sale Basis	Month
Feed Corn.....	4.35.....	4.35.....	0.07.....	March
White Cobb Yellow.....	4.10.....	5.00.....	0.43.....	March
Red Cobb Yellow.....	4.00.....	4.48.....	0.14.....	March
White Food Corn.....	5.00.....	6.00.....	0.99.....	March
Milo.....	3.65.....	3.65.....	-0.32.....	March
Soybeans.....	No Pool.....	4.91.....	-0.69.....	March
Wheat.....	No Pool.....	3.42.....	-0.39.....	KC March

94 1/2 %  
Prices effective Feb. 2, 1990

**Farmer's Co-Op Elevators**  
272-4335

## SPECIAL BULL AND REPLACEMENT HEIFER SALE

**SATURDAY, FEBRUARY 24  
11:00 AM  
CLOVIS LIVESTOCK AUCTION  
CLOVIS, NEW MEXICO**

Expecting 300 various bred Bulls and 1,000 Heifers weighing from 400-700 lbs.

**For More Information Call:  
Clovis Livestock Auction  
(505) 762-4422**

Joe Rowley  
(505) 356-5943

Charlie Rogers  
(505) 762-1070

Rustin Rowley  
(505) 763-7959

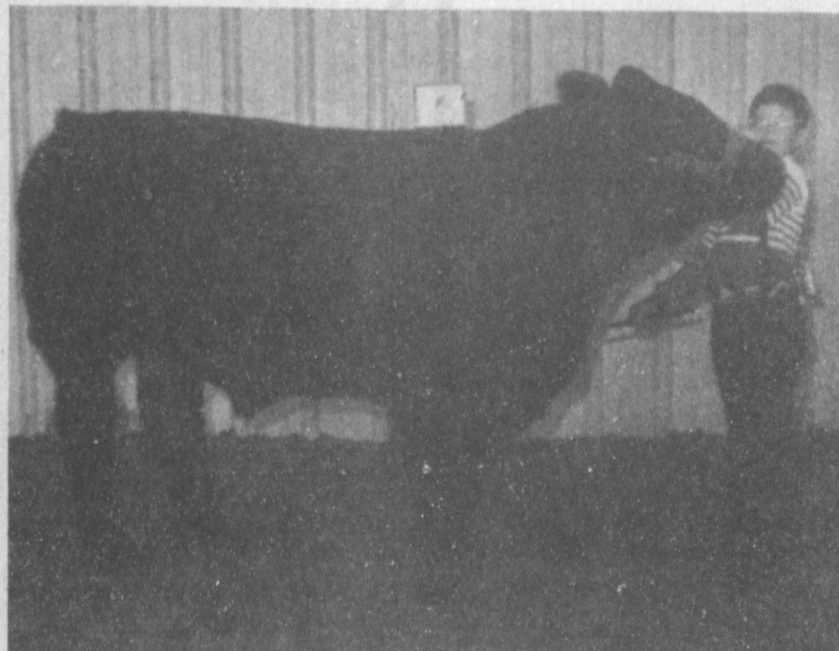
*Don't Forget the Catalog Closes For The Spring Horse Sale, February 15th!*

# Congratulations

## Three Way Stock Show Winners!



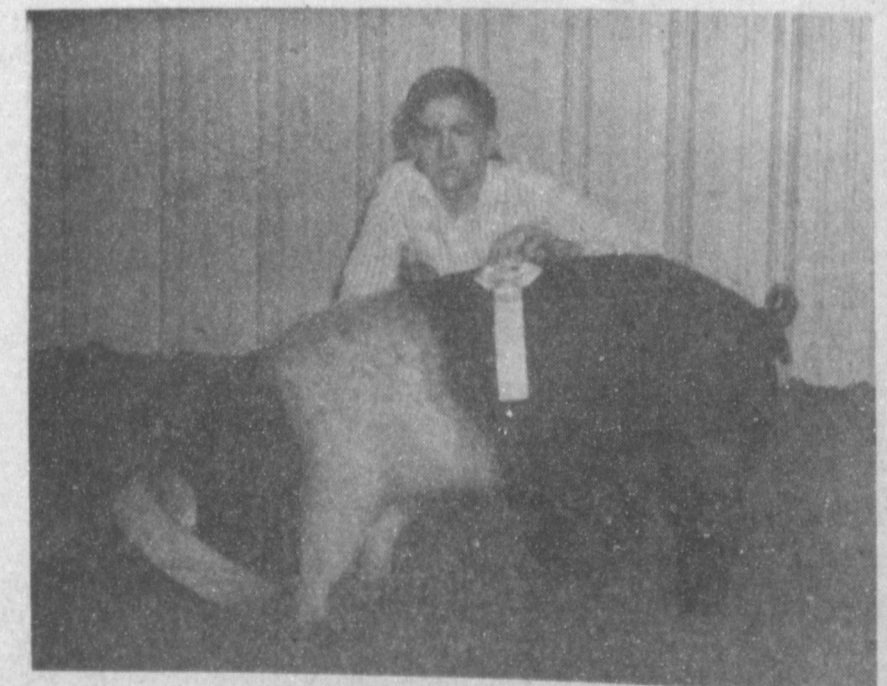
**RESERVE BREED CHAMPION**--Joshua Tooley exhibited his Chianina Cross heifer to Reserve Breed honors last Saturday at the Three Way Livestock Show. (Journal Photo)



**SHOWMANSHIP**--Joshua Tooley was awarded the Steer Showmanship Award at the Three Way Livestock Show last Saturday. Joshua is the son of Mr. and Mrs. Howard Tooley. (Journal Photo)



**GRAND CHAMPION AND BREED CHAMPION**--Russell Pollard showed his Maine-Anjou Heifer to Grand and Breed Champion honors last Saturday at the Three Way Livestock Show. (Journal Photo)



**RESERVE BREED CHAMPION HAMPSHIRE**--Marc Tucker exhibited his Heavyweight Hampshire to Reserve Breed honors at the Three Way Livestock Show held last Saturday. (Journal Photo)



**Wes-Tex Feed Yards, Inc.**

**RESERVE GRAND CHAMPION**--Exhibiting the Reserve Grand Champion Steer was Joshua Tooley, son of Mr. and Mrs. Howard Tooley. He won this honor at the Three Way Livestock Show. (Journal Photo)



LUBBOCK, Friday, January 26, 1990

According to Steve Verett of Ralls, President of Lubbock-based Plains Cotton Growers, Inc., High Plains cotton producers and agribusinessmen this year won't have to wait for November 6 to vote in an important election. They'll have one of their own between now and March 24.

That's the period during which county meetings will be scheduled for the election of PCG directors, says Verett, "and votes cast in these elections are every bit as important to cotton people as votes in city, county, state or even federal elections."

Collectively, Verett explains, PCG directors control and give guidance to all aspects of the organization, from its financial affairs to farm program policy, and from research funding and weevil control to positions on farm-related administrative ruling proposals. "And if the organization is to effectively serve the High Plains industry," he adds, "the cotton people of each county have to choose directors with the ability and the desire to make a positive contribution."

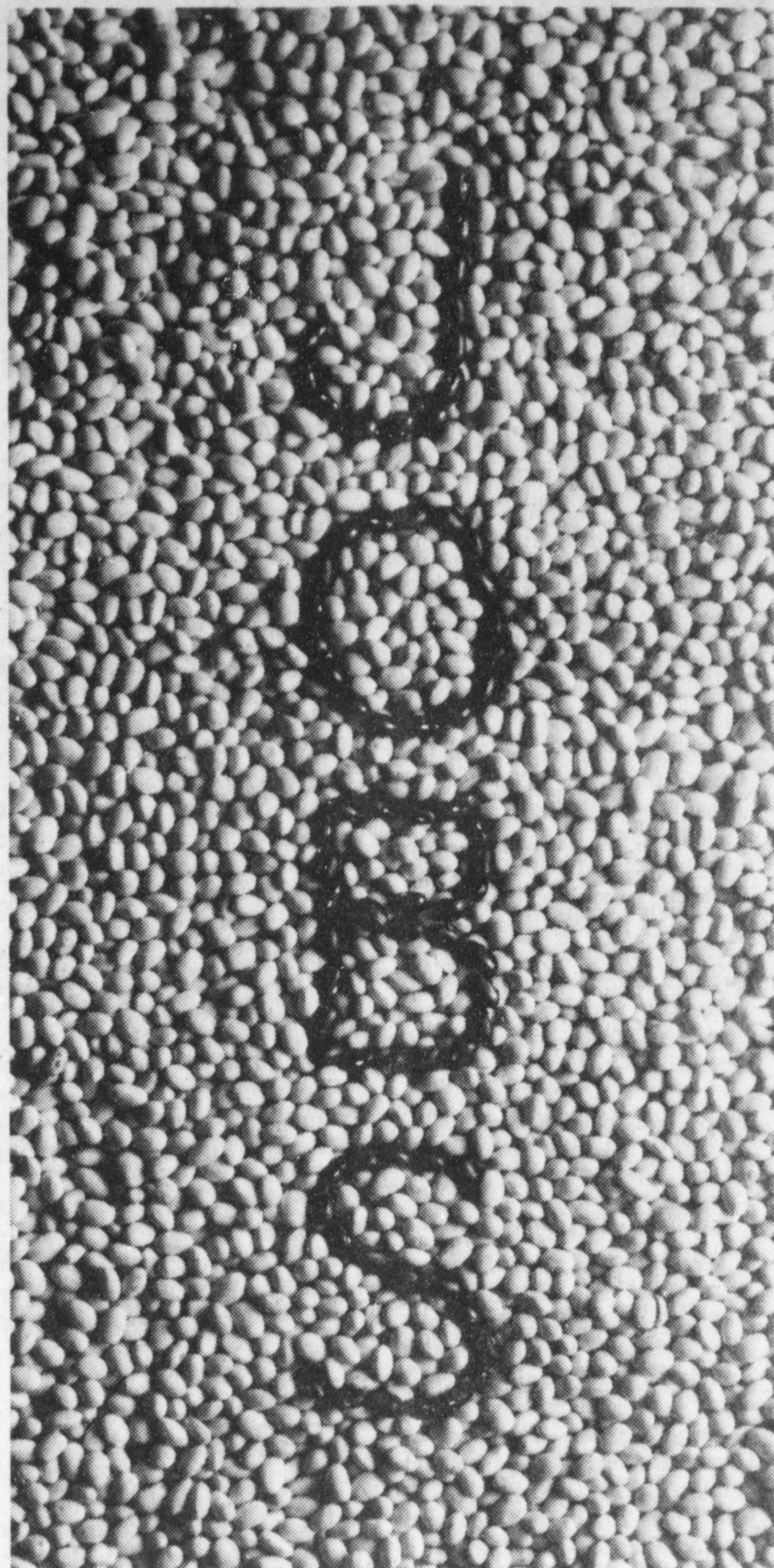
By attending county meetings, expressing their views and carefully considering the selection of their representatives to the Board, Verett continues, cotton people can assure that future PCG actions and policies will be expressly tailored to meet the true needs of the High Plains industry.

The date, time and place for each county meeting will be set by current directors in individual counties, avoiding conflict with other local activities whenever possible. Details of the meetings will be provided in advance news releases and will be posted in county gin offices as they are scheduled. Information is otherwise available by calling PCG's Lubbock office, 792-4904. Current PCG county directors and staff members will be on hand to provide information on the organization's work and answer questions.

PCG's support primarily comes from producers (25 cents per bale), with supplemental support from gins, compresses, oil mills, banks and other area businesses. While all producers and businessmen are invited to attend county meetings, only current dues-paying PCG members are eligible to participate in the election process.

Directors elected in county meetings will be certified by the membership at the PCG annual meeting, after which the Board will convene and elect 1990-91 officers. Current officers, all of whom have served the maximum term in their present position, include Verett, Vice President Larry Nelson of Tulia and Secretary-Treasurer Wayne Huffaker of Tahoka.

Although details are not complete, the annual meeting has been set for the morning of April 5 at Lubbock Memorial Civic Center



If you see the Census as only a bean count, look again.

Companies large and small use information supplied by the Census for planning and expansion. Which just may translate into more employment opportunities for you and your community.



Answer the Census. It counts for more than you think.

### LOUISA'S LETTER

Dear Louisa, neighbor until he finishes the job. Louisa.

A couple moved next door to us about six months ago and we have gotten real friendly. But lately I have noticed that Mrs. C. seems to think that she can call on my husband to do all sorts of odd jobs around her house that her husband should be doing. She laughs it off by saying that her husband doesn't know how to drive a nail but that my husband can do most anything that needs fixing.

Now the thing that worries me about this is that my husband seems to enjoy being called and spends too much time next door. What do you think I should do about this?

Answer:

Your husband is probably flattered by all the praise he is getting but it could turn into a situation that is not wholesome. Why not go over with him when he is called and sit and talk to your

Dear Louisa, Is it proper to give gloves to a girl friend. We are not engaged to be married but we are very good friends and I happen to know that she would like some real nice kid gloves. My mother says it is not proper to give clothes to a girl but does this mean gloves or things of that kind?

Jim-N.I.

Answer: It is not proper to give dresses, coats or lingerie to a girl friend but gloves, an evening bag, perfume or jewelry or a pretty-scarf is perfectly proper as a gift to a girl friend.

Louisa

Address your letter to Louisa, P.O. Box 532, Orangeburg, S.C. 29115

A good neighbor knows how to live and let other people alone.

### Congratulations



RESERVE BREED CHAMPION--Joshua Tooley showed his Fine Wool lamb to Reserve Breed honors last Saturday at the Three Way Livestock Show. (Journal Photo)

Maple Co-op Gin

### Congratulations



GRAND CHAMPION SWINE--Scott Pollard is shown with his Hampshire pig which won him the Grand Champion honors at the Three Way Livestock Show held last Saturday. Scott is the son of Mr. and Mrs. Terry Pollard. (Journal Photo)



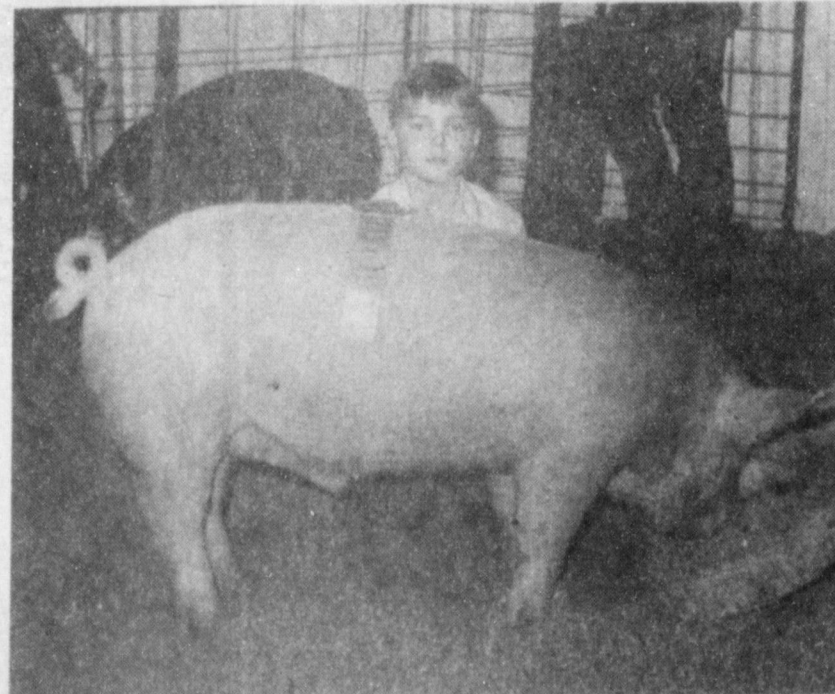
LAMB SHOWMANSHIP & GRAND CHAMPION--Larry Robertson is shown with his Grand Champion lamb at the Three Way Livestock Show last Saturday. Larry is the son of Mr. and Mrs. Darwin Robertson (Journal Photo)

Muleshoe Publishing Co.

### Congratulations



BREED CHAMPION DUROC--Scott Pollard exhibited his Heavyweight Duroc to Breed Champion honors at the Three Way Livestock Show last Saturday. Scott is the son of Mr. and Mrs. Terry Pollard. (Journal Photo)



BREED CHAMPION YORK--Daniel Reeves exhibited his Lightweight York to Breed honors at the Three Way Livestock Show last Saturday. Daniel is the son of Mr. and Mrs. Jack Reeves. (Journal Photo)



Member F.D.I.C.

## Sudan News

by: Evelyn Ritchie

Oleta Reece has returned from Alabama where she spent the holidays with her grandchildren and families.

Dennis Harvey of Lubbock visited with his parents, Mr. and Mrs. Halbert Harvey.

Mr. and Mrs. W.C. Masten of Amarillo visited during the weekend with their daughter, Mr. and Mrs. Al Harrison and Jay and attended the basketball game when the Hornets played and won against Plains Friday night. Jay is a member of the Hornet Basketball team.

Mr. and Mrs. Dale Masten and children of Durango, Colo. were holiday visitors with their parents Mr. and Mrs. Billy Chester and were also here to attend the 50th wedding anniversary celebration of Mr. and Mrs. W.C. Masten.

Mr. and Mrs. John Corley and girls of Lubbock visited during the weekend with her parents, Mr. and Mrs. James Withrow and sister, Mr. and Mrs. Greg Lance and Maegan.

Mr. and Mrs. Troy Waller of Amarillo visited recently with his mother, Mr. and Mrs. Waymon Gordon and attended worship services at the FBC.

Arlene Grigsby of Guymon, Okla. visited recently with her children, Mr. and Mrs. Damon Provence and Mr. and Mrs. Darren Provence and families and also her sister, Mr. and Mrs. Bobby Carson and Angie and other relatives joined them here for the holidays.

Mr. and Mrs. G.C. Ritchie were in Hobbs, N.M. Wednesday evening to attend revival services at the Highland Baptist Church there when her brothers, Rev. Ron and Rev. Don Corley of Farmington, N.M. were there to bring the message both in preaching and in song, and also showed slides of their mission work with the Navajo Indians in that vicinity.

Marley and Debbie Hall were in Amarillo Wednesday when Debbie had a doctors appointment.

Mrs. Gladene Alexander who moved to Sudan recently from California and aunt of B.A. Beauchamp has been hospitalized recently in ICU in the Methodist Hospital.

Visiting recently with Doyle Terrell was his daughter, Mattie Pearl of Amarillo.

Linda Wiseman, a student at ACU in Abilene was home for the weekend to help celebrate the 50th birthday of her dad, Pudd.

Air Force Sgt. Bret A. Alexander has arrived for duty at Luke Air Force Base, Ariz.

Alexander is a crew chief with the 58th Aircraft Generation

Squadron. He is the son of Darlene Alexander of Littlefield. His grandmother, Faye Jones, resides in Bula.

The sergeant is a 1983 graduate of Three-Way High School, Maple, Texas.

Pam Maxwell is now taking enrollment for the 1990-91 school year for pre-schoolers ages three and four years. She will be licensed with the Texas Dept. of Human Resources. The three year olds will be meeting on Mondays from 8:30 to 10:30 and four year olds on Tuesdays and Thursdays from 8:30 to 11:30 a.m. at 106 West First Street in Sudan. (This is the old Post Office building and previously used by Southwestern Public Service Co.)

Jeannia Nix of SMU in Dallas has been home for the past several days, with her parents, Mr. and Mrs. James Mike Nix, recuperating from her recent surgery.

Olin and James Mike Nix were in Odessa Wednesday to attend funeral services for Mike's uncle, H.B. Merritt, who died Monday after a lengthy illness.

Mr. and Mrs. Glen Cardwell visited during the weekend in Andrews with her sister and also in Plains with their daughter, Mr. and Mrs. Herman Synatsch and girls and in Lubbock with their other daughter, Susan Nettles and girls.

Mr. and Mrs. Wayne Doty visited in Hobbs Sunday with their daughter, Mr. and Mrs. Doyle Mapp and children.

It was reported that Rene Cole was readmitted Saturday to the Levelland Hospital and later this week was released.

Mrs. Ed Bellar is reportedly doing well following her eye surgery last week.

The January meeting of the local chapter of American Ex-Prisoners of War was held January 11 at 11 a.m. in the home of Nolan Harlan, Bula. Members attending were: Raymond and Josephine Benham, Levelland; Kaye Benham and Charles Burt, Levelland; Eloy Cardenas, Muleshoe; Raleigh Mason, Lazbuddie; and Nolan and Betty Harlan and John Harlan, Bula.

Business discussed included the Social Security notch babies; special veterans license plates authorized by the Texas Legislature in summer session in 1989; current veteran legislation; and new veterans outpatient clinics being opened in Texas.

Most WWII veterans come into the "Notch baby" category, and their Social Security checks are smaller than those born before 1917 and after 1921, making this provision discriminatory against WWII veterans.

The First Baptist Church was filled to capacity Sunday evening when the Harmonie Concert was presented.

Kyla Howell, Jacquelyn Miller

and Holly Enloe, accompanied on the piano by their mother, Margie Harmon, presented a few minutes concert of praise before others joining them were Haldon Messamore, Pam Humphreys, Vickie Howell, Greg Young, Charles Chovajsa, Jan Wood, Kenny Birkelback, Cindy Ratliff and Kim Messamore for the singing of "The Lord Reigns."

Persons attended from Littlefield, Amherst and other surrounding cities.

Ann Nix and children visited friends and relatives in Lamesa during the weekend.

Among college students home for the weekend were Stephanie Bickett, George and Eddie Salinas, Donice Holley, Cindy Roberts, Teena and Bonnie Newman.

Gilbert Churchman visited in Dimmitt and his daughter, the Jerry Ethridge family during the holidays and also in Muleshoe with his son, Mr. and Mrs. Scott Churchman and family.

It was reported that Dan Wood has returned home from Houston where he underwent treatment last week and he had also gotten a very good report.

Herman Welkener is a patient in the St. Mary's Hospital this week where he may possibly undergo surgery.

Mr. and Mrs. Ves Patterson have been in Austin recently where Ves underwent surgery. They visited their daughter, Fredda and family while there.

Mary Harper has been in Odessa for several days with her daughter, Mr. and Mrs. Tom Mills. Lisa has been ill for some time and her dad, Raymond, also has visited with them recently.

Visiting last week with Juanda Fields and Gary were their aunt, Lois Fields, of Clyde. They took her home Saturday.

Ricky May has returned to his home in Florida following a lengthy stay here with his mother, Mrs. Hazel May, who is seriously ill and also with his

sister, Mr. and Mrs. John Ritchey and family.

Russell Ingle has been released from the hospital and is recuperating now at home.

Mrs. Daisey Ford has returned home from Dallas where she visited several days with her daughters.

## Water Operation Open In Amarillo To Serve Area

Dave Kjerstad has notified *The Journals* that he has opened Water Still in Amarillo. He said Water Still is a full-service water store located at 4502 Bell Street, open Monday - Saturday 9:00 a.m. to 6:30 p.m. Water Still offers pure distilled drinking water, distilled ice, bottles, water crocks, coolers and Polar Bear water distillers, for both residential and commercial needs, added Kjerstad. Water Still will provide sales and service for the Panhandle trade area.

Kjerstad said he has chosen Amarillo for the central office and distribution center for franchising Water Still.

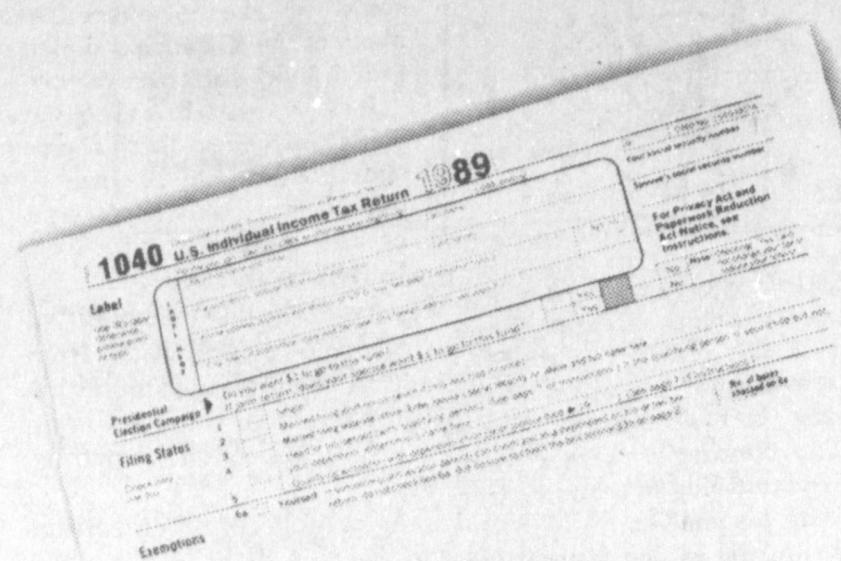
He added that Polar Bear Water Distiller Manufacturing Company is one of the largest water distiller manufacturing companies in the world. Polar Bear has granted Water Still exclusive rights to use their product in conjunction with franchising the full-service water store, Water Still, concluded the owner.

## BIBLE VERSE

"Now the brother shall betray the brother to death, and the father the son; and children shall rise up against (their) parents, and shall cause them to be put to death."

1. Who made this statement?
2. Where does it appear in the Bible?
3. What other gospels express the same idea?

Answers:  
1. Jesus.  
2. Mark 13:12.  
3. Luke 21:16 and Matthew 10:21.



**DON'T LET THIS COME BETWEEN YOU AND YOUR PEACE OF MIND.**

Your taxes will be that much less taxing if you get them off your list of things to do and do them now. So file now and file accurately. And make your taxes less taxing. **MAKE YOUR TAXES LESS TAXING.**

**Do you know you can try a hearing aid risk-free for 30 days?**

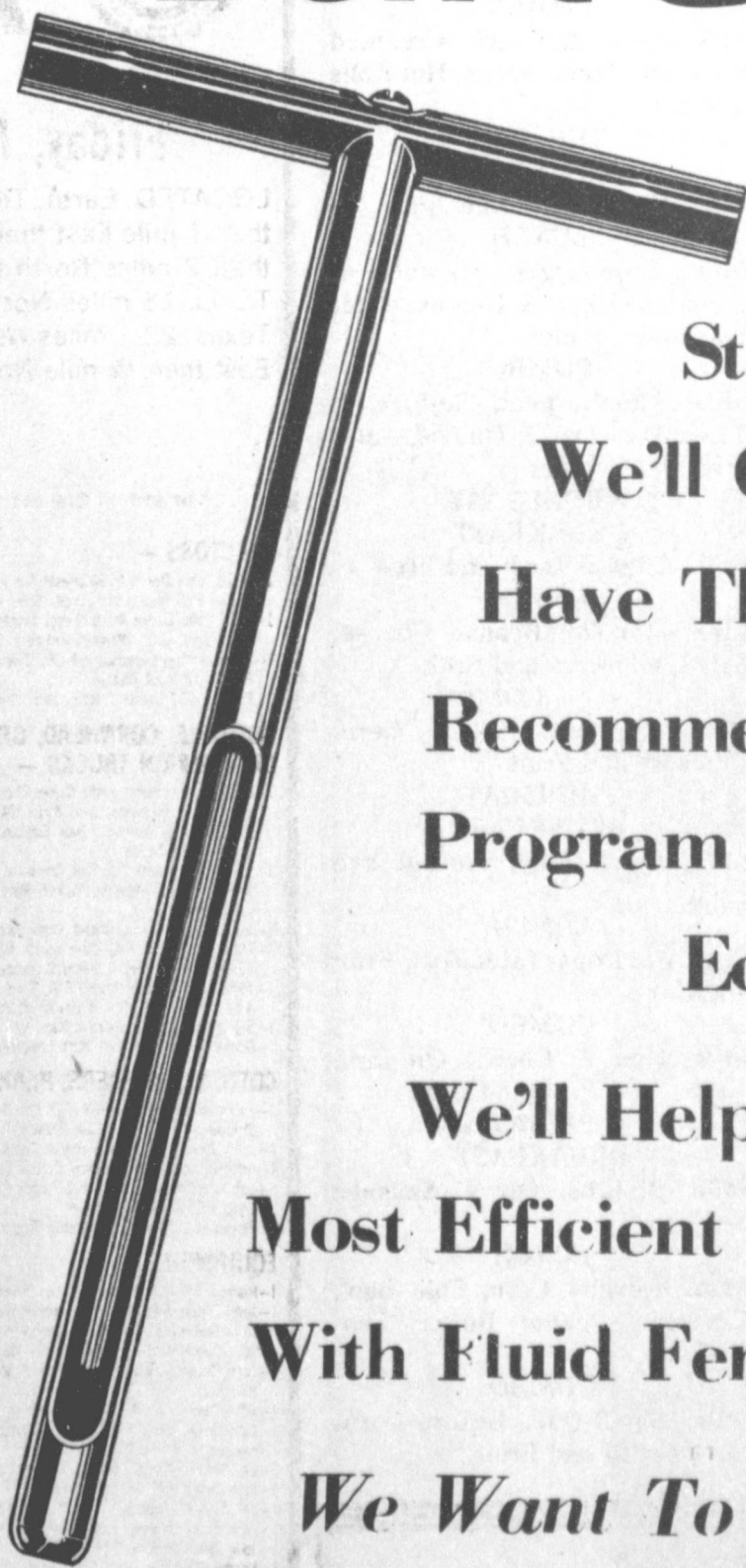
You need not risk a dime on a hearing aid unless you're convinced it's the right thing for you. We give you a full 30 days to decide how well you'll enjoy hearing with a custom fit Beltone hearing aid. If you're not satisfied with it for any reason, simply return it and we'll refund the full cost of the hearing aid.

At Beltone, we're in business to help people hear better. Call us for an appointment now!

Friday, February 9, 1990  
10 a.m. - 12 noon  
Bailey Co. Coliseum  
272-4114  
Free Hearing Test

*Beltone*  
Better Hearing Through Professional Care

# Don't Guess - Soil Test



**Start Out Right We'll Get Your Samples, Have Them Analyzed, And Recommend The Best Fertility Program For Your Maximum Economic Yield.**

**We'll Help You Work Out The Most Efficient Timing And Placement With Fluid Fertilizers.**

**We Want To Be Your Fertilizer Dealer!**

# Western "66" Co.

Earth Hwy

Muleshoe

272-4556

## Congratulations



**HEAVYWEIGHT HAMPSHIRE BREED CHAMPION**--Joshua Tooley is shown with his Breed Champion lamb at the Three Way Livestock Show. Joshua is the son of Mr. and Mrs. Howard Tooley. (Journal Photo)

*Bailey Gin Co.*

**Kiwanis News**



By R.A. Bradley

Sixteen Kiwanians, three honorary Kiwanians, Robbie Clapp, Jon Keith Turner and Chad Johnson, and one guest, Larry Parker met at the Old Corral Friday morning to gather round the Ground Hog to keep him from 'seeing his shadow.'

As the old saying goes, "If the Ground Hog sees his shadow," he will go back into his hole and we will have six more weeks of bad weather. Since we really haven't had bad weather, how can we have more bad weather? It all depends on when the Ground Hog comes out. If he came out while we were having breakfast, we were successful in keeping him from seeing his shadow. The sun wasn't up yet! If he came out later, we failed.

Jim Lutz, president, called the meeting to order. Reggie Johnson led the club in the pledge to the flag and the invocation was given by Don Martin.

"Who" Hugh Young had the friendship coin, but must still be looking for a friend. Hugh, you have heard it said, "The early bird gets the worm." Get up early, as some worm might be your friend.

Sweetheart Amy Montgomery was present and had managed to get her Dad up again. Congratulations Amy!!

Reggie Johnson reported that the annual track meet would be here March 10 and much help will be needed to put this track

meet on. The Kiwanis Club voted to donate \$100 to help defray some of the expenses. Also, many of the Kiwanians signed up to help with the track meet.

R. A. Bradley had the program Friday morning. Brad showed a slide presentation of some of the odd-shaped balloons that go up at the International Balloon Festival at Albuquerque.

This is quite a gathering of balloons. Probably as many as 800,000 people see the 8-day show.

You have to get up early and be out at the launch site between 6:00-6:30 a.m. Each Saturday and Sunday of the two weekends is Mass Ascension Days, and if you haven't seen about 600 balloons up at one time, you need to go.

There are all shapes, sizes and forms of balloons. Each balloon, fully equipped, costs from \$5,000 to \$30,000. They are beautiful, painted, designed, etc.

Just a few of the odd shapes include, Mickey Mouse, Mr. Planter, (Planters Peanuts), a Clown, Donald Duck, Chronical (a book), a rolled up newspaper, Air Planes, Wicked Witch of the West, Burger King 'Hamburger,' and many, many more.

One night during the week, they have the Balloon Glow. This is beautiful.

One day they have the 'key grab.' This is for the balloonist, if they can get a key from a 30-foot pole, they win whichever new Pontiac it fits.

There is something every day for eight days. The four days of the Mass Ascension draws the largest crowds.

If you plan on going to see one these Balloon Festivals, either have family or friends who might stay with or make reservations about a year in advance.

This show in Albuquerque is the biggest in the world. In October of 1989, they held their 18th Annual Balloon Festival.

Happy Ground Hog Day to everyone.

**State Rural Hero Sought For Honors By Extension**

If you know someone in Texas who saved another's life last year in circumstances related to farming or ranching, there's still time to nominate this person for the title of Texas' rural hero of 1989.

The deadline for nominations is Feb. 16, said Thomas Valco, Texas Agricultural Extension Service agricultural safety engineer and a member of the Texas Farm and Ranch Safety Council which presents the annual rural heroism award. Send entries to the Texas Farm and Ranch Safety Council, P. O. Box 2689, Waco, Texas 76702-2689.

Valco said the recipient of the award will be announced March 12 during the 51st annual Texas/Southwestern Safety Conference and Exposition at the Hyatt Regency Downtown in Houston.

"To qualify as a candidate, a person must have performed a human lifesaving act related to farming or ranching in 1989 within Texas," Valco said.

He said a nomination should include a written account of the incident and the names, addresses and telephone numbers of all the people involved. Photos and news clippings should accompany the nomination if they are available.

Winner of the award in 1988 was David Roberts of Morton, who rescued his younger brother, Dakota, from being injured by an electrical wire near their home in June of 1988. David received his award in Dallas last March.

**Letter To The Editor**

Dear Editor:

In preparation for the restoration of the Texas Capitol, the Old 1857 General Land Office, and the Capitol grounds, we have some exciting mysteries to solve and are looking for any photographs dating prior to 1920. We also need interior views of the rotunda, dome, corridors, foyers, and offices in the Capitol prior to 1959.

The State Preservation Board invites you to join us in our quest and we ask that your readers help us by searching through their family photographs for snapshots taken while visiting the Capitol. Quite often the building or an interior of a room is only visible in the background, but such a photograph can still provide invaluable details about furniture, carpet patterns, or light fixtures.

Surely, your readers' grandmother, grandfather, aunt, uncle, mother, father, brother or sister took great joy in standing in the middle of the rotunda to have their pictures made. Surely, someone through the years has gone 'Kodaking' to the State Capitol and taken just the kind of snapshots we are looking for.

If your readers have any photographs of the Texas Capitol, the Old General Land Office, or the Capitol grounds, we ask them to please forward a xerox copy to us as soon as possible. We will be more than happy to give them credit for any photographs that provide new information.

Thank you for any help you can give us on this joint, statewide effort. Together we can make Texas' beautiful Capitol second to none in Victorian restoration magnificence and authenticity for the future enjoyment and pride of Texans everywhere.

Sincerely,  
Allen McCree, FAIA  
Architect of the Capitol  
P. O. Box 13286  
Austin, TX 78711

Those perfectly contented with themselves are blinded by self-satisfaction.

**Depression Conference Set Feb. 13**

The National Institute of Mental Health estimates that one in three college students will suffer depression during his or her college career. To address this issue, West Texas State University and Amarillo College will cosponsor the conference "Depressive Illness on Campus" Tuesday, Feb. 13. The program is scheduled from 5-7:30 p.m. in the College Union Building at Amarillo College.

The conference will focus on the biology of depressive illness, differences between depression 'blues' and clinical depression, symptoms and treatment guidelines for relief and prevention. The interaction between depres-


sive illness and alcohol and other drugs will also be discussed.

David Kupfer, M.D., chairman of the department of psychiatry at the University of Pittsburgh School of Medicine, will present the scientific facts. He will be joined on the panel by two young adults who experienced depressive illness while in college.

The conference is open to the public, and participants may earn LPC, TAADAC (provider number pending), NCC and CEU credits.

Cost, including a light meal, is \$10 per person.

For more information or to make reservations, call Donna Flatt at 806-656-2340.



**Bailey Co.**

**Political Calendar**

**Bailey County Judge**

*Marilyn Cox*  
*Jim Watson*  
*Robert R. Alanis*

**District Judge**

*Jack Young*


**Commissioner Prec. 4**

*Terry Souder*  
*Alfonso Posadas*  
*Jodie Barrett*  
*Bennie Claunch*

**Commissioner Prec. 2**

*C.E. Grant*  
*Don Seales*

**VOTE!**



**Lazbuddie Menu**

FEB. 5-9 MONDAY BREAKFAST

French Toast, Juice and Milk LUNCH  
Bar-B-Q Sausage, Potatoe Salad, Pinto Benas, Hot Rolls, Fruit and Milk

TUESDAY BREAKFAST

Jelly Donuts, Juice and Milk LUNCH  
Fish Sandwiches, French Fries, Cole Slaw, Cake and Milk

WEDNESDAY BREAKFAST

Toast, Bacon and Milk LUNCH  
Chalupas, Pinto Beans, Green Salad, Pudding and Milk

THURSDAY BREAKFAST

Cereal, Juice and Milk LUNCH  
Chicken Fried Steak, Potatoes/Gravy, Peas, Hot Rolls, Fruit and Milk

FRIDAY BREAKFAST

Cinnamon Rolls, Fruit and Milk LUNCH  
Hamburgers, French Fries, Fixings, Cobbler and Milk

SALAD BAR SERVED MONDAY-WEDNESDAY

**Three Way Menu**

FEB. 5-9 MONDAY

Pancake/Sausage, Milk and Juice LUNCH  
Lasagna, Peas, Mash Potatoes, Hot Rolls, Milk and Cookies

TUESDAY BREAKFAST

Cereal/Raisins, Milk and Juice LUNCH  
Turkey Fajita's, Corn, Salad, Grated Cheese, Corn Bread, Milk and Brownies

WEDNESDAY BREAKFAST

Waffles, Milk and Juice LUNCH  
Mash Potatoes Delight w/Hamburger, Green Beans, Hot Rolls, Milk and Peach Cobbler

THURSDAY BREAKFAST

Toast/Sausage, Milk and Juice LUNCH  
Nacho Supreme, Tossed Salad, Refried Beans, Corn Bread, Milk and Cake

FRIDAY BREAKFAST

Biscuit/Eggs, Milk and Juice LUNCH  
Barbecue Beef Sandwich, French Fries, Hot Bun, Milk and Fruit Jello.

**Muleshoe Menu**

FEB. 5-9 MONDAY BREAKFAST

Milk, Cereal, Toast and Fruit LUNCH  
Milk, Steak & Gravy, Creamed Potatoes, Green Beans, Hot Rolls and Fruit

COMBO

Milk, Steak & Gravy, Creamed Potatoes, Green Beans, Hot Rolls and Fruit

TUESDAY BREAKFAST

Milk, Honey Buns and Juice LUNCH  
Milk, Hamburgers, Lettuce & Tomato, Pickles & Onions, Tater Tots and Cobbler

COMBO

Milk, Hamburgers, Lettuce & Tomato, Pickles & Onions, Tater Tots and Cobbler

WEDNESDAY BREAKFAST

Milk, Cheese Toast and Fruit LUNCH  
Milk, Taco's, Beans, Cheese, Salad, Crackers and Fruit

COMBO

Milk, Burritos, Salad, Corn, Crackers and Fruit

THURSDAY BREAKFAST

Milk, Toast, Jelly, Sausage and Fruit LUNCH  
Milk, Hot Dogs, Tater Tots, Fruit and Cake

COMBO

Milk, Ham & Cheese On Bun, Tater Tots, Fruit and Cake

FRIDAY BREAKFAST

Milk, Biscuits, Gravy, Sausage and Fruit LUNCH  
Milk, Burritos, Corn, Cole Slaw, Crackers, Peanut Butter Confection

COMBO

Milk, Bar-B-Que, Beans, Corn, Corn Bread and Fruit



# AUCTION



**Friday, February 9, 1990 — Sale Time: 10:00 a.m.**

LOCATED: Earth, Texas, 6 miles West on U.S. Highway 70 then 2 miles North on F.M. Highway 303 then 1 mile East then 1/4 mile North; OR From Muleshoe, Texas, 12 miles East on U.S. Highway 70 then 2 miles North on F.M. Highway 303 then 1 mile East then 1/4 mile North; OR From Sudan, Texas, 18 miles North on F.M. Highway 303 then 1 mile East then 1/4 mile North; OR From Hart, Texas, 22 1/2 miles West on F.M. Highway 145 then 8 1/2 miles South on F.M. Highway 303 then 1 mile East then 1/4 mile North.

**W. J. MEEKS & OTHERS — Owners**  
Telephone: Vic Coker — (806) 965-2468

I have sold my farm and am quitting farming and will sell the following at Public Auction — Any announcement Sale Day takes precedence.

**TRACTORS —**

- 1-1973 John Deere 4430 Diesel Tractor, Cab, A/C, Hdr., Radio, P/S Trans., W.F. 3-pt. O.H. Wts. 18,438 Rub.
- 1-1967 John Deere 4020 Diesel Tractor, Cab, S/R Trans., W.F. 3-pt. S.H. Weights, Fenders, 16,924 Rubber
- 1-1958 Massey Ferguson 50 LPG Tractor, W.F. 3-pt. P.T.O. 12,438 Rubber
- 1-Farmall 404 Diesel Tractor, W.F. 3-pt.

**COMBINE, CORNHEAD, GRAIN CART, GRAIN TRUCKS —**

- 1-1979 International 1480 Diesel Combine, Cab, A/C, Hdr., Radio, Hydrolstat, IHC 810, 24' Grain Hdr., Big Rubber, (400 Hours on New Engine, Hydrolstat, Final Drive), Field Ready
- 1-1968 John Deere 105 Gas Combine, Cab, Blower, 20' Variable Speed Harrow, Pickup Reel, 23,1x26 Rubber, (Low Hours)
- 1-John Deere 645 Cornhead, With Jammann Corn Savers
- 1-1967 Dodge 500 SA Grain Truck, V-8 Eng., 4 Sp., 2 Sp., 15' Hoods, Bed, Hous., 9,00x20 Rubber, (83,000 Miles)
- 1-1956 International A160 SA, Grain Truck, 6 Cylinder, 4 Sp., 2 Sp., 14' Bed, 8,25x20 Rubber, (22,000 Miles)
- 1-Big 12, 400 Bushel Grain Kart
- 1-Dodge Pickup Chassis, With Long Wide Bed

**COTTON STRIPPERS, PEANUT EQUIP. —**

- 1-1968 Allis Chalmers 707 XTB Self Propelled Gas Cotton Stripper, 4 Cyl. Eng., Cab, Blower, 2 Row Brush Hdr.
- 1-John Deere 282, 2 Row Brush Cotton Stripper, Basket
- 1-Antique John Deere 1 Row Cotton Stripper
- 1-Lot Allis Chalmers Cotton Stripper Parts
- 1-Long D.T. Peanut Combine
- 1-Pearman 2 Row, 3-pt. Peanut Diggr

**EQUIPMENT —**

- 1-Hamby 21, 1 S.B. 3-pt. Chisel/Sweep Plow, G.W.
- 1-John Deere F-835C, 116' Spinner Mouldboard Plow
- 1-John Deere 835, 6' Spinner Mouldboard Plow
- 1-John Deere 6 Row, D.T.B., G.W.D. Lister Planter, 3-pt.
- 1-John Deere 6 Row, Double Row, G.W.D. Planter, 4"x7" Bar, 3-pt.
- 1-John Deere 727 4' Shredder
- 1-John Deere 707, 4 Row, D.T. Shredder
- 1-Krause 18' Offset Disc
- 1-14 Tandem Discs, 2 Krause, 1-Milne
- 1-John Deere 6W 14 Tandem Disc
- 1-SM 8, 3-pt. Disc
- 1-John Deere 6 Row, 3-pt. Monitor Cultivator
- 1-John Deere 6 Row, F.M. Cultivator
- 1-Hamby 9 Shank, 3-pt. Deep Ripper Plow, G.W.
- 1-S&F Shank, 3-pt. Ripper Plow
- 1-Hancock D.T. Land Plow
- 12-John Deere 71 Flex Planter Units, D.D. Metal Boxes
- 6-International 185 Planter Units, D.D.
- 1-John Deere 16-8" an Drill, S.W.
- 1-Crow 8, 3-pt. Blaw 1-Big Rhino 8, 3-pt. Blade
- 1-Ti-State 10, 3-pt. Box Blade Float
- 1-Oliver 3-16' Spinner Mouldboard Plow
- 1-Massey Harris 3-14, D.T. Mouldboard Plow
- 1-Schlage Chiselbuste, Packer, For 4' Item Plow
- 2-SM Mouldboard Plow Packer, 1 1/2" (1.6 Btm.)
- 1-International 10, D.T. Tandem D.
- 1-Dixieborn 6, 3-pt. Plow
- 1-Ferguson 9 Shank at Spring Loaded Chisel Plow
- 1-Hamby 15, 3-pt. Disk Plow
- 1-7 Shank, 3-pt. Disk Chisel Plow

- 1-17, 3-pt. Toolbar
- 1-13 4x38 Tires & Rims
- 1-Set R.A.C. 8 Row Folding Mark
- 1-Set Mechanical Row Markers
- 1-Set Johnson 8 Row Markers
- 6-Rows Hamby Disc Bedder Units
- 2-R&I 6 Row, P.T.O. Rowweeds, W. Bearings
- 2-Hamby 6 Row, P.T.O. Rowweeds, Boots
- 7-Spring Loaded Water Furrow Pontoons
- 1-Phares-Wilkins 5 Row, 3-pt. Knifing Rig
- 1-5 Row, 3-pt. Stalkcutter Frame
- 1-4 Row, 3-pt. Stalkcutter, 1-12 Row, D.T. Sandfighter
- 1-Cushman 6', D.T. V Ditcher
- 1-Caldwell 6 Row Seed Packer
- 1-International 6, D.T. Mower
- 1-6, 3-pt. Blade
- 1-Handley 5, 3-pt. Blade
- 1-John Deere 4 Section, D.T. Rotary Hoe
- 1-Section Flex Spike-tooth Harrow
- 1-3-pt. Lift Arm Crane
- 1-9 Row, D.T. Sandfighter

**IRRIGATION —**

- 3-Olismobile 455 Irrigation Engines, All Need Valve Jobs
- 3-Chowiet 292 In. Eng., 1 Good, 2 Need Valve Jobs
- 1-Set 300 Irrigation Engine, Needs Valve Job
- 1-International 392 Irrigation Engine, Good
- 1-Pontiac 400 Irrigation Engine, Salvage
- 1-KMP Tailwater Pump, (No Engine)
- 1-546 Gal. 6"x20" Gated Pipe, 40' Rows
- 20-Joints 7"x20" Gated Pipe, 40' Rows
- 2-Joints 8"x20" Gated Pipe, 40' Rows
- 1-Lot Irrigation Hydrants, Various Sizes
- 1-Lot Irrigation Fittings, T's, L's, End Caps, Etc.
- 1-6' Cooling Jacket
- 1-Lot Drive Shaft Guards
- 1-Lot Murphy Panels
- 1-Lot Well Motor Stands
- 1-Lot Irrigation Drop Sticks
- 1-Lot Aluminum Irrigation Tubes, 1 1/4", 1 1/2", 2", 3"
- 1-Lot Irrigation Pipe Sleeves

**TRAILERS, TANKS, SPRAY EQUIP. —**

- 1-WW 6'x24' Goose-neck Triple Axle Stock Trailer, (New Brakes, Floor, Paint)
- 1-WW 5'x18' Goose-neck, T.A., 4 Horse Trailer
- 3-Big 12'x4' Wheel Trailers, With Steel Runners
- 2-Brady 4 Wheel Trailer Chassis
- 1-John Deere 4 Wheel Trailer Chassis
- 2-Truck Chassis 4 Wheel Flatbed Trailers
- 1-Ezee Flow 12' Dry Fertilizer Spreader
- 1-4 Wheel Trailer Chassis
- 2-Westendorf 4 Wheel Trailer Chassis
- 1-1,000 Gallon Propane Tank
- 1-1,000 Gallon Metal Water Tank On Skids
- 1-546 Gallon Butane Tank
- 1-500 Gallon Overhead Fuel Tanks & Stands
- 1-120 Gallon Fuel Tank & Pump
- 1-4 Compartment Fuel Tank
- 1-TSC 300 Gallon, D.T. Spray Rig
- 1-150 Gallon Fiberglass Spray Tank
- 1-4 Row Spray Boom
- 1-F.M. 300 Gallon Sprayer

**TRACTOR & TOOL MAKEUPS —**

- 1-Set 18x38 Snap-On Duals
- 1-Set 16.9x34 Snap-On Tractor Duals
- 1-Set 15.5x18 Snap-On Tractor Duals
- 1-John Deere 22, 4'x7' Toolbar, With D.O.B. With 12'x6 Roller
- 1-Hamby 21, D.S.B. Tool Carrier
- 1-Set Toolbars, V.S.
- 1-15, 2x' Toolbars
- 1-2'x10' Toolbars
- 5-21'x7", Toolbars
- 1-Demoliter 10, 3-pt. Toolbars

**HAY & LIVESTOCK EQUIP., AUGERS —**

- 1-Massey Ferguson Side Delivery Hay Rack
- 1-SM Swather Trailer
- 1-Cattle Loading Chute
- 1-SM Wire Roller
- 1-Lot Posts, Cross Ties
- 1-Lot Used Lumber & Tin
- 1-Mayrath 6'x18' Portable Grain Auger
- 1-Mayrath 6'x14' Grain Auger, With Gas Motor

**GARDEN TRACTOR, NON-CLASSIFIED —**

- 1-1970 John Deere 112 Garden Tractor, With Mower
- 1-Rolo Tiller
- 1-4 H.P. Gas Air Compressor, Needs Repair
- 1-H.P. Electric Air Compressor
- 1-Portable Electric 110 Volt Air Compressor
- 2-Chain Hoists
- 1-Lot Butane Carburetors, Regulators, Stub Shafts
- 1-Murphy Switches
- 1-Boil Bin, With Large Lot Bolts
- 1-Shop Heater
- 1-Antique Vice
- 1-Shop Anvils
- 2-20 Gal. Propane Tanks
- 1-Lot Small Propane Bottles & Tanks
- 2-House Jacks
- 1-Handyman Jack
- 1-Lot Chains
- 2-Measuring Wheels
- 1-Lot Tires, Whirlys
- 1-Large Lot Used Tin
- 1-Kemore Washing Machine
- 1-30 Gallon Electric Water Heater
- 1-Lot Pry Bars
- 1-Lot Part Barrels Oil
- 1-Lot Garden Hose
- 1-Lot Junk & Scrap Iron
- 1-Lot Forks, Scoops, Shovels, Hoes
- 1-Lot Red Brick Concrete Blocks
- 1-Lot Items Too Numerous to Mention

## Congratulations



BREED CHAMPION—Jonathan Bennett, grandson of Mr. and Mrs. Jack Lane, exhibited his Fine Wool to Breed honors at the Three Way Livestock Show. (Journal Photo)

# Claunch Gin

**Republican**

**Political Calendar**

*Bailey County Judge*

**James Warren**

**Five Star Auctioneers**

Box 1030 — Plainview, Texas 79073-1030

**Jerry Sullivan  
Funeral Services  
Held Friday**

Funeral services for Jerry Wayne Sullivan, 40 of Waxahachie were held at 1 p.m. Friday, Feb. 2 in Central Presbyterian Church of Waxahachie with Dr. Richard Collingsworth officiating.

Burial was in Oak Cliff Cemetery under the direction of Laurel Land Funeral Home of Dallas. Sullivan died at 9:30 a.m. Wednesday in the Presbyterian Hospital in Dallas following a lengthy illness.

Born July 29, 1949, in Marshall, TX, he attended school public school at Marshall and was a 1974, graduate of Texas Tech University in Lubbock. He was an elder in Central Presbyterian Church in Waxahachie where he was an active member of Section chairman of Christian Education committee, and led many other activities and functions. He was active in many local and civic activities and coached Little League Soccer and Baseball. He was manager of Employee Practices Dept. for Southland Corporation of Dallas, where he had been employed for more than 16 years.

Survivors include his wife: Sheryl (Mason) Sullivan; a son, Jason; his mother Mrs. Doris Sullivan of Marshall; a brother and sister-in-law, Robert and Martha Sullivan of Murchison; a sister and brother-in-law, Becky and Noris Conklin of Muleshoe; his mother and father-in-law, Rieligh and Lauranette Mason of Muleshoe; and a number of nieces, nephews, aunts and uncles.

The family requests memorials be made to Central Presbyterian Church at Waxahachie or Presbyterian Childrens Services, where Mrs. Sullivan is employed.

**Ora Mae Gandy  
Funeral Services  
Held Saturday**

Funeral services for Ora Mae Gandy, 86, of Morton were held at 2 p.m. Saturday, Feb. 3 in the Morton First United Methodist Church with the Rev. Al Jennings, pastor, officiating, assisted by the Rev. Jimmy Hardy, pastor of the First Missionary Baptist Church.

Burial was in Morton Memorial Cemetery under the direction of Ellis Funeral Home of Morton.

Ms. Gandy died at 6:30 p.m. Thursday in the Methodist Hospital at Levelland.

Born May 7, 1903, in Bosque, County, she had been a resident of Morton since 1931, moving there from Morton. She was a homemaker and a member of the Morton First United Methodist Church. She married Vallie Gandy on Dec. 25, 1921, in Meridian. He died Feb. 7, 1989.

Survivors include three sons, Leonard Gandy of Morton, Billy Joe Gandy of Chandler, Okla., and Don Gandy of McAllen; four daughters, Chloris Tarlton of Maple, Wilma Hill of Austin, Betty Hodges of Morton and Merle Wilson of Georgetown; a sister, Ada Lee Jones of Hot Springs, Ark.; a brother, Elmer Gardner of Morton; 21 grandchildren; and 28 great grandchildren.

She was preceded in death by a son, J.C. Gandy in 1973, and a daughter, Geraldine Herndon, in 1988.

Church is the answer to many of life's worries.

Money multiplies the power of man either for better or worse.

The gardener is now having a field day with seed catalogs.

**Fire Department  
News  
by: Ralph Sanchez**

The Muleshoe Fire Department logged the following activity from January 21-31.

\* January 23, 3:45 p.m., Burr fire, seven firemen responded.

\* January 26, 12:28 p.m., Burr fire, six firemen responded.

\* January 27, 9:15 p.m., one vehicle rollover. Investigation only, 14 firemen responded.

\* January 20, 5:08 p.m., Grass fire, 10 firemen responded.

On January 27, members of the Muleshoe Fire Department attended a meeting in Sudan, at the Sudan Fire Department.

The meeting was for the upcoming Third Annual Sudan Emergency Rescue School.

Topics discussed were Auto Extrication, Confined Space Res-

cue, Emergency Driving and Ditch and Trench Rescue.

The following members who attended the meeting in Sudan were Donald Harrison, Jack Dunham, Larry Rasco, J. O. Parker, Charles Lorange, Scott Churchman, Tony Scolley and Mark Tutt.

The Third Annual Sudan Emergency Rescue School will be held on June 2-3.



**BEST OF PRESS**

**Slow Down**

Old age often proves to be the great reformer.  
-Bee, Sacramento, Cal.

**Ulcerous Source**

Doctors agree that stomach ulcers come from something you hate, not from something you ate.  
-Eagle, Dothan, Ala.

**Ski!**

This is the time of year when most Americans can find invigorating exercise at ski resorts. As far south as North Carolina, Arizona and New Mexico one can find good ski slopes maintained and operated for the public.

A generation ago resorts were limited in number, as were skiers. The recent tremendous boom in this winter sport is attributable, in part, to the fact that, after swimming, skiing is the best all-round exercise for the body.

Skiing is for all ages, though beginners should avoid crowded slopes and steep runs used by experienced skiers. Serious two-party accidents have begun to occur in recent years; there are

now law suits pending...the charge being reckless skiing.

A good approach is to ski early, when slopes aren't crowded, and to take lessons before beginning.

Dick Thornburg, Attorney General:

There's nothing that's come to our attention that would indicate that this trial can't go forward. We are satisfied that we have evidence here that sustains the charges.

*A special thank you for the many expressions of sympathy shown during the loss of our mother.*

*The Minnie Dupler Family*

**Immaculate Conception Catholic Church**

Father Patrick Maher  
Northeast of City

**First Baptist Church**

220 West Ave. E.  
Barry Bradley, Pastor

**Emmanuel Baptist Church**

Iglesia Bautista Emmanuel  
107 East Third  
Isaias Cardenas, Pastor

**Trinity Baptist Church**

314 E. Ave. B.  
Rev. Dale Berry

**Circle Back Baptist Church**

Intersection FM 3397 & FM 298  
Pastor, Glen Price  
946-3676

**Calvary Baptist Church**

1733 W. Ave. C.  
Rev. Rick Michael

**Muleshoe Baptist Church**

8th and Ave. G.  
Bob Dodd, Pastor

**Progress Baptist Church**

Charles Fisk, Pastor  
Progress, Texas

**Richland Hills Baptist Church**

17th and West Ave. D.  
Allen Petersen, Pastor

**St. Matthews Baptist Church**

Corner of West Boston & West Birch  
M.S. Brown, Pastor

**Progress Second Baptist Church**

1st and 3rd Sunday  
Rev. Arthur Hayes

**The Community Church**

Morton Hwy  
Mort Cross, Pastor  
272-5992

**Church Of The Nazarene**

9th and Ave. C.  
Dennis Hayes, Pastor



**CLOTHED  
FOR  
COMFORT**

The north wind strikes, and the blizzard howls. We clothe ourselves for maximum warmth and comfort from the cold... for an all encompassing comfort, put on the Lord's mantle.

*"The Lord is my shepherd; I shall not want. He maketh me to lie down in green pastures; he leadeth me beside the still waters. He restoreth my soul; he leadeth me in the paths of righteousness for his name's sake. Yea, though I walk through the valley of the shadow of death, I will fear no evil; for thou*

*art with me; thy rod and thy staff they comfort me. Thou preparest a table before me in the presence of mine enemies; thou anointest my head with oil; my cup runneth over. Surely goodness and mercy shall follow me all the days of my life: and I will dwell in the house of the Lord forever."*



The Church is God's appointed agency in this world for spreading the knowledge of His love for man and of His demand for man to respond to that love by loving his neighbor. Without this grounding in the love of God, no government or society or way of life will long persevere and the freedoms which we hold so dear will inevitably perish. Therefore, even from a selfish point of view, one should support the Church for the sake of the welfare of himself and his family. Beyond that, however, every person should uphold and participate in the Church because it tells the truth about man's life, death and destiny; the truth which alone will set him free to live as a child of God.

© Coleman Adv.

**Primera Iglesia Bautista**

223 E. Ave. B.  
Roy Martinez, Pastor

**Lariat Church Of Christ**

Sunday School 10:00 a.m.  
Worship 11:00 & 6:00 p.m.  
Wednesday Services 7:00 p.m.  
Sam Billingsley, Minister

**Muleshoe Church Of Christ**

Clovis Hwy.  
Bret McCasland, Minister  
16th & Ave. D.

**Church Of Christ**

Sunday 10:30 a.m.  
Evening 6:00 p.m.  
Wednesday 8:00 p.m.

**First Assembly Of God**

Rev. G. Dean Reid, Pastor  
9:45 Sunday School  
11:00 Morning Worship  
6:30 Evening Services  
7:30 Mid-Week Services  
272-3984

**Spanish Assembly Of God**

East 6th and Ave. F.  
Mike Doyle, Pastor

**First United Methodist Church**

507 W. 2nd Street  
Richard Edwards, Pastor

**1st Baptist Church**

Lazbuddie, Tx. 965-2126  
Gary Wilcox, Pastor

**Primitive Baptist Church**

621 South First  
Elder Cleveland Bass, Pastor

**Lazbuddie Church Of Christ**

202 W. Ave. B.

**New Covenant Church**

Plainview Hwy.  
Sunday 10:00 a.m.  
Wednesday 7:00 p.m.  
Jimmy Lowe, Pastor

**Western Drug**  
114 Main 272-3106

**Lazbuddie Methodist Church**  
965-2121  
Larry Reid Farris, Pastor

**Templo Calvario**  
507 South Main  
Sunday 10:00 a.m.  
Sunday Evening 7:00 p.m.  
Evangelistic Services  
J.L. Soto, Pastor

**Dairy Queen**  
1204 W. Amer. Blvd. 272-3412

**Sain Irrigation**  
Clovis Hwy. 272-4397

**Ana's House of Beauty**  
109 W. Ave. B. 272-4152

**American Valley, Inc.**  
Hwy. 84 W. 272-4266

**Robert D. Green, Inc.**  
2400 W. Amer. Blvd. 272-4588

**Fry & Cox, Inc.**  
401 S. First 272-4511

**Bob Stovall Printing**  
221 E. Ave. B. 272-3373

**James Roy Meat Market**  
506 W. Amer. Blvd. 272-4361

**Lookin' Good**  
206 Main 272-5052

**Main Street Beauty Salon**  
115 Main 272-3448

**1st Bank Member F.D.I.C.**  
202 South First 272-4515

**Bratcher Motor Supply**  
107 E. Ave. B. 272-4288

**5-Area Telephone Co-Op**  
302 Uvalde 272-5533

**Irrigation Pumps & Power**  
W. Hwy. 84 272-4483

**Farmers Co-Op Elevators**  
113 N. 1st 272-4335

**Wes Tex Futures, Inc.**  
1910 W. Amer. Blvd. 272-5585

**Richland Hills Texaco**  
1914 W. Ave. B. 272-4875

**Parmer County Political Calendar  
Parmer Co.  
Judge  
Leland Gustin**

# CLASSIFIEDS 272-4536

**CLASSIFIED RATES**  
 15 Words & Under Minimum Charge \$2.30  
 Thereafter \$2.00  
 16 Words & Over 1st Insertion 15 cents per word  
 2nd Insertion 13 cents per word  
**CLASSIFIED DISPLAY RATES**  
 \$1.75 Per Column Inch  
**DEADLINES**  
 12 noon Tues. For Thursday Paper  
 12 noon Friday For Sunday Paper

To receive the reduced rate after the first insertion ad must run continuously.  
 We reserve the right to classify, revise, or reject any ad. We are not responsible for any error after ad has run once.

## 1. Personals

**CONCERNED About Someone's Drinking? HELP IS AVAILABLE**  
 through Al-Anon  
 Call 272-2350 or 965-2870 or come to visit Tuesday nights, 8:00 p.m. or Saturday mornings at 10:30 a.m. and through AA call 965-2870 or come visit Tuesday nights, 8:00 at 620 W. Second, Muleshoe.

**FOR YOUR Wedding Cakes, Decorated Cakes (Such as Hamburger, Pizza Cakes) Portrait or Cartoon Cakes, Special Valentine Cakes, For loved ones or office friends.** Call Ann Johnson 272-5746.  
 J1-5s-tfc

## 3. Help Wanted

**HELP WANTED: LVN or RN to complete Mobile Insurance Physicals. Must draw blood. Flexible hours.** Call 1-800-692-4485. E3-5s-3tc

**HELP WANTED**  
 Male general laborer for nursery/garden center. Only non-smokers need apply. Call between 9 a.m.-12 noon, Monday thru Thursday. 272-5536. P3-5t-tfc

**NEED someone to do part-time tractor driving. Must be experienced.** Call 946-3352 after 7:00. 3-5t-4tp

**WANTED: Mature individual with extensive farm background to manage assembly and handling department.** Contact C&H Equipment at 272-5514. C1-4t-4tc

**"ATTENTION HIRING!"**  
 Government jobs-your area. Many immediate openings without waiting list or test. \$17,840-\$69,485. C3-3s-4tp

**Classifieds 272-4536**

## 4. Houses For Rent

**FOR RENT:** 2-3 bedroom, one bath houses. \$300 each. Call 272-4011. H4-5t-4tc

## 5. Apts. For Rent

**APARTMENTS FOR RENT:** 1 or 2 bedrooms. Furnished and unfurnished. Some bills paid. 272-7575. P5-2t-tfc

## 9. Automobiles For Sale

**83 FORD Customized Van. B&W.T.V., Almost New Tires, Fiberglass carrier, Radio and Cassette, F&R Heat and Air.** 965-2766. 9-5t-2tp

## 11. For Sale Or Trade

**3 Submersible pumps Muleshoe Area. 25 HP 460 V with 185' of 6" pipe; 15 HP 220 V with 160' of 5" pipe; 15 HP 220 V with 180' of 4" pipe. Used less than 1 year. Phone 1-715-835-8372.** 11-5s-1tp

**FOR SALE: Kenmore 17.5 Cubic Ft. Upright Freezer \$200. 19" Portable Color TV, \$125. Regulation Size Pool Table, \$200.** Call 965-2125 after 5 p.m. 11-5s-2tp


**FOR SALE: 150 bags of PM 145 cotton seed. 90% germ. Call 946-3352 after 7:00.** 11-5t-4tp

**FOR SALE: Portable Welder on trailer.** Call 946-3352 after 7:00. 11-5t-4tp

**LOT FOR SALE: Richland Hills. Great view. 710 W. 20th. 140x140'. Call 272-4344 or 272-3510.** J11-52t-tfc

## 15. Misc.

### Grooming Services

by Keva Peterson  
  
 Monday thru Friday  
 8:00 a.m. to 6:00 p.m.  
 Complete grooming of all breeds by appointment only!  
**Keva Peterson**  
 315 W. Ave. K. 272-3473

### Ernie's Roofing

Specializing in flat roofs, shingles and Build-up roofs.  
 Residential-Commercial  
 Free estimates, References, work guaranteed.  
 L1s-33s-tfc  
**Bus. 505-762-6510**

## 17. Seed and Feed

**NEED EXTRA SPACE IN YOUR BARN?**  
 Let us pay Cash for your unwanted or outdated planting seed. Free pick up service. Cash paid for your planting seed when picked up. Write approx. # of bags of cottonseed, grain sorghum, corn, or other seed to:  
 Bio-Soil  
 P. O. Box 98556  
 Lubbock, TX 79499  
 Please include phone number!

## 18. Legals

### PUBLIC AUCTION SALE

Under the authority in Internal Revenue Code section 6331, the property described below has been seized for nonpayment of internal revenue taxes due from Sandra Martinez, Rt. 1 Box 2068, Hereford, Tx. 79045.

The property will be sold at public auction as provided by Internal Revenue Code section 6335 and related regulations.  
 Date of Sale: February 16th, 1990  
 Time of Sale: 11:30 am

Place of Sale: East steps of the Bailey County Court House, Muleshoe, Tx. 79345  
 Title Offered: Only the right, title and interest of Sandra Martinez in and to the property will be offered for sale. If requested, the Internal Revenue Service will furnish information about possible encumbrances, which may be useful in determining the value of the interest being sold.

Description of Property: All that certain lot, tract, or parcel of land, lying and situated in Bailey County, Texas, and more particularly described as follows, to wit:  
 All of lots Number Two (2), and Three (3), in Block Number Thirty Four (34), Original Town of Muleshoe, Bailey County, Texas.

Property may be inspected at: 506 E. 5th St., Muleshoe, Tx. 79345.  
 Payment Terms: Full payment required on acceptance of highest bid.  
 Form of Payment: All payments must be by cash, certified check, cashier's or treasurer's check or by a United States postal, bank, express, or telegraph money order. Make check or money order payable to the Internal Revenue Service.

Noel Delgado  
 Revenue Officer  
 1205 Texas Ave.  
 Rm. 307  
 Lubbock, Tx. 79401

**Cash Rewards Up To \$1,000 For Information! Call Bailey County Crime Line 272-HELP**

## 8. Real Estate

**FOR SALE OR RENT:** House in Lenau addition. 3 bedroom, 1 bath. 965-2838. G8-5s-4tc

**PROPERTY FOR SALE**  
 ON the Co-op Gin Road. 272-4006. 8-5s-6tp

**FOR SALE BY OWNER:** 2-1-1 new painted inside, fenced backyard and storm cellar. Nice neighborhood. Call 925-6477. K8-4t-4tc

**FOR SALE BY OWNER:** 3 bedroom, 3 1/2 bath Brick home. Den, formal living room and dining room, kitchen and utility, double garage, lots of storage, storm cellar, in good location. Also included 2-bedroom rent house. Call 272-3353. G8-5t-8tc

**LAND FOR SALE:** 160 Acres -- Parmer County, 299.13 Acres -- Castro County. Acreage Appraisal Real Estate. 794-9109. W8-4s-4tc

**FOR SALE:** Really nice modernized older home. Huge rooms, 3 baths, fireplace, sits on 1/4 of a block. Heat pump and refrigerated air. Call 272-3267 or 272-3304 after 6:00 p.m. A8-3t-tfc

## 8. Real Estate

**FOR SALE:** 143 Acres on Highway 70. Highway frontage 2 sides, Underground pipe, 6" well Electric, 13 Acres Pasture Call 965-2766. 8-5t-2tp

**FOR SALE:** 320 acres of dry land in the Goodland area. 272-4622. K8-4t-10tc

**LAND FOR SALE:** 7,000 acres of irrigated land. Will sell any part, or all. Sprinkler, fenced, and water tanks for cattle in each circle. Good cattle operation and excellent living quarters. Land is good for vegetables or grains. Near Earth, Texas. Will also sell or lease.  
**Randy Johnson**  
 (806) 272-3056

## Smallwood Real Estate

232 Main Muleshoe 272-4838



**Lenau Addition: 3 Bedroom, 1 Bath, Living & Dining Room, 19' x 11' wood burning stove. 1 Car garage, fenced back yard. Priced less than tax appraisal.**  
**FOR RENT on Main Street - Furnished Office:** Large reception room, Four private offices, Central heat & refrigerated air.

## 8. Real Estate

**FOR SALE OR RENT:** 2 bedroom, 2 full bath mobile home, on 45'x-150' fenced lot. Call 272-5435, after 5 p.m. G8-49t-tfc

**3-BEDROOM, 2-bath, double-wide mobile home for sale.** 272-3438. C8-5s-tfc

## 8. Real Estate

**HCR REAL ESTATE**  
 3-1 stucco house, fenced back yard, with a 1-bedroom in back.  
 \*  
 2-bedroom, den, fenced back yard \$10,000.00  
 \*  
 2-bedroom on corner lot, with storm windows. \$511,500.00  
 \*  
 1-Bedroom on small lot.  
 \*  
 Trailer spaces for sale.  
**Call Thursie Reid 272-5318**

## 8. Real Estate

**For Rent**  
 LARGE 3-bedroom house for rent or sale. Located in country.  
**Call 946-3417**

## Sudderth Realty, Inc. REALTOR

109 Fifth Street Farwell, Texas  
 Realtors/ Certified Appraisers

**240 ACRES IRRIGATED--One 4 inch and one 6 inch well together pump approximately 700 G.P.M., Lays Good, Near highway intersections 70-303 east of Muleshoe. Owner will finance. For more information Call 806-481-3288 or 806-825-3389**  
**EXCELLENT 320 ACRES irrigated with two 8 inch wells. 200-220 feet of water. Lays nearly perfect near Hub. Owner will finance**

## Bingham & Nieman Realty 272-5285 or 272-5286

**116 E. Ave. C**

**RICHLAND HILLS**  
**JUST LISTED-IMMACULATE-ENERGY EFFICIENT** 3-2-2 Brick, Cent. A&H, built-ins, FP, sunken lv. area with cathedral ceiling, ceiling fans, earthtones, storage bldg., much more!!!!150's

**4 NICE RESIDENTIAL LOTS PRICED FROM \$5,000.00!!!!**

**JUST LISTED- Nice 3-2-2 Brick on large corner lot, Cent. A&H, built-ins, storm windows & doors, large basement, much more!!!!**

**JUST LISTED - 3-2-2 Brick on corner lot, Cent. A&H, built-ins, FP, cov. Patio & more. \$60's!!!!!!!**

**VERY NICE 3-2-2 Brick Home, Cent. A&H, built-ins, FP, Wtr. Sftnr., auto. spkrl., Cov. Patio, Stor.-Shop, & much more!!!!!!!**

**HIGHLAND AREA**  
**NICE 3-2-2 Brick home (2 story), on corner lot, Cent. A&H, built-ins, and much more. LET'S LOOK TODAY!!!!160's**

**NICE 3-2-1 Brick Home, Cent. A&H, built-ins, large den with fireplace. Fenced yard, storage bldg. \$40's!!!!**

**PRICE REDUCED 2-2-2 Brick, corner lot, Cent. A&H, spacious rooms, utility, cov. patio, fenced yard, & much more. \$40's!!!!**

**HIGH SCHOOL**  
**JUST LISTED-COZY 2-1 Home, nicely remodeled, fenced yard, & more \$17,000!!!!**

**2-1 1/2-1 Brick, fl. furnace, CA, fenced yard & more.\$20's!!!!**

**NICE 2-1 1/2-1 Home, corner lot, built-ins, nice carpet, heat pump, fenced yard, storage bldg. & more!!!!!!**

**PRICE REDUCED 3-1-1 Home earthtone carpets, fenced yard, storm cellar & workshop!!!!**

**JUST LISTED-IMMACULATE 3-2-2 Brick, Cent. A&H, built-ins, energy efficient, ceiling fans, shop-storage bldg., fenced yard, much more.\$40's!!!!!!**

**3-2 Home, nicely remodeled, Heat pump, storm windows & doors, well insulated, ceiling fans, fenced yd., storage bldg. & more!!!!!!\$20's**

**LENAU ADD.**  
 3-1 Home on corner lot, wall heat, fenced yd. \$20's!!!!!!

**COUNTRY HOMES**  
**JUST LISTED-NICE 3-3-2 Brick Home on one acre tract at edge of town, Cent. A&H, built-ins, FP, sunroom, office sauna, wet bar, auto. spkrl., fenced yd., plus other amenities!!!!!!**

**JUST LISTED 3-2-2 Brick on 25 acres, close to town, Cent. A&H, built-ins, shop, barn, new 4 wire fence all around, much more!!!!!!**

**3-2-3 carport Home on 11 acres at edge of town, Cent. A&H, built-ins, storm cellar, barns, & corrals. \$50's!!!!!!**

**3-1-1 Home on approx. 5 acres at edge of town, domestic well and irrig. well, barns & more.\$20's!!!!!!**

**VERY NICE 3-2-1 Home on 1 acre, close to town, Cent. Heat, Evap. air, nice carpets, nicely remodeled. \$30's!!!!**

**2-1 Home, 20 acres, sub. pump, sprinkler, barns & corrals. \$40's!!!!**

**EXCELLENT COMMERCIAL TRACT 175' x 100', Hwy. 70 & 84, railroad spur access at rar, approx. 1200 sq. ft. bldg. PRICED TO SELL!!!!!!**

**NICE 3,500 sq. ft. office bldg. across from Courthouse. PRICED TO SELL!!!!!!**

**JUST LISTED-NICE COMMERCIAL BLDG. ON MAIN HIGHWAY. Approx. 2800 feet of area, suitable for various types of business. Possible Owner Financing to qualified Buyer.\$20's!!!!!!**

**GEORGE NIEMAN, BROKER** **DIANNE NIEMAN, BROKER**

## Do Volunteers Live Longer?

Studies have shown that volunteering reduces stress and depression, inspires self-esteem and may even help you live longer.  
 But many newcomers to volunteering often miss out on its many benefits without realizing it. Veteran volunteer David Driver hopes to change all this with *The Good Heart Book: A Guide to Volunteering* (The Noble Press, Inc., Chicago).  
 "So many volunteers begin impulsively," Driver says, "with only a general notion of contributing something to humanity. But after that initial burst of enthusiasm, they tend to get disillusioned quickly, which doesn't do anyone much good."  
 This disillusionment — or "volunteer burnout," as it is called — often springs from work that fails to teach, challenge or otherwise reward the volunteer. "You owe it to yourself and others to find a volunteer job that will benefit you," Driver says. "The more you get out of it, the more you can put back into your service of others."  
 The first chapter of *The Good Heart Book* offers an eight-step process for finding the right volunteer job. One important step involves listing personal, even selfish reasons for wanting to volunteer. These might include meeting new people, gaining business contacts, etc. One volunteer profiled in the book joined Habitat for Humanity for two specific reasons — "because I could learn carpentry and drywalling while building homes for the homeless."  
 Other steps include analyzing your schedule to determine how much time to commit and choosing an issue to focus on in your work. Readers looking for insights on today's most pressing social issues will find a series of chapters devoted to homelessness, child abuse and neglect, inner-city poverty, teens in crisis, illiteracy, the abandoned elderly, battered women, people with AIDS and people with disabilities.  
 In addition to helping you become an informed and effective volunteer, *The Good Heart Book* contains profiles of volunteers working in each of the social problem areas. A directory of national and local volunteer agencies is also included. Copies of *The Good Heart Book* are available in bookstores or directly from the publisher. Call (312) 642-1168 for ordering information.

