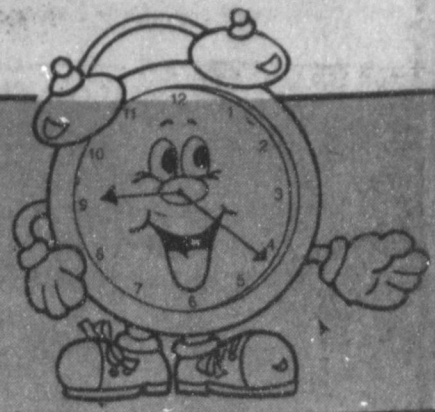


Foreman Company
Box 68
Manmouth, Ill. 61462



It's Time To
Spring Forward!
Change Your Clock
Forward 1-Hour
At 2 A.M. Sunday

AREA
And The Rains Come!
See Page 7

SCHOOL
Joe Cearley Spotlited
See Below

WEATHER

BAILEY COUNTY JOURNAL

'The Community Of Opportunity-Where Water Makes The Difference'



Vol. 26, No. 13

16 PAGES TODAY

Published Every Sunday At Muleshoe, Bailey County, Texas 79347

20^c

Sunday, April 3, 1988

Good Moisture Helps; But Wheat Still Stressed

Mother Nature Pulls April Fool Joke Here

Mother Nature! What are you doing? Don't you know it's very hard for the youngsters to try to find Easter Eggs in the snow!

At least, that's how it



Muleshoe Youth Baseball, Inc. will hold their final player registration Tuesday night, April 5, from 7-9 p.m. at the Muleshoe High School Gym, according to Tim McCormick, president of the organization.

All new players, as well as any returning players, must register on or before April 5 if they intend to participate this season. If a child is not able to attend the sign up on Tuesday night, they may go by 706 W. Ave. J to register, but they must do so before April 5.

Remember, April 5 is the absolute final date for signing a player to participate with Muleshoe Youth Baseball. There will be no exceptions made.

For more information regarding this, call Tim McCormick at 272-4477 or Cathy Gable at 272-3315.

Wednesday, at Abilene, the Lazbuddie FFA Judging Team again won first overall in competition.

Steve Bradshaw was second high individual and the team was second in cattle and third in sheep.

Cont. Page 6, Col. 1

In Profile

DeShazo Principal's 'Attitude' Says It All!

(Editor's note: *In Profile* takes a step back into the educational field this week. You will be introduced to one of Muleshoe's very unique and very caring school administrators -- let's now meet Joe Cearley, principal at Mary DeShazo Elementary School.)

You feel the warmth -- the friendly and enveloping atmosphere as soon as you step into the school -- DeShazo Elementary School -- that is.

There's an atmosphere of easy confidence, of rapport and of love from the front door, throughout the school of several hundred students.

Ah--and who's that tall young man strolling down the hallway of the school -- pausing periodically to listen closely to some youngster with his tale of woe or of pride -- patting him or her on the head, or briefly putting an arm around their small shoulders before going on his way? It must be Joe Cearley, who in his second year as principal at DeShazo, has created such an atmosphere for his students, for his teachers, aides and all the other staff members necessary to educate our youngsters.

His eyes take on a very

special glow as he talks about -- my kids -- all of them enrolled in the school, who, for the most part, attend happily every day.

How does this unique school principal establish such rapport with the students? His reply! "I think probably the rapport is my belief and concern for the kids.

"This belief is that every kid is as important as everyone else."

One definite way to establish that such rapport exists is to walk into the DeShazo gym, which also doubles as an auditorium. The several hundred youngsters are sitting cross-legged, laughing, talking and being youngsters.

Principal Cearley walks in front of them -- and raises both arms, extended with palms out.

There is instant, and absolute quiet in the large room. But, it is easy to see that the quiet is out of respect -- and love -- as you see their glowing eyes glued to their principal.

"I demand respect," said Principal Cearley, "and the kids know that. I love every kid in school the same. We have mutual expectations. They know what to expect from me, and I expect respect from them.

"We can love all the kids -- treat all the kids the same --



TRADITIONAL MARCH WITH THE CROSSES--Each year, on Good Friday, members of the Immaculate Conception Catholic Church, conduct the ritual of the March with the Crosses, from west of Muleshoe to the church. Although Good Friday this year was cold, with light snow falling, the members conducted the march as usual. In past years, such as 1987, the church members conducted the march in a sandstorm. [Journal Photo]

Celebrity Auction Chairmen Named; Plans Continuing

Plans for the third big Celebrity TV Auction are getting underway, and it is proving to be just as big, and maybe bigger, than the last two!

The big date is April 30, and it will again be held in the arena of the Bailey County Civic Center, beginning at 1 p.m.

Members of the Muleshoe Heritage Foundation will stage a gigantic event to raise funds to benefit the Muleshoe Heritage Center and renovation of

the Janes Ranch House and the Muleshoe Ranch Cookhouse.

The first Celebrity TV Auction was held in the studio of Channel 6, at the home of Jack and Magann Rennels, and raised \$8,000 in 1986.

It was moved to the Bailey County Civic Center the next year so people could come out and stay all day, if they wanted, and bid on the items they wanted. That year, 1987, over \$7,000 was raised.

This year's auction is expect-

ed to be even bigger and better and it is hoped a large amount of money will be raised for the Muleshoe Heritage Foundation to use to make more improvements in their Heritage Center.

The Santa Fe Depot was their main project the first two auctions, and it is now completed and being used not only by senior citizens, but many groups and individuals meet there daily.

Heritage Foundation officials
Cont. Page 6, Col. 4

Thursday morning, Bailey County Extension Agent told *The Journal* -- "If we don't get rain in the next couple of weeks, our dryland wheat will have very little potential this year.

"We need two to three inches if we are to produce the 16 bushel county average."

As a matter of fact, it did rain Thursday night, but the official measurement fell well short of the moisture needed to get the spring crops started.

Tanksley also said high winds continue to accompany the very dry temperatures. He said some of the winds have been along with heat, but within two to three days, cold spells set us back again.

This has proven to be quite accurate two times during the past six days. Monday morning, local residents got up to find snow on the windshields and lawns, and again on Friday morning, with light snow continuing to fall.

According to the extension agent, wheat continues to be grazed out and is very short now for livestock. He predicts that producers may not be able to hold cattle on the wheat until mid-April to May 1 as they would normally do.

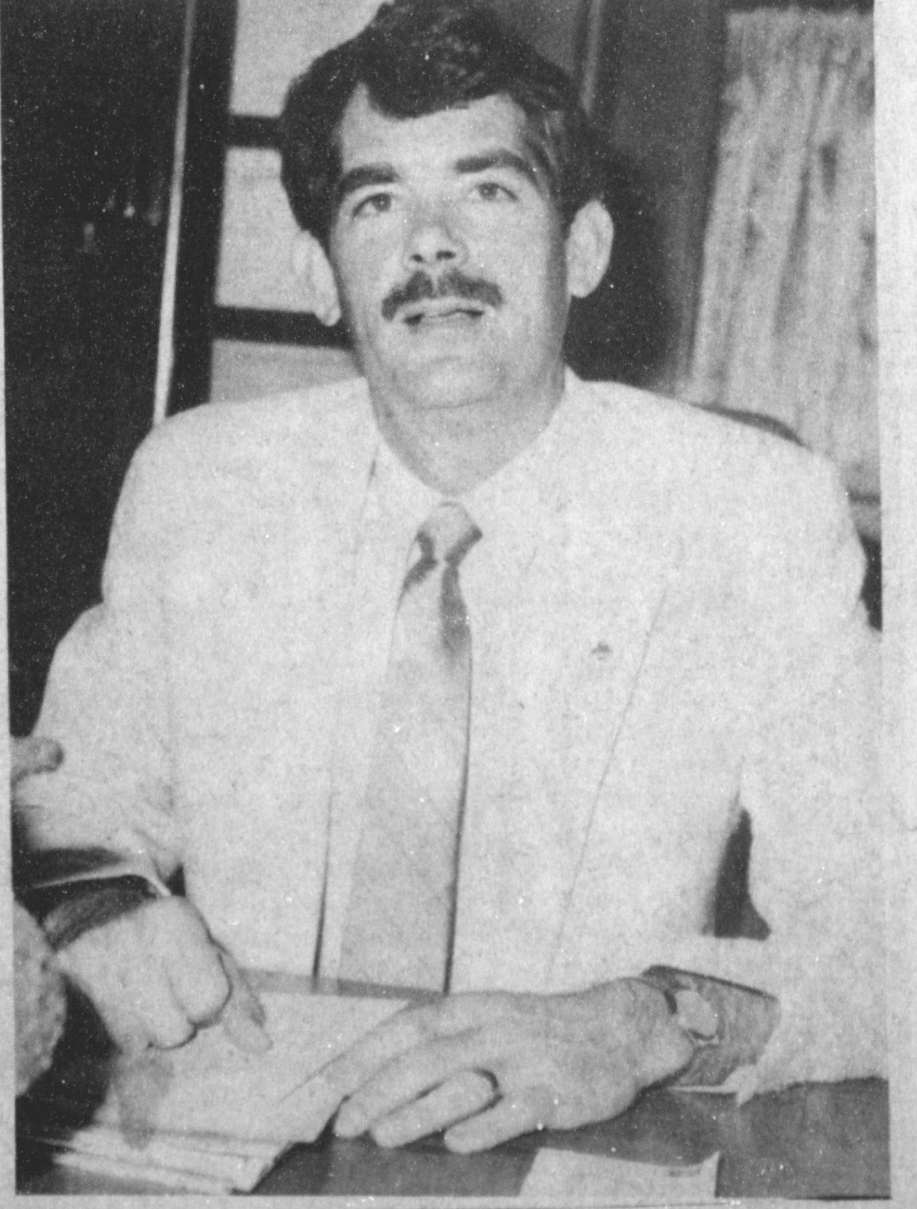
However, irrigated wheat has been responding well and is in good condition right now.

With wheat the major area crop, Tanksley warns producers that the Russian Wheat Aphid is beginning to cause problems, and many fields are being sprayed.

Tanksley said a turn row meeting will be scheduled in the near future to show producers what to look for when they are checking wheat for the Russian Wheat Aphid.

Vegetable-wise, the Extension agent said onion transplants have been completed, although the young vegetable has received shocks from the repeated cold spells.

Potato planting is underway.
Cont. Page 6, Col. 5



JOE CEARLEY

[Journal Photo]

In his own life, he has gained some experiences which have given him patience -- one virtue he exhibits with a quiet smile and quiet demeanor.

He grew up in Lovington, N.M. and attended New Mexico Junior College at Hobbs for two years, where he played basketball.

From there, he went to Plainview and attended Wayland Baptist University. This was in 1973.

In 1975, he became a sixth grade teacher in Plainview, a position he held for the next four years.

This was followed by working for the YMCA in Plainview until 1982 when he moved to Portales. While in Portales, he taught Special Education for One year and was a fourth grade teacher for two years.

In 1985, he moved to Olton and from Olton to Muleshoe in June, 1987.

"I had very little patience while I was growing up," he commented. "Or very little patience for the first two or three years I was married. Then in 1979, our daughter Michelle was born, weighing only two pounds. She stayed in the hospital for 63 days, and the

Cont. Page 6, Col. 3

Muleshoe Menu

APRIL 4-8-88
BREAKFAST
MONDAY
 Milk, Cooked Cereal, Toast, Fruit

TUESDAY
 Milk, Blueberry Muffin, Juice

WEDNESDAY
 Milk, French Toast Stick, Syrup, Fruit

THURSDAY
 Milk, Toast, Jelly, Fruit

FRIDAY
 Milk, Biscuits, Gravy, Sausage, Fruit

LUNCH
MONDAY
 Milk, Meat Loaf, Blackeyed Peas, Cheese Potatoes, Corn Bread, Pudding

Three Way Menu

APRIL 4-8-88
BREAKFAST
MONDAY
 Cereal, Juice, Milk

TUESDAY
 Toast/Jelly, Juice, Milk

WEDNESDAY
 Cinnamon Toast, Juice, Milk

THURSDAY
 Biscuit/Bacon / Jelly / Gravy, Juice, Milk

FRIDAY
 Waffles/Syrup, Juice, Milk

LUNCH
MONDAY
 Taco, Corn, Salad, Milk, No-Bake-Cookies

TUESDAY
 Pigs-In-Blanket, Peas, Carrot / Celery/Cheese Sticks, Milk, Cake

WEDNESDAY
 Pinto Beans, Okra, Tomato Relish, Corn Bread, Milk, Peanut Butter Pie

THURSDAY
 Hamburger Helper, Green Beans, Carrot / Celery Sticks, Hot Rolls, Milk, Honey & Butter

FRIDAY
 Tuna Sandwiches, Fries, Salad, Sliced Bread, Milk, Cookies

TUESDAY
 Milk, Juicy Burgers, Lettuce & Tomato, Pickles & Onions, Tater Tots, Cobbler

WEDNESDAY
 Milk, Enchalladas, Beans, Spinach, Corn Bread, Fruit

THURSDAY
 Milk, Burritos, Cheese Stick, Corn, Crackers, Cake, Fruit

FRIDAY
 Milk, Fried Chicken, Gravy, Green Beans, Creamed Potatoes, Hot Rolls, Fruit

COMBO LINE
MONDAY
 Milk, Pigs In Blanket, Black-eyed Peas, Cheese Potatoes, Pudding

TUESDAY
 Milk, Hamburgers, Lettuce & Tomato, Pickles & Onions, Tater Tots, Cobbler

WEDNESDAY
 Milk, Spaghetti With Meat Sauce, Beans, Spinach, Corn Bread, Fruit

Lazbuddie Menu

APRIL 4-8-88
BREAKFAST
MONDAY
 Toast, Bacon, Juice, Milk

TUESDAY
 Cereal, Juice, Milk

WEDNESDAY
 Toast, Oatmeal, Juice, Milk

THURSDAY
 Donuts, Fruit, Milk

FRIDAY
 Cinnamon Rolls, Applesauce, Milk

LUNCH
MONDAY
 Tacos, Green Salad, Corn, Pudding, Milk

TUESDAY
 Chicken Strips, Mashed Potatoes & Gravy, Green Beans, Hot Rolls, Fruit, Milk

WEDNESDAY
 Nachos, Green Salad, Pinto Beans, Cookies, Milk

THURSDAY
 Pizza, Corn, Green, Salad, Fruit, Milk

FRIDAY
 Hamburgers, French Fries, Lettuce, Pickles, Cobbler, Milk

SALAD BAR
OPEN EXCEPT FRIDAY

THURSDAY
 Milk, Chicken Pot Pie, Cheese Stick, Fried Okra, Cake

FRIDAY
 Milk, Fish, Macaroni & Cheese, Green Beans, Hot Rolls, Fruit

Furrow Dikes To Save Producer Time, Money

Waiting until after a rain to install furrow dikes is similar to closing the gate after the horses leave the pen. It may make producers feel better, but it won't save any of the runoff lost from the previous rainfall.

"We need to maximize the use of rainfall," says Ken Carver, High Plains Water District Assistant Manager. "The furrow dike is an effective, but inexpensive method of doing so," he says.

Furrow dikes are small dams spaced periodically down the furrow. The dams prevent water runoff by holding the water in place to soak into the soil.

Precipitation ranges from 16 to 20 inches per year across the Texas High Plains. Approximately 65 percent of the annual precipitation occurs just before and during the summer growing season.

Nearly two-thirds of the average annual rainfall is provided by showers with precipitation totals of less than one inch, which the soil can easily absorb. However, the remaining precipitation falls during short, intense thundershowers. In these cases, the downpour is greater than the soil's infiltration rate. As a result, runoff takes place.

Research conducted by the Texas Agricultural Experiment Station in Lubbock determined the amount of runoff caused by the slope of the land. Data revealed that no runoff occurred on level loam soils, while average annual runoff was 1.74 inches for land with a 0.2 percent slope, or a slope of two inches per 100 feet.

Runoff was 2.51 inches from soils with a 0.5 percent slope, 3.08 inches from soils with a 0.9 percent slope and 3.61 inches from soils with a 1.2 percent

IRS Waives Some Ag Tax Penalties

The Internal Revenue Service today informed Dr. Wayne Hayenga, economist-manage-

ment, that under certain circumstances it will waive penalties for underpayment of estimated tax for 1987 federal income tax returns filed by farmers who did not receive information documents from the U.S. Department of Agriculture by Feb. 15, 1988.

Hayenga, who is with the Texas Agricultural Extension Service, The Texas A&M University System, said the information documents are the 1987 Form 1099-A and Form 1099-G, or substitute Department of Agriculture Form CCC-182.

Generally, Hayenga explained, farmers are subject to special estimated tax rules. They do not have to file quarterly estimated tax returns and are relieved of any estimated tax penalty if they file their income tax returns and pay the tax due in full by March 1 instead of the usual April 15 filing deadline. Because of the delayed receipt of the information documents this year, some farmers will be unable to determine their tax due and file their 1987 returns by March 1, he added.

"The IRS said it will waive any estimated tax penalty for farmers who did not receive their information documents by Feb. 15, 1988. When they file the 1987 Form 1040, farmers should attach Form 2210F with their name and social security number at the top of the form and the words "Farm Waiver" at the bottom right-hand side. The rest of Form 2210F should be left blank," Hayenga said.

slope. The researchers noted an average annual runoff of 2.73 inches per acre without furrow dikes.

Additional findings from the Bushland and Lubbock Agricultural Experiment Stations noted increased crop yields with furrow dike use. For each additional inch of water provided beyond the basic water needed for plant development, cotton lint yields can increase as much as 30 pounds per acre while grain sorghum yields can increase up to 350 pounds per acre.

Cotton crop yields may increase by 90 pounds per acre while grain sorghum yields can increase up to 1,050 pounds per acre by using furrow dikes to collect an additional three inches of water which would have been lost to runoff.

Carver reminds producers that furrow dikes are highly cost effective. While initial equipment investments range from \$140 to \$300 per row, this cost can usually be recovered during the first year from reduced pumping costs and/or increased yields.

Dependence on underground water for irrigation is reduced by utilizing runoff water collected by the furrow dikes. Pumping costs are also lowered, and water is saved for future use.

Additional furrow diking information is available from the High Plains Underground Water Conservation District No. 1, 2930 Avenue Q, Lubbock, TX 79405 or by calling (806) 762-0181.

Postage Stamps Rates Increasing

On April 3

Today, Muleshoe Postmaster Abel Arguello announced that a decision has been reached by the Board of Governors of the United States Postal Service concerning the proposed increase in postage rates.

Effective April 3, 1988, Arguello says the new rate for first class postage will be 25 cents. This is the first increase in postage costs in three years.

The postmaster said although no one welcomes an increase in postage, it should be placed in perspective.

For example, in 1932, a first class postage stamp cost 3 cents. With adjustments for inflation, that same stamp would now cost 25.5 cents.

•SOFT •SUPPORTIVE •LIGHTWEIGHT

MADE IN U.S.A.



8910

LIGHT AS A FEATHER-MADE OF SOFT LEATHER

N	M	W	WW
6 1/2-11	5-11, 12	5-10	6-10

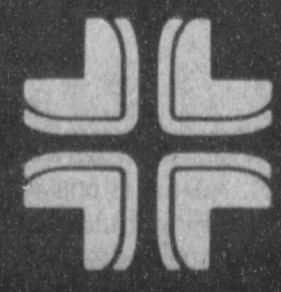
Fair Store
 120 Main 272-3500

RED WING SHOES

Sain Irrigation & Machine
 New pumps, pulling & repair all makes, bail wells, reperformate casing in well, gearhead repair, machine works, domestic well service. Located in 1900 block American Blvd. Gene Lowe building Phone 272-4397
Walter Sain



We took the world's most advanced EMS helicopter and added our own special feature: Experience.



ST. MARY OF THE PLAINS HOSPITAL

4000 24th Street ■ Lubbock, TX 79410

A Glorious Easter



FIRST EASTER EGG HUNT--One year old Stefani Langford, daughter of Sharon and Preston Langford will enjoy her first Easter egg hunt this afternoon following services at the First Assembly of God Church. Langford is employed by Pearson Construction and states that helping with youth basketball is his hobby. Mrs. Langford is secretary of Muleshoe Chamber of Commerce and Agriculture and lists shopping as her hobby.

By: Jim Cope, Pastor
Community Church

Two of the most delightful holidays that we celebrate in our nation are also holy days to the Christian Church. Those two days are Christmas and Easter. Though these two days have been greatly commercialized and secularized, they still stand as world-wide reminders of what God did to provide salvation from the penalty of sin for all mankind.

For us as human beings, it is almost incomprehensible that Jesus would endure the shame, the humiliation, the separation from all men, the rejection, and the physical suffering and pain. However, Jesus knew there was a plan of His Father's that was to be carried out in its entirety. He was willingly submissive to the will of God, and obediently did everything that was required to bring about the fulfillment of the plan of salvation.

In 1988, as I think of all the good that Jesus did upon the Earth, it is almost impossible for me to understand how anyone who demand His death by crucifixion.

Easter means to me that I can

look forward to a better life than I now have. I can look forward to eternal life with the One who gave His life for me. Not only can I look forward to life after physical death, but, I also have His help and companionship here and now, for Jesus said, "I will never leave you nor forsake you."

The Senior Pastor, Randall Ross, of Trinity Church in Lubbock, reminds us that the tombs of Confucius, Mohammed, and other spiritual leaders still have their mortal remains in them, but Jesus tomb was empty three days after He was buried. That's why we can sing so emphatically that Christ Arose. It seems so fitting that in America, Easter time comes about the time in Spring when all plant life is emerging with new buds and blossoms. Jesus said unless a kernel of wheat falls into the earth and dies itself, it cannot bring new life. But, miraculously, when it dies to itself, it brings forth not only new life, but it reproduces over.

I thank God, I can look back to a time in my life, when I died to myself, and came alive in Christ Jesus. I thought it would be painful to give up my old

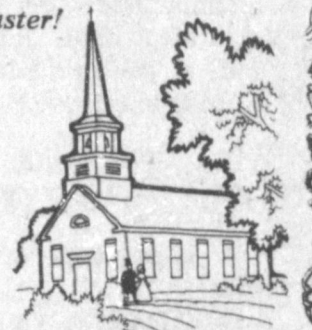
life, but to my surprise, it brought a joy I had never known before in my life.

I am grateful for what the resurrection means, not only to me, but what it means to millions who have already accepted Him and gone by way of the grave.

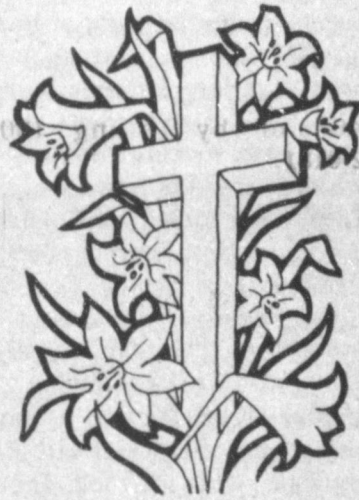
Jesus told His disciples that He was going away, but that He would return to get them and take them where He was, in order to be with the Father. That day will come, as surely as the prophecy of the coming of Jesus was fulfilled, and the prophecy of His death was fulfilled. Likewise, the whole world will see Him come as scripture prophesies. But, when He comes the next time, will you be glad to see Him or will you be sorry to see Him? I'm looking forward to His return.

Because of Easter, I have this Blessed hope in Him, that He will return for those who love Him and do His will.

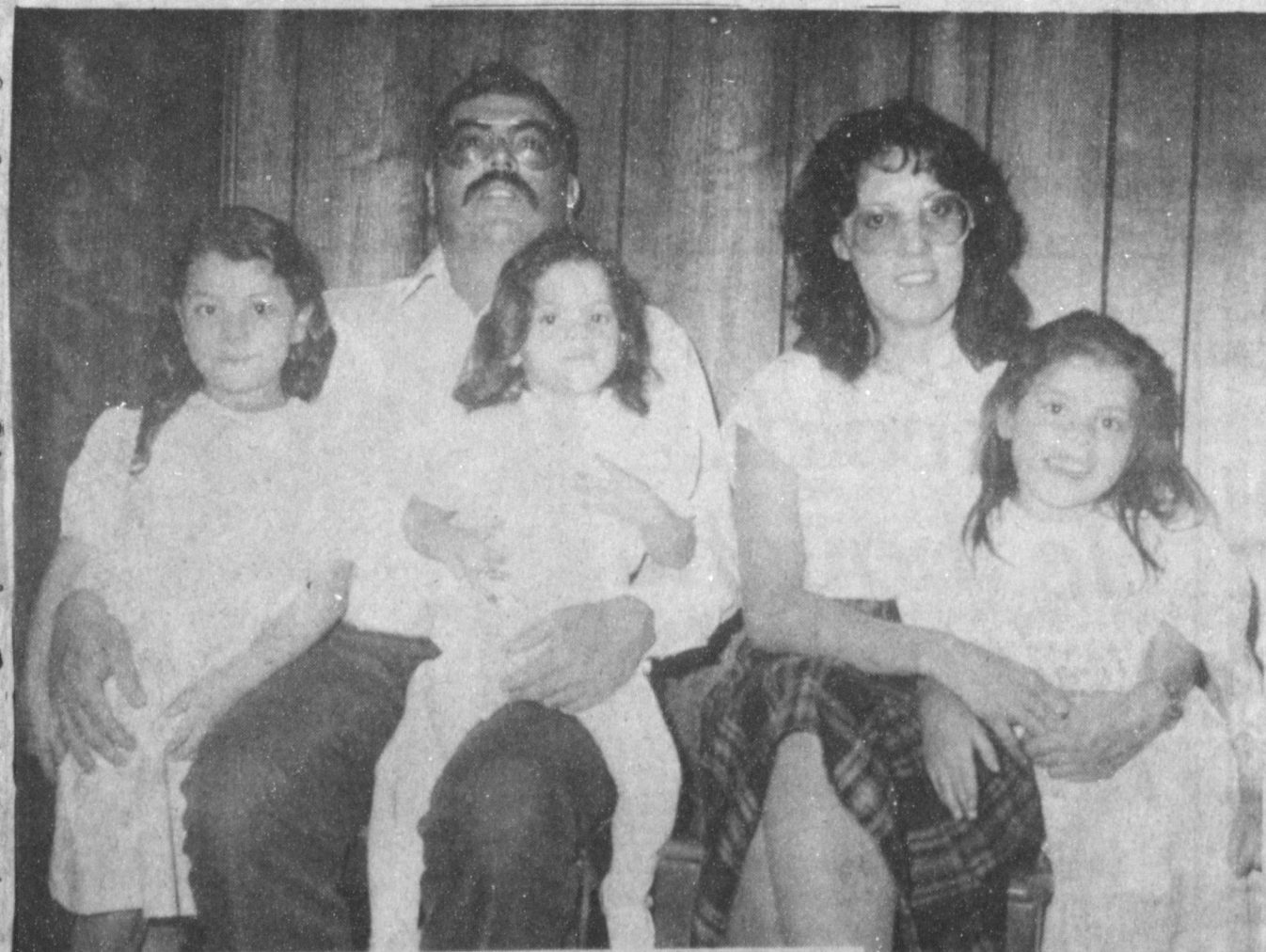
Happy Easter!



READY FOR EASTER SERVICES--Sheriff and Mrs. Bob Henderson will be attending Easter services at the First Assembly of God Church this morning. Sheriff Henderson is going on his eighth year of being sheriff of Bailey County. Prior to being elected sheriff, he served as a deputy for eight years. Mrs. Henderson has been a teachers assistant in the Muleshoe schools since 1981. They have two sons Bobbie who lives at Canyon and Jimmy of Muleshoe. They also have one grandson, Jay, seven years of age, son of Bobby and Sammie Henderson.



ATTENDING SERVICES AT FIRST BAPTIST CHURCH--Mr. and Mrs. Bob Graves and sons, Terry and Jerry Bob, are attending Easter services today at the First Baptist Church. Graves is principal at Watson Junior High School and Mrs. Graves is employed at Bailey County Electric. Terry is a junior at Texas Tech University at Lubbock and Jerry Bob is a senior at Muleshoe High School.



OFF TO EASTER SERVICES--Oscar and Liberty Hernandez and daughters, Vienna, 5; Olimpia, 4; and two year old Celeste, are attending Easter services at the Immaculate Conception Catholic Church today. Hernandez is employed by Pivot Products and stated that as a hobby he likes to do mechanic work. Mrs. Hernandez is employed at Sages Restaurant as well as being a TMC volunteer.



A JOYOUS EASTER--Mr. and Mrs. J.K. Adams of 608 W. Ave J. are attending Easter services today at the First United Methodist Church, where Mrs. Adams served as church hostess for many years. She also does some catering work. Adams is retired from Texas Agriculture Extension Service, but he said that he still enjoys growing tomatoes. Mrs. Adams stated that she enjoys sewing as a hobby.

Bridal Shower Honors

Miss Laura Latimer

Laura Latimer, bride elect of Michael Moore, was honored with a bridal shower Saturday, March 26 from 2:30 to 4 p.m. in the fellowship hall of the Three Way Baptist Church.

Guests were greeted by the honoree; her mother, Linda Latimer; her grandmother, Lois Latimer; and the prospective groom.

The serving table was covered with a lace table cloth with a light green underlay and was accented with an antique gold candelabra holding ivory tapers surrounded with ivory silk flowers.

The honoree, her mother and grandmother were presented corsages made of white lace doilies with light green ribbon and white wild flowers.

Covering the gift table was a white lace cloth. The prospective groom helped the honoree open the gifts.

Cookies, nuts, mints and lime shurbert were served from crystal appointments.

Special guests included the bride's mother, Linda Latimer; the prospective groom; the bride's grandmother, Lois Latimer; the bride's aunt, Janice Wylie; and a cousin, Lucille Wilson, all of Lubbock.

The hostesses gifts were a Sunbeam Electric mixer, two sets of beverage glasses and a set of kitchen towels.

Hostesses for the occasion included: Betty Eubanks, Paula Foley, Doris Huff, Betty Kirby, Chloe Klutts, Anna B. Lane, Rose Nichols, Lil Pollard, JoAnn Reeves, Pat Sowder, Letha Wheeler and Mildred Williams.

The couple exchanged marriage vows on Saturday, April 2nd at 2 p.m. in the Terrace Suite of the Lubbock Civic Center.

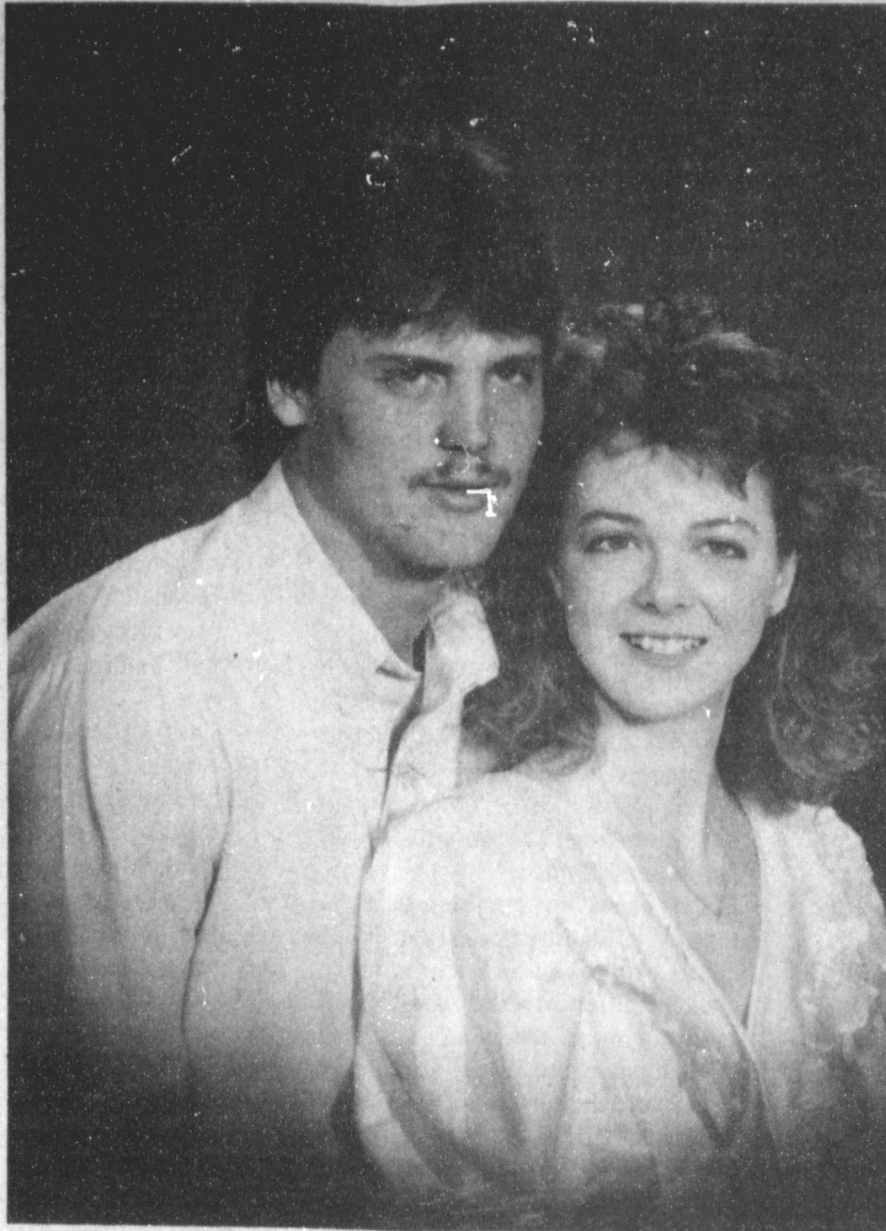
Sudan Women's Club News

The Sudan Women's Club sponsored a benefit basketball game Monday night in the gym when KAMC 28 team members played against Sudan coaches and faculty.

KAMC team players were Bill Seitzler, Andy Downs, Greg Todd, Jeff Brown and Rich Killwine. Sudan coaches and faculty included Royce McAdams, Ed Henley, Mike Martin, Doug Jones, David Quisenberry, Johnathan Robertson, Bo Lance, Ken Carr, Mike Fisher, Zanelle Martin, Donna Lance, Susan Baker and Cecilia Edwards coached by Lorett Reid.

Following the game, door prizes were given with Bill Seitzler drawing the tickets. Greg Lance won the under the counter TV, Kathy Gatewood, the under the counter clock radio; \$15 silver jewelry gift certificate from Lisa Walser was won by Toni Lowrance; Carl Mason of Littlefield won the 10 sessions tanning from Hawaiian Tan; Loretta Ray and Ryan Netherland each won three free videos from Main St. Video.

Kathy Gatewood, president, stated the benefit took in enough money to give the annual scholarship to a senior this year and the club would like to express their appreciation to all who helped make this benefit a success.



ENGAGEMENT ANNOUNCED---Donna Masten of Lubbock announces the engagement and approaching marriage of her daughter, Shawnda Danette, to David Wood, son of Mr. and Mrs. Dan Wood of Sudan. The bride elect is also the daughter of Danny Masten of Sudan. The couple plans to be married May 20 at the First Baptist Church in Sudan.

Creative Living

by Sheryl Borden

Information on common laundry problems and ways to make fashionable bow ties will be presented on "Creative Living" on Tuesday, April 5 at 12 noon and repeated on Saturday, April 9 at 2:00 pm on KENW-TV. (All times are Mountain).

Marilyn Smith, home economist with U.S. Borax Co. in Los Angeles, CA. will tell us everything we need to know

about doing the laundry -- everything to make those easy-care fabrics truly easy to care for. Marilyn will discuss common laundry problems and present effective solutions for many of these.

Another guest will be Eloise Wagers, Sales Manager for JHB International in Denver, CO. JHB International is one of the largest manufacturers of buttons in the country, but they also have a variety of other findings. Eloise will share some creative ideas for making bowties which are fashionable now. These are quick and easy to make, and relatively inexpensive, too.

On Tuesday, April 5 at 9:30 pm and on Thursday, April 7 at 12 noon "Creative Living" will feature Helen Hatton, a spokesperson for the American Paper Institute who will tell about a new symbol which is gaining widespread consumer attention and favor. This symbol is the recycling symbol, and Helen will discuss it's use. Helen is from Toronto, Canada.

Have you ever wondered how clothing manufacturers get started? Jacqueline Davis is a designer and manufacturer of the Lady "J" line of women's fashions, and she will tell about her beginning and show some exciting fashions. Jacqueline lives in Clovis, N.M.

"Creative Living" is produced and hosted by Sheryl Borden. The show airs on more than 100 PBS stations in the United States, Canada, Guam and Puerto Rico and is distributed by Pacific Mountain Network, Denver, CO.

Rebekah Lodge News

During the regular meeting of the Muleshoe Rebekah Lodge Tuesday, March 29, Adele Tompkins, representative from the Muleshoe Lodge, gave her report of the Assembly Meeting of Texas in San Antonio March 19-22.

She reported that 720 were registered with 120 of those being representatives from 229 Lodges across Texas with visitors from Kansas, Louisiana and Alberta, Canada.

Thirty seven members received the Assembly Degree. District 14 presented the Memorial Service commencing 66 Brothers and 350 Sisters who had died this past year.

Mrs. Tompkins reported there are 12,197 members in the State of Texas.

New officers elected for the coming year are Sue Monk, president; Rosie McMillen, vice-president; Madalin Lynch, Warden; Betty Dowell, secretary; and Addie Kirby, treasurer.

Sandi Robinson appointed as page, June Green as assistance color bearer and Ruby Green was selected to serve on the courtesy committee.

It was reported that the State Meeting will be held in Abilene in 1989, and in Odessa in 1990.

Attending the meeting from Muleshoe were Adele Tompkins, Thursie Reid, Dimple Sims, Ruby Green, June Green, and Sandi Robinson.

Wilma Wise from Friona Rebekah Lodge No. 308 who is District Deputy president for District 5, of which Muleshoe is a member, had her commission read. She asked the Muleshoe Lodge to help fill her basket with items that can be used by the residents of the Lodge homes.

Novella Price, Noble Grand, conducted a short business meeting.

Visitors present were Wilma Wise and Charlie Wise from Friona No. 308, and Mary Davis, Georgia Bullion and Ellen Whited from Friendship No. 21 of Clovis, N.M.

Refreshments were served to the visitors and 17 members by Clara Lou Jones and Patsy Chance.

Sudan CofC Plans Vacation Bible School

An exciting Vacation Bible School is being planned for this summer at the Sudan Church of Christ. This year's theme is "Discovering God's Power at The Wonderfaire." The dates for this exciting VBS will be June 6-11.

Stories about Jesus and his followers illustrate God's power and wonderful love. Life-changing Bible study, exciting games, crafts, recreation and singing will help students discover how they can follow God's instructions in their daily lives.

The country fair/wonderfaire theme will provide interest and excitement for everyone as they learn about God's special power and presence in their lives today.

The church had a special fellowship dinner after services last Sunday. Honored guests

were James and Kathy Humphreys, Krystal and Alissa; and Kevin and Rhonda Pickrell, Amanda and Laura. Both of these families have recently moved to Lubbock from Sudan. Also honored were Roby and Phyllis Lynn, Jennifer, Candace and Stephani; and James and Betty Withrow; who have moved back into this community in the past year.

A special Easter egg hunt was held last Sunday. About 25 boys and girls enjoyed singing songs and scrambling for Easter eggs after the fellowship dinner.

Sponsors included Nell Ingle, Phyllis Lynn, Cindy Wiseman, Shirley Fisher, and Sandra Franks. Additional treats were provided by Quinelle Pickrell.

Jesus died too soon. He would have repudiated His doctrine if He had lived to my age.

-F. W. Nietzsche.

Pizza Party

Held Sunday

In Littlefield

The Young Married and College Class of the Sudan Church of Christ had a Pizza Party last Sunday night at Pizza Inn in Littlefield.

Approximately 16 class members and 13 of their children were able to attend. Class members who attended were Larry Bellar, John Maxfield, Mike and Deneece McDonald, Randy and Doris Pierce, Lee Ray, Johnnie and Ginger Richey and Terry and Deanna Swart.

Bailey County Journal USPS 040-200
 Established March 31, 1963. Published by Muleshoe Publishing Co., Inc. Every Sunday at 304 W. Second, Box 449, Muleshoe, Texas. 79347. SECOND CLASS POSTAGE paid in Muleshoe, Texas. 79347. U.S. Post Office approved.

Member NATIONAL NEWSPAPER ASSOCIATION WEST TEXAS PRESS ASSOCIATION

TEXAS PRESS ASSOCIATION

L.B. Hall - President & Publisher
 Sammie Hall - Vice President & Controller
 Clara Williams - News
 Danett Bunch - Advertising
 Lillie Nino - Bookkeeping
 Evelyn Harris - Society

SUBSCRIPTIONS
 Muleshoe Journal and Bailey County Journal
 Muleshoe By Courier \$12.50
 Muleshoe Journal and Bailey County Journal
 Bailey County & Surrounding Counties By Mail \$14.75
 Muleshoe Journal and Bailey County Journal
 Everywhere in Texas \$18.50
 Advertising rate card on application

Turnbow, Atwood

Marriage Announced

Mr. and Mrs. Bill Turnbow of Muleshoe announces the marriage of their daughter, Tina to Kevin Atwood, son of Lois Atwood and Lee Atwood, both of Muleshoe.

The ceremony was performed by Justice of the Peace, Todd Ellis.

Miss Turnbow is a graduate of Muleshoe High School and Atwood will be a may graduate of Muleshoe High School.

They will make their home in the Needmore area.

Rapid Refund

WHY WAIT FOR YOUR TAX REFUND WHEN YOU CAN GET YOUR MONEY FAST!

Use H&R Block's Rapid Refund Program. It's available whether H&R Block prepares your tax return or not.

IT'S FAST! H&R BLOCK

For more details or to see if you qualify call H&R Block now.

224 West 2nd
 272-3332
 Weekdays 9 - 6 Sat. 9 - 5

BABY BABY BABY BABY BABY

Congratulations

Rex
 Finally Had A
BOY!!!!

BABY BABY BABY BABY BABY

Great event here in Muleshoe in forty eight Now she's forty in the show-me-state. Happy Birthday

Just In Time For Easter

alfred dunner inc.

Coordinated

Blue & White Chambray

Ladies Sizes 10 - 18

Lookin' Good

206 Main Phone 272-5052

You said it was cold... He thought you called him old.

To someone with a hearing loss, a casual remark can often lead to misunderstandings and hurt feelings. Feelings you may never be able to set right. Because even though a friend or relative may hear what you say, he or she may have trouble understanding certain words. And one misunderstood word is all it takes.

Why take the chance? Be a good friend. Show someone how much you care. Call Beltone and make an appointment for a loved one now. Many hearing problems can be helped.

Friday, March 11, 1988
 10 A.M.-12 P.M.
Beltone®
 Call Now For An Appointment To Avoid Waiting
Bailey County Coliseum
 272-4114

Local Youth Second In State

Holly Engelking, first grade honor roll student at Lazbuddie Elementary and daughter of Dave and Sheryl Engelking of Lazbuddie, recently participated in the Texas State Southwest Tumbling and Trampoline Championships held at Lubbock Memorial Civic Center. Over 700 gymnasts from across the state competed in the two-day event. Holly placed fourth over-all in the state competition.

Holly is a student of All American Gymnastics in Amarillo and also of Kregg Wellman

Gymnastics in Muleshoe. She is a member of the Southwest Tumbling and Trampoline Association.

The Lazbuddie six-year-old competed on the novice team early in the season but was quickly moved to the advanced team to compete against seven and eight-year-olds. Holly proved that she was able to compete with the advanced team at State, where she won third place in the floor exercise, fifth on the trampoline, and sixth on the double mini trampoline. She earned enough points to be placed fourth in the state.

The All American team from Amarillo won second place in the state meet, which qualified the team to compete in the world games to be held in May.

Coach Kregg Wellman considers Holly a power tumbler. He said that she has incredible strength in her upper body and in her legs and a desire to be a talented gymnast. "That's a winning combination," Wellman said he is looking forward to coaching Holly in the future.

Holly is the granddaughter of Mr. and Mrs. Richard Engelking of Lazbuddie and Mr. and Mrs. E.A. Bass of Muleshoe.



HOLLY ENGELKING

AHA 'Dance For Heart' Scheduled Here April 11

Over 30 Muleshoe Area dancers are expected to participate in the Dance for Heart dance at Watson Junior High Gym at 6:15 p.m. on Monday, April 11. The dancers raise money for the American Heart Association and have fun doing a form of exercises called Jazzercise.

The dancers hope to raise public awareness of Jazzercise and Heart Disease while raising funds to benefit the American Heart Association in Texas.

Jazzercise is a fitness sport combining the cardiovascular benefits of jogging with the fun of easy-to-learn, slide, lunge, skip, bend, twist and stretch in continuous motion. In addition to trimming and firming the body, jazzercise strengthens and conditions the heart by making the body work hard and demand an increased amount of oxygen.

Dance for Heart is being conducted statewide under the cosponsorship of the AHA and the Governor's commission on physical fitness. The funds raised will support research, public and professional education and community service programs of the American Heart Association in Texas.

Dancers are getting pledges this week for ten cents or more per minute from as many sponsors as they can enlist. The event is two hours long. There are two 50 minute dance sessions and the participants will dance as many sessions as they can in that time. Later, they will collect the pledges they have earned.

"We are grateful for the tremendous support we're getting from the dance instructors and students," said Hugh Young, Dance For Heart chair-

man of the Bailey County division of the AHA. "The funds will help us in our mission to prevent the premature death and disability from heart disease including heart attack and stroke. Those people who have volunteered to put this together should be congratulated for their enthusiastic cooperation."

For the most money raised in this event locally, there will be a free dinner for two presented. Along with other prizes supplied by the American Heart Association. Some of the prizes given by the AHA will be a towel, waterbottle, sports bag, watch, sweatshirt and warmup.

"The public is invited to attend the Dance for Heart and watch and encourage the dancers. The American Heart Association urges everyone to participate in a regular fitness program, and jazzercise is especially easy, healthy and fun. Jazzercise is easy to start and easy to continue and no special equipment or previous dance skills are required.

Guild Circle Met Monday In Tollett Home

The Guild Circle of the Sudan W.M.U met Monday night in the home of Mary Tollett. Jackie

Mrs. Cardwell Hosts Searchers S S Class

The Searchers class of the Sudan First Baptist Church held their March meeting Tuesday night at Savannah's in Littlefield.

Following the meal, the group met in the home of Marge Cardwell for the devotional that Frances Gardner brought.

Those attending were: Nora Phillips, Charls Ann Williams, Mary Powell, Linda Summer, Georgann Rasco, Patty Miller, Lynette Burns, the hostesses, Marge Cardwell, and a guest, Francis.

McAlpin gave the invocation. Anita Wallace brought the program on the continuing studies on Russia. Eloese Curry presided over the business meeting. The meeting adjourned with the Guild benediction, and refreshments were served by the hostess.

Attending were Mary Smith, Betty Masten, Anita Wallace, Grace Lopes, Frances Potter, Eloese Curry, Seva Ray, Mae White, Jackie McAlpin, Carol Hill, Nellie Williams, Thettie Walker, Dorothy Drake, and guests, Kathleen Goodwin of Virginia, Bethany and Hanna Williams.

What reason have atheists for saying that we cannot rise again?
-Blaise Pascal.

Latest Arrivals

Brady Rex Black
Mr. and Mrs. Boyd Rex Black are the proud parents of a son born at 6:21 p.m. Tuesday, March 29 in West Plains Medical Center.

The young man weighed nine pounds and ten ounces and has been named Brady Rex. The couple have three other children, Katie 7, Lysnie 5, and Marlie, 2 years of age.

Grandparents are Mr. and Mrs. Bill St. Clair and Mr. and Mrs. R.L. Black, all of Muleshoe.

Great grandparents are Mr. and Mrs. T.W. Cooper of Andrews.

Golden Gleams

For as in Adam all die, even so in Christ shall all be made alive.

-I Corinthians 15:22.

Let none of you say that this flesh is not judged and does not rise again.

-St. Clement.

At the resurrection the substance of our bodies, however disintegrated, will be reunited.

-St. Augustine.

STRIKE GOLD!

OFF Every 14K Gold H.S. Class Ring

\$40

OFF Every 10K Gold H.S. Class Ring

\$20

Offer valid 2/1/88-5/31/88 only for the purchase of ArtCarved 14K and 10K gold H.S. class rings.

FREE FEATURES ON ALL GOLD RINGS!
FULL LIFETIME WARRANTY

ARTCARVED
CLASS RINGS

Trophies & More

J-0000 843 129 Main Bring This Ad 272-3043

Subscribe To The Journals

(Muleshoe Journal and Bailey County Journal)

Fill In, Clip Out & Mail With Your Check Or Money Order to:

Muleshoe Journal/Bailey County Journal

P. O. Box 449 272-4536
Muleshoe, Texas 79347

Name

Street

City

County

State

Zip Code

Muleshoe Journal & Bailey County Journal
By Carrier.....\$12.50

Muleshoe Journal & Bailey County Journal
By Mail (Bailey & Surrounding Counties).....\$14.75

Muleshoe Journal & Bailey County Journal
By Mail (Elsewhere).....\$16.50

ACROSS THE FENCE

By
Kandy K. County McWhorter
Extension Agent

The first session of a series of meetings on basic nutrition will be held on Tuesday, April 5, 1988, at 5:30 p. m. in the meeting room of the Muleshoe Public Library.

This session will focus on sources of protein and carbohydrates and their proper preparation techniques.

These meetings are sponsored by the Bailey County Extension Home Economics Committee of the Bailey County Extension Program Council.

Educational programs conducted by the Texas Agricultural Extension Service serve people of all ages, regardless of socioeconomic level, race, color, sex, religion, handicap or national origin.

Make plans now to attend this informative and educational meeting on April 5 on proteins and carbohydrates. The other sessions will be on sources of vitamins A and C, and on sodium, sugars, and variety of foods.

NOTICE TO MULESHOE AND SURROUNDING AREA RESIDENTS

LITTLEFIELD MEDICAL CENTER

waives medical deductibles on all in-patient hospital admissions.

accepts 80% commercial insurance coverage as payment in full for all hospital admissions.

Out of pocket expense is virtually eliminated.

Littlefield Medical Center is a full service hospital with a 14 day in-patient chemical dependency rehabilitation program **"The IMPACT Program"**.

We're making it possible for you to obtain that needed medical care and ease your financial burden.

Staff Physician Access:
(806) 385-4421

For More Information Call:
Nadine Foley, Business Office Manager
Littlefield Medical Center
(806) 385-6411

TAKE YOUR BEST SHOT AT TAX SAVINGS...

Before Time Runs Out!

Individual Retirement Accounts are a sound investment for two reasons: You pay less in taxes and the interest you earn compounds tax free until you withdraw it.

Everyone's situation is different, and you should know the options before starting your IRA. Stop by our Investment Department for the answers. We'll help set up a plan that works for you.

Remember, you have until April 15th to qualify for this deduction on your 1987 tax return.

Take advantage of an IRA tax shelter at Muleshoe State Bank...before time runs out!

MULESHOE STATE BANK

MEMBER FDIC

101 West American Blvd. Phone 806/272-4561
MULESHOE, TEXAS 79347

Around Muleshoe

Con't. From Page 1

The Muleshoe Athletic Booster Club will meet Tuesday, April 5, at the Old Corral Restaurant at 7:30 p.m.

The group will be making plans for the All-Sports Banquet.

All parents of boys and girls in sports, and sports fans are encouraged to attend.

The Muleshoe High School graduating class of 1973 is planning a 15 year reunion.

It will be held July 30 in Muleshoe.

For more information, contact Chuck Smith at 272-5648 or Jama Mays at 505-392-7036.

H. John Fuller, superintendent of schools, has announced that the deadline for signing Student Transfer Requests is May 1, 1988.

Parents or guardians of those students who wish to apply for a transfer into the Muleshoe School District must complete the transfer request papers in the Superintendent's office.

All Student Transfer Requests are subject to approval by the Texas Education Agency, reminded the superintendent.

Sgt. Charlie Simmons of the Lubbock Highway Patrol District, of Plainview said for the month of February, our troopers investigated no fatal accidents, three personal injury accidents and one property damage accident.

H. John Fuller, superintendent of schools, reminds students and patrons of the Muleshoe Independent School District that Monday, April 4, is one of the scheduled bad weather make-up dates.

School will be held on Monday, April 4, in order to make up one of the days missed earlier in the year due to the snow.

School will resume at the regular time on Monday.

Mothers of twins who are interested in becoming a member of an area-wide 'Mother of Twins' Club, are invited to attend an organizational meeting in Olton on Monday, April 11.

The group will meet in the PCA party room at 7:30 p.m. Everyone who is a mother of twins or other multiple births is invited.

For more information, contact Rhonda Johnson at 285-3127 or Missy Powers at 285-2738.

A reminder has been issued that the Depot is open every Wednesday for senior citizens to take a sack lunch and enjoy games from 10 a.m. to about 3 p.m. Mrs. Lou Knowles is the hostess.

Thursday and Friday afternoons, from 1-4 p.m., the Depot

is open for senior citizens to visit and play games. Also, the public is invited to come by and see the Depot at this time.

If you are planning a party, a family reunion, a bridal or baby shower, a club meeting, you may reserve the Depot for your event by calling the Depot at 272-5873 or Jenne McVicker at 272-4741.

Winners of the Principal's award at Watson Junior High School this week include Casie Dodd, sixth grade; Monica Clemmons, seventh grade; and Tory Matthews, eighth grade.

Named teacher of the week was Karen McLaughlin, eighth grade math teacher.

Jennyslipper Walk-A-Thon Plans Final

This month, the annual Miles For Muleshoe Walkathon will again be sponsored by the Jennyslippers.

It has been scheduled for Saturday, April 23, beginning at 9 a.m.

Billie Downing, Walkathon chairman, said, "For the past five years, we have donated a major part of the cost of the 4th of July fireworks.

"At the same time, kids and organizations have been able to earn very nice prizes.

"Our goal is to be able to give the Chamber of Commerce a check for the total amount of the fireworks. With the help and generosity of friends like you, we think we can do it."

Walkers of all ages are encouraged to sign up, obtain pledges and walk one mile, two and a half miles, or the entire 10 mile route.

So start getting those pledges now.

Howard H. Carlyle Funeral Services Set Monday

Funeral services for Howard H. Carlyle, 98, of Farwell, formerly of Muleshoe, will be held at 2 p.m. Monday, April 4 in the First United Methodist Church with the Rev. Richard Edwards, pastor, officiating.

Burial will be in Bailey County Memorial Park under the direction of Ellis Funeral Home of Muleshoe. Carlyle died at 3:45 a.m. Saturday, April 2 in Farwell Convalescent Home.

He was born on Nov. 29, 1889, in Southwest City, Missouri. He was a retired hardware store sales clerk. He married Zula Harding, who preceded him in death in 1977. He was a veteran of the U.S. Army.

His survivors include a son, Howard H. Carlyle, Jr. of Farwell.

Lord taught me a lesson on patience.

"I learned a lot through that experience. A lot about myself -- and a lot about trusting in God and about patience. I believe God prepared me through that process for my work in Special Education. Even more than that, the Lord helped prepare me for administration."

Talking with Joe Cearley, it becomes very evident that he has a very deep and abiding faith and that he truly lives by that faith. He has an easy glow as he talks about his faith, his school, his family and his supportive staff members.

"I believe it all comes down to attitude," he adds. "With a Christ-like attitude, is being able to rely on Christ through the school day.

"I freely attribute any success to God, and the talent he has given me."

A rather modest man, Joe Cearley "pulls no punches" when he talks about Christ, or his kids.

He says he is beginning to see success in the kids at DeShazo now -- and "I want to be a part of that success."

He does have long term goals -- such as to be in some type of central office administration.

But, more importantly, are his immediate goals, such as -- "Right now, I want to continue to be a model for the students.

"I have no desire at this time to move, or for the foreseeable future, because of my concern and love for the kids around me."

A rather stern role-model when necessary, Joe Cearley prefers to attain the respect of his students through mutual love and respect, believing that youngsters respond to both love and respect -- by returning it to those who exhibit complete and authentic concern and love to them.

Not a principal to spend his time in his office with the door closed, it is more common to see Principal Joe Cearley in and out of the classrooms and visiting with the youngsters, and teachers, in the hallways, in the library, the lunchroom, on the playground, or wherever his young students may be.

He has also quickly attained the same rapport with all ages, and it has been noted that from the toddlers, to the grey-haired senior citizens, all persons readily respond to the school principal with the ready and real smile.

This also spills over to his home and family, and he points with pride to his wife, Teri and their three youngsters, Michael, 12; Michelle, nine and Mark, four.

Muleshoe is very fortunate to have people like Principal Joe Cearley, of DeShazo Elementary

School, here to care for their youngsters in those young and formative years.

Auction...

Con't. From Page 1

say people from out of town have been very impressed that Muleshoe has such a nice place for the various activities the Depot is being used for, as it is such a nice place for the various activities conducted.

"Muleshoe people are very proud of the Depot," said the spokesperson.

Mrs. Jack Schuster is general chairman of this year's Celebrity TV Auction, and many local people, and clubs, in the Muleshoe area, have joined together to make this another successful event for Muleshoe.

The Muleshoe Art Association has expressed an interest in participating again, and the members who donated their paintings have contributed a sizeable amount, very much appreciated, to the Muleshoe Heritage Foundation.

Always an important part of the Auction, the SCAC, a group of high school students, under leadership of Mrs. Jean Allison, will help as 'runners.' Other volunteers, representing the Lions and Kiwanis Clubs, have said they will be helping.

Committee chairmen were named during a recent meeting of the Celebrity TV Auction committee. Joan Lewis is the chairman of gift solicitation and R. A. Bradley is co-chairman. If you can make a contribution of any kind, such as handicrafts, cakes, pies, art work, or anything else -- please call Joan Lewis at 272-3469. It will take a lot of items to make the auction successful.

Also, if you can help by soliciting and picking up auction items from the businesses in town, please call one of the listed chairmen.

The Jennyslippers will again have the concession, and under direction of Food Chairman Evelyn Peat, they will serve barbecue, with all the trimmings beginning at 11:30 a.m. on the day of the auction.

Other committee chairmen include Phil Kent, bookkeeping; Roland McCormick, auctioneers; Merlin Neel, TV hook-ups; Jenne McVicker, publicity; and Kay Graves, publicity; and Maurine Hooten, telephones.

Also planned during the day will be live entertainment, designed to please anyone in the family. The Muleshoe Heritage Foundation encourages the entire community to turn out for the Celebrity TV Auction on Saturday, April 30, beginning at 1 p.m. at the Bailey County Civic Center.

Nature is beginning its spring show.

Good Moisture

Con't. From Page 1

and is expected to be over shortly.

Tanksley added that he had heard in the past several days that corn planters are out, and a little corn has been planted now. This is especially true around Earth, where some corn is in the ground.

"As a whole," said Tanksley, "the agriculture situation at the first of April is very dry conditions. We need top soil moisture to be able to have good planting conditions the first of May for cotton and other crops to be planted.

"From a dryland standpoint, there's just not much moisture. Of course, it did that last year, too."

The Extension agent says a lot of land has been 'put up,' bedded and fertilized, getting ready to plant when the producer can.

Livestock is basically in good condition -- at least those on wheat pasture, although they are not gaining the way farmers would like for them to, he added.

Deadline Nearing For Applications For Summer YCC

April 15 is the deadline for application for 15-18 year old area young men and women to apply for the United States Youth Conservation Corps.

Youth chosen for the YCC for this summer, to work through the Muleshoe National Wildlife Refuge, will begin work on June 6 for several weeks.

Application forms are available from the Muleshoe Wildlife Refuge, Box 549, Muleshoe, TX 79347.

Enrollees will be paid the minimum wage for a 40 hour work week. Most projects will be enrolling an equal number of males and females.

Some of the projects will include building trails, maintaining fences, cleaning up campgrounds, improving wildlife habitat, and other activities.

Interested youth must complete their application, and return it by the April 15 deadline date.

Range conditions are very dry, and pastureland being so dry creates daily fire hazards, he continued.

"In general," said the Extension agent, "farmers have a lot brighter outlook this year, as they had a good crop year and better prices in 1987.

"They are eager to get started and do a good job, trying to make a good crop."

Tanksley said the weather man has his hands tied again, with weather statewide very dry. Moisture is needed across the state, and range fires have been very common, such as the major range fire in the Abilene area.

Homeowners, realizing spring has arrived, are doing their early spring yard work. And as the weather continues to warm more and more fruit trees will be blooming.

However, it would appear that some fruit has already been lost to the continued cold spells that have plagued the area.

Tanksley reminded that information is currently available at the Bailey County Extension office to help not only big farmers, but homeowners, with their needs as spring gets well underway.

Annual City

Golf Tourney

Deadline Near

After a brief one year absence, the Muleshoe Golf and Country Club will again host the annual city/area tournament.

As in prior years, the tournament will be open to all city/area residents with an established handicap and will be conducted in the match play format.

There will be both a men's and ladies' division. Entry deadline is April 15. For more details and to enter, call the Pro Shop at 272-4250.

Other upcoming tournaments include the Annual Kickoff Classic to be held April 9-10. This will be a three-man lowball scramble.

Legal Notice


Public meeting concerning formation of non-profit corporation to manage and control Bailey County Memorial Park. Meeting with Trustee, David R. Langston, to be held on Thursday, April 14, 1988, at 7:00 p.m. in the Muleshoe State Bank community room. All current plot owners and interested members of public, welcome.

INDY WINNER SALE


Now, during Pennzoil's INDY WINNER SALE, you can get money back with every purchase of World Class Protection Pennzoil Motor Oil. A 20¢ Rebate on every bottle, or a \$3.00 Rebate on every case! (2 case limit) Just look on the back of the bottle to find Pennzoil's Mail-In Rebate Form. It's on the inside of every specially marked back label. Tear it off, fill it out, then mail it in.

World Class Protection

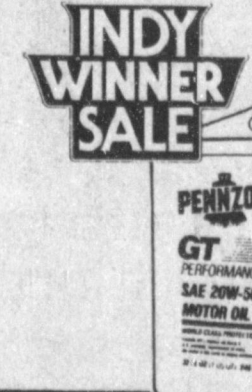
SAVE \$3.00 A CASE OR 20¢ A QUART WITH PENNZOIL MAIL-IN REBATES!



PENNZOIL	
.99 Quart	\$11.88 Case
-.20 Mig. Rebate	-.300 Mig. Rebate
.79 Quart	\$8.88 Case

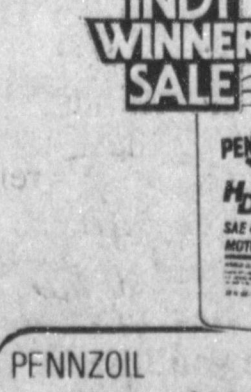


PENNZOIL	
\$1.05 Quart	\$12.60 Case
-.20 Mig. Rebate	-.300 Mig. Rebate
.85 Quart	\$9.60 Case

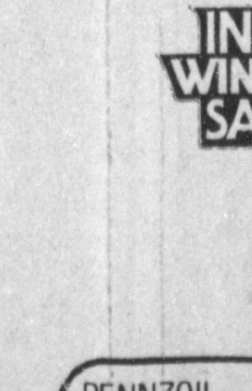


PENNZOIL	
\$1.05 Quart	\$12.60 Case
-.20 Mig. Rebate	-.300 Mig. Rebate
.85 Quart	\$9.60 Case

This Rebate Special covers all weights of your favorite Pennzoil motor oils. So stock up now, and start saving on the World Class Protection of Pennzoil. Hurry. Sale ends May 31.



PENNZOIL	
.90 Quart	\$10.80 Case
-.20 Mig. Rebate	-.300 Mig. Rebate
.70 Quart	\$7.80 Case



PENNZOIL	
.90 Quart	\$10.80 Case
-.20 Mig. Rebate	-.300 Mig. Rebate
.70 Quart	\$7.80 Case

A&M

FARM & RANCH SUPPLY

We Have 3 Great Locations To Serve You. All Are Welcomed.

2600 Mabry Dr. Clovis, N.M. 1-505-762-7717
 1601 S. Ave. D. Portales, N.M. 1-505-336-8543
 1302 W. American Blvd., Muleshoe, Texas 1-806-272-5571

Sundays 12:30 - 5:30 P.M.
 Monday-Saturday 7:30 A.M. - 6:00 P.M.



EMPLOYEE OF THE MONTH--Chester Yerby, longtime employee of Dale Oil Company, was named 'Employee of the Month' for March, and received a certificate and the travel trophy from Toni Eagle, manager of the Muleshoe Chamber of Commerce and Agriculture. His wife, Eleanor, is employed at Western Drug. (Journal Photo)

Check Pre-Plant Soil Temperature

In many cases the early bird does get the worm. But when it comes to spring planting, farmers may want to use a little restraint and take a look at soil temperatures before cranking up their planters.

One of the keys to getting spring crops off to a good start is to heed soil temperatures, cautions Spencer Tanksley, county agent with the Texas Agricultural Extension Service, The Texas A&M University System.

Soil temperatures have been shown to have an important effect on how well seeds germinate. Planting in cool soils often leads to poor seed germination and poor crop stands. Plants that do come up often lack vigor for early growth. And this opens the door to early season disease and insect attacks.

Tanksley advises farmers to begin planting only after the danger of a late frost is past and the soil has warmed to temperatures favorable to the intended crop.

Farmers also need to keep attuned to weather forecasts prior to planting. A sudden change in weather conditions following planting can be detrimental to the crop, particularly a cool, wet spell that can lower soil temperatures drastically.

Just when is it safe to plant what crop?

Average minimum temperatures (at the four-inch depth) for planting are as follows: corn, 50 degrees; sorghum, 55 degrees; cotton, 65 degrees; and soybeans, 70 degrees. "Minimum" rather than "average" temperatures should be used for rice and peanuts, with rice being 60 degrees and peanuts, 70 degrees.

Hardy vegetables such as onions, cabbage and potatoes can be planted once soil temperatures range between 45 and 50 degrees while warm-season vegetables, such as tomatoes, melons, beans and peppers need soil that has warmed into the 60s.

With early season planting, particularly when soil tempera-

tures are still marginal, farmers need to pay particular attention to using high quality seed, fungicides and other seed protectants, and adjusting seeding rates, notes Tanksley.

How do farmers keep abreast of changing soil temperatures?

Tanksley points out that daily readings are taken at various locations throughout Texas in cooperation with the Extension Service, the Texas Agricultural Experiment Station, the National Weather Service and individual cooperators. For example, the regional temperature reading for North Texas is based on temperatures at Lavon Dam northeast of Dallas, while readings at Lufkin and Longview make up the East Texas average. Regional readings are also made for the High Plains, Trans-Pecos area, Coastal Plains, South Texas and the Lower Rio Grande Valley.

As temperatures are collected, they are included in daily agricultural weather advisories issued for each of the regions by the National Weather Service's Southwest Agricultural Weather Service Center at Texas A&M University. The advisories are fed into the NOAA (National Oceanic and Atmospheric Administration) weather wire teletype system to be received by commercial radio and television stations. The advisories are also carried over the NOAA Weather Radio Network.

Specific treatment readings for about 40 locations also are distributed daily through regular weather service dissemination channels.

Keeping tabs on the weather and soil conditions can help farmers get off to a good start with spring planting, believes Tanksley. With the high cost of farm inputs, it's information that should be put to good use.

Sudan News

By: Evelyn Ritchie

The morning group of the United Methodist Women met in the Old Parlor of the Church for the regular meeting. The opening prayer was given by Thelma May with Nell Lane presenting the program on Ezra, chapters 5 & 6. Mary Tollett explained the use of the World Thank-Offering Boxes which were distributed.

Among those from Sudan who were in Plainview Tuesday night to watch the Flying Queens win against the Hilltoppers were Joan Nix, Lavern Harper, Billye Doty, Mr. and Mrs. U.J. King,

Mr. and Mrs. Byron Ford, Mr. and Mrs. Bo Lance and girls, Mr. and Mrs. Mike Fisher and family, Josephine Fisher, Mr. and Mrs. W.C. Masten, Mr. and Mrs. Harold Haynie, Mr. and Mrs. Norman Humphreys. The Queens will advance to the NAIA Tournament.

Present were Mary Olds, Nell Lane, Gil Rogers, Ruth Newman, Thelma May, Bertha Vereen, Gina Nichols, Margaret Smith, Rhoda Minyard, Anna Black, Laverne Harper and Mary Tollett. ***

The coming garage and bake sale was discussed and it was moved that it be held Thursday, May 5.

Visiting last week with Mr. and Mrs. Joe Burt Markham were their grandchildren from Amarillo.



John Deere Disk Parts... The Real Thing at Real Savings

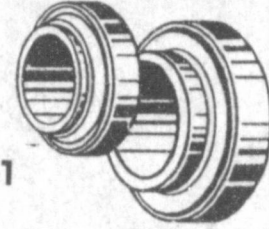
Well-known John Deere quality... made in America. Cross-rolled disk blades resist breakage. Carefully controlled heat-treating assures uniform hardness where it counts.

ANTI-FRICTION DISK BEARINGS

2941

PART NO. AB12603

4-lip seal keeps dirt out for dependability and long life.

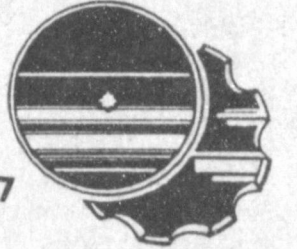


DISK BLADES

1677

PART NO. B31316 20 in.

Made from cross-rolled high-carbon steel for long wear, resistance to breakage. Custom heat-treating for uniform hardness.



John Deere disk parts... quality and price.

Dent & Co.

West Hwy. 84 Muleshoe 272-4296

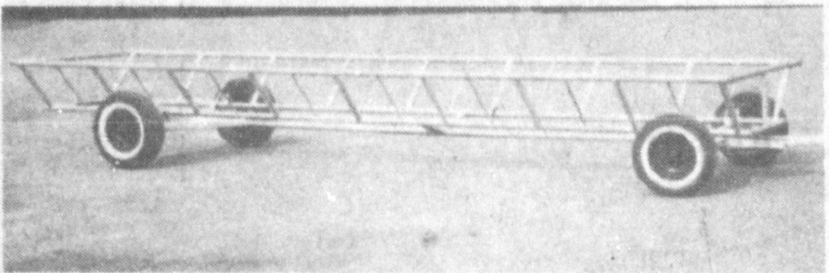
Well Defined

Some folks are like blisters—they don't show up until the work is done. —Tribune, Chicago.

Just So

Propaganda is baloney so artfully disguised that it passes as food for thought. —Enquirer, Chicago.

\$1,000 REWARD OFFERED



For information leading to the arrest and conviction of person or persons who stole 2 round-bale hay trailers from us at Hub.

HOWARD FLEMING

(806) 265-3215 or 247-3471

★ NOTICE ★ MULESHOE BUSINESSES!

Is your long distance company giving you its best price?

Some of the businesses we call on tell us that our competition has now offered them a "cheaper" price than they did before. It seems strange they weren't offered the "best" price to to begin with.

Why not call TTI... We treat you right the first time.



TRANSAMERICA TELECOMMUNICATIONS, INC.

CALL YOUR LOCAL REPRESENTATIVE MIKE CARTER

1-800-333-1134

Take a close look at Growers Brand Cotton Seed with Dr. Bobby Phipps.



Dr. Bobby Phipps, Idalou native and director of research for GroAgri Seed Company, Lubbock, Texas

“ When I look at cottonseed, I see the commitment of dedicated individuals and many years invested in researching the development of Growers Brand cottonseed.

Each variety's performance has been tested and proven before it's released.

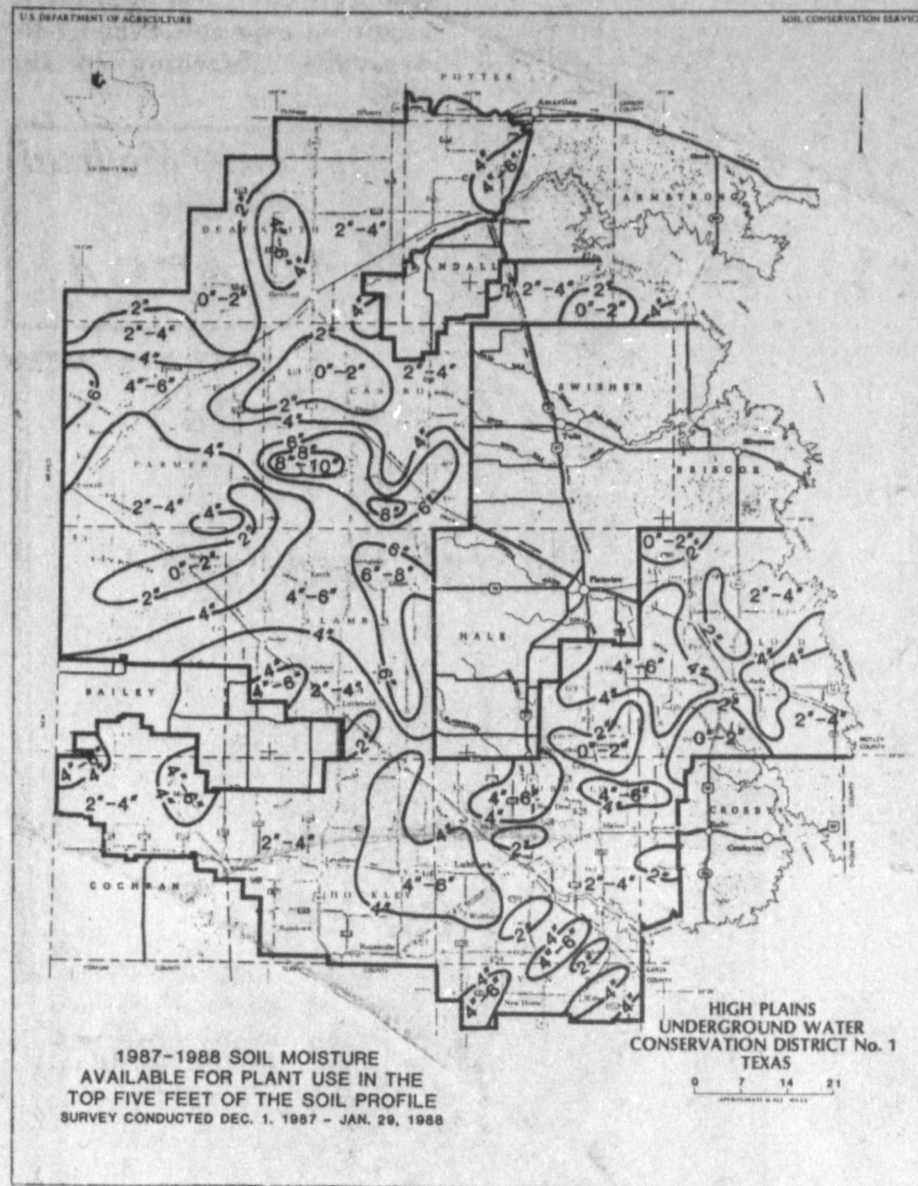
The standards set by the Texas Department of Agriculture are met and exceeded on every new variety.

Next time you see cotton seed,

I hope you'll see it in a different light. ”



P.O. Box 1656 Lubbock, Texas 79408 (806) 747-6225



Variable Moisture Conditions Prevail

The amount of moisture stored in the soil at planting time is the best early indicator of potential crop yields, says Mike Risinger, Soil Scientist with the USDA-Soil Conservation Service (USDA-SCS).

If the top five feet of soil is filled with moisture before planting, producers can generally expect an exceptionally good crop. In contrast, if the soil is dry at planting time, below average yields may be expected.

Currently, the area soil moisture conditions are generally below average and pre-plant irrigation will be needed to improve crop yield prospects.

"Over the majority of the District, soils will need four to six inches of water to bring the top five feet of soil to field capacity for the upcoming growing season. A few areas will need only two to four inches of water, while small areas will need up to eight inches," Risinger says.

Water District and USDA-SCS personnel measured available soil moisture at six-inch intervals down to five feet at more than 220 Water District neutron tube access sites during December, January and February.

Data obtained from the survey was used to construct soil moisture availability and soil moisture deficit maps to provide area producers with an inventory of soil moisture conditions.

While Water District and USDA-SCS personnel attempt to get the most accurate soil moisture readings available, Risinger notes the soil moisture survey results are not error-free or absolute. He encourages producers to check the soil moisture conditions on their own farms before beginning pre-plant irrigation.

Producers who do not have enough irrigation water to keep up with a growing crop's increasing water needs may wish to use a pre-plant irrigation to fill the plant root zone soil profile to field capacity before planting.

If the top five feet of the soil profile is filled with moisture before planting, a third to a half of the total water needs of most field crops can be obtained from the reserve. This greatly increases the chances for producing an average or above average crop, Risinger says.

of the total water needs of most field crops can be obtained from the reserve. This greatly increases the chances for producing an average or above average crop, Risinger says.

Producers are also reminded that nature will provide some of the needed moisture, Risinger says it is important to catch and hold the moisture in place until it can soak into the soil. Research has proven that the use of furrow dikes to harvest precipitation is the single most cost effective conservation practice that the Texas High Plains producer can implement to increase crop yield profits.

For more soil moisture information, contact the local USDA-SCS field office or the High Plains Underground Water Conservation District No. 1, 2930 Avenue Q, Lubbock, Texas 79405 or call (806) 762-0181.

Water District and USDA-SCS personnel measured available soil moisture at six-inch intervals down to five feet at more than 220 Water District neutron tube access sites during December, January and February.

Data obtained from the survey was used to construct soil moisture availability and soil moisture deficit maps to provide area producers with an inventory of soil moisture conditions.

While Water District and USDA-SCS personnel attempt to get the most accurate soil moisture readings available, Risinger notes the soil moisture survey results are not error-free or absolute. He encourages producers to check the soil moisture conditions on their own farms before beginning pre-plant irrigation.

Producers who do not have enough irrigation water to keep up with a growing crop's increasing water needs may wish to use a pre-plant irrigation to fill the plant root zone soil profile to field capacity before planting.

If the top five feet of the soil profile is filled with moisture before planting, a third to a half

Refinishing Furniture Calls For Precautions

For do-it-yourselfers, the hours spent refinishing can result produce beautiful furniture -- and headaches, dizziness or nausea.

According to Dr. Peggy Owens, a housing specialist, liquid paint and varnish removers are the culprits.

"Paint strippers are among the most toxic products used in home workshops. They contain solvents which can damage your skin, eyes, respiratory tract, nervous system and internal organs," she cautions.

Owens, who is with the Texas A&M University Agricultural Extension Service, says that although do-it-yourselfers typically heed label warnings to use strippers in a well-ventilated area, they often don't realize how much ventilation is required.

"If at all possible, it's best to work on projects outside. When you must work inside, you'll need 10-15 exchanges of indoor air with outdoor air every

hour," Owens explains.

The specialist says that rate of air exchange can be obtained with a window exhaust fan, but not an air conditioner.

"Air conditioners don't provide adequate ventilation for paint remover fumes because they recirculate air rather than exhausting it."

Owens also suggests that refinishers wear light-weight plastic splash goggles to prevent eye damage, and gloves to protect the skin.

All solvents will dissolve the skin's natural oil protective barrier, she notes, and after prolonged contact skin will turn dry and develop cracks. Some paint remover solvents will penetrate the skin and enter the blood stream.

"Plastic gloves made of blended neoprene and natural latex will withstand paint remover for a reasonable length of working time," the specialist says. "If you're using steel wool, put cotton gloves over the plastic ones to protect them from abrasion."

Once you have yourself protected, Owens advises protecting your property from fire hazards. The fire-causing potential of paint removers must be stated on the label, and will typically be stated as "Extremely flammable," "flammable," or "combustible."

"Before starting a paint stripping project, turn off all pilot lights and remove sources of heat, ultraviolet light or flame in areas where fumes may circulate. If you're working in a garage with a hot water heater, for example, be sure the pilot light is off."

As a final precaution, the specialist suggests that family members in poor health, children and pets not be allowed in areas where paint removers are being used or where fumes from them are present in the air.

Easter, 1988

Easter, a principal ecclesiastical event of the year, gets its name from Eostre, a Teutonic goddess whose festival was celebrated in the spring.

Her name was given to the Christian festival because, according to legend, she opened the portals of Valhalla to receive the White God and Sun God representing purity and light.

The Christian observance, this year on April 3rd, is a symbol of the Resurrection; it is, however, intertwined with religious customs and observances dating back hundreds of years before Christ.

The Easter egg became associated with Easter because eggs were forbidden to be eaten during Lent. On Easter Sunday they were traditionally served.

The Easter egg, though, dates back to the Egyptians and Persians, and also the Greeks and Romans, who ate eggs annually at spring festivals.

It's appropriate for Christians that Easter comes in the spring, when the renewal of life is apparent. Sunrise services in our churches—an observance of recent origin in most churches—symbolize the Resurrection at sunrise.

West Plains Medical Center
272-4524

CROP INSURANCE

Questions & Answers

Q. Why should I carry crop insurance?

A. One of the most important things you can do to get ahead financially is to avoid going backward financially. With crop expenses as high as they are and profit margins as narrow as they are, even a single crop loss can be a major business and personal setback - draining hard-earned financial reserves, making it difficult or impossible to repay existing debt and obtain additional credit, wrecking hopes for security and expansion and even jeopardizing your ability to earn a living for yourself and your family. The reason for carrying crop insurance is to be as certain as you possibly can be that it doesn't happen to you.

For More Information Contact:

Henry Insurance Agency, Inc.
P. O. Box 563 III W. Ave. B
Muleshoe, Texas 272-4581

Golf Course Makes New Weekend Rule

A new rule has been instituted at the Muleshoe Golf Course due to heavy weekend play on the golf course.

According to the new rule, the "Foursome S" rule will be in effect for the remainder of the golf season.

On weekends, between the hours of 11 a.m.-6 p.m., players must have at least a foursome and no more than a sixsome unless permission is obtained from the Pro Shop.

It was explained that this is necessary in order to accommodate the maximum number of players possible on the golf course.

All members are also asked to take a few minutes to reread and familiarize themselves with the local rules and regulations, displayed adjacent to the Number One teebox.

The fourth annual Kickoff Classic will be held April 9-10; and deadline to enter the City Tournament is April 15.

Call the Pro Shop at 272-4250 for details, and to enter the tournaments.

High Yielders for the High Plains FUNK'S



G-4673A

A top performing yellow hybrid on the High Plains

- Outstanding yield potential
- Good cold tolerance for early planting
- Produces large girthy ears
- Medium maturity

G-4500

- Flex-eared to adjust for growing conditions
- Excellent heat and drought tolerance
- Good standability
- Good grain quality
- Fast drydown
- Medium early maturity

Yellow Corn Test

Gene Smith - Lazbuddie, Tx

HYBRID	LBS/AC	RANK OUT OF 53 HYBRIDS
Funk's G-4673B	13,268	1
Funk's G-4500	12,852	4
Funk's G-4626	12,762	6

G-4673A Yields

Monti Vandiver	Muleshoe, Tx	12,228 lbs/ac	1 out of 20
Nicky Nickels	Clays Corner, Tx	11,637 lbs/ac	1 out of 19

Wiedebush & Co.
1620 W. American Blvd. Muleshoe 272-4281

Garden Seeds

wide selection of bulk garden seeds

Baker Farm Supply

1532 W. Amer. Blvd.
272-4613

CRP GRASSES

Sideoats **Switchgrass** **Bluestems**
Kleingrass **Buffalograss** **Lovegrasses**

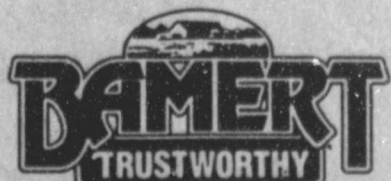
ALONG WITH MANY OTHERS

BAMERT SEED COMPANY

Route 3 - Box 1120
Muleshoe, Texas 79347

Specializing in Native Grasses Since 1951

1-800-262-9892



806-272-5506

Marie C. Lewis

Funeral Rites

Held Saturday

Funeral services for Marie C. Bock Lewis, 84, of Littlefield were held at 10:30 a.m. Saturday April 2 in the Earth United Methodist Church with the Rev. Brad Reeves, pastor, officiating.

Burial was in Earth Memorial Cemetery under the direction of Parsons-Ellis Funeral Home of Earth. Mrs. Lewis died at 2:25 a.m. Thursday in Littlefield Hospital House.

Born Sept. 1, 1903, in Hobart, Okla., she moved to Earth in 1929, from Hobart and in 1954, she moved to Ruidoso and from there to Truth or Consequences, N.M. and a year and half ago moved to Littlefield. She was a homemaker and a member of the Earth United Methodist Church, United Methodist Women and Woodmen of the World.

Survivors include a son, Melvin Bock of Earth; a sister,

**John Veteto
Local Woman's
Father Dies**

Funeral services for John Ellis Veteto, 82 of Panhandle were held at 11 a.m. Friday, April 1 in the First Baptist Church of Panhandle with Dr. Steve Vernon, Pastor, officiating.

Burial was in Panhandle Cemetery under the direction of Smith Funeral Home of Panhandle. Veteto died at 12:48 a.m. Wednesday.

Born November 6, 1905, in Paris, TX., he moved to Panhandle in 1951, from Memphis, TX. He was a retired fireman from Pantex, and was a member of the First Baptist Church, Carson Masonic Lodge No. 1167, Canadian Gem and Mineral Society and the Golden Age Fellowship.

Survivors include his wife, Cleo; five daughters, Jan Wilson of Panhandle, Beverly Carroll of Phoenix, Ariz., Sandra Ware of Borger, Lana Koziol of Hewitt and Kay Moxcrief of Muleshoe; a son, Rodney of Irving; two sisters, Mattie McQueen of Memphis, TX, and Abbie Veteto of Anarillo; and 12 grandchildren.

**Courthouse
News**

MARRIAGE LICENSE

Jimmy Loyde Bain and Cynthia Lou Ellen Carter, Plainview Cenobio Martinez and Pamela Kaye Harvey, Muleshoe

DISTRICT COURT

Lubbock County Appraisal District VS Bennett, F.O., Sr. Estate, Order of Dismissal

WARRANTY DEEDS

Allene Louise Peterson to Elias Noe Anzaldua and Juan Flo Garza--The (N/2) of the (NE/4) of Section (21), Block Y, WD&FW Johnson Subdivision Number (2), Bailey County, Texas.

Alvin A. Richards and wife, Melba J. Richards to U-Bar, Inc.--TRACT I: The (N/2) of Labor No. (9), League 212, Uvalde County School Lands, Bailey County, Texas, TRACT II: Labor (9), League 210, Lamb County School Lands, Bailey County, Texas.

Franklin Smith and wife, Penny Smith to Bernice Holde-man--All of Lot (9), in Block (4), Lakeside Addition Number (1), to the Town of Muleshoe, Bailey County, Texas.

Mona Irene Bennett to Tommy Silhan, Charley Silhan and Joe Silhan--All of Labor Numbers (21), in League Number (122), Childress County School Land, Bailey County, Texas.

F.O. Bennett III and wife, Marlis Bennett, and Bonnie Lou Bennett Keeney and her husband, Mike Keeney and Rebecca Joyce Bennett LeBoeuf and husband, Chris LeBoeuf to Tommy Silhan, Charley Silhan and Joe Silhan--All of Labors (6), (15), and (16), in League Number 124, Childress County School Lands, Bailey County, Texas.

All of Labor Number (18), League Number (123) Childress County School Lands, Bailey County, Texas.

Mrs. Eva Yock of Winfield, Kansas; two grandchildren; and three great grandchildren.

The family requests memorials be made to Earth Memorial Cemetery Association.



A message from this newspaper and the Texas Dept. of Public Safety

**Patients At
West Plains
Medical Center**

MONDAY, MARCH 28
Rhonda Roberts, Betty Smith, Frank Matthews, Bonnie Johnson, Ben Mesman, Jimmy Madrid, Montana D. Jones, Brian Box, Leslie Ann Moraw and Chad Montgomery.

TUESDAY, MARCH 29
Mildred Tiller, Betty Smith, Frank Matthews, Bonnie Johnson, Ben Mesman, Jimmy Madrid, Montana D. Jones, Brian Box, Stephanie Marlow, Chad Montgomery, Brenda Black and Baby Boy Black.

WEDNESDAY, MARCH 30
Mildred Tiller, Bonnie Johnson, Ben Mesman, Jimmy Madrid, Montana D. Jones, Stephanie Marlow, Brenda Black and Baby Boy Black.

**Council Sets
Annual Meet**

The Muleshoe Independent School District will be hosting the annual Chapter 1 Parent Program on Tuesday, April 5, at 7 p.m. in the Muleshoe High School cafeteria.

Families whose children are involved in the Chapter 1 program on any campus are invited to an evening of BINGO and have the opportunity to win some very nice prizes such as games, books, puzzles and educational toys.

Two special games during the evening are sure to delight some lucky winners with extraordinary prizes. A hostess will be assigned to each table to assist the players, if needed, and are families of eligible students are urged to **MAKE PLANS NOW TO ATTEND!!**

Six members will be elected

to two-year terms on the Chapter 1 Advisory Council for the Muleshoe Schools. The following names will appear on the ballot:

Lupe Espinoza, Mike Garcia, Mary Ann Arzola, Camilo Espinoza, Mary Hodges, Paul Alaniz, Joe Vela, Victor Arzola and Dora Alaniz.

Refreshments will be served

and every effort will be made to assure an enjoyable evening for everyone, according to the MISD officials.

**West Plains Medical
Center
272-4524**

Caring For Muleshoe Area Families
Since 1959

Ellis Funeral Directors

272-4524

Pre-Need Funeral Plans

Monuments
Granite-Marble-Bronze

**Immaculate Conception
Catholic Church**

Father Patrick Maher
Northeast of City

First Baptist Church

220 West Ave. E.
Barry Bradley, Pastor

**Emmanuel Baptist
Church**

Iglesia Bautista Emmanuel
107 East Third
Isaia Cardenas, Pastor

Trinity Baptist Church

314 E. Ave. B.
Rev. V.L. "Buster" Huggins

**Circle Back Baptist
Church**

Joel E. Stafford
Intersection FM 3397 & FM 298
946-3676

Calvary Baptist Church

1733 W. Ave. C.
Rev. Danny Mann

Muleshoe Baptist Church

8th and Ave. G.
Bob Dodd, Pastor

Progress Baptist Church

Paul Brigham, Pastor
Progress, Texas

**Richland Hills Baptist
Church**

17th and West Ave. D.
David McAdams, Pastor

**St. Matthews
Baptist Church**

Corner of West Boston &
West Birch
M.S. Brown, Pastor

**Progress Second
Baptist Church**

1st and 3rd Sunday
Clifford Slay, Pastor

The Community Church

Morton Hwy.
Jim Cope, Pastor, 272-5992

LOOKING HER BEST FOR



Easter is a day of conquest... a day of new life... a day of beginnings... This is the day that our Saviour arose in a mighty triumph over the grave. This is a day of joy... a day to remember... a day to attend services in the church that our Lord loved so much, but even though we all want to dress up and look our best for this special day it is not the most important part, for God does not look on outward appearances, but looks on the heart.



The Church is God's appointed agency in this world for spreading the knowledge of His love for man and of His demand for man to respond to that love by loving his neighbor. Without this grounding in the love of God, no government or society or way of life will long persevere and the freedoms which we hold so dear will inevitably perish. Therefore, even from a selfish point of view, one should support the Church for the sake of the welfare of himself and his family. Beyond that, however, every person should uphold and participate in the Church because it tells the truth about man's life, death and destiny; the truth which alone will set him free to live as a child of God.

Coleman Adv. Serv.



Longview Baptist Church

965-3413
B.C. Stonechiper, Pastor

Primera Iglesia Bautista

223 E. Ave. E.
Roy Martinez, Pastor

Lariat Church Of Christ

Sunday School 10:00 a.m.
Worship 11:00 & 6:00 p.m.
Wednesday Services 7:00 p.m.
Sam Billingsley, Minister

**Muleshoe Church
Of Christ**

Cloviss Hwy.
Bret McCasland, Minister

**16th & Ave. D.
Church Of Christ**

Sunday 10:30 a.m.
Evening 6:00 p.m.
Wednesday 8:00 p.m.

First Assembly Of God

Rev. David C. McCune
9:45 Sunday School
11:00 Morning Worship
6:30 Evening Services
7:30 Mid Week Services
272-3984

Primitive Baptist Church

621 South First
Elder Cleveland Bass, Pastor

**Spanish Assembly
Of God**

East 6th and Ave. F.
Luis Campos, Pastor

**First United Methodist
Church**

507 W. 2nd Street
Richard Edwards, Pastor

**El Divino Salvador
Methodist Church**

5th and Ave. D
Jose M. Fernandez, Pastor

1st Baptist Church

Lazbuddie, Tx. 965-2126
Gary Wilcox, Pastor

**Lazbuddie Church
Of Christ**

United Pentacostal
Lighthouse Church

207 East Ave G.
Rev. J.A. Torres

Western Drug 114 Main 272-3106			Dairy Queen 1204 W. Amer. Blvd. 272-3412
Little Gulf 202 W. Amer. Blvd. 272-4918	Baker Farm Supply 1532 W. Amer. Blvd. 272-4613	American Valley, Inc. Hwy. 84 W. 272-4266	Robert D. Green, Inc. 2400 W. Amer. Blvd. 272-4588
Attend The Church Of Your Choice	Bob Stovall Printing 221 E. Ave. B. 272-3373	James Roy Meat Market 506 W. Amer. Blvd. 272-4361	Lookin Good 206 Main 272-5052
Main Street Beauty Salon 115 Main 272-3448	1st Bank 202 South First 272-4515	Bratcher Motor Supply 107 E. Ave. D. 272-4288	Five Area Telephone Cooperative, Inc. 302 Uvalde 272-5533
Irrigation Pumps & Power West Hwy. 84 272-4483	Farmers Co-Op Elevators 113 N 1st 272-4490	Foster Fertilizer Lazbuddie 965-2921	Richland Hills Texaco 1914 W. Amer. Blvd. 272-4875

FmHA County Committee Election Set June 30

Farmers Home Administration (FmHA) will begin accepting nominations April 5 for election of county committee members under new rules that make it easier for farmers to qualify as candidates and to vote, said Jay R. McKay.

FmHA county committees perform a variety of duties for the U. S. Department of Agriculture's credit agency, includ-

ing deciding whether an applicant is eligible for a farm loan, he said.

"One important change broadens the definition of a farmer to anyone who has an interest in a farm in the county as owner, tenant or sharecropper," McKay said. "The new definition also includes the spouse of an eligible farmer. An

old requirement that more than half of the candidate's income must come from the farm operation has been dropped.

"The nominating period has been extended to 45 days from the previous 25 days, thus allowing more opportunity for people to run for the committee," continued McKay. "At least three eligible farmer voters, including the nominee, must sign the petition."

Two of the three committee members are elected by farmers in the county, and one is appointed by FmHA. One of the elected seats is to be filled for a three-year term at this year's election, which is scheduled for June 30.

"Another important change this year is that one member of this committee can be an active FmHA farm borrower, or be eligible for an FmHA farm loan," McKay said. "Previously, this was not allowed."

Anyone interested in running for the committee can obtain a petition and other information from the FmHA county office at 115 E. Ave. D, Muleshoe, TX, McKay concluded.

Nursing Home News

By: Joy Stancell

Our thanks to Barbara Lust and her Home Ec. class in Lazbuddie for making the residents St. "Pat's" day favors.

Eric Smith celebrated his birthday Sun. March 20th, his wife, Lucy Faye, had lunch with him. Eric chose the menu for his celebration. Lucy Faye, and his daughter and son-in-law, Mr. and Mrs. Chuck Thatcher, of Portales brought a special meal Sat. evening, plus birthday cake, which they all shared in the "old" dining room.

Jack, Jackie Morgan and Rachel from North Carolina son, daughter-in-law and great granddaughter of Stella Morgan visited last week.

We wish to express a special thanks to all our volunteers. Those that come so faithful and do loving and kind things and those who send helpful and useful donations. Also, our resident volunteers who do special things and help make life better for many.

Kiwanis Hosts Assistant Superintendent

By: R. A. Bradley

Nine Kiwanians, two guests and Sweetheart Sue Haire met Friday morning at the Old Corral. Jerry Hutton led the club in the pledge to the flag; Howard Watson gave the invocation.

Special guests were Elizabeth Watson and Don Martin. Hopefully, Don will become active in the Kiwanis Club again as Don is a past president of the Kiwanis Club.

President Max Crittenden was surprised with the waitresses coming out with a sweet roll and one candle and singing Happy Birthday. We had always thought that maybe Max was an April Fool joke on his parents. We didn't get the number of years. The fire department would not let them put all of the candles on the sweet roll as it might be a fire hazard. Sue Haire gave Max the friendship coin as she thought he needed a friend.

Bill Kinard, the club secretary, has moved and taken a position with the Gene Messer Ford at Lubbock. We sure are going to miss Bill, and wish him the best. The club appointed Jim Lutz as the secretary. Welcome -- Jim -- as the Club secretary.

There will be a board meeting next Wednesday, at 6:30 at the Old Corral.

Our program was Elizabeth Watson, who is the Superintendent of Curriculum at MISD. Elizabeth has taught and served in the MISD for a number of years. She is a very dedicated teacher and quite an asset to this community.

She told of the adult basic school for the school system to help adults further their educations, on Tuesdays and Thursdays, October through April.

They have one paid teacher and three aides.

They teach citizenship, math and reading. Since the amnesty law, they have from 80 to 100 students.

Elizabeth had a short question and answer period.

The MISD has a budget in excess of \$6.3 million per year. There are 227 paid employees.

proud to be a part of this community. This is no April Fool Joke!!

Spring

The world of nature coming to life around us now, a beauty beyond the capacity of mortal man, is here to be appreciated.

Spring is a time of hope, baseball, summer dreams, pretty girls in pretty dresses, and exhilaration over warming weather and the end of winter.

A close observation of the many miracles on all sides in every field and forest, and on every hillside, can bring tranquility and humbleness to every thinking individual.

When lovers are far apart they are made even sadder by the loveliness of Spring.

-Bhartrihari.



MULESHOE FIRE DEPARTMENT HONORED BY COFC--Jimmy Mills, fire marshal for the Muleshoe Fire Department, accepted a certificate on behalf of the Muleshoe Fire Department from the CofC. The highly acclaimed Fire Department was named 'Members of the Month' for March. Making the presentation was Toni Eagle, manager of the Muleshoe Chamber of Commerce and Agriculture. [Journal Photo]

NOTICE OF RIGHT TO NOMINATE BY PETITION

The Farmers Home Administration (FmHA) is accepting nominations for County Committee elections for [identification of county or area]. This notice is issued to inform eligible voters of the right to nominate candidates by petition. Copies of the petition and instructions on its completion can be obtained from your local FmHA office.

Persons nominated should have an interest in a farm as an owner, tenant, or sharecropper within the county or area in which activities of the county or area committee are carried out. They must be citizens of the United States or aliens lawfully admitted to the United States for permanent residence, and be well qualified for committee work. Spouses of those persons who meet the eligibility criteria are also eligible for nomination for election to the county committee. Nominations must be received in [identification of county office] no later than [12 days before the publication of Public Notice of Election]. FmHA committee elections are open to all eligible voters without regard to race, color, religion, national origin, age, political affiliation, marital status, sex, and/or handicap.

HONESTY

INTEGRITY

DEDICATED

DETERMINED



H.E. Newsom

I Am Asking for Your Vote

Have A Part In Making Me Your Next Commissioner Prec. I, Bailey County

- 1) A Native Texas -- Served in World War II
- 2) Been a citizen of Bailey County over 40 years
- 3) Experienced in road construction and heavy equipment
- 4) Will be full-time...Which I feel the job needs
- 5) I have always had the desire to help other people
- 6) I now have the time to serve my county full time
- 7) Believe in "Pay as You Go"
- 8) Will always have time to listen to your concerns

Vote April 12th In The Run Off Election
Subject to the action of the Democrat Party
paid by H.E. Newsom

...better sorghum hybrids
...new pricing programs.

Helping you choose the right set of sorghum hybrids at the right price is exactly what your neighborhood Pioneer representative is trained to do.

For the High Plains
8493 • 8333



Mike Winters, Pioneer Sales Representative (r. Amarillo, Texas)

Get Together

with...

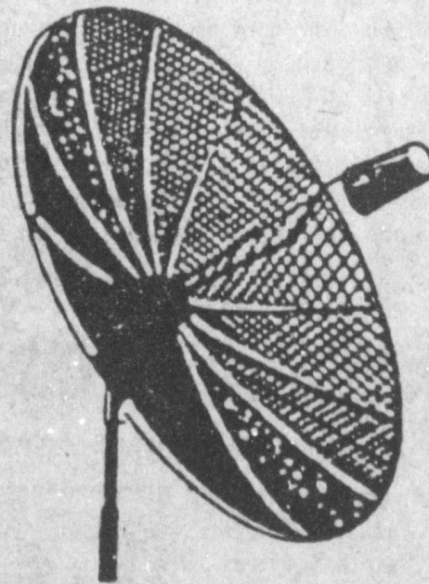
- | | | | |
|---|--|--------------------------------------|--|
| Gene & Francis Franks
Muleshoe
925-6454 | Wilburn Holloway
Muleshoe
946-3321 | Terry Hutton
Muleshoe
272-3711 | Gene Paul Jarman
Muleshoe
965-2340 |
|---|--|--------------------------------------|--|



Baldrige Satellite Systems of Clovis is proud to announce its association with

George M. Mitchell
of Muleshoe.

George will be running a special on the **G. I. Satellite Receiver & Descrambler**, an all in one unit. **Remote control, 10 ft. black mesh dish fully installed \$1949.00 plus tax.** (1 year parts and labor warranty)



1 YEAR FREE SUBSCRIPTION - CNN, Headline News, WGN, KTVT, WPIX, & WOR.



Video Cipher II 2400R Receiver

FEATURES:

- | | |
|--|--------------------------|
| Integrated Receiver and Descrambler | 70 MHz Loop Thru |
| Parental Supervision - Two Methods | Spectra-Sat Recall |
| Wireless Remote Control | C-Band and Ku-Band Ready |
| Complete Optional Antenna Controller | |
| Automatic Descrambling of Authorized Signals | |
| Stereo Sound - Digital Audio on VideoCipher II Channels Only | |

Baldrige Satellite Systems offers a complete welding shop for frame and dish repairs, ram repairs, and a full line of new and used equipment.

Call (806) 925-6771
(505) 762-6551

George, Alan, Steve, Paul or
Bill Baldrige - owner



HONORED AS BUSINESS OF THE MONTH-KC Mufflers and Manufacturing Co., Inc. was designated 'Business of the Month' for March by the Muleshoe Chamber of Commerce and Agriculture. CofC Manager Toni Eagle, made the presentation Wednesday morning. Accepting the certificate was Duane Castleberry, right. [Journal Photo]

Letters To The Editor

Dear Sirs,
I met 'Mike' Edgett, a native Californian (and just passing through town), quite by accident while drinking coffee with John Braten and Dale Griswold at the Old Corral. We were just leaving when Mr. Edgett (sitting across from our table drinking coffee) said, "Do you know what makes this country great? It's men just like you who are informed and intelligent and care about other people." After such an abrupt statement there was nothing to do but introduce myself and inquire of the nature of this stranger.

Clarence Michael Edgett proved to be a gentle and sensitive poet in love with life and absorbed in his surroundings. He was so impressed with the cloth roll towels in the Old Corral's restroom that he was inspired to write a poem in honor of the 'cloth towel' and gave it to the Pearsons.
Finally, Mike asked me to give this poem to our law enforcement agencies in town. I like what it says and believe all the citizens of our community would like to read it as well.

Sincerely,
David C. McCune
POLICE OFFICERS
Police Officers are the "Guardians of the law."
They are benefactors to all MANKIND.
They'll battle to help with "tooth and claw."

If you are in trouble or in a "BIND".

If they're in cars, helicopters, motorcycles, horseback, on foot, Ask for aid or call on the PHONE.
Your health and welfare, you'll find they'll put,
Ahead and above a life of their OWN.

Who you are, where you are, how you look,
It doesn't matter to them, they have one CARE;
To protect you in any way they can, from a crook.

Your life and well being are THEIR AFFAIR!
So dead wrong with their slams and DIGS.
When in trouble suppose they called in vain,
For Police Officers who they call PIGS?

Please respect these People who protect day and night.
Offer courtesy, not a Bronx cheer or a HOOT.
You'll be the first to cry and howl in fright,
If some thief runs away with your LOOT!

Some Police Officers drive & drive, others stay by their "POST."

In numbers They are pathetically, FEW.
They will die to protect those who hate THEM most!

THIS, NO OTHER GROUP IN

THE WORLD, WILL DO!

The "slobs" may refer to Him or Her, as a "dumb Cop".
They're often the butt of gags, -- jokes and a PUN.
If you are beaten or robbed, all restraint They will drop,
Come to your aid and support, "on the run!"

People affiliate Police with some faibles and tripe.
Being cold and hardboiled, are a FEW.
It's unfair to Them to stereotype.
They are as human as me and YOU.

If you break the law, They'll apprehend.
Their duty, They just cannot SHIRK.
You'll usually find that, in the end,
Most Police Officers are fair in Their WORK.

To POLICE OFFICERS everywhere, we say these Prayers:
You're the difference between "PANDEMONIUM and PEACE!"
Oh LORD above, watching Earthly Affairs,

YOU MUST BE PLEASED WITH OUR EARTH'S----NOBLE POLICE!

With great respect
Clarence Michael Edgett
19441 Edgett Lane,
Penn Valley, Calif. 95946.

Dear Editor:

This week, April 24-30, 1988 is National Organ and Tissue Donor Awareness Week. It is a time for renewed interest in, and public education about, the issue of organ donation. Each year literally thousands of our friends and neighbors in the United States remain blind, on dialysis or hospitalized, and some do not even survive the wait for a donated organ. Because of this donor shortage, Congress put into effect the required request legislation effective January 1, 1988. The intent of this legislation is to increase the donor pool by requiring hospitals to identify and approach families of potential organ or tissue donors.

Organ donation, at the time of bereavement, can be a difficult decision. Nonetheless, donation can really aid the healing process. One donor family put it this way, "If you could experience the joy we feel each time we meet or read about a recipient, understand the strength and courage we derived from their decision to become recipients, knowing this miracle truly does work, then you would know it is okay to ask."

Let us all consider this noble act. Making our decision now may avoid needless additional stress later. Many bereaved families have benefited by knowing that a living memorial of their loved one remains. David L. McCartney, M.D. Medical Director Great Plains Lions Eyebank 743-2471

Small, Rural Hospitals Feel Economic Crunch

In 1987, 17 Texas hospitals closed, according to the Texas Hospital Association, the industry's trade association. This compares with 18 closures in 1986, nine in 1985 and eight in 1984. Of the 52 hospitals that have closed in the past four years, five have reopened under either different ownership or management.

West Plains Hospital of Muleshoe was one of the five hospitals to re-open in Texas in 1987. It re-opened the doors on October 26, 1987, after having been closed on November 13, 1986.

"Nearly all of the 52 hospitals in Texas that closed during the past four years were relatively small, and the majority (31) were located in rural (non-metropolitan statistical areas) counties," said Karl Shaner, Dr. P.H., vice president, research and information services.

Only two of the 52 closed hospitals had more than 100 beds. A total of 692 beds were closed in 1987, as compared to 627 in 1986, 355 in 1985 and 272 in 1984. The five facilities that reopened account for 169 beds.

"With regard to their ownership status at the time of closure, nine hospitals were publicly-owned, 13 were private/non-profit institutions and 30 were investor-owned, either by individuals or a corporate system," Shaner noted.

In Texas, small and rural hospitals account for 220 of the 530 hospitals in the state, and serve an estimated three million people. Of the 52 closures, 29 hospitals were the only provider in their communities.

"This means that in 29 small Texas towns, people's access to health care services has been curtailed and compromised," said Charles Bailey, JD, vice president of legal affairs.

Why have so many hospitals closed in Texas? The bottom line answer is financial problems, Bailey noted. "The problems experienced by small, rural hospitals are caused by many of the same factors affecting urban hospitals, such as lower occupancy rates, more intensely ill patients who require more complex care, increased regulatory requirements, and inadequate payment from Medicare/Medicaid programs," he said.

"Because small, rural hospitals

also serve a greater than average proportion of Medicare patients, recent changes in the payment and review of care provided Medicare beneficiaries have had a more profound effect on their facilities and their ability to preserve financial stability," he added.

"Rural hospitals also face the problems of attracting sufficient numbers of qualified professional personnel and physicians, less access to capital and insufficient funding for marketing and diversification in order to respond to a more competitive health care environment," Bailey noted.

Since 1980, hospitals have seen a decline in discharges and in their average daily census; however, this has affected small and rural hospitals more severely. "In the first half of 1987, average occupancy rates were 25 percent in small hospitals with fewer than 25 beds, and 33 percent for hospitals with 26-49 beds," Bailey said.

Small, rural hospitals are affected by declining patient revenue margins. Higher inflation in the goods and services hospitals purchase, more severely ill patients with increased lengths of hospitalization, and slowed growth in outpatient visits, which in previous years contributed to the continued downturn in revenue margins for 1987, according to economic analysts for the American Hospital Association.

Combined with declining revenue margins is an increase of nearly one percent in the average length of stay for 1987, which had declined during much of the 1970s and in each year from 1982-85. The increase in length of stay in the first half of 1987 was highest among patients over age 65, a group for whom hospitals have incentives and pressures to reduce stays.

"This places an additional strain on hospital expenses, as they are paid a fixed rate for Medicare patient hospitalization," Bailey noted. Medicare patients account for more than 35 percent of all hospital services delivered, and in rural hospitals, may account for 60-75 percent, Dr. Shaner noted.

There's only one license for people who carry a lot of weight.

A new law for truck and bus drivers.

You may have only one driver's license issued by the state where you live, according to a new federal law. You should return any other licenses you hold to the states that issued them. Effective July 1, 1987, if you have more than one license, it will be illegal, and you may be fined up to \$2,500.

For additional information and exceptions, contact your local Texas Department of Public Safety office or your employer.

Garden Seeds
wide selection of bulk garden seeds
Baker Farm Supply
1532 W. Amer. Blvd.
272-4613

True Value HARDWARE STORES

Enjoy April in Paris from True Value

WIN 1 of 12 Trips for Two!



January, February, August or any month is perfect, too! During the whole year, historic and romantic Paris retains its captivating vitality. If you're one of twelve lucky winners, we'll wish you and a friend bon voyage and send you to Paris via Pan Am. For seven days and six nights you'll stay in the new Quality Inn Rive Gauche, within walking distance of the Eiffel Tower, the Arc de Triomphe, the Louvre Museum...and more! For day trips, visit Versailles - site of one of the world's ultimate lawns and gardens. Or stroll down the beautiful, tree-lined Champs-Élysées. Best of all, you'll always be close to the finest in French cuisine.
Just fill out an entry form at your local True Value Hardware Store, and your next vacation could be Paris! Hotel accommodations courtesy of Quality Inns International and airfare courtesy of Pan Am.

Pan Am flies to more cities in Europe than all other U.S. airlines combined. Expect more from Pan Am!

The Quality Choice
Quality Inns International, with more than 1,000 hotels in 15 countries, marketed under the Comfort, Quality and Clarion names. Make the Quality Choice!

Cutter & Company, 100% Member-Owned warehouse distributor serving over 6000 True Value Hardware Members who own their own stores, set their own prices and reserve the right to limit quantities. Because participating True Value Hardware Stores vary in size and merchandising policies, some may not stock all items shown. Prices may vary and change without notice. Prizes expire May 31, 1988. No purchase necessary to enter. Void where prohibited. Sweepstakes and prizes subject to complete rules on display at any participating True Value Hardware Store. Sweepstakes ends June 15, 1988.

COME IN FOR A FREE PACKET OF SEEDS!
You'll receive a FREE packet of Green Thumb™ Seeds just for entering the April in Paris Sweepstakes.
One per customer (up to 79¢ value).

LAWN CHIEF
199.88
3.5-HP, 21-In. Rear-Bagging Mower has a fully-baffled deck, lever-action height adjusters. #1

LAWN CHIEF
133.88
19-In. Electric Mower with 10-amp Briggs & Stratton motor, 7-in. wheels and flip-over handle that folds for storage. #19

WEED EATER
24.99
Electric Blower has a powerful 7.5-amp motor to eliminate grass, leaves with ease! 110-mp maximum air velocity. Insulated. #210

ROSS
14.97
Root Feeder™ lets you feed as you water. Nurtures plants at the roots. #2044

6.88 Your choice
60-Pk. Cartridges. Choose trees and shrub or evergreen for easy feeding! #480250

LAWN CHIEF
199.88
3.5-HP, 22-In. Lawn Mower is self-propelled, with front-wheel cog drive, 8-in. wheels, fingertip drive control. #38

GREEN THUMB
69.99
Garden Cart is ready for lots of yard work with 6 1/2-cu. ft. heaped capacity, rugged frame, 20-in. wheels. #75017

Tru Guard
7.88 Each or Both for 14.99
Tempo Entry Lock features a long-lasting brass finish and beautiful styling. #73

Single-Cylinder Dead-bolt is polished brass. For 2 3/8 or 2 3/4-in. backset. #503

BLACK & DECKER
79.99
20-In. High-Performance Hedge Trimmer with dual-action blades. #11120

Jobe's
5.44 Your choice
12-Pk. Fertilizer Spikes. Choose formulas for trees, evergreens or fruit trees. #500112

Galaxy
19.99
20-In. Wind Machine Fan has 3 speeds, plastic case and blades. Cradle allows for directed cooling. With carrying handle. #321

TRIM TRIMPER
24.99
4 1/2-Cu. Ft. Rhino™ Poly Wheelbarrow has an under-carriage grid for support. #420

GREEN PRIMER
8.88
60-Ft. Vinyl Hose with 5/8-in. I.D. 4-ply vinyl stays flexible in any weather. #52020

NELSON
5.88
GearStream™ Whirler Sprinkler waters 4 to 40-ft. circle. Wheel base. #590

meiner
24.99
1-Gal. Power Sprayer makes it effortless! Flexible rubber hose, adj. nozzle. #389

GREEN SWEEP
4.99
Green Sweep™ Liquid Lawn Food covers 5,000 sq. ft. No mixing. Ct. #111X

Monsanto
8.97
Roundup™ Weed Killer concentrate. Not avail. in Conn. Mail-in Offer for Bonus Garden Gloves Worth \$2.00

Fry & Cox, Inc.

401 S. First

272-4511



SAN ANTONIO VISITOR SPEAKS TO ROTARY--Last Tuesday, Jeff Smith, right, was in charge of the Rotary Program for the day. He introduced Shirley Smith, a San Antonio resident, who talked about several major projects underway in San Antonio, including the opening of Sea World of Texas. [Journal Photo]

18. Legal

NOTICE OF PUBLIC SALE

WHEREAS, pursuant to the terms of Security Agreements dated the 4th day of March, 1986, and dated the 20th day of November, 1986, MAARTEN VAN ZIELST granted to MULESHOE STATE BANK, MULESHOE, TEXAS, a security interest in the following described equipment, to-wit:

1. 1 John Deere 3120 Tractor, Serial No. T6H3HO43983L;
2. Cebece Sprayer, Serial No. 2189;
3. Rumpstad Bedder, Serial No. 204-2;
4. Amac Digger, Serial No. 20494;
5. Wolf Planter;
6. Cutter;
7. Lely Rotera;
8. Compass Peeler;
9. Lango Grader, Serial No. 4720369; and
10. 4 Conveyors and Hopper.

Such equipment is hereafter referred to as "equipment"; and WHEREAS, pursuant to the terms of the Security Agreements and Note secured thereby, the MULESHOE STATE BANK, MULESHOE, TEXAS has declared

the entire balance due upon such Note, whereby causing default in the terms of such Security Agreements.

NOW, THEREFORE, KNOW ALL MEN BY THESE PRESENTS, that MULESHOE STATE BANK, MULESHOE, TEXAS, pursuant to the provisions of Section 9.504 of the Texas Business & Commerce Code and the provisions of the above described Security Agreements hereby gives notice that the secured party intends to sell at public sale to the highest bidder for cash all of the equipment referred to above.

The sale will take place at the front door of the MULESHOE STATE BANK, MULESHOE, TEXAS, at 101 West American Boulevard, Muleshoe, Texas, at 10:00 a.m. Central Standard Time on April 11, 1988. Any persons requesting or requiring additional information regarding the sale may contact Mr. Robert Montgomery, Executive Vice President of the secured party, whose telephone number is (806) 272-4561. The secured party reserves the right to bid for

and purchase such property. Such property will be sold "AS IS" and "WITH ALL FAULTS" and without warranty, either express or implied, of any kind or warranty of merchantability and subject to all faults.

DATED March 31, 1988.

MULESHOE STATE BANK,
MULESHOE, TEXAS
BY:
ROBERT MONTGOMERY
EXECUTIVE VICE PRESIDENT

m18-14s-1tc

AIR CONDITIONING SPECIAL
G.M. TYPE AG COMPRESSOR
FOR DEERE-ALLIS-MASSEY \$126.00 COMPLETE W/CLUTCH
100 AMP DELCO ALTERNATOR \$59.00
NEW 90 AMP JOHN DEERE ALTERNATOR
Manufactured by Hippon-Denso for John Deere \$177.00

SUMMER SERVICE SPECIAL
Air Conditioning Service Special

D.C. Electric Service will come to the field and service your tractor air conditioner for \$250. This service includes a GM Compressor with clutch and dust shield, or a Tecumseh Compressor with a 7" clutch, a drier for the system, evacuation, recharge and leak test. This covers most John Deere, Case - IH - Ford & Massey applications. There is a \$0.40 per mile vehicle expense.

Plugged Expansion valves, blower motors, leaks, electrical repair, belts and hoses will be extra. Cleaning out condenser or flushing internal parts of system are extra.

—We Go Anywhere On the South Plains and our Labor Charge Does Not Start Until We Get to the Job.

ELECTRIC Service INC.

SLATON RD. & CEDAR AVE.
LUBBOCK, TX

Marc Bristol
Bob Haynie

806-745-4441

BIBLE VERSE



"Father, forgive them; for they know not what they do."

1. Who made the above request?
2. Upon what occasion?
3. Who were "they" to whom he referred?

4. Where may this verse be found?

Answers to Bible Verse

1. Jesus.
2. As he hung on the cross on Golgotha, or Calvary.
3. The Roman soldiers, who crucified Him specifically, but generally to the Jewish leaders who had caused his death.
4. Luke 23, part of the 34th verse.

OPEN Easter Sunday

EASTER SAVINGS

Formulated especially for alkaline soils of the Southwest, Turf Magic Super Lawn Food supplies all the essential nutrients to keep grass green, healthy and growing vigorously. The high percentage of nitrogen and iron combine to give a double shot of greenness power. Buffer is provided to help counteract the high pH of our soils. The highly available source of plant food is easy to spread and can be used around trees and shrubs. A 40-lb. bag covers 3,000 square feet.

Super Lawn Food
Only: **\$6.49**

with Briggs engine **3 HP 20" Push Mower**
Now Only: **\$99.99**
Reg. \$122.99

Georgia Marble Co.
Create your own landscape with: White Marble
Just: **\$3.99** A Bag

Lawn Sprayer
Only: **\$4.99**

Front: A&M Farm & Ranch Supply

Re-inforced Garden Hose
5/8" x 75' Now: **\$12.99**
Reg. \$14.99

Kill Those Dandelions Right Away
At Just: **\$3.29** 1 Pint

NELSON RAINSHOWER 45 non-pudding sprinkler
At: **\$9.99**

Oscillating Sprinkler
At: **\$9.99**

The Rain Train
Sale Price **\$44.99**
Mfg Rebate 5.00
Your Cost After Rebate **\$39.99**
Reg. Price \$61.90

Gro-STAKES Fertilizer
Once-a-year feeding for your plantings. Bag a Bundle™ & Save!
Your Choice: **29¢** ea.

Happy Easter

fill your **Basket** with buys

HYPONEX THE HOME FIELD ADVANTAGE
Sale Price **\$1.79**
Less Consumer Rebate **-0.40**
Doubled when Accompanied by this Ad **-0.40**
Your Cost After Rebate **99¢**

3 1/2 HP 21" Self Propelled Mower
Only: **\$399.00**
W/Free Bag

Universal Thatcher Blade
For: **\$4.99**
reg. \$5.99

Precision Structural Broadcast Spreader
Now: **\$22.99**
reg. \$29.95

Chunk Style Dog Food
Just: **\$7.49**

Hi-Protein Dog Meal
Now: **\$8.99**
27% Protein

A&M Farm & Ranch Supply

2600 Mabry Dr. Clovis, N.M. 1-505-762-7717
1601 S. Ave. D. Portales, N.M. 1-505-356-8543
1302 W. American Blvd., Muleshoe, Texas 1-806-272-5571

All Stores Open Monday-Saturday 7:30 A.M. - 6:00 P.M.
Sundays 12:30 - 5:00 P.M.

All Are Welcomed

The Place Where You Pay Less and Get The Very Best

Bailey County Journal

Classified

Call 272-4536

CLASSIFIED RATES
Per Word.....\$.15
Minimum Charge \$2.30

Consecutive Insertions
Minimum Charge \$2.00

CLASSIFIED DISPLAY RATES
\$1.75
Per Column Inch

DEADLINES
12 noon Tues.
For Thursday Paper
12 noon Friday
For Sunday Paper
We reserve the right to classify, revise, or reject any ad. Not responsible for any error after ad has run once.

1. Personals

FRANK'S
Refrigeration & Appliance Service Parts & Repairs
817 Gum Muleshoe, Texas 79347
Phone Business 272-5090 Home 272-3822. fl-6s-tfc

WANTED TO BUY:
10 used side rolls. Top prices paid. Day phone 385-4487, night phone 925-6484. sl-10s-tfc

MARY KAY COSMETICS Josie Flowers 272-3865, tube lipstick available. fl-49s-tfc

DEPENDABLE child care in my home. Fun & educational. Call 272-5316. sl-12t-6tc

RELIABLE MAN & women team want to contract yard work. Mowing, edging & trimming. 272-5753. 1-13t-2tp

OWN YOUR OWN beautiful discount shoe store. Offering over 300 top designer name brands and over 2000 styles at unbelievable retail prices of 6.75 to 19.99. *Gloria Vanderbilt *Calico *Bandolina *Andrew Geller *Almalfi *Bare Traps *Liz Claiborne *Bass *9 West and hundreds more. Your "\$" cash investment of \$12,900.00 to \$39,900.00 includes beginning inventory, training and fixtures. Call Anytime. Prestige Fashions 1-800-247-9127. 1-13t-2tp

STORAGE ROOMS & office space for rent call 272-4754. sl-53t-stfc

STORAGE Rooms Available For Storage \$25.00-\$30.00 per month Ted Barnhill 272-4903 bl-42s-tfc

CONCERNED About Someone's Drinking? **HELP IS AVAILABLE** through Al-Anon Call 227-2350 or 965-2870 or come to visit Tuesday nights, 8:00 p.m. or Saturday mornings at 11:00 a.m. at 1116 W. American Blvd., Muleshoe.

3. Help Wanted

VALLEY GRAIN Products, Inc. is accepting applications for a quality assurance position. Person will be trained in product analysis. Applications may be filled out at the main office between 9 a.m. - 4 p.m. 1/4 mi. East of Muleshoe on Hwy 84 or resume may be sent to P.O. Box 484 Muleshoe, Tx 79347. No phone calls accepted. v3-13s-tfc

HELP WANTED parts man to learn electrical business and blend two inventories. Ronald Ashford Electrical 272-4571. m3-12t-4tc

GET PAID for reading books! \$100.00 per title. Write: PASE-C883, 161 S. Lincolnway, N. Aurora, IL 60542. 3-11t-9tp

HELP wanted cook at Muleshoe Country Club. Apply in person. c3-14s-2tc

8. Real Estate

FOR SALE-3 bdrm, 2 bath, fireplace, large living area, central heat & air (ref), 2 car carport- built ins, washer, dryer and ref. underground sprinkler, satellite system, fenced back yard, 1780 sq. ft., 2 large storage buildings, also 1300 sq. ft. office building, central heat & air (ref), 2 bdrm mobile home can be used for rental. Call day or night 806-272-5151. g8-14s-tfc

FOR SALE 3 bdrm., house. Large corner lot. \$12,000. For information call 272-5410 after 4.30. 424 W. 9th g8-6s-stfc

ATTENTION! First time home buyers no credit needed, low down payment, low monthly payment, we deliver. Call 806-894-7212 or 894-8187. b8-14s-8tc

FOR SALE 3 bdrm, 1 1/2 bath, 2 car garage home on 2 1/2 acres 8 mi. West of Muleshoe on the West Camp road. Call Jeff Price 624-2303. p8-10t-tfc

FOR RENT, lease or sale, 2 bdrm, 1 bath house near school. Terms available. Call 817-663-5857 or 817-663-2084. b8-14s-tfc

REPOS! REPOS! 2 & 3 bdrm, no credit needed. Call 806-894-8187 or 894-7212. b8-14s-8tc

FOR SALE OR rent: 2-1-1 house with Geo-Thermal heat and air; fenced yard; large corner lot; outside cellar; storage room with garage; fireplace in living room; very reasonably priced or loan may be assumable; call 272-5077 after 5 or any-time weekends. 8-13t-12tc

8. Real Estate 8. Real Estate

JAMES F. HAYES & CO. AGRICULTURAL REAL ESTATE

Vic Coker-Agent
806) 965-2468

* 160 ACRES South of Clovis lays good, good water, ~~good~~ soil, Center Pivot Sprinkler Fully ~~not~~ ^{SOLD} A nice one!

2 LABORS SOUTH OF MULESHOE Longview Area, Good Soil, fully allotted Call for more details.

460 ACRES WEST OF BOVINA on State Line. 300 gallon water, good soils, 70 Acres of grass, good allotments, terms available!

313 ACRES on Parmer County-Castro County line. 2 wells, 2 tailwater pits, good allotments, steel barn, terms available.

* In cooperation with a New Mexico Broker.

2-160 Acre tracts northwestern Lamb County good water-2 wells on each farm good soil; lay good, Immediate possession.

1-210 Acre Farm-Lamb County: Steel barn & other improvements, 2 wells lots of underground pipe good soil & lays good. Immediate possession available.

15. Misc. 15. Misc.

InsuranceState Farm
Good Service, Good Coverage, Good Price...
That's State Farm Insurance
See Me For Savings On...
Homeowners, Auto, Health, Life and Business
F.L. Newton, Agent
128 East 10th 385-3055
Littlefield, Texas

116 E. Ave C BINGHAM & NIEMAN REALTY 272-5285 or 5286
PRICES REDUCED UP TO \$7,000 on 2 & 3-1-1 Brick Homes, Cent. heat, Energy Efficient. PRICED FROM \$23,500!! Approx. \$600.00 total move-in, payments based on income for qualified Buyers!!!

RICHLAND HILLS
IMMACULATE 3-2-2 Brick, corner lot, Cent. A&H, built-ins, FP, loads of storage & closet space, much more!
PRICE REDUCED-3-1-1 Brick, Cent. heat, Evap. air, built-ins, fenced yard....

MAKE OFFER 3-1-1/2 Home, Cent. heat, evap. air, built-ins, fenced yard, detached storage-garage. Nice locations. \$30's

HIGHLAND & STEWART
JUST LISTED-VERY NICE-3-2-2 Brick, Cent. A&H, newly remodeled kitchen with built-ins, storm windows, fenced yard, storage bldg. and much more!!!!

SPACIOUS 3-2-1/2 Brick Home on corner lot, Cent. A&H, built-ins, fireplace, loads of storage, 2900 plus sq. ft. of LV. area lots of extras, undrgrd. sprinkler sys., fenced yard. A GREAT BUY!!

NICE 3-2-2 Brick Home (2 story), on corner lot, Cent. A&H, built-ins, and much more. LET'S LOOK TODAY!!!!

JUST LISTED-2-1-1 home, wall heat, carpet, & more. LET'S LOOK TODAY!!!!

HIGH SCHOOL
3-2-1 Brick+2 carport, Cent. A&H, built-ins, fenced yard, Eff. Apt. or workshop & storage area. \$40's!!!!

NICE 3-2-2 home, Cent. A&H, utility, large fenced yard with lots of trees. \$40's!!!

JUST LISTED- Very well kept 3-1-1/2 Home. Cent. heat, nice carpets, storm windows, storage bldg. & more. \$40's!!!!

3-1-1 home, corner lot, Cent. A&H, built-ins. \$30's....

3-1-1 home, nice carpets, floor furnace, evap. air, built-ins, storage & more. \$30's!!!!

IMMACULATE-3-2-1 1/2 carport, Brick Home, Cent. A&H, built-ins, nice finished basement with fireplace, sprklr. sys., & much more!!!!

DIANNE NIEMAN, BROKER GEORGE NIEMAN, BROKER

8. Real Estate 8. Real Estate

Whitt-Reid Real Estate

201 Main Street 272-3611

2 & 3-1-1 Brick FmHA's have been reduced \$4000.00-\$7000.00 now ranging from \$23,500 to \$33,000.00 Est closing cost \$650.00 if you qualify. Terms cash, Conventions Loan, F.H.A. V.A. or FmHA.

1.34 A. 3-1-2 carport brick, fireplace, basement, fruit trees, grape vines, storage shed, driveway paved. Has hook up for mobile home. H25-35.

3-1-2 detached garage stucco, separate dining room, fenced back yard. Would consider lease purchase to the right person. H25-25

160 A West of Muleshoe, lays perfect, 2 irrigation wells, center pivot irrigation sprinkler-zimmatic approx. 1290 feet long. Steel barn 40x64. Mobilehome 16x84 feet. On pavement you need to see it.

Roy Whitt Broker Certified Appraiser
Thursie Reid George Poteet Sales People

10. Farm Equip. For Sale

LOCKWOOD Sprinkler with 13 towers, hydraulic oil driven with booster pump. Good condition. Call Paul Koeltzow 505-762-1324 in Clovis. k10-11t-6tc

FARM for lease or sale 80 acres. 8 mi. West of Muleshoe on Portales cut off 1/4 mi. South call 257-2026 or 965-2395. m10-14s-2tc

15. Misc.

JUST LISTED-3-1 home, nice carpets, new roof, storm windows & much more. \$20's!!!!

JUST LISTED-NICE 2-1-1 home, wall furnace heat, earthtone carpets!!! LENUA ADDITION

VERY NICE-2-1-1 1/2 carport home, Cent. Heat, evap. air, nice carpets, wood stove, storm windows & doors. Large storage-workshop. \$20's!!!!

JUST LISTED-COZY 3-1-1/2-1 home, Cent. heat, nice earthtone carpets, fenced yard, storage bldg., & more!!!!

JUST LISTED-3-1-1 home, Cent. A&H, utility, storage bldg., cellar, gas grill, & more. \$20's!!!!

COUNTRY HOMES
JUST LISTED-2-2-1 brick home on 1 acre on pavement, close to town, Cent. A&H. \$40's!!!!

2-1-1 1/2 carport home on 1 acre on pavement close to town, built-ins, wall furnace heat, evap. air, satellite system, and fenced area for horses or calves. \$20's!!!!

2-1 home, 20 acres, sub. pump, sprinkler, barns & corrals. \$40's!!!!

3-1 home on .59 acres on highway at edge of town plus 1-1 mobile home for rental unit, storage, or workshop. A GOOD BUY!!!!

LARGE BUILDING on 2 lots, paved parking....

JUST LISTED-Nice, well-maintained Self-Service Laundry. 34 washers, 16 dryers in nice, modern building, excellent location. Books available to qualified Buyer.

SALE OR LEASE nicely remodeled office bldg. with over 3,000 sq. ft. of area, excellent location across from Courthouse. PRICED TO SELL!!!

APPROX. 3,000 sq. ft. bldg. Railroad frontage. CASH PRICE \$15,000.00

8. Real Estate 8. Real Estate

SMALLWOOD REAL ESTATE

232 Main Muleshoe 272-4838

3-Bedroom, 1-bath, 1 car garage, Brick \$700.00 includes down payment and closing cost for qualified buyer.

2-Bedroom, 1 bath, \$500.00 down, \$160.00 per month. Located at 823 S. First.

2-Bedroom, 1-Bath mobile home, \$500.00 down, \$160.00 per month. Located at 901 W. Ave. B. s8-8s-stfc

Sudderth Realty, Inc. REALTOR
109 FIFTH STREET
(806) 481-3288 (806) 481-9194
FARWELL, TEXAS
Realtors/Certified Appraisers
WE NEED FARM LISTINGS

10. Farm Equip. For Sale 11. For Sale Or Trade

8 LATE model zim-matics, 3" & 4" Subs complete, good 292 and 305 engines, 60 & 80 hp gear drives, and other equipment located near Muleshoe. Call 806-272-5597. c10-14s-tfc

RELIANT evaporative window air conditioner with stand and cover. Call 272-5647. 11-14s-2tp

FOR SALE Tradeswinds Plaza Shopping Center 800 W. Amer. Blvd. Approximately 18,600 sq. ft. land Approximately 9,230 sq. ft. building 35,000.00 possible financing. Call Joe Helfin, Broker 792-6651 Lubbock h11-14s-6tcts

FOR SALE AKC registered Labrador Retriever puppies, 6 weeks old. Call 272-4390 or 272-4449. w11-12t-4tc

CUTE registered Buff Cocker Spaniel puppies for sale \$50. Free to a good home, adult red/white female cocker spaniel. 965-2488 after 5 p.m. w11-14s-4tc

15. Misc. 15. Misc.

HININGER GRASSLANDS
CAPTIVE BREEDERS
WOODWARD, OK
1-800-688-2235

Contemporary Conditioners & Brokers of Old World Bluestem, Legumes & Native Grasses

SPRING SALES NOW
Old World Blue Stems
Natives - "Blends"

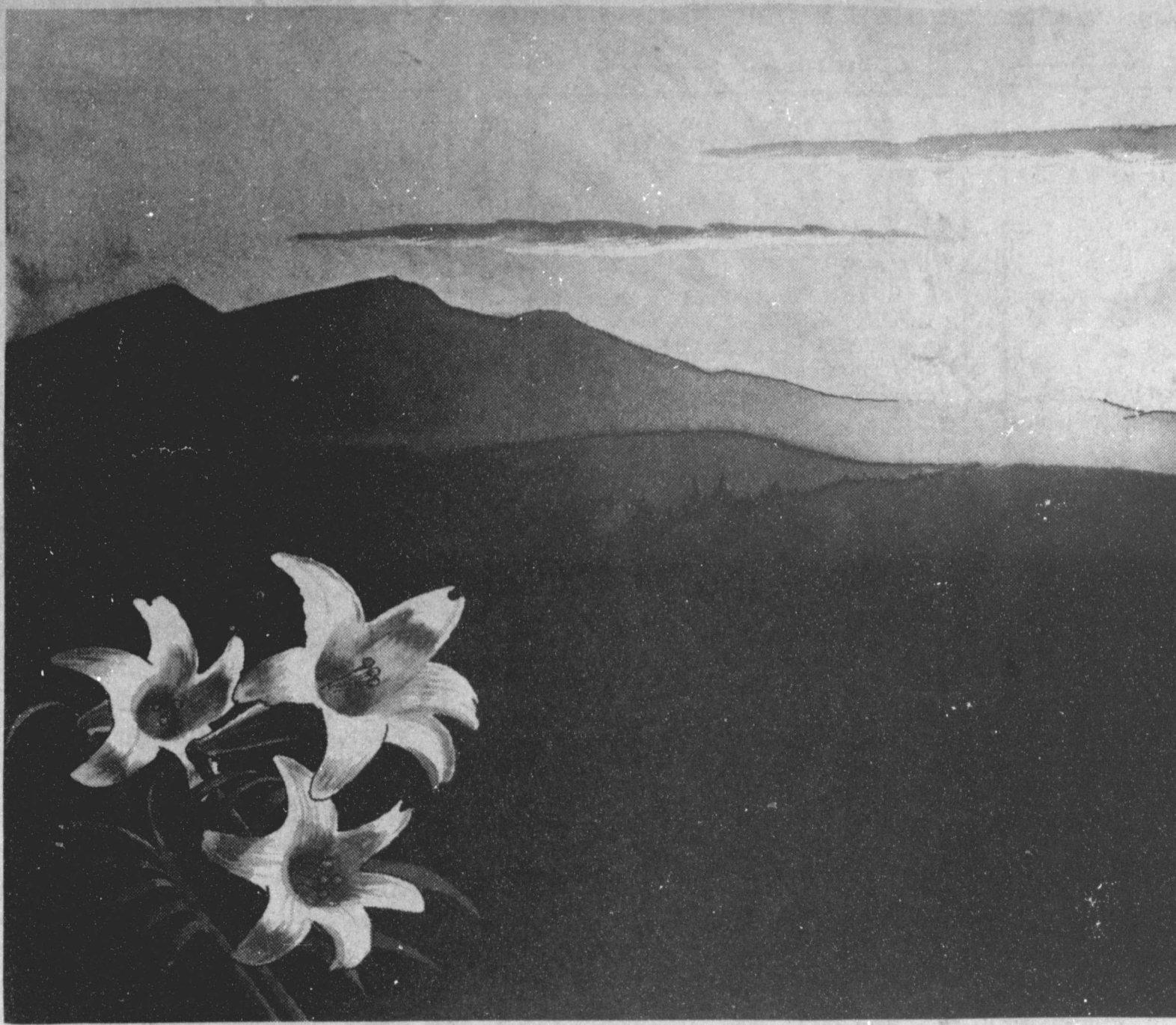
10000 lbs ready to drill
2 1/2" Little Blue
1 1/2" Big Blue
1 1/2" Indigo
1 1/2" Switch
1 1/2" Sand Bar
3 1/2" Blue Beam

Some are available
Some are available
Some are available
Some are available

Happy Easter
From The
Journal Staff

Think Classified!

Easter Reveals The Triumph Of Life Over Death



"For God so loved the world, that He gave His only begotten Son, that whosoever believeth in Him should not perish, but have everlasting life."

John 3:16

The beautiful story of Easter contains many messages of hope that have enriched the lives of all those who observe it. The dramatic events of the most memorable weekend in all history portray the victory of right over wrong and joy over sorrow, as well as the forgiveness of a deed so terrible that even the ruling magistrate would claim no responsibility for it. It is a time for reflection as well as rejoicing; and if the Son of God died to atone for our sins and to provide proof of immortality, the least we can do is try to be worthy of that sacrifice by improving our lives and by attending the Church of our choice; not only on Easter, but every Sunday throughout the year.

This message provided by the following sponsors:

Serv-All Thriftway

JLC Co.

Pizza Hut

Dairy Queen

Lookin Good

Bomer Electric

Jack's TV Service

Southside Welding

Lambert Cleaners

Webb Spudnut Shop

Sudduth, Field & Co.

Adrian Photography

Ana's House of Beauty

Chubby's Beauty Shop

Terry Field Insurance

The Family Hair Salon

Church's Fried Chicken

Farmer's Co-Op Elevator

Main Street Beauty Salon

Bingham & Nieman Realty

El Nuevo Leals Restaurant

Valley Grain Products, Inc.

Shipman & Son Body Shop

Alton Burton Service Center

Galante & Bobby Free Farm

Williams Brothers Office Supply

Muleshoe Livestock Auction, Inc.

A & M Farm & Ranch Supply

Michael R. Caldwell, Attorney At Law

Allison Bookkeeping & Tax Service

Clifton B. Allen, Custom Saddle Maker

Muleshoe Truck and Auto Service Center

