



## Registration For Schools Is Slated Friday

Second through eighth graders will register at West Ward, South Ward and Junior High School in Eastland Friday and school will begin Monday.

High school students registered at the end of school last year and first graders have already enrolled. High schoolers wanting to change their schedules and new students who have moved to Eastland will be in high school on Friday at high school. Douglas School students will register Monday morning.

Students are to register at their respective schools. Supt. Windell Siebert said tentative plans call for two first grades, one second grade, one third grade, two fourth grades and one fifth grade and West Ward and one class of each five grades at South Ward. However, those plans may be changed.

A final breakdown of school zones will be announced in Sunday's Telegram.

Second, third and fifth grades are expected to give school authorities the most difficulty since about 65 students are expected to be enrolled for each of these grades and it will be necessary to equally divide the students between West Ward and South Ward. Registration will begin at 8 a. m.

Sixty-five first graders registered for the two white schools and two first graders registered for the Colored school.

A principals' meeting was held Monday afternoon.

Students will begin school Monday and get a holiday the following Monday, Sept. 5, for Labor Day.

## Mavericks Have Two Scrimmages Set This Week

Eying their Sept. 2 opening game against Class AA Comanche, Eastland's shorthanded, but spirited football team began its second week of practice Monday and drew praise from Coach Carroll Shelton.

Shelton found much to be happy with despite the fact that he is extremely short handed. Only 18 boys were working out, but some were out because of sickness. Some 24 players are expected to be on the roster.

The Mavericks have two rugged scrimmages slated this week. Today they will go to Abilene to scrimmage Class AA Winters and Thursday they will scrimmage Class AA Stephenville on the local gridiron.

Coach Joe Ingram has announced initial workouts for Junior High School boys will begin Thursday. Junior High boys are to meet at 1 p. m. at the school. Equipment will be issued and plans announced.

Coach Ingram urged boys to get their physical examinations before then if possible.

Jimmy Hughes will assist Coach Ingram this year.

## UPPER LEON SOIL CONSERVATION NEWS

### Many Terraces and Farm Ponds Built In County This Summer

Accelerated progress is being made this summer in the application of conservation. This is especially noticeable in terrace construction. Since July 1, some 20 miles of terraces have been built by nine landowners in this vicinity.

Terraces in this area are built primarily for erosion protection in big rains. They are, however, very effective in this area in holding rainfall in place during small rains. Several farmers north of Cisco reported an increase of from seven to 11 bushels in small grain yields from terrace land. This was due primarily to better distribution of water and the retention of more water during the small showers we received last spring.

Terraces to be most effective must be supported with a good vegetative program of conservation farming. In general this must include cover crops, conservation rotations, proper management of crop residues, and contour farming.

Landowners who have recently built terrace systems are: Charles B. Woods, R. E. Baggett and E. C. Johnston all located north east of Eastland; G. C. Kimbrell and W. C. McGough, east of Eastland; Dick Foster of Gorman; H. A. Tyrone south of Carbon; and Jack Page and Henry Schaefer of Cisco. Several landowners are now in process of building terraces.

Twenty-six landowners have built farm ponds since the first of July. Farm ponds are the primary source of livestock water in this area, and it is generally recognized that a good distribution of livestock water is essential for good range management. Landowners of the Cisco area who have recently built ponds are: C. V. Brown, A. W. Harris, V. E. Plumlee and E. C. Johnston. New ponds in the Eastland area include those of Walter Duncan, T. A. Utey, C. M. McCain (two ponds), J. G. Harlow, Johnnie Aaron and Harrison. Ranger men who have built ponds include: C. B. Pruet, T. C. Fambro, L. E. Wallace, Pete Hathcock, M. L. Woods and George Moore. Ponds in the Carbon and Gorman vicinity are Don Estes, H. I. Blancet, J. B. Blancet, Jimmy Hughes, Albert Higgins, W. E. Miller, and S. S. Faircloth. Doyle Johnson north of Desdemona recently built two ponds.

In addition 14 landowners have constructed diversion terraces to either protect crop land from outside water or to increase the water shed into a farm pond.

Soil Conservation Service technicians, assisting the district supervisors of the Upper Leon Soil Conservation District and of the Palo Pinto Soil Conservation District worked with landowners in applying the above practices. Technicians assist in the site determination, lay out, supervision of construction, and checking for completion of conservation practices. Amounts completed are certified to the County A. S. C. Committee for Federal cost share payments.

It will soon be time to plant winter cover crops. Probably no other practice can do more to protect

Month	1960	Avg.
January	3.09	1.37
February	1.53	1.38
March	1.14	1.59
April	2.26	2.87
May	2.23	4.08
June	1.21	2.56
July	1.91	1.74
August	3.79	1.77
TOTALS	17.26	17.36

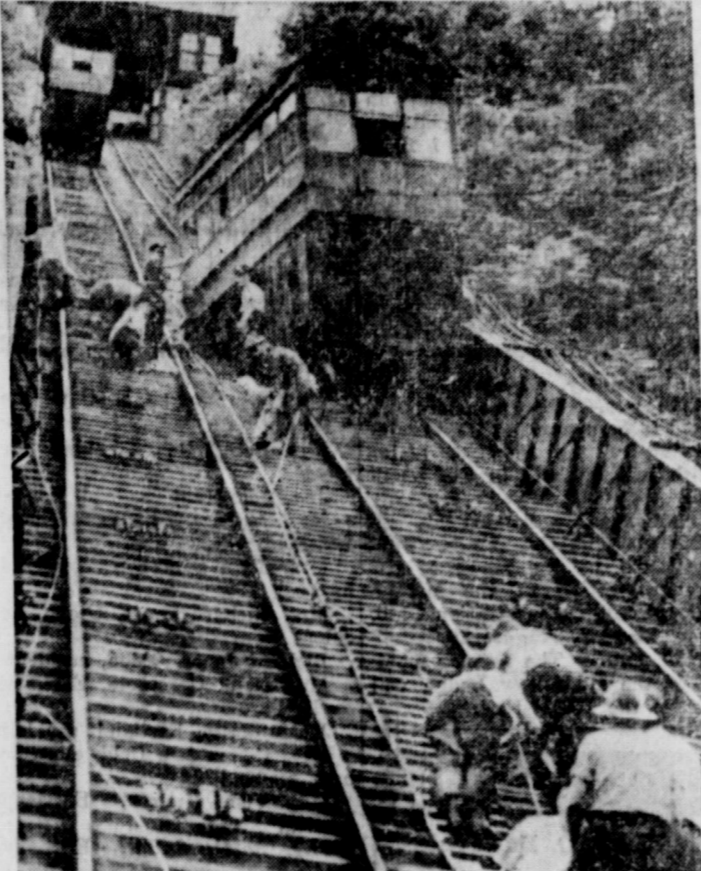
## Jaycee Meeting Tonight Termed Very Important

Eastland Jaycees meet tonight at 7:30 at the White Elephant restaurant and Dick Spalding, president, announced that the meeting will be of importance and all members are urged to attend.

Spalding said plans for the charter night banquet will be completed and a committee to study projects will be appointed.

All persons interested in joining the club were also urged to attend.

EASTLAND NATIONAL BANK  
"On The Square"  
MEMBER F. D. I. C.



SKY CAR DERAILED—Firefighters lead passengers down the track after a cable car became derailed 150 feet up Mt. Washington, Pittsburgh, Pa. No one was injured in the mishap.

## MARIE BONEY SAYS Eastland Seem Dull? Alternative Worse

If the following were fiction, it would begin "Once upon a time . . . We'd give it a title: either 'My Heart Belongs To Texas,' 'This Old Cruel World,' or 'The Difference In Places'."

The fact is that it isn't fiction. It is part of a letter received by friends of a young man who recently packed his family, earthly belongings, including a brand new college diploma, and drove off into the wild blue yonder, or a little resort town in a western state, to be more exact.

"We've been here six weeks," he wrote, "42 days, and my wife has reminded me 42 times that I rejected offers from seven companies to come here. The seven offers were in Texas, she adds."

"My job is just fine. I still maintain this is the one with the greatest future. The Division Superintendent (this division covers two states) came out last Friday. He thinks I should be ready to supervise an area within three years. It's pretty definite we won't be here less than a year or more than four years."

"This transfer is all that keeps us going—sort of like the cartoon in a recent Post showing a man with a dollar hanging from his hat brim as he went to work thereby constantly in front of him to keep him going."

"This town has all the disadantages of a large Texas city with none of the advantages. There aren't quite 2,000 residents, but the tourists more than double that number during the summer."

"Everything is wide open: liquor for sale in grocery and drug stores; dope prevalent, even in the high school; gambling on anything on any street corner. The local and county governments are corrupt—some people here have begun, then abandoned a cleanup attempt.

"People like it that way, because it's their living. The moral code is lower than the average family annual income, which is the lowest in the state. About half the families work only during the tourist season, earning less than \$500 and drawing unemployment to make out enough to eat on the rest of the time."

"The Communist Party has its area headquarters here. They're extremely active in this part of the country."

"Ninety percent of the people are members of the Catholic Church, but the priest—looking broken, by the way, not the way the priests around Texas look—tells me less than 20 percent of this 90 percent ever come to church."

"The tiny Baptist church has a preacher who is on leave from the foreign mission field. He says trying to witness to people here is harder than in a foreign country, because the people there seem eager to learn while these residents aren't. 'I think perhaps they'

(Continued on Page Three)

## Edward C. Hart Gets Masters Degree At Tech

Edward C. Hart of Eastland was one of 92 Graduate School students who received degrees at Texas Tech Saturday at summer commencement exercises.

Hart received his master's degree in electrical engineering. In all more than 500 were graduated at Tech.

SEE AND DRIVE the 1960 PONTIAC . . . fresh point of view and wide track too! MUIRHEAD MOTOR CO.

## COURTHOUSE AT NIGHT C-C Offers to Pay Share for Lighting

Eastland County Commissioners had a long drawn out meeting Monday, but despite the time spent meeting with individuals and delegations, not too much was accomplished. While a few concrete developments came out of the meeting a lot of future work was lined up for the Court.

Commissioners started their morning by hearing a delegation from the Eastland Chamber of Commerce. With Virgil Seaberry Jr. acting as spokesman, the group offered financial assistance from the C-C in getting the courthouse lighted up at night.

Seaberry told the Court that the delegation recognized that Eastland citizens would get more benefit out of lighting up the courthouse than citizens from other areas would—although he stressed that the courthouse belongs to all the people of this county—and he said the people of Eastland are willing to pay half of the cost. The Eastland C-C is willing to contribute \$270 of the estimated \$825 cost. Seaberry also reasoned that Eastland citizens pay at least one-fifth of the county's taxes and therefore would share an additional \$180 of the cost in county funds.

"Eastland county has the nicest looking courthouse in West Texas," Seaberry told the Court, then praised them for the upkeep given the building down through the years.

The courthouse had lights until the depression. When they burned out then they were not replaced. Commissioners took the proposal under advisement.

The second delegation appearing before the Commission was a group from Gorman and Rising Star. That group is interested in getting an emergency base radio station in that area and wants to go through the county so that the Federal government will share in the costs. The Court assured the group it would work with them.

Two members of the Ranger General Hospital board of directors, Bill Herrington of Ranger and Bernard Hanna of Eastland appeared before the Court and discussed hospital operations. Commissioners praised their efforts in operating the city-county hospital, located in Ranger.

In two important business transactions near the end of the session, the county budget hearing was slated for Sept. 19 and another one of the county's voting boxes was abolished.

The Okra voting precinct was voted out after Commissioner Bob Carter announced that the judge (Continued on Page Three)

## Courthouse News And Records

**INSTRUMENTS FILED**  
County Clerk's Office  
T. H. Albright to The Public, proof of heirship.  
Elizabeth Rock Albright to H. L. Bihartz & Associates, extension of oil and gas lease.  
Leon Edmondson Allen to Pan American Petroleum Company, oil and gas lease.  
Mrs. Mary O. Breithaupt to The Public, ex will.  
Pansy D. Barnhill, warranty deed.  
Robert P. Browder to Lee Fields, MML.  
R. A. Bledsoe to Don Pierson, warranty deed.  
City of Cisco to Boss Mfg. Company, lease.  
Bertie Crawley to The Public, affidavit.  
Bertie Crawley to M. F. Allen, warranty deed.  
Commercial State Bank to Morris Jefferies, release of deed of trust.  
Henry Cohen to J. M. Flournoy, oil and gas lease.  
R. L. Dobbins to Great Western Drilling Company, rat. of oil and gas lease.  
Dana C. Dobbins, Jr. to Great Western Drilling Company, rat. of oil and gas lease.  
N. J. Dillard to E. L. Hollinghead, deed.  
C. D. Dakan to R. E. Dakan, warranty deed.  
Herbert Ekert to Sig Faircloth, release of vendor's lien.  
Sam H. Eakin to W. L. Hall, assignment of oil and gas lease.  
James K. Eaton to Calvin Brown, MML.  
James K. Eaton to First Federal S & L Assn., deed of trust.  
Sig Faircloth to Eastland National Bank, assignment of vendor's lien.  
First Federal Savings & Loan Assn. to Gene C. Woods, release of deed of trust.  
First State Bank, Rising Star to Clarence G. Stroebel, release of deed of trust.  
(Continued on page three)

## Five Injured In Highway Crash West of Cisco

A three car accident five miles west of Cisco on Highway 80 Monday morning injured five persons and heavily damaged three vehicles.

The injured were Mrs. H. W. Simpson, 54, of Stamford; Mrs. Guy Denson of Stamford; Randy Denson, 9, of Stamford; C. D. Jeffrey of Abilene, and E. R. Harrgrave of Sweetwater.

Mrs. Simpson was the most seriously injured. She suffered a broken hip and cuts and bruises. Mrs. Denson and her son suffered cuts and bruises and Jeffrey and Harrgrave both had broken ribs. Jeffrey and Harrgrave were traveling east in a 1957 Ford, they told officers, when Mrs. Lula Mae McGee of Dallas, who was traveling west in a 1957 Pontiac, attempted to turn in front of them. Jeffrey said his car hit the Dallas woman's vehicle in the side, glanced off and crashed head-on into the 1956 Chevrolet driven by Mrs. Simpson.

Jeffrey's car and Mrs. Simpson's car were both near total losses and damage to the McGee vehicle was estimated at \$175.

Mrs. Simpson was transferred from Graham hospital in Cisco to Stamford hospital today and Mrs. Denson and her son were both released from the hospital.

## Farm Housing Loans Easier To Get Now

Under a recent change in the eligibility requirements for Farm Housing loans, a farmer who owns a farm that will annually produce for sale or home use at least \$400 worth of commodities may, if he meets other eligibility requirements, be able to obtain a Farm Housing loan.

Previously, according to H. P. Cole, Farmers Home Administration County Supervisor for Eastland County, an applicant had to own a farm that would produce a substantial amount of the operator's income.

Farm Housing loans are made by the Farmers Home Administration and are used to construct and repair needed farm houses and farm service buildings.

Other eligibility requirements for Farm Housing loans remain unchanged. These requirements are that the applicant lacks the resources needed to obtain credit elsewhere, be a citizen of the United States, and have sufficient income from farm and other sources to pay farm operating and family living expenses and meet payments, when due, on his debts.

Applications for this type of credit may be made at the county office of the Farmers Home Administration located in the Petroleum Building in Eastland.

W. W. Frankin, et al, of Eastland have a Caddo lime oil discovery near Nimrod. The try is the No. 1 Olga Schaefer, which flowed oil and gas on a drillstem test.

Gas surfaced in three minutes and oil in 50 minutes on the test taken at 2,860-2,880 feet.

The try is three miles southwest of the Jo Kiel (Caddo) Pool.

See and Drive the NEW TURBINE DRIVE BUICK WITH THE WILDCAT ENGINE MUIRHEAD MOTOR CO

## County Producer Near Nimrod Is Being Watched

W. W. Frankin, et al, of Eastland has a Caddo lime oil discovery near Nimrod. The try is the No. 1 Olga Schaefer, which flowed oil and gas on a drillstem test.

Gas surfaced in three minutes and oil in 50 minutes on the test taken at 2,860-2,880 feet.

The try is three miles southwest of the Jo Kiel (Caddo) Pool.

## County Is Included In Gas Market Study

A program to expand the natural gas market in a nine county area which includes Eastland County has been indicated by the West Central Texas Oil and Gas Association.

The immediate goal is to help promote outlets for gas from wells currently shut in for lack of market. The Association says dozens of such wells have been drilled in recent years. Association President Sam Robertson has appointed a five-man committee to survey the gas reserve situation in Eastland, Palo Pinto, Parker, Stephens, Erath, Young, Comanche, Brown and Coleman counties.

The committee will seek information from operators concerning the number of uncommitted shut-in gas wells, amount of proven acreage, wildcat acreage and gas reserves estimates.

W. N. (Bill) Tindell of Abilene is chairman of the committee and he has called for the cooperation of every gas producer or potential producer in the area to complete the study.

Tindell says drilling activity is lagging in a number of potentially good gas producing counties because pipeline connections are not available.

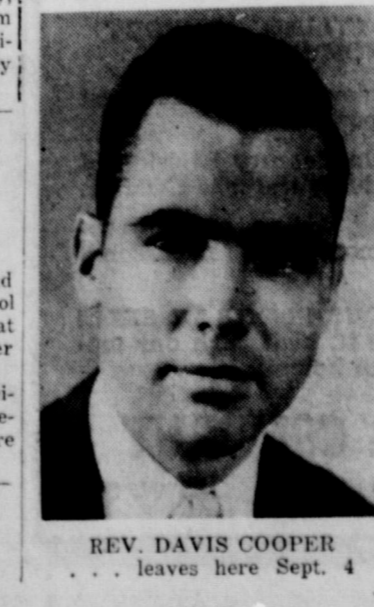
"A number of us believe the time has come when an improved market situation can be brought about by working together instead of individually."

Questionnaires will be mailed out in an effort to contact operators in the counties involved. The accumulated information then can be used to show prospective gas buyers what the area has to offer.

The territory involved in the study was called "a vast area of potential gas reserves" by Hamilton Rogers of Fort Worth, executive vice president of the Texas Pacific Coal and Oil Co. He estimated that more than a million acres of land are under oil and gas leases.

"If gas producers could be assured a reasonable payout, the submergent drilling campaign would be a terrific boon to the entire economy of the area," he said.

EASTLAND NATIONAL BANK  
"On The Square"  
MEMBER F. D. I. C.



REV. DAVIS COOPER leaves here Sept. 4

AD RIP  
LAND  
E. Moore  
Meridian: "Cau-  
Bridge."  
rated as the  
strict 10-A, are get-  
toward publicity.  
magazine rated  
third best Class A  
behind Stimpert  
The mag said the  
only go all the way  
picked as the  
in the state at  
this clinic.  
comments coming  
newspaper: "Th  
we believe, will  
standing Class A  
in the state this  
candidates are com-  
1960 team. They  
at at the grade  
this year, and there  
days to fill the  
fine players who  
spring."  
math school study  
been completed  
the men who serv-  
committee. It would  
that a report that  
no action wasn't  
report. However,  
of good material  
and some good  
of it.  
found from a  
and found out that  
faster when you  
them. Our yard  
the foot that  
was washed off  
in.  
in our old home  
and discovered  
are so confused  
everywhere.  
probably stick with  
ticket, though.  
change when you  
years or so. The  
ages we noted about  
(1). They have  
grass now; (2)  
has overrun the  
the people are get-  
all from the  
concerning our  
cream sodas and  
We were invited  
have an old fash-  
split on the house,  
and your life we  
them up on it.  
we call getting  
written word.  
get out and  
of the Lone Cedar  
golf course. Unde-  
is now open for  
ing to buy some  
balls before we try  
rough. There is too  
Leon around to  
received any cute  
long time and  
enjoy hearing from  
parents and grand-  
some of the cute  
children and grand-  
been saying lately.  
us a line, give us  
me by for a little  
says he ran across  
a recent Colorado  
two most over-  
the world is hav-  
of the go carts have  
here since we left  
go carts may be  
to an economic  
may try one next  
heard of the lit-  
were told it was  
get hurt in one.  
On Page Three)  
SCHLAG  
RANCE AGENCY  
presents the  
NEWS  
97  
1.32  
3.79  
1.77  
17.26  
25.83  
udy, Warm & Humid



# Eastland Telegram

Eastland County Record established in 1931, consolidated August 31, 1951. Chronicle established 1887, Telegram established 1928. Entered as second class matter at the Post Office in Eastland, Texas under the act of Congress of March 3, 1879.

**TIMES PUBLISHING COMPANY**  
Published Tri-Weekly—Tuesdays - Thursdays - Sundays  
Onous Dick and Joe Dennis, Publishers  
Virgil E. Moore, Editor

One week by carrier in city	.16
One month by carrier in city	.65
One year by mail in County	2.95
One year by mail in state	4.95
One year by mail out of state	6.95

**NOTICE TO PUBLIC**—Any erroneous reflection upon the character, standing or reputation of any person, firm or corporation which may appear in the columns of this newspaper will be gladly corrected upon being brought to the attention of the publishers.

## WANT ADS!

Cards of Thanks charged at rate of \$2.00 Each

### MISC FOR SALE

**FOR SALE:** 95 acres. One-fourth minerals. 7 miles northwest of Eastland. Write J. C. Hensley, Box 1018, Midland.

**FOR SALE:** Nice as new brown reclining chair. \$45. MA 9-1538.

**FOR SALE:** One seven foot ice box. Good condition. Suitable for lake cottage. See at 1416 S. Lamar or call Basham Electric.

**FOR SALE:** Accounting course at Draughns Business College, Abilene. \$595.00 course for only \$30.00. Payable \$50.00 monthly. Write Box 682, Eastland.

**FOR SALE:** Shallow water well pump and Premier tank in perfect condition. Nat Faircloth, Olden.

**FOR SALE:** Finco antenna and rotator. Complete. \$25.00 7.4 cub. foot Ergidaire. \$65.00. MA 9-1882.

**FOR SALE:** 13 year old mare. Bridle, saddle, ideal for children. \$125.00. Phone Main 9-1179.

**FOR SALE:** Pianos, gas heaters, chairs, venetian-blinds and scrap lumber. Mrs. A. F. Taylor, 700 S. Seaman. Phone MA 9-1169.

### REAL ESTATE FOR SALE

**FOR SALE:** One four room house, one antenna and one Cold-Spot refrigerator. 300 E. Plummer. Mrs. Guy Sherrill.

**FOR SALE OR RENT:** 3 bedroom house—6 acres. Call MA 9-1091.

**PLACE FOR SALE** in Olden. City water, 3 acres young orchard, \$8,500, or will sell house with garden spot, less orchard, \$7,500. A. G. Williamson, Olden.

**FOR SALE:** Modern 4 room house with bath. Shown after 2 p.m. 305 S. Neblett.

**FOR SALE:** Six room newly decorated house. Large lot. Terms or cash. 146 Coke St. Gorman. See during day.

**FOR SALE OR RENT:** Seven room house. Modern conveniences. Phone 2565, Carbon.

**FOR SALE OR RENT:** Large two bedroom house. One mile east. Modern, fireplace, floor furnace. Phone MA 9-1920.

### MISC. WANTED

**FOR SALE:** Ceiling fans at Village Hotel. Contact Mrs. Robinson.

**WANTED:** Girls to help with fountain. Davis Drug.

**WANTED:** Housekeeper. Call MA 9-1839.

### MATTRESSES

Save up to 50% renovating choice of color and firmness. Complete bedding. Made and guaranteed by WESTERN MATTRESS CO., San Angelo. Phone MA 9-2689, Eastland and leave address.

### Enjoy Life Downtown

Close to everything. 100 lovely redecorated rooms with 100 private baths, all with ceiling fans and heated with steam heat, for only \$39.50 per month which includes maid service. Delicious meals in Coffee Shop. Also apartments custom made to any size for permanent guests. Contact Mrs. Robinson, manager, the friendly Village Hotel (formerly the Connelley) Eastland, Texas

### SINGER

Reposessed Santomatic Vacuum Cleaners Floor Polishers Just take up payments!

**D. L. MORTON**  
Phone MA 9-2084  
Before 9 a.m. or after 6 p.m.

Then there was the guy who bought a carburetor that saved 30 percent on the gas, a new distributor that saved 50 percent on the gas and a new set of spark plugs that saved 40 percent on the gas. Last time we heard from him, his gas tank overflowed after 15 miles.

### AUTOS FOR SALE

**FOR SALE:** 1959 and 1951 Chevrolet pickups, 1954 Buick, 1952 Ford. See J. B. Kendrick at Ice-house.

### T. L. FAGG

**REAL ESTATE**  
Property Management  
Home and Farm Loans

### NOTICE

**FRESH DRESSED FRYERS and Fresh Dressed Hens At The Plant**  
PHONE MA 9-1200  
**WALKER Dressing Plant**

### ATTENTION HUNTERS:

Load your own 12 ga. ammunition. We furnish all components. Per box low velocity 7 1/2, \$2.00. Business hours only. Bruce Pipkin's Sport Center.

**SPECIAL NOTICE:** plowing, raking and hay baling. R. J. Cate, phone 2769, Olden.

**SPECIAL NOTICE:** Let me cut, rake and bale your hay. Casey Mezell, Phone MA 9-2703.

**ELECTROLUX** cleaners — new and rebuilt in stock. Authorized sales and service. Roy Gann, Phone MA 9-2474.

**NOTICE:** Kindergarten enrollment now. Ferne Green Savage, MA 9-2460.

**Eastland Masonic Lodge No. 467**  
Reg. Stated meetings 2nd Thursday of each month, at 8:00 p.m.  
H. C. Pounds, W. M.  
L. E. Huckaby, Secretary

**GOLDEN AGE NURSING HOME**... home atmosphere... care for all types of patients... special diet. 24 hour nursing care... doctor on call 24 hours. Phone HI 2-2579 Cisco, Texas

**WANTED:** Rock underpinning, house leveling, cement porches. Phone MA 9-1690.

### FOR RENT

**FOR RENT:** Furnished or unfurnished two bedroom apartments in duplex. 611 West Plummer.

**FOR RENT:** Six room house. Close to South Ward. Everett Plowman, Corner Drug.

**FOR RENT:** Newly decorated apartments. Hillside. Phone MA 9-8847.

**FOR RENT:** Nice four room house. See anytime. Alice Speer, 410 East Sadosa.

**FOR RENT:** Three bedroom house on North College. Phone MA 9-2370 or see Noble Squires.

**FOR RENT:** Two bedroom house, apply 507 South Madera.

**FOR RENT:** Two room apartment. Furnished, private bath. Elderly couple preferred. C. E. Johnson, 205 S. Walnut.

**FOR RENT:** Three bedroom house with one and a half bath. Call MA 9-2623 from 8 to 12 a.m. or 2 to 5 p.m.

### Let Us Build You A Metal Garbage Can Rack For \$4.50

Also Disk Rolling - Auto Salvage - Portable Welding Manufacturing of Bull Squeezers

**MACK McWHORTER**  
ED McKELVAIN  
**ACME WELDING and BLACKSMITH SHOP**  
Hwy. 80 W. - Pho. MA 9-1269

### Village Homes

Suite 210 — Village Hotel  
Don Pierson - MA 9-1033  
Norman Guess - MA 9-1545

### The 1960 COMET for the Economy-Wise

**NOW YOU CAN HAVE STYLING, COMFORT AND ECONOMY!**

Discerning people rightly demand only the finest quality in everything they possess.

It is for them that Lincoln-Mercury Division of Ford Motor Company introduces the new COMET.

COMET offers outstanding styling, more luxurious interiors, a finer ride, more room for passengers.

**WE HAVE THIS CAR ON OUR FLOOR TO SELL!** and invite you to come see it, visit with our mechanics and make yourself at home.

### GORR MOTOR COMPANY

HI 2-2726 CISCO 105 W. 9th

### Kindergarten Enrollment Is Now Going On

Green Kindergarten will open Oct. 1. Mrs. Ferne Green Savage announced today.

The Kindergarten at 903 West Plummer, is for pre-school age children. It will meet Tuesday, Wednesday and Thursday mornings. There will also be a class for the younger children on Fridays if there is enough demand.

Reservations can be phoned in now (MA 9-2460) and children will also be enrolled Oct. 1 from 9 to 11 a.m.

### SOCIAL CALENDAR

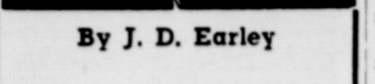
**Tuesday, August 23**  
7:30 p.m.—All members are urged to be present at the regular meeting of the Rebekah Lodge which will be held in the IOOF Hall.

**Wednesday, August 24**  
2 p.m.—The Community Clubhouse will be the scene of the regular meeting of the Morton Valley Home Demonstration Club.

**Monday, August 29**  
7:30 p.m.—The regular meeting of the Oddfellow Lodge will meet in the IOOF Hall.

### GAS-TOONS

By J. D. Earley



"I left the switch so you could find it."

You'll get a kick out of our eagerness to give good service.

### EARLEY TIRE SERVICE

**MOBIL PRODUCTS**  
Phone MA 9-2355  
302 West Main

### TELEPHONE TALK

by Arthur H. Marx, Jr., Manager

### HOW MANY CALLS A DAY IN EASTLAND?

"What is the average number of calls made a day in Eastland? That is a question I often hear, so I decided to look up the answer.

Every day an average of 11,832 calls are made here. That's about 8 calls per phone.

And every day people find new ways to get more value from the phone. Only recently I heard of a fisherman who says he uses his phone as an "alarm clock."

"I like to fish but I have a hard time getting up real early in the morning," he says. "So I have one of the guys phone me when he gets up. That way I can't turn off the 'alarm' and go back to sleep. I haven't been late or missed a trip since my friends started waking me up by phone."

Here's another case I heard of that shows the value of the telephone, day in and day out. One mother, after keeping a record of her calls for a week, figured that her two phones saved her family about three hours a day. "That's the time we would have spent just driving for errands and personal visits," she says.

As these stories show, the more you use your phone, the more value you get from it. So why not use it... for all it's worth!

### FREE PROGRAMS FOR YOUR GROUP

Since some Eastland civic, church and social groups already are planning fall programs, this seems like a good time to remind you of our standing offer to provide entertaining and informative telephone programs for your organization.

A booklet describing the variety of programs available—films, talks, lecture-demonstrations, telephone tours—is yours for the asking. Just call the telephone business office, MA 9-2691.

### HOW TO CALL LONG DISTANCE AND SAVE 1/3

It's so easy to save yourself a lot of money. How? By placing your Long Distance calls station-to-station (to a distant number rather than to a particular person).

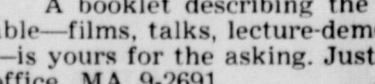
Here's the way to do it:

1. Give the operator the name of the city you want to call.
2. Next, tell her the number you are calling.
3. When the operator asks, give her the number you are calling from.

Why not try it tonight? Remember, rates are lower after 6 p.m. and all day Sunday.

Call by number. It's twice as fast.

### SOUTHWESTERN BELL TELEPHONE COMPANY



### Hospital News

Patients in the Eastland Memorial Hospital are the following:

O. T. Hazard, Eastland, medical  
Mrs. Maud Brawly, Eastland, medical  
Mrs. D. J. Walker, Eastland, medical  
Mrs. Alton Rogers and baby girl, Ranger  
Mrs. R. M. Sneed, Eastland, medical  
C. F. Chesnut, Ranger, medical  
Miss Susie Hurley, Cisco, medical  
Mrs. Badie Hallmark, Cisco, surgical  
Ronald Johnson, Eastland, surgical  
Mrs. T. O. Elam, Fabens, accident  
L. Gene Parks, Midland, medical  
L. W. Campbell, Eastland, medical  
Herman Stroud, Ranger, medical  
Mrs. Otto Morren, Eastland, medical  
Mrs. Bethel Roe, Eastland, surgical  
Joe Scott Hunt, medical, Ranger  
Mrs. Mattie Williams, medical, Eastland  
Mrs. Joan Slaughter, Eastland, medical  
Mrs. Richard Jones, Olden, accident  
Richard Jones, Olden, accident  
Mrs. H. J. Carothers, Eastland, medical  
J. M. Smith, Eastland, accident  
Mrs. Emma Lee Caldwell, Carbon, medical  
Mrs. Veda Hudson, Eastland, medical  
Mrs. Sarah Butler, Eastland, medical  
R. S. Hollis, Eastland, medical  
Mrs. Missouri Ann White, surgical, Abilene  
T. H. Landon, Eastland, medical  
Billy Carl True, Snyder, accident

Dismissed were:  
Roy Lawson, Nancy Wilcoxson, Gerald H. Lee, Mrs. Cody Cox and baby boy, Roy Stroud and Mrs. R. F. Justice.

Patients in the Ranger General Hospital from Eastland and Olden are:  
Mrs. Mary Loper, Eastland, medical  
A. C. Coldiron, Eastland, medical

### Beethoven Jr. Music Club To Meet Wednesday

Members of the Beethoven Junior Music Club will meet Wednesday at 10 a.m. in the home of Mr. and Mrs. Silas Decker, 405 E. Conner, for a coke party, the opening program of this year. Miss Sherry Decker, daughter of Mr. and Mrs. Decker, will be hostess for the event.

Miss Edna Stripe will be counselor and teacher for the members. Miss Stripe is replacing Mrs. A. F. Taylor as music teacher in Eastland.

### Look Who

Mr. and Mrs. Morgan of Midland announced the arrival of a baby girl, in a Midland Hospital. Phyllis Elaine weighs 10 pounds and 13 ounces.

Maternal grandparents and Mrs. C. B. Ladd and the paternal grandparents, Mr. and Mrs. J. Eastland.

May God's richest blessings be with each of you.

The A. R. Mayers Family

— READ THE CLASSIFIEDS —

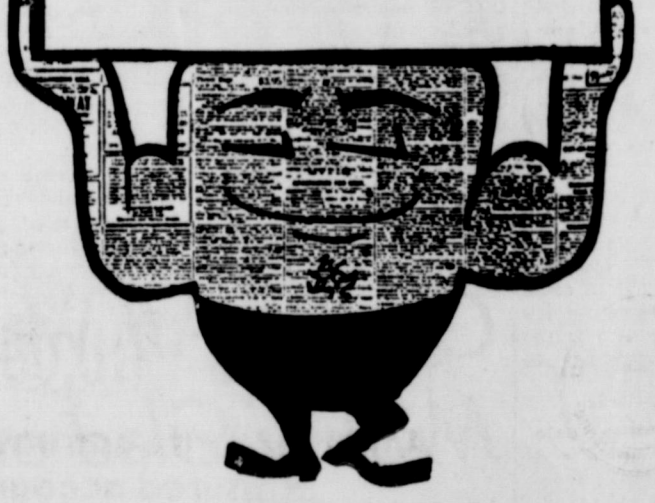


**SHORT-TRIP DRIVING** can dangerously increase formation of engine-crippling sludge and varnish. The super-additives in new Havoline Special 10W-30 Motor Oil prevent these formations. This new all-temperature oil actually saves your engine — keeps it running smoothly, powerfully, because it cleans as it lubricates. Try it!



- C. T. LUCAS—300 East Main
- E. S. HOGAN—702 W. Main
- PETE TUCKER — 503 W. Main
- DALE CHICKS — Hwy. 80 East
- ED BRADSHAW, Consignee

### "THE MIGHTY MIDGET" THE WANT AD WILL DO THE JOB FOR YOU



# For Just 70¢

You can run a seven word classified ad in this newspaper for THREE times. In this day and time that's really a bargain.

## Phone MA 9-170

# Eastland Telegram



Court News-

(Continued from Page One) First State Bank, Abilene to Marvin Lewis, transfer of lien. Farmers Bus Lines to The Public, assumed name. Federal Land Bank, Houston to J. B. Gardner, release of lien. Willard Gage to Wesley E. Gage, warranty deed. Annie F. Hatten to Mrs. Lottie B. Hobbs, warranty deed. W. M. Jarrell to Western Natural Gas Company, assignment. Morris Jefferies to First Federal S & L Assn., deed of trust. R. L. Kirk to Robert P. Browder, warranty deed. James Roan Livingston to The Public, proof of heirship. Marvin Lewis to Citizens National Bank, Abilene, transfer of lien. Thomas F. Lasell to First Federal S & L Assn., deed of trust. William Walter Mitchell to The Public, proof of heirship.

A. C. Morton to Lena May Patterson, dist. deed. Joe Macios to Travis L. Crutcheff, release of vendor's lien. Republic National Bank of Dallas to The Dan Danciger Fund, deed. Vera Z. Rhodes to Gene V. Rhodes, receipt. Burl Reed to Bevington Reed, warranty deed. Elbert Richardson to Thomas F. Lasell, warranty deed. W. E. M. Shay to Clarence G. Stroebel, release of oil and gas lease. William Tilman Stubblefield to First Federal S & L Assn., deed of trust. Tom Staamey to Eastland National Bank, deed of trust. Texaco, Inc. to Maggie Gray, release of oil and gas lease. Grace R. Thomas to First Federal S & L Assn., deed of trust. Ima Jean Weir to Bevington Reed, warranty deed. Katrina L. Wood to Edd Brooks, deed of trust. Daniel B. Young to United States of America, deed of trust. Marriage Licenses Jesse Elmer Givens and Frances Rene Phillips. James Monroe Bralley and Martha Elizabeth Gilbreath. James B. Reese and Jackie Mae Harris. Royce Weldon Taylor and Bobbie June Spink. Will Wenzler and Mary Venable. William Fred Seay and Carolyn Jean Weaver. Roy Dswain Day, Jr. and Mary Mollie Mitchell. James Burl Farmer and Dolores Jo Cox. Gilbert Roy Brown and Doris Sue Watson.

Eastland Seem-

(Continued from Page One) know too much", he says. His favorite illustration seems to be the story of the town whose citizens ran Jesus from their midst because He cast demons from a human being into their swine. "Give us our swine", the preacher says, "not Christ". His thinking does seem to apply.

"Upon re-reading this, I fear I've given the impression there are no decent people here. Naturally there are. We've met some of the nicest people we've ever known anywhere. It's just such a contrast from what we knew at home.

"Although the incomes here are low, prices are high. The only stores in town besides some beyond-our-reach tourist shops is J. C. Penney's. Food prices are 15 percent higher than elsewhere. "Knowing the nice people, thinking of that transfer, we'll be able to live here. Getting to like it seems out of the realm of possibility just now. "Take a tip from us. When you hear people say of a resort town: 'It's all right to visit, but I'd hate to live there', you believe them. Never move to one."

If this were fiction, there would have to be a climax or moral. Since it's fact, there's no climax, no sudden, out-of-the-blue event to either get them moved to create in them a consuming love for the place. And there's no moral either. Unless you'd like to remember this the next time you decide Eastland is far too dull and you'd prefer living in a thriving resort somewhere up in the mountains.

Average Beef Production Cost Is Listed

Exact average costs per mother cow to produce beef in Texas in these days of high expense have now been figured out by the Texas Agricultural Experiment Station in East Texas.

The experiment station comes up with an average cost of \$99 per annual average of 378 pounds of beef, taking into account all such items as interest on investment, operator's labor, depreciation and all other annual expenses. With the average production of 378 pounds of beef per year, it figures that the operator must receive slightly more than 26 cents per pound for the beef produced if he does nothing more than to break even. It goes without saying that many Texas operators, particularly those in the smaller brackets, seldom take into account all of the essential bookkeeping and losses.

If no charge is made for the operator's labor, the average cost per mother cow per year comes to \$82. In such case, the operator could cover all cost if he obtained 21.5 cents per pound for his beef, but he would be throwing his labor into the deal with no actual return. Then, cutting the bookkeeping still further, if interest on investment should be excluded the cost of production would come down to \$65 per cow. With a return of slightly more than 17 cents per pound the operator would be receiving a fair wage for his labor, but would not be getting to cover any return whatever for interest on his monetary investment.

If labor and interest costs both should be excluded, the annual cost for producing 378 pounds of beef each year would come to \$47 per mother cow. This means that over a short period of time the operator could receive 12.5 cents per pound for the beef produced and still manage to stay in business. However, what he would be receiving would be the bare costs of replacement for the beef he was marketing. Many Texas cowmen, who have watched the losses pile up in time of drought and in days when the

markets were glutted, could show the bookkeepers where they have managed to remain in business with considerable less return than the average indicated requirements. At the same time, however, they would be the first to admit that they were not actually making any money and knew it all the time even without any expert bookkeeping or accounting systems.

C-C Officers-

(Continued from Page One) of the precinct no longer wanted to serve and that the people of the area wanted to vote in Rising Star. Two other precincts, Scranton and Nimrod, came under observation. Those are the two boxes which didn't turn in election results until two days after the Democratic primaries. Commissioner Lamb of Cisco said he had been assured that Scranton would do better in the future and Judge Hart urged that Nimrod be kept as a voting box. Commissioners also heard reports from the two home demon-

stration agents and received a report that the county trapper would begin costing \$25 more a month beginning Sept. 1. In other routine business, several charity cases were heard.

ACHING MUSCLES

Quickly relieve tired, sore, aching muscles with STANBACK Powders or Tablets. STANBACK'S S. A. (Synergistic Action) brings faster, more complete relief from pain. Remember... Snap back with STANBACK!

Are You Sure You Don't Have Termites We offer a free inspection service to find out. Termites are doing thousands of dollars damage yearly. No building is safe from termites unless an approved chemical barrier is used. Their damage is seldom apparent until it reaches a serious stage because they work unseen within the wood, and do not break the surface. A sagging floor could be the results of termite infested lumber. We use approved methods and chemicals. Terms can be arranged. Termites - Roaches - Ants - Tree Spraying CALL OR WRITE W. H. McANALLY CISCO

DRIVE-IN THE CHURCH OF YOUR CHOICE EACH SUNDAY... Debbie Reynolds... THEATRE... CHILDREN FREE

IXIE Drive-In... RANGER HIGHWAY... SHOWS... MOTION PICTURE FOR EVERYONE!... THE GREATEST SHOW ON EARTH... Dick Clark

THIS IS YOUTH... Dick Clark... BECAUSE THEY'RE YOUNG... Michael Callan-Tuesday Weld and Victoria Shaw

Suits Filed County Clerk's Office Jean W. Scarlett v. William D. Scarlett, divorce. Welox, Inc. v. Jack Hailey, suit for debt. Z. W. Cook, et al v. Teddy Blass, damages. Ursula Elizabeth Richardson v. Buster Mack Richardson, divorce & child custody. Jennie Belle Fleming v. William Guy Fleming, divorce. William B. Rucker v. C. E. Paul, damages. Billy Howard Kleiner v. Texas Department of Public Safety, injunction. La Verne Washington v. Roy Washington, divorce. Cen-Tex, Inc. v. James W. Harmon, et al, debt. Standlee McCracken v. H. Leonard Powers, debt. Orders and Judgments 91st District Court First State Bank of Rising Star v. Reba Joe Childers, judgment. L. B. Swanner v. Shirlene Swanner, judgment. Dale Key v. James A. Shaffer, amended judgment.

Many-

(Continued from Page One) teet and condition our farmland. This practice is especially needed on peanut land. Your district supervisors and County A. S. C. Committee wish to encourage you to now make plans to "cover up your fields with a winter cover crop."

Would You Be Safe In Case Of An Atomic Attack? You can provide your family the protection they deserve now without leaving Eastland. See us today for information concerning the new, economical ESCOA SHELTER, a class A Civil Defense approved shelter which can save your life even in case of heavy fallout.

Ask for details about the Escoa Class A Emergency Shelter today! Warren Alexander Pearl Parks Big State Emergency Shelter CO. OF AMERICA Phone MAin 9-1370 Room 406, Petroleum Bldg.

Your Idle Dollars To Work For You We Pay You To SAVE! Current Dividend Is 4 1/4% Per Annum Payable June 30th and December 31st.

Accounts Are Insured Up To \$10,000.00 A man and wife can have \$30,000 in insured accounts.

our financial statement and literature on in- of accounts. Open an account by mail - your es will be answered promptly. ur assets are now over One and One-Fourth Million (\$1,250,000.00) dollars. ur accounts are insured by The Federal Savings & Loan Insurance Corporation, an Agency of The Federal Government. are member of The Federal Home Bank Loan System. e operate under a Federal Charter dated December 14, 1934. We write you to open an Investment Account or a Savings Account with us.

Federal Savings & Loan Association RANGER, TEXAS Phone MI 7-1611

RANGER DRIVE-IN... Box Office Opens 7:15—Show Starts at Dusk Adults 50c—Kiddies Under 11 Free Only Eastland County Drive-In Open All Year LAST TIMES TUESDAY ...ITS WHAT GOES ON WHEN THE LIGHTS GO OFF! ROCK HUDSON DORIS DAY PILLOW TALK in Eastland COLOR • CINEMASCOPE TONY RANDALL • THELMA RITTER

EVERY WEDNESDAY IS BARGAIN NITE 50¢ CAB LOAD TV'S LAFF-FAMED FUNSTERS DAN ROWAN and DICK MARTIN Once Upon A Horse LEIF ERICKSON-NITA TALBOT-JAMES GLEASON MARTHA HYER FREE! GET YOUR CHANCE ON THE NEW ATLAS SEWING MACHINE To Be Given Away Sunday Night, August 28

McGraw Motor Co.

CARS DODGE-STUDEBAKER TRUCKS 461 South Seaman Parts and Service Phone MA 9-1244

CHANNEL 9 (KRBC, Abilene) TUESDAY 7:00 Today 8:00 Today 9:00 Dough Re Mi 9:30 Play Yr Munch 10:00 Price Is Right 10:30 Concentration 11:00 Truth or Con. 11:30 Could Be You 12:00 News, Withr. 12:15 Devotions 12:30 3 Stooges 1:00 Queen for Day 1:30 Loretta Young 2:00 Dr. Malone 2:30 From Roots

CHANNEL 4 (KRLD, Dallas) TUESDAY 7:30 Cartoons 8:00 News 8:15 Cap. Kangaroo 9:00 Dec. Bride 9:30 Video Village 10:00 I Love Lucy 11:00 Love of Life 11:30 Search for Tm. 12:00 News 12:15 Full Circle 1:00 House Party 1:30 Millionaire 2:00 Millionaire 2:30 Verdict is Yrs.

CHANNEL 11 (KFJZ, Fort Worth) TUESDAY 8:30 Com. Theatre 9:00 Little Rascals 9:30 Jack La Lanne 10:00 Trb'l w. Fhr. 10:30 Rendezvous 11:00 Matinee 11:30 Mar'd Joan 12:00 Bugs Bunny

CHANNEL 5 (WBAP, Fort Worth) TUESDAY 5:55 Newsreel 6:00 Cont. Class'm. 7:00 Today 7:25 Weather 8:25 News 9:00 Dough Re Mi 9:30 Play Yr Munch 10:00 Price Is Right 10:30 Concentration 11:00 Tr. or Conseq. 11:30 Could Be You 12:00 Noon News 1:00 Queen for Day 1:30 Loretta Young 2:00 Dr. Malone 2:30 From Roots 3:00 Com. Theatre

CHANNEL 8 (WFAA, Dallas) TUESDAY 7:25 Devotional 7:30 Cartoons 8:00 Romper Rm. 8:30 Early Show 10:00 Julie Benell 11:00 My Lit. Margie 11:55 News 12:00 Restless Gun 12:30 Love That Bob 1:00 About Faces 1:30 Way of Life 2:00 Day in Court 2:30 Gale Storm 3:00 Beat Clock 3:30 Who Do Ya 4:00 Amer. Band. 5:00 Robin Hood

FOR GOOD LOOKING YOU CAN'T BEAT TV CABLE LOOKING COMMUNITY TELEVISION, INC. 'Call today and get five channels tomorrow' Village Hotel Phone MAin 9-1716



### New! Gillette Adjustable Razor

9 Settings for Superb Shaves!



NOW \$1.95 with new Super Blue Blades

#### VISITS MOTHER

Mr. and Mrs. Carroll Nelson of Killeen spent the weekend visiting Mrs. Nelson's mother, Mrs. W. E. Matlock.

#### RETURN HOME

Mrs. Eva Dick of Olden returned to her home Thursday from a two months visit in Odessa with her children.

— READ THE CLASSIFIEDS —



Mrs. Charles Bernard Barry ... formerly Wanda Dell Perrin

### Perrin - Barry Vows Solemnized In Abilene Church Rites

Miss Wanda Dell Perrin became the bride of Charles Bernard Barry of Abilene at seven o'clock Saturday evening, Aug. 13, in a double ring ceremony read in the chapel of the First Baptist Church, Abilene.

Officiating was Dr. James Zambo, professor of history at Hardin-Simmons University, Abilene.

The bride is the daughter of Mrs. Flora Perrin of Ranger. Parents of the bridegroom are Mr. and Mrs. Richard Barry of Windthorst.

Honor attendants were Donnie Martini of Wichita Falls and Mrs. James Blair of Ranger, twin sister of the bride.

Candlelighters and ushers were Jackie Odom of Brownwood, and Joe Howser and Cecil Norris of Abilene.

Donna Kay Barry of Wichita Falls, niece of the bridegroom, was flower girl. Ring bearer was Jackie Odom of Brownwood, nephew of the bride.

James Estes, organist, and Joe Chitwood, soloist, presented wedding music.

Miss Perrin was given in marriage by her brother, Harlon Perrin. She wore a gown of white embroidered organza styled with short sleeves, fitted bodice with pointed waistline, and waltz-length tiered skirt. Her veil of illusion was attached to a tiara of seed pearls. She wore a single strand of pearls and carried a cascade bouquet of pink sweetheart roses with a detachable corsage of baby sweetheart roses.

Mrs. Barry's waltz-length dress of pink organza over taffeta was fashioned with a matching cummerbund, fitted bodice with round neckline, and bouffant skirt. She carried a small white lace umbrella showered with pink rosebuds and ivy.

A reception was held in the dining room of the church. Serving in the house party were Eula Windham, Billie Gideon, Mrs. Jack Odom, Mrs. Dave Barry, Olene NeSmith, Mrs. Dan Stephenson, and Mrs. Afton Stehle.

For a wedding trip to Lake Buchanan, Mrs. Barry wore a bone silk shirtwaist dress with black patent accessories and the corsage from her bouquet.

The bride is a graduate of Ranger High School, Hendrick Hosp-

ital School of Nursing, and Baylor University School of Anesthesia.

The bridegroom graduated from Antelope High School and Draughton's School of Electronics at Wichita Falls. He is employed by Schlumberger Well Surveying Corporation.

#### LETTERS TO EDITOR

Dear Editor,

We take the Telegram and we do enjoy it a lot as I was born and raised in Eastland County. I read everything in the paper. I especially like your column and also enjoy reading Marie Boney's column, the Hollywood Happenings, and Mr. Joe Gray's column very much. I would like to have a paper each day to read and not have to wait for one three times a week. I would like to know if the Joe Gray from Eastland that I saw on Art Linkletter's program Aug. 17 is the one and same Joe Gray who writes the column in the paper. I sure was thrilled to see and here someone from my hometown on a TV program even though I have never met Mr. Gray.

I am sure sorry he didn't win the color TV set. He just didn't know babies well. He should not be a bachelor.

Mrs. Herbert Morrison 4923 McKnight Drive Odessa, Texas

(Editor's Note: That must be our Joe Gray. He is out running around.)

The first automobile insurance policy was issued in 1898, when the nation's automobile registration was about 800 cars.

#### Insurance AND Real Estate

D. L. KINNAIRD

Life - Fire - Auto - Farm

Pollo - Bonds

40 years in the Insurance Business in Eastland

#### FURNITURE for the Entire Home

Carpet - Rugs All Prices

Be Sure To Check With



## Good Taste

By Emily Post

#### The Privilege Of The Hostess

Dear Mrs. Post: We have a married couple to dinner occasionally sometimes alone and sometimes with other guests. Regardless of who is here this man will say, "How about some bridge?" as soon as we leave the dinner table. I feel he is very much out of order and that it is up to the host or hostess to plan the entertainment. We enjoy playing bridge but we also like to converse with our friends. Don't you think it is rude for a guest to suggest what to do unless he wishes to do.

Answer: You are right. It is not the province of a guest, but that of the hostess to suggest playing bridge or whatever else it is she wishes to do.

#### When To Arrive And Leave

Dear Mrs. Post: My husband and I have been invited to a dinner party at the house of his employer. I would like to know how long before dinner we are expected to arrive, and how long do we stay after dinner is over. They are very formal people and this will be our first visit to their house.

Answer: You should arrive on the stroke of the hour set for dinner and stay about an hour after dinner. It would be rude to leave sooner than that. When everyone is having a very good time and conversation is gay and amusing people naturally stay on. On the other hand, if the conversation has lagged, one should not stay longer than the conventional time.

#### Paying His Guest's Check

Dear Mrs. Post: When a man and girl go to a cafeteria for something to eat, shouldn't the man precede her so that when they reach the end of the line where the cashier is seated, he can pay for her food? If she goes first it makes a rather awkward

situation.

Answer: She should go ahead of him and when they get to where the cashier is, he merely leans forward and says to the cashier, "This lady is with me, please give me her check."

#### A Lonely Guest

Dear Mrs. Post: What is the proper behavior for a guest who finds herself a stranger at a large party? I was invited to a semi-business cocktail party last week and found that I knew no one at the party but the hostess. I felt very unnecessary and after about fifteen minutes I left. I would like to know if it would have been proper for me to go up to other guests without being introduced, and start a conversation.

Answer: You can't very well

walk up to two strangers who are talking together unless they speak directly to you. But you can quite properly start a conversation with either a man or woman who is seated, or standing, next to you. You must not, however, let it run on without response from your listener.

#### Like Her Coffee With Dessert

Dear Mrs. Post: While having dinner with a friend the other evening, the waiter brought my coffee before I had quite finished eating the main course. As I wanted the coffee with my dessert, I removed the saucer from underneath the cup and put it on top of the cup in order to keep the coffee from getting cold. I was told that this was bad manners. Was it?

Answer: It was. You should have told the waiter you did not want your coffee until your dessert.

#### Taking Back First Husband's Name

Dear Mrs. Post: My first husband died, and two years later I remarried. This second marriage was a very unhappy one and after several years we were divorced. Would it be proper for me to go back to my first husband's name? I do not want any part of my

second husband's name very distasteful to me. Answer: It is unusual to go back to her first husband's name—especially when she has been married to her second husband. Mrs. Post offers readers

lets on a variety of social and earning etiquette. If you like to have her leaflet sent to you, please send 10 cents in coin to P. O. Box 99, Station C, 19, N. Y. Mrs. Post is not responsible for the return of letters. (Released by The Bell Co.)

— READ THE CLASSIFIEDS —

COME IN AND SEE OUR COMPLETE SELECTION OF FINE CARPET'S

★ Prices to fit every budget  
★ We do our own installation

**Ranger Furniture Exchange**

"BRASHIER'S" RANGER Phone 242  
123 N. Rusk

Funeral Directors  
**HAMNER FUNERAL HOME**  
Ben E. Hamner

Oxygen Equipped - Air Conditioned

Eastland Phone MA 9-2611 Cisco Phone Hillcrest 2-1211

AMBULANCE SERVICE ANY WHERE ANY TIME  
Nominal Cost Burial Insurance For The Entire Family

**Years to Build, Seconds to Destroy**

... is a tragic reminder to those who are unfortunate in losing their worldly possessions without adequate insurance protection. Years of effort, savings and accomplishments may be wiped out in a single catastrophe. It could be only an explosion, a fire, a tornado, a collision, or something worse if we can imagine such a thing. It can happen anywhere, any time, to any one, without warning. Insurance will help in times of tragedy so why be unprepared?

**EARL BENDER & COMPANY**  
Eastland (Insurance since 1924) Texas

**COMPLETE AIR CONDITIONING SALES and SERVICE**

**SMITH PLUMBING AND TIN**  
PHONE MA 9-2422  
114 N. Seaman

**SINCE 1884**  
... quality workmanship and efficient service, approved throughout this area.

**ALEX RAWLINS & SONS**  
Weatherford Phone LY 4-2726 Texas  
Designers and Builders of Monuments Since 1884

**Ride The GO KARTS ON THE SPEEDWAY**

AMERICA'S FASTEST GROWING SPORT

**Highway 80 EAST Of Eastland, Texas**

**Insurance AND Real Estate**

**D. L. KINNAIRD**  
Life - Fire - Auto - Farm  
Pollo - Bonds  
40 years in the Insurance Business in Eastland

**FURNITURE for the Entire Home**

★ Carpet - Rugs All Prices

★ Be Sure To Check With

**Coats FURNITURE**  
WELLS-LAFAYETTE

**THE VILLAGE HOTEL COFFEE SHOP**  
is under new management

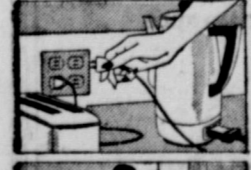
**We Feature ...**

- ★ Eastern Grain Fed Heavy Beef Steaks
- ★ Banquets and Parties on the Roof Garden

**Village Hotel Coffee Shop**  
J. C. LONG, Owner

**Better living is ready and waiting in homes that display this MEDALLION**

Right from the start, you'll enjoy electrical comforts and conveniences you've always wanted ... in a Medallion Home. The Medallion identifies homes that are wired and equipped for modern electrical living with ...



**FULL HOUSEPOWER** — properly planned wiring and plenty of outlets and circuits for the appliances you own now and those you may want to add later.



**WORK-SAVING ELECTRIC APPLIANCES** — Including an electric range; electric bathroom heating and at least three additional major electric appliances.



**LIGHT FOR LIVING** — properly placed fixtures for beautiful, efficient, sight-saving light. Light for living is planned lighting, based on the needs of the home.

Only new or remodeled homes that meet modern high standards for electrical living can display the Medallion. Look for it when you choose your home!

**TEXAS ELECTRIC SERVICE COMPANY**  
Frank Sayre, Manager