



Eastland Telegram

"COVERING EASTLAND COUNTY"



VOLUME TWENTY-NINE

EASTLAND TEXAS, THURSDAY, MARCH 19, 1959

No. 143

Stock Show Entries Total 468 This Year

Show to be Held At New Lake Site

Four hundred and sixty-eight entries have been made for the Eastland County Livestock Show which will be held in Eastland Friday and Saturday, according to N. E. Eaves, general show superintendent.

The show, sponsored annually by the Eastland County Livestock Raisers Association, will be held this year for the first time at the new Livestock Show Grounds near Lakeside Country Club on the banks of Eastland Lake.

To accommodate the large number of animals entered a large building 20 feet by 144 feet was moved to the new show grounds located just across the road from the Country Club at Eastland. In addition to and attached to the south side of the building a large shed has been constructed which is 28 by 144 feet.

Pens have been built inside the large building to take care of the hogs, sheep and goats. The shed is large enough to take care of the cattle to be exhibited and showed in the show, according to Eaves.

All animals will be sifted that are not of the quality or finish to be a credit to the show.

Adults can compete in the breeding classes but not in the fat classes and can receive ribbons only and no premium money.

Judging will take place as follows: 3 p.m. Friday, Angora Goats; 4 p.m. Breeding classes of sheep.

Saturday, 8:30 a.m., Fat hogs; 10 a.m. Breeding Classes of Swine; 11 a.m. Breeding Classes of Beef Cattle; 1 p.m. Fat lambs; 2:30 p.m. Dairy Cattle and 3:30 p.m. Fat Steers.

Tuesday night, March 24, a public auction of all the fat animals in the show will be held. It is expected that premium above market price will be paid on all the fat animals, as in the past.

Each exhibitor is limited to two animals per class in both breeding and fat divisions except

for chapter or 4-H Club which can show five animals.

The fat animals are to be judged on a packer basis. Fat hogs must weigh at least 175 pounds and not over 275 pounds. Fat lambs may be any breed or any weight. The lambs must be shown with their wool on.

A concession stand will be operated at the Show grounds by the Posse Anns. A spokesman said that women wanting to donate pies and cakes should bring them to the stand.

Parade to be Held Friday at Two In Eastland

Five bands and at least three riding groups are due to participate in the Sheriff's Posse parade in Eastland Friday afternoon.

The parade will kick off the 1959 Eastland County Livestock Show, which is to be held Friday and Saturday. It will begin at 2 p.m.

Bands from Eastland, Ranger, Cisco, Gorman and Rising Star will take part, according to Don Bradford of Ranger, this year's parade chairman.

The Sheriff's Posse, the Posse Anns and the Rising Star Riders Club will also ride in the parade. In addition a number of floats are entered and many riders will take part. The Ranger National Guard will also send several units to Eastland for the parade.

Prizes are awarded annually to the best band, the best float, and the best riding group.

Anyone wanting to enter a float in the parade can do so, Bradford said. He urged entries to turn out early so the parade could form early.

Senior Play Is Slated Friday Night at Eight

A successful businessman, his neglected family, and the complications of a forbidden daughter's marriage are the basic ingredients of the Eastland High School Senior play to be held Friday night at 8 p.m.

The play, entitled "Rest Assured," is directed by Kerman Bond and characters are as follows: Mr. Marlock, Elton Williams; Mrs. Marlock, Jamie Stamey; Jessica Marlock, Laura Harris; Middle, the maid, Rosemary Jones; Joe Lanconi, Jerry Hallmark; Luis, Lanconi, Perry Miller; Martha Lanconi, Florence Stroud; Lucifer, Michael Lisenbeck; Miss Acres, Judy Cokrell; George Plew, Stanley Reed; Mrs. Schmalz, Floyd Phillips; Dr. Brown, Clarence Mayers; Mr. Black, Fred Walker; and Mrs. Frinch, Janice Crabtree. Prompters are Jackie Baggett and Janice Crabtree.

Admission will be 75c for reserved seats, 50c for adults and 25c for students. Children under school age are admitted free of charge.

Bank Deposits Set New Record Here for March

Eastland bank deposits are \$278,877 higher now than they were at this same time a year ago, the statement of condition issued this week reveals.

Deposits in March, 1958 totaled \$3,631,701. At the close of business March 12, the date called for by the comptroller of currency in Washington and the State Banking Department, deposits at Eastland National Bank were \$3,910,572.

Loans and discounts were up slightly too, however. Loans a year ago totaled \$1,275,916, and now are listed at \$1,337,030.

Deposits are slightly lower than they were at the Dec. 31 bank call. Deposits then were listed at \$4,129,652. This is usual, though, since Dec. 31 deposits usually are higher than at any other time.

The March deposits at Eastland National was an all-time record.

SANDY'S SCHOOL SCOOPS

By SANDY TAYLOR
Telegram School Reporter

School band taking part.

The second meeting of the All-District Band will be held in Ranger Saturday. Two students from the Eastland band are in the first band and several are in the second band, so Eastland will be well represented come Saturday.

Last Friday afternoon, the students of the high school and junior high were treated to a matinee showing of the movie, "The Ten Commandments" at the Majestic Theatre. I am sure everyone enjoyed themselves and on behalf of the student body and faculty, I would like to thank Mr. Van Poy and the theatre personnel for showing us such a wonderful time and inspiring movie.

See ya next week!

Friday is also the date of the Eastland County Livestock Show at the new livestock arena near Lake Eastland. Several of the High School FFA members are entering stock in the show and it promises to be a good show. There will also be a parade in the afternoon with the Eastland High

MOORE about... EASTLAND

by Virgil E. Moore

Christina Stroebel, daughter of Mrs. Carl W. Stroebel, is one of two county Club girls who will show calves in this year's County Livestock Show.

The show as you well know, is slated for this Friday and Saturday, and Christina, as you might expect, is rather excited about the whole thing.

She was telling Eastland Lions the other day about the care of her calf. One of the two parts she discovered was keeping her animal clean. It seems that County Agent J. M. Cooper gave her some advice on the subject. In fact, he even talked her into using regular shampoo on the calf one time. Later Cooper admitted that might be carrying the grooming a bit too far, however.

Show time never rolls around that we don't recall the first story we ever wrote about the show. Instead of calling the County Livestock Raisers Association simply that, we made the mistake of calling it the County Livestock Growers Association.

Members of the Association made us write this sentence 2,000 times: "You grow peanuts and raise livestock."

This year's Show, from all indications, promises to be just about the best one yet. Members of the Livestock Association, the Sheriff's Posse and the Posse Anns, have worked hard to get the new showgrounds in excellent condition. They are proud of the grounds, and well they should be. We think that every person in Eastland should visit the show, Friday or Saturday (or both days). If you don't feel that you should go to the show to help out our young boys and girls, be greedy and go out just to enjoy yourself.

Cute Sayings Department—Craig Lund, who is crowding six, and his 3 1/2-year-old sister, Paula, children of Dr. and Mrs. Fehrman Lund, participated in this revealing conversation one day this week:

Craig: "Have you been crying?" Paula: "No." (Although a tear was running down her cheek.)

Craig: "But one of your little tears has come down!"

If you haven't seen Les Strawn and Al White in their new cowboy hats you have missed out on something.

Highway patrolmen recently turned in their old caps for the new Texas-size hats, and we think they look a lot more like the tourists you would expect now.

The fellow, or fellows, who broke in the Majestic Theatre the other night must have been disappointed guys. Actually the Majestic has a safe inside a safe, and while the burglars were able to get in the outside door, they couldn't finish the job.

Aubrey Van Hoy, theatre manager, said the burglars took their anger out on the rest of the locks in the building. Just about every door lock was ruined.

You will not be wanting to miss the Senior Play Friday night. We always enjoy seeing the students put on their annual performances, and from sneaking around the practice sessions a bit, we are in the position to guarantee a good performance this year.

(Continued On Page Five)

FREYSLAG INSURANCE AGENCY

WEATHER NEWS

High	72
Low	37
Rain	0
Total Rain for March	.24
Avg. Rain in March	1.59
Total Rain for Year	1.12
Forecast	Fair and Mild

County 4-H Winners In Contest Named

Winners in the annual Eastland County 4-H Club contests, which were held Saturday in Eastland, were announced today by Miss Wilene Sockwell, assistant Home Demonstration agent.

Forty-two 4-Hers participated in the contests. All first place winners will enter the District contest in Stephenville April 11.

Following is a list of winners in various contests:

Dairy Foods (Junior Team Division)—Rhonda Frasier and Diane Thompson of Rising Star, first; Jeanne Hanna and Judy Phillips of Eastland Junior High, second; Georgia Bess Faircloth and Gail Mae of Eastland Junior High, third; Linda Butler and Cecelia

Farm Bureau Seeking 100 New Members

Enthusiasm ran high Monday night when approximately 40 county Farm Bureau members gathered at the First Christian Church Annex in Eastland for their annual membership drive rally.

The county group set a goal of 100 new members during the March drive. J. D. Jordan, field representative, from Mason spoke very briefly on what Farm Bureau can accomplish as an organization, and introduced the guest speaker for the occasion, Millard Shivers, Texas Farm Bureau Organization director from Waco.

Shivers spoke to the group on "What is the purpose of Farm Bureau?"

"This pertinent question has many answers," Shivers stated. "First of all, it is a free, non-governmental, voluntary organization whose purpose is to analyze problems and help formulate plans for action when it involves farm and ranch people. It promotes economy, education, social advancement, as well as the welfare of the state and nation. Non-secular and non-secret in character, Farm Bureau is not only local and national in scope and influence, but it is internationally influential."

A group composed of Mr. and Mrs. Don Kincaid, Denise Kincaid and Trippy Moore Presented a skit, "Farm Bureau on Mars," followed by a Rock 'n Roll number by the two youngsters. The winner of the county 4-H "Share the Fun Festival," Christine Stroebel played several accordin numbers.

Refreshments of doughnuts and coffee were served after the group adjourned. Community chairman and workers will devote the rest of March in trying to enroll 100 new members and renew all that are delinquent. Five hundred members for 1959 is the ultimate goal.

4-H Boys and Girls Entertain Eastland Lions

A group of Eastland County 4-H Club boys and girls entertained Eastland Lions Tuesday at their noon luncheon.

County Agent J. M. Cooper introduced the 4-Hers and Curtis Hoase, assistant agent.

Jimmy Johnson of Scranton, Joe Herring of Eastland, and Christina Stroebel of Nimrod took part in the program.

McDonald Will Go to Germany

Airman 1st Class Gilbert McDonald, son of Mr. and Mrs. Odis McDonald, 403 S. Ostrom, will be sent to Germany in June by his choice.

Mrs. McDonald reports that because of having the highest grades in his class he was given a choice of overseas duty. Airman McDonald is stationed in San Angelo, at Goodfellow's AFB.

EASTLAND NATIONAL BANK "On The Square" MEMBER F. D. I. C.

Copeland, Eastland Jr. High, red ribbon; Roy Lynn Gann and Carolyn Warren, Eastland Junior High, red ribbon; Nona Wilkerson and Linda Blair from Scranton, red ribbon; Shirley Cozart and Glenda Stevens from Cisco West Ward, white ribbon.

Dairy Foods (Junior Individual)—Linda Ezell of Rising Star, first.

Electric (Junior Division)—Janet Kimbler and Sharon Sayre of Eastland Junior High, first; Sandra Teague and Linda Jones of Rising Star, second.

Share the Fun (Junior Division)—Terry Huffman, Donella and Zuelia Carville of Hodges Oak, Irving, first; Pat Perkins, Kathy Covington and Sara Cooper of Hodges Oak, Ranger, second; Sharolyn Roach, Charlene Vermilion, Sherry Jones, Sharon Stewart and Linda Duggan of Rising Star, third; Jane Parks and Sharon Wilcox of Cisco West Ward, red ribbon; Terry Chambers of Rising Star, red ribbon; and Glenda Jordan of Gorman, red ribbon.

Share the Fun (Senior Division)—Christina Stroebel of Nimrod, first; Judy Lewis, Julie Frost, Miriam Crabtree and Mary Craven of Eastland Junior High, second; Sandra Scaramell of Rising Star, third; and Joe Herring and Jimmy Wright of Eastland Junior High, blue ribbon.

Electric Contest (Senior Division)—Loresta Love of Ranger Junior High, and Buddy Surles, Cisco Junior High, first.

Dairy Foods Contest (Senior Division)—Frances Baird and Vicki Morgan of Scranton, first.

That's why Beta Sigma Phi Sorority in Eastland is asking for your support to provide care and treatment and facilities so that crippled children might grow into independent adults.

You and your neighbors provide the skilled technical staff, the special equipment, the treatment necessary to restore these children to normal living. Community service is a tradition of pioneering America. It recalls the days when all hands joined to welcome a neighbor by helping build his house. Today Easter Seal asks you to serve in that same tradition; to join hands and help a neighbor build a new life.

At a national square dance convention in Kentucky several months ago, a team of the performers held an audience of 20,000 spellbound. The group was called the "Joy Riders"—you see, they square dance in wheel chairs. These are 10 physically handicapped men and women. They

learned to square dance at their local Easter Seal Center. Suddenly they found themselves in the spotlight, holding the attention of thousands. The important fact about all this is that they were accepted because of their ability—not the ability to perform—and not their disability. This is part of rehabilitation, physiological rehabilitation. Only one phase of the work that is done by Easter seals in caring for crippled children and adults throughout the nation.

Services and facilities operated by Easter Seal Societies last year helped 130,567 children and 27,278 adults on their way to rehabilitation. Another 78,821 children and 9,986 adults were aided in facilities, services and projects co-sponsored with other organizations.

If you haven't yet sent your contribution, do so today, won't you? Return it in the Easter Seal envelope you received by mail, or address the treasurer for Eastland County, Mr. Bill J. Collings, 206 S. Oaklawn, Eastland.

Mrs. E. M. White Dies Tuesday

Mrs. E. M. White, 64-year-old sister to Mrs. Sallie Rogers and Charlie Ashcraft of Ranger, died Tuesday evening in Beville.

Leaving Wednesday to attend the services were Mrs. Sallie Rogers, Buddy Rogers and Mr. and Mrs. Elva Rogers and children. Buddy and Elva Rogers are grandchildren.

Born in Eastland County in 1894, Mrs. Rogers lived in Cisco for 10 years before moving to Beville in 1930. She was a member of the Methodist Church.

Burial is to be in Beville. Survivors include the husband; eight children, and a number of grandchildren.

Shriners to Hold Ladies Night at Country Club

Members of the Cross Timbers Shrine Club will hold a Ladies Night Friday, Lone Cedar Country Club.

Shriners who are club members will have non-members as their guests. Eastland, Cisco, Ranger, Strawn and Gorman will be represented at the meeting, according to Henry Pullman of Eastland, president.

Dinner and a social hour are planned.

All District Band Session Saturday

A concert will be given by the Stephenville stage band at 1:15 p.m. A dinner is set at 4:30 p.m.

Judges will be available for brass and reed players who were not present for the first meeting and who wish to try out for the second band. Dan Whitaker, director of the Ranger band, said, "New members will be added to the sections of the second band with as much fairness as is possible to all concerned." Fees for each new member will be 75c.

Souvenir programs, listing the day's activities, a history of the all-district bands, a list of towns and directors in the area, and a list of all students in each band will be made available.

Members of the Band Booster Club will man a concession stand to be set up in the downstairs study hall, and information booths will be set up in the main hall and band office.



A LOT OF FISH—Here are 23 crappie weighing 40 pounds, recently landed at Lake Leon by W. T. Casey and Dave Stagner of Ranger. Reports indicate that crappie are biting good, and if the warm weather continues—fishing at the lake looks promising.

Sorority to Head Easter Seal Drive

By Frances Walters
Publicity Chairman

If there's a crippled child in your town, he is yours. He is a member of your community hoping to overcome his physical handicap and to someday serve as an active, useful citizen.

That's why Beta Sigma Phi Sorority in Eastland is asking for your support to provide care and treatment and facilities so that crippled children might grow into independent adults.

You and your neighbors provide the skilled technical staff, the special equipment, the treatment necessary to restore these children to normal living. Community service is a tradition of pioneering America. It recalls the days when all hands joined to welcome a neighbor by helping build his house. Today Easter Seal asks you to serve in that same tradition; to join hands and help a neighbor build a new life.

At a national square dance convention in Kentucky several months ago, a team of the performers held an audience of 20,000 spellbound. The group was called the "Joy Riders"—you see, they square dance in wheel chairs. These are 10 physically handicapped men and women. They

learned to square dance at their local Easter Seal Center. Suddenly they found themselves in the spotlight, holding the attention of thousands. The important fact about all this is that they were accepted because of their ability—not the ability to perform—and not their disability. This is part of rehabilitation, physiological rehabilitation. Only one phase of the work that is done by Easter seals in caring for crippled children and adults throughout the nation.

Services and facilities operated by Easter Seal Societies last year helped 130,567 children and 27,278 adults on their way to rehabilitation. Another 78,821 children and 9,986 adults were aided in facilities, services and projects co-sponsored with other organizations.

If you haven't yet sent your contribution, do so today, won't you? Return it in the Easter Seal envelope you received by mail, or address the treasurer for Eastland County, Mr. Bill J. Collings, 206 S. Oaklawn, Eastland.

Mrs. E. M. White Dies Tuesday

Mrs. E. M. White, 64-year-old sister to Mrs. Sallie Rogers and Charlie Ashcraft of Ranger, died Tuesday evening in Beville.

Leaving Wednesday to attend the services were Mrs. Sallie Rogers, Buddy Rogers and Mr. and Mrs. Elva Rogers and children. Buddy and Elva Rogers are grandchildren.

Born in Eastland County in 1894, Mrs. Rogers lived in Cisco for 10 years before moving to Beville in 1930. She was a member of the Methodist Church.

Burial is to be in Beville. Survivors include the husband; eight children, and a number of grandchildren.



SUPERINTENDENT — Charles Hutto, son of Mr. and Mrs. Marvin Hutto of Olden, is assistant superintendent of the Swine division for this year's Stock Show. Hutto is a student at Ranger College, majoring in agriculture. He plans to complete his college work at Texas Tech or Sam Houston State College. He is employed by McGraw Motor Co.

EASTLAND NATIONAL BANK "On The Square" MEMBER F. D. I. C.

Peter G. Theous Funeral Rites Slated Friday

Funeral services for Peter G. Theous will be held Friday at 2 p.m. in the Hamner Funeral Home chapel.

Mr. Theous died Wednesday at 10:30 p.m. at his home, 404 West Plummer. A native of Greece, Mr. Theous was 67. He had been a resident of Eastland County for 40 years.

Burial will be in Eastland Cemetery under direction of Hamner's Funeral Home.

Funeral Services For Dr. Jackson Slated Today

Funeral services for Dr. Thomas G. Jackson, 76, longtime Eastland County physician, will be held Thursday at 2 p.m. in the Carbon Methodist Church.

Dr. Jackson died at Blackwell Hospital in Gorman at 2 p.m. Tuesday following a heart attack Sunday.

He received his degree in medicine in Memphis, Tenn. in 1910 and came to Texas shortly thereafter. He practiced in Garden City and Romeny before settling in Carbon in 1918.

In 1945 he became a staff member of the Blackwell Hospital in Gorman but went into semi-retirement in 1947 after suffering a heart attack. He was born in 1882 in Vernon, Ala.

Survivors include his wife; two daughters, Mrs. Betty Mae Webb of Crane and Mrs. Jettie Faye Bond of Phoenix, Ariz.; three sons, Max of Eastland, Bill of Bartlesville, and Thomas G. Jr. of Bartlesville, Okla.; two sisters, Mrs. Melvin Henson of Carbon and Mrs. Bill Graham of Vernon, Ala.; five grandchildren and two great-grandchildren.

Burial will be in Murry Memorial Cemetery in Carbon.

Sales Award to Be Presented to Curly Maynard

Claude (Curly) Maynard of King Motor Company, Eastland, whose sales performance during 1958 placed him among the champion Ford car and truck salesmen in the nation, will be honored by Ford Motor Company in Dallas Friday.

He will receive a Ford 300-500 Club award from W. J. Corbett, manager of Ford Division's Dallas district sales office, at a banquet and dance for dealership salesmen and their wives at the Adolphus Hotel.

The purpose of the 300-500 Club award is to focus attention on outstanding Ford salesmen and on car and truck selling as a profession that performs a valuable service to the national economy and the local community, according to Corbett.

Friday is also the date of the Eastland County Livestock Show at the new livestock arena near Lake Eastland. Several of the High School FFA members are entering stock in the show and it promises to be a good show. There will also be a parade in the afternoon with the Eastland High

TIRE OF A GAS HOG? OF PARKING A DINOSAUR? Try and buy the popular, smart new Rambler, truly a feisty-weeany gas burner. Famous for fun, resale, quality and economy.

See TOM'S SPORT CARS Eastland

Eastland Telegram

Eastland County Record established in 1931, consolidated August 31, 1951. Chronicle established 1887, Telegram established 1923. Entered as second class matter at the Post Office at Eastland, Texas under the act of Congress of March 3, 1879.

TIMES PUBLISHING COMPANY
Published Tri-Weekly—Tuesdays - Thursdays - Sundays
ONOUS DICK and JOE DENNIS, Publishers
VIRGIL E. MOORE, Editor
CAROLYN COLLINS, Society Editor

One week by carrier in city	.15
One month by carrier in city	.45
One year by mail in County	2.95
One year by mail in state	4.95
One year by mail out of state	6.95

NOTICE TO PUBLIC—Any erroneous reflection upon the character, standing or reputation of any person, firm or corporation which may appear in the columns of this newspaper will be gladly corrected upon being brought to the attention of the publishers.

WANT ADS

Cards of Thanks charged for at rate of \$2.00 Each

FOR RENT Seven room house, large garden already broke. Storm cellar, three blocks from post office in Carbon. Only \$15 a month. See owner 302 N. Dixie, Eastland.

FOR RENT Two room apartment. Furnished. 205 South Walnut.

FOR RENT Furnished two bedroom apartment in duplex. 611 Plummer.

FOR RENT Furnished apartments. Call 576 or 246.

FOR RENT Newly decorated apartments Hillside. Phone 9520.

FOR RENT Newly decorated apartments. Adults. Phone 1085-W.

FOR RENT 4 room unfurnished house. 2 bedrooms. Nice and clean. Phone 457-J. Alice Speer.

SPECIAL NOTICE

PLEASE—If anyone elopes, dies, gets married, has guests, goes away, moves to town, has a party, has a baby, has a fire, is ill, has an operation, has an accident, buys a home, wins a prize, builds a house, receives an award, makes a speech, holds a meeting, or takes part in any other usual or unusual event, that's news, and we want it. Eastland Telegram, Phone 601.

REFRIGERATION SERVICE—Dairy, Commercial, Auto, Household. Call collect, Bill Kendall, Hi 2-1312, Cisco, Texas.

NOTICE—Refrigeration repairs, household, commercial. Phone 785. Roy Gann, Nite 976.

MR. FARMER—We recommend Garner's Farm Record, a simplified bookkeeping system and income tax record for operating either a cash or inventory basis. So simple a school child can keep it. So economical all can afford it. So complete it meets all income tax laws. And your complete, simplified bookkeeping system costs just \$1.75. EASTLAND TELEGRAM.

EASTLAND MASONIC Lodge No. 467
Reg. Stated meetings 2nd Thursday of each month, at 7:30 p.m.
E. A. HATTEN, W. M.

WE ARE EQUIPPED TO DO...
★ Roustabout Work
★ Well Hook-Ups
★ Spray Painting
★ Tank Setting

P & H Oil Field
Construction • Painting
Phone 183 Eastland

SINGER SEWING MACHINES and VACUUM CLEANERS
New and Used
Call
Dois Morton
Phone 321-J after 5 p.m.
Service All Makes

MISC. WANTED
HELP WANTED: Wash, grease and tire man. No front work. Early Tire Service.
WANTED: Waitress and cook. Truck Stop Cafe.
HELP WANTED: Lady to do part time telephone work from her home. Rate \$1.00 per hour. Straight line required. G. G. Simmons, Box 5286, Abilene, Texas.
WOULD BUY farm on G. I. loan. Contact B. R. Kent, 405 West 50th Street, Odessa. Phone EM 6-4477 or R. F. Vann, Box 692, Olden.

AUTOS FOR SALE
FOR SALE: Bargain on pickups. Two Fords, one Chevrolet. 909 South Halbryan.
FOR SALE OR TRADE: 1955 Chevrolet, 6 cylinder, clean. Good condition. \$800 or trade for ski rig. A. G. Williamson, Olden.

LOST & FOUND -
LOST: Car keys in front of A&P. Reward. Eastland Telegram.
LOST: 4 year-old cow. Color, light red, white face. Just been dehorned. Fresh branded. Bar behind left shoulder. Clyde Brymer. Phone Collect HI 2-1693, Cisco.

COLD SUFFERERS
Get STANBACK, tablets or powders, for relief of COLD DISCOMFORTS. The STANBACK prescription type formula is a combination of pain relieving ingredients that work together for FASTER RELIEF OF HEADACHE, NEURALGIA and ACHING MUSCLES due to colds. STANBACK also REDUCES FEVER. SNAP BACK with STANBACK.

ANDERSON
ALEX RAWLINS & SONS
MONUMENTS
WEATHERFORD, TEX.
Serving This Community Since 1884
Phone LY4-2726

TERMITE CONTROL and all other types PEST EXTERMINATION
MODERN EXTERMINATING CO.
Box 312 Ranger
PHONE RANGER
Day 919—Night 911

Have You Been To HARELIKS INC. Lately?
"Eastland's Newest Dept. Store"

NORGE
★ Gold Star ★
GAS RANGE
only \$199.95 with TRADE
A.S.A. CERTIFIED PERFORMANCE
NORGE
Big 11 Ft.
\$199.95
\$200 DOWN WEEK
MATCHING FREEZER ONLY \$269.95
Auto-Defrost 13 Ft. Two-Door \$348.95
TRI-CITIES FURNITURE
East Side of Square

SEE FOR YOURSELF!
WORLD'S SAFEST POWER SAW
NO DANGEROUS CHAIN
NEW WRIGHT SUPER RAIL
NO OTHER SAW LIKE IT!
• Fells • Bucks • Limbs • Undercuts • Clears land • Prunes • Precision-cuts • Leaves Mill-edge • Only power saw SAFE UP IN A TREE or on a ladder.
Try it yourself. Call 193.80
US TODAY!
Perkins Implement Co.
Eastland Phone 683

RUBBER STAMPS
"24 HOUR SERVICE IF DESIRED"
EDDIE'S RUBBER STAMP SERVICE
207 SO. DAUGHERTY - P. O. BOX 646
EASTLAND, TEXAS

Your Old Tires will make the Down Payment
On A Set of First Line SEIBERLING SUPER SERVICE TIRES
670-15 RAYON \$15.58
670-15 NYLON \$17.08
(Black Tube Type—Plus Tax and Exchange)
All other sizes and types at equally low prices. Road hazard guarantee. All tires you buy from us are mounted and balanced at no extra cost to you.
SEE US FOR BARGAINS IN TIRES!
Seiberling Tire Distributor
Jim Horton Tire Service
East Main St. Phone 258
Eastland, Texas

REAL ESTATE FOR SALE
FOR SALE: Nice 18 room furnished apartment house. Close in. Quick sale. Bargain. See Davis and Hill, 207 W. Commerce.

TV and RADIO SERVICE
Sales - Trades - Used Sets
Call \$2.50 Phone 746-J-4
JACK LEACH EASTLAND

CARS WANTED
We will pay cash for your clean low mileage car. Any make or model.
BLEVINS MOTOR CO.
514 W. Main Phone 308

AS IT LOOKS FROM HERE
OMAR BURLISON, M. C.
17th District, Texas
WASHINGTON, D.C.—The Subcommittee for Review of the Mutual Security Programs, (commonly known as Foreign Aid), of which I am a member, has issued an interim report revealing startling mismanagement on both the part of our own Government and governments we are supposed to be helping.
Since soon after the end of the so-called Marshall Plan, I have been voting against Foreign Aid. My opposition is not that of an isolationist by any means. Rather, it is because of the scope and operation of programs launched in over-ambition.
The report of our committee will show that the Executive Department has come to Congress year after year with a system known as "illustrative programs." This simply means that they believe certain things can be accomplished in certain foreign nations by the appropriation of a certain number of dollars. After the money is appropriated, they then send the experts to the countries to be aided for the purpose of planning projects to fit the money.
It seemingly becomes the duty of the "experts" to figure out projects which will cost the amount of money appropriated. In many instances the Congress has appropriated too much money, and projects are overplanned. Obviously it results in a waste of the taxpayer's money, as well as placing a burden on the economy of the country to be benefited. Our Subcommittee has found that in numerous instances officials of certain foreign countries were not interested in carrying forward the projects of our own Government, but as it often the case in our own Country, evidently they felt that they would take whatever they could get, and as much of it as possible.
As an example of some of the things found by our Committee, funds were appropriated in 1952, with additional amounts being appropriated in succeeding years, for a sawmill in Pakistan which has not yet been started, and, in fact, the engineering is incomplete. The sum of \$611,500 has been obligated for the purpose. There is still no proof that it is a practical operation.
Many expenditures around the world have been made under pressure of "doing something." In many instances, "doing something" to stem the tide against Communist influence, but we have now become a sort of victim of blackmail by many countries. They tell us that unless we continue to pour out our dollars they may yield to Communist influence. This is becoming an old story.
There is need for world cooperation against the influence of Soviet Russia. We can not sit still and assume that all people around the world are going to love us, but on the other hand we can not buy their loyalty and respect. Our

NO MORE RENT RECEIPTS
You'll get a lot of pleasure out of seeing your monthly payments take you closer and closer to debt-free home ownership, once you exchange renting for buying a home. Ask about our sensible home loan plan, that has helped many of your friends and neighbors to debt-free home-ownership.
First Federal Savings and Loan Association
204 Main Street Ranger, Texas

THE ORIGINAL Lindy
AUDITOR'S FINE POINT BALL POINT PEN #F-460
12 THE COLOR OF THE PEN IS THE COLOR OF THE INK
49¢ each
FED. TAX INCL. FAIR TRADED
LINDY LEATHERWEIGHT RETRACTABLE BALL POINT PEN #620 \$1.00
LINDY CAVALIER RETRACTABLE BALL POINT PEN #630 \$1.69
LINDY FLYER RETRACTABLE BALL POINT PEN #650 \$1.69
LINDY COMMANDER RETRACTABLE BALL POINT PEN #625 \$1.49
• LINDY #600 Standard Size REFILLS
• LINDY #610 KWIK FIT REFILLS
• Break off type ink. Lindy and most retractable Ball Point Pens.
• 9 Refilling Ink Colors. 49¢ each fair traded.

BUSINESS OPPORTUNITY
\$400.00 MONTHLY SPARE TIME
Refilling and collecting money from our five-cent High Grade Candy machines in this area. No selling! To qualify for work you must have car, references, \$990.00 cash, secured by inventory. Devoting 7 hours a week to business, your end on percentage of collections will net up to \$400.00 monthly with very good possibilities of taking over full time. Income increasing accordingly. For interview, include phone in application. Box B, Eastland Telegram.

TV and RADIO SERVICE
Sales - Trades - Used Sets
Call \$2.50 Phone 746-J-4
JACK LEACH EASTLAND

CARS WANTED
We will pay cash for your clean low mileage car. Any make or model.
BLEVINS MOTOR CO.
514 W. Main Phone 308

REAL ESTATE FOR SALE
FOR SALE: Nice 18 room furnished apartment house. Close in. Quick sale. Bargain. See Davis and Hill, 207 W. Commerce.

TERMITE CONTROL and all other types PEST EXTERMINATION
MODERN EXTERMINATING CO.
Box 312 Ranger
PHONE RANGER
Day 919—Night 911

Have You Been To HARELIKS INC. Lately?
"Eastland's Newest Dept. Store"

failures, in my considered opinion, result in our not understanding the needs and aspirations of other people, as well as failing to have them understand us. This can not be accomplished by dollars alone and, in fact, in some instances it has been our handicap.
By our foreign aid we have created jealousies among nations. By our lavishness, we have created a feeling of obligation on the part of many nations, which is never conducive to friendship and understanding.
All our efforts in this respect have not been failures. There are visible successes, and strangely enough, some of the greatest successes have been in those places where our expenditures were most modest.
Before going to Ethiopia in 1949 Dr. Andrew J. Bennett, a great agriculturist and conservation advocate told the Congress he did not want hundreds of millions of dollars — not even millions — but only a modest amount with three or four well qualified and dedicated young men. He went to Ethiopia and accomplished more in 14 months with an expenditure of a few thousand dollars than has been accomplished in many countries during the last ten years. If his untimely death had not occurred in an airplane accident, he would have proved the correctness of his approach in other places.
Dr. Bennett's idea of economic Foreign Aid is the kind I believe would win friends and influence people.
The President has just submitted his request to Congress for a total of \$3,930,000,000 for Foreign Aid for the coming fiscal year.

Trade With Your Hometown Merchants

COLD SUFFERERS
Get STANBACK, tablets or powders, for relief of COLD DISCOMFORTS. The STANBACK prescription type formula is a combination of pain relieving ingredients that work together for FASTER RELIEF OF HEADACHE, NEURALGIA and ACHING MUSCLES due to colds. STANBACK also REDUCES FEVER. SNAP BACK with STANBACK.

CALL 601 FOR CLASSIFIEDS

"Do I Have to Suffer All My Life Just Because I'm a Woman?"
No! Today, women don't have to bear a special cross of agony! Girl or grandma, a remarkable tablet can bring blessed relief from awful "female miseries"!
Today, "female suffering" need never occur again for most women—not at any age! Imagine being free from the pain, misery, young and old used to dread! That's the promise of Lydia Pinkham's Tablets—wonderful relief women can have all through their lives!
Pinkham's unique combination of medicines was developed especially for women's ailments. (Even includes blood-building iron!) In doctors' tests, 3 out of 4 no longer suffered the awful monthly cramps, headaches, backaches. Later during change-of-life, "hot flashes" subside, irritability is calmed! Even after menopause, Pinkham's Tablets help build strength-giving blood! Just because you're a woman, you don't have to suffer! Start taking Pinkham's Tablets. Whatever your age, take them daily for all the benefits you can get all through your life! Lydia E. Pinkham's Tablets at drugstores.

FISHERMEN'S HEADQUARTERS
For a complete line of fishing equipment drop by to see our stock. You can buy a complete outfit or add to your present equipment. And don't forget our low, low prices!
Higginbotham-Bartlett Co.
Jack Elliott, Mgr.
301 W. Main Phone 112 or 1014

GIANT SUPPLY OF LINDY EXCLUSIVE FORMULA INK! - THE PEN YOU CAN DEPEND ON... NEVER HAVE TO REFILL!
Other copied - never equalled, the LINDY Auditor's Fine Point Ball Point Pen is America's finest writing instrument. 7 inches long - lasts three to four times longer than ordinary ball point pens - ink meets Govt. Specifications T-1-582.
THERE'S A LINDY BALL POINT PEN FOR EVERY WRITING NEED... CHOICE OF POINTS
LINDY UTILITY PEN #140 39¢ each MEDIUM POINT
LINDY STENO-PEN #1-457 49¢ each FINE POINT
LINDY T-F COPY PEN #M-464 59¢ each MEDIUM POINT
LINDY ALL PURPOSE MARKING PEN #393 59¢ each BROAD POINT
LINDY LAUNDRY & DRY CLEANING MARKING PEN #L-465 59¢ each BROAD POINT
LINDY COUNTER CHAIN PEN #470 79¢ each
Replacements of drilled LINDY UTILITY PEN 39¢ each MEDIUM POINT
EASTLAND TELEGRAM
Please send me... Lindy Pens as checked below.
Check or M.O. for \$..... Enclosed.
Color of Pen Denotes Color of Ink
#460 Utility Pen 39¢
#1-460 Auditor's Pen 49¢
#1-467 Steno Pen 49¢
#1-393 Lindy All Purpose Marking Pen 59¢
#L-465 Laundry Marker 59¢
#470 Lindy Counter Chain Pen 79¢
#M-464 T-F Copy Pen 59¢
ALL RETRACTABLES BLUE INK
#620 Featherweight \$1.00
#630 Cavalier \$1.69
#650 Flyer 49¢
#625 Commander 49¢
NAME.....
Address.....
City..... State.....

NO MORE RENT RECEIPTS
You'll get a lot of pleasure out of seeing your monthly payments take you closer and closer to debt-free home ownership, once you exchange renting for buying a home. Ask about our sensible home loan plan, that has helped many of your friends and neighbors to debt-free home-ownership.
First Federal Savings and Loan Association
204 Main Street Ranger, Texas

THE ORIGINAL Lindy
AUDITOR'S FINE POINT BALL POINT PEN #F-460
12 THE COLOR OF THE PEN IS THE COLOR OF THE INK
49¢ each
FED. TAX INCL. FAIR TRADED
LINDY LEATHERWEIGHT RETRACTABLE BALL POINT PEN #620 \$1.00
LINDY CAVALIER RETRACTABLE BALL POINT PEN #630 \$1.69
LINDY FLYER RETRACTABLE BALL POINT PEN #650 \$1.69
LINDY COMMANDER RETRACTABLE BALL POINT PEN #625 \$1.49
• LINDY #600 Standard Size REFILLS
• LINDY #610 KWIK FIT REFILLS
• Break off type ink. Lindy and most retractable Ball Point Pens.
• 9 Refilling Ink Colors. 49¢ each fair traded.

BUSINESS OPPORTUNITY
\$400.00 MONTHLY SPARE TIME
Refilling and collecting money from our five-cent High Grade Candy machines in this area. No selling! To qualify for work you must have car, references, \$990.00 cash, secured by inventory. Devoting 7 hours a week to business, your end on percentage of collections will net up to \$400.00 monthly with very good possibilities of taking over full time. Income increasing accordingly. For interview, include phone in application. Box B, Eastland Telegram.

TV and RADIO SERVICE
Sales - Trades - Used Sets
Call \$2.50 Phone 746-J-4
JACK LEACH EASTLAND

CARS WANTED
We will pay cash for your clean low mileage car. Any make or model.
BLEVINS MOTOR CO.
514 W. Main Phone 308

REAL ESTATE FOR SALE
FOR SALE: Nice 18 room furnished apartment house. Close in. Quick sale. Bargain. See Davis and Hill, 207 W. Commerce.

TERMITE CONTROL and all other types PEST EXTERMINATION
MODERN EXTERMINATING CO.
Box 312 Ranger
PHONE RANGER
Day 919—Night 911

Have You Been To HARELIKS INC. Lately?
"Eastland's Newest Dept. Store"

GIANT SUPPLY OF LINDY EXCLUSIVE FORMULA INK! - THE PEN YOU CAN DEPEND ON... NEVER HAVE TO REFILL!
Other copied - never equalled, the LINDY Auditor's Fine Point Ball Point Pen is America's finest writing instrument. 7 inches long - lasts three to four times longer than ordinary ball point pens - ink meets Govt. Specifications T-1-582.
THERE'S A LINDY BALL POINT PEN FOR EVERY WRITING NEED... CHOICE OF POINTS
LINDY UTILITY PEN #140 39¢ each MEDIUM POINT
LINDY STENO-PEN #1-457 49¢ each FINE POINT
LINDY T-F COPY PEN #M-464 59¢ each MEDIUM POINT
LINDY ALL PURPOSE MARKING PEN #393 59¢ each BROAD POINT
LINDY LAUNDRY & DRY CLEANING MARKING PEN #L-465 59¢ each BROAD POINT
LINDY COUNTER CHAIN PEN #470 79¢ each
Replacements of drilled LINDY UTILITY PEN 39¢ each MEDIUM POINT
EASTLAND TELEGRAM
Please send me... Lindy Pens as checked below.
Check or M.O. for \$..... Enclosed.
Color of Pen Denotes Color of Ink
#460 Utility Pen 39¢
#1-460 Auditor's Pen 49¢
#1-467 Steno Pen 49¢
#1-393 Lindy All Purpose Marking Pen 59¢
#L-465 Laundry Marker 59¢
#470 Lindy Counter Chain Pen 79¢
#M-464 T-F Copy Pen 59¢
ALL RETRACTABLES BLUE INK
#620 Featherweight \$1.00
#630 Cavalier \$1.69
#650 Flyer 49¢
#625 Commander 49¢
NAME.....
Address.....
City..... State.....

CASE OF MUMPS
Dean McDonald, who is eight years old and the son of Mr. and Mrs. Odie McDonald, is home from school with the mumps.

WSCS Women Attend Meeting

The annual conference of the Texas Convention of the Woman's Society of Christian Service was held Tuesday in Brownwood with several members from Eastland attending.

Attending were: Mrs. Frank Castleberry, who is the delegate from Eastland County; Mrs. Herman Hassell, who is the district secretary of children works; Rev. and Mrs. James Campbell, Mrs. H. L. Bulgerin, incoming president of the Woman's Society of Christian Service and Mrs. Bob Alexander.

4-H Holds Meeting

The Eastland 4-H Club met March 18 at 1:45 in the study hall of Eastland Junior High School.

Kay Morton, president, called the meeting to order and the secretary called the roll and read the minutes of the last meeting.

Miss Stockwell gave the results of the county wide contest. She then gave a discussion on the Texas Food Standard.

With no further business the meeting adjourned.

Civic League Meeting Held

Civic League and Garden Club will host their regular meeting luncheon in the Woman's Club Wednesday, March 25.

Hostesses include: Mimes, Turner, Collier, Cecil Collings, Jack Germy, Bemus Brewer, R. E. Sikes and L. A. Hightower.

Reservations must be made with Mrs. Frank Castleberry by noon Monday.

Games will be played as recreation.

★ Trade With Your Hometown Merchants ★

MARTHA'S MOVIE MEMOS
By MARTHA CONNELL

Another page will be written into the history of motion pictures when the Academy of Motion Picture Arts and Sciences holds its 31st annual "Oscar" presentation show April 6.

The Majestic Theatre patrons have this year, as in the past, a chance to pit their guesses against that of experts. From March 22 through April 5 official Sweepstakes ballots will be available at the Majestic Theatre and all information concerning the nominations for the various classifica-

tions will be on them.

There will be eight categories to be included in the Academy Awards Sweepstakes including: Best Performance By An Actor; Best Performance By An Actress; Best Best Motion Picture.

There will be local prizes consisting of: First; a month's pass for two; Second; a four month's pass for two; Third; a two month's pass for two; and Fourth; two, one month passes for two. Several other prizes will also be given.

Before the evening is ended, almost 90 million persons will have witnessed its presentation. By the time foreign nations have run Kinescopes of the event, radio stations have broadcast tapes, theatre newsreel films have shown, strips of the presentation

and all manner of periodicals have been printed, well over a billion persons will have been exposed to the happenings of April 6.

The Awards show of the Academy of Motion Picture Arts and Sciences is possibly the biggest honor-giving affair in any year. For one thing, the "Oscar" event has been taking place for 39 years; this year's will be the 31st annual affair.

This year, around 2,100 motion picture artists and craftsmen sent in secret ballots. Each branch in the Academy nominates in its own category. Actors nominate for acting, directors for directing, etc.

"Oscar" is also a symbol of success. He may be only 100 inches tall and weigh a mere seven pounds, but he was a hit from the

beginning in May, 1929, when less than 300 persons attended a banquet until today, when more than 4,000 seats are not adequate for the crowd attending.

MAJESTIC IN EASTLAND
Fri. & Sat.

BLAZING ACTION!
VICTOR NATURE
ESCORP WEST!

CINEMASCOPE
ELAINE STEWART
FAITH DOMERGUE

Regular Prices

JC DRIVE-IN THURSDAY
Circus - Eastland Highway Opens 6:45 Starts 7:15

'HOT SPELL
Anthony Quinn - Shirley Booth
FRIDAY - SATURDAY

RANDOLPH SCOTT Double-Hanging Double Thrills!
BUCHANAN RIDES ALONE! IN COLUMBIA COLOR

—JOY DRIVE IN DRIVERS PASS—
This Driver's pass and one paid admission will admit Driver FREE.
NOT GOOD AFTER MARCH 21, 1959

DIXIE Drive-In
EASTLAND RANGER HIGHWAY

Box Office Opens 6:45 Snow Starts 7:15
Box Office Closes 9:15 - Admission 50c
Children Under 12 FREE. Each Wednesday Is Bargain Night - Adults 25c
ADMISSION NEVER MORE THAN 50c
THURSDAY-FRIDAY-SATURDAY, MARCH 19-20-21

Wild Heritage
like the WEST and as VIOLENT and UNTAMED!
CINEMASCOPE in COLUMBIA COLOR
Will ROGERS, JR. - Maureen O'SULLIVAN - Rod MCKUEN - Casey TIBBS
Judy MEREDITH with GEORGE WINSLOW - GIGI PERREAU - TROY DONAHUE

PLUS: Color Cartoon & Color Parade

RANGER DRIVE-IN
HIGHWAY 80 EAST ON RANGER HILL

Box Office Opens 6:30 - Show Starts 7:00
Adults 50c - Kiddies Under 11 Free
Only Eastland County Drive-In With All Year Operation

THURSDAY - FRIDAY
TWO BIG PICTURES

LET'S ROCK!
Starring Julius LA ROSA
Featuring PAUL ANKA - DANNY ICE JUNIORS
ROY HAMILTON - WINK MARTINDALE
DELLA REESE - THE ROYAL TEENS
THE TYRONES
PHYLLIS NEWMAN

PLUS OUR SECOND FEATURE
THE GODDESS
KIM STANLEY
LLOYD BRIDGES

RANDOLPH SCOTT
A NOOSE WAS WAITING for the lone stranger!
BUCHANAN RIDES ALONE
IN COLUMBIA COLOR
Craig Stevens - Jennifer Holden - Barry Kelley
A SCOTT BROWN PRODUCTION

FREEVUE EVERY SATURDAY NITE

WORTH FOOD MART
NATIONALLY KNOWN BRANDS
LOW EVERY DAY LOW PRICES

MIRACLE WHIP 49¢
Sugar Peas 8 No. 303 Cans 1.00
Margarine 2 1-Lb. Pkgs. 29¢

BANANAS 10¢
CELERY Crisp 2 Stalks 25¢ SPINACH Fresh, Washed Cello Bag 19¢
Genuine Calavos CALIFORNIA MEDIUM SIZE AVOCADOS 3 for 25¢

SPAM 39¢
HORMEL'S LUNCHEON MEAT SAVE 10¢
12-Oz. Can

JELLY 25¢
Bama, Apple
New Process, Finest Flavor—SAVE 6c
20-Oz. TUMBLER

Beef Chuck Roast 49¢
WORTH CONTROLLED QUALITY—SAVE 16c ON EACH POUND

Premium Bacon 49¢
SWIFT'S SLICED

Drumsticks 59¢
YOUNGBLOOD'S FRESH FROZEN

Charcoal 10
ARROW BRAND

Phillips' "66" 239
80-Lb. Bag

Grapefruit Juice 25¢
46-Oz. Can

CHINESE DINNERS 59c
CHUN KING Chicken or Shrimp 12-Oz. Pkg.

CORN-ON-COB 39c
LIBBY'S FROZEN—SAVE 7c 2 2-Ear Pkgs.

POTATOES 59c
"M" BRAND BAKED—Stuffed with Cheddar Cheese or Sour Cream & Chives 2 14-Oz. Pkgs.

GLEEM TOOTH PASTE 57c
Economy Size

MILK-OF-MAGNESIA 43c
PHILLIPS' 12-Oz. Btl.

Premium Crackers 27c
NABISCO 1-Lb. Box

MARSHMALLOWS 23c
KRAFT—JET PUFFED 10-Oz. Pkg.

PEANUT BUTTER 59c
PETER PAN—SMOOTH 18-oz. Jar

BARBECUE SAUCE 39c
MORTON'S BEST YETT PINT BOTTLE

CRUSHED PINEAPPLE 19c
SANTA ROSA No. 303 can

FRENCH STYLE BEANS 17c
RENOVON No. 303 can

Mexican Style Beans 14c
PATIO No. 300 Can

BEANEE-WEANEE 27c
VAN CAMP'S 12-Oz. Can

LUNCHEON CORN 19c
WHITE SWAN No. 303 Can

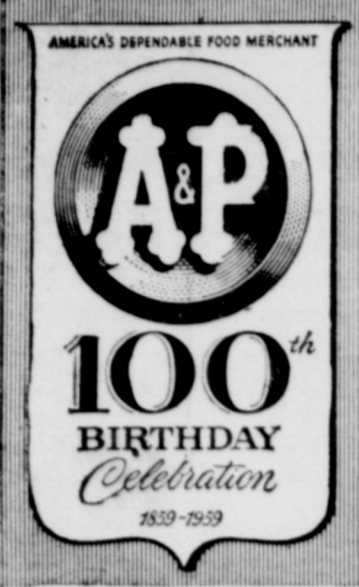
WORTH FOOD MART

Moore About—
(Continued from Page One)
Dick Kincheloe of Eastland and

R. D. McCrary started the fishing season off right last Saturday. The pair, fishing in a "private tank near Brad" caught an 8 1/4 pound bass, another which weighed just under seven pounds and eight more which ranged in weight from 1 1/2 pounds to three pounds.

To make the story work even harder on dry land fishermen, they did it all in an hour and a half. That's about all this column is going to hold, so better check it to you until Sunday.

Birthday Buys Galore... Your Cue to EXTRA CASH SAVINGS!



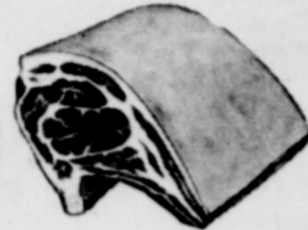
- LUX FLAKES**
Lge. Pkg. 33¢
- LUX SOAP**
3 Reg. Bars 29¢
- LUX SOAP**
2 Bath Bars 27¢
- LUX LIQUID**
22-oz. Can 71¢
- LIFEBUOY**
Reg. Bar 10¢
- LIFEBUOY**
Soft Bar 15¢
- DIAL SOAP**
2 Reg. Bars 27¢
- DIAL SOAP**
2 Bath Bars 4c Off 31¢
- NU SOFT**
Pt. Btl. 39¢
- "all"**
10-lb. Pkg. \$2.45
- "all"**
Reg. Pkg. 39¢
- WISK**
Qt. Can 71¢
- RINSO**
Reg. Pkg. 32¢
- SURF**
Reg. Pkg. 5c Off 27¢
- BREEZE**
Qt. Pkg. 77¢
- Strawberries**
10-Oz. Pkg. 19¢
- VEL BAR**
2 Reg. Bars 39¢

- DR. PEPPER** Plus Bottle Deposit 6 Bottle Carton 19¢
- ENGLISH STYLE COOKIES** CRISPO 3 1-lb. Pkgs. \$1.00
- TANG ORANGE BEVERAGE** 14-oz. Btl. 59¢ 7-oz. BH. 33¢
- CHOCOLATE BARS** NESTLES PLAIN, ALMOND OR CRUNCHY 10 Bars 39¢
- POTTED MEAT** ARMOUR'S STAR 3 1/2-oz. Can 10¢
- VIENNA SAUSAGE** ARMOUR'S STAR 2 4-oz. Cans 39¢
- LIGHT MEAT TUNA** CHICKEN OF THE SEA OR STAR-KIST CHUNK 9 1/2-oz. Can 39¢

Put Your Trust in "Super-Right" Meat

SUPER-RIGHT HEAVY CALF

Chuck Roast Lb. 65¢



Banquet Frozen—Chicken, Beef or Turkey, 8-oz. Meat Pies ea. 19¢

SUPER-RIGHT HEAVY CALF Arm Roast lb. 75c

Banquet Frozen—Chicken, Beef or Turkey Dinners ea. 49¢

HORMEL'S OVEN BROWN CANNED Picnics 4-lbs. ea. 3.19

ALL GOOD

Sliced Bacon Lb. 39¢

CHEESE SLICES MEL-O-BIT PASTEURIZED PROCESS AMERICAN, PIMENTO OR SWISS CHEESE 2 6-oz. Pkgs. 45¢

FRIED POTATOES A&P FROZEN FRENCH STYLE 2 9-oz. Pkgs. 25¢

Giant Paper Sale

- | | |
|---|---|
| WHITE OR COLORED
ZEE NAPKINS 3 Pkgs. of 30 29¢ | YELLOW
ZEE TOWELS 2 Jumbo Rolls 49¢ |
| ASSORTED COLORS
ZEE TOILET TISSUE 2 Pkgs. of 4 61¢ | PAPER BAGS
ZEE LUNCH BAGS 3 Pkgs. of 20 29¢ |
| PAPER TABLE NAPKINS—5c OFF LABEL
KLEENEX NAPKINS Pkg. of 50 22c | COLORED
SCOTTOWELS 2 Rolls 35¢ |
| SOFT WEVE WHITE OR COLORED
TOILET TISSUE 2 Pkgs. of 2 Rolls 45¢ | CUT-RITE
WAXED PAPER 2 125-ft. Rolls 49¢ |
| ALUMINUM REGULAR
ALCOA FOIL 25 ft. Roll 29¢ | ALUMINUM FOIL
REYNOLDS WRAP 75 ft. Roll 65¢ |
| KLEENEX TISSUE FACIAL 2 Boxes of 400 49¢ | PEST GUARD SHELF PAPER BUG-PROOF 3 25-ft. Rolls 1.00 |

Special!
Cherry Pie JANE PARKER Ea. 35¢
Mellorine A&P ASST. 1/2-gal. Ctn. 49¢



- Fresh Produce
- Sunkist California Naval **ORANGES** lb. 10c
 - Golden Ripe **BANANAS** lb. 10c
 - California Large **AVOCADOS** ea. 10c
 - Colorado Red **Potatoes** 10-lb. bag 35c
 - Green **ONIONS** bunch 5c
 - RADISHES** 6-oz. Pkg. 2 for 9c

Spanish Bar REG. 35¢ SPECIAL 27¢

- Tomato Ketchup** ANN PAGE 2 14-oz. Btls. 39¢
- Salad Dressing** ANN PAGE Qt. Jar 45c
- IONA PEAS** 2 303 Cans 25c
- MAZOLA OIL** Qt. Btl. 53¢
- NIAGARA STARCH** 24-oz. Pkg. 39¢
- KARO SYRUP** WHITE 24-oz. CORN SYRUP. Btl. 25¢
- BOSCO SYRUP** 1 1/2-lb. Jar 61c

Lustre extra-thick aluminum WATERLESS COOKWARE

Add A Piece Each Week! This Week's Special **GRIDDLE** 8" SIZE Ea. 99¢

No Limits! Closed on Sunday. **AP Food Stores** 1251 AMERICA'S DEPENDABLE FOOD MERCHANT 1959

- | | | | |
|--|--|---|---|
| LIQUID DETERGENT
SAIL 12-oz. Can 25c | LIQUID DETERGENT
SAIL 22-oz. Can 43c | SHORTENING
CRISCO 3-lb. Tin 85¢ | SHORTENING
FLUFFO 3-lb. Tin 85¢ |
|--|--|---|---|

Gorman Gatherings
By Mrs. R. E. Boucher
Mr. and Mrs. Bob Baswell and son Joe Ed of Ft. Worth were weekend guests in the home of his parents Mr. and Mrs. R. C. Boswell.

Mrs. Gene Marshall left Wednesday for Seattle, Wash. where she will join her husband who has been transferred there from San Francisco, Calif. Her father drove her to Abilene where she boarded a plane at 3 p.m. due to arrive at her destination at 5 a.m. Thursday.

Mrs. Marshall has been at the bedside of her mother who is a patient in the Blackwell Hospital.

Mrs. Minni Richey left Saturday morning for Corpus Christi where she will spend a few days with her daughter and family, Mr. and Mrs. Elvie Clark and little Richey.

Mr. and Mrs. Gene Ellison, Pat and Jeanne of Abilene spent Saturday night with his parents Mr. and Mrs. J. N. Ellison. They all left Sunday morning for San Antonio where they will visit with Mr. and Mrs. A. B. Hite, Susan and Sally. They will also visit with Mrs. Ellison's father Judge Joe Burkett who is suffering from a heart attack.

Mr. and Mrs. Jerry Clark and Jimmy of Abilene were guests in the home of his parents Mr. and Mrs. J. M. Nix.

Mr. and Mrs. Ed Rodgers of DeLeon were weekend visitors in the home of his parents, Dr. and Mrs. Veri Rodgers, and his grand mother, Mrs. George Blackwell.

Mrs. N. C. Crowley has rented her house to Mr. and Mrs. Paul Pennington and has moved to Arlington where she has purchased her a new home. Mr. Pennington is with the Magnolia Petroleum Company and will be employed at the Desdemona plant.

Supt. Gordon Baze and Mrs. M. F. Allen were absent from school several days last week because of a virus. The chicken pox has also kept a large number of pupils from school.

Mr. and Mrs. G. D. Riley were in Ft. Worth Thursday, Friday and Saturday visiting with their daughters, Mr. and Mrs. Perry Ferdue and Mr. and Mrs. Tony Immattea.

Mrs. Fanny Burkett spent the weekend in Breckenridge with her sisters, Miss Della Pullig and Mrs. Iona McKnight.

Mr. and Mrs. E. W. Underwood of Ft. Worth were weekend guest in the home of her mother, Mrs. T. F. Marrow.

Mr. and Mrs. J. E. Walker has as their guest over the weekend, Mr. and Mrs. W. M. Emmons, their daughter and husband from Breckenridge.

Recent guest in the home of Mrs. Nona Leazar were her daughter and husband, Mr. and Mrs. R. H. Pruitte of Crane.

Mr. and Mrs. Gene Kinnison of Moran were Sunday guests in the home of Mr. and Mrs. W. E. Hooker.

Mr. and Mrs. Ray Neal Baze of Ranger spent Saturday and Sunday with his parents, Mr. and Mrs. J. A. Baze. They also visited with his brother and family, Mr. and Mrs. Graydon Baze.

READ THE CLASSIFIEDS

CARD OF THANKS
Words are inadequate to express the sincere appreciation we wish to extend to our friends and neighbors for their many acts of kindness and expressions of sympathy in the final illness and death of our beloved husband and father. May God bless each of you.
Mrs. Helen Canaris
Mr. and Mrs. Breese Westmoreland and Family

VISITS BROTHER
Mrs. Myrtle Syster of has been a guest for the weeks in the home of the and sister-in-law, Mr. and E. Lawson, 203 North D

INGROW
HURTING
A few drops of OUTGROW helps relieve from tormenting pain of ingrow hairs. OUTGROW softens the skin under nail, allows the nail to be cut and vents further pain and discomfort. Is available at all drug counters.

CALL 601 FOR CLASSIFIED ADVERTISEMENT

In A Woman's World Spring Be With The

Easter Promenade

softly suited in a luxurious silk-like fabric

10.98

HARELIKS inc.

"The Family Department Store"

EASTER-BRIGHT

Beguiling beauties you'll wear from Easter-thru-summer! Little or large, demure or sophisticated, casual or flowered... you'll find them all here!

from 3.98

MILLINERY

HARELIKS

New Shipment Just Arrived "Easter Headquarters"

Stop pain of piles today at home — or money back!

A doctor's tests, amazing new Stainless Fazo® instantly relieved piles' torture! Gave internal and external relief! 6 medically-proved ingredients including Triolyte, relieve pain instantly! Reduce swelling. Promote healing. You sit, walk in comfort! Only stainless pile remedy. Stainless Fazo® Suppositories or Ointment at drugists. Trademark of Grace Laboratories, Inc. Ointment and Suppositories.

Luncheon Held By Morton Valley Community Club

A covered dish luncheon and a project quilt were the main themes of the Morton Valley Community Club meeting March 17. Devotion was given by Mrs. D. C. Frost to the following members: Mmes. W. E. Cox, Alvin Kincaid, Floyd White, J. R. Tankersley, E. B. Stovall, E. C. Ivey and Charles Walton, Jr.

Senior Tri-Hi-Y Elects Officers

The Eastland Hi-Y held a meeting Monday, March 9, where they saw a fine Southwest Conference football film. Fourteen members were present and election of officers was held.

Officers were elected as follows: Gary Lusk, president; vice-president, David Whitten; secretary, treasurer, Freddie Stroud; reporter, Gran Rhodes; Chaplain, Billy Don Turner. Homer Carroll and Billy Don Turner were elected for the record committee.

Past presiding officers were: President, Larry Hollis; Vice-president, Perry Miller; Secretary, Clinton Humphreys; treasurer, Bill Hallmark; Reporter, Oran Rhodes; and Chaplain, Billy Don Turner.

The next meeting will be held Monday, March 23.

HERE FOR SHOW

Mr. and Mrs. Vance Stephens of DeLeon will attend the Stock Show over the weekend and visit with her parents, Mr. and Mrs. Odie McDonald, 403 S. Ostrom. Mr. Stephens is one of the Agriculture teachers in De Leon.

Alpha Delphian Club Hears Talk On Cancer Drive

Mrs. Ida Bean presided over the March 12 meeting of the Alpha Delphian Club in the place of Mrs. M. B. Titsworth.

After a short business meeting, Mrs. K. L. Carpenter led a round table discussion on the Cancer drive.

Attending the meeting were Mmes. Ida Bean, R. L. Carpenter, N. N. Rosenquest, D. J. Flensy, Marguerite Welch and J. LeRoy Arnold.

The next meeting will be a "Do-It-Yourself" meeting with Mrs. S. N. Rosenquest as chairman. Her co-chairman will be Mmes. O. L. Hooper and J. LeRoy Arnold.

TO ATTEND MEETING

Mmes. Joseph Perkins, I. C. Inzer, Cecil Collings and Frank Sparks will attend a meeting of the Sixth District Convention of Federated Clubs, Thursday, March 19 and Friday, March 20 in Brownwood.

TRADE WITH YOUR HOMETOWN MERCHANTS

SOCIAL CALENDAR

Thursday, March 19

3:00 p.m.—The Thursday Afternoon Club will meet in the Woman's Club. The program will be "progress Through Knowledge Of The Arts."

2:00 p.m.—The Flatwood Home Demonstration Club will meet at the home of Mrs. Waverly Masengale, east of city.

7:30 p.m.—Past Matrons will meet in the home of Mrs. Garold Wingate.

Sunday, March 22

3 p.m. to 5 p.m.—Preferential tea for members of Beta Sigma Phi in the Woman's Club.

Monday, March 23

7:30 p.m.—Xi Alpha Zeta will meet in the home of Mrs. Ann Perry.

7:00 p.m.—Zeta Phi Alpha meeting in the home of Mrs. Willis Moore at 809 Halbryan. Mrs. Les Strawn will present the program.

Monday, March 23

7:30 p.m.—Oddfellow Lodge No. 120 will meet in the IOOF Hall.

Tuesday, March 24

7:30 p.m.—Rebekah Lodge No. 177 will meet in the IOOF Hall for their regular meeting.

Wednesday, March 25

7:00 p.m.—Civic League luncheon in the home of Mrs. Ronald Burton.

2:30 p.m.—Morton Valley Home Demonstration Club in the Morton Valley Club house.

Thursday, March 26

2:00 p.m.—Morton Valley Community Club in the Morton Valley Club House.

Mrs. Joe Tow Is Hostess to Local Art Club

Mrs. Joe Tow was hostess in her home at 2004 W. Commerce to the Eastland Art Club Tuesday.

The business meeting was presided over by Mrs. W. H. Lawson and interesting plans for future meetings were discussed. All members were busy with oil paintings and portraits.

Refreshments of open face sandwiches, stuffed celery, olives, chips and chocolate cake with apricot ice cream topping and coffee were served to the following members: Mmes. Homer White, Varge Daniel, Frances Urban, Sidney Seale, W. H. Lawson, Claude Maynard and Joe Tow.

The next meeting will be April 7 in the home of Mrs. Claude Maynard at 410 N. Walnut.

Fort Worth Club To Meet With Chambers Sunday

Representatives of the Fort Worth Anglers Club will meet with members of the Ranger and Eastland Chambers of Commerce Sunday at 2 p.m. in the Ranger Chamber to discuss plans for the Fishing Rodeo to be held at Lake Leon, April 19.

Members of the Fort Worth delegation include Andy Anderson, president of the club; A. M. (Monty) Montgomery, club director; and Dick Darmon, chairman of the fishing contests.

They will distribute entry blanks and membership cards for the rodeo, to be made available at Chambers of Commerce offices in Eastland and Ranger. Area citizens must have a membership card, priced at \$2 per man or \$4 per team, in order to participate in the fishing event.

America Lives Better Electrically As Industry Grows, Creates Jobs



THE PHRASE "ELECTRICITY BUILDS MORE JOBS" is the key to a nationwide event, National Electrical Week, this month, as well as a reminder of the role this powerful form of energy plays in our lives.

Local payrolls, national defense, comfort in the home, entertainment and plain good living all pivot on the services and products of this \$30 Billion industry. Over 50,000 local dealers, electric utilities, electrical manufacturers, trade associations, electricians and specialists celebrate their industry's contributions to the nation's welfare.

Americans can live better electrically because of the industry's constant progress in research and development. Today over 60 different types of appliances and electric home equipment are on the market, as compared to the 17 items that were available in 1930. Despite inflation, the cost of electrical service and equipment has stayed far below costs of other consumer goods and services.

National Electrical Week marks the birthday of pioneer Thomas Alva Edison, his 112th anniversary. Edison's inventive genius paved the way for America's vast and vital electrical industry. In the past half-century, the growth of the industry has been so rapid that one out of every 20 working Americans is today in some branch of the industry or related services. Over \$14 Billion annually pours out in wages to industry employees.

Some Call it Mass Murder—

... while others describe it as 'death on the loose again'. Whatever it is Department of Public Safety Officials predict that more persons will lose their lives in traffic accidents in the United States this year than for any previous year on record. More and faster cars on crowded highways spell out trouble for those who use them. What can be done in the face of this warning? We can all drive carefully and be adequately insured.

EARL BENDER & COMPANY

Eastland, (Insurance since 1924) Texas

AUTO SEAT COVERS

QUALITY FABRICS

We have a wide selection of colors and styles in long-wearing plastic-coated fabric covers for all makes and models. Buy now!

We Give S & H Green Stamps

BLEVINS MOTOR CO.

Come Our Way for Bargains That Pay

514 W. Main Phone 308

STATEMENT OF CONDITION

EASTLAND NATIONAL BANK

AT THE CLOSE OF BUSINESS, MARCH 12, 1959

EASTLAND, TEXAS

RESOURCES

Loans and Discounts	\$1,337,030.95
Stock in Federal Reserve Bank	3,000.00
Banking House	3,300.00
Furniture and Fixtures	13,940.01
U. S. Government Bonds	1,382,098.13
Other Bonds and Warrants	280,803.06
Cash and Exchange	1,157,501.90
	\$4,177,674.05

LIABILITIES

Capital Stock	50,000.00
Surplus	50,000.00
Reserves	50,000.00
Undivided Profits	117,094.18
Deposits	3,910,579.87
	\$4,177,674.05

NOTICE... Come To Kendrick Drive-In Dairy

(Serving This Territory Since 1940)

FOR

Good, Clean JERSEY Sweet Milk

Price - 70c Gal.

Phone 896-J-2 — Located Halfway between Eastland and Cisco

THESE PROGRESSIVE EASTLAND MERCHANTS HAVE JOINED THE...

Round-Up

Shopping Circle

REDEMPTION STORE

located in the

Coats Furniture Store

305 S. Seaman

Eastland, Texas

Come in and check the wonderful Gifts of Appreciation

MODERNE STUDIOS

"YOUR PHOTOGRAPHER"

HARLE'S CONOCO SERVICE

COATS FURNITURE COMPANY

DON PIERSON OLDS-CADILLAC

DEMA'S BEAUTY BOX

J. M. SMITH PLUMBING AND TIN

No Job Too Large or Small

SUNSHINE LAUNDRY

SAVE TWO WAYS

YOUR DOLLAR IS ACTUALLY WORTH MORE WHEN YOU SHOP THE STORES GIVING STAMPS

Better Values Plus Stamps

Means You SAVE While You SHOP

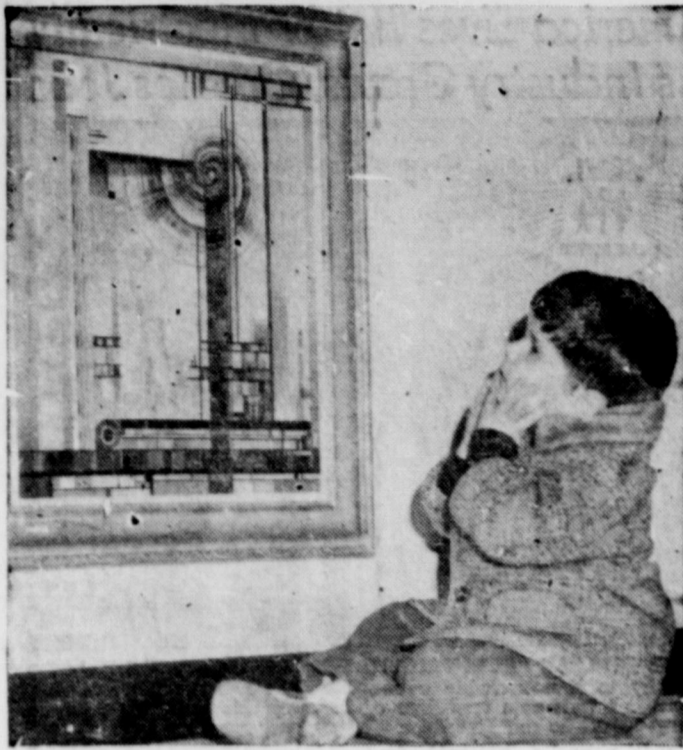
REMEMBER...

STAMPS

are redeemed in

Eastland.

- ★ NO WAITING
- ★ NO MAILING
- ★ NO DRIVING
- ★ JUST COME IN AND SHOP OUR REDEMPTION STORE!



Stanley Blevins Is Student Union Chairman H-SU

Stanley Blevins, sophomore student from Eastland, was recently elected stewardship chairman of Hardin-Simmons University for the year 1959-60.

Stanley is president of the sophomore class, and is a member of Life Service Band, B.S.A. Greater Council, and the Student Planning Board.

He is the son of Mr. and Mrs. A. J. Blevins Jr. of Eastland.

Card of Thanks

We wish to thank God for our many friends who express to us they cared and shared in the loss of our loved one.

The many deeds of kindness, the food, the flowers and the cards were a great source of comfort in our sorrow.

May God bless each of you.

Mrs. Laura Lou Trammel and Dickie

TRADE WITH YOUR HOMETOWN MERCHANTS

Hospital News

Patients in the Eastland Memorial Hospital are:

- Mrs. W. T. Powers, medical, Eastland
- Mrs. J. D. Stephenson, medical, Cisco
- Mrs. H. W. Hill, surgical, Cisco
- Mrs. J. T. Mitchell, medical, Gordon
- Mrs. Leonard Florence, medical, Eastland
- Mrs. D. E. Gann, medical, Odessa
- Mrs. J. M. Mathews, medical, Eastland
- Mrs. J. D. Phillips, medical, Rising Star
- Robert Finley, surgical, Cisco
- Mrs. C. W. Medford, medical, Eastland
- Mrs. T. A. Bendy, medical, Eastland
- Mrs. O. D. Bunton, medical, Ranger
- Mrs. Marvin Hutto, surgical, Olden
- H. C. Nix, surgical, Cisco
- C. A. Brown, medical, Eastland
- Mrs. Maggie Fox, medical, Eastland
- Mrs. Glenn Sprague and baby girl, Weatherford
- Mrs. Coe McElroy, surgical, Cisco
- S. H. Brock, medical, Eastland
- Mrs. Tony Puentez, surgical, Eastland
- Mrs. O. H. Oakley, medical, Ranger
- Mrs. Jessie Simmons and baby boy, Eastland
- Mrs. Bisenta Soto, medical, Eastland
- Mrs. A. J. Jackson, medical, Moran
- Floyd Brewer, surgical, Eastland

Patients dismissed were:

- Miss Sandra Pope, Mrs. W. L. Baker and Mrs. J. O. Jackson.

Patients in the Ranger General Hospital are:

- Carl Baustead, medical, Olden
- R. C. Adams, medical, Eastland

NOTICE

FRESH DRESSED FRYERS and Fresh Dressed Hens

At The Plant

PHONE 110

WALKER Dressing Plant

KING'S TV LOG

- Friday, March 20
- 6:30 Continental Classroom
 - 7:00 Today
 - 8:00 Today
 - 9:00 Dough Re Mi
 - 9:30 Treasure Hunt
 - 10:00 Price Is Right
 - 10:30 Concentration
 - 11:00 Tic Tac Dough
 - 11:30 It Could Be You
 - 12:00 News & Weather
 - 12:15 Daily Devotions
 - 12:20 Little Rascals
 - 1:00 Truth or Consequences
 - 1:30 Haggis Haggis
 - 2:00 Today Is Ours
 - 2:30 From These Roots
 - 3:00 Queen For A Day
 - 3:30 County Fair
 - 4:00 Command Presentation (MGM)
 - 5:30 Little Rascals
 - 6:00 News
 - 6:10 Weather
 - 6:15 NBC News
 - 6:30 Boots & Saddles
 - 7:00 Ellery Queen
 - 8:00 M-Squad
 - 8:30 The Thin Man
 - 9:00 Calvacade of Sports
 - 9:45 Jackpot Bowling
 - 10:00 News
 - 10:10 Weather
 - 10:15 MGM Command Presentation Sign Off
- Saturday, March 21
- 8:30 Texas Curriculum
 - 9:00 Howdy Doody
 - 9:30 Ruff and Reddy
 - 10:00 Fury
 - 10:30 Circus Boy
 - 11:00 True Story
 - 11:30 Detective's Dairy
 - 12:00 Watch Mr. Wizard
 - 12:30 MGM Command Presentation
 - 3:00 National Invitational Basketball
 - 4:00 Command Presentation (MGM)
 - 6:30 People Are Funny
 - 7:00 Perry Como Show
 - 8:00 Bob Cummings
 - 8:30 Cimarron City
 - 9:30 The DA's Man
 - 10:00 News
 - 10:10 Weather
 - 10:15 MGM Command Presentation Sign Off
- Courtesy of **Hood King Motor Co.**
- Main & Seaman Phone 42

WE, TOO—Peter Gruys' abstract against background of a dream city causes a case of small wonder for Eric Thomas Kaye, 3½, at a Bergen County artists' guild exhibit in Paramus, N.J.

LOWER FOOD PRICES

Something to Crow About!



CLOVER FARM

Coffee Drip or Regular Lb. Can **65¢**

LILT HOME **PERMANENT** Reg. 2.00 plus tax Tax Incl. **1.49**

GERBER'S **BABY FOOD** 3 4½-Oz. Cans **25c**

LOOSE LEAF **NOTE PAPER** 25c Size **16c**

SUPER SAVE **MARGARINE** Lb. **19c**

GAINES NEW **DOG FOOD** 3 No. 300 Tall **23c**

CHUCK TIME **VIENNAS** 2 No. ½ Cans **19c**

WHITE SWAN PURE PLUM

PRESERVES 16-Oz. Jar **16¢**

VAN CAMP **TUNA** No. 1 Flat **19¢** V-8 VEGETABLE **JUICE** Big 24-oz. Can **19¢**

CLOVER FARM RED

Pie Cherry No. 303 Can **25¢**

GLENDALE EARLY JUNE

Peas No. 303 Can **15¢**

U. S. NO. 1 RUSSET

Potatoes 10 Lbs. **43¢**

Cello Bag California **CARROTS** **10¢**

California Firm **LETTUCE**

Head **15¢**

Texas Green **CABBAGE**

Lb. **5¢**

HOUSEHOLD UTILITY SHEARS ONLY 50¢

With Order Form in Package

POUND 55¢

On The Menu! Our FINER **Meat Buys**

GOOD QUALITY **Loin Steak** Lb. **85¢**

CANNED **Picnics** 3 Lb. Can **199**

GOOCH'S THICK

Sliced Bacon 2 Lbs. **1.04**

BACON **Ends** 5 Lb. Box **1.05**

LEAN TENDER PORK **Chops** Lb. **55¢**

Sausage PURE PORK Lb. **39¢**



H. B. MacMoy, Owner
7:30 a.m. to 8:00 p.m. Weekdays
7:30 a.m. to 9:00 p.m. Saturdays

KRAFT VELVEETA **Cheese** 2 Lbs. **89¢**

Shocked by higher '59 Big Car Prices?

GO Rambler '59 AND SAVE more than ever!

On price, upkeep, resale, Rambler saves you more than ever. Easiest to handle, too. Try Personalized Comfort: individual sectional sofa front seats. Get big-car room, small-car economy. See your Rambler dealer.

TOM'S SPORT CARS, 307 West Commerce

New 100-inch wheelbase RAMBLER AMERICAN STATION WAGON

IT'S EASTER FASHION TIME!

... AND YOU'LL FALL IN LOVE WITH OUR NEW DRESSES!

Choose from dozens and dozens of new silks, cottons, and rayon-linens in every new silhouette, every pretty new color. Shop this week!

new **SHIRLEY TEMPLE dresses by Cinderella**

TWEEDY CHECKS 24.95

Justin McCarty picks an Arnel and cotton blend for a two piece dress-suit ideal for now and on through summer vacations. The skirt is fully lined to keep its shape, the top fitted smartly, with a velvet touch at the collar. In black, navy or brown. Sizes 10 to 20.

Imagine how happy she'll be wearing the very same fashion as Shirley Temple's daughters! We've every new springtime fashion inspired by her favorite star. Floaty little nylon sheers, dressy shirtwaists, the prettiest prints, wonderful plaids. See our new Springtime Collection of Shirley Temple dresses—today!

Justin McCarty

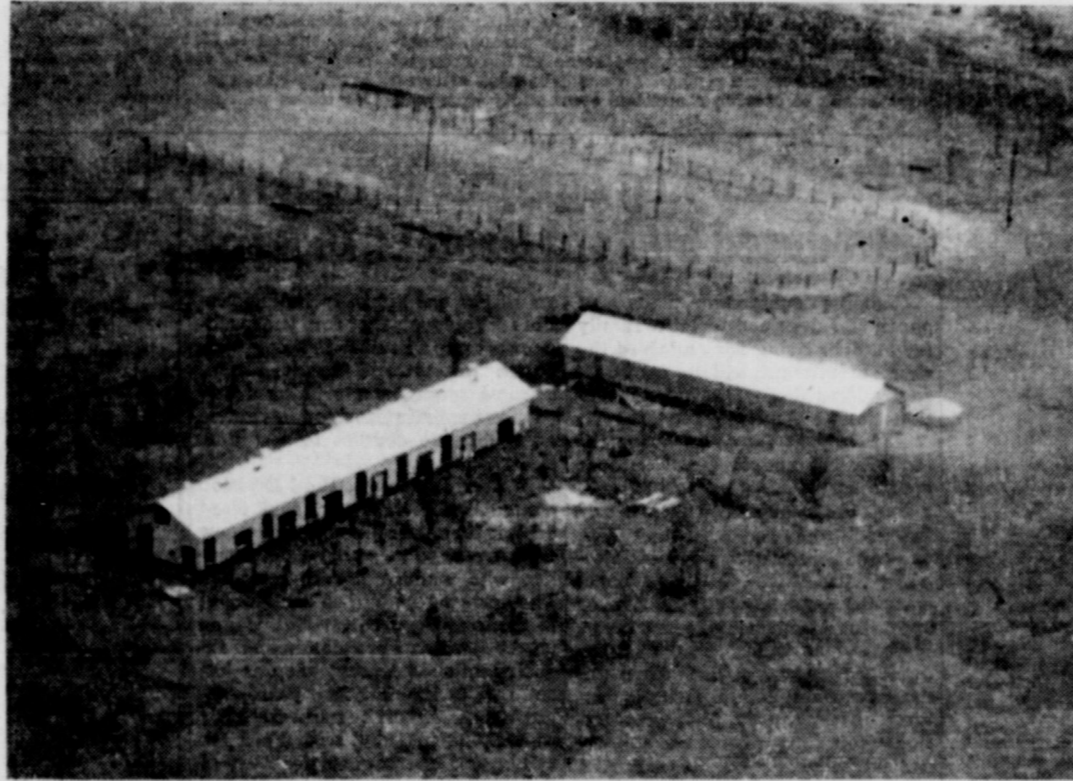
Anderson's

North Side of Square

BE SURE TO ATTEND THE EASTLAND COUNTY LIVESTOCK SHOW Friday and Saturday - March 20-21

SHOW SUPERINTENDENTS

N. B. Eaves, general superintendent
Johnny Aaron, assistant superintendent
Clinton Pierce, swine superintendent
Walter Kucklin, sheep and goats
Ernest Reich and Marshall Berry, dairy cattle
R. L. Stuard, fat steers superintendent
Ed Harrison, beef cattle



AERIAL VIEW OF NEW COUNTY LIVESTOCK SHOW GROUNDS

NEW SHOW GROUNDS

This years Eastland County Livestock Show will be held at the new show grounds on the banks of Eastland Lake. The County Livestock Raisers Association, show sponsors, were donated 25 acres of land by the City of Eastland. Two buildings and many improvements have been made.

*Congratulations to the County Livestock Raisers Assoc.
The Sheriff's Posse, Posse-Anns and Exhibitors*

THIS AD WAS MADE POSSIBLE BY THE FOLLOWING FIRMS:

Eastland National Bank
"On the Square" Member F.D.I.C.

Brown Plumbing Shop
Mr. and Mrs. Truman Brown
214 E. Neblett Phone 785

Scott Paint & Body Works
"We Make 'Em New Again"
300 W. Commerce Phone 977

Dairy Kreem
Highway 80—East
Harry Jordan Lawton Thompson

Eastland Grain & Seed
204 N. Seaman Phone 175

**PLUMBING & HEATING
AIR CONDITIONING**
J. M. Smith Plumbing & Tin
114 N. Seaman Phone 304

Geneva Petroleum Co.
Chemical Division
Mfg. GEPCO Chemical Products
Phone 833 or 332 Eastland

McGraw Motor Co.
Dodge - Plymouth
416 S. Seaman Phone 80

Darrell's Beauty Shop
Complete Hair Clinic
Darrell Emfinger, Owner
1003 S. Bassett Call 57

Hanna Hardware & Lumber Co.
201 N. Seaman Phone 70

Foremost Dairy Products
Clyde Manning, Mgr.
Eastland Phone 10

Texas Electric Service Co.
F. N. Sayre, Mgr. Phone 18

Doc Davis Drug
Prescriptions Filled Accurately
South Side of Square Phone 696

Earley Tire Service
Mobil Gas — Mobil Oil
302 W. Main Phone 208

**Otis K. Coleman's
Humble Service Station**
400 E. Main Phone 826

**Holloway
Texaco Service Station**
503 W. Main Phone 9545

Sig Faircloth Feed and Supply
506 East Main Phone 488

Crowell Lumber Co.
715 W. Main Phone 300

Sunshine Laundry
Automatic Washers and Dryers
Plus Maytag wringer type. Wet Wash, Rough
Dry, Finish Work
106 E. Plummer Phone 155

**OBIE & DOC
Humble Service Station**
Motors Steam Cleaned
802 W. Main Phone 9535

R. M. Sneed
General Oil Field Construction
Office Phone 684 Eastland

**Lovelace
Transfer & Storage**
Local and Long Distance Moving
Since 1929

**Eastland Chamber of
Commerce**

B & B Garage
Bob Sellers — Earnest Hood
COMPLETE AUTO REPAIRS
307 W. Commerce Phone 603

Kincaid's Feed Store
Phone Cisco HI 2-1200 Phone Ranger 1
303 N. Seaman Phone 73

Ed Haynes
Oil Field Supplies Bought and Sold
Care of Triangle Producers
Highway 80 East Phone 183

Rushing Motor Co.
DeSoto and Plymouth
215 S. Seaman Phone 313

City Garage
J. J. Finley, Proprietor
Engine, Starter and Generator Work
103 White St. Phone 995

Reed Oil Company
13 Major Brands Oil—Quart 35c
501 E. Main Phone 9550

**Texas Lightweight
Aggregate Company**
Producers of Concrete Aggregates
C. W. Martin Phone 51

Modern Dry Cleaners
Approved Sanitone Service
James Wright, Owner
210 S. Seaman Phone 132

Muirhead Motor Co.
Buick - Pontiac
Sales and Service Phone 692

Graham's Trim Shop
703 W. Main Phone 170

**Miller's
Phillips 66 Service Station**
513 W. Main Phone 565

Ruby Lee's Beauty Shop
Lucille Taylor, Owner
★ All Types Beauty Work ★
403 S. Lamar Phone 66

Hood King Motor Co.
Ford Sales and Service
North Side of Square Phone 42

PARADE, 2 p. m. FRIDAY In EASTLAND

The Great Crippler

Prospect Bright for Discovering Answers to Riddle of Arthritis

Editor's Note: This is the third of three articles on the nature, causes and prevention of arthritis by Dr. William S. Clark, director of medical care of the National Foundation.

By WILLIAM S. CLARK, M.D., Director of Medical Care, The National Foundation

Our position in relation to arthritis and the rheumatic diseases, foremost cripplers of manpower in the U. S. today, might be likened to standing on a small island of knowledge surrounded by a sea of ignorance.

Yet in the past few years our attitude toward this cruel, unpredictable disease has undergone an enormous change. We no longer believe that nothing can be done about it. Today the small vanguard of research scientists combating arthritis is growing; new recruits are joining them from many scientific fields; the prospect for the future was never more hopeful.

The arthritis picture today is not unlike that of polio 21 years ago. In 1938 we neither knew how to prevent polio, how to cure it or how to treat it effectively.

But in that year the National Foundation for Infantile Paralysis was formed, and soon after it conceived, organized and financed with March of Dimes money one of the most fruitful medical research programs of our time. Within two decades these research workers broke through barrier after barrier of darkness concerning virus disease until they found the Salk vaccine. There is still much to be done in polio. No cure has yet been found. But at least we have at hand a sturdy weapon against its ravages.

With this victory behind it, the National Foundation now turns to arthritis and the rheumatic diseases. The next few years may give us "the answer" to these maladies that have plagued the joints of man since the dawn of time.

Avenues of Research
In the first article of this series I described what arthritis is and how it affects the human body. In the second I told what can be done about it: treatment and relief. In this column I shall discuss the avenues of investigation we must explore in the future.

To begin with, the common denominator of several rheumatic diseases, including osteoarthritis, rheumatoid arthritis and rheumatic fever, is damage to the

connective tissue. This tissue consists of a fibrous protein imbedded in a mucoid carbohydrate called "ground substance." But our ignorance of its nature and function is still profound. We need to learn much more about its origin, physical and chemical structure, metabolism (rate at which it absorbs and uses food), behavior under normal and abnormal conditions. We may confidently expect our research to shed more light on this vital area.

Causes Unknown
We still know almost nothing about the causes of arthritis. Virus infection is not ruled out, though we have as yet isolated no responsible virus. Heredity may be another source, but we have no proof beyond the observation that certain types of arthritis run in families. Psychological tensions have been known to "trigger" attacks, but we still don't know how this works. Allergy and hypersensitive reaction is yet another avenue for causative research. These tentative clues lead us into such varied sciences as virology, genetics, biochemistry, enzyme chemistry, psychotherapy, immunology and epidemiology. Promising leads to the causes of arthritis already exist in all these fields. Now they must be followed up.

We have, again, no simple, accurate test for diagnosing rheumatoid arthritis. It stands to reason that the earlier the disease is detected, the better our chance to treat it and to stop its crippling. Work already has progressed to the point where we may soon hope for a simple and reliable diagnostic test.

"The Rheumatoid Factor"
The most promising clue in this direction is the recent discovery of "the rheumatoid factor." This is a difference between the blood of a normal person and a person with rheumatoid arthritis. In the blood of an arthritis patient there exists a heavy protein which, under certain laboratory conditions, forms clumps on foreign substances like the red blood cells of sheep. In about 75 per cent of rheumatoid patients the test works. Further research may refine it and make it almost 100 per cent accurate.

But the rheumatoid factor raises still more fascinating questions for medical science to answer. Just what is its nature and significance? Is it a cause or a symptom? Could it be an antibody—a substance that the blood sets up against disease? If so, does this not suggest that rheumatoid arthritis may spring from a virus or similar infection, perhaps one that has been latent for years? Or might it denote a hypersensitivity reaction to some other element in the body—a so-

called "auto-antibody?" Or again, might the rheumatoid factor be a secondary manifestation of some other as yet undetected cause of joint disease? Only from a concerted scientific attack can we hope for enlightenment.

Drugs are another fruitful area for research. Though cortisone and other "steroid compounds" have not fulfilled their original promise, our chemists may devise newer hormone preparations relatively free of injurious side-effects.

It has been noticed, for instance, that during pregnancy women with arthritis show marked improvement. Indicated here is an unknown factor in body chemistry that still needs to be explained.

What We Already Know
In the treatment of the after-effects of arthritis we may get from research no sudden, dramatic discoveries. Yet it is not generally recognized that severe crippling and disability might be eliminated by the application of what we already know. During its long experience with polio patients, the National Foundation, for instance, made notable pioneering contributions to the science of rehabilitation. Many a patient who, 10 or 20 years ago, would have spent a hopeless wheel chair-ridden life, now can be salvaged. We need still more research in rehabilitative techniques, and this is what the National Foundation's expanded program now proposes to do.

To achieve the goals I have touched on in this column, we need, above all, more trained minds and skilled hands in the whole galaxy of disease-fighting professions: more young doctors to specialize in rheumatic diseases; more young research scientists in laboratories; more biochemists, physiologists, nurses, physical and occupational therapists, medical social workers. The National Foundation already has swept the ranks of these much-needed experts through its professional education program. But we are still far short of the required number. The National Foundation is now seeking to recruit additional talents, without which we cannot hope to vanquish arthritis.

Hope For Future
All this upsurge of new interest and new activity is bound to bring results. It is reasonable to expect that in the not too distant future the clues we already have will lead us to a knowledge of how arthritis occurs and how it can be stopped. Already we stand on the threshold of a rapid advance into that future.

Besides arthritis, other areas of March of Dimes activity are polio, birth defects and virus diseases.



Dr. Clark

organized and financed with March of Dimes money one of the most fruitful medical research programs of our time. Within two decades these research workers broke through barrier after barrier of darkness concerning virus disease until they found the Salk vaccine. There is still much to be done in polio. No cure has yet been found. But at least we have at hand a sturdy weapon against its ravages.

With this victory behind it, the National Foundation now turns to arthritis and the rheumatic diseases. The next few years may give us "the answer" to these maladies that have plagued the joints of man since the dawn of time.

Avenues of Research

In the first article of this series I described what arthritis is and how it affects the human body. In the second I told what can be done about it: treatment and relief. In this column I shall discuss the avenues of investigation we must explore in the future.

To begin with, the common denominator of several rheumatic diseases, including osteoarthritis, rheumatoid arthritis and rheumatic fever, is damage to the

connective tissue. This tissue consists of a fibrous protein imbedded in a mucoid carbohydrate called "ground substance." But our ignorance of its nature and function is still profound. We need to learn much more about its origin, physical and chemical structure, metabolism (rate at which it absorbs and uses food), behavior under normal and abnormal conditions. We may confidently expect our research to shed more light on this vital area.

Causes Unknown

We still know almost nothing about the causes of arthritis. Virus infection is not ruled out, though we have as yet isolated no responsible virus. Heredity may be another source, but we have no proof beyond the observation that certain types of arthritis run in families. Psychological tensions have been known to "trigger" attacks, but we still don't know how this works. Allergy and hypersensitive reaction is yet another avenue for causative research. These tentative clues lead us into such varied sciences as virology, genetics, biochemistry, enzyme chemistry, psychotherapy, immunology and epidemiology. Promising leads to the causes of arthritis already exist in all these fields. Now they must be followed up.

We have, again, no simple, accurate test for diagnosing rheumatoid arthritis. It stands to reason that the earlier the disease is detected, the better our chance to treat it and to stop its crippling. Work already has progressed to the point where we may soon hope for a simple and reliable diagnostic test.

"The Rheumatoid Factor"

The most promising clue in this direction is the recent discovery of "the rheumatoid factor." This is a difference between the blood of a normal person and a person with rheumatoid arthritis. In the blood of an arthritis patient there exists a heavy protein which, under certain laboratory conditions, forms clumps on foreign substances like the red blood cells of sheep. In about 75 per cent of rheumatoid patients the test works. Further research may refine it and make it almost 100 per cent accurate.

But the rheumatoid factor raises still more fascinating questions for medical science to answer. Just what is its nature and significance? Is it a cause or a symptom? Could it be an antibody—a substance that the blood sets up against disease? If so, does this not suggest that rheumatoid arthritis may spring from a virus or similar infection, perhaps one that has been latent for years? Or might it denote a hypersensitivity reaction to some other element in the body—a so-

called "auto-antibody?" Or again, might the rheumatoid factor be a secondary manifestation of some other as yet undetected cause of joint disease? Only from a concerted scientific attack can we hope for enlightenment.

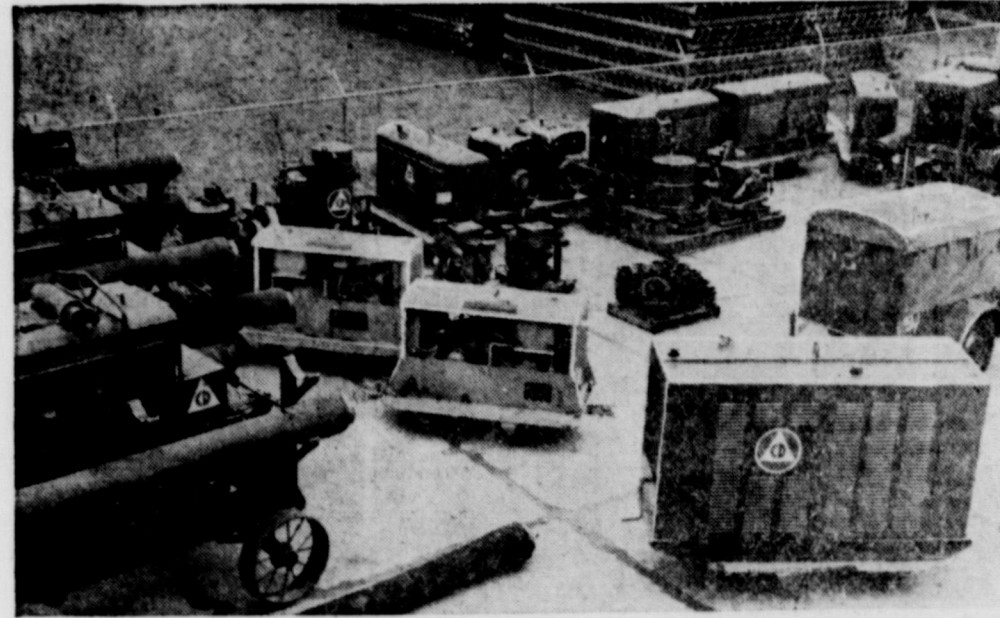
Drugs are another fruitful area for research. Though cortisone and other "steroid compounds" have not fulfilled their original promise, our chemists may devise newer hormone preparations relatively free of injurious side-effects.

It has been noticed, for instance, that during pregnancy women with arthritis show marked improvement. Indicated here is an unknown factor in body chemistry that still needs to be explained.

What We Already Know

In the treatment of the after-effects of arthritis we may get from research no sudden, dramatic discoveries. Yet it is not generally recognized that severe crippling and disability might be eliminated by the application of what we already know. During its long experience with polio patients, the National Foundation, for instance, made notable pioneering contributions to the science of rehabilitation. Many a patient who, 10 or 20 years ago, would have spent a hopeless wheel chair-ridden life, now can be salvaged. We need still more research in rehabilitative techniques, and this is what the National Foundation's expanded program now proposes to do.

To achieve the goals I have touched on in this column, we need, above all, more trained minds and skilled hands in the whole galaxy of disease-fighting professions: more young doctors to specialize in rheumatic diseases; more young research scientists in laboratories; more biochemists, physiologists, nurses, physical and occupational therapists, medical social workers. The National Foundation already has swept the ranks of these much-needed experts through its professional education program. But we are still far short of the required number. The National Foundation is now seeking to recruit additional talents, without which we cannot hope to vanquish arthritis.



TYPICAL UNIT of civil defense stockpiled engineering equipment showing the pumps, generators, water purifiers, and some of the miles of flexible-coupled pipe which could be used after an attack to provide a stricken community with pure water. Some of this "hardware," grouped in "Ten-Mile Units" to service ten miles of pipe each, already has been used in natural disasters to pump out flooded areas, and to bring in and purify water for towns with dry reservoirs. (ODCM Photo)

Paper Camping Equipment To Be Introduced by Ford Dealers, In April

Camping equipment made of paper and designed to let a family try outdoor living for one-third the usual investment will be introduced by Ford dealers across the nation during April.

A family of four can be outfitted with the "paper plus" outdoor equipment—four sleeping bags and a tent that sleeps two adults and two children—for less than \$60, or about \$4 for each day of a two-week vacation. Conventional equipment can cost up to five or six times as much.

For some time commercially-produced paper products have undergone field and laboratory evaluations by the U. S. Army Quartermaster Corps for possible use as parachutes, disposable uniforms, snow apparel and temporary shelter-

ers of various kinds, including possible replacement for the well-known "pup tent." It is being tested in rain rooms, arctic rooms, tropical rooms, and soldiers dressed in paper uniforms scramble over obstacle courses to test durability.

Walter J. Cooper, Ford Division general sales manager, said Ford dealers are introducing the new equipment to accommodate families who want a try at camping. The camping boom has contributed to the growth of the station wagon market, which Ford dominates. Industry sale of station wagons has doubled in the last five years, rising from 334,372 sales in 1954 to 612,023 in 1958, with Ford obtaining an average 40 per cent of the market during the period, Mr. Cooper said.

After introduction by Ford dealers, the "paper plus" camping equipment—which was designed by William Moss and Associates—will be marketed by Corporate Research, Inc., Ann Arbor, Mich.

In line with the trend toward disposable items in the nation, the cost of the equipment is low enough to permit throwing it away at the end of the season, eliminating the need for winter storage.

The Kaycel material, developed by Kimberly-Clark, is waterproof, lightweight and fire-retardant. Made of cellulose fibers (paper) with threads of nylon for added strength, it comes in various bright colors and designs, and it can be sewed, stretched, tied and folded. A tent for two weighs less than five pounds and can be packed in one-half cubic foot of space.

A seven-foot tent for two adults and two children will retail for approximately \$19; a four-foot square tent for two, \$13; a 20-foot para-wing, \$25; a sleeping bag, \$10 and a station wagon boot that turns the rear of the station wagon into private camping quarters, \$7.

Last year, an estimated 22 million Americans—double the 1950 total—spent \$885,000,000 to camp out-of-doors, and the number of campers grows at the rate of 10 per cent each year. The U. S. Forest Service lists 4,900 camping and picnic sites in the nation, which accommodate 24.5 million man-days of camping each year.

Tests of Gas Effects On Fish Are Underway

AUSTIN — Tests have been made to determine the effectiveness of gas producing chemicals in controlling over-populations of certain types of bottom-feeding rough fish, according to the Director of Inland Fisheries, Texas Games and Fish Commission.

One of the objects of these tests was to learn how much gas is necessary to float fish of various weights to the surface where they could be collected. Another answer sought was what type of chemical would provide the best results.

Attempts to inflate a few fish failed because their throats contained vertical shields of bone which prevented the entrance of every kind of tubing used. Calcium carbide proved to be the best gas producing chemical of those tested. The new problem was getting this chemical into the stomachs of the fish.

To do this, the calcium carbide had to be covered with a substance, made into pellets, and then fed to the fish. Various types of fat and waxes were used to cover and waterproof the carbide. A conference with druggists and pharmaceutical manufacturers failed to turn up any workable suggestions. Nevertheless, a few pellets were rolled by hand and dropped in a pond heavily infested with black bullhead catfish, without result.

Apparently, the pellets were either too large for the fish to swallow or the taste was wrong. More studies on this subject are being conducted.

NOTICE... Come To Kendrick Drive-In Dairy
(Serving This Territory Since 1940)
FOR
Good, Clean JERSEY Sweet Milk
Price - 70c Gal.
Phone 896-J-2 — Located Highway between Eastland and Cisco

Trade With Your Hometown Merchants
★ ★ ★ ★ ★
IF IT'S METAL
Decore Metal Products
306 E. Main Phone 288
SHOP WELDING PAINTING REPAIR

BE MODERN... INSTALL AN
Electric Lawn Light
Completely Installed
As Low As
\$29.95
Others at 39.95 to 54.95
For normal installation with up to 50-ft. of cable and normal installation of inside switch.
ONLY PENNIES TO OPERATE... Use all night—every night for less than 30c per month.
You can get YOUR choice of design and color—Black—White—Black and Brass or White and Brass.
Terms If Desired

Decore Metal Products
306 E. Main Phone 288

PLANT NOW
Dichondra Grass Seed
For Sale by
Carl Angstadt
Phone 187

T. L. FAGG
REAL ESTATE
Property Management
Home and Farm Loans

READ THE CLASSIFIEDS



step into the
Easter Spotlight
Meet...
Mohara-Lite
THE NEW FABRIC ENGINEERED TO WEATHER HUMIDITY AS WELL AS HEAT.
65.00
TWO-PANT
• The lighter-than-air feeling the fresh pressed look of DACRON
• The natural insulation and rich "hand" of WORSTED
• The silken lustre and resiliency of MOHAIR
It's the suit that has everything, but weighs next to nothing — you won't believe it until you wear it!
Fabric by Pacific Mills—Tailored by Joseph & Feiss

Cool Slacks
THAT KEEP THEIR SHAPE!
7.95 - 12.95

FOR LIGHTWEIGHT COMFORT, SMARTNESS, CORRECT FIT... you can't beat these fine slacks! OF ORLON DACRON or DACRON WOOL your press and shape stay in. Plain or textured weaves in brown, black, light grey, tan.



GO STEADY with
Crosby Square Juniors
BLACKS AND BROWNS
8.95

Boy's Shirts
SIZE 4 TO 18
1.98 to 3.95

BOY'S COATS
SIZE 4 TO 18
9.95 to 16.95
BOY'S WASHABLE SLACKS
SIZE 4 TO 14
5.95 to 7.95

THE MEN'S SHOP
WEST SIDE OF SQUARE

YOUR BEST NEW CAR DEAL IS HERE
BLEVINS Motor Co.
Come Our Way For Bargains That Pay
514 W. Main Phone 308
We Give S & H Green Stamps
HIGHEST TRADE-INS
Small Monthly PAYMENTS
FULLY GUARANTEED
AFTER-SALE SERVICE

OUR PHONE NUMBER IS 184

Pre Easter Special

- 1—8x10 Gold Toned Portrait
- 3—5x7 Portraits
- 8—Billfolds

REGULAR \$21.20 VALUE
All for just \$15.00

We Give Free 4 x 5 Enlargement with each roll of film developed.

MODERNE STUDIO

Eastland
Evenings and Sunday sittings by appointment

I GIVE YOU TEXAS

By **BOYCE HOUSE**

More recollections of the winter of 1920-21, spent in Cotulla at the Travelers Hotel:

The hotel guests, "regulars" and those who spent only one night under the roof of the Travelers' Hotel, were an interesting study and many of them I can recall 38 years afterward. There was an oil stock salesman named Snow from Chicago; a member of the legislature from Houston—his name was Hall; a big man with clipped mustache who was a spinach buyer; a lawyer who was a former member of the legislature—he was of German descent and spoke with a decided accent; his name was Burmester, or something similar, a widely-read and interesting conversationalist. He confided that he never tried to get rid of the accent, implying that before a non-Teutonic jury,

it created sympathy for his client because they felt the attorney was handicapped by an imperfect command of the language, which was far from the case.

Another guest was a wealthy, middle-aged widow whose husband, an Oklahoma oil man, had been shot to death and the slayer was serving a life sentence. Then there was a likeable young Irishman, with white teeth, dark mustache and ready smile, who spoke fluent Spanish and who attended every performance of a tent show in the Mexican quarter.

Still another was quite generous with information about himself. He had, he said, been a federal judge but had resigned and he was a friend of Senator Bailey and also of former Gov. James E. Ferguson and had contributed to their campaigns.

I did not realize how closely I was studying the guests until some months later, in a Brownwood hotel lobby, I saw the former federal judge and spoke to him, mentioning that I had met him in Cotulla. When he said he did not remember me and could not even remember ever having been in Cotulla, I said, "Then you had better be careful; you have a double" and I proceeded to quote half a dozen things that the man in the Cotulla hotel lobby had said about himself and the "judge" had to acknowledge that the man had been himself.

The most interesting of all the many guests was a soldier of fortune. He related that he had been in Nicaragua and had knocked down the dictator, General Castro, the result being that the "gringo" was thrown in jail with an excellent prospect of facing a firing squad but bribed a guard and escaped.

AS IT LOOKS FROM HERE

OMAR BURLISON, M. C.
17th District, Texas

WASHINGTON, D. C. — The count-down has started. Exactly two and a half months from now will come the greatest test for this Country and world peace which has occurred since World War II. It probably is a test as great as Korea—greater than that which occurred in Lebanon or that which involved Matsu and Quemoy.

May 27 is the deadline set by Khrushchev of the Soviet Union to give the East Germans control of the three air corridors, one railroad and one highway from West Germany through Soviet controlled territory to the City of Berlin, a distance of about 100 miles. After May 27, Khrushchev says that the East Germans, who are not recognized as a government by the Western powers, will assume control. He further indicates that the East Germans will close or restrict ingress and egress from the Allied sectors of West Berlin. He threatens that when and if the East Germans restrict travel and supplies through the transportation corridors from West Germany to West Berlin, and open these avenues of supply, should force be used to keep World War III may result.

President Eisenhower says we will not "budge an inch" in protecting our rights to West Berlin.

Why is it important we maintain our position in Berlin? It is important because if it were not Berlin, it would be some other place. It may be Korea again—Matsu or Quemoy; it may again be Lebanon or some other place in the Middle East; it may be Africa, Southeast Asia and even Latin America. There is no end to the trouble making by the Communists. Revolution is ripe in many places which are fertile ground for the seeds of foment sown by the Russians. They are masters at sowing. They are excellent judges of fertility.

If we are not underestimating the Soviets in the ballistic missile field, we are underestimating them in world trade, subversion and effectiveness of propaganda. As an example of the effectiveness of Khrushchev's propaganda, what could be more reasonable than his statement that, "It is the task of the German people to re-unite Berlin." It sounds reasonable that the German people themselves should decide how and when they shall unite and let others not "interfere." The catch is that the East German government was imposed by the Soviets, is dominated by them, and any settlement would be dictated by the Kremlin. He seemingly means that a settlement by the two German States would be between a West Germany, speaking for West Germany, and an East German government speaking for the Soviet Union.

The May 27 deadline set by Khrushchev is a real test for the Western powers. The United States, England and France either default, not only to the West Germans, but to all free governments, or they stand up to the Russians in the face of the most serious challenge presented since World War II. As the President has said, it is no time for panic in the face of these threats. It is, however, time for the Western nations to let it be crystal clear to the Kremlin that we have no intention of kowtowing under to their demands. Aside from the Allies' commit-

ment to the West Germans, it would only be a short time until another challenge of a similar nature would be presented in another place, and if possible, one even more sensitive. The world is now too small to find a place to hide. There really is little or no choice but to face the Soviets with all the determination at our command, backed up with whatever force is necessary. There is good reason to believe that if no doubt is left in the mind of the Dictator of the Kremlin

that we will resist this threat, no shooting will occur and no war result. Should, however, they miscalculate our determination, anything could happen. It is an understatement that

we sit in an anxious seat and must occupy the chair for the next two and a half months.

CALL 601 FOR CLASSIFIED ADVERTISEMENT

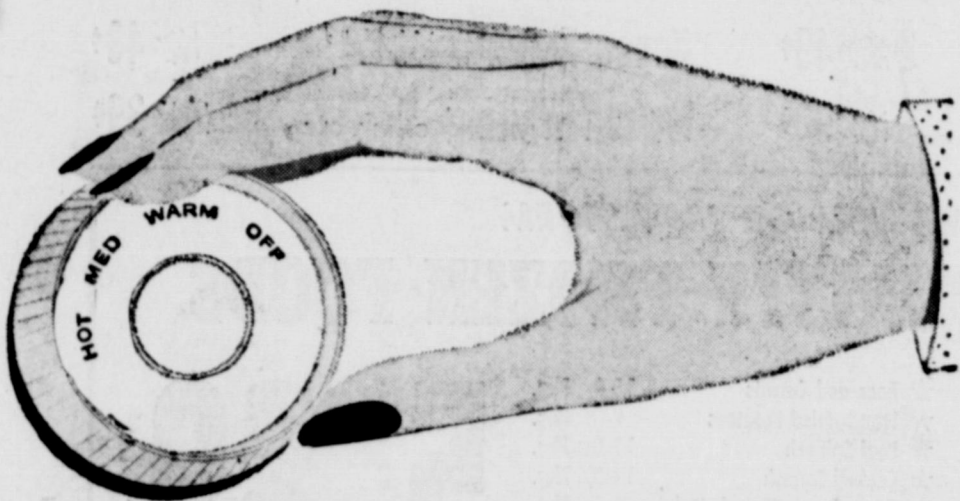
BASHAM BEAUTY BAR

Complete Beauty Service

1416 So. Lamar

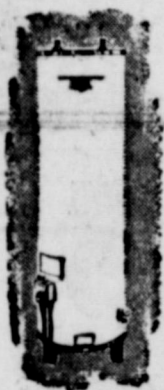
Phone 964

You need more than a dial...



to get plenty of hot water!

Only GAS laundry-rated water heaters



can give you the proper temperature control for washers . . . actually, temperatures tailored to your most exacting needs. A dial on a washer is not enough—the water heater must furnish enough hot water. Only a gas water heater is fast enough to keep pace with today's automatic appliances. For the finest gas water heaters see your gas appliance dealer, plumber, or Lone Star Gas.

See the new BRYANT automatic glass-lined GAS water-heater

Superior trouble-free performance—gives pure hot water at turn of a dial, at temperature you select. Porcelain glass lining, glass fiber insulation keep water pure—hot.

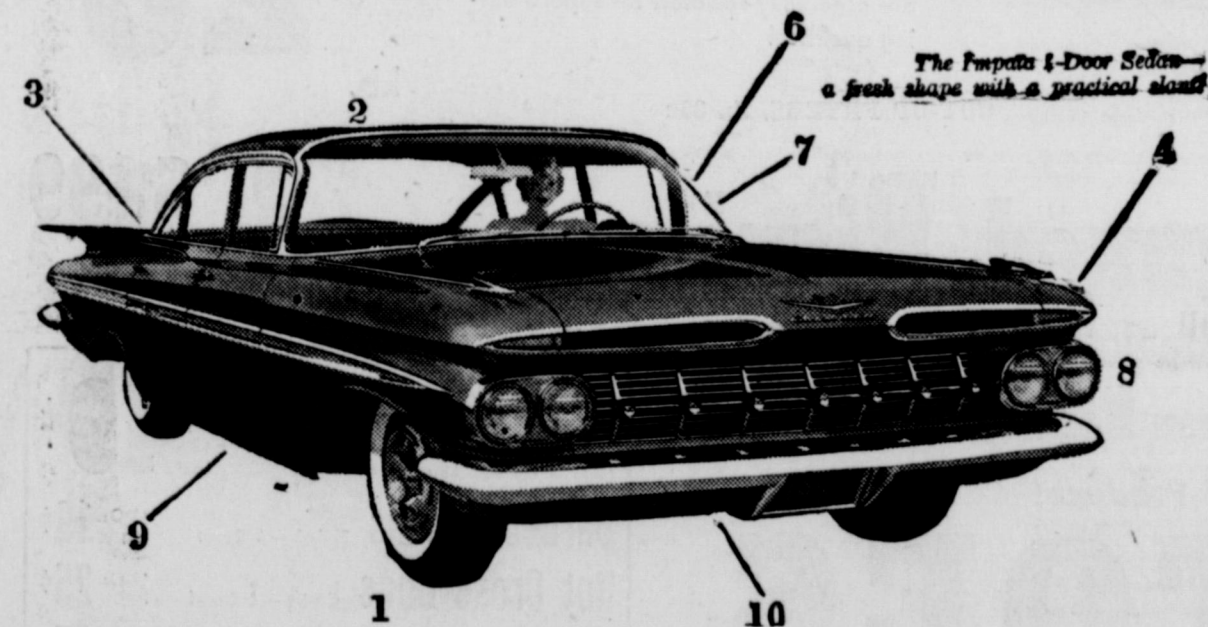
You name the down payment. Easy Terms.

LONE STAR GAS COMPANY

INGROWN NAIL HURTING YOU?
Immediate Relief!

A few drops of OUTGROW bring blessed relief from tormenting pain of ingrown nail. OUTGROW loosens the skin underneath the nail, allows the nail to be cut and thus prevents further pain and discomfort. OUTGROW is available at all drug counters.

NOTICE
FRESH DRESSED FRYERS and Fresh Dressed Hens At The Plant
PHONE 110
WALKER Dressing Plant



Chevy's new beauty makes beautiful sense!

From its lustrous new finish to its roomier interior, Chevy is as logical as it is lovely. It's '59's best looker—for the best reasons!

- 1. HANDSOME WHEELS
- 2. NEW MAGIC-MIRROR FINISH NEEDS NO WAXING OR POLISHING FOR UP TO THREE YEARS.
- 3. REAR DECK LUGGAGE. Five cubic feet more space.
- 4. FRONT AIR SCOOPS HELP ENGINE COOLING. Those stylish openings above the grille bring in more air.
- 5. ROOMIER FISHER BODY—wider than many costly cars.
- 6. VAST NEW AREAS OF VISIBILITY. And you'll find Safety Plate Glass all the way around.
- 7. INDIVIDUALLY HOODED INSTRUMENTS REDUCE GLARE.
- 8. ANODIZED ALUMINUM TRIM. Rust-resistant trim helps keep that showroom look.
- 9. EASIER TO GET IN—NEW STEP HEIGHT AND SEAT DESIGN. And there's lots of head room too!
- 10. HIGH CLEARANCE. Takes rough roads with room to spare.

See your local authorized Chevrolet dealer and pick out your new Chevy!

FULLEN MOTOR COMPANY
805 E. MAIN PHONE 44

EASTLAND

WE HAVE IT OR WE'LL GET IT

lumber and building Materials

NOW IS THE TIME TO START HOME REPAIRS, REMODELING OR BUILDING JOBS — CHOOSE ALL YOUR SUPPLIES FROM OUR YARD!

Free Delivery

HIGGINBOTHAM - BARTLETT CO.

301 W. Main Jack Elliott, Mgr. Phone 112 or 1014

More families agree...

Mrs Baird's Bread stays fresh longer

MRS BAIRD'S ENRICHED BREAD
STAYS FRESH LONGER

Typewriters
Adding Machines
Cash Registers
BUY SELL RENT
New Electric Adding Machines \$127.45
STEPHENS TYPEWRITER CO.
417 S. Lamar St. EASTLAND, TEX. Phone 639

M. H. PERRY
Representing
Southland Life
Life Retirement Income Partnership
Mortgage Cancellation
Educational - Annuities
Accident - Sickness
Hospitalization - Group
Call 173 or 128
107 W. Main ★ Eastland

Insurance AND Real Estate
D. L. KINNAIRD
Life - Fire - Auto - Farm
Policies - Bonds
39 years in the Insurance Business in Eastland

GOING TO EASTLAND IRON & METAL CO.

SHORTEST ROUTE TO YOUR BEST MARKET IN EASTLAND COUNTY & SURROUNDING COUNTIES ON SCRAP IRON & METALS CALL 270

WE BUY AND SELL
* NEW & USED PIPE
* NEW & USED FITTINGS
* STRUCTURAL STEEL
* ANGLES-CHANNEL-PLATE
* I BEAMS-REINFORCING RODS

COMPLETE LINE PLUMBING AND ELECTRICAL SUPPLIES

EASTLAND IRON & METAL CO.
OWNED AND OPERATED BY HENRY PULLMAN

FROZEN FOOD SALE!

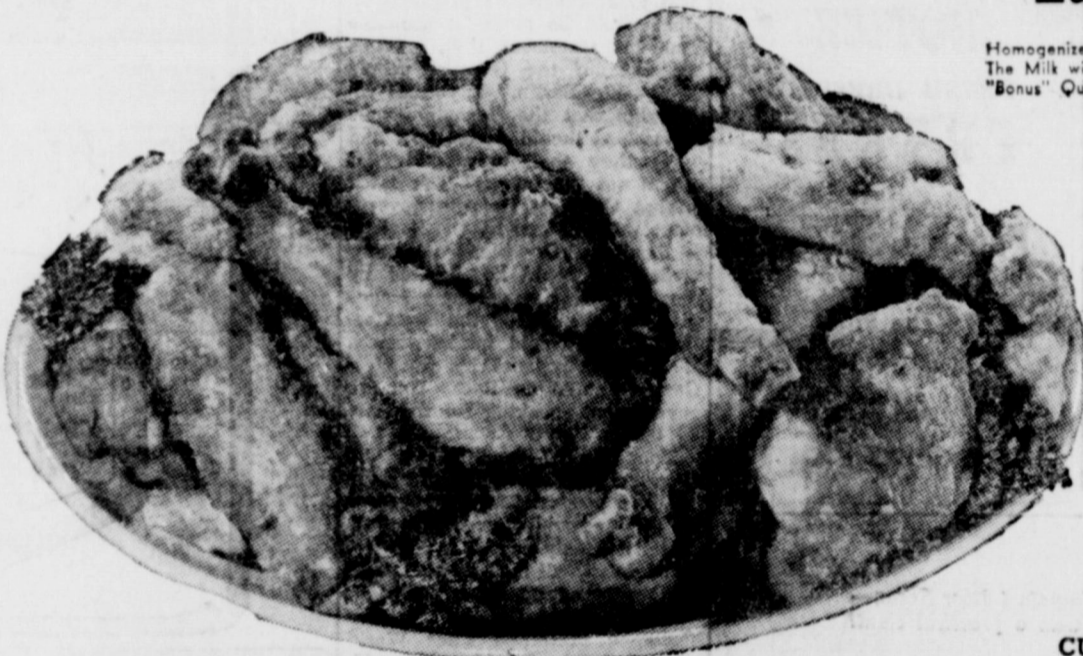
SAFEWAY



- Orange Juice** Scotch Treat Frozen — Add Variety to Your Breakfast Meal **4** 6-Oz. Cans **69¢**
- Lemonade** Bel-Air Frozen — Regular or Pink. Delicious Drink for Parties or Snacks. **4** 6-Oz. Cans **39¢**
- Strawberries** Scotch Treat Frozen — Makes Delicious Toppings for Cake and Ice Cream **3** 10-Oz. Cans **49¢**
- Fish Sticks** Captain's Choice Frozen Pre-Cooked — Delicious Fried **8-Oz. Pkg.** **29¢**
- Candied Yams** Bel-Air Frozen — Serve for Dinner with Picnic **14-Oz. Can** **25¢**
- Frozen Pies** Manor House — Beef, Chicken or Turkey. **2** 8-Oz. Pks. **49¢**
- Ocean Perch** Captain's Choice Frozen Fillets **1-Lb. Pkg.** **43¢**
- Chicken Breasts** Manor House Frozen **1-Lb. Pkg.** **99¢**
- Frozen Whiting** Captain's Choice **1 1/2-Lb. Pkg.** **39¢**

- Biscuits** Mrs. Wright's Sweetmilk or Buttermilk Delicious with Honey **4** 8-Oz. Cans **29¢**
- Pork & Beans** Taste Tell **4** 300 Cans **39¢**
- Margarine** Coldbrook — Delicious with Biscuits and Honey. An Economical Spread. **1-Lb. Pkg.** **16¢**
- Detergent** White Magic — Makes Every Wash a Whiter, Cleaner Wash Every Time. **Giant Box** **59¢**

- Large 'A' Eggs** Breakfast Gems, Grade 'A' Quality, Large Size. **Doz.** **49¢**
- Liquid Starch** White Magic — (Quart Bottle 21c). **1/2-Gal. Bottle** **41¢**
- Salad Dressing** Kraft Miracle Whip — **10-Oz. Jar** **55¢**
- Flour** Harvest Blosson **25** Lb. **\$1.53**
- Flour** Kitchen Craft — For All Your Baking Needs **5-Lb. Bag** **47¢**
- Gold Medal Flour** "Kitchen Tested" **5-Lb. Bag** **51¢**
- Nut Roll** Pillsbury Caramel — Just Heat and Eat **11-Oz. Can** **39¢**
- Candy** Nestle's Crunch, Plain Milk Chocolate, and Almond, 5c Bars **10** For **39¢**
- Tang** Instant Breakfast Beverage — Orange Flavored **12-Oz. Jar** **63¢**
- Friskies Dog Food** **2** 1-Lb. Cans **33¢**



MIX 'EM OR MATCH 'EM

BEL-AIR QUALITY FROZEN FOODS

- ★ Chopped Broccoli 10-Oz. Pkg.
- ★ Whole-Kernel Corn 10-Oz. Pkg.
- ★ Blackeye Peas 10-Oz. Pkg.
- ★ Green Peas 10-Oz. Pkg.
- ★ Mixed Vegetables 10-Oz. Pkg.
- ★ Peas and Carrots 10-Oz. Pkg.
- ★ French-Fried Potatoes 9-Oz. Pkg.
- ★ Leaf Spinach 12-Oz. Pkg.
- ★ Cooked Squash 14-Oz. Pkg.
- ★ Green Beans (French Style) 9-Oz. Pkg.

5 for 89¢

Stock Your Freezer at This Low Price. YOUR CHOICE

- Lucerne Milk** Homogenized. The Milk with the "Bonus" Quality Flavor! **1/2-Gal. Ctn.** **49¢**
- Frozen Dinners** Banquet, Chicken, Beef or Turkey. **11-Oz. Pkg.** **59¢**
- Bluebonnet Margarine** **1-Lb. Pkg.** **25¢**

Safeway Guaranteed Meats!

FRYERS

Fancy Whole — U. S. D. A. Inspected and Grade "A." Ready-to-Cook. Stock your freezer with the best, plump, tender, and full-meated chickens that are especially selected for superb eating qualities!

29¢

Lb.

CUT-UP FRYERS, lb. 33c

- LAMB BUYS!**
- Leg of Lamb** Zesty taste. Serve with cranberries. **Lb.** **65¢**
 - Shoulder Roast** Square cut. Thrifty and delicious. **Lb.** **39¢**
 - Lamb Chops** Loin or rib. Delicious with Mint Jelly. **Lb.** **95¢**

- Canned Picnics** Armour's Star Ready-to-eat No bone, no waste **3** -Lb. Cans **\$1.99**
- Calf Steak** Round or Sirloin — U.S. Good Grade, Bone-In **Lb.** **89¢**
- Chicken Hens** USDA Inspected 2-3 Lb. Average **Lb.** **29¢**

Bakery Feature of the Week

Slenderway Bread **19¢**

Skylark — Regular 23c Value High in Proteins, Low in Calories **1-Lb. Loaf**

- Barbecue Buns** Skylark — 8 Count **13-Oz. Pkg.** **19¢**
- Hot Cross Buns** Curtsy — 8 Count **12-Oz. Pkg.** **25¢**
- Profile Bread** Low in Calories **1-Lb. Loaf** **25¢**

Golden Ripe

BANANAS

Start your morning out right with Cereal Topped with Bananas.

10¢

Lb.

Safeway Guaranteed Produce!

POTATOES

All-Purpose Russet Smooth-skinned and solid — U.S. No. 2 in uniform "plenty-to-eat" sizes. Just right for boiling, baking or French-frying.

25 -Lb. Bag **79¢**

- Red Rome Apples** Ideal for Cooking. **Lb.** **10¢**
- Sunkist Lemons** Rich in Vitamin C. **6** For **15¢**
- Red Ripe Tomatoes** Garden Fresh. Add Zing to Your Salads. **13-Oz. Ctn.** **17¢**

- Air Deodorant** Colgate Florist, Mint, Pine, Spice and Floral **5 1/2-Oz. Can** **75¢**
- Dash Detergent** Detergent — Low Suds that Really Clean **9-Lb. 13-Oz. Box** **\$2.29**

- Comet** Cleanser — Washes Away Grease and Grime **2** 14-Oz. Cans **27¢**
- Chunk Tuna** Breast-O Chicken Light Meat — Green Label **No. 9 Can** **33¢**
- Instant Milk** Fat Non-Fat Powdered (Makes 12 Quarts) **39-Oz. Box** **89¢**
- Dog Food** Red Heart — Beef Flavored **24-Oz. Can** **25¢**

Oxydol Detergent — (15c Off) King Size \$1.19	Tide Detergent — Gets Your Clothes Large Tide Clean 32¢
Dreft Detergent — The Dishwashing Sensation Large Box 32¢	Cheer Detergent — Large Box 32¢
Ivory Soap Personal Bar — 4 For 27¢	Ad Detergent Dinnerware Pak 40-Oz. Box 83¢

Charmin Tissue Assorted Colors. 4 Roll Pak 35¢	Tomato Juice Heinz — Concentrated 2 6 1/4-Oz. Cans 29¢
Liquid Joy Detergent — For Mildness to Your Hands. 22-Oz. Can 71¢	Kraft Dinner Spaghetti — Meal in a Jiffy. 8-Oz. Pkg. 27¢
Napkins Charmin Paper 2 80-Ct. Pks. 29¢	Sanitary Napkins Modess — Regular, 12-Ct. Super or Teenage Box 35¢

Prices Effective Thursday, Friday and Saturday, March 19, 20 and 21.

SAFEWAY

Convenient Store to Serve You in Eastland