

Put Your Old Toys In the Lions Santa Box Today

Help Some Deserving Child Enjoy Christmas - Box Located In Front of Telegram Office

Eastland



Telegram

ONLY 18 More Shopping Days

VOL. 31

EASTLAND, TEXAS, SUNDAY, DECEMBER 4, 1960

No. 93

SOIL CONSERVATION NEWS

Grass Production On County Range Is Far From Average

By SCS TECHNICIANS
Grass production on local range land has been very low this past summer. Many poor conditions pastures are getting dangerously low on cover at present time. Rainfall last spring was just not enough to give us a season in most places for good grass growth. As a consequence our light ineffective summer served only to occasionally green up the grass without yielding much total growth.

Most farmers rain gauges have caught over twenty inches of rain since last Jan. 1, but gauges vary much from farm to farm. It is generally taken as a rule of thumb that an inch of water in the ground properly used by grass should yield 500 pounds of grass. This year, however, with a few local exceptions, a major portion of our recorded rainfall was in

such small showers that a large part of the rain was lost through surface evaporation before it could be utilized by grass roots. At best we have probably utilized only eight to 10 inches of water since last winter.

Recent forage yield estimates from clipping tests by Soil Conservation Service workers show the results of this limited moisture. Under good conditions of better grasses produced only 2,500 to 3,000 lbs of forage this year. Production estimates in the

fall of 1958 was over 5,000 lbs or about twice this year's production. In 1959 most clippings of better grasses showed 3,500 to 4,000 lbs per acre.

Many acres of poor conditions range can now be found with less than 1,000 lbs of grass cover per acre on the surface. It is a proven fact that at least 2,000 lbs of cover is needed to effectively absorb a reasonable portion of our average rainfall. Without more care in the next few months these overgrazed ranges can only slip back into the same conditions they were in 1953 and 1954.

Rainfall in September and October did germinate Rescue grass seed and start Texas Winter grass to grow. If we can get some winter moisture these grasses along with our small grain can sure help to winter our livestock.

Grass is the livestock farmer's real cash crop. Livestock are actually only grass stored on the hoof. A continuous supply of grass is essential for continuous livestock production. Unless we leave a cover of grass on the land we can not effectively utilize our erratic rainfall which is so essentially necessary for grass production.

Advance information has been received that the Post Office Department will issue the world's first range conservation commemorative postage stamp Feb. 2, 1961. The stamp will be the eighth in the Conservation Series that has included four wildlife stamps, and stamps featuring forestry, soil conservation, and water conservation. This stamp should be of much interest in the range country of which our local area is certainly a part.

I Give You Texas

By BOYCE HOUSE

There was a young newspaper reporter in a Nevada mining town many years ago. He and two friends staked out a claim but each thought the other would do the small amount of work that had to be done within 30 days to complete the title—and so they lost the claim. The new owners developed one of the richest gold mines in Virginia City.

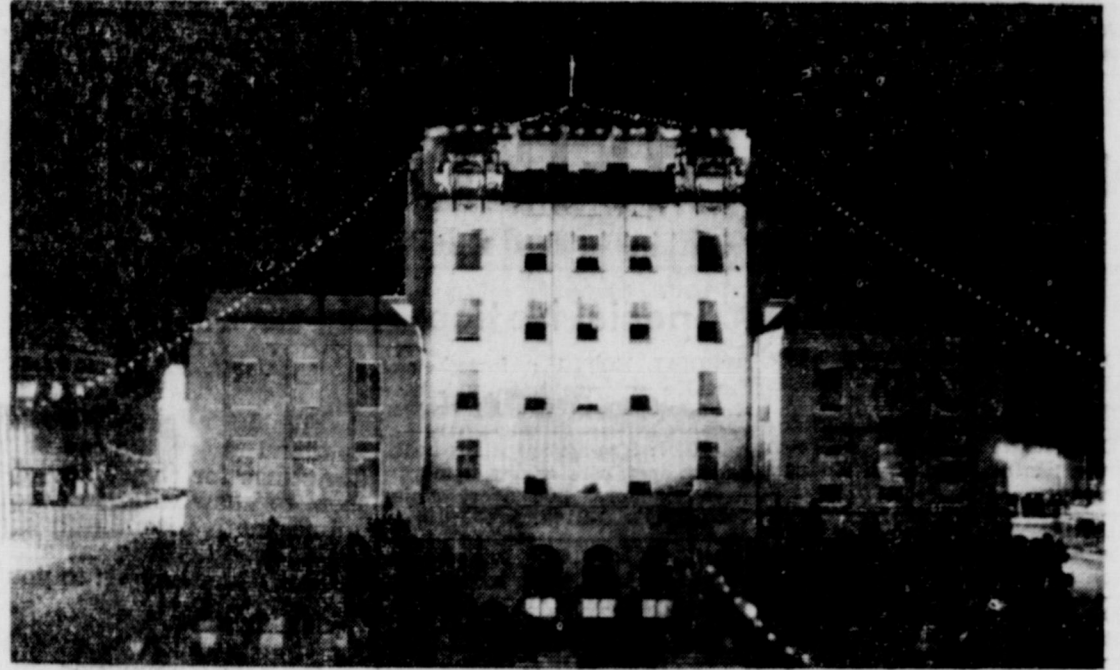
Anyone would say that for a man to lose a million dollars is certainly a misfortune—but the newspaperman was Mark Twain. If in his twenties, he had had riches dumped in his lap, he might not have had the incentive to write and so the world would have lost "Tom Sawyer" and "Huckleberry Finn."

Sometimes, what appears to be a misfortune later proves not to have been.

When Billy Rose (with whom I worked at the Fort Worth East Manana in 1936 and 1937) was a young man, he had an ambition to write songs so he went to the New York City library and studied titles, tunes and techniques of the hit songs of the past dozen years, then he composed such favorites as "Wedding Bells are Breaking up That Old Gang of Mine" and "Without a Song."

It is said that a newspaper writer, who was sent on an out-of-town assignment, returned to New York by a different route than the managing editor had instructed him as the writer figured it made no difference (anyhow). But the Johnstown flood hit just then and, if he had gone the route he had been told, he would have been the first out-of-town newspaperman on the scene. The result was that, when he got back to New York, he was fired.

In Big Spring, a drive-in cafe features a "chicken gizzard basket." And in Abilene, the slogan of the Hill & Hill Company is, "Head for the Hills."



LIGHTS CAME ON—This Christmas the Eastland County courthouse looks a little sharper than in past years. This night time picture shows how the building is illuminated on all four sides as well as the traditional Christmas lights. The building will be lighted up the year round by the recently installed flood lights. The lighting was made possible by the work of the Chamber of Commerce and the cooperation of the Commissioners Court. (Moderne Studio Photo).



THE SWITCH—County Judge John Hart, the switch which lights up the courthouse the first time since the depression years the illuminated at night. The long sought light-possible by the cooperation of the Chamber of Commerce. Watching the lights are H. J. Tanner, manager, and Virgil Seaberry, committee chairman. (Moderne Studio Photo).

United Fund Is Short of Goal

Eastland's United Fund drive was still some \$1,100 short of its goal of \$7,150 Saturday but Dick Spalding, drive chairman, said he believes that some individuals and firms have just been slow in turning in their contributions.

Spalding said he hopes to draw the drive to a successful close by this Wednesday. He urged volunteers to turn in their cards and

also asked that any person who has been missed contact him.

This year's goal is the same as last year's which was slightly over-subscribed. The seven participating agencies and the amount of money they will receive if the drive reaches the goal are: Boy Scouts, \$2,000; YMCA, \$1,800; Red Cross, \$1,500; Salvation Army, \$1,000; Girl Scouts, \$640; Texas Rehabilitation Center (Gonzales Warm Springs), \$200; Texas United Fund (USO), \$150; and campaign expenses, \$160.

Team captains this year have been Johnson Smith, Ben McKinstry, Ed Willman, Charles Frey-schlag, James K. Smith, Ronald Burton, Jimmy Young, Clyde Young, Luce Pittman, Herbert Ekrt and Willie Speaker.

James Wright is president of the United Fund and Mike George is advanced gift chairman.



Chartered Bus May Make Trip To Monterrey

Ranger College officials announced today that there is a possibility of getting a chartered bus to make the trip to Monterrey, Mexico for the Dec. 10 Mexican Orange Bowl game between the Rangers and the Monterrey All-Stars.

Much interest has been shown in the prospect of getting a chartered bus to make the trip. Several parties have indicated they plan (Continued on page two)

SEE and Drive the 1961 PONTIAC... fresh point of view and wide track too! MUIRHEAD MOTOR CO.

FROM OUR FILES

Dec. 4, 1930
Through the efforts of the Chamber of Commerce, a headstone for the unmarked grave of a Confederate soldier by the name of Thomas E. Melton, who is buried in the Alameda Cemetery. This soldier was a private in Company C of the 10th Mississippi Infantry.

The drive for funds of the United Charities of Eastland will begin next Tuesday afternoon following a meeting of the workers at the Methodist Church at noon. The charity work in Eastland has been handled in this manner for the past few years and has proven a most successful manner in which to handle our charities.

Dec. 4, 1940
Jack Hale of Eastland, area supervisor for the National Youth Administrator, has received approval of a community center at Eastland, upon which work is to start Monday.

Surplus commodities, listed by the United States Department of Agriculture, surplus marketing administration, has listed the surplus commodities to be issued under the food stamp plan for the month of December, beginning Dec. 1 and ending Dec. 31.

Dec. 4, 1950
Without committing themselves to build a hospital for Eastland, members of the Civic League and Garden Club Wednesday of last by an almost unanimous vote put the organization or record as being behind a movement to stir interest in a drive to secure a hospital for Eastland.

As in years past, the Eastland Chamber of Commerce will sponsor a pre-Christmas home decoration contest, it was announced this week.

EASTLAND NATIONAL BANK
"On The Square"
MEMBER F. D. I. C.

Play Briefs

The bobby-sox brigade invades the quite of home and peace of mind in the annual senior play, "Sing for Your Supper", which will be presented Thursday, Dec. 8, 1960, at 7:30 p.m. at the Eastland High School auditorium. The bobby-sox brigade is sponsored by Patsy Hollis, Janice Bradford, Suzanne Butler, Glenda Johnson, Linda Sue Dalton, and Beverly Daniels. The public is invited to join in the fun. Tickets are fifty cents for adults and high school and 25c for children.

BY LOCAL TEAMS

Tournament Wins Posted

Eastland High basketball teams advanced into second round play Thursday night by beating the Seranton boys and girls. The Mavs squeezed out a 47-45 victory and 51-29 win.

The two teams were due to swing back into action again Saturday night against host Carbon teams.

The Mavs won their games in story-book fashion, getting the final two points as the buzzer sounded. Seranton has an opportunity to win the game but failed to come through. With just eight seconds showing on the clock and with the score tied at Seranton player missed an all-important free shot. Red McCleskey rebounded for the eager Mavs and quickly passed to Ray Dendy. Dendy's pass was swiped by a Seranton lad, but Raymond Lusk tied the ball with four seconds showing.

Lusk controlled the tip but missed his shot. McCleskey rebounded and tossed the ball to Dendy who pushed home a jump shot at the buzzer ring.

It was a heartwarming win for Coach Joe Ingram's charges, who had an 0-3 record going into the tournament. The Mavs have managed to come close, but haven't been able to win before this game. Ingram doesn't have a starter back from last year's team, but he has developed the scrappiest team

Eastland has fielded in several years.

Tommy Beck was the backbone of the Eastland win. He scored 20 points on 10 goals, hitting 10 of 16 shots. The Mavs team had a good 48 percent average. McCleskey got 11 points, Dendy and Lusk seven each and Bobby O'Steen scored two.

Girls Easy Winners

The Mavettes, coached by Mrs. Milton Day, didn't have much trouble with the Seranton girls. Judy Seaberry had 21 points and Wanda Arther 20 in posting the one-sided win. Kay Morton added 10 points to the cause and Beverly Kline was a standout at her guard position.

Charles Fagg Dies In Lubbock Following Attack

Funeral services for Charles Fagg, 55, a former resident of Lubbock, were held Saturday at 10 a.m. in the Rix Funeral Home chapel in Lubbock.

Mr. Fagg, son of Mr. and Mrs. T. L. Fagg of Eastland, died Thursday at 11:30 p.m. in St. Mary's Hospital in Lubbock following a heart attack.

He formerly operated a furniture store in Eastland and was a graduate of Eastland High School and Texas Tech. He was born in Lewisville in 1905.

Mr. Fagg was employed by the Employment Security Commission of Hobbs, N. M. He formerly lived in Lubbock and was the manager of the South Plains Real Estate Co-op.

Survivors include his wife, former Elizabeth Rodgers, and his parents.

Burial was in Lubbock Cemetery.

Comanche Trail Council Annual Meeting Dec. 8

The twenty-eighth annual dinner meeting of Comanche Trail Council of the Boy Scouts of America will be held Dec. 8 in Brownwood in Hotel Brownwood at 7 p.m.

Cayce Moore of Hearne, humorist and philosopher will be the inspirational speaker. Moore is well known as an entertainer and speaker in this area. He is a public relations representative for a leading hotel in Dallas and is member of the speaking staff of Knife and Fork Clubs.

Other program highlights will include special music presented by the Brownwood High School choral group and the awarding of Silver Beaver Awards to Scouters who have given outstanding service to boyhood.

The annual business meeting will be held at 5 p.m. for the purpose of receiving reports of accomplishments and to elect and install officers for 1961 to serve in the eight-county Council. The ladies will attend an informal reception at 5 p.m. in the Hotel which will feature presentation by the speech department of Howard Payne College under direction of Dr. McDonald Held.

"The occasion is in tribute to Den Mothers, Cubmasters, Scoutmasters and Explorer Advisors who give leadership to some 2300 boys in the Scouting movement in the Comanche Trail Council and we expect all leaders, committee members and interested parents to be present", stated Cyrus B. Frost, Jr., of Eastland who is President of the Council.

Reservations may be made through the local Scout officials by December 5.

Surplus Foods Dates Listed

Next date for distributing the USDA Surplus Foods, in Eastland, will be as follows:

Monday, Dec. 12 Eastland, Olden and Ranger.

Tuesday, Dec. 13 Pioneer, Rising Star, Okra, Carbon, Gorman and Desdemona.

Wednesday, Dec. 14 Cisco, Seranton and Nimrod.



PLAY TICKET SALESMEN—When the Senior Class play, "Sing for Your Supper" is presented Friday night in the Eastland High School auditorium, you may not see this group of boys, but you can be certain that the play wouldn't have come off without their work. The ticket and work committee is made up of, back row, left to right, Julio Jimenez, Bill McCleskey, Bill Jones, Raymond Aepada, Larry Coplen, and Ray Dendy. Seated, left to right, are Rudy Fambrough, Jerry Lowrance, Billy Don Turner, Pat Akers and Clayton Hensley. (Canaris Studio Photo).

Eastland County Towns Show Population Gains

All five of Eastland County's major towns showed population gains in the final census report compared to the preliminary report issued several weeks ago.

The county as a whole gained 142 citizens in the re-check and the five major towns picked up 109.

Cisco showed the biggest gain, getting 52 more added to her population. Gorman gained 23 in the revised count, Eastland netted 16 more, Ranger 14 and Rising Star four.

Many of the other 33 persons found in the recheck lived in the immediate Eastland area and were discovered in the Chamber of Commerce "find your neighbor" drive. However they lived outside the actual Eastland city limits and could not be counted as city residents. The Eastland city limits are just one mile square.

CITY	1960	1950	LOSS
Cisco	4,423	5,280	731
Eastland	3,292	3,626	334
Gorman	1,142	1,317	175
Ranger	3,513	3,989	476
Rising Star	997	1,289	292
County	19,526	23,942	4,416

The overall county loss in the 10 year period was a stinging setback to the county. In fact, the loss practically matched the population of the largest town in the county.

EASTLAND NATIONAL BANK
"On The Square"
MEMBER F. D. I. C.

Eastland Telegram

Eastland County Record established in 1931, consolidated August 3, 1951. Chronicle established 1887, Telegram established 1928. Entered as second class matter at the Post Office in Eastland, Texas under the act of Congress of March 3, 1879.

TIMES PUBLISHING COMPANY

Published Tri-Weekly—Tuesdays - Thursdays - Sundays
Onous Dick and Joe Dennis, Publishers
Virgil E. Moore, Editor

One week by carrier in city 11
One month by carrier in city 61
One year by mail in County 2.91
One year by mail in state 4.91
One year by mail out of state 6.91

NOTICE TO PUBLIC—Any erroneous reflection upon the character, standing or reputation of any person, firm or corporation which may appear in the columns of this newspaper will be gladly corrected upon being brought to the attention of the publishers.

CLASSIFIED

Cards of Thanks charged for at rate of \$2.00 Each

For Rent

FOR RENT—Five room house call Everett Plowman, Corner Drug.

FOR RENT: Three bedroom house. Unfurnished. Call Rodgers Grocery.

FOR RENT: Three bedroom house. 507 W. Patterson. See Monroe Walker. 306 N. Dixie.

FOR RENT: Furnished 3 room cottage. 207 S. Walnut.

FOR RENT: Nice four room house. See anytime. Alice Speer, 410 East Sadasa.

FOR RENT: Nice unfurnished two bedroom house. Close in. Apply 210 E. Valley.

FOR RENT: Redecorated two bedroom house, sleeping porch. Also duplex. Phone MAIN 9-2523.

FOR RENT: Lovely apartments, with living, dining, bedrooms and kitchen, furnished or unfurnished at very reasonable rates. Also comfortable single rooms with tiled baths for only \$39.50. No stairs to climb, elevator equipped. Delicious food in our coffee shop and steam heated for really warm and comfortable living. Maid service is always included. Throw away your cares and high expenses and come live with us. The Village Hotel, Mrs. Robinson, manager—call me today, MAIN 9-1746.

FOR RENT: 5 room brick apartment. Good condition. On pavement close to school. \$35 monthly. Phone HI 2-1525, Cisco

FOR RENT: 5 room house to be moved. Located northwest Eastland. Contact B. H. Courtney, Phone MAIN 9-1340.

FOR RENT: 5 room house to be moved. Located 5 miles N.W. Eastland contact B. H. Courtney. Phone MA 9-1340.

FOR RENT: 5 room house to be moved. Located 5 miles N.W. Eastland contact B. H. Courtney. Phone MA 9-1340.

FOR RENT: 5 room house to be moved. Located 5 miles N.W. Eastland contact B. H. Courtney. Phone MA 9-1340.

FOR RENT: 5 room house to be moved. Located 5 miles N.W. Eastland contact B. H. Courtney. Phone MA 9-1340.

FOR RENT: 5 room house to be moved. Located 5 miles N.W. Eastland contact B. H. Courtney. Phone MA 9-1340.

FOR RENT: 5 room house to be moved. Located 5 miles N.W. Eastland contact B. H. Courtney. Phone MA 9-1340.

FOR RENT: 5 room house to be moved. Located 5 miles N.W. Eastland contact B. H. Courtney. Phone MA 9-1340.

FOR RENT: 5 room house to be moved. Located 5 miles N.W. Eastland contact B. H. Courtney. Phone MA 9-1340.

FOR RENT: 5 room house to be moved. Located 5 miles N.W. Eastland contact B. H. Courtney. Phone MA 9-1340.

FOR RENT: 5 room house to be moved. Located 5 miles N.W. Eastland contact B. H. Courtney. Phone MA 9-1340.

FOR RENT: 5 room house to be moved. Located 5 miles N.W. Eastland contact B. H. Courtney. Phone MA 9-1340.

FOR RENT: 5 room house to be moved. Located 5 miles N.W. Eastland contact B. H. Courtney. Phone MA 9-1340.

FOR RENT: 5 room house to be moved. Located 5 miles N.W. Eastland contact B. H. Courtney. Phone MA 9-1340.

FOR RENT: 5 room house to be moved. Located 5 miles N.W. Eastland contact B. H. Courtney. Phone MA 9-1340.

FOR RENT: 5 room house to be moved. Located 5 miles N.W. Eastland contact B. H. Courtney. Phone MA 9-1340.

FOR RENT: 5 room house to be moved. Located 5 miles N.W. Eastland contact B. H. Courtney. Phone MA 9-1340.

FOR RENT: 5 room house to be moved. Located 5 miles N.W. Eastland contact B. H. Courtney. Phone MA 9-1340.

FOR RENT: 5 room house to be moved. Located 5 miles N.W. Eastland contact B. H. Courtney. Phone MA 9-1340.

FOR RENT: 5 room house to be moved. Located 5 miles N.W. Eastland contact B. H. Courtney. Phone MA 9-1340.

FOR RENT: 5 room house to be moved. Located 5 miles N.W. Eastland contact B. H. Courtney. Phone MA 9-1340.

FOR RENT: 5 room house to be moved. Located 5 miles N.W. Eastland contact B. H. Courtney. Phone MA 9-1340.

FOR RENT: 5 room house to be moved. Located 5 miles N.W. Eastland contact B. H. Courtney. Phone MA 9-1340.

FOR RENT: 5 room house to be moved. Located 5 miles N.W. Eastland contact B. H. Courtney. Phone MA 9-1340.

FOR RENT: 5 room house to be moved. Located 5 miles N.W. Eastland contact B. H. Courtney. Phone MA 9-1340.

FOR RENT: 5 room house to be moved. Located 5 miles N.W. Eastland contact B. H. Courtney. Phone MA 9-1340.

FOR RENT: 5 room house to be moved. Located 5 miles N.W. Eastland contact B. H. Courtney. Phone MA 9-1340.

Christian Science

The completeness and supremacy of God will be underscored at Christian Science church services this Sunday.

Highlighting the Lesson Sermon "God the Only Cause and Creator" is the Golden Text from Psalms 134:5, 6: "Happy is he that hath the God of Jacob for his help, whose hope is in the Lord his God; which made heaven, and earth, the sea, and all truth for ever."

MATTRESSES

Save up to 50% renovating choice of color and firmness. Complete bedding. Made and guaranteed by WESTERN MATTRESS CO., San Angelo. Phone MA 9-2689, Eastland and leave address.



TELEPHONE TALK

by Archer H. Marx, Jr., Manager

PROMISE A PRINCESS FOR CHRISTMAS

Well, it's that time of year again when the men of Eastland tackle the problem of selecting something for Christmas for the "Lady-of-the-House". Some men never seem to know what to choose. So they end up with some unimaginative item — a compromise between something she doesn't really want and something she doesn't really dislike. (Ever happen to you?)

In any case, here's good news for Christmas shoppers. A Christmas surprise she'll use and treasure all year long . . . the new, streamlined Princess phone.

It's little, the ladies love it, and it lights. The dial glows more softly than a light on your Christmas tree, and when you lift the receiver, it shines brightly for easy dialing. It has a smart new oval shape, too.

So, why not "promise her" a Princess phone for Christmas? If you want to surprise her, we have a Christmas tree-shaped gift certificate to hang on the tree. It unfolds to show her the colors in which the Princess phone is available. White, pink, turquoise, blue and beige. After Christmas, we'll install the Princess phone in the color and place she likes best.

Like to order a Princess phone for your "Best Girl"? Just call the telephone business office.

GET NUMBERS NOW FOR HOLIDAY CALLS

I know a lot of folks in Eastland will be making Long Distance calls over the holidays, and so will thousands of others all over Texas.

To get everybody's call through as fast as possible, it's especially important you call by number.

If there are numbers you don't know, the Long Distance Operator will be glad to get them for you ahead of time so you'll have them when you call around Christmas or New Years. This number service is free now and every day of the year. We'll also send you a free Blue Book to keep a record of your numbers.

HOLIDAY GREETINGS

I'd like to take this opportunity, on behalf of all of us at the telephone company, to extend our best wishes to you and all the members of your family for this holiday season. Have a "Merry Christmas" and a "Happy New Year."

Call by number. It's twice as fast.
SOUTHWESTERN BELL TELEPHONE COMPANY

LUMBER FOR SALE

ALL KINDS

Flooring — hardwood flooring — 2x4; 2x6; 2x8; 2x12; shiplap; steel beams; all types of plumbing; brick; building tile.

Tearing down old school building on Church of God Camp Grounds west of City — starts Monday — see salesman on job — bargain prices.

Get Your — Christmas Cards

at

STEPHEN'S PRINTING CO.

Phone MA 9-2682 Eastland

Chartered

(Continued from Page One)

to travel to Monterrey by car for the game. This prompted college officials to check into the possibility of chartering a bus. If enough interest is shown in the project, a bus can be chartered for the trip. A round trip ticket for the trip would cost \$16.40. The trip would consist of three days. The bus would leave Ranger on Friday, Dec. 9 and begin its return trip on Sunday, Dec. 11.

Anyone interested in making the trip should contact the college officials early this week. Reservations would have to be made by Thursday morning in order that the bus could be chartered.

- Michael Smith, Olden, medical
- Mrs. Nancy Jones, medical
- Mrs. F. L. Spurlen, medical
- Fredrick M. Spurlen, surgical
- Arren Perdue, Cisco, medical
- Pat Armstrong, medical
- Mrs. Leola Barbee, surgical
- J. L. Cosburn, surgical
- Mrs. C. W. Webb, Cisco, surgical
- Mrs. Charles Holdbrook and baby girl, Houston
- Thomas Frank Hemfree, Dallas, accident
- Mrs. Myrtle Brois, medical, Carbon
- Mrs. Ruby Squiers, medical
- Mrs. Willa Brock, medical
- Mrs. Henry Marquis and baby boy, Cisco
- William Starr, Cisco, surgical
- Bert R. Kent, Olden, surgical
- Mrs. C. C. Pippen, Cisco, medical
- George L. Hunt, medical
- Johnny Jones, surgical
- Miss Susie Hurley, Cisco, surgical

Arthur Preslar, Mrs. T. O. Elgin, Dismissed were Tarrance and Mrs.

Hamner Life Insurance Co.

Ben E. Hamner, President

This company has been in operation since 1942 selling policies to be primarily for burial purposes. We write from \$600 and our policies are paid in cash, with freedom in the selection of the funeral of your choice.

Ages from 1 month to 90 years.

For further information come by to Hamner Funeral Home, 301 S. Lamar, P. O. Box 431 Dial MAIN 9

Hospital

Patients in the Eastland Memorial Hospital are the following:
Mrs. Dero Rains, Cisco, medical
Mrs. Ed Sargent, medical
Mrs. Eliza Malone, Moran, medical
Miss Sharon Day, medical
Mrs. Pearl Noble, medical
Mrs. J. L. Kuhn, Olden, medical
Mrs. Belle McCullough, medical

Suddenly Available

... lucrative dealerships in the high profit field of bomb and weather shelters. This program, backed by civil defense, is sweeping the nation. The Survival Unit sells for under \$2,000 and is financed. A limited number of dealerships will be opened. To see you can qualify and for more information call or write:

NUCLEAR DYNAMICS CORPORATION
Box 1866 — ABILENE, TEXAS — OR 2


SPECIALS

FOR... WEDNESDAY

Plus Double



Wednesday at



<p>JOLLY TIME Popcorn WAPCC Tomato Juice WHISK NEW CROP BURKETT—Fancy No. 1 Pecans BAMA Peanut Butter FANNING'S BREAD & BUTTER Pickles BOWMAN SALAD WAFER Crackers FOLGER'S Coffee VELVET Tissue ARMOUR'S STAR Sliced Bacon GOOD QUALITY BABY BEEF Loin Steak GOOCH'S RANCH PAK Weiners Plus 2.00 Worth Of B&B Stamps ARMOUR'S MATCHLESS Sliced Bacon KRAFT VELVEETA Cheese CALIF. WHITE Potatoes</p>	<p>10 Oz. Can 18¢</p> <p>46-Oz. Can 28¢</p> <p>Quart Can 28¢</p> <p>Lb. Bag 49¢</p> <p>Big 18-Oz. Jar 39¢</p> <p>15 Oz. Jar 25¢</p> <p>Lb. Box 27¢</p> <p>Drip or Reg. Lb. Can 69¢</p> <p>2 200 Count Boxes 25¢</p> <p>Lb. 55¢</p> <p>Lb. 75¢</p> <p>3 Lbs. 99¢</p> <p>Lb. 45¢</p> <p>2 Lb. Box 95¢</p> <p>10 Lbs. 59¢</p>
--	--

Calif. Lettuce Large Head 13¢

MacMOY'S Super Savings

400 S. Seaman Home Owned—Home Operated

Misc. For Sale

FOR SALE: Antenna. See at Sinclair Station. 610 W. Main.

FOR SALE: Five room house on pavement. 175 foot lot. \$9,200. Ben Hamner.

FOR SALE: Iron bed stands, dressers, new double sink and kitchen cabinets. Used Lumber—siding, doors, windows, 2x4, 2x6, 2x8, shiplap and flooring. 337 North Lamar. Pete Tindall.

FOR SALE: Good riding mare, breed. Phone MAIN 9-2720.

FOR SALE: Good riding mare, breed. Phone MAIN 9-2720.

FOR SALE: Good riding mare, breed. Phone MAIN 9-2720.

FOR SALE: Good riding mare, breed. Phone MAIN 9-2720.

FOR SALE: Good riding mare, breed. Phone MAIN 9-2720.

FOR SALE: Good riding mare, breed. Phone MAIN 9-2720.

FOR SALE: Good riding mare, breed. Phone MAIN 9-2720.

FOR SALE: Good riding mare, breed. Phone MAIN 9-2720.

FOR SALE: Good riding mare, breed. Phone MAIN 9-2720.

FOR SALE: Good riding mare, breed. Phone MAIN 9-2720.

FOR SALE: Good riding mare, breed. Phone MAIN 9-2720.

FOR SALE: Good riding mare, breed. Phone MAIN 9-2720.

FOR SALE: Good riding mare, breed. Phone MAIN 9-2720.

FOR SALE: Good riding mare, breed. Phone MAIN 9-2720.

FOR SALE: Good riding mare, breed. Phone MAIN 9-2720.

FOR SALE: Good riding mare, breed. Phone MAIN 9-2720.

FOR SALE: Good riding mare, breed. Phone MAIN 9-2720.

FOR SALE: Good riding mare, breed. Phone MAIN 9-2720.

FOR SALE: Good riding mare, breed. Phone MAIN 9-2720.

SPECIAL NOTICE: Horseshoing. Portable equipment. Gary Smith, Route 1, Ranger. Call MI 7-3685.

NOTICE: Storage space for boats and trailers, cars or any item you have to store. 306 West Main. Phone MAIN 9-2171.

SPECIAL NOTICE: Let me cut, rake and bale your hay. Casey Mezell, Phone MAIN 9-2703.

Eastland Masonic Lodge No. 467

Reg. Stated meetings 2nd Thursday of each month, at 7:30 p.m. H. C. Pounds, W. M. L. E. Huckaby, Secretary

NOTICE: Let me break and (or) sow your land. Contact B. H. Courtney, Main 9-1340.

Real Estate

FOR SALE: Two bath, two bedroom house on Oaklawn. Central heating, large lot, double garage. Call after 5 p.m. MAIN 9-2321.

FOR SALE: House 305 South Neblett.

FOR SALE

71-ACRE PEANUT FARM
39 Acre Allotment. Good Water Well. 7 Miles South of Eastland on Highway No. 6
Call Eastland MA 9-1807 after 5:30
PRICE \$7200.00

FOR SALE: Five room house to be moved. Located northwest Eastland. Contact B. H. Courtney. Phone MAIN 9-1340.

FOR SALE: 5 room house to be moved. Located 5 miles N.W. Eastland contact B. H. Courtney. Phone MA 9-1340.

INGROWN NAIL HURTING YOU?

Immediate Relief!

A few drops of OUTGRO® bring blessed relief from tormenting pain of ingrown nail. OUTGRO® toughens the skin underneath the nail, allows the nail to be cut and thus prevents further pain and discomfort. OUTGRO is available at all drug counters.

GOLDEN AGE NURSING HOME
Cisco, Texas
HOLIDAY SPECIAL
First five bringing this ad, \$125.00 per month.
Pat Pamplin, Ph. HI 2-3458

TIME

to choose your new home today! Choose your new home from our picture plans, choose your lot, and your color scheme today! It costs no more to get first choice in our new three bedroom homes. We are ready to build on Conner street! Veterans still nothing down, non-veterans only \$350 down and payments like rent!

Why throw away rent dollars every month? Pay your rent dollars on your own home and create a savings for your family. See or call us today. We arrange all of the financing and red tape. No obligation, of course.

Why throw away rent dollars every month? Pay your rent dollars on your own home and create a savings for your family. See or call us today. We arrange all of the financing and red tape. No obligation, of course.

Village Homes

Suite 210 — Village Hotel
Don Pierson — MA 9-1033
Norman Guess — MA 9-1545

FURNITURE for the Entire Home

★

Carpet - Rugs All Prices

★

Be Sure To Check With



NOTICE

FRESH DRESSED FRYERS and Fresh Dressed Hens

At The Plant
PHONE MA 9-1200

WALKER Dressing Plant

9-1707 for Classified Ads

See Us For
FURNITURE • APPLIANCES
CARPETS
 Low Prices Means Savings For You!
 Charges on furniture for 1 full year
FREE DELIVERY
Furniture Exchange
 "BRASHER'S"
RANGER Phone 242


KEY
ROWS
FAST
You Save Here

With your savings GROW instead of GO
 an insured savings account here
 regularly. And your savings will grow
 thanks to our better-than-average
 savings here are insured to \$10,000 by an
 United States government. Change
 " " by opening your savings account!

Federal Savings & Loan
Association of Ranger
 Ranger, Texas Phone MI 7-1611

ATTEND THE CHURCH OF
 YOUR CHOICE EACH SUNDAY

TODAY



M. H. Perry

It's a good day to discuss your
 future security through life
 insurance.

SO LET'S MEET ... TODAY!

Southland
 Life Insurance Company

107 W. Main
 Office Ph. MAIn 9-2275
 Residence Ph. MAIn 9-1095

SINGER
 New Sewing Machines
\$59.50 up
 Vacuum Cleaners — \$49.50
 Floor Polishers — \$29.95
 Rentals by week or month

Service All Makes
 Phone MA 9-2084
D. L. Morton
 Representative

First Baptist Church

Sunday—Sunday School, 9:45; morning worship service, 11 with Dr. W. O. Beazley in the pulpit and the choir will sing "It Took A Miracle" for the special music; Elementary Choirs, 5:30 p.m.; Training Union, 6:30; Evening Worship Service, 7:30

Tuesday—WMS Mission Study classes as follows: Ruth Treadwell Circle with Miss Sue Naylor, Minnie Oliver Circle with Mrs. I. C. Inzer, Mary Truly circle with Mrs. Earl Stephens, and Gertrude Circle with Mrs. W. H. Eddy. Associational "M" Night will be held at Cisco First Church Tuesday evening beginning at 7 p.m. Preceding it will be the monthly meetings of the W.M.U. and Board Meetings at 6:15.

Wednesday—Girl's Auxiliary, Royal Ambassadors, and Sunbeams, 6:45; Sunday School departments superintendents, 6:45; Teacher's Meeting, 7; Prayer Meeting, 7:45; Youth Choir and Adult Choir, 8:30.

VISITS PARENTS

Visiting in the home of Mr. and Mrs. A. W. Cogburn is their son, Benny Cogburn. He will be in Eastland until after Christmas then he will leave for tour of duty with the Armed Forces in North Africa. Benny was previously stationed in Las, Vegas, Nevada.

ATTEND THE CHURCH OF
 YOUR CHOICE EACH SUNDAY

Jehovah's Witnesses

Meetings to be held at the Kingdom Hall, 204 North Dixie Street for the week of December 4, are as follows.

Sunday: 3 p.m. Public Meeting with an hour lecture on the subject "A United World Through God's Kingdom" to be delivered by R. Z. Ryan of Abilene. Following the scheduled address, the weekly study of the Watchtower will be held. The Public is invited to hear this timely address and study with Jehovah's Witnesses.

Monday: 7 p.m. Bible study. Chapter eleven of textbook, "Your Will Be Done On Earth." Subject, "The Appointed Time of the End." Text, Daniel 11:31-33.

Friday: 7 p.m. Service Meeting; 9 p.m. Theocratic Ministry School's follows: Two readings of Psalms. Psalms 145:1 to 145:21 and Psalms 146:1 to 147:20.

Social Calendar

Monday, Dec. 5
 7:30 p.m.—The weekly meeting of the Oddfellow Lodge will be held in the IOOF Hall.
 7:30 p.m.—Castle Hall, 105 Commerce, will be the scene of the meeting of the Pythian Sisters.
 7:30 p.m.—Mrs. Cooper will be hostess to the regular meeting of Las Leales members. "Roses in December" will be given by Mrs. Whatley.

Tuesday, Dec. 6
 8 p.m.—Eastland Chapter No. 280, O.E.S. will meet in the Masonic Hall for their regular stated Meeting. All officers and members are requested to be present and all visitors welcomed.
 9:30 a.m.—"Emmanuel, God Be With Us" will be given by Mrs. James Campbell at the W.S.C.S. meeting.

Wednesday, Dec. 7
 3:30 p.m.—"Joy of Music" will be the program of the Music Study Club when they meet in the Woman's Club. Mrs. Myrtle Anderson will be the leader.

Mrs. Billie Smith Is Honored With Shower Thursday

Mrs. Billie Smith was honored with a miscellaneous baby shower Thursday afternoon in the Educational Building at Olden.

The honoree received many lovely gifts which were displayed. The serving table was decorated with a pink and blue cloth and centered with pink roses and carnations. The gift table was centered with a large stork.

Coffee, cookies and punch were served during the afternoon by the hostesses, Mmes. I. E. Talley, Pete Rodgers, Bill Hooks and C. A. Yarbrough.

Attending were the following: Mmes. Jean Miller, Gladen Cate, Gilbert Copeland, Danny Woods, Avery Yarbrough, Vesta Weeden, Kenneth Redman, Neal Surlin, Elizabeth Simmons, Rex Yarbrough, Rex Dick, Wayne Brock, C. E. Reynolds, Ray Carey, Benny Hagen, Myrtle Warren, Doris Cooper and the hostesses.

Those who sent gifts were Mmes. June Bond, Homer Lawrence, A. R. McFarland and Gene Woods.

COMPLETE AIR CONDITIONING SALES and SERVICE
SMITH PLUMBING AND TIN
 PHONE MA 9-2422
 114 N. Seaman

HAMNER FUNERAL HOME
 Ben E. Hamner, Owner

Serving Eastland County since 1924 with ambulance and funeral service. Our ambulances are oxygen equipped and air conditioned.

Through our nation-wide connections with other funeral directors, we can handle a funeral from any point in America. We offer this service knowing that we can relieve the family of all burdens incident to any death away from home.

Eastland Dial MA 9-2611

"DE-MAC"
PIZZA-BURGER



"The Greatest Taste Sensation in a Sandwich"

Produced according to
 Pizza-Burger System, Inc., Formula
 Mckay, Wisconsin

Sold Coast-to-Coast
 Dairy Treet

PT. M. REG. U. S. Pat. Off.
Dairy King

Another Message to American Industry Leaders about

The Opportunity Frontier OF TEXAS

IT'S 1965 FOR THIS MAN IN

The Opportunity Frontier OF TEXAS



Our planning engineers are "men who live in the future." They maintain a constant watch over growth patterns in the OPPORTUNITY FRONTIER OF TEXAS—population, retail sales, personal income, vehicle registration, construction, so they can plan effectively and anticipate power needs five and more years from now.

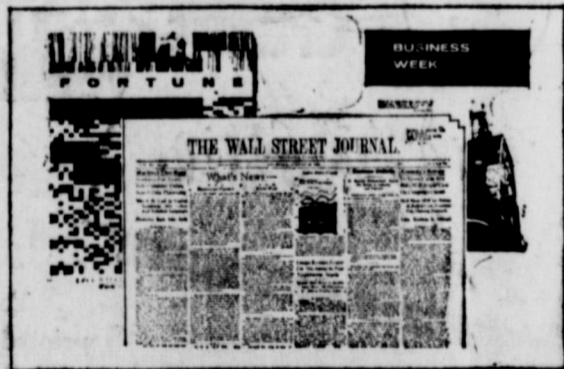
For example, the 240,000 kilowatt steam electric generating unit at our newest plant site near Graham, Texas, was planned in 1955 for operation in December, 1960. It is the eighteenth power generating unit built during the past twelve years at strategically located plants throughout our strong power system. These new units have increased by ten times the company's net generating capability.

Our well-planned power system assures metropolitan-type service throughout the area served by the company. When your firm relocates in this area—or when you open a new plant, warehouse or branch office in the OPPORTUNITY FRONTIER—you will have a sure source of low-cost power.

Our Area Development Department will gladly supply plant site information to fit your specific needs.

TEXAS ELECTRIC SERVICE COMPANY
 Dallas, Fort Worth, Texas • A Member of the Texas Utilities System

WE'RE INVITING THEM TO GROW WITH THIS PROGRESSIVE AREA



American business and industry are constantly looking to the future... selecting the location of plants, warehouses and branch offices to keep manufacturing, distribution and marketing operations efficient amid changing patterns of population and resources.

The dynamic growth and rich resources of The Opportunity Frontier of Texas, much of which is served by Texas Electric Service Company, offer many advantages for growth and expansion.

Business and industry executives—the men who decide on plant, warehouse and office sites—will see the message reproduced at left in Business Week, Fortune and The Wall Street Journal.

We are making this investment in area progress to promote the growth of the area we serve—to attract new customers, added tax revenues, and greater job opportunities which will benefit everyone.

TEXAS ELECTRIC SERVICE COMPANY

450 MILES LONG
 1720 MILES WIDE
 RICH IN RESOURCES

Dependable Electric Service...A Partner in Area Growth

Let's Have Stew Tonight!

Beef Cubes Lean, Boneless	Lb.	69c
Beef Short Ribs W. C. Q. Heavy Beef	Lb.	29c
Frankfurters Armour's Star	Lb. Pkg.	49c
Catfish Fillets Taste O'Sea	Lb. Pkg.	49c
Rainbow Trout Taste O'Sea	10-oz. Pkg.	49c
K. Y. Beans Fancy, Fresh Florida	Lb.	19c
Green Cabbage Texas Firm Heads	Lb.	4c
Pascal Celery California Crisp, Green	Stalk	10c
Green Onions Locally-Grown Young Mild	2 Bchs.	13c

WORTH FOOD MART



DOUBLE "S & H" GREEN STAMPS
 Wednesday — With Purchase of \$2.50 or More
 Prices Effective Monday, Tuesday and Wednesday

Hemet Whole	2 1-2 Cans	49c
Spiced Peaches		
Libby's	5 4-oz. Cans	100
Vienna Sausage		
Sunco All-White	U.S. Dept. of Agriculture Grade "A"	Dozen 59c
Large Eggs		
COFFEE White Swan All Grinds	Lb. Can	59c

COLOMBO'S PIZZA

With Cheese	7-Oz. Pkg.	49c
With Sausage	9-Oz. Pkg.	59c

FROZEN POTATOES
 Ore-Ida Tater Tots, French Fries or Golden Bakers

MIX OR MATCH
 2 1-Lb. Pkg. **59c**

BAYER
 Aspirin 100's Bottle **49c**

El Chico Tamales	3 300's Cans	49c
Champ Dog Food	8 1-Lb. Cans	59c
V-8 Cocktail	3 4-Oz. Cans	19c
Larsen's Veg-All	2 303's Cans	33c
Pizza Pie Mix	15 1/2-Oz.	39c
Ranch Style Beans	2 300's Cans	25c
Lustre-Creme	Each	79c
Honey & Almond	Plus 4c Tax	37c

READ THE CLASSIFIEDS

T. L. FAGG
REAL ESTATE
 Property Management
 Home and Farm Loans

Assembly of God

The Assembly of God, the church where you will find a welcome, invites you to attend each of the following services:

Sunday School at 10 a.m.; preaching service at 11.
 Wednesday night service, 7:45.

ATTEND THE CHURCH OF YOUR CHOICE EACH SUNDAY

Bethel Baptist Church

Morning worship begins at the Bethel Baptist Church with Sunday School at 9:45 a.m. James Pittman is superintendent and Truett Gregory is assistant.

Rev. Jimmie Roberts of Denton will bring the 11 a.m. message and also the evening message. All members and friends of the

church are invited to hear Rev. Roberts, Eddie Pietroszek, music director, will direct the choir for both services with Mrs. Tom Clark at the piano.

Evening worship begins with Wade Coan as director. Judy Kendrick will play the opening song for Training Union. The Training Union march will be played by Kathy Gregory. Church service is at 7:30 p.m.

The nursery will be open for each service.

Sunday School officers and teachers will meet Wednesday at 6:45 p.m.

Prayer service begins at 7:30 p.m. and choir practice is at 8:15 p.m.

ATTEND THE CHURCH OF YOUR CHOICE EACH SUNDAY

Members of Morton Valley Home Demonstration Club Meet Wed.

Members of the Morton Valley Home Demonstration Club met Wednesday for their regular meeting in the clubhouse. The meeting was a week late due to Thanksgiving.

Fourteen members were present and each answered roll call with "The program of the year which benefited me the most."

Mrs. N. S. Sherman, club president, called the meeting to order and presided over the business session. Mrs. D. J. West read the minutes of the previous meeting and then gave a report on the pecan show to be held in Cisco on Dec. 14 and 15.

Plans were then made for mem-

bers to attend the county wide club Christmas party to be held Dec. 7 in Eastland.

Mrs. Sherman reported that the club had received more paring knives to be sold. Mrs. Maybel Gordon gave the program on the Selection and Care of Undergarments. Mrs. Ruby Bond then demonstrated the process of making househoes from washcloths.

Mrs. Gordon, hostess for the day, served cookies and coffee to the following members present: Mmes. Josie Nix, De Alva Edwards, Ruby Bond, Evelyn West, Nona Pogue, Stella Hargus, Flora Kincaid, Beulah Bryant, Johnnie Laughlin, Jewel Danley, Bertha Harrison, Ann Sherman, Mary Hale.

The last meeting of the year will be the club Christmas Party Dec. 14. All members are urged to be present at which time secret pals will be revealed.

Mrs. M. H. Perry Hosts Xi Alpha Zeta Members

Mrs. M. H. Perry was hostess to members of the Xi Alpha Zeta Chapter of Beta Sigma Phi Monday night in her home at 413 Oaklawn.

The president, Mrs. Bill Leslie, presided when the group voted to send a contribution to the sorority state project, The Texas Association for Retarded Children of Texas.

The Chapter Christmas party to be held Dec. 10 at the R. M. Sneed farm was discussed. Plans to present a Christmas basket to a needy family were made.

"Each one-Teach One" was the title of the program presented by Mrs. Bill Walters. She told of the illiteracy problems in different countries and how each person could do his part in helping to correct these problems.

Refreshments of coconut cake and coffee were served by the hostess, Mrs. Perry, to the following members: Mmes. Bill Collings, Mike George, F. W. Graham, Bill Leslie, Virgil Moore, James Smith, and Bill Walters.

LEAVES FOR FT. HOOD

Jimmy R. Martin, son of Mrs. Frank Martin, has recently returned from Germany and will leave today for Ft. Hood where he will be stationed with the United States Army.

Better Hurry
 if you want that photo to give away this Christmas.

Canaris Studio
 Phone MAin 9-2044

Call MA 9-1707 for Classified Ads

RANGER DRIVE-IN
 HIGHWAY 80 EASY ON RANGER HILL
 Boxoffice Opens 6:45 — Show Starts at 7:00
 Adults 50c—Kiddies Under 11 Free
 Only Eastland County Drive-In Open All Year
 SUNDAY - MONDAY - TUESDAY

From "The Best-seller" that makes Peyton Place read like a book of "surreal rhythm!"

The Bramble Bush

Richard Burton · Barbara Rush
 Jack Carson · Angie Dickinson · James Dunn

A WARNER BROS. PICTURE · TECHNICOLOR
 HENRY JONES · Screenplay by MILTON SPERLING and PHILIP YORDAN · Produced by MILTON SPERLING
 Story and Screenplay by LEONARD ROSENMAN · Directed by DANIEL PETRIE

ATTEND THE CHURCH OF YOUR CHOICE EACH SUNDAY

Helps Heal And Clear Itchy Skin Rash!

Zemo—liquid or ointment—a doctor's antiseptic, promptly relieves itching, stops scratching and so helps heal and clear surface skin rashes. Buy Extra Strength Zemo for stubborn cases!

ALEX RAWLINS & SONS
 Weatherford Phone LY 4-2726 Texas
 Designers and Builders of Monuments Since 1884

SINCE 1884
 ... quality workmanship and efficient service, approved throughout this area.

The proof is in the postmark!
There is a SANTA CLAUS!

POSTMARK

Send your child a personal letter from Santa himself. You may select one of our beautifully printed, full color letters. Each letter comes complete with a full color envelope showing a picture of Santa Claus.

Mail your Santa Claus letters in our special mail box and we will have them sent from the famous Santa Claus Post Office, in Santa Claus, Indiana. A letter with the magic Santa Claus postmark thrills the youngster and remains a cherished souvenir.

Every child will be delighted to receive a personal letter from Santa Claus. Make this a gayer and brighter Christmas for the child of your choice.

THIS COMPLIMENTARY OFFER IS OUR WAY OF SAYING
Merry Christmas TO CHILDREN OF ALL AGES

Eastland National Bank
 AS SEEN ON THE DAVE GARROWAY "TODAY" TV SHOW

Music S...
 Be Pres...
 Christm...
 YOU V...
 Old...
 We Pick...
 JU...
 NGENE...
 MA...
 TODAY...
 ESTHE...
 Richard E...
 Tuesday...
 Search...
 SATURDA...
 4:0...
 4:1...
 4:2...
 4:3...
 4:4...
 4:5...
 5:0...
 5:1...
 5:2...
 5:3...
 5:4...
 5:5...
 6:0...
 6:1...
 6:2...
 6:3...
 6:4...
 6:5...
 7:0...
 7:1...
 7:2...
 7:3...
 7:4...
 7:5...
 8:0...
 8:1...
 8:2...
 8:3...
 8:4...
 8:5...
 9:0...
 9:1...
 9:2...
 9:3...
 9:4...
 9:5...
 10:0...
 10:1...
 10:2...
 10:3...
 10:4...
 10:5...
 11:0...
 11:1...
 11:2...
 11:3...
 11:4...
 11:5...
 12:0...
 12:1...
 12:2...
 12:3...
 12:4...
 12:5...
 1:0...
 1:1...
 1:2...
 1:3...
 1:4...
 1:5...
 2:0...
 2:1...
 2:2...
 2:3...
 2:4...
 2:5...
 3:0...
 3:1...
 3:2...
 3:3...
 3:4...
 3:5...
 4:0...
 4:1...
 4:2...
 4:3...
 4:4...
 4:5...
 5:0...
 5:1...
 5:2...
 5:3...
 5:4...
 5:5...
 6:0...
 6:1...
 6:2...
 6:3...
 6:4...
 6:5...
 7:0...
 7:1...
 7:2...
 7:3...
 7:4...
 7:5...
 8:0...
 8:1...
 8:2...
 8:3...
 8:4...
 8:5...
 9:0...
 9:1...
 9:2...
 9:3...
 9:4...
 9:5...
 10:0...
 10:1...
 10:2...
 10:3...
 10:4...
 10:5...
 11:0...
 11:1...
 11:2...
 11:3...
 11:4...
 11:5...
 12:0...
 12:1...
 12:2...
 12:3...
 12:4...
 12:5...
 1:0...
 1:1...
 1:2...
 1:3...
 1:4...
 1:5...
 2:0...
 2:1...
 2:2...
 2:3...
 2:4...
 2:5...
 3:0...
 3:1...
 3:2...
 3:3...
 3:4...
 3:5...
 4:0...
 4:1...
 4:2...
 4:3...
 4:4...
 4:5...
 5:0...
 5:1...
 5:2...
 5:3...
 5:4...
 5:5...
 6:0...
 6:1...
 6:2...
 6:3...
 6:4...
 6:5...
 7:0...
 7:1...
 7:2...
 7:3...
 7:4...
 7:5...
 8:0...
 8:1...
 8:2...
 8:3...
 8:4...
 8:5...
 9:0...
 9:1...
 9:2...
 9:3...
 9:4...
 9:5...
 10:0...
 10:1...
 10:2...
 10:3...
 10:4...
 10:5...
 11:0...
 11:1...
 11:2...
 11:3...
 11:4...
 11:5...
 12:0...
 12:1...
 12:2...
 12:3...
 12:4...
 12:5...
 1:0...
 1:1...
 1:2...
 1:3...
 1:4...
 1:5...
 2:0...
 2:1...
 2:2...
 2:3...
 2:4...
 2:5...
 3:0...
 3:1...
 3:2...
 3:3...
 3:4...
 3:5...
 4:0...
 4:1...
 4:2...
 4:3...
 4:4...
 4:5...
 5:0...
 5:1...
 5:2...
 5:3...
 5:4...
 5:5...
 6:0...
 6:1...
 6:2...
 6:3...
 6:4...
 6:5...
 7:0...
 7:1...
 7:2...
 7:3...
 7:4...
 7:5...
 8:0...
 8:1...
 8:2...
 8:3...
 8:4...
 8:5...
 9:0...
 9:1...
 9:2...
 9:3...
 9:4...
 9:5...
 10:0...
 10:1...
 10:2...
 10:3...
 10:4...
 10:5...
 11:0...
 11:1...
 11:2...
 11:3...
 11:4...
 11:5...
 12:0...
 12:1...
 12:2...
 12:3...
 12:4...
 12:5...
 1:0...
 1:1...
 1:2...
 1:3...
 1:4...
 1:5...
 2:0...
 2:1...
 2:2...
 2:3...
 2:4...
 2:5...
 3:0...
 3:1...
 3:2...
 3:3...
 3:4...
 3:5...
 4:0...
 4:1...
 4:2...
 4:3...
 4:4...
 4:5...
 5:0...
 5:1...
 5:2...
 5:3...
 5:4...
 5:5...
 6:0...
 6:1...
 6:2...
 6:3...
 6:4...
 6:5...
 7:0...
 7:1...
 7:2...
 7:3...
 7:4...
 7:5...
 8:0...
 8:1...
 8:2...
 8:3...
 8:4...
 8:5...
 9:0...
 9:1...
 9:2...
 9:3...
 9:4...
 9:5...
 10:0...
 10:1...
 10:2...
 10:3...
 10:4...
 10:5...
 11:0...
 11:1...
 11:2...
 11:3...
 11:4...
 11:5...
 12:0...
 12:1...
 12:2...
 12:3...
 12:4...
 12:5...
 1:0...
 1:1...
 1:2...
 1:3...
 1:4...
 1:5...
 2:0...
 2:1...
 2:2...
 2:3...
 2:4...
 2:5...
 3:0...
 3:1...
 3:2...
 3:3...
 3:4...
 3:5...
 4:0...
 4:1...
 4:2...
 4:3...
 4:4...
 4:5...
 5:0...
 5:1...
 5:2...
 5:3...
 5:4...
 5:5...
 6:0...
 6:1...
 6:2...
 6:3...
 6:4...
 6:5...
 7:0...
 7:1...
 7:2...
 7:3...
 7:4...
 7:5...
 8:0...
 8:1...
 8:2...
 8:3...
 8:4...
 8:5...
 9:0...
 9:1...
 9:2...
 9:3...
 9:4...
 9:5...
 10:0...
 10:1...
 10:2...
 10:3...
 10:4...
 10:5...
 11:0...
 11:1...
 11:2...
 11:3...
 11:4...
 11:5...
 12:0...
 12:1...
 12:2...
 12:3...
 12:4...
 12:5...
 1:0...
 1:1...
 1:2...
 1:3...
 1:4...
 1:5...
 2:0...
 2:1...
 2:2...
 2:3...
 2:4...
 2:5...
 3:0...
 3:1...
 3:2...
 3:3...
 3:4...
 3:5...
 4:0...
 4:1...
 4:2...
 4:3...
 4:4...
 4:5...
 5:0...
 5:1...
 5:2...
 5:3...
 5:4...
 5:5...
 6:0...
 6:1...
 6:2...
 6:3...
 6:4...
 6:5...
 7:0...
 7:1...
 7:2...
 7:3...
 7:4...
 7:5...
 8:0...
 8:1...
 8:2...
 8:3...
 8:4...
 8:5...
 9:0...
 9:1...
 9:2...
 9:3...
 9:4...
 9:5...
 10:0...
 10:1...
 10:2...
 10:3...
 10:4...
 10:5...
 11:0...
 11:1...
 11:2...
 11:3...
 11:4...
 11:5...
 12:0...
 12:1...
 12:2...
 12:3...
 12:4...
 12:5...
 1:0...
 1:1...
 1:2...
 1:3...
 1:4...
 1:5...
 2:0...
 2:1...
 2:2...
 2:3...
 2:4...
 2:5...
 3:0...
 3:1...
 3:2...
 3:3...
 3:4...
 3:5...
 4:0...
 4:1...
 4:2...
 4:3...
 4:4...
 4:5...
 5:0...
 5:1...
 5:2...
 5:3...
 5:4...
 5:5...
 6:0...
 6:1...
 6:2...
 6:3...
 6:4...
 6:5...
 7:0...
 7:1...
 7:2...
 7:3...
 7:4...
 7:5...
 8:0...
 8:1...
 8:2...
 8:3...
 8:4...
 8:5...
 9:0...
 9:1...
 9:2...
 9:3...
 9:4...
 9:5...
 10:0...
 10:1...
 10:2...
 10:3...
 10:4...
 10:5...
 11:0...
 11:1...
 11:2...
 11:3...
 11:4...
 11:5...
 12:0...
 12:1...
 12:2...
 12:3...
 12:4...
 12:5...
 1:0...
 1:1...
 1:2...
 1:3...
 1:4...
 1:5...
 2:0...
 2:1...
 2:2...
 2:3...
 2:4...
 2:5...
 3:0...
 3:1...
 3:2...
 3:3...
 3:4...
 3:5...
 4:0...
 4:1...
 4:2...
 4:3...
 4:4...
 4:5...
 5:0...
 5:1...
 5:2...
 5:3...
 5:4...
 5:5...
 6:0...
 6:1...
 6:2...
 6:3...
 6:4...
 6:5...
 7:0...
 7:1...
 7:2...
 7:3...
 7:4...
 7:5...
 8:0...
 8:1...
 8:2...
 8:3...
 8:4...
 8:5...
 9:0...
 9:1...
 9:2...
 9:3...
 9:4...
 9:5...
 10:0...
 10:1...
 10:2...
 10:3...
 10:4...
 10:5...
 11:0...
 11:1...
 11:2...
 11:3...
 11:4...
 11:5...
 12:0...
 12:1...
 12:2...
 12:3...
 12:4...
 12:5...
 1:0...
 1:1...
 1:2...
 1:3...
 1:4...
 1:5...
 2:0...
 2:1...
 2:2...
 2:3...
 2:4...
 2:5...
 3:0...
 3:1...
 3:2...
 3:3...
 3:4...
 3:5...
 4:0...
 4:1...
 4:2...
 4:3...
 4:4...
 4:5...
 5:0...
 5:1...
 5:2...
 5:3...
 5:4...
 5:5...
 6:0...
 6:1...
 6:2...
 6:3...
 6:4...
 6:5...
 7:0...
 7:1...
 7:2...
 7:3...
 7:4...
 7:5...
 8:0...
 8:1...
 8:2...
 8:3...
 8:4...
 8:5...
 9:0...
 9:1...
 9:2...
 9:3...
 9:4...
 9:5...
 10:0...
 10:1...
 10:2...
 10:3...
 10:4...
 10:5...
 11:0...
 11:1...
 11:2...
 11:3...
 11:4...
 11:5...
 12:0...
 12:1...
 12:2...
 12:3...
 12:4...
 12:5...
 1:0...
 1:1...
 1:2...
 1:3...
 1:4...
 1:5...
 2:0...
 2:1...
 2:2...
 2:3...
 2:4...
 2:5...
 3:0...
 3:1...
 3:2...
 3:3...
 3:4...
 3:5...
 4:0...
 4:1...
 4:2...
 4:3...
 4:4...
 4:5...
 5:0...
 5:1...
 5:2...
 5:3...
 5:4...
 5:5...
 6:0...
 6:1...
 6:2...
 6:3...
 6:4...
 6:5...
 7:0...
 7:1...
 7:2...
 7:3...
 7:4...
 7:5...
 8:0...
 8:1...
 8:2...
 8:3...
 8:4...
 8:5...
 9:0...
 9:1...
 9:2...
 9:3...
 9:4...
 9:5...
 10:0...
 10:1...
 10:2...
 10:3...
 10:4...
 10:5...
 11:0...
 11:1...
 11:2...
 11:3...
 11:4...
 11:5...
 12:0...
 12:1...
 12:2...
 12:3...
 12:4...
 12:5...
 1:0...
 1:1...
 1:2...
 1:3...
 1:4...
 1:5...
 2:0...
 2:1...
 2:2...
 2:3...
 2:4...
 2:5...
 3:0...
 3:1...
 3:2...
 3:3...
 3:4...
 3:5...
 4:0...
 4:1...
 4:2...
 4:3...
 4:4...
 4:5...
 5:0...
 5:1...
 5:2...
 5:3...
 5:4...
 5:5...
 6:0...
 6:1...
 6:2...
 6:3...
 6:4...
 6:5...
 7:0...
 7:1...
 7:2...
 7:3...
 7:4...
 7:5...
 8:0...
 8:1...
 8:2...
 8:3...
 8:4...
 8:5...
 9:0...
 9:1...
 9:2...
 9:3...
 9:4...
 9:5...
 10:0...
 10:1...
 10:2...
 10:3...
 10:4...
 10:5...
 11:0...
 11:1...
 11:2...
 11:3...
 11:4...
 11:5...
 12:0...
 12:1...
 12:2...
 12:3...
 12:4...
 12:5...
 1:0...
 1:1...
 1:2...
 1:3...
 1:4...
 1:5...
 2:0...
 2:1...
 2:2...
 2:3...
 2:4...
 2:5...
 3:0...
 3:1...
 3:2...
 3:3...
 3:4...
 3:5...
 4:0...
 4:1...
 4:2...
 4:3...
 4:4...
 4:5...
 5:0...
 5:1...
 5:2...
 5:3...
 5:4...
 5:5...
 6:0...
 6:1...
 6:2...
 6:3...
 6:4...
 6:5...
 7:0...
 7:1...
 7:2...
 7:3...
 7:4...
 7:5...
 8:0...
 8:1...
 8:2...
 8:3...
 8:4...
 8:5...
 9:0...
 9:1...
 9:2...
 9:3...
 9:4...
 9:5...
 10:0...
 10:1...
 10:2...
 10:3...
 10:4...
 10:5...
 11:0...
 11:1...
 11:2...
 11:3...

Call MA 9-1707 for Classified Ads -

YOU WILL BE PLEASSED WITH OUR WORK

Old Mattress Made Like New \$8.50 up

We Pick Up One Day . . . Deliver the Next JUST DROP US A POSTCARD

"Since 1928" "We Sell Sleep"

ANGER MATTRESS FACTORY RANGER, TEXAS

McGraw Motor Company

DODGE-STUDEBAKER Parts and Service

TRUCKS

Phone MA 9-1244

CHANNEL 9 (KABC, Abilene)

SUNDAY

12:45 Air Force 7:00 Nat. Velvet 1:00 Football 7:30 Tab Hunter 4:00 Film 8:00 Chevy Show 4:30 Devotions 9:00 Special 5:00 Meet Press 10:00 News 5:30 Gm. of Week 10:10 Weather 6:00 Shirley Temple 10:15 Com. Pres.

MONDAY

7:00 Dave Garroway 3:30 Hollywood 9:00 Dough Re Mi 4:00 Com. Pres. 9:30 Play Yr Hunch 5:30 3 Stooges 10:00 Price Is Right 4:00 News 10:30 Concentration 4:10 Weather 11:00 Truth or Con. 4:15 Huntley Rept. 11:30 Could Be You 4:30 On the Farm 12:00 News, Wthr. 7:00 Gandy Gong 12:15 Devotions 7:30 Wells Fargo 12:20 3 Stooges 8:00 Klondike 1:00 Jon Murray 8:30 Dante 1:30 Loreta Young 9:00 B. Stanwick 2:00 Dr. Malone 9:30 Bowling 2:30 From Roots 10:00 News 3:00 Roof for Daddy 10:10 Weather 10:15 Jack Paar

CHANNEL 4 (KRLD, Dallas)

SUNDAY

7:00 Cartoons 2:30 Bill Meek 7:15 Faith Today 2:45 Movie 7:45 Bible Soys 4:15 Songs 8:00 Featurettes 4:30 College Bowl 8:15 Hymns 5:00 I Love Lucy 8:30 Way of Truth 5:30 20th Century 8:45 Church 6:00 Lassie 9:00 Christ. Science 6:30 Dennis Menace 9:15 Catholic Rept. 7:00 Ed Sullivan 9:30 Church 8:00 G. E. Theatre 10:30 Amer. At Wb. 8:30 Jack Benny 11:00 Theatre 9:00 Harry Belafonte 12:00 News 9:30 What's my Line 12:15 Homes 10:00 News 12:30 Homes 10:15 News, Wthr. 12:45 Football 10:30 Movie 1:00 Movie 12:00 Vesper

MONDAY

7:30 Cartoons 3:15 Secret Storm 8:00 News 3:30 Edge of Mite 8:15 Cap. Kangaroo 4:00 Maple 9:00 Lorraine Show 5:15 Party Time 9:30 Video Village 4:00 News 10:00 I Love Lucy 4:10 Weather 11:00 Love of Life 4:15 News 11:30 Search for Tr. 7:00 Pfc. & Giddy 11:45 Guiding Light 7:00 Pfc. & Giddy 12:00 News 7:30 Pfc. Up Buddy 12:15 Beauty Sel. 8:00 Danny Thomas 12:30 As Wrid. Turns 8:30 Tomorrow 1:00 Full Circle 9:30 Face Nation 1:30 House Party 10:00 News 2:00 Millionaire 10:15 Weather 2:30 Verdict Is Yrs. 10:20 Pfc. & Place 3:00 Brighter Day 10:30 Movie/Time

CHANNEL 11 (KTVT Fort Worth)

SUNDAY

6:59 Sign On 1:30 Matinee 7:00 Westerns 3:00 Theatre 8:30 Crusades 4:00 Movie 9:00 Herald of Truth 4:00 News 9:30 Christophers 4:30 Showtime 10:30 Westerns 8:00 Spencer Tracy 11:00 Church 10:00 Dial 999 12:00 Information 10:30 News 12:30 Orat Roberts 11:00 Movie 1:00 Gospel

MONDAY

11:30 Cartoons 5:30 Amos 'N Andy 12:00 News 4:00 W. Woodpecker 12:15 Information 6:30 News 12:30 Trile w. Father 6:55 Weather 1:00 Motines 7:30 Bold Journey 3:00 Susie 7:30 Silent Service 3:30 I Married Joan 8:00 Divorce Court 4:00 Bugs Bunny 8:30 Wrestling 4:30 Popeye 10:00 Paul Coats 5:00 3 Stooges 10:30 News 11:00 Theatre

CHANNEL 5 (WBAP, Fort Worth)

SUNDAY

8:00 Christopher 4:00 Golf 8:30 Christ. Science 4:30 News 9:00 54. Penns 5:00 Meet Press 9:30 Televisions 5:30 People Funny 10:00 Christ. Quest. 6:00 Shirley Temple 10:30 Faith for Today 7:00 Nat. Velvet 11:00 Church 7:30 Tab Hunter 12:00 Newsreel 8:00 Chevy Show 12:30 Boy's Ranch 9:00 Special 1:00 City Hall 9:30 Your Life 1:30 Roy Bean 10:00 Texas News 2:00 Danger 10:15 Weather 2:30 Showcase 10:25 News Final 3:00 Abe Martin 10:30 Movie/Time 3:30 Pic. Are Funny

MONDAY

5:55 Newsreel 5:30 Popeye 6:00 Cont. Clrm. 5:55 Newsreel 7:00 Dave Garroway 6:00 News 9:00 Dough Re Mi 6:10 Weather 9:30 Play Yr Hunch 6:15 Brintley Report 10:00 Price Is Right 6:30 Riverboat 10:30 Concentration 7:30 Wells Fargo 11:00 Truth 7:00 Klondike 11:30 Could Be You 7:30 Dante 12:00 News 9:00 B. Stanwick 12:30 Dateline 9:30 Bowling 1:30Way of Life 10:00 Texas News 1:30 Loreta Young 10:15 Weather 2:00 Dr. Malone 10:25 News Final 2:30 From Roots 10:30 Sports 3:00 Comedy The. 10:35 Jack Paar 3:30 Hollywood 12:00 Midnite News 4:00 Family The. 12:05 Newsreel 12:10 Late Show

CHANNEL 8 (WFAA, Dallas)

SUNDAY

8:00 This Is Amer. 5:30 Walt Disney 8:15 Magic Carpet 6:30 Maverick 8:45 Life 6:00 Maverick 9:00 Movie 7:30 Lawman 10:30 Faith at Work 8:00 The Rebel 10:45 Sacred Heart 8:30 The Islander 11:00 Church 9:30 Valliant Yrs. 11:30 Church 10:00 Newsreel 12:00 Fannies 10:10 News 12:30 Rocky 10:15 Weather 1:00 Don Smoot 10:22 Sports 1:30 Yu. Ask for It 10:30 Op. Anallition 2:00 Champ. Bridge 12:00 News 2:30 Showtime

MONDAY

7:25 Devotional 5:00 Robin Hood 7:30 Alomanc 5:30 Cartoon Strip 7:50 News 6:00 Newsreel 8:00 Felix the Cat 6:10 News 8:30 Showcase 6:15 Weather 10:00 Julie Benell 6:22 Sports 11:00 Court 6:30 Cheyenne 11:30 Love That Bob 7:30 Surfside 4 12:00 The Team 8:30 Adv. Paradise 12:30 Queen for Day 9:30 Peter Gunn 1:00 About Faces 10:00 News 1:30 Media 10:10 News 2:00 Day In Court 10:15 Weather 2:30 Rd. to Reality 10:22 Sports 4:00 Bandstand 10:30 Tombstone 3:00 Best Cloc 11:00 Theatre 3:30 Who Do Ya 12:30 News 4:00 Amer. Band.

Harmony Baptist Church

Rev. Bill Penland, pastor

Harmony Baptist, the church with a friendly welcome and old time Gospel preaching from the Bible, welcomes you to its services.

Harmony Baptist Church will begin Sunday School at 10 a.m. with worship services at 11 o'clock with the pastor bringing the message. Training Union begins at 7 p.m. with evening preaching at eight.

Wednesday evening midweek service is held at 7 p.m. with Bible study and prayer meeting.

Thursday evening is visitation night at 7 p.m.

North Lamar Baptist Church

Rev. Aaron Oden

If you like real old time gospel preaching from the Bible, then come and be in our services where you will find a welcome.

Sunday School begins at 10 a.m. and night services begin at 6:30. Our mid-week prayer services begin at 7:15 p.m. on Wednesday.

First Methodist Church

Rev. James Campbell, pastor

Church School begins at 9:45. Charles P. Marshall is the superintendent; Mrs. Carl Elliott is the Secretary.

The morning worship begins at 10:50. A lovely and most unusual Communion Service will be presented with the choir leading along with the minister in the service. His message is titled "A Matter of Christian Conscience". The organ music will include the prelude "My Heart is Filled with Longing". Each of the offertory is "Andante in G" by Stults.

The service will close with the choir singing the benediction "Gloria In Excelsis" followed by the Threefold Amen. Postlude will be Beethoven's "Larghetto".

The Youth Fellowship meets at 6:15 and most of them remain for the worship service and to sing in the choir with Wendell Siebert leading. The worship hour is at 7 with the pastor again bringing the message.

The Woman's Society of Christian Service will meet in the church parlor Tuesday morning at 9:30 for the program "Recalling Our Heritage and Expanding Our Horizons" with Mrs. Cecil C. Collings bringing the program. Mrs. James Horton will discuss Missionary News and Mrs. C. W. Hole will talk on World Federation of Methodist Women.

The prayer group under the leadership of Mrs. W. P. Leslie, will meet at 9 o'clock. The Wesleyan Service Guild will meet in the church parlor Wednesday evening at 7:30. The choir will meet also Wednesday at 7:00. The Junior choir meets Wednesday afternoon at 4 o'clock.

December is Methodist Home Month. We trust that all will begin to make provision for a gracious gift to the children in the Home in Waco.

The Cisco District Conference will meet December 8 in Olney at 9 a.m. The delegates will want to make plans now to attend this important meeting. They are: Mrs. R. D. Burton, Mrs. W. P. Leslie, Grady Pipkin, Ed Wilman. Reserve: Mrs. Grady Pipkin, Mrs. Milburn S. Long, Mrs. T. M. Collie, Mrs. Cecil C. Collings.

Dr. J. C. Whittington Addresses Thursday Afternoon Club Members

Procedure was reversed at the regular meeting of the Thursday Afternoon Club held at 3 p.m. Thursday in the Woman's Club.

The program was presented first with Mrs. W. P. Leslie introducing Dr. J. C. Whittington. Dr. Whittington spoke on the subject "Needed Legislation for Education." Using charts, he showed the members the educational situation in Eastland County after which he recommended that legislation be passed in order that the schools could consolidate and still receive the same state aid so that the present debt might be paid off.

Following the program, the minutes were read and approved. Mrs. Cecil Collings reported on the activities of the library committee. Last summer the reading program had the theme "World Travel." Mrs. Collings pointed out that 43 children participated in the program with 15 children receiving award ribbons. She stated that Children's Book Week was held Nov. 13 through 18 with the week being launched by a successful Book Fair.

Mrs. Frank Lovett, chairman of the civic committee, reminded the members to bring some food for the cheer basket at the Christmas Party.

There being no further business, the meeting was adjourned.

First Christian Church

SUNDAY SERVICES

9:45 a.m. Church School. 11 a.m. Morning Worship Women's Day is being observed and Mrs. Norman Conner of Abilene will be the guest speaker. 6 p.m. Youth Meeting 7 p.m. Evening Vespers

Monday 3:15 p.m. C.W.F. Christian Tea

ATTEND THE CHURCH OF YOUR CHOICE EACH SUNDAY

First Presbyterian Church

Sunday:

9:45 a.m.—Church School. 11 a.m.—Divine Worship. Second Sunday in Advent is "Bible Sunday". The sermon will be on "The Geneva Bible", this year of 1960 being the 400th Anniversary of its publication.

Monday: 8 a.m.—Eastland Ministers' Association meets at the White Elephant.

5 p.m.—K E R C radio broadcast of a portion of Sunday's Divine Worship, including the Sermon by the Minister.

Tuesday: 9:30 a.m.—The Women of the Church meet in their only December meeting. There will be a special program, including installation of Officers for the coming year. The place is the Tom Wilson's home, 512 South Ammerman. All women are urged to attend.

ATTEND THE CHURCH OF YOUR CHOICE EACH SUNDAY

DO YOUR CAR WHEELS NEED BALANCING? 4 out of 5 do!

Yes, even most NEW cars need wheel balancing jobs

A good wheel balancing job with a modern Hunter Balancer pays for itself fast. That's true because unbalanced wheels pound your tires to an early death—and increase wear and tear on the front end of your car.

You get more pleasure out of driving—greater comfort, smoother riding, easier steering when you get a wheel balance job done with the modern Hunter Balancer. Yours will be a safer car on the highway, too.

Get your wheels checked FREE—in just 2 minutes. Stop in today.

BLEVINS MOTOR CO. 514 W. Main Eastland Phone M A9-2433

Those Famous Last Words—

... of the family who turned and slowly walk away after watching helplessly their home go up in a cloud of smoke are almost sure to be "we didn't have enough insurance". It's a tragic situation but not as bad as the family under similar circumstances who had no insurance at all. After the fire sirens sounds it's too late to discuss insurance with your agent. But now is the time while you have time. Tomorrow, you may have nothing to insure.

EARL BENDER & COMPANY Eastland (Insurance since 1924) Texas

AUTOMATIC TRANSMISSION SPECIALIST

J. T. CLARK - SERVICE MANAGER

LET US FIX IT FOR YOU!

Power-Glide • Hydramatic • Fordomatic Power-Flight • Strato-Flight Torque Flight

22 YEARS EXPERIENCE

TRANSMISSION LEAK? SWIFT PATTERN POOR?

SEE US NOW

BLEVINS MOTOR

514 W. Main

Eastland, Texas



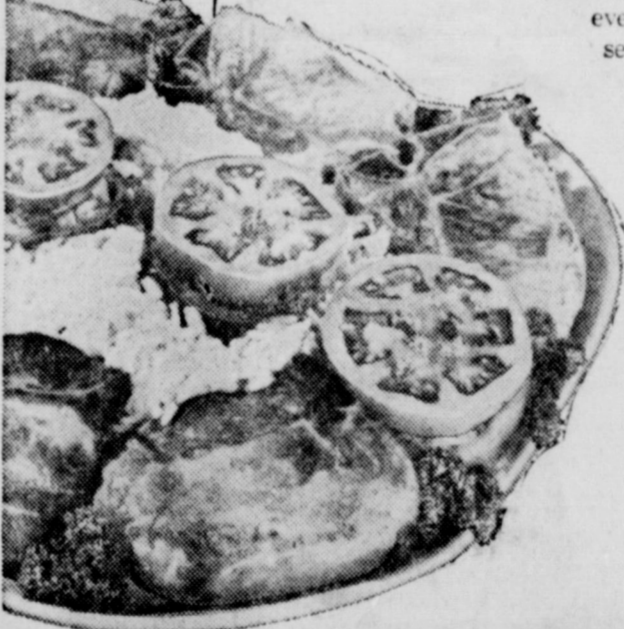
The holiday rush is on! Be ready with Safeway's "fix-easy" foods for...

SAFEWAY

Busy-Day Meals!

Naturally you want your family to enjoy delicious meals even during the hustle and bustle of the pre-holiday season. It's easy... just shop Safeway for our variety of tempting foods you can whisk to the table in minutes.

Plan now to stock up on Safeway's "fix-easy" foods that save you time and money. They'll be mighty popular with the folks at your house!



SARDINES Acornal Brand Mashed in oil. Fat making delicious sandwiches. No. 1s Can 10c

GAME HENS Smith's Pride Cornish Game Hens. Delicious served with wild rice. Lb. 39c

FISH STICKS Captain's Choice Frozen Precooked. Delicious and tasty. Rich in proteins. 2 8 Oz. Pkgs. 59c

French Fries Bel-air Frozen Crinkle Cut. 2 16-oz. Pkgs. 49c

Meat Pies Manor House Frozen, Beef, Turkey or Chicken. 2 8-Oz. Pies 45c

Turnovers Peppercorn Farm Frozen. Apple, Blueberry or Raspberry. 11-Oz. Pkg. 59c

Safeway Produce!

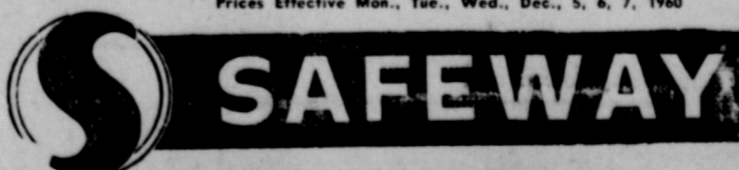
BEANS 19c Kentucky Wonder—Florida's Finest. Fresh and tender. Lb.

Cabbage 4c Fresh—Texas' Finest. Medium size heads. Lb.

Anjou Pears 19c Delicious and nutritious. Lb.

Peanuts 29c Raw—in-shell. Perfect for snacks and parties. Lb.

Prices Effective Mon., Tue., Wed., Dec. 5, 6, 7, 1960



Fix-Easy-Meats!

GROUND BEEF Economy—Made from U. S. Government beef. A Safeway Guaranteed Product. Lb. 39c

Pork Side 49c Fresh—Delicious fried. Lb.

Salt Jowl 25c Dry—Perfect for seasoning. Lb.

Link Sausage 39c Safeway Pure Pork. 1-Lb. Pkg.

Good Looking You Can't Beat TV Cable Looking!

Community Television, Inc.

Call today and get five channels tomorrow! Phone MAIn 9-1716

A Leading Banker Speaks About Better-than-ever U.S. Savings Bonds



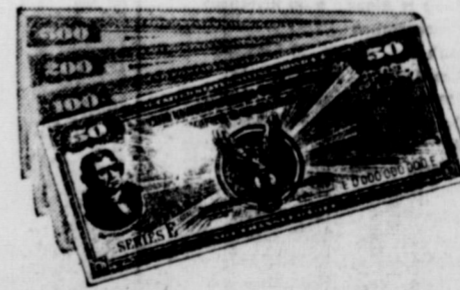
"The American Bankers Association has once again pledged vigorous support of the U.S. Savings Bonds program as an essential part of good Federal debt management. The encouragement of thrift, in all forms, is to the direct advantage of every financial institution and of the nation. America *needs* more savings, more thrifty families.

"The nation's bankers have long appreciated the value of the Bond program, and have given it consistent support. We approve the new, more liberal terms which apply to both new Bonds and old. We will continue to help our country, our customers and our communities by promoting and selling U.S. Savings Bonds—*now* better than ever.

"We bankers value our customers' faith in our financial judgment and, therefore, exercise extreme care in giving advice. But we need never hesitate to advise our customers to buy and hold U.S. Savings Bonds."

John W. Remington

President
Lincoln Rochester Trust Co.
1960 President, American Bankers Association



Here's how you can reach your savings goal with U.S. Savings Bonds (in just 7 years, 9 months)

If you want about	\$2,500	\$5,000	\$10,000
each week save	\$5.45	\$10.85	\$21.70

You save more than money with
U.S. Savings Bonds

The U.S. Government does not pay for this advertising. The Treasury Department thanks, for their patriotic donation, The Advertising Council and