



VOL. 31

EASTLAND, TEXAS, THURSDAY, OCTOBER 6, 1960

No. 68

## Eastland Welcomes Eight New Families

Families of the eight newcomers to Eastland during the month of September receptionist moved from various areas.

The eighth moved to the home of Mrs. W. R. Potts, who is making their home at 105 E. Lens.

Mrs. Norman G. Bassett and his wife, Mrs. S. Bassett, are moving from Ft. Worth. The Daniels have seven children, four boys and three girls.

J. O. Daniels, who is a barber, and family are residing at 607 W. Olive after moving from Ft. Worth. The Daniels have seven children, four boys and three girls.

Mrs. W. R. Potts have home at 105 E. Lens from Brownwood.

Mrs. R. D. Ribling, who is home in the Norwood is employed by W. Ashton and family east of the city after Andrews. He is employed at Eastland Supply Co. The one girl, who is two years of age.

## Activities for Year Is Planned By 4-H Council

The Eastland County 4-H Council met at the Court House Saturday for the purpose of planning the activities of the year. Jimmy Wright, chairman, presided.

The date for the Achievement Banquet was set for Nov. 12, National Achievement Day. The banquet will be held at the Cisco Junior High gymnasium. Plans were also discussed for a Christmas party.

Officers of the 4-H council are Jimmy Wright, chairman, of Eastland; Christina Stroebel, vice-chairman, of Nimrod; Danye Sherman, secretary, of Morton Valley; and Sharon Donham, reporter, of Rising Star.

The three committees appointed were the foods, entertainment and decoration committee. Carol Stroebel, Butch Phillips and Sharon Donham are members of the food committee. Entertainment committee members are Christina Stroebel, James West and Larry Duncan. Diana Thompson, Jimmy Ratliff, Judy Phillips and Cicely Sargents are members of decoration committee.

Approximately 50 members attended the meeting. After the business session an Officers Training School was held with J. M. Cooper in charge of the reports. Mrs. Carroll Shelton, the secretaries, Curtis Boase and Miss Melbaican Hohertz, the presidents and vice presidents.

## Muirhead Motors Puts Pontiacs On Display Here

"Pontiac for 1961 has combined dynamic new styling concepts with significant engineering advances to present the most exciting new car in its 53-year history," said S. E. Knudsen, General Motors vice president and Pontiac Motor Division general manager, in announcing Pontiac's new line of automobiles. Muirhead Motor Co. has the new Pontiacs on display here.

The new Pontiac is as much as .9 inch lower, four inches shorter, and 2.5 inches narrower, Knudsen revealed, yet important passenger compartment dimensions have been improved. Pontiac's famous wide track design, prevailing in each series, is also proportionately increased.

Knudsen also cited a new perimeter frame, new front and rear suspension systems, and a lighter weight, more efficient V-8 engine among the car's completely new engineering features.

"Pontiac's dynamic new styling approach for 1961 conveys an overall impression of distinguished simplicity and unmistakable identity."

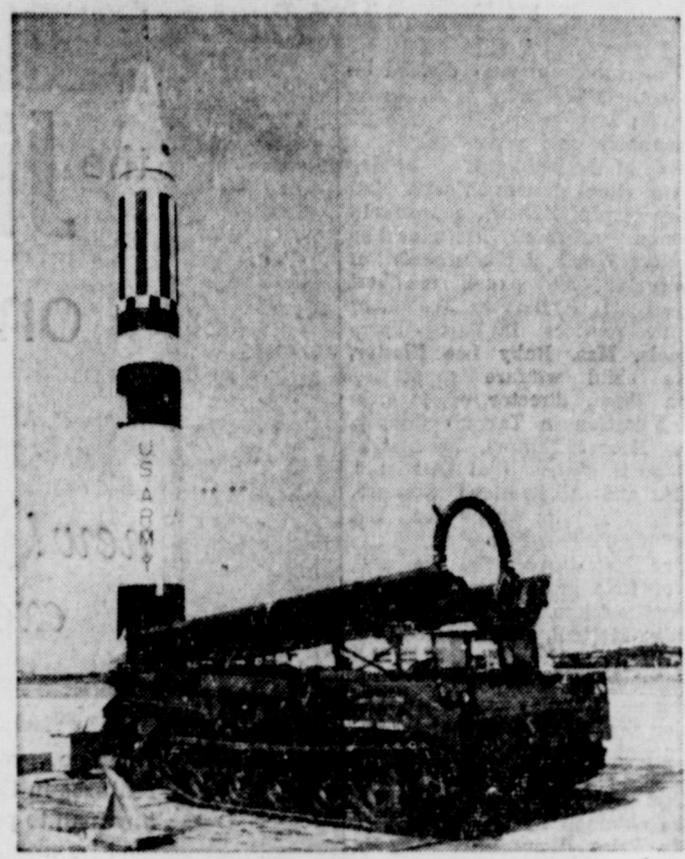
(See Picture Inside)

## John Woodall to Speak at Youth Rally Saturday

John Woodall, State president of the Christian Youth Fellowship, will be guest speaker at the Christian Church Youth Rally Saturday at 7 p.m. in the annex of the First Christian Church in Eastland.

The Christian Church young people of Cisco, Ranger and Eastland will meet for an evening of fun and fellowship.

Woodall will also bring the morning message at the First Christian Church in Eastland Sunday.



THE PERSHING MISSILE named in honor of General of the Armies John J. Pershing. A successful test firing of PERSHING from its new transporter-erector-launcher held recently was the first firing from its new mobile launcher. The new type launcher will permit PERSHING to be transported to an unprepared site, erected and fired in a matter of minutes.

## Dr. Ferguson Named 9:49 Class Leader

The Men's 9:49 Bible Class elected and installed new slate of officers during the regular Sunday morning class meeting at First Methodist Church in Eastland.

Dr. R. C. Ferguson was elected president of the class for the forthcoming six months. Leonard T. Florence was selected vice president. Earl Bender as secretary, Tom Haley as treasurer, Eliza Head as song leader, Homer Smith as assistant song leader.

Ronald Burton was elected teacher with J. M. Cooper as the assistant teacher. It is a class policy that the assistant teacher teach whenever the teacher can't be present as well as teach the class every Sunday.

In accepted the presidents position, Dr. Ferguson said he was a little surprised like the young man who was called on to pray at Epworth League several years ago. The doctor said the young man said, "Dear Lord this is a much of surprise to you as it is to me. Amen."

The doctor also spoke briefly on the history of the class, about its meeting in the First State Bank building back in the days Eastland Methodist worshipped in the building just west of Tom Lovelace's truck terminal.

He also said he was president of the class 34 years ago, back in the days before it became to be known as the Men's 9:49 Bible Class. That name was given to the class in 1930. Judge N. N. Rosenquest suggested the name the class has been using for the past 30 years and received a bible for offering the acceptor name.

The class has a unique name and the name is the official meeting time of the class.

After the installation of officers, Ronald Burton, the class teacher spoke on "The Stewardship of Life." He also said the class would not use the International Sunday School series for the next few weeks but would lend its thinking on the subject of "Stewardship." The series will be concluded with J. M. Cooper speaking on the subject of the title.

"The most familiar and the most incisive statement," Burton said, "of the doctrine of stewardship in the Bible or out of it is our Lord's parable of the talents."

"A man of large means went on a journey to a distant land,"

## Demo Rally Success Despite Bad Weather

Jim Wright, United States Congressman, told Eastland County Democrats that, "some unthinking people sling the mud of big spending socialism and welfare state at the Democrats, and in so doing they ignore the Republican platform and the record of the modern Democratic Party and baroque in the Eastland City Park."

Although the rally was dampened by threatening weather, some 700 Democrats from Eastland County, Weatherford, Jacksboro, Baird, Clyde, Abilene, Breckenridge and other points in North Central Texas turned out for the largest political rally held in Eastland County in many years.

Richard Moore of Cisco and Mrs. Roscoe Hopper of Ranger, are co-chairmen of the Kennedy-Johnson organization which has campaign headquarters in Ranger. Maurice Brooks and Virgil Musick are co-chairmen of the 17th Congressional District Democratic campaign.

Some six hundred pounds of barbecue was prepared by Keith Gregory of Ranger to feed the large crowd. Sam Aills of Ranger was County Chairman of Arrangements for the rally.

Wright, one of our youngest congressmen, and a fine speaker, talked in everyday language and presented what the crowd wanted to hear. He attacked the policies of the present administration in Washington and outlined the course the Democratic party would follow if they win in the November election.

He discussed the financial condition of the government and said, "The national debt was reduced \$11 billion under Truman's administration, even during the Korean War. Under the Republican, the debt has increased \$19 billion."

Wright was introduced by French Robertson of Abilene, Executive Committee of State Democratic Executive Committee, 24th Senatorial District, who called him "one of the young men destined for greater achievements on the national scene."

Among prominent state and area Democrats present were Calhoun County Executive Director of the Kennedy-Johnson Campaign (Continued On Page Six)

The Vikings, Anita Boskar, Rune Boskar, Christian Boskar, and Gunnar Kvarnheim, will present a program on folk-dance and folk song in the Eastland High School auditorium Friday morning at 9 a.m.

An admission of 15c will be charged to see The Vikings on their second coast to coast tour of the United States.

The Vikings will bring alive the old and new dances from the Arctic and the far-north in a program that is fast, vivid and meaningful. They are a Scandinavian group on tour in U. S.

The public is invited to attend the program which was made possible by Southern School Assemblies.

## The Vikings to Present Program At Eastland High

## PAGE ONE MUST

Eastland County Singing Convention will be held at Mountain Top Sunday for an "all day affair." Lunch will be served at 12:30 p.m. The public is invited.

The Co-Ed Club is having a car wash at the home of Mr. and Mrs. Robert Orr, 203 W. Patterson. The car wash will begin at 8 a.m. and continue until 6 p.m. For appointments Phone MAin 9-1225.

## Chevrolet and Corvaire at Fullens Friday

Top seller of 1960 automobiles Chevrolet promises to solidify position in 1961 by significantly broadening its range of passenger cars.

Scheduled for display at dealer showrooms Friday are 20 freshly styled conventional models; nine Corvaire including new passenger and commercial models, and the spirited two-place Corvair. Fullen Co. will have a large assortment of new models on display.

Complete new body styling, which provides easier loading for both passengers and baggage and establishes new heights in motorizing comfort and convenience, is featured in the regular line of passenger cars.

The entire body, from floor to roof and grille to rear bumper, is all new. Prime design emphasis has been placed on functionalism with thrift.

High on the list of advantages of the all-new cars are:

1. Easier entrance to passenger compartments.
2. Large, more accessible luggage space, with the trunk loading level lowered as much as 10.5 inches.
3. Improved chair height and over-the-hood visibility which will increase the ease of parking and add to driving safety.
4. Other safety items include improved brakes, overlap electric

(Continued On Page Six)

(See Picture Inside)

## Strong DeLeon Is Next For Eastland Mavericks

Eastland Mavericks will play a three game losing streak to the DeLeon Bearcats Friday night when the two teams meet in Bearcat Stadium in DeLeon in a non-league game.

DeLeon's only defeat this year came at the hands of Coleman. The Bearcats haven't even been defeated since.

Coch Shelton said his squad has had good workouts this week and he looks for them to give a good effort Friday night. Jerry Cheaney will be back in the lineup, and Tommy Beck, who has been nursing an elbow injury, will be ready to go.

Shelton said his second unit has greatly improved and he expects to get to use some of those Mavs Friday, enabling the starting unit to get some rest.

DeLeon hasn't posted a win over Eastland since 1957, but the two teams have always had close games.

## Milk Men Unhappy About Joe's Gripe

Joe Gray seems to have stirred the milk a bit too hard in one of his recent columns.

The Telegram received letters from J. P. Carson Jr., general manager of The Borden Co., Abilene, and from Hoyt Smith, general manager of the Central West Texas Producers Association, Abilene, answering Gray's complaint about the amount of milk he got in a carton.

The two letters are reproduced below.

**Carson's Letter**

I have read with much interest the editorial of Sept. 20 in your paper by Joe Gray, entitled, "Joe Demands Full Measure in Bottle." Since this article attacks the milk industry as a whole, and specifically that milk in Eastland where we distribute our products, we would like to take issue with your writer when he says a quart of milk isn't a quart of milk these days, and his reference to the good old days when business took pride in giving full measure. I don't know when the good old days were, but if they had the vigilant and watchful eye of our State Weights and Measure people

on their operation, I feel sure they gave full measure then as we are required to do now. These folks do not get merchandise from the processing plant, but they buy directly from the retailer as any consumer would do.

Did Mr. Gray take into consideration the expansion tolerance of milk at different temperatures? Evidently, he was measuring the contents; whereas, we would recommend the most accurate way of determining weight shortage would be to weigh contents instead of measuring them. The Attorney General of Texas would probably be very glad to hear from Mr. Gray because when a fine State Agency such as Weights and Measures are not functioning properly, he would like to know so that appropriate action can be taken.

Mr. Gray must also have a very keen sense of taste when he can detect the taste of paper in milk coming from the container. I would like to invite his participation in a blind, fold taste test to see if he can really detect the milk from paper containers. Our milk is available in glass bottles and we feel the customer should have his choice of containers.

(Continued On Page Four)

## Oldsmobile Can Be Seen Today at Pipkin Motors

The 1961 Oldsmobile Dynamic 88's, Super 88's and 98's in 18 different models incorporate the greatest changes in styling and design to be introduced by the division in many years, it was announced today by Jack F. Wolfram, vice president of General Motors and general manager of Oldsmobile. The new line of cars will be introduced to the public at Oldsmobile dealer showrooms across the nation Thursday. Pipkin Oldsmobile is the Oldsmobile dealer in Eastland.

"In addition to their completely new, fresh and distinctive look, many design changes for passenger comfort have been made to make the 88's and 98's more attractive than ever before," Wolfram said. "Head room is increased, the cars are much easier to get in and out of, and seating comfort is greatly improved.

"This, together with many mechanical advancements, make the 88's and 98's the most performing, most comfortable and smoothest riding and handling cars in the division's history," he declared.

"Oldsmobile's market has been widened—we are no longer fenced in by price class," Wolfram said. "Our new Dynamic 88's, Super 88's and 98's will please the many, many people who need want and are accustomed to the beauty, utility and prestige of a full-size Oldsmobile.

"The smaller F-85, Oldsmobile's entry in the low price field," he continued, "will attract the many, many people who have always wanted an Oldsmobile but never thought they could afford one—up until now."

Highlighting the styling motif the sculptured sides of the Dynamic 88, Super 88 and 98 sweep back the distinctive, alert-looking front end, with the profile tapering at the rear—styling that is unmistakably Oldsmobile. Excluding convertibles, a total of eight different roof designs is featured on the various models within the three series.

(See Picture Inside)

## MARIE BONEY SAYS

## What Is the Price Paid for Money

By MARIE BONEY

What shall it profit a man if he gain the whole world and lose his own soul, the voice asked her one night. Just home from a cocktail party, she was honestly puzzled by the question. The voice was familiar to her, naturally, since it had talked to her for years.

Always it fussed about something; these cocktail parties, for instance, or the kind of literature she accepted for publication by the large publishing house where she was an assistant editor.

Just tonight, she definitely decided to stop accepting manuscripts and write them because the authors received a greater share of the profits than she. In fact, she'd come home early to get started and now here was that peaky voice prattling about profit.

How can I plot a novel with you in my ear, she said angrily; you with your talk about profit. Methodically, she laid two newly-sharpened pencils beside the typewriter, plugged the coffee pot into a near-by outlet and sat down. She brushed her shoulder impatiently. It was almost as though something was sitting there dangling its feet, kicking her. I've lived alone too long, she told herself; not even a writer should have that much imagination.

She began typing rapidly. Soon her pages read like the novels she saw on her desk every day. Filthy words and suggestive scenes flowed onto the paper almost of their own volition. I didn't know it was so easy, she marvelled; how much money have I missed in the past?

She could stand the whispering inside her head no longer. Is that scripture, she wondered. It had been years since she read any scripture. Profit, profit, profit. She could stand the whispering no longer and got up to begin pacing across the floor.

Stopping by the coffee table, she snatched up some cigarettes. (Continued On Page Four)

## Blevins Motors To Introduce Newport Series

The Newport series, a new line of full-sized Chrysler cars in a lower price range, will be introduced in dealerships Thursday, reports C. E. Briggs, corporate vice president and general manager of the Chrysler and Imperial Division.

The Newport can be seen in Eastland at Blevins Motors.

Dealers will also unveil the newly styled 1961 Chrysler Windsor and New Yorker series models on that date. The Chrysler 300G, America's most powerful car will be announced later.

The Newport will powered by a 265-horsepower Firebolt V-8 engine of 361 cubic inches and 3-to-1 compression ratio. Designed to operate on regular grade fuel, the Newport engine and automatic transmission in its first economy run registered 510 miles on a single tankful of fuel—21.7 miles per gallon. It was driven by a 17-year-old Detroit student.

A floor-shift three speed manual transmission is standard equipment in the Newport and Windsor series.

"The new Chrysler Newport will bring two economies of operation into the full sized luxury car field," said Briggs. Regular fuel means an immediate savings of more than 10 per cent over premium fuel.

(See Picture Inside)

## Annual Barbecue Is Held by Texas Electric Friday

Texas Electric Service Company held its annual barbecue for transmission employees Friday at the City Park.

The meal of barbecue, potato salad, beans, and relishes was followed by an hour of Fellowship.

Out-of-town guests were Phil Attendorf, J. W. Godfrey, and Mrs. Ray Lerner, all of Fort Worth; Mr. and Mrs. Don Casey and children, and Roy Medley, all of Graham.

Attending from Eastland were Mmes. and Mmes. Frank Sayre, Ronald Burton, Mac Beazley, Audrey Burnam, Fred Eaves, Gene Boney, James E. Wright, Warren Chapman, Joe Anderson, Johnny Collins, Frank Higghower, Henry Van Geem, Bill Cooper, Kenneth Watson, Darrell Basham, Kenneth Garrett, Hub Lewis, Howard Wilson, Wayne Caton, and Fred Williams; Jim Golden, Cicero Harris, Earl Lewis, Mrs. Mary Barton, Mrs. W. J. Stone, Mrs. Hubert Jones and Miss Lydia Pearl-Houston.

Coverdies were shown for the following children: Sharon, Frankie, and Jimmy Sayre; Sidney Burton; Mark and Delia Eaves; Iris Ann, Celia and Rex Hovey; Jimmy and Jill Wright; Paul and Evelyn Chapman; Suzanne Cooper; Delaine Basham; Judy Lewis and her guest, Jan Lewis; Gene, Larry, Terry, and Yvonne Wilson; Joanna Stone; Donna, Sandra, Marsha, and Don Casey.

## Services Held Today for Miss Eula Johnson

Funeral services were held this afternoon at 3 p.m. in the Hammer Funeral Home Chapel for Miss Mary Eula Johnson who resided at 418 S. Connellie with her sister, Mrs. Ed Castleberry.

Miss Johnson was born Sept. 7, 1886 in Valley View, Tex. She came to Eastland from Brownwood about one year ago when she became ill.

She died Wednesday morning in Eastland Memorial Hospital.

Survivors include one sister, Mrs. Ed Castleberry of Eastland; one brother, J. E. Johnson of Conroe, Texas; 20 nieces and nephews.

## How Bankers First Starred

H. T. Wilson, president of the Eastland National Bank, traced the history of banking at the Lions Club meeting Monday.

Wilson was introduced by Judge Clyde Grissom, program chairman. The local bank official told Lions that banking began almost with the dawn of civilization.

**Food Distribution Announced**

Oct. 10—Eastland  
Oct. 11—Pioneer  
Oct. 12—Cisco

**YSCHLAG INSURANCE AGENCY**

Presenting the

**NEWS**

Isolated Showers

**EASTLAND NATIONAL BANK**  
"On The Square"  
MEMBER F. D. I. C.

**EASTLAND NATIONAL BANK**  
"On The Square"  
MEMBER F. D. I. C.

**SEE and DRIVE the 1960 PONTIAC... fresh point of view and wide track too! MUIRHEAD MOTOR CO.**

# Fall Furniture SPECIALS

FRIDAY, SATURDAY & MONDAY ONLY!

**9 Piece Dinette** 8 Foam Cushion Chairs  
72-Inch Table **8888**

**8 Piece Living Room Group**  
• 2 Platform Rockers  
• 1 Studio Divan  
• 2 Step Tables  
• 1 Coffee Table  
• 2 Lamps **114<sup>50</sup>**



**2-PC. SLEEPER SUITE**

- Foam Cushions
- Innerspring Mattress

Choice of Colors and Styles

**19950**  
With Trade

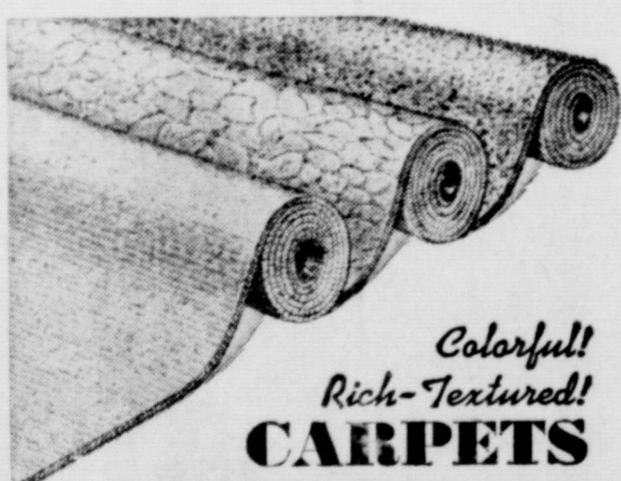
## Armstrong & Gold Seal Vinyl Linoleum

• 12-Foot Width ..... **179** Running Foot

WESTINGHOUSE SELF-CONTAINED

## Stero-4 Speed Changer

• New 1961 Model **14950** Plus State Tax



*Colorful!  
Rich-Textured!*  
**CARPETS**

**100% ALL WOOL**  
**6.95** Sq. Yd.

**100% NYLON**  
**5.95** Sq. Yd.

**55% NYLON  
45% COTTON**  
**4.95** Sq. Yd.

All Above Prices Include Laying and Heavy Rubberized Padding

We have several room size roll ends at a great saving! Bring Your Room Size and Save!

## 3 Piece Bedroom Suite

- Double Dresser
- Bed
- Chest
- Choice of 2 finishes

**99<sup>50</sup>**

NO CARRYING CHARGE ON FURNITURE OR CARPET

## Ranger Furniture Exchange

123 N. Rusk RANGER Phone MI 7-1404

### District 1 P-TA Holds Workshop In Mineral Wells

Between 350 and 400 women attended the meeting of the District 1, Texas Congress of Parents and Teachers workshop held at the Baker Hotel in Mineral Wells, September 29. The theme was "Strengthening the American Family Today."

The workshops were divided into sections according to school divisions: high school, junior high, elementary and pre-school.

One of the highlights of the day was a panel discussion with Mrs. Mary Strub Billew, consultant of home and family life education in Fort Worth public schools as moderator and panel members were Dr. L. P. Barrett, director of health services in Fort Worth schools, Mrs. Ruby Lee Piester, state child welfare supervisor, John Price, director of juvenile rehabilitation in Tarrant County, Mrs. Robert Haltom, Evaluation and goals chairman of District 1 P-TA and Miss Lloyd Stewart, woman's section writer for the Fort Worth Star-Telegram.

Dr. Barrett discussed the matter of fifth grade through junior high school age boys playing competitive football, and he asked that all parents read the article in the September edition of "McCall's" magazine. He also was discussion leader for the high school group. He urged that Driver's Education not be offered until the age of 16, as that is the legal age for licenses to be obtained.

Mr. Price, discussion leader for the elementary group, pointed out the fact that children need love, faith, and trust and if they do not get love at home they will get it elsewhere.

Miss Stewart compared today with 29 years ago, saying that youth were not so different but the time had changed. She stated that the parents were the different ones as they now push their children into social activities before they are old enough to be secure or mature in their feelings. Mrs. Piester suggested that the problem lay with trying to keep up with the Jones.

The workshop was preceded by a District Board meeting at the Baker Wednesday with Mrs. Stanley Statch, president of the board, presiding. It was announced during the meeting that there had been a re-distribution of the district, and area 1 is to include Parker, Palo Pinto, and Stephens counties. Area 2 will include Tarrant, Johnson, Hood and Somervell counties; Area 3, Hamilton, Erth and Comanche counties; Area 4, Shackelford, Callahan and Eastland; and area 5, Brown, Mills and Coleman counties.

There are 304 local P-TA units in the district.

Area P-TA members attending the workshop were: Mrs. Bob Latsom, District vice president from Cross Plains; Mrs. B. C. Jones, Local unit president, Cross Plains; Mrs. J. B. "Tip" Arthur, Eastland, district health chairman; Mrs. Frank Sayre, Eastland, district high school chairman, and Mrs. M. W. Herweck, Ranger, district parliamentarian.

These officers will plan a workshop based on the theme, "Strengthening the American Family Through Cooperative Action," for the area at a later date.

### Zeta Pi Members Are Entertained At Patio Party

Members of the Zeta Pi Chapter of Beta Sigma Phi and their guests were entertained with a patio party at the home of Mr. and Mrs. Art Johnson, 414 S. Hillcrest, Monday, Sept. 26.

During the buffet supper served on the patio, Mrs. Johnson told of sights experienced while on a recent trip to Oregon.

The group enjoyed an evening of visitation. Those attending the social were Mmes. and Mmes. Clyde Young, Mike Collins, Phil Hewett, Norman Watson, Elton Ables, Don Jeffcoat, Mrs. Stanley Harris and the host and hostess, Mr. and Mrs. Johnson.

KEEP YOUR LIGHT SHINING



Is the light of Christ's love reflected through you? Be in your place in the worship services.

DO NOT NEGLECT CHURCH

9:45 a.m. Church School  
11:00 a.m. Morning Worship  
3:00 p.m. District Six Convention, Lake Brownwood. There will be no Youth Meeting or Evening Vespers this Sunday night only. Everyone is urged to attend the e Convention.

**First Christian Church**  
Ray Heckendorn, Pastor



absolutely the most comfortable shirt you've ever worn!

the **Jimmy Demaret** one s-i-z-e shirt

by Jayson

new! exclusive! fits all men!

Imagine... you can enjoy all these extra features in the one-size knit shirt that fits any man to perfection!

- specially woven wash-and-wear knit that never loses its shape
- action-free raglan sleeves for complete freedom of movement
- fashionable convertible collar
- 13 colorfast colors and white
- short sleeves \$5.00
- long sleeves \$5.95

Come in and get yours today!



Voted by Owners

The Most Trouble-Free Car...

## RAMBLER ANNOUNCES STRONGEST GUARANTEE IN AUTO HISTORY

### 1 LIFETIME GUARANTEE ON NEW CERAMIC-ARMORED MUFFLER AND TAIL-PIPE STANDARD ON ALL '61 MODELS

Born of space-age developments, Rambler announces on all 1961 models a new Ceramic-Armored muffler and tail-pipe guaranteed against defects for the lifetime of the car while in the hands of the original owner. This covers total replacement cost including parts and labor. Every '61 Rambler muffler and tail-pipe is completely covered with a special ceramic coating—similar to that used in rockets and missiles—to give lasting protection against rust and corrosion caused by water, salt and acids. Another Rambler first!

### 2 12-MONTH, 12,000-MILE WARRANTY EXTENDED TO ALL NEW RAMBLER OWNERS

Now Rambler extends to all new Rambler owners its comprehensive full-year or 12,000-mile warranty, whichever occurs first. In fact, this liberal warranty, announced to dealers more than a year ago, also covers total replacement cost including parts and labor. It applies to all 1961 Rambler models and to 1960 Ramblers still within the warranty period. The normal industry warranty covers only 90 days or 4,000 miles.

*George Romney*  
PRESIDENT, AMERICAN MOTORS

More Evidence That **RAMBLER IS THE NEW WORLD STANDARD OF BASIC EXCELLENCE**

AMERICAN MOTORS CORPORATION, DETROIT 32, MICHIGAN





**MOST POPULAR PONTIAC BODY STYLE**, the rakish four-door Vista hardtop, is more beautiful than ever in the new 1961 Bonneville series. Curving windshield pillars, a slim line roof, and crisply defined side windows create a new custom appeal. At Muirhead Motor Co. in Eastland today.

**Marie—**

(Continued from Page One)

She lit one, smoked only briefly, put it down. Snubbing it in the ash tray, she wished the fire inside her could be quenched as easily. Profit, profit, profit. She began to hunt the Bible she'd neglected. Finally she found it on the top shelf of the closet, behind a shoe box.

She opened it and was immediately lost. It was a small Bible with no reference pages to guide her. You're so smart, she said to the voice, you tell me where it is. The voice seemed to have gone, leaving her completely alone. Frightened now, she flipped the pages. Old Testament or new she wondered. I should remember some verses, she told herself help-

lessly. Suddenly, a passage jumped from the page at her. It said nothing at all about money or profit. It simply read: "Let the words of my mouth and the mediation of my heart be acceptable in Thy sight, O Lord, my strength and my redeemer."

Running to the typing table, she gathered up her manuscript and read it. She literally gagged. The pages dropped from her numb fingers and scattered across the carpet. She sank down beside them and began to weep softly. Gradually the tears gained speed and she sobbed as she had not sobbed since before she moved to the city.

After awhile, she arose and with shaking hands gathered up each page of her novel. Very care-

fully, she put a large pan in the kitchen sink and placed her papers in it. If the fire threatened to get out of her control, she could turn on the faucet.

As these flames leaped, it seemed that the fire inside her cooled a little. I was so sure only ignorance didn't know money is the most important thing in the world she thought; now I know that decency doesn't know it either.

She went to bed in exhaustion, her experience having drained her of all energy. She felt unclean and unworthy; there was a bad taste in her mouth each time she closed her eyes and saw again the words she had typed.

But the image could be erased, she was sure. For the voice was again with her; not condemning this time, not warning at the

moment. All it said was: welcome back to My fold, My child.

**Milk—**

(Continued from Page One)

Although this article is interesting, we can't help but feel that a person, with as much talent as Mr. Gray, could be directed in activities of Civic interest and pride, or even politics, where we have a deep need today, and could be of so much more value to the fine community of Eastland.

**Smith's Letter**

I note with interest but also displeasure an article in your Sept. 20 publication. The article was entitled, "Joe Demands Full Measure in Bottle." I notice that you must have published the article with some reservation as you hastened to note at the end of the article to say that you received a full measure in your quart of milk.

Apparently Mr. Moore, Joe Gray had some thoughts on his mind which he wished for the public to be aware of and took advantage of your good nature in getting his views into print. My position in this matter is that such views as Mr. Gray's are not due publication before an investigation of such situations is conducted. It would be so much better in cases like this for responsible people to advise the proper authorities when they feel they are short-measured or short-weighted or products they buy.

There is an article in the October, 1960, Readers Digest entitled "How to Avoid Being Cheated." If you would suggest to Mr. Gray that he read this

article, I am sure he will see his action concerning pleasure at being short according to his need.

**Helps Heal And Itchy Skin**

Zemo—liquid or ointment—its antiseptic, preservative, itching, stops scratching, helps heal and clear rashes. Buy Extra Strength Zemo for stubborn cases!

— Call MA 9-1707 for Classified Ads — ATTEND THE CHURCH OF YOUR CHOICE EACH SUNDAY



**Thrifty-Cut Baby Beef Sale!**

<b>Round Steak</b>	or Sirloin Steak, Thrifty-Cut Baby Beef	Lb.	<b>69¢</b>
<b>T-Bone Steak</b>	Dad's Favorite! Thrifty-Cut Baby Beef	Lb.	<b>79¢</b>
<b>Rib Steak</b>	Thrifty-Cut Baby Beef Economical Steak Treat	Lb.	<b>59¢</b>
<b>Chuck Roast</b>	Thrifty-Cut Baby Beef Blade Cut	Lb.	<b>43¢</b>

<b>ARM ROAST</b>	Thrifty-Cut Baby Beef	Lb.	<b>49¢</b>
<b>PIKE'S PEAK ROAST</b>	Thrifty-Cut Rump or Thrifty-Cut Baby Beef	Lb.	<b>69¢</b>
<b>SHORT RIBS</b>	Thrifty-Cut Baby Beef	Lb.	<b>29¢</b>
<b>PREMIUM BACON</b>	Swift's Sliced	Lb. Pkg.	<b>55¢</b>
<b>BROWN 'N SERVE</b>	Swift's Premium Sausage	8-Oz. Pkg.	<b>49¢</b>
<b>HADDOCK PORTIONS</b>	Taste O'Sea	12-Oz.	<b>49¢</b>

**WORTH FOOD MART**

**Ground Beef**  
Worth Quality Really-Fresh  
Lb. **39¢**

**CLIP AND SAVE!**  
Redeem This Coupon for EXTRA  
**50 Free S & H Green Stamps**  
With the Purchase of 2 Cans  
**EL CHICO CHILI**  
Void After Sat., Oct. 8, 1960—Limit One  
**WORTH FOOD MART**

**CLIP AND SAVE!**  
Redeem This Coupon for EXTRA  
**50 Free S & H Green Stamps**  
With the Purchase of 3 Cans  
**BREAST-O-CHICKEN TUNA**  
Void After Sat., Oct. 8, 1960—Limit One  
**WORTH FOOD MART**

**CLIP AND SAVE!**  
Redeem This Coupon for EXTRA  
**50 Free S & H Green Stamps**  
With Purchase of 3 8-oz. cans Taste O'Sea  
**FISH STICKS** 8-oz. 3 Pkgs. **\$1.00**  
Void After Sat., Oct. 8, 1960—Limit One  
**WORTH FOOD MART**

El Chico Yellow Label	2	303's Cans	<b>39¢</b>
Tamales			
Stokely Red, Sour, Pitted			
Cherries		303's Can	<b>19¢</b>
Stilwell			
Tomatoes	2	303's Cans	<b>25¢</b>
Tenderleaf			
Tea Bags		48's Pkg.	<b>53¢</b>
Rainbo Kosher Dill			
Pickles	2	16-Oz. Jars	<b>39¢</b>
Hamburger Sliced			
White House			
Apple Sauce		25-Oz. Jar	<b>25¢</b>
Green Giant			
Peas	3	300's Cans	<b>55¢</b>
Parkay			
Margarine	3	1-Lb. Pkgs.	<b>59¢</b>
Sara Lee Frozen, All Butter			
Coffee Cake		14-Oz. Pkg.	<b>69¢</b>
Ore-Ida Frozen, Tater Tots or			
French Fries	2	1-Lb. Pkgs.	<b>59¢</b>

**Jell-o Gelatin** All Flavors 5 3-Oz. Pkgs. **39¢**

**Orange Juice** Del Monte 3 46-Oz. Cans **1.00**

Libby Cream Style or Whole Kernel	3	303's Cans	<b>49¢</b>
<b>GOLDEN CORN</b>			
Armour Star			
<b>VIENNAS</b> Sausage	5	4-Oz. Cans	<b>1.00</b>
Kraft's			
<b>MIRACLE WHIP</b>		Quart Jar	<b>49¢</b>

**Pillsbury—Refrigerator Cookies**

- Chocolate Chip
- Peanut Butter
- Cocoanut
- Butterscotch
- Sugar
- Oatmeal
- Caramel Nut Rolls

MIX OR MATCH 3 Pkgs. **1.00**

**Red Potatoes** U. S. No. 1 Colorado McClures 10 -Lb. Cello **49¢**

<b>Green Cabbage</b>	Firm Heads	Lb.	<b>5¢</b>
<b>Yellow Onions</b>	U. S. No. 1	Lb.	<b>5¢</b>
<b>Sweet Potatoes</b>	East Texas No. 1	2 Lbs.	<b>25¢</b>
<b>Waxed Rutabagas</b>	Minnesota	Lb.	<b>5¢</b>

**Tokay GRAPES**  
Lodi Flame  
2 Lbs. **25¢**

**CLIP AND SAVE!**  
Redeem This Coupon for EXTRA  
**75 Free S & H Green Stamps**  
with Purchase of Qt. Size Grip-Kote  
**6-MONTHS FLOOR WAX**  
Void After Sat., Oct. 8, 1960—Limit One  
**WORTH FOOD MART**

**CLIP AND SAVE!**  
Redeem This Coupon for EXTRA  
**75 Free S & H Green Stamps**  
With Purchase of Tek  
**INITIALED TOOTH BRUSH**  
Void After Sat., Oct. 8, 1960—Limit One  
**WORTH FOOD MART**

**CLIP AND SAVE!**  
Redeem This Coupon for EXTRA  
**50 Free S & H Green Stamps**  
With Purchase of 1 Pkg.  
**GIANT BREEZE DETERGENT**  
Void After Sat., Oct. 8, 1960—Limit One  
**WORTH FOOD MART**

**DIXIE Drive-In**  
EASTLAND RANGER HIGHWAY  
Box Office Opens 7:00 Show Starts  
Box Office Closes  
Admission 50c — Children Under 12 Free  
THURSDAY - FRIDAY - SATURDAY, OCT.

FRANK SINATRA EDWARD G. ROBINSON  
CAROLYN JONES THILMA RITTER KEITHAN WYNN  
FRANK CAPRA'S  
**"A HOLE IN THE HEAD"**  
PLUS: Two Color Cartoons  
SUNDAY - MONDAY - TUESDAY, OCT. 9

A hilarious guide to a slap-happy marriage and fun on the family plan!  
DORIS DAY DAVID NIVEN  
PLEASE DON'T EAT THE DAISIES  
PLUS: Two Color Cartoons

**RANGER DRIVE-IN**  
HIGHWAY 80 EASY ON RANGER HILL  
Box Office Opens 6:45 — Show Starts at 7:00  
Adults 50c—Kiddies Under 11 Free  
Only Eastland County Drive-In Open All Year  
THURSDAY - FRIDAY - SATURDAY

ROBERT BURLE RYAN IVES  
"DAY OF THE OUTLAW"  
A DAY YOU'LL NEVER FORGET!  
FREEVUE EVERY SATURDAY NITE  
SUNDAY - MONDAY - TUESDAY

YOU HAVE NEVER SEEN THE THINGS YOU WILL SEE IN  
DARRYL F. ZANUCK'S  
**CRACK IN THE MIRROR**  
ORSON WELLES - JULIETTE GRECO - BRADFORD DILLMAN  
Directed by RICHARD FLEISCHER  
A Darryl F. Zanuck Production  
CINEMASCOPE

**Eastland Telegram**  
 Record established in 1881, consolidated August 21, established 1887, Telegram established 1928. Entered matter at the Post Office in Eastland, Texas under the March 3, 1879.  
**TIMES PUBLISHING COMPANY**  
 Tri-Weekly—Tuesdays - Thursdays - Sundays  
 Louis Dick and Joe Dennis, Publishers  
 Virgil E. Moore, Editor

**WANTED ADS!**  
 Charges for at rate of \$2.00 Each

**RENT**  
 Decorated. Phone MA 9-1742.  
 Four room. Alice Speer.  
 Apartment. Robinson, Vil.  
 Modern two in on High-3-1742.  
 Apartment, 404.  
 Two bed-in duplex. 611.  
 Three room. Close in. Smith, 306.  
 Olden two bed-ater \$25.00 per E. Bridge.  
 REMOVED First message, a large bath and moving system. Further info. MA 9-1739. approval. Bids including the 300.

**MISC FOR SALE**  
 FOR SALE: Feeder pigs. Phone MA 9-2775.  
 FOR SALE: Registered Yorkshire pigs. 1955 Farmall C tractor with equipment. Wayne Brock Phone 2322, Olden.  
 FOR SALE: Good, clean seed oats. John Little, Route 1, Eastland. Phone MA 9-1967.  
 FOR SALE: T.V. 21" motorola, table model. \$35.00. 609 West Plummer. F. C. Tye.  
 FOR SALE: Gas range, Excellent condition. \$50. Call MA 9-2343.  
 FOR SALE: Muskrat coat. Good condition. See at Modern Dry Cleaners.  
 FOR SALE: Three good house trailers at bargain prices. W. D. Harper, Gorman.  
 FOR SALE: Ironrite ironer. Call MA 9-1648 after 5 p.m.

**REAL ESTATE FOR SALE**  
 FOR SALE: Two bedroom house. 125 ft. lot. 303 S. Oaklawn.  
 FOR SALE: Large house, garage and car port. 601 S. Halbryan. Call MA 9-1286.  
 FOR SALE: Three bedroom home on paved street. Approximately one acre land. See at 217 East Salsosa. Mrs. C. W. Young. Telephone MA 9-1257.

**SPECIAL NOTICE**  
 NOTICE: Lady desires light house keeping job for elderly lady or couple. Write B. Eastland Telegram.  
 PIANO TUNING: M. J. Kennamer will be in your city the first week in October. Call Main 9-1707.  
 SPECIAL NOTICE: Mowing, raking and hay baling. R. J. Cate, phone 2769, Olden.  
 SPECIAL NOTICE: Let me cut, rake and bale your hay. Casey Mezell, Phone MA 9-2703.  
 ELECTROLUX cleaners — new and rebuilt in stock. Authorized sales and service. Roy Gann, Phone MA 9-2474.

**NOTICE**  
 ALL ACCOUNTS payable to The Globe Clothiers prior to September 20th are payable to Mrs. Saule Perlestein, Box 306, Ranger, Texas, or may be paid to Earl Lebrede at The Globe Clothiers.

**Eastland Masonic Lodge No. 467**  
 Reg. Stated meetings 2nd Thursday of each month, at 8:00 p.m.  
 H. C. Pounds, W. M.  
 L. E. Huckaby, Secretary

**GOLDEN AGE NURSING HOME**  
 ... home atmosphere ... care for all types of patients ... special diet. 24 hour nursing care ... doctor on call 24 hours.  
 Phone HI 2-2579 Cisco, Texas

**PIANO TUNING**  
 M. J. KENNAMER is in your city each month. Write to him for tuning dates at ...  
 500 W. 7th St., DALLAS, TEXAS

**GIANT OCTOBER ANNIVERSARY SALE**: Wonderful selection of "number one" quality items at factory prices! Great reductions on live and artificial plants. Many discontinued designs at less than wholesale. Horton Ceramics Sale Room, Hwy 80 East, Eastland, Texas.  
 NOTICE: Would like to keep child for working mother. Reasonable. Phone MA 9-2143.

**Elizabeth Fox To Help With TWU Carnival**  
 Elizabeth Fox, 1959 graduate of Olden High School, will be working on the rides committee for the ninth annual Gold Rush Carnival at Texas Women's University to be held Oct. 11.  
 The carnival grounds north of the campus will feature some 30 games booths, rides for school children, a variety show and plenty of carnival type food. An unusual aspect of this affair is the act that TWU students do all the work on the carnival themselves instead of using professional help.  
 In connection with carnival, a resident of each dormitory, using the theme "Carnival of Songs," will construct a display similar to a parade float on the dormitory lawns. A loving cup will be awarded to the dormitory with the best display.

**ATTEND THE CHURCH OF YOUR CHOICE EACH SUNDAY**

**AUTOS FOR SALE**  
 FOR SALE: 1953 Ford six cylinder pick-up. Phone MA 9-1845.

**MISC WANTED**  
 WANTED: Girls to help with fountain. Davis Drug.  
 WANTED: Ironing. Quality work. 607 S. Dixie.  
 WANTED MAN OR WOMAN: Full or part time to represent Farmers Insurance Group, Multiple Line Insurance Company, Contact Robert C. Stewart, 2006 North First, Abilene, Texas. Phone Or 3-4381.

**Enjoy Life Downtown**  
 Close to everything. 100 lovely redecorated rooms with 100 private baths, all with ceiling fans and seated with steam heat, for only \$39.50 per month which includes maid service. Delicious meals in Coffee Shop. Also apartments custom made to any size for permanent guests. Contact Mrs. Robinson, manager, the friendly Village Hotel (formerly the Connellee) Eastland, Texas



**NEW OLDS**—Oldsmobile's all new and distinctive styling motif for 1961 is exemplified by this Dynamic 88 Holiday Coupe. The new body lines give the cars a long, sleek look, but over-all length of the 88's has been reduced 3 inches. The Super 88 is powered by the high performing 325-horsepower Skyrocket engine. At Pipkin Olds-Cadillac in Eastland today.

**SOCIAL CALENDAR**

**Thursday, Oct. 6**  
 2 p.m.—Ms. Beulah Turner will host the members of the Flatwood Home Demonstration Club when they hold their regular meeting.  
 3 p.m.—Members of the Thursday Afternoon Club will meet for an afternoon tea to begin the club's new year.  
**Monday, Oct. 10**  
 7:30 p.m.—Regular meeting of the Oddfellow Lodge will be held in the IOOF Hall.  
 7:30 p.m.—Monthly meeting of the American Legion Auxiliary will be held in the Legion Hall.  
 3 p.m.—Members of the Christian Women's Fellowship will attend the county council in Ranger.  
 7:30 p.m.—Mrs. Willis Moore

will host members of the Xi Alpha Zeta Chapter of Beta Sigma Phi. Mrs. M. K. George will have the program.

**Tuesday, Oct. 11**  
 7:30 p.m.—The IOOF Hall will be the scene of the regular meeting of the Rebekah Lodge.

9:30 a.m.—Members of the WSCS will meet at the church for their Mission Study.

**Wednesday, Oct. 12**  
 12 noon—Activities of Civic League and Garden Club will begin at a Hawaiian Luau in the Women's Club.

**Hospital News**  
 Patients in the Eastland Memorial Hospital are the following:  
 J. F. Trot, medical  
 Mrs. Nancy Jones, medical  
 Gille Burt Williams, surgical  
 Mrs. J. H. Rogers, Gordon, surgical  
 Mrs. Pat McPhearson, Cisco, medical  
 E. T. Boyd, Ranger, medical  
 Jerry Reeves, accident  
 Mrs. Joe Ingram, surgical  
 C. A. Lassiter, Cisco, medical  
 Mrs. Clara Hood, surgical  
 W. A. Blackmon, medical  
 Mrs. Josephine White, Cisco, medical  
 R. S. Hollis, medical  
 Mrs. T. O. Elam, Fabens, accident  
 Mrs. Margaret Welch, medical  
 Owen Mangum, Carbon, medical  
 Mrs. Martha Myrick, medical, Cisco  
 Dismissed:  
 Mrs. Dean Collins, Mrs. Mary Hill, Mrs. B. B. Cooper, Jerry Doyle, Mrs. Lela Carley and Mrs. C. M. Jackson.

**HOMES FOR SALE**  
 One (there were four) brand new colonial homes, all three bedrooms, all one and one-half baths, all brick trimmed, in the 500 block of Pershing. All have sliding glass doors, lovely concrete patios, all electric kitchens, built-in ranges, ovens, automatic dishwashers and disposals. Carpet, tile floors throughout, completed fenced yards, and many more wonderful new features all on terms you and your family can afford and enjoy. Only \$350 down (nothing down to veterans) and payments like rent. All are inspected and approved by FHA and GI.  
 Why throw away rent dollars every month? Pay your rent dollars on your own home and create a savings for your family. See or call us today. We arrange all of the financing and red tape. No obligation, of course.  
**Village Homes**  
 Suite 210 — Village Hotel  
 Don Pierson - MA 9-1033  
 Norman Guess - MA 9-1545

**Quick Relief of HEADACHE**  
 For faster, more complete relief of headache, neuralgia, neuritis pains, take STANBACK Tablets or Powders. STANBACK'S S.A. (Synergistic Action) — the combined action of several medically-approved ingredients in one easy-to-take dose — eases anxiety and tension, starts bringing relief right away.  
 Snap Back with STANBACK POWDERS  
 Guaranteed by Good Housekeeping

**oriental print shirtdress**  
 First on the scene for Fall and later... the shirtdress, designed with open collar, back pleat and full, full skirt. The print, reminiscent of the Far East, is done in exotic colors. Drip-dry cotton; 12-18.  
**3.99**  
**MODE O'DAY**  
 East Side of Square Eastland

**QUALITY AND ECONOMY IN OUR Meat Buys!**  
 Friday and Saturday Only

Even Roast	Good Calf	Lb.	39¢
Shoulder Roast	Good Calf	Lb.	45¢
Fresh Side Pork	Sliced	Lb.	49¢
Bone Steak	Good Calf	Lb.	59¢
Club Steak	Good Calf	Lb.	59¢
Pork Neck Bones	With Meat	Lb.	15¢
Pork Steak	Lean	Lb.	39¢
Fresh Pig Hams	1/2 or Whole	Lb.	43¢
Pork Sausage	Lean 3 lbs.		1.00

**Arnest-Sauls Packing Co.**  
 Retail Division

*It's Here... and it's Hot!*  
**Hot new number in the LOW-PRICE FIELD!**  
**F-85**  
*...every inch an OLDSMOBILE!*

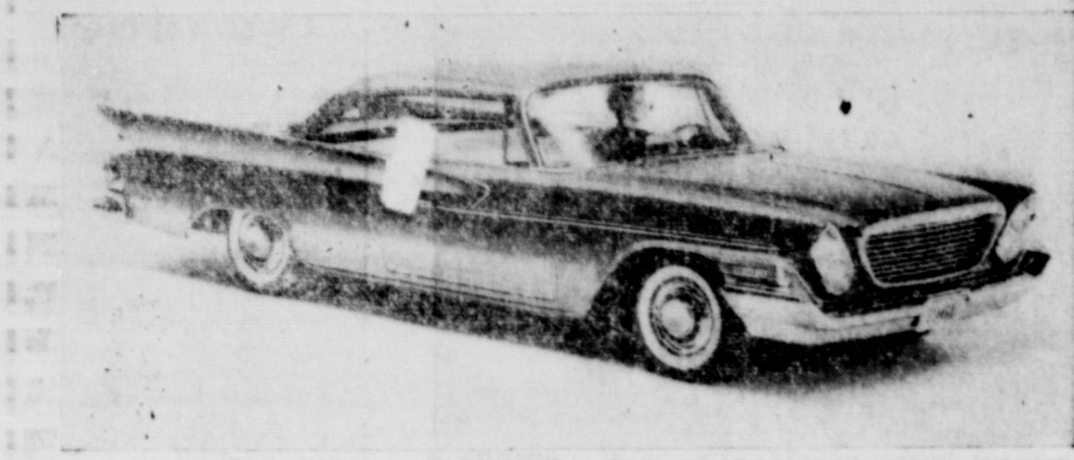
Here's an all-new kind of car in the low-price field—more agile to drive, more economical to operate! Sized to seat six in comfort! Not too big... not too small... just right for you! So sturdy and road-sure you'll drive all day without tiring! Smooth and quiet in the Oldsmobile tradition!

**Built for the buyer who wants something better in the low-price field!**

- Exclusive aluminum Rockette V-8 engine turns out a spirited 155 h.p.
- Handy 188-inch length.
- Easy-riding 112-inch wheelbase.
- Sedans or Station Wagons—all with four big doors.
- New Hydramatic with Accel-A-Rotate action (optional at extra cost).
- Big space inside... for you and your luggage!

**SEE YOUR LOCAL AUTHORIZED QUALITY DEALER**

Before you buy any low-priced car... be sure to see and drive the new **F-85!**  
**PIPKIN OLDS-CADILLAC, 314 WEST MAIN**  
 TUNE IN MICHAEL SHAYNE EVERY WEEK ON NBC-TV!



CHRYSLER INTRODUCES NEW SERIES — Pictured above is Chrysler's Newport series for 1961 to go with its Windsor and New Yorker models. The Newport, shown here is a two-door hardtop, powered by a 265-horsepower engine which operates on regular grade fuel, thus giving more miles per dollar. Being shown at Blevins Motor Company in Eastland today.

**NEWS FROM CARBON**  
The Eastland County Singing Convention will meet at Mountain Top Sunday, Oct. 9, all day, lunch at 12:30. Come and bring your lunch and spend the day with us.

At the last meeting of the Sabanno Valley Game Preserve Association plans were made for the annual barbecue which is to be held Oct. 10 at 6:30 p.m. The men will be generous and well-rounded out with drinks and everything complete at \$1.90 for adults and 60 cents for children. Mr. Will Usery has secured some interesting films for the evening and other means of entertainment are being planned. If the night is cool the program will be in the house.

Make your plans now to attend the barbecue and meet your friends there. Our regular meeting nights have been changed from Tuesday to Monday nights. Mr. and Mrs. A. D. Thurman of Cisco and Mr. and Mrs. A. M. Thurman of Gorman visited Mrs. Dacia Thurman and Tommy last week.

# SALE OF DUSTERS



from our regular stock...

- Sizes: S-M-L
- Fast Colors
- Checks & Plaids

reg. 1.98

## 88¢

**REPEAT OF A SELL-OUT! Fall Fabrics**

- Regular 1.00—Fuller Calico Print—36-Inch
- Regular 79¢—Davis & Catterall Cotton Print, 36-Inch
- Regular 59¢—Kolbe Border Print—36 Inch
- Regular 79¢—Drip-Dry Transitional Cottons, 36-Inch
- Regular 1.29—Tog-A-Sheen Chind Print—45 Inch

**NOW YARD 39¢**

- Regular 59¢—Schwartz-Liebman 100% Cotton—36 Inch
- Regular 49¢—Davis & Catterall Valencia Cotton—36 Inch
- Regular 69¢—Manes Character Cotton Print—36 Inch
- Regular 59¢—Cranston Playtime Cotton Print—36 Inch
- Regular 1.19—Bloomberg Crepe—45 Inch
- Regular 89¢—Sigo Fabrics—45 Inch
- Regular 69¢—Manes Drip-Ly Fabric—36 Inch

**NOW YARD 29¢**  
formerly Anderson's

# Nelson's

111 West Main - Eastland, Texas

Sam Murray and family of Eunice, N. M. visited their parents, Mr. and Mrs. Luther Murray and Mrs. Pearl Snodgrass, this week.

Mr. and Mrs. Woodrow Harris and son of Rising Star and Mr. and Mrs. Kelly and son of Crosscut visited Rev. and Mrs. Jimmy Turner and family Sunday and attended morning services at the Baptist Church.

The Carbon Wolverines played Pottsville there last Thursday night where they met stiff competition. We scored on the first play of the ball game when Rhodney Jackson ran about 35 yards around left end to score. The half ended 28 to 6 in Pottsville's favor. The final score was 40 to 19 in Pottsville's favor.

We went on to score two more touchdowns in the last half, one when Eddie Frashier scored with a 10 yard run. A pass from Jackson to McDaniel for 30 yards scored the third TD. The final score was 40 to 19 in Pottsville's favor.

We regret that McDaniel was injured in the game and has been hospitalized at Gorman. He will be out of this week's game but it is hoped he will be back in action soon.

We play our first conference game at Moran Saturday, Oct. 8, at 7:30 p.m. This promises to be a good game, so take your family and go over and give our boys your support.

Calvin Gilbert and family of Denton spent Saturday night and Sunday with his parents, Mr. and Mrs. C. C. Gilbert, and Nancy Ann returned home with them after spending the week with her grandparents.

Mr. and Mrs. J. C. Holloway of Eastland visited Mr. and Mrs. Marvin Hays Sunday.

Alec Scott is visiting relatives in Kentucky this week. Mr. and Mrs. John Nichols and Mary visited Kenneth, Mayhall and family. Tommy Nichols and family of Abilene. The daughter of Mr. and Mrs. Mayhall has been very ill in the hospital but was able to return home Sunday.

Mr. and Mrs. Ray Lewis and son, Wilbur Dean, and Mr. and Mrs. C. C. Fenter, accompanied by Mr. and Mrs. J. V. Lewis and daughter of Cisco left this week to attend a 10 day revival meeting near Gladewater. They also plan to visit their daughter, Mrs. J. E. Brewer and family of Corsicana.

Mr. and Mrs. W. M. Dunn and Mr. and Mrs. A. N. Mahan and Rev. B. F. Clement of Gorman spent two days on Possum Kingdom Lake last week.

Mrs. C. D. Sandlin and son, Ralph, of Springtown, spent the week with her son, D. D. Sandlin and family.

Mrs. George Jones is ill in the Gorman Hospital at this writing. Mr. and Mrs. Ed Layton of Eastland visited the C. C. Gilberts Sunday.

**Chevrolet-**  
(Continued from Page One)  
windshield wipers, and a placement for the fuel tank which protects it from road hazards such as hard bumps and flying stones. Although the conventional cars are shorter, narrower and slightly lower, the interior roominess remains about the same or better than comparable 1960 models. Riding comfort is improved. From a styling standpoint, the new models feature gently curves

and smooth lines and a generally cleaner and airier appearance from all angles. The Corvair models to be unveiled Friday also blossom out into a complete line of passenger and commercial vehicles. They include: Passenger cars—Club coupes, four-door sedans and a new Lakewood Station Wagon in the "500" and "700" series, plus the deluxe Monza Sport Coup and the new Greenbrier Sports Wagon. Commercial—Corvan, Rampside and Loads de trucs.

**Demo-**  
(Continued from Page One)  
sign, Charles Walker of Baird; Wiley Connally, brother and state representative of State Democratic Chairman Ed Connally of Abilene; Scott Bailey of Cisco, newly elected state representative from this district. Grady Hogue, president of Cisco Junior College served as Master of Ceremonies.

**Speakers Named For Baptist Convention**  
A complete roster of speakers has been confirmed for the 70th annual anniversary meeting of the Baptist General Convention of Texas to be held in Lubbock Oct. 11-Nov. 2. More than 7,500 Baptists from throughout the state are expected to attend the 70th annual meeting of the 1 1/2 million-member Convention.

The Eastland High School Stage band, under the direction of Ed Hewitt, gave a concert preceding the barbecue. Also the Harmonettes, a girls quartet from Baird High School entertained the crowd. A light thunder shower moved the crowd into the American Legion Hall for the enthusiastic speech given by Wright. He was given a standing ovation at the conclusion of the speech.

Theme for the three-day gathering will be "Found Faithful," said the Rev. J. Carroll Chadwick of Center, Texas, chairman of the Convention's committee on order of business. Opening session will pay tribute to Dr. Forrest C. Fcezor, Texas Baptist executive secretary who retires Dec. 31 after seven years in the state's top Baptist post.

**Ranger College Students Elect Class Officers**  
Ranger College students met Oct. 5 at the Activity Period for the organization of the classes and the election of class officers.

Three of the six general sessions will outline programs of the Texas Baptist Convention—State Missions, Human Welfare, and Christian Education. Topping the list of principal speakers will be the president of the 9 million-member Southern Baptist Convention, Dr. Ramsey Pollard, pastor of Bellevue Baptist Church, Memphis, Tenn. Dr. Gordon Clinard professor at Southwestern Baptist Theological Seminary will bring the annual Convention sermon.

Sophomore class officers are president, Howard Stallings, Fort Worth; vice president, Clyde Smith, Carrollton; secretary-treasurer, Pat Blakeley, Seagraves; reporter, Sandy Taylor, Eastland; and Student Council representative, Butch Scott, Anson.

Other principal speakers will include Dr. John Haldeman pastor of the Allapattah Baptist Church Miami, Fla.; Dr. C. E. Autrey, director of the Southern Baptist Home Mission Board's division of evangelism; and Dr. Leo Eddleman, president of New Orleans Baptist Theological Seminary.

Freshman class officers are as follows: president, Jimmy Potts, Breckenridge; vice-president, Don Lambeth, Goree; secretary-treasurer, Norma Gayle Emfinger, Ranger; reporter, Walter Blackwell, Ranger; and Student Council Representative, Bill Stuart, Ranger.



SUMMER TRAINING, Alaska. Infantrymen of Company C, 1st Battle Group, 22d Richardson, on a seven day hike through 60 miles of rugged mountains and glaciers on the Kenai Peninsula south of Anchorage.

**I. C. Maupin Catches Big Ones At Lake Leon**

H. B. O'Keefe of the Chuck-A-Block Marina at Lake Leon reports that fishing at Lake Leon has been good and there has been several good catches of big black bass and channel catfish around the lake in the past few days.

— Call MA 9-1707 for Classification

## VOTE FOR TEXAS

RICHARD M. NIXON, candidate for President, is a Californian, but he thinks the Texas way. Richard Nixon stands for:

- A strong national economy and defense so that America will not have to apologize to Khrushchev for anything;
- A sensible farm program that will attack present problems.
- Texas retaining its tidelands, and a tax plan to Texas.
- Local control of our schools.

If you will read and compare Nixon's that of his opponent, you will agree that Nixon is a vote for the best interests of TEXAS DEMOCRATS FOR NIXON & ALLAN SHIVERS, Chairman 308 W. 15th, Austin

Pol. Adv. Paid for by Democrats for Nixon & Allan Shivers, Chairman

# Chrysler '61

Others in Chrysler's price class are Jr. editions for '61. Not Chrysler! Why? Because Chrysler's reputation has always been based on full-size value cars. Result: your investment in a Chrysler will not be compromised by lesser cars bearing the Chrysler name.



This is the Newport 2-door Hardtop

## featuring the new Newport!

...a full-size Chrysler a new, lower price range

It's new! And it's a beauty! It's Newport... the big car that's every inch a Chrysler. Come see what you get with the Newport's new, lower price Unibody, a single unit that's 100% stronger than old-type body-and-frame construction. A new Firebolt V-8 engine that runs on regular gasoline. Five-foot-wide seats... plus a driver's seat that supports you from shoulder to knee. A brand-new alternator that gives your battery longer life. And unexcelled torque bar handling | The Newport! Full-size proof that Chrysler can't be beat for value. Ask your dealer. He's waiting with a key and the widest smile in town!

CHRYSLER '61: NEWPORT \* WINDSOR \* NEW YORKER \* 300

# BLEVINS MOTOR CO. 514 W. Main

### FURNITURE for the Entire Home

- Carpet - Rugs
- All Prices

Be Sure To Check With



**Time to Plan Winter Pasture**

Let this hot weather fool you. Winter is not far away, and the time to plan for winter pastures is now. Temporary pastures will supply the needed green grazing, and will also help with erosion control, says McBee.

McBee, extension pasture specialist, says Texas has had a good pasture year, but the summer grasses will be dormant during the winter months. Temporary pastures will supply the needed green grazing, and will also help with erosion control, says McBee.

Pastures, just like all other crops, need to be fertilized. A soil test is the only sure way to determine just what fertilizer is needed, and money spent for a soil test is never wasted. If the seed have to be dusted in, the fertilizer should be put down also, says McBee. Even if the winter pasture doesn't produce, the fertilizer is not wasted—it is there for the next crop.

McBee advises contacting the local county agent for additional information concerning winter pastures. County agents also have copies of L-258, "Winter Temporary Pastures."

**Hammer Life Insurance Company**  
Ben E. Hamner, President

This company has been in operation in this area since 1942 selling policies to be used primarily for burial purposes. We write from \$100 to \$50,000 and our policies are paid in cash, which allows freedom in the selection of the Funeral Director of your choice.

For further information come by to see us at Hammer Funeral Home, 301 S. Lamar, Eastland P. O. Box 431 Dial MAin 9-2611

YOU HAVE TO TRY IT TO BELIEVE IT!

**New Gillette Super BLUE BLADE**

10 for 69¢

FITS ALL GILLETTE RAZORS



**CRASHING TO HIS DEATH**—Moments after this photo was taken Jim Gilchrist, top car, was dead. He crashed into a retaining wall at Minnesota State Fair, St. Paul. The other driver in the accident, Rick Jackson, was not injured.

**Sixty-Three Members of Rhyne Family Attend Reunion Sunday**

A joyful day of picnicking, visiting and making movies was enjoyed by 63 members of the Rhyne family at their reunion formerly celebrated at "Uncle Jake Rhyne's Birthday" Sunday at the city park.

Children present were the following: Mr. and Mrs. Jake Rhyne and McLev of San Antonio; Mr. and Mrs. Philip Rhyne of Carbon, Mrs. Pearl Snodgrass, Mrs. Elbert Jackson of Carbon and Mr. and Mrs. Roger Harris of Eastland.

Grandchildren present were as follows: Mrs. Wilma Burgers of Saratoga, Calif.; Mr. and Mrs. Leake Lane and Sandy of Cisco; Mr. and Mrs. Sam Murray of Midland; Mr. and Mrs. H. E. Fox and children of Odessa; Mrs. Jack Shelby and Truman of Big Spring; Harold Snodgrass of Midland; Mr. and Mrs. C. B. Harris and Wayne of Westwater; Mr. and Mrs. Bill Becker and Brad of San Antonio; Mr. and Mrs. Cecil Self and children of Gorman; Mr. and Mrs. Joe Bennett and children of Gorman; Mr. and Mrs. Joe Garrett and children of Mineral Wells; and Ray Rhyne and children of Eastland.

Great-grandchildren present were Mr. and Mrs. Henry Jackson and children, Mr. and Mrs. Billy Frank Jackson, Albuquerque, N. M., A/3C John Roger Harris, Roswell, N. M., Mrs. Marcus Horn of Abilene. Guests included Mrs. Mae Truly of Eastland, Mr. and Mrs. H. L. Harris of Cisco and Rupert and Collette Brown of Cisco.

**Latest Tips On Freezing Poultry For Home Use**

The popular Texas Agricultural Extension Service bulletin "Freezing Poultry for Home Use" has recently been reprinted for the third time. In addition to listing the equipment needed for preparing poultry for freezing, the bulletin explains and illustrates the different steps in cutting and packaging poultry for efficient and easy use.

As explained in the bulletin by F. Z. Beanblossom, poultry marketing specialist and Roy Snyder, meats specialist, poultry used for freezing should be of high quality and prepared ready to cook. Because of this need for preparation, it is advisable to think about the every-day needs of the family and special occasions before preparation of the chicken or turkey starts. Be sure the poultry is ready to be cooked regardless of the form in which it is frozen.

The recommendations given in the bulletin have proven to be reliable in insuring a quality product, but they are not necessarily the only procedures. This bulletin, B-177, may be obtained from local county extension agents.

**STATIONED IN GERMANY**

P.F.C. Richard H. Corbell, son of Mr. and Mrs. L. E. Corbell, 310 N. Dixie, arrived in Karlsruhe, Germany Sept. 25. PFC Corbell is serving with the United States Army and will be stationed in Germany for the next 15 months. He is with the third missile battalion of the Air Defense Command.

**HOME FROM GERMANY**

Mr. and Mrs. John Fehl Jr. and son, Johnny, who have been in Germany for the past three years, are in Eastland visiting with his parents, Mr. and Mrs. John Fehl, S. Seaman.

Mr. Fehl is serving with the United States Army in Germany.

**ODESSA VISITORS**

Mr. and Mrs. Gene Clark and Karen of Odessa are visiting in the homes of their parents, Mr. and Mrs. Tommy Clark and Mrs. L. A. Scott.

**T. L. FAGG**  
REAL ESTATE

Property Management  
Home and Farm Loans

**MATTRESSES**

Save up to 50% renovating choice of color and firmness. Complete bedding. Made and guaranteed by WESTERN MATTRESS CO., San Angelo. Phone MA 9-2689, Eastland and leave address.

**Bobby Schuman**  
CONTRACTOR

D8 Caterpillars  
Root Plowing — Tanks  
Timber Chaining

PHONE  
DE LEON 2912  
EASTLAND MA 9-1912

**VISITS PARENTS**

Mr. and Mrs. Eugene Kitchens of Abernathy visited in the home of her parents, Mr. and Mrs. Finis Johnson, over the weekend.

**RETURNS HOME**

Mrs. E. T. Tucker of 611 S. Walnut has returned home from the Throckmorton Hospital where she spent 16 days. Mrs. Tucker is recovering at home now.

—Call MA 9-1707 for Classified Ads—

SAVE NOW! FINEST USED CARS IN TOWN

**Priced To Sell**

1959 Rambler 4-dr. Radio & Heater. White tires, real clean **1695<sup>00</sup>**

1956 Olds 88 4-Door. Air conditioned, power steering and brakes. One owner. Clean car. **995<sup>00</sup>**

1959 Olds 98 4-Dr. Air conditioned, power windows, seats. Real clean **2995<sup>00</sup>**

1957 Chevrolet 2-Dr. 6 Cyl. Standard shift. Radio and heater **895<sup>00</sup>**

**PIPKINS OLDS - CADILLAC**

314 W. Main EASTLAND Ph. MA 9-2636

**PROMPT ACTION**



**on your Home Loan Application**

Because we are specialists in home-financing, your application gets prompt attention here... from experienced loan people who know and understand local conditions. We'd like to work out a monthly-payment plan to fit your needs. When you're ready to buy or build, see us about the financing.

**First Federal Savings & Loan Association of Ranger**

ONLY 3% DOWN ON FHA LOANS

204 Main Ranger, Texas Phone MI 7-1611  
—Office Hours: 9 a.m. - 4 p.m.—Closed Saturday—

**"THE MIGHTY MIDGET"**  
THE WANT AD  
Will Do the Job for You

**For Just 70¢**

You can run a seven word classified ad in this newspaper for THREE times. In this day and time that's really a bargain.

Phone MA 9-1707  
Eastland Telegram

**-SPECIAL-**

**30 Day Only Get Acquainted BARGAIN OFFER**

**SEAT COVERS** Tailored To Your Car

FIBER AND ALL LEATHER TRIM

REGULAR 24<sup>95</sup> NOW **19<sup>95</sup>**

Save Up Your Car at This Unheard of Bargain

**BLEVINS MOTOR CO.**

Call MA 9-2433 for Appointment or Come by Stan Lynn, Trimmer

Most Models Rear Arm Rest \$2.50 Extra



**Dad! give your boy an "oil well" mechanical toy--only \$2.00**

This is one of the most remarkable new mechanical toys of the year—so strong and easy to work that a three-year old can play with it... so interesting to operate that it appeals to boys in their early teens.

Secure an "oil well" coupon from your neighbor under the Humble sign. Mail it with \$2.00 to the address indicated. Within a week or two, your boy will have his "oil well" and you'll have a happy little "oil man" in your home.

Plus coupon from any Humble Dealer

"Kids love this toy!"

**HUMBLE**

SIGN OF Happy Motoring!

"Escon," "Happy Motoring" are registered trademarks

HUMBLE OIL & REFINING COMPANY  
America's Leading ENERGY Company

### AROUND THE CAMPUS

**Why I Like To Read Novels**  
—Mike Herrington

I like to read novels because they are an escape into an excitingly different world. In novels of a earlier era it is possible to turn back the pages of time. I can imagine myself about to lead the Virginia reel with a pretty Southern belle or find myself serving gallant knight on a medieval battlefield. But reading is not all that history; much of it is current history in the making. In science fiction the novel is a little more exaggerated, but I can still visualize myself being the first man to land on Mars. In the more realistic modern novel I am able to see myself in a variety of occupations: Wyoming rancher, an African game warden, a Hollywood star, or presidential cabinet member. Because novels open this door to another world and shut out the worries of the realistic one, I enjoy reading them immensely.

Among the Ranger fans attending the Ranger-Del Mar game in Corpus Christi Saturday night

### Quail Season In Some Areas Still Uncertain

There is still a big question as to how good the 1960 quail season will be, according to the assistant executive secretary of the Game and Fish Commission in Austin.

Biologists are now checking conditions in regulatory areas for recommendations at the Oct. 7 meeting of the Game Commission.

At the July meeting it was suggested that quail season be opened Nov. 1 in most of the counties under regulatory authority. However, there was a strong protest in the part of dog owners and many others. It was decided to delay decision on the opening date. Since then, there is evidence that the quail crop in some areas isn't up to expectations.

The general quail season in Texas is Dec. 1-Jan. 16, inclusive. There are a few counties where the season opens two weeks earlier, and a few where it extends until Jan. 31.

Season for Texas shooting resorts opened Oct. 1, and will continue through February on both quail and pheasant. These are pen-raised birds, released for shooting over dogs. Eight resorts this year also are offering duck shooting. Information on these resorts can be obtained from Joe B. Davidson, representing the Sportsmen's Service Bureau, Box 661, Tyler, Texas.

were Mr. and Mrs. Neil Day of Eastland; Mr. and Mrs. Bill Brashire of San Antonio; Mr. and Mrs. Clarence Sheelar, of Chorus Christi; Cheerleaders Beth Key, Rita Sipes, Sandy Taylor, Nellie Sue Vinson, and Nancy Kelley; Mrs. R. L. Hamrick; and Homer Montgomery, a Ranger High graduate now playing football for the University of Chorus Christi.

### Hints Offered On Getting Most From Pastures

Are you getting maximum returns on your pasture investment. If not, chances are you are violating one or more of the cardinal

rules of pasture planning and use, says A. M. Meekma, extension dairy husbandman, of College Station.

These rules are:

Plant a productive forage crop or combination of crops so there will be an adequate pasture all year.

Use the best cultural practices, including fertilizing, to insure

pasture growth.

Keep waste to a minimum during grazing, harvesting and feeding.

Prevent damage from trampling or overuse.

If you don't have a productive stand, then plans for future stand need to be made, Meekma continues.

Pastures now available can be made more productive by proper

use. Strip grazing, which is simply grazing off an area and then allowing it to grow out again, prevents damage to some plants, the specialist explains. Feeding pasture as green chopped forage has a similar advantage, but under certain conditions, green chopping may be too expensive. Green chopping is, however, beneficial to plants such as alfalfa and oats.

Production of some pasture plants would not be greatly improved by strip grazing or green chopping. In this case, rotation grazing fills the bill, says Meekma. Most of the true clovers fit into this category.

Clipping the pasture after the herd has grazed it will remove un-eaten forage, promote new, more nutritious growth, and help control

weeds.

According to Meekma, production of inefficient pasture use by grazing and spot grazing. "The best pasture is 'Remember,'" he says, "the best pasture is available the forage is in its growth. Once plants begin to bloom, quality will decrease and production will fall."



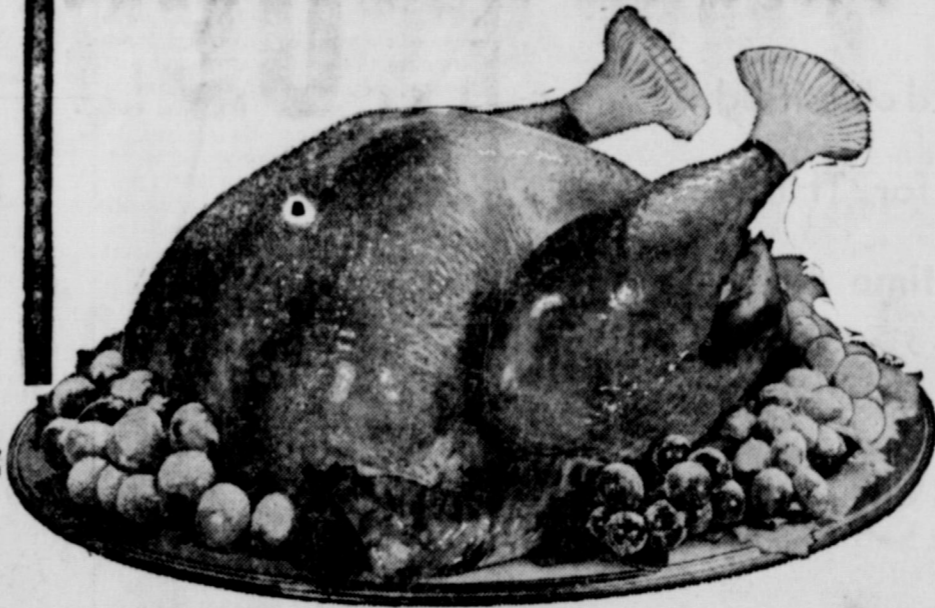
Redeem this Coupon for **50 FREE GOLD BOND Stamps** with the purchase of \$5.00 or more.

**SAFeway**

Limit One Per Customer. This Coupon Expires October 8, 1960.

# SAFeway SILVER

- GRAPE JUICE** Welch's — A refreshing beverage. **3** 24-Oz. Bottles **1**
- GRAPEFRUIT JUICE** Town House Natural. **4** 46-Oz. Cans **1**
- DEL MONTE DRINK** Pineapple-Grapefruit. **4** 46-Oz. Cans **1**
- TOMATO JUICE** Del Monte. **3** 46-Oz. Cans **1**
- PIE CHERRIES** Town House — Red sour pitted. **5** No. 303 Cans **1**



Safeway Meats

## GROUND BEEF

Economical — A Safeway Guaranteed Product. Made from U.S. Government Inspected Beef. **Lb. 39¢**

## Hen Turkeys

New Crop — 8 to 14-lb. avg. U.S.D.A. Inspected for wholesomeness and Grade "A" Ready-to-Cook, Whole. **Lb. 39¢**

- "Dollar Days" Buys!
- Whipping Cream Lucerne — Delicious with Strawberries. **1/2 Pt. 29¢**
  - Spaghetti Dinner With mushroom. **18 1/2 Oz. 45¢**
  - Chicken Noodle Dinner Kraft. **8 Oz. 41¢**
  - Instant Coffee Airway — High in Flavor, low in price. **1 1/2 Oz. 19¢**
  - Instant Coffee Safeway — 100% pure coffee. **1 1/2 Oz. 19¢**
  - Instant Cocoa Baker — Children can make Hot Chocolate themselves. **1 1/2 Oz. 45¢**

## Pork Spareribs

3 to 5-Lb. Avg. Delicious fried or barbecued. **Lb. 29¢**

"Naturally Aged" Safeway Beef!

## Round Steak

Full Cut — U.S.D.A. Choice Grade Heavy Beef. **Lb. 79¢**

- Veal Cutlets Manor House. Delicious fried. **Lb. 69¢**
- Sliced Bacon Safeway. Thick Sliced. **2 Lb. Pkg. 89¢**
- Pork Sausage Bulk — Delicious breakfast treat. **3 Lb. \$1.00**
- Pork Roast Boston Butt. **Lb. 45¢**
- Rump Roast U.S.D.A. Choice Grade Beef, "Naturally Aged." **Lb. 75¢**

- More Values!
- LaLani Pineapple Crushed. For topping cakes. **2 1/2 Lb. 31¢**
  - Empress Honey Strained — Golden sweet, energy packed. **24 Oz. 53¢**
  - Pancake Mix Kitchen Craft — Sweet cream buttermilk. **1 Lb. 19¢**
  - Pillsbury Best Flour For baking. **5 Lb. 55¢**
  - Nu Made Salad Oil For salads or cooking. **Quart Bottle 49¢**
  - Golden Keen Shortening — (12c off label). **3 Lb. 57¢**

## FLOUR

Harvest Blossom. **5 Lb. Bag 37¢**

For baking or frying. (10-Lb. Bag-69¢)

## CORN MEAL

Kitchen Craft. **5 Lb. Bag 35¢**

White enriched. (10-Lb. Bag-69¢)

1 LB. LOAF **19¢** Bakery Special of the Week Regular Price 25c

Mrs. Wright's Old World **BLACK BREAD**

**PROTEIN BREAD** Stylark Power Packed. L-Lysine added. Regular 27¢ value. **1-Lb. Loaf 19¢**

Raisin Bread Stylark food. **1-Lb. Loaf 27¢**

Twin Rolls Stylark Brown and Serve. Regular 23¢ value. "2¢ off." **13-Oz. Pkg. 21¢**

Buttermilk Bread Mrs. Wright's. **1 1/2-Lb. Loaf 26c**

- More Safeway Values!
- PEANUT BUTTER** Nu Made — Creamy or Chunky. (New at Safeway). **3** 12-Oz. Jars **1**
  - PRESERVES** Empress — Apricot, Grape, Peach or Strawberry. **4** 10-Oz. Jars **1**
  - TEMPEST TUNA** Grated Light Meat. **5** 6-Oz. Cans **1**
  - POOCH DOG FOOD** Regular or Liver Flavored. **13** 1-Lb. Cans **1**
  - DIAMOND MATCHES** Regular Kitchen Matches. **2** 6-Pack Cans. **1**

# SAFeway

**NOTICE**

**FRESH DRESSED FRYERS and Fresh Dressed Hens** At The Plant PHONE MA 9-1200

**WALKER Dressing Plant**

---

**FURNITURE for the Entire Home**

★ **Carpet - Rugs All Prices**

★ **Be Sure To Check With**

**Coats FURNITURE**



nd, Texas  
**ers Can  
 ove Yields  
 Good Seed**  
 farmers can take two  
 ps to improve their yield  
 portant cash crop," says

R. J. Hodges, Extension Service  
 Agronomist.  
 "First, they can plant the re-  
 commended variety. Secondly, they  
 should plant high quality seed of  
 the recommended variety," Hod-  
 ges said. "Certified and Registered  
 seed assure high quality planting  
 seed," added Hodges.

A survey of four Texas coun-  
 ties — Deaf Smith, Lamar,  
 Ochiltree, and Lipscomb — was  
 made recently by the Texas Agri-  
 culture Extension Service. "Pur-  
 pose is to learn if farmers are  
 plantin pure varieties of good  
 bread-making quality, or if seed  
 are mixed with other varieties, ne

said. Two-pound samples were  
 taken from the drill boxes and  
 sent to the State Department of  
 Agriculture in Austin. Samples  
 from drill boxes of Deaf Smith  
 farmers were planted in a demon-  
 stration on the Harold Shearhart  
 farm. "The results of this effort  
 would be helpful in improvng the

wheat output in Deaf Smith Coun-  
 ty, said J. W. Thomas, County  
 Agent.

Thus far, the survey showed  
 that too few farmers are planting  
 the recommended varieties. Al-  
 though farmers in Deaf Smith  
 planted 76.4 per cent of their  
 wheat acreage to recommended

varieties, such as Concho, Com-  
 anche, Crockett, Westar and  
 Ponca, the other three counties  
 planted only 15 per cent.

Hodges explained that the re-  
 commended varieties make more  
 net profits since they have the  
 best baking qualities and have  
 produced highest yields in experi-

ment station tests. They also have  
 advantages as early maturity.

Varieties such as Triumph and  
 Wichita matures early, thus mis-  
 sing the hot winds and run less  
 risk of being hauled out, but gener-  
 ally do not produce as high yields  
 as other recommended varieties,  
 also, they do not have the baking

qualities which millers prefer  
 their wheat.

A new variety, Tasosa, recom-  
 released by the Texas Agricultu-  
 al Experiment Station has t  
 qualities wheat farmers are loo-  
 ng for, Hodges said.

"It shows high test weight, high  
 yielding ability, strong straw at  
 outstanding baking quality. And  
 is only slightly later than the pre-  
 sent early maturing varieties. Mil-  
 lers will like its high test weight  
 strong gluten, good flour yield,  
 good absorption and good loaf  
 volume," Hodges said.

The use of certified or registe-  
 ed seed is equally important in o-  
 taining good yields, Hodges said.  
 The survey showed that wheat pro-  
 ducers in those counties tend  
 use their own seed for planting.  
 "We recommend that growers use  
 certified seed of a recommended  
 variety. However, if a farmer has  
 clean, fertile land, can harrow  
 without the danger of mechanic  
 mixture, and has ideal storage con-  
 ditions he may be safe in plantin  
 a few acres of certified seed each  
 year for seed purposes," Hodges  
 said. "It should be pointed out  
 that all farmers do not have the  
 conditions to grow good plantin  
 seed," cautioned Hodges.

# DOLLAR DAYS

**SAFeway**

Prices and Coupons Effective Thurs., Fri.  
 and Sat., Oct. 6, 7 and 8 in Eastland  
 We Reserve the Right to Limit Quantities.  
 No Sales to Dealers.

**Peaches**  
 Highway Sliced. **4** No. 2 1/2 Cans **1**  
 Yellow Cling sliced. Perfect for desserts.

**Strawberries**  
 Bel-air Frozen. **3** 16-Oz. Pkgs. **1**  
 Sliced. Delicious on short cakes.

**Fish Sticks**  
 Captain's Choice. **3** 8-Oz. Pkgs. **1**  
 Frozen precooked. Rich in proteins.

**GREEN BEANS** Gardenside Cut. Tender and succulent. **8** No. 303 Cans **1**

**PORK & BEANS** Highway — Or Large Dry Lima Beans or Dry Blackeye Peas. **12** No. 300 Cans **1**

**GOLDEN CORN** Highway Whole Kernel. Golden nuggets of goodness. **7** 12-Oz. Cans **1**

**SPINACH** Gardenside. Rich in iron and vitamin content. Has a flavor all its own. **9** No. 303 Cans **1**

**TOMATOES** Gardenside. For casseroles or delicious in soups and stews. **7** No. 303 Cans **1**

**WORKING WITH WOOD**

Everyone knows that wood will burn. By contrast, steel is not combustible. Although wood is stronger than steel, weight for weight, its combustibility has for years prevented its use for many types of buildings, such as school and hospitals. Improved material testing methods now disclose the advantages over steel for many construction purposes.

When exposed to the extreme heat of severe fire conditions thick, wooden beams will char slowly from the outside. Because wood is a poor conductor of heat when the outer surface is afire the inner core of the beam will be too cool to burn. The beam will retain its strength for prolonged periods. Steel, on the other hand, is a good conductor of heat. When subjected to the same severe fire conditions steel quickly becomes hot throughout. As a result it bends, loses its supporting capacity, and collapses much sooner than wooden timbers of equal strength.

In view of this natural safety factor of wood, building codes are being revised and many schools are now being made of wood with a substantial reduction in construction costs.

**National Cub Scout Director To Visit October 11**

O. W. Bennett of New Brunswick, New Jersey, the National Director of Cub Scouting of the Boy Scouts of America will conduct a clinic on Cubbing Tuesday, Oct. 11 in Brownwood at Hotel Brownwood at 7:30 p.m.

"All leaders of Cub Scouts and potential leaders throughout the eight counties served by Comanche Trail Council are invited to be present" according to Dr. H. H. Hargrove of Brownwood, Chairman of Leadership Training.

Bennett is a native of Redfield, South Dakota. He was a Boy Scout volunteer leader in Scouting ten years and has been a professional Scouter the past 20 years serving in Toledo, Ohio and for the past 13 years has been on the National Staff with headquarters in New Brunswick, New Jersey. At one time he was director of Exploring.

**Is Change-of-Life Making You Only Half a Woman?**



Too tense, too tired, too irritable to be a real companion to your husband?

Special women's medicine can relieve "hot flashes", weakness, nervousness... then you can enjoy life fully again!

Has change-of-life left you so weak you feel only "half" alive? Suffocated by "hot flashes", constantly tense... so you can't be an affectionate wife and mother?

Don't despair! Lydia Pinkham's Compound can relieve both tension and physical distress! In doctor's tests, Pinkham's gave dramatic help—without costly shots! Irritability is soothed. "Hot flashes" subside. Then most women can go "smiling through" change-of-life without suffering!

If change-of-life has left you only "half" a woman, get Lydia E. Pinkham's Vegetable Compound from druggists. See how fast you can feel "all woman" again!

**SLEEP 8 HOURS—WAKE UP TIRED?**  
 When due to simple iron-deficiency anemia, take Pinkham Tablets. Rich in iron, they start to strengthen your blood in one day!

**Safeway Produce**

**Delicious Apples** **19¢** Lb.  
 Washington State Extra Fancy. New crop. Perfect for out-of-hand eating.

**POTATOES** **10-Lb. bag 49¢**  
 U.S. No. 1 Red — Ideal all-purpose potatoes.

**Cranberries** **29¢** 1-Lb. Bag  
 Cape Cod. Tart and tempting.

**Bartlett Pears** **19¢** Lb.  
 For easy salads.

**LETTUCE** **2 25¢**  
 Crisp and crackling fresh. 2 Heads

**TOMATOES** **2 25¢**  
 Red, ripe and firm. Perfect for slicing. 2 Lbs.

**Values Galore!**

Orange Drink **37¢** 1/2-Gal. Jug  
 Just-Made — Children love it.

Pack Train Syrup **25¢** 1 1/2-Lb. Decants  
 Waffle and Pancake.

Sandwich Spread **39¢** Quart Jar  
 Lunch Box.

Italian Dressing **63¢** Quart Bottle  
 Wishbone.

Cheese Dressing **49¢** Pint Bottle  
 Wishbone.

Sno White Salt **9¢** 26-Oz. Box  
 Plain or Iodized.

**More Values!**

Angel Flake Coconut **63¢** 14-Oz. Pkg.  
 Batter — For cakes or pie.

Roxbury Candy **39¢** 11-Oz. Pkg.  
 Royal Mix.

Fluffiest Marshmallows **35¢** 1-Lb. Bag  
 Toast them.

Busy Baker Fig Bars **29¢** 1-Lb. Pkg.  
 Perfect for lunches.

Busy Baker Fig Bars **49¢** 2-Lb. Pkg.  
 For snacks and parties.

**PICKLES** **23¢**  
 Fanning's Bread and Butter. 15-Oz. Jar  
 A Tasty Treat.

**CATSUP** **49¢**  
 Highway. 3 14-Oz. Bottles  
 Delicious on meats.

**"G" is for Galago**  
 Do you know what this is?

This unusual animal is explained on page 559, Volume Six, in your Golden Book Encyclopedia now on sale at your Safeway Store. Be sure to get yours this week.

Volume 1 **49¢** only  
 Volume 2 through 16 **99¢** only

**Margarine** **2 29¢**  
 Coldbrook — An economical spread. 1-Lb. Ctns.

**Edwards Coffee** **69¢**  
 All Grinds. (2-Lb. Can) 1-Lb. Can (... \$1.37)

**Mellorine Beverage** **49¢**  
 Joyett — Vanilla, Chocolate, Strawberry or Neapolitan. 1/2-Gal. Ctn.

**3-Minute Oats** **19¢**  
 Cragmont — Cola, Lemon-Lime, Strawberry, Root Beer, Fruit Punch, Cream Soda, Orange Soda or Grape Soda. (Plus Deposit.) Quart Bottle

**SAFeway**

504 East Main, Eastland

WEEKEND VISITORS

Mr. and Mrs. Victor Cornelius have returned from Roswell, N. C. where they spent the weekend visiting in the home of their daughter and son-in-law, Mr. and Mrs. Charles Meeks and family.

**SINGER**  
Reposessed  
Santomatic  
Vacuum Cleaners  
Floor Polishers  
Just take up payments!  
**D. L. MORTON**  
Phone MAin 9-2084  
Before 9 a.m. or after 6 p.m.

# I GIVE YOU TEXAS

By BOYCE HOUSE

When I was a youngster, I associated greatness with winning. Therefore it was a matter of great surprise to me when, one season, the sports writers selected as 'the league' outstanding manager, Kid Eberfeld. His team was in last place.

What the sports writers were saying was that Eberfeld had almost no material and deserved the honor of "manager-of-the-year" for accomplishing something with little.

If winning was the only test, then the greatest general in history would be a man that most people

never heard of—the Duke of Marlborough, of whom it was said that he never besieged a city he did not capture, and never fought a battle he did not win.

But a leader may win because he has superior numbers or heavier guns or because of luck or because he is opposed by poor generals.

Napoleon is generally considered the greatest military genius of modern times—yet he lost battles and died a prisoner on a rocky island.

Robert E. Lee is considered by many to have been the greatest general of the English-speaking races — (Theodore Roosevelt, for one, thought so) — yet Lee lost battles and the Confederacy, for which he fought, fell.

As one philosopher expressed it, "Success is not in winning—but in playing a poor hand well."

I didn't see "Giant" until I caught it at a second-run theatre in Oklahoma City. The musical background is "The Eyes of Texas" and I expected it to be greeted with boos — but it only reminded the Sooners of their numerous victories over the University of Texas football team. (Before 1958 and 1959!)

In another Oklahoma City theatre, I saw a frontier movie of settlers and Indians — and when the cavalry was riding to the rescue of the settlers, I was afraid to cheer.

Daniel Webster once found himself the only passenger on a stage-coach. The driver was a villainous-looking individual who kept turning and looking back at Webster.

The passenger decided that the driver was actually a robber and at last said, "Why don't you go ahead and rob me?"

The driver exclaimed, "Rob you? I thought you were a robber."

There was an editorial writer who sometimes didn't feel up to writing an editorial. This usually occurred on a Monday. So he would clip out an editorial from another newspaper and write:

"What does our esteemed contemporary mean by the following?" And then would reproduce the editorial.

However he did this one time too many and lost his job.

## Guard Against Fire Damage

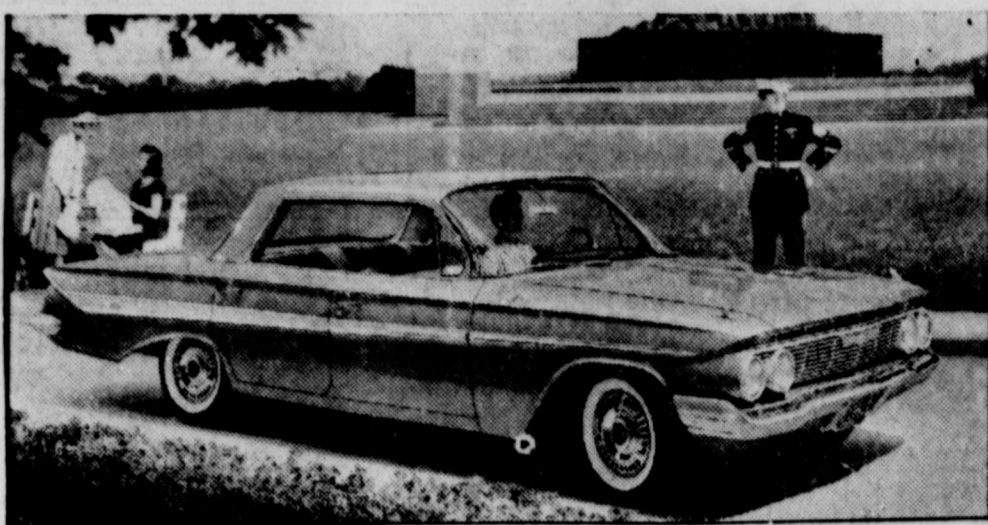
What would you and your family do in case of a fire? Do you have any emergency plan? The Texas Farm and Ranch Safety Council says that if every member of the family knows what to do in case of fire, severe property damage or even loss of life may be prevented.

The Councilmen urge families to work out a simple emergency plan that is understood, and even rehearsed periodically, by all members of the family. Basically, the plan should involve calling the fire department, getting the family to safety and saving animals or farm livestock.

The more isolated your place is, the more important it is to have fire-fighting equipment on hand. Such common tools as rakes, axes, shovels, a ladder and garden hoses are valuable for fighting small fires. It is also a good idea to have commercial fire extinguishers handy. Dry chemical or carbon dioxide extinguishers should be available for use on flammable liquid or electric fires, the Council says.

Another valuable fire-fighting aid is the farm pond or irrigation canals. If pumps are available water sources such as these could mean the difference between light or heavy losses. High-pressure orchard sprayers can also double as fire-fighting equipment.

Avoid fire hazards is also a vital part of safeguarding your home from damage, the Council points out. Care should be taken in house planning and construction, in installation and use of electrical appliances, and in such everyday activities as trash disposal, use of flammable liquids and power equipment operation.



**IMPALA ONE OF 20 NEW CHEVROLETS**—Designers have applied smooth, graceful lines to the '61 Chevrolet Impala, Bel Air and Biscayne passenger car lines. Wings on the rear deck have been smoother into the body. Roof lines, as noted in the Impara Sport Sedan (above) are freshly contoured and are separately styled for each model. At Fullen Motor Co. in Eastland today.



**VOTING REGISTRATION PROCEDURES** are explained to Pfc Marvene G. Morse of Fresno, California (left) and to Pfc Friedrich H. Klein of Seattle, Washington. Both men are members of the 2d Logistical Command, Fort Ord, California. Anxious to cast their ballots for the first time, the soldiers toured Monterey voting facilities to learn more about their newly attained privilege. Voting, the heritage of all U.S. citizens, was not always a privilege extended to members of the Armed Forces.

### ATTENDS FAMILY REUNION

Mr. and Mrs. J. C. Poe took her parents, Mr. and Mrs. O. Stone of Carbon, to Wichita Falls Sunday where they attended the family reunion of Mrs. Stone's family.

### RETURNS TO DENTON

Mr. and Mrs. Virgil E. Moore took Mrs. Moore's mother, Mrs. A. A. Wills to Denton Wednesday. Mrs. Wills has been visiting in the Moore home for the past week.

-- READ THE CLASSIFIEDS --

**INGROWN NAIL HURTING YOU?**  
Immediate Relief!  
A few drops of OUTGRO bring blessed relief from tormenting pain of ingrown nail. OUTGRO softens the skin underneath the nail, allows the nail to be cut and thus prevents further pain and discomfort. OUTGRO is available at all drug counters.

### Scales Better Than Guessing

How many times have you heard a dairy farmer say he didn't need to keep milk records because he could guess the amount of milk each cow gave? Shannon Carpenter, area extension dairy specialist, reports he has heard this many times, but that he had serious doubts about this professed ability.

In order to determine the accuracy with which milk weight was guessed, Carpenter set up a guessing test at the Tyler Experiment Station. In the test, ten men guessed 104 times at the production of 15 different cows.

Only twice in 104 guesses did the estimated weight agree exactly with the scale weight. Fifty-nine guesses were over by 11 percent, and 43 guesses were under by 8.1 percent. The total of the 104 guesses was only 2 percent over the total scale weight. The variance of 8 percent under to 11 percent over, however, would make it impossible to feed cows correctly by guessing at milk weights.

Results of this test strengthened Carpenter's conviction that dairymen who do a good job of feeding cows by guess could do a better job with scales.

### Training Course Set for Area Scouting Leaders

Leaders of Cub Scouts and Scouts are invited to attend training courses in Cubbing and Scouting to be held Oct. 15 in Eastland High School from 8 to 8 p.m.

"These are basic courses covering the fundamentals, organization and program of the Scouts of America and are all interested in giving leadership to boys through Scouting present!", stated Werner of Breckenridge, Chairman Leadership Training.

The faculty consists of V. Fox, Breckenridge; F. Nett, Ranger; M. G. Carter, Eastland directors of the training school. Werner Bend Robert H. Slaughter, Eastland, directing the Cub training.

National certificates are presented that evening to the fellowship dinner. No charge for the training.

Reservations are to be through the Boy Scout Office Brownwood by Oct. 10.

ATTEND THE CHURCH OF YOUR CHOICE EACH SUNDAY

**NOW OPEN**  
We Specialize In Mobil Lubrication  
Wells Dalton — Joe Dalton  
Next Door to Fullen Motor Co.  
**DALTON'S MOBIL STATION**  
Corner Bassett and Main  
Phone MA 9-2220

**NEW GULF DISTRIBUTOR**  
The Gulf Oil Corporation is happy to announce the appointment of Mr. Harry Gurney to succeed Mr. M. L. Keasler as their local distributor.  
**Gasoline - Oils - Greases - Tires**  
**Batteries - Accessories**  
**HARRY GURNEY**  
Distributor  
Phone HI 2-1120 Cisco, Texas

**Speaking on Subject of Quality**  
... it is always an appreciative compliment when so many of our customers tell us they like our insurance service. They must for many of them have been doing business with us for more than 35 years, and still are. There is no secret attached to this show of confidence. A quality product produces confidence. And we are proud that we have both—the confidence of a host of customers and a quality product to sell them.  
**EARL BENDER & COMPANY**  
Eastland (Insurance since 1924) Texas

**COMPLETE AIR CONDITIONING SALES and SERVICE**  
**SMITH PLUMBING AND TIN**  
PHONE MA 9-2422  
114 N. Seamar

**HAMNER FUNERAL HOME**  
Ben E. Hamner, Owner  
Serving Eastland County since 1924 with ambulance and funeral service. Our ambulances are oxygen equipped and air conditioned.  
Through our nation-wide connections with other funeral directors, we can handle a funeral from any point in America. We offer this service knowing that we can relieve the family of all burdens incident to any death away from home.  
Eastland Dial MA 9-2611

**DON'T LET THESE MEMORIES ESCAPE YOU**  
  
let us take that Portrait  
**CANARIS STUDIO**  
Phone MAin 9-2044 for Appointment

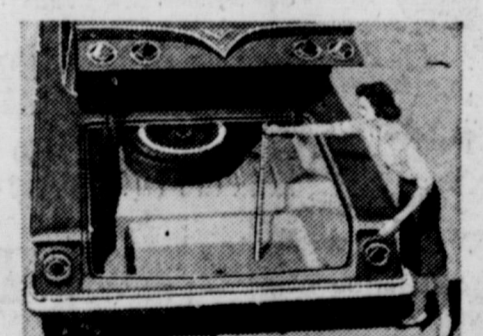
**TODAY**  
  
**M. H. Perry**  
It is a good day to discuss your future security through life insurance.  
**SO LET'S MEET... TODAY!**  
**Southland Life Insurance Company**  
107 W. Main  
Office Ph. MAin 9-2275  
Residence Ph. MAin 9-1095

# FRIDAY! THE GREATEST SIXTY-ONEDERFUL CHEVROLET

Here's the car that reads you loud and clear—the new-size, you-size '61 Chevrolet. We started out by trimming the outside size a bit (to give you extra inches of clearance for parking and maneuvering) but inside we left you a full measure of Chevy comfort. Door openings are as much as 6 inches wider to give feet, knees, and elbows the undisputed right of way. And the new easy-chair seats are as much as 14% higher—just right for seeing, just right for sitting.

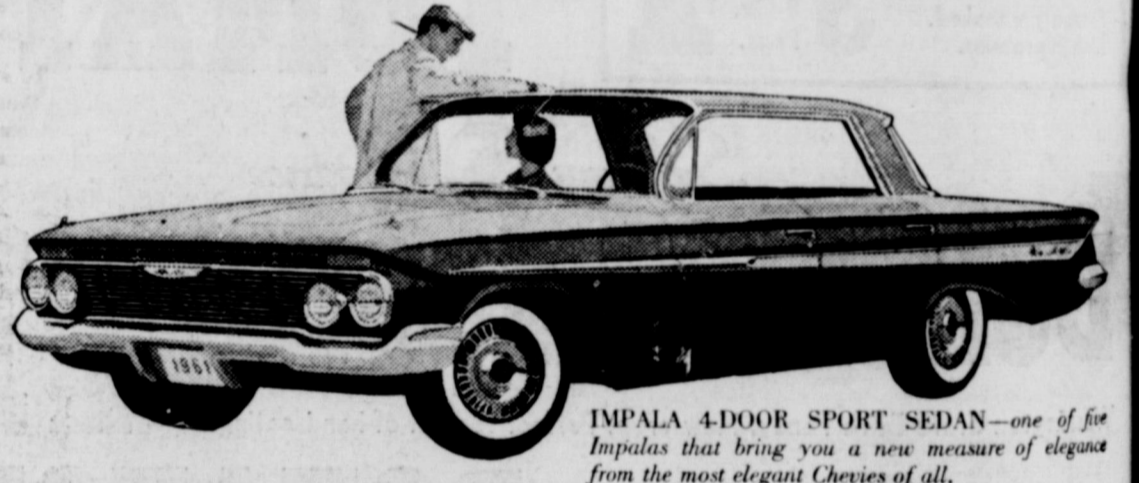
Once you've settled inside you'll have high and wide praises for Chevrolet's spacious new dimensions (in the Sport Coupes, for example, head room has been upped as much as 2 inches, and there's more leg room, too—front and rear). Chevy's new trunk is something else that will please you hugely—what with its deep-well shape and bumper-level loading it holds things you've never been able to get in a trunk before.

Yet, generously endowed as this car is with spaciousness and clean-etched elegance, it holds steadfastly to all the thrifty, dependable virtues Chevrolet buyers have come to take for granted. Your dealer's the man to see for all the details.

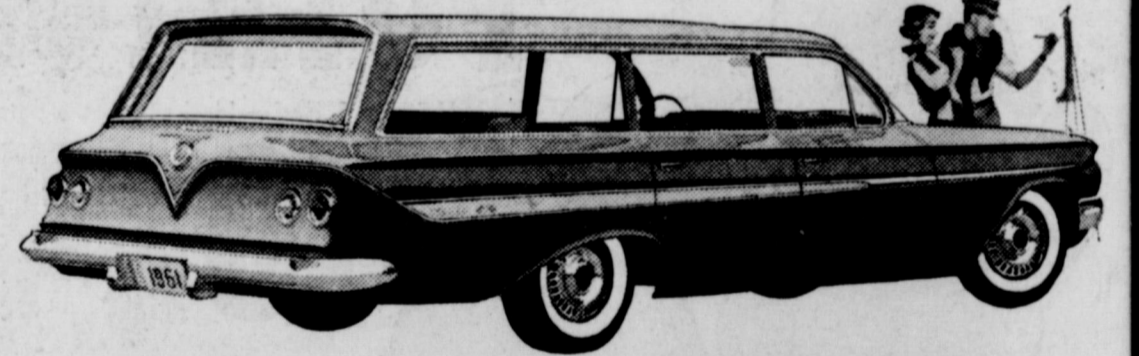


There's never been a trunk like it before! The floor's recessed more than half a foot and the loading height is as much as 10½ inches lower.

\*\*\*\*\*  
**INTRODUCING THE '61 CHEVY BISCAYNE 6**  
the lowest priced full-sized Chevy with big-car comfort at small-car prices!  
Chevy's new '61 Biscaynes—6 or V8—give you a full measure of Chevrolet quality, roominess and proved performance—yet they're priced down with many cars that give you a lot less! Now you can have economy and comfort, too!



**IMPALA 4-DOOR SPORT SEDAN**—one of five Impalas that bring you a new measure of elegance from the most elegant Chevies of all.



**NOMAD 9-PASSENGER STATION WAGON**. You have a choice of six Chevrolet wagons, each with a cave-sized cargo opening nearly 5 feet across.



**BEL AIR 2-DOOR SEDAN**, like all '61 Chevies, brings you Body by Fisher newness—more front seat leg room.



Biscayne 4-Door Sedan

See the new Chevrolet cars, Chevy Corvairs and the new Corvette at your local authorized Chevrolet dealer's

**FULLEN MOTOR COMPANY, INC.**  
EAST LAND  
305 E. MAIN  
PHONE MA 9-2676

9-1707 for Classified Ads —

**SINCE 1884**  
... quality workmanship and efficient service, approved throughout this area.

**RAWLINS & SONS**  
Phone LY 4-2726 Texas  
Builders of Monuments Since 1884

**Mrs. Chas. Harris Entertains Music Class Thursday**

Mrs. Charles B. Harris entertained the boy members of her music class Thursday night at her home, 520 S. Connelley.

Officers are Jerry Jackson, president; Bill McCollum, vice-president; and Bill Garner, game chairman. Members of the telephone committee are Bryan Garner, Clifton Stedum, Jimmy Campbell, David Cox, Frank Clabourn, Gregg Emfinger, John Baker and Billy Campbell. New officers will be elected every two months.

Bryan Garner then gave an interesting program followed by

**West Texas Art Association to Hold Meeting**

The West Texas Art Association will hold its Seventh Annual Meeting at the YWCA, North 9th and Orange in Abilene, Oct. 15.

Art work will be received from 8:30 to 10 a.m. Oct. 15. The exhibit will be judged by Raymond T. Entenmann, Director of the Fort Worth Art Center. Entenmann will discuss "Southwestern Art and Its Relationship to Current Trends" at the luncheon at 12 noon.

WTAA is open to any artist in this area interested in participating. The purpose is to acquaint the artists and the public with art production in West Texas.

Work should be original, independent of instructor or class supervision, or recent execution and not exhibited before in WTAA. Two entries in any medium may be shown by each artist. Dues of WTAA are \$2.00 per year.

Those interested in attending the exhibit, luncheon and the lecture will be charged an admittance fee of \$1.00 and the lunch will be \$1.50. Dues and reservations for the luncheon should be sent to Mrs. C. A. McFadden, 942 Santos, Abilene.

Art works winning citations will be sent to Laguna Gloria in Austin for the Annual Citation Show. Art work winning Circuit Citation Awards will be sent to various West Texas Towns.

**West Texas Art Association to Hold Meeting**

The West Texas Art Association will hold its Seventh Annual Meeting at the YWCA, North 9th and Orange in Abilene, Oct. 15.

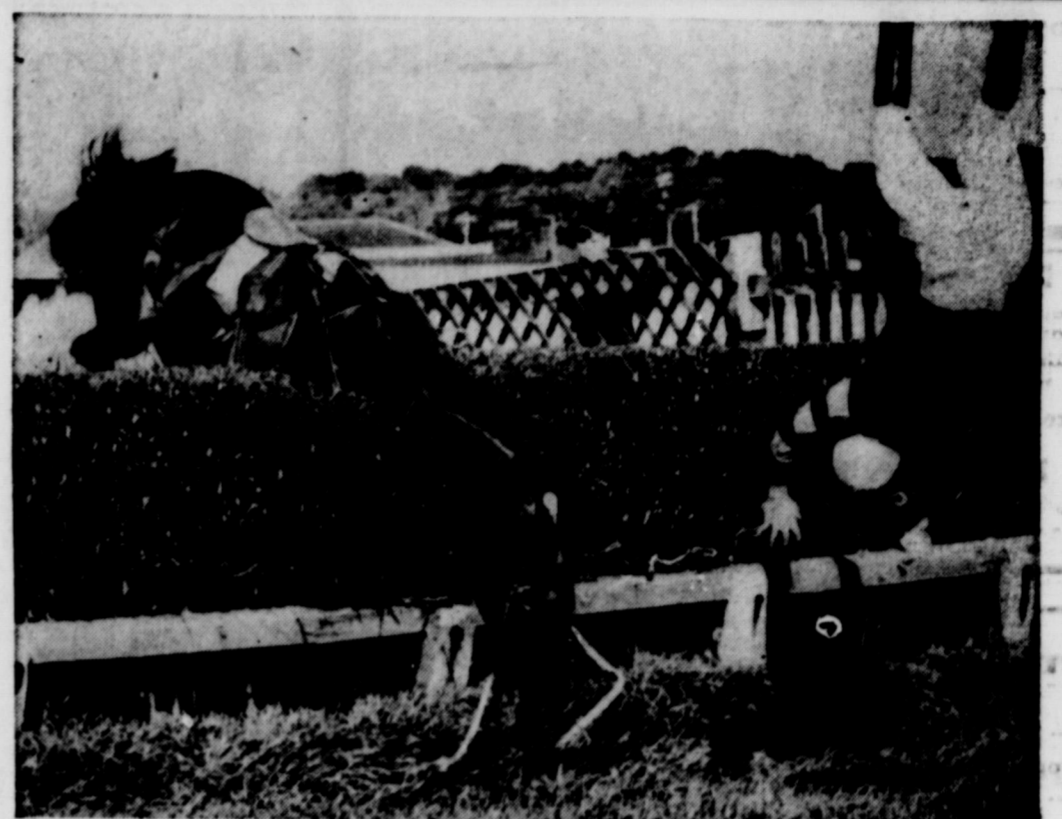
Art work will be received from 8:30 to 10 a.m. Oct. 15. The exhibit will be judged by Raymond T. Entenmann, Director of the Fort Worth Art Center. Entenmann will discuss "Southwestern Art and Its Relationship to Current Trends" at the luncheon at 12 noon.

WTAA is open to any artist in this area interested in participating. The purpose is to acquaint the artists and the public with art production in West Texas.

Work should be original, independent of instructor or class supervision, or recent execution and not exhibited before in WTAA. Two entries in any medium may be shown by each artist. Dues of WTAA are \$2.00 per year.

Those interested in attending the exhibit, luncheon and the lecture will be charged an admittance fee of \$1.00 and the lunch will be \$1.50. Dues and reservations for the luncheon should be sent to Mrs. C. A. McFadden, 942 Santos, Abilene.

Art works winning citations will be sent to Laguna Gloria in Austin for the Annual Citation Show. Art work winning Circuit Citation Awards will be sent to various West Texas Towns.



SAILING THIS ONE OUT—Jockey Bill Rees is still in the race, after a fashion. His mount had different thoughts about a hurdle at a race track in Plumpton, England.

**freshest taste in bread**

**MRS. BAIRD'S ENRICHED BREAD**  
STAYS FRESH LONGER

ATTEND THE CHURCH OF YOUR CHOICE EACH SUNDAY

**SHOW ON WORTH! CHEVROLET**

**NEW '61 CHEVY CORVAIR** More space... more spunk and wagons, too!



The newest car in America: the CORVAIR 700 LAKEWOOD 4-DOOR STATION WAGON.



CORVAIR 700 CLUB COUPE. Like all coupes and sedans, it has a longer range fuel tank.



CORVAIR 700 4-DOOR SEDAN. Provisions for heating ducts are built right into its body by Fisher.



Here's the new Chevy Corvair for '61 with a complete line of complete thrift cars.

To start with, every Corvair has a budget-pleasing price tag. And Corvair goes on from there to save you even more. With extra miles per gallon... quicker-than-ever cold-start warmup so you start saving sooner... a new extra-cost optional heater that warms everyone evenly. Riding along with this extra economy: more room inside for you, more room up front for your luggage (sedans and coupes have almost 12% more usable trunk space).

And our new wagons? You'll love them—think they're the greatest thing for families since houses. The Lakewood Station Wagon does a man-sized job with cargo, up to 68 cubic feet of it. The Greenbrier Sports Wagon you're going to have to see—it gives you up to 175.5 cubic feet of space for you and your things.

Corvair's whole thrifty lineup gets its pep from a spunkier 145-cu.-in. air-cooled rear engine. Same rear-engine traction, same smooth 4-wheel independent-suspension ride. See the polished and refined 1961 Corvair first chance you get at your Chevrolet dealer's.



Spare tire is in the rear in coupes and sedans—leaving more luggage space up front.



Even middle-seat passengers sit pretty, thanks to Corvair's practically flat floor.

Now in production—the GREENBRIER SPORTS WAGON with up to twice as much room as ordinary wagons (third seat optional at extra cost).

**McGraw Motor Co.**

CARS DODGE—STUDEBAKER TRUCKS  
611 South Seaman CHANNEL 9 (KRBC, Abilene) Phone MA 9-1244

THURSDAY	FRIDAY	SATURDAY
7:00 Today	3:00 Comedy Phases	6:30 Cont. Class
8:00 Today	3:30 Movie	7:00 Today
9:00 Dough Re Mi	4:00 Theatre	8:00 Today
9:30 Play Yr Hunch	5:45 Football	9:00 Dough Re Mi
10:00 Price Is Right	6:00 News	9:30 Play Yr Hunch
10:30 Concentration	6:15 NBC News	10:00 Price Is Right
11:00 Truth or Con.	6:30 Outlaws	10:30 Concentration
11:30 Could Be Ya.	7:30 Shotgun Slade	11:00 Truth or Con.
12:00 News, Wthr.	8:00 Bach. Father	11:30 Could Be Ya.
12:15 Devotions	8:30 Tenn. Ernie	12:00 News, Wthr.
12:20 Air Force	9:00 Bet Yr. Life	12:15 Devotions
12:30 3 Stooges	9:30 Theatre	12:20 3 Stooges
1:00 Queen for Day	10:00 News	1:00 Queen for Day
1:30 Loretta Young	10:10 Weather	1:30 Loretta Young
2:00 Dr. Malone	10:15 Com. Pres.	2:00 Dr. Malone
2:30 From Roots		2:30 From Roots

THURSDAY	FRIDAY	SATURDAY
7:30 Cartoons	3:00 Brighter Day	8:00 Cap. Kangaroo
8:00 News	3:15 Secret Storm	9:00 Hecks & J'ne
8:15 Cap. Kangaroo	3:30 Edge of Night	9:30 Mty. Mease
9:00 Dec. Bride	4:00 Movie	10:00 Lone Ranger
9:30 Video Village	5:15 Party Time	10:30 Travel for Fun
10:00 Clear Horizon	6:00 News	11:00 Search for Tm.
10:30 Clear Horizon	6:10 Weather	11:45 Guiding Light
11:00 Love of Life	6:15 News	12:00 News
11:30 Search for Tm.	6:30 Witness	12:15 Newsreel
11:45 Guiding Light	7:30 Ann Southern	1:00 Full Circle
12:00 News	8:00 Pony Express	1:30 House Party
12:15 Newsreel	9:00 Prsn. to Person	2:00 Millionaire
12:30 As Wrid. Turns	9:30 June Allyson	2:30 Verdict is Yrs.
1:00 Full Circle	10:00 News	
1:30 House Party	10:15 Weather	
2:00 Millionaire	10:30 People & Pics.	
2:30 Verdict is Yrs.	10:30 MovieTime	

THURSDAY	FRIDAY	SATURDAY
8:30 Comedy	5:00 Susie	8:29 Sign Gv
9:00 Little Rascals	5:30 Amos 'n Andy	8:30 Theatre
9:30 Jack La Lanne	6:00 M. Hoand	9:00 Little Rascals
10:00 Frb'l w. Fthr.	6:30 News	9:30 Jack La Lanne
10:30 Rendezvous	7:00 Treasure	10:00 Frb'l w. Fthr.
11:00 Matinee	8:00 Play of Wk.	10:30 Rendezvous
11:30 Mar'd Jean	8:30 Play of Week	11:00 Matinee
12:00 Bugs Bunny	9:00 Navy Log	12:30 Cartoons
12:30 Popeye	10:00 Navy Log	1:00 Matinee
	11:00 Theatre	1:30 Married Joan
		2:00 Bugs Bunny
		4:30 Popeye

THURSDAY	FRIDAY	SATURDAY
5:55 Newsreel	4:00 Family Theatre	6:00 Cont. Cl'm
6:00 Cont. Cl'm	5:30 Down Beat	7:00 Today
7:00 Today	6:00 News	7:25 Weather
7:25 Weather	6:15 NBC News	8:25 News
8:25 News	6:30 Outlaws	9:00 Dough Re Mi
9:00 Dough Re Mi	7:30 Bot Masterson	9:30 Play Yr Hunch
9:30 Play Yr Hunch	8:00 Bach. Father	10:00 Price Is Right
10:00 Price Is Right	8:30 Tenn. Ernie	10:30 Concentration
10:30 Concentration	9:00 Groucho Marx	11:00 Truth or Con.
11:00 Tr. or Conseq.	9:30 Frontier	11:30 Could Be Ya.
11:30 Could Be Ya.	10:00 Texas News	12:00 News
12:00 Noon News	10:15 Weather	12:30 Mystery
12:30 Mystery	10:25 News Final	1:00 Queen for Day
1:00 Queen for Day	10:30 Sports	1:30 Loretta Young
1:30 Loretta Young	10:35 Jack Paar	2:00 Dr. Malone
2:00 Dr. Malone	12:00 Newsreel	2:30 From Roots
2:30 From Roots	12:05 Newsreel	3:00 Com. Theatre
3:00 Com. Theatre	12:10 Late Show	
3:30 Adv. Theatre		

THURSDAY	FRIDAY	SATURDAY
7:25 Devotional	5:30 Robin Hood	7:30 Ag. on Parade
8:00 Cartoons	6:00 Newsreel	7:45 Thr. Partula
8:30 Romper Rm.	6:15 Weather	8:00 Sat. Special
9:00 Early Show	6:22 Sports	8:30 Hep. Cassidy
10:00 Julie Beall	6:30 Guestward Ho	9:00 Life of Riley
11:00 My Lit. Margie	7:00 Donna Reed	9:30 Robin Hood
11:55 News	7:30 Red McCoys	10:00 Movie
12:00 Restless Gun	8:00 Victor Borge	10:30 Bowling
12:30 Love That Bob	8:30 My J Sons	1:00 Bowling
1:00 About Faces	9:30 Man Hunt	1:30 World Series
1:30 Way of Life	10:00 Newsreel	2:00 Matinee
2:00 Bay in Court	10:15 News	2:30 World Series
2:30 Gale Storm	10:15 Weather	3:00 Luchup
3:00 Beat Clock	10:23 Sports	4:30 Expedition
3:30 Who Do Ya	10:30 I Led 3 Lives	
4:00 Amer. Band.	11:00 Theatre	
5:00 Robin Hood	12:30 News	

See the new Chevrolet cars, Chevy Corvairs and the new Corvette at your local authorized Chevrolet dealer's

**FULLEN MOTOR COMPANY, INC.**  
EASTLAND PHONE MA 9-2676

**FOR GOOD LOOKING YOU CAN'T BEAT TV CABLE LOOKING COMMUNITY TELEVISION, INC.**

'Call today and get five channels tomorrow'

Village Hotel Phone MA 9-1716

# DELEON VS. EASTLAND

## FRIDAY NIGHT

### 8 p. m.

### Game To Be Played There



**MAJESTIC**  
IN EASTLAND  
THURS. - FRI. & SAT.

**Hell to Eternity**  
Jeffrey Hunter David Janssen  
Adults 75c - Children 25c

SAT. MIDNIGHT SHOW  
11:30 p.m. All Seats 65c

**Brigitte Barot**  
in **COME DANCE WITH ME!**  
SUNDAY & MONDAY

MARLYN MONROE  
YVES MONTAND  
LIPS MAKE LOVE  
Adults 75c - Children 25c

**Freyschlag Insurance Agency**  
North Side of Square Phone MA 9-2275

**Texas Electric Service Company**  
F. N. Sayre, Mgr.  
Phone MA 9-2651

**Condy Barber Shop**  
Located In Village Hotel

**Smitty's Jewelry**  
East Side of Square  
Phone MA 9-1290

**Pools Dry Cleaners**  
"City Wide Delivery"  
209 S. Lamar Phone MA 9-2055

**Otis Coleman**  
HUMBLE PRODUCTS  
400 East Main Phone MA 9-1741

**Dairy Kreem**  
Highway 80 East  
Harry Jordan Jack Jordan



**Altman's**  
"Smart Women's Wear"  
North Side of Square

**B & B Garage**  
Earnest Hood  
Complete Auto Repairs  
307 W. Commerce Phone MA 9-2631

**Graham's Trim Shop**  
708 W. Main Phone MA 9-2266

**White Elephant Cafe**  
724 W. Main Phone MA 9-8881

**"Old Rip Cafe"**  
412 E. Main  
Mr. and Mrs. M. G. Godden

**Eastland Chamber of Commerce**

**Eastland Supply Co.**  
"Oil Field Supplies"  
115 E. Main Box 671 Phone MA 9-1595

**Eastland Auto Parts**  
Frank Deaton, Owner  
300 S. Seaman Phone MA 9-2158

**Lindley Paint & Body Works**  
"All Work Guaranteed"  
110 S. Bassett Phone MA 9-2240

**Miller's Phillips 66 Service Station**  
513 W. Main Phone MA 9-1644

**PERRY'S 5c - 10c - 25c Store**  
James Johnston, Mgr.

**J. M. Smith Plumbing and Tin**  
114 S. Seaman Phone MA 9-2422

**Hill Crest Food Market**  
When You Run Out - Run  
1401 West Main Phone MA 9-2631  
Eastland, Texas

**Eastland Telegraph**  
South Side of Square

**First Christian Church**  
Corner Olive and Lamar  
Ray Heckendorn, Pastor

**Modern Dry Cleaners**  
Approved Sanitone Service  
210 S. Seaman

**Pipkin Motor Co.**  
OLDSMOBILE - CADILLAC - Buick  
314 W. Main Phone MA 9-2631

**Eastland Auction Company**  
Hwy. 80 East Phone MA 9-2631

**Gregory Milk Distributing Co.**  
Bordens Dairy Products  
Serving Eastland, Stephens, Comanche and Coleman Counties  
Phone MA 9-1100

**Jeanette's Shop**  
West Side of Square

**Perkins Implement Co.**  
116 E. Main Phone MA 9-2631

**Dr. F. H. Lund**  
Optometrist  
Exchange Bldg. Phone MA 9-2631

**McGraw Motor Co.**  
DODGE - STUDEBAKER  
416 S. Seaman Phone MA 9-2631

**R. M. Sneed**  
General Oil Field Construction  
Office Phone MA 9-1756  
Res. Phone MA 9-2424

**Hood King Motor Co.**  
FORD SALES AND SERVICE  
On The Square  
Phone MA 9-1786

**The Men's Shop**  
Correct Styles for Men and Boys  
James Smith, Owner

**City Garage**  
J. J. Finley, Proprietor  
Engine, Starter and Generator Work  
103 White St. Phone MA 9-1704

**Foremost Dairy Products**  
Clyde Manning, Mgr.  
Eastland Phone MA 9-1701

**Eastland National Bank**  
"On the Square" Member F. D. I. C.

**Brown Plumbing Co.**  
Mr. and Mrs. Truman Brown  
214 E. Neblett Phone MA 9-1736

**Muirhead Motor Co.**  
BUICK - PONTIAC - OPAL  
Sales and Service Phone MA 9-3731

**Koen Salvage**  
Your Scrap Iron and Metal Dealer  
Highway 80 West Phone MA 9-2649

**Obie and Doc Humble Service Station**  
802 West Main Phone MA 9-8866

**Doc Davis Drug**  
Prescriptions Filled Accurately  
South Side of Square

**Lovelace Transfer & Storage**  
Local and Long Distance Moving  
Since 1929  
Eastland, Texas

**Reed Oil Company**  
13 Major Brands Oil - Quart 35c  
501 E. Main Phone MA 9-8890

**Texas Lightweight Aggregate Company**  
Producers of Concrete Aggregates  
C. W. Martin Phone MA 9-2060

**Earley Tire Service**  
Mobil Gas - Mobil Oil  
302 W. Main Phone MA 9-2355

**Western Auto Associate Store**  
J. L. Pittman, Owner  
East Side of Square Phone MA 9-2011

### MAVERICK'S 1960 SCHEDULE

Date	Opponent	Site	Oct. 7—DeLeon	There
Sept. 2	Eastland 22, Comanche 12		Oct. 14—Earley*	Here
Sept. 9	Cisco 28, Mavs 0		Oct. 21—Albany*	Here
Sept. 16	Ranger 20, Mavs 8		Oct. 28—Cross Plains*	There
Sept. 23	Dublin 22, Mavs 6		Nov. 4—Santa Anna*	Here
Sept. 30	Open		Nov. 11—Clyde*	There

\* Denotes District Games

### EASTLAND PLAYER ROSTER

No.	Name	Pos.	Wt.	No.	Name	Pos.
10	Graham, Mike	B	130	67	Jones, Bill	G
12	Beck, Tommy	B	138	69	Byars, Dick	G
14	Garner, Mickey	B	165	70	Moylan, Bill	G
16	Stroud, John	B	168	73	McCleskey, Bill	T
20	Graham, Gary	B	148	75	Jordan, Tony	T
24	Ables, J. D.	B	140	77	Chaney, Jerry	T
40	Kline, Phillip	E	115	80	Russell, Joe	E
42	Lewis, James	B	162	82	Shoemaker, John	E
50	Jones, Mike	C	117		Garrett, John	E
51	Cartwright, Bob	C	190		Herrera, Manuel	E
52	Culpepper, Gary	C	160		Fuentez, Lupe	E
65	Chaney, Gayle	G	142		Carroll Shelton, Head Coach	
66	Moylan, Jimmy	T	166		Don Dendy, Line Coach	



**CORVAIR STATION WAGON**—Chevrolet stylists adroitly meshed the roomy and versatile vehicle with the crisp, smart design of the Corvair. It came up with this sparkling new Corvair Lakewood Station Wagon. The air-cooled engine in the rear, folding seat and forward luggage compartment are adaptable to almost any job, commercial or pleasure. At Fullen Motors, Eastland today.

### 433 Pay Fines For Fishing Without Permit

AUSTIN, Sept.—Wardens will begin another crackdown on persons who fail to buy their hunting and fishing licenses, according to the director of law enforcement of the Game and Fish Commission. New licenses were required after Sept. 1.

Last month 433 persons paid fines for failure to have fishing licenses, according to the monthly report of the law enforcement division. The average fine for the month, with fines and costs amounting to \$1,075.42. Five persons paid fines for "telephoning" for fish. This is the illegal use of electrical devices in shocking fish.

Licenses were revoked on a dozen violators, including those who "telephoned" the fish. Others who killed deer out of season also got their licenses revoked.

"There is little excuse for a person to get caught without hunting or fishing license," the director said. "Everyone knows such a license is required. They think they can get by without one, and then get caught."

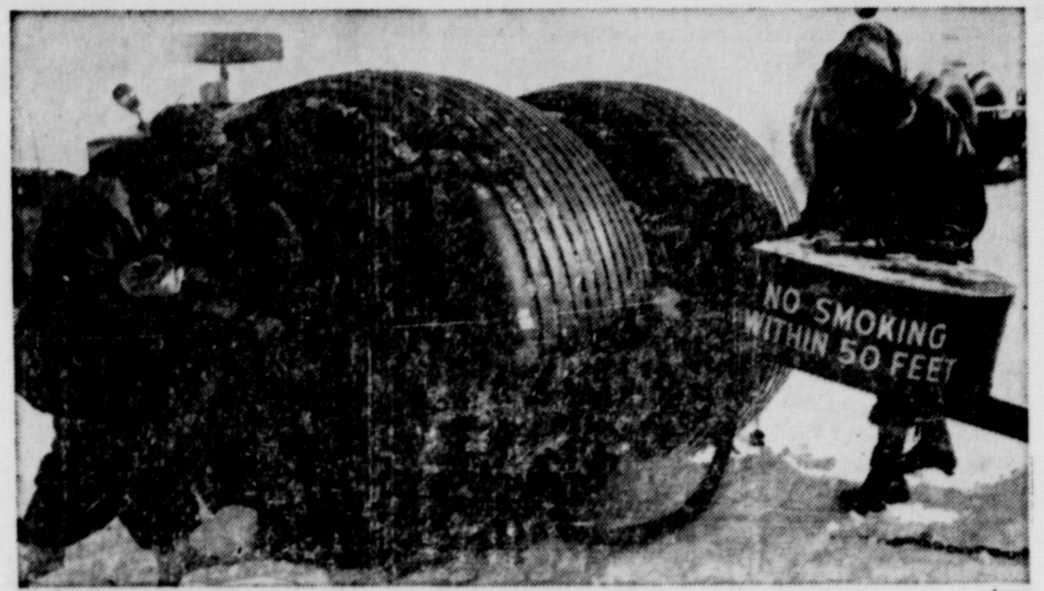
### Plans to Attend Fair Are Made by Tri-Hi-Y Members

Members of the Tri-Hi-Y met at the "Y" building Tuesday for their regular meeting.

The meeting was opened by Alice Frazer, president, who presided over the business session. Final plans were made for members to attend the State Fair in Dallas on Oct. 15.

Following the business meeting, Barbara McCullough gave an interesting talk on "How to be a Good 'Y' member."

The next meeting will be held Oct. 6 at 7:30 p.m. for the members who are interested in attending the pre-legislative meeting.



**ROLLING LIQUID TRANSPORTER (RLT)** carries fuel at Project "Lead Dog", U. S. Army Polar Expedition, Greenland Ice Cap. The 1,000-gallon RLT, a Transportation Corps development, consists of two wheels with necessary pumps and connections. Project "Lead Dog" is an 1,800-mile expedition to establish two safe overland routes from the crest of the Greenland Ice Cap to the ice free coast of Northeast Greenland.

### Carol Walter Is Hostess to Meet Of Double Seven

Carol Walter hosted the regular meeting of the Double Seven Club Tuesday.

Kay Morton, president, presided and led the club in the club motto. Julie Frost then led the members in the Lord's Prayer.

It has been announced that the new sponsors for the club will be Mr. and Mrs. O. D. Phillips. Appreciation to Mr. and Mrs. Ed Sargent for their help was expressed.

Plans were discussed for a hop including an extra project for the benefit of the club members.

Members attending the meeting were as follows: Carol Walter, Kay Morton, Becky McAlister, Judy Seaberry, Ann Freyschlag, Wanda Arther, Toni Horton, Carol McClesky, Julie Frost, Danye Sherman and Shirley Smith.

Cookies and cakes were served to those present.

### ATTEND THE CHURCH OF YOUR CHOICE EACH SUNDAY

TS  
ess  
Deer

If you hunt deer tags, you are entitled to the warning of the Game Commission, whose job is to protect and fish-...  
...to an ex-...  
...is required...  
...deer or turkey...  
...is not requir-...  
...of game...  
...are exempt from...  
...licenses: If you...  
...with your own...  
...deer and tur-...  
...er 65 or under...  
...If you qualify...  
...a license un-...  
...you do not

ary, because it...  
...a deer that...  
...tag. These tags...  
...atched to the...  
...after it is kill-...  
...tag in your...  
...ant. As soon...  
...er, the tag...  
...should be at-...  
...n, if a buck...  
...ere does are...  
...owly wrapped...  
...ted with ad-...  
...the tag should...  
...not become...  
...the carcass...  
...or the auto-...  
...it...  
...non-transfer-...  
...the name of

**Insurance AND Real Estate**  
**D. L. KINNAIRD**  
Life - Fire - Auto - Farm  
Pollo - Bonds  
40 years in the Insurance Business in Eastland

er how you sleep...  
o away tension  
The Englander  
TENSION • EASE  
ress  
mattress with the EXTRA level of Tension-Ease coils  
one knows that a firm mattress is good for you. Your...  
...back—needs firm support. But an ordinary...  
...is not enough. You need to unwind... to sleep the...  
...away. The Englander Tension-Ease is designed to...  
...and relief from tension. It's the only firm...  
...the extra level of Tension-Ease coils.  
...Tension-Ease is the only mattress available...  
...of Airfoamt or Innerspring.

**TENSION • EASE**  
The Englander Company, Inc. "T.M. The Englander Company, Inc."  
T.M. The Goodyear Tire & Rubber Company  
**Boats FURNITURE**  
HAMILTON - EASTLAND

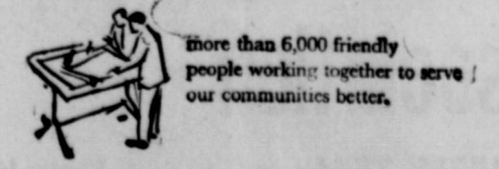


# GAS OVEN WITH A BRAIN

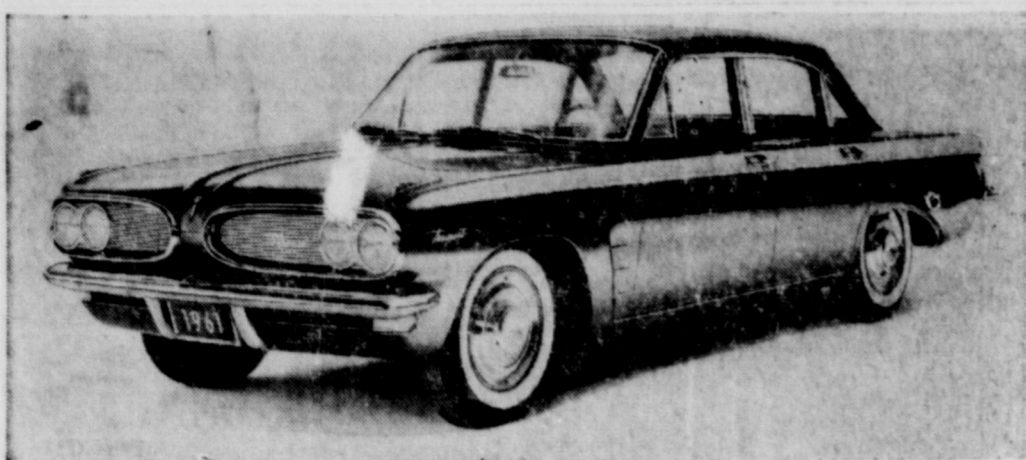
Amazing new gas oven control assures precision accuracy down to 140°. For the first time you have complete oven temperature accuracy from "high" to "new low" ... and with absolutely no fluctuation because it's GAS! If you have to delay, you can keep foods serving-hot ... no "warmed over" taste, no over-cooking, no drying. Delay serving ... warm dishes ... thaw frozen foods, all in the all-new gas oven!

## LETS YOU COOK AN ENTIRE MEAL READY TO SERVE HOURS BEFORE SERVING TIME

See all-new Gold Star gas ranges now! Get high trade-ins during **RANGE ROUNDUP** at your gas range dealers or **LONE STAR GAS COMPANY**.



more than 6,000 friendly people working together to serve our communities better.



**THE NEW TEMPEST BY PONTIAC**—Built on a 112-inch wheelbase the Tempest sedan features a 4-cylinder, front-mounted engine, a rear transmission and unit body construction with an overall length of 189.3 inches. At Muirhead Motor Co. in Eastland.

**Christian Women's Fellowship Meets in Church Annex Monday**

The Christian Women's Fellowship of the First Christian Church met for their regular meeting in the church annex Monday.

Mrs. Neil Day, president, opened the meeting with prayer by Mrs. R. L. Carpenter and presided over the business session.

The announcement was made that the county council of Christian Churches of Cisco, Eastland and Ranger will be held Oct. 10 in Ranger. William D. Hall, missionary speaker, will be guest speaker at the meeting which will begin at 2:30 p.m. Those who wish to attend the meeting are asked to contact Mrs. Day for arrangements as cars will be provided.

Mrs. L. E. Huckabay, program chairman, introduced Mrs. Ray Heckendorn, who gave the devotional and program. Her chosen subject was from Call to Worship, Psalm 17, "Deep Faith in Living

for the Master."

The meeting was closed with the C.W.F. song and benediction.

Members of the Lydia Group were hostesses. Refreshments of homemade cake and coffee were served to the following members present: Mmes. D. S. Buchanan, Ray Heckendorn, Guy Robinson, J. W. Watson, Jack Chamberlain, R. I. Malone, J. H. Evatt, Homer Williams, W. H. Drake, M. K. Beazley, Carl Garrett, H. F. Farrell, J. D. Fiensy, L. E. Huckabay, R. L. Carpenter, Neil Day and Miss Sally Day.

The next C.W.F. regular meeting will be held Nov. 7 in the church annex. All members are requested to be present.

It was also announced that the Fellowship Supper will be held Oct. 26 at the church annex with all members invited.

**Hunters Asked to Cooperate With Wildlife Service**

Daniel H. Janzen, Director of the Bureau of Sport Fisheries and Wildlife, at Washington, D. C., today urged all waterfowl hunters who have received registration cards with the purchase of their Federal duck stamps to cooperate with the Fish and Wildlife Service of the U. S. Department of the Interior by filling out and promptly returning the indicated portion of the form.

This year more than 1400 post offices throughout the country have been furnished with double postcard forms which are handed to purchasers of duck stamps at these particular post offices.

One-half of the card is to be filled out by the hunter and returned at once to the Bureau. The other half is to be retained as a sort of scorecard on which the numbers and kinds of waterfowl which he bags during the coming season, and the number of days he hunted.

"This sample of hunters who return the cards," said Director Janzen, will receive questionnaires at the end of the hunting season in which they will be asked to report their seasonal hunting success. It is highly important that

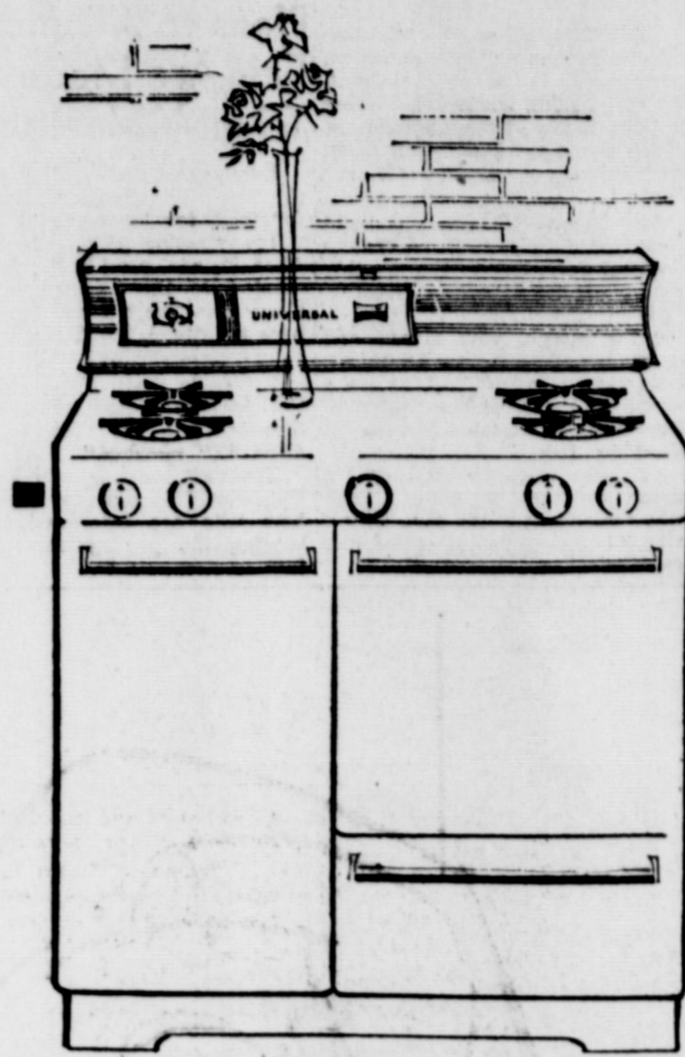
all duck stamp purchasers receiving registration cards fill them out and mail them promptly. Cards from everyone contacted are necessary to make our sample representa-

tive of the entire hunting population." The chief purpose of the survey is to determine as accurately as possible the extent of the water-

in order that a proper balance between the harvest of these birds and the hunting regulations may continue to be maintained. This annual mail survey was in-

augurated on a national basis during the 1951 hunting season when 150 post offices cooperated with the Service in handing out the card forms. According to Director

Janzen, it was progressive steps of Fish and Wildlife matter of estimating the harvest of water-



**\$199<sup>95</sup>** with trade

**Special Range Roundup Price**



**UNIVERSAL GAS RANGE MODEL 6061 AU** New fashion-styled

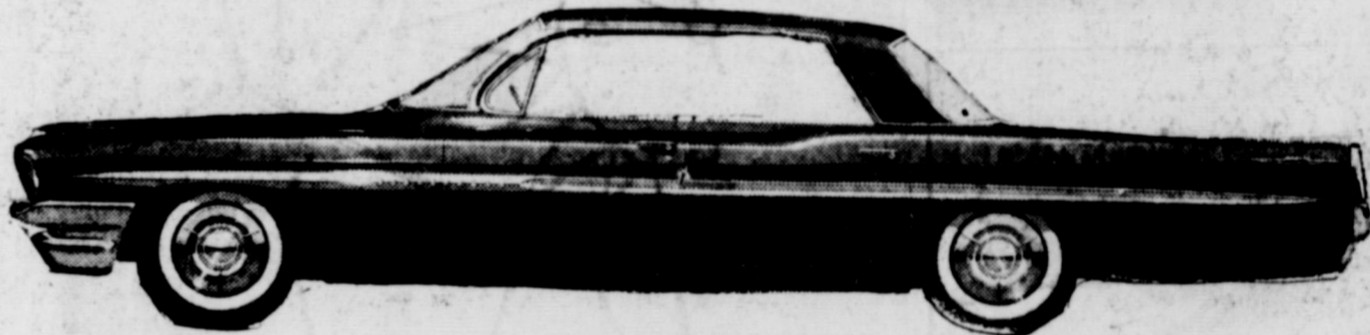
36" deluxe gas range has amazing burner-with-a-brain\* / 4-hour timer / fresh-air gas oven / smokeproof porcelain broiler / New obedient burners give fast flexibility, complete control / giant storage compartment / no hangover heat / smart, full-width oven door handle / as little as \$6.56 a month / during **RANGE ROUNDUP**

**LONE STAR GAS COMPANY**

more than 6,000 friendly people working together to serve our communities better.

\*AGA Trademark

**THE '61 PONTIAC IS OUT TODAY!**



**It's All Pontiac! on a new Wide-Track!**

**New track-to-body proportion!** The track is the width between the wheels. Pontiac is the only Wide-Track car. Body width is reduced, shaving side overhang, balancing more weight between the wheels. Best relationship of body width to wheel width ever tailored. Lean and sway are ancient history.

**Announcing the new Pontiac Trophy V-8 Engine!** We've improved the engine the experts said was perfect. New fuel induction system saves gas by using more air in the gasoline mixture. This makes the engine breathe more efficiently, giving you better acceleration. Eleven versions to choose from. Horsepowers range from 215 to 348. For best economy, specify the Trophy Economy V-8. Its lower compression ratio lets you use regular gas.

**More headroom, legroom, footroom for greater comfort!** You'll find great comfort in the extra roominess we've built into the '61 Pontiac. Seats are higher, yet there's more clearance beneath the steering wheel and more hatroom over your head. There is more legroom, more footroom. Doors are wider and designed to swing open farther. The more highway you put behind you (Pontiac specializes in this) the more you'll appreciate the new room that's all around you in this sleek new '61.



**THE ONLY WIDE-TRACK!** Body width trimmed to reduce overhang. More weight between the wheels. No other car on the road with such sure-footed duty and precision.

ISN'T THIS YOUR BIG YEAR FOR A WIDE-TRACK PONTIAC? ITS ALL PONTIAC!

BONNEVILLE • STAR CHIEF • VENTURA • CATALINA

ON DISPLAY NOW AT YOUR LOCAL AUTHORIZED PONTIAC DEALER

**MUIRHEAD MOTOR CO.**

PONTIAC SALES & SERVICE

301 W. Commerce

**SEE US FOR FURNITURE • APPLIANCES CARPETS**

Every Day Low Prices Means Savings For You! No carrying charges on furniture for 1 full year FREE DELIVERY

**Ranger Furniture Exchange**

"BRASHIER'S" RANGER

123 N. Rusk

Phone 242

ATTEND THE CHURCH OF YOUR CHOICE EACH SUNDAY

**Zemo Great for Minor Burns, Cuts**

Zemo, a doctor's formula, liquid or ointment, soothes, helps heal minor burns, cuts, bruises. Famously antiseptic, eases itch of surface rashes, eczema, teen-age pimples, athlete's foot. Stops scratching, so aids faster healing. For stubborn cases, get Extra Strength Zemo.

**PUT YOUR IDLE DOLLARS TO WORK FOR YOU We Pay You To SAVE!**

Our Current Dividend is **4 1/4%** Per Annum Payable June 30th and December 31st.



**ACCOUNTS ARE INSURED UP TO \$10,000.00**

A man and wife can have \$30,000 in insured accounts.

Ask for our financial statement and literature on insurance of accounts. Open an account by mail - your inquiries will be answered promptly.

- \* Our assets are now over One and One-Fourth Million (\$1,250,000.00) Dollars.
- \* Your accounts are insured by The Federal Savings & Loan Insurance Corporation, an Agency of The Federal Government.
- \* We are member of The Federal Home Bank Loan System.
- \* We operate under a Federal Charter dated December 14, 1934. We invite you to open an Investment Account or a Savings Account with us.

**First Federal Savings & Loan Association**

204 Main Street

RANGER, TEXAS

Phone MI 7-1611

Home  
e Lec  
Old R  
ORE  
out  
TLA  
E. M  
these day  
ing to h  
to print  
Eastland  
ary. We  
ly, but a  
recognize  
new indu  
wand.  
If we knew  
industries  
be able to  
vice any  
is that it  
and a  
results ca  
-ven-  
Texas El  
of adverti  
op forward  
prising sp  
papers an  
and Th  
such imp  
business W  
the com  
rechure li  
locating  
The broch  
lining wh  
to offer  
to see  
to help  
-ven-  
equally  
in the p  
ms and o  
land. Th  
the industr  
ved har  
attract  
ere is mu  
to help.  
about  
he may  
pains un  
oday.  
of a good  
all work  
each bett  
event  
Cont  
d by  
er of Co  
er a Fire  
writing  
books.  
ention W  
9-15. L  
comes on  
ention an  
will recei  
ary  
G  
y Club  
on Mon  
E. (Bob)  
istrict 57  
who is  
al visit to  
Clubs in  
ress the l  
President  
y Mack  
chairmen  
on and se  
president  
Texas P  
ner of  
ewood.  
of the H  
and the  
the Rota  
iff. Ge  
isti and  
87 del  
Rotary  
Conven  
erland.  
elected  
YSCH  
URANCE  
presents  
R NEWS  
in Oct.  
in Oct.  
For Year  
Eastland