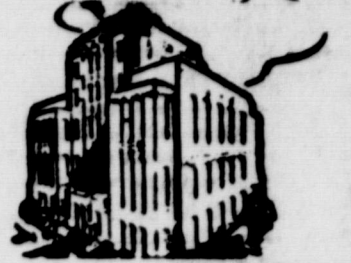


Turkeys to be Given Away in Eastland Saturday

Eastland Telegram

COVERING EASTLAND COUNTY



VOLUME TWENTY-NINE

EASTLAND, TEXAS, THURSDAY, NOVEMBER 20, 1958

No. 93

MOORE about... EASTLAND

by Virgil E. Moore

The old boy who wrote that one popular song, "People Are Funner Than Anybody," sure knew of what he spoke.

We knew that before Wednesday, too, but seeing the folks come through in those covered wagons helped to convince us a better. Can you imagine California in one of these buggies? For that matter, can you imagine going to California, period?

Read in the Star-Telegram where Blair Lewis put in a good plug for Saul Pullman. Saul was plagued by sickness this year, but we look for big things out of Saul ourself next year at TCU.

We are getting more and more impressed with Eastland's business district. Peeking in Clyde Young's the other day we were amazed at how Clyde has increased his stock. Young's is another fine asset to Eastland.

Also noted that the Bus Station and Western Union office recently got a new coat of paint.

Latest bit of loose verse: Diaries are of an ancient order. Modern gals use a tape recorder.

If you should spot a black Collie-Shepherd with a ring around its neck and white feet, phone Joe Housson at 1105-W. Joe's dog, "Boy," strayed from home and he wants him back badly. In fact, he has offered a \$25 reward for information leading to the recovery of the dog.

See City Police are driving around in a new Ford patrol car. Could be that's the reason they are holding the "Stolen Car School" here tomorrow.

From all indications about half of Eastland will be in Brownwood Saturday night to watch the Cisco Lobos beat Granbury. Cisco carries the Eastland County banner and the District 7-AA crown into the bi-district game, and County grid fans will back them all the way.

The dope is that the Lobos should easily win this one, then have tough sledding against Stamford. Our personal belief is that Stamford is in for a big surprise when they meet Perryton this week, however.

By the way, if you are wanting to see a lot of football this week, you can drop over and watch Cisco Junior College play the Hardin-Simmons Buttons tonight. Students and women will be admitted to the game free.

Liquor Raids Staged Here

State Liquor Control Board agents staged a series of arrests in Eastland County Wednesday afternoon, filing 11 cases in Eastland County Court.

Two pleas of guilty were heard by Judge John Hart on four cases and six cases are yet to be heard.

Samuel E. (Slim) Dupriest of Rising Star entered guilty pleas to three charges of selling beer. He was fined \$200 plus cost on one case and \$175 plus cost on each of the other two. Total cost to

Dupriest was \$629.50.

Roiston King of Eastland was fined \$150 plus cost, a total of \$176.50, on one charge of selling whiskey.

Other cases filed were:

R. W. Williams, selling whiskey. Elsie Lewis, selling whiskey. Gus Orman of Cisco, selling whiskey, vodka and gin. Delmar Cotton, selling whiskey. Jack Edmiston, selling whiskey. Rley Freeman of Eastland, selling whiskey, vodka and gin.



KNICKY ARTER
... all district guard

Seven Mavs Get Honors In District

All-district football players were selected and honorable mention players named by District 7-AA coaches in a Coleman meeting Wednesday night.

Each of the six schools in the district were given two votes on players, with the head coach and assistants participating. Selections were made by coaches on the basis of how the boys on other teams played against their own team.

Making the selections were Coaches Harold Barrett and O. C. Warden of Ranger; Carrol Shelton and Jon Tate of Eastland;

and head coaches and assistants from all other schools.

Cisco dominated the selections, placing six players on the first team, two boys on the second team and five on the honorable mention list.

Ballinger placed two boys on the first team, two on the second team and four honorable mentions. The Bluecats came in second in the district.

Ranger, tied for third in district standings, only placed two players on the first team.

Coleman, tied for third place, placed three players on the second team, with four honorable mentions.

Eastland, tied for fourth place in the district, made an impressive showing — with two players on the first team, two on the second team and three honorable mentions.

Winters is represented with three players on the second team, and nine honorable mentions.

It was the first year that Charles Veale has placed on the all-district selections. Lee King made first team quarterback for the second year in succession.

Five Turkeys To Be Given Away at Three

Five big turkeys will be given away here Saturday as Eastland merchants pay thanks to area citizens for "trading in Eastland."

The five turkeys will be awarded at 3 p.m. on the square by the Chamber of Commerce. Tickets which give citizens an opportunity to win one of the turkeys are in most Eastland stores. Herb Tanner, C-C manager, stressed the fact that individuals must be present to win.

The gift of the turkeys will get the 1958 Eastland holiday shopping season officially underway. Christmas lights will be turned on next Thursday night, and Santa Claus will visit Eastland Dec. 6, 13 and 20th.

Tanner said that he was extremely pleased this year to see Eastland businessmen stocking for the holiday season. "I truthfully think we can say this year you can buy just about anything in Eastland," he said.

Junior Tri-Hi-Y Girls to Sell Candy Canisters

Eastland Junior Tri-Hi-Y girls announced today that they will sell Christmas canisters of candy between now and Christmas to raise funds for the Hospital Auxiliary.

The candy will sell for \$1 and all proceeds will go for needed equipment at Eastland Memorial Hospital.

A spokesman said, "The canisters make perfect Christmas gifts and give Eastland citizens an opportunity to aid a worthy cause."

EASTLAND NATIONAL BANK
"On The Square"
MEMBER F. D. I. C.

Gray Matter

By JOE GRAY

Eastland people sure have a strong affinity for being on the scene when history is being made. That is to say if it isn't Eastland people on the scene at the time, it'll be former Eastland people.

When Ed Layton was running things out at South Ward he ran things his way. Actually if I and a few more of the boys then attending that institution of lower learning had known as much about our constitutional rights then as we know now, there were a time or two when he wouldn't have sent us home; we would've sent him home.

There is the time, for example, when Gerald Wingate, the Masengale twins, and I think Maurice Copeland and Sam Kennedy, treed the skunk out back of the tennis court in the Connellie park addition. We didn't hurt anyone at all at that time, but when we went to the first class of the morning the teacher, for some reason or other, must have gotten sick at her stomach. She grabbed her nose as if the thing was about to fall off. As Sam said, "That woman got sicker quicker than anybody I ever saw."

Our teacher ran right to School Principal Ed Layton, who came in our room to see what the disturbance was. He promptly decided some of the brighter boys in that class would have to go home for the day. As I look back on it he didn't have any constitutional right to have sent us home at that time. What we should have done then was to take it up with the superintendent of schools, but being youngsters we didn't fight for our rights. And as grandpa used to say, a fellow who won't show enough gumption to fight for his rights shouldn't be allowed any rights.

And if we'd fought for our rights then in the schools like we should, we'd had poor old Ed in an awfully embarrassing place. But we let him slip out of our noose.

Among the teachers Ed had helping him run South Ward in

those days was a fellow by the name of Merril F. Hines. Hines was one of these hard-working fellows who was always trying to get ahead in the world and to improve himself. He worked a lot around town in his spare time to make extra money. After all, school teachers in those days didn't enjoy as nice a credit rating as they do now, and among his extra curricular jobs he worked at the Texas Hotel as a night clerk. That was the same hotel that occupied the same spot occupied by Jack Muirhead parts and his upstairs apartments.

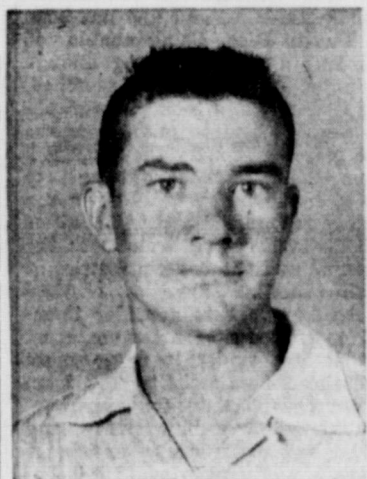
One night while Merril was on duty at the hotel a garage (across the street at the location of Jack Muirhead's used car lot now) exploded with such a terrific force the safe door was hurled across the street into the lobby of the Texas Hotel.

Mr. Hines later remarked about his coming out from behind the hotel desk as a case of slow motion getting into movement faster than greased lightning in a windstorm.

I have often in the intervening years wondered what became of Mr. Hines.

The other day I read in the larger papers of our state of the Latin-American who had been convicted of killing a small baby. It appears that the accused in this case wasn't able to afford a lawyer so the court appointed a lawyer to defend him. On appeal the case was reversed and sent by retrial on the grounds every per-

(Continued on Page Eight)



MARVIN AGNEW
... all district tackle

Over 100 Attend Annual Scout Meet

Over 100 persons attended the annual dinner meeting of the four-county Northeast District of the Comanche Trail Council, held in Eastland Tuesday night, at which time the 1959 Boy Scout Commissioners, members at large and institutional representatives were installed.

Unit leaders were presented with plaques for bringing in six or more new members during the current Round-Up Campaign of the Boy Scouts.

A total of 14 persons from Ranger and about 20 persons

from Eastland attended the meeting. Recognized were Den Mothers, Cub Masters, Scoutmasters and Explorer Advisors.

Representatives were also present from Cisco, Breckenridge, Stephenville and Dublin.

Following the program, introduced by Rev. E. E. Mulliner of Cisco and presented by a girl's trio from Cisco, committee reports for the year were heard.

Frank Sayre of Eastland gave the health and safety committee report. Arthur Deffebach said, in the advancement committee report, that 283 awards had been presented to Cubs during the year, with 379 award points. He also pointed out that 142 advancements in scouting had been made with 249 merit badges earned and four Eagle Scout ranks achieved. Explorers gained 35 individual awards during the year, earning 13 merit badges and two reaching the rank of Eagle.

Jodie Baker of Breckenridge, a member at large, made the leadership training committee report.

Cyrus Frost Jr. of Eastland made reports for the organization and extension committee and the finance committee. He pointed out that two new Boy Scout units had been gained during the year, and that the current membership drive was seeking 300 more units, an average of six boys per unit.

Frost indicated that the council is composed of 52 units made up of 984 Boy Scouts. Operational costs were about \$30,000 a year, he said, raised through the United Fund, Community Chest and special drives.

Baker presented M. G. Cartwright, scoutmaster of Troop 103 of Eastland with a Scouters Key award for six years service. Rev. Mulliner was presented with a 15-year service pin.

(Continued on Page Five)

Introduction of Maverick Backs Concludes Review of Grid Team

This is the final article in the series, "Meet the Mavericks," and features the backfield of the Maverick team. They are Mike Manning, Jimmy McElreath, John Stroud, Roger Taylor, and Billy Don Turner. These boys along with tri-captains, Larry Hollis and Clinton Ray Humphreys, have done a great job this year and really deserve a lot of credit.

Mike Manning, number 22, is a senior fullback and a member of the "E" Association and Hi-Y. He was also president of his sophomore class and fireboy of his junior class. Mike has also played basketball and run track on the high school teams.

Jimmy McElreath, number 25, is a sophomore fullback and is reporter of the sophomore class. He is also a member of the Future Farmers of America and has been treasurer of that organization for the past two years. Jimmy moved to Eastland from Bristol, Oklahoma, only last year and because of this was ineligible for "AA."

Billy Don Turner, number 11, is a junior halfback and a member of the "B" Association. He is also a member of the Hi-Y and has been chaplain of it for the past two years. Billy Don is going to be a Methodist preacher and holds service at the Eolian Methodist Church every other Sunday.

This concludes the traveling squad of the Eastland Mavericks and I hope everyone now knows the boys better who represents Eastland High School on the grid iron each Friday night.

Muscular Dystrophy Drive Is Explained

Rudolph Little, chairman of the local Muscular Dystrophy fund campaign, today described the work of the Muscular Dystrophy Association of America.

The local MD drive is scheduled for Monday night. Little pointed out that more than 200,000 children and adults suffer from muscular dystrophy.

"The MDAA was organized in 1950 and in the eight short years has developed into 81 currently active research projects in more than 50 leading medical institutions here and abroad," Little, who's own son suffers with the disease, pointed out.

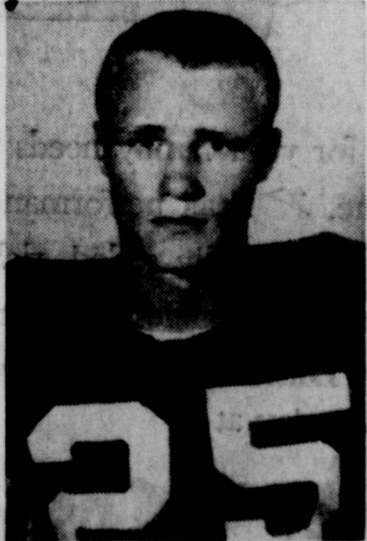
"These studies touch the entire field of muscle structure and functions, with specific work on

muscular dystrophy, and important areas of fundamental research in biochemistry, endocrinology, genetics, physiology and anatomy," he said.

"There are two of these research projects in Texas, both at Baylor University College of Medicine in Houston. The most significant recent development is that an ideal experimental animal has at least been made available for research. It is a mouse with a heredity myopathy strikingly similar to that found in human beings with muscular dystrophy. Thus scientists probing the mysteries of muscular dystrophy are now able to check results of their experiments in a short time."

"The MDAA's Institute for Muscle Disease is almost completed and the first muscle disease to be studied is muscular dystrophy. With the completion of this institute the American people will have had the symbol and physical manifestations of the highest scientific ideal, the determination to push through yet another of these scientific hindrances the gift of health and life to suffering millions."

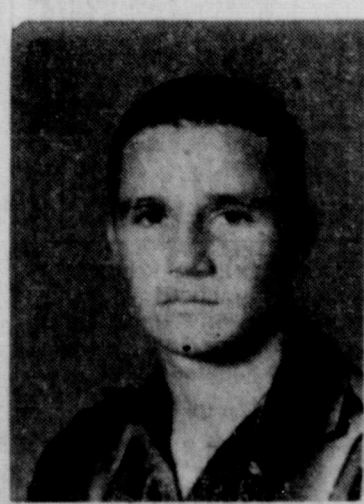
EASTLAND NATIONAL BANK
"On The Square"
Member F. D. I. C.



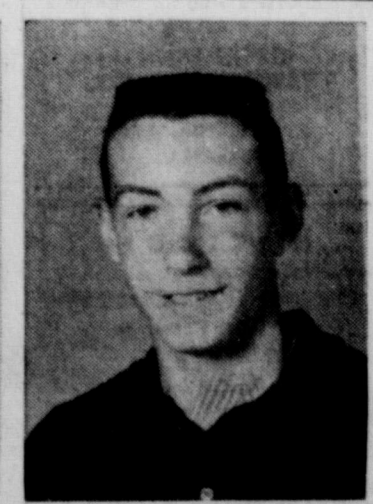
JIMMY MCELREATH
... sophomore back



MIKE MANNING
... senior fullback



BILLY DON TURNER
... junior fullback



ROGER TAYLOR
... sophomore halfback



JOHN STROUD
... freshman back

All District Teams

7-AA ALL-DISTRICT				
FIRST TEAM		Pos.	SECOND TEAM	
Player	School	Wt.	Player	School
John Adams	Cisco	180	End	150 Ricky Grissom, Winters
Billy Hammer	Cisco	165	End	160 Stanley Reed, Eastland
R. Dankworth	Ballinger	165	End	
Marvin Agnew	Eastland	175	Tackle	180 Don Smith, Coleman
Weaver Callaway	Cisco	170	Tackle	156 David Burton, Winters
Knicky Arther	Eastland	170	Tackle	165 Bobby Powers, Ballinger
Wayne Brown	Cisco	170	Guard	152 Jerry Kraatz, Winters
Charles Veale	Ranger	165	Guard	180 Douglas Kolb, Coleman
Lee King	Ranger	165	Center	165 J. Bob Richardson, Cisco
Jerry Candler	Ballinger	180	Q-Back	155 K. Winton, Ballinger
Randall Hess	Cisco	175	H-Back	145 Larry Hollis, Eastland
Duane Hale	Cisco	165	H-Back	150 Benton Porter, Cisco
			F Back	160 Pat DeBusk, Coleman

HONORABLE MENTION

ENDS—Ward Lane, Coleman; Jackie Nettik, Cisco.

TACKLES—Jack Qualls, Cisco; Joe Tom Johnson, Cisco; Joe Davidson, Ballinger; Don McWright and Benny Mathes, Winters.

GUARDS—Tommy Pleasants, Ballinger; Arthur Hodges and Louis Dietz, Winters; Gerald Darr, Cisco; Charles Chaney, Eastland.

CENTERS—Gary Ryan, Coleman; Don Hazard, Eastland; Vance Carter, Ballinger; George Scott, Winters.

QUARTERBACKS—Delbert Schaefer, Cisco; Jerry Harris, Coleman; Clint Humphries, Eastland; Jerry Dunnam, Winters.

HALFBACKS—Ronald Riley, Coleman; Jimmy Largent and Charles Awalt, Winters.

FULLBACKS—Charles Currey, Winters; Dalton Hoffman, Ballinger.

Auto Theft Seminar To be Held Friday

An Automobile Theft Seminar will be held in Eastland Friday, sponsored by the Texas Department of Public Safety.

Registration of area lawmen will begin at 9:30 in the 8th District courtroom in the courthouse. A luncheon is planned for noon at the White Elephant restaurant. Here is the program released by Chief Ray Laney:

- PROGRAM**
- 9:30 a.m. Registration
 - 10:00 a.m. Call to Order
 - C. C. Daniel, President, TPA
 - 10:05 a.m. Invocation
 - 10:10 a.m. Introduction of Guests and Purpose of Conference
 - Worth Seaman, DPS, Chum.
 - Auto Theft Committee, TPA
 - 10:20 a.m. Address of Welcome: Mr. Cyrus Frost, Jr., Mayor
 - 10:30 a.m. Auto Theft, The Luxury Crime of our Day
 - PANEL: Joel Tisdale, Ed Boyle, C. C. Benson
 - 11:00 a.m. Juvenile Problem: Chief Warren Dodson
 - 11:30 a.m. Juvenile Theft Film
 - 11:45 a.m. Lunch and Speaker Mr. Ed. Connally, President, RTLEF
 - 1:30 p.m. Commercial Thefts
 - PANEL: H. J. Cobb, R. W. Weddell, Martin Koonsman, Nat Finkston.
 - 2:15 p.m. Frauds and Conversions
 - PANEL: Mr. Tom Wilson, Bill Mabry, Captain J. C. Nichols, D. Johnson

3:00 p.m. Diction
C. C. Benson, Mgr., NATB, Captain George Morahan, DPS, Abilene

3:30 p.m. Available Services
Joel Tisdale - DPS, Ed Boyle - F.B.I., C. C. Benson-NATB

They Got Their Deer

(Editor's Note—"They Got Their Deer" will appear as often as necessary during the deer season. If you got your's telephone 601 or 602 and supply the necessary information.)

Ruddy Haun, 10 points.
Charles Freyschlag, four points.
Wendell Reed, 10 points.
Otis Coleman, six points.
Howard Sledge, six points.
W. L. Garner, six points.
E. E. McAlister, four points.
C. Walker, four points.
Bruce Pipkin, eight points.

TIERED OF A GAS HOG? TRY PARKING A DINOSAUR?

Try and buy the popular, smart new Rambler, truly a teeny-weezy gas burner. Famous for fun, resale, quality and economy.

See TOM'S SPORT CARS Eastland

SANDY'S SCHOOL SCOOPS

By SANDY TAYLOR
Telegram School Reporter

Well, football season is over for this year, but basketball season is just around the corner. Our final football game did not come out as everyone wished as our boys played a good game anyhow. They have really done a great job this year and I think they deserve a lot of credit for their hard work throughout the fall season.

A little incident happened in

Eastland Thursday night that has aroused quite a few tempers here. Sometime during the night, someone painted the words "Ranger" and "RHS" on the sidewalk in front of the school. They also blazed this across the front of the recently painted Maverick pressbox at the football stadium. Along with this, they threw rotten persimmons on the front of the school. As I said before, this made quite a few people mad and I'd sure hate to be the guilty person if some of these people caught up with me.

Monday afternoon, eight members of the Maverick band went to Ft. Worth to view a marching contest of the bands in the Ft. Worth region. The purpose of the trip was to pick up pointers for our region's marching contest which will be held in Winters, Dec. 6. The Maverick band plan to enter this contest as do other bands from this and surrounding counties. Those making the trip were Jackie Bennett, Ann Taoms, Sandy Taylor, Raymond Lusk, Gary Galt, Mike Potts, Bill Jones, Bill Loden, Elton Williams, and Mr. K. C. Reed. See ya next week.

FREYSCHLAG INSURANCE AGENCY
presents the
WEATHER NEWS

High	70
Low	31
Rain	0
Total Rain in November	1.98
Avg. Rain in November	1.67
Total Rain for Year	28.38
Forecast	Warmer

L. C. PHAGAN, FRESH JOBBERS
1206 W. 5th - Phone Area 61 2-1600
All types of oils and greases for farm, industrial and commercial uses.
Only local oil (no imported oil) used in making Premier Products.

PRE-THANKSGIVING STOCK-UP SALE!

SHORTENING BAKE-RITE

3 -Lb. Can **69¢**

BISCUITS FOOD MART SWEET MILK or BUTTER MILK-New, At Worth!

3 10-Cnt. Cans **25¢**

SUGAR PEAS TRELIS BRAND No. 4 SIEVE, TENDER

2 No. 303 Cans **25¢**



Prices Effective Thursday, Friday and Saturday
We Reserve the Right to Limit Quantities

APPLES
WASHINGTON EXTRA FANCY-RED DELICIOUS
4 Lbs. For Just **55¢**

Walnuts CALIFORNIA NEW CROP Lb. **49¢**
Fresh Dates CALAVOS BRAND 2 -Lb. Pkg. **65¢**

- Whole Green Beans** LIBBY'S 3 No. 303 Cans **69¢**
- Chicken Noodle** CAMPBELL'S SOUP 2 No. 1 Cans **33¢**
- Pi-Do Pie Crust** AUNT ELLEN'S 2 10-Oz. Pkgs. **35¢**
- Del Monte Pumpkin** 2-PIE SIZE No. 2 1/2 Can **19¢**
- Ripe Olives** LIBBY'S CADET No. 1 Tall Can **25¢**
- Poultry Stuffing** PEPPERIDGE FARMS 8-Oz. Pkg. **25¢**
- Kleenex Napkins** CLING LIKE CLOTH 2 50-Cnt. Boxes **45¢**
- Sugar** CONFECTIONER'S POWDERED, LIGHT OR DARK BROWN 2 1-Lb. Pkgs. **25¢**

- FAMOUS TEXAS **RUBY-RED GRAPEFRUIT** 2 Lb. **25¢**
- PLUMP, JUICY **WHITE ALMERIA GRAPES** Lb. **25¢**

- RUTABAGAS** LARGE HONDURAS Waxed Minnesota Lb. **5¢**
- COCONUTS** CRISP, TENDER-1-Lb. Cello Bag 2 for **29¢**
- CARROTS** 2 Bags **19¢**

Redeem Your "S & H" GREEN STAMPS
For Gifts For All The Family!

PEACHES Hunt's Yellow Cling Sliced or Halves No. 2 1/2 Can **25¢**

JELL-O 10 Delicious Flavors Gelatin Desserts 6 Reg. Pkgs. **45¢**

FOIL Reynold's Wrap Aluminum ECONOMY SIZE 75-Ft. Roll **69¢**

- | | |
|--|--|
| CUT ALL-GREEN FINEST ASPARAGUS No. 300 Can 25¢ | DROMEDARY PITTED DATES 16-Oz. Pkg. 39¢ |
| ZUSTIG APPLE RINGS 14-Oz. Jar 31¢ | SUNMAID BLEACHED RAISINS 15-Oz. Pkg. 35¢ |
| DOLE SLICED PINEAPPLE No. 1 Tall Can 29¢ | SUNMAID ZANTE CURRANTS 11-Oz. Pkg. 25¢ |
| COMSTOCK CHERRY PIE FILLING No. 2 Can 37¢ | MORGAN'S APPLE JUICE 24-Oz. Bott. 23¢ |
| BAMA-DECORATOR TUMBLER BLACKBERRY JAM 20-Oz. Tumbler 45¢ | HUNT'S TOMATO JUICE 46-Oz. Can 29¢ |

CAVERN MUSHROOMS Pieces and Stems 4-Oz. Can **29¢**

WORTH CONTROLLED QUALITY
HEAVY BEEF-ROUND
Steak
LB. **79¢**

Lowest-Priced, Highest Quality Poultry In Town!

- Armor's Star Bacon** SLICED Lb. **59¢**
- Dry Salt Bacon** SWIFT'S OXFORD Lb. **39¢**
- Longhorn Cheese** WISCONSIN Lb. **49¢**
- American Cheese** KRAFT'S SLICED Lb. **59¢**
- Tid-Bit Shrimp** TEXAS STAR BREADED, FROZEN 2 -Lb. Pkg. **1.39**

- BAKER'S SWEET **GERMAN CHOCOLATE** 4-Oz. Pkg. **25¢**
- DURKEE'S **SNOFLAKE COCONUT** 7-Oz. Pkg. **33¢**
- SWIFT'S **CHOPPED HAM** 12-Oz. Can **67¢**
- LUNCHEON MEAT **SWIFT'S PREM** 12-Oz. Can **51¢**
- SWIFT'S **HAMBURGERS** 10-Oz. Can **51¢**

- NABISCO, CRACKERS **HONEY GRAHAMS** 1-Lb. Box **37¢**
- CHEF'S PRIDE **LARGE LIMA BEANS** 2 -Lb. Pkg. **37¢**

Lustre-Creme SHAMPOO \$1.00 Size **89¢**

Beef Tacos El Chico Frozen 13 1/2-Oz. Pkg. **45¢**

Libbys Grape Juice Frozen 2 6-oz. Cans **39¢**

For Best Selections At
LOWEST PRICE
Buy SUNCO Holiday Poultry At
WORTH FOOD MART

WORTH FOOD MART

LACASA LINES
Mrs. D. B. Raney.
Mrs. L. A. Eudy is critically ill at the home of her daughter, Mrs.

Tryphena Pockrus. Her other children are with her; Riley Eudy of Coleman, Jewell Eudy of Odessa, Mrs. Dick McCollum of Miami, Arizona, and Mrs. Florence Bau-

man of Los Angeles.
Mr. and Mrs. J. A. Caraway at-

ter, Frank Caraway, of Gustine, Frances of Stratford who has also Sunday, Monday, another brother, been to the Wedding Anniversary Will Caraway and wife of Here- were honored with a dinner in the ford and Hartland Caraway, their home of Mrs. Will Caraway's sis-

tending the dinner were Mr. and Mrs. J. A. Caraway, Mrs. O. J. Caraway, Mr. and Mrs. Frank Bargesley, Coy Bargesley, Mr. and Mrs. Vincent Jones and Sharon, and J. B. Jones of the home. After- noon visitors were Mrs. H. L. Caraway, Mrs. Norman Morrison and children, and Mr. and Mrs. Robert Jackson.

Mr. and Mrs. John Gray visited Sunday with their son, Johnny Gray at Garland, bringing their grandson, Robert, home for a visit.

Mr. and Mrs. R. K. Carr of New London are spending this week with their daughter, Mrs. Frank Brooks.

The shower for Johnny Hodge and family, whose house had burned at Frankell, was well attended Friday night. An abundance of gifts were donated. Cookies and cakes not needed for refreshments were auctioned off for extra funds.

Several from here attended the funeral of Rev. Hugh Blair at Cisco, Monday.

Plant Diseases Take Texas Toll Of 15 Million

College Station—Small grain producers in Texas lost an estimated \$15,471,000 because of plant diseases in 1958. Harlan Smith, extension plant pathologist, said rusts accounted for most of the losses but that blights and smut also were of considerable importance.

Wheat growers lost an estimated 6,410,945 bushels; oat producers 5,138,293 bushels and barley losses due to diseases were estimated at 193,821 bushels. These losses, pointed out Smith, were suffered but others also lost because the grains never entered the channels of trade. Too, market grades of the harvested crops were lowered due to the plant diseases.

Smith said disease losses were overlooked by many growers in 1958 because of the high total state production. Rusts became established in South Texas on oats during the early part of the growing season and increased fairly rapidly during late fall and early winter. Cool weather during the spring season slowed the spread to the north. Light infections of wheat stripe rust developed in south and central Texas and later reached epidemic proportions in the major wheat areas of north-west Texas.

The plant pathologist suggested that small grain growers by using a combination of seed treatment and crop rotation could cut the losses. He also pointed out that some small grain varieties had resistance to the diseases and recommended that they be used in areas where adaptable.

Smith suggested a visit with the local county agent for more details on small grain diseases and possible control measures.

A&P Holiday Turkey!

"Super-Right" Dressed and Drawn Turkeys
HENS 8 to 14-lb. Avg. 43¢ **TOMS** 16 to 22-lb. Avg. 39¢

Beltville Turkeys lb. 49¢
"SUPER-RIGHT" SMOKEL
HAMS Shank Portion lb. 39¢ Butt Portion lb. 45¢ Whole or Shank Half lb. 53¢ Butt Half lb. 59¢

"Super-Right" Smoked Ham Center Slices lb. 89¢
"SUPER-RIGHT" SHOULDER **PORK STEAK** lb. 55¢ "SUPER-RIGHT" BOSTON BUTT **PORK ROAST** lb. 49¢
"SUPER-RIGHT" PORK **SAUSAGE** 2-lb. Bog 89¢ CAPN JOHN'S FROZEN—16-oz. Pkg. **Flounder** Fillet 55¢
CAPN JOHN'S FROZEN **PERCH FILLET** 16-oz. Pkg. 43¢ CAPN JOHN'S FROZEN FILLET **CATFISH** 16-oz. Pkg. 53¢

- "SUPER-RIGHT" SLICED Old-Fashioned Thick-Cut **Bacon** 3-lb. Pkg. 99¢
- WHITFIELD SWEET **MIDGET PICKLES** 2 12-oz. Jars 59¢
WORTHMORE **CHOCOLATE STARS** 8-oz. Pkg. 35¢
WORTHMORE **MINT WAFERS** 7 1/2-oz. Pkg. 35¢
WORTHMORE MILK CHOCOLATE **MOLASSES CHIPS** 8-oz. Pkg. 35¢
WORTHMORE **CHOC. PEANUTS** 7 1/2-oz. Pkg. 35¢
WORTHMORE **CHOC. ALMONDS** 5-oz. Pkg. 35¢
BETTY CROCKER White Yellow Devil's Food **CAKE MIXES** Pkg. 29¢
SULTANA **SALAD DRESSING** 8-oz. Btl. 35¢
SULTANA **STUFFED OLIVES** 10 1/2-oz. Btl. 49¢

- WHOLE and SPLIT **ARGO FIGS** 2 16-oz. Cans 33¢
SWEL CREAMY WHITE **FROSTING** 12-oz. Can 35¢
RAINBO DILL OR SOUR GHERKINS **PICKLES** 2 12-oz. Jars 39¢
WHITFIELD CANDIED CRISPY **WAFERS** 2 12-oz. Jars 47¢

- CONFECTIONERS OR **BROWN SUGAR** 2 16-oz. pkgs. 27¢
OCEAN SPRAY **Cranberry Sauce** 16-oz. Can 25¢
Shortening **dexo** 3-lb. Can 73¢
A&P SLICED **Pineapple** 20-oz. Can 31¢
Ann Page Strawberry **Preserves** 2-lb. Jar 59¢
Bell's Poultry **Seasoning** 1-oz. Pkg. 15¢

- JIFFY (MIX) **PIE CRUST** 2 9-oz. Pkgs. 29¢
TRAPPET'S SWEET **POTATOES** 16-oz. Can 23¢
FROZEN RITE **DINNER ROLLS** Pkg. of 24 29¢
ALCOA REG. WRAP **ALUMINUM FOIL** Reg. 25' Roll 31¢
A&P FANCY **MINCE MEAT** 9-oz. Pkg. 23¢
A&P FANCY **PUMPKIN** 29-oz. Can 23¢
FRENCH'S SALAD **MUSTARD** 2 5-oz. Jars 23¢
A&P FANCY CRUSHED **PINEAPPLE** 20-oz. Pkg. 23¢
FRENCH'S BANANA OR RUM **EXTRACTS** 1-oz. Btl. 23¢

- ANN PAGE PURE VANILLA **EXTRACT** 2-oz. Size 39¢
ANN PAGE TOMATO **SOUP** 3 10 1/2-oz. Cans 32¢
ANN PAGE—16-lb. Jar **Grape Jam** 29¢
EQUAL TO THE BEST—YET COST YOU LESS **dexola OIL** Qt. Btl. 49¢
A&P **ENGLISH PEAS** 16-oz. Can 23¢
ANN PAGE CHERRY **PRESERVES** 16-oz. Jar 35¢
A&P SMALL WHOLE **BEETS** 2 16-oz. Cans 25¢
A&P FANCY WHOLE **GREEN BEANS** 16-oz. Can 25¢
SULTANA **FRUIT COCKTAIL** 16-oz. Can 25¢

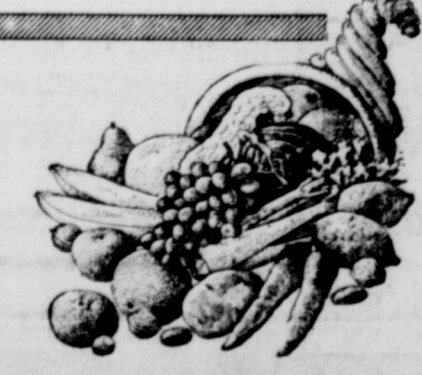
- Ann Page SPICES
ANN PAGE PURE GROUND **CINNAMON** 4-oz. Tin 43¢
ANN PAGE PURE GROUND **GINGER** 1 1/2-oz. Tin 21¢
ANN PAGE PURE GROUND **BLACK PEPPER** 4-oz. Tin 29¢
ANN PAGE PURE GROUND **NUTMEG** 2-oz. Tin 49¢
ANN PAGE PURE GROUND **PUMPKIN PIE SPICE** 1 1/2-oz. Tin 25¢

- OVER 3/4 FRUITS and NUTS!
Jane Parker **Pumpkin Pie** ea. 39¢
Jane Parker **LEMON PIE** ea. 41¢ Jane Parker Seeded **RYE BREAD** 16-oz. Loaf 15¢
JANE PARKER LARGE RING **Angel Food** ea. 39¢

- ANN PAGE PURE GROUND **CINNAMON** 4-oz. Tin 43¢
ANN PAGE PURE GROUND **GINGER** 1 1/2-oz. Tin 21¢
ANN PAGE PURE GROUND **BLACK PEPPER** 4-oz. Tin 29¢
ANN PAGE PURE GROUND **NUTMEG** 2-oz. Tin 49¢
ANN PAGE PURE GROUND **PUMPKIN PIE SPICE** 1 1/2-oz. Tin 25¢

- COLORADO U. S. NO. 1—Mesh Bag **RUSSETS** 25-lb. bag 89¢
RUBY RED TEXAS **GRAPEFRUIT** 3 for 25¢
TEXAS JUICY **ORANGES** bag 39¢
CALIFORNIA PASCAL—Stalk **CELERY** 19¢
FLORIDA—Large **CUKES** 3 for 19¢
OCEAN SPRAY—Box **CRANBERRIES** box 23¢

- DEODORANT SOAP **DIAL** 2 Reg. Bars 37¢
DEODORANT SOAP **DIAL** 2 Bath Bars 27¢
HIP-O-LITE MARSHMALLOW **CREME** 16-oz. Jar 25¢



CELLO CARROTS 2-lb. bag 19¢



Looking for something?..
LOOK TO THE WANT ADS

JOY DRIVE-IN Thurs. - Fri. - Sat. Open 6:15 - Starts 6:30
Cisco - Eastland Highway

HELL CANYON OUTLAWS
A WORLD JOURN PRODUCTION
DALE ROBERTSON - BRIAN KEITH
ROSSANA RORY

ALAN LADD the toughest **PARATROOPER** of them all!
LEO GENN
A COLUMBIA PICTURE - A WARKICK PRODUCTION

DIXIE Drive-In
EASTLAND RANGER HIGHWAY

Box Office Opens 6:30 Show Starts 6:45
Box Office Closes 9:00
—HEATED PATIO NOW OPEN—
Don't Let the Rain and Cold Keep You Home
Admission Never Over 50¢
Adults 50¢—Child Under 12 FREE
WEDNESDAY - THURSDAY, NOV. 19 - 20

THE BIG GUNS CRASH HEAD ON!
GEORGE MONTGOMERY **BADMAN'S COUNTRY**
The first story of the terror that shot Abilene apart!
NEVILLE BRAND - BUSTER CRABBE - KARIN BOOTH
PLUS: Two Color Cartoons

FRIDAY & SATURDAY, NOVEMBER 21 - 22

Universal International presents **AUDIE MURPHY - GIA SCALA**
RIDE A CROOKED TRAIL
CINEMASCOPE COLOR
WALTER MATTHAU - HENRY SILVA
— JOANNA MOORE - EDDIE LITTLE —

PLUS: Two Color Cartoons

RANGER DRIVE-IN
HIGHWAY 80 EAST ON RANGER HILL

Adults 50¢—Kiddies Under 11 Free
Box Office Opens 6:30 - Show Starts 7:00
LAST TIMES THURSDAY

Shock-fused expose of the one-way street to Hell!
GEORGE MONTGOMERY in **STREET OF SINNERS**
Geraldine Brooks - Nehemiah Persoff - Marilee Earle

—Plus Our Second Feature—
DEAN MARTIN AND JERRY LEWIS in **"SCARED STIFF"**
FRIDAY & SATURDAY
JACK WEBB AS THE **"D. I."**
FREEVUE SATURDAY NITE

Insurance AND Real Estate
D. L. KINNAIRD
Life - Fire - Auto - Farm
Polio - Bonds
39 years in the Insurance Business in Eastland

Reliable
Bring Your BATTERY TROUBLES To Us!
Group One Fits Most 6 Volt Cars
8.95
Exchange
JIM HORTON
East Main St. Phone 238
Eastland, Texas

RE-OPENS Friday, November 21st
LAKE CISCO SKATING RINK
 Regular Hours Weekdays: 7 to 10 p.m.
 Sunday 2 to 5 p. m.
 Special Rates to Parties—Call for Reservations
 Phones: Hillcrest 2-20112—Hillcrest 2-2666
MR. AND MRS. ED WENDE

NOTICE... Come To Kendrick Drive-In Dairy
 (Serving This Territory Since 1940)
FOR Good. Clean JERSEY Sweet Milk
Price - 70c Gal.
 Phone 896-J-2 — Located Halfway between Eastland and Cisco

NEW . . . DEAL
RE-MODEL—REPAIR
Up To 60 Months To Pay \$3,500 Is The Limit
 Well, if money is all you need, don't delay a minute more. It's easy and quick . . . obtaining one of our low-cost home loans. Like-rent monthly payments are tailored to suit your budget and needs. Call or come in!
HIGGINBOTHAM - BARTLETT CO.
 Jack Elliott, Mgr.
 301 W. Main Phone 112 or 1014
YOUR FRIEND AND NEIGHBOR

EGBDF Junior Music Club Has Social Hour In Harold White Home

Two new officers were elected by the EGBDF Junior Music Club when members met Saturday, Nov. 15 in the home of Mr. and Mrs. Harold E. White with their daughters, Marsha and Debra, as hostesses.
 The new officers, named to fill vacancies, are Jennifer Pryor, secretary and Marsha White, treasurer.
 Members opened the meeting by singing "America" and Mike Siebert, president, conducted a short business meeting.
 Jimmy Frost was elected as a new member of the club and reports from various officers were heard.
 A program followed the business meeting. Kimberly Hailey was leader for the afternoon and Mary Ann Turner led members in repeating the club pledge and collect.
 The Federation song for October, "In Christ There Is No East or West," was sung.

Mrs. F. L. Dragoo conducted a theory and all members participating made high grades.
 Then a musical program followed. The program:
 "Come Ye Thankful People," Marsha White, pianist.
 A Duet, "The Toy Band Parade," Debra White and Judy Crosby.
 Piano Solo, "Moccasin Dance," Mike Siebert.
 Piano Solo, "Etude" (from Oxford Book), Marsha White.
 Piano Solo, "Skaters Waltz," Mary Ann Turner.
 Piano Solo, "Allegro" from Sonata in G by Mozart, Jennifer Pryor.
 Judy Crosby will be leader for the club's next social hour.
 Refreshments of hot chocolate and pumpkin pie and candy were served by the hostesses from a decorated dining table to Mike Siebert, Layne Gregory, Jimmy Frost, Judy Crosby, Marsha White, Debra White, Jennifer Pryor, Mary Ann Turner, Lois Ann Sims and Kimberly Hailey.

Martha Kinard Is Honored On Seventh Birthday

Martha Kinard, daughter of Mr. and Mrs. Larry Kinard, was honored Nov. 8 with a party on her seventh birthday.
 Mrs. Kinard held the party in her home in the Leon Village. Guests came at 10 a. m. and stayed for lunch. Sandwiches, orange drink, potato chips and birthday cake were featured.
 Party games were played preceding the luncheon.
 Attending the party were Connie and Ronny Coan, Diana Fry, Cynthia Smith, Judy Crosby, Shannon Wilson, Rodney Mitchell, Billy Day, Jeff Germany, Earl Thomts, Larry Kinard Jr., Cheryl Brown and Mrs. W. M. Brown of Graham.
 Mr. and Mrs. C. L. Walton are the parents of a six pound 10 ounce girl, Robbie Lucille, who was born Nov. 11. Paternal grandparents are Mr. and Mrs. Charlie Walton of Morton Valley and maternal grandparents are Mr. and Mrs. Roy McGough of Ranger. Welcoming Robbie Lucille was two sisters, Mona, four, and Twania Charlene, three.

Over- (Continued from Page One)

Plaques for gaining members were presented by Baker to Fred Bennett, Scoutmaster of Troop 10 in Ranger; James Townzen, Explorer Post Advisor of Post 16 in Ranger; and Cartwright. C u b Packs from Stephenville, Breckenridge, and Dublin also received awards, along with Troop 30 of Dublin.
 H. A. Shockey, commissioner from Ranger, made the nominating committee report. Officers were installed by Fermin Smith of Brownwood.
 Installed as members of the commissioner staff were Dwaine Dennis and Shockey of Ranger; Hank Sims of Eastland; and others.
 Installed as members at large were W. A. Robinson, Deffenbach, Shockey, John A. Bates, Roscoe Hopper and W. F. Creager of Ranger; Frank Sayre and Grady Pipkin and Arthur Murrell of Eastland; and others.
 Named as institutional representatives from Eastland were Charles Freyschlag, Homer Smith

and James W. Reid. Institutional representatives from Ranger are James H. Ellison, Rev. Lively Brown, R. V. Robinson and Morris George. Institutional representative from Gorman is Thurman Jay. Ronald Servies is the representative from Carbon.
 Dr. E. J. Howell, president of Tarleton State College at Stephenville, was the principal speaker of the evening.

MY POP SAYS THIS MARKET HAS GOT TO COME BACK ANY DAY NOW ... BUT HE'S STILL BUYING...



- MIXED SCRAP IRON
- CLEAN CAST IRON
- OIL FIELD CABLE
- COMPLETE OLD CARS
- TIN FOR OUR PRESS
- COPPER WIRE
- LEAD, BABBITT, ZINC
- BRASS MIXED
- RADIATORS BATTERIES
- ALUMINUM MIXED

WE BUY AND SELL
 NEW and USED PIPE
 NEW and USED FITTINGS
 NEW and USED...
 STRUCTURAL REINFORCING BARS
 • FLAT BARS
 • ANGLES
 • CHANNEL
 • PLATE
 • I-BEAMS



EASTLAND IRON & METAL CO.
 OWNED AND OPERATED BY HENRY PULLMAN

INGROWN NAIL HURTING YOU?
 Immediate Relief!
 A few drops of OUTGRO® being massaged into the nail, relieves the pain of ingrown nail. OUTGRO® softens the skin underneath the nail, allows the nail to be cut and thus prevents further pain and discomfort. OUTGRO® is available at all drug counters.

Reduce Without Dieting
 Use my Stauffer "reduce with low calorie diet" machine. Reasonable rates.
 Mrs. Bert Fuller, 613 West Moss. Phone 653.

T. L. FAGG
 REAL ESTATE
 Property Management
 Home and Farm Loans



It's cane-grinding time!

...time for **BRER RABBIT SYRUP**

BLUE LABEL—for the rich flavor of freshly ground ribbon cane
BROWN LABEL—for deliciously mild sugar-cane flavor



...and the time to serve **BRER RABBIT SYRUP** is any time. Good morning, noon or night. Delicious on pancakes or waffles...and economical, too!

Cadillac



Motorodom's New Measurement of Greatness!

The American motorist has long since adopted his own technique for judging the year's automotive offerings. He simply looks to the new Cadillac car to discover motorodom's fullest measure of all that is new and good and wonderful.
 And never before has Cadillac placed such a high standard on the world's motor cars as it has for 1959. For the new "car of cars" has introduced a whole new concept of what an automobile can do and be . . . and how it should look and act.
 To the eye alone, it is a revelation. Elegant, majestic, substantial, poised—it has brought a new magic and splendor to the world of motion.
 Its Fleetwood interiors are miracles of advanced design.
 Appointments are beautiful beyond imagination . . . and its fabrics and leathers are unbelievably luxurious.
 The 1959 Cadillac is equally inspiring from behind the wheel. Its spectacular new engine, its advanced transmission and its new ease of ride and handling make every journey the most glorious distance between any two points.
 These Cadillac advancements have been interpreted in thirteen body styles—including a new Eldorado Brougham.
 So if you contemplate the purchase of any motor car in the coming year, you owe yourself an early visit with this newest of Cadillacs.
 Sixty minutes in the showroom and on the highway will give you a full understanding of the new way to measure greatness in a motor car.

The majestic new Cadillac for 1959 is now on display—inspect and drive it today!

VISIT YOUR LOCAL AUTHORIZED CADILLAC DEALER
DON P. ERSON OLDS -- CADILLAC
 314 West Main Street Eastland, Texas
 Every Window of Every Cadillac is Safety Plate Glass

Gorman Gatherings
By Mrs. R. E. Boucher

Mr. and Mrs. J. E. Walker had as their guests the past week their daughters, Mrs. W. M. Emmons of Breckenridge and Miss Walker of Phoenix, Ariz. Jerry is with the American Air Lines in Phoenix.

Visitors in the home of Mr. and Mrs. R. C. Boswell over the weekend were Mrs. Boswell's brother and sister-in-law, Mr. and Mrs. Eimer St. Clair of DeLeon and another of her brothers, Perry St. Clair of Comanche. Also visiting in their home was Mrs. Boswell's sister and brother-in-law, Mr. and Mrs. Wylie Yeagar of DeLeon, and their son, Bob, of Fort Worth. Mrs. Viola Cheatham of Comanche also visited.

Mrs. J. M. Ellison was a weekend visitor with her daughter and family, Mr. and Mrs. O. D. Hite, Susan and Sally, in San Antonio.

Mrs. Minnie Richey returned Friday from a week's visit with her son and family in Tulsa, Okla.

Mr. and Mrs. Odell Hogan of Takoka spent the weekend with his father, T. E. Hagan. They returned home Monday and Mr. Hogan went with them for an extended visit.

Mr. and Mrs. T. G. Gray had as their guests over the weekend

their children and grandchildren. Visitors included Mr. and Mrs. A. C. Maddocks and daughters, Perry and Majorie, of Denton; Mrs. James Mathews and son, James Gray, of Corpus Christi; Mr. and Mrs. Preston Lightfoot of Sweetwater; and Mr. and Mrs. Bob Dixon of Austin. Mr. and Mrs. Gray celebrated their 61st wedding anniversary.

Mrs. Gene Marshall left Sunday at 8 p.m. for Abilene where she boarded a plane for Ogden, Utah. Mr. Marshall will meet her in St. Lake. He is with the Internal Revenue accounting department and they will be in Ogden for several weeks. Mrs. Marshall has been at the bedside of her mother, Mrs. W. L. Andrus, who is now a patient in the Blackwell Hospital.

Mr. and Mrs. Aubrey Griffin and Michael of Borger are weekend guests in the home of their parents, Mr. and Mrs. W. L. Andrus and Mrs. Maudie Griffin. Mrs. Aubrey Griffin will remain for sometime to be at the bedside of her mother.

Mrs. Ella Logan of Corpus Christi was a weekend visitor in the home of her mother and sister, Mrs. Argie Pritchard and Mrs. Ethel Stahl.

Mr. and Mrs. R. E. Boucher were in Stolon and Post the first of the week. They carried Mrs. Boucher's brother, C. R. Vaught, home and visited in Post with her sisters, Mrs. C. J. Mangum and

Miss Mattie Vaught. Her sister and brother-in-law, Mr. and Mrs. D. F. Cagburn of Lubbock, spent Tuesday with them in the home of Mr. Vaught.

Mrs. R. C. Boswell's brother, Perry St. Clair of Comanche, underwent surgery Friday at the Blackwell Hospital. Last report he was doing nicely. Mr. St. Clair is sheriff of Comanche County.

Guests in the home of Mr. and Mrs. G. D. Riley over the weekend were Mrs. Tony Immatteo, Gene and Neil of Fort Worth and Miss Pat Tippet of Dallas.

Rev. and Mrs. W. M. Mustin of Los Angeles, Calif., Mrs. Willie Harvey of Wichita Falls, Ed Pritchard of Fort Worth and Austin Pritchard of Houston were visiting with relatives in Gorman Sunday. Mrs. Mustin and Mrs. Harvey are sisters of Ed Austin. Rev. Mustin is a retired minister. These people are all former citizens of the Midway community. They are cousins of Mrs. T. A. Thompson and Mrs. Ethel Stahl and nieces and nephews of Mrs. Argie Pritchard.

Mr. and Mrs. Jesse Pittman were Sunday visitors in the home of Mr. and Mrs. Marvin Nix.

Proper Machinery And Balance Make Farming Profits

Profitable farming today not only requires adequate machinery and equipment to make labor most productive, but it also requires a balance between the capital invested and the labor which goes into the farm business.

It has never been more true that "you must spend money to make money." It is possible, however, to spend money without adding to income. At the same time, many farmers can profitably spend more for machinery, especially if they can increase their volume of business and lower their costs per unit of product. The big questions farmers should ask themselves are:

1. Which costs should I increase and which should I cut?
2. Which costs can I cut that will not cut my income?
3. Which machines, if any, are not essential for my farm business?

The Texas Agricultural Extension Service has released a bulletin that will help answer these questions. It discusses factors to consider before buying machinery, how to cut machinery costs, selecting a machine, when to trade, along with cost-cutting tips and other related topics. Cecil Parker, farm management specialist and W. L. Ulrich, agricultural engineer, are the authors.

This publication is available from local county agents or the Agricultural Information Office, College Station, Texas. Ask for MP-281.

CALL 601 FOR CLASSIFIED

TOWN AND COUNTRY ANIMAL HOSPITAL
DR. SPENCER C. SPRULL
VETERINARIAN
Large Small Animal Practice
Bathing - Boarding - Clipping
Office Hours 8:00 to 12:00
2:00 to 5:00
Emergency Service
1491 TWO STORY BRICK
OLD GORMAN ROAD
BELEON, TEXAS

Maybe You Don't Need Insurance
... If you don't own a home, furniture, jewelry or a car you can get along without the services of an insurance agent. But for the most of us life is not that simple. Modern living has become so complex that the protection of property and liability is a major problem, and we must be insured. The individual you can always depend on for accurate solutions of your insurance problems is your local agent.

EARL BENDER & COMPANY
Eastland, (Insurance since 1924) Texas

NEW LOCATION
Tobby and Hops
Sewing Shop
Alterations
Alhambra Hotel - Phone 716

SEAT COVERS
FOR YOUR CAR
New Patterns - Beautiful Fabrics
Every Piece Cut and Sewed To Fit Your Particular Car
PRICES FROM \$22.50
"Budget Terms If Desired"
SEE STAN THE MAN AT
BLEVINS MOTOR CO.
514 W. Main Phone 308

* TOP TV-The Dinah Shore Chevy Show-Sunday-NBC-TV and the Pat Boone Chevy Showroom-weekly on ABC-TV.



The new Bel Air 2-Door Sedan

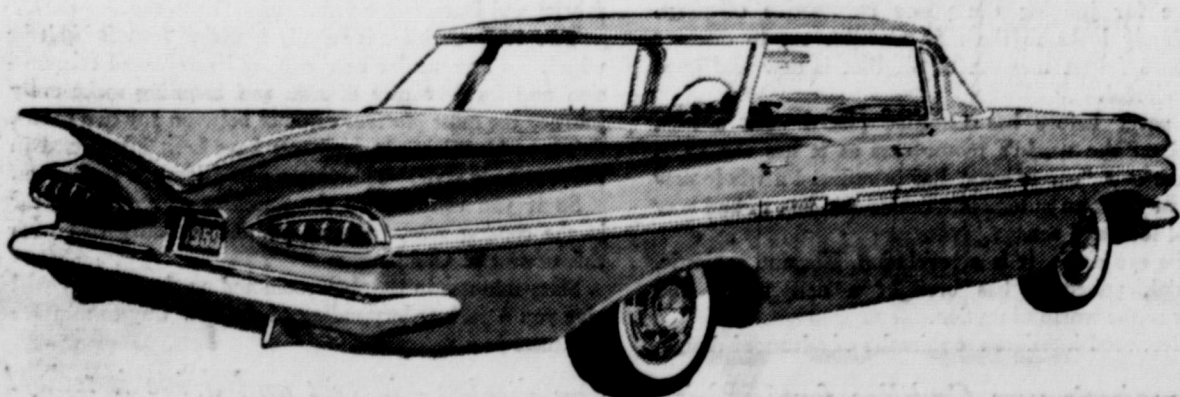
Be our guest for a pleasure test... drive a Chevy today!
DEFINITELY NEW, DECIDEDLY DIFFERENT!

Chevrolet shatters precedent beautifully with a completely new car for the second year in a row. Here's the one that's shaped to the new American taste. The '59 Chevy's new and different in everything from ride to roominess!

It's new all over! In the fresh slant of its Slimline design. In the spacious comfort of its Body by Fisher and vast areas of visibility. There's a new Hi-Thrift 6 that delivers up to 10% greater gas economy, bigger brakes, better-than-ever suspensions, a new finish that needs no waxing for up to three years. Nothing's new like Chevy's new! See it at your Chevrolet dealer's now.



what America wants, America gets in a Chevy!



The impressive new Impala Sport Sedan. Like all new Chevies, it has Safety Plate Glass all around.

see your local authorized Chevrolet dealer

FULLEN MOTOR COMPANY
305 E. MAIN PHONE 44

EASTLAND

Holiday Bargain Train

These Specials Good Friday and Saturday

CLOVER FARM Shortening 3 Lb. Can 69¢	HEMET WHOLE SPICED Peaches No. 2 1/2 Can 25¢
PILLSBURY Cake Mix White - Yellow - Chocolate 20-oz. Pkg. 25¢	CLOVER FARM FRUIT Cocktail 2 No. 303 Cans 49¢
CLOVER FARM Cranberry Sauce 2 16-Oz. Cans 35¢	CLOVER FARM Salt 26-Oz. Box 9¢
BORDEN'S Mellorine 1/2-Gallon Carton 49¢	No. 1 Russet POTATOES 10-Lb. Bag ... 43¢
PREMIUM SALTINE Crackers Lb. Box 27¢	Washington Red Delicious APPLES Lb. 15¢
MCCORMICK'S PURE Black Pepper 4-Oz. Can 29¢	Texas ORANGES 5-Lb. Bag ... 39¢
WHITE SWAN RED PLUM Preserves 12-Oz. Jar 16¢	Firm Green CABBAGE Lb. 6¢
SKINNER'S MACARONI or Spaghetti 2 7-Oz. Boxes 25¢	
NORTHERN TOILET Tissue 3 Rolls 25¢	

ORDER YOUR **Thanksgiving Turkey Now**

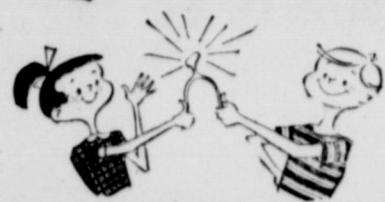
GOOCH'S FRANKS 3 Lbs. 1.05	ARMOUR'S MATCHLESS SLICED Bacon Lb. 49¢
	GOOCH'S COUNTRY STYLE PURE PORK Sausage 2 Lbs. 95¢
PORK ROAST Lb. 49¢	
CANNED PICNICS 3 Lb. Can 2.19	
LOIN STEAK Good Quality Lb. 85¢	

KRAFT AMERICAN CHEESE
2-Lb. Box **95¢**

It's QUALITY plus PRICE that counts when you buy Food
CLOVER FARM gives you BOTH
H. B. MacNoy, Owner
7:30 a.m. to 8:00 p.m. Weekdays
7:30 a.m. to 9:00 p.m. Saturdays

SAFEWAY

Thanksgiving Foods



The finest you could ever wish for!



ALL SAFEWAY STORES WILL BE
CLOSED
Thursday, November 27
THANKSGIVING
Avoid the last minute rush...
Shop Early at Safeway and Save!



TURKEYS HENS TOMS

Safeway Sells Only the
Finest Quality Turkeys...
U.S.D.A. "A" Grade...
Safeway Sells Turkeys at
Only One Price for Hens. All
Are U.S.D.A. "A" Grade.

U.S.D.A. Inspected and
Graded—Broad Breast—
Ready to Cook—
10 to 14 Pound Average

Lb. 41¢

U.S.D.A. Inspected and
Graded—Broad Breast—
Ready to Cook—
15 to 20 Pound Average

Lb. 35¢

Other Holiday Meat Buys!

- Extra Fancy Chicken Hens** Ready to Cook 3 1/2 to 6 Pound Average **Lb. 39¢**
- Maryland Standard Oysters** Perfect for Cocktails **Pr. Can 99¢**
- Small Beltsville Turkeys** 4 to 8 Pound Average Perfect Eating, Ready to Cook **Lb. 53¢**

Long Island Ducks Perfect for Roasting Ready to Cook **Lb. 55¢**

- Pork Roast** Boston Butt—So Juicy and Tender **Lb. 45¢**
- Pork Sausage** Wingate—Regular or Hot **1-Lb. Roll 35¢**

There Are No Finer Eggs Than Safeway Eggs!

Breakfast Gems Eggs Grade A Quality—Medium Size Truly a Breakfast Treat **Doz. 49¢**

Cream O' the Crop Eggs Grade AA Quality Large Size **Doz. 59¢**

Bakery Feature of the Week!

Mince Meat Snails Skylark—Regular 23c. Thursday, Friday and Saturday Only **7-Oz. Pkg. 19¢**

Party Protein Bread Skylark **1-Lb. Loaf 29¢**

Cloverleaf Rolls Skylark—6 and 6 Brown and Serve **13-Oz. Pkg. 23¢**

Fruit Cakes

Curtsy Sliced Bar **14-Oz. Pkg. 79¢**

Holiday Loaf **14-Oz. 59¢**

Holiday Ring **1-Lb. 5-Oz. Pkg. 89¢**

Banquet Dinners Frozen—Chicken, Beef or Turkey **11-Oz. Pkg. 59¢**

Green Peas Bel-Air Frozen—So Tender and Easy to Prepare **2 10-Oz. Pkgs. 29¢**

Green Giant Corn Cream Style Golden **303 Can 19¢**

Green Giant Peas Tender—Nourishing **303 Can 19¢**

Chicken of Sea Tuna Chunk Style—Green Label **No. 1/3 Can 33¢**

Eagle Chili Powder —Adds Flavor **1-Oz. Bottle 15¢**

Brer Rabbit Syrup Blue Label **12-Oz. Bottle 25¢**

Brer Rabbit Syrup Brown Label **12-Oz. Bottle 25¢**

Cane Sugar Imperial or Domino—Special Buy for Your Holiday Baking **5 Lb. Bag 51¢**

Cranberry Sauce Ocean Spray—Jellied or Whole—Adds the Finishing Touch to Your Thanksgiving Table **300 Can 21¢**

Sliced Strawberries Bel-Air Frozen—for a Perfect Dessert **10-Oz. Pkg. 19¢**

Whole Green Beans Del Monte—Tender, Rich in Garden Flavor **303 Can 23¢**

Golden Corn Highway—Whole Kernel—Extra Tender **2 12-Oz. Cans 25¢**

Holsum Olives Thrown Stuffed Manzanilla #3 **5-Oz. Jar 29¢**

Crispy Crackers Busy Baker Fresh—Perfect with Salads **2 Lb. Box 45¢**

Mexicorn So Tender and Delicious **2 12-Oz. Cans 39¢**

Niblets Corn Perfect for Thanksgiving **2 12-Oz. Cans 35¢**

Pecan Halves Funsters **3-Oz. Can 39¢**

Paper Plates Diamond Lunchette **8-Ct. Pkg. 15¢**

Faultless Starch Blued and Perfumed **2 12-Oz. Boxes 29¢**

Lux Toilet Soap Pink—for Lovelier Skin **2 Reg. Bars 19¢**

Lux Soap Flakes Ideal for Dishw... **Large Box 33¢**



- Red Apples** Delicious Medium Size **Lb. 13¢**
- Texas Yams** Kilo Dried, Perfect for Baking **Lb. 9¢**
- Yellow Onions** Just Right Flavor **Lb. 5¢**
- Cranberries** Ideal for Cranberry Sauce **1-Lb. Pkg. 21¢**

Edwards Coffee \$1.47 **2 Lb. Can 1.47**

All Grinds—Buy, Try, Compare—Why Pay More?

5 Lb. Bag 51¢

21¢

19¢

23¢

25¢

29¢

45¢

33¢

27¢

75¢

*For The Finest Holiday Produce
Be Sure Yours is From Safeway!*

Pascal CELERY
Fresh, Crisp, Green
Crunchy, Sweet. Truly
a Thanksgiving Must. **Stalk 15¢**

Pumpkin Libby—Perfect for your Pumpkin Pies That Are a MUST for the Thanksgiving Feast. **2 303 Cans 23¢**

Mince Meat Little Cook—For your Mince Pies and desserts. Made from selected quality ingredients blended from a famous Recipe. **9-Oz. Pkg. 23¢**

Fruit Cocktail Town House—Gay color, rich flavor for gelatin salads or desserts. Five delicious fruits. **3 No. 2 1/2 Cans 1.00**

Stuffing Bread Mrs. Wright's—Available Friday and Saturday, Nov. 21-22 Only **1 1/2-Lb. Pkg. 24¢**

Lucerne Egg Nog Mix

A Happy Note for the Holidays

Qt. 35¢

Rinso Blue Detergent For a Whiter Wash **Large Box 32¢**

Pine Deodorant Wizard—Push Button **6-Oz. Can 63¢**

Wizard Deodorant Spring Bouquet **6-Oz. Can 63¢**

Liquid Starch White Magic—Makes Ironing Easier **Qt. Bottle 19¢** **1/2-Gal. Jug 37¢**



SAFEWAY

Prices effective Thursday, Friday and Saturday, Nov. 20-21-22.
In Eastland
We reserve the right to limit quantities. No sales to dealers.

New Library Books

(The following new books are available in the shelves at Eastland Public Library.)

Fetty Lou who learns mountain ways and loves them.
Coca Holler by Olive Rambo Cook, is the story of a little back woods school and music and two young refugees.
Under the Lilacs by Louisa May Alcott, replaces the old worn the beloved classic about the boy and his ed-

ucated poodle, Sancho and the mischievous sisters Bab and Betty.
Teen-Age Books
Man Made Satellites by Willy Ley, all about rockets and satellite by a famous expert.
The Tender Time by Denise Cass Brookman is the story of every teen-age girl who remembers her first love—her first date. For this

a vividly real, once-in-a-lifetime account of first love.
Adult Fiction
The old favorite Rebecca by Daphne DuMaurier. A. J. Cronin's new novel, The Northern Light is the story of a true hero, a dedicated man who struggles against enormous odds to maintain his faith, his integrity, his very life. This novel could not be more timely, for in our country as in England, the issue of a free press is a dominant one.
Elizabeth Seifert's new novel Love Calls the Doctor is a fascinating study of contrasts between superficial and real beauty. Marian was beautiful and liked good time while her older sister Belinda was plain and a stay-at-home. Marian had the habit of borrowing or taking whatever belonged to Belinda, including her fiancée.
Daybreak by Frank G. Slaughter. When Young Dr. Cowan meets beautiful Lynn Thorndike, a schizophrenic on the verge of suicide because of an unhappy love affair, he sees his chance to try the use of a tranquilizing drug. How he struggles to save his newly patient and fights off opposition of a hospital superintendent makes a romantic novel.
The Complete Novels of Jane Austen including the old favorite Pride and Prejudice and Giants in the Earth by O. E. Rolvaag, a saga of the Prairie.
On the High School reading list we have newly acquired The Orphan Angel by Elinor Wylie, The Harbor Carnival by James Thurber, Green Mansions by W. R. Inge, and Barchester Towers by Anthony Trollope. Also we have a 1000 page volume called The Week-End with selections from such well known authors as Maugham, Helen Keller, Edna Ferber, Arnold Bennett etc. And the classics, Sentimental Tommy by M. Barrie and The School for Scandal by Sheridan.

Hospital News

Patients in the Eastland Memorial Hospital are:
Mrs. J. B. Hill, medical.
Mrs. Betty Sycamore, surgical, Cisco.
Clifton Wood, surgical.
A. H. Johnson, surgical, Cisco.
Mrs. Kirk Williams, surgical.
Mrs. Alice Cowan, medical.
Mrs. W. S. Walcutt, surgical.
Mrs. Roberta Garman, medical.
Mrs. W. E. Lutz, surgical.
D. E. Frazer, surgical.
Henry Watkins, medical.
Mrs. Emma Lee Nichols, surgical.
J. W. Dunslop, medical.
Mrs. Inez Hill, medical.
Mrs. Brasovath.
Mrs. Lane, medical.

Card of Thanks

Mrs. Homer White, president of the Eastland Art Club, extends the club's thanks to the Eastland Telegram and Radio Station KERC for the wonderful advance publicity they gave the art exhibit, to Mr. Victor Cornelius for the use of his building with its fine lighting facilities and to Mr. Frank Crowell whose lumber materials helped make the display a success.



"JEAN'S TEEN TIME" COMES TO EASTLAND—Students of Mrs. Jean Anderson strut their stuff at their regular Thursday night dancing class in the Tri-Hi-Y club room. Classes will continue for several more weeks, said Mrs. Anderson. (Photo by Moderne).

More families agree...
Mrs Baird's Bread stays fresh longer

Grav Matter
(Continued From Page One)
...on in America accused of a crime has a right to representation by competent counsel. But the lawyer in this case had failed to pay his dues in the Texas Bar Association. The Court of Criminal Appeals seemed to have held that a lawyer who hasn't paid his dues in the Bar Association isn't a lawyer in good standing and a lawyer must be a member of the bar in good standing to be competent counsel.
All of which seems a little far fetched about the qualifications of a lawyer and his ability to defend his client. This sort of makes one wonder about the application of the right-to-work law in this case. Actually, it's hard for me to see any difference whatever in labor having a closed shop than lawyers being a closed shop. It looks to me as if what is good for the goose is good for the gander, but the Court of Criminal Appeals seems to know better than you and I about these things.
Anyways, it still holds that when history is made either Eastland people or former Eastland people will be on hand to see that the history writers of our planet do a good job of writing. The lawyer in the case mentioned who had not paid his bar dues was none other than my old school teacher, Merret F. Hines, who used to give so many of us such a bad time out at South Ward in the days before he became a lawyer.

GIFTS FOR JOYOUS GIVING
Brashier's Pre-Holiday Savings!

7-Pc. DINETTE Black or Bronze 6 Chairs — Big Table 69⁹⁵ and old suite	2-PIECE Bedroom Suite SOLID MAPLE 64⁵⁰	BOX SPRING AND MATTRESS Full or Twin Size 5-Year Warranty 52⁴⁰	LANE CEDAR CHEST 39³⁹ up
---	---	--	--

LIVING ROOM VALUES—EXTRA SPECIAL! 2-PIECE FOAM RUBBER ★ Quality Upholstery ★ Choice of Three Colors ★ Values to 199.50 164⁵⁰	2-PIECE SOLID HONDURAS MAHOGANY BEDROOM SUITE ★ Pearl Grey ★ Triple Dresser ★ Bookcase Bed ★ Regular 219.50 144⁵⁰
---	---

Englander Foam Rubber HOTEL SET Full or Twin Size REG. 139.50 NOW 99⁵⁰	MATHIS HI-FI SET Mahogany Finish 20 Amp. 119⁵⁰	100% Wool Axminster CARPET Completely Installed over Heavy Padding 7⁹⁵ Sq. Yd.	5-Pc. Danish Modern STUDIO SUITE Foam Rubber Chair REG. 219.50 189⁵⁰
--	--	--	--

METAL UTILITY TABLE Electrical Outlet Choice of Colors 3³⁸	Buy Now On Our Easy Terms First Installment In January No Carrying Charges on Furniture Free Delivery - We Take Trade-Ins	TABLE SPECIALS Two Step and One Cocktail Lined Oak or Mahogany ALL THREE 19⁹⁵
--	--	--

SHOP AND SAVE NOW WHILE OUR STOCK IS COMPLETE

RANGER FURNITURE EXCHANGE

123 N. Rusk RANGER Phone 242

FRESH DRESSED

tender TURKEYS!

Toms 16 to 20 Lb. Average Lb. **39¢**

Hens 10 to 14-Lb. Average Lb. **45¢**

BELSVILLE
Hens 7 to 10-lb. Average Lb. **53¢**

FRESH
Side Pork Lb. **49¢**

Sausage Whole Hog Lb. **49¢**

Sausage Country Style **3** Lbs. **\$1**

Loin Steak Lb. **79¢**

Seven Roast Lb. **49¢**

LEAN BONELESS
Stew Meat Lb. **59¢**

PIT COOKED
Bar-B-Q Lb. **89¢**

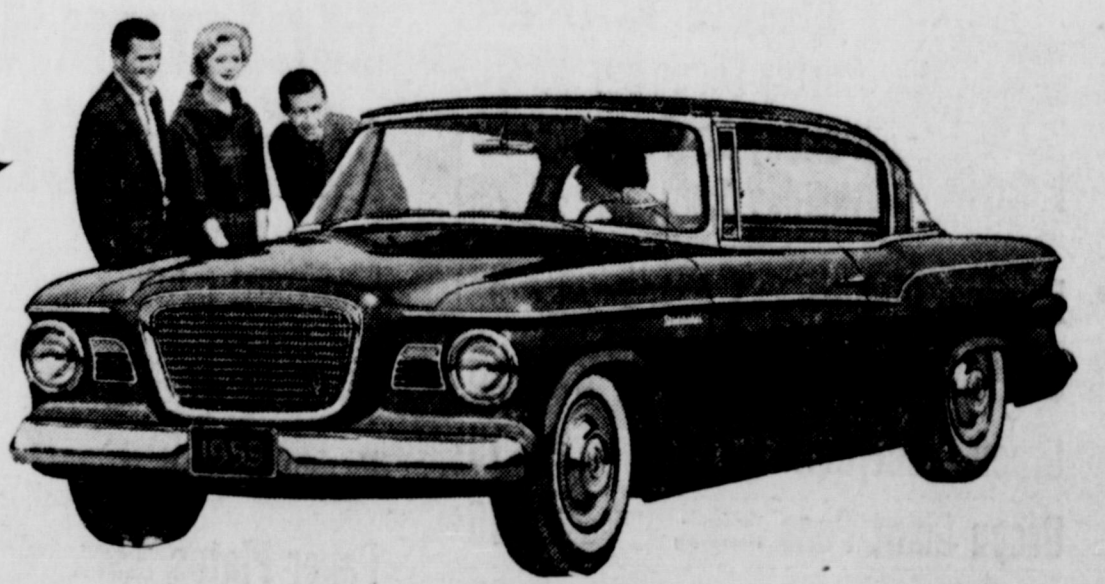
Chili HOMEMADE Lb. **59¢**

EARNEST
Frozen Food Center
210 South Lamar Phone 11

Trade With Your Hometown Merchants
GIFTS... Lay Them Away For Christmas at... MODE O' DAY.

STUDEBAKER PROUDLY WELCOMES another distinguished name to its growing family of fine dealers... **McGraw Motor Company** 416 SOUTH SEAMAN STREET now an authorized dealer for

THE **LARK** by STUDEBAKER
YOUR NEW DIMENSION IN MOTORING



... THE STUDEBAKER SILVER HAWK AND A FULL LINE OF STUDEBAKER TRUCKS

Visit this new Studebaker showroom now and see the most rewarding automotive values of the day—the great new line of cars and trucks that bear the oldest name in the industry. It's the only full line of family cars, sports cars and trucks specifically conceived to meet the needs and tastes of the times. Engineered and built by the famed craftsmen of Studebaker, these cars and trucks are uniquely designed for style with comfort, peak performance with economy, dependability with handling ease. See them now. You'll be glad you did.