



# Eastland Telegram

"COVERING EASTLAND COUNTY"



VOLUME TWENTY-NINE

EASTLAND, TEXAS, THURSDAY, OCTOBER 23, 1958

No. 76

# Mavericks Face Must Game Here Friday

## Probable Line Ups

EASTLAND	Wt.	Pos.	Blizzards
Stanley Reed	160	End	Ricky Grissom
Charles Martin	168	Tackle	David Burton
Mike Lisenbee	146	Guard	Gaston Ernst
Don Hazard	150	Center	Stanley Bolden
Knicky Arthur	165	Guard	Jerry Kraatz
Marvin Agnew	175	Tackle	Buddy Mathe
Philip Lewis	170	End	James Williams
Bill Humphreys	138	QB	Jerry Dunnam
Bill Don Turner	135	FB	Charles Curry
Samy McElreath	145	HB	Jimmy Largent
Jerry Hollis	148	HB	Charles Awalt

## Farm Bureau Elects Love

Eastland County Farm Bureau members Tuesday night re-elected John Love of Ranger as president of the county organization. The election came at the annual FB meeting held in the Fellowship Hall of the Eastland First Methodist Church.

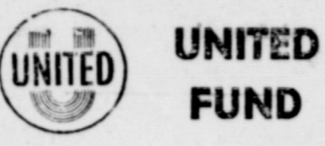
Don Kincaid of Cisco was named first vice president, A. W. Wright of Rising Star is second vice president, and Ray Norris is Eastland secretary-treasurer.

Directors elected are Clyde Coates of Cisco, Mrs. Dora Schaefer of Gorman, A. W. Wright of Rising Star, T. C. Cozart of Cisco and A. T. Wende of Cisco.

Mrs. Don Kincaid and daughter, Elaine and Denise entertained Farm Bureau members. Their songs were accompanied by Mrs. LaRue Brousard.

Delegates to the state convention were also elected. They are John Love, Ray Norris, Mr. and Mrs. J. C. Coates, and A. P. Wende.

### FACTS ABOUT YOUR UNITED FUND



Everett Plovman is not a native son but he is always present and working when anything for the good of Eastland is under way. He is one of the group captains, appointed by Steve Potts, to make a quick success of the United Fund Drive.

Born in New London, he lived in Abilene and Weatherford, where he graduated from high school, before coming to Eastland in 1939.

He lives with his wife and brand-new baby daughter at 1503 South Seaman.

Owner and operator of the Corner Drug Store, Plovman always has time for the civic organizations, working toward a better Eastland.

He is a veteran of World War II, serving with the Air Force. His memberships include VFW, American Legion, Lakeside Country Club and Quarterback Club. He has just finished serving as a board member of Lakeside and has served as president of Lions and Quarterback clubs.

Plovman praised the work of his team and said that they were getting their part of the Drive completed on schedule.

Plovman and his team are working hard but their efforts are for nothing unless the citizens of Eastland rise to their responsibility and meet the needs of the town through the United Fund.

Eastland has never failed in any worthwhile undertaking.

Eastland will go over the top with United Fund.

## Winters Favored In Do or Die Contest

Annihilation faces either the Winters Blizzards or the Eastland Mavericks Friday night when the two teams clash in an important District 7-AA game at Maverick Stadium in Eastland.

Both the Mavs and the Blizzards dropped close district games last week, and a second loss by either team will eliminate them, for all practical purposes, from the district race. The Mavericks were edged 24-19 by Coleman and Winters was dropped 20-14 by Ranger in opening round action last Friday. Both teams had the disadvantage of playing away from home in their openers.

On paper at least, Winters must be made the favorite. For the Blizzards downed tough Hamlin, 8-0, while the Mavericks lost to the same team, 14-20. For the year, both teams have won three and lost three. The visitors opened against strong Crane and were handed an 8-24 setback. The Blizzards came back strong to upset Anson, 12-7, in their venture, then held highly rated Brady to a 34-6 count.

Eastland opened against Hamlin, then beat Dublin, 39-12. The Mavs got an 8-0 win over DeLeon, then mowed down Cross Plains, 25-6, before losing, 37-14, to Albany, second ranked team in the state in Class A.

Winters has one of the biggest backfields in the district. The four starting Blizzards backs average out at 164 pounds a man, with the heaviest weighing 174 pounds and the lightest 153 pounds. That will give them a decided weight advantage in the backfield, for the biggest Mav back weighs just 148 pounds, and the smallest barely tips the scales at 135 pounds. The two lines will be well matched, with only four pounds difference in the entire two fronts.

Eastland made 122 points in six games and allowed 99, while Winters has made 76 points while giving up 105.

Eastland has three men on the injured list. Mike Manning, Marvin Agnew and Stanley Reed may all be slowed by injuries this week.

## MOORE about... EASTLAND by Virgil E. Moore

Sign on top of television set in lobby of Connellee Hotel (left) over from the World Series; "Please let announcer call the play."

The picking is tough this week in District 7-AA football circles. We look for our average to take a big drop after Friday night, but never-the-less, here are our predictions.

We see Cisco over Ranger by a 32-14 margin. The difference could easily be larger than that, for Cisco wants a win bad over the Dogs. On the other hand, Ranger has a fine passing game, and that's what will be needed to beat Cisco. If the Dogs win it will give us a 16-6 count. (Attention Mavs: We haven't missed a single prediction on Eastland this year and would appreciate a little help on this one.)

That brings us to the Winters-Eastland ballgame. Both teams lost heart-breakers last week and things could go either way. Winters will be favored by just about everyone, but we are climbing out on a limb and picking the Mavericks by a 16-6 count. (Attention Mavs: We haven't missed a single prediction on Eastland this year and would appreciate a little help on this one.)

The mice are getting thicker all the time. Out at the Lakeside Country Club they killed one the other morning which was selling sides on the shuffleboard pucks to other mice. No one complained until one of the riders drug his foot and stopped one of the shots in the three point zone.

Money talks as much as ever but what it says nowadays makes cents. (Stolen)

Notice that Ranger voters, by a 100-vote margin, decided to keep their parking meters.

Noted with interest that Cisco finally sniped a notice in the top ten in the Fort Worth Star-Telegram. The Lobos are now ranked eighth in the state.

Also saw in the Cisco paper that Charles Grasham of Dallas was successful bidder on the state owned Lake Cisco Fish Hatchery property. Grasham's bid of \$10,051 was accepted by the state.

Understand the peanut harvest is well along and some impressive figures are being quoted around the county. The cool front which hit didn't bring any moisture, so growers were pleased.

(Continued On Page Four)

**FREYSchLAG INSURANCE AGENCY** presents the **WEATHER NEWS**

High ..... 76  
Low Last Night ..... 41  
Rain ..... 0  
Rain In Oct. .... .99  
Avg. Rain In Oct. .... 2.74  
Total Rain for Year ..... 26.40  
12 Months Avg. Rain ..... 25.83  
Lake Leon Level ..... 75  
Forecast ..... Fair and Cloudy

**EASTLAND NATIONAL BANK**  
"On The Square"  
MEMBER F. D. I. C.

## Omar Burleson Has 100-percent Roll Call Record

WASHINGTON, D. C. — A review of the record of the 85th Congress, which adjourned in August, shows Congressman Omar Burleson, 17th District of Texas, to be one of twenty-two Members of the House with a perfect, 100 percent record on roll calls.

There were 193 roll calls during the First and Second Sessions of the Congress, and Burleson was present in every instance, and is on the record with a "yea" or "nay" vote.

The average of the 435 Members of the House is 87 percent of the roll calls.

Of the twenty-two with perfect voting participation records, four are Texans. Those besides Burleson are Beckwith, Brooks, and Rutherford.

## Conservation Practices Can Gain Assistance

COLLEGE STATION—Conservation practices which provide habitat and protection for wildlife qualify for assistance under the conservation reserve phase of the Soil Bank program.

Up to 80 percent of the cost of putting cropland into wildlife habitat plus an annual rental each year the land is under contract, will be paid by the Soil Bank program, says Ed Cooper, extension wildlife specialist.

Under the program, Cooper says farmers have a choice of five or 10 year contracts for planting trees or shrubs on conservation reserve acres. Cost share payments for such plantings cover land preparation, planting, mulching and, in some cases, cost of necessary soil building elements. Also included are food plot plantings to attract and hold quail, doves, deer and wild turkeys. Food plots located adjacent to protective cover or water may include domestic grains as well as natural foods, says Cooper.

Water habitat for ducks, geese and fur bearing animals are also included under the program. In addition to the restoration of former marsh lands by plugging drains, ditches may be dug or a series of shallow water areas may be provided on reserve acreage. For those interested in fishing, (Continued on Page Six)

**L. C. PHAGAN, PREMIER JOBBER**  
1206 W. Bliss — Phone Guco HI 2-1660  
All types of oils and greases for farm, industrial and commercial users.  
Only local oil (no imported oil) used in making Premier Products.



GOOD FISHING—Good fishing should result from restocking of a number of Eastland County farm ponds. The youth above shows ample proof that stocking such ponds pays good dividends.

## Moderne Names Annual Photo Contest Winners

Moderne Studios, Eastland, have announced winners in their first annual "Photo-Rama" Contest which closed Oct. 15.

Winners were announced in the four age brackets, as follows: In the infant to six year group, the winner was Debbie Fambro, Eastland, three year old daughter of Mr. and Mrs. Tim Fambro; In the 7 and 12 year bracket, winner was Donna Jean Hardy, 9 years old daughter of Mr. and Mrs. Kenneth Hardy, Ranger; In the 12 to 20 year group, winner was Lavonda Harris, 17 year old daughter of Mr. and Mrs. Frank Harris, Carbon; and in the 21 to 80 year old bracket, the winner was Mrs. Irene Hardy 37 years old, 6th St. Ranger.

All the winners were awarded 11x14 portraits, and those who were not picked their portraits may do so now at the Studio, Mrs. Fred Lamb, owner, said.

## County Farmers Get Shipment of Fish

(Editor's Note: The following article was prepared by members of the SCS Eastland Work Unit.)

A live shipment of fish for stocking farm and ranch ponds was received by cooperators of the Upper Leon Soil Conservation District at Cisco and Eastland, Friday, Oct. 17.

There were 23 farm ponds stocked with fish at this time. This makes two orders of fish that have been received this year. There were 27 who received fish back in May of this year. That total of 57 cooperators who have stocked their ponds this year.

Fish are furnished to cooperators in the Upper Leon Soil Conservation District by the Fish and Wildlife Service from the Federal Fish Hatchery at Burnet. Land owners and Soil Conservation Service technicians make site selection for the above ponds. A pond site determination includes finding suitable soil such as clay or shale that will hold water and a site with a suitable drainage area to keep a pond near full during normal rainfall.

When these ponds are properly stocked and fertilized they will support plenty of fishing for all the family, and there should be no restrictions to fishing as to seasons or size of fish removed. Removal of both small and large fish gives the remaining fish more food for growth. To do a good job in fertilizing, a balanced fertilizer is the best, such as 8-8-2 or 8-8-8. Usually about 500 pounds of fertilizer should do for a year for each one half surface acres of water in pond.

Fertilizer should be applied at the rate of 50 pounds per application. The average pond needs fertilizing every month to six weeks. The pond should be checked with a testing stick or hand. If the white disc or hand can not be seen at 12 inches depth, pond is adequately fertilized. If hand or disc can be seen at 18 inches depth pond is ready for another fertilization.

Fertilizer may be poured in water less than 6 inches deep from boat or broadcast by hand from bank on small ponds. Fertilizer should start in February and continue through November.

Fish are furnished to cooperators in the Upper Leon Soil Conservation District by the Fish and Wildlife Service from the Federal Fish Hatchery at Burnet. Land owners and Soil Conservation Service technicians make site selection for the above ponds. A pond site determination includes finding suitable soil such as clay or shale that will hold water and a site with a suitable drainage area to keep a pond near full during normal rainfall.

When these ponds are properly stocked and fertilized they will support plenty of fishing for all the family, and there should be no restrictions to fishing as to seasons or size of fish removed. Removal of both small and large fish gives the remaining fish more food for growth. To do a good job in fertilizing, a balanced fertilizer is the best, such as 8-8-2 or 8-8-8. Usually about 500 pounds of fertilizer should do for a year for each one half surface acres of water in pond.

Fertilizer should be applied at the rate of 50 pounds per application. The average pond needs fertilizing every month to six weeks. The pond should be checked with a testing stick or hand. If the white disc or hand can not be seen at 12 inches depth, pond is adequately fertilized. If hand or disc can be seen at 18 inches depth pond is ready for another fertilization.

Fertilizer may be poured in water less than 6 inches deep from boat or broadcast by hand from bank on small ponds. Fertilizer should start in February and continue through November.



**FACTORY QUEEN**—Mrs. James McCormick, left, is crowned queen of the Hollywood Vette Vassarette factory credit union by last year's queen, Mrs. Roy Tackett of Ranger. Mrs. Tackett placed the crown on Mrs. McCormick's head after Mike George, plant manager, announced the winner of the contest. Mrs. McCormick lives at 102 North Oak and has worked a year at the plant. She is a machine operator and has lived in Eastland most of her life. Other candidates were Mrs. L. W. Dalton of Eastland and Mrs. R. C. Arrington of Cisco. (Photo by Capps.)

## Review of Proposed Amendments Listed

Eastland County residents will go to the polls Tuesday, Nov. 4, to vote on nine amendments to the State Constitution.

Most important amendment to that of the state will be the proposal setting up annual sessions of the state legislature. This will mean more compensation for members of the House of Representatives and Senate.

Another amendment states that vacancies occurring in the office of County Judge and Justice of the Peace shall be filled by the Commissioners Court until the next general election.

Here is a summary of the nine different amendments:

Number One On The Ballot (HJR 1)—Provides for annual sessions of the legislature, changing the compensation, per diem, travel expenses of members of the legislature and authorizing temporary residence of the Lieutenant Governor and Speaker of the House in the Capitol Building.

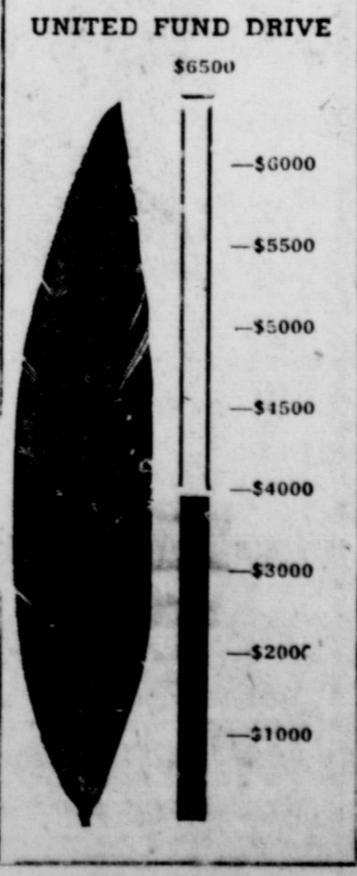
Number Two On The Ballot (SJR 6)—Authorizes each county to establish, after approval by its voters, a retirement, disability and death compensation fund covering the elective officers of the county precinct, as well as appointive officers and employees of the county or precinct.

Number Three On The Ballot (HJR 30)—Provides that vacancies in the office of County Judge and Justices of the Peace shall be filled by the Commissioners Court only until the next General Election.

Number Four On The Ballot (HJR 31)—Provides that any District, County, or Precinct official serving a four-year term must resign before announcing for a different office if there remains unexpired more than one (1) year of term for which he is elected.

Number Five On The Ballot (HJR 48)—Provides that a Home Rule City may provide by Charter Provision, and a City operating under the general laws may provide by majority vote, for a longer term of office than two (2) years for its officers, either elective or appointive, or both not to exceed four years.

Number Six On The Ballot (HJR 17)—Provides for pension for retired Texas Rangers who are eligible to participate in the



## Roast Sends... Out Firemen

That three-alarm fire last night wasn't a burning house after all, merely a slightly overdone roast.

Volunteer firemen rolled just about all of the City's equipment when the house fire alarm was sounded, but when they reached the house, in the 500 block of East Valley, they merely had to put out a burning roast.

There was some smoke damage.

## SANDY'S SCHOOL SCOOPS

By SANDY TAYLOR  
Telegram School Reporter

Hi!

Even though we just barely lost our first district tilt, the Mavericks will be going full force against the Winters Blizzards here Friday night. If they play as well this week as they did last week, I am sure they will come out with the larger score in our favor.

Last Thursday night a pep rally was held in the Majestic Theatre, and only a handful of people attended. I feel, and I know others, too, that if we are to have a winning ball team, they have to have support from the student body and other fans. If the cheerleaders, band, and townspeople go on all the trouble to have a good pep rally, there is no reason why there shouldn't be a large crowd, instead of only a few, so I hope that everybody who possibly can will attend the pep rally Thursday night.

Saturday afternoon the Mavericks Band marched in the Cisco Junior College Homecoming Parade along with the Eastland County Sheriff's posse. Posse members, and floats from Eastland, they were then guests at the barbecue held at the college and the football game between CJC and Elgin Junior College that evening.



KATHY WILLIAMSON  
1958 football queen

## Football Queen To Be Crowned At Grid Game

The Eastland Maverick Football Sweetheart for 1958 will be presented Friday night at Maverick Stadium during the half-time ceremonies. She is Kathy Williamson, a senior this year in E.H.S.

Kathy is a member of the Harmony Baptist Church in Morton Valley where she is also pianist. She is also a member of the Tri-Hi-Y and Double Seven Clubs in high school.

Last year, she was a member of the cast of the Junior play, "Papa Says No" and is senior cheerleader this year.

Miss Williamson is Lions Club Sweetheart and represented the Eastland Farm Bureau this year in the annual District Queen's contest.

Football captains, Knicky Arthur, Larry Hollis, and Clinton Ray Humphreys, cheerleaders, and band will present her at the Eastland-Winters football game Friday night.

## Tired of a Gas Hog?

Try and buy the popular, smart new Rambler, truly a teeny-weeny gas burner. Famous for fun, resale, quality and economy.

See TOM'S SPORT CARS Eastland



# Eastland Telegram

Eastland County Record established in 1931, consolidated August 31, 1951. Chronicle established 1887, Telegram established 1923. Entered as second class matter at the Post Office at Eastland, Texas under the act of Congress of March 3, 1879.

**TIMES PUBLISHING COMPANY**  
Published Tri-Weekly—Tuesdays - Thursdays - Sundays  
**ONOUS DICK and JOE DENNIS, Publishers**  
**VIRGIL E. MOORE, Editor**  
**CAROLYN COLLINS, Society Editor**

Subscription Rates:  
One week by carrier in city .15  
One month by carrier in city .45  
One year by mail in County 2.75  
One year by mail in state 4.75  
One year by mail out of state 6.75

## WANT ADS

Cards of Thanks charged for at rate of \$2.00 Each

### FOR RENT

**FOR RENT:** Newly decorated apartment, Hillside Apartments, Phone 9520.  
**FOR RENT:** Furnished two bedroom apartment in duplex, 611 West Plummer.  
**FOR RENT:** Two bed room house unfurnished good repair, 504 South Dixie street. Call J. A. Leard, phone 960.  
**FOR RENT:** Four room unfurnished house. Central heating and cooling system. Apply 500 South Bassett.  
**FOR RENT:** Newly decorated furnished four room apartment, Phone 90.  
**FOR RENT:** Four room house in Olden, newly decorated inside and out, city water. Phone 795-J-1, Eastland.  
**FOR RENT:** 3 room house and bath. Phone 806-J after 6.

### MISC. WANTED

**PIANO TEACHER WANTED**  
Benedicta School needs a piano teacher, there are several students that want to take lessons. If you are interested please call 2281 Benedicta, James R. William, Sept.

### REAL ESTATE FOR SALE

**FOR SALE:** Small house to be moved, 311 E. Valley.  
**FOR SALE:** Large five room house in Carbon, Texas, price \$3000. Address Reba Ransone, Carbon, Texas.

**M. H. PERRY**  
Representing  
**Southland Life**  
Life - Retirement Income Partnership  
Mortgage Cancellation  
Educational - Annuities  
Accident - Sickness  
Hospitalization - Group  
Call 173 or 128  
107 W. Main \* Eastland

**T. L. FAGG**  
REAL ESTATE  
Property Management  
Home and Farm Loans

**Buy Your Tires on Easy Payments**  
During month of October your old tires will make the down payment on two or more new ...  
**SEIBERLING TIRES**  
Easy payments arranged on balance.  
**JIM HORTON**  
TIRE SERVICE  
East Main St. Phone 258  
Eastland, Texas

### SPECIAL NOTICE

**NOTICE:** If you need combining or plowing call 1011-J-1.  
**HAVE TAX PROBLEMS?** Now you can get a "Personal Tax Secretary" for just \$1. This is a simple system for keeping personal and small business earnings and deductions to enable you to claim and prove your maximum deductions. Get yours today at the Eastland Telegram.

### MISC FOR SALE

**FOR SALE:** Choice hay 65c bale M. H. Everett, Olden.  
**FOR SALE or Rent:** 5 room house. Close in. Modern Call 826.  
**SIX months to pay for an Ed V.** Price tailored suit. Made to your individual measurements. NO interest, NO carrying charges.  
**C. L. FIELDS**  
103 W. Valley Phone 571  
**FOR SALE:** Homemade cakes and pies. Call 423.  
**FOR SALE:** Three new beautiful quilts, Sunbeam vacuum coffee-maker and automatic Sunbeam toaster reasonable. Nellie V. Gooden phone 392 or see 404 West Plummer.  
**FOR SALE:** New check protectors, \$25. Stephens Typewriter Company. Phone 639.  
**FOR SALE:** Used doors, windows and lumber. Calvin Lipkin, Phone 50, Ranger.  
**FOR SALE:** Nine foot Westinghouse refrigerator. Has deep freeze in top. Late model, in perfect condition. Eastland Telegram Office.

### AUTOS FOR SALE

**FOR SALE:** 1950 Buick sedan. Excellent condition. Call 545.  
**FOR SALE:** 1957 Buick Century 4-door hard top, extra nice, power steering, power brakes, air conditioned, priced to sell.  
1954 Pontiac Star Chief custom 4-door sedan. A-1 in every way, \$1050.00.  
**MUIRHEAD MOTOR CO.**  
Eastland Phone 601  
**FOR SALE:** 1951 Dodge pickup truck. \$200. See Lovelace Transfer and Storage.

**Insurance AND Real Estate**  
**D. L. KINNAIRD**  
Life - Fire - Auto - Farm  
Polio - Bonds  
39 years in the Insurance Business in Eastland

**LOST**  
LOST: A pair of glasses somewhere in Eastland. Reward for return to Earl Bender.  
**BUSINESS OPPORTUNITY**  
Any man interested in developing and marketing fluid-drive invention, with braking system without brake linings, invited to discuss such interest with William C. Edwards, inventor, patent pending. Address, Box 67, Olden, Texas.

**ACHING MUSCLES**  
Relieve pain of Tired, Sore, Aching Muscles with STANBACK Tablets or Powders. STANBACK'S prescription-type formula combines several medically proven ingredients for faster relief of pain. STANBACK has been granted the Good Housekeeping Seal—take STANBACK with confidence, and SNAP BACK with STANBACK.

**BABIES LIKE 7PP TITLES THEM**

**TOWN AND COUNTRY ANIMAL HOSPITAL**  
DR. SPENCER C. SPRUILL  
VETERINARIAN  
Large Small Animal Practice  
Bathing - Boarding - Clipping  
Office Hours 8:30 to 12:00  
2:30 to 5:00  
Emergency Service  
PHONE 5491 TWO STORY BRICK  
OLD GORMAN ROAD  
DELEON, TEXAS

**FOR CRUSHED MATERIALS**  
Filler Sand, Drive Way Materials, Crushed Concrete Rock  
PHONE 215  
After 6 p.m. telephone 575  
Edwin Aaron  
AARON MATERIALS

**Funeral Directors**  
**HAMNER FUNERAL HOMES**  
Ben E. Hamner  
Oxygen Equipped - Air Conditioned  
Eastland Phone 17 Cisco Phone Hillcrest 21211  
AMBULANCE SERVICE ANY WHERE ANY TIME  
Nominal Cost Burial Insurance  
For The Entire Family

**Inviting You to Visit**  
**MILDRED'S BEAUTY SHOP**  
One-Half Block West of Seaman on Burket St.  
POPULAR PRICES  
Phone 7 Mildred Cockrell, Operator

**NOTICE... Come To Kendrick Drive-In Dairy**  
(Serving This Territory Since 1940)  
**FOR**  
**Good, Clean JERSEY Sweet Milk**  
Price - 70c Gal.  
Phone 896-J-2 - Located Halfway between Eastland and Cisco

**1926 - 1958 32 YEARS SQUARE DEALING the YEAR ROUND**  
**IRON and STEEL SCRAP**  
**STAINLESS STEEL and NON-FERROUS SCRAP**  
**EASTLAND IRON & METAL CO.**  
OWNED AND OPERATED BY HENRY PULLMAN

### LEGAL NOTICE

**THE STATE OF TEXAS**  
To the Sheriff or any Constable of EASTLAND County, Greeting: JOHN S. HART, GUARDIAN of the Estate of J. L. CROSS, late of our County Court, his Final Account of the condition of the Estate of said J. L. CROSS, NON COMPOS MENTIS numbered 8914 on the Probate Docket of EASTLAND County, together with an application to be discharged from said trust.

You Are Hereby Commanded, that by publication of this writ the time and said publication shall be not less than ten days before day hereof, same being November 3, 1958 in a Newspaper printed in the County of EASTLAND you give due notice to all persons interested in the Account for Final Settlement of said Estate, to appear and contest the same if they see proper so to do, on Monday the 3rd day of November A. D. 1958, at the Court House of said County, in EASTLAND, Texas, when said Account and Application will be acted upon by said Court.

Given Under My Hand and seal of said Court, at my office in the Court House of Eastland this 20th day of October A. D. 1958  
Johnson Smith, Clerk, County Court Eastland County.  
Ey Gail Parsons, Deputy  
★ ★ ★ FOR CLASSIFIED ADVERTISEMENT ★ ★ ★

### LEGAL NOTICE

**NOTICE TO BIDDERS**  
Notice is hereby given that the following bids will be received at the County Court House, Eastland County, Texas will request bids to be made, in accordance with laws, by any interested parties and the purchase of equipment meeting the following specifications:  
One two (2) ton Truck, short wheelbase, with 750X20 tires, 10 ply tires. Further specifications to be obtained from R. L. Carter, Public Star, Texas.

Said bids will be considered by the court at its regular place of meeting in the courthouse at Eastland, Texas on November 10, 1958 at 10:00 A. M., and will at such time let a contract therefor if and bid be accepted; all such bids to be made as required by law. Right to reject any and all bids is hereby especially reserved by the Commissioners' Court.  
John S. Hart, County Judge; by order of the Commissioners' Court.

### Film to be Shown At Masonic Lodge Saturday Night

A film, "Texas Size Family" will be shown at the Masonic Lodge Saturday night, at 7:30. The film shows scenes from the Masonic Home and School at Fort Worth and various activities of the school.  
This will be a meeting of the Masters, Wardens and Secretary's Association, but will be an open meeting. All Masons, their families and friends are invited to attend.

### County

(Continued from Page One)

The following land owners are now in process of constructing ponds on their grass land: Ray Williams, E. E. Norris and Richard Kimer of the Carbon area; Lee Yeager, Jack Pence and Martin Pryor of Cisco; Elmer Galley, M. L. Woods and V. B. Gunther of the Ranger area.  
E. J. Gilbert of Ranger and W. H. Cooper of Eastland have recently completed terrace system on their crop lands. Casey Mezell, located east of Eastland, is now in process of terracing his cropland.  
Many land owners already have fine cover crops on their land and many others are still busy planting. Prospects for winter grazing are excellent on these croplands.

**NOTICE!**  
For Reliable  
**TV SERVICE**  
Call DAVE DUNCAN  
Phone 2761 in Olden

**Sunshine Laundry**  
Has Installed,  
**SPEED QUEEN COIN OPERATED AUTOMATIC WASHERS**... top loading with gyrators and three dryers for your convenience to dry clothes.  
20¢ LOAD WASH  
TWO LOADS DRIED, 25c  
**Sunshine Laundry**  
106 East Plummer St.

Looking for something?  
**LOOK TO THE WANT ADS**

**More families agree...**  
Mrs Baird's Bread stays fresh longer!

**OUR LOW PRICES PUT MORE MEAT ON YOUR TABLE**

Wilson Corn King Sliced Bacon	Lb.	55¢
Pork Chops	Lean Center Cuts	Lb. 69¢
Pork Roast	Lean Cuts	Lb. 45¢
Sausage	Whole Hog	Lb. 49¢
Sausage	Country Style	3 Lbs. \$1
Loin Steak		Lb. 79¢
Seven Roast		Lb. 49¢
Hens	Cage Fed	Lb. 35¢
Golden Oleo		Lb. 15¢
PIT COOKED Bar-B-Q Ham	Lb.	1.10
PIT COOKED Bar-B-Q	Lb.	89¢
Chili	HOMEMADE	Lb. 59¢

**EARNEST Frozen Food Center**  
210 South Lamar Phone 11



**Carolyn's  
MOVIE  
Comments**  
By Carolyn Collins

New and different will be "The Onionhead Revue" presented by the Eastland FHA and the Majestic Theatre which will feature 18 "glamorous movie stars" in a beauty contest. To be judged from the movie stars will be the "runner up of most beautiful," "best dressed" and "the funniest." Other contests will include pie eating, cracker chewing, apple dapping, baby bottle and gun.

You won't want to miss who will portray your favorite actress.

Andy Griffith, the "No Time for Sergeants" guy, returns to the screen with "Onionhead" filled with laughs and more laughs.

"Onionhead" is a combination of a part civilian, part Coast Guard background and co-stars Felicia Farr and Walter Matthau as the story starts in a small town college.

This movie is one for everyone to enjoy.

"Wind Across the Everglades" has the markings for a good movie

—the stars, story, filmed on location in southern Florida. This is the story of a renegade king of the swamp called Cottonmouth. He plunges into the swamp where no man dares go.

The stars include Burl Ives as Cottonmouth who ruled the marsh; Christopher Plummer, the man who dared go in the swamp after Cottonmouth; Gypsy Rose Lee, she supported the girls, Tony Galento, the heavyweight fighter, as an escaped con; MacKinlay Kantor, the celebrated author, as the judge; Chana Eden, the new European star; Emmett Kelly, the great circus clown; and Sammy Renick, the famous jockey.

Victor Mature stars in "China Doll" as a flying tiger who couldn't be stopped. Starring as Mature's "China Doll" is Li Li Hua, a great star of Asia.

Asia was not large enough to hold the flying tiger and his tigress who he bought.

"Never Love a Stranger" is another story of the gangsters and racketeers and not a "pretty" story but harsh and violent. John Drew Barrymore stars in the movie. Co-starring are Lita Milan and Robert Bray.

How does this movie influence your child? Does he take it as a

**Auxiliary States Thrifty Sale Date**

The Woman's Auxiliary of the Eastland Memorial Hospital have announced November 7 and 8 as the dates for their annual Thrift Sale and their committees.

Mrs. D. L. Houle, president of the auxiliary, and co-chairman, Mrs. Jack Frost and Mrs. Virgil Seaberry Jr. will direct the thrift sale.

"This sale is two fold in its purpose. The quality of articles secured from the unselfish donors are needed by this community at a price they can afford and the story and forget or does he take it more seriously?"

profit from this sale is used to maintain the Eastland Memorial Hospital grounds," says a spokesman of the Auxiliary.

The Receiving Committee will be at the Henry Pullman Building, south side of the square, Thursday, November 6, to accept donations.

Women of the Hospital Auxiliary believe "those who care share and it is through their interest and efforts each year that you will find choice articles in all the departments of the Thrift Sale."

If anyone cares to share phone the chairman of the following committees: Mrs. Dell Cox, receiving committee; Mrs. O. M. White, appraising committee; Mrs. Pen Hammer, hats; Mrs. Horace Horton, posters.

Mrs. R. E. Sikes, ladies ready to

**Mrs. I. C. Heck Is Welcomed as New Member of WSCS Tuesday**

Mrs. I. C. Heck was welcomed as a new member of the Woman's Society of Christian Service of the First Methodist Church Tuesday morning as they met in the church parlor.

Mrs. James Horton, president, presided over the meeting and opened the meeting with prayer. Mrs. Taylor Smith presented the treasurer's report.

During the business meeting Mrs. James Campbell was appointed as chairman of "Children's Work."

Mrs. W. P. Leslie announced that the next meeting would be on all day prayer meeting beginning at 10 a.m. All Society members are requested to bring a "sack lunch."

Mrs. Cecil Collins concluded the mission study on the Middle East with Mmes. B. O. Harrell, Rudolph Little and M. E. Tittsworth assisting in presenting the program.

Members attending were Mmes. V. N. Lewis, Clud Boles, H. J. Eulzerin, T. M. Collie, Cecil Collins, Frank Crowell, W. F. Denton, I. C. Heck, Tom Hajley, B. O. Horton, W. P. Leslie, Rudolph Little, W. A. Martin, Albie Toney, O. O. Mickie, Bob Alexander, Guy Quinn, R. E. Sikes, Taylor Smith, M. B. Tittsworth, Harold White, O. M. White, C. W. Young and James Campbell.

**JOY DRIVE-IN** Thurs. - Fri. - Sat.  
Open 6:30 - Starts 6:45  
Cisco - Eastland Highway

"The filming of Erskine Caldwell's best-selling and controversial novel about dirt farmers and their women in the Deep South."

**GOD'S LITTLE ACRE**  
ROBERT RYAN ALDO RAY TINA LOUISE

**DIXIE Drive-In**  
EASTLAND RANGER HIGHWAY

Box Office Opens 6:45 First Show 7:00  
Box Office Closes 9:00

—HEATED PATIO NOW OPEN—  
Don't Let the Rain and Cold Keep You Home  
Admission Never Over 50c  
Adults 50c—Child Under 12 FREE

WEDNESDAY - THURSDAY, OCTOBER 22 - 23

160 RADIO PICTURES PRESENTS  
**George GOBEL**  
**Diana DORS**  
**I Married a Woman**  
Adolphe MENJOU

PLUS: Two Color Cartoons

FRIDAY - SATURDAY, OCTOBER 24 - 25

**GUNSMOKE IN TUCSON**  
CINEMASCOPE COLOR  
MARK STEVENS

PLUS: Two Color Cartoons

**RANGER DRIVE-IN**  
HIGHWAY 80 EAST ON RANGER HILL

Adults 50c—Kiddies Under 11 Free  
Box Office Opens 6:30 - Show Starts 7:00

LAST TIMES THURSDAY

WHEN YOU SEE  
**Arrowhead**  
YOU'LL SEE THROUGH NEW EYES A TRUE STORY OF THE MIGHTY FIGHT FOR THE WEST!

CHARLTON HESTON  
The Indian-fighter

JACK PALANCE  
deadly Apache chief

KATY JURADO  
exotic, sultry trailor!

CHARLTON HESTON  
**ARROWHEAD**  
Jack Palance - Katy Jurado  
Brian Keith - Mary Sinclair  
Written by the Screen and Directed by CHARLES MARSHALL WARREN  
Special sets used by W. E. Burnett  
Produced by the Bob  
DOLBY BY TECHNICOLOR  
A PARAMOUNT PICTURE

FRIDAY & SATURDAY  
The West At War  
**'Ride A Violent Mile'**  
The Fate Of A Nation  
John Agar and Penny Edwards  
The Grandeur of Regalscope

FREEVUE SATURDAY NITE  
SUNDAY - MONDAY - TUESDAY  
FROST'S **GOD'S LITTLE ACRE**  
3-Week

**WORTH'S BUY OF THE WEEK**



**"DAIRY BRAND" SLICED Hormel Bacon**

- CHUCK ROAST THIRTY-CUT BABY BEEF Lb. 49c
- AMERICAN CHEESE KRAFT'S SLICED Lb. 59c
- PHILADELPHIA CREAM CHEESE 2 3-Oz. Pkg. 29c

**PREM**  
SWIFT'S LUNCHEON MEAT  
12-Oz. Can **45c**

**JEAN'S ROLLS**  
FROZEN 24-Cnt. Pkg. **25c**

**ORANGE JUICE**  
GARDEN GATE FROZEN Big 12-Oz. Can **49c**

**Bayer** ASPIRIN 100-Count Bottle **53c**  
**Pace** NO-LOTION PERMANENT (Plus 4c Tax) Reg. \$2.00 **1.69**

- WILSON'S IDEAL DOG FOOD 2 1-Lb. Cans **31c**
- SWIFT'S PARD DOG FOOD 5 1-Lb. Box **65c**
- WHITE, FAMILY-PACK NORTHERN TISSUE 4 Roll Pkg. **35c**
- SUPREME SALAD WAFERS 1-Lb. Box **29c**
- SOPHIE MAE PEANUT BRITTLE 1-Lb. Box **41c**

**Fryers**

Armor's Star-Whole or Cut-Up  
Lb. Only **29c**

Prices Effective Thru Saturday—  
We Reserve Right to Limit.

**WORTH FOOD MART**

- SIRLOIN STEAKS THIRTY-CUT BABY BEEF Lb. **89c**
- ROUND STEAK THIRTY-CUT BABY BEEF Lb. **89c**
- GROUND BEEF GUARANTEED FRESH Lb. **49c**

- WHOLE KERNEL GOLDEN NIBLETS CORN 12-Oz. Can **15c**
- DALTON'S BEST MAID Salad Dressing Quart Jar **35c**
- PLAIN-No Beans Hormel Chili No. 2 Can **55c**

**apples**  
RED DELICIOUS - EXTRA FANCY WASHINGTON STATE  
2 Lbs. Only **27c**

FIRM HEADS Green Cabbage Lb. **3 1/2c**

EAST TEXAS PUERTO RICAN Sweet Potatoes Lb. **9c**

- ARMOUR'S CHOPPED HAM 2 1/2-Oz. Can **65c**
- ARMOUR'S CORNED BEEF 12-Oz. Can **53c**
- ARMOUR'S POTTED MEAT 2 3/4-Oz. Cans **25c**
- ASSORTED COLORS LUX SOAP Reg. Bar **10c**
- ASSORTED COLORS LUX SOAP 2 Both Bars **27c**
- HEMET WHOLE SPICED PEACHES No. 2 1/2 Can **29c**
- CAMPBELL'S SOUP CHICKEN NOODLE 2 No. 1 Cans **35c**
- ZEE SANDWICH BAGS 30-Cnt. Pkg. **10c**
- ZEE WAXED PAPER 100-Ft. Roll **21c**
- WHITE OR BAINBO ZEE NAPKINS 2 Pkg. **27c**

**WORTH FOOD MART**



### Mrs. Ragland Is Hostess to Newly Named Circle

Mrs. E. C. Ragland was hostess to the circle of the Women's Missionary Union of the First Baptist Church which has chosen "Betty Tennyson" as their name. Mrs. Ragland, chairman of the group was hostess in her home at 410 South Oak Lawn Tuesday

morning. The following circle officers were chosen: Mrs. Carl Jones, associate chairman; Mrs. Stanley Lynn, secretary; Mrs. Roy Rushing, prayer chairman; Mrs. Eaco Walter, stewardship chairman. Mrs. Herbert Weaver, publicity chairman; Mrs. Iral Inzer, mission study chairman; Mrs. E. E. Denny, community missions chairman; Mrs. George Ford, Sunbeam leader. The circle is sponsor of the Sunbeam group.

Mrs. Inzer led the group in the beginning of the study of the mission book, "Into a New World," by J. Winston Crawley. Mrs. Ragland served coffee and cookies to those present: Mmes. Lynn, Rushing, Denny, C. S. Crahan, Inzer, Walter and Weaver. The circle will meet Tuesday with Mrs. Denny at 710 South Broughter.

### Eastland Art Club Makes Plans For Exhibit on November 14-15

Plans are being made for the Eastland Art Club exhibit which the club will sponsor November 14 and 15 in the Victor Cornelius building on the south east corner of the square. Mrs. Sidney Seale was hostess to the Art Club Tuesday afternoon.

Members of the club are planning to display over 100 paintings of landscapes and florals to the public. No admission will be charged for the exhibit.

Mrs. Seale served French pastry, Cokes and coffee to Mmes. Joe Tow, Marvin Hood, W. E. Lawson, Roy Lawson, Homer White, Varge Daniels of California, Mrs. W. W. Walters and Francis Urban. Mrs. Daniels is a sister of Homer White.

Mrs. Joe Tow will be hostess to the club for their next meeting at her lake side cabin.

### SOCIAL CALENDAR

**Thursday, October 23**  
2 p.m. — The Morton Valley Community Club will meet to make plans for musical in the Community Club House.

**Monday, October 27**  
9:30 a.m. — Mrs. F. W. Graham will be hostess to the Priscilla Group of the CWF of the First Christian Church.

3 p.m. — The Esther Group of the CWF of the First Christian Church will meet with Mrs. T. L. Cooper.

3 p.m. — Mrs. May Gattis will be hostess to the Lydia Group of the CWF of the First Christian Church.

7:30 p.m. — The Oddfellow Lodge No. 177 will meet for their regular meeting in the IOOF hall.

**Tuesday, October 28**  
9 p.m. — Members of the WSCS of the First Methodist Church will meet for a "Week of Prayer and Self-Denial" program. Mrs. W. P. Leslie will be leader. Prayer groups will meet at 9 a.m. prior to the meeting.

7:30 p.m. — Mrs. Don Kincaid will present the program on "Let's Match Wits" to the members of Zeta Pi Chapter of Beta Sigma Phi. Mrs. R. P. Haun will be hostess in her home at 204 S. Hillcrest.

7:30 p.m. — Members of the Rebekah Lodge will meet for their regular meeting in the IOOF Hall.

#### VISITS PARENTS

Mr. and Mrs. Jimmy Colburn and Scotty of Midland spent Sunday and Monday with their parents, Mr. and Mrs. Dick Yielding of Eastland and Mr. and Mrs. Walter Colburn of Olden.

### Hospital News

Patients in the Eastland Memorial Hospital are:

A. J. Basket, medical, Moran  
Mrs. Bobby Pittman, surgical  
Mrs. Estell Biggs, medical  
Mrs. Lou Foster, medical  
Mrs. W. B. Ensor, medical  
Mrs. Bobby Moore and baby girl

Mrs. Lydia Ziehr, medical  
Mrs. Stella McClendon, medical, Moran

Mrs. C. L. Bigby, surgical  
Jim Halmark, medical  
Mrs. J. F. Wilson, medical, Cisco  
Mrs. W. T. Powers, medical  
D. G. Hunt, medical  
Oscar Parr, medical  
Walter Robertson, medical  
Mrs. J. D. Hitt, medical, Cisco  
Dismissed were: Rev. and Mrs. Joseph Hays, Mrs. John Hellum and baby girl and Minnie Williams.

Dismissed from the Ranger General Hospital were Carol Hilliard of Olden and J. A. Mathews.

### Moore About-

(Continued From Page One)  
Friday is the 13th birthday of the United Nations. The UN was founded in San Francisco Oct. 24, 1945, and to this day it still has strong opposition in this country, just as President Wilson's League of Nations was fought after World War I.

—vem—  
See you at the ball game.

### Annual Baptist Convention to Be Held in Abilene

The Baptist Annual Convention of District 17 will be held in the Southside Baptist Church in Abilene Oct. 23 - 24. The WMU session begins at 12:50 p.m. with Mrs. George L. Graham of Abilene, president, in charge of the meeting. A returned missionary, Mrs. Keith Parks of Abilene, will bring the main message.

The pastor - laymen's conference will begin at 1 p.m. with L. L. Trott of Abilene presiding. Dr. L. L. Morris of the First Baptist Church, Midland, will bring the message. The general session will begin at 7 p.m. M. D. Rexrode of Haskell will preside, and Rev. Jack Southland, pastor of the First Baptist Church of Stamford, will bring the message.

Dr. Woodrow Fuller will bring the message at the Friday morning session, which begins at 9:45. Each department of the district will have reports, and special music will be presented at each session. Officers will be elected in the Friday afternoon session. The district is made up of 170 churches and 8,000 members.

### Sandy's-

(Continued from Page One)  
Phyllis Phillips, John Powell, Stanley Reed, Sandra Taylor, Kathy Williamson; junior class, Marvin Agnew, Judy Hassell, Linda McCollough, Bobby Phillips, Oran Rhodes, Odie White, Ronald Yancey; sophomore class, Linda Barry, Margaret Berry, Suzanne Butler, Alice Frazer, Betty Hallmark, Clayton Hensley, Sally Herrera, Patsy Hollis, Melvina Howie, Kathie Jones, Willie Pearl O'Steen, Mike Potts, Rodger Taylor; freshman class, Judy Blevins, Melvin Brown, Nona Butler, Mike Carothers, Eddie Dry, Linda Eidson, Bob Cartwright, Pauline Gould, Susan Johnson, Judy Keith, David Leach, Bobby O'Steen. Well, that's all for this week until the ballgame Friday night.

ATTEND THE CHURCH OF YOUR CHOICE EACH SUNDAY

### NEWS FROM DESDEMONA

Health in this community is some better at this writing.

"Aunt" Sally Eaton has been in the hospital at Gorman the past week but is reported quite improved at this time.

Mrs. Joe Murrel, who has been a patient in the Harris Hospital in Fort Worth the past three weeks undergoing various test, was able to return to her home here the middle of the past week.

Mr. and Mrs. Worth Burch and Children of Waco and Claudette Witte, Edna Taten and Mr. and Mrs. Grover Mosier of Carbon spent the weekend with Mrs. Lillie Wittie.

Peanut harvest is getting "underway" here following these few clear days.

Mr. and Mrs. Clay Emde of Kilgore are here this week visiting his mother Mrs. Mollie Emde.

Mr. and Mrs. Richard Krapf of Fort Worth are here on vacation and while here will work on their ranch near here.

Mr. and Mrs. Morgan Roberts and daughters Brenda and Ulinda were in Athens on the past weekend to visit a brother and sister-in-law, Mr. and Mrs. F. K. Roberts, and sister, Mrs. Wayne McIntosh and Kaye. Miss Lunelle Allen accompanied the Roberts to Gladwater to visit her uncle and aunt, Mr. and Mrs. Clyde C. Allen.

The Bobbie Gene Koonce family of Fort Worth are here on vacation.

Several people from here attended the funeral in Gorman Sunday afternoon of Mrs. Ernie Todd.

Mr. and Mrs. Jimmie Burleson and baby of Fort Worth were here for the weekend with their parents the Leroy Burlesons and Mr. and Mrs. Skinny Lewis.

Mr. and Mrs. Jay Grimshaw of Portales, New Mexico, were honored with a wedding shower Saturday night at the school's home economics room. Although Helen and Jay did not get to attend they received many nice useful gifts. Cake and punch were served to about 50 who were present.

Mrs. Minton Hanna was here Saturday to carry her girls back home. The children had been visiting their grand parents, Mr. and Mrs. H. T. Lanes.

Trade With Your Hometown Merchants

TRADE WITH YOUR HOMETOWN MERCHANTS



MODE O DAY East Side of Square - Eastland

**EXTRA SPECIAL!**  
For Two Weeks Only  
**All 21" TV Picture Tubes Installed, Complete — \$49.95**

We use only RCA and Sylvania Aluminized Tubes.

**VINSON TV SERVICE**

116 S. Rusk RANGER Phone 77



## LUMBER AND BUILDING MATERIALS

**WE HAVE WHAT YOU NEED!**

Yes, we have a large selection of all types of top-grade lumber and building materials . . . and at reasonable prices. You'll find what you want here, or we will help you find it! We invite you to just come in and browse around our yard and store if you like.

We have many interesting millwork pieces . . . finest hand and power tools . . . paints . . . roofing — and you can buy what you need on easy credit terms. Delivery is free in a 50-mile radius.

**HIGGINBOTHAM - BARTLETT CO.**

Jack Elliott, Mgr.

301 W. Main

Phone 112 or 1014

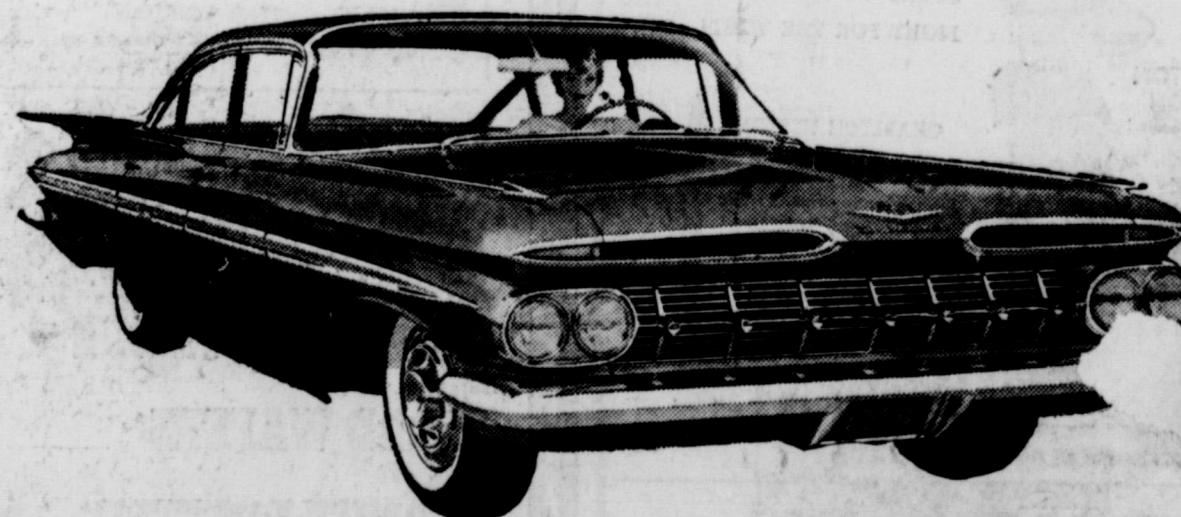
## CHEVROLET SAYS NEW LIKE NOBODY ELSE!

Let your eyes linger over Chevrolet's fresh, finely shaped contours. Relax in the roominess of its elegant new interior, get the exhilarating feel of its hushed, silken ride. No other car says new like this one!

Here's the car that's definitely new in a decidedly different way. The '59 Chevy is shaped to the new American taste with new Slimline design. It brings you a roomier body by Fisher, vast new areas of visibility. There's a new Magic-Mirror finish that needs no waxing or polishing for up to three years. A new Hi-Thrift 6 and a wide choice of vigorous V8's. Bigger, safer stopping brakes. An even smoother ride. At your Chevrolet dealer's right now!



what America wants, America gets in a Chevy!



definitely new, decidedly different! The new Impala 4-Door Sedan, like all new Chevies, has Safety Plate Glass all around

see your local authorized Chevrolet dealer

**FULLEN MOTOR COMPANY**

305 E. MAIN

PHONE 44

Phone 11

EASTLAND



### CUSTOM COOKING AT A BUDGET PRICE DELUXE UNIVERSAL GAS RANGE!

- Burner-with-a-Brain Foods won't burn or boil over!
- In-a-drawer broiler for smokeless, separate broiling
- One-hour timer clock
- Huge "4 pie-at-a-time" oven

**\$219**  
NOW ONLY

with trade in

Generous terms to fit your budget! UP TO 36 MONTHS TO PAY! **LONE STAR GAS COMPANY**



it's like having someone watch the cooking for you

### only a GAS Burner-with-a-Brain never burns your favorite meals!

Ever had a saucepan start to burn just when you were too busy to watch it? Well, it never has to happen again! Modern GAS Burner-with-a-brain watches the pot for you. You set it to the proper temperature . . . then the watchful brain automatically turns the flame down when the temperature is right. You never burn food . . . curdle sauces . . . or boil-over liquids. Come in and watch this magic miracle of modern GAS during our TRADE-UP TIME range sale. (And look at all the other luxury features of economical GAS cooking on the newest gas built-ins.) Special TRADE-UP allowances . . . low, low prices. Terms tailored for you.



See Your Gas Range Dealer or **LONE STAR GAS COMPANY**



Trade With Your  
Hometown Merchants

### Mrs. Melvin Crabtree Is Feted With Kitchen Shower Tuesday

Mrs. Melvin Crabtree, former Miss Martha Freese, was honored with a kitchen shower in the home of Frances Cogburn Tuesday evening.

Members of the Sub Deb Club were hostesses for the shower. The recent bride is the daughter of Mr. and Mrs. J. E. Freese, formerly of Eastland.

Miss Cogburn greeted the guests and presented them to the honoree and Mrs. P. W. Crabtree, mother of the bridegroom.

The guests were registered in a bride's book formed of a pink and white dish towel with a scoop attached to the front with a pink bow.

Carrying out the bride's chosen colors of pink and white, the serving table was centered with a miniature bride and groom flanked with pink candles in crystal holders. Pink napkins completed the table arrangement.

Miss Cogburn was assisted in serving pink punch, coconut balls, mints and Ritz crackers topped with cheese by her mother, Mrs. H. A. Cogburn.

Gifts were displayed on card tables.

Those attending or sending gifts were Linda Huckabay, Charlotte Vaught, Betty Young, Gerry Haynes, Jan Robertson, Beverly Moser, Fay Phelps and Judy Hassell, Mrs. Vadis Phelps and Mrs. V. T. Moser.

TRADE WITH YOUR  
HOMETOWN MERCHANTS

### Mrs. J. W. Watson Presents Lesson For Esther Group

Mrs. J. W. Watson presented the lesson study for the members of the Esther group of the First Christian Church as they met Monday afternoon.

Mrs. Bethel Reid was hostess as the group met in the church annex.

Mrs. Millie Brittain presented the devotional on "Draw Nigh to God." Mrs. Watson presented the lesson from the book, "Beginning in Jerusalem."

A short business meeting was presided over by Mrs. J. H. Evatt, chairman.

After the meeting Mrs. Reid served the group "good" homemade cake, ice cream and coffee. Those attending were Misses J. P. Glibreath, R. I. Malone, F. L. Cooper, Jack Chamberlain, Bethel Reid, Millie Brittain, J. H. Evatt and J. W. Watson.

### Mission Study Is Presented by Mrs. Norton for WMU

Mrs. Ansel Norton introduced the mission study of "Into a New World" to the members of the Cathleen Jones circle of the Woman's Missionary Union of the First Baptist Church.

Mrs. Warren Chapman was hostess to the circle Tuesday morning in her home, 508 South Oak Lawn.

Upon arrival Mrs. Chapman served assorted cookies and coffee to her guests.

Mrs. Frank Lovett opened the meeting with prayer with Mrs. Chapman leading the devotional on I Thessalonians 1:1-10. Mrs. R. D. Guthrie read the names of the missionaries from the caterer prayer list and led the prayer.

After Mrs. Norton introduced the mission study Mrs. Chapman closed the program with prayer.

Mrs. Willie Forrest was welcomed as a new member. Attending were Misses F. J. McWilliams, R. D. Guthrie, Frank Lovett, M. A. Treadwell Jr., Herbert Ekert, John Williams, Ansel Norton and the hostess, Mrs. Chapman.

**SINGER**  
SEWING MACHINES  
and  
VACUUM CLEANERS  
New and Used  
Call  
**Dois Morton**  
Phone 985-W-1 after 5 p.m.  
Service All Makes

### Here, There and Everywhere—

... people are moving in and moving out all trying to get located for one reason or another. Those who have moved to Eastland recently, and there are quite a number of families, should align themselves with our worthwhile institutions as quickly as possible. The connection with an old established insurance agency is a step in the right direction. In the Bender Agency one will find such an institution fully equipped and ready to serve. So drop in and let's get acquainted!

**EARL BENDER & COMPANY**  
Eastland, (Insurance since 1924) Texas.

### BE WISE send it to ... ROY'S REPAIR

LET US REPAIR YOUR APPLIANCES

Refrigerators  
Deep Freezers  
Milk Coolers  
Window Coolers  
Evaporative Coolers  
Automatic Washers  
Clothes Dryers  
Dish Washers  
Disposals

Percolators  
Coffee Makers  
Electric Irons  
Food Mixers  
Food Blenders  
Electric Sweepers  
Electric Fry Pans  
Electric Roasters  
Electric Ranges



Reasonable Rates — Work Guaranteed — Call 785  
Located at  
Brown Plumbing  
1006 W. Main St. **ROY GANN** Eastland, Texas  
Night Phone 976

# SURE TO SCORE FOOD BUYS

**CLOVER FARM**  
**COFFEE**  
Drip or Reg. **73¢**  
Lb. Can .....

**GOLD MEDAL**  
**FLOUR**  
10 Bag **89¢**  
Lb.

**BETTY CROCKER**  
**Muffin Mix** Raisin, Corn. 14-Oz. **19¢**  
Orange, Date Pkg.

**WAPCO SOUR OR DILL**  
**Pickles** Quart **29¢**  
Barrels

**CRISCO** 3 Lb. **83¢**  
Can

**SPORK LUNCHEON** 12-Oz. **45¢**  
MEAT Can

**CLOVER FARM**  
**Margarine** Lb. **19¢**

**WHITE SWAN RED PLUM**  
**Preserves** 12-Oz. **16¢**  
Jar

**SWIFT'S PARD**  
**Dog Food** 2 No. 300 **25¢**  
Tall

**Home Grown**  
**GREEN BEANS**  
Lb. .... **19¢**

**Waxed**  
**RUTABAGAS**  
Lb. .... **6¢**

**Washington Red**  
**DELICIOUS APPLES**  
Lb. .... **15¢**

**U. S. No. 1 Red**  
**POTATOES**  
10-Lb. **39¢**  
Bag ...

Fleecy White  
**Bleach**  
Quart Bottle  
**15c**

Red Label White  
**KARO**  
Pint Bottle  
**25c**

Van Camp's  
**TUNA**  
No. 1 Flat  
**19c**

**THRIFT**  
**Sliced Bacon** 2 Lbs. **89¢**

**Pork**  
**ROAST**  
Pound  
**49¢**

**GOCH'S**  
**FRANKS**  
3 Lbs.  
**1.05**

**HORMEL'S PORK**  
**Sausage** Lb. **39¢**

**Pork Ribs** Lb. **49¢**

**SMOKED**  
**Picnics** Lb. **39¢**

**MATCHLESS SLICED**  
**Bacon** Lb. **59¢**

**KRAFT VELVEETA**  
**Cheese** 2 Lb. **79¢**  
Box

It's QUALITY plus PRICE  
that counts when  
you buy Food  
... gives you BOTH

**CLOVER FARM**

H. B. MacMoy, Owner  
7:30 a.m. to 8:00 p.m. Weekdays  
7:30 a.m. to 9:00 p.m. Saturdays



### Eva Nell Kimbler Is Chosen As Circle Name of WMU Tuesday

Eva Nell Kimbler was the name chosen for the circle from First Baptist Church which met in the home of Mrs. J. L. Brashears Tuesday morning.

Mrs. Kimbler is a newly appointed missionary who is now at language study school at Costa Rica. Her husband was pastor of the Calvary Baptist Church of Breckenridge before their appointment.

### Morgan GA Meets With Anna Smith Heading Group

Anna Smith presided when the Morgan Girls' Auxiliary met at the First Baptist Church recently. Sharon Gist led in the singing of the G. A. hymn with Mary Ann Manning as accompanist.

Donna Kay Ford read the names of the missionaries on the prayer calendar and placed a star on a map of the world at the place where they were. Lois Ann Sims led a prayer for the missionaries.

A program entitled "See the Philippines" was given by Sharon Sayre, Janet Kimbler, Donna Ford, and Janice Dendy.

Refreshments of coconut and pineapple bits, and coconut cookies were served to those mentioned above and to Sharon Chick, Brenda Jenkins, Wanda Lane, Ernie Mae Lane, Mary Herrera, Sharon Hill, Roy Lynn Gann, Judy Morris and the counselor, Mrs. Herbert Ekkrat.

### Conservation-

(Continued from Page One) the conservation reserve program includes the construction of ponds. Cost share payments are available for the construction of fish ponds and annual rental payments are made under 5 or 10 year contracts at the choice of the farmer.

Details of the wildlife practices under the conservation reserve program are available at all county Agricultural Stabilization and Conservation (ASC) offices.

**Review-**  
(Continued from Page One) Number Nine On The Ballot (SJR 3)—Authorizes the Legislature to create a Hospital District coextensive with the incorporated limits to the City of Amarillo, Texas and a county wide Hospital District in Wichita County, Texas, and Hospital Districts in Jefferson County, Texas.

### Circle Is Hosted By Miss Chandler

Members of the newly named Woman's Missionary Union, Carolyn Bell Circle, of the First Baptist Church met with Miss Ida Chandler at 300 South Connelley for their first meeting of the church year. The meeting was held Tuesday morning.

Mrs. A. H. Halford led prayer for the missionary names appearing on the calendar.

Several business items were discussed including members of the future. Circle officers have also been elected as follows: Mrs. Halford, miniature missions; Mrs. J. C. Jolly, mission study; Mrs. R. K. Kelly, secretary and treasurer; and Mrs. M. A. Treadwell Sr., prayer chairman.

Mrs. Gordan Golston is chairman of the group.

Teed tea and cup cakes were served to Mrs. Halford, Howard Upchurch, Golston, Kelley, Jolly and Miss Chandler.

Mrs. Golston will be hostess to the group Tuesday morning at 9:30 o'clock in her home.

### Lesson Is Given By Mrs. Joe Tow For Lydia Group

Mrs. Joe Tow was assisted by Mrs. L. C. McNatt in presenting the program for the Lydia Group of the First Christian Church.

Mrs. Guy Robertson was hostess to the group in her home at 1208 South Green Monday afternoon at 3 o'clock.

Mrs. Tow presented the lesson on "Gospel of the Kingdom of God" assisted by Mrs. McNatt reading the scriptures.

Mrs. C. A. Peterson assisted by Mrs. Dave Fiensy gave the devotional of "If thou faint in the day of adversity thou strength is small" Proverbs 24:10.

The meeting was opened by prayer by Mrs. N. L. Smitham. Mrs. Winnie Wynne, chairman, presided over the business meeting. The missionary benediction being said in unison closed the meeting.

Mrs. May Gattis will be hostess to the Lydia Group October 27 in the church annex.

Attending were Mrs. Winnie Wynne, L. C. McNatt, Dave Fiensy, W. M. Bagley, T. A. Bendy, Eugene Day, Henry Ferrell, May Gattis, C. A. Peterson, Guy Robinson, N. L. Smitham, Dixie Williamson, Pat Murphy, Joe Tow, and Miss Sally Day.

## CASH SAVINGS ON A GRAND SCALE DURING... A&P's 99th ANNIVERSARY SALE!



We owe our 99th anniversary to you... and that's why we've been working to make this sale really exceptional! By your response, we know we're succeeding! Again this week, every department is bursting with buys that add up to significant cash savings. Be sure to get your share!

- DEODORANT SOAP ZEST 2 Reg. Bars ..... 29¢
- DEODORANT SOAP ZEST 2 Bath Bars ..... 39¢
- LAUNDRY SOAP IVORY Bar ..... 15¢
- TOILET SOAP IVORY 2 Bars ..... 19¢
- PERSONAL SOAP GRANULATED IVORY SNOW Reg. Pkg. ....
- SOAP FLAKES IVORY FLAKE Large Pkg. ....

- ANN PAGE 3 PEANUT BUTTER 12-oz. Jars
- ANN PAGE PANCAKE AND 3 WAFFLE SYRUP 24-oz. Btl.
- SULTANA 3 PORK & BEANS 52-oz. Cans
- ANN PAGE 4 GRAPE JAM 16-oz. Jar
- ANN PAGE FRENCH 4 DRESSING Pt. Btl.
- ANN PAGE SALAD 4 MUSTARD 2-lb. Jar
- ANN PAGE 4 NOODLES 1-lb. Pkg.
- Sultana Light Meat Chunk Style—6 1/2-oz. Can TUNA ..... 25c
- BUY 48 BAGS 48c and GET 16 EXTRA BAGS FOR 1c MORE OUR OWN TEA BAGS ..... 49c
- FROZEN MORTON APPLE PIES ..... 39c
- IONA—No. 303 Can TOMATOES ..... 2 for 25c

Your Choice

Campbell SOUPS

MINISTRONE SOUP } SPECIAL!  
CHICKEN VEGETABLE } 3 10 1/2-oz. Cans 49c  
TURKEY NOODLE }

FREESTONE PEACHES No. 2 1/2 Can 25¢

- JANE PARKER 8 INCH SIZE Pumpkin GIANT JELLY ROGLAZED DONUTS WHEAT BREAD

OREGON BARTLET Pears EAST TEXAS Yams CELLO Carrots SALTED SPANISH Peanuts VIRGINIA Peanuts Cash

Overseas Veterans Welcome Karl and Boyd Tanner Post No. 4136 VETERANS OF FOREIGN WARS Meets 2nd and 4th Thursday 8:00 p.m.

**NOTICE**  
FRESH DRESSED FRYERS and Fresh Dressed Hens At The Plant PHONE 110 WALKER Dressing Plant

CALL 601 FOR CLASSIFIED ADVERTISEMENT

IF IT'S METAL Decore Metal Products 306 E. Main Phone 288 SHOP WELDING PAINTING REPAIR

**INGROWN NAIL HURTING YOU?** Immediate Relief! A few drops of OUTGRO bring blessed relief from the irritating pain of ingrown nails. OUTGRO softens the skin underneath the nail, allows the nail to be cut free and the nail grows back pain and discomfort. OUTGRO is available at all drug counters.

NEW LOCATION **Tobby and Hops Sewing Shop** Alterations Alhambra Hotel - Phone 716

TERMITE CONTROL and all other types PEST EXTERMINATION MODERN EXTERMINATING CO. Box 312 Ranger PHONE RANGER Day 919-Night 911

FOR YOUR CONVENIENCE **LORISE'S PET PARLOR** Featuring complete line supplies for your pet's needs—Also Aquarium supplies. Quality at a minimum. Take advantage of our free bulletin board if you have a pet for sale or placement. Pups or kittens available. PHONE 5491—TWO STORY BRICK OLD GORMAN ROAD DELEON, TEXAS

**ALEX RAWLINS & SONS MONUMENTS WEATHERFORD, TEX.** Serving This Community Since 1884 Phone LY4-2726

**LEAD ADVANCED IN PRICE SO DID BATTERIES**

WE PAY NOW TOP PRICE \$1.35 EACH AND UP

**EASTLAND IRON & METAL CO.** Henry Pullman, Owner

**HATS — CLEANED AND BLOCKED**

★ Plain or Fancy Dry Cleaning  
★ Bonded Fur Storage  
★ Furs Cleaned and Glazed  
★ Fancy Re-Weaving  
★ Repair & Alterations

★ Tailored To Measure Clothing  
★ PHONE 132  
★ FREE Pickup, Delivery

★ Your clothes are insured while in our possession.  
★ 210 South Seaman

Modern Dry Cleaners



# Here Are All 12 SAFEWAY 'CROSS-OUT' Games

**Game No. 1**

0	4	8	12	16	20
24	28	32	36	40	44
48	52	56	60	64	68
72	76	80	84	88	92
96					

**Game No. 2**

0	6	12	18	24	30
36	42	48	54	60	66
72	78	84	90	96	

**Game No. 3**

0	4	8	12	16	20
24	28	32	36	40	44
48	52	56	60	64	68
72	76	80	84	88	92
96					

**Game No. 4**

2	4	6	8	10	12
14	16	18	20	22	24
26	28	30	32	34	36
38	40	42	44	46	48
50	52	54	56	58	60
62	64	66	68	70	72
74	76	78	80	82	84
86	88	90	92	94	96

**Game No. 5**

0	2	4	6	8	10
12	14	16	18	20	22
24	26	28	30	32	34
36	38	40	42	44	46
48	50	52	54	56	58
60	62	64	66	68	70
72	74	76	78	80	82
84	86	88	90	92	94
96					

**Game No. 6**

2	4	6	8	10	12
14	16	18	20	22	24
26	28	30	32	34	36
38	40	42	44	46	48
50	52	54	56	58	60
62	64	66	68	70	72
74	76	78	80	82	84
86	88	90	92	94	96

**Game No. 7**

0	2	4	6	8	10
12	14	16	18	20	22
24	26	28	30	32	34
36	38	40	42	44	46
48	50	52	54	56	58
60	62	64	66	68	70
72	74	76	78	80	82
84	86	88	90	92	94
96					

**Game No. 8**

0	2	4	6	8	10
12	14	16	18	20	22
24	26	28	30	32	34
36	38	40	42	44	46
48	50	52	54	56	58
60	62	64	66	68	70
72	74	76	78	80	82
84	86	88	90	92	94
96					

**Game No. 9**

0	2	4	6	8	10
12	14	16	18	20	22
24	26	28	30	32	34
36	38	40	42	44	46
48	50	52	54	56	58
60	62	64	66	68	70
72	74	76	78	80	82
84	86	88	90	92	94
96					

**Game No. 10**

2	4	6	8	10	12
14	16	18	20	22	24
26	28	30	32	34	36
38	40	42	44	46	48
50	52	54	56	58	60
62	64	66	68	70	72
74	76	78	80	82	84
86	88	90	92	94	96

**Game No. 11**

6	10	14	18	22	26
30	34	38	42	46	50
54	58	62	66	70	74
78	82	86	90	94	98

**Game No. 12**

0	2	4	6	8	10
12	14	16	18	20	22
24	26	28	30	32	34
36	38	40	42	44	46
48	50	52	54	56	58
60	62	64	66	68	70
72	74	76	78	80	82
84	86	88	90	92	94
96					

Here is your very last chance to win in Safeway's exciting Cross-Out Game. It's easy and it's fun. You can play all your cards against all Cross-Out Games. Check all your Cross-Out cards against all games in this ad. If you have 5 numbers in a row down, across or diagonally on your card you have a winning card. Turn card over to see that you have won and mail card as directed by Friday, October 31. You will receive your prize soon.

**Play All Your Cards Against All 12 'CROSS-OUT' Games**

Check These Week-End Specials!

**Green Giant Peas** Be sure to enter Green Giant's \$10,000 Fresh Green Money Contest. Entry Blank on Back of Label. **2 303 Cans 33¢**

**Cane Sugar** Pure Cane. Imperial or Domino. A Special Weekend Buy at Safeway. **10 -Lb. Bag 98¢**

**Margarine** Coldbrook — Buy, Try, Compare. Why Pay More! **2 1-Lb. Pkgs. 33¢**

**Butter** Shady Lane. A Safeway Guaranteed Product... Your Guide to Finest Quality at a Saving! **1-Lb. Pkg. 69¢**

**Vienna Sausage** Libby — Rich in Protein — **5 No. 1/2 Cans \$1.00**

**Green Beans** Cut, Highway — So Rich in Garden Flavor! **2 303 Cans 23¢**

**Red Cherries** Town House Sour Filled — Perfect for Pies **2 303 Cans 43¢**

**Del Monte Drink** Pineapple and Grapefruit **45-Oz. Can 29¢**

**Tomatoes** Standard The More You Buy... the More You'll Save! **2 303 Cans 21¢**

**Pinto Beans** Arrow Brand **4 -Lb. Bag 36¢**

**Pure Lard** Armour's Star **8 -Lb. Pail \$1.39**

**Flour** Kitchen Craft — For Better Baking **50 -Lb. Bag \$2.98**

**Party Pride Ice Cream** Vanilla, Chocolate, Strawberry, Cherry, Capri, Chocolate Chip, Almond, Pecan, Neapolitan or Banana Nut **1/2-Gal. Can 69¢**

**Kraft Caramels** Have you tried a delicious Kraft Caramel Apple? **1-Lb. 39¢**

**Prince Leo Salmon** Pink — perfect for the middle-of-the-week economy treat. A Safeway Guaranteed Product **1-Lb. Can 49¢**

**Mortons Salt** Plain or Iodized **2 24-Oz. Boxes 25¢**

**Bluebonnet Margarine** Spreads So Easily **1-Lb. Pkg. 27¢**

**Nabisco Crackers** Premium **1-Lb. Box 27¢**

**Applesauce Cookies** Sunshine — Perfect for Lunchbox **16-Oz. Pkg. 41¢**

**Mortons Potato Chips** Perfect for Snacks **2 3/4-Oz. Pkg. 15¢**

**Comet Cleanser** Sc. Off **2 Giant Cans 41¢**

**Ivory Toilet Soap** Personal **4 Bars 25¢**

**Camay Pink Soap** for Lovelier Skin **2 Bath Bars 27¢**



**Fancy FRYERS 29¢**

Whole Only — Tender, Juicy, Plump! A Chicken Dinner — Always a Winner! (With Safeway Fryers, of Course!)

**Bologna** Jumbo Sliced... All Time Lunchbox Favorite **8-Oz. Pkg. 31¢**

**Bakery Feature of the Week!**

**Skylark Sour French Rolls** **19¢**

12-Oz. 6 Count — Regular 23¢ Pkg. Thursday, Friday and Saturday Only

**Safeway Sausage** Country Style Truly a Breakfast Treat! **2 Lb. Bag 99¢**

Or Sirloin Steak — Bone-In U.S.D.A. Choice Grade Heavy Beef **Lb. 99¢**

**Zest Beauty Bar** Deodorant Toilet Soap **2 Bath Bars 39¢**

**Lava Soap** Gets Dirt Fast **2 Med. Bars 21¢**

**Ivory Snow** Soap Powder — Ideal for Personal Washables **Large Box 33¢**

**Cheer Detergent** It's Blue **Large Box 32¢**

**Dreft Detergent** Ideal for Dishes Too! **Large Box 32¢**

**Tide Detergent** The Washday Miracle **Large Box 32¢**

**Oxydol Detergent** 7c Off **Giant Box 70¢**

**Eggs** Breakfast Gems — Grade A Quality — Medium Size **Doz. 49¢**

**Edwards Coffee** Regular, Drip or Fine Grinds **2 -Lb. Can \$1.47**

**Maple Syrup** Vermont Maid **12-Oz. Bottle 31¢**

**Maple Syrup** Vermont Maid **24-Oz. Bottle 57¢**

**Bosco Milk Amplifier** Kids Love It! **12-Oz. Jar 39¢**

**Karo Syrup** Blue — Rich — Nourishing **1/2-Lb. Bot. 25¢**

**Mazola Corn Oil** Ideal for Frying **Qt. Bottle 57¢**

**Dash Detergent** Perfect for Automatic Washers **9-Lb. 13-Oz. Box \$2.29**

**Joy Liquid Detergent** 7c Off **22-Oz. Can 62¢**

**Laundry Starch** Niagara **12-Oz. Box 21¢**

**Kasco Dog Meal** Best for Your Pet **5-Lb. Pkg. 69¢**

**Cracked Wheat Bread** Skylark **1-Lb. Loaf 19¢**

**Danish Whirls** Curlys — 6 Count **10-Oz. Pkg. 39¢**

**Tomatoes** Ideal for Slicing So Fresh and Flavorful. Adds the Finishing Touch to Any Salad **2 13-Oz. Ctns. 27¢**

**Red Delicious Apples** Fancy and Extra Fancy Gleaming Red and Full of Flavor **Lb. 15¢**

**GE Light Bulb Sale!**

- ★ Frosted — 25-40 or 60 Watt . . . . . Each 21¢
- ★ Sun Gold — 100 Watt . . . . . Each 29¢
- ★ Frosted — 150 Watt . . . . . Each 27¢
- ★ 3-Way Frosted — 50-100-150 Watt . . . . . Each 55¢

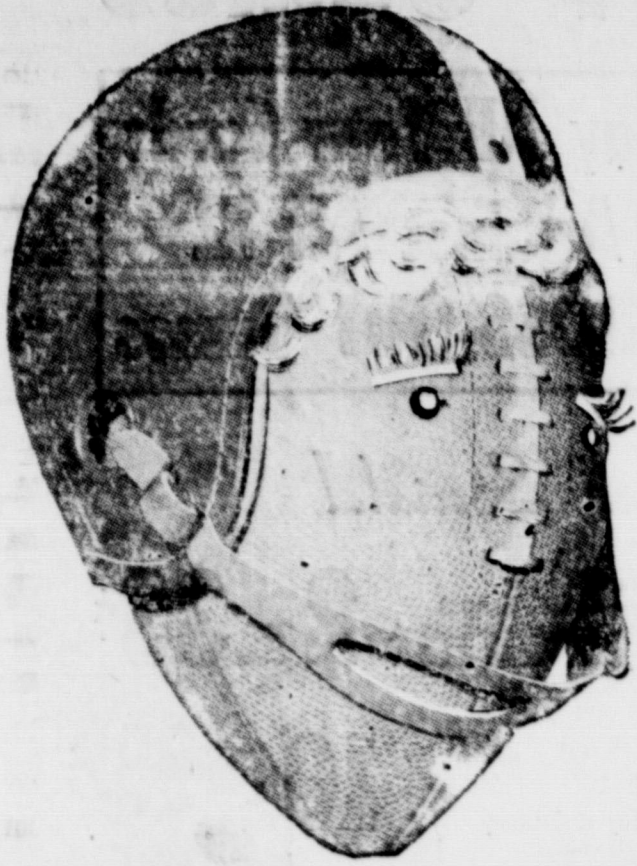
**Pie Pumpkins** Perfect for Pies **Lb. 5¢**

**Ironing Board Pad and Cover Set** Regular 1.98 **Now Only 99¢**

**SAFEWAY**

Prices effective Thursday, Friday, and Saturday, October 23-24-25. We reserve the right to limit quantities. No sales to dealers in Eastland.





TIME FOR THE BIG

KICK-OFF!

Friday Night 8:00 O'clock

MAVERICKS VS. WINTERS

-GAME TO BE PLAYED HERE-

Mavericks 1958 Football Schedule

Date	Opponent	Location	Date	Opponent	Location
Sept. 5	Hamlin 20, Mavs 14		Oct. 17	Coleman 24, Mavs 19	
Sept. 12	Mavs 39, Dublin 12		Oct. 24	Winters	Home
Sept. 19	Mavs 8, DeLeon 0		Oct. 31	Cisco	Home
Sept. 26	Mavs 28, Cross Plains 6		Nov. 7	Ballinger	There
Oct. 3	Albany 37, Mavs 14		Nov. 14	Ranger	There
Oct. 10		Open			



**MAJESTIC**  
IN EASTLAND

3 BIG DAYS!  
Thursday - Friday  
and Saturday

Lover Boy  
of the  
Coast Guard!

**ONIONHEAD**  
ANDY GRIFFITH  
FELICIA FARR  
EIN O'BRIEN

**Anderson's**  
Ladies' Apparel and Children's Wear  
Gifts - Millinery - Accessories  
North Side Square Eastland

**Texas Electric Service Co.**  
F. N. Sayre, Mgr. Phone 18

**R. M. Sneed**  
General Oil Field Construction  
Office Phone 684 Residence Phone 889

**King Motor Company**  
Ford Sales and Service  
On The Square Phone 42

**The Men's Shop**  
Correct Styles for Men and Boys

**Gregory**  
**Milk Distributing Company**  
Boys' Dairy Products  
Serving: Eastland, Stephens, Brown,  
Comanche Counties  
P. O. Box 390 Eastland Tel. 36

**Sunshine Laundry**  
Automatic - Conventional and Drying  
Machines  
Wet Wash - Rough Dry - Finish Work  
Mr. and Mrs. J. B. Kendrick  
106 E. Plummer Phone 155

**City Garage**  
J. J. Finley Proprietor  
Engine, Starter and Generator Work  
103 White St. Phone 995

**Foremost Dairy Products**  
Clyde Manning, Mgr.  
Eastland Phone 10

**Eastland National Bank**  
"On the Square" Member F.D.I.C.

**Eastland Iron & Metal Co.**  
East Main Street Phone 270

**Brown Plumbing Shop**  
Mr. and Mrs. Truman Brown  
214 E. Neblett Phone 735

**Freyschlag Insurance Agency**  
Phone 173

**Koen Salvage**  
Your Scrap Metal Dealer  
Highway 80 West Phone 680

**Geneva Petroleum Co.**  
Chemical Division  
Mfg. GEPCO Chemical Products  
Phone 833 or 332 Eastland

**OBIE & DOC**  
**Humble Service Station**  
802 W. Main Phone 9535

**Doc Davis Drug**  
Prescriptions Filled Accurately  
South Side of Square Phone 696

**Lovlace**  
**Transfer & Storage**  
Local and Long Distance Moving  
Since 1929  
Eastland, Texas

**Reed Oil Company**  
13 Major Brands Oil—Quart 35c  
501 E. Main Phone 9550

**Scott**  
**Paint & Body Works**  
"We Make 'Em New Again"  
300 W. Commerce Phone 977

**Don Pierson**  
Olds - Cadillac  
310 W. Main Phone 802

**Quality Shoe Shop**  
For Extra Wear—from Good Shoe Repair  
West Side of Square

**McGraw Motor Co.**  
Dodge - Plymouth  
416 S. Seaman Phone 80

**Altman's**  
"Smart Womens Wear"  
North Side of Square

**Connellee**  
**Coffee Shop**  
Mr. and Mrs. E. R. Overstreet

**Muirhead Motor Co.**  
Buick - Pontiac  
Sales and Service Phone 692

**Eastland Chamber of Commerce**

**Dairy Kreem**  
Highway 80—East  
Harry Jordan Lawton Thompson

**Texas Lightweight Aggregate Company**  
Producers of Concrete Aggregates  
C. W. Martin Phone 51

**Holloway**  
**Texaco Service Station**  
503 W. Main Phone 9545

**Ruby Lee's**  
**Beauty Shop**  
Lucille Taylor, Owner  
• All Types Beauty Work •  
403 S. Lamar Phone 66

**Eastland**  
**Steam Laundry**  
210 N. Lamar Phone 584

**White Elephant**  
**Cafe**  
724 W. Main Phone 9540

**Graham's Trim Shop**  
703 W. Main Phone 170

**Bruce Pipkin's**  
**Sport Center**  
304 E. Main Phone 525

**Miller's**  
**Phillips 66 Service Station**  
513 W. Main Phone 565

**Otis K. Coleman's**  
**Humble Service Station**  
400 E. Main Phone 826

**PLUMBING & HEATING**  
**AIR CONDITIONING**  
**J. M. Smith Plumbing & Tin**  
114 N. Seaman Phone 304

**B & B Garage**  
Bob Sellers - Earnest Hood  
COMPLETE AUTO REPAIRS  
307 W. Commerce Phone 603

**Modern**  
**Dry Cleaners**  
Approved Sanitone Service  
210 S. Seaman Phone 132

**Dr. F. H. Lund**  
Optometrist  
Exchange Bldg. Phone 30

**Kincaid's Feed & Turkey Hatchery**  
Eastland, Texas  
Full-O-Pep Feeds

If It's Metal  
**Decore Metal Products**  
306 E. Main Phone 288  
Shop Welding  
Painting Repair

**Earley**  
**Tire Service**  
Mobil Gas - Mobil Oil  
302 W. Main Phone 208

**"Old Rip Cafe"**  
Mr. and Mrs. L. B. Culpepper Jr.  
412 E. Main Phone 9511

**Eastland Mavericks 1958**

No.	Name	Pos.	Wt.	No.	Name	Pos.	Wt.
10	*Larry Hollis	B	148	29	*Clint Humphreys	B	138
11	Bill Turner	B	135	30	Charles Chaney	G	180
12	John Stroud	B	157	31	Don Hull	T	165
13	Charles Martin	T	168	33	Marvin Agnew	T	175
14	Mickey Garner	C	152	34	Mike Lischbee	G	146
15	Stanley Reed	E	160	36	Denny Dukes	E	165
18	Jerry Chaney	G	170	38	Gary Lusk	T	160
19	*Knicky Arther	G	165	Coaches: Carrol Shelton, John Tate and Bennett Ragsdale			
20	Roger Taylor	B	140	Managers: Clarence Mayers and Perry Miller			
22	Mike Manning	B	155	* Tri, Captains			
23	Philip Lewis	E	170				
25	James McElreath	B	145				
27	Don Hazard	C	150				