



Moore...

ABOUT

Eastland

By VIRGIL E. MOORE

Here's the latest puzzler going around at Eastland High School. Three men walked into a hotel and asked the desk clerk what it would cost them to spend the night. "Ten dollars each," he replied. The men paid the \$30 and went on up to their room. The desk clerk got to feeling bad about charging them so much, however, and after a while called over a bell boy and gave him \$5, telling him to take it up to the men and tell them they had been accidentally overcharged. The bell boy did as told, except he pocketed \$2 and gave each man back \$1. That made each man pay \$9 for his room. But remember the bell boy kept only \$2. Three times nine is 27, add the two the bell boy got and that makes \$29. So did the other buck get off?

Someone accused us of making a lot of mistakes in this column on purpose. Said we did it so that we would have something to write about the next day. Now that just isn't so. We just happen to be naturally talented when it comes to making mistakes.

Someone else wanted to know why it was that Norman Wright is always having to come over and write feature stories which are right under our nose, like the one about our new citizen from Germany which appeared in the last issue of the Telegram. If you just want to know, it just happens that we feel sorry for Norman and let him come over some time and write a story for us. After all, that's very little that we can do for the old boy now that he has been exiled to Ranger. So far we haven't let old Norm out of Davis Drug store. There's no telling what he could do if we gave him free rein.

Does anyone around town know who is heading the March of Dimes drive here. We can't find out, and therefore have been able to give the movement very little publicity. Seems the radio station is in about the same fix. John Slaughter phoned the other day wanting to know who the chairman is. Seems he has a \$25 check for the MOD from one of his listeners and doesn't know what to do with it. More than \$70 was pledged to the Dimes march at the recent spination.

We were pleased to see Eastland County commissioners vote to continue paying each fire department in the county \$50 a month to help defray the cost of fighting rural fires, at least for the present time. The Court will continue making the payments, which were inaugurated some three months ago, until Commissioner Bob Carter of Rising Star is able to meet with the group. At that time the Court will give firemen a definite answer commissioners promised Monday.

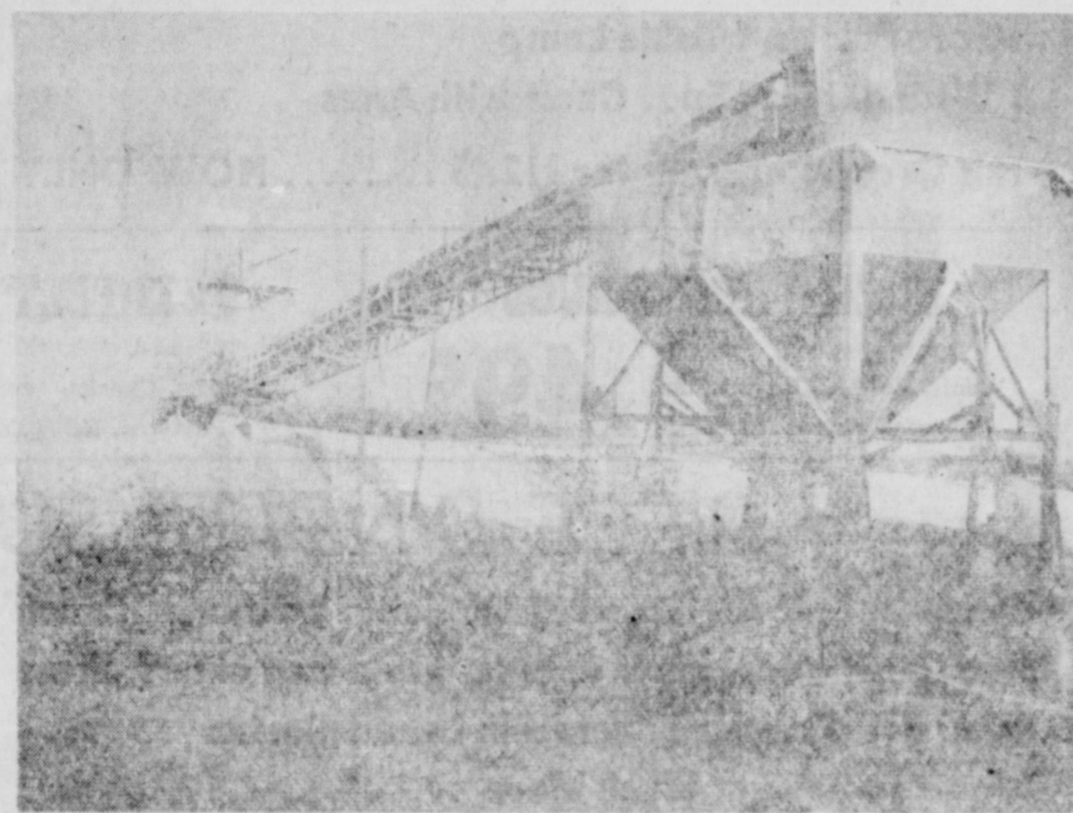
Through the years the county has refused to pay its rightful part for fire protection. We feel that this new policy is a wise one, and a fair one. Eastland firemen alone spent one-third of their time fighting fires last year out of the county limits. For this service they received \$150 from the county, all of that coming in the last three months. Firemen here made 59 calls in 1956, 19 of them to rural areas. City taxpayers deserve a better break than that, and under the new program (if it is continued) they will be getting a better break.

We also feel the Court deserves praise for taking advantage of the services of the county attorney at the last meeting of the Court. No matter who the county attorney is, we feel that he should meet with commissioners and be ready to give legal advice to them at all times. We do not say that his ruling should be final, but his services, which are paid for by the county, certainly should not go unused.

You know we bet Eastland has a lot of folks who would like to do some writing if they had the chance. And we are going to give them that chance. Any original writing (which we can print without getting sued) will be published. Of course we would prefer something that concerns Eastland County. A lot of you know interesting stores about this county, and we feel these tales should be printed and thus preserved for future (Continued on Page 8)

FOR
Fine Furniture, Floor Coverings, G. E. Appliances, It's Coats Furniture & Carpet, Ltd., Eastland Free Delivery and Convenient Terms. Good Trade Ins. too!

Working On Another Eastland County Asset



THIS HUGE ROCK CRUSHER is set up near the Staff bridge on the Eastland-Staff road and is crushing rock for the road-building project on the far side of Lake Leon. It takes a fleet of some 20 fast gravel trucks to keep ahead of the machine, and actually the trucks have damaged a large part of the road that had been previously built. But these hills and small mountains of rock are just more assets for Eastland County and there is probably enough of this commodity here to put a rock base on every new road in the state for many years to come. If the picture is dim, the whole operation was almost covered with a cloud of dust when the picture was taken. (Capps Studio Print)

Q-Back Club Elects 1957 Officers, But...

Eastland Quarterback Club members Tuesday night elected Henry Pullman as president of the club for the coming year, but Pullman, who was not at the meeting, announced Wednesday morning he could not accept the position because of business reasons.

HIGH FOR DAY IS 25

City Shivers Under Low Of 14 Degrees

Eastland shivered under a 14 degree reading this morning at five and the mercury still stood at only 19 degrees at eight o'clock.

The city was preparing for its second consecutive day in a row of sub-freezing weather. The mercury rose only to 24 1/2 degrees here Wednesday after a nighttime low of 19 degrees Tuesday.

Olden, Gordon Split Basketball Games Tuesday

OLDEN Olden split a pair of basketball games Tuesday night with Gordon. The Olden boys downed the Gordon boys, 60-40, but the Olden girls were edged out 44-41 by the Gordon girls.

Grand Opening Of New Humble Station Saturday

Grand Opening of the new Humble station at the corner of Highway 80 and Halyburton, next to the new Safeway store, at 5:30 Saturday.

the task of holding another election, Wells Dalton was named vice-president and Milton Underwood was re-elected secretary-treasurer.

Earl Labredo, Jack Chamberlain Jr. and Jimmy Young were elected to positions on the board of directors. They will join others Jim Watson and James Reid.

Friday, the weatherman says, and then warm up on Saturday.

Eastland County got no moisture from the cold front. Fruit trees, which last week were on the verge of blooming after several days of warm temperatures, are not believed to be hurt.

Eastland Joins Nation In Paying Postmaster Honor

Eastland joins the nation today in paying tribute to their postmaster. Today is national Postmaster's Day. It was proclaimed by Postmaster General Arthur Summerfield.

Jan. 17 calls to mind the fact that America has had many distinguished persons who were postmasters at one time or another.

"So, we postmasters have had some pretty high standards of conduct established for us over the years."

"I suppose so that you might say the job of postmaster has a SERVICE Pamper your car with quality service from our experienced mechanics. All cars—fast, efficient, economical. Call 502 today. Don Pieson Olds-Cadillac Eastland

Harvey Lewis, outgoing president, automatically becomes a member of the board.

No date had been announced this morning concerning another meeting to choose a president.

Members voted to definitely hold a minstrel this year as well as a membership drive. There were 109 members in the club during 1956 and hopes are that that number can be doubled.

The club voted to allow the president, vice president and members of the board of directors to go ahead with plans for the annual athletic banquet. The Club also recommended that a prominent and winning Southwest Conference coach be asked to make the principal address. He is to be contacted this week. Women will be invited to attend this year's banquet, something that has not been done in the past.

Your New Car Financed At Low Bank Rates With Your—EASTLAND NATIONAL BANK Member F. D. I. C.

Dale Statton pushed through a wo-pointer as the final buzzer sounded here Tuesday night to bow Eastland into an overtime playoff with the Throckmorton greyhounds, and then the shifty day sunk the only field goal made in the extra playoff period to give Eastland a slim 38-37 District 10-A victory.

The win gave Eastland a clean sweep for the night. In the first game of the twin bill the Mavericks overcame a six point deficit at all-time to win 55-46 going away.

Letter Jackets Go To 26 E. H. S. Mavericks

Cold Spell Prompts Awarding Of Letters

Eastland Mavericks are thankful for the sub-freezing weather. The mercury readings prompted Coach Carol Shelton to give out letter-jackets Wednesday.

Game Preserve Gives \$24 To March of Dimes

Members of the Sabanna Valley Game Preserve Association Tuesday night voted to donate \$24 to the March of Dimes. Berry Greenwood, secretary, revealed today.

A large number of members attended the regular meeting of the Association and several visitors were on hand. Members voted to designate the fourth Tuesday night of each month as Community night at the Center Point community house, near Carbon. Forty-two and music games will be played and canasta will be available when obtainable. Any other activities which members desire will also be added later. Refreshments will be served at each meeting.

Greenwood said the next community night meeting would be held Jan. 22. He urged everyone to "come early, bring your card tables, chairs and dominoes and be prepared to have a good time."

Eastland County Draws New Try

Eastland County drew another oil field try this week. The No. 1 G. A. Nunn Jr. is being drilled by O. F. Newsom of Rising Star 150 feet from the south and west lines of the north half of Section 26, Block 2, ETRR Survey, 3.1-2 miles northwest of Rising Star.

Typical Eastland Scene
★
County employees wearing a big smile

words, Class A Quarterfinal Champs. The jackets have leather sleeves and wool bodies.

Boys getting letterjackets include Duard Turner, Dale Statton, Lupe Herrera, Carl Freese, Johnny McMahon, Saul Pullman, P. A. Cox, Knicky Arthur, Bill Upchurch, Harvey Lewis, Jim Phillips, Dick Corbell, Neil Pogue, Jimmy Martin, Wayne Durham.

Larry Hollis, Fred Tucker, Bill Keith, Clyde Young, Stanley Blevins, Ronald Robertson, R. L. Stuard, Clint Humphreys, Wayne Dodson, J. C. Jarrett and Larry Alldridge. Jackets also went to coaches Shelton, Jon Tate and Jack Hoffman.

Eastland this year won the District 10-A championship and then went on to down Cross Plains 26-7 for bi-district honors, defeat Henrietta 20-7 for regional honors and upset Linden 24-14 for quarterfinal honors. The Mavs finally lost to Stinnett in the state semi-finals. Stinnett went on to slaughter Hondo for the state championship.

Managers jacked went to Elmo McAllister, Perry Miller and Clarence Mayers.

Anson Bearcats Defeat Douglas School Tigers

Anson's Bearcats took a 56-44 victory over the Douglas School Tigers here last week.

The game was hard fought all the way and the Eastland team led in the second quarter by a 17-16 margin. Anson's height advantage proved too much for the locals, however. Ralph Adams was high point man in the game, getting 21 points. Ray Dunn had eight.

Frozen Pipes Cause of Fire

Little damage resulted from a fire caused by trying to thaw out frozen water pipes here yesterday.

Firemen answered the alarm at 4:05 p.m. Wednesday to 707 West Commerce. Paper wrappings (Continued on Page Four)

BE SURE—SEE Don Pieson Olds-Cadillac Eastland Quality Care at Volume Prices

Team	W	L	Per
Wylie	2	0	100%
Clyde	1	0	100%
Eastland	1	1	50%
Albany	0	1	0%
Throckmorton	0	2	0%



DR. PAUL CAMPBELL

Dr. P. Campbell To Speak Friday To Church Group

Dr. Paul Campbell, noted speaker, will address members of the Christian Men's Fellowship of the First Christian Church here Friday night at 7 p.m.

Dr. Campbell, who until this year served as director of the Education and Extension of the Supreme Lodge of the Knights of Pythias, also is a Christian Church minister. For 14 years he was pastor of the Christian Church in Weatherford, and for the past 20 years he has been active in church work, including evangelism and public relations.

Anyone interested in attending the meeting were asked to contact Bill Collins, Jim Eldson or Earl Lewis.

Mattye Bentley Winner of Betty Crocker Contest

The Betty Crocker Homemaker of Tomorrow in Eastland High School is Mattye Jo Bentley.

She received the highest score in a written examination on homemaking knowledge and attitudes, administered Dec. 4, to senior girls in the graduating class. Her examination paper will be entered in competition to name this state's candidate for the title of All American Homemaker of Tomorrow and will also be considered for the runnerup award in the state. For her achievement, she will receive an award pin designed by Trifari of New York.

The national winner in the third annual Search conducted among 300,526 young women in 11,636 of the nation's public, private and parochial high schools will be named May 2 at the American Table banquet in the Waldorf-Astoria Hotel, New York City.

General Mills is sponsor of the program designed to assist schools in education for home and family living and to "emphasize through a sound scholarship award program the personal, qualitative and sense of values necessary to successful homemaking. A total of \$100,000 in scholarships will be awarded.

Each state Betty Crocker Homemaker of Tomorrow will receive a \$500 scholarship and an educational trip with her school advisor. Washington, D. C., colonia Williamsburg, Va., and New York City. A \$500 scholarship will be awarded the runnerup girls in each state. The school of the state winner will receive a set of the Encyclopedia Britannica.

The scholarship of the young woman named All-American Homemaker of Tomorrow will be increased to \$5,000. This year for the first time girls who rank second, third and fourth in the national finals will receive \$4,000, \$3,000 and \$2,000 scholarships, respectively.

Installment Loans Custom Made For Each Customer EASTLAND NATIONAL BANK Member F. D. I. C.

Local Dealers Here Announce Car Wins Plaque

Eastland's three Plymouth dealers received word this week that Plymouth has been named "the style leader of the entire American automotive industry" for 1957 by Dell's 1957 car annual.

McGraw Motor Co., Blevins Motor Co. and Kushing Motor Co. all announced their appreciation of the award. A spokesman for the three Eastland dealers said, "It certainly is nice to know that the experts agree with what we—and the American public—feel about our beautiful new Plymouth."

The Dell annual is an important buyers' guide magazine. It sells on the news stands for 75 cents a copy and has a large readership. All three local dealers are displaying a poster with replica of the plaque which was presented to Plymouth by the Dell editors. The three dealers also have an eight-page reprint of the article which appeared in the publication which is available for anyone who is interested in reading it.

Negro Leaders Ask Pool For Negroes Only

Eastland City Commissioners face the problem of deciding what to do about an appeal from some Negro leaders for a swimming pool.

The City has been asked by several persons to construct a pool in the Negro park. City Manager Jimmy Young estimates that a pool could be built for approximately \$6000, providing that individuals would donate their labor.

He has been feeling out individuals and clubs about how they feel about the project.

"The City absolutely does not have the money to build the pool," Young told Eastland Quarterback Club members this week while explaining the situation to them.

Mary Lena Jessop Buried Tuesday

Funeral services were held for Mrs. Mary Lena Jessop, 76, in the Hamner Funeral Home Chapel with Otto Johnson, Church of Christ minister, in charge.

Mrs. Jessop died Monday in the Tanager General Hospital. She is survived by one daughter, Mrs. Ruth Honea of Eastland. Burial was in Eastland Cemetery under the direction of Hamner Funeral Home.

President Gets Suggestions From Farmers In Area

Eastland County Farm Bureau leaders asked President Eisenhower to allow easing of some pasture land and cultivated land to the government as a means of materially helping drought-stricken farmers" when the President made his flying trip to San Angelo, it was revealed today.

Local Farm Bureau members also urged the President to have the government raise changed so that farmers can buy drought relief feeds directly through the Commodity Credit Corp. instead of the current method of buying from some local dealer.

These recommendations were made to the President on his on-the-spot inspection of the effects of the worst drought in modern (Continued on Page Four)

Weather FRESCH Insurance Agency
Generally fair with slowly rising temperatures Thursday and Friday. High Thursday near 30. Low Thursday night near 20. High Friday in the 40s.

Eastland Telegram

Eastland County Record established in 1931, consolidated August 31, 1951. Chronicle established 1887, Telegram established 1923. Entered as second class matter at the Post Office at Eastland, Texas under the act of Congress of March 3, 1879.

VIRGIL E. MOORE, Editor
TIMES PUBLISHING COMPANY
Published Tri-Weekly—Tuesdays - Thursdays - Sundays
ONOUS DICK and JOE DENNIS, Publishers
FRANCES MOORE, Society Editor

One week by carrier in city 18
One month by carrier in city 45
One year by mail in County 2.95
One year by mail in state 3.95
One year by mail out of state 5.95

NOTICE TO PUBLIC—Any erroneous reflection upon the character, standing or reputation of any person, firm or corporation which may appear in the columns of this newspaper will be gladly corrected upon being brought to the attention of the publishers.

Classified Ads..

Cards of Thanks charged for at rate of \$2.00 Each

FOR RENT -

FOR RENT: Furnished apartments. 611 West Plummer.

FOR RENT: Newly decorated apartments. Phone 1085-W.

FOR RENT: Four room furnished apartment, also bedroom with private bath. Phone 90.

FOR RENT: 4 room unfurnished apartment. Phone 394-J.

REAL ESTATE -

FOR SALE: Five room house. 603 Gilmer. Phone 989.

FOR SALE: Five room residence two extra lots. 611 Gilmer, Phone 444.

FOR SALE: 3 bedroom house. 505 S. Bassett. Call 720-W-2 or 707-W-2.

FOR SALE: 2 residences and 2 acres on school bus route. Would trade both for one. Phone 727-J-1.

AIN'T GONNA NEED THIS HOUSE NO LONGER—leaving town, house one year old, three bedroom, 9 big closets, oak flooring, shower and tub, Youngstown steel kitchen cabinets, 100 by 150 foot lot on paved street. Loan established, payments like rent. Concrete porches and car port, red wood crossed fenced. SEE ME PRONTO! Luther Black, Phone 300 until 5:30, 201 North Ammerman.

LOST & FOUND -

LOST: Black rim glasses. Call 695 or leave at Eastland Telegram.

LOST: Blond male pekinese, black around eyes. Answers to 'Puggy'. Reward. Phone 892-J-4.

MISC. FOR SALE -

FOR SALE: AUTO 1950 Plymouth suburban, good condition, good tires. \$475. Phone 17.

Native trees, shrubs and plants that we could probably furnish you in the size that you would like: live oak, post oak, black jack, red bud, pecan, hack berry, native elm, persimmon, willow, plum, prickly ash red hall, black hall, algerita berry bush, shinyahall, cactus and others. We welcome your inquiry. Tennyson Nursery and Landscape Service, 1003 West 16th Street, Cisco.

AUTOS FOR SALE

NEW IMPORTED STATION WAGONS. \$1595.
40 miles per gallon, 80 miles per hour. Sedans, hard tops, speedsters, also new Nash Rambler sedans and station wagons. Local service and parts. Tom's Sport Cars, Eastland.

BURKETT Pecan Trees for sale. Phone 193 after 6 p.m. J. M. Cooper.

TURKEYS
Poults, 25c and up. Check our feed prices and our finance plan. SPAIN FEED & SEED Eastland, Texas

FOR SALE: Ladies Zenith golf clubs and bag. Also saxophone. Phone 611.

NOTICE

NOTICE: Wash, lubricate, wash motor for only \$3.00. Gobin Humble Service Station, across from White Elephant. Phone 127.

NOTICE—Will do light house work, be companion to elderly women. Paulina Patterson, Gen. Del. Albany, Texas.

MISC. WANTED -

WANTED: Used baby's play pen. Mrs. Carrol Herring. Phone 2414 Oden.

WANTED: Carpenter work, repair, painting, and yard work. Phone 480-J.

M. H. PERRY
Representing
Southland Life
Life - Retirement Income Partnership
Mortgage Cancellation
Educational - Annuities
Accident - Sickness
Hospitalization - Group
Call 173 or 713-J
107 W. Main • Eastland

Overseas Veterans Welcome
Karl and Boyd Tanner
Post No. 4136
VETERANS OF FOREIGN WARS
Meets 2nd and 4th Thursday
8:00 p.m.

E. C. Murphys Observe Golden Anniversary Sun.

Mr. and Mrs. Elbert C. Murphy, living in Abilene since 1922, will celebrate their Golden wedding anniversary Sunday with an open house from 2 to 6 p.m. in their home at 533 Sayles Blvd. They and their children, Mr. and Mrs. Stanley Micknowski, Mr. and Mrs. Dallas Murphy, Mr. and Mrs. Clinton Murphy and Mr. and Mrs. Charles Lehrer invite all their friends and relatives to attend.

Mr. and Mrs. Murphy were married January 29, 1907 in a little country church of the Pleasant Valley Community near Eastland. Rev. J. W. Tennyson, a Baptist minister, officiated. Mr. and Mrs. Wilburn Scott and Mr. and Mrs. Charles Murphy were their attendants and are expected to be present at their anniversary celebration.

The couple lived in Eastland before moving to Abilene January 1, 1922.

Mrs. Murphy was the former Ella Cheshire, born October 11, 1885 at Fayetteville, Arkansas to Mr. and Mrs. W. C. Cheshire. The Cheshires moved to Eastland in 1900.

Murphy was born October 26, 1882 the son of Mr. and Mrs. C. R. Murphy who came to Eastland County in 1897, settling on a farm near Carbon where Murphy attended school.

At the time of their marriage, Murphy was a railway postoffice clerk and their first home was in Waco. However they soon moved to the farm in Eastland County. He entered the Eastland postoffice in 1919 and worked there until he was transferred to the Abilene office on January 1, 1922. He retired from the postoffice November 1952. He and his wife are members of the First Baptist Church in Abilene.

IN HOSPITAL

Jim Boggs, justice of the peace, left today for Dallas where he will enter the Maxfield X-ray and Radium Clinic for treatment. Mrs. Boggs accompanied him to Dallas.

INGROWN NAIL HURTING YOU?
Immediate Relief!
A few drops of OUTGRO being blessed relief from tormenting pain of ingrown nail. OUTGRO softens the skin underneath the nail, allows the nail to be cut and thus prevents further pain and discomfort. OUTGRO is available at all drug counters.

JANUARY SPECIALS

7 PIECE LIVING ROOM GROUP

- 1 Wood arm Sofa, makes into bed, red, green, tan
- 1 Step Table, 1 Coffee Table to match Sofa
- 2 Sofa Pillows, 1 Table Lamp
- 1 Wrought Iron Spot Chair with Arms

89⁵⁰

This Group Reg. sells for 112.45 NOW ONLY

18 x 27 THROW RUGS

Wools, Cottons, Rayons, and Blends. Values to 2.95. **49^c**

9 x 12 FELT BASE RUGS

Florals, Checks, and Block Patterns. NOW ONLY **3⁹⁹**

9 PIECE DINETTE SUITE

Made by Falcon - Large 36x60 Table with one 12-inch leaf, plastic top, black legs on table and chairs, Brass trim. Eight chairs covered in tweed plastic.

89⁵⁰

Made To Sell For Much More

BUNK BEDS

Wrought Iron. Can be converted to twin beds. Two 3-inch cotton mattress pads. Reg. 49.50 **34⁵⁰**

BABY BED AND MATTRESS

Full size bed and mattress. Assorted Colors. Reg. 37.50. **29⁵⁰**

Coats Furniture and Carpets Ltd.,

Free Delivery Easy Terms

EASTLAND Phone 585

G. E. Appliances Good Trade-Ins

MERCURY BOOSTS PRODUCTION TO A MERCURY A MINUTE TO MEET DEMAND

A record 40,000 Big M's being built in January... a 43% increase over December. A Mercury a minute, every minute of the day and night! All Mercury assembly plants are working overtime with the largest work force in Mercury history to meet the tremendous buyer demand. The landslide swing to Mercury is solid evidence that the new Big M is the most exciting car value of 1957. Never before has so much bigness and luxury cost so little. Prices for America's most beautiful and advanced car are just an easy step above the low-price three.



MERCURY for '57

with DREAM-CAR DESIGN

Wayne Motors

1006 W. Main EASTLAND

Phone 40

ALTMAN'S FINAL... CLEARANCE

and Special Sale... We have re-grouped and made further reductions on all Winter Apparel.

SPECIAL GROUP

- DRESSES
- COATS
- SUITS

1/2 Price

Others Greatly Reduced

SPECIAL SALE ON

Bras

Hollywood-Maxwell, Peter Pan

WERE 2.50 NOW **1.95**

Group Hi-A Nylon - Satin
WERE 3.95 NOW **2.95**

SPECIAL SALE

BLOUSES

Cotton - Jersey - Silk

WERE 3.95 NOW **2.95**

WERE 2.95 NOW **1.95**

STOLES Reduced 1-3 OFF

Group includes Wool Jersey, Nylon-Velveten

JWELED SWEATERS

Coat and Pull-Over Style. Were to 14.95

1/3 Off

OTHER SWEATERS REDUCED

HAT SALE

ONE GROUP OTHERS GREATLY REDUCED **5.00**

Altman's Style Shop

North Side of Square

Eastland

Meat Treats at... WORTH FOOD MART

Just take a look at the fine foods and low prices at Worth Food Mart this week. Highest quality meats at big savings, a fun-fest Mexican Fiesta featuring El Chico Frozen Foods, plus health-giving citrus fruits; altogether they add up to BETTER MEALS at LOWER PRICES!

El Chico Mexican Foods!

For something gratifyingly different, plan a "South of the Border" Fiesta for your family. Shop Worth Food Mart today for Famous El Chico Frozen Mexican Foods at REAL SAVINGS!

FIESTA

TAMALES El Chico 14-Oz. Frozen ... Pkg. **29¢**

TORTILLAS El Chico Frozen 2 Pkgs. **29¢**

MEXICAN DINNERS El Chico 16-Oz. Pkg. **59¢** Each

ENCHILADAS El Chico Beef 16-Oz. Pkg. **59¢** Each

TRIP TO MEXICO CITY
FOR TWO—VIA AMERICAN AIRLINES
No Purchase Necessary
Register FREE Daily At
Worth Food Mart

FREE! 50 Mexican Dinners at El Chico Restaurants
25 WINNERS—2 DINNERS EACH

CHUCK ROAST

WORTH CONTROLLED
QUALITY BEEF
Tender, Flavorful, Economical

Lb.

35¢

Stamps
"H" Green



Prices Effective
Thursday, Friday
and Saturday

WORTH CONTROLLED QUALITY BEEF

ROUND STEAK Lb. **69¢**

SWIFT'S SLICED

PREMIUM BACON 1-Lb. Pkg. **55¢**

WORTH CONTROLLED QUALITY BEEF

ROUND BONE ROAST Lb. **45¢**

WISCONSIN LONGHORN

CHEESE Lb. **49¢**

SWIFT'S PREMIUM

FRANKS 1-Lb. Pkg. **45¢**

WORTH CONTROLLED QUALITY BEEF

RUMP ROAST Lb. **59¢**

LEAN STREAKED

DRY SALT BACON Lb. **35¢**

TASTE O'SEA FROZEN

FISH STICKS 8-Oz. Pkg. **39¢**

TASTE O'SEA FROZEN

CATFISH FILLETS 1-Lb. Pkg. **49¢**

Grocery Values!

- WAPCO CUT
GREEN BEANS 2 No. 303 Cans **29¢**
- HEINZ
VEGETABLE SOUP 2 No. 1 Cans **29¢**
- NIBLETS'
MEXICORN 2 12-Oz. Cans **37¢**
- STANDARD
TOMATOES 2 No. 303 Cans **27¢**
- SLICED OR QUARTERS
OVERBLOOM "99" 1-Lb. Pkg. **32¢**
- SWEET CREAM
FOOD MART BUTTER 1-Lb. Pkg. **75¢**

- BALLARD OVEN-READY
BISCUITS 2 Reg. Pkgs. **25¢**
- KRAFT
CARAMELS 1-Lb. Pkg. **35¢**
- KRAFT MINIATURES
MARSHMALLOWS 10 1/2-Oz. Pkg. **25¢**
- KRAFT
CHEEZ WHIZ 8-Oz. Jar **31¢**
- ALL-PURPOSE
KRAFT OIL Quart Jar **65¢**
- KRAFT
MAYONNAISE Pint Jar **45¢**
- KRAFT
ORANGEADE 46-Oz. Can **29¢**
- MACARONI
KRAFT DINNERS 2 7 1/4-Oz. Pkgs. **31¢**
- GOLD MEDAL
FLOUR 5 Lb. Bag **51¢**
- 10c OFF LABEL
CHIFFON LIQUID 12 1/2-Oz. Can **39¢**
- 10c OFF LABEL
CHIFFON LIQUID 22-Oz. Can **69¢**
- WITH AT-7
DIAL SOAP 2 Bath Bars **35¢**
- ARMOUR'S
DASH DOG FOOD 2 1-Lb. Cans **31¢**

Citrus Sale!

ORANGES

SUNKIST CALIFORNIA NAVELS 2 Lbs. **29¢**

FLORIDA'S FINEST TEMPLE- Lb. **15¢**

"ZIPPER-SKIN"
FLORIDA TANGERINES Lb. **15¢**

LARGE, JUCY
SUNKIST LEMONS Lb. **19¢**

FANCY MARSH
SEEDLESS GRAPEFRUIT Lb. **9¢**

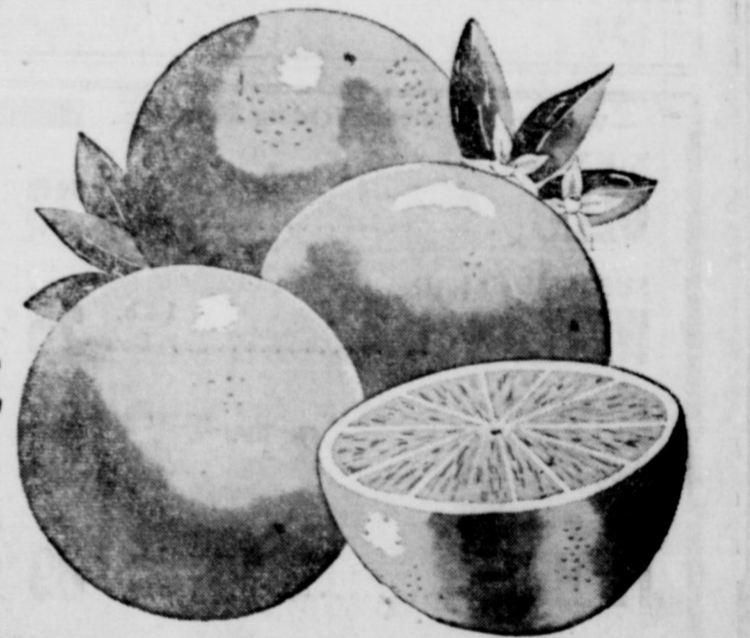
TEXAS RUBY
RED GRAPEFRUIT Lb. **10¢**

TENDER, CRISP
CARROTS 2 Lb. Cello **19¢**

YOUNG, TENDER
GREEN ONIONS 2 Bunches **19¢**

U.S. No. 1 Select
RUSSET POTATOES Lb. **8¢**

CRISP STALKS
PASCAL CELERY Lb. **14¢**



lovely nylons

BY "SUPERMARK"
with the amazing DOUBLE
YOUR MONEY BACK guarantee

\$1.25 and \$1.50
VALUES FOR ONLY
89¢ and 99¢

** 51 Gauge 15 Denier ** 60 Gauge 15 Denier
** 60 Gauge Stretch ** 400 Needle Seamless
** Insured Warranty Nylons

TOOTH PASTE

CREST-Reg. 53c
Large Size 2 Pkg. Deal **69¢**

TOOTH BRUSH

DR. WEST
Reg. 69c **49¢**

WORTH FOOD MART

Julia Hunter Discusses Meat Dishes

By Julia Hunter
Home Economics Director, Lone Star Gas Company

A meat dish is usually the basis of a meal. Such a dish may well be a meat and vegetable combination. Cold winter days are just right for steaming, deep brown stews, pot roasts and meat pies. These dishes are appetizing, nutritious, and, at the same time, easy on the cook and on the budget. Easy on the cook, for meat and vegetables are all in one dish. Easy on the budget, for, since the meats steam slowly, less tender, and less expensive) cuts are used.

For the rich brown color so necessary for eye appeal in beef and vegetable dishes, brown the beef slowly and thoroughly before adding liquid. So that vegetables keep their shape, texture and color, add them to the simmering beef just in time for them to cook until tender. If they cook for the several hours usually necessary for the beef, vegetables will become soft and lose much of their food value.

As in cooking any meat, low, constant temperature is important

Dazzling Acts To Be Part of Ft. Worth Rodeo

FORT WORTH — Brilliant specialty acts will be featured in the world's greatest indoor rodeo and Fat Stock Show, Jan. 25 at the Southwestern Exposition through Feb. 3, President-Manager W. R. Watt announces.

The Roy Rogers Liberty Horses in cooking the less tender cuts of beef for beef and vegetable dishes. Low constant temperature will give a more flavorful, more tender product with less loss of natural juices.

For more free information on meat and vegetable dishes, send a postcard to the Home Economics Department, Lone Star Gas Co., Room 601 at 301 S. Harwood, Dallas 1, Texas.

Recipe of the Week
Pot Roast with Vegetables: Mix 1/2 cup flour, 2 teaspoons salt and 1/2 teaspoon pepper. Dredge thoroughly in seasoned flour 3 to 4 pound pot roast (round, chuck, English-cut.) Heat in deep heavy kettle or Dutch oven over medium gas flame, 4 tablespoons meat drippings or shortening. Brown roast thoroughly on all sides in hot fat. (Slow browning is important and should take about 30 minutes). Add 1 cup boiling water. Cover and cook over simmer gas flame 2 hours, adding more hot water if necessary to keep roast surrounded with moisture. Add 6 potatoes, cut in half, 6 medium carrots, 6 medium onions, 6 small turnips. Cover and continue cooking until vegetables are tender, about thirty minutes. Remove meat and vegetables from liquid. Add to liquid hot water to make two cups liquid. Mix thoroughly 1/4 cup flour and 1/2 cup cold water. Add flour-water mixture to hot liquid in kettle, stirring constantly. Simmer 5 minutes. Makes six servings.

Eastland Joins-

(Continued from Page 1)

ways been one very close to the people, and postmasters a rare certainty among the best known of public servants everywhere—or at least we postmasters like to think so. And, today, I believe this role of the postmaster is more important than ever, because Americans are sending more mail than ever before.

"We expect it to be some 58 billion pieces of mail in this country this year—more than 300 pieces for every man, woman and child in America, and more mail than the rest of the world combined.

will be one of the attractions — eight beautiful and graceful Palominos who obey the voice of their master. The horses were trained by Glenn Randall of North Hollywood, Calif., trainer of Trigger and other famous movie horses.

A sensation wherever they have appeared and new in this region are the Colorado Westernaires, 30-member precision team on horseback.

Still another act will be Lynn Randall and Top Hat. The superbly-educated horse literally takes his lovely driver "for a buggy ride", for he swings and sways in time with a variety of dance melodies, bows and kneels—all while hitched to a buggy.

Besides the standard contests, the rodeo will present the Ranch Girls' barrel race, open cutting horse contest, and a horse show. The 400 cowboys give the Fort Worth show the largest number of contestants of any rodeo in the world and the grand entry also is the world's biggest. First performance is on opening night with two performances daily thereafter, at 2 and 8 p.m.

"Sometimes, though, I wonder whether times have really changed too much.

"In the olden days — until well along in the last century and even later in a good many places—there was no such thing as street and route addresses for most people.

"Whenever anybody sent them a letter they addressed it something like this:

"To Tom Smith Who Lives in the Blue House Next to the Red Barn Near to the Hog Wallow where Tom Nesbitt's Sow, Sussy, Got Drowned last Year."

"Well, today, we do have regular addresses for everybody—but a lot of people still continue to address mail almost as badly as that.

"For example, some people will confidently plunk a letter in the mail box addressed to "Joe Smith, City," or some such vague address, and expect us to deliver it.

"Or they may write the address so carelessly that—by comparison—hen scratching looks as clear as our own fine newspaper here.

"Well, by now, I suppose you have guessed at my ulterior motives in writing all of this.

"It is true—what I am leading up to, of course, is a plea to patrons to please address their mail legibly. If your handwriting is anyway suspect, as far as legibility is concerned, please print the address.

"Also, make certain of the address insofar as possible. And, as additional insurance that your important mail will get where it is supposed to—and all mail is important to the sender—please print your own name and return address on the mail.

"You may think I am saying all this merely to make things easier for us at your post office. And, frankly, that is at least partially true.

"With more people sending more

mail every day, we can ill afford the time required to process poorly addressed mail. True, we often get it delivered—even to "John Smith, City," sometimes—but think of how that time, multiplied by thousands, could be better spent in providing even better mail service for you.

"Besides my ulterior motives, however, I would like to call your attention to the fact that every lost letter or lost piece of mail means a very personal loss for someone. Even the lost bit of advertising material may mean a lost sale for a merchant.

"Those in our post office who could tell many stories of heart-break, lost friendships, want and are legally empowered to open lost letters in the hope of finding a clue to the addressee or sender need that certainly must have ensued from some of the lost letters they have handled and could not deliver.

"However, they had no alternative but destroy them.

"So, please resolve to address your mail correctly and legibly this year. Otherwise the letter that is lost may be your own."

President Gets-

(Continued from Page 1)

history. He met with state farm and ranch leaders in San Angelo Monday morning.

Mitchell Campbell, president of the County Farm Bureau, also announced that plans for a full time office in the country have not yet been completed.

READ THE CLASSIFIEDS
AD SERVICE

Frozen Pipes-

(Continued from Page 1)

around the pipes caught fire when an attempt was made to thaw them out. Firemen had to remove siding from the wall to fight the fire.

I. J. Cormack and A. J. Reeves answered the alarm. Volunteers attending the fire were Harvey Basham, Roy Smith, Foy True, Carl True, J. L. Ward, Guy Robinson, Don Daniels, Jack Willis, Wayne Jackson and Johnnie Grimmes.

CALL 601 FOR CLASSIFIED AD SERVICE

READ THE CLASSIFIEDS

Funeral Directors
HAMNER FUNERAL HOMES
Ben E. Hamner
Oxygen Equipped - Air Conditioned
Eastland Phone 17 Cisco Phone Hillcrest 21211
AMBULANCE SERVICE ANY WHERE ANY TIME
Nominal Cost Burial Insurance
For The Entire Family

Insurance AND Real Estate
D. L. KINNAIRD
Life - Fire - Auto - Farm
Polio - Bonds
37 years in the Insurance Business in Eastland

CLEAR PLASTIC SEAT COVERS
Protect The Beauty Of Your New Car
Tailored To Fit THE TRIM SHOP
706 W. Main Phone 170

RCA Whirlpool
automatic washers and dryers
Smith Plumbing and Tin
114 N. Seaman Phone 304

YOUR GROCER Serves you well

• He provides you with quality foods at fair prices. He and his family support their church and their schools. They participate in many community projects.

Your grocer is your neighbor—a good citizen. He deserves your consideration.

Boswell's DAIRY PRODUCTS

SPECIAL SALE
SALE STARTS FRIDAY MORNING 8 a.m.

MATERIALS 3 Yds. \$1
Values to 59c yard

NEW SHIPMENT MATERIAL 39c and 79c

TEEN-AGE Dresses 1/2 Price

CANNON Towels Reg. 49c Each NOW **3 for \$1**

JUST REC'D... FRESH SHIPMENT ROSE BUSHES
1-Yr. Old 79c 2-Yrs. Old \$1.79

PERRY'S
5c - 10c Phone 267 25c - 1.00

—We Give Hometown Trading Stamps—

KIMBELL'S OLEO	Lb.	23c
SUPREME SALAD WAFERS	1-Lb. Box	25c
KIMBELL'S SHOR'TN	3 Lb. Ctn.	73c
LIGHT CRUST FLOUR	10 Lb. Bag	89c
MUSTARD OR TURNIP GREENS	2 No. 303 Cans	25c
DEL MONTE TOMATO JUICE	2 No. 300 Cans	25c

These Prices Effective **FRIDAY and SATURDAY**

Pork Roast Lean	Lb.	37c
Sausage Country Style	Lb.	25c
Seven Roast Fed Baby Beef	Lb.	37c

—We Give Hometown Trading Stamps—

CALTOP SLICED PEACHES	No. 2 1/2 Can	29c
DEL MONTE FRUIT COCKTAIL	No. 300 Can	25c
DEL MONTE ORANGE JUICE	46Oz. CAN	35c
MISSION WHOLE KERNEL CORN	2 12-Oz. Cans	25c
KIMBELL'S SPINACH	No. 303 Can	15c
SUNNY HILLS CATSUP	Bottle	17c

HAMBURGER FRESH GROUND Lb. **29c**

LEAN BONELESS **StewMeat** Lb. **39c**

EARNEST Frozen Food Center
210 South Lamar Phone 11

LEAN CENTER CUTS **Pork Chops** Lb. **55c**

CALL 601 FOR CLASSIFIEDS

ATTEND THE CHURCH OF YOUR CHOICE EACH SUNDAY

CALL 601 FOR CLASSIFIEDS

INCOME TAX AIDS

One of a Series of 12 Articles Prepared by The Internal Revenue Service

This is the sixth in a series of 12 articles prepared by the Internal Revenue Service to assist taxpayers in avoiding tax audits. Thousands of taxpayers prepare tax returns each year containing questionable items which must be audited by the Internal Revenue Service. Tax audits are costly to the taxpayer and the Government. The Internal Revenue Service feels that a careful study of the tax instructions will enable taxpayers to prepare a correct tax return and, in some cases, pay less tax because he is able to take all the deductions to which he is entitled.

Here are the five most common reasons for the Internal Revenue Service having to adjust the deductions claimed by taxpayers for TAXES:

1. Federal excise taxes are not deductible unless they are incurred or paid in connection with a taxpayer's trade or business in the production or collection of income, or the management, conservation,

or maintenance of property held for the production of income. Under no circumstances are Federal income taxes deductible.

2. Title fees, auto inspection fees, parking meter charges, and other regulatory fees are not deductible as taxes. Charges for services such as water bills, or local benefits such as streets, sidewalks, etc., are not deductible.
3. Non-business taxes are deductible only if a taxpayer itemizes the deductions on page 2 of Form 1040.
4. State and local taxes with the exception of gasoline taxes and retail sales taxes are deductible as such only by the person upon whom they are imposed.
5. The portion of property taxes allocable to that part of the property tax year preceding the sale is considered as imposed on the seller and is deductible by him. That portion allocable to that part of the property tax year beginning on date of sale is considered as imposed on the buyer and deductible by him.

Taxpayers with complex returns may find it advisable to consult a qualified tax practitioner for help in preparing his tax returns. The law requires every taxpayer to have adequate records to support his tax returns. Taxpayers who keep good records for their business and for their personal affairs usually pay less tax than others. They check their records instead of their memory when they start preparing their tax return. Record keeping is also beneficial in planning your personal affairs. If you have a good set of records, you will probably know how to meet your day-to-day financial problems.

In the next article, we will discuss errors taxpayers make in claiming deductions for medical expenses.

ANNOUNCING

The Opening Of McCrary's Barber Shop

ALL TYPES HAIR CUTS

Cannellee Hotel Eastland, Texas
Your Patronage Appreciated

DIXIE Drive-In

EASTLAND RANGER HIGHWAY

Box Office Opens 6:45
Show Starts 7:00
Box Office Closes 9:00

Admission—50c . . . Children Under 12—Free
WEDNESDAY - THURSDAY, JAN. 16 - 17

A Boy and His Horse... Yet their story of Courage... Devotion... and Suspense... is one you will never forget!

Walt Disney's The Littlest Outlaw

TECHNICOLOR

PLUS: Color Cartoon

FRIDAY - SATURDAY, JAN. 18 - 19

Francis in the Haunted House

MICKEY ROONEY

A UNIVERSAL-INTERNATIONAL PICTURE

PLUS: Color Cartoon

SOCIAL CALENDAR

7 p.m.—Past Matrons Association of the Order of Eastern Star will meet in the home of Mrs. Winnie Wynne. Mrs. D. J. Fiensy is president.

Monday, January 21
7:30 p.m.—"Can Johnny Read" by Mrs. D. E. Frazer and "Johnny Can Certainly Write" by Mrs. Rudolph Little will be presented at the Las Leales meet in the Woman's Club.

Tuesday, January 22
7:30 p.m.—Members of the Zeta Pi chapter of Beta Sigma Phi will travel to Cisco to meet in the home of Mrs. Bob Verhetsel, 800 East 23rd.

Thursday, January 24
3 p.m.—Mrs. Taylor Smith will be program leader at the Alpha Delphian Club meeting in the Woman's Club at which time Mrs. Don Hart will present a Home Demonstration Program.

ATTEND THE CHURCH OF YOUR CHOICE SUNDAY



RED CIRCLE

1-Lb. BAG **91¢**
3-Lb Bag \$2.67



BOKAR COFFEE

1-Lb. BAG **95¢**
3-Lb Bag \$2.79



A&P VACUUM-PACKED COFFEE 1-Lb. Tin 99¢

BOURLAND'S MARKET VALUES

CHOICE BEEF	Baby Beef Lot Fed Home Butchered Loin, Choice T-Bone or Club	59¢
CHUCK OR SHO. ROUND STEAK OR ROAST NICE LEAN	Lb.	39¢
PORK CHOPS GROUND MEAT	Lb.	55¢
Wilson's Cheese	2 Lb. Box	75c
DECKER'S KORN KIST	Lb.	43¢
BACON SLICED	Lb.	43¢
DECKER'S TALL KORN BACON THICK SLICED	2 Lbs.	98¢
SHANKLESS PIGNICS	Lb.	35¢

CORN A&P Whole Kernel 2 303 Cans **25¢**

PIE APPLES COMSTOCK SLICED BUY ONE CAN AT REG. 25¢ GET SECOND FOR 12¢ 2 No. 2 Cans **40¢**

PEACHES DEL MONTE WHOLE SPICED OR GOLDEN CITY FREESTONES (2 STYLES) Your Choice No. 2 1/2 Can **25¢**

ANN PAGE SPECIAL

PURE PRESERVES

Peach • Apricot • Pineapple

4¢ off Reg. 29¢ **25¢**
One-pound jar

10¢ off Reg. 55¢ **45¢**
Two-pound jar

ANN PAGE SPECIAL

TOMATO SOUP

10 1/2-oz. Regular Size 20-oz. Family Size

4/39¢ 2 for 29¢

NUTLEY OLEO

Lb. **21¢**

SUNNYFIELD

FLOUR

5 Lb. Sack **39¢**

EQUAL TO THE BEST — YET COSTS YOU LESS

dexo

All-Purpose Shortening

1-lb. Can **33¢** 3-lb. Can **79¢**

LIQUID DETERGENT

JOY

Giant Size 22-oz. Can **69¢**

CRESTVIEW FRESH MEDIUM

EGGS Doz. **39¢**

SULTANA PRUNE PLUMS 29-oz. Can 19¢	PURE CANE SUGAR 10 lb. bag 99¢
A-PENN HARD GLOSS FLOOR WAX 2 Pint Cans 59¢	ANN PAGE Peanut Butter 1-lb. Jar 39¢
A-PENN HARD GLOSS FLOOR WAX 2 Qt. Cans 99¢	ANN PAGE (WITH OR WITHOUT CHILI-GRAVY) RED BEANS 3 16-oz. Cans 29¢
A-PENN HARD GLOSS FLOOR WAX 1/2 Gal. Can 89¢	SULTANA PORK & BEANS 3 16-oz. Cans 29¢
SPANISH BAR Jane Parker Lead Cake Es. 30¢	JUICE Snow Crop Frozen Orange 2 6-oz. Cans 35¢
PECAN ROLLS Jane Parker Caramel Pkg. 33¢	JUICE Snow Crop Frozen Blended A & P—No. 303 Can 2 6-oz. Cans 33¢
CHERRY PIE Jane Parker Each 39¢	Spinach 2 for 25c
Kleenex 25c	KIMBELL'S White Corn Meal 5 lb. bag 35c
CORN MUFFINS Jane Parker at 6 23¢	OUR OWN TEA 48 Tea Bags 48¢
Nabisco Premium —Lb. Box 25c	Nectar Tea 55c

U. S. NO. 1 IDAHO RUSSET

Potatoes 10 Lb. Mesh Bag **49c**

FLORIDA JUICY **ORANGES** 8 Pound Bag **49c**

FLORIDAR UBY RED **GRAPEFRUIT** 8 Pound Bag **59c**

FRESH TENDER TEXAS **CARROTS** 2 Lb. Bag **15c**

SOUTH AMERICAN **BANANAS** Pound **15¢**

FLORIDA KENTUCKY WONDER **GREEN BEANS** Lb. **19¢**

CRISPY **LETTUCE** Head **19¢**

Red Potatoes 25 No. 1 Lbs. **99¢**

IONA SELECT TOMATOES 2 16-Oz. Can. 25¢	MARCAL KITCHEN CHARM WAXED PAPER ROLL 19¢	KRAFT CHEEZ WHIZ Pint Jar 57¢	DETERGENT BREEZE Giant Size 75¢	CLEANSER COMET 2 14 oz. Pkgs. 29¢ Giant Size 21¢
--	---	---	---	---

PENNEY'S ALWAYS FIRST QUALITY!



"REGULATED" COTTONS 79c yard

A mixed bouquet of proud Penney perfectionist prints and go-together solids—unmatched at this low price! Such easy care . . . sanforized*, machine-washable, crease-resistant.



One-time special! Cottons and rayons!

See for yourself what beautiful fabrics you'll find in generous dress and blouse lengths! Designs and colors for every sewing need! Compare for style, quality, value!

4 yards \$1

SPECIAL PURCHASE!
Imported Pure Irish **DRESS LINEN**
1.00 Yard
Crease Resistant—Machine Washable

SPECIAL!
Silicone **Ironing Board Cover**
And Plastic Foam Pad
1.44 Set
For Faster, Easier, Scorch Resistant Ironing

Xi Alpha Zeta's And Zeta Pi's Have Joint Meet

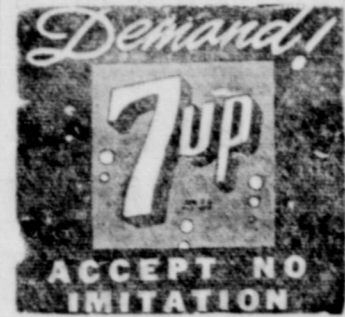
Members of the Zeta Pi and Xi Alpha Zeta chapters of Beta Sigma Phi met in a joint meeting in the home of Mrs. Nell Hurt, 1111 Crest, Mrs. Fran Sayre, president of the hostess chapter, Xi Alpha Zeta, presided. Following a short business session Mrs. Victor Cornelius showed beautiful color slides she and her husband took on their recent trip to New York, France, Germany, Belgium and other places of interest.

It was shown that the girls are grown up and are now holding jobs. The girls were surprised to see people were still wearing wood shoes. Mrs. F. H. Lund and Mrs. Truman Brown were co-hostesses with Mrs. Hurt. Refreshments of coffee, cakes and cake squares were served to Meses. R. M.

Final Rites For Mrs. Robinett Are Read Friday

Funeral services were held in the Higginbotham Chapel at Comanche Friday afternoon for Mrs. Robinett, 67, who died from a heart attack at the home of her son, Rev. Kraft Johnson, pastor of the First Baptist Church of God in Rising Star. Assisted by Rev. Kraft Johnson, Baptist minister, who presided at the graveside rites in Gorman. Born May 20, 1890, Mrs. Robinett moved to Texas with her husband and brother at the age of 12. She was married to Charles Robinett of Virginia, Dec. 1912. Survived by three sons, Bill Leslie, Willis Moore, and Larry Kinard; four daughters, Nell Hurt, Jack Horn, Doyle, Bill Arthur, Arthur Gallagher, Hugh Need, Strawn, Virgil Moore, James Smith, F. H. Lund, Bill Collins, and Kaye, M. H. Perry and A. Crosby.

ember 22, 1912, who preceded her in death in 1948. It was at that time that she, with her son, moved from Gorman to Comanche. Mrs. Robinett is survived by three sons, Milton and Charley Ed. of Dallas and Eddie of Comanche; four daughters, Mrs. Lou Gilbert of North Carolina, Mrs. Opal Fox and Mrs. Frankie David of Grand Prairie and Mrs. ... Burial was in Gorman Cemetery.



King Size DR. PEPPER

Crt. of 6 10-oz. Bottles 18¢

SPECIAL

IDAHO WASHED WAXED RUSSET

Potatoes

10-Lb. Bag 39¢

SPECIAL

GLENDALE YELLOW CR. STY.

CORN

2 No. 303 Cans 25¢

SPECIAL

SUNSHINE KRISPY

CRACKERS

1-Lb. Box 25¢

SPECIAL

SCRATCH

TABLET

25c SIZE 10¢

SPECIAL

GLENDALE

Peaches

Sliced or Halves No. 2 1/2 Can 29¢

IMPERIAL PURE CANE

SUGAR

Lb. Bag

49¢

CLOVER FARM

COFFEE

Drip or Regular

Lb. Can 87¢

COLGATE ECONOMY

Dental Cream

65c Size 53¢

KRAFT'S MIRACLE WHIP

Salad Dressing

Qt. Size 49¢

KRAFT

Dinners

Pkg. 15¢

CLOVER FARM

Margarine

Lb. 23¢

CLOVER FARM PINEAPPLE

JUICE

46-Oz. Can 29¢

GOLDEN

Fluffo

3 Lb. Can 79¢

BETTY CROCKER

Cake Mix

Devil Food, Yellow or White

20-Oz. Pkg. 28¢

Clover Farm

BLEACH qt. 13¢

Glendale Cut Green—No. 303 can

BEANS 2 for 29¢

Glendale—No. 303 Can

SPINACH 2 for 25¢

Fancy Delicious

APPLES lb. 15¢

CENTRAL AMERICAN

Bananas

Lb. 12 1/2¢

WILSON'S PLAIN SLICED

Bacon

3 Lbs. 98¢

TO FRY OR BOIL

Bacon Ends

3 Lbs. 49¢

GOOCH'S

FRANKS

3 Lbs. 89¢

CHUCK

Roast

Good Quality

Lb. 37¢

FRESH

Ground Meat

Lb. 29¢

LEAN TENDER

Pork Chops

Lb. 55¢

ROUND

STEAK

Good Quality

Lb. 65¢

CLUB

STEAK

Good Quality

Lb. 49¢

OPEN EVERY NIGHT TIL 8 P.M.—SATURDAY TIL 9 P. M.



400 South Seaman

Phone 31

You're Invited

OPEN HOUSE

Saturday!

HUMBLE Service Station

Highway 80 & Halbryan

to meet Mr. Dwight Hendricks

Mr. Hendricks and his salesmen cordially invite you and your family to the open house at this fine new service station. They'd like to introduce you to 8-step Humble service, to Humble's fine gasolines, to Humble's great motor oils. They'd like you to inspect the station's spotless rest rooms, to look over its complete equipment for the care of your car.

Seriously... drive in and get acquainted.

Special for the ladies!

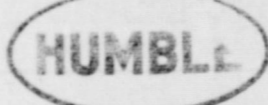


Just! Be sure to drive in Saturday for a lovely miniature Hawaiian orchid. There's one waiting especially for you.

Seriously... drive in and get acquainted.

DWIGHT HENDRICKS

AGENT



WASHING AND LUBRICATION, ATLAS TIRES, BATTERIES AND ACCESSORIES

EASTLAND IRON & METAL CO.

Scrap Iron and Metal Is Our Specialty

S



R

A

P

PHONE 270

For Over 30 Years In Eastland Square Dealing The Year 'Round

Owned and Operated by Henry Pullman

EASTLAND IRON & METAL CO.

EASTLAND IRON & METAL CO.

VISITS MOTHER
R. Lester Foster of Fort Worth spent the weekend with his mother, Mrs. Ida B. Foster.

TRI-CITIES REAL ESTATE EXCHANGE

★
Oil and Gas Leases
Business Property
Farms & Ranches



REALTOR
Phone 1076 Box 22
Eastland

BUTLER
BILL HYDE
Sells and Builds
STEEL BUILDINGS
for:
• Industry
• Commerce
• Schools
and other single-story
construction
STANFORD
ENGINEERING CO.
P.O. Box 687 Dial 3-4721
Abilene, Texas

OUR
WINTERPROOF SERVICE
leaves
WEATHER WORRIES
BEHIND

EARLY TIRE SERVICE
302 W. Main Eastland
PHONE 208

SPRING IS NEAR
OUTBOARD Motor Tune Up
7.95

- All Horse-Power Motors
- Check & Set Points
- Check & Set Plugs
- Check Condensers
- Adjust Carburetor
- Check Lower Unit
- Tested In Test Tank
- Clean Motor Completely

JOHNSON Sea-Horse
SALES AND SERVICE
Bruce Pipkin's
Sport Center
304 E. Main Ph. 525

WE SPECIALIZE
IN BABY PHOTOS



Let us capture your baby's beauty now in a portrait!

Canaris Studio
Eastside of Square
Phone 46



LOOK WHO'S NEW

A girl, Teresa Laverne, was born Monday at 11:20 a.m. in the Gorman Hospital to Mr. and Mrs. Glenn Garrett. She weighed 6 lbs. and 15 ounces. Her grandparents are Mr. and Mrs. A. H. Byrd of Carbon and Mr. and Mrs. A. K. Garrett, Mrs. Emma Phillips of Carbon and Mr. and Mrs. G. C. Oglesby of Eastland are the great grandparents.

Eastland County Federation Meet To Be Saturday

The Eastland County Federation meeting will be held in Cisco, at the Womans Club, Saturday afternoon, at 2:30 p.m. All clubs are urged to send representatives. This is an important meeting. Officers for the coming administration are to be elected, and other appointive details worked out. Everyone is urged to be present, and bring others with you. The Cisco clubs are the hostess group and will provide the program and refreshments, so plan to attend.



ALEX RAWLINS & SONS
MONUMENTS
WEATHERFORD, TEX.
Serving This Community Since 1884

M. & W. Plumbing
PHONE 1159
405 S. Seaman

ED V. PRICE & CO. TAILORED SUITS
Sport Coats Slacks
C. L. FIELDS
Phone 571 103 W. Valley

T. L. FAGG R. L. JONES
REAL ESTATE
Property Management
Home and Farm Loans

Baird Woman No. 5,000 To File SS Claim

Mrs. Selma Irene Bonner of Baird, wife of William Pierce Bonner, on Dec. 19th became the five thousandth person in 1956 to file a claim for social security benefits in the Abilene office of the Social Security Administration, according to R. R. Tuley, Jr., District Manager. Mrs. Bonner gave her written permission to publicize her claim, as social security records are normally confidential and cannot be disclosed unless such permission is granted.

Mrs. Bonner's claim illustrates one of the new provisions in the law that of the reduction in age for women to age 62 for social security benefits as wife, widow, or retired wage-earner. She became 62 years of age in December.

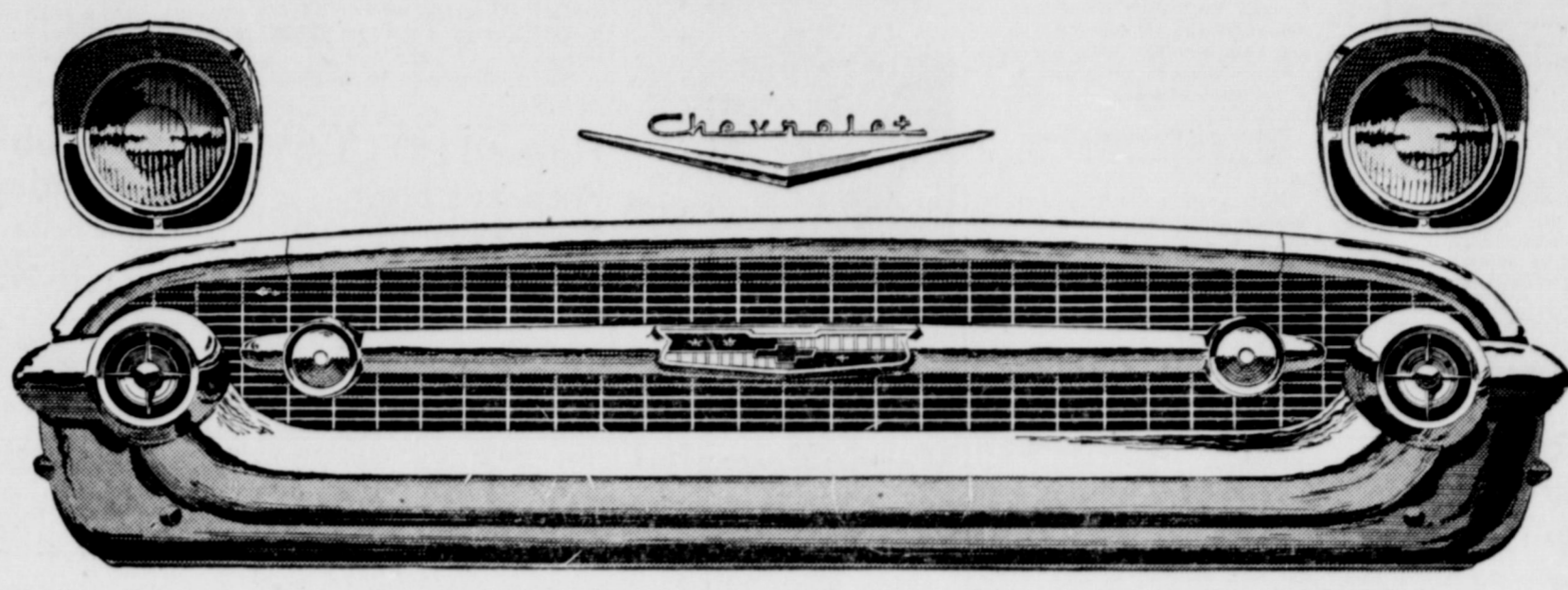
Her benefit amount will be based on the wage record of her husband, who has been receiving payment since early 1955. He operates a small trucking business in Baird and secured his social security coverage as a self-employed person. Mrs. Bonner was born in Trent, daughter of Mr. and Mrs. Charley Hutcheson, pioneer settlers in that area. In fact, the town of Trent was named for her maternal grandfather, Riley Trent, an early cattleman in Taylor county. She and Mr. Bonner were married in Trent in 1911, and have one daughter, Mrs. Irene Neithercutt, who is temporarily living with them in Baird while her husband is away on work for the Santa Fe Railroad.

As she is not yet 65 years of age the amount to be paid Mrs. Bonner will not be the full one-half of her husband's rate, but will be actuarially reduced. This reduction will work out so that until she passes the age of 77, her total benefit amount will be larger than if she had waited until age 65 to file her claim. She agreed to permit use of her story as a means of acquainting others who may be in similar positions of the 1956 Amendments to the Social Security Act so that they may consider filing their own claims before reach-

Hospital News

Patients in the Eastland Memorial Hospital are:
Joe Poole, medical
Mrs. R. L. Meroney, o.b.
Mrs. Maggie Owen, medical
Mrs. Oleta Skinner, Carbon, surgical
Mrs. Frances Hudson, surgical
Lowell Thomas, surgical
Mrs. Marvis Thames, surgical
Willard Liles, medical
Mrs. Annie Martin, Olden, medical
Mrs. M. M. Pippin, Cisco, medical
J. H. Haynes, medical
R. P. Sneed, medical
Dismissed were Mrs. Wilma Cate and Mrs. L. P. Quarles.
Patients in the Ranger General Hospital from Eastland are:
Frank Jones, medical
Monroe Poe, surgical
Lucy Gill, medical
Mrs. T. E. Richardson, medical.
Dismissed were Mrs. Eddie Lorenz and baby girl and Edwin L. Aaron.

ing the former retirement age of 65. TRADE WITH YOUR HOME-TOWN MERCHANTS CALL 601 FOR CLASSIFIED AD SERVICE CALL 601 FOR CLASSIFIEDS



Chevrolet shows you some important differences in low-priced cars just by

the look on its face!

There's a look of substance and character and quality about that new Chevrolet front end that reveals a lot. Feel the strength and solidity of the grille and you learn even more.

Wouldn't you say that most of the '57 cars look good from 50 feet away, but what about from 50 inches away? What does a close-up of the grille tell you, for example? Is it solidly made like the new Chevrolet grille? Or, in

comparison does it look less rich in design—feel less strong and solid? Compare the quality and construction of the bumpers and headlights, the fit of the chrome trim.

The more closely you look all around the car, the more clearly you'll see that Chevrolet has the edge in the way it's put together. You'll find, for instance, that Chevrolet is the only car in its field with a lacquer finish... that only Chevrolet Bel Air models give you foam rubber cushions in front and rear seats as standard equipment. These are just a few of the advantages of Body

by Fisher. And Chevrolet, you know, is the only low-priced car that has a Fisher Body. We'll be glad to give you a close-up, comparative look at this new Chevy any time you care to come in. This week, maybe?



AIR CONDITIONING—TEMPERATURES MADE TO ORDER—AT NEW LOW COST. LET US DEMONSTRATE!

Only franchised Chevrolet dealers  display this famous trademark

FULLEN MOTOR COMPANY

305 E. Main EASTLAND, TEXAS Phone 44

Now! SPECIAL PRICE

on this big 10.9 Cu. Ft. 1957

Servel
gas
refrigerator



WAS \$369⁹⁵ NOW **\$269⁹⁵**
ONLY
WITH OLD REFRIGERATOR

ONLY \$1 DOWN
\$1⁶⁰ a week
...payable monthly

Model 1075G **SAVE \$100⁰⁰**
for limited time only

Get all these exclusive SERVEL advantages

- 10-YEAR GUARANTEE. Servel's freezing system has a guarantee twice as long as for any other refrigerator. Serviced by Lone Star Gas.
- HUGE STORAGE SPACE. 10.9 cubic feet. Separate 56 lb. freezer. In-A-Door storage holds even quart bottles. 2 Dew-Magic fresheners.
- NO MOVING PARTS in freezing system. Nothing to wear out and cause repair expense!
- DEPENDABLE COLD. No off and on fluctuations. Uses dependable gas. No interrupted service due to bad weather!
- SILENT OPERATION. Runs on a tiny jet-flame of gas. Operating costs stay low, efficiency stays high!

Come in and Save — TODAY!
LONE STAR GAS COMPANY

Indian Mountain Club Studies Gardens Tuesday

"A well planned garden is a source of food the year round, with the many kinds of vegetables and fruits that can be grown successfully in the family garden plot" was the statement made by the home demonstration agent, Mrs. Mary Jo Blackwell, to members of the Indian Mountain Home Demonstration Club, during a lesson on gardening at the club's first meeting of the new year, at the club rooms.

The growing of tomatoes, with emphasis on selection of seed, preparation of soil, variety of kind best suited to the area, climate, inoculation of seed, and cultivation of tomatoes was discussed at length during the lesson period.

Mrs. Blackwell, who met with the Indian Mountain club for the first time Tuesday, was introduced

Mrs. Robinson Is Hostess To Group Two Meet

"A Fugitive Becomes a King" was the lesson studied at the Monday meeting of Group 2 of the First Christian Church in the home of Mrs. Guy Robinson, 1308 South Green Street. Mrs. Dave Finney presented the lesson with Mrs. Eugene Day reading scriptures in keeping with the title.

The meeting opened with all present repeating the "Lord's Prayer" in unison. Mrs. N. L. Smitham, president, presided.

Mrs. Eugene Day, program leader, introduced Mrs. L. C. McNatt who brought the devotional for the afternoon.

The regular CWF benediction closed the meeting until Monday afternoon when the group will meet in the home of Mrs. N. L. Smitham, 205 Virginia.

Refreshments of fruit cake and coffee were served to Meses. Roy Turner, N. L. Smitham, Eugene Day, Dave Finney, I. L. Malone, L. C. McNatt, N. T. Johnson, Winnie Wynne, C. M. Kelly, Miss Sally Day and the hostess, Mrs. Robinson.

by the club president, Mrs. Lee Anglin. Mrs. Henry Hey gave the devotional and led a short recreation program, followed by a roll call and reading of minutes by Mrs. E. L. Curb, secretary.

Announcement of committee members to meet at one o'clock Monday, at the County HD Council meeting were made. Mrs. Bill Tucker, chairman of the County Council Recreation Committee attended the council committee meeting and together with her committee members, presented a list of recommendations for study by the club.

Following the agent's lesson, a refreshment plate was served to all.

Next meeting will be on Jan. 22. Visitors are always welcome.

Recreation Meet Held By Mansker Lake Community

Recreation for old and young alike was the program schedule carried out at the first meeting of the new year, and members of the Mansker Lake Community group pronounced it a success. Elmer E. Blackwell is chairman of the group. All business is set aside for the first meeting in each month and everybody has an opportunity to join in the fun of entertaining or being entertained. Richard Tucker gave the invitation, and Alton Underwood led the group in singing several songs. John Love presided in the absence of Mr. Blackwell.

A welcome reading was given by tiny four-year-old Nancy White. A quartet of girls, Rita and Jessie Underwood, Loresta Love and Patsy Nail, sang hymns and novelty numbers.

Outstanding performance by a trio of youngsters, Susan, Wayne, and Zach White of Gunsight, a sister and brothers combination—brought the house down in applause with their excellent singing. This group of visiting young singers were secured for the program by Mrs. John Love, program leader for the meeting.

At the close of the song-fest, refreshments of sandwiches and hot chocolate were served to the 40 or more persons attending.

READ THE CLASSIFIEDS



MISS SARAH SHAW engagement announced

Engagement of Sarah Shaw and Massie Revealed

Mr. and Mrs. Clyde Reagan Show wish to announce the en-

agement of their daughter, Sarah, to Lt. Robert Eugene Massie, son of Mr. and Mrs. Thomas Guy Massie, of Waynesville, North Carolina.

Miss Shaw is a graduate of South Park High School in Beaumont and at present is employed by Hovell Oil and Refining Company in Houston. Lt. Massie is a graduate of the University of North Carolina and is now stationed at Ellington Air Force Base, Houston.

The wedding will be in Houston April 5.

Howard HD Club Prepares New Year's Bread

A New Year's demonstration was given at the Howard Home Demonstration Club Thursday at Deaconess. A new bread called Kings Ring was prepared, cooked and served to the eight members present.

Roll call was answered with each member giving a wish and contribution for the new year.

The next meeting of the club will be on Jan. 22 at 7:30 p.m. All interested are invited.

Letter to Editor

Eastland Telegram Eastland, Texas Gentlemen:

Just read your article on poll tax, Telegram Jan. 10, 1957. In order for a person sixty years old to have a free vote in 1957, he must have been sixty years old before Jan. first 1956.

We vote with a 1956 poll tax in 1957, and if the voter became sixty years old in 1956 he was only

Stitch And Chatter Club Meets Monday

Mrs. Clarence Penn was hostess to the Stitch and Chatter Club Monday night in her home at 599 West Plummer.

Following a business meeting, refreshments of pecan pie and coffee were served.

Those present were Meses. Audrey McLee, J. C. Fox, Parks Poe, Howard Upchurch, Guy Robinson, Jack Hillman, J. L. Owen, James Sherill and Homer Latham.

The next meeting will be held in the home of Mrs. Kenneth Garrett, 210 Hill Street.

fifty-nine years old at the time of levy, Jan. 1, 1956, Art. 2959, Texas election code.

Mr. J. C. Allison of Eastland is one of the best authorities on election law in this section.

Yours,
L. E. Clark
Democratic Precinct Chrm.
Precinct No. 25
Deadmona, Texas

Moore About-

(Continued from Page 1)

generations. If you feel you have a good story, but don't know too much about writing, call on us. We will help you in any way possible.

(Editor's Note: Mr. Clark is absolutely correct.)

That's it for now. See you Sunday.

TRADE WITH YOUR HOMETOWN MERCHANTS

WE BUY

SCRAP

IRON AND METAL

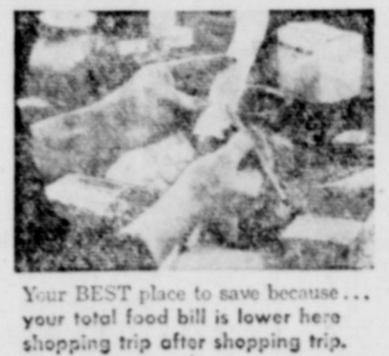
Get Our Prices Before You Sell

- You Will Like Our Prices
- You Will Like Our Weights
- You Will Like Our Service

KOEN SALVAGE

Highway 80 West 1315 W. Main

SAFEWAY'S your BEST place to save!



Your BEST place to save because... your total food bill is lower here shopping trip after shopping trip.



Your BEST place to save because... weekly specials mean "bonus" savings for you.

FREE! SAVE A TAPE

THE MOST POPULAR SAVINGS PLAN YET!

Save your cash register tapes when you shop Safeway. When you have the required number of envelopes for the gift you want, bring them to Safeway and the Store Manager will exchange them for your FREE GIFT!

Here are just a few of the many wonderful gifts in Safeway Save-A-Tape Plan:

- One-Pound Stewarts
- Cooper Cookware
- Belgian Scales
- Popmaster Cook Pepper



Your BEST place to save because... friendly, courteous service makes shopping more fun.



Your BEST place to save because... our unconditional guarantee protects your every purchase.



You'll be dollars ahead this year... shopping Safeway. Our low prices on items after item—right down the line—mean important savings on your total food bill. Combined with top quality merchandise and friendly courteous service, these low prices make Safeway "your BEST place to save!"

- ### Jane Arden Cookie Sale!
- Sandwich Cookies Jane Arden 18-Oz. 43c
 - Wafer Cookies Jane Arden 14-Oz. 29c
 - Jane Arden Peffs Jane Arden 4-Oz. 27c
 - Sandwich Cookies Jane Arden 7 1/2-Oz. 27c
 - Jane Arden Cookies Jane Arden 4-Oz. 29c
 - Vanilla Wafers Jane Arden 7-Oz. 19c
 - Drop Cookies Jane Arden 16-Oz. 43c
 - Fancy Mix Cookies Jane Arden 7 1/2-Oz. 29c

- ### Today's Good Buys!
- Royal Satin Shortening 3 Lb. 93c
 - Kuners Peppers Sweet Cherry 11-Oz. 29c
 - Ritz Crackers For Snacks 15-Oz. 35c
 - Pinwheel Cookies Nabisco 17 1/2-Oz. 53c
 - Hi-Ho Crackers Leading Freshness 16-Oz. 35c
 - Spry Shortening Best for Baking 3 Lb. 99c
 - Sandwich Spread 16-Oz. 34c

- ### Dried Fruits!
- Seedless Raisins York Brand 2 Lb. 41c
 - Large Peaches Glenview 12-Oz. 43c
 - Glenview Apricots Medium 12-Oz. 69c
 - Glenview Apples Selected 8-Oz. 35c

- ### Week-End Buys!
- Skylark Bread Regular Sliced White 24-Pk. 25c
 - Lucerne Milk Homogenized 1/2-Gal. 49c
 - Lucerne Buttermilk 1/2-Gal. 40c

NICE HOME FOR SALE

The John Goode Home

Two bedrooms, extra large living room and dining room, large kitchen with extra large cabinet space and lots of windows, plumbed for automatic, new wiring, large lot 100 ft. wide by 110 ft. deep, fenced in back yard with barbecue pit, carpet grass, nice garage with storeroom, on paved street close to South Ward. Shown by appointment only.

FOR IMMEDIATE SALE!
(Owner wishes to move into large house)

\$6,500.00

Nice loan can be arranged for right party, easy payments.

Listed Exclusively With

Tri-Cities Real Estate

100 West Commerce Eastland Phone 1076

PHONE 42 EXPERT

Day and Night

BODY WORK AND PAINTING

WRECKER SERVICE

KING MOTOR CO.

Direct Factory Ford Dealer
Northeast Corner of Square

Looking Back on 1956-

... the inventory shows that the scales weighed out a good portion of the better things for us to enjoy. While the mistakes we made stick out like a sore thumb and our failures almost overwhelm us, yet these discouragements are small indeed when compared to the unhappiness and tragic experiences of some who happen to live in other countries. We are glad we live right here in Eastland County where we have had the opportunity to serve a host of loyal customers for more than 20 years.

EARL BENDER & COMPANY

Eastland, (Insurance since 1924) Texas

Today's Feature Buys!

- Revlon's Silicare Skin Lotion 1 1/2 Oz. Bottle 69c
- Kitchen Craft Flour 10 Lb. Bag 65c
- Kitchen Craft Flour 25 Lb. Bag \$1.00
- Gold Medal Flour or Gladiola 10 Lb. Bag 65c
- Pure Lard For Baking or Frying 3 Lb. Ctn. 35c

Safeway Good Buys!

- Tomato Juice Taste Talls 2 46-Oz. Cans 35c
- Plain Wolf Chili Winter Treat No. 2 Can 39c
- Empress Preserves Apricot, Peach, Pineapple 12-Oz. Jar 15c
- Sandwich Spread Lunch Box 32-Oz. Jar 57c
- Pinto Beans Sunny Hills 4 Lb. Cello 25c
- Lux Soap Regular Size 2 Bars 17c
- Lux Soap Bath Size 2 Bars 25c
- Lifebouy Soap Regular Size 2 Bars 19c
- Lifebouy Soap Bath Size 2 Bars 27c
- Dial Soap Regular Size 2 Bars 25c
- Palmolive Soap Regular Size 2 Bars 17c
- Palmolive Soap Bath Size 2 Bars 25c
- Ivory Laundry Soap 6 Oz. Bar 9c
- Ivory Laundry Soap 2 10 Oz. Bars 29c
- Lux Flakes Large Size Box 32c
- Silver Dust Blue Detergent Ctn. 75c
- Breeze Detergent Works Wonders on Washdays Ctn. 75c
- Surf Detergent Cuts Clothes Washer Ctn. 73c
- Lux Liquid Detergent 25-Oz. Ctn. 69c
- Edwards Coffee 1 1/2 Oz. 1.03
- Edwards Coffee 2 1/2 Oz. 1.89
- Peanut Butter Peter Pan Plain or Crunchy 12-Oz. Jar 42c
- Kraft Salad Oil 6 Oz. 65c
- Ballard Biscuits Sweetroll or Buttermilk 2 1/2 Oz. Cans 25c
- Swifts Prom Delicious for Sandwiches 12-Oz. Can 41c
- Ivory Soap Personal Size 4 Bars 23c
- Babo Cleanser For All Household Cleaning 2 1/2 Oz. Cans 25c
- Babo Cleanser For All Household Cleaning 2 1/2 Oz. Cans 35c
- Busy Baker Crackers 1 Lb. Box 27c

Dried Foods!

- Small White Beans Sunny Hills 2 1/2 Lb. 31c
- Sunny Hills Baby Limas 2 1/2 Lb. 29c
- Sunny Hills Large Limas 2 1/2 Lb. 38c
- Sunny Hills Blackeye Peas 2 1/2 Lb. 31c

Farm Fresh Produce

Sunkist Oranges

Navel 110's 2 Lbs. 25c

Florida New Potatoes

- Crunchy Fresh Carrots Sweet 1 Lb. Cello 10c
- Snowy Cauliflower Heads 2 Lbs. 15c
- Bulk Russet Potatoes 8c
- Yellow Onions Pick of the Crop 6c

Safeway Meat Values!

- Jumbo Sliced Bologna 8-Oz. Pkg. 19c
- Fresh Pork Spareribs Small-Lean Lb. 39c
- Poppy Sliced Bacon 1 Lb. Cello 55c
- Dry Salt Jowl Perfect for Seasoning Lb. 15c
- Round Steak U.S. Call Graded Lb. 69c
- Ground Beef Economy Lb. 29c
- Chuck Roast U.S. Call Graded Lb. 35c
- Short Ribs U.S. Call Graded Lb. 23c
- Veal Cutlets Fresh Lb. 89c
- Boston Butt Pork Roast Lb. 39c
- Pork Sausage Wipe Reg. or Hot Lb. 33c
- Sliced Bacon Thick Northern Cured 2 Lb. Pkg. 99c
- Frankfurters Sausages All Meats 1 Lb. Cello 47c

Prices effective Thursday, Friday and Saturday, January 17-18-19 in

