



Utility Connections Here Show Good Increase In 56

Population Of City Estimated At 4257

All four utility companies reported substantial increases in total number of customers during the past year, reflecting the growth of Eastland in 1956.

And at least one all-time high was reported. Southwestern Bell Telephone Co. reported total connections here now at 1817. Exact figures for a year ago were unavailable, but there were fewer than 1800. A spokesman said this is the most phones Eastland has ever had in use.

The City of Eastland Water Dept. also announced an increase in total number of customers. In January, 1956 total connections were 1385. The total at the beginning of 1957 had increased to 1420 for an increase of 35. City Manager Jim Young said 79 new deposits were turned in during the year.

Texas Electric Service Co., also reported a good increase. Frank Sayre, district manager, said TESCO now serves 1448 customers in Eastland as compared to 1430 a year ago at this approximate time.

Hubert Westfall, manager of Lone Star Gas Co., also reported an increase in customers. Lone Star Gas now serves 1390 accounts. A year ago their total connections were listed at 1375. Westfall said the number of customers was the largest in many years and said it was the largest increase in a single year since the oil boom.

The bright picture painted by these figures shows the following: Adding the light, gas and water customers together and dividing by three you come up with a key number of 1419. Figuring three people to a meter that pushes Eastland's population, which at last census was 3600, to 4257. The national average is 3 1/2 persons to a meter. Using that figure it pushes the city's population up to 4966.

North Central Texas Firemen Elect Officers

More than 100 attended the North Central Texas Fire Association pumper races in Eastland Tuesday night, and then firemen from seven area towns then elected new officers for the coming year.

Alvin Bennett, Aledo, President; Day Mace, Breckenridge, 1st Vice-President; Tom Jordan, Palo Pinto, 2nd Vice-President; LeRoy Grayson, Comanche, Sergeant at Arms; Max Ohr, Ranger, Chaplain; Mrs. Alvin Bennett, Aledo, Sponsor; Mike Love, Breckenridge, Masscot.

Eastland had the best time in the races, with a 20 seconds flat performance. The local team, however, Weatherford won first place with the best time of visiting teams, 22.3 seconds. Cisco and Mineral Wells tied with 22.5 seconds times, and Mineral Wells won the run off. Breckenridge was a fourth with a time of 24.5 seconds, Comanche was fifth with a time of 26 seconds and Ranger was last with a time of 26.5 seconds, according to officials of the organization.

The Association holds pumper races every three months. Comanche will be host for the next meeting, April 5.

Moore...

ABOUT Eastland
By VIRGIL E. MOORE

Rotarians here enjoyed perhaps the best meal they ever ate Monday when they had their first meeting in the newly redecorated and enlarged White Elephant Restaurant. Victor Cornelius really treated them in style. And just to make sure everything was okay Victor handed each member a Tum for the tummy as he left.

Down at Tom's Sport Cars, which opened this week, they are still getting use to the British terms used in the hand book for those little British cars. It took 'em two days to figure out what the strangler was. Finally someone guessed that it was what we Americans call a choke.

We are not sure just how it's going to work out, but something has got to change. Monday of this week Rotarians voted to accept an invitation to have a joint Brotherhood Week meeting with Eastland Lions and Tuesday the Lions voted to accept an invitation to have the same meeting with Rotarians. Looks like the boys are just going to swap eating places for the day unless someone gets the signals straight.

J. T. Gregory insulted us mighty bad this week. Gregory said he was getting interested in our views on the need for a new city charter. "And I think I have the answer to how you can put the thing across," he asserted.

Eager to get his advice, we quickly asked, "How, J. T.?" "Well," he said, "you can start off by writing about it somewhere else but in your column. Everyone with any sense doesn't read that part of the paper, so how are they going to know about it?"

Just wait and see if we send you a Christmas card next year boy!

Herb Tanner was laughing the other day about a letter he got from the Fort Worth Chamber of Commerce telling about the visit that boosters from that city would make here Tuesday. He reached back in his files and pulled out another letter, dated 1923, which was the same, word for word.

"Those boys don't believe in changing things too much," he explained.

The Telegram offers an apology to subscribers on Routes 1 and 2 in Eastland. Because of a mix-up in the mailing room, these subscribers failed to get their Tuesday papers. We found out about the mistake early Wednesday and didn't forget it the rest of the day. The telephone practically rang off the hook. We will try hard not to let it happen again folks and thanks for caring.

A neckless has been turned in at the Telegram office and is waiting for the rightful owner. Describe it and it's yours.

See where the price of brooms is going up, so if you need one you better get it now. A 20 percent increase is predicted. That's two-bits a stick. The 1956 broom crop is only about 46 percent of 1955's crop, thus the price hike. Sounds like a good excuse for not sweeping the floor to us.

In the last few days we have been criticised both for not having anything bad to say about the officiating at the Olden tournament and not having anything bad to say about the Olden tournament.

Trash Fire Is Quickly Put Out

Eastland firemen answered an alarm at 7:50 p.m. last night at the Hollywood-Maxwell plant on East Main to fight a trash fire. Despite high winds, the fire was quickly extinguished, and no damage was caused, a spokesman said. Volunteers were hindered by heavy traffic.



RE-ELECTED—Officers of the Eastland National Bank were re-elected for the coming year at the annual board of directors meeting held here Tuesday afternoon. H. T. Wilson was re-elected president, J. P. McCracken as chairman of the board and Russell Hill as vice-president. Members of the board of directors include J. A. Beard, Hill, McCracken and Treadwell. Wilson is pictured at left and Hill at right.

New Auto Plates To Be Black And White

Texasians will have to dream up something new this year to ward off attacks by State Highway Patrolmen. That's the consensus of most Eastland Countians, anyway, after looking at the new automobile license plates.

For the first time in years, Texas license plates will not be the familiar black and yellow. Those that have been used by patrolmen and other exempt cars for years. They have black numerals and white backgrounds, so near the silver ones in use by patrolmen that a fast look won't tell the difference.

Prefix for Eastland County license plates this year will be "DK" and "DJ." The "DK" plates will be issued first. The new licenses go on sale Feb. 1.

The Tax Assessor-Collector's office revealed that 9990 plates have been received for automobiles, 2000 for trucks, 1125 for farm vehicles, 125 for truck-trailers, 500 for trailers, 50 for home trailers, 50 for motorcycles and 100 for dealers.

The license plates, which are annually made by convicts in Texas prisons, are the same size as the ones were last year, and appear the same except for the new coloring.

Olden Defeats Gordon; Opens District Play

OLDEN—Olden split a doubleheader with Gordon here Tuesday night. The Olden boys won, 56-45, while the girls were edged out, 33-29.

Eddie Mann, the only Hornet starter left from last year's fine team, paced Olden with 35 points. Wilma Edwards was high scorer for the Olden girls with 10 points.

The Hornets open district play Friday night when they play host to Carbon. Both a girls and boys game will be played, with action starting at 7 p.m.

Safeway Contest Winners Named

Mrs. H. E. Basham of Eastland was winner of the refrigerator given away by the Eastland Safeway store and Mrs. Edwin Erwin of Cisco won the new kitchen range. C. P. Jenkins, manager, announced today.

Eighty-five other winners were also named. Twenty-five won turkeys and 60 were greeted with free baskets of groceries valued at \$10. Names of all the winners appear in today's Telegram.

FOR Fine Furniture, Floor Coverings, G. E. Appliances, It's Coats Furniture & Carpet, Ltd., Eastland. Free Delivery and Convenient Terms. Good Trade-Ins, too!

District Play Opens For Mavs In Wylie

It looks like the Mavs will have to look up to their cage opponents this year in District 10-A play. Eastland, blessed with a group of good basketball players this year, may find that height of two of their opponents is just too much.

Coach Jon Tate was singing the blues this week after getting scouting reports on Clyde and

Wylie. "They are definitely the teams to beat," he said.

And Tate's situation isn't one he has made up either. Clyde's starting five averages six foot three inches. "Our tallest boy is shorter than their shortest one," Tate explained. "And Wylie is every bit that big. I've been told that the two teams are a toss-up, so that means double trouble for us."

Tate doesn't deny that he has some good material, even if all of his boys do have to stand on their tip-toes to kiss a five foot eight girl.

In Dale Slatton he has one of the best shots in this part of Texas. Slatton knows when to shoot and when to pass, and the other four Mavericks don't mind feeding him the ball. So far the Mavs have shown no sign of point-toss, a disease that whips many a team.

Many of Slatton's two pointers have been set up by alert passing. In Lupe Herrera the Mavs have an excellent long shot artist, and Button Humphrey and Harvey Lewis have both been aggressive floor men, and both boys can shoot. Johnny McMahan is a dead shot from either side of the basket, and has outjumped some of the tallest men under the basket. Larry

Hollis has divided starting time with Humphrey, and gives the Mavs the advantage of having just as good a team after one man fouls out as they had when the game started. In Otis Green, the tallest man on the squad, Tate has a diamond in the rough. Green, a freshman, promises to be one of the Mavs' top men after getting a little experience, which Tate has been providing him at every possible chance. On top of that, Eastland has a half dozen other players with better than average ability.

Wylie Friday The Mavs will find out fast what their ack of height is going to do to them. They open district competition against Wylie in Wylie Friday night. A double round robin will be played in District 10-A, on a home and home basis.

Tate says the Mavs will play Rising Star Saturday night in Rising Star, providing game arrangements can be worked out.

Following is the 1957 district schedule. Games will be played on Tuesday and Friday nights. Tate hopes to fill the open dates with non-district games.

Date	Opponent	Site
Jan. 11	Wylie	here
Jan. 15	Throckmorton	here
Jan. 18	Clyde	here
Jan. 22	Oren	there
Jan. 25	Albany	here
Feb. 1	Throckmorton	there
Feb. 5	Clyde	here
Feb. 8	Oren	there
Feb. 12	Oren	there
Feb. 15	Albany	here

Partly cloudy and much colder Thursday. Continued cold Thursday night and Friday. High Thursday in low 30s. Low Thursday night 18-20. High Friday in the 40s.



FIRST MEETING—Eastland Rotarians held their first meeting this week in the newly remodeled and enlarged White Elephant Restaurant. Members of the club are pictured above just after finishing "the best meal ever enjoyed by local Rotarians." Standing is Tom Wilson, president. Club members were each given a Tum by Victor Cornelius, owner of the cafe, as they left. (Telegram Staff Photo).

Poll Tax Sales Are Slow Despite Senate Election

Sale of poll taxes in Eastland County is "just about as slow as expected," a spokesman for the County Clerk's office said today.

The taxes went on sale Jan. 1 and so far citizens seem to think they are not much of a bargain. The slips, which give a person the legal privilege of voting in Texas, cost \$1.75 as in the past. Reason for the slow amount of sales is credited to this being an off year as far as elections are concerned. No county election is due in 1957, but city and school board elections will be held in most towns in the county. And the special election to fill the U. S. Senate seat vacated by Price Daniel will come in 1957.

Any person who will become 21 years of age after Jan. 1 or 30 days before an election is required to obtain an exemption certificate in order to be entitled to a free vote, it was pointed out. It seems that not many of the free

tabs have even been given away. These exemptions can be secured at the tax collector's office in Eastland.

Sub-stations have been set up in most towns in the county so that the poll tax slips can be more easily secured.

It was also pointed out that persons who were 60 years of age or older before Jan. 1 are entitled to a free vote, but they are not re-

HONORABLE MENTION

Slatton And Martin On All-State Squad

Eastland's Jimmy Martin and Dale Slatton were given honorable mention in the Class A all-state squad selected by the Texas Sports Writers Association.

The Mavs failed to place a single man on the first or second team, but that was no insult judging from the way the teams were selected. Stinnett, a four touch-down better team than any other Class A team in the state, got only one man on the first team and one on the second. Most of the first teamers were selected for all practical purposes before the football was ever kicked last season.

Making the first team at ends were Billy Neuman of Hondo and David Alexander of White Oak. At tackles were Mike Cobb of White Oak and Billy Ford of Humble. Max Burnett of Mason and Tommy Adams of Sonora were selected as guards and Chester Collinsworth of Merkel as centers. In the backfield were Larry Dawson of Stinnett, Butch Woods of Hondo, George Johnson of Sonora and Alvin Hartman of Hondo.

Making the second team were Bill Townsend of Bastrop and Joe Barela of Eagle Lake, ends; Car-

ter Franklin of Kerens and David Jacobs of Big Lake, tackles; James Miller of White Oak and Gerald Emerson of Henrietta, guards; Carl Taylor of Falls, center; Dale Deal of Bastrop, Kermit Rutledge of Merkel and Bobby Gurtwitz of Three Rivers, backs.

Other honorable mentions included Clark Baum of Cross Plains at end, Jimmy Crenshaw of Wylie at guard, Robert McLeod of Merkel at back and Carl McKeever of Merkel at guard.

Martin got 11 points in the voting and Slatton got 10.

Group Insurance Made Available For Subscribers

Subscribers of the Telegram are being offered a community group hospital benefit plan by States General Life Insurance Co.

This group plan is guaranteed renewable for life and cannot be cancelled by the company, according to R. C. Rosson, spokesman for the legal reserve stock company.

"The Telegram, in making this policy available to our subscribers, in no way urges subscribers to enroll," O. H. Dick, publisher explained. "The plan is simply being made available for those who would like to join in a group and thus save money."

To join the group plan and individual must subscribe to the Telegram. Larry Matthews is in charge of enrollment officers working here. States General Life plans to employ a local agent.

A company spokesman had the following comment on group insurance:

"One of the most provocative articles which has appeared in America's publication in many years was presented in a past issue of Readers Digest, entitled 'Let the Buyer Be Wary... Be' (Continued on Page Two)

Commissioners Meeting Today

Eastland City Commissioners will hold their first meeting of the new year this afternoon at 2 p.m.

City Manager Jimmy Young announced the change in time. Commissioners usually meet the second Thursday of each month at 7 p.m. Routine city business is on the agenda.

Service

Pamper your car with quality service from our experienced mechanics. All cars—fast, efficient, economical. Call 802 today.

Don Pierson Olds-Cadillac Eastland

Installment Loans Custom Made For Each Customer EASTLAND NATIONAL BANK Member F. D. I. C.

Weather FREYSCLAG INSURANCE AGENCY
No. Side Square Phone 175
Presents the Weather Report

Eastland Telegram

Eastland County Record established in 1931, consolidated August 31, 1951. Chronicle established 1937, Telegram established 1932. Entered as second class matter at the Post Office at Eastland, Texas under the act of Congress of March 3, 1879.

VIRGIL E. MOORE, Editor
TIMES PUBLISHING COMPANY
Published Tri-Weekly—Tuesdays - Thursdays - Sundays

ONOUS DICK and JOE DENNIS, Publishers
FRANCES MOORE, Society Editor

One week by carrier to city . . . \$5
One month by carrier in city . . . \$15
One year by mail in County . . . \$1.95
One year by mail in state . . . \$3.95
One year by mail out of state . . . \$5.95

NOTICE TO PUBLIC—Any erroneous reflection upon the character, standing or reputation of any person, firm or corporation which may appear in the columns of this newspaper will be gladly corrected upon being brought to the attention of the publishers.

Classified Ads.

Cards of Thanks charged for at rate of \$2.00 Each

LOST & FOUND -

LOST: Small yellowish - brown Chihuahua dog. Pointed ears, smutty nose. Answers to "Butch". Reward. Mrs. Carl Timmons. Phone 214-W.

FOR RENT

FOR RENT: Large house. 107 North Dixie. Phone 974.

FOR RENT: Furnished apartments. 611 West Plummer.

FOR RENT: Newly decorated apartments. Phone 1085-W.

FOR RENT: Three bedroom house, 507 West Patterson. See Monroe Walker, 6 miles northwest of Eastland.

FOR RENT: Four room furnished apartment, also bedroom with private bath. Phone 90.

FOR RENT: Samford place, 160 acres. 201 East Plummer.

FOR RENT: 4 room unfurnished apartment. Phone 394-J.

FOR RENT: 6 room house, 2 baths, double garage, on pavement. See Mrs. A. F. Taylor, 700 S. Seaman or call 320 or 713-J.

FOR SALE: Three room house, 2 blocks from square, 209 W. Valley.

REAL ESTATE -

FOR SALE: Five room house, 603 Gilmer. Phone 989.

FOR SALE: Five room residence two extra lots. 611 Gilmer, Phone 444.

FOR SALE: 3 bedroom house, 565 S. Bassett. Call 720-W-2 or 707-W-2.

FOR SALE: 2 residences and 2 acres on school bus route. Would trade both for one. Phone 727-J-1.

FOR SALE: 2 residences and 2 acres on school bus route. Would trade both for one. Phone 727-J-1.

FOR SALE: 2 residences and 2 acres on school bus route. Would trade both for one. Phone 727-J-1.

FOR SALE: 2 residences and 2 acres on school bus route. Would trade both for one. Phone 727-J-1.

FOR SALE: 2 residences and 2 acres on school bus route. Would trade both for one. Phone 727-J-1.

FOR SALE: 2 residences and 2 acres on school bus route. Would trade both for one. Phone 727-J-1.

FOR SALE: 2 residences and 2 acres on school bus route. Would trade both for one. Phone 727-J-1.

FOR SALE: 2 residences and 2 acres on school bus route. Would trade both for one. Phone 727-J-1.

FOR SALE: 2 residences and 2 acres on school bus route. Would trade both for one. Phone 727-J-1.

FOR SALE: 2 residences and 2 acres on school bus route. Would trade both for one. Phone 727-J-1.

FOR SALE: 2 residences and 2 acres on school bus route. Would trade both for one. Phone 727-J-1.

FOR SALE: 2 residences and 2 acres on school bus route. Would trade both for one. Phone 727-J-1.

FOR SALE: 2 residences and 2 acres on school bus route. Would trade both for one. Phone 727-J-1.

FOR SALE: 2 residences and 2 acres on school bus route. Would trade both for one. Phone 727-J-1.

FOR SALE: 2 residences and 2 acres on school bus route. Would trade both for one. Phone 727-J-1.

FOR SALE: 2 residences and 2 acres on school bus route. Would trade both for one. Phone 727-J-1.

FOR SALE: 2 residences and 2 acres on school bus route. Would trade both for one. Phone 727-J-1.

FOR SALE: 2 residences and 2 acres on school bus route. Would trade both for one. Phone 727-J-1.

FOR SALE: 2 residences and 2 acres on school bus route. Would trade both for one. Phone 727-J-1.

FOR SALE: 2 residences and 2 acres on school bus route. Would trade both for one. Phone 727-J-1.

FOR SALE: 2 residences and 2 acres on school bus route. Would trade both for one. Phone 727-J-1.

FOR SALE: 2 residences and 2 acres on school bus route. Would trade both for one. Phone 727-J-1.

FOR SALE: 2 residences and 2 acres on school bus route. Would trade both for one. Phone 727-J-1.

FOR SALE: 2 residences and 2 acres on school bus route. Would trade both for one. Phone 727-J-1.

FOR SALE: 2 residences and 2 acres on school bus route. Would trade both for one. Phone 727-J-1.

FOR SALE: 2 residences and 2 acres on school bus route. Would trade both for one. Phone 727-J-1.

FOR SALE: 2 residences and 2 acres on school bus route. Would trade both for one. Phone 727-J-1.

FOR SALE: 2 residences and 2 acres on school bus route. Would trade both for one. Phone 727-J-1.

FOR SALE: 2 residences and 2 acres on school bus route. Would trade both for one. Phone 727-J-1.

FOR SALE: 2 residences and 2 acres on school bus route. Would trade both for one. Phone 727-J-1.

FOR SALE: 2 residences and 2 acres on school bus route. Would trade both for one. Phone 727-J-1.

FOR SALE: 2 residences and 2 acres on school bus route. Would trade both for one. Phone 727-J-1.

FOR SALE: 2 residences and 2 acres on school bus route. Would trade both for one. Phone 727-J-1.

FOR SALE: 2 residences and 2 acres on school bus route. Would trade both for one. Phone 727-J-1.

FOR SALE: 2 residences and 2 acres on school bus route. Would trade both for one. Phone 727-J-1.

FOR SALE: 2 residences and 2 acres on school bus route. Would trade both for one. Phone 727-J-1.

Moore About-

(Continued From Page 1)

say about the "bad sportsman-ship shown by some Eastland fans.

HELP WANTED

WANTED: Reliable baby sitter and house keeper, 5 1/2 days a week. Apply at Eastland Telegram.

Reliable Party Wanted

MALE OR FEMALE TO SERVICE ROUTE

CIGARETTE MACHINES No Selling or Soliciting ROUTE ESTABLISHED FOR OPERATOR FULL OR PART TIME Substantial Income Per Month to Start \$1,995 CASH REQUIRED

Please don't waste our time unless you have the necessary capital and are sincerely interested in expanding—we finance expansion—if fully qualified and able to take over at once write briefly about yourself and include phone number for personal interview.

Silver-King Distributing Co., Inc. 4473 Olive St., St. Louis, Mo.

MISC. FOR SALE -

FOR SALE: AUTO 1950 Plymouth suburban, good condition, good tires. \$475. Phone 17.

Native trees, shrubs and plants that we could probably furnish you in the size that you would like: live oak, post oak, black jack, red bud, pecan, hack berry, native elm, persimmon, willow, plum, prickly ash red hall, black hall, algeria berry bush, shinyahall, cactus and others. We welcome your inquiry. Tennyson Nursery and Landscape Service, 1003 West 16th Street, Cisco.

AUTOS FOR SALE

NEW IMPORTED STATION WAGONS, \$1595

40 miles per gallon, 80 miles per hour. Sedans, hard tops, speedsters, also new Nash Rambler sedans and station wagons. Local service and parts. Tom's Sport Cars, Eastland.

Eastland High-

(Continued from Page 1)

without the services of Jerry Davis, one of their regulars. Dale Slatton led the Mavericks in scoring with 26 points. He got 18 of his points in the final half, after missing shots in the first two periods that usually are cinches for him. Harvey Lewis got eight for the Mavs and J. C. Butler, a set-shot artist, picked up 17 for the losers.

Box Score

Player	fg	ft	tp
Slatton, f	11	4	26
Lewis, f	2	4	8
McMahan, c	2	0	4
Herrera, g	2	0	4
Hollis, g	0	0	0
Humphrey, g	2	0	4
Green, f	0	2	2
Totals	20	10	50
Player	fg	ft	tp
Rising Star	7	3	17
Butler, f			

MEN & WOMEN FOR ADDED INCOME PART TIME OR FULL TIME

Reliable men or women for this area to handle world famous nationally advertised products. In demand daily, sold everywhere in the United States to men, women and children.

These products are sold through our new beautiful merchandising dispensers. This is an unusual opportunity to secure your future. Will not interfere with your present employment. All locations secured by company representative. To qualify you must have \$1,399.00 cash available for inventory: 3 references and car: 5 spare hours weekly, and must be able to start at once. This company will extend financial assistance to full time if desired.

For personal interview in your city, write and include phone number, to PEN-VENT CORP. 918 S. Brentwood Clayton, 5, Mo.

Meadum, f	7	0	14
Rucker, c	0	0	0
Walker, g	1	1	3
Scott, g	3	0	6
Totals	18	4	40

GROUP-

(Continued from Page 1)

Sure You Know What's in Your Health and Accident Policy" . . . written by Blake Clark.

The reason for the through analysis of "hospitalization" by the Readers Digest publication is the "mushrooming" of companies throughout the United States writing this type of insurance. Clarke pointed out that 25 years ago 50 companies provided health and accident type of coverage while at the present time there are in excess of 800 companies crowding the field. The success of community sponsored group companies, in providing low cost protection through its sponsored program, is contrasted to the benefits derived from the individual policies written by a host of both small and large companies.

The Readers Digest reporter does not question the benefits of "hospitalization insurance" which the same publication explored in detail in an article entitled "Health and Accident Insurance . . . How Much Can You Rely on Them?" Rather, he sums up the findings of the Senate Judiciary Committee which heard testimony of state insurance commissioners, insurance executives, agents and investigators. Pending a formal report by the Senate Committee the following conclusions:

1. If you lose your health you may lose your protection: Citing individual cases of the disastrous consequences which can happen with "individual policies" containing a provision whereby the policy could be cancelled at the option of the company the Readers Digest makes the following pointed observation: "Ninety percent of the health and accident insurance issued under a group plan" bear such clauses, or a clause that permits the company to refuse renewal whenever a premium falls due."

(Ed's Note: A second article concerning the article in Reader's

Control Cattle Shipments

FORT WORTH — Interstate movement of all cattle except steers, spayed heifers and calves under eight months of age comes under Federal control Jan. 1, 1957, according to a recent announcement by the United States Department of Agriculture.

The action is being taken to curb the spread of brucellosis (Bang's disease) and will directly affect any cattleman who has occasion to be involved in the interstate shipment of stock.

The new rules were the subject of considerable discussion at a quarterly meeting of Texas and Southwestern Cattle Raisers Association directors held in Fort Worth Dec. 7.

Edgar Hudgins of Hungerford, vice-president and chairman of the Association's animal health committee, advised the organization's 10,000 members to start a herd brucellosis vaccination program immediately. "Beginning Jan. 1, the federal government will require a certificate of vaccination or a negative blood test of all interstate shipment of cattle except steers, spayed heifers and calves under eight months of age," Hudgins said. He also mentioned that there is a possibility of embargos from some states.

Hudgins advised cattlemen to carry out a program designated as Plan C. Under this plan all females between the ages of four and eight months in dairy cattle

Digest will appear Sunday in the Telegram.)

and four and 12 months in beef cattle must be vaccinated with strain 19 brucellosis vaccine. "The state is furnishing free vaccine," he said. "Details can be worked out through local veterinarians." Under the new regulation cattlemen were advised that violation of the new rules constitutes a federal offense.

TRADE WITH YOUR HOMETOWN MERCHANTS



ON A NEW '57 JOHNSON SEA-HORSE! Your old outboard is worth money! Let's talk "trade-in" on a sparkling new '57 Johnson. Nine great models, 3 to 35 hp!

Bruce Pipkin's Sport Center 304 E. Main Ph. 525



M and W PLUMBING COMPANY

- Bath Fixtures • Fittings • Repair Parts
- Prompt and Courteous Service
- Business Appreciated

405 S. Seaman Eastland Phone 1159

Overseas Veterans Welcome Karl and Boyd Tanner Post No. 4136 VETERANS OF FOREIGN WARS Meets 2nd and 4th Thursday 8:00 p.m.

Insurance AND Real Estate D. L. KINNAIRD

Life - Fire - Auto - Farm
Police - Bonds

37 years in the insurance
Business in Eastland

OUR WINTERPROOF SERVICE leaves WEATHER WORRIES BEHIND

EARLY TIRE SERVICE

302 W. Main Eastland PHONE 208

PHONE 1159 M. & W. Plumbing 405 S. Seaman

T. L. FAGG R. L. JONES

REAL ESTATE
Property Management
Home and Farm Loans

M. H. PERRY

Representing Southland Life
Life - Retirement Income Partnership
Mortgage Cancellation
Educational - Annuities
Accident - Sickness
Hospitalization - Group
Call 173 or 713-J
107 W. Main • Eastland

ALEX RAWLINS & SONS MONUMENTS WEATHERFORD, TEX. Serving This Community Since 1884

TRADE WITH YOUR HOMETOWN MERCHANTS

PHONE 42 EXPERT

Day and Night BODY WORK AND PAINTING WRECKER SERVICE

KING MOTOR CO.

Direct Factory Ford Dealer
Northeast Corner of Square

Looking Back on 1956-

... the inventory shows that the scales weighed out a good portion of the better things for us to enjoy. While the mistakes we made stick out like a sore thumb and our failures almost overwhelm us, yet these discouragements are small indeed when compared to the unhappiness and tragic experiences of some who happen to live in other countries. We are glad we live right here in Eastland County where we have had the opportunity to serve a host of loyal customers for more than 30 years.

EARL BENDER & COMPANY

Eastland. (Insurance since 1924) Texas

We're Authorized Dealers For

ALL HOTPOINT APPLIANCES

Washing Machines — Dryers — Ranges
Dish Washers — Disposals
Home Freezers — Refrigerators
Air Conditioners — Hot Water Heaters

Call Us For Complete Service On ALL Appliances

SMITH PLUMBING & TIN

114 S. Seaman Phone 304

Funeral Directors HAMNER FUNERAL HOMES

Ben E. Hamner
Oxygen Equipped - Air Conditioned

Eastland Phone 17 Cisco Phone Hillcrest 21211
AMBULANCE SERVICE ANY WHERE ANY TIME
Nominal Cost Burial Insurance
For The Entire Family

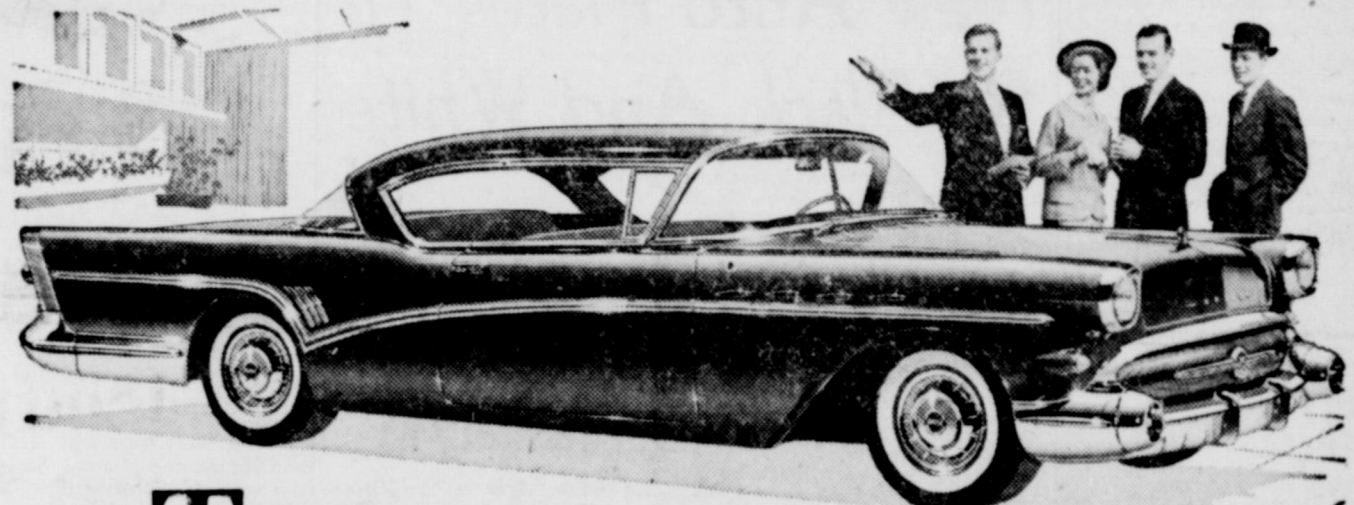
OIL FIELD Equipment

- SURFACE CASING
- OIL STRING CASING
- TUBING
- RODS
- PUMPING UNITS
- TANKS

BOUGHT - SOLD - TRADED

IRISH DRILLING CO., INC.

Hwy. 80 East Eastland, Texas
Office Phone 100 - 101 Yard Phone 199



Buick Super 2-Door Riviera

Top Click of the New Car Season

WANT TO GET your New Year off to a rollicking start?

Want to take the wheel of the car that's winning raves from Coast to Coast and back again?

Then take the wheel of a 1957 Buick and try the sparkling-est new performance team in all autodom.

We mean the team with the highest-powered V8 engine ever to ginger a Buick — and an advanced new Variable Pitch Dynaflo.*

Here, with just a judicious touch of foot to treadle, you get response so obediently instant, so liquid smooth, and so full range in "Drive"—that you've never in your life felt anything like it.

SAFETY REMINDER: In fast-moving traffic on turnpikes, parkways and freeways, keep a good distance from the car in front—and a little more for the car behind you, and every good measure. That way you, and every driver behind you, get a bigger margin of safety for braking action.

Big Thrill's Buick

WHEN BETTER AUTOMOBILES ARE BUILT BUICK WILL BUILD THEM

Muirhead Motor Co.

301 West Commerce EASTLAND, TEXAS Phone 692

It's sports-car going in a full-sized traveler that's sheer delight from start to finish.

Know what else?

Folks like the way this new kind of performance comes dressed in sleek and glamorous styling that's fresher than tomorrow's news.

They like the new roominess inside these low-sweep Buicks and the new luxury of their "nested" ride.

They like the new ease of handling, the new steadiness of cornering, the way stops are always on the level no matter how quickly you use the brakes.

Fact is, folks like everything about the newest Buick yet—the car that's fast becoming the biggest hit of the new car year—and you will, too. Come on in and try it this week. We'll have the red carpet out for you.

*New Advanced Variable Pitch Dynaflo is the only Dynaflo Buick builds today. It is standard on Roadmaster, Super and Century—optional at modest extra cost on the Special.

Gorman Gatherings

By Mrs. R. E. Boucher

Mr. George Cole was born September 19, 1876 and died January 7, 1957. He was united in marriage to Miss Dicie Wagner and to this union four children were born. Mrs. J. A. Lasater, Gorman, J. D. and G. W. Cole of Kermit, his wife and one son preceded him in death. Besides his children three grandsons, Jerry Cole of Okinawa, Burl and Billy Cole of Kermit, two sisters, Mrs. Annie Scoggins of Buffalo Gap and Mrs. L. M. McCormick of Sweetwater and one brother, Tom Cole of Rotan and a number of nieces and nephews survive.

Funeral services were held in the First Baptist Church Wednesday and burial was in Hamilton. Mr. and Mrs. Lonnie Rush, Mr. and Mrs. Arpry Couch, Jo Ann and Donald of Fort Worth and Herbert E. Agnew of Ballinger attended the Cole Funeral.

Mr. and Mrs. Gene Ellison and Jeanne of Abilene were guests Sunday in the J. N. Ellisons home.

Mr. and Mrs. Earl Stone, Jr., sons, Lee and Ranly of Fort Worth spent the week end in the house of their parents, Mr. and Mrs. H. H. Pulleg and Mr. and

Thelma Edwards, Jim Mangum Are Class Favorites

Miss Thelma Edwards of Olden and Jim Mangum of Carbon have been selected as favorites of the Sophomore class of Ranger Junior College.

Thelma is the daughter of Mrs. W. P. Edwards of Olden. She has served as cheerleader and as president of Phi Theta Kappa. She is also a student assistant.

Mangum, well-known for his athletic ability in this section, is the son of Mr. and Mrs. O. A. Mangum of Carbon. He has served as class officer and has lettered in football the past two seasons, playing at the end position.

Both Jim and Thelma will appear on the favorite section of the 1957 Ranger.

Mrs. Earl Stone, Sr.

Mrs. Ruth Carter had as her guests over the week end a nephew, Moore Covy of North Carolina and two nieces, Mrs. Linnie Williams of Haskell and Mrs. Ruth Williams of Henrietta. Mrs. Carter is ill in the home of her daughter, Mrs. J. A. Baze.

Evening Classes Elect Favorites At Ranger College

At a special assembly held on January 7, the evening classes under the direction of Pat Thomas made selections for the favorite section of the 1957 Ranger.

Miss Mary Jo Stie of Ranger defeated Peggy Miller for "Best Personality", and J. O. Jackson of Gorman defeated Jimmy Comacho for the same honor.

Mrs. Marie Boney of Eastland was unopposed for "Most Representative" while D. E. Dick, De Shane of Strawn was named "Most Representative Boy." Garry Lawrence was runner-up.

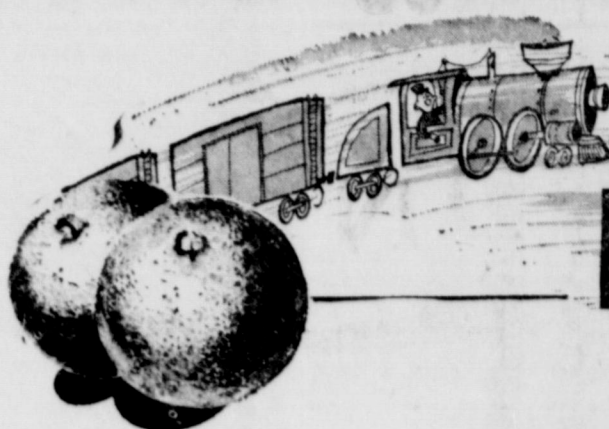
Bill Cooper of Eastland defeated Ed Basham of Ranger for Sophomore Favorite while Miss Peggy Miller of Ranger was named Freshman Favorite.

Two mascots for the group were chosen:

Suzanne Cooper, seven-month old daughter of Mr. and Mrs. Bill Cooper of Eastland, and Scottie Norton, eighteen-month old son of Don Norton of Ranger defeated Iris Ann and Carla Boney and Debra Kay Norton.

Iris Ann and Carla were chosen as last years' mascots for the night group.

ATTEND THE CHURCH OF YOUR CHOICE EACH SUNDAY



Bringing you BARGAINS Is Our BUSINESS!

FREE
Roy Rogers Punch Out Ranch Sets with any of these
POST CEREALS
Post Toasties, 12-oz. pkg. ... 23c
Post 40% Bran Flakes 14-oz. pkg. ... 26c
Post Tens, Carton ... 36c
Post Grape Nuts 12-oz. pkg. ... 21c
Post Sugar Crisp 10-oz. pkg. ... 25c

SPECIAL

IDAHO WASHED RUSSET

Potatoes

10-Lb. Bag **39¢**

SPECIAL

GLENDALE YELLOW CR. STY.

CORN

2 No. 303 Cans **25¢**

SPECIAL

RITZ

CRACKERS

8-Oz. Box **21¢**

SPECIAL

GERBER'S

Baby Food

3 4 1/4-Oz. Cans **25¢**

SPECIAL

GLENDALE

Peaches

Sliced or Halves No. 2 1/2 Can **29¢**

GOLDEN

Fluffo 3 Lb. Can **79¢**

WELCH'S

Grape Juice 24-Oz. Bottle **29¢**

CLOVER FARM PINEAPPLE

JUICE 46-Oz. Can **29¢**

GOLD MEDAL

FLOUR 5 Lb. Bag **47¢**

VEL

The Hard Water Detergent Large Box **25¢**

MEADOLAKE

Margarine Lb. **25¢**

BIG MIKE

Dog Food No. 300 Tall Can **6¢**

BETTY CROCKER

Cake Mix Devil Food, Yellow or White 20-Oz. Pkg. **28¢**

FANCY DELICIOUS

Apples Lb. **15¢**

EAT MORE

Cranberries 2 1-Lb. Boxes **29¢**

CENTRAL AMERICAN

BANANAS Lb. **12 1/2 ¢**

GOOCH'S THICK SLICED

Bacon 2 Lbs. **1.08**

HOMEMADE PURE PORK

Sausage Lb. **29¢**

Chuck Roast Good Quality Lb. **37¢**

FRESH

Ground Meat Lb. **29¢**

LEAN TENDER

Pork Chops Lb. **55¢**

FRESH CUT UP

FRYERS Lb. **45¢**

BEEF

Short Ribs Lb. **23¢**

HOME MADE

CHILI Lb. **49¢**

OPEN EVERY NIGHT TIL 8 P.M.—SATURDAY TIL 9 P.M.

CLOVER FARM STORES
400 South Seaman Phone 31

Warehouse Clearance SALE!

Big Discounts for You on new automatic GAS appliances

Samples of new automatic GAS appliances are now on Lone Star Gas sales floors for clearance!

Take advantage of huge savings, but Supply is Limited!

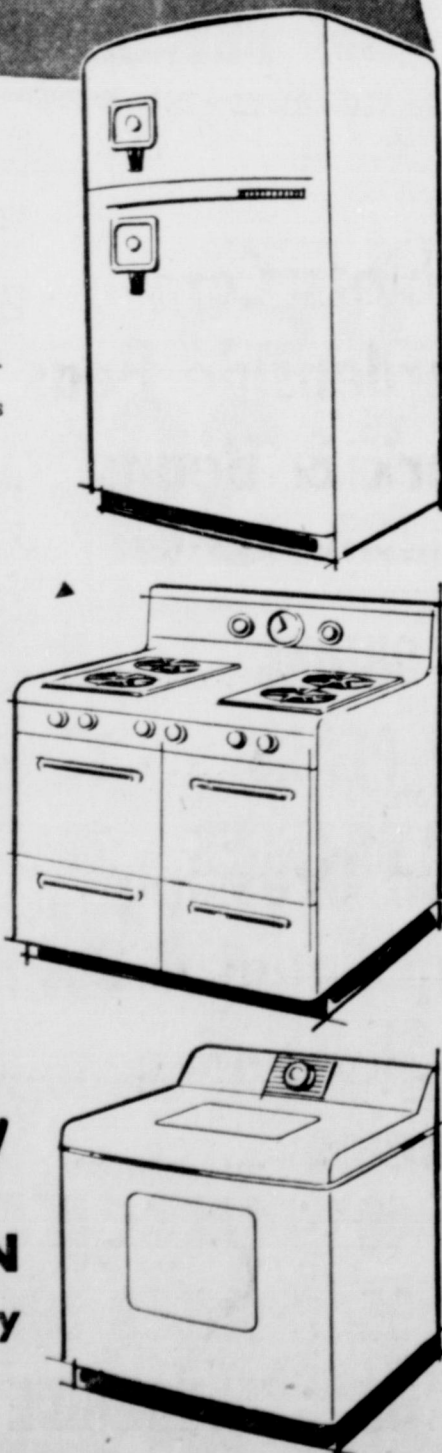
Now—come to Lone Star Gas for that gas appliance you've been needing. Make big savings on ranges, refrigerators and clothes dryers. Buy on low, easy terms of only \$1 down, take up to 36 months to pay. You get free normal installation, but don't wait—selections won't last long!

Cash in on the Big Savings NOW

Buy for only \$1 DOWN 36 months to pay



LONE STAR GAS COMPANY



Your **SAFEGWAY** says "Thank You" with a **BIG...**

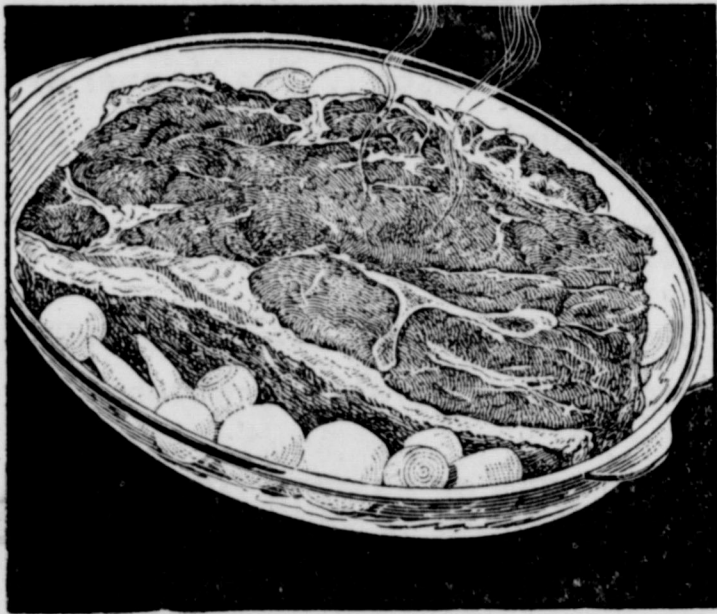
APPRECIATION SALE

*Come on Out and Load Up
on These Values!*



Have you joined Safeway's Save-A-Tape plan yet? This is a wonderful new way to get lovely items for your home you've always wanted. It's Easy, It's Fun, Join Today!

Prune Juice Westfair	24-Oz. Bottle	33¢	Grapefruit Juice Town House	45-Oz. Can	29¢	Sauerkraut Stone Crook	No. 2 1/2 Can	21¢
Tomato Juice Taste Tells	2 No. 2 Cans	27¢	Orange Juice Full O'Gold Sweetened	46-Oz. Can	39¢	Tomatoes Gardenside	2 No. 303 Cans	27¢
Honeybird Cherries Red Sour Pitted	2 No. 303 Cans	29¢	V-8 Cocktail Good for You	2 12-Oz. Cans	27¢	Spanish Rice Brown Beauty	No. 300 Can	19¢
Cut Green Beans Gardenside	3 No. 303 Cans	25¢	Unpeeled Apricots Highway Klaves	No. 2 1/2 Can	35¢	Oil Sardines Tempest	3 No. 1/4 Cans	35¢
			Spiced Peaches Hemet Whole Yellow Cling	No. 2 1/2 Can	31¢	Airway Coffee Thrifty	1 1/2 Pkg.	87¢
			Bartlett Pears Harper House	No. 2 1/2 Can	45¢	Nob Hill Coffee Full-Flavored	1 1/2 Pkg.	95¢
			Veg-All Larsens	No. 303 Can	20¢			



Safeway's Guaranteed Meats

Calf Chuck Roast U.S. Gov't Graded Tender, Juicy	Lb.	33¢	OCEAN PERCH Captains Choice Frozen	16-Oz. Pkg.	29¢
Pork Chops Center Cut	Lb.	59¢	FREE! FREE! FREE! HOT DOGS A free hot dog will be given to our first 2,000 customers at our store Saturday, January 12.		
Poppy Sliced Bacon	1-Lb. Cello	55¢			
Smoked Picnics 6 to 8-Lb. Avg. Whole Only	Lb.	33¢			

Appreciation Buys!

Sandwich Spread Lunch Box	32-Oz. Jar	67¢
Pepper Sauce Perfection Green	6-Oz. Bottle	22¢
Red Hill Catsup Always Flavorful	14-Oz. Bottle	20¢
Del Monte Catsup Tasty	14-Oz. Bottle	22¢
Tomato Sauce Taste Tells	8-Oz. Can	9¢
White Beans Small Sunny Hills	2 1-Lb. Pkg.	31¢
Large Limas Sunny Hills	1-Lb. Pkg.	20¢
French Dressing Broclies	8-Oz. Bottle	25¢
Show Boat Rice Short Grain	2 1-Lb. Cello	30¢
Seedless Raisins Vine Crest	1-Lb. Pkg.	24¢
Large Peaches Glenview Dried	12-Oz. Pkg.	43¢
Medium Apricots Glenview Dried	12-Oz. Pkg.	69¢
Selected Apples Glenview Dried	8-Oz. Pkg.	35¢
Busy Baker Crackers Cisp	1-Lb. Box	25¢
Kraft Cheese Cracker Barrel Sharp	8-Oz. Pkg.	45¢

Ground Beef Economy	Lb.	29¢	Fresh Pork Spareribs Small-Lean	Lb.	45¢
Round Steak Bone In U.S. Choice Heavy Steers	Lb.	69¢	Dry Salt Bacon Center Cut	Lb.	33¢
Rib Chops Calf U.S. Gov't Graded	Lb.	63¢	Frankfurters Somerset All Meat	Lb.	45¢
Short Ribs or Brisket Calf, U.S. Gov't Graded	Lb.	23¢	Luncheon Meat Spiced	8-Oz. Pkg.	29¢
Fresh Pork Picnics Whole Shank-On	Lb.	29¢	Canned Ham Pear Shaped Ready to Eat	6 3/4-Lb. Can	\$5.99

Safeway Good Buys!

Lucerne Milk Homogenized	1/2-Gal. Ctn.	49¢
Coldbrook Margarine	1-Lb. Pkg.	23¢
Tea Garden Jelly Apple, Plum, Grape	5 12-Oz. Jars	\$1.00
Peanut Butter Beverly Creamy or Chunky	12-Oz. Jar	41¢
Sioux Bee Strained Honey	8-Oz. Can	23¢
Bud Waffle Syrup	24-Oz. Bottle	49¢

Feature Buys at Safeway

Niblets Corn Extra Tender	2 12-Oz. Cans	19¢
Gardenside Peas Early June or Sweet	3 No. 303 Cans	25¢
Pork & Beans Taste Tells	No. 300 Can	5¢
Cherub Milk No Finer Milk	2 14 1/2-Oz. Cans	17¢

Check these Special Buys

Carnation Evaporated Milk or Pet	2 14 1/2-Oz. Cans	19¢
Duchess Salad Dressing Flavor-Packed	32-Oz. Jar	36¢
Miracle Whip Salad Dressing Makes Tasty Salads	32-Oz. Jar	39¢
Royal Satin Shortening For Better Baking	3 1-Lb. Can	73¢
Crisco Shortening Easily Digestible	3 1-Lb. Can	79¢
Mammy Lou Corn Meal White	10 1-Lb. Bag	69¢
Aunt Jemima Corn Meal White	10 1-Lb. Bag	69¢

Farm Fresh Produce

Fresh Carrots Crunchy	1-Lb. Cello	5¢
Yellow Onions Pick of the Crop	2 Lbs.	5¢
Firm Cabbage Full Bodied	Lb.	5¢

Russet Potatoes Economy	10-lb. Bag	65¢
Florida Oranges Juicy	8-lb. Bag	65¢
Crisp Lettuce Nice Firm Heads	lb.	23¢

Prices effective Thursday, Friday, and Saturday, Jan. 10-11-12, in Eastland.

Shop  **SAFEGWAY**

Safety Film Is Shown To Las Leales Members

Miss Gladys Green explained to members of the Las Leales Club Monday night in the Woman's Club how to make and the manners of keeping New Years resolutions. She said it was better to make one good resolution and keep it than to make several and not keep any of them.

Mrs. Homer Smith was hostess for the evening.

"What's New In Safety" was presented by Mrs. Don Parker who introduced Glen Doss. Doss showed a safety film on "The Case of

TV LOG

KRBC-TV

FRIDAY

7:00—Today
9:00—Home
10:00—The Price is Right

Tommy Tucker.

Those present were Mmes. Homer Smith, D. E. Frazer, E. E. McAlister, Wayne Caton, Opal Cross, J. C. Whattley, Leonard Huckabay, W. E. Brasher, Guy Patterson, Hubert Westfall, Don Parker, Herman Hassell, Anna Grace Bumpass, Misses Gladys Green, Jessie Lee Ligon and Verna Johnson.

10:30—Truth or Consequences
11:00—Tic Tac Dough
11:30—It Could Be You
12:00—Daily Devotions
12:05—Mid-Day Theatre
1:30—Tenn. Ernie Show
2:00—Matinee Theatre
3:00—Queen for a Day
3:45—Modern Romances
4:00—Comedy Time
4:30—Laurel & Hardy
5:00—Junior Auction
5:30—Money for Music
6:00—News
6:10—Sports
6:25—Weather
6:30—Coke Time
6:45—NBC News
7:00—Blondie
7:30—Life of Riley
8:00—Story Theatre
8:30—The Unexpected
9:00—Cavalcade of Sports
9:45—Red Barbers Corner
10:00—News
10:10—Feature 9
10:40—Weather
10:45—Feature 9
11:30—Sign Off

SATURDAY

1:15—News Review
1:30—Pro Basketball
4:00—Fury
4:30—The Juke Box
5:00—Big Picture
5:30—Palmino Playhouse
6:30—People or Funny
7:00—Perry Como
7:30—Cecilia Hour
8:00—George Gobel
8:30—Your Hit Parade
10:00—News
10:10—Channel 9 Jamboree
10:40—Weather
10:45—Channel 9 Jamboree

Around the Town At Olden

By Mrs. Dick Yielding

Mr. and Mrs. Gene Rouch and family of Holiday spent the week end here with Mrs. Ethel Rouch and Freddie.

Mr. and Mrs. Jimmie Colburn of Fort Worth drove up last Friday night for the basketball tournament and returned home Monday afternoon.

Mrs. John Morgan and son have returned home from Arizona where they had spent three weeks with her parents.

Mrs. C. C. Martin and Wanda and Mr. and Mrs. Blackie Fox were among those who enjoyed a noon dinner at the Calvary Baptist Church in Eastland last Sunday.

Mrs. Ann Blankinship of Abilene, formerly of Olden, visited Olden friends Saturday afternoon.

Mr. and Mrs. Jess Hendricks spent last Saturday night in Kokomo with her brother, Mr. and Mrs. A. B. Eaves.

In the tournament which ended on Saturday night, the Olden boys won consolation and the girls won second place.

C. B. O'Brien, who is employed in New Mexico was home over the week end.

Mr. and Mrs. Joe Langdon of Breckenridge were visiting in Olden last Tuesday.

Mr. and Mrs. Aubrey Alford and daughter from Eunice, New Mexico are visiting in the home of Mr. and Mrs. Gene Falls this week.

Mr. and Mrs. I. E. Talley spent Sunday afternoon and Monday in Waco visiting relatives.

Mr. and Mrs. John Morgan and baby and Mr. and Mrs. Dick Yielding visited in the home of Mr. and Mrs. Joe McKelvain on

Friendship Class Hold Monthly Luncheon Tuesday

The regular monthly luncheon of the Freindship Sunday School Class of the First Christian Church was held Tuesday in the church annex. Mrs. Winnie Wynne, president of the class, served as hostess.

Flowing the luncheon a program was given with Mrs. N. L. Smitham at the piano when all present joined in singing sacred hymns. The devotional was given by Mrs. Lon Horn. Other members on the program were Mmes. D. J. Fiensy, Roy Turner and Cyrus Miller.

Attending were Mmes. Mattie Miller, J. R. Gilbreath, T. L. Cooper, Fiensy, Miller, Horn, Smitham, Turner, T. A. Bendy, Margaret East and Wynne.

Mrs. Anna Martin, mother of Mrs. O. T. Grubbs, was admitted to the Eastland hospital early Tuesday morning.

ATTEND THE CHURCH OF YOUR CHOICE EACH SUNDAY

SPRING IS NEAR OUTBOARD Motor Tune Up 7.95

- All Horse-Power Motors
- Check & Set Points
- Check & Set Plugs
- Check Condensers
- Adjust Carburetor
- Check Lower Unit
- Tested In Test Tank
- Clean Motor Completely

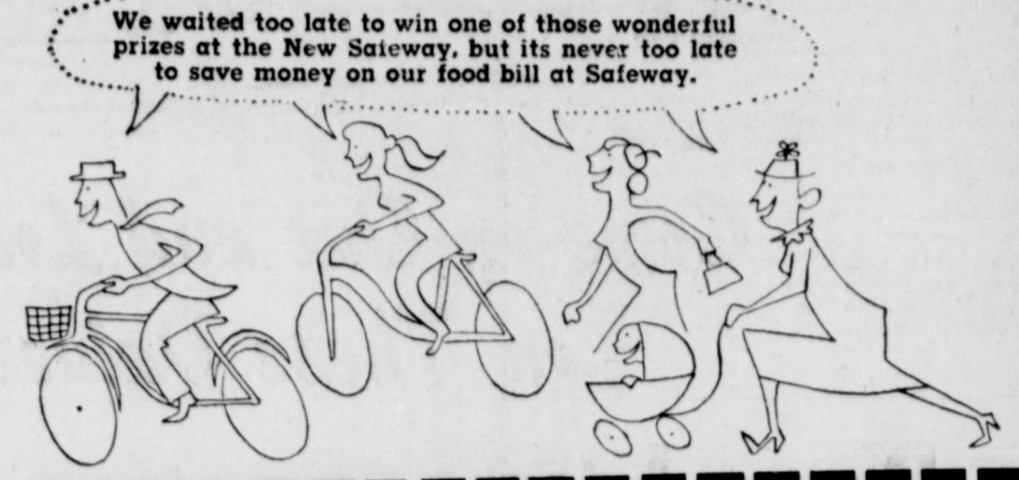
JOHNSON Sea-Horse SALES AND SERVICE
Bruce Pipkin's Sport Center
304 E. Main Ph. 525

RETURNED FROM VISITING ILL SISTER

D. E. Frazer has just returned from Marlin where he has been with his sister Mrs. Nelcine Webb,

who underwent major surgery at Torbett Sanatorium. Reports are that Mrs. Webb's condition at this time is very good.

CALL 601 FOR CLASSIFIEDS



Congratulations

... TO THE WINNERS OF THE HOTPOINT ELECTRIC RANGE AND THE HOTPOINT REFRIGERATOR FREEZR

FIRST GRAND PRIZE

To Mrs. Edwin Erwin of Cisco... The Winner of the Hotpoint Electric Range

SECOND GRAND PRIZE

To Mrs. H. E. Basham of Eastland... The Winner of the Hotpoint Refrigerator - Freezer

WINNERS OF HTE 25 PLUMP CHRISTMAS TURKEYS ARE AS FOLLOWS:

- | | |
|-------------------------------------|--------------------------|
| Ethel Aldredge, Eastland | J. A. Fox, Eastland |
| Blair Lewis, Eastland | Joann Yancy, Eastland |
| Hilton Parsons, Eastland | Mrs. Mary Bowles, Cisco |
| James E. Wright, Eastland | I. J. Dobbins, Cisco |
| Homer Stiffler, Eastland | Mrs. Joe Lilley, Cisco |
| Cody Cox, Eastland | L. J. Burnett, Ranger |
| Mrs. G. F. Bennett, Rt. 1, Eastland | Mrs. Glen Hamner, Ranger |
| Mrs. L. O. Langlitz, Eastland | L. W. Phillips, Ranger |
| H. M. Hart, Eastland | Mrs. Carl Butler, Olden |
| C. B. Graham, Eastland | W. L. Baker, Olden |
| John E. Ernst, Eastland | Mrs. J. E. Roys, Winters |
| L. L. Hartman, Eastland | Henry Wilson, Okra |
| J. T. Berry, Eastland | |

THESE SAFEWAY CUSTOMERS EACH WON A \$10.00 BASKET OF GROCERIES...

- | | |
|------------------------------|-------------------------------|
| Ray Langham, Eastland | Corene Woodall, DeLeon |
| Mrs. E. W. Gourley, Eastland | Delia Dunlap, Eastland |
| Janie Harris, Eastland | James Dabney, Eastland |
| Nute Hart, Eastland | M. Mitchell, Eastland |
| Rosa Hart, Eastland | V. A. Russell, Eastland |
| David Carrothers, Eastland | Frank Sayre, Eastland |
| O. L. Hooper, Eastland | R. G. Shelton, Eastland |
| I. E. Mosley, Eastland | Joe Stephens, Eastland |
| H. M. Hart, Eastland | Mrs. W. J. Mitchell, Eastland |
| Albert Taylor, Gordon | Andy Clark, Eastland |
| Albert Taylor, Gordon | A. O. Tindall, Eastland |
| Mabel Matlock, Olden | D. G. Basham, Eastland |
| Docia Renfroe, Olden | Lou Ella Turner, Eastland |
| W. L. Baker, Olden | Bill McAfee, Eastland |
| Opal King, Olden | Mrs. Homer Stiffler, Eastland |
| V. M. Hamilton, Olden | Mrs. James Horton, Eastland |
| Carrol Herring, Olden | Mrs. R. H. Latham, Eastland |
| Albert Taylor, Gorman | S. W. Dunlap, Eastland |
| Albert Taylor, Gorman | Dell Cox, Eastland |
| John Love, Ranger | Nettie Hart, Eastland |
| Audrey Yonkers, Ranger | Walter Maynard, Eastland |
| Mrs. C. R. Neeley, Ranger | Pearl McCullough, Eastland |
| Carl Reeves, Ranger | O. M. White, Eastland |
| Mrs. E. L. Tackett, Ranger | E. A. Benwall, Eastland |
| Mrs. M. C. Sharp, Ranger | Bessie Mae Everton, Eastland |
| Chip White, Cisco | Charles F. Owens, Eastland |
| W. W. Shirley, Cisco | Lorraine Harris, Eastland |
| Mrs. Mae Gattis, Fort Worth | Jane Bowles, Eastland |
| George Baker, Abilene | Roy Langham, Eastland |
| Mrs. Leroy Macon, Stamford | Gene Boney, Eastland |

RCA Whirlpool
automatic washers and dryers

Smith Plumbing and Tin
114 N. Seaman Phone 304

WE BUY **SCRAP** IRON AND METAL

Get Our Prices Before You Sell

- You Will Like Our Prices
- You Will Like Our Weights
- You Will Like Our Service

KOEN SALVAGE
Highway 80 West 1315 W. Main

THIS IS THE BIG M FOR 1957

Styling from dream-cars

BOLD, IMAGINATIVE LINES—Here is the first dream car you can own—the first car you can buy with Dream-Car Design. Here's distinctive, distinguished styling shared by no other car.

size from expensive cars

action from sports cars

WIDEST RANGE AND CHOICE OF POWER IN MERCURY HISTORY—A 290-hp TURNPIKE CRUISER V-8 engine is optional on all models. In the Montclair series the standard engine is a 255-hp Safety-Surge V-8 with a Power-Booster Fan that saves horsepower over other cars waste. A 255-hp Safety-Surge V-8 is standard in the Monterey series. A special M-335 engine (335-hp) is available at extra cost in Monterey models equipped with standard transmissions.

price just above small cars

Never before has so much bigness and luxury cost so little. And Mercury introduces features you can't buy at any price in other cars. Mercury's new Dream-Car Design is Mercury's alone. It's sleek, daring, clean-cut—makes other cars look plump and old-fashioned. Mercury's exclusive Floating Ride is the finest combination of bump-smothering features ever put between you and the road.

Check the low price tags in our showroom. You'll find you can get a new Big M for little more down—or per month—than for the lowest price cars. And what a lot more you get!

THE BIG M

STRAIGHT OUT OF TOMORROW **MERCURY for '57** with DREAM-CAR DESIGN

Wayne Motors 1006 W. Main EASTLAND Phone 40

Shop **SAFEWAY**

ATTEND THE CHURCH OF YOUR CHOICE SUNDAY

CALL 601 FOR CLASSIFIEDS

Steve Oprendeck Speaks at Civic League Meet, Films Are Shown

Steve Oprendeck, Abilene insurance man today asserted that Americans sanction the slaughter of thirty to forty thousand of our people upon the highways each year.

Speaking to the Eastland Civic League, Wednesday in the Woman's Club, Oprendeck said, "What is wrong, that so long as we are not personally touched, our reaction to these deaths, injuries and property losses is apathetic and indifferent. We meet and fight less serious threats with united, resolute action, but we let this one pass unchallenged."

The speaker pointed out that the privilege of using the highways is granted, withheld or taken away at the request of the community. "It is shocking, but it is a fact, the public indifference to motor vehicle deaths is such that they seem to be incidentally acquiring the status of a 'natural cause' in the public mind," Oprendeck said.

"For every young life taken by polio, the automobile takes five lives. The critical age for fatal polio is from five to fourteen years, when the polio death rate reaches a peak of two per 100,000 population. Now let's take a look at the automobile death rate—Under five years of age—11.0 per 100,000 population; five to fourteen—9.2 per 100,000 population; fifteen to twenty-four—7.3 per 100,000 population. I hope you will not misunderstand me for I am not opposed to polio drives, or any other of these very worthy causes, but something must be done about this automobile slaughter and it must be done now," Oprendeck concluded.

Mr. Oprendeck appeared on the Eastland Civic League Program in behalf of the Southwestern Insurance Information Service of Dallas. He is special agent of the Commercial Standard Insurance Co. of Ft. Worth.

Mrs. Tom Wilson, program leader for the afternoon, introduced Oprendeck and also W. K. Cooper, employee of Texas Electric, who showed two films, "The Fatal Step" a Telephone Spotlight on Texas safety film showed the group the danger of fast driving and the many deaths

G.I. Dependents Eligible for Some Medical Care

Dependents of servicemen and servicewomen of the Armed Forces became eligible December 7 this year for certain civilian medical care under Public Law 569, with the federal government paying the bills of private physicians and hospitals.

Brig. General L. Holmes Ginn, Fourth Army surgeon with headquarters at Fort Sam Houston, Tex., has announced that Texas dependents will be paid by the Finance Officer of Fort Sam Houston. Bills from Texas hospitals will be processed for the government by the Mutual Benefit Health and Accident Association, Omaha, Neb.

General Ginn said that the necessary forms for administering the new law will be mailed soon to all Texas hospitals, and that physicians may obtain their forms from those sources. Physicians will send the bills for their fees to Commanding General, Headquarters Fourth Army, Fort Sam Houston, Tex., Attention: Surgeon.

Until further notice, Fourth Army headquarters will conduct the administration of the law in Texas, with respect to physicians' fees, for all the uniformed services, General Ginn indicated. These services include the Army, Navy, Air Force, Marines, commissioned corps of the Coast Guard and Geodetic Survey, and the commissioned corps of the Public Health Service. Eligible members of these services include those appointed, enlisted, inducted or called, ordered or conscripted who are serving on active duty for more than 30 days.

Everybody's Talking About... **Dearborn**



AREA HEAT

Want to heat your home better... at less cost... with greater convenience? Then come in and let us tell you about Dearborn Area Heat!

it has cost. The second film was entitled "Breast Cancer Examination" by the American Cancer Society.

Mrs. Cecil Collins and Mrs. Samuel Butler were named as the nominating committee at the business session preceding the program. Election of officers will be held at the February 13 meeting of the League.

Mrs. Arthur Morrell, president, announced that the monthly luncheon of the club will begin January 29. Chairmen for the luncheons will be Mmes. Harold Bulgerin, Donald Burton, Morris Kessler, and Jack Frost. All women in Eastland and surrounding communities are invited to attend this monthly affair.

Punch and cake squares were served by Mrs. E. L. Carpenter and Mrs. Frank Sayre, hostess committee, before the group adjourned.

SOCIAL CALENDAR

Thursday, January 10
3 p.m.—The Alpha Delphin Club will meet in the Club House and have Rev. Jack Garrett as guest speaker for the afternoon. Members will answer roll call with a Bible verse.

Monday, January 14
7:30 p.m.—Zeta Pi members will be guests of Xi Alpha Zeta at a joint meeting of the two Beta Sigma Phi chapters in the home of Mrs. Neil Hart, 103 South Hill Crest.

Tuesday, January 15
8:15 p.m.—"Physical Needs of the School" and "Enrollment Trends" will be presented at the West Ward Parent Teachers Association meeting in the school. Hostesses for the afternoon will be the first grade mothers and Mrs. Homer Smith.

Thursday, January 17
8 p.m.—"Affairs of the Middle East" will be the Thursday afternoon Club program topic at their meeting in the Woman's Club. Mrs. Earl Conner will be leader.

Coats Furniture & Carpets, Ltd.

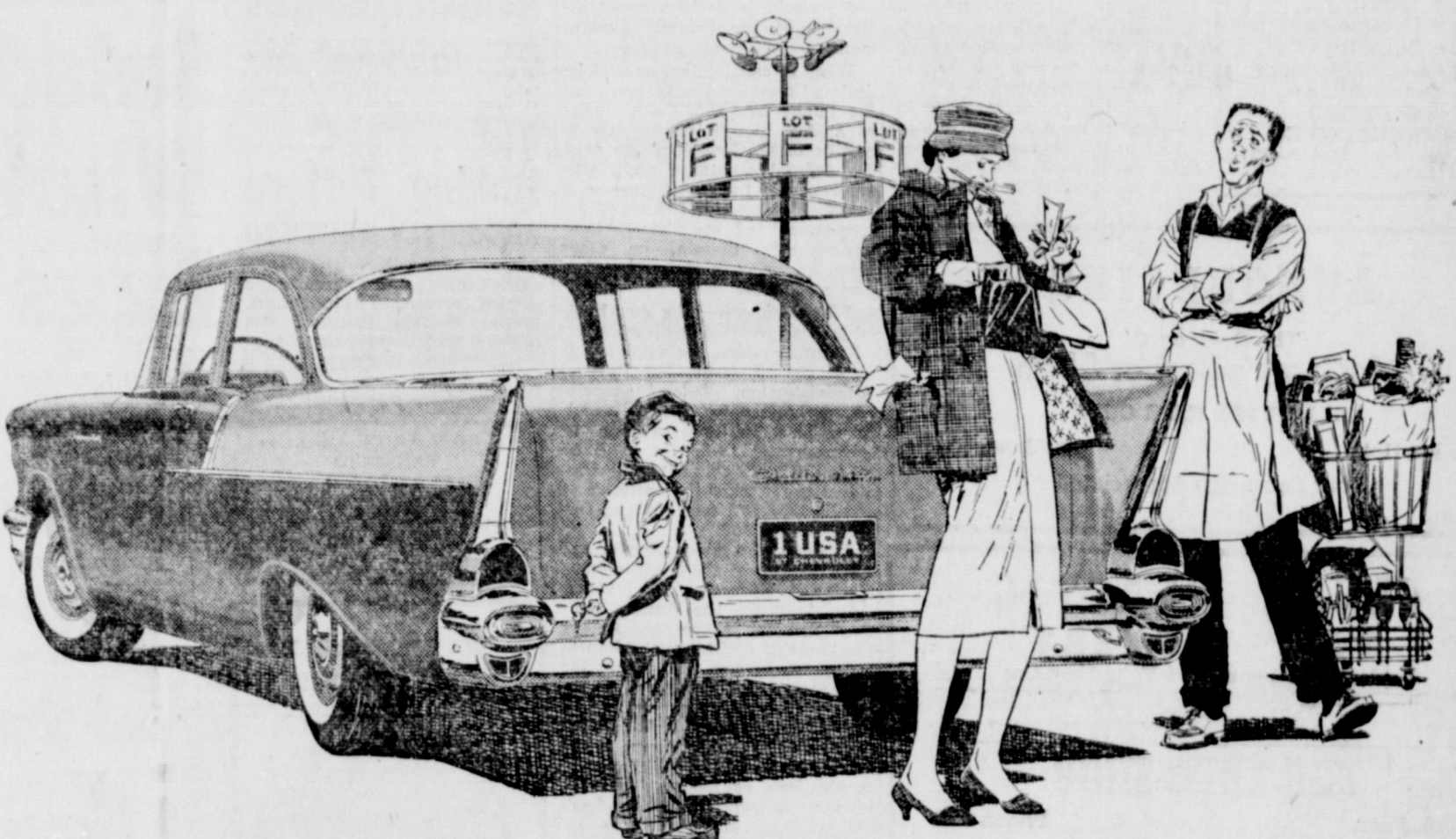
EASY TERMS FREE DELIVERY GOOD TRADE-INS

Authorized G. E. Appliance Dealer

305 S. Seaman EASTLAND Phone 585

Big beauty with small-budget ways!

It's powered by Chevy's famous six



The "One-Fifty" 2-Door Sedan with Body by Fisher—one of 20 beautiful new Chevrolets for '57! AIR CONDITIONING—TEMPERATURES MADE TO ORDER—AT NEW LOW COST. LET US DEMONSTRATE!

Only franchised Chevrolet dealers **CHEVROLET** display this famous trademark

FULLEN MOTOR COMPANY

305 E. Main EASTLAND, TEXAS Phone 44

—We Give Hometown Trading Stamps—

KIMBELLS		
SHORTENING	THREE POUND CAN	79¢
CALTOP		
SLICED PEACHES	No 2 1-2 CAN	29¢
DEL MONTE CRUSHED PINEAPPLE	Flat Can	15¢
DEL MONTE ORANGE JUICE	46 Oz. CAN	35¢
MISSION WHOLE KERNEL CORN	2 12-Oz. Cans	25¢
WELCH'S GRAPE JUICE	3 24-Oz. Bottles	1.00

These Prices Effective **FRIDAY and SATURDAY**

Wednesday Double Stamp Day

FED BEEF		
Chuck Roast	Lb.	32¢
FED BEEF SHOULDER		
Round Roast	Lb.	39¢
BONELESS LEAN		
Stew Meat	Lb.	39¢

—We Give Hometown Trading Stamps—

BOUQUET BRAND		
PEARS	No. 2 1-2 CAN	35¢
KIMBELLS		
WAFLE SYRUP	24-Oz. Bottle	39¢
KIMBELLS		
OLEO	Lb.	23¢
DEL MONTE SEEDLESS		
RAISINS	15-Oz. Pkg.	23¢
CHARMINS		
NAPKINS	2 80 count Pkgs.	25¢
DEL MONTE		
GARDEN PEAS	303 Can	21¢

COUNTRY STYLE SAUSAGE	lb.	25¢	FRESH DRESSED FRYERS	3 to 3 1/2 lb. average	Lb.	35¢
------------------------------	-----	------------	-----------------------------	------------------------	-----	------------

FRESH FROZEN **HENS** **35¢**

EARNEST Frozen Food Center 210 South Lamar Phone 11

Calf Liver Lb. **29¢**