

# EASTLAND TELEGRAM

EASTLAND, TEXAS 76448: Today's CENTER for tomorrow's FUTURE!



Volume 104 Number 88

Published each Sunday and Thursday in Eastland--Price 10¢ plus 1¢ tax

Thursday, November 2, 1972

## Mavericks Go To Cisco Friday For County Crown

The mythical Eastland County football title goes on the line Friday evening when the

Eastland Mavericks and Cisco Lobos clash at Lobo Stadium in Cisco, with a 7:30 p.m.

kickoff. It's Round Three in the District 9 - AA race and the two

local teams will be playing their hearts out in what could well be THE game of the year

for both. At the same time, they'll all be keeping radar antennae up on the Coleman - Clyde battle in Coleman the same night.

The two weaker teams in the loop, Hamilton and Comanche, battle at Hamilton Friday night.

The Eastland Cheerleaders would like to announce a Thursday pep rally. It will begin at approximately 2:50 and it will be held on the south side of the square. All townspeople are urged to attend.

Also, be sure and come to the regular pep rally Friday at the gym at 3:00 p.m. This is an important game so let's have everybody come to the pep rally.

### Tid Bits

By HVO

**GOOD SERVICE,** sure 'nough, is the Poll - TAXI to be offered by the Veterans of Foreign Wars Post here next Tuesday, General Election Day. Mr. Glen Bakker is in charge of this important VFW service and if you need a ride to the voting box, remember this telephone number - 629 - 2316. That's the command post hotline for a free voting ride, and three automobiles will be cruising Eastland and one will be working Olden to see that everyone who wants to go to the polls on this key day has a chance to. Remember the number, 629 - 2316.

**SAY HELLO** to the Delta Exploration Co., a seismograph firm doing a little oil exploration hereabouts. We met Party Chief Wayne Upchurch, looking for office space (with parking) and housing for some 20 or so people who'll be here for several weeks.

**GOOD NEWS** from the Texas Highway Dept. which will list Mrs. Marene Johnson - Johnson's Stamp Mural Window in their next publication of Texas Tour Trails. Mrs. Jack Germany's article in the Texas Star continues to attract visitors here to see the window and Mrs. Johnson is giving almost constant tour comments at the Post Office Mural for the many who come our way to see this important attraction.

**PUBLIC INVITED** to attend a school program at the New Gym Friday, Nov. 3, at 9 a.m. Featuring a world famous Juggling act, Foy and Fay. Admission is 15 cents.

Foy and Fay were both born in Glasgow, Scotland. Mr. Foy is the son of a well known Scottish juggler, who at an early age decided to follow in his father's footsteps and became a juggler himself. He eventually outshined his father by becoming an internationally famous unicyclist and juggler. He has performed at the London Palladium, Radio City Music Hall, La Scala Berlin, the Gaumont Paris. One of the highlights of Mr. Foy's career was doing a command performance for the Queen of England and her family. He also did a special performance for the King and Queen of Thailand.

**LAKE LEON** Keeper James Johnson reports that rains have put probably a foot of water into the lake, but that as of Wednesday the lake is still some three feet below full, so more rain and more runoff should bring the lake up to par. Most stock tanks reported in good condition.

**THE MEDICAL CENTER** in the Good Country: That's Eastland. Ever broadening are facilities for good health care, and extra special services for the aged. What with Hickman Nursing Home, a skilled care center which provides facilities for all levels of need, and the addition of Valley View Lodge, joining Eastland Manor in providing care for Intermediate III patients, it all makes for extensive accommodations for all.

## Valley View Opening Attracts Many Visitors



Mrs. Shirley Frost, administrator of Eastland's new Valley View Lodge, 700 S. Ostrom, discusses chart rack in the central nursing station of the new 102 bed facility which had its formal opening Sunday, Oct. 29. (Dabney photo)



MRS. VIRGINIA PENCE  
...assistant administrator

Mrs. Virginia Pence, veteran health care specialist and state licensed Nursing Home Administrator, has been named Assistant Administrator and Bookkeeper at Valley View Lodge, just opened 102 bed facility in Eastland, according to Administrator Mrs. Shirley Frost.

Mrs. Frost said, "Mrs. Pence is a highly qualified nursing home administrator and we are so happy to be able to add her to our staff."

Mrs. Pence started work as bookkeeper at West Texas Hospital in Lubbock and has worked since that time at both hospitals and nursing homes. She completed the nursing home administrators course at Cisco Junior College.

She and her husband, Mr. William A. (Bill) Pence, live at 506 W. 4th St., Cisco. They have two children at home, Elaine, 19, and Jim 15.

Their two married children are Donald G. Pence of Abilene and Mrs. David Weise of Carlsbad, N.M.

### Clyde Garrett Funeral Services

Clyde L. Garrett, 69, passed away Tuesday at 8:40 p.m. in the Eastland Memorial Hospital after a lengthy illness.

Funeral service will be held Thursday (today) at 2:30 p.m. in Bakker Funeral Home Chapel with Rev. H.B. Terry of Abilene officiating.

Burial will be in Gorman Cemetery under the direction of Bakker Funeral Home.

Mr. Garrett was born March 19, 1903, in Eastland County, and married Florence Foresythe May 16, 1930, in Lawton, Oklahoma. Mr. Garrett retired in 1968 after 28 years with Texas Electric Service in Eastland.

Survivors are his wife; one son, Joe of Odessa; one daughter, Joyleen Hicks of Houston; three brothers, J.V. Garrett of Gorman, W.P. Garrett of Pasadena, A.K. Garrett of Eastland; one sister Willie May Hendrick of Eastland; 15 grandchildren, and three great grandchildren.

### Fullen Motor Co. Laugh-A-Day

The woman motorist, on her trip through Europe, posed for a souvenir snapshot next to an historic ruin in Greece.

"Don't get the car in the picture," she cautioned. "My husband will be certain I ran into the place."

## Stragedy Film To Be Shown Thursday

Is the Soviet Union really ahead of the United States in weapons production? Has the balance of power moved?

The answer to these and many other important questions will be answered in a 27-minute documentary film, entitled "Only the Strong..." to be shown at two special showings at the Eastland Community Theatre at Bellhurst Playhouse Thursday, Nov. 2, beginning at 7:30 and 8:30 p.m., Mrs. Virginia Russell has announced.

The public is cordially invited to attend either or both showings she emphasized, and there will be no admission charged.

Produced by the Institute for American Strategy, the film is being shown in major television markets throughout the nation.

Commentators in the film include Gen. Lyman L. Lemnitzer, former chairman of the Joint Chiefs of Staff; Gen. Bruce K. Holloway, Commander in Chief, SAC; Gen. Seth McKee, Commander in Chief, North American Air Defense Command; The Honorable Foy Kohler, former U.S. Ambassador to Russia; and Dr. Edward Teller, nuclear physicist.

The film documents and graphically compares the various weapon systems of the two super powers, with film

**FREYSCHLAG Insurance WEATHER**  
FAIR and warmer Thursday. High Thursday in the low 60s. Chance of rain, 50 per cent.

Records of fairly recent vintage shows these Cisco - Eastland games:

Year	Eas.	Cisco
1947	0	14
1948	6	0
1949	0	20
1950	13	13
1951	13	6
1952	6	26
1953	7	0
1954	12	51
1955	13	33
1956	26	27
1957	18	21
1958	6	28
1959	8	35
1960	0	28
1961	0	40
1962	20	18
1963	14	34
1964	0	34
1965	14	8
1966	6	40
1967		
1968	0	16
1969	42	0
1970	58	6
1971		57

## Texas Electric Honors Banquet

Texas Electric Service Co. employees from this area honored members of the company's Quarter Century Club at a meeting Monday night in the Eastland elementary school cafeteria.

Members of the club are those employees who have 25 years or more of service with the company.

Five new members to the club from this area were recognized and received award watches from the company's president, Burl B. Hulsey Jr. of Fort Worth. The five were H.M. Burnett, A.W. Lafferty, J.C. Ownby, D.L. Mitchell and E.M. Childs, all of Graham.

It was also the 25th meeting of the Quarter Century Club since it was organized in 1948, and in his remarks to the employees, Hulsey emphasized the growth of the area and the company and the increase in the use of electricity during this time.

Hulsey said that 25 years ago, the company was serving some 9,750 customers in this area. Today, the number of customers is more than 15,000.

Also, the company's generating capability then was only 107,000 kilowatts. Today, at 3,146,000 kilowatts, it is more than 30 times the capacity.

Hulsey credited the members of the Quarter Century Club with being an important part in the company's growth and in improving the company's service to its customers during these years.

Touching on the energy crisis, Hulsey said that "just at the time when the nation's need for electric power is rapidly increasing, we are faced with both an energy crisis and a rising concern for the environment that is challenging the industry's ability to meet these needs."

"These major issues were brought into focus recently by the President in a message to Congress when he said our objective must be the 'blessings

## Eastland Bonds Lose By 922-97

A record number of Eastland voters braved cold and damp weather Tuesday to go to the polls and defeat a proposed bond issue for a library - civic center with a vote of 922 against, and 97 for.

Two voting boxes were maintained. In the box for ballots of voters with property on the city tax rolls, the vote was 806 against and 80 for. In the box for voters without property on the city tax rolls, the vote was 116 against and 17 for.

Veteran vote watchers called the total turnout of 1,019

Tuesday the largest number in recent history. Only 501 voted in the April City Commission election this year.

The vote turnout was predicted in a record absentee vote in the issue when 33 people voted in advance.

Some were guessing that this vote probably showed the near total for Eastland city limit voting strength, which has in the past been pretty much a mystery. Voting total, registered for the Eastland voting precinct which includes of course the rural voters too, is 2,265 this year.

## Mrs. Nix Returns From Three Day Workshop

Mrs. T.B. (Lou) Nix, Administrator representing the Hickman Nursing Home in Eastland, Texas, has just returned from a three day educational workshop held October 27, 28 and 29, 1972, at the Inn of the Golden West in Odessa. The workshop was co-sponsored by the Texas Nursing Home Association and Texas League for Nursing, and was directed by the University of Texas at Austin, Division of Extension, Distributive Education Department.

Titled, "Because We're All In This Together", the workshop concerned communication and interpersonal relations between the nursing home administrator and nursing staff, and was approved by the Texas Licensure Board for Nursing Home Administrators to count toward fourteen hours of continuing education.

The Texas Nursing Home Association is the professional association of licensed extended care facilities, nursing

Ladies Game Day will be held Friday, Nov. 3, at the Lone Cedar Country Club at 10 a.m. Reservations should be made by Thursday by calling Mrs. James Horton, Mrs. J.F. Collings, or Mrs. Joe Stephen.

and custodial homes in the state, and has in the last five years, trained over 13,000 nursing home administrators and staff members in its education program. Its 700 members represents over 42,000 beds, and are both proprietary and non-profit. TNHA is affiliated with the American Nursing Home Association and is dedicated to improvement of health care for the aged.

## NOTICE

**ABSENTEE ENDS FRIDAY**  
Absentee voting in the Tuesday, Nov. 7 General Election, ends Friday at 5 p.m. at the County Clerk's Office.  
Persons who plan to be out of town Tuesday next, are advised to avail themselves of the opportunity to vote absentee before that deadline.  
Record absentee voting is being reported by County Clerk Johnson Smith who reports over 300 voted in advance by midweek.  
A total of 9,374 persons are qualified to vote in the county this year, including 652 under 21.



**FUN TIME AT VASSARETTE** - Top prize winners in the Halloween Party at the Vassarette Plant Tuesday morning were these "well-dressed" employees. First place winner is Connie Jaramillo of Cisco, second from right, who won an electric roaster; Second Place Winner Nelda Gary of Cisco, right, won an electric clock; Third Place Winner Ruby Gay of Carbon, second from left, won a thermo server; and Jennifer Alexander of Eastland, left, correctly guessed the weight of a 42 - pound pumpkin and won a \$5 bill. Looking on at back is Plant Manager Gene Johnson. (Staff Photo)

## FOR SALE

FOR SALE: Hospital bed, mattress and side rails. One half mile east of Morton Valley 629-1864. t-95

FOR SALE: Cabin on Lake Leon near dam and a 17' A Cat Bulldozer. Call Adrian Bryant 734-5642 in Gorman. t-96

FOR TRADE: Good 5 room house in Andrews, Texas. Carpeted, nice yard, corner lot. Trade for house of equal value on area lake, water-front preferred. Write O.O. Barrett, 709 NE 3rd, Andrews, Texas. 79714. t-94

FOR SALE: Disc plow, 2 disc with 3 point hitch. Cultivator with 3 point hitch. 8' N Ford Tractor Excellent Condition. New paint. Telephone 629-1109. t-96

MISC FOR SALE CARPETS a fright? Make them a beautiful sight with Blue Lustre. Rent electric shampooer \$1. Perry Brothers. t-89

FOR SALE: CLEAN expensive carpets with the best. Blue Lustre is America's favorite. Rent shampooer \$1. Coats Furniture. t-89

FOR SALE: G.E. Electric Range Refrigerator and Portable Dishwasher. Avocado 1 year old. Call 629-2903. t-88

FOR SALE: 1970 Yamaha Twin 90. Runs perfectly. See at 1201 Oddie in Ranger or Tel. 647-1310. t-97

EXTRA GENTLE six year old mare. Perfect for children or inexperienced rider. Contact Gerald Hoffman, Hagaman Ranch, Ranger, Texas. Tel. 647-3566. t-97

3 Month old 18 inch WM441 G.E. Black and White portable television A steal at only 129.99 phone 629-2662

FOR SALE: Honda Motorcycle 250CC O.M. Boyle 629-2507 t-88

DOE PERMIT ISSUANCE Doe permits for Eastland County will be issued in the County Sheriff's Office at the County Courthouse on Wednesday, Nov. 8 from 8 a.m. to 5 p.m. Game Warden Kenneth Payne has announced.

Sewing machines. Touch and Sew Singer Model 600. Does everything \$51.35 629-2920. We also clean and adjust all makes and models. t-93

FOR SALE: Must sell 2 registered 70 bright sorrel Stallions, very gentle, good confirmation, top blood line, trained, broke to ride, start at the gate, also a double registered 68 Palamino Stallion, 16 hands, good blood line, confirmation, proven Station, for more info. phone. 653-2268 or 629-2503 t-90

FOR SALE: 3 bedroom, 2 bath home, excellent condition and location, carpeted. Might consider trade. Call 629-1676. t-91

**Free Delivery After 5 p.m. \$2.50 Minimum ROGERS GRO 629-2292**

**EASTLAND PET SHOP Tropical Fish And Supplies 208 N. Oaklawn Call 629-1237**

For Sale All kinds small appliances. Electric motors. Will trade. Home after 5p.m. 3mi. S. Cisco Hwy. 183 T.E. Weathersbee

"OH YES" Have client who wants to buy 80 acres. Would buy up to 240 acres. Eastland, Carbon, Gorman area prefer unimproved land. Write A.H. Thurman, Box 19, Rt. 1, Rising Star. t-88

**A. K. C. POODLE Puppies Call 629-1211**

**GRAND OPENING OLDEN GIFT SHOP 4 mi. E. on Int 20 MEXICO IMPORTS** Large selection of arts on velvet, art, plaster, planters and numerous other items. Ph. 629-1235. t-89

FOR SALE: Special built, Mobile Home, 16 x 65 ft. Features two full baths, double insulated, central air and heat. Many other features. Call 629-1200, 629-1943 or 647-1780. t-88

FOR SALE: Dress up your office with these elegant desk sets from Eldon. Ash trays and pencil cups to match. See at the Eastland Telegram. t-97

FOR SALE: In Olden 1.1 acre 31 x 13 block building 600 ft paved road frontage. Call 653-2268 or 629-2503. t-91

**FOR SALE LAKE LEON CABIN. 817-968-3332**

HOMES AND LAKE CABINS. For leisure living, on your lake lot or home site. 9 floor plans; 1 to 4 bedrooms, 1 1/2 - or 2 baths. Many deluxe options to choose from. Finished completely, throughout. Reasonable prices. Suitable Financing available. To really see and appreciate our high quality homes, you'll have to come by our factory sales office at 2409 N. Main St., Cleburne, Texas 76031. Ph. (817) 641-9107. NBC Modular Homes. t-96

**FOR SALE** The Board of Trustees of the Eastland Independent School District will accept bids until 7:00 p.m. Monday, Nov. 13, 1972, for the purpose of selling lot 18, E.L. Woods addition of City of Eastland. (NW Corner of Lens and Bassett Streets) along with the house and out-buildings located on the site. The Board reserves the right to refuse any and all bids. Bid forms may be secured at the Business office at the Eastland High School. t-11-12

FOR SALE: AKC Toy Poodle puppies, black or white. 629-2328 or 1006 W. Commerce. t-97

FOR SALE: Spinnet type mahogany piano, full key board. Phone 653-2268 or 629-2503. t-90

FOR SALE: Lake Cabin on Staff Side of the Lake; good boat dock and large lot. Call 629-1021 day or 629-1918 night. t-88

Singer Sewing Machine Repair Center Servicing all makes. New and Used for sale. Complete line of parts. MODERN DRY CLEANERS 210 S. Seaman

Are you sure your home is insured? Let Freyschlag Insurance Agency check over your existing policy for needed changes - or let us fix you a new one. Freyschlag Ins. Agency, 107 W. Main - 629-2275. "On The Square".

FOR SALE: 71 Honda 450. Priced for quick sale. Call 442-3623. t-93

1969 GMC Long, wide bed, new tires, power steering, radio, heater, automatic transmission. Good condition. \$1400.00. 629-1361 or 629-1962. t-93

Mercers Appliance Repair Dishwashers, washers, dryers, stoves, disposals and ovens. G. R. Mercer, Olden, Texas. Call 653-2473

FOR SALE: In Eastland 3 bedroom, 1 bath house, paved street, Excellent condition. Phone 653-2444. t-97

PORCH SALE: 112 E. Sadosa Thursday, Friday, Saturday, Nov. 2, 3, 4 after 12 noon. t-88

**FOR RENT**

FOR RENT: Small trailer for 1 or 2 persons. All bills paid. \$2.00 per day 617 S. Madera 629-2805. t-88

FOR RENT: Unfurnished cottage. Only \$35 per mo. 503 S. High top of Park Hill. Call 629-1417. t-97

FOR RENT: Nice size 2 bedroom house for rent in Eastland. 629-2398.

## FOR RENT

FOR RENT: Furnished, private 3 room cottages with carports. Daily, weekly, or monthly. Pleasant Place Motel west edge of Eastland. Call 629-8878. t-97

**Village Hotel** 209 West Main. Rooms by the day, week, or month. All utilities paid. Call 817-629-1716 1 mo.

**HILLSIDE APTS.** Attractive 1 bedroom & efficiency - \$55 to \$70 per month. Water & gas paid. Call 629-1374. t-71

FOR RENT: 3 Room Furnished Apt. with carport. Cable and bills paid for couple or individual. 203 N. Dixie. Eddie Pietraszek t-87

**Wanted**

WANTED: Need reliable woman to live in with elderly couple. Private room and bath, salary. Ph. 647-1227 in Ranger. t-97

WANT TO BUY: Quilts, new, old or tops, call collect. 647-3590 in Ranger after 6 p.m. t-97

WANTED: Waitress at Old Rip Cafe. Eastland. Apply in person. t-97

Custom Upholstering and Furniture Refinishing. Eddie's Upholstery Shop 205 N. Dixie. 629-1304. Open 8 to 6 weekdays. t-90

WANT TO BUY acreage from owner near my property northwest of Carbon Harry Holt. Ph. (915) 677-7884. 757 Davis Dr., Abilene, Texas. t-89

## NOTICES

Home Needed - Beautiful 30 inch Harvest Gold Westing house Electric Range - Self cleaning oven - complete timer System you'll have to see to believe only 288.88 phone 629-2662

Needed: Some to take up payments on 1 VMTSS RCA Stereo An Asset to any Home. 189.79 phone 629-2662

NOTICE: Will not be responsible for debts other than my own. Gary D. Moore. t-89

**CARPET CLEANING With STEAM - VAC** Experienced, courteous, reliable service. Work guaranteed. Free estimates. Reasonable prices. Call 629-1304 8:30 - 5 p.m.

## NOTICES

FOR LEASE - Dairy Treat No. 2. Hwy. 80 West. Contact Mrs. G.R. Nance. 442-1472. Cisco. t-88

NOTICE - Mattresses. Complete bedding made by Western Mattress Co., San Angelo. Best quality, low price, renovate or exchange new. Every other Wednesday. They're guaranteed. For home appointment, call Lois Meazell, 629-2703, leave name. t-97

**B&H TRADING POST** 311 N. Seaman Buy, Sell, Trade Ph. 629-2885 Cash or terms t-1 mo. 11-5

Freyschlag Insurance has exactly the kind of policy that you need. Check with Charles today and see just how he can help you. Freyschlag Insurance Agency, on the Square in Eastland. 629-2275. 107 W. Main Street

Let us insulate your house. Warmer in winter, cooler in summer. Phone 817-643-4222. Rising Star, Mr. Gibson. t-93

"We can handle anything but litterbugs." **Goodie Pest Control** Phone 629-1179 after 3:00 310 N. Ammerman roaches, ants, termites, moths, spiders. ALL GUARANTEED.

FOR RENT: this MINI-BILLBOARD for ONLY \$3.50 a month Call your local paper!

**DAY CARE CENTER** Need children from 3 to 6 years old. Call 629-2388. t-93

**GREGORY HEATING & PLUMBING REPAIR SERVICE** After 6 p.m. Call 639-2340. t-97

**EMMET MORREN PLUMBING COMPLETE REPAIR SERVICE** 1015 W. Main 629-2092 24 Hour Service

**MASONIC LODGE NO. 467** Meets second Thursday of each month at 7:30 p.m. in the Masonic Hall. Call V.S. Day, W.M. at 653-2444 or L.E. Huckabay, sec'y at 629-1391 for information.

H.V. O'BRIEN, Publisher and Editor  
Second Class Postage paid at Eastland Texas under Act of Congress on March 1870.  
Published semi-weekly - Thursdays and Sundays by Eastland County Newspapers, Inc.

SUBSCRIPTION RATES: By carrier in city, 15 c a week or 65 c a month; one year by mail incountry, \$5; city P.O. Boxes, \$6; one year elsewhere in state, \$7; out of state, \$8.

NOTICE: Any erroneous reflection upon the character, standing, or reputation of any person, firm or corporation which may appear in the columns of this newspaper will be gladly corrected upon being brought to the attention of the editor.

**SOUTHLAND LIFE INSURANCE**  
**M. H. PERRY**  
100 S. Seaman  
629-1566  
629-1095

**EASTLAND ROTARY CLUB**  
Pat Miller, president  
  
Meets each Monday

**Lost & Found**  
FOUND: A solid white female German Shepherd. Anyone knowing any information about the dog may call 629-1621.

LOST: Reward for gold initial ring, initials W.B. Lost at pep rally in Eastland or Eastland - Olney game. Please call 629-2719. t-89

POSITION OPEN: Central Texas Opportunities, Inc., Family Planning Project has a position open. The position is for a Registered Nurse for an eight-county Family Planning Program. For further information, applications and job descriptions write Central Texas Opportunities, Inc., Family Planning Project, P.O. Box 820, Coleman, Texas 76834. Last day for filing applications is November 10, 1972. Central Texas Opportunities, Inc. is an Equal Opportunity Employer. t-90

FOR RENT: this MINI-BILLBOARD ONLY \$3.50 a month Call your local paper!

**INSULATION**  
  
**REAL ESTATE**

**Business Property**  
Restaurant and meat market & locker plant, large building with apt. upstairs in Eastland. Equipped and ready to go.

Small grocery, station, extra land with trailer parking spaces. Stocked & equipped and ready to go, with living quarters. Ideal for semi-retired couple. Asking \$10,600.00. Make us an offer.

**Lake Property**  
Over an acre of deeded land at Lake Leon. 4 bedroom home, large screened in porch, 2 baths, storage bldg., water well, pressure system. \$11,500.00

**Homes For Sale in Eastland**  
2 bdrm home with 20' x 40' shop building. Fronting Main Street. Suitable for small business of some type. Make us an offer.

Nice 3 bdrm home, 75' x 275' lot, 2 baths, fireplace, central heat, carpet, double carport and storage building. \$16,800.00.

Nice 2 bdrm. frame 50' x 140' lot. Wall to wall carpet, 1 1/2 baths, neat kitchen, washer hookup, central air and heat. Close to school. \$15,225.00.

2 bdrm. house with 50' x 150' lot, 1 bath, carpets and drapes go, washer hookup, 2 car garage. Hillcrest Addition. \$9,500.00.

2 bdrm. brick, 1 bath, garage, large lot with pecan trees. Make us an offer.

2 bdrm. frame, large 150' x 200' lot. Washer and dryer hookup, close to school. Owner might consider some trade or will finance himself. \$5,500.00

**Homes in Ranger**  
3 bdrm. frame, 1 bath, living room, dining room, kitchen, enclosed porch. \$3,500.00

3 bdrm frame. Large lot 160' x 225'. Some carpeting, garage and carport. \$7,500.00.

Nice 3 bdrm frame home, good closets, washer hookup, wall to wall carpeting throughout, garage with storage, fenced in back yard. \$11,750.00

**Houses in Carbon**  
Nice 3 bdrm.. frame home, wall to wall carpet, built in oven and range, washer and dryer hookup, cellar and garage, \$8,750.00.

**Land**  
160 acres sandy land on pavement. Suitable to be put in Coastal. \$175.00 per acre

80 acres land with nice brick home on pavement.

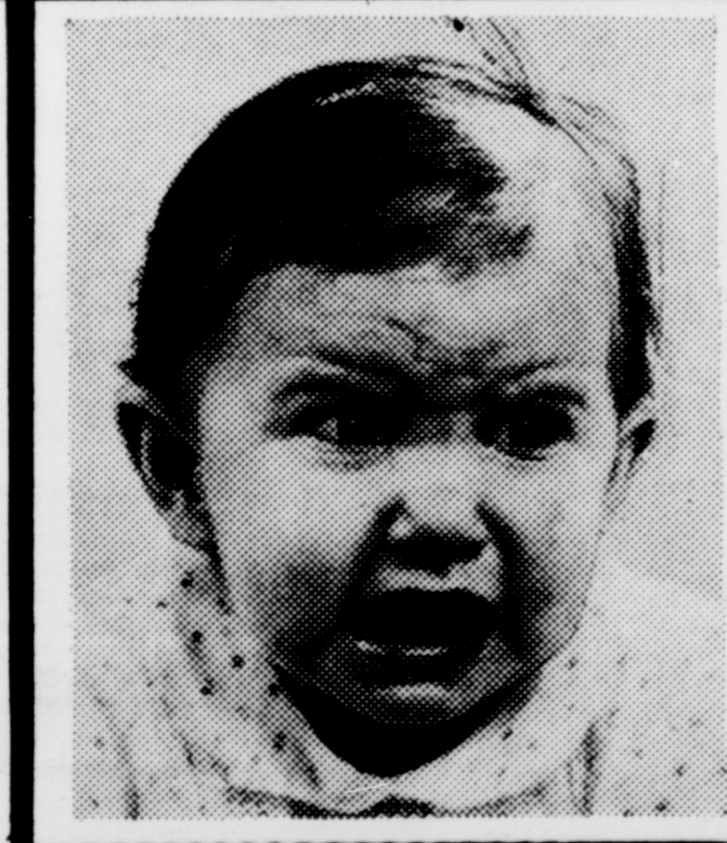
120 acres irrigated peanut farm with over 90 acre allotment. \$500.00 per acre.

200 acre unimproved stock farm. 50 acres cultivated. One well. 2 tanks

320 acres stockfarm. 90 acres cultivated. Good improvements, 6 miles from Cisco, plenty water, good hunting.

590 acre sandy land stock farm, 9 pastures, 3 wells, 3 tanks, small house, corrals and barns, 40 acres peanut allotment, \$275.00 per acre.

We have several large ranches, motels and other businesses for sale and trade. Contact us.



"WHAT -  
lost another  
job?"

YOUR LOCAL INDEPENDENT INSURANCE AGENT is on the job 24 hours a day, providing policies from a variety of companies to best match your needs - and working to service and collect your claims in full. We invite you to insure with Kinnaid Insurance Agency.

**KINNAID INSURANCE AGENCY**  
207 W. Main Since 1919  
Don Kinnaid Eastland 629-2544

**CONFIDENCE**  
2933 JAN 72 M.P. 65  
*Our Purpose Is To Guide You*  
Our thoughtful attention is given to every necessary detail. You can have confidence in our experience.  
We take care of all the arrangements, expertly, with earnest consideration for the family's wishes.  
**Arrington Funeral Home**  
Ph. 629-2611 -- Eastland  
*Friendly Personalized Service*

**CANCER INSURANCE UP TO \$50,000**  
**M.H.PERRY**  
629-1566

**NOW OPEN EASTLAND TV SERVICE**  
Color & B & W SPECIALIZING IN A-1 REPAIR  
We Service All Makes Free Pick up & Delivery  
611 1/2 W. Commerce 629-2829 (Behind Bordens Milk)  
Wayne Bailey, Owner Dale Chick, Service

**REAL ESTATE**  
ALL TYPES  
OF REAL ESTATE:  
HOMES  
farms  
ranches  
Financing Assistance  
Listings requested and long list of good properties on hand  
CALL US AND LET US SHOW YOU HOW WE CAN HELP YOU  
**M. L. TERRELL REAL ESTATE**  
Farm Bureau Building Hiway 80 East Tel. 629-1725 Day Night call 629-2443 Eastland, Texas

**KINCAID REAL ESTATE**  
100 South Seaman Eastland, Texas 629-1781  
Robert M. Kincaid 629-2721  
J.W. Elder 647-1321  
Keith W. Starr 442-3949

**LETTERS to EDITOR**

Editor:  
I've watched the race for State Treasurer very closely and I will cast my vote for State Representative Maurice Angly. The Sharpstown scandal has cast a long shadow on our state government and I'm convinced Angly is an honest man who will not play favorites in depositing state funds as the

present Treasurer did in the Sharpstown bank.  
This is no time for concerned Texans to be worried about party labels. We should support the candidates who we feel are best for the job they seek. Maurice Angly is one of those candidates.

Sincerely,  
Mrs. Gordon Wadley

**TEXACO SERVICE CENTER**  
503 W. Main. 629-8895

Offering top line Texaco Products, wash & grease, tune-ups, muffler & brake service.

We give S & H GREEN STAMPS & Appreciate Your Business.

**WINTER SPECIAL** JTW Brand Anti-Freeze  
\$1.49 Per Gallon Carry Out

**FREE PICKUP & DELIVERY**  
AAA Emergency Service

Editor:  
If the City of Eastland is willing to vote a \$215,000 indebtedness for a Library and Civic Center, don't you suppose that by hook or crook they could provide the City with a City Cab?

How long has Eastland been without a cab?

The town is full of strangers who have no friends to call on to take them anywhere.

This town is full of widows, many who could not drive a car if they had one.

Many men for one reason or another need the use of a cab every week.

Before we vote for the Civic Center, let's go all out for a City Cab.

Mrs. T.E. Castleberry

Editor:  
There is a bill of \$1600.00 now in the hands of the City from the architects and planners of the late ill-fated bond election. This bill of \$1600.00 has to be paid by someone, apparently.

However, it is my personal feeling, and I am sure the feeling also of the voters who soundly defeated the improperly called election, that the proponents of the election, those actually involved in calling the commissioners together to set the election, those who planned it, and pushed it, without first looking into all legal aspects of the election, those who obligated the city to this outlandish indebtedness, without first getting some sort of approval in advance from the balance of the city commissioners, in fact...the particular person, or persons involved in accruing this debt should pay it.

It is not legally, or morally, right to expect the taxpayers of Eastland who were NOT responsible for this debt to have

**MAJOR MARKET FOR MOBILE HOUSING**

AUSTIN -- Some still call them "House Trailers". Even within the industry, most people call them "coaches". Regardless of what you choose to call them, mobile homes all come under the category of manufactured housing. And in calendar year 1971 -- the last full year for which complete statistics are available -- nearly one-half million mobile homes were manufactured in the U.S. Close to 40,000 of this number were delivered to dealers' sales lots in Texas making Texas second only to Florida in total mobile home retail activity in the United States.

Obviously, manufactured housing, generally and mobile to have their tax money used to pay it. The results of the election clearly indicate that the people were against the project from the word "go".

In other words, it would appear that the members of the "Mayor's Committee" should divide it up among themselves and pay the bill. It is a bill not legally authorized in the first place, and it is hoped it will be settled before the Commissioners meet officially on Monday, Nov. 20th.

There are vital pieces of equipment needed in the fire and police departments, some city employees are being paid below average wages, street work needs to be done, just to mention a few things. It would have been easier for those who incurred the bill to have just taken a \$1600.00 check from the city's check book and flushed it down the nearest commode.

F. James Dabney

homes, specifically, now dominate the low cost, single family housing market. It can be stated more dramatically this way: In the \$15,000 range and below, 94 percent of all single residence dwellings built in the U.S. last year were mobile homes.

Why the big trend toward manufactured housing? Low maintenance and convenience certainly are factors but cost is the prime motivator. Six thousand dollars on the average, will purchase a 720 square foot, two bedroom, bath and a half mobile home completely furnished, including appliances. This is a per foot cost to the buyer of about \$8.45 compared to an average \$15.00 per square foot for site built housing. Also the average mortgage on a mobile home is seven years.

So strong is the trend toward mobile home living that at least one national marketing firm projection says that by 1975, 85 percent of all single family homes will be some form of manufactured housing.

Manufactured housing differs from prefabricated housing in that the mobile home and its related forms of sectional housing are completely assembled on a production line utilizing the most advanced forms of assembly techniques available. When the home comes off the line, it is a completed product, ready for occupancy, once it has been set up on site.

A prefab home is one assembled on the building site from component parts built elsewhere.

What happens to all the mobile homes after they come

off the production line? They are delivered to retail dealers all over the U.S. for ultimate sale to the consumer. About two-thirds of all mobile homes purchased ultimately end up on private lots. The remaining homes are placed in mobile home parks on land owned by the park developer and rented to the mobile home owner for a monthly fee. Today, in the U.S., there are enough mobile homes in parks to populate a city the size of New York.

Tax wise the mobile home presents a dilemma for many of the tax people. Generally speaking, the mobile home is legally considered a motor vehicle and, where levied, taxed as personal property. In Texas, where mobile homes may be homesteaded, all mobile homes located on land owned by the dweller, are classified for taxation purposes as Real Property. This has helped the situation considerably in Texas, where tax assessors and collectors find it easier to get these residents on the tax rolls.

Currently in preparation, a tax survey conducted by Texas Christian University will reveal the true picture of property taxation in Texas as it related to the mobile home owner. Usually the biggest concern to the tax people is the supposed load on the schools where mobile home communities spring up. Contradictory to most beliefs, the typical mobile home family is much smaller than families occupying site built housing and multi family housing such as apartment complexes. The national average currently is 2.2 children per family.

Patronize our advertisers

**U-NEED-A**

ticket for the Pancake-Sausage Supper At Elementary School, Friday, Nov. 10, 4:30 to 7:30

**See a Lion**

**BAKKER FUNERAL HOME**

306 W. PLUMMER PH. 817-629-1726  
EASTLAND, TEXAS 76448



DALE O. BAKKER

Dear friends,

If the deceased was covered by Social Security, the family should file benefit claims promptly. We will provide the address and phone number of the nearest Social Security field office and we or your attorney can advise the procedure to be followed.

Several records and certificates will be required in presenting a claim - we can assist you to secure these necessary papers.

Respectfully,

*Dale O. Bakker*



*This Sale is a Present for You*

**PERRY'S FOR GREAT Sale VALUES..**  
*Warmcrest* **AUTOMATIC BLANKET**  
45% POLYESTER—35% RAYON—20% COTTON  
72"x84" DOUBLE BED, SINGLE CONTROL

- Mothproof—Non-Allergenic
- Luxurious 100% Nylon Binding
- Machine Washable and Dryable

Reg. \$12<sup>98</sup> **\$9<sup>88</sup>**

FULLY AUTOMATIC CONTROL with a NIGHT LIGHT  
Control automatically adjusts to changes in room temperature assuring constant warmth all night long.

A Colorfully poly-wrapped blanket packed with features customers want most, to assure years of luxurious sleeping comfort.

**GUARANTEED 2 YEARS**

72" x 90"  
MADE IN U.S.A.  
**CANNON**  
**BLANKETS**  
Assorted Colors  
Values \$4<sup>99</sup>  
**\$3<sup>22</sup>**

**LADY VANITY HAIR DRYER**  
Reg. \$19<sup>98</sup>  
**\$14<sup>88</sup>**

**100 COUNT BAYER ASPIRIN**  
FAST PAIN RELIEF  
REG. \$1<sup>17</sup>  
**77¢**

Reg. \$13<sup>98</sup> **\$10<sup>88</sup>** **ELECTRIC HEATERS** REG. \$10<sup>98</sup> **\$7<sup>88</sup>**

**perry's TOY-O-RAMA**

**C & D BATTERIES**  
Reg. 30¢ each  
**2/47¢**  
Ever Ready 9-Volt Transistor Radio

**SAYELLE & KNITTED WORSTED YARN**  
REG. \$1<sup>99</sup> **88¢**

Reg. \$12<sup>98</sup>  
**INCH WORM**  
Ride 'em **\$9<sup>66</sup>**

**ROCK AND SOX ROBOT**  
By MARX  
Reg. \$12<sup>98</sup> **\$9<sup>66</sup>**

**MRS. BEASLEY DOLL**  
By Mattell  
Reg. \$12<sup>98</sup> **\$9<sup>66</sup>**

**TIMEY TELL DOLL**  
By Mattell  
Reg. \$14<sup>98</sup> **\$10<sup>88</sup>**

**BATTERIES**  
Reg. 79¢  
**2/\$1<sup>18</sup>**

**SHOP PERRY'S FOR CHRISTMAS**

**MEN'S 10-SPEED BIKE**  
Reg. \$79<sup>95</sup> **\$66<sup>88</sup>**

**USE OUR LAYAWAY**

**BABY TENDER LOVE™**

She looks and feels so much like a real baby... makes little girls feel like they're real mummies!

Made from a new vinyl foam that feels just like a real baby's skin. Bathe and wash her in water, change her diapers after she drinks her bottle, dress and undress her.

By Mattell  
Reg. \$11<sup>98</sup> **\$8<sup>66</sup>**

**45-Piece DINNERWARE SET**  
Break Resistant - 2-Year Guaranteed  
Reg. \$10<sup>97</sup> **\$7<sup>97</sup>**

**PERRY'S EASTLAND, TEXAS**

# EASTLAND MAVERICKS

'71 QUARTER—FINAL CHAMPIONS  
VS

# CISCO LOBOES

IN

**CISCO**  
7:30 p.m.



**LET'S GO!**

1972 Football Schedule EASTLAND PUBLIC SCHOOLS			
Sept. 8	-	Haskell 21, Eastland, 20	
Sept. 15		Eastland 36 - Ranger 0	
Sept. 22		Eastland 39 - DeLeon 14	
Sept. 29		Eastland 16 - Olney 8	8:00
Oct. 6		Open	
Oct. 13		Eastland 20, Breckenridge 12	8:00
Oct. 20		Coleman 19, Eastland 0	7:30
Oct. 27		Eastland 22, Comanche 8	7:30
Nov. 3		Cisco at Cisco	7:30
Nov. 10		Hamilton at Eastland	7:30
Nov. 17		Clyde at Clyde	7:30
-----			
			H.S.
Sept 14		Clyde at Clyde	7th 8th B Team
Oct. 5		Cisco at Eastland	5:00 6:00 7:30
Oct. 12		Ranger at Ranger	5:00 6:00 7:30
Oct. 19		Cisco at Cisco	5:30 6:30 7:45
Oct. 26		Clyde at Eastland	5:00 6:00 7:30
Nov. 9		DeLeon at DeLeon	5:30 6:30 7:45
Nov. 16		Ranger at Eastland	5:00 6:00 7:30

AZTEC MOBILE HOMES  
EASTLAND  
STAFF AND EMPLOYEES

EASTLAND MANOR  
BOND ELECTRIC

HICKMAN NURSING HOME

W. H. "BILL" HOFFMANN

MR. AND MRS.  
VICTOR CORNELIUS

MR. & MRS. LEWIS TINER

R.M. SNEED

A-1 FINA SERVICE  
COMANCHE COUNTY  
ELECTRIC CO-OP ASSOCIATION

J. T. Gregory, Distributor

ARRINGTON  
FUNERAL HOME

FREYSCHLAG  
INSURANCE AGENCY

BAIRDS TV

B & W CLINIC AND STAFF

KINCAID REAL ESTATE

WESTERN AUTO

THARP TIRE COMPANY

FOREMOST DAIRIES

1972 EASTLAND MAVERICKS				
Red	White	Name	Pos.	Wt.
10	10	Terry Ensor	QB	145
12	14	John Jimenez	QB	200
20	20	Leo Gaeta	E	142
24	24	Sammy Herrera	B	157
25	25	Russell Smith	B	163
30	30	Tony Thomas	B	198
32	32	Larry Barnes, (Capt.)	B	179
33	33	Howard King, (Capt.)	B	203
40	22	Larry Bolles	B	141
42	42	Ralph Harrison	B	135
50	50	Ralph Underwood	C	155
51	51	Rex Boney	C	186
52	52	Alfred Orosco	C	130
60	60	Jace Staggs	G	133
61	61	Steve Lopez, (Capt.)	G	173
65	65	Allen Jolly	T	182
66	66	Isaac Orosco	G	125
69	69	Mike Reid	G	162
70	70	Mark Parsons	T	160
72	72	Rickey Reynolds	T	173
73	73	Dale Minchew	T	200
75	75	David Baze	T	195
80	80	John Marshall	B	130
82	82	Tom Morren	E	178
84	84	B.W. Robertson	E	136
87	87	Garry Barnes	E	180

Coaches: Clyde Evatt (Sul Ross)  
Don Adair (North Texas)  
Doug Dallas (Sul Ross)

Managers:  
Larry Courtney  
Pat Hart  
Randy Collins

FARM BUREAU

ALTMAN'S STYLE SHOP

ROBERTSON'S TV SALES

D.L. KINNAIRD

HOOD KING MOTOR CO.

BAKKER FUNERAL HOME

BOLES DAIRY QUEEN

SUPER SAVE

EASTLAND  
CHAMBER OF COMMERCE

HARELIK'S DEPT. STORE

TEXAS ELECTRIC  
SERVICE

BOB CARROLL  
CONSTRUCTION CO.  
EASTLAND, TEXAS

HILLCREST FOOD MARKET

BRAY'S  
DEPARTMENT STORE

TEXAS  
LIGHTWEIGHT AGGREGATE

EASTLAND NATIONAL  
BANK

DR. AND MRS.  
M. A. TREADWELL, JR.

GOODYEAR SERVICE STORE

EASTLAND COUNTY  
ABSTRACT CO.

## Southern Television Systems Corporation

CISCO - EASTLAND - RANGER... Inviting You To Watch All Of The Games--NCAA - AFL - NFL

# Safeway Dollar Days

**Baby Food**  
Heinz, Strained  
Safeway Special! **12** Reg. Jars **\$1**

**Cake Mix**  
Duncan Hines Layer Cake  
Safeway Special! **3** Reg. Boxes **\$1**

**Apple Sauce**  
Town House, Flavorful!  
Safeway Big Buy! **5** 16-oz. Cans **\$1**

**Kleenex**  
Facial Tissue, Soft!  
Safeway Special! **4** 200-Ct. Boxes **\$1**

Shop Safeway... Save on **DOLLAR DAY VALUES!**  
Stock up with these Low, Low Prices! You'll be delighted with the Variety and Quality and Money-Saving Dollar Day Buys!

**SHOP SAFEWAY & SAVE!**

**SAFEWAY**

**Chicken Noodle**  
Soup, Town House  
Safeway Special! **6** 10 1/2-oz. Cans **\$1**

**Paper Towels**  
Kleenex Boutique  
Safeway Special! **3** Jumbo Rolls **\$1**

**Delsey Tissue**  
Toilet Tissue, Absorbent!  
Safeway Special! **4** 2-Roll Pkgs. **\$1**

**Mushrooms**  
Green Giant ★Whole or ★Sliced  
Safeway Special! **3** 2 1/2-oz. Jars **\$1**

**Shop and Save With These Values!**

Enriched Flour 39¢ <small>Harvest Blossom, 5-Lb. Bag</small>	Chunk Tuna 37¢ <small>Sea Trader, Light Meat, 4 1/2-oz. Can</small>
Salad Dressing 37¢ <small>Piedmont, Quart Jar</small>	Tomatoes 20¢ <small>Gardenside, 16-oz. Can</small>
Dog & Cat Food 7¢ <small>Favorite Brand, 13 1/2-oz. Can</small>	Salad Oil 49¢ <small>no-made Cooking Oil, 24-oz. Glass</small>
Liquid Bleach 27¢ <small>White Magic, 1/2-Gal. Plastic</small>	Black Pepper 39¢ <small>Trader Horn, Ground, 4-oz. Can</small>
Canned Pop 8¢ <small>Snowy Peak, 12-oz. Can</small>	Detergent 49¢ <small>Parade, For All Your Wash, 49-oz. Box</small>
Pinto Beans 29¢ <small>Town House, Dry, 2-Lb. Pkg.</small>	Cleanser 13¢ <small>White Magic, 14-oz. Can</small>

**Safeway Money-Saving Low Prices!**

**Deodorant Soap** Truly Fine Safeway Special! **8** 5-oz. Bars **\$1**

**Fruit Drinks** Cragmont, Refreshing! Safeway Big Buy! **4** 46-oz. Cans **\$1**

**Velkay Shortening** All Purpose Safeway Big Buy! **3-Lb. Can** **62¢**

**Saltine Crackers** Melrose Soda Crackers Safeway Big Buy! **1-Lb. Box** **23¢**

**Chili with Beans** Town House, ★Regular or ★Hot! Safeway Big Buy! **15-oz. Can** **35¢**

**Compare Dairy Values!**

<b>Cottage Cheese</b> 29¢ <small>Lucerne, High in Protein! (32-oz. Ctn. 58¢) Special! 16-oz. Ctn.</small>
<b>Fresh Milk</b> 56¢ <small>Lucerne Low Fat 1/2-Gal. Carton</small>
<b>Fresh Eggs</b> 43¢ <small>Breakfast Gems Grade 'A', Medium -Dozen</small>

**WEST BEND Partipans**  
NOW ON SALE!  
3 QT. COVERED SAUCE PAN  
• Genuine porcelain-on-aluminum pan  
• Fired-on No-Stick interior  
• Gentle, even-heating  
• Poppy or harvest  
ONLY \$4.99

**Guaranteed Meats!**

**Young Turkeys**  
Toms **37¢**  
OVER 16 Lbs. USDA Inspected Grade 'A' —Lb.

Hen Turkeys **45¢**  
Young, Under 16 Lbs. USDA Grade 'A' —Lb.

Fryer-Roaster Turkeys **49¢**  
Young Turkeys, Under 9 Lbs. USDA Grade 'A', Manor House —Lb.

**Compare Quality and Price!**

Lean Ground Beef 89¢ <small>Compare Lean &amp; Fat Content! 2-Lb. Club</small>	Fresh Pork Roast 59¢ <small>Whole Picnic —Lb.</small>
Ground Beef 149¢ <small>Regular, Safeway 2-Lb. Club</small>	Fresh Pork Chops 88¢ <small>Family Pack —Lb.</small>
Boneless Steak 108¢ <small>Center Cut, Chuck, USDA Choice Grade Heavy Beef —Lb.</small>	Pork Spareribs 85¢ <small>Fresh, 1 1/2 to 3-Lb. Avg. —Lb.</small>
Boneless Roast 98¢ <small>Chuck or ★Shoulder, USDA Choice Grade Heavy Beef —Lb.</small>	Eckrich Sausage 119¢ <small>Smoked, Heart &amp; Serves! —Lb.</small>
Top Sirloin Steak 179¢ <small>USDA Choice Grade Heavy Beef —Lb.</small>	Canned Ham 349¢ <small>Safeway, Fully Cooked! 3-Lb. Can</small>
Boneless Ham 159¢ <small>Swift's Master's, Halves —Lb.</small>	Stick Salami 89¢ <small>Safeway, By The Piece —Lb.</small>
<b>Sliced Bacon 69¢</b> <small>Full of Flavor! 1-Lb. Pkg. No. 1 Quality, Sliced</small>	Smorgas Pac 119¢ <small>Eckrich, Regular 1-Lb. Pkg.</small>
Safeway Bacon 95¢ <small>1-Lb. Pkg. No. 1 Quality, Sliced</small>	Chuck Roast 69¢ <small>Full Block Cut, USDA Choice Grade Heavy Beef —Lb.</small>
Rath Bacon 98¢ <small>Black Hawk, Sliced 1-Lb. Pkg.</small>	
Link Sausage 69¢ <small>Pork, Safeway 1-Lb. Pkg.</small>	

**ALL MEAT Wieners 63¢**  
★Safeway or ★Neuhoff, Tender! —12-oz. Pkg.

**Variety and Quality Meats... Always at Safeway!**

**FRESH FRYERS 29¢**  
Finest Quality Available at Any Price! Whole —Lb.

**Cut-Up Fryers 38¢**  
Regular, Ready to Cook! —Lb.

**Baking Chickens 37¢**  
Fresh, USDA Grade 'A' —Lb.

**Smoked Ham 59¢**  
Shank Portions, Best Any Shall! —Lb.

**Whole Ham 75¢**  
★Full Shank Half, Smoked —Lb.

**Ham Roast 1.09**  
Center Cut, Delicious! —Lb.

**Check These Low Prices!**

**Anti-Freeze** **1.47**  
PEAK ANTI-FREEZE  
Peak. Get Ready, Gallon For Winter! Plastic

**Texaco Motor Oil** 3 Quart \$1  
★20 or ★30 Wt. —Each

**Liquid Gold** 1.69  
Scott's Wood Polish, ★16-oz. Bottle ★10-oz. Aerosol

**Lysol Spray** 98¢  
7-oz. Aerosol

**Floor Finish** 87¢  
White Magic Acrylic 27-oz. Bottle

**Safeway Quality Frozen Foods!**

**Hash Browns 3** 32-oz. Pkgs. **\$1**  
Potatoes, Bel-air Safeway Special!

**Mince Pie** 3 24-oz. Pkgs. **\$1**  
or Pumpkin Pie. Easy to Prepare!

**Corn-on-Cob 49¢**  
Bel-air, Fresh Flavor! —4-Ear Pkg.

**Strawberries 25¢**  
Scotch Treat, Sliced —10-oz. Pkg.

**Waffles 10¢**  
Bel-air, Breakfast Treat! —5-oz. Pkg.

**Red Apples 25¢**  
Red Delicious, Extra Fancy, Large Size —Lb.

**Avocados 39¢**  
Garden Fresh! Florida, Booth Variety —Each

**Texas Yams 19¢**  
US #1, Medium Size —Lb.

**Onions 2 lbs. 29¢**  
Yellow, US #1.

**Radishes 2** 4-oz. Cellophane **25¢**  
Tops Removed!

**Large Tangelos 19¢**  
New Florida Harvest —Lb.

**Sunkist Lemons 3 for 19¢**  
New Crop, Large Size, Each

**Ruby Grapefruit 19¢**  
Tangy! New Texas Harvest —Each

**Crisp Carrots 19¢**  
US #1, Vitamin Rich 1-Lb. Cello

**Russet Potatoes 89¢**  
US #1, Best For Baking! Bag 10-Lb.

**Green Cabbage 9¢**  
Firm Heads, Medium Size —Lb.

**SAFEWAY**

Prices Effective Thurs., Fri., Sat., Sun., Nov. 2, 3, 4 & 5, in Eastland  
No Sales to Dealers.

© Copyright 1960, Safeway Stores, Incorporated.

THRIFT SHOP: Still accepting items on commission. You name it, we got it. 510 E. 7th. 442 - 2564.

FOR SALE: In Olden 11 acre 31 x 13 block building 600 ft. paved road frontage. Call 653 - 2268 or 629 - 2503. 11-9

## Hospital Report

Patients in Ranger General Hospital Wednesday morning were:

Sarah Atkins  
Mary O'Neal  
Dora Lovera  
Elva Rogers  
Ticia Casevoli  
Nita Melton  
Lois Vunovich  
Anna Williams  
Blaza Krensavage  
Leona Hill  
Mike Kelley  
James Yarbrough  
Mary Lou Daniel  
Charlie Isabell

Patients in Eastland Memorial Hospital Wednesday morning were:  
Maurine Williams  
Blanche Watkins  
Lummie Boyd, Cisco  
Gloria Scott

### 91st DISTRICT CLERK'S OFFICE

Eddie Mae Steward vs. Aaron Steward, Jr. - divorce  
D - E - N Contracting Co., Inc. vs. Gorman Peanut Co. - Suit on account  
Billie Jeanne Fletcher vs. Sanford P. Fagadar - suit on note  
Thelma Leona Simpson vs. Wilson W Simpson - divorce  
Hesako Rose vs. Joe Erwin Rose - divorce and child custody

### CRIMINAL RECORD

Frank Merriwether - sale of intoxicating liquor in a dry territory; possess for the purpose of sale an alcoholic beverage to wit: beer, in a dry area

### NOW OPEN EASTLAND TV SERVICE

Color & B&W  
Specializing  
In A - 1 Repair  
We Service All Makes  
Free Pickup  
& Delivery  
611 1/2 W. Commerce  
629 - 2829  
(Behind Borden's Milk)  
Wayne Bailey, Owner  
Dale Chick,  
Service

SO-LO  
AUTO PARTS  
(Formerly  
Eastland Auto  
Parts)  
300 S. Seaman  
629-2158 Eastland  
"Trade Where  
The Pros Trade"

Visiting Hours  
Eastland  
Memorial  
Hospital  
2:30 to 4 p. m.  
7 to 8:30 p. m.

Fontains of DeLeon  
(Licensee) For the Joy  
of a Beautiful Complexion  
For Whatever Your Complexion  
Problem May Be!  
Non-Surgical!  
"Look Younger as You Grow Older"  
Free Private Consultations  
401 Navarro (Hwy. 66 & 16)  
Call DeLeon  
893 6377 DeLeon, Texas

## Farmers Union To Hold Annual Meet

The annual meeting of the Eastland County Farmers Union will be held in Rising Star at the American Legion Hall on Nov. 6 at 6:30 p.m., according to planning committee chairman Oral Davis.

This meeting is held for the purpose of electing officers and directors for the ensuing year and electing delegates to the Texas Farmers Union State Convention to be held in Arlington in early December. Policy resolutions will be considered for adoption and submitted to the state program drafting committee as recommendations for state policy.

The guest speaker for the annual occasion will be Jay Naman of Waco, president of Texas Farmers Union.

A covered dish supper is planned for the occasion.

November 2, 1972

Fontains of DeLeon  
(Licensee) For the Joy  
of a Beautiful Complexion  
For Whatever Your Complexion  
Problem May Be!  
Non-Surgical!  
"Look Younger as You Grow Older"  
Free Private Consultations  
401 Navarro (Hwy. 66 & 16)  
Call DeLeon  
893 6377 DeLeon, Texas

### NOW OPEN EASTLAND TV SERVICE

Color & B&W  
Specializing  
In A - 1 Repair  
We Service All Makes  
Free Pickup  
& Delivery  
611 1/2 W. Commerce  
629 - 2829  
(Behind Borden's Milk)  
Wayne Bailey, Owner  
Dale Chick,  
Service

## ABC MAJESTIC THEATRE EASTLAND FRI-SAT-SUN



THE HOTTEST THING ON WHEELS

RAQUEL WELCH  
KANSAS CITY BOMBER

FRI OPEN - 7:15  
FEATURE - 7:30 - 9:16  
SAT - SUN OPEN 2:00 FEATURE  
- 2:15-4:00-5:45-7:30-9:15

"Because Someone Lived"  
**RAWLINS MONUMENTS**  
Since 1884 THE NAME to look for in distinctive memorials

ROY TAYLOR 500 EAST 8TH ST. CISCO  
You may call Collect 442-1127

You only buy a memorial once; we can help you make the right choice. Our 88 years of experience and our sincere desire to serve you are yours for the asking.

SHOWING THE BEST IN MOTION PICTURES

## Ranger

FRIDAY DRIVE-IN THEATRE  
SATURDAY  
SUNDAY  
Nov. 3-4-5



STEVE McQUEEN  
'LE MANS'

Steve McQueen takes you for a drive in the country. The country is France. The drive is at 200MPH!

COMING SOON The Godfather NOW AT REG. PRICES!

Factory Outlet  
New & Used  
**Mobile Homes**  
12, 14, and 24 Wide  
Bank Financing  
Low Down Payment  
**Big Tex**  
**Mobile Homes**  
On I20 2 miles East of Eastland  
Wanda (Mrs. Eddie) Barnes, Mgr.  
817-653-2358

**MRS BAIRD'S**  
Baked with family pride.

Furniture - Carpet - Appliances  
Serving Eastland County For Over 51 Years  
**RANGER FURNITURE EXCHANGE**  
No Interest Or Carrying Charges For 1 Full Year On Furniture & Carpet - Free Delivery  
Phone 647 -1404 Ranger, Texas

# HEIDENHEIMER'S Special

ANSON... BALLINGER WINTERS  
CISCO... HAMLIN

# RAKE IN SAVINGS



**NEW DRESS SHIRTS**  
"VENTURE"  
65% Polyester, 35% Cotton  
Two Button Cuffs  
Two Pockets  
**\$3.99**  
each



**SALE**  
**MEN'S DRESS PANTS**  
100% Polyester  
Knits & Double Knits  
Pre-priced to \$18.00  
NOW **\$8.88**

**No Iron SHEET SALE**  
Pacific Permanent Press.  
Extra Strength Muslin  
50 Percent Polyester  
50 Percent Cotton  
"Sherbet" Multi - Stripes  
Double Bed Flat or Fitted  
Reg. \$3.99 **\$2.98** Each  
Matching Pillow Cases **\$2.49** Pair

**DIRECTORS 8-OZ. TAILORED KNIT SHIRTS**  
Permanent Press!  
Long Sleeves and Tails,  
Plaids or Solids.  
**\$5.99**

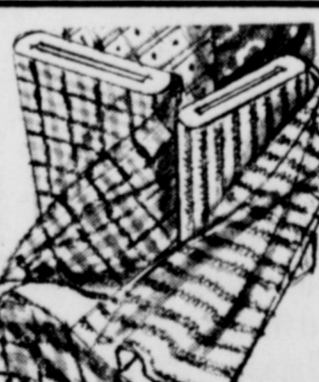
**MEN'S NASSAU Perma-Press Plaid Flannel Shirts**  
Two Front Pockets  
**\$2.99** ca.

**MEN'S WESTERN SHIRTS**  
65% Polyester, 35% Cotton  
Neck Sizes & Sleeve Lengths  
NEW PATTERNS  
**\$6.99**

**MEN'S "ENVOY" CPO JACKETS**  
PILE LINED  
Snap-on Front and Pockets.  
TWO BIG FRONT POCKETS!  
**\$12.99**

**NEW SHIPMENT! LADIES' HARD SOLE SLIPPERS**  
NEW FALL COLORS  
Also Gold and Silver  
**\$2.99** Pair

**45-In. Cottons**  
—In—  
DENIMS... SAILCLOTHS CHECKS... PLAIDS  
Regular \$1.00 Yard  
SALE PRICE  
**79c** Yard



**100% COTTONS**  
Wash and Wear  
BRUSHED DENIMS PRINTS FLANNELS  
**2 Yards \$1.00**

**NYLON MARQUISSETTE PANELS**  
40x81  
WHITE, GOLD, PINK, BEIGE  
**97c**



"LEDA"  
**PANTY HOSE**  
ONE SIZE!  
Re-inforced Panty,  
Nude Heel.  
**69c** Pair

**fall fashion fabric event**  
100% POLYESTER  
**DOUBLE KNITS**  
60 Inches Wide!  
SALE PRICE  
**\$2.98** Yard

**BOYS' SHRINKS**  
"Short Sleeve Sweater"  
Colors to compliment any pants!  
Wear With Full Sleeve Shirts  
**\$4.99** Each

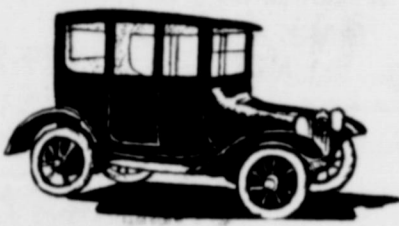
**SPECIAL ELECTION NOTICE**

FOR THE convenience of senior citizens and others who may need a ride to the election polls Tuesday, Nov. 7

VFW Post 4136 will offer a Poll-Taxi Service Coordinated by Glen Bakker, who can be contacted at 629-2316

**K B HOMES**  
New Construction - Remodeling  
Custom Built Homes on your lot or ours. FHA, VA, OR Farmers Home Loan  
Call 442-3024 in Cisco  
Linton Batteas Dewey Kennemur

Is your car becoming a Collectors item?



In one step you can take care of insurance for that new car as well as arrange financing for it.

Your local MFA Insurance agent can help you arrange both. Stop by, or call him today. He's as near as your phone. MFA Insurance, the Shelter people.



RICHARD ROSSANDER, Agent  
200 W. Main  
Phone 629-2563

**EASTLAND comings & goings**

Mrs. Arabel Cohen visited Mrs. Roland Perry and Mrs. Floyd Gilbert of Gorman and Mrs. Ima Stubblefield of Carbon last Tuesday.

Mrs. James LeFan and Mrs. Lila Hardigree of Temple visited Mrs. Jack Lusk on Tuesday of last week.

Mr. and Mrs. Wayne Hardin and children spent last weekend with his parents Mr. and Mrs. A.C. Hardin.

Mr. and Mrs. James Baker and children of Abilene visited her mother Mrs. Cleo Greenwood.

Mr. and Mrs. Robert Willett of Midland is visiting her parents Mr. and Mrs. Rufus Hicks.

**Pioneer Club Meet Oct. 26**

Pioneer Club met Oct. 26 in the home of Mrs. Alma Castleberry for a noon luncheon. The club voted Ida Tankersley in the club, and sent a card to Mrs. Johnson at the rest home.

The club voted to have a Thanksgiving and Christmas party on December 21 in the home of Mrs. Bassett.

Plate lunches were sent to Mr. Crawford and Mrs. Hodges.

Members present were Mrs. Fannie O'Brien, Mrs. Herring, Mrs. Lockhart, Mrs. Nix, Mrs. Crawford, Mrs. Hastings and hostess Mrs. Castleberry.

**School Lunch Menu**

- Thursday, Nov. 2  
Lasagna  
Blackeyed peas  
Buttered carrots  
Stuffed celery  
Hot rolls  
Cake squares
- Friday, Nov. 3  
Hamburgers  
Buttered corn  
Potato chips  
Applesauce

**HEATING**  
Smith's PLUMBING

**Insurance Rate Seen Down By Rep. Hanm**

Area residents can expect a major reduction in the cost of extended coverage insurance on their homes by January 1, State Rep. Joe C. Hanna said today.

The announcement came after a day-long meeting Monday between State Insurance Commissioners and Rep. Hanna and Rep. Renal Rosson of Snyder, chairmen of the House Interim Committee studying extended coverage in Texas.

The savings to area residents will be brought about by changing not only rates but territorial lines, according to Rep. Hanna. The changes will result in a 15 to 25 percent reduction to the people, he believes.

The Interim Committee has been studying the rating system of extended coverage in Texas since June, and Rep. Hanna has contended that the system which makes rates in this area as much as 3 1/2 times higher than rates in adjoining counties is inequitable and basically unfair.

According to Rep. Hanna, Insurance Commissioners Durwood Manford and Ed Price agreed that extended coverage insurance here is definitely excessive, and that meaningful changes would be made, bringing about reduced rates. Rates and territorial lines are scheduled to be changed, effective January 1, according to the Commissioners.

**Graham - Jordan Bowl With Dave Soutor**

Jack Graham and Bill Jordan recently won the honor of bowling in exhibition matches in Abilene with pro-bowler Dave Soutor.

Jack Graham was in top five handicap qualified and bowled with Soutor on Saturday, Oct. 28.

Bill Jordan qualified in top five scratch division and bowled Sunday, Oct. 29.

Action took place at Abilene Bowl Lane.

**Oysters Are In Season**  
ROGERS GROCERY  
Eastland 629-2292



NEW QUARTER CENTURY member J.C. Ownby, formerly of Ranger received a wrist watch from Burl Hulsey, president of Texas Electric Service Company Monday night during the annual Quarter Century Club meeting. Along with Ownby three of five charter club members present were A.N. Larson of Ranger, Miss Margarie van Hoose, and Johnny Hart.

**Green Kindergarten Activities**

The 18th year of the Green Kindergarten started off with a 'Bang' with 20 happy, eager tots wanting to learn and work so hard at play and many other activities.

They took several trips and hikes while the weather was warm. They enjoyed going up on high school hill twice and getting to sit in the big school buses to rest. They played games on high school hill, then back to their room for rest period and refreshments. Each took their turn being host and hostess.

Birthdays celebrated in October were Dwight Kinnaird and Kristen Willoughby, both were six years old. Miniature cup cakes with orange pumpkins and green stems were served with punch. The group sang 'Happy Birthday'. Mrs. Green is now 'Kindergarten Grandmother'. She had Tania Faircloth the first year and now she has Tania's daughter, Angela Griffin. Mrs. Green is very pleased and happy to have Mrs. James Woods working with her this year. Mr. and Mrs. James Woods and their son Jerry treated the Kindergarten to a Halloween party and bags of M&M's.

The children had colored pictures made in the living room. One will be placed in their scrapbook that they will

bring home next March. Parents please send this and all articles with child's name on them for their scrap book.

The tots enjoyed decorating their Kindergarten windows with huge Halloween pumpkins, etc. They will put them in their project books. They put on an interesting program.

We encourage the tots to do as much as possible on their own as parents will not go to public school with them.

This year's Kindergarten students are: Wendy Lynn High, Jerry Don Woods, Clyde 'David' Brashear, Kristi Leigh May, Bert Edward Rabb, Robert James Ragland, Paula Ann Boyd, Scott Payne, Dwight Lewis Kinnaird, Whitney Elaine Reese, Tamra Dawn Barron, Kristen Lea Willoughby, Gary Douglas Simmons, Amy Jo Simms, Jon Cary Carter, Julie Ann Potter, Jana Michelle Cogburn, Kelly Jean Muirhead, Jodi Coan, and Angela Denise Griffin. Ferne Green

For subscription to the  
Fort Worth Star Telegram  
Dallas Morning News  
Fort Worth Press  
Dallas Times Herald  
Gil Biggs dealer 629-1210

Game Day is Friday  
Prizes galore  
Bring your partner  
Or maybe four.  
For reservations call Mrs. J.F. Collins  
James Horton, or Joe Stephen

**Grand Opening!**  
WILSON VACUUM CLEANER SALES & SER.  
3 S. Lamar, Eastland, Tex.  
Sat. Only, \$299<sup>95</sup> Vacuum Cleaners \$99<sup>95</sup> WITH THIS COUPON  
If You Need A Vacuum Cleaner, Get The Best At This Special Price!

**ABBIE-----**  
Here to help with all your Jewelry, Drug, or Cosmetic needs.  
  
FAST FREE DELIVERY  
Central Drug  
103 W. Main  
629-2681

**INTERNATIONAL 73 PICKUP**  
  
The Other Pickup  
This one has the other look, the other features, the other points of value. It's the only pickup with collapsible steering column as standard equipment, the one with the gas tank mounted outside the cab. And who else offers you a choice of 13 body colors, 4 upholstery colors, and 3 different interiors? Power for '73 can be a six, a 345 V-8 or a 392 V-8, teamed with 3-speed automatic transmission or 3, 4 and 5-speed manuals. See the '73 list of luxuries, too—air conditioning, stereo, the works!  
Compare International...The Other Pickup.  
**TRADE NOW!**  
**CITY GARAGE**  
Eastland  
103 W. White 629-1709

**COUNT ON US**  
FOR ALL YOUR AUTO SERVICE...  
Opening Special  
Complete Front end Alignment on all American made autos with air conditioners only \$8.50  
Only \$7.50 for Front End Alignment on all American made autos without air conditioners.  
All Repairs can be placed on Texaco Credit Cards.  
Bob's Automotive Repair  
403 E. Main 629-2922

**PECANS**  
Bought - Sold - Custom Shelled  
PECANS FOR SALE: IN HULL, SHELLED  
**GRAHAM PECAN CO.**  
LOVING HWY. GRAHAM, TEXAS  
Office Phone: (817) 549-4286  
Night: (817) 549-0168 or 549-2219

**GENERAL ELECTION**  
Eastland County, Texas  
November 7, 1972  
**SAMPLE BALLOT**

GENERAL ELECTION  
Eastland County, Texas  
November 7, 1972

**INSTRUCTION NOTE:**  
Vote for the candidate of your choice in each race by placing an X in the square beside the candidate's name. You may vote a straight ticket (that is, vote for all the candidates of a certain party, and for no candidates outside that party's column) by placing an X in the square beside the name of the party of your choice at the head of the party column. If you use this straight-ticket method of marking, do not mark squares beside the names of individual candidates.

Note: Voter's signature to be affixed on the reverse side.

Candidates for:	Democratic Party	Republican Party	Socialist Workers	Raza Unida Party	Write-In
President and Vice President	<input type="checkbox"/> GEORGE McGOVERN AND K. SARGENT SHREYER	<input type="checkbox"/> RICHARD M. NIXON AND SPIRO T. AGNEW	<input type="checkbox"/> LINDA JENNESS AND ANDREW PULLEY	<input type="checkbox"/>	
U. S. Senator	<input type="checkbox"/> BAREFOOT SANDERS	<input type="checkbox"/> JOHN G. TOWER	<input type="checkbox"/> TOM LEONARD	<input type="checkbox"/> FLORES AMATA	
U. S. Representative, 17th Congressional District	<input type="checkbox"/> OMAR BURLISON	<input type="checkbox"/>	<input type="checkbox"/>	<input type="checkbox"/>	
Governor	<input type="checkbox"/> DOLPH BRISCOE	<input type="checkbox"/> HENRY C. (HANK) GROVER	<input type="checkbox"/> DEBORAH LEONARD	<input type="checkbox"/> RAMSEY MUNIZ	
Lieutenant Governor	<input type="checkbox"/> BILL HOBBY	<input type="checkbox"/>	<input type="checkbox"/> MEYER ALEWITZ	<input type="checkbox"/> ALMA CANALES	
Attorney General	<input type="checkbox"/> JOHN HILL	<input type="checkbox"/>	<input type="checkbox"/> THOMAS SINCAID	<input type="checkbox"/>	
Comptroller of Public Accounts	<input type="checkbox"/> ROBERT S. CALVERT	<input type="checkbox"/>	<input type="checkbox"/> ANNE SPRINGER	<input type="checkbox"/>	
State Treasurer	<input type="checkbox"/> JESSE JAMES	<input type="checkbox"/> MAURICE ANGLY, JR.	<input type="checkbox"/>	<input type="checkbox"/> RUBEN SOLIS, JR.	
Commissioner of General Land Office	<input type="checkbox"/> BOB ARMSTRONG	<input type="checkbox"/>	<input type="checkbox"/> HOWARD PETRICK	<input type="checkbox"/>	
Commissioner of Agriculture	<input type="checkbox"/> JOHN C. WHITE	<input type="checkbox"/>	<input type="checkbox"/>	<input type="checkbox"/>	
Railroad Commissioner	<input type="checkbox"/> BYRON TUNNELL	<input type="checkbox"/> JIM SEGREST	<input type="checkbox"/>	<input type="checkbox"/> FRED R. GARZA	
Chief Justice, Supreme Court	<input type="checkbox"/> JOE GREENHILL	<input type="checkbox"/>	<input type="checkbox"/>	<input type="checkbox"/>	
Associate Justice Supreme Court, Place 1	<input type="checkbox"/> PRICE DANIEL	<input type="checkbox"/>	<input type="checkbox"/>	<input type="checkbox"/>	
Associate Justice Supreme Court, Place 2	<input type="checkbox"/> SAM JOHNSON	<input type="checkbox"/>	<input type="checkbox"/>	<input type="checkbox"/>	
Judge, Court of Criminal Appeals	<input type="checkbox"/> WENDELL A. ODOM	<input type="checkbox"/>	<input type="checkbox"/>	<input type="checkbox"/>	
State Senator, 22nd District	<input type="checkbox"/> TOM CREIGHTON	<input type="checkbox"/>	<input type="checkbox"/>	<input type="checkbox"/>	
State Representative, District 54	<input type="checkbox"/> JOE HANNA	<input type="checkbox"/> JACK HETZEL	<input type="checkbox"/>	<input type="checkbox"/>	
Member State Board of Education, District 17	<input type="checkbox"/> JAMES M. BINTON	<input type="checkbox"/> JAMES ROMINGER	<input type="checkbox"/>	<input type="checkbox"/>	
Court of Civil Appeals, District 11	<input type="checkbox"/> RALEIGH BROWN	<input type="checkbox"/>	<input type="checkbox"/>	<input type="checkbox"/>	
Associate Justice, District Court	<input type="checkbox"/> EARL CONNER, JR.	<input type="checkbox"/>	<input type="checkbox"/>	<input type="checkbox"/>	
Criminal District Attorney of Eastland County (Unexpired Term)	<input type="checkbox"/> EMORY C. WALTON	<input type="checkbox"/>	<input type="checkbox"/>	<input type="checkbox"/>	
Sheriff	<input type="checkbox"/> L. E. (LEFTY) SUBLETT	<input type="checkbox"/>	<input type="checkbox"/>	<input type="checkbox"/>	
Tax Assessor & Collector	<input type="checkbox"/> NANCY TROUT	<input type="checkbox"/>	<input type="checkbox"/>	<input type="checkbox"/>	
County Surveyor	<input type="checkbox"/> CHESTER H. BRENNEMAN	<input type="checkbox"/>	<input type="checkbox"/>	<input type="checkbox"/>	
County Commissioner Precinct 1	<input type="checkbox"/> DANNY WOODS	<input type="checkbox"/>	<input type="checkbox"/>	<input type="checkbox"/>	
County Commissioner Precinct 1	<input type="checkbox"/> WILLIAM A. (BILL) HUNTER	<input type="checkbox"/>	<input type="checkbox"/>	<input type="checkbox"/>	

**PROPOSED CONSTITUTIONAL AMENDMENTS**

Instruction Note: Place an X in the square beside the statement indicating the way you wish to vote.

No. 1	<input type="checkbox"/> For <input type="checkbox"/> Against	The constitutional amendment to provide annual salaries of \$8,400 for members of the Senate and House of Representatives.	No. 8	<input type="checkbox"/> For <input type="checkbox"/> Against	The constitutional amendment to provide a four-year term of office for the Governor, Lieutenant Governor, Attorney General, Comptroller of Public Accounts, Treasurer, Commissioner of the General Land Office, Secretary of State, and certain statutory State officers.
No. 2	<input type="checkbox"/> For <input type="checkbox"/> Against	The constitutional amendment abolishing the Lamar County Hospital District.	No. 9	<input type="checkbox"/> For <input type="checkbox"/> Against	The constitutional amendment to provide that directors of soil and water conservation districts are not disqualified from holding or being compensated for more than one office.
No. 3	<input type="checkbox"/> For <input type="checkbox"/> Against	The constitutional amendment to require the commissioners court in all counties of the state to compensate all justices of the peace on a salary basis.	No. 10	<input type="checkbox"/> For <input type="checkbox"/> Against	The constitutional amendment revising provisions on the time and method of proposing amendments to the state constitution and the time and method of publishing notice of proposed amendments.
No. 4	<input type="checkbox"/> For <input type="checkbox"/> Against	The constitutional amendment providing for a constitutional revision commission which precedes the convening of the members of the 63rd Legislature as a constitutional convention in January, 1974, for the purpose of submitting to the voters a new constitution or revisions of the existing state constitution.	No. 11	<input type="checkbox"/> For <input type="checkbox"/> Against	The constitutional amendment to provide a salary of \$22,500 for the Lieutenant Governor and the Speaker of the House of Representatives.
No. 5	<input type="checkbox"/> For <input type="checkbox"/> Against	The constitutional amendment allowing certain tax exemptions to disabled veterans, their surviving spouses and surviving minor children, and the surviving spouses and surviving minor children of members of the armed forces who lose their life while on active duty.	No. 12	<input type="checkbox"/> For <input type="checkbox"/> Against	The constitutional amendment permitting State employees, who are not State officers, to serve as members of the governing bodies of school districts, cities, towns, or other local governmental districts, without forfeiting their State salary, and specifying exceptions to the constitutional prohibition against payment of State funds for compensation to any person who holds more than one civil office of emolument.
No. 6	<input type="checkbox"/> For <input type="checkbox"/> Against	The constitutional amendment providing that the various political subdivisions of the State may exempt not less than Three Thousand Dollars (\$3,000) of the value of residence homesteads of all persons sixty-five (65) years of age or older from ad valorem taxes under certain conditions.	No. 13	<input type="checkbox"/> For <input type="checkbox"/> Against	The constitutional amendment to set a six percent (6%) weighted average annual interest rate for bonds issued pursuant to constitutional authority presently having a specified interest ceiling.
No. 7	<input type="checkbox"/> For <input type="checkbox"/> Against	The constitutional amendment to provide that equality under the law shall not be denied or abridged because of sex, race, color, creed, or national origin.	No. 14	<input type="checkbox"/> For <input type="checkbox"/> Against	The constitutional amendment to allow a county to reduce its county permanent school fund and distribute the money to independent and common school districts on a per scholastic basis.

**Pleasant Valley Cemetary**

This cemetery is located in Eastland County about nine miles southwest of Eastland City on the Leon River.

I wrote about the cemetery last week telling the condition it is and about our effort to raise money and put in savings and just using the interest for the upkeep of the cemetery but we have got to have much more than we have \$15.00 for the permanent fund.

I am writing this week about some people buried here that made more news than the ordinary funeral. The first one - a man and his small child were found dead. They had both been shot. The report was that he had shot the child and then himself as a gun was found near them. It was also reported that there had been family trouble which caused him to commit this deed.

The next was a beautiful little girl who grew up here in the valley. Her daddy was in very poor health and soon died while she was only a small child. As the little girl's mother had to be away from home much of the time working, the little girl, although very young, would get out and pick the wild daisies in the valley. One day while out she fell in a large tank (pond) of water. When they found her she was drowned. I remember being at the funeral, which was very sad. A lady stood near the grave holding a large bouquet of wild daisies which grew in the valley. She told me that the little girl had brought her wild

daisies many times and now she was putting these on her grave. The little girl was not more than five or six.

The next was a man found in his home in bed with his head split open with an axe. His wife was accused of committing the deed and stood trial but I do not remember how it ended.

I have not mentioned the names of any of these but you can find out by asking anyone that lived there then.

All of these graves with the most of the other need to be cared for. I do not know where any of the relatives of these are.

If you can help on this plan, it certainly will be appreciated. It is paying a tribute to the dead. And I have the feeling if we cannot make a "go" of this that it will never be done.

I will write about others that are buried here next week.

Thanks,  
E.C. Murphy,  
533 Sayles Blvd.,  
Abilene, Texas. 79605

**Thursday Club To Meet Nov. 2**

The Thursday Afternoon Study Club will meet Thursday, November 2nd at 3:00 p.m. in the Woman's Club Building. This is Children's Book Week and a very interesting program is planned on "Channels of Learning" with Mrs. Cecil Collings as program chairman.

**Engagement Announced**

Mr. and Mrs. Truman Brown, 514 South Hillcrest, announce the engagement of their daughter Nida Ann to Mr. Gregory Dean Bennett of Gorman.

The wedding date is December 22 at 6:30 p.m. in the home of the bride's parents. Bride - elect, Nida is a 1971 graduate of Eastland High School, and is attending Cisco Junior College.

Future Bridegroom, Dean, is a graduate of Gorman High School and has attended Tarleton State College for three years and is now attending Southwestern State College School of Pharmacy in Weatherford, Okla.



Nida Ann Brown

**PERMANENT ANTI-FREEZE**  
**\$1.69 Gal.**  
**(carry-out)**

**LUZIER**  
Personalized Cosmetics  
Unconditionally Guaranteed  
**MRS. MILDRED ADAIR**  
511 S. Mulberry Eastland, Texas  
629-2848

**GOODYEAR SERVICE STORE**  
FRANK MURPHY, MGR.  
EASTLAND 629-2662

**THANK YOU . . .**

*We want to thank all who have helped make Eastland Manor Nursing Home such a success and for helping make our Open House at Valley View Lodge such an outstanding success.*

*We hope that you will continue to visit us at both Centers and always think of Eastland Manor and Valley View Lodge as Your Number One Nursing Care Centers.*



*By the way, we are still accepting applications for resident patients and employees at both locations.*

**Please call 629-1779 or 629-2686**

**VALLEY VIEW LODGE**

Mrs. Shirley Frost

...Administrator

**EASTLAND MANOR**

Gene Frost

...Administrator

**"Dedicated to Nursing Care Progress"**







**MYSTERIOUS PHOTOGRAPH** - This photograph was reproduced by James Cotton of Cotton's Studio in Cisco, from a print in the possession of Mrs. Carl Zeihl of Cisco. Mrs. Zeihl reportedly obtained the print from a relative in Houston, who had received it from a person in Shreveport, La., where it was reportedly made on Feb. 25. The story is that an amateur photographer, using up a roll of film, pointed the camera into the sky and the resulting negative occurred. It appears to be of Christ, but persons familiar with photography state that such a print could be produced by various methods including the superimposing of negatives in an enlarger. The coincidence is that only recently a Floydada paper ran a similar photograph and reported that the picture was made at a burial service. Other reports have been made from a wide area. One from Ranger was a mysterious image appearing on a photograph made in a church in that city. The image appeared in the picture on an otherwise blank wall.

**Bazaar Called Success**

The Fourth Annual Senior Citizen's Pre-Christmas Bazaar was proclaimed a big success this year. There were 62 exhibitors that earned a record of \$792.74 from their sales of handmade articles. This was a big increase over last year's sales.

The Bazaar is a growing county-wide project with exhibitors participating from all over the county.

One of the many highlights of the two day sale was the opening program. Mrs. Mary Black and Mr. George T. Moore were the oldest man and woman exhibitor. Also appearing on the program were County Judge Scott Bailey, Eastland Mayor Durel Reid, and State Representative Joe Ilanna.

The exhibitors this year were:

EASTLAND: Mrs. Maude Dabney, Mrs. E.J. Hogan, Mrs. Gena Beene, Mrs. Dick Yielding, Mrs. Dave Putnam, Mrs. J.C. Allison, Mrs. Mary Black, Mrs. Corrie Harlow, Mrs. Stella Goodman, Mrs. Jessie Neal, Mrs. Essie Laughry, Mrs. Ellen Reddick, Mrs. Mindie Webb, Glenn Liles, Mrs. Rittie Brown, Mrs. Shoemaker, Mrs. J.M. Smith, Mrs. Miles Awalt, Mrs. Annie Vines, Mrs. Ellen Horn, Mrs. Paul Hodge, Mrs. Fannie O'Brien, Mrs. Julia Carter,

**West Side Barbershop Re - Opens**

An historic Eastland landmark will come to life again Saturday when the West Side Barber Shop re-opens for business.

Mr. Jess Siebert, now retired, operated the shop for many years, and it was always a favorite gathering place for young and old, Monday morning quarterback, visitors and others.

Mr. Charles Underwood, a native of Stephenville, now of Morton Valley, has remodeled the shop and will open for business Saturday. He will be joined by Charles Langford in the two chair shop.

Mr. Underwood will feature men's hair styling and has announced a boy's get-acquainted offer for those under 12 at \$1.25. The shop will also have a shine man.

The shop will be closed on Sundays and Monday and plans some additional announcements in the near future, Mr. Underwood said.

The new proprietor operated a shop in Stephenville for five years.

**Joe Hanna Speaks To Lions**

State Rep. Joe Hanna outlined details of the 14 Constitutional Amendment propositions to appear on the Tuesday, Nov. 7 General Election, for members of the Eastland Lions Club at their regular meeting Tuesday noon at Camp Inspiration.

Supt. Wendell Siebert introduced Rep. Hanna for David Martin, Program Chairman.

President Clint Bray presided.

Special Events Chairman Monroe Rollins reported on the Candy Sale just held and the Pancake Supper to be held Nov. 10.

Guests included Mr. and Mrs. Tom Stark, Gene Abbott and W.L. Simmel, all of Cisco; new member E.A. Connel; and former member Dick Dixon, now of El Paso.

Best news brought by Rep. Hanna concerned extended coverage insurance rates which will be reduced from 15

to 25 percent as the result of work brought to the Insurance Commission regarding the zoning which affects this area. Approximately \$500,000 in insurance costs will be realized in this area Rep. Hanna said.

The work that was done on competitive insurance rates resulted in attention being focused on the insurance matters by the commission even though a competitive rate bill did not get out of committee, Mr. Hanna said.

During his discussion of the amendments, Rep. Hanna detailed the pros and cons of each without giving personal recommendations.

Commenting on the next session, he guessed that the house would be 30 percent rural and 70 percent urban, and brought smiles when he reported that based on preliminary study, he sees no broad base increases in taxes next session.

**Gets 99 Years In 91st Trial**

A 91st District Court jury Monday afternoon handed down the stiffest sentence in a narcotics case in the history of the court.

Lennie Joe Hughes, 22, of Olden, was sentenced to 99 years in the state penitentiary by the jury for "sale of a narcotic drug." Hughes was found guilty of the sale of 12.84 grams of marijuana for \$12 to an undercover state narcotic agent in Ranger on Nov. 12, 1971.

Hughes was on parole from an Eastland County burglary conviction in 1970 at the time of the sale.

The jury found Hughes guilty after 10 minutes of

deliberation, taking 45 minutes to set his sentence. Formal sentencing by Judge Earl Conner Jr. will come at a later date.

Eastland County District Attorney Emory Walton put five character witnesses on the stand including Eastland County Sheriff L.E. Sublett, Eastland Police Chief Johnnie Morren, Justice of the Peace Wells Dalton, Abilene Parole Officer Davis Linn and Ronnie Tucker, state narcotic agent.

Court appointed defense attorney Dewey Cox of Ranger placed Hughes's mother, Mrs. Ruby Hughes of Olden, on the stand as a defense character witness.

**Dogies Lose To Clyde**

**By John Hill**

The Eastland 7th and 8th grade Dogies faced the Clyde Junior High Bulldogs in a gridiron contest at Maverick Stadium, Oct. 28.

The games were rained out Thursday and were scheduled to start with the 7th grade playing first at 9:00 a.m. Saturday morning.

The record kept by the Eastland 8th grade was broken Saturday as the team lost their first game after a season and a half. The score in the 7th grade game was Clyde 12, Eastland 8 and the 8th grade ended their game with Clyde 7, Eastland 0.

In the 7th grade game, Larry Mathis intercepted a pass late in the first quarter but the Dogies were held at the Bulldog 41. The only score made by the Dogies came late in the second quarter when halfback Elwyn Davidson ran around the right side of the line from 20 yards out on a reverse. The try for the conversion was good as the reverse to the reverse again fooled the defense.

The Bulldogs scored in the third quarter on a 30 yard run

by the tailback, 20. The try for the conversion was missed as Kenneth Underhill caught the quarterback behind the line. The last touchdown of the game came in the latter part of the fourth quarter after the Bulldogs recovered a Dogie fumble when the tailback, 20, ran up the right side of the line, from four yards out.

In the 8th grade game like the 7th grade game, the winning score for the Bulldogs came late in the fourth quarter after recovering a Dogie fumble. In the 8th grade game, the touchdown came when the quarterback, 24, passed to the end, 19. The try for the conversion was missed. The Dogie safety, Brian Haun, intercepted three passes in the game and Mike Lewis also intercepted a pass for the Dogies but the Dogies were held after each interception.

**NOTICE**

William H. Betts of Fort Worth will be preaching at Bethel Baptist Church Sunday, Nov. 5th, in view of a call as pastor. Come worship with us.



Eastland policemen Jerry Rich, left, and Sgt. Ben Sancillo, are shown escorting Charles Edward Munoy, 18, of Dallas, left, and Jesse Rance Sledge, 18, also of Dallas. Sheriff Lefty Sublett flushed the pair from hiding east of Eastland, and both were apprehended by Rich and Sancillo during a Saturday manhunt. The pair were two of four wanted for kidnaping a Colorado City man. (Photo by James Dabney)

**4 Suspects Caught Here In Manhunt Charged**

Four teenaged Dallas youths who allegedly kidnaped a 21 year old Colorado City man at gunpoint Saturday afternoon were being held in Mitchell County Jail Saturday night following a chase across four counties which ended in their arrest near Eastland.

The four, arraigned before Mitchell County Justice of the Peace Leonard Henderson shortly before 9 p.m. Saturday, were expected to be charged Monday morning with auto theft and kidnaping.

It was a massive effort by all lawmen and citizens in the swift, safe roundup of the four. Lawmen expressed their appreciation to all who assisted in the project.

Word at mid week was that the four men have been charged with rape in Dallas.

The escapade began about noon Saturday with the abduction of Stan Shawn, son of Mr. and Mrs. Wayne Shawn of Colorado City, from a supermarket parking lot. Shawn, in his parent's late model automobile, was driven east along Interstate 20 as the foursome apparently headed for Dallas, police said.

Shawn was then locked in the trunk of a second car on a service road outside of Loraine, after which the four continued east in the Shawn vehicle. Escaping from the trunk, Shawn contacted Rodney Walker of the Loraine Police Department.

Law enforcement officials were given the car's description and direction of travel, and it was spotted soon near Cisco by Highway Patrolman Jerry Mathews of Eastland. Police and sheriff's officers then joined in the chase, at one point being assisted by an airplane.

The stolen car was found abandoned about 2:30 p.m. on U.S. Highway 80 east of Eastland, and the search was narrowed to an area of thick underbrush between Highway 80 and FM 570. Two suspects were arrested about 3 p.m. by Eastland Police Sgt. Ben Sancillo.

Ranger policeman John E. Boyd answered a call from the county law officers and headed west on I - 20 toward Eastland. Boyd stated he parked the police car across the median near a rest stop area and waited outside his vehicle for the suspects. Soon a car fitting the description of the stolen car appeared and quickly turned around and headed back toward Eastland, Boyd recalled.

Other lawmen were trailing close behind the suspects, Boyd said. "I got in my vehicle and joined in the chase," he added.

The auto turned off I - 20 onto the old highway near a motel east of Eastland and came to a dead-end. The search was narrowed to an area of thick underbrush between I - 20 and FM 570. Two suspects were arrested about 3 p.m. by Sgt. Ben Sancillo, and the other two were apprehended approximately two and one-half hours later by Gene Gourley of Ranger and Patrolman Mathews and Game Warden Kenneth Payne.

Assisting in the second arrest were Mitchell County Sheriff-elect Bill McGuire and Deputy Sheriff Simon, who took custody of the four men and returned them to Colorado City.

Mr. and Mrs. Claude Sellers of Breckenridge visited with Mr. and Mrs. Hollis Jones Sunday.

**Civic League & Garden Club To Meet Nov. 8**

The Civic League and Garden Club will meet Wednesday, Nov. 8 at 12:00 at the Lone Cedar Country Club for a luncheon and a program brought by Miss Geraldine Hill of Dallas. Miss Hill will display and explain her exquisite collection of miniature, a term used for things smaller than miniatures. She will bring a doll house, inspired, incidentally, by Colleen Moore's doll house, with each room furnished in different materials; for instance, one will house all sterling silver items, another will have petit

JOIN THE THOUSANDS OF WOMEN WHO REGULARLY USE MARY KAY COSMETICS!!  
"NO WOMAN NEED EVER LOOK 40!"

Call, Elizabeth Harris Tel. No. 629-2836  
For a Complimentary Facial

**Custom Built Homes**  
Your Property or Ours  
We Furnish Plans-Arrange Financing  
One phone call gets you a home  
**H & W**  
**Development Co.**  
1201 W. Commerce Eastland  
**629-1305**



**LAUNCHING STAFF WATER PROJECT** - These men join happily in final preparations for the development of the long-awaited Staff Water System which will go into construction within ten days, be completed in 200 more days at a cost of \$254,627. This contract, awarded to the Beall Construction Co. of Abilene, will include all of the area east and west of Staff and south to the Don Estes Place. Shown from left are Staff System Board Member E.F. Arterburn; Board Member Cody McDaniel; Contractor R.S. Beall; Board Member T.L. Morgan; Contractor Joe Beall; System Secretary Jimmy Little; District Supervisor for Farmers Home Administration E.L. Foster; and Engineer Leon Decker. Cecil Reeves is president of the Staff Water Supply Corp. and A.J. Ingram is vice president. The other director is Larry Herrington. Yeatts & Decker of Abilene is consulting engineering firm.

**BOOK NEW SELECTIONS**

**NOTORIOUS WESTERN CHARACTERS**

**PIONEERS OF THE WESTERN FRONTIER**  
by Harriett Farnsworth  
Best Sellers: "... an unusual approach to the history of the West... Through the personal interviews of the author many of the scenes of the late 19th Century western frontier are revived... The volume will help fill out the historical section of the school library." Fwd. Photos. Gr. 7-up. CC. ISBN 0-8111-0102-9 \$5.95

**LAW WEST OF THE PECOS**  
by Everett Lloyd  
As saloon-keeper, Justice of the Peace, and Oracle of some of the most humorous decisions known to the law, Judge Roy Bean's posthumous fame has become worldwide. Ftrpc. Prolog. Photos. Illus. Gr. 4-12. CC. ISBN 0-8111-0133-9 \$5.95

**GREAT GUNFIGHTERS OF THE WEST**  
by Carl W. Brehnan  
Gripping, ruthlessly real biographies of the great gunfighters of the West by one of the foremost authorities of Western Lore. Complete picture section, including rare photographs of gunfighters. Gr. 7-12. CC. ISBN 0-8111-0077-4 \$5.95

**BAD MAN OF THE WEST, THE**  
by George Hendricks, Ph.D.  
What were the bad men of the Old West really like? J. Frank Dobie, authority on Southwestern literature said: "The Western bad man was different from ordinary criminals... George Hendricks knows what he was, and whoeever reads his book will know too." Illus. endpapers. Ftrpc. Fwd. by Captain John R. Hughes, Texas Ranger. 18 pages of photos. Appen. Biblio. Index. Gr. 6-12. CC. ISBN 0-8111-0010-3 \$5.95

**FIGHTING EDITORS**  
by J. A. Schmitt  
Pens clash with blazing six-guns. Portions of text lifted from original Western publications, errors and all. Excellently researched. Double-spread title page. Intro. Epilog. Ftrps. Illus. chapter headings. Gr. 7-12. ISBN 0-8111-0060-X \$5.95

**YOUNGER BROTHERS**  
by Carl W. Brehnan  
Reissued by popular demand. Ruthless, hair-raising story of infamous outlaw brothers—complete and authentic. Double-spread title page. Fwd. Photos. Illus. Gr. 7-up. CC. ISBN 0-8111-0241-6 \$6.95

**At Your Local Newspaper**

# Carbon News

By Mrs. Bob Hastings

Miss Mary Jo Baker and Mr. Aubrey Tucker were married Friday morning, Oct. 26, in the home of Mr. Roy Tucker, grandfather of the groom. Rev. Clarence Wilson of Lingleville officiated. The bride is the daughter of Mr. and Mrs. Tommy Joe Baker of Carbon. She is a graduate of Carbon High School. The groom is the son of Mr. and Mrs. Joe D.

Tucker of Cisco. He is a graduate of Cisco High School. Attendants were Miss Cordelia Regian of Carbon and Stanley Tucker of Cisco. Guests were the immediate families of the couple. The young people are at home at 705 W. Commerce, Eastland.

Mr. and Mrs. Bill Carlton have moved to Odessa last

week where he is employed.

Mr. and Mrs. Don Bennet of Wichita Falls and Mr. and Mrs. Kenneth Turner of Taylor were weekend visitors of Mr. and Mrs. Luther Reese.

Mr. and Mrs. M.M. Brackman and grandchildren Dean and Tommie Lee Turner of Pasadena and Mr. and Mrs. Johnny Brackman of Houston spent the weekend with Mr. J.B. Johnson and family.

Mr. and Mrs. Hulon Hogan and family spent Sunday with Mr. and Mrs. Truett Norris and Dickey.

Mrs. Price Mathison and Brenda of Abilene accompanied Rev. Mathison to Carbon Sunday and attended church service. The Mathisons were dinner guests of Mr. and Mrs. Charles Morgan.

Visiting in the home of Mr. and Mrs. Edd Ramsey last

week were Mrs. Stella Ramsey and Mrs. Lois Ramsey of Palacios and Mr. and Mrs. O.A. Ramsey of Abilene.

Mr. and Mrs. John Burns spent the weekend with his sisters Mrs. Ella Hewit and Miss May Burns of Levelland last weekend.

Mrs. Jack Daniels and Brenda of Eastland visited the W.J. Greers Sunday afternoon.

Mr. and Mrs. W.D. Greathouse of Russellville, Arkansas spent this weekend with Mr. and Mrs. Henry Lovell.

Mr. and Mrs. Carroll Hogan and family of Albany visited the Jim Hogan family last week.

Tommy and Dale Baker and another brother Buddy of Fort Worth were Deer hunting near Tinsleep, Wyoming recently. The party shot a 4 point buck.

Sr. C. Carl Rice and wife Jan of Norfolk, Va., are visiting his parents Mr. and Mrs. Henry Rice. Mr. Rice has returned to the states from the Mediterranean.

# attention

All major peanut producing states now have state legislative authority to deduct money from the peanut growers sales. In each state peanut grower leaders clearly saw the need for these assessments and worked hard to bring them about. All of them except Florida, who has just recently passed necessary legislation have organized and are carrying out successful checkoff programs. Some have been doing this for almost twenty years.

October 6 marked the third anniversary of the Texas Peanut Producers Board. Like most the other states, our act provides a refund clause for those who feel that the program will not benefit them or is money ill spent. After legislation was passed in Texas to authorize the program, a growers referendum was held to determine their attitude regarding such a program. A majority vote of 66 and two thirds percent was required for the referendum to carry. The result was 84.2 percent of those voting favored a program to assist them in research, insect and disease control, education and promotion.

As a result of the referendum, the Producers Board was created and has functioned in accordance with the legislation since the inception. Refunds to growers average 3.8 percent for the three years of collections. This reflects a continued favorable attitude on the part of growers. However, we do have those who say it isn't fair to automatically withhold \$1.00 per net ton from their sales because it doesn't do them any good and the buyer should not

have the right to withhold it. But is it fair? If it were not for the refund provision of the legislation, perhaps it would not be. Some states do not have this provision and the grower cannot get his money back. Is this fair?

The big question should be centered on the man who pays the bill. Is it fair for him to pay and his neighbor ride on his good graces? Well, perhaps it is, especially if he can receive gain without sharing it with the neighbor who refused to pay.

The USDA warns us that because of the rapid escalation of their cost, the peanut program is in jeopardy. We had approximately a 30 percent surplus of peanuts last year and as long as we have a surplus we are vulnerable to modifications and even complete program loss. World market price of peanuts is approximately one-half of our support price. If we lose our support price or less than the 75 percent of parity we're presently getting, we are in trouble.

In an effort to better organize ourselves and to study effectively together some means of combatting our situation, the National Peanut Growers Group was formed. It is the thinking of this group that it is better to sell our way out of this predicament rather than remain so vulnerable and find ourselves in trouble. This calls for an extensive promotional campaign to increase the consumption of peanuts both domestically and abroad. The Steering Committee of the NPGG has studied proposals of various public relation firms and reviewed their past work and selected Smith Bucklin &

Thursday, November 2, 1972

Associates of Chicago to conduct this campaign.

This firm has been quite effective in promoting other commodities such as popcorn, soybeans, and others and we feel will do a good job for peanuts. These are professional people and professional people require money. This money has to come from producers and the major portion has to come from the check-off programs. So if we do sell ourselves out of trouble, the question is raised as to who should benefit from the results. Is the man who is not willing to pay entitled to these benefits, should he be left to do his own research and marketing?

Is it fair for this organization and the organizations of the other states to represent only those who pay into the program? Would it be fair to those who are paying for us to represent both participants and non-participants? Due to

another record crop, peanut leaders will be busy throughout the months ahead negotiating program modifications and fighting to hold on to a program that will insure a healthy economy for the producer.

There are varied opinions as to what is fair. I personally feel that the man who pays the fare should get the ride and consequently I will work to that end.



NOVEMBER 1972

**GARDENHIRE OIL COMPANY**  
 Yes! We can sell wholesale to you!  
 See us for all your oil, grease, filters, spark plugs, brake fluid, anti-freeze, S. T. P. for oil, gasoline, diesel or radiator, tires for cars, truck or tractor. WE HAVE TANKS for farm or commercial gasoline and diesel fuel. See us before you trade. All major brands of Oil and Grease.  
**WHY PAY MORE??**

**perry's**  
**BIG CUTS IN FABRICS!**  
 NEW SHIPMENT  
**100% POLYESTER FANCY DOUBLE KNITS**  
 Machine Wash & Wear Reg. \$4.99 **\$2.77**  
 Full Bolts  
 Beautiful Multi Colors

**MEN'S DOUBLE KNIT SUITING**  
 Fall Colors Reg. \$5.99 **\$3.99**  
 1 - 5 Yard Lengths

**Fancy WIDE WALE CORDUROY**  
 Reg. \$1.39 **99¢**

**DOUBLE KNITS**  
 1 - 5 Yard Lengths Reg. \$2.99 **\$1.77**  
 Fall Colors

**DOUBLE KNIT**  
 Fall Colors Reg. \$3.99 **\$2.99**  
 On Bolts  
 Asst. Solid & Prints

**PRINT DRESS MATERIAL**  
 Assorted Values to 79¢ **4/\$1**

**perry's FABRIC CENTER**

**AIR CONDITIONING**  
**Smith's PLUMBING**

All the Benefits and Service a Motorist Might Need ARE AVAILABLE NOW!



Ray Woodall is YOUR MCAA Representative and can offer you these features:  
 1. \$500 Cash Appearance Bond  
 2. \$5000 Bail Bond  
 3. Communication Service  
 4. Emergency Road Service  
 5. Attorney Fees  
 6. Legal Fees  
 7. Away - From - Home Expenses  
 8. Roadrunner Touring Aids  
 9. Cash Rewards  
 10. Lost Credit Card Plan PLUS MUCH, MUCH MORE!  
 Call Ray and find out about the MCAA Benefits today! 507 S. Green - Eastland, Tex. 76448  
 817 - 629 - 2939

State Farm is now paying big 20% car insurance dividends to eligible Texas policy holders on expiring six-month policies.  
**CALL 629-1096**

**211 W. Main** like a good neighbor, B.T. Van Cleave is there.  
 STATE FARM MUTUAL AUTOMOBILE INSURANCE COMPANY - HOME OFFICE: BLOOMINGTON, ILLINOIS

**ABCO**  
 PLUMBING & HEATING CONTRACTING & REPAIR  
 Small Ditching Service  
 629-1200 - 629-1943  
 AFTER 5 p.m., call 647-1780  
 SERVING TEXANS 26 YEARS  
**Bob Williams** Owner

**SUPER SAVE MARKETS** Harvest of Food Savings

IMPERIAL Pure Cane SUGAR 5-Lb. Ba <b>65¢</b>	IMPERIAL SUGAR EXTRA FINE granulated	WHITE SWAN GOLDEN CORN 5 303 Cans <b>\$1.00</b>	WHITE SWAN MODERATELY SWEET CORN 5 303 Cans <b>\$1.00</b>
SHORTENING CRISCO 3-Lb. Can <b>69¢</b>	IMPERIAL CHEESE 10-Oz. Pkg <b>79¢</b>	TRASH CAN BAGS 43¢	DEL MONTE EARLY GARDEN SWEET PEAS 4 303 Cans <b>\$1.00</b>
DETERGENT AJAX Giant Box <b>59¢</b>	IMPERIAL CHEESE 15-Oz. Pkg <b>43¢</b>	PALMOLIVE LIQUID 32-Oz. Pkg <b>69¢</b>	WAPCO CUT GREEN BEANS 5 303 Cans <b>\$1.00</b>
WHITE SWAN TOMATO SAUCE 10 8-Oz. Cans <b>\$1.00</b>	IMPERIAL CHEESE 15-Oz. Pkg <b>39¢</b>	CREAM CHEESE 39¢	WAPCO CUT GREEN BEANS 5 303 Cans <b>\$1.00</b>
WHITE SWAN MARGARINE 4 1-Lb. Tubs <b>\$1.00</b>	IMPERIAL CHEESE 15-Oz. Pkg <b>99¢</b>	CHEESE WHIZ 99¢	DETERGENT PUNCH King Size <b>89¢</b>
KLEENEX TOWELS 3 Jumbo Rolls <b>\$1.00</b>	IMPERIAL CHEESE 15-Oz. Pkg <b>29¢</b>	FRUIT COCKTAIL 4 300 Cans <b>\$1.00</b>	WASH FANCY APPLES 29¢
DOG FOOD 3 300 Cans <b>89¢</b>	IMPERIAL CHEESE 15-Oz. Pkg <b>65¢</b>	WHEATIES 65¢	RUSSET POTATOES 10 lb. bag <b>69¢</b>
CHILDREN'S HAIR SPRAY 69¢	IMPERIAL CHEESE 15-Oz. Pkg <b>29¢</b>	MANDARIN ORANGES 29¢	VAN CAMP'S TUNA 3 Reg. Cans <b>\$1.00</b>
EXCEDRIN 177 Value <b>\$1.49</b>	IMPERIAL CHEESE 15-Oz. Pkg <b>49¢</b>	SWEET ROLLS 4 6-Oz. Cans <b>\$1.00</b>	BANQUET POT PIES 5 8-Oz. Pkgs. <b>\$1.00</b>
POLIDENT 59¢ Value <b>49¢</b>	IMPERIAL CHEESE 15-Oz. Pkg <b>67¢</b>	MARGARINE 49¢	GOLDEN NIP ORANGE JUICE 5 6-Oz. Cans <b>\$1.00</b>
TOOTH PASTE 39¢	IMPERIAL CHEESE 15-Oz. Pkg <b>43¢</b>	SWEET POTATOES 3 8-Oz. Cans <b>\$1.00</b>	PATIO COMB. CHEESE or BEEF ENCH. MEXICAN DINNERS Reg. <b>49¢</b>
TRAC II RAZOR 1.89	IMPERIAL CHEESE 15-Oz. Pkg <b>67¢</b>	WISHBONE DRESSING 3 8-Oz. Bks. <b>\$1.00</b>	Decker's LUNCH MEAT 45¢
TRAC II BLADES 89¢	IMPERIAL CHEESE 15-Oz. Pkg <b>43¢</b>	CANNED MILK 5 Tall Cans <b>\$1.00</b>	SAMMY'S PRIDE BACON Lb. Pkg. <b>79¢</b>
	IMPERIAL CHEESE 15-Oz. Pkg <b>43¢</b>	CINNAMON CRISPS 45¢	NEUHOFF HICKORY SMOKED SMOKIES 12-Oz. Pkg. <b>79¢</b>
	IMPERIAL CHEESE 15-Oz. Pkg <b>43¢</b>	KOTEX 12-Ct. Box <b>43¢</b>	SAMMY'S PRIDE FRANKS 12-Oz. Pkg. <b>49¢</b>
	IMPERIAL CHEESE 15-Oz. Pkg <b>43¢</b>	GRAPEFRUIT JUICE 48-Oz. Can. <b>45¢</b>	FRANK'S CHEESE SPREAD 8-Oz. Pkg. <b>49¢</b>
	IMPERIAL CHEESE 15-Oz. Pkg <b>43¢</b>	VAN CAMP PORK & BEANS 4 No. 2 Cans <b>\$1.00</b>	DECKER'S QUALITY MEAT BOLOGNA <b>69¢</b>
	IMPERIAL CHEESE 15-Oz. Pkg <b>43¢</b>	KLEENEX BOUTIQUE FACIAL TISSUE 125-Ct. Box <b>29¢</b>	SAUSAGE Gooch Lb. Roll <b>55¢</b>
	IMPERIAL CHEESE 15-Oz. Pkg <b>43¢</b>	CRACKERS 12-Oz. Box <b>39¢</b>	BATH BLACKHAWK HICKORY SMOKED HAM NUGGETT <b>\$1.69</b>
	IMPERIAL CHEESE 15-Oz. Pkg <b>43¢</b>	BORDENS ICE CREAM 79¢	BORDENS BUTTERMILK CHOC. MILK 49¢

PRICES GOOD THROUGH SATURDAY NOVEMBER 4

**SUPER SAVE**  
 Ph. 629-1191 400 S. Seaman  
 G.A. WHITE, Manager

**We Give Gold Bond Stamps Double Stamps**  
 Every Wednesday With \$2.50 Purchase or more  
 Excluding Cigarettes