

FREYNSCHLAG
Insurance
Weather
WARMER SUNDAY
Temperatures in the 70's.

EASTLAND TELEGRAM

EASTLAND, TEXAS 76448: Today's CENTER for tomorrow's FUTURE!

RECORD ABSENTEES
A record number of 370 persons had voted absentee for the Tuesday General Election, before the Friday, 5 p.m. deadline at the County Clerk's Office.

Volume 104 Number 89

Published each Sunday and Thursday in Eastland--Price 10¢ plus 1¢ tax

Sunday, November 5, 1972

Tid Bits

By HVO

PROPOSED: At least a Congressional Medal of Honor with two-tone silver and gold oak leaf cluster for Milton Fullen, the Chevrolet man. Why? If you must ask, you've not noticed the building coming down on the northeast corner of Plummer and S. Seaman intersection. Thanks Milton.

VOTE TUESDAY

VOTE EARLY Tuesday so that the vote counters here and around the nation and their allied communication helpers can give us all early returns early Tuesday night. You'll want YOUR vote to be in the quick returns.

VOTE TUESDAY

GOOD NEWS from County Clerk Johnson Smith who reports that a Thursday bulletin from the State Attorney General's Office DOES PERMIT us to take a marked ballot into the polls SO LONG as it is not marked in the CANDIDATES area. This means that for those of us who may have trouble remembering how we want to vote on the Constitution Amendments, we can mark a sample ballot (reduced in size this newspaper) on the amendments, and take it to the polls with us. "Texas Election Code prohibits the use of premarked ballot for candidates only", the bulletin reminds.

VOTE TUESDAY

EXTRA SPECIAL NOTICE: The firm selling advertising to underwrite a proposed map of this county DOES NOT have connection with the County Centennial program, nor is the firm representing the Eastland Chamber of Commerce, reports Mike Collins.

VOTE TUESDAY

Centennial Memorial

Club Renames Library, Plans Re-Location

Contributions are already moving in for the Centennial Memorial Library which the Thursday Afternoon Club has announced.

The Club voted Thursday to purchase the Sledge Building in downtown Eastland and to change the name of the library to the Centennial Memorial Library.

And immediately according to club officials, citizens began calling in contributions to be made in memory of departed loved ones.

The Woman's Club will remain at the present Plummer St. location.

Mrs. Jack Germany has been named public information officer for the new library project.

The library is to be dedicated to the many pioneers and to the successive generation of children, Mrs. Dan Childress, club president said. Mrs. Joseph M. Perkins, co-library



VOTE AS YOU DOG - GONE PLEASE - - BUT PLEASE VOTE. Pictured above is Christi Marshall and her dog Shadow as they do their bit to encourage registered voters to get out and vote Tuesday, November 7.

Mavericks Blast Loboes, 19-8

A lot of "ifs" are now straightened out in District 9-AA after Friday night's action. In what has to be their best-played game of the year, the Eastland Mavericks dominated the play, and beat the Cisco Loboes, 19-8. The score could have been much higher in favor of Eastland had not Cisco played their best in at least three goal-line stubborn defense situations, in what was otherwise the Loboes' weakest showing of the year.

Meanwhile down in Coleman, the District further got shook out with Coleman downing potent Clyde, 7-3. Comanche also whipped Hamilton, 47-12. Both Cisco and Eastland have been beaten by Coleman, so both towns were hoping for a Clyde victory because both still have to play Clyde, and before Friday, it could have resulted in a three-way tie to be decided by a coin toss. But

Friday put an end to that kind of speculation. Cisco meets Clyde there next Friday while Eastland is hosting Hamilton. The Mavericks won their tenth victory over Cisco in Friday night's test in the past 25 outings, and took the mythical county crown; with both teams having already beat Ranger. Coach Clyde Evatt's Mavericks put it all together with few miscues and the power attack of Back Tony Thomas who amassed nearly 250 yards, and Back Howard King who approached the 150 yard mark. The statistics are staggeringly in favor of Eastland, indicating that much more scoring could have been in the offering had not Cisco Head Coach Jim Puryear's crew been so stubborn down where it really counts at the goal post. Eastland had no fumbles and in fact scooped up a Lobo pass

| CISCO | EASTLAND |
|--------------------|------------------|
| 1st Downs | 19 |
| Rushing Yards | 330 |
| Passing Yards | 19 |
| Passes Completed | 3 of 7 |
| Passes Intercepted | 1 |
| 4 for 41 | 1 for 29 |
| 3 for 25 | Penalties, Yards |
| | 8 for 66 |
| | Fumbles Lost |
| | 0 |

to play turn around. Cisco's big moment came on a kick return touchdown by a freshman Lobo.

In perfect football weather before a packed Chesley Stadium in Cisco, Eastland took the opening kick and began immediately with their ground game. With Terry Ensor at quarterback, the Mavericks called on King and Thomas repeatedly for yardage which they delivered. A fast fake to King, and toss-out to Thomas played worked most of the night for the Mavs, although the Loboes read it right a few times and zeroed in.

The first Eastland first down came on the fake with Thomas going 35 to the Cisco 12. A nice pass to Larry Barnes got another first and put the ball on the one. Next play up King plowed over and Plack Kicker Tommy Morren followed with a perfect boot to make it a kick 7-0 for Eastland.

But it didn't stand up long. On the kick, also by Morren, Lobo Alternating Freshman Quarterback Ronnie Powelson took the kick deep, and the Maverick defenders missed him on every count, and he made the march 80-yard to set the Cisco stands on ear with a quick and easy six point touchdown. On point after Quarterback Billy Ervin plowed over after a Maverick penalty moved the ball halfway, and the score stood 8-6. Eastland culminated a four-firsts drive later in the first quarter with a field goal from about the ten, when Morren proved accurate and the ball sailed through the uprights for three more points, and the Mavericks moved out in front 10-8.

On the kick after, a Lobo dropped the ball and Maverick Sammy Herrera recovered but it was a quick turn over as a Lobo snagged an Ensor toss to set up a series of quips late in the first quarter. Cisco had two 15 yard penalties on their first play from center of the game, and on the third try Ervin tossed, and Eastland's Leo

Fullen Motor Co. Laugh-A-Day

A baker in El Paso went crazy trying to cheat on the doughnuts by making the holes larger every day. The larger he made the holes, the more dough it took to go around them.

General Election Polls Open 8 to 7 Tuesday In 8 County Boxes

A record number of local voters will join their fellow citizens across the nation Tuesday in going to the polls to mark a bed sheet sized ballot in the 1972 General Election.

The nominations are all in and there are choices in a goodly number of party columns, as well as 14 Constitutional Amendment Propositions.

Heading the list on the ballot will be the decision for the Chief Executive of the nation, in the choice between Incumbent Republican President Richard Nixon and Challenger Democratic George McGovern.

Polls open at 8 a.m. and voting will continue until 7 p.m.

A record number of people are registered and qualified in the county, with a total registration of 9,374, including 652 under 21. By voting precincts, the total looks like this:

Eastland, 2,265; Olden, 246; Ranger, 1,593; Desdemona, 201; Gorman, 990; Carbon 280, Rising Star, 1,210; and Cisco, 2,589.

Gaeta caught for another exchange. Early in the second quarter Morren tried another field goal after the Loboes had proven stiff at the goal, but the kick went wide and Cisco took over for their first full set of downs, ending in a punt.

After the recess at half, the Mavericks kicked and the Loboes went for it on a fourth down situation, and the Mavericks took over on the Cisco 27. King got a big 14 and repeated with short gainers moving right to the goal, but it was one of those times that the Loboes were stubborn, and the ball went over, but it proved fruitless and after a punt, Eastland had the ball again on the Cisco 40. Thomas, after the famous Ensor fake, scampered 38 to the Cisco 12. King got a yard, and then from the 11, Thomas zapped around right end for another Maverick score. Morren's PAT failed and it stood 16-8.

Cisco got its first first down early in the fourth quarter and followed with two more in quick succession. Ervin and Powelson alternated at signals and called on Ronnie Pence and others for yardage. A pass to Darryl Adams gained a big 13 for the Loboes.

Maverick Morren got his second field goal late in the fourth from about the ten for the final scoring of the game.

End B.W. Robertson had an outstanding game for Eastland, breaking up a key pass try to Adams, and four plays later intercepting an Ervin toss. In the interim, Pepper Puryear had an Ervin pass followed by Harold Prescott's successful grab.

Outstanding at defense for the Loboes were Ervin, Mike Moore and Prescott.

Doing yeoman's chores at defense for the Mavericks were Larry Bolles, Mike Reid, Robertson and Garry Barnes.

The U.S. Senatorial race pitting Incumbent Republican John Tower and Challenger Barefoot Sanders is attracting great interest.

U.S. Rep. Omar Burleson (Democrat) is unopposed for re-election.

Democratic Nominee Dolph Briscoe is opposed by Republican Henry C. Grover for the Governor's Mansion in Texas.

Democrats Bill Hobby is unopposed for Lt. Gov., as is John Hill for Attorney General and Robert S. Calvert for comptroller of public accounts.

Incumbent Democrat Jesse James is challenged by Republican Maurice Angly for State Treasurer.

Other unopposed Democratic office holders are Bob Armstrong, Commissioner of General Land Office; John C. White, Commissioner of Agriculture; Joe Greenhill, Chief Justice, Supreme Court; Price Daniel, Associate Justice Supreme Court; Sam Johnson, Associate Justice, Supreme Court; Wendell A. Odum, Judge, Court of Criminal Appeals; State senator Tom Creighton, 22nd District.

State Rep. Joe Hanna, District 54 incumbent, is opposed by Jack Hetzel of Jacksboro, Republican. Democrat James M. Binion and Republican James Rominger seek a seat on the State Board of Education, District 17.

Unopposed Democratic local candidates are:

Raleigh Brown, Court of Civil Appeals, 11th District; Earl Conner Jr., District Judge, 91st Court; Emory C. Walton, Criminal District Attorney of Eastland County (Unexpired Term); L.E. Sublett, sheriff; Nancy Trout, Tax Assessor - Collector; Chester H. Breneman, County Surveyor; Danny Woods, Precinct One Commissioner; L.T. Owen, Commissioner Precinct Three (Rising Star); Arley Bibby.

Constable, Rising Star; Bill Hunter, Constable, Precinct One (Eastland).

The 14 amendment propositions are briefly as follows:

(In order of appearance)

1. To increase salaries of Texas legislators from \$4,800 to \$8,400 a year.

(Most unbiased observers think a little increase would be in order.)

2. To abolish the Lamar County Hospital District.

(Seems there's no other way to handle this routine business legally.)

3. To require all justices of the peace to be paid on a salary basis.

(Smaller counties may want to keep fee system of compensation.)

4. To direct the new Legislature to set up a commission to revise the state constitution, meet in January, 1974 to consider the revision and decide what proposals should be submitted to the electorate.

(There seems to be some misunderstanding about the effect of this proposition.)

5. To allow certain tax exemptions for disabled veterans, dependents and survivors.

(Could be more trouble than it's worth.)

6. To permit local governments to exempt not less than \$1,000 of the value of residence homesteads of persons 65 or older from local property taxes.

(Optional feature could cause confusion and inequities.)

7. Women's rights verified by constitutional provision.

(May not be necessary; on the other hand, can't hurt much.)

8. To provide four-year terms of office for governor, etc.

(Already the law and practiced in 39 states.)

9. To exempt directors of soil and water conservation

districts from constitutional prohibition against holding more than one office.

(No serious objection has been raised.)

10. To allow submission of constitutional amendments at Special Sessions.

(With present rules, Legislature has proposed about 335 amendments.)

11. To provide a salary of \$22,500 each for lieutenant governor and speaker of the House.

(These officials now draw only a legislator's \$400 a month.)

12. To permit state employees to serve on governing boards of school districts, cities, other local districts.

(Same comment as for No. 9.)

13. To raise to 6 percent weighed average a year the interest rate on bonds authorized by the constitution.

(They'd better do it if they count on selling them.)

14. To enable counties to reduce their permanent school funds and distribute the money to independent and common school districts on a per scholastic basis.

(The State will have to make up for those that do it.)

(ED. NOTE: Evaluations and opinions are from Highway Highlights, a publication of the Texas Good Roads Association.)

1968 ELECTION

In the 1968 General Election, Democrat Hubert Humphrey carried Eastland County, 3,231 to Richard Nixon's 2,699.

Nixon carried the absentee and the Eastland box in that year. The Eastland Precinct vote was 681 Nixon and 597 Humphrey -- so it was close there too.

The Socialist Workers and Raza Unida Vantis have columns on the ballot with 13 candidates offered in the two.

The WSCS will meet Tuesday at 9:30 a.m. at the First United Methodist church.

WHERE TO VOTE TUESDAY

- Pct. 1 Eastland Courthouse : Mrs. Jeanette Harris; Mrs. Marcus Odell, alternate
- Pct. 2 Olden Post Office: Jim Everett; Mrs. S.G. Evetts, Alternate
- Pct. 3 Ranger Police Station: Charles Arnett; Mrs. L.H. Hagaman, alternate
- Pct. 4 Desdemona Post Office: L.E. Clark, Mrs. Myrtle Reed, alternate
- Pct. 5 Gorman Post Office: Odie Brightwell; Glen Jordan, alternate
- Pct. 6 Carbon Post Office: Mrs. D.D. Sandlin; Mrs. Murl Campbell, alternate
- Pct. 7 Rising Star City Hall: G.A. Dunn; Fred Price, alternate
- Pct. 8 Cisco City Hall: J.V. Heyser, Jr.; W.R. Huestis, alternate

POLLS OPEN 8 a.m. to 7 p.m. VOTE EARLY!!

YOUR 'ONE VOTE' COULD MAKE THE DIFFERENCE

Work Wonders

Sunday,
November 5
1972

FOR SALE

FOR SALE: Impala Chev. 4 door 327 automatic shift. Good condition. See at 908 S. Bassett in Eastland. t-89

FOR SALE: Cabin on Lake Leon near dam and a 17' A Cat Bulldozer. Call Adrian Bryant 734 - 5642 in Gorman. t-89

MISC. FOR SALE - CARPETS a fright? Make them a beautiful sight with Blue Lustre. Rent electric shampooer \$1. Perry Brothers. t-89

3 Month old 18 inch WM441 G.E. Black and White portable television A steal at only 129.99 phone 629-2662

FOR SALE - CLEAN expensive carpets with the best Blue Lustre is America's favorite. Rent shampooer \$1. Coats Furniture. t-89

FOR SALE: 3 bedroom, 2 bath home, excellent condition and location, carpeted. Might consider trade. Call 629-1676. t-89

FOR SALE: Dress up your office with these elegant desk sets from Eldon. Ash trays and pencil cups to match. See at the Eastland Telegram. t-89

HOMES AND LAKE CABINS. For leisure living, on your lake lot or home site. 9 floor plans: 1 to 4 bedrooms, 1 1/2 - or 2 baths. Many deluxe options to choose from. Finished completely, throughout. Reasonable prices. Suitable Financing available. To really see and appreciate our high-quality homes, you'll have to come by our factory sales office at 2409 N. Main St., Cleburne, Texas. 76031. Ph. (817) 641-9107. NBC Modular Homes. t-96

FOR SALE: The Board of Trustees of the Eastland Independent School District will accept bids until 7:00 p.m. Monday, Nov. 13, 1972, for the purpose of selling lot 18, E.L. Woods addition of City of Eastland. (NW Corner of Lens and Bassett Streets) along with the house and out-buildings located on the site. The Board reserves the right to refuse any and all bids. Bid forms may be secured at the Business office at the Eastland High School. t-11-12

FOR SALE: AKC Toy Poodle puppies, black or white. 629-2328 or 1006 W. Commerce. t-89

FOR SALE: In Eastland 3 bedroom, 1 bath house, paved street, excellent condition. Phone 653-2444. t-89

TO MEET BANK NOTE: Sell jeep Station Wagon and tractor. Price B.J. Laub, Rt. 1 Carbon. Ph. 629-2586. t-90

FOR SALE LAKE LEON CABIN.
817-968-3332

FOR SALE: Hospital bed, mattress and side rails. One half mile east of Morton Valley 629-1864. t-95

FOR SALE

EASTLAND PET SHOP
Tropical Fish And Supplies
208 N. Oaklawn
Call 629-1237
t-96

For Sale
All kinds small appliances
Electric motors. Will trade.
Home after 5p.m. 3mi. S.
Cisco Hwy. 183 T.E.
Weathersbee

GRAND OPENING OLDEN GIFT SHOP
4 mi. E. on Int. 20
MEXICO IMPORTS
Large selection of arts on
velvet, art, plaster, planters
and numerous other items.
Ph. 629-1235. t-89

A. K. C. POODLE Puppies
Call 629-1211

FOR SALE: 71 Honda 450.
Priced for quick sale. Call
442-3623. t-93

FOR SALE: In Olden 1.1
acre 31 x 13 block building
600 ft. paved road frontage.
Call 653-2268 or 629-
2503. t-91

FOR SALE: Must sell 2
registered 70 bright sorrel
Stallions, very gentle, good
confirmation, top blood line,
trained, broke to ride, start
at the gate, also a double
registered 68' Palomino
Stallion, 16 hands, good
blood line, confirmation,
proven Station, for more inf.
phone 653-2268 or 629-
2503. t-90

FOR SALE: Disc plow, 2
disc with 3 point hitch.
Cultivator with 3 point hitch.
8 - N Ford Tractor Excellent
Condition. New paint.
Telephone 629-1109. t-96

FOR SALE: Spinet type
mahogany piano, full key
board. Phone 653-2268 or
629-2503. t-90

Sewing machines. Touch
and Sew Singer Model 600
Does everything \$51.35 629-
2920. We also clean and
adjust all makes and
models. t-93

FOR SALE: 1965 Fastback
Mustang, new paint, air and
automatic, 289, V-8, good
tires, extra clean. Call 629-
2562. \$775.00. t-97

1969 GMC Long wide bed,
new tires, power steering,
radio, heater, automatic
transmission. Good
condition. \$1400.00. 629-1361 or
629-1962. t-93

NOTICES

Free Delivery After 5 p.m. \$2.50 Minimum ROGERS GRO 629-2292

Singer Sewing Machine
Repair Center
Servicing all makes,
New and Used for sale.
Complete line of parts.
MODERN DRY CLEANERS
210 S. Seaman

Are you sure your home is insured? Let Freyschlag Insurance Agency check over your existing policy for needed changes - or let us fix you a new one. Freyschlag Ins. Agency, 107 W. Main - 629-2275. "On The Square".

NOTICE - Mattresses. Complete bedding made by Western Mattress Co., San Angelo. Best quality, low price, renovate or exchange new. Every other Wednesday. They're guaranteed. For home appointment, call Lois Meazell, 629-2703, leave name. if

B&H TRADING POST
311 N. Seaman
Buy, Sell, Trade
Pho. 629-2885
Cash or terms
t-1 mo. 11-5

Freyschlag Insurance has exactly the kind of policy that you need. Check with Charles today and see just how he can help you. Freyschlag Insurance Agency, on the Square in Eastland. 629-2275. 107 W. Main Street

Let us insulate your house. Warmer in winter, cooler in summer. Phone 817-643-4222, Rising Star, Mr. Gibson. t-93

FOR TRADE: Good 5 room house in Andrews, Texas. Carpeted, nice yard, corner lot. Trade for house of equal value on area lake, waterfront preferred. Write O.O. Barrett, 709 NE 3rd, Andrews, Texas. 79714. t-94

HOLT'S DITCHING SERVICE
Water Service Lines
Sewage Drain Lines
PVC Pipe & Fittings
Installed & Repaired
SIDNEY HOLT
311 N. Seaman
Pho. 629-2885.

FOR RENT

FOR RENT: Unfurnished cottage. Only \$35 per mo. 503 S. High top of Park Hill. Call 629-1417. t-89

FOR RENT: Nice size 2 bedroom house for rent in Eastland. 629-2396.

FOR RENT

FOR RENT: Furnished, private 3 room cottages with carports. Daily, weekly, or monthly. Pleasant Place Motel west edge of Eastland. Call 629-8878. t-89

Village Hotel
209 West Main. Rooms by the day, week, or month. All utilities paid. Call 817-629-1716
1 mo.

HILLSIDE APTS.
Attractive 1 bedroom & efficiency - \$55 to \$70 per month. Water & gas paid. Call 629-1374. t-71

Wanted

WANTED: Coordinator for activity program in area nursing home. Ability to work with people, recruit and supervise volunteers, knowledge of arts and crafts necessary in planning and carrying out programs. Salary depends upon qualification. Contact Lou Nix, Hickman Nursing Home, 401 Moss, Eastland. t-89

WANTED: Waitress at Old Rip Cafe. Eastland. Apply in person. t-89

WANT TO BUY acreage from owner near my property northwest of Carbon Harry Holt. Ph. (915) 677-7884. 757 Davis Dr., Abilene, Texas. t-89

Custom Upholstering and Furniture Refinishing. Eddie's Upholstery Shop 205 N. Dixie
629-1304
Open 8 to 6 weekdays.
t-90

NOTICES

DAY CARE CENTER
Need children from 3 to 6 years old. Call 629-2398. t-93

Home Needed - Beautiful 30 inch Harvest Gold Westing house Electric Range - Self cleaning oven - complete timer System you'll have to see to believe only 288.88 phone 629-2662

Needed: Some to take up payments on 1 VMTSS RCA Stereo An Asset to any Home. 189.79 phone 629-2662
NOTICE: Will not be responsible for debts other than my own. Gary D. Moore. t-89

CARPET CLEANING With STEAM - VAC
Experienced, courteous, reliable service. Work guaranteed. Free estimates. Reasonable prices.
Call 629-1304
8:30 - 5 p.m.

SERVICES

GREGORY PLUMBING & HEATING
629-2844
Res. 639-2340

Mercers Appliance Repair
Dishwashers, washers, dryers, stoves, disposals and ovens
G. R. Mercer, Olden, Texas
Call 653-2473

"We can handle anything but litterbugs."
Goode Pest Control
Phone 629-1179 after 3:00
310 N. Ammerman
roaches, ants, termites, moths, spiders.
ALL GUARANTEED

LEGAL NOTICE

NOTICE TO BIDDERS
The Eastland County Commissioners Court will receive bids on purchase of a new motor grader to be used in Precinct No. 3, Eastland County, Texas. Bids will be opened at 10:00 a.m., November 13th, 1972, at the Eastland County Commissioners Court Room, Eastland, Texas. Successful bidder must take in trade a used No. 45 A C Motor Grader. Interested bidders may inspect trade-in at Rising Star, Texas. Specifications for new motor grader may be obtained from Eastland County Auditor, Eastland, Texas.

Published by order, Eastland County Commissioners Court. 11-5, 11-9

FOR RENT:
this
MINI-BILLBOARD
for
ONLY \$3.50 a month
Call your local paper!

EMMET MORREN PLUMBING COMPLETE REPAIR SERVICE
1015 W. Main
629-2092
24 Hour Service

MASONIC LODGE NO. 467
Meets second Thursday of each month at 7:30 p.m. in the Masonic Hall. Call V.S. Day, W.M. at 653-2444 or L.E. Huckabay, sec'y at 629-1391 for information.

FOR RENT:
this
MINI-BILLBOARD
ONLY \$3.50 a month
Call your local paper!

H.V. O'BRIEN, Publisher and Editor
Second Class Postage paid at Eastland Texas under Act of Congress on March 1870.
Published semi-weekly - Thursdays and Sundays by Eastland County Newspapers, Inc.

SUBSCRIPTION RATES: By carrier in city, 15 c a week or 65 c a month; one year by mail in county, \$5; city P.O. Boxes, \$6; one year elsewhere in state, \$7; out of state, \$8.

NOTICE: Any erroneous reflection upon the character, standing, or reputation of any person, firm or corporation which may appear in the columns of this newspaper will be gladly corrected upon being brought to the attention of the editor.

SOUTHLAND LIFE INSURANCE
M. H. PERRY
100 S. Seaman
629-1566
629-1095

EASTLAND ROTARY CLUB
Pat Miller, president
Meets each Monday

Lost & Found
FOUND: A solid white female German Shepherd. Anyone knowing any information about the dog may call 629-1621.

LOST: Reward for gold initial ring, initials W.B. Lost at pep rally in Eastland or Eastland - Olney game. Please call 629-2719. t-89

POSITION OPEN: Central Texas Opportunities, Inc., Family Planning Project has a position open. The position is for a Registered Nurse for an eight-county Family Planning Program. For further information, applications and job descriptions write Central Texas Opportunities, Inc., Family Planning Project, P.O. Box 820, Coleman, Texas 76834. Last day for filing applications is November 10, 1972. Central Texas Opportunities, Inc. is an Equal Opportunity Employer. t-90

FOR RENT:
this
MINI-BILLBOARD
ONLY \$3.50 a month
Call your local paper!

INSULATION



REAL ESTATE

Business Property
Restaurant and meat market & locker plant, large building with apt. upstairs in Eastland. Equipped and ready to go.

Small grocery, station, extra land with trailer parking spaces. Stocked & equipped and ready to go, with living quarters. Ideal for semi-retired couple. Asking \$10,600.00. Make us an offer.

Lake Property
Over an acre of deeded land at Lake Leon. 4 bedroom home, large screened in porch, 2 baths, storage bldg, water well, pressure system. \$11,500.00

Homes For Sale In Eastland

2 bdrm home with 20' x 40' shop building. Fronting Main Street. Suitable for small business of some type. Make us an offer.

Nice 3 bdrm home, 75' x 275' lot, 2 baths, fireplace, central heat, carpet, double carport and storage building. \$16,800.00.

Nice 2 bdrm. frame 50' x 140' lot. Wall to wall carpet, 1 1/2 baths, neat kitchen, washer hookup, central air and heat. Close to school. \$15,225.00.

2 bdrm. house with 50' x 150' lot. 1 bath, carpets and drapes go, washer hookup, 2 car garage, Hillcrest Addition. \$9,500.00.

2 bdrm. brick, 1 bath, garage, large lot with pecan trees. Make us an offer.

2 bdrm. frame, large 150' x 200' lot. Washer and dryer hookup, close to school. Owner might consider some trade or will finance himself. \$5,500.00

Homes in Ranger

3 bdrm. frame, 1 bath, living room, dining room, kitchen, enclosed porch. \$3,500.00

3 bdrm frame. Large lot 160' x 225'. Some carpeting, garage and carport. \$7,500.00.

Nice 3 bdrm frame home, good closets, washer hookup, wall to wall carpeting throughout, garage with storage, fenced in back yard. \$11,750.00

Houses in Carbon
Nice 3 bdrm., frame home, wall to wall carpet, built in oven and range, washer and dryer hookup, cellar and garage. \$8,750.00.

Land
160 acres sandy land on pavement. Suitable to be put in Coastal. \$175.00 per acre

80 acres land with nice brick home on pavement.

120 acres irrigated peanut farm with over 90 acre allotment. \$500.00 per acre.

200 acre unimproved stock farm. 50 acres cultivated. One well. 2 tanks

320 acres stockfarm. 90 acres cultivated. Good improvements, 6 miles from Cisco, plenty water, good hunting.

590 acre sandy land stock farm, 9 pastures, 3 wells, 3 tanks, small house, corrals and barns, 40 acres peanut allotment, \$275.00 per acre.

We have several large ranches, motels and other businesses for sale and trade. Contact us.

KINCAID REAL ESTATE
100 South Seaman
Eastland, Texas
629-1781
Robert M. Kincaid
629-2721
J.W. Elder
647-1321
Keith W. Starr
442-3968

CANCER INSURANCE UP TO \$50,000
M.H.PERRY
629-1566

NOW OPEN EASTLAND TV SERVICE
Color & B & W
SPECIALIZING IN A-1 REPAIR

We Service All Makes
Free Pick up & Delivery
611 1/2 W. Commerce
629-2829
(Behind Bordens Milk)
Wayne Bailey, Owner Dale Chick, Service

REAL ESTATE

ALL TYPES OF REAL ESTATE:

HOMES
farms
ranches

Financing Assistance

Listings requested and long list of good properties on hand

CALL US AND LET US SHOW YOU HOW WE CAN HELP YOU

M. L. TERRELL REAL ESTATE
Farm Bureau Building
Hiway 80 East
Tel. 629-1725 Day
Night call 629-2443
Eastland, Texas



"WHAT - lost another job?"

YOUR LOCAL INDEPENDENT INSURANCE AGENT is on the job 24 hours a day, providing policies from a variety of companies to best match your needs - and working to service and collect your claims in full. We invite you to insure with Kinnaid Insurance Agency.

KINNAIRD INSURANCE AGENCY
207 W. Main Since 1919
Don Kinnaird Eastland 629-2544

CONFIDENCE
2933 JAN 72 M.P. 65
Our Purpose Is To Guide You
Our thoughtful attention is given to every necessary detail. You can have confidence in our experience.
We take care of all the arrangements, expertly, with earnest consideration for the family's wishes.
Arrington Funeral Home
Ph. 629-2611 -- Eastland
Friendly Personalized Service



HD NEWS

By Janet Thomas County Home Demonstration Agent

Despite all the rain and cold weather, the Senior Citizen's Bazaar was a big success. There were 62 exhibitors who sold \$792.74 during the two day sale. All money from the sales goes to the exhibitors. The many people that worked on all the various committees plus the Home Demonstration Club ladies who furnished all the

delicious food a big "Thanks" goes to each of you.

This was the fourth annual county wide Bazaar of this type and the interest and participation is growing each year.

Home Demonstration Council met this week for their regular monthly meeting. Council

members made plans for their Christmas party and program which will be on December 1st. Also Council will sponsor a bake sale during the county Pecan Show on December 15 and 16 in the Courthouse Lobby.

Mrs. Doris Myers, Home Management Specialist for the Texas Agricultural Extension Service at Texas A&M, will be in Eastland this coming week to meet with the Family Living Committee. Plans are being developed for a "Business and Estate Planning Seminar for Women". The Seminar will be held in the near future and

present important business and legal information for women.

The Family Living Committee is a group of women

from each community in the county that study and develop educational home economics programs for women and families.

Last week two outstanding 4-H'ers from Eastland County were honored at the annual District Eight 4-H Gold Star Banquet in Stephenville. Cynthia Claborn and William

Donham of Eastland County were among some 35 4-H Gold Star winners to receive recognition at this banquet. Congratulations Cynthia and William for a job well done!

NOW OPEN EASTLAND TV SERVICE

Color & B&W Specializing In A - 1 Repair We Service All Makes Free Pickup & Delivery 611 1/2 W. Commerce 629 - 2829 (Behind Borden's Milk) Wayne Bailey, Owner Dale Chick, Service

Furniture - Carpet - Appliances
Serving Eastland County For Over 51 Years
RANGER FURNITURE EXCHANGE
No Interest Or Carrying Charges For 1 Full Year On Furniture & Carpet - Free Delivery
Phone 647 -1404 Ranger, Texas

JRB Unbeatable prices

SAVES YOU MOST SERVES YOU BEST

3 CONVENIENT LOCATIONS TO SERVE YOU

CISCO - EASTLAND - RANGER

WE RESERVE THE RIGHT TO LIMIT QUANTITIES



Look at the way we've cut prices and you get S&H Green Stamps, too!

Unbeatable stamps

November 7 - 11, 1972

DOUBLE STAMPS - WEDNESDAY & SATURDAY

COTTAGE CHEESE Foremost 24 oz. ctn. **49¢**

DR. PEPPER 10 oz. Bottles - Plus Deposit 8 Pack **49¢**

Del Monte Cut **GREEN BEANS** 5/\$1 No. 303

CRISCO 3 lb. can **69¢**
With Purchase of \$5.00 or more Exclud. Cigs. LIMIT 1

PORK CHOPS Family Pack lb. **89¢**

PORK STEAKS Extra Lean lb. **79¢**

Parade **COFFEE** 1 lb. can All Grinds **69¢**

Del Monte **SPINACH** 5/\$1 No. 303

PORK ROAST JRB 1 lb. carton lb. **69¢**

SPARE RIBS Excellent for Bar-B-Q lb. **49¢**

Del Monte **CORN** 5/\$1 No. 303 Golden Cream Style or Whole Kernel

Del Monte **PEAS** 5/\$1 No. 303

BACON Decker All Meat lb. **79¢**

Sunday House **SMOKED TURKEYS** 6-8 lb. avg. lb. **99¢**

Whole Sun Pure Florida Frozen **ORANGE JUICE** 6 oz. can 5/\$1

Home Laundry size **CHEER DETERGENT** \$2.59

FRANKS 12 oz. pkg. lb. **59¢**

TURKEY DRUM STICKS Gooch lb. **1.09**

DASH 30 Off Label Jumbo size \$2.19

Oscar Mayer Pure Pork **PORK LINK** lb. **1.09**

USDA Inspected **HOT LINKS** lb. **37¢**

Oscar Mayer All Beef **FRANKS** 1 lb. pkg. lb. **1.09**

FRYERS BREAST QUARTERS All White Meat lb. **39¢**

Gooch Olde Virginia **FREE SAUSAGE** Buy one, get one free. 1 lb. **29¢**

FRYERS LEG QUARTERS All Dark Meat lb. **49¢**

USDA Inspected **FRYERS** Whole Only lb. **29¢**

PALMOLIVE LIQUID 67¢

9 oz. can **AIR FRESHENERS** 59¢ Sun Country All Scents

Future **FLOOR FINISH** 27 oz. bottle \$1.29

Regard **PANELING CLEANER** 14 oz. can \$1.69

Rain Barrel **FABRIC SOFTNER** 26 oz. Bottle 79¢

Rainbo Dills or Sours **PICKLES** 16 oz. jar 47¢

Pledge Regular or Lemon **FURNITURE POLISH** 7 oz. can 95¢

Medium or Wide **NOODLES** 8 oz. bag 29¢

Pet Instant **MILK** 8 quart \$1.09

Pet Instant **MILK** 12 quart \$1.59

Yellow **ONIONS** 2/29¢ lbs.

Rome **APPLES** lb. 19¢

CABBAGE lb. 10¢

SWEET POTATOES lb. 19¢

Russet **POTATOES** 8 lb. bag 69¢

BONUS CARD MONEY WINNERS

- \$20.00 Jeannie Cogburn
- \$50.00 Marie Boyett
- \$50.00 Erma Simmons
- \$100.00 Mrs. C.E. Moats
- \$1,000.00 Mrs. Evelyn Leshikar
- \$50.00 Mrs. Hattie Williamson
- \$100.00 Mrs. J. Dale Baker
- \$50.00 Lee Michael
- \$20.00 Juana Sanchez
- \$20.00 L.M. Halston
- \$50.00 Alice Morris
- \$20.00 Mrs. Ben Box
- \$100.00 Mrs. B.J. Densman
- \$100.00 Melvin Bridges
- \$50.00 Leona Burns
- \$100.00 Norma Mooring

American Beauty 12 oz. Bottle **CATSUP**

Libby or Del Monte **PUMPKIN** No. 303 can

Head & Shoulders **SHAMPOO** Reg. Lotion 3.6 oz. Reg. 95¢ **79¢**

CONTACT CAPSULES 20's Reg. \$2.25 **\$2.29**

Regular or Super **TAMPAX** 40's Reg. \$1.99 **\$1.29**

Secret Spray **DEODORANT** 4 oz. Reg. \$1.00 **79¢**

Sinarest Reg. \$1.29 **79¢**

Body All **DEODORANT** 5 oz. Reg. \$1.29 **99¢**

Scope **MOUTHWASH** 12 oz. Reg. \$1.29 **79¢**

NO MORE TANGLES 7 oz. Reg. \$1.29 **99¢**

Garden Fresh PRODUCE

Susy the Checker says

STOP! DON'T FORGET YOUR

BONUS CARD

WHEN YOU VISIT OUR STORE!

YOUR Bonus Card MAY ENTITLE YOU TO \$1,000.00 in CASH!

4-H NEWS

Cynthia Claborn, Cisco 4-H Club and William Donham, Nimrod 4-H Club, were honored at the District 4-H Gold Star Banquet, Saturday, Oct. 28th. Cynthia and William received the Gold Star, the highest County 4-H Award, and were presented with certificates for their achievement.

The banquet was sponsored by the Electric Cooperatives serving the area. Attending the Banquet from Eastland County were Mr. and Mrs. W.L. Donham, Mr. and Mrs. Bill Claborn, Judge and Mrs. Bailey and Mr. and Mrs. Jasper Williamson.

Milva Kincaid, Jo Ann Green, Tim Ferguson and William Donham met Saturday morning, Oct. 28th, to discuss the establishment of a Junior

Leaders Association and how it would be useful to the County 4-H program. The steering committee feels that Junior Leaders can take over many of the rolls now performed only by Adult Leaders. They would work as project leaders and help many of the younger 4-H members.

The committee decided to have its first meeting of the 4-H Junior Leaders Association on Saturday, Nov. 18th, at 3:00 p.m. at the Cisco Chamber of Commerce. At this meeting officers will be elected and other business taken care of.

The Adult Leaders Association will meet on Tuesday, Nov. 7th at 7:30 p.m.

Farm Bureau Represented At Convention

Eastland County Farm Bureau will be represented by twelve voting delegates at the Texas Farm Bureau annual convention to be held Nov. 12-15 in Houston.

They are: Mr. and Mrs. Jack Cozart, Cisco; Mr. and Mrs. Sam Kimmell, Cisco; Ted Botts, Ranger; Mr. and Mrs. C.M. Guthery, Desdemona; Mr. and Mrs. Dee Williamson, Eastland; Mr. and Mrs. Henry [unclear] at the Farm Bureau Building in Eastland. This is a very important meeting as there is much business to discuss. All 4-H parents and leaders are urged to attend.

Fry, Cisco; and Winford Fry, Cisco.

Also attending the 39th annual Texas Farm Bureau meet from this county will be Buddy Aaron and Omer Akers. They will be among the some 1,500 persons from the 206 organized county Farm Bureaus in the state expected to attend the event.

Altogether, there will be some 900 voting delegates from county Farm Bureaus who will formulate Texas Farm Bureau policies for 1973 and recom-

mendations to the American Farm Bureau Federation on national issues, based on resolutions from county conventions over the state.

Dolph Briscoe of Uvalde, Democratic gubernatorial nominee, will be the principal guest speaker at the convention. Other speakers will include Minister R.J. Weber of Zionsville near Brenham who will deliver the sermon at the vesper service opening the convention. Texas Farm Bureau President J.T. Woodson, TFB Executive Director Warren Newberry and Marvin McLellan of Lexington, Miss., who will be the banquet speaker.

Other highlights of the convention will be the annual TFB queen contest with 12 contestants representing that

many districts, a young people's Discussion Meet and Talent Find, and special conferences with outstanding speakers, relating to a number of commodities and other matters of interest to Farm Bureau members.

Sunday, November 5, 1972

HELEN CRAWFORD
Representative of
GAY TRAVEL SERVICE, INC. of Abilene
Phone 442-2265



"Because Someone Lived"
RAWLINS
MONUMENTS

Since 1884 THE NAME to look for in distinctive memorials

ROY TAYLOR 500 EAST 8TH ST. CISCO
You may call Collect 442-1127

You only buy a memorial once; we can help you make the right choice. Our 88 years of experience and our sincere desire to serve you are yours for the asking.

Fountains of DeLeon
(Licensee) For the Joy...
of a Beautiful Complexion
For Whatever Your Complexion
Non Surgical! Problem May Be!
"Look Younger as You Grow Older"
Free Private Consultations
104 Navarro (Hwy. 86 & 16)
Call DeLeon
893 327 DeLeon, Texas

'BOTANY' '500'® FALL/WINTER 1972.



If We Can Make You An Expert, We Can Make You A Customer. Botany 500®

We know how to tell a quality suit from a poorly made one (and it's not by looking at the price tag!). We want you to know too, so you'll never buy anything that doesn't give you years of lasting satisfaction. We're not afraid to make you an expert on quality, because that's all we sell. For instance, our exciting new collection of suits and sportcoats by Botany 500 represents the finest in fabric, workmanship, and design, as well as the latest in dramatic new fashion. In fact, these suits and sportcoats have more hand finishing, more hand tailoring, more of all the quality extras, than you'll find in clothing costing many dollars more! So why not come in soon and let our expert salesmen show you their fine points. The more you know, the more you'll appreciate what this great new Botany 500 collection can offer you!

- SUITS
- SPORT COATS
- SLACKS

THE MAN'S STORE
Bob Elliott
CISCO

Why You Should Re-Elect President Richard Nixon Nov. 7

LET'S LOOK At AGRICULTURE And STOCK RAISING

WE HAVE one of the most abundant supplies of food in history. Our exports of livestock, fresh meats, grain sorghums and grain are going to add many dollars to the general economy.

WE'RE SELLING COMMODITIES of which we've had surpluses—and we're helping provide jobs on trucks and ships at the same time.

HERE ARE SOME OF THE REASONS

PRESIDENT NIXON'S AGRICULTURAL ACT OF 1970 gave producers more flexibility and freedom in operations.

PRESIDENT NIXON'S ADMINISTRATION has turned around the farm situation that saw farmers get an increase in income of 6 per cent between 1951 and 1969 while wage rates went up 6 per cent every year.

PRESIDENT NIXON gave agriculture one of the most effective spokesmen in recent history by appointment of Earl Butz as Secretary of Agriculture.

FOR YOUR OWN GOOD

RE-ELECT THE PRESIDENT

AND REMEMBER

The Only Way to Have Your Say

IS TO

Get Out and Vote Nov. 7

Pol. Adv. Sponsored by Texas Media Committee for Nixon, Sam Kinch, Chairman

DOLLAR DAY



SHIRT SALE

ENTIRE STOCK MEN'S SHIRTS REDUCED FOR DOLLAR DAY ONLY! ALL SHIRTS REGARDLESS OF PRICE FOR ONE DOLLAR OFF REGULAR PRICE

\$1 OFF

Shop Now Pay Later

MEN'S SUITS & SPORT COATS

New Wide Lapel Collars 100% Wool & Wool Blends

| | |
|------------------------------|------------------------------|
| SUITS | SPORT COATS |
| Reg. \$79 ⁹⁹ | Reg. \$50 |
| NOW \$53⁰⁰ | NOW \$25⁰⁰ |

MEN'S SHOE SALE

Oxford & Buckles Most All Sizes

| | |
|-----------|-----------------|
| Reg. \$14 | NOW \$10 |
|-----------|-----------------|

Men's 100% Polyester Double Knit PANTS

| | |
|-----------|-----------------|
| Reg. \$15 | NOW \$10 |
|-----------|-----------------|

Women's 100% Nylon PANTY HOSE

Winter Shades Sheer to Waist sizes A & B **99¢**

100% Polyester DOUBLE KNIT FABRIC

60" Wide Many Colors **\$244 YD.**

Women's Double Knit SKIRTS 100% Polyester

Many Colors Most All Sizes **\$8⁹⁹** SPECIAL BUY!

Women's 100% Polyester Double Knit

PANTS

Many Colors Regular & Talls

Special Price. **\$8**



Bray's

EASTLAND — RANGER
EASTLAND COUNTY'S FAMILY STORE

Attendance In Ranger Schools Good During First Nine Weeks

Attendance in the Ranger Public Schools has been good the past nine weeks despite much illness with Young Elementary School having 97 percent of their pupils present each of the 43 days taught.

A change in State attendance bookkeeping caused the high school attendance to be slightly lower this year. Several students in the senior class do not attend all day.

Miss McClatchy, John Dreinhofer Exchange Wedding Vows



MRS. JOHN DREINHOFFER III

Nuptial vows uniting Miss Wanda Jean McClatchy and Mr. John Fredrick Dreinhofer III were solemnized at eight o'clock in the evening on Saturday, November fourth, at the Church By The Lake in Brownwood.

Wallace of Brady who sang "The Twelfth of Never" and "One Hand, One Heart" and Steve Austin, brother-in-law of the bride, who sang "O Perfect Love".

bridesmaids bouquets centered the bride's table. The three tiered cake, adorned with white doves, wedding bells and rosebuds and a crystal bowl holding grape punch completed the table setting.

Morris Newnhams To Leave For Yugoslavia

Mr. and Mrs. Morris Newnhams will leave Sunday for a tour of Yugoslavia. They join thirty-five "quota-busting" dealers in Whirlpool appliances for the eleven-day holiday vacation.

There will be one day to enjoy the wonders of Venice, Italy, the trip made by high speed hydrofoil boat.

Garden Club Flower Show Set Dec. 8

Ranger Garden Club today announces the forthcoming Flower Show. The "home placement" flower show with a Christmas theme will be this year's Ranger Garden Club project.

The bride's mother was attired in a dress of pastel aqua crepe designed with ruffle at neckline, long sleeves with matching vest.

White candelabra holding purple candles and the

Ranger Group Wants Guidelines Followed

If a group of interested Ranger citizens has its way, recent federal guidelines for the "one man, one vote" rule will be applied to the possible realignment of four commissioner precincts in Eastland County.

Under the present set-up Commissioner's Precinct 1, with Danny Woods of Olden as commissioner, encompasses Eastland, Olden and Ranger and has an approximate voting strength of 4,235 registered voters.

missioner and about 1,470 registered voters. Precinct 3, composed of Rising Star and with L.D. Owens as commissioner, has 1,200 registered voters.

No action is expected to take place with respect to the realignment prior to Nov. 13, when the county commissioners are due to meet in regular session.

FOR RENT: this MINI-BILLBOARD for ONLY \$3.50 a month Call your local paper!

Let's Look At The NIXON-TOWER Record Ann Armstrong said: "Never before in this century have two major party candidates for president been so diametrically opposed on the basic issues."

TEXANS ARE PROUD OF TOWER A United States Senator should not be chained to a desk, to vote on routine motions. He should be getting out and getting the job done for Texas as Senator Tower has done.

The Republican Party of Eastland County, urges Democrats and Independents to join us, as we stand by a President who speaks up for all Americans, who is taking us on a sane path to progress, who is restoring order and justice, reason and self-confidence, who has brought us together.

Senator Tower receives more invitations to speak than any other United States Senator. That in itself is something for Texans to be proud of. The Senator is invited because he enjoys a national reputation for his knowledge and abilities.

FOR RENT: this MINI-BILLBOARD ONLY \$3.50 a month Call your local paper!

AVAILABLE AGAIN! 'The Ranger Story' Pick-up A '10-Pack' For \$6.00 and Resell Your Place For A \$4.00 Profit! \$1.00 Each AT THE TIMES

Sears WARNING! This Sears MULTI-SPEED Belt Massager with Lighted Switch May be Unsafe... Only Model 449-29110 (Sears only model with a light), sold from December, 1969 until taken off sale October 4, 1972, is affected.

GENERAL ELECTION Eastland County, Texas November 7, 1972 SAMPLE BALLOT

Table with columns for Candidates for: Democratic Party, Republican Party, Socialist Workers, Raza Unida Party, Write-In. Lists various candidates for offices like President and Vice President, U.S. Senator, etc.

PROPOSED CONSTITUTIONAL AMENDMENTS. Instruction Note: Place an X in the square beside the statement indicating the way you wish to vote. Lists 14 amendments regarding salaries, hospital districts, judicial compensation, etc.

For Effective, Reliable Representation ELECT JOE C. HANNA for STATE REPRESENTATIVE, DIST. 54 -A man you can believe in - HE IS YOUR CLOSEST VOICE TO STATE GOVERNMENT

Loretta Morris Retires After 28 Years

Miss Loretta Morris, Homemaking Teacher at Eastland High School since 1944, has submitted her resignation to the Board of Trustees effective November 1st.

She had recently undergone surgery and felt that she would not be able to continue her teaching

schedule at full capacity for some time. She has served as Junior Class sponsor at Eastland High School for many years as well as sponsor for the local Future Homemakers Chapter and the Young Homemakers Group. She has been active in planning with other faculty

members the outstanding Eastland High School Junior - Senior Banquet and Prom each spring for a number of years. Prior to coming to Eastland High School as Vocational Homemaking Teacher she taught at Olden.

Mrs. Imogene Haun, who has been one of the science teachers in the High School since 1965, has been transferred to the Vocational Homemaking Department to fill the vacancy as a result of the resignation. Mrs. Haun is a graduate of Texas State College for Women at Denton with a major in Home Economics Education.

In other action this week, the Board of Trustees accepted the resignation of Winston Boles as a member of the Board of Trustees, in order that his son would be eligible for consideration as a faculty member at Eastland High School. He has served as a trustee since his election to the Board in April of 1971.

PTO Carnival Big Success

Mrs. Bill Wofford and Mrs. Bob O'Neal are pleased to announce the P.T.O. Carnival for the Elementary School was very successful. Total amount deposited in the Eastland National Bank was \$1,023.47. Bills totaled \$170.00 (at present) and \$90.00 in change making a total of \$769.00 clear. This money will be turned over to the Elementary School to buy something the school needs. Also the Christmas and Valentine parties will come out of this. There will be a complete report given at the next P.T.O. meeting. Again the officers of the P.T.O. and all the children of the Elementary School wish to thank each and every one.

Special thanks to the mothers who worked, the Fire Department, Police Department, Mr. Glen Asher, Mr. R.O. Baze, Mr. John Ed Nevill, Mr. Carroll Nelson, Mr. Siebert, Mr. James Housson, Mr. Winston Boles, the Jaycees, all the grocery stores, Coca Cola Co., and all merchants in our great town.

Shelford Golf Company

Distributor For Munsingwear

Munsingwear, the world's largest manufacturer of golf shirts, has concluded a manufacturing and marketing agreement in the United Kingdom. The Shelford Golf Company, Ltd. has been appointed distributor for Munsingwear golf shirts, sweaters and hosiery.

Bond Sales

Above Average

According to a report received, sales of Series E and H United States Savings Bonds in Eastland County during September totaled \$7,024. Sales for the nine - month period were \$167,725 for 56 percent of the 1972 goal of \$300,000.

Sales in Texas during the month were \$16,357,152 compared to \$15,465,128 during September 1971. The January - September sales totaled \$159,190,679 with 81 percent of the sales goal of \$197.5 million achieved.

Nationwide, September purchases of Series E and H Bonds amounted to \$472 million - 13.8 percent above 1971 sales of \$415 million. Sales for the first nine months totaled \$4,774 million - 14.4 percent above a year earlier. Exchanges of Series E for new Series H Bonds amounting to \$254 million were reported for the nine month period - 29 percent above the \$197 million exchanged in 1971.

All the Benefits and Service a Motorist Might Need ARE AVAILABLE NOW!



Ray Woodall is YOUR

MCAA Representative and can offer you these features:

1. \$500 Cash Appearance Bond
 2. \$5000 Bail Bond
 3. Communication Service
 4. Emergency Road Service.
 5. Attorney Fees
 6. Legal Fees
 7. Away - From - Home Expenses
 8. Roadrunner Touring Aids
 9. Cash Rewards
 10. Lost Credit Card Plan
- PLUS MUCH, MUCH MORE. Call Ray and find out about the MCAA Benefits today! 507 S. Green - Eastland, Tex. 76448 817 - 629 - 2939

State Farm is now paying big 20% car insurance dividends-

to eligible Texas policy holders on expiring six-month policies.

CALL 629-1096



211 W. Main like a good neighbor, B.T. Van Cleave is there.

STATE FARM MUTUAL AUTOMOBILE INSURANCE COMPANY - HOME OFFICE: Bloomington, Illinois

ABCO

PLUMBING & HEATING CONTRACTING & REPAIR

Small Ditching Service

629-1200 - 629-1943 AFTER 5 p.m., call 647-1780

SERVING TEXANS 26 YEARS Bob Williams Owner

Joe Hanna Appointed To Serve On Committee

STATE REP. Joe C. Hanna has been appointed to serve on the powerful appropriations committee, replacing Rep. Grant Jones of Abilene, who resigned Tuesday.

House Speaker Rayford OES To Hold Meeting Nov. 7

Eastland Chapter number 280, Order of the Eastern Star, will hold a stated meeting Tuesday, November 7th at 7:30 p.m. Mrs. Sarah Cross will be honored in recognition of her fifty years of service in the Order. All members are urged to be in attendance.

Your Money Works at Home

Sunday, November 5, 1972

Factory Outlet New & Used Mobile Homes

12, 14, and 24 Wide Bank Financing Low Down Payment

Big Tex Mobile Homes

On I20 2 miles East of Eastland Wanda (Mrs. Eddie) Barnes, Mgr.

817-653-2358

Price announced the appointment today after Jones, who was elected to the Senate this year, resigned.

According to new house rules instigated this year, Hanna can remain on the committee as long as he serves in the House. A place on the appropriations committee is sought after because all money allocations in state government must originate there.

Hanna, now a member of the Taxation and Revenue Com-

mittee must resign his position on that committee to accept the new assignment. His appointment becomes effective immediately.



SPECIAL ELECTION NOTICE

FOR THE convenience of senior citizens and others who may need a ride to the election polls Tuesday, Nov. 7

VFW Post 4136 will offer a Poll-Taxi Service Coordinated by Glen Bakker, who can be contacted at 629-2316

P O E FLORAL

Football Mums
Special Occasions
Funeral Arrangements
Gift Items
Corsages

609 W. Main Eastland, Texas
Ph. 629-1711

SAVE AMERICA! MARK YOUR BALLOT FOR THE PEOPLES' PARTY

GENERAL ELECTION

Eastland County, Texas
November 7, 1972

SAMPLE BALLOT

INSTRUCTION NOTE: Vote for the candidate of your choice in each race by placing an X in the square beside the candidate's name. You may vote a straight ticket (that is, vote for all the candidates of a certain party, and for no candidates outside that party's column) by placing an X in the square beside the name of the party of your choice at the head of the party column. If you use this straight-ticket method of marking, do not mark squares beside the names of individual candidates.

| Candidates for: | Democratic Party | Republican Party | Socialist Workers | Some United Party | Write-In |
|---|---|--|---|---------------------------------------|----------|
| President and Vice President | <input checked="" type="checkbox"/> GEORGE McGOVERN AND S. SARGENT SHREVE | <input type="checkbox"/> RICHARD M. NIXON AND SPIRO T. AGNEW | <input type="checkbox"/> LINDA JENNINGS AND ANDREW FULLER | <input type="checkbox"/> | |
| U. S. Senator | <input type="checkbox"/> BAREFOOT SANDERS | <input type="checkbox"/> JOHN G. TOWER | <input type="checkbox"/> TOM LOBY '69 | <input type="checkbox"/> FLOREN AMATA | |
| U. S. Representative, 17th Congressional District | <input type="checkbox"/> ONAR HULSESON | <input type="checkbox"/> | <input type="checkbox"/> | <input type="checkbox"/> | |
| Governor | <input type="checkbox"/> DOLPH BRISCOE | <input type="checkbox"/> HENRY C. (HANK) ROOPER | <input type="checkbox"/> REP | <input type="checkbox"/> DANNEY SHINE | |
| Lieutenant Governor | <input type="checkbox"/> BILL HOBBY | <input type="checkbox"/> | <input type="checkbox"/> | <input type="checkbox"/> ANNA SARAZAR | |
| Attorney General | <input type="checkbox"/> JOHN HILL | <input type="checkbox"/> | <input type="checkbox"/> | <input type="checkbox"/> | |
| Comptroller of Public Accounts | <input type="checkbox"/> ROBERT S. CALVERT | <input type="checkbox"/> | <input type="checkbox"/> | <input type="checkbox"/> | |
| State Treasurer | <input type="checkbox"/> JAMES | <input type="checkbox"/> | <input type="checkbox"/> | <input type="checkbox"/> | |
| Commissioner of General Land Office | <input type="checkbox"/> | <input type="checkbox"/> | <input type="checkbox"/> | <input type="checkbox"/> | |
| Commissioner of Agriculture | <input type="checkbox"/> | <input type="checkbox"/> | <input type="checkbox"/> | <input type="checkbox"/> | |
| Ballot Commissioners | <input type="checkbox"/> | <input type="checkbox"/> | <input type="checkbox"/> | <input type="checkbox"/> | |
| Chief Justice, Supreme C | <input type="checkbox"/> | <input type="checkbox"/> | <input type="checkbox"/> | <input type="checkbox"/> | |
| Associate Justice 1st Place | <input type="checkbox"/> | <input type="checkbox"/> | <input type="checkbox"/> | <input type="checkbox"/> | |
| Associate Justice 2nd Place | <input type="checkbox"/> | <input type="checkbox"/> | <input type="checkbox"/> | <input type="checkbox"/> | |
| Judge, Civil | <input type="checkbox"/> | <input type="checkbox"/> | <input type="checkbox"/> | <input type="checkbox"/> | |
| Judge, Criminal | <input type="checkbox"/> | <input type="checkbox"/> | <input type="checkbox"/> | <input type="checkbox"/> | |
| Judge, Probate | <input type="checkbox"/> | <input type="checkbox"/> | <input type="checkbox"/> | <input type="checkbox"/> | |
| Judge, Juvenile | <input type="checkbox"/> | <input type="checkbox"/> | <input type="checkbox"/> | <input type="checkbox"/> | |

THIS POLITICAL AD PAID FOR BY PEOPLE WHO BELIEVE IN THE DEMOCRATIC PARTY FOR EASTLAND COUNTY

GARDENHIRE OIL COMPANY
Yes! We can sell wholesale to you!
See us for all your oil, grease, filters, spark plugs, brake fluid, anti-freeze, S. T. P. for oil, gasoline, diesel or radiator, tires for cars, truck or tractor. WE HAVE TANKS for farm or commercial gasoline and diesel fuel. See us before you trade. All major brands of Oil and Grease.

WHY PAY MORE??

PERMANENT ANTI-FREEZE \$1.69 Gal. (carry-out)

GOODYEAR SERVICE STORE
FRANK MURPHY, MGR. 629-2662
EASTLAND

NEW OWNERSHIP GLEN MITCHELL
has purchased the West Main Premier.

He will feature the Self Service Island, as well as the Full Service Pumps.

All Major Brands of Oil will maintain their Low 49¢ a quart price.

Drop By And See Us At **WEST SIDE PREMEIR**

Gordon pot

by DeMarquis Gordon

Many people agree that this is the most beautiful time of the year in Eastland County. The trees are putting on their beautiful yellow and red fall colors. In almost any direction you go in the county you will find the pleasing scenery.

Many people suppose that Jack Frost is responsible for the changing color, but he is not. Robert Dewers, County Extension Horticulturist at San Antonio, tells us frost is not responsible for the change in leaf colors. In fact leaves begin to turn before we have any frost.

The change in coloring is the result of chemical processes which take place in the tree. The change is a preparation for winter. All during the spring and summer the leaves have served as factories, where the foods necessary for the trees' growth have been manufactured.

This food making takes place in numberless tiny cells of the leaf and is carried on by small green bodies which give the leaf its color. These chlorophyll bodies, as they are called, make the food of the tree by combining carbon taken from carbonic acid gas of the air with hydrogen, oxygen, and various minerals supplied by the water which the roots gather.

In the fall when cool weather causes a slowing down of the vital processes the work of the leaves comes to an end. The machinery of the leaf factory is dismantled, so to speak, the chlorophyll is broken up into the various substances of which it is composed, and whatever food there is on hand is sent to the body of the tree to be stored up for use in the spring. All that remains in the cell cavities of the leaf is a watery substance in which a few oil globules and crystals, and a small number of yellow bodies can be seen. These give the leaves the yellow coloring so familiar in the autumnal foliage.

It often happens that there is more sugar in the leaf than can be readily transferred back to the tree. When this is the case, the chemical combination with the other substances produces many colored tints varying from the brilliant red of the dogwood to the more austere red-browns of the oaks.

While the leaf is changing, other preparations are being made. At the point where the stem of the leaf is attached to the tree, a special layer of cells

develop which gradually severs the tissues that support the leaf. At the same time, nature heals the cut so that when the leaf is finally blown off by the wind or falls from its own weight, the place where it grew on the twig is marked by a scar.

The recent cool weather indicates that our first freeze may not be far off. A killing frost can spell danger for livestock grazing on sorghum stubble or any of the sorghum-sudan hybrid pastures.

The reason is prussic acid poisoning of the animals. The danger of prussic poisoning exists mainly in pastures and fields where sorghum stubble is

Eastland Farmers Union To Meet in Rising Star

The Eastland County Farmers Union annual meeting will be held at 6:30 p.m. Monday in Rising Star at the American Legion Hall.

Texas Farmers Union president Jay Naman of Waco will speak on the outlook of agricultural and rural related legislation possibilities at the state and federal levels for next year.

Current officers for Eastland County Farmers Union include: Lee W. Starr, Cisco, president; E. B. Harding, Rising Star, first vice president; Claude Fuller, Gorman, second vice president; and Oral Davis, Rising Star, secretary-treasurer.

Business to be conducted at the meeting will include the election of next year's officers, election of delegates to represent the county at the state convention to be held in Arlington Dec. 7-9 and drafting of resolutions.

President Starr said, "This meeting is open to all interested farmers, rancher and rural residents, and we are expecting a large turnout to hear our state president."

A covered dish supper will be served.

Custom Built Homes

Your Property or Ours

We Furnish Plans-Arrange Financing

One phone call gets you a home

H & W Development Co.

1201 W. Commerce Eastland 629-1305



WILSON VACUUM CLEANER SALES & SERVICE
103 S. LAMAR EASTLAND

Distributor of the famous AIR-WAY SANITIZER.

Member of the Better Business Bureau
—FREE HOME DEMONSTRATIONS—
KIRBY'S-ELECTROLUX-HOOVER'S
Parts and Service on all makes.

SPECIAL--We will rebuild your Kirby, Electrolux, Hoover, Airway. Labor \$3.50 plus parts. FREE PICK-UP AND DELIVERY IN EASTLAND COUNTY. 1 to 3 day service. 12 month guarantee.

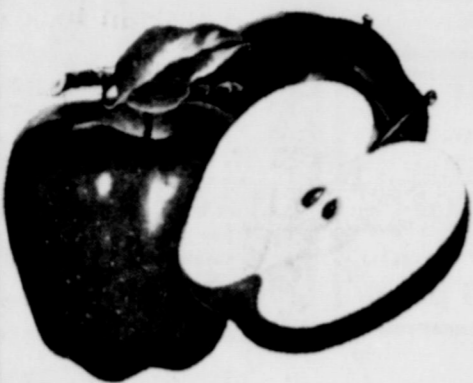
We appreciate your business.

ADVICE: Please ask for identification from anyone stating that they represent us.

SAFEWAY

COMPARE LOW EVERYDAY PRICES Plus SPECIALS!

Crisp, Juicy Sweet!



Delicious Apples

Red. Full of Flavor!
Lunch Box Size!

3 Lb. Bag 49¢

Garden Fresh Fruits and Vegetables!

Extra Fancy!
Golden Apples 25¢
Golden Delicious, Washington, Large Size —Lb.

Avocados Florida, Extra Large —Each 39¢

Tomatoes Florida, Extra Large —Each 39¢

Cucumbers Selected Sliced Size, Each 2 for 25¢

Bell Peppers Large Size, Each 2 for 25¢

Red Radishes No Wax! 2 6-oz. Cans 29¢

Green Onions Large Bunches 2 for 29¢

Crunchy Fresh!
Crisp Celery 29¢
Large Meaty Stalks! —Each

Rome Apples Red, Extra Fancy, Large Size —Lb. 25¢

Mincemeat New York, Ready to Eat! 18-oz. Jar 49¢

Glace Fruit Mix For Baking! 16-oz. Pkg. 59¢

Pineapple Sliced, *No Juice, 4-oz. Can 39¢

Large Walnuts New California Harvest —Lb. 69¢

Navel Oranges California, Fancy, Large Size —Lb. 25¢

Ruby Grapefruit New Texas, 6-Ct. Bag 99¢

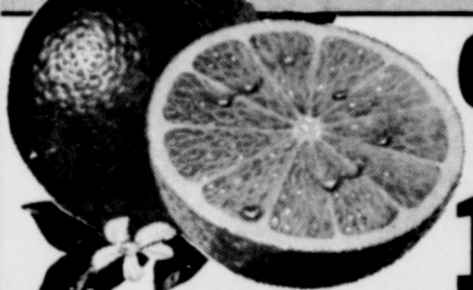
Sunkist Lemons Small Size 12-Ct. Cello 59¢

Tangelos New Florida Harvest 5-Lb. Bag 69¢

Orange Juice Safeway, Pure 1/2-Gal. Dozen 89¢

Grape Jam Country Pure Brand, No Preservatives Added 16-oz. Jar 47¢

Rich in Vitamin 'C'!



Oranges

New Texas Harvest, Economy Pack

15 Lb. Bag 99¢

Saving YOU Money

is one of the most important parts of being your People to People store. Safeway has low, low everyday prices plus money saving specials every day! What do you call a store that offers you high values with low prices and courteous service?

Safeway! Your People to People Store



Fresh Eggs

Breakfast Gems Medium, Grade 'A'

Safeway Special! —Doz. 38¢



Waffles

Bel-air, Frozen

Safeway Big Buy! 5-oz. Pkg. 10¢



Orange Juice

Texsun, Frozen

Safeway Big Buy! 6-oz. Can 19¢



Biscuits

Mrs. Wright's *Sweet Milk or *Buttermilk

Safeway Big Buy! 10-Ct. Can 8¢



Towels

Paper, Tree Saver

Safeway Big Buy! 175-Ct. Roll 28¢



Detergent

Parade, For Laundry!

Safeway Big Buy! 49-oz. Box 49¢



Bleach

White Magic, Liquid

Safeway Big Buy! 1/2-Gal. Plastic 27¢

COMPARE LOW PRICES!

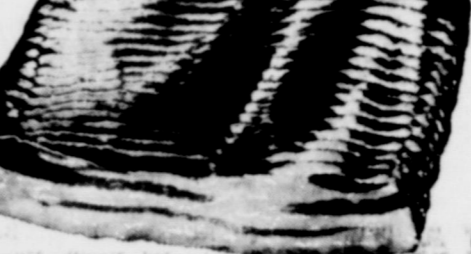
- Salad Dressing Piedmont Quart Jar 37¢
- Chunk Tuna Sea Trader, Light Meat 6 1/2-oz. Can 37¢
- Enriched Flour Harvest Blossom 5-Lb. Bag 39¢
- Shortening Velkey, All Purpose 2-Lb. Can 62¢
- Cake Mix Mrs. Wright's, Layer Cake 18 1/2-oz. Pkg. 29¢
- Saltines Malibu Soda Crackers 1-Lb. Box 23¢
- Tomato Soup Town House 10 1/2-oz. Can 11¢

EVERYDAY LOW PRICES!

- Plain Chili Town House 15-oz. Can 49¢
- Fruit Cocktail Town House 17-oz. Can 27¢
- Apple Sauce Highway, Tasty! 16-oz. Glass 19¢
- Salad Oil no-made, Cooking Oil 24-oz. Glass 55¢
- Swift's Prem Luncheon Meat 13-oz. Jar 55¢
- Mayonnaise no-made, Creamy Quart Jar 59¢
- Tomato Sauce Texas Magic 8-oz. Can 11¢

Sliced Bacon

Slab, Rindless, Full of Flavor!



—Lb. 69¢
(Safeway Bacon 1-Lb. Pkg. 95¢)

Chuck Roast Full Blade Cut, USDA Choice Grade Heavy Beef —Lb. 69¢

Link Sausage Pork, Safeway Breakfast Favorite! 1-Lb. Pkg. 69¢

Fresh Pork Chops Economical Family Pack! —Lb. 88¢

Fresh Pork Steak Best Cut —Lb. 79¢

Link Sausage Pork, Oscar Meyer Natural Casing —Lb. \$1.05

Mexican Sausage Hot Links —Lb. 67¢

Beef Patties Pre-Cooked, Shortened, Chicken Fried —Lb. 89¢

Fish Sticks Pre-Cooked, Large Size —Lb. 59¢

Perch Fillets Raw, Fresh-Frozen —Lb. 75¢

Beef Short Ribs USDA Choice Grade Heavy Beef —Lb. 49¢

Hamburger Steaks Freshly Ground —Lb. 83¢

Round Steak Full Cut, Includes Eye of Round, USDA Choice Heavy Beef —Lb. \$1.35

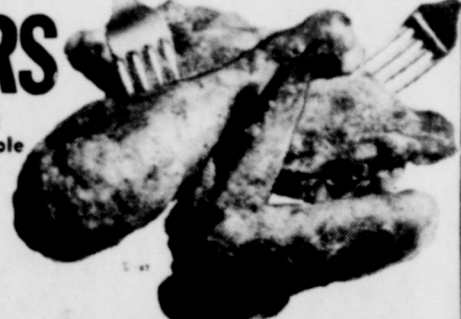
Lean Ground Beef Compare Lean and Fat Content! —Lb. 89¢

Safeway Meats are Guaranteed to Please!

FRESH FRYERS

USDA Inspected Grade 'A'. Ready to Cook! Finest Quality Available at Any Price! Whole

—Lb. 29¢



Cut-Up Fryers Regular, USDA Insp. Grade 'A' —Lb. 38¢

Fryer Halves Split, From USDA Insp. Grade 'A' Fryers —Lb. 39¢

Pinwheel Pack *4 Thighs, *4 Drumsticks, From USDA Insp. Grade 'A' Fryers —Lb. 69¢

Split Breasts With Ribs, Cut From USDA Insp. Grade 'A' Fryers —Lb. 77¢

Turkey Roast Major House, Ready to Bake! 2-Lb. Pkg. \$2.25

Boneless Ham Market Choice, *Half or *Whole —Lb. \$1.65

Lunch Meat Safeway Sliced *All Beef Bologna *Spiced *Macaroni & Cheese *Pickle-Pimento —Lb. 35¢

All Meat Wieners Safeway, Plump and Tender! —12-oz. Pkg. 63¢

Armour Hot Dogs Armour Star, All Meat —12-oz. Pkg. 65¢

All Beef Wieners Safeway, Tasty! 1-Lb. Pkg. 89¢

All Meat Wieners Oscar Meyer 1-Lb. Pkg. 95¢

Chopped Ham Safeway Sliced 8-oz. Pkg. 69¢

Sliced Bologna Safeway *Reg. or *Thick 1-Lb. Pkg. 79¢

Ham Slices Center Slices, Smoked —Lb. \$1.29

Smoked Ham

Shank Portion, Flavorful! —Lb. 59¢
(Full Butt Half 79¢) Smoked Ham

The Light Touch



By Clint Bray
At a party, there are two kinds of people: those who want to go home early, and those who want to stay late. Trouble is, they're usually married to each other.

Learn by experience -- other people's, if you're smart.

A happy homeowner is one who likes to fix things around the house -- T.V.

If you could kick the person responsible for most of your troubles, you wouldn't be able to sit down for six months.

Budget: mathematical confirmation of your suspicions.

We're kind to your budget at BRAY'S. See us for your winter clothing.

Canned Pop

- Snowy Peak, Refreshing!** 12-oz. Can 8¢
- Great With Snacks!**
- Pork & Beans** Van Camp's 16-oz. Can 16¢
- Green Peas** Garden of Eatin' 16-oz. Can 16¢
- French's Mustard** Tasty! 8-oz. Jar 14¢
- Fruit Drinks** Crispment 48-oz. Can 25¢
- V-8 Juice** Vegetable Cocktail 48-oz. Can 44¢
- Iodized Salt** 28-oz. Box 9¢

EVERYDAY LOW PRICES!

- Dog & Cat Food** Favorite Brand 15 1/2-oz. 7¢
- Pinto Beans** Town House, Dry 2-Lb. Pkg. 29¢
- Tomato Catsup** Highway 14-oz. Bottle 21¢
- Black Pepper** Trader Horn, Ground 4-oz. Can 39¢
- Aluminum Foil** Kitchen Craft, 12 Inches Wide 25-Ft. Roll 25¢
- Facial Tissues** Silk Brand 100-Ct. Box 18¢
- Paper Napkins** Tree Saver 40-Ct. Pkg. 10¢
- Diapers** Disposable, Truly Fine, Overnight 12-Ct. Pkg. 85¢

Shop and Save!

- Aspirin** Bayer, Fast Relief! 100-Ct. Bottle 77¢
- Tampax Tampons** Absorbent! 10-Ct. Pkg. 43¢
- Kotex Napkins** Feminine 12-Ct. Pkg. 41¢
- Alka-Seltzer** Tablets 25-Ct. Bottle 59¢
- Vitamin 'C'** Tablets, 250 Mg. Safeway 100-Ct. Bottle 89¢
- Aqua Net** Hair Spray 12-oz. Can 59¢
- Baby Shampoo** Saxe 16-oz. Bottle 69¢

| | | | |
|---|--|---|--|
| Detergent Palmolive Liquid For Dishes! Mild to Hands! 32-oz. Plastic 78¢ | Pillsbury Flour All Purpose 5-Lb. Bag 62¢ | Imperial Sof-Spread Margarine, Light Flavor! 1-Lb. Plastic 45¢ | Nescafe Instant Coffee 6-oz. Jar \$1.10 Dial Spray Anti-Perisprant 9-oz. Can \$1.39 |
|---|--|---|--|

Prices Effective Mon., Tues. & Wed., Nov. 6, 7 & 8, in EASTLAND No Sales to Dealers.

© Copyright 1980, Safeway Stores, Incorporated

Hospital Report

PATIENTS IN Eastland morning were:
Memorial Hospital Saturday Maurine Williams

Willie Wylie, Moran
Lummie Boyd, Cisco
Jeanette Thomas
Gloria Scott
James Cooper, Cisco
Jinks Reynolds, Rising Star

Junior Wilson, Rising Star
James Wright
Frank Kirk, Gorman
Elbert Strickland
Jake Hoefner, Albany
Cora Spurlen
Amanda Morris
Denise Akers
Leo Pitts, Gordon
Emma McBride, Cisco
Pearl Hobbs, Carbon
Dallas Frost
Billy Harle, Carbon
Jackie Wood
Charles Werley
Rose Day
Ila Pulley, Gorman
Ethel Heagler, Cisco
James Franklin, Cisco
Idona Carr, Fort Worth
Mary Schraeder
Jerry Jackson
Baby Girl Culpepper
Sudie Groves
Charlie Harp
James Agnew, Cisco
Gary Campbell, Gorman
Lenora Steinman, Cisco
Marie Culpepper
Pat Arntfield, Strawn

Ray Norris
Joe Cooper, Cisco
Linnie Brown, Ranger
Millard Chambers, Rising Star
Paul Kirkland, Baird

Patients in Ranger General Hospital Saturday morning were:

Sarah Atkins
Elva Rogers
Ticia Criscuoli
Mike Kelley
Lonzo Melton
Smith O. Holloway
Joe Holub
Mary Daniels
Lois Vunovich
Sally Frasier
Anna Williams
Blaza Krensavage
Jack Howdeshell
Leona Hill
A.C. Pierce
Rosa Lee Koerner
Mrs. Jean England
Baby Girl England
Vannie Barron

Sunday, November 5, 1972

DOE PERMIT ISSUANCE
Doe permits for Eastland County will be issued in the County Sheriff's Office at the County Courthouse on Wednesday, Nov. 8 from 8 a.m. to 5 p.m. Game Warden Kenneth Payne has announced.

We know a fellow who is so disagreeable, his own shadow won't keep him company. He has a concrete mind - permanently set and all mixed up.

Fountains of DeLeon
(Licensee) For the Joy of a Beautiful Complexion For Whatever Your Complexion Problem May Be!
(Non-Surgical) "Look Younger as You Grow Older"
Free Private Consultations
404 Navarro (Hwy. 45 & 16)
Call DeLeon
893 - 6377 DeLeon, Texas



JACK HETZEL
candidate for State Representative District 54, wishes you to be informed of your voter rights.

On Nov. 7, you can vote for candidate of your choice -- no matter how you voted in primary.

The law is on your side. The ballots are secret. Vote your convictions. Your decision is more important this year than ever.

PAID POLITICAL ANNOUNCEMENT
BY FRIENDS OF JACK HETZEL,
JOYCE KRUEGER FINANCE CHAIRMAN

NOTICE

Valley View Lodge, Inc.,
700 S. Ostrom St.
Eastland, Texas
complies with the Civil Rights Act of 1964. Valley View Lodge observes an open policy in regard to hiring of employees employees and admittance of residence without regard to race, color or national origin.

Telephone 629-1779
Shirley Frost,
Administrator

SO-LO AUTO PARTS
(Formerly Eastland Auto Parts)
300 S. Seaman
629-2158 Eastland
"Trade Where The Pros Trade"

NOW OPEN EASTLAND TV SERVICE

Color & B&W Specializing In A - 1 Repair We Service All Makes Free Pickup & Delivery
611 1/2 W. Commerce
629 - 2829
(Behind Borden's Milk)
Wayne Bailey, Owner
Dale Chick, Service

Visiting Hours
Eastland Memorial Hospital
2:30 to 4 p. m.
7 to 8:30 p. m.

RANGER DRIVE-IN THEATRE
LAST TIMES SUNDAY NOVEMBER
STEVE MCQUEEN "LE MANS"
A CINEMA CENTER FILMS PRESENTATION
A NATIONAL GENERAL PICTURES RELEASE

Coming FRIDAY, SATURDAY & SUNDAY NOVEMBER 10-12
Somebody warn the West. Nigger Charley ain't running no more.
Presenting Pictures Presents A Larry G. Spangler Production
"The Legend of NIGGER CHARLEY"
PG PARENTS STRONGLY CAUTIONED
COMING SOON The Godfather NOW AT BIG PRICES!

A vote for AMENDMENTS I & III IS A VOTE OF CONFIDENCE in those whom you have elected as legislative leaders in Texas. You can do no less!

Tuesday, November 7, 1972



Elect

HENRY C. (HANK) GROVER For GOVERNOR

A man who takes a stand; a real Texan. His loyalty is to the people of Texas. He's against George McGovern.

COMPARE THE RECORDS . . . and you'll vote GROVER FOR GOVERNOR.

HENRY C. (HANK) GROVER

- Now in sixth year in state Senate. Served six years in State House of Representatives.
- Conservative voting record for all 12 years in legislature.
- Voted against busing and is co-author of constitutional amendment to outlaw busing.
- Against amnesty for draft dodgers and deserters.
- Always voted against a state income tax. Will veto a state income tax if elected governor.
- Voted against Caesar Chavez and the lettuce boycott.
- Has led fight against increased welfare spending.
- Voted against considering the Sharpstown banking bill.
- Excellent Farm Bureau voting record; member of Farm Bureau of Lavaca County.
- Forty-five years old; fourth generation Texan.

DOLPH BRISCOE

- For George McGovern for President. Voted for George McGovern at the Democratic National Convention. Recently welcomed George McGovern to Texas.
- Dropped out of state government nearly 15 years ago.
- Very liberal voting record as member of House of Representatives.
- Refused to oppose busing at Democratic State Convention in Houston.
- George McGovern wants total amnesty for draft dodgers and deserters and Dolph Briscoe supports George McGovern.
- Refused to take a stand against state income tax at Democratic State Convention.
- Took a stand for Caesar Chavez and the lettuce boycott at Democratic State Convention.
- George McGovern's platform will destroy the military defense of the United States and Dolph Briscoe voted for that platform.

LETTERS to EDITOR

Editor: In regards to a recent letter in your paper, Eastland DOES have a taxi cab, and as of Monday, Nov. 6, it will be back in service.

Eastland's cab has been out of circulation for two months due to a wreck which was not my fault. The cab was totaled and I was hurt.

We will welcome all calls from businessmen, aged people, and anybody else mentioned in the other letter.

Our cab service is extended to every person in Eastland.

Anybody who needs a taxi at any time call 629-1240, and we will try to serve you to the best of our ability.

Mrs. R.D. Arnold Editor: As you know, each time the Texas Legislature convenes, a vast number of decisions of critical importance to cities are made. It is therefore imperative that we, as local of-

ficials, assure that State legislators sympathetic with the needs of cities are sent to Austin in 1973; and I sincerely hope that all of the member mayors and councilmen of TML are taking an active part in the legislative races now underway.

In the case of your House District, for example, candidate Joe Hanna has consistently demonstrated an understanding of municipal needs. During his tenure as a member of the House of Representatives, he sponsored a number of bills beneficial to cities, and he strongly opposed measures which would hamper the ability of cities to solve their problems. TML appreciates Representative Hanna's support, and we look forward to working with him in the 1973 House of Representatives.

Sincerely yours, Alfred H. Koebig Mayor, Seguin President, Texas Municipal League

Dear Editor: Yes, we take pride in our little town as well as our youth. We like to see our streets, yards and houses clean and neat. We like to see our youngsters "well behaved".

Well, did you happen to see our streets, yards and houses as you went to Sunday School last Sunday, after the Saturday night Halloween celebration?

Or did you have to stay home cleaning spattered eggs and tomatoes mixed with toilet paper from your yard, front porch, walls, window screens, or car? Did you see the egg running down the windows and walls of our beautiful new apartment house?

If you did get to church, did you notice "busted" pumpkin, egg shells, "smushed" tomatoes and toilet paper in the streets by your church - and all along the way? - the same ugly picture all over town.

Who is to blame? Our youth? Are others to blame, too? What about the parents who made it possible for them to buy eggs, tomatoes, balloons, and toilet paper to smear over town? What about the merchant who sells these youngsters dozens and dozens of eggs each Halloween night?

Why - when throwing eggs and such on Halloween or any other time, is considered an act of vandalism - and warnings about such, and threats of fines have been sent over radio all week - will parents take their youth to the grocery store to buy eggs, or why will the grocer sell dozens and dozens of eggs that they know will be used to throw at cars, people, and houses?

Are parents concerned about the character of the youth? The youth seem to think they're having good clean fun. Do the grocers need the money so badly that they sell these to

celebrating youth in order to make a little profit regardless of how the product is used?

Sincerely A Citizen of a Clean Little Town

Dear Editor: When will we Americans learn that the preservation and general welfare of our great nation does not depend entirely on who is elected president and which party is in power. Every election year there are those in both major parties that are "dead sure" that if their candidates are not elected, we are headed for certain and immediate ruin! Strong political ambitions, prejudiced opinions, jealousies and resentments build up into soaring emotional fervor! Campaign speeches get out of hand, and half-truths and perversions prevail, if not on the part of the candidates, then certainly by some of their supporters.

As unholy emotional temperatures rise, the moral barometers go down, down, down. How many times have you heard men in public places and families in their own homes let a friendly political

discussion degenerate into heated arguments? Sometimes serious damage results, and hurt feelings and resentments follow, perhaps for years afterward.

Now we are supposed to be a Christian nation; certainly it was founded upon Christian principles by men of high integrity. But I'm sorry to say that many professing Christians and - or church members, including some ministers, spend more time and emotional energy criticizing our leaders than in praying for them, and writing letters of encouragement and help to them. No finite man is perfect, and no political party has all the answers, or is a panacea for all our ills. Only a fool would believe that!

Of course our world is in turmoil; of course serious threats haunt us from all sides, of course we want wars to cease and peace to reign! Indeed we should study issues carefully, and vote to the best of our ability. But people - it's going to take more than that! Knowing surely by now that man cannot legislate (nor dictate) righteousness and peace, we should be ready to

search for and accept something that really will work! It just could be that we should take more seriously the truths from that Great Letter from our omnipotent, omniscient, omnipresent Heavenly Father, for through it He still speaks today: "Righteousness exalteth a nation; but sin is a reproach to any people." Prov. 14:34. "Nation shall rise against nation" Matt. 24:7. "Blessed is the nation whose God is the Lord". Ps. 33:12. "If my people, which are called by my name, shall humble themselves and pray, and seek my face, and turn from their wicked ways, then will I hear from Heaven, and will forgive their sin, and will heal their land." II Chron. 7:14.

In conclusion, I quote excerpts from one of Longfellow's immortal poems: Thou, too, sail on, O Ship of State! Sail on, O Union, strong and great! Humanity with all its fears, With all its hopes of future years, Is hanging breathless on thy fate!

Our hearts, our hopes are all with thee, Our hearts, our hopes, our prayers, our tears, Our faith triumphant o'er our fears."

May this now be true!

Sincerely, Idelle McDaniel

TEXACO SERVICE CENTER 503 W. Main. 629-8895 Offering top line Texaco Products, wash & grease, tune-ups, muffler & brake service. We give S & H GREEN STAMPS & Appreciate Your Business. WINTER SPECIAL \$1.49 Per Gallon Carry Out JTW Brand Anti-Freeze FREE PICKUP & DELIVERY AAA Emergency Service

LUZIER Personalized Cosmetics Unconditionally Guaranteed MRS. MILDRED ADAIR 511 S. Mulberry Eastland, Texas 629-2848

VOTE BYRON TUNNELL RAILROAD COMMISSIONER YOUR SUPPORT SINCERELY APPRECIATED

NEW SELECTIONS AMERICAN HEROES FATHER OF TEXAS, STEPHEN F. AUSTIN by Mallo Phegley... WISDOM OF GEORGE WASHINGTON by T. Whitfield Davidson... ALAMO, THE by Walter F. McCaleb, Ph.D. SAMUEL A. MAVERICK by Irwin and Kathryn Margaret Sexton... ROAD TO SAN JACINTO by Dorothy Hillard Richey... WILLIAM BARRET TRAVIS by Walter F. McCaleb, Ph.D. COLONEL AARON BURR: The Misunderstood Man by Samuel Eagle Burr, Jr., Ed.D. TEN TALL TEXANS by Daniel James Kublak... BLUEBONNETS AND BLOOD by Ulrich Troubetsky... MARKS OF LEE ON OUR LAND by Maurine Whorton Redway... BIGFOOT WALLACE by Walter F. McCaleb, Ph.D. NOTORIOUS WESTERN CHARACTERS PIONEERS OF THE WESTERN FRONTIER by Harriett Farnsworth... LAW WEST OF THE PEOS by Everett Lloyd... GREAT GUNFIGHTERS OF THE WEST by Carl W. Broshan... BAD MAN OF THE WEST, THE by George Hendricks, Ph.D. FIGHTING EDITORS by J. A. Schmitt... YOUNGER BROTHERS by Carl W. Broshan

At your service: Electricity that helps broaden the path to knowledge. Project a herd of charging elephants onto a movie screen, and a student sees what is happening in a far away world. Test his ability against an electronic speed-reading machine, and he almost surely will respond to the spirit of the challenge. Educators today are much aware of the value of audio-visual equipment in the classroom. Modern education is a sight-and-sound world in which electricity helps bring history, geography, literature and languages to life. Electricity is hard at work for you just about any- where you go these days. And the use of electricity is expected to increase in the years ahead. When additional power is needed, we'll be ready to provide it to schools and to all our customers. But getting ready and staying ready is an increasingly expensive, never-ending job at Texas Electric. Our construction expenditures are at a record high for facilities necessary to keep an adequate and reliable power supply at your service. TEXAS ELECTRIC SERVICE COMPANY People power... at your service F. N. SAYRE, Manager, Phone 629-2651

At Your Local Newspaper



New City Patrolman is Jerry Rich, 30, of DeLeon. Rich is a former Gorman officer. He and his wife reside in the Hillside apartments, and have one child. Rich is a member of the Baptist Church, and his wife attends the Church of Christ. (Dabney Photo)



Recent addition to the Eastland Police Department is patrolman Finas Ray Otwell, 35. Otwell recently worked as a Security Guard in Stephenville. He and his wife and two children reside at 501 S. Ammerman Street. Otwell is a native of DeLeon. (Dabney Photo)

Library Staff Takes Trip To Big Springs

The Library Staff of Eastland High School made a trip to Big Spring for the annual Teen Age Library Association Convention. The group consisted of Paula Lund, president; Connie Langlitz, vice president; Vickie Staggs, treasurer; and Mila Kincaid, reporter. Others were Keith Mercer, David Walker, Becky Miller and sponsors Melba Michael and Miss Kathy Bramlet.

The meeting was held at Big Spring High School October 21, 1972, at 9:00 a.m. The schedule was well planned. There was very good entertainment by the stage band of Big Spring High and some folk singers.

This year Eastland is vice president and had the program. Guest speaker was Carol McGiduary whose program was a book review on Jigs and Juleps. A second speaker, Sharon Welch, gave a talk on the many uses and variations of bulletin boards. Next year

McGiduary whose program was a book review on Jigs and Juleps. A second speaker, Sharon Welch, gave a talk on the many uses and variations of bulletin boards. Next year

HEY!!

Now that we have your attention we can tell you where you can get the **BEST BARBER WORK**

Available At the "WESTSIDE BARBER SHOP" of course, at 103 S. Lamar - "next door to Perry's 5 & 10. Razor Cuts - Barber Supplies - Hair Styling Boys under 12 yrs. old, only \$1.25

Charles Langford "Owned & Operated By" C.R. (Junior) Alexander

Slightly Wet

Eastland will be president and corresponding secretary of the 1973 convention.

All reported a good time and learned more about the library.

October closed out on a "wet" note with 5.25 inches recorded for the month. The front that moved in Monday brought 72 of an inch that day.

83 Tuesday for a two-day total of 1.55, and lifting the year's total to 17.47. That's down from a year ago when 28.70 inches had been recorded. The front dropped temperatures from a high of 75

degrees Monday to a low of 41 Monday night, and prospect appeared to be bright for more of the same in store as November got underway.

November 5, 1972

HAPPY BIRTHDAY MOTHER & NANNY

Carolyn, Janie, Donna, Bill,



Lori, Diana, Tony, Chad

NOTICE

SPRAY PAINTING Fast Courteous Service

2 Bedroom House \$199⁰⁰ 3 Bedroom House \$249⁰⁰

Spray Paint Anything-Barns, Fences, Oil Field Equip., Out Houses, Etc.

Also Blown Acoustic Ceilings FREE ESTIMATES

Call COMPLETE PAINTINGS & DECORATING SERVICE

442-1585 or 442-3977, Cisco

BAKKER FUNERAL HOME

306 W. PLUMMER PH. 817-629-1726 EASTLAND, TEXAS 76448



Dear friends,

We appreciate comment on these little letters. Any suggestions you may have will be gladly received.

We think of these messages as part of our service. We try to make them as informative as possible.

You will note an absence of sales talk or claims of superiority. These letters are purely for your information.

Respectfully,

Dale O. Bakker



K B HOMES

New Construction - Remodeling Custom Built Homes on your lot or ours. FHA, VA, OR Farmers Home Loan

Call 442-3024 in Cisco

Linton Batteas Dewey Kennemur

For subscription to the Fort Worth Star Telegram

Dallas Morning News

Fort Worth Press

Dallas Times Herald

Gil Biggs dealer 629-1210

LET'S RE-ELECT JESSE JAMES STATE TREASURER

His proven record merits your vote and support



JESSE JAMES IS PROVEN

JESSE JAMES STATE TREASURER State Treasurer Jesse James made for the people of Texas over \$16,000,000.00 last year in interest earned on State Funds deposited in over 1,100 Texas Banks, more than any Billion Dollar Bank in Texas made net during the same period.

Jesse James saved the taxpayers over \$50,000,000.00 financing the deficit.

Jesse James has proven he knows how to handle your State Finances efficiently.

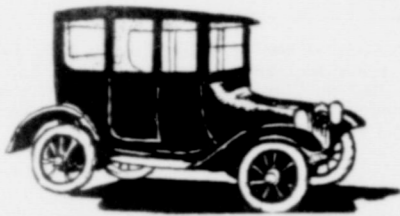
LET'S VOTE FOR AND RE-ELECT JESSE JAMES STATE TREASURER

Pol. Adv. Paid for by Jesse James, State Treasurer

School Lunch Menu

- Monday, Nov. 6 Steak & gravy Buttered rice Green peas Lettuce & tomato salad Hot rolls Gingerbread
- Tuesday, Nov. 7 Corn dogs French fries Blackeyed peas Lime delight salad Sliced bread Rice pudding
- Wednesday, Nov. 8 Beef tacos Pinto beans Buttered carrots Stuffed celery Cornbread Fruit cobbler
- Thursday, Nov. 9 Turkey a la king on Corn bread squares Green beans Whipped potatoes Tossed salad
- Friday, Nov. 10 Sloppy Jo burgers Round up salad Pork & beans Jello with bananas

Is your car becoming a Collectors item?



In one step you can take care of insurance for that new car as well as arrange financing for it.

Your local MFA Insurance agent can help you arrange both. Stop by, or call him today. He's as near as your phone. MFA Insurance, the Shelter people.



RICHARD ROSSANDER, Agent 200 W. Main Phone 629-2563

INTERNATIONAL 73 PICKUP



The Other Pickup

This one has the other look, the other features, the other points of value. It's the only pickup with collapsible steering column as standard equipment, the one with the gas tank mounted outside the cab. And who else offers you a choice of 13 body colors, 4

upholstery colors, and 3 different interiors? Power for '73 can be a six, a 345 V-8 or a 392 V-8, teamed with 3-speed automatic transmission or 3, 4 and 5-speed manuals. See the '73 list of luxuries, too—air conditioning, stereo, the works!

Compare International...The Other Pickup.

TRADE NOW!

CITY GARAGE

Eastland

103 W. White

629-1709

COUNT ON US

FOR ALL YOUR AUTO SERVICE... Opening Special

Complete Front end Alignment on all American made autos with air conditioners only \$8.50

Only \$7.50 for Front End Alignment on all American made autos without air conditioners.

All Repairs can be placed on Texaco Credit Cards.

Bob's Automotive Repair 403 E. Main 629-2922

PECANS Bought - Sold - Custom Shelled

PECANS FOR SALE: IN HULL, SHELLED

GRAHAM PECAN CO.

LOVING HWY. GRAHAM, TEXAS

Office Phone: (817) 549-4286 Night: (817) 549-0168 or 549-2219

Oysters Are In Season ROGERS GROCERY Eastland 629-2292

HEATING



ABBIE-----

Here to help with all your Jewelry, Drug, or Cosmetic needs.



FAST FREE DELIVERY Central Drug

629-2681

U-NEED-A

ticket for the Pancake-Sausage Supper At Elementary School, Friday, Nov. 10, 4:30 to 7:30

See a Lion

Authorized Medicare Supplier for

- Wheel Chairs Hospital Beds
- Walkers Crutches
- Canes Vaporizers
- Commode Chairs and other sickroom supplies

All of the above are available for non-medicare patients on a sales or rental base basis.

U-SAVE PHARMACY 629-1166 Commerce & Daugherty St. Eastland

Game Day is Friday

Prizes galore

Bring your partner

Or maybe four.

For reservations call Mrs. J.F. Collins James Horton, or Joe Stephen

J.R.B. Family Center

Porcelain-Wear OVAL ROASTER \$152 to \$388

Re-usable Aluminum ROASTER PANS 79c to 99c

GEM BATH-PAK Reg. \$200 Value NOW 79c

Dupont 100% Nylon LADIES PAJAMAS \$299