



Rising Star C-C Blasting SCC Program In County

The Rising Star Chamber of Commerce has passed a resolution blasting the County Stabilization and Conservation Committee (formerly PMA) because the SCC program in Eastland County "does not include, at the present time and does not intend to include during the remainder of 1954, a supported legume program for cover crops."

RJC Adds Two New Divisions

Ranger Junior College has two new divisions. The Agriculture Department, headed by Dr. Grady Tice, and the Speech and Dramatic Department, headed by Mrs. David L. Norton, are being well received by students at Ranger Junior College. Courses in Animal Husbandry and Agronomy are crowded with students interested in agriculture.

GI Returning From Korea

2ND DIV., KOREA (Spl.) — Sgt. Charles E. Davidson, 22, son of Mr. and Mrs. L. J. Sutherland, Rising Star, is returning to the U. S. as part of the thousand-man honor guard escorting 2d Infantry Division colors from Korea to Ft. Lewis, Wash., the battle-hardened outfit's new home.

Weather
REYSCHLAG
INSURANCE AGENCY
No. 512 Square Phone 173
Presents the Weather Report

Your New Car Financed At Low Bank Rates With Your—
EASTLAND NATIONAL BANK
Member F. D. I. C.

Bulldogs Probable Starters

No.	Name	Pos.	Wt.	Class
30	Jerry Cantrell	LE	170	Soph.
36	Archie Robinson	LT	185	Jr.
31	Tommy Young	LG	185	Jr.
28	John Hagaman	C	185	Soph.
38	Charles Bonney	RG	165	Soph.
40	Eddie Jones	RT	215	Sr.
33	John Rush	RE	172	Sr.
42	Scott Forney	QB	170	Sr.
25	Jimmy Littlefield	LH	165	Sr.
22	Jerry Wharton	RH	150	Jr.
37	Tommy Sutton	FB	165	Jr.

BULLDOG RESERVES

ENDS				
No.	Name	Wt.	Class	
3	Ronald Bush	160	Sr.	
4	John Wylie	145	Jr.	
	Claude Koenig	140	Jr.	
	Toad Tibbels	150	Soph.	
32	Boone Yarbrough	145	Fresh.	

TACKLES				
No.	Name	Wt.	Class	
46	Johnny Graves	185	Sr.	
38	Pete Jameson	175	Jr.	

GUARDS				
No.	Name	Wt.	Class	
41	Gary Patterson	180	Sr.	
20	Dan Cruse	135	Soph.	
35	Gene Bagwell	163	Soph.	
	Robert Veale	150	Fresh.	

CENTERS				
No.	Name	Wt.	Class	
	Dale Cozart	135	Fresh.	
	Wayne Jowers	115	Fresh.	

QUARTERBACKS				
No.	Name	Wt.	Class	
24	John Swinney	139	Jr.	
26	Paul Hinds	135	Soph.	

HALFBACKS				
No.	Name	Wt.	Class	
	Howard Oliver	128	Jr.	
23	Bennie Robinson	140	Jr.	
	Jerry Bradford	150	Soph.	
	David Wharton	135	Fresh.	
27	Freddy Cooper	115	Fresh.	
	Dwayne Brown	145	Fresh.	

Oil News—

No. 3-A Guy Parker Staked Near Eastland

No. 3-A Guy Parker has been staked by Porter and Hafner, et al., of Olney, six miles south of Eastland.

Site was staked 1,502 feet from the north and 1,577 feet from the west lines of the southwest quarter in Section 30, Block 2, ETRR Survey. Proposed depth is 1,500 feet with rotary.

Other area oil news: Potential eight miles east of Breckenridge in the Gilchrist-Svenson (Strawn) Field was a Gilchrist Drilling Co. of Abilene No. 4-A Svenson Ranch, Section 37, Block 5, T&P Survey.

Daily potential was 60.19 barrels of 40 gravity oil pumping from 40 perforations at 1,891-96 feet. Casing is set at 1,936 feet and the hole bottomed at 1,955 feet.

game program for cover crops; and

Emmett E. Powell, manager of the SCC office in Eastland.

Powell, when contacted by a reporter Wednesday, said he had received a copy of the resolution. Asked if he would care to make a statement, he said, "I certainly would."

Powell said that the Rising Star group "just don't know the score." He said, "Our County Committee and myself are just as interested in a cover crop program as anybody."

The resolution charged that both Brown County and Comanche County do have cover crop programs. A check revealed that both counties do.

Powell said the Eastland County committee faced the situation of wanting to do something, but now having the money to do it with. He explained that SCC funds are appropriated by Congress, and "you just don't spend more than you are appropriated."

He said the Eastland County Committee had spent most of their allotted funds on tanks and terraces, while the other two counties named have not. "We barely have enough money to finish out our year," he declared.

"It takes a lot of money to set up a cover crop program," Powell explained, "and we just haven't got the money."

He said an open meeting of the county committee was scheduled for 9 this morning in the SCC office in the courthouse in Eastland.

"The committee would in a minute set up the program if we had the money," Powell said. The meeting today was an effort to find funds for such a program.

The Rising Star resolution said, in part, "It is our opinion that such a program in Eastland County is practically necessary and exceedingly advisable at this time."

The resolution in full: "WHEREAS, we are informed that the P. M. A. program in Eastland County does not include, at the present time and does not intend to include during the remainder of 1954, a supported legume program for cover crops; and

Cooking With Gas

It's Old Stove Round-up Time In Eastland; Look Yours Over

October and November is Old Stove Round-up time in Eastland and most of the nation. And it's a mighty good chance for local homemakers to pick up some good bargains at Eastland appliance dealers.

Every gas range dealer is offer-

Records Show Dogs Lead In Wins 21-7

What is probably the biggest year-in and year-out grudge game in Texas high school football is on tap Friday night when the Ranger Bulldogs play hosts to the Eastland Mavericks.

The grid rivalry goes back as far as records do and the ledger leans far to the side of Ranger. A check back through the year 1922, with the exception of 1942, 1943 and 1944 when records were unavailable, show that Ranger has won 21 games and Eastland seven, while one game ended in a tie.

In modern history, that being since 1944, Ranger has won seven of nine games. Eastland won one and tied another. The Eastland victory came in 1947 when the Mavericks blanked the Ranger team 6-0. That year, you will remember, is the year Eastland had her best team in history, taking regional honors.

Ranger has won the last six

games in a row, and the Mavs have not even managed to score on the Bulldogs since 1950. In the last three games Ranger has won top-heavy victories.

There have been close games and run-away games, the record shows. The worst Ranger ever beat the Mavs was in 1952 when they blanked Eastland 47-0. Eastland's biggest victory over the Dogs came in 1936 when they ran up a 45-6 score. The following year Eastland won 47-13 to tie Ranger in the most points made in a single game.

That 1922 game, by the way, is the first tilt that records show. The following year, Ranger took a 25-0 victory and in 1924 the Dogs won 13-9 in a close one. Eastland broke into the win column the following year with a 25-0 win but Ranger got revenge in 1926, winning 46-0.

The closest game on record, and the one that must have been the most exciting, was won by Ranger in 1928. That year the Mavs came out on the short end of a 26-25 score. The tie came in 1945 when neither team managed to score.

Ranger, as you well know, had their most successful season this past year, when they won the State Class A championship. This year's game, although probably the one both teams had rather win than any other, is not even a district affair. Ranger has jumped into Class AA this year, while the Mavericks remain in Class A.

There's one thing for sure. When Eastland and Ranger play, you will always see a good football game.

designing new, vastly-improved models designed to fit the needs of modern living in the home of today and tomorrow.

There are ranges with periscope windows in the range tops, windows offering a full, unobstructed view of the oven interior from an erect position.

Top burner timer controls, perfected after 25 years of research, are standard equipment on many ranges.

A micro-jet pilot, made from a small stainless hypodermic needle, is only one of several improvements offered by one range manufacturer. The flame is no larger than the head on a hatpin. Cool? Of Course!

Some dealers are featuring gas ranges equipped with finger-operated fold-away shelves and vanishing griddle tops with built-in grease shields.

Prospective owners of new gas ranges will see a one-pound griddle grease catcher which, when full activates a warning light on the manifold panel.

Many ovens feature side circulation, designed to eliminate cold corners and loss of circulation.

Automatic clock controls will be standard equipment on virtually all models.

There is a gas range that cooks, then automatically washes, dries (and rinses) all dinner dishes for eight persons in minutes.

Homemakers will see a new development in gas cookery—a range featuring a separate built-in rotisserie, or barbecue cooker, complete with revolving skewer.

Oven cleaning is made easy by a "lift-off" oven door. This door is easily removed from the range, without the aid of any tools.

One new range is designed in such a manner that it may be completely dismantled for more effective cleaning.

Built-in units, now making such attractive and efficient additions to many modern homes, are being featured by many builders.

There are ranges in solid colors, colors designed to fit individual tastes in home furnishing.

And there are other improvements too numerous to mention.

W. Cunningham Improved After Recent Accident

Weldon Cunningham of Ranger, who was seriously injured in an early morning mishap on Sept. 19, is out of danger and improving nicely, his father, O. D. Cunningham, told a reporter, this morning.

He is a patient in the Eastland Memorial Hospital.

Cunningham, 20, received four broken ribs and multiple abrasions, when the 1953 Mercury he was driving, failed to make a turn 2.6 miles south of Eastland on Highway 6 and overturned several times. One of the broken ribs punctured a lung, causing it to fill with fluid. He then contracted pneumonia.

Installation Loans Custom Made For Each Customer
EASTLAND NATIONAL BANK
Member F. D. I. C.

OWN THE ECONOMY WINNER
The 1954 DODGE
McGraw Motor Co.

Eastland-Ranger Clash In Thirty-Second Game

B TEAMERS PLAY MINERAL WELLS TONITE

Eastland's B teamers go after their second win in a row tonight when they journey to Mineral Wells for a game to be played there at 7:30 p.m.

Coach Bobby Blair's charges dumped Dublin 13-0 in their first outing and are shooting for win number two tonight.

The probable starting line up will have Don Smith at left end, Gene Reagan at left tackle, Clayton Stoker at left guard, Ken Watson at center, John Lively at right guard, Johnny McMahon at right tackle and Wayne Durham at right end.

J. C. Jarrett will start as quarterback, Don Lee will be at left half, David Willoughby at full-back and Saul Pullman at right half.

Civil Service Chemist Jobs Are Available

The United States Civil Service Commission Eighth Regional Office, Dallas, Texas, released a special plea today for qualified applicants for organic and analytical organic chemist positions involving fundamental and applied research in the utilization of cotton, vegetable oils, fatty acids, terpenes and resin acids, and for physicist positions involving fundamental and applied research in electron optics and the molecular structure and properties of cotton and related textile fibers.

The salary range for these positions is from \$3410 to \$7040 per annum.

Persons who believe they might qualify for any of these positions are urged to apply at any post office for application forms or information as to where they may be obtained or obtain them from the Regional Director, Eighth U. S. Civil Service Region, 1114 Commerce Street, Dallas, Texas.

Peanut Harvest In Area Disappointing

Ranger, Cisco, Gorman and Rising Star all have reported first loads of peanuts marketed as the disappointing 1954 peanut harvest has swung into full steam. Estimates are that the short crop will total only about one-fourth of a normal crop.

Thursday, S. E. Cloninger, manager of the Southwestern Peanut Growers' Association with headquarters in Gorman, said, "The 1954 peanut crop is estimated at one-third less than the last five year average normal yield. Growers should take steps to insure seed for planting the 1955 crop. This can be done by placing your peanuts under loan or by each grower keeping enough peanuts to plant their 1955 allotment. Unless growers take one of the two steps mentioned above, adequate peanut seed may not be available for planting the 1955 crop."

A rain in parts of the county, particularly in the Cisco area, had slowed the harvesting last week, but things were in full swing again Thursday as the county again missed its chance for a rain.

Ranger's first load of peanuts was harvested by A. F. Burkhalter, who resides four miles north of Rising Star. The first load brought to Cisco was credited to Edwin W. Carlisle, who lives south of that city. Eastland does not have a peanut company.

Eastland County's peanut allotment totals near 30,000 acres, of which Emmett E. Powell, head of the ASC office, says approximately 28,000 acres were planted. Estimates on the county crop show that anywhere from eight to



Warren Tayman to speak to Rotarians

Rotary District Governor Will Speak Monday

The Rotary Club of Eastland will be host to Warren Tayman, governor of the 186th District of Rotary International, who is making his annual official visit to each of the 32 Rotary Clubs in this district.

He will address the club Monday, Oct. 11 and confer with President Frank Sayre and Secretary Earl Stephens and committee chairman on Rotary administration and service activities, and on plans for the participation by the Rotary Club of Eastland in the world-wide observance of Rotary's Golden Anniversary, Feb. 23-June 2.

Tayman is in the insurance business in Stamford and is a charter member of the Stamford club. He was elected district governor of Rotary International at the annual Rotary convention in Seattle, Wash., last June. He is one of the 229 district governors supervising the activities of some 8,300 Rotary Clubs which have a membership of 389,000 business and professional executives in 89 countries and geographical regions throughout the world.

BULLDOGS ARE RATED THREE TO FAVORITES BY DOPESTERS

For the thirty-second time, two of Texas' bitterest high school football rivals will meet each other on the gridiron Friday night when the Ranger Bulldogs of District 9-AA play hosts to the Eastland Mavericks of District 7-A.

As in all times past, the win-loss record of all other games will be forgotten when these two rival city teams clash in one of the top schoolboy games of the week meet.

Although the tilt means nothing to either as far as district hopes are concerned, it might easily rate as the top game of the year for either team.

Eastland, winless against the Dogs since 1947, would give their teeth for this one, especially since the dopesters have placed Coach Carrol Shelton's charges in the underdogs roll by three touchdowns. The Dogs, under Coach Boone Yarbrough, are equally desiring their twenty-second win against their rivals to the west.

What the outcome will be will have to wait until Friday night, but one thing is sure, an outstanding football game is on tap. The Mavericks could win a moral victory just by scoring on Ranger. For the boys from the capital city of Eastland County haven't managed to do even that in the last three years.

Both teams have been going through rugged workouts during the week, after both took losses last week. Workouts will taper off in both camps this afternoon.

Eastland A&P To Join In Celebration

Beginning this weekend and continuing through the month of October, the A&P Food Store in Eastland will observe the 95th Anniversary of the founding of America's largest retail food concern, the Great Atlantic & Pacific Tea Company.

Local observance of the event will be reflected in special prices on a wide variety of foods, many having been packed from this summer's crops. The store will be specially decorated for the month-long celebration.

A&P was founded in 1859 when the late George Huntington Hartford opened a small store in New York City, tea being the principal commodity for sale.

Through the years the company annually added to the line of foodstuffs for sale in A&P stores. Today, shoppers may purchase virtually any item of food they need.

Eastland Manager Willis Moore extended an invitation to everyone to visit A&P during the anniversary sale.

Maverick Probable Starters

No.	Name	Pos.	Wt.	Class
30	Clyde Evatt	LE	165	Jr.
18	Larry Tankersley	LT	179	Jr.
27	Roy Don Harris	LG	151	Jr.
19	Terry Warren	C	152	Jr.
13	Lupe Herrera	RG	151	Jr.
25	Carl Freeze	RT	164	Jr.
28	Leo Smith	RE	156	Jr.
21	Harvey Lewis	QB	140	Jr.
20	Bill Upchurch	HB	135	Soph.
10	Ben Cate	HB	145	Jr.
31	Jimmy Martin	FB	154	Soph.

MAVERICK RESERVES

ENDS				
No.	Name	Wt.	Class	
17	Henry Sims	134	Sr.	
24	Dick Corbell	144	Sr.	

TACKLES				
No.	Name	Wt.	Class	
25	Charles Cook	168	Sr.	

GUARDS				
No.	Name	Wt.	Class	
29	Paul Herrera	138	Jr.	
22	Jimmy Phillips	145	Jr.	

CENTER				
No.	Name	Wt.	Class	
26	Neil Pogue	138	Jr.	

BACKS				
No.	Name	Wt.	Class	
15	Larry Graham	148	Jr.	
16	Jack Akers	139	Sr.	
12	Gale Slatton	138	Soph.	
11	Dward Turner	147	Jr.	

Lions Given Program By CJC Students

Eastland Lions heard a musical program Tuesday at their regular luncheon meeting held in the Fellowship Hall of the First Methodist Church.

Jack Chambliss, head of the Cisco Junior College Music Department, and two of his students performed for the club. Chambliss sang two solo numbers, as did Joy Lynne Robinson.

Van Allen was program chairman.

STYLE - SAFETY - ECONOMY
That's The DODGE for 1954
McGraw Motor Co.

Last week Eastland lost to strongly favored Merkel 13-0 while Ranger was bowing to Brownwood 26-13. In Eastland's three other games they lost to Cisco 52-12, DeLeon 14-0 and Granbury 39-13.

Ranger holds a 14-0 win over DeLeon, beat Brewer 28-6 and Colorado City took the Bulldogs in the first game of the season 35 to 6.

Kickoff time is 8 p.m. Game site is Bulldog Stadium. Excitement is high.

DPS Report On Mrs. Blackwell Still Lacking

Justice of the Peace Jim Bogus said Thursday morning that he had still not received word from the Department of Public Safety laboratory in Austin regarding an autopsy report on Mrs. Ola Faye Blackwell.

The Eastland JP said he is awaiting a registered letter from the department.

Bogus, Texas Ranger Jim Riddle and Deputy Sheriff Lee Horn were in Austin Tuesday.

Olden, Putnam Split Pair Of Cage Games

PUTNAM (TNS) — The Olden Hornets and the Putnam Panthers split a pair of cage games here Tuesday night in the opening games of the season for Olden. The Olden boys rang up a 51-43 win, but Putnam's girls won 37-36.

The boys game was a loosely played affair. The Hornets jumped out front in the first quarter 12-6 but were behind 19-20 at halftime. In the second half Coach Billy (Hank) Green's charges began to get hold of themselves, however, to give to the victory.

The Olden girls led 21-16 at halftime, but could not hold the lead against the veteran Putnam team.

The Hornets see action again Oct. 12 when the Panthers return the engagement.

Dr. Whittington Reopens Office After Navy Duty

Dr. James C. Whittington announced today that he has reopened his office in Eastland. Dr. Whittington has just recently been discharged from the Navy.

He is an eye, ear, nose and throat specialist, and has his office in rooms 5-7-9 in the Exchange Building.

Eastland Telegram

Eastland County Record established in 1931, consolidated August 31, 1951. Chronicle established 1887, Telegram established 1923. Entered as second class matter at the Post-office at Eastland, Texas under the act of Congress of March 3, 1879.

O. H. DICK, Manager
TIMES PUBLISHING COMPANY
Published Tri-Weekly—Tuesdays - Thursdays - Sundays
O. H. Dick and Joe Dennis, Publishers

One week by carrier in city . . . 15
One month by carrier in city . . . 45
One year by mail in County . . . 2.95
One year by mail in state . . . 3.95
One year by mail out of state . . . 5.95

NOTICE TO PUBLIC—Any erroneous reflection upon the character, standing or reputation of any person, firm or corporation which may appear in the columns of this newspaper will be gladly corrected upon being brought to the attention of the publishers.

Classified Ads..

SPECIAL NOTICES

LODGE NOTICE
Stated meeting R. A. chapter No. 403 meets on fourth Thursday of each month.
L. E. Huekabay, H. P. H. P. Pentecost, Sec.

Regular meeting Tuesday night 8 p. m.

Stated meeting of Eastland Lodge No. 467 meets second Thursday night of each month.
Wayne Jackson, W.M.
H. P. Pentecost, Sec.

NOTICE deer hunters. For sale 300 Savage, 270 Remington and 8-MM Mauser. These guns taken in on trade for new tires. Will sell the money. Jim Horton Tire Service, East Main, Eastland.

RENTALS

FOR RENT: Furnished four room apartment, newly decorated. 109 North Dixie.

FOR RENT: Two bedroom unfurnished house. Apply 407 S. Madenia.

FOR RENT: Downtown upstairs apartment, furnished, air-conditioned, \$42.50 month, bills paid, phone 692.

FOR RENT: Furnished apartment. Phone 9520. Hillside Apartments.

FOR RENT: Four room nicely furnished apartment, private bath, garage. Phone 648-W.

FOR RENT: Unfurnished house, 440 month. See Tom Lovelace.

FOR RENT: Three room furnished apartment and bath. 310 E. Main.

FOR RENT: Four room furnished apartment. Call 394-J.

FOR RENT: Unfurnished, newly decorated, one and two bedroom apartments, garages, phone 465.

FOR RENT: Furnished house two or three bedrooms. 403 East Sodasa.

REAL ESTATE

FOR SALE: Brick home. Call Mrs. James Horton. Phone 461, Eastland.

Good Home on Wheels — Take it with you or live on your own lot here in Eastland. 28 Ft. Trailer house, modern, all priced to sell quick.

FAGG And JONES
Phone 597

FOR SALE or LEASE: Extra good farm, 11 head good stock cows and calves, plenty water. Phone 319-J.

FOR RENT: Two room furnished apartment 206 South Walnut.

LOST & FOUND

LOST: Set of car keys. If found call 9540 or 741-W.

T. L. FAGG R. L. JONES REAL ESTATE

Property Management Home and Farm Loans

MONUMENTS

Of Distinction call MRS. ED AYCOCK
Over years of experience enables us to give you prompt and courteous service.
See display at 306 Ave. E. or call 188 for appointment
Cisco

MISC. FOR SALE

FOR SALE: Special price on fryers for deep freeze. W. G. Waker phone 109-J.

FOR SALE: Fine Jersey milk cow. Phone 319-J.

FOR SALE: Complete twin bedroom suite includes two box springs and two mattresses. O'Keefe and Merritt six burner range, double oven and double broilers, glass doors. One 9x9 wash Wilton rug 15 wires to inch. One 10x14 wash Wilton rug 15 wires to inch. Warner Coffman, Connellee Coffee Shop.

FOR SALE: or trade, 28 foot Zimmer trailer house, good condition. Phone 729-W-1.

FOR SALE: Coronet in very good condition \$30. See at Eastland Telegram office.

FOR SALE: Seven case upright Coca-Cola Vending Machine, in perfect condition any priced for quick sale. MacMay Clover Farm Store. You may see this upright box at the Coca-Cola Bottling Plant.

FOR SALE: 1 Fairbanks Morse cylinder water pump and pressure tank for shallow well, 80 ft. 2" galvanized well pipe. C. J. Langlitz, Olden.

FOR SALE: 25 stands of Bees, one 4-tray honey extractor, extra equipment. Phone 734-W.

FOR SALE: Baby bed with Simmons innerspring Baby Beauty mattress. \$25. Phone 832-W.

FOR SALE: Pianos, upright and baby grands. Good condition, ready to use. Real bargains. Mrs. A. F. Taylor, 700 South Seaman.

FOR SALE: Men and women's used clothing. 114 North Seaman.

FOR SALE: Used Grain drill. International 14 hole 7 inch spacing. Perkins Implement Co.

FOR SALE: to local person: Route of forty 5c coin-operated machines. Can be serviced by man or woman as part time business. Requires \$400 cash, balance paid from profits. Champion Vendors, 1119 E. Houston Street, San Antonio, Texas.

FOR SALE: Take offs, repossessed and trade in tires at low prices. Get a good 6.70x15 tire for \$6.00. Jim Horton Tire Service, East Main, Eastland.

AUTOS FOR SALE

SPECIALS

1950 Buick Sedan, radio and heater with almost new tires, specially priced for only . . . \$395.00

SUPER SPECIAL

1948 Nash Ambassador, radio, heater and overdrive, beautiful light grey finish. Extra good tires, one owner since new. Super special for only . . . \$285.00

See DON PIERSON

FOR SALE: 1951 Dodge pick-up. Good rubber, A-1 shape. Priced to sell. RED GRAHAM SERVICE STATION.

Miscellaneous Wanted

NOTICE: Need your septic tank pumped out? Phone 2795, Olden.

WANTED: Paper hanging, painting or carpenter work, general contracting. A. W. Cartledge 410 South Dixie.

WANTED: Good used youth bed. Phone 601.

BUSINESS OPPORTUNITIES

SALESMAN WANTED: Can you sell a product guaranteed by Good Housekeeping? If you can I have a job for you. Prefer college students or men who need to make extra money. If you can sell you can make good money part time. Write P. O. Box 29 giving name, age, address and phone number.



THE POTWATCHER REMEMBERS—The latest development in automatic cooking is the top burner control called Potwatcher that "remembers" to shut off gas for you. The new set-and-forget dial, developed by Robertshaw-Fulton, times cooking up to one hour. It prevents burned pots, ruined food. It saves on gas. A lovely New York homemaker, Glendora Donaldson, is shown demonstrating the Potwatcher.

RJC RANGERS FAVORED TO BE LOOP TITLE CONTENDERS

As Pioneer Conference teams approach their fourth game of the season this weekend the Ranger Junior College Rangers, favored to be loop title contenders this season, lead the league in total offense. The Rangers have compiled a total net offensive gain of 1,272 yards in four games, an average of 318 yards per game.

The Rangers are also the leading rushing team with 1,106 yards in four games. The San Angelo Rams are the loop's leading passing eleven with a total overhead gain of 409 yards in three games. The Rams also are the league's

LEGAL NOTICES

Sealed bids will be received in the office of the Scranton School superintendent on Oct. 13, 1954, at 3 p.m. for a 1945 Ford School Bus being offered for sale. This equipment may be seen at Scranton School. Bid proposals may be secured by contacting Scranton School Board, Scranton, Texas.

Overseas Veterans Welcome Post No. 4138 VETERANS OF FOREIGN WARS Meets 2nd and 4th Thursday 8:00 p.m. Karl and Boyd Tanner

HAMNER FUNERAL HOME
Funeral Directors
BEN E. HAMNER EASTLAND, TEXAS PHONE 13

THOMAS FUNERAL HOME
PHONE 166 CISCO, TEXAS
Nominal Cost Burial Insurance For The Entire Family

DIXIE Drive-In
EASTLAND RANGER HIGHWAY

Box Office Opens . . . 6:45
First Showing . . . 7:15
Second Showing . . . 9:15
Each Tuesday is Bargain Night - Adults 25c Admission 50c - Children Under 12 Free

WEDNESDAY - THURSDAY, OCT. 6 - 7

THE NIGHT THE EARTH WILL NEVER FORGET!
IT CAME FROM OUTER SPACE
RICHARD CARLSON
BARBARA RUSH
A Universal International Picture

FRIDAY AND SATURDAY, OCT. 8 - 9

The violent life of **SAM GARRETT, gunslinger!**
THE DESPERADO
WAYNE MORRIS
AN ALLIED ARTISTS PICTURE
PLUS: Color Cartoon and Sports Reel

FOUR ARE INJURED IN RANGER WRECK

Two Latin-American children suffered severe head lacerations and two other persons were less seriously injured in a two-car mishap which occurred about 8 o'clock Wednesday morning at the intersection of Mesquite and South Rusk.

The children are Bertha Hernandez, 7, daughter of M. B. Hernandez, and Delia Camacho, 6, daughter of Joe Camacho, driver of one of the vehicles involved. Miss Diane Ervin driver of the other car, was not injured, but remained in the hospital under observation Wednesday.

Mr. Camacho and his son, Johnny, 8, were released after treatment. The boy suffered a cut lip and bruises, while Camacho received a severe leg bruise.

The Camacho car, a 1950 Mercury, was traveling north on Rusk, while Miss Ervin was going east on Mesquite. The Ervin vehicle, a 1950 Chevrolet, struck the left rear fender of the Camacho car, according to investigating officers. Mr. Camacho and the two girls were thrown from the car.

Peanuts —

(Continued from Page One)
000 tons. The government support price for peanuts has been set at \$228.50 per ton this year. Marketing quotas have been in effect for peanuts since 1948. In a referendum held last December, producers voted to continue the quotas for the 1954, 1955 and 1956 crops.

Stephenville Man Elected To Ayrshire Assoc.

The unanimous election of L. E. Pittman of Stephenville to membership in the Ayrshire Breeders' Association has been announced by the National Secretary, Chester C. Putney of Brandon, Vermont.

The ancestors of the herd of dairy cows owned by Pittman trace back to the heather-covered hills of County Ayr, Scotland, from which the breed derives its name. There are now more than 20,000 herds of Ayrshires in the United States.

JOY DRIVE-IN
CISCO - EASTLAND HIGHWAY
Tue. - Wed. - Thurs.

WILD BILL ELLIOTT
"THE HOMESTEADERS"

And
WHITE FIRE
SCOTT GRADY
MARTY CASTLE

Sunday - Monday

RANGER IDLE BUT PIONEER TEAMS DUE TO SEE ACTION

ARLINGTON, October 5—Only three Pioneer Conference grid elevens are slated to do battle this week, each against non-league opponents.

The Tarleton State Plowboys, who got back into the victory column last Saturday with an impressive 39-0 victory over a good Allen Academy team, will go to Kilgore Thursday for a game with the power-laden Kilgore JC Rangers. Coach H. A. "Sandy" Sanford's smart and well-drilled Plowboys will be underdogs against their Longhorn Conference rivals who, despite a recent 16-20 setback by the ASC Rebels, appear to be one of the most powerful teams in Texas JC circles this season.

On Saturday the Arlington State Rebels, the loop's only undefeated and untied team, will journey to Corsicana for a setto with the Navarro JC Bulldogs who downed previously undefeated and untied Ranger, 13-7, last Saturday. The Rebs, with three consecutive victories over high-rated teams behind them, will be favored; but Coach Claude "Chena" Gilstrap of ASC isn't going to let his charges forget that under identical circumstances in 1952, Navarro handed the Rebs their only defeat of the season.

Another Saturday game matches Coach Max Bumgardner's San Angelo Rams, 34-6 victors over Victoria last week, with the Wharton Pioneers at Wharton. In early season games Wharton was beaten both by Ranger and ASC. San Angelo's fate in the Wharton contest might be an indication of how the Rams compare with the two teams now favored to fight it out with the Rams for the 1954 league championship.

Ranger, upset 7-13 by Navarro

FOR SALE MINNOWS
J. O. WHISENAT
OLDEN, TEXAS

PALACE
THEATRE - BY CISCO, TEXAS
Wednesday - Thursday

THE LIDDIE CANTOR STORY
Keefe Brasselle - Marilyn Erskine

Friday - Saturday
CRIME WAVE
HAYDEN NELSON KIRK

Plus
Paris Playboys

Box Office Opens 5:45
Closes 7 p.m. Reopens 7:30

Magnificent Obsession Starts 8:00 p.m. Sat. Also runs Sun. - Mon. and Tues.

Brown Sanatorium
Office hours 8 to 5 p.m.
Dr. N. A. Brown, D.C.
In Charge
800 W. 6th St. Cisco

Quick Relief for HEADACHE NEURALGIA
Test STANBACK yourself . . . tablets or powders . . . against any preparation you've ever used.

Guaranteed by Good Housekeeping
Snap Back with **STANBACK**

Appliances - Sales & Service
Plumbing & Elect.
CISCO Appliance Co.
Cisco, Texas
Phone 414

FARMS - RANCHES
Pentecost & Johnson
REAL ESTATE
City Property

Real Estate And Rentals
MRS. J. C. ALLISON
Phone 347 920 W. Commerce

STARTS SUNDAY
33 Centuries look down upon you through the miracle of **CINEMASCOPE**
Photographed with the revolutionary new anamorphic lens
20th Century-Fox presents
DARRYL F. ZANUCK'S production of
THE EGYPTIAN
Color by DE LUXE
In the Wonder of 4-Track High-Fidelity, Directional-STEREOPHONIC SOUND
MAJESTIC

RAKE
WE HAD A CLOSE CALL THAT TIME! THIS NEARLY CAME OPEN WHEN SHE PICKED IT UP!
THAT'S RIGHT! STRETCH! YOUR LEGS MUST BE CRAMPED!
KEEP AWAY FROM THAT PHONE! I'M SPOOKED TO BE ALONE HERE - REMEMBER?

MARY WORTH'S FAMILY
YES? - WHAT ARE YOU SELLING?
UH... MYSELF, I SUPPOSE YOU MIGHT SAY...!
I'M MRS. WORTH... DIDN'T MRS. RILEY TELL YOU ABOUT ME?
YOU'RE THE NEW HOUSE-MOTHER? YES! SHE SANG US A HYMN ABOUT YOU!... SORRY I DIDN'T RECOGNIZE YOU WITHOUT A HALO!
FRANKLY, I'M ALWAYS SUSPICIOUS OF PRODUCTS... OR PEOPLE... WHO ARE OVERSOLD IN ADVANCE!
PAPPY!

Rising Star —
(Continued from Page One)
acre at a cost of \$2.30 per acre.
"BROWN COUNTY
"On 1/3rd of the cultivated acreage (not to exceed 50 acres on any one farm), P. M. A. office will furnish as follows:
"Vetch and Rye—10 lbs. per acre at a cost of \$1.10 per acre.
"Pens—20 lbs. per acre at a cost of 95c per acre.
"Rye—30 lbs. per acre at a cost

of 95c per acre.
"\$20-0 Fertilizer—200 lbs. per acre at a cost of \$2.40 per acre.
"AND WHEREAS, it is our opinion that such program in Eastland County is practically necessary and exceedingly advisable at this time in order that the soil conservation and soil building practices of our County may be carried on;

"AND WHEREAS, many farms in our County do not have sufficient allotment in supported price crops to meet the economic needs of the farmers of our County, thus creating the advisability and the necessity of a soil building program; and especially this is true in view of the fact that our County has suffered severe droughts and crop failures during the past four years;

"NOW, THEREFORE, BE IT RESOLVED: That the County Committee and the County Supervisor, Emmett Powell be and they are hereby urgently requested to adopt immediately a program of legume planting for cover crops similar to those of the Counties of Brown and Comanche, as are herein outlined;

"BE IT FURTHER RESOLVED: That the dead-line for compliance with any adopted legume planting for cover crop program be extended by the County Committee to not earlier than December 15th, 1954;

"BE IT FURTHER RESOLVED: That a copy of this resolution be furnished at once to the P. M. A. office at Eastland for Eastland County, Texas, and a copy of same be sent to each Chamber of Commerce in Eastland County and any other organizations in the County interested in the up-building of our soils;

"BE IT FURTHER RESOLVED: That a copy of this resolution be furnished for publication in the newspapers of Eastland County;

"BE IT FURTHER RESOLVED: That a copy of this resolution be mailed to the State P. M. A. Office at College Station, Texas."

Record —
(Continued From Page One)

Fall Bargain Offer!

THE ABILENE REPORTER-NEWS

Bigger and Better in 1955!

Family Weekly to Start Jan. 2

One Year Morning and Sunday... 11.95
Daily Only... 10.95
By Mail Anywhere in West Texas

See Your Agent Today!

COME IN PLEASE DRIVE OUT PLEASED

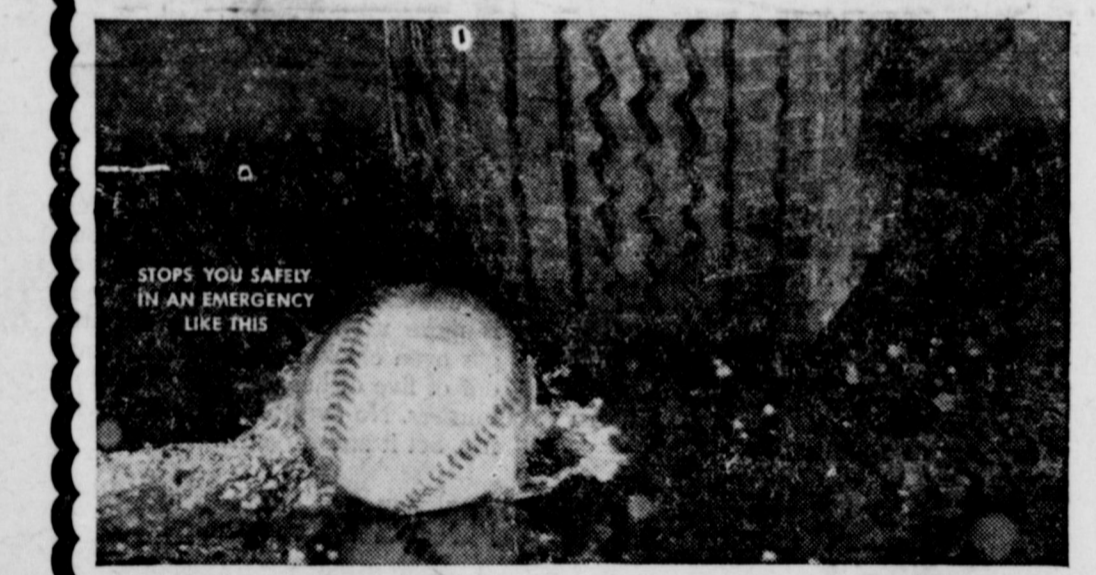


We have a huge car-washing business too. We clean your car inside and out, and we're proud of all the satisfied customers we have. Drive in for service.

HUMBLE
OBIE & DOC
SERVICE STATION
207 E. Main Phone 9535

B.F. Goodrich SAFETYLINER TUBELESS

is the new-car Tubeless with the 6-year lead, COSTS NO MORE THAN REGULAR TIRE AND TUBE



Car Manufacturers' Adoption of Safetyliner Tubeless climaxes 6 years of single-banded B. F. Goodrich Tubeless Tire development.

SAFETYLINER GIVES PATENTED PROTECTION AGAINST BLOWOUTS, REVOLUTIONARY PROTECTION AGAINST SKIDS

B. F. Goodrich announces a new Tubeless—the B. F. Goodrich SAFETYLINER—that puts Tubeless Tire safety in the regular tire-and tube price range!

Engineered exclusively for today's streamlined new cars, this streamlined Tubeless Tire is the choice of many carmakers for new 1955 cars. It has no inner tube to blow out. Instead it has a patented inner liner, part of the tire itself. In case of a bruise-break, cause of most sudden blowouts in tires with tubes, the SAFETYLINER does not blow out. You merely get a gradual loss of air—a safe s-s-slowout that gives you time to stop safely.

17% Better Skid Resistance
A new tread design gives the B. F. Goodrich SAFETYLINER greater skid resistance than previous new-car tires. In locked-wheel stopping tests on smooth, wet pavement, SAFETYLINERS stopped in 17% less distance.

It is designed for modern highways, and the new powerful cars. It practically eliminates squeal.

AS LITTLE AS \$4 DOWN PUTS A SET OF SAFETYLINERS ON YOUR CAR...LOW WEEKLY TERMS



CHANGES BLOWOUTS TO S-S-S-SLOWOUTS
On curves, it's almost silent. It rides smoother. Yet the SAFETYLINER costs no more than a regular tire and tube.

The Tubeless Tire was invented, patented and perfected by B. F. Goodrich. Over 3,000,000 B. F. Goodrich Tubeless Tires have been sold since the first one was announced in 1947. They have been proved by over 50 million miles of use. Only B. F. Goodrich has 30,000 Tubeless Tire retailers trained to serve you and backed by 6 years of Tubeless Tire know-how.

B. F. Goodrich SAFETYLINER Tubeless Tires fit standard wheels.

THERE ARE MORE B. F. GOODRICH TUBELESS TIRES IN USE THAN ALL OTHER MAKES COMBINED

KING MOTOR COMPANY
100 East Main Phone 42

B.F. Goodrich FIRST IN RUBBER

CLOVER FARM STORE

Autumn Festival

Here's what you've been looking for... our big, annual Autumn Festival of tremendous food values! Each and every department in our store has specials galore... don't miss 'em. Now's the time to stock-up on 1954 packed canned goods... buy 2 cans or 6 cans... OR A WHOLE CASE... you'll save!

Save... on Top Quality CLOVER FARM FOODS!
EXTRA SAVINGS NOW ON 1954 PACK CANNED GOODS

FALL CLOSE-OUT ITEMS

CANADA DRY BEVERAGE ALL FLAVORS	Reg. 20c	16 Qt.
GRAFETTE SYRUP	Reg. 39c	16 Oz. Bottle 32c
DELAWARE PUNCH SYRUP	Reg. 45c	16 Oz. Bottle 36c
WOODLAND THERMOS JUG FULLY	Reg. 3.29	Holds 2.79 Gallon
WOODLAND THERMOS JUG WITH BOTTOM SPOUT	Reg. 5.45	Holds 4.95 Gallon
ALLENCO REVOLVING LAWN SPRINKLER	Reg. 2.29	1.95
YODER LAWN SPRINKLER	Reg. 63c	55c
WATER HOSE	DISCOUNT 20%	

DIAMOND EMBOSSED

Napkins	2	80-ct. Box	25c
Corn	2	12-oz. Cans	27c
Biscuits		Can	11c
Flour	5	Lb. Box	49c
Catsup		14-oz. Bot.	19c
Purex		Qt.	17c

CLOVER FARM RED SOUR PITTED

Cherries		No. 303 Can	29c
Tide or Cheer		Large Size	29c
Baby Food	3	4-oz. Cans	25c
Beans	2	No. 303 Cans	25c
Koolade	6	Pkgs.	25c

WOLF Chili
No. 2 Can
45c

Short'ing
3-Lb. Can
89c

U. S. NO. 1 RUSSETT

Potatoes	10	Lb. Mesh Bag	39c
Apples		Lb.	10c
Roast		Lb.	39c
Roast		Lb.	35c
Loin Steak		Lb.	45c
Club Steak		Lb.	49c
Hamburger		Lb.	25c
Bacon		Lb.	59c

Political Announcements

This paper is authorized to make the following announcements, subject to the November 2 General Election. TOM C. HIGH Democratic write-in candidate for Constable Precinct 1.

FOR SALE Battery raised FRYERS Lb. 48c Also do custom dressing. Fryers under 2 1/2 lbs., 10c. Large, 12 1/2 Lb. Hens, 15c Lb. WALKER DRESSING PLANT West on Highway 80 South at Y Phone 109-J

Call 601 For Classified Ad Service



Dorothy Kilgallen says... Eleven Time Savers Are Built In... My New Detroit Jewel Range!



RETIRE YOUR OLD RANGE Your Old Range Probably More Than Covers Your Down Payment!

Old Stove Round-up SAVINGS AUTHORIZED DEALER WHITE Auto Store THE HOME OF GREATER VALUES East Side of Square

Stylorama Draws Large Crowd, Many New Styles Presented

An array of beautiful fall clothing was shown from Anderson's and Altman's Style Shop. Tuesday evening, when the Beta Sigma Phi Sorority sponsored their annual Stylorama, at the Eastland High School auditorium. Miss Rhelda Reed of Cisco furnished the background music as the models paraded across the stage, which was beautifully decorated with garlands of gayly colored ropes of paper hanging from the ceiling, before a pink tree holding rhinestone ornaments, banked with an arrangement of Periwinkles. Winter coats were shown first then children's clothing was modeled by Vicki Marene King, Shiela Sneed, Jan Jolly and Bill Hoffmann, Jr. Casual and sport clothing from each of the shops were next in appearance, followed by suits and dressy dresses. Approximately 50 garments were shown, bearing labels from Lilli Ann, Rothmoor,

International, Shenanigan, Justin McCarty, Minx Mode, Cotillion, and many other famous brands from Anderson's worn with hats by Frank Benson and others. Children's clothing was from Chips and Twigs and Prissy Missy. From Altman's were Swansdown, Handmacher, Paula Brooks, L'Aiglon Nardis, Hobby, and Melton Sheppard worn with Jan Leslie hats. Mentioned above are only a few of the many brand names, Mrs. Robertson has many more equally as famous. Some of the garments shown by each of the stores bore famed labels from Texas Manufacturers, made from Texas materials and by Texas labor. Just before the showing of the jeweled formal a skit entitled "The Wedding of the Jewels" in pantomime, with Mrs. Johnson, author and director, reading, was presented by Janis Little, emerald; Barbara Hightower, ruby; Goldia Skiles, diamond; Jane Jordan, amethyst; Gayla Walters, pearl; Doris Day, topaz; and Ellen Whatley, sapphire. Mrs. Art Johnson, attired in shimmering white satin, accented with numerous rhinestones, served as commentator. She presented a gift to Miss Reed, following her piano solo, Dance Negre by Cyril Scott, in behalf of the Sorority members. Mrs. LeJune Horton, president

of Xi Alpha Zeta, and Mrs. Fehrman Lund, president of Zeta Pi, were introduced by Mrs. Johnson. They gave the door prizes to lucky ticket holders, who were Mrs. V. L. Red of Olden, Mrs. Bob Ables, and Mrs. Virgil E. Moore, both of Eastland. Sorority chairman who assisted Mrs. Johnson in the presentation were Mmes. W. B. Barrow and Bill Walters of the Xi Alpha Zeta chapter and Mmes. R. M. Sneed and Truman Brown of the Zeta Pi chapter. Models for Altman's were Misses Jane Myrick, Patsy Young, Ella Mae Patterson, Mmes. Thura Taylor, Hubert Jones, Virgil Seaberry, Johnny Aaron, Anna Grace Bumpass, Horace Horton, Charles Layton, Jack Kelly. Modeling for Anderson's were little Misses Vicki Marene King, Shiela Sneed, Jan Jolly, and Bill Hoffmann, Jr. Mmes. Bruce Pipkin, Luther Wilson, Bob King, R. M. Sneed, Bill Hoffmann, Jimmie Ervin, Bill Collins, Elvie Shephard, Misses Jeanette Caton, an Marjorie van Hoose.

Mr. and Mrs. C. P. Bell from Nordheim visited here last week-end with Mr. Bell's mother, Mrs. George W. Bell. Mrs. Bell also had as guest her grandson, Jimmy Clary of Fort Worth.

Eastland Group Is Invited To Victory Party

A special program of entertainment is to be presented for the High school and college groups, and their guests, on Friday night after the Ranger-Eastland football game. The Ranger ministerial Alliance has Dick Walters, Walter Arterburn, Mmes. D. D. Brian, and Ralph E. Perkins as a special committee for the entertainment. The program will be held in the lower auditorium of the First Baptist Church. Immediately following the program a delicious snack will be served to all who attend. We are looking forward to the Eastland group coming too," Rev. Brian said, "we want to build the finest Christian fellowship known in these parts, and we have the right kind of people here who love the Lord and are willing to put forth the effort and expense to offer our young people and their guests the very best in programs and entertainment." Everyone is invited to attend these services.

Automobiles today contain more light bulbs than an average five-room home. Current models have an average of 20 lights, and some have as many as 38. There were only five or six lights in the average 1925 car, about 13 in the 1940 models and 16 1946 cars.

Annual State BSU Convention To Be Held In Abilene

News of the assignment of M-Sgt. Jack C. Cantrell to the United States Army Recruiting station at Lewiston, Idaho, and also at Yakama, Washington has been received here by his mother, Mrs. John Cantrell, 208 South Connellee. Sgt. Cantrell served as recruiting supervisor at Spokane since March, before taking over the duties at Lewiston. Prior to service there he spent 18 months overseas at the Oppana Ordnance Depot in Korea. Mrs. Cantrell has returned from a visit with the sergeant and his wife, who have a new son born May 29, and who is Mrs. Cantrells first grandchild. Mrs. Cantrell has another son, Wilfred, who is also in service and is expected home from France, where he has been stationed for some time. Mrs. Paul D. Ferguson of Amarillo, who has been here visiting with her mother for the past four weeks returned to her home Sunday.

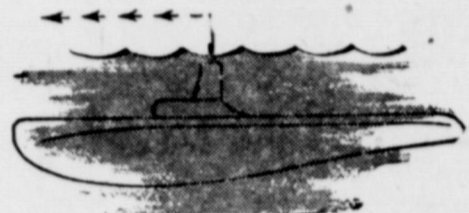
Mrs. Cantrell Returns From Visit With Son

Loans to develop irrigation systems and farmstead water supplies and new type credit for financing soil conservation measure are available because of recently passed Federal legislation. Farmers Home Administration will handle the loans.

Eighth Grade Organizes For School Year

The Eighth grade of Junior High School met Tuesday October 5th to organize for the year, under the direction of M. M. Sheffield, principal. Clinton Ray Humphrey was elected president; Nicky Arther, vice-president; Dot Gibbs, secretary; Larry Hollis, treasurer; Sue Stoker, reporter; Jerry Robinson, parliamentarian; Jamie Stamey, Editor. A short business session was held and the class decided to edit a school paper, which will carry news of the school. Call 601 For Classified Ad Service DR. O. A. JONES Chiropractor 7 a.m. till 12 noon 210 Pet. Bldg Eastland

a periscope in your kitchen!

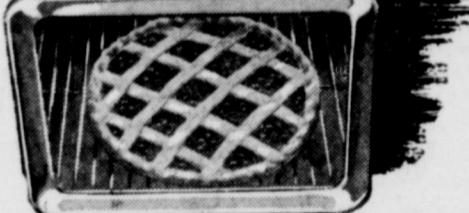


hi-vue

The scientific marvel of the periscope adapted to America's Most Modern Gas Range provides the clear-vision convenience of a glass door oven - RAISED TO COMFORTABLE EYE LEVEL!



Yes, O'Keefe & Merritt has put the periscope principle to work for you - so that you never need stoop or squint to see inside your oven - you never need open the oven door while cooking! A glance at the Hi-Vue window gives you an excellent view of the miracles of oven cooking - cake rising, roast turning golden brown, pie reaching tasty perfection before your very eyes!



HI-VUE - another exclusive first by O'Keefe & Merritt - originators of the GRILLEVATOR BROILER, KOOL KONTROL PANEL, VANISHING SHELF-COVER

Old Stove Round-up SAVINGS SEE THE AMAZING NEW HI-VUE GAS RANGE - AT OUR SHOWROOM NOW! Lamb Motor Co. 305 East Main Phone 44



Old Stove Round-up SAVINGS



MODERN LIVING is making the kitchen the center of family life. This calls for a '55 Automatic Plus Gas Range in decorator's colors to keynote or complement your color scheme. Choose pastel green, pastel yellow, brilliant red or antique copper to make your modern gas kitchen pretty as a picture. NEW TOP BURNER TIMER times coffee, eggs, and vegetables from one to 60 minutes, then turns burner off automatically. Top Burner Timer is more useful than the automatic gas oven clock control because four out of five dishes are cooked on top burners. No over-cooking or scorching. Set it and forget it!

Don't Buy A New Range Until You See The Sensational New DEABORN RANGES AT Willy Willys Furniture Mart 305-07 South Seaman - Phone 585

E. L. Martin & Sons CLOSE-OUT SALE RANGER, TEXAS MANY PRICES HAVE BEEN LOWERED AND NEW BARGAINS ADDED LADIES DRESSES Actual values to \$19.95 4.00 TO GET ONE OF THESE - YOU MUST HURRY MEN'S DRESS TROUSERS From 3.99 Up BOYS LONG SLEEVE SPORT SHIRTS CLOSING OUT 1.44 SPECIAL GROUP CHILDRENS SHOES Values to \$6.95 2.99 INCLUDING VITALITY AND POLL-PARROT MEN'S SPORT SHIRTS CLOSING OUT 1.39 DRASTIC REDUCTIONS IN DISCONTINUED VANITY FAIR LINGERIE COSTUME JEWELRY 1/2 PRICE SHOP NOW AND SAVE! MEN'S WESTERN SHIRTS VALUES TO \$4.98 NOW 2.77



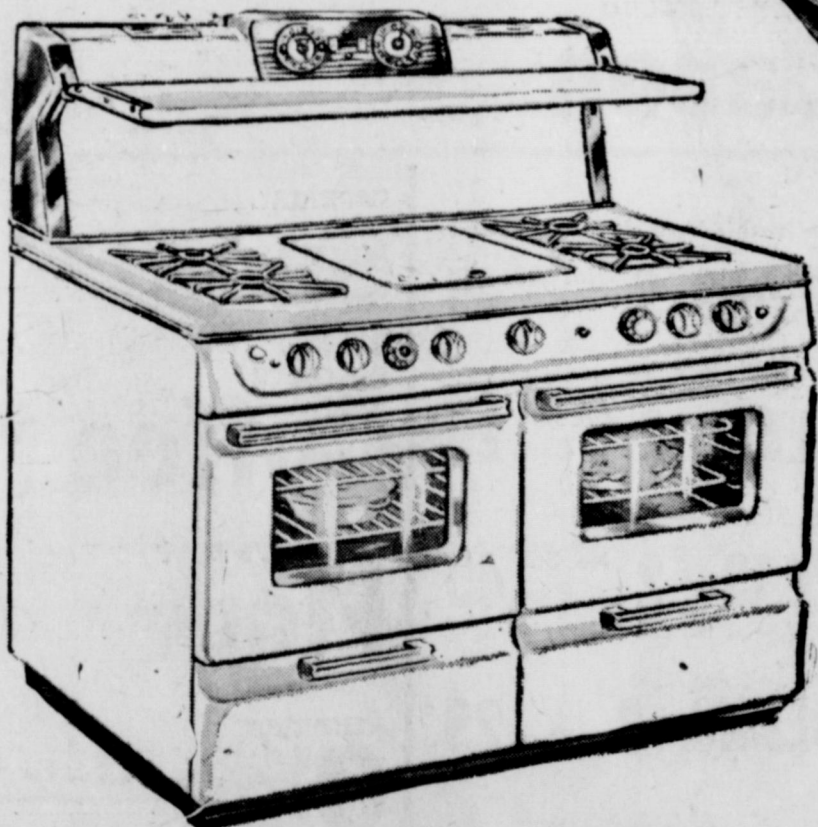
A magnificent Premiere Showing launches **Annual Old Stove Round-Up Sale**

'55 automatic plus gas ranges

THE 1954 OLD STOVE ROUND-UP SALE is on! It's the only Nationwide Sale of a major home appliance. This year's Round-Up Sale is the most exciting ever because all leading dealers are premiering the '55 Automatic Plus Gas Ranges.

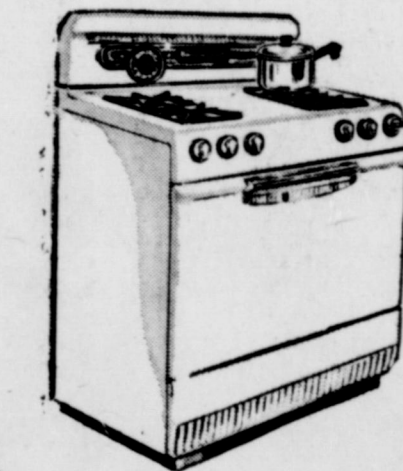
This very minute at the Premiere Showing a '55 Automatic Plus Gas Range is ready to make your cooking automatic... cleaner... cooler... faster and more economical. Its smart, smooth-flowing lines and scintillating chrome will give your kitchen a sparkling new look.

It's time to modernize... time to save. Take advantage of the special values and terms. Attend the Premiere Showing of '55 Automatic Plus Gas Ranges at 1954 Old Stove Round-Up Sale today.

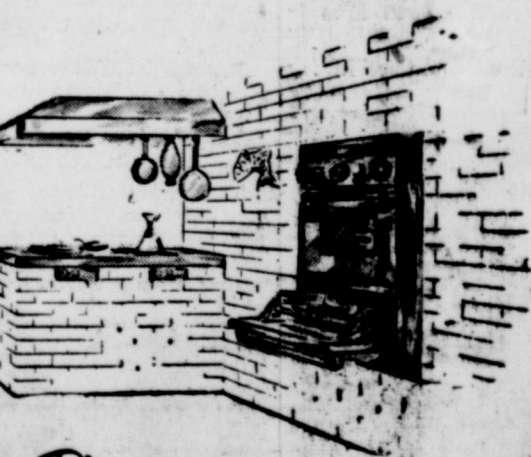


MODERN LIVING is making the kitchen the center of family life. This calls for a '55 Automatic Plus Gas Range in decorators' colors to keynote or complement your color scheme. Choose pastel green, pastel yellow, brilliant red or antique copper to make your modern gas kitchen pretty as a picture.

NEW TOP BURNER TIMER times coffee, eggs, and vegetables from one to 60 minutes, then turns burner off automatically. Top Burner Timer is more useful than the automatic gas oven clock control because four out of five dishes are cooked on top burners. No over-cooking or scorching. Set it and forget it!



It's **Automatic Plus** Smaller outside... bigger inside. New 30-inch width model gives you more baking capacity than standard 36-inch model. Of course, the oven turns on... cooks... turns off by clock control.



It's **Automatic Plus** Gas cooking top, oven and broiler build into your cabinets wherever you wish. Only gas gives you a separate smokeless broiler beneath the fully automatic, clock-controlled oven.

It's **Automatic Plus** Lift the smooth center work top and you've a built-in griddle. Lift the griddle... you've a 12-inch extra high-speed burner. This vanishing griddle top is three times as useful - it's Automatic Plus.



In '54, more people than ever before are cooking with gas!

modern gas cooking is **Automatic Plus**

- cool
- fast
- clean
- safe
- flexible
- dependable
- economical — cooks for 1/4 cost of any other automatic fuel

Annual Old Stove Round-Up Sale Now
Save at **GAS** Range Dealers and Lone Star Gas Company

Mr. and Mrs. John E. Collins have returned home from a several weeks stay in Colorado. The mountains were covered with snow and the weather was getting very cool, before we left, Mrs. Collins said.

DON'T WAIT

COME IN

NOW

BUY AHEAD and you'll BE AHEAD
Get your **Deorborn NOW!**



Famous Cool Safety Cabinet Heater

It's Easy to Pay With LAY-AWAY
ONLY **1.00** DOWN
Easy Weekly Payments

WESTERN AUTO
ASSOCIATE STORE
East Side Square
Herbert Ekrot - Owner

Save!
Today - Choose Your Christmas

BULOVA
Gift of a Lifetime!

GODDESS OF TIME
17 jewels, 2 diamonds \$4950

\$100
Reserves Your Choice Until Christmas!

BULOVA "23"
23 jewels, self-winding, certified waterproof, unbreakable mainspring, raised gold numerals, shock resistant, anti-magnetic, sweep second hand \$9950 (also available with black dial)

SMITTY'S JEWELRY
East Side of Square



MRS. ELLA MAE WOOTEN from Centennial Temple 100 of San Angelo will serve as Protector at the district convention held here Saturday by the Pythian Sisters.



MRS. DELIA STOCTON from Centennial Temple 100 of San Angelo who will serve as district treasurer, Saturday at the district convention of the order of Pythian Sisters.



MRS. MATTIE LOU FOX, who will serve as district past chief in the convention of the Pythian Sisters of this district held here in the Connellee Hotel next Saturday.

Hospital Report

Patients in the Eastland Memorial Hospital Thursday morning were: Weldon Cunningham, Ranger; Mrs. L. E. Barber, Midland; Mrs. R. C. Crawford, Cisco; T. G. Jackson and R. C. Greer, both medical, Eastland. Dismissed Wednesday were Mrs. A. C. Brown and infant daughter, Mrs. H. B. Grizzle and infant daughter.

The Army will soon start rearmored one infantry—as experimental units to test techniques that might be required during atomic warfare.



They won't be little very long

But you can remember your children's precious growing-up years forever with professionally made portraits. Phone for an appointment today.

CANARIS STUDIO
Phone 46

Mrs. Huckabay Reviews Book On Indian Politics At Las Leales Club's First Meeting This Year

Mrs. L. E. Huckabay reviewed, "Prison and Chocolate Cake" by Nayantara Sahgal, which portrays the life of three daughters of a prominent political family in India, for members of Leales Club. Mrs. Huckabay was dressed in the costume of the Indian woman and told the story in first person. She brought to life the problems of political families in their fight for freedom from Britain, their dreams of the future and told of the education of the three girls. Mrs. J. C. Whately, president, presided and introduced Mrs. Rudolph Little, program chairman, who outlined the year's study, "Tomorrow Unlimited," and presented the other committee members, Mmes. Wayne Caton, W. Q. Vernez, and Opal Cross, who served as hostesses for the evening. Monday night's meeting, in the Woman's Club was the first of the season, and the program was entitled, "Flight into the Future."

Sub Deb Club Meets With Doris N. Abbott

The Sub Deb Club met in the home of Doris Nell Abbott Wednesday afternoon. During the business session the club ordered the new club sweaters and a new member, Annette Sherman, was voted into the club.

Refreshments of sandwiches, potato chips and Cokes were served to Janette Caton, Emelie Miller, Jeanne Pittman, Sandra Potts, Lou Ann Corbell, Kedron Williams Billie Jo Trout, Carol Ann Hill, Dorothy Jo McKinney, Evelyn Jordan, Jane Ann Jernigas, Merle Craig, anice Little and the hostess, Joyce Nell Abbott.

The automobile industry uses almost \$80 million worth of cotton in its products in one year.

Game tables seated the members in groups of four, with places marked by the attractive new year books, where they were served a dessert course.

Centering each of the tables was a small globe, holding a small space ship. The large table, placed in prominent view, was covered with a white linen cloth and held a ship, made of styfoam and decorated with bronze chrysanthemums, with creatures of other worlds, artistically arranged and in keeping with the course of study.

During the short business session, the club voted to sponsor Mrs. James Horton as chairman of the coming district convention, which will be held here in April. They also voted to give \$15 toward preparation of the Woman's Club.

Others present were Mmes. W. E. Brasher, Anna Pumpass, O. H. Dick, D. E. Frazier, Eldress Gattis, H. L. Hassell, B. F. Hanna, Horace Horton, E. E. McAllister, Don Parker, Guy Patterson, Wendell Siebert, Homer Smith, Thura Taylor, Hubert Westfall, James Horton and Misses Verna Johnson and Eunice Nell.

Kidney Slow-Down May Bring Restless Nights

When kidney function slows down, many folks complain of nagging backache, headaches, dizziness and loss of pep and energy. Don't suffer restless nights with these discomforts if reduced kidney function is getting you down—due to such common causes as stress and strain, over-exertion or exposure to cold. Minor bladder irritations due to cold or wrong diet may cause setting up nights or frequent passages. Don't neglect your kidneys if these conditions bother you. Try Doan's Pills—a mild diuretic. Used successfully by millions for over 50 years. It's amazing how many times Doan's give happy relief from these discomforts—help the 12 miles of kidney tubes and filters flush out waste. Get Doan's Pills today!

Life Is More Satisfying—
... in a home of your own and you may have an added feeling of satisfaction if you keep it adequately insured. Being adequately insured means that your insurance carrier be well capitalized and it's local agent be one who is experienced in all matters pertaining to proper insurance coverages. Let us insure the home, its furnishings or the new car. Without obligation or cost you may get here a complete analysis of your insurable properties as often as the need arises.

EARL BENDER & COMPANY
Eastland (Insurance Since 1924) Texas



calves on the ground are like MONEY IN THE BANK

It costs a lot of money to keep a cow. A lot of that money is lost if she fails to settle or drops small, weak calves that die or develop into "tail-enders."

BIG CROPS of husky calves are a must, if a fellow is going to make money ranching. This is especially true when the price of cattle is off.

Your range needs help. It takes more than grass alone to give your cows what they need to grow and drop the kind of calves that will bring top prices next fall.

PURINA RANGE CHECKERS have proved their worth in research tests and on thousands of ranches. This favorite range supplement has what it takes. Cattle love Checkers, do well on them. Cows stay up in good shape at calving time, have lots of milk for the calves, too.

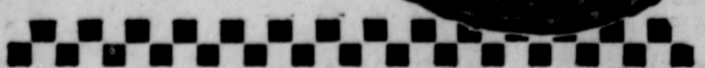
More and more Southern cattlemen are planning their breeding program so that calves come in the late fall. These calves are ready to eat early grass—hit the early market, which is usually best.

Feed for big calf crops the Purina Way. Purina Range Checkers can help you keep your operation on the profit side of the ledger.

COME IN. We'll visit about Purina Range Checkers and profitable ranch management. Make it soon!

Your Store with the Checker-board Sign

WILSON FEED AND SEED
204 N. Seaman Phone 175



Thursday Afternoon Club Opens Season Tuesday With 9 a.m. Coffee

A coffee at 9 a.m. Tuesday at the Woman's Club opened the season for the Thursday Afternoon Club members.

Mrs. Frank Castleberry, president welcomed the members and presented Mrs. Cecil Collings, program leader, who presented the new year books and outlined the year's study. She also introduced Mrs. Iral Inzer in a review of "Album of American Poetry" by Ted Malone.

Hostesses were members of the year book committee, including Mmes. Collings, W. P. Leslie, Har- sid Durham, and Turner Collie. Mrs. Leslie and Mrs. Collings presided over the refreshment table which was attractively prepared with a lace cloth and decorated with a three crystal tumbler arrangement of Queen's Wreath and red roses. Coffee, tea, cinnamon rolls and frosted grapes were served.

Present were Mmes. Castleberry, Earl Conner, Collings, Collie, Frank Crowell, Fred Davenport, Cyrus B. Frost, James Horton, Inzer, D. L. Kinnaird, Leslie, W. W. Linkenhogor, Milburn S. Long, Frank Lovett, Arthur Murrell, B. W. Patterson, Robert G. Perkins, Grady Pipkin, Don Russell, Virgil T. Saaberry Jr., R. E. Sikes, Frank Sparks, E. R. Townsend, M. A. Tredwell, Dixie Williamson, and Clyde Young.

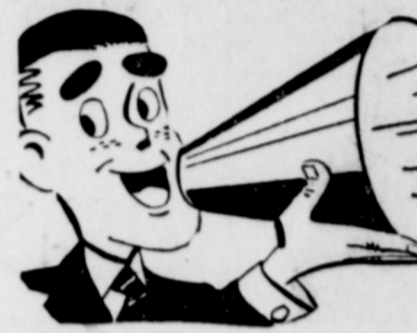
Call 601 For Classified Ad Service

Tricky Texan To Try New Tricks

LUBBOCK — Gene Thompson, the Texan who startled Londoners during the summer by flying under the London Bridge, is looking forward to a new thrill. Thompson saw the Ford Thunderbird on display at the Panhandle-South Plains Fair and immediately placed an order for one of the sleek, low-silhouette cars.

According to Harry Morris, Lubbock Ford dealer, Thompson hasn't revealed plans for any sensational stunts with the Thunderbird.

PATRONIZE YOUR HOME TOWN MERCHANTS!



VALUES TO SHOUT ABOUT!

FRESH GROUND Hamburger Lb. 19c	Cal-Top PEACHES No. 2 1/2 Can 25c
COUNTRY STYLE Sausage 3 Lbs. \$1	Kimbell's Grapefruit JUICE 46 Oz. Can 29c
PORK Roast Lb. 39c	Nu Zest Orange JUICE 46 Oz. Can 35c
BABY BEEF 7-Roast Lb. 35c	Del Monte Tomato JUICE 46 Oz. Can 29c
SHOULDER ARM Roast Lb. 35c	Welch's Grape JUICE 24 Oz. Bottle 39c
CENTER CUT Pork Chops Lb. 59c	Diamond Brand CORN 2 No. 303 Cans 29c
MIDWEST SLICED Bacon Lb. 59c	Del Monte SPINACH No. 303 Can 15c
	Del Monte PUMPKIN No. 303 Can 15c

McGrath's French Style, Sliced BEANS 2 No. 303 Cans 45c	IMPERIAL Sugar 10 Lbs. 89c
Kimbell's Blackeye PEAS 2 No. 303 Cans 29c	FOLGER'S Coffee Lb. \$1.09
Del Monte — Sugar PEAS 2 No. 303 Cans 45c	KIMBELL'S BEST Flour 25 Lb. Sack \$1.79
Pinto BEANS 3 Lbs. 29c	KIMBELL'S Oleo Lb. 21c
Ajax CLEANSER 2 Cans 25c	YELLOW Onions Lb. 5c
French's MUSTARD 6 Oz. Jar 10c	WINESAP Apples Lb. 10c
Post TOASTIES 8 Oz. Pkg. 15c	

These Prices Effective Friday and Saturday Only

EARNEST Frozen Food Center

206 South Lamar Phone 170



What's The Score?

By Virgil Moore

The name of this column is What's The Score, and at this moment, that's what we are basically interested in. Our reason is two fold.

Reason one is that we would like to find out the scores of the Eastland-Ranger games in the years 1942, 1943 and 1944. Perhaps the two teams did not play, but as a page one story indicates, records are complete except for those three games back to the year 1922. If you happen to know the score, and-or know that the games were not played, how about letting us hear from you.

The other reason, of course, is that we would like to know what the score of the Maverick-Ranger game will be Friday night. And a few other tilts, we might add. But before we get our magic ball out and do a little guess work, let's glance briefly at last week's game.

Those who saw the affair know that about the only good offense the Mavs came up with was in that great drive to the three in the opening minutes of the third quarter. Jimmy Martin was the big gun in the drive, as well as all night.

Jimmy carried the ball 10 times that game to gain a net yardage of 45 yards, 4.5 yards a try. That brings his rushing average for the year up to 3.8 yards a try and his total yards gained rushing to 184.

Martin still trails Billy Upchurch, however. Upchurch's great opening game against Cisco, in which he averaged 9.4 yards a try in 13 carries, is still tiding him over. He had a total yardage gained of 193 yards for an average of 4.9. He gained only 15 yards in seven tries against Merkel, however.

Ben Cate still leads the Maverick passing game despite the fact he didn't complete a single toss last Friday. He was out of the tilt because of an injury during much of the game. Cate has passed for 91 yards in the airways in 17 tries. He has completed six of those passes.

Harvey Lewis, who passed 11 times for four completions against Merkel, ranks second with a passing yardage of 81 yards. He has heaved the ball a total of 34 times, completing 12 of them.

Upchurch has passed nine times

and completed six of those attempts. His passes have been short ones, however, for a net yardage of only 23 yards.

The star of the Mavs' passing game has been End Clyde Evatt. Probably you haven't realized it, but Evatt was on the receiving end of every pass completed against Merkel, catching five tosses.

A brief look at last week's guessing game: Again we hit five out of six right in District 7-A play to keep up our steady one-niss a week pace in district game. Our college picks were terrible, however, as we picked only two winners out of seven games. Too many upsets. That dropped our average from a healthy .783 to a weak .720 for the year. We have hit 36 right, and 14 wrong in 50 guesses.

This week things get rough in District 7-A. The only easy game to pick is the Cross Plains affair. The Buffs, with five wins in a row, have an open date. Picking blindly, we favor Munday over Wylie, Clyde over Gorman in a close one, Baird to upset Rising Star (the Cats' first loss), San Saba to hand Dublin loss number five, and Ranger to outscore Eastland 20-13 in what could prove to be an upset despite the fact Ranger is a three touchdown favorite in most books.

In college games, we like Baylor over Arkansas, Rice better than Wisconsin, S.M.U. over Missouri, completing 12 of them.

Upchurch has passed nine times

C. W. Norris Family Gather At Lake Cisco For Reunion

Members of the C. W. Norris family held the annual Norris family reunion and celebrated the wedding anniversary of Mr. and Mrs. Charlie Norris, September 18 and 19 at Lake Cisco.

All of the ten children were present. Several grandchildren were unable to attend, one was Patsy Norris Collins, the first grand daughter, who was born Oct. 13, 1934, but present was the first great grand daughter, who was also born on October 13, 1952. She is Thresa Pullig, daughter of Mr. and Mrs. Maurice Pullig of Abilene.

Also present was a grandson, Charles Norris, who had just returned from three years of overseas duty. He is the son of Mr. and Mrs. Elmer Norris of Ralls. Other present were Mr. and Mrs. J. L. Dorsey and girls, Archer City; Mr. and Mrs. D. A. Hadderton and family of Loving; Mr. and Mrs. A. L. Rogers and children of Ranger; Mr. and Mrs. W. B. Maynard and family, Eastland; Mrs. Lorena

over Houston and North Texas over Hardin Simmons. Probably another bad week for us in college games.

That's the score, at least right now.

Phelps, Wilda and Daryle; Mr. and Mrs. Paul Norris and family, Mr. and Mrs. G. A. Norris and family Mr. and Mrs. Obie Duncan and children, Mr. and Mrs. C. W. Norris, all of Carbon; and Mr. and Mrs. Elmer Norris and family of Ralls; Mr. and Mrs. A. F. Pullig and Girls of Sweetwater; Mr. and Mrs. Dalton Norris and boys of Ralls; Dayne Norris of Lubbock; Mr. and Mrs. Maurice Pullig and Terry of Abilene; Miss Betty Thornton of Ralls, Ronnie Phelps and Miss Dorothy Darr of Sweetwater.

Barbecue and turkey with all of the trimmings were enjoyed and games of 42, golf, and skating were enjoyed by all.

The group plans to meet again in September of 55.

A "garden of fragrance," planned especially for the blind to enjoy, will be planted in the Brooklyn, N. Y., Botanical Gardens. Signs identifying the flowers will be in Braille, and fragrant plants which give off an aroma when their leaves are bruised will cover the footpaths.

More than 300,000 soldiers currently are enrolled in the United States Armed Forces Institute.

John A. Seay Is Found Dead This Morning

John Anderson Seay was found dead at 8:30 this morning in his home on Alice St. in Ranger by J. A. Blue, a neighbor. Mr. Seay had been dead since about 6 p.m. yesterday according to Dr. C. W. Harris, examining physician, who also stated that death was due to a heart attack.

Mr. Seay was married to the former Pearl Jane Heaton on July 5, 1908 in Erath County. She preceded him in death in February, 1918.

Seay is survived by one daughter, Mrs. Sam Seay of Ranger; a son, John Wesley Seay of Amarillo; one brother, T. N. Seay of Gorman; and 8 grandchildren.

Services will be held at 3 o'clock Friday, Oct. 8 at the First Baptist Church in Ranger, with Rev. Ralph Perkins, pastor, officiating. Interment will be in Evergreen cemetery, with Killingsworth Funeral Home in charge.

The first building in the United States for teaching scientific agriculture was erected at Michigan State College in 1857.



- ★ The KING and I Great Broadway Musical Show!
 - ★ ICE CYCLES OF '55
 - ★ AUTO DAREDEVILS
 - ★ COTTON BOWL FOOTBALL
 - ★ NEW WOMEN'S BLDG.
 - ★ HOUSE BEAUTIFUL
 - ★ AUTOMOBILE SHOW
 - ★ PAN-AMERICAN LIVESTOCK
 - ★ BIRD SHOW
 - ★ AGRICULTURE
 - ★ FREE ACTS
 - ★ 10,000 FREE EXHIBITS
- Plan to Go!
- OCT. 9-24 * DALLAS**

MOBIL 210

- Stays 34% Stronger
- Lasts 14% Longer

At the Sign of the **FLYING RED HORSE**

W. Q. VERNER Phone 64 Eastland

CITY GARAGE
J. J. Finley, Proprietor
Engine, Starter and Generator Work
103 White St. Phone 995

MODERN DRY CLEANERS
209 So. Seaman Phone 132

EASTLAND Chamber of Commerce

MUIRHEAD MOTOR CO.
304 W. Main Phone 692

DOC DAVIS DRUG
FILLED ACCURATELY
South Side of Square Phone 696

WILSON FEED AND SEED
YUR PURINA DEALER
204 N. Seaman Phone 175

McGRAW MOTOR COMPANY
416 So. Seaman Phone 80

Eastland Venetian Blind Mfg. Co.
405 1/2 So. Seaman Phone 436

FREYSCHLAG INSURANCE AGENCY
North Side of Square Phone 173

POOL'S DRY CLEANERS
Free Pick-Up and Delivery
207 So. Lamar St. Phone 47

Poe Floral
"When It's Mums Say It With Poes"
200 North Green Phone 96

STOKER TRUCK AND TRACTOR
International Harvester Trucks & Tractors
Sales and Service
Phone 657

Let's Go Mavericks

Ranger Bull Dogs VS. Eastland Mavericks

NIGHT GAME 8:00 p. m.

FRIDAY, OCTOBER 8 AT RANGER

EASTLAND MAVERICK ROSTER		CENTERS
ENDS	BACKS	
Leo Smith	Terry Warren	
Clyde Evatt	Neil Pogue	
Richard Corbell		
Henry Sims		
TACKLES	GUARDS	
Carl Freeze	Lupe Herrera	
Larry Tankersley	Rual Herrera	
Charles Cook	Jimmy Phillips	
	Roy Don Harris	
	Jack Akers	

1954 SCHEDULE OF THE EASTLAND MAVERICKS

SEPT. 10—Eastland 12, Cisco 51

SEPT. 17—De Leon 14, Eastland 0

SEPT. 24—Granbury 39, Eastland 13

OCT. 1—Merkel 13, Eastland 0

OCT. 8—Ranger at Ranger

OCT. 15—Open

OCT. 22—Clyde at Eastland*

OCT. 29—Rising Star at Rising Star*

NOV. 5—Wylie at Eastland*

NOV. 12—Cross Plains at Eastland*

NOV. 19—Dublin at Dublin*

*Denotes District Games

UNDER NEW MANAGEMENT

CONNELLEE HOTEL COFFEE SHOP

Mrs. Fred Harrell - Warren Coffman

WILSON'S VARIETY STORE

West Side of Square
We Give S&H Green Stamps

CARL JOHNSON DRY GOODS

North Side of Square

KING MOTOR COMPANY
100 East Main Phone 42

CISCO LAUNDRY SERVICE
IN EASTLAND
Otis Coleman, Mgr. Phone 60

MANHATTEN CAFE
FOOD YOU'LL ENJOY
North Side of Square

MURRELL'S GROCERY & MARKET
"Pit Cooked Barbecue"
700 West Main Phone 9538

MOBIL OIL AND MOBIL GAS
W. Q. VERNER, Consignee

LUMBER
Estimates No Obligation
Higginbotham - Bartlett Co.
301 W. Main Phone 112

HOLLYWOOD CORSET FACTORIES
Eastland, Texas

ARTHUR PRODUCE & FEED
303 N. Seaman Phone 43

HOWELL & ROGERS GROCERY & MARKET
111 White St. Phone 178

Eastland Steam Laundry and Washateria
Pickup and Delivery
210 N. Lamar Phone 584

R. M. SNEED CONTRACTOR
Oil Field Construction - Labor Gangs - Bulldozers - Ditching Machines - Welding Machines - Back Hoe Side Booms - Pipe Line Construction
Hwy. 80 East Phone 684

EASTLAND TELEGRAM

Unless given a goodrest between lactation periods, dairy cows may not produce strong, healthy calves. She should have from 6 to 8 weeks of rest, good care and a balanced ration.

Eclipse, a new, attractive white onion with mild flavor, excellent yield and high resistance to pink for fall planting. It was developed by the Texas Agricultural Experiment Station and USDA.

First tooth... or first party dress

have the Portrait made now...



Your child's portrait keeps the memories first in your heart.

For the priceless record of each precious age—have your child's portrait made now.

SHULTZ PHOTO STUDIO

202 1/2 W. Main Eastland

SOCIAL CALENDAR

Thursday October 7
Thursday Afternoon Club
American Legion, Legion Hall 7:30 p.m.

Friday October 8
District Convention of Pythian Sisters.
Eastland-Ranger Football Game 5 p.m. Tanager.

Saturday October 9
State Fair - Dallas.
Monday October 11
CWF County Council - Ranger.

Commissioner's Court 9 a.m. Courthouse.
Rotary Club, 12 noon Connellee Hotel.
W.S.C.S. Methodist church parlor.

Baptist WMU Circle meetings.
October 12
Lions Club 12 noon First Methodist Church.
Baptist Home Makers Class Party 7 p.m.
Fire Dept. Auxillary 7:30 p.m. City Hall.

October 13
Civic League and Garden Club Luncheon 12 noon Connellee Hotel roof.

October 14
City Commissioner's meeting 7 p.m. City Hall.
V.F.W. 7:30 p.m. VFW hall.
Alpha Delphian Club 7 p.m. Woman's Club.

October 18
Christian Women's Fellowship Circle meetings.
Commissioner's Court 9 a.m. Court Room.
Rotary Club 12 noon Connellee roof.

Las Leales Club 7:30 p.m. Woman's Club.
Baptist Women's WMU 3:15 Baptist Church.
Methodist W.S.C.S. 2:30 Methodist Church.

The 1954 estimated yield of Texas cotton is 212 pounds an acre. This compares with 233 pounds an acre from the harvested acres last year. Dry, hot weather can still cut this year's crop.

Arlington Man New Veep For Texas Jaycees

GRAND PRAIRIE — Rocky Ford, state president of the Texas Junior Chamber of Commerce, has announced the appointment, effective Oct. 8, of Don C. Baker to the position of acting executive vice president of the Texas Jaycees. The TJCC state headquarters building is at 1516 West Main, Grand Prairie. Baker succeeds B. F. Shepherd, who has served as executive vice president of the organization since Sept., 1952. Mr. Shepherd has resigned to accept a position with a hardware firm in Longview. The Shepherds and their two sons, Richard and Jaycee,

lived at 1802 Walnut while residents of Grand Prairie. Mr. Baker has served the Texas Jaycees as administrative assistant at the state office since August, 1953. He served 29 months in the European Theatre with the United States Army and upon his discharge attended Indiana University. Baker came to Grand Prairie from Kerrville where he was associated with the Memorial Funeral Home. He was an active member of the Kerrville Jaycees serving as vice president of that club for three years and as a director for one year. Don, his wife, Evelyn and three year old daughter, Veda Marie, reside at 1707 Reeve, Arlington.

For safety's sake, locate radio or television antennas away from electric power lines and install lightning protective devices. It's not a good idea to attach aerials to chimneys.

STRICTLY BUSINESS

by McFeathers



"Notice your chair was oiled, Mr. Pottleby?"

LOW! LOW! PRICES!

Wolf CHILI
No. 2 Can
47c

Piggly Wiggly
1916 1954

Campbell's TOMATO SOUP
No. 1 Tall Can
10c

MEADOLAKE OLEO 1-Lb. Carton **32c**

MAGIC GARDEN, CUT GREEN BEANS 303 CAN 18c	FLORIDA GOLD, FROZEN ORANGE JUICE 2 6 OZ. CANS 31c
GREEN GIANT—303 Can PEAS 21c	HUNT'S RED—8-oz. can TOMATO SAUCE 9c
NIBLET'S WHOLE KERNEL—12-oz. can CORN 19c	KITCHEN-KRAFT—303 can BLACK EYE PEAS 2 for 23c
NIBLET'S—12-oz. can MEXICORN 21c	GIANT BOX TREND SUDS 49c
GREEN GIANT CREAM STYLE—303 can CORN 16c	GOLD STANDARD SALMON 43c

TEXSUN, 303 Can Grapefruit Section 19c	Lipton's CHICKEN NOODLE SOUP MIX	SOS Pads Box of 10 25c
CHURCH'S, 24-ounce Apple Juice 33c	Cooks in 7 Minutes, 4 to 6 servings in each package.	SHORTIES, NYLON Foot Sock Pair 39c
MONARCH Apricot Nectar 46-oz. can 43c	3 PKGS. FOR 41c	WEST BRAND Bean Pots Each 6.59
LIBBY'S, 303 Can Kraut Juice 12c		PLASTIC DOT Work Gloves Pair 39c
MORTON HOUSE OVEN Baked Beans 401 Can 22c		BOSS WOLLOPER Work Gloves Pair 37c
MAGIC GARDEN Sliced Beets 303 can 12c		COLGATE RIBBON Dental Cream Giant Tube 45c

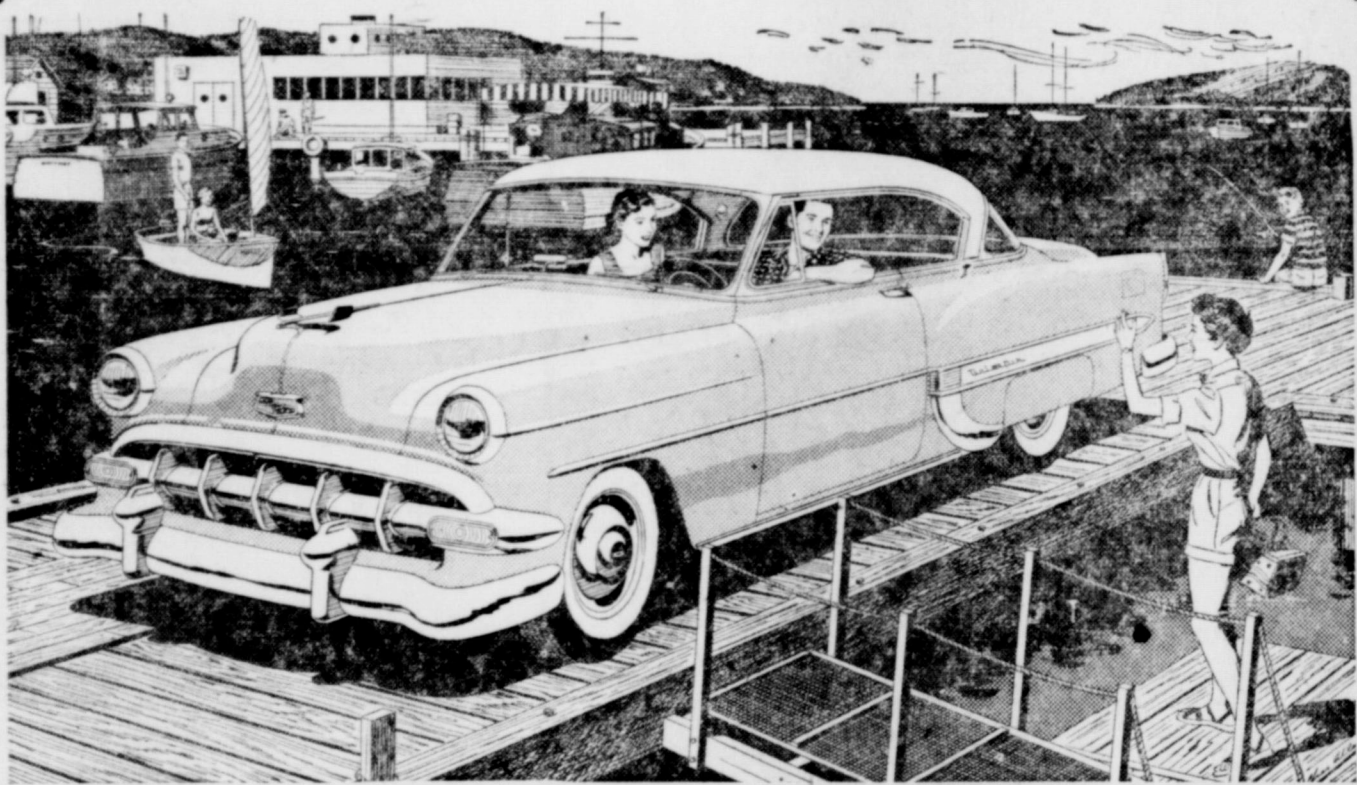
SKINNER'S CUT MACARONI 2 7-OZ. PKGS. 25c	Lipton's BEEF FLAVOR Vegetable Soup 19c PKG.	SKINNER'S CUT SPAGHETTI 2 7-OZ. BOXES 25c
MAY-FIELD, CREAM STYLE Corn 303 Can 2 for 25c		GROWN BEAUTY Spanish Rice 300 can 19c
TRAPPY'S Whole Okra 303 Can 18c		DEER BRAND Tomatoes 303 can 2 for 25c
Trellis Peas 303 can 2 for 29c		SWEETOSE Waffle Syrup Pint 23c
DURAND'S, LOUISIANA GOLDEN YAM Sweet Potatoes No. 3 squat can 29c		REGULAR OR QUICK—14-oz. box Cream of Wheat 23c
WESTINGHOUSE, 40-W to 60-W Light Bulbs each 16c		PIONEER Biscuit Mix 2 Lb. Pkg. 47c
PLANTER'S, SALTED, COCKTAIL Peanuts 8-oz. can 37c		PRE-COOKED, 15-oz. box Minute Rice 42c

CORN MEAL AUNT JEMIMA White 5 Lb. Bag **41c**

SKINNER RAISIN BRAN 10 OZ. PKG. 19	SKINNER RAISIN WHEAT 10 OZ. PKG. 18c	Sunshine Krispy Crackers 1-LB. BOX 27c	Sunshine Buttered Flavored COOKIES 10-OZ. BOX 32c
------------------------------------	--------------------------------------	--	---

Finest Quality MEATS

ARMOUR STAR FRESH DRESSED Fryers Lb. 49c	FRESH Tomatoes Carton 14c
BABY BEEF Seven Roast Lb. 33c	HOME GROWN Okra Lb. 19c
BABY BEEF Club Steak Lb. 49c	HOME GROWN TURNIP Greens Lb. 10c
BABY BEEF Short Ribs Lb. 19c	FLORIDA Oranges Lb. 13c
FRESH GROUND Beef Lb. 25c	FRESH NEW Potatoes Lb. 8c



You'll always be glad you bought a Chevrolet!

And here are four good reasons why! You save when you buy — Chevrolet's the lowest-priced line of all—yet you save when you trade. You'll stay proud of Chevrolet's lasting good looks. You'll enjoy luxury-car features like Body by Fisher, a full-length box-girder frame and Unitized Knee-Action ride —exclusive to Chevrolet in its field. And right now you'll get the deal of the year on a new Chevrolet. Come in and let us prove it to you!

YEAR AFTER YEAR, MORE PEOPLE BUY **Chevrolet** THAN ANY OTHER CAR!



FULLEN MOTOR COMPANY
Sales—CHEVROLET—Service

305 EAST MAIN

PHONE 44

LOW! LOW! PRICES!