

MOORE about... EASTLAND by Virgil E. Moore

For quite a spell now we have been wanting to write a column about bantam chickens. The subject has been on our mind for months, but frankly, we didn't know for sure how to spell bantam and hated to waste that much time looking her word up.

We started once to just take a jab at it, and if we had you folks would be laughing right now about how Moore About misspelled a little six letter word.

We had to get our Webster down for some other reason the other day, however, and decided since we had that much of a head start, we'd just look the word up. Webster says that bantam means: (1.) A miniature fowl of any of many dwarf breeds. (2.) A person of diminutive stature and combative disposition.

Now the chickens we are gonna talk about were true bantams. They were indeed fowls of many breeds. And before you wise off about that second definition, we will admit that we have been called bantam ourselves a few times. Used to be, back in our junior high days, that we tried to whip every kid who called us skinny. Things worked out well the first two or three outings, but then we found a kid who fought back. That ended that!

We were going to tell you about our chickens though.

—*veem*—
We got into the bantam chicken business back in about 1937. Our Mama (that's what most of you folks call your grandmother) gave us a rooster and two hens. We called 'em our rainbow chickens, for they were truly beautiful fowls.

Our trouble was we didn't have anyplace to keep the things. Mama brought them to us one morning just before we were off to school, so we had to make a decision in a hurry. We got three pieces of string, tied a piece around one leg of each chicken, then we put the other ends around a fig tree by the side of the house. Speaking of fig bush, did we ever tell you about the time we decided to make a little home... but that's another story.

Well, to make a short story long, when we got back from school those chickens had been working on that string pretty hard. They had chewed. (or what ever a chicken does) the string up to the place it was tied to the fig bush and there they stood, practically glued to the bush.

—*veem*—
We figured that those chickens wouldn't last out the day with all that string in 'em, but we cut them loose and put them in our clubhouse. Then we got to work on that fence. We built what we believed was the strongest, most escape-proof pen in the world. Then we took our chickens and threw them in.

The rooster got out first, but Bessie ran a close second and Susie wasn't far behind. We clipped one of the wings of each of the bantams, and with that much of a handicap, it was Bessie who got out first, with Susie second. After that, we gave it up and hoped for the best.

—*veem*—
Our flock soon grew to 34 hens and one rooster. Cranky never did allow as how those hens needed more than one rooster, and everytime one of our baby chicks would learn to crow Cranky would kill it dead or at least run it out of the country.

Every day we had an Easter egg hunt at our house, for those hens—in the 10 years we fooled with them—never did hide an egg in the same place.

—*veem*—
Mary, she's our sister not another hen, never did like old Cranky. In fact we think it must have been Mary who named the rooster. For every time Mary

(Continued On Page Three)

Local Riding Groups, Band To Fort Worth

Friday is Eastland Day at the Southwestern Exposition and Fat Stock Show in Fort Worth and the Eastland County Sheriff's Posse, the Posse Anns, the High School Band and a large number of Eastland citizens will be on hand to give the 62nd show a big sendoff.

The band and two riding groups will march in the downtown parade Friday afternoon and the Sheriff's Posse and Posse Anns will perform in the Grand Entry. Last year the Sheriff's Posse won the first place award for riding groups in the parade.

Gov. Price Daniel will lead the parade, and the first rodeo per-

formance is scheduled at 8 p.m. Friday.

Gail Davis, star of the Annie Oakley television series, will be featured in afternoon and night rodeos throughout the 10-day stock show, which ends Feb. 2.

Riding clubs and sheriff's posses from many towns will participate in the opening day parade. Dozens of bands from Texas high schools also will take part.

Actual livestock events begin at 8 a.m. Friday morning (Jan. 24) with the sifting of barrows, lambs and steers in the livestock barns.

The junior livestock department of the show will be larger this year than 1957 due to a substantial increase in the number of entries by Texas FFA and 4-H Club members.

Other livestock departments also were up in total entries this year, especially the sheep and swine divisions.

Hereford, with 389 entries, top the number of beef breeding stock. Other entries are Polled Herefords, 178; Aberdeen-Angus, 243; Shorthorns, 104; Santa Gertrudis, 22; Brahmans, 44 and Brangus, 24.

Of the 85 dairy cattle entered 89 are Guernseys and 46 are Jerseys. Also in the open show are 942 sheep and 767 swine.

The junior livestock show features 293 steers—179 Herefords, 69 Aberdeen-Angus and 45 Shorthorns; 2 dairy heifers; 386 lambs; 300 pigs and 79 junior heifers.

One of the biggest drawing cards of the exposition is the horse show, which this year is bigger than ever. About 100 more Quarter horses are entered in the 1958 show than last year. The Fort Worth Quarter horse show is the largest of its kind in the nation.

The Fort Worth Exposition always has more "special days" honoring cities and groups than any other show in the country. This year, more than 100 towns, communities, organizations, youth groups and clubs will have a "day".

Opportunity to visit the free Texas Ranch and Farm Show where the newest things for better farming, better ranching and better home-making are on display. A carnival midway will be open on Exposition grounds to offer thrilling rides, shows and games for young and old.

Admission Tests For UT Students Set In 44 Cities

AUSTIN — High school seniors planning to enter the University of Texas in September, 1958, or later should plan to take admission tests being given Feb. 8 in 44 Texas cities, Dr. H. T. Manuel, Testing and Guidance Bureau director, said.

Test application blanks must be received at the University at least 10 days before the test. Requests for test application blanks and information bulletins should be addressed to Director, Testing and Guidance Bureau, University of Texas, Austin 130.

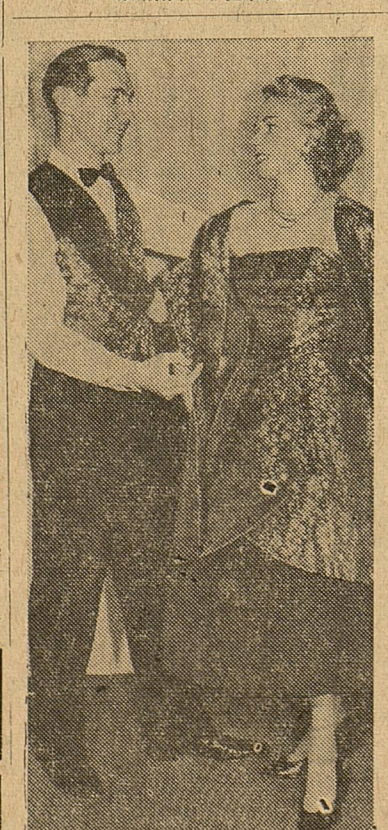
University admission tests are scheduled Feb. 8 in Abilene, Amarillo, Austin, Bay City, Beaumont, Breckenridge, Brownwood, Bryan, Childress, Columbus, Corpus Christi, Corsicana, Dallas, El Paso, Falfurrias, Fort Stockton, Fort Worth, Galveston, Gonzales, Harlingen, Houston, Kerrville, Lampasas, Laredo, Longview, Lubbock, Lufkin, McAllen, Midland, Palestine, Pampa, Port Arthur, San Angelo, San Antonio, Sherman, Snyder, Sulphur Springs, Temple, Texarkana, Tyler, Uvalde, Victoria, Waco and Wichita Falls.

Dr. Manuel reported applications to take University admission tests are running about 25 per cent ahead of the number received at this time last year.

"It is uncertain at this time whether this great number of applications indicates simply a desire to take the tests early or an actual increase in the total number of candidates for admission," he added. "The great bulge in enrollment to result from the increased birthrate of the 1940's is not expected for another year or two."

Prospective students have the option of taking University of Texas admission tests without charge or the Scholastic Aptitude Test of the College Entrance Examination Board at their own expense. The standard of performance required for admission is the same for both tests.

Installation Loans Custom Made For Each Customer EASTLAND NATIONAL BANK Member F.D.I.C.



DATE DUO—Bronze-and-black flowered brocade waistcoat worn by the model at left matches his partner's dress in a new, look-alike date fashion for evening wear introduced recently in London, England.

Eastland's boys came through with a victory this past year in the annual battle of the sexes. There were 87 boys born in Eastland during 1957 and just 33 girls.

That's the first time in a number of years that more boys have been born here than girls. In 1956 the girls won the stark race easily. There were 39 girls born that year and just 26 boys.

During 1957 a total of 70 birth certificates were filed at City Hall, where records were taken. That indicates an increase in births here, since only 65 were recorded in 1956.

First baby born during 1957 was Cathy Jo Jordan, daughter of Mr. and Mrs. Billy Bruce Jordan, 406 South Oaklawn. Cathy, was born Jan. 6, 1957. The last baby of 1957 here was Michael Don Lewis. The son of Mr. and Mrs. P. V. Lewis, 1313 South Bassett, Michael was born Dec. 29.

As has been the trend in recent years, January and February were not popular months for increasing this city's population. Only one boy was born in January and none in February, while two girls were born in January and one in February. By comparison there were six births in December and 10 in November. Apparently Uncle Sam has had something to do with that. Uncle, in his usual caustic manner, has decided last of the year is his best time to do a bonus. If a child is born in December he may be

BE SURE—See Don Pierson Olds - Cadillac Eastland Quality Cars at Volume Prices



COMPLETES SCHOOL—Lindell C. Levens has just completed a two week Johnson Motor Co. school. The Bruce Pipkin Sport Center mechanic went through all phases of repair work on Johnson and Evenrude motors while at the Waukagan, Ill. school, tearing down motors, finding what was wrong with them, and then repairing them. To complete the schooling, he took a written examination, Pipkin explained. "Our shop is completely equipped and we think we have one of the finest mechanics in the business," Pipkin said.

Quarterback Club Membership Open

You are gonna have to get up mighty early Friday morning if you're going to miss a representative of the Eastland Quarterback Club. Vernon Humphrey, membership drive chairman for the club, will have his six man committee up and on the job at 5:30 in the morning, Wells Dalton, Sen Hunt, J. B. (Tip) Arther, Henry Pullman, J. D. Earley and Hood King may be yawning at this time, but they will be alert enough to get a good start on getting the 300

members President James Smith has set as a quota.

Last year the club had 230 members, which was close to an all time high. Smith set the 300 member goal at the club's first meeting of the year. Memberships sell for \$5 each. If 300 are sold that will mean \$1500 for the club.

"That's no t so much money," Smith said, when you consider this club spent \$1800 on athletics directly last year, and more indirectly."

DUN AND BRADSTREET REPORT SHOWS

Eastland Leads In Business Gains

Eastland led all other Eastland County towns in business growth during the last five years, both percentage wise and in number of new business, A. J. Hemphill, district manager of the Fort Worth office of Dun and Bradstreet, Inc., revealed today.

Eastland showed a four per cent increase in business houses in the five year period just ended. The city in 1952 had 124 business houses listed in the Dun and Bradstreet Reference Book, and today 129 are listed. Figures were obtained from a physical count of the D&B reference book, Hemphill said. The county as a whole shows a total of 498 manufacturers, wholesalers and retailers.

Cisco came nearer than any other city to Eastland. That city showed a drop in businesses, percentage wise, of two per cent. All other towns in the county have fewer businesses today than they did five years ago.

The report also shows that Eastland ranks second only to Cisco in total number of businesses. Cisco has 149 to Eastland's 129. The listing shows Ranger has 110, Rising Star has 49, Gorman has 27, Carbon and Desdemona each eight, Olden four and Scranton three.

The reference book, Hemphill pointed out, only lists manufacturers, wholesalers and retailers. It does not include some of the service and professional businesses such as barber and beauty shops, stock and real estate brokers. Thus the figure for businesses in Eastland County would be higher than the 498 quoted.

During the past year, Hemphill said, 284 changes were made in the reference book listings of Eastland County businesses. The book contains approximately three million business listings for over 50,000 communities in the United States.

Each Reference Book listing, which includes the rating, is a condensed summary of the infor-

mation contained in the Dun & Bradstreet credit report. The report includes a history of the business (who owns it, who runs it, and how long it has been operating); a description of what the business does and how it does it; a financial section (which usually includes the latest financial statement); and a record of how the

concern pays its bills. While credit reports are primarily used by businessmen who want to evaluate the credit risk before shipping or selling, insurance underwriters also use credit reports to review risks, rates, and coverage for fire and other types of insurance.



TWO LEGS UP—"Hexapod," this six-legged frog, is a feature attraction at the Boston Museum of Science. The freak was found at North Andover, Mass. At the museum, they figure "Hexapod" started out to be twins but that division of the egg was somehow interrupted and the frog ended up with two extra hind legs instead.

Mavs to Host Albany Friday

Hard to figure Dist. 10-A teams swing back into basketball action Friday night, with two games scheduled in the circuit.

Eastland takes on Albany in the local gym while Clyde meets Wylie in Wylie. Throckmorton, the league leader, has a needed open date. Tuesday night Throckmorton lost to Wylie in a 51-46 minor upset. Albany was losing to Clyde, 52-38, in Clyde meanwhile.

The district is the best balanced it has been in years. Eastland hasn't won a district game yet, but the Mavs lost to Throckmorton just by six points, and with five seconds to go in that game, which was played in Throckmorton, trailed by just two. Apparently the district is one in which any team can beat the other on a given night.

Clyde, the pre-season favorite,

still must be marked as the team to beat. Throckmorton as a 3-1 record, Clyde has lost one of three, Wylie has won two and lost one, Albany has won one and lost two and Eastland has lost three.

The Mavericks looked sharp in the last outing, except for point making. "We just couldn't hit," Coach Jon Tate said. Johnny McMahon had the best percentage of any Mavs for the night, hitting a third of his shots, but the Mavs percentage record was the lowest of the year. "Our passing and teamwork were at it's best," Tate said.

Albany has a fast team, but doesn't have the height possessed by Clyde and Wylie. The Mavs should want this one badly, since a loss would mean Eastland would be winless in first half play.

Go to Church Sunday

By REV. W. E. HALLENBECK Church of God Minister

Time is the most valuable thing a man has. It comes as a free gift of God. We cannot borrow a minute from tomorrow or call back a moment from yesterday. The average man passed middle time becomes keenly conscious of the passing of years. In his youth time seemed to drag on his hands, and often he thought the day would never pass. The new adventure that was planned for the next week seemed almost an eternity older so many things that he had hoped to accomplish in life remain yet undone and no longer is there time for the task.

There is an old story of a prisoner in a cell with contractive walls. Day by day his space lessened—he saw the whole of that window yesterday, he sees only

half of it to-day, Nearer and nearer the walls are drawn together till they meet and crash him between them. So the walls of time are crushing in upon us and we are in a race to accomplish the important things of life while there is time. Jesus said, "I must work the works of him that sent me while it is day. The night cometh when no man can work."

The wise man Solomon counsels us on the proper use of time. To every thing there is a season, and a time to every purpose under heaven:

A time to be born, and a time to die; a time to plant, and a time to pluck up that which is planted; a time to kill, and a time to heal; a time to break down, and a time to build up; a time to weep, and a time to laugh; a time to mourn, and a time to dance;

A time to cast away stones, and a time to gather stones together. A time to embrace and a time to refrain from embracing; a time to get, and a time to lose; a time to keep, and a time to cast away;

(Continued on Page Two)



The Nimrod club recently built and put up the new 4-H Club welcome sign on Hwy 80 about 9 miles west of Cisco, various lumber and supply companies of Cisco cooperating with the club boys and girls in donating lumber, nails and materials. We salute you men for your generosity and help. The 4 foot by 5 foot sign is green with a map of Texas in White. The words "Welcome, 4-H Clubs Eastland County" and a four leaf clover are on the sign. The letters H in each of the 4 leaflets stand for Head, heart, hands and health.

Eastland Club boys received their 4-H identification cards recently. Others over the county will receive them at their next club meeting in February. The back of the card certifies that the reverse is a 4-H member. On the reverse side is the 4-H pledge.

Over 50 club boys from various parts of the county have indicated they will show their animals at the annual county livestock show to be held at Eastland on March 2 and 29. The show will likely be held at the airport again and for the last time as plans are underway to erect a show barn near the Eastland Lake for future shows.

David Ray, Soranton, has for his club project two Corriedale-Rambouillet crossbred lambs that he got from the Terrell Ranch at Taff last February. David, son of Mr. and Mrs. P. M. Ray, lives just west of Soranton, also had lambs last year as his project.

Guy Ed Custer, 10, in the Cisco East Ward Club has named his club lamb "Wildcat" because he has been so hard to tame. "Wildcat" came to be untame on weight though "Pop" friendly dog of the Custers, may have been one reason for the lamb's temperament. Guy Ed's parents are Mr. and Mrs. Clyde Custer. Mr. Custer works for the City of Cisco.



FREYSCHLAG INSURANCE AGENCY presents the **WEATHER NEWS**

High	57
Low	28
Rain	.07
Total Rain for Jan.	1.69
Total Rain for Year	1.69
Forecast	Warmer

Installation Loans Custom Made For Each Customer EASTLAND NATIONAL BANK Member F. D. I. C.

Eastland Telegram

Eastland County Record established in 1931, consolidated August 31, 1951. Chronicle established 1887, Telegram established 1923. Entered as second class matter at the Post Office at Eastland, Texas under the act of Congress of March 3, 1879.

TIMES PUBLISHING COMPANY
Published Tri-Weekly—Tuesdays - Thursdays - Sundays
ONOUS DICK and JOE DENNIS, Publishers
VIRGIL E. MOORE Editor
CAROLYN COLLINS, Society Editor

One week by carrier in city	.15
One month by carrier in city	.65
One year by mail in County	2.95
One year by mail in State	4.95
One year by mail out of state	6.95

NOTICE TO PUBLIC—Any erroneous reflection upon the character, standing or reputation of any person, firm or corporation which may appear in the columns of this newspaper will be gladly corrected upon being brought to the attention of the publishers.

Classified Ads..

Cards of Thanks charged for at rate of \$2.00 Each

FOR RENT -
FOR RENT: Two 5-room houses. Call 727-J-1.

PIANO FOR RENT: By night or week. Lovelace Transfer and Storage. Phone 314.

FOR RENT: Furnished apartment. Bills paid. 1111 South Seaman. Phone 574.

FOR RENT: Small furnished house, three rooms and bath. 310 East Main.

FOR RENT: Three bedroom house, 801 W. Commerce. Hamner, Phone 17.

FOR RENT: Redecorated 3 bedroom house. Near three schools. Phone 539 after 6 p.m.

FOR RENT: Small furnished house with garage, close in, ideal for couple. 311 E. Valley.

FOR RENT: Furnished apartments. 611 Plummer.

FOR RENT: Newly decorated apartments. Phone 2085-W.

FOR RENT: Newly decorated apartment. Hillside Apartments. Phone 9520.

FOR RENT: 3 bedroom unfurnished house, 309 North Ammerman. Phone 446-J or 270.

SPECIAL NOTICE

Reduce Without Dieting
Use my Stauffer Reducing Machine. Reasonable rates.
Mrs. Bert Fuller, 613 West Moss. Phone 653.

REAL ESTATE - FOR SALE

FOR SALE: In Olden two room modern house. 4 acres land. Fenced. Well and jet pump. 705 West 12th, Cisco. Hillcrest 2-1685.

LOT FOR SALE: Lot five block five Hillcrest addition. Write Mrs. M. L. Jeffress, 125 Fir, San Diego 1, Calif.

FOR SALE: 153 acres. Good orchard. Soft shell pecans. Part mineral. Call on G. I. Fair improvements.

FOR TRADE: 200 acres well improved. Two or three hundred pecan trees. Nice rock house. Will take house in Eastland.

FOR SALE: About 3 acres. Two good houses on it. On highway. Already financed \$50 per month. Pentecost & Day Phone 1063.

FOR SALE: Five room house, four lots. My equity and take up payments of \$40. Will take part side note. Contact Bruce Butler, phone 892-J-1.

E. K. HENDERSON home for sale. 104 E. Valley or phone 189.

FOR SALE: 3 bedroom house, 605 S. Bassett. Call 720-W-2 or 707 W-2.

FOR SALE: Three room house 1405 S. Bassett.

FOR SALE IN CISCO: Three bedroom brick home on paved corner lot. Central heating, dish washer and garbage disposal unit. Double garage and nice garage apartment. Phone 848, Eastland.

MISC. FOR SALE -

FOR SALE: Registered Collie puppies. 204 South College St. Phone 624.

FOR SALE: Registered Siamese kittens. Bill Parten, Carbon.

FOR SALE: Rye seeds for planting, nice well matured seed, clean enough. A. H. Cox, Ivan Star Route, Breckenridge, Tex.

FOR SALE: Reconditioned Remington typewriter, \$25. Stephens Typewriter Co., Phone 639.

FOR SALE: Pecan trees and fruit trees at reduced prices for commercial planting. Several leading varieties, including some new varieties of peaches. Tennyson Nursery, 1003 West 16th, Cisco.

FOR SALE: Sorghum Alum seed. Australian strain. \$1 per pound. Ed McCanlies, 1105 West 7th, Cisco.

FOR SALE: Garner's Farm Tax Record. Approved by tax experts. Eastland Telegram.

BUSINESS OPPORTUNITIES

OPENING AVAILABLE
In this area for responsible person. Full or part time work. 7 to 12 hours per week nets to \$250. Full time to \$20,000. Must have \$900 to \$1750 capital which is secured. For local interview give age, present work, car, etc. Write Box 8361, Minneapolis 16, Minnesota.

SPARE TIME SERVICING
HERSHEY CANDY ROUTE

We will select a responsible person in your area to service our NEW HERSHEY CANDY DISPENSERS. No selling or experience necessary. Qualified person will have opportunity of earning \$5,000 per year devoting spare time to start. About 6 hours per week required to service route and manage business. To be eligible you must drive car and be able to make small investment of \$594 CASH to handle inventory. For personal interview write giving particulars, phone and reference to: District Manager, Dept. 203, 8693 Lynnhaven Road, Cleveland 30, Ohio.

COURTHOUSE NEWS AND RECORDS

Real Estate Transfers, Marriages, Suits Filed
Court Judgments, Orders, Etc.

INSTRUMENTS FILED
County Clerk's Office

W. L. Andrus to G. L. Whitely, release of vendor's lien.
Charles L. Bomar to R. P. Haun, warranty deed.
F. S. Boland to Magnolia Petroleum Co., assignment of oil and gas lease.
F. S. Boland to Magnolia Petroleum Co., assignment of oil and gas lease.
F. S. Boland to Magnolia Petroleum Co., assignment of oil and gas lease.
L. E. Booth to W. M. Isenhour, deed of trust.
Commissioners Court to State of Texas, right of way.
E. C. Conner to Harry F. Finks, release of oil and gas lease.
Commercial State Bank, Ranger to G. J. Boyd, release of vendor's lien.
Mrs. Martin Duval to Tom B. Stark, oil and gas lease.
W. T. Ditto to The Public, co probate.
Estelle Donnell to V. B. Menyard, warranty deed.
Herbert Ekzut to Grover E. Hallmark, warranty deed.
Clara B. Eaton to Tom B. Stark, oil and gas lease.
Elbert Ezzell to Magnolia Petroleum Co., assignment of oil and gas lease.

Political Announcements

The Eastland Telegram has been authorized to announce candidates for public office in the Democratic First Primary election in July as follows:

- State Representative**
PAUL BRASHEAR
- County Judge**
JOHN S. HART (Re-election)
CLYDE L. GARRETT
- County Clerk**
JOHNSON SMITH (Re-Election)
- For Justice of the Peace Precinct 1**
C. E. OWEN
- County Treasurer**
MRS. ELLEN JUSTICE

Insurance AND Real Estate
D. L. KINNAIRD
Life - Fire - Auto - Farm
Polio - Bonds
39 years in the Insurance
Business in Eastland

Customer Satisfaction IS OUR AIM
• Rough Dry • Finish
• Wet Wash
Pick-Up - Delivery Service
Eastland Steam Laundry
Phone 584

ALEX RAWLINS & SONS
MONUMENTS
WEATHERFORD, TEX.
Serving This Community Since 1884

WE RECOMMEND
Garner's
Farm Tax Record
Completely Meets All Income Tax Requirements
NOW COMPLETE WITH SOCIAL SECURITY RECORDS
APPROVED BY TAX EXPERTS BANKERS AND FARMERS EVERYWHERE
• SIMPLE • ECONOMICAL • COMPLETE
PRICE \$1.75 PER BOOK Plus Sales Tax
MADE FOR THE FARMER WHO WANTS THE BEST IN PROTECTION AND SERVICE AT LOWEST POSSIBLE COST
Sold By
THE EASTLAND TELEGRAM

Go To Church-
(Continued from Page One)
A time to tend, and a time to sew; a time to keep silence and a time to speak;
A time to love and a time to hate; a time of war, and a time of peace.
There is also in the time allotted to us plenty of time to worship God. The Master has designed that we may have one full day in every week for, spiritual development and worship. In his great wisdom he knew man's need. The wise man will use that day for the purpose for which God gave it, 'To assemble for worship' The song poet expressed it in these words: 'Take time to be holy, Speak oft with Thy Lord: Abide in Him always, and feed

PROBATE
T. A. Graves, deceased, application to probate will.
Arthur L. Gattis, deceased, application to probate will.
Hugh G. Vermillion, deceased, application to probate will.

SUITS FILED
Connie Austin Yarborough v. State Department of Public Safety, damages and injunction.
Zilla Agnew v. W. L. Agnew, divorce.

ORDERS AND JUDGMENTS
91st District Court
Rosa Lee Coleman v. Thomas Ray Coleman, judgment.
Jo Ann Darden v. E. C. Darden, order.
Bert Klimist v. Raymond Freeman & Nettie Garrett dba Garrett Barber & Beauty Supply Co., order.
Betty Jane Steffen v. M. E. Steffen, order of dismissal.
Connie Austin Yarborough v. State Department of Public Safety, order.
T. R. Vaughn v. Edith Genease Vaughn, order.
Mrs. Eula Mae Stevens v. Samuel L. Stevens, order.

Political Calendar

Jan. 31—Last day to pay poll taxes and last day to obtain exemption certificates.
May 5—Deadline for candidates to get name on primary ballot.
July 26—Absentee voting for First Primary.
July 26—Precinct conventions and first primary election.
August 2—County Convention
August 3-19—Absentee voting for second primary.
August 23—Second primary
Sept. 9—State convention
Oct. 14-31—Absentee voting for General election.
Nov. 4—General election.

ED V. PRICE & CO.
TAILORED SUITS
Sport Coats Slacks
C. L. FIELDS
Phone 571 103 W. Valley

PERMANENTS
\$7.50 Oil-Glo Creme \$5.00
Creme Waves 7.50 and up
Lanolin Waves 10.00
Basham BEAUTY BAR
1416 S. Lamar Phone 964

TRAVEL WITH YOUR HOMETOWN MERCHANTS
Mrs. Frank Castleberry and her guest, Mrs. Will Keith, visited with Charles Pettit at the beautiful Flattop Ranch this week. Pettit is the brother of Mrs. Castleberry. An article was written in the Post on the Flattop Ranch last July.

34 Years of Continuous Service
... is a long-time record for any business or profession to achieve. But years without growth are wasted and growth without achievement is impossible. My, how we have grown these 34 years! So with renewed energy and with every modern facility to serve you, we approach the future with confidence. And in the mood of a school boy we can in all sincerity say to our many friends and customers 'thank you' and HAPPY NEW YEAR!
EARL BENDER & COMPANY
Eastland, (Insurance since 1924) Texas

Demand!
7UP
ACCEPT NO IMITATION

Funeral Directors
HAMNER FUNERAL HOMES
Ben E. Hamner
Oxygen Equipped - Air Conditioned
Eastland Phone 17 Cisco Phone Hillcrest 21211
AMBULANCE SERVICE ANY WHERE ANY TIME
Nominal Cost Burial Insurance
For The Entire Family

J-B HOUSE PAINT
Looks Better STAYS Brighter LASTS Longer

Brighten Up
PORCH AND OUT DOOR FURNITURE GARDEN TOOLS OUTDOOR TOYS
JONES-BLAIR

J-B JIFFY DRY

America's Finest VARNISH
HEAVY-BODIED WEAR-RESISTANT MODERATELY PRICED
HANNA
HARDWARE & LUMBER COMPANY
203 N. Seaman Eastland Phone 70

General Line Of
Nursery Stock, Pecan Trees, Shade Trees, Flowering Shrubs, Evergreens
WOMACK'S NURSERY
DeLeon Phone 3642

JOHNSON MOTORS
ALL TYPE BOATS
Factory Trained Motor Mechanic

SPORT CENTER
Eastland Phone 525

MISC. WANTED -
WANTED: Housework, 307 Lackland or call 1165.

JOB WANTED: Housekeeping, steady work, or day work. Nice, clean, colored girl. Phone 547.

WANT TO BUY: Late model car, low mileage, one owner. Phone 2763, Olden.

HELP WANTED Female

POSITION WANTED: By young woman—Ten years experience in accounting and bookkeeping. General office work. Call Connellee Coffee Shop.

HELP WANTED: Local Saleslady, age 27-43, with car. Earnings \$100 to \$150 weekly. Permanent. Write Box S, Eastland Telegram.

Try Them On In Your Home!
FREE
Actual Size Replica Cut-Out Maico Hearing Glasses

Now, in the privacy of your own home, discover how good you look in the all-new slender Maico Hearing Glasses. Included is colorful folder showing face flattering styles for men and women. Send coupon today.

Inquire at Corner Drug, Eastland or, Write:
MAICO HEARING SERVICE
734 Butternut - Abilene, Texas.

LOST & FOUND -
LOST: Leather key container. Contact K. B. Tanner, phone 562.

AUTOS FOR SALE
FOR SALE: '53 Chevrolet sedan delivery. Good condition. 3033 South Madera, G. H. Falk.

Gas does it best... for less!
completely automatic gas CLOTHES DRYER
THE MOST ECONOMICAL WAY TO END WASHDAY DRUDGERY

SPECIAL LOW SALE PRICE
169⁹⁵
AT LONE STAR GAS COMPANY
DOWN PAYMENT TAILORED TO FIT YOUR NEEDS
AS LOW AS \$5⁵⁴ PER MONTH

Universal dryers give you more features for your money!

- COUNTER STYLE TOP. Modern top, provides added working space.
- "NO SNAG" TUMBLER. Smooth heavy coated enameled surfaces eliminate snagging or tearing.
- HEAVY-DUTY CABINET. Finished in gleaming white baked-on enamel.
- AUTOMATIC SAFETY PILOT. Lights automatically. Safe, sure and dependable. No 220 volt wiring needed.

LONE STAR GAS COMPANY



Cary Higatower
Grocery Manager

DON'T MISS WORTH FOOD MART'S

Managers' Appreciation Sale!



Homer Meek
Meat Manager

A NOTE from the MANAGERS!

This is our way of saying "THANKS" for making WORTH FOOD MART'S first full year of operation here so gratifying. There's lots of prizes and EXTRA LOW PRICES during this big event. Come in, shake hands, reap savings, win prizes.

CRISCO

SHORTENING

5c OFF LABEL

YOU PAY (NET)

3 -Lb. Can 79¢

EGGS WORTH-MART GRADE "A" LARGE Doz. 49¢

Strawberries LIBBY'S FROZEN SLICED 3 10-Oz. Pkgs. 69¢

Reddi-Whip AMERICA'S FAVORITE DESSERT TOPPING 7-Oz. Can 49¢

PICNICS ARMOUR'S STAR SMOKED 6 to 8-Lb. Average Lb. Only 33¢

SWIFT'S SLICED

Premium Bacon Lb. Pkg. 69¢

WORTH CONTROLLED QUALITY

Beef Chuck Roast Lb. 53¢

Sliced Bologna SWIFT'S PREMIUM Lb. 49¢

American Cheese KRAFT'S SLICED Lb. 59¢

RATH'S MEATBALLS FRESH-FROZEN 20 PER PACKAGE 10-Oz. Pkg. 69¢

CALAVOS LARGE SIZE AVOCADOS 2 for 25¢

CELERY HEARTS CRISP, TENDER 2-Ct. Pkg. 23¢

WINESAP APPLES CRISP, SNAPPY Lb. 15¢

WHITE ONIONS U. S. NO. 1 IDAHO Lb. 10¢

SALAD DRESSING Morton's Quart Jar 45¢ PEARS D'ANJOU Lb. 17¢

LEMONS HELP FIGHT FLU & COLDS! Lb. 17¢

Prices Effective Thursday, Friday and Saturday

Reserve Rights to Limit

FREE!

Hundreds of Dollars in Prizes

- ★ ADMIRAL UPRIGHT FOOD FREEZER
- ★ RCA WHIRLPOOL ELECTRIC RANGE

- ★ Norelco Speedshaver
- ★ Ladies Train Case
- ★ Ladies Empress "75" Electric Shaver
- ★ 8 Beautiful Dolls with Rooted Hair
- ★ 4 Signature Dogs
- ★ 12 Plastic Clothes Baskets

NO PURCHASE NECESSARY

You Do Not Have to Be Present to Win

REGISTER FREE EVERYDAY AT WORTH FOOD MART in RANGER, EASTLAND & CISCO only

Drawing will be at Eastland Store, 7 p.m., Feb. 1

Moore About—

(Continued from Page One)

would step out the back door Cranky would make a bee-line for her he would lower one wing to the ground, make some nasty noise in his throat and chase her back in the house. Every once in a while he would catch Mary... out we were always able to talk father into letting us keep the chickens after all.

One thing we didn't ever figure out was how to come out on top of a trade with those bantams.

Roy Arnett was the first guy to gyp us. Roy talked us into trading him a couple of hens (he wanted a hen and a rooster, but what with Cranky around we didn't have any roosters to trade) for a pair of pigeons. Roy explained that after we kept the pigeons awhile we could turn them loose and they would always come back home, just like his did.

Roy was right. We kept them two months, turned 'em loose and they almost flapped their wings off flying back to Roy's house. That was the pattern of things for the next year, and finally we insisted that Roy give us our chickens back. He refused, saying that the pigeons were still ours and we could come over to his house and get 'em anytime we wanted to.

Don Massey (who, by the way, was born at Olden), pulled the next stinky deal on us. Don traded us a pair of rabbits for six hens. He reasoned that two rabbits were worth more than six hens for obvious reasons. We decided after two years that Don either sold us two bucks or two does, or else all

the stories we had heard about rabbits were a bunch of lies. We started with two rabbits, and we ended with two rabbits.

We could tell you lots more stories about those bantams, but frankly the more we write the more choked up we get about 'em. Poor ol' Cranky got to getting old and let one of those upstart baby chicks get too big to handle. We looked out the window one day just in time to see him lose his only fight. After that we kinda lost interest in bantams, and gradually gave them all away.

INGROWN NAIL HURTING YOU?
Immediate Relief!
A few drops of OUTGROW bring blessed relief from tormenting pairs of ingrown nail. OUTGROW softens the skin underneath the nail, allows the nail to be cut and thus prevents further pain and discomfort. OUTGROW is available at all drug counters.

NOTICE
FRESH DRESSED FRYERS and Fresh Dressed RABBITS At The Plant PHONE 110 WALKER Dressing Plant

TENNYSON'S TENTH ANNIVERSARY NURSERY STOCK SALE!

20 to 50 per cent off on every item in our big stock of Roses, Shrubs, Evergreens, Fruit and Shade Trees, Berries, and so forth.

We have the most complete stock of Nursery Goods to be found in this section! You can get what you need at big savings during this Sale!

TENNYSON NURSERY
1003 W. 16th Cisco, Texas

FREE!

50 DOOR PRIZES At Each Store Friday & Saturday

- ★ 1st 50 People Friday will Each Receive a quart of Morton's Salad Dressing PLUS a 2-lb. bag of Gold Medal Flour.
- ★ 1st 50 People Saturday will Each Receive a Dozen Worth-Mart Grade "A" Large Eggs and a Package of Frozen Rolls.

CALAVOS LARGE SIZE AVOCADOS 2 for 25¢

CELERY HEARTS CRISP, TENDER 2-Ct. Pkg. 23¢

WINESAP APPLES CRISP, SNAPPY Lb. 15¢

WHITE ONIONS U. S. NO. 1 IDAHO Lb. 10¢

SALAD DRESSING Morton's Quart Jar 45¢ PEARS D'ANJOU Lb. 17¢

LEMONS HELP FIGHT FLU & COLDS! Lb. 17¢

ECONOMY SIZE...

MAKES MORE... SAVES MORE!

PET INSTANT NON-FAT DRY MILK

12 QT. PKG. 89¢

Listerine ANTISEPTIC

14-Oz. Bottle 79¢

Mentholatum

Regular Size Jar 33¢

TIME TO BUY... TIME TO SAVE ON LUMBER AND BUILDING SUPPLIES

It's Easy to Pay...

FHA	When amount to finance is —	Lowest Monthly payment is —	FHA
	100.00	5.98	
	200.00	6.39	
	300.00	9.58	
	400.00	12.78	
	500.00	15.97	
	600.00	19.17	
	700.00	22.36	
	800.00	25.56	
	900.00	28.56	

• FOR HOME IMPROVEMENTS •

Why delay making desired improvements when FHA monthly payments are so reasonable?

Enjoy more convenience and comfort in your home while you pay for the improvements in easy installments. Up to 36 months for repayment... lower FHA rates.

Let us give you a free estimate of your home improvement requirements and arrange monthly terms to fit your budget.

AS IT LOOKS FOR HERE

By OMAR BURLESON

WASHINGTON, D. C.—The great scientist Dr. Arthur N. Compton pioneered work in nuclear physics which led to the development of the first atomic bomb chain reaction. He pioneered work on x-rays and directed the world cosmic ray surveys. For

these numerous other scientific accomplishments he won the Nobel prize.

Dr. Stanley Livingston is Professor of Physics at Massachusetts Institute of Technology. He aided in the development of the first cyclotron, cosmotron and electro-synchrotron. He is a past President of the National Federation of American Scientists. Dr. Livingston is one of the foremost authorities on scientific developments in the Soviet Union.

I have just spent three hours with these two gentlemen in a discussion which might be properly styled, "Implications of nuclear weapons on United States Foreign Policy."

These two scientists agree that Russia is ahead of us in some phases of science while we are ahead in many others. They have no doubt that the United States leads the Soviets in far many more respects than they lead us.

Neither Dr. Compton nor Dr. Livingston believe that we should launch out on any "crash" program to educate more scientists.

Neither believes that the advance of science in the Soviet Union came from secrets stolen from the United States. Each says that it would hardly be possible for a scientist in one country to try to steal secret formulas of another and put them to use without knowledge and capabilities of producing the formulas in the first place.

Dr. Livingston particularly has talked to many Russian scientists. He says they talk freely about their developments but say nothing about politics. Asked if the Russian scientist had made the

leaders in the Kremlin aware that the world can now be destroyed by nuclear weapons, he replied that he believed they had. He further said that they discussed nuclear developments within official Soviet Government policy but not politics itself. Our scientific representatives meeting with the Russians are unable to thusly speak.

Herein lies a major problem for the United States. It is my privilege to serve as chairman of the Subcommittee on National Security. We must cope with this problem and try to come up with practical answers. The fate of the world hangs in the balance—the very soul of the world is at stake.

The scientists have created these awful and terrifying instruments of destruction which can also be a great blessing to mankind if turned to peaceful purposes. To a large degree, it is also in the hands of the scientists to find the actual means of controlling these weapons between nations who have enemy systems. Diplomatic agreements are one thing—applied controls are another.

It will not be easy nor will it be soon—but it must be certain.

Lacasa Lines

Mrs. D. B. Raney

The people of Lacasa will honor all those who have birthdays in January with a covered dish luncheon at the Community Center, Sunday, January 26th.

There will also be a "Forty-two" party at the center on Friday night, January 24th with an invitation to all.

The ladies of the Community Club are making several gifts and urge all to come and help.

Caroline Jones has been absent from school several days because of illness.

Many of our people attended the Youth Revival at the Eastside Baptist Church of Ranger over the weekend.

Jackie Eddleman of this community did the preaching. Mrs. Cordia Lambert took the

Fellowship Training Union Class to the Sunday night services.

Mrs. Ida Raney, who was ill in the Ranger General Hospital, is at the home of her daughter, Mrs. A. O. Templeton and is much improved.

Visitors in the Jack Pockrus home the past week were Mes. Robert and Joe Jackson, Sue Watson, and Hubert and Bill Pockrus.

Mr. and Mrs. A. O. Templeton visited their son, Carlton Templeton, and wife and daughter, Carla Sunday at Abilene.

ATTEND THE CHURCH OF YOUR CHOICE EACH SUNDAY

CALL 601 FOR CLASSIFIEDS

READ THE CLASSIFIEDS

Overseas Veterans Welcome
Karl and Boyd Tanner
Post No. 4136
VETERANS
OF
FOREIGN
WARS
Meets 2nd and
4th Thursday
8:00 p.m.

HALF HOUR
Laundry Service
Automatic coin operated
washer and dryers, open
24 hours every day.
WASHERS—20 per load
DRYERS — 25c for 2
washer loads
LAUNDROMAT
515 West Main
In Old Tip Top Cafe Building

NOTICE... Come To
Kendrick Drive-In Dairy
(Serving This Territory Since 1940)
FOR
Good, Clean JERSEY Sweet Milk
Price - 70c Gal.
Phone 896-J-2 — Located Halfway between
Eastland and Cisco

VISIT OUR NEW STATION



THE PROOF IS IN THE DRIVING!

Test Drive Phillips 66

Flite-Fuel



Try it today! Discover why we say "It's Performance That Counts!"

No other gasoline provides the combination of high performance components you get in Phillips 66 FLITE-FUEL. You get the advantages of advanced high octane... and right now FLITE-FUEL is Winter-Blended for easy starting and best performance in your climate. Today, fill up at your Phillips 66 Dealer's, and bring out the best in your car!

PHILLIPS PETROLEUM COMPANY

Miller's 66 Service

WEST MAIN STREET

FUNK & WAGNALLS ENCYCLOPEDIA

On the BOOK-A-WEEK Plan!
VOLUME NO. 2 ON SALE THURSDAY!
Here's the greatest encyclopedia bargain ever offered!
Volume No. 2 goes on sale TODAY!—Volume No. 1 is still on sale, so you can start building your set right now.

VOL. 1 only 25¢
With \$2.50 in purchases

Then, Each Week, Another Volume of the Set—Until Your Set's Complete 99¢
with any purchase

Each Volume is FULL LIBRARY SIZE
25 VOLUMES
9,446 PAGES
5,850,000 WORDS
30,000 SUBJECTS—5,750 ILLUSTRATIONS.

Compare This Volume With Any Volume Selling for \$4.00!

3 1/2 Inches High and 5 1/2 Inches Wide

2nd Big Week of the Managers & Clerks Sale

- | | |
|---|--|
| A&P FANCY QUALITY
SAUERKRAUT 2 16-oz. Cans 21¢ | JANE PARKER
CHERRY PIES ea. 43¢ |
| A&P FANCY QUALITY
APPLESAUCE 2 16-oz. Cans 29¢ | JANE PARKER GIANT
JELLY ROLL ea. 53¢ |
| SULTANA CHOICE FRUIT
COCKTAIL 30-oz. Can 31¢ | JANE PARKER — 3 KINDS
CAKE DONUTS Doz. 20¢ |
| A&P FANCY QUALITY
G'FRUIT JUICE 46-oz. Can 21¢ | JANE PARKER
FUDGE COOKIES 11-oz. Pkg. 27¢ |
| ANN PAGE White, Yellow, Devil's Food, or Honey Spice
CAKE MIXES 4 20-oz. Pkgs. 85¢ | RELIABLE CUT
GREEN BEANS 2 16-oz. Cans 29¢ |
| ANN PAGE
TOMATO SOUP 4 10 1/2-oz. Cans 39¢ 3 20-oz. Cans 49¢ | SULTANA STRAWBERRY
PRESERVES 12-oz. Glass 27¢ |
| Nabisco Krispy Crackers 1-lb. Box 27¢ | ANN PAGE PURE
APPLE JELLY 12-oz. Glass 19¢ |
| WHITE, YELLOW OR PINK FACIAL TISSUES
KLEENEX TISSUES 2 Boxes of 400 49¢ | GOLDEN RISE
BISCUITS 3 8-oz. Pkgs. 29¢ |
| Weekend Meat Values!
"SUPER-RIGHT" QUALITY PORK
SAUSAGE | FEBRUARY ISSUE
WOMAN'S DAY ea. 10¢ |
| (MILD) 1-lb. Roll 35¢ 2-lb. Bag 69¢ | "SUPER-RIGHT" CANNED
CORNER BEEF 3 12-oz. Cans \$1.00 |
| BANQUET CHICKEN
Pies 2 for 45¢ | "SUPER-RIGHT" CANNED
ROAST BEEF 3 12-oz. Cans \$1.00 |
| "SUPER-RIGHT" HEAVY BEEF BLADE CUT
CHUCK ROAST lb. 45¢ | |
| Super-Right Heavy Beef Shoulder
ROAST Lb. 69¢ | |
| "SUPER-RIGHT" FRESHLY
GROUND BEEF lb. 45¢ | |
| "SUPER-RIGHT" HEAVY BEEF TOP
ROUND STEAK lb. 99¢ | |
| "SUPER-RIGHT" HEAVY BEEF BOTTOM
ROUND STEAK lb. 95¢ | |
| "SUPER-RIGHT" THICK CUT
SLICED BACON 2-lb. Pkg. \$1.09 | |
| CAP'N JOHN'S
FISH STICKS 2 10-oz. Pkgs. 65¢ | |
| H & D Whiting
FISH 1 1/2-Lb. 33¢ | |
| CAP'N JOHN'S
PERCH FILLETS 16-oz. Pkg. 39¢ | |
| CAP'N JOHN'S FRIED
SHRIMP 10-oz. Pkg. 59¢ | |

- SOAP FLAKES
LUX FLAKES
Lge. Pkg. **33¢**
- TOILET SOAP
Lifebuoy
3 Reg. Bars **29¢**
- TOILET SOAP
Lifebuoy
2 Bath Bars **29¢**
- TOILET SOAP
LUX SOAP
2 Reg. Bars **19¢**
- TOILET SOAP
LUX SOAP
2 Bath Bars **27¢**
- BLUE DETERGENT
RINSO
Reg. Pkg. **32¢**
- DETERGENT
SURF
Reg. Pkg. **32¢**
- DETERGENT
BREEZE
Giant Pkg. **77¢**

- ### Fresh Fruits & Vegetables
- WINESAP APPLES** Lb. **15¢**
- Washington State Extra Fancy Red DELICIOUS **APPLES** Lb. **15¢**
- TEXAS JUICY **ORANGES** 5 Lb. Bag **29¢**
- FLORIDA NEW **POTATOES 3** Lb. **25¢**
- TEXAS YAMS** Lb. **12¢**
- CALIFORNIA **AVOCADOS 2** Pcs. **25¢**
- MINNESOTA **RUTABAGAS** Lb. **5¢**
- TROPICAL AMERICAN **BANANAS** 2 Lbs. **25¢**

- "Super Right" Luncheon **Meat** 12-Oz. Can **35¢**
- DETERGENT **LIQUID LUX** 22-oz. Can **69¢**
- SUNNYFIELD **Flour** 25-Lb. Sack **1.83**
- DETERGENT **FLUFFY "all"** Reg. Pkg. **39¢**
- BLUE DETERGENT **Liquid Wisk** 32-oz. Can **69¢**
- ALL PURPOSE SHORTENING **SPRY** 3 lb. Can **91¢**
- STAR-KIST GREEN LABEL **TUNA FISH** 6 1/2-oz. Can **33¢**
- IONA — 303 Can **Tomatoes 2** for **23¢**



Here's tops in hearty, thrifty eating . . .

POT ROAST 'n POTATOES

U. S. D. A. Choice Grade Heavy Steers

Beef Chuck Blade Pot Roast

Juicy, tork-tender, with the rich flavor you get only in beef from top government grades. Safeway's cut gives you a chunky, meaty roast that means more delicious meat for your money. Buy one for your "Pot Roast 'n' Potatoes" meal . . . several more for your freezer . . . at this good-value price!

Poppy Sliced Bacon Distinctive Smoky Flavor

Choice Beef Arm Pot Roast U.S.D.A. Grade Heavy Steers

Boneless Beef Chuck Roast U.S.D.A. Choice Grade Heavy Steers

Economy Ground Beef Safeway Guaranteed — Made from U.S. Government Inspected Beef

Plumrose Danish Ham Imported Pear Shaped

Lb. **45¢**

1-Lb. Cello **63¢**

Lb. **55¢**

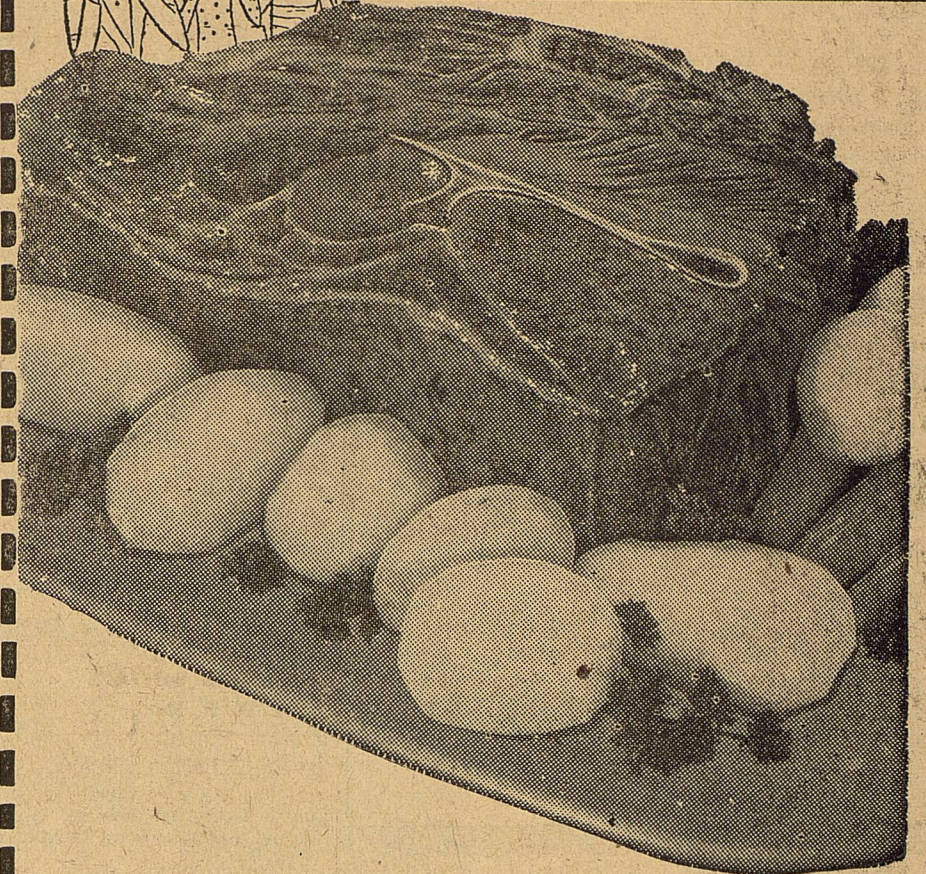
Lb. **65¢**

Lb. **43¢**

4-Lb. Can **\$4²⁵**



Get Many Valuable Premiums Free When You Save Safeway's Green Cash Register Tapes



Eat and stay slim!

JANUARY FAMILY CIRCLE

63 Diet-Wise Meal Plans the Whole Family Will Love satisfying breakfasts, lunches, dinners plus desserts and snacks

Roxbury Candies

Chocolate Balls Malted Milk 8-Oz. Pkg. **39¢**
Chocolate Stars Rich 8 1/2-Oz. Pkg. **39¢**
Chocolate Drops Family Favorite 14-Oz. Pkg. **39¢**
Peanut Clusters Special Buy 14-Oz. Pkg. **59¢**

Absorbine Jr. Reg. 1.25 Size **85¢**

Concord Grape Juice Tea Garden 24-Oz. Bottle **29¢**

Tomato Juice Sunny Dawn or Town House 46-Oz. Can **25¢**

Libby Bartlett Pears No. 2 1/2 Can **35¢**

Winslow Asparagus Fancy Cut All Green 2 No. 1 Cans **35¢**

Libby Corn Cream Style Golden 2 303 Cans **29¢**

Del Monte Spinach Fresh Flavored 2 303 Cans **25¢**

Del Monte Tomatoes Whole 303 Can **21¢**

Joyette Dessert Delicious Mellorine Assorted Flavors 1/2-Gal. Ctn. **39¢**

Chopped Ham Armour's Star 12-Oz. Can **49¢**

Strawberry Jelly Empress 12-Oz. Jar **25¢**

Sno White Salt Iodized or Free Running 26-Oz. Box **10¢**

Top Quality Values

Bouillon Cubes Steero Instant 2 3/4-Oz. Pkg. **35¢**
Cherry Pie Filling Lucky Leaf No. 2 Can **39¢**
Ivory Soap Toilet Personal Size 4 Bars **25¢**
Zest Soap Toilet, Deodorant Beauty Bar 2 Reg. Bars **29¢**

Safeway Good Buys

Zest Beauty Bar Deodorant Toilet Soap 2 Bath Bars **39¢**
Lava Soap Medium Size 2 Bars **23¢**
Soap Powder Ivory Snow Large Box **33¢**
Ad Detergent Ideal for Automatics 19-Oz. Box **31¢**

Prices effective Thursday, Friday and Saturday, January 23-24-25 — In Eastland No Sales to Dealers

RUSSET POTATOES

Economy—Just right for baking, French frying, or boiling

10 Lb. Bag **49¢**

Fresh Carrots Sweet, Tender, Crisp to Bite Into 1-Lb. Cello **10¢**

Yellow Onions Idaho Finest Just Right Flavor Lb. **4¢**

Sunkist Oranges Navel — Sweet and Delicious Lb. **15¢**

Cherry Rhubarb Ideal for Making Pies Lb. **15¢**

Fresh Broccoli Try Some for Dinner Lb. **19¢**

Look at These Special Buys!

Sliced Apples Lakemoor Fancy No. 2 Can **25¢**

Airway Coffee Rich Flavored 1-Lb. Pkg. **75¢**

Nob Hill Coffee Full Flavored 1-Lb. Pkg. **79¢**

Safeway Instant Coffee 6-Oz. Jar **\$1⁰⁷**

Cherub Milk Evaporated 3 1/4 1/2-Oz. Cans **40¢**

Dried Apples Glenview Selected 8-Oz. Cello **29¢**

Royal Satin Shortening 3-Lb. Can **80¢**

Kitchen Craft Flour Sifter and Shaker Pkg. 14-Oz. **19¢**

Bel-air Potatoes Frozen French Fried 2 9-Oz. Pkgs. **29¢**

Potato Patties Bal-air Frozen 2 12-Oz. Pkgs. **29¢**

Ice Cream Cottillon, Vanilla Chocolate or Strawberry Pt. Ctn. **35¢**

Half and Half Lucerne Pt. Ctn. **28¢**

Whipping Cream Lucerne 1/2 Pt. Ctn. **29¢**

Get Acquainted Specials!

Skylark Bread Butter and Egg 1-Lb. Loaf **19¢**

Skylark Bread Multi Grain 1-Lb. Loaf **22¢**

Jelly Snails Curtsy 7-Oz. Pkg. **19¢**

Protein Bread Skylark New Arrival 1-Lb. Loaf **25¢**

Bel-air Strawberries Frozen — Sliced 2 10-Oz. Size **31¢**

Breakfast Gems Eggs Grade A Quality Large Size Doz. **59¢**

Cottage Cheese Lucerne; Regular, Farm, Chive or Low Calorie 16-Oz. Ctn. **23¢**

Joy Detergent Liquid 22-Oz. Can **69¢**

Comet Cleanser Gets Dirt Fast 21 1/2-Oz. Can **21¢**

Zee Napkins Colored or White 2 80 Ct. Pkgs. **29¢**

Zee Tissue Assorted Colors 4-Roll Pak **35¢**

Zee Lunch Bags Perfect Size 2 20-Ct. Pkgs. **25¢**

Charmin Tissue Assorted Colors 4-Roll Pak **35¢**

Apple Butter Musselman 25-Oz. Jar **33¢**

Holsum Olives Spiral Pack #8 5-Oz. Bottle **47¢**

Wesson Oil Ideal for Frying Qt. Bottle **69¢**

Snowdrift Shortening 3-Lb. Can **91¢**

Bisquick Biscuits Home Style or Buttermilk 2 8-Oz. Cans **23¢**

Puffin Biscuits Sweetmilk or Buttermilk 2 8-Oz. Cans **23¢**



SAFEWAY

NEWS FROM DES DEMONA

A wedding shower was given at the school home economics room Saturday night honoring Mr. and Mrs. Dalton Anderson of Dublin. The couple were married Jan. 1 in Ranger. They received many nice gifts. Delicious punch and cake were served.

Mr. and Mrs. Lonnie Williamson were in Brownwood Sunday to be with a group of relatives on a "Get-to-gether" visit.

Mrs. J. Davis is in the Browns Hospital at Cisco suffering with rheumatism.

Mrs. Dess Abernathy attended the funeral of her Uncle Tom Hunter in Stephenville Saturday. Mr. and Mrs. Bobby Jean Koonce of Fort Worth spent the weekend here with his parents, Mr. and Mrs. Bob Koonce.

Mrs. Frank Leazer and Mrs. Ofie Wright of Andrews spent several days with Mr. and Mrs. John Arnold last week.

Oakland Wier of Fort Worth spent the weekend here with his sister, and brother-in-law, Mr. and Mrs. Bob Koonce, and brothers and sister-in-law, Coleman Wier and Mr. and Mrs. W. W. Wier.

C. H. Williams spent part of this weekend in Midland with a son and family, Mr. and Mrs. Leo

Williams and while there also visited in Odessa with a daughter and family, Mr. and Mrs. W. T. Yardley and family.

Mrs. H. T. Lane visited in Abilene Sunday with her sister, Mrs. W. E. Koonce, who has been quite ill. Mrs. Lane reports that Mrs. Koonce is quite improved.

Mr. and Mrs. Chubbie of Arlington had their little son, Rickey, in the hospital at Gorman several days last week. Little Rickey was released from the hospital Saturday and carried home Sunday. Rickey is the grandson of Mr. and Mrs. Roy Guthery.

Mrs. C. H. May and son Larry spent the weekend in Greenville with a son and brother, Mr. and Mrs. Ernest Key and family.

Mr. and Mrs. Rob Guthery of Arlington spent Sunday here with his parents, Mr. and Mrs. Roy Guthery.

Mrs. Mollie Emde and Mrs. Ollie Fien were on the sick list last week.

I GIVE YOU TEXAS

By **BOYCE HOUSE**

A small boy thinks his father knows everything and it is a never-to-be-forgotten moment when a son is able to tell his dad something that he didn't know.

When my father and I got off the train at Carbon we were met by a son of the man we were going to visit—a doctor who lived in the country.

At the farm, the boys showed me around and one of the points of interest they pointed out was a pond, as we called it back in Arkansas—but they referred to it as a tank.

Next summer my father and I were traveling through the South Texas ranch country in a hack for the benefit of my father's health. He was told that a good camping place for noon would be at a tank.

Around noon, he remarked "I don't see any tank in sight" and I realized that he was looking for a steel or wooden tower, so it was with pride that I pointed to a pond and said, "There it is; they call that a tank in Texas."

A. T. Barrett of Fort Worth has fun handing his friends his business card for on the back this is printed:

"Give your wife \$18 to buy a gallon of good whiskey. Buy all your drinks from her at the current price of 50 cents per drink. Remember, there are 96 drinks in a gallon.

"By the time you have guzzled the first gallon she will have \$30 in the bank and \$18 to start in business again. Should you live ten years and continue to buy your booze from your wife, she will have enough money to give you a respectable burial, educate your children, buy a car, house and lot, and marry a decent man after you die with snakes in your boots."

its, also provide much needed vitamin C.

If you plan breakfast around a cereal, be sure to include milk, meat or eggs, too, in order to get the most from the incomplete protein of cereal. Animal foods contain complete protein.

Keep the menu simple and easy to prepare. Allow time for all family members to eat leisurely and enjoy the meal. An attractive centerpiece and colorful mats or dishes will spark appetites, and add interest to this important meal.

What's the status of health in your family? Could it be improved in 1958? Here is a check that is certain to add to better family health.

Here are the seven important factors; good nutrition, sanitation, regular health examinations, immunization, exercise, rest and recreation, an adequate home health center, and a means of achieving the status of radiant health which is the result of complete physical, social and mental well-being.

An accepted guide for good nutrition is the Texas Food Standard. Mrs. Johnson points out that family attitudes toward food and the enjoyment of meal time are just as important as the kind and amount of food eaten. Sanitation includes a healthful water supply, safe sewage and garbage disposal, cleanliness around the barn and home, as well as clean milk free from bacteria.

TRADE WITH YOUR HOMETOWN MERCHANTS



Box Office Opens 6:30
Starts 6:45
Box Office Closes 8:45

THURSDAY - FRIDAY - SATURDAY, JAN. 23-24-25

ANNOUNCING OPENING
OF
Connellee Barber Shop
IN CONNELLEE HOTEL

CONDY E
CARTER
Owner

FLATTOPS
OUR
SPECIALTY

IT'S THE LAW in Texas
A public service feature of the State Bar of Texas

COLD SUFFERERS
Get STANBACK, tablets or powders, for relief of COLD DISCOMFORTS. The STANBACK prescription type formula is a combination of pain relieving ingredients that work together for FASTER RELIEF OF HEADACHE, NEURALGIA and ACHING MUSCLES due to colds. STANBACK also REDUCES FEVER. SNAP BACK with STANBACK.

As a juror you are a judge of the evidence presented at a trial. In order to reach a proper verdict, you have to decide what to believe and what not to believe. One person can't believe two diametrically opposed statements.

But alas, there is no fool-proof way to sift out the true from the false. Lacking a surfire truth detector, our jury system is the best method yet found.

So the jurors must consider the factors affecting the witnesses' credibility so far as the evidence discloses them—age, education, work, or looks and conduct on the witness stand; relationships between the witness and the parties; stakes in the trial's outcome; bias, if it appears; the strength of the witness' memory; the chances they have had to see, hear, and know what they have testified to; their candor; the reasonableness of their testimony.

Witness often differ in details due to their different opportunities or powers to observe, or their money of what they saw, heard, or did. In view of these differences try to reconcile gaps when you reasonably can.

Consider why a witness may make untrue statements: Is it because of confusion, nervousness, mistakes, poor memory, thoughtlessness, lack of intelligence, or evil intent?

The law assumes that the common sense and experience of twelve men will be more reliable than that of only one, in finding the truth among the statements offered by witnesses in a trial. The conclusion of the twelve jurors will be safer and wiser because of the broad background of education, age, profession, and experience brought to bear on disputed matters.

(This column, prepared by the State Bar of Texas, is written to inform—not to advise. No person should ever apply or interpret any law without the aid of an attorney who is fully advised concerning the facts involved, because a slight variance in facts may change the application of the law.)

MEAT IS OUR BUSINESS
IT IS NOT A SIDE LINE
PRICED TO SUIT YOUR BUDGET

GRADE A			
Fryers	Fresh Dressed	Lb.	45¢
FRESH			
Pork	BACKBONE	Lb.	49¢
Pork	TENDERS ALL LEAN	Lb.	89¢
Sausage	Whole Hog	2 Lbs.	98¢
Sausage	Country Style	3 Lbs.	89¢
Seven Roast	Fed Beef	Lb.	47¢
Eggs	Fresh Country White Infertile	Doz.	49¢
CARNATION			
Mellorine		1/2 Gal.	39¢

—READY TO EAT FOODS—

BAR-B-Q BEEF	lb.	79c
BAR-B-Q HAM	lb.	99c
BAR-B-Q German Sausage	lb.	99c
BAR-B-Q SPARE RIBS	lb.	89c
BAR-B-Q FRYERS, large size	each	1.29
RED BEANS	pint	19c
POTATO SALAD	pint	25c
CHILI, home made	pint	49c

EARNEST
Frozen Food Center

210 South Lamar Phone 11

PLANTER BOXES

If you're interested in a planter box, may we help you. We can furnish —

- New Boxes.
- Rich Top Soil.
- Peat Moss.
- Plants.

Terms can be arranged.

TENNYSON NURSERY
1003 W. 16th St. Cisco

Your children's growing-up years...

Keep them forever in portraits

A phone call will arrange your appointment.

CANARIS STUDIO

HOME MAKERS Views and News

Brenda Kirkland Home Dem. Agent
Essie Weathers Asst. Home Dem. Agent

START THE NEW YEAR OFF RIGHT—EAT A GOOD BREAKFAST EVERY MORNING. Two out of three Americans eat too little breakfast. How about you? A good breakfast can prevent that empty, shaky feeling that often hits around 11:00 a.m. when breakfast has been inadequate. A good breakfast pattern goes something like this: fruit, cereal, eggs, toast and beverage. Vary the basic pattern by the kind of fruit, cereal or bread you use and by the way you prepare the eggs.

One of the benefits of serving fruit first is that the acid taste of fruit starts the saliva flowing, thus helping to create an appetite for breakfast. The pulp of fruit as well as the minerals are useful for their laxative effects. Although most fruits are acid, they don't have an acid effect on the body. Instead they help to counteract the other acids of the body. Many fruits, especially citrus fru-

PAY YOUR TAXES IN JANUARY

...and avoid a penalty and interest

Taxes on property in Eastland are now payable. Under the law, unpaid taxes will be subject to penalty and interest after January 31, 1958.

City of Eastland

WAYNE! LOREN! THE GREAT SAHARA ADVENTURE!

The sun...the sand...but they were the big fire!

One man knew the way to the treasure... the other knew the way to the woman!

John Wayne Sophia Loren Rossano Brazzi

Legend of the Lost

3 DAYS ONLY
THURSDAY, FRIDAY and SATURDAY
Jan. 23, 24 & 25
Adults 65c
Children 25c

TECHNIRAMA® and TECHNICOLOR® by KURT KASZNAR
Screenplay by ANGELO PORTALINO • Story by ROBERT PRESNELL, JR.
Produced and Directed by HENRY HATHAWAY • A BATAIC Production
Released thru UNITED ARTISTS

Hospital Auxiliary Elects Mrs. Houle As President Wednesday

Mrs. D. L. Houle was installed as president of the Woman's Auxiliary of the Eastland Memorial Hospital at a coffee given by Mrs. Samuel Butler Wednesday morning. Preceding the business session coffee, hot tea, fruit cake, cinnamon stick cake and nuts were served to the guests as they arrived.

Mrs. Houle presided at the china coffee service and Mrs. Clyde Grissom presided at the china tea service. Various flower arrangements were noted throughout the home. Mrs. Samuel Butler, president, opened and presided over the

meeting. After welcoming her guests she gave a New Year's greeting to everyone, as this was the first meeting of the year for the Auxiliary. Reports of the year's progress was given by the various committee chairmen. As a summary of all the reports the Auxiliary had a very successful year.

Mrs. James Horton, chairman of the grounds committee, reported that 10 mimosa trees had been planted during 1957. Other trees and plants planted were three pin oaks, nine live oak, various scrubs and grass.

To conclude the business session Mrs. Jack Frost, Jr., nominating committee chairman, read the slate of new officers.

Mrs. Horton installed the following officers: Mrs. Houle as president; Mrs. H. T. Weaver as first vice president; Mrs. T. M. Fullen, second vice president; Mrs. Virgil Seaberry, Jr., secretary; Mrs. Jack Carothers, treasurer; Mrs. Samuel Butler, historian.

Mrs. Horton told the new officers that their office was not only an obligation but also a honor. As most appropriate she read the by-laws and read the duties of each officer.

Before the meeting was adjourned Mrs. Houle spoke to the group of the honor of being elected president of the Auxiliary and of her need for the co-operation of everyone in the coming year.

Mrs. Houle also appointed Mrs. Frost and Mrs. Seaberry as committee chairmen of the Thrift Sale, Mrs. Fullen as chairman of the Emergency Committee, Mrs. Butler as chairman of the Grounds Committee and Miss Carolyn Collins, reporter.

Eastland G.A.'s Attend Ranger Meeting Sunday

Seven members of the Morgan Girls Auxiliary and their counselors attended an Associational G. A. meeting at First Baptist Church of Ranger Sunday afternoon where a missionary who is home on furlough from Nigeria, Rev. Thomas Kennedy was the speaker. Sharon Sherman of Albany, Associational president was in charge of the meeting which opened with songs and prayer. Rev. Kennedy then told the girls about his work in Nigeria and showed slide pictures of the boys and girls who live there.

Cookies and Cokes were served in the Fellowship Hall of the church during a social hour which followed.

The next Associational meeting will be held in First Baptist Church of Eastland on April 20.

Those attending from Eastland were Dona Ford, Brenda Jenkins, Mary Herrera, Sharon Sayre, Janet Kimbler, Lois Ann Sims, Wanda and Ernie Lane, Andrea Rhodes, Susan Kimbler, Mrs. Gene Rhodes and Mrs. Harvey Kimbler.

Home Missions Is Theme for Morgan Circle Program

Mrs. H. T. Weaver co-chairman, presided when the Morgan Circle of the First Baptist Church met Tuesday morning in the home of Mrs. I. C. Inzer, 400 So. Oak Lawn.

Mrs. Earl Stephens, program chairman introduced the program about "Home Mission Work" and read scripture from Joel 2:28-29. Mrs. Bill Frazier read the missionaries' names from the Calendar of Prayer and led in prayer for them.

Mrs. Harvey Kimbler told about City Mission work; Mrs. H. P. Weaver discussed Baptist work at the Cuban Baptist Clinic in Havana; and Mrs. Gene Rhodes spoke about work among Negroes.

A refreshment plate of date bars and coffee was served to those mentioned above and to Miss Sue Naylor, Mrs. F. N. Sayre, and a new member, Mrs. A. G. Crosby.

CALL 601 FOR CLASSIFIED ADVERTISEMENT

READ THE CLASSIFIED ADVERTISEMENT

M. H. PERRY
Representing
Southland Life
Life - Retirement Income Partnership
Mortgage Cancellation
Educational - Annuities
Accident - Sickness
Hospitalization - Group
Call 173 or 713-J
107 W. Main • Eastland

FLOWER SHOP Irma Parker Martha Brashier
CHOICE FLOWERS
WEDDINGS CORSAGES
FTD FUNERAL DESIGNS
200 N. Green POTTED PLANTS Tel. 140

SOCIAL CALENDAR

Thursday, Jan. 23
7 p.m. — Bethoven Junior Music Club will meet in the home of Georgia Bess Faircloth, daughter of Mr. and Mrs. S. S. Faircloth, at the corner of Bedford and Valley.

Saturday, Jan. 25
9 a.m. — Bake Sale will open in the annex of the First Christian Church and remain open until sold out. The bake sale is sponsored by Christian Woman's Fellowship. Bake goods of all kinds will be sold. Coffee and pieces of cake and pie will also be sold.

Monday, Jan. 27
9 a.m. — Rachel group of the CWF will meet in the home of Mrs. Hugh Neeld, 1111 South Seaman for their regular meeting.
9:30 a.m. — Priscilla group of the CWF will meet in the home of Mrs. Curtis Young, 203 North Connellee.

3 p.m. — Lydia group of the CWF group will meet in the home of Mrs. J. D. Barton, for their regular meeting.
3 p.m. — Esther group of the CWF group will meet in the home of Mrs. J. H. Evatt, 1310 S. Slay for their regular meeting.

3 p.m. — Martin Circle of the Woman's Society of Christian Service will meet in the home of Mrs. W. P. Leslie, 507 Hillcrest. Co-hostess will be Mmes. Leonard Florence, Tom Haley and Ina Bean. Mrs. Ronald Burton will present the devotional.

Tuesday, Jan. 28
9:30 a.m. — Mrs. M. S. Long will be hostess to the Van Geem Circle of the WSCS Co-hostesses will be Mmes. Taylor Smith, J. A. Doyle and W. T. Powers. Mrs. Smith will present the program.
7:30 p.m. — Zeta Pi Chapter of the Beta Sigma Phi will meet in the home of Mrs. Ed Lorenz, 1500 West Commerce. Mrs. Virgil Moore will be co-hostess. Program on "Travel" will be presented by Mrs. Les Strawn.

7:30 p.m. — Wendell Siebert will be speaker at the meeting of the South Ward PTA meeting. Siebert will speak on "Parents and Youth Can be Partners." Mrs. D. E. Frazer's fourth grade will present the program.

Wednesday, Jan. 29
12 noon — Civic League and Garden Club will hold a luncheon at the Woman's Club House. Call Mrs. Frank Castleberry for reservations. Reservations must be made by Monday.

Thursday, Jan. 30
7:30 p.m. — Gleasers Sunday School Class of First Baptist Church will meet in the home of Mrs. W. D. Dukes, 105 North Hillcrest.

Rev. R. Bumpass Speaks On Racial Question Monday

Rev. Richard Bumpass spoke on the racial question from a religious and social aspect, for members of Las Leales Club at their meeting Monday evening at the Woman's Club.

He urged each to forget their prejudices and take a Christian's attitude toward the colored people and their problems.

Rev. Bumpass was introduced by his mother, Mrs. Anna Grace Bumpass, president and program chairman for the evening. Mrs. Wayne Caton was hostess.

A candle was lighted by the president in memory of the late Jessie Lee Igon. Mrs. Hassell read a poem dedicated to her memory.

Announcement of annual Valentine Party, Feb. 3, was made. Husbands and friends of members will be guests.

Present were Mmes. Myrtle Anderson, Bumpass, Caton, Opal Cross, O. H. Dick, D. E. Frazer, P. L. Hassell, L. E. Huckabay, W. A. Leslie, Rudolph Little, Don Parker, Guy Patterson, Homer Smith, Thura Taylor, J. C. Whatley, A. G. Crosby, Miss Gladys Green, and guest, Rev. Bumpass.

CWF Sponsors Bake Sale To Be Held Saturday

A bake sale will be held in the annex of the First Christian Church Saturday beginning at 9 a.m. Christian Woman's Fellowship is sponsoring the sale.

All kinds of bake goods will be sold. Coffee and pieces of pie and cake will be sold. The C.W.F. invites everyone to come to the bake sale.

Mmes. Cyrus, S. G. McCullough, Roy Turner, Millie Brittain, Henry Ferrell, Mattie Miller, R. I. Malone and Lon Horn are members of the committee chosen to supervise the bake sale.

T. L. FAGG
REAL ESTATE
Property Management
Home and Farm Loans

Luncheon To Be Held Wednesday At Woman's Club

Civic League and Garden Club monthly luncheons will be resumed Wednesday at 12 noon at the Woman's Club.

Women of the area, whether club members or not, are invited to attend.

The meal will be served promptly at 12 o'clock in order that women who are employed may return to their work by 1 p.m.

Games—bridge or canasta—will be played by those who wish to remain.

Reservations, which must be made by noon Monday, may be had by calling Mrs. Frank Castleberry at 289. The charge of \$1.00 per person may be paid Wednesday at the time of the luncheon.

Hostesses will be Mmes. Jack Germany, Jack Frost, M. L. Keasles, and J. F. Collins.

ATTEND THE CHURCH OF YOUR CHOICE EACH SUNDAY

CALL 601 FOR CLASSIFIED ADVERTISEMENT

Just Arrived
Shipment of
Juniors, Misses and Half-Size Dresses.



SALE PRICE
1.99

SALE
BLOUSES
1.49

MODE O' DAY
East Side of Square
Eastland

ANDERSON'S

SALE STARTS FRIDAY
MORNING 9 O'CLOCK

1/2 PRICE

Sale!

Large Group Ladies and Childrens

- COATS
- SUITS
- DRESSES
- BLOUSES
- SKIRTS
- PURSES • HATS

ALL JEWELRY AND GIFTS

1/3 OFF

SPECIAL
Table of Values 1.00
To 5.95 Now

Further Reductions On One Group Lingerie and Childrens Wear

NO LAY-AWAYS NO EXCHANGES

PENNEY'S
ALWAYS FIRST QUALITY!

WHY SPEND MORE? Shop ahead now for the rest of your winter needs. Penney's takes drastic markdowns on hundreds of wanted, in-season items... makes big Penney values even bigger!

SAVE! JANUARY CLEARANCE



BIG MAC ARMY TWILLS FOR MEN IN MOTION!

The right weight, the right cut! Big Macs are expertly proportion sized. Completely Sanforized, reinforced stitching, sturdy zipper flys. Vat dyed, mercerized, machine washable.

8 1/2-oz. twill pant sizes 28 to 50 **3.29**

6-oz. twill shirts, sizes 14 to 17 **2.69**

RANGER COLLEGE

Begins Spring Term January 27, 1958

- DEPARTMENTS
- Art
 - Speech
 - Government
 - Agriculture
 - Engineering
 - Social Science
 - Pre-Professional



- DEPARTMENTS
- Math
 - Music
 - English
 - History
 - Science
 - Education
 - Business Adm.

Spring Semester Registration at RANGER COLLEGE will begin January 27th and end January 29th. A student will find a variety of courses to meet the requirements for higher degrees in the schedule. A well-rounded program of Science, Mathematics, Social Science, Education, Business Administration, Pre-Professional courses, etc., is offered.

Indications for increased enrollment due to pre-registration makes it necessary to register on the day set for registration.

RANGER COLLEGE FACULTY consists of thirty-seven well-qualified teachers in the particular departments.

Call The Registrar, Mrs. Don Elliott
Phone 620—Box 135

RANGER COLLEGE

DR. PRICE R. ASHTON, Pres.

REDUCED!
Blanket Lined
Jackets AND JUMPERS
4.00

REDUCED!
Mens Corduroy
Sport Shirts
3.00 and 4.00

REDUCED!
Womens
Better Dresses
2.00 - 3.00 - 4.00

REDUCED!
Entire Stock Womens
Sweaters
\$2, \$3, \$4, \$5

REDUCED!
Womens Nylon
Quilted Robes
8.00

REDUCED!
One Group
Boys Jackets
5.00

REDUCED!
Mens
Flannel Shirts
1.33

REDUCED!
White
Sheet Blankets
1.57

REDUCED!
Girls
Better Dresses
2.00 - 3.00 - 4.00

REDUCED!
Entire Stock
Girls Sweaters
2.00 - 3.00

REDUCED!
Boys
Sweat Shirts
1.00

REDUCED!
Mens and Boys
Winter Caps
1.50

REDUCED—Long Sleeve, Long Legs
Mens Union Suits 1.66

OKLAHOMA VISITOR
Mrs. Will Keith of Lenapah, Okla., is visiting with Mrs. Frank Castleberry. She is a former re-

sident of Eastland. She lived here for 20 years. Mrs. Keith and her husband came here during the boom. Will Keith was in the gaso-

line business here and in Ranger. He is now retired and spends his time with his oil interest and with his registered Angus cattle on his ranch.

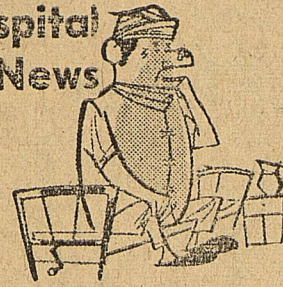
ATTEND THE CHURCH OF YOUR CHOICE EACH SUNDAY

Covered Dish Luncheon Is Held In Fellowship Hall by WSCS

The members of the Woman's Society of Christian Service entertained with a covered dish luncheon Monday, 12:30 p.m. in the Fellowship Hall of the First Methodist Church.

Leslie and Richard Smith. A Social Club was enjoyed prior to the luncheon. Singing and reports were given by each office.

Hospital News



Patients in the Eastland Memorial Hospital are:

Mrs. A. L. Underwood, surgical, Gorman.
L. C. Anderson, medical, Cisco
Robert Blackley, medical, Abilene
Mrs. Melvin Travis, surgical, Cisco
Mrs. Bobby Blackwell, medical, Cisco
Mrs. Joe Tullos, medical, Cisco
Paul Smith, medical, Ranger
Floyd Casebolt, surgical, Witesboro
Mrs. Martha Hubbard, surgical
Roy L. Young, medical
Mrs. Fred Hale, medical
Dismissed were:
Billy Don Turner, Mrs. C. R. Roop and baby boy, Mrs. Mary Brown and Carl Highsmith.

Patients in the Ranger General Hospital from Eastland and Olden are:

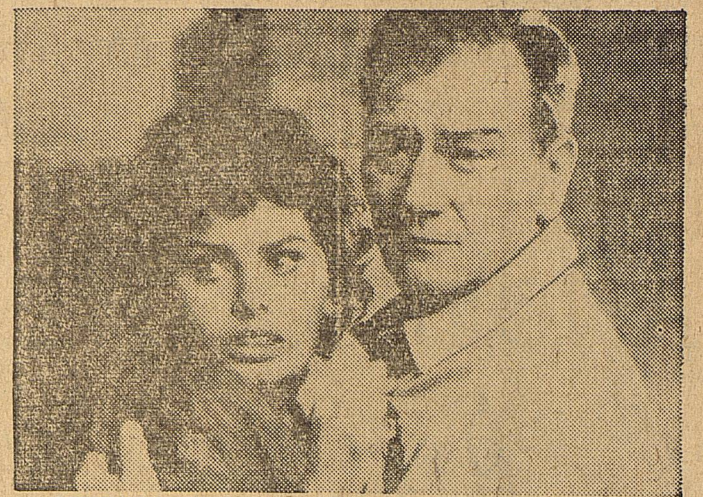
Clayton Pierce, medical
Mrs. James Tinnin, medical
T. A. Utley, medical
Mrs. L. L. Fowler, medical
Mrs. Frances Murry, medical
R. L. Stewart, Jr., medical
T. L. Ward, medical
Dismissed was Mrs. Roxie Theous.

Film Is Shown At West Ward PTA Meeting Tuesday

Movie of "Freedom Highway" was shown at the meeting of the West Ward PTA Tuesday afternoon in the school auditorium. The film shown by J. W. Turner was based on patriotism. Following the film a business session was held. During the session plans were made for a bakeless bake sale to be held in the near future. Mrs. Homer Smith's first grade won the room count. Miss Gladys Green and her second grade room mothers were tea hostesses to about 50 members.

ATTEND THE CHURCH OF YOUR CHOICE EACH SUNDAY

Majestic Thursday, Friday and Saturday



SOPHIA LOREN clings to JOHN WAYNE in lost city of Sahara in United Artists release, "LEGEND OF THE LOST". Technicolor. The adventurous Wayne everyone expects him to be.

E. E. COCKERELL, M. D.
Rectal, Skin and Colon Specialists

Office Phone 2-0027 118 Victoria Street
Res. Phone 4-4938 Abilene, Texas

PILES TREATED WITHOUT SURGERY
Fissure Fistula and Other Rectal Diseases
Successfully Treated . . .

EASTLAND, TEXAS—CONNELLY HOTEL
SATURDAY, JANUARY 25

From 12 Noon to 4:30 P.M.

YOU SAVE MORE WITH OUR Food Values!

COFFEE Clover Farm Drip or Reg. Lb. **79¢**

HURRY! FOR THESE BUYS!
Glendale Early June **PEAS**
2
No. 303 Cans **27¢**

GOLDEN Fluffo 3 Lb. **89¢**

LOOSE LEAF NOTE Paper 25c Pkg. **16¢**

GERBER'S Baby Food 3 4 3/4-Oz. Cans **25¢**

NORTHERN Napkins 2 80 Count Boxes **25¢**

BETTY CROCKER Cake Mix Devil Food or White Cake 20-Oz. Pkg. **25¢**

Miracle Whip KRAFT'S 16-Oz. Jar **36¢**

HURRY! FOR THESE BUYS!
Big Mike **DOG FOOD**
3
No. 300 Tall **20¢**

KRAFT'S FRENCH Dressing 8-Oz. Bottle **24¢**

GLENDALE CREAM Corn 2 No. 303 Cans **25¢**

CALIFORNIA FIRM GREEN Cabbage Lb. **5¢**

TEXAS RUBY RED Grapefruit Lb. **10¢**

FRESH GREEN Onions 2 Bunches **15¢**

POTATOES U. S. No. 1 Idaho Russet 10 Lb. Bag **43¢**

HURRY! FOR THESE BUYS!
GOOCH'S **FRANKS**
3 Pounds **94¢**

GOOCH'S THICK SLICED Bacon 2 Lbs. **1.25**

LEAN TENDER Pork Ribs Lb. **45¢**

RATH'S PORK Sausage 2 Lbs. **79¢**

WILSON PASTURIZED Cheese SPREAD 2 Lb. Box **79¢**

Loin Steak Good Quality Lb. **79¢**

HURRY! FOR THESE BUYS!
Rib **STEAK**
Good Quality Pound **68¢**



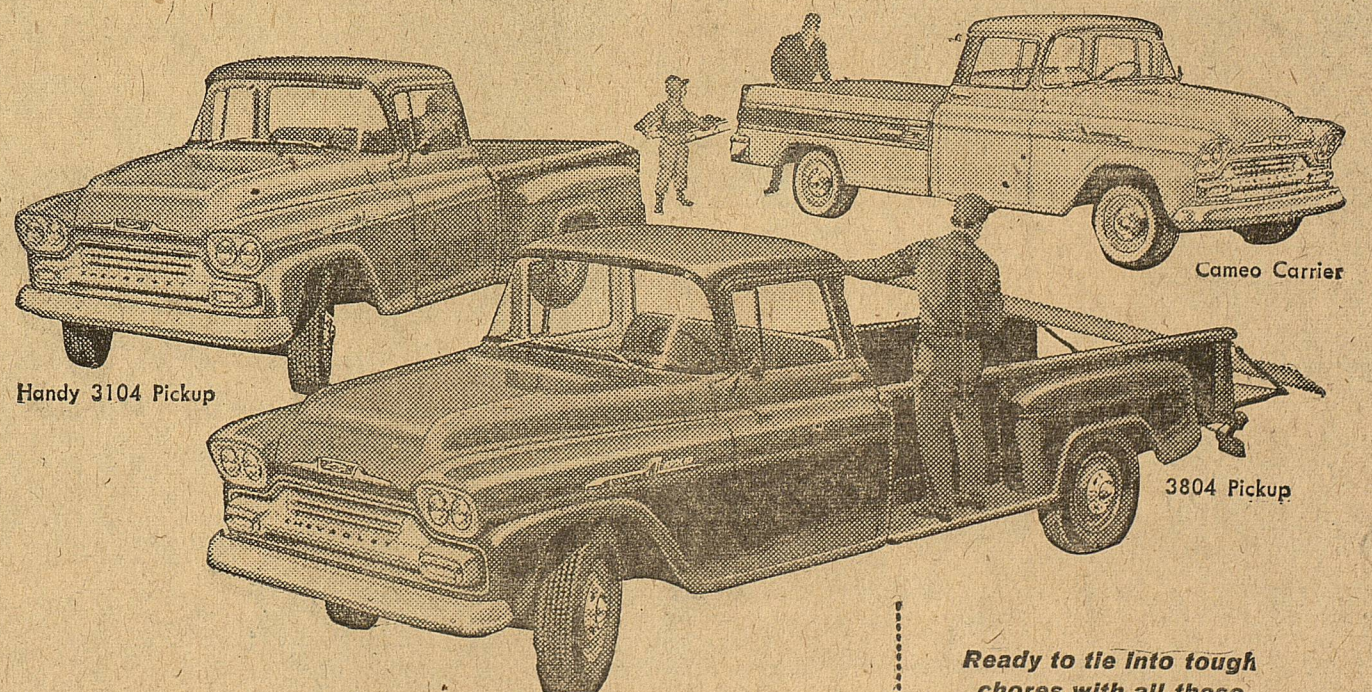
H. B. MacCoby, Owner
7:30 a.m. to 2:00 p.m. Weekdays
7:30 a.m. to 9:00 p.m. Saturdays

BACON ENDS
5-Lb. Box **1.35**

FRESHER WHEN YOU SERVE IT



HANDIEST, HANDSOMEST PICKUPS THAT EVER HUSTLED A LOAD!



Here's new hustle, new muscle and new style! Chevrolet's '58 pickup fleet brings you a new high in efficiency with more powerful high-compression V8 and 6-cylinder engines!

You'll find improved fuel-saving 145-h.p. Thriftmaster 6's, or new 283-cu.-in. 160-h.p. Trademaster V8's (optional at extra cost). And built-in muscle with new extra-rigid front end sheet metal and hefty frames! New style fenders, grille and cab interiors combine good looks with cantake-it durability. Visit your Chevrolet dealer soon.

Ready to fit into tough chores with all these work-whipping features!

PICKUP BOXES UP TO 9 FEET IN LENGTH Take your choice of 78", 98" or 108" pickup boxes. Each offers a full-width grain-tight tailgate, more load space (no inboard wheelhouses).

HARDWOOD FLOORS, FLUSH TYPE SKID STRIPS Sturdy pickup floors are constructed of resilient seasoned hardwood. Skid strips, recessed nearly flush, give platform longer life.

NEW HUSTLE . . . NEW MUSCLE . . . NEW STYLE

NEW CHEVROLET TASK-FORCE 58

Only franchised Chevrolet dealers display this famous trademark. See Your Local Authorized Chevrolet Dealer