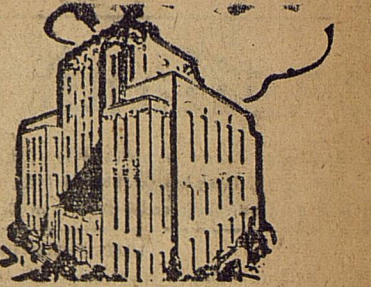




Eastland Telegram

"COVERING EASTLAND COUNTY"



VOLUME TWENTY-EIGHT

EASTLAND, TEXAS, TUESDAY, NOVEMBER 19, 1957

No.

Moore... ABOUT EASTLAND

by Virgil E. Moore

About those speed limits... We said in our last column that we didn't know who it was who set speed limits on State Highways. We do now. Speed limits are set by the Legislature.

Anyone of you who ever took a drivers license test knows that in Texas the speed limit on any road or highway outside the city limits is 60 miles per hour in the daytime and 55 miles per hour at night. Now that's what they accept as the correct answer on those written tests they give you, but we have learned that isn't really the case.

Texas Motor Vehicle Laws say this (and we are printing it all despite the fact you may think it dull): "No person shall drive a vehicle on a highway at a speed greater than is reasonable and prudent under the conditions then existing having regard to the actual and potential hazards when approaching and crossing an intersection or a railway grade crossing, when approaching and going around a curve, when approaching a hill crest, when traveling upon any narrow or winding roadway, or when special hazard exists with respect to pedestrians or other traffic or by reason of weather or other conditions; and in every case the speed shall be so controlled as to be necessary to avoid collisions with any person, vehicle, or other conveyance on or entering the highway in compliance with legal requirements and the duty of all persons to use due care."

The law goes on to say, "Where no special hazard exists that requires lower speed for compliance with subsection 1 of this Section, the speed of any vehicle not in excess of the limits specified in this subsection or established as hereinafter authorized shall be lawful, but any speed in excess of the limits specified in this subsection or established as hereinafter authorized shall be prima facie evidence that the speed is not reasonable or prudent and that it is unlawful."

(1) Thirty miles per hour in any business or residence district for all vehicles; (2) Sixty miles per hour during the daytime and 55 miles per hour during the nighttime in locations other than business or residence districts for all vehicles except commercial vehicles, truck - tractors, trailers, or semi-trailers as defined in this Act and all motor vehicles engaged in this State in the business of transporting passengers for compensation or hire."

In other words, in Texas, no matter what road or highway you may be traveling on, you are automatically considered to be driving at a speed greater than is reasonable and prudent under the conditions when you go faster than 60 mph during the day and 55 mph at night. But on the other hand, you may be considered to be driving at a speed greater than is reasonable and prudent when you are moving but 40 mph on the same highways at certain places, even if there are signs up that read 60 mph.

Therefore, the State has up signs on some highways which say the speed limit is 60 mph, but actually a driver breaks the letter of the law when he travels over 50. This is all very clear to us, but we just don't understand it!

We apologize to Eastland County deer hunters. Sometime back we said that "DEAR season" opened Saturday. This apparently is not true. For far too many hunters have returned with DEER for them to have been hunting DEAR.

Things are certainly taking on a holiday look in Eastland. We believe more merchants are coming through with pretty (Continued On Page Six.)

County, FB Delegates Hear President Talk

Fifteen hundred delegates to the State County Farm Bureau convention in Fort Worth— including six from Eastland County—today heard the president of the State FB declare that farmers and ranchers must demand some form of economic protection as long as agriculture is forced to

"buy in a captive market of industry" and has to pay "any price collective bargaining can obtain."

Pecan Growers To Meet Friday Night To Plan for Show

There will be a meeting of all members of the Eastland County Pecan Growers Association and others interested in the pecan industry in the Commissioners Courtroom on the second floor of the courthouse in Eastland Friday night at 7:30 o'clock.

Details pertaining to the annual pecan show that will be held at Cisco Dec. 6-7, a membership drive, and other matters of interest will be discussed and attended to at this important meeting.

You are cordially invited to this meeting and we hope that you can arrange to be there.

The south door of the courthouse will be open on the night of the meeting.

Eastland Masons To Breck Meeting

More than 100 Masons are expected to attend the Masters, Wardens and Secretaries meeting to be held in the Breckenridge Lodge tonight.

A supper will be served from 6:30 to 7:30 p.m. in the Lodge Banquet room. Following supper the regular business meeting of the Association will be held at which time officers will be elected for the coming year.

A Master Mason's Degree will be conferred after the Association meeting. All Master Masons are invited.

"If one segment lags too much, all must bear the consequences," he stated. "All depressions in our history have been farm-led and farm-fed. When the buying power of agriculture falls behind, workers must be laid off in industry. This results in even less buying power and more workers lose their jobs. Thus we have the downward spiral that can only lead to a depression."

Hammond told the 1,500 Farm Bureau members convened at the Hotel Adolphus that "we cannot allow agriculture to trigger an economic set-back from which we might never recover."

Eastland County delegates at the meeting, which will continue through Wednesday, are John Love, Ben Freeman, Don Kincaid, Wayne Thurman, Ray Norris and Mitchell Campbell.

The state farm leader pointed out that "since industry and labor enjoy their tariffs and their wage and hour laws, it is only fair that we have some sort of economic protection for agriculture."

He stated that continued price support legislation must be the core of any farm program - a floor to prevent disastrous price slumps.

"After all, we must buy in the captive market of industry and we must pay any price collective bargaining can obtain," he said.

Hammond told the voting delegates from some 175 organized counties that they had the responsibility of selecting a sound farm program. In reviewing several of the plans currently being suggested to various groups, Hammond cautioned against doing away with all government programs.

(Continued On Page Four)



WINS HUMBLE CONTEST—Mrs. Everett Plowman has been named a winner in the Humble Football Season Contest. Mrs. Plowman is shown above receiving her transistor radio from Harold Reese, local Humble manager. Her winning also paid off for station manager Otis Coleman. Coleman received the radio he is holding for supplying a winning entry blank. The contest will continue for several more weeks. Each week 24 portable TV sets and 48 transistor radios are awarded. Then there are four grand prizes, a five-day vacation trip for two to the Cotton Bowl in Dallas. (Telegram Staff Photo.)

Carbon Herald Amazing Paper; Pleased 'Em All

(Editor's Note: This is the 43rd in a series of articles taken from the book, "History of Eastland County, Texas," written by Mrs. George Langston in 1904.)

The Herald, editor and proprietor. The Herald, the local paper for Eastland County pleases its readers and pays its advertisers, and is strictly a local and county newspaper.

Although not published at the County Town, it brings all court news of importance to the general public. It has a good circulation and is increasing rapidly.

Only clean advertising from clean people is advertised.

The Bank of Carbon Responsibility, \$500,000.

W. H. Eddleman, president, W. A. Waldrop, vice-president; J. E. Spencer, cashier.

That so able a financier as W. H. Eddleman is connected with this bank insures its solidity.

That J. E. Spencer, who has been in the banking business for several years, is its cashier, speaks for its popularity, while Mr. Waldrop, the efficient cashier of the bank of Gorman, only emphasizes the strength of the organization.

The Carbon Bank occupies its own two-story brick building.

Finley Bros. W. P. Finley and S. P. Finley, members of this firm were born in Tennessee and emigrated to Texas with their parents and he other brothers in 1867. They located in Eastland in the memorable year of 1876, and engaged in farming. Later some of the family lived at Jewell, and in the early '80's W. P. Finley and Mr. Duke (now of Dallas) merchandised at Cisco.

This firm established itself here in a general merchandise business in 1895 and enjoys a long and moving trade.

The Finleys are substantial and progressive citizens and foster every interest of the promising town.

Mrs. D. P. Finley is able president of the Board of Trustees.

(Continued On Page Six.)

Installation Loans Custom Made For Each Customer EASTLAND NATIONAL BANK Member F. D. I. C.

INCLUDING WIN OVER RANGER

Mavs End Good Season

Proof that winning football is now very much in the vein of Eastland was evident this week. The 1957 Mavericks just wrapped up a season of five wins, four losses and a tie.

Not many years ago that would have been a successful season here. Not so anymore. Eastland fans, players, and coaches alike wanted more. Despite the fact that I may sound slightly sour-grapish one will have to admit after studying the season record, that the Mavs could have very easily had a record of nine wins and one loss, plus a district championship. And it is not hard to see where that record could have been 10 and 0.

For a refresher here's how the year went:

- Eastland 18, Cisco 21
- Eastland 25, Dublin 7
- Eastland 6, LeLeon 20
- Eastland 19, Cross Plains 7
- Eastland 14, Ranger 13
- Eastland 33, Gorman 19
- Eastland 6, Wylie 13
- Eastland 13, Albany 18
- Eastland 13, Throckmorton 13
- Eastland 43, Clyde 6

You can see that in every game the Mavs played one more touchdown would have tied or won the game, with the exception of the DeLeon tilt. And in every game the Mavs lost, Eastland had more first downs and more net yardage than their opponents did.

For the year the Mavs scored 190 points and their 10 opponents got 111. The Mavs had 154 first downs to 111 and 2373 yards rushing to 1820. In the yards passing department yardage stood 572 for Eastland, and 514 for the opposition.

Eastland passers threw 78 aerials during the season and completed 26. In fact, Quarterback Clinton Humphreys got all the completions, and passed most of the time (73). The Mavs had seven of their passes intercepted and got 13 of their opponents.

Humphrey ended the season with a 37 yard punting average. He kicked the ball 25 times. Mavs opponents punted 30 times and had a 32 yard per try average. The Mavs had 46 penalties during the year which cost them 500 yards. Their opponents had 60 penalties, but yardage lost was only 490. Eastland lost the ball 14 times on fumbles, but recovered 19 of their opponents' miscues.

Quarterback Clint Humphreys (Continued on Page Six)

Teeny Weeny Gas Burners! Largest selection of new sedans, hardtops, convertibles in this area. Prices start at \$1095. TOM'S SPORT CARS Eastland

Atwell Top Scorer; Pullman Ranks Third

Jerry Atwell, Albany's great halfback, wrapper up the District 10-A scoring title Friday night despite he was held to just six points by the Wylie Bulldogs. Atwell ended the season with 87 points, edging Joe Rex Schulte, the Wylie quarterback, who had 79 points.

Eastland's Saul Pullman, a cunch for all-district honors at the fullback slot, moved past three Throckmorton backs and Jimmy Ellis of Albany to take third place in the district. Before Friday night Pullman was tied with Ellis for sixth place. He scored two touchdowns to run his scoring up to 60 points, and played just over one quarter in doing that. Pullman got one of his scores from the end position on a pass from Clint Humphrey.

Bill Norwood ended up in ninth place and Johnny McMahon finished 12th among all 10-A scorers.

PLAYER	TEAM	POINTS
Jerry Atwell	Albany	87
Joe Rex Schulte	Wylie	79
Saul Pullman	Eastland	60
Jerry Grable	Throckmorton	54
Chigger Hibbets	Throckm.	54
Rob Neely	Throckmorton	54
Jimmy Ellis	Albany	54

Harold Hicks	Clyde	32
Bill Norwood	Eastland	29
Verner Allen	Wylie	29
Kenneth Hill	Albany	29
Billy Ray Cullins	Clyde	29
Johnny McMahon	Eastland	25
James Baker	Throckmorton	25
Larry Hollis	Eastland	24
Havell Kester	Throckmorton	19
Clint Humphrey	Eastland	18
Larry Hibbets	Throckmorton	18
Jack Eubanks	Albany	15
Darley Hilby	Throckmorton	15
Barkie Jenkins	Albany	13
Dale Davis	Clyde	13
Stanley Reed	Eastland	12
Joe Martin	Eastland	12
Glenn Carter	Wylie	12
Ferry Tally	Wylie	12
Kenneth Watson	Eastland	9
Charles Woodward	Albany	7
Franklin Bales	Albany	6
Don Huston	Wylie	6
Don Greene	Clyde	6
Harold Dabson	Albany	6
Freddie Watson	Clyde	6
John Martin	Throckmorton	6
Carter King	Albany	6
Steward Ledbetter	Albany	6
Loen Chrane	Clyde	6
Paul Raling	Albany	2
Archie Freeman	Albany	15
Billy Bishop	Throckmorton	1

BE SURE—See Don Pierson Olds - Cadillac Eastland Quality Cars at Volume Prices
--

THEY BEAT RANGER—The Mavericks of 1957 did something no Eastland team has been able to do in 10 years, they beat the Ranger Bulldogs. And naturally that's the high point of the 1957 season. The Mavs wrapped up their season with a 43-6 victory over Clyde Friday night. Ranger is champion of District 7-AA. On the

top row, from left to right, are Coach Jon Tate, Knicky Arther, Henry Van Geem, Jr., Saul Pullman, Johnny McMahon, Ronald Robertson, Kenneth Watson, Fred Tucker, Hampton Stamey and Coach Carroll Shelton. Second row, left to right, are Stanley Reed, Bill Norwood, Marvin Agnew, Larry Aldredge, Mike Lisenbee,

Wayne Dodson, Clint Humphrey, Freddie Miller, Gary Lusk, Phillip Lewis and Ray Humphreys. Bottom row, 1 to 6, are Clarence Mayers, J. J. Smith, Charles Thompson, Mike Manning, Joe Martin, Billy Don Turner, Leroy Hollis, LeMurray, Charles Martin, Truman Lane and Raymond Lusk.

Hunters Get Early Kills; Deer Scatter

Deer hunters around the Eastland area were happier this week than they have been in several years. Many first week hunters have their buck already on cold storage.

Although it is impossible to list all kills (for the simple reason we do not know about them) here are some that have come to our attention:

Bill Hoffman of Eastland brought back a seven-pointer from the Fambro Ranch.

Both Mr. and Mrs. Bill Kendrick made kills. Bill got a five point buck and Mrs. Kendrick returned with a six-pointer. They were hunting on the Wallace Ranch.

Raymond Beck of Eastland got a six point buck on the Fambro Ranch.

Gordon Smith of Eastland returned with a fat four-pointer. Smith hunted in Llano County.

Montie Walker of Carbon ranks as the top point man so far. He killed a nine point buck on the Wallace Ranch.

Milton Day of Eastland came close to that himself, however. He brought down an eight-pointer at the Allen Ranch.

Ed Richardson, Lake Leon caretaker, also got an eight point deer. He was hunting on the Wallace Ranch.

W. J. Greer of Carbon killed a six pointer at the Wallace Ranch. All of these deer are on storage at Earnest Frozen Food.

Homer Latham of Eastland got a six pointer at Camp Ranch. Mrs. Bob Mueller of Eastland

returned with a four pointer from the Dan Swayner Ranch.

And Dale Langhitz of Eastland got a seven point buck on the same ranch.

The Telegram will appreciate information during the season kills.

PAGE ONE MUST

A. M. Ward, who formerly operated an upholstery shop here, has announced he will re-open for business. Ward's new shop will be located at the corner of Moss and Connellee. He will feature complete upholstery work.

The annual Texas Electric Service Co. Quarter-Century Club banquet will be held tonight at the Ringer. All 25-year employees a special honoree at the affair.

Eastland Knights of Pythias and Pythian Sisters will hold their annual Roll Call tonight at 7:30. Supper will be served and donations will be taken up to buy gifts for children in the Pythian Home.

W. A. Breland, assistant director of personnel for Lone Star Gas Co., will be guest speaker tonight at a dinner at the White Elephant restaurant for all scout leaders and their wives.

'Y' Talent Show Is Set For December 5

Eastland's four YMCA clubs have set Dec. 5 as the date for their amateur talent show to raise funds with which to buy Christmas toys, clothes and groceries for local underprivileged families.

The show will be held in the High School auditorium and tickets will go on sale in the near future. Admission prices will be 50 and 25 cents.

The four sponsoring clubs will be the Hi-Y, Juan Jay Smith president and Ray E. Pool and Harold E. White, sponsors; Tri-Hi-Y, Sydney Lou Seale, president and Mrs. Billy Frost and Mrs. Jack Carothers, sponsors; the Junior Hi-Y, Clark Conner, president and James K. Smith and Gene Townsend, sponsors; and the Junior Tri-Hi-Y, Barbara McCollough, president, and Mrs. Clyde Evans and Mrs. B. W. Howell, sponsors.

A spokesman emphasized that "None of the money raised will be used for the YMCA organization. This show was selected by the clubs as a means of carrying on a worthy project in connection with the Y program. Most of the money will be done by Y members."

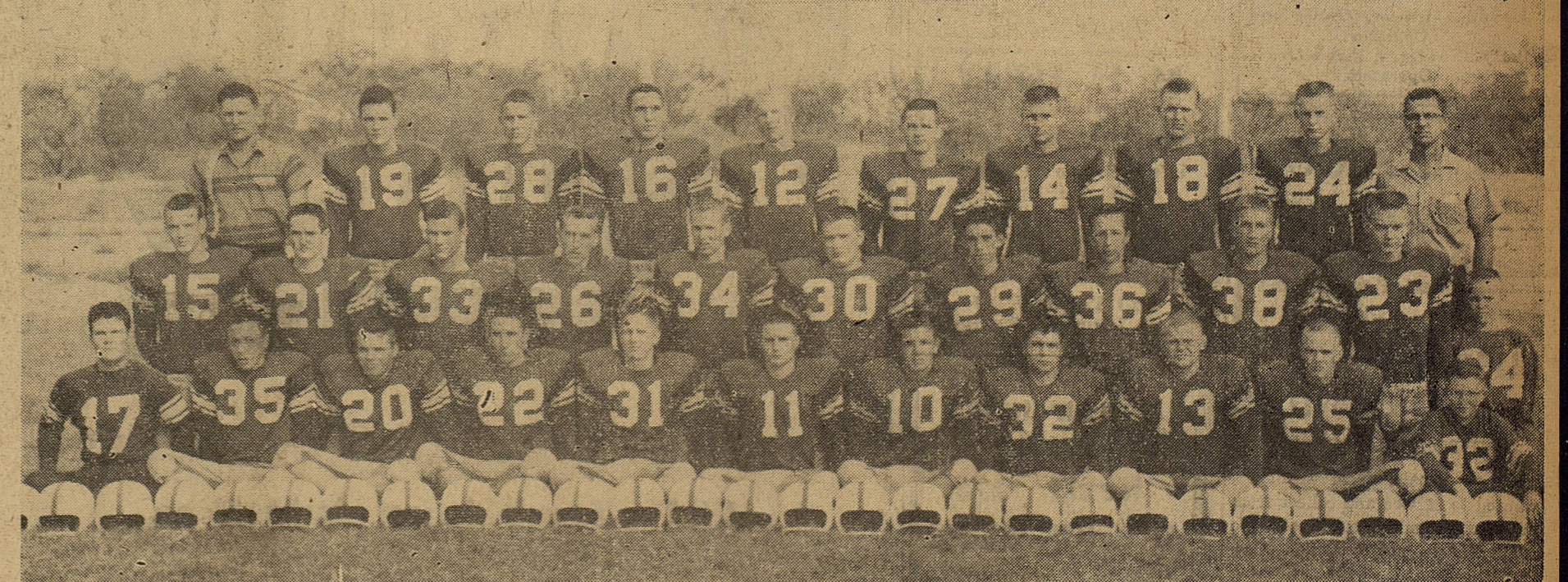
Anyone wanting to enter the contest can do so by sending the name, address, phone number and type of act to Mrs. Clyde Evans, 912 West Commerce, or by phoning 374 or 139. An entry form will appear in Thursday's Telegram.

Auditions will be held and the show will be limited to 12 or 13 acts. Entries will be accepted through Nov. 27.

James Wright will organize a band to play for the acts which require music.

Installation Loans Custom Made For Each Customer EASTLAND NATIONAL BANK Member F. D. I. C.

EASTLAND NATIONAL BANK Member F.D.I.C.



Eastland Telegram

Eastland County Record established in 1931, consolidated August 31, 1951. Chronicle established 1887, Telegram established 1923. Entered as second class matter at the Post Office at Eastland, Texas under the act of Congress of March 3, 1879.

TIMES PUBLISHING COMPANY
Published Tri-Weekly—Tuesdays - Thursdays - Sundays
ONOUS DICK and JOE DENNIS, Publishers
VIRGIL E. MOORE, Editor
CAROLYN COLLINS, Society Editor

One week by carrier in city	.15
One month by carrier in city	.45
One year by mail in County	2.95
One year by mail in state	4.95
One year by mail out of state	6.95

NOTICE TO PUBLIC—Any erroneous reflection upon the character, standing or reputation of any person, firm or corporation which may appear in the columns of this newspaper will be gladly corrected upon being brought to the attention of the publishers.

Classified Ads..

Cards of Thanks charged for at rate of \$2.00 Each

FOR RENT -

FOR RENT: New two bedroom home, 503 Conner. Contact Jenkins at Safeway.

FOR RENT: 3 room furnished apartment. Private bath. Newly decorated. Mostly new furniture. BINS paid. Call 718, no answer call 716.

FOR RENT: 2 room furnished apartment and private bath. Phone 811-W.

FOR RENT: Six room furnished or unfurnished house, \$25 a month Phone 733.

FOR RENT: Three room apartment, private bath and garage. See Mrs. A. F. Taylor, 700 S. Seaman. Phone 320 or 713-J.

FOR RENT: Furnished, entire second floor, 4 rooms and bath, newly decorated. Two large walk-in closets, garage. Utilities paid. Adults only. 1111 South Seaman. Phone 574.

FOR RENT: 4 furnished, 4 unfurnished, duplex. Call 394-J.

FOR RENT: Modern four room house, soft water. See Travis Reese, Olden.

FOR RENT: Furnished apartments. 611 Plummer.

FOR RENT: Newly decorated apartments. Phone 2085-W.

FOR RENT: Newly decorated apartment. Hillside Apartments. Phone 9520.

FOR RENT: Five room unfurnished house, 103 N. Ammerman. Phone 446-J or 270.

NOTICE

FRESH DRESSED FRYERS

Every Day Special Price for Your Deep Freeze

—also—
Chicken Blood Bait... Guaranteed to stay on any type hook.

PHONE 110

WALKER Dressing Plant

SPECIALS

- 25.00 Permanents 20.00
- 20.00 Permanents 15.00
- 15.00 Permanents 10.00
- 10.00 Permanents 7.50
- Other Permanents 5.00

For a complete Beauty service call 14. If we please you, tell others. If not, tell us.

JOSEPHINE Beauty Salon

Josephine Brister, Owner and Operator
Betty Crawley - Vivian Jones Operators

T. L. FAGG

REAL ESTATE

Property Management
Home and Farm Loans

BUSINESS OPPORTUNITIES

RESPONSIBLE PERSON

male or female, from this area, wanted to service and collect from automatic vending machines. No selling. Age not essential. Car, references, and \$700 working capital necessary. 7 to 12 hours weekly nets to \$250 monthly. Possibility full time work. For local interview give full particulars, phone. Write P. O. Box 4827 Dallas 6, Texas.

READ THE CLASSIFIEDS

HELP WANTED Female

FEMALE HELP WANTED: Women Sew Easy Ready-Cut Warm-A-Round Aprons Home. Earn \$26.16 dozen—Spare time write—Accurate Mfr's, Freeport, New York

LEAVES FOR PUERTO RICO

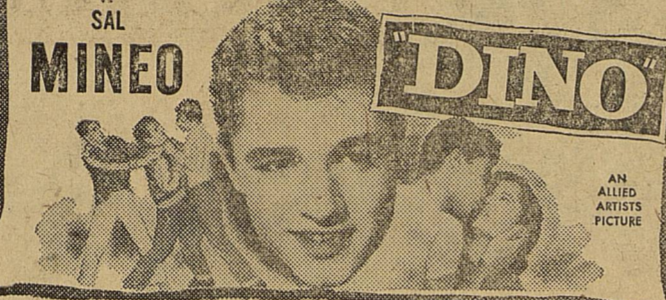
Mrs. Roger Fochlich, the former Miss Margie Abbott of Eastland, left Friday morning for San Juan, Puerto Rico, where she will join her husband, A-3-c Roger A. Fochlich. He is stationed at Ramsey Air Force Base in San Juan. Mrs. Fochlich is the daughter of Mr. and Mrs. Roscoe Abbott of Eastland.



Box Office Opens 6:30
Show Starts 6:45
Box Office Closes 9:00

SUNDAY - MONDAY - TUESDAY, NOV. 17-18-19
Tuesday Is Bargain Day—Adults 25c
Child Under 12—Free

When He Puts on the PRESSURE...Life EXPLODES!



PLUS: Color Cartoon and Sports Reel

WEDNESDAY - THURSDAY, NOV. 20 - 21



Will Success Spoil Rock Hunter?

PLUS: Color Cartoon and Sports Reel

BUYING! SELLING! RENTING! SWAPPING!



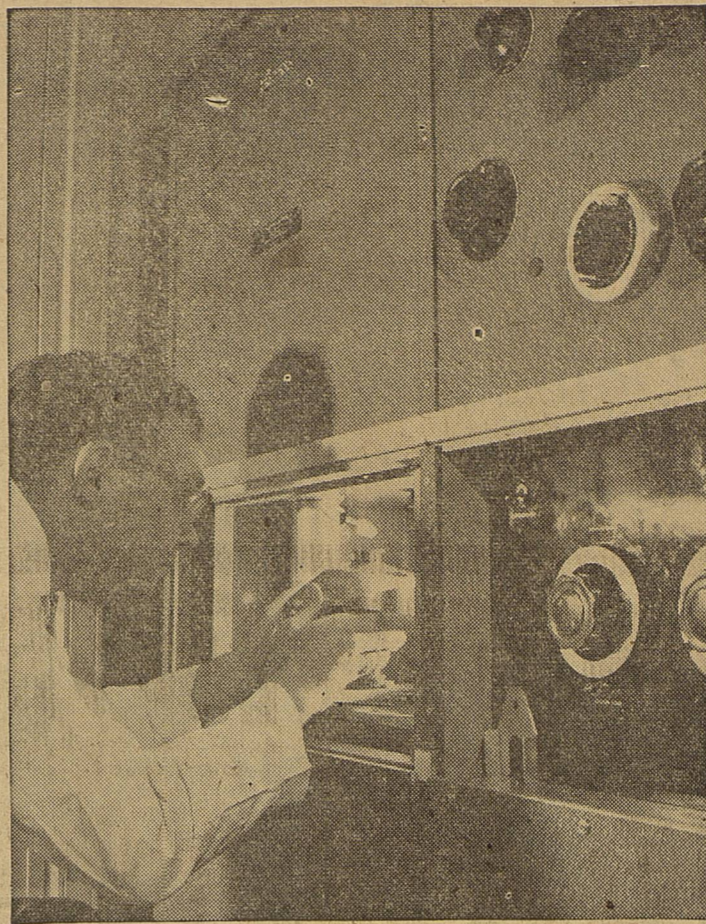
YOU'LL FIND IT IN THE

WANT ADS

Read and Use Want Ads for Quick Results!

It's The Town's Biggest Market Place...

EASTLAND TELEGRAM



DAVID E. SOULES, candidate for the Ph.D. in immunology at Wadley Research Institute in Dallas, demonstrates the Institute's newly acquired Spinco Analytical and Preparative Ultracentrifuge. One of 275 such machines in existence, the Ultracentrifuge is used for the separation of various components of the blood and for determination of molecular weights. The powerful machine, which is capable of 70,000 rpm, offers new techniques in the study of leukemia and cancer of the blood. Wadley is the first private institution in northeastern Texas to acquire the Ultracentrifuge.

Wadley Blood Bank Expands Research

Dr. Joseph M. Hill, head of the Wadley Research Institute and Blood Bank in Dallas, has announced the recent purchase of a Spinco Analytical and Preparative Ultracentrifuge to further scientific research at the Institute. Purchase of the costly machine, the 275th in existence, was made possible by a gift from Mr. and Mrs. Harry E. Spencer of Irving, Texas. The Ultracentrifuge, which offers a new method for the separation of very small materials, is the only such machine in the Dallas-Fort Worth area.

In addition to its medical research value in the separation of various components of the blood, the Ultracentrifuge will be used by scientists at Wadley for the determination of molecular weights. Dr. Hill said the machine would offer "new approaches and techniques" in the study of leukemia and cancer of the blood and would help to identify the properties which are yet to be seen.

The Ultracentrifuge, which may well become a great aid in the development of new therapies, was designed by Dr. E. G. Pickels. It offers a means for driving various rotors at constant speeds up to 70,000 rpm (the average automobile develops 4,000 to 5,000 rpm). The powerful machine is equipped with preparative and analytical rotors, a refrigeration system for keeping the rotors at reduced temperature and two cameras for the provision of visual study of the blood's components, while spinning at this terrific speed.

The Wadley Research Institute and Blood Bank, founded in 1951 by Mr. and Mrs. J. K. Wadley of Texarkana, has initiated much advanced research into the challenging problems of leukemia and cancer of the blood. Also, the non-profit institution has set remarkable paces in the fields of service and teaching. As a division of Baylor University's Graduate School, Wadley now awards both the Master's degree and the Ph.D.

Dr. Hill said that all of the research departments at the Institute would be able to take advantage of the new Ultracentrifuge. The departments of research include bacteriology, immunology, hematology, cytology, chemistry and genetics.

About half of the Ultracentrifuges in existence are being used in the study of Atherosclerosis (hardening of the arteries). Another fourth are used in the determining of homogeneity and

heterogeneity, while the remaining Ultracentrifuges are used for the separation of various components of the blood and for the determination of molecular weights.

It is believed that this powerful machine, which can attain centrifugal forces of 250,000 times gravity, will be of great value in the finding of differences in the materials extracted from the blood cells of the leukemia patient as compared to those of the normal human being.

Hospital News



Patients in the Eastland Memorial Hospital are:

Mrs. Grace Bray, surgical
Mrs. H. C. Ballinger and baby girl, Cisco
Mrs. James Blackmon and baby girl

Linda Adams, medical
Felix Rosson, medical, Cisco
Mrs. Earl Bender, surgical
E. M. Hunt, medical
Mrs. Horace Horton and baby boy

Mrs. Herbert Tanner, medical
Mary Jane Rendall, medical, Cisco

Mrs. Virgil Seaberry, surgical
J. D. Hitt, medical, Cisco
Dismissed were:
Mrs. J. C. Mecheley, Garold Wingate, Weldon Brossard, Mrs. Elvis Nelms, Mrs. Myrtle Anderson and Harold Courtney.

Patients in the Ranger General Hospital from Eastland and Olden are:

Roy L. Young, medical
Tommy Alford, Jr., medical
Mrs. Mabel Owens, surgical
Mrs. W. B. Harris, medical
Mrs. Ruth Hagar, medical
J. R. Lingham, medical
LeRoy Millican, medical
T. J. Humphrey, medical
Mrs. Emily Caldwell, medical
Mrs. W. J. Shoemaker, surgical
R. L. Sellers, medical, Olden

Dismissed were:
Mrs. L. D. Yancey and Mrs. E. M. Slaughter.

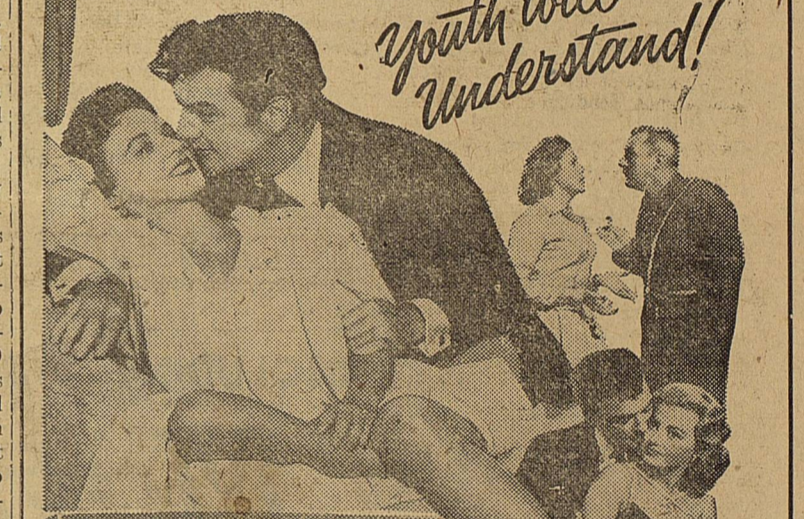
MAJESTIC EASTLAND

FRIDAY AND SATURDAY

Old enough to be a mother...too young to be married!

Parents may be shocked but...

Youth will understand!



Eighteen and Anxious

AB-PT PICTURES CORPORATION presents
William CAMPBELL • Martha SCOTT • Jackie LOUGHERY • Jim BACKUS • Ron HAGERTHY • Jackie COOGAN and Mary WEBSTER
Executive Producer IRVING H. LEVIN • Produced by EDWARD CHEVRE
Director by RE. PARKER • Screenplay by DALE and KATHLEEN EDGSON
A SOLID Swingin' Song Hits!
"Teach Me How to Cry"
"Bye Baby, Bye"
"Step Out of My Dream"
"Some Day We'll Love Again"

2 DAYS ONLY AND AT REGULAR PRICES!

for '58...it's

OLDSmobility

MOST IMPRESSIVE STYLE YOU'VE EVER SEEN!

EVERYTHING'S NEW...
EXCITING...IN GOOD TASTE!

NOW! SEE THE FEATURES OF THE FUTURE AT YOUR AUTHORIZED OLDSMOBILE QUALITY DEALER'S!



AROUND RANGER COLLEGE CAMPUS

By Ranger College Journalism Class

PERSONALITY OF THE WEEK MARY LOU WRIGHT

By Elpidia Gonzales
Mary Lou Wright is both a wise and happy choice as Personality of the Week this week, for she is not only a leader and an outstanding student of the Ranger College campus, but also a talented young lady of attractive personality.

Mary Lou, a 1956 honor graduate of Ranger High School, is a sophomore majoring in science.

Her parents are Mr. and Mrs. George Wright of Ranger. She is the oldest of four sisters in a family whose family ties are very close. An active member of the First Methodist Church, she is a loyal member of the church choir and she works part time as church secretary.

She has been very active in class and student life in Ranger College. In her freshman year she was given the science award for accomplishing more in the study of chemistry than any other student. In addition, she was a member of Phi Theta Kappa, national honorary scholarship society, vice-president of the Science Club, student council representative of the International Relations Club, and a member of the Debs. As a sophomore she is president of Phi Theta Kappa, secretary of the International Relations Club, and co-editor of The Ranger. She has been a valuable member of both the college band and chorus since entering Ranger College.

Among her many interests music has played a great part in Mary Lou's life. While in Ranger High School, she was a member of the band for five consecutive years and of the stage band for two years. Those years of experience in music helped develop her into the fine music lover that she is. She has, however, many other interests, which range from the field of sports to the field of books.

Mary Lou has many fine personal qualities. She is intelligent and sincere, and she is thoughtful of other people. Her friendship is one to be cherished for its loyalty and depth. This young lady is of very neat appearance. She is of average height and slender build; her eyes are brown and her hair is long and blonde.

Perhaps her most admirable trait is her outstanding love and respect for her family. She has a favorite quotation that symbolizes her feelings:

"A sister is a special gift God minted from the sun. How do I know these things so well? He gave me more than one."

CALL 601 FOR CLASSIFIED ADVERTISEMENT

OLDEN HIGH SCHOOL

By Elizabeth Fox

Favorites chosen by popular votes this year are best all around, Betty Napier and Gary Woods; most beautiful, Cindy Fox; most handsome, Tommy Alford; and most popular, Eddie Munn and Elizabeth Fox.

The annual coronation at Olden will be held Nov. 19 in the Olden gym. High school king and queen this year are Jack Hilliard and Wilma Edwards. The princess and princesses in high school are Wylie Stewart and Betty Cook, fresh-

men; Gary Fox and Judy Brown, sophomores; Jerry Colburn and Patsy Fox, juniors; and Eddie Munn and Tommie Sharpe, seniors. The duke and duchesses in grade school are Sharon Holladay and Larry Williamson, first grade; Gary Copeland and Linda May, second grade; Jackie Cate and Margaret Fox, third; Russell Walker and Carolyn Thomas, fourth; Tommy Duncan and Carol Fox, fifth; Ronald Patton and Edith Cates, sixth; Bubba Everett and Caroline Covington, seventh; and Rodney Patton and Dorothy Boyett, eighth.

The crown and train bearers and flower girls are chosen from the first and second grades. Nancy Fridge and Wade Thomas are crown bearers, Belinda Owens and Kenneth Fox are train bearers and

Patricia Sullivan and Pam Williamson are flower girls.

The paper staff has been announced and are beginning to work on the paper. The first edition will be published Nov. 22. The subscription price is 50 cents. Everyone is urged to get their money in before the first paper comes out.

The Olden High School Hornets slightly got beat by Santo boys and girls Tuesday. The boys were not playing ball like they should and the result was that they got beat by a score of 48 to 62. The boys are going to have to get on the ball if they are going to win anything this year. The high point man for Olden was Eddie Munn with 25 points and Jack Hilliard

with 13. Jack is showing some great improvement over last year.

The girls lost 61 to 33. The girls have been up against some real good ball clubs this year. High point girl for Olden was Cindy Fox with 15 points.

Grade school played Scranton Thursday night. We think we're going to have a real good high school team later on with this group.

TRADE WITH YOUR HOMETOWN MERCHANTS

READ THE CLASSIFIEDS

Funeral Directors HAMNER FUNERAL HOMES

Ben E. Hamner

Oxygen Equipped - Air Conditioned

Eastland
Phone 17

Cisco
Phone Hillcrest 2121

AMBULANCE SERVICE ANY WHERE ANY TIME

Nominal Cost Burial Insurance

For The Entire Family

BACK AGAIN

complete REUPHOLSTERY service

Re-covering 2-pc. set . . . \$9.50
Labor and Material. Platform
Rocker 8.00, Labor. Any Chair
12.00, Labor.

"25 Years Experience"

WARD'S UPHOLSTERY SHOP

Moss and Connelley
Phone 653 Eastland

Try Them On In Your Home!

FREE

Actual Size Replica Cut-Out Maico Hearing Glasses

Now, in the privacy of your own home, discover how good you look in the all-new slender Maico Hearing Glasses. Included is colorful folder showing face flattering styles for men and women. Send coupon today.

Inquire at Corner Drug, Eastland or, Write:
MAICO HEARING SERVICE
734 Butternut - Abilene, Texas

Furniture Upholstering

We are now able to do your furniture upholstery, and invite you to take advantage of our new service.

TRIM SHOP

Phone 170 708 West Main

NOW - we'll give you 30.00 for your old typewriter*



toward the purchase of the brand new 1957

SMITH-CORONA PACEMAKER

Regularly \$179.50 plus tax
149.50

YOURS for only plus tax with your old typewriter

- World's Lowest Priced, Famous Make Office Typewriter
- Fast Flick-set Tabulation
- Full-size, 84-character Keyboard
- Sharp, Beautiful Write
- Light Touch and Super-Speed Action.

*Any standard keyboard portable or office typewriter, regardless of age, make or condition.

EASTLAND TELEGRAM

South Side of Square

Phone 601

DOUBLE *J. & N.* GREEN STAMPS WEDNESDAY

WITH PURCHASE OF \$2.50 OR MORE

POTATOES	U. S. No. 1 Russet	10	-Lb. Cello	55¢
ORANGES	Texas-Sweet, Juicy	5	-Lb. Cello	35¢
SUGAR PEAS	Happyvale No. 303 Can	10		10¢
SLIM-CHEEZ	Vandervoort's Cottage Cheese	16-Oz. Pkg.		29¢
PEACHES	Yellow-Bow Elberta Irregular Slices	No. 2 1/2 Can		25¢
Instant Coffee	Folgers 25c Off (NET)	6-Oz. Jar		99¢



For Best Selection
Holiday Poultry
Give Us Your Order Now!

Prices Good Tues. & Wed.—We Reserve Right To Limit—NO SALES TO DEALERS!

Redeem "S & H" Green Stamps

FOR CHRISTMAS GIFTS FOR ALL THE FAMILY!

CHICKEN OF THE SEA	No. 1/2 Can	31¢
CHUNK STYLE TUNA Can	25¢
MORTON HOUSE		
BAKED BEANS	16-oz. Can	25¢
MORTON HOUSE		
SLICED BEEF & GRAVY	16-oz. Can	51¢
HORMEL		
CHILI WITH BEANS	16-oz. Can	35¢
NABISCO		
PREMIUM CRACKERS	1-Lb. Box	27¢
NABISCO COOKIES		
OREO SANDWICH	11 3/4-oz. Pkg.	39¢
DELIGHTFUL FRAGRANCE		
CASHMERE BOUQUET	3 Reg. Bars	29¢
COMPLEXION CARE		
CASHMERE BOUQUET	2 Bath Bars	29¢

WIN PRIZES ON PLAY "MARKO"

KFJZ-TV Channel 11

Saturdays 7 - 8 p.m.
This Week's Cards Must Have "Brown" Bands

VOL. 12 Also 1-11 Now On Sale!

ENCYCLOPEDIA OF PICTURED KNOWLEDGE

For The Entire Family

WORTH \$5.00 Per Volume Vol. 608

49¢

VOLS. 2 through 10 only 99¢ each

On Our Convenient Book-A-Week Plan

LIPTON'S				
ONION SOUP MIX Pkg.	17¢		
LIPTON'S SOUP MIX				
BEEF & VEGETABLE Pkg.	17¢		
LIPTON'S SOUP MIX				
CHICKEN NOODLE	3 Ct. Pkg.	42¢		
ARMOUR'S VEGETOLE				
SHORTENING	3 Lb. Can	79¢		
LUNCHEON MEAT				
ARMOUR'S TREET	12-oz. Can	45¢		
ARMOUR'S				
VIENNA SAUSAGE	2 4-oz. Cans	39¢		
ARMOUR'S				
BEEF STEW	24-oz. Can	47¢		
HEAVY DUTY				
WISK DETERGENT	Quart Can	69¢		

SAVE 60% AND MORE!

12" Hi-Fi 33 1/3 RPM Records
Highest Quality—Famous Music
This Week's Specials

- Mood Music
- Polka Party

NEAR 'EM PLAYED BY THE "PROS" ON KFJZ-1270
Guaranteed \$3.98 Value
\$1.49 Each

Thick-Sliced Bacon	Armour Star	2	-Lb. Pkg.	\$1.09
LONGHORN CHEESE	Wisconsin		Lb.	49¢
FRANKFURTERS	Swift's Premium		Lb. Pkg.	49¢

CUT OKRA	TRAPPEY'S FROZEN	3	10-oz. Pkgs.	49¢
WAFFLES	CHEF'S FROZEN	2	6-ct. Pkg.	25¢
ECONOMY BUY COLGATE TOOTH PASTE	Economy		Size	59¢
MINT FLAVORED-PHILLIPS MILK OF MAGNESIA			12-oz. Botl.	47¢

WORTH FOOD MART

CALL 601 FOR CLASSIFIED
ADVERTISEMENT

George (Condy) Carter
is now associated with the
Eastside Barber Shop
Your Patronage Appreciated
"Flattops A Specialty"



J. V. Plumlee, 11, son of Mr. and Mrs. Vadus Plumlee, southwest of Cisco, is a member of the Nimrod Club. He has a 9 months

old purebred Hampshire gilt that he plans to have bred in the near future to the registered Hampshire boar belonging to Park Plambeck, Pleasant Hill. J. V. purchased the gilt from Walker Tonne, Nimrod. J. V. goes to school at Cisco Junior High.

Rodney Harrelson sold his Holstein heifer about two months ago. He has written an essay in the hope of winning a registered Jersey heifer under the Youth Dairy Program. His brother Phillip won one of the youth dairy program heifers several years ago. Rodney, son of Mr. and Mrs. Oliver Harrel-

son, is also a member of the Nimrod Club.

Keeping records on projects and studying the 4-H record book was the subject at the regular monthly meeting of the Nimrod Club recently. Warnie Kanady presided at the opening of the meeting after which the girls and boys met separately. At the conclusion of the meeting, popcorn balls were served the group by Christine Stroebel and her mother, Mrs. Carl Stroebel. The club is planning an xmas party.

Walter Pope, 13 and his brother Baylis, 11, sons of Mr. and Mrs. Bill Pope are outstanding 4-H members of the Nimrod Club. They plan to have some registered Rambouillet sheep for their project. Both boys go to Cross Plains to school. Incidentally, Walter and Baylis have four younger brothers.

The County 4-H Club Council will have its first meeting of the year in the Commissioners Courtroom in Eastland next Saturday, Nov. 16th. The President of each of the 15 boys clubs, the 15 girls clubs and a duly elected representative from each of the different clubs make up the membership of the council. Officers are to be chosen at the meeting and plans for the annual Xmas party will be made. The meeting will begin at 9:30 A.M.

The regular monthly meeting of the Nimrod Club will be held at the Community Clubhouse there next Thursday night, Nov. 14th. There are 12 boys in the club there along with about that many girls. Several of the parents usually meet with the club on meeting nights.

Jimmy Gryder, Cisco is getting a pig for his first project in club work. Jimmy is interested and enthusiastic about the work. There are three different clubs in Cisco. One at the West Ward, one at the East Ward and one in Cisco Junior High.

"It was fun," said Guy Ed Custer, Cisco, after the lamb he had selected at the Terrell Ranch last Saturday, dragged

him down. He was being asked about the experience and to explain the dirt on his hair when he made the above remark. Guy Ed is a member of the Cisco East Ward Club and is the son of the Clyde Clusters of Cisco.

Jack Whitten, Rt. 1, Eastland, was named as President of one of the two Eastland Jr. High Clubs at their meeting. Mike Graham was elected as Secretary-Treasurer of the club and J. B. Tankersley was named representative. Other officers have not as yet been elected.

County FB-

(Continued from Page One)

"It is not fair for agriculture to operate in a pure free enterprise economy while industry and labor enjoy special privileges. This would be turning the lambs loose for the wolves to slaughter. On the other hand, we must keep in mind that the law of supply and demand is a basic law, and we must always adhere to its principles."

As for the proposals to bolster farm income by compensatory or direct production payments, the Farm Bureau leader urged a careful analysis of possible results. Under such a plan, the government would pay producers the difference between the free market price and a level of parity (most proposals say 90 per cent) set by the government.

"These compensatory payments would be direct subsidies, and we could expect that the government would exercise a very rigid control over agriculture because of that," he pointed out.

"Another danger in such a program is that there is always a tendency to limit the amount of payment that any one operator could receive. The net result would be the levelling off of incomes for all farmers and ranchers."

Hammond told the convention delegates that such a program has another built-in fault.

"It takes money to pay for it, money that has to be appropriated by Congress," he stated. Can you or I afford to have our incomes dependent upon the whims of Congress?"

He said that he believed that "most folks advocating direct production payments are sincere in their desire to help agriculture. But, we must analyze and program from the standpoint of what it will do to agriculture in the long run."

Judging Changed In Stock Show Junior Division

Judging in the junior steer show at the 1958 Southwestern Exposition and Fat Stock Show in Fort Worth will be changed, show officials have announced.

Steers will be judged by age in the junior show just as in the open show. Previously, the junior show steers were judged by weight.

The age groups are:

Junior yearling steers, calved between Jan. 1 and April 30, 1956.

Summer yearling steers, calved between May 1 and Aug. 31, 1956.

Senior steer calves, calved between Sept. 1 and Dec. 31, 1956.

Junior steer calves, calved after Jan. 1, 1957.

Deadline for entry of cattle, sheep and swine in the Fort Worth show is Dec. 15. The Southwestern Exposition is scheduled Jan. 24 through Feb. 2.

Mr. and Mrs. Abe Hall of Fredericksburg and Mr. and Mrs. R. A. Lefevre and son of Abilene were guests in the home of Mr. and Mrs. J. R. Lanier.

TRADE WITH YOUR HOMETOWN MERCHANTS



MOVED

OBIE & DOC ANNOUNCE

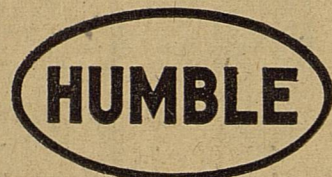
To Their Many FRIENDS AND CUSTOMERS

We Have Moved from 207 East Main To
802 WEST MAIN... Formerly Gobin Humble Service Station. Across from White Elephant Restaurant.

GO HUMBLE... WE DID!

DEALERS IN

OBIE
and
DOC



802 West Main
Phone
9535

PRODUCTS

Your Office Supply Check List

- Ledger Sheets
- Ledger Binder
- Ledger Indexes
- Columnar Sheets
- Columnar Pads
- Journal
- Cash Books
- Day Books
- Sales Books
- Receipt Books
- Inventory Sheets
- Manuscript Covers
- Rulers
- Ring Binders
- Brief Cases
- Storage Binders
- Daters
- Rubber Stamps
- Stamp Pad Ink
- Clip Boards
- Pencil Sharpeners
- Pencils
- Erasers
- Stick Files
- Harp Files
- Steel Card File
- Filing Cabinet
- Filing Cards
- Filing Indexes
- Listo Marking Pencils
- Markwell Dry Pens
- Markwell Staplers
- Bostich Staplers
- Hotchkiss Staplers
- Pencil Lead
- Speedball Ink
- Speedball Drawing Points
- Stencils
- Duplicator Ink
- Correction Fluid
- Type Cleaner
- Memo Paper
- Typewriter Paper
- Esterbrook Pens and Pencils
- Esterbrook Desk Sets
- Esterbrook Renew Points
- Bates Paper Punch
- Thumb Tacks
- Clasp Envelopes
- Desk Blotters
- Waste Baskets
- Liquid Paste
- Typewriter Tables
- Staple Removers
- Moisteners
- Notary Seals
- Gold Seals
- Price Tags
- Rubber Bands
- Paper Clips
- Manila File Folders
- Desk Trays
- Scotch Tape
- Typewriter Ribbons
- Adding Machine Ribbons
- Carbon Paper
- National Cash Register Paper



ALEX RAWLINS & SONS
MONUMENTS
WEATHERFORD, TEX.
Serving This Community Since 1884

Overseas Veterans Welcome
Karl and Boyd Tanner
Post No. 4136
VETERANS OF FOREIGN WARS
Meets 2nd and 4th Thursday 8:00 p.m.

Your children's growing-up years...



Keep them forever in portraits

A phone call will arrange your appointment.

CANARIS STUDIO

On The Square Phone 46

Wednesday



AT MacMoy CLOVER FARM STORE
PLUS THESE WEDNESDAY SPECIALS

CLOVER FARM
Coffee Drip Or Reg. Lb. **75¢**

MRS. TUCKER'S
Short'ning 3 Lb. Can **79¢**

SUNSHINE KRISPY
Crackers 1-Lb. Box **27¢**

HONEY BOY
Salmon No. 1 Tall **49¢**

CLOVER FARM
Margarine Lb. **23¢**

ZEE TOILET
Tissue 4 Rolls **30¢**

KRAFT'S MINIATURE
Marshmallows 6 1/4-Oz. Pkg. **17¢**

KRAFT'S MIRACLE WHIP
Salad Dressing Pint **37¢**

WASHINGTON FANCY JONATHAN
Apples Lb. **12 1/2¢**

U. S. NO. 1 IDAHO RUSSET
Potatoes 10 Lb. Bag **43¢**

ARMOUR'S STAR
Bacon Sliced Lb. **59¢**

LOIN
Steak Choice Beef Lb. **68¢**

BEEF
Short Ribs Lb. **29¢**

KRAFT VELVEETA
Cheese 2 Lb. Box **89¢**

Rib Steak Choice Beef Lb. **59¢**

OPEN EVERY NIGHT TIL 8 P.M. — SATURDAY TIL 9 P.M.



400 South Seaman

Phone 31

EASTLAND TELEGRAM OFFICE

Eastland

Phone 601

Civic League and Garden Club Is Entertained by Mrs. Irma Austin

Mrs. Irma Austin, beautiful and vivacious Dallas fashion model, entertained Civic League and Garden Club members Wednesday with a talk she proved qualified to give, "The Charm of Women." "Enthusiasm" she described as the greatest single factor in being a charming person. Defining charm as a quality of personality, she insisted that you must possess it as all times and not attempt to do it for special occasions. To be more charming, she suggested that a person must not be offensive in any way—in appearance, manner or conversation—and that primarily she should be unselfish, particularly in regards to her talking and listening habits. She gave tips on social etiquette, posture, walk, grace of movement, clothing, and personal grooming. She amused her audience with her demonstrations of "how not to do" these things. In addition to her modeling career, Mrs. Austin conducts school in charm for groups in Dallas and other Texas cities. Her speciality is working with teenage groups. Mrs. W. A. Leslie introduced Mrs. Austin and told of her background of study with John Robert Powers in New York.

Mrs. Austin's talk followed the club's "Holiday Goodies Buffet" for which members brought their favorite holiday dish and its recipe. The recipes were sold by auction.

Mrs. Art Johnson presided and was described later by Mrs. Austin as a woman whose "enthusiasm" made her a very charming person.

Hostesses were Mes. O. M. White, chairman, T. M. Fullen, F. W. Graham, T. M. Collier, and H. L. Hassell.

A large cornucopia overflowing with a variety of colorful fruit provided the centerpiece for the table. A three-tier vendor's cart, light green in color, carried the many desserts which guests bought.

Mrs. Arthur Murrell poured coffee from a silver service.

Arrangements of Chrysanthemums decorated the piano and the game tables at which guests were seated.

A motion to incorporate a silver tea with the Christmas meeting was passed during the business session.

CALL 601 FOR CLASSIFIED ADVERTISEMENT

Women's Activities

SOCIAL CALENDAR

Wednesday, Nov. 20.

5:30 p.m.—Music Study Club will meet in the home of Mrs. Joseph M. Perkins, 1021 South Seaman for a salad supper. The meeting was to be held at Mrs. Myrtle Anderson's but to reasons unknown it was changed. Rehearsal of the Music Study Club chorus will be at Woman's Club at 4:30 p.m.

9 a.m. to 11 a.m.—Pie, cake, and coffee sale will be held in the First Christian Church annex. The sale will close at 11 a.m. and then re-open at 2:30 p.m. and stay open until 4 p.m. Cake and pie will be sold by the piece and whole. The sale is sponsored by the Zeta Phi Chapter of the Beta Sigma Phi.

7:30 p.m.—Wesleyan Service Guild of the First Methodist Church will meet at the church for their regular meeting.

Thursday, Nov. 21

11 a.m. to 1 p.m.—WCS of the Methodist Church will hold a Turkey dinner in the Fellowship Hall. It will be \$1.25 per plate. Everyone is invited to attend.

3 p.m.—Thursday Afternoon Club will meet at the Woman's Club with Mrs. Cyrus Frost as leader. Theme of the program will be "Nature." Mrs. Milburn Long and Mrs. James Horton will present the program. Mrs. Frank Sayre will be in charge of a film.

7:30 p.m.—Olden P-TA will meet for a short business meeting and film, "A Desk for Billy," in the gymnasium. All parents are urged to be present especially the parents who have children beginning school next year.

7 p.m.—Thanksgiving turkey dinner will be held in the annex of the First Christian Church. All members are invited to come and bring their family. They are to bring a covered dish of a salad, vegetable or dessert. Turkey will be furnished by the groups of the CWF.

Friday, Nov. 22

9 a.m.—Music Study Club will begin their Thrift Sale in the Pullman building on the south side of the square. The sale will continue through Saturday.

Three Girls and Sponsor Attended District Meeting

"Tis Fun to Be a Family" was the theme for the district two Future Homemakers of America meeting in Merkel High School Saturday, Jan. Robertson, Eastland chapter president, Willie O'Steen, Carroll Garrett, and Loretta Morris, adviser, attended.

Dr. Joe Humphrey, dean of McMurry College spoke on "Family Affairs" and Mrs. Theron Guffey of Abilene spoke on "The Family and Consumer Buying." The other parts of the program consisted of skits by FHA chapters on "The Family and Civil Defense," "An Evening at Home," "Family Going on Vacation," "Careers in Home Economics," and a devotional.

The Merkel chapter had a coffee for advisers and mothers in their homemaking department prior to registration at nine o'clock which gave an opportunity to see their department which has recently been remodeled.

New Cisco Pastor To Speak Here at Christian Church

Clyde Lindsley, newly named pastor of the First Christian Church of Cisco, will be the speaker at the annual Thanksgiving Fellowship Supper of the First Christian Church.

Lindsley has his A. B. and B.D. degrees from Phillips University, Enid, Okla. and is working now on his master of theology degree at Brite College of the Bible, Texas Christian University. He was for 10 years pastor of the First Christian Church in Midland. His other pastorate include Arlington Heights Christian Church, Fort Worth and Broadmoor Christian Church, Shreveport, La.

The supper will be held in the Fellowship Hall, Thursday, Nov. 21 at 7 p.m. The groups of the CWF will be providing the turkey and the Church will provide the bread and drinks. The membership is asked to bring the vegetables, desserts and salads.

Mr. and Mrs. Ray Pool, co-chairmen of the Membership Development Committee, are in charge of the program and the following persons are in charge of the meal: Mrs. B. H. Clifton, chairman, and the Mesdames Curtis Young, W. M. Bagley, W. E. Lewis, E. K. Henderson and W. Q. Verner.

Evangel Class Meets for Dinner in Fagans' Home

The Evangel Class of the First Baptist Church will meet in the home of Mr. and Mrs. Lewis Fagan, 207 South Connellee, on Thursday at 6:30 p.m. for a business meeting and Thanksgiving dinner.

Members are requested to bring a gift for a family who has illness. They are also asked to donate 50 cents to help pay the expense of the dinner.

The dinner will be prepared by Mrs. Fagan and her co-hostess, Mes. Richard May, Howard Upchurch, and Clyde Manning. Nursery will be open for the children.

All members are urged to be present and bring their husbands as guests.

CALL 601 FOR CLASSIFIED ADVERTISEMENT

PERMANENTS
 \$ 7.50 Oil-Glo Creme .. \$ 5.00
 \$10.00 Creme Wave \$ 7.50
 \$15.00 Creme Oil Wave \$10.00
Basham Beauty Bar
 Lula Mae Smith Basham
 1416 S. Lamar Phone 964

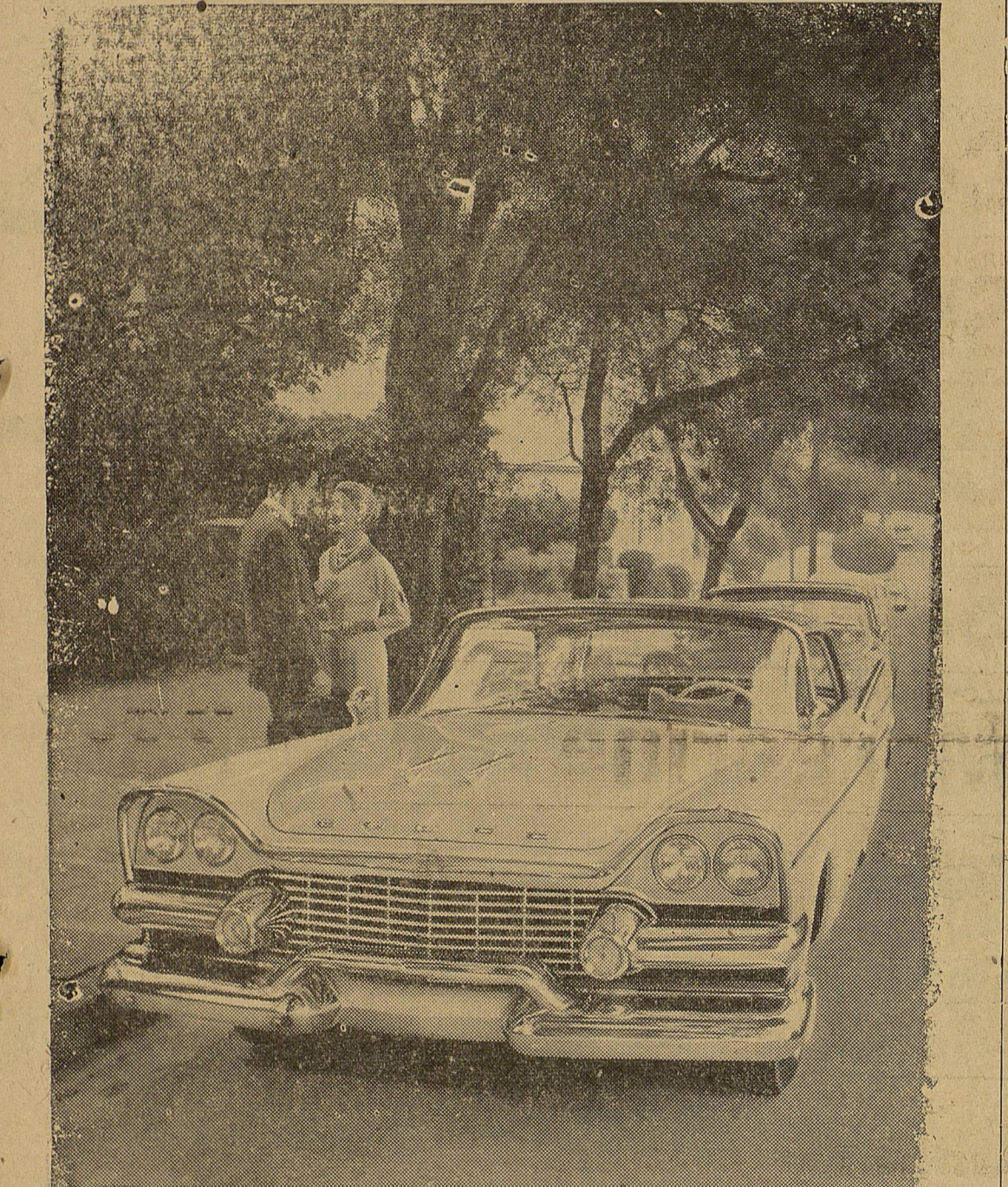
NOTICE... Come To Kendrick Drive-In Dairy
 (Serving This Territory Since 1940)
FOR Good, Clean JERSEY Sweet Milk
Price - 70c Gal.
 Phone 896-J-2 — Located Halfway between Eastland and Cisco

CALL 601 FOR CLASSIFIED ADVERTISEMENT

Thrft Sale to Be Held by Music Club Fri. and Sat.
 Music Study Club invites everyone to attend the Thrift Sale to be held Friday and Saturday in the Pullman building located on the south side of the square. The sale will begin at 9 a.m. The Club has begun to gather up the items for the sale. If you have anything that you would like to contribute you can call any member of the committee or bring it to the Pullman building Thursday afternoon. They are collecting such items as toys, clothes, jewelry and such. Members of the committee are Mes. Art Johnson, Allen Dabney, Grady Pipkin and Griffin Hart. Music Club's says, "Don't miss ATTEND THE CHURCH OF YOUR CHOICE EACH SUNDAY"

ATTEND THE CHURCH OF YOUR CHOICE EACH SUNDAY

Save Money On Auto Repairs!
 We are equipped to do all your auto, truck and field mechanic work. Mechanic Vernon Garrett has 20 years experience and is factory trained. We can do your tractor repair work, too.
 —For Night and Sunday Work Call 1186—
HIGHWAY GARAGE
 1006 West Main M. E. Spain Eastland



TOO LITTLE, TOO LATE is the way we Dodge dealers feel about competitors' efforts to match the Swept-Wing 58. They lowered the roof some, but left the sides high. Their windshields got smaller while ours got bigger. So much for styling. Then, for another important comparison, take ride. Here's Dodge with Torsion-Aire suspension that just about everybody admits is the greatest advance in sway-free, dip-free, silent going than any car offers. So what do these other cars do? They borrow an air suspension system that's been used in buses for two years! (Costing well over \$100.00 extra.) And most of 'em still don't have push-button driving—much less Dodge TorqueFlite—the proven automatic transmission. If you're a little disappointed in the '58 version of your car, come in and see our Swept-Wing 58. The others are catching on—but they can't catch up.

See Swept-Wing 58 by Dodge at
McGraw Motor Co.
 416 S. Seaman Street Phone 80

11 a.m. to 1 p.m.—WCS of the Methodist Church will hold a Turkey dinner in the Fellowship Hall. It will be \$1.25 per plate. Everyone is invited to attend.
 3 p.m.—Thursday Afternoon Club will meet at the Woman's Club with Mrs. Cyrus Frost as leader. Theme of the program will be "Nature." Mrs. Milburn Long and Mrs. James Horton will present the program. Mrs. Frank Sayre will be in charge of a film.
 7:30 p.m.—Olden P-TA will meet for a short business meeting and film, "A Desk for Billy," in the gymnasium. All parents are urged to be present especially the parents who have children beginning school next year.
 7 p.m.—Thanksgiving turkey dinner will be held in the annex of the First Christian Church. All members are invited to come and bring their family. They are to bring a covered dish of a salad, vegetable or dessert. Turkey will be furnished by the groups of the CWF.
 Friday, Nov. 22
 9 a.m.—Music Study Club will begin their Thrift Sale in the Pullman building on the south side of the square. The sale will continue through Saturday.

BEAUTIFUL!

That's the only word to describe our new stock of stationery. We have our largest selection ever and just in time for your early holiday shopping. Priced from \$1 to \$2.50. Naturally all our stock can be imprinted—and in just one day!

EASTLAND TELEGRAM

CHRISTMAS SALE!!

— DIAMONDS —
 Hundreds of Diamond Rings On Sale!
 UNHEARD OF VALUES... UP TO 75% OFF THE REGULAR PRICE! A SAMPLE OF THE BARGAINS:

Large Diamond Solitaire— Just under 1 carat	Reg. \$625.00	Sale \$395.00
6 Diamond Wedding Set	Reg. 210.00	Sale 79.50
Diamond Cluster Dinner Ring— Large center, 14 side stones	Reg. 295.00	Sale 99.50
5 Diamond Fishtail Band	Reg. 162.50	Sale 88.50
16 Diamond Wedding Set	Reg. 142.00	Sale 87.50
Diamond Engagement Ring	Reg. 192.50	Sale 99.75
1-3 Carat Diamond Set	Reg. 210.00	Sale 129.00
1/2 Carat Diamond Set	Reg. 247.00	Sale 169.50
1 Full Carat Diamond Set	Reg. 450.00	Sale 295.00

Group of Ladies' 3 and 5 Diamond Wedding Bands
 Reg. \$37.50 to \$49.50
Your Choice \$16.95

MILK GLASS
 The hottest selling gift line in America today—NOW ON SALE!
 Come See For Yourself!!
 ALL OTHER GIFTS—including Imports... Up To 1/2 OFF!

RINGS - RINGS
 Many, many styles in both ladies' and men's rings. Drastic reductions. SOME LESS THAN 1/2 PRICE!

END YOUR SHOPPING WORRIES HERE!

— WATCHES —
 Fabulous selection of Nationally Known Watches on sale at sensational prices... Some less than 1/2 Price! All new models! For example...
 Man's Dress Watch, Reg. 100.00 Sale 57.50
 Lovely Ladies Watch, Reg. 71.50 Sale 38.50
 Gent's Watch, Reg. 45.00 Sale 23.75

—Scores of Others To Choose From—

Costume Jewelry
 Never before such a large selection of costume jewelry on sale. Most of it just received and unpacked. All types... stone sets, tailored, rhinestones.

**Bargains Throughout the Store
 Too Numerous To Mention.
 DON'T FAIL TO COME IN!**

Please Everyone With A Gift From Beskow's... Please Yourself With The Money You Will Save

BESKOW JEWELRY
 NEXT TO PENNEY'S EASTLAND

TV LOG

KRBC-TV
WEDNESDAY
 6:55—Daily Devotions
 7:00—Today
 7:25—News
 7:30—Today
 7:55—News
 8:00—Today
 8:00—Arlene Frances
 8:30—Treasure Hunt
 10:00—Price is Right

ED V. PRICE & CO
TAILORED SUITS
 Sport Coats Slacks
C. L. FIELDS
 Phone 571 103 W. Valley

10:30—Truth or Conseq.
 11:00—Tic Tac Dough
 11:30—It Could Be You
 12:00—Tex & Jinx
 12:30—Howard Miller
 1:30—Bride and Groom
 2:00—NBC Matinee
 3:00—Queen for a Day
 3:45—Modern Romances
 4:00—Comedy Time
 4:30—Command Perf.
 6:00—News
 6:10—Weather
 6:15—NBC News
 6:30—Wagon Train
 7:30—On the Farm
 8:00—Kraft TV Theatre
 9:00—This is Your Life
 9:30—Telephone Time
 10:00—News
 10:10—Weather
 10:15—Command Perf.
 11:30—Sign off

THURSDAY
 6:55—Daily Devotions

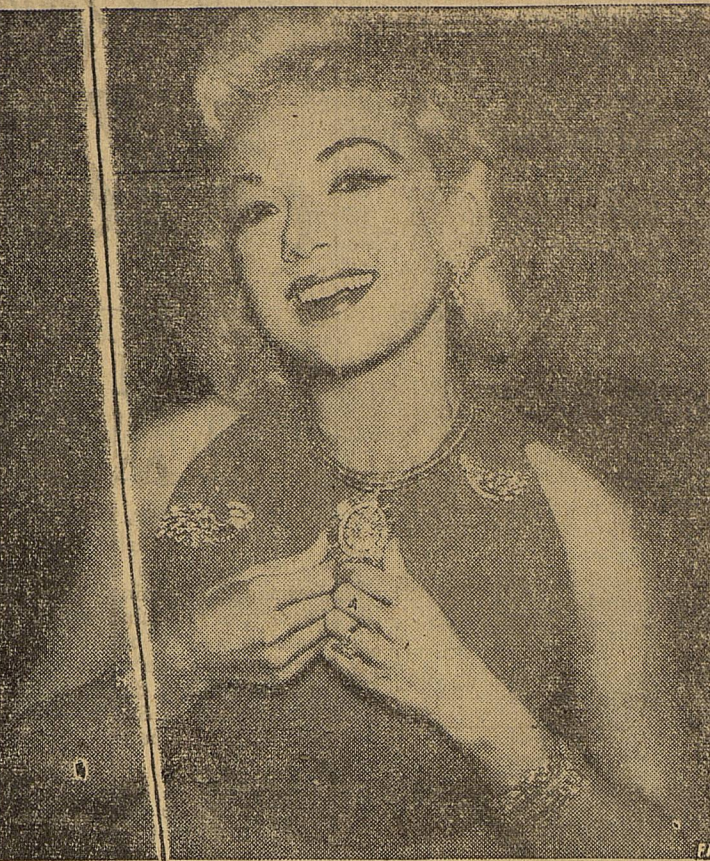
7:00—Today
 7:25—News
 7:30—Today
 7:55—News
 8:00—Today
 8:00—Arlene Frances
 8:30—Treasure Hunt
 10:00—Price is Right
 10:30—Truth or Conseq.
 11:00—Tic Tac Dough
 11:30—It Could Be You
 12:00—Tex & Jinx
 12:30—Howard Miller
 1:30—Bride and Groom
 2:00—NBC Matinee
 3:00—Queen for a Day
 3:45—Modern Romances
 4:00—Comedy Time
 4:30—Command Perf.
 6:00—News
 6:10—Weather
 6:15—NBC News
 6:30—Armchair Adventures
 6:45—Football with Chuck
 7:00—You Bet Your Life
 7:30—Dragnet
 8:00—People's Choice
 8:30—Ford Show
 9:00—The Innocent Age
 10:00—News
 10:10—Weather
 10:15—Command Perf.
 11:30—Sign off

WRAP TV
WEDNESDAY
 6:00—Sunup
 7:00—Today
 9:00—Arlene Frances Show
 9:30—Treasure Hunt
 10:00—The Price is Right
 10:30—Truth or Consequences
 11:00—Tic Tac Dough
 11:30—It Could Be You
 12:00—High Noon News
 12:30—Margret McDonald

12:45—Eddie Williams Show
 1:00—Howard Miller Show
 1:30—Bride and Groom
 2:00—Matinee Theater
 2:30—Queen for a Day
 3:45—Modern Romances
 4:00—Comedy Time
 4:30—Drama Time
 5:00—Kitty's Wonderland
 5:40—News and Weather
 5:45—News
 6:00—Annie Oakley
 6:30—Wagon Train
 7:30—Father Knows Best
 8:00—Kraft TV Theater
 9:00—This is your life
 9:30—Badge 714
 10:00—Texas News
 10:15—Weather Telefacts
 10:25—Southwest News
 10:30—World of Sports
 10:40—World Newsreel
 10:50—World Weather
 11:00—Tonight
 12:00—Sign off

THURSDAY
 6:30—Sunup
 7:00—Today
 9:00—Arlene Frances Show
 9:30—Treasure Hunt
 10:00—The Price is Right
 10:30—Truth or Consequences
 11:00—Tic Tac Dough
 11:30—It Could Be You
 12:00—High Noon News
 12:30—Margret McDonald
 1:00—Howard Miller Show
 1:30—Bride and Groom
 2:00—Matinee Theater
 2:30—Queen for a Day
 3:45—Modern Romances
 4:00—Comedy Time
 4:30—Drama Time
 5:00—Kitty's Wonderland
 5:40—News and Weather
 5:45—News
 6:00—Last of the Mohicans
 6:30—Tic Tac Dough
 7:00—Grocho Marx
 7:30—Dragnet
 8:00—People's Choice
 8:30—Tennessee Ernie Ford
 9:00—The Innocent Years
 10:00—Texas News
 10:15—Weather Telefacts
 10:25—Southwest News
 10:30—World of Sports
 10:40—World Newsreel
 10:50—World Weather
 11:00—Tonight
 12:00—Sign off

Dogpatch Was Never Like This



MAMMY YOKUM would faint dead away if she saw Daisy Mae decked out in this quarter million dollar diamond and palladium ensemble by famed jewelry designer Lucien Piccard. But strange as it seems it is "Daisy Mae" — the Daisy Mae, that is, of the Broadway musical hit "Li'l Abner" who is Edith Adams off the stage. The Lucien Piccard choker pendant is valued at \$100,000 with 452 diamonds set in palladium. The wrist watch Miss Adams is wearing is a "conversation piece" which has a 5-carat heart shaped diamond for a crystal. The diamonds in all these striking pieces are set in gleaming white palladium which is favored by designers because it brings out the fire of the diamonds while holding them securely.

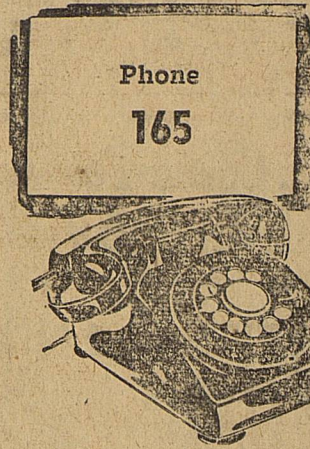
Mavs—

Continued From Page One
 had just a one yard a try average for the year running, but the Junior man-under, it was mentioned before, completed 26 passes for 572 yards. Eight of those completions went for touchdowns and another was good for an extra point. Joe Martin a promising full-

back carried the ball just 13 times during the season, but he picked up 111 yards in that time. That's a 13-yard average. Truman Lane carried four times, getting 31 yards and an eight yard average. Billy Don Turner got 20 yards in four carries for a five yard average and Mike Manning averaged two yards in nine carries.

ANNOUNCING

... the opening of
 Lindley & Duncan



BODY SHOP

Located at Muirhead Motor Co.

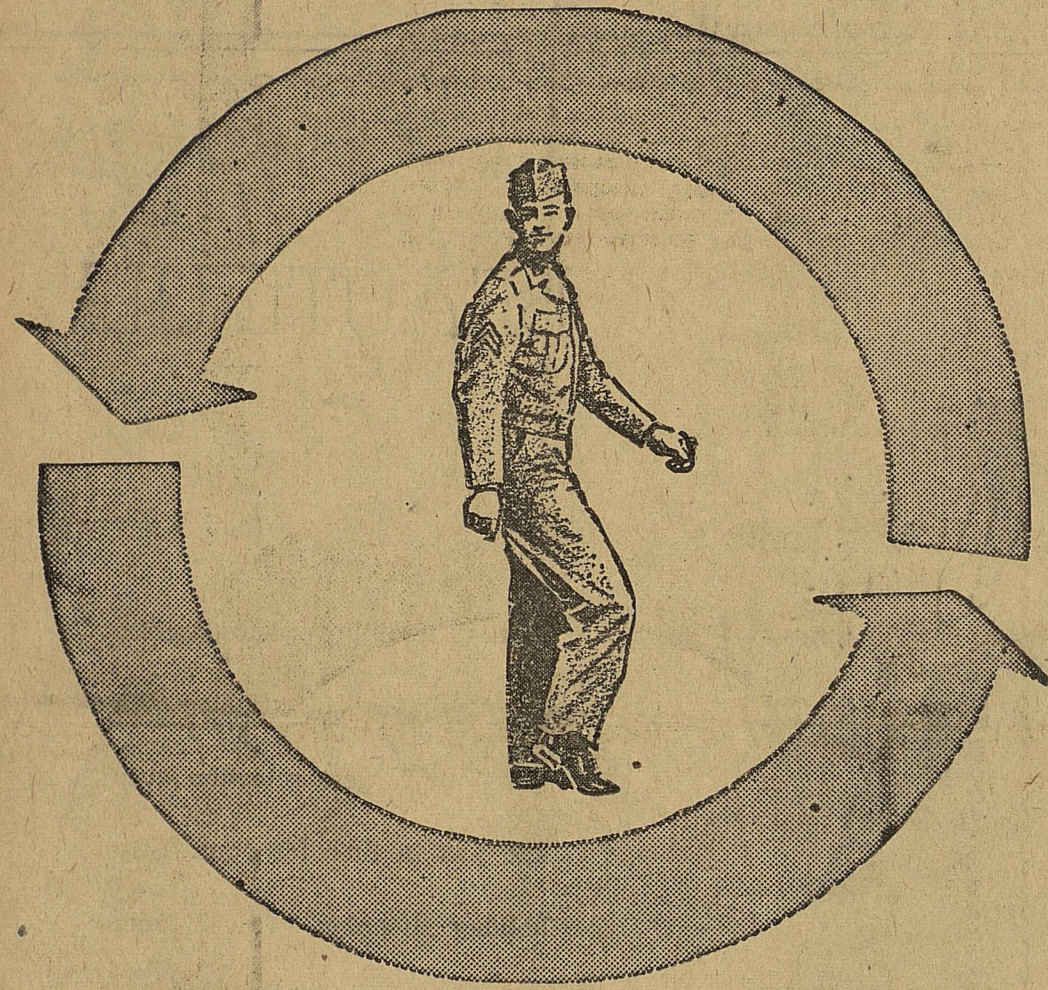
Every Job
 Guaranteed To Please

You're Leading a Sheltered Life—

... if you think yesterday's insurance could rebuild your home today. You can see the effect of increased prices most every time you buy an article at the store. Ditto with building costs especially labor. Just imagine what it would be like if a disaster struck and you had to buy again everything you now own. The sensible thing to do is to get your insurance in line with today's replacement costs. Let's talk it over today.

EARL BENDER & COMPANY

Eastland, (Insurance since 1924) Texas



UNIT ROTATION

The U. S. Army's Unit Rotation Plan assigns selected units to specific stateside and foreign duty stations and tells in advance when the units will rotate (exchange duty stations). This unique plan LETS YOU CHOOSE a famous Army unit whose history and traditions you'll be proud to share. You'll know WHERE you'll go and WHEN. You'll make new friends and, more important, keep them. You'll have job security no soldier ever dreamed of before. To seize the best opportunity the U. S. Army has ever offered — join a ROTATION unit!

U. S. ARMY

Carbon—

(Continued from Page One)

A. C. Poe, M. D.
 Dr. Poe was born in Magnolia, Ark. and came to Carbon in 1896. He received his education in the public schools of his native state, and took his degree from the Memphis Hospital Medical College.

Dr. Poe is the senior member of the firm of Poe & Moore, druggists. This firm is one of the three state agents in the county for the supply of school books adopted by the Board of Examiners.

It is such men as Dr. Poe that make a town grow. He believes in the future prosperity of the town, backed by its richly promising agricultural possibilities, and upon this belief he makes his investments.

With C. B. Poe as a partner, the doctor is interested in the lumberyard, which does a large business and carries a complete and up-to-date stock.

Besides his various business interests this enterprising citizen does an extensive practice. As evidence of the prosperity of the people of this section and of their integrity as well, they pay on an average 95 per cent of their physician's accounts.
 (Next: "T. J. Morris, Merchant")

TURKEY WINNER

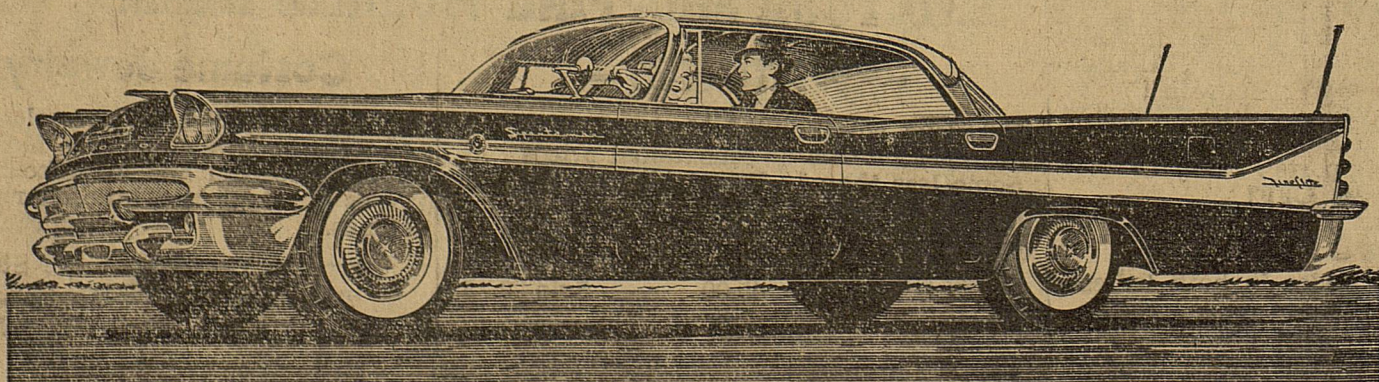
Mrs J. C. Poe won the turkey that was given away by the Double Seven Club Saturday at 2 p.m.

READ THE CLASSIFIEDS

DE SOTO Dealers present GROUCHO MARX in "You Bet Your Life" on NBC Television

ONLY THE 1958 DE SOTO GIVES YOU THE STYLE OF THE FUTURE TODAY

De Soto's new Flight-Sweep styling—low, lean and modern on the outside—luxurious and roomy inside—huge new Wrap-Over windshield—vertical tail fins for 20% more directional stability. Functional dual headlights are standard equipment on all 16 models.



THREE NEW PRICE RANGES... STARTING JUST ABOVE THE LOWEST... FIRESWEEP • FIREFLITE • FIREHOME

RUSHING MOTOR CO.

211 S. Seaman

EASTLAND

Phone 313

Ask your dealer about new De Soto • Constant-Control power steering • Safe Grip differential • 4-Season air conditioning • Feather Touch power brakes

Moore About—

(Continued from Page 1)

Christmas decorations here than there has been in years. In the long run those decorations will pay off... just like all other types of advertising do.

—vém—
 See you Thursday.

TRI-CITY SIGN SERVICE

201 North Ammerman Eastland Phone 754

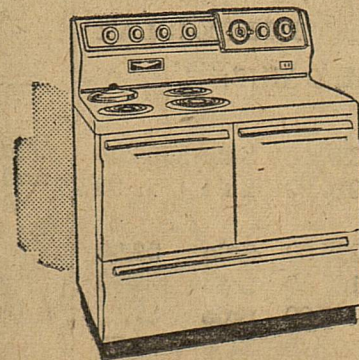
• TRUCK LETTERING • WALL SIGNS • PAINTED BULLETINS

—COMPLETE SIGN SERVICE—

ELECTRIC COOKING—
So
wonderfully
fast!



When minutes count, I can count on the speed of my **ELECTRIC** range!



New super-speed units on today's electric ranges start heating *instantly*—reach full high heat in *seconds*! Fully-insulated electric ovens with accurately controlled heat mean fast, sure roasting and baking, timed exactly right for maximum flavor and minimum food shrinkage. Whether it's top-of-range cooking, baking or broiling, you get the speed you want... *electrically*! See your electric range dealer soon. COOK BETTER... ELECTRICALLY!



TEXAS ELECTRIC SERVICE COMPANY

F. N. SAYRE, Manager—Phone 18