

Eastland Tests Clyde For Cellar Friday

Moore... ABOUT EASTLAND by Virgil E. Moore

Judge Clyde Grissom introduced Charles Zivney to Eastland Lions Tuesday, remarking that the speaker, a Fort Worth broker, was "simply going to tell us all how to get rich."

Judge Grissom had his fellow judges of the Court of Civil Appeals as his guests, introducing them as "the best two judges west of the Mississippi."

We don't know how Eastland is so fortunate. In the first place the city is indeed fortunate to even have the Eleventh District Court of Civil Appeals in Eastland. Then on top of that Eastland has always been lucky to have not only able jurists on the bench, but men who have joined in to help make this a better place to live. Judge Cecil Collings and Judge Esco Walter are the other two members of the Court now. Judge Walter, the newest member, we are pleased to report, is just as friendly and cooperative as are the other two members. And we'd like to take this opportunity to thank Homer Smith clerk of the court, for his help in the past.

The Eleventh District Court of Civil Appeals is one of our biggest assets. We shouldn't forget it.

Cisco is setting the pace as far as united and/or community work is concerned. That city has the largest goal in the county, \$10,000, and is short of that goal by mere \$700. Ranger has raised \$4000. Eleven agencies cooperate in the Cisco drive. Eastland's goal is \$6500, and it's going to be met.

Stevie, four year old son of Mr. and Mrs. Miron Ligon, now of Arlington, was visiting his grandmother, Mrs. W. H. Groves, in Eastland the other day with his parents. Stevie had long wanted a donkey, and on his way out to the lake he could talk of nothing else. His folks assured the lad he wasn't going to get one, but Stevie set out on his own to do so. About an hour after they arrived at the lake the youngster began screaming. His Daddy raced toward him, then stopped about halfway there. Stevie was running in this way and that and yelling, "Daddy, come help me catch this baby donkey."

Mr. Ligon decided not to chase the big jack rabbit.

Two women got on the bus. When they sat down in their seats, one said to the other, "The man didn't collect my fare."

The other replied, "Don't bother, he probably doesn't even know it has not been paid."

"Oh," exclaimed the other, "that wouldn't be honest. I'm going to pay the fare." She got up and paid.

When she returned she said, "See there, it does pay to be honest. I gave the man a quarter and he gave me change for a half."

We try not to be jealous of folks, but it's impossible for us not to be of Mrs. Everett Plowman. Mae wins more contests than any living soul. Her latest victory was scored in Humble's grid contest. She won herself a radio. Magic words, that's what the gal has.

Friday night the Eastland Mavericks play their last game of the 1957 season. For a number of the boys it will be their (Continued on Page Two)

FREYSCHLAG INSURANCE AGENCY presents the

WEATHER NEWS

WEATHER	
High	67
Low	39
Rain Since Tuesday	0
Total Rain for Nov.	3.48
Avg. Rain for Nov.	1.67
Total Rain for Year	40.89
Forecast	Rain



CIVIL APPEALS COURT JUSTICES—The appointment of Esco Walter, right, as associate justice of the Eleventh District Court of Civil Appeals has once again filled these three important seats. Walter, Abilene attorney, was appointed by Gov. Price Danier to fill the vacancy created by the death of Judge Milburn S. Long. At left is Associate Justice Cecil Collings and Chief Justice Clyde Grissom sits between the other two judges. Judge Walter's appointment was approved during the special meeting of the Legislature, and he took his oath of office just before this picture was taken. (Staff Photo).

County to Repair Ranger Hospital

Eastland County Commissioners Tuesday were told by County Attorney Joe Nusselle that they had full authority to invest money in repairing Ranger General Hospital if they so desire.

With that assurance commissioners voted to go ahead with some of the work members of the Hospital Board of Directors had requested. They said some work which couldn't wait would be done immediately. Commissioners debated contracting the rest of the work out, and indicated they would request an outline of what repairs are needed.

Nusselle was called in to report on his telephone conversation with an assistant attorney general. He said it was his opinion and the opinion of the state attorney that the county could invest money out of the county permanent improvement fund for hospital repairs, although the county has only half interest in the hospital. Ranger General Hospital is jointly owned by the City of Ranger and the County. Both name half of the members of the governing board.

Nusselle was asked if he didn't think it would be better if the City gave up their power of control over the hospital to the County, if the county spends an additional \$5000-\$6000. He replied that legally it wouldn't make any difference, but said that he would naturally recommend such action strictly from a business standpoint.

"Legally," he declared, "you have no control over the hospital, except that you can cut off the flow of county money."

Nusselle recommended that the County ask and receive a repair budget before pledging any money. He said the Hospital Board should provide the county with a yearly budget every year.

Right of Way
The County, in other business, formally agreed to purchase right-of-way for two new farm-to-market roads in the county. The State will build 14 1/2 miles of new FM roads. Right-of-way between Carbon and the Cisco and Rising Star highway will be purchased by the

Warner Coffman Dies of Heart Attack in Cisco

Warner H. Coffman, former manager of the Connelley Hotel Coffee Shop in Eastland, died last night in his home in Cisco following a heart attack.

Mr. Coffman was manager of Coffman's Coffee Shop in Cisco at the time of his death. He had lived in Cisco 2 1/2 years, moving there from Eastland.

Services have tentatively been scheduled for 2 p.m. Friday at the Fifth Street Church of Christ in Cisco, with services at Bullock Cemetery near Ranger.

Mr. Coffman was a member of the County Sheriff's posse. Survivors include a sister, Mrs. Gerald Wingate of Eastland.

County to Repair Ranger Hospital

county, as will land to give the county a FM road from Alameda to Desdemona.

Commissioners approved the purchase of \$22,000 worth of county road and bridge bonds, retiring the bonds before their maturity and saving interest. The Road and Bridge fund still is in remarkable good shape, having \$147,000. It has grown to that amount from a \$20,000 balance in 1950.

The County also purchased \$10,000 worth of Graham School District bonds out of Permanent School Fund money. The bonds were purchased as an investment and mature in 1972.

Commissioners also canvassed the election and payed monthly bills.

made of this section a very attractive portion of the State by the development of the superior advantages of this immediate locality.

Fruits and vegetables, together with a thoroughly diversified agricultural product, offered strong inducements to the emigrate from the East, and year by year the town has grown, developing rare commercial possibilities, and has attained a prosperous and established position.

It is the proud boast of this people that they are surrounded by the most productive soil that can be found west of the Brazos river, and with a thoroughly up to

date lot of businessmen the little city is gradually but surely forging its way to the front.

All lines of business are well represented—from the bank and the big department stores down to the chili joint, and employ a capital of \$500. Kimble & Crume, druggists; J. R. Huckabee, general merchandise; Low & Troxell, general merchandise; Mr. Winter's gin, the largest and best in West Texas; Mrs. Yates' hotel. (Continued on Page Two)

When I went to Eastland it was a quiet little town of 500 people, and when the oil boom struck, 20,000 people crowded in the first year," Lawrence said.

"They came in carts, wagons, on horseback, in T-models and broken down trucks," he smiled.

"At one time we had a murder a day in the county, and stealing, robbery and assaults were the usual thing."

As Lawrence remembers, the robbery and crowd vengeance, the bank robbers invaded the bank, took \$6,000 and then as they were leaving, the shooting started.

"Cisco Police Chief Bedford and Policeman Carmichael were shot and killed by the robbers. One of the robbers was wounded and he was put in a car with the loot. The car driver jumped out with the loot and the hands ran off."

"The other three bandits, including Marshal Ratliff, jumped into another car, leaving the in-

Early Gorman Boaster 'Most Productive Land'

(Editor's Note: This is the 41st in a series of articles taken from the book, "History of Eastland County, Texas," written by Mrs. George Langston in 1904.)

H. E. Anderson
Has the largest store in Texas in an inland town, and it contains everything except drugs.

One year ago Uncle Tommy Anderson sold one acre of ground to J. V. Haule, and stipulated that if intoxicants were ever sold on the land it would revert to the original owners.

In 1883, H. E. Anderson, son of Uncle Tommy, bought out Mr. Haule's stock of general merchandise but soon sold out to Rev. J. K. Miller and Mr. Sayles. Then he built a new and larger store, and has since carried a stock of general merchandise employing from eight to 15 clerks.

There are few men who have the courage of their convictions in a more marked degree than Mr. Anderson. In 1885 and 1886, when conditions were vastly different from the present time, a big barbecue and dance was twice given by the Rising Star community to influence people to become citizens.

Twice did Mr. Anderson refuse to contribute to this entertainment because of the last feature of it—the dance. He was converted at sixteen years of age, made steward in the Methodist church at eighteen, was the first Sunday School Superintendent in the town, and had lived what he professed. The stand he took on this occasion had great effect.

Mr. Anderson is the present Sunday School Superintendent in the Methodist Church and his wife is a daughter of Major Munn of Nimrod.

Gorman
A thriving little city of 1200 population, is situated on the Texas Central Railroad, 25 miles southeast of Cisco. The town was surveyed in 1891 by the railroad people and began its existence in the virgin forest—the Oliver Chill, Flow having forced the stockmen westward. The era, thus inaugurated by the arrival of the railroad,

Installation Loans Custom Made For Each Customer EASTLAND NATIONAL BANK Member F. D. I. C.

Installation Loans Custom Made For Each Customer EASTLAND NATIONAL BANK Member F. D. I. C.

Probable Line-Ups

EASTLAND	Wt.	Position	Wt.	CLYDE
Stanley Reed	152	End	160	Harry Odum
Charles Martin	172	Tackle	160	Joe South
Henry VanGeem	148	Guard	165	Don Lloyd
Kenneth Watson	157	Center	150	Paul Knuffen
Knicky Arther	156	Guard	155	Tom Gable
Marvin Agnew	160	Tackle	190	Robert Walker
Johnny McMahan	160	End	160	Dale Davis
Clint Humphreys	134	QB	165	Leon Chrane
Bill Norwood	138	HB	165	Jerry Powers
Larry Hollis	142	HB	160	Jimmy Towney
Saul Pullman	190	FB	170	Bill Cullin

Christmas Season Is Due to Begin Friday

Eastland merchants Friday will begin passing out tickets that will eventually be worth \$100 in prize money to four lucky persons who do their shopping in Eastland.

It's all part of the Chamber of Commerce Christmas Shopping program. There is nothing to buy, all an individual has to do is write his name and address on the ticket and turn it in at the chamber of commerce office, or put it in the drawing pot the Saturday before Christmas, when the four names will be drawn. Rules do require that the winners be present.

Texas Electric Service Co. employees also have started placing the polls for the special Christmas decorations. This year's decorations will be featured by a huge star at the top of the courthouse. The star will be twice the size of the one used in past years, and will blink on and off. It will have red and green lights. A large Christmas tree will also be placed on the courthouse square this year. Santa will come to town three

times, bringing a basket full of candy on each trip for the boys and girls of the Eastland area. His three trips will be made on the three Saturdays before Christmas. The lights go on Thanksgiving night.

PAGE ONE MUST

Eastland's newest business concern, Main Street Laundromat, 515 West Main, opened for business this week. The laundromat, coin operated, is open 24 hours daily, with both washer and dryer facilities. Registration is being held all this week with door prizes to be given away Saturday.

Eastland city commissioners will hold their regular monthly meeting tonight at 7 at City Hall.

George (Condy) Carter is now associated with the East Side Barber Shop. Carter is married and has a 10 year old son, James. The Carters are members of the Baptist Church and he is a Mason and a member of both the VFW and the American Legion. They come to Eastland from Abilene.

The Double Seven Club will give away a turkey Saturday at 2 p.m. on the north side of the square. You do not have to be present to win.

The Knights of Pythias and Pythian Sisters will hold their annual roll Tuesday at Castle Hall on the east side of the square. Supper will be served and donations for the children's home will be taken.

Eastland County Farm Bureau directors will meet tonight at the Farm Bureau office in Eastland.

Tough Mavs Must Win To Save Face

The Eastland Mavericks, a team which three District 10-A teams had to come from behind to beat or tie, will bow out of the 1957 football season Friday night when Coaches Carol Shelton and Jon Tate send their squad against the lowly Clyde Bulldogs.

The Mavericks will be battling the Dogs for the district cellar, despite the fact that Eastland lost to Albany by only five points and to Wylie by seven. Albany and Wylie meet the same night with the district crown at stake, and Albany is heavily favored to take the game.

Clyde comes into the game with a record of two wins and seven losses. Eastland has a record of four wins, four losses and one tie. In district play Clyde has lost three games; the Mavericks have been beaten twice and tied once.

Clyde holds wins over Santa Anna, 20-12, and Aspermont, 20-14. The Bulldogs lost to Rochester, 6-7; Rule, 0-20; Balid, 13-22; Rotan, 13-34; Throckmorton, 7-43; and Albany, 7-39. The Dogs had to forfeit to Wylie because of illness.

Clyde is still short of manpower according to Coach Don Allen. Allen told the Telegram earlier this week that he hadn't enough boys suited out to scrimmage for the past two weeks because of flu. He says Quarterback Harold Hicks, Clyde's star, will not start. Hicks is the eighth leading scorer in District 10-A, despite the fact

he plays on a losing club. He had scored 32 points.

Billy Ray Cullin, a 170 fullback, will be in the starting line-up, however. Cullin has 29 points to his credit. End Dale Davis has been a favorite target for the pass-minded Clyde crew this year. He has scored two TD's on long passes. The Clyde coach said he had a letter team than records would indicate. "We just haven't been able to get over the flu all year long," he stated.

Wayne Dodson is still out of the Mav line-up with a bad leg, but other than boys who earlier went "out for the season," the Mavs are in fairly good shape. The Mavericks scrimmaged Wednesday afternoon, getting in their only good workout of the week due to bad weather.

Eastland has been able to out-statistic every team they have played this year, with the exception of one. Ranger got more on the figuring sheet than Eastland, but the Mavs won that one. Eastland, however, beat DeLeon Albany, Wylie and Cisco on statistics, and all of those teams beat the Mavs on score. There's something to that statement that they add up the statistics and count the score.

The Mav ground attack has been unstopable this year from their own one to their opponents five. Then things haven't looked so rosy in some of the tilts. Kickoff time is 7:30 p.m.

New 1958 Cadillac On Display At Don Piersons Has That Long Look

The low, longer look is achieved through a longer hood, wider and longer fenders and the addition of rear ventpane windows in the new 1958 Cadillacs which are now on display at Don Pierson Olds-Cadillac in Eastland.

The 1958 look comes from a new "going away" tail fin, the four headlamp system, sweeping low lines, different over-all profile and new interiors.

Engineering advances include the use of four-link rear suspension in all models. By use of this new linkage, the Cadillac is adaptable to standard coil spring suspension or the optional air suspension.

The suspension system has redesigned air springs at each wheel and a leveling system which maintains the car at a constant height. Another feature of the Cadillac is a valve which allows the driver to raise the car and additional five inches for going up steep ramps or driveways. Cadillac's four headlamp sys-

tem has an outer lamp with both high and low beams for city driving. The high beam of the outer lamp provides soft general lighting and is used in conjunction with the single high beam of the inner lamps for open highway driving.

Charles Loreto Named Judge of Supreme Court

Judge Charles A. Loreto, husband of the former Rosalie Leslie of Eastland, was recently appointed judge of the Supreme Court of New York by Gov. Averill Harriman.

In formal ceremonies witnessed by Gov. Harriman and Mrs. Loreto, daughter of Mrs. W. P. Leslie of Eastland, and more than 600 others, Secretary of State Carmine DeSapio administered the oath of office.

Former Eastland Sheriff Recalls Oil Boom Days

(Editor's Note: The following article recently appeared in the Odessa American. It was written by Tracy Byers.)

Basking in the West Texas sunshine here, with memories of investigating more murders than most people dream of in nightmares, H. E. (Elmer) Lawrence, 31, former sheriff of Eastland County during the wild oil boom days there, lives quietly now.

"When I went to Eastland it was a quiet little town of 500 people, and when the oil boom struck, 20,000 people crowded in the first year," Lawrence said.

"They came in carts, wagons, on horseback, in T-models and broken down trucks," he smiled.

"At one time we had a murder a day in the county, and stealing, robbery and assaults were the usual thing."

As Lawrence remembers, the robbery and crowd vengeance, the bank robbers invaded the bank, took \$6,000 and then as they were leaving, the shooting started.

"Cisco Police Chief Bedford and Policeman Carmichael were shot and killed by the robbers. One of the robbers was wounded and he was put in a car with the loot. The car driver jumped out with the loot and the hands ran off."

"The other three bandits, including Marshal Ratliff, jumped into another car, leaving the in-

jured man and the \$6,000," Lawrence said.

"They all were captured within a few days and Ratliff was later sentenced to the penitentiary. He was brought back for a hearing in his sanity."

He was in the county jail a "astland, where Lawrence said he cted insane and helpless. The one day he jumped the jailer, shot and killed the man with the jailer's own gun.

After Ratliff was settled back in the jail, a group of angry townspeople marched to the jail, pulled Ratliff out, and hanged him on a telephone pole beside the jail. It was about 1928 or 1930 then, (Dec. 28, 1927)

Lawrence was born in Lee County, moved to Burnet County, to Coleman County and then to Eastland County where he first was deputy sheriff for several years at Rising Star, before going to Eastland to be a deputy there before he was elected sheriff.

He lives here with his son, H. E. Lawrence and Mrs. Lawrence, at their home at 1300 Redbud, where he talked of old times in Eastland, as he sat in a sun-flooded window of the brick and wood-

paneled family room. The young-ers Lawrence moved about four and a half years ago from El Paso and own and operate Dairyland at the Andrews Highway.

"We had problems at Eastland, but Ranger had the worst boom and Desdemona was the wildest place," the former officer said.

"In those days there was no movement to speak of, and one night two gangs began fighting in Desdemona and totally wrecked two cafes and a clothing store. There wasn't \$50 worth of stuff that could have been salvaged."

He continued, "I left Eastland for Desdemona in an old pick-up (Continued on Page Two)

Richard Bumpass Elected Officer In Fellowship

Richard Bumpass of Eastland has been elected secretary treasurer of the Theological Fellowship at Southwestern Baptist Seminary in Fort Worth.

The Fellowship is composed of young men who are studying for the ministry. Bumpass is a 1955 graduate of Texas A&M College, and is working for a Bachelor of Divinity degree.

BE SURE—See Don Pierson Olds - Cadillac Eastland Quality Cars at Volume Prices

Eastland Telegram

Eastland County Record established in 1931, consolidated August 31, 1951. Chronicle established 1887, Telegram established 1923. Entered as second class matter at the Post Office at Eastland, Texas under the act of Congress of March 3, 1879.

TIMES PUBLISHING COMPANY
Published Tri-Weekly—Tuesdays - Thursdays - Sundays
ONOUS DICK and JOE DENNIS, Publishers
VIRGIL E. MOORE Editor
CAROLYN COLLINS, Society Editor

One week by carrier in city	.15
One month by carrier in city	.65
One year by mail in County	2.95
One year by mail in state	4.95
One year by mail out of state	6.95

NOTICE TO PUBLIC—Any erroneous reflection upon the character, standing or reputation of any person, firm or corporation which may appear in the columns of this newspaper will be gladly corrected upon being brought to the attention of the publishers.

Classified Ads..

Cards of Thanks charged for at rate of \$2.00 Each

FOR RENT -

FOR RENT: 3 large rooms, furnished, bills paid, private bath apartment. 416 North Lamar.

FOR RENT: Nice apartment. Call 246 or 576.

FOR RENT: New decorated 3 room apartment and private bath. Phone 718.

FOR RENT: 2 room furnished apartment and private bath. Phone 811-W.

FOR RENT: Six room furnished or unfurnished house, \$25 a month Phone 733.

FOR RENT: Three room apartment, private bath and garage. See Mrs. A. F. Taylor, 700 S. Seaman. Phone 320 or 713-J.

FOR RENT: Furnished, entire second floor, 4 rooms and bath, newly decorated. Two large walk-in closets, garage. Utilities paid. Adults only. 1111 South Seaman. Phone 574.

FOR RENT: 4 furnished, 4 unfurnished, duplex. Call 394-J.

FOR RENT: Modern four room house, soft water. See Travis Reese, Olden.

FOR RENT: Small furnished house, close in. Apply 210 E. Valley, after 6 p.m.

FOR RENT: Furnished apartments. 611 Plummer.

FOR RENT: Newly decorated apartments. Phone 2085-W.

FOR RENT -- Newly decorated apartment. Hillside Apartments. Phone 9520.

FOR RENT: Five room unfurnished house, 103 N. Ammerman. Phone 446-J or 270.

SPECIAL NOTICE

NOTICE: Build a chain link fence. We do all the work, complete the fence. No down payment, 3 years to pay. Call Eastland Chain Link Fence Co. Phone 108-J. Marvin Food, manager.

NOTICE: Can take five ladies for reducing plan. Phone 653. Mrs. Bert Fuller, 613 West Moss.

Reduce Without Dieting
Use my Stauffer Reducing Machine. Reasonable rates.
Mrs. Bert Fuller, 613 West Moss. Phone 653.

REAL ESTATE - FOR SALE

FOR SALE: Two bedroom house. Remodeled inside and out. See Pop Whitaker or 1137-W.

E. K. HENDERSON home for sale. 104 E. Valley or phone 189.

FOR SALE: 3 bedroom house. 605 S. Bassett. Call 720-W-2 or 707-W-2.

FOR SALE: Three room house, 1405 S. Bassett.

FOR SALE IN CISCO: Three bedroom brick home on paved corner lot. Central heating, dish washer and garbage disposal unit. Double garage and nice garage apartment. Phone 848, Eastland.

FOR SALE: 5 room house and 4 lots across street from school. Straight sale or my equity and \$40 per month payments. Phone 417-J. 116 East Garvin.

FOR SALE: 3 bedroom house, Hillcrest. Appointment only. Tom Stamey.

MISC. FOR SALE -

FOR SALE: Broad breast bronze turkeys, 25c pound. Kendrick Dairy, half way between Eastland and Cisco.

FOR SALE: Registered Siamese kittens. Bill Parton, Carbon.

FOR SALE: Rye seeds for planting, nice well matured seed, clean enough. A. H. Cox, Ivan Star Route, Breckenridge, Tex.

FOR SALE: 1956 Evinrude motor, used, 15 miles. Original price \$385, Sale price \$275. Phone 421, Ranger.

FOR SALE: Used Schwinn 26 inch boys bicycle, good shape. Phone 525.

Used 12 gauge single shot Winchester shot gun, \$17.50. Phone 525.

New and Used outboard motors, boats, shotguns, rifles and bicycles. Phone 525.

Deer rifle model 99 savage 250-3000 cal. with K4 Weaver scope, gun case, box shells (retail value \$192) \$130. Sport Center, Phone 525, Eastland.

FOR SALE: Nice, dark desk for home. Zenith console radio and record player combination. Box springs. Interspring mattress. Phone 2445, Olden.

SPECIALS

- 25.00 Permanents 20.00
- 20.00 Permanents 15.00
- 15.00 Permanents 10.00
- 10.00 Permanents 7.50
- Other Permanents 5.00

For a complete Beauty service call 14. If we please you, tell others. If not, tell us.

JOSEPHINE Beauty Salon
Josephine Briester, Owner and Operator
Betty Crawley - Vivian Jones Operator

T. L. FAGG

REAL ESTATE
Property Management
Home and Farm Loans

NOTICE

FRESH DRESSED FRYERS

Every Day Special Price for Your Deep Freeze —also—
Chicken Blood Bait ... Guaranteed to stay on any type hook.

PHONE 110
WALKER Dressing Plant

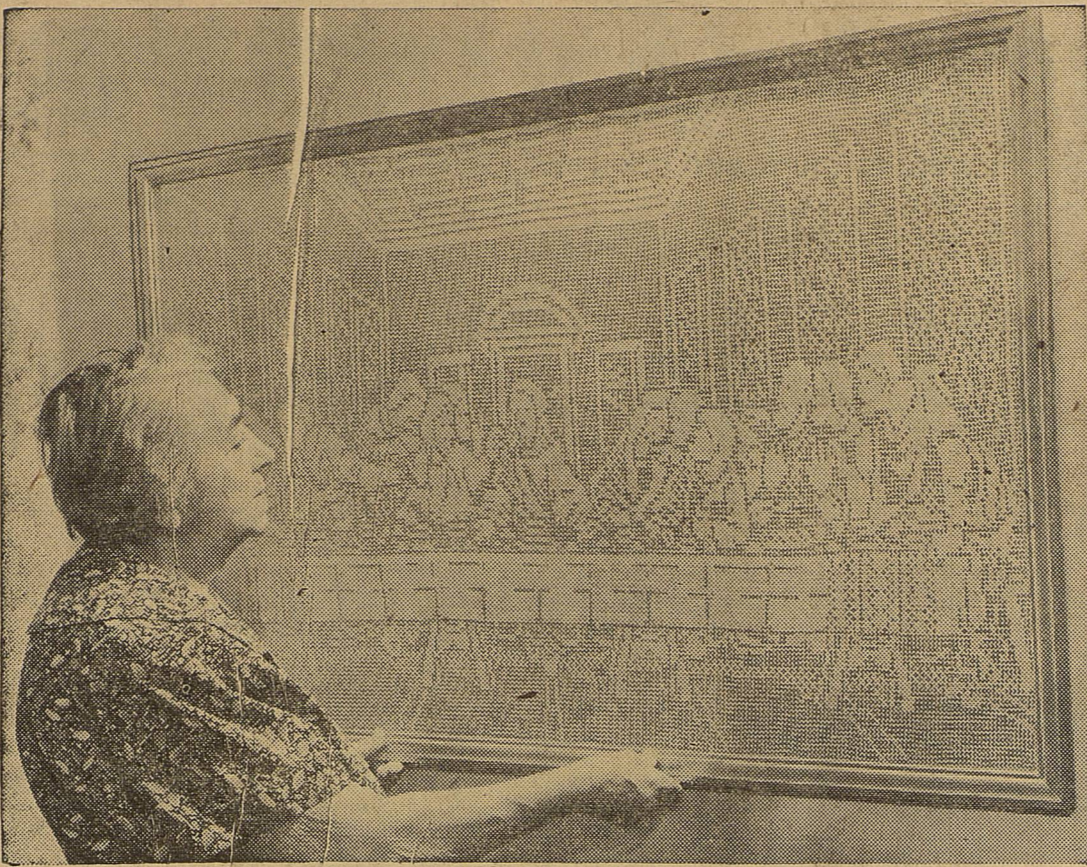
HELP WANTED Female

FEMALE HELP WANTED: Girl for fountain work. Toombs & Richardson Drug.

WANTED: Stenographer wanted in Breckenridge. Permanent job for conscientious person. Good hours, vacation, fringe benefits. Must be able to type neatly with reasonable speed and accuracy. Shorthand not necessary. Starting salary \$200.00 a month and raise in six months. Write details of qualifications and experience and give telephone number where applicant may be contacted and best time. Applications will be handled in strict confidence. Write Employment Manager, Box 752, Breckenridge, Texas.

HELP WANTED - FEMALE: Women sew easy Ready-Cut Wrap-A-Round Aprons. Home earn \$26.16 Dozen-Spare Time Write Accurate Mfr's, Freeport, New York.

M. H. PERRY
Representing
Southland Life
Life - Retirement Income Partnership
Mortgage Cancellation
Educational - Annuities
Accident - Sickness
Hospitalization - Group
Call 173 or 713-J
107 W. Main • Eastland



LABOR OF LOVE—Mrs. Frances Kuchda looks with a critical eye at the results of her painstaking artistry—a crocheted version of "The Last Supper." Mrs. Kuchda of Leavenworth, Kan., estimates that she spent two to three years in actual labor on the work, which measures 30 by 60 inches.

Former Sheriff—

(Continued from Page 1)

truck and we skidded along muddy roads and across fields, but when we got there the wreckage was complete."

"What really launched the most vicious day of killings and stealing was national prohibition, when it started in 1919, Lawrence declared.

"Everyone began bootlegging, and there were more killings, more drunkenness and more fights than ever. The way liquor sales are handled here in Odessa is one

of the reasons this town is quiet. This is the only way, because prohibition just doesn't prohibit, but increases lawlessness," he sighed in a matter-of-fact tone.

"We would move into a gambling house arrest the operators and padlock the place," Lawrence smiled. "Two days later someone else would have broken open the doors and gambling would be in full swing again."

"Several Texas Rangers were moved into Eastland County to try to get some kind of order out of the place, but we couldn't see where it made any difference,"

Lawrence said.

He spoke quietly, with the detachment of living many years and having seen everything. "There were so many wild people then, and no one knew anyone, and there were crowds everywhere at night."

It was all part of a long ago life, as he added without bitterness or emotion, "Everyone was on the go, moving in and moving out, going from one town to another, and no one seemed to care."

The former lawman sat quietly looking around the handsomely furnished family room, where a two-way fireplace serves both kitchen and sitting room, and where peace and contentment were a far cry from the ramshackled boom towns of tents and wagons long ago. He moved out here last spring to stay with his son.

Moore About—

(Continued from Page One)

final high school game. We hope that a large number of Eastland fans will follow the Mavs to Clyde. A victory will not give Eastland any Championships, but it will give them a record of five wins, four losses and a tie, putting them over the halfway mark. They want this one. So we will see you at Clyde.

Early Gorman—

(Continued from Page 1)

The May Drug Company, T. L. Gates Lumber Yard, the weekly newspaper, a canning factory in active and successful operation, are some of the stores and shops and business interests of the town. These numerous interests enable Gorman to handle her own immense agricultural products to the very best advantage.

The town is incorporated for municipal and school purposes. The splendid churches, together with organized lodges, chartered clubs and business men's organizations, foster and keep in close touch the religious and social life with the commercial advancements.

Everything considered, the town stands without a rival in many respects in this section of the State, and offers special inducements to the home seeker.

(Next: "F. B. Winters")

Court of Civil Appeals Eleventh District

The following proceedings were had in the Court of Civil Appeals, Eleventh Supreme Judicial District.

Motions Submitted

George H. Tracy et al vs. Lion Oil Company et al. Motion of Appellee, Lion Oil Company, for extension of time to file brief. Mitchell.

George H. Tracy et al vs. Lion Oil Company et al. Motion of Appellee, Humble Oil Co., for extension of time to file brief. Mitchell.

Chester G. Root vs. Henry Hester et ux. Motion of Appellee, City of Mineral Wells, to strike Appellant's motion to file Statement of Facts, Supplemental Transcript and Photostat. Palo Pinto.

Chester G. Root vs. Henry Hester et ux. Motion of Appellee, City of Mineral Wells, to strike Appellant's motion to file Statement of Facts, Supplemental Transcript and Photostat. Palo Pinto.

Chester G. Root vs. Henry Hester et ux. Motion of Appellee, City of Mineral Wells, to strike Appellant's motion to file Statement of Facts, Supplemental Transcript and Photostat. Palo Pinto.

Chester G. Root vs. Henry Hester et ux. Motion of Appellee, City of Mineral Wells, to strike Appellant's motion to file Statement of Facts, Supplemental Transcript and Photostat. Palo Pinto.

Chester G. Root vs. Henry Hester et ux. Motion of Appellee, City of Mineral Wells, to strike Appellant's motion to file Statement of Facts, Supplemental Transcript and Photostat. Palo Pinto.

Chester G. Root vs. Henry Hester et ux. Motion of Appellee, City of Mineral Wells, to strike Appellant's motion to file Statement of Facts, Supplemental Transcript and Photostat. Palo Pinto.

Chester G. Root vs. Henry Hester et ux. Motion of Appellee, City of Mineral Wells, to strike Appellant's motion to file Statement of Facts, Supplemental Transcript and Photostat. Palo Pinto.

Chester G. Root vs. Henry Hester et ux. Motion of Appellee, City of Mineral Wells, to strike Appellant's motion to file Statement of Facts, Supplemental Transcript and Photostat. Palo Pinto.

Chester G. Root vs. Henry Hester et ux. Motion of Appellee, City of Mineral Wells, to strike Appellant's motion to file Statement of Facts, Supplemental Transcript and Photostat. Palo Pinto.

Chester G. Root vs. Henry Hester et ux. Motion of Appellee, City of Mineral Wells, to strike Appellant's motion to file Statement of Facts, Supplemental Transcript and Photostat. Palo Pinto.

Chester G. Root vs. Henry Hester et ux. Motion of Appellee, City of Mineral Wells, to strike Appellant's motion to file Statement of Facts, Supplemental Transcript and Photostat. Palo Pinto.

Chester G. Root vs. Henry Hester et ux. Motion of Appellee, City of Mineral Wells, to strike Appellant's motion to file Statement of Facts, Supplemental Transcript and Photostat. Palo Pinto.

Chester G. Root vs. Henry Hester et ux. Motion of Appellee, City of Mineral Wells, to strike Appellant's motion to file Statement of Facts, Supplemental Transcript and Photostat. Palo Pinto.

Chester G. Root vs. Henry Hester et ux. Motion of Appellee, City of Mineral Wells, to strike Appellant's motion to file Statement of Facts, Supplemental Transcript and Photostat. Palo Pinto.

Chester G. Root vs. Henry Hester et ux. Motion of Appellee, City of Mineral Wells, to strike Appellant's motion to file Statement of Facts, Supplemental Transcript and Photostat. Palo Pinto.

Chester G. Root vs. Henry Hester et ux. Motion of Appellee, City of Mineral Wells, to strike Appellant's motion to file Statement of Facts, Supplemental Transcript and Photostat. Palo Pinto.

Chester G. Root vs. Henry Hester et ux. Motion of Appellee, City of Mineral Wells, to strike Appellant's motion to file Statement of Facts, Supplemental Transcript and Photostat. Palo Pinto.

Chester G. Root vs. Henry Hester et ux. Motion of Appellee, City of Mineral Wells, to strike Appellant's motion to file Statement of Facts, Supplemental Transcript and Photostat. Palo Pinto.

Chester G. Root vs. Henry Hester et ux. Motion of Appellee, City of Mineral Wells, to strike Appellant's motion to file Statement of Facts, Supplemental Transcript and Photostat. Palo Pinto.

Chester G. Root vs. Henry Hester et ux. Motion of Appellee, City of Mineral Wells, to strike Appellant's motion to file Statement of Facts, Supplemental Transcript and Photostat. Palo Pinto.

Chester G. Root vs. Henry Hester et ux. Motion of Appellee, City of Mineral Wells, to strike Appellant's motion to file Statement of Facts, Supplemental Transcript and Photostat. Palo Pinto.

Chester G. Root vs. Henry Hester et ux. Motion of Appellee, City of Mineral Wells, to strike Appellant's motion to file Statement of Facts, Supplemental Transcript and Photostat. Palo Pinto.

Chester G. Root vs. Henry Hester et ux. Motion of Appellee, City of Mineral Wells, to strike Appellant's motion to file Statement of Facts, Supplemental Transcript and Photostat. Palo Pinto.

Chester G. Root vs. Henry Hester et ux. Motion of Appellee, City of Mineral Wells, to strike Appellant's motion to file Statement of Facts, Supplemental Transcript and Photostat. Palo Pinto.

Chester G. Root vs. Henry Hester et ux. Motion of Appellee, City of Mineral Wells, to strike Appellant's motion to file Statement of Facts, Supplemental Transcript and Photostat. Palo Pinto.

Chester G. Root vs. Henry Hester et ux. Motion of Appellee, City of Mineral Wells, to strike Appellant's motion to file Statement of Facts, Supplemental Transcript and Photostat. Palo Pinto.

Chester G. Root vs. Henry Hester et ux. Motion of Appellee, City of Mineral Wells, to strike Appellant's motion to file Statement of Facts, Supplemental Transcript and Photostat. Palo Pinto.

Chester G. Root vs. Henry Hester et ux. Motion of Appellee, City of Mineral Wells, to strike Appellant's motion to file Statement of Facts, Supplemental Transcript and Photostat. Palo Pinto.

Chester G. Root vs. Henry Hester et ux. Motion of Appellee, City of Mineral Wells, to strike Appellant's motion to file Statement of Facts, Supplemental Transcript and Photostat. Palo Pinto.

Chester G. Root vs. Henry Hester et ux. Motion of Appellee, City of Mineral Wells, to strike Appellant's motion to file Statement of Facts, Supplemental Transcript and Photostat. Palo Pinto.

Chester G. Root vs. Henry Hester et ux. Motion of Appellee, City of Mineral Wells, to strike Appellant's motion to file Statement of Facts, Supplemental Transcript and Photostat. Palo Pinto.

Chester G. Root vs. Henry Hester et ux. Motion of Appellee, City of Mineral Wells, to strike Appellant's motion to file Statement of Facts, Supplemental Transcript and Photostat. Palo Pinto.

Chester G. Root vs. Henry Hester et ux. Motion of Appellee, City of Mineral Wells, to strike Appellant's motion to file Statement of Facts, Supplemental Transcript and Photostat. Palo Pinto.

Chester G. Root vs. Henry Hester et ux. Motion of Appellee, City of Mineral Wells, to strike Appellant's motion to file Statement of Facts, Supplemental Transcript and Photostat. Palo Pinto.

er et ux. Motion of Appellees, Henry Hester et ux, to strike and not consider Appellant's motion to strike Statement of Facts. Palo Pinto.

Cases Set for Submission Nov. 15
Gulf, Colorado & Santa Fe Railway Co. vs. G. C. McBride et al. Brown.

J. F. Tucker vs. Jack T. Menefee. Eastland.

Frank Gilliam et al vs. Gordon Griffin. Brown.

Cases Set for Submission Nov. 22
Combined American Insurance Co., vs. C. C. Tammell. Erath.

Cases Set for Submission Nov. 22
J. M. Miller et ux vs. Crown Central Petroleum Corp. et al. Haskell.

Chemical Express et al vs. The City of Roscoe. Nolan.

B. A. Duffy et al vs. Gib Calaway. Taylor.

Cases Set for Submission December 13
H. B. Robb, Jr. vs. Gary H. Reid et al. Taylor.

George H. Tracy vs. Lion Oil Company et al Mitchell.

Chester G. Root vs. Henry Hester et ux. Palo Pinto.

Carl Miles vs. J. O. Martin. Taylor.

W. S. Alexander et al vs. Earl Byrd. Brown.

LUBBOCK VISITORS
Mr. and Mrs. M. L. Brashear of Lubbock, formerly of Eastland, are visiting here with relatives and other friends in Eastland this week. They are staying at the Pleasant Place Motel for a few days.

CALL 601 FOR CLASSIFIED ADVERTISEMENT

Mr. and Mrs. Ed Culbertson and daughter, Kay, were dinner guests in the home of Mrs. Grover Collins recently. Kay was here for the football game Friday night. They are from Haskell and formerly of Eastland.

ATTENDS FUNERAL
Mrs. A. J. Blevins Sr., attended the funeral of her nephew, Mr. R. L. Elms, in Lubbock today. Mr. and Mrs. A. J. Blevins Jr. also attended the funeral.

Insurance AND Real Estate
D. L. KINNAIRD
Life - Fire - Auto - Farm
Bonds - Policies
37 years in the Insurance
Business in Eastland

ALEX RAWLINS & SONS
MONUMENTS
WEATHERFORD, TEX.
Serving This Community Since 1884

Funeral Directors
HAMNER FUNERAL HOMES
Ben E. Hamner
Oxygen Equipped - Air Conditioned
Eastland Phone 17
Cisco Phone Hillcrest 21211
AMBULANCE SERVICE ANY WHERE ANY TIME
Nominal Cost Burial Insurance
For The Entire Family

BETTER MEAT FOR LESS
Friday and Saturday Only

LEAN SHOULDER	
Pork Roast	Lb. 39¢
COUNTRY STYLE	
Pork Sausage 4	Lbs. \$1
Sausage Made From Pork Hams And Shoulders Only	2 Lbs. 79¢
BABY BEEF	
Seven Roast	Lb. 39¢
BABY BEEF	
Round Steak	Lb. 69¢
Turkeys No. 1 Hens 10 to 14-Lbs.	Lb. 37¢
WISCONSIN LONG HORN	
Cheese	Lb. 49¢

EARNEST Frozen Food Center
210 South Lamar Phone 11

NOW - we'll give you 30.00 for your old typewriter*

toward the purchase of the brand new 1957 **SMITH-CORONA PACEMAKER**

Regularly \$179.50 plus tax
149.50 plus tax
YOURS for only with your old typewriter

- World's Lowest Priced, Famous Make Office Typewriter
- Fast Flick-set Tabulation
- Full-size, 84-character Keyboard
- Sharp, Beautiful Write
- Light Touch and Super-Speed Action.

*Any standard keyboard portable or office typewriter, regardless of age, make or condition.

EASTLAND TELEGRAM
South Side of Square Phone 601

Now the All-Time Economy Champ Is 58's Glamour Star!

Rambler With Jet Stream Styling!

1 American Big Car Room and Comfort 2 European Small Car Economy, Handling Ease **Get the Best of Both GO RAMBLER!**

Be Smarter—Buy Rambler and Save! See Your Rambler, Nash or Hudson Dealer

American Motors Means More for Americans

SOCIAL CALENDAR

Thursday, Nov. 14

3 p.m.—The Alpha Delphian Club will meet in the Woman's Club for "Art Appreciation" day. Art club will be the guests of the club at this meeting. Mrs. Roy Lawson will speak on "Flower Arrangements" and Mrs. W. W. Walters, "Painting as a Hobby."

7 p.m.—Past Matrons of the Eastern Star will meet for their regular meeting in the home of Mrs. Aurey Van Hoy, 511 South Walnut.

Monday, Nov. 11
7:30 p.m.—Band Booster will meet in the Band Hall for their regular meeting.

Thursday, Nov. 14
7 p.m.—Past Matrons of Eastern Star will meet with Mrs. Aubrey Van Hoy, 511 South Walnut, for their meeting.

Monday, Nov. 18
9 a.m.—Rachel group of the Christian Woman's Fellowship of the First Christian Church will meet in the home of Mrs. Charles Beskow, 601 West Moss.

9:30 a.m.—Priscilla group of the Christian Woman's Fellowship of the First Christian Church will meet in the home of Mrs. Neil Day, 911 South Daughtery, for their regular meeting.

3 p.m.—Lydia group of the Christian Woman's Fellowship of the First Christian Church will meet in the home of Mrs. L. C. McNatt, 510 East Pershing for their regular meeting.

3 p.m.—Esther group of the Christian Woman's Fellowship of the First Christian Church will meet in the home of Mrs. Winnie Wynne, 111 North Comellee.

7:30 p.m.—Las Leales Club will meet in the Woman's Club for their regular meeting with Mrs. L. E. Huckabay, Miss Gladys Green and Mrs. Herman Hassell, hostesses. Mrs. J. C. Whitley will bring the program on "The Burnished Sword."

Tuesday, Nov. 19
3:15 p.m.—West Ward P.T.A. will meet at the school for their regular meeting. The program will be on "Guidance with Meaning." A film will pertain to this subject. The first grade mothers and Mrs. Homer Smith will be hostess.

Wednesday, Nov. 20
7:30 p.m.—Wesleyan Service Guild of the First Methodist Church will meet at the church for their regular meeting.

9 a.m. to 11 a.m.—Pie, cake, and coffee sale will be held in the First Christian Church annex. The sale will close at 11 a.m. and then re-open at 2:30 p.m. and stay open until 4 p.m. Cake and pie will be sold by the piece and whole. The sale is sponsored by the Zeta Pi Chapter of the Beta Sigma Phi.



Pauline Ramsey Attends A.D.A.A. Meeting in Fla.

Pauline Ramsey, dental assistant to Dr. J. O. Jolly, attended the thirty-third annual session of the American Dental Assistant Association meeting at Bal Harbor, Miami Beach, Florida, on Nov. 4 through 7.

Mrs. Ramsey was representing the 17th District Dental Assistant Society of Texas as an alternate delegate and president-elect of her local society out of Abilene.

Opal Smith, dental assistant to Dr. W. J. Kemp in Haskell and president of the 17th District Dental Assistant Society, also attended the meeting.

Mrs. Ramsey and Mrs. Smith with many other delegates traveled by Delta Air Lines out of Dallas to Miami and back to Dallas.

Mrs. Ramsey is the daughter of Mrs. Beatrice Hellums of Rising Star. Before becoming an assistant to Dr. Jolly Mrs. Ramsey was dental assistant to her husband, Dr. E. H. Ramsey, Sr., in Rising Star, worked in the Rising Star Hospital two years and one year in the Eastland Memorial Hospital.

Zeta Pi Chapter To Sponsor Cake Sale Wednesday

Coffee, pie and cake sale was discussed at the meeting of the Zeta Pi Chapter of the Beta Sigma Phi Tuesday night in the home of Mrs. Norman Guess.

Zeta Pi Chapter decided to have coffee, pie and cake sale in the annex of the First Christian Church on Wednesday from 9 a.m. to 11 a.m. Pie and cake will be by the piece and whole.

Mrs. Arthur Gallagher, president, presided over the meeting. During the meeting, it was voted to send the endowment fund to the National Cystic

Fibrosis Research Foundation for children.

The club bought a Bible and sent it to the Terrell St. Hospital for part of their state project. They also assisted in the Muscular Dystrophy Drive.

Mrs. R. P. Haun gave a program on "Personality and Relationship." During the program the members were given a sheet of paper with four questions to answer. The questions were such as (1) Your own definition of personality. (2) List five good personality traits that you admire in your friends. (3) Give examples of how one's personality plays an important part in one's happiness at home, in business and in social relations. and (4) Name three people that your group feels they would like to pattern their personalities from.

Judy Seaberry Is Elected Reporter Of Jr. Tri-Hi-Y

Judy Seaberry was elected reporter of the Junior Tri-Hi-Y in their meeting Monday night.

Barbara McCullough presided over the meeting. During the business meeting plans were made

for a Christmas project. Those attending were Ann Freyschlag, Shirley Smith, Kathleen Turner, Linda Butler, Sharon Wilson, Billie Brooks, Ray Morton, Carol McCleskey, Toni Horton, Helen Lilley, Sandra Wheeler, Marsha Smith, Darlene Kleiner, Barbara McCullough, Paulene Gould, Gracie Tankersley, Judy Seaberry and sponsors, Mrs. B. W. Howell and Mrs. Clyde Evans.

Mrs. Virgil Moore was co-hostess. Refreshments of fruit cake topped with whipped cream and pecans with coffee and cokes. Those present were Mmes. A. G. Crosby, Arthur Gallagher, Norman Guess, R. P. Haun, Don Kincaid, Ed Lorenz, Virgil Moore, Willis Moore, Hught Neeld and James Smith.

READ THE CLASSIFIEDS
ED V. PRICE & CO.
TAILORED
SUITS
Sport Coats Slacks
C. L. FIELDS
Phone 571 103 W. Valley

Furniture Upholstering

We are now able to do your furniture upholstery, and invite you to take advantage of our new service.

TRIM SHOP

Phone 170 708 West Main

PRE-THANKSGIVING SALE!!

Stock-Up Now — Save Time and Money



- WHOLE YAMS** No. 3 Sq. Can **19¢**
- PUMPKIN** LIBBY'S OR DEL MONTE 2 No. 303 Cans **25¢**
- GREEN BEANS** DEL MONTE CUT No. 303 Can **19¢**

Prices Effective Thru Saturday, Nov. 16, Reserve Right to Limit No Sales to Dealers

- SWIFT'S ALLSWEET OLEO 1-Lb. Pkg. **29¢**
- LIFTON'S TEA BAGS 16-Ct. Pkg. **25¢**
- BETTY CROCKER ASSTD. CAKE MIXES 20-Oz. Pkg. **31¢**
- QUAKER YELLOW CORN MEAL 2½-Lb. Box **27¢**
- UNDERWOOD'S DEVILED HAM 2½-Oz. Can **19¢**
- PABLUM MIXED CEREAL 8-Oz. Pkg. **21¢**
- SWIFT'S EGG YOLKS OR MEATS FOR BABIES 3½-Oz. Jar **23¢**

- BROWN SUGAR** Or Powdered Imperial or Domino 2 1-Lb. Boxes **25¢**
- SPICED PEACHES** Pratt-Low Whole 3 No. 2½ Cans **69¢**
- ROYAL GELATIN** Assorted Flavors Pkg. **5¢**
- BAMA APPLE JELLY** 20-Oz. Tumbler **19¢**
- SWIFT'S JEWEL** Shortening 3 Lb. Can **69¢**

Order Holiday Poultry & Hams Now For Best Selections, Lowest Price!

- PUFFIN BISCUITS** 2 Cans **25¢**
- CHILI WITH BEANS** 16-Oz. Can **35¢**
- RITZ CRACKERS** 1-Lb. Pkg. **37¢**
- DREFT DETERGENT** Giant Pkg. **75¢**
- MAPLE-FLAVORED WORTH SYRUP** Quart Botl. **45¢**
- JOY LIQUID** 22-Oz. Can **69¢**

BANANAS

SELECT QUALITY GOLDEN-RIPE

Lb. Only **10¢**

- Swift's Frozen Meats •
- SWIFT'S PREMIUM HAMBURGER PATTIES 12-Oz. Pkg. **59¢**
 - SWIFT'S PREMIUM SANDWICH STEAKS 12-Oz. Pkg. **89¢**
 - SWIFT'S PREMIUM BUTTERED BEEF STEAKS 8-Oz. Pkg. **49¢**
 - SWIFT'S PREMIUM FRENCHED VEAL CUTLETS 12-Oz. Pkg. **99¢**
 - SWIFT'S PREMIUM LOIN LUNCHEON STEAKS 8-Oz. Pkg. **59¢**

- Frozen Food Special!
- OLD SOUTH FROZEN ORANGE JUICE** 2 6-Oz. Cans **29¢**
 - CHUN KING FROZEN CHINESE DINNER** 12-Oz. Pkg. **75¢**

Roast

WORTH CONTROLLED QUALITY BEEF - CHUCK BLADE

Lb. only **39¢**

- LISTERINE** ANTISEPTIC 7-OZ. BOTL. **49¢**
- CREAM OIL** WILDROOT MEDIUM SIZE PLUS TAX **49¢**

- ROUND BONE ROAST** "W.C.Q." BEEF Arm Chuck Lb. **49¢**
- PREMIUM BACON** Swift's Sliced Lb. **59¢**
- NEUHOFF'S SMOKIES** Smoked Sausage 12-Oz. Pkg. **59¢**
- DRY SALT BACON** Swift's Oxford Lb. **39¢**

Miss Worth Invites You to Play "MARKO" SATURDAYS, 7 to 8 p.m. KFJZ-TV channel 11 Free MARKO Cards only at

WORTH FOOD MART

This Week's Cards Must Have "Yellow" Bands

Vol. 11 Also 1-10 Now On Sale!

ENCYCLOPEDIA OF PICTURED KNOWLEDGE For the Entire Family

WORTH \$5.00 Per Volume

49¢

On Our Convenient Book-A-Week Plan

SAVE 60% AND MORE!

12" Hi-Fi 33 1/3 RPM Records Highest Quality—Famous Music This Week's Specials

- Cha-Cha & Mamba
- The Kina and I

HEAR 'EM PLAYED BY THE "PROS" ON KFJZ-1270

Guaranteed \$3.98 Value

\$1.49 Each

PENNEY'S ALWAYS FIRST QUALITY



Week-End VALUES

PENNEY'S PJ'S IN STRIPES, FANCIES

3.49

sizes A, B, C, D

Winter sleeping comfort starts with Towncraft's cotton flannels! Full cut for comfort, saforized* to stay that way. Machine washable.

*Won't shrink more than 1%

NEW PRINTS IN COTTON FLANNEL!

4.98

sizes small, medium, large, extra large

Handsomely patterned Towncrafts, backed with superb Penney tailoring! Stripes, checks or plaids... all brand new. Saforized* machine washable.

*Won't shrink more than 1%

REDUCED! One Table Women and Children

Shoes 2.00

REDUCED! One Group

Boy's Slacks 3.00

Sizes 10 to 18

SPECIAL! Remnants

1-3 OFF

REGULAR PRICE

REDUCED! One Group Mens

All Wool Slacks 6.88

REDUCED! One Group

PRESCILLA Curtains 3.00

SPECIAL! Boys

Sweat Shirts 1.00

Sizes 4 to 16

SPECIAL! Feather

Bed Pillows 1.00 each

REDUCED! One Group Mens Rayon Blend

Slacks 5.00

Save as You Spend with D.N. Green Stamps

READ THE CLASSIFIEDS

JOY DRIVE-IN
CISCO — EASTLAND HIGHWAY

Opens 6:45 Closes 9:00

FRIDAY AND SATURDAY

SUSPENSE, ADVENTURE AND INTRIGUE!
VAN JOHNSON - MARTINE CAROL - HERBERT LOM
ACTION OF THE TIGER
FROM M-G-M IN CINEMASCOPE AND COLOR

ANNOUNCING

... the opening of
Lindley & Duncan
BODY SHOP

Phone 165

Located at Muirhead Motor Co.

Every Job Guaranteed To Please

WSCS Plans Turkey Dinner At Tuesday Meeting

Mrs. Frank Crowell presided during the meeting of Woman's Society of Christian Service which met Tuesday morning in the church parlor of the First Methodist Church.

Mrs. Crowell introduced a guest, Mrs. Owen Ambrose, and a new member, Mrs. C. A. Cockerell who resides at 1301 South Seamon.

The Society voted to have a "kitchen clean-up" at 9:30 a.m., Monday, and all members are urged to attend.

Committees were read off and arrangements were made for the annual turkey dinner which will be served to the public Friday, Nov. 22. Mrs. Crowell announced that preparation for turkey dinner will begin Thursday, Nov. 22.

The program for the meeting was on "The Mind That Was in Christ," and was under the leadership of Mrs. Crowell. Other members on the program were Mrs. W. P. Leslie, Mrs. Tom Haley, Mrs. Rudolph Little, and Mrs. Richard Smith.

Members attending were Meses. H. J. Bulgerin, Ronald Burton, Frank Castleberry, Frank Crowell, W. F. Deaton, J. A. Doyle, Tom Haley, Charles Harris, T. M. Johnson, W. W. Lanev, W. P. Leslie, Rudolph Little, W. A. Martin, J. M. Perkins, Richard Smith, Jerry Souther, Henry Van Geem, H. E. White and O. M. White.

Card of Thanks

Words cannot express the gratitude in our hearts for every kindness shown us in our hour of sorrow in the passing of our loved one. The lovely floral offerings, the food brought to our home, and every expression of sympathy helped us to erase the heartache and grief. May life's richest blessings be yours in our prayer.

Mrs. Bill Tucker
Billy Alvin Tucker and Family
Malcolm Tucker
Mrs. Mabel Owen

ATTEND THE CHURCH OF YOUR CHOICE EACH SUNDAY

Women's Activities

Sgt. Cockerell Speaks At Tri-Hi-Y Meeting

Sergeant Cockerell of the Eastland Highway Patrol gave a talk on law enforcement, its history, departments and divisions and its functions in the meeting of the Tri-Hi-Y Tuesday, Nov. 5.

Anne Pittman, vice-president, presided over the meeting. Judy Inzer presented the devotional and a short prayer.

Rosemary Jones gave a report on what the West Texas Conference would be about and what Eastland YMCA would do if it were host. The Conference was discussed and they voted to be host. Officers and other representatives of the Hi-Y and Tri-Hi-Y of the West Texas area will be present. During the two days of the conference the visitors will stay in the home of the Eastland members of the Hi-Y and Tri-Hi-Y.

Sergeant Cockerell spoke to the group on law enforcement, its history, departments and divisions and their functions. He also expressed his wish that Eastland High School were equipped for driver's education course. He explained advantages of the course which were its aids in preventing car accidents and also helps a teenager to obtain his driver's license. He asked the group to drive safely and obey the traffic laws.

The group decided to gather up clothing to bring to the YMCA for an orphan's home. The clothes will be sent to the Brian school superintendent who will see that they are delivered to the proper place.

Those present at the meeting

were as follows: Judy Inzer, Frances Cogburn, Albine Jimenez, Phillis Phillips, Janie Morton, Janie Arthur, Linett Capers, Jamie Stamey, Gaila Walters, Patricia Fullen, Nancy Beck, Roma Kay Ploughman, Carroll Garrett, Linda Huckabay, Yvonne Green, Barbara Brock, Sarah Sims, Sue Day, Jackie Baggett, Dixie Durham, Sandy Taylor, Rosemary Jones, Betty Jordan, Martha Freese, Marsha Connell, Brenda Evans, Jean Smith, Anne Pittman, Mrs. Bill Frost and Mrs. H. J. Carothers and one guest, Sergeant Cockerell.

Art Club Plans Christmas Party

Plans for their Christmas party were made by the Thursday Afternoon Art Club in their meeting in the home of Mrs. W. E. Lawson recently.

Art Club will hold their annual Christmas party in the home of their president, Mrs. Joe Tow. The club also discussed their paintings that they are to take to the meeting of the Alpha Delphian Club on Thursday. The Thursday Afternoon Art Club will be guests of the Alpha Delphian Club.

Mrs. Lawson had "elaborately" decorated her home with dried autumn arrangements which she had made.

Refreshments of loaf cake with cherry icing and whipped cream with coffee and mints were served from a table laid with a "beautiful" cut work cloth.

Those attending were Meses. Frances Urban, H. B. MacMoy, Homer White, Joe Tow, W. W. Walters, one guest Mrs. Cora Reiman of Cisco, and the hostess, Mrs. W. E. Lawson.

Trip to Abilene Is Planned by Junior Y Boys

Junior Y boys made plans for a trip to see the Harlem Globe Trotters play basketball in Abilene in their meeting at the Y. M. C. A. building Monday night.

During the business meeting the boys planned the annual Christmas party for the needy children. The boys agreed to help the advisor to make this project a successful one.

After the meeting was adjourned the members enjoyed a recreation period for the remainder of the period.

Those present were Clark Conner, Dena Murray, Lyndell Garrett, Jimmy Moylan, J. B. Tankersley, Junior Ensor, Howard Patton and Mike Thornell.

CALL 601 FOR CLASSIFIED ADVERTISEMENT

Try Them On In Your Home! FREE

Actual Size Replica Cut-Out Maico Hearing Glasses

Now, in the privacy of your own home, discover how good you look in the all-new slender Maico Hearing Glasses. Included is colorful folder showing face flattering styles for men and women. Send coupon today.

Inquire at Corner Drug, Eastland or, Write:
MAICO HEARING SERVICE
734 Butternut - Abilene, Texas

CALL 601 FOR CLASSIFIEDS

DIXIE Drive-In
EASTLAND RANGER HIGHWAY

Box Office Opens 6:30
Show Starts 6:45
Box Office Closes 9:00

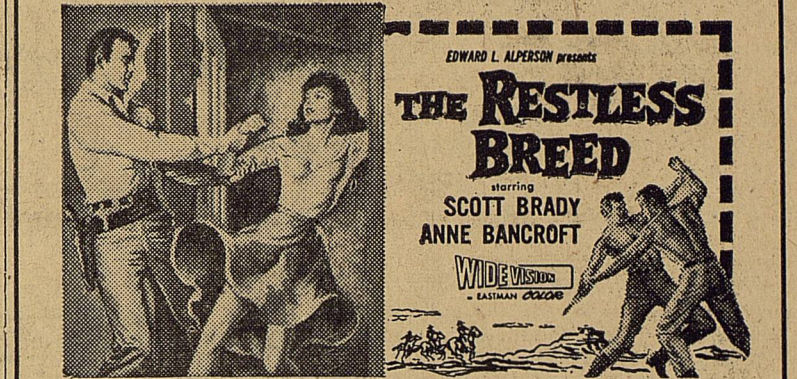
WEDNESDAY - THURSDAY, NOV. 13 - 14



COLOR BY DE LUXE CINEMASCOPE Released by 20th Century-Fox

PLUS: Color Cartoon and Sports Reel

FRIDAY - SATURDAY, NOVEMBER 15 - 16



PLUS: Color Cartoon and Sports Reel

TRI-CITY SIGN SERVICE

201 North Ammerman Eastland Phone 754
• TRUCK LETTERING • WALL SIGNS • PAINTED BULLETINS
—COMPLETE SIGN SERVICE—

BUYING! SELLING! RENTING! SWAPPING!



Read and Use Want Ads for Quick Results!

It's The Town's Biggest Market Place ...

EASTLAND TELEGRAM

Little girls beget big heartaches

From the moment they're born, girls are a lot of trouble. Little ones wiggle too much. Big ones shed too many tears. All of them want dresses that cost too much. And Mothers and Dads never stop worrying about them—never stop loving them—as they take each difficult step from babyhood to girlhood, from blue jeans to crinolines.

Is your little girl starting school this year? If so, she's taking her first step towards growing up—starting on her way towards high school, college, wedding bells and managing a home of her own. There's so much you want her to learn. So many things she needs to know to grow up into the kind of wife and mother you want her to be.

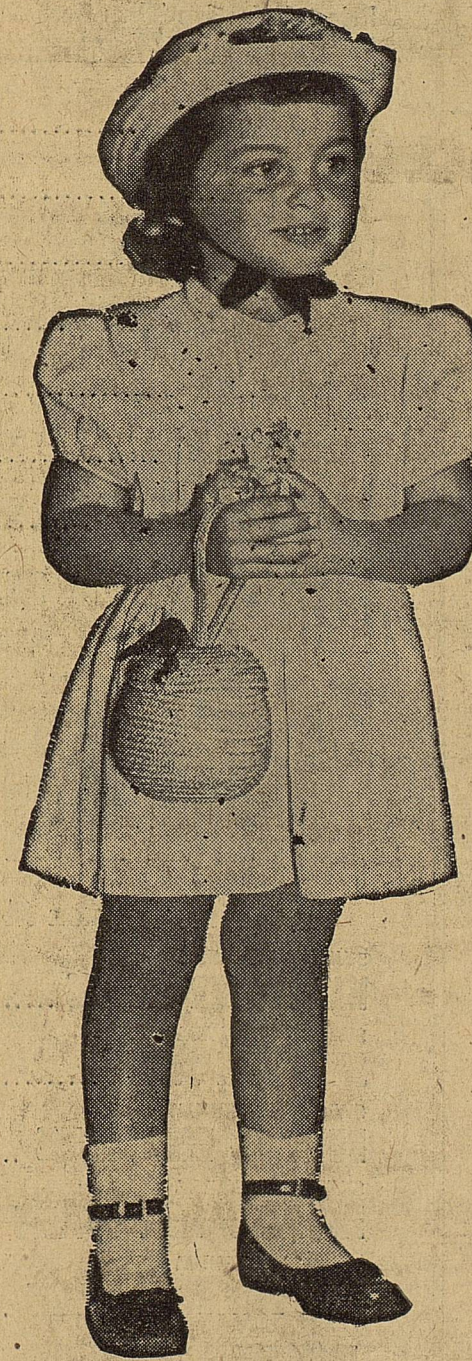
One of the important lessons for your daughter to learn is the meaning of thrift and the value of a regular savings program. And that's what the U. S.

Treasury's School Savings Program will teach her. By the purchase of 10¢ and 25¢ Savings Stamps in their schools, children can save up for U. S. Savings Bonds of their very own. And, as you know, Savings Bonds are one of the best investments that any of us can make.

Is your child's school participating in this important program? Why not speak to your principal, school superintendent or P. T. A. group about it? And start the U. S. School Savings Program in your school today.

Your Savings Bonds State Director will gladly help you install a School Savings Plan or revitalize a present one. Phone or write him—or contact the Savings Bonds Division, U. S. Treasury Department, Washington 25, D. C.

U. S. Savings Stamps point the way you want your child to grow!



ATTEND SCHOOL IN FORT WORTH

Mr. and Mrs. J. C. Poe attended Allied Design school at the school.

Texas Hotel in Fort Worth over the weekend. Some Christmas designs were shown and taught at the school.

Mr. and Mrs. Poe took her parents, Mr. and Mrs. O. Stone of Carbon, to visit her brother and family, Mr. and Mrs. Jess Bates,

and other relatives in Fort Worth this weekend.

READ THE CLASSIFIEDS

Hospital News



Patients in the Eastland Memorial Hospital are:
Mrs. Walter Horton, surgical
Mrs. Jerry Sims, medical
Mrs. Virgil Seaberry, Sr., surgical
J. C. Maheley, medical
Weldon Broussard, medical
Mrs. Gordon Wadley, surgical
Gerald Wingate, medical
Mrs. Elvis Nelms, medical, Cisco.

Mrs. Myrtle Anderson, medical
J. D. Hitt, medical, Cisco
Mrs. Tom Christesson, medical, Breckenridge
Mrs. John Roper, medical
Mrs. Frankie Lassiter and baby boys

Harold Courtney, medical
Dismissed were:
Mrs. H. P. Cole and baby boy,
John Roger Harris and Mrs. Gene Anderson and baby boys.

Patients in the Ranger General Hospital from Eastland and Olden are:

Mrs. Mabel Owens, surgical
Mrs. L. D. Yancey, medical
Peggy Yancey, medical
Mrs. Ruth Hagar, medical
J. R. Langham, medical
LeRoy Millican, medical
T. J. Humphreys, medical
Mrs. Emily Caldwell, medical
Mrs. W. J. Shoenrock, surgical
R. L. Sellers, medical, Olden
Mrs. E. M. Slaughter, surgical
Josie Hernandez, medical
Dismissed was Rufus Hendricks.

WEEKEND TRIP

Mrs. Iona Bownds and Doris visited in Ralls, Lorenzo and Lubbock over the weekend. They spent Saturday night with Mrs. Bownds' mother-in-law, Mrs. R. W. Bownds of Lubbock.

ARIZONA VISITORS

Mr. and Mrs. Hosey Lanier of Selegaman, Ariz., were guests in the home of Mr. and Mrs. J. R. Lanier last week. Mrs. R. A. Lanier and son, James, of Abilene were weekend guests in the home of Mr. and Mrs. J. R. Lanier.

ATTEND THE CHURCH OF YOUR CHOICE EACH SUNDAY

Gorman Gatherings

By Mrs. R. E. Boucher

Mr. and Mrs. Bob Boswell of Fort Worth were guests in the home of his parents, Mr. and Mrs. R. C. Boswell, Saturday night.

Mr. and Mrs. James Smith had as guests Sunday, her parents, Mr. and Mrs. R. E. Boswell and her brother, Bob, and wife.

Mr. and Mrs. L. G. Gray had as their guests over the week their daughters and husbands, Mr. and Mrs. A. C. Maddocks of Denton, and Mr. and Mrs. Preston Lightfoot of Sweetwater.

Mrs. J. N. Ellison and Mrs. Minnie Richey were shopping in Stephenville Wednesday.

Mr. and Mrs. Walter Dexon of Winters visited with Mr. and Mrs. R. E. Boucher Saturday night and visited with Mrs. B. E. Wilson, who underwent surgery Saturday morning at the Blackwell Hospital. At the last report she was doing nicely.

Mrs. Minnie Richey had as her guest over the weekend her niece and family, Mr. and Mrs. G. A. Little, Andy and Tommy of Dallas.

Neil Sutton of Borger was a recent visitor with his mother, Mrs. Martha Sutton.

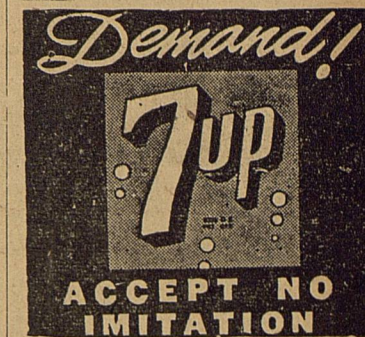
Mr. and Mrs. Gene Ellison, Pat and Jeanne of Abilene were visiting in the homes of their parents, Mr. and Mrs. J. N. Ellison and Mrs. Fannye Burkett, during the holidays.

Mrs. L. F. Morrow came home Sunday from Fort Worth where she has been visiting with her children, Mr. and Mrs. E. W. Underwood and family. Underwood drove her home.

ATTENDS WORKER'S CONFERENCE

Mr. and Mrs. W. C. Howard of Olden attended the Baptist Worker's Conference in Rising Star Tuesday night.

Miss Jan Hokit of Fort Worth and Joe Thomas Hague of Tyler were guests in the home of Mr. and Mrs. Weaver Hague Sunday.



EAT BETTER BUY MORE SPEND LESS WHEN YOU SHOP HERE!

CLOVER FARM

Coffee Drip or Regular

1-Lb. Can **75¢**

Chase & Sanborn

Instant COFFEE

Big 6-Oz. Jar

99¢

Glendale

Early June

PEAS

2

No. 303 Cans

25¢

Clover Farm

Grapefruit

JUICE

46-Oz. Can

25¢

Spanish

Sweet Yellow

ONIONS

Pound

5¢

SPORK

12-Oz. Can

43¢

BETTY CROCKER OR PUFFIN

Biscuits

Can **10¢**

CLOVER FARM

Peaches Sliced or Halves

No. 2 1/2 Can **29¢**

GOLDEN FLUFFO

Shortening

3 Lb. Can **89¢**

GLENDALE HAND PACKED

Tomatoes

2 No. 303 Cans **25¢**

GLENDALE FANCY

Spinach

2 No. 303 Cans **25¢**

Crackerjacks

2 Boxes **15¢**

GLENDALE YELLOW CREAM

Corn

2 303 Cans **25¢**

GLEEM

Tooth Paste

Family Size 79c Size **63¢**

CENTRAL AMERICAN

Bananas

Lb. **12 1/2¢**

CALIFORNIA

Carrots

Lb. Bag **12 1/2¢**

U. S. NO. 1 IDAHO RUSSET

Potatoes

10 Lb. Bag **43¢**

ARMOUR'S STAR SLICED

Bacon

Lb. **59¢**

RATH'S BLACK HAWK PORK

Sausage

2 Lbs. **83¢**

GOOCH'S

Franks

3 Lbs. **94¢**

Club Steak

Choice Beef Lb. **59¢**

Chuck Roast

Choice Beef Lb. **45¢**

Loin Steak

Choice Beef Lb. **68¢**

Pork Chops

Lean Tender Lb. **59¢**

save-



H. B. MacMoy, Owner

7:30 a.m. to 8:00 p.m. Weekdays

7:30 a.m. to 9:00 p.m. Saturdays

SMOKED

Picnics

Lb. **39¢**

FRESHER WHEN YOU SERVE IT



NEW!

Brer Rabbit Waffle Syrup

More Maple-y Clear Through... Costs you less, too!

If your family is sweet on syrup, they'll love Brer Rabbit's new WAFFLESYRUP. For this maple-y flavored treat is rich and full-bodied. Perfect on pancakes and waffles. And how it glorifies all your other favorite foods. Toast, cereal, ice cream—you name it, Brer Rabbit Waffle Syrup will make it an extra-special treat.

Brer Rabbit Waffle Syrup is the newest member of the Brer Rabbit family of fine syrups—the syrups of the South!

BROWN LABEL— Mild sugar cane sweet flavor!
BLUE LABEL— Old-time ribbon-cane flavor!



Carbon School News

By LINDA COLLINS

Telegram School Reporter

We began this week feeling pretty spry because we did not have but one day last week. School closed because of flu and muddy roads.

Our football game with Priddy which was to be at Priddy was changed to Carbon. Some of the folks around here said our boys had something to "howl" about when we beat Pottsville and we have another victory to howl

Your children's growing-up years...



Keep them forever in portraits

A phone call will arrange your appointment.

CANARIS STUDIO

On The Square Phone 46

about this week. We beat Priddy 68-0. Our boys are really beginning to snore for "dear ole" C.H.S. The boys responsible for the touchdowns and extra points are Lenny Frazer, two touchdowns; Charles Bryant, three touchdowns; Jimmy Sandlin, two touchdowns and one extra point; Mickey Rodgers, one touchdown and three extra points; James Wyatt, one touchdown and one extra point; Robert Norris made one extra point. We are really proud of our boys. Our football game next week will be with Mullin there at 7:30 p.m. We would like to see all of you there being as this is our last game of the season. We sure hope we win.

Our pictures will be retaken Wednesday and then this will be the last of the picture taking for the annual this year.

It won't be long until basketball season will be here. Basketball is already underway at Carbon. The first basketball game will be at Gustine on Friday, Nov. 15.

The girls playing basketball are as follows:

Mary Butler, guard; Colleen Campbell, forward; Linda Eaves, guard; Patsy Hale, guard; Doris Harle, guard; Lorene Lewis, guard; Ann Mangum, forward; Wanda May, guard; Kay McDaniels, forward; Nancy Norris, forward; Jo Rasberry, forward; Ruth Rasberry, guard; Mittie Rone, guard; Dorothy Simmons, guard; Maxine Stacy, forward; Annie Stephenson, forward; and Kathy Underwood, forward; Sandra Lasater will be manager for the basketball team.

I guess that is all for this week but I will be back soon to tell you about our game with Mullin and anything else that happens over our way.

Card of Thanks

We are deeply grateful to our friends who in anyway contributed to our comfort in the passing of our beloved husband and father.

To the ladies for the food, for the beautiful floral offerings, to Dr. Payne for his untiring efforts and to Brother Flaming for his comforting words, your acts of kindness will live in our hearts always.

The Lasater Family

CALL 601 FOR CLASSIFIED ADVERTISEMENT

I GIVE YOU TEXAS

By BOYCE HOUSE

In Corpus Christi, the weather forecast—instead of flatly naming a high temperature—will give a range such as, "High today will be between 89 and 94." Of course, it being Texas and summer, (when I was there) you knew it was going to reach 94—but doesn't "between 89 and 94" sound more cooling?

A bluff divides the downtown section of Corpus Christi. There are three ways for the pedestrian to get to the top of the bluff. One is by a walkway which curves around beside the street. Another is a picturesque flight of steps which has a white sculptural design in front of it. The third way, is by means of a tunnel—yes, you reach the top by going through a tunnel. But there is a slope and then a flight of steps. I know of no other city with three-way method.

On my arrival in Corpus Christi, I heard a terrific voice which sounded as though it was coming over a loud-speaker turned as high as it would go. On entering the tunnel, I perceived the source: a crippled beggar who was preaching. The acoustical power of the tunnel is amazing.

La Retama library is in the center of the business district—on the spot where the city hall used to be.

The city busses go in for advertising—not just cards inside or signs on the outside, but the entire bus. One, for example, looks like a huge loaf of bread. Another looks like a package of butter. I wonder if the citizens instead

of speaking of such-and-such a bus route (such as North Beach) don't say, "You catch Jones Butter-milk and transfer to Smith's Baked Beans."

Jutting out into the bay are two long piers, each with a double line of sail boats and cabin cruisers rocking at anchor.

Palm trees, cape jasmines (or is it jessamines?), a church with towers and a tiled dome, the pink Princess Louise Hotel on the beach, the immense Robert Driscoll Hotel on top of the bluff—the bay, deep blue in the late afternoon and rippled by a wind, the water stretching to the rim of the world—these are a few of the features that make Corpus Christi highly attractive.

Overseas Veterans Welcome
Karl and Boyd Tanner
Post No. 4134
VETERANS OF
FOREIGN
WARS
Meets 2nd and
4th Thursday
8:00 p.m.

PERMANENTS
\$ 7.50 Oil-Glo Creme .. \$ 5.00
\$10.00 Creme Wave \$ 7.50
\$15.00 Creme Oil Wave \$10.00

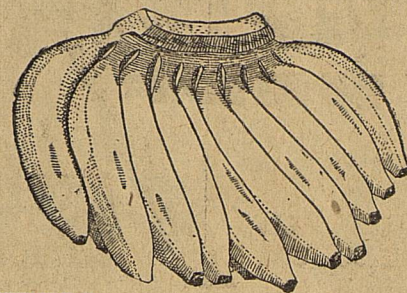
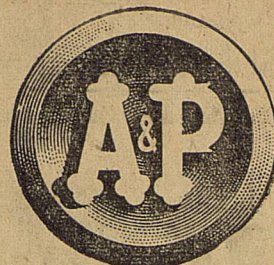
Basham Beauty Bar
Lula Mae Smith Basham
1416 S. Lamar Phone 964

You're Leading a Sheltered Life-

... if you think yesterday's insurance could rebuild your home today. You can see the effect of increased prices most every time you buy an article at the store. Ditto with building costs especially labor. Just imagine what it would be like if a disaster struck and you had to buy again everything you now own. The sensible thing to do is to get your insurance in line with today's replacement costs. Let's talk it over today.

EARL BENDER & COMPANY

Eastland, (Insurance since 1924) Texas



EASY-TO-CHOOSE FAVORITES!

BANANAS

GOLDEN

RIPE.....

2 lbs. 25¢

TEXAS

Green Cabbage 1lb. 5c

OREGON BARTLETT

PEARS 1lb. 15c

CALIFORNIA

AVOCADOS each 19c

ARIZONA ICEBERG

LETTUCE 2 heads 29c

FLORIDA MARSH SEEDLESS GRAPEFRUIT 3 for 25c

FRESH

CARROTS 2-lb. bag 19c

IMPORTED ITALIAN

CHESTNUTS 1lb. 29c

ROASTED—3-Oz. Bag

PEANUTS 25c

RAW—1-Lb. Bag

PEANUTS 35c

FROZEN FOOD FIESTA

A&P ORANGE JUICE 2 6-oz. Cans 27¢

A&P BABY LIMA BEANS 2 10-oz. Pkgs. 33¢

A&P GOLDEN CORN WHOLE KERNEL 2 10-oz. Pkgs. 29¢

BIRDS EYE GREEN PEAS 2 10-oz. Pkgs. 31¢

BIRDS EYE BROCCOLI SPEARS 2 10-oz. Pkgs. 43¢

BIRDS EYE SPINACH LEAF OR CHOPPED 2 10-oz. Pkgs. 31¢

CHOC. CHERRIES WARWICK CHOCOLAT F COVERED 1-lb. Pkg. 59¢

THIN MINTS WARWICK BITTERSWEET 1-lb. Pkg. 45¢

Chocolate Drops WORTHMORE 12-oz. Pkg. 29¢

CHOC. PEANUTS WORTHMORE 7 1/2-oz. Pkg. 29¢

PEANUT CLUSTERS WORTHMORE Pkg. 29¢

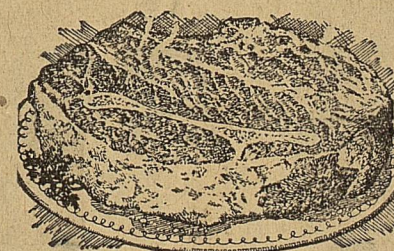
Sour or Dill Pickles RAINBO 3 12-oz. Jars 59¢

SWEET GHERKINS RAINBO 2 12-oz. Jars 59¢

CRISPY PICKLES RAINBO 2 12-oz. Jars 49¢

A&P APPLE SAUCE 2 16-oz. Cans 29¢

Dried Pinto Beans 2 1-lb. Pkg. 19¢



You Can Put Your Trust In Bourland's Meats

CHUCK

Roast-or-Steak 1lb. 49¢

DECKERS TALL KORN Bacon THICK SLICED 2 1-lb. 1.09

Ground Beef 1lb. 39¢ Sirloin Steak 1lb. 69¢

100% PURE PORK—Home Made

Sausage 1lb. 55¢ Club Steak 1lb. 69¢

GOLDEN RISE BISCUITS Pkg. 10¢

DEPENDABLE BEANS 5 KINDS 2 16-oz. Cans 15¢

TEXIZE LIQUID DETERGENT 5¢ Off 12-oz. Can 25¢

TEXIZE LIQUID DETERGENT 10¢ Off 22-oz. Can 45¢

SHELLED PECAN HALVES 1lb. 99¢

CRESTMONT ICE CREAM Holiday Flavor Tutti Fruitti 1/2-Gal. Ctn. 69¢

TOMATO KETCHUP ANN PAGE 14-oz. Btl. 19¢

JANE PARKER CHERRY PIES ea. 43¢

JANE PARKER ANGEL FOOD RING CAKE 1-lb. ea. 39¢

JANE PARKER JELLY TOPPED BUNS Pkg. 25¢

JANE PARKER RAISIN BREAD 1-lb. Loaf 17¢

Jane Parker Sandwich Cookies 11-oz. pkg. 29c

Jane Parker Fruit Cakes LIGHT CAKES DARK CAKES (New)

1 1/2 lbs. \$1.35 1 lb. 75¢

3 lbs. \$2.65 2 lbs. \$1.45

5 lbs. \$3.85

FLORIENT AEROSOL BOMB DEODORIZER 5 1/2-oz. Can 69¢

DEODORANT TOILET SOAP GOLDEN DIAL 2 Reg. Bars 27¢

DEODORANT TOILET SOAP GOLDEN DIAL 2 Bath Bars 37¢

GREEN LABEL

Star Kist Tuna

6 1/2-Oz. Can 31¢

COMSTOCK PIE FILLINGS

APPLE 24-oz. Can 37¢ BLUEBERRY No. 2 49¢

CHERRY 3 Cans \$1.00 PEACH No. 2 35¢



NEW 58 FORD

Proved and approved around the world!

Now at King Motor Co. in Eastland

The whole wide world was its test track! Yes, the 58 Ford is the car that circled the world and conquered every conceivable kind of driving condition from mountain snow to desert sand to monsoon mud. This is graphic proof of the stamina and dependability and drive-ability that are yours in the 58 Ford! And what about Ford's style for 58? Well, the French summed it up in one word—"magnifique!" From Honey-combed grille to Safety-Twin taillights the 58 Ford is a steel-sculptured beauty that'll win your heart like it won hearts around the world. Power? Ford's got it aplenty! And its economical power, too. Three brand-

new Interceptor V-8's feature Precision Fuel Induction to squeeze the utmost from today's modern fuels. Team an Interceptor powerhouse with Ford's versatile, all-new Cruise-O-Matic Drive and you can have savings of up to 15% on gasoline. And there's so much more that's new in the 58 Ford... Magic-Circle steering, for example, to make your steering feather-easy... and optional Ford-Aire Suspension for the newest in a true air ride to really cushion road shock—give you the best ride ever! But don't just take our word for it. Come in and see and try the 58 Ford. Do it today!

58 FORD

THERE'S NOTHING NEWER IN THE WORLD

SAFEWAY CITRUS SALE

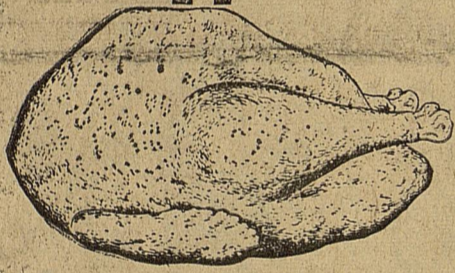
Put "Sunshine" in your fall meals during Safeway's Great Citrus Sale.

Bel-air Frozen Orange Juice

Bel-air orange juice is actually fresher than fresh. The fruit is tree-ripened and processed within 24 hours after picking.

12-Oz. Can **25¢**

- | | | | |
|-----------------------------------------|----------------------------|---------------|------------|
| Natural Grapefruit Juice | Town House | 2 46-Oz. Cans | 41¢ |
| Sweetened Orange Juice | Town House | 46-Oz. Can | 25¢ |
| Orange & Grapefruit Juice | Town House or Blend O'Gold | 46-Oz. Can | 23¢ |
| Pineapple & Grapefruit Juice | Del Monte | 46-Oz. Can | 29¢ |



CHICKEN HENS



Manor House, U.S.D.A. Inspected. Ready to Cook 3 1/2 to 6-lb. Avg.

Nice to Fricassee, Stew or Roast

Lb. **37¢**

- | | | | |
|----------------------------------|--------------------------|----------------|---------------|
| Canned Picnics | Pear Shaped Ready to Eat | 4 1/2 -Lb. Can | \$2.49 |
| Hormel Canned Hams | Pear Shaped Ready to Eat | 4 -Lb. Can | \$3.99 |
| Wingate Pure Pork Sausage | Reg. or Hot | 2 -Lb. Roll | 69¢ |
| Somerset All Meat Franks | | 1 -Lb. Roll | 53¢ |

- | | | | | | | | |
|-----------------------------|----------------------------|----------------|------------|-----------------------------|-------------------------------------------------------|----------------|---------------|
| Zee Napkins | Colored or White | 2 80-Ct. Pkgs. | 29¢ | Razor Blades | Gillette Blue - Reg. Pack | 5-Ct. Pkg. | 25¢ |
| Zee Tissue | Assorted Colors Family Pak | 4 -Roll | 35¢ | Zest Beauty Bar | Deodorant Toilet Soap | 2 Reg. Bars | 29¢ |
| Zee Lunch Bags | Perfect Size | 2 20-Ct. Pkgs. | 25¢ | All Detergent | Ideal for Automatics | 10 -Lb. Box | \$2.39 |
| Colgate Dental Cream | Large Tube | | 29¢ | All Detergent | Extra Fluffy | 3 -Lb. Box | 75¢ |
| Pablum Cereals | Assorted Pack | 6-Pkg. Ctn. | 31¢ | Liquid Detergent | Wisk | 16-Oz. Can | 43¢ |
| Kraft Mustard | Horseradish or Salad | 6-Oz. Jar | 10¢ | Liquid Detergent | Joy | 32-Oz. Can | 99¢ |
| Crisco Shortening | For All Your Baking | 3 -Lb. Can | 91¢ | Dog Food | Red Heart Assorted | 2 -Lb. Cans | 31¢ |
| Fluffo Shortening | For Lighter Cakes | 3 -Lb. Can | 91¢ | Dog Food | Champ 99 Horsemeat | 15 3/4-Oz. Can | 18¢ |
| Kraft Caramels | Fresh, Chewy | 1-Lb. Pkg. | 39¢ | Soft Weve Tissue | Assorted Colors | 2 Rolls | 27¢ |
| Frozen Rite Rolls | Parker House | 22-Oz. Pkg. | 39¢ | Skylark Raisin Bread | | 1-Lb. Loaf | 25¢ |
| Cheez Whiz | Kraft | 16-Oz. Jar | 55¢ | Biscuits | Skylark Brown and Serve 12-Count Buttermilk | 9-Oz. Pkg. | 18¢ |
| Velveeta Cheese | Kraft | 2 -Lb. Box | 79¢ | Danish Whirls | Curtsy - 1/2 count | 10-Oz. Pkg. | 39¢ |
| Shaving Cream | Gillette Foamy | 6 1/4-Oz. Can | 79¢ | Bread | Skylark Buttermilk - Made with Sweet Cream Buttermilk | 1 1/2-Lb. Loaf | 27¢ |
| | | | | Ponds Cold Cream | | Small Jar | 40¢ |

Florida Oranges 8 -Lb. Bag **45¢**

Keep Plenty on Hand for Juice... Sweet and Delicious...

- | | | | |
|----------------------------|--------------------------|------------|------------|
| Ruby Red Grapefruit | Plump Fragrant | 8 -Lb. Bag | 45¢ |
| White Grapefruit | Fresh in from the Groves | 8 -Lb. Bag | 45¢ |
| Fresh Lemons | Loaded with Juice | Lb. | 15¢ |

- | | | | |
|------------------------|---------------------------------|-----------------|------------|
| Powdered Milk | Carnation - Instant Makes 8 Qt. | 25 1/2-Oz. Pkg. | 69¢ |
| Cranberry Sauce | Ocean Spray Jellied or Whole | No. 300 Can | 23¢ |
| Airway Coffee | Full Flavored | 1-Lb. Pkg. | 73¢ |
| Nob Hill Coffee | Rich Flavored | 1-Lb. Pkg. | 79¢ |
| Edwards Coffee | Regular, Drip or Pulverized | 1-Lb. Can | 83¢ |
| Instant Coffee | Edwards | 2-Oz. Jar | 45¢ |

Your Old Broom is worth 50¢ toward the purchase of a brand new Safeway or Aladdin Broom

REGULAR PRICE	\$1.79
50¢ ALLOWANCE50
YOU PAY ONLY	\$1.29

- | | | | |
|----------------------------------|------------------------------------------------------------------------|------------------|---------------|
| Del Monte Early June Peas | | 2 No. 303 Cans | 35¢ |
| Austex Beef Stew | and Vegetables | No. 300 Can | 29¢ |
| Empress Preserves | Apricot, Apricot Pineapple, Grape, Peach, Red Plum and Peach Pineapple | 3 20-Oz. Jars | \$1.00 |
| Velkay Shortening | Creamy Smooth | 3 -Lb. Ctn. | 65¢ |
| Parade Detergent | Plastic Pail, Reg. \$6.28 Value - While It Lasts | 10-Lb. Pail | \$3.98 |
| Revlon Clean and Clear | Cleansing Lotion | 5 1/2-Oz. Bottle | 89¢ |
| Breakfast Gems Eggs | Grade A Quality Large | Doz. | 67¢ |

COMBINATION OFFER

Ground Black Pepper 4-Oz. Can Crown Colony **19¢**

Sno White Iodized Salt 26-Oz. Box or Free Tuning **10¢**

Both For **29¢**

Our unconditional guarantee protects your every purchase.

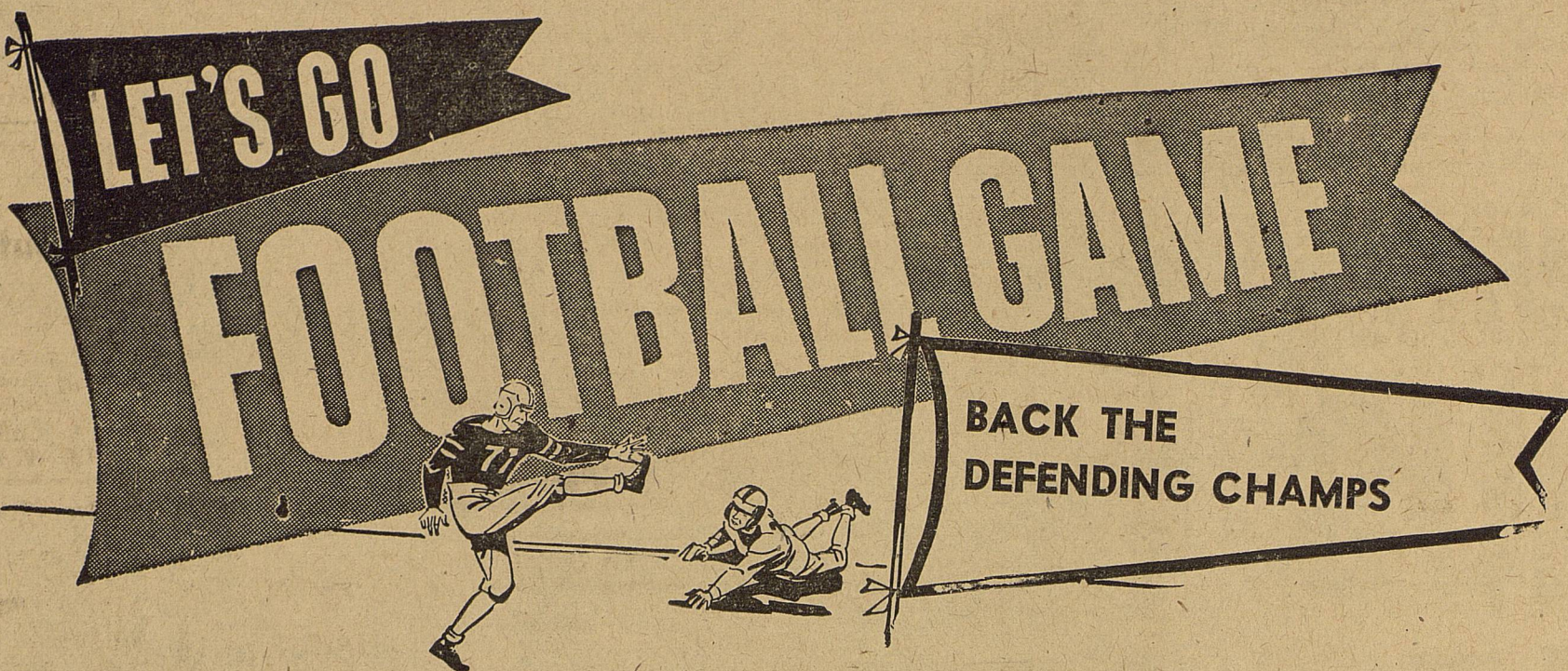
Buy with confidence! You take no chances when you shop here. Everything you buy is backed by our guarantee to refund the full purchase price on any item that does not please you.

**GREEN CASH REGISTER
SAVE SAFEWAY'S
TAPES AND GET
VALUABLE PREMIUMS
FREE!**

- | | | | |
|-------------------------|------------------------------------------------|----------------|------------|
| Biscuits | Ballard or Pillsbury Sweetmilk or Buttermilk | 2 8-Oz. Cans | 25¢ |
| Biscuits | Gladiola, Sweetmilk, Buttermilk or Whole Wheat | 2 8-Oz. Cans | 25¢ |
| Cream Cheese | Kraft, Phila. Plain, Pimento or Chive | 2 3-Oz. Pkgs. | 31¢ |
| Baby Okra | or Blackeye Peas Bel-air Frozen | 2 10-Oz. Pkgs. | 45¢ |
| Bel-air Spinach | Chopped | 2 12-Oz. Pkgs. | 29¢ |
| Bel-air Waffles | Frozen | 2 5-Ct. Pkgs. | 25¢ |
| Lucerne Milk | Homogenized | 1/2-Gal. Ctn. | 47¢ |
| Fritos King Size | Delicious for dips | 6-Oz. Pkgs. | 29¢ |
| Chunk Style Tuna | Chicken of Sea Green Label | No. 1/2 Can | 32¢ |
| Dial Toilet Soap | Bath Size | 2 Bars | 37¢ |



Prices effective Thursday, Friday and Saturday, Nov. 14-15-16. No sales to dealers.



FRIDAY NIGHT - 7:30 O'CLOCK

CLYDE

-VS.-

MAVERICKS

GAME TO BE PLAYED AT CLYDE

Mavericks 1957 Football Schedule

Date	Opponent	Place	Date	Opponent	Place
Sept. 6	Cisco 21, Eastland 18		Oct. 18	Wylie 13, Mavs 7	
Sept. 13	Dublin 7, Eastland 25		Oct. 25	Albany 19, Mavs 13	
Sept. 20	DeLeon 20, Eastland 6		Nov. 1	Open	
Sept. 27	Cross Plains 6, Mavs 19		Nov. 8	Throckmorton 13, Mavs 13	
Oct. 4	Ranger 13, Eastland 14		Nov. 15	Clyde*	Clyde
Oct. 11	Gorman 19, Eastland 33				

*Denotes District Games

MAJESTIC IN EASTLAND
THURS. - FRI. - and SAT.

ELVIS PRESLEY
JAILHOUSE ROCK
STARRING JUDY TYLER
CINEMASCOPE

Adults 60c Child 25c

SUNDAY and MONDAY
Filmed Entirely
—WITHOUT—
Army Co-Operation
ALL FOR LAUGHS!

Operation MAD BALL
JACK LEMMON
ERNIE KOVACS
KATHRYN GRANT



Anderson's
Ladies' Apparel and Children's Wear
Gifts - Millinery - Accessories
North Side Square Eastland

Carl Johnson's Dry Goods
Band and Pep Squad Shoes
North Side Square

Texas Electric Service Co.
F. N. Sayre, Mgr. Phone 18

R. M. Sneed
General Oil Field Construction
Office Phone 684 Residence Phone 889

King Motor Company
Ford Sales and Service
On The Square Phone 42

EASTLAND TELEGRAM

The Men's Shop
Correct Styles for Men and Boys

Gregory Milk Distributing Company
Borden's Dairy Products
Serving: Eastland, Stephens, Brown, Comanche Counties
P. O. Box 390 Eastland Tel. 36

Dairy Treat
"Where Everybody Meets"
814 W. Main Phone 69
Mr. and Mrs. B. W. Robertson

Higginbotham Bartlett Co.
Lumber - Paint - Hardware
Fishing Tackle
301 W. Main Jack Elliott, Mgr. Ph. 112

Sunshine Laundry
Wet Wash - Rough Dry - Finish Work
Free Delivery
Mr. and Mrs. J. B. Kendrick
106 E. Plummer Phone 155

PERRY'S
5 - 10 - 25c STORE
James Smith, Mgr.

City Garage
J. J. Finley, Proprietor
Engine, Starter and Generator Work
103 White St. Phone 995

Foremost Dairy Products
Clyde Manning, Mgr.
Eastland Phone 10

Eastland National Bank
"On the Square" Member F.D.I.C.

Eastland Iron & Metal Co.
East Main Street Phone 270

Brown Plumbing Shop
Mr. and Mrs. Truman Brown
214 E. Neblett Phone 785

Eastland Chamber of Commerce

Nig's Cafe
"Where Everybody Eats"
North Side Square Phone 9522

Eastland Venetian Blind Mfg. Co.
405 1/2 S. Seaman Phone 436

McGraw Motor Co.
Dodge - Plymouth
416 S. Seaman Phone 80

Koen Salvage
Your Scrap Metal Dealer
Highway 80 West Phone 680

Rushing Motor Co.
De Soto - Plymouth
Phone 313 Eastland

Geneva Petroleum Co.
Paraffin Chemicals
Phone 833 Eastland

Leon Bourland Family

OBIE & DOC
Cosden Service Station
East Main & Bassett Phone 9535

Poe Floral
When It's Flowers ... Say It With Ours
West Main Phone 96

Muirhead Motor Co.
Buick - Pontiac
Sales and Service Phone 692

Doc Davis Drug
Prescriptions Filled Accurately
South Side of Square Phone 696

Irish Drilling Company
Highway 80 East Phone 100

R. M. Sneed Contractor
Oil Field Construction
Hwy. 80 East Phone 684

Freyschlag Insurance Agency
Phone 173

Altman's
"Smart Womens Wear"
North Side of Square

Lovelace Transfer & Storage
Local and Long Distance Moving
Since 1929
Eastland, Texas

Reed Oil Company
13 Major Brands
Oil - Quart 35c
Reg. Gas 22 9-10 Ethyl 24 9-10
501 E. Main Phone 9550

Scott Paint & Body Works
"We Make 'Em New Again"
300 W. Commerce Ph. 977

F. W. (Red) Graham Gulf Products
West Main Phone 9509

TOMS Sport Cars
Phone 8 308 W. Main

Kincaid's Feed & Turkey Hatchery
Full-O-Pep Feeds
Eastland, Texas

EARLEY TIRE SERVICE

302 WEST MAIN PHONE 208

Compliments of

TRI-CITIES REAL ESTATE

Phone 1076 Phone 1076

"Selling Eastland and Eastland County"

Mavericks 1957 Player Roster

No.	Name	Pos.	Wt.	No.	Name	Pos.	Wt.
10	Hollis, Larry	HB	142	24	Stamey, Hampton	T	147
11	Turner, Bill	HB	135	25	Lane, Truman	B	136
12	McMahan, John	E	160	26	Aldredge, Larry	G	152
13	Martin, Charles	T	172	27	Robertson, Ronald	HB	138
14	Watson, Kenneth	C	157	28	Van Geem, Henry Jr.	G	148
15	Reed, Stanley	E	152	29	Humphrey, Clint	QB	134
16	Pullman, Saul	FB	190	30	Dodson, Wayne	T	210
17	Tucker, Fred	C	189	31	Martin, Joe	QB	158
18	Thompson, Charles	E	140	32	Murray, Leo	G	131
19	Arther, Knick	G	156	33	Agnew, Marvin	G	160
20	Norwood, Bill	HB	138	34	Lisenbee, Mike	E	144
21	Manning, Mike	HB	158	35	Smith, J. J.	B	130
22	Lewis, Phillip	E	164	36	Miller, Freddie	E	143
23				38	Lusk, Gary	T	200

Coaches: Carrol Shelton, Baylor—Jon Tate, Sul Ross

READ THE CLASSIFIEDS

New Banana Mix Makes Spice Cake



Spice Cake, an all-time favorite, is even more delicious and certainly easier made with a new instant Banana Cake Mix. Try it!

- Banana Spice Cake, Lemon Frosting**
- 1 package instant banana cake mix
 - 1 1/2 cups water
 - 2 eggs, unbeat
 - 1/2 teaspoon cinnamon
 - 1/2 teaspoon nutmeg
 - 1/2 to 1/2 teaspoon cloves
- Lemon Butter Frosting**
- Place cake mix in mixing bowl; add water, eggs, and spices. Beat 3 minutes until smooth and creamy.
 - Pour batter into 9 x 9 x 2-inch pan, which has been greased and floured on bottom and sides. Bake in moderate oven (350° F.) 40 to 45 minutes.
 - Cool cake in pan, then spread with Lemon Butter Frosting.
 - Lemon Butter Frosting.** Measure 2 cups sifted confectioners' sugar. Cream 1/4 cup butter; add dash of salt, part of sugar, blending well. Then add rest of sugar, alternately with about 2 1/2 tablespoons milk until of spreading consistency. Beat after each addition until smooth. Add 2 teaspoons lemon juice and 1/2 teaspoon grated lemon rind; blend well.

ABOUT YOUR HEALTH



A weekly public service feature from the Texas State Department of Health
HENRY A. HOLLE, M.D., Commissioner

Ridding school lobbies and cafeterias of soft drink and candy vending machines would be one of the most important contributions school officials could make toward better dental health for children.

While the full relationship between diet and dental cares has not yet been firmly nailed down, researchers are in agreement on this: sugar—including that in candy and soft drinks—is a distinct factor in the process of decay.

Practically all pastries and confections contain quantities of sugar. A candy bar may have five to 20 teaspoonsful; a piece of cake has 15; a bottle of pop three to five.

We Americans consume 10 times as much sugar per person as our great-grandfathers did 100 years ago. We use three times as much as we need for energy requirements.

Not only does sugar intake provide fertile food for acid-producing bacteria, but it also spoils the youngsters' appetite at mealtime.

Saliva furnished a buffering action against ordinary amounts of sugar taken into the mouth at mealtime. But if a person nibbles on candy or cookies several times daily between meals, saliva cannot cope with acid buildup.

This applies to adults as well as to children, but it is more meaningful to youngsters since habits they learn in youth carry over into maturity.

The significance of a diet low in refined carbohydrates has been pointed out in recent university studies. Dental patients kept on such a diet for a certain period of time show a sharp reduction of acid-producing bacteria in the mouth.

After successfully concluding treatment for their dental ills, these same patients were able to return to a diet with moderate amounts of carbohydrates and yet remain relatively free of dental disease.

The State Health Department now has a service whereby saliva specimens may be submitted to be checked for decay-causing organisms. When the laboratory analysis is completed, the Department will recommend a diet designed to overcome those organisms. The service is available only through practicing dentists, and is intended for adults and children highly susceptible to dental decay.

Some people are able to eat lots of sweets and still be immune to dental diseases. The answer seems to be that something in the mouths of such people is lethal to acid-producing bacteria. An estimated three percent of the American population is cariesimmune.

Walk into almost any public school in Texas and chances are you will see bright-hued dispensers of dental decay. Until they are

Veterans Land Board to Show \$25 Million Profit

The Veterans' Land Board has now purchased \$114,143,000 worth of Texas farmland with the \$100,000,000 available to it, Land Commissioner Earl Rudder said this week.

Payments from veterans participating in the program are used to buy more land.

Eventually, a \$25,000,000 "profit" will be realized from the first \$100,000,000 in the program, Commissioner Rudder said. This money will be put in a fund which the State Legislature controls.

The land commissioner also noted that the bond market continues to block the sale of some part of the second \$100,000,000 worth of bonds in the program.

No more than three per cent interest may be paid to purchasers of these securities. Bonds on the market are now selling at an average interest of 3.43 per cent.



IT'S THE LAW
★ in Texas ★
A public service feature of the State Bar of Texas

PROBATE LAWS RECENTLY CHANGED

Easier handling of the estates of deceased persons, and at less cost, will result from laws recently passed by the Texas Legislature. During its regular session in early 1957, the 55th Legislature enacted a number of amendments to the Texas Probate Code. The changes became effective on Aug. 22nd.

Here are a few of the new provisions:

1. Some of the notices issued in probate proceedings may now be served by Certified Mail. Formerly the law required service by

Registered Mail, which is more expensive.

2. The amount of bond required of an executor or administrator has been reduced under some circumstances. The estate will thereby save on bond premiums. The old law required a bond to be double the value of all personal property in the estate, even if issued by a corporate bonding company. Now a corporate bond need only match equally the value of the property.

3. Sometimes it is desired to use a bond signed by individuals rather than a bonding company. The old law required these individuals to own real property worth double the value of the estate. Personal property could not be considered. The new law allows personal property to be used in qualifying as a bond signer. However, the two-for-one requirement is retained on this type of bonds.

4. The old law providing for compensation of the executor at not less than 2 1/2 percent of the value of the estate has been eliminated. Now this compensation is

left for the courts to fix on some reasonable basis—this will mean lower costs to many estates.

5. Where a husband or wife is adjudged mentally incompetent, the other spouse now acquires full control of the entire community estate without any type of legal proceedings and without having to furnish a bond.

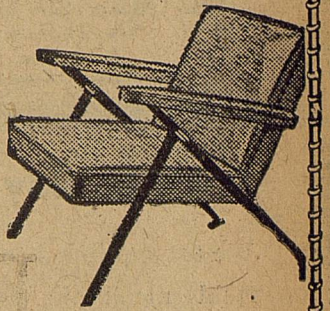
(This column, prepared by the State Bar of Texas, is written to inform—not to advise. No person should ever apply or interpret any law without the aid of an attorney who is fully advised concerning the facts involved, because a slight variance in facts may change the application of the law.)

ATTEND THE CHURCH OF YOUR CHOICE EACH SUNDAY

ED V. PRICE & CO.
TAILORED
SUITS
Sport Coats Slacks
C. L. FIELDS
Phone 571 103 W. Valley

M. H. PERRY
Representing
Southland Life
Life - Retirement Income Partnership
Mortgage Cancellation
Educational - Annuities
Accident - Sickness
Hospitalization - Group
Call 173 or 713-J
107 W. Main • Eastland

Furniture Upholstering

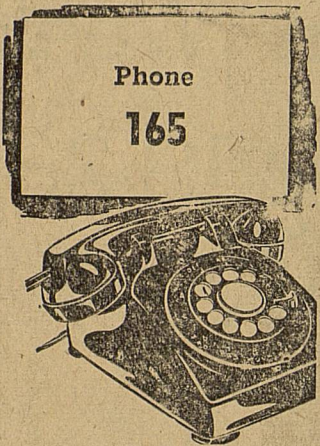


We are now able to do your furniture upholstery, and invite you to take advantage of our new service.

TRIM SHOP

Phone 170 708 West Main

ANNOUNCING



... the opening of
Lindley & Duncan

BODY SHOP

Located at Muirhead Motor Co.

Every Job Guaranteed To Please

2ND ANNIVERSARY

SALE

At COATS FURNITURE—ENDS NOVEMBER 19

Be Sure to come by and Register for the 200.00 in Free Prizes. Drawing November 19th.

CIRCLE Chairs	5.88	CLOTHES Hampers	4.88
209 COIL Mattresses	24.88	5-PC. Living Room	99.50
7-PC. Dinettes	88.88	UTILITY Cabinet	12.88
THROW Rugs	each 49c	SOFA Pillows	79c
PLATFORM Rockers	14.95	ASSORTED Chairs	38.88
9-DRAWER Chest	18.88	8 x 10 Fiber Rugs	12.88
5-PC. Dinette	38.88	ASSORTED Chairs	18.88
2-PIECE Bed Room	49.50	9 x 12 Fiber Rugs	16.88

Lay-A-Way

We Will Hold Any Item You Choose and Deliver Christmas Eve.

Coats Furniture & Carpets, Ltd.

EASY TERMS FREE DELIVERY GOOD TRADE-INS
305 S. Seaman Authorized G. E. Appliance Dealer EASTLAND Phone 585



Cadillac

PROUDLY PRESENTS FOR 1958

MOTORDOM'S MASTERPIECE!

An entirely new Cadillac classic in styling, luxury and performance!

Seldom in Cadillac history has there been an announcement as significant as the message you are now reading.

For this is the announcement that introduces the finest motor car ever to bear the celebrated Cadillac name.

Certainly, one glance at its extraordinary grace and symmetry will tell you instantly that it is motordom's masterpiece in styling.

Its new sweep and stature, its remarkable new rear fender design, its dazzling new grille and four-headlamp system, and its tasteful use of chrome and color... all mark it as a singularly beautiful and majestic creation.

Surely, one look at its new Fleetwood coachcrafting will

convince you that this is motordom's masterpiece in luxury.

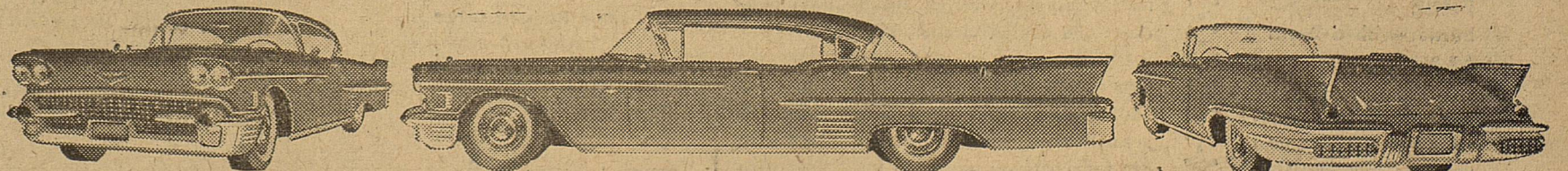
There are exciting new fabrics and leathers... wondrous new beauty of appointments... and a whole host of new passenger conveniences.

And, unquestionably, a single journey behind the wheel will reveal why this is motordom's masterpiece in performance.

There is a spectacular new high-performance engine... an even smoother, more responsive transmission... and, as an option at extra cost, the marvel of Cadillac air suspension.

It's all new—it's all wonderful—and it's all waiting for you today in our showroom.

We urge you to see and drive the 1958 Cadillac soon.



VISIT YOUR AUTHORIZED CADILLAC DEALER

Don Pierson Olds - Cadillac

314 W. MAIN EASTLAND Phone 802

COURTHOUSE NEWS AND RECORDS

Real Estate Transfers, Marriages, Suits Filed
Court Judgments, Orders, Etc.

Clinton M. Britain to Wallace F. Britain, warranty deed.
A. W. Brazda to Wesley Stifler, warranty deed.

Beth A. Bailey to E. Morris Seydell, assignment of oil and gas lease.
Andrew S. Barada to The Public, cc probate.

Melvin Brin to Marion Investment Co., extension agreement.
City of Cisco to Mrs. W. P. Fuller, cemetery deed.

Albert H. Dorrance to Homer L. Gordon, release of vendor's lien.

Eastland County Water Supply District to Lola H. Wilcox, contract.

Employers' Casualty Company vs. J. W. Roe, abstract of judgment.

First State Bank, Rising Star to C. Alice Spencer, release of deed of trust.

J. L. Hammit to R. W. Patterson, warranty deed.
L. B. Horn to James S. Smith, oil and gas lease.

L. B. Horn to James S. Smith, oil and gas lease.
Irish Drilling Company, Inc. to Great Expectations Oil Corp., assignment.

G. L. Lowrance to Premier Oil Refining Co., oil and gas lease.
Magnolia Petroleum Company to Standard Oil Company, oil and gas lease.

Magnolia Petroleum Company to Standard Oil Company, oil and gas lease.

State of Texas to W. M. Pennington, tax receipt.

State of Texas to W. M. Pennington, tax receipt.

Worth Thomason to S. B. Roberts, assignment of oil and gas lease.

Worth Thomason to George A. Donnelly, assignment of oil and gas lease.

Texas Employers' Insurance Company v. Roe Drilling Company, abstract of judgment.

Texas Employers' Insurance Company v. Roe Drilling Company, abstract of judgment.

United States of America to Tri-Cities Broadcasting Co., release of tax lien.

Hall Walker to Mrs. Barbara Walker, MD.

Mrs. C. D. Woods to Cavalier Oil Corporation, oil and gas lease.

A. W. Williamson to A. W. Williamson, Jr., warranty deed.

Dick Wilcox to Calvin Brown, ML & assignment.

J. D. Wheeler to Cisco Lumber & Supply Company, rec. deed.

Paul Yardley to First National Bank, Cisco, transfer of vendor's lien.

J. D. Yancey to Frank Crowell, MML.

Marriage Licenses
James Leotis Holmes and Donna Mae Nelson.
Charley Clayton High and Earline Turner.

Ronald Dean Bush and Una Elizabeth Brown.
John Curtis Rogers and Mary Nell Smith.

Probate
J. B. Caudle, deceased, application for community administration.

Suits Filed
City of Ranger v. Brice Walker Belowsky, et vir, injunction.

Sarah Allie Steel v. National Health & Life Insurance Company, for collection of life insurance.

Jewell Earline Vincent v. Donald Wayne Vincent, divorce and custody.

B. R. Hatton v. G. L. Williamson, et al. suit on note.

Helen Patton v. Carl Patton, divorce and division of property.

Lorena Cox v. Cecil M. Cox, divorce.

Rosa Lee Coleman v. Thomas Ray Coleman, divorce.

Orders and Judgments
91st District Court
Ann Vaughn Holcombe v. E. M. Holcombe, judgment.

Jewell Earline Vincent v. Donald Wayne Vincent, order.

J. A. Estes, et ux v. Jack Pittman, et al, order.

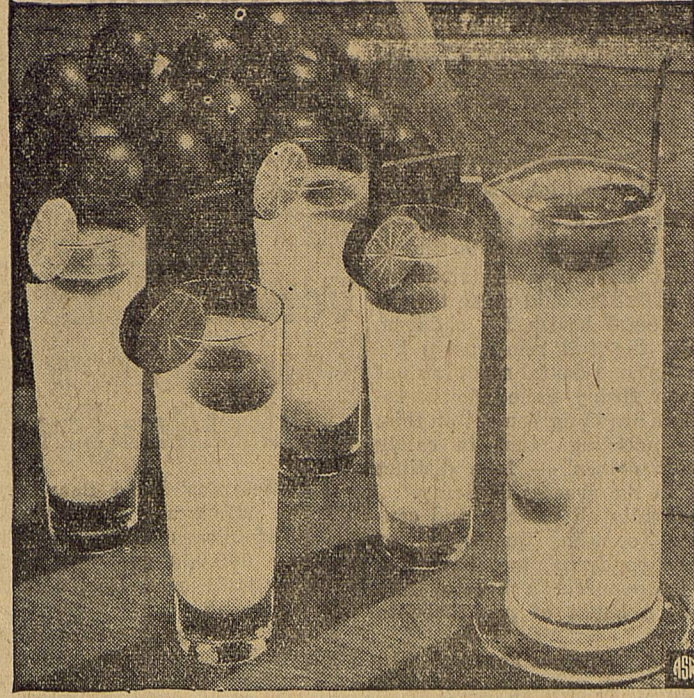
Quarter Horses To Be Auctioned At Stock Show

About 100 Quarter horses will be auctioned off Feb. 2 during the second annual sale of the 1958 Southwestern Exposition and Fat Stock Show, it is announced.

The sale is under sponsorship of the National Cutting Horse Association and is approved by the American Quarter Horse Association. All entries, stallions, mares and geldings, will be foals of 1954 through 1957.

All animals will be sold at halt (with no performance demonstrations.) Walter Britten will be auctioneer.

Torrid Times for Florida Limes!



Cucumbers, long green with envy, can relinquish their reputation for coolness to the big shiny Florida limes now reaching our markets in the nick of summertime! Big as lemons are our American-grown limes and useful in the same ways. They are "ripe when green and green when ripe" and make the best cold drinks you've had in ages.

They used to call them "Persians" or "Tahitian", these big green, glossy limes but now, with the state taking over the growing of them in quantity, they're known as "Florida Seedless" and must pass rigid tests for maturity and juice-content before they can be shipped to market. Expect them to be emerald as Ireland in color—that's the way they are supposed to be. And expect them to cool you off, as they do in these recipes:

- Lime Sparkle**
1 1/2 cups Florida lime juice
Ice
1 quart sparkling water
Florida lime wedges
Combine lime juice and sugar; shake or stir well with ice until very cold and frosty. Add sparkling water; mix well. Serve with lime wedges. Serves 6.
- Lime Frost**
1/2 cup Florida lime juice
4 cups cold water
2 egg whites
1/4 cup sugar
Combine lime juice and water; chill. Beat egg whites stiff; gradually add sugar beating constantly. Slowly add lime juice mixture, stirring constantly. Pour into tall glasses over shaved ice. Serve immediately. Serves 4.

will come to \$1,000.

Entry fees and horse show premiums probably will be more than an estimated \$37,185.

Rodeo contenders will be trying for an estimated \$63,950, which includes entry fees.

READ THE CLASSIFIEDS

INGROWN NAIL HURTING YOU?
Immediate Relief!

A few drops of OUTGRO bring blessed relief from tormenting pain of ingrown nail. OUTGRO toughens the skin underneath the nail, allows the nail to be cut and thus prevents further pain and discomfort. OUTGRO is available at all drug counters.

ANDERSON

ALEX PAWLINS & SONS
MONUMENTS
WEATHERFORD, TEX.
Serving This Community Since 1884

Overseas Veterans Welcome
Karl and Boyd Tanner
Post No. 4136
VETERANS OF FOREIGN WARS
Meets 2nd and 4th Thursday 8:00 p.m.

Save Money On Auto Repairs!

We are equipped to do all your auto, truck and field mechanic work. Mechanic Vernon Garrett has 20 years experience and is factory trained. We can do your tractor repair work, too.

—For Night and Sunday Work Call 1186—

HIGHWAY GARAGE
1006 West Main M. E. Spain Eastland

TRI-CITY SIGN SERVICE
201 North Ammerman Eastland Phone 754
• TRUCK LETTERING • WALL SIGNS • PAINTED BULLETINS
—COMPLETE SIGN SERVICE—

Bank, Cisco, transfer of vendor's lien.

J. D. Yancey to Frank Crowell, MML.

Marriage Licenses
James Leotis Holmes and Donna Mae Nelson.
Charley Clayton High and Earline Turner.

Ronald Dean Bush and Una Elizabeth Brown.
John Curtis Rogers and Mary Nell Smith.

Probate
J. B. Caudle, deceased, application for community administration.

Suits Filed
City of Ranger v. Brice Walker Belowsky, et vir, injunction.

Sarah Allie Steel v. National Health & Life Insurance Company, for collection of life insurance.

Jewell Earline Vincent v. Donald Wayne Vincent, divorce and custody.

B. R. Hatton v. G. L. Williamson, et al. suit on note.

Helen Patton v. Carl Patton, divorce and division of property.

Lorena Cox v. Cecil M. Cox, divorce.

Rosa Lee Coleman v. Thomas Ray Coleman, divorce.

Orders and Judgments
91st District Court
Ann Vaughn Holcombe v. E. M. Holcombe, judgment.

Jewell Earline Vincent v. Donald Wayne Vincent, order.

J. A. Estes, et ux v. Jack Pittman, et al, order.

Deadlines For Fat Stock Show Entries Given

Deadlines for entry of cattle, sheep, swine, horses, poultry, pigeons and rabbits in the 1958 Southwestern Exposition and Fat Stock Show have been announced.

Potential exhibitors of cattle, sheep and swine must have their entry blanks postmarked by Dec. 15. Horse show entries must be postmarked Jan. 1 and poultry, rabbits and pigeons by Jan. 10.

The Fort Worth show, scheduled Jan. 24 through Feb. 2, is offering cash awards totaling \$188,374 for livestock and horse exhibitors and rodeo contestants.

Seven breeds of beef breeding cattle, Herefords, Polled Herefords, Shorthorns, Aberdeen-Angus, Brahmans, Santa Gertrudis and Brangus have been allotted \$45,150 of the premium total.

Junior show premiums total \$11,919, which includes \$3,761 for steers, \$2,880 for heifers; \$2,000 for dairy calves; \$1,128 for lambs and \$2,150 for swine.

Open show steers will compete for \$4,180; open dairy cattle, \$7,635; poultry, pigeons and rabbits, \$2,000; sheep \$5,875, and swine \$8,950.

Awards in the judging contests

Insurance AND Real Estate
D. L. KINNAIRD
Life - Fire - Auto - Farm
Pollo - Bonds
37 years in the Insurance
Business in Eastland

HEAR

Monday
Rev. James Flaming

Tuesday
Rev. Melvin Rathael

Wednesday
Rev. Harvey Kimbler

Thursday
Rev. J. B. Fowler

Friday
Rev. B. L. Davis

Saturday
Rev. L. L. Trott

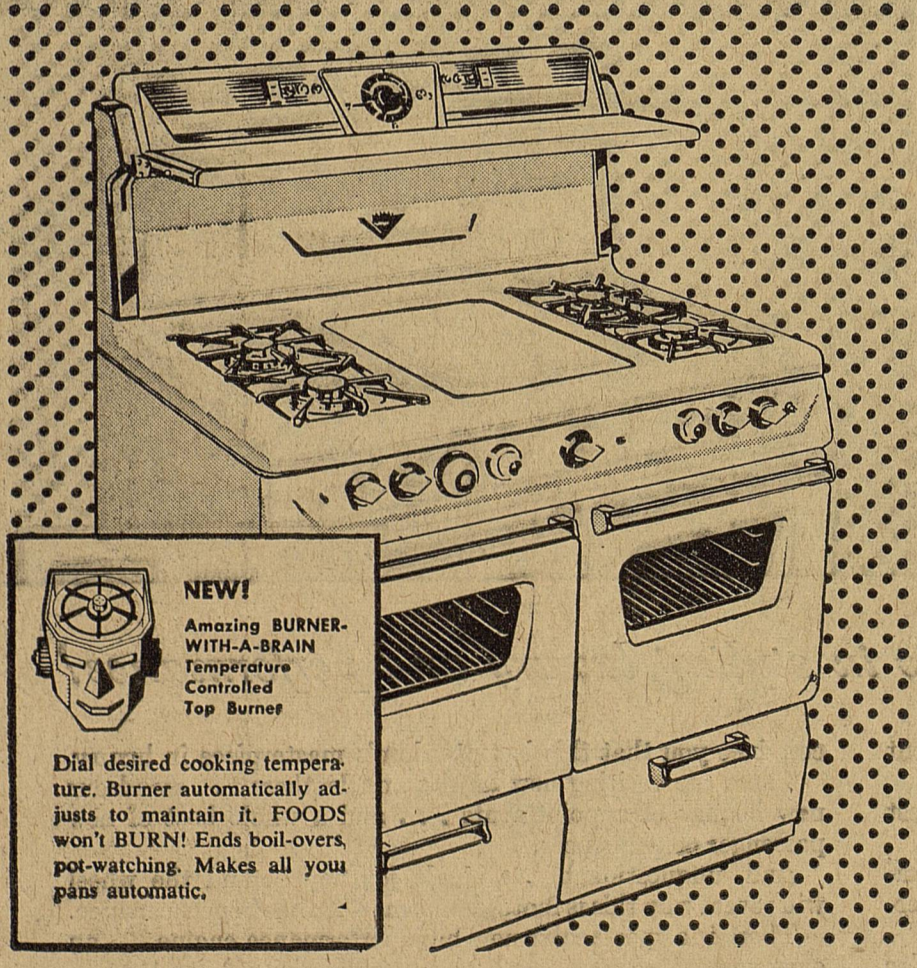
—7:30 p.m.—

Dedication Week November 18-23

at the
Bethel Baptist Church

Brand new models...big savings GIANT VALUE GAS RANGE SALE

HURRY! LIMITED TIME OFFER



NEW!
Amazing BURNER WITH A-BRAIN Temperature Controlled Top Burner

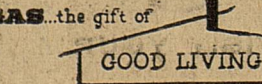
Dial desired cooking temperature. Burner automatically adjusts to maintain it. FOODS won't BURN! Ends boil-overs, pot-watching. Makes all your pans automatic.

Sale Prices!
Low Down Payments!
TERRIFIC TRADE-INS
on your old gas or electric range!

NEW
Automatic Range-Top Griddles. Removable to give you extra giant burner-with-a-brain.

NEW
In-Oven Meat Thermometers. Gives you perfect roasts every time. Ends guesswork.

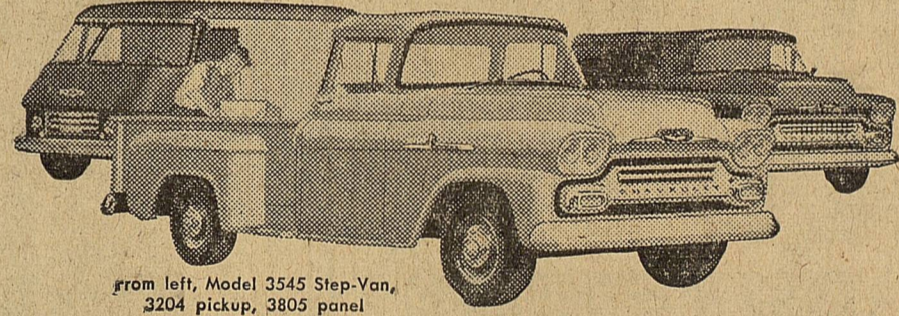
NEW
Built-in Rotisseries. For spit-barbecued meats, fowls, and other fun-to-do foods.



FREE Burner-with-a-Brain MASKS for youngsters... Ask for your robot masks when you stop into your dealer or Lone Star Gas. See the terrific deal you can get on your new gas range. Do it TODAY!

SAVE MONEY WITH GAS!
No Hangover Heat. When it's ON, it's cooking. When it's OFF, it's OFF. This instant response with gas means fewer boil-overs and cooler, cleaner, kitchens.
Gas Costs Less Every Month. Cut costs 300% when you cook with gas. You can actually cook for more than 4 years with gas for what you must pay for 1 year with artificial electric cooking.*

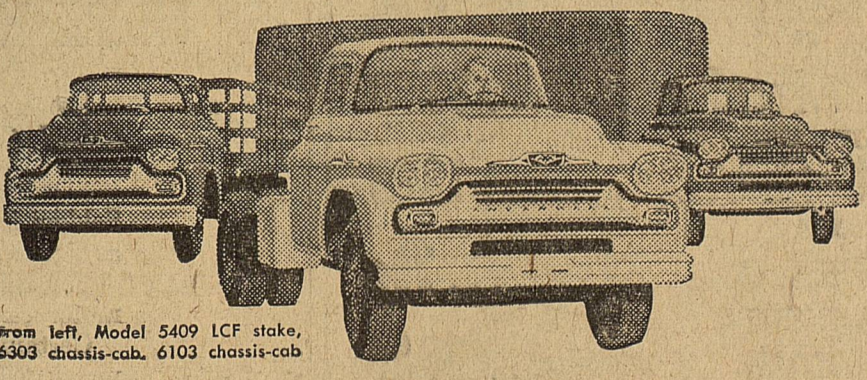
See your gas range dealer or
LONE STAR GAS COMPANY



from left, Model 3545 Step-Van, 3204 pickup, 3805 panel

Here for '58 in 3 hard-working weight classes!

NEW HUSTLE! NEW MUSCLE! NEW STYLE!

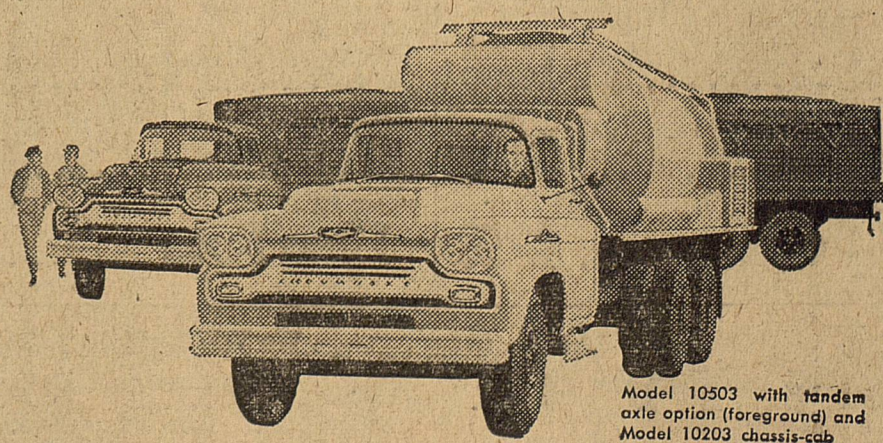


from left, Model 5409 LCF stake, 6303 chassis-cab, 6103 chassis-cab

NEW LIGHT-DUTY Apaches
There's new pep and power in every Apache model, whether you choose the Thriftmaster 6, famous for economy, or the short-stroke Trademaster V8* with a full 283-cubic-inch displacement. Three brand-new Step-Vans make their debut to solve troublesome delivery chores. Rolling in for '58, too, are high-capacity pickups, panels and versatile 4-wheel drive models.
*Optional at extra cost on all conventional models

NEW MEDIUM-DUTY Vikings
Nine new medium-duty models add to the versatility of these Vikings, with new cab-to-rear-axle dimensions for improved semi-trailer, dump and van-type operations. Advanced V8's and 6's deliver efficient, hard-pulling power, with the Heavy-Duty Super Taskmaster V8* packing a high of 175 h.p. High-tonnage options hike GVW ratings to 21,000 lbs.
*Optional at extra cost on all Series 50 and 60 trucks except Forward-Control models

NEW HEAVY-DUTY Spartans
The heavy-duty Spartans make hauling history with the most revolutionary truck engine in decades—the Workmaster V8 with Wedge-Head design! Featured on high-tonnage heavyweights, this completely new 230-h.p. power plant achieves a new high in efficiency! Your Chevrolet dealer is eager to show you many other advanced features, including Triple-Torque Tandem options that boost GCW ratings all the way to 50,000 lbs.!



Model 10503 with tandem axle option (foreground) and Model 10203 chassis-cab

Latest editions of the "Big Wheel" in trucks!

NEW CHEVROLET TASK-FORCE 58

Only franchised Chevrolet dealers **CHEVROLET** display this famous trademark
See Your Local Authorized Chevrolet Dealer