

EBRUARY
and Girl
/C Music
nd Mrs. R. C.
d were visit
orth where
show spon
f Texas We
which their
arguson, ha
Plummer, g
mer of Ex
of a vocal
nbers in the

nd Mrs. R. C.
d were visit
orth where
show spon
f Texas We
which their
arguson, ha
Plummer, g
mer of Ex
of a vocal
nbers in the

nd Mrs. R. C.
d were visit
orth where
show spon
f Texas We
which their
arguson, ha
Plummer, g
mer of Ex
of a vocal
nbers in the

nd Mrs. R. C.
d were visit
orth where
show spon
f Texas We
which their
arguson, ha
Plummer, g
mer of Ex
of a vocal
nbers in the

nd Mrs. R. C.
d were visit
orth where
show spon
f Texas We
which their
arguson, ha
Plummer, g
mer of Ex
of a vocal
nbers in the

nd Mrs. R. C.
d were visit
orth where
show spon
f Texas We
which their
arguson, ha
Plummer, g
mer of Ex
of a vocal
nbers in the

nd Mrs. R. C.
d were visit
orth where
show spon
f Texas We
which their
arguson, ha
Plummer, g
mer of Ex
of a vocal
nbers in the

Eastland Telegram

UNITED PRESS BRINGS LATE NEWS OF THE WORLD TO TELEGRAM READERS

EASTLAND, TEXAS, TUESDAY EVENING, FEBRUARY 21, 1940

PRICE 3c DAILY (5c ON SUNDAY)

NO. 78

MAKE EASTLAND
YOUR SHOPPING
CENTER

AND HAS PREPARED FOR INVASION

By E. C. BURMAN
Staff Correspondent
DALLAS, Feb. 21.—To
be prepared for an invasion
of Holland, the correspondents
of defense works erected
at the war started.

was the answer of the Dutch
staff to frequent rumors
of an invasion of the
Netherlands, thinking the
country would succumb quickly
to the war.

The correspondents were shown
fortifications of apparent
strength carefully detailed
Holland traditional method of
defense—foundations of the coun-
try from the intersected myriads
small and large canals, lakes
and rivers.

Three main defense lines were
pointed out, with the other
respondents were required to
point out other details that
they were useful to any future
invasion.

The three lines were roughly
parallel, one behind the other,
and they were to have a two-fold
purpose: to repel any attempt
to reach the waterways of
Holland, and to halt any
attempt to reach the waterways of
Holland, and to halt any

attempts to reach the waterways of
Holland, and to halt any
attempts to reach the waterways of
Holland, and to halt any

attempts to reach the waterways of
Holland, and to halt any
attempts to reach the waterways of
Holland, and to halt any

attempts to reach the waterways of
Holland, and to halt any
attempts to reach the waterways of
Holland, and to halt any

attempts to reach the waterways of
Holland, and to halt any
attempts to reach the waterways of
Holland, and to halt any

attempts to reach the waterways of
Holland, and to halt any
attempts to reach the waterways of
Holland, and to halt any

MAY SELECTED AS MANAGER OF GAS COMPANY

Dallas, Tex., Chester L. May of
Dallas, executive vice president
and general manager of Commu-
nity Natural Gas Company, Feb.
19 was elected president of the
two companies, which are retail
distribution companies served by
Lone Star Gas Company, the whole
sale end of the system. Mr. May



CHESTER L. MAY

succeeds the late L. B. Denning,
Sr., who in addition to being pre-
sident of Lone Star Gas Corpora-
tion was also president of these
companies.

Mr. May's election places him
at the head of a gas system serv-
ing 170,000 meters in more than
290 towns and cities in north
Texas and southern Oklahoma,
the largest gas system in the
Southwest. The system ex-
tends from Hollis and Purcell,
Okla., on the north, to Round
Rock and College Station on the
South, and from San Angelo on
the West, to Sulphur Springs and
Clarksville on the east. It also
includes El Paso and Galveston
which are off the main pipe line
system.

A career man in the natural gas
industry, Mr. May entered the
business in 1909 in Ohio. He was
with the Ohio Fuel Supply Com-
pany and later with the Arkansas
Natural Gas Company. Coming
to Texas in 1916 to make survey
of all properties of Lone Star Gas
Company, he later was appointed
assistant to the superintendent of
gas measurement and in 1921 was
appointed general superintendent
of the Farmers Gas Company.

This company was absorbed by
Community Natural Gas Company
which was organized in 1925, and
Mr. May was named general super-
intendent with supervision over
the company's expansion program.
During the next five years he per-
sonally supervised the construc-
tion of more than 200 town dis-
tribution plants, the largest build-
ing program of any company in
the country. This great accom-
plishment brought to towns and
cities over a wide area the type
of gas service previously enjoyed
only by large cities.

In 1933 Texas Gas Company
was merged with Community
Natural and Mr. May was elected
vice president and general man-
ager of both companies, having
held that position in Community
Natural since 1929. In 1935 the
Municipal Gas Company which
served 20 Texas cities, was also
merged with the Community Nat-
ural Gas Co.

SWEDISH TOWN IS BOMBED BY SOVIET PLANES

PAJALA, Sweden, Feb. 21.—
Russian planes today bombed this
little Swedish church town, Mayor
George Taube reported. The may-
or stated that the church and sev-
eral houses were damaged when
they were set afire by incendiary
bombs. Seven planes were reported
to have participated in the raid.

The mayor of the town claimed
that more than 30 demolition
bombs and several hundred incendi-
ary bombs had been dropped,
and that much damage had re-
sulted from the air raid.

It is thought possible that the
bombing might have been a mis-
take, as many of the landmarks
had been obliterated by deep
snow, which covered the entire
countryside.

According to the mayor the
bombs were dropped from planes
flying at an altitude of 10,000
feet, and from this altitude it was
considered easy to make a mis-
take in the location of the towns.
This is the first time Swedish
towns have been bombed, though
there have been several reports of
bombings by Russian planes in
Norway.

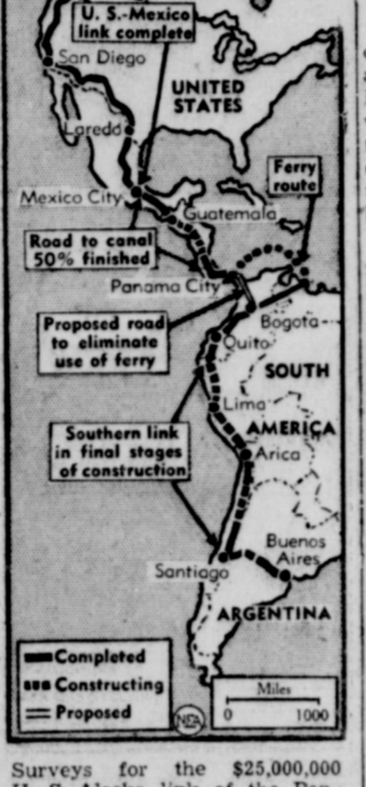
Sweden is expected to make a
severe protest immediately to Mos-
cow over the incident.

At the exact time of the bomb-
ing the Swedish parliament was
giving a vote of confidence to the
cabinet and the foreign minister
for the policy of declining to give
material aid to Finland in her war
with Russia in return for promises
that Sweden would not be molested.

Sweden is divided over giving
aid to Finland, a large proportion
of the people being in favor of
military aid. This group is led by
a committee to maintain freedom of
the Northern European countries.

Meantime Swedes have decided
to continue giving non-military aid
to Finland, and to build up Swe-
dish defenses, because it is feared
that if Finland's defense cracks up
Sweden may be threatened.

Survey Last Link of Huge Highway



Surveys for the \$25,000,000 U.S.-Mexico link of the Pan-American highway will soon begin to bring the 13,000-mile peace roadway, mapped above, to completion.

47 Nationalities Of Soldiers Now On Western Front

PARIS, Feb. 21.—Soldiers of
47 nationalities are fighting along
the French at the Western
Front, it was disclosed today.

Many understand only enough
French to comprehend military or-
ders.

This aspect of the French army
was disclosed with award of the
Legion of Honor and the Croix de
Guerre, with palm, to a young
White Russian refugee second
lieutenant who used his last bullet
to save his patrol from extermina-
tion.

The Russian was leading his pa-
trol between the lines when he
encountered a larger German pa-
trol in a forest. Both patrols hid
behind trees and sniped at each
other. The French patrol ran out
of bullets but the young lieuten-
ant used his last to kill the officer
in charge of the German patrol.
The Germans fell back with their
wounded.

For two years White Russian
refugees and their sons born in
France have been assimilated in
the French army just as native
born conscripts. Poles are incor-
porated in the Polish Legion, now
in training, and the Czechs have
been rolled into a Czech Legion.
All other foreign volunteers are in
new regiments independent of the
French Foreign Legion and are
training in a separate camp.
Thousands of Germans, Austrians,
Italians and even Finns are en-
listed.

RED AND FINN CLAIMS CLASH OVER KOIVISTO

Russian and Finnish claims over
the status of Koivisto, western
anchor port of the Mannerheim
Line, were contradictory today
with Russia claiming that the
town and fort had been captured
and Finland still maintaining
that the fort was still manned
by Finns.

The weather appeared to be
coming to Finland's aid, with a
new blizzard sweeping over the
entire country, apparently in time
to slow down or stop the Rus-
sian drive on the Mannerheim line
on the Karelian Isthmus.

From Moscow it is claimed that
Russian troops are within four to
six miles of Viipuri, second largest
Finnish city. If Viipuri should
fall to Russia it is generally con-
sidered that Finland cannot long
hold out against the invaders, as
Red troops could then encircle
much of the Mannerheim line.

More than 800 Russian planes
have engaged in extensive bomb-
ing and raiding activities through-
out Finland in the past 24 to
35 hours, reports state, with two
raids being made on Helsinki to-
day. Finnish soldiers have shot
down Russian parachute troops
that were dropped near the city,
and claim to have shot down from
17 to 25 planes in the past 24
hours.

The Moscow radio has announced
that a major attack would come
within a few hours and that the
Finnish defense was to be smashed.
Observers were of the opinion,
however, that Russia's boast that
they would break through the
Mannerheim Line by Friday, Feb.
23, 22nd anniversary of the Red
Army, likely would not be made
good, especially if the blizzard
continued. At this time of the
year from five to six weeks more
of severe weather is usually ex-
pected and the winter has been
much more severe throughout
Finland this year.

Guarding Against Runaway Prices Urged On Grocers

SAN ANTONIO, Feb. 21.—Co-
operation of grocers in avoiding
"runaway prices" such as threat-
ened when war was declared last
fall was commended today by
President Galen H. McKinney in
an address before the Texas
Wholesale Grocers' Association.

"All branches of the food dis-
tribution business have followed
the lead of Secretary of Agricul-
ture Wallace," said the Fort
Worth grocer's executive, "with
the result that runaway prices
were avoided. Last September
there was a food price scare, but
through the cooperation of organ-
izations such as ours, prices were
held in line."

McKinney, vice president of Wap-
les-Platter Company, urged co-
operation with the government in
the food stamp plan of distribut-
ing surplus commodities to needy
families and in the federal wage-
hour law.

Oregon's Wishing Fishing Tree



Fishermen at Taft, Ore., drape samples of their catch on this tree to carry out the popular belief that the custom will bring them good luck on their next trip. Neighborhood cats clean the tree every night.

INVENTORY TAKEN OF COUNTY WPA PROJECTS

Eastland County WPA projects
as of Feb. 1 were given employ-
ment to 80 per cent of the total
case load within the county, ac-
cording to J. C. Douglas, district
engineer, division of operations,
in a letter written to County Judge
W. S. Adamson.

Copies of the letter were sent
county commissioners, the mayor
of Carbon, Eastland, Ranger and
Cisco, District WPA Director Maj-
or Karl Wallace and Area Engin-
eer R. Towner Dickinson.

"Douglas' letter stated that East-
land county's employment to 80
per cent of the case load "Com-
pares most favorably with our
district average of 69 per cent."
"Eastland county and the sev-
eral active sponsors within the
county are to be commended,"
said the letter.

Douglas further observed that
"It is encouraging to note that all
the projects now in operation,
with the exception of U. S. High-
way No. 80 and the Olden school,
will continue in operation until
the end of the present fiscal year
June 30, 1940. The proposals in
transit and approved projects will
ultimately represent an excep-
tionally fine reserve. For the
time being, there is nothing to be
concerned about in Eastland Coun-
ty."

The letter to Judge Adamson
and other officials showed that of
the case load of 1,421 male work-
ers 1,047 of the number are as-
signed to projects.

Operating projects, location,
workers assigned and estimated
completion date:
Streets, Eastland, 82 June 30.
Roads, county wide, 752, June
30.
School, Olden, 43, March 30.
Highway construction, U. S.
No. 80, 94, March 1.
Drainage, Ranger, 72, June 30.
Approved projects include a
school building job at Alameda to
start Feb. 26 and employ 195 men
for six months.

"PHONY" WAR TO BE REAL BY SPRING

By LOUIS F. KEEMLE
United Press Cable Editor
Foreign correspondents back
home from abroad are in the main
convinced that the so-called "pho-
ny" war—not meaning the real
one being waged in Finland—will
turn into a violent one with the
coming of spring.

They base their belief on the
reasoning that the terrific econom-
ic strain the draining of capital,
reserves and material resources;
the disruption of trade and the
hardships being borne by civilian
populations through a bitter win-
ter will impel one side or the other
to try to end it before facing
another winter.

Opinion is divided on where the
blow-off will come. Scandinavia is
considered a strong possibility;
Southeastern Europe and the Near
and Middle East are not ruled out.

Most of the correspondents are
inclined to think however, that the
Western Front will be the scene
of action. The major strength of
both Germany and the Allies is
concentrated back of the Siegf-
ried and Maginot Lines and it is
logical to assume that some
side is to win a victory.

As to whether the attack will be
a direct German assault on the
Maginot Line or a flanking move-
ment through neutral countries,
military experts abroad do not
know.

The French estimate that even
if the Germans could break
through the Maginot Line, which
they doubt, it would cost about
1,000,000 men.

Correspondents who have stud-
ied the situation on the ground
and talked with military leaders
lean to the opinion that if a flank-
ing attack is made, it will be
through Belgium and Luxembourg,
not through the Netherlands.

Their view is based on the fol-
lowing reasons:
An attack through the Nether-
lands would still leave Belgium to
be traversed; a tour of Holland's
dikes and defenses show them to
be excellent and capable of ham-
pering an invader; the delay would
give the Allies time to pour a
strong defending army into Bel-
gium; while air bases on the
Dutch coast might be a German
objective, equally good bases are
available on the Belgium coast,
much closer to England.

Feb. 21.—An army
today announced
sharp artillery and
fire on the Western
front, but no details were given
bulletins.

EASTLAND TELEGRAM

Published every afternoon (except Thursday, Saturday and Sunday) and every Sunday morning.

Member of United Press Association
Member Advertising Bureau—Texas Daily Press League

NOTICE TO THE PUBLIC

Any erroneous reflections upon the character, standing or reputation of any person, firm or corporation which may appear in the columns of this paper will be gladly corrected upon being brought to the attention of the publisher.

Obituaries, cards of thanks, notices of lodge meetings, etc., are charged for at regular advertising rates which will be furnished upon application.

Entered as second-class matter at the postoffice at Eastland, Texas, under Act of March 3, 1879.

SUBSCRIPTION RATES

ONE YEAR BY MAIL (in Texas) \$3.00

'Okies' in New York

California isn't the only commonwealth concerned with the problem of migrant "Okies." New York City has them, but they're called something else there—"relief floaters." In the past two years, 2015 such persons have been sent home by the city.

Like the Okies the floaters have left their homes because there was nothing left for them to do. They wandered about in the hope that somewhere they would find jobs. Eventually, they gravitated to New York, where there was nothing left for them except relief. New York has little choice in the matter. It can't support jobless people from every state in the Union. And so the floaters are being shipped home to get relief in their own communities.

What makes the plight of these migrants more tragic is the fact that they had the courage to leave their homes and go out to look for work. They can hardly be blamed if they return to their communities in complete despair. They are not likely to be met by any brass bands.

Football Splits Our Defense

Abolition of the annual Army and Navy football game was recommended by Representative Paul W. Shafer (Rep., Mich.) because, he charged, the rivalry among cadets and midshipmen carries on after graduation to the detriment of the services.—News item.

ENSIGN: There's a request here, sir from General Engeltweet. He wants a couple of destroyers to back up his troops.

ADMIRAL: Engeltweet? Where did I hear—Oh, yes, I remember. Tell him no.

ADMIRAL (exploding): You heard me. The answer is no. Nary a rowboat for Engeltweet. Not after what he did to me in the Army-Navy game of '98.

ADMIRAL: Well, it was last down, 10 yards to go for a touchdown, two minutes left to play, and we needed that score to win. I grabbed the ball cut around end and was three yards from the stripe when Engeltweet came from the side, butted me in the middle and—we lost. I missed a chance to be a hero, and it took me 20 years to get my admiral's commission, all because of Engeltweet. I send no destroyers to back up his anemic land troops.

ENSIGN: I quite understand, sir. I don't blame you. I'll wire him that the fleet's sick in bed.

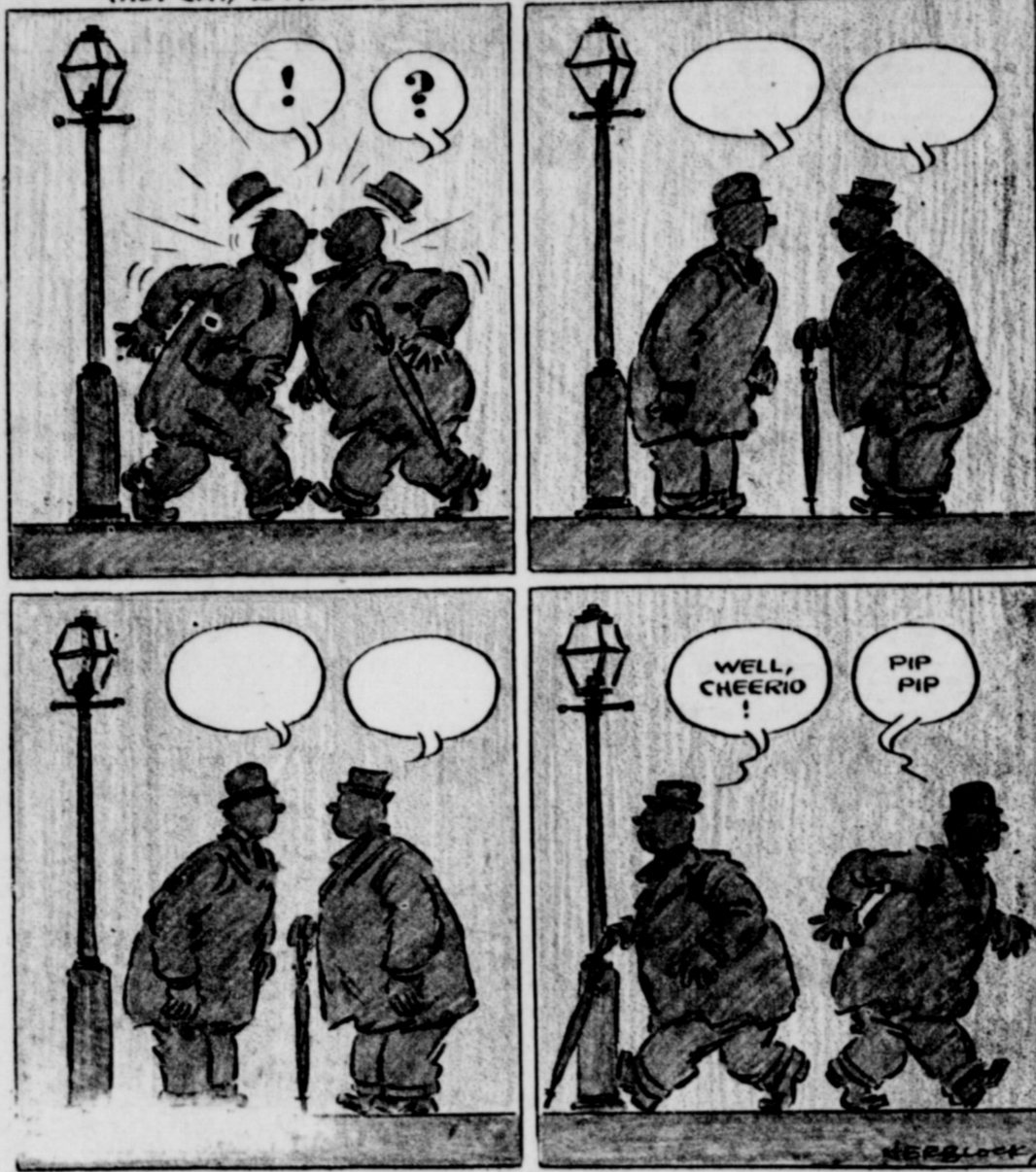
Mrs. Roosevelt's efforts to locate rooms via telephone for American Youth Congress delegates turned out to be pretty successful. She will be much in demand to conduct telephone campaigns for groups sponsoring theater benefit parties.

German publishers are assured of a bright future, if they can depend on a new edition of "Mein Kampf" every time Der Fuehrer changes his mind about whom he hates.

Mayor LaGuardia will have to be wary from now on or someone will elect him President behind his back.

Evening in London

BRITISH GOVERNMENT ASKS PEOPLE TO BE CAREFUL WHAT THEY SAY, TO AVOID GIVING INFORMATION TO THE ENEMY.



Officers Probing Theft at Warehouse

Sheriff Loss Woods and Eastland officers today were investigating the theft of a quantity of oil from the Magnolia gasoline warehouse Tuesday night or Wednesday morning in Eastland.

The warehouse is located in the northwest part of Eastland. Indications pointed to the gaining of entrance to the warehouse through the front door.

There were no tracks indicating a car had been driven up to the warehouse, officers stated. Sheriff W Woods said that 27 cans of about four gallons capacity each were stolen.

Officers indicated that the oil might have been carried to a truck or car parked at some distance from the warehouse.

March Proration To Disregard Estimate Of Federal Bureau

AUSTIN, Feb. 21.—Members of the State Railroad Commission announced today that the estimates of market demand for Texas crude oil would be thrown overboard when the March proration figures are set.

The estimates of the Federal Bureau of Mines, on which Texas proration figures have been based, were declared to be entirely too low.

Col. Ernest O. Thompson, member of the commission, termed the bureau estimates as "absurd."

State Chief for School Speaker

Representatives from most of the schools in the county were at Eastland Wednesday morning and heard State School Supt. L. A. Woods speak on "State and Local School Problems."

Among those present were principals, superintendents, school board members and others.

Supt. Woods was greeted on his arrival by County School Supt. T. C. Williams; B. E. McGlamery, crippled children's worker in the Department of Education; Supt. P. B. Bittle of Eastland and numerous others.

Leith Scotland Is Struck By A Shell

LEITH, Scotland, Feb. 21.—Shells from a coast defense gun today struck a factory in Leith, in which many were at work. No casualties were reported.

It was believed that one of the coast defense guns on the Firth of Forth had been elevated too high, and the shell carried into the town.

Texas produces approximately one-third of the nation's natural gasoline, made from natural gas. More than 90 per cent of it is used for improving gasoline refined from Texas crude oil.

DELEGATES TO CHURCH MEET ARE SELECTED

Women delegates from all the Methodist churches in the Cisco district, Central Texas Conference, at a meeting Tuesday in Eastland selected delegates to the provisional meeting of the women of the conference. The provisional meeting of the women of the conference will be held April 8 in Weatherford.

Delegates chosen to the Weatherford meeting: Mrs. Edward Snead, Dublin; Mrs. Roy A. Langston, Cisco; Mrs. B. E. McGlamery, Eastland; Mrs. G. Alfred Brown, Ranger; Mrs. J. E. Crawford, Cisco; Mrs. L. S. Williams, Carbon; Mrs. H. B. Clark, Caddo; Mrs. F. L. Willshire, De Leon; Mrs. E. W. Kimble, Gorman.

The ultimate purpose of the several provisional conferences is the nomination of women members of the Board of Missions and Church Extension for both the General and Jurisdictional conferences of the New Methodist Church.

Camera Prints Will Remain On Display

Photographic prints of the Fort Worth Camera Club which have been on display at the Eastland Drug Store in Eastland, will remain on display throughout the first of next week, officials of the Ranger Camera Club, sponsor of the exhibit, announced today.

The prints, 30 in all, were first displayed at Ranger and are described as reflecting the best work of the Fort Worth club.

Body Of Kitchens Infant To Strawn

The body of Loretta Irene Kitchens, infant daughter of Mr. and Mrs. Louis Kitchens of Strawn, was taken to Strawn for burial, it was reported Tuesday by Hamner Undertaking company attendants at Eastland. The child was still-born at Eastland.

Aged Man's Funeral Held At Flatwood

Following his death at the County Home for aged near Eastland, Robert D. Byrd, 71, was buried in services at the Flatwood church and Flatwood cemetery, attendants at the Hamner Undertaking company reported Wednesday.

Man Confesses To Part In Slaying

WARREN, Ark., Feb. 21.—Harold Burkes admitted today complicity in the kidnap-slaying of Joseph Calloway, Houston salesman Feb. 14 in which Mrs. Tom Henry, held at Lake Charles, La., has confessed actual shooting.

Oil supplanted cotton as Texas' largest money crop in 1929.

Pioneer Resident Of Sector Expires At Home In Clyde

Funeral services for Mrs. Samantha Victoria Burkett, 93, mother of Florial Representative Omar Burkett of Eastland and Former State Senator Joe Burkett of San Antonio, who died Tuesday night at Clyde, will be held Thursday.

The funeral services will be held in Clyde, friends said. For the past several months her health had been failing but until the last she was active and on the final day of her life cooked and sewed as was her custom.

She was the wife of J. H. Burkett, known as the producer of Burkett pecans. She was born January 16, 1847, in Titus County. As a widow 58 years ago she married Mr. Burkett at Llano. She had lived on the Burkett farm at Clyde for 32 years.

She was the mother of Omar Burkett of Eastland, Joe Burkett of San Antonio, Iru Jackson of Clyde, Dr. Kay Burkett of Los Angeles, Calif., and the following children by a previous marriage, Mrs. G. H. Joiner of Hamlin, Mrs. W. A. Bentley of Houston and S. E. Nolley of Seminole.

Descendants include 30 grandchildren, 20 great grandchildren and one great-great-grandchild.

She also was the aunt of Mrs. W. S. Poe, Eastland; Former State Senator T. J. Holbrook, Galveston; Mrs. C. W. Ellis, Eastland, and Mrs. G. D. Holbrook, Brownwood.

Home Demonstration Meetings Are Slated

Four home demonstration club meetings are scheduled for the remainder of this week, according to Ruth Ramey, county home agent.

Today a meeting of the Staff club was scheduled at the church in that community.

Thursday afternoon the Bass Lake Club will meet, Friday afternoon at 1 o'clock Pleasant Hill is to meet in the home of Mrs. Ralph Hagan and at 3 o'clock the same day the Word club is scheduled to meet in the home of Mrs. Elbert Ezzell.

Cooperation From Towns And Rural Sections Is Theme

Cooperation of businessmen with farmers was the theme of a meeting of the Lions Club Tuesday at the Connellee Hotel.

W. B. Starr of Dan Horn, former agricultural agent of the Texas and Pacific Railway and one of the leading farmers in this section, and Bill Usery of Rising Star, also prominent in farming circles, were the main speakers.

Starr in his talk also mentioned the chemurgic possibilities of potato raising in this section.

L. R. Burnside, president, presided. Dan Childress was the guest of Judge Clyde Grissom.

Discord Prevails On at Least Two Of State Boards

AUSTIN, Tex.—Open discord now exists in two of the state's numerous three-member boards. How long it will be before there are public breaks on other boards is keeping the capitol on tip-toe.

First public outburst was an angry interchange between Chairman Harry Know, Jr., of the State Board of Control and Member Tom DeBerry over the procedure at the board hearing on complaints about San Antonio State Hospital.

Next came an outburst at this week's meeting of the State Liquor Control Board. Tired of sitting silent while the board's minister-chairman made statements that they construed to be a reflection on the board, both other members of the board turned on Dr. W. D. Bradford and soundly lectured him for his course. Over his vote they ordered an investigation of complaints they said came from disgruntled former employees.

Because of the death of the late Chairman Claude Teer, Gov. W. Lee O'Daniel has appointed a majority of the present members of the Board of Control. He named one member of the Liquor Control Board and will not have a majority on that board unless he is re-elected for a second term.

On the Board of Control both of Governor O'Daniel's appointees have voted against Tom DeBerry, who was appointed by Former Gov. James V. Allred. On the Liquor Control Board both members appointed by Former Governor Allred have voted against O'Daniel's appointee.

On the State Safety Commission which directs the State Police Department, two of the present members were appointed before Governor O'Daniel took office. His lone appointment on that board was made recently. His choice was Judge Edwin Lacy of Longview.

State Life Insurance Commissioner Walter Woodward was named on the Board of Insurance Commissioners by Governor O'Daniel and is serving peacefully with two commissioners appointed by Governor Allred—R. G. Waters, casualty commissioner, and Marvin Hall, fire insurance commissioner.

Chairman Brady P. Gentry of the State Highway Commission is also serving without friction with two of Governor Allred's appointees, Harry Hines and Robert Lee Bobbitt.

The other important three-member board is the railroad commission. All its members are elected by the people. The governor can appoint a member only in case of a vacancy between elections. Two members of that board are considering a race for governor.

122,000 In The Area Get Living In Oil Industry

FORT WORTH, Feb. 21.—More than 122,000 persons in Fort Worth and its trade territory of West Texas get their living from the oil industry, Harold G. Neely, Fort Worth oilman, told the Junior Chamber of Commerce here Wednesday.

"Over 44,000 men, women and children in Fort Worth, or more than one in five you meet on the street, depend for their livelihood directly upon the oil industry," Mr. Neely reported. In addition, there are over 77,000 others in the 73 West Texas counties constituting our trade territory. That's a total of more than 122,000 Texans in these 74 counties who get their bread and meat solely from this one industry."

Thousands more benefit indirectly from the expenditure of the wages of the oil employees, Mr. Neely declared. Oil's payroll in Fort Worth is \$11,758,800 a year, while in the West Texas area the industry spends \$22,325,270 more for wages, a total of \$34,084,070 a year. In addition, the oil industry pays West Texas ranchers and farmers \$20,000,000 a year in lease and royalty payments. Taxes paid by the industry in West Texas total \$10,940,197 a year, while plant investments, equipment, etc., bring oil's total expenditure in West Texas to \$64,215,166 annually, Mr. Neely said, quoting figures just compiled by the Texas Mid-Continent Oil and Gas Association.

"When the \$13,143,451 spent each year by oilmen in Fort Worth for wages, taxes and improvements, is added, this is a total expenditure of \$77,378,617 a year from this one industry in Fort Worth and her trade territory," Mr. Neely added. "The largest part of this finds its way into retail trade in West Texas, and ultimately into Fort Worth retail and wholesale houses and banks and thus into the pockets of you and me."

Oil Company properties in Fort Worth, which is miles from any producing oil well, now represent an assessed value of \$17,851,982, or 12 per cent of the assessed value of all property in Tarrant County, the speaker said. In the 73 West Texas counties, oil properties make up an even larger share, being 27 per cent. The assessed value there is \$187,757,382 out of \$692,382,506, or more than one-fourth. Altogether, the oil properties of the 74 counties aggregate \$205,609,364 at regular assessment rates.

"And every dollar of this \$200,000,000," Mr. Neely pointed out, "has been invested or created for our section of the state by the activities of the West Texas oilmen."

NYA Enrolled Entertained Dance at

Mayor C. W. Hoffland and members of the City Commission entertained NYA boys, girls and women with a dance at the legion clubhouse in Eastland Tuesday night, as a token of appreciation for the work done for the city by the Ranger, The Legion by Ed Herring, music and refreshments and cakes were served.

Short talks were given by White and Henry Eastland.

Ranger city officials attended included Mayor, Commissioner J. T. City Secretary E. T. NYA officials and who were present in Ziegler of Fort Worth of Eastland; Ray M. Squires, S. C. Hughes, land, H. A. Tillet, Shaw, Mrs. Wilson, W. Mr. McGaughey of R.

The affair was the kind sponsored for Youth Enrollees, Wednesday.

WASHINGTON, Feb. 21.—Senator Martin Dies, chairman of the subcommittee on un-American activities, announced today that he would spend the remainder of his vacation in the United States, and that he would spend the remainder of his vacation in the United States, and that he would spend the remainder of his vacation in the United States.

Dies Is To De Committe Until He R

WASHINGTON, Feb. 21.—Senator Martin Dies, chairman of the subcommittee on un-American activities, announced today that he would spend the remainder of his vacation in the United States, and that he would spend the remainder of his vacation in the United States.

Doctors told Dies that the chief cause of his illness was a cold which had been brewing for at least 30 days.

Dies announced that he would spend the remainder of his vacation in the United States, and that he would spend the remainder of his vacation in the United States.

Whether you are a business man or a housewife, you are vitally interested in the welfare of the state and local government and in the welfare of the people.

Whether you are a business man or a housewife, you are vitally interested in the welfare of the state and local government and in the welfare of the people.

Whether you are a business man or a housewife, you are vitally interested in the welfare of the state and local government and in the welfare of the people.

Whether you are a business man or a housewife, you are vitally interested in the welfare of the state and local government and in the welfare of the people.

Whether you are a business man or a housewife, you are vitally interested in the welfare of the state and local government and in the welfare of the people.

WHERE Will Your Advertising When the Ink is Dry?

WILL IT BE --
Thrown into the Gutter?
Hidden Under Shrubbery?
Blown Against the Hedge?
Just Rubbish on the Lawn?
Thrown in the Waste Basket?
Consumed by a Trash Burner?

or WILL IT BE --
Inside the HOME - a cherished and INVITED member of the family circle. This is where your message will be if placed in The Eastland Telegram which is a welcome visitor in homes of this area.

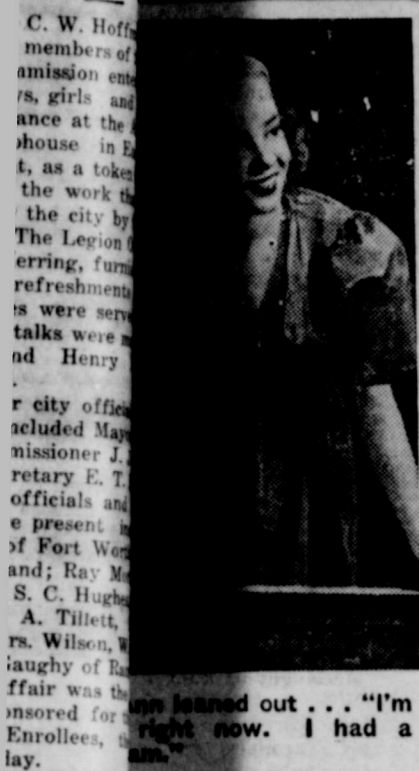
The EASTLAND TELEGRAM is the only paper in the world that tells about the home folks and what they're doing.

EASTLAND TELEGRAM

Advertising—Commercial Printers

BRITISH QUEEN
HORIZONTAL
1, 6 Wife of the King of Great Britain.
14 To combine.
15 Instane.
16 Sawlike organ.
17 Relief.
18 Relinquishing claims.
21 Pistol.
22 The deep.
24 To distort.
25 Seed bag.
26 Roof window.
28 Beaten with a cane.
30 Half an em.
31 To handle.
32 Indefinite article.
33 Note in scale.
34 Room recess.
35 Fiber knots.
37 Assaults.
40 Apart.
42 Peak.
43 Each.
44 Jewel.
45 Type standard.
ANSWER TO PREVIOUS PUZZLE
11 Unit of work.
12 Exchanges.
13 Derby.
19 Distorted.
20 Right.
23 Roomy.
25 Window glass panels.
26 She is or strongly attached to her family.
27 Click beetle.
28 She visited with her husband last year.
29 Predicament.
34 Snake.
36 Hog.
38 Single name.
39 Young salmon.
41 To deafen.
46 Genus of auks.
47 Courtesy title.
48 Button.
49 Stringed instrument.
50 Nigh.
53 Vestment.
55 Constellation.
57 Coloring matter.
46 Weapons.
48 Oriental resthouse.
51 Form of "be."
52 Clock face.
54 Climbing plant.
56 Norse mythology.
58 Wholly.
59 Mistake.
60 Affirmative vote.
61 Her husband's former title.
62 Her eldest daughter is the heir.
VERTICAL
1 In so far as.
2 Concord.
3 Kind of duck.
4 And.
5 Modern.
6 Arabian military commander.
7 To bathe.
8 Roman calendar day.
9 Onager.
10 To subsist.

Enrollment pertained to the city...



C. W. Hoff... members of mission...

CHAPTER I

BROWN had the fidgets. He told the truth, she was string and whether or not...

Ann had the only room on the third floor of what had once been a fine old home...

It was a few minutes past 9 when she turned down the shabby worn coverings of her thin bed...

Eastland Girl Studying Under Famous Vocal Teacher With a Movie, Opera Career Possibility

Clarine is not an ordinary girl. She is a young Texas girl who has been studying under the direction of Van Grove...

\$15 A WEEK BY LOUISE HOLMES

Ann had the only room on the third floor of what had once been a fine old home...



"I heard you scream," Paul said... "Well—good night."

Ann's frightened face turned to the window. Pale yellow light shone from across the alley...

ANN was restless and wide awake. Pulling down the blind, she switched on the light which dangled from the ceiling...

FRECKLES and HIS FRIENDS

GOSH, SERGEANT, I DON'T SEE HOW YOU CAN BLAME US FOR WHAT HECTOR DID TO THOSE CITY TREES!

SMALL BOYS ARE INFILTRATED BY WHAT BIGGER BOYS DO AND HE SPENDS MOST OF HIS TIME WITH YOU TWO!

IF THAT'S THE CASE, WHY NOT GO ALL THE WAY BACK AND BLAME THE WHOLE THING ON COLUMBUS!

BRUCE CATTON IN WASHINGTON

WASHINGTON.—When you stop to add it up, the growing "demand" that Roosevelt be a candidate for a third term comes chiefly from two sources...

interesting is the fact that some of the best New Dealers in town have been wondering how long it would be before the President remembered it.

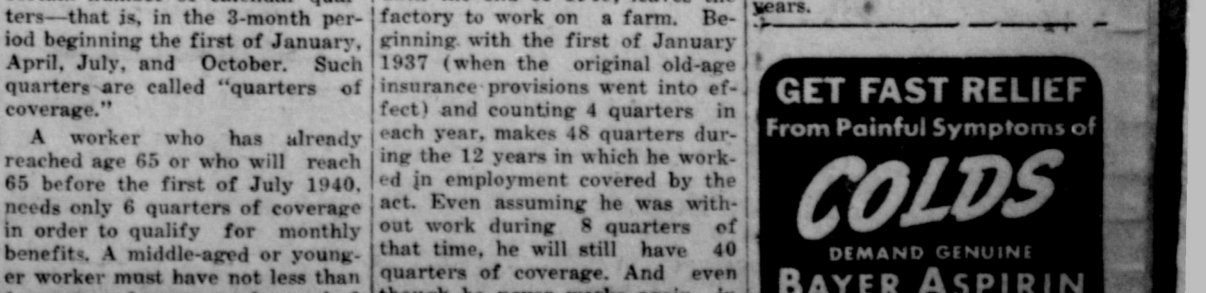
Federal Old-Age And Survivor's Insurance Plan

(Editor's Note: The following is another of a series of articles prepared by W. O. King, manager of the Abilene Social Security Board field office...

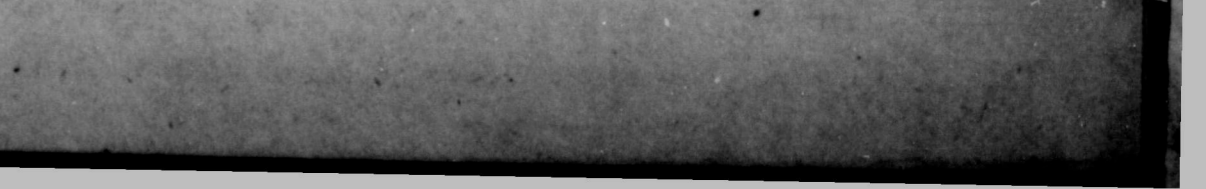
RED RYDER By Fred Harman



ALLEY OOP By Fred Harman



OUT OUR WAY BY WILLIAMS



WHY YOU MUST BE MISTAKEN! MY BOYS HAVE BEEN IN BED FOR SOME TIME. NO, I'M NOT MISTAKEN! THOSE SNOW-BALLS CAME RIGHT FROM THIS HOUSE!

Texas' present proven oil reserves of 10,794,055,000 (billions) barrels are over five billion barrels more than all the oil produced in Texas during the past fifty years.

GET FAST RELIEF From Painful Symptoms of COLDS DEMAND GENUINE BAYER ASPIRIN

Society Notes

CALENDAR TONIGHT

Baptist Training Union study course, 7 o'clock at the church. Miss Nell Casement of Dallas, state worker, in charge.

Mid-week prayer services, Church of Christ, 7:30.

Mid-week services, First Christian Church, 7:30.

Mid-week services, Church of God, 7:30.

CALENDAR THURSDAY
Alpha Delphians will meet at 2:30 Thursday afternoon in the Woman's Clubhouse.

30 Year Club Met
The members of the 30 Year Pioneer Women's Club met in the home of Mrs. E. T. Cox, Sr., Tuesday for the monthly session.

A delicious covered dish luncheon was served at the noon hour and was followed with a social period. Informal games and contests were enjoyed throughout the afternoon.

Those present: Mmes. Maggie Dulin, W. S. Barber, Jno. Matthews, B. F. Wilcox, John Mays, Sallie Morris, John Norton, Nora Andrews, Exer Hunt, Ida Jones, Minnie Love, Ida Morris, W. H.

Mullings, Mary Blowers, Ida Harris, Berna Lean Blowers.

Congratulations
Mr. and Mrs. Floyd Thomas of Charleston, South Carolina, announce the birth of a 7-pound baby girl, born Wednesday morning, February 21, at the Payne hospital. The baby has been named Joan. Mrs. Thomas is the daughter of Mr. and Mrs. Jim Wood of Eastland.

Junior Las Lealeas Have Federation Program
At the meeting Tuesday evening of the Junior Las Lealeas Club, a program on "Federation and Procedure" was heard with Miss Ima Ruth Hale, as hostess and leader. Miss Hale also presided over the opening busi-

Eastland Women To Get Tips of Corset Expert

Miss Helen Warner, expert New York Adviser to fashionable women on the problems of correct corsetry, will be at the J. C. Penney Company at the Eastland store Friday and Saturday, Feb. 23 and 24.

Miss Warner, who has had extensive experience, and achieved sensational results with difficult



MISS HELEN WARNER

figure programs, will demonstrate to you how correctly chosen and properly fitted foundations can mould and control the natural figure curves... help correct poor posture... preserve good posture and the beautiful flowing lines that are so essential to feminine loveliness. She can help you in your selection of the correctly-proportioned foundation, best suited to your own individual figure characteristics—and to the sculptured silhouette Paris has sponsored for spring. Miss Warner says "women are often amazed when they see how lovely their figure really is... how comfortable they feel when correctly fitted."

You are invited... mothers and daughters alike... to visit Penney's store and let Miss Warner advise you on your figure problems... or if you have no problem, she will help you select the garment best suited to your individual type and to the fashions of the moment.

100 Present When Church Meet Held

Approximately 100 persons were present Tuesday evening at an all-church fellowship meeting and dinner in the First Methodist Church of Eastland.

W. C. Campbell served as toastmaster and V. T. Seaberry, Sr., spoke on the subject "Great Men of Church and State." He especially pointed out great men whose birthday anniversaries have occurred recently.

Bob Huchingson and V. T. Seaberry, Jr., were in a modernized portion of the drama, "Hamlet."

Bible Lecture Will Be Given Tonight

Second of a series of Bible lectures to be given by Rev. P. W. Walker, pastor, will be held tonight at 7:30 in the Booster classroom with Rev. Walker discussing the subject "Does Progressive Development Lessen God's Authority?"

The public has been extended an invitation to attend.

Address Familiar To El Paso Policeman

By United Press
EL PASO, Texas—When a call came over the police radio to go to 912 Magoffin Avenue, Patrolman W. A. Heppner remarked to Patrolman H. C. Cashman as they cruised in a radio scout car: "That address sounds familiar."

It ought to have—the residence of his mother-in-law, who had reported the theft of two valuable Indian statues, shop reported having," he added.

"They said children were digging the reflectors out to use as marbles. Reflectors in Texas signs aren't round and don't make good marbles."

Placing of the signs at spots along the highway at every point of possible danger to motorists is carefully planned, Lyons pointed out.

"Every sign is placed 400 feet from the obstacle, so that if you are driving as fast as 70 miles an hour, and don't apply your brakes until you reach the sign, you will still have plenty of time to stop."

At the first sniffle

... Quick! use this specialized medication for the nose... where most colds start. Helps prevent colds developing.

VICKS VA-TRO-NOL

CLASSIFIED

WANTED: Housekeeper, unincumbered, white. Phone 60.

LET A LOCAN MAN do your mattress renovating. See McCORD at 303 N. Dixie Street. One-day service.

WANTED—Large second hand baby bed. Call 601, or apply at 508 S. Daugherty.

APARTMENT FOR RENT, all bills paid, \$3 per week. Only couples desired. 413 South Daugherty street.

WHY NOT try my meals. During week 30c; Sundays 35c.—MRS. A. M. STOKES, 305 North Daugherty.

Eastland Personals

Mr. and Mrs. Cecil Barham and Mr. and Mrs. James Pipkin were visitors Monday evening in Abilene.

Target Shooting at Highway Signs Is Costly for State

By United Press
EL PASO, Tex.—Target shooters and "just plain vandals" are the chief reason C. W. Lyons spends his working day repairing highway signs as division mechanic of the Texas State Highway Department.

Gradually, however, road markers are being developed that are hard to damage, thus cutting maintenance costs which now amount to \$2 for each sign brought into Lyons' shop for repairs.

The vandals pry from the signs the glass reflectors that make the markers visible at night. Target shooters like to hear the metal sign ring when smacked by a bullet.

In his work Lyons has found that most of the "sign hunters" use .45 calibre pistols with .22 calibre types running a close second. Almost half the markers brought in for repairs have been peppered with .22 bullets.

"We are gradually developing and standardizing a type of sign that is difficult to damage," he said. "The first signs were made of wood and cracked easily. Then they were replaced with signs made of enameled metal, but the enamel cracked off in big chunks when it was hit. Embossed signs were used for a while, but they were difficult to straighten. Now we use painted signs of heavy metal, thick enough that a bullet cannot easily make a hole."

"People used to dig reflectors out of signs easily, but we have a method of mounting them now that almost does away with the menace. So heavily protected are the reflector-type markers that they cost from five to six dollars each."

"But we don't have the trouble that a New York highway sign

Free Book From McCleary Clinic

Any one afflicted with hemorrhoids (piles), fistula, non-malignant rectal ills of any kind or colon troubles, would do well to write the McCleary Clinic, E-100 Elms Blvd., Excelsior Springs, Mo., for a copy of a book published by that institution. The book is full of valuable information—explains the nature of rectal ailments of various kinds, cautions against possibly harmful procedures, and offers suggestions helpful to any one suffering from these common ills.

The McCleary Clinic is the largest institution of its kind in the world, specializing exclusively in rectal and colon cases. Its treatment is known to thousands of former patients, who have come to it from all over the States, Canada, and many foreign lands. A written request will bring you a free copy of the book, in plain wrapper, without placing you under any obligation.

In 1938 the total tax on Texas oil averaged 9.3 cents per barrel.

LADIES
Clip This Ad
Bring it to our Store Friday or Saturday only, and receive one \$2.00 Hollywood make-up kit, consisting of—
\$1.00 FACE POWDER
50c CREAM ROUGE and LIPSTICK VANITY
50c HOLLYWOOD PERFUME
ALL 3 FOR ONLY—
29c

WITH THIS COUPON
LIMIT—2 Sets to a Customer
Mail Orders add 5c Extra.

TOOMBS & RICHARDSON DRUG STORE
East Side of Square

Announcements

This newspaper publishes the following notices, subject to Democratic primary.

For Congress, 1st District, OTIS (OAT) of Jones

For Assessor-Collector, CLYDE S. JONES

For County Clerk, R. V. (RIP)

For Sheriff, LOSS WOOD

For Criminal District, EARL CROFT

For County Judge, W. S. ADAMS, R. L. RUST

For County Treasurer, GARLAND HENRY

For Commission, HENRY V. HENRY

For District Clerk, JOHN WHITE

Penney's Special Showing

Lady Lyke FOUNDATION FASHIONS

Straight from the Fashion Front to You!

For Two Days
FRIDAY and SATURDAY,
FEB. 23 and 24th

Miss Helen Warner, expert New York adviser to fashionable women on the problems of correct corsetry will be here to advise you on your figure problems... to help you select the proper garment best suited to your individual type.

Yours is the NEW SCULPTURED SILHOUETTE with a correctly fitted LADY LYKE foundation. You are ALL INVITED... mothers and daughters alike, to visit Penney's and let Miss Warner advise you. There is NO CHARGE for this expert consultation. Low economy prices!

*Reg. U. S. Pat. Off.

J. C. PENNEY COMPANY, Incorporated
EASTLAND, TEXAS — Where Eastland County Shops and Saves!

"Take home the six-bottle carton, today"

Only Coca-Cola gives you the refreshed feeling that people the world over welcome. Pure, wholesome, delicious,—Coca-Cola belongs in your refrigerator at home. And the convenient way to get it there is in the handy six-bottle carton.

BOTTLED UNDER AUTHORITY OF THE COCA-COLA CO. BY
TEXAS COCA-COLA BOTTLING COMPANY

Biggest motoring SURPRISE since Lincoln-Zephyr

IN its own way, Mercury 8 has done again, at a lower price, what Lincoln-Zephyr did a few years ago. It has gathered together the good things its price would normally buy... then topped them off with still more good things its price never bought before! It flashed to instant, brilliant success by being a brilliant new kind of car!

Drive it and you soon see how truly new it is! You find it big... big to look at, big to ride in. You find it marvelously comfortable. You find it superbly powered... with a 95 horsepower V-8 engine that stands above the country's most respected... You find it faultlessly fitted... gearshift on the steering post, insensitively peculiarly its own, sleek lines, safe with steel and Safety Glass... And then you hear owners tell up to 20 per gallon... that, for all its size, it's the easiest to drive... and you know that another built car has opened another new motoring satisfaction!

MERCURY 8
UP-AND-COMING CAR ON THE MARKET

THE FORD MOTOR COMPANY — FORD, MERCURY, LINCOLN-ZEPHYR AND LINCOLN

ATTENTION! TO THOSE WHO HAVE Refrigerators WHEN IN NEED OF SERVICE ON YOUR MACHINE CALL 33 SEELYE ELECTRIC CO.

LYRIC
Tuesday - Wednesday

Robert TAYLOR
LEW AYRES
"REMEMBER" -EXTRA-
"March of Time"
— Presents —
"REPUBLIC of FINLAND"

He takes 'a stitch in time' on Texas telephones

Each day this Texas telephone man flips keys and watches sensitive indicators as he searches for a clue to possible trouble on Texas telephones. He fully appreciates the wisdom of a stitch in time in finding and fixing troubles—or weak spots that might result in trouble. That is one way we safeguard your telephone service in Texas. And one result is that despite the increasing complexity of telephone equipment, telephone customers report troubles on their telephones only half as often as they did 10 years ago. A stitch in time saves nine. These words in action contribute their share to the accuracy, dependability and low cost of your telephone service.

A luxury you can afford—a chat with the folks back home—by Long Distance.

SOUTHWESTERN BELL TELEPHONE COMPANY