

Eastland Telegram

UNITED PRESS BRINGS LATE NEWS OF THE WORLD TO TELEGRAM READERS

EASTLAND, TEXAS, TUESDAY EVENING, FEBRUARY 20, 1940

PRICE 3c DAILY (5c ON SUNDAY)

NO. 77

MAKE EASTLAND
YOUR SHOPPING
CENTER

EASTLAND
SHOPPING
CENTER

Dies Back in Storm Center



Back to work in Washington after a long illness, Representative Martin Dies (Dem., Tex.), finds the Pelley storm blown over, but new ones brewing in and around his committee investigating un-American activities. Raising the possibility that the group might next question Father Coughlin, Dies found committee members opposed to such a move.

40 PLANS FOR COUNCIL MADE AT GATHERING

Delegates to a district meeting were chosen and a budget for the year adopted at a recent meeting of the Eastland County Home Demonstration Council in the courthouse at Eastland.

The delegates to the district meeting, to be held in April at Abilene, the Mrs. T. E. Robertson of Flatwood, Mrs. Josie K. Nix and Mrs. John Love of Alameda.

The budget requirements, of \$150, was reported by the members of the finance committee and adopted by the entire group. Items in the budget of the council are: year books, \$30; state convention expense, \$50; prizes, \$10; stamp expense of secretary, \$5; district meeting expenses, \$5, and miscellaneous, \$50.

The money is to be raised by club members in the sale of flavoring, entrance into a national canning contest and other methods.

Other committee reports adopted by the group:

- Exhibits Committee**
 1. Each club sponsor fair in local community.
 2. Each club show educational exhibit at county fair.
 3. Each club member can the two jars for county exhibit.
 4. Each club bring more individual entries to county fair, provided more and better show space can be obtained.
 5. Precinct feather comfort shows and one big show in connection with the county fair.
 6. Exhibits and educational committees meet with county fair committee to work out space and arrangements for county fair exhibits.

- Expansion Committee**
 1. More social meetings in each community with non-club members invited.
 2. Stress of educational exhibits in local and county fairs.
 3. More special demonstrations or area meetings on seasonal topics, one in each precinct. These meetings are to be in addition to the regular club programs and more for the whole family than for the women. All will be invited and urged to attend.
 4. Continue the good neighbor program with each club member to reach two non-club members in each of the two demonstrations carried.

- Recreation Committee**
 1. Each club required to start program with ten minute recreation.
 2. An all day meeting for training recreation leaders, each quarter. The first one to be held in March.

- Education Committee**
 1. Invite all women in the community to all club meetings.
 2. Club members visit non-club members and take information to the women who are not able to attend meetings.
 3. Educational exhibits at local meetings and precinct and county wide.

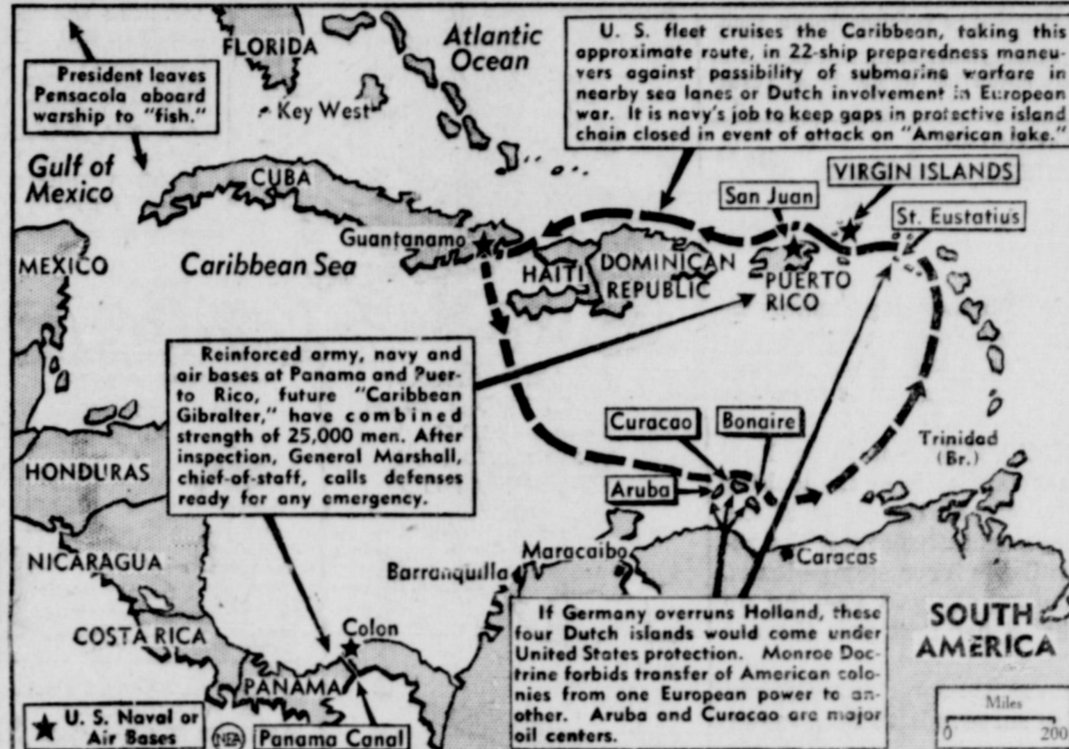
- Reporters Committee**
 1. Each club reporter write one feature story during the year.
 2. Each club reporter have series of pictures showing the demonstration from the beginning on through to completion.
 3. Each reporter send club announcement and club report to paper each month.
 4. Each club reporter send one story to The Banner the official paper of the organization.
 5. Each reporter keeps clippings of reports and shows the exhibit at the end of the year.

- Next meeting of the council will be Wednesday, March 13. Visitors at the session were Miss Alberta Martin, home economics teacher, Olden, and Mrs. Davis, former president of the County Federation of Women's Clubs, Desdemona.**

Eastland, Callahan Doctors to Meet at Baird this Evening

Local members of the organization are planning to attend a dinner and regular meeting of the Eastland-Callahan Counties Medical Society tonight in Baird. Dr. Charles F. Clayton of Fort Worth and Dr. W. B. Adamson of Abilene are scheduled to be two of the main speakers. Dr. F. C. Payne of Rising Star is president of the society, which meets alternate months. Dr. C. C. Cogburn of Eastland is secretary-treasurer of the society.

President on Mystery Cruise Leaves Nation Guessing



Off to do more than fish on his mystery cruise into the Caribbean, President Roosevelt leaves the country guessing as to possible courses he may follow: (1) inspection of reinforced garrisons at Panama or Puerto Rico bases; (2) observation of U. S. fleet now maneuvering in waters mapped above; (3) conference on the high seas in this area with British, French or Italian representatives. Embarking, the President refused to deny the latter possibility.

EASTLAND MAV SCHEDULE FOR YEAR LISTED

Coach E. B. Grady, Jr., announced Tuesday the 1940 schedule of the Eastland Mavericks.

The Mavericks are a member of the district 12-A in which Weatherford and Rising Star were recently added as member teams. This will be the second year of participation of Eastland in the grid district.

New suits for the gridgers were recently received and the boys will be outfitted from shoes to helmets in completely new equipment.

- Schedule:**
 - September 13, Cisco at Eastland.
 - September 20, open.
 - September 27, Eastland at Hamilton.
 - October 4, Eastland at Gorman.
 - October 11, De Leon at Eastland.
 - October 18, Eastland at Comanche.
 - October 25, open.
 - November 1, Ranger at Eastland.
 - November 11, Eastland at Rising Star.
 - November 15, Eastland at Hico.
 - November 22, Dublin at Eastland.
 - November 29, Eastland at Weatherford.

Ranger Boy Named As President Of University Council

AUSTIN, Feb. 20.—Frank Conley of Ranger became president of the Inter-Fraternity Council at the University of Texas this week upon the resignation of Everett Hutchinson of Hempstead. Conley had been serving as vice-president. A senior in the College of Arts and Sciences, Conley is a member of Chi Phi fraternity, the Big Brother and Sister Club, and the Eastland Club. He is on the Judiciary Council of the Students' Association.

Terrace Work Is On Agent's Slate

Terracing work occupies the major portion of the schedule of County Agent Elmo V. Cook this week. On Tuesday he was to assist in terracing five acres on the Albert Hill farm at Ranger and 100 acres on the W. B. Richards farm near Ranger.

Wednesday he will be at the Earnest Ott farm for terracing and at the J. H. Barton farm, both in the Tudor community. The official plans 200 acres of terracing work Thursday on the J. H. Requa farm near Sabanno and on Friday will be at the Allen Dunn farm for 100 acres of terracing. The Dunn farm is in the Okra community.

Army Will Mass 80,000 In the South For War Practice

By United Press

United Press Staff Correspondent ATLANTA, Ga.—Strength and speed of the army will be tested in the deep South this spring on a mammoth scale never before equaled in this country.

Regular army troops, 80,000 strong, will be divided into two huge opposing forces for a lengthy sham battle "somewhere along the Mississippi."

Military officers, from corps area generals down, are working daily with complicated maps, diagrams and combat statistics to complete plans for the gigantic maneuvers to be carried out by forces comprising the 3d army.

Because most of the maneuver dates and places are tentative, 4th Corps area officials here are withholding definite details. Commanding officers for the war games, however, have been announced.

Enbick in Command
Lieut. Gen. Stanley D. Enbick, commander of the 3d Army, will direct advance plans for the maneuver and the two armies of 40,000 men each will be led by Maj.-Gen. Walter Krueger of Fort Sam Houston and Brig.-Gen. Walter C. Short of Fort Benning.

Unusual public interest, inspired largely because of the current European conflict, has been evidenced in the planned "battle of the South," the locale of which probably will be disclosed as soon as the army has received permission to "trespass" on land in the area.

The war games, however, were expected to be "fought" somewhere near the Mississippi river, probably over an extended "front" of several hundred miles.

Normally placid bayous will hear the crash of artillery (firing blank but nonetheless loud shells). And sleepy little river towns probably will snap into a wakeful attitude to the tune of rumbing tank companies.

Test For Motorization
Transporting 80,000 men into a concentration maneuver area will be a major and colorful task in itself, particularly since virtually all American fighting units have been motorized.

Soldiers by the thousand have been sent to Southern forts for winter training in recent months and these forces probably will be combined for the spring "battle."

HIGH FOUR-H HONORS GIVEN COUNTY BOYS

A. C. Pratt, assistant county agent, announced today that three Eastland county 4-H club boys—Ray Blackwell of Alameda, Howard Hinman of Ranger and Marvin Dupuy of Kokomo—have been selected as Gold Star Club boys because of their records in 1939.

Pratt said that their selection is a high honor as there are only 100 Gold Star Club boys chosen each year in the state.

The announcement that three county youths had been selected for the honor was given by L. L. Johnson of College Station, who is state boys' 4-H club agent. In this extension district of 19 counties there were only seven Gold Star youths.

Pratt has also been notified that the County 4-H Pig Club has been judged as second best in the district during 1939.

Gold Circulation Plan Considered By United States
WASHINGTON, Feb. 20.—The treasury department is seriously considering a proposal for free circulation of gold in the United States again, and going back to the gold certificates.

The country now has about 60 per cent of the available world supply of gold, or approximately \$18,600,000,000 worth on hand. Continued flow of gold to the United States, it was indicated, might soon force other countries on a trade or barter system if the gold is kept out of circulation longer.

Japan's Economic Strength Sapped In Chinese War
WASHINGTON, Feb. 20.—The state department has received reliable reports that the Japanese economic strength has been almost spent in the war with China and that the country is now near economic exhaustion.

The abrogation of the Japanese-American trade agreement has also been reported to have an effect upon Japan's economic welfare. Shortage of coal and fuel are reported to be the most pressing in Japan right now.

German Attack Held Back by the French
PARIS, Feb. 20.—An official army communique today announced that a German patrol attack on the Western Front had failed in its objective when met by French resistance. No casualties were reported.

FINNS REPORT NEW DIVISION IS ENCIRCLED

A Finnish communique said tonight that heavy fighting had resulted in great Russian losses on the Karelian Isthmus and north of Lake Ladoga in which all attacks were repulsed. Copenhagen said, however, that the Finnish fort at Koivisto on the Gulf of Finland was cut off from the main army.

Finland today reported that another Russian division, this time the sixth, had been surrounded and soon would be cut to pieces like other divisions have been, bringing the total Russian casualties in two major counter attacks on the eastern front to approximately 36,000.

Meantime Russia has reported that advances are still being made on the Karelian Isthmus, toward Viipuri, though the Finns still claim that the attack has been slowed up. Some concern was reported being felt over the number of Russian wounded in the Leningrad hospitals, which are full and overflowing.

Viipuri was again bombed from the air, with incendiary bombs being used. Large parts of the city, which is constructed chiefly of wooden houses, are reported to be in flames.

Reports have been received that a Russian woman diplomat had been the main factor in keeping Sweden from giving direct aid to Finland, and for the announcement by King Gustav that foreign troops would not be allowed to enter Finland through Sweden. She is reported to have promised that Russia will not invade Sweden.

It is feared that with the Russian army so near to Viipuri that the town cannot hold out much longer and may soon be taken over. Baron Mannerheim, commander in chief of the Finnish forces, however, has reported that the second defense of the Mannerheim Line was to be held at all odds, and that it is much stronger than the fortifications that have already been taken.

Celebration By Ranger Masons Will Be Tonight
The annual Masonic and Eastern Star Washington Birthday celebration will be held tonight at 7:30 in the banquet room of the Masonic building in Ranger, with a good program being presented.

The banquet room, which has been used for the past year by the National Youth Administration for its wood shop, has recently been vacated and cleaned up in preparation for the celebration tonight, which is for Masons, their families, members of the Eastern Star and their families. The refreshments will be served by the Eastern Star.

C. E. May will be presiding officer at the annual event, and the program will be opened by singing of America, led by F. D. Hicks, Rev. H. B. Johnson, pastor of the First Christian Church of Ranger, will pronounce the invocation.

Musical numbers to be presented include a piano solo by Peggy Bundick, a vocal solo by Vera Vivian Cooper, a xylophone solo by Elsie Hummel, a violin solo by Jack Pearsall, accompanied on the piano by Mrs. Pearsall, and a vocal solo by Gaston Dixon.

A short talk will be made by Mrs. B. E. Rigby, district deputy grand mason of the Eastern Star, and address and other numbers will be presented by Mr. and Mrs. Pitt Pitman, of Hella Temple, Dallas.

The refreshments will be served just before the benediction. The banquet room has been decorated for the occasion by members of the Ranger Fire Department.

A large crowd of Masons and members of the Eastern Star is expected to be present with visitors from a number of surrounding towns.

Old-Age Survivor's Insurance Plan

The following series of articles by W. O. King, of the Abilene Social Security field office, to be published in this paper. The series is educational in nature and is intended to give the general public information and encourage them to address themselves to the Social Security Act.

What is meant by Covered Employment?
The following are excluded types of employment which are not covered under the old-age survivors insurance program of the Social Security Act. He thinks of cooks, maids, butlers, gardeners, who are employed by private families, or those who are employed in the home of a private family.

What is meant by Covered Employment?
The following are excluded types of employment which are not covered under the old-age survivors insurance program of the Social Security Act. He thinks of cooks, maids, butlers, gardeners, who are employed by private families, or those who are employed in the home of a private family.

What is meant by Covered Employment?
The following are excluded types of employment which are not covered under the old-age survivors insurance program of the Social Security Act. He thinks of cooks, maids, butlers, gardeners, who are employed by private families, or those who are employed in the home of a private family.

What is meant by Covered Employment?
The following are excluded types of employment which are not covered under the old-age survivors insurance program of the Social Security Act. He thinks of cooks, maids, butlers, gardeners, who are employed by private families, or those who are employed in the home of a private family.

What is meant by Covered Employment?
The following are excluded types of employment which are not covered under the old-age survivors insurance program of the Social Security Act. He thinks of cooks, maids, butlers, gardeners, who are employed by private families, or those who are employed in the home of a private family.

What is meant by Covered Employment?
The following are excluded types of employment which are not covered under the old-age survivors insurance program of the Social Security Act. He thinks of cooks, maids, butlers, gardeners, who are employed by private families, or those who are employed in the home of a private family.

What is meant by Covered Employment?
The following are excluded types of employment which are not covered under the old-age survivors insurance program of the Social Security Act. He thinks of cooks, maids, butlers, gardeners, who are employed by private families, or those who are employed in the home of a private family.

What is meant by Covered Employment?
The following are excluded types of employment which are not covered under the old-age survivors insurance program of the Social Security Act. He thinks of cooks, maids, butlers, gardeners, who are employed by private families, or those who are employed in the home of a private family.

What is meant by Covered Employment?
The following are excluded types of employment which are not covered under the old-age survivors insurance program of the Social Security Act. He thinks of cooks, maids, butlers, gardeners, who are employed by private families, or those who are employed in the home of a private family.

What is meant by Covered Employment?
The following are excluded types of employment which are not covered under the old-age survivors insurance program of the Social Security Act. He thinks of cooks, maids, butlers, gardeners, who are employed by private families, or those who are employed in the home of a private family.

What is meant by Covered Employment?
The following are excluded types of employment which are not covered under the old-age survivors insurance program of the Social Security Act. He thinks of cooks, maids, butlers, gardeners, who are employed by private families, or those who are employed in the home of a private family.

EASTLAND TELEGRAM

Published every afternoon (except Thursday, Saturday and Sunday) and every Sunday morning.

Member of United Press Association Member Advertising Bureau—Texas Daily Press League

NOTICE TO THE PUBLIC

Any erroneous reflections upon the character, standing or reputation of any person, firm or corporation which may appear in the columns of this paper will be gladly corrected upon being brought to the attention of the publisher.

Obituaries, cards of thanks, notices of lodge meetings, etc., are charged for at regular advertising rates which will be furnished upon application.

Entered as second-class matter at the postoffice at Eastland, Texas, under Act of March 3, 1879.

SUBSCRIPTION RATES

ONE YEAR BY MAIL (In Texas) \$3.00

There's Money for Rent Again

People who go around looking for mortgage money usually have a reasonably fair idea just how good times are. If the money's easy to get, they know things aren't so bad; if capital can't be readily pried loose, conditions aren't so good.

So the recent report of the National Association of Real Estate Boards, to the effect that capital is again looking for takers, offers a hopeful footnote on the signs of the times. In 81 per cent of 261 representative cities, the report said, capital was readily available for mortgage loans. In 11 per cent of the cities, the supply was keeping up with the demand, and in only 8 per cent was there a shortage of money.

In fact, the situation has never appeared more favorable during the 17 years in which surveys have been made, the association said.

Of further cheer to the prospective home owner should be the fact that mortgage interest rates have dropped off generally from 6 per cent to 5 per cent. In some places, money can be had for 4 1/2 per cent.

The decline of 1 per cent in the standard rate may seem like a dribble, but calculated over a long term it is nothing to sneer at. On a \$12,000 home, financed on a 20-year plan the difference between 6 and 5 per cent would amount to \$2400 after 20 years.

In only 3 per cent of the cities surveyed is there a current tendency for the interest rate to rise. In 41 per cent of the communities, on the other hand, the tendency is toward even further reductions, and in 33 per cent, it is steady.

The fact that mortgage money is plentiful, despite the fact that interest rates have dropped, would be encouraging during any era. That it should come at a time when war has struck the world is regarded by real estate men as an extremely favorable sign. It is an indication that war influence has not yet gripped the nation and that mortgage money is showing no tendency to become scarce, as might be expected in a period of unstable economic and political conditions.

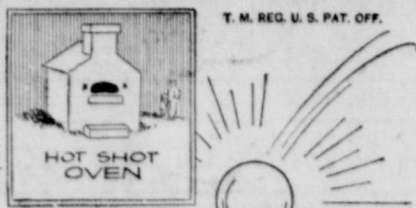
Connected with the government programs for expanding and improving housing and with the current campaign to trim building costs, the reduced mortgage rates and the abundant supply of capital offer genuine incentive to the man who is thinking of building. Most home builders are dependent on the use of someone else's money to get their project under way. If such money can be easily obtained, the confidence of capital in the building program is pretty well established.

Nothing more wholesome could happen to the American people in the spring and summer to come than a substantial increase in building activity.

Two New York gentlemen are charged with making off with a 2000-pound linotype machine. Just wanted it for the children, no doubt.

THIS CURIOUS WORLD

By William Ferguson



AT FORT MARION, IN ST. AUGUSTINE, FLORIDA, THERE STANDS A "HOT SHOT" OVEN WHICH WAS DESIGNED TO FURNISH A SUPPLY OF RED HOT CANNON BALLS TO BE FIRED FROM THE BATTERY.



WHAT DO WE CALL A METEOR AFTER IT STRIKES THE EARTH?

ANSWER: A meteorite.

Meet Top Dog of the U. S. A.



Top dog of America, and looking as if he knows it, is Champion My Own Bruce, beautiful jet black cocker spaniel owned by Herman E. Melenthin of Poughkeepsie, N. Y. He is pictured with his prize cup after being named best dog in the Westminster Kennel Club show in New York.

Junior College To Play Game Tonight

Coach H. G. Jennigs of Ranger Junior College, announced today that the Decatur Indians would play the Ranger Junior College basketball team tonight in the Recreation Building.

The Ranger college team has been showing steady improvement, and is expected to put up a good game tonight against the visitors.

Candidates Begin To Come Out In Governor's Race

State Highway Commissioner Harry Hines will announce his candidacy for nomination as governor of Texas in an address from Austin tonight and Railroad Commissioner Jerry Sadler, although unannounced, said he was "raring to go" because nobody of his political belief was in the race.

At Dallas former Governor James E. Ferguson said that many persons were urging that his wife enter the race for governor, and that she cannot be counted on, although she is not planning to run.

Baird Boosters to Visit In Eastland

A group from Baird advertising the Callahan County Fat Stock Show and Rodeo scheduled in Baird next Saturday will visit shortly in Eastland Wednesday morning to advertise the event.

The motorcycle group arrived in Eastland at 10 o'clock and will stay for 20 minutes. Tours to be visited Wednesday are Futarm, Cisco, Eastland, Rising Star, Pioneer, Cross Plains, Burkett, Coleman, Goldsboro, Novice, Lawn, Oplin and Eula.

Finnish Defense a Factor In a Loan

WASHINGTON, Feb. 20.—Jesse Jones, chairman of the Reconstruction Finance Corporation and the Export Import Bank, stated today that the American loans to Finland, which have been suggested in congress, will depend largely on how long Finland can hold out against the Russian invasion.

Should the Finnish defense crack up soon the loan will not likely be made, it was indicated in reliable sources in Washington.

Political Showdown Seen for Spring

WASHINGTON, Feb. 20.—Political observers today saw possibilities of a showdown between President Franklin D. Roosevelt and Vice President John Nance Garner in five and possibly six states this spring.

Garner's name has been entered or is expected to be listed in primaries in Ohio, Illinois, Wisconsin, Nebraska, Oregon and possibly California.

State Deficit Has Decided Increase

AUSTIN, Feb. 20.—State Treasurer Charley Lockhart revealed today that the state general fund deficit had increased from \$20,917,447 on Feb. 5 to \$22,750,024 as result of slump in tax receipts.

Two Children Born At Payne Hospital

Two children were born Monday at the Payne hospital in Eastland.

A girl, weighing 7 1/4 pounds, was born to Rev. and Mrs. W. Weathers. The father is pastor of the First Baptist church of Eastland.

A son was born to Mr. and Mrs. Bert Peyton. The heir weighed 8 1/2 pounds. They reside at the Leon plant near Eastland. Both mothers and children were reported doing nicely.

Wool, Mohair Meet Held at Gatesville

Several from Eastland county attended a recent meeting in Gatesville at which the cooperative marketing of wool and mohair was discussed, it was announced today.

Attending were County Agent Elmo V. Cook, Assistant Agent A. C. Pratt, J. F. Mosley and Dr. R. H. Hodges of Ranger.

Among officials present were M. T. Payne, district 8 extension agent; W. I. Glass, agent of this extension district; C. E. Bowles, cooperative marketing specialist; A. K. Mackey, animal husbandryman, and L. F. Aston, Texas manager for the Midwest Wool Marketing Association, with offices in Fort Worth. During the meeting Mosley was appointed to represent the Midwest concern in Eastland county.

Counties represented at the meeting were Shackelford, Eastland, Bosque, Freestone, Limestone, Bell, McLennan, Hamilton, Mills, Coryell.

The first oil well completed in Texas was in 1866 near Oil Springs in Nagodoches County.

Ranger NYA Team To Enter State Meet

Coach S. C. Hughes of the National Youth Administration basketball team of Ranger, has received a notice from H. A. Ziegler, NYA district director of Fort Worth, that the Ranger club would represent the district at a basketball tournament at the Regional Youth Center at Inks Dam, Burnet, on March 1 and 2.

The Ranger team has been declared champions of District 7, which has headquarters in Fort Worth.

A large number of strong NYA teams have indicated their intentions to participate in the tournament and from a starting field of over 50 clubs, 12 outstanding teams are expected to enter the state meet.

The eliminations will begin Friday afternoon, March 1, and the meet will continue through Friday night and Saturday. The consolation and final games will be played Saturday night and the championship team will be presented a suitable trophy, immediately following the game.

Texas produces more than four-fifths of all the nation's output of carbon black, used mainly by tire manufacturers.

Dr. Woods' Talk Set at Eastland

L. A. Woods, superintendent of public instruction for the state will speak at a meeting to which the public is invited Wednesday morning, Feb. 21, in one of the district courtrooms in Eastland. The talk will begin at 10 a. m.

T. C. Williams, county superintendent, has announced that trustees, teachers and officials of Eastland county schools are invited to attend the meeting.

Dr. Woods has chosen as his subject "State and Local School Problems."

Baldness Hereditary A Doctor Declares

MINNEAPOLIS, Minn.—It's hereditary—if your father has a bald head so will you, according to a professor.

"Most bald men today, with some exceptions, of course, had bald fathers," he said.

"If your dad lost his hair at an early age, chances are you'll also acquire a shiny pate at an early age."

"Men worried about their thinning locks ought to take it easy and wait for the inevitable."

The oil refining industry pays workers the highest wages of any industry in Texas.

Six Jobs Offered 'Incompetent' Worker

SALT LAKE CITY, Utah—Miss Dana E. Jones was out of a job. This ad she inserted in a Salt Lake paper:

"Incompetent, unoriginal stenographer never passed ugly duckling stage. Call Elizabeth Lawrence after 10 A. M."

By noon, Miss Jones had six offers of jobs—including two as a secretary.

Will Is Preserved For Future History

PHILADELPHIA—The Board of City Trusts has voted to spend \$350 out of the \$86,000,000 estate of Stephen Girard to restore and preserve the original will, which is becoming dangerously brittle and discolored with age.

The century-old document, one of the prized records of the office of the Register of Wills, is more than 100 pages long. Each page is covered with an invisible preparation to protect it from light and wear.

There are 79,000 gasoline pumps in use in Texas service stations, an average of one pump for each 18.7 automobiles.

Legionnaires As Cops

MILFORD, Conn.—of the annual police can Legionnaires protection of the law officers went rug-cutting.

Not only did they munity crime free, tured four men w city as suspects metal thefts.

ATTEND F

Ernest Halkins Andrews and fam Fratas, attended Pete Vietas, 43, Greece.

"Texas' carbon tire makers to made from sour gas er commercial use.

The presence was first reported vitors of the De

In the Corson of the most fam of Texas, there producing an aver tenths of one bar Thirty-six other ly one-fifth of a b

CANDID SHOTS of Yourself Enjoying EASIER SEEING

Good light makes reading easier and enables you to read longer without becoming drowsy, one of the first signs of over-worked eyes. Sewing, as every woman knows, requires good eyes and good light, especially if fast and accurate work is to be done. Treat yourself to a good light in the bathroom and see how much better you can give your face a quick shave. Kitchen work is easier if you have plenty of light to see clearly what you are preparing or have cooking on the stove.

Plan Now to Have EASIER SEEING in Your Home. You can enjoy Easier Seeing in YOUR home at small cost. Inexpensive light fixtures are available in local stores which just screw into present light sockets. Even just a larger bulb may give you the added light you need. You'll find that the slight additional cost of GOOD light, only a few pennies a day, is one of the best investments in your home. Buy Lamp Bulbs and Fixtures from Local Stores TEXAS ELECTRIC SERVICE COMPANY

CANAL BUILDER

Answer to Previous Puzzle. HORIZONTAL: 1 Pictured canal builder, Ferdinand. 9 He was in charge of building the Suez. 13 At this place. 14 Born. 15 Astringent. 17 To wander about. 18 Father. 19 Ruby. 21 Ancient deity. 23 To flatter. 26 Roof final. 28 To deposit. 29 Part of foot. 30 To bend the head. 31 Russian. 32 Ogled. 35 Part of circle. 36 Bones. 37 Girdle. 39 Lion. 40 Mother. 42 Dye. 43 Onager. VERTICAL: 2 Exclamation. 3 Envoys. 4 Age. 5 Serious. 6 To endow. 7 To ring as a bell. 8 Auto body. 9 Imprisoned as a bird. 10 Malt drink. 11 Cardinal number. 12 Common verb. 16 He was also a statesman or. 20 His title. 22 Regrets. 24 Flightless bird. 25 Toward. 27 Innocent. 33 Battering machine. 34 Photographic material. 38 Poise. 41 Land measure. 44 Silk. 45 To hurl. 47 Sloth. 48 Nobleman. 49 Caper. 51 Person opposed. 55 Organ of hearing. 56 Plural. 58 Wing. 59 Pronoun. 60 Southeast. 61 Africa. 63 Note in scale.

Crossword puzzle grid with numbers 1-65 and a portrait of a man in the bottom right corner.

THE CAPTAIN'S DAUGHTER

BY HELEN WORDEN

CHAPTER XXV
success of the William Marbury could be measured by the number of photographers and newspaper reporters congregated at the great mansion at 88th and Fifth Avenue. It was 10 o'clock but many guests had already arrived.
ly there was a shout, came the Donovans, father, Dan himself and Lynda.
s blazed. Lenses clicked, took Dan by one arm and by the other. "Let's give break," he said, pausing on the stone steps with his son. "How's this boys? Dan, Lynda in closer."
crowd on the sidewalk, and time it was a big one, as a Rolls-Royce town car.
y volume," exclaimed Mrs. Dan, hobbling out with the aid of a footman. "Actually posing pictures."
s behind her arm away Dan's. "She's right. We should have done that."
s in. "What's that Lynda, my dear?" His voice, gentle when he spoke to his daughter, was now stern. "You wouldn't understand, Dan." Lynda snapped, just happened to make me little idiot. It's not your I should have known.
s when Mike Donovan recognized trouble ahead he spoke quietly.
was just putting meself in line of the photographers, "he answered quietly. "If any of me is goin' to help they can have it."
AND MRS. DANIEL DONOVAN. A footman in breeches, standing at the top red-velvet carpeted marble boomed out the names of Dan and Lynda. They both started unconsciously, then walked unly into the grand ballroom. Mrs. Martin and her husband were receiving.
Lynda and Dan appeared, and join her and their as she referred to your uncle kick—, red Dan, to Lynda, after they shaken hands with the hunh couple, "or at least break un?"
(The End)

BRUCE CATTON IN WASHINGTON

BY BRUCE CATTON

WASHINGTON.—Demand for modification of the state-federal unemployment insurance system will almost certainly be made before this Congress adjourns.
On the one hand, the trust fund which is financed by the 3 per cent payroll tax, and from which benefits are paid, has grown rapidly.
It has increased by 35 per cent since benefit payments began.
Although payments ran to \$200,000,000 during the last six months of 1939, the fund took in \$400,000,000 during the same period and stands now at approximately a billion and a half.
On the other hand, there is good evidence to show that a number of small business firms are having great difficulty meeting the tax, and that it is proving onerous enough to generate a substantial demand that the load be lightened.
EMPLOYERS PROTEST UNEMPLOYMENT TAX
THE U. S. Chamber of Commerce has received many protests. A few samples:
A middle-western widow who runs a small manufacturing business established by her husband, employing about a dozen workers, wrote that at the end of the past year when she came to balance her books, she found that what she had paid in unemployment tax was just three times what she had left for herself as net profit.
An eastern business man totaled all of the taxes his firm paid and found that his payroll tax was the biggest single item. It ran to 36 per cent of his total tax bill, topping even his real estate taxes.
CLAIM TAX PREVENTS EXPANSION
OF the thousand-odd members of the Chamber who replied to a questionnaire asking if they were making capital investment in new plant or in modernization this year, a large number said they were not—because the payroll tax was making it financially impossible.
One point of complaint is the "merit rating" system, now in effect in Wisconsin and soon to be set up in most other states, by which a firm may win a substantial reduction in its payroll tax if its record shows that it seldom discharges a worker.
In a quiz about the wage-hour law, a number of employers reported that they could not hire temporary workers in rush seasons, because letting them go would spoil that merit record; instead, they preferred to pay time and one-half for overtime.

RED RYDER

By Fred Harman



ALLEY OOP

By Fred Harman



OUR WAY

BY WILLIAMS



Double-Duty 'Dreadnaught' Tanks



battleships are these amphibians of the U. S. Army Tank Corps. With guns bristling side turret and others aimed astern, the tanks ford a stream nearly five feet deep during recent war games at Fort Benning, Ga.

FRECKLES and HIS FRIENDS

BY WILLIAMS



Wedding on the Wires



Modern marriages don't shy at a little thing like distance between pastor and principals. In McAllen, Tex., Ethel Macrae and Roy McNeil were wed by telephone as the bride's father read ceremony in Warrensburg, Mo., and relatives in Washington, D. C., listened in. Knot was retied by a justice later.

Dairy Products Association Will Meet On Mar. 7

COLLEGE STATION, Tex.—Delegations from North, South, East and West Texas Counties will gather here Thursday, March 7th, for the Annual Meeting of the Texas Dairy Products Association according to Charles N. Shepardson, Head of the Department of Dairy Husbandry, Texas A. & M. College, and Vice-Chairman of the Associations Dairy Development Committee.
"Interest is particularly keen in the meeting," said Shepardson, "because of the fact that it will be the first time that Texas dairy men, breeders of dairy cattle and State and national processors have sat in meeting with Texas civic leaders, bankers, agricultural workers and editors to discuss and develop a program for the advancement of Texas dairying and the balancing of the State's agricultural program." "Needless to say," said Shepardson, "the Texas A. & M. College is glad to have this representative group visit the institution."
The one day program, as outlined, will consist of an address of welcome at 9:00 a. m. by President T. O. Walton with response by J. W. Ridgway of San Antonio, followed by the President's address by Henry Teubel of Tullia. "National Developments and the Responsibilities of the Dairy Products Manufacturers" will be the subject of W. A. Wentworth, New York, Director of Public Relations for the Borden Company. "Silent Partners of the Dairy Industry" will be discussed by A. L. Ward of the National Cottonteed Products Association. The subject "A Quality Control Program for Texas" will be handled by K. M. Renner, Department of Dairy Manufacturers, Texas Technological College.
A noon luncheon for visitors and delegates will be held in the College Mess Hall, highlights of which will be an address by J. L. Kraft, President of the Kraft Cheese Company of Chicago. At an afternoon session, F. W. Atkinson, an acknowledged authority on dairy cattle, and Head of Dairy Husbandry Department of the

Forced to Slay Husband's Killer



Weird events of the wildest nightmare couldn't match the torturous ordeal of murder and suicide lived through by Mrs. Ralph Caldwell in a snowbound farmhouse east of Washington, Pa. Wounded as she tried in vain to protect her husband from the mad shotgun charge fired by a disgruntled farm hand, she was later forced by the murderer to pull trigger while he held barrel of gun against his own chest.

Artificial Lake To Blot Out A Mine

DEADWOOD, S. D.—Man had tested nature again and today Spring creek, a gushing Black Hills mountain stream, runs over a bed cut through the heart of a granite mountain.
The stream was diverted from its original course through a channel drilled 650 feet through solid granite—all because conservationists wanted it to feed an artificial lake being built at Harney National Forest, near Sheridan.
The tunnel is 5 by 7 feet and can carry flood waters of 15 feet.
At present 150 CCC enrollees are constructing a 120-foot dam into which waters of the creek will be turned this year. The dam, costing \$250,000, will cover five acres at the base, sloping up to half an acre at the top.
When completed, the artificial lake will have a shoreline of about 7 1/2 miles—400 acres of water surface—and an average depth of 60 feet.
And right in the midst of the lake site now lies the once thriving mining camp of Sheridan. All traces of the camp will be removed before water is sent into the lake.
The manufacture of petroleum products from Texas oil constitutes 41 per cent of all the manufacturing in Texas.
Eighty per cent of all the crude oil produced in Texas is refined in Texas. Less than three per cent of the cotton produced in Texas is processed in Texas and none of the wool or mohair.
Nearly one-third of all the oil produced in Texas comes from old pumping or stripper wells.

CAUGHT COLD? Get direct relief from discomforts... rub through chest, back with clinic-tested VICKS VAPORUB

Society Notes

CALENDAR TONIGHT

Junior Las Lealas will meet tonight at Woman's Clubhouse at 7:30 with a program on Federation and Parliamentary work. Miss Ima Ruth Hale is hostess and leader for this program with Mrs. Joseph M. Perkins to speak on Value of Federation and Mrs. James Horton to speak on Parliamentary Drill.

Observe Anniversary With Luncheon at Clubhouse

Observing the twentieth anniversary of the Music Study Club, which was organized February, 1920, an anniversary luncheon will be held at the Clubhouse at 12:00 Wednesday, February 21.

Mrs. W. E. Stallter, Mrs. J. F. Collins, Mrs. P. B. Bittle, Mrs. Cecil Barham, and Mrs. Guy Patterson will be hostesses for the celebration, and all members of the club are invited to attend.

148 Enrolled in Study Course Of Baptist Training Union

The Baptist Training Union study course had an enrollment of 148 for the second night of the course Monday.

Marked interest has been shown in the course which began Sunday evening and will run through Friday February 23.

Each evening at 7 o'clock the classes meet in the lower assembly room for an opening song service.

CLASSIFIED

WANTED: Housekeeper, unincumbered, white. Phone 60.

LET A LOCAN MAN do your mattress renovating. See McCORD at 303 N. Dixie Street. One-day service.

FOR QUICK SALE: 6-room house in first class condition, garage, also Dodge car. Apply MRS. A. L. COOK, at Fashion Shop, Phone 25.

WANTED—Large second hand baby bed. Call 601, or apply at 508 S. Daugherty.

APARTMENT FOR RENT, all bills paid, \$3 per week. Only couples desired. 413 South Daugherty street.

WHY NOT try my meals. During week 20c; Sundays 35c.—MRS. A. M. STOKES, 305 North Daugherty.

and from there to their respective class rooms. A fifteen minute intermission is held between the two class periods, which last for forty-five minutes.

Miss Nell Casement of Dallas, state worker, is presiding over the assembly session and conducts the Modern B. T. U. Methods class.

Other instructors are Rev. Jones W. Weathers, Soul Winning class; Norman From, Howard Payne College, Intermediates; Garner Altom if Cisco, Juniors, and Miss May Taylor, beginners and primary. Mrs. Lee Bishop will have charge of the nursery each evening.

Attend New York Show

While on her recent visit to New York City, Mrs. Joseph M. Perkins of Eastland attended John Golden's production "Skylark" which is starring Gertrude Lawrence at the Morosco Theatre.

Mrs. Pierce Rites Held on Tuesday With Breck Burial

Funeral services for Mrs. Bessie Pierce, 46, former resident of Eastland who died last week at St. Petersburg, Fla., were conducted Tuesday. Burial was in a cemetery at Breckenridge beside the grave of her father, W. J. Brown.

Mrs. Pierce's death in Florida followed a short illness. She was born in Breckenridge July 3, 1893. She had lived in Florida for the past six years where she owned and operated a beauty parlor.

Besides Breckenridge and Eastland, Mrs. Pierce had also lived in Abilene.

Survivors include her mother, Mrs. Nannie Brown of Abilene, her sister, Mrs. Willie Mae Thompson of Abilene, two children, Mrs. A. G. Stouter of St. Petersburg, Fla., and James Ray Pierce of Bartlett, Tex., and a niece, Genevieve Thompson of Abilene.

Pallbearers were listed as follows: Murrell Brown, Leon Taylor, Bob Brown of Abilene, Clyde Curry, Homer Curry, Conrad Russell of Weatherford, Ernest Curry and Joe Curry of Mineral Wells.

City Manager of Eastland to Attend Meeting in Dallas

M. H. Kelly, Eastland, state vice president of the Texas League of Municipalities, will attend a meeting sponsored by the organization March 8 at the Hotel Adolphus in Dallas.

Henry Pullman Talks At Rotary Gathering

A classification talk was given by Henry Pullman at the weekly luncheon of the Rotary club in Eastland Monday noon at the First Methodist church.

Jack Frost, president, presided. Visitors were R. S. West of Cisco, guest of Jack Muirhead, and Dan Childress, Eastland, guest of W. P. Leslie. J. B. Johnson will be in charge of the program next week.

Officials Leave On Journey to Capitol

County Judge W. S. Adamson and County Auditor Don Parker left Tuesday afternoon for Austin to confer with officials on county finance matters.

Eastland Fighting Fans at Tourney

F. W. (Red) Graham, Pat Ross, Neal Day, Happy Hightower, Jack Vaught and Bob Vaught of Eastland attended the Golden Gloves fight finals Monday night in Fort Worth.

Donations Given For Finnish Aid

H. J. Tanner, chairman of Finnish Relief activities in Eastland, announced Tuesday that \$9.33 in donations were received Saturday and Sunday by girls assisting in the Eastland "Help Finland Movie Days."

Through cooperation of Cecil Barham, resident manager of Texas Consolidated Theatres, Inc., the girls were given permission to receive the donations in the theatre lobbies.

Tanner expressed appreciation for the aid of everyone and said he believed donations would have been greater had the weather been more agreeable Saturday and Sunday.

The money has been sent Finnish Relief Inc., headquarters at New York.

Kelly, who is city manager of Eastland, and officials expected at least 25 city managers from over Texas to be present at the meeting and discuss mutual problems.

The meeting is being held at Dallas on invitation of City Manager James W. Aston of Dallas.

Eastland Personals

Constable Saint of Desdemona was here on business Tuesday. John Layton, Gorman, was a visitor Tuesday in Eastland.

America Fought 'Unfinished War' Near Finn Arctic Battleground

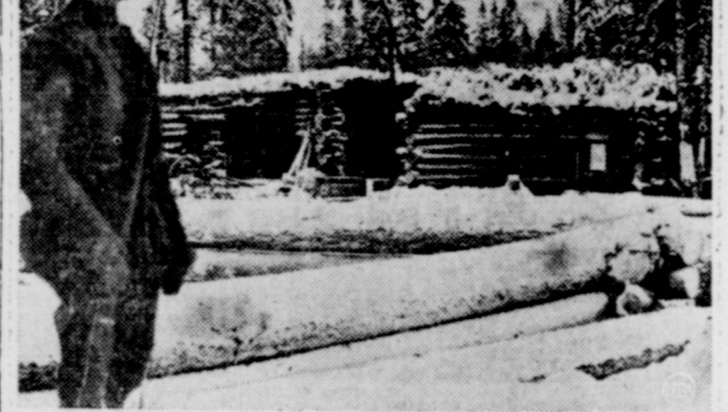


Americans once fought in the Arctic snows near scene of present Russo-Finnish war. Heavy black lines show where American troops campaigned during and after World War. Shading shows area of occupation. Dotted lines show nearby lines of conflict in today's war.

When news comes from Finland of battles above the Arctic Circle at 50 below, there are several thousand Americans who know all about that—veterans of an "unfinished war."

They are veterans of the American expeditionary force which arrived at Archangel in September, 1918. There were 4500 of them then. Most were Wisconsin and Michigan boys.

This strange adventure is little known. But the Americans who were there, fighting near the same territory where Russian and Finn now clash, are not likely to forget it. They had joined the army



Taking shelter from the Russian winter in log barracks, American troops in 1919 wore fur hats a la Finland, like this buck private didn't like it, but the British sold

to fight Germans in France. They wound up fighting Russians in Arctic Siberia. Many of them have never found out why.

For 10 months, through the whole of the winter of 1918-1919, these American boys huddled in huts, marched over the frozen tundra, fought and died in the dim violet light of Arctic winter.

REASON FOR ARCTIC CAMPAIGN ARE OBSCURE For what? It is hard today to understand the causes behind the adventure.

In the early spring of 1918 it looked bad for the allies. The Germans were advancing in France, partly because Russia had dropped out of the war, releasing German divisions for the western front. Nobody knew what was going on in Russia, but it was widely believed that amid internal chaos the Germans were getting control of the whole country.

It was feared that they would seize Murmansk and Archangel on the Arctic Sea, and use them as submarine bases. From those ports railroads run southward to Petrograd and to the main line of the Trans-Siberian Railway. It was even feared that they would be able to recruit Russians in vast masses for the German army.

The British, at Trotsky's invitation, sent a small force to Murmansk to hold it against possible German seizure. By creating a "front" in north Russia, it was also hoped to prevent any Russian help for Germany.

The allies kept pestering the United States to send men to help. Pershing was dubious of it; Baker

Political Announcements

This newspaper is authorized to publish the following announcements of candidates for public offices, subject to the action of the Democratic primaries:

- For Congress, 17th District: OTIS (OAT) MILLER of Jones County
- For Assessor-Collector: CLYDE S. KARKALITS
- For County Clerk: R. V. (PIP) GALLOWAY
- For Sheriff: LOSS WOODS
- For Criminal District Attorney: EARL CONNER, JR.
- For County Judge: W. S. ADAMSON R. L. RUST
- For County Treasurer: GARLAND BRANTON
- For Commissioner Precinct No. 1: HENRY V. DAVENPORT
- For District Clerk: JOHN WHITE

AMERICANS, LIKE FINNS, USED RUSSIAN RIFLES

The Americans, armed with a tricky Russian rifle, and backed by only two batteries of Canadian artillery, found it heavy going.

They were frittered away on little dabbbling expeditions, down the Vologda railroad, up the Dvina river.

The bitterest winter weather and Russian re-enforcements came on them together. Ironside soon saw that advance was hopeless, and merely tried to hold the ground already won, some 100 miles south of Archangel.

The Armistice came in France on Nov. 11, but as the guns died on the Western Front, they blazed at Toulgas where part of the 339th, with a few Royal Scots and Canadian artillerymen, were repelling desperate attacks by the gray-clad Red Army.

A dozen little "fronts" with detachments of American troops stood off Red attacks, then dug in for the winter, building log blockhouses to repulse frequent attacks.

By spring, the Americans were fed up with the whole thing. Then somebody back home remembered. Gradually the Americans were withdrawn, leaving the British and White Russians in the lines until that autumn, when they also pulled out. In June the Americans sailed for home. That is, all but the hundreds who were buried in the same frozen snowfields that now are spattered anew with the blood of Russian and Finn.

General Poole, unsuccessful, was quickly replaced by Gen. William E. Ironside, the same officer who today commands the British army in France.



It was 50 below zero when this American soldier was photographed before a blockhouse on the Vologda railroad front south of Archangel in February, 1919.

In ten large Texas cities with total population of 1,430,000, there are 600,000 persons or 42 per cent who depend for their living upon the oil industry.

Twenty-three thousand pumping or stripper wells in older Texas oil fields average only three barrels of oil daily. Railroad Commission reports show.

Eastland Girls TWC Music

Dr. and Mrs. R. C. Eastland were visiting Fort Worth where musical show sponsored by students of Texas Wesleyan and in which their daughter, Jane Ferguson, had Marie Plummer, a member of a vocal group had numbers in the

Development of vast supplies of iron commercially possible and oil in that area meet competition of the other iron nations, experts predict.

LYR

Tuesday - We

Robert

TAYLOR

LEW

AYRE

"REMEM

-EXTRA

"March of

— Present

"REPUBLIC

FINLAN

ATTENT

TO THOSE WHO

Refriger

WHEN IN NE

SERVICE ON

MACHINE C

SEELY

ELECTR

position

along

re trend

s after

re filled

ops with

rtars, wh

m their

one sect

re in a p

beautif

an firing

ty did no

re taken

sitions.

We saw

ls, sluice



ced as t

e. Ther

THIS BANK WILL BE

CLOSED

THURSDAY, FEB. 22nd

WASHINGTON

IT is only in recent years that historians have succeeded in breaking through much of the mysterious aura that has surrounded the memory of George Washington. We know him as a man of great fortitude, with an almost superhuman ability to endure hardship. We know him as a devoted father and husband, as a great leader.

GEORGE WASHINGTON was all of this, and more. He was an astute businessman who realized that freedom of expression and action was the sole guarantee of personal as well as business life. We can think of no more appropriate time than this to show this other side of Washington.

PLEASE ATTEND TO YOUR BANKING
NEEDS WEDNESDAY!

Eastland National Bank

"I Got a raise Today!"

Good work. You had it coming... But don't let it slip through your fingers!

Some of that extra money you'll save. Some you'll spend—to fix up the house, buy clothes you've needed, get things for the children. Advertising can help you select wisely.

This paper is full of sound, helpful buying counsel. Read the advertisements carefully. Then you'll purchase with the foreknowledge that means money saved... and put all your salary to good use!