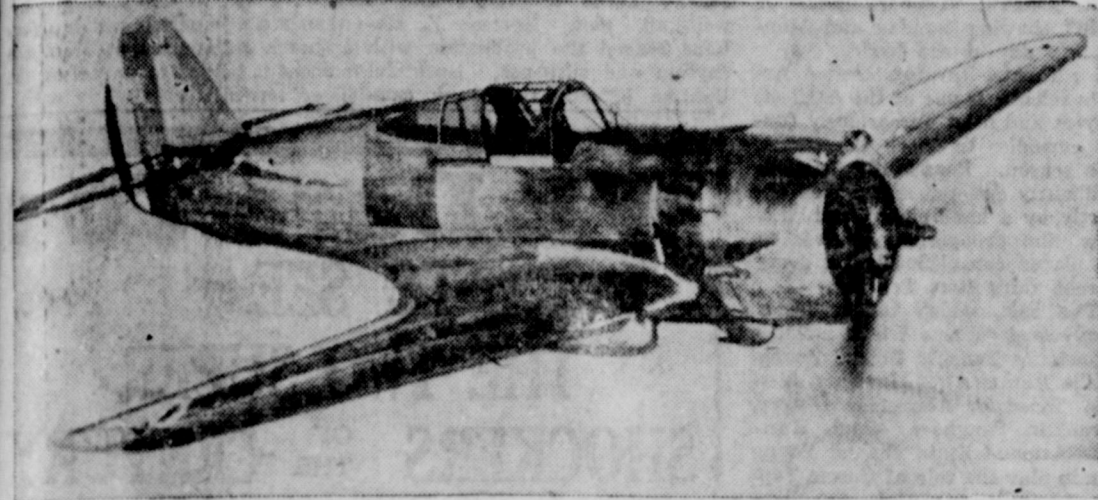


Streaks to 575 Miles-Per-Hour Speed Record



Whistling through space at 575 miles per hour in a dive over Buffalo, N. Y., this Curtiss Hawk pursuit plane smashed all existing speed records for man. The airship, with Pilot H. Lloyd Child at controls, is pictured at 22,000 feet just before the dive.

Quite a Skate ---and Only 88



Still sizzling the ice at the age of 88, George W. Musso, beloved oldest regular skater in New England, is pictured out for a game of hockey at Lynn.

Judge and County Group Return From Meeting At Austin

W. S. Adamson, back from a meeting of the County Judges and Commissioners Association of Texas in Austin this week, said Friday that a plan worked out by the state highway department and the county and district road bond indebtedness committee of the association whereby a one-cent gas tax would be used to retire road bond indebtedness over a period of 25 years was approved at the session.

In addition to Judge Adamson, all members of commissioners court, Fred Siekman, Arch Bink, Henry Davenport and Newt Crawley, and Auditor Don Parker attended.

If the approved plan gets the oke of the legislature it is expected the county's tax rate could possibly be cut 50 cents.

Churches; Young People to Meet In Albany On Sunday

The Fifth Sunday conference for Presbyterian Young People will be held in Albany, Sunday, Jan. 29, from three to nine p. m. The usual program will be given, with leading speaker, Dr. Alexander Warren, of the Department of Evangelism of the Presbyterian Church. Dr. Warren will speak in the afternoon and at night. He is a young man, still under thirty, of great consecration and power. He is now engaged in special services in Albany. This is the only series he will be able to conduct in the Presbytery of Abilene this season.

"You will be greatly helped in your spiritual life by attending the afternoon and evening conference next Sunday. Announcements state, the Albany church will furnish a "chili supper" at 6 p. m. for all guests. Plan to attend."

Bids Asked Upon Transplanting Of Tree At Postoffice

Written bids for the transplanting of a liveoak tree on the post office lawn in Eastland will be received at the office of Postmaster Frank A. Jones until February 5.

Postmaster Jones also has announced written bids will be received until the same date for a hose reel with a capacity of 100 feet.

Persons Named In Indictments Listed

Eight persons, named in indictments returned Thursday by the district court grand jury, had been arrested by Friday at noon, according to Deputy Sheriff Tug Underwood. Total number of indictments returned was 16.

The eight persons and charges were listed by Deputy Underwood as follows: L. T. Williams, theft over \$50. Orville Davis, Cleburne, chicken theft. Curtis Flack, Cisco, driving intoxicated. H. S. Brandon, driving intoxicated. Earl Beggs, Eastland, theft under \$50. Roy Beggs, Eastland, theft under \$50. Terry Clark, Rising Star, driving intoxicated. Eugene Higgins, Cleburne, chicken theft.

Eastland Pastor To Talk at Breckenridge

Rev. P. W. Walker, who is pastor of the First Methodist Church at Eastland, will speak at a men's banquet in the Methodist Church tonight at Breckenridge.

Demands Hearing



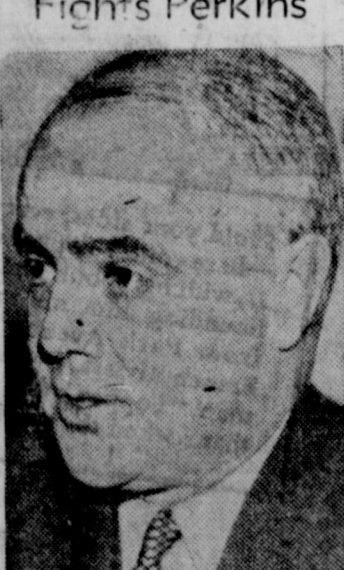
Labor Secretary Frances Perkins, above, met demands by Representative J. Parnell Thomas of New Jersey for her impeachment with counter demands for quick hearing of charges against her and two Labor Department aides.

Self-Defender



Immigration Commissioner James L. Houghteling, above, gets an opportunity with his chief, Labor Secretary Frances Perkins, before the House judiciary committee to defend himself against demands for his impeachment made by Representative J. Parnell Thomas of New Jersey.

Fights Perkins



Representative J. Parnell Thomas, New Jersey Republican, who asks impeachment of Labor Secretary Frances Perkins and two department aides on charges of failing to press deportation proceedings against Harry Bridges, West Coast C. I. O. leader.

Staff HD Club To Meet next Wednesday

The Staff home demonstration club will meet this Wednesday, Feb. 1, at 2 o'clock in the home of Mrs. Lowry. Every member should be present and all visitors are invited.

ITALY CLAIMS HOSTILITY NOT HER ATTITUDE

LONDON, Jan. 27.—Italy assured Great Britain today of its absence of hostile intention against any European nation as the powers awaited official declaration of England and Germany in the struggle for power in the Mediterranean area.

The Italian assurances were given in connection with the calling up of 60,000 reservists for February re-training during a month which many diplomats fear will see a showdown in the quarrel between France and Italy. France had ordered up reservists in advance of the normal training date.

Meantime interest centered on the speech which Prime Minister Neville Chamberlain of Great Britain will deliver Saturday in which he is expected to make clear England's determination to forestall a new crisis in Europe's affairs if possible.

This attitude on the part of Britain already has been indicated by a public warning from Sir Samuel Hoare, home secretary, that the strength of the British Empire is irresistible in event of a great conflict.

Meanwhile the Spanish nationalist forces, sweeping north to encircle the retreating loyalist segment of Spain along the French border, captured Badalona today, and continued forward.

Badalona is eight miles north of Barcelona, and is the first important town on the coastal highway to the north.

Generalissimo Francisco Franco, determined to give the republicans no rest, has ordered four army corps to pursue and wipe out the remaining Catalan army.

Grocers Trade Is Given Unusual Fun

BUFFALO, N. Y.—The word "unusual" hardly does justice to Albert Pinkel's grocery. It's amazing.

A potential Gertrude Stein, musician, artist, imitator and "what-not," Pinkel would rather, it seems, entertain his customers than wait on them.

The unpredictable Pinkel has his show-window filled with hand-printed poems which in themselves indicate what lies ahead for the customer who crosses the threshold of the little store. An example of Pinkel's poetic ability is this one:

"It's coming true A nation Is going to give everybody a suit then you won't have anymore home You won't need any we all will go to Boston Hill."

Just as puzzling, if not more so, is Pinkel's conversation. Asked how long he had had the store, the grocer, wearing a red telephone hat, replied:

"Sixty minutes after 12 o'clock I was very lucky—I 1 o'clock. This morning I had a wonderful appetite—at 60 minutes after 7 o'clock I 8 o'clock"

The walls of the store are covered with more poems and plenty of pencil sketches, drawn by the versatile Pinkel.

DEATH TOLL IN BIG QUAKE STILL MOUNTS

SANTIAGO, Chile, Jan. 27.—The death toll of the most disastrous earthquake of the century on the South American continent, mounted rapidly today as workmen repaired communication lines to South Central Chile.

Appalling conditions were revealed in the six states which felt the earthquake embracing an area of 40,000 square miles, with a population of 1,600,000.

Typical of the startling messages was one from a United Press correspondent at Cauquenes. The message was sent by a horseman courier, 40 miles through the mountains to Talca, where the telegraph line ends.

It reported a toll of 2,500 dead and 2,500 injured in that city alone. The total casualties may never be known. A Santiago newspaper estimated today there were more than 30,000 dead and 50,000 injured.

A partial United Press compilation showed the following major centers of death:

- Chellan with 10,000. Concepcion with 2,000. Cauquines with 2,500. San Rosendo with 1,000. Penco with 200. Many other places reported 10, 20 or more dead. Many more have not been heard from.

The injured numbered tens of thousands and the homeless hundreds of thousands. The damage was expected to reach \$50,000,000.

Cooperation On Freight Rate Fight Is Urged Today

FORT WORTH, Jan. 27.—Full cooperation of the larger West Texas cities was asked today by the West Texas Chamber of Commerce public affairs committee as it sought to widen its drive for lower freight rates in the Southwest.

Pointing out that small towns had provided the greatest impetus for the drive, D. A. Bandeen of Abilene, manager of the WTCC said, "We need the help of the men of influence in the big cities."

Bogus Check Drive Is Given Support

AUSTIN, Texas.—Reproductions of bogus checks are being printed regularly in the bulletin of the Texas public safety department in an effort to trip up several organized groups of bad check passers.

The checks usually purport to be those of some large corporation or organization and have various numbers filled in like the checks of concerns with large index files. The amounts are inserted by "protecting" devices. It has been noted that while many names are used for the payee, the initials "J. W." frequently appear.

Large groups of checks have been gathered from Taylor, Beaumont, Bay City, Wharton, Granger, Luling and Bastrop, all showing similarities.

In other towns a man and woman have worked together, renting rooms to get local endorsements to aid in cashing bogus checks.

Funds For Planes Asked By President

WASHINGTON, Jan. 27.—President Roosevelt today asked congress for a \$50,000,000 emergency appropriation for the purchase of 565 new combat planes for the army.

The money would be used to make immediate start on the \$552,000,000 defense program that Mr. Roosevelt previously had outlined.

PROCEEDINGS 11TH COURT OF CIVIL APPEALS

The following proceedings were had Friday in the Court of Civil Appeals, Eleventh Supreme Judicial District:

Reversed and Remanded General Life Ins. Co., vs. Nellie Potter, Rain.

Motions Submitted Edinburg Consolidated Independent School District vs. Southland Life Insurance Co., et al, plaintiff-in-error's motion for extension of time to file statement of facts.

I. H. Hale, et ux. Federal Land Bank, et al, appellant's motion to file statement of facts out of time.

Motion Granted Edinburg Consolidated Independent School District vs. Southland Life Insurance Co., et al, plaintiff-in-error's motion for extension of time to file statement of facts.

Cases Submitted January 27, 1939 M. McAllister Stevenson et al, vs. W. L. Wilson, Nolan.

The Robert E. Lee Ins. Co. vs. J. T. Sanderson, Nolan. C. R. Elliott vs. Estate of Kate F. Morton, deceased. Haskell.

Cases to be Submitted Feb. 3, 1939 Traders & General Ins. Co. vs. Raymond Ray, Palo Pinto. Texas Pacific Coal & Oil Co. vs. C. O. Smith, Stephens.

Midland Bank In Its New Building

MIDLAND, Texas.—The First National Bank of Midland has moved into its new \$300,000 building, the largest bank building in West Texas.

The structure has eight stories. It is finished in white stone trim and glass, with black granite work, and is air-conditioned. All office space in it has been leased.

The opening of the new building commemorated the 50th anniversary of the founding of the private bank, Connell Brothers and Scharbauer, which became the First National Bank in 1890.

French Plane Sale To Be Investigated

WASHINGTON, Jan. 27.—The senate military affairs committee today ordered an extensive inquiry into the proposed sale of about 600 American military airplanes to France.

The committee acted shortly after President Roosevelt declared that the administration had sanctioned the French deal.

Door to NYA Wood Shop Broken today

The glass door of the National Youth Administration woodworking shop in Ranger, was broken during the noon hour today.

When the boys left the shop for their dormitory, where they eat, the door was locked. When they returned at 1 o'clock the glass door was broken.

Ranger police were making a checkup to try to determine whether the door had been accidentally broken, or if an attempt had been made to steal tools from the shop. No loss of tools or materials was immediately noticed.

SENATE NEARS A VOTE UPON RELIEF BILL

WASHINGTON, Jan. 27.—The senate today neared a vote on President Roosevelt's demand for \$875,000,000 relief funds with supporters and economy advocates both predicting victory by a few votes.

The vote was set for 3 p. m., and Senate Majority Leader Alben W. Barkley, expressed confidence the motion to increase the appropriation from \$725,000,000 to \$875,000,000 would be successful.

Chairman Alva B. Adams of the appropriations sub-committee, claimed a three-vote margin in favor of the economy bloc.

Senator Elmer Thomas of Oklahoma spoke first in the final debate. He announced that he would vote for the \$150,000,000 increase.

"The funds appropriated are admittedly necessary," said Thomas. "They will do no more than provide a degree of shelter, fuel and food for a portion of our unfortunate and distressed people."

Sen. David I. Walsh of Massachusetts, who spoke next, said he would vote for \$875,000,000.

Prizes Offered to Students For Best Theme on Oil Topic

TULSA, Oklahoma.—The Independent Petroleum Association of America will award one prize of \$1,000 and 18 state prizes of \$100 each to senior students who are this year completing their work in accredited high schools, it is announced by Charles F. Roeser, Fort Worth, Texas, president of the association.

The awards are to be made for the best essays on the subject: "What Oil and Gas Have Done for My Community."

Announcement of the contest is being made to superintendents of schools in the states of Arkansas, California, Colorado, Illinois, Indiana, Kansas, Kentucky, Louisiana, Michigan, Montana, New Mexico, New York, Ohio, Oklahoma, Pennsylvania, Texas, West Virginia and Wyoming.

The Grand Award, \$1,000 will go to the student adjudged by the Committee on Award to have submitted the best essay. The \$100 prize will be given to the writers of the best essays from the 18 states, one prize to each state including that from which the Grand Award comes.

With the announcement to school superintendents, rules of the contest and full particulars have been included. Additional copies, it was explained, will be sent upon request. The address of the Independent Petroleum Association of America is 704 Thompson Building, Tulsa, Oklahoma.

Ranger Scouts have Hike, Steak Fry

Marion Thomas, scoutmaster of Ranger troop, took the patrol leaders and their assistants on a steak fry. Instructions in a patrol leaders duties were given. They then practiced flashlight signals.

On the way back two boys passed their scout pace.

During the last scout meeting the troop took in a new member, Pleas Moore, Jr.

Lower Freight Rate Is Now Forseen

FORT WORTH, Texas.—The fight for lower freight rates on all classes of merchandise shipped from Fort Worth into Oklahoma is nearing success, shippers believe.

A new rate schedule, approved recently by the executive traffic committee of southwestern railroads, has been sent to the interstate commerce commission for consideration. If the ICC upholds the new schedule, the rates will go into effect within 60 to 90 days, according to Ed P. Byars, traffic manager of the Fort Worth Freight Bureau.

DISMISS CASE

Case of City of Eastland against W. B. Collie has been dismissed in 88th district court at the cost of the plaintiff.

OBJECTION TO ALLRED VOICED IN COMMITTEE

WASHINGTON, Jan. 27.—Rep. Martin Dies of Texas today told a senate judiciary sub-committee that popular sentiment is "overwhelmingly against the appointment" of former Gov. James V. Allred as a district judge for the Southern District of Texas.

Dies told Sen. Joseph C. O'Mahoney, the only sub-committee member present at the start of the hearing, the same objection applied to "any other non-resident of the district."

Sen. Morris Sheppard of Texas said he did not think non-residents in the district a sufficient objection to Gov. Allred's appointment.

"He has been both a governor and an attorney general. He is a citizen of the state at large," Sheppard said.

Sheppard added that he wanted to "go on record" in favor of Allred, although he had recommended Brantley Harris of Galveston.

Sen. Tom Connally of Texas, who also recommended another candidate, merely had inserted into the record his reply to the chairman of the judiciary committee, offering no objection to Allred's appointment.

R. R. Groves, representing the negro citizens community of Houston, protested the appointment on the grounds that Allred as attorney general and governor, denied negroes the right to vote in democratic primaries, although he had allowed Mexicans to do so.

Mrs. Perkins Will Report upon Trip

Mrs. Joseph M. Perkins, president of the Texas Federation of Women's Clubs, who has just returned from Washington, will speak at services of the First Methodist Church Sunday night at 7 o'clock in Eastland.

While in Washington Mrs. Perkins attended sessions of the General Federation of Women's Clubs and also attended a conference on "The Cause and Cure of War." She will speak of the trip and conference.

Four Newspapers Get Recognition

URBANA, Ill. — Four Texas newspapers received honors in the 1938 National Community Newspaper Contest.

The Bee-Picayune of Beeville won citations in two divisions, getting honor rating among weekly papers and also for outstanding news stories.

The Big Spring Weekly News also won honor rating among the weeklies.

The Cleveland Advocate won honor rating from community service campaigns.

Sheep Growers Hear Trade Plans Rapped

SAN ANGELO, Jan. 27.—Western sheep ranchers, attending the annual convention of the National Wood Growers association, demanded today that the United States government drop its program of reciprocal trade agreements.

The association asked that agreements already made be rescinded. It also demanded that congress take over the responsibility for any further tariff revisions.

Lone Shark Bills Offered in House

AUSTIN, Jan. 27.—Two bills, designed to curb "lone sharks" in Texas today were among a dozen measures introduced in the Texas legislature to regulate various phases of the state's life.

Both the house and senate were adjourned until Monday.

The loan shark bills are aimed at "personal loan" firms that charge usurious interest rates. Both bills provide fines and jail sentences for violators and require the filing of surety bonds. Both bills exempt banks, credit unions and other recognized financial establishments.

THE WEATHER WEST TEXAS—Fair in west and north, rain in southeast, warmer in southeast and south central portions tonight. Saturday partly cloudy, slightly colder.

# Come To Eastland Daily For Your Entertainment

## HERE AND THERE

BY CECIL BARHAM

### A Human Fire-Eater (What Will People Be Eating Next), and a Western Movie Star Will Make Appearances At The Connellee This Week . . .

Well friends today whers in another week of great entertainment for you at the Eastland Theatres. Paramount's Flaming Cavalade of American Aviation "Men With Wings" is showing at the Lyric today and Saturday and on the same program will be the latest Popeye cartoon "Cops Is Always Right" and The Paramount News. "Men With Wings" is made in beautiful technicolor and has as its stars Fred MacMurray, Louise Campbell, Ray Milland and Andy Devine. You see "Topper Takes A Trip," at the Lyric Sunday and Monday, you will have one laugh after another . . . as the ghostly Marion again pulls her whole bag of "ectoplasm" tricks—with plenty of new ones—while she drags Topper all over the country trying to patch up the trouble she caused him in the first Topper picture—"Take my advice, if you can't 'take' 90 minutes of helpless laughter, Don't Come Near The Theatre.

Tuesday and Wednesday you will have your first chance to see Jimmie Fidler, the gossip king of the air, act in a picture. He does his stuff with Pat O'Brien, John Wayne and Margaret Lindsay in Warner Brother's swing musical "Garden of the Moon." Thursday brings in The Jones Family in "Down on the Farm."

Gene Autry, Smiley Burnett and Joe Frisco will do their stuff in "Western Jamboree" at the Connellee Friday and Saturday and Reno Starr, the famous fire eater, will appear on the stage at 3:00 and 8:30 each of these days. His act consists of fire eating stunts that you would never believe without seeing. Sunday brings to the Connellee screen Clark Gable and Myrna Loy in "Too Hot To Handle." Wednesday The Connellee will present Tex Hall, western movie star, in person along with one of his latest pictures "Santa Fe Stampede" in which the Three Mesquiteers also play. Tex will be present at 2:30 P.M., 7:05 and 9:15. Thursday will bring in the Road Show attraction "Paroled From The Big House."

What Happens to the 25c you spend to go to the movies? Who gets it? Where Does it Go? The Movie executives has solved the mystery. Let's take one picture, for instance, "Topper Takes a Trip" and we can tell you where every dollar the public spends on that picture will go. Let's say you are the average husband or boy friend. Let's say you take your wife to see "Topper Takes a Trip" and it costs you 50 cents. You may think that the bulk of the profit goes back to Hollywood. But 65 cents of that dollar stays right in your own community! Part of the 65 cents will go to the staff, management and employees of the theatre and the rest to the local newspaper, printers, city and county taxes, local charitable organizations and extra attractions to make your next visit to the theatre more enjoyable. Ten cents will go to the man who must have a large organization to distribute the film, and 25c will go back to Hollywood to be used in new productions. In other words, the motion picture industry is in the hands of four partners—the men who produce and distribute pictures, and the man who shows them in his theatres, and the public, and this partnership means over a billion dollars a year to communities throughout America.

Oh! Mama! Those Horror Men are coming again, and this time they will try to scare you half to death in "The Ghost Walks" and "The Living Dead" on the Big Horror midnight show at the Connellee Saturday night at 11:15.

Do you want in on a secret? The old Movie Bug is after, and I hope he gets you.



Fred MacMurray, Louise Campbell, and Ray Milland in the Technicolor hit, "Men With Wings" Lyric today and Saturday.



Gene Autry in "Western Jamboree." The cast includes Smiley Burnett, Joe Frisco. This thrill packed story of the west is at the Connellee today and Saturday.



Clark Gable and Myrna Loy in "Too Hot To Handle" also in the cast is Walter Connolly and Walter Pidgeon. Connellee Sunday only!



Roland Young and Constance Bennett in "Topper Takes A Trip" the thrilling sequel to "Topper" cast includes Billie Burke, Lyric Sunday, Monday.

### "MEN WITH WINGS" MARKS FIRST AIR FILM MADE IN TECHNICOLOR

Hollywood's first air epic ever to be filmed in technicolor is Paramount's "Men With Wings," which will have its local opening today at the Lyric theatre.

It was produced and directed by a man who probably knows more about working in color than any one in filmdom. He is William A. Wellman, who made the two recent Technicolor hits, "A Star Is Born" and "Nothing Sacred," as well as the great aviation epic of a few years ago, the unforgettable "Wings."

Fred MacMurray, Ray Milland and Louise Campbell head the cast of the thrilling romance of three young American pioneers of the air who live during the surging years from the flight of the Wright Brothers at Kitty Hawk in 1903 to the lightning round-the-world hops of the present day.

Opening when the three leading characters are ten years old, just after the triumph of the Wrights, "Men With Wings" carries them forward in the sweeping torrent of man's progress in the air. The success of the airplane opens up a glorious new world to them, and they plunge into aviation with the almost religious enthusiasm which has characterized every group of pioneers in history. Even their love for each other ranks second to their love of flying.

Miss Campbell, in love with both men, must choose between the ro-

mance, dare-devil swashbuckler of the air, MacMurray, and the courageous, pioneering builder of planes, Milland. In her decision today at the Lyric theatre, Andy Devine leads the group.

Wellman has assembled a supporting cast of some of Hollywood's best-liked players. Andy Devine leads the group.

### OUT OF THE SKY... AND INTO YOUR HEART!



**MEN WITH WINGS**  
The breathless story of men who risk their lives in the skyways... and women who wait on the ground for their return!  
Brought to Life in Glorious **TECHNICOLOR!**  
Fred MacMurray - Louise Campbell - Ray Milland - Andy Devine - Lynne Overman - Porter Hall - Walter Abel - John Wayne - William A. Wellman  
ADM. 10c - 15c - 25c

"POPEYE CARTOON" FRIDAY - SATURDAY  
"Paramount News" **LYRIC**

ON THE STAGE IN PERSON **TEX HALL** WESTERN MOVIE STAR  
ON SCREEN  
"3 Mesquiteers" "SANTA FE STAMPEDE"  
ONE DAY ONLY **WEDNESDAY** FEBRUARY 1st  
**CONNELLEE**  
ADM. 10c - 25c

**CONNELLEE THURSDAY ONLY!**  
Adm. 10c - 15c - 25c

It Rips the Lid Off the Parole Racket!  
SEE—What Happens When Crooked Parole Boards Turn Human Vultures Loose to Prey on Society!  
**"Paroled FROM THE BIG HOUSE"**  
A JAY VEE DEE PRODUCTION WITH AN **All Star Cast!**  
SENSATIONAL IN ITS REVELATIONS

**CONNELLEE THEATRE**  
FRIDAY and SATURDAY  
ON THE STAGE  
**Reno Star**  
"THE HUMAN FIRE-EATER"  
(15 Minute Act of Things You Never Believe Without Seeing—)  
— STAGE SHOWS —  
At 3:00 and 8:30  
**Gene AUTRY** WESTERN JAMBOREE  
Adm. 10c - 15c - Fri. - Sat. - Sun.

### "TOPPER TAKES A TRIP" IS A HILARIOUS COMEDY HIT

Hal Roach's "Topper Takes A Trip" showing Sunday and Monday at the Lyric.  
Theatre through United Artists' release, is one of the daffiest, gayest and most uproariously funny comedies to reach the screen this season. Beautifully staged, brilliantly directed and played expertly by a hand-picked cast, this new film production deserves to be placed conspicuously on every screen fan's Best Ten list.

The cast, which reads like a Hollywood "Who's Who," includes Constance Bennett, Roland Young, Billie Burke, Alan Mowbray, Verree Teasdale, Alexander D'Arcy, Franklin Pangborn, Paul Hurst and Armand Kaliz. Roland Young again play the role of Cosmo Topper, the bewildered banker, who is about to lose his prim and conventional wife, played by the ever-delightful Billie Burke. Constance Bennett, beautiful and glamorous, portrays again the ghostly Marion Kerby, who is anxious to assist the unhappy Toppers in regaining marital happiness.

"Topper Takes A Trip," which you have probably guessed is a sequel to last year's successful "Topper," swings in action from New York to the pictorial brilliance of the French Riviera where Topper proceeds to race from one jam to another under the stage-management of Marion and her phantom hoaxes.

The screen story of "Topper Takes A Trip," written by Jack Jevne, Eddie Moran and Corey Ford, provides crackling dialogue

swiftly paced situations and acra work and expert photography well-knit plot. Norman Z. Mc- enhance a production which offers Led staged the production with top-notch entertainment from the rhythm and suspense. Beautiful moment it begins to unreel on the lighting effects, first rank cam-silver screen.

### WE DARE YOU TO SEE THE TWO SUPER SHOCKERS OF THE CENTURY

SHOCKER NO. 1  
**"THE LIVING DEAD"**  
SHOCKER NO. 2  
**"THE GHOST WALKS"**  
BOTH SHOWED ON THE BIG MIDNIGHT SHOW  
SATURDAY - 11:15 P. M.  
ALL SEATS **CONNELLEE** ALL SEATS  
10c - 25c

Clark Gable - Myrna Loy  
**TOO HOT TO HANDLE**  
with WALTER PIDGEON WALTER CONNOLLY LEO CARRILLO  
Directed by Jack Conway  
Produced by Lawrence Weinstein  
SUNDAY ONLY  
**CONNELLEE**

**LYRIC THEATRE**  
Tuesday - Wednesday THURSDAY ONLY!  
It's a Mardi-Gras of Mirth! The Gayest Show on Earth!  
**GARDEN OF THE MOON**  
The Jones Family in **DOWN ON THE FARM**  
with PAT O'BRIEN - JOHN PAYNE MARGARET LINDSAY - JIMMIE FIDLER  
Directed by ROBERT BRANLEY - Presented by WALTER BRILL  
Screen Play by Jerry Wald and Richard Macarday - From the Saturday Evening Post Story by J. H. McMillan  
and Robert Spence - Music and Lyrics by Elmer Wiggins

**Topper STEPS OUT AGAIN!**  
Hold your sides, everybody — here comes Topper again! ... with his spook girl friend hounding him all the way from Park Avenue to the French Riviera. Even funnier than "Topper", the picture that rocked the world!  
HAL ROACH presents **TOPPER TAKES A TRIP**  
STARRING **Constance BENNETT Roland YOUNG**  
with BILLIE BURKE - ALAN MOWBRAY - VERREE TEASDALE FRANKLIN PANGBORN - ALEXANDER D'ARCY MR. ATLAS ("The Thin Man" Dog)  
Directed by NORMAN Z. McROD  
**SUNDAY LYRIC MONDAY**

PIGGY WIGGLY

PIGGY WIGGLY

# A Page for ALL BARGAIN HUNTERS

**FLOUR** PIPKIN'S BEST 24 Lb. Bag 73c 12 Lb. Bag 39c  
 TEXAS KING FLOUR 48 LB. BAG \$1.15 24 LB. BAG 59c

BLUE RIDGE WHOLE KERNEL **CORN** THIS IS NOT A FIELD CORN BUT A FANCY SUGAR CORN (Limit 6) NO. 2 CANS **8 1/2c**

**GEBHARDTS** Spiced Mexican Style **BEANS** can 7 1/2c

**SALAD DRESSING** Plymouth Pints 15c QT. JARS 25c

**Green Beans** Staff-o-Life No. 2 Cans 2 For 15c

**Libbys** Sweet Pickled **PEACHES** Tall Cans 11c

**PINEAPPLE** Libby's Tidbits or Crushed 2 9 Oz. Cans 15c

**TOMATOES** 4 No. 2 Cans 25c **PORK & BEANS** OVEN BAKED 16 oz. cans 5c

**PUMPKIN** FAME No. 2 Cans 9c **CIBB'S SOUPS** Tomato-Vegetable 10 1/2 oz. cans 5c

**CATSUP** "SCOTT CO." 14 oz. bottles 2 for 23c **OATS** "3 MINUTE" Bowl and Plate, Cup and Saucer—Lg. Pkg. 25c

**MINCE MEAT** IMPERIAL 9 oz. pkg. 9c **CRACKERS** 1 LB. BOX 2 for 15c

**K C BAKING POWDER** 25 oz. Cans 17c **PEANUT BUTTER** QUART JAR 25c

**TOMATO JUICE** CAMPBELL'S 50 oz. cans 23c **COFFEE** PIGGLY WIGGLY "The Best Yet"—Lb. 22c

**LIGHT MEAT TUNA** CORTEZ Can 15c **BLACKEYE PEAS** 2 LB. BAG 15c

**SYRUP** CHAPMAN'S COUNTRY SORGHUM No. 5 Cans 39c **MILK** PET OR CARNATION 3 TALL OR 6 SMALL CANS 20c

**JELLY** ASSORTED 13 oz. glass 15c **PICKLES** DILL OR SOUR Full Quart 15c

**RAISINS** 2 LB. PKG. 15c 4 LB. PKG. 29c **PRESERVES** 8 OZ. JAR 10c

**POST BRAN** 10 Oz. Pkgs. 10c 16 Oz. Pkgs. 15c

**RED HOT Values**

**Sunbrite CLEANSER** 5c

PURE CANE **SUGAR** 10 Lbs. 47c

**COMPOUND** 8 Lb. Crt. Vegetole 73c

**COFFEE** "PLYMOUTH" A Trial Will Convince You—Pound 15c

**P. & G. SOAP** 4 GIANT BARS 17c

**KOHINOOR** Finest Country Gentleman **CORN** 2 No. 2 Cans 25c

**JOHNSON'S GLO-COAT** Buy Pint for GET 1-3 PINT FREE! 59c

**PIPKIN'S PIGGLY WIGGLY**

EASTLAND, TEXAS

We Reserve the Right to Limit Quantities!

JANUARY 27-28, 1939

**SPECIAL SAVINGS**

**ON Quality Meats**

Armour's Star Tenderized, Half or Whole Lb.

**Hams** 25c



SEVEN CUT **BABY BEEF ROAST** Lb. 18c

COUNTRY **PURE PORK SAUSAGE** Per Pound 19c

**PIC LIVER** Per Pound 15c

**LONCHORN CHEESE** Per Pound 19c

SWEET SIXTEEN **OLEO** Pound 14c Salt **JOWLS** 9c

**BOLOGNA** Per Pound 10c

**SLICED BACON** Armour's Star (sliced here) lb. 32c Keystone lb. 25c

**FRYERS, HENS, FISH & OYSTERS!**

**Fresh FRUITS and VEGETABLES**



Texas Sweet **ORANGES** 2 Size 288 Dozen 25c

Texas Seedless **GRAPEFRUIT** 5 for 10c

**CARROTS** 2 LARGE BUNCHES 5c

**APPLES** EXTRA FANCY WINESAPS Size 173—Dozen 33c EXTRA FANCY DELICIOUS Per Dozen 29c

**LETTUCE** 2 LARGE HEADS 9c

**CAULIFLOWER** PER HEAD 10c

**RUTABAGAS** NORTHERN GROWN—LB. 5c

**SPINACH** 3 Pounds 10c

TEXAS NEW **POTATOES** Pound 5c

TEXAS SWEET **Oranges** LARGE JUICY DOZEN 25c

PIGGY WIGGLY

PIGGY WIGGLY

**EASTLAND TELEGRAM**

Published every afternoon (except Thursday, Saturday and Sunday) and every Sunday morning.

Member Advertising Bureau—Texas Daily Press League  
Member of United Press Association.

**NOTICE TO THE PUBLIC**

Any erroneous reflection upon the character, standing or reputation of any person, firm or corporation which may appear in the columns of this paper will be gladly corrected upon being brought to the attention of the publisher.

Obituaries, cards of thanks, notices of lodge meetings, etc., are charged for at regular advertising rates which will be furnished upon application.

Entered as second-class matter at the postoffice at Eastland, Texas, under Act of March, 1879.

**SUBSCRIPTION RATE**

ONE YEAR BY MAIL (In Texas) ..... \$3.00

**America Gets Ready to Tackle a Big Job**

Looking at industrial and business recovery figures day after day we are apt to get into the position of the chap who couldn't see the forest because there were too many trees in his way.

These figures trace the outlines of something big—but we're so close to them, we see so many of them and they are such dry and unexciting things anyhow that it's easy to miss the point.

But what is really going on is worth looking at, if we could only see it under all the statistics. America is coming out of its long coma. In one way and another—maybe by luck as much as anything—it is on the road back to good times again, and that is as significant a fact as any in the world today.

For it means, first of all, that the land which is best-equipped and best-disposed to exploit to the full all of the marvelous possibilities of this age of super-production is about to resume its destined job.

It is altogether too easy to forget what that may involve. The one great fact about this era in history is not the war-peril, the rise of dictatorships or the general breaking up of old codes and old social organizations, but simply the facts that the human race at last has it in its power to produce so much of everything that everybody can have enough.

That has never been possible before. Until now, poverty was in truth inevitable, and hunger and want were the destined lot of many. There was never quite enough of everything to go around, and there was no conceivable way of making the deficiencies good.

That is no longer true. The machinery that will end scarcity forever is at last available. We haven't learned how to use it yet, to be sure; but what does industrial prosperity in America mean, if not that the world's most skilled and productive land is hard at it finding out how this new possibility of abundance can best be developed and exploited?

And if returning prosperity has that significance, it also means that the grave doubts and questionings about our freedom, our form of government and the organization of our social system—doubts that have been so disturbing in the last half dozen years—will presently cease to bother us.

People do not surrender their liberties or overthrow their institutions when times are good. They do it only under dire pressure of want. Remove the pressure and the danger automatically vanishes. And an American that is truly prosperous again will be able to forget its worries about theisms of the Right and the Left alike.

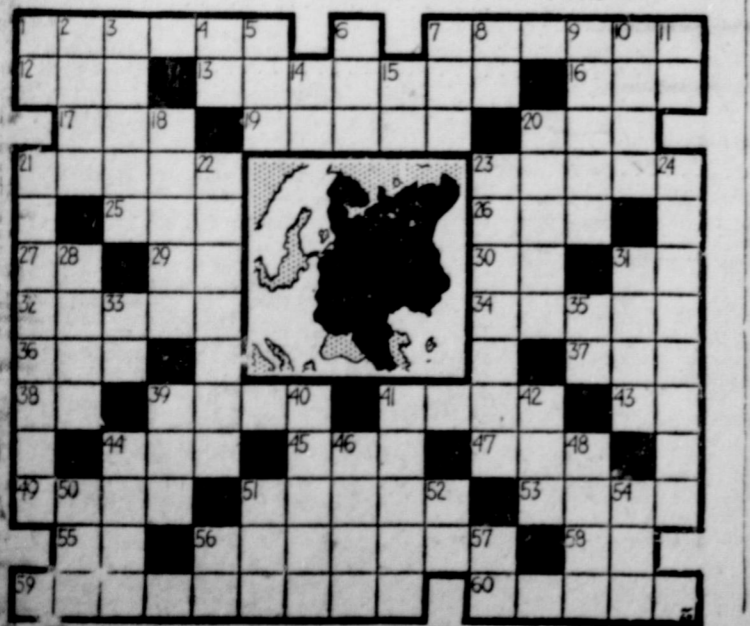
These are the things involved in this story of returning prosperity. It is hard to see them in the dry figures about freight car loadings, retail sales, steel production and the like, but they are there just the same. The nation has a tremendous job to do, and it is getting back into shape to do it. In the long run, that may prove the most important fact in the history of this generation.

**OUTLINE MAP**

HORIZONTAL  
1 Pictured in the map of \_\_\_\_\_  
7 Its political leader.  
12 Constellation.  
13 Eighteenth sign of the Zodiac.  
16 Expert flyer.  
17 Kava.  
19 Meeting.  
20 Reverence.  
21 Hill side.  
23 Indian vernacular.  
25 Beam.  
29 Onager.  
27 Soul.  
29 Musical note.  
30 Plural.  
31 Ident.  
32 Elects.  
34 Hidden.  
36 To soak flax.  
37 Affirmative.  
38 Within.  
39 Insect which consumes wool.

Answer to Previous Puzzle  
EDWARD JOHNSON  
DUSTY POSTING  
MANAGER

VERTICAL  
1 Great Egyptian god.  
2 Russian mountains.  
3 Flavor.  
4 Form of "be."  
5 Part of a play.  
6 To cook in fat.  
7 To roost.  
8 Toward.  
9 Plots of grass.  
10 Covered with frosting.  
11 Northeast.  
14 Either.  
15 Postscript.  
18 Aside.  
20 Church pathway.  
21 Its territory is in Asia.  
22 Sight.  
23 Comes to pass.  
24 All is state owned.  
28 Last word of a prayer.  
31 Thought.  
33 Neuter pronoun.  
35 Railway.  
39 Insane.  
40 Mohammedan nymph.  
41 To besiege.  
42 Large cask.  
44 Microbe.  
46 Frees.  
50 Self.  
51 Gat.  
52 Half an em.  
54 By way of.  
56 Bushel.  
57 Spain.



**'Maybe You Could Live With Your Parents'**



**JOHN T. FLYNN**

BY JOHN T. FLYNN  
NEA Service Staff Correspondent

If you will look at a chart of business activity—not just production activity—you will see that the general tendency was down from the beginning of January, 1937, until around April, 1938.

This in spite of that Dun and Bradstreet report that building costs rose all through 1937 right up to September, the end of the building season. They have declined since.

One of the very serious things the matter with us is the rigidity of building costs—both material and labor. Labor costs, of course, are controlled by union wage scales. Building material costs are controlled by agreements among manufacturers and collusion of all sorts among contractors and subcontractors.

The fact that the country could move down in a serious depression for nine months chiefly because the building industry refuses to get going and yet all that time building costs should rise, is complete evidence that these costs are controlled.

Nothing much can be done about this until unless the Department of Justice moves with ruthless activity against price and production agreements, express and implied, among material groups and against collusive activities of contractor groups.

This is one spot where a swift and relentless warfare against violations of various anti-trust laws will perform a potent service for recovery.

But this will not be enough. There will remain the labor costs. These are dominated by the American Federation of Labor.

The building trades unions have slowly, by drastic cutting off of apprenticeships, cut down the amount of available union labor. They have raised wage scales and work terms in such a way as almost to make profitable building impossible.

No man can make a single argument against organization of building workers into unions or against union efforts to protect working conditions and rights against employer exploitation. There is no doubt that the character of the building industry has made it difficult for building workers to make a decent living without comparatively high daily wages. They do not work enough days in the year. But as they have raised the daily wage and imposed other restrictions they have still further cut down the number of days because they have helped to reduce building.

They are not alone to blame for this. The building industry has not been very intelligent in its effort to spread work throughout the year. It has been given to spasmodic, sudden and swift seasonal speculative adventures rather than to carefully sustained and planned programs. To meet this situation the building unions should take the initiative in making wage arrangements with builders who can offer continuous or at least semi-continuous employment.

(Copyright, 1938, NEA Service, Inc.)

air pilots annually. Further training would be given superior students who enlisted in the Air Reserve. The war planes would be, in case of war, manned with student pilots used as a partly trained reserve.

**FEDERAL HOUSING**—The Federal Housing Administration in 1938, despite the lag in residential construction during the early part of the year, transacted a total business of nearly a billion and a quarter dollars, the largest annual volume in its history.

**INCREASE IN COSTS OF PUBLIC RELIEF**—An estimated 6,000,000 different households probably comprising about 21,300,000 persons, received public aid in November from Federal, State, and local funds amounting to \$275,167,000.

**1938 WAS MUCH WARMER**—The year 1938, following recent weather trends was remarkably warm. In fact, for the country as a whole, 1938 was one of the warmest years of record, according to the Weather Bureau. Every first-order Weather Bureau station in the country reported above normal temperatures for the year, which probably is unprecedented in Bureau annals.

**DANISH ROYALTY**—The Department of State has been informed that upon the receipt of information that Their Royal Highnesses the Crown Prince and Crown Princess of Denmark expect to visit the United States the latter part of April, 1939, the President and Mrs. Roosevelt extended an invitation to their Royal Highnesses to be their guests at Hyde Park for several days during the course of their visit to this country. The invitation of the President and Mrs. Roosevelt has been accepted by Their Royal Highnesses.

**COLLEGE COURSES**—Twenty-five colleges, almost evenly distributed throughout the country, now offer undergraduate courses, some of them leading to special degrees, in the expanding field of sanitary and public health engineering. The net increase in the number of colleges giving training to those wishing to engage in this type of work apparently represents a healthy growth.

**U. S. AIRFLEET**—Doubling of the United States air fleet has been asked by the President in order to insure security by giving us strength. He asked that the Army and Navy be given money to raise the present combined force of 4300 planes to 8500 planes. This number would be only the needed amount to protect the American mainland, Hawaii, Alaska, Puerto Rico and the Canal Zone. The United States stands at present fifth in the world's air powers. If this request goes through, our place would jump to that of second.

**PILOT TRAINING**—Ten million dollars a year has been asked by President Roosevelt to pay for training of twenty thousand civil-

**FARM WAGE RATES LOWER**

Wage rates for hired farm workers dropped sharply during the last quarter of 1938. It is attributed to the lower level of pay to a sizeable increase in the supply of workers available in rural areas and the usual late-year downturn in labor requirements.

**FARMERS CO-OPS**—Cooperative buying and selling among farmers has reached such proportions that the business of their associations constitutes a large part of the business of agriculture. There are now approximately 15,000 rural cooperatives in the country, including mutual water companies and insurance companies.

**Mussolini Tells Of Barcelonas Fall**  
ROME, Jan. 26.—Premier Mussolini tonight proclaimed the fall of Barcelona from the balcony of Venice Palace. He declared "Spain now has been freed from the infamy of the tyranny of the Reds."

**Roosevelt Offers Relief To Chileans**  
WASHINGTON, Jan. 26.—President Roosevelt today cabled the president of Chile an offer of American relief for victims of the disastrous earthquake there. The white house said that if Chile should need outside supplies in a hurry this government would do its best to provide them.

Umpire Bill Klem has an unusual winter-home. What he does use, baseball fans won't believe it anyway.

Try My Washing and Lubrication on a money-back guarantee.—De Douglas, Also Texaco products and storage.  
Dick's Quick Service Station Where Most People Trade Main and Seaman

**ELECTRICAL APPLIANCES**  
Texas Electric Service Co.

**Hamner Undertaking Co.**  
Phones 17 and 564  
DAY OR NIGHT AMBULANCE SERVICE

**SHERIFF'S SALE (TAX SUITS)**  
THE STATE OF TEXAS )  
County of Eastland )  
By virtue of an Order of Sale For Delinquent Taxes issued out of the Honorable 58th District Court of Eastland County, Texas, to-wit: Lots 109 & 200, Block J-1, O. T. Addition, City of Eastland, Texas, said property being levied on as the property of Mrs. Dell Williams and to me, as Sheriff, directed and delivered, I will proceed to sell at public auction, to the highest bidder, for cash in hand, within the hours prescribed by law for Sheriff's sales, on the first Tuesday in February, A. D. 1939, it being the 7th day of said month, at the Court House door of said Eastland County, in the City of Eastland, the following described land situated in Eastland County, Texas, to-wit: Lots 109 & 200, Block J-1, O. T. Addition, City of Eastland, Texas, said property being levied on as the property of Mrs. Dell Williams and to me, as Sheriff, directed and delivered, I will proceed to sell at public auction, to the highest bidder, for cash in hand, within the hours prescribed by law for Sheriff's sales, on the first Tuesday in February, A. D. 1939, it being the 7th day of said month, at the Court House door of said Eastland County, in the City of Eastland, the following described land situated in Eastland County, Texas, to-wit: Lots 109 & 200, Block J-1, O. T. Addition, City of Eastland, Texas, said property being levied on as the property of Mrs. Dell Williams and to me, as Sheriff, directed and delivered, I will proceed to sell at public auction, to the highest bidder, for cash in hand, within the hours prescribed by law for Sheriff's sales, on the first Tuesday in February, A. D. 1939, it being the 7th day of said month, at the Court House door of said Eastland County, in the City of Eastland, the following described land situated in Eastland County, Texas, to-wit: Lots 109 & 200, Block J-1, O. T. Addition, City of Eastland, Texas, said property being levied on as the property of Mrs. Dell Williams and to me, as Sheriff, directed and delivered, I will proceed to sell at public auction, to the highest bidder, for cash in hand, within the hours prescribed by law for Sheriff's sales, on the first Tuesday in February, A. D. 1939, it being the 7th day of said month, at the Court House door of said Eastland County, in the City of Eastland, the following described land situated in Eastland County, Texas, to-wit: Lots 109 & 200, Block J-1, O. T. Addition, City of Eastland, Texas, said property being levied on as the property of Mrs. Dell Williams and to me, as Sheriff, directed and delivered, I will proceed to sell at public auction, to the highest bidder, for cash in hand, within the hours prescribed by law for Sheriff's sales, on the first Tuesday in February, A. D. 1939, it being the 7th day of said month, at the Court House door of said Eastland County, in the City of Eastland, the following described land situated in Eastland County, Texas, to-wit: Lots 109 & 200, Block J-1, O. T. Addition, City of Eastland, Texas, said property being levied on as the property of Mrs. Dell Williams and to me, as Sheriff, directed and delivered, I will proceed to sell at public auction, to the highest bidder, for cash in hand, within the hours prescribed by law for Sheriff's sales, on the first Tuesday in February, A. D. 1939, it being the 7th day of said month, at the Court House door of said Eastland County, in the City of Eastland, the following described land situated in Eastland County, Texas, to-wit: Lots 109 & 200, Block J-1, O. T. Addition, City of Eastland, Texas, said property being levied on as the property of Mrs. Dell Williams and to me, as Sheriff, directed and delivered, I will proceed to sell at public auction, to the highest bidder, for cash in hand, within the hours prescribed by law for Sheriff's sales, on the first Tuesday in February, A. D. 1939, it being the 7th day of said month, at the Court House door of said Eastland County, in the City of Eastland, the following described land situated in Eastland County, Texas, to-wit: Lots 109 & 200, Block J-1, O. T. Addition, City of Eastland, Texas, said property being levied on as the property of Mrs. Dell Williams and to me, as Sheriff, directed and delivered, I will proceed to sell at public auction, to the highest bidder, for cash in hand, within the hours prescribed by law for Sheriff's sales, on the first Tuesday in February, A. D. 1939, it being the 7th day of said month, at the Court House door of said Eastland County, in the City of Eastland, the following described land situated in Eastland County, Texas, to-wit: Lots 109 & 200, Block J-1, O. T. Addition, City of Eastland, Texas, said property being levied on as the property of Mrs. Dell Williams and to me, as Sheriff, directed and delivered, I will proceed to sell at public auction, to the highest bidder, for cash in hand, within the hours prescribed by law for Sheriff's sales, on the first Tuesday in February, A. D. 1939, it being the 7th day of said month, at the Court House door of said Eastland County, in the City of Eastland, the following described land situated in Eastland County, Texas, to-wit: Lots 109 & 200, Block J-1, O. T. Addition, City of Eastland, Texas, said property being levied on as the property of Mrs. Dell Williams and to me, as Sheriff, directed and delivered, I will proceed to sell at public auction, to the highest bidder, for cash in hand, within the hours prescribed by law for Sheriff's sales, on the first Tuesday in February, A. D. 1939, it being the 7th day of said month, at the Court House door of said Eastland County, in the City of Eastland, the following described land situated in Eastland County, Texas, to-wit: Lots 109 & 200, Block J-1, O. T. Addition, City of Eastland, Texas, said property being levied on as the property of Mrs. Dell Williams and to me, as Sheriff, directed and delivered, I will proceed to sell at public auction, to the highest bidder, for cash in hand, within the hours prescribed by law for Sheriff's sales, on the first Tuesday in February, A. D. 1939, it being the 7th day of said month, at the Court House door of said Eastland County, in the City of Eastland, the following described land situated in Eastland County, Texas, to-wit: Lots 109 & 200, Block J-1, O. T. Addition, City of Eastland, Texas, said property being levied on as the property of Mrs. Dell Williams and to me, as Sheriff, directed and delivered, I will proceed to sell at public auction, to the highest bidder, for cash in hand, within the hours prescribed by law for Sheriff's sales, on the first Tuesday in February, A. D. 1939, it being the 7th day of said month, at the Court House door of said Eastland County, in the City of Eastland, the following described land situated in Eastland County, Texas, to-wit: Lots 109 & 200, Block J-1, O. T. Addition, City of Eastland, Texas, said property being levied on as the property of Mrs. Dell Williams and to me, as Sheriff, directed and delivered, I will proceed to sell at public auction, to the highest bidder, for cash in hand, within the hours prescribed by law for Sheriff's sales, on the first Tuesday in February, A. D. 1939, it being the 7th day of said month, at the Court House door of said Eastland County, in the City of Eastland, the following described land situated in Eastland County, Texas, to-wit: Lots 109 & 200, Block J-1, O. T. Addition, City of Eastland, Texas, said property being levied on as the property of Mrs. Dell Williams and to me, as Sheriff, directed and delivered, I will proceed to sell at public auction, to the highest bidder, for cash in hand, within the hours prescribed by law for Sheriff's sales, on the first Tuesday in February, A. D. 1939, it being the 7th day of said month, at the Court House door of said Eastland County, in the City of Eastland, the following described land situated in Eastland County, Texas, to-wit: Lots 109 & 200, Block J-1, O. T. Addition, City of Eastland, Texas, said property being levied on as the property of Mrs. Dell Williams and to me, as Sheriff, directed and delivered, I will proceed to sell at public auction, to the highest bidder, for cash in hand, within the hours prescribed by law for Sheriff's sales, on the first Tuesday in February, A. D. 1939, it being the 7th day of said month, at the Court House door of said Eastland County, in the City of Eastland, the following described land situated in Eastland County, Texas, to-wit: Lots 109 & 200, Block J-1, O. T. Addition, City of Eastland, Texas, said property being levied on as the property of Mrs. Dell Williams and to me, as Sheriff, directed and delivered, I will proceed to sell at public auction, to the highest bidder, for cash in hand, within the hours prescribed by law for Sheriff's sales, on the first Tuesday in February, A. D. 1939, it being the 7th day of said month, at the Court House door of said Eastland County, in the City of Eastland, the following described land situated in Eastland County, Texas, to-wit: Lots 109 & 200, Block J-1, O. T. Addition, City of Eastland, Texas, said property being levied on as the property of Mrs. Dell Williams and to me, as Sheriff, directed and delivered, I will proceed to sell at public auction, to the highest bidder, for cash in hand, within the hours prescribed by law for Sheriff's sales, on the first Tuesday in February, A. D. 1939, it being the 7th day of said month, at the Court House door of said Eastland County, in the City of Eastland, the following described land situated in Eastland County, Texas, to-wit: Lots 109 & 200, Block J-1, O. T. Addition, City of Eastland, Texas, said property being levied on as the property of Mrs. Dell Williams and to me, as Sheriff, directed and delivered, I will proceed to sell at public auction, to the highest bidder, for cash in hand, within the hours prescribed by law for Sheriff's sales, on the first Tuesday in February, A. D. 1939, it being the 7th day of said month, at the Court House door of said Eastland County, in the City of Eastland, the following described land situated in Eastland County, Texas, to-wit: Lots 109 & 200, Block J-1, O. T. Addition, City of Eastland, Texas, said property being levied on as the property of Mrs. Dell Williams and to me, as Sheriff, directed and delivered, I will proceed to sell at public auction, to the highest bidder, for cash in hand, within the hours prescribed by law for Sheriff's sales, on the first Tuesday in February, A. D. 1939, it being the 7th day of said month, at the Court House door of said Eastland County, in the City of Eastland, the following described land situated in Eastland County, Texas, to-wit: Lots 109 & 200, Block J-1, O. T. Addition, City of Eastland, Texas, said property being levied on as the property of Mrs. Dell Williams and to me, as Sheriff, directed and delivered, I will proceed to sell at public auction, to the highest bidder, for cash in hand, within the hours prescribed by law for Sheriff's sales, on the first Tuesday in February, A. D. 1939, it being the 7th day of said month, at the Court House door of said Eastland County, in the City of Eastland, the following described land situated in Eastland County, Texas, to-wit: Lots 109 & 200, Block J-1, O. T. Addition, City of Eastland, Texas, said property being levied on as the property of Mrs. Dell Williams and to me, as Sheriff, directed and delivered, I will proceed to sell at public auction, to the highest bidder, for cash in hand, within the hours prescribed by law for Sheriff's sales, on the first Tuesday in February, A. D. 1939, it being the 7th day of said month, at the Court House door of said Eastland County, in the City of Eastland, the following described land situated in Eastland County, Texas, to-wit: Lots 109 & 200, Block J-1, O. T. Addition, City of Eastland, Texas, said property being levied on as the property of Mrs. Dell Williams and to me, as Sheriff, directed and delivered, I will proceed to sell at public auction, to the highest bidder, for cash in hand, within the hours prescribed by law for Sheriff's sales, on the first Tuesday in February, A. D. 1939, it being the 7th day of said month, at the Court House door of said Eastland County, in the City of Eastland, the following described land situated in Eastland County, Texas, to-wit: Lots 109 & 200, Block J-1, O. T. Addition, City of Eastland, Texas, said property being levied on as the property of Mrs. Dell Williams and to me, as Sheriff, directed and delivered, I will proceed to sell at public auction, to the highest bidder, for cash in hand, within the hours prescribed by law for Sheriff's sales, on the first Tuesday in February, A. D. 1939, it being the 7th day of said month, at the Court House door of said Eastland County, in the City of Eastland, the following described land situated in Eastland County, Texas, to-wit: Lots 109 & 200, Block J-1, O. T. Addition, City of Eastland, Texas, said property being levied on as the property of Mrs. Dell Williams and to me, as Sheriff, directed and delivered, I will proceed to sell at public auction, to the highest bidder, for cash in hand, within the hours prescribed by law for Sheriff's sales, on the first Tuesday in February, A. D. 1939, it being the 7th day of said month, at the Court House door of said Eastland County, in the City of Eastland, the following described land situated in Eastland County, Texas, to-wit: Lots 109 & 200, Block J-1, O. T. Addition, City of Eastland, Texas, said property being levied on as the property of Mrs. Dell Williams and to me, as Sheriff, directed and delivered, I will proceed to sell at public auction, to the highest bidder, for cash in hand, within the hours prescribed by law for Sheriff's sales, on the first Tuesday in February, A. D. 1939, it being the 7th day of said month, at the Court House door of said Eastland County, in the City of Eastland, the following described land situated in Eastland County, Texas, to-wit: Lots 109 & 200, Block J-1, O. T. Addition, City of Eastland, Texas, said property being levied on as the property of Mrs. Dell Williams and to me, as Sheriff, directed and delivered, I will proceed to sell at public auction, to the highest bidder, for cash in hand, within the hours prescribed by law for Sheriff's sales, on the first Tuesday in February, A. D. 1939, it being the 7th day of said month, at the Court House door of said Eastland County, in the City of Eastland, the following described land situated in Eastland County, Texas, to-wit: Lots 109 & 200, Block J-1, O. T. Addition, City of Eastland, Texas, said property being levied on as the property of Mrs. Dell Williams and to me, as Sheriff, directed and delivered, I will proceed to sell at public auction, to the highest bidder, for cash in hand, within the hours prescribed by law for Sheriff's sales, on the first Tuesday in February, A. D. 1939, it being the 7th day of said month, at the Court House door of said Eastland County, in the City of Eastland, the following described land situated in Eastland County, Texas, to-wit: Lots 109 & 200, Block J-1, O. T. Addition, City of Eastland, Texas, said property being levied on as the property of Mrs. Dell Williams and to me, as Sheriff, directed and delivered, I will proceed to sell at public auction, to the highest bidder, for cash in hand, within the hours prescribed by law for Sheriff's sales, on the first Tuesday in February, A. D. 1939, it being the 7th day of said month, at the Court House door of said Eastland County, in the City of Eastland, the following described land situated in Eastland County, Texas, to-wit: Lots 109 & 200, Block J-1, O. T. Addition, City of Eastland, Texas, said property being levied on as the property of Mrs. Dell Williams and to me, as Sheriff, directed and delivered, I will proceed to sell at public auction, to the highest bidder, for cash in hand, within the hours prescribed by law for Sheriff's sales, on the first Tuesday in February, A. D. 1939, it being the 7th day of said month, at the Court House door of said Eastland County, in the City of Eastland, the following described land situated in Eastland County, Texas, to-wit: Lots 109 & 200, Block J-1, O. T. Addition, City of Eastland, Texas, said property being levied on as the property of Mrs. Dell Williams and to me, as Sheriff, directed and delivered, I will proceed to sell at public auction, to the highest bidder, for cash in hand, within the hours prescribed by law for Sheriff's sales, on the first Tuesday in February, A. D. 1939, it being the 7th day of said month, at the Court House door of said Eastland County, in the City of Eastland, the following described land situated in Eastland County, Texas, to-wit: Lots 109 & 200, Block J-1, O. T. Addition, City of Eastland, Texas, said property being levied on as the property of Mrs. Dell Williams and to me, as Sheriff, directed and delivered, I will proceed to sell at public auction, to the highest bidder, for cash in hand, within the hours prescribed by law for Sheriff's sales, on the first Tuesday in February, A. D. 1939, it being the 7th day of said month, at the Court House door of said Eastland County, in the City of Eastland, the following described land situated in Eastland County, Texas, to-wit: Lots 109 & 200, Block J-1, O. T. Addition, City of Eastland, Texas, said property being levied on as the property of Mrs. Dell Williams and to me, as Sheriff, directed and delivered, I will proceed to sell at public auction, to the highest bidder, for cash in hand, within the hours prescribed by law for Sheriff's sales, on the first Tuesday in February, A. D. 1939, it being the 7th day of said month, at the Court House door of said Eastland County, in the City of Eastland, the following described land situated in Eastland County, Texas, to-wit: Lots 109 & 200, Block J-1, O. T. Addition, City of Eastland, Texas, said property being levied on as the property of Mrs. Dell Williams and to me, as Sheriff, directed and delivered, I will proceed to sell at public auction, to the highest bidder, for cash in hand, within the hours prescribed by law for Sheriff's sales, on the first Tuesday in February, A. D. 1939, it being the 7th day of said month, at the Court House door of said Eastland County, in the City of Eastland, the following described land situated in Eastland County, Texas, to-wit: Lots 109 & 200, Block J-1, O. T. Addition, City of Eastland, Texas, said property being levied on as the property of Mrs. Dell Williams and to me, as Sheriff, directed and delivered, I will proceed to sell at public auction, to the highest bidder, for cash in hand, within the hours prescribed by law for Sheriff's sales, on the first Tuesday in February, A. D. 1939, it being the 7th day of said month, at the Court House door of said Eastland County, in the City of Eastland, the following described land situated in Eastland County, Texas, to-wit: Lots 109 & 200, Block J-1, O. T. Addition, City of Eastland, Texas, said property being levied on as the property of Mrs. Dell Williams and to me, as Sheriff, directed and delivered, I will proceed to sell at public auction, to the highest bidder, for cash in hand, within the hours prescribed by law for Sheriff's sales, on the first Tuesday in February, A. D. 1939, it being the 7th day of said month, at the Court House door of said Eastland County, in the City of Eastland, the following described land situated in Eastland County, Texas, to-wit: Lots 109 & 200, Block J-1, O. T. Addition, City of Eastland, Texas, said property being levied on as the property of Mrs. Dell Williams and to me, as Sheriff, directed and delivered, I will proceed to sell at public auction, to the highest bidder, for cash in hand, within the hours prescribed by law for Sheriff's sales, on the first Tuesday in February, A. D. 1939, it being the 7th day of said month, at the Court House door of said Eastland County, in the City of Eastland, the following described land situated in Eastland County, Texas, to-wit: Lots 109 & 200, Block J-1, O. T. Addition, City of Eastland, Texas, said property being levied on as the property of Mrs. Dell Williams and to me, as Sheriff, directed and delivered, I will proceed to sell at public auction, to the highest bidder, for cash in hand, within the hours prescribed by law for Sheriff's sales, on the first Tuesday in February, A. D. 1939, it being the 7th day of said month, at the Court House door of said Eastland County, in the City of Eastland, the following described land situated in Eastland County, Texas, to-wit: Lots 109 & 200, Block J-1, O. T. Addition, City of Eastland, Texas, said property being levied on as the property of Mrs. Dell Williams and to me, as Sheriff, directed and delivered, I will proceed to sell at public auction, to the highest bidder, for cash in hand, within the hours prescribed by law for Sheriff's sales, on the first Tuesday in February, A. D. 1939, it being the 7th day of said month, at the Court House door of said Eastland County, in the City of Eastland, the following described land situated in Eastland County, Texas, to-wit: Lots 109 & 200, Block J-1, O. T. Addition, City of Eastland, Texas, said property being levied on as the property of Mrs. Dell Williams and to me, as Sheriff, directed and delivered, I will proceed to sell at public auction, to the highest bidder, for cash in hand, within the hours prescribed by law for Sheriff's sales, on the first Tuesday in February, A. D. 1939, it being the 7th day of said month, at the Court House door of said Eastland County, in the City of Eastland, the following described land situated in Eastland County, Texas, to-wit: Lots 109 & 200, Block J-1, O. T. Addition, City of Eastland, Texas, said property being levied on as the property of Mrs. Dell Williams and to me, as Sheriff, directed and delivered, I will proceed to sell at public auction, to the highest bidder, for cash in hand, within the hours prescribed by law for Sheriff's sales, on the first Tuesday in February, A. D. 1939, it being the 7th day of said month, at the Court House door of said Eastland County, in the City of Eastland, the following described land situated in Eastland County, Texas, to-wit: Lots 109 & 200, Block J-1, O. T. Addition, City of Eastland, Texas, said property being levied on as the property of Mrs. Dell Williams and to me, as Sheriff, directed and delivered, I will proceed to sell at public auction, to the highest bidder, for cash in hand, within the hours prescribed by law for Sheriff's sales, on the first Tuesday in February, A. D. 1939, it being the 7th day of said month, at the Court House door of said Eastland County, in the City of Eastland, the following described land situated in Eastland County, Texas, to-wit: Lots 109 & 200, Block J-1, O. T. Addition, City of Eastland, Texas, said property being levied on as the property of Mrs. Dell Williams and to me, as Sheriff, directed and delivered, I will proceed to sell at public auction, to the highest bidder, for cash in hand, within the hours prescribed by law for Sheriff's sales, on the first Tuesday in February, A. D. 1939, it being the 7th day of said month, at the Court House door of said Eastland County, in the City of Eastland, the following described land situated in Eastland County, Texas, to-wit: Lots 109 & 200, Block J-1, O. T. Addition, City of Eastland, Texas, said property being levied on as the property of Mrs. Dell Williams and to me, as Sheriff, directed and delivered, I will proceed to sell at public auction, to the highest bidder, for cash in hand, within the hours prescribed by law for Sheriff's sales, on the first Tuesday in February, A. D. 1939, it being the 7th day of said month, at the Court House door of said Eastland County, in the City of Eastland, the following described land situated in Eastland County, Texas, to-wit: Lots 109 & 200, Block J-1, O. T. Addition, City of Eastland, Texas, said property being levied on as the property of Mrs. Dell Williams and to me, as Sheriff, directed and delivered, I will proceed to sell at public auction, to the highest bidder, for cash in hand, within the hours prescribed by law for Sheriff's sales, on the first Tuesday in February, A. D. 1939, it being the 7th day of said month, at the Court House door of said Eastland County, in the City of Eastland, the following described land situated in Eastland County, Texas, to-wit: Lots 109 & 200, Block J-1, O. T. Addition, City of Eastland, Texas, said property being levied on as the property of Mrs. Dell Williams and to me, as Sheriff, directed and delivered, I will proceed to sell at public auction, to the highest bidder, for cash in hand, within the hours prescribed by law for Sheriff's sales, on the first Tuesday in February, A. D. 1939, it being the 7th day of said month, at the Court House door of said Eastland County, in the City of Eastland, the following described land situated in Eastland County, Texas, to-wit: Lots 109 & 200, Block J-1, O. T. Addition, City of Eastland, Texas, said property being levied on as the property of Mrs. Dell Williams and to me, as Sheriff, directed and delivered, I will proceed to sell at public auction, to the highest bidder, for cash in hand, within the hours prescribed by law for Sheriff's sales, on the first Tuesday in February, A. D. 1939, it being the 7th day of said month, at the Court House door of said Eastland County, in the City of Eastland, the following described land situated in Eastland County, Texas, to-wit: Lots 109 & 200, Block J-1, O. T. Addition, City of Eastland, Texas, said property being levied on as the property of Mrs. Dell Williams and to me, as Sheriff, directed and delivered, I will proceed to sell at public auction, to the highest bidder, for cash in hand, within the hours prescribed by law for Sheriff's sales, on the first Tuesday in February, A. D. 1939, it being the 7th day of said month, at the Court House door of said Eastland County, in the City of Eastland, the following described land situated in Eastland County, Texas, to-wit: Lots 109 & 200, Block J-1, O. T. Addition, City of Eastland, Texas, said property being levied on as the property of Mrs. Dell Williams and to me, as Sheriff, directed and delivered, I will proceed to sell at public auction, to the highest bidder, for cash in hand, within the hours prescribed by law for Sheriff's sales, on the first Tuesday in February, A. D. 1939, it being the 7th day of said month, at the Court House door of said Eastland County, in the City of Eastland, the following described land situated in Eastland County, Texas, to-wit: Lots 109 & 200, Block J-1, O. T. Addition, City of Eastland, Texas, said property being levied on as the property of Mrs. Dell Williams and to me, as Sheriff, directed and delivered, I will proceed to sell at public auction, to the highest bidder, for cash in hand, within the hours prescribed by law for Sheriff's sales, on the first Tuesday in February, A. D. 1939, it being the 7th day of said month, at the Court House door of said Eastland County, in the City of Eastland, the following described land situated in Eastland County, Texas, to-wit: Lots 109 & 200, Block J-1, O. T. Addition, City of Eastland, Texas, said property being levied on as the property of Mrs. Dell Williams and to me, as Sheriff, directed and delivered, I will proceed to sell at public auction, to the highest bidder, for cash in hand, within the hours prescribed by law for Sheriff's sales, on the first Tuesday in February, A. D. 1939, it being the 7th day of said month, at the Court House door of said Eastland County, in the City of Eastland, the following described land situated in Eastland County, Texas, to-wit: Lots 109 & 200, Block J-1, O. T. Addition, City of Eastland, Texas, said property being levied on as the property of Mrs. Dell Williams and to me, as Sheriff, directed and delivered, I will proceed to sell at public auction, to the highest bidder, for cash in hand, within the hours prescribed by law for Sheriff's sales, on the first Tuesday in February, A. D. 1939, it being the 7th day of said month, at the Court House door of said Eastland County,

SERIAL STORY NO TIME TO MARRY

BY ELINORE COWAN STONE

COPYRIGHT, 1939, NEA SERVICE, INC.

Yesterday, just as Janet is getting ready to go to work, she is interrupted by a knock on the door. It was weeks before she saw him again.

CHAPTER XVII The extra cleaning service offered by the management had been a real windfall, because it made it possible to save the expense of Mary's wages. Janet, under Aunt Mary's instruction, prepared the simple meals.

"You mean the owner of the apartment?" Janet frowned. "But I thought his name was Sartorius."

"No, I mean Miss Cynthia's husband—the day he came to arrange about your taking this apartment."

"It's all right, Anna," Janet said quietly. "But we—the family—can't want my aunt worried about unnecessary details. She's rather old, you know. Of course you won't mention this to her or to any one who might."

"No, ma'am!" the girl promised devoutly.

It was several minutes before it occurred to Janet that she, too, was a beneficiary of Timothy Benton's generosity.

AFTER that interrupted dinner at the Italian restaurant, Janet did not see Barney McNight until early in November.

He drifted into the apartment one evening as casually as if he had left it only a few hours before, and asked Janet if she would like to go for a ride.

"Don't worry if we're a little late, Aunt Mary," he said when Janet agreed.

"Worry!" sniffed Aunt Mary, to whom the word was like a red flag. "Neurotics worry. I shall go to bed with a good book and forget all about you."

But Janet, who knew that Aunt Mary did worry, was conscience-stricken when, miles out along the road, she glanced at the clock in a filling station before which they were stopped, and saw that it was after one.

"We'd better stop on it, Barney," she suggested. "It will take us over an hour the best we can do, and that fraud of an aunt of mine won't shut an eye until she hears the front door open and close."

"Nonsense! She knows you're with me," Barney said; but he did step on it.

"And by the way," Janet observed, "just when and where do you catch up with your own sleep? You never seem to be at home when I call up?"

"You mean you've been trying to telephone me?" For a moment Barney seemed genuinely startled and pleased. "Then he went on almost brusquely. 'Oh, here and there—when there isn't anything more exciting to do. I couldn't have got off tonight, but the man I was to see is in the hospital with a slug in his left shoulder, and those birds in white coats wouldn't let me talk to him.'"

"A slug? . . . Barney, it is dangerous then—what you're doing! I wish—"

"Well, it isn't my shoulder the slug's in, if you notice," Barney's tone was impatient. "For Heaven's sake, Jan, don't you turn into a worry wart. You're much more amusing as you are."

"All right, you crazy Irishman," Janet retorted, "stick your neck out as far as you please; and if you insist on being a Boy Scout, how's this for an epitaph: 'Here lies the body of Barney McNight. As a sleuth of the underworld, he was a fright. He died with his boots on, as a hero's should. Because he forgot—'

"To remove them that night suppose," Barney cut in. "Why just goes to show that poets are born, not made. . . . And don't be hard-boiled, either, Jan. Isn't in your line."

reached over and patted her arm briefly in the darkness. "Still pals?" he asked. "Still pals," Janet confirmed, and laughed.

It was as near to a quarrel and an apology as they had ever come. They had hardly driven a quarter of a mile farther when, dipping down a steep grade into the flats along the river, they ran abruptly into a fog that was like a heavy gray sea, boiling up about them and even into the car. Barney slowed the motor, leaned out of his window, and finally stopped.

"Damned if I know which side of the road I'm on," he said, "or even whether there is any road. Take the flash, will you, Jan, and see if you can make out anything that looks like a curb?"

"I can't see anything that looks like anything," Janet reported. "Let me get out and walk along the edge. Maybe I can guide you until we get out of this."

They tried it along those lines for a few rods; then Barney stopped the engine. "Can't do," he called. "This gives me the jitters. We'll have to park till it lifts."

Janet explored for a few moments. "There's a hedge here," she shouted finally, "and quite a bare space. I think it's a field. If you pull to the right and then back, we'll be off the road, anyhow."

He did so under her direction; and Janet climbed back into the car, shivering more from the nervous tension of the past few minutes than from chill.

"Cold?" Barney asked quickly. He reached over the seat back, dragged out an old rain coat he kept in the rear of the car, and wrapped it about her shoulders. "My plaid shall shelter thee," he quoted.

With the fog like a wall about them, they seemed to be off in a remote world of their own, isolated in time and space. They arduously talked at all, yet Janet found herself strangely contented and at rest. Barney was a comfortable person to be with. It occurred to her that she had never enjoyed a companionship just like his before. With Lance, there had been a sense of unrest, a nervous anxiety to measure up to fastidious standards. . . . Friendship, after all, was the one, real relationship.

Janet did not know how long they sat so, before she realized that Barney was asleep, utterly relaxed in the corner of the seat, as if he had not slept for hours. . . . Not so very companionable after all, she thought; and was surprised to find herself feeling suddenly very much abandoned and alone.

(To Be Continued)

—dropped her cherished book heedlessly on the rug in her haste, and hurrying to the window, slipped and fallen on the polished floor.

She was unconscious when Janet reached her. She remained unconscious for hours after she was taken to the hospital. The resident physician, whom Janet talked to first said she had a broken hip and a dangerous chill. Apparently she had lain for hours in her thin nightgown under those wind-blown curtains.

Janet tried desperately to get a message to Cynthia at Nice. But evidently Cynthia and Timothy Benton had moved on since the last card had come, and her message missed them. It was six weeks before Janet actually caught up with them in Cairo, and by that time it was too late.

When she tried to get Barney at the office of his newspaper, she was told by a crisp secretarial voice that McNight was out of town. . . . No, the office couldn't say where he was to be found. When Janet tried his home telephone later, it was silent. For the first time Janet realized how much she had come to depend on Barney.

LANCE called her up—first at the apartment, as the switchboard girl told her later, and finally at the hospital. By that time Aunt Mary's chill had developed into pleurisy—overnight it was pneumonia. The surgeon who set her hip told Janet that she would probably never walk again.

Janet was at the hospital when Lance's call came. "Janet," Lance said, "I'm sorry that I can't tell you. Isn't there something I can do?"

"I'm afraid not, Lance. Only the doctor is much use," Janet said wearily—quite as if he were any of a hundred others who had called to ask the same question.

"It won't hurt like this forever, Jan," Cynthia had said. "I know." And unbelievably, Cynthia had been right.

So many people wanted to help that Janet—especially after the first week—found it hard to understand why Barney was not among them.

Thanksgiving came and went. Christmas was at hand. . . . Aunt Mary had always been as excited as a child about Christmas. She had passed the pneumonia crisis safely, to the complete amazement of her doctors, but continued to suffer a great deal from her hip.

It was the day Cynthia's radiogram came from Cairo that Janet, firmly ejected from Aunt Mary's room by the nurse, went out for a walk in the park.

Good will trip of an Italian warship to Montevideo wound up in a fist fight in a saloon. Evidently the natives didn't take kindly to good-will imposed upon them by the crew of a battle wagon.

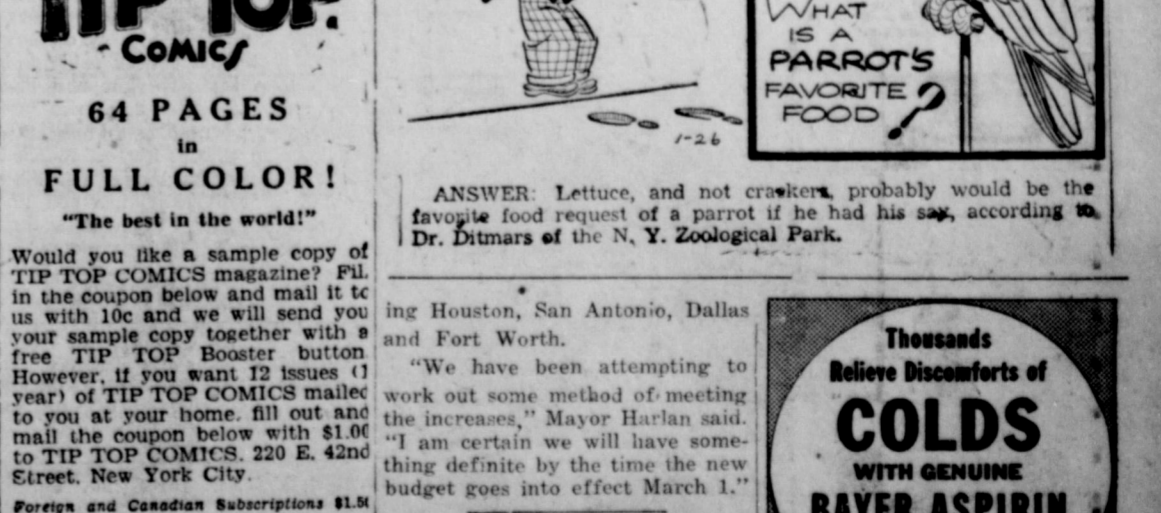
It was a great year in Hollywood. Ferdinand the Bull rose to stardom and Lieut. Col. James Roosevelt of the Marines started at the top of the ladder with Samuel Goldwyn.

FRECKLES and HIS FRIENDS



Killough Purchases Building Located On Seaman Street

MYRA NORTH, Special Nurse - By Thompson and Coll



El Paso Firemen And Officers Will Get Pay Increase

THIS CURIOUS WORLD



ANSWER: Lettuce, and not crackers, probably would be the favorite food request of a parrot if he had his say, according to Dr. Ditmars of the N. Y. Zoological Park.

Tip Top Comics 64 PAGES FULL COLOR! 'The best in the world!'

Thousands Believe Discomforts of COLDS WITH GENUINE BAYER ASPIRIN

LOCAL—EASTLAND—SOCIAL

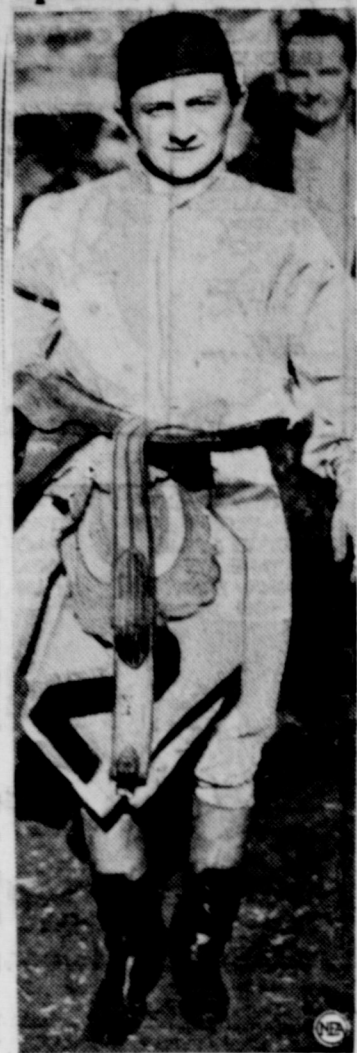
PHONE 601 BESSIE TAYLOR, Editor

Visitor Entertained Entertaining with a seated tea, Mrs. W. F. Miller honored Mrs. J. W. Thomas of Bryson, who has been visiting in Eastland the past week.

Mouse Farming On Ranch Pays

By United Press MODESTO, Cal.—Most people try to get rid of the mice around their homes, but not Frank Cook, Modesto district rancher. Cook actually encourages them, then sells them and lives on the profits.

Spurns Seabiscuit



Don Meade

Turning down an offer from Charles S. Howard to ride Seabiscuit in the \$100,000 Santa Anita Handicap, March 4, Jockey Don Meade remains at Hialeah, where he rode 20 winners in the first 10 days of the meeting, after being banished for 2 1/2 years.

"OUT OUR WAY" - - - - - By Williams



Texas Tax Units Far Outnumber Its Clinics, Libraries

DALLAS, Tex.—Texas has nearly 25 times as many different taxing units within its borders as it has hospitals and public libraries combined, the National Consumers Tax Commission reported in a survey today.

sumers Tax Commission reported in a survey today. The commission's analysis, directed from its headquarters in Chicago, was made public through Mrs. Kenneth C. Frazier, of Dallas, president and leader of the organization's nation-wide campaign against taxes "which penalize the consumer." She is aided in

Texas by Mrs. Volney W. Taylor, of Brownsville, national committee member. "There is a grand total of 8,676 governmental agencies in Texas with the power to raise revenue from the public, according to a Public Administration Service study," the report stated. "They include counties, incorpor-

MANY NEVER SUSPECT CAUSE OF BACKACHES

This Old Treatment Often Brings Happy Relief Many sufferers relieve nagging backache quickly, now they discover that the real cause of their trouble may be tired kidneys. The kidneys are Nature's chief way of taking the excess acids and wastes out of the blood. Most people pass about 3 pints a day or about 2 pounds of waste.

During the first few years of his venture, Cook was able to sell only 20,000 mice. Now, he says, the demand has grown. Last year he sold 20,000, and he predicts he will top that record in 1933. Research laboratories are his chief market. Cook becomes irked when people tell him his work is easy—that all he has to do is turn the mice loose and "let 'em multiply." He denies there is anything easy about the work, pointing out that infinite care must be taken to keep his charges in good health. Diet and housing are the greatest problems.

Pat Neff's Bible Is Still In Office of Governor of Texas

By United Press AUSTIN, Texas—A leather-bound copy of the Oxford self-pronouncing Bible (Sunday school teachers' edition) is passed from governor to governor of Texas. The Bible was left in the governor's office on Jan. 18, 1925, when Pat M. Neff ended a four-year term as chief executive. On its cover in gold leaf is the inscription: "Presented to my successors in office." Neff's signature in gold leaf, with the dates of his administration, are on the cover.

Neff underscored the 105th verse of the 119th Psalm. "Thy word is a lamp unto my feet and a light unto my path." St. Matthew 7:12 was marked by Miriam A. Ferguson when she ended her first term Jan. 18, 1927. The passage is: "Therefore all things whatsoever ye do that men should do unto you, do ye even so unto them; for this is the law and the prophets."

Gov. Dan Moody marked two passages in the Bible on Jan. 10, 1931. One was John 3:16: "For God so loved the world that he gave his only begotten Son, that whosoever believeth in Him should not perish but have everlasting life. The other was Psalms 19:14: "Let the words of my mouth and the meditations of my heart be acceptable in Thy sight, O Lord, my strength and my redeemer."

Gov. Ross Sterling left no marked passage with his signature. As Mrs. Ferguson ended her second term on Jan. 15, 1932, she marked Jeremiah 50:32: "And the most proud shall stumble and fall and none shall raise him up; and I will kindle a fire in his cities and it shall devour all round about him."

Gov. James V. Allred marked Psalms 91:2: "I will say of the Lord, He is my refuge and my fortress; my God; in Him will I trust." Several passages in the Bible have been marked without signatures. Ecclesiastes 10:16: "Woe to thee, O land, when thy king is a child and thy princes eat in the morning."

Matthew 5:43-44: "Ye have heard that it hath been said 'Thou shalt love thy neighbor and hate thy enemy.' But I say unto you, Love your enemies, bless them that curse you, do good to them that hate you and pray for them which despitefully use you and persecute you."

Matthew 5:11 is underscored

CLASSIFIED GOOD FORDSON tractor \$50. 300 bales Johnson grass hay. Also good milch cow with week-old heifer calf. See Conoco Service Station.

THE BIG SIX for \$1.00. 6 rose bushes \$1.50, 6 daisies 35c; 6 canus 50c; 6 corn flowers 35c; 6 Scabiosa 35c. Total value \$3.05, all for \$1.00 postpaid. Hagan Floral Company, Mineral Wells, Tex.

WANTED: Men with cars to sell Farmer-Stockman. See R. L. Ralston, after 6 p. m., Crown-Naylor Tourist Camp, Eastland.

BURR'S FINAL END O' MONTH JANUARY CLEARANCE



LADIES' Suede Belts Values to 20c... All Sizes! Red, black, green and brown. 5c LADIES' FALL Dresses Values to \$3.95! They will go fast... Come early! \$1.77

Ladies' Rayon Panties Pants and Bloomers EACH 10c Ladies' Fall Coats Values to \$9.90! You must see this value \$4.48 Ladies' Fall Hats Values to \$1.98 49c

WHITE Outing 27-In. Extra Quality! YARD 6c Prints All new Spring colors! Big Selections... Fall Colors YARD 7 1/2c

Burr's DEPARTMENT STORE West Side Square Eastland

GOOD NEWS For Winter Appetites

Oranges 2 Doz. 25c Carrots 3 Bchs. 10c Grapefruit Doz. 25c Cabbage Lb. 2 1/2c Winesap Apples Doz. 15c Green Beans Lb. 12c Delicious Apples Doz. 20c Celery Stalk 10c Sunkist Lemons Doz. 18c Lettuce 2 Heads 9c Strawberries Box 19c SQUASH - - LB. 10c LIGHT CRUST FLOUR 48 lbs. \$1.39 FIVE ROSES FLOUR 48 lbs. 89c RED CUP COFFEE lb. 15c RICE 2 lbs. 9c EVAPORATED PEACHES 2 lbs. 25c PRUNES 2 lbs. 15c C. F. Pork & Beans Can 5c 4 NO. 2 CANS Tomatoes 25c COUNTRY GENTLEMAN CORN, 2 No. 2 Cans 25c KRAUT, No. 2 1/2 Can 10c SHRIMP Can 19c C. F. MILK, 6 small. or 3 tall 19c Yams 5 lbs. 15c Grapefruit 3 Cans 25c Oats, C. F., Lge Pkg. 19c Chili Beans 3 Cans 25c Peanut Butter Qt. 25c 1 Kix, 2 Wheaties for 25c OXYDOL, lge. pkg. 19c CLOVER FARM—Granulated SOAP 2 pkgs. 35c Pork Sausage lb. 15c Seven Roast lb. 18c SALT JOWL lb. 10c SUGAR CURED SQUARES lb. 15c HENS lb. 18c CLOVER FARM BUTTER lb. 33c OLEO 2 lbs. 25c BARBECUE No Bone Sliced - Ready No Waste! to Serve—Lb. 35c PORK CHOPS Lb. 22c

FOODS CLOVER FARM STORES MEAT

ated places, water control districts, irrigation and conservation districts, and others. "With so many agencies looking for revenues, in addition to federal and state governments, there is bound to be overlapping and pyramiding of taxes. It is small wonder that taxes, of which 63 per cent are paid by consumers in higher prices on every purchase, now are equal to 23.6 per cent of the national income."

The report, stating that nearly 3,000 NCTC units across the country already are active in the hidden tax crusade, added: "The tremendous extent to which our taxation system has grown is shown by contrasting this figure of 8,676 governmental units in Texas with the number of hospital and public libraries throughout the state. Their combined total is only 354."

A bridesmaid at a London wedding defied etiquette by singing "The Lambeth Walk." Lots of bridegrooms have had reason to shout "Oy!"

Beware Coughs from common colds That Hang On No matter how many medicines you have tried for your common cough, chest cold, or bronchial irritation, you may get relief now with Creomulsion. Serious trouble may be brewing and you cannot afford to take a chance with any remedy less potent than Creomulsion, which goes right to the seat of the trouble and aids nature to soothe and heal the inflamed mucous membranes and to loosen and expel germladen phlegm. Even if other remedies have failed, don't be discouraged, try Creomulsion. Your druggist is authorized to refund your money if you are not thoroughly satisfied with the benefits obtained. Creomulsion is one word, ask for it plainly, see that the name on the bottle is Creomulsion, and you'll get the genuine product and the relief you want. (Adv.)

DR. R. C. FERGUSON 208 Exchange National Bank Building - Eastland, Texas Diseases of Children and Infant Feeding Office Hours: 9:30 to 12-2:30 to 5 Office Phone 191 Residence Phone 190

Bigger and Better MEAT VALUES BACON Armour's Star 1 lb. 32c Armour's Glider 1 lb. Pkg. 23c Squares Lb. 19c Salt Pork Lb. 17c Baby Beef STEAK, Choice Cut Lb. 25c Baby Beef Roast, Choice Cut Lb. 18c Baby Beef Rolled and Seasoned Lb. 20c DRESSED HENS and FRYERS! CHILI 1 Lb. Brick 20c PORK SAUSAGE, Home Made Lb. 20c PORK SHOULDER ROAST Lb. 18c PORK LOIN or CHOPS Lb. 23c HAMS—Morell's Pride—Tendered, Half or Whole Lb. 25c Center Slices Lb. 35c OWNED AND OPERATED BY S. L. (LEON) BOURLAND Market Located in A. & P. Store

LISTEN FOLKS! JUST RECEIVED ANOTHER CARLOAD OF FLOUR AND FEED FLOUR QUEEN QUALITY 48 Lbs. \$1.35 FLOUR HEREFORD 48 Lbs. \$1.20 FLOUR PREMIER 48 Lbs. 85c WHEAT BRAN Mill Run 100 Lbs. 95c MAIZE THRESHED 100 Lbs. 90c COTTONSEED MEAL AND CAKE 43% \$1.50 GROUND CORN 100 Lbs. \$1.10 HULLS AND MEAL—20% Meal and 80% Hulls—100 Lbs. 85c CHOPS 100 Lbs. \$1.40 Nicholson's Tested Field and Garden Seeds in Bulk COMPLETE LINE PURINA PRODUCTS KILLOUGH FLOUR AND FEED STORE Purina-Rhone Milling Products FLOUR—FEEDS Texland Hotel Bldg., So. Seaman St. Phone 165

ARE YOU Weak, Pale Houston, Texas—Emily Plaster, Schuler St., says relative was so weak and nervous she hardly got around. Pierce's Favorite Prescription strength her so well. Not after using it she was well as ever! Buy liquid or tablets at drug store today. See how much and stronger you feel after using this

First Aid for Constipation Nyal Mineral Oil A non-habit forming relief for constipation and irregular movements. Pure, tasteless and odorless. 59c Corner Drug Store Eastland