

HOSPITAL NEWS

The following people were patients in the Eastland Memorial hospital Friday morning:

Bess Hoffmann
 Mary Mahaffey (Mrs. Hugh)
 Naoma Clark, Cross Plains
 Cindy Brock, Cisco
 Ethel Levens
 Willie Terrell
 Verna Underwood
 Frances Zernial
 Clara Murray, Gorman
 Della Johnson
 Ruby Hull
 Nettie Simpson, Rising Star
 Alma Elder, Cisco
 Margaret Brown
 Robert Fields
 Oscar Petree, Cisco

Carl McGough
 Thomas Caton
 Zula Collie
 Grace Brown, Cross Plains
 Mitchell Perdue, Cisco
 Donald Nall, Brownwood
 George White, Cisco
 Lee Williamson, Olden
 Mary Mahaffey
 Arlee Wigington, Cisco
 Maggie Christian, Rising Star
 Naida Williamson
 Sadie Goode, Ranger
 L. H. Stroud
 Earl Clemmer
 David Baze
 Fran Stubblefield
 Herman Dunlap
 Henry Burnam

Baby Boy Simmons, Gorman
 M. D. I. c. Cisco
 Jimmy Couch, Caddo
 Verna Davis, Gorman
 Ellen Horn
 Stella Jarrett, Olden
 Nannie Almon, Olden
 Linda Well, Cisco
 Betty Phippen, Cisco
 Chassie Whitley
 Breckenridge
 Eugenia Chesshir, Cross Plains
 Arie Hering
 Anna Cooper
 Minnie Gattis, Cisco
 Fay Stephenson, Cisco
 Leona Baggett, Cisco
 Elvie Freeman
 Carolyn Gillean, Cisco
 Raymond Pickeral, Cisco
 Kim Bollinger, Ranger
 Dale Chick

Harrison Pitman, Gorman
 Nancy Agnew, Cisco
 Sharon Rainey, Gorman

Patients in Ranger General Hospital Saturday morning were:
 Sam Scott
 Larry Garrett
 Cleo Red
 Mrs. Kim Hopkins
 Martha Ussery
 Mrs. Boyd Hart
 Valerie Daskevich
 Barbar Thackerson
 Latho McGee
 Winnie Pirkle
 U. L. Benny
 Alvie Reeves
 Mrs. U. L. Benny
 Iva Toland

Gene Bilby
 Larry Bilby
 Yvonne Fitzhugh
 Ralph Veale
 Mrs. R. D. Swannerand baby girl
 Hendrix baby boy

The Eastland Chapter of Young Homemakers met in the Homemaking Department of Eastland High School on Tuesday September 14.

Clara Park gave the program on the "Art of Foiling." Each member and guest made a light plate switch and saw some of the lovely things to be made by Foil Art.

Refreshments of punch and cake were served to, Patty Jones, Diane Harris, Clara Park, Karen Lawson, Elizabeth Wallace, Charlene Thackerson, Dixie Edwards, Myrma Lewis, Martha Hicker, Marilyn Rodgers, Nona Fox, Jane Finley, Danye Taylor, Shirley Ables, Kathy Stevens, and advisor Miss Morris



A-1 Office Machines
 Your office machine needs...
 Whether sales or service...
 Are our Business
 Call 629-1707 Eastland
 Call 847-1101 Ranger
 Call 442-2244 Cisco

FREE ESTIMATES ON new roofs only
 Repair of Your Old Roofs
 Residential and Commercial
"ALL NEW WORK GUARANTEED"
TRI-CITIES ROOFING CO
 Call Nobil Squiers
 629-2370
EASTLAND

UNITED STATES ENCYCLOPEDIA OF HISTORY
 VOLUME 3
 ONLY \$1.49
 WITH 10-DAY MONEY-BACK GUARANTEE!

Complete 16 volume set available at special savings on a volume per week plan.

J R B SUPER MARKET
 Sunday, September 19, 1971

PRICES SHOWN GOOD Monday, Tuesday, Wednesday

FAMILY CENTER EASTLAND ONLY

Ladies PANTY HOSE pair 59¢
 Large Ice Tea GLASSES each 29¢
 Chef-size GRATERS For Kitchen Use 53¢
 Loma Plastic WASTE BASKETS 74¢
 Boys Back-to-School SOCKS pair 58¢

WITH TURNIPS 2 1/2 can 3/\$1

We now have a full line of art supplies. Also some colors in bead line.

Fabulous GOLD TABLEWARE
 EXQUISITE "Wavy" PATTERN
 With \$3.00 Purchase **69¢** Per piece

24 Karat GOLD PLATED
 • DISHWASHER SAFE •
 • NEVER NEEDS POLISHING

only

Cisco, Eastland, Ranger

DOUBLE S&H GREEN STAMPS EVERY WEDNESDAY AND SATURDAY
 With \$2.50 Purchase or

Bonus Savings!
 Shurfine **SUGAR** 5 lb. **49¢**
 with \$3 purchase or more

Ranch Oven **BISCUITS** 12/\$1

SALAD DRESSING Shurfine qt. **49¢**

FRESH FRUITS & VEGETABLES

BANANAS
 Golden Ripe lb. **10¢**
 White 8 lb. **POTATOES** 69¢
 Fresh **CORN** ears 6/49¢
CABBAGE lb. 9¢

APPLES
 Arkansas Jonathan lb. **19¢**

- Sugary Sam Whole and Cut YAMS 3 can 3/\$1
- Keelblers Coconut, Choc. Drop COOKIES 14 oz. pkg 53¢
- Karo Red Lable SYRUP pt. 37¢
- Shurfresh CRACKERS lb. 29¢
- Carolina PEACHES 2 1/2 3/\$1
- AF Dills PICKLES qt. 57¢

- Del Monte **CORN** 303 **4/\$1**
- Del Monte **BEANS** 303 **4/\$1**
- Del Monte **PEAS** 303 **4/\$1**
- Shurfine cut GREEN BEANS 303 can 4/\$1

ICE CREAM JRB 1/2 gal. **59¢**

- Roxey **DOG FOOD** 300 can **12/\$1**
- Del Monte **SPINACH** 303 **4/\$1**
- Bama Red Plum JAM 18 oz. 49¢
- Puss 'n Boots CAT FOOD 15 1/2 oz. can 2/35¢
- Real Kill INSECT SPRAY pt. 69¢
- Shurfine Tomato SOUP 10 oz. can 10¢
- DREAM WHIP 4 oz. pkg. 49¢
- Van Camp HOMINY 2 can 6/\$1

Baby Beef Sale

RUMP ROAST Tender Baby Beef lb. 89¢
 SIRLOIN STEAK Tender Baby Beef lb. \$1.09
 T-BONE STEAK Tender Baby Beef lb. \$1.49
 SWISS STEAK Tender Baby Beef Arm lb. 89¢
 SHORT RIBS Tender Baby Beef lb. 49¢

Bama PEANUT BUTTER 12 oz. jar 47¢

USDA CHOICE J.R.B. MEATS ARE U.S. GOVERNMENT INSPECTED AND GRADED IF FOR ANY REASON YOU ARE NOT SATISFIED WE WILL CHEERFULLY REFUND YOUR MONEY.

Meats PRICED FOR SAVINGS

- FRANKS Deckers quality 12 oz. pkg. 49¢
- COOKED STEAKS Gooch Blue Ribbon lb. 99¢
- STEAK FINGERS Gooch Blue Ribbon 12 oz. pkg 69¢
- CERVELOT Deckers Texas Style lb. 79¢
- HOT LINKS Gooch Blue Ribbon lb. 69¢
- SLICED SLAB BACON Rindless lb. 59¢
- SLICED BACON Silver Spur lb. 59¢
- FRYERS Cut up Pan ready lb. 35¢

BUDGET SAVERS!
 Tender Baby Beef Blade Cut
Chuck Roast lb. **59¢**

BUDGET SAVERS!
 Tender Baby Beef Full Cut
Round Steak lb. **99¢**

BUDGET SAVERS!
 USDA Inspected Farm fresh Whole lb.
Fryers **29¢**

Maryland Club **COFFEE** lb. **79¢** (with coupon)

JRB THIS COUPON IS **WORTH 10¢**
 When you buy a 1 lb. pound Can of Maryland Club Coffee **79¢** with coupon
 Cash value 1/20c. Limit one per customer
 COUPON EXPIRES 9-23-71

BUDGET SAVERS!
 Tender Baby Beef Full Cut
Round Steak lb. **99¢**

BUDGET SAVERS!
 Shop Made Seasoned Just Right
Pork Sausage 3 lbs. **\$1**

**REGISTERED
QUARTER HORSES
FOR SALE**

B. L. Rogers - SANTO, TEXAS

Fountain's of DeLeon
"For the Joy
of a Beautiful Complexion"
SPECIALIZED SKIN SERVICES
— For Whatever
Your Complexion Problem May Be!
• FACE REJUVENATION (Non-Surgical)
"Lift" Fringes of Eye Crow's Feet
• ACNE • ACNE SCARS • OILY • PIMPLES
• WHITE HEADS • DEFT • FRECKLES
Free - Private Consultations • Call DeLeon
604 Havana Hwy. E. & S. DeLeon, Texas



Sunday, September 19, 1971 NOTICE

Notice is hereby given that a meeting will be held on September 20, 1971 beginning at 10:00 a.m. in the Eastland County Commissioner's Courtroom, Eastland, Texas, for the purpose of considering the annual budget for the ensuing year.

By order of
Eastland County Commissioner's Court Eastland, Texas

Gordon Pot
By De Gordon, County Agent

Harvest of early planted peanuts is now underway in Eastland County. Producers still believe the yields will not be as good as they should be, but most agree that yields will be good.

One producer described the unpredictable nature of peanuts when he said they can promise the most and give the least or promise the least and give the most of any crop he has ever grown. "You never know what they'll make until you have harvested and sold them," says another farmer.

This field day will provide producers an opportunity to see results of this year's peanut research activities.

Livestock producers in Eastland County are urged to be on the alert for screwworms as numerous cases continue to spread over the state. Screwworm cases have been found as close as San Sabu and Lampasas Counties.

Large numbers of foliage eating worms can be found in all parts of the county. Fall armyworms are damaging all types of young grasses including lawn grasses. Walnut caterpillars and fall webworms are causing damage to trees especially to pecan trees. All the foliage feeders can be controlled by applying carbaryl (Sevin).

Soon you will be seeing a lot of peanut trailers and farm equipment on our highways. This practice is necessary, but does cause a hazard to all motorists. Everyone must be on the alert for the slow moving equipment.

A yellow-orange triangle is showing up on more and more tractors, combines, and other farm equipment which travel at speeds of 25 miles per hour or less. The fluorescent triangle is highly visible during daylight and the reflective border glows brilliantly as a hollow red triangle in the path of headlights at night. Be on the alert for this warning in the coming months of harvest season.

The moisture has been sufficient for a very good peanut crop, but the insects and disease have taken their toll. Lesser cornstalk borers continue to cause damage but remain at a level that does not require treatment in most fields. The armyworms have increased in many fields but are not causing excess damage to foliage. Beneficial insects in the peanut fields are helping to keep the foliage feeders under control.

Two peanut field days at research stations will be of interest to peanut growers in Eastland County. The first is the annual field day at the Texas A&M Plant Disease Research Station at Yoakum. It will be held on Sept. 30 beginning at 1 p.m.

Tours will be conducted of various field plots and a discussion period will follow at 3 p.m. The station is located on State Highway 111 two miles east of Yoakum.

Discussions will be featured on the two major insects of peanuts, the lesser cornstalk borer and the burrowing bug, plus the use of fungicides, nematocides and herbicides.

Another field day which will be of greater interest to local peanut growers is the Tarleton Experiment Station Annual Field Day. It will be held on Thursday, October 14, 1971.

Institute To Be Held Tuesday

FAMILY BUSINESS INSTITUTE for all interested family members will begin this coming Tuesday evening. Each of the five sessions will be held in the Texas Electric Reddy Room in Eastland beginning at 7:30 p.m. The Institute is being sponsored free of cost to all wishing to attend by the Eastland County Agricultural Extension Service.

First Session- Tuesday, Sept. 21.

TOPIC: "CREDIT -WHAT YOU NEED TO KNOW".
SPEAKERS: Mrs. Bonnie Fowler, Home Management Specialist, Texas Agricultural Extension Service, Tex. A&M University; Mr. James E. Sutton, Consumer Education Consultant, Office of Consumer Credit Commissioner, Austin, Texas.

Second Session- Monday, Sept. 27.

TOPIC: "FAMILY INVESTMENTS".
SPEAKER: Mr. Gerald A. Galbraith, Stockbroker, Vice-Pres., Schneider-Bernet & Hickman, Inc., Abilene.

Third Session - Tuesday, Oct. 5.

TOPIC: "FAMILY INSURANCE".
SPEAKER: Mr. Bill Adams, Agency Manager, Southland Life Insurance, Fort Worth; Mr. M. H. Perry, Southland Life Ins. Agent, Eastland.

Fourth Session - Tuesday, Oct. 12.

TOPIC: "ESTATE PLANNING".
SPEAKER: Mr. Virgil Seaberry, Attorney.

Fifth Session - Tuesday, Oct. 19.

TOPIC: "RETIREMENT PLANNING - Social Security, Medicare, and Old Age Assistance".
SPEAKER: Mr. Charles Butler, Dept. of Public Welfare; Mr. Joe Housson, Dept. of Public Welfare.



FOREIGN VISITORS--Dr. Jack Elson, president of Ranger Junior College, explains a point about local newspapers for Nigerian agricultural visitors, Charles A. Lot and James O. Okunoye, at the new web offset newspaper publishing plant in Fastland this week, as Farmers Home Administration District Supervisor E. L. Foster, host to the visitors, looks on. Accompanying the college president on the tour were RJC Dean R. B. Golemon and Director of Development Carl Garrett, and County FHA Supervisor O. M. Broyle. All were given a tour of the new plant on a printing day, and the foreign visitors were shown how a small town newspaper is put together and published in a modern plant. The two Nigerians are staying in Stephenville as part of an inter-country exchange training program, and visited other points including the cattle and peanut production farms of Lee Jernigan and Donald Holder on Thursday. Twenty-six year-old Lot is assistant Credit Officer and Okunoye, 32, is Agricultural Superintendent, both of Western State Agricultural and Industrial Investment Corp., Ibadan, Nigeria.

The training abroad is designed to thoroughly familiarize these field technicians with operational procedures used by U. S. Cooperatives and rural credit organizations to effectively and efficiently make a sound farm loans and service and collect them using proven practices carried out by field personnel and their headquarters organization. Also they will better understand the selection training and use of farmer advisory boards and committees, relationships between field technicians and applicants, and how to keep local public and other government officials informed about programs such as WNACC conducts in the field. The training obtained will be transmitted to other field staff members of the Corporation in the Circle (Area) and serve as a basis for increased loan-making and serving efficiency so that an impact will be observed on privately owned farm operations in Nigeria.

Sorority Begins 1971-72 Activities

The Zeta Pi Chapter of Beta Sigma Phi held its first meeting of the 1971-72 year Monday, September 13, in the Eastland Community Room. The Xi Zeta Nu chapter from Ranger and the Xi Alpha Zeta chapter of Ranger were guests for the special program, which was presented by John Haddad, Field Service Director for the Texas Health Careers Program. He explained the "Firing Line," a new program to acquaint students interested in health careers with local medical personnel, and stated that Eastland County was the starting point in this project.

He also gave and explained the presentation he made to high school junior assemblies across the state. He was in Eastland County Schools this week.

Mrs. C. P. Chick was hostess and in charge of the program for the meeting and Mrs. H. D. Alsup, president, presided.

Refreshments of punch, cookies, mints, and nuts were served to the visiting chapters and special guests Marene Johnson Johnson, sponsor, and Mrs. Lewis Tiner and Sue Cantrell of Eastland Memorial Hospital.

In the business meeting, the chapter discussed their float for the Peanut Bowl Parade and made plans for such activities in the near future.

Zeta Pi members present were Mmes. Alsup, Chick, Don Brumblow, James Fulen, Ted Martin, and C. R. Kinser.

Abilene, Tex. A free offer of special interest to those who hear but do not understand words has been announced by Beltone. A non-operating model of the smallest Beltone aid ever made will be given absolutely free to anyone answering this advertisement.

Try it to see how it is worn in the privacy of your own home without cost or obligation of any kind. It's yours to keep, free. It weighs less than a third of an ounce, and it's all at ear level, in one unit. No wires lead from body to head.

These models are free, so we suggest you write for yours now. Again, we repeat, there is no cost, and certainly no obligation. Write to: Beltone Hearing Aid Service, Meadows Medical Center, 1325 Hickory, Abilene, Texas 79601.



New minister for the Flatwoods Church of Christ is W. E. Moore of Eastland. Moore recently retired as an Assistant State Director for the Department of Public Welfare in Austin.

During his years with the Department of Public Welfare, he also served as minister at several area churches of Christ, including Rising Star, Carbon, and Cisco.

Prior to going to work for the Department of Welfare, Moore at one time was minister of the Austin Ave. Church of Christ in Brownwood, and later the Rising Star Church of Christ. He moved from Rising Star to the Eastland Church of Christ in 1929, where he preached for six years before moving to Sweetwater. He returned to the Eastland Church in 1937, where he remained until he took his job with the Department of Welfare.

During his years with the Welfare Department, he

maintained his ministerial activities, preaching for smaller churches that could not at the time afford a full-time preacher.

In speaking of his association with the Flatwood Church of Christ, Moore said, "we have a very active congregation at Flatwoods, some very qualified leaders, and are presently planning the addition of a baptistry to our building, and possibly the addition of some classroom space."

Leaders of the Flatwoods church, according to Moore, are O. B. Moon, W. E. Reynolds, Herman Jordon, Earnest Sneed, Darrell Raney, Don Jones, J. E. Turner, H. D. Joiner, Don Brinkley, Larry Sooter, Bill Green, and Dewey Webb.

Mr. Moore is married and lives at 2004 W. Commerce, in Eastland. His daughter, Mrs. W. R. Swaim, lives in Fort Worth. She and Mr. Swaim are the parents of three daughters.

RANGER DRIVE-IN THEATRE

SHOW STARTS AT DUSK

Sustimes Sunday Sept 19th

BURT LANCASTER
ROBERT RYAN
LEE J. COBB

"LAWMAN"
COLOR by DeLuxe
GP United Artists

Coming next **FRI.**
Sept 24

ONE SHOWING
Nightly
at 8:30pm

THE GIANT OF THEM ALL.

GEORGE STEVENS' PRODUCTION
GIANT

FROM THE NOVEL BY ETNA FERBER
ROCK HURDISON - JAMES DEAN
ELIZABETH TAYLOR
Warner Bros. / RKO Company

EASTLAND AUTO PARTS

300 S. Seaman Ph. 629-2158

DOYAL RHODES
27 years as the leading
Partsman in this area
Serving you
with
"Parts for All Cars"
TOOLS-EQUIPMENT-SUPPLIES
FOR
GARAGES-STATIONS-FLEETS-INDUSTRY

"SHORTY" ALCOCK
33 years offering Quality
Shop Service
SPECIALIZING IN
VALVE GRINDING

60 Years Experience To Serve
Your Automotive Needs
EASTLAND AUTO PARTS
WE APPRECIATE YOUR BUSINESS



4-H clubs in Eastland County are hearing programs during the month of September on "Keeping Good 4-H Records". Members are urged to attend local club meetings during the month.

Cisco 4-H meets September 20 at the American Legion.
Happy Go Getters and Eastland Sr. Club will meet on September 21.
Carbon 4-H will meet on September 27.
Ranger 4-H will meet on September 28.

Eastland County 4-H club members are reminded to ride as a group in the Peanut Bowl Parade September 18. The group is planning to ride dressed as Indians complete with war paint! Meet at the corner of Commerce and Oak at 2:00 if you plan to ride.

Many Eastland County 4-H club members are participating this week in the West Texas Fair activities. On Saturday morning, Sept. 18 club members Warren Carlile and Ernest Thompson from Nimrod 4-H, Theresa Scott and Karen Guthrie, Rising Star 4-H, and Becky Kincaid and Susie Carter, Eastland will give demonstrations in the Women's Building at the Fair. Visitors should visit these demonstrations that will be held throughout the day. Results of county winners at the West Texas Fair will be given later.

Good luck to Penny Berry and Susie Hanna as they compete in the State 4-H Horse Show to be held in Fort Worth September 23-25.

One-Car Accident Injures Traveler

A California man, P. W. Jackson, was taken to the Eastland Memorial Hospital with minor injuries after a one-car accident six-tenths of a mile west of Eastland at 6:45 a.m. Thursday.

Eastland Highway Patrolman Weldon Watson, who investigated the accident, said that a brother of the injured party, William Jackson, was driving the car when it failed to negotiate a turn, went off the road and struck a tree.

The pair were on their way from California to Fort Worth to attend a funeral.



Mrs. Bonnie Fowler

Students Learn Of Health Careers

"300 Great Futures await you," John Haddad of Austin, director of Field Services for the Texas Health Careers Program, told high school and junior high students at assembly programs held in county high schools throughout this past week.

Mr. Haddad was here to acquaint students with the opportunities available in the medical profession and urged them to think seriously about selecting a career now and begin working toward it. In his program of audio visual material and musical selections, he explained some of the needs and gave personal experiences and ideas to emphasize the need for selecting a career early.

The Firing Line, a new program to assist students interested in medical careers through personal contact with local medical personnel, was also launched in Eastland County this week. Haddad stated. The Austin office will have on file names of people in this area who have signed up to assist students and act as a "Big sister or brother" to those who desire to enter health careers, he said. A Watts line in the Austin office is available 24 hours a day for information and help to students who care to call the office, he continued.

During the past four years, the staff of the Texas Health Careers Program has presented assemblies to over 500,000 junior and senior high school assemblies in Texas. Mr. Haddad stated that he would make appearances in about 200 schools during this tour.

GARDENHIRE OIL COMPANY

Yes! We can sell wholesale to you!

See us for all your oil, grease, filters, spark plugs, brake fluid, anti-freeze, S. T. P. for oil, gasoline, diesel or radiator, tires for cars, truck or tractor. WE HAVE TANKS for farm or commercial gasoline and diesel fuel. See us before you trade. All major brands of Oil and Grease.

WHY PAY MORE??

THIS NEWSPAPER TO PUBLISH

PICTURES OF LOCAL CHILDREN (RURAL INCLUDED)

FREE NO OBLIGATION!

PICTURES TAKEN IN FULL COLOR

- ★ Help us make this a good Feature — take your children to the place and at the time given below.
- ★ A Professional Child's photographer will take several poses in COLOR. Please dress your children to take FULL ADVANTAGE of COLOR Photography.

NOTE: The picture of your children will RUN IN BLACK and WHITE in this Newspaper.

You may ORDER COLOR OR BLACK and WHITE PHOTOGRAPHS from the representative — but this is entirely up to you!

PICTURES WILL BE TAKEN IN COLOR

TAKEN IN LIVING COLOR

TAKEN IN TRUE COLOR

HERE IS THE TIME AND THE PLACE

FIREMAN'S HALL

PARK HILL

Mon. and Tues. Sept. 20th and 21st
10 am to 5 pm

SEE NEWS STORY FOR ADDITIONAL DETAILS.

VOTE

TUESDAY

IMPORTANT NOTICE

The annual meeting of the contributors of The Eastland Memorial Hospital will be held on Sept. 28, 1971 at 7:30 p.m. in the Conference Room of Eastland Memorial Hospital, Eastland, Texas. Directors will be elected for ensuing year.

R.P. Haun, Jr.,
Secretary

Board of Directors--
Eastland Memorial Hospital

HILLCREST FOOD MKT.

INSTANT NESTEA	3 oz. jar	\$1.19
DEL MONTE CORN	303 can	4/\$1
FOLGERS COFFEE	lb.	69¢
with \$5 purchase excluding cigs.		
OLD VIRGINIA BRAND GOOCH SAUSAGE	2 lbs.	\$1.15
MELLORINE	½ gal.	3/\$1
GOLDEN BANANAS	lb.	10¢
MISSION PEAS	303 can	6/\$1

Mary and Ed Sargent,
Owners
OPEN SUNDAY



This is one of the friends the Don Baird family met in Bueno Park Movieland Wax Museum in Disneyland while on their summer trip to California and Las Vegas, Nevada.

LEGAL NOTICE

AN ACT relating to the recording and rerecording of livestock brands and marks; and declaring an emergency.

BE IT ENACTED BY THE LEGISLATURE OF THE STATE OF TEXAS:

Section 1. (a) This Act shall apply to every county in this State. In all the counties, each owner of any livestock mentioned in Chapter 1 of Title 121 of the Revised Civil Statutes of 1925 shall within six months after this Act takes effect, have his mark and brand for such stock recorded in the office of the county clerk of the county. These owners shall record the marks and brands whether the brands and marks have been previously recorded or not.

(b) The owner shall have the right to have his mark and brand recorded in his name who according to the present records of the county first recorded the brand and mark in the county, or in event it can not be ascertained from the records who first recorded the brand and mark in the county, then the person who has been using such mark and brand the longest shall have the right to have the brand and mark recorded in his name.

(c) After the expiration of six months from the taking effect of this Act, all records of marks and brands now in existence in the county shall no longer have any force or effect and after the expiration of six months, only the records made after this Act takes effect shall be examined or considered in recording marks and brands in the county.

(d) Immediately upon the taking effect of this Act, the county clerk of the county shall have this Act published in some newspaper of general circulation in the county for a period of thirty days. The publication shall be paid for by the county out of the general county fund.

Sec. 2. All clerks in reregistering brands shall comply with Articles 6890 through 6899, inclusive, of the Revised Civil Statutes of Texas, 1925, as amended, and with Section 1, Chapter 273, Acts of the 41st Legislature, 1929, as amended (Article 6899A, Vernon's Texas Civil Statutes), and shall also be aware of and comply with Articles 1484, 1485, and 1486 of the Penal Code of Texas, 1925.

Sec. 3. All brands and marks registered under the provisions of this Act shall be reregistered every 10 years in the manner prescribed in Section 1 of this Act.

Sec. 4. The importance of this legislation and the crowded condition of the calendars in both Houses create an emergency and an imperative public necessity that the Constitutional Rule requiring bills to be read on three several days in each House be suspended, and this Rule is hereby suspended; and that this Act take effect and be in force from and after its passage, and it is so enacted.

STORK NEWS

Mr. and Mrs. Scott White of Odessa announce the arrival of their first child, Christopher Scott, born at 11:05 a.m., Monday, Sept. 6, in Medical Center Hospital in Odessa.

Mr. and Mrs. W. E. White of Odessa are paternal grandparents and Mr. and Mrs. Bill Minor of Odessa are maternal grandparents. Paternal great grandmother is Mrs. Edna Taylor of Eastland.

EHS Assembly Program Set

Eastland Public Schools announce they will have a Southern Assembly Program on Wednesday, Sept. 22, 9:00 a.m., in the New Gym. Admission is 15¢ for all students and parents.

Leo Gasca is a famous circus and television artist and a member of the well known Gasca family. He was born in Argentina, of Mexican parents and traveled all over South America with his father's circus, learning all the complexities of the circus world.

He developed into a star performer, specializing in tumbling, hand-balancing, head stands, juggling, and trapeze. His act has been a feature in leading circuses in this country, Mexico, South America and Europe.

This is a program neatly demonstrating physical fitness and professional skill in routines both daring and exciting. Interspersed, are touches of humor and comedy to liven the presentation.

More Maverick Supporters

The Eastland Quarterback Club for 1971 has signed up some new members. These new members include:

James B. Johnston, Bill Walters, Bill Walters, Winston Boles, Ima Boles, Emory Walton, Howard Bookeeping, Bob Phillips, Walter Maynard, B. W. Robertson, Mrs. B. W. Robertson, Jay Staggs, Fran Staggs, Austin McCloud, Terrell Grocery, Randy Butler, George Ford, Johnny Aaron, Curly Maynard, Charles Marshall, Mrs. Charles Marshall, Dr. B. B. Alexander,

Rosemary Miller, Don Baird, Richard Roseander, Mrs. Don Baird, Buck Wheat, M. G. Key, Vernon Humphrey, Eastland Grain and Seed.

Bill Anderson, Anita Anderson; Debbie Anderson, Guy Horton, L. J. Williamson, Jerry Buchanan; Burton Christenson; Charles Beskow; Ed Ivey; Esco Walters; Scott Body Works, J. D. Allen; Bill Wolford; Floyd Williams, Mervin Maynard; Cecil Collings, Mrs. Cecil Collings; W. L. Griffin, Pat Turner, Bob Vennemen, Don Brinkley.

Announcing!

RCA

XL-100

100% Solid State AccuColor

with CIRCUITRY DESIGNED FOR X-tended L-ife!!!

Brilliant Color!
Extended Life!
Greater Dependability!

100% SOLID STATE ACCUCOLOR!
CIRCUITRY DESIGNED FOR EXTENDED LIFE!

XL-100 is made to last. All chassis tubes are out-replaced with solid state circuitry to perform longer with fewer repairs! And you'll get the brightest, sharpest color in RCA history with RCA's black matrix picture tube... and the tuning's a snap... virtually fool-proof. RCA's "AccuMatic" locks color within a normal range so even if the set becomes mistuned, you just press a button and a beautiful color snaps back. RCA XL-100 sets are BACKED FOR A FULL YEAR ON PARTS & LABOR!

Come in for a DEMONSTRATION!
Compare the PRICE and VALUE!
ROBERTSONS TV SALES & SERVICE
100 W. Commerce 629-1625

At Texas Electric, People Power is at your service.

Can one of our home economists help you?

We want you to get the greatest benefit from the electricity you buy from us. And our home economists are ready to help see that you do.

Don't hesitate to call when you have questions about the use and care of your electric range, washer, dryer, refrigerator or freezer. Or a dishwasher, a blender, disposer or any other appliance.

One of our home economists usually can give you the answers when you telephone. If not, she'll follow through until she gets you the information you need.

If you're building or remodeling, she can and will help you plan your new kitchen. The result will be your own personal design, one that's right for your work patterns, family needs and decorative impulses.

If you want help in planning better lighting for your home, she'll be glad to provide it. And it's possible that the improved lighting she suggests will require less electricity than you were using previously.

There is no charge for our help, because we see this as part of our job. At Texas Electric, People Power is at your service.



TEXAS
ELECTRIC SERVICE COMPANY
People power... at your service
F. N. SAYRE, Manager, Phone 629-2651

LEADERS ON THE FIELD AND OFF...

The Football Players

Since that first Rutgers-Princeton college football game a century ago, football has done much for the moral character as well as the physical strength of players of every age.

Football builds leadership, on and off the field. That's why we take pleasure in saluting the leaders of tomorrow... our high school football players.

Prescription Pharmacy
Telephone 629-1475
East Side of Square

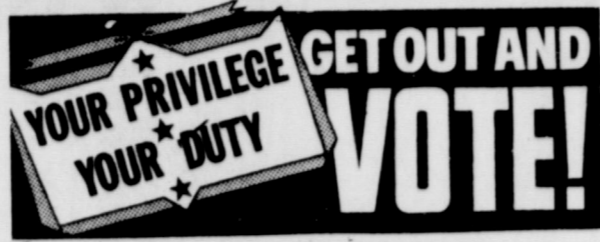
Good Neighbor Days In Eastland

SPECIALS FOR THIS WEEK

Maple finished
Boston Rocker
with seat and back cushions
reg. \$29⁵⁰ **\$19⁸⁸**

7 - piece
Virtue Dinette
Choice of bronze or green
reg. \$149⁵⁰ **\$119⁸⁸**

COATS FURNITURE



Eastland Sewer Bond Election

Tues. Sept. 21
City Hall, 7 to 7
BE SURE TO VOTE

VICTOR CORNELIUS

THARP TIRE CO.

E MAIN 629-2922
A complete line of Farm Tires
Automobile Tires
Front End Alignment
Brake jobs (all types)
Tire Vulcanization



DUNLOP TIRES

Bank of America American Express
Master Charge Texaco Credit Cards

SPECIAL
RE CAPS
\$12⁵⁰ plus tax

OTIS COLEMAN Mgr.

Bray's DEPARTMENT STORE

Eastland County's Family Store
STORE HOURS-9 a.m. to 5 p.m.
EASTLAND - RANGER

Women's Sheer Panty Hose



Sizes A & B
Colors
Chocolate Brown
Roamonly Brown
Navy
one pair for ONLY

99¢

Eastland Auction Co.

SALE EVERY TUESDAY

LLOYD COAN
Owner

EASTLAND

629-1760

Coats Furniture Inc., established in 1955, is owned and managed by Willard Griffin. Employees for Coats Furniture, include C. P. Benton, employed for nine years, and Solora Gilkey, with 15 years service. Also employed is the Griffin's daughter, Marcia.

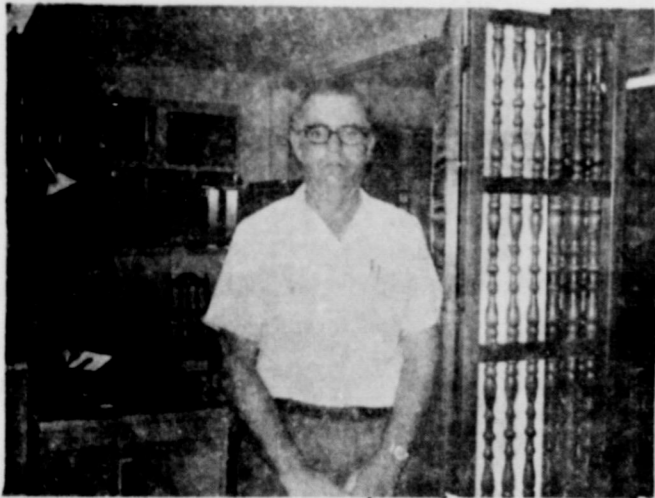
Willard and his wife Onella, have one daughter, Marcia, who is attending Cisco Junior College, and one son, Don, who is an Art Teacher for the Eastland Public School System. The Griffins are members of the First Methodist Church of Eastland.

Coats Furniture carries such lines as Serta Bedding, La-7-Boy Recliners, Futorian Recliners, Virtue Dinette, Riverside Bedroom, and Armstrong Lineoleum.

Coats Furniture, Inc.

305 South Seaman Street

Eastland, Texas 76448



WE MUST MAKE ROOM IMMEDIATELY FOR OUR '72 LINE! COME IN NOW AND GET THE GREATEST SAVINGS. THE LOWEST PRICES AND BIGGEST TRADE-IN'S OF THE YEAR DURING OUR GIGANTIC

CLEARANCE Sale!

INTERNATIONAL 1971 SCOUT TRAVELALL AND PICKUP



INTERNATIONAL '71 SCOUT
The Actionmobile! Choice of 4, 6 or 8 engines up to 345 cubic inches, standard or all-wheel drive, manual or automatic transmission. The buy of the year!



INTERNATIONAL '71 TRAVELALL
Limited supply at great savings! 25% roomier than any passenger-car wagon. Rides 9. With luxury options such as air-conditioning, 6 or V-8. Save now!



WHILE THEY LAST!
INSTANT FINANCING OR ON-THE-SPOT TERMS!
CITY GARAGE AND EQUIPMENT CO.



Hallmark

A MYRIAD OF COLOR

There's a whole kaleidoscopic arrangement of coordinated papers and matching accessories in our Hallmark gift wrap department.

Westmoreland Glass

Fostoria-Pickard

Pasco Fine China

Johnson Bros.
Ironstone

EASTLAND DRUG

SMITH PLUMBING CO.

Phone 629-1722

Now is the time to check all your heating supplies. We have the material to do the job.

FILTERS

MOTORS

BELTS

THERMOSTATS

SAFETY CONTROLS

"We are equipped to do the Job"

Serving Eastland Since 1923 with Quality Work



classic lover's choice in polyester double knit

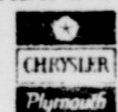
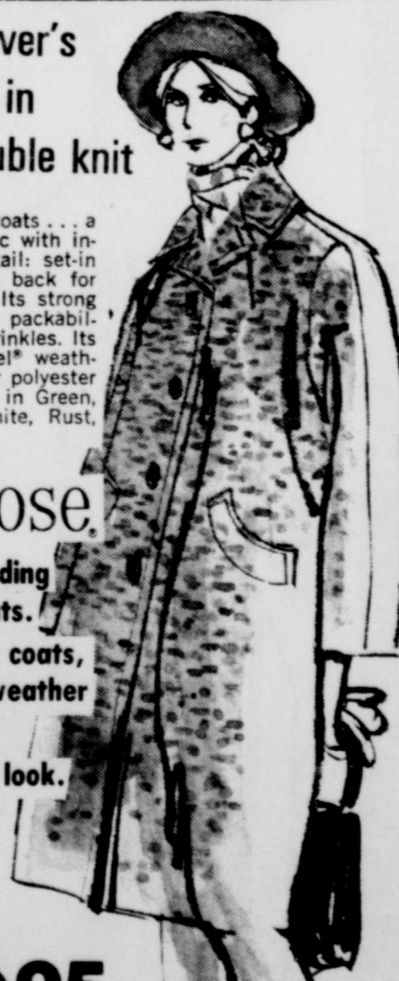
Choose the coat of coats... a go-everywhere classic with interesting sleeve detail: set-in in front, dolman in back for flattering slimness. Its strong points: washability, packability, freedom from wrinkles. Its ace-in-the-hole: Zepel® weatherproofing and inner polyester winterizing. Have it in Green, Red, Purple, Off-White, Rust, Black for 14-42.

Betty Rose

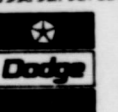
See our outstanding collection of coats. You'll find dress coats, pant coats, all weather coats, fun furs, and the leather look.

\$49⁹⁵

EASTLAND
ALTMAN'S



Dodge Trucks



see the
NEW CARS
for '72

CRAIN MOTOR CO.

PHONE 629-2430

215 S. SEAMAN ST.

EVERETT E. CRAIN

OWNER

GORDON NEWS

Mr. and Mrs. Howard Baker of Andrews visited during the weekend with her sister and brother-in-law, Mr. and Mrs. Edgar Rinke.

Captain and Mrs. Len Dailey of Wichita Falls spent the weekend with Mr. and Mrs. Ronald Teichman and Ronald Stephen. Mr. Teichman, who was a captain in the Air Force, recently was separated from the Air Force and he and his family have moved here.

Mr. and Mrs. Johnny Stowe, Bobby and Russell visited their grandm other, Mrs. Axel Martin of Lipan Sunday.

Mr. and Mrs. Robert Pierce, Anita and Jamie of Jaytor visited her grandmother, Mrs. Hazel Martin of Lipan Sunday.

Mr. and Mrs. Robert Pierce, Anita and Jamir of Jayton, visited from Saturday until Monday with Mrs. Cora Pierce and Mr. and Mrs. Lennie Stallings.

Weekend visitors in the home of Mr. and Mrs. R. O. McFaddin were Mr. and Mrs. Eddie Edwards and Gary of Waxahachie and Mr. and Mrs. Don McFaddin, Linda Kay and Rebecca of Carrollton.

A family reunion of the late Mr. and Mrs. C. M. Wilson was held at Palo Pinto Lake this past weekend.

Mr. and Mrs. Bill Merriman visited Monday in Pollsville with Mr. and Mrs. Granvy Phillips.

Mr. and Mrs. Ralph Maxwell spent the weekend in Oklahoma City with their son and family Mr. and Mrs. Tommy Maxwell.

Hickman Visitors

Mr. and Mrs. oe Gregg and son of Gatesville to see Ike Butler.

Clifton Parker to see Mr. Howard.

Linda Spencer to see Mr. Howard

Mr. and Mrs. Milton Nash to see Mrs. Nash

Mr. and Mrs. T. G. Fambrough to see Ada Turner D. R. Ford

Mr. and Mrs. Terry Cox to see Mmes. Terry and Rainey

Hattie Weathers to Mmes. Terry and Rainey

Nell Whitehead to see Mmes. Terry and Rainey

Bob Mace to see Mmes. Terry and Rainey

Sheila Moseley to see Mmes. Terry and Rainey

Mr. and Mrs. George Paulsen of Round Lake Minn., to see Mr. Reich

F. C. Smith of Ranger to see J. E. Crawford

Eturo Glenn of Ranger to see J. E. Crawford

Mr. and Mrs. J esse Mathews of Tomball to see J. E. Crawford

Mr. and Mrs. Mrs. FRuthe Vecklaner to see J. E. Crawford

Ovella Turner to see Beulah Turner and Ada Turner

Mary Wheat of Ranger to see Ben Cunningham

Mr. and Mrs. Frank Sheppard of Odessa to see Ben Cunningham

Loyce Scott

Charles Alford of Dallas to see Mrs. Brashears

Mr. and Mrs. Travis Duncan of Abilene to see Homer Duncan

Mr. and Mrs. Stokes to see Mr. Butler

Pearl Snell of Carbon to see Mr. Butler

Mrs. Odell Tucker to see Beulah and Ada Turner

Nina Robbins to see Beulah and Ada Turner

Mr. and Mrs. G. T. Adams of Medlothian to see Mrs. Turner

Sylvia Moreland of Lancaster to see Mmes. Terry, Fox, and Rainey

Mrs. R. L. Alford of Lancaster to see Mmes. Terry, Fox and Rainey

Mr. and Mrs. C. J. Covington of Odessa to see Mr. Crawford

Jeanne Contorie of Desdemona to see Mmes. Terry and Rainey

Mr. and Rs. Hinkle of Texarkana to see Mmes. Terry and Rainey

Mr. and Mrs. Rainey of Desdamona to see Mmes. Terry and Rainey

Mr. and Mrs. Lee Widner and Rebecca of Mineral Wells, to see Mr. Crawford

Mrs. Mary Phillips of Abilene to see Mrs. Brashears

Mrs. C. Jacob of Cisco to see Mr. Reich

Mr. and Mrs. H. A. Butler and daughter of Odessa to see Ike Butler

Mrs. Manuel Gomez of Ranger to see Jose Castro

Joyce Stove of Ranger to see Jose Castro

Rosa Castro of Ranger to see Jose Castro

Mr. and Mrs. Mac Gomez of Ranger to see Jose Castro

S. S. Williams

Sunday, September 19, 1971

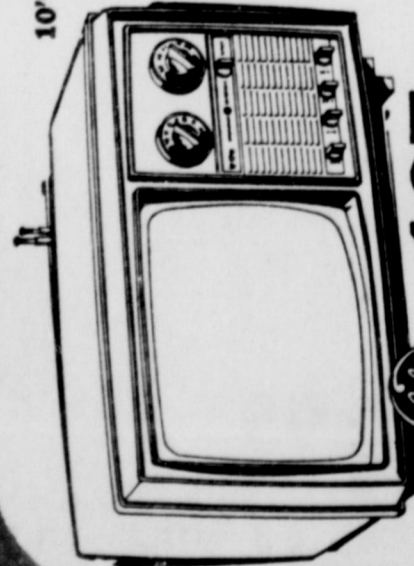
SAVE THIS ADVERTISEMENT FOR FOOTBALL SCHEDULES AND BEST TELEVISION BUYS

General Electric... TELEVISION
for football Viewing at its finest!



**10" PORTA-COLOR TV
DIAG. 60 SQUARE INCH
VIEWING AREA**

"In-Line" Picture Tube System, Up-Front Control, VHF, UHF, Solid State Tuner, VHF, "Pre-Set" Fine Tuning, Control, Built-in Telescoping Dipole Antenna, Precision Etched Copper Circuitry



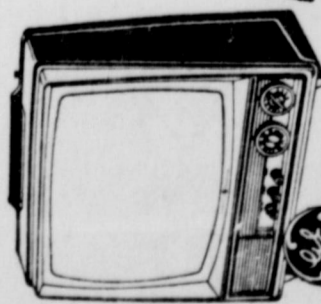
\$187

WM2011HCR



**12" DIAG MONOCHROME
TELEVISION
74 SQ. IN. VIEWING AREA**

Up-Front Controls, Front Sound, High Gain VHF Tuner, UHF Solid State Tuner, Built-in Telescoping Monopole Fold-down Antenna, Precision Etched Copper Circuitry



\$67

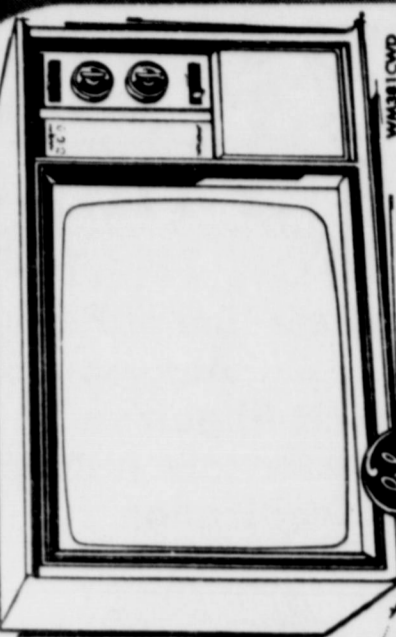
WM1555AV

We still have some real bargains in 1971 color consoles at close out prices

EASY TERMS

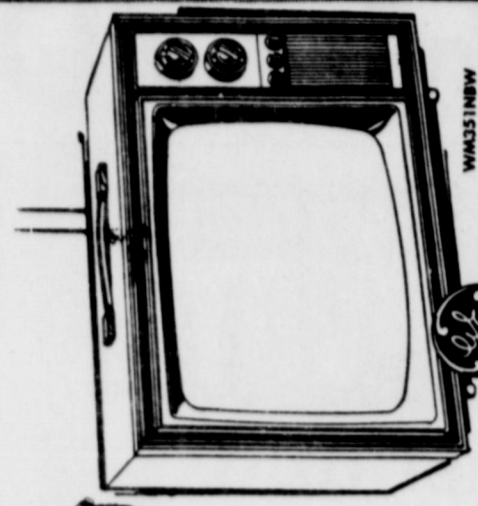
JUST SAY CHARGE IT

19" DIAG. COLOR TELEVISION
Big 185 Sq. Inch Viewing Area, Automatic Fine Tuning and GE Sensi-
tronic Tuning System, VHF Pre-Set
Fine Tuning, UHF Solid State Tuning,
Slide Volume Control, Color Keyed
Tuning, GE 19" Diag. Spectra-Brite
Picture Tube, GE Insta-Color Picture.



\$397

WM431CWD



**16" PORTA-COLOR TELEVISION
145 SQ. INCH VIEWING AREA**

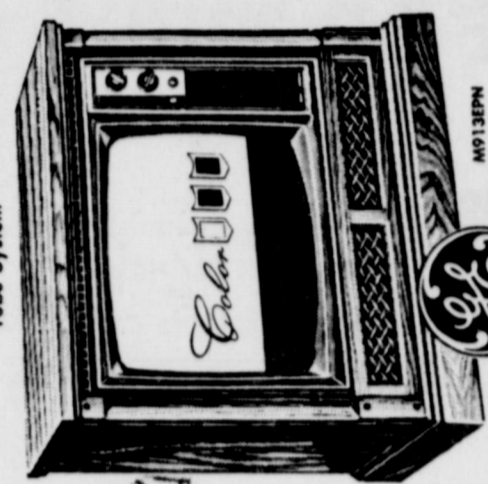
16" Diag. Spectra-Brite Picture Tube, Up-Front Control Center, Front Sound, Sensitronic Tuning System, VHF Pre-Set Fine Tuning and UHF Solid State Tuning, Porta Color "In-Line" Picture Tube System

\$297

WM431NDW

**THE VALLEJO
23" DIAGONAL
COLOR TV
295 SQ. INCH
VIEWING
AREA**

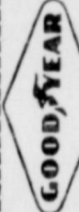
Dramatic Spanish Styling in Pecan Cabinetry, Auto-matic Skintone Stabilizer, Auto-matic Color Purifier, Keyed AGC, GE Sensitronic Tuning System, Up-Front Control Center



\$497

WM13EPN

CLIP THIS LISTING FOR QUICK, EASY REFERENCE TO YOUR FAVORITE NFL, AFL, AND SOUTHWEST CONFERENCE GAME... AND SHOP GOODYEAR FOR THE FINEST FOOTBALL VIEWING TELEVISIONS.



**DALLAS COWBOY
SCHEDULE**

Sunday, Sept. 19 BUFFALO*
Sunday, Sept. 26 PHILADELPHIA*
Monday, Oct. 3 WASHINGTON (home)
Sunday, Oct. 11 NEW YORK GIANTS
Sunday, Oct. 17 NEW ORLEANS* (home)
Sunday, Oct. 24 NEW ENGLAND (home)
Sunday, Oct. 31 CHICAGO*
Sunday, Nov. 7 ST. LOUIS*
Sunday, Nov. 14 PHILADELPHIA (home)
Sunday, Nov. 21 WASHINGTON*
Thursday, Nov. 25 LOS ANGELES (home)
Saturday, Dec. 4 NEW YORK JETS (home)
Saturday, Dec. 18 ST. LOUIS (home)
Sunday, Dec. 12 NEW YORK GIANTS*

**HOUSTON OILER
SCHEDULE**

Sunday, Sept. 19 CLEVELAND
Sunday, Sept. 26 KANSAS CITY (home)
Sunday, Oct. 3 NEW ORLEANS (home)
Sunday, Oct. 10 WASHINGTON
Sunday, Oct. 17 DETROIT (home)
Sunday, Oct. 24 PITTSBURG
Sunday, Oct. 31 CINCINNATI (home)
Sunday, Nov. 7 NEW ENGLAND
Sunday, Nov. 14 OAKLAND
Sunday, Nov. 21 CINCINNATI
Sunday, Nov. 28 CLEVELAND (home)
Sunday, Dec. 5 PITTSBURG (home)
Sunday, Dec. 12 BUFFALO
Sunday, Dec. 19 SAN DIEGO (home)

**EASTLAND MAVERICKS
SCHEDULE**

Red and Black
Non-Conference Games Start 8:00
• Conference Games Start 7:30

Sept. 10-Haskell There
Sept. 17-Ranger Home
Sept. 24-DeLeon There
Oct. 1-Cisco Home
Oct. 8-Comanche • There
Oct. 15-Clyde • Home
Oct. 22-Hamilton • There
Oct. 29-Ballinger • Home
Nov. 5-Winters • There
Nov. 12-Coleman • Home

**THE CASABLANCA II
25" SCREEN
IN. VIEWING
315 SQ. AREA**

Dramatic Spanish Styling, Bold Pecan Cabinetry, GE Sensitronic Tuning System and Reliccolor Chassis, Automatic Skintone Stabilizer, Automatic Color Purifier, Insta-Color Picture

\$597



WM73EPN

3 WAYS TO PAY AT GOODYEAR



**GOODYEAR
SERVICE STORE**

STORE HOURS: 8 a.m. to 5:30 p.m.

EASTLAND, TEX

SAVE THIS ADVERTISEMENT FOR FOOTBALL SCHEDULES AND BEST TELEVISION BUYS