

EASTLAND TELEGRAM



EASTLAND, TEXAS 76448: Today's CENTER for tomorrow's FUTURE!

Volume No. 103, Number 80

Thursday, October 7, 1971

Price: 10¢

TidBits

By HVO

HOPE YOU'LL mark your calendar for Sunday, Oct. 17, from 3 to 5 p.m. and plan to attend the open house of our new printing facilities at the Telegram in Eastland. We'll be demonstrating all the equipment and making a press run beginning at 4. It won't be as pretentious as that staged by the Ah, You Know, What's It's Name, over in Abilene, but we hope you'll share our pride in the additions made here to provide better printing facilities.

BEEN ASKED repeatedly around the square if we were helping promote the "Religious Rock" musical held here recently because of the extensive publicity on these pages. Not so, we reply, and remind that we try hard to keep the papers non-demonstrational, non-political and servants to all, keeping our personal preferences to ourselves. But since we've been asked, here's the personal feeling on the phrase "religious rock": Not good. It doesn't seem that the two words harmonize at all, due to the origin of the word "rock" when according to memory was originated by one Wild Bill Hailey and his Comets, and the term had a sexual connotation. Not exactly blendable to the word "religious", do you think? Can't judge the concert though, 'cause I didn't hear it.

MAYOR JAMES Reid sure plugged "eating peanuts" at the meeting of area city officials here last week. Table companion Bob Hunter of ACC's public information section told us that night that the Abilene schools have given up the junior college idea their now the state's paying tuitions for some attending private schools so maybe our county's colleges have a growing, glowing future. Over at RJC, Development Man Carl Garrett is busy mapping a master plan, and big talk on that campus having a new library building. Since we have the privilege of printing the two college papers, we're going to expose the new name for the RJC paper: the "RAP WRAP". How about that for a college paper? Over at CJC, it's Macy thinking time as their Band and Belles make plans.

SOLID CITI ZEN come to town has to be Mr. Everett Crain over at Crain Motor Co. who wears his tradin' britches every day and is moving out automobiles and pickups. You'll get to see aldealers wares at one time at the ANNUAL NEW CAR SHOW AND SIDEWALK SALE to be held Saturday, October 16, in DOWNTOWN Eastland. You can think your Chamber of Commerce for this fine program and they've got a lot more up their sleeve for the days ahead. The blood'sucking of our economy by the powers in Abilene may change when the new weekly newspaper starts printing exclusive local news there soon.

THE UNITED Fund is in top hands with Don Nicholas superheading the drive this year. You can be sure it'll get done right. Ever stop to take the time to thank Charles Marshall for the great job he does as public announcer for the local games? How'd you like Director Paul Wallace and the Maverick's Band's "pollution" show? Pretty timely, huh? Noticed Brad Frazier and Blake Lund busily helping the football boys Friday night.

PLEASE HELP us find Gene continued on inside

Bank Assets Near \$12 Million

Eastland's bloom is showing again! For the fifth time in as many consecutive quarterly reports,

Eastland National Bank is reporting record assets, according to President H. T. Wilson.

With the report, issued at the close of business Sept. 30, assets are recorded at \$11,963,225.42.

In another key area too, the statistics whisper not so quietly of Eastland's growing economy. Deposits at the

In another key area too, the statistics whisper not so quietly of Eastland's growing economy. Deposits at the beginning of this quarter reflect \$10,961,673.80. Deposits at the local bank have grown steadily. At the same period in 1968, \$7 million plus was shown; hitting \$8 million plus at the end of that year. The \$9 million plus figure was reached with the third quarter report of 1969. It was at the close of business in September of 1970, that the \$10 million figure was reported.

Assets have grown from \$8 million plus on the first day of October, 1968, hitting \$9 million plus at the end of that year, and touched \$10 million plus at the

end of 1969. They dipped to \$9 million plus at the first and second quarter reports of 1970 and went back to \$10 million plus a year ago.

Indexes all over town are upward bound. New home building continues to be on the increase here and merchants generally report strong sales, with customers apparently taking advantage of the present freeze on prices.

The City Commission late last week in a special meeting authorized revision of plat design for a small housing development to begin in southwest Eastland, on the west side of College St., between Sadosa and Hill Sts. Some five new homes are tentatively set to be built. In other action in that same meeting the commission set the price for the 56 by 150 lot where the old City Hall formerly stood at the corner of Plummer and Daugherty in response to a request from a buyer who plans to make a substantial improvement to the choice property.

In the industrial are, Hollywood Vassarotte (which will celebrate its 25th anniversary in Eastland next month), Victor Cornelious, Axtex Mobile Homes, Texas Lightweight Aggregate and House of Webster Ceramics, continue to maintain steady advancement and in most cases, expansions of production and payrolls.

The city's Industrial Commission is presently negotiating with key prospects, with one in particular; showing decided interest in the city as a plant location.

All hurdles appear to have been topped for the beginning of construction on the city's new 68-unit apartment complex to be built in the south part of town under private investment. The expanding services of the modern bank is the city's financial center, includes a Special Service Dept. headed by Mrs. Inez Bourdeaux who assists customers both at her office and at their home or in the nursing homes when they are confined due to illness or age.

As has been repeated many times, Eastland's growth is not spectacularly fast, but steady and on an even keel. And too, the locals are on ce again being treated to a first-rate, winning-type football team under the guidance of Head Coach Shirley Frazier and his excellent staff.

Who would ask for more? EVERY one is urged to attend the Eastland High School Pep Rally this Friday at 3:00

ENTRY deadline for this week's football contest is 2 p.m. Friday.

The mighty Mavericks get encouragement from the student body and fans alike at Friday Afternoon pep rally in Eastland gym.



Pictured above are two of the Pure Bred Texas Longhorn Steers that were sold at the Eastland Auction Co. Tuesday afternoon. The steers belonged to Lloyd Koen and he kept them for sightseeing purposes and for his hobby. They sold at \$23.80 per hundred pounds a total of \$684.25. Mr. J. L. Hutcheson from Clifton bought them. Lloyd stated that they were a good topic of conversation as well as beautiful animals. He has had one of the longhorns for about four years.

New Auto, FARM Equipment & Sidewalk Sale Plans Mapped

Plans are virtually complete for Eastland's Annual New Car and Farm Equipment Show and Sidewalk Sale to be held Saturday, October 16 in downtown Eastland, according to an announcement by the sponsoring Chamber of Commerce today.

All Eastland auto dealers are participating and will have new model displays on the south and west side of the square that day.

In addition, over 30 merchants will be participating in a gigantic merchandise and service give-away, and will be taking registrations for the free gifts in their respective stores on Thursday, Oct. 14, through Saturday. The Chamber of Commerce will provide booths on the square for Saturday registration for those firms ordinarily closed on Saturday. The drawings for the prizes will be held at 4:30 p.m. Saturday with all the prizes to be given away.

Displaying new models automobiles, pickups, trucks and tractors and farm equipment will be:

CITY GARAGE, CRAIN MOTOR CO., FULLEN MOTOR COMPANY, HOOD

KING MOTOR CO., PERKINS IMPLEMENT CO., BRUCE PIPKIN MOTOR CO., AND SQUIRES FARM STORE.

The Chamber will also be offering free refreshments on the square the day of the big event.

One planning official called it "The day to bring the family to town, and stay all day."

Merchants will also be offering special sidewalk sales for convenient shopping where the excitement is. Special buys are being offered unlimited values for Eastland visitors on that day.

PARTICIPATING

Harleiks Department Store, Mode 'O'Day, Perry Bros. Inc., Bray's Department Store, Jeanette's Shop, Western Auto, Sledge Market, Eastland Telegram, Triple D. Discount, Robertsons TV Sales & Service, Coats Furniture Inc., Super Save Market, Eastland Auto Parts, Texas Electric Service, Eastland National Bank, Prescription Pharmacy, Kendrick Music Center

Goodyear Tire & Rubber Co., Sharp Tire Co., Perkins Implement Co., Central Drug Co., Altmans Style Shop, Quality Shoe Shop, Eastland Drug, H & R Lumber Co., Hill Crest Food Market, Harmon Short Stop no. 6, Eastland Tire Service, Rogers Grocery & Market, Safeway Store, JRB Food Store, Squires Farm Store

CAR DEALERS

Crain Motor Co., Fullen Motor Co., King Motor Co., Finley Garage, Bruce Ipkin Motor Co.

FARM DEALERS

Perkins Implement Co., Squires Farm Store

S. O. S. members with to encourage for any interested person to attend these meetings. Contact 629-1464 for information.

150 Firemen At Meet

The North Texas Fireman's quarterly meeting was held in Fireman's Hall in Eastland Saturday October 2. Six towns were represented at the quarterly event and over 150 firemen attended.

Preceding the evening meeting a pumper race was held behind the Eastland Post office, on the corner of Green and White. The race began at 7 p.m. with six teams competing.

The winner of the pumper race was Weatherford with a time of 22.8 seconds. Mineral Wells was second with a time of 27.5 seconds. Cisco was third with a time of 28.5 seconds.

Host team, Eastland, was not qualified under association rules, but had a time of 20.3 seconds. Ranger's time was 29 seconds.

Towns represented included Ranger, Mineral Wells, Cisco, Weatherford, Aledo, and Eastland.

Following the pumper races, the firemen were treated to a dinner at Fireman's Hall followed by a dance. President of the organization is Joe Thomas, chief of Weatherford Fire Department.

Aledo, winner of the permanent trophy at the last quarterly meeting, retained possession for another year.

Volunteer Chief, Jack Graham of Eastland, announces that the next quarterly meeting will be held in Cisco in January.

Mavericks Face Indians Friday

Editor's Quote Book
Winning isn't everything, but wanting to win is.
—Vince Lombardi

Comanche halfback, not only is the leading scorer in the Big Country, but is also among the top rushers.

Dudley is averaging over 18 points per game.

Every Comanche opponent has found it almost impossible to stop the 5'11" 165 pounder.

IMPORTANT

THERE will be a school bus on the square at 2:30 p.m. Friday until 2:00 p.m. for the purpose of transporting all Business men and employees to the Eastland High School Pep Rally. The Bus will leave the Square at 2:50 p.m. and return at 3:30 p.m., immediately after the pep rally is over. The Mavericks need all the support that the town can give them. THE EASTLAND TELEGRAM OFFICE will be closed from 2:50 until after the pep rally so that all of our employees can attend the rally. Every one is cordially invited to attend. AND support the Mavericks.

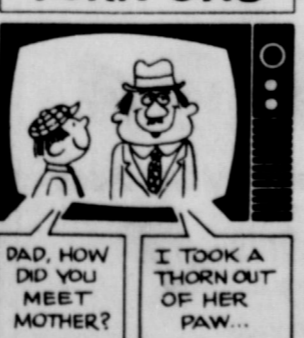
Kickoff time is 7:30 p.m. and its an hour's drive from Eastland.

The Indians have other outstanding players in McDougal, a senior quarterback.

Gry Robertson, 175, Senior Guard was an all-district performer last year, and has been outstanding against all opponents this year.

The Mavericks came out to the Cisco contest in good

Fullen Motor TURN ON'S



physical condition, and will only be without the services of Rueben Gaeta, Senior TB who is out with a leg injury.

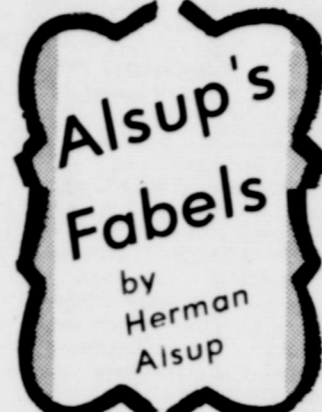
Several of the team members have come down with sore throats and colds this week, but all are expected to be ready Friday.

Comanche will be celebrating their Homecoming so the Mavericks could be in for a rough night.

VFW TO Meet it is announced that the VFW meeting will be at 8 p.m. Thursday October 7, at the VFW Hall. All members are urged to attend.

The Girl Scouts began their "Kick-Off" meeting for the 1972 year with a weiner roast on Park hill Saturday, October 2. Approximately 117 were present for the cookout.

The Ca... will go to District II Council in Stephenville, EASTLAND NATIONAL BANK EASTLAND, TEXAS



OOP'S I goofed. In the Thursday edition of the Telegram when I ran the Eastland High School class officers' pictures and names I had the pictures in the proper place BUT the names did not come out just right. Names of the Juniors were with the senior pictures and the same for the Juniors. Sorry!!

NOTICED At the pep rally Friday that quite a few towns people attended. This really shows that the town is behind the Mavericks.

Attending the rally was Miss Barbara Ritter of Anson who is a student at Tarleton State College. Barbara was on her way home for the Anson pep rally and had car trouble in Eastland. Miss Ritter was Miss Anson in the Texas State Peanut Queen Pageant Eastland in 1970.

AT ONE CORNER in Eastland noticed you have to almost get half your car out in the street to be able to see who or what's coming. By then, if anything, it is too late. Let's encourage every one to keep the vacant lots mowed and some people their own yards. Wonder if some club or organization would take on this for a project. Sure would be nice.

ALL STORES in Eastland are getting in new merchandise for the fall and especially for CHRISTMAS. New items for the holiday season are in at most of the stores in town and now's the time to start thinking about it. If you don't, you might not get exactly what you want.

I HAD A total of 56 entries in the football contest this week. As it turned out several entries were within three or four points of the total score of 57-6. The two entries closest were Wanda Baird 56-6, and James Massey 58-6.

All of the past winners in the contest can pickup their theatre tickets at the Eastland Telegram this Friday, October 8th.



MRS. BESSIE HOFFMANN services Wednesday

Mrs. Hoffmann Buried Here Wednesday

Bessie May Hoffmann 71, died at 5:50 p.m. Monday in Eastland Memorial Hospital after a three-week illness. She was the wife of the late C. W. Hoffmann Sr.

Funeral was at 2 p.m. Wednesday in the First Methodist Church in Eastland with the Rev. Len Lane of Fort Worth officiating, assisted by the Rev. Cecil Ellis, pastor.

Burial was in Eastland Cemetery, directed by Arrington Funeral Home.

She came to Eastland in 1918 and had lived in the Abilene area about two years before then. She was a member of the Thursday Afternoon Club, Daughters of the Nile and Civic Garden Club.

Born Feb. 19, 1900, in Carbon Hill, Ala., she had lived in Eastland since 1918. She was formerly of Tye. She was a member of the First Methodist Church of Eastland. She married Carl W. Hoffmann Jan. 25, 1923 in Eastland.

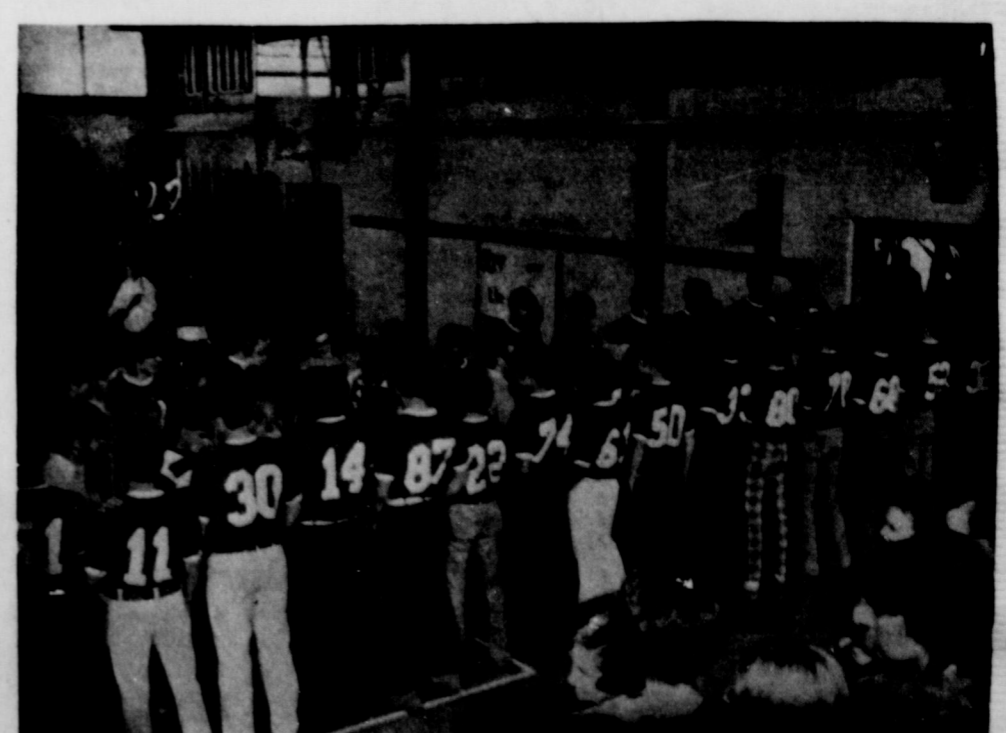
Survivors include two sons, W. H. (Bill) of Eastland and C. W. Jr. of Eastland; one daughter, Mrs. Gus Gavrel of Fort Worth; one sister, Helen Hilton of Tyler; and eight grandchildren.

Pecan Tour IS Friday

The Eastland County Flal pecan tour that was originally scheduled for September 24 has been rescheduled for October 8. Dan Childress, President to the Eastland County Pecan Growers Association, said the tour had to be post poned because of the rain.

Those interests in going on the tour are requested to meet at ammie's Restaurant in Cisco at 9:30 a.m. Friday morning. The first stop will be made at Dale C...ile's orchard near Nimrod where visitors will see a pecan weevil control demonstration. One stop will be made on the Philpott orchard before noon.

The tour will stop at Rising Star for lunch on a short business meeting. After lunch the tour will continue to Mrs. C. E. Smith's orchard south of Rising Star.



classified ads

phone
629-1707

Thursday, October 7, 1971

EASTLAND TELEGRAM
Phone 629-1707
110 W. Commerce St. Eastland, Texas 76448

NOTICE MOVED
BASHAM ELECTRIC
AND
REFRIGERATION
309 W. White, Across from jail
none day or night, 629-2526
Hours: 8:30-5. Closed Sat.

LAKE LEO PROPE
Y
van home, so. side. Plots,
cas., 7 rms. \$8,000.

1 bedroom lake cabin furnished
\$4,200.
1 bedroom concrete block
home, large screened in porch,
furnished including 15 ft. Lone
Star Boat \$6,500.

2 vacant deeded lots, so. side.
\$2500.

3 bedroom home furnished
irrefamily room and fireplace
overlooking Lone Cedar
Country Club. North side.
\$11,500.

Furnished mobile home lge.
screened porch fish pier, 2 stall
boat house, excellent lot. \$8,500.

HOMES
2 bedroom home 3 lots. \$2,500.
Mobile home, 12 x 60, \$5,100.

2 bedroom, den, Halbryan.
\$3000.
2 bedroom, den, Ranger. \$5500.
2 bedroom just remodeled,
\$5,500.

2 bedroom home, extra large
living area, been recently
paneled, 4 lots. \$6500.

3 bedroom, 2 bath, double
garage. \$11,100.
4 bedroom, 1 acre land. \$7,350.

Several homes with small
acreage in Olden area.
3 bedroom home, remodeled,
large den, fireplace. \$13,650.

FARMS AND RANCHES
Nice 3 bedroom home, 80 acres
land, improved pasture, plenty
good shallow water, on
pavement. \$30,000.

3 bedroom house, 80 acres of
land, 5 miles out, \$16,000.
194 acres, some lake frontage,
pecan trees, close in.

240 acres, cleared native
pasture with some pecans and
creek bottom. Net fences. Will
subdivide into smaller tracts.
for G. I. \$150. per acre

40 acres land all permanent
pasture on pavement. 15 ac.
peanut allot. good water well,
and pressure system. \$10,000
will G. I.

40 acres of land 3 bedroom
home some improved grasses,
so. part of county. \$17,000.
51 acres-38 cult. balance brush.
17 acres peanut allot. water
well. 6 mi. from Ranger, will G.
I. or owner will finance.

Well improved 1,000 acre ranch
with cheap interest rate loan.
Will consider some clear trade
for equity.

1750 acre ranch, some clear
excellent hunting in good
location.

2800 acre well improved
Lampasas ranch with running
water.

14,000 acre improved North
Texas ranch. Will consider
some trade.

For these and other places
contact:

KINCAID REAL ESTATE
100 South Seaman
Eastland, Texas 629-1781
Robert M. Kincaid 629-9721
J. W. Elzer 647-1321

FOR SALE
FOR SALE: Pomeranian
puppies, three months old.
\$20.00 each. Tel. 647-1735 in
Ranger. 80

FOR SALE - CLEAN carpets
the save and safe way with Blue
Lustre. Rent electric sham-
pooper \$1. Coats Furniture. 81

FOR SALE: Good two bedroom
house. Close in. Call 629-1457. 77

FOR SALE: - Ten pair big w.f.
cows with first calves by side;
three pair black face cows with
first calves by side; and 10 head
big heifers without calves. Garl
D. Gorr, Cisco, residence phone
442-1642 or business phone 442-
3640. 82

FOR SALE: approximately
three acres, in city limits of
Carbon. Good well water; block
building. Call 627-5611 or write,
Jewell Miller, Rt. 2, Decatur,
Texas. 79

MENUS

Thursday, Oct. 7
Hot dogs with chili
Pinto beans
Chopped spinach
Carrot & celery sticks
(cornbread)
Chocolate pudding.

Friday, Oct. 8
Hamburgers
Pimento Cheese sandwich
Candied Yams
Pork & beans
Cookies

Poodle Grooming
Telephone
647-1288 -- 647-1845

FOR SALE
LOT FOR SALE: Corner of
West Commerce and College.
Call 629-2595. tf

FOR SALE: Large sugar
pears, \$2.00 for 1/2 bushel. 130
bufl. of hay grazer; 75 a bail.
Call 629-2485 after 6 p.m. tf

FOR RENT OR SALE: Nice
two bedroom home; near Lake
Leon Dam. Unfurnished, with
stove and icebox. For in-
formation contact 653-2374 in
Olden. tf

FOR SALE: Registered young
Hereford bulls, Real Owendard
breeding. Ready for service.
Charles Clark, 442-1140 Cisco or
629-1148 Eastland. 81

FOR SALE: House in Carbon.
City water and well water. 4
bedrooms. All built in Kitchen.
Large recreation room.
Completely carpeted. Mary
Snell at Carbon TF

FOR QUICK SALE: Furnished
or unfurnished two-bedroom
house and adjacent large
storeroom. 1022 Spring Rd., in
Ranger. Tel. 647-3203. 81

FOR SALE: House and lot in
Gorman. Seven room glassed
in back porch. Mrs. R. D.
Watley at 734-5416. T-81.

FOR SALE: 1969 model; 12 by
60 two bedroom Mobile Home.
Small equity. Take up
payments. Call from 8 to 5, 629-
1754, and after 5, call 629-2937. tf

FOR SALE: 1967 Chevlelle S. S.
396. Like new; yellow with
white vinyl top; excellent
condition; Call at 629-2668 or
see at 300 N. Oak. tf

FOR SALE: 2 refrigerated
electric coke boxes, good
condition; Phone 629-2301 or
629-2636. tf

FOR SALE: 1969 model; 12 by
60 two bedroom Mobile Home.
Small equity. Take up
payments. Call from 8 to 5, 629-
1754, and after 5, call 629-2937. tf

FOR SALE: Coastal bermuda
hay, irrigated and using 360 lb.
fertilizer per acre each cutting.
\$1.25 per bale in field and \$1.35
out of the barn, Lucky Ranch,
Ranch, Route 2, Box 184,
Brownwood, Texas, Telephone
(915), 646-1196, Messrs. Sim-
on or Joe Armendarez. T81

FOR RENT
FOR RENT: two rooms, and
bath, furnished. Close in. T V
Cable; bills paid. Call 629-2396.
tf

FOR RENT: Four bedroom
house 604 E. Valley. Call H. W.
Eddy at 629-2059. tf

FOR RENT: One bedroom;
private entrance and bath.
Close in. 401 S. Daugherty. Call
629-2243. T 79

FOR RENT: 5 room, furnished
house. No children. Call 629-
1361 or 629-1193. tf

FOR RENT: Four room fur-
nished house. Bills paid. Close
in. Call 629-2579. tf

FOR RENT: 5 room, furnished
house. No children. Call 629-
1361 or 629-1173. tf

WANTED
WANTED: Cooks, dish-
washers, and waitresses. Part-
time or full time; good wages,
apply in person, at the White
Elephant Restaurant, at 724 W.
Main in Eastland, or call 629-
8845. 81

WANT TO BUY: Old used
trailer house; big enough for
four bunks, stove, refrigerator.
Call 629-1781, 8to 5 daily, or 629-
2721 Sunday. T 81

HELP WANTED: LVN by
examination. Good salary,
better than average fringe
benefits, insurance, sick leave
and holidays. Call or come by
Western Manor, Inc., Ranger,
Texas. RTel. 647-3111. tf

WANTED
WANTED: Waitress needed;
apply at Old Rip Cafe. tf

NOTICE
DANCE CLASS each Tuesday,
2 to 6 p.m. for ages 4 to 16. Teen
Town Bldg. in Ranger, Tel. 647-
934, at above times. 84

MASONIC LODGE NO. 467
Meets second
Thursday of each
month at 8:00 p.m.
in the Masonic
Hall. Call R. Pat
Miller, W. M., at 629-1077
or L. E. Huckabay sec'y, 629-
1391 for information.

EASTLAND ROTARY CLUB
Saul Pullman, president

Meets each Monday
noon at White Eleph-
ant Restaurant in
Eastland.

LOST DOG - White English
Setter with lite orange freckles.
Female- 2-years old. Has collar.
N. E. Richardson, Phone 647-
1004. 78 \$50.00 reward.

EARL BENDER & COMPANY
INSURANCE
SINCE 1924
112 W. COMMERCE
Eastland - 629-1077

LVN'S NOTICE:
LVN's needed immediately
with waived or
education. EX-
CEPTIONAL GOOD
SALARY; insurance,
vacation and other fringe
benefits. Call Gene or
Shirley Frost Eastland
Manor Nursing Home, at
629-2686 or 629-1577.

TERRY STACY
WELDING SERVICE
Ph. 639-2542 or 629-2216
Carbon, Texas 76435

"We can handle anything
but termites!"
Goodie Pest Control
Phone 629-1179 after 3:00
310 N. Ammerman
roaches, ants, termites,
moss, spiders
ALL WORK GUARANTEE

ROY LEE SMITH
PLUMBING
Contracting and Repairing
Complete Plumbing fixtures
and Supplies
Water Systems
Electric Motors
Bath & Kitchen
Improvements
Trained, Adequate Staff
Call a Licensed Plumber
Day or Night
629-1722

SMITH PLUMBING
114 N. Seaman
Eastland

Homes For Sale
3 bdrm & 2 baths, N.
Ammerman, \$13,600.
2 bdrm & bath, S. Daugherty,
\$9,500.
Home, Extra-large lot Foch St.,
\$12,600.
2 bdrm, furnished, S.
Seaman, \$6,750.

Farms and Ranches
71 acres, 6 miles out of Eastland
on Pav. Will G.I., \$10,500.
2-40 acre tracts - S. Cisco, on
Pav. Peanut allot.
100 acres - S. Eastland, 50 acre
Peanut Allot.

160 acres N. Eastland
Pavement House- Good barns-
40 coastal bermuda- terms &
god Int. rate.
240 acres - Stephens Co. - Good
house & barns - \$157.50 per
acre.
220 acres W. Cisco - 127 acres-
cult. some wheat allot. on
pavement - \$147.50 per acre -
\$7000. down - 1/2 minerals.

280 acres Lake Leon - owner
will finance.
627 acres - Eastland county -
good place.
650 acres - 1/2 River bottom -
lots, pecans, fair house - good
barns - good ranch.
677 acres on pavement - some
bottom land pecans, good
fences - \$137.50 per acre.
303 acres - 80 peanuts - water-
sell or trade.
612 acres E. of Eastland on
Pav. fair improvements.
House and 38 acres - on pav-
ment - \$12,600. near Ranger.
Home and 42 acres near
Eastland - city water.
600 acres, 3 bdrm home, 2
baths, Eastland Co.

1756 acres- Interstate 20- Lots-
Deer- Terms.
960 acres - good home- 100 acres
coastal.
46 Peanuts - Eastland County-
terms.

M. L. TERRELL
REAL ESTATE
FARM BURKEAUG BLDG.
Highway 80 East
629-1725
M. L. Terrell
629-2443
r. F. Hodge
629-1964
734-5414 Gorman

NOTICE
MASONIC LODGE NO. 467
Meets second
Thursday of each
month at 8:00 p.m.
in the Masonic
Hall. Call R. Pat
Miller, W. M., at 629-1077
or L. E. Huckabay sec'y, 629-
1391 for information.

EASTLAND ROTARY CLUB
Saul Pullman, president

Meets each Monday
noon at White Eleph-
ant Restaurant in
Eastland.

LOST DOG - White English
Setter with lite orange freckles.
Female- 2-years old. Has collar.
N. E. Richardson, Phone 647-
1004. 78 \$50.00 reward.

EARL BENDER & COMPANY
INSURANCE
SINCE 1924
112 W. COMMERCE
Eastland - 629-1077

LVN'S NOTICE:
LVN's needed immediately
with waived or
education. EX-
CEPTIONAL GOOD
SALARY; insurance,
vacation and other fringe
benefits. Call Gene or
Shirley Frost Eastland
Manor Nursing Home, at
629-2686 or 629-1577.

TERRY STACY
WELDING SERVICE
Ph. 639-2542 or 629-2216
Carbon, Texas 76435

"We can handle anything
but termites!"
Goodie Pest Control
Phone 629-1179 after 3:00
310 N. Ammerman
roaches, ants, termites,
moss, spiders
ALL WORK GUARANTEE

ROY LEE SMITH
PLUMBING
Contracting and Repairing
Complete Plumbing fixtures
and Supplies
Water Systems
Electric Motors
Bath & Kitchen
Improvements
Trained, Adequate Staff
Call a Licensed Plumber
Day or Night
629-1722

SMITH PLUMBING
114 N. Seaman
Eastland

Homes For Sale
3 bdrm & 2 baths, N.
Ammerman, \$13,600.
2 bdrm & bath, S. Daugherty,
\$9,500.
Home, Extra-large lot Foch St.,
\$12,600.
2 bdrm, furnished, S.
Seaman, \$6,750.

Farms and Ranches
71 acres, 6 miles out of Eastland
on Pav. Will G.I., \$10,500.
2-40 acre tracts - S. Cisco, on
Pav. Peanut allot.
100 acres - S. Eastland, 50 acre
Peanut Allot.

160 acres N. Eastland
Pavement House- Good barns-
40 coastal bermuda- terms &
god Int. rate.
240 acres - Stephens Co. - Good
house & barns - \$157.50 per
acre.
220 acres W. Cisco - 127 acres-
cult. some wheat allot. on
pavement - \$147.50 per acre -
\$7000. down - 1/2 minerals.

280 acres Lake Leon - owner
will finance.
627 acres - Eastland county -
good place.
650 acres - 1/2 River bottom -
lots, pecans, fair house - good
barns - good ranch.
677 acres on pavement - some
bottom land pecans, good
fences - \$137.50 per acre.
303 acres - 80 peanuts - water-
sell or trade.
612 acres E. of Eastland on
Pav. fair improvements.
House and 38 acres - on pav-
ment - \$12,600. near Ranger.
Home and 42 acres near
Eastland - city water.
600 acres, 3 bdrm home, 2
baths, Eastland Co.

1756 acres- Interstate 20- Lots-
Deer- Terms.
960 acres - good home- 100 acres
coastal.
46 Peanuts - Eastland County-
terms.

M. L. TERRELL
REAL ESTATE
FARM BURKEAUG BLDG.
Highway 80 East
629-1725
M. L. Terrell
629-2443
r. F. Hodge
629-1964
734-5414 Gorman

DAIRY TREAT

Open 7 Days a Week
Open 11 a. m. to 10:00 p. m.
814 W. Main - 629-1144
HOME DELIVERIES

ABC
Plumbing & Heating
Contracting &
Repairing
Complete Plumbing
Service
Call 629-1200
day or night

BOB WILLIAMS
Master Plumber
Serving Texans
25 years

Eastland Steam Laundry
PICKUP & DELIVERY
for your every laundry need
Mr. & Mrs. Z. W. Cook
210 N. Lamar 629-2613

GARDENHIRE OIL COMPANY
Yes! We can sell wholesale to you!
See us for all your oil, grease, filters, spark plugs,
brake fluid, anti-freeze, S. T. P. for oil, gasoline,
diesel or radiator, tires for cars, truck or tractor.
WE HAVE TANKS for farm or commercial
gasoline and diesel fuel. See us before you trade.
All major brands of Oil and Grease.
WHY PAY MORE??

GET ACQUAINTED OFFER
Any size home exterminated for roaches, ants, fleas,
silver fish, mice, only \$5.00.
Free Termite inspection
Any size home exterminated for termites only \$50.00
all work guaranteed for one year.
Call now 643-2838 Rising Star, Texas
BIG COUNTRY EXTERMINATORS
Special Prices on commercial accounts and apart-
ments.

Shoe and Boot Repair of all types
Boots Mocs, shoes, belts, billfolds
all types of repair work.
SALES & SERVICE
QUALITY SHOE SHOP
W. Main Street, Charlie Paul Williams

NOW OPEN
Sledges
Barbeque
Dining Room
210 S. Lamar 629-2913

OPEN
Monday thru Friday
11:00 a.m. to 1:30 p.m.
and 5 p.m. to 7:00 p.m.
Dining Room Closea on Saturday
Meat market open all day Saturday
Sunday Noon Only
11:30 to 1:30 p.m.
Our daily Take-Out Service
is the BEST Table-setter in Town!

LEGAL NOTICE

CONTRACTOR'S NOTICE
OF TEXAS HIGHWAY
CONSTRUCTION

Sealed proposals for con-
structing 3.148 miles of Ga.,
Flex. Base, ACP on Main Lanes
and Gra., Strs., Flex. Base &
Two Crse. Surf. Trt. on Front
Roads: I 20-3(22)361 - Fr: 3.0
Mi. W. of Erath Co. Line To:
Erath Co. Line C 314-4-17 - Fr.:
Eastland Co. Line To: 0.1 Mi.
E. on Highway No. IH 20,
covered by I 20-3(22)361 & C314-
4-17 in Eastland & Erath
County, will be received at the
Highway Department, Austin,
until 9:00 A.M., October 29,
1971, and then publicly opened
and read. THIS CONTRACT IS
SUBJECT TO THE WORK
HOURS ACT OF 1962, PL-87-581
AND IMPLEMENTING
REGULATIONS.

The State Highway Depart-
ment, in accordance with the
provisions of Title VI of the
Civil Rights Act of 1964 (78 Stat.
252) and the Regulations of the
U. S. Department of Trans-
portation (15 C.F.R., Part 8),
issued pursuant to such Act,
hereby notifies all bidders that
it will affirmatively insure that
the contract entered into
pursuant to this advertisement
will be awarded to the lowest
responsible bidder without
discrimination on the ground of
race, color, or national origin.
Plans and specifications in-
cluding minimum wage rates
as provided by Law are
available at the office of R. P.
Hau, Jr., Resident Engineer,
Eastland, Texas, and Texas
Highway Department, Austin.
Usual rights reserved. (Oct. 7
& Oct. 14)

FOR SALE
The Board of trustees of the
Zastland Independent School
District will accept bids until
7:30 p.m. Monday October 11,
1971 for the purpose of selling
the following property located
in Olden Texas:

One two bedroom residence
formerly used as a teacherage
by the Olden School. District
located across the street east of
the Olden Gym on five city lots.
Bid forms on which to submit
bids may be secured at the
business office of the Eastland
School District in the high
school building.

FOR SALE: 1965 Galaxie 500 in
pretty blue with white vinyl top.
Beautiful blue vinyl interior.
Big engine. All power and iar.
Good rubber and low actual
local mileage. Ideal family car.
Call 629-2412. tf

WANTED
Consultant for Luzier
Cosmetics Will train
Contact Mrs. C. L. Dinsmore
P. O. Box 243, Ranger, Texas
76470
1310 Young St. 647-1446

EMMET MORREN
PLUMBING
COMPLETE REPAIR
SERVICE
1015 W. Main
629-2092
-24 Hour Service-

ROLLINS & SONS
MOBIL SERVICE
Call for Appointments
on Wash- Grease
Oil Change
601 W. MAIN
629-8816

OUR DAD WANTS TO INSURE YOUR CAR

D. L. KINNAIRD
GENERAL INSURANCE
207 W. MAIN ST. - 629-2544

Thought For Food

Children enjoy fixing their own
lunch when a tasty but easy
recipe is provided! Let them slice
frankfurters in thin circles and
place on bread slices spread with
butter, margarine or mustard.
Next, the sandwiches are topped
with cheese slices, American or
Swiss, before they go under the
broiler until the cheese is bubbly
hot.
Give a breakfast party soon
and invite the crowd over for
ham and pancakes with a new
twist. The ham becomes a part
of the pancake in tasty Deviled
Ham Griddle Cakes. Prepare two
cups packaged pancake mix ac-
cording to package directions and
stir in a can of deviled ham.
Grill as usual; serve with maple
syrup.
The average farmer produces
seven times as much per hour
today than the average farmer 50
years ago.

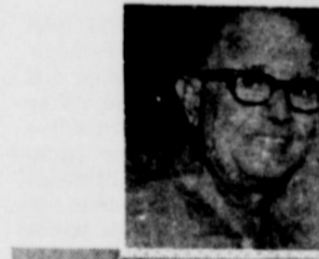
sympathy
and
advice...

WE ARE HERE TO SERVE YOU

Whatever the hour,
feel free to call on us
for understanding
counsel in time of
sorrow.

Arrington
Funeral
Home
EASTLAND
629-2611

HAVE YOUR CAKE AND EAT IT, TOO... THROUGH CASH VALUE LIFE INSURANCE



M. H. PERRY

SOUTHLAND LIFE
INSURANCE COMPANY
100 S. SEAMAN
629-1566
RES. 629-1095

Bring a
Heart of Gold Agent
into your Life.



Prison Rodeo Each Sunday

HUNTSVILLE - Most of the 15,500 inmates of the Texas Department of Corrections are looking forward to the 40th Annual Texas Prison Rodeo held each Sunday in October and most of them are wondering who will emerge as champion of the 1971 series.

However, oldtimers are looking to John Wesley of Navasota, serving a 12-year prison term at the Huntsville Unit, TDC, who last year finished a strong third while

competing in only two events - bareback bronc and bull riding. Because of his fine riding, he won the coveted silver "best bareback rider" belt buckle.

In addition to the sensational and thrilling convict cowboy contests, this year's show will highlight some of the best known country and western celebrities as guest artists.

Dottie West and the Heartaches will appear on October 3, followed by Connie Smith and Nat Suckey on October 10;

Charlie Walker on October 17; the Waylon Jennings Show on October 24, and the Porter Wagoner Show on October 31.

Chuckwagon Races and the popular Chariot Races will be featured as added attractions during each of the five Sunday performances.

Reserved seat tickets, priced at \$3, \$4, \$5 and \$5.50 may be obtained by writing Texas Prison Rodeo, Box 99, Huntsville, Texas, 77340, enclosing check or money order.

AS IT LOOKS FROM HERE
Omar Burleson, M.C.
17th District, Texas

Washington D. C. - Parts and bits of the following comments have appeared in the news from time to time but the purpose here is to attempt to consolidate an over-all view of where we "at."

Tremendous changes are in the making, both in this Country and worldwide.

ON THE FOREIGN FRONT the Russians are suddenly willing to talk about things which they would not mention before. Seemingly the Communist Chinese are coming out

of their shell. Here in Washington last week the eleven more highly industrialized nations groped for a new money system.

The British appear to be about ready to join the European Common Market, which trade-wise will effect the United States. The Japanese are pushing towards greater power, militarily and economically. The entire world seems to be headed for new arrangements in a number of respects. Since World War II, the United States and Russia, with the balance of power, have dominated things but other forces are rapidly coming

The monthly food distribution dates have been announced by Administrator Leo Clinton as follows:

Monday, Oct. 11 - Eastland, Rising Star, Carbon, Gorman, Desdemona, and Okra
Olen and Ranger.
Tuesday, Oct. 12 - Pioneer, Wrentham, Oct. 13 - Cisco, Granton and Nimrod

THE WINDING DOWN OF VIETNAM has its built-in problems, too - jobs for returning veterans, health and rehabilitation and educational opportunities. There will be savings, of course, but not as great as might be expected if restoration is made in our defense arsenal. The increases in caring for war veterans will be a continuing effort.

REGISTERED QUARTER HORSES FOR SALE

B. L. Rogers SANTO, TEXAS

SAFEWAY COMPARE LOW EVERYDAY PRICES Plus SPECIALS!

BISCUITS

Mrs. Wright's
★ Sweet Milk or
★ Buttermilk
Special! (Limit 6) 10-Ct. Can **5¢**

ORANGE JUICE

Texsun, Rich in Vitamin 'C'! 6-oz. Can **19¢**

Lemonade Scotch Treat 6-oz. Can **10¢**

Blackeye Peas Bel-air 10-oz. Pkg. **28¢**

Broccoli Spears Bel-air 10-oz. Pkg. **31¢**

WAFFLES

Bel-air, Breakfast Treat! 5-oz. Pkg. **10¢**

Honey Buns Merton 9-oz. Pkg. **35¢**

French Toast Deweyflake 11 1/2-oz. Pkg. **49¢**

Pie Shells Dutch Ann. 9 inch 2-Ct. Pkg. **29¢**

STRAWBERRIES

Scotch Treat, Sliced 10-oz. Pkg. **25¢**

Cool Whip Birds Eye Topping 4 1/2-oz. Ctn. **37¢**

Apple Juice Tree Top 6-oz. Can **25¢**

Muffins Blueberry, Merton 9 1/2-oz. Pkg. **45¢**

FRENCH FRIES

Slim Jim Shoestring Potatoes 8-oz. Pkg. **10¢**

Cooked Shrimp El Dorado, Peeled, Frozen 10-oz. Pkg. **95¢**

Hush Puppies Gold King, Frozen 16-oz. Pkg. **33¢**

Onion Rings Mrs. Pauls, French Fried 9-oz. Pkg. **55¢**

APPLE PIE

Bel-air, Quick & Easy! 24-oz. Pkg. **39¢**

Cream Pies Bel-air, Assorted 14-oz. Pkg. **28¢**

Popsicles Assorted Flavors 6-Bar Pkg. **29¢**

Ice Cream Snow Star, Assorted 1/2-Gal. Carton **69¢**

DINNERS

Banquet, Assorted (Except Beef) Reg. Pkg. **38¢**

Meat Pies Spare Time, Assorted 6-oz. Pkg. **15¢**

Steak N' Tater Dinner, Night Hawk 6-oz. Pkg. **63¢**

Cheese Pizza Bel-air, Tasty! 16-oz. Pkg. **67¢**

CHUNK TUNA

Sea Trader, Light Meat 6 1/2-oz. Can **35¢**

Salad Dressing Piedmont, Quart Jar **37¢**

Hormel Spam Lunch Meat 12-oz. Can **55¢**

Fruit Cocktail Towne House 16-oz. Can **26¢**

MELLORINE

Joyett, Assorted Flavors Safeway Special! 1/2-Gal. Ctn. **33¢**

KRAFT DINNER

Macaroni & Cheese, 7 1/4-oz. Pkg. **19¢**
Safeway Special!

Diet Drinks Croquet, Assorted 12-oz. Can **10¢**

Golden Corn Highway, Whole Kernel 16-oz. Can **19¢**

Tomatoes Gardendale 16-oz. Can **19¢**

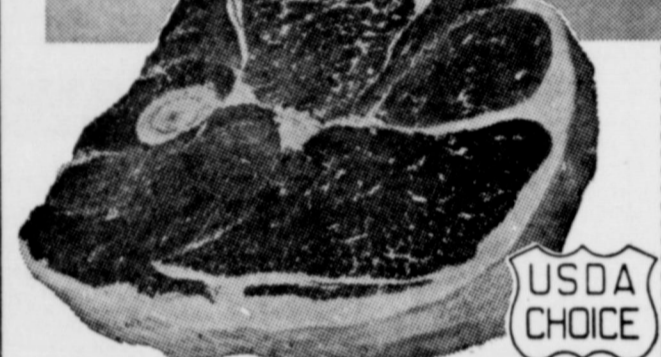
PEANUT BUTTER

nu-made *Creamy or *Chunky, 18-oz. Jar **49¢**
Safeway Special!

Tomato Juice Highway 46-oz. Can **33¢**

Potato Chips Party Pride 9-oz. Pkg. **49¢**

Canned Pop Snowy Peak, Assorted Flavors 12-oz. Can **8¢**



Round Steak 97¢
Full Cut, Includes Eye of Round, USDA Choice Grade Heavy Beef

Lean Ground Beef 79¢
Compare Quality! -Lb.

Hamburger Steaks 79¢
Freshly Ground! -Lb.

Ground Beef 138¢
Safeway Chub Pack 2-Lb. Chub

Rump Roast 97¢
USDA Choice Grade Heavy Beef -Lb.

Boneless Roast 115¢
*Butter Round or *Pikes Peak, USDA Choice Grade Heavy Beef -Lb.

Loin Tip Roast 139¢
USDA Choice Grade Heavy Beef -Lb.

Cure 81 Hams 139¢
Boneless *Half or *Whole, Hormel -Lb.

Fresh Pork Roast 53¢
Buff Cut, Semi-Boneless -Lb.

Fresh Pork Steak 63¢
Buff Cut, Flavorful -Lb.

Little Sizzlers 53¢
Hormel Link Sausage 12-oz. Pkg.

Link Sausage 85¢
Oscar Mayer, Pork, Natural Casing -Lb.

Eckrich Sausage 89¢
Polish, Heat & Serve! 12-oz. Pkg.

Lunch Meat 3¢
Safeway Sliced, *Pickle-Pimiento *Macaroni & Cheese *Olive *Spiced *All Beef Bologna 6-oz. Pkg.

Boneless Roast 99¢
*Chuck or *Shoulder, USDA Choice Heavy Beef -Lb.

Pork Chops 58¢
Fresh, Family Pack -Lb.



Potatoes 20 Lb. 99¢
Red, Full of Energy! Economy Bag

Yellow Onions 39¢
US #1, For Added Flavor! 3-Lb. Bag

Crisp Celery 29¢
Large Meaty Stalks -Each

Golden Carrots 29¢
Safeway, Freshly Packed! 2-Lb. Cello

Green Cabbage 9¢
Top Quality! Medium -Lb.

Green Beans 29¢
Kentucky Wonder Variety -Lb.

Texas Yams 19¢
Texas' Finest! Medium -Lb.

PAPER TOWELS

Tree Saver, White, Absorbent! 175-Ct. Roll **28¢**

Toilet Tissue A-1 Brand, 4-Roll **29¢**

Aluminum Foil Kitchen Craft, 25-Ft. Roll **25¢**

Sanitary Napkins Truly Fine, *Reg. or *Super 24-Ct. Pkg. **69¢**

FACIAL TISSUE

Silk, Assorted Colors 150-Ct. Box **18¢**

Paper Napkins Tree Saver, White 40-Ct. Pkg. **10¢**

Detergent Parade, Family Wash 49-oz. Box **49¢**

Pine-Sol Disinfectant Cleaner 15-oz. Bottle **58¢**



Sliced Bacon 65¢
Safeway No. 1 Quality! -1-Lb. Pkg.

Pork Spareribs 69¢
1 1/2 to 3-Lb. Ava. -Lb.

Rath Bacon 69¢
Rath Black Hawk, Sliced 1-Lb. Pkg.

Fish Sticks 65¢
Pre-Cooked, Large -Lb.

Rath Franks 69¢
Black Hawk, All Meat 1-Lb. Pkg.

Armour Bacon 69¢
Armour Star MiraCure, Sliced 1-Lb. Pkg.

Sliced Bologna 69¢
Safeway, Jumbo, *Reg. or *Thick 1-Lb. Pkg.

Smorgas Pac 99¢
Eckrich, All Beef 12-oz. Pkg.

Armour Franks 53¢
Armour Star, All Meat 12-oz. Pkg.

All Meat Franks 49¢
Safeway 12-oz. Pkg.

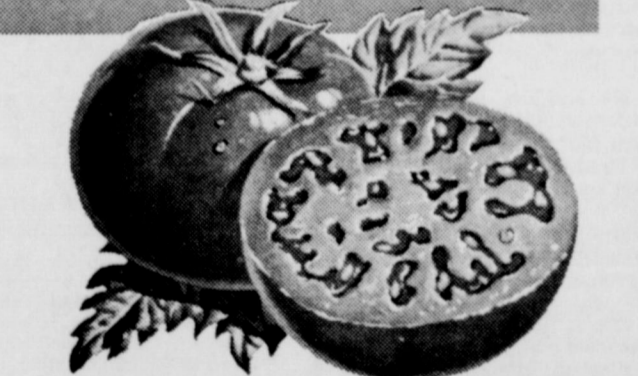
Beef Patties 89¢
Pre-Cooked, Chicken Fried, Shurtover -Lb.

Smoked Pork Chops 98¢
*Loin or *Rib Center Cut -Lb.

Baking Chickens 37¢
Fresh, 3 to 3 1/2-Lb. USDA Grade 'A' -Lb.

Pinwheel Pack 69¢
*4 Thighs *4 Drumsticks, Cut From USDA Insp. Grade 'A' Fryers -Lb.

FRESH FRYERS 29¢
USDA Inspected Grade 'A', Special! -Whole-Lb.



Tomatoes 29¢
Vine Ripe! Large Slicing Size! -Lb.

Red Delicious 29¢
Apples, Washington Extra Fancy -Lb.

Bell Peppers 10¢
Ideal For Stuffing! Large Size -Each

Red Apples 69¢
Delicious Apples, Lunchbox Size 3-Lb. Bag

Blue Free Plums 19¢
US #1, Sweet! Large -Lb.

Valencia Oranges 23¢
California Fancy, Large -Lb.

Honeydews 54¢
California, Delicious! Large -Each

LARGE 'A' EGGS

Breakfast Gems Safeway Special! -Doz. **39¢**

English Muffins Mrs. Wright's 12-oz. Pkg. **35¢**

White Bread Mrs. Wright's *Reg. or *Sandwich, Sliced 1 1/2-Lb. Loaf **29¢**

Fresh Milk Lucerne Low Fat 1/2-Gal. Carton **49¢**

FLOUR 49¢
Gold Medal, All-Purpose! Enriched Safeway Special! -5-Lb. Bag

VIENNAS

Libby Sausage, 4-oz. Can **19¢**

Pork & Beans Van Camp 16-oz. Can **16¢**

Barbeque Beef Ireland's, Sliced 10 1/2-oz. Can **77¢**

Deviled Ham Underwood 4 1/2-oz. Can **49¢**

CAKE MIXES

Mrs. Wright's, Assorted Flavors 18 1/2-oz. Pkg. **28¢**

Cane Sugar Candi Case Pure Case 5-Lb. Bag **63¢**

Powdered Sugar Imperial 1-Lb. Bag **19¢**

Sno-White Salt *Plate or *Folded 26-oz. Box **9¢**

DOG FOOD

Favorite Brand, For Cats Too! 15 1/2-oz. Can **7¢**

Pet Litter Sani-Sorb 10-Lb. Bag **49¢**

Purina Dog Chow 5-Lb. Bag **79¢**

Wild Bird Food Millford 5-Lb. Bag **49¢**

LIQUID BLEACH

White Magic Sparkling Whites Gallon Plastic **38¢**

Par Liquid Detergent 32-oz. Plastic **39¢**

Fabric Softener Par Gallon Plastic **89¢**

S.O.S. Pads Scouring Pads 10-Ct. Box **29¢**

CATSUP

Highway, Rich Flavor! 14-oz. Bottle **19¢**

Chili Con Carne Towne House *Regular or *Hot 15-oz. Can **35¢**

Tomato Soup Towne House 10 1/4-oz. Can **10¢**

Saltines Melrose Soda Crackers 1-Lb. Box **23¢**

FUNK & WAGNALL

Standard Reference Encyclopedia, Vols. #10 & #11 -Each **\$189**

Colgate Toothpaste (64 Oz. Label) 4.75-oz. Tube **73¢**

Toothbrushes Safeway, Assorted -Each **29¢**

Soft & Dri Deodorant, Giltate (18 Oz. Label) 8-oz. Aerosol **\$131**

ANTISEPTIC

S.P. Mouthwash 16-oz. Bottle **23¢**

Rubbing Alcohol Soothing! 16-oz. Bottle **16¢**

Toothpaste Safeway Brand 3.25-oz. Tube **29¢**

Aspirin Tablets Safeway, 5-Grain 100-Ct. Bottle **19¢**

Prices Effective Oct. 7-9, in EASTLAND No Sales to Dealers.

SAFEWAY

© Copyright 1960, Safeway Stores, Incorporated.

★ HOSPITAL NEWS ★

Patients in Ranger General Hospital Wednesday morning were:

O. R. Criswell
Claude Chadwick
David Striz
Herbert Luster.
Ruth Honea.
Henry Hamilton.
Valerie Daskevich.
Dora Dempsey.
Esther McKeen.
A. D. Grumbles.
Vergie Smith.
Lena Choate.
Mabel Williams.
Nettie Sudderth.
Agnes Bordeau.
Josie Craine.
Mrs. Walter Henry.
J. D. Barker.

Claude Vinson.
Mrs. Jerry Alford and baby boy.
A. H. Carleton.
Albin W. Fleming.
Hendrix Baby Boy

Patients in the E. L. Graham Memorial Hospital were reported as follows:

Opal Tompkins.
Claire Cutting.
Samuel L. Blatman.
Helen Drumwright.
Roberta Johnson.
Eunice Hembree.
Harvey Locke.
Robert L. Slaughter
Pearl Eppler.
Eleodora Tolentino.
Vera Clark.
Lorene Carpenter.
Dirk George.
Juanita Hartsell.
Hester Miller.
T. E. Agnew.
Royce Kilgore.
Beulah Brown.

Theodore Lewis.
Mary Mahaffey, (Mrs. Hugh).
Grace Brown, Cross Plains.

W. R. Hammett, Rising Star.
Jess Ables, De Leon.
Joe Wallace, Rising Star.
Gustav Brandt, Cisco.
Mary Mehaffey.
Tommy Perry, Cisco.
Fay Martin.
Martha Gray, Cisco.
Mary East.
Elizabeth Buse, Gordon.
Becky Tate, Cisco.
Jay McGee, Ranger.
David Hardin, Eastland.
Jessie Lemley Gorman.

Jessie Lemley, Gorman
Louise Dorsey
Nina Graham
Baby Boy Alford.
George Hill, Rising Star
Lucian Collins, Rising Star.

Lorine Crawford.
Princess Alford.

Mr. and Mrs. Walter Collins of Hurst attended services at the Church of Christ Sunday morning.

Mr. and Mrs. Chrales Morgan and family visited the D. D. Jackson of Nimrod Sunday afternoon.

Ronnie Hughes, who is teaching in Longview School System visited his parents, Mr. and Mrs. Jimmie Hughes and Donald over the weekend.

FREE ESTIMATES ON new roofs only
Repair of Your Old Roofs
Residential and Commercial
"ALL NEW WORK GUARANTEED"
TRI-CITIES ROOFING CO
Call Nabil Squiers
629-2370
EASTLAND

Horse Racing—Full Family Fun!
Big Time—\$100,000.00 Estimated Purse
3 CONSECUTIVE SUNDAYS
Oct. 10, Oct. 17, Oct. 24
Oct. 17 2 year olds Tri-5 Late Championship
Oct. 16, Oct. 23
"Come Race With Us"
TONKAWA DOWNS, Inc.
P. O. BOX 390
GRAHAM, TEXAS 76046
(817) 549-1519

RANGER DRIVE-IN THEATRE
FRIDAY SATURDAY & SUNDAY
OCTOBER 8-9-10

SEE the devil gods of the primeval jungle!
SEE the most titanic earth-quake ever filmed!
SEE the terrifying ordeal of the virgins!
SEE the flaming torch against the naked blade!

SEE the sensational new star Julie Ege
She's a creature you'll never forget!

starring JULIE EGE / TONY BONNER
BRIAN O'SHAUGHNESSY / ROBERT JOHN
CREATURES THE WORLD FORGOT
TECHNICOLOR®

"Because Someone Lived"
RAWLINS MONUMENTS

Since 1884 THE NAME to look for in distinctive memorials

Roy Taylor 500 East 8th St. Cisco

Please Call Collect
CALL 442-1127

MRS BAIRD'S

Baked with family pride.

CARBON NEWS

Mr. and Mrs. Roy Odell Stannfield of San Jose California visited with his uncle Jim Hogan and other relatives on Thursday and Friday of last week.

Elvis Vaughn of Midland spent this week with his mother, Mrs. Callie Vaughn.

Mrs. Myrtle Higgins visited in Whitney with a brother-in-law Don Higgins, who has been ill.

Marc Morgan, son of Mr. and Mrs. Charles Morgan had the misfortune to be bitten by a dog Saturday afternoon. He was treated at Eastland Memorial Hospital and returned home.

Jack Stubblefield of Bartlesville, Oklahoma has been visiting his father, J. T. Stubblefield, who has been a patient in the Eastland Hospital; also his brother Mack Stubblefield and family.

Mrs. H. A. Nanes and her niece, Mrs. Lora Welch of Ranger, visited the Lee Patterson family in Breckenridge on Friday.

Mr. and Mrs. Earl Strickler of Breckenridge visited his sister, Mrs. Pearl Snell last week.

Mr. and Mrs. Freddie Gilmore of Gorman spent Sunday with Mr. and Mrs. Truman Snell.

Rev. and Mrs. Jim Robers and Mary Lee attended Homecoming of the North Baptist Church of Lewisville Sunday afternoon. Rev. Roberts will preach the homecoming sermon Sunday night. Dale Jackson will fill the pulpit at Carbon in Brother Robert's absence.

Mrs. Jewel Jackson and son, Bob of Odessa, are on an extended trip this week. They will visit Mr. and Mrs. Henry Sims of Graham, Miss Betty Jane Jackson of Oklahoma City, Okla., and Mrs. Leland Jackson, Larry and Diane of Springfield, Missouri. They will also visit in Sherman with an aunt Mrs. Newton Shipp.

Mr. and Mrs. Don R. Weaver and family of Abilene were visitors in the home of his parents, Mr. and Mrs. J. H. Weaver.

Mr. and Mrs. Cullen Rogers visited with their son, Mr. and Mrs. Mickey Rogers and family of Fredricksburg Saturday and Sunday.

Mr. and Mrs. Ed Stacy visited her mother, Mrs. John Strummons of Gorman.

Rev. Norman Smith of Comanche was guest minister at Carbon Church of Christ on Sunday.

The following people were listed as patients in the Eastland Memorial Hospital on Wednesday morning:

Alvie Allgood.
Wilma Miller.
Pansy Parker, Rising Star.
Tommie Harris, Cisco.
Carrie Capers, Gorman.
Elizabeth Nealy.
Valera Hargus.
Della Johnson.
Anna Crockett, DeLeon.
Lola Brumbelow, Cisco.
Atha Williamson, Olden.
Bertha Freeman.
Geneva Sessum, Gorman.

4-H Club Members

4-H CLUB WEEK
OCT. 3rd-9th

"4-H Bridges The Gap" by Mrs. Judy Cardwell, Assoc. Co. H. D. Agent

Eastland County 4-H youth will be helping to "Bridge The Gap" as they celebrate National 4-H Club Week Oct. 3-9.

4-H Club work does help to bridge the gap between youth and adults. Individual adults, with a liking for young people, volunteer their time to lead clubs in the county. Adult leaders like Mrs. Jean Harbin, Eastland leader, work with older 4-Hers who are called Jr. Leaders.

Adult and junior leaders work together to show the younger 4-H members the "how to" of various activities thus helping keep an open line of communication between members and adults.

4-H is an exciting "learning by doing" experience in which a 4-Her can select a project, and set his own goals. By projects end, he has learned useful skills, the dignity of work and the satisfaction of responsibility. If you don't believe the wide variety of learning experiences available to 4-H members just ask one.

Jo Ann Green a Cisco 4-Her, developed a high standard of achievement in home management. When Jo Ann began her foods project she also selected a home management project. Through the two projects she learned about nutrition, and how to select, operate and care for small electric and non electric kitchen appliances.

Nimrod 4-Her, Warren Carlile is working with the County Agricultural Agent and his father Dale Carlile, on his 4-H pecan project. This year Warren is helping to locate certain types of insects that are harmful to pecan trees. He keeps records on his findings and reports to the County Agent. His work in Pecans will not only be of help to him with project work but will be beneficial to he and his family.

Mr. and Mrs. Roy Odell Stannfield of San Jose California visited with his uncle Jim Hogan and other relatives on Thursday and Friday of last week.

Elvis Vaughn of Midland spent this week with his mother, Mrs. Callie Vaughn.

Mrs. Myrtle Higgins visited in Whitney with a brother-in-law Don Higgins, who has been ill.

Marc Morgan, son of Mr. and Mrs. Charles Morgan had the misfortune to be bitten by a dog Saturday afternoon. He was treated at Eastland Memorial Hospital and returned home.

Jack Stubblefield of Bartlesville, Oklahoma has been visiting his father, J. T. Stubblefield, who has been a patient in the Eastland Hospital; also his brother Mack Stubblefield and family.

Mrs. H. A. Nanes and her niece, Mrs. Lora Welch of Ranger, visited the Lee Patterson family in Breckenridge on Friday.

Mr. and Mrs. Earl Strickler of Breckenridge visited his sister, Mrs. Pearl Snell last week.

Mr. and Mrs. Freddie Gilmore of Gorman spent Sunday with Mr. and Mrs. Truman Snell.

Rev. and Mrs. Jim Robers and Mary Lee attended Homecoming of the North Baptist Church of Lewisville Sunday afternoon. Rev. Roberts will preach the homecoming sermon Sunday night. Dale Jackson will fill the pulpit at Carbon in Brother Robert's absence.

Mrs. Jewel Jackson and son, Bob of Odessa, are on an extended trip this week. They will visit Mr. and Mrs. Henry Sims of Graham, Miss Betty Jane Jackson of Oklahoma City, Okla., and Mrs. Leland Jackson, Larry and Diane of Springfield, Missouri. They will also visit in Sherman with an aunt Mrs. Newton Shipp.

Mr. and Mrs. Don R. Weaver and family of Abilene were visitors in the home of his parents, Mr. and Mrs. J. H. Weaver.

Mr. and Mrs. Cullen Rogers visited with their son, Mr. and Mrs. Mickey Rogers and family of Fredricksburg Saturday and Sunday.

Mr. and Mrs. Ed Stacy visited her mother, Mrs. John Strummons of Gorman.

Rev. Norman Smith of Comanche was guest minister at Carbon Church of Christ on Sunday.

STATE FAIR OF TEXAS
A WORLD'S FAIR IN JUST 16 DAYS!

BROADWAY MUSICAL PROMISES, PROMISES

David Merrick presents the current smash hit so famed for its Burt Bacharach musical score. Nightly (except Mondays) in State Fair Music Hall, matinees on Saturdays & Sundays.

"TRANSPO"

Modern marvels of transportation. The actual Lunar Land Rover trainer from NASA, huge model of French "Concorde" SST, new one-man mini-helicopter, new Dallas-Fort Worth Regional Airport "people-moving" system and more.

Cotton Bowl Free Spectaculars

All with Fireworks Finale. Oct. 14 Dallas Symphony Spectacular; Oct. 18 Texas Music Festival & East Texas on Parade; Oct. 19 La Fiesta Mexicana; Oct. 24 The Air Force Tattoo.

Free Entertainment

All Hirt in Cotton Bowl Oct. 12; Colossal Free Circus; Regal Tahitians; Jesse Lopez; Alamo City Jazz; Don Hall Family; Mobil Sky Revue; U.S. Marine Corps Drum & Bugle, and many more.

MULTIFARIOUS WOMEN'S ACTIVITIES

PAN AMERICAN LIVESTOCK
1972 AUTOMOBILE SHOW
AND MUCH, MUCH MORE!
OCTOBER 9-24

4-H Club Members

Outstanding junior leader Suzanne Harbin is a typical example of leadership that 4-H helps one to develop. Suzanne is a member of County 4-H Council, governing body of the Eastland 4-H clubs, and is Vice Chairman of the District 4-H council. She works with younger 4-H members in foods and clothing projects. Suzanne has helped plan many county activities such as camp and Awards programs.

The 4-H clubs in Eastland County also serve their communities well. Rising Star 4-H members with the guidance of adult leader Mrs. Johnnie Scott and Jr. Leader Cynthia Housell sponsor an annual rabies vaccination clinic. With 4-H members providing this service to their community, citizens are able to have their pets vaccinated without having to travel a dry distance.

The newly organized Ranger 4-H club with Kay Jones, president, giving outstanding leadership, is donating \$25 to the purchase of new stage curtains for the high school.

Cisco is a cleaner town now because of the litter barrels that were placed throughout the town by 4-H club members.

4-H in Eastland County is an endless story of enthusiastic young people learning the challenge of tomorrow because they have completed the smaller challenges of today. Learn how you can help promote the welfare of this nation's most precious resource — her young people.

You're Tops 4-H Club Members

Fontaine's of DeLeon
"Comanche's Largest Electrolysis Clinic"
UNWANTED HAIR Removed Permanently
By the ONLY medically approved way!
Specially - Graduate Practitioners
Member A.E.A. - E.S.A. - T.E.A. - A.S.E. - E.A.T.
Free - Private Consultations
Call DeLeon 893-6377
604 Nazario (Hwy. 6 & D 16) DeLeon, Texas

Horseshoeing
Normal, cold corrective, pathological, surgical
In conjunction with
Lake Road
Animal Hospital
Cisco
Every Thursday

MAJESTIC THEATRE EASTLAND
PHONE 629-1120
He dreamed himself a cattle drive

WALT DISNEY PRODUCTIONS
Scandalous JOHN
he's beautiful... he's outrageous...

KEITH ARAU
CAREY LENZ
MORGAN OAKLAND
TECHNICOLOR PANAVISION
FRIDAY OPEN 6:45 FEATURE 7-9:07
SAT SUN OPEN 2:15
FEATURES 2:35-4:45-6:50-9

Stretch-a-Buck

AT **HEIDENHEIMER'S** IN CISCO

Special **Panty Hose** Reg. \$1 Wed. and Thurs. only
Nylon Enkasheer **2 pairs \$1**
One size fits all up to 165 lbs. Colors in Taupe and beige

One group boy's long sleeve **Sports Shirt \$1.77 each or 3/\$5**
Sizes 6 to 20 Solids, stripes, plaids values to \$4.99

Men's and boys **Blue Denim Jeans \$4.95 pair**
New shipment Button thru front flare legs waist sizes up to 36

Quilting Special
Precut Package 100% polyester
Unbleached Domestic Dacron Batts full 16 oz. Roll
Good quality 5 yd. \$1 Reg. \$1.99 NOW \$1

One Table **Bonded Acrylics \$2.98 YARD**
54 to 60 in. Rea. \$3.99
Solids stripes plaids textures NOW \$2.98 YARD

Dacron Polyester 60 in. widths stripes solids textures reg. \$4.99 NOW \$3.88 ya.

Party Honors Ward On TESCO Retirement



Friday night, October 1st, J. L. Ward was honored with a party at Lone Cedar County Club to celebrate his retirement from Texas Electric Company. Ward had completed 28 years and 8 days with TESCO.

A native of Arkansas, Ward moved his family to Coleman when he was two years old. Later the family moved to a farm 20 miles from Mountainaire, New Mexico, where they lived out a government claim.

At the age of 16, Ward moved, with his family, back to Coleman where he completed his schooling. His first job was on a construction crew building a new ice cream house in Coleman for West Texas Utilities Company. He also did other types of construction before joining Texas Electric Service Co. At the beginning of World War II, he assisted in building electrical distribution lines at Camp Bowie near Brownwood, and as a result of the experience went to work in Eastland with the Distribution Department of TESCO.

In 1953, Ward transferred to Eastland Service truck, a job he held until his retirement.

Ward is married to the former Mary Garrett, and the couple have 9 children, 22 grandchildren, and 2 great grandchildren.

Mrs. Fullen Is Hostess for Zeta Pi

The Zeta Pi Chapter of Beta Sigma Phi met Monday, October 4, in the home of Mrs. James Fullen with the president Mrs. H. D. Alsop presiding.

Members voted to save and collect proof of purchase labels from several nationally known products to help purchase supplies and food for UNICEF.

In other business, members discussed an October social and a model meeting for rushers.

Sorority members are now selling Beta Sigma Phi International holiday cookbooks. They are \$3.50 each and can be purchased from any club member or by calling 629-1010.

The program "Her Crowning Glory" was given by Mrs. Alsop. She traced the history of hairdressing from prehistoric times to present.

Refreshments of chocolate meringues, chicken puffs, lime sherbert punch, relishes and nuts were served to Mes. Alsop, Don Brumblow, Kenny Payne, Ted Martin, C. P. Chick, C. R. Kinsler, Jackie Don Simpson, and guests Marene Johnson and Mrs. Jim Webb by the hostess.

Luther Stroud Buried Following Monday Services

Funeral for Luther H. Stroud, 81 was conducted at 10 a.m. Monday in Killingsworth Funeral Chapel with the Rev. Lee Fields, pastor of Eastside Baptist Church and the Rev. K. C. Edmonds, retired Baptist minister, officiating.

Burial was in Evergreen Cemetery with Cliff Goforth, B. H. Hazard, N. R. Box, Dee Rodgers, Billy Highsmith, and L. J. Burnett serving as pallbearers.

Mr. Stroud died at 11:55 p.m. Thursday in Hickman Nursing Home in Eastland.

Born Oct. 8, 1889 in Enterprise, Miss., he married Viola McCallum on Dec. 10, 1911 in Enterprise. A resident of Ranger since 1929, he was a retired maintenance man with Lone Star Gas Co. He was a member of Eastside Baptist Church.

Survivors include his wife of Ranger; three sons, J. L. (Leon) and Roy L., both of

Farm Bureau Holds Annual Meet Tuesday

The Eastland County Farm Bureau held its annual convention Tuesday October 5, 1971 in the First Christian Church Annex.

Officers, directors and Delegates to the State Convention were elected.

Sam Kimmell of Cisco was elected President for the coming year. Other officers elected were 1st Vice President, Winford Fry of Cisco, 2nd Vice President, Pete Hathcock of Ranger, and Secretary-Treasurer Ray Norris of Eastland.

Directors elected to serve until 1973 are: Herman Schaefer of Cisco, James Field of Gorman, K. F. Kirbe of Ranger, Richard Burgess of Carbon, Winford Fry of Cisco, Jack Cozart of Cisco, Ray Norris of Eastland, Ted Botts of Ranger, Charles Little of Eastland and J. R. Grimshaw of Desdemona.

Directors elected to serve until 1972 are: Henry Fry of Cisco, Pete Hathcock of Ranger, Sam Kimmell of Cisco, Jerry Anderson of Gorman, J. C. Clearman of Gorman, Don Shepard of Cisco, J. C. Coats of Cisco, Bill Claborn of Eastland, H. H. Harrellson of Cisco, and Dee Williamson of Eastland.

Delegates elected to attend Texas Farm Bureau Convention in Amarillo on November 14 to 17th were: Sam Kimmell, Mr. and Mrs. Jack Cozart, Mr. and Mrs. Henry Fry, Mr. and Mrs. Richard Burgess, Mr. and Mrs. K. F. Kirk, Alternate Delegates, Winford Fry and Cyrus Justice and Pete Hathcock.

The speaker for the convention was Miss Marilyn Thompson spoke on her trip to the Texas Farm Bureau Citizenship Seminar held at the Baylor University in Waco in July. Miss Thompson spoke on our American Heritage and the Capitalistic Private Enterprise System that has made ours the greatest of all nations.

Mrs. Mildred Williams was in Fort Worth last weekend to visit her daughter, Glenda Rains. They attended the Dallas Cowboy-Washington Redskins football game.

Mr. and Mrs. David Alsop and daughter Brenda were weekend guests of his mother, Mrs. Era Alsop of Dallas.

Butterflies Invade

The Monarch Butterflies have now reached this area on their way to Mexico. Some butterflies do not fly far from the place where they were born, but some of the species are known to travel long distances. The Monarch butterfly is the most famous among the butterfly travelers.

Every Autumn the monarch butterflies gather by the thousands and fly away in large groups. The monarch butterfly begins its flight near Toronto, Canada and travels down through the Carolinas, Georgia, along the Gulf of Mexico through Alabama, Missouri, Louisiana of down through Texas into Mexico near Catorce.

In the spring some of these migrating butterflies return to the north. Some monarchs have been known to cross oceans. Nobody knows whether the

transoceanic travelers fly all the way, assisted by the strong winds, or whether they light on ships and are carried part of the distance.

The monarch flutters its way across the country during the day and when the fall nights become cooler he begins to roost. They look like dead leaves on the tree limbs.

Scientists do not know why the Monarchs fly southward in autumn and northward in spring. Possibly it is an advantage for them to breed in cooler, northern climates where milkweed plants are abundant all summer. Some day the scientists will learn what it is that guides Monarchs on their flight. The scientists think, perhaps the monarchs are guided by the sun.

The Monarchs that fly south in autumn are not the same ones that flew north the previous spring. Their descendants make the southward flight.

Mrs. Fred Hodges left Sunday for a visit with her son, Dale Ellis and family of Charlotte, N. C.

Alan Earnest Is Speaker for Rotary Meeting



Alan Earnest, Padgett, potential candidate for the U. S. Congress in District 17, was guest speaker at the Rotary noon luncheon Monday, October 4, in the White Elephant.

Earnest spoke on the change in America urbanization, with the basic topic concerning urbanization versus ruralization.

Earnest stated, "The fact is rural cities are dying." young

people are leaving the smaller towns, and seeking opportunity in larger cities. Two thirds of voters live in larger cities. Rural cities are to decline 30 percent within the next decade.

"Why does America need ruralization? Family Farms and family businesses are disappearing. Through this loss, feelings of accomplishments, security and a sense of pride and independence are disappearing also."

"Crime, alcohol, drugs and other major problems are much greater in larger cities," Earnest continued.

Earnest plans to produce new and diverse programs to make these accomplishments possible; a new era of ruralization to help stabilize family business and farms.

Earnest stated, "I want to make clear that I am not against large cities, but both big and small can be prosperous and should be allowed the opportunity."

Banks To Observe Public Holidays

The Congress of the United States and The Texas Legislature have designated the second and fourth Mondays in October as public holidays on which all state and federal offices and all banks in Texas must close, according to Oscar Lindemann of Dallas, President of the Texas Bankers Association.

Eastland National Bank will be closed Monday.

The traditional Columbus Day of October 12 and Veterans Day of November 11 were changed several years ago by Congress and the Texas Legislature to the second and fourth Mondays in October. The 1971 will be the first year however in which these new Monday public holidays will be observed.

Both dates were declared mandatory bank holidays by the Texas Legislature so that Texas laws would conform with the laws of the federal government and a majority of the other states, Lindemann said.

Tea to Honor Mrs. Zuspahn, OES Officer

Eloise Zuspahn, Deputy Grand Matron District 3, Section 4, Grand Chapter of Texas Order of the Eastern Star, will be honored with a tea from 2 to 4 p.m. Sunday, October 10, in the Women's Club Building.

All members of the order are invited to the tea, hosted by Mrs. Betty Lyerla, Worthy Matron, and Member of Eastland Chapter No. 280.

Zeta Pi Launches Label Drive

Members of the Zeta Pi Chapter of Beta Sigma Phi have begun a drive to collect labels from several nationally known advertised products to send to UNICEF for the purpose of providing food medical supplies, school supplies and other articles for needy children around the world.

Mr. and Mrs. C. E. Beck, Sr., were weekend guests of Col. and Mrs. James Calvert and family of Fort Worth. Here they also enjoyed a visit with their grandson, Keith Beck of Banning, Calif.

Anyone wishing to help with this project by donating these labels can do so by saving the proof of purchase labels and contacting a sorority member to pick the up by Nov. 1. Call 629-1010 for further information if needed.

The labels needed and what they will provide for UNICEF are as follows:

2 Hunts Snack Pack Cartons-3 DPT shots

1 Pals or Pals plus Iron vitamins box-10 tuberculosis vaccinations

2 Birds eye Vegetable front labels-seed to sow 200 feet of carrots

1 Welch's jam, jelly, or preserves label-antibiotic to fight trachoma

2 Kool Aid Packages-1 small pox vaccination

"Support UNICEF" Seals from 10 Peter Paul candies-dried milk for 25 glasses of milk

100 Clark Gum pack wrappers-1 year's school supplies for 2 children

"We are very excited about this project and hope to send a large bundle of these labels to help this cause. We want to urge everyone who uses these products to save their cartons or labels and we will pick them up at any time before Nov. 1. Contact any club member or call 629-1010 if you are interested in helping," stated Club President Mrs. H. D. Alsop.

WHITE SWAN
Cream Style or Whole Kernel
GOLDEN CORN
5 303 Cans \$1.00

\$UPER \$AVE
MARKETS

FIRST in Savings

BANANAS 10¢
2 1/2 lb. Bunches 25¢
RED DELICIOUS APPLES 25¢

ONIONS 8¢
Cello Radishes 25¢

White Swan Cut Green Beans 6/\$1
303 can

SAVE BIG!!!
White Swan Canned Drinks
12 oz. can 12/\$1

White Swan Luncheon Peas 4/\$1
303 can

Fireside Saltine Crackers 23¢
1 lb. box

White Swan Spinach 6/\$1
303 can

Sunshine Vanilla Wafers 39¢
11 oz. pkg.

Check our Prices First!

Kendrick Grade A Medium Eggs 3 doz. 89¢

Borden 1/2 gal. reg. Ice Cream 79¢

Soft 'n Lite Flour 5 lb. bag 39¢

SPECIALY PRICED!!!

WHITE SWAN BISCUITS
Reg. and Buttermilk
6 10-Cr. Cans 49¢

Deckers 2 lb. packed Sausage 98¢

Pork Steak lb. 55¢

Decker Bacon 2 lb. pkg. 99¢

Ground Chuck lb. 69¢

Gooch German Sausage Ring pkg. 79¢

HOME OWNED-HOME OPERATED
SUPER SAVE
G.A. WHITE-Manager
Ph. 629-1191 400 S. Seaman

DOUBLE GOLD BOND STAMPS
Every Wednesday with \$2.50 purchase

SEE OUR COMPLETE LINE OF KODAK CAMERA SUPPLIES

FILM AND FLASH BULBS

Ask about our 2 day film service for all black and white and colored films.

Get 1 regular print plus 1 miniature print FREE!



CAMERA!

Prescription Pharmacy

Telephone 629-1475

East Side of Square

DATA PROCESSING coming to Mr. Altom's office too for tax rolls next week. The County Commissioner's Court has signed a contract with the Pritchard-Abbott, well-known Fort Worth tax firm, to handle the roll-making next year, INCLUDING the oil and gas figuring. The tax office will assess all other property and the contractor will figure the oil and gas, and put it all on computers for the speedier more efficient system. They wasn't much choice: the two antique, wide-margin typewriters used here for the rolls are just about to turn up their towe, and too, the state isn't going to furnish necessary data for the oil and gas business, so most every county with production is already on the computer system. You might like to know that Edgar has made the oil and gas rolls since 1959, assisted by Hubbard Gilbert.

BE THERE FOR THE KICK OFF

Carbon
Wolverines
OPEN

Carbon
Sept. 9 Mullin 51-20
17 May There
24 Sidney There
Oct. 1 Gustine Here
8 Open
15 Leuders Avoca There
22 Gordon Here
29 Strawn There
Nov. 4 Tolar There
12 Santo Here

Eastland High School
MAVERICKS
Red-Black

EHS MAVS vs. INDIANS

Friday Night, 7:30 p.m. **THERE**
EASTLAND MAVERICKS **COMANCHE**

NO.	NAME	Weight
10	CRAIG LUND	200
12	LEO GAETA	130
14	JOHN JIMINEZ	190
20	RALPH HARRISON	130
22	CHARLES MARSHALL	132
24	RUBEN GAETA	175
25	RANDY REXROAT	168
30	TONY THOMAS	190
32	RONALD McCLESKEY	170
33	HOWARD KING	192
40	LARRY BOLLES	142
42	JOE HERRERA	150
50	SCOTT MILLER	155
51	REX BONEY	158
52	MIKE JONES	180
60	JIM MOSELEY	180
61	STEVE LOPEZ	165
65	ALLAN JOLLY	162
66	GIL GAETA	190
67	MAC CALDWELL	170
70	STEVE HART	172
72	LARRY BARNES	174
74	MIKE PARSONS	175
75	RODNEY REYNOLDS	235
80	BOB MACE	142
81	DICKIE ANDERSON	162
86	E. W. ROBERTSON	142
87	GARRY BARNES	174
88	JAMES EIDSON	190

**LET'S GO
TEAM!**



LEADERS ON THE FIELD AND OFF...
The Football Players

COACHES

Shirley Frazier
Don Jones
Eddie Spiller
Doug Dallas

Supt. Wendell Seibert
Prin. Elvin Hill

Football is one of the greatest equalizers, developing sportsmanship, team effort, sound character and leadership. We, the following Eastland advertisers, pay tribute to our local football teams.

Band Dir. Paul Wallace

EASTLAND MAVERICKS — 1971
Red and Black
Non-Conference Games Start 8:00
+ Conference Games Start 7:30

Sept. 10	Eastland 27, Haskell 6
Sept 17 -	Eastland 41, Ranger 0
Sept. 24 -	Sept. 24 Eastland 48, De Leon 0
+ Oct. 1	Eastland 57 Cisco 6
+ Oct. 8	Comanche There
+ Oct. 15	Clyde Home
+ Oct. 22	Hamilton There
+ Oct. 29	Ballinger Home
+ Nov. 5	Winters There
+ Nov. 12	Coleman Home

7th — 8th & JV

Sept. 5	Ranger Home, 7 & 8
Sept. 16	Stephenville Home, JV
Sept. 23	Cisco Home, 7, 8, JV
Sept. 30	Open
Oct. 7	Ranger Home, JV
Oct. 14	De Leon Home, 7, 8, JV
Oct. 21	Clyde Home, 7, 8, JV
Oct. 28	Cisco There, 7, 8, JV
Nov. 4	Clyde There, 7, 8, JV
Nov. 11	Ranger There, 7, 8, JV

Cheerleaders Sponsor Mrs. Nancy Mahan

Cheerleaders:
Sarah Brewer
Susie Miller
Shirley Ford
Cindy Leonard

ALTMAN'S STYLE SHOP 109 West Main 629-1150
MAVERICK BARBER SHOP 104 S. Seaman
ROBERTSON'S TV SALES RCA VICTOR DEALER 100 West Commerce
D. L. KINNAIRD GENERAL INSURANCE 207 West Main 629-2544
HOOD KING MOTOR CO. FORD AND MERCURY SALES AND SERVICE On the Square 629-1786
SHAY'S DEPARTMENT STORE 111 South Lamar 629-1789
TEXAS LIGHTWEIGHT AGGREGATE PRODUCERS OF CONCRETE AGGREGATION C. W. Martin, Mgr. 629-2060
EASTLAND NATIONAL BANK EASTLAND, TEXAS
BOLES DAIRY QUEEN 'WHERE THE MAVERICKS MEET' Hwy. 80 East 629-2400
R. M. SNEED CONTRACTOR INC. Hwy. 80 East 629-1756
COMANCHE COUNTY ELECTRIC CO-OP ASSOCIATION 1311 West Main 629-2088

DR. AND MRS. M. A. TREADWELL, JR.
EASTLAND MEMORIAL HOSPITAL
SUPER SAVE 400 South Seaman 629-1191
HICKMAN NURSING HOME NO. 2 MRS. T. B. NIX - ADMINISTRATOR 104 South Seaman 629-1151
BORDEN'S J. T. GREGORY, DISTRIBUTOR 611 West Commerce 629-1100

W. H. "BILL" HOFFMANN
EASTLAND CHAMBER OF COMMERCE
ARRINGTON FUNERAL HOME 301 South Lamar 629-2611
FREYSCHLAG INSURANCE AGENCY 107 West Main 629-2275
HARELIK'S DEPT. STORE 212 West Main 629-1443

DON BAIRD TV REPAIR 207 S. Oaklawn
MR. and MRS. VICTOR CORNELIUS
B&W CLINIC AND STAFF H. J. BULGERIN, MD B.B. ALEXANDER, M.D. 400 West Plummer
KINCAID REAL ESTATE FARM AND RANCH LOANS 100 South Seaman 629-1781
WESTERN AUTO ASSOCIATE STORES Commerce and Lamar 629-2011
EARL BENDER AND COMPANY INSURANCE Pat and Annelle Miller
THARP TIRE COMPANY DUNLOP TIRES AND ACCESSORIES East Main Street
TEXAS ELECTRIC SERVICE COMPANY People power... at your service. F. N. SAYRE, Manager, Phone 629-2651
FOREMOST DAIRIES CLYDE MANNING, MGR. 410 West Commerce 629-1701
BOND ELECTRIC 629-1724
EASTLAND MANOR E. E. FROST, ADMINISTRATOR 1405 West Commerce

Southern Television Systems Corporation

CISCO - EASTLAND - RANGER... Inviting You To Watch All Of The Games--NCAA - AFL - NFL

J R B

SUPER MARKET

**DOUBLE S&H
GREEN STAMPS
EVERY WEDNESDAY
AND SATURDAY**
With \$2.50 Purchase or

Foremost
Ice Cream
Big 5 qt.
\$1⁵⁹

Del Monte
Catsup
14 oz. **4/\$1**

**UNITED STATES ENCYCLOPEDIA
OF HISTORY**
VOLUME 5
ONLY **\$1⁹⁹**
WITH 10-DAY
MONEY-BACK
GUARANTEE!

Complete 16 volume set available at special savings on a volume per week plan.

Aunt Jemima
Waffle Syrup
24 oz. **69^c**

Motts
Apple Juice
qt. **3/\$1**

Keeblers Keebies
Cookies
Big 19 oz. pkg. **59^c**

FAMILY CENTER EASTLAND ONLY

Girl's Acetate **39^c**
Panties Sizes 2-12 pair
Ladies Knee HI Stretch
Fruit of the Loom **59^c**
Hose pair
Stack Coffee **35^c**
Mugs **35^c**
Nine cup Pyrex
Percolator **\$5⁹⁵**
Men's Black Pocket
Comb **15^c**

Peter Pan
Peanut Butter
18 oz. jar **65^c**

Quaker Instant
Oatmeal
10 oz. pkg. **49^c**

3 lb. can
Crisco
89^c

Gladiola
Flour
5 lb. bag
49^c

Meats

PRICED FOR SAVINGS



JRB MEATS ARE U.S. GOVERNMENT INSPECTED AND GRADED. IF FOR ANY REASON YOU ARE NOT SATISFIED WE WILL CHEERFULLY REFUND YOUR MONEY.

Market made seasoned just right

Pork Sausage
3 lbs. **\$1**

Fresh Picnic Style
Pork Roast
lb. **39^c**

Evangeline cut and whole
Yams
2 1/2 can **4/\$1**

Jiffy
Cake Mix
8/\$1

Cello Bag
Pinto Beans
2 lb. **29^c**

Del Monte
Tuna Fish
1/2 can **39^c**

Gooch Blue Ribbon Sliced Bacon lb. **68^c**
A. F. No. 1 Quality Sliced Bacon lb. **65^c**
Cut up Pan ready Fryers lb. **35^c**
Fresh excellent for seasoning Pork Hocks lb. **49^c**
Quick to Fix Pork Cutlets lb. **\$1⁰⁹**
Lean and Tender Pork Steak lb. **55^c**

Half or whole Fresh Ham Roast lb. **59^c**
U. S. D. A. Inspected Farm Fresh Fryers whole lb. **29^c**
Extra Lean Fresh Ham Steaks lb. **89^c**
Deckers Ranch Style Ham Boneless lb. **\$1³⁹**
Deckers Quality Franks Rindless 12 oz. pkg. **53^c**
Sliced Slab Bacon lb. **59^c**

FARM FRESH

Fresh and Sweet Prune Plum lb. **19^c**
Texas No. 1 Sweet Potatoes lb. **19^c**
Firm Green heads Cabbage **9^c**
Kusset 8 lb. bag Potatoes **59^c**
Golden Sweet Bananas lb. **10^c**

Maxwell Instant 6 oz.
Coffee
With Coupon
81^c

Fabulous GOLD TABLEWARE

\$4.00 VALUE! **FEATURED THIS WEEK!**

Delicately sculptured, exquisitely beautiful heavy weight, 24 Karat electroplated to exceed the thickness of U. S. government requirements with pure gold on heavy weight enduring stainless steel. The shimmering beauty of this elegant tableware will never fade, rust or tarnish. It is distinctive... it is beautiful...

only 69^c

With \$3.00 Purchase

Per piece



24 Karat GOLD PLATED

DISHWASHER SAFE
NEVER NEEDS POLISHING

JRB COUPON
Save 30c
WITH THIS COUPON WHEN YOU BUY A 6 OZ. JAR OF Instant MAXWELL HOUSE COFFEE AT JRB
62. JAN ONLY 81c

4-H BRIDGES THE GAP

National 4-H Week Oct. 3-9

A salute is in order for 4-H members this week during National 4-H Week! The 4-H theme for 1971, "4-H Bridges the Gap," has a special meaning for the 4 million boys and girls enrolled in the worldwide 4-H program, 75,000 members in Texas, and 300 in Eastland County.

These youth are learning to bridge many gaps as they strive to make a better world for tomorrow. They work, play, and learn together about projects varying from money management to recreation, food and nutrition to livestock, clothing to horses, leadership and many others.

Walnut Clinic

Western Auto

Killingsworth
Funeral Home

Jones Enco

Dr. John Foster

Tri-County Motors

Pickrell
Insurance Co.

Bagwell Motor Co.



Eastland County 4-H Council members making plans for National 4-H Club Week-October 3-9. Left to right- Brit Ferguson, Cisco Council-Chairman, Jo Ann Stroebel, Council Reporter; Suzanne Harbin, District Vice President



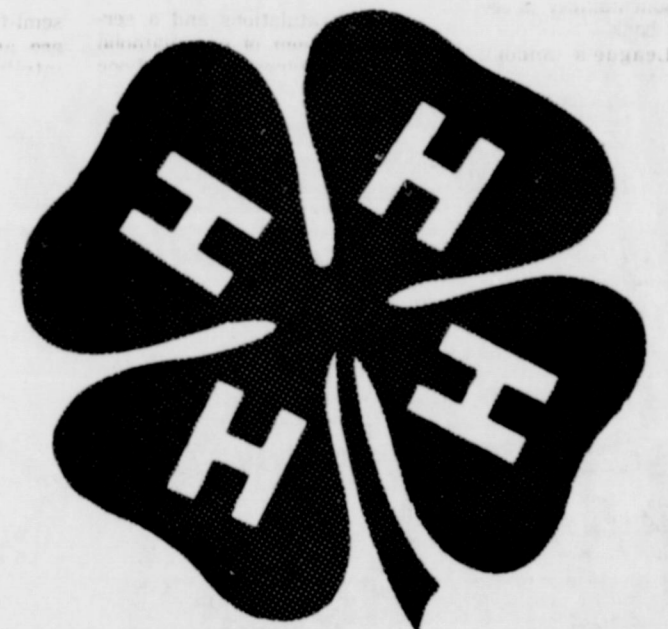
Prescription Pharmacy

Hood King Motor Co.



Eastland County 4-H Council Members Robin Griffin, Carbon; Scott Miller, Lana Arrington, Mary Jane Harbin, Eastland; and Eddie Hamilton of Ranger.

There's A Future in 4-H... For Everybody



Discussing plans for the county 4-H Clubbers are their leaders, left to right, Mrs. Jerry Bob Greer, Mrs. Jean Harbin, Mrs. Faye Tucker and Bobby Tucker.

Rust Processing Plant

JCPenneys

Mott's Variety Store

KERC, the voice of
Eastland County

Thornton Feed Mill

LeRoy Witzshe
Morton Foods

Johnny Kent's
One- Stop Grocery



County 4-H Adult Leaders left to right are Bill Claborn, Ralph Berry and Mrs. Twila Carlile.

Graham Motor Co.
'Fords by the number'

Eastland Drug Co.

Lake Road
Animal Hospital
Bill Cardwell, DVM

Coca-Cola Bottling Co.

Perry Brothers Inc.

Altman's Style Shop

Central Drug Co.



Texas Electric
Service Co.

Goodyear
Service Store



R. G. (Buck) Wheat
Real Estate

Eddie's Upholstery

Austin College Coach Calls Wilson 'The Winning Grinner'

STEVE WILSON
...The Grinner



SHERMAN— Coach Duane Nutt says Steve Wilson, the Austin College weak side linebacker, could grin his way out of a gunfight.

Two-day drills this fall started for the Kangeroos at 7 a.m. "Now if you can imagine, it was already hot at that time of the morning, nobody had even had breakfast, sweat was pouring off everybody's nose, and Wilson looked like he was going to break up any minute," Nutt said.

But the coaching staff soon discovered that football was not a laughing matter to Wilson, 175-pounder from Eastland by way of Ranger Junior College. "The tougher it got, the more

teeth he showed," said Nutt. "That's just his way."

And this Saturday Wilson got a chance to show all 32 molars when the Kangeroos went to Lincoln, Neb. Austin College is 6-3 for the year while Nebraska Wesleyan is 3-0.

The Plainsmen have put down Dana, Midland, and Missouri Western while Austin College was losing to Southwestern (Tenn.), Harding, and Northwood. Saturday's game will be the fifth meeting between the two schools, and Nebraska Wesleyan won its first game of the series last year 24-8.

Defensive coach Scott Henington says that Wilson, fastest linebacker on the squad with 4.9 speed for the 40, is probably as physically con-

ditioned as anybody he ever put on a football field. But that has not always been true; he ballooned to 209 one year in the off season at Ranger Junior College.

At Eastland, Wilson was an all-state tailback and honorable mention All America, but for the Kangeroos he's strictly defense. Last Saturday, he and his defensive mates shut out Northwood although the Kangeroos lost 7-6 when the Knights scored on an interception runback.

During the entire game, the Knights put together only one sustained drive. It brought them to the Kangeroo 20 with a first down. But three plays later they were still at the 20, and a field goal attempt missed. In fact, Northwood showed minus rushing yards at the half.

Humanitarian Visits Eastland

A man with a mission visited Eastland again this week seeking support of community leaders and the public in his goal for harmonious living of all people.

Louis Calvin Browning of Fort Worth, president of the Youth Crime Prevention League, Inc., is no stranger in Eastland. He visits annually, and during the past 13 years, has been here many times, speaking to all groups encouraging "working together."

Nationally, he is one of the few men to speak out against Rapp Brown, Carmichael, Dick Gregory and other who have advocated violence.

Browning's calling card says: "For national loyalty—against riots."

He's presently raising \$300,000 to build a state and national headquarters, to be built in Dallas, and to celebrate its 13th anniversary, the league brought James Meredith to Dallas on Sept. 26.

Browning invites churches, clubs, and organizations to assist and asks that contributions be made to the endowment fund, the Youth Crime Prevention League of America, in care of First National Bank in Dallas, and the account number is 0846683 with that bank.

The League's announced purpose is to coordinate all religious demonstrations; to encourage love against hate through a leadership program.

The founder envisions an international program with goodwill ambassadors traveling and speaking throughout the world in a effort for peace.

He regrets that there are no federal programs to assist financially in training young people of all races to love and respect for their fellows.

Program aims of the League include: (SIS) Stay in School instead of staying in the streets; law and order; respect for the flag; individual responsibility; proper conduct in society.

W. S. C. S.

The William Circle of the WSCS of the First United Methodist Church met Tuesday morning at the home of Mrs. Frank Crowell.

Mrs. Willman presided over the brief business session when the announcement was made of the WSCS Bazaar and dinner at the church on November 17th.

Mrs. Brockman gave the devotion from Matthew: "Are You Fighting Yourself?" Mrs. Elliott gave several poems on the seasons with appropriate pictures.

Refreshments of fruit punch, cookies, sandwiches and grapes were served to the following: Mesdames Poole, Davenport, Harris, Brockman, Bender, Van Geem, Elliott, Stokes, Ellis, Miller, Mickle, Davis, Britt, Stephen, Miss Opal Morris, the hostess, Mrs. Crowell and the co-hostess Mrs. Willman.

Jack Mace received a letter of congratulations and a service emblem of one diamond and two rubies from the Lone Star Gas Company, for the completion of twenty-five years of employment, October 1, 1971.

In the letter of congratulation, Carol Neaves of Dallas, area vice-president quoted, "I extend to you my sincere appreciation and thanks for your loyalty to Lone Star, and good work in its behalf."

Mace is a serviceman in Cisco, and part-time in Eastland. He and his wife reside at 517 E. Conner, Eastland.



DR. L. C. BROWNING
...VISITS Eastland

Local's Granddaughter Given Scholarship Award

Paulette Lasater daughter of Mr. and Mrs. B. J. Lasater of Tanglewood Island, has been named semi-finalist in the 1971-72 National Merit Scholarship Program, announces David Sullivan, Breckenridge High School principal.

The approximately 15,000 semi-finalists appointed today are among the nations most intellectually talented high school seniors. They will compete for some 3,000 merit scholarships to be awarded in 1972.

Only the top one percent of the nation's high school seniors earn such recognition.

Paulette is active in many fields at Breckenridge High School, including treasurer of her senior class, editor of the school annual and chapter and district president of the Future Teachers of America Club. She received many additional honors throughout her high school years.

Semifinalists must advance to finalist standing to be considered for the merit scholarships to be awarded next spring. Semifinalists become finalists by receiving the endorsement of their schools, substantiating their high NMSQT performance of a second examination, and providing information about their achievements and interests.

High school grades, accomplishments, leadership qualities, and extracurricular

activities of the finalist are evaluated, along with the text scores, in selecting Merit Scholarship winners.

Paulette's father, B. J. Lasater was raised in Eastland and completed high school here. Paulette is the granddaughter of Mrs. B. W. Lasater of Eastland.

The following proceedings were had in the Court of Civil Appeals, Eleventh Supreme Judicial District of Texas:

AFFIRMED

Fireman's Fund Insurance Company et al. v. Commercial Standard Insurance Company et al. (Opinion by Judge McCoud) Tarrant

Palo Pinto General Hospital et al. v. Houston Fire and Casualty Insurance Company. (Opinion by Judge Walter) Palo Pinto

MOTIONS SUBMITTED
David Haskins v. Doris R. Finks et vir. Appellant's motion for rehearing. Tarrant

Wayne Adams v. North Leon River Irrigation Corp. et al. Agreed motion for extension of time to file Appellee's briefs. Comanche

International Security Life Insurance Company v. E. A. Buck. Appellant's motion to leave to file supplemental transcript. Hale

Matty Padgett v. Sidney T. Padgett, Independent executor. Appellant's motion for extension of time to file statement of facts. Palo Pinto

Tasty - Topic

Beef Cubed Steaks—Tasty Topping
4 beef cubed steaks
2 tablespoons lard or drippings
1/2 teaspoon salt
1/4 cup catsup
2 tablespoons chopped green onion
1/4 cup shredded Cheddar cheese

Brown steaks on both sides in lard or drippings for 7 to 10 minutes. Pour off drippings. Top each steak with 1 tablespoon catsup, 1/2 teaspoon onion and 1 tablespoon shredded cheese. Cover and cook over low heat 2 to 3 minutes or until cheese melts. 4 servings.

Funeral Services Held Tues For Billy Bacon Sr

Billy Bacon, Sr., 68 passed away Monday, Oct. 4 at 4:30 a.m. in the Eastland Memorial Hospital after a long illness. Funeral services were held at 11:00 a.m. Tuesday at the Nazarene Church (Rust-Martin-Rhyme Chapel). Interment was in Oakwood Cemetery under the direction of Rust-Martin-Rhyme Funeral Home.

Mr. Bacon was born April 17, 1903 in Cisco. He married Nina Ellard in 1929 in Breckenridge who passed away in 1954. He was a rancher and a long time member of the First Christian Church.

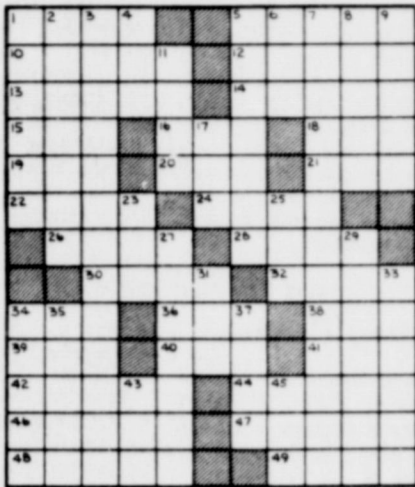
Survivors include 3 sons, Billy Bacon, Jr., Tommy Bacon, and Truman Earl Bacon, Cisco; 3 sisters, Mrs. D. Peters, Cisco; Miss Bird Bacon, Nacogdoches; Mrs. F. M. Shields of Wolf City, and

CROSSWORD PUZZLE

ACROSS
1. Kitty
5. Lawman's symbol
10. Jellied dish
12. Pianist
13. Queen (Fr.)
14. Comedian
15. Every bit
16. "Agnus"
18. Throw
19. Actress
20. Ancient times
21. Snoop
22. Famous Italian family
24. Son of Jacob
26. False show
28. Region of Pakistan
30. Etc. a relative
32. German river
34. It became Eve
36. Mr. Bernstein, to friends
38. Land measure
39. Dollar bill
40. Peoples of south China
41. Owned
42. Saying
44. Routine work

DOWN
1. Procession
2. Ineffectual collog. (3 wds.)
4. Source of Satan
5. In addition to the humanities
7. Suggesting discreetly (3 wds.)

Today's Answer
8. One beyond hope
9. Luge-brosious poem
11. Yield
17. Building extension
23. Consume
25. Contend
27. "The Falcon"
29. Madden
31. Pasture
33. Binsh
34. Sunday dinner
35. Asian country
37. Near
43. Consume by fire
45. Inlet



Volunteers Get Check F. Bureau

The Eastland Volunteer Fire Department received a check for \$75.00 recently from Texas Farm Bureau Insurance Companies as an expression of thanks for the department's work on the property of G. S. Peak, 409 Bassett, Eastland. The money will be used for the fund for banquets and fish fries.

The Insurance Company believes volunteer fire departments have contributed to reduce the amount of loss involved by fire and more important, to prevent fires. It is their hope this money will help the Eastland Volunteer Fire Department in their program.

Finks et vir. Appellant's motion for rehearing. Tarrant
CASES SUBMITTED
Paul Golson et ux v. Ann Capehart et al. Coleman

Mid-Town Mayor



MOTIONS GRANTED
Wayne Adams v. North Leon River Irrigation Corp. et al. Agreed motion for extension of time to file Appellee's briefs. Comanche

International Security Life Insurance Company v. E. A. Buck. Appellant's motion for leave to file supplemental transcript. Hale

Matty Padgett v. Sidney T. Padgett, Independent Executor. Appellant's motion for extension of time to file statement of facts. Palo Pinto

MOTION OVERRULED
David Haskins v. Doris R.

BAIRD'S TV SALES & SERVICE

WE MAKE SERVICE CALLS

629-1673

FALL SAVINGS ON YEAR ROUND USED CARS

- 69 FORD Pickup-4 speed V8 Power Steering
- 69 Chevy Caprice 4 door hard top air and power.
- 70 FORD Fairlane 500 air and power 1 owner low mileage
- 65 Plymouth V8 Air 1 owner
- 60 Chevrolet Standard 6 cylinder
- 59 Chevy Pickup Automatic 1 owner clean

TIME TO BUY A NEW 1971 FORD, WHILE THEY LAST!

King Motor Co.

100 E. Main Eastland 629-1786

HELPING TO SAFEGUARD HEALTH



Tender Care Won't Do the Whole Job

When your child is ill, it takes a little more than tender, loving care to nurse him back to health quickly and effectively.

It takes the medical know-how of your doctor and pharmacist. Rely on us for sick-care help.

CENTRAL DRUG

629-2681 103 W. Main St.

EDDIE'S
513 West Main
629-8838



OFFERING THE BEST IN AUTO SERVICE

Auto Repair
Vic Edwards

Free Pickup and Delivery Guaranteed Service

At Phillips 66 it's performance that counts

HILLCREST FOOD STORE

OPEN 7 a.m. to 11 p.m. 7 DAYS A WEEK
SPECIAL SUGAR . 5 lbs. 49¢
with purchase of \$5 or more excluding cigarettes

MELLORINE 1/2 ga. 3/\$1.00

Our Darling CORN 5/\$1.00

Decker's MARGARINE 2/25¢

Mission PEAS 5/\$1.00

Idaho Russett POTATOES 10 lb. bag 59¢

Forget Price Hikes.



Get this deluxe Carrier furnace for only \$269 Plus Installation

- Stratosteel® Heat Exchanger coated with aluminum-steel alloy and a ceramic coating for longer life.
- Printed Circuit Control Center provides one central connection point for accessories such as air cleaners and humidifiers.
- Equipped with 100% pilot safety shutoff valve.
- Compact, durable construction with an attractive baked enamel exterior.
- Sized for 3-ton cooling capacity.

Comparable values in any size furnace to fit your need. Call us today. And ask us about our Free Humidifier offer with installation of a Carrier Electronic Air Cleaner. Start your completely controlled environment with Carrier.

Forget price hikes. Call us today.
SMITH PLUMBING CO.
114 N. Seaman 629-1722

Mrs McGough Buried at College Station

Mrs. Minnie Myers McGough passed away in an Austin hospital Tuesday, September 14 after a long illness.

The funeral was held at 2 p.m. Thursday, September 16 in the Chapel of Callaway-ones Funera home, with the Rev. Robert Bray of the First Christian Church officiating. Interment was in the College Station Cemetery.

Born in Valley View, Cooke County on December 8, 1909, Mrs. McGough had been a resident of College Station for 14 years since the retirement of her husband Ronny Wayne McGough from 35 years of service with the Humble Oil Company.

She was a twin daughter of the late Mr. and Mrs. Robert E. Lee Myers (A&M Class of 1902) who were in the lumber business at College Station for many years. She was a member of the First Christian Church, Bryan College Station Art Club, and Daughter of the Republic of Texas, being a great granddaughter of Texas pioneer families: The Rev. Elias Myers-James Loving families; and the Rev. Benjamin West and James Knight families of Dallas and Denton Counties.

She attended school at Eastland and was married to Bonny Wayne McGough on December 14, 1926 in Eastland. To this union, one son, Bonnie Wayne McGough Jr. was born. He died in an oil field accident in 1956. He was in the A&M Class of 1953.

Survivors are her husband of College Station, and a foster daughter, Mrs. Barbara Morris Fernandes of Lima, Oer; two sisters, Miss Opal Myers and Mrs. Wanda Myers Wieder both of College Station, and one brother, Delbert L. Myers of Houston.

Our vision grows dim, When all that we need, Is a moment with Him.

HOLIDAY NOTICE

NO BUSINESS WILL BE TRANSACTED MONDAY, OCTOBER 11, 1971, IN OBSERVANCE OF COLUMBUS DAY

Please make your banking arrangements accordingly

EASTLAND NATIONAL BANK
EASTLAND, TEXAS
MEMBER FDIC

LETTERS TO THE EDITOR

Thank you for publishing a note requesting observations of the above. A result we got a very good report from MR J. W. Harper who lives 6 miles north of Eastland and a mile west of Morton Valley. The object lit up the area there and he got a very good look at it. It went due north and about a half way up from the horizon to the North Star.

Almost immediately he heard a sonic boom with some roaring. Combining his line of sight towards the terminal point with one we measured from near Duley, Callahan County, would indicate meteorites may have fallen about 25 miles north of Breckenridge (say near Murray).

But here are indications from Fort Worth observations that the end may have been south of Breckenridge, near Mr. Harper. In any case there are grounds for believing the object was coming from the southeast, and smaller pieces may have fallen off southeast of the terminal area.

We are still anxious to hear from anyone else who may have witnessed it from points to the east or west of the suspected end region, say anywhere from Anson and Albany to Mineral Wells. If anyone even closer heard the boom from it even a sound observation would help as it would tell us which way from the observer the path lay. It looks like it was somewhere between 4 and 14 miles high when it was extinguished, and meteorites can fall from well such a luminous end height—they always go out before hitting the ground.

Sincerely,
Oscar E. Monning

Visiting Parents

Mr. and Mrs. J. B. Tankersley, Rodger, Julie and Russell of Colorado Springs, Colorado are visiting his parents, Mr. and Mrs. W. E. Tankersley.

Visit Here

Dr. and Mrs. Hamlin McWilliams of Hempstead and Mrs. J. F. McWilliams of Jarrell, spent the weekend with Mrs. Earl Bender.

This community. This town. This paper. Keep in touch.

Thelma Dixon Buried

Thelma Dixon, 65, died at 2:50 a.m. Wednesday at the medical center in Franklinton, La., after a long illness.

Service was held at 4 p.m. Thursday at the G. F. Poole Funeral Home in Franklinton, La. The body was taken to the Arrington Funeral Home Friday.

Funeral was held at 2 p.m. Saturday at the First Presbyterian Church in Eastland with burial in Gun-sight Cemetery in Stephens County. Arrington Funeral Home was in charge of arrangements.

She was born Jan. 4, 1906, in Stephens County. She had lived in the area a number of years before moving to Louisiana.

Survivors include one sister, Mrs. E. C. Johnston of Eastland; one brother, T. L. (Toad) Boles of Eastland; a number of nieces and nephews.

Final Rites Wednesday For W. Crouch

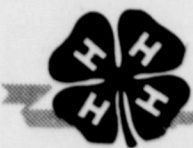
William Ralph Crouch, passed away October 4, 1971 in the Medical Center Hospital in Odessa. He was born February 2, 1924, in Eastland County.

Funeral services were in the Antioch Christian Church in Odessa at 10 a.m. Wednesday, October 6, with graveside rites at Dobbs-Valley Cemetery, near Mineral Wells.

Survivors include his wife, Sue; one daughter, Mrs. Susan Gary of Odessa; one son, Ray Iera of Crain; his parents, Mr. and Mrs. W. F. Crouch of Lake Leon, one brother, Bob of Dallas; one sister, Mrs. Marilyn Miller of El Paso; two grandchildren; two nieces, two nephews, and a number of uncles and aunts.

Alsop's Fables

NOTE to Lady who tries to jay-walk across the street. It just doesn't pay, especially when it's behind a cattle trailer.



Penny Berry of Cisco and Susie Hanna of Eastland were contestants in the State 4-H Horse Show held on September 23-25 in Fort Worth. Both girls competed in Halter, Barrel Racing, and Pole Bending classes. Neither girl placed in the top fifteen, but their times were very near those that did. Penny and Susie have been active Horse Club members and have participated in many other contests. Through the horse program the girls have learned responsibility, sportsmanship, and how to meet people in the public.

The horse program in the county has helped those and other 4-H members develop many qualities which only competition and club involvement can instill.

Mrs. Janet Thomas
County Home Demonstration Agent

Eastland Home Demonstration delegates to the National Extension Homemaker's Council report an excellent and informative meeting. Eastland County delegates were Mrs. Guy Sherrill, Flatwood Home Demonstration Club; Mrs. E. E. Sandlin, Pleasant Hill Home Demonstration Club; and Mrs. J. C. Clearman, Kokomo Home Demonstration Club.

More than 2,500 Home Demonstration Club members were represented at the national meeting in Dallas states Mrs. Janet Thomas, County Home Demonstration Agent. These ladies represented 43 states in attendance.

Principal speaker was Edwin Kirby, administrator of Extension Service, Washington, D. C., and he praised the group for their voluntary leadership efforts. Dr. Kirby said the home demonstration club members were especially to be commended for their leadership with the youth, the disadvantaged, poor, elderly, and handicapped across the nation.

The Eastland County delegates reported a most informative meeting with excellent speakers and workshops. The ladies also attended the state meeting which was held in conjunction with the national conference.

Bishop Barns To Preach October 9

The congregation of Holy Trinity Episcopal Church in Eastland (710 South Seaman) cordially invites its many friends to hear Bishop William Paul Barns of the Diocese of Dallas preach at the church on Saturday, October 9, at 5 p.m. Bishop Barns not only has both earned and honorary degrees from various schools and seminaries of the Episcopal Church, but also has an earned doctorate from the University of Nebraska in philosophy. He regularly teaches a philosophy course in the night school at T.C.U.

On Sunday, Oct. 17, the church returns to its weekly schedule with services at 11 a.m. each Sunday. The congregation welcomes visitors to all services. Holy Trinity is now being supplied by the Rev. Raleigh Denison, who is also assistant professor at Tarleton State College in Stephenville. Mr. Denison, who received his degree in theological studies at Berkeley Divinity School in New Haven, Connecticut, is a native of Lampasas, Texas, and is married to the former Mary Bert Hewitt of Georgetown. They are the parents of two daughters, Susie 14, and Rebecca, 11.

Contributions May Be Deposited

Contributions to help defray expenses for Rev. and Mrs. Oscar Newdiger may be deposited in boxes placed at Kitty's Snowwhite Laundry and First State Bank.

Mrs. Newdiger, wife of the pastor of the Church of God of Prophecy, is a patient in M. D. Anderson Hospital in Houston.

STATEMENT OF CONDITION

AT THE CLOSE OF BUSINESS, SEPT. 30, 1971
EASTLAND, TEXAS 76448

RESOURCES

Loans and Discounts	\$5,062,763.99
Stock in Federal Reserve Bank	7,500.00
Banking House	121,244.56
Furniture and Fixtures	71,267.57
U. S. Government Bonds	3,888,769.33
Other Bonds and Warrants	1,162,313.26
Other Assets	244,920.06
Cash and Exchange	1,404,446.65
Fed. Funds Sold	300,000.00
	\$11,963,225.42

LIABILITIES

Capital Stock	\$ 100,000.00
Surplus	150,000.00
Deferred Income	145,558.56
Undivided Profits	398,557.33
Reserve for Taxes, Int., Etc.	187,435.73
Deposits	10,981,673.80
	\$11,963,225.42



EASTLAND NATIONAL BANK

EASTLAND, TEXAS



GOOD YEAR SERVICE STORES

SAVE \$17 TO \$34 ON A SET OF 4-PLY NYLON CORD TIRES



USE OUR RAIN CHECK PROGRAM: Because of continued heavy demand for Goodyear tires, we may run out of some sizes during this offer, but we will be happy to order your size tire at the advertised price and issue you a rain check for future delivery of the merchandise.

20% OFF BLACKWALLS OR WHITEWALLS

"MARATHON 78"

- 78 series • Low profile
- Looks great! • 7 rib tread pattern • Range of sizes

Low profile for stability, 7 rib tread pattern for mileage and traction. High priced look in shoulder and sidewall styling. Available in blackwall and extra narrow whitewall design.

SPECIAL OFFER ENDS SATURDAY NIGHT

CHECK HERE FOR YOUR SAVINGS!						
Size	Replaces	WHITETALL		BLACKWALL		Plus Fed. Ex. Tax Per Tire
		Reg. Price Each With Trade	Sale Price Each No Trade in	Reg. Price Each With Trade	Sale Price Each No Trade in	
6.50-13"	—	\$26.80	\$21.44	\$22.20	\$17.76	\$1.76
E78-14	7.35-14	\$28.50	\$22.80	\$24.35	\$19.48	\$2.21
F78-14	7.75-14	\$29.50	\$23.60	\$25.85	\$20.68	\$2.38
G78-14	8.25-14	\$32.90	\$26.32	\$28.50	\$22.80	\$2.55
H78-14	8.55-14	\$35.60	\$28.48	\$30.95	\$24.76	\$2.74
J78-14	8.85-14	\$40.45	\$32.36	\$35.35	\$28.28	\$2.91
5.60-15	—	\$27.30	\$21.84	\$23.65	\$18.92	\$1.74
F78-15	7.75-15	\$30.25	\$24.16	\$26.55	\$21.24	\$2.42
G78-15	8.25-15	\$33.90	\$27.12	\$29.25	\$23.40	\$2.64
H78-15	8.55-15	\$36.55	\$29.24	\$31.95	\$25.56	\$2.80
J78-15	—	\$42.90	\$34.32	\$38.20	\$30.60	\$2.89

*Except 6.50-13 Size - 5 Rib Tread Pattern
GOODYEAR - THE ONLY MAKER OF POLYGLAS® TIRES

ON-THE-SPOT FINANCING - JUST SAY "CHARGE IT"

3 WAYS TO PAY AT GOODYEAR



SAVE ON RETREADS

ANY SIZE LISTED WHITEWALL OR BLACKWALL

\$12

plus 27¢ to 35¢ Fed. Ex. Tax per tire (depending on size) and retreadable tire

- Sizes: 6.00x13, 6.50x13, 7.00x13, 6.95x14, 7.00x14, 7.35x14, 6.50x15, 7.35x15 - LARGER SIZES SLIGHTLY HIGHER PRICED!
- Same type tread design as our 2-ply "Power Cushion" bias ply tires.



PROFESSIONAL LUBE AND OIL CHANGE \$5.55

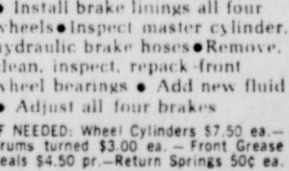


PROFESSIONAL FRONT-END ALIGNMENT \$9.95



"GOODYEAR" BRAKE RELINE OFFER \$29.95

Except disc brakes, foreign cars.



"SNAP BACK" ENGINE TUNE-UP \$29.88

6 cyl. U.S. auto - add \$4 for 8 cyl.



Now at your nearby GOODYEAR SERVICE STORE

GOODYEAR SERVICE STORE

STORE HOURS: 8 a.m. to 5:30 p.m.

EASTLAND, TEX.

FORD DRY CLEANERS

The freshness of autumn calls for clothes that are dry cleaned to perfection by our modern methods.

Service Is Fast! Pick-Up and Delivery

629-2055

209 S. Lamar