



BAILEY COUNTY JOURNAL

'The Community of Opportunity Where Water Makes the Difference'



20¢

Volume 19, No. 30

12 Pages Today

Published Every Sunday at Muleshoe, Bailey County, Texas 79347

Sunday, July 26, 1981

Instructor, Student Die In Plane Accident

Agent Emphasizes Farm Safety Week

Both President Reagan and Gov. Clements have signed proclamations designating this week for emphasis on farm safety activities, points out Spencer Tanksley, county agent with the Texas Agricultural Extension Service, Texas A&M University System.

Theme for the weeklong

Around Muleshoe

Three Muleshoe students are among 216 candidates for Eastern New Mexico University's summer commencement on Friday, July 31.

Vowery I. Dodd will be awarded a bachelor of science in education degree in elementary education, honors, while Lori Diane Skipworth receives a bachelor of science in education degree in elementary education. Sherry Ann Washington will be awarded a bachelor of science degree in mass communication.

Joel Rangel, son of Mr. and Mrs. Vicente Rangel of Littlefield, has been promoted in the US Air Force to the rank of senior air-cont. Page 6, Col. 3

Dinner Will Honor Hance

Congressman Kent Hance will be honored Tuesday, August 4 with a dinner in the Lubbock Memorial Civic Center in a demonstration of the 19th District's support for his leadership in Congress toward economic goals proposed by President Reagan.

Introduction of the Hance-Conable bill, which is acceptable to the White House and includes many elements of the President's

observance is "Enjoy Life-Safely."

Farm Safety Week, sponsored by the National Safety Council, Texas Safety Association and the state Cooperative Extension Services is supported by many organizations serving agriculture. These organizations are asking farmers and ranchers nationwide to assist in their efforts to reduce accidents and to promote safety in all recreation.

All accidents involving Texas farm and ranch residents accounted for more than 400 fatalities and nearly 38,000 disabling injuries in 1980, points out Tanksley. Agricultural work-related accidents claimed about 200 lives and caused about 20,000 disabling injuries. Ten percent of all agricultural accidents occur in Texas.

Total cost of accidents to Texas farm and ranch people exceeded one-half billion dollars last year while the figure topped \$5 billion nationally, adds Tanksley.

Farm Safety Week is designed to call attention to both leisure-time and work safety as a necessary part of efforts to control off-the-job, profit-eating accident losses, says Tanksley.

tax cut proposals, has been highly publicized by national networks and major newspapers.

"Congressman Hance, only in his second term, has quickly become a national leader in his efforts to help find solutions to the pressing monetary problems of this country, and we want the nation to know that this district is behind him 100 percent," said C.B. Carter, who with Mike Higgins and George Cont. Page 6, Col. 3

Muleshoe ISD Budget Increased

The largest increase in school property taxes in history was adopted by school trustees last year, according to the report *Bench Marks for 1981-82 School District Budgets in Texas* published by the Texas Research League.

Tax bills mailed by the 1,070 school districts in Texas totaled almost \$2 1/2 billion—a whopping \$393 million increase over the previous year. Statewide the increase was 18.8 percent.

The increase for the Muleshoe ISD was 5.4 percent.

Last fall school districts adopted budgets for 1980-81 calling for spending averaging \$1,928.95 per student for current operations. Muleshoe's budget called for \$1,876.77 per

The average salary for classroom teachers paid by Muleshoe ISD in 1979-80 was \$13,397 which was 7.1 percent above the minimum salary prescribed by the state. The average— Cont. Page 6, Col. 4

ASCS Issues Crop Notice

According to Rusty Williamson, County ASCS director, all farmers must have their crops certified no later than 5 p.m. August 3, 1981, in order to be eligible for 1981 program benefits. All producers not certified by this time will be subject to a late file penalty fee. No exceptions will be made.

ASCS office hours are from 8 a.m. to 5 p.m. Certification will be taken



PLANE WRECKAGE.....Morgan D. Locker, long-time area resident and Captain Jerome Fulwider of Cannon Air Force Base were killed Wednesday when the light plane they were flying crashed and burned at Warren Field in Muleshoe.

In Depth Explanation Given On Redistricting

Prior to a July 28 Public Meeting and an effort to contact and correspond with all groups concerned with the up-coming re-districting, Judge Glen Williams and the members of the Commissioners Court met Wednesday afternoon.

Several invitations were issued to minority group members for input on the re-districting. An explanation of proposed plans was made to those present; and Jesse Leal, spokesman for one group stated to the court that he felt "the job had been well-done and everyone had been dealt with in

a fair manner." Joe Gonzales was also present as a representative.

According to Judge Glen Williams, "In 1964 the United States Supreme Court handed down a landmark decision commonly known as the "One Person - One Vote Rule". And in connection therewith Chief Justice Earl Warren explained the basic principal underlying that decision with this statement. "No right is more precious in a free country than that of having a voice in the election of those who make the laws under which, as good citizens, we must live. Ot-

her rights, even the most basic, are illusory if the right to vote is undermined."

Williams stated, this simply means that Congressional Districts, State Legislative and Senatorial Districts, County Commissioner's Precincts, City Wards, and other governments similarly structured must be equalized according to population, so that a vote in one district is equal to that in another.

Therefore it is necessary that Legislatures, Commissioner's Courts, City Councils, etc. to periodically re-apportion and equalize their population. The law does not state at what times or intervals that is to be done, but an equality of population must be achieved and maintained. As a general rule, a 10 percent tolerance is considered as being acceptable.

"In an effort to comply with these laws the Bailey County Commissioner's Court is now in the process of re-apportioning the County Commissioner's and justice precincts of Bailey County. Along with this re-definition of the election precincts will be necessary. "Election Precincts" should be thought of as being distinct from "commissioner's precincts". "Election precincts" are commonly known as "voting boxes."

As headed down by Legislation, with these procedures there are other requirements that must be observed, that are quite detailed and complicated. One example of this is observation of the Voting



HOT POTATOES.....This member of Defensa Inc. tries to keep his potatoes cool in the hot temperatures Friday. This man and about two dozen others dug this truck load of potatoes near Dimmitt. These potatoes are made available to

Locker Fatally Injured

Funeral services were held Friday, July 24 at 2 p.m. in the Muleshoe Church of Christ for Morgan D. Locker. Long-time Muleshoe resident and professional pilot, Locker and his companion were killed at approximately 3 p.m. Wednesday in the crash of a light aircraft here.

Locker was an examiner and was on a certification flight with a student identified as Captain Jerome Fulwider from Cannon Air Force Base.

Locker in his life time had successfully trained hundreds of pilots over a large area.

According to witnesses' observations, trouble was apparently encountered when the light plane, a low winged Moonie, lifted off the runway and drifted sidewise, smashing into trees which lined the southside of the Warren Field Airport. The plane exploded upon impact, trapping both men in the wreckage.

The FAA and the National Transportation and Safety Board are currently investigating the cause of the mishap.

Born in Oklahoma on June 30, 1920, the 61 year old Muleshoe resident had operated a flying service in the area for many years. Locker was a well-known figure in this area, having

moved to Muleshoe in 1925 from Duke, Oklahoma. He was married to Frieda Marie Martin on November 19, 1947.

An exceptional and respected professional pilot, Locker served his country in the United States Air Force during World War II and was also active in many phases of local events.

Locker is survived by his wife, Frieda; two sons, Don and Fred Locker of Muleshoe; and two daughters, Mrs. Gail Bruns of Muleshoe and Karen Locker of Gainsville, Florida. Other survivors include two brothers, Ernest Locker of Muleshoe and

Fred Locker of Bula, Texas.

Services were conducted by Rev. David Cox and interment was in Bailey County Memorial Park under the direction of Ellis Funeral Home.

The other man killed in the crash, Captain Jerome Fulwider, was connected with the Air Force Audit Agency.

He was a native of Selma, Alabama and is survived by his wife and two children. Memorial services will be held July 27 at 3 p.m. at Cannon Air Force Base with funeral services and burial later in Selma.



MORGAN D. LOCKER

Farmers Increasing Need For Chemical Defoliant

In their process of shortening the cotton season to complete harvesting before the late summer storms, Texas farmers are increasing their need for a chemical defoliant at harvest time, cotton specialists say.

"We want to get the cotton harvested as soon as possible," explains Dr. Robert Metzger, extension

Two Sentenced To Serve Time

Ronnie Ray Provens and Lynn Thompson were sentenced to serve time in the State Penitentiary in the 287 Judicial District Court this week. Judge Frank B. Kiser, Jr. of Levelland and the 286 Judicial District presided.

Provens pleaded guilty to entering the airport without consent while Thompson pleaded guilty to theft of 11 head of cattle.

Lynn Salazar also pleaded guilty to forgery and received four years probation. Court costs and restitution of \$75 were ordered.

Judge Kiser took the case of Richard Puckett under advisement and a verdict will be rendered at a later date pending further matters in the case. Puckett is charged with possession of a short barrel firearm.

Judge Jack Young exchanged duties with Judge

cotton specialist at Texas A&M University. "But, desiccants used to prepare the plants for harvest, such as paraquat or arsenic, require a 75 to 80 percent open boll count to be economically effective and also to prevent yield reduction."

To help beat the bad weather, Metzger says, growers can use a defoliant before the desiccant to hasten opening of the mature bolls. The defoliant should be applied when 60 percent of the bolls are open.

Weather conditions are important for this application, according to Doug Nail, Mobil Chemical Company's product manager for Folex defoliant.

"The ideal weather conditions for applying defoliants are warm and sunny days with night time temperatures above 65 degrees F" Nail told the Farm American News Service. "Average conditions--55 to 65 degrees-- may require a higher rate of defoliant for good results."

A desiccant is ensured better coverage on large plants when a defoliant is applied first. Once the desired defoliation has taken place, which may range from four to seven days, then a desiccant is applied.

Spray coverage is crucial with both defoliants and desiccants to get the full effect of the chemicals.

Experts recommend five gallons of spary per acre minimum for aerial application.

At least 15 gallons of spray per acre should be used with ground equipment, and up to 12 gallons by air or 30 gallons on the ground for a tall, rank crop. Large spray droplets help to get the defoliant down into the plants, where it can knock off the bottom leaves as well as the upper canopy.

One important rule of thumb Metzger stresses is: don't defoliate acreage faster than you can harvest it. "For example, you shouldn't defoliate 500 acres at one time if you have the capacity to harvest only 250 at any given time," Metzger points out.

If the harvest is delayed, Cont. Page 6, Col. 4

Amusement Group Here Next Week

The Jest Amusement Company will be bringing their carnival to Muleshoe once again this year. The carnival will be set up at the Boy Scout Grounds at the south end of Main Street.

The show, which features rides and concessions for all ages, will be in Muleshoe from July 27 through August 1. The Jest

Miss Kite, Straham Exchange Vows

Brenda Mae Kite and Gaylon Straham exchanged wedding vows in a double ring ceremony June 19 at the home of the bride's aunt and uncle, Mr. and Mrs. Charles Boyd of Amarillo. Glen Watson of North Amarillo Church of Christ united the couple in marriage.

Sally Brainard of Pampa was the maid of honor and

Kathy Taylor of Amarillo, sister of the bride, was the bridesmaid. Best man was Wade Wilson and groomsman was Brent Burrows, both of Amarillo.

The home was decorated in greenery and a candelabra and music was provided by Kathy Taylor. Miss Taylor and Miss Brainard wore pink floor length gowns and carried pink carnations.

The bride wore a formal gown of white organza over satin accented with chantilly lace and seed pearls featuring a Victorian neckline and empire waistline. She wore a fingertip veil of tulle and chantilly lace and carried a bouquet of white orchids.

A three-tiered white cake with miniature bride and groom on top and a chocolate groom's cake

were served to guests by Pam Ott of Lazbuddie.

The bride's traveling outfit was a silk dress highlighted with white orchids from her bridal bouquet.

The bride is the daughter of Mr. and Mrs. Robert Sailor of Pampa and Mr. and Mrs. Don Kite of Amarillo, while the groom is the son of Mr. and Mrs. Don Straham of Muleshoe.

After a wedding trip to Arkansas, the couple are at home in Rogers, Arkansas.

The bride is a 1978 graduate of Pampa High School and attended Texas Tech and West Texas State. The groom is a 1979 graduate of Muleshoe High School and employed by the Pontiac division in Rogers.

Reagan: seeks account of still missing Viet MIAs.



MR. AND MRS. GAYLON STRAHAM

EXPERT PROVIDES TIPS ON CHILDREN PICTURES

It doesn't take an expert or an expensive camera to take attractive pictures of your children, claims Doris Pinney, an internationally acclaimed professional photographer.

To prove her point, she recently put aside her professional equipment and spent some time using a Kodak Colorburst 350 instant camera. "I was delighted with the results," said Ms. Pinney. She advocates instant pictures "because children get excited when they see the pictures—adults too. It's instant gratification and a lot of fun for everyone."

"One of the secrets to

great pictures is to move in close," states Ms. Pinney. "Many people attempt to photograph their children at too great a distance, thus losing details." The Kodak Colorburst 350 instant camera solves that problem with two built-in lenses: a close-up lens that lets you get as close as two feet from your subject and a normal lens that lets you take pictures from four feet to infinity.

Here are some additional tips that Ms. Pinney offers to help you take great pictures of the youngsters.

Plan ahead. Captive subjects are much easier to shoot. For little babies, a

bathub or highchair are natural spots. A sandbox is great for pictures of the older kids.

Have your camera ready at all times. The built-in electronic flash on the Colorburst 350 instant camera makes spur-of-the-moment pictures a snap, indoors or outside on cloudy days.

Turn the camera for vertical or horizontal pictures—whichever fills the viewfinder best.

The girl who knows she's cute isn't as cute as she thinks she is.

Bailey County Journal USPS 480-200
 Established March 31, 1963. Published by Muleshoe Publishing Co., Inc. Every Sunday at 264 W. Second. Box 489, Muleshoe, Texas 79347. Second class postage paid at Muleshoe, Texas 79347.

MEMBER 1981
TEXAS PRESS ASSOCIATION

L.B. Hall - President
 James Woods - Vice President
 Shirley Estess - News
 Evelyn Harris - Society
 Holly Millup - Advertising
 Russi Bonnett - Bookkeeper

SUBSCRIPTIONS:
 Muleshoe Journal and Bailey County Journal
 Bailey and surrounding counties.....\$10.50
 Muleshoe Journal and Bailey County Journal
 Everywhere in Texas.....\$11.95
 Muleshoe Journal and Bailey County Journal
 Outside of Texas.....\$12.95
 Yearly by Carrier.....\$11.50
 Monthly by Carrier.....\$.95
 Advertising rate card on application.

American Life & Accident Insurance Company
 Cash, burial Cancer N S C A Group
 Hospitalization Life Insurance Specialist in the 100% Medicare Supplement

Robert Wilson
 Branch Office
 #7 Briercroft Ofc. Park
 Suite 110 Phone 806 765-8985
 Lubbock, Texas 79412

Local
 Box 431 Phone 272-4069
 Muleshoe, Texas 79347

Fry & Cox Inc. 481 S. 1st 272-4311

20" ROTARY MOWER
 135.99

"WHERE YOU ALWAYS BUY THE BEST FOR LESS"

GIBSON'S

We Will Be Closed Wednesday To Take Further Markdowns!

Open 10-7 Mon.-Sat. 1-6 Sunday

Final Markdowns Now In Progress In All Depts.

Customer Appreciation Drawing!
Come In & Register For \$100 Worth Of FREE Merchandise (of your choice). Drawing Will Be Held July 31 at 5p.m. You Need Not Be Present To Win, No Purchase Necessary & You May Register As Often As You Like!

Must Be 18 Years of Age or Older!

Auto Dept. 30% Off	Cameras . Film . Radios . Calculators 30% Off
Entire Stock Hardware 30% Off	Seasonal 30% Off
Back to School Savings • Ladies • Mens • Childrens • Domestic • Shoes & Boots Final Mark Down On Entire Clothing Dept. 40-50-70% Off	Entire Stock Paint 40% Off

Going Out Of Business Sale

All Sales Final

. No Phone Calls . No Layaways . No Exchanges

Special - Special <h1 style="font-size: 2em;">50% off</h1> Regular Price Air Filters Gas & Oil Filters	<h2 style="font-size: 1.5em;">Toys</h2> <h1 style="font-size: 2em;">40% off</h1> Christmas Specials Buy Early
Final Markdown! Sporting Goods <h1 style="font-size: 2em;">30% off</h1>	Special Grab Tables <h1 style="font-size: 2em;">50-75% Off</h1>
Housewares <h1 style="font-size: 2em;">30% off</h1>	Stationary <h1 style="font-size: 2em;">20% Off</h1>
<h2 style="font-size: 1.5em;">Fight Inflation... With These Quitting Business</h2>	
Watches, Jewelry & Sunglasses <h1 style="font-size: 2em;">30% off</h1>	



Double Ring Ceremony Unites Martin, McFarland



MISS MITZI MARDIS

Miss Mardis Feted With Bridal Shower

Mitzi Mardis, bride-elect of Brad Morrison, was honored with a wedding shower Sunday at the First Assembly of God Fellowship Hall.

Guests were greeted by Miss Mardis, Lucy Mardis and Joyce Morrison and registered by Sharla Morrison.

An apricot bouquet highlighted the table with thumbprint cookies with apricot and beige centers.

Special guests were Mrs. E.W. Morrison of Clarendon, grandmother to the

groom and Carolyn Clark and Debbie Morrison of Amarillo, aunts of the groom.

The hostess gift was a cooker, toaster and stone-ware dishes.

Hostesses were: Bobby Dunham, Pat Prater, Norma Prather, Alma Crim, Gladys Myers, Theresa Jones, Joyce Scott, Pat Gunter, Pat Watson, Mary Alice Ramm, Ruby Henderson, Bobbie Harrison, Mary Brantley, Sheryl Morris, Darlene Henry and Debbie Kemp.



MR. AND MRS. LONNIE CHRISTIAN MCFARLAND

Yalonda Gale Martin and Lonnie Christian McFarland were united in marriage in the Oklahoma Lane Baptist Church, July 11, at 5:00 p.m. Rev. Gene H. Davis, uncle of the bride, performed the double ring ceremony.

Lisa McClenney of Plainview and Mack McFarland, brother of the groom were honor attendants.

The bride selected a street length dress of eyelot with a squared neck and puffed sleeves. The dress was trimmed in insert lace and peach ribbon which matched her bouquet of peach and brown tone silk flowers. The flowers were carried atop a Bible.

A peach street length silk dress was worn by the maid of honor, who carried a bouquet of peach silk flowers.

Miss Martin is the daughter of Mr. and Mrs. Bill Martin of Lariat, while McFarland is the son of Mr. and Mrs. John McFarland also of Lariat.

A two layer white cake with peach rose buds graced the reception table which was highlighted with a centerpiece of the brides chosen colors. Leslie Hughes and Clair Brown, sisters of the groom served the guests.



ENGAGEMENT ANNOUNCED.....Mr. and Mrs. Lloyd Throckmorton announce the engagement and approaching marriage of their daughter, Danita, to Tom Fischback, son of Mr. and Mrs. John Fischback of St. Paul, Minnesota. Danita is a graduate of Muleshoe High School and a 1980 graduate of Southwestern University in Weatherford, Oklahoma. The wedding will be September 12 at the 16th and Ave. D Church of Christ in Muleshoe.

ters of the groom served the guests.

A Farwell High School and West Texas State graduate, the bride is employed by Shirley Anderson Elevator in Lariat where the groom is the manager. He is a graduate of Farwell and South Plains College.

Woman prays for jackpot, wins \$2.8 million in Lotto.

Nutrition And You

AGING

Right now 80% of all Americans can expect to live to be 70 or older. Nutrition can't be expected to hold back the aging process, but it has an important role to play in extending the quality of life.

Many of the common complaints of old age have roots in poor nutrition. Some people argue that you just can't expect to

Dr. Scala feel terrific after a certain age. That's not true, however, according to Dr. James Scala, noted authority on nutrition and vice president for Science and Technology at Shaklee Corporation. "There is mounting evidence that many vague physical complaints may be the result of poor diet. And the elderly are among those Americans whose diets are at greatest risk, as indicated by many government surveys."

As people age, metabolism slows down so that fewer calories are needed. But there is no parallel decrease in the need for vitamins and minerals. In fact, some nutritionists think that the need for some nutrients may increase.



Dr. Michael A. Rowley,
M.D.
Diplomat
American Board Of Radiology
Announces
The Opening Of His Practice
In
Diagnostic Radiology
All Examinations Will Be
Done At
Clovis High Plains Hospital

Entire Stock
Hardware
30% Off
During Gibsons
Quitting Business Sale

Going Out of Business
Sale
Everything
35% Off
Includes Seasonal
Items
Store Fixtures Also
For Sale
Imagination Plus
Tradewinds Plaza
Muleshoe, Texas



ENGAGEMENT ANNOUNCED.....Mr. and Mrs. Raymond Hall of Hartley wish to announce the engagement and approaching marriage of their daughter, Carmelita to Eddie Gage, son of Mr. and Mrs. Bob Gage of Muleshoe. An August 1 wedding is planned in the Hartley United Methodist Church. The bride-elect graduated from Hartley High School in 1977 and is a recent graduate in marketing from West Texas State. She is presently working toward a master's degree in business administration and serves as assistant to the dean of education. The prospective bridegroom graduated from Hereford High School and received his bachelor of science degree from WT. Gage is presently working on a master's degree in education and is employed by the Canyon Independent School District.



Americans spend about 35% of their total food dollar on eating out.

1/2 Price Sale
Continues
On Spring & Summer
Merchandise
Albertson's Shop For Men

Tips On Toys
Helpful Hints for Fun,
Safety and Economy
TESTS FOR TOYS
Now that large numbers of toys are being bought year-round, parents, friends and relatives of young people are increasingly interested in the many measures taken to make sure toys sold today are safe.

GET BACK TO BASICS!
Follow The Diet Center Program Exactly
Just ask Gene Fitzke...
HE LOST 210 POUNDS
IN JUST 11½ MONTHS
"The Diet Center probably saved my life and added a whole new outlook on living! By following this marvelous program, I lost 210 pounds and over 200 measured inches in just 11½ months!"
DIET CENTER
The Natural Way
To Lose Weight!
"HOW TO WIN AT THE LOSING GAME"
DIET CENTER INC.
Tradewinds Plaza
8-5

Miss Trujillo, Tucker United In Livingston

Miss Dana Quay Trujillo, daughter of Mr. and Mrs. Bob R. Belt of Livingston, and Kevin Edward Tucker, son of Edna Black of Muleshoe, were united in marriage by the Rev. Mark Lewis, pastor, in a ceremony at 3 p.m. June 27 in the sanctuary of the First United Methodist Church in Livingston.

Special nuptial music was "The Wedding Song,"

sung by Mrs. Marcus Payne of Huntsville, vocalist. Mrs. Leon Fowler of Woodville provided organ music. Both are cousins of the bride.

The bride, given in marriage by her father, wore a designer gown of white silken organza and imported Alencon lace. The lace adorned the bodice, with scattered bridal pearls, a lace wedding band collar,

sheer yoke and full bishop sleeves, accented with motifs of the lace. From the slightly lifted waistline of the gown a softly full skirt was accented with Alencon lace around the hemline and swept into a chapel-length train. The bride wore a veil edged with Alencon lace. To complete her attire, the bride wore a gold heirloom family bracelet and carried a bouquet of bridal rosebuds and Bells-of-Ireland.

The maid of honor was Miss Darla Belt, sister of the bride. She wore a floor-length gown of pink organza fashioned with a cape of pink lace. She carried a bouquet of lilies in burgandy and pink.

Vance Tucker of Houston was his brother's best man. Robert Belt, brother of the bride, was usher.

Members of the house-party included Miss Debra Trujillo of Austin, Mrs. Mark Sales, Miss Cheryl Cortez, Miss Cindy Shields of Houston, Miss Jill Hopson of Huntsville, Miss Shelly Rawls of Mesquite and Miss Nanette Chachers of Dayton.

The mother of the bride wore a floor-length mauve chiffon gown and the bridegroom's mother wore a floor-length yellow silesta knit gown.



MRS. KEVIN EDWARD TUCKER
(nee Miss Dana Quay Trujillo)



Leslie Ann Moraw

Leslie Ann Moraw was born to Mr. and Mrs. Charles Moraw at 4:10 a.m. Sunday, July 19. Leslie weighed seven pounds eight ounces and has a sister who is two years old.

Grandparents are Mr. and Mrs. T.L. Kelley of Lubbock and Mr. and Mrs. Rudolph Moraw of Muleshoe.

Great grandparents are Mr. and Mrs. George E. Morris of London England.

Kyle Wayne Mayfield

Mr. and Mrs. Bruce Mayfield are the proud parents of a six pound, 15 ounce baby boy born Sunday, July 19, at 8:26 a.m. He has been named Kyle Wayne Mayfield.

Grandparents are Mr. and Mrs. Billy Mayfield of Farwell and Mr. and Mrs. Chuck Studer of Clovis.

Great grandparents are Mr. and Mrs. Frank Mayfield of Plainview, Mr. and Mrs. John Cherry of Pennsylvania and Mr. and Mrs. Tony Holmburg of Clovis.

Tiffanie D'Anne Kittrell

Tiffanie D'Ann Kittrell was born to Mr. and Mrs. Kenny Kittrell on Monday, July 20, at 5:23 p.m. She weighed nine pounds.

Grandparents are Mr. and Mrs. Buster Kittrell and Rev. and Mrs. H.D. Hunter, all of Muleshoe.

Great grandparents are Thelma Kittrell of Farwell, Mr. and Mrs. S.E. Simpson of Clovis, and Mr. and Mrs. Hoke Hunter of Tyler.

WOTS

Weekly Meeting

W.O.T.S. (Women of Talk Station) met Thursday, July 23 at Tri-County Community Room for their weekly covered dish luncheon, with Zellma Toler and Ruth Simpson as the hos-

esses.

The dessert table featured blue appointments along with a birthday cake in honor of Eva Cruz's birthday. She was presented a bud vase and card by the group.

The next luncheon will be at the XIT Restaurant at 11:30 a.m. on July 30.

The August 6 meeting will be at Tri-County Savings and Loan with Lois

Martinez and Millie Mitchell as the hostesses.

Members present were: Millie Mitchell, Zellma Toler, Lois Martinec, Ruth Simpson, Jerri, Kristi and Jackie Chapman, Gina Carney, Paula Carney and Amber and Rhonda Carney and family and Doris Fichtmaster.

Guests were: Mary Jo Lemon and Beth Cortes.

Special Grab Tables
50 TO 75% Off
During Gibsons
Quitting Business Sale

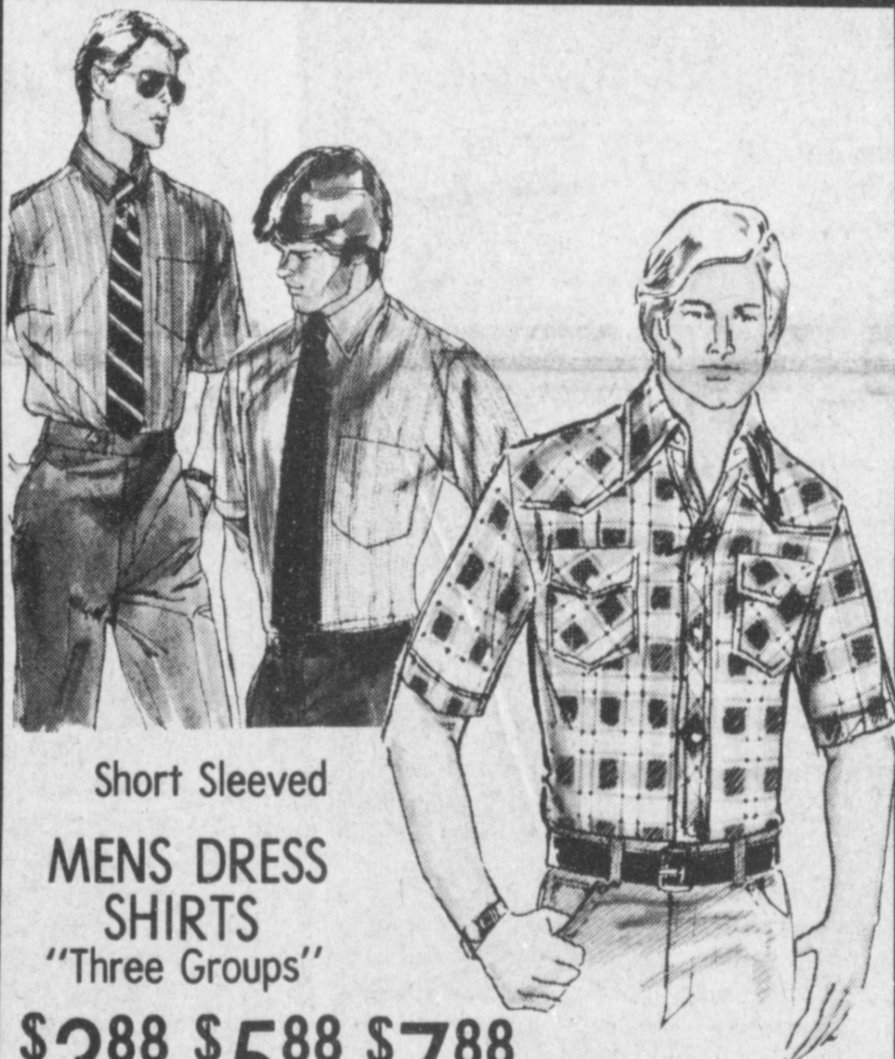
Expressions Of Love
Bridal Selections For
Melinda Morrison
Bride Elect Of
Brent Burrows
Open 10-5:30 Mon. - Sat.
Expressions
272-5393

321 MAIN
MULESHOE

Anthony's
C. R. ANTHONY CO.

OPEN
9 to 6

SALE-A-THON



Short Sleeved
MENS DRESS SHIRTS
"Three Groups"
\$388 \$588 \$788

Short Sleeve
MENS WESTERN SHIRTS
Reg. \$8⁹⁹ & \$9⁹⁹ **\$6⁸⁸**



Three Price Groups • Large Selections
JUNIOR COOL FASHION TOPS
Group I **\$788** Group II **\$988** Group III **\$1288**

Farmer Grain Hedging Seminar

High Plains Commodities Invites You To Attend
Their Farmer Grain Hedging & Marketing Seminar

Date: Thursday, July 30, 1981
Place: XIT Restaurant . . .
Calf Fries & Shrimp Appetizers
Time: 7:00 P.M. Door Prizes

Mr. Alvin Fischbach, Director Of Grain Hedging For Stotler & Co., Chicago, Illinois Will Conduct This Seminar Which Is Educational And We Believe It Will Prove Beneficial To Both The Beginning And Experienced Farmer Hedger In The Marketing Of Their Grains.

Bring Your Associate And Plan To Attend

HIGH PLAINS COMMODITIES
115 E. AVE. D
MULESHOE, TEXAS

Spring And Summer

FABRIC CLEARANCE

Giant Group Just Reduced
ASSORTED WOVENS AND KNIT FABRICS

\$1 YARD

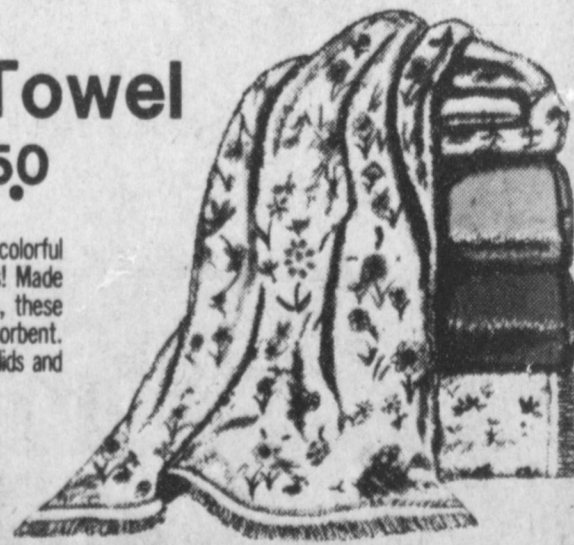
Fantastic Buys
WOW!
Shop Early
For Best
Selection



Bath Towel

2 for 3⁵⁰

Accent your bath with colorful first quality bath towels! Made especially for Anthony's, these towels are thick and absorbent. Choose from assorted solids and prints, reg. 1.99 each.



Special Group • Clearance
LADIES SPRING & SUMMER SANDALS & DRESS SHOES
Reg. \$18⁹⁹

\$5



Redistricting...

Cont. From Page 1

"As a basis for re-apportionment, the Court must use the official 1980 Census count. Those figures, by enumeration districts, must be transposed to county and city maps showing the population as it presently exists in each precinct," said Williams. "Also, the maps must be defined so as to show the area concentration of minority population in brackets of 80 percent from 60-80 percent, from 50-60 percent, and from 30-50 percent."

"The Court is not supposed to re-apportion, that is to re-draw precinct lines, in a way deliberately designed to dilute minority voting strength," explained Williams.

According to the law, commissioner's precincts must be contiguous and reasonably well shaped so as to be workable. Along with equalization of population, the Court may consider such things as tax values, miles of road, and convenience. The basic objective is to equalize population and no other consideration may over-ride that.

"If a commissioner's precinct can feasibly be designed with as much as 65 percent minority population, then the Court must either do so or show good and justifiable reasons for not doing it," said the judge.

In Bailey County the justice precincts will be co-extensive with Commissioner's Precincts. But in Justice Precincts, a population balance is not as important, because justices of the peace do not sit as representatives on a governing board as do county commissioner. "Election precincts, or 'voting boxes' as they are commonly called, are created within commissioner's precincts, and for obvious reasons they cannot be overlapping precinct lines," he stated.

Law requires that information be given to the public regarding the re-apportionment procedure; and, the public must be invited to participate.

es" he stated. Law requires that information be given to the public regarding the re-apportionment procedure; and, the public must be invited to participate.

"A public meeting has called for Tuesday, July

28, in the district courtroom" according to Williams, "and, in the meantime a group of local citizens has met with the Court to assist and offer suggestions. Records of all publicity given, Commissioner's Court orders, public notices, names of participants, maps and other data are being kept and will be assembled for submission to the Department of Justice in Washington," he said.

In due course of law, procedures and the final re-districting plan must be approved by the Department of Justice before it becomes official. This applies to election and justice precincts as well as commissioner's precincts. The final date for approval is November 30, 1981.

According to law, Bailey County was re-apportioned in 1970; and it was the intent of the Court to re-apportion again after the 1980 census. But in 1978 a class action suit was filed in Federal Court in Lubbock by Alberto Daniel of Muleshoe for immediate re-apportionment. That case was settled by an agreed judgment on March 31, 1980. Under the judgment the Court agreed to re-apportion again following the 1980 General Election after the 1980 census was completed. Also under terms of the judgment, a certain area presently situated in Precinct #1 is to be transferred to Precinct #4. That embraces the area from the center of Birch Street south in the Lenau Addition and the area lying west of Highway 214 north of the railroad, extending to the XII Drive-In Theater and west to the cotton compress.

Therefore, according to Judge Williams, the work is well underway and will, hopefully, be completed by the end of July. The commissioners have made house and head counts of all people within the county. "The minority population, blacks, hispanics, have been identified so re-drawing the precinct lines should be relatively simple. The rural population should not be disturbed as all changes will probably be made within the city limits," he adds.

According to the census count, Bailey County has a total population of 8,168. Of these, 2,770 are listed as being of Spanish origin. There are 181 blacks, five Indians and nine Asians.



SOUTHERN REGIONAL QUALIFIER....Kristi Spies, daughter of Mr. and Mrs. Ronnie Spies of Muleshoe placed 3rd in State 4-H Reining Competition. Kristi will advance to Southern Regional in Baton Rouge, La. on August 13-15.



HALTER GELDING WINNER....Kim Farmer, daughter of Mr. and Mrs. Charles Farmer of Muleshoe, placed 3rd in halter at the State 4-H Horse Show in Waco last week. She competed in the 4 and under division as well as Western Pleasure.

Three Way Girl In Workshop

Belinda Wheeler of Muleshoe is currently attending a two-week summer theatre workshop in Nacogdoches, Texas conducted by the Theatre Department of Stephen F. Austin State University.

Students are spending the two weeks working in various areas of the theatre arts such as acting, directing, prose and poetry

Muleshoe...

Cont. From Page 1

Rangel is a Morse systems operator at San Vito dei Normanni Air Station, Italy, with the 6917th Electronic Security Group.

His wife, Kathleen is the daughter of Mr. and Mrs. Frank Gonzales of Amherst.

The airman is a 1978 graduate of Muleshoe High School.

Hance...

Cont. From Page 1

McCluskey, all of Lubbock, are co-chairmen of the event.

Open to everyone, the dinner will begin at 8 p.m. Tuesday, August 4 in the Lubbock Memorial Civic Center. For further information or reservations, which must be in by July 29, call 793-8826 in Lubbock, or write P.O. Box 1, Lubbock, Texas 79408.

Marketing Options For Cotton Grower

Faced with a record world cotton crop and a lackluster demand for their product, cotton growers need to map out a sound marketing strategy, a key part of this strategy is keeping a close eye on the market itself.

Dr. Carl Anderson, marketing economist with the Texas Agricultural Extension Service, Texas A&M University System, suggests a number of marketing options for cotton producers:

--Establish a selling price by forward contracting or hedging in the futures market and arrange delivery at some future date.

--Sell at harvest.

--Hold and sell later.

--Place cotton under the Commodity Credit Corporation loan program and hope the price will go up.

"Growers can develop a 'feel' for the cotton market by watching daily and weekly reports on prices and worldwide production and use," says the economist. "Bumper 1980 crops in Russia and China have burdened the market, and U.S. prices have fallen about \$35 per bale since January," according to Anderson,

two developments will bear heavily on the cotton market for the season ahead -- low carryover stocks and export demand.

"During the summer, the market will move up and down between low supplies and good and bad reports on crop conditions," says Anderson. "A decline in interest rates might also give the market a boost."

Periods of market strength may offer an opportunity to forward-price some cotton between now and the time harvest gets into full swing, he adds.

"Export demand will be the main factor influencing cotton prices this fall and winter," believes Anderson. "The growing importance of exports to disappearance of U.S. cotton suggests even more price uncertainty than in the past, 'export demand is subject not only to the uncertainty of foreign production but also to political disruptions.'"

Any major change in the cotton market will likely stem from a change in exports from current projections of about 7 million bales, notes the economist.

If the new U.S. crop turns out about 13.5 to 14 million bales, market prices will likely go up or down as exports go above or below the 7-million-bale figure.

"Historically, when cotton supplies improve as it appears they will in 1981--the market usually remains weak. However, the worldwide supply-demand balance is expected to remain tight. So watch for a time when the market is on the upswing to 'set' your price," Anderson advises growers. "With the high cost of holding cotton, timing your sale is more important than ever."

Tri State Fair Judges Selected

Final selection of judges for the various livestock events at the 1981 Tri State Fair has been completed. Lynn Griffin, Fair Manager, has announced the names of the judges, who represent 7 states. Vance Uden of Franklin, Nebraska, will judge the Angus and Shorthorn Cattle Shows. Hereford Cattle will be judged by Miles McKee of Manhattan, Kansas. Mr. McKee, who is with the Department of Animal Science at Kansas State University, will also judge cattle in the Simmental Show. Bobby Lee of Wilson, Texas, will judge the Barrow Show, and Joe. E. Wise of Lamesa, Texas, will judge

the lambs. Clinton Bippert, C.E.A., will place winners in the Capon Show, and James Stanley, Sr. will come from Dalton, Georgia, to judge the Bantams. Ernie Parks of Peoria, Arizona, will judge the Rabbit Show. The Appaloosa Show will be judged by Sarah Runyon of Jefferson City, Missouri. Mrs. Leny J. Williams of Gila Bend, Arizona, will place the Arabian Horses. Paint horses will be judged by Dr. Bill Jackson of Stephenville, Texas. The Cutting and

**** The world might be a great deal better if some people were not so anxious to prevent anyone else from succeeding.

Quarter Horse Shows will be judged by Don Dodge of Scottsdale, Arizona, and Jack Rydberg, Wiley, Colorado.

ON SOCIAL SECURITY

The 36 million Americans drawing Social Security found an 11.2 percent boost in the benefit checks. But the elderly also will have to start paying higher premiums this month for their supplementary medical insurance.

ON RULING

More prime time television shows are likely to be supplanted by campaign pitches as a result of a Supreme Court decision that expands the right of federal candidates to buy time for their paid political advertisements.

Fall, Fall, Fall

Get your figure in shape

for the fall activities,

Football & Holiday Seasons

Beverly's new Fall wardrobe is all size 10. She has thrown her old 18s away... forever!

Pat Walker's has changed my life. I've learned so much about nutrition, my metabolism and combining foods properly for permanent weight loss. The Pat Walker's Symmetricon unit has gently shaped my body with results unlike those I used to achieve with strenuous exercise. I'll never forget my husband's jokes about those "muscles".

This time I don't have muscles and firm fat. I have firm tissue with no excess fat because... Pat Walker's gets rid of fat. Thank you Pat Walker's!

BEVERLY WOODY GRAHAM, TEXAS

BEING A TEN does make a difference, even if it's only in dress sizes. The difference? Over and above a size 18... it's healthier, building of esteem and it makes a difference in availability of assortment when shopping for clothing, whether one piece or a wardrobe.

IF "THE PROBLEM" is yours we'll let you share it with us. "THOSE PROBLEMS" are ours at Pat Walker's; pure and simple, we know how to deal with them through confidential professional counselling and the use of our exclusive Symmetricon passive exercise unit.



TODAY AFTER PAT WALKER'S



BEFORE PAT WALKER'S



NO TENT, JUST LAST SUMMER'S SHORTS

Now's the time to take advantage of our 20% savings on a total figure correction program. For that new Fall Wardrobe.

CALL TODAY for a no-obligation appointment for analysis of your figure and free courtesy treatment. We'll design an individualized program just for you, tell you how long it will take and its cost on a per treatment basis of just \$5.00.

20% Savings thru July only

Pat Walkers

119 Ave C

Pat Walker's
Figure Perfection Salons
International

Gibsons Quitting Business Sale

Auto. Dept.

30% off

EXTRA SPECIAL, SPECIAL
Five Point

DOG FOOD

50 LB BAG 25 LB BAG

9³⁶ 5¹

A&M

Alert
Cat Food
3⁴⁵





The Consumer Alert

by Mark White
Attorney General

AUSTIN—On the 24th of May 1981, the City of Austin, Texas received heavy rains which caused some severe flooding along one of its major streets. In this area were at least four new car dealers who experienced severe flood damage to their new cars. Over 300 Volkswagen, Ford, Plymouth, Chrysler, and Toyota cars were involved.

As usually occurs when such things happen, the automobile dealers sold these cars to their insurance companies to be

resold to salvage dealers for parts and scrap. However, problems may exist for unwary consumers if these cars are sold to used car dealers for resale.

Often these cars are ir-repairable, yet they may be cleaned up and made to appear sound and offered for sale at "fantastic" bargains either as new or used cars. These cars can be spruced up to look and run satisfactorily for a while, but problems may develop after about six months, including cor-

roded wiring leading to electrical problems, rust on the body, mildewed carpet and seats, and transmission and/or engine problems.

In order to protect yourself when purchasing a car you suspect of having been flooded, here are a few suggestions to follow when checking the car:

- 1) Check trunk around tail lights for mud.
- 2) Look inside door panels for straw and mud.
- 3) Look for sill line on radiator.
- 4) Run finger under dash for sand or sludge.
- 5) Check under carpet in car and trunk for silt and debris.
- 6) Look for a milky finish on interior vinyl.
- 7) Test all electrical components, such as turn signals and windshield wipers.
- 8) Inspect dashboard gauges and dials for evidence of water.
- 9) Check for corrosion and rusting underneath the car's hood, bumpers, and body.
- 10) Examine the interior of the

automobile, including the trunk. Remove the rear seat to check for musty odors, and water marks on stuffing and upholstery.

11) Be watchful for white smoke being emitted from the exhaust pipe. This may be an indication that the engine has recently been cleaned out, an unusual practice ordinarily employed only when something is seriously wrong.

12) Most of all, do business with a responsible dealer. He will not attempt to sell a flood damaged automobile without disclosing its condition.

13) Beware of a much lower price on a new car than the going price.

14) Check the title - If it's a "duplicate original" it may be that the car was salvaged and a duplicate title applied for to hide that information. Do a title search for your own information.

or if the warranty has been canceled because the car was flooded.

Has A Point
Professor: Can you tell me something about the word "statistics?"

Sophomore: Well, they're something like a Bikini-what they reveal is interesting, but what they conceal is vital.

Enrollment continues to rise in engineering and business areas

COLLEGE STATION — College students will be flocking to engineering and business programs in the fall as those areas continue to experience the greatest enrollment

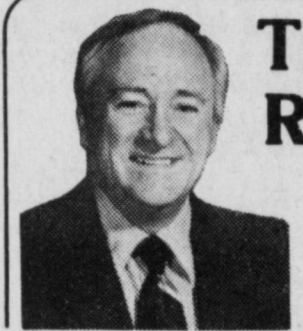
growth, report Texas A&M University officials.

Dr. Bill Lay, director of admissions, said requests for admissions in engineering are up more than 15 percent and applications for business administration also are up.

Dr. Robert Hill, a Texas A&M business analyst, said nearly half of the new students entering state universities dur-

ing the next decade will be business students. The total number of business students at Texas colleges and universities is projected to increase this decade by 9,104 — from an estimated 71,187 in fall 1981 to 80,291 in 1990, he said.

Amtrak survives with a little help.



The Speaker Reports

by Bill Clayton

AUSTIN—The state's executive and administrative departments and agencies received a great deal of attention in the state budget for the next two years.

The Department of Corrections received funding in the amount of \$134.8 million for the biennium for construction of additional cell or bed space for housing inmates, plus an additional \$10 million appropriated for unforeseen developments relating to the federal court order. Other funding increases to the Department of Corrections include additional funding for the medical program, \$500,000 for contract treatment for substance abuse, \$11.8 million for operation of the prison units funded by emergency appropriation, and \$5 million for construction of agricultural facilities.

Contingency funding is provided to the Board of Pardons and Paroles in the amount of \$19.5 million for the biennium for placement of additional parolees in halfway house programs.

Contingency funding is provided to the Adult Probation Commission in the amount of \$5.8 million for diversion of commitments to the Department of Corrections into a program of intensive supervision.

Increased funding of \$25.3 million over the amounts recommended by the Legislative Budget Board went to the Comptroller of Public Accounts to provide additional personnel for enforcement and audit functions and associated equipment.

Funding of \$20.06 million for increased benefits to annuitants of the Employees Retirement System was approved.

Funding of \$42 million to the State Purchasing and General Services Commission was granted to construct the Human Services Center to house human services agencies; \$25 million to construct the William B. Travis State Office Building; and \$2.3 million for repair and renovation projects.

The Department of Public Safety received funding for 20 additional highway pa-

trolemen, 20 additional narcotics agents, 10 additional license and weight officers, and for an additional one-step salary increase for law enforcement personnel in 1983.

Funding of \$6.4 million was appropriated to the Department of Water Resources for hazardous waste disposal.

These were among the significant increases or changes in funding to the agencies. They were made with the idea in mind that the state receive fair value for its expenditures and because they are necessary to our continued system of government.

HERE'S A UNIQUE OPPORTUNITY IN MULESHOE, TEXAS

Start your own business—as the owner/operator of a Montgomery Ward Catalog Sales Agency, and have a trusted 109 year reputation the first day.

We're looking for Sales Agents—ambitious, hardworking individuals with an urge to break out on their own. And, we may have just what you're looking for.

Our unique Sales Agency Store program offers an exciting opportunity to operate a business of your own with a small investment, and also gives you the opportunity to take advantage of the excellent we've already made, as well as over a century of Catalog business experience. Once you become a Sales Agent, you can use Ward's name, catalogs and credit. Sell our branded merchandise with over 100,000 items, and have access to the same systems, concepts and materials we use to operate our company-owned stores. Best of all, your investment will probably be considerably less than would be required for a regular retail business with similar sales volume.

If you are willing to accept responsibility in return for a future in your own business, we'd like to talk about your personal qualifications, and give you more details about our plan. Write or phone today.

Joe Belden
1902 W. Michigan
Midland, Tx.
915-683-1595

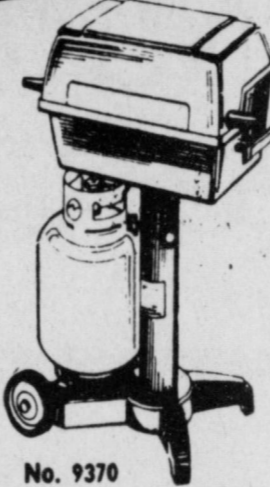


WHAT A SALE

STRUCTO GAS GRILL WITH ELECTRIC STARTER

STRUCTO DOUBLE BURNER OUTDOOR GAS GRILL

For those who love all-season outdoor cooking, Structo makes this deluxe cast aluminum grill with double burner (separate controls). Side handle for easy mobility. 20-lb. LP gas cylinder (included) attaches to grill. 24.5 sq. in. cooking grid. (Black)



No. 9370

REG. 151.75
SPECIAL... **134⁹⁵**



ILLUSIONS 1-6478

Mens 10-speed
Tires: 26" x 1-3/8"
Frame: 22"

9:00 AM SALE PRICE

10% OFF

10:00 AM SALE PRICE

20% OFF

12:00 AM SALE PRICE

30% OFF

2:00 PM SALE PRICE

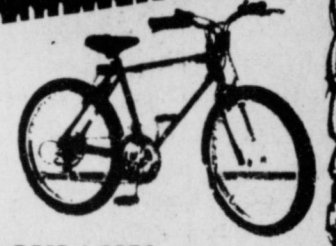
40% OFF

3:00 PM SALE PRICE

45% OFF

4:00 PM SALE PRICE

50% OFF



BAJA 1-9576

Mens 24" 10 speed w/caliper brak
Tires: 24" x 1.125" knobbies
Frame: 18"

Murray Bicycle Close Out Sale

Subject To Stock On Hand No Rainchecks

HOURLY DISCOUNTS UNTIL THEY ARE GONE!

10:00 AM SALE PRICE 10% OFF
11:00 AM SALE PRICE 20% OFF
12:00 AM SALE PRICE 30% OFF
1:00 PM SALE PRICE 35% OFF
2:00 PM SALE PRICE 40% OFF
3:00 PM SALE PRICE 45% OFF
4:00 PM SALE PRICE 50% OFF



BMX 1-5330

Brakes: caliper w/new brake levers
Tires: 20" x 2.125" knobbies
Stern, topbar and handlebar pads

PHOENIX 1-6573

Ladies 10-speed
Tires: 26" x 1-3/8" Tanwalls
Frame: 19"

PHOENIX 1-6472

Mens 10 speed
Tires: 26" x 1-3/8" Tanwalls
Frame: 22"

The Most Advanced Gasoline-Powered String Trimmer Ever Made

The ST-100 is an unqualified hit. Within the year since we introduced it, the ST-100 has made Homelite the undisputed "King of the Jungle!"

And because it is gasoline-powered, its range and maneuverability are virtually unlimited. The ST-100 trims farther out than an electric trimmer can reach... closer in than a lawnmower can go.

No other trimmer, gas or electric, can pack all these innovative features into such a rugged, powerful package - and bring it all in at a shade over 7 lbs.

The ST-100 comes fully assembled and ready to go to work. Its light weight and superb balance make it one of the few yard tools a lady can love.

EXCLUSIVE IDEALINE - THE WORLD'S MOST ADVANCED STRING ADVANCING SYSTEM.

A major breakthrough in automatic string advancing systems, Homelite's Idealine is also the easiest to use. It's the only one that eliminates the need for the thumbing, bumping, pushing or prying that puts such a strain on other trimmers... and their operators.

When you need more string, simply squeeze and release the trigger slowly a few times... and you're go!

2 1/2" CUTTING PATH.

The ST-100 cuts the widest swath of any trimmer you can buy. Its heavy-duty .065" cutting string, supplied on a convenient easy-replacement spool, easily makes short work of tall weeds and grass.

POWERFUL 2 1/2 CC 4-CYCLE ENGINE.

Homelite pioneered the versatile 4-cycle gasoline engine back in 1921. Today, the same rugged dependability that powers our chain saws is yours in the ST-100. **DIRECT DRIVE FOR MAXIMUM USEABLE POWER.**

With the engine mounted directly on top of the cutting head, every ounce of the ST-100's power is put to work cutting or trimming.

EVEN MORE FEATURES THAT NO OTHER TRIMMER IN ITS CLASS CAN OFFER!

Solid State Ignition provides dependable starting, and longer spark plug life. Fully adjustable head grip lets you set the ST-100's balance to suit yourself. Combination fuel tank-handle not only saves weight, it gives the ST-100 even better balance, as well.

Free-standing design is also unique to the ST-100. Makes refueling easier. Handle hook for easy storage.

Throttle lock for easier starting.

3-chambered softener muffler, another Homelite innovation, directs engine noise down into the ground for quieter operation.

WHEN A TOOL IS THIS FAR AHEAD, YOU CAN BET HOMELITE TECHNOLOGY IS BEHIND IT!

THE HOMELITE ST-100 GAS TRIMMER



119⁹⁵

Don't Let Bugs Take A Bite Out Of Your Profit This Year!

"M" Services

Entomological Services For The Concerned Farmer

Spot Checks

Scouting For All Crops

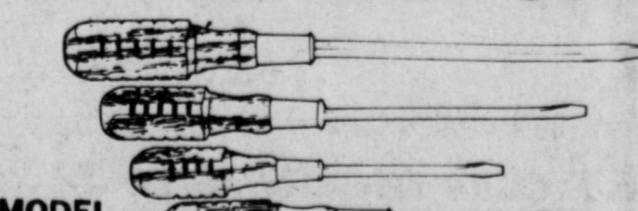
Five Years Experience In This Area

Member Of The American Registry Of Professional Entomologists.

Rick Mack
Home: 792-1404

Office:
ph. 667-2245

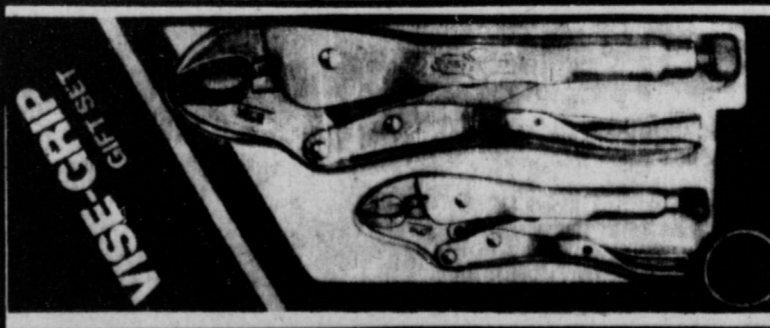
7 Piece Set Screwdriver Set



MODEL SW 7

3⁹⁵

Assorted shank lengths, heads and size tapers. Drop forged tempered steel shanks with sure grip wood handles. This popular set includes: 5 slotted points 3/16" x 2", 3/16" x 4", 1/4" x 4", 1/4" x 6", 5/16" x 8", plus Phillips head screwdrivers: #1 point x 3" and #2 point x 4"



Vice Grip GIFT SET

Special Sale Price **8⁹⁵**

4 Pc. Ball Pein Set

8-12-16 and 24-ounce ball pein hammers. Shock absorbing fiberglass handles with rubber grip. Polished steel heads are epoxy bonded to handle. Fully beveled crown.

MODEL BHS 4 Regular **23.50**

18⁹⁵

A&M FARM & RANCH SUPPLY

3 CONVENIENT LOCATIONS
1601 S. Ave. D - Portales
2600 E. Mabry Drive - Clovis
1302 W. American Blvd. - Muleshoe

H.H. Snow Services Here

Funeral services for H.H. Snow, 88, of Muleshoe were scheduled for 2 p.m. Sunday at the Muleshoe First United Methodist Church with Rev. Bill Kent, pastor, officiating. Mr. Snow died at 6:22 p.m. Thursday at the Muleshoe Nursing Home. Mr. Snow was born March 18, 1893 in Gatesville, Texas. He married Juanita Parker December 23, 1921 in Eastland, Texas. Mr. Snow operated the



H.H. SNOW

Kube Services Held In Lariat

Funeral services for Rudolph Frederick Kube, 70, of the Lariat Community, were held Friday at 2:30 p.m. at the St. John's Lutheran Church of Lariat with Herman Schelter, pastor, officiating. Mr. Kube was pronounced dead at 8:30 p.m. Wednesday by Justice of the Peace Albert Smith of Farwell, Texas.

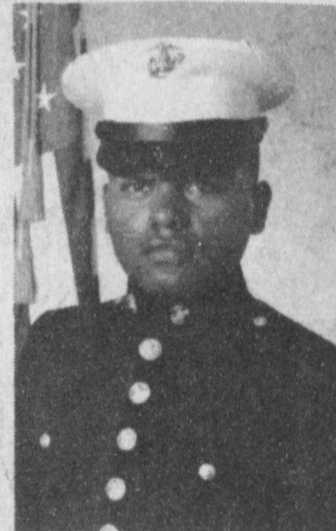
Mr. Kube was born July 29, 1910 in Lexington, Texas. He was a farmer and a member of the St. John's Lutheran Church of Lariat. Survivors include two sisters, Mrs. Eddie Ramm of Farwell, Mrs. Velma Zoch of Clovis; and one brother, Ludwig Kube of Borger.

Interment was in the Oklahoma Lane Cemetery under the direction of Ellis Funeral Home.

Texaco service station in Enochs and was also a retired Maple High School teacher. He had been a resident of Muleshoe for 22 years, moving here from Enochs where he had resided for 33 years. He was a member of the Muleshoe First United Methodist Church and the Muleshoe Chapter of Oddfellows and Rebekah Lodge.

Survivors include his wife, Juanita and one sister, Mrs. May Stansbury of Tomball, Texas.

Interment was to be in the Enochs Cemetery under the direction of Ellis Funeral Home.



BENITO PEREZ

Perez Dies In Australia

Benito Perez, 23, son of Magdalene Perez and Santos Muniz of Muleshoe died Monday, July 20, in Australia where he was stationed with the U.S. Navy.

Perez joined the Navy in December of 1980 after serving in the U.S. Marines for five years.

He is the grandson of Gilberto and Lupe Muniz of Sudan.

Survivors include six sisters and one brother: Maria of Muleshoe, Mrs. Francis Armendarey of Sudan, Rose Mary Patterson of Midland, Lucy, Alicia and Letty of Muleshoe and Magaleno Perez, Jr. of Sudan.

West Plains Medical Center Report

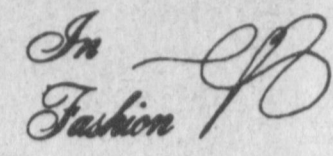
ADMITTED

July 20
Anna Taylor, Rose Vigil, Sandra Gray, Kenneth Johnson, Gil Lamb, Juan Gutierrez, Dollie Harmon, Amanda Tandy, Kelli Mitchell, Euca Guzman
July 21
David Pitcock, File Pena, Grace Allison, Kay Knowlton
July 22
De Anna Wiland, Regina Buers, Michael McGinnes, Addie Mieks, Carolyn Maxwell

DISMISSED

July 20
Freddie Hysinger, Jose Mendey, James Williams, Betty Steinback
July 21
Martha Rojas, Birdie Phelps-expired, Erica Guzman, Roxanne Mayfield & baby girl, Amanda Tandy, Pershing Busbice
July 22

Elba Faubus, David Pitcock, Rose Vigil, Fele Pena, Gil Lamb, Debbie Kittrell & baby girl, Kay Knowlton, Secundino Murrillo July 23
Dee Ann Wieland, Kelli Mitchell



Now a classic, jumpsuits play an important role in summer wardrobes. For cool comfort, jumps in softest cotton are seen in a rainbow of colors from pale pastels to rich darker tones.

Gibsons Quitting Business Sale

House Wares

30% off

BIBLE VERSE

"Mine eyes are upon all their ways; they are not hid from my face, neither is their iniquity hid from mine eyes."

1. Who was the author of the above statement?
2. What disaster was he prophesying?
3. What is its meaning for us today?
4. Where may this verse be found?

Answers to Bible Verse

1. Jeremiah the Prophet.
2. The utter ruin of the Jews.

3. That God is ever cognizant of our actions and knows our sins.
4. Jeremiah 16:17.

All governments depend upon the good will of the people.

The deterioration of every government begins with the decay of the principles on which it was founded.
- C. L. De Montesquieu.

Those who bear equally the burdens of government should equally participate of its benefits.
- Thomas Jefferson.

Tara

Come Home to Tara!
Restaurant
A SOUTHERN CLASSIC

underground atlanta Bar

Lunch
Monday-Friday 11:00-2:00

Dinner
Monday-Thursday 5:30-10:00
Friday & Saturday 5:30-11:00

4th & Slide, Lubbock



For additional information, contact Shara Airkart or David Heath.
797-6328

ATTEND THE CHURCH OF YOUR CHOICE

FIRST CHRISTIAN CHURCH
130 W. Ave. G
Rev. Walter Bartholf
Sunday School - 10 a.m.
Worship - 11 a.m.

LATIN AMERICAN METHODIST MISSION
Ave. D and Fifth Street
R.Q. Chavez, Pastor

THE COMMUNITY CHURCH
H.D. Hunter, Pastor
Morton Highway

CALVARY BAPTIST CHURCH
James Williams, Pastor
1733 W. Ave. C

PROGRESS SECOND BAPTIST CHURCH
Clifford Slay, Pastor
1st and 3rd Sundays

FIRST UNITED METHODIST CHURCH
Rev. Bill Kent
507 W. Second, Muleshoe

ST. JOHN LUTHERAN
Lariat, Texas
Herman J. Schelter, Pastor
Sunday School - 10 a.m.
Worship - 11 a.m.

PRIMITIVE BAPTIST CHURCH
621 South First
Elder Bernard Gowens

MULESHOE CHURCH OF CHRIST
David Cox, Minister
Clovis Highway

JEHOVAH WITNESS
Friona Highway
Boyd Lowery, Minister

ST. MATTHEW BAPTIST CHURCH
Corner of West Boston & West Birch
Rev. M.S. Brown, Pastor

UNITED PENTECOSTAL GOSPEL LIGHTHOUSE
207 E. Ave. G
George Green, Pastor


IMMACULATE CONCEPTION CATHOLIC CHURCH
Father Patrick Mahar
Northeast of City in Morrison Addition

"REMEMBER, GRANDPA, WHEN..."

How Grandpa loves to hear that young voice say those magic words that mean, "We had good times together! I appreciate all the wonderful things you did for me when you were younger and able." Old folks love attention. They need it. They deserve to have it. They've spent their lives helping us, many times at the expense of their own desires and plans.

God commands us in Leviticus 19:32: "Thou shalt rise up before the hoary head, and honour the face of the old man, and fear thy God. I am the Lord."

Honor the older ones, too, by attending church this week and taking them with you.



MULESHOE ASSEMBLY OF GOD
517 S. First
Rev. James Golaz

EMMANUEL BAPTIST CHURCH
Iglesia Bautista Emmanuel
107 E. Third
Isaia Cardenas, Pastor

RICHLAND HILLS BAPTIST CHURCH
17th and West Ave. D
Brock Sanders, Pastor

SPANISH BAPTIST MISSION
Rev. Aradio Gonzalez
East Third and Ave. E

TRINITY BAPTIST CHURCH
314 Ave. B
Don Knight, Pastor

LONGVIEW BAPTIST CHURCH
B.C. Stonecipher, Pastor
Phone 946-3413

16th AND AVE D CHURCH OF CHRIST
James Johnson, Pastor
Sunday - 10:30 a.m.
Evening - 6 p.m.
Wednesday - 8 p.m.

PROGRESS BAPTIST CHURCH
Progress, Texas
Danny Jackson

NORTHSIDE CHURCH OF CHRIST
117 E. Birch Street

SPANISH ASSEMBLY OF GOD
East 6th and Ave. F
Rev. Hipolito Pecina

MULESHOE BAPTIST CHURCH
8th and Ave. G
Bob Dodd, Pastor

FIRST BAPTIST CHURCH
Rev. J.E. Meeks, Pastor

CHURCH OF THE NAZARENE
Ninth and Ave. C
Rev. Jimmie Williams, Pastor

The Church is God's appointed agency in this world for spreading the knowledge of His love for man and of His demand for man to respond to that love by loving his neighbor. Without this grounding in the love of God, no government or society or way of life will long persevere and the freedoms which we hold so dear will inevitably perish. Therefore, even from a selfish point of view, one should support the Church for the sake of the welfare of himself and his family. Beyond that, however, every person should uphold and participate in the Church because it tells the truth about man's life, death and destiny; the truth which alone will set him free to live as a child of God.

NEW!

HALO



no extra charge!
8x10 Color Portrait
Still Only 88¢

Picture your little angel in our innovative HALO Portrait. It's a new delicate approach to an old classic style.

88¢ per sitting. The HALO Portrait is available for single subjects only. One special per family. Poses our selection. Backgrounds may occasionally change. Additional portraits available for purchase with no obligation. Remember, minors must be accompanied by parent. Satisfaction always, or your money cheerfully refunded.

Thur. Fri. Sat.
July 30-31 Aug. 1
Daily: 10 A.M.- 6 P.M.

Saturday: 10 A.M.-5 P.M.
128 Main Street,
Muleshoe

PERRYS

Muleshoe Home Center, Inc.	Muleshoe Co-op Gins	Dairy Queen Margie Hawkins Manager 272-3412	Bratcher Motor Supply 107 E. Ave. B 272-4288
Robert Green Inc. Your Oldsmobile, GMC, Pontiac, Buick Dealer W. Hwy. 84 272-4588	Dent-Rempe Implement Co. John Deere Dealer	White's Cashway Grocery Where Friends Meet and Prices Talk	Western Sprinklers Inc. ZIMMATIC 272-4544
Good News Bookstore Clovis, N.M.	Kemp's Discount Furniture 1210 W. Amer. Blvd. 272-5023	Western Drug 114 Main	Muleshoe Body Shop 402 N. First 272-4246
Main Street Beauty Salon	401 S. First 272-4511	Muleshoe Publishing Co.	Lee's Western

Watchdog

The Texas Consumer Association Education Fund's Report from Austin
By Jim Hightower, President

Did you ever ride a train? When trains are running right, there's really no better way to get from here to there. In fact, you can even feel good about a train ride, in a way you're never going to feel good about driving Central Expressway in Dallas, or catching Braniff's 7 A.M. flight to Houston.

But, even though Americans love trains, we're losing them. Just 25 years ago, Texas had dozens of passenger lines stopping in a thousand towns. Today, we are down to two Amtrak lines, making only 21 stops in our state. And it looks like we're never going to lose these, if the airline, bus and highway lobbies have their way in the U.S. Congress. Then we'll be left singing this verse from the classic hobo song: "All around the water tank/ Standin' in the rain/A thousand miles away from home/ Waitin' on a train."

Despite the fact that Amtrak has been gradually improving service on its Texas lines, and that there has been a steady increase in customers getting on board, Congress continues to chop the system to pieces down here, giving it no chance to succeed. In 1979, the "Lone Star" route from Houston to Chicago was axed, and current plans in Washington call for termination of the "Inter American," which runs from Larado through Dallas and on to Chicago. Only the "Sunset Limited" would remain to serve Texas, making eight stops from Beaumont to El Paso, but few expect it to last long either.

So the real question is not whether to save this line or that one, but whether to abandon the whole idea of transcontinental passenger trains.

Let 'em go, say the detractors — nobody rides these relics in the past any more, preferring instead to take a car, plane or bus.

Not so fast, say train advocates. Last year's count was 21.4 million passengers climbing aboard Amtrak, and if we were expanding the system rather than destroying it, many millions more would be drawn to the rails again. France, Japan, Canada and other modern countries have sleek, fast, convenient (and full) trains, and Americans should not settle for less. Rail travel makes all kinds of sense, especially in large states like Texas, where trips between far-flung cities are a frequent burden on people. A good rail system would give them an energy-efficient, comfortable way to go, at a fair price.

All that might be true, concede those trying to mothball Amtrak, but taxpayers are footing part of the bill for the train system, and government has no business subsidizing one means of transportation over another.

Right back at you, say train buffs — taxpayers subsidize all forms of travel. Who do you think pays for highways, airports, roadside parks, the Highway Patrol, air traffic controllers and so forth?

Transportation lobbyists are pushing hard in Congress to put Amtrak on a sidetrack for good. How do you see it? Should we junk the passenger train as just another piece of vanishing America, or should we rebuild our system and modernize it so trains can carry the load for us again? Make your views known by writing to your U.S. Representative. You can reach all members of Congress at this address: House Office Building/ Washington, D.C./ 20515.

U.S. & PLO

LOS ANGELES -- Despite an official policy prohibiting negotiations with the Palestine Liberation Organization, U.S. officials have talked secretly to the terrorist group for seven years, the Los Angeles Times reports. Discussions have been held with the PLO under Presidents Nixon, Ford, Carter and Reagan, the newspaper said.



CHARRED WRECKAGE... This light Moonie plane crashed near Warren Field in Muleshoe at approximately 3:30 p.m. last Wednesday, killing two men. The plane reportedly hit a line of trees, causing it to go out of control. It was totally destroyed and both men were badly burned.

STATE CAPITAL HIGHLIGHTS

By Lyndell Williams

TEXAS PRESS ASSOCIATION

AUSTIN—Acting quickly in the first week of the special session, the Texas Legislature made progress toward passing three of the five issues called by the Governor.

The Senate redistricting committee approved a congressional redistricting plan, while the House overwhelmingly voted to abolish the state property tax and to create a fund to assist water projects across the state.

If each chamber this week endorses the lead taken by the other, it will be three down, two to go before the halfway point.

The proposed congressional redistricting plan contains a primarily black district in Dallas, which is what Gov. Bill Clements wanted. Unless the House alters the plan, the Governor will sign the bill.

The property tax and water fund were issues presented in the form of proposed constitutional amendments. Should the Senate follow the House action, the issues will go to the voters on the November ballot.

That leaves only the Medical Practice Act and revision of the Property Tax Code as unfinished business on the special session agenda. Disappointed observers who had wanted to see more political action now predict a scrimmage over the property tax code changes.

State Property Tax

In abolishing the ad valorem tax, the Legislature would not make much difference in taxpayers' bills. In 1979 the Legislature lowered the tax to a speck of a sum, and it wasn't even worth collecting. The total tax in an entire rural county might come to \$2.50.

Still, the tax remained in the Texas Constitution as the source of construction funds for 17 state universities and colleges. Attorney Gen. Mark White ruled that until the law was removed from the Constitution, no other revenues could be used for construction.

Following his ruling, Mid-

western State University in Wichita Falls filed suit to resume collecting the tax, possibly including over \$250 in back taxes to 1979.

If the law is stricken from the Constitution, the lawsuit becomes moot and the threat of back taxes disappears.

Water Fund

The water fund amendment, sponsored by no less than House Speaker Bill Clayton, would set up a dedicated state fund financed by surplus revenues.

Under its provisions, unspent state money would be divided, with half going into the water projects assistance fund and the other half for purposes chosen by the Legislature.

The Texas Water Development Board would administer the fund, steering it as loan money to local governments, to help research water projects, and to pay for reservoirs.

The amendment is coupled with enabling legislation which appropriates \$40 million to the fund in 1982. The issue will reach voters on the November ballot.

Congressional Redistricting

By far the most politically rife issue on the Governor's agenda, the task of redrawing congressional districts was thought to become a sticking point in the special session.

It's surprising how people can be manipulated by the dollar.



By **Bill Wooley**

agri-facts

Satellite television reception, utilizing a privately owned antenna and reception equipment is very much on the horizon, as we've mentioned, to bring entertainment, information and a new business tool to the farmer and rancher. And, although it's not one of the 90-odd channels you might receive with your own set-up, the U.S.D.A. is benefiting from satellite technology in faster and more accurate information on crop conditions, particularly in Russia, through Landsat and soon through NOAA-6, a meteorological satellite. A constant and accurate eye on Russian weather conditions and crops is a valuable tool in light of reconvened U.S.A. - U.S.S.R. talks on grain sales. And how does the Russian wheat crop look? Good, according to the satellite - about 34 million hectares, down about 3 million from 1980, with an almost ideal winter, and almost no snow cover.

Wooley International, Inc.
W. Hwy 84
272-5514

Entire Clothing Dept.

40-50-75% Off

During Gibsons Quitting Business Sale

If Not N.O.W. When?

If you haven't yet combined your savings and checking accounts into a Muleshoe State Bank N.O.W. Account, you're losing interest—fast!! The N.O.W. Account acts like a regular checking account—there when you need it. Open a N.O.W. Account—now and watch your interest grow!!

MULESHOE STATE BANK
Member FDIC 272-4561

SHOP RITE



BEST BUYS UNDER THE SUN!

Prices Good Sun. July 26 thru Wed. July 29.

Bath Tissue

4pk. Delsey White Asst. Prints **89¢**



501 W. American Blvd.



Canned Soda

Shurfine Asst. Flavors

5 12 oz. can **99¢**

Charcoal

Energy Briquets 10 lb. bag

\$1.49

Cheer Detergent

171 oz. Powder 70¢ Off

\$5.88

Bar-B-Que Sauce

18 oz. btl.

69¢

Dish Detergent

Palmolive Liquid 13¢ Off

99¢



22 oz. btl.

Shurfresh Water Added **Hams**

\$1.79

Whole lb.

\$1.89

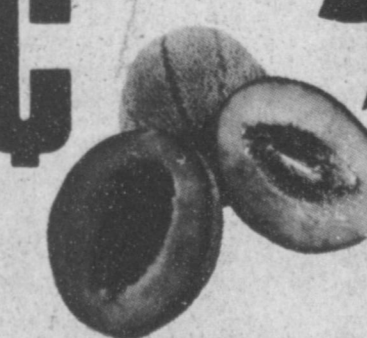
Half lb.

Cantaloupe

Western Juicy Sweet

29¢

lb.



Margarine

49¢

lb.



Shurfresh **Ice Cream**

\$1.29

1/2 gal. ctn. Asst. Flavors



32 oz. jar

Miracle Whip

\$1.19

Hi Dri

Paper Towels



2 Rolls

99¢

DOUBLE STAMPS



Nursing Home News
By Joy Stancell

Gertrude Hendrix, Mrs. Bertie Hendrix's daughter-in-law from California took Mrs. Hendrix visiting over the weekend. They went to Plainview, Kress and Hart. Mr. and Mrs. Ernest Holland and Jerry Hutton visited her in the Nursing Home.

Annie Brown went to Clovis to visit with her daughter and her grandson and his family last week.

Mrs. Wenner visited her home. It is nice to see Mrs. Wenner able to walk about the Nursing Home again.

Clara Weaver's daughter, Linda came Tuesday. She came to get Chris who had been spending the summer with Mr. Weaver. Clara went home Friday and Saturday to be with her family. They enjoyed fresh vegetables and fried chicken. She is expecting a visit from her other daughter and her family this week.

Mrs. Lena Hawkins, Maude Kersey, Mr. Jerry Hutton, Mr. and Mrs. Ernest Hollman, Ruby Garner visited the Nursing Home. We thank you for coming.

Mr. and Mrs. Brinker were visited Tuesday by Mrs. Julian, Mrs. Reed, Mrs. Jack Lane from Tegall.

Ona Fiffie was visited by Mr. and Mrs. Odom, Mrs. Lena Hawkins, Mrs. Charles, Mr. and Mrs. Coffman, May Atkin.

Mrs. Josephine Wenner was visited by Janice Bradshaw Tuesday and Thursday.

Mr. and Mrs. Sam Bradley, Mr. and Mrs. Gene Bradley and families were here visiting their parents, Mr. and Mrs. A.M. Bradley.

Glenda Jennings, Bro. and Mrs. Crenshaw from the Lazbuddie Methodist Church came to have a Sing-A-Long with the residents and guest Wednesday afternoon.

The faults of the younger generation stem from the faults of the elder generation.

Public Notice

COMMISSIONER'S COURT ORDER AND PUBLIC NOTICE

There came on to be considered the matter of re-apportionment of the Commissioners, Justice, and election precincts of Bailey County, after which the following ORDER, upon a motion by Commissioner Scott, seconded by Commissioner Stephens, and a unanimous vote, was passed and approved.

It is hereby ordered that the work of re-apportioning the Commissioners, Justice and election precincts of Bailey County, as already begun, be expeditiously carried forward and completed as soon as possible.

In that procedure official maps are to be prepared reflecting the official 1980 census count, relating to each precinct, and identifying the minority population in all areas.

Citizens participation, including blacks, those of Spanish origin, both men and women, laymen and professionals, from all areas of the county, will be utilized, and a public hearing will be held for a general discussion of the said re-apportionment. Public notices will be published in the *Muleshoe Journal*, and extensive publicity will be given over the local radio and TV stations. The Commissioner's Court does hereby invite suggestions from all our citizens so as to make this re-apportionment process as orderly and equitable as possible.

It is further ordered that a public hearing be held in the District Courtroom on Tuesday, July 28, 1981 relative to the said re-apportionment process. The meeting will begin at 10 a.m. and continue until 5 p.m. The public is cordially invited to attend, and be heard.

The County Judge is hereby authorized to cause notice of said hearing to be published for three consecutive weeks in the *Muleshoe Journal*, the dates of said publications to be July 12, 19, 26, 1981 respectively. And a substantial copy of this ORDER shall constitute said notice.

Passed and approved this 1st day of July, 1981.
THE BAILEY COUNTY COMMISSIONER'S COURT

By Glen Williams (S)
County Judge
15-28s-3tsc

Public Notice

NOTICE PUBLIC SCHOOL LAND OFFERED FOR LEASE IN BAILEY COUNTY

The Commissioner's Court of Foard County, Texas, offers for lease for a three year term, beginning January 1, 1982, the sur-

Public Notice

NOTICE TO CONTRACTORS

Scaled bids addressed to the City of Muleshoe, Texas, will be received at the City Hall until 8:30 a.m., August 7, 1981, and then publicly opened and read for furnishing all plant, labor, material and equipment, and performing all work required for 6" water line and appurtenances.

Bids shall be submitted in sealed envelopes upon the blank form of the proposal attached hereto and marked in the upper left hand corner.

No Bid Bond, Performance Bond, or Payment Bond will be required.

The right is reserved to reject any and all bids and to waive any informality in bids received.

Plans, specifications and bidding documents may be secured from the office of Bill R. McMorries & Associates, Inc., 6300 Canyon Drive, Amarillo, Texas 79109, on deposit of Fifty (\$50.00) Dollars per set which sum so deposited will be refunded, provided: (1) All documents are returned in good condition to Bill R. McMorries & Associates, Inc. not later than 48 hours prior to the time for receiving bids; or (2) The Contractor submits a bid and all documents are returned in good condition to Bill R. McMorries & Associates, Inc. at the time that bids are opened.

CITY OF MULESHOE TEXAS

By: Charles Bratcher, Mayor

15-307-27c

face only of the following described land located in Bailey County, Texas, and belonging to the Foard County School District:

1. Abstract No. 335, Labor No. 6, League No. 192, Foard County School Land, containing 177 acres of land, more or less.

2. Abstract No. 335, Labor No. 15, League No. 192, Foard County School Land, containing 177 acres of land, more or less.

3. Abstract No. 335, Labor No. 16, League No. 192, Foard County School Land, containing 177 acres of land, more or less.

Detailed information as to the terms and covenants upon which any lease will be conditioned may be obtained by writing to Charlie Bell, County Judge, Foard County, Crowell, Texas, but sealed bids will be received by the Court only until 10 a.m. on Monday, August 10, 1981.

Charlie Bell, County Judge by order of the Commissioner's Court, Foard County, Texas.

15-28s-2tsc

Enochs News
By Mrs J.D. Bayless

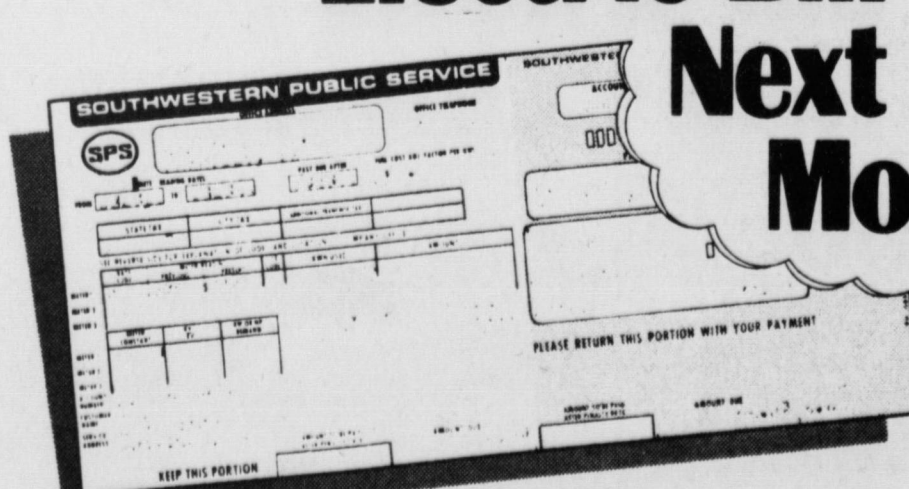
Mr. and Mrs. Robert George and their friends, Mr. and Mrs. Bell of Lubbock visited Mrs. Georges' parents, the E.N. McCall Friday night. They were on their vacation going to their cabin in the Capitan Mountains.

The rains received the past two weeks were spotted, some received a 1/2 inch of rain, some 2 inches and the Ben Kuhler's received over 7 inches of rain the past two weeks, some received some hail.

Patricia Brown moved back to Roswell, N.M. recently, she is the daughter of Mr. and Mrs. Bill Brown.

Final Markdowns
Sporting Goods
30% Off
Gibsons Quitting
Business Sale

Averaged Billing Could Reduce Your Electric Bill Next Month




The Averaged Billing Plan with SPS can take a big bite out of your electric bill next month.

How? Because Averaged Billing evens out the highs and lows that occur in your electric bills throughout the year. So you pay about the same each month. The Averaged Billing Plan from SPS can help just about anybody. You can depend on it. Just call Southwestern Public Service.

SPS
SOUTHWESTERN PUBLIC SERVICE COMPANY

SAFETY FIRST ...ON THE FARM
FARM SAFETY WEEK JULY 25-31
Your accidents hurt all of us!



TAKE EXTRA CARE!

We depend on farmers for our food, health and economy. Carelessness causes loss of days and dollars to you, and hurts all of us. Take time to prevent disaster on your farm. Check over your buildings, equipment and wiring regularly. Approach your livestock cautiously.

PREVENT ACCIDENTS BEFORE THEY HAPPEN!

Presented By The Following Safety Minded Merchants:

- AVI. Corp.**
- Black Insurance Agency**
- John's Custom Mill**
- Campbell Irrigation**
- Terry Field Insurance Agency**
- McCormick Seeds, Inc.**
- Riverside Chemical**
- Cliff Allen Custom Saddles**
- Dent & Rempe Implement Co.**
- Barrett Produce**
- Bailey County Farm Bureau**
- Smallwood-Harmon Insurance**
- Wooley International Inc.**
- West Plains Medical Center**
- Western 66 Company**
- Irrigation Pumps & Power**
- Production Credit Association**
- Five Area Telephone Cooperative Inc.**
- Muleshoe Publishing Co.**
- Bailey County Electric Cooperative Association**

South Plains Fair Offers Big Premiums

Ed Breihan, Chairman of the South Plains Maid of Cotton Committee of the Lubbock Chamber of Commerce, announces that this fall's selection for the 1982 South Plains Maid of Cotton will be held Oct. 8-9, 1981. Most of the activities will be held in Lubbock's Memorial Civic Center with the first judging session to begin with the luncheon sponsored by the Lubbock Cotton Auxiliary at noon on Thursday, October 8. The finals will be held in the banquet hall of the Memorial Civic Center, Friday evening directly preceding the Maid of Cotton Ball.

The Lubbock Cotton Auxiliary will furnish the new Maid selection a \$500.00 scholarship to be used to further her education. The new Maid will also receive an all-cotton wardrobe and an all-expense paid trip for herself and her chaperone to Memphis, Tennessee to the national finals to be held in December.

Any young lady with the following qualifications is eligible to enter the South Plains Maid of Cotton selection: never have been married; be between 19 and 23 years of age as of December 27, 1981; be at least 5-feet 5-inches tall without shoes or hairpiece and be a resident of the South Plains area. Specifics on eligibility can be obtained by calling the Lubbock Chamber of Commerce.

Application forms will be available at the Chamber beginning August 1 and entry deadline will be 5 p.m. September 18, 1981. Enrollment in a college located in the South Plains constitutes residency for

any prospective candidate for the event, regardless of where her parents reside.

Melissa Gore 1981 South Plains Maid of Cotton, who is a junior at Texas Tech, will be the official hostess for this year's selection.

Members of the South Plains Maid of Cotton Committee are busy working to make his year's event the best ever. Several sub-committees have areas of responsibility to conduct the Maid of Cotton Ball, entertainment, contestant coordination, finance and publicity.

Easy Sauce Tops Off Elegant Cheese Omelet



Rich mushroom sauce makes this omelet special.

Nothing beats this tailored-for-two cheese omelet for ease of preparation, economy and downright good eating. The perky mushroom sauce is made quickly with Soup for One Savory Cream of Mushroom Soup.

CHEESE OMELET WITH MUSHROOM SAUCE
1 can (7 1/2 ounces) Campbell's Soup for One Savory Cream of Mushroom Soup
4 eggs
Generous dash pepper
2 tablespoons butter or margarine
1/4 cup shredded sharp Cheddar cheese
1/2 teaspoon dried chives

To make omelet, in bowl, beat 1/4 cup soup, eggs and pepper. In small skillet, melt butter; pour in egg mixture. Cook slowly. As undersurface becomes set, lift slightly to allow uncooked egg to flow underneath and cook. Sprinkle with cheese. Make shallow cut down center; fold over. Transfer to platter. Meanwhile, to make sauce, combine remaining soup and chives. Heat; stir occasionally. Serve with omelet. Makes 2 servings.

The Sandhills Philosopher

Editor's note: The Sandhills Philosopher on his Johnson grass on Sandy Creek examines the latest Supreme Court ruling and goes off in several directions.

Dear editor:

Even before a woman gets there, the Supreme Court, knowing she's on the way, has ruled that a woman is entitled to the same pay as a man if she's doing similar work. Not equal work, just similar work. Those guys know what they're doing.

As a result, already some city employees are striking, demanding that the rule be enforced, with city officials saying they'd have to raise taxes to do it. I've looked in vain for some official to solve the problem, in a move to fight inflation, by suggesting the way to equalize pay is to lower the men's salaries

SPS Plans Share Sell

Southwestern Public Service Company announced today that it has filed registration statements with the Securities and Exchange Commission covering its proposed offering of \$30 million in First Mortgage Bonds due in 1991, and 120,000 shares of cumulative preferred stock at \$100 par value.

Net proceeds from the sale of the new bonds and additional preferred stock will be used to defray the cost of the Company's construction program, including the payment of outstanding short-term debt incurred primarily in connection with such programs.

Southwestern Public Service Company, based in Amarillo, Texas, provides electric service for eastern New Mexico, the Panhandle and South Plains of Texas, the Oklahoma Panhandle and southwestern Kansas.

Dillon, Read & Co. Inc. is the managing underwriter of the bond offering but is the sole underwriter of the preferred stock offering.

down to what the women are making. Would that comply with the Court's ruling? I'm not proposing it. You don't have to be a Supreme Court judge to look out for your own health.

But what interests me is the possibility of carrying the Supreme Court's ruling further. For example, my farming is similar but not equal to alot of others around here. Is it now my Constitutional right to get paid as much as they? Where do I go to get my check?

Or take a Justice of the Peace in some small town. He rules on issues and makes legal decisions. Certainly his work is similar but not equal to the work of a Supreme Court judge. Isn't he entitled to the \$70,000 a year or whatever it is a Supreme Court judge gets?

I don't know what the salary differential is, but shouldn't the Governor of a small state be paid as much as the Governor of a big state? Their work is similar and sometimes equal. Both sometimes pro-

mise more than they can deliver and deliver more than their state can pay for.

Understand, I'm in favor of women getting paid on the same basis as men, but I'm wrestling with the problem of whether a piccolo player in a marching band should get as much as the guy who has to tote that big drum.

Yours faithfully,
J.A.

Today's advertising paves the way for tomorrow's profits.

Prehistoric bones discovered in cave

COLLEGE STATION — Human bones that may be thousands of years old have been found more than 550 feet underground in the state's deepest cave, which a Texas A&M University researcher described as "a perfect Venus fly trap — once you're in, there's no way to go but down." The remains were found at the bottom of Sorcerer's Cave

in rugged Terrell County by a group of amateur spelunkers from San Antonio, said Dr. Gentry Steele, a physical anthropologist at Texas A&M.

The bones may belong to more than one person and are prehistoric in age, said Steele, who is overseeing study of the bones and other animal material recovered from the cave — including a mummified vulture — at Texas A&M.

Then there are those who like jokes — on the other fellow.

Ellis Funeral Home

24 Hour Ambulance Service

Ph. 272-4574

Muleshoe



July Clearance Sale!

Starts July 27 Thru Aug. 1

We Will Have A Sidewalk Sale Sat., Aug. 1!

Wrangler



Style	Reg.	Sale
13 MWZ Cowboy Cut	\$18 ⁹⁵	\$14 ⁹⁸
945 Reg Cut... Bootflare	\$17 ⁹⁵	\$13 ⁹⁸
935 Slimcut... Bootflare	\$17 ⁹⁵	\$13 ⁹⁸
938 50/50... Bootflare	\$15 ⁹⁵	\$12 ⁹⁵
Colored 50/50... Bootflare	\$16 ⁹⁵	\$13 ²⁵
Big Mens Soze 44-50	\$19 ⁹⁵	\$14 ⁹⁸

All Mens Long Sleeve Shirts \$5 off

All Boys Long Sleeve \$3 off

Mens Short Sleeve Shirts \$3 off

Large Group Ladies, Junior & Missy Jeans

Up To 50% off

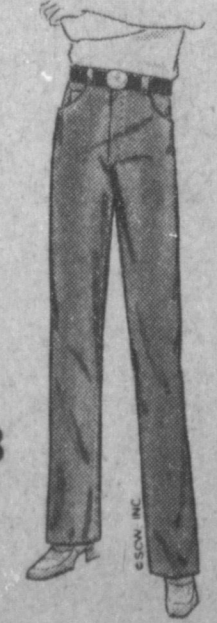
Ladies Fashion Boots Reg. \$66⁹⁵ & \$99⁹⁵ To \$49⁹⁵ To \$79⁹⁵

Mens Dress Suits 30% off

Mens Sport Coats Reg. 75.95 to 105.00 \$45⁹⁵ to \$64⁹⁵

GROUP Work Boots Marked Down

Levi Shrink To Fit 100% Cotton Jeans Style 501 Reg. 18.95 \$14⁹⁸
Boot Flare 100% Cotton Or Dura Plus Jeans Reg. 18.95 \$14⁹⁸



Gibsons Quitting Business Sale

Toys

40% off
Buy Early For Christmas!

Welcome To Muleshoe



MR. AND MRS. LES IRVIN

This week we welcome Les and Melba and their daughter, Leah Denise, to Muleshoe. Irvin comes to Muleshoe from Crockett, Texas where he was the Chief of Police and Melba was a medical secretary. Les is the new Chief of Police here in Muleshoe. The Irvin's have one daughter, Leah Denise, age 13, who is visiting her grandmother in Crockett. As hobbies, Les enjoys reading, sports and Melba enjoys baking and cake decorating. They both enjoy working with young people. The Irvin's attend the Assembly of God Church and now reside at 807 W. 8th.

James Crane Tire Co.
GOODYEAR

322 N. 1st.

272-4594

Henry Insurance

Damron Rexall

All Leather Coats & Vests 30% off



Straw Hats 30% off

Levi & Wrangler 100% Polyester Jeans Reg. \$19⁹⁵ & \$21⁹⁵ \$12⁹⁸

All Taos Moccassins 40% off

Wrangler No-Fault 100% Cotton Denim Boot Flare Jeans Boys... Sizes 6-14 Reg. \$12⁹⁵ \$9⁹⁸
Students... Sizes 25-30 \$15⁹⁵ \$12⁹⁸

Wrangler Perma Press 50/50 Denim Jeans Boys... \$6⁵⁰
Students... \$8⁵⁰

Large Group Sale Boots Values To \$139⁹⁵ \$59⁹⁵ To \$79⁹⁵

All Ladies Blouses & Shirts 30% off

All Other Boots Marked Down Sale Rack Belts Up To 50% off

Rack Boys Knit Summer Shirts Up To 50% off

All Childrens Clothes Marked Down At Close out Prices

Large Sale Table Odds & Ends

Lee's Western Wear Inc.

1910 W. Amer. Blvd.

Muleshoe

272-4663