

SUPER SAVER

S&H GREEN STAMPS
EVERY WEDNESDAY—



BAKED FINGERS 12 OZ. PKG. **79c**

Bacon

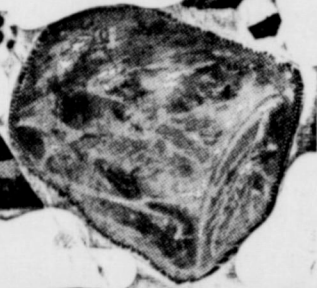
77c lb



FRESH PICNIC STYLE

PORK ROAST

39c LB.



Steak
79c lb

SHORT RIBS
U.S.D.A. CHOICE **39c** lb



GEBHARDT

TAMALES 2 1/2 CAN **39c**

SHURFINE

SUGAR 5 LB. BAG **55c**



JRB Mellorine

1/2 Gallon! **29c**



DUCE

10c lb

25c lb

Large Green Slicers

Cucumber

19c lb

MAXWELL HOUSE

COFFEE

1-LB. CAN **69c**
With Coupon

LYSOL
LIQUID
CLEANER

28 oz. Bottle

98c



JRB COUPON

save

WITH THIS COUPON WHEN YOU BUY A 1-LB. CAN OF
MAXWELL HOUSE
OR **ELECTRA PERK** COFFEE

JRB SUPER MARKETS
1 LB. CAN ONLY **69c** WITH COUPON

ONE COUPON PER FAMILY - OFFER EXPIRES 9-26-70



BAMA
GRAPE
JAM

18 Oz. Jar

45c

PET
CANNED
MILK

13 Oz. Can

18c

ALL FLAVORS
JELL-O

3 1/2 Oz. Box

33c

J R B CASH GIVE AWAY

NO PURCHASE REQUIRED

4 WEEK SPECIALS—PLUS OTHER PRIZES

JRB No. 9—Cisco will give away 4 \$25.00 cash prizes each week for the first three weeks and 1 \$100 and 2 \$50.00 prizes the last week.

JRB No. 11—Eastland will give away 4 \$25.00 cash prizes each week for the first three weeks and 1 \$100 and 2 \$50.00 prizes the last week.

JRB No. 10—Ranger will give away 4 \$25.00 cash prizes each week for the first three weeks and 1 \$100 and 2 \$50.00 prizes the last week.

PET

COFFEE 11 Oz. Jar
CREAMER

39c



EVERY DAY LOW PRICES

- Ribbon Cane Syrup Steen 2 1/2 lb. bucket. **57c**
- Cut Green Beans Shurfine 303-Can. **5/\$1.00**
- MIXED GREENS Alma, 303 **14c**
- CUT OKRA Trappys, 303 Can. **25c**
- PEAS Argo Ex Standard, 303 Can. **5/\$1.00**
- SAUER KRAUT Shurfine, 303 Can. **2/45c**
- TOMATOES Gold Tip Standard 303 Can. **5/\$1.00**
- DEVILED HAM Libbys, 3 Oz. Can. **24c**
- CORN BEEF Libbys, 12 Oz. Can. **69c**
- TANGY SPAGHETTI DINNER 18 oz. Box **33c**
- Franco American Spaghetti 15 oz. Box **19c**
- Sun Ripe Dried Apples 8 Oz. Pkg. **49c**
- RAISINS Del Monte Seedless, 15 Oz. Pkg. **37c**
- POP CORN 3 Minute Yellow, 2 Lb. **39c**
- CORN MEAL Shurfine, 5 Lb. Bag **45c**
- PAN CAKE MIX Aunt Jemima 2 Lb. **53c**
- POUND CAKE MIX Betty Crocker 17 Oz. **38c**
- SUGAR Imperial Powdered, 1 Lb. Box **18c**
- SHORTENING Crisco, 3 Lb. Can. **89c**
- CRISCO COOKING OIL 24 Oz. **54c**
- PLANTERS PEANUT OIL 24 Oz. **75c**
- CHILI POWDER Morton's, 1 Oz. **39c**
- BABY FOOD **6/65c**
- ALKA SELTZER Foil Pack 36's **79c**

- TEA Lipton Tea Bags, Family Size, 24 Count. **87c**
- POST TOASTIES 18 Oz. **43c**
- WHEATIES CEREAL 12 Oz. **44c**

ASC Committee Elected, To Convene Sept. 23

Farmers and ranchers of Eastland county have elected a total of 30 ASC community committees and alternates in a mail election conducted earlier this month, according to Guy Lyerla, chairman of the County Agricultural Stabilization and Conservation (ASC) Committee.

ASC community committees assist the County ASC committee in administering farm programs in Eastland county, such as wheat, cotton and peanut acreage allotments, feed grain bases, and agricultural conservation cost-sharing measures. They also help keep local producers informed of farm program provisions and regulations.

In addition, the just-elected ASC community committees have an important responsibility in the near future in filling vacancies on the county ASC committee and determining the chairman and vice-chairman for the coming year, Mr. Lyerla said.

The new ASC community committees will convene September 23, 1970 at 10:00 a.m. in the commissioners courtroom in the Eastland county courthouse. The meeting is open to the public. They will elect one county committee to serve a three-year term and two alternates to serve one-year terms. After the vacancies are filled, the community committees will determine which of the three regular members of the County ASC Committee will be chairman and vice-chairman.

Each of the 6 ASC community committees are made up of three members and two alternates, who serve for a one-year period. The candidate in each ASC community who received the largest number of votes is the committee chairman. Second highest is vice-chairman; third is regular committee member; fourth and fifth in the number of votes received are first and second alternates.

Requirements For Operation Of Commercial Vehicles Told

With the approach of the harvest season when many farmers use commercial vehicles to transport their agricultural products to market, the following requirements which Texas law places upon the operation of such vehicles have been listed by the Texas Department of Public Safety as a reminder.

- I. Trucks: Weight Limitations
 - A. No single axle may exceed 18,000 lbs.
 - B. No tandem axle may exceed 32,000 lbs.
 - C. The maximum gross weight allowed for any vehicle or combination of vehicles is 72,000 lbs.
- II. REGISTRATION: All trucks must be registered for their gross weight allowed or their actual gross weight when loaded. The license receipts for a commercial vehicle must be carried on the

vehicle at all times.
III. EQUIPMENT: All trucks must be equipped with all the equipment required to be approved for a Motor Vehicle Inspection Certificate and must display a current sticker.

IV. The operator of any truck with a carrying capacity in excess of one ton must be licensed as a commercial operator.

V. TRAILERS: Weight Limits same as for Trucks

- A. Registration
 1. A trailer with a gross weight of 4,000 lbs. or less used by a farmer to haul his own products needs no registration.
 2. A trailer weighing over 4,000 lbs., but not over 10,000 lbs. used by a farmer to haul his own products may be registered with the \$5.30 farm trailer plate. All trailers with a gross weight in excess of 4,000 lbs. must display valid registration.
 3. A trailer weighing over 4,000 lbs., but not over 15,000 lbs. may be used to haul cotton seed with the \$5.30 farm trailer plate.

a. Trailers being operated with the farm trailer plate are subject to the following restrictions:

- (1). When gross weight exceeds 4,000 lbs. must be operated at a speed of 30 MPH or less.
- (2). Cannot be used for hire.
- (3). Cannot use metal tires or wheels.
- (4). Must have adequate hitch to prevent breakaway.
- (5). Operation must conform with all other provisions of law.
- (6). Any violation of these restrictions makes the operator of the farm trailer liable for prosecution for operating an un-registered vehicle and payment of regular registration fees.

This information is provided in the hope of answering some of the more common questions. For further information contact your local Department of Public Safety Patrolman or the Tax-Assessor Collector of your county.

Great Plains Program Makes Big Contribution to Economy

The Great Plains Conservation Program administered by the Rising Star Soil Conservation Service office is a cost share type program on permanent type practices. This is a program which contributes to the reduction of soil and water losses. It also reduces one of the greatest pollution hazards, which is the deposit of silt into the streams and lakes of the community.

There are at the present time 94 active Great Plains Contracts with local farmers and ranchers according to Raymon A. Wade of the Rising Star Soil Conservation office.

During 1970 the Great Plains program paid these 94 cooperators over \$58,000 to control soil erosion. This is a boost to the economy of the area beyond its value in the treatment of many acres to reduce soil and water losses and pollution. These permanent type practices not

only reduce erosion and pollution but will be in the near future contribute to increased production from eroded areas that have been stabilized.

"Have you noticed the old gullied areas in fields along our highways that have been smoothed out and established to grass?" Wade suggested. "How about that sandy field that used to blow? Many of the fields are now in permanent vegetation. The water that runs out of them is nearly clear. The sand no longer blows from them."

"On every road in the Rising Star area one can see coverts after coverts of quail as one drives down the road. This, too, is a benefit of good Soil Conservation. It is also a potential source of income if a farmer wants to lease out for hunting. Many doves are available now. Ponds are ready to be fished. Quail hunting will be good when the season opens."

Hospital Patients

Patients in Ranger General Hospital Saturday Morning were:

- Mrs. Elith Young
- Mrs. Elva Taylor
- Mrs. Emma Hopkins
- Mrs. Viola Stroud
- Mrs. R. L. Edwards
- Mrs. Maxine Sunday
- McCoy twin girls
- Mrs. Henry Coldeaway
- Mrs. Louise Lendis
- Riley Roberson
- Marion Goforth
- A.H. Carleton
- Tom Koonce
- Mick Guydin
- Frank Striz
- George W. Rhyne
- Daniel Dunson

EASTLAND HOSPITAL

The following persons were patients at Eastland Memorial Hospital Saturday morning:

- Elmyra Hodge
- Wilmer Westbrook, Ranger
- Roland Earp, Rising Star
- Stella Murphy
- Adella Reed, Rising Star
- Mrs. Willie Williams
- Lula Walker
- Onah June Gobel, Ft. Worth
- Don Brinkley
- J.D. (Bud) Glenn, Carbon
- Minnie Gattie, Cisco
- Alta Morren, Cisco
- Melissa Farnsworth, Baird
- Lula Peiry, Cisco
- Overton Stone
- Winnie Squiers
- Beverly Nicholson
- Kathryn Townsend, Cisco
- Trudie Andrews, Cisco
- Ike Butler, Carbon
- James Hudson, Rising Star
- Jacqueline Hendricks, Cisco
- Zula Collie
- Louise Wheat, Ranger
- Elnora Webster
- Guy Patterson
- Mina Laffoon
- Mary McCoy
- Willie Jo Carter
- Dana Jackson, Cisco
- Jim Nookester
- Wilson Ensor
- Grace Brown, Cross Plains
- Stella Thurman, Gorman
- Cordia Dick, Olden
- Julia Holt, Abilene
- Nannie Parsons Strawn
- Elizabeth Buse, Gordon
- Geraldine, Rising Star
- Harrison Pitman, Gordon
- Ann Justice
- Orita Rushing
- Winnie Perkins, Cisco
- Juel Browning, Olden
- Mrs. Joe King
- Virginia Albarez
- Mary Rodgers
- Judy Williams, Gorman
- Faye Harbin
- Flenora Williams
- Mae Ferguson
- Wilma Raney, Freeport
- Ida Head
- Frances Sublett, Cisco
- Nancy Brown
- Lena Lassiter, Cisco
- Walter Reimund, Cisco
- J.D. Ables
- John Reed
- Katie Langley, Ranger
- Baby Girl Brown
- Baby Girl Perkins, Cisco

Chain-Link and Wood All Types
Concrete Fence Curbs — Crushed Rock Sidewalks and Patios
Hurricane Fence Co.
1002 & 1003 Southeast 8 1/2 St.
Mineral Wells, Texas 76067
Call Collect 325-0981
Lee Roy Starks
"Best Prices Ever In Eastland County"

FOR SALE
Fina Service Station
Ideal for 2 men or can be operated by one man.
Good Established Business.
See Pete Tucker at
Eastland Fina
207 E. Main St. Eastland

WANT ADS WORK

25c OFF

WITH THIS COUPON on the purchase of any ticket to see

"THE SAVAGE WILD"

At the Majestic Thurs., Fri. & Sat.

MAJESTIC

SUNDAY — MONDAY — TUESDAY

Sun. 12:45 — Shows 1:00-3:40-6:20-9:00
Mon.-Tues. open 5-15 — Shows 5:20 & 8:00 only

The luckiest people in the world are the people who can see **BARBRA AS FUNNY GIRL** at popular prices! Continuous performances!

ACADEMY AWARD BEST ACTRESS BARBRA STREISAND

COLUMBIA PICTURES RASTAR PRODUCTIONS present **BARBRA STREISAND - OMAR SHARIF. FUNNY GIRL**

KAY MEDFORD ANNE FRANCIS WALTER PRODIGEN
HERBERT ROSS JULIE STYNE BOB MERRILL
RAY STARK WILLIAM WYLER

Supports GENERAL AUDIENCES

STARTS WEDNESDAY

Open 4:45 — Shows 5:00-7:00-9:00
Adults \$1.50 — Discount 1.25 — Child 75c

WHERE THE TRAILS END and ADVENTURE BEGINS only the strongest survive!

THE SAVAGE WILD

TECHNICOLOR...TECHNISCOPE
GORDON EASTMAN
*1970 American International Pictures, Inc.

SAVE!
Mac McGough, Ranger
Clem Gillespie, Eastland
Ted Fields, Cisco
BRINGS YOU SKELTANE
(The New Economy Gasoline)
—PLUS
4 "Step-Up" Grades with Kectane
(The Original Cleaning Gasoline)
DRIVE IN TODAY

SEE US FOR ALL QUALITY PETROLEUM PRODUCTS AND SERVICES!

RANGE DRIVE-IN THEATRE

LAST TIMES SEPT. 20

PETER USTINOV
JONATHAN JOHNSON
WINTERS

FRIDAY — SATURDAY
SEPTEMBER 25 — 26

FREE ONE MORE

NEVER BEFORE WERE THEY AGAIN FOR THE SEC

CHRISLAW TRADE MARK

SAMMY DAVIS, JR.

"ONE MORE"

COLOR by Deluxe

TIRE SALE

THE WIDE BELTED TIRE OF THE 70'S

WARD HST "78" WID

WARDS RIVERSIDE 4-SQUARE PASSENGER TIRE GUARANTEE

FAST, FREE MOUNTING!

2ND TIRE 1/2 PRICE when you buy 1st tire at reg. price plus F.E.T. each

WIDE TRACK DELIVERY FOR TRUCKS, CAMPERS

- Extra-wide tread gives superior traction, control,
- Tough nylon cord body

TUBELESS BLACKWALL SIZES	REGULAR PRICE EACH	SECOND TIRE EACH	PLUS F.E.T. EACH
8.00-16.5"	44.20	22.10	3.33
8.00-16.5"	50.20	25.10	3.62
10.00-16.5"	61.80	30.90	4.40
10.00-16.5"	70.50	35.25	4.78

*6 ply rating 18-ply rating

Riverside® ST-107

LOW AS **13.30***

8.00-13 lbs. blk. plus F.E.T.

4-ply nylon cord body
Built for durability. Guaranteed against tread wear-out for 27 months.

*With trade-in tires. White-walls \$3 more each.

4-PLY NYLON CORD BODY PLUS 2 RAYON BELTS

A stronger, cooler-running tire for today's speeds! Improved mileage, traction. Guaranteed 39 months against tread wear-out.

SIZE TUBELESS BLACKWALL	REPLACES REGULAR SIZE	REGULAR PRICE EACH
C78-14	6.95-14	32.50
E78-14	7.35-14	34.50
F78-14	7.75-14	36.50
G78-14	8.25-14	39.00
H78-14	8.55-14	42.00
J78-14	8.85-14	45.00
F78-15	7.75-15	36.50
G78-15	8.15-15	39.00
H78-15	8.45-15	42.00
J78-15	8.85-15	45.00
L78-15	9.00-15	45.00

*With trade-in tire off your car.