



BAILEY COUNTY JOURNAL

"The Community of Opportunity Where Water Makes the Difference"

Weather

	HIGH	LOW
January 19	69	30
January 20	69	30
January 21	69	23
January 22	67	18
Moisture year to date:	0,05	

VOL. 10 NO. 4

10 PAGES

Published Every Sunday at Muleshoe, Bailey County, Texas - 79347

10 CENTS

SUNDAY, JANUARY 23, 1972



OUTSTANDING MEN . . . These four men were presented awards at the annual Jaycee Bosses Night Banquet Friday night at the Muleshoe Country Club. Left to right are Henry Stoneham who received a plaque for his outstanding services to the Jaycees; James Crane, Merchant of the Year Award; Eugene Shaw, Outstanding Young Farmer Award; and Harrold King, Jaycee Boss of the Year. Not present was Derrell Turner who received the Outstanding Young Man of the Year Award.

Voter Registration Lagging In County

Only About Half Of Voters Registered

Monday, February 7 Is Filing Deadline

Bailey County Democratic Chairman Harvey Bass reports that the last day to file for the Democratic Primary will be February 7 at 6 p.m. At the present time the office of County Commissioner Precinct Three is the only one that is shaping up to be a real race with three people filing for the office so far. Those who have filed for the office are C.A. Petree, R.P. (Bob) Sanders and W.H. (Bill) Eubanks. Other candidates for county offices are Jean Lovelady, Bailey County Tax Assessor and Collector; Jack Young, District Attorney; Dee Clements, Sheriff; Gordan H. (Corky) Green, County Attorney; and W.M. (Matt) Dudley, County Commissioner, Precinct One.

Jean Lovelady, Bailey County Tax Assessor, reports that just under 1465 voters have registered to vote in Bailey County this year. This is only half of the usual number of qualified voters in the county. This year, the new voter registration law allows voters to register 31 days prior to the election that they wish to vote in. The first election in Bailey County this year will be the school board and Hospital District Board election to be held April 1. Anyone wishing to vote in this election must register on or before the last day of February to be a qualified voter. Voters wishing to register may come by the Tax Office in the Bailey County Courthouse and fill out a registration card or mail the completed form to the Tax Office. Mrs. Lovelady also reported that new 1972 license plates will go on sale February 1 in the Tax Office.

Eugene Shaw Named Outstanding Farmer

Several outstanding young men in the Muleshoe area were honored Friday night, January 21, at the annual Muleshoe Jaycees' "Bosses Night Banquet" held at the Muleshoe Country Club.

Eugene Shaw was presented the Outstanding Young Farmer Award by the program Chairman, Dr. Jim Tucker. Shaw was given the award on the basis of his progress made in agriculture as a career, agriculture practices, his relation to his home, farmstead, equipment and record keeping, and the extent of soil and water conservation practices. Judges for the program were Henry Stoneham, Soil Conservation Leader; Ernest Kerr, head of the local Federal Land Bank; and J. K. Adams, County Agent, Jaycee President Jeff Smith reported he had received word that Shaw had not only won the local contest, but was selected as the State Outstanding Young Farmer. By winning this high award, Shaw will be going to Souix Falls, S. D., March 5-8 for the National Young Farmer Contest. This national Jaycee program is sponsored by the Chevrolet Division of General Motors who will pay the expense of Shaw and his wife to the national contest. On the local level, Crow Chevrolet is the sponsor and John Crow presented Shaw with a \$25 savings bond.

Top Rated Hereford Slips Past Mules

A powerful Hereford basketball team barely slipped past the Muleshoe Mules Friday night to win the game by two points, 59-57. Johnny Hayes scored 26 points; Mike Riley, nine; Randy Field, seven; James Turnbow, six; Larry Mitchell, five; SDO Heathington, three; and Rand Baker, one. The score by quarters was: Muleshoe-12-26-41-57 Hereford-16-30-41-59. The Boy's B team also were defeated by Hereford's B team by a score of 70 to 43. In other basketball action this past week, the Mules played Canyon Tuesday night losing by another narrow one point. Johnny Hayes made two defensive and 3 offensive rebounds, hit 13 out of 22 from the field for 59%, made one of two attempted free throws for 50%, committed four fouls and scored 27 points. Randy Field made one defensive and one offensive rebound, attempted three free shots, attempted two free throws, had five fouls but scored no points. Mike Riley had three defensive and three offensive rebounds, hit 13 out of 22 from the field for 59%, made one of two attempted free throws for 50%, committed four fouls and scored 27 points.

Other entries in the Young Farmer Contest were R. D. (Tub) Angeley and John Neil Agee. Other awards were presented during the program including the Outstanding Merchant of the Year. This award went to James Crane of James Crane Tire Company and was presented to him by Jaycee James Brown. Harrold King of King Grain Company was presented the Boss of the Year award by Doyce Turner. The Outstanding Young Man award was presented to Derrell Turner. Clarence

Cont. on page 2, col. 4

1971 High Plains Irrigation Survey

1971 saw a further increase in the amount of irrigated land and the number of irrigation wells in the Panhandle and South Plains, but the wells continue to deliver less water each year. This and other information is contained in the 1971 edition of the High Plains Irrigation Survey prepared by Leon New, area irrigation specialist with the Texas Agricultural Extension Service, from information provided by county agricultural agents in the 42-county survey area. Copies are available to the general public through county Extension offices. The total crop acreage in the 42-county area was about 9.6 million acres in 1971, which was 24,000 less than the year before. Some dryland crops were not planted due to dry weather. Some crops were stressed for moisture during the extremely dry conditions early in the season due to inadequate soil moisture. But more of the total acreage is irrigated than in past years. High Plains farmers irrigated almost 5.8 million acres in last year, for an increase of 276,000 acres over 1970. An additional half million acres are subject to irrigation, to push the total potential acreage to almost 6.3 million. Irrigation well statistics show what is happening to the High Plains water supply. Some 1,200 were drilled last year to raise the total to more than 66,000. But in 1971, each well irrigated only 87 acres, as compared to 103 acres ten years ago. Available water was spread over slightly more acres this

year in effort to water thirsty crops and offset the effects of the drought. Almost 90 percent of the wells now must lift water more than 125 feet, and almost 75 percent average less than 700 gallons output per minute. As in the past, most wells are powered by natural gas. A happy note is that using water from playa lakes and other recirculating systems is becoming more common. About 2,500 lakes and 2,200 recirculating systems were used in 1971 to supplement wells. In contrast to irrigation wells, most of these pumping installations were powered by LP gas or electricity. As in the past, surface irrigation is still used. Cont. on page 2, col. 6

Ramm Attends Farm Bureau Conference

Ernest Ramm of Muleshoe, president of the Bailey County Farm Bureau, attended the first annual New County Farm Bureau Presidents Conference January 19 through 20 in Waco. Limited to newly-elected county Farm Bureau presidents, the conference was conducted by the Texas Farm Bureau for the purpose of providing orientation on relationships between the state and county Farm Bureaus. One general session featured a discussion of the structure of the Farm Bureau. Cont. on page 2, col. 7

around muleshoe with the journal staff

W.T. Millen, Jack Little, Marshall Head, Norman Head and J.K. Adams attended the Futures Trading Seminar at Hereford last week. Guest speakers from all over the United States spoke to the group.

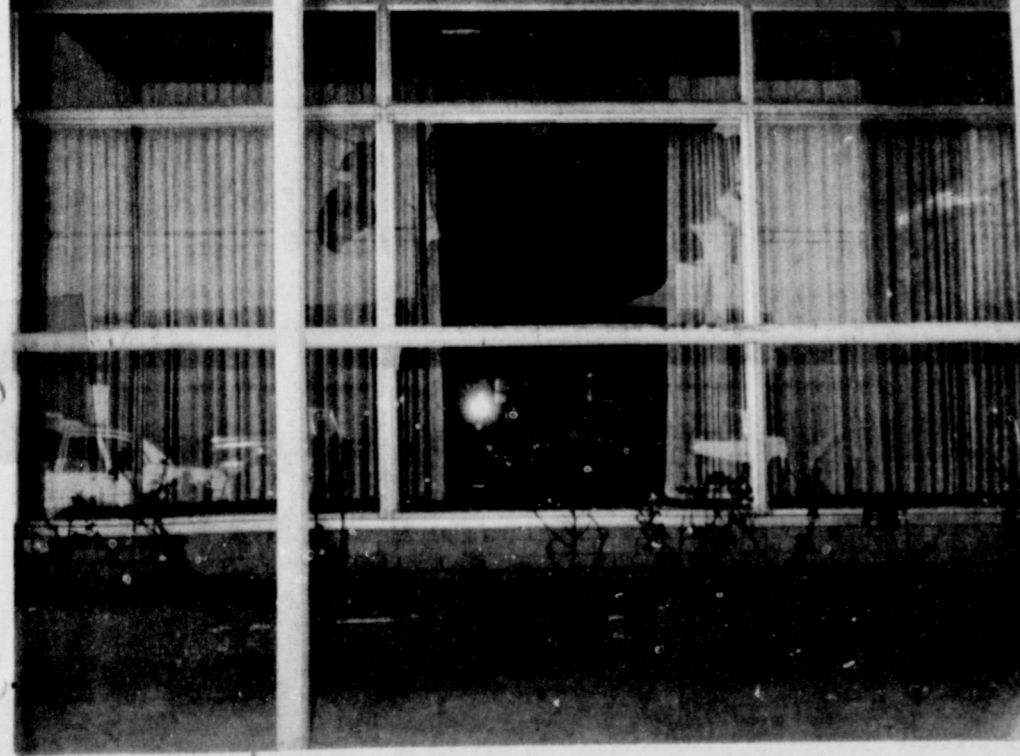
Buck Taylor is home after spending three days in University Hospital in Lubbock. He is recuperating from eye surgery.

Guests in the home of Mr. and Mrs. R.D. Gilliland Sunday night were her brother and family, Mr. and Mrs. Sammy Thompson of Plainview.

Wayne Williams of Williams Brothers Office Supply will leave Sunday, today, for Albuquerque, N.M. to attend a service training school on Victor Electronic Calculators.

Among the 410 students in the College of Home Economics at Texas Tech University qualifying for the Dean's Honor List for the fall semester were the

Cont. on page 2, col. 8



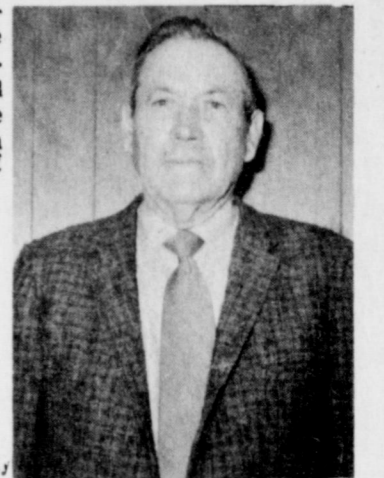
VANDALS HIT . . . Bailey County Electric was one of several Muleshoe businesses that were damaged by vandals Friday night. Other broken windows were reported at the Selective Service, Jones Farm Store, the Swap Shop and Red Barn Chemicals. At press time Saturday morning, law officials were investigating the vandalism.

Dr. Jenkins Speaks At Sorghum Disease Seminar

The second of four Family Living Seminars was held Monday night, January 17, in the Bailey County Electric meeting room. Dr. Jim Jenkins, chief psychologist from the Mental Health and Retardation Center in Plainview, presented a program on Child Adjustment and Development. The next seminar in the series will be held Monday night, January 24, at 7 p.m. in the Bailey County Electric meeting room. The program on Child and Cont. on page 2, col. 6

High Plains Underwater District . . . Goodwin Elected President Of Board

Ross Goodwin of Muleshoe was elected President of the Board of Directors for the High Plains Underwater Conservation District One at their Lubbock meeting January 18. This district consists of the southern high plains and includes over 8,000 square miles. Its functions consist of many operations including well spacing, water level measurements each January, preparations of decline maps for figuring water depletion, waste water abatement and numerous other projects. Goodwin also served on the Board of Directors of the Texas Water Conservation, a statewide organization. He was named last week to the Resolutions Committee of the irrigation panel of that organization. These organizations work along with other agencies to conserve the existing underground and surface water in this area and in the state. They also encourage the importation of surplus water from other areas into this area to supplement the declining underground water in this locality.



W.M. (Matt) DUDLEY
Matt Dudley Files For Re-election
County Commissioner Precinct One W.M. (Matt) Dudley has authorized the Journal to announce his candidacy for reelection in the May 6 Democratic election. Cont. on page 2, col. 8



MARCH OF DIMES WEEK PROCLAIMED . . . Bailey County Judge, Glen Williams is shown signing the proclamation proclaiming January 23-29 as March of Dimes Week in Bailey County. Looking on is Mrs. Jerry Harrison, Bailey County March of Dimes Chairman. On Tuesday, January 27, Mother's March will be conducted from house to house in the community.

Educators

Attend Hearing On Textbooks

Twenty-one teachers and administrators from Muleshoe attended the textbook examination and hearing Saturday, January 8, at Smylie Wilson Junior High School, Lubbock. All textbooks up for adoption were presented by representatives of the publishers.

The new books, which cover 27 different elementary and secondary school subjects, were selected from a field of 441 student titles by the State Textbook Committee in September.

Subjects included on the list are basal reading, vocal music, geography, earth science, English composition, related mathematics, advanced Texas studies, French German, Spanish, graphic arts, industrial materials and processes, woodworking, automotive trades, building construction trades, graphic arts trades, metal

trades, driver education and traffic safety, and consumer mathematics.

"The local textbook committee will select their own books from a total of 112 titles adopted by the Muleshoe School Board by March 1, 1972. The new books will be used in the classrooms beginning in the fall of 1972," said Neal Dillman, superintendent.

Those attending from Muleshoe were Milton Oyler, Katherine Sanders, Mary B. Obenhaus, Mabel Wolfe, Bill Taylor, Owetha Finley, Eloise Thompson, Jane Rudd, Letha Patterson, Pauline Guinn, Nellie Rannels, Wilma Smith, Loyce Killingsworth, Wayland Etheridge, Dorothy Beddingfield, Mary Scoggins, Doris Scoggins, Ruby Lee Kerr, James Jennings, Nicole Landers, and Elizabeth Watson.

F. Edward Hebert, Congressman (D-La.)

"Recent events clearly indicate... we now have an 'open season' on all classified information in government."

Humorist To Address Judges Conference

COLLEGE STATION--Noted humorist Cayce Moore, a barber and country philosopher from Hearne, will be the featured banquet speaker at the 14th Annual County Judges and Commissioners Conference, February 9-10, at Texas A&M University.

Moore's career as a humorist began when he started writing a column for a local newspaper. His fame as a speaker has spread rapidly throughout the nation, says Charles E. Lawrence, general chairman of the conference and Extension county officials program specialist. With his own special gift of gab, Moore has become one of the country's most popular entertainers.

According to Lawrence, the annual banquet provides a relaxation break in the busy schedule of learning sessions in which conferees participate. Moore will continue the tradition of patriotic, challenging and humorous speakers that have been featured on previous programs.

The banquet will be held February 9 at 7 p.m. at the Ramada Inn in College Station, Texas

A&M's Singing Cadets will also be featured.

The annual conference is sponsored by the Texas Agricultural Extension Service in cooperation with the State County Judges and Commissioners Association.

Jaycees...

Cont. from page 1

Christian presented a plaque to Henry Stoneham for his outstanding service to the Jaycees in the Youth Football and Youth Basketball programs.

Jaycee President Jeff Smith gave the welcome address to the group and then introduced the speaker, Dr. C. L. Kay.

Kay is the assistant president of Lubbock Christian College and has won many outstanding awards for his public speaking. He presented a slide presentation on history through Europe directed to the Jaycee Creed.

The annual banquet was the conclusion of a week proclaimed "Jaycee Week" by President Nixon and Governor Preston Smith.

Mules...

Cont. from page 1

rebounds, hit two of four field shots for 50%, made one out of two free throws for 50%, committed two fouls and scored five points.

Larry Mitchell had two defensive rebounds, hit three out of nine from the field for 33%, made six of seven attempted free throws for 86%, committed four fouls and scored 12 points.

Don Heathington had six defensive and one offensive rebound, attempted four field shots, made two out of four free throws for 50%, had four fouls and scored two points.

Team totals for Muleshoe were 22 defensive rebounds, 16 offensive rebounds, 19 of 46 field shots for 41%, 15 of 25 free throws for 63%, they lost the ball 21 times, had 23 fouls and 53 points.

Hereford has 22 defensive and 12 offensive rebounds, 22 of 51 from the field for 43%, 10 of 22 free throws for 45%, lost the ball 21 times, had 19 fouls and 54 points.

Score by quarters: Muleshoe-12-23-38-53. Canyon-22-36-48-54.

Faulkner spurns Wilson plan for United Ireland.

Survey...

Cont. from page 1

rigation is the most popular method, and accounts for 79 percent of the total. But sprinkler systems are gaining in popularity. They accounted for 21 percent of the total irrigated land in 1971, and enjoyed an eight percent increase over sprinkler-irrigated land in 1970. There are almost 9,000 sprinkler systems currently irrigating an average of 146 acres each. About 150 new systems were added last year.

The survey reports that about 925 additional miles of underground pipe were installed in 1971, and now furnish water to 54 percent of the total irrigated acreage. Underground pipe is found on more than 75 percent of all irrigated farms.

Of the 9.6 million total crop acreage, 38 percent was planted to grain sorghum, 25 percent to cotton and 22 percent to allotted wheat, Alfalfa, castors, and ensilage, along with forage and pasture, accounted for most of the rest of the acreage.

Grain sorghum again led other crops in percentage of irrigated land. The 39 percent total was tops over cotton with 27 percent and wheat with 17 percent. Corn was the commodity with the largest increase last year, with a 34 percent jump over 1970. All 344,000 acres of corn were irrigated.

Cotton enjoyed an increase of 11 percent in total acreage over the preceding year. Sixty-four percent was irrigated. Grain sorghum had a jump of seven percent on irrigated acreage, but dropped 14 percent on dryland. This was blamed on the drought conditions during most of the year. Sixty-one percent was irrigated.

Wheat lost seven percent in 1971. Almost a third of the crop was grazed out and an additional quarter million acres were grazed on set-aside acreage.

The survey gives county-by-county statistics on the number of irrigated farms, acres under cultivation and irrigation, and totals on almost every crop grown in the High Plains. In addition to information concerning irrigation wells, the report also indicates trends in irrigation activities of the 42-county area.

"This survey can be invaluable to producers, suppliers, financiers, and other agri-businessmen of the High Plains in making management and planning decisions for 1972. New concludes, "it can serve as a valuable reference on irrigation, regardless of the type of farming operation."

Seminar...

Cont. from page 1

Parent Relations will be presented by Dr. Mary Bubliss, chief psychiatrist from the center.

The seminars are being sponsored by Epsilon Sigma Alpha and the public is invited to attend free of charge. For questions regarding Mental Health or Mental Retardation the public can call Mrs. Rowena Watson at 272-4433.

Bailey County Journal
Established March 11, 1903
Published by Muleshoe Publishing Co., Inc.
Every Sunday at 304 W. Second Box 449
Muleshoe, Texas 79347
Second class postage paid at Muleshoe, Texas
Muleshoe, Texas, 79347.

TEXAS PRESS ASSOCIATION
Member 1972

L. B. Hall, President
Jessica P. Hall, Sec.-Treas.
L. B. Hall, Managing Editor
Katie Foster, News Reporter
Jeane Gilliam, Society
Elizabeth Barnett, Advertising
Polly Orwell, Office Manager

SUBSCRIPTIONS:
Zone 1-Bailey-Parmer-Cochran-Lamb counties: \$4.00 per year; \$4.50 per year by carrier. With Thursday Muleshoe Journal, both papers \$5.50 per year; \$6.00 per year by carrier.
Zone II-Out-of-Territory: \$4.50 per year with Thursday Muleshoe Journal, both papers, \$6.25 per year.
Monthly, by carrier -55¢; single copies-10¢
Advertising rate card on application



ATTENDS WACO MEETING . . . Ernest Ramm, right, president of the Bailey County Farm Bureau, attended the first annual New County Farm Bureau Presidents Conference January 19-20 in Waco, Welcoming him to the meeting is Texas Farm Bureau President, J. T. Woodson.

Ramm...

Cont. from page 1

TFB and its affiliated service companies. The roles and responsibilities of the various departments in the TFB were also discussed. The county leaders toured the site of the new Farm Bureau state headquarters now under construction in west Waco. They also visited the present quarters of the organization in downtown Waco.

Grants...

Cont. from page 1

control equipment and training for law enforcement officers of the region. The equipment will include protective gear for officers, chemical agents and lethal and non-lethal weapons.

Governmental units to participate in the equipment purchase are Lubbock County, Bailey County, Muleshoe, Plainview and Brownfield, SPAG will serve as purchasing agent.

The local units of government will provide a cash match of \$6,383.

The two South Plains grant applications were among 53, totaling more than 3.6 million dollars, considered by the CJC Executive Committee.

Workshop...

Cont. from page 1

Rosenow, Plant Breeder, and Dr. R.A. Frederiksen; Sorghum Diseases in the Southeastern States in 1971 by Billy F. Moore, Extension Plant Pathologist, Mississippi State University; and Bacterial Soft Rot of Sorghum by Dr. Natale Zummo, U.S.D.A. ARS, Meridan, Mississippi.

The Muleshoe High School Varsity Girls Basketball team will travel to Friona Tuesday night, January 25, for a game with the Friona Squaws.

Dudley...

Cont. from page 1

atic Primary. "I would like to take this opportunity to announce my candidacy for County Commissioner of Precinct Number one, Bailey County.

I would also like to thank you for your support and confidence in the past as it has been a pleasure to serve you and ask for your support in the coming elections."

Muleshoe...

Cont. from page 1

following students from Muleshoe: Brenda Tiller, Vallery Moore and Elizabeth E. Herington.

Dean Black a 1968 graduate of Muleshoe High School and a senior at Hardin-Simmons University will be student teaching at Lincoln during the 1972 spring semester.

Three reports of vandalism were reported Friday night with windows being broken out at the Selective Service Office, the Swap shop and Jones Farm Store. At press time, law officers were still investigating the incidents.

There will be a Treflan meeting Monday, January 31, at 7:30 p.m. in the Muleshoe High School cafeteria. The meal will be free and door prizes will be given away. Entertainment will also be provided. Farmers and their families and the general public is invited to attend.

The Muleshoe High School Varsity Girls Basketball team will travel to Friona Tuesday night, January 25, for a game with the Friona Squaws.

WELCOME TO . . .

Revival Services

RICHLAND HILLS BAPTIST CHURCH

AVE. D AT 17th STREET

January 23-30th, 7:30 p.m.

EVANGELIST

J. P. Jones

SINGER

J. C. Shanks

FOR SALE!!!

14th STREET TRAILER PARK

MULESHOE - WEST 14th

*** 1/2 BLOCK LAND * DUPLEX**

*** ALSO EXTRA NICE 4 ROOM AND BATH HOUSE ON CORNER**

ROOM FOR 12 TRAILERS


D.O. Smith

1601 Ave. B, Muleshoe Phone 272-3409

Singleton-Ellis Funeral Home

24 Hour Ambulance Service

Ph. 272-4574 Muleshoe



Game Time!

"SUPPORT THE MULES and MULETTES"

We wish you a Successful 1971-72 Basketball Season.

BASKETBALL SCHEDULE

MULESHOE HIGH BASKETBALL SCHEDULE


Varsity and B Team Boys

Dec. 21	Dimmitt	There
Dec. 29-30	Muleshoe Tournament	
Jan. 7*	Perryton	There
Jan. 8*	Dumas	There
Jan. 11*	Tulia	Here
Jan. 14*	Levelland	Here
Jan. 18*	Canyon	There
Jan. 21*	Hereford	Here
Jan. 28*	Perryton	Here
Jan. 29*	Dumas	Here
Feb. 1*	Tulia	There
Feb. 8*	Canyon	Here
Feb. 15*	Levelland	There

*Denotes District 1AAA Games

Varsity and B Team Girls'


Dec. 21	Dimmitt	A-B	5:00 p.m.	T
Dec. 27, 28, 29, 30	Slaton Tourney	A		T
Jan. 7	Open			
Jan. 11	Lockney	A-B	5:00 p.m.	T
Jan. 14	Canyon	A-B	5:00 p.m.	T
Jan. 18	Tulia	A-B	5:00 p.m.	T
Jan. 21	Wayland Queen	A		
	Bees (tentative)		6:30 p.m.	H
Jan. 25	Friona	A-B	6:30 p.m.	T
Jan. 28	Lockney	A	6:30 p.m.	H
Feb. 1	Olton	A	6:30 p.m.	T
Feb. 4	Canyon		5:00 p.m.	H
Feb. 8	Tulia	A-B	5:00 p.m.	T



SPONSORED BY THE FOLLOWING

"BASKETBALL SUPPORTERS"

OF MULESHOE HIGH SCHOOL:



Western Drug Co.

First Street Conoco

First National Bank

Crow Chevrolet Co.

Art Craft Printing

B & S Irrigation

Dr. B.R. Putman

Cobb's

Johns Custom Mill

Muleshoe Co-op Gins

White's Cashway Grocery

Wrinkle Welding & Machine

Leal's El Nuevo Restaurant

Bailey County Electric Co-operation Association

Dari Delite

Texas Sesame

Nowlin Studio

King Grain Co.

Ruth's Drive In

James Glaze Co.

Johns Custom Mill

Muleshoe Co-op Gins

White's Cashway Grocery

Wrinkle Welding & Machine

Leal's El Nuevo Restaurant

Bailey County Electric Co-operation Association

NEWS REPORT FROM WASHINGTON

Muskie Ahead—Humphrey & McGovern—Wallace & McCarthy—Connally's Talk—

Washington, D. C.—Whatever the polls show in measuring voter preference, and one major poll recently showed Hubert Humphrey ahead of Edmund Muskie, the fact is that Muskie's forces are well ahead in the lining up of convention delegates, the real key to the nomination.

Muskie is now ahead in the key states of New York, Ohio, Pennsylvania, Illinois, California and in the South. More prominent Democrats have flopped into his corner recently than into that of any other candidate. He is still the candidate to beat, by a good margin, even though his campaign hasn't stirred great enthusiasm among Democratic voters.

In the coming months Hubert Humphrey will increase the pressure, now that he's running again. He and Muskie must be ranked the leading contenders in a field now quite large. Humphrey, insiders say, has considerable financial backing and is the one candidate—at this stage—who can call in almost as many party figures in behalf of his campaign as Muskie. The party's 1968 nominee is now locked in a close contest with his running mate of that year.

Senator George McGovern, after a year's campaigning,

BUYING CORN
Secretary of Agriculture Earl L. Butz has announced that the government has purchased 1.425 million bushels of corn in Middle Western markets to increase prices and take the corn off the glutted market.

The paths of glory lead but to the grave.
—Thomas Gray.

is having his problems. Liked by almost all who interview or question him, McGovern has nevertheless been badly hurt by the President's defusing of the Vietnam war as an emotional, crisis-issue of the moment. Unless he can move mountains soon—and this would be quite a feat—McGovern's chances will grow even slimmer.

Eugene McCarthy could hurt liberal candidates such as John Lindsay, in key states such as New York, and George Wallace will surely hurt moderate Democrats such as Henry Jackson in the South, now that they're committed.

In this connection, the Florida primary in March is fast taking on a great significance as a make-or-break test for several of the candidates. Here the effects of Wallace's entry into the nomination derby are sure to be felt. Wallace won the primary in 1968.

Treasury Secretary John Connally's optimistic talk about the stock market raised eyebrows in Washington. Connally said he thought the Dow-Jones averages would break 1,000 this year, perhaps 1100. Usually politicians don't make specific stock market predictions in election years.

TALKATIVE SENATE
A report in the Congressional Record revealed that the 100-member Senate talked almost twice as much as the 435-member House during the first session of the 92nd Congress.

SIGNS TAX BILL
President Nixon has signed the tax measure calling it a "responsible bill" that would give some tax reduction to nearly every American and create new jobs.

Editorials



Forever...

How long is forever? It depends upon who you are. To an innocent child born with the burden of a defect of mind or body, it is literally as long as he lives—unless we all help.

And we can help. The National Foundation—March of Dimes says, New breakthroughs in genetics, immunology and other medical sciences are showing the way to actually prevent these tragic "accidents of nature" that strike some 250,000 American babies each year.

Today it is possible to discover and cope with certain of these tragedies even before birth—and even earlier, even before conception. Genetic counseling can tell prospective parents what the risks of their having a child with some kind of defect. Vaccines against rubella (German measles) and Rh blood disease can prevent literally thousands of cases of blindness, deafness, heart damage, mental retardation and other defects.

These, and other scientific marvels still in the laboratory stage, can reduce the toll. But only if we help, only if we lend a hand to the March of Dimes. It supports more than 100 medical service programs around the country which attack the problem from every level: research, treatment, rehabilitation, prenatal care and professional and public health education.

Let's get behind the March of Dimes. They deserve our support. To put it the March of Dimes way: "Birth defects are forever...unless you help."

TAX CUT
Cuts in federal income taxes that became effective January 1 will put more cash into the pockets of most Americans. Families with just one wage earner will benefit the most.

The Youth Vote

Much has been heard in recent years about the youth vote. In many cases the youth vote is considered the student vote. But this is far from an accurate picture; the youth vote, as a whole, is traditionally not as far left as the college student vote.

There are an estimated 11 million Americans between the ages of 18 and 21—the newly enfranchised youth vote. But of this number, some 7 million do not attend college. Many are working, many housewives, etc.

Television often gives the impression militants and revolutionaries represent the majority of today's youth, a distorted picture. There are militants and revolutionaries in today's 18-21 age group but they are in a minority and probably decreasingly. Recent samplings indicate today's youth only slightly to the left of their parents, politically speaking—the normal trend of recent decades.

Thus the youth vote, on which certain presidential candidates currently count heavily, is a somewhat iffy vote. Moreover, no candidate in 1971 enjoys the enthusiastic or mass backing which both Eugene McCarthy and the late Robert Kennedy enjoyed in 1968. The 1972 election, therefore, is not likely to be determined by the youth vote any more than by several other voter groups.

Richard Nixon, President:
"I can say without question that the state of German-American relations is excellent at this time."

Edmund S. Muskie, Senator (D-Me):
"I am seeking the Presidency not merely to change Presidents but to change the country."

1972 Political Gas

With every Democratic politician with any encouragement in the race for the presidential nomination, the American voter in 1972 is destined to experience a baffling political gas barrage between now and November, often boring and sometimes purposely deceptive.

The job of the voter, as he attempts to intelligently analyze claims, is to separate the political gas from fact. For example, candidates will bemoan the rise of crime. The fact is that crime in recent years has invariably risen. The key is the rate of increase—whether the rate has turned up or down in recent years.

Likewise, though the prime interest rate for blue-chip corporate customers is now five per cent, equal to the low of 1966, as claimed, what the average voter is interested in is home mortgage rates, car loan rates and other small loan rates—for the individual. They are still high.

Voters should be skeptical of candidates who promise pie in the sky, good incomes for everyone, welfare for all who want it, jobs for all, etc. It's impossible for any candidate to deliver on such promises. To lead lazy, gullible and untalented individuals to expect too much from government produces later, unjustified frustrations, disillusionment and dissatisfaction.

Eugene McCarthy, Democratic presidential candidate:
"We will talk about where people stood in 1968, and what they have done or not done since that time."

Patricia Nixon, wife of the President, in Ghana:
"I would like to see him have another go as President."

WANTED: FEEDER CATTLE
Immediate Through March
Delivery
Parmer County Feedlot
"Cap" Naegle
Days (806)225-4400
Nights (806)238-4041

3rd ANNUAL BALLOON BUST SALE
5% TO 50% OFF
on each & every purchase you make
Monday Jan. 24 ONLY!

a discount on each purchase

BONDED KNIT \$1³⁷ yd.
less your discount

5¢ card

SEAM BINDING HEM FACING RICK RACK BIAS TAPE PIPPING 7¢

perry's

WE RESOLVE To Keep Lower Prices

BACON PEYTON'S Lb. 69¢

SUNRAY CURED PICNIC SHOULDERS Lb. 49¢

ZESTA 1 lb. CRACKERS 2 69¢ boxes

EL FOOD ORANGE DRINK 1/2 gal. 39¢

NESTLE'S QUIK 2 lb. box 79¢

SHURFRESH limit 6 at this price BISCUITS 5¢

CRISCO 3 Lb. Tin 79¢
with \$5 purchase limit one thereafter 99¢

CRISCO

WHITE 10 LB. BAG POTATOES 39¢

AVOCADOS EACH 15¢

GRAPES RED Lb. 29¢

PEPSI-COLA 6 BTL. CTN. PLUS DEPOSIT 45¢

Build your set the easy piece-a-week way... 39¢ each basic piece

Lovelace FINE IMPORTED PORCELAIN CHINA

Jim's Pay N' Save FRIENDEST STORE IN TOWN

QUALITY MERCHANDISE AT LOWEST PRICES

Start your set today.

Assemble your set a different piece each week.

Dinner Plate	1.6.11
Cup	2.7.12
Saucer	3.8.13
Dessert Dish	4.9.14
Bread & Butter	5.10.15

Specials Good
Sun. Jan. 23 thru Sat. Jan. 29 8 a.m. till 9 p.m. 6 Days a Week Sundays 9 a.m. till 9 p.m. 201 S. 1st. Street

Beta Sigma Phi Conducts Ritual of Jewels Ceremony

Alpha Zeta Pi, chapter of Beta Sigma Phi met January 18 in the home of Mrs. Tom Jimks.

A candlelight ceremony was conducted by Mrs. Max King, assisted by Mrs. Don Rempe, Mrs. C. J. Feagley, Mrs. Benie Splawn and Mrs. Doyce Turner. Those receiving Ritual of Jewels badges were Mrs. Jerry Don Haley and Mrs. John Agee.

The business meeting was presided over by the president, Mrs. Max King. Marcia Dale

Henry, service committee member, reported that the personal shower for the girls at Girlstown will be hosted by Beta Sigma Phi sometime in the spring. The Sorority also voted to donate money to the Library again.

Mrs. Don Barnes, social chairman, announced the plans for the Valentine Ball to be held at the Muleshoe Country Club on February 12. At this time, the new Valentine Queen will be announced.

Hostesses, Mrs. Tom Jinks, Mrs. Don Rempe and Mrs. Jerry Don Glover served finger sandwiches, chips and dips, relishes, cookies and hot cheeseballs to the following members: Mrs. Joel Young, Mrs. Charles Smith, Mrs. Charles Smith, Mrs. Jerry Don Haley, Mrs. Eric Smith, Mrs. Don Barnes, Mrs. Tom Flowers, Mrs. John Agee, Mrs. C. J. Feagley, Mrs. Benie Splawn, Mrs. Doyce Turner, Mrs. Joe King, Mrs. Marcia Henry, Mrs. Dick Johnson, Mrs. Glen Watkins, Mrs. Max King, and Mrs. Travis Bessire. The next meeting will be February 1 in the home of Mrs. C. J. Feagley.



RECEIVE BADGES . . . Mrs. Jerry Don Haley, left, and Mrs. John Agee received Ritual of Jewels badges in a Beta Sigma Phi candlelight ceremony Tuesday night.



MARRIAGE ANNOUNCED. . . . Mr. and Mrs. Bernis Camp announce the marriage of their daughter, Carol Lynn, to Hal Tibbels, Route 2, Muleshoe, on January 2, 1972, at Guadalupe, Mexico. The couple plan to live in Lubbock, where they will continue their education.

First Birthday Celebrated By

Kimberly Dianne parents, Mr. and Mrs. J.W. Holmes. She is the daughter of Mr. and Mrs. Stephen J. Hassler of Clovis and has one sister, Ladaun, three years old.

TELEX.

Hearing Aids

Clovis Hearing Aid Center

Batteries & Molds. Free Tests.

Service All Makes.

416 Mitchell Phone 763-6900

Clovis, N.M.

Ladies Association Of Country Club Has Luncheon

The Ladies Association of the Muleshoe Country Club held its first monthly luncheon and regular business meeting of the new year Wednesday, January 19 in the dining room of the Muleshoe Country Club. Mrs. Max King, president, presided over the business meeting. Mrs. King announced the working committees for the coming year.

Mrs. Tommy Haley, tournament chairman, passed out golf balls to Mrs. M.D. Gunstream, Mrs. Charles Smith and Mrs. Houston Hart.

Mrs. Doyce Turner, card-playing chairman, announced there would be card play after the meeting.

Bridge, shanghai and golf were played by those wishing to participate. Mrs. Turner and Mrs. Ray Precure won high in bridge.

Members present were Mrs. Ken Box, Mrs. Tim Campbell, Mrs. Dee Chitwood, Mrs. Dick Chitwood, Mrs. Morris Douglas, Mrs. Howard Elliott, Mrs. Tommy Haley, Mrs. Jerry Don Haley, Mrs. Hart, Mrs. Richard Hawkings, Mrs. Kenneth Henry, Mrs. Clyde Holt, Mrs. Dick Johnson, Mrs. Chief Jones, Mrs. Harold King, Mrs. Max

King, Mrs. Woody Lambert, Mrs. Ernest Martin, Mrs. Don May, Mrs. Clem Peden, Mrs. Precure, Mrs. Turner, Mrs. Vance Wagon, Mrs. Joe Pat Wagon, Mrs. Pearl Ward, Mrs. Glen Watkins, Mrs. Thurman White, Mrs. Paul Willbanks and Mrs. Buck Wood.

TOPS Hold Weekly Meeting

The Muleshoe Jenny TOPS Chapter 34 met Thursday night, January 20 at the Bailey County Electric meeting room. June Vinson, leader called the meeting to order. Members repeated the pledge and sang the Friendship song. Evelyn Harris, weight recorder, called the roll. Twenty-three members were present, and one new member, Evelyn Moore, also attended. Queen for the week was Evelyn Harris. First runner-up was Ann Vinson and second runner-up were Ann Newman and Myrtle Chambliss. Evelyn Harris gave the pep talk. The meeting was dismissed with the singing of the good-night song.

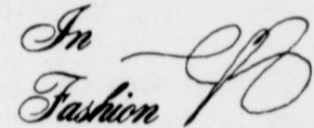
Educators Hear Dr. Taylor

Katherine Sanders, Virginia Bowers, Mabel Wolfe, Wayland Ethridge, Jim Parrish, Gail Bruns, Nancy Pewitt, Doris Scoggin, Mike Pollard, Marcus Gist, Wayne LaGrone, Kathleen Francis and Elizabeth Watson attended a program, "Motivating Reluctant Learners," Tuesday, January 18 at the Lubbockview Christian Church.

Dr. Frank Taylor of Santa Monica, California, dynamically presented ideas concerning motivation, classroom management, and changing behavior of children.

Dr. Taylor demonstrated how instruction could be personalized for students, how to use specific materials, and how to arrange classrooms with interest centers to provide maximum motivation.

Over 750 area teachers attended this evening meeting in Lubbock.



Skirts are not tight for spring—they may have stitched down pleats at the waist but they will widen as they reach the hemline. Altogether, the styles this spring will be more conservative and prettier than in recent months.

Iota Eta Chapter Of ESA Meets In Sudan

The Iota Eta Chapter of Episcopi Sigma Alpha met for their regular meeting Thursday, January 6 in the home of Alma Lumpkin, with Martha Markham as co-hostess.

President, Loretta Reid, presided during the business meeting. Plans were discussed for a clothing drive for the Lubbock State School. A thank you letter from the State School was read stating their appreciation for the Christmas stockings from the Iota Eta Chapter. A note was also read from Girlstown thanking the Chapter for a gift of linens. Tutu King was elected to represent the Sudan Chapter in the beauty contest which will be held in Tulsa at a later date. The program, "Drug Interactions," was presented by Loretta Reid. Attending were Glynna Harrison, Mary Cowart, Waynette Fisher, Charlene Blume, Pam Wiseman, Ruth Vincent, TuTu King, Loretta Reid, Mary Tollett, Maxine Nichols, Alma Lumpkin and Martha Markham.

Goodland Bible Study Club Has Meeting

The Goodland Bible Study Club met January 18 in the home of Kay Kindie. Lyndell Galt gave a report on Mrs. C. B. Hightower, who is in critical condition in the University Hospital in Lubbock and sent their prayers and well wishes to her family. The lesson for the day was

the 20th Chapter of John. The next meeting will be with Frieda Lowe on February 1. Those present were Lyndell Galt, Drucilla Hutton, Rosemary Johnson, Frieda Lowe, Opal McCelvey, Betty Parkman, Maxine Ragsdale, Sammie Simpson, Chloris Tarlton, Ruby Waldrip and Kay Kindie.



"All tied up" usually suggests that one's movements are restricted.

But to us, "all tied up" means good things. For example, this year we'll complete building a transmission line that will enable us to move electric power to the Public Service Company of Oklahoma . . . maybe even as far away as the East Coast. Or, to bring electric power into our system from far-away places.

Either way, it's a good deal for you — our customer. It means efficiency in the distribution of electric power and it means firming up dependability.

Yes, "all tied up" means we'll be — so you won't be!

ELECTRICITY—IT DOES SO MUCH GOOD

The Electric Company

FOR SO MANY PEOPLE

Pre-INVENTORY Clearance

Monday, January 24 Through Saturday, 29

THE FOLLOWING ITEMS ARE SPECIAL GROUPS WHICH HAVE BEEN REDUCED 1/2 PRICE FOR OUR PRE-INVENTORY CLEARANCE.

- | | | |
|-------------------------|-------|--------------------|
| MEN'S
SPORT SHIRTS | 1/2 | LADIES'
DRESSES |
| PANTS
CASUAL & FLARE | | SPORTSWEAR |
| DRESS SLACKS | PRICE | PANT SUITS |
| SPORT COATS | | COATS |
| SUITS | | ROBES |
| WINTER COATS | SALE | GIRLS'
DRESSES |
| BOY'S
SWEATERS | | SPORTSWEAR |
| SPORT SHIRTS | | ROBES |
| CASUAL PANTS | | INFANTS & TODDLERS |
| WINTER COATS | | PLAY CLOTHES |
| SPORT COATS | | |
| SUITS | | |





MR. AND MRS. CARL ELLINGTON

Mrs. Lineham Will Present Program On Arthritis

Mrs. Charles Lineham of Midland, executive director of the West Texas Arthritis Foundation, will be the guest speaker for the Progress Home Demonstration Club on Tuesday, January 25. The meeting will be at the Muleshoe State Bank community room at 2 p.m. The Club cordially invites anyone interested in learning more about arthritis, its symptoms and treatment, to attend. The West Texas Chapter of the

Arthritis Foundation was organized in 1966 and is made up of 83 counties in this part of the state. Mrs. Lineham has served as director of this organization for the past two and one half years. Previous to that time, she served as a board member and was on the board of the National Foundation. She has worked with some of the topmost authorities on the subject and will conduct a question and answer session at the close of her presentation.

Music Teachers Hear Program On "Technic"

The Muleshoe Music Teachers Association met Monday night at 8 p.m. in the home of Mrs. Jimmy Milner. Mrs. W. T. Watson was in charge of the program for the meeting. She opened the program with a game, giving each one present questions to be answered with terms used in music. Mrs. Sam Damron was the winner. Mrs. Watson presented three students, Becky Milner, who played "Sonatina" by Aram Khachaturian; Jana Garrett, who played "Majesty of the Deep" by George F. Hamer; and Gayla Hooten, who played "Für Elise" by Ludwig van Beethoven. Refreshments of sour cream cake, coffee and hot spiced tea were served by Mrs. Watson to Mrs. Damron, Mrs. A. M. Bradley, Mrs. Milner, Mrs. Craft, Mrs. Phil Garrett and daughter, Jana, Mrs. Robert Hooten and daughter, Gayla, and Becky Milner.

Ellingtons Celebrate 25th Anniversary

Mr. and Mrs. Carl Ellington were honored with a reception in celebration of their 25th wedding Anniversary Saturday evening, January 15 at the First National Bank.

Three Way 4-H Has Foods Show

The food project group of Three Way 4-H Club completed the requirements with a club food show for their mothers and friends on Tuesday, January 18. Those participating were Pattie Bowers, Princess Parkman, Julie Carlisle, Jackie, Carlisle, Renee Lowe, Robin Reeves, Kristin Cockery and Tami Davis. Mrs. Robin Taylor, county home demonstration agent, judged the exhibits and helped the girls with their study of nutrition and table setting. These girls will participate in the county food show on March 25.

Selecting Children's Books

COLLEGE STATION—"Books bulging with vivid pictures and stories fascinate children of all ages," reminded Jane Fleischer, Extension family life education specialist at Texas A&M University.

"When children grow up with books, the books become their friends," Miss Fleischer explained. "And it's almost impossible to start too soon. By his first birthday, a toddler takes delight in recognizing familiar scenes and objects in books."

Selecting books for preschool children requires careful consideration, according to the specialist. "Illustrated books should be adorned with clear, intense, pleasing colors. Pictures should have simple lines for the very young child and progress to greater detail for older children."

"Size and shape of books should also be suitable to the age of the child," she added. "Choose well-constructed books with strong binding and good paper." Story books should describe reasonable characters in situations familiar to the young child, Miss Fleischer said. "By the time the child is five, he will enjoy books of adventure, imagination and people in other lands."

Hostesses for the reception were their daughter and son-in-law, Mr. and Mrs. J. W. Wilson of Austin, and their son, Eddie Ellington, of Muleshoe. Guests were registered by Miss Tammie Alexander of Lubbock.

The serving table was covered with white lace over a pink linen cloth and centered with a floral arrangement of white Figi mums and pink carnations. Refreshments of cake, punch and mints were served by Mrs. Roy Alexander and Mrs. J. C. Alexander, both of Lubbock. Entertainment for the reception was provided by the "Hard and Easy" group.

Hobby Club Makes Egg Carton Flowers

The Muleshoe Hobby Club met Thursday, January 20 in the Muleshoe State Bank community room. The meeting was opened by the president, Ethel Julian, Ruth Bass demonstrated the making of flowers from egg cartons.

Hostess was Mae Henderson. The hostess gift was drawn by Blanche Cash. Nineteen members were present.

Those attending and bringing displays were Ruth Williams, decorative bottle; Ruth Bass, jewelry box and beads; Bernice Amerson, afghan; Levina Pitts, calendars and turtles made from styrofoam; Dora Phipps, jewelry chest; Allie Barbour, antique egg beater; Hallie Briscoe, decorated pipe; Myrtle Chambliss, mice made from cotton balls and Mabel Caldwell, glass hen, antique amethyst bubble vase, and a net and corchor handle clothes brush.

Club Women Study Drapes

The Needmore Community Club met on Wednesday, January 19, with 11 members answering roll call. The minutes were approved as read. Following a short business meeting, Mrs. Robin Taylor, Bailey County Home Demonstration Agent, presented a program on the Art of Making Drapes. Instructions on cutting and assembling drapes were given.

Those attending were Mrs. Jody Barrett, Mrs. Van Rogers, Mrs. Fred Beene, Mrs. Watt Underdown, Mrs. Hal Phipps, Mrs. Morris Killough, Mrs. Buster Kittrell, Mrs. Lewis Wayne Shaffer, Mrs. Lester Howard, Mrs. LeLend Jones and Mrs. Joe McMakin.

Out-of-town guests included Ellington's mother, Mrs. Dicy Ellington, Killen; Mrs. Ellington's parents, Mr. and Mrs. G. W. Alexander, Haskell; Mr. and Mrs. Herschel Alexander and Terry, Munday; George Alexander and James and Thomas Alexander and Johnny, all of San Antonio; Mr. and Mrs. J. C. Alexander and family and Mr. and Mrs. Roy Alexander and family, all of Lubbock; and Mr. and Mrs. Randy Johnson and Mr. and Mrs. Gary Fenn, Clovis.

Epsilon Sigma Alpha Plans Valentine Coronation Ball

Epsilon Chi Chapter of Epsilon Sigma Alpha met in the country home of Mrs. Dick Chitwood on Tuesday night, January 18. Hostesses for the occasion were Mrs. Dick Chitwood and Mrs. Eugene Howard.

Refreshments of chips, dips and fondue were served and charades and games were played.

A short business meeting was held. Mrs. Jerry Harrison, chairman of the March of Dimes Drive, announced that it will be held on Thursday, January 27 from 4 to 6 p.m.

Plans were made for the Valentine Coronation Ball for Saturday February 5 at 8 p.m. at the Muleshoe Country Club. Special guests will be russhes and husbands in-active members and husbands and Sigma Upsilon sister chapter from Friona, and their husbands. Chances on a box of Valentine candy will be sold at the door for 25 cents.

Plans were also made to attend the District IX meeting in Tulia, Sunday, January 23. Mrs. Gary Smith will represent the Chapter in the District Beauty Queen Contest.

Progress 4-H Club Reports On Projects

The Progress 4-H Club met Tuesday, January 18. John Gunter III served as president pro-tem. Mrs. Ernest Ramm gave a report on the club's Christmas party. Mrs. Jimmie Carpenter reported on the program committee meeting held on January 8. Each member was given a copy of the programs that will be given in 1972.

Mrs. Bob Henderson reported the Sour Doughboys had finished their cooking lessons and would work on their food records Monday, January 24. Mrs. Mason and Mrs. Ramm have started their cooking projects. The County Food Show will be held on March 25.

The electric project will start sometime after February 19,

so any member interested may contact Auston Floyd.

Mrs. Buddy Black presented a leadership plaque to Mr. and Mrs. John Gunter, who were leaders in 1970-71.

Tray Stoneman introduced Highway Patrolman Joe Young, who showed a film on safe driving. Gunter reports that the club appreciated Young giving the program.

The young junior members led the group in several games. Refreshments were served, and the meeting was adjourned.

GET A FREE CAR WASH with each fill-up AT Riehl's Car Wash



QUEEN CANDIDATE.....Mrs. Gary Smith will represent the Muleshoe Chapter of Epsilon Sigma Alpha in the District IX ESA Beauty Contest on Sunday, January 23 at Tulia.

Student Takes Trip

Camille Hobbs, daughter of Mrs. Beulah Hobbs of Farwell, and granddaughter of Mrs. Lula Kistler of Muleshoe, accompanied an Abilene Christian College student, Kathy Young and her parents on a recent trip to California. Camille is a junior elementary education major at Abilene Christian College this semester. While there, she visited with her brother and his wife, Mr. and Mrs. Walter A. Moeller of Gardena, and with her uncles and families, Mr. and Mrs. Gene Kistler of Huntington Beach and Mr. and Mrs. Merle Kistler of Pomona. She also saw most of the points of interest in southern California, including Disneyland.

Announcing

THE Bailey County Abstract

113 W. Ave. D MULESHOE

is open

UNDER THE MANAGEMENT

OF: Cleta Williams

FORMER EMPLOYEE OF MRS. LELA BARRON

Phone 272-3459

Box 485

STUDIO QUALITY AT STORE PRICES

LIVING COLOR 8" X 10" BEAUTIFUL LIVING COLOR PORTRAIT

ONE PER CHILD ONLY
TWO PER FAMILY
GROUPS AT 79¢ PER PERSON

YOU CHOOSE FROM SEVERAL POSES

ALL WORK DONE WITH EASTMAN KODAK MATERIALS

PLUS 50¢ HANDLING

79¢

perry's

SATISFACTION GUARANTEED

DAYS Saturday
DATES January 29
STUDIO HOURS 10-5

PAUVEY Associates

Anthony's PRE-INVENTORY CLEANUP SALE

ALL SALES FINAL NO LAYAWAYS

4 DAYS MONDAY THROUGH THURSDAY

WE WILL CLOSE 5:00 p.m. SAT. JAN. 29th FOR INVENTORY

91 ONLY BOY'S PERMA PRESS SPORT SHIRTS SIZES 8 YRS. TO 18 YRS. SHORT AND LONG SLEEVES VALUES TO \$3.99 \$1	169 LADIES' AND GIRLS' CASUAL OR DRESS SHOES VALUES TO \$12.99 \$2	87 PIECES GIRLS' SPORTSWEAR SIZES 2YRS. TO 14 YRS. VALUES TO \$5.00 \$1
156 PR. MEN'S OR BOY'S PERMA PRESS CASUAL PANTS VALUES TO \$10.00 \$4	178 PIECES LADIES' AND PETITE SPORTSWEAR AND DRESSES VALUES TO \$16.99 \$3	69 PIECES LADIES' NYLON OR BLENDS SLEEPWEAR VALUES TO \$6.00 YOUR CHOICE \$2
88 ONLY MEN'S SHORT OR LONG SLEEVES SPORT OR DRESS SHIRTS VALUES TO \$5.99 \$2	SPECIAL GROUP SCARFS, SUPPORT HOSE STRETCH TIGHTS VALUES TO \$3.50 50¢	182 PRS. LADIES' AND TEENS LEVIS FOR GALS REGULAR VALUES UP TO \$12.00 NOW \$4
63 PR. MEN'S OR YOUNG MEN'S DRESS SHOES VALUES TO \$16.99 \$8	LADIES' AND GIRLS' BRUSHED NYLON WARM SLEEPWEAR REGULAR VALUES TO \$8.00 NOW \$4	SHOP OUR BIG BARGAIN TABLE PANTS SHIRTS DRESSES WALKING SHORTS VALUES \$8.00 GIRLS' LADIES' BOY'S MEN'S \$1

CONGRESSMAN

Bob Price

18th Congressional District

Calling the national defense system the cornerstone of America's survival as a free nation, Congressman Bob Price today blasted the efforts of congressional doves to cut defense spending as being naive and totally unrealistic.

Speaking at a Ladies Club Luncheon at the home of Mrs.

Joe H. Staley of Wichita Falls, the Texas lawmaker criticized those in and out of government who have been calling for a so-called reordering of national priorities. These people would have us believe that funds spent for a strong national de-

fense have been wrongly channeled and wasted, and that these costs somehow stand in the way of the 'good life' for all Americans. Nothing can be further from the truth, however, since the fact is that without national survival, there can be no 'good life' for any American or for anyone else in the world who depends upon the strength of the United States to prevent the expansion of communist tyranny.

Price said that contrary to what some of the Democrat party presidential hopefuls would have the public believe, determining the size and composition of the defense depart-

ment budget does not really involve assigning differing weights of importance between national defense and domestic programs, between guns and butter. He declared, "Decisions on the size and make up of the defense budget should only be based on the needs of national survival, nothing more and nothing less."

The Congressman stated that the American people and their elected officials must never forget that the ability of the United States to survive in the nuclear age does not depend on how well the nation has managed its domestic programs. It will depend instead on whether the

U. S. can avoid a destructive war with Soviet Russia or Red China. "If we fail in this endeavor, we fail in everything, and the American ideals and way of life we hold so dear will have come to dust and radioactive dust at that."

Price noted that based on the current state on international geopolitics, defense spending may well have to be increased from its present level of \$70 billion to as high as perhaps \$80 billion. He observed, "There is no doubt about it. Self protection and national survival carry a high price tag; but can we afford as a nation and a people to pay it?"

Cannon Wing Commander Reassigned

and Air Force Exchange Service.

Prior to taking command of the 27th TFW in May, 1970, Colonel Francis was vice commander and director of operations for the 27th.

Colonel Francis received his commission as a second lieutenant in January, 1944 following aviation cadet training at Maxwell Field, Ala., Avon Park, Fla. and Greenville, Miss. Following his training, he was assigned as an instructor pilot in Greenville.

U.S. and overseas. A native of Dukedom, Tenn., Colonel Francis is married to the former Sarah Ann Baker of Carbondale, Ill. They have two children: Charles E. Jr., an officer in the U.S. Marine Corps, and Linda, a 1970 graduate of Clovis High School currently attending Eastern New Mexico University.

A new wing commander has not yet been selected.

I make no haste to have my numbers read. Seldom comes glory till a man be dead.

-Robert Herrick.

Six Weeks Honor Roll

Third Grade--Michelle Agee, Gloria Anguiano, Ruthie Burton, Julius Briscoe, Patricia Bridges, Brenda Clay, Gary Cox, Leslie Cowan, Casey Farmer, Nancy Garcia, and Shelli Hawkins.

Greg Harrison, Jill Johnson, Sally Lunsford, Shelly Macha, Brad Poyner, Johnny Puckett, Roy Quiroz, Keva Roming, Laurie Seay, Wendy Stice, Brenda Stevens, Leslie Wagnon, and Clifford Watson.

Fourth Grade--Scott Baker, Joel Bratcher, Jalayne Collins, Brenda Dodd, Sheryl Dunham, Sharla Henry, Sandra Hughes, and Robert King.

Jesse Lackey, Lamont Lewis, Mark Northcutt, Debra Stevens, Shelly Splawn, Becky Turner, Dennis Watson, Tommy Wheeler, and Pam Young.

Fifth Grade--Treena Bass, Brent Burrows, Douglas Cowan, Anita DeLeon, Dean Estep, Beatrice Edmunson, Hope Free, Sandra Faver, Janell Garrett, Jana Grimsley, Michael Green, Mark Harmon, Shari Harlin, Gwen Ham, Debbie Hall, Keith Hawkins, and Shannon Kennedy.

Mamuel Lopez, Lavanne Lloyd, Cecil Mardis, Tammy Nestatt, Dave Poyner, and Benetta Roming.

Susan Rodriguez, Clayton Ramm, Jeep Shanks, Karen Stovall, Terry Shafer, Billy Sismore, Dickey Sudduth, Steve Turner, Tammy Whitaker, Leslie White, and Keith Woodard.

Not all the comic characters are found in the comic books.

Out of Orbit

INSTEAD OF A LECTURE, I'VE ARRANGED FOR A GUEST SPEAKER

SCHEDULE OF EVENTS

Monday, January 24
7:30 -- Rainbow--Masonic Hall
Square Thrus -- American Legion Hall

Tuesday, January 25
2:00 -- Progress Home Dem. Club--MSB
7:30 -- Order of Eastern Star -- Masonic Hall
Goodland Bible Study

7:30 p.m. Alcoholic Anonymous, South First
8:00 p.m. Rebekahs, Odd-fellows Lodge

Wednesday, January 26
Demolay--Masonic Hall

Thursday, January 27
Muleshoe Study Club
7:00 -- TOPS--REA meeting room
4:30p.m. & 7:00p.m.--Weight Watchers Catholic Center

Any upcoming community event for Schedule of Events, please report to the Journal office.

Compliments Of: MULESHOE STATE BANK MEMBER FDIC



Double Green Stamps every Wednesday

WITH \$2.50 PURCHASE OR MORE

EARLY WEEK SPECIALS!

SAVE 30c on Purchase of Maxwell House **COFFEE**

All Grinds **59¢**
Lb. Can

On first can with this coupon

Excluding Cigarettes Thereafter 89¢
Coupon good only at Piggly Wiggly through Jan. 26, 1972

Fruit Drinks

Wagner Flavors **4 \$1**

32 oz. bottle

Boned Chicken

College Inn **3 \$1**

5 Oz. Can

Chunk Tuna

Carnation **3 \$1**

6 1/2 Oz. Can FOR

Cut From Lean Boston Butts, **Pork Steak**

Pound **68¢**

First Grade Quality, **Sliced Bacon**

Farmer Jones, **75¢**

Pound Package

Sliced Bacon Farmer Jones First Grade Quality 2 Pound Package **\$1.47**

Shrimp Fisher Boy, Breaded 8 Ounce Package **69¢**

Fish 'N Chips Fisher Boy 1 Pound Package **69¢**

Fish Sticks Fisher Boy 2 Pound Package **98¢**

Swiss Cheese Signature, Natural Chunks 8 Ounce **68¢**

Cheese Slices Farmer Jones, Individually Wrapped American Singles 6 Ounce Pkg. **41¢**

Longhorn Cheese Farmer Jones Halfmoon 8 Oz. Package **56¢**

Cream Cheese Kraft's Philadelphia Plain 8 Ounce **39¢**

Pork Roast

Fresh Picnic Cuts **48¢**

Pound

Piggly Wiggly or Carol Ann **Golden Corn**

Cream Style or Whole Kernel **5 \$1**

16 1/2 Oz. Can

Bonne' Assorted Colors **Bathroom Tissue**

2 ply, Twin Pak **25¢**

Bonnie **Detergent**

49 Oz. Box **49¢**

Piggly Wiggly or Carol Ann **Green Beans**

Cut **5 \$1**

16 Oz. Can

Lara Lynn Assorted **COOKIES**

10 oz. box **5 \$1**

3 Lb. Can **CRISCO**

99¢

Fresh Frozen Foods!

Fruit Pies

Morton's, Frozen, Apple, Peach, Cherry, 20 Ounce Pie **29¢**

Frozen Vegetables

Kounty Kist **3 \$1**

20 Oz. Bags, Golden Corn
18 Oz. Bags, Cut Green Beans
20 Oz. Bags, Green Peas

Breakfast Treat Frozen Waffles 5 Ounce Package **10¢**

Dairy Specials!

YOGURT

Prices **25¢**

8 Oz. Carton

Sour Cream

Or Dips Prices **3 \$1**

8 Oz. Carton

Grapefruit

Sweet, Juicy Each **5** Lb. Bag **49¢**

Crisp, Garden Fresh Each **Carrots** 11lb. Pound Bag **15¢**

Good Eating **D'Anjou Pears** Lb. **19¢**



MULE'S TALE



Official Publication of Muleshoe High School Written and Edited by Students of the Muleshoe Schools

Vol. 7, No. 0

EDITOR Jan Jinks

SUNDAY, MARCH 21, 1971

Muletrain Spotlights Speech Dept.

Mulette Maneuvers

The Varsity girls played their best game of the season Tuesday night at Tulia, winning 52-41. The running points for the A girls are: Judy Winn-30 points; Jeannie Putman-17

Nancy Hoover Is New Music Director

Mrs. Nancy Hoover is Muleshoe High's new choral music director. Mrs. Hoover is a graduate of the Texas Tech School of Music. She sang in the Tech chorus for 3 years, played in the Tech band for 3 years, and participated in Tech Opera Theater for 3 years. Mrs. Hoover grew up in Littlefield where she participated in Sweepstakes choruses and bands for four years. She was in the Texas All State Chorus for three years. She won honors in both vocal and instrumental solos and ensembles. Mrs. Hoover is also an accomplished pianist and organist.



NANCY HOOVER

Coaches Comment



Mrs. Hoover's husband, Jerry, is the new Music and Youth Director of the First Baptist Church. They have two sons, Craig-age 5 and Mark-age 3.

It is Mrs. Hoover's hope to build a choral music program of which all can be proud. She points out that a love of music and singing has permanent and lasting value for all persons.

Music is most enjoyable for those who learn how to perform as a group. Group singing and performance produces a great personal satisfaction and sense of accomplishment. Mrs. Hoover hopes to have a large enough chorus this semester to stage and present some current musicals. You may consider this your personal invitation to join the chorus at mid-term.

The Mules ended the first half of District play with a three win and 2 loss record. We were defeated by Levelland 65 to 60 and by Canyon 54 to 53. The boys played well in both games and with a couple of breaks in the last few minutes would have won both of these games. Canyon and Levelland will play Friday night, January 21, for the first half championship.

In order to win the District, a team has to win both halves of District play. If two different teams win each half, there will be a one game playoff for the district championship.

I was pleased with our play in the first half of District. All of the boys gave a tremendous effort and they have dedicated themselves to do even better in the second half of play in order to win the district. One of our best efforts was in the Canyon game when the Mules trailed by twenty points in the second quarter and came back to take the lead in the latter stages of the game. This was accomplished against one of the best teams in the district and it demonstrated how much courage and determination these boys have.

We appreciate very much the support by our fans. In the Levelland game, we had the largest crowd ever in the gym for a high school game. This means a lot to the players and will help them to play even better in the second half of district play.

Seniors Select Class Favorites

At the first Senior class meeting of the new semester, the first order of business was electing class favorites. They are Jenny Milburn and Ricky Faver.

Mr. Block made an announce-



BRENT BLACKMEN

Ever met a villain? If you saw the melodrama, "Egad What a Cad," you have. Brent Blackman is this villain. Brent has also been in the play, "Charlie Brown" and the one act, "The Choir". He is in Boy's Prose and placed second at the '72 Friona Forensic Tournament. Brent is the son of Mr. and Mrs. M.F. Blackman. He has one older sister, Marsha. Brent is a Junior at MHS and his activities include Student Council Vice President, "Mighty M" Band Drum Major, Thespian Vice-President, Beauty Pageant Chairman, Stage Band, Member of the United Methodist Youth and is active in Junior Class activities including Chairman of the Junior-Senior Banquet.



GRETA BAMERT

Greta Bamert, the daughter of Mr. and Mrs. Carl Bamert, is a Senior in Poetry Interpretation. As a Freshman Greta took fourth place at the Kermit Tournament. As a Sophomore she took honors with a first in Dimmitt, second at Kermit, a first at Spearman, a first in District and a second in Regional. As a Junior, Greta took honors with a third in Dimmitt, a second in District in Poetry Interpretation. She also took first place honors in Duet Acting at West Texas State University. She was also picked as the Drama Student of the Year during her Junior year. As a Senior she has placed third in the Friona Tournament.

Other than speech, Greta is active in FTA where she is secretary and was elected Miss FTA for 1971-1972. She is parliamentarian of the Thespians and is in Dusty Pages.

Outside of school, Greta spends her time playing the piano, writing poetry, and preparing for contest plays.

When asked to comment, Greta said, "The kids in Contest Speech are some of the greatest people I've ever had the privilege of working with. They all work as a team and bring back the proof of it after every tournament. I only wish the people at MHS and Muleshoe as a whole realized the work we put in and appreciated the contributions and sacrifices we have made to do our school justice and to make Muleshoe proud of us."

Careful driving is always important because your life is at stake on the highways.

Teachers Have In-Service Program

Muleshoe administrators, teachers, and aides were involved in in-service training, Monday, January 17.

Dr. Wilma Jo Bush of The School of Education, Pan American University, Edinburg, Texas, was the key note speaker. Dr. Bush, an educator, author, and psychologist, talked to the local educators about "Learning Disabilities of Children."

After Dr. Bush's presentation, the faculty divided into smaller groups and other resource personnel presented programs relative to particular teaching fields.

Dr. Alice Kidd, Math Consultant from the Texas Education Agency, discussed guidelines and curriculum with the junior high and high school math teachers.

Elwyn Tyrone, consultant from the Texas Education Agency, discussed and demonstrated the inquiry approach to the secondary social studies teachers.

Dr. Woodie Coleman, Program Director of Region XVII, Education Service Center, presented "Developing Self Concept" and the ERIC System to the English, Fine arts, science, business, foreign language, re-



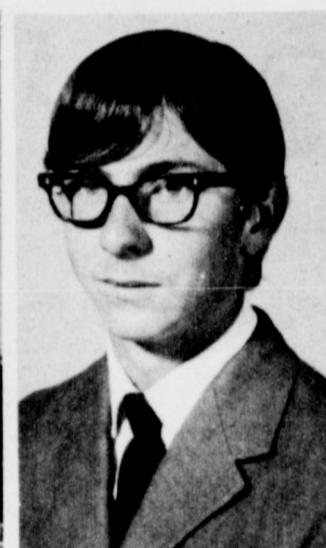
DONNA WOODARD

A prose reader in the Speech department is Donna Woodard. She is the daughter of Mr. and Mrs. W.C. Woodard. Donna has two older brothers, John and Steve, and two older sisters, Mrs. Bob Copeland and Judy. Donna is a senior at Muleshoe High School and has placed second at Friona so far this year. Other than speech, Donna's activities include FFA, FTA, member of a Folk singing group, President of Thespian Troupe 714, Senior class reporter and Student Council Representative and is a dedicated actress in the school plays.

15 Receive All Region Band Honors

Tryouts were held Saturday, January 15, for All Region Band. Muleshoe students competed with 3A and 4A schools in this area. Muleshoe had 15 people to make All Region. They are Denette Mann and Kim Cowan, flutes; Becky Milner, Sharron Wrinkle, and Jama Merritt, clarinets; Linda Middlebrooks, bass clarinet; Stephanie Bryant, alto saxophone; Monica Griffiths and Karen Locker, Tenor Saxophones; Karen Hamilton, concert bass clarinet; Charlotte Wedel and Kim Milner, Bassoons; Danny Blaylock, Trumpet; and Brent Blackman and Bobbi Hardaway, French Horns.

They will spend a three day weekend in Lubbock, January 27, 28, and 29. A concert will be held Saturday, January 29, 1972.



BILLY RIALS

"I believe that this speech class is the greatest class in school. All the people are wonderful and Mr. Moore is one of the greatest persons I have ever known. He is simply fantastic. He's the one who has made our speech class as great as it is."

This comment was made by Billy Rials, the son of Mr. and Mrs. Jack Rials. Billy has three sisters, Mrs. Eddie Atkins of Arlington Texas, Mrs. James Dumack, and Sylvia Rials. Billy's family resides at 414 west 9th.

Billy's speech event is Boy's Prose Reading. He is a senior at MHS and is involved in Thespians, President of the Art Club, plays guitar in a folk group, and participates in school plays.



LARRY MITCHEL

Larry Mitchell has been chosen "Best of MHS" this week. He is the 17 year old son of Mr. and Mrs. George Mitchell. He has one younger brother, George, 16.

Larry is one of the Mighty Mules this year. With his hard work and great ability he has helped the team achieve many victories.

Thespians wish to thank him and give him the recognition he truly deserves.

NHS Students of The Month

Peggy Carter, daughter of Mr. and Mrs. J. R. Carter is a Senior at Muleshoe High School. She is a member of FFA and is president of the HERO Chapter. Peggy is a HECE student employed at Harvey Bass Appliance. She is a member of FTA.

Lizan Gunter, the daughter of Byron Gunter, is a Junior at MHS. She is President of Rose Chapter of FFA, a member of FTA, is a member of the Varsity Basketball team, and is FFA Plowgirl.

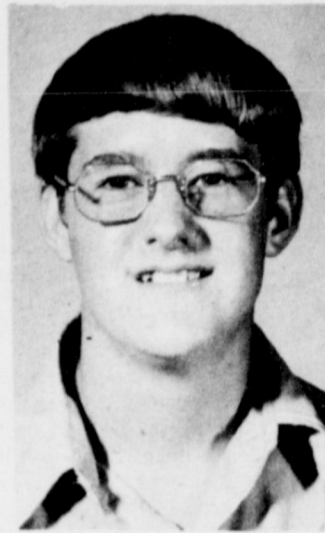
Brenda Weeks, a Sophomore at MHS, is the daughter of Mr. and Mrs. C. W. Weeks. She is basketball manager, a member of FFA and of FTA.

Cindy Harvey, a freshman, is the daughter of Mr. and Mrs. Charles Harvey. She is a member of Pep Squad and FFA. She is a freshman basketball player, and enjoys playing tennis. Her hobbies are cooking and sewing.

These students have been selected as Honor Students of the Month and are featured on the National Honor Society, and these students are selected each month by the faculty.

Honors Won Under Moore's Direction

The Muletrain Staff of MHS is highlighting the students competing in poetry and prose interpretation in the Speech Department. These students are involved in two phases of five which the Speech Department competes in throughout the year. The Muletrain Staff is honored to spotlight these students who have honored Muleshoe High School with their participation and superior accomplishments. This department is under the direction of Mr. Kerry Moore, English and Speech teacher at MHS. His qualifications, experience, and ability to direct the students are all important in the excellent representation the Speech Department gives to MHS. Mr. Moore is admired and respected by all his students.



BILL CHAPMAN

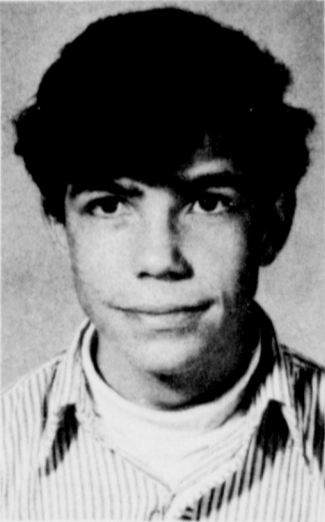
Poetry is Bill Chapman's speech event. Bill is the son of Mr. and Mrs. B.F. Chapman, Jr. He has one sister, Martha Jane, a senior at MHS. They reside at 615 West 6th Street. Bill is a Junior at MHS and is active in Demolays.



JUDY WOODARD

Placing third in the Hub of the Plains and Friona Tournaments is Judy Woodard. Judy is the daughter of Mr. and Mrs. W.C. Woodard. She has two older brothers, Steve and John, and two sisters, Mrs. Bob Copeland and Donna. They reside at 424 West Ave. B.

Judy is a Senior at MHS and competes in Prose and Drama. Her activities include Secretary of Thespians, participation in school plays, and singing the folk group "Hard and Easy." Judy is a member of DECA and works at the XIT Steak House. Judy's only comment was, "Go Mules."



LARRY TORRES

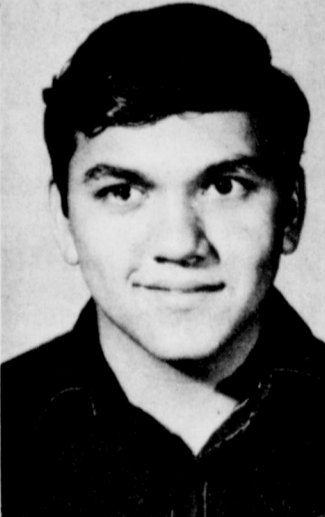
One of the prose readers is Larry Torres, a sophomore at MHS. Larry is the son of Mrs. Estella Torres. They reside at 301 East Dallas.

Larry has been in the semifinals at the Hub of the Plains Tournament and went to the finals at Friona. His other activities include Thespians, school plays, and is a member of the Catholic Church. Larry also enjoys swimming.



MELINDA BUTLER

A Freshman poetry interpreter is Melinda Butler. Melinda is the daughter of Mr. and Mrs. Charles T. Glover. They reside at Route 2, Box 309. Melinda was in the semifinals at The Friona Tournament. Her activities include FTA, FFA, ART Club, and Thespians.



JOHN GARTH

John Garth, a junior student at MHS, is the son of Mr. and Mrs. D.T. Garth. John's speech event is poetry interpretation, and he placed first in the Friona Tournament.

ONE MINUTE SPORTS QUIZ

1. What was the Dallas-Minnesota score?
2. Who won the All-Glenn fight?
3. Who won the Arizona State-FSU game?
4. How many times have Alabama and Nebraska met in bowl games?

Answers to Sports Quiz

1. 20-12, Dallas.
2. Muhammad Ali.
3. Arizona State, 45-38.
4. Three.

School Menu

- Jan. 24-28, 1972
- MONDAY
- Milk
 - Frito Pie
 - Pork and Beans
 - Buttered Carrots
 - Corn Bread
 - Chocolate Pudding-Whipped Topping
- TUESDAY
- Milk
 - Hamburger
 - Pickles-onions
 - Lettuce
 - Tater Tots
 - Peach Half with Prune
- WEDNESDAY
- Milk
 - Fried Chicken-Gravy
 - Buttered Rice-Sugar
 - Blackeyed Peas with Snaps
 - Hot Rolls-Honey
 - Fruit Cup
- THURSDAY
- Milk
 - Hot Dog With Sauce
 - Macaroni Salad
 - Chilled Tomatoes
 - Raisin Cobbler
- FRIDAY
- Milk
 - Turkey and Dressing
 - Cranberry Sauce
 - Green Beans
 - Creamed Potatoes
 - White Bread
 - Pumpkin Pie

Muleshoe High School Beauty Pageant
 High School Auditorium
 February 19, 1972
 7:30 P.M.

The Sandhills Philosopher



Editor's note: The Sandhills Philosopher on his Johnson grass farm may be getting in over his depth this week, but it's probably not the last time. Dear editor: A book-reading friend of mine has spent considerable time lately trying to figure out the great Howard Hughes mystery, whether the biography coming out about him is authentic and whether that was Hughes on the telephone with all those reporters denying he's ever heard of the man who wrote

the book. What this friend doesn't understand is that the selling of snake oil cuts across all levels of society. Whether you're selling patent medicine from the back of a covered wagon or in front of a T. V. color camera via satellite, ingredients remain about the same and the percentage of suckers remains unchanged. If you're selling books, the vocabulary of the audience widens but the gullibility percentage remains constant. This is known as the first law of human nature. According to an article I remember reading in a newspaper a few weeks ago, there were 35,000 different books published in the United States last year, or nearly 100 a day. Since this is many more than any one person could read in a lifetime even if he didn't watch television, slept very little, and didn't even subscribe to the Journals, naturally the few books that do get bought in the thousands require some of the selling techniques inherited from the men who sold from the backs of covered wagons. If the writer who said he interviewed Mr. Hughes is cars all around the country really did, it looks like some fingerprints would have been left

somewhere. If Mr. Hughes really wanted to remove all doubt about his denying the interviews took place, all he'd have had to do was speak via television or in person instead of by telephone. I don't usually get off on such literary topics as this, and for all I know everything may be on the up-and-up in this matter, but it is well to remember that film-flamery is an ancient art not limited to politics and international affairs, and the more advanced man becomes the better it works. Where can I get hold of a copy of this Hughes book? Yours faithfully, J. A.

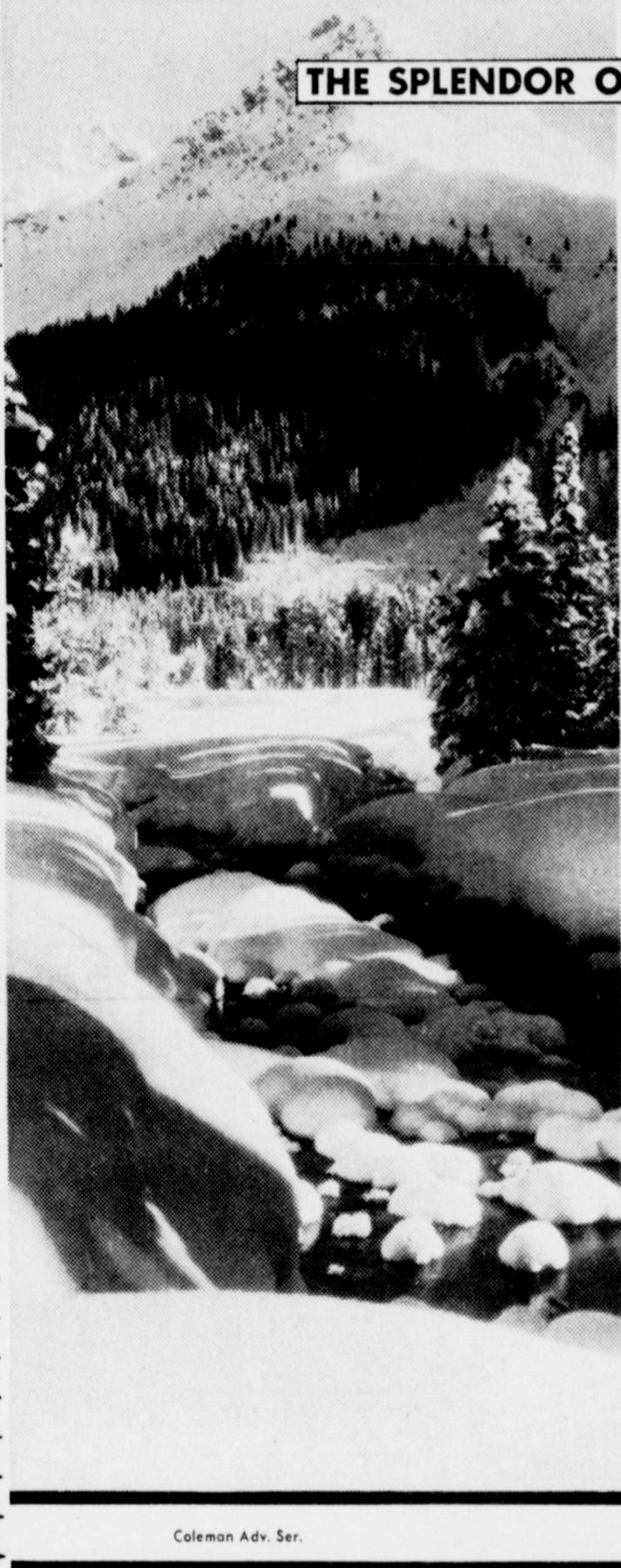
Martin Opposes New Code

AG OPINIONS-- Atty. Gen. Crawford C. Martin declared the controversial new code of ethics for state and local officials unconstitutional, and was commended by Governor Smith and Secretary of State Bob Bullock. In other recent opinions, Martin concluded: "A school of veterinary and zoological medicine at Texas Tech University can be approved by simple majority vote of the Coordinating Board, Texas College and University System. New and separate institutions require a two-thirds vote of the Board."

*A witness in a criminal case under subpoena is entitled to mileage and witness fees. *Jim Wells County commissioners redistricting of commissioners precincts August 11 is void due to failure to publish notice of changes. *Fees dedicated to the Real Estate Research Center at Texas A & M University are not in the state treasury and do not need to be appropriated by the legislature. INSURANCE CUTS ORDERED-- The State Insurance Board has directed lower collision insurance premiums for motorists whose cars are equipped with new damage-resistant bumpers. No domestic manufacturers have yet certified cars that meet the standards, however. Twenty per cent discounts were ordered for 1972 cars with bumpers that can stand a five-miles-per-hour collision, front or rear, without damage. Fifteen per cent discounts were ordered for 1972 cars with bumpers which can stand a five-mph front end crash and a two-and-a-half-mph rear end bump. Ten per cent reductions apply for 1972 autos sustaining a five-mph front and two-and-a-half-mph rear collision without damage to lights, fuel, exhaust, cooling or latching systems or to the bumpers themselves.

Street-by-street tests with sensitive scanning equipment to record possible abnormal radioactivity from uranium mining operations will be made in the South Texas area. Air and ground surveys by the State Health Department have disclosed no evidence of public health hazards, and none is anticipated by S.H.D. However, health problems have been reported in Colorado where a gas released by radium remained in tailings or wastes after usable uranium is extracted. The wastes there were used for construction fill. Towns to be covered in the screening include Floresville, Karnes City, Kenedy, Three Rivers, George West, Tilden, Pleasanton, Leming, Poth, Hobson, Falls City, Helena, Panna Maria, Coy City, Lenz, Caesar, Pawnee, Mineral, Oakville, Simmons, Calhoun, Whitsett, Peggy, Campbellton, Christine, McCoy and Caughran. Uranium mills operate in Falls City and near Three Rivers.

- | | | | | |
|---|--|--|---|---|
| MULESHOE ASSEMBLY OF GOD
517 S. First
H.D. Hunter, Pastor | SPANISH ASSEMBLY OF GOD
East 6th and Ave. F
Rev. Hicolito Pecina | FIRST UNITED METHODIST CHURCH
507 West Second
J.B. Fowler, Jr., Pastor | PROGRESS BAPTIST CHURCH
Progress, Texas
Murrell Johns, Pastor | ZION REST PRIMITIVE BAPTIST CHURCH
207 E. Ave. G
Glen Williams, Elder |
| FIRST BAPTIST CHURCH
220 W. Ave. E
Douglas DuBose, Pastor | SPANISH BAPTIST MISSION
E. 3rd and Ave. E
Larry W. Henry, Pastor | MULESHOE BAPTIST CHURCH
8th Street & Ave. G
Rev. J.D. Brown | ST. MATTHEW BAPTIST CHURCH
W. Third
Rev. E. McFrazier, Pastor | PRIMITIVE BAPTIST CHURCH
621 S. First
Afton Richards, Elder |



THE SPLENDOR OF THE SNOW

Snow falls and puts a beautiful white blanket over the mountains, and even before this one is gone, others will fall. It will become deeper and deeper until the spring, when it begins to melt and provides life giving waters to many streams. These streams meet with others and become rivers and provide water for irrigation and lakes throughout our land.

Our Lord, Jesus has said that He will give to any that seek Him... "a well of water springing up into everlasting life." — John 4, 14



The Church is God's appointed agency in this world for spreading the knowledge of His love for man and of His demand for man to respond to that love by loving his neighbor. Without this grounding in the love of God, no government or society or way of life will long persevere and the freedoms which we hold so dear will inevitably perish. Therefore, even from a selfish point of view, one should support the Church for the sake of the welfare of himself and his family. Beyond that, however, every person should uphold and participate in the Church because it tells the truth about man's life, death and destiny; the truth which alone will set him free to live as a child of God.

- FIRST CHRISTIAN CHURCH
130 W. Ave. G
Walter Bartholf, Minister
Sunday Evening Service 6 p.m.
- IMMACULATE CONCEPTION CATHOLIC CHURCH (Fr.)
Robert O'Leary, Northeast of City
- MULESHOE CHURCH OF CHRIST
Clovis Highway
Royce Clay, Minister
- SIXTEENTH & D CHURCH OF CHRIST
Sunday-10:30 a.m.
Evening-6p.m.
Wednesday-7 p.m.
- NORTHSIDE CHURCH OF CHRIST
117 E. Birch Street
Glenn Winston, Minister
- JEHOVAH'S WITNESS
Friona Highway
Boyd Lowery, Minister
- RICHLAND HILLS BAPTIST CHURCH
17th & West Ave. D
J.P. Jones, Pastor
- ST. JOHN LUTHERAN
Lariat, Texas
Herbert E. Peiman
- LATIN AMERICAN METHODIST MISSION
Ave. D & 5th Street
Pastor Rosaleo (Ross) Chavez,
- FIRST PRESBYTERIAN
Morton Highway
Edwin L. Manning, Pastor
Sunday Morning Service 9 a.m.
- CHURCH OF THE NAZARENE
Ninth & Ave. C
James W. Humble, Pastor
- CALVARY BAPTIST CHURCH
1733 W. Ave. C
Rev. Charles Kenneth Harvey
- TRINITY BAPTIST CHURCH
314 E. Ave. B
V.L. Huggins, Pastor
- Y.L. METHODIST CHURCH
Rt. 1 Muleshoe
Arron L. Mitchell

The following business firms urge you to attend the church of your choice this Sunday and every Sunday

- | | | | |
|--|--------------------------------------|--|-------------------------------------|
| First National Bank
224 S. First | St. Clair's
110 Main | Fry & Cox
401 S. First | Muleshoe State Bank
304 Main |
| Bratcher Motor Supply
107 E. Ave. B | B & S Irrigation Company
114 Main | Charles Lenau Lumber Co.
202 E. Ash | Cobb's Department Store
218 Main |
| White's Cashway Grocery
402 Main | Western Drug
114 Main | Muleshoe Publishing Co.
304 W. Second | Muleshoe Co-Op Gins
Muleshoe |
| Dari Delite Drive-In
210 N. First | XIT Drive-In Theater
Friona Hwy. | Brock Motor Company
422 N. First | Muleshoe Motor Company |

GIBSON'S DISCOUNT CENTER
MULESHOE, TEXAS
These Specials Good Thru Wednesday

<p>Scripto VU LIGHTER \$1</p> <p>PERCOLATOR Westmark 9 cup Aluminum Poppy Avocado Gold \$6.99</p> <p>Hoover Steam Dry IRON 4018 \$10.97</p> <p>EXCO Find WHISTLING TEA KETTLE \$6.47</p> <p>Cast Iron Divided CORN BREAD SKILLETS \$1.88</p> <p>SKILLET #5-8 1/2" \$1.37 #8-10 5/8" \$1.77 \$1.99</p> <p>Cast Iron MUFFIN PAN \$1.88</p> <p>Stardust Plastic Coated PLAYING CARDS 23¢ deck</p> <p>Hoyle Deluxe POKER CHIPS 100 #7880 89¢</p> <p>Lady Sunbeam Deluxe #MS2 MANICURIST \$14.97</p>	<p>NORTHERN DELUXE 4-WAY MAKE-UP MIRROR \$16.97</p> <p>Sunbeam TEFLON COATED COOKER & DEEP FRYER - PORCELAIN FINISH \$23.97</p> <p>WESTBEND COLORFAIR COOKWARE SET Porcelain on Aluminum No Stick Interior 7 pc. set Poppy or Harvest \$11.77</p> <p>Hankcraft Cool Vapor VAPORIZER HUMIDIFIER #242 \$6.97</p> <p>WENLE HARRARD OKIE FROM MUSKOGEE Stereo RECORD ALBUMS \$4.98 val. \$3.17 \$5.98 val. \$3.77</p> <p>Stereo 8 track CARTRIDGES \$6.98 val. \$4.77</p> <p>Realtone 4 Band RADIO #2424 \$22.97</p> <p>Realtone AM-FM Solid State PORTABLE RADIO #2261 \$15.97</p>
---	---

Three Way News

By Mrs. H.W. Garvin

Karen Chunn from Causey, N.M. spent the week end with Christene Powell.

Mrs. George Tyson was in Lubbock Tuesday on business.

Mr. and Mrs. Gib Dupler and children were in Amarillo over the week end visiting relatives.

Mrs. Ronald Bruce and children spent last week in Munday visiting her parents.

Mr. Bill Roberts from Lubbock, Mr. Carl Armwin and Mr. Pete Tompson from Jacksboro were in the Goodland community Wednesday working cattle on Mr. Roberts ranch.

Three Way school returned to classes Monday after the Christmas holidays.

Mrs. W.H. Eubanks spent last week in Midland with her daughter.

Mr. and Mrs. Nelson Carlisle were in Littlefield Monday shopping.

Mrs. Bill Mann and children from Artesia, N.M. visited in the Gib Dupler home Sunday night.

Jill Wheeler from Floydada spent part of last week with her grandparents, the Johnnie Wheelers.

Three Way basketball teams played Whitherrel Tuesday night on the home court. Winning all three games. Three Way basketball teams played in the Amherst tournament the past week with the Three-Way boys losing out in all games and Three Way girls winning consolation.

Mr. E. E. Kindle was a medical patient in a Littlefield hospital last week.

Mr. and Mrs. Bud Huff spent Saturday in Lubbock visiting their son and wife, the Chester Huffs, and in Tahoka visiting his grandmother.

Mrs. Rayford Masten was in Levelland Friday to see her dentist and visit her daughter and family, the Lamar Pollards.

Mrs. C. B. Hightower is a patient in University Hospital in Lubbock.

Mr. and Mrs. Nelson Carlisle and children spent last weekend in Floydada visiting his brother.

Mrs. Johnnie Wheeler spent the weekend in Floydada visiting her son and family, the Joe Wheelers.

Albert Ellis from Tatum, N.M. was in the community Friday visiting.

Mrs. Earl Bowers and daughter returned home Tuesday

from Baytown where she visited her daughter and family, the Glen Campbells.

Mrs. Dutch Powell and Lanita were in Lubbock Thursday shopping.

Mrs. George Tyson was in Lubbock Saturday on business.

Mr. and Mrs. Lamar Pollard and son from Levelland spent the weekend with her parents, the Rayford Mastens.

The cotton harvest in the community is almost finished.

Joe Partlow spent the Christmas holidays at home with his parents, the J. L. Partlows. Partlow is in the Navy stationed at Great Lakes, Illinois.

Three Way basketball teams played Bledsoe at Bledsoe Tuesday night, with the girls winning the game and Three Way boys losing to Bledsoe Friday night. Three Way played Bula on the home court with Three Way boys winning and Three Way girls losing to Bula.

Mr. and Mrs. Leon Dupler and Mrs. Minnie Dupler were

in Lubbock Wednesday to be with Hugh Dupler, who underwent surgery in Methodist hospital.

Mr. and Mrs. R. L. Reeves from Post spent Friday night in the Jack Reeves home.

Mr. and Mrs. R. L. Reeves were dinner guests in the D. S. Fowler home Saturday.

Mrs. C. B. Hightower is a medical patient in University Hospital in Lubbock.

Mr. and Mrs. Leon Dupler and girls spent the weekend in Corpus Christi visiting their son and family, the Tommy Dupler's.

Kim and Glenn Ray Fowler from Morton spent the weekend with their grandparents, the D. S. Fowler's.

Mr. and Mrs. Boe Batteas and family and Mrs. Carrol Fort from Brownwood spent Sunday night in the P. L. Fort home.

Mr. and Mrs. Carl Miller and daughter from Canyon spent the weekend in the community with her parents.

Extension Veterinarian Named

COLLEGE STATION, Jan. 21 (Spl)...The Texas Agricultural Extension Service has appointed an area feedlot veterinarian to serve the pan-handle region. He is Dr. Gene E. Cope who formerly was in private practice in Hereford.

"Cope is filling a new position which was created to serve the area's rapidly growing feedlot industry," noted Dr. John E. Hutchison, director of the Extension Service, in announcing the appointment. The panhandle is now feeding about 2.4 million head of cattle a year, and animal

health is a critical aspect of the industry. Statewide, 3.7 million head of cattle were fed in 1971.

The veterinarian will provide specialized assistance to feedlots to combat costly disease problems, said Hutchison. The estimated cost of diseases to the Texas feedlot industry is more than \$8 million a year. Cope is a native of Sterling City where he was reared on a ranch. He received his doctor of veterinary medicine degree from Texas A&M University in 1959. He served as a

student assistant in San Angelo during the summer of 1958 and as an assistant veterinarian in Clarendon in 1959. He has been in private practice in Hereford for the past 12 years and has served as a consultant to feedlots on animal health problems, of the American and Texas Veterinary Medical Associations and the Southwestern Cattle Feeders Association. He holds Honorary FFA degrees from the Dimmitt and Hereford FFA chapters.

Cope served in the U.S. Air Force for four years. He and his wife, Betty, have three children. Those whose values are based on money have lost their sense of values.

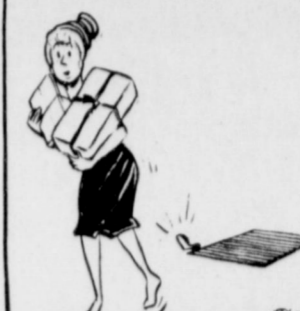
BIBLE VERSE

"It is written, man shall not live by bread alone, but by every word that proceedeth out of the mouth of God."

1. Who spoke these words?
2. To whom were they addressed?
3. When did the conversation occur?
4. Where may it be found in the Bible?

Answers to Bible Verse

1. Jesus.
2. Satan.
3. During Jesus' temptation, in the wilderness.
4. Matthew 4:4.



MADMOISELLE HEALTH SALON

is now open

MONDAY thru SATURDAY
9 a.m. til 9 p.m.

Facilities Available
For Men & Women

Ultra-Modern
Exercise Equipment

STEAM BATH
SAUNA BATH
MASSAGE

Qualified Instructors To Assist
With Individual Programs
Available At All Times

Call 247-3312 for information and
appointment for free analysis and
guest treatment.

6th Street & Euclid Ave.

FRIONA, TEXAS

Mildred Rule-owner

An important message for people who prepare their own income tax returns.

Maybe you've been cheating yourself all these years.

Every year, between January and April, millions of people sit down to do battle with Uncle Sam. Some are "self styled" accountants. Others think they can save a few dollars doing it themselves—so why not. The sad truth is, however, no matter what their reason was for starting, many of them end the same. On the short end.

You see, when it comes to income taxes, amateurs should depend on H&R Block. We have all the facilities to help you make "income tax time" a pleasant experience. To begin with, H&R Block now has over 6,000 conveniently located offices manned by thousands of specially trained personnel who are anxious to help you. They'll sit you down over a free cup of coffee and show you some things about your income tax that you might never have known existed. For example, do you know

all about deductions for child care or casualty losses? And maybe you aren't aware that if your income increased last year, you may be able to save tax dollars by "income averaging."

Well, when it comes to income taxes, H&R Block is aware of just about everything because we're a company that eats, sleeps, and drinks tax returns 365 days a year.

Yes, maybe you can save a couple of bucks by doing your own return but it really may be costing you a lot more by not having your return done by H&R Block.

DON'T LET AN AMATEUR DO H&R BLOCK'S JOB.

H&R Block.

The income tax people.

109 S. FIRST ST.

NO APPOINTMENT NECESSARY

OPEN TODAY

9 a.m.-6 p.m. WEEKDAYS
9 a.m.-5 p.m. SATURDAY
272-3283

MID WINTER CARNIVAL OF FOOD SAVINGS



APPLES

WASHINGTON EXTRA FANCY DELICIOUS

Lb. **19¢**



DASH

JUMBO SIZE

\$1.99



BACON

HORMEL BLACK LABEL SLICED

Lb. **79¢**



PEARS

WASHINGTON DANJOU EXTRA FANCY

CELLO BAG

Lb. **19¢**



MIRACLE WHIP SALAD DRESSING

QT. JAR

59¢



HAMS

HORMEL CURE "81" BONELESS

Lb. **\$1.49**



RADISHES

each **9**

CALIFORNIA PURPLE TOP

Lb. **9¢**



TURNIPS

Lb. **9¢**



EGGS

SHURFRESH GRADE "A" LARGE

DOZ. **39¢**



BUTTERMILK

1/2 Gallon Cloverlake

39¢



MEAT PIES

Morton Frozen (Beef, Turkey & Chicken)

14 oz. pkg. Shurline Frozen

5 for \$1



SAUSAGE

GLOVER'S HOT LINK

Lb. **59¢**



FISH STICKS

24 oz. bottle Crisco

69¢



SALAD OIL

MC2 Liquid 22 oz. bottle

59¢



CHORIZOS

GLOVER'S SWIFT PREMIUM

Lb. **59¢**



DETERGENT

46 oz. can Hi C

29¢



ORANGE DRINK

14 oz. Box Applan Way Regular

3 for \$1



BAKING HENS

USDA CHOICE GRADE BEEF BONELESS

Lb. **49¢**



PIZZA MIX

Flat Can Del Monte

29¢



TUNA

2 Roll Pkg. Soft Weave Bathroom

2 for 79¢



TISSUE

1 1/2 gallon Clorox

2 for 49¢



BLEACH

Quart Bottle Del Monte

79¢



PRUNE JUICE

Viktor Puy (30 gal. size 10 ct. Box)

53¢



TRASH BAGS

59¢

Wagnon Grocery & Market

PRESENTS

Lovelace

MAGNIFICENT WHITE ON WHITE PATTERN IN

FINE IMPORTED PORCELAIN CHINA

BY CROWN VICTORIA

Build your set the easy piece-a-week way.

39¢ each basic piece

Item	Week
Dinner Plate	1, 6, 11
Cup	2, 7, 12
Saucer	3, 8, 13
Dessert Dish	4, 9, 14
Bread & Butter	5, 10, 15

Assemble your set a different piece each week.

THIS WEEK'S FEATURE SAUCER **39¢** Start your set today.

Wagnon Grocery & Mkt.

515 W AMERICAN BLVD. MULESHOE PHONE 272-4406