

EASTLAND TELEGRAM



EASTLAND, TEXAS 76448 — THURSDAY, AUGUST 31, 1967

TEN CENTS (10c)

TO ACCIDENTS

VIA WRONG ATTITUDE
VIA LACK OF KNOWLEDGE
VIA ERRORS IN JUDGEMENT



SAFETY MEETING — Pointing the way to accidents are Ronnie Reese and Bill Leonard, safety manager for Oak Farms Dairy. Sitting to the right are DPS Patrolmen Ken Perry, Sgt. Roger Sosebee, Dick Dixon, Neiman Smith and City Patrolman Marvin Green.

Jaycees' Labor Day Rest Stop Opens Friday

The Jaycees will open a rest stop for the tourists on the north side of the square on the grounds of the court house beginning Sept. 1 and lasting through Sept. 4. Donations of coffee were given to the Jaycees from these local businesses: A&P, Super Save, Safeway, JRB, Webbs 7-11, Hillcrest, McCoy Texan, and Freds Grocery. Dale Bakker, president of the Jaycees, would like to advise all motorists to drive with extreme caution during the holiday.

Bits
By H.V.O.

Fund Started To Replace Fire Truck Which Burned

The Eastland Fire Department lost its rural fire truck Saturday when a gas line broke and sprayed fuel over the truck in the midst of a grass fire. The truck was completely burned, Volunteer Chief Wayne Jackson reported. The 1,100-gallon tank was taken to Abilene Monday for sandblasting and it is believed that it will be alright. The pump was being checked out and may be re-usable, he said. Besides the 1955 Ford truck, some 400 feet of new inch and a half hose (at \$1.35 a foot) was burned as was a new 225 radio, recently installed. The truck was at a grass fire east of Eastland about 3 p. m. Saturday, when the incident occurred. Estimates are that 90% of the runs made by the truck were to rural fires, and the Volunteer Fire Department has invited rural residents to assist in replacing the rural fire-fighter. It will take some \$2,560 to replace the vehicle, Jackson said.

The city receives \$50 a month from the county as payment for rural fire fighting, but this only just about pays for the gasoline, Jackson said. There are some seven departments in the county being paid 50 a month. The local department fights most of the rural fires, he said, because of its central location. A fund has already been started and several have contributed. Donations may be made to Jackson, any fireman here, or at the Eastland City Hall, he said. The department has a 1951 Ford pumper, a 1919 pumper and an older ladder truck. A temporary rural rig has been put together using a 1941 Chevrolet with a 1,100 gallon tank on it, to which a small pump has been added. Hopes are that a regular rural truck can be back in service in a few weeks. The city is in the process of buying a new fire truck now, with an International truck on order, to be converted to a firetruck. Delivery isn't expected for several months. Contributions to the fund have been announced as follows:

Eastland Nat. Bank	\$100.00
Waverly Messengale	25.00
Pete Tindell	10.00
Donated to date	\$135.00

JP Precinct Numbers Match Commissioners

With Ranger As Only Exception

The Justice of the Peace Precinct numbers in Eastland County were re-numbered by the Commissioners Court Monday, which should result in further clarification. The law provides that each county shall have at least four commissioners precincts and as many as eight (two in each) justice precincts. The Commissioners Court shuffled the Justice Precinct numbers to coincide with the commissioners precinct numbers — with one exception.

The Fastland JP precinct will remain Number One, which is the same as its commission number; Carbon and Gorman will be numbered JP Precinct Two, to match its Commission Number; Rising Star becomes JP Precinct Three, same as commission; and ditto on Cisco, becoming JP Precinct Four to match its commission number. Ranger which is in the Commissioners Precinct One, will become JP Precinct No. Five. The changes become effective Sept. 1.

Final Rites For Mrs. Potter Are Held Wednesday

Mrs. Laura Ellen Potter, 71, who died at 7:30 a. m. Monday after a months illness, was buried after funeral services at 1 p. m. Wednesday at Rust Funeral Home Chapel. Burial was in Oakwood Cemetery with the Rev. Mart Agnew in charge of service.

Mrs. Potter, who lived with her husband, John P. Potter at 207 Armstrong, was born Dec. 27, 1895, in Ranger. She was married to Mr. Potter on Oct. 11, 1911, at Comanche. They moved here 44 years ago from LeeRay in Stephens County.

Mrs. Potter was a long-time member of the East Cisco Baptist Church. She died at Eastland Memorial Hospital.

Surviving are the husband of Cisco; one son, John Potter, Jr. of Abilene; four daughters, Mrs. Roy D. Gann of Eastland, Mrs. Ardella Hayes of Cisco, Mrs. R. L. Thackerson of Irving, and Mr. and Mrs. M. P. Herring of Snyder; two brothers, Henry and Jim Bishop of Mt. Vernon, Ill.; one sister, Mrs. Edith Skaggs, of Randlette, Okla.; 11 grandchildren, and six great-grandchildren.

Fullen Motor Co.
"LAUGH-A-DAY"

Caddy to perspiring golfer: "Mr. if you like, you may look for your ball in the rough. It's shaded."

Horton Tire Co.
Presents

BREAD of Life

Behold, now is the accepted time: behold, now is the day of salvation. — 2 Cor. 6:2.

Time is earnest, passing by; Death is earnest, drawing nigh; Sinner, wilt thou trifling be? Time and death appeal to thee.

Eastland National Bank
EASTLAND, TEXAS

Summer Vacation Ends -- School Bells Ring at 8 a.m. IN EASTLAND FRIDAY

The summer holiday season closes at 8 a. m. Friday for Eastland Public School students. Classes begin at that hour for all grades, and the first day is scheduled to be a "full day of operation", Supt. Wendell Siebert says. High school and junior high will dismiss at 3:15 p. m., as will all elementary school grades except the first grade classes, which are excused at 2:30 p. m.

Three bus routes will be in operation this year operating over the same routes as during previous terms. Buses will leave on their respective routes at 7 a. m. each morning in order to arrive at school by 8 a. m. The price of school lunches will remain the same as last year.

Registration has been completed in all buildings and the opening enrollment is anticipated to be close to the last year figure. Monday Sept. 5th, will be the first holiday of the new school year. With the addition of Mrs. Ora Lee Woods as a third grade teacher, the faculty of the Eastland Independent School District is complete for the 1967-68 school year with the exception of a high school moratorium. It is anticipated that this position will be filled by the opening of school on Sept. 1st. Mrs. Woods has just completed her Master of Education degree during the last school year at Hardin-Simmons University, and completed her B. S. Degree at southeastern State College of Oklahoma.

Kindergarten To Open October 3

Ferne Green has announced that the Green Kindergarten will open as usual Tuesday, Oct. 3. Mothers are asked to bring their children Monday, Oct. 2, sometime between 4 to 6 p. m. to 903 W. Plummer St. and get them enrolled.

Kindergarten will start anytime after 9 a. m. on Tuesday, Wednesday, and Thursday and will be out at 12 noon. Classes will last from October through March 1968. School age next year will be given preference.

"Mothers please call and check if your child's name is on the list. Last year's students have a place reserved." "The children are given a full round program in preparation for public school, this is not baby sitting. We work hard on four, five, and six year old levels. "We would appreciate hearing from the mothers now so we will know how many teachers we will need and supplies bought," said Mrs. Green. Call Ferne Green at 629-2460 in the morning. "We are planning on another large group this year," she said.



W. Q. VERNER
...top man of 4

Verner Wins City Position

W. Q. Verner, Eastland automobile salesman, was elected to the city commission Tuesday in a special election to replace lawyer Bill Hart, who resigned. Three other Eastland men, running for the commission place, were Roy Lee Smith, 37 votes; Henry Parson, 45 votes; and John Foster, 44 votes. All three were making a first try for elected office. A total of 285 votes were cast. Verner is sales manager at Bruce Pipkin Motor Co. and has been a resident of Eastland for 30 years. His wife, Iphema, is employed by Victor Cornelius Menu Co. They are members of First Christian Church, where W. Q. is a substitute teacher for the Men's Fellowship Bible Class.

Radio Theft Is Investigated

Investigation is underway by the Eastland County Sheriff's Department and others into the theft of some \$890 worth of radio equipment reportedly taken from the James Dabney residence, 605 S. Seaman St. Taken in the bold robbery about midnight Thursday from Dabney's shop behind his house were: A Philco 164B power meter, valued at \$330, serial number a Utica MC27 citizens band radio with channels 11 and 16; a Knight C99 C.B. radio; a 22 channel Pearce-Simpson, 12-volt C. B. radio, valued at \$260; a TML-2 receiver; a chrome plated ball and spring assembly; a Ray-Tel TWR-9 Transistorized C. B. radio.

No Injuries In 3-Car Accident

There were no injuries in a three-car crash Thursday, 2.4 miles east of Cisco on U. S. 80. The accident involved Harold Lee Davies of Cisco, driver of a 1966 Ford, Alex Garland Huntzeker of Big Spring, driver of a 1962 Ford, and Douglas Wayne Isabell of Abilene, driver of a 1964 Dodge Truck. No injuries were reported Highway Patrolman Jack Therwagner was investigating officer.

Mavericks Scrimmage Wildcats Here Friday

At 7:30 p. m. At Local Stadium

The Eastland Mavericks will scrimmage the Rising Star Wildcats at Maverick Stadium in Eastland Friday night, beginning at 7:30 p. m. for their first public appearance of the season. The Mavericks moved into their third week of practice this week, finishing two-day workouts Wednesday. Head Coach Shirley Frazier

labeled his light, but agile team, "ready to go." First game of the season will be Friday, Sept. 8, when the Mavericks go to Cross Plains to meet the Buffaloes. The workouts have been good, the coach says, with only minor sprains and bruises, during the first two weeks. Harold Price is Line Coach and Doug Dallas is backfield coach. Some 35 boys are out for football this season, with both the Varsity and B teams to front moves through before being picked from this number weekend.

Jr.-Hi Grid Drills Beginning Friday

The Junior High football practice will begin Friday, Sept. 1, the coach has announced. Before receiving equipment, each boy must have a physical. The physical forms may be obtained from the superintendent's office or from Coach Shirley Frazier at the gym. These forms must also be signed by the parents, he said. All Junior High School boys are asked to bring their own shoes to work out in when practice begins Friday. The first game will be played on Thursday, Sept. 7, with the 7th and 8th grades playing Albany at Albany.

Mrs. Pat Murphy and sister, Mrs. Anne Bryan have recently returned from Paducah where they attended the funeral of their sister, Mrs. W. C. Campbell. Mrs. Betty H. Brock of Abilene also went with them, too. Their niece and nephew, Mr. and Mrs. Howard Powell came back with them and spent several days with their aunts in Eastland.

Freyschlag INSURANCE

Presents the WEATHER — Partly cloudy through Thursday. High both days near 90. Cooling trend expected as mild front moves through before being picked from this number weekend.

WRESTLING EVENTS EASTLAND TUESDAY NIGHT

Wrestling will come to Eastland Tuesday, Sept. 5, at the Old Eastland School gym, sponsored by the Beta Sigma Phi chapter.

Matches will be on wrestling fans. The event will be for the American Tag Team Championship. The North American Wrestling Association will be putting on the line against the Negro wrestler, Thunderbolt Patterson, and Dory Funk Jr., another popular wrestler, and is a big favorite in this part of the country. He is one of the top wrestlers in the world today.

They will be taking on two of the most savage wrestlers—Thunderbolt Patterson and The Duke. Thunderbolt Patterson is the most savage wrestler to ever come to Texas. He will stop at nothing to win a match and he is notorious for cutting up his opponent with brass knuckles. His partner, The Duke, is equally as mean and vicious.

The Lawman and Dory Jr. will have to be at their best to keep their belts and defeat these two in Eastland Tuesday night.

The semi-final will be the girl wrestlers, Evelyn Stevens vs. Kathy O'Brien. These are two top girls in wrestling, and they combine blinding speed and great wrestling skill that keep the fans standing with excitement.

A special grudge match between The Lawman and Thunderbolt Patterson will be featured. The Lawman has asked for this special match in Eastland because of the grudge between them. These two men have been after each other for weeks and every time they meet, it turns into a bloody brawl.

Dory Funk Jr. will also go against The Duke.

The matches are sponsored by the Beta Sigma Phi of Eastland. Advance reservations may be made by calling Eastland Supply Co., 629-1595. Admission will be \$1.50 ring-side; \$1.25 general admission; and \$1 for children under 12.

Special referee will be Dale Slatton, former All-State football player at Eastland High School.

County Opens Bids on Truck

County Commissioners opened bids on a dump truck for Commissioners Precinct Four (Cisco) Monday and awarded the contract to supply the truck to the low bidder, Kay Chevrolet of Cisco.

Two bids were received and the low bid was \$27,785.52.

Advanced Study Courses Will Be Offered at CJC

As a part of its community service function, Cisco Junior College is endeavoring to arrange several extension courses for the advantage of teachers and others in the area in need of advanced courses beyond the junior college level, according to an announcement by Mrs. Gloria Benton, College Counselor.

Contact has been made with Hardin - Simmons University and North Texas State University extension divisions and both institutions will provide such courses depending on the number of individuals interested and the courses needed.

Interested persons are urged to write or call Mrs. Benton at the college, area code 817-442-2655, as soon as possible so that arrangements can be completed.

Rotary Has Film On Telephoning

The Rotary Club had its regular meeting at the White Elephant at noon Monday, with Rev. Houston Brewer, program chairman, introducing a film on telephone manners in business.

Rotarians Charles Deere and C. W. Willerlin of Breckenridge were guests.

Mrs. Hill Hosts HD Club Meet

Mrs. Steele Hill was hostess to the Flatwood Home Demonstration Club Thursday Aug. 24, at her Lake Leon cabin.

Each member brought a covered dish and a fine meal was prepared. Swimming was also enjoyed by the members.

Those present were Mmes. M. C. Graves, Beulah Turner, M. W. Grieger, Edna Taylor, Ruby Cavanaugh, Pete Tucker, E. W. Ballinger, Fannei O'Brien, Onie Pogue, A. H. Brown, Guy Sherrill, Velma Lusk, and the hostess.

Mr. and Mrs. Gene Rhodes and Andrea returned Wednesday from Gladewater, Longview, and Kilgore where they had been since Sunday.

Viola Guthrie of Hico, a former member, was visiting. Lou Ann and Laurie Ruth Randle of Houston, Shirley Thompson, and Lois Hastings were visitors.

ENROLL AT CJC

The following students have completed pre-registration procedures at Cisco Junior College for the fall semester, 1967-68: Jon Layne Gregory, Charles Ray Moon, Sherry Jo Butler, Julia Cathlene Clark, Howard Thomas Maynard, Charles Mosley, Doris Mae Trout, Jerry Steve Franklin, Jerry B. McCullough, Thomas W. McCullough, Cheryl L. Sosebee, J. D. Ables, James Lee Herridge, Shirley Jean Reid, and Kenny Cogburn.

ANNOUNCING: CHANGE OF NAME

Mr. and Mrs. George Ford, owners-operators of Pool Dry Cleaners announce they have changed the name of their business to FORD'S DRY CLEANERS, and with the announcement of this change, they will also offer a special discount on all cash and carry dry cleaning. You will still receive the same quality service. Free pick up and delivery plus discount on any cash and carry dry cleaning. Open until 7 p.m. each night to serve your needs better. Telephone 629-2055 for pick up and delivery.

FORD'S DRY CLEANING

209 S. LAMAR

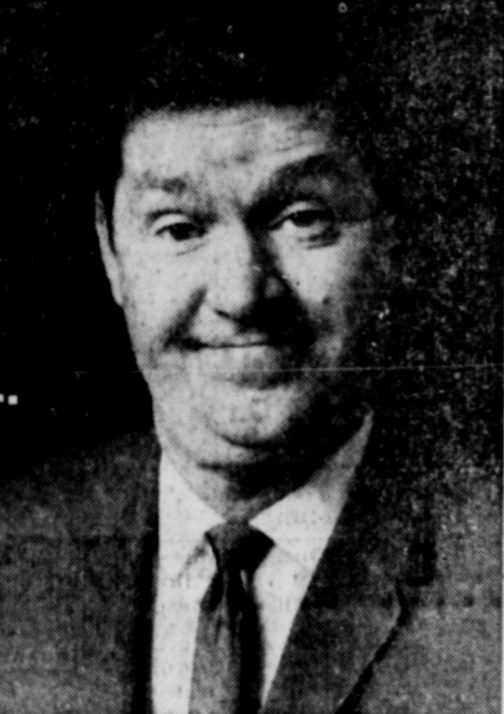
★ ADVERTISING BRINGS RESULTS ★

HILLCREST FOOD MARKET

— WHEN YOU RUN OUT — RUN IN —
HOURS: Sunday: Open 8 to 9:30 a.m. — Noon to 8 p.m.
All Other Days: 8 to 8
WE'LL BE OPEN MONDAY — FOR YOUR HOLIDAY NEEDS

- GOOCH SHOULDER
- PICNIC 3 lb can 1.99**
- IMPERIAL — With \$5.00 Purchase Excluding Cigarettes
- SUGAR 5 lbs 49c**
- AMERICAN MAID
- BISCUITS 3 cans 25c**
- VAN CAMP
- TUNA 4 for \$1**
- FOREMOST
- MELLORINE 3-½ gal \$1**
- BORDEN or FOREMOST
- BUTTERMILK ½ gal 39c**
- DECKER'S BIG D
- OLEO 2 for 39c**
- KIMBELL'S
- COFFEE lb 59c**
- RUSSETT
- POTATOES 10 lbs 45c**
- DEL MONTE
- GOLDEN CORN 4 for \$1**
- DECKER'S PURE
- PORK SAUSAGE lb 49c**
- KRAFT SALAD BOWL
- SALAD DRESSING qt 39c**

My heating system doesn't circulate warm fresh air through my house... and I'm perfectly happy with it!



So was your grandfather with his. Talk to your gas heating contractor or Lone Star Gas about modernizing!

Imagine the comfort of warm circulating air reaching every corner of your home this winter. That's what you get with modern gas central heating. And only with gas heating. Of course, there's a wide variety of modern, automatic gas heating equipment to take care of any situation—whether you're heating one room, several rooms or your entire home. Call your gas heating contractor or Lone Star Gas for a free estimate—now—during August and September when heating contractors have more time, and are offering savings. Modernize for winter with modern gas heating.



"And I thought I was happy!"

lovable · packable · wearable
KNITS
top fashion..top values!

By Aileen, Lois Young
Jo Hardin and Lorna



IT'S NEW AT...
HARELIK'S
EASTLAND

A CHECKING REMINDER

FOR SEPTEMBER 1, 1967

For Checking Account Customers

For Local Businessmen

Beginning September 1, 1967, Federal Reserve Banks will not accept customers' drafts or checks on which the printed name of the bank has been changed.

Therefore, it will be necessary for each checking account customer to use his own personalized check every time he writes a check, at home or away.

The avalanche of checks has caused automation of banking, and only those personalized checks which carry the customer's coded bank number printed on each check, can be used.

In order to serve your banking needs best, we're asking that after September 1, you do not accept any draft check or any check on which your customer has changed the bank's name. We solicit your help in encouraging your customers to use their own personalized checks for each transaction.

In the event that is necessary for you to accept such checks, we'll ask you to handle them separately from your regular deposit, because special handling will be required. Make a separate deposit slip for such checks.

WHAT IS A "CHANGED" CHECK? — One on which the printed name of a bank has been scratched out, and another bank's name written. High-speed, electronic scanning equipment, now in use cannot 'read' such changes.

Eastland National Bank
"On the Square"
EASTLAND, TEXAS
MEMBER F. D. I. C.

BY-THE-WAY: You are welcome to call the bank, 629-1751, if there are any questions pertaining to the new procedures.



Fire Insurance Key Rate To Go Down A Cent Ranger, Eastland

Homeowners in two Eastland County towns will have reduced fire insurance premiums next year as the result of key rates just issued by the State Board of Insurance. The key rates in Ranger and Eastland will each be reduced by one cent — making new key rates in Ranger 36-cent rate; and in Eastland the new rate will be 28 cents, down from the current 30-cent rate.

Key rates are decided by the State agency through a system of charges for fire risks and credits for fire protection practices in Texas towns and cities. Ranger had a total of 43 risks in charges, due to power pumping units not up to standards, supply main not adequate, 29 per cent of the risks deficient in size in residential district, 40 per cent of main-deficient in residential districts, fire hydrants 15 per cent deficient in residential areas and 11 per cent deficient in residential sections. In Ranger, ladder truck deficient number, only an electric siren, 90 per cent deficient in building code of enforcement, head wives in mercantile district, frame ranges in mercantile district and 25 per cent of roofs in residential a combustible. These are Ranger's credits:

one per cent for one extra 100-gallon booster truck, two per cent for a separate booster tank truck with at least a 250 gallon tank, one per cent for chief's car, three per cent for methods of fire prevention taught in all public schools, two per cent for maintenance of arson reward and four per cent for firemen's training school.

Eastland has a total of 32 risks in charges, due to power for pumping units not up to standards, supply main not in duplicate, 29 per cent of mains deficient in size in mercantile district and 17 per cent deficient in residential districts, fire hydrants 15 per cent deficient in number in mercantile districts, fire department 60 per cent deficient in number of full paid men, only an electric siren, building laws inadequate, no alleys, overhead wires in mercantile district, frame ranges in mercantile district and more than 25 per cent of roofs in residential sections combustible.

Eastland had the following credits: one per cent for one 100 gallon booster truck, three per cent for teaching fire prevention in schools, two per cent for arson reward maintenance and five per cent for firemen's training school.

Becky Simms visited in Fort Worth with her grandparents last weekend. Mr. and Mrs. Frank Hardesty and Mr. and Mrs. W.M. Simms.

Music Club Plans For Thrift Sale

Eastland Music Study Club will hold their annual Thrift Sale Sept. 7th-8th, and 9th from 9 a. m. to 5 p. m. each day.

Please take your merchandise to Mrs. E. G. Rice's garage. The sale will be held in the W. A. Leslie Building on the north side of the square.

The following members will be on duty Thursday morning, Sept. 7th: Mrs. Frank Weaver, Mrs. T. E. Richardson, Mrs. Sallie Bishop and Mrs. E. G. Rice. Thursday afternoon: Mrs. Clara Cockrill, Marjorie Van Hoose, and Mrs. Rice. Friday morning, Sept. 8th: Mrs. Dale Langlitz, and Mrs. Joe Stephens. Friday afternoon: Mrs. Mike Collins, Mrs. Donald L. Kinnard Jr., and Mrs. F. H. Toombs. Saturday morning, Sept. 9th: Mrs. Marvin Hood, and Mrs. Arthur Murrell. Saturday afternoon: Mrs. Donald L. Kinnard, Sr. and Mrs. Gwenn Meacham.

Rising Star Man Is At Fort Hood

Army Specialist Four William J. Clarke III, 22, whose parents live in Rising Star, was assigned to the 1st Armored Division at Fort Hood, Aug. 10.

Spec. Clarke, a mechanic in Headquarters and Service Battery, 1st Battalion of the division's 73rd Artillery, entered the Army in October 1965 and completed basic training at Fort Polk, La.

Clarke is a 1964 graduate of Rising Star High School. His wife, Roberta, is with him at Fort Hood.

Eastland has more than 25 civic, social and fraternal organizations.

Open House Honors C. L. Rogerses On Golden Wedding Anniversary

Mr. and Mrs. Cullen L. Rogers were honored on their 50th wedding anniversary Sunday, Aug. 27.

Approximately 150 guests called during the afternoon for the open house.

Five of their children and their families attended the open house. They were as follows: Mr. and Mrs. Raymond Rogers and Grady of Madras, Oregon; Mr. and Mrs. Kenneth Rogers and Don of Odessa; Mr. and Mrs. E. C. Huddleston, Larry, and Marilynn of Fort Worth; Mr. and Mrs. Glenn Clement, Bobby, Roger, and Deborah of Andrews; and Rickey Rogers of San Antonio.

Other relatives attending include Mrs. Jean McDowell of Honolulu, Hawaii, a granddaughter; three brothers of Mr. Rogers, Mr. and Mrs. Ed Rogers of Bend, Oregon, Mr. and Mrs. Ab Rogers of Porterville, Calif., and Mr. and Mrs. George Rogers of Odessa; one sister, Mr. and Mrs. C. H. Rusk of Iowa Park; and a host of nieces, nephews, and friends.

Thompson Reunion To Be Held Sunday

The reunion of the deceased Carlton and Clay Thompson families will be held Sunday, Sept. 3, at Lakewood Recreation Center located west of Cross Plains on Highway 36.

About 100 people are expected to attend the 10th annual reunion. A program will be given Sunday morning and dinner will be catered.

"The magazine is fine," he said, "but we object to the long distance phone calls to local businessmen and implying that our office has endorsed the program and is encouraging people to buy advertising."

The calls are being made from Houston, Sublett said, and we feel that merchants should be advised that our department is in no way endorsing the sales program.

A warning was issued earlier but the sales technique apparently is back in use, he said.

WRESTLING Tuesday, September 5 8:30 P. M. EASTLAND, TEXAS

NORTH AMERICAN Tag Team Championship



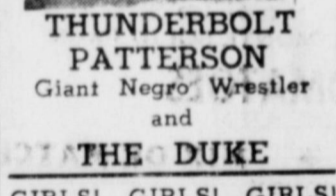
The LAWMAN DON SLATTON

DORY FUNK Jr. Champions

VS THUNDERBOLT PATTERSON Giant Negro Wrestler and

THE DUKE

GIRLS! GIRLS! GIRLS!



EVELYN STEVENS VS KATHY O'BRIEN

Special Grudge Match

Thunderbolt Patterson vs THE LAWMAN

DORY FUNK, Jr. vs THE DUKE

SPECIAL REFEREE Former All-State Football Player From Eastland

DALE SLATTON

Sponsored By Eastland's Beta Sigma Phi Old Eastland High School Gym

Reservations 629-1595

Ringside \$1.50
General Adm. \$1.25
Children \$1.00

Guests in the home of Mr. and Mrs. E. T. Tucker last week were their son and his family, Mr. and Mrs. Walter L. Tucker of Mekeok, North Dakota.

Mr. and Mrs. A. Pierce and family visited in Eastland with family and friends last weekend.

OBIE'S Humble Products Service Station
24 HR. SERVICE
Road Service 8 a.m. to 5 p.m.

HUMBLE STEAM CLEANING WASH - LUBRICATION
For fast pick-up & delivery
Dial 629-8866
Complete line Accessories TIRES BATTERIES
802 W. MAIN

Mortgage Insurance is a sure way to know...

You'll leave your wife A HOME - NOT A HEADACHE!

Something good happens when you see your "Heart of Gold" M. H. PERRY
107 W. MAIN ST.
Office — 629-1566
Residence — 629-1066
Southland Life INSURANCE

IMPORTANT NOTICE

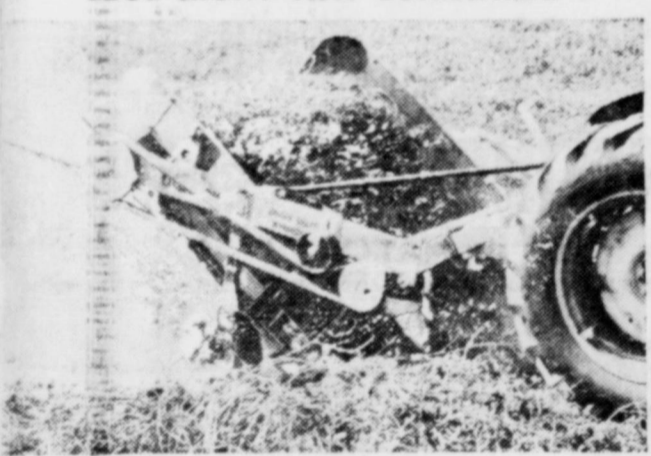
The annual meeting of the Contributors of The Eastland Memorial Hospital will be held on September 26, 1967 at 7:30 p.m. in the Conference Room Eastland Memorial Hospital, Eastland, Texas. Directors will be elected for ensuing year.

Mrs. SAMUEL BUTLER, Secretary
Board of Directors — Eastland Memorial Hospital

MONUMENTS

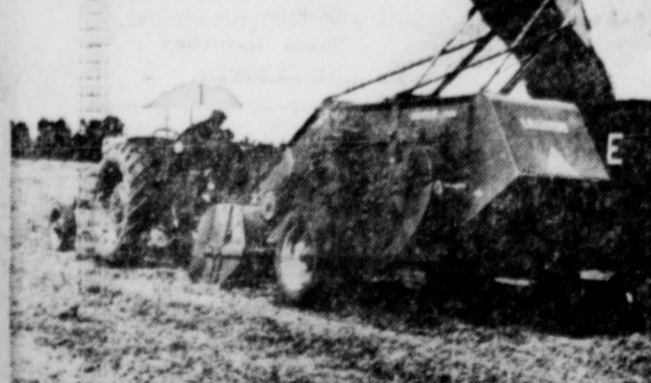
Riley-Gardner Memorial - Hamilton
Clyde Benton & Willard Griffin
Local Agents
See display at Coats Furniture
305 S. Seaman Eastland, Texas

TAILOR-MADE WINDROWS—JUST RIGHT FOR COMBINING



THE HIGH SPEED LILLISTON 2700
DIGGER—SHAKER—WINDROWER
LEAVES PEANUTS PERFECT FOR COMBINING
PUT IT TO WORK FOR YOU
SQUIERS FARM STORE
EASTLAND, TEXAS

OWNERS INSIST THAT THE LILLISTON 1500 COMBINE IS THE GREATEST MONEY-MAKER THAT EVER PICKED A PEANUT FIELD CLEAN.



SQUIERS FARM STORE
EASTLAND, TEXAS

GUARANTEED ELECTRIC SERVICE BOND ELECTRIC
407 Foch
629-1724

LATEX WALL PAINT WHITE & COLORS
2.98 gal White Exterior LATEX HOUSE PAINT
4.50 gal

CROWELL LUMBER CO.
EASTLAND

... IT IS. WE'LL BE GLAD TO PROVE IT.

SQUIERS FARM STORE
EASTLAND, TEXAS

Food Savings ARE FOR REAL

FOR THE **LABOR DAY WEEKEND**
Stockup: Super Save Will Be Closed On Monday, September 4

- CALIFORNIA VINE RIPE **TOMATOES** lb 19c
- FRESH — LARGE HEAD **LETTUCE** 15c
- THOMPSON SEEDLESS **GRAPES** lb 19c
- STARKIST — REG. CAN **CHUNK STYLE TUNA** 29c

BLEACH PUREX 29c
MA & WELL HOUSE **COFFEE** 69c
MAXWELL HOUSE COFFEE

BORDEN'S MELLORINE
3 1/2 gal cartons **\$1**

WHITE SWAN SHORTENING 3-lb. Can **59c**

REGULAR BOTTLES **COCA-COLA** 12-Btl. Ctn. **69c**

LIBBY'S VIENNA SAUSAGE 5 4-Oz. Cans **\$1.00**

ZEE NAPKINS Assorted Colors 80 Ct. **25c**

White Swan MUSTARD 16 OZ. JAR **23c**

White Swan PORK & BEANS 2 300 CANS **25c**

W-P CHARCOAL 10 LB. BAG **69c**

FROZEN FOODS GOLDEN NIP "Florida-Fresh" ORANGE JUICE

2 6 oz cans **29c**
TATER BOY CRINKLE CUT **POTATOES** 3 2 LB. PKGS **\$1**

EL CHICO MEXICAN or ENCHILADA DINNERS Reg. Pkg **39c**

Decker's Tall Corn **Sliced BACON** lb 59c

GOOCH BLUE RIBBON PICNICS 3 lb can **1.99**

Chuck ROAST lb 49c

MARKET SLICED — ALL-MEAT BOLOGNA lb 49c

Longhorn Cheese lb 59c

Decker's All-Meat — 12 OZ. PKG **FRANKS** pkg **43c**

HEALTH & BEAUTY AIDS

STYLE HAIR SPRAY 79c Value **59c**

BAN SPRAY AEROSOL DEODORANT \$1 Value **79c**

MACLEAN'S TOOTHPASTE 65c Value **49c**

36 COUNT EXCEDRIN 79c Value **59c**

HOME-OWNED — HOME-OPERATED
SUPER SAVE
GENE HAYNES, MGR.
PHONE 629-1191
400 S. SEAMAN

Lavery Is Buried In Final Services Held Wednesday

Funeral services were conducted at 10 a. m. Wednesday for Harold Charles (Hal) Lavery, 70, former Cisco city secretary, at Holy Rosary Catholic Church with Father Robert C. Wilson, pastor, officiating. Mr. Lavery died at 4:45 a. m. Monday in Ranger General Hospital after an illness of about three months.

Burial was in the family plot at the Evergreen Cemetery in Ranger with Rust Funeral Home of Cisco in charge of arrangements. Rosary was recited at 8 p. m. Tuesday at Rust Chapel.

Mr. Lavery, who retired last Jan. 1 after serving for 26 years as Cisco city secretary, was born Jan. 2, 1897, at Clarcedon, Penna., and received his high school education there. He was a graduate of the St. Mary's College at Warren, Penna.

Following service in World War I, Mr. Lavery spent some 18 years as a golf professional, including employment with the country clubs at Warren, Penna., Wichita, Kansas, for 12 years, and at Brownwood, Texas, for four years. He was an occasional player in early day pro circuit tournament, and the family has many trophies that he won.

Mr. Lavery retired from golf after being injured in an auto accident in the late 1930s. He served for five years as city secretary at Ranger before coming to Cisco.

The work of Mr. Lavery as Cisco city secretary was responsible in a large part for the city's recovery from a bad financial condition, Mayor W. W. Sawyers told The Press. "Hal's work contributed very materially to the stable financial condition that we enjoy today," Mr. Sawyers said.

Mr. Lavery was a member of the Holy Rosary Catholic Church.

Surviving Mr. Lavery are his wife of Cisco; one son, Charles, of Cisco; a step-son, Worth Carlin, of Corpus Christi; a step-daughter, Mrs. Charles Krueger, Cisco; two brothers, William F. Lavery of Cushing, Okla., and A. J. Lavery, El Paso; one sister, Mrs. Sallie Overly, White Oak, Texas; and eight grandchildren.

Named as pallbearers were James McCracken, D. H. C. Brown, Anton White, Jack Rawson, and S. R. Alexander, all of Cisco, and William Bourdeau, Jr., of Ranger.

Honorary pallbearers were named as follows: Lewis Starr, A. G. Sander, Tom B. Stark, J. L. Stafford, Con Collins, Sutton Crofts, Arlin Agnew, Byron Gleason, Jim Hanlon, E. L. Jackson, J. W. Slaughter, Billy Reynolds and Nick Miller, all of Cisco.



MR. AND MRS. GENE AGNEW
... and \$2,000 Check!

Ciscoans Win \$2,000 In National Contest

Mr. and Mrs. Gene Agnew of Cisco have won \$2,000 as 1st place in a nation-wide survey and drawing conducted by the American Research Bureau, Beltsville, Maryland, according to a letter received Saturday from Peter Langhoff, president of ARB.

How did they happen to win the money? Last May, the Agnews received a telephone call from a lady in Maryland asking if they would participate in a survey on radio broadcasting.

which was being sponsored by the American Research Bureau. The survey was to see how many people listen to the radio as compared to television viewers.

They agreed to help, and for five days, when they listened to their radio, they noted the time, station, call numbers of the station, and type of program—music, news, variety, etc.

At the end of the five days, the Agnews put a number given them by the bureau on the diary, and returned it to ARB.

A drawing was held Thursday, Aug. 24, and the Agnew's "lucky number" was drawn as grand winner.

What are the plans for the \$2,000. "Well, I'm going shopping one day," Mrs. Agnew said. "And we're going to remodel and add to our house. The rest will be put into a savings account."

Mr. Agnew is employed by Lone Star Gas Co., and Mrs. Agnew is employed by Dr. Paul M. Woods. They have two children, Cheryl 7, and Allen 6, and live at 704 East 21st St.

Mrs. Agnew is the daughter of Mr. and Mrs. Robert Douglas, and Mr. Agnew's parents are Mr. and Mrs. Arlin Agnew, all of Cisco.

Cisco Couple Wins Lone Cedar Bridge

Five tables of bridge players from Cisco, Eastland, Ranger, Gorman, Stephenville, Houston and Fort Worth played bridge Saturday afternoon at Lone Cedar Duplicate Bridge Club.

Winners were announced as follows: first, Mrs. Dick Bearman and Mrs. E. L. Graham, both of Cisco; second, Mrs. James P. Morris of Ranger and Lloyd London of Cisco; third, Mrs. Keith Whitt of Gorman and Mrs. Charles

Sandler of Cisco; and Mrs. Pat Crawford and Mrs. Frank Weaver, both of Eastland. Mr. London is club director.

The force of gravity on the sun is 28 times that on earth. The rolling to hilly surface of Eastland County is partly in the Western Cross Timbers and partly on the prairies.

In 1963, Eastland County produced 974,300 bushels of peanuts on 38,972 acres of land.

Both sodium and chlorine, which compose common salt, are deadly poison.

RAWLINS SINCE 1888
Monuments
WEATHERFORD - PHONE LY 4-2728

IF WE MAY ASSIST YOU, CALL US COLLECT OR MAIL THIS AD

NAME _____ PHONE _____

ADDRESS _____ CITY _____

DIXIE Drive-In
EASTLAND RANGER HIGHWAY
Admission 60c — Children Under 12 FREE — Each
Wednesday & Thursday Bargain Night - Adults 25c

WEDNESDAY — THURSDAY
MODESTY BLAISE
IN COLOR
MONICA VITTI TERENCE STAMP

FRIDAY — SATURDAY
SEPTEMBER 1 & 2
COLUMBIA PRESENTS
40 Guns To Apache Pass

INTERSTATE'S
MAJESTY
EASTLAND PH. MA

NOW THRU SATURDAY

Open Thurs.-Fri. — 4:45, shows at 5:30

Open Sat. — 1:45, shows at 2:40, 4:45

Adults — 90c Discount — 75c

TIMBER! was the cry... and hilarity the result in a tall tale about some very little people!

WALT DISNEY'S
THE GNOME MOB

CAST: TOM LOWELL, GARBER, DOUGLASS

RANGER DRIVE-IN THEATRE

ADULTS 60c — KIDDIES UNDER 11 FREE
SHOW STARTS AT DUSK Boxoffice Closes 9:30

THURSDAY — FRIDAY — SATURDAY
AUGUST 31 — SEPTEMBER 1 - 2
Double Feature Program — Each Feature Shows One Time Nightly Starting At Dusk

IN THE LAND OF GIANTS... THEIR GUNS WERE LAW... AND LEGEND!

UNIVERSAL PICTURE
DON MURRAY in COLOR
GUY STOCKWELL - ABBY DALTON
THE PLAINSMAN
PLUS OUR SECOND FEATURE

DEADLY... DANGEROUS... THE GAME IS BLINDFOLD
THE PRIZE IS BREATHLESS SUSPENSE!

UNIVERSAL PICTURE
ROCK HUDSON & CLAUDIA CARDINALE
"BLINDFOLD"
TECHNICOLOR® PANAVISION®

Ranger's

MONTGOMERY WARD

Big Store

WILL BE OPEN LABOR DAY
MONDAY SEPTEMBER 4th
WATCH FOR OUR BIG AD

PALACE
Downtown Cisco
Evening Show 7:30
Sat. Matinee — 2:00
Fri-Sat-Sun-Mon

THE MAN WITH NO NAME IS BACK...
THE MAN IN BLACK IS WAITING!
FOR A FEW DOLLARS MORE

use the **WANT ADS**

Carrier

Lowest prices

in Carrier history on central air conditioning equipment

MOST ADVANCED DESIGN ON THE MARKET
Model 38GF

Matching Cooling Coil

Carrier
Rated in accordance with ARI Standard 210-64

- Space-Saving New Shape
- Quiet Operation
- Simplified Installation

A sound investment that qualifies for low financing rates. A home improvement that gives years of comfort. Fine Carrier equipment designed for smooth, trouble-free operation. Installed and serviced with care. For no-obligation estimate, call us today.

SMITH PLUMBING CO.
114 Seaman — Eastland — Phone 629-1722

HEIDENHEIMER'S
EASTLAND COUNTY HEADQUARTERS FOR
LEVI'S

Regular
Husky
Slim

SIZES 4 to 12
3⁹⁸
Reg. or Slim

Get that cool, unruffled look!

There's a size for him in
VAT-DYED BLUE
Double-Knee LEVI'S

LEVI'S STA-PREST TRIMCUTS
never need ironing
STA-PREST

The Tops Win Bluffdale Tourney

White Tops won on heads-up ball by every member of the team, and the pitching of all four games by Joan Greenwood, who won the Outstanding Pitchers Trophy of the tournament and the catching of Mary "Sis" Wesley, who won an outstanding players trophy and the good management of Truman Maynard and Coaching of third base by Jack Shoemaker, and a rule book from the crowd.

Bluffdale won second, Kut and Kurl won consolation. The Rounders of Weatherford took Sportsmanship and the Millers from Stephenville also play some good ball.

The winning game went like this:

In the first inning, Mary (Sis) Wesley led off batting with a single, stole second on a fake bunt by Mark Clark, then Mary popped up for the first out, Sis tried to steal third and was thrown out on a close call. Linda Brooks got a single then got caught trying for second.

In the second Martha Vinson led off with a triple followed by Joy Lynn Maynard by another triple. Thelma Humphrey popped out as did Ann Baker, Jo Ann Greenwood drove a fly over first base for a double scoring Joy Maynard for two runs. Zeima Zilloughby grounded out at first. Meanwhile the Bluffdale Wranglers went scoreless for four complete innings.

Ann Baker and Jo Ann Greenwood both scored in the fourth with Bluffdale getting one run in the fifth, also Linda Brooks scored in the fifth for the White Tops.

The sixth went scoreless for both sides then in the seventh Linda Brooks got a home-run followed by a triple by Martha Vinson who was brought home by a double from Thelma Humphrey.

Bluffdale got tough in the seventh, bringing in three runs, but the final score stood 7-4 for the Whitetops.

Lions Hear Report On Conventions, Past and Future

A report on some 16 International Lions Club conventions and a preview of the one up-coming in Texas was program for the Eastland Lions Club at its regular meeting at noon Tuesday.

Speaking was Joe Weaver of Cisco who reported on the Golden Anniversary convention held this summer in Chicago, and 5 others he has attended since his first one, also in Chicago, in 1944.

President C. W. Hoffmann Jr. president, and announced that 21 cases of Halloween candy has been ordered to be sold by the club, beginning in October. Guests introduced by Tip Arther were Lee Verner of Austin, Walter Dicken of Brownwood and Joe Dennis of Ranger.

Weaver also reported on the Lions Crippled Children's Summer Camp at Kerrville, and said that a record 756 youngsters attended the camp this summer. The long abandoned program for the blind will be resumed for adult men beginning Sept. 5, he said. Lion James McCracken of Cisco, retiring director of the children's camp, has been elected third vice president, Weaver said.

Some 48,000 attended the Chicago convention, setting a new record—quite a contrast to the first international convention in Dallas in 1917.

James Reid was program chairman and introduced Mr. Weaver.

The 1968 International Convention will be in Dallas, June 26-29, 1968, at which time Dave Evans of Texas will be installed as International President.

The local club will be called on to assist and help underwrite the cost of the hosting responsibilities, Weaver explained.

Mr. E. G. Rice will be program chairman next week.

Recent visitors in the home of Mrs. Ida Brashear were her sisters, Mrs. Willie Allen and Mrs. Opal Hammett, both of Odessa and a nephew, Roy O'Donovan of Levelland.

Students To See Safety Demonstration Wed.

Students of Eastland School will have an opportunity at 9:30 a. m. Sept. 6, Wednesday, to see for themselves

how the false impression and sense of security that a driver of a modern automobile get, can and does, often lead into the danger zone and trouble, when they participate in a series of driving tests, Wendell Seibert, Superintendent, announced today.

The tests, which will be in two parts, will be given under the direction of Ben Bullard, Assistant Safety Director, Texas Farm Bureau.

The first section will be a short talk and film on traffic safety, while the second will be a demonstration on Plummer Street, North of the school.

High point of the demonstration will come when driving tests are made with various students and faculty members in the specially equipped car. An electric detonator which is mounted on the front bumper of the car will fire yellow paint bullets to indicate the distance required to stop the car in an emergency.

The driver being tested will be signaled to stop by the report of the first shell. The second will be fired automatically when the brake is applied and the third when the car halts. Distance between the spots of paint will then be measured to determine the reaction, braking, and total stopping distances.

Tests will be limited to 20, 30, and 40 mile per hour speeds because of the danger of making emergency stops at higher speeds. Police officers will be used as drivers in the high speed tests.

As part of a program for safety on the highway, the Texas Farm Bureau Safety Department has presented this driving demonstration and test before the high schools of this state since 1957. The program is being brought to Eastland under the sponsorship of Eastland County Farm Bureau.

The public is invited to attend.

Mike Jones, a student at Commerce, was home visiting his parents, Mr. and Mrs. Morris Jones, last weekend. Tuesday, Mrs. Jones and Kathy took Mike to Lovefield where he flew to visit his brother and his family, Mr. and Mrs. Bill Jones. Bill is stationed at Hamilton Air Force Base in California.

Prices Good Thru Sept. 2, 1967

SHOP

The store that cares... about you!

Quantity Rights Reserved

"SUPER-RIGHT" QUALITY AGED HEAVY BEEF ROUND

STEAKS 89¢

.lb.

"SUPER-RIGHT" QUALITY SMOKED — BUTT PORTION — LB. 49¢

Mohawk Can'd

HAMS

5 lbs Each 4²⁹

HAMS

SHANK PORTION

.....LB

39¢

Normel Holland Sliced

4 Oz. 59¢

"Super-Right" Buys for the Weekend!

Super-Right QHB

STEAK Cube Chuck LB 89¢

D'S SAUSAGE, PEPPERONI, HAMBURGER

PIZZA 12" Each 63¢

Super-Right QHB

POT ROAST Chuck Blade - Lb 43¢

ALLGOOD BRAND SLICED

BACON

1-lb. Pkg. 59¢

CAP'T JOHN'S FROZEN

PERCH FILLETS 1-lb. Pkg. 39¢

Sultana All Varieties Frozen

DINNERS Each 39¢

Sultana Fro. Beef, Chick., Turkey

MEAT PIES 6 For 97¢

Label Day Grocery values!

BRIQUETS A&P Charcoal 20-lb. Bag 79¢

PLATES Fonda Paper Pkg. of 150 79¢

DRINK A&P Orange 3 1-Qt. 14-oz. Cans 89¢

JUICE Realemon Lemon 1 1/2-Pt. Btl. 44¢

LEMONADE Coastal Reg. & Pink Frozen 3 6-oz. Cans 25¢

MELLORINE

29¢

CONTESSA ASSORTED FLAVORS

1/2-Gal. Ctn...

School Supplies!

STARLINE 10 1/2" x 8" WITH HONEY KRAFT COVER AND 3 SUBJECT DIVIDER WIREBOUND

COMPOSITION BOOKS Ea. 46¢

PADDED TYPING PAPER 50 Sheets Ea. 29¢

WIRE BOUND MEMO BOOK 50 Sheets Ea. 15¢

NIFTY LOOSE LEAF **FILLER PAPER** Pkg. of 500 74¢

NIFTY LOOSE LEAF **FILLER PAPER** Pkg. of 300 47¢

SHEAFFER WITH 7 REFILLS **CARTRIDGE PENS** Each 49¢

\$2.19 VINYL BINDER, 25¢ PKG. OF FILLER PAPER, 29¢ PKG. OF INDEX DIVIDERS, 49¢ MIRA KOTE SUBJECT BOOK, 39¢ "BIC" BALL POINT PEN, AND 29¢ ZIPPER POUCH

STARTER SET All For \$1.79

WHOLE SUN FROZEN **LEMONADE** 2 12-oz. Cans 35¢

A&P'S OWN ALUMINUM WRAP **WONDERFOIL** 12" x 25' Roll 19¢

ZEE PAPER **NAPKINS** Pkg. of 360 49¢

CHEF BOY-AR-DEE FROZEN **Cheese Pizza** 12 1/2-oz. Each 59¢

CHEF BOY-AR-DEE FROZEN **Sausage Pizza** 13 1/2-oz. Each 69¢

LANDER TOILETRIES

EGG SHAMPOO, LUXURY SHAMPOO, CREME RINSE, AND FOAMING BATH OIL

Your Choice in Clear Plastic Qt. Size 49¢

SUPREME COOKIES **PECAN SANDIES** 14-oz. Pkg. 53¢

SUPREME COOKIES **PARTY ANIMALS** 7-oz. Ctn. 49¢

A&P VACUUM **COFFEE** 1-lb. Can 71¢

WHITE HOUSE NONFAT DRY **INST. MILK** 9 1/2-oz. Ctn. 33¢

ANN PAGE TARTAR **SAUCE** 10 1/2-oz. Jar 29¢

ANN PAGE MACARONI AND CHEESE **DINNERS** 2 7 1/2-oz. Pkg. 39¢

SULTANA **Peanut Butter** 2 1/2-lb. Jar 99¢

ANN PAGE FINE, MED., AND BROAD **NOODLES** 1-lb. Pkg. 33¢

CREST PAK VACUUM **MIXED NUTS** 13-oz. Can 49¢

BORDEN'S EAGLE BRAND **MILK** 2 1 1/2-oz. Cans 69¢

DETERGENT SURF Gl. Size 83¢

DETERGENT BREEZE Gl. Size 85¢

DETERGENT RINSO Gl. Size 83¢

DETERGENT Fluffy "all" Gl. Size 83¢

AUTOMATIC DISHWASHER DETERGENT Dish "all" 1-lb. 4-oz. Size 45¢

AUTOMATIC WASHER DETERGENT Active "all" 9-lb. 13-oz. Size \$2.35

DR PEPPER

REGULAR or DIET KING SIZE

3 6-Btl. Ctns. \$1.00

Plus Deposit

Holiday Fruits & Vegetables!

CALIFORNIA **NECTRINES** lb 29¢

SULTANA **MAYONNAISE** qt 49¢

ARMOUR'S **POTTED MEAT** 3-oz. Can 10¢

MILK HOEHOERING **POTATOES** 1 1/2-oz. Can 10¢

PRESERVES Iona Strawberry 1-lb. Jar 29¢

Jane Parker Bakery

CAKE DONUTS 2 Doz. 45¢

POUND CAKES 1-lb. 9-oz. Each 55¢

JANE PARKER ROUND TOP, SANDWICH OR EXTRA THIN WHITE **BREAD** Special..... 2 1 1/2-lb. Loaves 49¢

PECAN PIES 1 1/2-lb. Each 53¢

BROWN 'N SERVE **DINNER ROLLS** Pkg. of 12 15¢

OUR OWN LOOSE PACK **TEA** 1-lb. Box 99¢

HAIR DRESSING **VITALIS** 7-oz. Btl. 79¢

A&P 5-GRAIN **ASPIRIN** Btl. 19¢

HEADACHE TABLETS **EXCEDRIN** Btl. 69¢

TOOTH PASTE **PEPSODENT** 3 1/4-oz. Tube 55¢

BETTER SAFE THAN SORRY

Insurance Protects Your Family Property

contents of your your clothing and are protected? Our covers loss caused by fire, water and hazards . . . Get broad protection



NAIRD INSURANCE AGENCY

W. MAIN 629 - 2544

Since 1919 — Your Independent Agent

LOW-COST INSURANCE COVERAGE

NOTICE

The Hickman Nursing Homes in Eastland and Cisco, Texas, comply with the Civil Rights Act Title VI, covering Nursing Homes.

An open policy is observed for all persons in the community without regard to race, color or national origin. This includes patients, employees and professionals giving patient service in the homes.



SAFEGWAY STORES will be
CLOSED
MONDAY, SEPTEMBER 4
Shop Ahead for the Holiday

Buy ahead for a fun-filled week end

- Soft Drinks** Cragmont **10¢**
Special! Assorted Flavors. —Quart Bottle.
- Ozark Briquets** Charcoal **49¢**
Pick Some Up for the Holiday! (Why Pay 59¢) —10-Lb. Bag
- Hamburger Buns** or Hot Dog Buns **19¢**
Special! Mrs. Wright's. —8-Count Pkg.
- Paper Napkins** Silk **9¢**
Special! Assorted Colors. —60-Count Pkg.
- Pork & Beans** Highway **2 for 25¢**
Holiday Need. (Why Pay 2/27¢) —16-oz. Can

SAFEGWAY



- Soda Crackers** Melrose. (Why Pay 25¢) —1-Lb. Pkg.
- Campbell Soup** Chicken Noodle. (Why Pay 2/35¢) —1 1/2-oz. Can
- Cheese Food** Breeze. (Why Pay 69¢) —2-Lb. Pkg.
- Chunk Tuna** Sea Trader, Light Meat. (Why Pay 35¢) —6 1/2-oz. Can
- Cottage Cheese** Lucerne, All Styles. (Why Pay 35¢) —16-oz. Ctn.

SAVE
Holly Sugar
Beet. **39¢**
Special!
5-Lb. Bag
With \$5 or More Purchase
(11-oz ONE 11)

SAVE
Swift Prem
Special!
12-oz. Can **49¢**

SAVE
Dog Food
Pooch. ★ Regular
or ★ Liver Flavor.
(Why Pay 3/29¢)
15 1/2-oz. Can **8¢**

SAVE
Flour
Harvest Blossom.
(Why Pay 45¢)
5-Lb. Bag **39¢**

- Bakery Values!**
- White Bread** **49¢**
Mrs. Wright's - Special!
Regular or Sand-wich Sliced. 2 1 1/2-lb. Loaves
 - French Bread** **19¢**
Skylark, Full Wrapped. 1-lb. Loaf
 - Crushed Wheat Bread** **25¢**
Skylark. 1-lb. Loaf
 - Cinnamon Rolls** **29¢**
Mrs. Wright's - 8-Ct. Pkg.

Frozen Food Values!

Lemonade **10¢**
Scotch Treat, Regular. —6-oz. Can

- Compare These Low Prices!**
- Lunch Bags** Kitchen Craft—50-Count Pkg.
 - Preserves** Empress, Assorted—2-Lb.
 - Peanut Butter** NuMade, Creamy or Chunky—12-oz. Jar
 - Sandwich Spread** NuMade, 16-oz. Jar
 - Salad Dressing** Piedmont—Quart Jar
 - Cookies** Busy Baker, Big Family Assortment—24-oz. Pkg.
 - Aluminum Foil** Kitchen Craft, 12" x 25' Roll, Special!
 - Marshmallows** Special! Fluf-Puff—16-oz. Pkg.
 - French's Mustard** 9-oz. Jar
 - Paper Plates** Bonware, White 9", 40-Count Pkg.
 - Mayonnaise** Hellman's—Quart Jar

- Always Fresh at Safeway!**
- Margarine** **15¢**
Cafabrook Solids. —1-Lb. Pkg.
 - Biscuits** **8¢**
Mrs. Wright's, Sweetmilk or Buttermilk—8-oz.
 - Half & Half** **20¢**
Milk, Lucerne, 1/2-Pint Carton

- Catfish Fillets** Capitan's Choice, 1-lb. Pkg. **65¢**
- Glazed Shrimp** Sea Pak P.D.O., 12-oz. Pkg. **\$1.59**
- Fish Sticks** Sea Pak, Breaded, 14-oz. Pkg. **63¢**
- Breaded Oysters** Sea Pak, 6-oz. Pkg. **59¢**
- Fantail Shrimp** Capitan's Choice, Breaded, 10-oz. Pkg. **79¢**
- Sherbet** Lucerne, Assorted—1/2-Gallon Carton **59¢**
Special!
- Banquet Dinners** Frozen, Assorted, Regular **39¢**
- Cream Pies** Bel-air, Assorted—14-oz. Pkg. **29¢**

Mix or Match Canned Juice

- ★ Unsweetened Pink Grapefruit
- ★ Unsweetened Orange
- ★ Natural Grapefruit
- ★ Orange-Grapefruit
- ★ Sweetened Orange
- ★ Sweetened Pink Grapefruit
- ★ Sweetened Grapefruit
- ★ Tomato

Your Choice **3 for 99¢**

- Compare These Discount Prices!**
- Hair Spray** **59¢**
Truly Fine. —13-oz. Can
 - Tooth Paste** Safeway, Florida, Family Size **59¢**
 - Vitamins** Safeway, Multiple, 100-Count Bottle **69¢**

There's No Place Like Safeway for Quality Meat!



Sirloin Steak
Waste-Free Trim.
USDA Choice Grade Heavy Beef. **Lb. 98¢**

- T-Bone Steak** or Club **\$1.19**
USDA Choice Grade Heavy Beef. —Lb.
- Round Steak** Full-Cut **98¢**
USDA Choice Grade Heavy Beef. —Lb.
- Short Ribs** For Barbecuing, Baking, Braising **35¢**
USDA Choice Grade Heavy Beef. —Lb.
- Porterhouse Steak** **\$1.29**
USDA Choice Grade Heavy Beef. —Lb.
- Boneless Roast** Rump or Bottom Round **\$1.19**
USDA Choice Grade Heavy Beef. —Lb.
- Ground Beef** Freshly Ground **2 98¢**
Safeway, Club Pak. —Lb.

Pork Spareribs **49¢**
Medium Size, Good for Barbecuing. 3 to 5-Lb. Avg.—Lb.

Hen Turkeys **37¢**
USDA Inspected... Grade A, Finest Quality Available. 10 to 16-Lb. Average. —Lb.

Fryer-Roaster Turkeys **45¢**
USDA Inspected... Grade A, 5 to 7-Lb. Avg. —Lb.

Sliced Bacon **79¢**
Armour's Mira-Cure. —1-Lb. Pkg.
(Safeway Thick Sliced... 2-Lb. Pkg. \$1.45)

- Leo's Sliced Meats** **2 for 75¢**
★ Beef ★ Corned Beef ★ Dark Turkey ★ Ham ★ Spicy Beef, 39¢ Variety.
- Sliced Turkey** or Chicken, Leo's. **2 for 89¢**
- Danola Sliced Ham** **67¢**
4 1/2-oz. Pkg.
- Cooked Picnic** **49¢**
Swift's Premium, 4 to 8-Lb. Average—Lb.
- FRANKS** **55¢**
All Meat, Armour Star or Safeway, Stock up for the Holiday. —1-Lb. Pkg.
- FRYERS** **29¢**
JSDA Inspected... Grade A Everyday Low Price, Whole, (Cut-Up... Lb. 35¢) —Lb.
- Fryer Halves** or Leg Quarters. **37¢**
Cut from USDA Inspected, Grade A Fryers. —Lb.
- Fryer Breast Quarters** **45¢**
Cut from USDA Inspected, Grade A Fryers. —Lb.
- Smorgas Pak** **89¢**
Eckrich, 4 Varieties in 1 Pkg. —Lb.
- Bologna** **59¢**
Jumbo, Safeway, Regular or Thick Sliced—Lb.
- Chunk Luncheon Meats** **69¢**
★ Safeway Salami for Beer ★ Armour Texas-Style Corvetail ★ Decker Muenchner Sausage, (8y the Piece). —Lb.
- Canned Ham** **3 for \$2.79**
Samsel's Mahawk.

Quality Fresh Produce at Safeway!



Watermelon **59¢**
Texas' Finest, Thumping Good!
Ice Cold Melons Available.
(Cut melons... 5¢ Lb.)
24 to 28-Lb. Average. —Each

- Peaches** Freestone, Yellow—Lb. **29¢**
- Oranges** Valencia, Large—Lb. **19¢**

Variety Melon Sale!

- ★ Honeydews ★ Persians **19¢**
- ★ Crenshaws ★ Casabas **Lb. 19¢**

Fresh Prunes **19¢**
Italian, Northwest Finest. —Lb.

Tomatoes **29¢**
Vine Ripened. —Lb.

Cabbage **5¢**
Large, firm heads. —Lb.

Corn **6.3¢**
Full Ears.

Cauliflower **3¢**
Large Heads —Each

Breakfast Starters!

- Pancake Mix** **25¢**
Special! Kitchen Craft, Buttermilk, 1-Lb. Pkg.
- Pancake Syrup** **59¢**
Special! Sleepy Hollow, 24-oz. Bottle
- Orange Juice** **6 for \$1**
Bel-air Special! —6-oz. Can (12-oz. Can, 3 for \$1)
- Large 'A' Eggs** **45¢**
Breakfast Gems. —Dozen

Back-to-School Values!

- Notebook Paper** **25¢**
Loose Leaf, 2-Hole, (60¢ Value)—100-Sheet
- 2 1/2" Ring Binder** **59¢**
Campus Mate, w/Filter Paper, Theme Note Book (\$2.99 Value)
- Theme Book** **45¢**
Spiral Bound, 2-Hole, 10 1/2" x 8 1/2" (49¢ Value)
- School Binder** **45¢**
All-in-One Set with 2-Hole Filter Paper, Theme Book & Index Cards (\$4.99 Value)

Prices Effective Thurs., Fri. and Sat., Aug. 31, Sept. 1 and 2, in Eastland. We Reserve the Right to Limit Quantities. No Sales to Dealers.

