

# EASTLAND TELEGRAM

EASTLAND, TEXAS 76448 - THURSDAY, JUNE 25, 1970

PRICE 10¢

## Welcome Mat Out for 1970 Homecoming

By **JOE GREY**  
Welcome back home, home-comer. It's good to see you and have you back with us.

If it weren't for the magnitude of Eastland Homecomings, Bill Sewell says we would have them more often but when one puts on a show the size of Eastland's Quinquennial Celebration, it takes a little time to prepare.

Starting with a Gold Tournament, the climax of the homecoming will come Saturday evening in Maverick Stadium with a gaint barbecue.

Then sometime Saturday most classes will be holding a reunion or a get-together at various places around town. The class of 1920, 21, 22, and 23 are meeting with their class

agent, Miss Verna Johnson at the Church annex at the First Christian Church Saturday at 9:30 a. m. All old-timers are especially invited to come pass the time with them and per-

haps enjoy a good cup of coffee and a piece of cake. All class reunion schedules will be posted on the bulletin board at the registration desk at the Elementary School

and all class agents who haven't turned in their meeting time and place are requested to please notify the desk.

The Class of 1946 will have a class meeting in the home of Harold Everett at 905 S. Seaman Saturday at 2 p. m.

One of the busiest places this homecoming will be the spacious home of Virginia W. Russell. She will be co-hostess

at her home with Mrs. Milton Hunt, Mrs. Ruth Butler and Mrs. Horace T. Carpenter, for the class of 1928 Friday at 7:00 p. m. All other who are here in Eastland for the homecoming are also invited to the Russells for this gathering on the lawn.

Then Saturday afternoon at 2:30 sons John and Joe will be co-hosts for the classes of 1962 and 1963.

It has been said that we might as well call this a homecoming at the Russells' as so much of the homecoming activity will be centered around their lovely home.

Henry Van Geem will host a reunion of the class of 1931 at the Church Annex to the First Christian Church Saturday at 2:00 p. m. All other classes are also invited to this meeting, he said.

In the late afternoon the barbecue at Maverick Stadium will be catered by Jetton's, and Bill Sewell says the food will not only be good, but there will be plenty of it.

After the barbecue there will be at least three dances to occupy one's time and Sunday morning will bring a non-denominational church service at the air-conditioned Elementary School Cafeteria.

The principle address will be given by Grady Allison, pastor of Saint Thomas Presbyterian Church of Houston, the son of Mrs. and Mr. J. C. Allison of Eastland.

## Nothing But the Best from E.H.S.



**CHEERLEADERS** — Kneeling: Janie Miller, head cheerleader, Bottom-Sarah Brewer, Junior; Kay Hoffmann, Senior; Top - Connie Langlitz, Sophomore; and Ann Haun, Freshman.

Eastland High School cheerleaders took four "superior" rating and one "excellent" rating in their class in competition at the Cheerleader School held June 14-19 on the campus of Southern Methodist University in Dallas. The cheerleaders also won the "Spirit Stick of the Week." The five girls participated in classes designed to introduce new stunts and skits, cheerleading techniques, new yells, planning of pep rallies and ways to boost school spirit.

## Wild West Pageant Is Set at Amphitheater

July 4 at 8:30 p.m. is the time to put on your six gun and 10-gallon hat and relive the days of the settling of the country.

The setting is the Kendrick Amphitheater Production of the Wild West Spectacular. The program will be filled with fun, frolic, music, shooting, fighting, saloon scenes, you'll like it.

As it happened in the early days, you can be a part of it again in this production.

A gigantic fireworks display, the largest ever presented in the theater, will follow the production. It will follow the trip of a U.S. Astronaut from count down and blast off from earth to the moon and return, complete with splash down and recovery, all made from fireworks.

The highlight of the evening will be the drawing for the new 1970 Maverick to be given away free. The way to get your name in the basket for the drawing will be through the admission ticket to the Wild West Show, so everyone

attending will have an opportunity to win. Tickets are now on sale at the Kendrick Music Center and the Kendrick Poultry Farm. Admission price is \$1.50 for reserved seats or \$1 for general admission, and you furnish your own chair.

All proceeds from this production will be used to purchase permanent seats for the theater.

In the vent of bad weather, the production will be held the following Saturday night.

Make your reservations early by purchasing a ticket or by phoning 817-629-2732.

### LOOK WHO'S NEW?

Mr. and Mrs. Joseph Russell announce the birth of a son born Wednesday morning, June 24, in Eastland Memorial Hospital. The baby weighed seven pounds and 13 ounces.

Maternal grandparents are Judge and Mrs. Esco Walters of Eastland. Paternal grandmother is Mrs. Virginia Weaver Russell of Eastland.

## 2 Eastland Girls Seek County Title

Miss Eastland County 1971 will be chosen from a field of ten lovely young ladies with the theme for the pageant spectacular being "Signs of the Zodiac: From Pisces to Aquarius."

The contestants in the pageant from Eastland are Miss Sharon Sims and Miss Patsy Kincaid.

The theme will be reflected in stage settings, the lighting, and the music. The show is designed to depict the grace, poise, beauty and talent of the contestants seeking the

Miss Eastland County 1971 title. The winner is eligible for the Miss Texas and the Miss America Pageants.

The emphasis of the contest will be on talent with the girls displaying a wide range of performances, including dancing, music, twirling, art and sewing.

Miss Linda Kay Chandler—Miss Lake Cisco 1970—who will compete in the Miss Texas pageant—will present the comedy monologue she will be presenting at the Miss Texas Pageant, in Ft. Worth, July 12-18.

Mel Sandler, pageant producer, commented that the talent the girls displayed was equal to any talent presented in the Miss America Pageant in Atlantic City.

## 15 Indicted By Grand Jury

A 91st District Court Jury was recessed at noon Tuesday until July 20, after examining 19 cases and handing down 15 indictments.

Three cases were no-billed, including a negligent homicide, and one case passed. Indictments included three felony DWIs, two, indecent exposures to children, one felony worthless check, two goat thefts, two cattle thefts, three felony thefts and two burglary.

Al Anderson, of Cisco is jury foreman. Most of the indicted persons are in custody in Eastland County Jail or out on bond County District Attorney Emory Walton reports.

## Methodists To Hear Home Towner Sunday

Rev. Lloyd M. Hearn who graduated from the Eastland High School in 1923 will preach at the First United Methodist Church next Sunday morning at the 10:55 a.m. Worship Service.

Rev. Hearn has been in the teaching profession as well as the ministry of the church. He is presently pastor of the First United Methodist Church of Ackerley, Texas.

"We have many fond memories of Eastland and Eastland High," states Rev. Hearn in his acceptance of the invitation to preach Sunday morning. In his letter to the present pastor, Rev. Cecil M. Ellis, he further states, "It is most gracious of you to give me this opportunity."

In regard to the "Home Coming Worship" at the High School at 8:00 a.m. Sunday morning the pastor, Rev. Cecil M. Ellis says, "By all

means, attend the Worship at the High School, and then, worship with us at 10:55 a.m. in the First United Methodist Church."

## Red Sox Whip Bulldogs For 5-in-Row

In a hard fought game Friday night, the Red Sox of Eastland beat the Ranger Bulldogs by a score of 2-1 making it 5 in a row for the Red Sox.

Randy Rexroat was the winning pitcher in the extra inning thriller going 8 full innings. In the first game of the season, the Red Sox beat Albany 9 to 4. Rueben Gaeta was the winning pitcher. The 2nd game against Ranger was 1 to 0 with Daryl Thomas going all the way on the mound. In the 3rd game Joe Herrera pitched his way to a 5 to 2 win over Cisco.

The Red Sox took Clyde to the cleaners by a score of 11 to 3 with Daryl Thomas on the mound to bring us up to date with the seniors.

Members of the squad are: 18 year olds—Alex Jimenez, Daryl Thomas, Mike Arther, Jimmy McCoy and Jimmy McCullough. 17 year olds: Joe Herrera, Rocky Maynard Rueben Gaeta, Billy Harbin, and Gary Thomas. 16 year olds: Bobby Emfinger, Randy Rexroat, Rodney Reynolds, Bob Mace and Bobby Kincheloe. Manager is Ray Harbin. Coaches are Bob Jones and Ken Perry.

The Red Sox will be at home the next 3 games playing Albany June 23rd, Cisco June 26th and Clyde July 7th.

321 persons under the age of 18 in Eastland County received a social security check on Jan. 3, 1970.

## Jana Rexroat Is Eastland Entry In Gorman Test

Miss Jana Rexroat will represent the Eastland Chamber of Commerce in the Eastland County Peanut Princess Contest.

The County Contest will be held in the Gorman High School Auditorium Friday night June 26th.

The winner of the County Contest will enter the State Peanut Queen Contest which will be in Eastland August 14 and 15.



JANA REXROAT

EASTLAND NATIONAL BANK EASTLAND, TEXAS

## FULLEN MOTOR Co. LAUGH-A-DAY

An alumnus shown a list of current examination questions by his old economics professor, explained: "Why, those are the same questions you asked when I was in school!"

"Yes," said the professor, "we ask the same questions every year."

"But don't you know that students hand the questions along from one year to the next?"

"Sure," said the prof. "But in economics we change the answers."

Horton Tire Co. Present

## BREAD of Life

Every branch in me that beareth not fruit he taketh away; and every branch that beareth fruit, he purgeth it, that it may bring forth more fruit.—John 15: 2.

## Olden Due New P.O. Facility

Olden residents are due a new post office facility according to an announcement by Cong. Omar Burlison this week.

In a message this week he said that the Post Office Department will seek a site for containing approximately 3,000 square feet for a new Olden Post Office.

Cong. Burlison will visit this area soon on the matter, he said.

## Russell Walker Wins Lakeside Scramble

A team captained by Russell Walker of Eastland won first place in a scramble tournament at Lakeside Golf Course last Saturday afternoon. Some 40 area golfers participated in the tournament.

Walker, who formerly was a member of the Eastland High School and Cisco Junior College golf teams, is a member of the golf team at East Texas State University. His scramble team had 12 birdies and an eagle for a net score of 58 for 18 holes.

Playing with Walker on the winning team were Everett Plowman of Eastland, Pete Ruiz of Breckenridge and J. W. Sittion of Cisco. The four men divided 40 golf balls as first prize.

Second honors went to a team captained by Norman Rhodes of Eastland. Playing with him were Travis Hilliard, O. H. Dick, Sonny Sipes and Dusty Rhodes. Their score was 59.

Teams captained by Jeep Mitcham of Cisco and Red Stephens of San Antonio tied

for third place with 64s.

Playing with Mitcham were Bill Daubb, Vandall Weathers and Cotton Guy. Stephens' had Letha Stafford, Jodie Baker, J. B. Sittion and Joe Zuspahn on his team.

Lakeside plans a partnership tournament later in the summer, it has been announced.

### VISIT HERE

Visiting Mr. and Mrs. Rudolph Little and Mrs. C. L. Little last weekend were Dr. and Mrs. Christian Gellinek of New Haven, Connecticut. Mrs. Gellinek is the former Janis Little. Also visiting for the weekend was Dr. Fritz von Stellwehe, M.D. of St. Paul's Hospital in Dallas.

## Freyschlag INSURANCE

Presents the WEATHER -

GOOD WEATHER FOR A REUNION: Fair and hot, with possible afternoon showers.

## It's Been a Long, Long Time ...



Human Maynard with the Eastland Girls Softball team—the White row: Marie Culpepper, Thelma Humphery, Mary (Sis) Wesley, Lila Peggy Kloss. Front row: Shirley Thompson, Sharon Shoemaker, Penwood, Nancy Maynard, Debra Keith. (Photo by Lloyd Armstrong)

itors, It's Good to Have You Home; Enjoy Yourselves

# WANT ADS WORK WONDERS

## Announcements

**MASONIC LODGE NO. 467**  
Meets second Thursday of each month at 8:00 p.m. in the Masonic Hall. Call E. M. Thompson, W.M., at 629-1665 or L. E. Huckabay, sec'y, 629-1391 for information.

**EASTLAND ROTARY CLUB**  
Meets each Monday noon at White Elephant Restaurant in Eastland.  
Roy Lee Smith, resident

## Notice

NOTICE: Painting, interior, exterior, sheetrock repair, paneling, small home repair jobs; also floor sanding and finishing—J. R. Langston, Olfen, Texas 629-2224. 52

NOTICE: Eastland Pump Service, operated by Cody Cox, has purchased C. M. Cox Dair Contracting, and will now offer back hoe and dump truck work. Phone 629-2944, Eastland Pump Service, Box 441, Eastland. 51

NOTICE: Experienced, practical nurse wants job sitting with sick or elderly on weekends—day shift in hospital, nursing home, or your home. Phone Carbon 629-2462. 52

NOTICE: Now is the time to begin planning your next seasons irrigation needs. See us for design work, and a complete line of irrigation pumps, pipes, and supplies. We carry the largest stock in Central Texas. Kimmell Irrigation Service & Supply, Hwy. 16, & Bivlar, De Leon, Texas. Phone 893-6266. 51

FOUND: All the record-keeping supplies you need for the new year—at one location: your local newspaper office. Farm and business records, payroll records, tax saving requirements. All kinds of supplies for the home and office. Shop at home and save. 51

NOTICE: Piano tuning. Private lessons on nearly all instruments. Contact Kendrick Music Center, 702 S. Seaman, Eastland. 51

**NOTICE—EDDIE'S**



**Now Offering Complete Shop Service**

Eldred I. Allcock  
30 years experience  
(16) General Motors, 8 Ford, 4 Chrysler  
**SHOP FOREMAN**  
Specializing in Automatic Transmissions, Major & Minor Overhauls, Tune-ups.

General Repair

**FEATURING AUTO SERVICE At EDDIE'S 66**

And you'll enjoy depending on us to take care of all your auto service needs.

**SERVICE CENTER**  
American Automobile Association

Call 629-8838  
—FREE PICKUP—  
GUARANTEED SERVICE & TOP PHILLIPS PRODUCTS  
West Main St.

NOTICE: LADIES, become a FASHION SHOW DIRECTOR for PARK LANE. Part time work—full time pay. Contact Mary Lou Thompson, 854-1183 or 854-1346, Baird. 62

NOTICE: I shall not be responsible for any debt other than my own. Douglas Fron. 52

NOTICE: Piano tuning and repair. Co. Ron Berbe 629-2970. If no answer call 629-1722 (will take message). 59

NOTICE: Reduce safe & fast with GoBese Tablets & E-Vap "water pills". CENTRAL DRUG. 55.

NOTICE: Backhoe Service and Dirt hauling. Call Eastland, 629-1795 days; or Cisco, 442-1340 at night. 51

NOTICE: Would like to buy a few acres of land near Eastland with city water and gas if possible. Would prefer without house. Write Box ABC Eastland Telegram. 51

MISC. FOR SALE—PILE is soft and lofty. Colors retain brilliance in carpets cleaned with Blue Lustr. Rent electric shampooer \$1. Perry Brothers. 52

**HOMES FOR SALE**  
3 Bd Rm Home extra nice in good area.  
2 Bd Rm Home Fireplace 3 Block of Hospital \$7000.00.  
2 Bd Rm Home Roomy place needs some repair \$4250.00.  
3 Bd Rm Small Home and 2 Acres on Interstate 20.  
3 Bd Rm Brick 2 Bath Built ins Central Heat & Garden area.  
4 Houses 9 Lots as a unit Rented \$21000.00.

**Lake Leon**  
Nice Lake Cabin Sleeping Area 12x28 ft Liv Area 14x28 ft Next place \$5500.00.  
Lake Leon Mobil Home with nice lot and good Water Frontage \$8900.00 extra nice.  
Lake Leon Home Convenient location real nice \$10,500.00.  
Nice Lake Leon Home Boat and Motor Good Water Frontage nice Deeded Lot \$9450.00.

**FARM & RANCHES**  
3 Bd Rm New Brick Home and 13 Acres Land with 70 Pecan Trees Coastal Bermuda.  
2 Bd Rm Home 11 acres land Large Barn 100 Fruit Trees City Water good terms.  
120 Acres on Pavement, Net Fences, Good Tanks, some Coastal, 37 acres Peanuts.  
160 Acres 2 Miles out of Eastland good terms available.  
113 Acres North of Gorman, Well Water, Tank, 2/3 in Cult. \$200.00 per acre Terms.  
280 Acres on Highway 80 \$150.00 acre some Cult good Terms.  
900 Acres Hubbard Lake 1/3 Bottom with some Pecans.  
340 Acres Stephens County cleared and Seeded 1/3 Cult. and improvements \$135.00 acre Terms.  
500 Acres Coastal and improved Grasses 40 Acres Peanut Net Fences.  
1000 Acres well improved Net Fences Nice Home some Coastal and Peanuts high carrying capacity good terms \$1450.00 Int.  
1300 Acre Ranch good Grass Ranch Net Fences on Pavement excellent Deer Hunting \$110.00 per Acre.  
1500 Acres well improved Ranch good Fences on pavement \$125.00 Acre Terms.  
1700 Acres good Grass on Pavement excellent Hunting \$125.00 Acre cash or Terms.  
2800 Acres well improved Ranch open rolling Scattered Live Oak with live Creek Lampasas County.

**KINCAID REAL ESTATE**  
Long Term Farm and Ranch Loans  
100 S. Seaman — 629-1788  
F. W. Elder, Robert Kincaid 647-1321 — 629-2721

**ONE - STOP SERVICE**  
FOR Total-Car Care! That's D & M  
**SERVICE CENTER**  
802 W. Main St.  
Humble Products  
General Repair  
Air - Conditioning  
Brake Work  
Road Service: 8 to 5  
Open 24 Hours  
• OBIE DUNCAN  
• ROBERT MANGUM  
Steam Cleaning  
Wash - Lubrication  
Tires Batteries  
Complete line accessories  
Dial 629-8866

NOTICE—Dry Cleaning \$1.50 for 8 pound load Tuesday and Thursdays. \$2.00 all other days. Taylor Center, 410 East 10th, Cisco. Open 7 days weekly 6:30 a.m. till 9:30 p.m. 501c

## For Sale

FOR SALE—CARPETS and life too can be beautiful if you use Blue Lustr. Rent electric shampooer \$1. Coats Furniture. 52

FOR SALE—Irrigation Equipment—We carry the largest supply in central Texas. Kimmell Irrigation Service and Supply, Hwy. 16—De Leon, Texas, Phone 893-6266. 70

FOR SALE: 15' mag wheels. Call 629-1191. 51

FOR SALE: Lake cottage near Staff Wooded lot. Boat dock and ramp. 2 Br., bath, kitchen, living area. Screen porch. Fully furnished. Sep. Carport and Storage. \$10,500. Contact W. C. Robinson, 656 Falcon Dr., Waco, Texas 76710. Phone 817-772-3198.

FOR SALE: Inspirational for devotions and super ideal for gifts — Drawing Toward God. Hardbound book of original drawings and text by Noted Texas Artist Jack Hamm. \$3.50 each. At the Telegram office exclusively.

FOR SALE: Filing cabinets, desk, work stations, office machines, and everything you need to brighten up, modernize your office, shop and home needs for the new year. See your local newspaper for big savings. Some used items, and many brand new ideas just waiting to help you do a better job. Just come by the newspaper office. 51

FOR SALE IN CISCO—Three bedroom, foyer, large living dining room area, utility room, bath, fenced back yard Call Victor Childers, Rising Star 643-3653 or see C. D. Ballou, 643-2931. 911c

FOR SALE: Service station and grocery. Good location. Completely equipped. Highway 6 and Burkett. Call 629-2427 for information. 51

FOR SALE: Have a good stock of good used tires. Horton Tire Co. 51

FOR SALE: House, \$4,900. 114 E. Conner. Call 629-1854 after 12 noon. 51

FOR SALE: Five-bedroom, two-bath home at 1209 South Seaman. One and one-half story. Large rooms. Downstairs carpeted. Three-car garage and carport. Reduced to \$8500.00. Call 629-2427. 51

**THE BEST**  
24-Hour Baby Sitting  
Weekly - Daily - Hourly  
**BETTY MEEK**  
209 East Valley  
629-1546

**HOMES FOR SALE**  
3 bedroom, 1 bath home, outh Hillcrest.  
3 bedroom, 1 bath, South Mulberry.  
2 bedroom home, West Main  
2 bedroom home, North Armerman.  
3 bedroom home, 13 acres, Lake Leon.  
2 nice lake cabins at Lake Leon.  
2 bedroom home, 10 acres, north Eastland.

**FARMS AND RANCHES**  
220 acres Cisco area, wheat allot, some oil income, owner finance.  
113 acres near Cisco, on pavement, good fences.  
274 acres near Lake Leon, good terms.  
188 acres near Lake Leon, fair home.  
127 acres near Carbon, 25 acres peanuts.  
226 acres north Eastland, 80 acres cult.  
303 acres, 82 acres peanuts, near Desdemona.  
612 acres near Lake Leon.  
486 acres near Lake Leon.  
1494 acres Eastland County, nice home.  
1756 acres Eastland County, lots of deer.  
Other tracts large or small, Eastland County.

**M. L. TERRELL REAL ESTATE FARM BUREAU BLDG.**  
Highway 8 East  
Call 629-1725 Day  
Call 629-2443 Night

FOR SALE, Large 3 bedroom house, 109x150 ft. lot, plenty of nice trees, located at 204 High Street in Eastland. Also old piano—\$100.00. Contact Fred C. Johnson, Route 3, Box 703a Midland, Texas, 79701 phone 684-4272 Area code 915. 64

FOR SALE: Nice Lake Leon lot with 8x43 feet Mobile home, furnished, water, lights, and sewer system. Phone 629-2258. 51

FOR SALE: 1965 Plymouth Belvedere I Station Wagon 6 passenger-standard shift-low mileage, good condition. Phone 629-1293. 51

FIREWORKS, fishing tackle at discount prices. FOR SALE: large ceiling gas heater big power saw, large safe, saw sharpening machine, property on Highway 16 at edge of city limits. FOR RENT: Mobil home space; open every day until 8:30 p.m.—PRUITT'S STORE, Strawn, Texas, south of school buildings. 53

PLACE FOR SALE—6 1/2 acres five-room house with new fireplace, several other buildings. Two miles North on Caddo Hwy. Phone 647-1537. 51

FOR SALE—Two row tractor, breaking plow and mower, call 647-1638, Ranger 51

**Wells Brothers Pant Contractors**  
Spray or Brush Taping, Bedding Textoning, Acoustics  
—Free Estimates—  
Call collect Ranger 647-1778 or 647-3049

**NOTICE: GENE MILICAN**  
\*\*\*  
**COMPLETE AUTO PAINT & BODY SERVICE**  
\*\*\*  
At Hood King Motors  
\*\*\*  
You'll like our work!

**JIM'S ELECTRIC**  
You call 629-2929 and I will wire.  
FREE ESTIMATES  
Jim Gideon, 1502 S. Bassett

**HAY BAILING PLOWING**  
Experienced Operators  
Heulon Perrin, 647-1028  
Dwight Squires, 647-1397  
In Ranger

Prevent Disease Loss at Small Cost  
**USE OUR LIVESTOCK SUPPLY DEPARTMENT**  
EASTLAND DRUG

**ROY LEE SMITH PLUMBING**  
Contracting & Repairing Complete plumbing fixtures and supplies.  
• Water Systems  
• Electric Motors  
• Bath & Kitchen improvements  
• Trained, adequate staff  
Call a licensed plumber Day or Night 629-1722  
**Smith Plumbing**  
114 N. Seaman Eastland

## Wanted

WANTED—One man for delivery, and one man for night warehouse work. West Texas Produce, Cisco. 54

WANTED—Carpenter Work Building or remodeling, roofing and so forth free estimates. Call 629-1654. U. V. Williams. 54

WANTED—Blackberries, if anyone has any blackberries call 629-2413. 51

NOTICE: Dozer work done. Bennie O'Brien. Call 629-2771, Eastland. 53

NOTICE: Baby sitting in my home—By hour or by day. Dorothy Capers. Phone 629-1604. 53

**CARD OF THANKS**  
We the mother and sisters of Merle C. McWhorton, wish to express our thanks to our friends for the floral offerings, words of kindness and food, during the loss of our son and brother.  
Mrs. Pearl Griffith, mother  
Mrs. Frances McPherson  
Mrs. Joyce Moore  
and Ethel Scott. 51

**FOR SALE**  
69 Singer Zig-Zag with cabinet. No attachments needed to do anything. Makes button holes, blind hems, decorative designs. Sew on buttons, etc. Wanted responsible person to take up payments. Original price \$279.95. Balance \$54. Cash or \$7 monthly. Call 629-2192, Eastland, Cisco, 442-3036 anytime or Rising Star 643-2794 anytime. 51

**Your ability to work is your greatest asset**  
Protect it with a HEALTH & ACCIDENT PLAN  
Something good happens when you see your "Heart of Gold" man



**M. H. PERRY**  
107 W. Main St.  
Office — 629-1566  
Residence — 629-1095

**SOUTHLAND LIFE INSURANCE COMPANY**

**ED SAYS—SHOP AT HOME**  
Friendly-Quick In-Out  
**ED SARGENT**  
7 DAYS A WEEK  
7:30-6:00  
Sun: 7:30 a.m.-9:30 a.m.  
11:00 a.m.-6:00 p.m.  
**Hillcrest Food Mkt. Service**

**EMMET MORREN PLUMBING COMPLETE REPAIR SERVICE**  
401 South Oak  
629-2092  
—24 Hour Service—

**CIVIL WAR DIARY**  
By Maj. James T. Poe CSA  
With list of 1,200 fellow prisoners on Johnson Island, giving name, rank, unit and when and where captured. 125 pages, hardbound, with illustrations. \$5. Industrial-Plus Press P. O. Box 29, Eastland, Texas 76448

**ROLLINS & SONS MOBIL SERVICE**  
Call for Appointments on Wash - Grease Oil Changes  
601 W. MAIN  
6700 - 6700

## Is Hostess for Flatwood Meet

The Flatwood Home Demonstration Club met Thursday afternoon in the home of Mrs. Guy Sherrill.  
Mrs. Sherrill led the motto, creed, and prayer. She read Romans 12:1-5 for the devotional.  
Mrs. Graves called the roll which was answered with "What other club members mean to me."  
Mrs. Zelma Lusk led the signing and presented the program.  
Mrs. Fannie O'Brien led the recreation.  
Present were Meses Hastings, Graves, Taylor, O'Brien, Horn, Lusk, Fambrough, and Sherrill.

Mr. and Mrs. Joe Stephens will leave Sunday, June 28, for a week's vacation in Canada. They will be visiting Mrs. Stephen's brother, Joe Bull, at Calgary.

## For Rent

FOR RENT: Three room furnished apartment. All bills paid. Prefer working couple or retired couple. See at 608 West Plummer or call 629-2957. 51

FOR RENT: Roomy air-conditioned garage apartment, to individual or working couple with good references only. Phone 629-2413 after 5 p. m. \$70.00 per month. All utilities including TV cable connection paid. 51

FOR RENT—Furnished two bedroom apartment in duplex. 611 Plummer. 451c

FOR RENT: Nice furnished cottages with carports. PP Motel, Highway 80 west. Telephone 629-8878. 51

FOR RENT: Furnished apartment and furnished cottage; also small unfurnished house. PP Motel, call 629-8878. 51

**GREEN ST. FLOWER & GIFT SHOP**  
Ha R. Parrish-200 N. Green  
Telephone 629-1101  
Eastland, Texas 76448



**Western Mattress Co.**  
Mattress, Box Springs, Custom bill.  
Renovated or exchange. New Guarantee. Save 50%  
Call 629-1740 or 629-1398  
EASTLAND

**NOTICE**  
Hospital Beds For Rent  
New and Used Furniture For Sale

**Wayne Jackson FURNITURE**  
110 N. Seaman St.

**PERMANENTS**  
\$10 Cold Waves — \$8.50  
—Open 8:30 to 5:30—  
Close noon Wed. & Sat.  
Basham Beauty Bar

**OUR DAD WANTS TO SELL YOU SOME INSURANCE HOW ABOUT SEEING AT**  
D. L. KINNAIRD GENERAL INSURANCE  
207 W. Main St. — 629-2544

JIMMY  
CAROL ANN

**EASTLAND TELEGRAM**  
Phone 629-1701  
110 W. Commerce St.  
(Consolidate with Eastland Chron. 1887, and Eastland County News. 1931.)

Second Class Postage paid as Second Class Matter under the act of Congress of October 3, 1917.

Published Semi-Weekly - Thursday  
By Eastland County News

**SUBSCRIPTION RATES:** By mail or by carrier. Single copy 5c. 6 months \$2.50. 1 year \$4.50. 2 years \$8.00. In advance. Payment in cash. No cash on account.

**NOTICE:** Any erroneous reflection, standing or reputation of any corporation which may appear in this newspaper will be gladly corrected, brought to the attention of the publisher.

**WEST TEXAS PRESS**

**AVAILABLE NOW. WHEN THE NEED IS THE HOME LIGHTNING**  
The Home Lightning Protector—can prevent costly appliance—can help assure uninterrupted—is the only device of its kind—replacement guarantee—CSA listing  
LIMITED TIME ONLY

**BOND ELECTRIC**  
EASTLAND, TEXAS

**The Next Best Thing—**  
... to a clear conscience is the feeling of security in your property is adequately insured in your home town who are as you need them most. This is especially true during your vacation time. Whether you are on a trip, vacation time is hazardous. Be sure to check with your insurance agent. Be sure to check with your insurance agent. Be sure to check with your insurance agent.

**Earl Bender & Co.**  
Eastland (Insurance since 1911)

**REAL CHICKEN FRIED**  
ala carte  
**HOT STEAK SANDWICHES**  
with cream gravy  
**TO GO, OR EAT IT**  
Open 11 a.m. to 10 p.m.  
**7 days a week**  
**DAIRY KING**  
Casey Meadors  
West Highway 8 East

# COURT NEWS

**George Harris and Company** to William R. Doyle, warranty deed.

**Galaxy Oil Company** to Rock Hill Industries, Inc., assignment royalty interest.

**E. L. Graham M. D. et ux** to H. A. Tyrone, warranty deed.

**Patra Goss** to Church of Christ of Rising Star, warranty deed.

**Joe T. Gray, receiver**, to Ed F. Henderson, oil and gas lease.

**Robert S. Gleason** to B. J. Greenhaw, assignment oil and gas lease.

**William M. Howard et al** to Frank Hallmark et ux, warranty deed.

**Mandy G. Hallmark**, deceased, to the public, proof of heirship.

**Harold D. Hendricks et ux** to First Federal Savings and Loan Association, Ranger, deed of trust.

**Leonard Hageman** to Joe Frank McCollum, warranty deed.

**H. S. Holder** to Eastland National Bank deed of trust.

**Mrs. Marie Hatton** to Carrie Cooper, quit claim deed.

**Carlton Holder** to Joe Culpepper, deed of trust.

**B. E. Hanson** to Thomas C. Horne III et al to Southern Savings and Loan Association, deed of trust.

**Thomas E. Hickman** to Southern Savings and Loan Association, deed of trust.

**L. B. Harris et al** to the public, affidavit.

**Wilfred J. Henry et ux** to Don Harris, warranty deed.

**Don Harris** to Southern Savings and Loan Association, deed of trust.

**Robert Earl Hamilton et ux** to Higginbotham Brothers, mechanic and materialman lien.

**Thomas E. Hickman** to Roy H. Simmons, deed of trust.

**Handy Spot Grocery** to the public, assumed name.

**Melvin Wayne Iley** to Neta J. Gee, warranty deed.

**Gracie Mearle Jenkins et al** to Bobby J. Thornhill, warranty deed.

**W. M. Jeffcoat** to James Elrod, release vendor's lien and deed of trust.

**Joseph E. Seagram and Sons, Inc.** to Texas Pacific Company, Inc., assignment mineral interest.

**J. B. (Buster) Jennings** to Omar A. Hatton et ux, warranty deed.

**Doris Mae Kent et vir** to Betty C. Miller, warranty deed.

**Gupt C. Kirkpatrick** to Ralph C. Hart, oil and gas lease.

**Horace King** to Abilene Savings Association, deed of trust.

**Lica Petroleum Corporation** to Bayard Walker et al, assignment mineral interest.

**C. J. Langlitz**, deceased, to the public, proof of heirship, with will attached.

**Nell C. Lavery et al** to W. H. Mayhew, warranty deed.

**Gary L. Lowrance et ux** to Homer Nix, warranty deed.

**C. J. Langlitz estate** to the public, certificate showing no inheritance tax due.

**Bertie Medford** to the public, affidavit.

**W. H. (Bill) Mayhew**, to Laura Faye Mayhew power of attorney.

**Betty C. Miller** to First Federal Savings and Loan Association, Ranger, deed of trust.

**Calvin Millican et ux** to W. H. Millican et ux, warranty deed.

**James P. McCracken et al** to J. T. Richardson, warranty deed.

**T. L. McMaster** to L. E. Clark, deed of trust.

**Katheryn G. Ponsler**, individual and as independent executrix of estate of Rosco L. Ponsler, deceased, to Louise Kimmell, warranty deed.

**Ed. S. Pritchard** to Willie Arnolds Bender, warranty deed.

**Phillips Petroleum Company et al** to Mrs. Effie Brown, release oil and gas lease.

**M. L. Perdue et ux** to Donald Max Hunt, warranty deed.

**Harold L. Price et ux** to Jackie Feist to Higginbotham Brother and Company, mechanic and materialman's lien and assignment.

**Louise Whisenant Rodgers**, deceased, to the public, proof of heirship.

**Jimmie R. Rodgers et al** to B. R. Rodgers quit claim deed.

**Travis Reese et ux** to Mack B. Barrett et ux, assignment lake lease.

**Mal Rumph et al** to Ed F. Henderson, oil and gas lease.

**Lucille Brown Rutherford et al** to Glenda Louise Barr, warranty deed.

**Jerome L. Ready et ux** to Gerald Dugan, assignment contract.

## NOW DOUBLE S&H GREEN STAMPS EACH WEDNESDAY AND SATURDAY PLUS GREAT WEEK END SAVINGS!

Fresh Water  
**CATFISH**  
14 to 16 oz.

Pound **89<sup>c</sup>**

Silver Spur  
**SLICED BACON**  
Lb.

 **67<sup>c</sup>**

Fresh Thin Sliced  
**Beef Liver** lb. **59c**

Fresh Tasty  
**Pork Liver** lb. **49c**

Armour Star  
**Fryer Livers** lb. **69c**

Boneless Fillets  
**Red Snapper** lb. **69c**

Armours Texas Style Cracker Size  
**Cervelat** lb. **79c**

Gooch Blue Ribbon  
**Franks** 12-oz. pkg. **59c**

American  
**Sliced Cheese** 6-oz. pkg. **39c**

Gooch Blue Ribbon—1 lb. pkg.  
**Sliced Bologna** lb. **69c**

Gooch Blue Ribbon Buffet Boneless  
**Ham** lb. **1.49**

**Sirloin Steak** pkg. of 3 **\$1**

**HAMBURGER PATTIES** pkg. of 10 **\$1**

### • MIX OR MATCH •

Sugar Sam cut & whole No. 3 sqt.

**YAMS** can **3 \$1**

Carolina Elberta Sliced 2 1/2

**PEACHES** can **3 \$1**

Van Camp No. 2 1/2

**PORK & BEANS** can **3 \$1**

Shurfine—Ass't. Flavors 46-oz.

**DRINKS** can **3 \$1**

Shurfine 303 can

**APPLE SAUCE** can **4 \$1**

Shurfine Cut 303

**GREEN BEANS** can **4 \$1**

Sweet Treat Crushed

**PINEAPPLE** can **4 \$1**

Homefolks Fresh Shelled No. 2

**BLACKKEY PEAS** can **4 \$1**

Van Camps No. 2

**PORK & BEANS** can **4 \$1**

Shurfine 303

**SLICED BEETS** can **5 \$1**

Argo 303

**PEAS** can **5 \$1**

Del Monte Whole 303

**NEW POTATOES** can **5 \$1**

Ranch Style 15-oz.

**BEANS** can **5 \$1**

Mayfield Cream Style 303

**CORN** can **5 \$1**

### • DAIRY FOOD SPECIALS

JRB  
**MELLORINE** 1/2 gal. **3/\$1**

Foremost  
**COTTAGE CHEESE** 24 oz. **47c**

### • HEALTH & BEAUTY AIDS

Gillette Foamy  
**SHAVING CREAM** reg. 1.19 **79c**

9-Volt  
**TRANSISTOR BATTERY** reg. 69c **39c**

JRB COUPON


**save 14c**

WITH THIS COUPON WHEN

You buy a one can of

**MAXWELL HOUSE<sup>®</sup>**  
OR **ELECTRA PERK<sup>™</sup> COFFEE**

AT JRB



**1b. Can only 79c** WITH COUPON

ONE COUPON PER FAMILY - OFFER EXPIRES June 30, 1970



**DOUBLE S&H GREEN STAMPS**

with purchase of \$2.50 or more Wed. and Saturday

# JRB SUPERMARKETS

**S & H GREEN STAMPS**  
WITH EVERY PURCHASE

PRICES GOOD THROUGH SATURDAY, JUNE 27  
Quantity Rights Reserved — No Sales to Dealers  
PRICES GOOD IN EASTLAND

JRB Meats are U.S. Government inspected and Graded. If for any reason you are not satisfied we will cheerfully refund your money.

Swift's Premium

## Fryer BREASTS

All White Meat

**2-LB. PKG. 99<sup>c</sup>**

USDA Grade A  
**FRYERS** lb. **29c**  
Cut Up, Pan Ready lb. 35c

CRISCO—with \$5.00 or more purchase

## Shortening 3-Lb. Can 69<sup>c</sup>

Instant Cream  
**Instant Cream** big 20 oz. jar **59c**

Energy  
**Bleach** 1/2-gal. **29c**

Kleenex or Northern  
**Paper Towels** jumbo rolls **3/\$1**

Savory  
**Margarine** 1 lb. solid **5/\$1**

Keeblers Pecan Sandies  
**Cookies** 14-oz. pkg. **45c**

Arrow  
**Charcoal Lighter** qt. **39c**

Morton's All Varieties Frozen  
**Dinners** **2/89c**

Big Chief  
**Paper Plates** 100 ct. **79c**

Shurfine All Flavors  
**CAKE MIXES** 4 boxes **\$1**

Shurfine Frozen  
**ORANGE JUICE** 6-oz. can 5 for **\$1**

Libby's Vienna

## SAUSAGE


4-oz. can 4 for **\$1**

Northern

## TOILET TISSUE

4 roll carton **39c**

Garden Fresh Produce Features!


 **LETTUCE** large head **19c**

Texas Vine Ripened  
**TOMATOES** lb. **29c**

Alabama Large  
**CORN** 6 ears **59c**

Texas Sweet  
**PEACHES** lb. **29c**

Texas Fresh  
**CUCUMBERS** lb. **19c**





COLLEEN KELLY

## Engagement Told

Mr. and Mrs. Henry H. Kelly of Eastland announce the engagement and approaching marriage of their daughter, Chloe Colleen, to Mr. Mart Kim Martin, son of Mr. and Mrs. Derrell Martin of Seymour. The wedding will be August 14 at 8:00 p.m. in the Methodist Church in Seymour.

The bride-elect graduated from Eastland High School and is a sophomore at Tarleton State College where she was FFA Sweetheart. The future bridegroom is a graduate of Seymour High in Seymour and is a Senior at Tarleton State College, majoring in Animal Science.

### LEGAL NOTICE THE STATE OF TEXAS

To an sheriff or any Constable within the State of Texas—GREETING:

You are hereby commanded to cause to be published once each week for four consecutive weeks, the first to be at least twenty-eight days before the return day thereof, in a newspaper printed in Eastland County, Texas, the accompanying citation, of which the herein below following is the true copy.

### Citation by Publication THE STATE OF TEXAS

TO: Mike Henry Oil Company, and each of the unknown officers, directors, stockholders, successors and assigns of Mike Henry Oil Company.

Defendants, Greeting YOU ARE HEREBY COMMANDED to appear before the Honorable 91st District Court of Eastland County at the Courthouse there of in Eastland, Texas, by filing a written answer or before 10 o'clock a.m. of the first Monday next after the expiration of forty-two days from the date of the issuance of this citation, same being the 10th day of June A.D. 1970, to Plaintiff's Petition filed in said court, on the 9th day of June A.D. 1970, in this cause, numbered 25,357 on the docket of said court and styled A. G. Weaver, B. J. Greenhaw, and C. E. Ragland, Plaintiffs, vs. Mike Henry Oil Company, and each of the unknown officers, directors, Stockholders, suc-

cessors and assigns of Mike Henry Oil Company, Defendants.

A brief statement of the nature of this suit is as follows, to-wit:\*

This is a suit to appoint a receiver to execute an oil, gas and other mineral lease on and under the following described land in Eastland County, Texas.

160 acres, more or less, out of the Abraham Smeltzer Survey, Abst. 431 described as follows;

Beginning on the E. B. L. of said Survey at the N. E. corner of the John Walls Subdivision of said Survey; Thence North 1173 varas along said E.B.L.; Thence West 848 varas to bed of branch;

Thence Southerly with meandering of said branch to N.B.L. of said Walls Tract; Thence East 652 varas to beginning, as is more fully shown by Plaintiff's Petition on file in this cause.

If this citation is not served within ninety days after the date of its issuance, it shall be returned unserved.

The officer executing this writ shall promptly serve the same according to requirements of law, and the mandates hereof, and make due return as the law directs.

Issued and given under my hand and the seal of said court at Eastland Texas, this the 10th day of June A.D. 1970.

Attest: MYRTLE VAN GEEM, Clerk, 91st District Court Eastland County Texas, By Joe T Gray, Deputy. 6-18, 6-25, 7-2, 7-9

## HOW CLEAN IS YOUR HOUSEHOLD WATER?

Don't gamble on dirty water! Like MAGIC you can turn your present water supply into CRYSTAL-CLEAR, crisp tasting "spring like" water. You will actually enjoy using your water for drinking, cooking, beverages, etc., knowing it is free from silt, sediment, rust, scale particles, sand, algae, dirt, cloudiness, and most other suspended matter. Aply named, the Guardian Water Filter is the most effective, dependable, lowest-cost protection against these water problems (It does not soften water.)

### Guardian WATER FILTER MODEL GS

only \$19.95  
Includes one cartridge in the filter plus one extra 5-1 sediment cartridge.  
Additional 5-1 \$1.50 cartridges at.  
economy pack \$5.75 of four

Also Available exclusive 1-2 taste-odor-sediment filter cartridges. Remove all objectionable tastes & odors. each \$2.75



SMITH PLUMBING

Eastland

When you need sympathy and advice . . .

WE ARE HERE TO SERVE YOU

Whatever the hour, feel free to call on us for understanding counsel in time of SORROW.

Arrington

Funeral Home

EASTLAND 629-2611

## Economy WSCS Senior Breakfast Nets \$25 Gift for WestTex Rehab.

The Senior Breakfast, traditionally given the members of the graduating class of Eastland High School by the Woman's Society of Christian Service of the United Methodist Church, cost less in 1970 than in previous years, Mrs. Carl Elliott, treasurer, announced.

Mrs. Elliott said, "In the face of rising costs, that is news. Credit goes to the women who managed the event."

As a result of the economy, the WSCS voted to give \$25. to the Seniors to donate to their selected recipient. The class wished to extend this help to the West Texas Rehabilitation Center in Abilene.

Following is the acknowledgment of the gift:

"Dear Graduating Seniors: Your gift to the West Texas Rehabilitation Center's financial strength is slowly

growing and the program is again showing signs of vigor. With the coming of summer, we hope to continue to serve the handicapped. This can be done through the generosity of thoughtful friends. Sincerely, Shelley V. Smith, A. R. P. T. Executive Director.

## Lions Eat Fish, Install Officers At Lake Meeting

A total of 119 Lions and guests banqueted on fresh fried fish and participated in an officer-installation ceremony at Lake Leon Tuesday evening.

J. B. (Tip) Arthur assumed the leadership of the club as new president, replacing Jeff Glazner, during the impressive installation conducted by O. L. Stamey of Cisco. A past-president's pin and a plaque from the club was given Retiring President Glazner, and the new president and Club Sweetheart JoAnn Baker were given appropriate pins of their office.

Approximately 100 pounds of fish were fried for the occasion, and Lions, wives, children and guests had their fill on the lawn at the cabins of James Reel and Evan Mitchell on the shore of the lake.

Other new officers are Dale Bakker, DeMarquis Gordon, Lewis Tiner, Dick Dixon, Joe Gray, James Smith, Carl Garrett, Gilbert Meredith, Darwin Miller, James Reid, Wendell Siebert, Mike Collins, Ray Pryor and Glazner.



MISS SUZANNE HARBIN

A successor to Miss Suzanne Harbin, 1969 Ranger Jaycee Rodeo Queen, will be crowned during the final performance of the 8th Annual Jaycee Rodeo, Saturday evening, July 11.

Entries are now being accepted with all women, single or married, between the ages of 14 and 25 years, who live within a 25 mile radius of Ranger being eligible. Entries will be judged 20 per cent on attire, 30 per cent on personality and 50 per cent on horsemanship.

An entry fee of \$5 must be paid and the contestant must have a sponsor, a business within a 25-mile radius of Ranger. The winner will retain the title for one year.

Fill out the entry blank (see elsewhere in this paper) and mail to Ann Rigby, Rt. 2, Rodeo Queen's Contest Chairman, Ranger, Texas. Enclose the \$5 entry fee and a billfold size black and white photo for publication in the Ranger Times.

## McBEE-NEAL WEDDING VOWS SAID IN CHURCH PARLOR

Mrs. Jessie McBee and Mr. Russel Neal were united in marriage Saturday, June 20, in the church parlor of the First United Methodist Church with the Rev. Cecil Ellis officiating.

Mrs. Bernice Durham was pianist.

The bride's attendant was her sister, Mrs. Claude Thomas. Best man was Claude Thomas of Melrose, N. M.

The bride wore a two-piece navy blue dress with white accessories. Her corsage was white carnations.

Following the wedding a re-

ception was held in the home of the bride at 509 South Green.

The table was covered with a white lace cloth over pale pink and was centered with the bride's bouquet.

A three tiered wedding cake was decorated in pink and white. Mrs. Gressie Phelps, sister-in-law of the bride, served the cake. Mrs. Ima Jordan served the pink punch from a crystal punch bowl.

After a short wedding trip they will be at home at 509 South Green Street.

## 3 Granddaughters Here For Reunion Delight Mrs. Wood

Mrs. Harry E. Wood is proud to have her three grandchildren home this weekend for homecoming. Her oldest granddaughter is Janie Mayfield of Arlington, daughter of Cecil W. and Melba (Wood) Mayfield. She has completed her second year at Texas Tech in Lubbock and is a member of Kappa Alpha Theta.

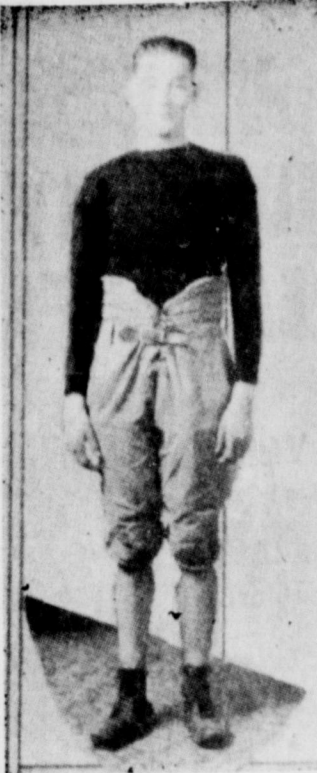
She worked as a counselor at Camp Davis of Rociada, N. M., last summer. This summer she is working again at Camp Davis as head counselor (with responsibility of training other counselors and be-

ing head counselor for the younger girls.)

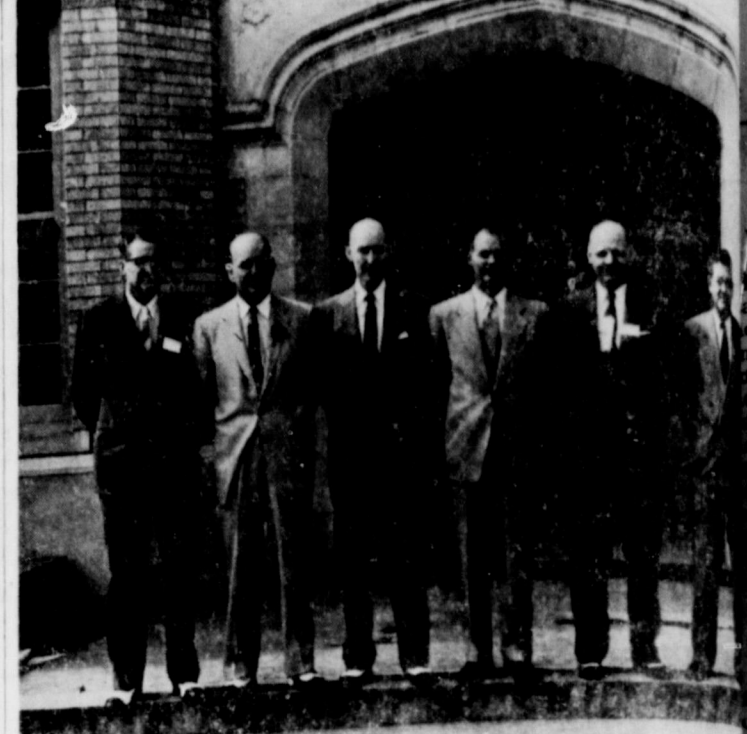
Another granddaughter is Mary Lee Wright of Fort Worth, daughter of Robert L. and Nelda (Wood) Wright. She has finished her first year at Trinity University, San Antonio, where she was elected representative of the Student Council. This summer she is working her third summer at Six Flags Over Texas as a sales lady in Indian Village.

The youngest granddaughter is Tris-ce-Ann Parker of Carbondale, Colo., daughter of Wallace M. and Noomi (Wood) Parker. She is spending this week in Denver, as guest of the state along with other outstanding young ladies of the state who are representing their high schools. The girls will be taken on educational tours to the capitol, museums and other places of interest.

Tris-Ce-Ann will be a senior in Carbondale High School next year. She won her trip by writing a letter on the theme "Why I would like to go to Girl's State."



SHAZZO HARRELL  
end



BASEBALL TEAM MEMBERS IN 1928—Shown at 1957 reunion: Charles E. LaFon Jr., Reagan Coleman, Terrell Coleman, Eugene Vaughan, Hayden Osburn and Raymond Owenby.

# TENT SALE

## CLEARANCE SPECIALS

MODERN IN-STORE SHOPPING

**FREE:** 12-pc cooking set with \$250 appliance purchase

**HURRY! SALE ENDS SAT**

### TIRE CLEARANCE

Discontinued designs... odds and ends... tubeless... tube-type... blackwalls... whitewalls.

Quantity	Size	Tire	Price	F.E.T.
8	8.45-15	Power cushion 22.50	2.47	Extra Narrow (blemish)
4	8.25-14	All Weather Narrow Wall 15.57	2.17	Nylon Tubeless
4	7.75-14	Marathon MTHU Blackwall 15.60	2.17	Nylon Tubeless 4 ply (blemish)
6	F78 14	Marathon 78 Black 20.00	2.44	
8	L78-15	C.P.C. PG 2 wall (blemish) 50.00	3.22	
20	8.25-14	C.P.C. 3 wall Vyt. 40.00	2.33	

• 18 mph speed • Weights only 72 lbs. • Goodyear tires • Vinyl, foam seat • Apache Blue

• 20 mph speed • Weights only 74 lbs. • Goodyear tires • Vinyl, foam seat • Renegade Red

## FLOOR SAMPLE CLEARANCE

### 1 GE DISHWASHER

GGSM15L  
Power Shower  
**\$189.95**

1 BC82A87  
Westinghouse Combination  
RECORD PLAYER, RA  
**\$129.95**

1 M424CBG  
16" GE Black and  
PORTABLE TELE  
**\$79.88**

1 DDE514OU  
GE ELECTRIC  
Perma-Press cycle & Autom  
**\$139.88**

1 WA843D  
**GE WASHER**  
With Mini-Basket Filter Flo  
**\$229.88**

WE HONOR  
master charge  
THE INTERBANK CARD

Liberal Budget Terms - Low Monthly Payments

# HAS BEEN

ENOLD

an editorial  
Tyson in The  
ay on Sept-  
e referred to  
mong "Young  
ay like this,  
ments and  
are all, all-  
pper places.  
y light on  
ed more so  
ed meal of  
cents. If a  
ent of the  
ent study of  
e human  
s to 100 per  
and happier  
er."

cal tools. When he has exhaust-  
ed every other storehouse of  
munitions, he simply hunts up  
the idle headed man or wom-  
an, the idle handed and the  
idle hearted and his equip-  
ment needed for his diabolical-  
ism of every character, are  
readily supplied."

Rising Star business men  
organized a Commercial Club  
during the early part of 1917.

A number of Rising Star  
citizens met in the Woodman  
Hall and organized a Com-  
mercial Club for Rising Star.  
A Constitution and By-laws  
governing the organization  
was read, discussed and adop-  
ted. The following officers  
were elected: C. F. Falls,  
president; W. E. Tyler, vice-  
president; F. W. Roberts, Wm.  
Koonce, D. F. Smith, R. A.  
Horton and S. H. Nance, direc-  
tors.

Between 25 and 30 citizens  
enrolled at the first meeting,  
as members of the club.

A secretary and chair-  
n of various committees were  
to be announced later.


Rising Star went over the  
top in the purchase of War  
Savings Bonds in 1917. A Red  
Cross Auxiliary was organiz-  
ed and every one gave of his  
time, talent and means to help  
win the war. Miss Love Jones  
was elected chairman, Mrs.  
W. W. Joyce, vice-chairman,  
Mrs. Kinchin, secretary, and  
Joe Henry, treasurer.

A committee of two called  
on every business ma- and  
farmer for donations to furth-  
er the work of the Red Cross.

More than 100 persons gave to  
the cause. One hundred and  
eighty five dollars was col-  
lected within a short time.

Rising Star announced Lib-  
erty Bond Patriots for the  
week of June 15, 1917. Men  
who were with the govern-  
ment and willing to loan  
money to our government as  
fifty dollar subscribers were  
M. D. Gibson, Jay Koonce,  
James Irby, J. C. Livingston,  
A. P. Conway, J. N. Tunnell,  
R. L. Brown, R. M. Damron,  
J. A. Hulin, F. W. Roberts,  
E. M. Nance, A. L. McDonald,  
A. J. Joyce, C. F. Falls, E. F.  
Bucy, J. J. Gregg, J. L. Al-  
ford, H. J. Jones, and S. H.  
Nance. Those who loaned \$100  
were D. E. Jones, S. T. Mc-  
Caskill, and J. W. Elkins.

Prof. J. E. Smith was elect-  
ed school superintendent in  
1917 and moved here from  
Carbon. He and his wife came  
highly recommended as high  
ranking teachers. Other teach-  
ers elected for the fall school  
term were, Misses Myrtle  
Powden, Frankie and Ruby  
Swift, Lela Mangum and Mrs.  
A. Morris.



**Don't tie yourself down to high interest rates.**

Get a variable rate  
Federal Land Bank loan  
on your farm or ranch.



**Federal LAND BANK Association**

OF  
BRECKENRIDGE, TEXAS

A representative is avail-  
able in the Farm Bureau  
Building on Wednesday of  
each week.

## EIGHTH ANNUAL

# RANGER JAYCEE RODEO

THURSDAY - FRIDAY - SATURDAY, JULY 9-10-11

8:30 P.M. EACH NIGHT

Belt Buckle Awarded in Each Event

- JAYCEE
- RESCUE
- RACE
- NIGHTLY



Dance Held at Rodeo Barn Each Night

CUTTING HORSE CONTEST FINALS SATURDAY NIGHT

BARE BACK BRONC RIDING  
STEER WRESTLING  
GIRLS BARREL RACING

BULL RIDING  
CALF ROPING  
CLOWNS

## RANGER, TEXAS

### COME TO n's Steak House & Motel

#### SPECIAL BUFFETS

6 a.m. to 9 p.m. — 7 days a week  
Highway 6 — DeLeon

you can eat—serve yourself  
tea & Coffee

#### FRESH WATER CATFISH

Fish Night by Request

Monday and Thursday . . . 5 to 9—  
\$1.35

# SHOP COMPARE SAVE

We've cut the prices, but not the quality

are New in Eastland — But our welcome to all is old and sincere:  
me visit your town's newest facility. Especially do we welcome  
ex-students. You'll like Triple-D Discounts.

## VISIT US FOR VALUE & SAVINGS!

- PORTABLE ELECTRIC FAN ..... our price \$13.97
- PER TOWELS ..... 2 rolls 25c
- TEA SPOONS 4-in-pack ..... our price 47c
- TELEPHONE SPONGE ..... our price 63c
- DORADO TEA TUMBLERS ..... our price 4 for 73c
- ICE CREAM SCOOP ..... our price 33c
- RUSH HAIR ROLLERS ..... our price 47c
- X 126 FILM ..... our price 97c
- BEACH TOWELS ..... our price \$1.47

- RIGHT GUARD DEODORANT  
7-oz. size  
Reg. 1.59  
our price 88c
- G.E. FLASH CUBES  
our price 97c

- Regular 75c  
BUFFERIN 36's  
our price 47c
- Styrofoam ICE CHEST  
30 quart  
our price 67c
- 1/2 Gallon PLASTIC PITCHERS  
our price 19c

- REGULAR \$1.19  
LISTERINE ANTISEPTIC  
14-oz. Bottle  
our price 67c
- reg. 53c — 1-oz.  
CAMPHO PHINIQUE LIQUID ..... our price 33c
- reg. 1.50  
VISINE EYE DROPS ..... our price 97c
- reg. 1.05 family size  
COLGATE TOOTH PASTE ..... our price 63c
- reg. 1.19  
EFFERDENT DENTURE TABLETS ..... our price 73c
- reg. 65c  
MAVIS TALCUM SPECIAL ..... our price 37c
- reg. 65c  
NOXZEMA SKIN CREAM ..... our price 41c
- reg. 99c  
LANOLIN PLUS HAIR SPRAY ..... our price 3 for \$1
- ASSORTED COLOR, SIZES  
THONGS ..... our price 23c
- 1 TRAY—METAL  
TACKLE BOX ..... our price \$1.77

**TRIPPLE 'D' DISCOUNTS**

South Side of Square **CENTER** 629-1083 Eastland

# DOWN MEMORY LANE



**WELCOME  
 EXES  
 & BEST WISHES**



BY CHRISTY R. COON  
**SAFARI INTO THE SUNSET**  
 It's the days now and I  
 find myself driving back to my  
 childhood home in West Tex-  
 as.

I shall look on with nostal-  
 gia as the long shadows of  
 the incomparable western  
 twilight fall like blue chiffon  
 so, over the "riddy" of the  
 prairie;

I shall know the ceaseless,  
 restless western wind once  
 more, ask myself for the  
 thousandth time what myster-  
 ious thing it can be so endless-  
 ly telling;

And, although my happiness  
 now lies in the gentler beau-  
 ties of sweet, fragrant Miss-  
 issippi, I yet, ever so often,  
 experience the need to return  
 for a little while to the wide,  
 harsh, exultant openness of  
 the West.

And, because it is the home  
 of my childhood and there-  
 fore redolent with memories,  
 I shall love going back; the  
 very impersonal, overwhelm-  
 ing bigness and lonesomeness  
 of it will be sweet to me.

I'll cherish every prairie  
 dog on the ranchlands, every  
 chaparral flushed by the noise  
 of my passing car;

I'll love every swirling dust  
 devil that suddenly forms,  
 lifts toward the sky, then  
 touches down to stir the sere,  
 sparse grass like a brief min-  
 iature cyclone;

I'll see every sage and mes-  
 quite bush through affection-  
 ate eyes, love every cactus

## OF MANY THINGS

I shall look on with tenderness  
 upon the landscape's dusty  
 greens and beiges and char-  
 truese running together in the  
 distance like the pastels in an  
 inexpert water color;

I shall look on with nostal-  
 gia as the long shadows of  
 the incomparable western  
 twilight fall like blue chiffon  
 so, over the "riddy" of the  
 prairie;

I shall know the ceaseless,  
 restless western wind once  
 more, ask myself for the  
 thousandth time what myster-  
 ious thing it can be so endless-  
 ly telling;

And I shall love it all - the  
 beautiful, the ugly, the gentle,  
 the harsh the sad, the joyous  
 and exultant, the illusive.

It will be, as always, a  
 sentimental journey. My Tex-  
 as Trek, my Safari into the  
 Sunset. With the gentlest of  
 old hands to welcome me how  
 could it be otherwise?

There will be the old houses  
 to see and old objects to han-  
 dle, dimly-remembered; crum-  
 bling sidewalks to tread;  
 spots redolent with mem-  
 ories to visit; little wind-swept  
 graves to sit beside and touch  
 with gentle fingers.

Before I know it, of course,  
 my time of returning will be  
 gone and I shall find myself  
 on my way back to the busy-  
 ness of my life in the Green  
 Cathedral of my beautiful  
 East where I hope to live out  
 my days. But I shall bring  
 something back with me,  
 something of value. I shan't  
 be quite the same; I shan't be  
 a little renewed, somehow  
 dusted with gold.

Because for a few days I  
 shall have been back into the  
 glory of the sunset and West  
 Texas, I shall have been -  
 for a little while - back home.

**WELCOME VISITORS  
 HEAR  
 REVEREND LLOYD M.  
 Sunday  
 - 11 A.M. SERVICE -  
 FIRST UNITED METHODIST**

**WELCOME  
 HOME  
 YOU'LL FIND YOUR FRIENDS  
 & VALUES GALORE  
 PERRY'S 5-10**

**'HELLO, HOMECOMING  
 VISITORS'**

A Warm Welcome Awaits You  
**ALTMAN'S STYLE SHOP**

(Some of you remember us as "The Fashionable")

We Hope You'll Come to Our  
**SUMMER SALE!**

WE Have A Nice Selection of  
**FAMOUS NAME DRESSES:**

Nelly Don, R&K, Mr. Jack,  
 Jeannie Durrel, Lorch and Many Others

**JUNIOR DRESSES** By Gay Gibson  
 Jurell, Lois Ann, Jrs. & Petites,

**SPORTSWEAR** By Fem-Form, Jantzen  
 Devon, Wrangler & Others.

● You'll Find Pants, Pants Suits, & Pants  
 Dresses

BE SURE TO SEE OUR  
**"FUN-FIVE" WET LOOK &  
 DRESSY COATS**  
 ALL AT

**ALTMAN'S STYLE SHOP**

EASTLAND

**WELCOME HOME!!  
 REMEMBER, YOU'RE ALWAYS  
 WELCOME AT  
 HANNA  
 HARDWARE & LUMBER**

# DOWN MEMORY LANE



**THERE WEREN'T MANY OF US  
 IN THE BEGINNING - BUT  
 LOOK AT US NOW -  
 READY TO SERVE & READY  
 TO WELCOME YOU, TO  
 THE HOMECOMING  
 Eastland Memorial Hospital**



**You called,  
 madame?**

Fast, efficient, courteous  
 air conditioning service  
 is one of the trademarks  
 of your Carrier  
 Dependable. Give us a  
 call and let us show you  
 what we mean.



**SMITH  
 PLUMBING  
 EASTLAND**

## In '29, Who Were Ideals?

What constituted the Ideal  
 Girl and Ideal Boy in 1929?  
 according to the High School  
 annual the Mavericks, this is  
 He and She.

### Our Ideal Girl

Form: Lucile Brogdon  
 Hair: Ruby Tindall  
 Clothes: Louis Weaver  
 Face: Dorothy McCannies  
 Feet: Evelyn Hearn  
 Eyes: Madge Brefsford  
 Intelligence: Brazil Hillyer  
 Popularity: Josephine Martin  
 Personality: Mary Elizabeth  
 Harris

### Our Ideal Boy

Physique: Robert Ferrell  
 Hair: Billie Cheathan  
 Eyes: Frank Laurent  
 Personality: Earl Mayo  
 Face: George Taggart  
 Pen: Carl Foster  
 Smile: Pearl Brawner  
 Ability to play football: Con-  
 nie Smith.  
 -FROM 1957

## DOWN MEMORY LANE . . .



**Louis Harelik At Eastland  
 Opening!  
 You'll Find A Modern Clothing  
 Store Today and A Sincere Welcome  
 Always At  
 Harelik's Dept. Store**

# DOWN MEMORY LANE



WHEN? WHERE? WHO?

Write The

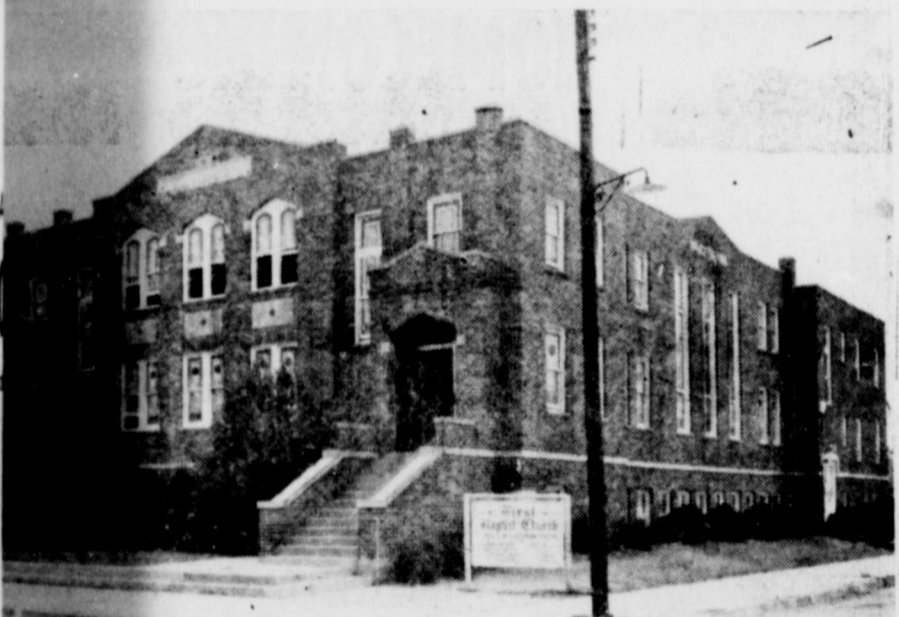
INTERSTATE'S

# MAJESTIC

EASTLAND

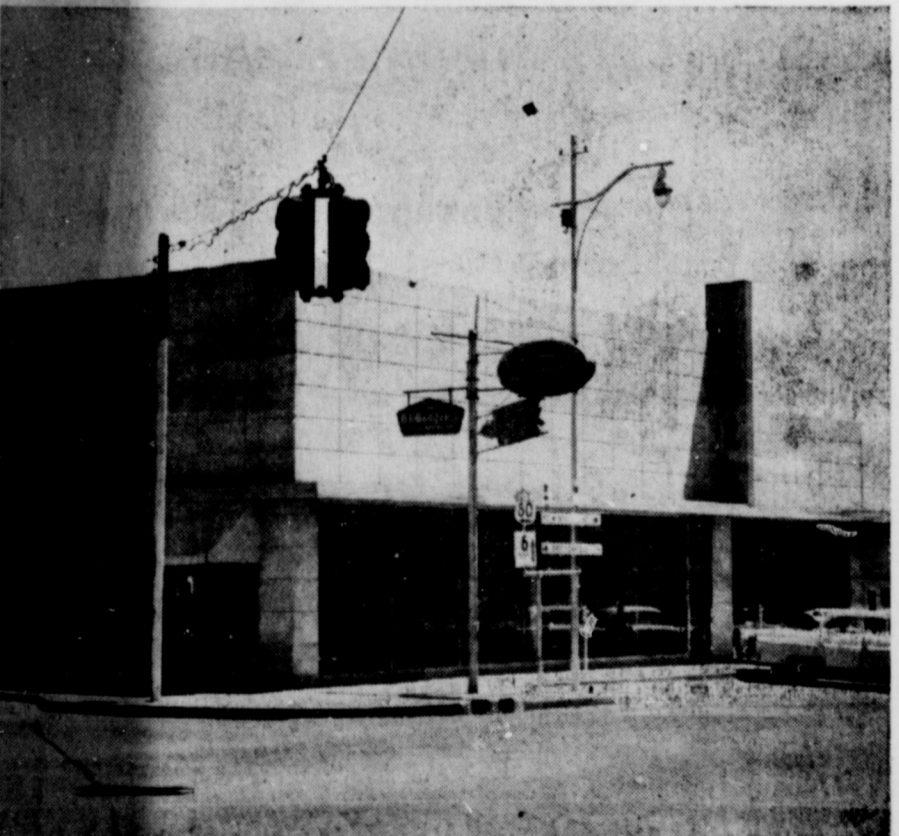
692-1120

# DOWN MEMORY LANE



WELCOME FIRST BAPTIST

# DOWN MEMORY LANE



SAME CORNER - SAME WELCOME  
**KING MOTOR CO.**

## THE Greatest?



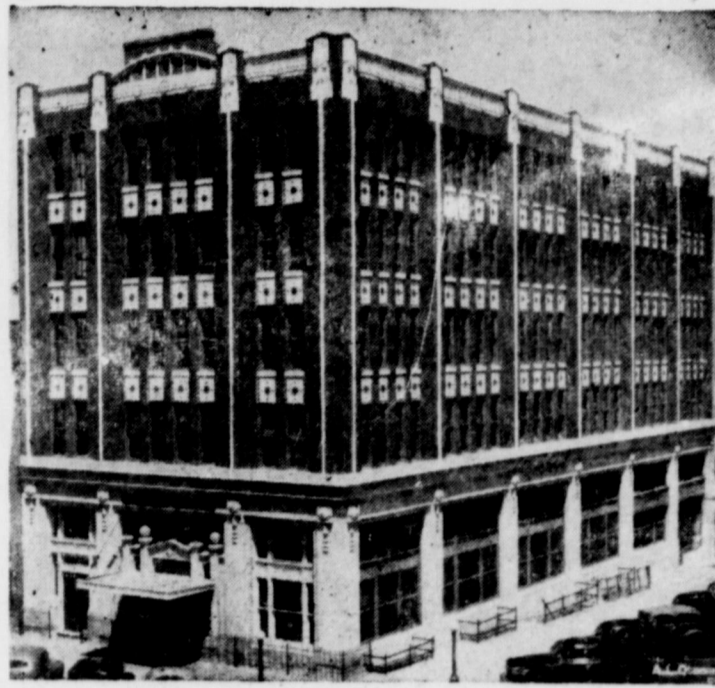
Ed T. Cox, all state fullback in the mid-twenties and super athlete in all sports, was unanimously selected by the Athletic Committee, as Eastland's greatest of all time. Cox played when Eastland was a member of the old "Oil Belt District" which was composed of Abilene, Ranger, Cisco, Breckenridge and Brownwood.

Cox passed away in 1947 while living in Lufkin and is survived by his widow, the former Wilma Wayne Robason, E.H.S. Ex, who lives in Ft. Worth. His parents, Mr. and Mrs. Ed T. Cox, Sr., still reside in Eastland. His daughter is Mrs. Betty Glyn Morrison, Houston.

His brother, Robert, now of Casper, Wyoming played center at the time Ed T. played, and was considered a very good athlete also. Ed T. has three sisters all E.H.S. Exes, Mrs. Mildred Amis, Eastland, Mrs. Blowers, College Station, and Mrs. Carolyn Killiman, Lake Jackson, Tex.

Darrell Tully was named runner-up to Cox as Eastland's greatest athlete and Tommy "Chief" Pickins was third choice.

# DOWN MEMORY LANE



SAME  
CORNER

— ● —  
SAME  
FRIENDLY  
SERVICE

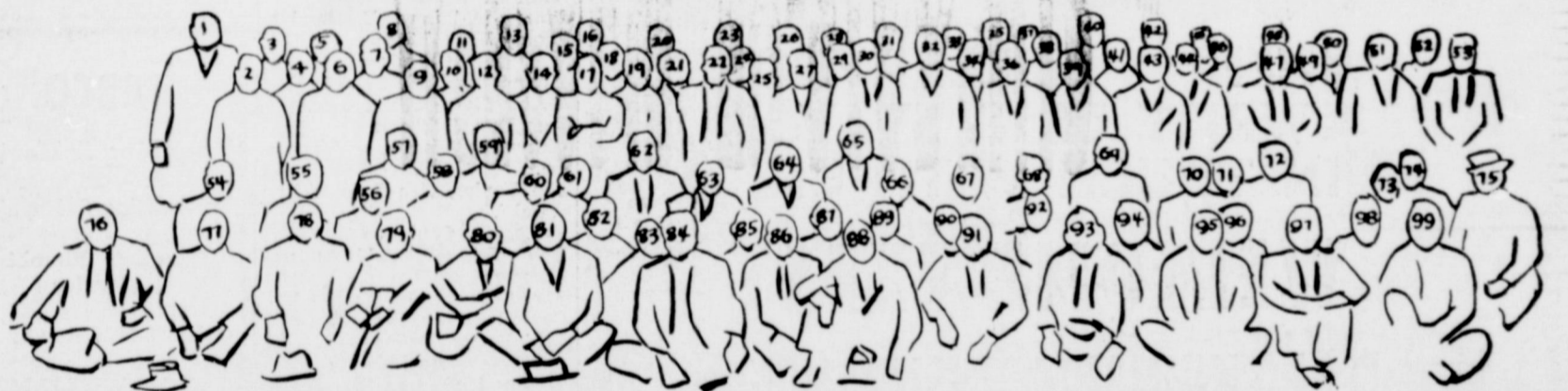
BUT NOW IN MODERN  
QUARTERS TO SERVE YOU  
AND WELCOME YOU  
TO THE HOMECOMINGS



**EASTLAND NATIONAL BANK**  
EASTLAND, TEXAS

MEMBER F. D. I. C.

# DOWN MEMORY LANE



1. D. Carroll (D)
2. Jack Ciyatt
3. Jim Drake
4. Frank Hatten
5. Frank Hodges
6. Giles
7. Roy Pentecost
8. B. Hanna
9. E. M. Threat
10. Victor Ginn (D)
11. Wayne Jackson
12. Harold Osborne
13. Everett Plowman
14. Charlie Butler
15. Ed Layton
16. Ed T. Cox, Jr. (D)
17. Gene Haines
18. J. C. Allison
19. C. C. Peak
20. J. F. McWilliams

21. Ed T. Cox, Sr. (D)
- 22.
23. W. D. R. Owen (D)
24. Bucky Harris
25. Guy Robinson
26. L. M. Cawley
27. Jess Richardson
28. Bond
29. Lloyd Young
30. G. Branton (D)
31. Ed Everett (D)
32. Guy Patterson
33. C. W. Pattit
34. A. O. Cook (D)
35. Lowell Snyder
36. Tug Underwood
37. W. G. Pettit
38. Jim Gilbreath
39. Victor Cornelius
- 40.

- 41.
42. Howard Upchurch
- 43.
44. Clyde Karkalits (D)
45. Raymond McCord
46. Carroll Nobles
47. J. F. Trott (D)
48. Parks Poe
49. H. P. Pentecost (D)
- 50.
- 51.
52. Joss Safley (D)
53. M. L. Campbell
54. J. C. Poe
55. Boles
56. Arlys Burgamy
57. Henry Murphy
58. A. W. Wright
59. L. Jackson
60. Jones Weathers (D) Pastor

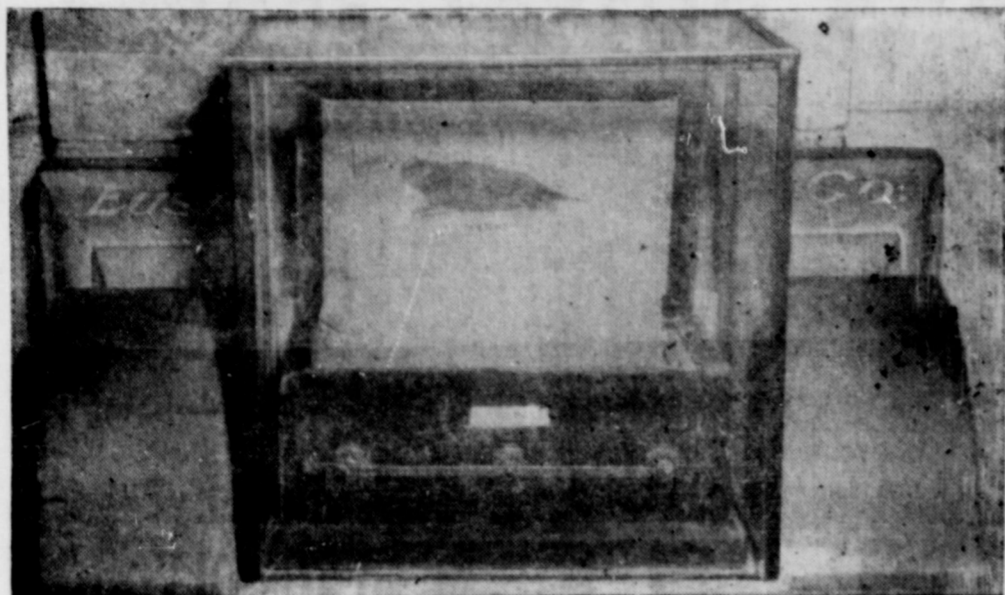
61. C. Y. Dorsey, Preacher
62. John Norton (D)
63. W. L. Gann
64. W. G. Womack (D)
65. O. F. Chastain (D)
66. Buz Daniel
67. Bill Adams
68. Clyde Pettit (D)
69. John White
- 70.
71. J. R. Lanier
72. W. L. Woods
73. Fred Kyle Davis (D)
74. Leo Bishop
75. D. L. Kinnaid
76. Loss Woods (D)
77. W. S. Poe
78. Dr. Isabel (D)
79. Bob Vaught
80. Don Parker

81. A. B. Cornelius
82. C. J. Langlitz
83. Earl Conner
84. L. J. Lambert (D)
85. C. T. Reeves
- 86.
87. McCord
- 88.
89. J. T. Sawyer
90. Bruce Butler (D)
91. Ocie Hunt (D)
92. Jordan (D)
- 93.
94. Hugh Carlton
95. Babe Lanier
96. Hugh Mahaffey
97. John D. Harvey
98. S. A. Green
- 99.
- (D) Deceased

COURTESY OF VICTOR CORNELIUS

# WELCOME EX-STUDENTS

# DOWN MEMORY LANE



And Least We Forget  
**Coats Furniture Inc**

## Dr., Mrs. Robert M. Collie Expected for Homecoming Here



DR. ROBERT M. COLLIE  
... here for homecoming

Dr. Robert M. Collie and family will be here for Homecoming. A third child, a son, Robert M. Collie, III, was born to Dr. Collie and the late Judith M. Collie, PhD, at the University of Texas at Dallas. The family has a daughter, Judith M. Collie, who is a student at the University of Texas at Dallas.

### Athletic Greats Listed in 1957

Listed below are the all-time athletic greats of Eastland High School as selected by the alumni athletic committee:

**GOLF GREATS**  
Sam Conner, Ballinger  
S. J. Barnett, Hobbs, N. M.  
Tim Barnett, address unknown  
George Meredith, address unknown

Dug Jones, Address unknown  
Earl Conner, Jr., Eastland  
Bob Sikes, Dallas  
J. T. Hammitt, Address unknown

**BASEBALL GREATS**  
Tommy Pickens, Address unknown

Letty Hunt, Del Rio  
Reagan Coleman, Jackson, Miss.  
Bucky Harris, Eastland  
Charles Griffin, High Island

**STATE CHAMPIONS**  
Earl Conner, Jr.—Mile run  
Buzz Daniels—High Hurdles  
Shag Hansen—  
Virginia Norton)

Josephine Martin) Tennis,  
Girl's doubles

**MAVERICK FOOTBALL GREATS**

**Ends**  
Billy Chenetham, Midland  
Lewis Crosley, Bartlesville, Okla.  
Volney Dale, Monahans  
Shazzo Harrell, Cresson  
Dale Slatton, Eastland

**Tackles**  
Bill Sikes, El Paso  
Sen Hunt, Eastland  
Tommy Pickens, address unknown

Jimmy Mathews, Eastland  
Jimmy King, Kilgore

**Guards**  
Wayne Lambert, Ft. Worth  
Bobby Garrett, Deceased  
Sam Day, Lubbock  
Clarence Manck, Marrero, La.  
Jim Taylor, San Luis Obispo, Calif.

**Centers**  
Bob Womack, Address unknown  
Earl Conners, Jr., Eastland  
Carroll Allison, Downey, Calif.  
Carl Foster, Dallas

**Backs**  
Jimmy McAdams, St. Johns, Newfoundland  
John Garrison, Houston  
Tommy Samuels, Brownwood  
Homer Mitchell, San Antonio  
Maurice Stalter, Midland  
Estes Burgamy, Lubbock

He and Mrs. Collie transferred to the Louisiana Conference and while serving a church in New Orleans, he took more graduate work at Tulane University.

In 1965 he transferred to the Sacramento, Nevada, Conference and entered the Pacific School of Religion in Berkeley, Calif. He served the First Methodist Church in Dixon, Calif.

Bob received a Doctor of Theology Degree, Pastoral Care and Counseling for the Western Conference of Ohio with Headquarters in Columbus.

Mrs. Collie received her BA degree from TWC and her Masters of Religious Education Degree from Perkins School of Theology of SMU. She is an accomplished musician, soloist and artist, having taught piano, organ, directed choirs and sang in the Oakland Symphony Chorus. She has taught art in both California and Ohio.

The Collies have two children, Crista and Robert Turner.

Bull Johnson, Address unknown  
Bob Blair, Odessa  
John Hicks, Ft. Worth  
Jimmy Mathews, Austin  
Rex Clark, Odessa  
Darrell Tully, Houston  
Bob "Fuzzy" Furse, Jackson, Miss.  
Ed T. Cox, deceased  
Jimmy Martin, Eastland.  
—FROM 1957

**ABCO**  
Plumbing & Heating  
Contracting & Repairing

Complete Plumbing Service  
Call 629-2786 day or nite

**BOB WILLIAMS**  
Master Plumber  
Serving Texans 25 years

# DOWN MEMORY LANE



WHEN? WHERE? WHO?  
WRITE US & STAY  
IN TOUCH WITH US

## WELCOME EXES

### D. L. KINNAIRD INSURANCE

207 W. Main — 629-2544  
— — SINCE 1919 — —

# DOWN MEMORY LANE . . .



WELCOME HOME  
★ ★ ★  
**VILLAGE HOTEL**

# DOWN MEMORY LANE



A DAM A BUILDING  
WHAT YEAR?  
WELCOME EXES ALWAYS  
**EASTLAND  
CHAMBER OF COMMERCE**

WELCOME TO  
HOMECOMING  
CLASS OF '41

## PIPKIN MOTOR CO

Cadillac, Buick, Olds., Pontiac

GMC, American Motors

## NOTICE: EXES—

YOU'LL FIND A NEW LOCK AT  
YOUR OLD GATHERING PLACE

Our Location is Historic!  
First Permanent Building,  
Former Corner Drug and Now

## MODE O'DAY

HOME OF FASHION  
Come See our Lines of  
THE LATEST VALUES!

NEW FALL MERCHANDISE  
ARRIVING DAILY

## MODE O'DAY

West Side of Square



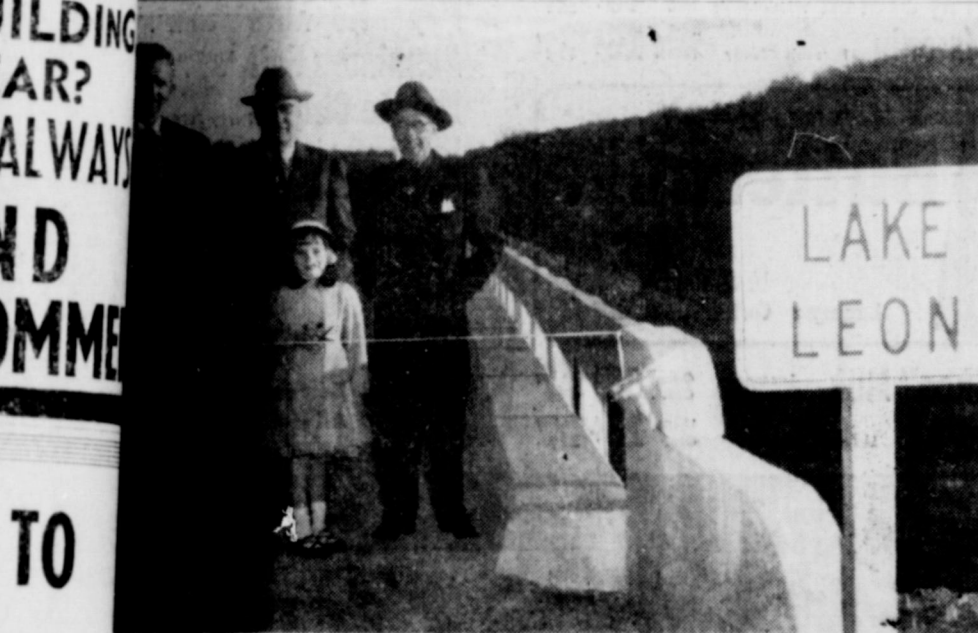
"Howdy  
Exes;  
Welcome  
Home!"

YOU'LL FIND A BIG  
WELCOME AND  
A STORE FULL OF VALUE AT  
**CENTRAL DRUG**





McGOUGH, right, receives an air medal with 'V' for "personal helping evacuate casualties in Vietnam. Sp4 McGough serves as a 189th Assault Helicopter Company now in Vietnam. The son of W. C. McGough of Fort Stockton, Carson formerly formerly at Olden and Carbon. He is the grandson of Sastland County pi-Bill" McGough. He is the nephew of Mr. and Mrs. Burgess Downd Mrs. Carl McGough, Mrs. Frankie Collins, and Mrs. Jess Williams, nd; and Mr. and Mrs. Wayne McGough of College Station.



LAKE LEON



FRANKIE DRAKE FERGUSON is small in stature but not in love. She is waging a crusade for, in her words, "the health and happiness of our children." She had started the Eureka Infant X-Ray Foundation at Taylor, Texas. The fund is dependent upon contributions which may be addressed to the foundation at 1509 Chestnut in Abilene. She is the granddaughter of the Honorable Squire H. B. Horn, who was justice of the peace in Eastland for 18 years. Mrs. Ferguson will be in Eastland for the Homecoming and will be happy to discuss the Foundation with one and all.



CHAS. LAFON BUCKY HARRIS

**He Has Two . . .  
... Sheepskins**

Hubert Toombs holds the distinction of having graduated from EHS twice.

After receiving his first diploma, the number of school grades was increased and Hubert returned to high school the following year and received his second diploma from EHS. Hubert has operated Toombs & Richardson Drug Store on the East side of the Square for the past thirty-five years. He was a great basketball player during his high school days. He played with Alfred Lafoon, Guy Parker, Joe Johnson, ect.

—FROM 1957

**Program In 1957**

- Here is the program for the service:
- I. Call to Worship—Violin Ensemble
  - II. Song—"Heavenly Bodies"—E. ...
  - III. Song—"Heavenly Bodies"—E. ...
  - IV. ...
  - V. ...
  - VI. ...
  - VII. Prayer—Rev. Lloyd ...
  - VIII. Special Music—Violin Ensemble Arranged by Mrs. ...
  - IX. ...
  - X. Song—"Zest Be The Tie"—Congregation
  - XI. Benediction—Rev. Leonard Todd
  - XII. Response—Violin Ensemble

**WELCOME TO ALL...**

**WE JOIN IN PULLING FOR EASTLAND---WE'LL HAVE A BRAND NEW STORE FOR YOU SOON!**

**GOODYEAR SERVICE STORE**

Eastland, Texas

★ ADVERTISING BRINGS RESULTS ★

**WELCOME TO THE HOMECOMING**

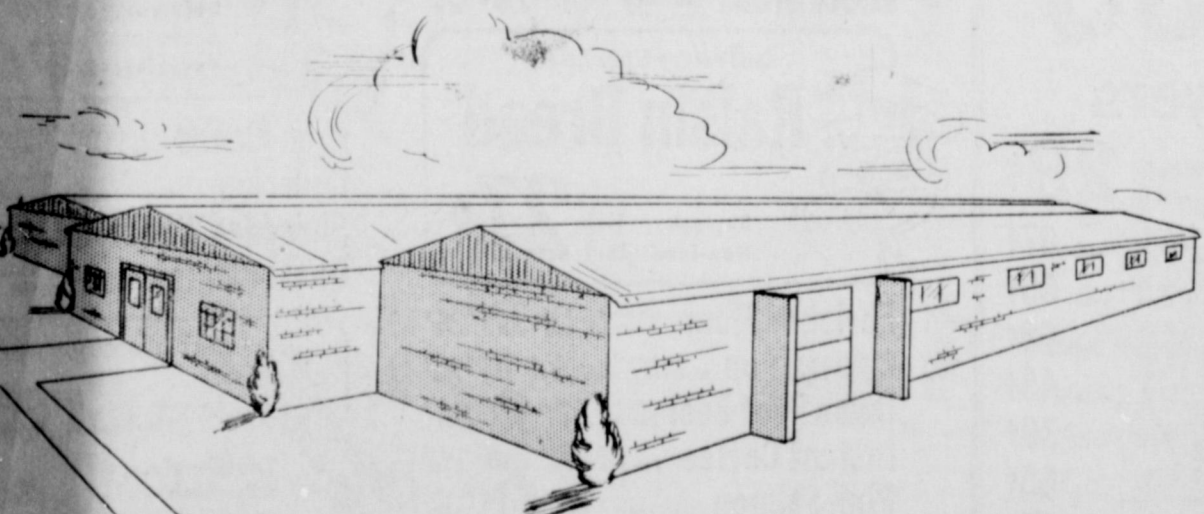
We Opened the Year Of Your Last Reunion (1965)

**COME LOOK AT US NOW!**

YOU'LL LIKE OUR STORE

**BRAY'S DEPT. STORE**

**DOWN MEMORY LANE**



**THESE WERE PLANS IN 1956  
LOOK AT US TODAY!  
HOLLYWOOD VASSERETTE**

**SUPER SAVE MARKETS** CAN

**COOKIES 10/\$1**

**WELCOME TO THE HOME-COMING**

<b>BORDEN'S MELLORINE</b> Ass't Flavors 1/2 GAL Ctn 39¢	<b>BORDEN'S BUTTERMILK</b> 1/2 GAL Ctn 49¢	<b>SUNSHINE Vanilla Waffers</b> 1-Lb. Pkg. 35¢
<b>WHITE SWAN CUT GREEN BEANS</b> 5 303 can \$1	<b>WHITE SWAN Pineapple Juice</b> 46-oz. Can 39¢	<b>RANCH STYLE BEANS</b> 2 300 cans 35¢
<b>SWEETHEART FLOUR</b> 5-lb. bag 39¢	<b>WHITE SWAN Whole Kernel &amp; Cream Style CORN</b> 5 303 cans \$1	<b>WHITE SWAN PEACHES</b> 3 2 1/2 can 89¢
<b>WHITE SWAN Pork &amp; Beans</b> 7 300 can \$1	<b>WHITE SWAN RSD CHERRIES</b> 3 303 can \$1	Health & Beauty Aids GET SET <b>HAIR SPRAY</b> 79¢ Value <b>59¢</b> CREST Extra Large <b>TOOTH PASTE</b> #3c Value <b>67¢</b> Afta- <b>RISE SHAVE BOMB</b> 79¢ Value <b>59¢</b> PASTING (100) <b>HAIRY LAX</b> 99¢ Value <b>79¢</b> GILLETTE <b>PETROLEUM JELLY</b> #100 Value <b>69¢</b> RIGHT <b>GUARD</b> #100 Value <b>79¢</b> ADJUSTABLE BY <b>GILLETTE BANDS</b> #100 Value <b>79¢</b>

**Produce O' Plenty**

RADISHES or <b>GREEN ONIONS</b> Bunch 10¢	<b>Barbecued BEEF RIBS</b> lb. 79¢
<b>PEACHES</b> lb. 25¢	<b>Barbecued HOT LINKS</b> lb. 79¢
<b>CORN</b> ear 2/19¢	<b>Barbecued CHOPPED BEEF</b> lb. \$1.29
<b>ONIONS YELLOW</b> lb. 10¢	<b>Barbecued FRYERS</b> lb. \$1.19
Fresh Crisp <b>Lettuce</b> head 19¢	Home-made <b>POTATO SALAD</b> lb. 45¢
	Home Cooked <b>BEANS</b> pint 39¢

**DOUBLE GOLD BOND STAMPS**

Every Wednesday with \$2.50 Purchase Or More

HOME OWNED — HOME OPERATED

**SUPER SAVE**

G. A. WHITE — Manager  
PHONE 629-1191 400 S. SEAMAN

# HOSPITAL NEWS

**EASTLAND MEMORIAL**  
Patients in the Eastland Memorial Hospital Wednesday were reported as:  
Neva White.  
Robbie Henderson, Rising Star.  
Carrie Reese.  
Florence Raney, Ranger.  
Jerry Stephens.  
W. F. Reagan.  
Arie Herring.

Laura Noble.  
Sidney Berta Bendy.  
Betty Hallum.  
Francis Boggs, Breckenridge.  
Raymond Calvert.  
William Haynes.  
Eula Shamburger, Cisco.  
Julia Rhyne, Cisco.  
Roy Rhyne.  
John Taylor, Cisco.  
Inez Ingram, Cross Plains.  
Rebecca Brooker, Gorman.

Maudie Hardy, Rising Star.  
Cedera Lovell, Carbon.  
Lula Dixon, Putnam.  
Mathilda Tonne.  
Charlie Houser, Comanche.  
Marcus Grieger.  
Flora Maynard.  
Euna Barbee, Gorman.  
Myrtle Gray.  
Ellen Hayes.  
Susie Underwood, Ranger.  
Barbara Thompson, Cisco.  
Walter Wharton.  
George Carter.  
John Dabney.  
Elzo Walker, Rising Star.

Robert Turner.  
Robert Turner.  
Howard Bradford.  
Steve Estes, Desdemona.  
Joe Langley, Ranger.  
Elizabeth Stagner, Breckenridge.  
Martha Justice.  
Ina Bean.  
Katherine Johnson, Cisco.  
Robert Penwarden, Arlington.  
Sandra Armstrong, Rising Star.  
Mary Barron, Gordon.  
Lowell Snyder.

**RANGER GENERAL**  
Patients in Ranger General Hospital Wednesday morning were:  
Miss Margaret King.  
Mrs. Beulah Melton.  
Baby Teresa Sue Potree.  
Mrs. Dessie Sharp.  
Mrs. B. A. Alderson.  
Mrs. Margaret Smith.  
Mrs. Clema Pharris.  
Mrs. Judy Jeraldton.  
Mrs. Carmen Coung.  
Mrs. Beulah Langford.  
Valerie Ann Hoover.  
Cecelia Smoot.

Mrs. Reed Campbell.  
Jacob Davis.  
George Gibson.  
Horace White.  
J. D. Riddling.  
J. B. Wells.  
W. M. Shipman.  
Earl Horton.  
W. A. Chishum.  
Ed Crawford.  
Mark Carr.  
T. W. Parsons.  
A bicycle built in 1898 could seat ten people.

EASTLAND  
PAGE SIX  
**RAWLINS**  
ROY TAYLOR / 500 E. ...

# LOW, LOW PRICES EVERY DAY Plus SPECIALS!

## Safeway Has LOW EVERYDAY PRICES!

Safeway has big Specials, Too, everytime you shop... for total savings that add up fast! And Safeway offers a large selection of all your favorite products... the quality you're looking for... the extra values in Every Department that stretch your grocery dollars.

SHOP and SAVE at SAFEWAY! LOW PRICES EVERY DAY and SPECIALS, TOO!

**Safeway Special!**  
**Dinners**  
Banquet Assorted. Frozen. 3 Pkgs. **\$1**

**EVERYDAY LOW PRICES!**  
Cake Mixes Mrs. Wright's Assorted. Reg. Pkg. **25¢** Why Pay 28¢  
Morsels Nestle Semi-Sweet. 6-oz. Pkg. **28¢** Why Pay 31¢  
Cake Mixes Duncan Hines Assorted. Reg. Pkg. **38¢** Why Pay 39¢

**Safeway Special!**  
**Salad Dressing**  
NuMade. Tasty, Rich Flavor. Quart Jar **39¢**

**Safeway Big Buy!**  
**Liquid Bleach**  
White Magic. Gallon Plastic **38¢**

**Safeway Special!**  
**Handi Wipes**  
Paper Napkins Aluminum Foil Potato Chips Fritos

**Mellorine** Assorted Flavors. 1/2-Gal. Carton **39¢** Why Pay 45¢  
**Popsicles** Orange, Cherry or Grape. 6-Ct. Pkg. **29¢** Why Pay 31¢  
**Orange Juice** Scotch Treat From Florida. 6-oz. Can. **19¢** Why Pay 21¢  
**Peaches** Bel-air. Frozen. 12-oz. Pkg. **31¢** Why Pay 33¢  
**Baby Okra** Whole. Bel-air. Frozen. 10-oz. Pkg. **29¢** Why Pay 32¢

**Safeway Big Buy!**  
**Lemonade**  
Scotch Treat. Regular. 6-oz. Can **10¢**

**Biscuits** Mrs. Wright's Sweet Milk or Buttermilk. 8-oz. Can **8¢** Why Pay 10¢  
**Shortening** Velkoy. 3-Lb. **62¢** Why Pay 65¢  
**Crisco Oil** Cooking. 12-oz. Bottle **31¢** Why Pay 32¢  
**Baking Powder** Columet. 7-oz. Can **20¢**  
**Fruit Cocktail** Town House. 16-oz. Can **25¢** Why Pay 27¢  
**Pear Halves** Del Monte. 16-oz. Can **35¢** Why Pay 37¢

**Safeway Special!**  
**Buttermilk**  
Lucerne. 1/2-Gal. Carton **45¢**

**Safeway Special!**  
**Yogurt**  
Lucerne Assorted. 11-oz. Pkg. **25¢** Why Pay 27¢

**Safeway Special!**  
**Ice Cream**  
Snow Star Assorted. 1/2-Gal. Carton **59¢**

**Baby Food** Heinz Assorted. Sterilized. 4 1/2-oz. Jar **9¢** Why Pay 10¢  
**Cookies** Gerber's Animal Shaped. 4 1/2-oz. Box **23¢** Why Pay 24¢  
**Similac** Liquid. With Iron. 13-oz. Can **26¢** Why Pay 28¢  
**Zippy Pickles** Whole. Dill. 22-oz. Jar **43¢** Why Pay 45¢  
**Heinz Pickles** Whole. Sweet. 24-oz. Jar **57¢** Why Pay 59¢

**Safeway Special!**  
**Peaches**  
Hunt's Slices or Halves. Yellow. 29-oz. Can **25¢**

**"Choc" Milk** Lucerne. Chocolate. 11-oz. Pkg. **33¢** Why Pay 36¢  
**Yogurt** Lucerne Assorted. 11-oz. Pkg. **25¢** Why Pay 27¢

**Sweet Potatoes** Condit. Mrs. Paul. Frozen. 12-oz. Pkg. **39¢** Why Pay 41¢  
**Haddock Dinners** Weight Watchers. 16-oz. Pkg. **97¢** Why Pay 99¢  
**Sausage Pizza** Chef. 12 1/2-oz. Pkg. **77¢** Why Pay 79¢  
**Casserole** Mornan. Frozen. Marzani & Cheese. 8-oz. Pkg. **23¢** Why Pay 25¢

**Safeway Special!**  
**Strawberries**  
Scotch Treat. Frozen. 10-oz. Sliced Pkg. **25¢**

**Tomato Soup** Town House. 10 1/2-oz. Can **10¢** Why Pay 12¢  
**Saltines** MeRose Soda Crackers. 1-Lb. Box **21¢** Why Pay 23¢  
**Pork & Beans** Campbell's. 14-oz. Can **14¢** Why Pay 15¢  
**Spaghetti** Italian. Franco American. 15 1/2-oz. Can **19¢** Why Pay 21¢

**Safeway Big Buy!**  
**Cream Pies**  
Bel-air. Assorted. 14-oz. Frozen Pkg. **29¢**

**Margarine** Special! Mazola Corn Oil. 3 1/2-Lb. Ctn. **\$1** Why Pay 35¢  
**French Dressing** Mrs. Wright's Savory. 8-oz. Bottle **25¢** Why Pay 29¢  
**Green Goddess** Seven Seas. 8-oz. Bottle **45¢** Why Pay 46¢  
**Salad Dressing** Wishbone Creamy. 8-oz. Bottle **37¢** Why Pay 40¢  
**Alpo Dog Food** Horsemeat. 14 1/2-oz. Can **29¢** Why Pay 31¢  
**Tuna Cat Food** Glomar Puss Red Meat. 2-oz. Can **29¢** Why Pay 2/31¢

**Safeway Special!**  
**Green Peas**  
Del Monte. Early Garden. 17-oz. Can **19¢**

**Fruit Drinks** Croqmont Assorted. 46-oz. Can **25¢** Why Pay 27¢  
**Del Monte Juice** Pineapple. 46-oz. Can **37¢** Why Pay 39¢  
**Prune Juice** Sun Sweet. 12-oz. Can **23¢** Why Pay 25¢  
**Charcoal** Briquets. Grillit. 10-Lb. Bag **59¢** Why Pay 62¢  
**Lighter** Charcoal. Safeway Ozark. Quart Can **29¢** Why Pay 35¢  
**Garbage Cans** with Lid. Safeway 20-Gal. Size. Each **\$1.99** Why Pay \$2.29

**Safeway Big Buy!**  
**Dog Food**  
Twin Pet. Dogs. Love it! 15-oz. Can **7¢**

**Chuck Tuna** Sea Trader. Light Meat. 3 1/2-oz. Ctn. **\$1** Why Pay 35¢  
**Green Beans** Cut. Del Monte. 16-oz. Can **24¢** Why Pay 25¢  
**Whole Beets** Fancy. Town House. 16-oz. Can **16¢** Why Pay 18¢  
**Golden Corn** Stakely. Cream Style. 17-oz. Can **22¢** Why Pay 23¢

**Fresh Fruits & Vegetables**  
**Tomatoes** Large. Vine Ripened. **1-Lb. 29¢**

**Bananas** Lunchbox Favorite. Special At Safeway!—Lb. **10¢**

**Peaches** Yellow Freestone. Large. **1-Lb. 29¢**

**Variety & Quality Fruits & Vegetables**  
**Apricots** Royal. Large or Extra Large. —Lb. **29¢**  
**White Grapes** Perlette. Seedless. —Lb. **39¢**  
**Pitted Dates** Waldorf. (Regular 12-oz. Pkg.) 10-oz. Pkg. **39¢**  
**Celery** Large Stalks. New Crop. —Each **29¢**  
**Red Delicious Apples** Washington Large—Lb. **29¢**  
**Red Potatoes** Large Crisp. —Lb. **29¢**  
**Lettuce** Large Crisp. —Lb. **29¢**  
**Yellow Squash** —Lb. **29¢**  
**Cucumbers** —Lb. **29¢**  
**Vertagreen** Lawn & Garden (5-10-15) —Lb. **29¢**  
**Phillips 66** Lawn Fertilizer. (20-0-0) —Lb. **29¢**

**Safeway Meats Are Guaranteed to Please!**  
**Chuck Roast** Full Blade Cut. USDA Choice Grade Heavy Beef. Compare the Trim! —Lb. **55¢**  
**Chuck Steak** or \*7-Bone Roast. USDA Choice Heavy Beef—Lb. **69¢**  
**Boneless Roast** \*Chuck or \*Shoulder. USDA Choice Grade Heavy Beef —Lb. **84¢**  
**Armour Franks** or \*Safeway. All Meat. 1-Lb. Pkg. **69¢**  
**Bologna** Sterling. By the Piece. —Lb. **55¢**  
**Corn Dogs** Great For Snacks! 10-Ct. Pkg. **\$1**  
**Boneless Hams** Half Hams. Armour Star. —Lb. **\$1.39**  
**Ham Nuggets** Boneless. Armour Star. —Lb. **\$1.55**  
**Canned Hams** Armour Star. 3-Lb. **\$3.49**  
**Lunch Meat** \*Frikish. Sliced. \*German. \*Bologna. \*Crisco. \*Spiced. \*Old Fashion. 8-oz. Pkg. **69¢**  
**Armour Bacon** \*Armour Star Nitrate Free. 1-Lb. **83¢**  
**Sliced Bacon** Safeway #1 Quality. 1-Lb. Pkg. **79¢**  
**Fancy Fryers** USDA Insp. Grade 'A' Cut From USDA. (Cut-Up—Lb. 35¢) Whole —Lb. **29¢**  
**Pinwheel Pak** \*4-Thighs \*4-Drumsticks. Cut From USDA. Insp. Grade 'A' Fryers. —Lb. **67¢**  
**Drumsticks** \*4-Thighs. Cut From USDA. Insp. Grade 'A' Fryers. —Lb. **65¢**  
**Split Breasts** With Bone. Cut From USDA. Insp. Grade 'A' Fryers. —Lb. **69¢**  
**4-Legged Fryers** Cut From USDA. Insp. Grade 'A' Fryers. —Lb. **45¢**  
**Leg Quarters** Cut From USDA. Insp. Grade 'A' Fryers. —Lb. **39¢**  
**Breast Quarters** Cut From USDA. Insp. Grade 'A' Fryers. —Lb. **45¢**  
**Cooked Salami** Sliced. Safeway. 8-oz. Pkg. **45¢**  
**Pork Chops** Quarter Sliced. Park Loin. —Lb. **77¢**  
**Fish Sticks** Jumbo. Pre-Cooked. —Lb. **59¢**  
**Perch Fillets** Large. Pre-Cooked. —Lb. **65¢**  
**Smoked Bacon** Sliced. (Sliced—Lb. 69¢) —Lb. **59¢**  
**Ground Chuck** Lean Beef. —Lb. **79¢**  
**Hamburger Steaks** Ready To Grill! —Lb. **69¢**  
**Ground Beef** Safeway Handy Chub Pak. 2-Lb. **\$1.25**  
**Arm Roast** Full Cut. USDA Choice Grade Heavy Beef. —Lb. **75¢**  
**Boneless Steak** Chuck. USDA Choice Grade Heavy Beef. —Lb. **98¢**  
**Short Ribs** USDA Choice Heavy Beef. —Lb. **45¢**  
**Beef Patties** Chicken Fried. Shurtover. Pre-Cooked. —Lb. **98¢**  
**Hot Links** Mexican Sausage. —Lb. **59¢**  
**Eckrich Sausage** Polish. 12-oz. Pkg. **95¢**  
**Boneless Roast** \*Chuck or \*Shoulder. USDA Choice Grade Heavy Beef —Lb. **84¢**  
**Armour Franks** or \*Safeway. All Meat. 1-Lb. Pkg. **69¢**  
**Bologna** Sterling. By the Piece. —Lb. **55¢**  
**Corn Dogs** Great For Snacks! 10-Ct. Pkg. **\$1**  
**Boneless Hams** Half Hams. Armour Star. —Lb. **\$1.39**  
**Ham Nuggets** Boneless. Armour Star. —Lb. **\$1.55**  
**Canned Hams** Armour Star. 3-Lb. **\$3.49**  
**Lunch Meat** \*Frikish. Sliced. \*German. \*Bologna. \*Crisco. \*Spiced. \*Old Fashion. 8-oz. Pkg. **69¢**  
**Armour Bacon** \*Armour Star Nitrate Free. 1-Lb. **83¢**  
**Sliced Bacon** Safeway #1 Quality. 1-Lb. Pkg. **79¢**  
**Fancy Fryers** USDA Insp. Grade 'A' Cut From USDA. (Cut-Up—Lb. 35¢) Whole —Lb. **29¢**  
**Pinwheel Pak** \*4-Thighs \*4-Drumsticks. Cut From USDA. Insp. Grade 'A' Fryers. —Lb. **67¢**  
**Drumsticks** \*4-Thighs. Cut From USDA. Insp. Grade 'A' Fryers. —Lb. **65¢**  
**Split Breasts** With Bone. Cut From USDA. Insp. Grade 'A' Fryers. —Lb. **69¢**  
**4-Legged Fryers** Cut From USDA. Insp. Grade 'A' Fryers. —Lb. **45¢**  
**Leg Quarters** Cut From USDA. Insp. Grade 'A' Fryers. —Lb. **39¢**  
**Breast Quarters** Cut From USDA. Insp. Grade 'A' Fryers. —Lb. **45¢**  
**Cooked Salami** Sliced. Safeway. 8-oz. Pkg. **45¢**  
**Pork Chops** Quarter Sliced. Park Loin. —Lb. **77¢**  
**Fish Sticks** Jumbo. Pre-Cooked. —Lb. **59¢**  
**Perch Fillets** Large. Pre-Cooked. —Lb. **65¢**  
**Smoked Bacon** Sliced. (Sliced—Lb. 69¢) —Lb. **59¢**  
**Ground Chuck** Lean Beef. —Lb. **79¢**  
**Hamburger Steaks** Ready To Grill! —Lb. **69¢**  
**Ground Beef** Safeway Handy Chub Pak. 2-Lb. **\$1.25**  
**Arm Roast** Full Cut. USDA Choice Grade Heavy Beef. —Lb. **75¢**  
**Boneless Steak** Chuck. USDA Choice Grade Heavy Beef. —Lb. **98¢**  
**Short Ribs** USDA Choice Heavy Beef. —Lb. **45¢**  
**Beef Patties** Chicken Fried. Shurtover. Pre-Cooked. —Lb. **98¢**  
**Hot Links** Mexican Sausage. —Lb. **59¢**  
**Eckrich Sausage** Polish. 12-oz. Pkg. **95¢**

**Armour Franks** \*Armour Star. All Meat. 12-oz. Pkg. **55¢**

**Lunch Meat** Safeway Sliced. \*All Beef Bologna. \*Macaroni & Cheese. \*Spiced. \*Pickle-Pimiento. \*Olive. 3 6-oz. Pkgs. **\$1**

**Smoked Picnics** 4 to 8-Lb. Average. Whole. —Lb. **43¢**

## EVERYDAY LOW PRICES!

**English Bread** Skylark. Muffin Style. 1-Lb. **39¢** Why Pay 41¢  
**White Bread** Mrs. Wright's Regular or \*Sandwich Sliced. 1-Lb. **29¢** Why Pay 31¢

**Safeway Big Buy!**  
**Corn Flakes**  
Safeway. Breakfast. 11-oz. Favorite! Box

**Safeway Special!**  
**Raisin Bread**  
Skylark. 1-Lb. Non-Iced Loaf **27¢**

**Bran Flakes** Post #475  
**Cheerios** General Mills  
**Shredded Wheat** Nabisco  
**Quaker Oats** Quick

**Enriched Flour** Harvest Blossom. 5-Lb. **37¢** Why Pay 39¢  
**Canned Pop** Croqmont Assorted Flavors. 12-oz. Can **8¢** Why Pay 10¢  
**Dad's Root Beer** Old Fashion. 1 1/2-Gal. Jug **48¢** Why Pay 50¢  
**Instant Coffee** Folger's. 2-oz. Jar **53¢** Why Pay 57¢  
**Pink Salmon** Sea Trader. 7 1/2-oz. Can **51¢** Why Pay 53¢  
**Spam** A Hamel Product. 7-oz. Can **38¢** Why Pay 41¢

**Safeway Special!**  
**Toothpaste**  
\*Regular or \*Mint. (1.05 Value) Tube

Prices Effective Thurs., Fri. and Sat., June 25, 26 and 27, in... We Reserve the Right to Limit Quantities. No Sales to Dealers.

# SAFEWAY