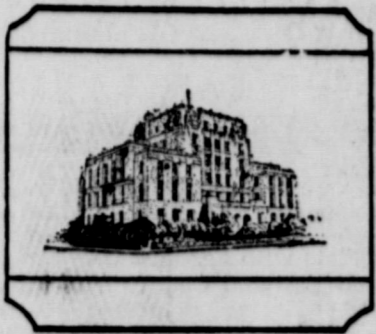


# EASTLAND TELEGRAM



VOLUME 97, NUMBER 7

EASTLAND, TEXAS 76448 - THURSDAY, JANUARY 22, 1970

PRICE 10c

## Tid Bits

By H.V.O.

All adults interested in Little League are asked to a meeting at 2:30 p.m. Sunday, January 25, at the Texas Electric distribution meeting room.

John Graham, president, said new officers will be elected and plans for this year will be made.

Don Nicholas was elected president of the Eastland Civic Theater's Board of Directors Sunday afternoon at a meeting in the home of Mrs. Virginia W. Russell.

James Reid was elected vice-president, and Mrs. Jack Germany, secretary-treasurer.

Mrs. Russell, chairman of the Board, expressed appreciation on her behalf of the organization to outgoing president Ralph Steven for his work during the past years.

Thursday, February 26 was set as opening night for the Theatre's new production of the play, "Our Town," which is now being cast. Performances will follow on the evening of the 27 and the 28 of February with a matinee on Sunday March 1.

Attending the meeting were Stevens, Nicholas, Reid, Kenneth Watson, and Mmes Bill Angus, Tom Wilson, Don Pierson and Jack Germany.

The 4-H Clover Clopper met at 7:30 p.m. January 15 at the Farm Bureau.

Eddy Blair called the meeting to order and Becky Miller led the 4-H Club motto and prayer.

Members decided to attend the show at Freeman's in Clyde Saturday, January 24. A committee was appointed to plan a Play Day. Those on the committee are Kathy Briscoe, Suzanne Harbin, Becky Miller, Audrey Briscoe, and Susie Hanna.

Judging committee members are Lana Arrington, Becky Miller, Susie Carter and Barbara Boyd for the Juniors; Susie Hanna, Suzanne Harbin, Kathy Briscoe and Eddy Blair for the Seniors.

Present were Eddy Blair, Penny Berry, Buster Boyd, Barbara Boyd, Audrey Briscoe, Kathy Briscoe, Claudia Bulgerin, Susie Carter, Lana Arrington, Kelly Collins, Susie Hanna, Suzanne Harbin, Magsy Jane Harbin, Karen Plowman, Susie Miller, and Ken Miller.

Jerry Buchanan, his wife, and son, have recently moved here from Cisco. He has been employed with Lone Star Gas for the past four years, working in Dublin and Cisco.

He is married to the former Patricia Johnson of Comanche. Their son Ken is 8 months old.

While in Cisco, Buchanan served in the fire department and was second vice-president of the JC's.

JIM GEORGE, president of the Eastland County Independent Fire Dept., has been notified by Cong. Omar Burleson that a request to the F.C.C. for a radio frequency permit on fire service, has been approved, at 180 watts, with call letters KKG700, on the same frequency as used by fire and police in this area. The permit has been mailed to the newly forming independent fire fighting organization. . . . Folks are missing Postmaster Marcus O'Dell and will be happy when he's able to fly his flu bud and return to the office. His able staff is carrying on admirably, but would welcome him back too.

## reyschlag

INSURANCE

Presents the WEATHER -

MOSTLY CLOUDY today with chance freezing drizzle and snow. Decreasing cloudiness and so not so cold beginning Thursday afternoon.

## Mavericks Dip Clyde 93-71 Girls Lose 1st; Indians Next

Back in stride are the Eastland Mavericks, who whipped the Clyde Bulldogs, 93-71 on Tuesday evening, but the Mavericks suffered their first District 8-AA loss to the Clyde girls, 68-41.

Winning too in Clyde was the Eastland B team, 52-51. The win bolstered the Mavericks after suffering a one-point loss, their first loop loss, at the hands of Hamilton last week.

The teams travel again Friday, when the Varsity and D Mavericks go to Comanche, to take on the tribe for the first time this year.

Randall Treadwell lead the Mavericks with 23 points as Jana Rexroat paced the Mavericks with 14.

The Mavericks now have a 3-1 record, while Clyde is opposed to 2-2.

Maverick scoring:

	FG	FT	TP
Lund	6	5	15
Rexroat	7	0	14
Thomas	5	4	14
Treadwell	9	5	23
Smith	5	1	11
Bed	2	2	6
Mace	3	0	6

## Scott Bailey To Ask Re-election As County Judge

County Judge Scott Bailey has announced his candidacy for re-election. In making his announcement, Judge Bailey said that he wished to express his appreciation to the people of Eastland County for allowing him the opportunity to serve in this important office.

Bailey, who is at this time unopposed for re-election is a lifetime resident of Eastland County, having been born and reared in Cisco. He attended the public schools of Cisco as well as graduating from Cisco Jr. College and North Texas State University in Denton. He is a veteran of the Korean Conflict, married, and he and Mrs. Bailey have a son and daughter.

He said that he would have a formal statement of his candidacy at a later date and he would make every effort to see and talk to as many voters as possible between now and the May 2nd Democratic Primary Election in which he is a candidate.

## GOP Primary Set in County

Republican Primary election will be held in Eastland County in the following towns: Eastland, Cisco, Rising Star and Gorman, County Chairman Mrs. H. B. Bulgerin of Eastland has announced. Election judges and other details will be announced at a later date, she said.

## Mrs. Aileen Raymond Buried in Tuesday Rites

Mrs. Mary Aileen Raymond, 60, died at 3 a.m. Sunday in Scott and White Hospital in Temple, following a five week illness.

Funeral was held at 2 p.m. Tuesday in the First Baptist Church of Moran, with the Rev. Jack Riley of Snyder, former pastor of the Moran church, officiating.

Burial was in the Moran Cemetery. Mrs. Raymond was born June 18, 1909 in Coleman County. She graduated from Howard Payne College in Brownwood in 1932 and began teaching in Jones County. She had taught in Rosemond, Calif., Moran, and for the past three years, had taught English and Spanish at Eastland High School.

Her husband, F. R. Raymond, died in September, 1961.

	FG	FT	TP
Elrod	1	0	2
Edison	1	0	2
TOTALS	39	15	93

Clyde scoring:

	FG	FT	TP
Pierce	8	8	24
Hawk	4	3	11
Rosinbaum	4	6	11
Copeland	5	3	13
Fleming	0	1	1
Newman	1	0	2
Anderson	0	3	3
Hoffman	1	1	3
TOTALS	23	25	71

## JAYCEES SEEK AIR SERVICE

Continuing their efforts to improve services and facilities for Eastland, the Eastland Jaycees are attempting to secure for this area, air freight service to the Eastland Airport, and hopefully, eventually scheduled airline service for the city.

A delegation of Jaycees, led by President Don Baird, appeared at a public hearing in Austin Tuesday, before the Texas Aeronautics Commission, at which the formal request for such service was made.

The only dissenting voice, as might be expected, came from an Abilene concern, opposing such expansion of services in the Big Country.

The Texas Aeronautics Commission hearing on Aztec Airways' attempt to fly air freight service to West Texas points has ended, and all that is left before a decision is made is final consideration for the full commission.

The airlines want to offer air freight service between Abilene, San Angelo, Stephenville, Eastland, Mineral Wells and Fort Worth.

The company's president, Mario Cadena of Irving, said that his company would use single engine aircraft to serve the West Texas points. Aztec will offer three flights a day for cargo hauling only.

Cadena said the company would be able to begin operations 15 days after the certificate is granted and would start making a profit in its third month.

Bryon L. Singleton, manager of Texas Power and Light Co. in Stephenville, said his company would use the service if it was offered. He added that Stephenville does not now have such service, and it would be "a boon to those who are trying to attract industry to the town."

Stephenville Chamber of Commerce Manager D. F. Montgomery agreed and said "we may not now need the service, but as we grow it will be a necessity."

Col. Herbert L. Phillips,

Mavette Scoring

	FG	FT	TP
Sullivent	6	1	13
Rexroat	3	12	18
Crawford	0	2	2
Allen	1	4	6
Kincaid	0	2	2
Carey	1	1	3
TOTALS			

In other action, Hamilton beat Granby, 59-33; Comanche beat Cisco, 70-49; Carbon wins over Moran, 88-46; Gorman over Putnam, 52-40; and Albany over Ranger, 86-71.



CONG. BURLERSON Files for Re-Election

## Burleson Will Seek Return To Congress Seat

WASHINGTON, D. C. — Congressman Omar Burleson, who represents the 17th District of Texas in the U. S. House of Representatives, has announced for re-election.

He has filed for a place on the ballot in the Democratic Primary Election on May 2, 1970.

Burleson was elected to the 80th Congress from the 17th District and has been re-elected to each succeeding Congress. He is a member of the Ways and Means Committee, considered to be the most powerful and prestigious in the House.

## Speech Students Talk to Lions on Generation Gap

A half dozen Eastland High School students came very close to bridging it, when they talked to members of the Eastland Lions Club at noon on Tuesday on the subject: "The Generation Gap."

Supt. Wendell Siebert was program chairman and introduced the well-groomed students, all members of the Thespian Club, and of Mrs. Vernon Mahon's Speech Class. Lana Parks was moderator and introduced the others speakers.

Others were Shelly Siebert, Martha Brewer, Randy Lowrance Roy Miller and Joe Trout.

Miss Brewer suggested that the "gap" is the result of gaps in language, communications and reasoning.

Calling for "just the right amount of discipline — not too much, and certainly not too little," Lowrance proposed that many young people are dressing and acting ridiculous simply because this is their last means of getting attention.

Miller suggested that it's possible that there may be some delinquent parents as well as youngsters.

President Jeff Glazner presided at the Eastland High School meeting, and Zone Chairman Earnest Sneed reported that seven members of the Eastland club and seven members of the Cisco club attended a meeting of the Lions Club in Breckenridge last Friday.

Homer Smith will have the meeting here next week.

The high school students & their talks were warmly received by the Lions Club members and President Glazner called the students and all Eastland students, the best in the world.

Horton Tire Co. Presents **BREAD of Life**

Peace I leave with you, my peace I give unto you; not as the world giveth, give I unto you.—John 14:27. As the storm clouds shroud my way, In the Father's will, Jesus keeps me, by His grace, Unafraid and still.

EASTLAND NATIONAL BANK EASTLAND, TEXAS

## Gas Rate Hike Reluctantly Adopted By Commission

### STATEMENT ON RATE IS GIVEN

Mayor Frank Deaton issued the following statement concerning the passage by the Eastland City Commission of the new Lone Star Gas Co. rate increase:

"At the regular meeting of the Eastland City Commission Monday night, the Commission, with much reservation, passed on second reading, a rate increase for Lone Star Gas Company of 20.06 percent . . . It was, and still is, the feeling of every member of the City Commission, that Lone Star Gas Company's request was unreasonable. You recall, Lone Star asked for a 25% increase. The Eastland City Commission, after three months of study, learned that with out doubt, Lone Star could receive a rate increase by going through the Texas Railroad Commission. Lone Star Gas had told the local commission that if they had to go to the Railroad Commission for the increase, they would ask for a 35% increase, which according to the company, represented the company's profit shortage in the Eastland system. If the City of Eastland wished to fight the proposal, several thousand dollars would have to be spent in the fight, with no guarantee that a 35% increase would not be granted. In consideration of these facts, the Eastland City Commission, acting in what they believed to be the best interest of Eastland tax payers and Eastland customers of Lone Star Gas Co., VERY VERY RELUCTANTLY passed on second reading the 20.06 percent increase. If it could be considered a consolation . . . this figure is 4.94 percent below what Lone Star Gas originally asked for.

Signed: MAYOR W. F. DEATON

## Meeting Set On Farm Income Tax Reporting

Farmers who have questions about the 1969 income tax reporting are encouraged to attend an income tax meeting Friday, Jan. 23, in Eastland. The meeting will be held in the Eastland County Farm Bureau meeting room on Highway 80 east of Eastland beginning at 9:30 a. m.

County Agent De Gordon said the meeting was arranged to help farm families better understand the income tax reporting. James S. Denton Jr., Extension Farm Management Specialist, will be here to discuss the tax reporting and answer questions. Denton, an economist, studies the income tax laws as they apply to farmers and is well qualified to discuss tax reporting.

Gordon said Denton will spend little time discussing the techniques of filling out the forms, but will discuss in more detail the type of records and information that should be reported by the farmers. He will discuss such things as income to be reported, farm business expenses, depreciation and other deductions.

The county agent said that those farmers who plan to have an accountant complete their forms will benefit from the meeting as well as those who fill out the forms themselves.

At 1:00 p. m. a representative from the Social Security Administration will discuss the farmers, social security.

Gordon invites both men and women interested in learning more about the tax and social security to attend. The 1970 edition of the Farmers Tax Guide will be available.

### 15 FILED FOR PRIMARY

The number of candidates having filed with the county democratic executive committee for places on the primary ballot May 2 had reached 15 Tuesday with announcement of two candidates for justice of the peace posts in the county.

Mrs. Scott Bailey, committee secretary announced that Carl Lamb has filed for justice of the peace in Precinct 4, which includes Cisco, and that E. M. (Buddy) Turner has filed for justice of the peace in Precinct 3 in which Rising Star is located.

Jesse Reynolds was the only candidate for County Comm'r Precinct 4, to have filed with the County Democratic Executive Committee last week. Mr. W. W. Sawyers has announced but he had not at that time filed with the committee. His name was listed Sunday as having filed.

A Game Tournament Benefit to renovate the Powder Room at Lone Cedar Country Club has been announced for Friday, February 6, by Mrs. James Horton, General Chairman.

## LIBRARY MORATORIUM CALLED FOR NEXT WEEK

The Thursday Afternoon Club has declared the week of January 25-January 31 as MORATORIUM WEEK.

The dictionary defines "Moratorium" as: "A period of truce, as in war; a period of delay granted to a debtor." We usually think of "Moratorium" as people marching on something.

The club's MORATORIUM could be all these things. Not that the club is "at war" but the library committee and Librarian Mrs. A. E. Cushman do "fight" hard to maintain an excellent public library.

Part of their job is to keep

up with all books, and sometimes books are not returned promptly (people check out books and honestly intend to get them back on time; but people forget, time goes by, and the books are still out).

A delay granted to a debtor fits the week, also. The library has a fire system for overdue books. Next week anyone who has overdue books may return them free of fines.

Check your own bookshelf and see if, just maybe, you have a book there which should have been returned to the Eastland Public Library.

If you do, march down to the library with it.

Lone Star Gas Co. received final approval this week for a natural gas rate increase amounting to 20.06 per cent. Final reading of the increase ordinance came at the regular city commission meeting Monday evening with all commissioners present at the City Hall.

(A legal notice copy of the new ordinance appears in this issue).

Local Lone Star Gas Co. Manager James Zusspenn attended the meeting and was informed by Mayor Frank Deaton, presiding, that the commission had unanimously approved the ordinance on second reading.

In other business before the commission, representatives of the Church of God appeared, with Spokesman Darrell Basham, former resident of Graham, seeking assistance in securing city water for the church organization's Camp Inspiration west of the city. Mike Collins, who owns the land between the camp and the Hillcrest Area attended.

Newly elected Volunteer Fire Chief Jack Graham and officers Eddy Petrasek and Johnny Grimes, also attended and pledged to cooperate with the city in the operation of the Fire Department.

Indications were that the new gas rate would go into effect with the first gas bills rendered after the final approval of this ordinance.

According to the ordinance, the new rate will be: First 1,000 cu. ft. or fraction thereof \$1.856 gross; \$1.67 net; all over 1,000 cu. ft. at \$1.9322 per Mcf gross; \$.929 per Mcf Net.

The ordinance was first read on Dec. 15, following several months of negotiations between city officials and company officials. The company first asked for a 25 per cent hike.

In another action, Local Insurance Man Donald Kinnaird Jr. presented the city a proposal, which was tentatively accepted, to provide liability insurance for the city under the recently-enacted tort claims act, which requires that city be answerable for injuries. The premium cost for the extended coverage will be \$4,000 per year, and will also include the mandatory workman's compensation coverage required by law.

The insurance will be split up between the Kinnaird, Freyehsig and Miller agencies, it was said.

## T. A. Byrd Buried Tuesday At Flatwood

Thomas A. (Aunt) Byrd, 73, lifetime Eastland County resident, died at 3:10 a.m. Sunday in the Hickman Nursing Home.

Funeral services were held at 2 p.m. Tuesday in the Arrington Funeral Chapel, with the Rev. Lee Fields of Carbon officiating, assisted by the Rev. A. J. Thomas, pastor of Mangum Baptist Church.

Burial was in the Flatwood Cemetery.

Mr. Byrd was born Dec. 17, 1896 and farmed most of his life in the Flatwood Community south of Eastland.

He married Zettie B. Herring on July 27, 1918 in Rains County. She died in 1965.

He was a member of the Mangum Baptist Church. Survivors include one son, James F. Byrd of Goldsmith; two daughters, Mrs. J. L. (Bobbie) Pittman of Eastland and Mrs. J. L. (Patsy) Hogan of Cuero; one brother, M. H. Byrd of Carbon; six grandchildren, and three great-grandchildren.

## FULLEN MOTOR Co. LAUGH-A-DAY

Man to florist: "Suppose a man goes home with a rather poor excuse. What would you recommend to close the credibility gap?"

# WANT ADS WORK WONDERS

## Announcements

**MASONIC LODGE NO. 467**  
Meets second Thursday of each month at 7:30 p.m. in the Masonic Hall. Call E. M. Simpson, W.M., at 629-1465 or L. E. Huckabay, Sec'y, 629-1391 for information.

## EASTLAND ROTARY CLUB

Meets each Monday noon at White Elephant Restaurant in Eastland.  
Roy Lee Smith, resident

## Notice

NOTICE: Now is the time to begin planning your next season's irrigation needs. See us for design work, and a complete line of irrigation pumps, pipes, and supplies. We carry the largest stock in Central Texas. Kimmell Irrigation Service & Supply, Hwy. 16, & Bivolar, De Leon, Texas. Phone 863-8266.

NOTICE: Now is the time to begin planning your next season's irrigation needs. See us for design work, and a complete line of irrigation pumps, pipes, and supplies. We carry the largest stock in Central Texas. Kimmell Irrigation Service & Supply, Hwy. 16, & Bivolar, De Leon, Texas. Phone 863-8266.

NOTICE: Come to Eastland Pet Shop, 208 North Oaklawn for pets and pet supplies. Tropical fish, monkeys, snakes, etc. anything you need. Open 8:30 a.m. to 8 p.m. Monday through Saturday.

NOTICE: Let us process your meat animals for freezer or locker. Lockers for rent. A. Z. Myrick, Cisco-Locker Plant.

NOTICE: Piano tuning. Private lessons on nearly all instruments. Contact Kendrick Music Center, 102 S. Seaman Eastland.

NOTICE — \$25.00 reward for evidence leading to the recovery and conviction of the person or persons taking Civil War sword from the home of Mrs. W. C. Whaley, Eastland. Phone 629-1476, Eastland.

## NOTICE—EDDIE'S



Now Offering Complete Shop Service

Eldred L. Allcock  
30 years experience  
(16. General Motors, 8 Ford, 4 Chrysler)  
SHOP FOREMAN  
Specializing in Automatic Transmissions, Major & Minor Overhauls, Tune-ups.

General Repair  
FEATURING AUTO SERVICE At EDDIE'S 66  
And you'll enjoy depending on us to take care of all your auto service needs.

SERVICE CENTER  
American Automobile Association  
Call 629-8838  
—FREE PICKUP—  
GUARANTEED SERVICE & TOP PHILLIPS PRODUCTS  
West Main St

NOTICE: Wise shoppers read the Classifieds. You are! List your "unwants" and pocket the cash. Rent that spare room. Sell that garage accumulation. A Newspaper Classified gets results—and the rates are low. Think of how many people you talk to at one time. Call your local newspaper and a friendly ad taker will help you toward Classified Success.

## For Sale

FOR SALE — Small acreage. Highway 89 West, three bedroom, 1 1/2 bath. Income producing rent property. 442-1274.

FOR SALE: Filing cabinet's desk, work stations, office machines, and everything you need to brighten up, modernize your office, shop and home needs for the new year. See your local newspaper for big savings. Some used items, and many brand new ideas just waiting to help you do a better job. Just come by the newspaper office.

FOR SALE 1965 Plymouth Fury III, two door hardtop, air conditioned, heater, radio, white wall tires. Call Eastland 629-1692.

FOR SALE: Store fixtures, including dressing rods, racks, gondolas, shelves, counter, plastic hangers, breast forms and T-Stands, plus many items. See at Mode O'Day, Eastland.

## HOMES FOR SALE

2 Bedroom enclosed back porch good solid Home with large Lot, Ranger, Texas.

3 Bedroom Brick 2 bath built-in kitchen, wall to wall carpet near school.

3 Bedroom close in needs some repairs S. Daugherty.

2 Bedroom Home also 1 bedroom home close in priced to sell.

2 Bedroom Home nice roomy living and dining area. Terms. 3 bedroom brick with 3 1/2 acres lots of floor space, paneled throughout, Olden, Texas.

3 Bedroom Brick has 1 acre, fireplace, 1 1/2 bath, Olden, Texas.

Small 3 bedroom home 2 acres on Interstate 20, Olden, Texas. Home and 12 acres of land priced to sell edge Eastland.

4 Bedroom home, 3 acres, Olden, Texas.

2 Bedroom Lake Leon Home South Side furnished, \$4750.

Lake Leon Home completely furnished, Boat House must see to appreciate.

See us for Building Lots in Eastland.

FARMS AND RANCHES  
90 Acres good Sandy Land, plenty water, native Burmuds on pavement.

90 Acres Sandy Land, no improvements, no allotments.

100 Acres good allotments good terms.

140 Acres 138 Cult good Grass 1 bedroom House.

500 Acre ranch on pavement, net fences \$190.00 acre.

422 Acre improved Grass good fences, will consider trade.

900 Acres Sandy Land some Coastal and Love Grass, consider trade.

1260 Acres good Deer Hunting Terms.

1500 Acre ranch on pavement well improved terms.

2800 Acre ranch, well improved, Lempassa area.

We have many other good Ranches this area and other parts of Texas, Okla., and Colo.

Long Term Farm and Ranch Loans contact us.

KINCAID REAL ESTATE  
J. W. Elder, Robert Kincaid  
100 S. Seaman — 629-1788  
647-1321 — 629-2721

ONE - STOP SERVICE FOR Total-Car Care! That's D & M SERVICE CENTER  
802 W. Main St.  
Humble Products  
General Repair  
Air - Conditioning  
Brake Work  
Road Service: 8 to 5  
Open 24 Hours  
OBIE DUNCAN  
ROBERT MANGUM  
Steam Cleaning  
Wash - Lubrication

Tires Batteries  
Complete line accessories  
Dial 629-8945

## Wanted

SPECIAL — Valentine Gifts at BIG, BIG savings. Small Appliances: electric — mixers, blenders, coffee makers, hair dryers, coffee makers, mixers, blenders, shavers, knives, irons. All one of a kind sale: 25 PER CENT OFF, through February, Friday 13.  
KENDRICK MUSIC CENTER Eastland. feb. 12

NOTICE — For Mods and Swingers—we now have psychedelic posters, black lights, bulbs and fixtures and accessories. See our complete lines.  
KENDRICK MUSIC CENTER, Eastland. tf

WANTED: Waitress and dish washer. Apply in person at Old Rip Cafe. tf

FOR SALE: Tilting table saw with attachments. Also jointer. Like new. Call Olden. 639-2444. 10

'68 Repossessed Singer Ziz-zag buttonholes, fancy stitches. \$39.95 or \$8. a month. Write: Credit Manager, Box 1292, Abilene. 87tfc

FOR SALE — 1970 Mobile Home. Two-bedroom, 12 x 58 feet. \$3200.00 cash. 800 Travis, Ranger. 56

FOR SALE: 1969 Spuer Sport Chevrolet. Tinted windshield. Power brakes. Power steering. Air conditioner. Radio. White vinyl top. White interior. Call Eastland. 629-2919. 413

FOR SALE — 1970 Texas Almanac, \$1.95. The Eastland Telegram. tfe

FOR SALE: Have a good stock of good used tires. Houston Tire Co. tf

FOR SALE: Inspirational for devotions and super ideal for gifts — Drawing Toward God. Handbound book of original drawings and text by Noted Texas Artist Jack Hamm. \$3.50 each. At the Telegram office exclusively.

FOR SALE — 212 acre farm. 34 acre peanut allotment. Call Rush Crawley, Eastland, 629-2522. 10

MISC. FOR SALE — For better cleaning, to keep colors gleaming, use Blue Luster carpet cleaner. Rent electric steam-popper \$1. Perry Brothers. 8

FOR SALE — Cleanest carpet cleaner you ever used, so easy too. Get Blue Luster. Rent electric steam-popper \$1. Coats Furniture. 91tfc

FOR SALE IN CISCO — Three bedroom, foyer, large living-dining room area, utility room, bath, fenced back yard. Call Victor Childers, Rising Star 643-3653 or see C. D. Ballew, 643-2931. 91tfc

## For Rent

FOR RENT: Furnished apartment and furnished cottage; also small unfurnished house. PP Motel, call 629-8878. tf

FOR RENT — Rooms and apartments. Village Hotel. Call 629-1716. tf

FOR RENT: Upstairs apartment, three large rooms. Ideal for couple. Call 629-1675 after 6 p.m. tf

FOR RENT: Nice furnished cottages with carports. PP Motel, Highway 89 west. Telephone 629-8878. tf

## HOMES AND CABINS

Nice Brick Home Lake Leon— 3 Bedroom 13 ac. Lake Leon— Nice Cabin Lake Leon—

FARMERS AND RANCHERS  
80 acres-30 peanuts-near Carbon-terms.

115 acres-32 peanut-some pecans-50 coastal-near Eastland.

303 acres-80 peanuts-near Desdemona.

220 acres-west Cisco-some oil production.

274 acres-east of Eastland-Good terms.

480 acres-East of Eastland-on Pavment.

200 acres-Ranger area.

145 acres-Interstate 20 East Eastland.

875 acres-Callahan Co. Good terms. Have larger tracts—Eastland Co.

M. L. TERRELL REAL ESTATE FARM BUREAU BLDG.  
Highway 8 East  
Call 629-1725 Day  
Call 629-2443 Night

## Wanted

WANTED: Want to lease pasture, any acreage, with or without house, in Eastland, Cisco, Ranger area. Call Eastland. 629-2931. 53

FOR SALE: 1969 V-8 four-door Ford. Good work car. Call 629-1273 after 5 p.m. 7

HELP WANTED: Need woman to come to my home, keep baby and five-year-old child; do light housework; five days a week. Call 629-2446 after five on week days or anytime Saturday or Sunday. 7

HELP WANTED: Part time job for man, housewife, or student to assist with local sales and service for Fuller Brush Co. \$2.00 per hour plus commission. Write: Bx 2189, Dallas, Texas, 75201. 7

WANTED — Delivery man. Must be dependable with good driving record. Apply at West Texas Produce Co., Cisco. 8

FOUND: All the record-keeping supplies you need for the new year—at one location: your local newspaper office. Farm and business records, payroll records, tax saving requirements. All kinds of supplies for the home and office. Shop at home and save. tf

FOR SALE: Store fixtures, including dressing rods, racks, gondolas, shelves, counter, plastic hangers, breast forms and T-Stands, plus many items. See at Mode O'Day, Eastland. EB

FOR RENT: One bedroom furnished house. Also two bedroom unfurnished house. Contact Lonnie Voorhies, 1717 Metador, Abilene, Texas, 79605. 7

Western Mattress Co. Mattress, Box Springs, Custom, bill.

Renovated or exchange. New Guarantee. Save 50%  
Call 629-1740 or 629-1398 EASTLAND

GREEN ST. FLOWER & GIFT SHOP  
Ita R. Parrish-260 N. Green  
Telephone 629-1101  
Eastland, Texas 76448

HAY BAILING  
PLOWING  
Experienced Operators  
Heulon Perrin, 647-1028  
Dwight Squires, 647-1397  
In Ranger

Prevent Disease Loss at Small Cost  
USE OUR LIVESTOCK SUPPLY DEPARTMENT  
EASTLAND DRUG

TV SERVICE  
WHITENTON PLAZA COLOR TV  
Stephenville  
Call 968-3312 collect  
Will be in Eastland each Friday  
Satisfaction Guaranteed!  
35 Years Experience!

ROY LEE SMITH  
distributor for Dayton  
Electric Motors  
offering complete motor replacement (Other brand motors available)  
Complete Line in stock at  
Smith Plumbing Co.  
111 S. Seaman 629-1722

## Political Announcements

This news paper has been authorized to announce political candidates, subjects to action of the Democratic primaries, as follows:

District Clerk: JOE GRAY  
Justice of the Peace, Pct. One: L. W. (Wells) DALTON, re-election  
County School Supt.: O. L. STAMEY, re-election  
Constable, Precinct One ALLEN T. SQUYRES  
County Judge SCOTT BAILEY, re-election

Wells Brothers Pant Contractors  
Spray or Brush Taping, Bedding Textoning, Acoustics  
—Free Estimates—  
Call collect, Ranger 647-1778 or 647-3045

Let's EAT

FRESH CATFISH served with FRENCH FRIES HUSH PUPPIES ONION RINGS SALAD

DELICIOUS MEXICAN FOOD Served Daily After 5 P.M. Except Mondays

Lake Leon BOAT-TEL  
Ph. 647-3627

NOTICE: COMPLETE AUTO PAINT & BODY SERVICE

GENE MILICAN  
At Hood King Motors  
You'll like our work!

EMMET MORREN  
PLUMBING COMPLETE REPAIR SERVICE  
401 South Oak  
629-2092  
—24 Hour Service—

CIVIL WAR DIARY  
By Maj. James T. Poe CSA  
With list of 1,200 fellow prisoners on Johnson Island, giving name, rank, unit and when and where captured. 125 pages, hardbound, with illustrations. \$5. Industrial-Plus Press  
P. O. Box 29, Eastland, Texas 76448

Wiglets for Sale  
Wiglets, Wigs, Falls  
Cleaned and Styled  
811 West Moss  
Call 629-1334 after 6 p.m.

ROLLINS & SONS  
MOBIL SERVICE  
Call for Appointments on Wash - Grease Oil Changes  
601 W. MAIN  
9789 - 629

## YOUR VOTE COUNTS!

But You Can Not Vote Unless You REGISTER  
By Saturday, Jan. 31

## CARD OF THANKS

We would like to express our gratitude for the many acts of kindness shown us during the illness and death of our mother. We appreciate so much the food and beautiful floral offerings. We are very grateful to Dr. Watkins; the staff and nurses at Manor Nursing Home; the Rev. Avery Sullivan; others who presented the beautiful music; and the pallbearers. May God's blessing be upon each of you.  
The family of Mrs. Amelia Chesnut

## PERMANENTS

\$10 Cold Waves — \$8.50  
—Open 8:30 to 5:30—  
Close noon Wed. & Sat.  
Basham Beauty Bar

## DRIVERS NEEDED

Train NOW to drive semi-truck, local and over the road. You can earn over \$4 per hour, after short training. For interview and application, call (214) 742-2924 or write Safety Dept., Nationwide Systems, Inc., 4747 Green, Dallas, Texas 75207. 8

FOR SALE — 1962 Chevrolet pickup, 4-speed transmission, good motor, tires, recent engine overhaul. Phone 629-1043.

FOR SALE (or will trade for Livestock): 50 model Wheatland Type International Tractor on Butane. Eight Disc Breaking Plow; One 6 foot Chisel plow; One 10 foot International Grain Drill. All in good shape. Alven Kincaid, phone 629-2726. 7

BUSINESS OPPORTUNITIES — For Lease, independent service station, good location, small investment. 1020 W. Walker, Breckenridge, Tex. Contact Tom Julian, 106 Karen Lane, Iowa Park, Tex. 817-592-5417. 7

FOR SALE: 160 acres between Breckenridge and Ranger, 50 acres cultivated balance pasture, fenced, two ponds, good well, all utilities, nice building site. Several barns and sheds on all weather road, no minerals, \$150 acre. 2628 Lawrence, Irving, Texas 214-254-4853. 7

Coastal Bermuda Planting  
Good healthy sprigs furnished and hauled in insulated van for your protection. Ten Years experience in coastal planting and management. Call or write for prices and information.  
WOODIE POWELL  
ARDEON KIMMELL  
Phone 893-6233  
De Leon, Texas 76444

ED SAYS—  
SHOP AT HOME  
Friendly-Quick In-Out Service  
ED SERGENT  
Hillcrest Food Mkt.  
7:30-6:00  
7 DAYS A WEEK  
Sun: 7:30 a.m.-9:30 a.m.  
11:00 a.m.-6:00 p.m.  
629-2681

OUR DAD WANTS TO SELL YOU SOME INSURANCE HOW ABOUT SEEING HIM AT  
D. L. KINNAIRD GENERAL INSURANCE  
207 W. Main St. — 629-2544

JIMMY  
CAROL ANN  
DWIGHT

Central Drug  
629-2681

Earl Bender & Company  
Eastland (Insurance since 1924) Texas

Maybe you don't need Insurance—  
... and possibly you don't if you are financially able to look out after yourself. But for the most of us, we are just a little bit afraid to take the risk so we buy insurance. Modern living has become so complex that the protection of property against its many hazards is a major problem and we should be insured. The individual you can always depend on for correct solutions of your insurance problems is the local agent. Try him first!

HERE'S TO YOUR GOOD HEALTH, ALWAYS!

YOUR PHARMACIST FOLLOWS YOUR DOCTOR'S ORDERS  
In the compounding of prescriptions, as registered pharmacists we are pledged to following your doctor's orders. For your health's sake, his word is law.

Your Registered Pharmacist...  
Family's Best Friend

Central Drug  
629-2681

Earl Bender & Company  
Eastland (Insurance since 1924) Texas

Earl Bender & Company  
Eastland (Insurance since 1924) Texas

Earl Bender & Company  
Eastland (Insurance since 1924) Texas

Earl Bender & Company  
Eastland (Insurance since 1924) Texas

## 2 Eastlanders In Law Training Course in Abilene

Texas Alcohol Beverage Commission, and Leroy Steinman, patrolman of Eastland Police Dept., are attending a five week law Enforcement Academy in Abilene to obtain 140 hours of specialized classroom and field instruction.

The training is the result of a new state law that requires certification of all new law officers within a designated period of time after September 1, 1970.

Adams and Steinman have enrolled in the Law Enforcement Academy to obtain their certification from the Texas Commission on Law Enforcement Officer Standards and Education as a means to upgrade their profession and further prepare them to perform their job satisfactorily.

The Law Enforcement Academy is certified by Texas Commission and is sponsored by the West Central Texas Council of Governments. Certified instructors are being furnished along with classroom facilities by the City of Abilene Police Department.

Classes began January 5, with two daily sessions currently underway. "Our aim," according to Walter Eubanks, Law Enforcement Coordinator with the Council of Governments, "is to assist every law enforcement officer in our region to obtain a certificate and the special training, who wants to get it."

Additional schools and other special courses will be offered in the future to better train and qualify area peace officers.

Miss Lela Lee, daughter of Mr. and Mrs. Jack Lee, has been named to the "President's List" at Rice University, where she is a sophomore student.

The honor list was announced following the close of the semester.

## Homer Beards To Move Soon To Goldthwaite

Mr. and Mrs. Homer Beard and their daughter, Mrs. Deanna Gruben, will move next week to Goldthwaite, where Mr. Beard will assume duties as assistant administrator of Hickman Nursing Home.

He has held a similar position in Eastland since Dec. 1967.

They have been active members of Bethel Baptist Church here. He is a member of Eastland Lions Club.

Mrs. Gruben is now in Hawaii, visiting with her husband, who is on R and R leave from Vietnam.

Beard said, "We have enjoyed being in Eastland very much and feel that we have made lasting friendships here. We express our appreciation to all the people who welcomed us so warmly and have been so nice to us."

## Visit Tuckers Over Weekend

Visiting in the home of Mr. and Mrs. E. T. Tucker over the week-end were their children, Mr. and Mrs. T. J. Tucker and son; Mr. and Mrs. W. D. Holliday of Throckmorton; Mr. and Mrs. Freddie Tucker of Grapevine; Mr. and Mrs. Jack Tucker and children of Perrin; Mr. and Mrs. Pete Tucker and children of Eastland.

This was the first time they had all been together since August, 1967.

One son, Walter Tucker of North Dakota was not able to come.

Bring This  
Ad for  
**FREE GAME**  
OF POOL  
AT THE  
**Golden Cue**  
In RANGER  
WATCH FOR  
TOURNAMENT DATE

# ALTMAN'S AFTER INVENTORY CLEARANCE

Drastic Reductions on All Fall  
and Winter Apparel

SWEATERS, SHELLS, SKIRTS, PANTS  
Further Reduced to Clear our Stock.

## DRESS SALE—

We have added to our sale rack of famous name dresses. Buy now at great savings—you get two for the price of one.

ALL FALL AND WINTER COATS REDUCED TO  
CLEAR OUR STOCK.

Reductions on Special Groups of  
Lingerie and Robes



# KINGLY QUALITY



'66 OLDS

All power and air

'61 FORD FALCON

6-Cylinder

'69 FORD

Fairlane, Factory Air

'69 MERCURY MARQUIS

All power and air—new tires

'68 FORD GALAXIE 500

Fully Equipped

'69 FORD RANGER Pickup Factory air and power (long wheel base)



## KING MOTOR CO.

EASTLAND

Modern way  
to winter-long  
comfort...



Flameless electric heat is one of the nicest  
features of a Total Electric home

Heat that fills your home with comforting wall-to-wall warmth. Heat as clean as electric light. Flameless electric heat so clean it can't soil walls, curtains or woodwork. That's the modern-as-tomorrow kind of heating you'll enjoy in a Total Electric home. And that's just one of the many advantages of living in a home where flameless electricity does everything. Let us tell you more about Total Electric living and our low rate for Total Electric homes.



TEXAS ELECTRIC SERVICE COMPANY

## White Sale comes to Ford Country. Big savings on the whole herd.

**WHITE SALE TORINO**  
Special edition of our lowest-priced hardtop. Includes dual racing mirrors, carpets, whitewalls, and more. And it's waiting for you now!

**WHITE SALE GALAXIE 500**  
Lowest-priced full-size V-8 hardtop anywhere. Special White Sale edition with 302 CID V-8 and special interior trim now means extra savings on the big, quiet Galaxie!

**WHITE SALE FORD EXPLORER SPECIALS**—The pickups with the biggest choice of sale-priced options. Explorer... with Ford's exclusive Twin-I-Beam front suspension. Now's your chance to save up to \$197\* on an F-250!

\*Based on manufacturer's suggested retail prices



Fairlane 500 2-Door Hardtop

Galaxie 500 2-Door Hardtop

Ford Explorer Pickup

## HOOD KING MOTOR COMPANY

305 E. Main

Eastland, Texas

MA 9-2678

# IT HAS BEEN

By Vada Arnold

There was a time when children didn't go to a Toy Shop or a variety store to buy a new toy every time they wanted something new to play with. With their imagination and ingenuity, they manufactured play things from broken dishes, rocks, pieces of tin broken down chairs, old buckets, cans, bottles, spoons and boxes that were available. Old wheels from farm implements, little wagons and even old buggy and wagon wheels made wonderful play things. And those children had fun, real honest to goodness fun.

Every little girl had a play house, under a Spreading oak, in a grove of trees, in the shade of the house, or in a fence corner. Some houses were built high off the ground in those days, and many girls set up housekeeping under the house or in the storm cellar. No matter where it was located it was a house, a home even though it was born of imagination.

There were usually five or six rooms to a playhouse, each carefully marked off with the whitest and smoothest stones to be found. Rooms were divided by a path of rocks, at doorway rocks were left off and no one dared to step over a wall, but must go through a doorway. Furniture for these rooms were improvised of bits of lumber, tin, rocks and cans. For instance, a board laid across an old bucket made an ideal table, a dresser was a necessity, it too was a board laid on some kind of foundation next to a tree. If a shiny piece of tin could be found it was set up on the board, and leaned against the trunk of the tree for support; there you had a mirror as fine as any little girl housewife could wish for. There were cook stoves,

wash benches and cook stoves. Cook stoves made of rocks, one laid on another to a height of about one foot, and covered with a piece of tin or an iron door from someones old, old cook stove. It was ideal for the delicious meals prepared and cooked by juvenile homemakers. Even if meals were imaginary they satisfied imaginary appetites. Every little girl specialized in having company for dinner. For hours she made mud cakes and pies, fried ham and chicken (sticks and chips from the family woodpile) and boiled greens (from the nearby weed patch). Each cobbler and fried sausage were always on the menu. Each meal was served with milk, tea or coffee. Milk was just wonderful (made of soap-suds.) coffee and tea made of water with enough dark dirt stirred in to make a brown liquid. Of course, there was sugar and cream (nice light sand and thick soap-suds).

If there were no real playmates to enjoy these sumptuous meals, imaginary guests were invited and they became real living, breathing, eating guests in the minds of children. These guests were talked to, served and enjoyed as much as if they were real.

Imaginary families with a husband, babies, to grown boys and girls rounded out these play homes and families. Little boys rode bucking bronchos, in reality an old broom stick or a smooth limb from a tree with a cotton string for a bridle. They drove herds of cattle from Texas to parts unknown. They preached, were Indians, held funerals and baptised stick dolls. They were pirates, doctors, school teachers, farmers and merchants; of course, a few beggars and hoboes were in the lot to cause trouble. These boys built sies of odd pieces of lumber gathered here and there, and spent hours taking turn about pulling their sleds by an old piece of rope. At times some of the kids rode and others pulled the sleds. No Jet ride or a trip in a Cadillac could ever compare with a homemade sled ride.

Boys dug caves in sides of ditches and held secret meetings in them, much to the disgust of little girls already endowed with woman's curiosity.

Boys and Girls loved pets, cats, dogs, squirrels, rabbits and pigs. Cats were dressed in dolls clothes and hauled around in paste board boxes, all went well until a dog made chase, the box turned over and cats ran for shelter under the house. Then came the task of coaxing the frightened animal out in order to rescue the doll clothes.

Maybe to the modern child these modes of entertainment seem "corny", but actually they were the foundation of peaceful, solid and useful citizenships.



**DOUBLE S&H GREEN STAMPS**  
with purchase of \$2.50 or more every Wednesday

# JRB SUPERMARKETS

**S & H GREEN STAMPS WITH EVERY PURCHASE**

PRICES GOOD THROUGH SATURDAY, JAN. 24  
Quantity Rights Reserved - No Sales to Dealers  
PRICES GOOD IN EASTLAND

JRB Meats are U.S. Government Inspected and Graded. If for any reason you are not satisfied we will cheerfully refund your money.

## ★ MIX OR MATCH ★

Gold Tip	303	<b>5 FOR \$1</b>
TOMATOES	can	
Van Camp's	300	
PORK & BEANS	can	
Ranch Style	300	
BEANS	can	

Seaside	303	<b>6 CANS \$1</b>
Butter Beans	can	
Ranch Style Black Eye	15-oz.	
Peas and Bacon	can	
American Beauty Mixed	300	
VEGETABLES		
Gold Tip Cut	303	<b>7 FOR \$1</b>
Green Beans	can	
Food King	300	
Butter Beans	can	
Ranch Style	300	
Pinto Beans	can	

Food King Green & White	300	<b>8 FOR \$1</b>
LIMAS		
Red Bird	No. 1/2	<b>7 FOR \$1</b>
VIENNA SAUSAGE	can	
Food King Mexican	300	<b>8 FOR \$1</b>
STYLE BEANS	can	

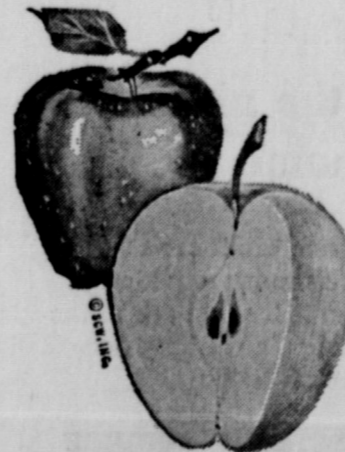
Clear Sailing	300	<b>8 FOR \$1</b>
Pork & Beans	can	
Food King	300	<b>8 FOR \$1</b>
NAVY BEANS	can	
Uncle William	300	<b>8 FOR \$1</b>
HOMINY	can	
Alma	300	<b>8 FOR \$1</b>
PINTO BEANS	can	

Zee  
**TOILET TISSUE**  
3 4 roll pkg. \$1.00

Del Monte  
**PEAS**  
4 303 cans \$1

## Garden Fresh Produce Features!

Red Delicious		
APPLES	Extra Fancy	lb. 19c
RADISHES		2 pkgs. 29c
California Sunkist		
ORANGES		lb. 19c
ONIONS	green	2 bunches 29c
Cellophane		
CARROTS	1-lb. bags	2 bags 29c

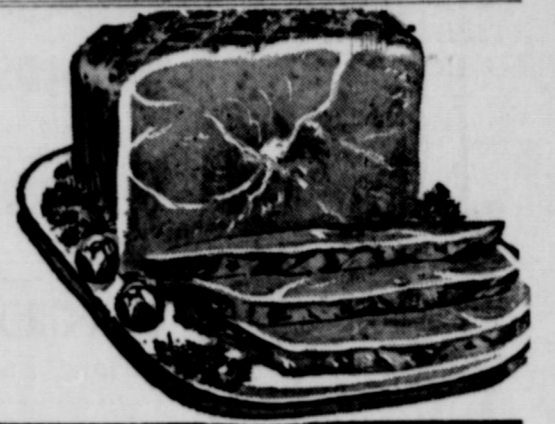


# THE BEST SAVINGS GOING *J.N.* GREEN STAMPS SAVE THEM --- AND SAVE!!

Rath Cedar Farm

## CANNED PICNICS

3-lb. can... **\$2.69**

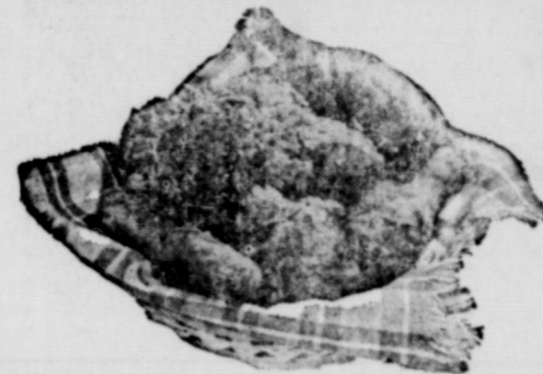


## Gooch Olde Virginia SAUSAGE

lb. 85c... 2-lbs. \$1.69

Gooch Blue Ribbon		
FRANKS	12-oz. pkg.	59c
Gooch Blue Ribbon		
STEAK FINGERS	12-oz. pkg.	79c
Miss Wisconsin—6-mo. age—10-oz. pkg.		
LONGHORN CHEESE		69c
U.S.D.A. Choice		
CHUCK ROAST	lb.	59c

U.S.D.A. Choice		
FAMILY STEAK	lb.	79c
U.S.D.A. Choice—Arm		
SWISS STEAK	lb.	89c
Lean Cubes		
STEW MEAT	Boneless lb.	89c
Flavor Fresh		
GROUND CHUCK	lb.	79c



USDA GRADE A  
**FRYERS**  
whole.....lb. 29c  
cut up, pan ready.....lb. 35c

Jumbo Zee  
**TOWELS**  
3 for \$1.00

### ● DRUG DEPARTMENT

Alka Seltzer Plus		
COLD TABLETS	reg. 1.59	99c
LISTERINE	reg. 1.19	89c
RIGHT GUARD	reg. 1.09	89c

MAYONNAISE	Kraft's	quart	59c
SHORTENING	Bake Rite	3-lb. can	49c
Faultless			
SPRAY STARCH		15-oz. can	49c

Pet Skimmed			
MILK	tall can	10c	
Shurfine			
SUGAR	5-lbs.		49c

Foremost			
HALF & HALF		pint	33c

J.R.B.			
MELLORINE	1/2-gallon		3 for \$1

Shurfine			
ORANGE JUICE	6-oz. can		5 for \$1

Morton's Turkey, Beef or			
CHICKEN DINNERS		11-oz.	39c

## ONLY YOU CAN VOTE!

BUT YOUR MOTHER, FATHER, DAUGHTER,  
SON, HUSBAND OR WIFE CAN

REGISTER FOR  
YOU!

DON'T BE A VOTE-POOR FAMILY. GET  
ALL YOUR FOLKS REGISTERED BY JAN. 31.

THE 123-DAY VOTER  
REGISTRATION PERIOD  
ENDS JANUARY 31!

# IF YOU DON'T REGISTER YOU CAN NOT VOTE!

IT'S FREE! AT YOUR TAX ASSESSOR'S OFFICE!

Shurfine  
**FLOUR**  
5-LB. Bag **39c**

### Eastland Report From Auction

**FREE ESTIMATES ON new roofs only Repair of Your Old Roofs Residential and Commercial**

**"ALL NEW WORK GUARANTEED" TRI-CITIES ROOFING CO.**

Call Nobil Squiers 629-2370 EASTLAND

Eastland Auction Company report for January 13: strong market on all classes; heifers showed some weakness. 1803 head cattle, 437 hogs, 7 sheep and goats sold; 366 consignors; 77 buyers.

Prices reported: butcher bulls, 24.50 to 29.25; stocker bulls, 24 to 36; butcher cows, 18 to 24; canners and cutters, 14 to 22.25; butcher calves, 26 to 30; stocker steer calves, light choice, 32 to 47; heavy choice, 26.75 to 35.25; stocker heifer calves, 28.75 to 33.25; yearling heifers, 23 to 29.25; stocker cows, 160 to 220; pairs, 200 to 310; butcher hogs, 26 to 28; sows, 22 to 24.

## County Hopes for Improvement In 41.6 Registration Record

"OPERATION EVERYBODY!" chairman, Mrs. James A. McMullen III of Fort Worth announced that Eastland county has attained 41.6 percent of its quota as set by the Texas Democratic Party.

"That figure puts Eastland county in 12th place in its division," County Chairman A. E. Crawley said. "The statewide goal is to have 4,250,000 Texans registered by the time the 123-day voter registration period ends on Saturday, January 31."

"OPERATION EVERYBODY!" is a project of the State Democratic Executive Committee. Mrs. Carol Vance of Houston, as vice-chairman, serves with Mrs. McMullen on the special drive.

"More than half of the statewide goal has been reached," Mr. Crawley said. "Voter registration application forms are at the County Tax Assessor's

### Musgrove To Serve On Parks Wildlife Group

State Representative Burke Musgrove of Breckenridge will serve on an interim House Committee to study parks and wildlife management in other states. Other House members serving on the committee will be Representatives Jack McLaughlin of Fort Worth, who will be chairman of the Committee, George Baker of Fort Stockton, Tom Holmes of Granbury and Russell Cummings of Houston.

### Breck Editor Is Honored

Virgil Moore, editor of the Breckenridge American and former editor of the Eastland Telegram, was named "Most Distinguished Citizen" in Breckenridge and Stephens County Friday night during the 51st annual Breckenridge Chamber of Commerce banquet.

Editor Moore was praised for his active role in supporting law and order, new industry and activities of City and county government. Moore has served as chairman of the Hubbard Lake Development Committee, is director of the Texas High School Football Hall of Fame and has served as president of the Chamber of Commerce in Breckenridge.

LET RUBY SPRINGER YOUR TAX PRACTICER RANGER, TEXAS ASSIST YOU IN ANY WAY IN PREPARING YOUR TAX RETURN, THE NEW FORMS, OR ANY PROBLEMS

Office hrs. 8:30 - 5:00 Or by appointment Tele. 647-3230 or Res. 647-3237

INTERSTATES MAJESTIC EASTLAND 692-1120

THURSDAY - FRIDAY - SATURDAY  
Thur.-Fri.: open 5:15 - Shows: 5:30-7:20-9:10  
Saturday: open 1:45 - Shows: 2:30-5:40-7:30-9:20

VIVA MAX!



PETER PAMELA USTINOV TIFFIN  
JONATHAN JOHN WINTERS IASTIN

VIVA MAX!

STARTS SUNDAY



DON'T MISS the Academy Award performance of PATTY DUKE.

"Me, Natalie"  
Patty Duke  
Color by Deluxe

COUNT ON US FOR ALL YOUR AUTO SERVICE...



How Can We Help Your Car?

We can fix your car's tires, muffler, front end, brakes, steering, transmission, lighting, or just about anything else. You may call us experts... but don't forget to call us.

—ALL WORK GUARANTEED—

**HORTON TIRE SERVICE EASTLAND**

### Palace Cisco

Adm. 75c Per Person  
CHILD FREE (under 12 w-p)

FRIDAY-SATURDAY First Feature (M)  
FRIDAY at 7:30  
SAT. at 3:50-7:30

He as a wife. She has a husband. With so much in common they just have to fall in love.

"THE APRIL FOOLS"  
JACK LEMMON

Second Feature (G)  
FRIDAY at 9:15  
SAT. at 2:00-9:15

They had nothing to lose but their lives.

"THE STALKING MOON"  
GREGORY PECK  
EVA MARIE SAINT

A FUNNY COMEDY WITH A GREAT WESTERN. WHERE CAN YOU FIND MORE.

### Civil Defense Data Released By U.S.D.A. Team

The Eastland County U.S. D.A. Civil Defense Committee has mailed a limited number of bulletins to county residents with key data pertaining to civil defense practices and programs.

One item, a Department of Defense pamphlet, outlining an above-ground home fallout shelter for six adults which, the pamphlet says, "will adequately protect against radioactive fallout from nuclear explosions."

The other material explains what the U.S.D.A. can do when natural disaster strikes—provide food, arrange credit, donate food, and other.

Members of the local U.S. D.A. civil defense team are Jesse G. Meredith, chairman; DeMarquis Gordon, secretary; O. M. Boyle and E. E. McAlister.

### MUY BUENO! SI, SI!

heat of the kitchen and just prefer to savor the flavor... you'll truly appreciate this taste-tempting collection of unusually appetizing "Original Mexican Food Recipes."

Over fifty delectable Mexican food delights are included in this handy recipe booklet dedicated to "those who live to eat," and lover's pronunciation guide so you can order appropriately illustrated. Valued added feature is a Mexican food what you wish in Mexico or any state-side restaurant specializing in this culinary fare.



If you like Mexican food—whether at home or away—this recipe collection is for you!

PRICE: ONE DOLLAR PER COPY  
On Sale at  
RANGER EASTLAND CISCO  
TIMES TELEGRAM PRESS  
or order by mail from LONGHORN PRESS, CISCO, TEXAS

An inch won't make you very tall.  
You've got to keep on growing;

One little ad won't do it all.  
You've got to keep them going.

One step won't take you very far.  
You've got to keep on walking;

One word won't tell folks who you are.  
You've got to keep on talking.

A constant drop of water  
Wears the hardest stone.

And the dog that keeps on gnawing  
Chews up the toughest bone.

The constant-wooling lover  
Carries off the blushing maid.

And the constant advertiser  
Is the one who gets the trade.

Your Local Newspaper

**RANGER DRIVE-IN THEATRE**

ADULTS 75c — KIDDIES UNDER 11 FREE  
Box Office Opens 6:30 Show Starts 7:00

FRIDAY — SATURDAY — SUNDAY  
JANUARY 23-24-25

**A SUPER ADVENTURE**

And in the hero.

OLIVER REED MICHAEL J. POLLARD  
**HANNIBAL BROOKS**  
A Michael Winner Film  
United Artists

## Everyone Must Register To Vote

Under New Texas Law, EVERYONE, even PERSONS OVER 60, regardless of where you live, MUST REGISTER NOW to be eligible to vote in the 1970 elections.  
Deadline Jan. 31

APPLICATION FOR VOTER REGISTRATION CERTIFICATE COUNTY, TEXAS

Name of Voter \_\_\_\_\_ Date \_\_\_\_\_ Zip Code \_\_\_\_\_  
(Please Print) (If Known)

Home Address \_\_\_\_\_ City \_\_\_\_\_  
(If Route and Box No., also show Street or Road)

Sex  Male  Female Age \_\_\_\_\_ years. If under 21 years, give full date of birth \_\_\_\_\_, 19\_\_

Voting Precinct (if known) \_\_\_\_\_ (Name or Number)

I certify that applicant is a citizen of the United States and has resided in Texas more than 1 year and in the county and city (if residing in a city) more than 6 months immediately preceding the date of this application, except as listed under EXCEPTIONS below. I understand the giving of false information to procure the registration of a voter is a felony.

Exceptions for New Residents	Mo.	Day	Year
Show date of arrival:			
If in Texas less than 1 year . . . . .			
If in County less than 6 mos. . . . .			
If in City less than 6 mos. . . . .			

Signature of Voter or Agent \_\_\_\_\_  
Agent's relationship to Voter \_\_\_\_\_  
\*Only a husband, wife, father, mother, son or daughter may apply for registration as agent for the voter.

Mail Certificate to following temporary address \_\_\_\_\_ if not to be mailed to home address above.

Clip this form, fill it out and mail to your County Tax Assessor, or contact your local Tax Assessor for an Application Form.

**TEXANS FOR VOTER REGISTRATION** U. S. SENATOR RALPH W. YARBOROUGH  
HONORARY CHAIRMAN

**FEDERAL SAVINGS & LOAN Association**  
RANGER, TEXAS

Statement of Condition as of December 31, 1969

ASSETS	
First Mortgage Loans	\$4,428,301.70
FHA Home Improvement Loans	100,824.93
Loans on Savings Accounts	126,582.31
Real Estate Sold on Contract	3,124.51
Real Estate Owned	29,949.32
Stock in Federal Home Loan Bank	36,660.00
Cash on Hand and in Banks	307,281.79
Federal Home Loan Bank Consolidated Notes Owned	125,044.07
Office Building	119,845.81
Furniture, Fixtures & Equipment	21,858.29
Prepayment of Federal Savings and Loan Insurance Premiums	60,724.84
Other Assets	8,584.98
	<hr/> \$5,368,722.55
LIABILITIES	
Savings Capital	\$4,805,438.69
Advances by Borrowers for Taxes & Insurance	42,667.83
Advances from Federal Home Loan Bank	200,000.00
Other Borrowed Money	None
Other Liabilities	6,169.42
Specific Reserves	34,298.85
General Reserves and Surplus	280,147.76
	<hr/> \$5,368,722.55

**OFFICERS**

**DIRECTORS**

FELTON P. BRASHIER, President  
WILLARD SWANEY, Vice President  
LESTER CROSSLEY, Exec. V. P., Sec'y.  
REBA C. RAWLS, Treas.-Ass't. Sec'y.  
DEWEY C. COX, Jr., General Counsel

F. P. Brashier  
Dewey C. Cox, Jr.  
Willard Swaney  
Lester Crossley  
Dr. W. P. Watkins  
M.D.  
Col. B. Mills

UP TO \$20,000

## Auto Sticker Deadline Near; Many Lacking

AUSTIN—With the State's April 15 motor vehicle inspection deadline approximately 90 days away, large numbers of Texas motorists have yet to take their vehicles in for the mandatory annual safety inspection.

Colonel Wilson E. Speir, Director of the Texas Department of Public Safety, today urged all motorists whose vehicles have not been inspected to visit an inspection station as soon as possible. "Those getting the inspection now will avoid long lines which are certain to develop at many stations as the April 15 deadline draws near," he said.

The DPS Director noted that Texas adopted an annual inspection program on September 1, 1969. All vehicles inspected since that date have had the sticker placed on the left side of the windshield with a larger number tab inserted to show the month of expiration.

For example, vehicles inspected in September have the number nine displayed and will require reinspection before September 30, 1970. Those inspected in October have the number 10 and must be re-inspected before October 31, 1970. Vehicles which are inspected in January will bear the number one and reinspection will be required before January 31, 1971.

All vehicles which currently have a sticker on the right side of the windshield have not been re-inspected in compliance with the new law, and their owners have only until April 15 to visit an approved inspection station.

## Various Proof Needed For SS Applications

A question often asked by persons about to apply for social security benefits is, "What proofs or records should I take with me when I apply?"

Different proofs are needed for different types of applications, says R. R. Tuley, Jr., social security district manager in Abilene. Proof of age is needed for regular retirement claims, and for children's, widow's wife's, parent's benefits. Proof of marriage is needed for wife's or widow's benefits. Proof of death is needed for all survivor claims.

Then there's one proof which is needed for all types of social security claims. This is proof of the insured worker's most recent earnings.

Social security benefits are based on average earnings over a period of years. All earnings covered by social security are reported to social

security's record-keeping center in Baltimore, Maryland, to be credited to individual worker's accounts. This requires a period of time, however, and when a claimant applies for social security benefits, all of the insured worker's recent earnings may not yet be recorded on his account. So, proof would be the 1962 W-2 Form, "Withholding Tax Statement." For self-employed persons, it would be the income tax return for 1969 and the cancelled check or money order stub used to pay the tax.

With this information about 1969 earnings, the correct social security payments for 1970 can be determined quickly. Without it, there could be a delay of several months in determining the proper benefit rate. Thus, time can be saved on completing almost any claim if this important interim record is brought along at the time of the first interview, Tuley observed.

## Sen. Yarborough Urges All Texans To Register Now

Sen. Ralph W. Yarborough (D-Tex) today urged all Texans to register to vote before the Jan. 31 deadline.

Sen. Yarborough said, "I am greatly concerned because voter registration totals are down in the small and medium population counties. It's essential for good government that the people in the small towns of Texas and in the rural areas register so their voice can be heard through the ballot boxes on election day."

"All eligible Texans must register before the Jan. 31 deadline, including those senior citizens over 65 years of age who reside in the rural counties of our state, Senator Yarborough said.

eligible citizens must register by the January 31 deadline if true democracy by all of the government representing the people is to have great numbers of citizens register," Senator Yarborough said.




**WELCOME TO**  
**LaDon's Steak House & Motel**  
Highway 6 — In DeLeon  
open 6 a.m. to 9 p.m. — 7 days a week

FRESH WATER CATFISH EVERY THURSDAY  
5 to 9 p.m., buffet style.  
**ALL YOU CAN EAT for \$1.35**

**SPECIAL . . . SPECIAL**  
10% DISCOUNT ON ANY FOOD ITEM  
WITH THIS COUPON  
ANY DAY!

★ READ THE CLASSIFIEDS ★


## SEALS OF SERVICE

 <b>LIONS</b> Founded: 1917 Clubs: 23,916 Members: 910,000	 <b>ROTARY</b> Founded: 1905 Clubs: 13,986 Members: 660,500	 <b>JUNIOR CHAMBER</b> Founded: 1920 Clubs: 6,300 Members: 325,000
--	--	---

Say!

Why don't you take a pencil — or pen — in hand and fill out a voter registration form and send it to your county tax assessors office so you can vote in 1970?

Okay!  
Better hurry!  
The deadline is Saturday January 31!





JUDY McLEOD



THE HARVARDS



WALKER AND SHAW



JAY HUMPHRY

# SHIPSTADS & JOHNSON ICE FOLLIES INTERNATIONAL

Texas Premiere  
**ABILENE - FEB. 4-8**  
Taylor County Coliseum

Unsurpassed Beauty    Sheer Fun    Thrills    Exciting Color  
Spectacle after Spectacle, Featuring the World's Top Talent on Ice  
CANADIAN CHAMPION JAY HUMPHRY  
LOVELY JUDY McLEOD    THE GREAT HARVARDS  
THE ICE FOLLIES

FOR CHOICE SEATS—ORDER NOW BY MAIL

<p>7 ABILENE PERFORMANCES</p> <p>Wed., Feb. 4, 8 PM (Sold Out)</p> <p>Thu., Feb. 5, 8 PM</p> <p>Fri., Feb. 6, 8 PM</p> <p>Sat., Feb. 7, 2 PM &amp; 8 PM</p> <p>Sun., Feb. 8, 2 PM and 6 PM</p> <p>Prices: \$4, \$3 and \$2 Half Price Jrs. (16 and under) 8 PM Feb. 5, 2 PM Feb. 7 2 and 6 PM Feb. 8</p>	<p>Make checks payable to ICE FOLLIES</p> <p>Mail to: ICE FOLLIES, P.O. Box 3016 Taylor County Coliseum Abilene, Texas 79604</p> <p>Enclosed is Check    Money Order    Totaling \$_____</p> <p>For _____ ADULT TICKETS at _____ EACH</p> <p>And/or _____ JUNIOR TICKETS at _____ EACH</p> <p>FOR PERFORMANCES OF _____</p> <p>Day    Date    Time</p> <p>NAME _____</p> <p>Street _____ Phone _____</p> <p>City _____ State _____ Zip _____</p> <p>Please enclose self-addressed, stamped envelope for return of tickets.</p> <p>To avoid delay, be sure coupon information is accurate and complete.</p>
--	--

## Elegant! MAJESTIC MOROCCO DINNERWARE

Only  
**33¢**  
WITH EACH AND EVERY \$3 GROCERY PURCHASE



DINNER PLATE


**BUY A PIECE EACH WEEK!**

Only  
**33¢**  
WITH EACH AND EVERY \$3 GROCERY PURCHASE



CUP

Only  
**33¢**  
WITH EACH AND EVERY \$3 GROCERY PURCHASE



SAUCER

Only  
**33¢**  
WITH EACH AND EVERY \$3 GROCERY PURCHASE



BREAD & BUTTER PLATE

Only  
**33¢**  
WITH EACH AND EVERY \$3 GROCERY PURCHASE



FRUIT/DESSERT



Exclusively at Your ... **SAFEWAY**

True Elegance at True Savings ...

## MOROCCO DINNERWARE

Imaginative artistry of design adds new dimensions of beauty and elegance to Morocco dinnerware. Fashioned in the traditional style, its luxurious look is emphasized by the rich, glowing patterns forever protected under a crystal clear glaze. Truly a masterpiece of formal dinnerware artistry. Morocco is practical for everyday use ...

- ★ DISHWASHER SAFE
- ★ OVENPROOF
- ★ DETERGENT PROOF
- ★ FADE PROOF

# 33¢

WITH EACH AND EVERY \$3 GROCERY PURCHASE

Each week a different place setting piece will be featured ... ★ Fruit/Dessert ★ Bread & Butter Plate ★ Dinner Plate ★ Cup ★ Saucer. For each \$3 purchase you pay only 33¢ for the featured item; for each \$6 purchase, two items at 33¢ each, etc. PLUS ... Each week you may purchase your choice of matching completer pieces at savings up to 50%.

## Start Your Set TODAY!

BUY-A-PIECE A WEEK ... ONLY 33¢ with each \$3.00 Purchase!

SCHEDULE BELOW RUNS THREE CONSECUTIVE TIMES

1st WEEK	DINNER PLATE	only 33¢ <small>WITH EACH AND EVERY \$3 PURCHASE</small>
2nd WEEK	CUP	only 33¢ <small>WITH EACH AND EVERY \$3 PURCHASE</small>
3rd WEEK	SAUCER	only 33¢ <small>WITH EACH AND EVERY \$3 PURCHASE</small>
4th WEEK	BREAD & BUTTER PLATE	only 33¢ <small>WITH EACH AND EVERY \$3 PURCHASE</small>
5th WEEK	FRUIT / DESSERT DISH	only 33¢ <small>WITH EACH AND EVERY \$3 PURCHASE</small>

GREAT SAVINGS ON COMPLETER PIECES! Purchase all completer pieces at special discount savings any time during this extraordinary offer. No grocery purchase required.

COMPLETER PIECES AVAILABLE THROUGHOUT THE WEEK

3-pc. Place Setting ... \$1.19	Sugar Bowl ... \$1.39	Covered Butter Dish ... \$1.49
2 Soup Bowls ... .99	Creamer ... 1.39	Salad Bowl ... 3.39
4 Salad Plates ... 1.49	Sauce Boat ... 1.69	Covered Casserole ... 3.69
4 Fruit/Dessert ... 1.49	Oval Platter ... 1.19	2 Mugs ... .99
Vegetable Bowl ... 1.49	Coffee Server ... 2.99	Tearpot ... 3.49
Chop Plate ... 1.49	Salt & Pepper ... 1.19	Relish Plate ... .99

SAFEWAY

**\* HOSPITAL NEWS \***

Patients listed in the Eastland Memorial Hospital Wednesday were:

Wanda Cottle, Gorman	Olen Killion, Cisco
Vera Harris, Cisco	James Cunningham, Ranger
Willie Vay Wylie, Moran	Henry Curtis, Cisco
Daisy Steel, Cisco	Bertie Poe
Gladys Owings, Cisco	Beulah Cooper
William Mitcham, Cisco	E. J. McKellar
	James Franklin
	Myrtle Gray

Annie Nunn, Cross Plains  
Clarence Little  
Cleburne Robertson  
Lois Greene, Eufaula, Ala.  
Garrett Webb  
John Mitchell  
Clifford Edwards, Moran  
Efford Hogan  
LeRoy Cooper, Sweetwater  
Jennie Pierce  
Irene Preslar  
Mary Jo Eaves, Gorman  
Marion Herridge  
Cynthia Ebrod  
Gladys Taylor, Cisco

Maggie Christian, Rising Star  
Jefferson Mackey  
John Tableman, Cisco  
Frank Barnard  
Charlie Houser, Comanche  
Mattie Clatt  
Mae Cecil, Cisco  
Frank Tucker, Carbon  
Sharon Steddum  
Margaret Hanna  
Johnnie Aaron  
Flornece Yancey  
Natalie Vasallo, Cisco  
Helen Murrell

Elvie Pillow  
Beulah Turner  
Willie Pritchard, Cisco  
Marshall Thomas, Cisco  
Harry Eddy  
Margaret Harder, Cisco  
Morris Jones  
Susie Naylor  
Annie Allison, Gorman  
Daniel Fuller, Cisco  
James Young  
James Watson, Gorman  
Ella Canrell  
Anne Brady, Cisco  
Carolyn Whitfill

Patients in danger General Hospital Wednesday morning were:  
Mrs. Earl Horton  
M. S. Nannie Buck  
Mrs. Ella White  
Mrs. O. F. Grumbles  
Mrs. Mary Reddell  
Mrs. Vennie Carwile  
Mrs. W. W. Mitchell  
Mrs. Louise Buswell  
Mrs. Eula Blackwell  
Mrs. Martha Thomason  
Mrs. Clark Bradford  
Bonnie Martin

MRS. PAUL HILL  
Bradley Ellison  
Claude Blacklock  
Richard Henderson  
Ben Yung  
W. D. Turner  
J. M. Davis  
Sopharino Lopez  
Lawrence Hart  
Pat Cates  
R. C. Wilson  
R. L. Stewart  
Max Oht  
Marion Harrison  
Josh Riddling

J. B. Houghton  
Frank Chisum

**FREE!**  
VOTER REGISTRATION  
See Your Tax Assessor-Collector Before Jan. 31

**SAFEWAY LOW LOW PRICES Plus SPECIALS EVERY DAY!**



**Unconditionally Guaranteed Meat!**

**Round Steak** —Lb. **89¢**  
Baby Beef, Full Cut. (Boneless—Lb. 99¢)

**Sirloin Steak** Baby Beef —Lb. **\$1.05**

**Rump Roast** 89¢ —Lb. Baby Beef

**Rib Steaks** 95¢ —Lb. Baby Beef

**Pork Roast** Fresh Picnics, Whole —Lb. **49¢**

**Pork Roast** Semi-Boneless, Boston Butt —Lb. **65¢**

**Pork Chops** Quarter Sliced Pork Loin —Lb. **79¢**

**Pork Sausage** Wingate, \*Reg. or \*Hot 2-Lb. Pkg. **\$1.08**

**All Beef Sausage** Safeway 2-Lb. Pkg. **98¢**

**Polish Sausage** Eckrich 12-oz. Pkg. **89¢**

**All Meat Franks** Safeway 12-oz. Pkg. **55¢**

**Sliced Bologna** Safeway 1-Lb. Pkg. **69¢**

**All Meat Bologna** Eckrich 8-oz. Pkg. **49¢**

**Thick Bacon** Safeway, Thick Sliced 2-Lb. Pkg. **\$1.65**

**Chicken Hens** Fresh-Frozen, USDA Insp. Grade 'A' 4 1/2-Lb. Pkg. **53¢**

**Lunch Meat** Sliced, \*All Beef Bologna, \*Ham, \*Chicken, \*Salami, \*Pickle-Picnics, \*Olives 3-Pkg. **\$1**

**SAFEWAY SELLS ONLY USDA GRADE 'A' WHOLE FRYERS**

**FRYERS 29¢**

USDA Insp. Grade 'A' Safeway Special! (Cut-Up Fresh or Frozen—Lb. 35¢) —Lb.

**Split Breasts** Cut From USDA Insp. Grade 'A' Fryers —Lb. **73¢**

**Leg Quarters** Cut From USDA Insp. Grade 'A' Fryers —Lb. **38¢**

**Drumsticks** \*Wings, Cut From USDA Insp. Grade 'A' Fryers —Lb. **68¢**

Low, Low Prices!

**Honeysuckle White Turkeys**

10 to 14-Lb. Average USDA Insp. Grade 'A' (Half or Whole) —Lb. **48¢**

**Variety & Quality!**

**Sliced Bacon** —Lb. **69¢**  
Slab, Rindless, Breakfast Treat!

**Armour Bacon** —Lb. **89¢**  
Armour Star Minicure, Sliced (Safeway 1-Lb. Pkg. 85¢)

**Smoked Picnics** 49¢ —Lb. Whole, Lean and Delicately Flavored

**Sliced Picnics** Smoked \*Half or \*Whole —Lb. **55¢**

**Safeway Low, Low Meat Prices!**

**T-Bone Steak** —Lb. **\$1.29**  
Baby Beef

**Boneless Brisket** 89¢ —Lb. Baby Beef

**Rib Steaks** 95¢ —Lb. USDA Choice Grade Heavy Beef

**Boneless Roast** 95¢ —Lb. \*Chuck or \*Shoulder, USDA Choice Heavy Beef

**Ground Chuck** —Lb. **79¢**  
Lean Beef

**Ground Beef** —Lb. **\$1.19**  
Safeway Handy Chub Pak —2-Lb. Chub

**Top Sirloin Steak** 155¢ —Lb. Boneless, USDA Choice Grade Heavy Beef

**New York Steak** 209¢ —Lb. Boneless Strip, USDA Choice Grade Heavy Beef

**Enriched Flour**

Harvest Blossom, All-Purpose

Low, Low Prices

5-Lb. Bag **39¢**

**Tomatoes**

Gardenside, Great for Casseroles

Safeway Special!

16-oz. Can **15¢**

**Cake Mixes**

Mrs. Wright's, Assorted

Everyday Low Price

18 1/2-oz. Pkg. **25¢**

**Corn Meal**

Covered Wagon, White

No Messy Stamps

5-Lb. Bag **39¢**

**Ivory Soap**

Personal Size

Safeway Special!

4 Bar Pkg. **25¢**

**Shop Safeway... and Save CASH!**

Don't pay for expensive stamps or "Gimmicks" or be confused with inconvenient coupons! Safeway saves you CASH with Everyday Low, Low Prices Plus Everyday Specials! You get top quality for less!

Save CASH Every Day... Shop Safeway!

**Check These Safeway Low, Low Prices!**

**Detergent** Parade, Washday Favorite! 49-oz. Box **49¢**  
Big Buy!

**Baby Food** Heinz Assorted Strained \*Fruits \*Vegetables \*Desserts Big Buy! Reg. Jar **8¢**

**Tomato Soup** Town House, Lunchtime Favorite! 10 3/4-oz. Can **10¢**  
Big Buy!

**Del Monte Catsup** Rich Flavor, Safeway Special! 14-oz. Bottle **19¢**

**Stokely Corn** Golden, \*Whole Kernel or \*Cream Style Special! 17-oz. Can **19¢**

**Tomato Sauce** Hunt's Safeway Special, 8-oz. Can **10¢**

**Check This Safeway Bakery Value!**

**Raisin Bread** 29¢  
Iced, Skylark, Safeway Special! 1-Lb. Loaf

**Low Prices on Quality Dairy Foods!**

**Cottage Cheese** 29¢  
Lucerne, All Styles, 1-Lb. Ctn. (2-Lb. Carton 57¢) Special!

**"Choc" Milk** Lucerne 33¢  
Buttermilk Lucerne 31¢  
Yogurt Lucerne 25¢

**Sour Cream** Lucerne 37¢  
Fresh Milk Lucerne 61¢  
Cereal Blend Lucerne 29¢  
Low Fat Milk Lucerne 55¢

**More Safeway Low, Low Prices!**

**Cane Sugar** Condi Case, Pure Cane 5-Lb. Bag **56¢**

**Folger's Coffee** All Grinds 1-Lb. Can **83¢**

**Canned Biscuits** Mrs. Wright's, \*Sweet Milk \*Buttermilk 8-oz. Pkg. **8¢** Why Pay 9¢

**Velkay Shortening** 3-Lb. Can **65¢** Why Pay 69¢

**Facial Tissues** Silk Assorted Colors 150-Ct. Box **17¢** Why Pay 21¢

**Saltines** Melrose, Soda Crackers 1-Lb. Box **19¢** Why Pay 25¢

**Paper Napkins** Silk Assorted Colors 60-Ct. Pkg. **9¢** Why Pay 10¢

**Pinto Beans** Town House 2-Lb. Bag **25¢** Why Pay 29¢

**Carnation Milk** Evaporated 13-oz. Can **17¢** Why Pay 19¢

**Garden Fresh Fruits & Vegetables!**

**Bananas** Golden Ripe! Special at Safeway! —Lb. **10¢**

**Check These Safeway Produce Low, Low Prices!**

<b>Strawberries</b> Red & Plump 3 Pint Cartons <b>\$1</b>	<b>Texas Yams</b> Texas Grown —Lb. <b>19¢</b>
<b>Potatoes</b> White Halg. US #1A 10-Lb. Bag <b>59¢</b>	<b>Carrots</b> Nutritious 2 1-Lb. Cans <b>39¢</b>
<b>Russet Potatoes</b> US #1A, Selected 5-Lb. Bag <b>49¢</b>	<b>Seedless Raisins</b> Town House 2-Lb. Bag <b>69¢</b>
<b>Oranges</b> *Sunkist Navel or *Temple, Large Fancy —Lb. <b>19¢</b>	<b>Breakfast Prunes</b> Gardenside 2-Lb. Bag <b>69¢</b>
<b>Jonathan Apples</b> Crisp 3-Lb. Bag <b>49¢</b>	<b>Sunkist Lemons</b> So Juicy, Cal. 49¢
<b>Pineapples</b> Superleaf —Each <b>45¢</b>	<b>Orange Juice</b> Safeway, Pure, From Florida, (1/2-Gal. Dec. 75¢) Quart Dec. <b>39¢</b>

**Frozen Food Low, Low Prices!**

**Dinners** Banquet Assorted, Safeway Special! Reg. Pkg. **39¢**

**Mexican Dinners** Circle T, Family Favorite! —14-oz. Pkg. **39¢**

**Orange Juice** Scotch Treat, From Florida —4-oz. Can **18¢**

**Waffles** Bel-air, Breakfast Treat! —5-oz. Pkg. **2 1/2**

**Low, Low Prices!**

**Ice Cream** Snow Star, Assorted Flavors 1/2-Gal. **59¢**

**Perch Fillets** Captain's Choice, Green Pack —1-Lb. Pkg. **49¢**

**Onion Rings** French Fried, Bel-air —4-oz. Pkg. **35¢**

**Shoestrings** Scotch Treat —2-Lb. Pkg. **35¢**

**More Low Prices!**

**Dog Food** Twin Pet Big Buy! 15-oz. Can **7¢**

**Safeway Low, Low Prices!**

**Rubbing Alcohol** Great for Massages —16-oz. Plastic Bottle **14¢**

**Aspirin** Safeway, 5 Grain, A Guaranteed Quality Product! 100-Ct. Bottle **14¢**

**Comet** Clear, ser (2e Off Label) Special! 2 14-oz. Cans **25¢**

**Bleach** White Magic Liquid Big Buy! 39¢  
Gnlor Plastic

**Top Quality Fresh Fruits & Vegetables at Safeway!**

**Lettuce** Large Crisp Heads. A Must for Every Salad —Each **19¢**

## LEGAL NOTICE

**LEGAL NOTICE**  
AN ORDINANCE FIXING AND DETERMINING THE GENERAL SERVICE RATE TO BE CHARGED FOR SALES OF NATURAL GAS TO RESIDENTIAL AND COMMERCIAL CONSUMERS WITHIN THE CITY LIMITS OF EASTLAND, EASTLAND COUNTY, TEXAS, AND PROVIDING FOR THE MANNER IN WHICH SUCH RATE

MAY BE CHANGED, ADJUSTED AND AMENDED. BE IT ORDAINED BY THE CITY OF EASTLAND, TEXAS:  
SECTION 1. Effective with the first gas bills rendered after the final approval of this ordinance, the maximum general service rate for sales of natural gas rendered to residential and commercial consumers within the city limits

of Eastland by Lone Star Gas Company, a Texas corporation, its successors and assigns, is hereby fixed and determined as follows:  
First 1,000 cu. ft. or fraction thereof \$1.856 Gross; \$1.67 Net  
All Over 1,000 cu. ft. at \$1.0322 per Mef Gross; \$.929 per Mef Net.  
No gas bill will be rendered to any residential or commercial consumer served under the above rate not consuming any gas during any monthly billing period.  
ADJUSTMENT  
The amount of each net monthly bill computed at the above stated rates shall be

subject to the following adjustment. Plus an amount equivalent to the proportionate part of any new tax, or increased tax, or any other governmental imposition, rental, fee or charge (except state, county, city and special district ad valorem taxes and taxes on net income) levied, assessed or imposed subsequent to July 1, 1969, upon or allocable to the Company's distribution operations, by a new or amended law, ordinance or contract. Each gross monthly bill shall be adjusted proportionately. Company, at its option, may forego the application of this adjustment; however, failure of Company to apply such adjustment shall not constitute a waiver of Company's right from time to time, or at any time, to make such adjustment, in whole or in part, in any subsequent current monthly bill that may be applicable to such bill.  
Net rate shall apply to all bills paid within ten days from monthly billing date; gross rate shall be applicable thereafter.  
The above rate is applicable to each residential and commercial consumer per month or for any part of a month for which gas is used at the same location.  
In addition to the aforesaid rates, Company shall have the right to collect such reasonable charges as are necessary to conduct its business and to carry out its reasonable rules and regulations in effect.  
SECTION 2. The rate set forth in Section 1 may be changed and amended by either the City or Company furnishing gas in the manner provided by law. Service, hereunder is subject to the orders of regulatory bodies having jurisdiction, and to the Company's Rules and Regulations currently on file in the Company's office.  
PASSED AND APPROVED on first reading on this the 15th day of December, A.D., 1969.

FINALLY PASSED AND APPROVED on second reading on this the 19th day of January, A.D., 1970.  
ATTEST:  
LEWIS TINER  
Secretary  
W. F. DEATON  
Mayor  
City of Eastland, Texas  
STATE OF TEXAS  
COUNTY OF EASTLAND  
I, Lewis Tiner, Secretary of the City of Eastland, Eastland

County, Texas, hereby certify that the above and foregoing is a true and correct copy of an ordinance passed by the City Commission on first reading on the 15th day of December, 1969, and was finally passed and approved by the City Commission on second and final reading on the 19th day of January, 1970, all as appears of record in the Minutes of said City Commission in

Book 7, page January, 1970.  
WITNESS MY HAND AND SEAL OF SAID CITY, this the 19th day of January, A. D., 1970.  
LEWIS TINER  
Secretary  
City of Eastland, Texas

Mr. and Mrs. Garry Rollins of Denton visited his parents, Mr. and Mrs. F. M. Rollins, last week-end.

## A carefully prepared family insurance plan

**Protects your home, your family and yourself**



Something good happens when you see your "Heart of Gold" man  
**M. H. FERRY**  
107 W. Main St.  
Office — 629-1566  
Residence — 629-1095

**Southland Life**  
INSURANCE COMPANY

Pick Your

**Hallmark Cards**  
When you care enough to send the very best

Valetines & Party Goods Now!




**EASTLAND DRUG**

# Two years from now a 1970 Buick should be a little newer than most other cars.



Buicks are built that way. Checked and rechecked. Buick drive trains are balanced right on the cars. Buicks have semi-closed cooling systems. They should never overheat. Every Buick has a strong, long-lasting body by Fisher. All Buick V8 engines have carburetor time modulated choke controls for fast, easy starting in any weather. Every time. Every Buick V-8 engine is precision balanced and inspected right on the assembly line by a unique compressed air technique known as air motoring. Buick developed it. It's another Buick exclusive. That, incredibly, is only the beginning.

The final result is lasting value. An integral part of every Buick. Standard equipment on the Buick that's waiting for you at the Buick Value Center. The Buick showroom nearest you. Where you can learn all the facts about the new cars that will stay new longer. Where you can begin enjoying Buick value.



**Buick Value. Something to believe in.**

you'll find more food values all over the store!

### PILE UP BARGAINS

Sunshine CRACKERS 1-lb. box <b>37c</b>	White Swan SHORTENING 3-lb. can <b>59c</b>
WHITE SWAN	
SPINACH	6 303 cans <b>\$1</b>
Wish Bone FRENCH DRESSING 16-oz. bottle <b>59c</b>	CRISCO OIL 48-oz. bottle <b>89c</b>
WHITE SWAN	
APPLE SAUCE	6 303 cans <b>\$1</b>
WHITE SWAN	
BISCUITS Regular or Buttermilk	6 8-oz. cans <b>49c</b>
WHITE SWAN	
PINEAPPLE JUICE	3 46-oz. cans <b>\$1</b>

### SUPER SAVE MARKETS

Borden's BUTTERMILK 1/2-gal. carton <b>45c</b>
Borden's MELLORINE Assorted Flavors 1/2-gal. carton <b>39c</b>
White Swan PORK & BEANS 15-oz. cans <b>\$1</b>
SPAGHETTI No. 300 can <b>9c</b>
HI-VI 50 DOG FOOD 300 can <b>9c</b>
HAIR SPRAY <b>AQUA NET</b> 79c Value <b>49c</b>
DENTAL CREAM <b>49c</b>
ANACIN <b>59c</b>
CANNON BATH TOWELS 12-oz. pkg. <b>59c</b>

### Produce O' Plenty

Russet Potatoes	10 lbs. <b>59c</b>
Bananas	lb. <b>10c</b>
Yams	lb. <b>19c</b>
Rome Apples	lb. <b>19c</b>
Oranges	5-lb. bag <b>49c</b>

### TASTY MEATS WITH THRIFT APPEAL

Chuck Roast	lb. <b>59c</b>
Beef Ribs	lb. <b>39c</b>
Decker's Country Sausage	2 lbs. <b>1.19</b>
Decker's Korn Kist Sliced Bacon	lb. <b>59c</b>
Decker's Weiners	12-oz. pkg. <b>59c</b>

HOME OWNED — HOME OPERATED

# SUPER SAVE

G. A. WHITE — Manager  
PHONE 629-1191 400 S. SEAMAN

**DOUBLE GOLD BOND STAMPS**  
Every Wednesday with \$2.50 Purchase Or More