

EASTLAND TELEGRAM



VOLUME 90, NUMBER 88

EASTLAND, TEXAS 76448 — THURSDAY, NOVEMBER 3, 1966

TEN CENTS (10c)

TidBITS



By H.V.O.

LAST WILL and testament of some departed soul has found its way on a scratch pad, now being used by Grover Hallmark:

"My overdraft at the bank will go to my wife. She will explain it."

"My equity in my automobile to my son. He will then have to go to work to keep up payments and buy gas and oil."

"Give my good will to the supply house... they took some awful chances on me and are entitled to something."

"My equipment goes to the junk man. He's had his eye on it for several years."

"I want six of my creditors for pallbearers. They have carried me for so long they might as well finish the job."

MRS. VIRGINIA Russell has asked us to remind you that Sen. John Tower will speak on television Thursday evening at 8:30 p. m., and she urges good viewing.

Church of God Set Revival Here

The First Church of God, Lamar and Valley Streets, will begin a week-long revival Sunday, Nov. 6, announced the pastor, the Rev. O. M. Williams.

The Rev. Billy Sanders, pastor of the Church of God in Lubbock, will preach at the 7:30 p. m. services through Nov. 13.

Music and singing will be in charge of the Rev. Mr. and Mrs. W. E. Hallenbeck, pastors of the Cisco Church of God and former Eastland pastors.

The public was invited to attend.

FISH SUPPER IS THURSDAY NITE

The Men's Fellowship Bible Class of the First Christian Church will hold its annual fish supper in the church annex at 6:30 p. m. Thursday, Nov. 3.

All men are invited to attend. A program has been arranged.

Mavericks vs. Loboes In Cisco Friday Night

the boundaries of Eastland County during the past weeks, the Eastland High School Mavericks and the Cisco High School Loboes football teams will each be looking for a much-needed victory when

they clash Friday night in Cisco. Kickoff time is 7:30.

Neighbors and friendly rivals for years, the teams are in the same league this season for the first time in a long time with the moving up into District 7-AA by Eastland.

The Loboes are win-less this year and the Mavericks have had three wins but none in district competition.

Coach Shirley Frazier reports his Mavericks ready to go, and rarin' to meet some "home folks" for a change after having duled with the likes of Outlanders like Hamilton, Granbury and Comanche.

A large delegation of fans are expected to make the trip to Cisco to see the traditional battle between the two teams.

Maverick Of The Week ...



66

STEVE WILSON

15-year-old sophomore, son of Mr. and Mrs. Guy Horton of 511 Pershing St.

A halfback, Steve is a line-backer on defense and in the Comanche game earned his honor when he carried the ball 25 times for 65 yards. He caught a 29-yard pass for a touchdown, and threw another one complete for four yards.

Defensively, he intercepted two Comanche passes.

This is his first year of varsity ball, and he plays basketball, baseball and runs track.

Ed Sargent Loses In Debate With Rattler

Mrs. Ed Sargent reported Wednesday morning that her husband was resting fairly well in Eastland Memorial Hospital where he has been since Friday afternoon, when he was bitten by a rattlesnake.

Ed was checking livestock in a pasture south of Eastland when the snake bit him above the left ankle. He managed to get back to his pickup, where he made a tourniquet of bailing wire and drove himself to town. He was admitted to the hospital immediately.

CISCO - EASTLAND RECORD

| | | |
|-----------|---|------------------------|
| 1934 | — | Eastland 23, Cisco 7. |
| 1935 | — | Eastland 0, Cisco 0. |
| 1936 | — | Eastland 28, Cisco 0. |
| 1937 | — | Eastland 6, Cisco 0. |
| 1938 | — | Cisco 18, Eastland 0. |
| 1939 | — | Cisco 27, Eastland 0. |
| 1940-1947 | — | Unavailable. |
| 1947 | — | Cisco 14, Eastland 0. |
| 1948 | — | Eastland 6, Cisco 0. |
| 1949 | — | Eastland 13, Cisco 13. |
| 1950 | — | Cisco 20, Eastland 0. |
| 1951 | — | Eastland 13, Cisco 6. |
| 1952 | — | Cisco 26, Eastland 6. |
| 1953 | — | Eastland 7, Cisco 0. |
| 1954 | — | Cisco 51, Eastland 12. |
| 1955 | — | Cisco 33, Eastland 13. |
| 1956 | — | Cisco 27, Eastland 25. |
| 1957 | — | Cisco 21, Eastland 18. |
| 1958 | — | Cisco 28, Eastland 6. |
| 1959 | — | Cisco 35, Eastland 6. |
| 1960 | — | Cisco 28, Eastland 0. |
| 1961 | — | Cisco 41, Eastland 0. |
| 1962 | — | Eastland 20, Cisco 18. |
| 1963 | — | Cisco 34, Eastland 14. |
| 1964 | — | Cisco 34, Eastland 0. |
| 1965 | — | Eastland 14, Cisco 8. |

PICK O' THE WEEK

Last week's results: 11 right and 1 wrong.

District 7-AA
Hamilton over Clyde.
Granbury over Comanche.

Others
Brownwood over Childress.
Herschi over Graham.
Santa Anna over Cross Plains.

Goldthwaite over Early.
Ranger over De Leon.
Albany over Baird.
Gorman over Blooming Grove.

Vernon over Burk Burnett.
Bangs over Hico.
Game of the Week
Eastland 16, Cisco 15.

Church Plans For Barbecue

The First Baptist Church Colored will hold a benefit dinner for the Junior Usher Board in the church annex on North Lamar Street this Saturday beginning at 11 a. m.

Plates are \$1 each with dessert and drink free. There will also be pastry, pies, and cakes for sale.

Roston King will prepare the barbecue.

Freyschlag INSURANCE

Presents the WEATHER —
THURSDAY — Sunny. Sun rises at 6:26, sets at 5:01. Moon rises at 9:04 p. m. Fishing best.

FRIDAY — Mild. Sun rises at 6:27, sets at 5:00. The moon rises at 10:12 p. m. Fishing best.

SATURDAY — Unsettled. Sun rises at 6:28, sets at 5:59. Moon rises 11:23 p. m. Fishing poor.



SUPPER-TIME AT THE CARNIVAL—Bernard Hanna accepts with relish goodies being served at the food booth at the P-TA Halloween Carnival in the Gym Monday night. Behind the counter are Mrs. Minton Hanna and Mrs. Fred Brown.

'Stolen Auto' Report Turns Out To Be Halloween Pranking 'Fun'

A Halloween prank turned into a four-state alarm Monday.

Jeannie Wright, daughter of Mr. and Mrs. James T. Wright, parked a white 1959 Chevrolet Impala in front of Eastland High School about 7:30 Monday night.

When she left the Halloween Carnival an hour later, the car was gone.

Local police considered the whole thing a local joke and hunted for the car in likely spots: the cemetery, the spillway, Lake Leon. Failing to find the car, police put out an alert to area

towns, and Austin. Thinking the Eastland theft could be connected with another car theft some hours earlier, the alarm was spread to neighboring states.

City police found the car behind the gym about 11 p. m. Jeannie, Sandra Copland, and Jimmy Finley had driven by the gym twenty minutes before 11, someone parked the car there just before it was sighted by police.

Halloween enthusiasm in Eastland was generally fairly calm, Police Chief Ray Laney reported.

Democrats Hold Lively Meeting

An enthusiastic delegation of 31 Eastland County Democrats met Tuesday evening and participated in a lively discussion of politics — "from the Courthouse to the White House."

Talk centered on Democrat Waggoner Carr's campaign for U. S. Senator. A poll taken from the good county wide representation indicated a victory for Mr. Carr over his Republican opponent John Tower in Eastland County.

Chairman Mike Collins, county chairman for Carr, read the following telegram:

"I have just learned of your meeting tonight of all good Democrats. Please give my best regards and good wishes to the fine people of Eastland County. I know that all of you are working for a great Democratic victory Nov. 8. Do not leave a stone unturned to assure victory for our party. I will be looking forward to visiting each of you after the election. Best wishes and good luck. Waggoner Carr, Attorney General of Texas."

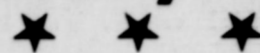
A discussion followed on the ballot itself, including the 16 constitutional amendments, and the fact that there are four parties listed, which will mean that a person wishing to vote a straight party ticket, will need to mark through the other three columns.

A lively discussion of party loyalty followed, particularly as it pertains to county office holders, and it was the general consensus of the group that all county office holders should participate in party activities other than only seeking their own office.

Chairman Collins said: "Until we can have a strong, well-organized Republican party with their own primaries, we can't strengthen our own party and enjoy the complete cooperation of all elected officials."

Campaign materials including bumper stickers and post cards, were distributed and each attendee pledged to be active in working to get out the vote on Tuesday, Nov. 8.

EASTLAND AUTO SHOW SATURDAY, 12 TILDARK



See the '67s; \$100 in Prizes Given

All the new automobiles will be on display at one location in Eastland Saturday at the 1967 Eastland Auto Show, to be held in the 100 block of E. Commerce St., it has been announced here.

All local dealers and the local bank are participating in the special showing from

12 noon Saturday until "sundown."

Not only will local area residents be able to see all the fine new automobiles at one time, but there will also be fabulous free prizes to be given away every hour on the hour, beginning at 1 p. m.

Registration for the prizes will get underway at noon and drawings will be held hourly.

A \$10 bill will be given each hour by a different dealer, and at 5 p. m. a grand prize of a \$50 savings bond will be given by the bank.

Free refreshments will be available throughout the showing from a special hospitality bar.

Participants are Fullen Motor Co., King Motor Co., Muirhead Motor Co., Pipkin Motor Co., Rushing Motor Co. and Eastland National Bank.

The entire public is cordially invited to attend the special showing and see the many advances that are available on the brand new automobiles.

Eastland has a reputation for being the new-car center for this entire area and the special Auto Show Saturday will be evidence of this standing.

Handling arrangements for the special show are T. M. Fullen of Fullen Motor Co., Bob King of King Motor Co., Jack Muirhead of Muirhead Motor Co., Bruce Pipkin of Pipkin Motor Co., Herman Rushing of Rushing Motor Co., Grover Hallmark, vice president of Eastland National Bank.

On view for easy inspection in the block-long display will be the new lines, carried by Eastland dealers, including the Chevrolets, Fords, Mercurys, Comets, Buicks, Pontiacs, Oldsmobiles, Cadillacs, Ramblers, GMC trucks, Chryslers and Plymouths.

You do not have to be present to win the prizes, representatives, report, and every one may register beginning at 12 noon. The bank will also have an instant financing booth available at the showing. Other features of the Auto Show will be announced.

The admission is free of course, and as always, there will be free parking in Eastland on Saturday.

There'll be all types of vehicles on display — sports cars, economy models, family sedans, luxury models, and specialty items — enough to keep automobile buffs busy for an entire afternoon.

The Association invited you to the bake sale at A&P, 8 a. m. to 2 p. m. at A&P, Safeway, and Super Save.

The Association is composed of girls who have earned an athletic letter. All 31 prospective members of the girls' basketball team, the Mavettes, are helping the Association in this money-making project.

Money earned from the bake sale will be used to film two basketball games. The films made last year proved valuable in helping the girls see their mistakes and correct them in future games.

Officers of the Association are Arline Arnold, president; Sue Underwood, vice-president; Shirley Reid, secretary; and Marie Wilson reporter.

The Association invited you to the bake sale at A&P, 8 a. m. to 2 p. m. at A&P, Safeway, and Super Save.

Janet King, granddaughter of Mrs. Hattie Baker, is doing her practice teaching in Austin this semester. Mrs. Bessie Williams, sister-in-law of Mrs. Baker, has returned to her home in Nashville, Tennessee, after a week's visit in Eastland.

Mr. Leslie will have the key role in orienting Methodists of the Cisco area as to the importance of the annual Christmas offering which will be made in Methodist churches throughout Texas and New Mexico in December.

Bishop W. Kenneth Pope addressed the 157 who attended the meeting in Waco on Wednesday and Thursday (Oct. 26 & 27). He listed the Methodist Home's recent advances in the field of child-care and challenged Methodist laymen and ministers in Texas, New Mexico to do their parts to aid in the Home's continued program.

"There are more than 360 children on the campus at The Methodist Home today, and the average child there is the by-product of a home destroyed by alcohol, divorce, crime, mental illness or desertion," said Mr. Leslie.

"We are dedicated to contributing our support to the staff's task of providing love, understanding and special counseling and to furnishing food, clothing and shelter for these children. The Methodist Home has a heartwarming 76-year record of working to provide a child with a healthy, normal life and with the ability to make his own way and meet the demands of society," added Mr. Leslie.

Mrs. Aline McFatter has returned from Rotan where she attended funeral services for her brother-in-law, Lon R. Adams.

will get underway at noon and drawings will be held hourly.

A \$10 bill will be given each hour by a different dealer, and at 5 p. m. a grand prize of a \$50 savings bond will be given by the bank.

Free refreshments will be available throughout the showing from a special hospitality bar.

Participants are Fullen Motor Co., King Motor Co., Muirhead Motor Co., Pipkin Motor Co., Rushing Motor Co. and Eastland National Bank.

The entire public is cordially invited to attend the special showing and see the many advances that are available on the brand new automobiles.

Eastland has a reputation for being the new-car center for this entire area and the special Auto Show Saturday will be evidence of this standing.

Handling arrangements for the special show are T. M. Fullen of Fullen Motor Co., Bob King of King Motor Co., Jack Muirhead of Muirhead Motor Co., Bruce Pipkin of Pipkin Motor Co., Herman Rushing of Rushing Motor Co., Grover Hallmark, vice president of Eastland National Bank.

On view for easy inspection in the block-long display will be the new lines, carried by Eastland dealers, including the Chevrolets, Fords, Mercurys, Comets, Buicks, Pontiacs, Oldsmobiles, Cadillacs, Ramblers, GMC trucks, Chryslers and Plymouths.

You do not have to be present to win the prizes, representatives, report, and every one may register beginning at 12 noon. The bank will also have an instant financing booth available at the showing. Other features of the Auto Show will be announced.

The admission is free of course, and as always, there will be free parking in Eastland on Saturday.

There'll be all types of vehicles on display — sports cars, economy models, family sedans, luxury models, and specialty items — enough to keep automobile buffs busy for an entire afternoon.

The Association invited you to the bake sale at A&P, 8 a. m. to 2 p. m. at A&P, Safeway, and Super Save.

Janet King, granddaughter of Mrs. Hattie Baker, is doing her practice teaching in Austin this semester. Mrs. Bessie Williams, sister-in-law of Mrs. Baker, has returned to her home in Nashville, Tennessee, after a week's visit in Eastland.

Mr. Leslie will have the key role in orienting Methodists of the Cisco area as to the importance of the annual Christmas offering which will be made in Methodist churches throughout Texas and New Mexico in December.

Bishop W. Kenneth Pope addressed the 157 who attended the meeting in Waco on Wednesday and Thursday (Oct. 26 & 27). He listed the Methodist Home's recent advances in the field of child-care and challenged Methodist laymen and ministers in Texas, New Mexico to do their parts to aid in the Home's continued program.

"There are more than 360 children on the campus at The Methodist Home today, and the average child there is the by-product of a home destroyed by alcohol, divorce, crime, mental illness or desertion," said Mr. Leslie.

"We are dedicated to contributing our support to the staff's task of providing love, understanding and special counseling and to furnishing food, clothing and shelter for these children. The Methodist Home has a heartwarming 76-year record of working to provide a child with a healthy, normal life and with the ability to make his own way and meet the demands of society," added Mr. Leslie.

Mrs. Aline McFatter has returned from Rotan where she attended funeral services for her brother-in-law, Lon R. Adams.

Mrs. Aline McFatter has returned from Rotan where she attended funeral services for her brother-in-law, Lon R. Adams.

Mrs. Aline McFatter has returned from Rotan where she attended funeral services for her brother-in-law, Lon R. Adams.

Mrs. Aline McFatter has returned from Rotan where she attended funeral services for her brother-in-law, Lon R. Adams.



CARNIVAL FUN — Teacher Keith Watkins tries his luck at the Grab Bag at the Halloween Carnival Monday night.

All the new automobiles will be on display at one location in Eastland Saturday at the 1967 Eastland Auto Show, to be held in the 100 block of E. Commerce St., it has been announced here.

All local dealers and the local bank are participating in the special showing from

12 noon Saturday until "sundown."

Not only will local area residents be able to see all the fine new automobiles at one time, but there will also be fabulous free prizes to be given away every hour on the hour, beginning at 1 p. m.

Registration for the prizes will get underway at noon and drawings will be held hourly.

A \$10 bill will be given each hour by a different dealer, and at 5 p. m. a grand prize of a \$50 savings bond will be given by the bank.

Free refreshments will be available throughout the showing from a special hospitality bar.

Participants are Fullen Motor Co., King Motor Co., Muirhead Motor Co., Pipkin Motor Co., Rushing Motor Co. and Eastland National Bank.

The entire public is cordially invited to attend the special showing and see the many advances that are available on the brand new automobiles.

Eastland has a reputation for being the new-car center for this entire area and the special Auto Show Saturday will be evidence of this standing.

Handling arrangements for the special show are T. M. Fullen of Fullen Motor Co., Bob King of King Motor Co., Jack Muirhead of Muirhead Motor Co., Bruce Pipkin of Pipkin Motor Co., Herman Rushing of Rushing Motor Co., Grover Hallmark, vice president of Eastland National Bank.

On view for easy inspection in the block-long display will be the new lines, carried by Eastland dealers, including the Chevrolets, Fords, Mercurys, Comets, Buicks, Pontiacs, Oldsmobiles, Cadillacs, Ramblers, GMC trucks, Chryslers and Plymouths.

You do not have to be present to win the prizes, representatives, report, and every one may register beginning at 12 noon. The bank will also have an instant financing booth available at the showing. Other features of the Auto Show will be announced.

The admission is free of course, and as always, there will be free parking in Eastland on Saturday.

There'll be all types of vehicles on display — sports cars, economy models, family sedans, luxury models, and specialty items — enough to keep automobile buffs busy for an entire afternoon.

The Association invited you to the bake sale at A&P, 8 a. m. to 2 p. m. at A&P, Safeway, and Super Save.

The Association is composed of girls who have earned an athletic letter. All 31 prospective members of the girls' basketball team, the Mavettes, are helping the Association in this money-making project.

Money earned from the bake sale will be used to film two basketball games. The films made last year proved valuable in helping the girls see their mistakes and correct them in future games.

Officers of the Association are Arline Arnold, president; Sue Underwood, vice-president; Shirley Reid, secretary; and Marie Wilson reporter.

The Association invited you to the bake sale at A&P, 8 a. m. to 2 p. m. at A&P, Safeway, and Super Save.

Janet King, granddaughter of Mrs. Hattie Baker, is doing her practice teaching in Austin this semester. Mrs. Bessie Williams, sister-in-law of Mrs. Baker, has returned to her home in Nashville, Tennessee, after a week's visit in Eastland.

Mr. Leslie will have the key role in orienting Methodists of the Cisco area as to the importance of the annual Christmas offering which will be made in Methodist churches throughout Texas and New Mexico in December.

Bishop W. Kenneth Pope addressed the 157 who attended the meeting in Waco on Wednesday and Thursday (Oct. 26 & 27). He listed the Methodist Home's recent advances in the field of child-care and challenged Methodist laymen and ministers in Texas, New Mexico to do their parts to aid in the Home's continued program.

"There are more than 360 children on the campus at The Methodist Home today, and the average child there is the by-product of a home destroyed by alcohol, divorce, crime, mental illness or desertion," said Mr. Leslie.

BAKE SALE SET SATURDAY BY 'E' ASSOCIATION

The Eastland High School Girls' "E" Association is having a bake sale Saturday, Nov. 5, from 8 a. m. to 2 p. m. at A&P, Safeway, and Super Save.

The Association is composed of girls who have earned an athletic letter. All 31 prospective members of the girls' basketball team, the Mavettes, are helping the Association in this money-making project.

Money earned from the bake sale will be used to film two basketball games. The films made last year proved valuable in helping the girls see their mistakes and correct them in future games.

Officers of the Association are Arline Arnold, president; Sue Underwood, vice-president; Shirley Reid, secretary; and Marie Wilson reporter.

The Association invited you to the bake sale at A&P, 8 a. m. to 2 p. m. at A&P, Safeway, and Super Save.

Janet King, granddaughter of Mrs. Hattie Baker, is doing her practice teaching in Austin this semester. Mrs. Bessie Williams, sister-in-law of Mrs. Baker, has returned to her home in Nashville, Tennessee, after a week's visit in Eastland.

Mr. Leslie will have the key role in orienting Methodists of the Cisco area as to the importance of the annual Christmas offering which will be made in Methodist churches throughout Texas and New Mexico in December.

Bishop W. Kenneth Pope addressed the 157 who attended the meeting in Waco on Wednesday and Thursday (Oct. 26 & 27). He listed the Methodist Home's recent advances in the field of child-care and challenged Methodist laymen and ministers in Texas, New Mexico to do their parts to aid in the Home's continued program.

"There are more than 360 children on the campus at The Methodist Home today, and the average child there is the by-product of a home destroyed by alcohol, divorce, crime, mental illness or desertion," said Mr. Leslie.

"We are dedicated to contributing our support to the staff's task of providing love, understanding and special counseling and to furnishing food, clothing and shelter for these children. The Methodist Home has a heartwarming 76-year record of working to provide a child with a healthy, normal life and with the ability to make his own way and meet the demands of society," added Mr. Leslie.

Mrs. Aline McFatter has returned from Rotan where she attended funeral services for her brother-in-law, Lon R. Adams.

Mrs. Aline McFatter has returned from Rotan where she attended funeral services for her brother-in-law, Lon R. Adams.

Mrs. Aline McFatter has returned from Rotan where she attended funeral services for her brother-in-law, Lon R. Adams.

Mrs. Aline McFatter has returned from Rotan where she attended funeral services for her brother-in-law, Lon R. Adams.

Mrs. Aline McF

Announcements

MASONIC LODGE NO. 167
Meets second Thursday of each month at 7:30 p. m. in the Masonic Hall. Call T. L. Amis, W. M., MA 9-2267 or L. E. Huckabay, Sec., MA 9-1391 for information.

EASTLAND ROTARY CLUB

Meets each Monday noon at White Elephant Restaurant in Eastland.
Roland MacFarland, President

Notice

NOTICE: Prints of photos appearing in the Telegram are available by contacting the office at MAIn 9-1707. tf

NOTICE: Plan your own home. Valley View Estates. Kinnaid Real Estate. tf

NOTICE: Close to schools. Valley View Estates. Kinnaid Real Estate. tf

NOTICE: FHA and GI home financing. Valley View Estates. Kinnaid Real Estate. tf

NOTICE: Planning a wedding? Eastland Telegram has napkins for both shower and reception. tf

NOTICE: Need extra money for Christmas? Beauty Counselor has sales openings. Flexible hours. Full or part-time. Call Ranger HI 7-3180. 86

NOTICE: Want rent? See Valley View Estates. Kinnaid Real Estate. tf

NOTICE: For home repairs. Call R. C. Turner, Home Services, Eastland, MA 9-2286. No job too small. Free estimates. tf

NOTICE: See us for rubber stamps. The Eastland Telegram. tfc

NOTICE: If you want to drink that's your business. If you want to stop, that's ours. Tricities Alcoholics Anonymous. Box 542, Eastland, Tex. 500 N. Seaman. 104

NOTICE: Need extra money for Christmas? Beauty counselor has sales openings. Flexible hours. Full or part-time. Call Ranger HI 7-3180.

NOTICE: Complete line of infant girls' and boys' clothes. Up to size 4 in little girls dresses. NEW: nylon tights in pastels and red. Sizes 6 mo., 1 year and 1 year to 3-yr. ONLY \$1.25. Guaranteed one year. Full line shower gifts. (We cater to showers). Mrs. Houle's Babyland, 612 South Daugherty. MA 9-2089. tf

GERT'S a gay girl — ready for a whirl after cleaning carpets with Blue Lustrite. Rent electric shampooer \$1. Coats Furniture Co. 89

For Sale

FOR SALE: Ranches and farms — 160, 290 and 733, east of Ranger, good deer country; 185 acres, below lake, nice 3 bedroom home, peanut all; 40 acres, all, nice 1400 square feet home, near Carbon; 100 acres, well fenced, west of Ranger four miles; other larger tracts in this area.

HOMES AND LOTS — Two bedroom, Cisco to rent; two bedroom, Cisco to sell; two and three bedrooms in Eastland; new three bedroom brick homes, F.H.A. or G.I. Loan; three acres, nice home sites, Olden; several lots, two houses in Ranger, \$2,500. Contact Buck Wheat, Ranch and Farm Service, 301 N. Seaman, Eastland. Phone MA 9-2131, night MA 9-1973. tf

FOR SALE: Freezers, both upright and chest types. Refrigerators with freezer across tops. All are guaranteed. Call MA 9-1157. Carl Timmons. 89

FOR SALE: Caloric gas range. Excellent condition. Ultra-matic model with look-in oven. One single wrought iron bed with new mattress. See at 509 Pershing St. or call MAIn 9-2182. tf

FOR SALE: Registered Angora Billies. Hunter's Drive in Dairy, Hwy. 80, Olden. Phone 2374. tf

FOR SALE: All kinds of wood-working tools. Many other things. 105 South Armerman. tf

FOR SALE: 1966 Ford pickup with sleeper. \$1850.00. Call MAIn 9-1423 after 5 p.m. 89

FOR SALE: 1965 Honda motorcycle. \$1500.00. See A. K. Garrett, 310 Hill. 88

FOR SALE: Small business. See at 1300 Seaman St. tf

FOR SALE: Lovely home at 510 E. Conner St. in Eastland. 3 bed rooms, den, 2 baths. Small down payment and 30 year pay out at 6%. Why pay rent? Tel HI 2-1499, Cisco.

FOR SALE: Take up payments on 1966 Corvair Corsa, 4500 miles, four speed, 149 horsepower, Call KERC, MAIn 9-2621. tf

HOMES FOR SALE

New Homes in Eastland's newest addition, Valley View Estates.

Three bedroom house, one bath, 808 South Bassett.

Five room house with large lot in Olden, \$3500.00.

Four bedroom home — 1205 West Commerce, newly re-decorated. Financing available. Must see to appreciate.

Modern eight room dwelling in Olden, one-half acre. Priced for quick sale.

Tourist court and dwelling, Highway 80 west. Excellent income property.

Numerous other dwellings in all parts of town in all price ranges. tf

KINNAIRD REAL ESTATE
207 W. Main — MA 9-2544
Eastland, Texas

Farms & Ranches

160 acre peanut farm, nice home.

120 acre peanut farm, nice home.

160 acre stock farm, new net fences, 7 tanks, some pecans, Coastal, good grass, "top notch", will finance.

224 acres, good limestone, live oak area, 70 acres cultivation, 4 tanks, net fences.

193 acres grass, pecans, minerals, good production, adjoins lake, owner will finance.

300 acres Desdemona area, minerals, good oil production, 35 acres peanuts, possible irrigation on this.

320 acres good grass land, net fences, good water, fair house, owner financed.

420 acres, practically new home, good irrigation wells and equipment, 200 cultivated.

580 acres, 100 in peanuts, approx. 2,000 pecan trees, two bedroom home, net fences, well watered, \$135 acre.

700 acres, well improved stock farm.

980 acres, improved, on the pavement.

900 acres, unimproved mesquite grass land.

1,400 acres improved ranch, on pavement.

1,800 acres grass northwest of Eastland.

4,000 acres improved ranch, good minerals, good water, high carrying capacity, paved road. A good solid ranch, owner financed, low down payment and reasonable interest rate.

HOMES FOR SALE

Nice 3 bedroom, 1 1/2 baths, 3 lots, bomb shelter, nice yard, trees and shrubery on Hillcrest. Excellent terms or cash.

Nice 2 bedroom, 2 1/2 lots, trees, cyclone fence. Good terms. On Oaklawn Street. \$10,000.

Nice 3 bedroom, 1 1/2 bath, 3 lots, corner Sadosa and Daugherty St. Some terms can be arranged. Present owner wants cash, \$7850.

Small 2 bedroom house, some fruit trees, finance with \$600 down. \$3250.

Nice 2 bedroom house, close in, recently remodeled. Financed. \$6300.

Clean 4 bedroom home, remodeled, some financing. Is priced at \$8,000.

Home and small acreage at Lake Leon. Terms or cash. \$15,750. . . .

Try This Car Quiz!

Do you get speedy automotive service? () ()
Do you get friendly, courteous treatment? () ()
Do you get complete satisfaction in every way? () ()

If your answers are yes, you must already be one of our customers!

On the other hand, if one or more of your answers are "no," we invite you to try our service. You see, we've studied the book on customer satisfaction and how to achieve it. Our facilities are clean and modern, our equipment is the finest.

ROOF TROUBLES?

For FREE ESTIMATES on Roofing Remodeling or Carpenter Work Call

ADEN ELMORE
Carpenter & Contractor
MA 9-1297

FOR SALE or Trade: House damaged by fire. Lumber could be salvaged. Also furniture, some antiques. Four lots improved with orchard. Would swap for trailer house. See at 608 W. 19th, Cisco. Call A. A. Hutton, HI 2-1918 in Cisco.

FOR SALE: Alfalfa hay. Call MO 2-9035, Putnam. Jim Meador.

FOR SALE: Registered Angora Billies. Hunter's Drive in Dairy, Hwy. 80, Olden. Phone 2374. tf

FOR SALE: Eastland's newest Addition. Valley View Estates. Kinnaid Real Estate. tf

Wanted

HELP WANTED: Cook and Waitress. Apply at Old Rip Cafe. 88

HELP WANTED: Male or female. Person over 25 to supply Rawleigh products to families in Eastland and Ranger. If interested in a good income with security for the future, write Raleigh TX F 1620 1126. Memphis, Tenn.

WANTED: The opportunity to prove how effective Want Ads work for you. Low cost, high readership means results. Buy, sale, rent, trade, swap, hire or find a job. Try 'em and see! The Telegram Want Ad number is MAIn 9-1707. tf

HELP WANTED, MALE or FEMALE: Person needed for profitable Rawleigh business in Eastland or Ranger. Products sold here over 40 years. Good living at start. Write Rawleigh, TXJ -1020-101, Memphis, Tennessee. 96

WANTED: A janitor. Either man or couple. Possibly retired. Fiesta Bowl in Eastland. tf

Give your child a future for a present. Buy or earn the World Book - Childcraft Program. For details, write Mrs. Lorene Parker, 774 Clinton, Abilene, Texas. 93

LOSE WEIGHT safely with Dex-A-Diet Tablets. Only 98c at Central Drug. 88

Make Your Ice Cream With Fresh Whole Milk From...

HUNTERS Dairy Drive In
Hwy. 80 South of Olden

Whole Milk — 80c Gal.
Butter Milk — 50c Gal.
Country Butter — 85c Lb
Farm Fresh Eggs
55c DOZEN

● SEIBERLING
● FIRESTONE
● COOPER

The Reliable One

HORTON Tire Service
Eastland

ROLLINS & SONS MOBIL SERVICE
Call for Appointments on Wash - Grease Oil Changes
601 W. MAIN
MAIn 9-8816

OBIE'S HUMBLE SERVICE STATION
802 W. Main
MA 9-8866

Texas needs the advantage of having two-party representation in the Senate to "work both sides of the aisle" for legislation that will benefit all the people of Texas. For example, oil and gas legislation, Texas defense appropriations, and our right-to-work law all need broad-based support in both parties. Senator Tower is respected by Democrats as well as Republicans. (Paid political announcement — paid for by Eastland County Republican Party, Mrs. Virginia W. Russell, Chairman.)

Rentals

FOR LEASE — 509 acres on Sabanno Creek between Carbon and Rising Star. 20 acres of coastal; 160 acres grain land four stock ponds, Creek and branch, fence and cross fence netting, Ed Glover, Jr. Route One, Ph 7054, De Leon, Texas

FOR RENT: Two bedroom house, 303 West Moss. Three bedroom house, 801 West Commerce. Call MA 9-2290 tf

FOR RENT: 1 unfurnished 3-bedroom house. Call Harma Hardware, 201 North Seaman. MAIn 9-2104. tf

FOR RENT: Five-room house with sleeping porch. New cabinets. Call MAIn 9-1848. 89

FOR RENT: Three bedroom house. 503 South Mulberry. Contact Mrs. C. C. Street. MA 9-1578. tf

QUAIL LEASE: Wanted this season. Full particulars first letter. Charles Steen, 3523 High Vista, Dallas 34, Texas. Or call Dallas CH 7-4166. 93

FOR RENT: Two bedroom house. 504 South Dixie. Call MAIn 9-2442. tf

Senator Tower is one of the most well-informed members of Congress on the war in Viet Nam. He's toured the combat zone in Viet Nam and many of his proposals on military policy, have been adopted by the administration. (Paid political announcement — paid for by Eastland County Republican Party, Mrs. Virginia W. Russell, Chairman)

Senator Tower is a key member of the Armed Services Committee as the only Texan on this committee. He oversees more than \$3.5 billion being spent in Texas annually at 36 major military installations and in defense contract work. (Paid political announcement — paid for by Eastland County Republican Party, Mrs. Virginia W. Russell, Chairman.)

Announcing The Opening RAY'S TRADING POST
207 N. Seaman

Special values in Used Furniture, Appliances, & Household Needs. Including TVs, Washers & Dryers. Shop us first and save!

PIANO TUNING
MOSE J. KENAMER
Phone MAIn 9-1242

CHANGE Of Management CATTLEMEN'S Restaurant
At Eastland Livestock Barn
Mrs. T. M. ALFORD
New Manager
Open each day except Saturday 6 a.m. - 10 p.m.

Thursday, Nov. 3

6:30 p. m. — Couple's League, Fiesta Bowl.
2 p. m. — Flatwood Home Demonstration Club, Mrs. Myrtle Clark.
6:30 a. m. — Jaycees, Old Rip Cafe.
6 p. m. — Junior High football games at Cross Plains.
6:30 p. m. — Men's Fellowship Bible Class annual fish supper, First Christian Church Annex.
8:30 p. m. — Men's League at Fiesta Bowl.
3 p. m. — Thursday Afternoon Club, Woman's Club House.
9 a. m. — Women's League at Fiesta Bowl.

Friday, Nov. 4

7 p. m. — Hollywood-Vasaret Leagues at Fiesta Bowl.
7:30 p. m. — Mavericks at Cisco for conference football.
6:30 p. m. — Texas Electric annual banquet at National Guard Armory in Breckenridge.
1 to 5 p. m. — Automobile Show, South side of Bank.
11 a. m. — Benefit Dinner, annex of First Baptist Church Colored.
8 a. m. to 2 p. m. — Girls E Association Bake Sale at A&P, Safeway and Super Save.
9 a. m. — Maverick B team football game with Clyde at Maverick Stadium.
1 p. m. — Turkey Shoot at rifle range, Eastland Airport.

Saturday, Nov. 5

1 to 5 p. m. — Automobile Show, South side of Bank.
11 a. m. — Benefit Dinner, annex of First Baptist Church Colored.
8 a. m. to 2 p. m. — Girls E Association Bake Sale at A&P, Safeway and Super Save.
9 a. m. — Maverick B team football game with Clyde at Maverick Stadium.
1 p. m. — Turkey Shoot at rifle range, Eastland Airport.

Senator John Tower is doing a good job for Texas. In 1965 and 1966, 19 major bills bearing his name passed the Senate which ranged from The San Antonio HemisFair Bill to far-reaching soil and water conservation measure. In addition Tower fought successfully to keep Texas' right-to-work law. (Paid political announcement — paid for by Eastland County Republican Party, Mrs. Virginia W. Russell, Chairman)

AUCTION ENROLL NOW
Auction classes begin on Sept. 12, 1966, at the COL. TEX HERRING SCHOOL OF AUCTION
2209 Edgemont
Abilene — Ph. OW 2-1710

Free Estimates on New Roof Only Repair of Your Old Roof Residential and Commercial
EASTLAND ROOFING CO.
call Noble Squiers Eastland

PIANO TUNING
MOSE J. KENAMER
Phone MAIn 9-1242

TAKE A VACATION FROM THE LAUNDRY THIS SUMMER
Let Us Do The **FAMILY WASH** For You!
Free Pickup and Delivery
CISCO STEAM LAUNDRY
Cisco — HI 2-2151

Eastland Memorial Hospital
Patients in Eastland Memorial Hospital on Wednesday morning were as follows:
Mattie Melroe.
Eva Dick, Olden.
Dorothy Goswick.
Ed Sargent.
Charley Rattikin.
Anne Tucker, Cisco.
Odie Matthews.
Golda Wilson, Cisco.
Dan Washington.
R. C. Shelton.
J. I. Brinkley.
Julia Weeks, Ranger.
Ella Perrin, Breckenridge.
Wessie Johnson.
W. H. Kirk, Gorman.
Elijah Dunn, Carbon.
Oral Robertson.
Miles Pharris.
Lillie Little.
Annie Cunningham, Ranger.
Lona Riley.
Thelma Tickner, Cisco.
Maudie Hardy, Cisco.

NOV. 7th, 10:00 A.M.
12 Units (some damaged fire) — 3-bedroom first quarters — Cafe and fix — 150 feet on Highway 2
Owner willing to finance 2 down payment for 10 yr at 6%
This property is offered Sale with owner reserving right to buy back the last for \$100.00.
Information Contact Col. Clarence Collins Associates Auctioneer OR 4-8150 — 3900 So. OW 2-0404 — Abilene, Tex.

OPENING STUDIO PIANO & GUITAR
300 North Ammerma
Mrs. CHAS. B. HARR
MAIn 9-2151

FOR SALE
105 Acres Grass Land
Good Cattle Fence
Permanent Stock Tank
Good Title & Mineral Deed
4 and 1/2 miles south, 3/4 mile west Eastland
CONTACT CARL MURRELL
Box 369
Hamlin, Texas

See ahead with
M.H. PERRY
MA 9-1095
PHONE MAIN 9-1586
FAM. PROTECTI
Let him show you how little it costs to see ahead — and be sure
Southland Life
INSURANCE COMPANY
Home Office - Southland Center - Dallas

ON VACATION
Closed Oct. 24
Open Nov. 4
Basham Electric
Basham Beauty B

DAY AND NIGHT EMERGENCY TOWING
WE ARE ONLY A CALL AWAY
24 HOUR WRECKER SERVICE
Complete SAFETY INSPECTION CENTER Auto Repairs
Phon MA 9-2270 Night MA 9-2224
Allen Auto Repair
At Rushing Motor Co. 215 South Seaman

● SEIBERLING
● FIRESTONE
● COOPER

The Reliable One

HORTON Tire Service
Eastland

JOE SAYS:
Sometimes the best gain is to lose.

JOE CULPEPPER
of Hood King Motor Co. also says: "See me for the best automobile deal."

Did you know that \$1,795 will buy a brand new 1966 GMC Pick-up at Pipkin-Oldsmobile. Cadillac located at 314 West Main in Eastland, Texas.

NOTICE
Josephine Brister has opened a brand new Beauty Shop at 409 W. Moss. She invites all her customers and friends to call for appointments: MAIn 9-1090

MATTRESSES
● New Innerspring Unit
● Choice of Ticking
● New and Renovate
● Choice of Firmness
● Cleaned, Felted Cotton
● New Mattress Guarantee

WESTERN MATTRESS CO.
Box 5288 — San Angelo
In Eastland Call MA 9-1398

GUARANTEED ELECTRIC SERVICE
BOND ELECTRIC
407 Foch
MAIn 9-1724

GENERAL NURSERY STOCK CUSTOM SPRAYING
For Trees, Shrubs, Lawns and Underneath Houses. Also Roach Extermination. Call us for Free estimates.
1405 S. Lamar
MAIn 9-2009
Mr. and Mrs. Howell Sledge
Open Monday - Saturday 9 a. m. to 6 p. m.

Dean-O Contest

"WHAT'S DEANO SAYING?" — To enter the 'Dean Martin Dialogue' contest, write what you think he might be saying in this scene and the five other scenes to be shown. Winner of the contest will be given a free trip to Gaudalajara, Mexico. Details and entry blanks may be obtained at the Majestic Theatre office or at this newspaper. Scenes are from "Texas Across the River," Martin's new picture.



★ ★ ★



★ ★ ★



★ ★ ★



★ ★ ★



Eastland Wins B Football Game Last Saturday

The Eastland High School B team defeated the Cisco High School B team, 26-6 last Saturday in Cisco.

Cisco's lone score came late in the first period when Lorenzo Chrisman connected with James Linebarger who galloped 50 yards for the only Cisco TD. Pass for extra point was incomplete.

George Sims lead Eastland's scoring; over left tackle for 80 yards and the first six pointer; another seven-yard run netted six more; and a 45-yard run over right tackle for six more.

Eddie Kincaid ran over the extra points following one touchdown and caught a pass for another two point conversion.

Dudley Copeland found a hole and ploughed over left tackle for a 20-yard run and a touchdown and Grady Gregory went over center for the extra two points. Danny Elrod caught a 20-yard pass for six more Eastland points.

Score by quarter:
Eastland — 8 14 0 14 — 36
Cisco — 6 0 0 0 — 6

| Statistics | | Eastland | Cisco |
|------------|-----------------|----------|-------|
| 17 | First downs | 9 | |
| 329 | Yards rushing | 41 | |
| 57 | Yards passing | 125 | |
| 4 of 11 | Passes | 9 of 25 | |
| 2 | Intercepted by | 2 | |
| 2 for 35 | Punting | none | |
| 1 | Fumbles lost | 1 | |
| 105 | Yards penalized | 40 | |

Breck Woman Is Named Society's Poem Counselor

Miss Ollie Roediger of Breckenridge has been named poetry counselor by the Poetry Society of Texas, with headquarters in Dallas. Miss Roediger will serve the following counties: Stephens, Young, Shackelford, Throckmorton Palo Pinto and Eastland.

William E. Bard, president of Texas Poetry Society, and his executive board, plan to create branch societies in towns where ten or more people (including poets and patrons of poetry) are interested enough to form such a group. Anyone interested may write Miss Roediger, Route 1, Box 190, Breckenridge, Texas, 76024 to arrange a conference with her.

Bard has expressed a desire that Texas Culture through the medium of poetry be brought to the attention of more people and, at the same time, that the awful "Far-Left" stuff which is offered as "new" be counteracted. Plans are underway to erect a poet's Hall of fame somewhere in the state.

Texas Poetry Society recently affiliated with the National Federation of State Poetry Societies. With a membership of over 600, it is the second largest poetry society in the world. Yearly membership dues in the society are \$5.00. More than \$1,600 in prizes are offered in this year's annual contest.

Miss Roediger has had a wide experience in the field of poetry. She was for many years a member of the American Poetry Society with headquarters in New York City. She was a member and officer of the Wichita Falls Manuscript Club and has been an honorary member of the club, since moving to Breckenridge.

She will be glad to hear from any group interested in organizing a branch society.

Aldridge Service Held Monday At Local Cemetery

Graveside rites for Alexander M. Aldridge, believed to be in his 80's, were held at 10 a. m. Monday in Oakwood Cemetery with the Rev. Jesse E. Cassle pastor of the First Baptist Church, officiating.

Mr. Aldridge died Wednesday night in the Green Acres Nursing Home. No relatives of the man could be located by Rust Funeral Home, which was in charge of interment.

Mr. Aldridge came to the Mobley Nursing Home (now closed) here in 1963 and then transferred to an Eastland rest home before moving back to Cisco a month ago.

A nephew, Emmett Duros, thought to live in Fort Worth, could not be located.

EASTLAND AUTOMOBILE SHOW SATURDAY, NOV. 5 • 100 BLOCK EAST COMMERCE



EASTLAND TELEGRAM

Thursday, November 3, 1966

Page Three

CONGRESSMAN BURLESON BACK IN DISTRICT AFTER SESSION

ABILENE — Congressman Omar Burleson returned to the district Sunday night following the adjournment of the 89th Congress, one of the longest sessions in recent years. The Congressman indicated that he doubted the quality of some of the legislation passed by the 89th Congress, even though there could be no doubt that the quantity of legislation passed exceeded that of any congress in history.

Burleson will spend the biggest part of November and December visiting about over the newly reapportioned 17th Congressional District. He expects to touch base in as many different places in the district as possible during the

remaining days of the fall and prior to the reconvening of the Congress in early January. He pointed out that with 138 cities and towns in the 24 counties of the district, it will be humanly impossible to visit everywhere and see everyone of the nearly 400,000 people in the district.

Congressman Burleson is unopposed in the upcoming Nov. 8 general election. He was renominated in the Democratic Party Primary in May of this year. With the 90th Congress to convene in January, Burleson will begin his 21st year of service in the U. S. House of Representatives for the 17th Congressional District. He is chairman of the House Adminis-

tration Committee and second from the chairman of the powerful House Foreign Affairs Committee. His district office is located at 2101 Post Office Building in Abilene. He is a native of Jones County and calls Anson his home.

Carbon Coach Is Rotary Speaker

Ry Allen presented the Rotary program at noon Monday. Allen showed a film as well as speaking to the group.

Guests were James McKinzie and Marsha Treadwell, from Eastland High School; J. T. Carter, Mike Collins, and James Reid, all of Eastland; and Jimmy Hughes of Carbon.

Visiting Rotarians were Bob Qualls and Chuck Wilson, both of Cisco; Doby Debose of Phoenix, Arizona; B. B. Hall of Plainview; and Grover Porter of Dallas. Grover Hallmark was program chairman for the meeting.

"Baby Purse-onalities"



"He's trying that same old line on that new girl."

Maybe he is . . . but we have just the right every girl. That's why we carry so many lines of hair - beauty aids . . . to give you the right shampoos, rinses, color aids and line (of beauty-preparations, that is) for wave sets for your hair. We carry many lines of cosmetics too, so you can have the right skin toners, powders, lipsticks, nail polishes and eye preparations for your skin and your coloring. Make our cosmetic counter your "Home of Beauty."

CENTRAL DRUG

24-hour Emergency Service
Precise, Accurate, Experienced & Dependable
MA 9-2684 North Side of Square
Emergency Number after 6:30 — MAIN 9-2689

KEEP TOWER

U.S. SENATOR
HE'S DOING A GOOD JOB FOR TEXAS

Pol. Adv. — paid for by Campaign for Senator Tower's Re-Election, Lloyd London, Chairman.

MERCURY TURNS EASTLAND Into COUGAR Country



Find Cougar excitement at the Auto Show in all 28 models of Mercury, the Man's Car!

Cougar's taking over! Because it's America's first luxury sports car at a popular price!

And that price includes concealed headlamps,

a V-8, rear turn signals that flash in 1-2-3 steps, buckets, sports-type steering wheel—the works!

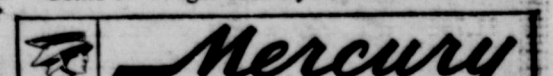
Cougar excitement runs through the whole Mercury line. The luxurious new Marquis. Action-loving Cyclones. All 28 1967 Mercurys!

Mercury sets the show on fire. With taller, brighter, tougher, better ideas. Man's Car ideas.

Man's Car ideas like Marquis front seats. They split into "club chairs," so a man gets the legroom he wants without disturbing his wife.

And options such as a foot-easing speed control that's up where it's handiest—works from a button on the turn signal lever.

Come to Cougar country for Man's Car ideas.



Marquis • Brougham • Park Lane • Montclair • Monterey
Cyclone • Caliente • Capri • Comet 202 • Cool new Cougar

Mercury, the Man's Car.

SEE ALL 28 MODELS OF THE MAN'S CAR AT YOUR MERCURY MAN'S, YOUR MERCURY DEALER.

HOOD KING MOTOR COMPANY

Main at Seaman

EASTLAND, TEXAS

Phone MA 9-1788

LINCOLN-MERCURY DIVISION

MORTON VALLEY HD PLANS FOR BIG EVENTS

The Morton Valley Home Demonstration Club met Wednesday afternoon in the club house. Mrs. C. T. Brockman, president, called the meeting to order and Mrs. H. C. Pounds led the group in the motto pledge and prayer.

Mrs. H. M. Sherman read the devotional scripture, Matthew 7:20.

Mrs. L. W. Leach, secretary called the roll, which was answered with "My Favorite Piece of Furniture."

Each member donated a dollar for the work which is being done on the club house.

Plans were made for Achievement Day, Nov. 2 and the club voted to join with the other clubs in the county to help at the Pecan Show.

Each member showed an item she had made for the club's "Achievement Day."

Mrs. H. C. Thompson, who recently moved to Morton Valley was welcomed as a new club member.

Mrs. L. E. Orms led the recreation period and Mrs. Josie K. Nix, hostess, served refreshments of witches brew, coffee, cokes, cookies, doughnuts salted nuts, and Halloween candy from a table decorated with Jack O' Lanterns and Halloween colors.

Present were two visitors, Mrs. Grace Funk of Level-land, and Mrs. Pearl Marton of Los Angeles. Also, these members: Mmes. W. S. Rice, E. L. Donley, D. J. West, Jeff Laughlin, Orms, L. W. Leach, G. M. Hargus, C. T. Brockman, W. E. Tankersley, H. M. Sherman, H. C. Thompson, H. C. Pounds, Homer White, R. W. Gordon, and Alvin Kincaid.

The next meeting will be Nov. 9, with Mrs. Orms as hostess.

Work - Party Prepares Camp

Some 35 men from Odessa, Abilene, Sweetwater, Ballinger, Big Spring, Eastland, and Cisco were at Camp Inspiration in Eastland last week to prepare the camp for winter.

Mr. and Mrs. Floyd Jones of Menard remained to continue work on the large tabernacle on the camp grounds. The tabernacle is being sealed and painted white.

READ THE CLASSIFIEDS



Fannie O'Brien Is Hobby Club Host

The Hobby Club met in the home of Mrs. Fannie O'Brien Wednesday afternoon, with Mrs. Dick Yielding, president, presiding.

Plans were made to enter items in the Eastland County Achievement Day and mem-

bers voted to set the November meeting for Wednesday, November 16. It will be in the home of Mrs. Jess Taylor.

Mrs. J. A. Pogue, present-ed her niece, Mrs. Hazel Mc-

Cormack of Dallas. Mrs. McCormack displayed items she had made which would be good for gifts for those who are ill.

Mrs. O'Brien served cake, candy, and cold drinks to Mmes. Pat Crawford, M.W. Greiger, Jess Taylor, Pogue, Yielding, Edgar McCullom, and McCormack.

NOW CARS

Now—at the Auto Show! More than just "new" cars. More than new makeup on old faces. The Now Cars are designed from scratch for today's driving by today's drivers. Cars with engines that never existed before. Cars with more room, more power, more safety, more flair. The Now Cars. Cars on top of today from the company on top of today: The 1967 American Motors. See them!

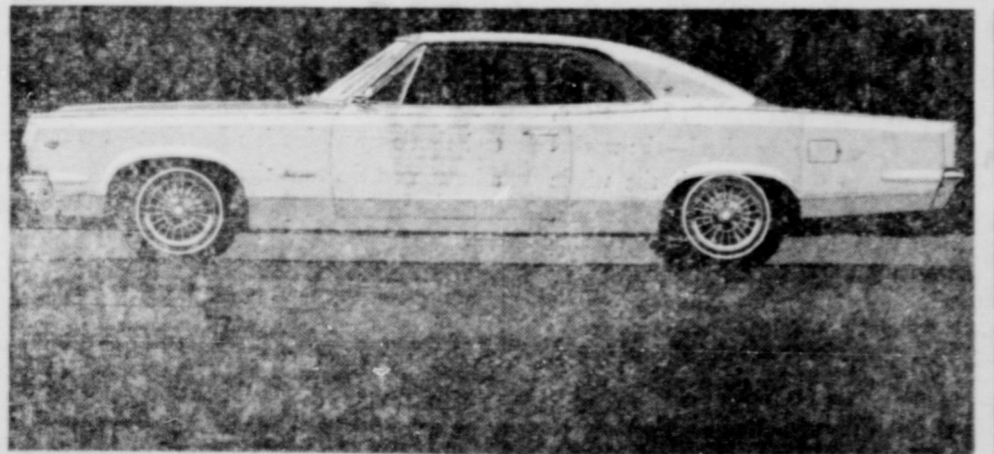
5/50,000

Now—this great new warranty: In addition to 2-year or 24,000-mile warranty on the entire automobile, American Motors Corporation warrants the engine block, head and internal parts, water pump, intake manifold, transmission case and internal parts (except manual clutch), torque converter, drive shaft, universal joints, rear axle, differential and rear wheel bearings of its 1967 cars to be free from defects in material or workmanship for 5 years or 50,000 miles, whichever comes first. The owner must change the engine oil and install new oil filter every six (6) months or 4,000 miles, whichever comes first, clean oil filler cap (dipstick type) and carburetor air cleaner element every 4,000 miles and replace it every 24,000 miles and furnish evidence of this service to an Authorized American Motors Dealer every six (6) months and have him certify its receipt and the car's mileage. Further, American Motors Corporation so warrants the remainder of each car for 2 years or 24,000 miles, whichever comes first, except tires (warranted by the manufacturer). Any part so defective, will be repaired or replaced, in accordance with the applicable portion of the warranty, without charge at an Authorized American Motors Dealer. Owners are responsible for deterioration, misuse and normal maintenance.

2/24,000



REBEL Now—the first Excitement Machine in the intermediate class! Cars for Now that never existed before! Hardtop, convertible, wagon, sedan—all with big Six or Typhoon V-8 power! With more people space than any other cars their size!



AMBASSADOR Now—full-size luxury cars created for today for the young man who wants his luxury car now! New 118" wheelbase. Interior now so spacious as the most expensive full-size cars. Choice of 5 smooth, silent V-8's and Sixes.



RAMBLER AMERICAN Now—Typhoon V-8 thunder comes to the low-priced economy champs! America's only complete line of compacts!

THE 1967 AMERICAN MOTORS

SEE AMBASSADOR-MARLIN-REBEL-RAMBLER AMERICAN AT THE AUTO SHOW! TEST-DRIVE YOUR FAVORITE AT YOUR AMERICAN MOTORS/RAMBLER DEALER!

PIPKIN MOTOR COMPANY

GENERAL DYNAMICS

Fort Worth Division

IMMEDIATE OPENINGS AT REGULAR PAY DURING TRAINING TOOL DESIGNERS

Prefer applicants to have at least 2 years college, including algebra, trigonometry, and engineering drawing. Must pass aptitude test.

NUMERICAL CONTROL PROGRAMMERS and TOOL & OPERATIONS PLANNERS

Minimum 2 years college in field of Engineering or Mathematics. Knowledge of mechanical drawing and blueprint reading. Prefer additional experience in: Machine shop, tool design, manufacturing, computer data processing.

APPLY

TEXAS EMPLOYMENT COMMISSION
614 Texas St., Fort Worth
or send resume

AIR CRAFT ASSEMBLY TRAINEES

Applicants who qualify will be given training in a field of aircraft assembly. Class room training in blueprint reading, use of assembly hand tools, assembly techniques and other subjects necessary in order to accomplish aircraft assembly work. Prefer applicants to have high school diploma. YOU MAY QUALIFY FOR PAY WHILE TRAINING.

APPLY

TEXAS EMPLOYMENT COMMISSION
1021 Taylor St., Fort Worth
or send resume

EARN WHILE YOU LEARN A TRADE

Ambitious, trainable workers are needed NOW to help build the F-111 and to fill other interesting jobs in the fast growing aircraft industry. GENERAL DYNAMICS, FORT WORTH DIVISION will offer on-the-job training to high school graduates who are able to use shop math, and who qualify for employment in the following classifications:

- Tool and Die Makers
- Jig and Fixture Builders
- Form Block Makers Metal & Wood
- Template Makers
- Pattern Makers Plaster
- Tool Makers Plastic
- Die Finishers

APPLY

TEXAS EMPLOYMENT COMMISSION
1021 Taylor St., Fort Worth
or send resume

Additionally, openings for EXPERIENCED people exist in following classifications:

PLASTIC PARTS FABRICATORS TEMPLATE MAKERS TOOL MAKERS PLASTIC

Must be high school graduate and have at least 1 year's experience in form block making.

HELIARC WELDERS

Must have held aircraft welding certification.

TOOLING INSPECTORS

2 to 5 years experience in jig and fixtures and tool and dies.

APPLY

TEXAS EMPLOYMENT COMMISSION
1021 Taylor St., Fort Worth
or send resume

TOOL & OPERATIONS PLANNERS

Must have at least 3 years recent experience in tooling and processing of machine shop, sheet metal details and assemblies.

TOOL DESIGNERS

Must have at least 3 years recent experience.

APPLY

TEXAS EMPLOYMENT COMMISSION
614 Texas St., Fort Worth
or send resume

- Excellent wages and fringe benefits including
- Group Insurance Plan
- Company Paid Retirement Plan
- Liberal Vacation Plan
- Seven Paid Holidays per Year
- Extensive Recreational Facilities

Ad paid for by General Dynamics

GENERAL DYNAMICS
Fort Worth Division

Desdemona News

Peanut harvest is now in "full swing" here. Farmers are happy over this nice, crisp October weather. The grain crops need rain.

Mrs. Lonnie Williamson has been a patient in the Gorman Hospital since Saturday. At last report, he is quite improved.

Mr. and Mrs. Horace Lane were home for the weekend from Temple, where Mrs. Lane is taking treatments.

Mr. and Mrs. Ora Fuqua had as guests one day last week, Mrs. A. A. Brown of De Leon, Mr. and Mrs. Calvin Moorman of Albany, and Mrs. Eva Harper of Livermore, California.

Mrs. Mary Harrell will leave this week to spend an indefinite time in Oklahoma with her daughter.

Mr. and Mrs. R. H. Abel had all their children home for the past weekend. They are Mr. and Mrs. Robert Abel of Oil Center, New Mexico; Mrs. Helen Walker of El Paso; and Mrs. Ruth Baker of Oil Center, and their children.

Mr. and Mrs. Tom Roberts and children of Irving spent the past weekend here with his brother, Mr. and Mrs. Morgan Roberts and family.

Mr. and Mrs. Jerry Bryan and children, Tammy, Harvey, and Rhonda, all of Abilene, were here for the weekend to visit her parents, Mr. and Mrs. Alton Wright.

Mrs. Ethel Keith attended the funeral at Bethel (Greasy Corner) Cemetery held for Joel Mack, son of Mr. and Mrs. Marshall Reeves last Wednesday.

Mr. and Mrs. Alton Wilhite of Monahans were here last week to visit relatives.

Word was received here one day last week that Mrs. Virginia Purvis of Stephenville had passed away. Her husband is a nephew of Grannie Northcutt.

Mr. and Mrs. Joe Murrell were in Cross Plains one day last week and attended the funeral of his sister-in-law, Mrs. John Murrell.



INKA DINKA DOO DURANTE LEADS CARR BANDWAGON—Jimmy Durante, the famous singing comedian, sounds a few notes to the delight of Waggoner Carr and Gov. John Connally. Durante was the headline entertainer at Carr's victory kickoff dinner in Austin, a high point in his campaign for the United States Senate.

Out of the Bowling Bag

| Hollywood-Vassarette Friday Night League | | V's | |
|--|------------|-----------------------------|-----------|
| Team | W L Avg. | Books | Points |
| Backs | 24 16 .903 | Books | 18 22 896 |
| Hooks | 24 16 .889 | High Team Three Games | 2828 |
| Books | 22 18 .891 | Books | 2761 |
| Eyes | 20 20 .835 | High Individual Three Games | 573 |
| Cups | 18 22 .892 | Jerry Blackwell | 573 |
| Straps | 18 22 .885 | Don Vieregiver | 523 |
| | | Gerald Dempsey | 522 |

Work Will Start In Near Future

A \$200,000 improvement for the Lone Star as Company gasoline absorption plant at Pueblo has been approved for the immediate future, according to an announcement here Monday. The plant is located in Eastland County some 12 miles northwest of Cisco on Highway 360.

The work will consist of modernizing and upgrading the gasoline plant by replacing the old ambient temperature oil absorption and distillation system with a low temperature refrigerated oil absorption and distillation system, according to Supt. L. M. Cawley of the plant.

Work will be done by Lone Star employees and will begin within 60 days, Mr. Cawley said. Plans call for the work to be completed by March 1, 1967. The modernization program will increase the over-all efficiency of the system, Mr. Cawley said.

At Pueblo, Lone Star Gas Company has two compressor station set-ups, a storage plant, the gasoline absorption plant and two dehydration plants.

The underground storage in the LeeRay area, which is operated out of Pueblo, has a capacity of five billion cubic feet of gas, and gas is pumped into the storage wells throughout the summer for use during the cold weather of winter.

Lone Star has operated its Pueblo setup since purchasing the plant in 1929 from the old Moody corporation. The plant has been enlarged and modernized over the years. Some 17 men work at the plant.

In addition to the plant, Lone Star as Company has 14 men in a pipe line department and five in a meter department operating out of Pueblo.

| THURSDAY NIGHT MEN'S HANDICAP | |
|-------------------------------|-------------|
| Team | W L Pins |
| Hoot's Place | 42 14 10473 |
| Southwest Mac | 40 16 19758 |
| Southern TV | 38 18 19625 |
| Coca Cola | 34 22 19459 |
| VC Menus | 32 24 19262 |
| Vol Fire Dept | 32 24 19085 |
| Arrington FH | 20 36 19430 |
| Charlie Smith | 16 40 18923 |
| Goodyear | 14 32 17113 |
| B&W Service | 12 44 18740 |

| High Team Three Games | |
|-----------------------|------|
| Goodyear | 2889 |
| Southern TV | 2833 |
| Coca Cola | 2674 |

| High Individual Three Games | |
|-----------------------------|-----|
| D. D. Allen | 550 |
| Gerald Dempsey | 547 |
| Charles Horton | 542 |

| High Team Games | |
|-----------------|------|
| Coca Cola | 1040 |
| Goodyear | 1036 |
| Hoot's Place | 1006 |

| High Individual Game | |
|----------------------|-----|
| John Willen | 224 |
| L. Garcia | 211 |
| M. England | 206 |

PAUL A. GREEN
KIRBY
Vacuum Sales, Service & Parts
P.O. Box 632, Olden
Phone OLDEN 2452

In The Churches ...

ASSEMBLY OF GOD
Lamar and Sadosa
Rev. James E. Emery, Sr., pastor
Sunday School 9:45 a. m.
Worship Service 11 a. m.
Evening Worship 7 p. m.

BETHEL BAPTIST CHURCH
1306 West Main
Rev. Bill Goff, pastor
Sunday School 9:45 a. m.
Worship Service 11 a. m.
Training Union 6:30 p. m.
Evening Worship 7:30 p. m.

CALVARY BAPTIST Church
207 North Oak
Rev. Hari L. Williams, pastor
Sunday School 10 a. m.
Worship Service 11 a. m.
Prayer Meeting 6 p. m.
Evening Worship 6:30 p. m.

CHURCH OF CHRIST
309 South Daugherty
Stuart Love, minister
Bible School 9:30 a. m.
Worship Service 10:20 a. m.
Youth Fellowship 6 p. m.
Evening Worship 7 p. m.

FIRST BAPTIST CHURCH
101 West Plummer
Rev. Haston Brewer, pastor
Sunday School 9:45 a. m.
Worship Service 11 a. m.
Training Union 6:15 p. m.
Evening Worship 7:30 p. m.

FIRST BAPTIST (Colored)
710 North Seaman
Rev. J. L. Norris, pastor
Sunday School 9:30 a. m.
Worship Service 11 a. m.
Training Union 5:45 p. m.
Evening Worship 7:30 p. m.

FIRST CHRISTIAN CHURCH
215 South Lamar
Sunday School 9:45 a. m.
Worship Service 11 a. m.

FIRST CHURCH OF GOD
210 West Valley
Rev. O. R. Williams, pastor
Sunday School 9:45 a. m.
Worship Service 11 a. m.
Evening Worship 7:30 p. m.

EASTLAND AUTOMOBILE SHOW SATURDAY, NOV. 5 • 100 BLOCK EAST COMMERCE

FIRST CHURCH OF CHRIST, Scientist
Plummer and Lamar
Sunday School 9:45 a. m.
Church 11 a. m.

FIRST METHODIST Church
215 South Mulberry
Rev. J. Lester Davenport, pastor
Sunday School 9:45 a. m.
Worship Service 10:50 a. m.
Youth Fellowship 6 p. m.
Evening Worship 7 p. m.

FIRST PRESBYTERIAN CHURCH—Walnut and Valley
Rev. Eugene Surface, pastor
Sunday School 10 a. m.
Worship Service 11 a. m.

HOLY TRINITY EPISCOPAL CHURCH
710 South Seaman
Father Ellington
Morning Prayer
Service 10:30 a. m.

MANGUM BAPTIST Church
South of City
Rev. A. J. Thomas, pastor
Sunday School 10 a. m.
Worship Service 11 a. m.
Training Union 6 p. m.
Evening Worship 7 p. m.

NORTH OSTROM CHURCH OF CHRIST
For information, Call MA 9-2219 or MA 9-1182
Worship Service 10:30 a.m.
Evening Worship 6 p.m.

SMITH CHAPEL METHODIST CHURCH (colored)
700 North Seaman (Meets 1st and 3rd Sundays)
Rev. P. F. Flemings, pastor
Sunday School 9:45 a. m.
Worship Service 11 a. m.

ST. FRANCIS CATHOLIC CHURCH
South Halbryen
Father Emil Slovacek, pastor
Mass 9:30 a. m.

UNITED PENTECOSTAL CHURCH
206 North Dixie
Rev. H. F. Wilkins, pastor
Sunday School 10 a. m.
Worship Service 11 a. m.
Evangelistic Service 7:45 p.m.

Regional Office Issues Statement

World War II veterans have less than one year left to take advantage of GI guaranteed or insured loans, according to A. W. Stratton, Chief Benefits Director of the Veterans Administration.

July 25, 1967, is the deadline for World War II veterans' eligibility, he said. Eligibility for World War II veterans is determined by a formula which adds ten years to the date of their last discharge plus one year for each 90 days of service.

Thus eligibility for many has already expired, but the July 25, 1967 date is the cutoff for all other World War II veterans.

Veterans who were discharged for a service-connected disability and the widows of such veterans will be eligible up to the July 25, 1967 deadline.

Those eligible may obtain a guaranteed or insured loan to purchase a home, farm or to buy or start a business.

For veterans of the Korean Conflict the formula for determining GI loan eligibility is the same as for veterans of World War II. However, the Korean Conflict entitlement did not begin to expire until January 31, 1965, and the final deadline is January 31, 1975.

FOR THANKSGIVING THANKS

For family and friends for parties and dinners and nights on the town. Or because winter is on the way.

Poe Floral
Main 9-1711
509 W. Main
Send Flowers Today

You Don't Need Much Advice —
... but it is valuable now and then. For example when you go to buy a policy of insurance, don't select any kind of a policy or any kind of an agent. There is a big difference. You will likely never use your insurance anyway, but if you do your agent will be the key person in any settlement you make with the insurance company. It is sound advice to buy only from local agents who have long records of successful performance in adjusting insurance claims.

Earl Bender & Company
Eastland (Insurance since 1924) Texas



Bert Chambers
whose parents live in ... have enrolled as ... year students at the eastern Baptist Theological Seminary in Fort Worth. (Dub) Chambers received the bachelor of arts from Howard Payne in 1965. Blair, son of Earl A. Box 745, Eastland, received the bachelor of science from Hardin-Simmons University in 1964. Both and Chambers began toward the bachelor of degree at the seminary.

Civil Appeals Court

Following proceedings in the Court of Civil Appeals, Eleventh Supreme District of Texas, on ...

Affirmed
Smith v. Larry Lou ... et ux. Opinion by Walter, Potter County, affirmed and affirmed.

Travelers Insurance Co. v. Mike Y. Munos, Appellant's motion for extension of time to file brief, Howard.

Motions Granted
W. J. Seidon et al v. S&S Aggregates Co., Appellee's motion to amend transcript, Dawson.

Florence Hall et al v. Emma Sue Powell Tucker et al. Agreed motion for extension of time to file Appellee's briefs, Ward.

The Travelers Insurance Co. v. Mike Y. Munos, Appellant's motion for extension of time to file brief, Howard.

Motions Overruled
Ivan Jack Wilson v. Texas Employers' Insurance Association, Appellant's motion for rehearing, Harris County.

Cases Submitted
Pump Engineering Co. v. Robert Preston, Taylor.
Barney Malone et al v. Ben Dixon, Baylor.
W. J. Seidon et al v. S&S Aggregates Co., Dawson.

Free Estimates on Roof Only
Repair of Your Old Roof Residential and Commercial
EASTLAND ROOFING CO.
call Nobles Squiers Eastland

ANNOUNCING NOW OPERATING
NUMBLE SERVICE STATION
400 E. MAIN STREET
Next Door To Saweway

ALL AUTO ACCESSORIES
TIRES — BATTERIES
WASH — GREASE
Phone MAIn 9-1688

EVEN'S ENCO SERVICE
L. C. LEVENS, Manager
7 a.m. to 10 p.m. — 7 days a week
"We'll appreciate your business."

FOR OUR SAKE, PLEASE VOTE!

We can't vote. We're too little. Voting is what grown-ups do when they are good citizens. People who go to the polls decide the shape of our future. If you love us enough, you'll be a good citizen and take time to vote Tuesday.

Vote for Us and the U.S.

There will be a meeting of the In Crowd in the In Car at Eastland Auto Show

SATURDAY, NOV. 5

See the In Car. See the Tuned Car.
See further proof of the famous phrase:
"When better automobiles are built, Buick will build them."
(Something for everybody.)
See why 1967 isn't going to be just another year to mark off on your calendar,
count me in.

Buick Motor Division
MUIRHEAD MOTOR COMPANY
301 WEST COMMERCE STREET
EASTLAND, TEXAS

Mrs. Stephens Is Hostess For Martha Dorcas Class Meeting

The Martha Dorcas Sunday School Class of the First Methodist Church met with Mrs. Joe Stephens for a business & social meeting.

The Stephen's home was beautifully decorated with orange pyracantha carrying out the Halloween color.

The meeting opened with a prayer by Mrs. H. H. Harde- man after which a short bus- ness session was led by the class president Mrs. W. F. De-

Hardeman, Mrs. C. M. Gogue, Mrs. Roy Stokes and Mrs. W. B. Harris had charge of the social hour. After supervised conversation, a refreshment plate of pumpkin pie with whipped cream topping, nuts and Halloween punca was served to the following class members: Mmes. M. A. Clyatt, Turner Collie, J. Lester Dav- enport, Carl Elliott, H. H. Har- deman, W. B. Harris, Charles Harris, E. O. Harrell, James Horton, D. C. Frost, J. U. John- son, Roy Lawson, Charles Mar- shall, C. M. Pogue, Floyd Rob- ertson, R. E. Sikes, Joe Sten- phen, R. E. Townsend and Miss Minnie Lay.

Plans for the revival were discussed and a letter from the Harris Hospital in Fort Worth acknowledging a scholarship given by the class, was read. The Martha Dorcas Class has given \$100 scholar- ship, to the Harris School of Nursing for several years.

Mrs. James Horton brought the devotion, "Faith Without Works Availeth Nothing."

The hostess, Mrs. Stephen and co-hostesses, Mrs. H. H.

Mrs. Castleberry Hosts Pioneer Club Thursday

The Pioneer Club met at noon Thursday, October 27, in the home of Mrs. Alma Castleberry. The prayer was led by Mrs. Sallie Garrett.

Following the luncheon, a business meeting was con- ducted by Mrs. Reva Horn, new club president. Mrs. Grace Funk led the recreat- ion period of games.

These members were present: Mesdames Ben Bassett, Garrett, Theo Davis, Fannie Lockhart, Nora Vaught, Ton- sie Johnson, Horn, Ina Mae Hill, Jessie Nix, May Harri- son, Fannie Littleton, Mattie Miller, Mabel White, Bertha Box, Nora Wilkerson, Lorine Crawford, Fannie O'Brien, Gardenhire, Prudie Harde- man, Castleberry, and Miss Louise Stroebel, guest of Mrs. Harrison.

The Pioneer Club will meet in the Christian Church an- nex at noon, Thursday, Nov- ember 17, for their annual Thanksgiving luncheon. Mrs. Ben Bassett and Mrs. Mabel White will be co-hostesses.



Falcon for 1967 retains its distinctive, long-hooded "Mustang look" and offers the buyer an even greater selection of engines, transmissions and optional features. The engine lineup now in- cludes a 225-horsepower, four-barrel 280 CID V-8 with Select Shift Cruise-O-Matic which permits manual or automatic gear shifting. The Futura Station Wagon (above) has an optional two-way tail gate while the Futura Sports Coupe (below) is distinguished by a new grille, a spear-like trim moulding and two deeply sculp- tured "wastegate" areas behind the front wheel cutout.

GREEN KINDERGARTEN BUSY DURING MONTH OF OCTOBER

The Green Kindergarten at 903 West Plummer Street has had a very busy month of October.

Mr. and Mrs. Bill Hoff- mann were named Kinder- garten Parents of the year. Ginger is attending Kinder- garten for the third year and Bill and Kay attended two years each. Ginger will go to public school next year. She is a very hard working student and a fine leader.

The children went on a hike around the Kindergarten yard in groups the first week of school. The second week, they took a trip around High School Hill and had pictures taken, outside the "big school bus," after having been inside the bus. They talked about the "Weekly Readers," which on the cover that week, had a picture of a school bus. M. and Mrs. Erwin Rus h of Perry, Ga., visited with the group one morning. Mrs.

Rush is a sister of Mrs. Green and they were here to visit Rev. Asa Hoskins who has been a patient in East- land Memorial Hospital for seven months. Rev. Hoskins is the father of Mrs. Rush and Mrs. Green.

One week, the children studied "Animals: Dog Week" and Mrs. A. K. Garrett brought a box of tiny puppies to school.

Mrs. A. E. Cushman had the children bring pretty fall leaves in connection with their science page in the weekly reader.

"The entire group is eager to learn new things, which is why kindergarten is so impor- tant," states Fern Green.

The children had a very ex- citing Halloween Parties. They made faces and hats. Mr. and Mrs. Carl Ramsey and Renee gave the party, with gold napkins, face-de- corated cup cakes, blow out favors and witch and skeleton favors. Pictures were made of this gay Halloween party.

Parents, please send this article for your child's Pro- ject Book on Tuesday, Nov. 1.

Mrs. Cyrus Miller Hosts Ruth Group

The Ruth Group, CWF, of the First Christian Church met in the home of Mrs. Cy- rus Miller. Mrs. Curtis Young presented the devo- tional.

The group is beginning a series of lessons on Canadian Missionaries, and Mrs. L. E. Huckaby spoke on this theme.

Mrs. Miller served pump- kin pie, coffee, candy, and nuts to Mmes. W. E. Tanker- sley, Huckaby, Vernon Hum- phrev, Charles Beskow, J. W. Watson, Young, Wayne Caton, and S. G. McCullough.

The next meeting will be at 7:30 p. m., Monday, Nov. 28 in the home of Mrs. Charles Beskow.

Airman England On Asian Duty

Airman First Class Michael W. England of Eastland, Tex. is now on duty with U. S. combat air forces in South- east Asia.

Airman Eng'land, son of Mr. and Mrs. William G. En- gland of 508 W. Valley St., Eastland, is assigned to a forward combat base. He is an electronic equipment re- pairman.

The airman attended East- land High School.

Mrs. Sue Bakker Is Hostess For Zeta Pi Meet

Mrs. Sue Bakker was hos- tess to the Zeta Pi Chapter of Beta Sigma Phi Monday night, Oct. 24.

President Ann Hoffmann presided and read Pledge Ri- tual for new pledges.

Pledge pins were present- ed to these new members.

Mrs. Carolyn Smith presen- ted a program on Friendship, stressing the importance of giving and receiving friend- ship. She brought out the fact that friendship must be given or received freely; it can never be bought or sold.

The Ways and Means com- mitted discussed plans for the future.

Mrs. Bakker served cherry chilled pie, nuts, coffee and cookies to Mmes. Charlene Simpson, Mary Watson, Nona Fox, Mary Joiner, Ar- lenne Fry, Carolyn Smith, Hoffmann, Beth Frazier, Jean Ann Price, Kathy Owens Ly- lia Mahaffey, Wanda Baird, and Diane Allen.

READ THE CLASSIFIEDS

HARELIKS' FIRST MONDAY SPECIAL

PRICES GOOD THUS. - FRI. - SAT. - MON.

SPECIAL PURCHASE

Bath TOWELS

20x40
SLIGHTLY IRREGULARS
98c Values

- SOLIDS
- STRIPES
- FLORAL

72c

VALUE PLUS UNBLEACHED DOMESTIC

38" — FIRST CHOICE
GOOD QUALITY

- REG. 29c
- 5 For \$1**

SPECIAL PURCHASE

WASH CLOTH

18x18
SLIGHTLY IRREGULARS
19c VALUE

- SOLIDS
- STRIPES
- PLAIDS

6 For \$1

SPECIAL Feather Pillows

STRIPE TICK
17 x 25
GOOD BUY

- REG. 1.29
- 92c**

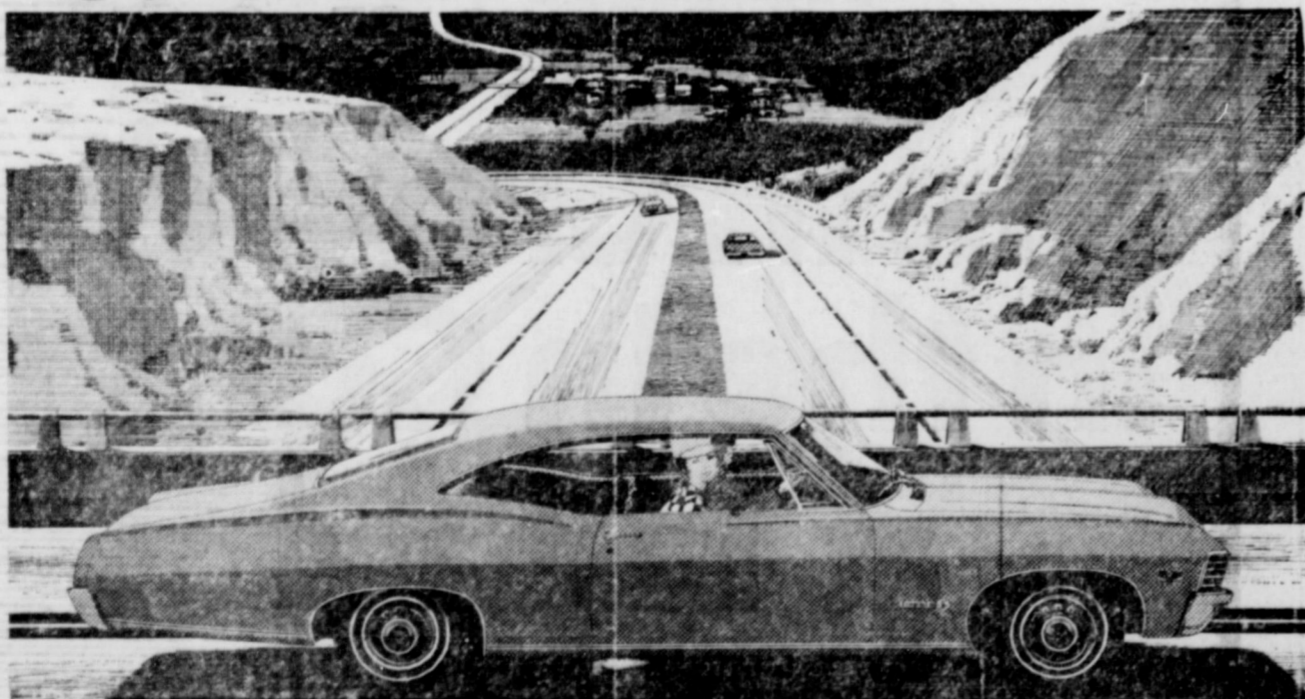
Why Don't You Shop

HARELIK'S

First ???

EASTLAND

'67 CHEVROLET



Impala Super Sport Coupe—a clean new sweep in roof lines.

Now that you've seen all the daring new things our stylists did, get in and sample some of the safest, soundest ideas on the road!

What you feel is as new as what you see—thanks to all the fresh thinking that's gone into the way it rides, steers, stops and looks after your safety.

It's got a remarkable new road feel—beginning with a ride so hushed and gentle you'll feel like calling this the '67 Shhchevrolet. The steering is as much as 10% easier. And you'll find the stopping smoother, too.

We put safety features on top of safety features. For example, an energy-absorbing steering wheel atop the new GM-developed energy-absorbing steering column. A dual master cylinder brake system with warning light. And seat belts front and rear with pushbutton buckles. All standard, to be sure.

And there's a new SS 427 perfor- mance package—complete with 385-

hp Turbo-Jet V8 and flat-cornering suspension. You can order it for either the Impala Super Sport Coupe or Convertible.

Of course, there are all sorts of new custom features you can add, too, such as tape or FM stereo. But if you find so much that's new a bit too much to remember—drop down to your dealer's and take a drive. It'll all become unforgettable.



Everything new that could happen...happened! Now at your Chevrolet dealer's.



FULLEN MOTOR COMPANY



4-H Homeplans
Prepare for
a Lifetime

your KEY

to low cost AUTO LOANS

There's no better place than the EASTLAND AUTOMOBILE SHOW Saturday, Nov. 5, 1966, to see all the new automobiles!

There's no better place to finance that new auto than with the friendly folks at ENB.

Our low cost auto loans are keyed to your budget.

Eastland National Bank
"On the Square"

Ranger's Southwest Machine Doubles Capacity in 6 Months

It was back in 1963 and Rangerites were talking, as always about how bad things were looking for the community — some even said that there is no hope — others pointed out that what is needed is new industry and then someone said that a new machine shop was opening in Ranger — yes, what we need is new industry — didn't you hear me, I said a new machine shop is opening in Ranger — oh, I don't know, if we just had a new industry—

And so it went — G. E. "Red" Langford opened his machine shop, utilizing some 5,000 square feet of floor space, hired 3 men, put in a phone, hung up a sign, Southwest Machine and Engineering Company and no one seemed to notice.

Well, now its 1966 and that small machine shop employs 65, has 40,000 square feet of floor space, a direct line to Fort Worth that keeps six telephones ringing and is recognized as one of the leading industries in the area.

Southwest Machines and Engineering Company of Ranger works 24 hours a day to turn steel, aluminum, stainless, and magnesium into component parts and sub-assemblies for General Dynamics, Bell Helicopter, LTV, Merdock Machines and Engineering and others.

Even though we work two 12 hour shifts each day, we still have a backlog of orders and have contracts in hand to keep us busy through 1968, said General Manager Eddie Taylor.

Within the last six months 13 new machines costing many thousands of dollars

have been installed, number of employees have doubled and Lanco Machine Company of Fort Worth has been absorbed into the company and moved to Ranger.

We will continue to grow predicted Taylor, in fact we just recently received a \$100,000 contract from General Dynamics and we are in the process of incorporating under the name Southwest Machine and Tool Inc.

What if the war ends in Viet Nam? — We would still have enough commercial orders from Bell and the others to keep us plenty busy, observes Taylor, because all of these companies make commercial products.

The Ranger firm sub-contracts to other machine shops, has a \$150,000 per year payroll and employs mostly area people. Ranger is not receiving all the benefits from the huge payroll because many of the employees have been unable to find suitable housing in Ranger — so they live in Eastland and other area towns.

Eddie Taylor keeps the machines turning out delicate parts with excellent help from key men such as, Norman Morrison, production control manager; Jerry Lang and Mack Couger, shop superintendents; Jack Morris, assistant shop foreman; Hulon Knight, lathe supervisor; and Duane Lang, night supervisor.

John Satterwhite, office manager, keeps the paper work straight with the assistance of Johnnie Robinson, who was one of the first salaried employees of the company, Mary Langford and Mildred Roberson.



MARINE PRIVATE First Class William S. Clark, son of Mrs. James Query of Eastland, Tex., is congratulated by his Series Commander, Captain Michael A. St. Marie upon receiving a Marine Corps Dress Blues uniform, awarded at the Marine Corps Recruit Depot. Donated by Leatherneck Magazine, the award was presented during recruit graduation at the Marine Depot. PFC Clark competed with approximately 80 recruits for the award which is presented to the honorman of each platoon. In addition to this award, PFC Clark was selected as the honorman of his series. He also received a promotion to Private First Class during the graduation ceremonies. PFC Clark is spending a twenty-day leave with his parents before reporting to Camp LeJeune, North Carolina.

Are you going to be out of town Tuesday, Nov. 8?

Texas is a great state of on-the-go people. If YOU intend to be out of town on Tuesday, November 8—Election Day—be sure to exercise your right as a citizen to vote absentee. Your vote counts, but only if you cast it!

ABSENTEE VOTING

Ends Friday, Nov. 4!

See your County Clerk for full details



SCHOOL LUNCH SERVES THE NATION in city schools, suburban schools, and in country schools. For 20 years the National School Lunch Program has been helping to provide nutritious school lunches to youngsters in every State and S. territory. Since passage of the National School Lunch Act in 1946, the program has grown steadily until it now reaches 19 million youngsters in over 71,000 schools. Federal donations of food and cash enable children to buy for about 30 cents a nutritious plate lunch worth an average of 50 cents. Needy students unable to pay the regular price receive free lunches. The National School Lunch Program, administered by the U.S. Department of Agriculture's Consumer and Marketing Service in operation with State and local officials, is available to about 75 percent of the Nation's school children. Those attending old, orly-equipped city and isolated country schools without lunch service are usually the ones most in need of good food. Successful Federal, State and local efforts, of recent years, to begin lunch programs where none were possible before have shown it much can be done to close the nutrition gap between the majority of American youngsters and their less fortunate neighbors.

Monuments
WEATHERFORD PHONE LY. 2-2726

WE MAY ASSIST YOU, CALL US COLLECT OR MAIL THIS AD

NAME _____ PHONE _____

ADDRESS _____ CITY _____

RANGER DRIVE-IN THEATRE

NOVEMBER 4-5-6
FRIDAY — SATURDAY — SUNDAY

ADULTS 60 c. KIDDIES UNDER 11 FREE
BOX OFFICE OPENS 7:15 SHOW STARTS 7:45

LAUGHTER FOR EVERYONE!!

Lasca Roberts • Gene Saks
Barbara Harris • Wm. Daniels • Barry Gordon

A Thousand Clowns

MARTIN BALSAM • GENE SAKS
WM. DANIELS • BARRY GORDON



JOHN P. MOYLAN

John Moylan Ends Training

Marine Private John P. Moylan, son of Mrs. Beatrice Moylan of 212 W. Valley, Eastland, Tex., has completed four weeks of individual combat training here.

During the training period, he received more than 200 hours of instruction in guerrilla warfare, the use of infantry weapons, combat patrols, and squad tactics.

His next assignment is four weeks of basic specialist training to prepare him for a specific job in the Marine Corps. Marines to be assigned to infantry units will be taught sub-specialties such as the technical operation of the machine gun, grenade launcher, or mortar. Those entering highly skilled occupational fields will receive advanced training at resident technical schools.

State Selective Service Office Is 30 Years Old

AUSIN — State Selective Service headquarters marked the 30th anniversary of Lt. Gen. Lewis B. Hershey's association with the draft system last week.

General Hershey, the national director, who will be 73 years old September 12, began his Selective Service work September 1, 1936. Colonel Morris S. Schwartz, state selective service director, noted.

It was in 1936, while General Hershey was in Hawaii serving as an Army major, that he was ordered to Washington to serve as the executive secretary of the Joint Army and Navy Committee for Selective Service.

In this assignment, General Hershey carried out planning and training activities, the most important thing being the development of a proposed military manpower law in the event it was needed by the nation in the future.

He saw this proposed legislation become effective September 16, 1940. President Roosevelt appointed him director of Selective Service July 31, 1941, and he has held the job since.

Colonel Schwartz, the Texas state director, in talking of General Hershey's three decades as draft board chief, said people in the System often wonder what has kept him at this same task for so long.

"I can sum it up in three words," he said. "Dedication and citizenship."

During his 30 years of activity with the System General Hershey has seen it send 10 million men to the armed forces in World War II and 3½ million during the Korean war, Berlin build-up, Cuban Crisis, and Viet Nam conflict. During his time, he saw draft boards register 82 million men.

General Hershey has served in Texas in capacities other than as director of Selective Service. He served in the Army along the Mexican border in 1916 and at Fort Bliss, El Paso, in the 1920s.

In Austin several years ago, when a group of men gave him some highway and city maps to find his way around the Rio Grande Valley and the Border, he offered his thanks, but remarked that he thought he wouldn't get lost, as he had covered most of the ground on a horse.

In February of this year, General Hershey completed 55 years of military service, 26 of them as a general officer.

IN EASTLAND HOSPITAL

Eastland County Sheriff L. E. (Lefty) Sublett was admitted to Eastland Memorial Hospital last Sunday night for a physical check-up. According to reports this morning, he was resting comfortably.

Mr. and Mrs. T. R. Seelye of Dallas visited in the home of Mr. and Mrs. I. E. Talley over the weekend.

A reminder— SENATOR TOWER has done something for you about THE THREAT OF VIOLENT WEATHER

Senator Tower is a leading supporter of legislation to provide funds for NADWARN, a new early storm-warning system for tornadoes, hurricanes, flooding, and other severe weather conditions. NADWARN is forecasted to be one of the nation's greatest protectors of life, limb, and property. Here is another example of Senator Tower's dedication to assist in the problems created throughout Texas by our huge state's wide-spread violent weather difficulties.

- YOU COME FIRST WITH SENATOR JOHN TOWER
- Senator Tower serves you as a STRONG FRIEND OF THE LAW AND OF CIVIL ORDER.
- Against Tower serves you as an effective FIGHTER AGAINST INFLATION AND SKY-ROCKETING PRICES.
- Senator Tower serves you as a LEADER IN THE PURSUIT OF VICTORY IN VIET NAM.
- YOU CAN COUNT ON THINGS GETTING DONE WITH SENATOR TOWER ON THE JOB.

He has earned National Congressional seniority and gained experience no new Senator could replace. With John Tower in the Senate, Texas has the distinct advantage of having its voice heard in the highest leadership councils of both parties.

KEEP TOWER
U.S. SENATOR
HE'S DOING A GOOD JOB FOR TEXAS

FD. POL. AD—Pd. for by TEXANS FOR TOWER, Sprosser, Wann, Chrm.

Sun Viewed by Most Of Waterlogged Area

Cliff Wires Seek Aid Offer Flood Relief. Made City Suggest Help By Tow

RAIN DAMAGE LID OFFERED BY TOWER

Storm-Stricken Officials Cleared by Tower Visit



See the incredible disappearing windshield wipers!



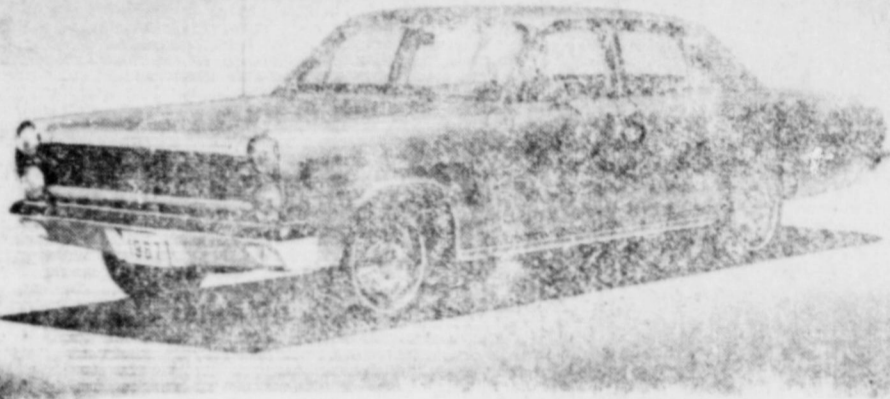
See the fabulous Wide-Track Pontiac and Tempest live at

100 East Commerce St. — Saturday, Nov. 5

See your authorized Pontiac dealer for a test drive!

MUIRHEAD MOTOR COMPANY

301 W. COMMERCE EASTLAND, TEXAS



Funeral Services For Mrs. Lamb Are Held Today

Funeral services for Mrs. Willie Myrtle Lamb, 84, were to be conducted at 10 a. m. Tuesday (today) in the Rust Funeral Home Chapel with the Rev. Jesse E. Cassle, pastor of the First Baptist Church, officiating. Mrs. Lamb, whose Cisco residence was 606 W. 9th, died at 10:30 p. m. Sunday in a Gorman nursing home. She had been ill for six months. Burial was to be in Pleasant Hill Cemetery. The member of the East Cisco Baptist Church was born in Erath County Dec. 4, 1881, and lived there until she

moved to Cisco 12 years ago. She was married to the Rev. Samuel A. Lamb May 17, 1913, in Eastland. He died in 1944. Mrs. Lamb had been an active church worker. She is survived by a son, Troy of Cisco; two stepsons, Dewey of Dallas and Leonard of Fort Worth; two daughters, Mrs. C. L. Bisbee of Andrews and Mrs. E. S. Ramsey of Port Lavaca; four stepdaughters, Mrs. Jess Taylor of Eastland, Mrs. J.B. Wright and Mrs. W. W. Edleman, both of Arlington, and Mrs. Roy Horner of Dallas; a brother, Cicero Rogers of the Chaney Community; eight grandchildren and one great-grandchild. Pallbearers were Robert Jess Hagan, C. F. Coats, Cecil Carter, Claude Rich and Joe Tucker.

Most Questions About Medicare On Patient Cost

Now that medicare has been in operation for three full months, most social security offices can identify the one question that is being asked the most about the hospital insurance portion of the law. R. R. Tuley, Jr., Abilene—district manager, reports that the chief question asked his staff is this, "Just how much of a hospital bill will I be responsible for?" The proper answer is that medicare pays all but the first \$40 of the hospital bill for up to 60 days except charges for the physician's and surgeons' services, personal comfort items, and any costs for the first 3 pints of blood.

Tuley also noted that participating hospitals agreed that no patient would be billed for anything except the first \$40 and the personal comfort items furnished. Personal comfort items (cost of which often are covered by private insurance policies) are such things as telephones, TV, private rather than semi-private room accommodations, private duty nurses, etc. Medicare does cover laboratory fees, operating room costs, special diets, drugs furnished by the hospital, splints, casts, wheelchairs, crutches, hospital gowns, X-rays, electrocardiograms, blood tests, even a private room if medically necessary, etc., according to Tuley.

In summary, medicare covers all necessary in-patient services ordinarily furnished plus anything else medically necessary (except the first \$40, and \$10 per day, 61st through 90th days). Persons in Texas having questions about an individual bill and medicare's settlement thereon with the hospital, should direct their inquiries to Medicare, Group Hospital Services, Blue Cross, Dallas, Texas.

MENU

Monday: steak and gravy, buttered rice, green beans, apple and celery salad, hot rolls, peach cobbler.
Tuesday: weiners with cheese, pinto beans, sprouts or cabbage, onion and pickles, corn bread, cinnamon rolls.
Wednesday: Beef stew with onions, potatoes, carrots and tomatoes, corn bread, prunes with peanut butter cookies.
Thursday: sausage patties, black-eyed peas, diced potatoes, tossed salad, hot rolls, fudge cake.
Friday: fish sticks, whole kernel corn, potato chips, tartar sauce, sliced bread, fruit jello.

EASTLAND COUNTY DELEGATES ATTENDING TSTA IN AUSTIN

James W. Childress and Mrs. L. H. Hageman will be in Austin on November 3-5 to attend the 88th annual convention of Texas State Teachers Association to be held in the city's municipal auditorium. Childress and Mrs. Hageman are official delegates from the Eastland County Unit of which R. B. Golemon is president.

"Texas — The Future Is Now" is the theme of the sessions which will feature such speakers as Governor John Connally, Dr. Carroll Newsom, vice president for education, Radio Corporation of America and Dr. Irvamie Applegate, president of the National Education Association and dean of education at St. Cloud State College, St. Cloud, Minnesota.

With a membership of 102,500 and 110,000 expected to join this year, TSTA is the largest professional organization in Texas and the second largest state educational

Mrs. Hemphill, Ranger Resident, Dies in Hospital

Mrs. Mary Elizabeth Hemphill, 84, died in Ranger General Hospital at noon Monday, Oct. 31.

Funeral services were held at 2 p. m. Wednesday in Killingsworth Funeral Chapel with Rev. K. C. Edmonds officiating. Burial was in Simpson Cemetery near Koko. Born Nov. 11, 1881, in Arkansas, she married J. W. Hemphill in 1930 in Mineral Wells. He preceded her in death several years ago.

A retired school teacher, she was a member of the Baptist Church, he had lived in Ranger for the past four years. She was a member of the Eastern Star.

Survivors include a brother, Edd Wheeler of Prairie Grove, Ark.; a sister-in-law, Mrs. Mattie Wheeler of Ranger; and several nieces and nephews.

Pallbearers were A. Z. Sharp, L. D. Sharp, L. D. Sharp, Reed Campbell, Bill Ogden and Jack Williams.

Vote for YOU!
ONLY YOU CAN CAST YOUR VOTE!
Vote! TUESDAY!



All Of A Sudden — It's WINTER
Time passes unnoticed how LONG has it been since your car had a tenance check-up?
PREVENTATIVE MAINTENANCE PAYS
VIC'S
Auto Repair
VIC EDWARDS
306 W. Main St.
MAin 9-2111

NO GIMMICKS.....NO GIVE AWAYS.... JUST LOW EVERY DAY PRICES FROM YOUR FRIENDLY SUPER SAVE MARKET

SUPER \$AVE MARKETS

RUSSETT
Potatoes 10 lb. bag 39c
Extra Fancy Delicious
Apples lb. 19c
Ruby Red
Grapefruit ... 2 lbs 25c

EZ-TIME
E-Z TIME 22-Oz. Plastic 49c
Detergent
BREEZE Reg. Box 37c
Soap
LIFEBOUY Reg. Bar 19c
Liquid Detergent
IVORY 22 Oz. Plastic 69c
Condensed
ALL 49 Oz. Box 81c
Soap
LIFEBOUY Bath Bar 21c

Breast of Chicken 3 Reg \$1
TUNA
Blackburn's SYRUP 45 Oz 39c
Vigo Boy Label 2 300 Dog Food 23c

Frozen Foods
JOHNSTON Apple-Pumpkin-Mince 34 Oz. 59c
FRUIT PIES EL CHICO ENCHILADA MEXICAN DINNERS 39c
TATER BOY POTATOES Birds Eye 2-lb Pkg. 29c
CORN on the COB 4-Ear Pkg. 49c

NABISCO
CHOC. PINWHEELS 49c
IDEAL CHOC. PEANUT BARS 49c

COFFEE
MAXWELL HOUSE 79c Pound Can

HUNT'S
Sliced or Halves PEACHES 4 No. 2 1/2 Cans \$1.00

WOLF
CHILI 65c No. 2 Can

MAXWELL HOUSE
COFFEE

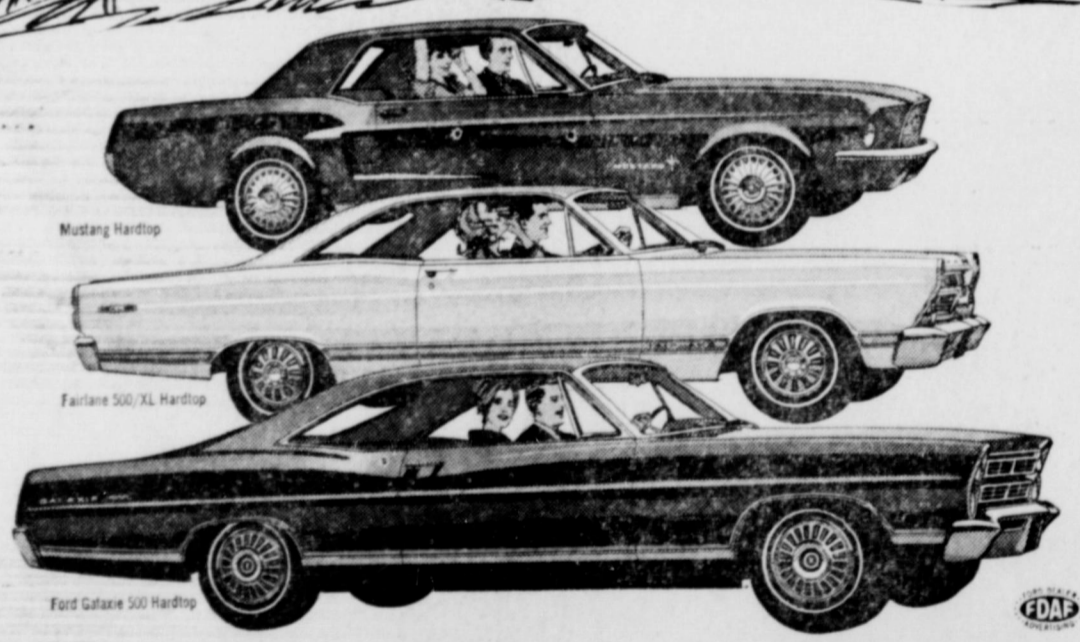
HAIR SPRAY
AQUA NET 79c Value 49c
BAYER 100% ASPIRIN 89c Value 69c
VICK'S COUGH SYRUP FORMULA 44 98c Value 79c
CASHMERE ROUQUET TALC 67c Value 49c

GIRLS "E" ASSOCIATION BAKE SALE Saturday at Super Save

HUNT'S TOMATO SAUCE 2 1/2 Oz. 29c
DEFATION EVAP MILK 3 7/8 Oz. 59c
LIBBY'S CUT GREEN BEANS 2 300 49c
LIBBY'S TOMATO JUICE 3 44-Oz. 57c

Betty Crocker 16 oz Brownie Mix 39c
Peter Pan 18 Oz. Peanut Butter Jar 69c
Fresh Kosher. Dill Pickles qt. 49c
Wolf 15 Oz. Tamales can 29c
Pillsbury Ast. Fla. Cookies Reg. Pkg. 49c
80 Count BAGGIES 39c

Texas is Ford Country.



Where '67 Fords make the best travel companions

Travel with a '67 Ford and enjoy Texas scenery in a new kind of peace and quiet. (Even quieter than the '66s that proved quieter than some of the world's most expensive imports.) Or join the Fairlaners in their swinging new family car. (Such a big performer, you'll scarcely believe its small price tag.) Or even go the all-out economy route with Falcon '67. (And... surprise... wind up hip-deep in luxury only more expensive cars have a right to.) No matter how you choose, you've got a choice way of traveling Ford Country. Make a choice little deal with your Ford Dealer today!



HOOD KING MOTOR COMPANY

Main at Seaman EASTLAND, TEXAS Phone MA 9-1786

WE GIVE GOLD BOND STAMPS

HOME-OWNED — HOME-OPERATED
SUPER \$AVE
GENE HAYNES, MGR.
MA 9-1191 400 S. SEAM

Auto Show Provides Delightful Decision-Making Fun

★ ★ ★
EASTLAND TELEGRAM
 Thursday, November 3, 1966 Page One

EASTLAND AUTOMOBILE SHOW
SATURDAY, NOV. 5 • 100 BLOCK EAST COMMERCE

The Annual Eastland Automobile Show will be held Saturday, Nov. 5 in the 100 block of East Commerce St., sponsored by the Eastland Automobile Dealers and Eastland National Bank.

shopper who has his mind made up to buy a '67-model car. It can be confusing, too, sometimes for the individual, often for the family, even after the major, positive decision on which nameplate. That one decision is only part of the agony of choice, as one automotive marketing

executive called it recently, because the bright and shining cars on display at the Auto Show are representative of more than 360 models offered for '67 by the U. S. industry.

The series of choices does not end even then. Standard equipment varies from model to model, nameplate to nameplate, and thoughtful consideration of that has to come before the shopper faces the long list of optional equipment which brings him his preferences in ease, convenience, comfort.

An auto show is a pleasant experience for the whole fam-

ily — that's part of the fun, deciding.

And this year, \$100 in prize will be given free. A \$10 bill will be given every hour, beginning at 1 p. m., and a \$50 Savings Bond will be given at 5 p. m. Everyone may register

do not have to be present to

win. The individual shopper can ease his mind by approaching the purchase of his '67 car in the frame of mind with which the businessman or the fleet buyer does. He can achieve that frame of mind by answering a few

questions to himself before he arrives at the Auto Show.

First, just what do you want your new car to do? Everybody shops for transportation, yes, but the buyer should bear in mind which kind he needs. Personal? Family? Children, too?

Business? Here fundamental choices run to roominess, from coupes and sports coupes through the sedans and station wagons.

For which kind of driving? City and suburban, limited travel? Or many days on the highways and Big-I systems? Now his choices go to engine sizes, horsepower; transmissions; variations in trunk sizes from model to model; and even to upholstery and comfort items.

Economy or luxury? Choices here are made from his knowledge of his budgets, both for investment in the car and daily operating costs,

and go up or down the manufacturers' suggested-price range and to interior decor, automatic vs. manual transmission, power for steering, brakes, seats, windows, antenna, convertible top; and to all the other options.

Most individuals and families approaching car purchases talk a lot about the options ahead of time — with the boys in the office, the girls at the supermarket, friends, neighbors, brothers and sisters and cousins. What they're after, really, is to find out what other people are doing, what others like in their cars.

CHILDREN BOOK WEEK

L. A. E. Cushman, Librarian "Books Please!" is the 1966 sponsor for Children's Book Week which is being celebrated Oct. 30th - Nov. 5th at Eastland Public Library, announced the Library Chairman of the Thursday Afternoon Club.

land's children do read, some 3,055 books last year as compared to the adults 1781 books.

Here are some of our new books that are sure to "please":

"Let's Travel in Mexico," "Father of Supersonic Flight," "The Big Game," "No Room," "Victoria's Castle," "Jennie's Hat," "The Fox and the Fire," "A Spy in Old West Point," One that will please the adults too is call "Christmas Magic." It is all about the art of making decorations and ornaments of assorted papers, foil, ribbon and string, old Christmas cards and various materials. "Books Please!"

MRS. PAT CRAWFORD INSTALLS SS OFFICERS

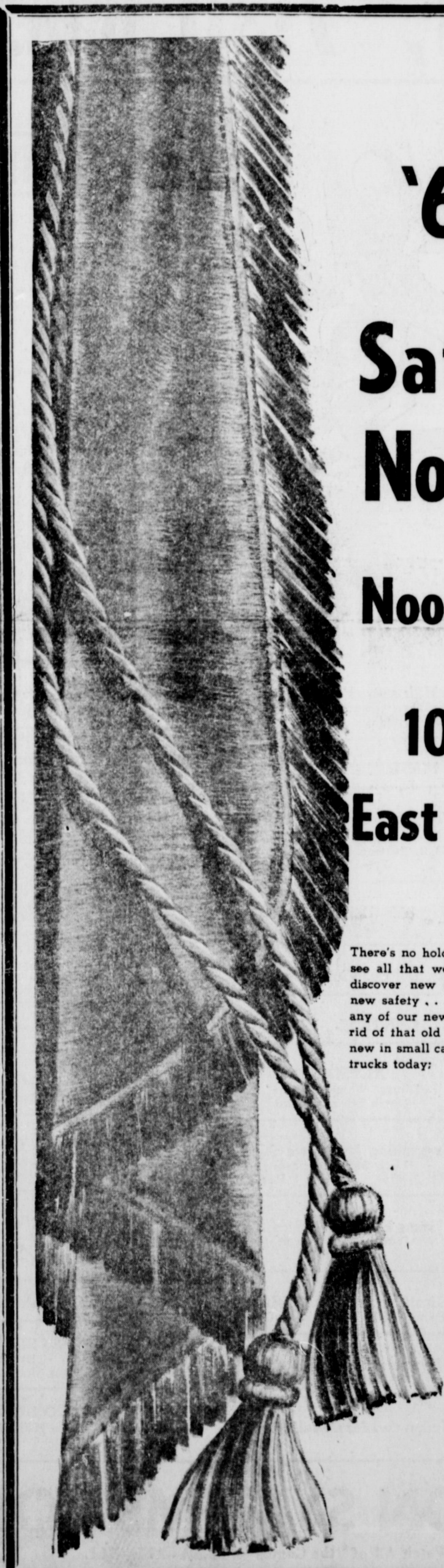
Mrs. Pat Crawford conducted installation services for Dorcas Sunday School of First Baptist Church the regular monthly class meeting Thursday evening Mrs. E. W. Ballinger's home.

Hailey and Odessa Manning, group captains. Mrs. Whitten presided during the business meeting and Miss Hearn led the opening prayer. The class set Nov. 17 as the date for the next meeting. Mrs. Don Estes will be hostess. Mrs. Ballinger served a refreshment plate of pumpkin pie, candy, coffee and tea. Attending the meeting were Meses. Crawford, Hutto, Whitten, Estes, Turner, Pittman, Edwards, Garner, Barton, Hailey, Manning, Ferne Green, Merle Poe, Mabel Garrett, and Miss Hearn.

mode o'day



as seen in November
AM:PM FAVORITE!
 Day blooming and night flowering robe of Lowenstein's 'Ice Cream' blend of Avril rayon/cotton... a luxury blend of lasting beauty. Sizes S/M/L/XL in floral prints. **4.99**
 Many Other Dusters and Robes To Choose From 3.99 to 10.99
 Use our Layway now for your Christmas Gifts
 Eastland, Texas



EASTLAND'S '67 AUTO SHOW

Saturday Nov. 5th

Noon 'Til Dark

100 Block East Commerce

There's no holding back any auto lover when you see all that we've revved up for you. This year discover new styling... new performance... new safety... and new economy. So, come sit in any of our new exciting cars, hon-n-ey, you'll get rid of that old buggy for sure. Come see all that's new in small cars, sports cars, large cars, compacts, trucks today:

FREE PARKING
FREE REFRESHMENTS

You do not have to be present to win — Everyone may register beginning at 12 noon.

A FREE \$10 BILL GIVEN EVERY HOUR ON THE HOUR BY THESE LOCAL DEALERS BEGINNING AT 1 P.M.

- **FULLEN MOTOR CO. CHEVROLET**
 303 E. MAIN ST. MA 9-2676
\$10 Prize
- **KING MOTOR CO. FORD, MERCURY, COMET**
 100 E. MAIN ST. MA 9-1786
\$10 Prize
- **MUIRHEAD MOTOR CO. BUICK ● PONTIAC**
 301 W. COMMERCE MA 9-1731
\$10 Prize
- **PIPKIN MOTOR CO. Oldsmobile, Cadillac, Rambler GMC Trucks**
 314 W. MAIN ST. MA 9-2635
\$10 Prize
- **RUSHING MOTOR CO. CHRYSLER ● PLYMOUTH**
 215 S. SEAMAN MA 9-2430
\$10 Prize

SATURDAY

100 BLOCK E. COMMERCE ST.
 12 NOON UNTIL SUNDOWN

GRAND PRIZE AT 5 p.m.
\$50 SAVINGS BOND
 GIVEN FREE BY

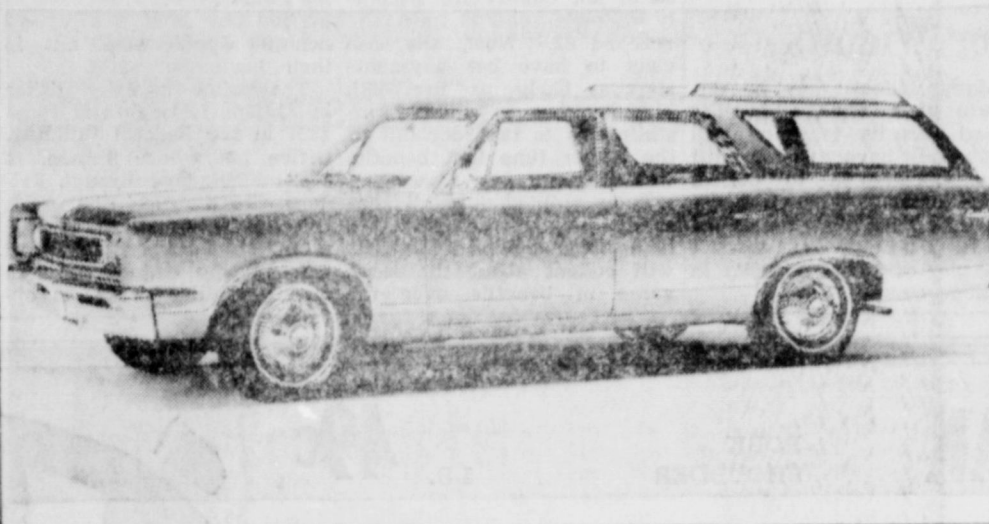
Eastland National Bank
"On the Square"
EASTLAND, TEXAS
 ON-THE-SPOT BANK-RATE FINANCING SATURDAY AND EVERY DAY

Superstitious? 'Not Me!' -- Can You Say That, Truthfully?

Superstitions are said to be "The belief in the impossible."
For example, many believe that if an announcer tells no-hit baseball game, the pitcher's chances of finishing the game as a no-hit game are spoiled. No-hit games are extremely rare. A pitcher may grow tired during the game and give up some hits in later innings. The announcer's speech did not cause this. But who could prove it?
And that's why superstitions persist; even when we don't admit to holding them, we have lingering doubts.

Most superstitions are connected with luck, either good or bad. Finding a pin and picking it up is supposed to make the whole day go well. A four-leaved clover, a horseshoe hung up so that "the luck cannot leak out," and a rabbit's foot are supposed to bring good luck.
Breaking a mirror, spilling salt, walking under a ladder, having a black cat cross your path, and opening an umbrella in the house are supposed to bring bad luck.
Friday, the 13th is an unlucky day — the number 13 is considered unlucky by so many people that often buildings and hotels skip that

EASTLAND AUTOMOBILE SHOW SATURDAY, NOV. 5 @ 100 BLOCK EAST COMMERCE



floor, going directly in number from 12 to 24.

Usually, a person can find some occurrence to fulfill the prediction. A bad grade on today's test? Because the student didn't study, of course. Yet...he did spill salt at breakfast, didn't he?
An unexpected gift? Grandmother did pick up that pin last Thursday, didn't she?
And so it goes. Pick your favorite superstition and enjoy it. If you haven't one, maybe one of these will fit you:
A blister on your tongue means that you have told a lie.
If you're afraid of lightning, you have something to hide.
When you have cold shivers, someone is talking about you.
A hat placed on a bed means a death in the family will occur soon.
Sing before breakfast, cry before supper.
Killing a spider is bad

luck.
The seventh child of a family is sure to be lucky.
If you count the number of fish you have caught, you will catch no more that day.
If you hang an adder's skin in the rafters, your house will never catch fire.
If you tell your dream before breakfast, it will come true.
Are superstitions unhealthy? Not as long as they do not interfere with normal living, say the authorities. In this era, a belief that riding in a car, using the telephone, or walking on a sidewalk was unlucky would be a severe handicap to normal living.
But not mentioning a dream until after you've eaten! Or not counting the fish in your possession? Oh, you know better, of course but still...

The Litter Critter Says...
**PREVENT
ROADSIDE FIRES**
TEXAS HIGHWAY DEPARTMENT

★ **PALACE** ★
IN DOWNTOWN CISCO
OPEN 1:45 - STARTS 2:00
SATURDAY & SUNDAY
AFTERNOON
FIRST FEATURE
'Planet of the Vampires'
—IN COLOR—
SECOND FEATURE
'Ambush Bay'
—IN COLOR—
HUGH O'BRIAN

Eastland Auction Sale

Eastland Auction Company reported that 1,511 head of cattle, 125 hogs and 296 goats and sheep were sold last Tuesday. Also, 277 consigners and 81 buyers were in attendance.
Prices were listed as follows:
Butcher bulls, 19 to 21.70; cows, 16 to 17.40; calves, 20 to 23.40; hogs, 20 to 21.
Stocker: bulls, 19 to 25; steer calves, light choice, 22 to 28.50; heavy choice, 22 to 27.50; heifer calves, 22 to 24.50; cows, 120 to 165; goats, 1.50 to 8 per head.
Canners and cutters, 11 to 15.50; yearling heifers, 20 to 23; pairs of cows and calves, 135 to 271; sows, 18 to 20; packer goats, 3 to 6.50; and lambs, 21.50.



A team for a better Texas for you!

Governor John Connally and Attorney General Waggoner Carr have worked together for 4 years to give Texas and YOU a better state and better opportunities.
As a United States Senator in Washington, Waggoner Carr will co-operate with Governor Connally to work for better education, more jobs, benefits for our elderly, and better prices for our farmers, ranchers and dairymen. He will do what is right for Texas!

Vote Democratic, Tuesday, Nov. 8, 1966

Elect Democrat
WAGGONER CARR
United States Senator

AN INTERSTATE THEATRE
MAJESTIC
THURSDAY — FRIDAY — SATURDAY
Thur. & Fri. Open 4:45 — Show 5:10-7:15-9:30
Sat. Open 12:45 — Show 1:00-3:05-5:10-7:15-9:20

*A Swingin' Fun-Romp
That Fractures The Frontier!*

Dead Man on a Horse ★ **Alan Delon**
Joey Bishop
Texas Across the River
Rosemary Forsyth

MARQUAND PETER GRAVES MICHAEL ANSARA LINDEN CHILES
ANDREW PRINE

JOY DRIVE-IN Open 7:00 - Starts 7:30
CISCO - EASTLAND HIGHWAY Adults — 60c
FRIDAY and SATURDAY
DOUBLE EXCITEMENT AT POPULAR PRICES

| | |
|--|---|
| First Feature 'Ambush Bay' —IN COLOR— HUGH O'BRIAN | Second Feature 'Planet of the Vampires' —IN COLOR— |
|--|---|

Cadillac makes any automobile show a special event!

No auto show is "just another auto show" when the exciting all-new 1967 Cadillac is on display. Merely admiring this magnificent motor car is an enjoyable and rewarding experience. You will be impressed when you see the surprising newness of the Cadillac you've known and admired for years—or the dramatic daring of the Fleetwood Eldorado—world's finest personal car. But most of all, you will discover a new enthusiasm for motoring when you drive either of these great cars. Ask your authorized Cadillac dealer for this opportunity. He will be happy to accommodate you at your earliest convenience.

GM Cadillac Motor Car Division
Surprisingly New! Superbly Cadillac!
Standard of the World 1967



SEDAN DEVILLE—ONE OF TWELVE BRILLIANT NEW CADILLACS FOR 1967



FLEETWOOD ELDORADO—WORLD'S FINEST PERSONAL CAR

MEET CADILLAC AT THE EASTLAND COUNTY AUTOMOBILE SHOW
NOVEMBER 5 — 100 BLOCK EAST COMMERCE
and at your local authorized Cadillac dealer's
PIPKIN OLD S-CADILLAC

My Mommy cooks with modern Gas because...

Modern gas cooking is fast, safe, clean, cool, dependable, efficient, completely automatic—and more economical than you-know-what. See the modern gas ranges now at gas appliance dealers or Lone Star Gas.

Jubilee Gas Range Sale

Isn't This Generation Responsible in Upkeep Of Un-Kept Cemeteries

Whose responsibility is it to be concerned with the upkeep of the many cemeteries and burial places in Eastland County? There's about 80. Of course, most of the larger ones, and the "newer" ones are properly cared for by the cities and cemetery groups, which voluntarily contribute money and labor to seeing that the final resting places don't just "grow up to the weeds." But what about the many which do not fall into these categories? And apparently there are quite a few which fall into this "neglect" category. Fortunately most cemeteries are in good repair, while others show the ravages of time and decay. Members of the Eastland Committee have located and list the following cemeteries and burial places in the county: Alameda.

Basham, Baseline Road, Bear Springs, Bedford, Goecker Mountain, Brown, Buffalo Wallow, Bullock. Carbon, Central, Center Point, Cisco, Christ Lutheran (no. One and No. 2), Cross Road, Colony, Corinth, Coyote Peak, Cook and Curtis. Davidson, Desdemona, Dothan, Drake. Eastland, Ellison Springs, Elm, Elm Switch, Freedom, Flatwoods, Gonzales, Gorman, Gregg, Haskel, Hale, Morgan, Hittson Howard, Hunter, Jewell, Jordan, Kokomo. Lane, Latham, Liberty Hill, Long Branch, Lutheran (Mossman). Merriman, Mitchell, Monroe, Morgan, Mueller, Murray Memorial. Mystem Grave, McBeth, McGroom, McNeese. Nimrod. Old Providence. Pioneer, Pleasant Grove, Pleasant Hill, Pleasant Valley, Pisgah. Ranger No. One and No. Two, Reagan, Rising Star, Romney, Robinson. Savano, Scranton, Simpson, Salt Tank, Staff, Sutton, Tipton, Wayside. Some of the burial plots are on private property, and have for the most part, been partially cared for by the owners. Some of the cemeteries are:

Senior Citizens Are Target of Amendment 7

State Senator Franklin Spears has called on Texas voters to defeat Constitutional Amendment 7 at the polls Nov. 8. The amendment, if passed, is supposed to repeal the poll tax, but actually it creates a confusing and misleading voter registration system.



SENATOR FRANKLIN SPEARS

Spears said he favors defeat of Proposition Seven because: "1. It is no longer necessary to repeal the Texas poll tax. The courts have already done so. "2. Proposition Seven is misleading because its language does not reflect what passage would actually mean." Spears said passage of the amendment would mean: "1. That all voters must register—even those over 65 [who] do not now have to register. "2. That all voters must register each year—thus not allowing the Legislature the chance to decide whether registration should be annual, biennial or permanent."

"If Proposition 7 passes," said Spears, "Texas would be the only state in the nation with annual registration. Annual registration is bad because it has no protection against voting fraud. Re-registration by voting is far more preferable." Re-registration by voting is sometimes called permanent registration. Under such a system, said Spears, "voter lists are available the year 'round and can thus be purged of those not qualified." Also, he pointed out, no dead persons would be listed, nor can convicts or other ineligible voters—because these names are automatically furnished to the voter registrar who removes them. Persons who move from one county to another under permanent registration must register and are automatically removed in the county of their former residence.

"Finally," said Spears, "the cost of re-registration by voting is only one-tenth as costly as would be the system set up by Proposition Seven—25 cents per voter as opposed to 2.5 cents."

"The strongest democracies in the history of man are those where citizen participation is greatest," said Spears. He added: "Proposition 7 would drastically limit participation by people in their government. "Texas is already low in citizenship participation—in the last two Presidential elections we ranked in the bottom seven of the 50 states in the percentage of eligible voters who actually voted. "Under Proposition 7 the Legislature is given no chance to provide for greater participation."

Railroads Pay \$27,837 in Taxes To This County

Current annual taxes paid to the various government agencies in Eastland County totaled \$27,837, according to the Texas Railroad Association. That amount was the county's share of the nearly \$10,000,000 the railroads paid in Texas on their own right of way and other property. The biggest railroad contribution was to the school systems throughout the state. Large sums were also distributed to city, village and county governments and for road and bridge funds. In addition, was the large total in taxes the railroads' nearly 35,000 Texas employees contributed on their own property. The vast majority of rail workers, many of whom live in Eastland County, own their own homes. "With the future of our country and state depending to a great extent upon the education of our youth, I am delighted that nearly half of the taxes paid by the railroads go to support the schools," said Walter Caven, general counsel of the Texas Railroad Association. "Recognizing this need for education, many of the railroads operating in Texas also make scholarships available to a large number of students every year."

C. E. PAUL, D. C.
Complete
Chiropractic
Health Service
Ave I at 8th St.—(Hwy. 80)
Cisco, Texas
Phone HI 2-1677

BATTERY
TROUBLES?
CALL
HORTON TIRE CO.
MA 9 - 1420
\$8.95 and up
plus tax

teries aren't "officially" named but have been given names by the historical committee for statistical purposes, and therefore some not listed may be called by another name. A detailed cemetery-by-cemetery report, is being planned soon, it has been announced. Information, other than that already given, regarding the cemeteries, will be appreciated by Historical Committee Chairman Mike Collins and other members of the committee.

Social Security Has Age Option For Widows

Many widows may be unaware of a change in the social security law and still think they have to wait until they become 62 to collect social security widow's benefits. This is the concern of R. R. Tuley Jr., district manager of Social Security in Abilene.

Until the change in the law, effective Sept. 1965, the widow of a man who had worked under social security could not qualify for monthly widow's benefits until she reached 62. Now, she can elect to have her payments start as early as her 60th birthday, but in smaller installments to take account of the longer time that benefits will be paid. Tuley pointed out that generally women who choose to take these reduced benefits will collect about the same value in benefits over the

years. He urged widows, who may have been waiting for their 62nd birthdays, to call or visit the Social Security office nearest their homes to find out how the age-60 benefits would work out in their particular cases. The social security office in Abilene is located at room 2321 in the Federal Building. Office hours are 9 a.m. to 5 p.m. Mondays through Fridays. In addition, the office is open from 5 p.m. until 9 p.m. on Tuesdays to afford persons who cannot come in during regular hours an opportunity to discuss social security matters with a representative. A representative will be at the Cisco Chamber of Commerce Wednesday, Nov. 2. One will be in Eastland Nov. 7, and one in Ranger Nov. 9.

PROGRAM ANNOUNCED
The J. H. Kendrick family will furnish the program Sunday morning, Nov. 6, at the Men's Fellowship Bible Class. The program will start at 9:45 a.m. in the annex of the First Christian Church. The public is invited.



| | | | |
|---------------------|-------------------------------|----------|-----|
| PORK STEAK | PORK SHOULDER | LB. | 49c |
| SLICED BACON | J.R.B. Dry Cured | LB. PKG. | 65c |
| SAUSAGE | Shop Made Seasoned JUST RIGHT | LB. | 49c |
| SALT BACON | WITH STREAK O-LEAN | LB. | 49c |
| Decker's | A.F.-12 Oz. Pkg. | | |
| HOT LINKS | lb. | 59c | |
| | FRANKFURTERS | | 49c |

Prices Effective Thru. Saturday November 5, 1966

| | | | | |
|-----------------------------|----------------|--------|--------|-----|
| PINEAPPLE ORANGE | Drink Shurfine | 5 Cans | 46 Oz. | \$1 |
| PINEAPPLE GRAPEFRUIT | Drink Shurfine | 5 Cans | 46 Oz. | \$1 |

| | | | | | | | |
|--|----------------|------------------------------------|----------------|---------------|---|----------------|------------|
| CONTACT Nasal Spray \$1.29 SIZE | 69c | Shortening SHURFINE | 3 LB. CAN | 59c | OLEO FOOD KING SOLIDS | | |
| SILK SATIN Lotion — 59c Size | 39c | Tomato Soup HEINZ | 10 NO. 1 CANS. | \$1 | 5 1-LB. CTNS. | \$1 | |
| SALT Shurfine Plain or Iodized | 2 26 Oz. Boxes | Austex Chili WITE BEANS | 3 15 OZ. CANS. | \$1 | BISCUITS Shurfresh S'milk or B'milk | 3 8 Oz. PKGS. | 23c |
| | 15c | Crackers SHURFRESH SALTINES | 4 1-LB. BOXES | \$1.00 | TUNA Shurfine - Chunk Style | 4 No. 1/2 Cans | \$1 |
| | | Pinto Beans ARROW | 2 Lb. Bag | 19c | | | |

• SHURFINE CARNIVAL SPECIALS •

| | | |
|-----------------------------------|----------------|------------|
| TOILET TISSUE Northern | 3 4-Roll PKG. | \$1 |
| GOLDEN CORN Shurfine | 6 303 CANS | \$1 |
| FRUIT COCKTAIL Shurfine | 5 303 CANS | \$1 |
| WHOLE OKRA Shurfine Frozen | 5 10 Oz. PKG. | \$1 |
| CUT CORN Shurfine Frozen | 5 10 Oz. PKGS. | \$1 |

TIDE

DETERGENT

Giant Box 49c

With \$5.00 or More Purchase
Limit One Box Per Customer

THIS WEEK GET YOUR

Star Glow SAUCER

Each week a piece of Star Glow Dinnerware will be featured for just 99¢. For each \$5 in grocery purchases, you are entitled to one piece at this low price. There's no limit... with a \$10 purchase you can get two pieces... and so on!

NO SALES To Dealers

• GARDEN FRESH PRODUCE •

| | | |
|---|-----------|-----|
| RED POTATOES U. S. NO. 1 | 10 lbs. | 45c |
| GOLDEN CORN FLORIDA — FULL EARS | 3 ears | 29c |
| CUCUMBERS LONG GREEN | 3 for | 19c |
| APPLES FANCY JONATHAN | 4 lb. bag | 39c |
| RADISHES CELLO — FRESH and CRISP | 3 bags | 19c |



KEEP TOWER
 U.S. SENATOR
 IS DOING A GOOD JOB FOR TEXAS

Adv. — paid for by Campaign for Senator Tower's Re-Election, Lloyd London, chairman.

TEXAS IS ON THE MOVE!

Virtually every field of endeavor, our state has made dramatic progress in the past four years under the strong leadership of Governor John Connally. His administration's bold, yet sensible programs have helped provide new opportunity and a better way of life for all our people.

PROVED EDUCATION — Since 1963, state investment in higher education has doubled, and faculty salaries have increased 40%. State support of local public schools have increased 44% in four years, including a \$100 million teacher pay raise enacted in 1965. Technical and vocational training programs have been vastly increased; junior college enrollment doubled during the current bi-ennium. Special literacy programs for migrant workers and their children have been expanded. A college student loan fund of \$85 million has been established. And a special Governor's Committee on Public Education currently is studying all facets of elementary and secondary education.

WATER RESOURCES DEVELOPMENT — Long range planning and development have been given top priority. \$100 million in bonds have been issued for development of needed storage facilities; authorization has been granted to expand this program to \$200 million for the next two years.

CONCERN FOR THE AGED AND NEEDED — Since 1963, assistance to our elderly has been increased 27%. The Governor's Committee on Aging is continually working for the benefit of our senior citizens.

INDOOR RECREATION — More than \$2 million has been invested in improving ten of our most attractive state parks during the past two years to provide additional recreational facilities.

INDUSTRIAL EXPANSION — A record 855 new industrial plants have been established the past three years, moving Texas into second place in the nation in industrial expansion. Last year, more than 23,000 new jobs were created in manufacturing alone — the best year ever for the Texas labor force.

INCREASED TOURISM — More than 12 million tourists visited Texas last year, adding more than \$900 million to the state's economy, and creating 140,000 new jobs. The state's tourist advertising program has been sharply expanded.

MENTAL HEALTH AND MENTAL RETARDATION — New emphasis on prevention of mental illness and mental retardation has been achieved through establishment of new community centers, replacing the former practice of "warehousing" patients. Investment for research into causes of mental disorders has doubled the past four years.

BETTER HIGHWAY TRANSPORTATION — Texas has more farm-to-market roads than any other state — more than 35,134 miles. We lead the nation in construction of interstate highways, at a cost 40% below the nation's average.

COMBAT AIR AND WATER POLLUTION — New legislation for public health, "The Clear Air Act of Texas," provides state action to combat air pollution. Similar vigorous action has been initiated to control pollution of Texas streams, bays and estuaries.

NEW CULTURAL GROWTH — The Fine Arts Commission was established in 1965 to nurture the cultural enrichment of Texans. The state's cultural heritage will be preserved and portrayed in the state's pavilion at HemisFair '68 in San Antonio.

BUSINESSLIKE ADMINISTRATION — With unprecedented teamwork, our state government has operated responsibly and efficiently. The Legislature has finished its work on time in each session. Following a pay-as-you-go policy, we have maintained a healthy surplus in the general revenue fund without curtailing essential services.

HEALTHY, GROWING ECONOMY — Business activity rose 11% last year, as Texas continues one of the brightest growth areas. Employment and income are at an all-time high, unemployment at an all-time low. Despite increased responsibilities, our state government costs only \$168.78 a year per citizen, fourth lowest in the nation. No broad-based tax has been enacted the past four years. Texas still has no personal income or payroll tax, no corporate income tax, and is one of few remaining states with a limited sales tax of 2%.

LET'S KEEP THIS KIND OF PROGRESS AND PROSPERITY FOR TEXAS! HELP GIVE AN OVERWHELMING MANDATE FOR THE VISIONARY LEADERSHIP OF DEMOCRATIC GOVERNOR JOHN CONNALLY AT THE POLLS NOVEMBER 8TH!

RE-ELECT GOVERNOR JOHN

CONNALLY

FOR A GREATER TEXAS!



(Political ad paid for by Connally for Governor Committee, Lewis Timberlake, Chairman)

**Officials Endorse No. 5
 Amendment In Resolution**

Seven organizations and associations of county, district and precinct officials and employees have announced their support of Senate Joint Resolution No. 4, No. 5 on the ballot to be voted on November 8.

**Contracts Let
 For Highway 36
 Development**

A contract for 4.425 miles on Highway SH 36 in Eastland County has been awarded to an Amarillo firm, it was announced in Austin by the State Highway Commission.

Cooper and Woodruff, Inc. submitted the low bid of \$142,160.60 on the project which will include flexible base, asphaltic concrete, pavement and one course surface treatment on shoulders. The work is expected to take 180 working days, according to E. M. Pritchard, District Highway Engineer at Brownwood.

R. P. Haun, Resident Engineer at Eastland, will be in active charge of the project while it is under construction. Haun stated that Cooper and Woodruff already have one job underway in the county and that estimated starting date for the new project is after December 1. Haun said that the contractor has several families living in Cisco and Eastland at this time, but the company is short-handed and is experiencing some difficulty in finding local men to work.

by Carl S. Smith, chairman of the committee formed by the Texas Federation of District, County and Precinct Officials to encourage state-wide support of Amendment No. 5.

The amendment authorizes the State Legislature to provide a retirement plan for county employees and officers to be financed by participants in the system and prohibits the state from ever appropriating funds for the system.

The organizations and associations which have now come out strongly endorsing Amendment No. 5 and urging its approval include:

Texas Federation of District, County and Precinct Officials; The Sheriff's Association of Texas; The County Treasurers Association of Texas; Tax Assessor-Collectors Association of Texas; County and County Judges and Commissioners of Texas; Justices of the Peace and Constables Association of Texas; the District Clerks.

"These organizations and their friends are working hard to encourage general support for Amendment No. 5 and I feel the public in general recognizes the need for the retirement system it will provide," Smith stated.

"Such systems are now available to virtually every group of governmental employees as well as those in private enterprise so there is every reason for county employees to enjoy such benefits," he added.

"Particularly in view of the fact that it will be the participants themselves who will finance the system—not the state which is specifically prohibited from ever making an appropriation for the system under the provisions of the amendment No. 5," Mr. Smith concluded.

Announcing
**EASTLAND'S ANNUAL
 AUTO SHOW**
 WILL BE PRESENTED
SATURDAY, NOV. 5, 1966
 100 BLOCK EAST COMMERCE
12 NOON 'TIL DARK
SEE ALL THE '67 AUTOS
**PLUS \$100 IN PRIZES
 TO BE GIVEN AWAY**
**MAKE PLANS NOW TO
 ENJOY THE LOCAL AUTO SHOW**

Sponsored by EASTLAND NATIONAL BANK &
 EASTLAND NEW CAR DEALERS

- FULLEN MOTOR CO.
- KING MOTOR CO.
- PIPKIN MOTOR CO.
- MUIRHEAD MOTOR CO.
- RUSHING MOTOR CO.

*Us Plymouth Dealers will do
 most anything to win you over*

New win-you-over Plymouth Fury! Longer. More luxury. Topped off with loving care that's new to the low price field.

Fury III—4 Door Hardtop

Want us to whip you up a cake? Do a few handstands? Or just stop bugging you so you can test drive a '67 Plymouth Fury? We'll do darn near anything to bring you face to face with one. From the top-of-the-line VIP to the dollar-saving Fury I, they're the biggest, most tempting Plymouths ever. Longer by almost 4 inches, much more luxurious, with no less than 21 new safety-value features. Come try Fury—and put our do-anything promise to the test. About the only thing we won't do is short-change you on comfort.

Plymouth '67

Big Win-A-Car Sweepstakes! Come in and register to win a '67 Chrysler, Plymouth, or Imperial. Now during our big 1967 Plymouth Announcement Celebration.

AUTHORIZED DEALERS **CHRYSLER** MOTORS CORPORATION

See your Plymouth Dealer *He's all heart.*

RUSHING MOTOR CO.

215 S. SEAMAN EASTLAND MA 9-2430

Barracuda For 1967 Is The Swingingest



The Plymouth Barracuda, the original sporty fastback in the compact car field, has completely new aerodynamic styling for 1967. It is lower, longer and wider. The wheelbase has been extended two inches to 108, and the over-all length of 193 inches is nearly five inches longer than the 1966 model. The new Barracuda has an appearance completely unlike that of any other car in the Plymouth line. Front and rear fenders and body side panels use sculptured metal rather than chrome ornamentation to emphasize the car's flowing lines.

From the rear, the 1967 Barracuda has a look similar to European grand touring cars, including an aerodynamic spoiler form of aluminum applique. Standard engines are the 225 cubic inch six or the 273 cubic inch V-8. Motor sports competitors can order the optional four-barrel, 383 cubic inch V-8 engine. The popular Formula S package is continued as an option. Standard safety features include an energy-absorbing steering column, dual braking system, safety inside door handles and a hazard warning system.

ELECTION JUDGES NAMED FOR NOV. 8 BALLOTING

County Judge Scott Bailey has announced the following election judges and places for the election Tuesday, Nov. 8.

Eastland: Mrs. L. D. Harris, first floor of Courthouse. All offices in the courthouse will be closed that day, with the place of voting open from 8 to 7.

Ranger: Calvin Brown, Recreation Building.

Cisco: J. V. Heyser, Jr., City Hall.

Kokomo: Wayne White,

Community Center.

Olden: C. J. Langlitz, Community Center.

Desdemona: L. E. Clark, Gorman; Odie Brightwell, School house.

will substitute for W. G. Baker, who is ill and cannot serve; voting in the fire hall.

Carbon: H. M. Gilbert, school tax office.

Rising Star: Charles Ballew, American Legion Hall.

Pioneer: Doss Alexander, Community Center.

Nimrod: Ed Townsend, Progressive Club Building.

Scranton: Felix F. Boland, Community Center.

A. E. Crawley of Ranger has been appointed election judge of absentee voting.

Each voting precinct will be open from 8 a. m. to 7 p. m.

prosperity, farmers are receiving less for many of their commodities than they did 18 years ago.

"In fact," Carr said, "they have almost become the forgotten people of our economy."

Carr applauded Governor John Connally's action in launching a study of food costs in Texas. The Governor requested the University of Texas, Texas A & M and Texas Tech to make the study and report to him by December 1.

Carr, who had previously called for more information on food costs, expressed hope the study will produce evidence to correct "a great deal of misinformation about who is to blame."

READ THE CLASSIFIEDS

WANTED

PROSPECTS FOR

- Vinyl Insulating Windows
- Plastic and Insulating Siding
- Aluminum Replacement Windows
- Aluminum and Steel Siding
- Fry Roofing
- Fiberglass Insulation

J. H. TURNER
Home Improvement Company
HI 2-3262 — Cisco

Only YOU can do it!
VOTE! TUESDAY!

Carr Concerned Over Rising Costs of Foods

AUSTIN. — Some people are trying to make farmers, ranchers and dairymen "the scapegoats of inflation" Attorney General Waggoner Carr has declared in calling for more detailed information on the composite factors of food prices.

As a United States Senator, Carr said, he would take steps to determine what share of food costs actually goes to the farmer-producer. The Department of Agriculture would be asked to provide periodic detailed breakdowns to reveal what share actually goes to the farmer-producer.

"I, and Mrs. Carr in particular, certainly share the concern of housewives over rising food costs," Carr said. "But I am convinced that the farmers and ranchers of Texas are not to blame for high supermarket prices." The Democratic candidate pointed out that in a time of

HEY BOYS and GIRLS of

RANGER, EASTLAND, and CISCO

Saturday, November 5 — 9 a.m.

Bantam Bowlers — Junior Bowlers

AGES up to 19 Years

Fun and bowling party at Fiesta Bowl in Eastland

JOIN THE A.J.B.C. LEAGUE THERE WILL BE:

FREE - Coca Cola & Pepsi Cola — FREE - Ice Cream — FREE Bowling Games

FREE — Instructions — FREE — Balloons

KIDS: BRING MOTHER OR FATHER

FREE DOOR PRIZE DRAWING FOR PARENTS

FIESTA BOWL

Texas Needs a "Can-Do" Man in the United States Senate! Independent and effective ...that's Democrat Waggoner Carr!

Texas needs Waggoner Carr in the United States Senate!

We, the citizens of Eastland County, as you to join us in working for and supporting WAGGONER CAR FOR THE U. S. SENATE.



Vote for Independent Thinking — Effective Action!
Elect Democrat

WAGGONER CARR
United States Senator

PD. POL. ADV.: Paid for Eastland County Democrats for Carr, Mike Collins, Crm.

The Rocket Action Cars are out front again!

Good show!

Come see for yourself! Olds has a whole auto show wrapped up for you in one big exciting exhibit! Breathtaking new front-wheel-drive Toronado—better than ever the second time around! Two new Delta 88 Custom hardtops that are making "88" the popular new buy-word for luxury! A whole new series of dazzling Delmont 88s, priced below many models with "low-price names"! Cutlass Supreme—now a brand-new, five-car series with fine-car features like the low-price field never had before! Wagons. 4-4-2s. F-85s. They'll all be there to make this the most complete "show-within-a-show" you've ever laid eyes on!

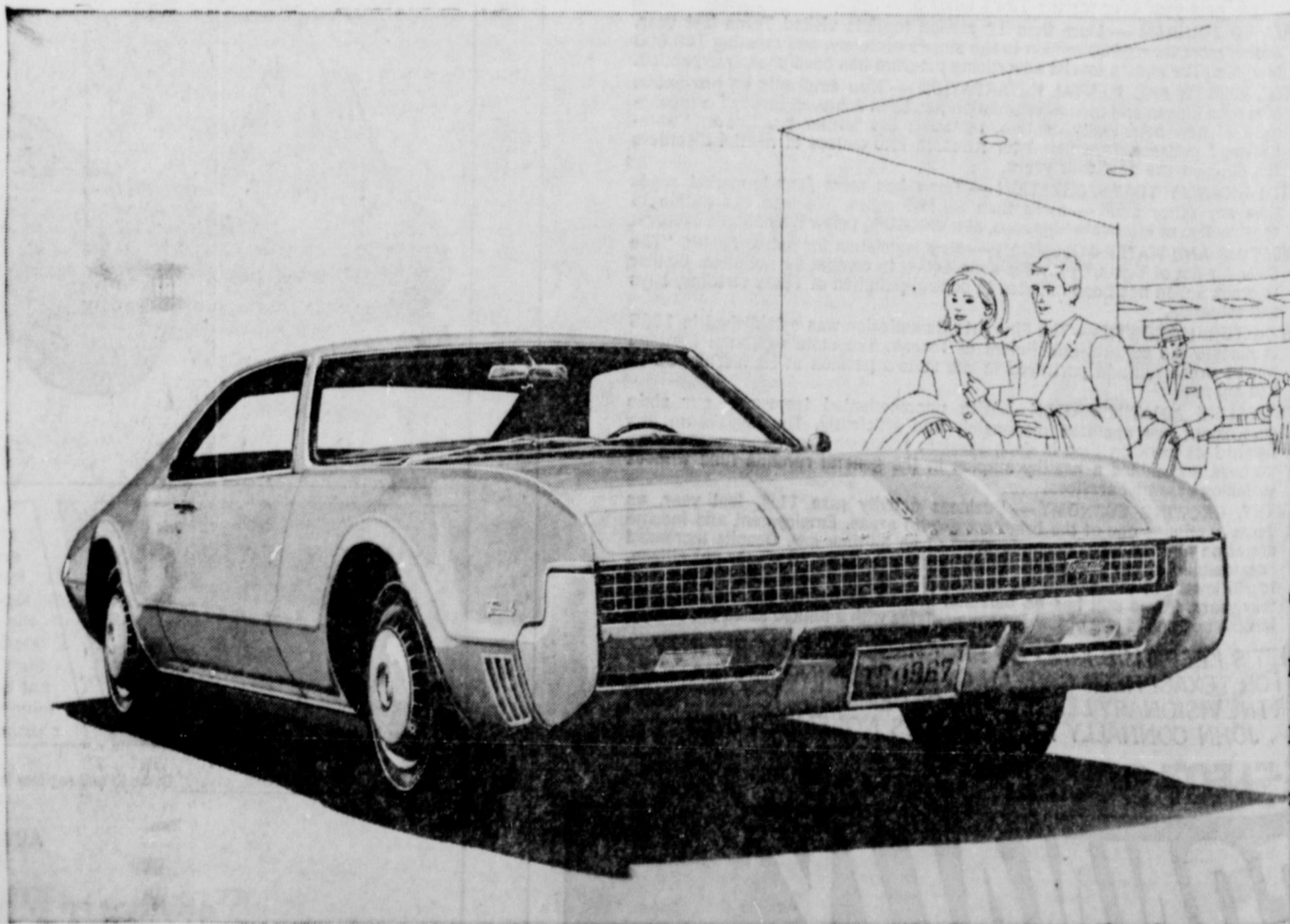
Olds thinks of your safety, too, with the GM developed energy absorbing steering column that can compress on severe impact up to 8 1/2 inches; with four-way hazard warning flasher, outside rearview mirror, dual master cylinder brake system, plus many other safety features—all standard.

Engineered for excitement... Toronado-style!

'67 OLDSMOBILE

See the Olds Exhibit at Eastland Auto Show

100 E. Commerce St. — Saturday, November 5, 1966



PIPKIN OLDS-CADILLAC

314 W. MAIN — EASTLAND — MA 9-2636

See Your nearby Oldsmobile Dealer—the Man who has Everything: Toronado, Ninety-Eight, Delta 88, Delmont 88, Cutlass Supreme, F-85, Vista-Cruiser, 4-4-2

1-Year-Old Rolling Pin Is WMU Early-Day Collection

WMU of Bethel Baptist met Tuesday morning church. Mrs. J. C. president, conducted business meeting. Opening song, "Amazing Grace," was led by Mrs. May. Mrs. Bill Goff he prayer calendar and Mrs. Pittman led the for missionaries.

Program for the week presented by Mrs. Marri-rtis, assisted by Mrs. James Glenn, and L. C. Curtis served pound which she baked ac- g to a recipe from the Coffee was served by brown.

museum containing gs of "Grandmother's" was enjoyed by those t. The WMU plans to ue to add items to this y. Anyone having any- to show in this interest is asked to loan it to WMU. Some items now e display are Bibles, a tea pot from Hong watches, and many ot- ings. The oldest item olling pin which is over ears old. Mrs. Luce

Pittman owns this rolling pin. The next meeting will be Tuesday, Nov. 8, at 9:30 a.m. at the church. The program will be "Baptists in Japan." Attending Tuesday were Mmes. Allison, Goff, Curtis, Pittman, Glenn, Brown, Tom Clark, Armstrong, May Stella Roderrick, and Joe Moors. There were seven children in Sunbeams.

Mrs. Scott Bailey Is Club Woman of Year

Mrs. Scott Bailey was chosen Woman of the Year by the Pleasant Hill Home Demonstration Club at its last meeting, which was held at the home of president, Mrs. T. L. Hale.

The club made plans for Achievement Day for all county home demonstration clubs. The event will be held Wednesday, Nov. 2, in Eastland.

The club voted to operate a concession stand at the Eastland County Pecan Show in Rising Star in December. A program on mental health was given by Mrs. Hale.

Ken. Williamson, Math Teacher, Is Invited to Meet

Kenneth Williamson, Andrews' High School math teacher, has been invited to Austin to attend the November 4th Texas State Teachers Associational meeting. Mr. Williamson was one of seven teachers in Texas recommended by the Texas Education Agency. These seven will speak at the meeting to the Secondary Principals Section on "Outstanding and Unusual Methods Used in Secondary Schools."

Williamson's topics will be "Projects Method", and he will discuss working with students interested in math outside the classroom.

Williamson is President of the Permian Basin Mathematics Council, and treasurer of the Permian Basin Mathematics and Science Teachers Association.

An Eastland High School graduate, Williamson received his B. S. from Howard Payne and M. Ed. from Sul Ross. He has done post-graduate work in modern mathematics at Kansas State University, University of Arizona, and the University of Illinois.

He is the son of Mr. and Mrs. A. W. Williamson Sr. of Eastland and his wife is the former Barbara Dick, daughter of Mr. and Mrs. O. H. Dick of Olden.

SHOP

The store that cares...about you!

MOHAWK CANNED

HAMS

- EL CHICO MEXICAN OR ENCHILADA DINNERS Each 39c
- GONZALEZ SAUSAGE, HAMBURGER, CHEESE PEPERONI PIZZAS 1-lb. 6 oz. Each 89c
- "Super-Right" Heavy Calf ARM ROAST LB. 59c
- "Super-Right" All Meat FRANKS 12 Oz. Pkg. 49c
- "Super-Right" Heavy Calf SHORT RIBS LB. 29c
- "Super-Right" Heavy Calf CHUCK STEAK LB. 59c
- "Super-Right" Heavy Calf ARM STEAK LB. 69c

ALLGOOD BRAND

BACON

"SUPER-RIGHT" HEAVY CALF

RIB STEAK

"SUPER-RIGHT" HEAVY CALF BLADE CUT

CHUCK ROAST

ALLGOOD BRAND
BACON
Sliced 1-lb. Pkg. **69c**

\$3.99
5-lb. Can

\$1.25c
2-lb. Pkg.

69c
L B

43c
...lb.

DETERGENT
DOVE LIQUID 22 Oz. Size **65c**

DETERGENT
SILVER DUST 3-lb. Box **85c**

DECORANT SOAP
LIFEBUOY 2 Reg. Bars **29c**

DECORANT SOAP
LIFEBUOY 2 Bath Bars **39c**

TOILET SOAP
LUX 3 Reg. Bars **35c**

TOILET SOAP
LUX 2 Bath Bars **35c**

COMPLEXION SOAP
DOVE 2 Bath Bars **49c**

DETERGENT
LUX LIQUID 1-qt. 6-oz. Size **65c**

SHORTENING
CRISCO 2 lb. Tin **35c**

SHORTENING
FLUFFO 3-lb. Can **89c**

ANN PAGE ELBOW Macaroni 1-lb. Pkg. **2 Pkgs.**

ANN PAGE ELBOW Spaghetti 1-lb. Pkg. **39c**

ANN PAGE REG. & THIN Spaghetti 1-lb. Pkg. **39c**

ANN PAGE ELBOW Macaroni 2-lb. Pkg. **35c**

ANN PAGE ELBOW Spaghetti 2-lb. Pkg. **35c**

ANN PAGE PEACH, PINEAPPLE OR APRICOT PRESERVES 2-lb. Jar **59c**

1200 HEAD WILL SELL
Brownwood Cattle Auction
Nov. 5, 1966 - 1:00 P.M.

A dispersion of the Buckners Orphans Home ranch. This is a reputation herd of Hereford cattle. We will also sell various other smaller consignments.

Mr. Cattleman:
If you are looking for some top commercial cattle at sensible prices, 10 head or enough to stock a ranch, be here Saturday, Nov. 5. Partial list of cattle to be on sale:
130 Choice Hereford cows—4 to 7 years old. Some registered cows—no papers furnished.
75 Straight 4 year old Hereford cows.
70 Two year Hereford heifers, bread to start calving January 1.—All these cows pregnancy tested.
120 Angus Cows—4 yr. Old.—Calving now.
100 Hereford heifers, 14 to 18 months old selling en.
150 Angus and Angus Hereford cross heifers—out half open, balance start calving next May.

For other information or Complete List of Consignments Call
WAYNE MAY
Home Phone 642-8619 Brownwood, Texas
3-0654-Brownwood, Tex. 247-4183, Llano, Tex.

Vote for YOU!
ONLY YOU CAN CAST YOUR VOTE!
Don't forget to VOTE!

Have You Heard . . .
Each week thousands are turning to the famous White Cross Plan because it offers just the protection they want at a rate they can easily afford. This Plan, sponsored by Bankers Life & Casulty Co. of Chicago, Illinois can provide you protection to fit your needs:

- Hospitalization
- Medical - Surgical
- Doctor Bills
- Income Protection
- Life Insurance All Kinds

Even if you have insurance, you should find out about this inexpensive Plan . . . why gamble with the future security and welfare of your family? Contact your local White Cross agent for full information about this money-saving Plan and it won't cost you a cent.

MARIE MAYHEW
P. O. Box 166
607 West 4th
Cisco — HI 2-1553

DOLLAR SALE ITEMS OF LESSER QUANTITY SOLD AT REGULAR PRICE

REALPRUNE IN DECANTER PRUNE JUICE Qt. Jar **3/4 \$1.00**

DUNCAN HINES DELUXE LAYER CAKE MIXES 4c Off Pkg. **4/5 \$1.00**

Purex Bleach 1/2-Gal. Plastic

A&P PEARS 1-lb. Can **4/5 \$1.00**

STOKELY HONEY POD GREEN PEAS 1-lb. Can **5/6 \$1.00**

COMSTOCK PIE SLICED APPLES 1-lb. 4-oz. Can **5/6 \$1.00**

ZEE DECORATOR PAPER TOWELS Jumbo Roll

STOKELY SHELLIE BEANS 1-lb. Can **5/6 \$1.00**

STOKELY CREAM STYLE OR WHOLE KERNEL GOLDEN CORN 1-lb. Can **5/6 \$1.00**

STOKELY SLICED OR CUT GREEN BEANS 1-lb. Can **5/6 \$1.00**

STOKELY FRUIT COCKTAIL 1-lb. Can

A&P 100% COLOMBIAN COFFEE 1-lb. Can **79c**

SULTANA GRAPE JELLY 2-lb. Jar **39c**

FRENCH'S SPAGHETTI SAUCE MIX 2 1 1/2-oz. Pkgs. **39c**

ANN PAGE CANE & MAPLE SYRUP 1-lb. 8-oz. Bottle **49c**

Frozen Foods

SIMPLE SIMON MINCE OR PUMPKIN PIES 2-lb. Each **49c**

MORTON HONEY BUNS 4 9-oz. Pkgs. **99c**

CAULIFLOWER West Pat 8-oz. Pkg. **10c**

Frozen

CHEESE SPREAD VELVEETA 2-lb. Loaf **\$1.00**

SWIFT'S BEEF STEW 2 1 1/2-lb. Cans **\$1**

A&P APPLE SAUCE 7 1-lb. Cans **\$1**

PLEASE READ THIS . . .

NOTICE FROM

BEN HAMNER

Over two years ago, August 1964, I sold ALL my interests in the Hamner Life Insurance Co. to Mr. E. J. Arrington and Associates and since that date I have had absolutely nothing to do with the management or policy making of the company, so please do not hold me responsible for any changes now taking place in the management of said company regarding new rates now being charged.

BEN E. HAMNER
EASTLAND

BANANAS LB. **10c**

YAMS LB. **2 for 29c**

GRAPEFRUIT EACH **4 for 39c**

PLAY A&P MYSTERY CASH BINGO

WIN CASH PRIZES UP TO . . . **\$1,000**

JANE PARKER WHITE ENRICHED REGULAR OR SANDWICH **BREAD 4 99** SPECIAL

Freshly Baked Jane Parker **FRUIT CAKE**
AMERICA'S FAVORITE—OVER 1/2 FRUIT & NUTS!

5 LB. CAKE **\$3.99**
1 1/2 LB. CAKE **\$1.49** 3-LB. CAKE **\$2.89**

JANE PARKER PINEAPPLE TOPPED **SWEET ROLLS** 10-oz. Pkg. **33c**

JANE PARKER BROWN 'N SERVE **FRENCH ROLLS** 2 10-oz. Pkgs. **43c**

JANE PARKER **APPLE PIES** 1 1/2-lb. Each

JANE PARKER ICED SPICED **SPANISH BAR** 1-lb. 3-oz. Each

3 For \$1.00

MORE FOR YOUR MONEY AT A&P! PLAID STAMPS TOO!

PRICES GOOD THRU NOV. 5, 1966
QUANTITY RIGHTS RESERVED

Ann Page Chocolate **CANDY**
CHOCOLATE COVERED PEANUTS, CHOCOLATE STARS, BRIDGE MIX, PEANUT CLUSTERS OR CARAMEL NUGGETS

1-LB. BOX **59c**

SAFEWAY STOCK-UP SALE



**MORE
for your
DOLLAR**

FREE!
Pick or 10¢—24-oz. Box
Sno-White Salt
With the Purchase of
4-oz. Can Green Colored
Black Pepper... 39¢

Corn Meal Save 8¢ Kitchen Craft, ★ White or ★ Yellow. **5 Lb. Bag 39¢**

Biscuits Save 1¢ per Can Mrs. Wright's, Sweetmilk or Buttermilk—8-oz. Can **7¢**

Facial Tissue Save 11¢ Truly Fine, Assorted colors, 200-Ct. Box **5 for 89¢**

Detergent Save 10¢ White Magic, Dishwasher Res. Box **3 for \$1**

Family Flour Save 26¢ Kitchen Craft, For all your baking and cooking. **5 Lb. Bag 39¢**

Coffee Save 20¢ Edwards, All grinds—1-Lb. Can (2-Lb. Can... \$1.34) (3-Lb. Can... \$2.01) **59¢**

Detergent Save 10¢ White Magic, Cleans white, (10¢ off label)—49-oz. Box **49¢**

Bleach Save 8¢ White Magic, Gets out stains—1/2-Gallon Plastic **25¢**

Pinto Beans Town House, Dried, 4 Lb. **49¢**

Jell-Well Gelatin Assorted Fruit Flavors—3-oz. Pkg. **12 for \$1**

Deodorant Soap Brocade, Reg., Bars, 6-Ct. Pkg. **49¢**

Strained Honey Empress—24-oz. Glass **59¢**

Mayonnaise No Made, Smooth—Quart Jar **43¢**

Tomato Catsup Town House, Tangy, 14-oz. Bottle **5 for \$1**

Cooking Oil No Made, Fresh—48-oz. Bottle **89¢**

Save on Non-Foods!

Creme Rinse Sue Free, For silky hair—16-oz. Bottle **39¢**

Dippity-Do Settling Gel, Reg. or Pink Flair—8-oz. Jar **99¢**

Crest Tooth Paste—Family Size Tube **69¢**

Aqua Net Hair Spray—12-oz. Can **69¢**

Gleem Tooth Paste, Family Size Tube **69¢**

Right Guard Deodorant, Gillette, 4-oz. Can **69¢**

Shampoo Truly Fine—16-oz. Bottle **67¢**

Bakery Fresh

Rye Bread Sliced, (Reg. 21¢), 1-Lb. Loaf **19¢**

Rolls Mrs. Wright's, Buttery, (2¢ off label)—6-Pkg. **27¢**

Burger Buns Mrs. Wright's, 14-oz. Pkg. **23¢**

Texas Toast Mrs. Wright's, 11 1/2-Lb. Loaf **29¢**

From the Dairy Case!

Cottage Cheese [32-oz. Cts... 57¢] Lucerne, All styles—16-oz. Cts. **29¢**

Longhorn Cheese Safeway—Lb. **69¢**

Chocolate Milk Lucerne—1/2-Gal. Cts. **49¢**

Lucky Whip Dessert Topping—10-oz. Can **53¢**

Ritz Crackers From Nabisco—8-oz. Box **29¢**

Maxwell House Coffee, Regular or Drip, 13 1/2-Pkg. **83¢**

Maxwell House Coffee, Regular or Drip, 2-Lb. Can **\$1.65**

Nestea Mix Lemon Flavored Tea Mix, 4-oz. Package **59¢**

Action Bleach Powerful—22-oz. Box **83¢**

Ajax Detergent For all the wash, Reg. Box **37¢**

Ajax Liquid Household Cleaner, 15-oz. Plastic **39¢**

Ajax Cleanser For deep cleaning, 14-oz. Can **2 for 35¢**

Palmolive Gold Toilet Soap, Reg. Bar, **2 for 33¢**

Table Syrup Simply 1 Bottle, (4¢ off label)—24-oz. Bottle **55¢**

Pancake Mix Kitchen Craft, Buttermilk, **2 for 45¢**

Preserves Empress, Strawberry—20-oz. Jar **59¢**

Peanut Butter Best, Smooth, Creamy or Chunky, 3 Lb. Glass **99¢**

Golden Corn Town House, ★ Whole Kernel or ★ Cream Style—17-oz. Can **5 for \$1**

Beverages Creamed, Assorted Savin & Mince, Blue Raspberry—12-Ct. Pkg. **10¢**



U.S.D.A. Choice Grade Heavy Beef Sale!

Sirloin Steak U.S.D.A. Choice Grade Heavy Beef, Trimmed before weighing for your eating pleasure. **Lb. 89¢**

T-Bone Steaks or Club Steak, U.S.D.A. Choice Heavy Beef, So good broiled—Lb. **99¢**

Round Steak Full Cut, U.S.D.A. Choice Grade Heavy Beef—Lb. **85¢**

Rump Roast or Loin Tip, Boneless, U.S.D.A. Choice Grade Heavy Beef—Lb. **\$1.09**

Boneless Sirloin Top Cut, U.S.D.A. Choice Heavy Beef—Lb. **\$1.49**

New York Strip U.S.D.A. Choice Grade Heavy Beef—Lb. **\$1.69**

FRYERS Fancy, Whole, U.S.D.A. Inspected... Grade "A", **Lb. 29¢** (Cut-Up Manner House or Reg. U.S.D.A. Inspected, Grade "A"—Lb. **35¢**)

Sliced Bacon Thick Sliced, Safeway brand, **2 Lb. \$1.39**

Ground Beef Safeway, Chub Pak keeps meat fresh, **3 Lb. \$1.55**

Parkay Margarine From Kraft—1-Lb. Cts. **33¢**

Kraft Cheese Sliced, ★ Natural Swiss or ★ Macaroni—8-oz. Pkg. **47¢**

Green Giant Corn ★ Niblets or ★ Medjigs, In butter sauce—10-oz. Pkg. **33¢**

Nestea Instant Tea—11 1/2-oz. Jar, White—Qt. Bottle **89¢**

Heinz Vinegar (Cider, Qt. Bottle... 37¢) **31¢**

Crisco Vegetable shortening, (4¢ off label) **3 Lb. 91¢**

Fruit Cocktail Diet Delight—16-oz. Can **33¢**

Diet Delight Pears Halves—16-oz. Can **43¢**

Applesauce Diet Delight—16-oz. Can **29¢**

Betty Crocker Mix ★ Chocolate Brownie—22 1/2-oz. Box **49¢**

Variety and Freshness at Safeway...

Bananas Sweet and golden ripe, Pack one in the lunch bags, **Lb. 10¢**

Avocados Jalna variety, Thin, green skin—Each **2 for 29¢**

Grapefruit Ruby Red, Low in calories—Each **2 for 25¢**

Carrots Serve hot cold, (2¢ off label) **2 Lb. 19¢**

Apples Red Delicious, From Washington State, **3 Lb. 49¢**

Tomatoes Large, Perfect for slicing—Lb. **29¢**

Tokay Grapes Full of juice—Lb. **19¢**

Eggplant So good baked—Lb. **19¢**

Green Onions Crisp, Bunch **2 for 25¢**

Radishes For Flavor, 6-oz. Cello **2 for 25¢**

Lemons Sunkist, Thin sliced, Pkg. of 6 **35¢**

Best in Frozen Foods!

Mellorine Jayell, Assorted Flavors, 10-Gal. Cts. **29¢**

Orange Juice Belsin, The real thing, 12-oz. Can **39¢**

Strawberries Belsin, Sliced, 10-oz. Pkg. **29¢**

Mix or Match

- ★ Whole Okra
- ★ Cut Green Beans
- ★ Mixed Vegetables
- ★ Broccoli Spears
- ★ Blackeye Peas
- ★ Yellow Squash
- ★ Cut Corn
- ★ Green Peas
- ★ French Fries Reg. Cut
- ★ French Fried

Reg. Pkg. **4 for \$1** Reg. Pkg. **5 for \$1**



Yellow Onions Safeway brand, **3 Lb. 29¢**

Texas Yams Yellow and sweet, **2 Lb. 25¢**

Cucumbers Crisp and cool—Each **3 for 29¢**

Eastland

Prices and Coupons Effective Thurs., Fri. and Sat., Nov. 3, 4 and 5, 1964. We Reserve the Right to Limit Quantities and Sales to Dealers.



SAFEWAY'S BONUS COUPONS!

Coupon Worth 50 GOLD BOND STAMPS With the Purchase of 1 1/2-Lb. Loaf Skylark Reg. or Sandwich **WHITE BREAD** Coupon Expires November 5, 1964.

Coupon Worth 100 GOLD BOND STAMPS With the Purchase of 10-Lb. Bag Red **DELICIOUS APPLES** Coupon Expires November 5, 1964.

Coupon Worth 20¢ Off the Regular Purchase Price Any 3-Lb. or Larger **BEEF ROAST** Coupon Expires November 5, 1964.