



Moore... ABOUT Eastland

By VIRGIL E. MOORE

Texas sports writers may meet this week to protest the action of Eastland High School. The Mavericks are charged with failing to read the sports pages correctly.

Three separate charges are being drawn up, and the Mavs may stand trial on all or one at a time. The specific charges are: Failure to lose, as forecast by 99.99 percent of all sports writers in the state, in the Cross Plains, Henrietta and Linden games.

There had been growing resentment in the past few weeks, and when the Mavericks ran roughshod over Linden's Tigers for the few. A Cow Town sports writer, the first writer from the Moon-Telegram to see the Mavs in action this year, was practically speechless at the Linden game.

Finally he came out with a, "They can't do this, they didn't even have a man on the Moon-Telegram's all-state team. Not even an honorable mention. It's possible."

And a representative of the AP (the apologetic press) was equally concerned. "The nerve of these guys," he grunted. "Don't they know they aren't even rated in the first 10."

But it was a Key City Cub-Reporter representative who topped the list. "Wait until Merkel gets a shot at these boys," he stated. "Those Badgers will eat these boys up."

No one around had the heart to tell the fellow his wonderful Badgers wouldn't be playing football anymore this year, but he found out anyway when he called in his story to the Key City Cub-Reporter. Someone there told him the gallant Badgers got too busy reading their press clippings and got a severe case of snake bite. When he received the sad news his chin dropped, his nose twitched and his hand reached for his hip pocket.

"Impossible," he screamed, "impossible!"

When assured the impossible had happened, he calmly regained his self control. "Well tear down the page then," he said, sounding like a little boy who had just got the inside dope on Santa Claus, "and throw that headline we had set up away."

But you have to give the boys who like to think of themselves as gridiron experts a pat on the back. They don't give up, these boys. Immediately they checked their magic balls and came up with the expected fact that Eastland doesn't have a chance against Stinnett.

"It's the Rattlers by three touchdowns," said the Apologetic Press Sunday morning.

"The Cinderella kids will meet their doom Saturday," declared the Moon-Telegram.

"Stinnett by 40 points," echoed the Cub-Reporter. "Nobody can beat a team that beat the Badgers."

And what did the Mavericks have to say about it all? Not a thing. They do their talking on the playing field!

Cisco Junior College Denied Conference Seat

Cisco Junior College, which had applied for admittance to the Pioneer Conference, was denied admittance Saturday when conference officials met in Dallas and decided not to expand "at this time."

The Pioneer Conference is composed of Arlington State, Tarleton State, Ranger Junior College, San Angelo College and Schreiner Institute.

Dean Cecil Ballow of Tarleton State was elected vice president to replace Dean R. L. Willis of RJC who resigned last September. The conference also voted to limit eligibility in its sports programs to two years of competition. High school students, attending some college classes, were also barred from college teams.

Mrs. Horace Kullenbery returned to her home in Austin after spending several days here with her mother Geany Nortscutt and Eva.

SERVICE
Pamper your car with quality service from our experienced mechanics. All cars—fast, efficient, economical. Call 802 today.
Don Pierson Olds-Cadillac Eastland

Powell Outlines Conservation Reserve Acreage Plan In Area

Emmett Powell, head of the Eastland Agricultural Stabilization and Conservation office, today released the following information on the Conservation Reserve Acreage Plan as it applies to Eastland County farmers:

"The Conservation Reserve Acreage program is on cropland, not on pasture. "Contracts will be in force until the end of 1961, or five years from the date of signing.

"The acreage put in the Conservation Reserve Acreage is determined by the Soil Bank crops that have been grown on the farm in 1955 and 1956.

"Soil Bank crops are corn, cotton, peanuts, sorghum and small grains for harvest.

"When an acreage is placed in the Reserve the total crops listed as Soil Bank crops are reduced by the amount placed in the Reserve. In other words it works this way: a farm has 100 acres base of Soil Bank crops; 25 acres is placed in the acreage reserve, the limit for Soil Bank crops would be 75 acres during the contract period.

Funeral Services Are Held Sunday For J. B. Gray

Funeral services for J. B. Gray of Olden were held Sunday at 2 p.m. in the Olden Baptist Church with Rev. Carroll Herring, pastor, officiating, assisted by Rev. H. D. Blair.

Mr. Gray died suddenly of a heart attack Friday while on the job with Phillips Oil Co. in Andrews.

Survivors include his wife, two sisters, Misses Lois Gray and Addie Gray; both of Fort Worth; and a brother, W. C. Gray, Fort Worth.

Burial services were held at Travis Hill, Ervin Talley, Marvin Hutto, Travis Reese, Pete Rodgers and Gilbert Copeland. Burial was in Eastland Cemetery under the direction of Hamner Funeral Home.

BE SURE—SEE Don Pierson Olds-Cadillac Eastland Quality Cars at Volume Prices

Installation Loans Custom Made For Each Customer EASTLAND NATIONAL BANK Member F. D. I. C.

UNDERDOGS AGAIN!

Childress Journey Awaits Eager Mavs

Eastland football fans got their hopes high this week after the Mavericks polished off Linden's Tigers in quarterfinal play of the State Class A race.

The main hope among Mav fans is that the team will have more luck than school officials have. For the second time Eastland officials missed the call of a coin, and their bad luck will mean that Eastland will have to travel 198 miles to meet Stinnett's Rattlers, 26-0 victors over Merkel.

The game will be played in Childress, the site picked by Stinnett. It is a field in which the Rattlers have played and won three games this year, and is the same field in which Stinnett beat Ranger last season in the state quarterfinals. Childress is 142 miles from Stinnett.

Also much to the regret of many local fans — particularly merchants and businessmen who will probably have to miss the tilt now — is the fact that the game will be played Saturday afternoon. Gametime has been set for 2:30.

Stinnett will be heavily favored to win the match. The Associated Press put it this way: "Stinnett removed what was thought to be its toughest foe as it waltzed over Merkey, 26-0." The AP picks Stinnett to meet Hondo in the finals, with Stinnett the favorite in that game.

Eastland won't be a stranger to the underdog role, however. For the past three weeks the Mavs have been picked to lose, but they have refused to give up. In fact, Coach Carrol Shelton's men seem to gain strength and ability with each new game.

Stinnett has an impressive record. The Rattlers have coiled around 13 opponents in a row. They have scored 482 points to their opponents' 94. Only once have they been held to less than four touchdowns in a game, and only three times have they been held below 32 points in a game.

If you go by comparative scores you must agree with the experts and pick Stinnett by a big score.

"The acreage placed in the Conservation Reserve Acreage program must have a cover of perennial grass established as soon as possible.

"The Soil Bank program will share 80 per cent of the cost of establishing this grass harvested from it during the time of the contract.

"In addition to the cost-sharing on the cover crop, the Soil Bank program will pay a rental of nine dollars per acre, per year, during the contract period, if no crop is grazed or harvested.

"The producer must control the

Baptist Cantata Presentation Is Set For Dec. 23

The First Baptist Church today announced that the cantata, "The Music of Christmas" will be presented the evening of Dec. 23 in the church auditorium. The cantata will be under the direction of John Dickey, minister of music and education. The cantata was written by Ira B. Wilson to help capture the spirit of Christmas in music.

Feature soloist will be Mrs. G. E. Dendy and Mrs. Harvey Kimbler, sopranos; Mrs. Harold Hitt, alto; and Dr. M. A. Treadwell Jr., tenor.

First Baptist Church annually presents a cantata and invites the public as guests. The pastor, Harvey Kimbler, has extended a special invitation this year because "this is an outstanding production and the first presented by the church choir under the direction of Mr. Dickey."

Dickey came to the church in August from Irving and is a student in the School of Music of Southwestern Baptist Theological Seminary in Fort Worth. He recently sang in the seminary presentation of Handel's "The Messiah."

BE SURE—SEE Don Pierson Olds-Cadillac Eastland Quality Cars at Volume Prices

Installation Loans Custom Made For Each Customer EASTLAND NATIONAL BANK Member F. D. I. C.

Upper Bracket of State Class A Schoolboy Football Playoffs

1. Stinnett Stinnett 33-6
2. Clarendon Stinnett 32-0
3. Farwell Farwell 27-4
4. Hale Center Stinnett 26-0

5. Sundown Merkel 60-20
6. Merkel Merkel 51-13
7. Big Lake Sonora 23-13
8. Sonora EASTLAND 26-7

9. Cross Plains EASTLAND 27-20
10. EASTLAND Hondo 13-0
11. Holliday Henrietta 19-14
12. Henrietta Hondo

13. Wilmer Hutchins W. H. 34-12
14. Rockwall Linden 25-0
15. Linden Humbler 11-2
16. White Oak Linden 27-13

growth of sunflowers and cocklebur on the conservation Reserve Acreage.

"A producer may put acreage in the Conservation program and still place cotton, peanuts and wheat in the Acreage Reserve Program.

"The land in the acreage reserve must be defined in the contract and can not be moved from field to field.

"If the producer violates the contract during the five years, he will repay all the money received under the contract with interest at 6 per cent. In addition to losing all the payments on the farm, the producer is subject to a penalty of 50 per cent of the annual payment.

"The contract can not be terminated until the end of five years.

"If a producer sells or loses control of the farm during the contract period and his successor does not wish to continue the contract the original producer must refund all the money received.

"Producers who sign Conservation Reserve Acreage contracts must plant within the allotted crop acreages except wheat, which has a limit of 15 acres or the allotment whichever is the larger.

"The entire acreage on farms under contract will be checked and measured for compliance and the total Soil Bank crops must not exceed the permitted base.

"Landlord and tenant must both understand and sign the acreage agreement.

"In case of a cash lease, the lease must be at least for the duration of the contract.

"A landlord must not reduce the number of tenants in order to increase his share of the Soil Bank payments.

"The above is just a general outline of the program.

"Contracts are now being signed in the ASC office. If you are interested in this program please contact the county office and we will be glad to explain all the details."

BE SURE—SEE Don Pierson Olds-Cadillac Eastland Quality Cars at Volume Prices

More Santa Letters Sent To North Pole

Dear Santa, I will leave some cookies and milk for you.
Love, Kay Williamson Andrews, Texas

Dear Santa Claus, I'm a little girl 3 1/2 years old. Please bring me a little piano and stove and a little ring. That's all I want. Thank you and Merry Xmas.
Debbie Aaron

Dear Santa Claus, I'm a little girl 4 years old. I have been a real nice girl to everyone and to Eddie. Please remember him. Please bring me a (Continued on Page 3)

Dear Santa, I want a set of guns, a pellet gun and a bicycle.
Dickie Herrell Olden

Dear Santa, I want a bicycle and a typewriter with keys and I want a projector with films. I'm 6 years old and my brother just wants a surprise and our baby wants a rocking horse.
See You soon, Tom Kuykendall

Dear Santa, I would like to have a telephone for Christmas so I could call my Granddaddy and Mommie Rex. I want a buggy and a baby too.
Fine Furniture, Floor Coverings, G. E. Appliances, It's Coats Furniture & Carpet, Ltd., Eastland Free Delivery and Convenient Terms. Good Trade-Ins, too!



"AND I SAY TO YOU"—Perched on a stone to deliver his oration, a distinguished member of the Rock Penguin clan, at London, England, Zoo, gives his views on world affairs. Judging by the hair-raising effect, his fellow birds are quite agitated by it all.

Victor Cornelius Employees Share \$5500 in Bonuses

Bonuses in the amount of \$5,500 and a trip to Dallas for shopping and viewing Cinerama's "Seven Wonders of the World" were the Christmas treats Victor Cornelius provided employees of his theatrical advertising plant and their families.

Mr. and Mrs. Cornelius and their guests left Eastland by chartered bus at 9:30 a.m. Saturday, stopping for lunch at Wyatt's Cafeteria in Fort Worth.

After several hours of shopping, with headquarters in a downtown hotel, the group attended the 5 o'clock showing of the Cinerama feature.

Before the return trip guests were feted with a steak dinner served in the banquet room of the Torch Restaurant.

This is the second 4-H party given this school year.

"We hope that all the 4-H Club members in the County, their parents and their friends can attend," stated Charlene Eckert, assistant Home Demonstration Agent, and Curtis L. Bonase, Assistant County Agricultural Agent.

Refreshments at the party will be Cool Aid, cookies and pop corn balls.

This is the second 4-H party given this school year.

"We hope that all the 4-H Club members in the County, their parents and their friends can attend," stated Charlene Eckert, assistant Home Demonstration Agent, and Curtis L. Bonase, Assistant County Agricultural Agent.

Refreshments at the party will be Cool Aid, cookies and pop corn balls.

This is the second 4-H party given this school year.

"We hope that all the 4-H Club members in the County, their parents and their friends can attend," stated Charlene Eckert, assistant Home Demonstration Agent, and Curtis L. Bonase, Assistant County Agricultural Agent.

Refreshments at the party will be Cool Aid, cookies and pop corn balls.

This is the second 4-H party given this school year.

"We hope that all the 4-H Club members in the County, their parents and their friends can attend," stated Charlene Eckert, assistant Home Demonstration Agent, and Curtis L. Bonase, Assistant County Agricultural Agent.

Junior Play Set Thursday

Norman Guess Is Named Olds Top Salesman In Area

Norman Guess, sales manager for Don Pierson Olds - Cadillac, Eastland, is attending a national conference of leading Oldsmobile salesman in New York City during the National Automobile Show.

Guess was the outstanding salesman in the zone during the period from May 1 to October 31 and thus qualified as a member of Oldsmobile's exclusive Rocket Vanguard retail salesmen.

Guess and top salesman from Oldsmobile's other 23 sales zones arrived in New York Dec. 9. They will stay at the Waldorf-Astoria Hotel. The Rocket Vanguard leaders' conference met Monday at the Waldorf - Astoria, with Jack F. Wolfram, Oldsmobile general manager, and V. H. Sutherland, general sales manager, in attendance.

While in New York the top Oldsmobile salesmen will visit the 42nd National Automobile Show, first to be held since 1940, at the Coliseum. Scheduled entertainment includes a visit to the Copacabana night club, dinner at Leone's famous restaurant and attendance at "Most Happy Fella", one of the current Broadway hit shows.

The Rocket Vanguard conference will conclude Tuesday.

Christmas Party Set Thursday By County 4-H Clubs

Thursday night, the 4-H Clubs of Eastland County are having a Christmas party.

A short talk will be given by Rev. James Fleming, pastor of the Bethel Baptist Church in Eastland. Christmas carols will be sung by the 4-H'ers and they plan to exchange inexpensive gifts at the party.

Kathleen Ziehr is the newly elected chairman of the County 4-H Standing Committee. Rose Mary Berry, Roland Ziehr and Joel Graham are on the program committee for the party.

Refreshments at the party will be Cool Aid, cookies and pop corn balls.

This is the second 4-H party given this school year.

"We hope that all the 4-H Club members in the County, their parents and their friends can attend," stated Charlene Eckert, assistant Home Demonstration Agent, and Curtis L. Bonase, Assistant County Agricultural Agent.

Refreshments at the party will be Cool Aid, cookies and pop corn balls.

This is the second 4-H party given this school year.

"We hope that all the 4-H Club members in the County, their parents and their friends can attend," stated Charlene Eckert, assistant Home Demonstration Agent, and Curtis L. Bonase, Assistant County Agricultural Agent.

Refreshments at the party will be Cool Aid, cookies and pop corn balls.

This is the second 4-H party given this school year.

"We hope that all the 4-H Club members in the County, their parents and their friends can attend," stated Charlene Eckert, assistant Home Demonstration Agent, and Curtis L. Bonase, Assistant County Agricultural Agent.

Refreshments at the party will be Cool Aid, cookies and pop corn balls.

This is the second 4-H party given this school year.

"We hope that all the 4-H Club members in the County, their parents and their friends can attend," stated Charlene Eckert, assistant Home Demonstration Agent, and Curtis L. Bonase, Assistant County Agricultural Agent.

The Juniors of Eastland High School will present their annual play, Finders Creepers, Thursday evening, December 13, at 7:30 in the high school auditorium.

The play is a hilarious comedy-mystery about dead bodies that "bop" and eat scrambled eggs. Two teenage boys find these hair-raising phenomena difficult to cope with. It is a laugh from start to finish.

Admission price will be 35 cents for students and 50 cents for adults.

Mrs. Earl Conner Jr. will direct the play.

County Purchases \$20,000 Worth of Courthouse Bonds

County commissioners Monday voted to purchase \$20,000 worth of outstanding bonds on the courthouse.

The bonds would have matured in March 1957 and March 1959. The county was able to purchase the bonds at par rate and thus saved approximately \$500 in interest.

Following the purchase of the bonds only \$45,099 will be owed on the courthouse.

Commissioners also paid bills at the regular semi-monthly meeting.

Postmark... That Error

Here's a tip: Don't ask Eastland postmen to sell you any stamps.

We know the Telegram told you to Sunday, but for our sake, don't do it. Our advice came as a result of a typographical error. We meant to say that "Rural" carriers will sell you stamps, but we left out the rural.

Local carriers, with more than they can do now, are not taking too kindly to our advice. Just to get on the right side of them we might also remind you that they can't pick up bundles of Christmas cards and take them to the post office. They're walking and you're riding. Remember?

Mrs. Wittrup's Father Succumbs

Word was received here today that Dr. M. W. Campbell, pioneer of Wills Point, and father of Mrs. Eddie Wittrup, passed away Monday.

Funeral services will be held this afternoon in Wills Point.

Rotary Club To Change Meeting Place

A humorous talk by Professor Jackson of Denton featured Monday's Eastland Rotary Club meeting.

Don Pierson was program chairman and introduced the guest speaker. Rotarians voted to begin meeting at the White Elephant Cafe beginning in January.

Weather

Partly cloudy and windy Tuesday and Tuesday night. Cloudy and colder Wednesday.



LOOK MA, ONE HAND—The graceful statue in Rockefeller Center, New York City, appears to have no trouble supporting a huge Christmas tree. The 64-foot white spruce, a gift to the Center from New Hampshire, was being raised into position by crane when the photographer caught tree and statue in this interesting angle.

Eastland Telegram

Eastland County Record established in 1931, consolidated August 31, 1951. Chronicle established 1887. Telegram established 1923. Entered as second class matter at the Post Office at Eastland, Texas under the act of Congress of March 3, 1879.

VIRGIL E. MOORE, Editor
TIMES PUBLISHING COMPANY
Published Tri-Weekly—Tuesdays - Thursdays - Sundays
ONOBIS DICK and JOE DENNIS, Publishers
FRANCES MOORE, Society Editor

One week by carrier in city	.18
One month by carrier in city	.45
One year by mail in County	2.95
One year by mail in state	3.95
One year by mail out of state	5.95

NOTICE TO PUBLIC—Any erroneous reflection upon the character, standing or reputation of any person, firm or corporation which may appear in the columns of this newspaper will be gladly corrected upon being brought to the attention of the publishers.

Classified Ads.

Cards of Thanks charged for at rate of \$2.00 Each

FOR RENT -

FOR RENT: 4 room unfurnished apartment. Call 394-J, or 379.

FOR RENT: 4 room unfurnished house. Phone 583-W.

FOR RENT: Furnished apartments. 611 West Plummer.

FOR RENT: Newly decorated apartments. Phone 1083-W.

FOR RENT: Furnished apartment, 207 S. Walnut.

FOR RENT: Large house, \$40. See in the back after 5 p.m. at 107 N. Dixie.

FOR RENT: 3 bedroom house, 1 1/2 bath. Inquire at 1211 West Main. Phone 894-J.

FOR RENT: Three room newly decorated furnished apartment with bath. \$25 month. 310 E. Main.

FOR RENT: 6 room house, 207 South Main. Phone 896-W-1.

FOR RENT: 4 room house, 207 South Main. Phone 896-W-1.

FOR RENT: 4 room house, 207 South Main. Phone 896-W-1.

FOR RENT: 4 room house, 207 South Main. Phone 896-W-1.

FOR RENT: 4 room house, 207 South Main. Phone 896-W-1.

FOR RENT: 4 room house, 207 South Main. Phone 896-W-1.

FOR RENT: 4 room house, 207 South Main. Phone 896-W-1.

FOR RENT: 4 room house, 207 South Main. Phone 896-W-1.

FOR RENT: 4 room house, 207 South Main. Phone 896-W-1.

FOR RENT: 4 room house, 207 South Main. Phone 896-W-1.

FOR RENT: 4 room house, 207 South Main. Phone 896-W-1.

FOR RENT: 4 room house, 207 South Main. Phone 896-W-1.

FOR RENT: 4 room house, 207 South Main. Phone 896-W-1.

FOR RENT: 4 room house, 207 South Main. Phone 896-W-1.

FOR RENT: 4 room house, 207 South Main. Phone 896-W-1.

FOR RENT: 4 room house, 207 South Main. Phone 896-W-1.

FOR RENT: 4 room house, 207 South Main. Phone 896-W-1.

FOR RENT: 4 room house, 207 South Main. Phone 896-W-1.

FOR RENT: 4 room house, 207 South Main. Phone 896-W-1.

FOR RENT: 4 room house, 207 South Main. Phone 896-W-1.

FOR RENT: 4 room house, 207 South Main. Phone 896-W-1.

FOR RENT: 4 room house, 207 South Main. Phone 896-W-1.

FOR RENT: 4 room house, 207 South Main. Phone 896-W-1.

FOR RENT: 4 room house, 207 South Main. Phone 896-W-1.

FOR RENT: 4 room house, 207 South Main. Phone 896-W-1.

FOR RENT: 4 room house, 207 South Main. Phone 896-W-1.

FOR RENT: 4 room house, 207 South Main. Phone 896-W-1.

FOR RENT: 4 room house, 207 South Main. Phone 896-W-1.

FOR RENT: 4 room house, 207 South Main. Phone 896-W-1.

FOR RENT: 4 room house, 207 South Main. Phone 896-W-1.

FOR RENT: 4 room house, 207 South Main. Phone 896-W-1.

FOR RENT: 4 room house, 207 South Main. Phone 896-W-1.

FOR RENT: 4 room house, 207 South Main. Phone 896-W-1.

FOR RENT: 4 room house, 207 South Main. Phone 896-W-1.

FOR RENT: 4 room house, 207 South Main. Phone 896-W-1.

FOR RENT: 4 room house, 207 South Main. Phone 896-W-1.

FOR RENT: 4 room house, 207 South Main. Phone 896-W-1.

FOR RENT: 4 room house, 207 South Main. Phone 896-W-1.

FOR RENT: 4 room house, 207 South Main. Phone 896-W-1.

FOR RENT: 4 room house, 207 South Main. Phone 896-W-1.

FOR RENT: 4 room house, 207 South Main. Phone 896-W-1.

FOR RENT: 4 room house, 207 South Main. Phone 896-W-1.

FOR RENT: 4 room house, 207 South Main. Phone 896-W-1.

FOR RENT: 4 room house, 207 South Main. Phone 896-W-1.

FOR RENT: 4 room house, 207 South Main. Phone 896-W-1.

FOR RENT: 4 room house, 207 South Main. Phone 896-W-1.

FOR RENT: 4 room house, 207 South Main. Phone 896-W-1.

REAL ESTATE -

FOR SALE: Five room house, 603 Gilmer. Phone 989.

FOR SALE: Five room residence two extra lots. 611 Gilmer. Phone 444.

BUY A YARD FENCE. Buy a cyclone fence. Keep your own children and pets at home, and strays out. No down payment, 36 months to pay. Eastland Cyclone Fence Co. Phone 108-J, Marvin Hood, Mgr.

REAL ESTATE: I now offer 2 nice residences and 2 acres out of city limits for one residence close in. Phone 727-J-1.

FOR SALE: 6 room house with 6 lots, near schools, might trade for property close in. Mrs. J. F. McWilliams.

FOR SALE: House at 1308 South Lamar. Sell at reduced price. Phone 887.

FOR SALE: 6 room house with 6 lots, near schools, might trade for property close in. Mrs. J. F. McWilliams.

FOR SALE: House at 1308 South Lamar. Sell at reduced price. Phone 887.

FOR SALE: 6 room house with 6 lots, near schools, might trade for property close in. Mrs. J. F. McWilliams.

FOR SALE: House at 1308 South Lamar. Sell at reduced price. Phone 887.

FOR SALE: 6 room house with 6 lots, near schools, might trade for property close in. Mrs. J. F. McWilliams.

FOR SALE: House at 1308 South Lamar. Sell at reduced price. Phone 887.

FOR SALE: 6 room house with 6 lots, near schools, might trade for property close in. Mrs. J. F. McWilliams.

FOR SALE: House at 1308 South Lamar. Sell at reduced price. Phone 887.

FOR SALE: 6 room house with 6 lots, near schools, might trade for property close in. Mrs. J. F. McWilliams.

FOR SALE: House at 1308 South Lamar. Sell at reduced price. Phone 887.

FOR SALE: 6 room house with 6 lots, near schools, might trade for property close in. Mrs. J. F. McWilliams.

FOR SALE: House at 1308 South Lamar. Sell at reduced price. Phone 887.

FOR SALE: 6 room house with 6 lots, near schools, might trade for property close in. Mrs. J. F. McWilliams.

FOR SALE: House at 1308 South Lamar. Sell at reduced price. Phone 887.

FOR SALE: 6 room house with 6 lots, near schools, might trade for property close in. Mrs. J. F. McWilliams.

FOR SALE: House at 1308 South Lamar. Sell at reduced price. Phone 887.

FOR SALE: 6 room house with 6 lots, near schools, might trade for property close in. Mrs. J. F. McWilliams.

FOR SALE: House at 1308 South Lamar. Sell at reduced price. Phone 887.

FOR SALE: 6 room house with 6 lots, near schools, might trade for property close in. Mrs. J. F. McWilliams.

FOR SALE: House at 1308 South Lamar. Sell at reduced price. Phone 887.

FOR SALE: 6 room house with 6 lots, near schools, might trade for property close in. Mrs. J. F. McWilliams.

FOR SALE: House at 1308 South Lamar. Sell at reduced price. Phone 887.

FOR SALE: 6 room house with 6 lots, near schools, might trade for property close in. Mrs. J. F. McWilliams.

FOR SALE: House at 1308 South Lamar. Sell at reduced price. Phone 887.

FOR SALE: 6 room house with 6 lots, near schools, might trade for property close in. Mrs. J. F. McWilliams.

FOR SALE: House at 1308 South Lamar. Sell at reduced price. Phone 887.

FOR SALE: 6 room house with 6 lots, near schools, might trade for property close in. Mrs. J. F. McWilliams.

FOR SALE: House at 1308 South Lamar. Sell at reduced price. Phone 887.

FOR SALE: 6 room house with 6 lots, near schools, might trade for property close in. Mrs. J. F. McWilliams.

FOR SALE: House at 1308 South Lamar. Sell at reduced price. Phone 887.

FOR SALE: 6 room house with 6 lots, near schools, might trade for property close in. Mrs. J. F. McWilliams.

FOR SALE: House at 1308 South Lamar. Sell at reduced price. Phone 887.

FOR SALE: 6 room house with 6 lots, near schools, might trade for property close in. Mrs. J. F. McWilliams.

FOR SALE: House at 1308 South Lamar. Sell at reduced price. Phone 887.

FOR SALE: 6 room house with 6 lots, near schools, might trade for property close in. Mrs. J. F. McWilliams.

FOR SALE: House at 1308 South Lamar. Sell at reduced price. Phone 887.

FOR SALE: 6 room house with 6 lots, near schools, might trade for property close in. Mrs. J. F. McWilliams.

FOR SALE: House at 1308 South Lamar. Sell at reduced price. Phone 887.

FOR SALE: 6 room house with 6 lots, near schools, might trade for property close in. Mrs. J. F. McWilliams.

FOR SALE: House at 1308 South Lamar. Sell at reduced price. Phone 887.

FOR SALE: 6 room house with 6 lots, near schools, might trade for property close in. Mrs. J. F. McWilliams.

FOR SALE: House at 1308 South Lamar. Sell at reduced price. Phone 887.

FOR SALE: 6 room house with 6 lots, near schools, might trade for property close in. Mrs. J. F. McWilliams.

FOR SALE: House at 1308 South Lamar. Sell at reduced price. Phone 887.

FOR SALE: 6 room house with 6 lots, near schools, might trade for property close in. Mrs. J. F. McWilliams.

FOR SALE: House at 1308 South Lamar. Sell at reduced price. Phone 887.

FOR SALE: 6 room house with 6 lots, near schools, might trade for property close in. Mrs. J. F. McWilliams.

FOR SALE: House at 1308 South Lamar. Sell at reduced price. Phone 887.

FOR SALE: 6 room house with 6 lots, near schools, might trade for property close in. Mrs. J. F. McWilliams.

CARD OF THANKS

We wish to thank our many friends for their lovely floral offerings and words of comfort. They have meant so much to us in our time of sorrow and grief in the loss of our loved one, J. B. Gray. We also want to express our gratitude to those who sat up at the funeral home.
Lois Lucille Gray
Mr. and Mrs. E. W. Griffin
Lois and Addie Gray
Mr. and Mrs. W. C. Gray
and family.

TRADE WITH YOUR HOME-TOWN MERCHANTS

Overseas Veterans Welcome
Karl and Boyd Tanner
Post No. 413d
VETERANS
OF
FOREIGN
WARS
Meets 2nd and
4th Thursday
8:00 p.m.

PHONE 1159
M. & W.
Plumbing
405 S. Seaman

BUY YOUR WIFE
A
HOME
FOR
CHRISTMAS

3 bedroom home, well located, \$4,500.00. Terms.
4 room rock home, large bedroom, large kitchen, hardwood floors, \$3,785.00. \$500.00 will handle.
2 bedroom home, plenty of room, 3 large lots, \$6,700.00. \$2,500.00 down, payments \$49.99.
2 bedroom home, corner lot, cistern, good location, \$5,200.00. \$1,000.00 down.

Lovely 2 bedroom home, extra large kitchen, with large cabinet space, large living room, 2 years old, quiet part of town, tile b a t h, gorgeous floors, fenced in yard, newly decorated. \$7,000.00. \$700.00 will move you in, low payments.

2 bedroom, stone veneer, double garage, large lot, paved street, \$5,780.00. L o w downpayment.

Nice 2 bedroom home, paved street, lovely back bedroom, lots of built-ins, large lot, fruit trees, recently redecorated. \$6,200.00. \$1,000.00 will handle.

3 bedrooms and den, 2 baths, double garage, lovely part of town, a "real home", all sorts of extra space and built-ins. Really nice. \$10,500.00. Low downpayment, easy terms.

In Olden, 2 bedrooms, central heating, new water system, 1 acre, excellent condition, \$3,700.00. \$700.00 down and \$35.00 per month.

2 good, profit making businesses in Eastland, will sell, or trade.

In Olden: 4 acres, irrigation, 7 room house, barn, shop, good income property. \$7,875.00. L o w downpayment.

220 acres open mesquite land, barn and corral, well, windmill, stock tanks.

300 acres East of Eastland, frontage on Highway 80, also fronts on FM Road 570.

145 acres south of Stephenville, modern home, outbuildings, wells, electric pumps and windmill.

112 acres near DeLeon, Peanut and Cotton allotment, good tanks, spring fed, nice house, good tractor, 20 head cattle, orchard, on REA, school and bus routes.

20 acres south of Eastland, 3 room house, fenced, tank. \$1,000.00 cash.

40 acre orchard SW Cisco, peaches, apples, pears, etc. fenced. Several nice business buildings in downtown Eastland.

See us before you make any decision on Real Estate

TRI-CITIES
REAL ESTATE
EXCHANGE
100 W. Commerce Ph. 1076
EASTLAND

Around the Town At Olden By Mrs. Dick Yieldino

The community Xmas tree benefit ball game between Olden and Lipan was played here on Tuesday evening. Olden lost by a very few scores.

Mr. and Mrs. Lee McGuire spent Thanksgiving at Desdemona with her mother and other relatives.

Mrs. Ethel Rowch left last Wednesday evening for Holiday where she spent the holidays with her children. Freddy was home from Glessa for the week end.

Mr. and Mrs. Jess Hendricks attended the bridal shower honoring Mr. and Mrs. Bob Murry of Koko on Tuesday evening of last week. Mrs. Murry was the former Miss Sarah Hendricks before her recent marriage.

Berry Elliott, who has been in the Ranger General hospital for the past three weeks has improved and is home again.

NOTICE: There will be a 42 party Friday night at 7:30 P.M. at the IOOF Lodge and refreshments.

Man or Woman OWN YOUR OWN BUSINESS

A new item. First time offered. Start in spare time, if satisfied, then work full time. Refilling and collecting money from bulk machines in this area. To qualify you must have a car, references, \$360 cash to secure territory and inventory. Devoting 4 hours a week to business your end on percentages of collection should net approximately \$175 monthly with very good possibility of taking over full time. Income increasing accordingly. If applicant can qualify financial assistance will be given by Co. for expansion to full time position with above average income. Include phone in application.
Box BB
Care of Eastland Telegram

Sunday visitors in the home of Mr. and Mrs. B. Williams were Mr. and Mrs. Lon Williams and son, and Miss Bonnie Williams all of Abilene and Mr. and Mrs. Guy Craig of Eastland.

Mr. and Mrs. Burle McGraw and son spent Thanksgiving day in Abilene.

Mr. and Mrs. Jimmie Fox, Jr., of Laredo was here visiting his grandmother, Mrs. Lillian McMinn over the week end.

Mr. and Mrs. John Morgan and Keith spent several days with his folks in Abilene last week.

Mrs. Willie Bockman spent last week in Gordon in the home of her daughter, Mrs. Lonnie Coleman and family. Her children from Dallas joined them for Thanksgiving dinner on Thursday. Mr. and Mrs. Homer Harrison, of Idalou, a niece of Mrs. Bockman's were recent visitors in her home.

Mr. and Mrs. Carl Butler enjoyed having all their children and families except Mrs. James Snodgrass home for the holidays.

Mrs. W. H. Seals is spending the week here in the home of her parents, Mr. and Mrs. O. T. Hunt.

Mrs. Walter Colburn has returned from a week's stay in the home of her son Edd and family in Wichita Falls.

Mr. and Mrs. Dick Yielding returned home Sunday evening from Kilgore where they spent the holidays.

Mr. and Mrs. R. D. Peace and daughters spent the week end at Center with their parents.

Mrs. Neta Fay Jacobs and children are visiting relatives in Wichita Falls this week.

VISITS PARENTS

Visiting in the home of Mr. and Mrs. J. D. Pittman over the week end was their daughter, Jeannie Pittman of Mary Hardin Baylor College, Belton.

Mr. and Mrs. Gene Rhodes visited in Gladewater over the week end with Mr. and Mrs. I. T. Fuller and in Longview, Fort Worth, Weatherford and Denton. They returned Sunday.

Dress Up Meats With Stuffing

With the advent of the holiday season, homemakers throughout the country make more of an effort to add a little extra something to dress up the family meals.

Reba Stiggs, well known home economist, states that various stuffings add a note of distinction, without much effort, to a meal cut either beef, veal, pork or lamb. Actually, seasonal holidays call for special dress so why not start now to make plans to dress up your meats. For an economical lamb dinner around the holiday season, plan on lamb shanks stuffed with a celery-rice stuffing. See if the family doesn't exclaim over this innovation.

Lamb Shanks - Celery-Rice Stuffing
6 lamb shanks, 3 tablespoons lard or drippings, 2 teaspoons salt, 1-8 teaspoon pepper, 2 cups water or enough to cover, 3-4 cup rice,

1-2 cup chopped celery, 1 teaspoon poultry seasoning.
Brown the lamb shanks in lard or drippings. Pour off drippings. Add salt, pepper, and water. Cover and simmer until tender, about 2 hours. Remove meat from broth. When shanks are cool enough to handle, remove bones.
Cook rice in lamb broth. Drain rice, saving broth. Combine cooked rice, celery and poultry seasoning. Stuff shanks with celery-rice mixture. Place in making dish. Pour remaining lamb broth over stuffed shanks. Cover and cook in a moderate oven (350 degrees) until heated through. Yield: 6 servings.

HAS EYE SURGERY

Martin Smith of Olden, is a patient in the Hendricks Memorial Hospital in Abilene where he underwent eye surgery.

Mr. and Mrs. Virgil Moore and sons visited in the home of her mother, Mrs. Ella Willis in Denton over the week end.

GO TO DALLAS

Mr. and Mrs. Ed Haynes took Mrs. Jewel Golson to Dallas Sunday where she will spend some time with her sister.

CALL 601 FOR CLASSIFIED AD SERVICE



ALEX RAWLINS & SONS
MONUMENTS
WEATHERFORD, TEX.
Serving This Community
Since 1884

FOR MANY REASONS

ACCUMULATORS OF SCRAP IRON AND METALS HAVE LONG FOUND IT MOST SATISFACTORY TO SELL TO

EASTLAND

IRON AND METAL CO.

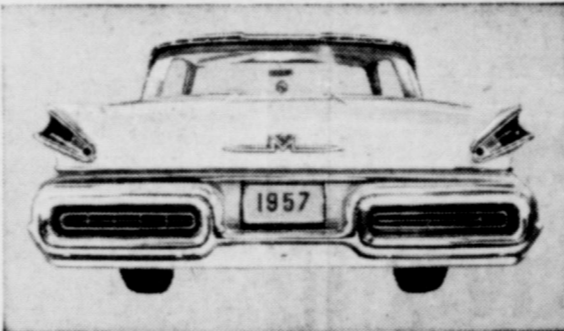
WHY NOT GET IN TOUCH WITH US

PHONE 270

ONE BLOCK EAST OF THE NEW SAFEWAY STORE
OVER 30 YEARS SQUARE DEALING THE YEAR ROUND

Owned and Operated by
HENRY PULLMAN

Dream-car beauty, bigness and features at a price you never dreamed possible!

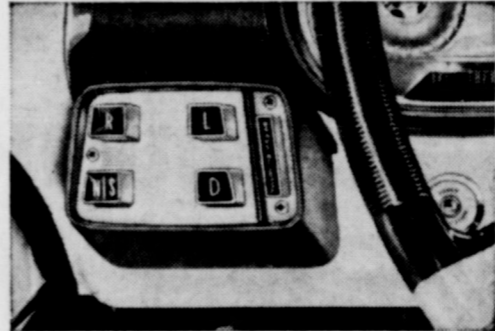


SLEEK DREAM-CAR DESIGN REPLACES BULGES

Mercury introduces bold, clean-cut lines shared by no other car. V-angle Tail-lights, Jet-Flo Bumpers, sculptured rear deck and roof - here's styling that will influence the shape of cars for years to come.

EXCLUSIVE FLOATING RIDE ABSORBS BUMPS

Full-Cushion Shock Absorbers, new swept-back half-joint front suspension, and many more features combine to soak up bumps, vibrations.



NEW KEYBOARD CONTROL SIMPLIFIES 6 OPERATIONS

THE BIG M's new keyboard starts the engine - controls neutral, drive, low, and reverse - and releases Mercury's convenient Toe-Set Parking Brake.

POWER SEAT THAT "REMEMBERS" ENDS GUESSWORK

No need to hunt for your favorite seat adjustment. You dial it from the instrument panel. The new power seat moves to it automatically.



BIGGEST SIZE INCREASE IN THE INDUSTRY

Bigger in every important dimension! More than 17 1/2 feet long, over 6 1/2 feet wide, with inches more leg room, headroom, hip room, and shoulder room - the most spacious Mercury ever built.

FAN SAVES HORSEPOWER OTHER CARS WASTE

A Power-Booster Fan, in the Montclair series, coasts when not needed for engine cooling (80% of the time). You get a far

Childress -
(Continued from Page 1)

In 25 of 27 starts in his two ears there (one of the 27 was a e), reports his team in excellent physical condition. The Raters are already eyeing their upcoming tilt" with Honda.

Here are the season records of the two teams:

ASTLAND		OPP.
6	Cisco	27
9	Dublin	0
9	DeLeon	7
2	Cross Plains	7
2	Ranger	28
3	Gorman	0
8	Wylie	6
5	Albany	33
8	Throckmorton	0
2	Clyde	2
6	Cross Plains	7
7	Henrietta	20
4	Linden	14

TINNETT		OPP.
7	Clarendon	14
0	Hollis, Okla.	7
3	Priona	0
7	McLean	14
8	Lefors	14
6	Sunray	6
4	White Deer	19
8	Gruver	7
5	Wheeler	7
3	Panhandle	0
6	Clarendon	6
2	Farwell	0
2	Merkel	0

FILLERS

Adolf Hitler is officially dead. A judge in Berchtesgaden, Germany, has ruled that Hitler died of self-inflicted gunshot wound a.m. on April 30, 1945.

Thanksgiving became a legal holiday in a National Proclamation issued by President Lincoln on Oct. 3, 1863.

A statue of Joseph Stalin is to be eased off the scene in East Berlin. A hotel will be built on the site, according to an East German source.

Of the home fires which took lives last year, more were caused by defective or overheated heating equipment than by any other cause, according to the National Fire Prevention Association.

Some authorities hold that the first real Thanksgiving—formally set aside by the governor as a day of prayer—was on July 30, 1623.

Lone Holly Tree May Not Bear Berries for Yule

Planting a single holly tree isn't the berries if you hope to grow your own Christmas decorations.

Unless there are both male and female hollies (staminate and pistillate trees) on your grounds or nearby, the greenery will be unadorned by fruit in the Fall. Many nurseries offer hollies of proven types that will produce an abundance of bright berries if pollinated.

Pleasing forms of the male plants are available too and these can be relied on to produce quantities of the needed pollen, according to E. I. Kabel, field representative of the Davey Tree Expert Co. Such male trees should be planted closely enough to the berry-bearers to assure active interest of bees and other insects important to pollination. Experts estimate there should be one staminate tree for every ten pistillate ones.

Annual shearing is good for hollies after they pass their infant stages. This helps keep them dense and attractive. So the cuttings you bring into the home for the Yuletide have double benefits. Hollies

More Santa -

(Continued from Page 1)
doll bed and record player.
Nida Ann Brown

Dear Santa Claus,
Would you please bring me a Tiny Tears doll with clothes, a baton and a grocery cart.
Thank you,
Rhonda Kay Maynard

Dear Santa Claus,
I would like for you to bring me a gun and holster set, a horse and a motor boat.
Thank you,
Rocky Maynard

Forest Industry Adds \$316 Million To Texas Economy

HOUSTON (Special) — The forest industries of Texas are adding \$316,564,000 annually to the state's wealth, George W. Stanley, chairman of the Texas Forest Industries Committee, said today.

Stanley, whose committee sponsors the industry-operated Tree Farm program in Texas, said the Department of Commerce's newest Census of Manufacturers shows that forest industries of the Lone Star State in 1954 added \$191.7 million in value through manufacture, paid out nearly \$110 million in salaries and wages, and spent \$15 million for capital improvements.

The \$191.7 million value added through manufacture represented an increase of over 26 per cent since 1947, Stanley said.

Texas' forest industries, the report shows, directly employ some 38,000 people. Forest industries are rated a close second to yews as choice foundation plantings.

Appropriately, the popular modern kinds boast appealing holiday names. These include Cheerful, Merry Christmas, Old Heavy Berry and Mrs. Santa.

All these strains produce an abundance of large and brightly colored fruit.

ries in this state are those which manufacture lumber, furniture and fixtures, pulp, paper and other paper and wood products. The industry chairman said ex-

pansion of the Tree Farm program, which encourages private landowners to grow repeated tree crops through careful management and protection of their

woorlands, will broaden the base of the state's vast forest economy. Texas is second-highest state in the nation in number of certified Tree Farms — 914 on Nov. 1,

comprising more than 3.4 million acres of timberlands. Nationally, the program is operated by the forest industries of the United States through American

Products Industries, Inc., Washington, D.C.
TRADE WITH YOUR HOME-TOWN MERCHANTS

Enjoy Your Holidays! Stock Up And Save!

DOUBLE "S & H" GREEN STAMPS
At Worth Food Mart **WEDNESDAY** with Purchase of \$2.50 or More

GIFT TIP! REDEEM YOUR "S & H" GREEN STAMPS FOR CHRISTMAS GIFTS!
SAVE YOUR CASH!

COFFEE	Dining Car 5c Off Label Reg. 99c - Special Price 94c YOU PAY ONLY (Net)	1-Lb. Can	89c
MARGARINE	PANTRY MAIDE	2 1-Lb. Pkgs.	37c
WOLF CHILI	NO BEANS	No. 2 Can	45c

PRICES EFFECTIVE TUESDAY & WEDNESDAY

SWANSON FROZEN POT PIES	Chicken, Beef, or Turkey	2 8-Oz. Pkgs.	49c
MINUTE MAID FROZEN ORANGE JUICE		2 6-Oz. Cans	37c
CHASE & SANBORN INSTANT COFFEE	25c OFF LABEL	You Pay Net 6-Oz. Jar	\$1 10

RANCH STYLE BEANS	No. 300 Can	10c
CAMPBELL'S TOMATO SOUP	No. 1 Can	10c

CLEAR PLASTIC SEAT COVERS
Protect The Beauty Of Your New Car
Tailored To Fit
THE TRIM SHOP
706 W. Main Phone 170

BABIES LIKE IT LIKE THEM

BAMA STRAWBERRY PRESERVES	20-Oz. Tumbler	39c
DEL MONTE CRUSHED PINEAPPLE	4 No. 2 \$ 00 Cans	1
LADY BETTY PRUNE JUICE	Quart Botl.	25c
COLORED FAMILY-PAK ZEE TISSUE	4 -Roll Pkg.	29c
U. S. NO. 1 RED POTATOES	10 -Lb. Cello	49c

our garden of values!

Versatile Beef Buy!

Worth Controlled Quality Beef

ROUND STEAK
Lb. Only **69c**

GREEN CABBAGE	FIRM HEADS	3 1/2 Lb.	3
CARROTS	CALIFORNIA, WASHED	2 Lbs.	23c
SPINACH	FRESH, CLEAN	Cello Pkg.	19c
BANANAS	FANCY, CENTRAL AMERICA	Lb.	15c
LOCALLY GROWN GREEN ONIONS		2 Bchs.	15c
CALTROP BRAND FRESH DATES		3 8-Oz. Pkgs.	50c
HONDURAS FRESH LARGE COCONUTS		Each	15c

Fresh Sliced PORK LIVER	Lb.	19c
"W. C. Q." Beef RUMP ROAST	Lb.	59c
Longhorn CHEESE	Wisconsin Lb.	49c
Armour's Star SAUSAGE	Pure Pork Small Lean Sides Lb.	33c
SPARE RIBS	Kraft's Assorted Each	45c
PARTY SNACKS		19c
Fresh Boston BUTT PORK ROAST	Lb.	39c

other grocery buys!

Flour	Medal Gold 10 -Lb. Bag	95c
QWIP	The Real Cream Dessert Topping	Reg. 53c Can
RITZ	N.B.C. Crackers	1-Lb. Pkg. 35c
FRUIT CAKE	Holiday	3 -Lb. Ctn. \$1 19
FRUIT CAKE	Holiday Harvest Ring	21-Oz. Pkg. 73c

VEL BEAUTY BAR	Reg. Bar	25c
VEL DETERGENT	Giant Pkg.	73c
VEL LIQUID DETERGENT	12-Oz. Can	39c
McCORMICK BLACK PEPPER	4-Oz. Can	31c
CAT FOOD PUSS & BOOTS	2 1-Lb. Cans	27c
VEL WAFFLE MIX	16-Oz. Pkg.	27c
STALEY'S SWEETOSE WAFFLE SYRUP	Pint Botl.	25c
TOILET SOAP PALMOLIVE SOAP	2 Bath Bars	25c
CASHMERE BOUQUET	3 Reg. Bars	25c

SMITTY'S Christmas Watch Values from \$19.75
See the finest watches while selections are still complete!

WESTFIELD TROJAN Water-tight Anti-magnetic Sweep-second hand Radium hands & dial **\$19.75**

WESTFIELD WENDIE Expansion bracelet **\$24.75**

BULOVA AMBASSADOR 17 Jewels **\$39.75**

BULOVA AMERICAN GIRL 17 Jewels **\$49.75**

Make Some One Happy With A Beautiful Starter Set **12.95 and 14.95**

BUY NOW - PAY NEXT YEAR!

PRICES INCLUDE FEDERAL TAX

Smitty's Jewelry
East Side of Square Phone 98

WORTH FOOD MART



Miss Margaret Ann Ammer . . . is engaged

Margaret Ann Ammer To Marry Robert Drake Keigh January 27

The engagement of Miss Margaret Ann Ammer to Robert Drake Keigh, son of Mr. and Mrs. M. H. Keigh, Jr., Breckenridge, has been announced by her parents, Mr. and Mrs. Jack Ammer of Monahans, formerly of Eastland.

Wedding vows will be read Sunday January 27 at 4 p. m. in the First Methodist Church, Monahans.

Miss Ammer received her degree in music from Texas Tech in August. She is now teaching music in the Romar Junior High School in Bryan and lives at College Station. She is a graduate of Monahans High School and attended Texas Christian University.

Keigh is a graduate of Breckenridge High School and is now attending Texas A&M where he is majoring in petroleum engineering and a member of the football team.

Co-Ed Club To Sponsor Chili Dinner Saturday

A chili dinner will be held Thursday at noon until 1 p. m. in the First Christian Church Annex sponsored by the Co-Ed Club. Chili, coffee and pie will be served.

Tickets are 50 cents and may be bought from any member of the club. Everyone is invited to attend.

SOCIAL CALENDAR

Tuesday, December 11
7:30 p. m. — Mrs. R. M. Sneed will be hostess to the Zeta Pi chapter of Beta Sigma Phi in her home, 503 South Oaklawn. Mrs. Jerry Carter will be co-hostess.
7:30 p. m. — The Music Study Club will present its gift to the public and present the Abilene Christian College A Cappella Chorus with Dr. Leonard Burford, director, in the high school auditorium.
7:30 — Special meeting of Eastland chapter OES for purpose of initiation. Also Christmas party and exchange of gifts in banquet room. All members are urged to be present.

Wednesday, December 12
3 p. m. — Mrs. Frank Sparks will present "A Candle in the Forest" at the Civic League and Garden Club meeting in the Woman's Club. All women of Eastland are invited to attend.

Thursday, December 13
7:30 p. m. — Members of the Alpha Delphian Club will meet in the Woman's Club for their annual Christmas party.

12-noon to 1 p. m. — Members of the Co-ed Club are sponsoring a chili dinner in the First Christian Church Annex. Tickets are 50 cents and may be bought from any member of the club.

2 p. m. — The Morton Valley Home Demonstration Club will meet in the home of Mrs. W. J. Graham for a Christmas party and gift exchange.

7:30 p. m. — The Junior Class of Eastland High School will present their annual play titled "Finders Creepers," in the school auditorium. Admission price will be 35 cents for students and 50 cents for adults.

Friday, December 14
7:30 p. m. — Mrs. Marene Johnson will honor members of the Zeta Pi and Xi Alpha Zeta chapters of Beta Sigma Phi with a Christmas party in the Woman's Club. Members will exchange gifts with their secret pal.

7:30 p. m. — The Gleaner's Class of the First Baptist Church will hold a Christmas social in the home of Mrs. W. L. Garner, 311 North Walnut.

Shirley Smith To Host EGBDF Music Club

Shirley Smith will be hostess to the EGBDF Club Saturday in the home of her parents, Mr. and Mrs. Johnson Smith at 4 p. m. Sharon Sayre will be leader for a Christmas program and Julie Frost, president, will preside over the business session. Mrs. F. L. Drago is sponsor and director of the club.

Hospital News

Mrs. Ronald Koch, medical
Mrs. Nora Norton, medical
Mrs. Myrtle Johnson, Cisco, medical
Howard Sherman, surgical
Rodger Noble, medical
Shirley Gail Thompson, Cisco, medical
Buford Webb, medical
Dismissed were Ray Cavanaugh, Mrs. Mary Timmons, C. H. Tankersley, Mrs. Jewel Golson, Mrs. Mary Jacoby and baby boy.
Patients in the Ranger General Hospital from Eastland are:
Howard Gill, medical
D. L. Harber, medical
Mrs. Eunice Smith, medical
Dismissed was Diana Maynard.

A&P Food Store Introduces Own Instant Coffee

A&P Food Store announced today the introduction of its own private label brand of instant coffee.

The new, low-priced, instant coffee comes in two- and six-ounce jars bearing the A&P insignia. It is now available in the local A&P Food Store.

Processed from pure coffee in strict compliance with company standards, the new product has freshness and quality guarantees.

A&P also retails its own regular coffees under the Bokar, Red Circle, Eight O'Clock and A&P Vacuum - pack labels.

ATTEND THE CHURCH OF YOUR CHOICE EACH SUNDAY

How to Light Outdoor Holiday Displays

Everyone becomes an electrician of sorts during the Christmas season, with the usual tree lights and possibly porch, lawn, or roof decorations.

If you are planning an ambitious outdoor holiday lighting display, the December issue of Better Homes & Gardens magazine says there are easy ways to save yourself the frustration of faulty wiring, blown fuses, bulbs that won't burn, and switches that fail. An article advises preparing your equipment now.

The first step is to unpack your Christmas light strings and test for loose connections and defective bulbs. Wiggle the string at each lamp socket so any breaks in the line or in the bulb will show up clearly.

An idea used by commercial displayers is to use in hard-to-reach places such as high on the tree or on the roof. Bulbs get old and weak; new ones are less likely to burn out.

Strings of tiny, series-wired (Code type C-6) bulbs should not be used outdoors, advises the article. The slightly larger C-7½ bulbs can be used indoors or out and require no hunting for burn-outs. The C-9½ bulbs, larger yet, work the same way and give the most brilliant of outdoor displays.

Usually the manufacturer states on the box how many strings of the bulbs can be plugged together. Your concern is not about overloading the house circuit, but over-

Lacasa Lines

Mrs. D. E. Raney

Mr. and Mrs. Vernon Stuard of Fort Worth spent Thanksgiving Day with his parents, Mr. and Mrs. Martin Stuard.

Charles Raney was home from Texas University for the Thanksgiving holidays. He had a visitor over the weekend, Richard Hodge of Ranger.

Mr. and Mrs. Johnnie Gray of Garland spent the weekend visiting his parents, Mr. and Mrs. John Gray. They were also dinner guests

loading the low-capacity wire. When you connect a number of strings, the first one carries the current for all the others. So, if you wish to have more than the recommended number of bulbs, simply use more than one extension cord, says the magazine.

For outdoor floodlights to illuminate Christmas displays, your best bet is to stick to the 150-watt PAR-38 bulbs. These are the weatherproof reflector type, like the kind used to light driveways. You can obtain 300- and 500-watt reflector bulbs for outdoor use, but those are likely to explode in a cold rain or snow unless protected by expensive fixtures. So just use two or more of the PAR-38s when you wish more light. Indoors, you can use the 150-watt R-40 or 75-watt R-30 reflector spots and floods.

of Mrs. Vallie Jones Saturday evening.

Norman Morrison of Fort Worth. The WMU of New Hope Baptist Church is observing the Moon week of prayer with program each afternoon under leadership of Mrs. John Gray.

CARPETS

By LEE'S
COMPLETE CARPET SERVICE
Smoothedge Installation
Berlout Moth Proofing Service
RAYON AVISCO - WOOL - COTTON
Ranger Furniture Exchange
"BRASHIER'S" RANGER
123 N. Rusk Phone 24

When the Fire Alarm Sounds—

... and it's your house would you feel secure in knowing that your insurance program is adequate to cover the loss? Or would you be a "wish I had?" There is no guessing about insurance coverage. You either have it when you need it or you don't. Better let us examine your insurance program now and see if your coverages are complete and line with present-day values and replacement costs. No obligation.

EARL BENDER & COMPANY

Eastland (Insurance since 1924)

Whirlpool

automatic washers and dryers

Smith Plumbing and Tin

114 N. Seaman Phone 304

OIL FIELD Equipment

- SURFACE CASING
- OIL STRING CASING
- TUBING
- RODS
- PUMPING UNITS
- TANKS

BOUGHT - SOLD - TRADED

IRISH DRILLING CO., INC.

Hwy. 80 East Eastland, Texas
Office Phone 100 - 101 Yard Phone 199

M. H. PERRY

Representing
Southland Life
Life - Retirement Income Partnership
Mortgage Cancellation
Educational - Annuities
Accident - Sickness
Hospitalization - Group
Call 173 or 713-J
107 W. Main • Eastland

OUR WINTERPROOF SERVICE

leaves WEATHER WORRIES BEHIND

EARLY TIRE SERVICE

302 W. Main Eastland PHONE 208

"All right! Stop telling us how smoothly your OK Used Car ran and get on with the rest of your story."

USED OK CARS

Only franchised Chevrolet dealers display these famous trademarks.

FULLEN MOTOR CO.

305 E. Main EASTLAND Phone

—We Give Hometown Trading Stamps—

KIMBELL'S SHORTENING	3 Lb. Ctn.	69c
KIMBELL'S BEST FLOUR	25 Lb. Bag	1.75
KIMBELL'S OLEO	Lb.	23c
KIMBELL'S MUSTARD OR TURNIP GREENS	2 No. 303 Cans	25c
GIANT SIZE CHEER	Box	69c
U.S. NO. 1 RED POTATOES	10 Lbs.	39c
RUBY RED GRAPEFRUIT	Lb.	10c
TEXAS ORANGES	5 Lb. Bag	35c

GIVE US YOUR ORDER NOW FOR A FANCY FRESH DRESSED CHRISTMAS TURKEY, AND BE SURE YOU GET THE SIZE YOU WANT

These Prices Effective ...

WEDNESDAY through SATURDAY

WEDNESDAY	DOUBLE STAMP DAY	WEDNESDAY
Seven Roast SAUSAGE	Choice Beef, Lb.	35c
	Country Style, Lb.	Lb. 25c 2 Lbs. 49c 5 Lbs. 1.00
Pork Chops	Lean Center Cuts, Lb.	55c
Hamburger	Fresh Ground, Lb.	25c
Stewmeat	Lean Boneless, Lb.	39c

—We Give Hometown Trading Stamps—

KIMBELL'S CRANBERRY SAUCE	2 No. 300 Cans	35c
DEL MONTE PEAR HALVES	No. 303 Can	29c
MISSION WHOLE KERNEL CORN	2 12-Oz. Cans	25c
DEL MONTE CHUSHED PINEAPPLE	Flat Can	15c
KIMBELL'S BLACKEYE PEAS	No. 300 Can	15c
KIMBELL'S WHOLE GREEN BEANS	No. 303 Can	21c
KIMBELL'S—GRAPE or APPLE JELLY	3 20-Oz. Jars	1.00
PINTO BEANS	2 Lb. cello Bag	23c

GIVE US YOUR ORDER NOW FOR A FANCY FRESH DRESSED CHRISTMAS TURKEY, AND BE SURE YOU GET THE SIZE YOU WANT

PORK ROAST	Lean Shoulder, Lb.	35c
EARNEST	Frozen Food Center	210 South Lamar Phone 11
HOMEMADE CHILI	Lb.	49c

COURTHOUSE NEWS AND RECORDS

Real Estate Transfers, Marriages, Suits Filed. Court Judgments, Orders, Etc.

INSTRUMENTS FILED
County Clerk's Office
 R. C. Alexander to Keith Robert Engelhart, warranty deed.
 C. E. Allen to A. M. Griffin, oil and gas lease.
 G. F. Beck to Bob L. Barnhill, warranty deed.
 Bob L. Barnhill to First Federal S&L Assn., deed of trust.
 J. B. Brandon to J. Davis Smith, warranty deed.

Mrs. George Blackwell to Eddie T. Bryant, release of vendor's lien.
 Eddie T. Bryant to Drew D. Jackson, warranty deed.
 T. E. Bucy to Henry Collins, quit claim deed.
 James A. Bentley to L. R. Pearson, assignment of oil and gas lease.
 H. H. Black to L. P. Black, warranty deed.

WE BUY SCRAP IRON AND METAL
Get Our Prices Before You Sell
 WE PAY HIGHEST MARKET PRICES
 WE APPRECIATE YOUR BUSINESS
KOEN SALVAGE
 Highway 80 West 1315 W. Main

COMPLETE WRECKER SERVICE
DAY AND NIGHT Ph. 42
 Expert Body Work and Painting
 Choice of Colors
KING MOTOR CO.
 Direct Factory Ford Dealer NE Corner Square
 Phone 42

We're Authorized Dealers For
ALL HOTPOINT APPLIANCES
 Washing Machines — Dryers — Ranges
 Dish Washers — Disposals
 Home Freezers — Refrigerators
 Air Conditioners — Hot Water Heaters
 Call Us For Complete Service On ALL Appliances
SMITH PLUMBING & TIN
 114 S. Seaman Phone 304

James A. Bentley to The Public, pooling agreement.
 Carrie Bryant to Hoyt Bryant, warranty deed.
 Charles T. Bott to Texas Electric Service Co., right of way.
 L. N. Bryan to Texas Electric Service Co., right of way.
 Gordon S. Clark to Earl D. Baker, MML.
 Lillian Coleman to Tom Stamey, warranty deed.
 George V. Cooke to Adelyn Wallace, assignment of oil and gas lease.
 George T. Crawford to Jo Ann Crawford, quit claim deed.
 Henry C. Crow to State of Texas, right of way.
 O. S. Carroll to George L. Forbes, warranty deed.
 Catherine Cunningham to R. W. Baxter, oil and gas lease.
 Catherine Cunningham to The Public, affidavit.
 City of Ranger to J. C. Moore, cemetery deed.
 Duquesne Oil Corp to Phil Davies, oil and gas lease.
 Dowell, Inc. to S. Kopel, release of MML.
 Dublin National Bank to E. W. Harris, transfer of vendors lien.
 Earley Tire Service v. Pete DeLosSantos, abstract of judgment.
 First National Bank, Cisco to R. E. Bradshaw, assignment of lease.
 First National Bank v. E. W. Griffin, abstract of judgment.
 C. D. Fonville to Eastland National Bank, deed of trust.
 First National Bank, Cisco to O. S. Carroll, release of deed of trust.
 J. O. Green to Lee Fields, warranty deed.
 Fred Goodstein to Trigood Oil Company, assignment of oil and gas lease.
 A. Z. Glover to J. S. Hulin, warranty deed.
 John W. Guy to State of Texas, right of way.
 Mrs. M. A. Glenn to Featherlite Corp., warranty deed.
 Eugene Lee Harris to A. F. Harris, quit claim deed.
 Thad Henderson to Phil Daviss, oil and gas lease.
 W. H. Hall to Carl D. Gorr, release of vendor's lien.
 W. J. Herrington to J. B. Mauldin, warranty deed.
 Ola May Henderson to W. H. McMillan, assignment of deed of trust.
 C. H. Havelka to Jarbe Oil Co., Inc., assignment of oil and gas lease.
 B. A. Ingram to S. R. Gardner, oil and gas lease.
 Ace Lucas to Dr. N. A. Brown, cor. warranty deed.
 Mrs. S. J. Munn to R. J. Harris, release of vendor's lien.
 George Mollenkaph to R. W. Baxter, oil and gas lease.
 E. A. Norton to Adra Lee Fox, warranty deed.
 Ronald B. Pruet, to James A. Bentley, assignment of oil and gas lease.
 Trullie Price to F. G. Wheat, quit claim deed.
 Mrs. Jon H. Poole to Pearl Emily Harris, warranty deed.
 Jon H. Poole to Pearl Emily Harris, release of vendor's lien.
 Reconstruction Finance Corp. to Benjamin H. Fly, power of attorney.
 Pat H. Stanford, Inc. to Southwestern Life Insurance Co., deed of trust.
 Pat H. Stanford, Inc. to Southwestern Life Insurance Co., as signment of lease.
 Fred A. Steffey to Franklin P. Wilcoxon, release of vendor's lien.
 Smith Plumbing Company to E. A. Norton, release of judgment.
 Scott-White Memorial Hospital v. William Henry Hall, abstract of judgment.
 George C. Scott to R. W. Baxter, oil and gas lease.
 Franklin P. Wilcoxon to R. H. Cutting, warranty deed.
 Franklin P. Wilcoxon to J. L. Hammit, warranty deed.
 C. L. Webb to Lee W. Starr, warranty deed.
 Nora Lee Weaver to C. D. Fonville, warranty deed.
 E. K. Winge to R. W. Baxter, oil and gas lease.
 Mrs. Ada B. Williams to Tom McArthur, deed-of-trust.

MARRIAGE LICENSES
 Richard Howard Stultz to Mildred Dolores Ellis.

PROBATE
 James Wesley Owings, minor, application for appointment of guardian.
 Lucille Suther Heltzel, deceased, application to probate will.
 William W. Ernst, deceased, application for administration.

TV LOG KRBC-TV

TUESDAY

3:00—Queen For A Day
 3:45—Modern Romances
 4:00—Comedy Time
 4:30—Yesterday's Newsreels
 4:45—Sterling
 5:00—Kalvin Keewee
 5:30—Laurel & Hardy
 6:00—News
 6:15—Sports
 6:25—Weather
 6:30—Jonathan Winters
 6:45—Town & Country
 7:00—Big Surprise
 7:30—TBA
 8:00—Jane Wyman
 8:30—Circle Theater
 9:30—Texas In Review
 10:00—News
 10:10—Feature 9

WEDNESDAY

7:00—Today
 9:00—Ding Dong School
 9:30—The Price is Right
 10:00—Home
 11:00—The Tac Dough
 11:30—It Could Be You
 12:00—Daily Devotions
 12:05—Mid-Day Theatre
 1:30—Ten. Ernie Show
 2:00—Matinee Theatre
 3:00—Queen for a Day
 3:45—Modern Romances
 4:00—Comedy Time
 4:30—Yesterday's Newsreels

4:45—Sterling
 5:00—Kalvin Keewee
 5:30—Laurel & Hardy
 6:00—News
 6:15—Sports
 6:25—Weather
 6:30—Coke Time
 6:45—NBC News
 7:00—On the Farm
 7:30—Federal Men
 8:00—Kraft TV Theatre
 9:30—This Is Your Life
 9:50—Slim Willet
 10:00—News
 10:10—Feature 9
 10:40—Weather
 10:45—Feature 9
 11:30—Sign Off

VISIT DAUGHTER
 Mr. and Mrs. Dennis Farr visited in Denton over the week end with their daughter and son-in-law, Mr. and Mrs. C. L. Johnson and Robert Mark.

**T. L. FAGG
 R. L. JONES**
 REAL ESTATE
 Property Management
 Home and Farm Loans

Insurance AND Real Estate
D. L. KINNAIRD
 Life - Fire - Auto - Farm
 Polio - Bonds
 37 years in the Insurance
 Business In Eastland

Wednesday Double BB Stamps

AT MacMOY CLOVER FARM STORE
 PLUS THESE WEDNESDAY SPECIALS

IMPERIAL PURE CANE
SUGAR 5 Lb. Bag **48c**

MEADOWLAKE
Margarine Lb. **23c**

CLOVER FARM
MILK 3 Tall Cans **38c**

JELLO All Flavors **2** Pkgs. **15c**

CONCHO
Pork & Beans 2 No. 300 Tall **19c**

WELCH
Grape Juice 24-Oz. Bottle **29c**

CLOVER FARM
Pumpkin 2 No. 300 Tall **25c**

CLOVER FARM FRUIT
Cocktail No. 303 Can **25c**

GERBER'S
Baby Food 3 4 3/4-Oz. Cans **25c**

GLENDAL Sliced or Halves—No. 2 1/2 Can
PEACHES **29c**

FANCY
DELICIOUS APPLES Lb. **15c**

FLORIDA ORANGES Lb. **12 1/2c**

U. S. NO. 1 IDAHO RUSSET
POTATOES 10 Lb. Bag **39c**

CENTRAL AMERICAN
Bananas Lb. **12 1/2c**

Fryers Fresh Cut Up Lb. **39c**

SLICED
Bacon 2 Lbs. **63c**

Pork Roast Lb. **39c**

Sausage HORMEL **2** Lb. Bag **89c**

FRESH
Ground Meat Lb. **29c**

OPEN EVERY NIGHT TIL 8 P.M.—SATURDAY TIL 9 P.M.
FOODS CLOVER FARM STORES
 400 South Seaman Phone 31

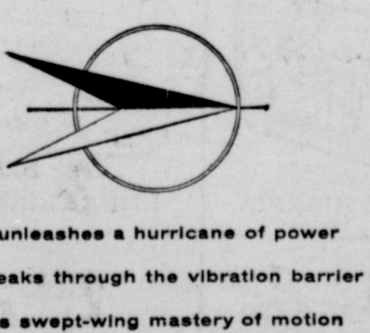


For the gift that will charm your friends and family, let us take a portrait of you or your children. Avoid the last minute rush! Phone for your appointment today!

Expert Film Finishing
CANARIS STUDIO
 Eastside of Square Phone 46



Step into the wonderful world of AUTODYNAMICS
It tames a tornado of torque!



Ahead of you, the hushed purr of a muted engine throbs with power.
 And at your fingertips, the push-button magic of new TorqueFlite automatic transmission stands ready to convert this power to surging take-off.
 A touch of the "Drive" button triggers the newest, slickest, most responsive "get up and go" on the road. You sweep to cruising speed through an extra speed range that gives silk-smooth breakaway acceleration. Here is push-button driving that packs a thrilling new "1-2 punch" for complete and effortless command of

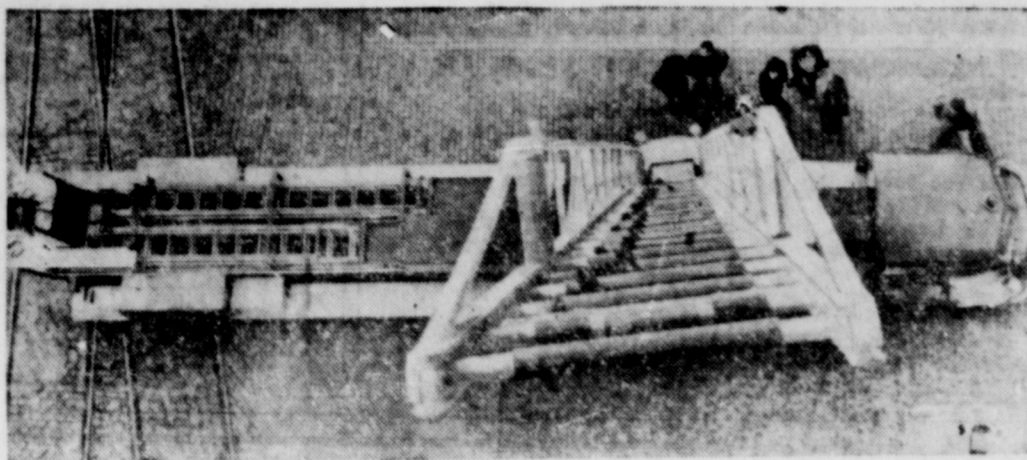
every driving situation. You break away from the pack when the light says "go." Romp through stop-and-go 5 o'clock rushes. Breeze past "highway crawlers."
 Push-button driving is just one of the exciting experiences that await you in the Swept-Wing Dodge. There's a mighty new aircraft-type 310 hp. Super D-500 V-8 Engine. New Total-Contact Brakes that match stopping power with horsepower. New Torsion-Air Ride that cushions you in a "Realm of Silence."
 All this is yours in a low-slung, swept-wing beauty only 4 1/2 feet high. See and drive it today!

SWEPT-WING '57 **Dodge**

McGraw Motor Company

416 S. Seaman Street

Phone 80



THIS WAY AND WATCH YOUR STEP—If you should ever get caught at the wrong end of a fire, you could have this sight confronting you. It's a victim's view of a rescue ladder, provided in this overhead shot of new fire equipment in St. Louis, Mo. The 100-foot ladder is easing up to the 80-foot level.

GI Allowances For School Vets Are Due Early

Veterans in school under the Korean GI Bill most likely will get their monthly GI Allowance before they go home for the Christmas vacation, Scott B. Harrington, manager of the Veterans Administration Regional Office in Dallas, said today.

Normally, GI allowance checks are mailed around the 20th of the month. But in December, many schools begin vacations before that date. So that veterans won't have to go on vacation without funds, VA is making a special effort to mail the checks beforehand, Mr. Harrington said.

The Dallas VA regional office is speeding up steps to authorize GI allowance payments for veteran-trainees and is making arrangements with Treasury Department Disbursing Offices—which actually issue the GI checks for early distribution.

Veterans and their schools can cooperate in this effort by getting monthly certifications of training status to VA promptly after the end of November, Mr. Harrington said.

"There may be exceptional cases in which it may not be possible to make the payments ahead of time," Mr. Harrington said, "but in most cases veterans will receive their checks before going home for Christmas."

Thursday Afternoon Club Hears Speech On Religious Affairs

Mrs. Charles Loreto of New York City was the guest speaker for the Thursday Afternoon Club Thursday.

Mrs. Loreto, the former Rosalie Leslie, is the daughter of Mrs. W. P. Leslie and was reared in Eastland. During Mrs. Loreto's interesting career, she has been a successful country school teacher, a university administrator and is now filling an important place in New York City as the wife of Judge Charles Loreto, an outstanding judge and civic leader. Her charming personality and her interest in educational and religious affairs have made her many friends among the leaders in the fields both in this country and abroad.

Mrs. Loreto is an active leader in the International Christian Leadership movement an organization to stimulate lay people everywhere to draw near to God and to try to find His way for each life. The purpose of the movement, started 25 years ago, is to make Christian leaders and to make leaders Christians; a worldwide effort to bring about a spiritual awareness and awakening.

The speaker recounted numerous examples of the good being accomplished by the members of these groups as she gave personal experiences and observations with film illustrations of the International Christian Leadership Conference held in Europe, which she and Judge Loreto attended. During the business session of the club, plans were made to continue the story hour for children on the first Saturday morning in each month. Parents are urged to make it possible for their children to attend these sessions which are both entertaining and instructive. Plans for the club's annual Christmas dinner were announced by the year book chairman, Mrs. Collings. Those present were Meses, Earl Conner, Cecil Collings, Turner Colie, Fred Davenport, Harold Durham, Cyrus Frost, C. W. Hoffman, James Horton, D. L. Houle, Iral Inzer, Hubert Jones, Donald Kinnaid, W. P. Leslie, Milburn Long, Frank Lovett, B. W. Patterson, Robert Perkins, F. N. Sayre, Virgil Seaberry, Jr., Frank Sparks, M. A. Treadwell and Tom Wilson.

Old Cowboy Challenges Draw Experts

Ed McGivern, colorful Western figure who holds all recognized marks for quick draw and speed accuracy in the pistol field, authors a challenge to modern day Hollywood "gunslingers" in the upcoming (January) issue of Guns Magazine. McGivern, now 80 years old, has invented electric timing devices to measure the speed of drawing a gun and says he'll be happy to test any of the celluloid shooters claims to shooting prowess. McGivern has been timed at from 2-5ths down to 1-4 of a second in the draw-fire-and-hit competition.

Itching Torture Promptly Relieved

A doctor's formula—soothing anti-itching Zemo—promptly relieves the itching, burning of Skin Rashes, Eczema, Psoriasis, Ringworm and Athlete's Foot. Zemo stops scratching and so aids healing. Zemo relieves irritated skin.

Aching Muscles

Relieve pains of tired, sore, aching muscles with STANBACK, tablets or powder. STANBACK acts fast to bring comforting relief... because the STANBACK formula combines several prescription type ingredients for fast relief of pain.

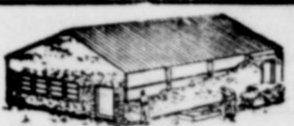
Ex-Ranger Boy In Who's Who

Charles Massegee, son of Rev. and Mrs. J. C. Massegee formerly of Ranger, has been listed in the 1956-57 Who's Who in American Colleges and Universities. Massegee is a student at H-SU where he is a 3-year letterman in football, a member of the BSU and Life Service Band, and a member of Cowboys for Christ, a Baptist student group in the athletic department.

HOLIDAY LIGHTING TIPS

If your garage is attached to your house, here's a novel idea for a new way to decorate it for the holidays. Transform the garage door into a giant December calendar page with numbers cut from dark green oilcloth. Cross off each day with strips of red oilcloth, and outline December 25 with bright, shiny tinsel. Finish off with a frame of greens and illuminate with a 150-watt weatherproof projector spotlight.

CALL 601 FOR CLASSIFIED AD SERVICE



BUTLER
BILL HYDE
Sells and Builds
STEEL BUILDINGS
for:
• Industry
• Commerce
• Schools
and other single-story construction
STANFORD
ENGINEERING CO.
P.O. Box 687 Dial 3-4721
Abilene, Texas

INGROWN NAIL HURTING YOU?
Immediate Relief!
A few drops of OUTGRO bring blessed relief from tormenting pain of ingrown nail. OUTGRO softens the skin underneath the nail, allows the nail to lie flat and thus prevents further pain and discomfort. OUTGRO is available at all drug counters.

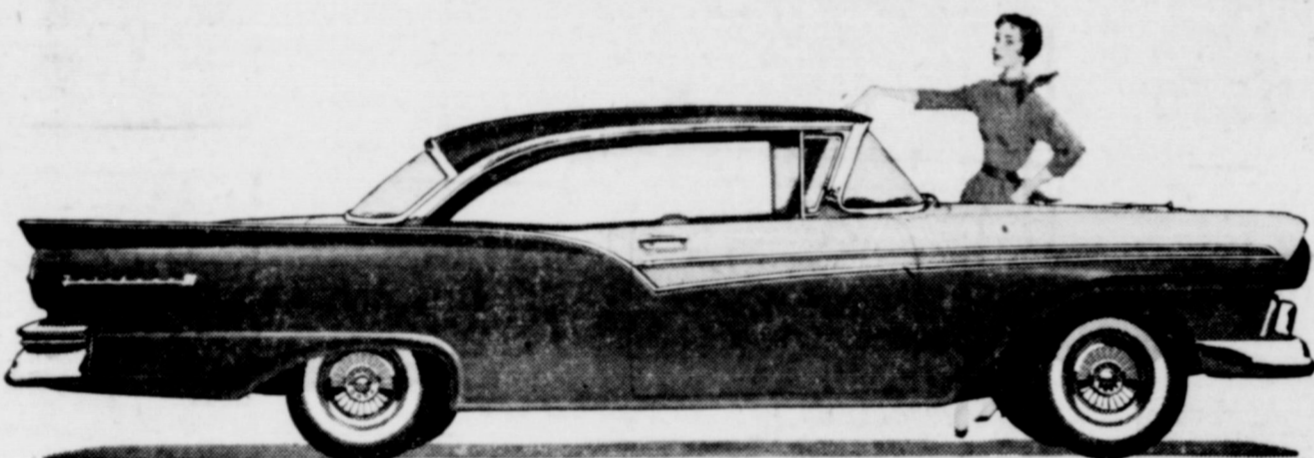


Say MERRY CHRISTMAS with GIFTS from BESKOW'S and SAVE

Fabulous selection of watches and diamonds at real savings to you! Hundreds of styles of costume jewelry at reduced prices. Many other gifts that everyone loves to receive.

BESKOW JEWELRY
Next to Penney's Eastland

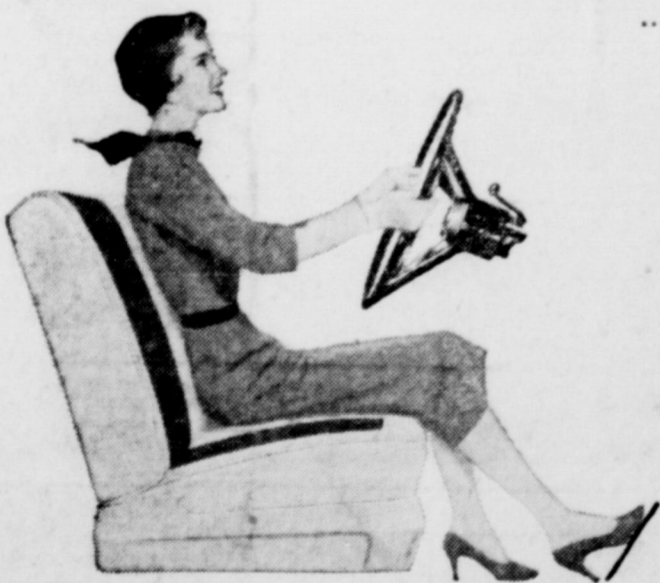
Funeral Directors
HAMNER FUNERAL HOMES
Ben E. Hamner
Oxygen Equipped - Air Conditioned
Eastland Phone 17 Cisco Phone Hillcrest 21211
AMBULANCE SERVICE ANY WHERE ANY TIME
Nominal Cost Burial Insurance
For The Entire Family



The exciting Ford Fairlane 500 Club Victoria (above)—over 17 feet long—is one of two new, bigger Ford sizes this year.

If you think it looks new... wait till you drive it!

- ...For there's where Ford's newness really pays off
- ...in melting mountains... in smoothing the bumps
- ...in straightening the curves



You can see that Ford's longer, lower Sculptured Look makes other cars look downright old-fashioned. But the part you can't see—the new "Inner Ford"—is what shows its stuff when you drive a Ford. It's revolutionary from the wheels up! And it feels it.

Ford's wider frame lets you sit sweet and low. And Ford's new front suspension, rear springs and new easy handling are part of the scheme to make you think every road is cloud-smooth.

The magic touch of the new Ford power plants makes mountains disappear. What looks like uphill feels like downhill. You get this surging power in a wide choice of Silver Anniversary V-8 engines. Or choose Ford's Mileage Maker Six, the most powerful Six in the low-price field.

There's magic in Ford's price tag, too! You won't believe this big new Ford is still priced Ford-low. But it is. Come in and test its magic. It's a real "Wizard of Ah-h-h-h!"

Action Test the New Kind of FORD

King Motor Company

100 E. Main DIRECT FACTORY FORD DEALER EASTLAND Phone 42
See Great TV, Ford Theatre Channel 9 KRBC-TV, Thursday 8:30 p.m.

Since 1913
1,552,446 FORD CARS and TRUCKS
have been
BUILT IN TEXAS BY TEXANS!

GIVE HER Mealtime Magic

with Electric cooking appliances

She'll love the convenience of these modern, automatic, "cook-anywhere" appliances. Choose an automatic electric roaster that turns out flavorful meals just right every time. Or an automatic electric frying pan with measured heat built right in. Or an easy-to-use rotisserie that roasts, broils, or grills foods to a king's taste. And don't forget all the wonderful foods that can be prepared with an electric deep fat fryer. Electric cooking appliances are gifts of better living that go on giving through the years!

ELECTRIC ROTISSERIE

ELECTRIC ROASTER OVEN

ELECTRIC DEEP FRYER

ELECTRIC FOOD MIXER



See the new portable electric cooking appliances now on display at your favorite appliance dealer's store!

TEXAS ELECTRIC SERVICE COMPANY

F. N. SAYRE, Manager Phone 18

CALL 601 FOR CLASSIFIEDS

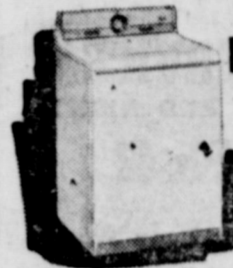
MAYTAG

AUTOMATIC AND CONVENTIONAL
WASHERS - GAS RANGES
"We Service What We Sell"
Hamner Appliance Store
205 S. Lamar Phone 623



AUTOMATIC WATER LEVEL CONTROL

saves up to 1 1/2 gallons
NEW
MAYTAG All-Fabric AUTOMATIC



Want to wash a small load without work, wait, and waste? Simply set the exclusive Maytag Automatic Water Level Control on low. No need to stand by. Water automatically shuts off when proper level is reached. Saves up to 1 1/2 gallons! SAVES SUDS, TOO! In the MAYTAG All-Fabric Automatic, sudsy warm water is retained while the rinse and spin cycle is completed. Then, by simply pushing Maytag's SUDS RETURN button, it's returned for re-use. Saves important money on suds and hot water.

Hamner Appliance Store

205 S. Lamar Phone 623