

UARY 9, 1935
aid
G Co
ion or sni
st a few dr
o avoid m
zes: 30¢, 5

TODAY'S NEWS TODAY!

Eastland Telegram

Delivered To Your Home
10c WEEK

UNITED PRESS SERVICE BRINGS LATEST NEWS OF THE WORLD TO TELEGRAM READERS

EASTLAND, TEXAS, THURSDAY EVENING, JANUARY 10, 1935

PRICE FIVE CENTS

No. 58

Connally Prepares New Oil Control Measure

Directors and Assistants in League Events

The list of event directors and assistants for impending intercollegiate league contests in the state in complete, names furnished by W. P. Palm, director general, discloses.

Directors—Debate, R. N. Cluck, spelling, R. B. Hodges, Alabama; athletics, S. J. Petty, Eastland; ready writing, Carl Johnston, Eastland; declamation, Albert Jones, Carbon; extemporaneous speaking, Lewis Smith, Morton; music memory, Mrs. Fred Johnson, Rising Star; arithmetic, Lillian Strain, Ranger; one-act play, Miss Luey Lewis, Cisco; song singing, Miss McCoy, Olden; story telling, Miss Marguerite Adams, Ranger, and typewriting, Miss Ina Mae Riek, Eastland.

Assistants—Class B: Athletics, B. B. Brummett, Scranton; music, S. D. Phillips, Eastland; playground ball, ward schools, P. Hatley, Ranger; class A high school playground ball, "Red" Moore, Ranger; Class B high school playground ball, L. C. Cooksey, Olden; rural school playground ball, Jodie Jordan, Romney; volley ball, E. T. Dawson, Rising Star.

Lie Is Whopper; He's U. S. Champ



He leaped off a 1000-foot cliff on his trained mule, in chasing a jackrabbit, shouted "Whoa," and the mule stopped just before hitting the ground, letting him drop gently to continue the pursuit, Vern Osborn, above, of Centralia, Wash., told the Burlington, Wis., Liars club. So naturally the judges named him national champion liar for 1935.

WOMAN TO BE SURPRISE IN KIDNAP CASE

FLEMINGTON, N. J., Jan. 10. Bruno Hauptmann's defense today introduced a "woman in a green dress" as a mystery "exhibit" to refute Dr. John Condon's tale of the Lindbergh ransom negotiations.

The woman, whose name was given simply as "Mrs. Koeran," has been at Jafsie's house and according to the defense had been given two letters which were not yet in evidence when the noon recess was ordered.

Attorney General David Wilentz demanded that the two letters be submitted at once to the court. After a wrangle it was determined that they would not go into evidence until the defense opens its case.

Condon admitted knowing the woman. He was not sure he had given her any letters, he said.

The appearance of the woman, who stood in front of Jafsie while he looked her over and decided he knew her, came as the first big defense surprise.

LINDBERGH AND HAUPTMANN IN CROWDED COURTROOM



So close together that they could almost have touched hands, Col. Charles A. Lindbergh, left circle, and Bruno Richard Hauptmann, right circle, sat in the crowded little Flemington courthouse during a brief recess in Hauptmann's trial on a charge of murdering the infant Charles Lindbergh, Jr. At the counsel table in the foreground are (1) Edward J. Reilly, Hauptmann's chief counsel, and (2) Attorney General David T. Wilentz of New Jersey, chief prosecutor.

BILL CONTAINS MANY CHANGES FROM OTHERS

WASHINGTON, Jan. 10.—A new and perfected bill to provide for regulation of interstate shipment of petroleum, designed to meet objections of the supreme court to NRA oil provisions was introduced in the senate today by Senator Tom Connally, democrat, Texas.

AUSTIN, Jan. 10.—"Hot oil" produced in Texas will be confiscated for the benefit of the state permanent school funds under a bill being prepared today.

Jurors Continue Investigation of McBee Death Case

Grand jurors Thursday began the fourth day of investigation of the death of H. L. McBee, in which 12 KENT TATUM persons are charged.

Possibility of grand jurors occurring with the case until next week was foreseen by some.

The skeleton of McBee was found Dec. 22 near Rising Star, hanging from a post oak tree.

Mrs. and Mrs. Raymond Henry and M. E. Tyler, all of Rising Star, have been charged with murder in connection with the alleged slaying. Mrs. Henry made bond out of jail.

That reminds me...

Tomorrow The Fashion will throw open its doors to the women of this entire community for their unusual complete clearance sale of all winter merchandise. The quality of the merchandise handled by this popular firm needs no introduction to those who have patronized them. Today's issue of the Telegram carries a double page advertisement giving first hand information on the wonderful values that they are offering. The sale is storewide and in order to make preparations for the sale the store is closed all day today.

Basketball Group Will Meet at 6:00 In School Gym

Prospective players on the to-be organized Eastland all-stars basketball team were called to meet tonight at 6 p. m., in the high school gymnasium by Terrell Coleman.

The group if organized will endeavor to match games with out of town aggregations of this section. A captain will probably be elected tonight, Coleman said.

Candidates for the team are Lloyd Pope, Royce Pope, Marshall Watson, Ray Morris, Terrell Coleman, Karl Tanner, Howard Miller, Raymond Overby, Charles Lafoon and Marshall Coleman.

U. S. SHOULD JOIN COURT REPORT SAYS

WASHINGTON, Jan. 10.—The senate foreign relations committee, declaring "the United States should delay no longer in giving its adherence to the world court," today presented to the senate its favorable report on the court project.

Reports were presented by Democratic Leader Joseph Robinson, author of the resolution of ratification, on which the senate will be asked to act.

The resolution will be called up for debate at a later date. It carries a provision that the court shall not entertain any requests for an advisory opinion touching any dispute in which the United States has, or claims, an interest.

District Institute Meet In Eastland All Day Wednesday

The District Missionary Institute of the Methodist church convened in Eastland Wednesday morning for an all-day session.

Guest speakers included Rev. J. L. Ferguson of Nashville, Tenn., and Rev. D. K. Porter, Breckenridge.

Rev. Stanford was pastor host; Rev. F. L. Turner, song leader; Rev. S. A. Ashburn and Rev. J. E. Curry, presiding elder from Cisco directed the meeting.

Twenty-one charges had representation at the meeting, Rev. Stanford said. Charges in the district include Ranger, Breckenridge, Eastland, Desdemona, Cisco and Caddo.

The Eastland Women's Missionary Society served dinner at the noon hour.

The program for the meeting: Devotional, Rev. M. W. Clark. Part One: Evangelism. Directed by the Presiding Elder. Address on Evangelism by Rev. D. K. Porter.

Group discussion on Evangelism: 1. Plans of the General Commission on Evangelism; 2. Plans of the Conference Board of Missions; 3. Plans of the District.

Part Two: Missions. Directed by the Missionary Secretary. Address on Missions by Rev. J. L. Ferguson.

Sale and consignment of Study Book.

Group discussion on Missions: Financial situation, Missionary special, rural work, commission, cooperation with Colored Methodist, Literature.

Closing Devotional.

RIOTS BREAK OUT IN SAAR OVER VOTING

SAARBRUCKEN, Saar, Jan. 10. Serious rioting broke out today with the arrival of 58 South American Saarlanders to vote in the Jan. 15 plebiscite.

The Nazi German front had its usual cordon around the station when the train pulled in. Attempts of opposition elements to break through started the riots.

The Saar cavalry and mounted police fought the massed ranks of Nazi sympathizers who retreated in formation.

They attempted another demonstration and began to erect barricades.

The cavalry rapidly controlled the mob without the help of the international army of the League of Nations, which has been patrolling the streets without arms.

After the rioting heavy patrols of foreign troops were sent into the streets. Three Nazis were injured. None of the visitors was hurt.

Funeral Services Held on Thursday For Mrs. Wilson

Funeral services were conducted at Strawn Wednesday afternoon for Mrs. Mary Jane Roberson, 67, wife of A. J. Roberson, who died at her home in Thurber Tuesday night.

The services were conducted at Mrs. Marion cemetery with Rev. W. H. Rucker, pastor of the First Baptist church of Strawn, officiating. Interment was in Mt. Marion cemetery.

The decedent was born in Hunt county, Texas, July 5, 1867. She was married at the age of 16 and was the mother of 10 children. Her surviving children are Mrs. Annie Guest, Thurber; Mrs. Sada Stages, Strawn; Bill Roberson, Strawn; Mrs. W. E. Bolen, Strawn; Alex Roberson, Ranger; Joe Roberson, Thurber; Walter Roberson, Strawn; Mrs. Ernest Ott, Thurber, and J. B. Roberson, Ranger. One child is dead.

Active pallbearers at the funeral were F. G. Head, Strawn; R. R. Alderson, Ranger; Paul Beaver; Lon Shaw, Strawn; H. G. Burch, Ranger; W. L. Garner, Strawn; Murry Ott, Thurber; W. R. Clardy, Ranger, and Joe Dennis, Ranger.

Sales Tax Fight Is Started Today

AUSTIN, Jan. 10.—The sales tax fight was on today in the Texas legislature.

Former Gov. James Ferguson urged it unsuccessfully before the 43rd legislature. Gov.-elect James V. Allred said in his campaign he would veto a sales tax.

Senator T. J. Holbrook of Galveston, yesterday offered a constitutional amendment to impose a sales tax. A governor cannot veto a constitutional amendment.

Holbrook's tax would go to pay off an estimated \$800,000,000 in outstanding public bonds.

RY Club Receives Two New Members At Meet Wednesday

Induction ceremonies for two new members, Darrell Tully and Frank Hatten, were held at the club meeting Wednesday evening at high school.

Music for the club orchestra is being ordered, club members stated. The organization will be led by Tanner and possibly Miss Beaud will serve as pianist, was said.

The club membership includes Boyd Tanner, Horace Horton, Raymond Pipkin, Sam Butler, Jack Eastworth, John Hart, Jemie Mason, Rex Gray, Edmund Herring, Frank Hatten, Darrell Tully, Curtis Terrell, Clyde Chaney, Parker Brown, Billy Satterwhite, Marshall Coleman, Tom Harrison, Ward Johnson and Ralph Mahon. Terrell Coleman is sponsor for the group.

Eastland High School Will Need New Coach and It Should Not Be Delayed

Coach S. J. Petty has made us a good coach and during the less than two year season he has been here he has made many friends. He recently was appointed coach of the Mineral Wells High school and they are to be congratulated on acquiring his services. He is a man of unusual ability and of high moral character. Just the kind of coach that the school age boys and girls need in their midst. Hate to lose him but when opportunity comes along it is besting that it should be taken advantage of.

Eastland Five Win Over Eliasville 23 To 22 Friday Night

Tied at the half, Eastland Mavericks quintet accelerated after the game division mark to win over Eliasville by one point, 23-22. The game marked the second win in the Oil Belt cage season for the Eastland five, they having won over Breckenridge 17-13 Friday.

The game between Eastland and Mineral Wells originally scheduled to be played in the latter city Friday, has been transferred to Eastland.

The game Tuesday was the best seen on the Eastland court to date. Tully of Eastland, with 10 points, was high scorer.

S. D. Phillips refereed, Marshall Coleman kept time and Bailey Hinton kept score.

The box score:

Funeral Is Held Wednesday For a Thurber Pioneer

Mrs. Sallie Jane Wilson, wife of the late Dr. T. M. Wilson, passed away at the family residence, 409 South Daugherty street, Eastland, at 2:10 p. m., January 9, 1935, after an illness of several months.

Funeral services were conducted at the First Baptist church Thursday afternoon by her pastor, Rev. O. B. Darby, and the Rev. George W. Shearer, pastor of the First Methodist church, Arlington, a former neighbor and close friend.

She was born in Rockingham, North Carolina, October 8, 1862, the daughter of Tilman Jackson and Elizabeth Moore Stubblefield. The family later moved to Kentucky, and after a short residence there came to Texas while Mrs. Wilson was yet a young child and settled near Bremond, Robertson county. She attended the public schools of that section, graduating from a college in Bremond. As a young lady she taught school in that part of Texas, often riding horseback to and from the school room. She never lost interest in higher education, and always took a great delight in all school activities, including athletic sports. Not long before her death she listened attentively to the returns of a college football game.

Mrs. Wilson was married to Dr. Wilson May 3, 1883, and resided with him at Kossow and Thornton, Texas, and in 1908 they moved to Eastland, where on December 14, 1909, Dr. Wilson passed away. She was a true helpmate to her physician-husband, and was intensely interested in medical science.

Mrs. Wilson united with the Methodist church as a young girl.

(Continued on page 3)

Woman's Bond Set In Murder Case

GATESVILLE, Texas, Jan. 10. Bond for Mrs. Ethel Johnson of Dallas, held on charges of murder in connection with the death of her son and daughter-in-law last August has been set at \$10,000 for each case, Justice of the Peace A. Shirley said today.

Mrs. Johnson attempted to make bond for her release today, but the bond was refused by the sheriff, it was learned.

Examining trial has been waived.

Convict Is Wanted For Questioning In A Bank Robbery

HOUSTON, Jan. 10.—W. S. Scrivner, convict serving 10 years for bank robbery, will be questioned in the holdup of the Milan hotel in which loot valued at \$13,900 was taken. Police Captain Banyan Payne said today.

Scrivner, freed from Harlem prison farm several weeks ago on furlough, was due back at midnight. Captain Payne said he would be there to meet him. The prisoner's name was brought into the case because of his connection with the old "Keggy" Jones gang, whose breakup ended in several murders.

Senate Will Ask Ickes to Explain Article Approval

AUSTIN, Jan. 10.—The Texas senate today adopted a resolution inviting Secretary of the Interior Ickes to address the senate and explain his reported approval of "piping hot" magazine articles condemning Texas oil law enforcement.

The article was written by Owen White, published last week.

Texas senators resolved the article brands a majority of the senate of Texas as bribe takers, accusing Vice President John Garner "with the low art of double-crossing" and brands a United States senator from Texas with "political chicanery."

LONG BOOSTS BUT REVOLTS HAS STARTED

WASHINGTON, Jan. 10.—Senator Huey Long, democrat, Louisiana, definitely severed his allegiance to the Roosevelt administration today and appealed for nationwide support of his "share our wealth" plan.

He lashed the administration's recovery program and made an attack on the president in a fiery radio address last night. He followed it with an announcement he would have none of the present policies.

The "Kingfish," fresh from new political conquests in his home state, offered a plan which he said would make "every man a king" in 60 days, spend the wealth and make 100,000 new millionaires.

NEW YEAR BABIES TIED

CLEVELAND, O.—Two baby boys tied for the honor of being Cleveland's first-born in 1935. The arrival of each was officially set at 12:01 a. m., Jan. 1. They were born to Mrs. Charles Norton and Mrs. Louis Bertik.

ENDOWS DOG HOSPITAL

CINCINNATI, O.—A bequest of \$500 for establishment of a free hospital and clinic for dogs in connection with the Society for the Prevention of Cruelty to Animals, was contained in the will of Ida M. Crane, probated here.

DOG IS FIRE ALARM

CANYONVILLE, Ore.—While G. C. Wolfe was visiting neighbors, his house caught fire. His dog leaped through a window of the morning structure, ran to the neighbor's home, and led them back to the blaze.

JOB SURPLUS

MASS.—The ERA has greater than the local Administrator reported he received 370 applications for 500

STING PROTECTION

BANY, Ore.—When county agents arrested Frank Adams for honey, it was found he had ten pairs of pants and five shirts but no socks or underwear.

THE WEATHER

TEXAS.—Partly cloudy to clear Friday. Cooler north on Friday.

EASTLAND TELEGRAM

Published every afternoon (except Saturday and Sunday) and every Sunday Morning

Member Advertising Bureau — Texas Daily Press League Member of United Press Association

NOTICE TO THE PUBLIC

Any erroneous reflection upon the character, standing or reputation of any person, firm or corporation which may appear in the columns of this paper will be gladly corrected upon being brought to the attention of the publisher.

Obituaries, cards of thanks, notices of lodge meetings, etc., are charged for at regular advertising rates, which will be furnished upon application.

Entered as second-class matter at the post office at Eastland, Texas, under Act of March, 1879

SUBSCRIPTION RATES

Single copies \$.05 Six months 2.50 One year 4.00

ALL SUBSCRIPTIONS PAYABLE IN ADVANCE

We May Have to Shift Our Ways of Living

The outstanding feature of present-day America seems to be the earnest effort that people are making to understand the society in which they are living.

Because the last few years taught us so forcibly that the present is the child of the past, we are also beginning to discover that the future will be the child of today.

Dr. O. E. Baker, senior economist of the Department of Agriculture, pointed out recently that we are about to undergo very profound changes in the matter of population growth.

For about 25 years to come, he says, we will live in a kind of national middle age; then our population will begin to decline, the decline will be progressive—and we shall suddenly find ourselves an old nation, facing all the problems which old age brings to any living organism.

Now all this seems to be mixed up, in a very peculiar fashion, with our habits of life. For some reason, the birth rate in the cities is lower than the birth rate in rural areas.

The implication, as Dr. Baker points out, is that a civilization based primarily on an industrial and commercial system in which the individual is the economic unit is very likely to develop a declining population.

To be permanent, it must be based on agriculture, or on some other system in which the family is the economic unit.

This is very puzzling, and we probably shall need to know a great deal more than we know now about a great deal more than we know now about the laws of heredity, and of human fertility generally, before we can fully understand it.

But it is a hint that our primary concern, in the long run, must be not simply to devise a smoothly working economic system, but to fashion a way of life that will bring a broader and fuller life to the masses of people.

When we crowd ourselves into cities and compel millions of people to live cramped and narrow lives, we in-

Man of Letters

Crossword puzzle grid with clues and answers. Includes a small portrait of a man.

"OUT OUR WAY"

By Williams



THE WORRY WART. EXPORT PIGS. CORVALLIS, Ore.—Twenty-one pedigreed and especially selected pigs from Oregon have been sent to China...

Lovable

LOVABLE. This was a new Allan Ann decided. A dangerous Allan he had been drinking, not a little as she had thought...

Texas Turkey Crop Brought Millions

SAN ANTONIO — South and Central Texas contributed about \$2,000,000 worth of turkeys to the carlot markets during Thanksgiving, Christmas and New Year's day...

American Critic of Hitler Jailed



Accused of "talking rather freely" against the Hitler government, Miss Elsa Sittell (above) of New York was held incommunicado in a one-room jail at Waldmohr, Germany...

FRECKLES and HIS FRIENDS—By Blosser



The Newfangles (Mom 'n' Pop)



ALLEY OOP



ALLEY OOP



ALLEY OOP



ALLEY OOP



ALLEY OOP



ALLEY OOP



ALLEY OOP



Vertical text on the far right edge of the page, including 'Legal' and other fragments.

Strong Defense Holland's Plan As Europe Arms

By H. C. BURMAN
Special Press Staff Correspondent
THE HAGUE.—Surrounded by re-arming countries, Holland preparing for non-aggressive defense. ...

Sotol Is Fed To Texas Livestock

By United Press
SAN ANGELO.—Sotol is saving the livestock on many ranches in West Texas this year. ...

Texas Telephone Meeting Is Planned

By United Press
DALLAS.—The Texas Telephone association will meet in Dallas in March, it was announced by Oscar Burton, president. ...

Thurber Pioneer

(Continued from page 1)

but after her marriage joined the Baptist church with her husband, and remained a faithful member of that denomination. She was a member of the Royal Neighbors of America, and many persons in Eastland owe their insurance in that organization to her untiring efforts. ...

Legal Records

New Cars Registered
M. C. Tucker, Carbon, 1934
T. B. Garrett, Carbon, Chevrolet sedan.
M. L. Perdue, Cisco, 1934 Chevrolet sedan.
W. J. Berry, Cisco, 1934 Chevrolet sedan.
Cases Filed in Justice Court
State of Texas vs. Lee Hedley, reading.
State of Texas vs. Tom Butler, reading while drunk.
State of Texas vs. Roy Horn, unknown.
Marriage Licenses Issued
E. C. Manning and Gladys Caver, Ranger.

BIG TURNIPS
By United Press
SPRINGFIELD, Mo.—Turnip growers in this section broke all records for size and weight this season. Warren Dykes, Strafford farmer, took first honors in a turnip contest, with a nine-pounder. His son, Henry, came second, with one weighing 8 3/4 pounds. ...

107th BIRTHDAY
By United Press
COLUMBIA, Mo.—"Uncle Joe" Goslin, negro, central Missouri's oldest man, recently celebrated his 107th birthday. The Boone county house in which "Uncle Joe" was born during the administration of President John Quincy Adams still stands. ...

SPOILS KIDS SKATING
By United Press
KENOSHA, Wis.—City water department authorities here appealed to police to stop the practice of boys turning on fire hydrants to flood streets or vacant lots for ice skating rinks. Traffic hazards and other safety risks were created by the practice. ...

FINDS RARE NEWSPAPERS
By United Press
KLAMATH FALLS, Ore.—Several 190-year-old issues of the New York Mirror were found by J. D. Poulson and L. R. Bruce in an abandoned cabin. The papers were in fair preservation and were dated 1834. ...

WARDS JANUARY Events



• Cellophane Wrapped
Full Cut, Finely Tailored!
Dress Shirts
Look at the collar and cuffs—carefully sewed and interlined! Remember, they're all vat-dyed fast colors, in to stay! That goes for the new fancy prints too. 14 to 17.
• Boys' sizes, only 169c
98c
Plain Colors in White, Blue and Tan—Preshrunk!

Smart Women Wear Wards Ringless Hose
69c
A clear hose with no style-spoiling shadows and rings. Full fashioned and all silk. Toe and heel reinforced. New smart shades.
Great Chance to Save on Cotton Remnants
10c
Yard
Some gay tub-fast prints—also other washable plain and patterned broadcloths, shirtings and suitings. Buy for now and later.

Stock Up Now on Wards Sheets and Cases
84c 21c
Each Each
Wards famous "Long-wears"—81 x 99-inch sheets and 42 x 36-inch cases—of good quality muslin that launders so well! White Sale savings!
"Winter King" 47% More Power 18 Mos. Service \$5.19
With Four Cells
No battery worries for at least 18 months with Wards "Winter King". 47% more power than Society of Automotive Engineers' requirements. Save at Wards! Standard Battery 98.00

Metal Beds
Famous Quality—Low Priced!
All metal—in walnut enamel finish. No creaky sturdy fillers.
5.95
Full Size

Coil Spring
Amazing at Wards Low Price
90 big single deck coils for comfort. Drop frame base.
5.95

Mattress
Deep inner coils in felted cotton. Ticking cover.
16.95

Pull-Up Chair
A Big Value at a Low Ward Price!
Extra large! In tapestry, or moquette with velour.
7.95

WESTERN FIELD .22 RIFLE \$9.95
Bolt Action 16-Shot Repeater
New! Has deep Beavertail fore-end until now found only on highest priced target rifles! Walnut finished stock with pistol grip. 24" barrel shoots any rifle .22's.
Receiver Peep Sight
Wards CleanFire Long Rifle .22's
None Better Model **26c** for 50

Let Your Feet Enjoy Life!
Nightandays
Wear Nightandays and stop suffering from F. A. (foot agony). Ties, straps, oxfords! Smart looking, divinely comfortable with beautifully soft leather. All sizes! Low priced!
\$1.98
Pr.
• Combination Lasts! Arch Supports!

Men's Oxfords \$2.98
Pair
Fine calfskin leather. Rubber heels and oak leather soles. Husky wear! Save!
Goodyear Welt!

Child's Calf Ties 79c
Black calf-grain, fully lined. Rubber heels, composition soles. Sizes 8 1/2 to 2.

New Oxfords \$1.98
Brown or Black Leather
Sizes 3 to 8. Embossed moccasin vamp. Leather sole.

Solid Leather \$2.98
Men's Tough Black Elk
Two full oak leather outsoles. Rubber heels. Wear!

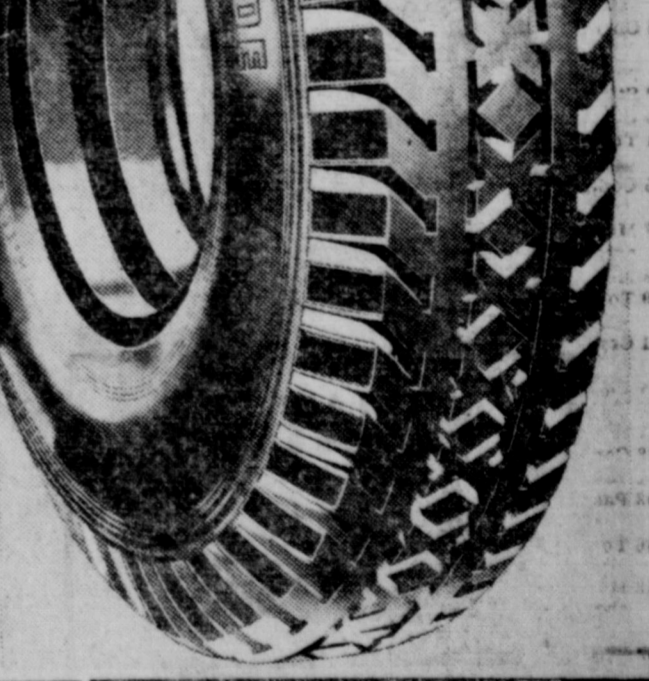
New FIRST QUALITY RIVERSIDES! Guaranteed without limit! America's best tire value!

Improved... strengthened... especially designed to more than meet the strains put on tires by today's speedier cars! Backed by the strongest written tire guarantee ever offered... UNLIMITED as to time or mileage... a guarantee that gives you complete protection against everything that can happen to a tire on the road. Drop in—let us tell you more about this new Riverside!

Check These Low Ward Prices!

NEW RIVERSIDES	4-PLY plus 2 cord breakers	6-PLY plus 2 cord breakers
4.40-21	\$5.80	\$ 8.05
4.50-21	6.45	8.05
4.50-20	7.20	7.20
5.00-19	7.25	9.20
5.25-18	8.10	10.10
5.50-17	8.90	10.55
6.00-18		12.15
6.50-19		14.45

USE WARDS CONVENIENT BUDGET PLAN PAYMENTS



Spark Plugs 33c Each
Famous Riversides! No better made even at twice Wards low price. Sizes for all cars.

Generators 3.98
75% Allowance for Your Old One
For Ford A-AA only \$4.45
Rebuilds that run like new. For Ford T

100% PURE PENNSYLVANIA Motor Oil 17c
In Your Own Container
For severe cold weather or severe hot weather! The year-round oil. Double-duty gives it twin range. Wards price is seasonally low for such high quality oil.

THIS CURIOUS WORLD



★ 407-409 West Main Street Phone 447 Ranger, Texas

MONTGOMERY WARD

ANNUARY



Buy Quality

THE F S
Announces Gre

SALE STARTS
FRIDAY,
JANUARY 11TH
9:00 A. M.



January CLEAR



DRESSES

Even if you have plenty dresses you can afford to buy more at this wonderful clearance sale of all dresses. We have never did anything like this before . . . just take our entire dresses and slash the price below what you ever expected to pay for them. Every dress is of the latest fashions and of course you have plenty of time to wear them.

- Values to \$12.50
Knit Suits, Silk Dresses, a wonderful group—now
\$4.50
- Values to \$14.95
Come and look! You will buy! Quality and value are in this group!
\$6.95
- Values to \$19.50
Including Levine, Snyder Knit and other outstanding makes for street, afternoon and evening.
\$8.95

CHOICE OF HOUSE ALL OTHER DRESSES;
Values to \$32.50 **\$12.95**

FABRIC GLOVES
Values 75c to \$1.98
39c 59c
and
98c

FLASH!
SERVICE and CHIFFON
HOSIERY
Regular 50c Value
2 Pair to Customer
25c each

10% DISCOUNT
ON ALL
Vanity Fair
Lingerie
SPECIAL SALE
MOJUD HOSIERY
10% OFF!
Regular Values 69c to \$1.45

See Them!
One Group
DRESSES
and Corduroy Suits
Values to \$7.95
Silk, Wool; Black,
Brown, Navy, Green
\$2.95

don't wait
COME EARLY!

ALL-WEATHER COATS FOR RAIN
OR COLD!
\$12.50 values **\$4.95**

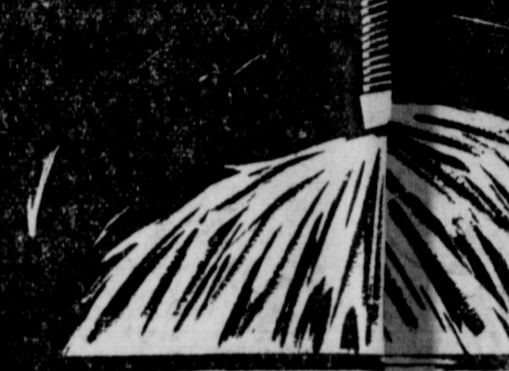


clearance

OF
Every HAT

All hats are of the newest and latest Winter fashions and of course the prices are so low that you can afford to buy one for every occasion, and now is really the time to buy hats, regardless of how many you have. There is certainly a value here that no woman can resist.

\$1.00 to \$8.50 Values
50c \$1.00
\$1.50 \$2.00



CLEAN
WEEP
OF
VERY-
HING!

TO
50c
AND MORE



FLASH!
BEAD GLO
Only

HALF PRICE
PURSES
\$1.00 to \$3.95 — Group
50c \$1.00
79
Lovely Lounging
CORDUROY PAJA
Regular \$4.95 Value
\$2.95

SWEATERS
and
BLOUSES
\$1.49 to \$3.95 Value
GROUPED!
Now is your chance to buy!
Plenty of time to wear!
50c \$1.00
and
\$1.95

THE F S
EASTLAND

FASHION

es Greatest of All



Buy Quality

Clearance



SALE STARTS
FRIDAY,
JANUARY 11TH
9:00 A. M.



CLEAN
WEEP
OF
EVERY-
THING!

first time since
been in busi-
are making a
deep sale of e-
in our stor-
nt to sell th-
dise and to d-
rices are truly
ally low. Wi-
ill in full swin-
be for several
However our
urchases will
arriving and
t to have room
em somewhere
ey do arrive
as this wonder-
tunity to save

MORE

FLASH!
BEAD GLOVES

\$2.98 Value
\$1.49

Balbriggan PAJAMAS

Values to \$2.00
79c and \$1.39

FLANNEL ROBES

Only a Few Left
\$2.95

One Group
COATS

and Swagger Suite
Tailored and Beau-
tiful Models

\$5.00



Act NOW

BE AMONG THE FIRST COMERS
FOR BETTER SELECTIONS!

A selection of Shoes, \$5.85 values;
AAAA to B; **\$3.95**
Sizes 4 to 10; 4 to 10

January Clearance of WOMEN'S SHOES

We're clearing our stock
at unheard of prices to
make way for our new
Spring styles!



EVERY SHOE INCLUDED IN
THIS SALE IS NEW and FRESH.

Not a clearance of "cast-offs," but
a remarkable sale of the new Win-
ter styles and fashion notes. \$2.95
values; flat heels, sport or oxfords
black or brown. Now priced at
only—

\$1.95 pr.

\$3.00 and \$4.95
SPORT OXFORDS
Now . . . **\$2.95**
Dress Shoes

Ties, Straps, Pumps, kid
and suedes; high and
low heels; \$3.95 to
\$4.95 values!

\$2.95



COATS

We determined that this coat sale should out-do all past efforts. We determined that the price must be within the reach of everyone—and that the fashions must be to everyone's liking! They look like much more expensive coats . . . and they'll keep looking like that, for there is surprising quality back of them! Made of beautiful treckark woolens, nicely lined . . . and warmly interlined. If you've waited until now to get your coat, this is the greatest stroke of luck you've ever had!

Fur-Trimmed
and Sport

Values to \$22.50

\$8.95

One Special Group
REDFERN
COATS

Values to \$29.50

\$12.95

One Special Group
Year-Round
COATS

See These Sure!

\$14.95

ONLY FOUR COATS

All Fur-Trimmed
Values to \$55.00

\$29.50

ONLY TWO COATS

Beautiful and Wonderful
Values to \$79.50

\$49.50

Velvet Robes
and Pajamas

Values to \$8.50

\$4.95

One Group
Fur-Trimmed
COATS

\$18.95

COSTUME
JEWELRY

Also Cigarette Cases and
Compacts, \$1.00 to
to \$3.95 values.

50c \$1.00

IMPORTED LAPIN
FUR JACKETS

One Black — Three Parchment
Regular \$39.50 Values

\$16.95

BLOOMERS and BRIEFS

Think of It—Regular 79c
values now to go at

39c

FASHION

NORTH SIDE SQUARE

Clearance

Appointees Will Be Named Soon

AUSTIN, Tex.—With the election of a Speaker accomplished, early announcement of Governor-elect Allred's long-delayed appointments is expected. Until they are made some of the departments will be unable to get down to satisfactory work routine. Recently Ranger circles have been disturbed by reports that the old force that dropped out when Mrs. Ferguson became Governor may go back. Some members of the old force have been visiting the capitol. Some may be again on the force; others will not.

Former Adjutant General (Ranger Bill) Sterling is now busy with oil wells in Bastrop county. Former Ranger Captain Frank Hamer, trailer of Clyde Barrow and Bonnie Parker, is "out" so far as Allred's ranger plans are concerned. Former Ranger Captain Tom Hickman of Fort Worth has a good berth with the state comptroller's department.

Ranger Captain D. E. Hamer, brother of Frank, may possibly remain at the head of the organization. He has done some valuable investigating for Allred. He doesn't seek "glory arrests" for himself or his rangers. To them his orders are to keep the outlaws on the jump.

"Keep them moving; don't let them settle down in a safe hide-out. If they are on the jump someone will get them. If we get them, fine. If we run them onto someone else, that's fine too. The main thing is to get them, no matter who gets the credit."

Ranger Joe Osoba, another of the modern rangers who has made quite a reputation, probably will go. Osoba is outspoken. His remarks about a member of the Attorney General's department seem to bar him from any chance of remaining under Allred. That will be particularly true if Former Assistant Attorney General Richard Waters of Texas should be made adjutant general instead of insurance commissioner.

Roller Coaster Road Straightened

ODESSA, Tex.—Texas' famed "roller coaster" highway, whose dips and turns in following the natural contours of the sand dunes are so steep that they never fail to give motorists a thrill, will soon be a thing of the past. Contract for rebuilding the stretch, which extends for seven miles in Ward county, has been let by the State Highway department. The roadway is to be turned into a level stretch of highway.

It will be made into a level stretch of highway, that is, if the elements permit. For the sand hills through which the road passes are constantly shifting with every change of the prevailing winds. When the "roller coaster" road was built in 1917, the first road through that section, natives were skeptical. The first wind storm, they said, would bury the highway under feet of sand.

The engineer on the job replied that by building the highway to follow the natural contours of the dunes, the wind could be made to sweep it clean rather than cover it up.

The first sandstorm that came proved that the engineer was right. When the air cleared after several days, the highway was clean, and polished smooth as marble.

Now the highway commission is building a new road, straight and level, utterly disregarding the century old threat of the dunes that have buried Indian camps, fences and everything else that got in their way.

Will the dunes at last submit? Old timers shake their heads. The highway department, they say, will have to hire a crew of sand shovellers to keep the new roadway clear.

WATCH KIDNEYS SAME AS BOWELS

Wash Out Your 79,200 Feet of Kidney Tubes
Your bowels contain only 27 feet of intestine, yet the kidneys contain nearly 10 million tiny tubes or filters which would measure 79,200 feet if laid end to end. Therefore, it is just as important to watch the kidneys as the bowels. Kidneys are working all the time and are Nature's chief way of taking the acids and poisons out of the blood.

Healthy persons pass 8 pints a day thru the bladder which contains nearly 4 pints of waste matter. If you pass less than this amount, your 79,200 feet of kidney tubes may be clogged with poisonous waste. This is the danger signal and may be the beginning of nagging backache, leg pain, loss of pep and vitality, getting up nights, hiccups, swollen feet and ankles, rheumatic pains and discharges.

Kidneys should be watched closely and need cleaning out the same as bowels. Ask your druggist for DOAN'S PILLS, an old prescription, which has been used successfully by millions of kidney sufferers for over 40 years. They give quick relief and will help to wash out your 79,200 feet of kidney tubes.

But don't take chances with strong drugs and so-called "kidney cures" which claim to fix you up in 15 minutes. Your common sense will tell you that this is impossible. Treatments of this nature may seriously injure and irritate delicate tissues. Insist on DOAN'S PILLS, the old reliable relief that comes in 15 minutes or less. Write for a free booklet "How to Tell if Your Kidneys are Clogged" by Dr. J. C. Doan.

'Dusting the Covers of Texas History' for The Texas Centennial Celebrations of 1936

Father Manuel Garza stood in the doorway of his small wooden house near Rosaio, and saw coming from beyond the hill messengers from the Viceroy. He watched them anxiously as they came closer. Were they bringing permission to build a mission? Or had his plans been defeated? It was December 31, 1791—over a month since the men had left with his letters to the Viceroy.

The messengers bowed to Father Garza, and gave praises with him when he read of his permission to build a church. Already a site had been selected, and as soon as possible, a suitable place of worship and home for the Indians would be built. The juncture of the San Antonio River and the Guadalupe River had been selected as a tentative location as early as May, 1791.

Nothing could have pleased Father Garza more than for the chiefs to request him to go with them to invite their kinsmen to become members of the mission at Rosaio. Those who asked him were deserters of the church, true, but nothing could daunt the enthusiastic priest. Accompanied by a special escort from Gov. Munez Garcia, he went to the rancharia of the kinsmen at San Xavier. His heart was full of joy that the governor was in sympathy with his plans.

As the leaves began to turn in the early autumn, Father Garza made another trip, this time along the coast. "Build a mission at the mouth of the Guadalupe River," the chiefs said, "and the whole coast is yours." The encourage-

ment received was all that Father Garza needed. He wrote letters a once to the Viceroy, and received his reply that last day of December.

A lack of sufficient, necessary supplies delayed the building of the church for more than a year. Beginnings had been made, however, and the Spanish mission was to be the home of the Karankawas, Orkiskias, Tawakanas, Towshas and Comanches. Mission Nuestra Senora del Refugio—Our Lady of Refuge—was to be built, monument to one who believed in conversion of friends or foes, in spite of obstacles.

It was well that Marques de Rubi in 1767 made his recommendation that the Apache Indians be trusted no longer, and that the missions built for them be given up. Attempts to make good friends and good Christians out of the Apaches had ended in the massacre at Mission San Luis on the San Saba River. Still, the priests had persisted in their work, and would have been faithful to their task throughout many years to come, had not Marques de Rubi urged them to use their efforts elsewhere. The few ornaments and valuable records that were saved from the plunder of the Indians during the massacre were moved to Coahuila in 1722, and San Luis existed no more.

The Spanish had progressed rapidly in their new province, but in 1722, the frontier of actual occupation had receded as far south as Bexar and La Bahia. If it had been for those loyal men and

women who followed Antonio Gil y Barbo back to their old homes in East Texas, it is entirely probable that Spanish ownership would have been weakened and practically broken. A settlement on the Trinity River, called Bucareli, was the home of the new settlers until they moved, five or six years later to the old mission of Guadalupe, founded by Ramon in 1718. There they remained, perfect evidence of Spanish authority to the Province of Texas.

Before the order for secularization of all missions was passed in 1794, one last mission was founded. It was Mission Nuestra Senora del Refugio. The story of its founding is as fascinating and eventful as the story of the first mission in Texas. Refugio will not be forgotten in 1936 when Centennial celebrations will honor

those fathers who spent their lives making their visions come true.

Allred and Chevigny Not In "Who's Who"

By United Press
AUSTIN—Gov. Elect James V. Allred and Football Coach Jack Chevigny, the state capital's most talked about young men, do not appear in the Austin list of youths "Who's Who."

The omissions are emphasized because young men closely associated in their work as aides have been listed. Major Paul Wakefield, responsible for effective Allred campaign publicity, is named. Freshman Coach William Nelson James of the University of Texas got the nod while the famous Chevigny was left on the bench.

Cactus Beetle Not To Aid Wasteland

BROWNSVILLE.—The Rio Grande's huge cactus beetle has lost the honor of helping to destroy Australia's 50,000,000-acre wasteland.

R. R. Taylor of the Australian Department of Agriculture spent nearly a year studying the mimorista flavidissima moth, the larvae of which attack and feed on cactus.

The mimorista, however, also enjoys a diet of tomatoes and beans, so Taylor was forced to seek elsewhere for a beetle. The scientist later reported he found an insect in Mexico he believed would do the work. Taylor said the cactus was not

a native of Australia, but was taken on to the continent as food for some cochineal then used to make dye for military uniforms. The cochineal died, but the cactus has lived and overran the country. Australia had little success in combatting the plant until the cactoblastis insect was selected. Taylor said, however, that the cactoblastis feeds only on large patches of cactus and another beetle was needed to eat the smaller patches as well.

Never mind the weather—baseball teams are getting ready for spring training.

The republican party has outlined a 20-point program for recovery, the main point being the recovery of the republican party.

In this estimate of the number of people still unemployed, President Roosevelt included General Johnson?

MISERABLE, AILING

IF your day is gins with nerves, backache or rheumatic pains, you need a tonic like Pierce's Favorite Prescription. It is open to S. B. Taylor of E. 1st Ave., People's Clinic, Dallas, Texas. Write Dr. Pierce's Clinic, Buffalo, N. Y. for free medical advice.

LOOK WHAT YOU GET!

A SENSATIONAL NEWSPAPER & MAGAZINE BARGAIN

AND Eastland Daily Telegram (for 52 weeks)

PICK ONE From This List Magazine

PICK TWO Magazines From This List

GROUP-A

YOUR CHOICE OF ANY ONE OF THESE MAGAZINES

American Boy	1 yr.
American Girl	1 yr.
Christian Herald	1 yr.
Liberty (52 issues)	1 yr.
New Outlook	1 yr.
Parents' Magazine	1 yr.
Physical Culture	1 yr.
Real America	1 yr.
Screenland	1 yr.
St. Nicholas	6 mos
True Story	1 yr.

AND TWO MAGAZINES FROM GROUP B

3 IN ALL

10c

PER WEEK AND A PAYMENT NOW OF (ONE DOLLAR)

Covers Entire Cost of BOTH Newspaper and the 3 Magazines

GROUP-B

YOUR CHOICE OF ANY TWO OF THESE MAGAZINES

Better Homes & Gardens	1 yr.
Delineator	1 yr.
Household Magazine	2 yrs.
Needlecraft	2 yrs.
Open Road (Boys)	2 yrs.
Pathfinder (Weekly)	1 yr.
Pictorial Review	1 yr.
Silver Screen	1 yr.
Sports Afield	1 yr.
Woman's World	2 yrs.

AND ONE MAGAZINE FROM GROUP A

3 IN ALL

All Three Magazines May Be Selected From Group "B"

THIS OFFER IS OPEN TO OLD SUBSCRIBERS AS WELL AS NEW!

Just check your selections on the handy coupon. Mail or give to any carrier!

ORDER BLANK FOR NEW OR OLD SUBSCRIBERS

DAILY TELEGRAM Eastland, Texas DATE

GENTLEMEN: I hereby agree to subscribe to, or extend my present subscription to the Ranger Times for a period of fifty-two weeks from this date and also for the THREE magazines listed below. I am paying \$1.00 and agree to pay my regular carrier 10c per week for 52 weeks. It is understood that this contract cannot be cancelled without immediate discontinuance of the magazine subscriptions.

Name..... Address.....

Apt..... Town..... Phone.....

HERE ARE THE MAGAZINES I WANT

- 1.....
- 2.....
- 3.....

NOTE: It is very important that you make your selection strictly in accordance with the lists as given and no substitutions or changes can be allowed.

WE GUARANTEE THIS OFFER TO BE EXACTLY AS REPRESENTED

THIS CURIOUS WORLD By William Ferguson

THE PRECIOUS WENTLETRAP
A SEA-SHELL SOLD FOR \$200 EACH, IN 1700.
THE CHINESE BEGAN COUNTING FEETING THEM AND THE PRICE DROPPED LATER. THE SHELLS WERE FOUND TO BE FAIRLY COMMON.

SPRING-TAIL INSECTS
JUMP CONSIDERABLE DISTANCES BY RELEASING A SPRING AT THE REAR END OF THE BODY.

IN ENGLAND,
FOLIAGE DOES NOT CHANGE TO BRILLIANT COLORS IN THE FALL, AS IT DOES IN THE UNITED STATES.

ENGLISH art critics ridiculed the work of American landscape painters when they exhibited pictures showing the brilliant colors of American autumn. They were believed to be colors of pure imagination.

THIS CURIOUS WORLD By William Ferguson

COTTON MOTHS,
INSECTS THAT GROW AS LARGE AS BATS, BREED IN THE TROPICS, AND FLY NORTHWARD IN THE FALL, WHERE THEY DIE OF COLD.

HERE IS MORE THAN ONE "UNITED STATES" (UNITED STATES OF MEXICO, OF COLOMBIA AND OF BRAZIL)

ONE SPECIES OF BRAZILIAN TREE FROG BUILDS MUD CRATERS ABOVE THE WATER LEVEL, AND LAYS ITS EGGS INSIDE, WHERE THEY ARE PROTECTED FROM FISH.

NO one knows just why the cotton moth leaves its warm home in the south and goes north to meet the winter. . . there, to end its days. Although they breed only in tropical climes, they have been found as far north as Canada.

Local
Frida
Ward sch
and 1 p. m.
the Study clu
officers, 3
Prescription
open to
S. B. Taylor of
E. 1st Ave.,
People's Clin
Dallas, Texas
Write Dr. Pier
Buffalo, N. Y.
for free medic
club voted to
arnate. Wed
former day
session ann
report will b
of books car
for pre-sch
Study Club
am and Elect
Music Stud
mual electio
fternoon, dur
n, which will
of Mrs. H.
tent, at 3 p.
nuse.
cers to be e
first and se
recording s
correspond
director,
ress reporter
Runners Clu
Patty Nell
Tuesday aft
Runners clu
other, Mrs. I
club is a c
iation, one c
n of Mrs. A.
session was
air retiring
Lucas, with
the secretar
Junior club
meeting at pi
rinary electio
Emmalee
Hennessee,
Lou Crosi
Lou Hart
Stahr, report
title; and Fra
program wa
sald by Fran
article, "Sigh
ted by Mava
also were
silly, Patty N
Johnnie L
and Hele
article, "Th
ed by Franc
Hood servi
plate of
cakes, hot
cream toj
Luncheon
L. E. Hick
Readers Lu
sidence Tues
original tr
atmosphere
Luncheon w
table, lai
noon, and ce
No. 14
Treasury D
VICE OF CC
OF THE CU
ington, D. C
wards, by s
presented t
has been ma
National of
Eastland, i
and Stat
with all t
minutes of t
to be co
an association
to commence
therefore I
comptroller
certify
Bank, in
the Cou
Texas
Bus
Ses
utes
advisy wh
and seal of
November,
J. F. T
Comptroller
ECTI
PLIA
lectri

Local--Eastland--Social

Ward school, assembly 9 o'clock, open to patrons. Study club, annual election, 8 p. m. Program, Mrs. E. Roy, Townsend, Red nurse, and food specialist, and the sanitary conditions of the city was one of the features of the program. Mrs. E. Roy, Townsend, Red nurse, and food specialist, and the sanitary conditions of the city was one of the features of the program.

Friday school, assembly 9 o'clock, open to patrons. Study club, annual election, 8 p. m. Program, Mrs. E. Roy, Townsend, Red nurse, and food specialist, and the sanitary conditions of the city was one of the features of the program.

Friday school, assembly 9 o'clock, open to patrons. Study club, annual election, 8 p. m. Program, Mrs. E. Roy, Townsend, Red nurse, and food specialist, and the sanitary conditions of the city was one of the features of the program.

Friday school, assembly 9 o'clock, open to patrons. Study club, annual election, 8 p. m. Program, Mrs. E. Roy, Townsend, Red nurse, and food specialist, and the sanitary conditions of the city was one of the features of the program.

Friday school, assembly 9 o'clock, open to patrons. Study club, annual election, 8 p. m. Program, Mrs. E. Roy, Townsend, Red nurse, and food specialist, and the sanitary conditions of the city was one of the features of the program.

Friday school, assembly 9 o'clock, open to patrons. Study club, annual election, 8 p. m. Program, Mrs. E. Roy, Townsend, Red nurse, and food specialist, and the sanitary conditions of the city was one of the features of the program.

Friday school, assembly 9 o'clock, open to patrons. Study club, annual election, 8 p. m. Program, Mrs. E. Roy, Townsend, Red nurse, and food specialist, and the sanitary conditions of the city was one of the features of the program.

Friday school, assembly 9 o'clock, open to patrons. Study club, annual election, 8 p. m. Program, Mrs. E. Roy, Townsend, Red nurse, and food specialist, and the sanitary conditions of the city was one of the features of the program.

Friday school, assembly 9 o'clock, open to patrons. Study club, annual election, 8 p. m. Program, Mrs. E. Roy, Townsend, Red nurse, and food specialist, and the sanitary conditions of the city was one of the features of the program.

Friday school, assembly 9 o'clock, open to patrons. Study club, annual election, 8 p. m. Program, Mrs. E. Roy, Townsend, Red nurse, and food specialist, and the sanitary conditions of the city was one of the features of the program.

Friday school, assembly 9 o'clock, open to patrons. Study club, annual election, 8 p. m. Program, Mrs. E. Roy, Townsend, Red nurse, and food specialist, and the sanitary conditions of the city was one of the features of the program.

Friday school, assembly 9 o'clock, open to patrons. Study club, annual election, 8 p. m. Program, Mrs. E. Roy, Townsend, Red nurse, and food specialist, and the sanitary conditions of the city was one of the features of the program.

Friday school, assembly 9 o'clock, open to patrons. Study club, annual election, 8 p. m. Program, Mrs. E. Roy, Townsend, Red nurse, and food specialist, and the sanitary conditions of the city was one of the features of the program.

Friday school, assembly 9 o'clock, open to patrons. Study club, annual election, 8 p. m. Program, Mrs. E. Roy, Townsend, Red nurse, and food specialist, and the sanitary conditions of the city was one of the features of the program.

Friday school, assembly 9 o'clock, open to patrons. Study club, annual election, 8 p. m. Program, Mrs. E. Roy, Townsend, Red nurse, and food specialist, and the sanitary conditions of the city was one of the features of the program.

Friday school, assembly 9 o'clock, open to patrons. Study club, annual election, 8 p. m. Program, Mrs. E. Roy, Townsend, Red nurse, and food specialist, and the sanitary conditions of the city was one of the features of the program.

Friday school, assembly 9 o'clock, open to patrons. Study club, annual election, 8 p. m. Program, Mrs. E. Roy, Townsend, Red nurse, and food specialist, and the sanitary conditions of the city was one of the features of the program.

Friday school, assembly 9 o'clock, open to patrons. Study club, annual election, 8 p. m. Program, Mrs. E. Roy, Townsend, Red nurse, and food specialist, and the sanitary conditions of the city was one of the features of the program.

Friday school, assembly 9 o'clock, open to patrons. Study club, annual election, 8 p. m. Program, Mrs. E. Roy, Townsend, Red nurse, and food specialist, and the sanitary conditions of the city was one of the features of the program.

Friday school, assembly 9 o'clock, open to patrons. Study club, annual election, 8 p. m. Program, Mrs. E. Roy, Townsend, Red nurse, and food specialist, and the sanitary conditions of the city was one of the features of the program.

Friday school, assembly 9 o'clock, open to patrons. Study club, annual election, 8 p. m. Program, Mrs. E. Roy, Townsend, Red nurse, and food specialist, and the sanitary conditions of the city was one of the features of the program.

Friday school, assembly 9 o'clock, open to patrons. Study club, annual election, 8 p. m. Program, Mrs. E. Roy, Townsend, Red nurse, and food specialist, and the sanitary conditions of the city was one of the features of the program.

Friday school, assembly 9 o'clock, open to patrons. Study club, annual election, 8 p. m. Program, Mrs. E. Roy, Townsend, Red nurse, and food specialist, and the sanitary conditions of the city was one of the features of the program.

Friday school, assembly 9 o'clock, open to patrons. Study club, annual election, 8 p. m. Program, Mrs. E. Roy, Townsend, Red nurse, and food specialist, and the sanitary conditions of the city was one of the features of the program.

Friday school, assembly 9 o'clock, open to patrons. Study club, annual election, 8 p. m. Program, Mrs. E. Roy, Townsend, Red nurse, and food specialist, and the sanitary conditions of the city was one of the features of the program.

Friday school, assembly 9 o'clock, open to patrons. Study club, annual election, 8 p. m. Program, Mrs. E. Roy, Townsend, Red nurse, and food specialist, and the sanitary conditions of the city was one of the features of the program.

Friday school, assembly 9 o'clock, open to patrons. Study club, annual election, 8 p. m. Program, Mrs. E. Roy, Townsend, Red nurse, and food specialist, and the sanitary conditions of the city was one of the features of the program.

Friday school, assembly 9 o'clock, open to patrons. Study club, annual election, 8 p. m. Program, Mrs. E. Roy, Townsend, Red nurse, and food specialist, and the sanitary conditions of the city was one of the features of the program.

Friday school, assembly 9 o'clock, open to patrons. Study club, annual election, 8 p. m. Program, Mrs. E. Roy, Townsend, Red nurse, and food specialist, and the sanitary conditions of the city was one of the features of the program.

Friday school, assembly 9 o'clock, open to patrons. Study club, annual election, 8 p. m. Program, Mrs. E. Roy, Townsend, Red nurse, and food specialist, and the sanitary conditions of the city was one of the features of the program.

Friday school, assembly 9 o'clock, open to patrons. Study club, annual election, 8 p. m. Program, Mrs. E. Roy, Townsend, Red nurse, and food specialist, and the sanitary conditions of the city was one of the features of the program.

Friday school, assembly 9 o'clock, open to patrons. Study club, annual election, 8 p. m. Program, Mrs. E. Roy, Townsend, Red nurse, and food specialist, and the sanitary conditions of the city was one of the features of the program.

Friday school, assembly 9 o'clock, open to patrons. Study club, annual election, 8 p. m. Program, Mrs. E. Roy, Townsend, Red nurse, and food specialist, and the sanitary conditions of the city was one of the features of the program.

Friday school, assembly 9 o'clock, open to patrons. Study club, annual election, 8 p. m. Program, Mrs. E. Roy, Townsend, Red nurse, and food specialist, and the sanitary conditions of the city was one of the features of the program.

Friday school, assembly 9 o'clock, open to patrons. Study club, annual election, 8 p. m. Program, Mrs. E. Roy, Townsend, Red nurse, and food specialist, and the sanitary conditions of the city was one of the features of the program.

Friday school, assembly 9 o'clock, open to patrons. Study club, annual election, 8 p. m. Program, Mrs. E. Roy, Townsend, Red nurse, and food specialist, and the sanitary conditions of the city was one of the features of the program.

Friday school, assembly 9 o'clock, open to patrons. Study club, annual election, 8 p. m. Program, Mrs. E. Roy, Townsend, Red nurse, and food specialist, and the sanitary conditions of the city was one of the features of the program.

Friday school, assembly 9 o'clock, open to patrons. Study club, annual election, 8 p. m. Program, Mrs. E. Roy, Townsend, Red nurse, and food specialist, and the sanitary conditions of the city was one of the features of the program.

Friday school, assembly 9 o'clock, open to patrons. Study club, annual election, 8 p. m. Program, Mrs. E. Roy, Townsend, Red nurse, and food specialist, and the sanitary conditions of the city was one of the features of the program.

Friday school, assembly 9 o'clock, open to patrons. Study club, annual election, 8 p. m. Program, Mrs. E. Roy, Townsend, Red nurse, and food specialist, and the sanitary conditions of the city was one of the features of the program.

Friday school, assembly 9 o'clock, open to patrons. Study club, annual election, 8 p. m. Program, Mrs. E. Roy, Townsend, Red nurse, and food specialist, and the sanitary conditions of the city was one of the features of the program.

Friday school, assembly 9 o'clock, open to patrons. Study club, annual election, 8 p. m. Program, Mrs. E. Roy, Townsend, Red nurse, and food specialist, and the sanitary conditions of the city was one of the features of the program.

Friday school, assembly 9 o'clock, open to patrons. Study club, annual election, 8 p. m. Program, Mrs. E. Roy, Townsend, Red nurse, and food specialist, and the sanitary conditions of the city was one of the features of the program.

Friday school, assembly 9 o'clock, open to patrons. Study club, annual election, 8 p. m. Program, Mrs. E. Roy, Townsend, Red nurse, and food specialist, and the sanitary conditions of the city was one of the features of the program.

Friday school, assembly 9 o'clock, open to patrons. Study club, annual election, 8 p. m. Program, Mrs. E. Roy, Townsend, Red nurse, and food specialist, and the sanitary conditions of the city was one of the features of the program.

Mrs. R. L. Slaughter, protector; Mrs. Ralph Durr, outer guard. Other sisters present were Mrs. C. F. Shepherd and Mrs. M. Newman, and the following guests from Breckenridge: Mmes. Etta Mattias, Mae Pruitt, Rachel Wallace, Cecil Eubanks, Ruth Morrow, Liles, and Stripling.

Mrs. Wallace very graciously presented a lovely floral spray of pink carnations to the most excellent chief, Mrs. Andrews. A delightful program of games interspersed with music by Mrs. Eubanks closed the pleasant evening, when refreshments were served of hot chocolate with marshmallow topping and a variety of small cakes.

STOCK MARKETS

Table with columns for stock names and prices. Includes items like Am Can, Am P & L, Am & F Pwr, etc.

Gould Heiress Elopes



The story of the heiress incurring parental displeasure through elopement was reversed when Anne Gould, daughter of Jay Gould, made an unexpected taxi cab trip to Harrison, N. Y., for an after-midnight marriage to F. Spencer Mendor, actor, of San Saba, Texas.

Table with columns for stock names and prices. Includes items like United Air & T, United Corp, U S Ind Alc, etc.

Sept. . . . 73% 73% 73 1/2 73 1/2
Oats—
May 55 1/2 54 1/2 55 1/2 54 1/2
July 48 1/2 47 1/2 47 1/2 47 1/2
Sept. . . . 44 1/2 44 1/2 44 1/2 44 1/2
Rye—
May 75% 74% 74% 75%

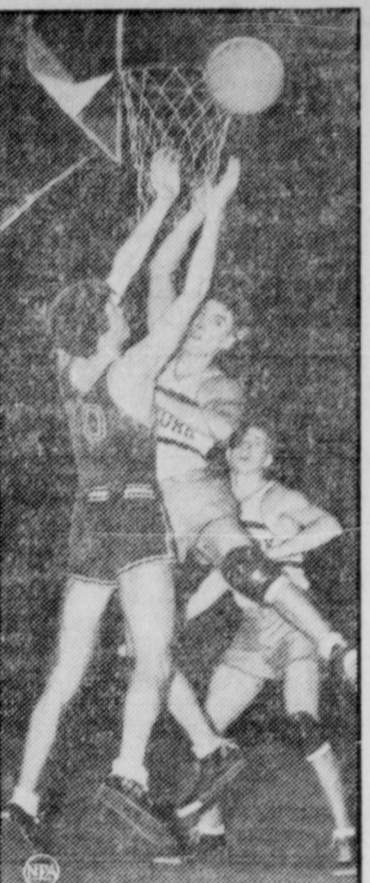
Innocent Exchange of Cars Righted by Eastland Policeman

Nightwatchman Robert Ball called up Rev. E. R. Stanford of Eastland late one night recently to inquire about a missing car. It happened this way— Rev. and Mrs. Stanford went to an Eastland theatre. After seeing the show, when upon the sidewalk they noticed their car wasn't in the original location.

Eastland Personals

Mr. and Mrs. M. B. Griffin were in Gatesville Tuesday to attend the funeral of Mr. Griffin's grandmother held that day. J. M. Amyx is spending a few days in Eastland greeting his friends, while recuperating from a five months stay in the hospital.

GOES BIG TIME



Scoring a foul shot with less than two minutes to play, New York University defeated the University of Kentucky's wonder team, 23-22, in an inter-sectional basketball contest in Madison Square Garden. More than 16,500—a record crowd—saw this interesting action when Terjesen of New York U. and Taylor, No. 10, of Kentucky, went into action under the basket.

Car Thefts Reach Larger Proportions

DALLAS, Jan. 9.—Automobile thefts in Dallas have reached alarming proportions, according to T. R. Garretson, head of the police records bureau. Automobile thefts for December 1934 showed an increase of 129 percent over December, 1933. Last month 229 machines were stolen in comparison with 100 the year before, Capt. Garretson said.

A man claims the invention of unbreakable china, but we won't take his word for it until we've tried some of it on our maid.

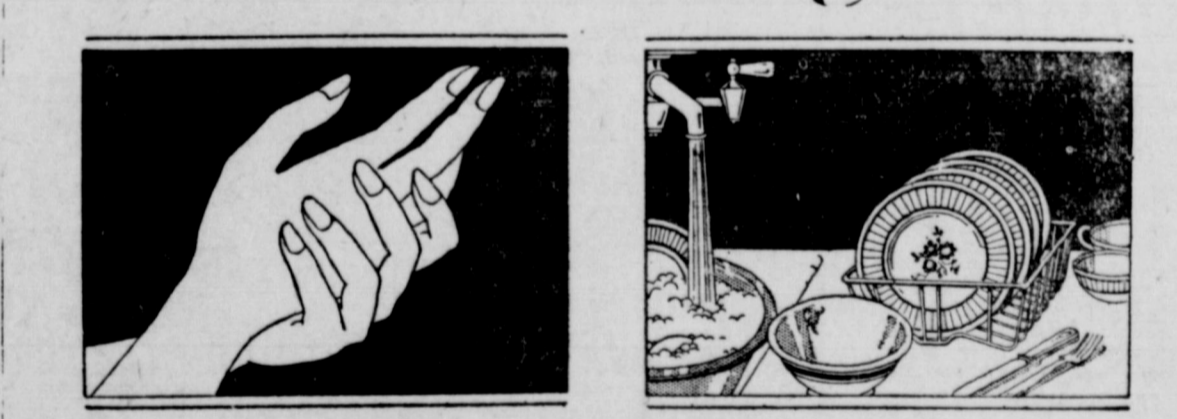
Try a Want Ad if You

CLASSIFIED ADS

AUTO LOANS—Want a loan on your car? Let me make you an offer. Frank Lovett, 208 South Lamar, Eastland, Phone 33. FOR RENT—Five room house, 2 miles south on highway. Gas, city water, concrete cellar, garden, orchard, plot, small pasture. W. W. Kelly, county agent's office. MAN WANTED for Rawleigh Route of 800 families. Write today, Rawleigh, Dept. TXA-221-SA, Memphis, Tenn. CLERKS—Men - Women, good health. Experience unnecessary. Common education sufficient to qualify for government work \$105 to 175 monthly. Write Civil Service Training Bureau, Inc., Box 1, this paper. EXCHANGE—Home with improved stock farm acreage, for Eastland home. Phone 403-M.

LYRIC 3-DAYS-3 Thursday, Friday, Saturday YOUR FAVORITE STAR IN ANOTHER GREAT PICTURE! He's the fire-eating boss of a small town who kisses all the babies and captures all the votes... who warms with friendship to young lovers... but is too hot to handle in a fight! Will! ROGERS The COUNTY CHAIRMAN The never-to-be-forgotten play by GEORGE ADE a FOX picture with EVELYN VENABLE - KENT TAYLOR Louise Dresser - Mickey Rooney and STEPHEN FETCHIT Produced by Edward W. Butcher Directed by John Blystone IN NEW TECHNICOLOR Prices This Attraction: Lower Floor 25c Balcony . . . 15c Children . . . 10c

Soap and Water is not enough!



WHETHER it's washing dishes or any of the other many cleaning jobs about the home, soap and water is not enough for a thorough cleaning. HOT water is needed! And the surest, easiest and cheapest way of having it on tap is with a modern automatic gas water heater. With one of these modern heaters you are assured of a never-ending supply of instant hot water, and at a cost of only a few cents per day. So why go on lighting, waiting and watching when so little money will install a modern heater during our January Sale? Won't you investigate? Special Inducements Small Down Payment Easy Monthly Payments Trade-in Allowance 5 Reasons FOR HAVING AN Automatic Gas Water Heater 1. Instant hot water always on tap—day or night—in adequate quantities. 2. Keeps uniform temperature. No scalding or lukewarm water. 3. Provides clean hot water from rustproof copper tank. Heated hand-lighting ends state-climbing. 4. Prevents waste of water and fuel. A. G. A. approved gas appliances are eligible for modernization loans under the National Housing Act. Ask your gas appliance dealer or your gas company for particulars. Lone Star Natural Gas Co. GAS SYSTEM

No. 14299 Treasury Department OFFICE OF COMPTROLLER OF THE CURRENCY Washington, D. C., Nov. 3, 1934 I, J. F. T. O'CONNOR, Controller of the Currency, certify that Eastland National Bank, in the City of Eastland, in the County of Eastland, in the State of Texas, has been authorized to commence the business of banking under Section 5169 of the United States Statutes. In witness whereof I have hereunto set my hand and seal of office this 3rd day of November, 1934. J. F. T. O'CONNOR, Controller of the Currency

ELECTRICAL APPLIANCES Electric Service Co.

At The
GLOBE
Ranger

At The
Men's Shop
Eastland

A TREAT FOR THE COMMUNITY

Now! Annual JANUARY CLEARAWAY

**SALE STARTS
FRIDAY, JANUARY 11**

EVERYTHING FOR MEN!

Planning for a real sale event is something that we always do with the major consideration of giving the right kind of values, and we have made special efforts to make this annual clearance one of the best we have ever had. No special merchandise was purchased for this sale and everything is from our regular stock. Every man should take advantage of this wonderful opportunity to save on everything that a man has to wear. Just a glance at the prices will convince you that we have actually made sensational bargains in the high quality merchandise that we feature. This sale is store-wide and prices on everything have been reduced.

**SALE STARTS
FRIDAY, JANUARY 11**

ONE LOT WORK BOOTS
Our regular \$5 and \$6 values; brown only **\$2.95**

MEN'S SOX



The very highest quality... Hole-proof, Interwoven and Phoenix. Regular 65c, 75c and \$1.00 values

2 PAIR **\$1.00**

Regular \$.50 value **39c**

10% Off All Work Clothes

FROM **10% Off**

SPECIAL MEN'S SUITS

These suits were carried over for a season or two. Complete close-out.

Values to \$40 Your Choice

\$10.00

TO **33 1/3% Off**

25% Off All LUG-LAGE

20% OFF BOYS' CLOTHING
SUITS, SHIRTS, CAPS, SHOES, PAJAMAS
AT THE GLOBE

MEN'S SHIRTS

All from our regular stock of Enro, Arrow and other fine makes — \$1.50 and \$1.65 values.

\$1.19

\$2.00 values **\$1.59**

\$2.50 values **\$1.85**



Men's Leather Jackets

Not Too Late... Plenty Winter Ahead! Field and Stream and California or Suede and calfskin; button or zipper; long or short.



\$8.85 values **\$6.95**

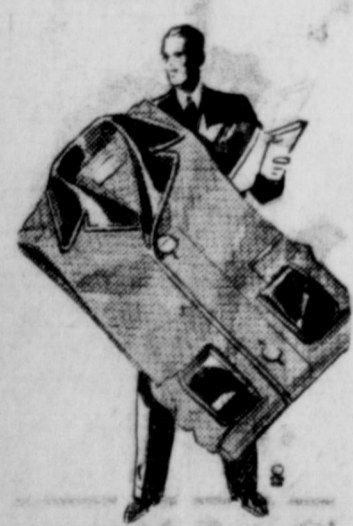
\$9.85 values **\$7.65**

\$12.45 values **\$9.45**

\$15.00 values **\$11.95**

MEN'S PAJAMAS

Now is the time to buy these wonderful bargains!



\$2.50 values **\$1.85**

\$2.00 values **\$1.55**

\$1.50 values **\$1.15**

\$3.50 values **\$2.65**

MEN'S GLOVES

FOR DRESS
Hanson Make — Real Bargains



\$1.95 values **\$1.59**

\$2.50 values **\$1.85**

\$3.50 values **\$2.65**

One Lot Pajamas
Regular \$1.50 to \$2.00 values; Broadcloth; also all fancy colors **98c**

Early-Bird Specials

One Group Shirts
Broken sizes; values to \$2.00; Enro, Manhattan and Shritcraft **98c**

Our Regular **BERG HATS**
\$3.50 to \$3.95 values **\$2.95**

All-Wool **SHIRTS**
Values to \$6.00 **\$2.45**

Trench Coats
Get Yours Now!
\$3.95 value **\$2.95**
\$4.95 value **\$3.95**
\$5.95 value **\$4.95**

EXTRA SPECIAL!
One group broken lot, all good styles and colors Stetson and Dobbs **HATS**
\$6.50 to \$8.00 values **\$4.95**

EXTRA SPECIAL!
One Group **MEN'S SWEATERS**
\$2.50 to \$5.00 values **1/2 PRICE**
Pullover and Coat **ALL-WOOL**



January Sale

SUITS and COATS

Now is the time to buy your suit or overcoat at these remarkable savings. Most of the suits are with two pair pants. Double and single breasted and by-swing styles.



- \$19.50 Value **\$15.60**
- \$22.50 value **\$16.60**
- \$25.00 value **\$18.75**
- \$27.50 value **\$20.65**
- \$29.50 value **\$22.85**
- \$32.50 value **\$24.85**
- \$34.50 value **\$26.85**

SHOES



Men! HERE'S YOUR BIG OPPORTUNITY

ONE LOT FORTUNE, FRIENDLY FIVE AND BOSTONIAN SHOES, BLACK AND TAN, BROKEN SIZES, VALUES TO \$8.00, SPECIALLY PRICED FOR CLOSE-OUT... \$295

One Group Edwin Clapp, Bostonian and Florsheim **HIGH SHOES.**
Values to \$16.00 **\$6.95**

Our Regular Stock Florsheim Calfskin Oxfords, Black and Tan **\$7.45 \$7.95**

One Group Bostonian and Friendlies Regular \$5 and \$6 values **\$3.95**

One Lot **JUSTIN BOOTS**
\$16.00 values **\$10.85**

Around the Store The GLOBE AND THE MEN'S SHOP RANGER EASTLAND CLEARANCE!

MAIN STREET
RANGER

EASTLAND
East Side Square

MEN'S TIES

All new patterns silk and wool; all wanted colors.

Regular \$1.50 values **\$1.15**

Regular \$1.00 value **79c**



MEN'S UNDERWEAR

Cooper Spring Needle Union Suits Supply your cold weather needs at this low price.

\$2.00 values **\$1.49**

\$2.50 values **\$1.85**

\$3.00 values **\$2.15**

\$5.00 values **\$3.45**



Ladies' Suede Jackets

Brown, Red, Green, Black and Tan Size 12 to 20

\$6.65 values **\$4.95**

\$9.85 values **\$6.95**

\$12.85 values **\$3.95**



Ladies' Phoenix HOSIERY

69c

Stock reduced but here's values!

T
N
VOL.
MISS
MAY
HERI
HONOLU
Amelia Ear
off late to
plane on a
the Pacific
the weather
Although
announcem
United Pres
was consid
The plan
and her hu
the public
According
takeoff will
afternoon,
conditions
flight whic
a similar pl
ago.
Twenty
Go to
Twenty-
youths hav
camp at W
months' en
The boys
man; New
route 2; R
Chick Brow
non Lee; B
Coo route
co; Royce
Selman,
Gibbs; Gor
German ro
Nimrod ro
Hinger rou
das, Easti
ger route 3
er; C. V
route 2; C
James Ray
Prentice D
Gush, Ea
Wade; Do
Eise, Rin
Blaine St
ger, and F
Star.
Grand
From
To C
Ninety-f
today shift
from the
case to ot
District A
located. J
Owens in
for another
called.
The dist
that no re
would be f
Investigati
thought, w
week and e
of next we
Worke
Gre
Work w
was relief
a Green st
Eastland.
The proj
cooperation
of the two
Commerce
Eastland
supervision
furnishes t
and
Barnson
announced
ford, paste
will speak
later." an
son of Mai
Vesper
usual.
FAS
FULLM,
Washington
as a proje
committee
to be one
in 1