

EASTLAND TELEGRAM

Published every afternoon (except Saturday and Sunday) and every Sunday Morning

Member Advertising Bureau - Texas Daily Press League Member of United Press Association

NOTICE TO THE PUBLIC:

Any erroneous reference upon the character, standing or reputation of any person, firm or corporation which may appear in the columns of this paper will be gladly corrected upon being brought to the attention of the publisher.

Obituaries, cards of thanks, notices of lodge meetings, etc., are charged for at regular advertising rates, which will be furnished upon application.

Entered as second-class matter at the post office at Eastland, Texas, under Act of March, 1879.

SUBSCRIPTION RATES

Single copies 5¢ Six months 2.50 One year 4.00 ALL SUBSCRIPTIONS PAYABLE IN ADVANCE

Emergency Legislation

The legislature will find itself during the first two weeks of its session, dealing again with emergency phases of relief.

The first question will be finding state provision to care for the "unemployables" to be dropped by federal relief rolls Feb. 1.

The diversion of the rest of the state bread bond issue, and some other means to provide state care for the disabled, the infirm and similar persons classified as unable to work will be sought.

On its face, the federal regulations seem extremely callous and harsh. Those able to make a living will be fed by the federal government, if they happen to have failed to devise a way to make a living. Those unable to must shift for themselves. Able-bodied, strapping men in the prime of life will be able to march to relief headquarters and draw groceries. The invalids, extremely aged, women untrained for work, regardless of circumstances, will be turned away with the word—"this food is only for the able-bodied."

Every city has a number of chronic knockers. They just keep on doing the only thing they know how to do well. They knock morning, noon and night. Somebody should set them right.

Some people jay-walk because they don't know any better; some jay-walk to save time, while others jay-walk out of pure meanness.

Some states seem to be floundering in a sea of trouble. Adding more taxes to their present burden will merely help them to drown business more quickly.

Lack of ambition is a disease. Some people have had cases of it.

It is said that prosperity is just around the corner, but it is a corner that must be successfully found and turned.

The government of a city is never better than its citizens want it to be.

FRECKLES and HIS FRIENDS-By Blosser

Comic strip panels for 'Freckles and His Friends' featuring dialogue about a man with a beard and a girl with a weak chin.

"OUT OUR WAY" - - - - - By Williams

Cartoon titled 'OUT OUR WAY' showing a woman sitting at a desk and a man talking to her. Includes dialogue bubbles and a caption 'HEROES ARE MADE—NOT BORN'.

Hunting Bug That Manufactures Cheese

By United Press VANCOUVER, B. C., Jan. 11.—The identity of the bacteria that makes cheese taste and smell like cheese is being sought by research workers attached to the University of British Columbia's department of dairying.

Dr. Bythe Eagles, who believes that discovery of the responsible bacteria would revolutionize the whole dairying industry.

"Cheese making will be a science, not a mystery handed down from father to son," he states. "As it is, you start to make cheese exactly the same way you have made it a thousand years; you may get good cheese, you may get bad cheese."

say to the farmer, 'if you take this fellow (or perhaps it will be this one and that bug working together) and put them into your milk, and do this and so with it, you will get good cheese'.

"We are trying to isolate the responsible bacteria. Then you can say to the farmer, 'if you take this fellow (or perhaps it will be this one and that bug working together) and put them into your milk, and do this and so with it, you will get good cheese'."

Lovable

Novel section titled 'Lovable' by Mark Raymond, featuring a story about a man named Peter and a woman named Ann.

God of Old

Among the citations which comprise the lesson-sermon is the following from the Bible: "But thou, when thou prayest, enter into thy closet, and when thou hast shut thy door, pray to thy Father which is in secret; and thy Father which seeth in secret shall reward thee openly" (Matthew 6:6).

Report of 11th Court of Civil Appeals Friday

The following proceedings were had in the Court of Civil Appeals for the 11th supreme judicial district: Motions Submitted: Hosea Rogers, et al vs. W. T. Allen, et al, motion to strike appellant's brief; B. L. Northcutt vs. Magnolia Petroleum Company, motion for extension of time to file statement of facts; City of Sweetwater, et al vs. Mrs. Charles L. Beryle, et al, appellee's motion to advance.

God of Old

Crossword puzzle grid with clues for words like 'HORIZONTAL', 'VERTICAL', and 'Answer to Previous Puzzle'.

The Newfangles (Mom 'n' Pop) By Coward

Comic strip panels for 'The Newfangles (Mom 'n' Pop)' featuring dialogue about a man's appearance and a woman's reaction.

Local--Eastland--Social

OFFICE 681 TELEPHONES RESIDENCE 288

CALENDAR SUNDAY
Christian church, Rev. Lee
of Cisco, guest preacher
9 a. m. and 7:15 p. m. Every-

certained with an informal dinner
party Thursday night at their
home, in honor of Mr. and Mrs.

MONDAY
Women's Missionary Society,
that church, Circle meet 2:45

Everything Set
For a Good Time
The Junior Thursday club have
everything set and going well for

Proposals Made to
event Publication
Of Military Secrets
WASHINGTON, Jan. 12.—Army
navy requests for drastic pro-

Commercial Bank-
(Continued from page 1)
For their stock of the same kind
of money that they originally in-

invoked. To close the bank meant
liquidation of the notes which
would have been a big sacrifice to

ST. FRANCIS XAVIER CHURCH
On Sunday mass will be at 8 a.
m., by Rev. M. Collins.

Commercial State Bank
The depression continued and
business grew worse which caused

SHIRLEY HAS FINEST
ROLE IN NEW FILM
Shirley Temple, most sensational
screen discovery of the year, at last

CHURCH OF GOD
Rev. E. W. Barnett, Pastor
Sunday school, 10 a. m.
Preaching service, 10:45 a. m.

ST. FRANCIS XAVIER CHURCH
On Sunday mass will be at 8 a.
m., by Rev. M. Collins.

By the way the airlines have
been clipping time off their flying
schedules, we may soon find it

Resorters Turn
Mavs Back 30 to
14 Friday Night

Eastland Maverick quintet drop-
ped their first conference game
tilt of the season Friday night

Mineral Wells, 30
Green, fwd 5 1 11
Hags, fwd 0 0 0

Eastland, 14
Shoopman, fwd 2 1 5
Threatt, fwd 0 0 0

HENS UNDER NRA
OAKVILLE, Wash.—John Ger-
ritts, farmer, decided his hens were

Next Board Meet
That of Regular
Date On Feb. 4th

Unless a meeting of the East-
land school board is called before
their next regular meeting date,

COLONY

The Colony P. T. A. will have a
regular meeting Jan. 11. We
urge the parents of every pupil to

LACASA
Several people from this com-
munity attended the singing con-
vention in Breckenridge, Sunday.

RICH GIRL?
POOR GIRL?



Which Would He Choose?

Everyone expected Brian Westmore
to marry Vicky, but he fell in love with
Gale. Vicky was rich. Gale worked in

"Silken Spindles"

It begins Jan. 17th—This Paper

the laboratory for foods and teach
it next semester. She has a work-
ing group of girls so she expects to

News reports have it that the
man behind the cemetery wall
called out, "Hey, Doktor!"



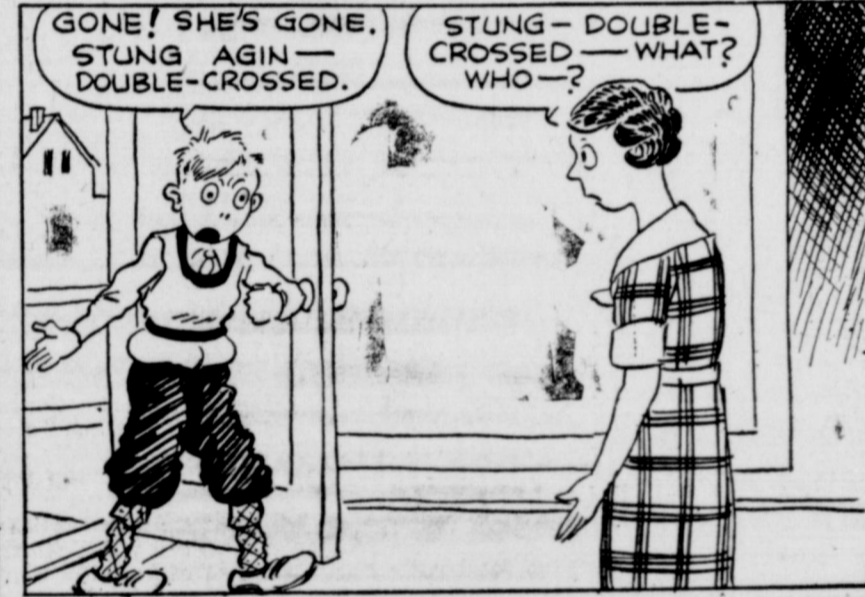
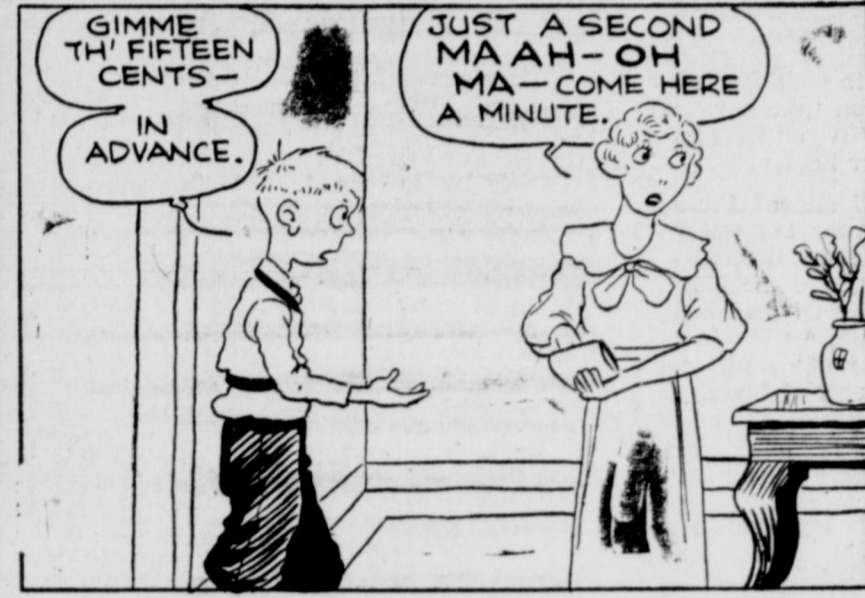
TO THE PUBLIC

The Commercial State Bank is
Now in Position to Pay all of It's
Depositors in Full!

We Have Available Cash to Pay all Deposits
New, Old, Restricted, Unrestricted, Including
Time Deposits or Certificates of Deposit----
Whether Due or Not!

Hall Walker
Vice-President

LET OUR WAY The Willets By Williams



Drilling Start on Well in County Is Slated Jan. 14th

Application for drilling was filed by three operators last week in the oil and gas division office of the railroad commission at Eastland.

Sarah J. McBride of Cisco filed application for drilling No. 1 Morgan, Barnhill survey, section 35, Eastland county. Operator intends starting Jan. 14 to 3,000 feet.

M. J. Dalton of Mineral Wells has started No. 1 Pennington, Samuel Harding survey, Palo Pinto county. Depth contemplated 1,300 feet.

J. G. Jarvis et al of Fort Worth have started No. 1 Henry Williamson on Falls county school lands, Wise county. The location is about two and a half miles from Sunset.

Completion of International Petroleum Corporation's No. 4, M. Castleman survey, Palo Pinto county was filed. Drilling was completed Jan. 2. According to the record, 20 barrels per day are being made at a total depth of 1,365 feet.

Application to shoot was filed by R. A. Conkling et al of Oklahoma City, Okla., on their No. 1 J. C. Leazer, H. & T. C. survey, Comanche county. The 3 barrels production rate was intended to be stepped up with a 500 gallon shot of nitro.

Near Rising Star the latter part of the week, Charles Cox and others were drilling at 2,800 feet on the Watkins well, three and a half miles southeast of Rising Star. The group have been having trouble with the line. Pay sand is expected at 2850 or 2900 and if no more trouble is encountered the holes should be finished soon. The well was started early last spring.

STOCK MARKETS

By United Press

Closing selected New York stocks:

Am Can	111 1/2
Am P & L	3 1/2
Am Rad & S S	14 1/2
Am Smelt	36 1/2
Am T & T	104 1/2
Anaconda	10 1/2
Auburn Auto	26
Avn Corp Del	4 1/2
Barnsdall	6 1/2
Beth Steel	31 1/2
Byers A M	18 1/2
Canada Dry	14 1/2
Case J I	56 1/2
Chrysler	38 1/2
Comw & Sou	1 1/2
Cons Oil	7 1/2
Curtiss Wright	2 1/2
Elec Au L	25 1/2
Elec St Bat	15 1/2
Foster Wheel	18 1/2
Fox Film	11 1/2
Freeport Tex	24
Gen Elec	21 1/2
Gen Foods	33 1/2
Gen Mot	31 1/2
Gillette S R	14 1/2
Goodyear	23 1/2
Gt West Sugar	27 1/2
Houston Oil	15 1/2
Int Cement	28 1/2
Int Harvester	39 1/2
Johns Manville	52 1/2
Kroger G & B	27 1/2
Liq Carb	29
Marshall Field	10 1/2
Montg Ward	37 1/2
Nat Dairy	15 1/2
Ohio Oil	9 1/2
Penney J C	70 1/2
Phelps Dodge	14 1/2
Phillips Pet	14 1/2
Pure Oil	6 1/2
Purity Bak	9 1/2
Radio	27 1/2
Sears Roebuck	37 1/2
Shell Union Oil	6 1/2
Socony Vac	13 1/2
Southern Pac	16 1/2
Stan Oil N J	24 1/2
Studebaker	2 1/2
Texas Corp	19 1/2
Tex Pac C & O	3 1/2
Und Elliott	58 1/2
Union Carb	45 1/2
United Corp	2 1/2
U S Gypsum	51
U S Ind Alc	49
U S Steel	37 1/2
Vanadium	19 1/2
Westing Elec	38 1/2
Worthington	17 1/2

Curb Stocks

Cities Service	1 1/2
Ford M Ltd	8 1/2
Gulf Oil Pa	58
Humble Oil	44 1/2
Niag Hud Pwr	3

Labor Federation Says Recovery Is Now On The Way

WASHINGTON, Jan. 12.—The American Federation of Labor in its annual review today reported the nation moved unevenly forward toward economic recovery in 1934.

The review said the groundwork has now been laid for gradual recovery.

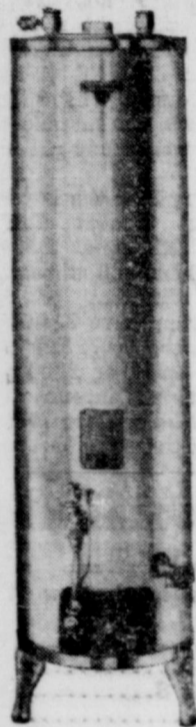
Unemployment increased by 429,000 during the year, the federation reported. It added President Roosevelt's proposed \$4,000,000,000 work program offered the only hope of new jobs in 1935.

On the debit side of recovery the review listed decreased farm production and 11,000,000 unemployed.

Try a WANT-AD

No waiting with

Automatic Gas Water Heater



You never have to wait for hot water before you can take a bath or wash the dishes—if you have an automatic gas water heater.

When you install one of these modern heaters your hot water troubles are over. The insulated tank is so well built and the temperature control so well designed that you can count on its low upkeep and economy of operation. Inquire now about special January terms!

- Small Down Payment
- Easy Monthly Payments
- Trade-in Allowance



Look for this "Seal of Safety" on the gas appliance you buy.

Community Natural Gas Co.



Expects 1935 To Be Big One For Insurance Firm

Swinging into the year 1935 with an optimistic spirit of enthusiasm, Frank Lovett, who has been representing the Southwestern Life Insurance company of Dallas for the past nine years, states that the company looks for the biggest business this year in its history. The expectation is based solely on the record of this remarkable Texas insurance institution, which has maintained a standard second to none in its line. The statement as published in this issue of the paper of its financial condition is truly one to be proud of.

Regardless of what kind of life insurance one may desire Mr. Lovett has just that kind of policy to offer, and of course every person should have an insurance policy. Mr. Lovett has his office at 208 South Lamar street, phone 33. The following statement as handed to us by Mr. Lovett gives in detail the loyalty to the Southwestern Insurance company to the state of Texas and its citizenship:

Of all the indices of Texas business conditions, perhaps none offers more definite and specific proof of progress than the annual statement of a large life insurance company which for thirty-two years has done business in every nook and corner of Texas, but which writes no insurance outside of Texas. Such a company is the Southwestern Life of Dallas, the only one of the large Texas companies which does not go outside the State for business. It is by far the largest United States company operating in only one state. By reporting an increase of more than fifteen millions insurance in force during 1934, the first substantial gain since 1930, this Texas institution offers significant evidence of business improvement in Texas.

A record of the Company's size for the past five years writes the history of the depression. Up to the end of 1929, the Southwestern had made large gains annually for many years, having doubled in size during the previous six years.

Early in 1930 lapses and surrenders began to be felt, and the gain during that year was small—approximately one-third of that for 1929. On December 31, 1931 the Company had less insurance in force than it had at the beginning of the year. The next year, 1932, generally conceded to be the worst for nearly all lines of business, proved the most difficult for Texas policyholders. Notwithstanding the production of thirty-seven millions of new insurance by the Company's agents, the total volume in force fell off more than

fourteen millions. Recovery commenced in 1933 when a gain of about one and a half millions was recorded. The gain of fifteen millions for 1934 has just been announced in the annual report to policyholders of President C. F. O'Donnell.

A comparison of the annual statements for 1929 and 1934 reveals some interesting changes in the Company's investment practice, due to the introduction by the New Deal of its government lending agencies. Prior to 1930 the Southwestern Life found a ready outlet for its reserves and surplus funds in the mortgage loan field, and 55 per cent of its assets were invested in loans on Texas farms and city property. At the end of 1934 only 36 per cent of its assets were in mortgages, while the bond item had increased from 8 per cent to 22 per cent.

The tendency toward increasing liquidity is revealed in the larger proportion of cash and United States Government bonds, now more than five millions, or approximately 12 per cent of all assets, as compared to 8 per cent at the end of 1929. While the normal income of a legal reserve life insurance company far exceeds its normal disbursements, the companies have been called upon in recent years to meet heavy withdrawals of policy reserves or "cash values." Many millions of dollars have been loaned to Texas citizens on the security of their policies, and doubtless many a business and family budget has been saved by these emergency funds.

President O'Donnell says that the demand for policy loans has been steadily decreasing, however, and the life companies are turning again to long-term investments. With gradual retirement of the Federal Government from the real estate loan business, the companies are anticipating an improved demand for first mortgages. Properly selected Texas mortgage loans have given a good account of themselves during the depression. The Southwestern Life's figures for 1934 reveal that interest collected on real estate loans during the year yielded a return of six per cent on a total investment of more than sixteen millions. Since organization in 1903, the Company has loaned approximately forty-six millions to Texas citizens on Texas real estate.

That Reminds Me

Continued from page 1

Lieutenant Governor Walter F. Woodul, on Tuesday, Jan. 15. This event usually draws citizens from every part of the state and is Australia's premier affair both patriotically and socially. The inaugural ball which climaxes the day is one of beautiful women with gorgeous and lovely gowns with a brilliant setting that glorifies the countenances of happy people mingling together.

Retiring Governor Miriam Ferguson will not retire this time under previous circumstances. She has had no accusations hurled against her and her administration has been the most peaceful and dignified of any previous one. James E. Ferguson is far from being the underdog in politics, although his man was not elected there are people in the state of Texas that will give Jim Ferguson most anything politically he may wish, but in the recent election they refused to follow his advice as to giving it to another person. That is simply political peculiarities and not by any means a slam at the Fergusons.

Mary Pickford and Douglas Fairbanks are getting too much publicity under the circumstances. What is happening to them is happening to thousands every day who are not even mentioned. They gave the public good entertainment and the public piled up millions for them. That is as it should be. But now they must look to their own laurels. Both had been married before so the experience was not of a novice nature by any means. The public cannot make ideal couples out of anybody. It takes two people to make that and the ideal couple is few and far between. Most near ideal couples are those who take life each day as it comes, neither gossiping nor worrying about what their neighbor is doing. They visit their neighbor for friendly chats and discuss the generalities of life, and when they are home they keep busy and haven't time to flare up at every little thing that comes in the line of their conversation. There was romance in Mary's and Doug's first experience of courtship and marriage, but there couldn't have been but very little in the second in which they were the principals.

Blustery south winds opened up the day Saturday. In fact we thought we were coming out on a March day as we emerged for the day's run of work events. As the weatherman says we will no doubt say dearly for this warm January a little later on. A good snow followed by a week's rain would be the most welcome thing in this section that we know of. It would be worth several million dollars in good for the future harvest as well as make us feel that we are having a real winter.

Even at that somehow we are plugging along and none of us have such a tremendous kick to make. There is always an even

FLIER'S DAUGHTER



Shirley Temple, in the new Fox Film production, "Bright Eyes," at last has the picture you've been waiting to see. She'll brighten your eyes and lighten your heart in this thrilling story of a little girl who was the angel of an airport. James Dunn is seen opposite her once more.

New Hat Blocking Machine at Modern

Keeping up with progress and ever ready to render the highest type of quality service in this community the Modern Dry Cleaners and Dyers have installed the very newest and most modern hat blocking machine on the market. This new innovation gives better workmanship, speedier service and guaranteed satisfaction, J. B. Johnson says. "We are proud to announce first, our new model 1935 factory method hat crown and brim ironing machine; second, our affiliation with Rhodes National Hatter Bureau of Scientific hat renewal and a franchise for the use of Col-r-bac, a product recently developed in the Nacco Laboratories which will produce the Rhodes factory finish, eliminate sulfide mouse color perspiration stains and mottled spots on hats. We invite any one to inspect our

new hat department operating daily in our show window."

This is just another stride towards giving everybody in this community the best of service by the Modern Dry Cleaners and when something new and different that gives better work comes out they are the first to install it. Such an institution deserves the patronage of the citizenship of this entire territory.

Eastland Personals

L. C. Cash of Pioneer was a courthouse visitor Saturday.

J. M. Parker of Gorman transacted business in the 11th Court of Civil Appeals Saturday.

Mrs. C. C. Gibson of Breckenridge is visiting her brother and family, Mr. and Mrs. Cecil Hibbert.

Mrs. H. C. Davis returned from Taboka Saturday, after a visit with her mother, Mrs. E. S. Davis.

Mrs. F. P. Dunham is in Fort Worth visiting her daughter and husband, Mr. and Mrs. R. P. LeMond.

Mrs. Veon Howard is confined to her home with illness.

NOTICE OF FIRST MEETING OF CREDITORS

In the District Court of the United States for the Northern District of Texas in Bankruptcy, Abilene, Division.

In the matter of Wade Oscar Russell, Bankrupt, No. 1713 in Bankruptcy. Abilene, Texas, Jan. 11, 1935.

BEFORE D. M. OLDHAM, Jr., Referee in Bankruptcy

To the creditors of Wade Oscar Russell of Gorman, in the county of Eastland and District aforesaid, a bankrupt. Notice is hereby given that on the 7th day of January, A. D. 1935, the said Wade Oscar Russell was duly adjudged bankrupt, and that the first meeting of his creditors will be held at my office in the City of Abilene, Taylor County, Texas, on the 23rd day of January, A. D. 1935, at 10 o'clock in the forenoon, at which time the said creditors may attend, prove their claims, appoint a trustee, examine the bankrupt and transact such other business as may properly come before said meeting.

D. M. OLDHAM, Jr., Referee in Bankruptcy.

CLASSIFIED

AUTO LOANS—Want your car? Let me make a deal for you. Frank Lovett, 208 South Lamar, Eastland. Phone 33.

FOR RENT—Five room house, concrete cellar, chard, plot, small pastures. Kelly, county agent's office.

FOR RENT—Six room house; good location school. See T. A. Johnson, Seaman st.

FOR SALE—Turkey cured tons; copper reasonable. Also hot raising. Sarah Hendrix, 1, Eastland.

ELECTRIC APPLIANCES

Texas Electric Service

LYRIC NOW PLAYING

YOUR EYES, TOO, WILL BRIGHTEN

The dancing gleam of childhood joy... the glitter of tears... the ray of hope... the gleam of mirth



SHIRLEY TEMPLE BRIGHT EYES

Plus: "BABES AT SEA" Cartoon SOUND NEWS

A FOX Picture with JAMES DUNN Produced by Sol M. Wurtzel Directed by David Butler

TRY A WANT AD—IT ALWAYS PAYS!

Announcing the Installation of the Most Modern Hat-Blocking Machine on the Market Today!

THE FOLLOWING SERVICES, NOW AVAILABLE:

The SLICK-UP . . . 50c

For the busy men! The hat will be surface-cleaned with an odorless fluid, completely ironed by the factory method while you wait. A fifteen-minute service supreme.



The THRO-CLEAN

The hat will go through our regular cleaning system, perspiration stains removed, de-odorized and beautifully factory-finished, delivered to your door.



Ladies' Hats SPECIAL!

carefully cleaned, re-styled and "factory finished" just like new.

REBUILT . . . \$1.25

Hat renewal. Thoroughly cleaned and COL-R-BAC applied.

See Our Window Display!

A new and different way to satisfactorily merchandise hat cleaning service at the price you can afford to pay.

A hat-ironing machine reits the tiny miriad of fur as in the factory felting process—enables the hat to stand up twice as long under all weather conditions. We have the only hat-ironing equipment in this city.

MODERN DRY CLEANERS & DYERS

EVERY EMPLOYEE A CRAFTSMAN

EASTLAND

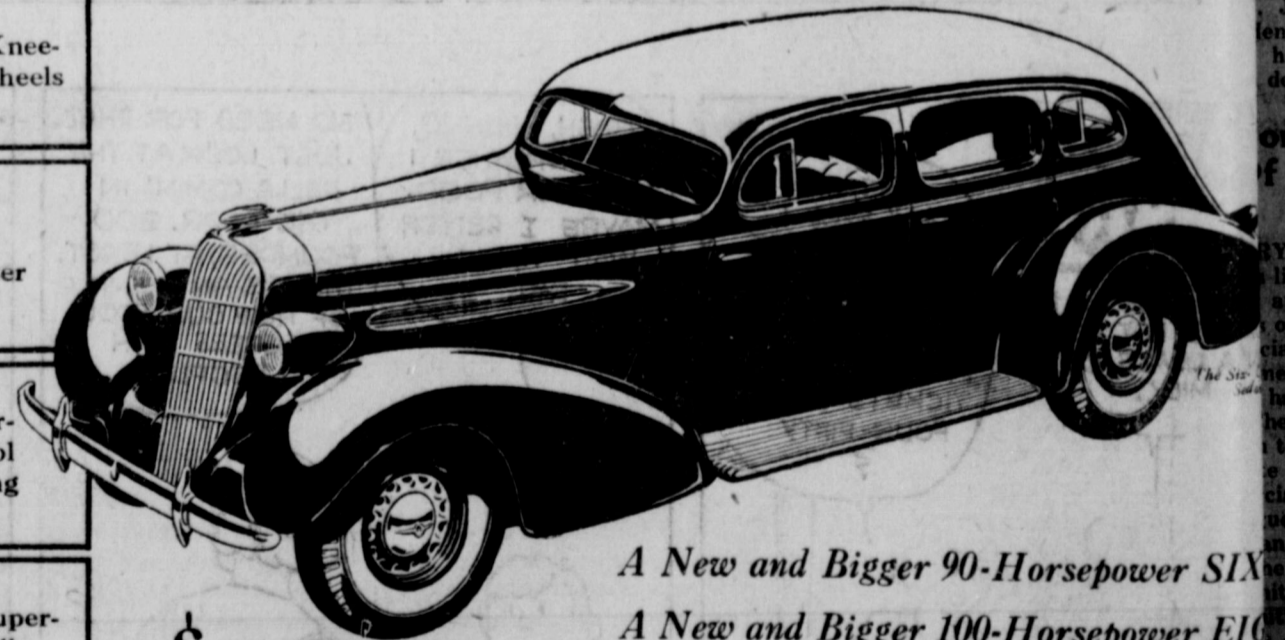
SOUTH SEAMAN STREET

Announcing . . .

"The Car that Has Everything"

NEW OLDSMOBILE

New Streamline Beauty • Longer Wheelbase • More Room
More Comfort • Greater Power • Increased Economy
and Solid-Steel "Turret-Top" Bodies by Fisher



\$675

Sixes \$875 and up . . . Eights \$860 and up, list prices as Lansing, subject to change without notice. Bumpers with guards, spare tire, and rear spring covers built into all cars at the factory at extra cost. Convenience! G.M.A.C. time payment plan. A GENERAL MOTORS VALUE

A New and Bigger 90-Horsepower SIX

A New and Bigger 100-Horsepower EIGHT

EVERYTHING you want in a 1935 car. Every quality essential to motoring satisfaction. Every feature you expect in a complete modern automobile. This new Oldsmobile is certainly the car that has everything! Solid-Steel "Turret-Top" Bodies by Fisher—featuring a seam-

less steel roof. KNEE-ARM WHEELS—built into the car as an integral unit of a body at no extra cost. Big hydraulic brakes. All features shown at the low price is still right where you want it . . . in the low-price field.

THE MOST COMPLETELY SOUND-PROOF CAR EVER BUILT

MUIRHEAD MOTOR COMPANY

Phone 692

Corner Seaman and Olive Streets