



Mavericks Can Get Cinch Tie In 10-A With Win Friday

Eastland's Mavericks can cinch a tie for the District 10-A championship Friday night when they take on Throckmorton in an out-

Moore...

ABOUT Eastland
By Virgil E. Moore

All we have to say about Tuesday's election is this: Apparently no one informed the local bootleggers that it's against the law to sell liquor on election day!

And since this is a day of serious thinking, maybe we should remind all of our readers who have moved, married or died to send in their change of address so that they can receive the Telegram at their new address.

Richard Smith, First Methodist Church pastor, was overheard doing a little quarterbacking from the stands at a recent Maverick game. Finally, when Harvey Lewis called the opposite play from what the minister had selected, Smith admonished, "That's the way it is, they don't listen to me no matter where I talk from."

Maurice Dry, area game warden, brought in one of the largest buck deer you ever hope to see the other day. The buck had been hit by a truck on the bridge across Palo Pinto creek. Leon Bourland dressed the deer out and it netted 106 pounds, with hide and head off. The meat will be sent to the Knights of Pythias Home in Weatherford.

Getting back to the election for a half second, it might be well to note that Allan Shivers, Ralph Yarborough and even Elvis Presley all got write-in votes in the election. We were pleased to note that Eastland County voters approved all of the eight constitutional amendments.

That's all for now. See you in Throckmorton.

Jack Muirhead Motors To Put New 1957 Buicks On Display Friday

Buick today introduced a new line of cars for 1957 packed with more engineering and styling changes than any previous model in Buick history. The new Buick can be seen on display Friday at Jack Muirhead Motor Co.

The new line features all-new roomier bodies, boldly designed in smart, new "dream car" styling, new and more powerful V-8 engines, and a completely new chassis with improved ride and handling.

All of the new cars have been reduced in height. Some models are as much as three and three-eighths inches lower than last year, without any sacrifice in ground clearance. Headroom re-

main the same and legroom has been increased in the four-door hardtops.

"We have packed more engineering and styling improvements in the 1957 model than any previous Buick in history," said Edward T. Ragsdale, general manager of Buick and vice president of General Motors. "The new bodies, with their lower silhouette, plus the new engineering changes that improve ride and handling, make the 1957 line the greatest value we have ever offered the motoring public."

A brand new estate wagon, designed in the same racy, hardtop styling as the other models in the line, is offered in the Century and Special series.

A new 364-cubic inch V-8 engine, with 10-to-1 compression ratio, generates 300 horsepower (Continued on Page 2)

against us," Coach Shelton reflected, and he indicated that he didn't expect Throckmorton to be any different.

Shelton said the Mavs' opponents run from a Split T. Tie (Continued on Page Five)

Game Preserve Barbecue Ticket Sale Is Brisk

The advance sale of tickets for the third semi-annual Sabanna Valley Game Preserve Association barbecue to be held Tuesday at 6 p.m. at the Center Point community house, five miles south of Carbon, has already assured that the affair will top the previous two barbecues in attendance and may very well more than double that of the other two, Berry Greenwood, secretary-treasurer, revealed today.

Greenwood said that in addition to the barbecue there will be a program lasting 1 1/2 hours. It will be presented by a biologist from Texas A&M College. He will show mounted specimens of wild life with special emphasis on hawks and reptiles. He said poisonous and non-poisonous snakes will be shown and talks will be given concerning them and their relationship to game preservation. The speaker will show that hawks are not all harmful to farmers, and he will show how they may distinguish between the good hawks and bad ones.

"It is the aim of the committee to take care of all corners at the barbecue, but people planning to attend can do the committee a favor as well as themselves by getting their tickets early, thereby assuring themselves of being amply provided for," Greenwood said.

Installation Loans Custom Made For Each Customer
EASTLAND NATIONAL BANK
Member F. D. I. C.

Weather FREYSCLAG INSURANCE AGENCY
No. Side Square Phone 178
Presents the Weather Report.

Generally fair Thursday and Friday. Much cooler. Possibly 35 Thursday night.



PRESIDENT DWIGHT D. EISENHOWER

Traditional Poppies Go On Sale Saturday

Legion Auxiliary members will hold their annual poppy sale here Saturday, with Mrs. S. F. Owen serving as chairman.

Mrs. Owen issued the following statement today concerning the sale:

"In the spring of 1919, amid complete devastation, the poppies bloomed in abundance on the bat-

Deadline For Mailing Overseas Packages Nears

Postal patrons this coming Christmas season can speed the processing and assure quicker delivery of their Christmas parcels and cards by availing themselves of various postal services and free postal information pamphlets. Postmaster Marene Johnson announced today. She also revealed Nov. 15 is the last day overseas packages can be mailed with the assurance of delivery by Christmas. The services mentioned by the (Continued on Page Five)

tiefields of France, where so many of our men had fallen in battle, and that a replica of this poppy has become the Memorial Flower of the American Legion and

"That the American Legion was the first national organization to adopt the poppy as its Memorial Flower, having taken this action in Cleveland, Sept. 27-29, 1920.

"That at the time the American Legion Auxiliary adopted the poppy it pledged the profits from the poppy sales 100 per cent to welfare relief for service men and women and their families. Thus fulfilling the true meaning of the poppy—an emblem of faith, faith which is being kept with all who died, through service to the living.

Rolling Stone Is Added To Ike's Landslide Here

Eastland County voted overwhelmingly for President Dwight D. Eisenhower and Vice President Richard Nixon in Tuesday's general election, casting the county in the Republican column for the Presidency for the third time in its history.

It was the first time this county, and the state as well, had ever helped to re-elect a Republican candidate for President. But complete results show that it was no fluke. President Eisenhower and his running mate polled 3580 votes to 2512 for the Democratic candidates, Adlai Stevenson and Estes Kefauver, in Eastland County.

The Republican ticket was never behind in this county. Minutes after the polls closed the Desdemona precinct report was filed, giving Eisenhower a 49 to 35 lead. The President's lead continued to build up steadily, and the last two boxes to report, Gorman and the courthouse box in Eastland, pushed his lead even higher. These two boxes kept the issue at stake until late Wednesday afternoon, however.

COMPLETE RETURNS

You can find complete returns of Tuesday's general election inside today's Telegram. A precinct by precinct report that gives you all the information you desire is on page 7.

Eisenhower carried 15 of the 25 boxes, while Stevenson was ahead in nine. One precinct ended in a tie. In 1952 the President carried 19 of the precincts and Stevenson seven. One box, Tudor, has since been abandoned. In addition to the 15 precincts carried by Eisenhower, the Republicans also were ahead in absentee voting.

The margin of the Republican victory this year was 1068 votes. Eisenhower won 4518 votes to 3866 for Stevenson in 1952, a difference of 1132 votes.

Daniel Easy Winner
As throughout the state, Price Daniel, running on the Democratic ticket, was an easy victor. He received 3544 votes to 620 for write-in candidate W. Lee O'Daniel, the Republican candidate. Democratic candidates won in all of the other races.

All of the nine constitutional amendments received approval in Eastland County. Amendment 1 was the aid to the mis-sentenced amendment, No. 2 was the tax re-allocation amendment, No. 3 college fund, No. 4 teacher retirement, No. 5, veterans land fund, No. 6 oath of office, No. 7 jury trial waiver and No. 8 Denial of bail. The teacher retirement amendment lead the field, receiving 3410 favorable votes and only 603 against.

State and nationwide, the Republicans swept into the White House for another four year term, but failed to gain control in Congress.

Eisenhower, running well ahead

of his party, won 41 of the 48 states, and won Texas' 24 electoral votes with the most smashing victory the Republicans have ever scored in Texas. A total of 457 electoral votes will go to Eisenhower to 74 for Stevenson.

Democrats, however, apparently have maintained majorities in both the House and Senate. Never before in the two-party system has a President failed to carry at least one branch of Congress when he was elected.

It may be interesting to note that 11 of the 25 precincts in the county reversed themselves during Tuesday's election as far as the 1952 election was concerned.

Four of the precincts which had voted for Stevenson in 1952 switched over to Eisenhower, while six of the boxes that went to the GOP in 1952 fell into the Democratic column this time. One box, Okra, which Stevenson won four years ago, ended in a dead heat.

Boxes which went for Stevenson in 1952 but switched this year were Rising Star (8), Ranger (4), Carbon (12), and Cook (24).

Those which switched to Stevenson were Rising Star (7), Alameda (10), Scranton (16), Dothan (19), Romney (20), Pleasant Hill (22) and Sabano (27).

In Eastland It Is Eisenhower 2 To 1

A vote of confidence that no one could question, a two to one margin victory, was handed President Dwight D. Eisenhower here Tuesday when Eastland citizens went to the polls to have their say in the 1956 Presidential election.

President Eisenhower and his running mate, Richard Nixon, carried both of the Eastland boxes easily, piling up a total of 936 to 468. It was the second Republican victory in the city of Eastland in

the town's history. Eastland went GOP in 1952, but the city stuck with the Democrats when Herbert Hoover carried Texas.

Precinct 1, the courthouse box, gave the President a margin of 521 votes to 290 for Adlai Stevenson, the Democratic flag bearer.

Precinct 2, City Hall, went for Ike 480 to 229. There was no doubt that this truly was a "Democrats for Eisenhower" victory, for the Grand Old Party fell on its face here in all of the other races, getting only a handful of votes.

The city's voters didn't turn out in quite the strength that they did four years ago. Then 1692 voters went to the polls, giving Eisenhower 1073 votes and Stevenson 619. This year 1375 voted, handing Eisenhower a majority of 907 to 468 for Stevenson.

Other new officers are Homer Ferguson, City Clerk, president; Check Smith, Gorman, vice president; and W. E. (Dizzy) Dean, Cisco, secretary-treasurer. Special installation ceremonies were conducted at an open meeting by officers of the Moslah Temple Divan in Fort Worth.

The Cross Timber Shrine Club is a social organization composed of members from Eastland, Ranger, Cisco, Sedwick, Olden, Cross Plains, Gorman, Rising Star, Strawn and Moran.

Observers, who before the election had felt the voting could go either way here, credited the war situation and the Soil Bank plan with Eisenhower's victory here. And one observer said, "The recent rains didn't hurt him."

New Pontiac Goes On Display Here Friday At Jack Muirhead Motor Co.

Pontiac introduces its 1957 models Friday with three series, the Star Chief on a 124-inch wheelbase, the Super Chief and Chieftain on 122-inch wheelbase, in 15 new body styles, according to S. E. Knudsen, GM vice president and general manager of Pontiac Motor Division. Featuring exciting Star Flight body styling with "starlite" or "accent" two-toning, luxurious interiors and spectacular performance, the new models will be on display at Jack Muirhead Motors Friday.

"The 1957 Pontiacs are the most exciting new cars we have ever offered," Knudsen said. "From the massive gleaming front to the smart, streamlined fins of

the rear fenders, the 1957 Pontiacs are a triumph of modern design and safety engineering. The body design is new. The overall length has been increased 1.2 inches; however, the lower silhouette and the dramatic styling creates a much longer and sleeker appearance."

The wide, low front end of the 1957 Pontiac is high-lighted and protected by heavy wrap-around bumpers with integrated-type (Continued on Page Five)

Your New Car Financed At Low Bank Rates With Your—
EASTLAND NATIONAL BANK
Member F. D. I. C.



OLDS COMPLETELY RESTYLED—The new Oldsmobile for 1957 goes on display here Friday at Don Pierson Oldsmobile-Cadillac. Embodying the most sweeping model change in 20 years, Oldsmobile's 1957 Starfire 98 Holiday sedan, pictured above, has all new styling from front to rear bumper. The exclusive accent stripe starting at the belt line and sweeping rearwards on the rear fender provides an entirely new color motif.

Don Pierson Motors To Reveal New 1957 Line of Oldsmobiles Friday

Oldsmobile for 1957 which goes on display here Friday at Don Pierson Oldsmobile-Cadillac, has completed the most sweeping model change in the past 20 years, with distinctive styling innovations and mechanical improvements in every one of the 17 body styles in three series of cars.

The body is completely new, creating a fashion-new exterior appearance with deeper bumpers and a redesigned grille. Mechanical and structural advances include a new wider and heavier chassis, new "pivot-plate" front suspension of a design that resists dipping, improved rear suspension, a new 277-h.p. "Rocket" engine, known as the T-400 due to its high torque throughout the driving range, and new 14-inch wheels.

Outstanding styling note is the accent stripe, an Oldsmobile exclusive, that runs more than half the length of the car's side panels between narrow chrome mouldings. This marks the first new style trend in exterior color application since Oldsmobile introduced two-tone color styling in the body in 1954. The accent stripe permits a new two-tone effect, with the car painted one color and the accent stripe in a contrasting color. However, the (Continued on Page Five)

SERVICE
Pamper your car with quality service from our experienced mechanics. All cars—fast, efficient, economical. Call 802 today.
Don Pierson Oldsmobile-Cadillac
Eastland



PONTIAC CUSTOM CATALINA—Longer, lower Star Flight styling of the luxurious 1957 Custom Catalina sedan combines with the powerful new V-8 engine and the more responsive Strato-Flight Hydra-Matic transmission to make the new car the most exciting ever offered by Pontiac. The new Pontiac goes on display Friday here at Jack Muirhead Motors.



BUICK AT MUIRHEADS—The classic design of Buick's new dream car styling for 1957 is exemplified in the Super four-door hardtop with its low silhouette and racy lines. Powered by a 300-horsepower V-8 engine, with 10 to 1 compression ratio, the Super is one of the most agile cars on the highway. The Buick for '57 can be seen Friday at Jack Muirhead Motors in Eastland.

Eastland Telegram

Eastland County Record established in 1931, consolidated August 31, 1951. Chronicle established 1887, Telegram established 1923. Entered as second class matter at the Post Office at Eastland, Texas under the act of Congress of March 3, 1879.

VIRGIL E. MOORE, Editor
TIMES PUBLISHING COMPANY
Published Tri-Weekly—Tuesdays - Thursdays - Sundays
ONOUS DICK and JOE DENNIS, Publishers
FRANCES MOORE, Society Editor

One week by carrier in city15
One month by carrier in city45
One year by mail in County2.95
One year by mail in state3.95
One year by mail out of state5.95

NOTICE TO PUBLIC—Any erroneous reflection upon the character, standing or reputation of any person, firm or corporation which may appear in the columns of this newspaper will be gladly corrected upon being brought to the attention of the publishers.

Classified Ads.

Cards of Thanks charged for at rate of \$2.00 Each

FOR RENT -

FOR RENT: Small furnished house with garage, bills paid, 211 East Valley.
FOR RENT: 4 room house, garage, 209 South Connellee. Call 842 after 5 p.m.
FOR RENT: Furnished apartments. 611 West Plummer.
FOR RENT: Furnished apartment. Phone 9620. Hillside Apartments.
FOR RENT: Newly decorated apartments. Phone 1085-W.
FOR RENT: 5 room house, 709 Halbryan. Contact Ben Hamner.
WANTED TO RENT: 2 bedroom house for the new Safeway manager, in Eastland. Room 210 Petroleum Building.
FOR RENT: Furnished 2 bedroom duplex. 200 E. Valley, Phone 672.
FOR SALE - 10 church pews, \$3.50 each. Can be seen at Olden Baptist Church.
FOR RENT: Large house, \$40. See in the back after 5 p.m. at 107 N. Dixie.

MISC. WANTED -

EMPLOYMENT wanted for young man. Mechanical, construction, or driving vehicle. Call 183.
FOR WATER WELL Drilling see Roy Parker, North Kent Street, or Box 223, Gorman, Tex.
WANTED: 40 head large feeder shoats. Kirksey Locker, Throckmorton, Texas.

NOTICE

HIGH SCHOOL DIPLOMA

New Home Study High School Course enables you to finish High School in your spare time. Write for FREE BULLETIN.

Name _____
Address _____
City _____ State _____

Central High School
2020 Live Oak Street
Dallas, Texas

SEE ME for your personalized cards and other gifts. Greeting Card and Gift Shop. Mrs. C. M. Pogue, Hwy. 80 East.

LOST & FOUND -

STRAYED: three ewe sheep, three lambs, one black goat. Notify Gordon Clark, Route 2, 113-W-1.

LOST: Pair of glasses in court-house. Finder notify Mrs. Emma Kent, Route 5, Cisco.

LOST: Reddish - brown female Pekinese. 401 South Dixie. Phone 601.

FARMS FOR SALE

FOR SALE: 270 acres, ideal stock farm or dairy. Good grass, plenty of water. Good improvements. \$65 acre. J. A. Ferguson, Route 3, Hico.

Jack -

(Continued from Page 1)

in the Roadmaster, Super and Century series, an increase of 45 horsepower over last year. The Special, which also has a 364-cubic inch engine, with 9.5-to-1 compression ratio, has a maximum horsepower rating of 250, compared to 220 last year.

The variable pitch Dynaflo transmission, which has proved such a spectacular success, is continued as standard equipment on the Roadmaster, Super and Century, and optional on the Special.

The new styling presents dramatic new front and rear design, bigger panoramic windshields with a more rakish slant to the pillars, new bumpers both front and rear, and three-piece back windows on the Special, Century and Roadmaster.

One-piece panoramic back windows are standard on Super models and also are optional on the Roadmaster at no extra cost. Newly designed ventilators, new sculptured sweep-spear molding, and full rear wheel cutouts, Buick hallmarks, have been retained on all models.

The rear body pillar on the Roadmaster and Super series is wider and slopes forward from top to bottom, lending a racier appearance to the overall styling. On four-door models the portion of the body pillar above the doorbelt line is included in the door panel. This feature, plus the fact that the entire rear door is located forward of the rear wheel cutout, provides eased access to the rear seat.

The new front end design features a grille with fine vertical bars of die-cast zinc chromed and polished to a high luster. A red, white and blue medallion, with wings extending from either side, is centered in the grille. The medallion is emblazoned with the figures 1-9-5-7, following the custom Buick introduced last year of putting the model year on its cars.

The hood line has been lowered and the fender lines raised, accentuating the long, low silhouette, and also providing better visibility.

Visiting in the home of Mr. and Mrs. James Smith, Cynthia and Kenneth over the week end were her parents, Mr. and Mrs. L. D. Lewis of Cumby and two uncles and two aunts, Mr. and Mrs. E. F. Lewis and Mr. and Mrs. H. T. Lewis all of Wichita Falls. A birthday dinner was prepared Sunday in honor of L. D. Lewis.

CALL 601 FOR CLASSIFIED AD SERVICE

WHY PAY RENT? REAL ESTATE BARGAINS

3 bedroom home, well located, \$4,500.00. Terms.

4 room rock home, large bedroom, large kitchen, sheet-rock, hardwood floors, wall-to-wall floor covering, \$3,785. \$500.00 will handle.

2 bedroom home, plenty of room, 5 extra lots, \$6,700.00. \$2,900 down, payments \$49.00 per mo.

2 bedroom home, corner lot, cistern, good location, \$5,300. \$1,000 will handle and terms.

Lovely 2 bedroom home, extra large kitchen with large cabinet space, large living room. 2 years old, quiet part of town, tile bath, immense living room, gorgeous floors, fenced in yard, newly painted, \$7,000.00. \$1,000 will move you in. Balance easy terms.

2 bedroom, stone veneer, double garage, large lot, paved street, \$5,780.00.

2 bedroom home, Seaman St., lots of fruit trees, fenced in back yard, close to town. \$5,300.00. \$500.00 will move you in. Balance at \$40.00 per mo, with interest.

Nice 2 bedroom home, paved street, lovely back bedroom, with lots of built-ins, large lot, fruit trees, recently redecorated. \$6,000.00, \$1,000 will handle with balance on easy terms.

Lots of other listings on farms and ranches, and property in Olden, Ranger, and Cisco. See us before you decide on anything.

Choice lots for houses all over town.

3 bedroom, hardwood floors, rock veneer, paved street. Extra large lot. \$6,500.00. Terms.

Tri-Cities Real Estate Exchange

100 W. Commerce
Eastland Phone 1076



A&P's abundant array of **FALL FOODS**

...THRIFTILY PRICED FOR SOLID SAVINGS!

CRESTMONT ICE CREAM
Four Reg. Flavors and **TUTTI-FRUTTI**
1/2 Gal. Each **69¢**

- WARWICK CHOCOLATE COVERED **THIN MINTS** 16 oz. Pkg. **39¢**
- WARWICK **CHERRIES** CHOCOLATE COVERED 16-oz. Pkg. **49¢**
- BEANS with PORK, VEGETARIAN or BOSTON STYLE **ANN PAGE BEANS** 16-oz. Can **10¢**
- A&P POPPIN **CORN** 2 lb. bag **29c**
- INSTANT—4-Oz. Jar **SANKA COFFEE** . . . \$ **1 07**
- A&P FANCY QUALITY **PIE PUMPKIN** **19c**
- SELECT QUALITY **SULTANA RICE** 2-lb. Pkg. **25¢**

- A&P FANCY QUALITY **GREEN LIMA BEANS** 2 16-oz. Cans **35¢**
- A&P FANCY QUALITY **GREEN BEANS** FRENCH STYLE 2 16-oz. Cans **35¢**
- SULTANA GOLDEN **WHOLE KERNEL CORN** 16-oz. Can **10¢**
- CAMPFIRE SALAD **MARSHMALLOWS** 2 7-oz. Pkgs. **35¢**
- JIFFY PIE CRUST MIX OR **JIFFY CAKE MIX** YELLOW, SPICE, WHITE OR CHOCOLATE 9-oz. Pkg. **10¢**

Baby Beef or Veal
Home Butchered Milk Fed
LOIN - SMALL T-BONE
or **CLUB**
Pound **59c**

Bourland Market Meat Values

- CHUCK **STEAK OR ROAST** Lb. **39¢**
- FRESH **GROUND MEAT** Lb. **29¢**
- PICNIC **HAMS** 5 to 7 Lb. Avg. Lb. **39¢**

SLICED - MORRELL'S PALACE

- BACON** Lb. **39¢**
- THICK SLICED**—Decker's or Wilson's **BACON** 2 Lbs. **98¢**
- Home Butchered **Calf Liver** lb. **50c**
- 4-Lb. Avg. **Canned Picnics** . . ea. **2.75**
- No. 1 - No Ends **Dry Salt** lb. **35c**

SOAP FLAKES
LUX
Large Pkg. **32¢**

TOILET SOAP
LIFEBUOY
2 Regular Bars **19¢**

TOILET SOAP
LIFEBUOY
2 Bath Bars **27¢**

BLUE DETERGENT
RINSO
Large Size . . . **31¢**

DETERGENT
OXYDOL
Giant Size . . . **75¢**

TOILET SOAP
LUX
3 Regular Bars **25¢**

TOILET SOAP
LUX
2 Bath Bars **25¢**

DISH TOWEL IN EACH PKG.
SILVER DUST
Large Size . . . **32¢**

DETERGENT
BREEZE
Giant Size **75¢**

SHORTENING
SPRY
3-lb. Can **91¢**

LIQUID DETERGENT
LUX
22-Oz. **69¢**

DOG FOOD
DASH
Special Offer 16-Oz. Can . . . **13¢**

Mrs Tucker's
SHORT'N
8 Lb. Can **1.69**

Jewel - Crustine or Mrs. Tuckers
SHORT'N
3 Lb. Ctn. **59c**

Fresh Fruits and Vegetables

- EXTRA FANCY Washington Red Delicious **APPLES** Lb. **19¢**
- EXTRA FANCY Idaho **RED ROMES** Lb. **17¢**
- FLORIDA **ORANGES** 8-Lb. Bag **45¢**
- CRISP FRESH **CARROTS** 2 Lb. Bag **15¢**
- NEW YORK **CAULIFLOWER** Lb. **13¢**
- FLORIDA KENTUCKY WONDER **GREEN BEANS** Lb. **19¢**
- GREEN **CABBAGE** Lb. **5¢**

ORANGE CHIFFON CAKE
JANE PARKER
Special! **43¢**

JANE PARKER **FRUIT CAKE** 1 1/2 lbs. **1.35** 3 lbs. **2.65**

JANE PARKER **BLUEBERRY PIE** ea. **53¢**

JANE PARKER **LEMON COOKIES** 2 11-oz. Pkgs. **49¢**

LIBBY'S FROZEN **ORANGE JUICE** 2 8-oz. Cans **33c**

LIBBY'S FROZEN **GREEN PEAS** 10-oz. Pkg. **21c**

LIBBY'S FROZEN **MIXED VEGETABLES** 10-oz. Pkg. **21c**

LIBBY'S FROZEN **CHOPPED BROCCOLI** 10-oz. Pkg. **21c**

LIBBY'S FROZEN **BABY LIMA BEANS** 10-oz. Pkg. **25c**

DOLE FROZEN **PINEAPPLE JUICE** 2 6-oz. Cans **29c**

DOLE FROZEN **PINEAPPLE CHUNKS** 13 1/2-oz. Can **23c**

NABISCO CRACKERS, 7-oz. box **19c**

NABISCO CRACKERS, 1b. box **25c**

GERBER'S STRAINED FRUITS AND **VEGETABLES** 4 Cans **33¢**

GERBER'S STRAINED OR **CHOPPED MEATS** Can **21c**

BABY CEREALS
(BARLEY, RICE, OATMEAL OR MIXED)
PABLUM Pkg. **19¢**

WESSON OIL Qt. Bl. **63¢**

SNOWDRIFT 3-lb. Can **85¢**

PUREX DRY BLEACH

BEADS O' BLEACH Qt. Pkg. **65¢**

ZIM ZEEB
KRAFT'S
CHEESE WHIZ
16-Oz. Jar **57¢**

ASSORTED PRESERVES 5-oz. Jar **10¢**

PASTEL TOILET TISSUE Zee Pkg. of 4 Rolls **35¢**

NIAGARA **STARCH** 12-Oz. Pkg. **21¢**

UNDERWOOD DEVILED **HAM** 7 1/2-oz. Can **17¢**

(Prices effective through Sat., Nov. 10)
AMERICA'S FINEST FOOD RETAILER SINCE 1889
A&P Food Stores
THE GREAT ATLANTIC & PACIFIC TEA COMPANY

SAFEWAY STORES

Will interview applicants for male and female food clerks and meat wrappers, ages 19 to 35, Tuesday, Nov. 6 through Saturday, Nov. 10—8 a.m. to 6 p.m. Week Days. Saturday 8 to 12.

Room 210 Petroleum Bldg.

Only Two More Days To Register

SALE & SALES



Grand Prize -- 1957 CADILLAC Sedan deVille
AIR-CONDITIONED AND LOADED WITH EQUIPMENT!

The Last of Eight Natural Royal Pastel Mink Stoles
by KOSLOW'S of FORT WORTH

Another 100 Books of S & H Green Stamps 4 WINNERS—
25 BOOKS EACH



BE SURE TO REGISTER

Drawing is open to all adults except employees of Worth Food Mart, their families and our advertising associates.

Prices Good Thurs., Fri., & Sat.

PORK LOIN ROAST

LOIN or RIB END

Lb. **39¢**



LEAN CENTER CUTS

Pork Chops Lb. **59¢**

SMALL LEAN SIDES

Spare Ribs Lb. **39¢**

WORTH QUALITY CALF

CHUCK ROAST Lb. **35¢**

WORTH QUALITY CALF

SIRLOIN STEAKS Lb. **63¢**

WORTH QUALITY CALF

RIB CHOPS Lb. **59¢**

TASTE O' SEA

CATFISH STICKS 8-Oz. **49¢**

WORTH QUALITY CALF

SHORT RIBS Lb. **21¢**

UNDERWOOD'S FROZEN

BARBECUE 1-Lb. **79¢**

SWIFT'S ORIOLE

Sliced Bacon Lb. **43¢**

SNOWDRIFT

SHORTENING

3 Lb. **83¢**

KEN-L-RATION

DOG FOOD

2 1-Lb. Cans **25¢**

SWEET PEAS

ROSEDALE GARDEN SWEET

2 No. 303 Cans **25¢**

Frozen Foods Specials

POUND CAKE SARA LEE — ALL BUTTER	12-Oz. Pkg.	69¢
COFFEE CAKE SARA LEE — ALL BUTTER	14½-Oz. Pkg.	69¢
CHOCOLATE CAKE SARA LEE	18-Oz. Pkg.	79¢
FROZEN-RITE ROLLS	2-Doz. Ct. Pkg.	39¢

TOMATOES RENOWN BRAND No. 303 Can **10¢**

PINEAPPLE DEL MONTE No. 1¼ SLICED Can **19¢**

Pinto Beans 2 Lb. Pkg. **19¢**

Cake Mixes BETTY CROCKER ASSORTED Pkg. **29¢**

Plain Chili GEBHARDT'S No. 300 Can **29¢**

CHILI WITH BEANS GEBHARDT'S No. 300 Can **23¢**

Tomato Juice WESTERN MAID 46-Oz. Can **23¢**



LETTUCE CRISP, FIRM HEADS Lb. **23¢**

CALIFORNIA TOMATOES Ceilo Ctn. **19¢**
 Yellow Rutabaga Firm Green Heads
TURNIPS Lb. **5¢** **CABBAGE** Lb. **4¢**
 California Pascal Maryland Sweet
CELERY Lb. **10¢** **YAMS** Lb. **15¢**
 Fresh California U.S. No. 1 Lg. Colo-RED
DATES Pkg. **19¢** **POTATOES** Lb. **5¢**
GRAPEFRUIT SEEDLESS Bag **49¢**
CRANBERRIES OCEAN SPRAY FRESH Box **25¢**

CUT GREEN BEANS DEL MONTE No. 303 Can	23¢
LIMA BEANS SEASIDE No. 303 Can	12¢
COOKED SPAGHETTI HEINZ 15¼-Oz. Can	16¢
SLICED BEETS DEL MONTE, CLASSED No. 303 Jar	17¢
PIE APPLES WHITE HOUSE No. 2 Can	27¢
CHILI SAUCE DEL MONTE 12-Oz. Jar	27¢
WHIPPED BUTTER DAISY 8-Oz. Pkg.	49¢
MARGARINE PANTRY MAIDE 1-Lb. Pkg.	21¢



"If we get out of this alive, Stupid..."

The Travelers Safety Service

Vivian Jones Recital Reset For Nov. 20

The date for the Benefit Recital to be presented by Vivian Jones, originally set for November 6, has been planned for November 20 at 8 p.m. in the High School auditorium. Mrs. Jones had to postpone the concert because of illness.

Miss Charlotte Vaught, daughter of Mrs. Elizabeth Vaught, will accompany Mrs. Jones at the piano.

Anyone who purchased a ticket for the recital is asked to keep them until November 20.

SOCIAL CALENDAR

Tuesday, November 13

7 p.m.—The Homemakers Class of the First Baptist Church will have a covered dish supper in the home of Mrs. Victor Cornelius, 308 East Main.

7:30 p.m.—Mrs. Hugh Neel will present a program on "Poetry into Music" at the Zeta Pi meeting in the home of Mrs. Norman Guess. Mrs. James Smith will be co-hostess.

7:30 p.m.—The Xi Alpha Zeta chapter of Beta Sigma Phi will meet in the home of Mrs. Neil Hurt, 103 South Hill Crest.

Wednesday, November 14

11:30 to 1:30 — Members of the Methodist Church will sponsor a Turkey Dinner in the Fellowship Hall of the church. Tickets for the dinner are one dollar per plate and the public is invited.

3 p.m.—The Civic League and Garden Club will meet in the Woman's Club to hear a book review by Mrs. L. E. Dudley of Abilene.

Thursday, November 15

3 p.m.—Mrs. Virgil Seaberry, Jr. will be the program leader at the Thursday Afternoon Club meeting in the Woman's Club.

Women's Activities

Mrs. James Horton Shows South American Film To Thursday Club

Mrs. James Horton presented the second of a series of programs on "World Affairs Are Our Affairs" for the Thursday Afternoon Club on November 1. Mrs. Horton's subject was "South American Affairs in Technicolor," a personal photographic tour of persons, places, and scenes. The pictures gave a concise glimpse of South American ways of life and of native beauty spots at principal cities along the eastern coast, across the lake region on the southern tip and back up the west coast to the States. Mrs. Tom Wilson was leader for the afternoon and prefaced her presentation of the speaker with the quotation "Friendship is the only cement that will hold the world together."

Mrs. Frank Sparks, president, presided at the business session, and Mrs. Robert G. Perkins, recording secretary read the minutes and correspondence. The club voted to make a donation toward the remodeling of the YMCA, a recreation center for teen-agers. Mrs. D. L. Kinnaird announced the donation by Mr. and Mrs. D. L. Houle of two books to the library in memory of the late Judge B. W. Patterson and Clyde Karalits of Cisco. Correspondence was read announcing that beginning last Monday, the Arlene Francis television "Home" show will have a brief period devoted to the General Federation of Women's Clubs. The year book chairman announced that the meeting on November 15 will feature a violin recital of international music by Glenna Johnson Hake and Orland Johnson, accompanist. Those present were Mesdames Frank Castleberry, Earl Conner, Cecil Collings, Frank Crowell, Fred Davenport, Harold Durham, Cyrus Frost, Ben Hamner, James Horton, Iral Inzer, Hubert Jones, D. L. Kinnaird, W. P. Leslie, Milburn Long, Frank Lovett, W. A. Martin, B. W. Patterson, Robert Perkins, F. N. Sayre, Virgil Seaberry, Jr., R. E. Sikes, Frank Sparks, Roy Townsend, M. A. Treadwell and Tom Wilson.

Methodists To Sponsor Turkey Dinner Nov. 14

A turkey dinner will be held Wednesday from 11:30 to 1:30 in the Fellowship Hall of the Methodist Church. The affair will be sponsored by the Methodist Church.

Tickets are one dollar per plate and may be purchased from Mrs. Frank Castleberry (phone 289), ticket chairman. The public is cordially invited to come to the hall and enjoy this turkey dinner with all the trimmings.

ATTEND THE CHURCH OF YOUR CHOICE EACH SUNDAY

Presbyterian Women Meet At Church Thursday

The Women's association of the First Presbyterian Church met at the church Thursday morning at 9:30 with Mrs. E. C. Johnston, president, presiding.

The devotional was given by Mrs. Eugene Surface who also read the names from the "Yearbook of Prayer."

The following reports were given from the members who attended classes at the Presbyterial in Eastland November 1: "Christian Education," Mrs. R. A. Cooper; "Fellowship," Mrs. Jack Germany; "Administration," Mrs. Larry Kinard; "National Missions," Mrs. L. W. Hart.

An announcement was made that the annual Prayer Service will be held November 20 at 7:30 p.m. at the church. Guests will be welcomed.

Present for the meeting were Meses. A. L. Fox, Virgil Seaberry, Jr., Eugene Surface, Larry Kinard, L. W. Hart, R. A. Cooper, Tom Wilson, E. C. Johnston and Jack Germany.

VISIT SON, BROTHER

Mr. and Mrs. Homer Smith and Juan Jay spent the week end in Austin visiting their son and brother, Don Smith. They were luncheon, banquet guests, Saturday of Phi-Sigma Kappa fraternity of which Don is a pledge. They attended the Texas University-SMU football game. Hampton Stamey accompanied them on the trip.

TRADE WITH YOUR HOME-TOWN MERCHANTS

**T. L. FAGG
R. L. JONES**
REAL ESTATE
Property Management
Home and Farm Loans

CALL 601 FOR CLASSIFIEDS

COMPLETE BODY-FENDER Repair

WRECKER SERVICE DAY AND NIGHT Ph. 42
Expert Body Work and Painting
Choice of Colors

KING MOTOR CO.
Direct Factory Ford Dealer
NE Corner Square
Phone 42

SPECIAL! 1/4 Carat
Diamond Set ONLY \$97.50
EASY TERMS Beskow Jewelry
Next to Penney's Eastland

Funeral Directors HAMNER FUNERAL HOMES
Ben E. Hamner
Oxygen Equipped - Air Conditioned
Eastland Phone 17 Cisco Phone Hillcrest 2121
AMBULANCE SERVICE ANY WHERE ANY TIME
Nominal Cost Burial Insurance
For The Entire Family

I am interested in the LONE CEDAR COUNTRY CLUB. Please contact me.

Name _____
Street _____
City _____
Phone Number _____
Mail To:
Box 751—Eastland
Box 1637—Cisco
Box 17—Ranger

Your Office Supply Check List

- Ledger Sheets
- Ledger Binder
- Ledger Indexes
- Columnar Sheets
- Columnar Pads
- Journal
- Cash Books
- Day Books
- Sales Books
- Receipt Books
- Inventory Sheets
- Manuscript Covers
- Rulers
- Ring Binders
- Brief Cases
- Storage Binders
- Daters
- Rubber Stamps
- Stamp Pad Ink
- Clip Boards
- Pencil Sharpeners
- Pencils
- Erasers
- Stick Files
- Harp Files
- Steel Card File
- Filing Cabinet
- Filing Cards
- Filing Indexes
- Listo Marking Pencils
- Markwell Dry Pens
- Markwell Staplers
- Bostich Staplers
- Hotchkiss Staplers
- Pencil Lead
- Speedball Ink
- Speedball Drawing Points
- Stencils
- Duplicator Ink
- Correction Fluid
- Type Cleaner
- Memo Paper
- Typewriter Paper
- Esterbrook Pens and Pencils
- Esterbrook Desk Sets
- Esterbrook Renew Points
- Bates Paper Punch
- Thumb Tacks
- Clasp Envelopes
- Desk Blotters
- Waste Baskets
- Liquid Paste
- Typewriter Tables
- Staple Removers
- Moisteners
- Notary Seals
- Gold Seals
- Price Tags
- Rubber Bands
- Paper Clips
- Manila File Folders
- Desk Trays
- Scotch Tape
- Typewriter Ribbons
- Adding Machine Ribbons
- Carbon Paper
- National Cash Register Paper

EASTLAND TELEGRAM OFFICE

Eastland

Phone 601

AS SEEN ON TV
"GET ACQUAINTED"

SALE

ENJOY MORE "HOLD IN" POWER THAN YOU EVER DREAMED POSSIBLE... AND WITH HEAVENLY COMFORT!

NEW **PLAYTEX living GIRDLES** NOW \$3.99
LIGHTWEIGHT
Deluxe Model with non-roll top 4.99 Regularly \$5.95

Phone or mail your order today!

Name _____
Address _____
City _____ Zone _____
We will send the correct size Playtex Girdle to fit your waist and hips. Waist Hips Ques.

<input type="checkbox"/> Pink	<input type="checkbox"/> White LIVING Lightweight	\$3.99		
<input type="checkbox"/> Pink	<input type="checkbox"/> White DELUXE With Non-Roll Top	\$4.99		
<input type="checkbox"/> Pink	<input type="checkbox"/> White DELUXE X Large	\$5.95	\$3.49	\$4.49

For a limited time only, you can buy the Playtex Living Girdle at this low "get acquainted" price because Playtex is sure you will want more!

Prove to yourself that it tucks in your tummy, trims down your hips. Wear it with all the new slim styles. The "hold-in" power secret is in the material—new split-resistant Fabricon, the miracle blend of downy-soft cotton and latex... with hundreds of tiny air holes for cool, cool comfort!

ANDERSON'S
Women's and Children's Fashions

North Side Square

Eastland

Don Pierson -

(Continued from Page 1)

conventional two-tone styling is still available as an optional extra. "More new features and design changes have gone into the 1957 Oldsmobile than any of its predecessors in at least the past two decades. This has made it necessary for Oldsmobile to spend double the amount for the 1957 model change than any previous

year," it was announced by J. F. Wolfram, general manager of Oldsmobile Division and vice president of General Motors.

Four new body styles have been added to the 1957 Oldsmobile line—three Fiesta station wagon models and an economy priced "88" convertible coupe. The division of body styles for 1957 includes seven in the Golden Rocket "88" series, six in the Super "88" series and four in the Starfire "98" series.

The streamlined 1957 Oldsmobile silhouette, more than two inches lower and nearly five inches longer than last year, presents as its most salient styling motif the new accent stripe. The accent stripe is available in eight colors that contrast with the body color. It originates just forward of the dip in the belt line and sweeps downward and then through the rear fender panel to the taillight trim.

Another styling innovation is the twin "Sky-line" heading that originates at the top of the windshield on each side of the roof and sweeps rearward through the struts that divide the rear window into three glass areas and thence across the rear deck almost to its base. The twin strutted rear windows give a distinctive appearance to the rear view. The sculptured rear fenders also forecast a new styling trend, their graceful surfaces helping to accentuate the long rear fender crown.

The Oldsmobile front end styling is entirely new, with a "hi-lo" bumper incorporating massive upper and lower bumper bars for double protection, closely spaced horizontal louvers to direct air into the engine compartment, chrome block letter spelling out the Oldsmobile name across the grille and unique parking lights adapted from Oldsmobile's 1956

"dream car." There is a new hood ornament, rocket fender emblems on each front fender and a "span-a-ranic" windshield that is deeper, wider and contains up to 18 per cent more glass area. The hooded headlamps have a wider visor.

Traditional -

(Continued from Page 1)

In forty states, and that the workers receive pay for each poppy made, the material being furnished free by the Auxiliary.

"That through the American Legion Auxiliary poppy program more than \$3000,000 is paid annually to needy and disabled service men and women for making the poppies.

"That proceeds from the sale of over 25,000,000 poppies made annually under the guidance of the American Legion Auxiliary amount to more than \$2,000,000, every penny of which is devoted to rehabilitation work by both the Legion and Auxiliary, which includes aid to the needy veterans and their families.

"That the public is given an opportunity each year to help the great work of the American Legion and the American Legion Auxiliary, as well as an opportunity to pay tribute to all who die in service, by wearing a poppy on Poppy Day, Nov. 10."

Mavs -

(Continued from Page 1)

said the Mavs would have a slight weight advantage, but added, "They don't have a little ball club though."

The Mav mentor said from his scouting reports, he believed that Throckmorton would play Eastland as a team. "They don't have any individual stars," he asserted. Kickoff time is 8 p.m.

New Pontiac -

(Continued from Page 1)

bumper guards. Large oval parking lamps are set into the lower part of the bumpers. A semi-circular chrome grille and a full width air scoop direct air flow to the car radiator.

Hooded head lamps surmounted by sleek front-fender ornaments are prominent in the front-end styling. Greater vision is achieved by lowering the hood 1.6 inches and increasing the windshield area 75.4 square inches in sedans and other station wagons.

The flair of the rear fender fin houses an integrated tail and back-up lamp and a safety reflector. The rear projection of the oval tail lamp is protected by a projection in the rear bumper which also serves as an exhaust port on cars equipped with dual exhausts.

A missile outline trim of stainless steel sweeps the entire length of the car on each side. The Star Flight styling of the 1957 Pontiac is further accentuated by a wind-split molding in the rear fender. On the Star Chief models this torpedo-shaped wind-split is sheathed in stainless steel. The same material, brushed to a satin finish, is used on the vane wheel discs. A full range of excitingly modern colors is available on the 16 body styles.

The eye catching appeal of the 1957 Pontiac is not limited to exterior styling for the new cars offer the most luxurious color-keyed interiors in Pontiac history. Star Chief series models are upholstered in the finest hand-buffed leather in "dream car" colors of Silver Beige, Kenya Ivory, Cordova Red, Limefizz Green, Sencrest Green and Fontaine Blue. These top grain leathers can also be had in combination with "encore" patterned nylon fabrics.

Super Chief series models feature upholstery of colorful combination in "horizons" patterned nylon faced fabric and grained vinyl coated fabrics. Rich-piled carpeting is standard equipment for the Star Chief and Super Chief series, except in convertibles and station wagons. The economy priced Chieftain series models offer a new height of luxury with interiors of contemporary tweed patterns of nylon faced cloth and vinyl. Sixty-six interior trim combinations are offered in the 1957 line.

Special Service Planned By Vets For Vets Day

A memorial observance will be held here Monday to "honor the memory of those of our citizens who gave their all in the defense of our great country," Pat Murphy chairman, revealed today.

Murphy said the observance would be held from 10 to 11 a.m. at the memorial fountain in the southwest corner of the courthouse square.

Mayor George L. Davenport has proclaimed the hours of 10 to 11 as the time set aside to honor the war dead. Local stores and offices will close during the ceremony.



Gather a Windfall of SAVINGS

VAN CAMP'S
TUNA
No. 1 Flat **19c**



COFFEE Clover Farm Drip or Reg., Lb. Can **89c**

MEADOLAKE

Margarine Lb. **23c**

BETTY CROCKER

Cake Mix All Flavors 24-Oz. Box **29c**

CLOVER FARM

Short'n 3 Lb. Can **79c**

CHUCK TIME

VIENNAS 2 No. 1/4 Cans **19c**

AMERICAN OIL

SARDINES 2 No. 1 Flat **19c**

PREMIUM SALTINE

Crackers 1-Lb. Box **25c**

U. S. NO. 1 IDAHO RUSSETS

POTATOES 10 Lb. Bag **39c**

DELICIOUS

APPLES Lb. **15c**

CENTRAL AMERICAN

BANANAS Lb. **12 1/2c**

FRESH CUT UP

FRYERS Lb. **34c**

GOOCH'S

FRANKS 3 Lbs. **89c**

BACON Ends and Pieces 5 Lb. Box **79c**

Sausage Rath Pure Pork 2 Lb. Bag **75c**

BONELESS

Pork Roast Lb. **43c**

Chuck Roast Good Quality, Lb. **35c**

Club Steak Good Quality, Lb. **49c**

FRESH

Ground Meat Lb. **29c**

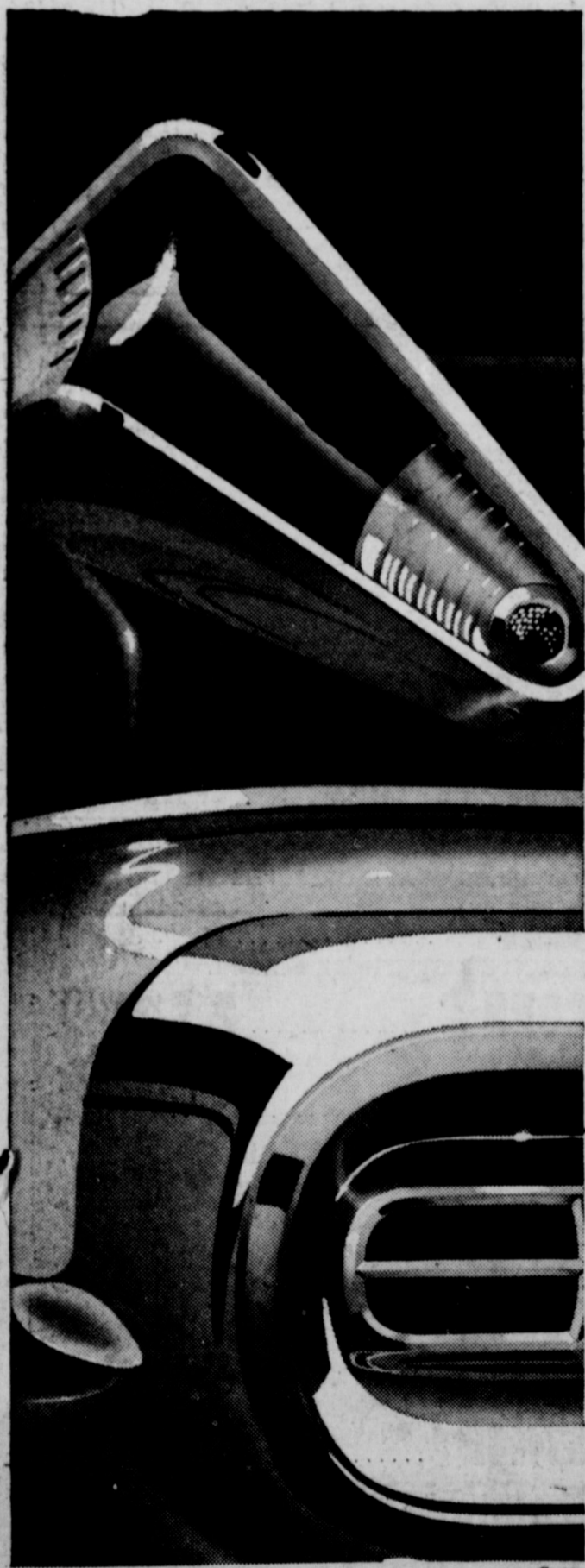
OPEN EVERY NIGHT TIL 8 P.M.—SATURDAY TIL 9 P. M.



400 South Seaman

Phone 31

Outdates every other car on the road!



The Big M for '57 with DREAM-CAR DESIGN

See this straight-out-of-tomorrow car at your Mercury Dealer's

NOVEMBER 12

SPECIAL

WRIGLEY'S **GUM**

3 Pkgs. **10c**

SPECIAL

VEL

Large Box **25c**

SPECIAL

GLENDALE **CATSUP**

14-Oz. Bottle **15c**

SPECIAL

GOLD MEDAL **Flour**

25 Lb. Bag **1.79**

SPECIAL

RED LABEL **KARO**

Pint Bottle **24c**

INGROWN NAIL HURTING YOU? Immediate Relief!
A few drops of OUTGRO® bring blessed relief from irritating pain of ingrown nail. OUTGRO® loosens the skin around the nail, allows the nail to lie flat and thus prevents further growth of the nail. OUTGRO® is available at all drug counters.



CAT-A-PULTING—This poor bird is sitting pretty for pouncing pussy. Palmer M. Pederson, a rancher near Billings, Mont., snapped the picture as the cat leaped, won a \$50 prize in "Popular Photography" Magazine's international picture contest.

NEWS FROM DESDEMONA
By Ann-I McMasters

Mrs. E. H. May returned home Sunday after spending a week in Greenville with her son Earnest Key and children while Mrs. Earnest Key was in Houston with their daughter little Debbie Key who is to undergo heart surgery November 19. She was formally booked for surgery on November 6 but due to a slight cold the time was changed.

Clay Emde was here the latter part of the week to visit with his mother Mrs. Mollie Emde and to attend the funeral of a niece of Mrs. Emde, Mrs. Clara Woodard of Gorman.

Mrs. Mack Keith and girl friend both of Monahans spent the week end here with relatives. Her sister, Mrs. Ruth Belyeu returned to Monahans with them where she will be employed by Furr Food Store.

Eugene Lewis, son of Mr. and Mrs. Jody Lewis returned home Monday after being in the Gorman Hospital a few days following a fall which occurred at school.

Visiting Mr. and Mrs. Doyle Johnson and boys was his sister

Look Who's New

Mr. and Mrs. Bill Cavanaugh of McCombs are the parents of a baby girl born November 4 in the Gorman hospital. She weighed eight pounds and three ounces and has been named Marla June. The Cavanaugh's have one other child, a boy, Gale, age five.

The grandparents are Mr. and Mrs. Marvin Hays of Carbon and Mr. and Mrs. Jess Cavanaugh of Eastland.

Mr. and Mrs. Thomas Lindsley of Foley, Alabama, are the parents of a son born November 6 in Alabama. He has been named Robert Steven.

Thomas is a former resident of Olden and attended Olden schools. The baby's grandparents are Mr. and Mrs. Bob Sellers of Olden.

STRICTLY FRESH

JUNIOR at college sneaks in under the bell, crows with the ball and shoots the bull, leaving Dad to tackle the bill.

A strip-teaser was billed as "Melba, Toast of the Town." Takes crust to pull one like that.

Polliticians should write out their speeches on onion skin



paper, in case they have to cut their words afterward.

Many's the man who's gotten himself into deep water in the office football pool.

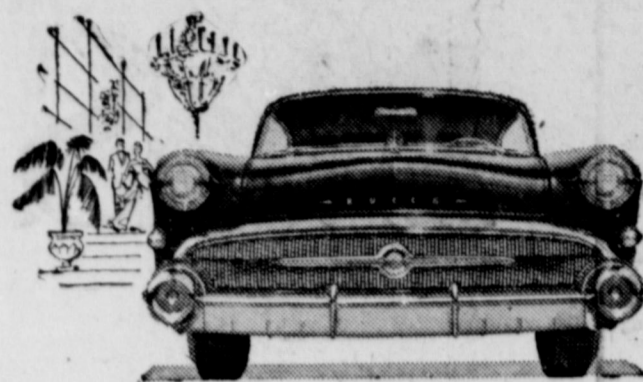
Evelyn Crawford and son, Rogell of Snider. Also Charles Nix of Palo Pinto visited with them.

Mrs. Jessie Clark and two children of Electra visited her mother Mrs. Rouse over the week end.

Visiting Mr. and Mrs. Raymond Lindley were Mr. and Mrs. T. H. Yarbrough of Arlington, his sister,

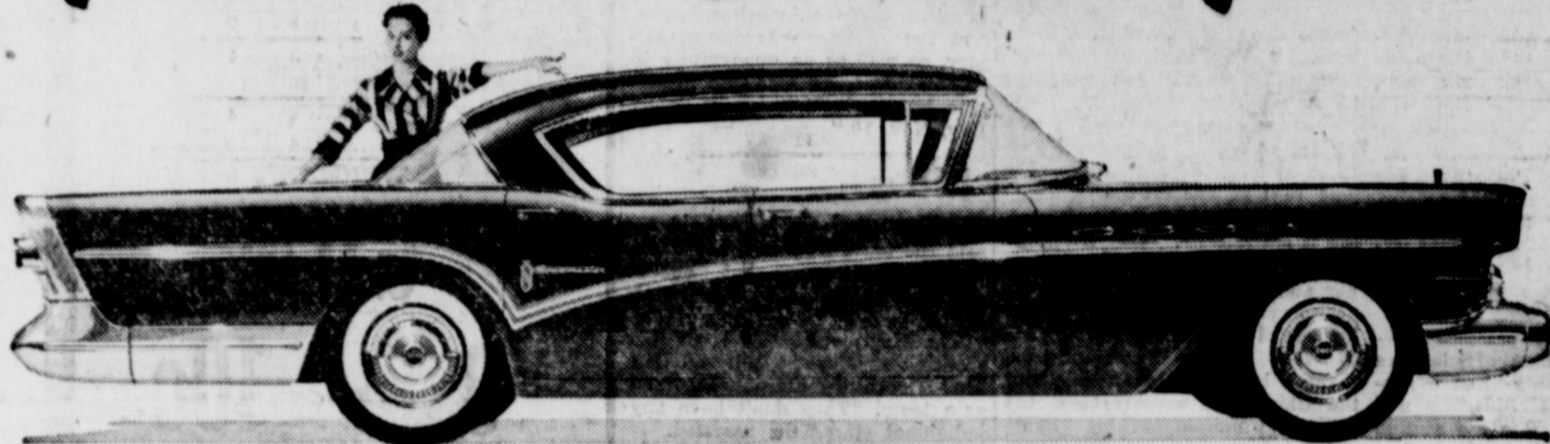
Mr. and Mrs. John Tankersley of Arlington, their friend, Mrs. Lindley, father, Mr. Robins of Steph-

enville and their son, Eddie Lindley of Odessa. Also Mr. and Mrs. Eli Russian of Huntsville.



We got it!
We got it!

Newest Buick Yet



YOU know all that talk you've been hearing about the 1957 new car models being *really* new? Well, in the case of the 1957 Buicks it's true—*gospel* true. We mean these 1957 Buicks are new in the precise and literal sense. We mean new from the ground up, and from gleaming grille to sassy taillights. We mean new lowness, new styling, new bodies, new windshields, new controls, new safety-padded instrument panels, new safety steering wheels, new seating, new fabrics, new colors. We mean new front end, new rear end, new frame, new braking, new steering, new handling, new riding, new roadability—a whole new chassis of greater solidity and safety. We mean V8 engines new from the crankshaft up—engines that deliver an all-time high in horsepower and

compression from their 364-cubic-inch displacement. And we mean, most of all, an advanced new Variable Pitch Dynaflo*—so instant in the starting range—so utterly smooth and so totally full-range in "Drive"—that your need for "Low" is practically eliminated. So come take in these low-silhouette, these boldly beautiful, these *instantly obedient* Buicks for 1957. Then you'll see why you can't blame us for being so fired up about it all—and how catching this excitement can be.



*New Advanced Variable Pitch Dynaflo is the only Dynaflo Buick builds today. It is standard on Roadmaster, Super and Century—optional at modest extra cost on the Special.



SEE "JACK AND THE BEANSTALK" ON NOV. 12th
—A new NBC-TV color spectacular brought to you by your Buick Dealer

WHEN BETTER AUTOMOBILES ARE BUILT BUICK WILL BUILD THEM

Muirhead Motor Co.

301 West Commerce

EASTLAND, TEXAS

Phone 692

WE BUY SCRAP IRON AND METAL
Get Our Prices Before You Sell
WE PAY HIGHEST MARKET PRICES
WE APPRECIATE YOUR BUSINESS
KOEN SALVAGE
Highway 80 West 1315 W. Main

MAYTAG
AUTOMATIC AND CONVENTIONAL
WASHERS - GAS RANGES
"We Service What We Sell"
Hamner Appliance Store
205 S. Lamar Phone 623

For the gift that will charm your friends and family, let us take a portrait of you or your children. Avoid the last minute rush! Phone for your appointment today!

Expert Film Finishing
CANARIS STUDIO
Eastside of Square Phone 46

—We Give Hometown Trading Stamps—

—We Give Hometown Trading Stamps—

Friday - Saturday

ONLY

Pork Roast	Lean Shoulder, Lb.	35c
Hamburger	Fresh Ground, Lb.	25c
SAUSAGE	Country Style, Lb.	25c
Wieners	All Meat	3 Lbs. \$1
HENS	SMALL Size	Lb. 49c
	14 TO 16 LB. AVG.	TURKEYS Lb. 43c

JELLY	20-Oz. Jars	3 1.00
CORN	12-Oz. Cans	2 25c
SUG PEAS	No. 303 Can	15c
SALT	26-Oz. Boxes	3 25c
SHORT'N	3 Lb. Can	85c
SAUCE	No. 300 Cans	2 35c
SYRUP	5 Lb. Jar	59c
MACARONI Or SPAGHETTI		25c
CHILI	No. 2 Can	45c

Made From Heavy Loin And Shoulder
Sausage 2 Lb. Bag 1.05

EARNEST
Frozen Food Center
210 South Lamar Phone 11

Short Ribs Lb. 25c

9380

"STARFIRE 98"

n '57

ENGINE
FUTURE

SEE THIS BEAUTY NOW

erson

CADILLAC

EASTLAND

Phone 802

