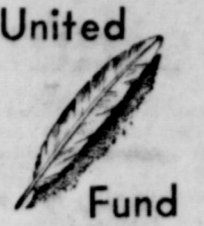




"COVERING EASTLAND COUNTY"



VOLUME TWENTY-SEVEN

EASTLAND TELEGRAM, THURSDAY, NOVEMBER 1, 1956

NUMBER 79

Moore... ABOUT Eastland By Virgil E. Moore

This is the story of Kenneth Renfro, a fellow who none of you probably know, but a guy who was one of our closest friends for 15 years — the 15 years we spent in school.

We both started school together in the early 1930's, and one of the first things that we can remember was a conversation we had as first graders.

Our reason for wanting to be a newspaperman, or journalist as we prefer to be called — stemmed from the fact that our father had been in the profession before his death some years before we entered William B. Travis elementary school in Corsicana. To us, no other way of making a living had any attraction.

United Fund Drive Begins

Eastland's United Fund drive reached the \$1750 mark just 24 hours after it got underway, John Goode, general chairman, revealed this morning.

B TEAMERS TO HOST DUBLIN HERE TONIGHT

Eastland B teamers, sporting a record of four wins against one loss, take on the Dublin B's in a return match here tonight in a game to begin at 7:30 p.m.

Eastland downed Dublin 38-0 when the two teams met earlier this season in Dublin. Since that time the locals have defeated Cross Plains, Albany and Cisco. Their one loss came to Cisco, but later the B-Mavs reversed the setback by taking a 26-0 win over the Lobos.

Service Pamper your car with quality service from our experienced mechanics. All cars—fast, efficient, economical. Call 802 today.

Nine Proposed Amendments Summerized for Eastland Lions

A preview of the eight proposed constitutional amendments which will be voted on by Texas Tuesday, and the ninth which will be decided Nov. 13 was given Eastland Lions this week by Wendell Siebert, Eastland school superintendent, with special emphasis on amendment four.

Siebert, stressing the fact that it "is your duty to study these amendments and then vote," outlined each amendment briefly, and then pounded hard on the need of the fourth amendment, which would give Texas teachers a better retirement program.

PAGE ONE MUST

Friday is the last day to cast an absentee ballot in the general election. City Manager Jimmy Young and wife have returned from Lubbock where Young attended the annual city footballers' convention.

UNITED FUND DRIVE

\$6200

\$5,000
\$4,000
\$3,000
\$2,000
\$1,000

"Give A Days Pay"

Goode said the drive "is off to a wonderful start" but reminded the some 100 volunteer workers that "to have a successful drive and reach the \$2000 goal we must all work extra hard."

A kickoff breakfast Wednesday morning at the Fellowship Hall of the First Methodist Church got the drive underway.

Charles Layton served as master of ceremonies, and reports were heard from various chairmen. Frank Sayre, president of the United Fund, spoke briefly, again outlining the purpose of the United Fund, and mentioning the work of the five cooperating agencies. Sayre praised Goode for a "job well done."

Charles Layton served as master of ceremonies, and reports were heard from various chairmen. Frank Sayre, president of the United Fund, spoke briefly, again outlining the purpose of the United Fund, and mentioning the work of the five cooperating agencies. Sayre praised Goode for a "job well done."

TESCO Quarter Century Club Banquet Saturday

Texas Electric Service Co. employees in the Eastland area will gather in the gymnasium at Eastland High School Saturday night for their annual dinner and party honoring members of the Quarter Century Club.

A charcoal broiled filet mignon dinner with all the trimmings will be served. Following the dinner and program, the orchestra will play for dancing in the new gym. No new members of the Quarter Century Club have been added this year to the group in this area, which includes J. F. Collins, A. Fauth, H. M. Hart, O. L. Hooper, Marjorie van Hooser, W. W. Laney (retired), Earl Woody and Roy Young, Eastland; Raymond Alvarado, G. A. Barker, C. L. Bigby, H. E. Craven, J. L. Kuhn, C. L. Little, A. R. Lowmire, Howard McDonald, C. L. Mitchell, Guy Quinn, H. C. Swindell, O. M. White, Leon plant; Wayne Cato, J. K. Golden, Frank Hightower, Hubert Jones and R. A. Medley, Eastland transmission; R. E. Lee, H. R. Shackelford and J. M. Taylor (retired), Breckenridge; J. L. Funderburgh and L. D. Stewart, DeLeon; S. B. Harbison, Graham; and A. N. Larson, Ranger.

Eastland Given Invitation By Fat Stock Show

Eastland has been given an invitation to save a special day at the Southwestern Exposition and Fat Stock Show. A letter to the Chamber of Commerce from W. R. Watt, president and manager of the Fort Worth exposition, Jan. 25-Feb. 3, states: "The 'days' of the cities add color and contribute much to the success of the Stock Show and we are grateful for your participation in the past.

Youth Center Opening Is To Be Held Friday Night

Open House Planned For All Saturday

A dream will come true here Friday night. That's when the first opening of the YMCA youth center will be held, Steve Potts, "Y" president, revealed today. In announcing the formal opening of the youth center, Potts also disclosed that Mr. and Mrs. Jack Hoffmann had accepted the positions of supervisors for the center. Hoffmann is Junior High School coach here.



RARE CHATTEL, WELL INSURED—A blue-eyed, white python, called the "most beautiful snake in the world," is shown upon its arrival in Chicago, en route from India to the Brookfield, Ill. Zoo. Because of its rarity, special life insurance has been taken out for the snake during its stay in the Windy City. The non-poisonous snake is valued at \$25,000. Holding the eight-foot-long python are: Robert Snedgar, zoo's curator of reptiles; guard Jim Ruzicka, Zoo Director Robert Bean; and guard Walter Buegel.

Band Boosters Plan Sale of Fruit Cakes

Eastland Band Boosters met Tuesday night and made plans for a concerted membership drive. "The drive is underway as of now," Band Master Howard Gill said today. "Membership dues are 50 cents and may be paid to any band member or booster official. Please give your name so a correct record may be kept and proper credits given. The money will go to pay off indebtedness on the new uniforms and all contributions will be gratefully accepted."

Turkey Time... Trouble Time

Comes that question again: What is Thanksgiving? From all indications a lot of Eastland mothers are going to have to fix two Thanksgiving dinners. Here's how things stack up locally. The chamber of commerce has set Nov. 29 as the official holiday. The Post Office and all other Federal offices will be closed the 22nd. Local schools will celebrate the 29th. State colleges will observe the pre-Roosevelt holiday, but many of the other colleges will eat turkey the 22nd.

Sabanna Game Preserve Sets Third Barbecue

Plans for the third semi-annual Sabanna Valley Game Preserve Association barbecue were announced today by Berry Greenwood, secretary-treasurer. The barbecue will be held Nov. 1 at the Center Point community house, five miles south of Carbon, beginning at 6 p.m.

BE SURE—SEE Don Pierson Olds-Cadillac Eastland Quality Care at Volume Prices

Statistics Look Good To Resting Mavs

Eastland's Mavericks, enjoying an open date this Friday after knocking down their two top-rated district opponents in successive weeks, won't be shopping for any polish to shine up the district crown they have yet to win. Coach Carroll Shelton revealed this week. Shelton, obviously pleased with the Mavericks' victories over Wylie and Albany, still wants a

Eastland, fortunately, has a well rounded ball club instead of one or two stars. That statement is backed up by the fact that 10 of the Mavericks have crossed into their opponents back yard this year. Quarterback Harvey Lewis is the leading scorer. He has 49 points to his credit, with eight touchdowns and one extra point. Lewis has scored in all but two affairs, the Dublin and Cross Plains games.

Eastland has completed 25 of 90 passes for eight touchdowns. Their opponents have hit 20 of 52, but have scored only one time in the air, and that was a screen pass play in the final seconds of the game against Albany. Eastland has intercepted 10 passes and had 11 interceptions. The Mavs have recovered 24 of their opponents' fumbles, losing 15 themselves. The Mavs have punted 25 times for an average of just under 22 yards a punt. Their opponents have punted 26 times for slightly under 29 yards a punt.

Eastland Telegram

Eastland County Record established in 1931, consolidated August 31, 1951. Chronicle established 1887, Telegram established 1923. Entered as second class matter at the Post Office at Eastland, Texas under the act of Congress of March 3, 1879.

VIRGIL E. MOORE, Editor
TIMES PUBLISHING COMPANY
Published Tri-Weekly—Tuesdays - Thursdays - Sundays
ONOUS DICK and JOE DENNIS, Publishers
FRANCES MOORE, Society Editor

One week by carrier in city .16
One month by carrier in city .65
One year by mail in County 2.95
One year by mail in state 9.95
One year by mail out of state 17.95

NOTICE TO PUBLIC—Any erroneous reflection upon the character, standing or reputation of any person, firm or corporation which may appear in the columns of this newspaper will be gladly corrected upon being brought to the attention of the publishers.

Classified Ads..

Cards of Thanks charged for at rate of \$2.00 Each

FOR RENT -

FOR RENT: Small furnished house with garage, bills paid. 211 East Valley.

FOR RENT: 4 room house, garage, 209 South Connellee. Call 842 after 5 p.m.

FOR RENT: Furnished apartments. 611 West Plummer.

FOR RENT: Furnished apartment. Phone 9520. Hillside Apartments.

MISC. WANTED -

WANTED FINISH HIGH SCHOOL or grade school at home spare time. Books furnished. Diploma awarded. Start where you left school. Write Columbia School Box 1298 Abilene.

FOR WATER WELL Drilling see Roy Parker, North Kent Street, or Box 223, Gorman, Tex.

WANTED: 40 head large feeder shots. Kirkey Locker, Throckmorton, Texas.

NOTICE

HIGH SCHOOL DIPLOMA

New Home Study High School Course enables you to finish High School in your spare time. Write for FREE BULLETIN.

Name _____
Address _____
City _____ State _____

Central High School
2020 Live Oak Street
Dallas, Texas

REFRIGERATOR TROUBLE? Call us for repairs or service on refrigerators or deep freeze units. Call Chambers Frozen Food Lockers, Phone 125, night 214-J, Gorman.

HELP WANTED

WANTED: Fountain help. Apply in person to Davis Drug.

HELP WANTED: Experienced beauty operator. Phone 379.

LADY TO DO telephone survey work in home. \$1 per hour. Must have straight telephone line. Write qualifications to box z, c-o Eastland Telegram.

REAL ESTATE -

FOR SALE: Five room house. 603 Gilmer. Phone 989.

FOR SALE: House, 409 S. Walnut. Phone 541.

FOR SALE: Five room residence two extra lots. 611 Gilmer, Phone 444.

FARMS FOR SALE

FOR SALE: 270 acres, ideal stock farm or dairy. Good grass, plenty of water. Good improvements. \$65 acre. J. A. Ferguson, Route 3, Hico.

CALL 601 FOR CLASSIFIED AD SERVICE

Overseas Veterans Welcome
Karl and Boyd Tanner
Post No. 4136
VETERANS OF FOREIGN WARS
Meets 2nd and 4th Thursday 8:00 p.m.

WE BUY SCRAP

IRON AND METAL
Get Our Prices Before You Sell
WE PAY HIGHEST MARKET PRICES
WE APPRECIATE YOUR BUSINESS
KOEN SALVAGE
Highway 80 West 1315 W. Main

THE TRUTH IS

DOZEN FOR DEFENSE
THE U.S. MILITARY ACADEMY AT WEST POINT WAS FOUNDED IN 1802 WITH A COURSE ON 12 SUBJECTS - IT OPENED FOR BUSINESS ON JULY 4, 1956!

FOR EASY SERIES "E" SAVINGS BONDS WHICH HELD TO MATURITY (YEARS) MONTHLY PAY AN AVERAGE OF 3% COMPOUNDED SEMIANNUALLY AND WITH THE AUTOMATIC EXTENSION PROVISION, IT WILL GO ON PAYING THAT SAME FINE INTEREST FOR TEN MORE YEARS! SO - SAVE THE EASY WAY!

GOLD IN THEM THAR WAVES!
EXPERIMENT HAS PROVEN THAT IN A CLING WILE OF SEA WATER THERE IS ABOUT \$2,000,000 IN GOLD AND \$450,000 IN SILVER! BUT IT IS ECONOMICALLY UNPROFITABLE TO PROCESS THIS HUGE QUANTITY OF WATER TO EXTRACT ITS RICHES.

FOR A SAFE AND SECURE FUTURE BUY "WESTERN U.S. SAVINGS BONDS!"

Lacasa Lines

Mrs. Pory Pittman of Archer City visited her father, M. I. Lasiter, one day last week.

Portia Truesdale of Breckenridge spent Sunday night with Ann Raney.

In the absence of the pastor, Jackie Taylor, Bill Brock of Fort Worth and pastor of Oak Grove church, preached Sunday morning and night at New Hope Baptist church. Mrs. Brock and daughter were also present. Jackie Taylor is preaching in a revival at Richardson Hills Baptist church, Fort Worth.

The Junior Training Union had a halloween social at the Lacasa club house Friday night. They were few in number but full of halloween spirit. Refreshments consisted of orange punch and halloween cookies.

The ladies of the community met Monday afternoon at the home of Mr. and Mrs. Jack Pockrus to quilt.

Nina Stanford spent Wednesday night with Ginger Langford at Frankell.

FOR SALE: 1955 Chrysler New Yorker, excellent condition. Power steering, power brakes, power windows, air-conditioning. Inquire Eastland National Bank.

FOR SALE: Twelve foot aluminum Arkansas Traveler with new 12 horse motor and trailer, \$335. See at Bud Miller's Station.

FOR SALE: Large upright piano, \$100. Call 374 after 5 p.m.

FOR SALE: 1955 Chrysler New Yorker, excellent condition. Power steering, power brakes, power windows, air-conditioning. Inquire Eastland National Bank.

FOR SALE: 1955 Chrysler New Yorker, excellent condition. Power steering, power brakes, power windows, air-conditioning. Inquire Eastland National Bank.

FOR SALE: 1955 Chrysler New Yorker, excellent condition. Power steering, power brakes, power windows, air-conditioning. Inquire Eastland National Bank.

FOR SALE: 1955 Chrysler New Yorker, excellent condition. Power steering, power brakes, power windows, air-conditioning. Inquire Eastland National Bank.

FOR SALE: 1955 Chrysler New Yorker, excellent condition. Power steering, power brakes, power windows, air-conditioning. Inquire Eastland National Bank.

FOR SALE: 1955 Chrysler New Yorker, excellent condition. Power steering, power brakes, power windows, air-conditioning. Inquire Eastland National Bank.

FOR SALE: 1955 Chrysler New Yorker, excellent condition. Power steering, power brakes, power windows, air-conditioning. Inquire Eastland National Bank.

FOR SALE: 1955 Chrysler New Yorker, excellent condition. Power steering, power brakes, power windows, air-conditioning. Inquire Eastland National Bank.

FOR SALE: 1955 Chrysler New Yorker, excellent condition. Power steering, power brakes, power windows, air-conditioning. Inquire Eastland National Bank.

FOR SALE: 1955 Chrysler New Yorker, excellent condition. Power steering, power brakes, power windows, air-conditioning. Inquire Eastland National Bank.

FOR SALE: 1955 Chrysler New Yorker, excellent condition. Power steering, power brakes, power windows, air-conditioning. Inquire Eastland National Bank.

FOR SALE: 1955 Chrysler New Yorker, excellent condition. Power steering, power brakes, power windows, air-conditioning. Inquire Eastland National Bank.

FOR SALE: 1955 Chrysler New Yorker, excellent condition. Power steering, power brakes, power windows, air-conditioning. Inquire Eastland National Bank.

FOR SALE: 1955 Chrysler New Yorker, excellent condition. Power steering, power brakes, power windows, air-conditioning. Inquire Eastland National Bank.

FOR SALE: 1955 Chrysler New Yorker, excellent condition. Power steering, power brakes, power windows, air-conditioning. Inquire Eastland National Bank.

FOR SALE: 1955 Chrysler New Yorker, excellent condition. Power steering, power brakes, power windows, air-conditioning. Inquire Eastland National Bank.

FOR SALE: 1955 Chrysler New Yorker, excellent condition. Power steering, power brakes, power windows, air-conditioning. Inquire Eastland National Bank.

FOR SALE: 1955 Chrysler New Yorker, excellent condition. Power steering, power brakes, power windows, air-conditioning. Inquire Eastland National Bank.

FOR SALE: 1955 Chrysler New Yorker, excellent condition. Power steering, power brakes, power windows, air-conditioning. Inquire Eastland National Bank.

FOR SALE: 1955 Chrysler New Yorker, excellent condition. Power steering, power brakes, power windows, air-conditioning. Inquire Eastland National Bank.

FOR SALE: 1955 Chrysler New Yorker, excellent condition. Power steering, power brakes, power windows, air-conditioning. Inquire Eastland National Bank.

FOR SALE: 1955 Chrysler New Yorker, excellent condition. Power steering, power brakes, power windows, air-conditioning. Inquire Eastland National Bank.

FOR SALE: 1955 Chrysler New Yorker, excellent condition. Power steering, power brakes, power windows, air-conditioning. Inquire Eastland National Bank.

FOR SALE: 1955 Chrysler New Yorker, excellent condition. Power steering, power brakes, power windows, air-conditioning. Inquire Eastland National Bank.

Sabanna - Nine -

(Continued from Page 1) who don't like beef," Greenwood said.

Following the barbecue a program featuring films, mounted specimens of wild life and talks by experts from Texas A&M College will be held. The program is being secured by County Agent J. M. Cooper. Barbecue tickets are now on sale and may be obtained from any officer of the Association or from Ned Morris and W. E. Walker in Carbon and Mrs. Bill Brown at the Eastland National Bank.

TRADE WITH YOUR HOMETOWN MERCHANTS

SPECIAL THIS WEEK!

POM POM Large bunches \$1.00

Fresh California CARNATIONS \$3.00 dozen

POE FLORAL

"When It's Flowers—Say It With Ours"

609 West Main Phone 96

Moore About -

(Continued from Page 1) slightly off. What his "slogan" actually means is, "We got them before and we can get them again." John assured us he wasn't trying to "get" anyone.

That's all for us today. See you Sunday.

ATTEND CHURCH SUNDAY

MAJESTIC

THE MUSICAL THAT HITS A NEW HIGH IN FUN AND ROMANCE!

BING CROSBY GRACE KELLY FRANK SINATRA

HIGH SOCIETY

CELESTE HOLM - JOHN LUND LOUIS CALHORN - SIDNEY BLACKMER LOUIS ARMSTRONG

SPECIAL!

1/4 Carat

Diamond Set ONLY \$27.50

Beskow Jewelry

EASY TERMS Next to Penney's Eastland

Eastland Given -

(Continued from Page 1) the farm and ranch youth through the Junior Livestock Show.

Everyone is working hard to try to make the '57 show the finest yet. We are looking forward to your acceptance and will give your plans as widespread publicity as possible and all of us will do everything in our power to make your visit enjoyable.

66,000 -

(Continued from Page 1) of about one-half million of the fish that have been put in there this year. The Tuesday batch came from Possum Kingdom.

The Georgia Red Perch is said to be one of the finest eating fish there is, and grows to a size of from 2 to 3 pounds.

RETURNED SATURDAY Mrs. C. W. Pettit returned Saturday from Lawton, Oklahoma where she visited her son and daughter-in-law, S. F. and Mrs. C. W. Pettit and daughters, Debby and Mary Ann.

PECANS Wanted To Buy Your Commercial Shelling Pecans KING PEANUT CO. 335 S. 11th St. - Abilene, Tex.

CALL 601 FOR CLASSIFIED AD SERVICE

PECANS

Wanted To Buy Your Commercial Shelling Pecans KING PEANUT CO. 335 S. 11th St. - Abilene, Tex.

"next to myself I like 'BYD.' best"

FINE PREMIUM COTTON ATHLETIC SHIRTS 69c 3 for 2.05

KNIT BREVS Sizes 28-46 89c

TEE SHIRTS Sizes S, M, L, XL 89c

SANFORIZED SHORTS Sizes 28-44 3 for 2.65

UNCONDITIONALLY GUARANTEED EXCLUSIVE nylon's FOR LONGER WEAR, EASIER LAUNDERING

LABRO-SHRUNK FOR GUARANTEED PERMANENT FIT

SHORTS NYLON STITCHED AT POINTS OF STRAIN

BREVS HAVE DOUBLE THICKNESS SEAT FOR COMFORT IN ACTION

STORE NAME ADDRESS

Please send me the following:

Name _____ Address _____ City _____

Quantity _____ Item _____ Size _____ Price _____

NAME NICK MILLER

THE MAN'S STORE "CHARGE ACCOUNTS INVITED" CISCO

PENNEY'S ALWAYS FIRST QUALITY!

Founder's Day

8 EACH: PLACE SPOONS, PLACE FORKS, SALAD FORKS, HOLLOW HANDLE PLACE KNIVES

1 EACH: SUGAR SHELL PIERCED SERVING SPOON, SERVING SPOON, GOLD MEAT FORK, BUTTER KNIFE

16 TEASPOONS

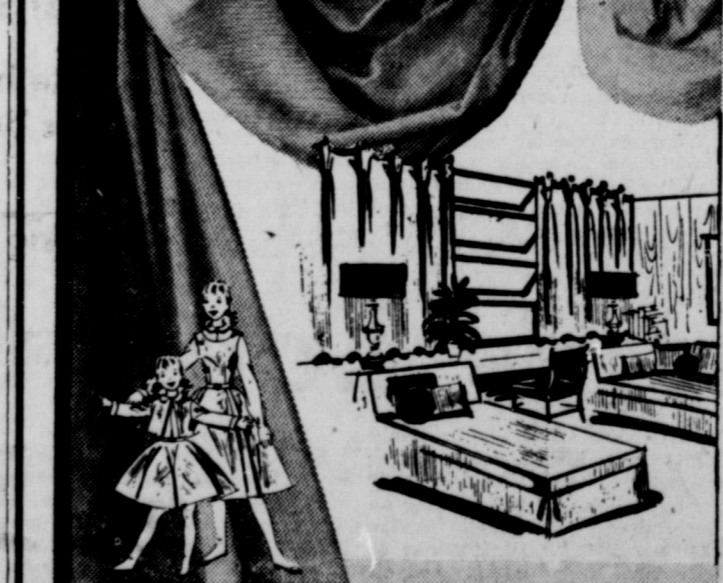
"JUBILEE" 53 Piece Service

By International Silver!

Big-name quality at big savings for Founder's day! Original Rogers AA quality silverplate, Penney's exclusive "Jubilee" pattern.

18⁹⁵

FOUNDER'S DAY SPECIAL!



A Look-twice Penney Price!

PINWALE CORDUROY 77c

Unheard of...velvety jewel bright pinwale corduroy at such a low Penney price! See what wonderful separates you can make, what's better than long-wearing corduroy for children's clothes?

Yard

BIG-NAME QUALITY AT BIG PENNEY SAVINGS

as over 1650 stores salute Mr. J. C. Penney on

Always Timely Gifts...

Packed With Plenty of Value!

packed with plenty of value! not one...but 2 pairs of

SHEER STRETCHABLES!

Sleek stretchable sheers at Penney's special low price! 15-denier, 60-gauge construction gives sheer-ness plus good wear! Compare... you'll discover Penney's quality.

35¢ 2 pairs

1 sizes: midge, norm, long

ALL ACRICAN MACHINE WASHABLE

MILDEW RESISTANT 8⁸⁸

72 x 90" SIZE 3 1/2-Lb. WEIGHT

Perferential Tea Honors Four New Beta Sigma Phi Members

A Preferential Tea honoring the new members of Beta Sigma Phi was held Sunday in the home of Mrs. Hugh Neeld, 1111 South Seaman by Beta Sigma Phi members. Mrs. Arthur Gallagher and Mrs. Jerry Carter were co-hostesses. Honorees for the afternoon were Mmes. A. G. Crosby, Charles Bomar, N. G. Watson, and Ed Lorenz.

The service table was laid with a cutwork cloth and centered with an arrangement of yellow mums. Coffee was served from a silver service with iced cake squares, nuts and mints. Mrs. Carter registered the guests. Yellow mums

were featured on the registration table. Those calling between three and five o'clock were Mmes. Ronald Burton, Jerry Carter, Larry Kinard, Arthur Gallagher, Jack Horn, Marene Johnson, Hugh Neeld, Tom Stamey, Bob Verhetsel, Charles Bomar, Ed Lorenz, Bill Leslie, Fehrman Lund, Bill Walters and Frank Sayre.

CALL 601 FOR CLASSIFIED AD SERVICE

Vivian Jones Will Present Benefit Recital November 6

If the old saying that "The good people do will live after them," then Vivian Jones, outstanding mezzo soprano of Eastland will live long in the memory of Eastland residents, for on November 6th at the Eastland High School auditorium at 8 p.m. she will present a concert, assisted by a choir

from all colored churches as a Christmas cheer benefit for the six colored children who recently lost their parents through tragedy. Miss Charlotte Vaught, daughter of Mrs. Elizabeth Vaught, is also lending her talent as musician to accompany the singer. Admission is a very nominal

fee and every bit of it will go to the fund for the children. The program is as follows:
 Danny Boy by Weatherly;
 My Task by Ashford;
 The Lord's Prayer by Malotte;
 Junior Choir — selected number;
 The Rosary by Nevin;
 The Holy City by Weatherly and Adams;
 Senior Choir — selected numbers — accompanist, Ozona Durrell;
 Going Home by Dvorak;

Trees by Rasback;
 Swing Low Sweet Chariot by Hall Johnson assisted by full choir.
 The public is cordially invited to attend while they are awaiting the election returns.

Hospital News

Patients in the Eastland Memorial Hospital are:
 Gregoris Benevides, medical
 Mrs. Marjorie McAfee, o.b.
 Mrs. Jewel Gholson, accident

Mrs. William O'Neal, surgery
 Mrs. Gene Kumbler and baby girl
 Patients in the Ranger General Hospital from Eastland are:
 Mrs. Henry Harle, medical
 Mrs. J. S. Cox, surgical
 Jimmy Kuyken, medical
 Dismissed were Nancy and Barbara Benton

TRADE WITH YOUR HOMETOWN MERCHANTS

—We Give Hometown Trading Stamps—

KIMBELL'S BEST FLOUR	25 Lb. Bag	1.75
KIMBELL'S OLEO	Lb.	23 ^c
ALL BRANDS BISCUITS	2 Cans	25 ^c
KIMBELL'S POP CORN	Lb. Cello Bag	19 ^c
PASCAL CELERY	Stalk	15 ^c
FIRM GREEN CABBAGE	Lb.	4 ^c
TEXAS ORANGES	5 Lb. Bag	39 ^c
YAMS	Lb.	10 ^c
YELLOW SQUASH	2 Lbs.	15 ^c

Friday - Saturday ONLY

Seven Roast	Choice. Lb.	32 ^c
SAUSAGE	Country Style. Lb.	25 ^c
Hamburger	Fresh Ground. Lb.	25 ^c
PORK ROAST	Lean Shoulder. Lb.	35 ^c
CLUB STEAK	Lb.	49 ^c

—We Give Hometown Trading Stamps—

DEL MONTE FRUIT COCKTAIL	No. 300 Can	25 ^c
KOUNTY KIST WHOLE KERNEL CORN	2 12-Oz. Cans	25 ^c
DIAMOND BRAND TOMATOES	2 No. 303 Cans	25 ^c
KIMBELL'S PIE CHERRIES	No. 303 Can	23 ^c
SUNNY HILLS CATSUP	Bottle	17 ^c
PINTO BEANS	2 Lb. Cello	19 ^c
JELLO All Flavors	3 Pkgs.	25 ^c
KIMBELL'S BEST SHORTENING	3 Lb. Ctn.	73 ^c
VEL	Large Box	29 ^c

SHORT RIBS	Lb.	25 ^c
------------	-----	-----------------

EARNEST
 Frozen Food Center
 210 South Lamar Phone 11

BRICK CHILI HOME Made	Lb.	49 ^c
CHEESE Red Rhine Wisconsin	Lb.	55 ^c



SEVEN SOLID REASONS WHY TEXANS SHOULD SUPPORT EISENHOWER

1. He ended the useless war in Korea and has kept America out of war.
2. He has given this country an effective foreign policy, backed up by a powerful defense force at less cost. He does not believe in a policy of weakness.
3. He achieved the conversion from war to peace with the greatest prosperity the American people have ever known.
4. He has kept his promise to the people of Texas by restoring to us our tidelands.
5. He replaced crook-and-crony government by restoring morality, honesty, integrity and saneness, to our national government.
6. He stopped the trend toward socialism by turning to the initiative and ability of the American people rather than government regimentation.
7. He has cut government spending and waste, thus bringing about a cut in taxes.

Vote for IKE

TEXAS DEMOCRATS FOR EISENHOWER

Political Advertising Paid for by Eastland County Committee.

Mrs. Murrell Is Hostess To Civic League Board

Mrs. Arthur Murrell was hostess to members of the Executive Board of the Civic League and Garden Club Friday in her home, 401 Oak Lawn.

The group discussed raising funds for the year and it was decided to have a Silver Tea at the club's regular meeting December 12. Mrs. Frank Sparks will be hostess for the tea assisted by Meses. W. E. Cheaney, Clyde Grison and Virgil Seaberry.

New citizens of Eastland and surrounding communities are urged to call Mrs. Frank Castleberry (289), membership chairman, for club year books and the books will be brought to them.

Dues for the entire year are one dollar, out of town memberships, one dollar and inactive memberships are two dollars a year.

All members of the board were present at the meeting. They were Meses. Horace Horton, Frank Castleberry, E. W. Brewer, Jack Frost, Milburn Long, Sidney Seale, W. F. Davenport, Herman Hassell and the hostess.

Rebecca Graham Hosts Double Seven Club

Rebecca Graham was hostess to the Double Seven Club recently in the home of her parents, Mr. and Mrs. E. L. Graham, 605 South Green.

Following a short business session, at which time the group discussed raising money, refreshments of candy and Cokes were served.

Those attending were Sandy Taylor, Jannie Morton, Pat Fulen, Phyllis Phillips, Jamie Stamey, Cora Mendietta, Dixie Durham, Jackie Baggett, Janie Arther, Linnett Capers, Rosemary Jones and the hostess, Rebecca Graham.

SOCIAL CALENDAR

Thursday, November 1
3 p.m. — "The South American Affairs in Technicolor" will be the theme of the Thursday Afternoon Club meeting in the Woman's Club, at which time a film will be shown by Mrs. James Horton.

7 p.m. — The Gleaners Class of the First Baptist Church will meet for a social in the home of Mrs. Johnson Smith, 1411 West Commerce.

Friday, November 2
The Hospital Auxiliary will hold its annual Thrift Sale in the Pullman building on the south side of the square. The sale will last through Saturday.

6:30 p.m. — Members of the Zeta Pi and Xi Alpha Zeta chapters of Beta Sigma Phi will hold their Pledge Ritual and Banquet in the roof garden of the Connellee Hotel.

Saturday, November 3
10 a.m. — Mrs. Gerry Horton will tell stories at the Saturday Story Hour in the Woman's Club. All children ages three through the fifth grade are invited to attend.

Monday, November 5
7:30 p.m. — Las Leales Club will meet in the Woman's Club for a program entitled "Papa Married a Morman" presented by Mrs. Wayne Caton.

Tuesday, November 6
8 p.m. — The First Baptist Church (colored) will sponsor a Benefit Recital in the Eastland High School auditorium.

Mrs. Horton To Tell Stories Saturday At 10

Mrs. Gerry Horton will be story teller Saturday at the monthly Saturday Story Hour at 10 a.m. in the Woman's Club.

Mrs. Horton has planned a very interesting program and invites all children between the ages of three years and the fifth grade to attend.

The Thursday Afternoon Club sponsors the hour.

Local Women Go To TCU Luncheon

Members of Alpha Delta Pi sorority at TCU entertained guests, and parents of members and pledges with a luncheon Saturday, at the Western Hills in Fort Worth, as their welcome for "Parents Day" activities at Texas Christian University.

Jeanette Caton had as her guests her mother, Mrs. Wayne Caton and a friend Mrs. Eldress Gattis both from Eastland.

ATTEND THE CHURCH OF YOUR CHOICE EACH SUNDAY

Mrs. Huckabay Speaks At CWF Meeting Monday

Mrs. L. E. Huckabay gave a very interesting and informative talk based on the ideas presented at the District Convention to members of the Christian Women's Fellowship Monday in the church annex. The convention was held at Lake Brownwood on October 28. A humorous poem relating the laymen's general view of a minister, written by a minister and given at the convention, was the highlight of Mrs. Huckabay's talk. Mrs. Roy Turner was in charge of the worship service which followed the program.

Mrs. Lon Horn, vice president, presided during the business session. Reports were heard from standing committees. Mrs. Bill Collings and Mrs. L. E. Huckabay were appointed to act as chairmen to head clean up committees for kitchen scrubbing of the church's annex. Monetary offerings from groups one, two and three were accepted by the president to aid in financing the CWF's annual expenses. Plans were discussed for the church's Thanksgiving Fellowship Supper.

Group one of the CWF served delicious pumpkin pie topped with whipped cream and coffee during the social hour. Those present were Meses. T. A. Bendy, Margaret East, Millie Brittain, J. W. Watson, T. L. Cooper, B. H. Clifton, N. L. Smithan, Christine Beskow, Eugene Day, Dave Fiensy, L. C. McNatt, Neil Day, Henry Ferrell, Carl Garrett, L. E. Huckabay, R. L. Carpenter, Curtis Young, Bill Collings, Roy Turner, Lon Horn and Misses Sally Day and Mattie Miller.

Look Who's New

S-fc and Mrs. C. W. Pettit of Lawton, Oklahoma, formerly of Eastland, are the parents of a daughter, Mary Ann, born October 3 in Lawton. She has one sister, Debby, age seven. Her grandparents are Mrs. C. W. Pettit, 204 West Plummer and Mr. and Mrs. G. W. Rollins, 1110 South Seaman.

Mr. and Mrs. Charles Hollis of Odessa are the parents of an eight pound, three ounce daughter, born October 27 in an Odessa hospital. The grandparents are Mr. and Mrs. L. W. Nabors of Odessa and Mr. Hollis of Hot Springs, Arkansas. She is the great-granddaughter of the late Mr. L. R. Nabors of Eastland. Mrs. Hollis is the former Dorothy Jean Nabors of Eastland and they have two other children, Dianne and Charles.

David Eugene Kimler is the 6 pound 14 ounce son of Rev. and Mrs. Gene Kimler of Breckenridge, born October 30 at 8 p.m. in the Eastland Memorial Hospital. Grandparents are Mr. and Mrs. Arlie Hitt of Palestine and Mr. and Mrs. E. B. Kimler of Pasadena. Rev. Kimler is pastor of the Calvary Baptist Church in Breckenridge.

NEWS FROM DESDEMONA

Mr. and Mrs. Delmer Loyd Varner and family of Ft. Worth visited his parents Mr. and Mrs. Chess Varner this weekend.

Mr. and Mrs. Whit Richard of Breckenridge visited relatives and friends here over the weekend.

Mr. and Mrs. James Riggs of Ft. Worth visited their parents Mr. and Mrs. Ed Riggs and Mr. and Mrs. Feri Lewis this weekend.

Mr. and Mrs. Morris Nance and children of Midland visited friends and relatives here this weekend.

Leroy Nabors son of Mrs. Doris Nabors visited here with his mother, sister and brother.

Lendon Shipman of Ft. Worth and C. M. Pinkerton of Dallas spent this weekend with Mr. and Mrs. R. L. Sharp and ate dinner with Mr. and Mrs. J. D. McMaster Sunday.

Mr. and Mrs. H. T. Lane attended funeral services at Mingo Monday for Alton Wayne Foster, 19, who died in a car wreck Saturday. He was a cousin of Mr. Lane.

YOU'LL REALLY LIKE A&P QUALITY...

You Can Count On A&P VALUES



MELLORINE ASSORTED FLAVORS FROZEN DESSERT SPECIALI 1/2-Gal. 49¢ Ctn.

SHORTENING CRUSTENE SPECIALI 3 lb. 59¢ Ctn.

FACIAL TISSUE SPECIALI ANGEL SOFT 2 Pkgs. of 400 39¢

SALAD DRESSING ANN PAGE SPECIALI 43¢

ANN PAGE BEANS WITH PORK VEGETARIAN BOSTON 16-oz. Can 10¢

KING ARTHUR & HIS KNIGHTS BOOK
Windermere Readers Ea. 99¢

BLUE DETERGENT CHEER
Giant Size 73¢

LIQUID DETERGENT JOY
Giant Size 69¢

PINK TOILET SOAP CAMAY
3 Reg. Bars 25¢

PINK TOILET SOAP CAMAY
2 Bath Bars 25¢

CLEANSER SPIC & SPAN
16-oz. Pkg. 27¢

ALL PURPOSE SHORTENING CRISCO
3-lb. Can 91¢

GOLDEN SHORTENING FLUFFO
3-lb. Can 91¢

DETERGENT DASH
25-oz. Pkg. 39¢

DETERGENT CASCADE
20-oz. Pkg. 43¢

GREEN GIANT PEAS
16-Oz. Can 21¢

HY-POWER JUMBO TAMALES
28-Oz. Cans 1.00

IDEAL DOG FOOD
16-oz. Cans 27¢

KARO CORN SYRUP (Red Label)
16-oz. Btl. 25¢

MAZOLA OIL
Qt. Btl. 65¢

A & P WHOLE KERNEL Corn
303 Can ... 15¢

IONA Tomatoes
303 Can 2 for 25¢

SUNNYFIELD Flour
10-Lb. Bag 71¢

NORTHERN Tissue
3 for 25¢

WASHINGTON RED DELICIOUS APPLES Lb. 19¢

FIRM HEAD GREEN CABBAGE Lb. 3¢

CELLO CARROTS Lb. Bag 10¢

TURNIPS and TOPS Bunch 10¢

Canadian Rutabagas Lb. 5¢

Hearts Celery Cellophane Bag 25¢

APPLE PIE
JANE PARKER SPECIAL Each 43¢

GOLD POUND CAKE JANE PARKER Each 25¢

LA CHOY CHINESE BEEF DINNER Pkg 79¢

LA CHOY CHOW MEIN NOODLES 16-oz. Can 17¢

ZEE TOILET TISSUE 4 Rolls in Pkg. 35¢

ZEE PAPER NAPKINS 2 Pkgs. of 80 27¢

A&P PUMPKIN No. 2 1/2 Can 19¢

Hi-C Orangeade 21¢

Apple Jelly Ann Page, 34-oz. glass 21¢

Tomato Ketchup 21¢

Steak Sauce 31¢

India Relish 21¢

Spaghetti French American 2 for 21¢

Chili Sauce 31¢

Syrup Brer Rabbit Blue Label, 12-oz. Btl. 23¢

Grahams Nabisco Chocolate, 5 1/2-oz. Pkg. 21¢

Crackers Nabisco Golden Oyster, 16-oz. Pkg. 25¢

Prices effective through Nov. 3
AMERICA'S FAVORITE FOOD RETAILER SINCE 1925

A&P Super Markets
THE GREAT ATLANTIC & PACIFIC TEA COMPANY

DETERGENT ALL 1/4-oz. Pkg. 39¢

BROOKS CATSUP 12-Oz. Btl. 21¢

KRA-T OIL 7 1/2 Btl. 33¢

AUNT JEMIMA MEAL 5 Lb. Sack 37¢

OUR WINTERPROOF SERVICE
leaves **WEATHER WORRIES** BEHIND

EARLY TIRE SERVICE
302 W. Main Eastland
PHONE 208

CARPETS By LEE'S
COMPLETE CARPET SERVICE
Smoothedge Installation
Berlout Moth Proofing Service
RAYON AVISCO - WOOL - COTTON

Ranger Furniture Exchange
"BRASHIER'S" RANGER Phone 242
123 N. Rusk

Let O-K True Your Tires
For a Smooth Ride that Will Save Money

- ★ Truing means more riding pleasure from your car and many more miles of travel from your tires. Out of round tires cause excess wear, car vibration.
- ★ Balancing your wheels gives you lots of additional tire mileage, smoother ride, easier driving.
- ★ Truing and balancing \$2.00 per wheel.

O-K RUBBER WELDERS
IRA DAWSON, Prop.
Tire Repairing and Recapping
140 E. 8th St. CISCO Phone HI 2-9980

MAKE YOUR VOTE COUNT MOST
It's legal to SCRATCH YOUR BALLOT

Strike Out DEMOCRATIC PARTY
For President and Vice President
Stevenson
Kefauver

Check REPUBLICAN PARTY
For President and Vice President
Eisenhower
Nixon

Write in WRITE-IN
For Governor
W. Lee O'Daniel

Your Vote for IKE and PAPPY..... is a Vote for GOOD GOVERNMENT!
(Political Adv. Paid For by W. Lee O'Daniel)

Hamburger Feast Honors Seven Year Old Steve

Steve Lund was honored Friday with a hamburger supper on his seventh birthday in the home of his parents, Dr. and Mrs. F. H. Lund, 613 South Seaman. Games were played and pictures were taken throughout the party. Hamburgers, potato chips, Cokes, western designed cake and ice cream were served to Steve's classmates who attended. They were Eileen Smith, Donna Beth Hart, Jeannie Freyschlag, Andrea Rhodes, Donna Horton, Darlene Lovelace, John Earl Goode, David Reese, Gary Upchurch, Ernest Gill, the honoree and his brother, Craig Lund.

VISITING DAUGHTER

Mr. and Mrs. G. W. Rollins are in Lawton, Oklahoma visiting their daughter and son-in-law, S. C. and Mrs. C. W. Pettit, and their new granddaughter, born October 3, and another granddaughter, Debby Pettit.

Musical Program Is Heard At E.G.B.D.F. Music Club

Miss Julie Frost took charge as new president of the EGBDF Music Club Saturday afternoon at a meeting in the home of her parents, Mr. and Mrs. Billy Frost, 402 South Dixie. Assisting Julie and her mother as co-hostesses were Mrs. Ronald Koch and daughter, Sue.

After a short business session conducted by Mrs. F. L. Drago, teacher and counselor, Julie assumed duties as new president. Other officers entering office were Mike Siebert, vice president, Shirley Smith, recording secretary, Nora Jean Jordan, corresponding secretary, Sue Koch, treasurer, Weldon Broussard, critic and Kimberly Hailey, historian.

Five persons were elected to membership in the club. They were Danye Sherman, Marsha White, Layne Gregory, Janet Kimbler and Judy Phillips.

The program for the afternoon, under the leadership of Mike Siebert, began with all members repeating the Junior Pledge and

Collect. Shirley Smith, pianist, accompanied the group in singing "America The Beautiful," followed by Sharon Sayre reading the twenty-fourth Psalm.

The story of the hymn "For the Beauty of the Earth" was told by Julie Frost after which she accompanied the group in singing the hymn. Several of the members played piano solos. They were "Tiny Tigers" by Fletcher, played by Mike Siebert; "Streamline" by Jennifer Pryor; "Leap Frog" by Burton, presented by Cheryl Brown; "In the Highlands of Scotland" by Heller, played by Nora Jean Jordan and Sharon Sayre presented a hymn "Jesus Lover of My Soul." Shirley Smith's solo was from Somatina in C Major "Rondo" — movement by Mozart.

To conclude the program, Shirley Smith told the hymn story of "O Worship the King" followed by Sue Koch accompanying the members in singing the hymn.

Fourteen of the club's sixteen members were present and one visitor, Connie Koch.

Mrs. Frost and co-hostesses served refreshments of fruit punch, cup cakes and candy at the social hour following the adjournment of the meeting. Decorations throughout the house were of a Halloween motif.

The group will meet again in December.

Craig Lund Celebrates His Third Birthday

Eleven children were at the Dr. and Mrs. F. H. Lund home Monday to help Craig Lund celebrate his third birthday.

The children had a very enjoyable time playing on the gym set in the Lund back yard and with other toys. Favors were hats and horns.

After the honoree had received and opened his gifts, a white birthday cake, topped with a cowboy, cactus, guns and three candies, was served with ice cream and pink lemonade.

Attending the party were Susan and Janet Guess, Trippy and Ricky Moore, Cynthia and Kenneth Smith, Alan Leslie, Jackie Pruitt, Darlene and Clint Lovelace, Krista Cole and Mmes. Charles Lovelace, Homer Cole, Harley Pruitt, Bill Leslie, James Smith, Virgil Moore and Norman Guess.

CLOVER FARM STORES

GIGANTIC AUTUMN FESTIVAL

2ND BIG WEEK

VALUES

CLOVER FARM STORES

COFFEE Clover Farm Drip or Reg., Lb. Can **89c**

DASH DOG FOOD

2 No. 300 Tall Cans **25c**

AUTO BODYS AND LIGHT SHEET SCRAP FOR BAILING PURPOSES \$20.00 per ton

IRON AND STEEL SCRAP \$25.00 - \$35.00 per ton

OIL FIELD CABLE - \$25.00 per ton

NON-FERROUS METALS

Radiators — Batteries — Lead — Babbit
Copper Wire — Brass — Aluminum — Zink

EASTLAND IRON AND METAL CO.

Phone 270 Owner, H. Pullman East Main St.

SPECIAL MORTON FRUIT PIES

8-Inch 39c
1 1/2 Pound

SPECIAL VEL or SURF

Large Box 25c

SPECIAL SCRATCH TABLET

25c Size 10c

SPECIAL GOLD MEDAL Flour

25 Lbs. Bag 1.79

SPECIAL CLOVER FARM SALT

26-Oz. Pkg. 9c

CLOVER FARM

Short'n 3 Lb. Can **79c**

MEADOLAKE Margarine Lb. **23c**

LOOSE LEAF Note Paper 25c Size **19c**

CONCHO Pork & Beans No. 300 Tall **10c**

SUNSHINE KRISPY Crackers 1-Lb. Box **25c**

BETTY CROCKER Cake Mix All Flavors 24-Oz. Box **29c**

NORTHERN Napkins 2 80 Count **27c**

OLD DUTCH Cleanser Reg. Can **10c**

U. S. NO. 1 IDAHO RUSSET POTATOES 10 Lb. Bag **39c**

CENTRAL AMERICAN BANANAS Lb. **12 1/2c**

GOOCH'S BACON Thick Sliced 2 Lbs. **89c**

Chuck Roast Good Quality, Lb. **39c**

Club Steak Good Quality, Lb. **49c**

GOOCH'S FRANKS All Meat, Lb. **39c**

BEEF SHORT RIBS Lb. **23c**

HOME MADE PURE PORK Sausage Lb. **29c**

SMOKED PICNICS Lb. **29c**

Fryers Fresh Cut Up, Lb. **33c**

Now Available In

RANGER EASTLAND AND CISCO

Boswell's Milk and OTHER FINE DAIRY PRODUCTS

... delivered to your favorite food store in mechanically refrigerated trucks ... always fresh, pure and safe.

try **BOSWELL'S MILK** "It's Good All The Time"

GET BOSWELL DAIRY PRODUCTS AT THESE EASTLAND FOOD STORES

Howell & Rogers Gro. Kinsey Grocery **Lanier Grocery Worth Food Mart**

OPEN EVERY NIGHT TIL 8 P.M.—SATURDAY TIL 9 P.M.

CLOVER FARM STORES

400 South Seaman Phone 31

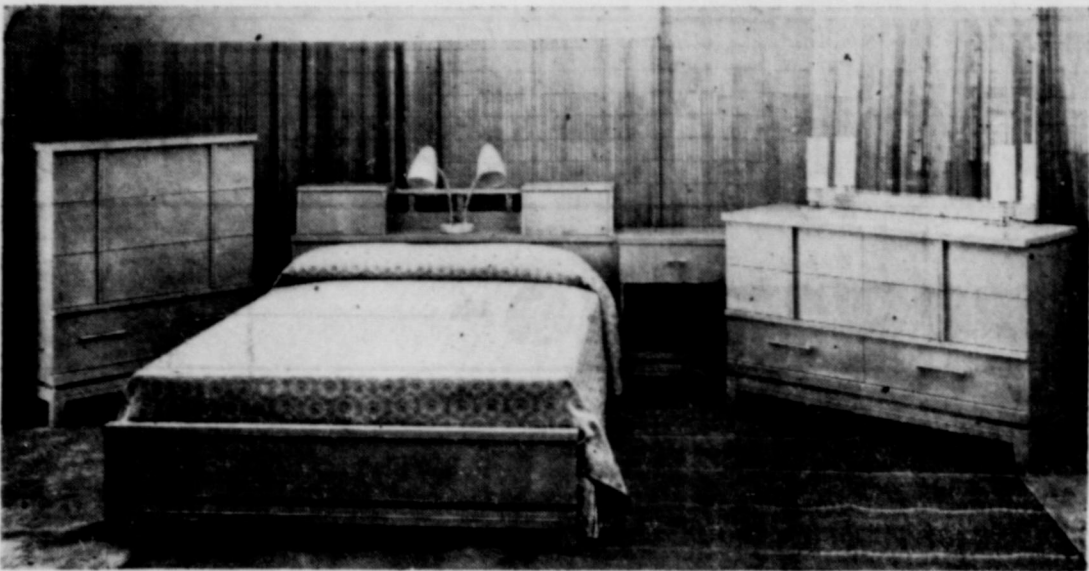
A FALL SAVINGS EVENT OF GREAT IMPORTANCE TO HOMEOWNERS EVERYWHERE

SALE

OUR
1ST

ANNIVERSARY

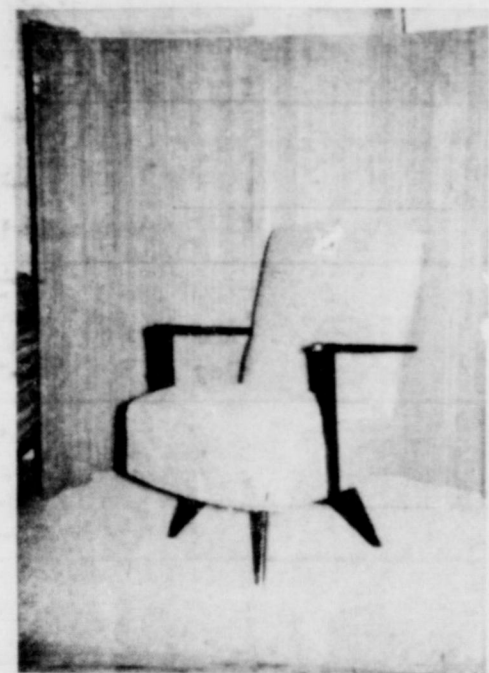
Starts Tomorrow at Coats Furniture - EASTLAND!



Genuine American Mahogany Bedroom Suite
 Book Case Bed, Double Dresser with Plate Glass Mirror, Dust Paneling and Center Guided Drawers . . . **\$119.50**
 REG. \$159.50 VALUE

Same Suite with Triple Dresser, \$179.50 value . . . \$139.50

SPECIAL! Double Dresser and Panel Bed - Same Construction as Picture Above. **\$99.50** \$9.95 Down
 A Regular \$149.50 Value

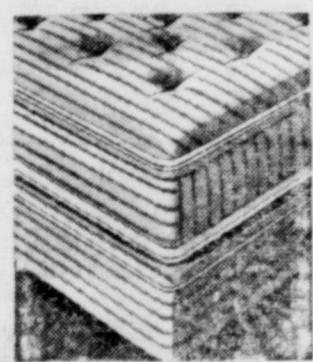


Swivel Platforms

Lime Oak and Mahogany Assorted Fabrics Assorted Color Combinations

Reg. **\$24.50**
\$32.95

Swivel Works on Ball Bearings For Easy Rotating.



EXTRA SPECIAL! INNERSPRING MATTRESS AND BOX SPRINGS

Full Size! Perfect Match! Colored Stripe Ticking! **\$49.50** For Set
Reg. \$79.00

Big Cedar Robes AND CHESTS TO MATCH

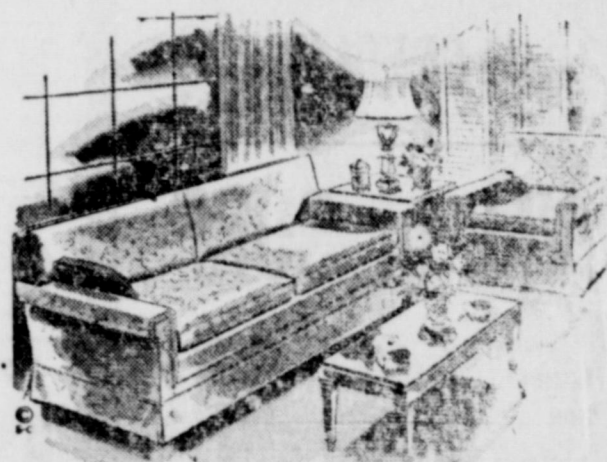
Made of aromatic Red Cedar! Jumbo Robe has space for dozens of hanging garments. Also large shoe rack! Both pieces wonderful to own and wonderful for gifts. They solve your storage problem. **BOTH FOR \$49.95**
REG. \$79.95 VALUE

We take this opportunity to show our Thanks for the excellent patronage you have given us in our first year in Eastland, by offering these extra values in good furniture. Please come in and look around, because you are always welcome at Coats Furniture!

FREE! FREE!
\$200 IN PRIZES

Come in and register for the following prizes to be given away FRIDAY, NOV. 17. Nothing to buy! You don't have to be present to win!

- Genuine Stratolounger
- Lane Cedar Chest
- G. E. Vacuum Cleaner



SPECIAL PURCHASE! 2-PC. HIDE-A-BED SUITES

Sofa converts into a full size bed with regular innerspring mattress. Large matching club chair in the newest decorator fabrics.

Regular \$279.50 Value

FOR THIS **\$199.50**
EVENT ONLY

9 x 12 LINOLEUM RUGS

For kitchen, living room and bedroom. Large selection patterns and colors. Give-aways at this low price. **\$3.95**

SOFA PILLOWS

Made from upholstery material and filled with soft, clean cotton. **79c**

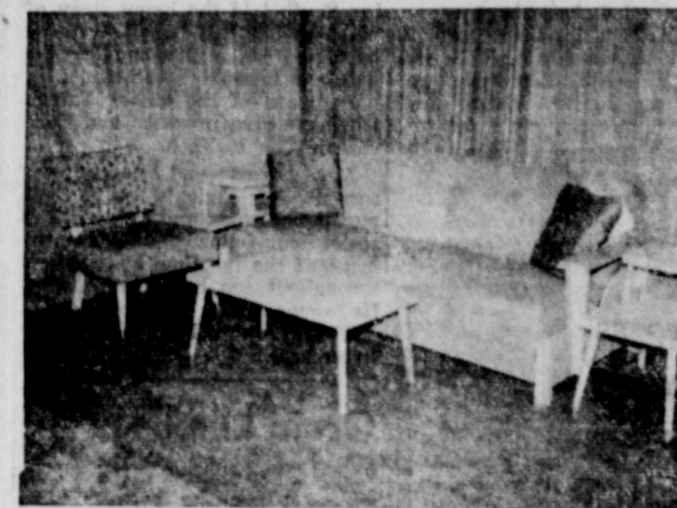
FIBER BOTTOM CHAIRS

Straight Backs Woven Fiber Bottoms **\$1.75**

NOVELTY ITEMS

- ★ Metal Smokers
 - ★ Metal Ash Trays
 - ★ Metal Fruit Bowls
- 99c**

Many Items Not Advertised
Look For The Red Tags



7-Piece Living Room Group

All Hardwood Frames Oak Arms Assorted Colors

- Sofa Bed
- Occasional Chair
- 3 Plastic Top Tables
- 2 Sofa Pillows

REGULAR \$131.50 VALUE
\$8.95 DOWN -- \$7.50 MONTHLY

\$89.50



METAL ARM CHAIR

Arms and legs finished in black. Plastic covered seats and backs. No-sag construction. Boxed—Easy to assemble.

\$7.95 **2 for \$15**

Regular \$12.95 Value

REG. \$23.95 FIBER RUGS

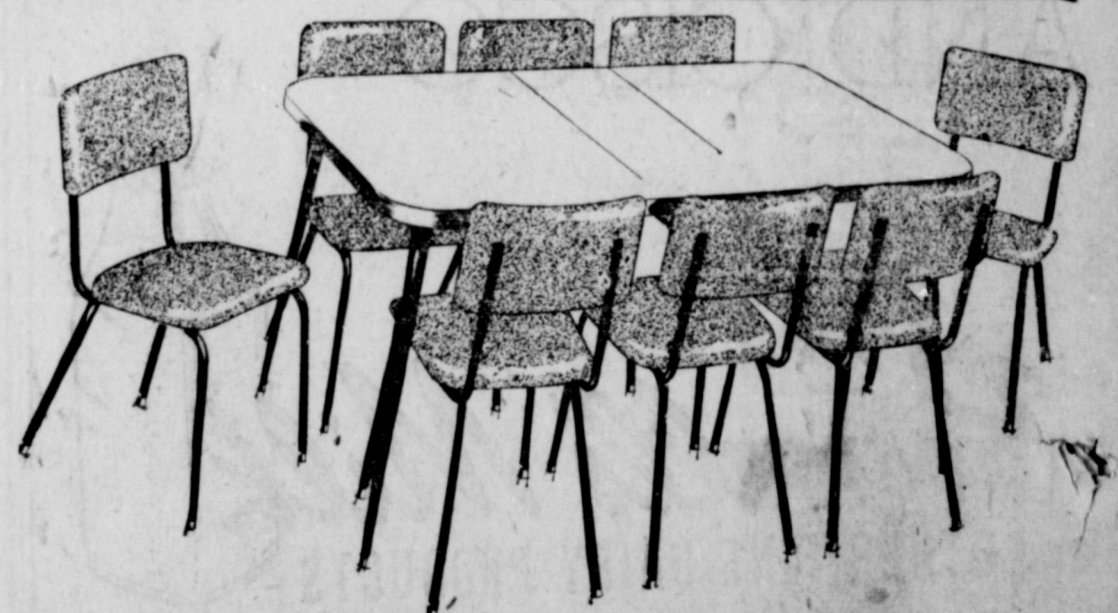
Size 9 x 12. Here's a lot of rug for a very little money, with woven through reversible patterns that give you twice the wear. These rugs fit into any decorative scheme and are especially appropriate in today's informal decor schemes. Each rug carries Good Housekeeping seal.

\$16.99

5-PIECE DINETTE SUITES

Plastic Table Tops. Tweed Texture. Upholstery. Regular \$49.50, Now

\$29.50



NEVER BEFORE! JUST THINK OF IT!

7-PIECE DINETTE SUITE 2 EXTRA CHAIRS FREE!

High pressure "MIRRO-SHEEN" plastic top on full size table. Blond walnut tops. Assorted colors on chairs. **\$99.50**
Black finish on legs. Hurry while they last! Easy terms!

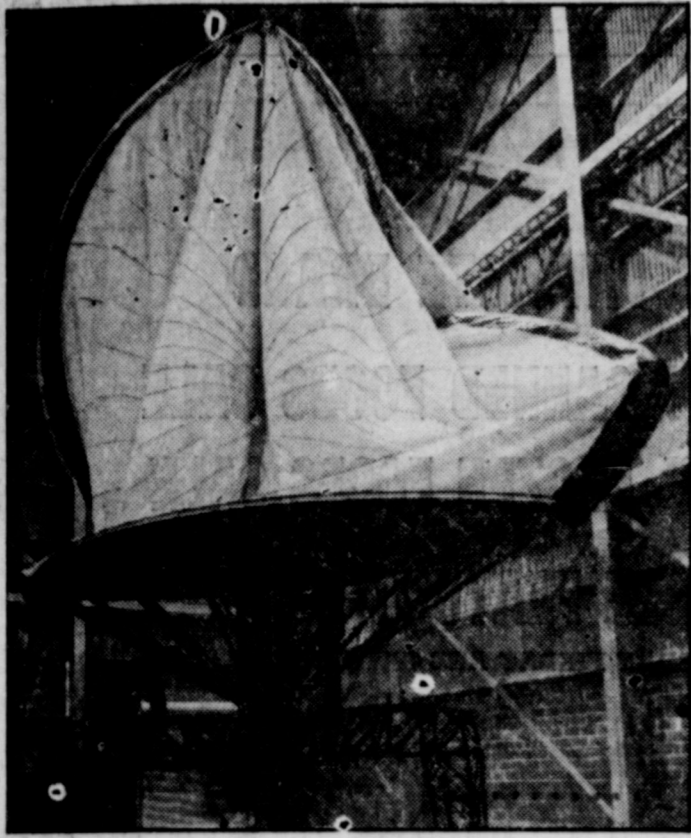
Coats Furniture & Carpets, Ltd.

EASTLAND — PHONE 585

Free Delivery

EASY TERMS

CALL 601 FOR CLASSIFIEDS



LOLLIPOP RADAR—Resembling a giant lollipop, the Parabolon radar antenna, above, is literally blown up like a balloon. The lightweight, mobile radar unit, designed for the Air Force by Westinghouse, can be assembled or dismantled by a crew of nine in several hours, and weighs only 1,690 pounds, compared to 10,000 pounds for equivalent existing metal antennas and their support structures. The Parabolon antenna stands 30 feet high, and, when inflated, forms a double parabolic reflector, coated on one inside surface with vaporized aluminum to reflect radar waves.



Funeral Directors
HAMNER FUNERAL HOMES
Ben E. Hamner
Oxygen Equipped - Air Conditioned
Eastland Phone 17 Cisco Phone Hillcrest 2121
AMBULANCE SERVICE ANY WHERE ANY TIME
Nominal Cost Burial Insurance
For The Entire Family



IT'S THE LAW
in Texas

WHO ENDORSED THAT CHECK?

Many people scarcely look at the endorsements on a check, even though they accept it from a stranger, and that can lead to trouble.

Take Jack Storm down at the neighborhood hardware store, for example. He's one who will warn you — emphatically, with gestures — that it's smart to follow the simple rule: "Know your endorser."

Our laws set up many rules to protect us, and one of these rules protects the holder of a check by declaring that if he can't collect from the person who wrote out the check (the drawer), he can collect from the person who signed the check over to him (endorsed it). This, of course, applies only where a check changes hands at least once.

We mentioned Jack Storm. He accepted a \$100 check from a nice looking fellow who said he needed to buy a kit of tools for his new job. We won't use real names, but let's say the check was made out to Will Works and signed by Art Jayson.

"Sure, Art Jayson's lived in the neighborhood for twenty years," Jack said. "I know him well. Just sign your name on the back."

Jack forgot to identify the endorser, and it turned out that Will Works was a phony name, and that Art Jayson's signature was a forgery. Jack had no idea where to find the stranger, and he ended up losing about \$40 in tools and \$60 cash.

Right after that a good friend, we'll call him Bob Samson, bought a \$2 paintbrush from Jack, and gave him a \$60 check. It was made out to Paul Smart and signed with "Regno Canning Co., Inc., Rex Rogue, President."

Bob Samson placed his signature beneath Smart's endorsement, and Jack gave friend Bob the paint brush and \$58 change.

Well, there wasn't any "Regno Canning Co., Inc.," and this check also was worthless. But it was a different story this time for Jack. He contacted Bob Samson, and, of course, Bob had to make good on his endorsement.

Bob Samson managed to find Paul Smart, and it was Paul who ended up minus \$60. But, what if

Smart had been a stranger to Samson?
In a nutshell, anyone who endorses a check guarantees that any previous signatures are genuine and that the check will be paid. If the check is worthless, or the original maker's signature has been forged, then you may collect the amount of the check from the last endorser. Be sure you know the endorser personally, so you can fall back upon him in event it becomes necessary.

(This column, based on Texas law, is written to inform — not to advise. No person should ever apply or interpret any law without the aid of an attorney who knows the facts because the facts change the application of the law.)

New Tricks With Aluminum Foil

There's no limit to the number of things you can do with the many varieties of aluminum foil. It is useful in all phases of home-making.

In the kitchen, use a foil lining for your brown-sugar cannister. It will keep the brown sugar soft and moist, says an article in the November issue of Better Homes & Gardens magazine. To keep portions of the Thanksgiving turkey from getting too dark, wrap foil strips around the end of each leg and cover the breast loosely with a square of foil.

Foil helps the garden enthusiast, too. Wrap tender perennial bulbs in foil to keep them plump. Tests show they will last the winter in fine shape. Store the foil-wrapped bulbs where the temperature will be around 40 to 45 degrees, suggests the magazine.

Plastic bags made airtight with aluminum foil provide safe keeping for silver or for wool clothes. Tear a two-inch strip of household foil, fold it in half lengthwise, fit the folded strip over the open end of a plastic bag holding the item to be stored. Set the iron on "wool" (medium heat), quickly run the tip of the iron across the strip of foil. Let it cool, lift off the foil, and you have an airtight bag.

TV LOG

- THURSDAY
3:45—Modern Romances
4:00—Comedy Time
4:30—Yesterday's Newsreels
4:45—Sterling
5:00—Kalin Keewee
5:30—Laurel & Hardy
6:00—News
6:05—News
6:10—Football With Chuck
6:25—Weather
6:30—Dinah Shore
6:45—NBC News
7:00—Best of Groucho
7:30—Political
8:00—People's Choice
8:30—Ford Show
9:00—Lux Video Theatre
10:00—News
10:10—Hollywood Wrestling
10:40—Weather
10:45—Frank Leaby
11:00—Hollywood Wrestling
11:30—Sign Off
- FRIDAY
7:00—Today
9:00—Ding Dong School
9:30—Bandstand
10:00—Home
11:00—Tic Tac Dough
11:30—It Could Be You
12:00—Daily Devotions
12:05—Mid-Day Theatre
1:30—Tenn. Ernie Show
2:00—Matinee Theatre
3:00—Queen For A Day
3:45—Modern Romances
4:00—Comedy Time
4:30—Yesterday's Newsreels
4:45—Sterling

Here's How To Carve Turkey

Three things are necessary for efficiently carving a turkey: a sharp carving knife, sturdy carving fork, and a kingsize platter. Place the turkey with legs to your right and begin carving the side toward your guests. Hold the

drumstick with your fingers, cutting the joint joining the leg to the backbone, suggests the November issue of Better Homes & Gardens magazine.

Then, hold the leg on the plate and cut the joint to separate the drumstick and thigh. Slice the drumstick, turning for even slices. Cut the thigh in slices parallel to the bone.

To cut white meat, the magazine says, first make a deep cut into the breast to the body frame, parallel to and as close to the wing as possible. Anchor the turkey with a fork.

Starting halfway up the breast,

cut thin slices of white meat down to the cut made at wing level. Take stuffing from the opening where the leg was removed, the magazine says.

In event of a major attack on the United States, farmers and small town dwellers would be expected to take care of target city evacuated areas, according to the Federal Civil Defense Administration.

CALL 601 FOR CLASSIFIED AD SERVICE

MAYTAG
AUTOMATIC AND CONVENTIONAL
WASHERS - GAS RANGES

"We Service What We Sell"
Hamner Appliance Store
205 S. Lamar Phone 623

OIL FIELD
Equipment

- SURFACE CASING
 - OIL STRING CASING
 - TUBING
 - RODS
 - PUMPING UNITS
 - TANKS
- BOUGHT - SOLD - TRADED
IRISH DRILLING CO., INC.

Hwy. 80 East Office Phone 100 - 101 Eastland, Texas Yard Phone 199

Polio is Still Around—

... and may be for a long time. While some progress is being made by the medical profession and other groups to eradicate it, it is still a dreaded disease and feared by millions. To be financially prepared if it strikes is our plain duty and personal obligation. This Agency is stocked with every form of Polio insurance available at small cost. In the insurance field Polio insurance is the best buy on the market today. Don't be without it for a single moment.

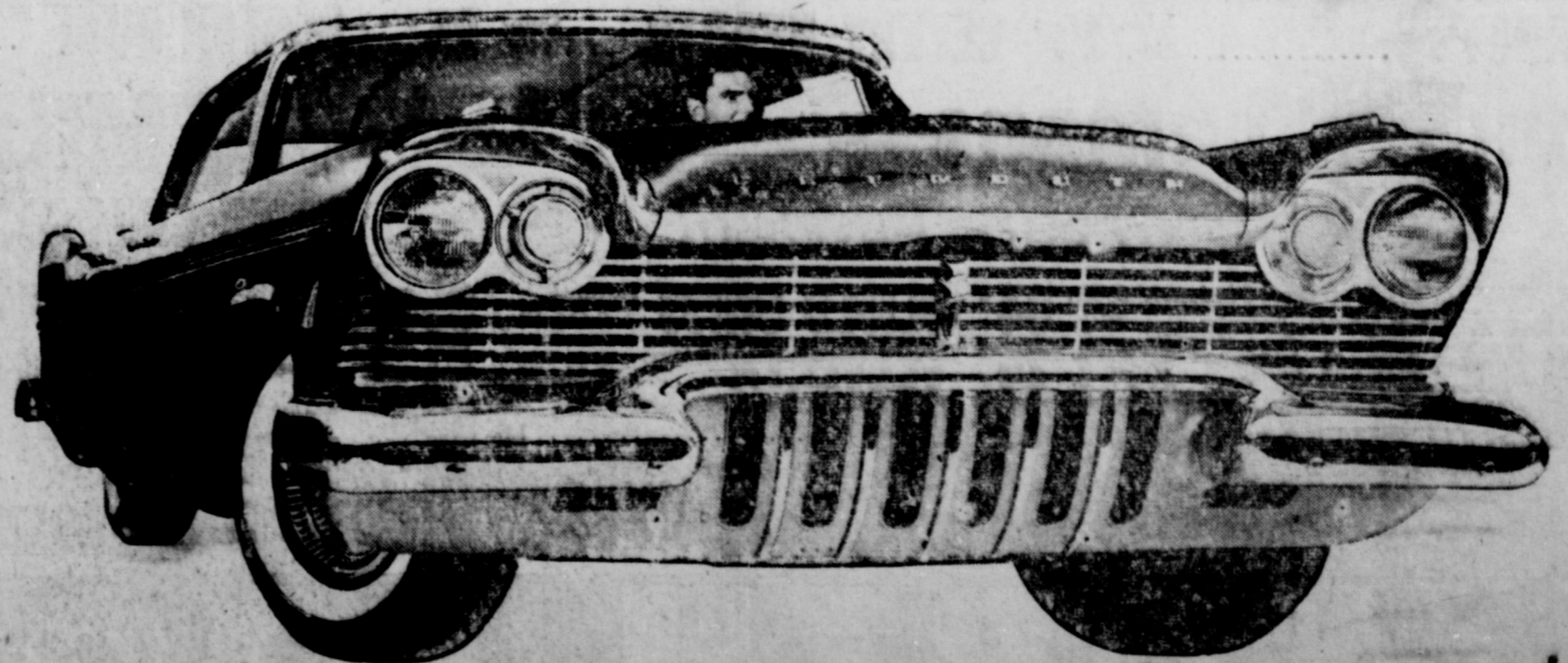
EARL BENDER & COMPANY
Eastland (Insurance since 1924) Texas



SUDDENLY, IT'S 1960...

In one flaming moment, Plymouth leaps 3 full years ahead! Plymouth's traditionally great engineering brings you the fabulous new Fury "301" V-8... revolutionary new Torsion-Aire ride... exciting sports-car handling... new super-safe Total Contact Brakes... dramatic Flight-Sweep Styling. The car you might have expected in 1960 is at your Plymouth dealer's now! See it! Drive it! Own it!

PLYMOUTH!



BLEVINS MOTOR CO. • 511 West Main
PHONE 308

FELLOW DEMOCRATS
It's Easy To
VOTE FOR
TEXAS BORN **IKE**



No. 0000 SAMPLE BALLOT

You may vote for the candidate of your choice by placing an X in the square beside the name or you may vote for the candidate of your choice in each race by scratching or marking out all other names in that race.

DEMOCRATIC PARTY	REPUBLICAN PARTY	CONSTITUTION PARTY
<input type="checkbox"/> For President and Vice-President Dwight D. EISENHOWER and Richard M. NIXON	<input type="checkbox"/> For President and Vice-President Dwight D. EISENHOWER and Richard M. NIXON	<input type="checkbox"/> For President and Vice-President Thomas H. WRENDEL and Thomas H. WRENDEL
<input type="checkbox"/> For Congressman-At-Large MARTIN DIES	<input type="checkbox"/> For Congressman-At-Large WILLIAM R. BRYANT	<input type="checkbox"/> For Congressman-At-Large FRED T. SPANGLER
<input type="checkbox"/> For Governor PRICE DANIEL	<input type="checkbox"/> For Governor WILLIAM R. BRYANT	<input type="checkbox"/> For Governor FRED T. SPANGLER
<input type="checkbox"/> For Lieutenant Governor BEN HAMBY	<input type="checkbox"/> For Lieutenant Governor LEO MOURAN	<input type="checkbox"/> For Lieutenant Governor LEO MOURAN
<input type="checkbox"/> For Attorney General WILL WILSON	<input type="checkbox"/> For Attorney General LEO MOURAN	<input type="checkbox"/> For Attorney General LEO MOURAN
<input type="checkbox"/> For Associate Justice, Supreme Court, First District MEADE F. GRIFFIN	<input type="checkbox"/> For Associate Justice, Supreme Court, First District ROBERT W. CALVERT	<input type="checkbox"/> For Associate Justice, Supreme Court, First District ROBERT W. CALVERT
<input type="checkbox"/> For Associate Justice, Supreme Court, Second District JAMES H. NORWELL	<input type="checkbox"/> For Associate Justice, Supreme Court, Second District W. A. MORRISON	<input type="checkbox"/> For Associate Justice, Supreme Court, Second District W. A. MORRISON
<input type="checkbox"/> For Judge of Court of Criminal Appeals W. A. MORRISON	<input type="checkbox"/> For Judge of Court of Criminal Appeals W. A. MORRISON	<input type="checkbox"/> For Judge of Court of Criminal Appeals W. A. MORRISON
<input type="checkbox"/> For Railroad Commissioner WILLIAM J. MURRAY, JR.	<input type="checkbox"/> For Railroad Commissioner WILLIAM J. MURRAY, JR.	<input type="checkbox"/> For Railroad Commissioner WILLIAM J. MURRAY, JR.
<input type="checkbox"/> For Comptroller of Public Accounts ROBERT S. CALVERT	<input type="checkbox"/> For Comptroller of Public Accounts ROBERT S. CALVERT	<input type="checkbox"/> For Comptroller of Public Accounts ROBERT S. CALVERT
<input type="checkbox"/> For Commissioner of General Land Office EARL RUDDER	<input type="checkbox"/> For Commissioner of General Land Office EARL RUDDER	<input type="checkbox"/> For Commissioner of General Land Office EARL RUDDER
<input type="checkbox"/> For State Treasurer JESSE JAMES	<input type="checkbox"/> For State Treasurer JESSE JAMES	<input type="checkbox"/> For State Treasurer JESSE JAMES
<input type="checkbox"/> For State Commissioner of Agriculture JOHN C. WHITE	<input type="checkbox"/> For State Commissioner of Agriculture JOHN C. WHITE	<input type="checkbox"/> For State Commissioner of Agriculture JOHN C. WHITE

EISENHOWER

IS A BETTER DEMOCRAT THAN STEVENSON!

TEXAS DEMOCRATS FOR EISENHOWER

W. R. BOB SMITH, CHAIRMAN

You are a free Texan... You can vote any way you like. Regardless of what you may have heard, it is perfectly legal to split your ticket if you want to, just as it is legal to vote the Democratic ticket straight, or the Republican ticket straight. The purpose of the ballot is to determine what the people want. And if you want to vote for Eisenhower and Nixon—then cast the rest of your ballot for the Democratic nominees—that is your privilege. Don't let anyone tell you otherwise! BY LAW YOUR VOTE MUST BE COUNTED

(Pol. Adv.—Paid for by Texas Democrats for Eisenhower, Weldon Hart, Director)

SALE of SALES

DOUBLE-FE

Libby's
HARVEST OF VALUES!
 TOTE 'EM HOME BY THE BAGFUL

STARRING AMERICA'S FAVORITE BRAND

Libby's

FEATURE NO. 1 **CANNED FOODS SALE**
 FEATURE NO. 2 **FROZEN FOODS SALE**

STOCK YOUR PANTRY AND YOUR FREEZER DURING THIS DOUBLE FEATURE!

PRICES EFFECTIVE THURSDAY FRIDAY AND SATURDAY

Libby's
TOMATO JUICE
 No. 303 Cans **10** **\$1**

LIBBY'S
Tomato Juice 4-Oz. Can **25¢**
LIBBY'S KRAUT 2 No. 303 Cans **25¢**
LIBBY'S CUT BEETS 2 No. 303 Cans **25¢**
WHOLE GREEN BEANS Libby No. 303 Can **19¢**
DEEP BROWN BEANS Libby 2 14-Oz. Cans **25¢**

Libby's
PEAS
 GARDEN SWEET No. 303 Cans **6** **\$1**

LIBBY'S
VIENNAS Sausage 6 4-Oz. Cans **\$1**

Libby's
Cream Style CORN
 White or Golden No. 303 Cans **15¢**

LIBBY'S
PEACHES Sliced or 1/2's No. 2 1/2 Can **29¢**
GRAPEFRUIT JUICE Libby 46-Oz. Can **25¢**
CORNER BEEF HASH Libby 16-Oz. Can **27¢**

Libby's
FRUIT COCKTAIL
 No. 303 Cans **5** **\$1**

LIBBY'S
LIBBY BEEF STEW 3 24-Oz. Cans **\$1.00**
LIBBY PINK SALMON 1-Lb. Can **55¢**
PEARS Libby's 4 No. 303 Cans **\$1**

CRISCO Shortening **3** -Lb. Can **85¢**

SUGAR PURE CANE **10** -Lb. Bag **89¢**

COFFEE FOLGERS All Grinds 1-Lb. Can **95¢**

TOMATO SOUP No. 1 HEINZ. Can **10¢**

KLEENEX TISSUES ... 2 400-Ct. Pkgs. **39¢**

LIMA BEANS Libby Green Buffet Can **15¢** **WHOLE BEETS** Libby's No. 303 Can **19¢**
PUMPKIN Libby's No. 303 Can **14¢** **PEAS & CARROTS** Libby's No. 303 Can **23¢**
LUNCHEON Libby's Lunch Meat 12-Oz. Can **37¢** **APRICOTS** Libby's 1/2's No. 303 Unpeeled Can **29¢**
POTTED MEAT Libby's No. 1/4 Can **9¢** **FLOUR** GLADIOLA 5 -Lb. Bag **49¢**

potatoes

U. S. NO. 1 RUSSETS

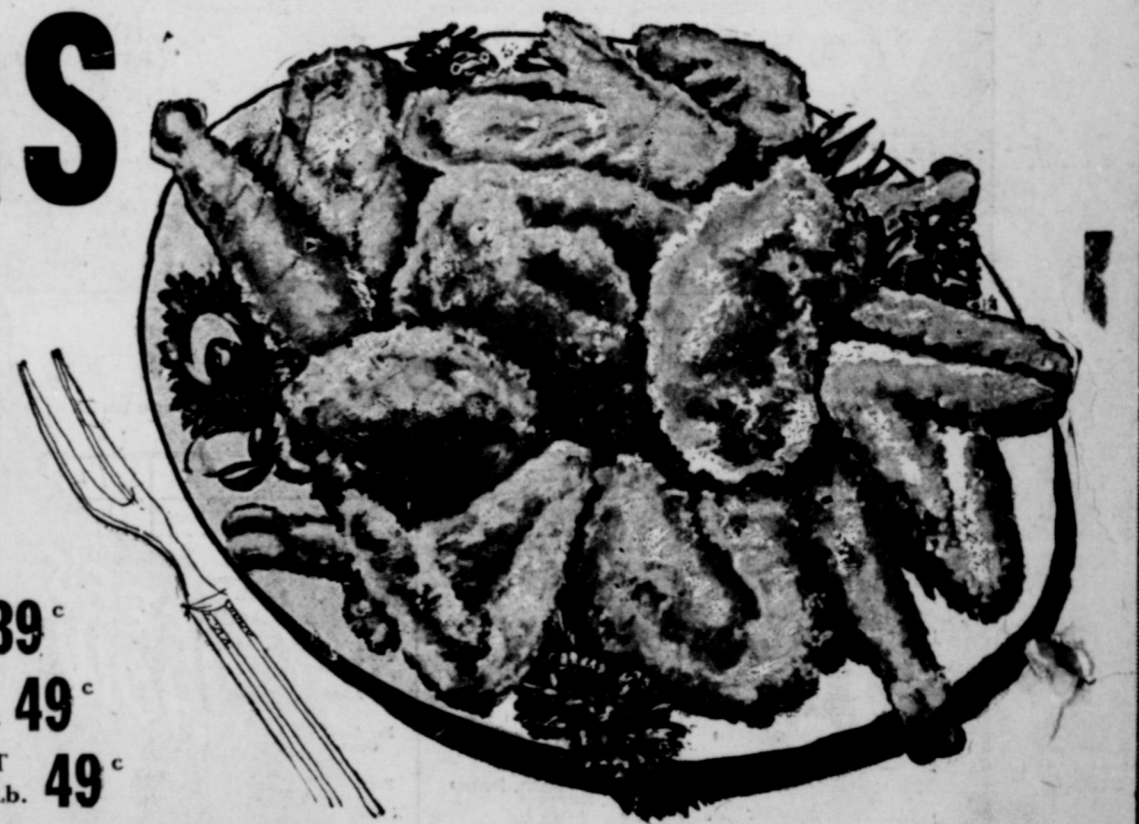


10 -Lb. Cello Bag **59¢**

FRYERS

ARMOUR'S WHOLE OR CUT-UP

Lb. **33¢**



FRANKS Swift Premium Lb. Pkg. **39¢**
SPARE RIBS Small Lean Sides Lb. **49¢**
BOSTON BUTT PORK ROAST Lb. **49¢**

PREMIUM BACON SWIFT'S SLICED 1-Lb. Pkg. **49¢**

BRICK CHILI Swift's Premium Lb. Pkg. **55¢** **CALF CHUCK ROAST** "W. Q." Lb. **35¢**
CALF RIB CHOPS Worth Quality Lb. **59¢** **SIRLOIN STEAKS** Worth Quality Calif. Lb. **59¢**

SALAD DRESSING Morton's Bestyett. Qt. **45¢** **PARD DOG FOOD** 2 1-Lb. Cans **29¢**
IVORY SOAP 99 44/100% Pure 2 Large Lb. **29¢** **IVORY SOAP** Personal 4 Reg. Bars **23¢**
DASH DETERGENT 25-Oz. Pkg. **39¢** **JOY LIQUID** Detergent 12-Oz. Can **39¢**

BEST FOR PIES
ROME APPLES Lb. **17¢** **SEEDLESS GRAPES** Lb. **21¢**
 SELECT WAXED
RUTABAGA TURNIPS Lb. **6¢** **SWEET POTATOES** Lb. **10¢**
 TENDER, CRISP - CALIFORNIA
CARROTS 1-Lb. Pkg. **10¢** **CELERY HEARTS** Cello Pkg. **25¢**

Sunkist Lemons FULL O' JUICE Lb. **19¢**

Kraft Cheese Festival!
CHEESE SLICES Deluxe-Pimiento, 8-Oz. Pkg. **34¢** **SLICED SWISS** Natural 6-Oz. Pkg. **35¢**
 Swiss, American
PHILADELPHIA Cream Cheese 2 3-Oz. Pkgs. **25¢** **VELVEETA** Kraft 1-Lb. Pkg. **51¢**
PIMIENTO CHEEZ-WHIZ Jar **33¢** **KAY** Natural Cheddar Lb. **59¢**
Cracker Barrel Mellow 8-Oz. Pkg. **39¢** Mellow 13-Oz. Pkg. **61¢**
 Sharp 8-Oz. Pkg. **45¢** Sharp 13-Oz. Pkg. **71¢**

WORTH FOOD MART

FEATURE

at **WORTH FOOD MARTS**

OVER \$14,000 IN PRIZES

★ **GRAND PRIZE 1957 CADILLAC** AIR - CONDITIONED SEDAN DE VILLE

★ **8 Natural Royal Pastel Mink Stoles**

One Each Week For Eight Weeks

★ **800 Books of S & H Green Stamps**

4 Winners Weekly - 25 Books Each

No Purchase Necessary
Register Daily



Stoles by KOSLOW'S

WORTH FOOD MART CONGRATULATES 5th WEEK WINNERS

Mink Stole MRS. MAXINE REYNOLDS
2625 HAYNES, FT. WORTH

Green Stamps MRS. J. F. BOUSE, MRS. H. T. WEAVER
R. E. BOOKER, PFC. & MRS. R. T. SHIVERS

MORE for your BUCK SALE

Libby's

FROZEN FOODS



LIBBY'S FROZEN

PIES

CHICKEN, BEEF or TURKEY;
APPLE, CHERRY, BLUEBERRY
PEACH or BOYSENBERRY

5 Pkgs. **\$1**



LIBBY FROZEN FRESH

PEAS

7 10-Oz. Pkgs. **\$1**

ORANGE JUICE Libby's Fresh Frozen **6** 6-Oz. Cans **\$1**

GRAPE JUICE LIBBY-FROZEN **5** 6-Oz. Cans **\$1**

CREAM STYLE CORN 10-Oz.

GARDEN VEGETABLES ... 10-Oz.

CUT CORN 10-Oz.

CUT GREEN BEANS 9-Oz.

FRENCH CUT BEANS 9-Oz.

5 Pkgs. **\$1**

LIBBY'S SLICED FROZEN FRESH

STRAWBERRIES 5 10-Oz. Pkgs. **\$1**

FORDHOOK LIMAS **4** 10-Oz. Pkgs. **\$1**

CAULIFLOWER

BABY LIMAS **4** 10-Oz. Pkgs. **\$1**

BROCCOLI SPEARS



MELLORINE

FOREMOST Assorted Flavors 1/2-Gal. Carton

39c

SCOTT TISSUE

White or Lovely Pastel Reg. Roll

10c

STAR-KIST TUNA

or Chicken-of-The-Sea Chunk Style No. 1/2 Can

19c

ENTER LIBBY'S "Golden Diamond" Sweepstakes

Imagine your dream coming true all at once! You'll be singin' and sayin' you never had it so good!

WIN \$40,000 Dream House
Libby's Great Sweepstakes also includes **18 NEW FORD CARS**

Get Sntry Blanks at Any Worth Food Mart

Void where licensed, taxed, restricted or prohibited by law.

FREE! Famous RAIN-MATE plastic hood in a smart, colorful case! Protects hair from rain, snow, dust!

Get your RAIN-MATE FREE. Mail this coupon with 3 complete labels and/or embossed can-tops from LIBBY'S FROZEN FOODS to RAIN-MATE, Libby, McNeill & Libby, Chicago 9, Ill.

NAME _____
ADDRESS _____
CITY _____ STATE _____

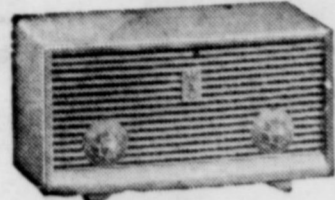
Offer expires Nov. 24, 1956. Supply limited. Offer limited one per family. Offer not valid where licensed, taxed, restricted or prohibited by law.

CALL 601 FOR CLASSIFIEDS

NEW! RICHER TONE!
BETTER PERFORMANCE!
ALL NEW STYLING!

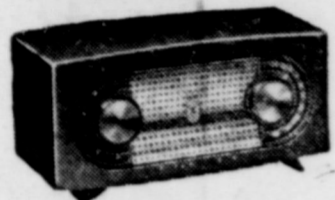
ZENITH
TABLE RADIOS

with WAVEMAGNET ANTENNA
and ZENITH QUALITY SPEAKERS!
for better reception—rich, clear sound!



The New Pacemaker—Z508. Brilliant home-fashion styling in gay new colors. Front-mount controls, range Pink, Shadow Blue, French Beige or Maroon. AC/DC.

21.95
Maroon



The New Overland—Z510. Improved circuits bring in even weak, distant stations sharp and clear. In French Grey, Antique White or Maroon colors. AC/DC operation.

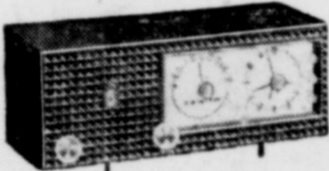
26.95
Maroon

The New Statesman—Z511 with two speakers! For the first time—truly outstanding tone in a small table radio. Two front-firing speakers double listening enjoyment. Maroon color. AC/DC.



29.95

The Deluxe Clock Radio—Z522. Dramatic all new design. Operates small appliances automatically. Phonolock. Garnet Red, Sky Grey, or Debutante Pink colors. AC only.



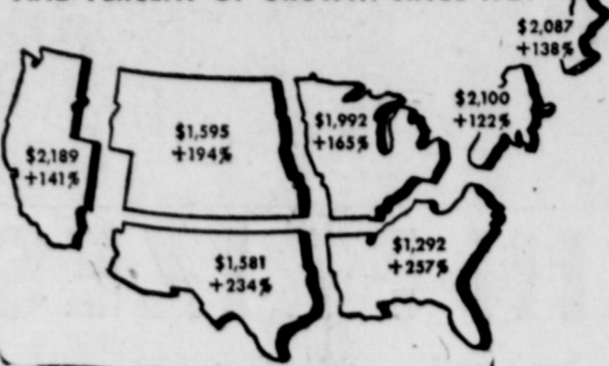
46.95

It pays to invest in Zenith quality!

Western Auto Associate Store

East Side Square Herbert Ekert, Owner Phone 38

PER CAPITA INCOME IN 1955 AND PERCENT OF GROWTH SINCE 1929



Prepared by NAM from Gov't Statistics

Southeast Areas Exhibit Most Rapid Growth

The economic growth of the various regions of the United States can be measured by the per capita personal income of their peoples.

For the United States as a whole the per capita income of \$1,847 in 1929 was 163% greater than in 1929. Less than half of this gain was real—the rest being pure inflation. However, since all regions of the country were hit by the inflation, the relative growth shown in the chart is significant.

While there is considerable range in per capita income between regions, there has been a strong tendency for those regions which have the lowest per capita incomes to grow more rapidly than those which are above average. The region with the highest per capita income was only 1.7 times the lowest in 1955, compared to 2.6 times in 1929.

The lowest per capita income is still to be found in the Southeast region, but this area's gain since 1929 was the greatest. Its income of \$1,292 per person for 1955 was 3 1/2 times that of 1929. The Southwest and Northwest regions' per capita incomes were also below average, though gains were much above average since 1929.

The Middle East region, conversely, had the highest per capita income in 1929, but its percentage growth has been the lowest of all areas. The Far West, with \$2,189 per person income, was the highest of the seven regions in 1955.

Since 1929, the regions have exhibited a wide variation in per capita income growth, but relative positions of the areas, except for the Far West's replacement of the Middle East in the top position, have remained the same.

Are You Living On Your Lot?

The average homeowner knows all about his house from foundation to rooftop, but is often completely "in the dark" about his exact property lot lines. A simple \$20 to \$40 lot survey can tell all and settle disputes before they occur.

When you buy or sell property, consult a reliable attorney and hire a good surveyor, advises an article in the November issue of Better Homes & Gardens magazine. The attorney checks the legal description and abstract for flaws. The surveyor locates the property on the actual ground.

From the surveyor's work you discover: If existing fences are true property lines, if garages or sheds are on your property or your neighbor's, if your house is located on the lot to conform with zoning regulations... all things you should know before you buy to avoid expensive legal difficulties later.

A realtor can point to a fence and say, "That's your boundary." The present owner can indicate a stake and say, "That's your corner." Both may be wrong. Hire a surveyor, the magazine says. He's the only one who can tell you for sure.

It's a common experience for surveyors to find that property lines don't correspond with fence lines. If the difference amounts to a few inches, there's generally no argument. If the fence line misses the property line as much as three feet, an unneighborly situation can arise.

If the neighbors cannot agree on a common line, it's up to the courts to declare a true boundary. If a fence has marked the line for 20 years or more, the court will be more inclined to accept that as the true property line. In doing so, the court applies the "Law of Adverse Possession."

However, if the neighbors agree on the surveyor's line, they have the expense of moving the fence line, and they have to have the deed description changed. In any case, a survey would have been much less trouble. When you have your lot corners put in, request that they be set in concrete. It will be somewhat more expensive, but the corners will be more permanent and carry more authority. If you build a fence along a surveyed line, set it six inches inside your line to avoid future disputes, the magazine says.

CALL 601 FOR CLASSIFIED AD SERVICE

**T. L. FAGG
R. L. JONES**
REAL ESTATE
Property Management
Home and Farm Loans

**ALEX RAWLINS & SONS
MONUMENTS
WEATHERFORD, TEX.**
Serving This Community Since 1884

TRI-CITIES REAL ESTATE EXCHANGE
★
Oil and Gas Leases
Business Property
Farms & Ranches

REALTOR
Phone 1076 Box 22
Eastland

Court Of Civil Appeals Eleventh District

Reversed and Remanded
3259 Roy Stafford vs. Ora Steward. (Opinion by Judge Long). Erath.
Cases Submitted
3282 Texas General Indemnity Co. vs. Jose Vasquez Villa. Howard.
3283 Dunigan Tool & Supply Co. vs. P. Q. Echols. Stephens.
3284 George L. King vs. Jack Moberley et al. Shackelford.
3285 Charles N. Stages et al vs. H. B. Zachary Co., Inc. Howard.
3276 F. L. Kelly et al vs. Edward Green et ux. Baylor



CHIMPLY DIVINE—Rompin' on the ramp at a London, England, fashion show, "Candy," model chimpanzee model, displays a new fashion at the Cyril Lord House Fashion Show. "Candy" obviously goes apt over frilly shindigs like this and was monkeying around to the restrained delight (?) of honest-to-goodness model Puck Bunting.

Apple Treats For The Family

Apple Muffins belong with the easy-to-make apple treats such as Dutch Apple Cake, Apple Turnovers, and Apple Dumplings. Don't you just long to make them all, now that apples are back in season?

Here is a little different recipe for Apple Muffins in which each muffin is crowned with a ring of apple dipped in sugar and cinnamon. You'll enjoy your first autumn batch of these apple treats and so will your family.

- Apple Ring Muffins**
- 2 cups sifted flour
 - 1 1/2 teaspoons salt
 - 1/4 cup sugar
 - 3 teaspoons baking powder
 - 2 eggs, well-beaten
 - 3/4 cup milk
 - 2 tablespoons shortening, melted
 - 3 to 4 tart apples
 - 1/4 cup sugar
 - 1 tablespoon cinnamon
 - 2 tablespoons butter or margarine, melted.

Sift together flour, salt, 1/4 cup sugar and baking powder. Combine eggs, milk and shortening. Add to dry ingredients, mixing only enough to dampen all flour. Wash, core and par apples. Cut a 1/2 inch slice from the top and bottom of each apple. Chop the slices and fold into flour mixture. Fill

PECANS
Wanted To Buy Your Commercial Shelling Pecans
KING PEANUT CO.
335 S. 11th St. - Abilene, Tex.

Demand!
7up
ACCEPT NO IMITATION

well-greased large muffin pan half full.
Cut remainder of each apple into rings about 1/2 inch thick. Mix 1/4 cup sugar and cinnamon. Dip apple rings into sugar mixture.
Place a slice of apple on top of batter in each muffin cup. Bake in a hot oven (425°F) for 30 to 35 minutes or until muffins and apples are done. Brush apple rings with butter or margarine while hot. Serve hot or cold. Makes 10 to 12 large muffins.
Leftover gravy need not be thrown away. It will taste just as good several months from now if you freeze small amounts in clean baby-food-size cans, un-mold, seal in plastic bags, and place in your freezer, says the Better Homes & Gardens magazine.

Tex Says He's No Expert But He Believes Ike Is

The other night a bunch of us were sitting around in the drug store after the football game, drinking coffee and talking. You know how it is after a game in a small town, especially after a home team loss. Nearly every man in the crowd had a theory as to why we didn't win the game. Most of them, of course, blamed the coach. I couldn't help remembering that before we consolidated the county schools we didn't even have enough boys to make up a football team. And these same football experts who were saying what Rockne or Bud Wilkinson would have done, up until a few years ago they didn't know a football from a watermelon.

But that's the way it is in a small town (and in big ones, too, I understand). I guess there's no real harm done, although sometimes it's pretty rough on the coach. I guess we have a right, in this free country, to be self-appointed experts in any line we want to pick out. It seems to me that most people choose either football or politics.

Take this presidential election coming up next Tuesday: During the last few weeks I have heard so many different political experts that I nearly got confused sometimes. I have to stop and think that the fellow who is talking probably doesn't know any more about it than I do, and that helps me keep straightened out.

In fact, I guess I have had my mind made up all along. To make no bones about it, I like Ike. He's a man you can always look up to and respect—the kind of

man you'd be proud to point out to any person, from any country on the face of the globe, and say: "That's our President!"
"About Adlai, now, I'm not so sure. Of course, if he was elected, he would be my President, too, and I would hope he'd do a lot better than most people around here seem to think he would. This is something I don't think we need to worry about, because from all I can hear and read, Ike is going to win it again."
It seems to me that if Adlai ever had a chance around here, he threw it away when he came out with that H-bomb business. Now, the folks in our town don't know much about H-bombs, except that they don't want any personal dealings with them. Our scientific knowledge of H-bombs is about on a par with our football knowledge. I reckon, but we do know one thing: We don't want some misguided, inexperienced fellow fooling around with our national defense. When it comes to picking what Bulganin says or what Eisenhower says, I'll take Ike. So will the rest of the country, if I don't miss my guess.

Just before we broke up the other night Doc Brown came into the drug store, and somebody asked him: "Hey, Doc, how's Ike doin'?" Doc said: "Well, it's a busy campaign for the medical profession. Last week Ike went and got his heart examined; and I understand that this week Adlai is going to get his head examined."

Yours truly,
Tex
(Pol. adv. paid for by Texas Democrats for Eisenhower, Willard Hart, Director.)

.....IT'S RANGE CHANGE SALE TIME!

SAVE \$60.00

ON OUR MOST POPULAR
Universal GAS RANGE

- Temperature controlled top-burner FOODS WON'T BURN!
- Automatic oven and burner lighting MATCHLESS OPERATION
- Comfort-Touch oven door COOL, CLEAN KITCHENS
- One-Hour electric timer clock
- Reci-file rotating recipe chart

Model 8035CP

\$309.95
Special Trade-in **60.00**

\$1 DOWN...as low as \$1.88 weekly PAYABLE MONTHLY

249⁹⁵

LONE STAR GAS COMPANY

IT'S RANGE CHANGE SALE TIME!

CALL 601 FOR CLASSIFIED AD SERVICE

**T. L. FAGG
R. L. JONES**
REAL ESTATE
Property Management
Home and Farm Loans

**ALEX RAWLINS & SONS
MONUMENTS
WEATHERFORD, TEX.**
Serving This Community Since 1884

TRI-CITIES REAL ESTATE EXCHANGE
★
Oil and Gas Leases
Business Property
Farms & Ranches

REALTOR
Phone 1076 Box 22
Eastland

Suddenly you know how modern a range should be— flame-fast gas ranges alone offer 4 times less fuel cost!

Sally, this is Jane... I'm upset. Our electric bill has really jumped since we got our new electric range.

Jane, our gas bill is one of the lowest-cost conveniences we have! Why don't you switch to gas at less than 1/4 the cost!

ONLY WITH EXCITING NEW FEATURES LIKE THESE CAN YOU REALLY COOK MODERN!

- Cook-Saver Automatic Top Burner Control.** New flame-fast gas Cook-Saver holds pre-set temperature. Foods won't burn! Makes all your pans automatic!
- Built-In Rotisserie.** Broil indoors with flame-kissed "barbecue" flavor. Turns out your favorite foods easily and deliciously.
- Simmer Flame.** On each burner, tiny points of flame make waterless, "Vitamin-save" cookery a snap. Unlimited keep-warm and simmer settings.
- Automatic Clock-Controlled Oven.** Cooks whole meals while housemaker is away...turns oven on and off automatically. Even circulation of heat...use any rack position.

But of course Smart Southwest Moderns know that cooking with gas is the most economical way to cook. It costs less than 1/4 as much to use as electric cooking. This means: If you can cook on an electric range for \$2.20 a month—you can do the same amount of cooking with gas for less than 55¢ a month. (Or a savings of \$19.80 a year!) What's more, an automatic gas range costs less to buy, less to install, and less to operate and maintain. No wonder smart women say truly modern cooking is cooking with flame-fast gas.

SAFEST COOKING EVER! American Gas Association seal assures reliability. Fire insurance statistics prove gas is safer!

SIZZLING TRADE-INS NOW on your gas or electric range. Cook modern—change today to a new ultra-modern gas range.

see your gas range dealer or LONE STAR GAS COMPANY
More than 85 out of 100 women cook with gas!