



# Eastland Telegram

"COVERING EASTLAND COUNTY"

Top  
Turkey  
OWN

VOLUME TWENTY-SEVEN

EASTLAND, TEXAS, THURSDAY, SEPTEMBER 6, 1956

NUMBER 56

## Mavs Go Against Cisco In Opener Friday

### Moore... ABOUT Eastland By Virgil E. Moore

Eastland's Mavericks will go into the opening game of the 1956 season boomed as the team to beat in District 10-A, and that despite the fact the mighty Albany Lions are in the same district with the locals for the first time.

The favorite brand was stamped on Eastland by Fred Sanner, Abilene Reporter-News sports writer, in Wednesday's paper. Sanner says the Mavs are the favorite in the district with the "a close runner-up." He picked Throckmorton for third place honors, Wylie for fourth and Clyde for the cellar, despite the fact that Clyde won District 8-B honors last year.

We are glad to see Eastland getting a lot of good publicity about their gridiron team. But frankly, pre-season predictions are worth just about as much as the paper they are printed on, and despite the fact that newspaper is at an all time high, a sheet doesn't cost very much.

The Mavericks can clip page 10-A of the Reporter-News and paste it in every available scrapbook, and it won't hurt them a single football game. If anything, the article will tend to hurt the locals' chances of winning. For Sanner has drawn a target and he has placed Eastland in the bullseye.

The 1956 Mavericks are an unproven team. We submit that statement knowing it won't make you happy. But the Mavs didn't win the district last year, and they didn't have a really impressive win-loss record. The same players - in the main - are back this year. And they are good boys. But we hope that they don't get the idea that Fred Sanner is going to make them the district champions. If they do win top honors they will do it all by themselves. Sunday we hope that we too can join Sanner in predicting that Eastland really has a great ball club, that they will win the district championship. But we want to see 'em play Cisco first.

### SEASON OPENER SEPT. 13

## Sixteen Gridsters Report At Carbon

CARBON — Sixteen Carbon High School gridsters are working out daily getting in shape for an eight game schedule in six man football.

Carbon, competing in District 12, will play all of their games this year on Thursday nights. They will open their season Sept. 13 with a home game against Iredell.

Included in the 16 prospects which turned out to greet coaches Bob Erowler and Jimmy Hughes, are two seniors, five juniors, four sophomores and five freshmen.

Carbon will have five returning lettermen, including two two-year lettermen, halfbacks Charles Little and James Wyatt.

The roster is as follows:  
Robert Norris, end, weighs 140, junior one year letterman; John Grace, end, 160, sophomore squadman; Don Underwood, 135 pound end, sophomore; Bob Hogan, 135 pound junior end; Daryl Phelps, 150 pound end, senior, one year letterman; Jerry May, 120 pound sophomore center, squadman;

The Telegram this year will staff Carbon High School grid games and will carry results of the tilts in each Sunday's edition.

freshman end; Don Wilson, 130 pound freshman end; Marvin Lee, 130 pound junior end, squarman; Kenneth Tucker, 180 pound sophomore center, squadman; Mickey Rogers, 140 pound sophomore center, squadman; Larry Greer, 135 pound junior quarterback, one year letterman; John Wilson, 130 pound freshman quarterback; Charles Little, 135 pound two year senior letterman; James Wyatt, 140 pound two year junior halfback letterman; Charles Bryant, 150 pound freshman halfback; and Frankie Scott, 115 pound freshman end.

Carbon will compete in Region III, with the winner of the district playing the winner of District 11. The winner of that bi-district game will meet the winner of the District 9-10 bi-district affair for regional honors.

Sept. 29 Open  
Sept. 27 Gordon at Carbon  
Oct. 4 Open  
Oct. 11 Gustine at Gustine  
Oct. 18 Open  
Oct. 25 Sidney at Sidney  
Nov. 1 Star at Star  
Nov. 8 Pottsville at Carbon  
Nov. 15 Priddy at Carbon  
Nov. 22 Mullin at Carbon  
—Denotes district games.

### Pep Rally... ... Set Thursday

Eastland football fans will kick off the 1956 season Thursday night with a pep rally at the Majestic Theatre.

The Maverick band, football players and cheer leaders will all appear on the stage of the Majestic beginning at 7:30 p.m.

Following the rally, the regular showing of Moby Dick will be held.

### County Draws New Oil Try In Southwest

A regular field try has been staked in Eastland county. It is the No. 2 F. W. Roberts, being put down by Sam Eakin of Rising Star.

The well is located 270 feet from the south line and 450 feet from the west line of the north-west fourth of Section 2, ETRR Survey, 3 1/2 miles northwest of Rising Star on a 78 acre lease. Proposed depth is 1200 feet with rotary.

In Stephens county, a wildcat try has been staked eight miles north of Eastland. Ramon E. Bowen of Houston is the operator and the try is the No. 1 H. N. B. Toib, Location in is Section 458, SPRR Survey, in a shallow depleted area. Proposed depth is 4000 feet and present elevation is 1478 feet.

The No. 6 Minnie Jeter Liles is another Stephens county try. It is being drilled by Leo Vesenmeir Jr. of Dallas and is located in the E. S. Bales Survey, 14 miles northwest of Brownsville. Proposed depth is 2995 feet.

Two wildcat tries are being drilled in Palo Pinto county, both by K&F Investment Co. of Lubbock. They are the No. 2 and 3 Lemley No. 2, located six miles west of Graford on a 45 acre lease, spots a fourth mile south of the No. 1 Lemley. Elevation is 996 feet to the Strawn sand and the well is in the process of being completed. The No. 3 try has reached 1001 feet and is in the process of being completed.



DISNEYLAND VISITORS—Shown from the left are Richard Jones, Robert Johnson, Mike Cushman and Don Webb of Eastland, who recently were among the many visitors to Disneyland who enjoyed "Rides" on the T.W.A.'s rocketship to the moon. The eighty foot structure, which is the theme of the tomorrowland section of Walt Disney's magic kingdom, simulates a 12 minute "trip" to the moon by rocketship as scientists predict it will be made in 1985. (Travel News Photo)

## Worth Food Market Will Remodel Pipkin Store

Worth Food Markets assumed operational control of the Pipkin Piggly Wiggly food chain effective Tuesday, Sept. 4, when terms of an agreement for purchase of the Pipkin chain became effective.

Worth Food Markets, which is owned by Food Mart, Inc., of El Paso, promptly announced that all advertised prices would be the same throughout the Worth Food Markets network, including Fort Worth stores and the newly-acquired Pipkin stores.

The Pipkin chain had stores in Eastland, Ranger, Graham, Cisco, and Coleman. The Pipkin acquisition now gives Worth Food Markets a total of 28 units.

The Worth Food Markets management also stated that Pipkin

stores would be renovated, and remodeled and that equipment would be modernized.

Employees in the Pipkin stores will receive such Worth Food Markets benefits as life and policy insurance, and family hospitalization insurance, a company spokesman said.

The new management announced that it would continue the issuance of S and H Green Stamps, with double stamps on Wednesday, and that all Pipkin stores would enjoy the Worth chain's policy of having one of the largest selections of nationally advertised products in Texas.

Worth Food Markets is part of the overall operation of Food Mart, which now operates a total of 57 markets in Texas and New Mexico.

The chain was taken over by the present management in 1950, when it was doing only \$7 million in volume a year. It is now doing business at an annual rate in excess of \$50 million.

Worth is currently adding two new supermarkets in Dallas, one in Hurst, and one in Fort Worth.

### Former Countian Nominated for Rotary Governor

W. Truett Walton, vice president and dean of students, Hardin-Simmons university was endorsed by Ranger Rotarians as a nominee for governor of the 186 district, Rotary international, at the Wednesday meeting of the local club.

Walton has been a Rotarian for the past 21 years, having served as president of clubs in Ranger (1937-38) and Abilene (1950-51).

He has an outstanding background in Rotary, professional and community work.

He has served as a director, member and chairman of all major club committees. He was Golden anniversary chairman of district 186 1954-55. He is now chairman for the district conference for 1957.

Walton was officially approved by the Abilene Rotary club's board of director as a candidate for governor of the 186 district.

The district governor is elected to a one-year term. He serves 36 clubs in West, Central and North Texas cities.

Walton is a former superintendent of the Ranger school system. Sydney A. Galpin of Wichita Falls is the present district governor.

### NEGROES INTEGRATE IN RANGER

Enrollment Here Shows Increase

Eastland school enrollment totaled 747 students this week, Supt. Wendell Siebert announced today.

That is an increase of some 35 students over last year, most of the increase coming in West Ward school.

A breakdown in enrollment figures shows 201 students at high school, 185 at Junior-high, 194 at West Ward, 137 at South Ward and 50 at Douglas school, Siebert said that a few more students were still expected to enroll. Last year enrollment totaled approximately 700, with 679 in the four last year, South Ward 139, Junior high 180 and high school 200.

A check among other county schools revealed that 740 students enrolled at Ranger, including the first three Negro students to be integrated in a white school in Eastland county.

In Deselemona the enrollment was announced at 103 by Supt. Robert Pierce.

Supt. Travis Hilliard said enrollment at Olden totaled 130. At Carbon schools, the enrollment figure was 175, according to Supt. Bob Browder. Scranton school enrolled 107.

Partly cloudy and cool Thursday and Friday. Scattered thunder-showers Thursday. High both days 85-90. Low both nights 70-75. Lake Leon level was 71.00 Thursday. Rainfall early Thursday morning totaled .08. Low today was 63. Wednesday's high 95, low 68. Tuesday's high was 95.

Your New Car Financed At Low Bank Rates With Your EASTLAND NATIONAL BANK Member F. D. I. C.

### Farm Bureau Expects 1000 For Barbecue

An estimated 1000 persons are expected to be on hand Friday night for the annual Eastland county Farm Bureau barbecue to be held in the City Park in Eastland.

The barbecue will begin at 7 p.m. and entertainment will be provided by Bryant Houston, world champion fiddler of Eastland, and several other members of his family.

Principle address of the evening will be made by Melvin Mann, public relations specialist, who now heads the Farm Bureau Blue Cross insurance drive.

Tickets for the barbecue may be secured from any Farm Bureau director or Ray Norris of Eastland, secretary.

J. W. Cooper is serving as general arrangements chairman. A. Z. Mottet will serve as master of ceremonies and make introductions.

FOR —  
Fine Furniture, Floor Coverings, G. E. Appliances, It's Coats Furniture & Carpet, Ltd., Eastland. Free Delivery and Convenient Terms. Good Trade Ins. too!

## Traditional Rivals To Play In Cisco

Eastland's "wait until next year" team hits the field Friday night against one of their top traditional foes — the Cisco Lobes, in a non-district game to be played in Lobo Stadium in Cisco.

Kickoff time is 8 p.m. The 1956 version of the Mavs is being plugged as the team Eastland fans have been talking about for the last four years. The call around the capital city of Eastland county has been "wait until next year" every since this group of youngsters was in junior high. Now, for the most part, the Maverick team is a senior-dominated squad. Ten of Coach Carrol Shelton's starting team will be seniors. The eleventh man will be a junior.

There will be a letterman at every position. At ends Shelton will start Dale Slatton, 170 pound converted halfback, and Dick Corbell, a 160 pounder. Carl Freese, 175, and Duard Turner, 168, will nail down the tackle positions. Lane Herrera, 170, and Jimmy Phillips, 152, will be at the guard slots and 150 pound Neil Pogue will be the center. Missing from the lineup released Thursday by Coach Shelton is the name of Wayne Durham, a 184 pound tackle. Durham is suffering from an ankle injury and may not see action against Cisco.

The backfield will have 158 pound Harvey Lewis, a two year letterman, as the man under, with Saul Fullman, 165 pound junior, in the fullback slot. Halfbacks will be Jimmy Martin, a three year letterman, and a 170 pounder, and Bill Upchurch, the lightest nbn on the team at 145 pounds.

With Durham in the lineup, Coaches Shelton and Jon Tate could field a starting lineup which averaged 165 pounds a man. That would average out to 168 pounds a man in the line and 155 pounds a man in the backfield. With Durham out, the overall average will drop to 162 pounds a man.

Coach Shelton's biggest complaint this season has been lack of reserves, but the 24 man traveling squad looks impressive. Other Mavs who will make the trip to Cisco are backs Larry Hollis, 138 pound sophomore; P. A. Cox, 141 pound senior; Clyde Young, 155 pound senior; Ronald Robertson, 142 pound junior; Clinton Humphreys, 138 pound sophomore; and J. C. Jarrett, 148 pound senior.

Reserve linemen include 150 pound John McMahan, junior end; 198 pound Fred Tucker, junior center; 151 pound Knicky Arther, sophomore guard; 160 pound Stanley Blevins, senior guard; 150 pound R. L. Stuard, sophomore end; and 170 pound Wayne Dodson, freshman tackle.

Coach Jay Williams will have five lettermen on his starting lineup, with as many seniors. His backfield will be composed of senior Benji Lipey, fullback; sophomore Randall Hess, quarter back; and halfbacks Ronnie Bostick and Benton Porter, both sophomores. Lipey and Hess are both lettermen, and Lipey is being boomed as the hottest backfield star in this area. He, un-

### Everything... ...is Cricket

Everything is really cricket in Eastland these days. Every where you walk the little black insects can be seen, and chirping is the call of the day.

Local merchants have started their annual fight against the little fiddlers, placing poison around their store fronts, and sweeping the dead insects into the street every morning.

But don't be surprised if you look around and find one of the critters on your shoulder.

### Water Board In Meeting

The Eastland county Water Board met in regular session Tuesday night, Sept. 4.

It was decided that a larger pump would be installed in the new future in order to take care of the needs for which the board has contracts. This step will be taken as quickly as possible, according to Felton Brashier, Sr., chairman.

Other business conducted by the board was of a routine nature.

### Eastland Auto Parts To Open This Monday

Formal opening of Eastland Auto Parts will be held Monday, Sept. 10, Frank Deaton, owner, and Doyal Rhodes, manager, announced today.

Eastland's newest business will open its doors for business that day. The new firm is located in the Pullman Building, where the Sport-arena was located.

Deaton said that Eastland Auto Parts would be headquarters for a complete line of auto parts. A complete automotive machine shop will also be a feature of the new company.

Deaton has been in the auto parts business for 3 1/2 years in Ranger and has lived there for 27 years. He plans to move to Eastland as soon as possible.

Rhodes has been an Eastland resident for nine years. He is married and the father of one, a boy. He was employed by Deaton in Ranger for the past three years. He has 13 years experience in auto parts and shop business.

Mrs. Johnny Collins will be bookkeeper for the new firm. The new buyer and manager invited everyone to visit their new store Monday, and said he would appreciate their business in the future.



FRANK DEATON

DOYAL RHODES

Air Condition any Car. 3 Hours. Reg. \$400 with 4-cyl. compressor. Elect. clutch, \$26 extra. SPECIAL FACTORY PRICE \$273.00. FREE Your choice electric skillet or deep fryer with each unit. Don Pierson Olds - Cadillac Eastland

BE SURE—SEE Don Pierson Olds-Cadillac Eastland Quality Cars at Volume Prices

# Eastland Telegram

Eastland County Record established in 1931, consolidated August 31, 1951. Chronicle established 1887, Telegram established 1923. Entered as second class matter at the Post Office at Eastland, Texas under the act of Congress of March 3, 1879.

VIRGIL E. MOORE, Editor  
TIMES PUBLISHING COMPANY  
Published Tri-Weekly—Tuesdays - Thursdays - Sundays  
ONOUS DICK and JOE DENNIS, Publishers  
FRANCES MOORE, Society Editor

One week by carrier in city	.15
One month by carrier in city	.45
One year by mail in County	2.95
One year by mail in state	3.95
One year by mail out of state	5.95

NOTICE TO PUBLIC—Any erroneous reflection upon the character, standing or reputation of any person, firm or corporation which may appear in the columns of this newspaper will be gladly corrected upon being brought to the attention of the publishers.

## Classified Ads..

Cards of Thanks charged for at rate of \$2.00 Each

### MISC. FOR SALE - FOR RENT -

FOR SALE: 1948 Ford 1/2 ton pick-up. Phone 1123.

FOR SALE: Modern seven room house in Ranger to be moved. Insulated, asbestos siding. Phone 928 (Ranger).

FOR SALE: Upright piano, \$60. Phone 628-W-1.

FOR SALE: GI equity in two bedroom house, 410 S. Oaklawn. Phone 419-W.

FOR SALE: Model 25 Winchester pump shotgun. Like new. Call 616.

FOR SALE or LEASE: Abstract plant and building. For information contact E. M. Waldron 616 W. 7th St., Fort Worth, Texas. Phone ED-21367.

FOR SALE: Plastic briefcases with zipper, \$1.75. Eastland Telegram.

FOR SALE: MAYTAG WASHING MACHINES—Automatic and Wringer type. Hammer Appliance Store, Eastland, Texas.

NOTICE: For best reception, you can not beat PHILCO TELEVISION. Hammer Appliance Store, Eastland, Texas.

FOR SALE: 195 1/2 acre oil lease. Call 33 or 1328 W. Main.

FOR SALE: Bred Hampshire gilts, with or without papers. Homer Stephens, Route 1, Gorman. Mile west of Ruebac.

FOR SALE: MINNOWS. BIG Golden Shiners and Red Horses. Pink Haley, east side of Olden.

NOTARY SEALS: At Eastland Telegram Office Supply.

FOR SALE: Liberty Record Storage Boxes. Telegram Office Supply.

FOR SALE: Ed T. Cox's Eastland County Histories. Eastland Telegram.

FOR SALE: Twelve foot aluminum Arkansas Traveler with new 12 horse motor and trailer, \$335. See at Bud Miller's Station.

FOR SALE: 14 foot yellow jacket, run-about boat and Mercury 25 outboard motor and trailer. \$475. See at 910 South Bassett or phone 54.

FOR SALE: 1951 - 3/4 ton pick-up. Excellent condition. Phone 755-W-2.

FOR SALE: 51 pickup. \$275. Good condition. 107 North Dixie, in back.

FOR SALE: 220 acres, 60 acres in cultivation. Open mesquite grass. 4 1/2 miles northeast Desdemona. P. E. Fox.

FOR RENT: 3 or 4 room furnished apartment, bills paid. Air-conditioned, carpet, 2 blocks from square. Call 584.

FOR RENT: Furnished, air-conditioned apartments. 611 West Plummer.

FOR RENT: Furnished apartment. Phone 9520. Hillside Apartments.

FOR RENT: 4 room house. Call 582-W after 5:30.

FOR RENT: Four room furnished house. Adults. Phone 1102.

FOR RENT: Five room house at Olden. See A. L. Thorp.

**HELP WANTED FEMALE -**  
HELP WANTED: Fountain help wanted. Davis Drug.

**MISC. WANTED -**  
FOR WATER WELL Drilling see Roy Parker, North Kent Street, or Box 223, Gorman, Tex.

SEWING WANTED. School special. 1106 West Main. Tobby and Hallie.

WANTED: 40 head large feeder shoats. Kirksey Locker, Throckmorton, Texas.

WANTED: Listing from owner, four pr five room dwelling. Henry Collins, box 285, Carbon.

**NOTICE**  
NOTICE: We have opened a nursing home for elderly people in Gorman. Licensed vocational nurse. Government inspected. Kirk Nursing Home, phone 25-J.

**REAL ESTATE -**  
WANTED EQUITIES: Will pay cash immediately for small equities in houses. Phone 802. Don Purson.

FOR SALE: 5 room house, good garage. 507 S. Green St.


FOR SALE: New home, Tom Stamey, phone 875.

CALL 601 FOR CLASSIFIED AD SERVICE

**FARMS FOR SALE**  
FOR SALE: 270 acres, ideal stock farm or dairy. Good grass, plenty of water. Good improvements. \$65 acre. J. A. Ferguson, Route 3, Hico.

**ALEX RAWLINS & SONS MONUMENTS WEATHERFORD, TEX.**  
Serving This Community Since 1884

**MOBIL 210**  
★ Stays 34% Stronger  
★ Lasts 14% Longer  
At the Sign of the FLYING RED HORSE



**Earley Tire Service**  
302 W. Main - Eastland - Phone 208

**Funeral Directors HAMNER FUNERAL HOMES**  
Ben E. Hamner  
Oxygen Equipped - Air Conditioned

Eastland Phone 17 Cisco Phone Hillcrest 21211  
**AMBULANCE SERVICE ANY WHERE ANY TIME**  
Nominal Cost Burial Insurance  
For The Entire Family

### Ticklers By George



"Daddy, would you like to hear my imitation of a cat fight?"

**902 School Boy Teams to Kickoff Season**

The 1956 Texas high school football season, which opens Sept. 7, will be a record year for the state with 902 teams participating, according to official lists released yesterday by the University Interscholastic League.

The total is five more than the number of teams playing last year, Dr. Rhea H. Williams, league athletic director, said, and more than is participating in any other state in the nation.

For four conferences — AA, A, B, and six-man football — practice started last Monday and the date for opening games is Friday, Sept. 7. Conferences AAAA and AAA began workouts last Friday and open their seasons on Sept. 14.

Only conferences AAAA and AAA have more teams this fall than last season, due primarily to changes in conference membership requirements.

The conferences are based on school enrollments, and for the 1956-57 and 1957-58 school years the breakdown is: AAAA, enrollment of 845 and over; AAA, 307-845; AA, 200-370; A, 120-200; B, 119 and under. A high school with less than 100 enrollment may play six-man football.

The 1956 conference requirements were: AAAA, 1200 and up; AAA, 550-1200; AA, 225 - 550; A, 125-225; B, 124 and under. The six-man rule is unchanged.

Conference totals for the 1956 season are: Conference AAAA, 86 teams, compared to 57 last year; AAA, 87 teams, compared to 60 last year; AA, 162 this fall, 182 last season; A, 188, down from 203 last year; B, 227, compared to 230 last year; and six-

man, 150, down from 165 last season.

All of last year's state champions will be campaigning again in their old leagues, with the exception of Deer Park, the 1955 conference A champ, which has been moved into AA to fit its enrollment. Other defending state champions are: Abilene in AAAA; Port Neches in AAA; and Stamford in AA. Conference B and six-man conferences do not play past regional championships.

### SOCIAL CALENDAR

**Thursday, September 6**  
7 p.m. — The Evangel Class of the First Baptist Church will meet in the home of Mrs. Aubrey Van-Hoy, 511 South Walnut for a covered dish supper and business meeting. All members, associate members and prospective members are cordially invited. Mrs. Ola Eldredge is the class teacher.

**Sunday, September 9**  
2 to 5 p.m. — Mr. and Mrs. C. W. Norris will celebrate their 50th wedding anniversary in the City park. All friends and relatives are invited to drop by.

**Monday, September 10**  
7 p.m. — The WSCS Fellowship Dinner will be held in the Methodist Church. Mrs. James Horton will show films taken on her trip to South America.

**Tuesday, September 11**  
7:30 p.m. — XI Alpha Zeta's will meet in the home of Mrs. Bill Leslie, 305 North Ammerman for their first meeting of the year.

**WE BUY SCRAP IRON AND METAL**  
Get Our Prices Before You Sell  
WE PAY HIGHEST MARKET PRICES  
WE APPRECIATE YOUR BUSINESS  
**KOEN SALVAGE**  
Highway 80 West 1315 W. Main

We're Authorized Dealers For  
**ALL HOTPOINT APPLIANCES**  
Washing Machines — Dryers — Ranges  
Dish Washers — Disposals  
Home Freezers — Refrigerators  
Air Conditioners — Hot Water Heaters

Call Us For Complete Service On ALL Appliances

**SMITH PLUMBING & TIN**  
114 S. Seaman Phone 304

**OIL FIELD Equipment**

- SURFACE CASING
- OIL STRING CASING
- TUBING
- RODS
- PUMPING UNITS
- TANKS

**BOUGHT - SOLD - TRADED IRISH DRILLING CO., INC.**  
208 W. Commerce—Eastland, Texas  
Pipe Yard Highway 80 East  
Office Phone 100 - 101 Yard Phone 199

### Moore About -

(Continued from Page One)  
and no deaths. But more deserving is the Highway Patrol and local police departments. Some 155 drivers will not agree with that, because approximately that many paid fines over the long weekend holiday after being nabbed by radar. But the record is proof in itself that more rigid enforcement of traffic laws will cut down on unnecessary highway deaths.

We are not hunting for another fight (we still have plenty of old ones on hand), but it seems a shame to us that Lake Leon still does not have public picnic tables. True, there are many privately owned picnic areas, but we can see no reason for not having a few public picnicking areas. Yes, we know it costs money. But instead of waiting until a dream area can be built, it seems that it would be better to have a few public facilities now, and add on later. A lake isn't new but one. As it now stands, Ringling Lake is a far better area for the average Eastland family than is Lake Leon.

Unfortunately, it appears that the Chamber of Commerce membership drive has flopped. The goal wasn't reached; in fact it wasn't neared. Frankly, we are disappointed.

That's it for now. See you Sunday.

**VISITING THIS WEEK**  
H. E. Chaney of Lubbock is visiting here this week.

**CELEBRATED ANNIVERSARY**  
Mr. and Mrs. J. H. Roe celebrated their 60th wedding anniversary Sunday with a quiet evening at home.

**T. L. FAGG R. L. JONES**  
REAL ESTATE  
Property Management  
Home and Farm Loans

### NEWS FROM DESDEMONA

By Aniel McMasters

Little Kimberly Joe Keith, baby daughter of Mr. and Mrs. Bernard Keith, age 8 months, passed away in the hospital at Odessa September 1.

Funeral services were held at Odessa Monday at the First Baptist Church at 8 a.m. and then the possession left immediately for DeLeon.

Services were held at the Victor Cemetery at 4 p.m. Monday.

Little Kim is survived by her parents, a sister, Vicki Lynn, her grandparents, Mr. and Mrs. Cameron of Odessa and Ethel Keith of Desdemona and other relatives. Nighbors Funeral Home had charge.

The Desdemona School opened September 3. School was begun with an assembly in the high school gym. The community wants all the newcomers to feel welcome here in Desdemona. We want to welcome our new superintendent, Mr. Pierce, and all the other teachers. I know if we all try together we will make this the greatest year Desdemona school has ever known. I know truly that I speak also for every person of this community.

David Lewis, son of Mr. and Mrs. Jody Lewis and Hershel Griffith, son of Mr. and Mrs. Atlas Griffith left Wednesday at 9 a.m. for Camp Gorman, Georgia, where they will attend training.

Visiting Mr. and Mrs. John Ash, Eula and Arlington over the

holiday were Mr. and Mrs. Kenneth Foreman of Ranger. Also visiting recently with the Ash family were Mr. and Mrs. Henry Young and Jim of Floydada, Mildred Young, Marvin Young and Donnie Young of Farwell.

Visiting Mr. and Mrs. Hyson Echols were Mr. and Mrs. Jack Boyd and children of Fort Worth.

Mr. and Mrs. Earnest Key and family of Greenville are visiting Mr. and Mrs. Shorty May, Anita and Larry.

**M. H. PERRY**  
Representing  
**Southland Life**  
Life - Retirement Income  
Partnership  
Mortgage Cancellation  
Educational - Annuities  
Accident - Sickness  
Hospitalization - Group  
Call 173 or 713-J  
107 W. Main • Eastland

Visiting Mr. and Mrs. Tony Ash recently were Mr. and Mrs. Billy Stevens of Orshell, Mr. and Mrs. B. E. Lewis of Grand Prairie and Mr. and Mrs. West and family of Monahans.

Tickets for Friday night's Eastland-Cisco game can still be secured at the school's business office here.

Local officials urged fans to get their tickets here and avoid a last minute rush in Cisco.

### Grid Tickets Still On Sale

Local officials urged fans to get their tickets here and avoid a last minute rush in Cisco.

**NEW! PITTSBURGH Cementhide**  
(Polyvinyl Emulsion Type)  
Rubberized MASONRY PAINT  
FOR BRICK, STUCCO, CONCRETE  
CEMENT-ASBESTOS SHINGLES, CEMENT BLOCK

**NOW— More than 100 Colors to choose from**



• Goes on Easily • No Primer Needed  
• Dries Quickly • Lap Marks Do Not Show

Resists penetration of moisture from the outside and yet it "breathes," allowing moisture to escape from behind it, minimizing blistering and peeling.

**CROWELL LUMBER CO.**  
"Everything To Build Anything"  
722 W. Main Phone 300  
PITTSBURGH PAINTS KEEP THAT GUY PAINTED LOOK LONGER

## Your Office Supply Check List

- Ledger Sheets
- Ledger Binder
- Ledger Indexes
- Columnar Sheets
- Columnar Pads
- Journal
- Cash Books
- Day Books
- Sales Books
- Receipt Books
- Inventory Sheets
- Manuscript Covers
- Rulers
- Ring Binders
- Brief Cases
- Storage Binders
- Daters
- Rubber Stamps
- Stamp Pad Ink
- Clip Boards
- Pencil Sharpeners
- Pencils
- Erasers
- Stick Files
- Harp Files
- Steel Card File
- Filing Cabinet
- Filing Cards
- Filing Indexes
- Listo Marking Pencils
- Markwell Dry Pens
- Markwell Staplers
- Bostich Staplers
- Hotchkiss Staplers
- Pencil Lead
- Speedball Ink
- Speedball Drawing Points
- Stencils
- Duplicator Ink
- Correction Fluid
- Type Cleaner
- Memo Paper
- Typewriter Paper
- Esterbrook Pens and Pencils
- Esterbrook Desk Sets
- Esterbrook Renew Points
- Bates Paper Punch
- Thumb Tacks
- Clasp Envelopes
- Desk Blotters
- Waste Baskets
- Liquid Paste
- Typewriter Tables
- Staple Removers
- Moisteners
- Notary Seals
- Gold Seals
- Price Tags
- Rubber Bands
- Paper Clips
- Manila File Folders
- Desk Trays
- Scotch Tape
- Typewriter Ribbons
- Adding Machine Ribbons
- Carbon Paper
- National Cash Register Paper

**EASTLAND TELEGRAM OFFICE**  
Eastland Phone 601

**manager's**

Here is an open invitation to you to come in and get acquainted with WORTH FOOD MARKET'S way of bringing you the best of everything to eat at consistently LOWER PRICES. Carey Hightower, grocery manager, and Homer Meek, meat manager invite you to come in today and see for yourself.

PRICES EFFECTIVE THURSDAY, FRIDAY, SATURDAY AT ALL WORTH FOOD MARKETS

# WELCOME WEEK VALUES!



LOWER PRICES PLUS S & H GREEN STAMPS

**Peas** TRELIS 4-Sieve No. 303 Cans **2 25c**

**Flour** GOLD MEDAL Lb. Bag **10 89c**

<b>QUICK</b> 40-Oz. Pkg. <b>45c</b>	<b>WESSON OIL</b> Quart Botl. <b>65c</b>
<b>TUNA</b> Van Camp No. 1/2 Can <b>21c</b>	<b>DASH</b> Dog Food 2 1-Lb. Cans <b>29c</b>
<b>SYRUP</b> Log Cabin 24-Oz. Glass <b>59c</b>	<b>PICKLES</b> Libby's Kosher Dill Jar <b>35c</b>
<b>V-8</b> Vegetable Juice 46-Oz. Can <b>39c</b>	<b>JELLY</b> Welch's Grape 20-Oz. Jar <b>37c</b>
<b>HI-C</b> Orange Drink 46-Oz. Can <b>29c</b>	<b>PIMIENTOS</b> Dromedary Glass 2-Oz. <b>10c</b>

**at WORTH FOOD MARKETS**

FORMERLY PIPKIN'S PIGGLY WIGGLY

**BABY FOOD** Gerber's Strained 12 4 1/2-Oz. Cans **\$1.00**

**TOMATO SOUP** Campbell No. 1 Can **10c**

**PET MILK** Evaporated 2 Tall Cans **25c**

**APRICOTS** Hunt's Whole Unpeeled 4 No. 2 1/2 Cans **\$1.00**

**Breakfast Buy!**

**ARMOUR'S STAR SLICED BACON**

**Lb. Only 49c**

SALAD DRESSING

**MIRACLE WHIP** Quart Jar **49c**

<b>PINEAPPLE</b> Libby's Crushed No. 2 Can <b>27c</b>	<b>PORK &amp; BEANS</b> Van Camp No. 300 Can <b>15c</b>
<b>FRUIT COCKTAIL</b> Libby's No. 303 Can <b>25c</b>	<b>YELLOW CORN</b> Mayfield No. 303 Can <b>12c</b>

**Tomato Catsup** HUNT'S 2 14-Oz. Botts. **35c**

<b>BAKERITE</b> Shortening 3 Lb. Can <b>85c</b>	<b>FROZEN FOOD SPECIALS!</b>
<b>LUNCHEON</b> Oscar Mayer Luncheon Meat 12-Oz. Can <b>33c</b>	<b>M. C. P. Lemonade</b> 3 6-oz. Cans <b>29c</b>
<b>SPAGHETTI</b> Franco-American Prepared 15 1/2-Oz. Can <b>16c</b>	<b>OLD SOUTH Orange Juice</b> 2 6-oz. Cans <b>29c</b>
<b>PEANUT BUTTER</b> Peter Pan Smooth 18-Oz. Jar <b>61c</b>	

Try the NEW, THE ALL NEW!

**Pillsbury CAKE MIX**

White . Yellow .  
Chocolate . Caramel  
Orange . Spice

Redeem Your Pillsbury Coupons Here!

**ARMOUR'S BANNER SQUARES**

**Smoked Bacon** Lb. **29c**

**WORTH QUALITY**

**Calf Chuck Roast** Lb. **35c**

**WORTH QUALITY**

**Calf Rib Chops** Lb. **59c**

**ARMOUR'S STAR**

**Franks** Lb. Pkg. **39c**

**WORTH QUALITY**

**Calf Sirloin Steak** Lb. **63c**

**WORTH QUALITY**

**Calf Round Steak** Lb. **69c**

**WISCONSIN**

**Longhorn Cheese** Lb. **49c**

**Priced A Better Buy!**

**Nature's Sweet Golden Ripe BANANAS**

**2 Lbs. Only 25c**

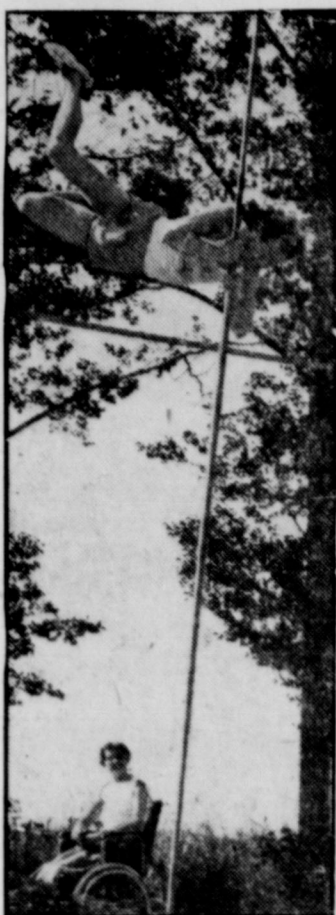
*Freshest Produce*

<b>RED POTATOES</b> U.S. No. 1 Triumph	Lb.	<b>4c</b>
<b>TOMATOES</b> Selected Cartons 3's, 4's	Ctn.	<b>19c</b>
<b>SUNKIST LEMONS</b> Large Size	Lb.	<b>19c</b>
<b>CABBAGE</b> Colorado Firm Heads	Lb.	<b>5c</b>
<b>GRAPES</b> Flame Tokays	2 Lbs.	<b>25c</b>
<b>CARROTS</b> Crisp, Tender Cello-Wrapped	2 1-Lb. Bags	<b>19c</b>
<b>CUCUMBERS</b> California Fancy	Lb.	<b>14c</b>
<b>YELLOW ONIONS</b> Mild Flavor	Lb.	<b>8c</b>
<b>SWEET POTATOES</b> Select New Crop	Lb.	<b>15c</b>

**WORTH FOOD MARKETS**

**CARD OF THANKS**  
 We cannot fully express with words our deep appreciation for the loving kindness shown to us and our loved ones by our many friends at the loss of our husband and father.  
 Thank you from the bottom of our hearts for the beautiful flowers, the cards and for the food you brought to us.  
 Gene V. Rhodes and family  
 Mrs. A. H. Rhodes  
 Mrs. W. T. Quinn

**Carbon Couple To Celebrate Anniversary**  
 Mr. and Mrs. C. W. Norris of Carbon will celebrate their golden wedding anniversary Sunday from 2 to 5 p.m. in the Eastland City Park.  
 All friends and relatives of the couple are invited to attend.

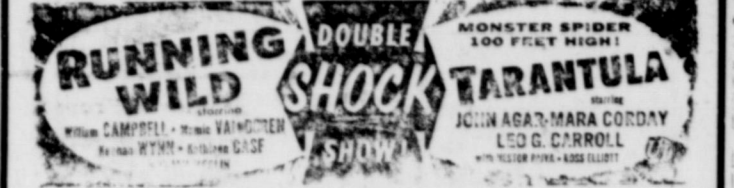


**TWO TO GET UP**—Ragee Lundberg, Swedish pole vault champion, performs brilliantly for one special spectator—his wife, Jinni. Mrs. Lundberg, a polio patient, was "loaned" to her husband for two weeks by the convalescent home in Stockholm on the condition that Ragee learn the gymnastics program Jinni has to go through every morning. Having learned it all, Ragee is now able to teach his wife how to move again, while he keeps training for the Olympic games. They hope soon to reach their goals: his, to jump higher; hers, to walk again.

**DIXIE Drive-In**  
 EASTLAND RANGER HIGHWAY

Box Office Opens 7:15  
 First Showing 7:45  
 Box Office Closes 9:45

WEDNESDAY THURSDAY, SEPT. 5 - 6



PLUS: Color Cartoon and Sports Reel

FRIDAY - SATURDAY, SEPT. 7 - 8



PLUS: Color Cartoon and Sports Reel

# Women's Activities

## Local Students Favor Texas U.

Many Eastland and Olden young people will be leaving for college this week and next. Some to return and others for the first time. Fifteen different colleges and universities will be represented by Eastland and Olden students.  
 Listed below are students leaving for school and the school they have chosen to attend:  
**NOARTH TEXAS STATE COLLEGE:** Pauline Cogburn, Don Roff, Don Webb, Sarita Seale, Bettie Joyce Miner and Richard Bourland.  
**BAYLOR UNIVERSITY:** Jana Weaver, Helen Taylor, Bill Butler, Olden.  
**RANGER JUNIOR COLLEGE:** Doris Day, Evelyn Jordan, Stanley Harris, and Thelma Edwards, Donald Gene Lawrence, Phil Hilliard, Oliver Cavet, Wilma Elliott and Tommy Edwards all of Olden.  
**CISCO JUNIOR COLLEGE:** Ray Hogan, Henry Sims, Gilbert McDonald.  
**TEXAS TECHNOLOGICAL COLLEGE:** Bill Smith, David Willoughby, Clyde Evatt, and Frances O'Brien of Olden.  
**A&M COLLEGE:** Jerry Arther, Lee Stambough, Purton Norris, Larry Tankersley, John McAlister, George Harris.  
**MARY HARDIN BAYLOR:** Jennie Pittman.  
**HOWARD PAYNE COLLEGE:** Bill Burton of Olden.  
**ARLINGTON STATE COLLEGE:** Darrell Basham and Kenneth Reese of Olden.  
**MIDWESTERN:** Freddie Rowch of Olden.  
**TEXAS CHRISTIAN UNIVERSITY:** Dolores Warden, Helen Ruth Flowers, Jeanette Caton and Lou McFadden.  
**UNIVERSITY OF TEXAS:** Charles Collins, Neil VanGeem, Alice Cushman, Janis Little, Don Smith, Jimmy Don Huckabay, Jimmy Lynn Harris, Richard Jones, Herbert Weaver and Doug King, Medical School.  
**McMURRY COLLEGE:** Sammy Miller and Jimmy Everett of Olden.  
**HARDIN - SIMMONS:** Joe Muirhead.  
**UNIVERSITY OF CALIFORNIA:** Edith Cox.

### Emmett Powell Is New President of Fellowship Class

Emmett Powell, newly elected president of the Men's Fellowship Class of the First Christian Church, announced the following appointments last Sunday: Attendance committee: Clarence Bigby, Jerry Freese, Homer Meek, Bill Reid, Ray Norris and Homer Stuffer. Works or Projects committee: Jack Chamberlain Jr., Bill Collins, Pat Murphy and Eddie Sargent. Entertainment committee: Earl Lewis, Tom Earnest, Johnnie Collins and Guy Robinson. Publicity committee: H. R. Garrett, L. E. McGraw and Richard Cox. Sick committee: Morris Keasler, Wes Harris, Porter Woods and Jim Beard.  
 Other officers of the Men's Fellowship Class are: Porter Woods, vice-president; L. E. Huckabay, treasurer; and Morris Keasler and L. E. McGraw, attendance secretaries. E. K. Henderson was re-elected teacher of the class.  
 "Although this class is an integral part of the church school of the First Christian Church it is interdenominational in scope," Powell said. "Men from all walks of life and from every church in the community are active in its program. The group meets in the church fellowship hall every Sunday at 9:30 a.m. for coffee and to be followed by a rousing song service under the direction of Carl Garrett or Bill Collins with Mrs. Ruth Lewis at the piano. E. K. Henderson, an elder of the First Christian Church, then leads the class in the study of the international Sunday school lesson for this week. All men of the community are invited to attend."

**ATTENDS WEDDING**  
 Mrs. John D. McRae returned from Midland Sunday, where she attended the wedding Friday night of her niece, Mary Ann McRae and Thomas Menzies Sloan. The marriage took place at 8 p.m. in the First Presbyterian Church followed by a reception for 400 guests at the Midland Country Club.  
 Mrs. Sloan is the daughter of Mr. and Mrs. Hamilton E. McRae, Jr., formerly of Eastland. Sloan is the son of Mrs. Thomas N. Sloan and the late Mr. Sloan. Midland will be their home after Sloan completes his studies at Texas University.



Style 2910  
 Back interested centers on this all-important sheath. A touch of contrast to accent pockets and collar. \$16.95.  
 Other Junior Lines from \$10.95 to 69.95

GET READY FOR THE FALL GAMES  
 With A New Outfit From Our SPORTS WEAR DEPT.

**ALTMAN'S**  
 "Nationally Advertised Fashions"  
 North Side Square Eastland

### Alford's Honor Olden Teachers, Board Members

Mr. and Mrs. Tommy Alford, Leon Village, were hosts to the annual picnic for the Olden school teachers and board members Friday night at the O. H. Dick place on Lake Leon.  
 Those attending were Mrs. Margaret Southern, daughter of Mr. and Mrs. Alford; Mr. and Mrs. Travis Hilliard and children; Mr. and Mrs. Harry Fox and children; Mr. and Mrs. Gene Woods and children; Mr. and Mrs. Haley and daughter; Mr. and Mrs. C. N. Snow and son; Miss Eunice Hamilton; Miss Nannie Allmon; Mr. and Mrs. J. D. Herrell and son and guests; Mr. and Mrs. Archie Kelley and son; Mr. and Mrs. Bud Fox and daughter; Mr. and Mrs. Z. D. Cook and children.  
 Also Mr. and Mrs. Bernard O'Brien and children; Mr. and Mrs. Marvin Hutto and son; Mrs. Bill Edwards and daughter; Mr. and Mrs. O. H. Dick; Mrs. T. L. Lockhart; Mrs. Dee Cooper and children; Mr. and Mrs. Tom Sharp; Mr. and Mrs. Gilbert Cope land; Mr. and Mrs. Jim Everett and son; Ray Larimore; Mary Ann Reese and Don Fox.

### Billie Jo Trout, Larry Graham to Exchange Vows

Mr. and Mrs. Lester Trout of Breckenridge, formerly of Eastland, announce the engagement and approaching marriage of their daughter, Billie Jo Trout of Eastland, to Larry Jay Graham, son of Mr. and Mrs. Wince Graham of Morton Valley.  
 Both are graduates of Eastland High School. Miss Trout is employed by Earl Bender and Graham is employed by the Republic Supply Company in Abilene.  
 They plan to make their home in Abilene.

### LOOK WHO'S NEW

Mary Katherine Cole is the baby daughter of Mr. and Mrs. Jack Cole of Dallas. She was born September 1 at 11 a.m. in the Methodist Hospital in Dallas, and weighed 6 pounds and 15 ounces. Her two brothers are Weldon, age 4, and Tim, age two. Mr. and Mrs. M. B. Griffin of Lubbock and Mr. and Mrs. Odell Cole of Caddo are the grandparents.

### GO TO AUSTIN

Mr. and Mrs. H. E. Basham spent Monday and Tuesday in Austin on business.

**BILL HYDE Sells and Builds**  
  
**BUTLER**  
**STEEL BUILDINGS for:**  
 • Industry  
 • Commerce  
 • Schools  
 and other single-story construction  
**STANFORD ENGINEERING CO.**  
 P.O. Box 687 Dial 3-4721  
 Abilene, Texas

### Ranger Girl and Jim Clay Grubbs Are Wed Sunday

Miss Joyce Willingham of Ranger and Jim Clay Grubbs of Olden were married Sunday night in the Church of Christ parsonage in Moran. Officiating minister was Clarence Brock.  
 Those attending were Mr. and Mrs. Edward Willingham, parents of the bride; Mr. and Mrs. O. T. Grubbs, parents of the bridegroom; Mr. and Mrs. H. F. Callaway and Weaver, Mrs. Annie Martin and Mrs. Clarence Brock.  
 Grubbs is employed by Lone Star Gas Company at Ranger.  
 The couple is making their home in Ranger.

### ATTENDS GIFT SHOW

Mrs. Myrtle Anderson attended the gift show in Dallas over the week end.

### WEEK END GUESTS

Visiting Mr. and Mrs. T. L. Lasater, during the week end were Mr. and Mrs. Fred Ford and sons, Davey, Richard and John of Fresno, California; Mr. and Mrs. M. C. Ivie and children, Marsha Anne and Pamela of San Antonio; Mrs. Ruby Lasater, Cisco, Mr. and Mrs. R. N. Lasater, Dallas, and Mr. and Mrs. Worth Ford and daughter, Janice, Odessa.

### Highlight of the Ike Clark fall collection is this tweed-captan jumper worn over a hooded jersey sheath. The zippered captan slips off to reveal a basic dress and the hood converts into a soft cowl collar.



**MAJESTIC**

**NEVER SUCH A SIGHT! NEVER SUCH MIGHT!**  
 WARNER BROS. PRESENT  
**GREGORY PECK**  
 IN THE JOHN HUSTON PRODUCTION OF HERMAN MULLER'S  
**MOBY DICK**  
 with RICHARD LEO and BASEHART GINN  
**STARTS TODAY - FRIDAY and SATURDAY**  
 Attend Pep Rally Tonight Adults 65c - Children 25c

**PENNEY'S**  
 ALWAYS FIRST QUALITY!

**WEEK END VALUES**

**BETTER MILEAGE! BUDGET PRICE!**  
 double-loop knit nylons for longer wear!  
  
**PENNEY FIRST QUALITY STRETCHABLE SHEERS**  
 Look how much better you can do on a budget at Penney's! Glamour stretchables that cling beautifully in double-loop knit for wear you never dreamed possible! Slim dark seams.  
 2 For 1.50  
 Midge, Norm, Long

**SPECIAL! Draw Drapes \$5.00 Pair**  
 Very special draper offer! Draw drapes in Burlington Mills' cotton-rayon Damask, 50 inches wide, floor length. Matching scatter pillows.  
 2 for 3.00  
**SPECIAL! Women's Tufted Chenille Duster Length ROBES 3.00**  
 Sizes 10 to 46  
**SPECIAL! All White SHEET BLANKETS 2 for 3.00**  
 Size 70" x 84"  
 Quality Nylon **SLEEK, SLIM BRIEFS**  
 2 for \$1

**STAINLESS... styled by International**  
  
 Silver, boasts a new dimension in beauty!  
**REPEAT OF A SELLOUT! SERVES 8! 44-PIECE STAINLESS STEEL SET Includes 2-piece salad set**  
 Here's stainless with style—made exclusively for Penney's! Rich, modern design. Contoured handle knives. Wash, dry, no polishing!  
**9.77**

Penney's quality nylon briefs with the silken feel... at a buy'em by the dozen price! Weightless as a whisper... but sturdy knit to last longer through countless wash 'n wearings! Full comfy cut... never bind or chafe!

**Tangy New Dressing Gives Spark To Potato Salad**



While there's still time to enjoy warm fall days and all outdoors says "Come, it's cooler out here!", move the family to the back yard for dinner. A meal that coaxes most these busy days is the kind that takes but moments to prepare—potato salad and cold cuts. Try a different dressing that will lend new interest to your salad. You will like this new one. It's made with economical Carnation instant nonfat dry milk. Perhaps you didn't know that it is good for cooking as well as for drinking. When recipes call for milk, simply use reliquified instant. Low-calorie "Magic Crystals" dissolve instantly in cold water. There's no beating, shaking, lumping or foaming. Mix as needed or mix a day's supply for all your cooking, baking and drinking.

**Tangy Cooked Salad Dressing**

(Makes about 1 1/4 cups)

- 3/4 cups "Magic Crystals"
- Instant
- 1 1/4 cups water
- 1 egg
- 1 teaspoon dry mustard
- 1/4 teaspoon celery seed
- 1/4 teaspoon cayenne pepper, to taste
- 2 tablespoons flour
- 1/2 cup vinegar
- 2 tablespoons butter
- 1 teaspoon salt

Mix instant nonfat dry milk with water. Beat egg. Combine with reliquified instant. Blend well. Mix dry ingredients together in top of double boiler. Slowly add instant milk-egg mixture. Stir until thoroughly blended. Cook over hot water until mixture begins to thicken (about 5-8 minutes). Stir constantly. Add vinegar and butter. Continue cooking until thickened (about 3-4 minutes). Remove from heat and beat with rotary beater until smooth. Chill in covered container in refrigerator. Two hours before serving time, combine salad dressing with salad ingredients. Let stand in refrigerator until ready to use.

**Letters To Editor**

Mr. Virgil E. Moore  
Editor - Eastland Telegram  
Dear Mr. Moore,

I am presently serving with the army in Boeblingen, Germany. The weather is fine and the scenery is beautiful, but nevertheless I would rather be back in Eastland.

Your articles in the Telegram are of particular interest to me, and I enjoy reading them very much.

Seems like the folks around there are really going "hog wild" for water sports, and why not? With a fine lake like Lake Leon, I wish I were there to participate in such activities myself.

I receive my papers here about two or three weeks after publication, but that is understandable considering the distance they have to travel. Anyway, I enjoy getting them and am continually looking forward to many more fine copies.

By the way, I presume that Eastland, as well as most of Texas is in bad need of rain. Too bad!

I can't send you the two or three inches we get over here each week, but since that is impossible, all I can do is hope along with the rest of you folks that rain will eventually come.

Well old boy, keep up the fine work, and I will keep posted on the progress of our fair city from time to time through the papers.

My regards are extended to you and all the folks of Eastland for a job well done. Keep the home fires burning, I'll be back.

Sincerely yours,  
Robert B. Latham

**VISITING FRIENDS**

Mrs. L. J. Lambert of Dallas is in Eastland this week visiting friends.

**TRI-CITIES REAL ESTATE EXCHANGE**

Oil and Gas Leases  
Business Property  
Farms & Ranches



REALTOR  
Phone 1076 Box 22  
Eastland

**For Your Building Needs**

PHONE 881  
• New Homes  
• Remodeling  
All Work Guaranteed  
J. D. Parson - Frank Harris

**This is How it Works Out—**

Insurance operates on the theory that the worst never happens, and it seldom does. Insurance says: "You will have no losses for a whole year." You challenge, pay the premium, and wait. Who wins? The law of averages gives the premium to the insurance company, and a full year's protection and satisfaction to you, and, like the story, it ends well, everybody is happy but the poor fellow who wasn't insured the year the law of averages went hay-wire!

**EARL BENDER & COMPANY**  
Eastland (Insurance since 1924) Texas

**FREE — FREE — FREE  
\$8,000.00 CADILLAC**

You may win this \$8,000.00 Eldorado Seville. All you have to do is register at Moser Humble Service Station . . . Located across the street from The White Elephant Restaurant.



**NOTHING TO BUY**

REGISTER EVERY DAY IF YOU WISH.  
CONTEST CLOSSES SEPTEMBER 25TH

**Moser Humble Service Station**  
Corner of Main and Dixie Phone 127

**SCHOOL DAYS SALE**



LOOSE LEAF  
**NOTE PAPER**  
25c Pkg.  
**15c**

MRS. TUCKERS

**SHORTENING . . . . . 3 Lb. Can 89c**

**SPECIAL**

CLOVER FARM BLACK

**PEPPER**  
2 1/2-oz. Boxes **25c**

**SPECIAL**

PUFFIN

**BISCUITS**  
Can **10c**

**SPECIAL**

WHITE SWAN BLACKEYED

**PEAS**  
No. 300 Tall **10c**

**SPECIAL**

VAN CAMP'S

**TUNA**  
No. 1 Flat **19c**

**SPECIAL**

NABISCO RITZ

**CRACKERS**  
1-Lb. Box **35c**

CLOVER FARM

**COFFEE** Drip or Reg. Lb. Can **89c**

CLOVER FARM

**PORK & BEANS** No. 300 Tall **10c**

WAPCO WHOLE NEW

**POTATOES** No. 303 Can **10c**

CLOVER FARM WAXED

**PAPER** 100-Foot Roll **23c**

BETTY CROCKER

**CAKE MIXES** 20-oz. Box **29c**

THOMPSON SEEDLESS

**Grapes** Lb. **12 1/2c**

CALIFORNIA BURBANK

**Potatoes** 10 Lb. Bag **49c**

CENTRAL AMERICAN

**Bananas** Lb. **12 1/2c**

VINE RIPE

**Tomatoes** Lb. **19c**

WILSON'S

**Bacon** Thick Sliced 2 Lbs. **89c**

CHOICE BEEF

**STEAK** Lb. **65c**

**FRYERS** Fresh Cut-Up. Lb. **39c**

**Chuck Roast** Choice Beef. Lb. **39c**

**Club Steak** Choice Beef. Lb. **49c**

**GROUND BEEF** Fresh Lb. **29c**

**HAMS** Cured. 10 to 12-lb. Avg. Whole. Lb. **53c**

CURED HAM

**HOCKS** Lb. **19c**

OPEN EVERY NIGHT TIL 8 P.M.—SATURDAY TIL 9 P. M.

**CLOVER FARM STORES**

400 South Seaman

Phone 31

**STOKLEY'S SALE**



Stokley's Frozen  
**SPINACH**

LEAF OR CHOPPED  
3 12-Oz. Pkgs. . . . . **49c**

Stokley's Frozen  
**POTATOES**

Diced or French Fry  
3 12-Oz. Pkgs. . . . . **49c**

Stokley's Frozen  
**CORN**

CUT  
3 10-Oz. Pkgs. . . . . **59c**

Stokley's Frozen  
**BROCCOLI**

CHOPPED  
3 10-Oz. Pkgs. . . . . **59c**

Stokley's Frozen  
**BEANS**

Regular or French Cut  
3 10-Oz. Pkgs. . . . . **59c**

Stokley's Frozen  
**PIES**

Chicken - Turkey - Beef  
3 8-Oz. Pkgs. . . . . **69c**

Stokley's Frozen  
**BEANS**

BABY LIMAS  
3 10-Oz. Pkgs. . . . . **79c**

Stokley's Frozen  
**SPEARS**

BROCCOLI  
3 10-Oz. Pkgs. . . . . **79c**

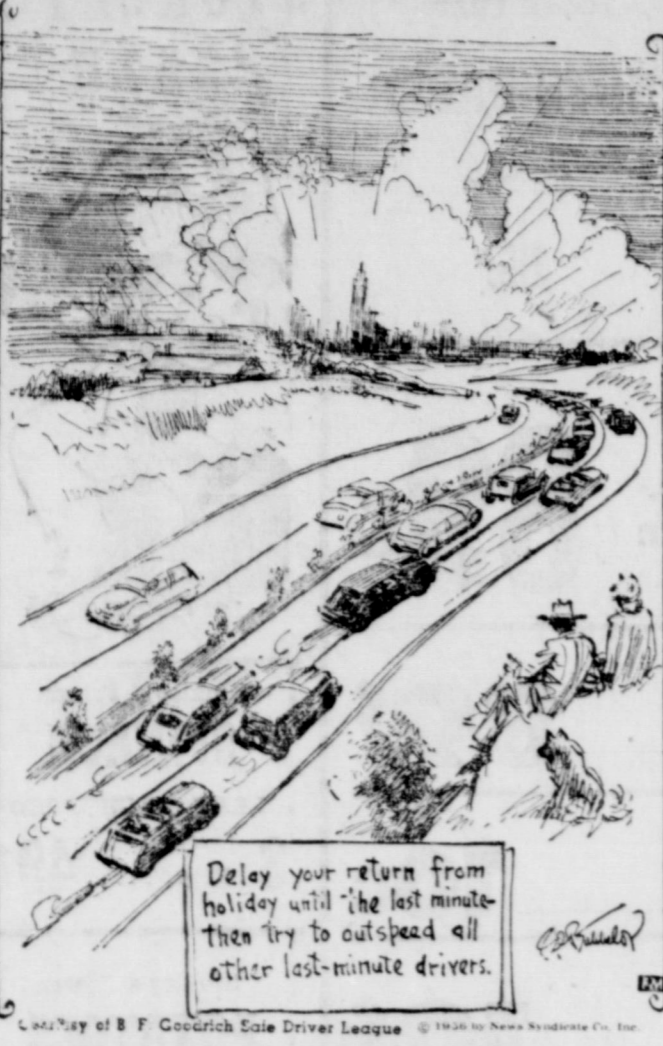
Stokley's Frozen  
**JUICE**

ORANGE  
6 6-Oz. Cans . . . . . **89c**

Stokley's Frozen  
**CAULIFLOWER**

3 10-Oz. Pkgs. . . . . **79c**

**INVITING THE UNDERTAKER-**



**Teacher-Training TV Program to Be Launched in Area September 22**

ABILENE (Spl.) — A teacher-training television program will be launched the weekend of Sept. 22-23 over station KRBC-TV, Channel 9, in Abilene.

The program is part of a statewide project designed to qualify bachelor degree holders lacking professional requirements for teaching through an accelerated teacher educational program. Enrollment in the television education program will make the degree holder eligible for employment on an emergency teaching permit.

Dr. Joe Humphrey, dean of McMurry College in Abilene, is chairman of the West Texas area committee which is working with the Texas Education Agency on the TV recruitment and teacher education project. Dr. Humphrey and the West Texas area committee are in charge of the program originating at KRBC-TV.

Thirteen other such districts in Texas will guide the presentation of the program over TV stations throughout the state.

Other members of the West Texas area committee are Dr. Walter H. Adams, dean of Abilene Christian College; Olaf South, superintendent of schools at Sweetwater; Dr. H. B. Smith, dean of Hardin - Simmons University; Paul Whitton, superintendent of the Cross Plains schools; and Donald McDonald, director of curriculum, Abilene Public Schools.

McDonald will be the instructor for the KRBC-TV program. The committee serves as an advisory group to Dr. J. W. Edgar, state commissioner of education. The project will be presented in two 13-week series. The second series of the 26 telecasts is due to begin Feb. 1, 1957.

College graduates of the West

Texas area who desire to become teachers through the recruitment and teacher education TV project will be required to do the following:

Register at an area cooperating college or university; Pay fees to the college or university where they enroll;

View 26 telecasts, read required related materials, and submit informal papers;

Utilize opportunities to visit schools for "on the job looks"; and

Take the program series examination. Cooperating colleges will designate staff members as advisors to the participants. However, most of the study will be by mail and by television.

Prospective participants in the Abilene area may contact any of the following for complete information:

Dr. Orval Filbeck, Abilene Christian College.

George Graham or Dr. H. B. Smith, Hardin - Simmons University.

Dr. Morgan Young, McMurry College.

Eligibility requirements other than a bachelor degree include a C plus grade average evidenced by a transcript of college work; United States citizenship; and three references as to good moral character.

The television project was set up by the Texas Education Agency to cope with the problem of an expected 350,000 additional children in Texas schools by 1960. Fifteen thousand new teachers must enter the classroom and the more than 71,000 now teaching must remain in the classroom if those additional children are to have teachers.

"These potential teachers," Dr.

Humphrey said, "may be housewives, persons desiring to change careers, and persons who earlier turned thumbs down on a professional career but now would like to enter a profession such as teaching. Two factors characterize all prospects whether they are employed or non-employed."

These factors are that the potential teachers hold college degrees but lack professional requirements for obtaining teaching certificates and that they have never found enough of the right time to establish college residence to meet the teacher education requirements.

The state television project is designed to hurdle these obstacles. Participants will have the opportunity for an individualized teacher education program tailored to their needs and abilities. Their reward will be an emergency teaching permit and eligibility for three-year renewal of the emergency permit upon completion of the program series.

**VISITING HERE**

Mrs. W. P. Weaver from DeLeon is visiting in the H. T. Weaver home this week.

**MONAHANS VISITORS**

Mr. and Mrs. J. C. Day visited in Monahans over the week end.

**ALL RISK ... POLICY**  
 FIRE & THEFT - COLLISION  
 • OUTBOARD MOTORS  
 • BOATS  
 • BOAT TRAILERS  
**KINNAIRD**  
 INSURANCE AGENCY  
 207 W. Main  
 "37 Years in Eastland"

**Hospital Report**

Patients in the Eastland Memorial Hospital are:

Mrs. Kate Adkins, Cisco, surgical

C. H. Tankersley, surgical  
 Neil Moore, medical  
 Mrs. Elizabeth Notgrass, Cisco, medical

Mrs. Mary Kansteiner, Cisco, surgical

Mrs. Frank Day, medical  
 Dismissed were: Mrs. Marjorie Courtney and baby boy, Mrs. Olga Reich, Cisco, C. C. Garmany, John H. Nix, Don Jobe and Mrs. Ruth Burkett.

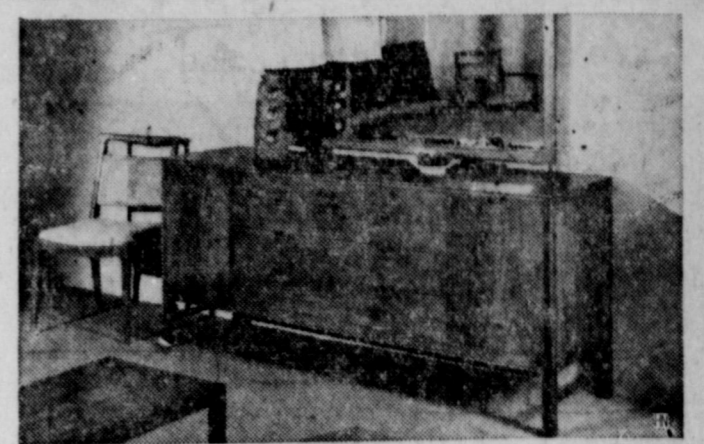
Patients in the Ranger General Hospital from Eastland are:

M. O. Brown, surgical

Miss Jo McAfee, surgical

Mrs. W. C. Vickers, medical

CALL 601 FOR CLASSIFIED AD SERVICE



Elegant simplicity distinguishes a new correlated bedroom and dining room group called "Janus." It was named for the two-faced Roman god of the household because it looks forward and backward in its design. The furniture blends Oriental and Scandinavian influences and is walnut in a mace finish. The double dresser shown here eliminates hardware in favor of recessed cut-out drawer pulls, as do the other pieces in the group. Notice that the drawers are centered and cabinets placed on each side. (Mt. Airy Furniture Co.)

**Friday - Saturday**

OPEN TIL 8 P.M. FOR YOUR SHOPPING CONVENIENCE

- CAL TOP  
**Peaches** No. 2 1/2 Can ..... **29c**  
**FRUIT COCKTAIL, Del Monte, No. 303 can** ..... **25c**  
**TUNA, Grated, Kimbell's, flat can** ..... **19c**  
**TOMATO JUICE, Diamond Brand, 46-oz. can** .... **29c**  
**HOMINY, Diamond Brand, 3 No. 300 cans** ..... **25c**

- KIMBELL'S  
**Short'n** 3 Lb. Ctn. **73c**  
**DOG FOOD, Kim, 3 tall cans** ..... **23c**  
**PEAS, Mission Sugar, No. 303 can** ..... **15c**

- KIMBELL'S BEST  
**Flour** 25 Lb. Bag **1.75**  
**NAPKINS, Charmin, 2 80-count Pkgs.** ..... **25c**  
**KLEENEX, 400 count Pkg.** ..... **25c**

- OLEO** Kimbell's, Lb. .... **23c**

- POTATOES** Large Red ..... 10 Lb. Bag **49c**  
**Kentucky Wonder GREEN BEANS** ..... lb. **19c**  
**CARROTS** Cello ..... 2 for **19c**  
**Flaming Tokay GRAPES** ..... 2 lbs. **25c**

- SEVEN  
**ROAST** Choice Beef, Lb. .... **37c**

- SLICED  
**BACON** Corn King, Lb. .... **45c**

- T-BONE  
**STEAK** Choice Beef, Lb. .... **59c**

- HENS** Young and Tender, Lb. .... **35c**

- Fryers** Top Quality Fresh Dressed, Lb. .... **49c**

- CALF  
**LIVER** Lb. .... **39c**

- FRESH GROUND  
**Hamburger** Lb. .... **25c**

**EARNEST**  
**Frozen Food Center**  
 210 South Lamar Phone 11

**Proudest title in the world!**

**housewife**

**A tribute to the American housewife**

"Just a housewife" is a term we hear too often. That's about like saying "just a doctor" or "just a company president." The job you're doing as a housewife is one of the most important anybody is doing in America today.

**Who is mainly responsible for your family's health?**  
 It's you — the housewife. And our fine national health record testifies to the good job you're doing on this score.

**Who sets your family's standing in your community?**  
 You do. You not only create an attractive home for your family and plan the entertaining, but also make most of the outside social contacts in church, club and community. How far would the charitable operations of these groups get without your help?

**And your family's financial standing depends as much upon your ability to manage money as it does your husband's ability to earn it.** Your family savings program is as much your responsibility as it is your husband's.

That's why so many women today are urging their husbands to invest in U. S. Series E Savings Bonds. They know that the principal invested in Bonds is safe — not subject to market fluctuations. And the returns are sure — an average 3% interest, compounded semi-annually when held to maturity (9 years and 8 months). With the automatic extension privilege, Bonds will continue to pay that same high interest for 10 years more. That means \$1.80 in returns for every \$1.00 invested.

Remember, you can help your family win financial security tomorrow — by encouraging your husband to invest regularly in Savings Bonds today.

And the next time you hear someone say "just a housewife," stick up your chin and speak up for the job you're doing. Where would your family or your country be without you?

For the big things in your life, be ready with U. S. Savings Bonds



THOUGHT FOR TODAY:  
Only Men who do nothing  
are always right!

Courtesy  
**Don Pierson**  
Oldsmobile — Cadillac  
Eastland, Texas

**SOVE** ON SEAT COVERS

Custom Made  
For Your Car  
Beautiful Selection Materials  
Come In and See  
**The Trim Shop**  
E. L. GRAHAM  
511 W. Main Eastland

### COURTHOUSE NEWS AND RECORDS

Real Estate Transfers, Marriages, Suits Filed.  
Court Judgments, Orders, Etc.

#### INSTRUMENTS FILED

91st District Court  
Selina E. Alexander to The Public, affidavit.  
Selina E. Alexander to Kenneth Matatall, warranty deed.  
Preston A. Alexander to Selina E. Alexander, quit claim deed.  
Charles Bell to S. G. Jackson, warranty deed.  
N. A. Brown to Estate of R. G. Milling, desc. of interest.  
G. C. Beggs to J. L. Haynes, warranty deed.  
C. C. Brown to John T. Brown, release of vendor's lien.  
John T. Brown to C. C. Brown, warranty deed.  
C. C. Brown to John F. Brown, warranty deed.  
Mrs. L. H. (Mary) Brown to Arnes Helms, warranty deed.  
Silas E. Carter, Jr. to First National Bank, Cisco, assignment of vendor's lien.  
A. H. Carlton to Ranger Lbr. & Supply Co., MML & assignment.  
E. P. Crawford to Silas E. Carter, Jr., release of vendor's lien.  
Silas E. Carter to Jimmy C. Noble, warranty deed.  
H. L. Colson to Carrel Smith, warranty deed.  
Artie L. Collings to Frank Crowell, MML & assignment.  
Paul DeCleva to Elton M. Hyder, Jr., assignment of oil and gas lease.  
J. S. Felts to James D. Holman, assignment of oil and gas lease.  
Jess Flippen to First State Bank, Rising Star, warranty deed.  
J. W. Fleming to Ocie S. Stamey, deed of trust.  
Guillot Mtg. Co. to Joseph Dry Goods Co., Inc., release of deed of trust.  
Charlie L. Garrett to Eastland National Bank, deed of trust.  
H. H. Hardeman to Stafford Roofing & Siding Company, contract.  
Lee Hanegan to E. J. Sparkman, deed of trust.  
Ames Helms to Mrs. L. H. (Mary) Brown, quit claim deed.  
Hickok & Reynolds, Inc. to J. H. Reynolds, assignment of mineral interest.  
W. M. Jarrell to J. F. A. Schlueter, assignment of oil and gas lease.  
W. M. Jarrell to Jarre Oil Company, assignment of oil and gas lease.

J. N. Jordan to Meredith Black, warranty deed.  
Mrs. Malye Kilgore to First State Bank, Rising Star, transfer of vendor's lien.  
W. S. Kendall to O. L. Stamey, deed of trust.  
John Junior Latham to Marie D. Latham, power of attorney.  
Austin L. Lewis to Roy G. Baker, assignment of oil and gas lease.  
Maude R. Lisenbee to J. C. Trimble, warranty deed.  
E. A. Maddox to Olen Crenshaw, warranty deed.  
Kenneth Matatall to Gilman & Gilman, deed of trust.  
Lee Moor to Lee Moor Farms, Inc., warranty deed.  
Pearl Miles to Standard Oil Company of Texas, oil and gas lease.  
Mary Neoma McCorkle to Tom B. Stark, oil and gas lease.  
Elizabeth McCracken to Roy Kenneth Mays, warranty deed.  
Jimmy Clarence Noble to Silas E. Carter, Jr., deed of trust.  
Premier Petroleum Co. to Premier Oil Ref. Co. of Texas, release of deed of trust.  
G. S. Peak to First Federal S & L Assn., deed of trust.  
Homer T. Robinson to George E. Register, warranty deed.  
Dr. C. L. Reeves to United States of America, notice.  
F. W. Roberts to The Public, affidavit.  
Mrs. Amanda Rogers to G. S. Peak, warranty deed.  
E. E. Roberts to Robert L. Slaughter, release of oil and gas lease.

Selig Company of Texas to Ranger Peanut Co., release of judgment.  
E. J. Sparkman to Lee Harreman, warranty deed.  
E. J. Sparkman to First National Bank, Cisco, transfer of vendors lien.  
Tom B. Stark to Magnolia Petroleum Co., assignment of oil and gas lease.  
Oscar Schaefer to Magnolia Petroleum Co., rat. & division order.  
San Lorenzo Nursery to Edwin Wittrup, release of judgment.  
Security Life & Accident Company to Frank Leach, release of deed of trust.  
O. L. Stamey to W. S. Kendall, warranty deed.  
O. L. Stamey to J. W. Fleming, warranty deed.  
D. L. Tucker to Eastland National Bank, deed of trust.

**PROBATE**  
James H. Pipkin, et al, minors, petition for receiver.  
A. H. Rhodes, deceased, application to probate will.  
Thomas R. Motley, deceased, application to probate will.

**MARRIAGE LICENSES**  
Jesse Lee Ward and Mary E. Garrett.  
Everest A. Smith and Esma Ann Noble.  
Darrell Gene Basham and Darlene Joyce Johnson.  
James Douglas Crabtree and Rottie Marie Tucker.

Wayland M. Phillips and Martha Faye Parrigan.  
**SUITS FILED**  
91st District Court  
Leala Orman v. Gussie Lee Orman, divorce.  
First State Bank of Rising Star v. Reba Joe Childers, suit on note.  
Lillie Irene Guess v. George Austin Guess, divorce & division of property.

**ORDERS AND JUDGMENTS**  
91st District Court  
Billy F. Sisemore v. Lawanda Yvonne Sisemore, order.  
W. W. Franklin v. C. D. Rabb, et al, order.  
Vivian Jones v. Walter Joe Jones, judgment.

Funeral Directors  
**HAMNER FUNERAL HOMES**  
Ben E. Hamner  
Oxygen Equipped - Air Conditioned  
Eastland Phone 17 Cisco Phone Hillcrest 21211  
**AMBULANCE SERVICE ANY WHERE ANY TIME**  
Nominal Cost Burial Insurance  
For The Entire Family

**WE BUY SCRAP**  
IRON AND METAL  
Get Our Prices Before You Sell  
WE PAY HIGHEST MARKET PRICES  
WE APPRECIATE YOUR BUSINESS  
**KOEN SALVAGE**  
Highway 80 West 1315 W. Main

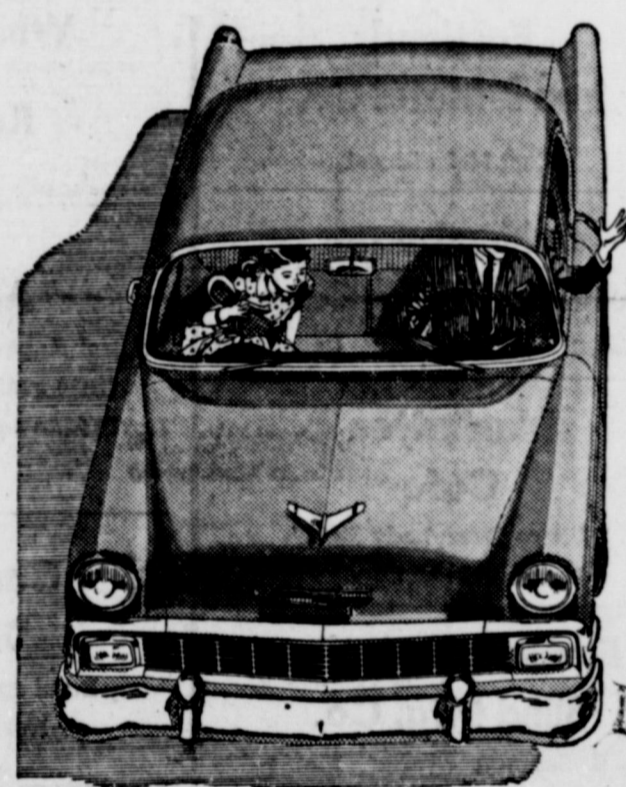
**MOBIL 210**  
★ Stays 34% Stronger  
★ Lasts 14% Longer  
At the Sign of the FLYING RED HORSE  
  
**Earley Tire Service**  
302 W. Main - Eastland - Phone 208

We're Authorized Dealers For  
**ALL HOTPOINT APPLIANCES**  
Washing Machines — Dryers — Ranges  
Dish Washers — Disposals  
Home Freezers — Refrigerators  
Air Conditioners — Hot Water Heaters  
Call Us For Complete Service  
On ALL Appliances  
**SMITH PLUMBING & TIN**  
114 S. Seaman Phone 304

**FREE — FREE — FREE**  
**\$8,000.00 CADILLAC**  
You may win this \$8,000.00 Eldorado Seville. All you have to do is register at Moser Humble Service Station . . . Located across the street from The White Elephant Restaurant.  
  
**NOTHING TO BUY**  
REGISTER EVERY DAY IF YOU WISH.  
CONTEST CLOSES SEPTEMBER 25TH  
**Moser Humble Service Station**  
Corner of Main and Dixie Phone 127



**HEADS PONTIAC**— S. E. Knudsen, new General Manager of Pontiac, has had a distinguished career with General Motors. He started with Pontiac in 1939 and has held major positions with GM's Process Development, Allison and Detroit Diesel Divisions. He is 43 and the son of the late W. S. Knudsen, former president of GM.



Why spend the extra dollars for a higher priced car? Chevy's smart as they come with its stylish Body by Fisher—and it's a beautiful thing to handle!

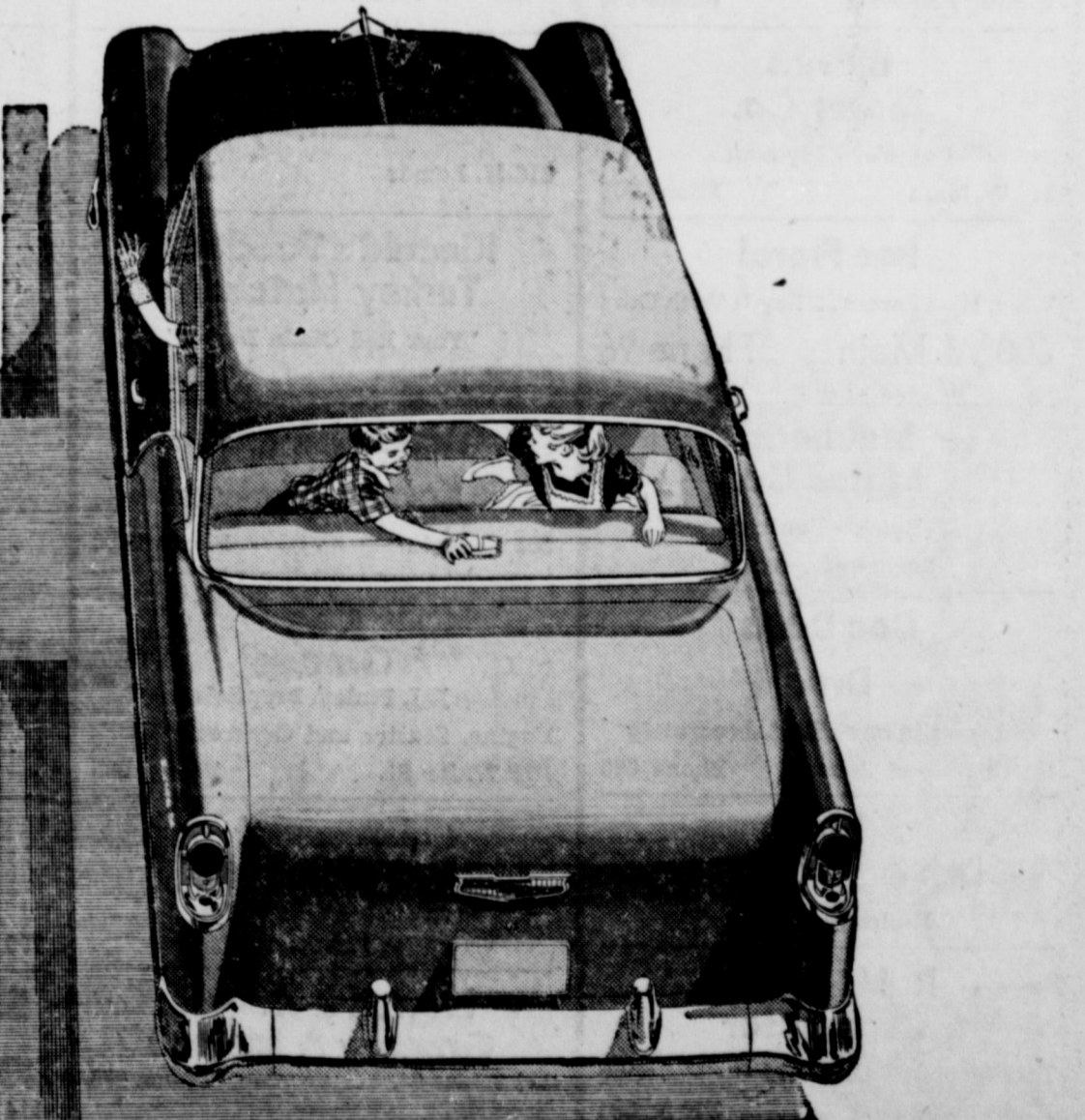
In truth, there's been a quiet revolution in the automotive world. Higher priced cars used to provide much more in space, ride, and handling. But no longer. Chevy, in plain fact, offers all the luxury, all the performance, all the space and styling you've always hoped for—and better roadability, quicker response, more accurate control.

That's hard to believe—if you haven't driven a new Chevrolet. And if you haven't, you owe yourself a demonstration. We'll be happy to arrange it.



You get more car when you buy it . . . more dollars when you sell it! Chevy has the highest resale value of the leading low-priced models!

They don't come any smarter—  
**OR GO ANY SWEETER!**



Only franchised Chevrolet dealers **CHEVROLET** display this famous trademark  
**FULLEN MOTOR COMPANY**  
305 E. Main EASTLAND, TEXAS Phone 44

**SCRAP:**  
VITAL RAW MATERIAL FOR A BETTER WORLD  
The Scrap Iron Market Price Is Booming . . . Bring Your Scrap Iron and Metal To The  
**EASTLAND IRON AND METAL CO.**  
**SQUARE DEALING**  
The Year Around For Over 30 Years  
Owned And Operated By Henry Pullman  
PHONE 270 502 EAST MAIN HIGHWAY 80

**AIR CONDITIONING** TEMPERATURES MADE TO ORDER AT NEW LOW COST. LET US DEMONSTRATE!

Sunday & Monday **MAJESTIC** Thur. - Fri. & Sat.

CINEMA SCOPE **WALK THE PROUD LAND** AUDIE MURPHY

CINEMA SCOPE **Moby Dick** Gregory PECK



# FRIDAY NIGHT - 8:00 O'CLOCK

## MAVERICKS -VS- CISCO

GAME TO BE PLAYED OVER THERE

LET'S ALL GO AND ROOT FOR THE MAVS

THIS IS THE YEAR WHEN THE MAVERICKS SHOULD REALLY GO!  
LET'S GET BEHIND THEM - STAY BEHIND THEM - AND SHOVE!

### Mavericks 1956 Football Schedule

Sept. 7	Cisco	T	Oct. 19	Wylie*	H
Sept. 14	Dublin	T	Oct. 26	Albany*	T
Sept. 21	De Leon	H	Nov. 2	Open	
Sept. 28	Cross Plains	H	Nov. 9	Throckmorton*	T
Oct. 5	Ranger	T	Nov. 16	Clyde*	H
Oct. 12	Gorman	H			*District Games



**Mr. and Mrs. Leon Bourland and Family**

OBIE & DOC  
**Cosden Service Station**  
East Main & Bassett Ph. 9535

**Hillcrest Food Market**  
Mr. and Mrs. Sid Arthur Jr.  
Highway 80 West Phone 580

**Blevins Motor Co.**  
Chrysler - Plymouth  
511 W. Main Phone 308

**Poe Floral**  
When It's Flowers... Say It With Ours  
608 W. Main Phone 96

**Muirhead Motor Co.**  
Buick - Pontiac  
Sales and Service

**Doc Davis Drug**  
Prescriptions Filled Accurately  
South Side of Square Phone 695

**Irish Drilling Company**  
Highway 80 East

**R. M. Sneed Contractor**  
Dirt Moving - Oil Field Construction  
Highway 80 East Phone 684

**Freyschlag Insurance Agency**  
North Side Square Phone 173

Under New Management  
**Connellee Coffee Shop**  
Mrs. W. D. Poarch Ersie Mathes

**Western Auto Associate Store**  
East Side of Square Phone 38

**Eastland National Bank**  
"On the Square"  
Member F.D.I.C.

**Lasater Laundry**  
210 N. Lamar Phone 584

**Kincaid's Feed and Turkey Hatchery**  
"Your Red Chain Dealer"  
303 N. Seaman Phone 73

**Tucker Magnolia Service Station**  
301 E. Main Phone 9503

**City Garage**  
J. J. Finley, Proprietor  
Engine, Starter and Generator Work  
103 White St. Phone 995

**Foremost Dairy Products**  
Clyde Manning, Mgr.  
Eastland

**Howell & Rogers Grocery & Market**  
111 White St. Phone 178

**Higginbotham Bartlett Co.**  
Lumber - Paint - Hardware  
Fishing Tackle  
301 W. Main Ph. 112  
Jack Elliott, Mgr.

**Eastland Iron & Metal Co.**  
East Main Street

**Schlumberger Well Surveying Corp.**  
Phone 86 200 E. Commerce

**Manhattan Cafe**  
"Where Everybody Eats"  
North Side of Square

**Eastland Venetian Blind Mfg. Co.**  
405 1/2 S. Seaman Phone 436

**McGraw Motor Co.**  
Dodge - Plymouth  
416 S. Seaman Phone 80

**Brown Plumbing Shop**  
214 S. Neblett Phone 785

**Eastland Chamber of Commerce**

**Murrell's Grocery & Market**  
"Pit Cooked Barbecue"  
700 W. Main Phone 9538

**Smith's Plumbing & Tin**  
**Basham's Electric**  
114 N. Seaman Phone 304

**Altman's**  
"Smart Womens Wear"  
North Side of Square

**White Elephant Restaurant**

**Anderson's**  
Ladies' Apparel and Children's Wear  
Gifts - Millinery - Accessories  
North Side Square Eastland

**Carl Johnson's Dry Goods**  
Band and Pep Squad Shoes  
North Side Square

**Modern Dry Cleaners**  
"Your Sanitone Cleaner"  
209 S. Seaman Phone 132

**Phillips Welding**  
102 South Bassett  
Phone 666 or 892-J-4

**Koen Salvage**  
Your Scrap and Metal Dealer  
Highway 80 West Phone 9505

**EARLEY TIRE SERVICE**  
302 W. Main Phone 208



### Broilers Have Become Big Business

Farmers produced well over a billion broilers in 1955, compared with only 143 million in 1940. Their value was over 10 times the \$72,000,000 grossed by the 1940 broiler producers. Production in Texas in 1955 was 79 million birds valued at \$60,411,000.

It used to be that chickens for eating were produced for the most part in fairly small farm flocks, mainly as a by product from egg production. But in the past decade and a half, broilers have become a mass production business. K. F. Schlamb, extension poultry marketing specialist, suggests that

much of this change has been due to contract and other methods of financing.

A small (by today's standards) sideline flock of 3,000 to 5,000 broilers requires about \$2,000 to \$3,000 of working capital, on the average, according to Schlamb. A flock of 12,000 to 15,000 birds, which could take the full time of one man, requires around \$7,000 capital before the birds are fully grown. It takes about 9 to 11 weeks to raise a flock of broilers to market size, and financial risks are greater than in most farm businesses. Most Texas producers

sell at about 9 weeks. For this reason, contract financing has become a rather familiar pattern in the 22 important broiler states. Under the contract system, someone other than the farmer may provide chicks, feed, medications, even buildings and equipment. The farmer provides his labor and management ability, and possibly his buildings and equipment. When the broilers are sold, profits are divided in a proportion agreed upon in the contract—frequently about 25 percent to the investor and 75 percent to the farmer.

Other financing plans provide for the investor to pay the farmer so much per week for boarding the chickens, regardless of the price of poultry meat, or so much per pound for broiler meat produced. Under either type plan, bonuses may be provided for better than average efficiency.

Many broiler producers have found that contract financing provides a chance of income at small risk and a way to use family labor. It also may train the farmer in a new skill if the investor—frequently a feed dealer or hatcheryman—provides supervision and advice on the best methods of feeding and caring for chicks.

Consumers, too, have benefited from an expanding broiler industry, says the specialist, because of the larger supplies of a favored meat at moderate prices.



### Calves on the ground are like MONEY IN THE BANK

It costs a lot of money to keep a cow. A lot of that money is lost if she fails to settle or drops small, weak calves that die or develop into "tail-enders."

**BIG CROPS** of husky calves are a must, if a fellow is going to make money ranching. This is especially true when the price of cattle is off.

Your range needs help. It takes more than grass alone to give your cows what they need to grow and drop the kind of calves that will bring top prices next fall.

**PURINA RANGE CHECKERS** have proved their worth in research tests and on thousands of ranches. This favorite range supplement has what it takes. Cattle love Checkers, do well on them. Cows stay up in good shape at calving time, have lots of milk for the calves, too.

More and more Southern cattlemen are planning their breeding program so that calves come in the late fall. These calves are ready to eat early grass—hit the early market, which is usually best.

Feed for big calf crops the Purina Way. Purina Range Checkers can help you keep your operation on the profit side of the ledger.

**COME IN.** We'll visit about Purina Range Checkers and profitable ranch management. Make it soon!

Your Store with the Checker-board Sign

**We Buy EGGS EASTLAND Feed & Seed**

204 N. Seaman Ph. 175



- MADE RIGHT
- PRICED RIGHT
- PROVED RIGHT
- MICRO-MIXED

### LOSE UGLY FAT IN TEN DAYS OR MONEY BACK

If you are overweight, here is the first really thrilling news to come along in years. A new & convenient way to get rid of extra pounds easier than ever, so you can be as slim and trim as you want. This new product called DIATRON curbs both hunger & appetite. No drugs, no diet, no exercise. Absolutely harmless. When you take DIATRON, you still enjoy your meals, still eat the foods you like but you simply don't have the urge for extra portions and automatically your weight must come down, because, as your own doctor will tell you, when you eat less, you weigh less. Excess weight endangers your heart, kidneys. So no matter what you have tried before, get DIATRON and prove to yourself what it can do. DIATRON is sold on this GUARANTEE: You must lose weight with the first package you use or the package costs you nothing. Just return the bottle to your druggist and get your money back. DIATRON costs \$3.00 and is sold with this strict money back guarantee by:

Corner Drug Store - Eastland  
Mail orders filled

**Insurance AND Real Estate D. L. KINNAIRD**  
Life - Fire - Auto - Farm  
Polio - Bonds  
37 years in the Insurance Business in Eastland



Photo by Texas Highway Department  
**BASTROP STATE PARK** has among its attractions the Lost Pines golf course where players find beautiful scenery as well as sporty course with a good water hazard. The park is at the junction of Texas Highways 21 and 71 about one mile east of Bastrop, Texas.

### Moderate Grazing Has Paid In Great Plains Grazing Tests

**COLLEGE STATION** — Moderate grazing of land in the Great Plains region is more profitable in the long run than either too-heavy or too-light grazing. Twenty years of research at the U.S. Range Livestock Experiment Station, Miles City, Montana, says A. H. Walker, extension range specialist, has furnished the proof.

On the heavily grazed land, 1 cow to 23 acres, 71 percent of the cows produced calves. These made an average daily gain of 1.5 pounds, and pounds of calf produced per cow at weaning averaged 268. This amounted to 11.6 pounds of calf per acre. Cows on moderately grazed range produced an 86 percent calf crop; gained 1.8 pounds daily and their calves averaged 428 pounds at weaning. Calf pounds produced per acre was 12.1. One cow to 81 acres was considered moderate grazing.

In the light grazing experiment, 93 percent of the cows produced calves; average daily gain was 1.9 pounds; calves weighed 438 pounds at weaning which meant 10.5 pounds of calf produced per acre. Under light grazing one cow was run on 39 acres.

Heavy grazing not only resulted in smaller calf crops and lighter gains but also caused injury to

the range over a long period. It also reduced the vigor of range plants, causing a shift from the better native tall grasses to the less productive short grasses. Trampling left the soil less permeable to moisture and left little grass residue for soil cover and for maintaining soil structure and fertility.

Light grazing, though good for conserving soil resources, did not give the ranchman the most from his range. Moderate grazing is favored because of more profit in the long run and also because ranges remained in more stable condition.

Walker points out that this research is highly significant because during the last seven years breeding stock were used in the tests which had been produced from stock raised under each of the three grazing intensity patterns. Six lots of cows have been used in the experiments—two for each grazing pattern.

**VISIT IN GLADEWATER**  
Mr. and Mrs. Claude Maynard visited Mr. and Mrs. O. B. Moon in Gladewater over the Labor Day week end. The Moons have recently moved into a new red brick ranch home.

### A&M Information Office Now Has Two New Publications Available

Two recent Texas Agricultural Experiment Station publications, B-830, Cotton Production on the Texas High Plains and B-832, Smith-Doxey Classification, Fiber Testing and Problems of the Cotton Trade, are now available from the Agricultural Information Office, College Station, Texas.

The first named was prepared by the staff of the Lubbock substation headed by Superintendent D. L. Jones and Dr. H. C. Lane of the Department of Plant Physiology and Pathology, College Station.

Such items as seedbed preparation, fertilization, insects, diseases, varieties, defoliation, harvesting and field storage of cotton are discussed. The authors point out a successful cotton program for the area is through lower cost of production. They say this can be accomplished only by a thorough understanding of the factors influencing cotton production, so that a sound integrated production program can be evolved. Listed in the bulletin are the results of research aimed at developing such a program.

Dr. R. L. Hunt, professor, Department of Agricultural Economics and Sociology, in the second bulletin reports the finding of a study made last year. He interviewed or sent a questionnaire to members of the Texas Cotton Association and 65 merchants answered the questions in sufficient detail to use their replies. These firms represent shippers, f.o.b. merchants, spot brokers and mill buyers and have an annual business of approximately 4,864,000 bales.

On Smith-Doxey, 53 said they bought some cotton on S-D classification and in 1954 about 38 percent of their total purchases were made on the basis of "green cards." Thirty-two said the service was satisfactory or at least partially so; 20 said it was not satisfactory and practically all made some criticism of S-D classification.

**M. H. PERRY**  
Representing  
**Southland Life**  
Life - Retirement Income Partnership  
Mortgage Cancellation  
Educational - Annuities  
Accident - Sickness  
Hospitalization - Group  
Call 173 or 713-J  
107 W. Main • Eastland



**This is How it Works Out—**  
Insurance operates on the theory that the worst never happens, and it seldom does. Insurance says: "You will have no losses for a whole year." You challenge, pay the premium, and wait. Who wins? The law of averages gives the premium to the insurance company, and a full year's protection and satisfaction to you, and, like the story, it ends well, everybody is happy but the poor fellow who wasn't insured the year the law of averages went hay-wire!

**EARL BENDER & COMPANY**  
Eastland (Insurance since 1924) Texas

## OIL FIELD Equipment

- SURFACE CASING
- OIL STRING CASING
- TUBING
- RODS
- PUMPING UNITS
- TANKS

**BOUGHT - SOLD - TRADED**  
**IRISH DRILLING CO., INC.**  
208 W. Commerce—Eastland, Texas  
Pipe Yard Highway 80 East  
Office Phone 100 - 101 Yard Phone 199

## STATIONERY

### OFFICE SUPPLIES

- LEDGERS
- PENCILS
- ALL KINDS PAPER
- CARBON PAPER
- FILE CABINETS
- PENCIL SHARPENERS
- TYPEWRITER RIBBONS

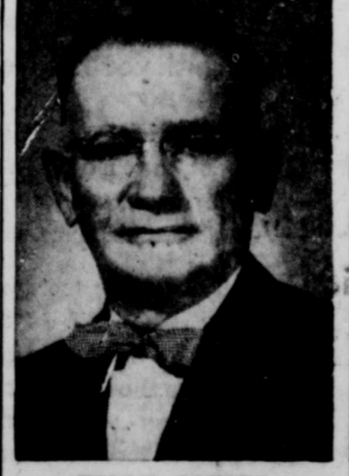
## EASTLAND TELEGRAM

PHONE 601 Eastland



Buttons and bows trim this cool comfortable frock, with its long torso ending in a full skirt. Tiny black and orange gas lamps decorate the Early American print, a cotton bag fabric. Cotton bags in bright prints are used to package feed, flour, fertilizer, and other farm products. The empty containers are transformed into smart-looking wearing apparel by thousands of American women every year.

**TRULY CARTER**  
Now Associated With  
**MUIRHEAD MOTOR COMPANY**  
301 W. COMMERCE EASTLAND



**TRULY CARTER**  
Wishes to invite his many friends to call him anytime for a new or used — Automobile  
**BUICK and PONTIAC**  
Eastland 692

For big jobs, small jobs, all jobs

# Ford Trucks Cost Less!

"I earn as much as \$30 a day more because my Ford T-800 tandem job can carry more payload than comparable trucks," says timber-hauler Clarence Landwing.

"Low cost, dependability, toughness—that's what I get in Ford trucks," says John Kark. "Ford's power takes me through tough going that would stop many another truck."

Only a Ford pickup gives you the economy of modern Short Stroke design in both Six and V-8!

Ford's low prices mean real savings. But the on-the-job savings you get in Ford trucks count even more!

Take running costs; they're downright low. Because only Ford gives you the gas and oil economy of Short Stroke power. Only Ford offers Short Stroke engines backed by over 5 billion miles of on-the-job experience.

Upkeep costs are low because Ford trucks are built extra strong. They outlast all other leading makes—proved by insurance experts. That same stand-up ruggedness means greater dependability, too.

And when it comes time to trade—you'll gain from Ford's traditionally high resale value, too. You'll find that, from start to finish, Ford trucks cost less.

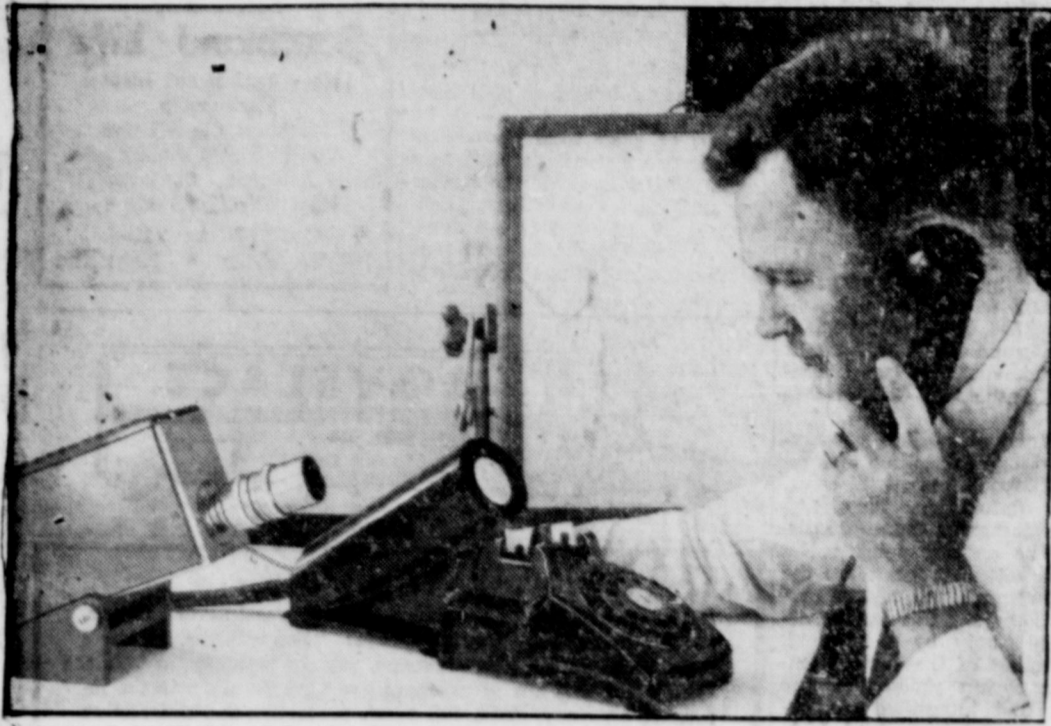
**THE BIG FLEETS BUY MORE FORD TRUCKS THAN ANY OTHER MAKE**

**SEE YOUR FORD DEALER**  
**Ford Trucks last longer**  
Using latest registration data on 10,502,351 trucks, life insurance experts prove Ford trucks last longer.

Since 1913  
1,553,444 FORD CARS and TRUCKS  
have been  
BUILT IN TEXAS BY TEXANS!

## King Motor Company

DIRECT FACTORY FORD DEALER  
EASTLAND  
100 E. Main  
See Great TV, Ford Theatre Channel 9 KRBC-TV, Thursday 8:30 p.m. Phone 62



WHOSE PICTURE ARE YOU DIALING?—The hear-and-see telephones of the future aren't far away any more. Floyd K. Becker, a Bell Telephone Laboratories engineer, demonstrates a successful model of a picture-see system. A two-by-three-inch screen and small transmitter, left, are the principal components of the system, which uses only one extra telephone line on the customer's premises. It will be possible to dial a caller's picture like an ordinary telephone call. Bell engineers have transmitted recognizable pictures between New York and Los Angeles.



STATUTORY DIVISION OF SEPARATE ESTATES EXPLAINED

The death of an intestate person (one who has made no will) may give rise to many problems regarding distribution of his separate estate. In a recent column we investigated the manner of dividing the community estate upon the death of a husband or wife. Now we shall see that, where separate property is involved, a completely different set of rules applies in determining heirship and apportioning the estate among the rightful claimants.

It may be well to recall that the separate estate of a husband or wife includes property owned by either before marriage, and that which is acquired after marriage by gift or inheritance. Any other property acquired after marriage is presumed by law to be community property until the contrary is clearly proved.

Now, here is a general idea as to how your separate property will be divided if you do not make a will with contrary provisions prior to your death.

If your husband or wife survives and if, in addition, there are surviving children or descendants of previously deceased children, the children and their descendants immediately obtain a full (fee) title in two-thirds of the real estate involved. The surviving spouse receives a life interest in the remaining one-third of the real property, which passes on to the children and their descendants upon the death of the spouse.

The rule for distributing personal property — cash, stocks, bonds, furniture, or any other items not constituting real estate — is different. Here the surviving spouse gets full ownership of one-third, and the children and their descendants inherit the balance.

Now suppose your husband or wife survives, but there are no surviving children or their descendants. In this case the surviving spouse inherits all of the personal property involved.

With regard to real estate, the survivor obtains full title to one-half, and the other half is divided between your mother and father, if both survive you. If only one of them survives, he or she receives only half of this portion, and the

50,000 Eggs Needed To Make Living For The Average Poultry Producer

How many hens are needed to provide a living income for the producer? The answer to this frequently asked question involves not only hen numbers but more important, says Ben Wormeli, extension poultry husbandman, is the number of eggs required each week to earn the expected living income.

It is generally considered, says the specialist, that about 50,000 dozens of eggs are required to earn a living for a poultryman. Production on a weekly basis would need average about 1,000 dozens.

If average earnings were five cents a dozen, this production would return to the producer \$50 each week. Since feed and flock depreciation represent about 90 percent of the cost of producing eggs, the successful producer

should concentrate on these two items of management. To produce 52,000 dozens of eggs in a year with hens that average 17 dozens of eggs each, about 56 percent production, the poultryman would need a flock of slightly more than 3,000 laying hens in production the year-round. Since mortality and culling will take out about 20 percent of the hens during the laying year, the poultryman will have the equivalent of a 12 months production from 90 percent of the pullets housed, points out Wormeli.

By upping the rate of lay per hen, the total number required to produce the 1,000 dozens of eggs each week can be cut. Too, says the specialist, it is just good business for the poultryman to carefully estimate his average costs and earnings and thus set a reasonable potential profit per dozen.

Too, Wormeli urges egg producers to seek a dependable graded egg market where he can get full pay for producing eggs of top quality. By starting replacement chicks several times each year, the producer can maintain both uniform marketing or egg volume and income from his egg business. Thus making his living income more stable.

TRADE WITH YOUR HOME-TOWN MERCHANTS

Other half (or one-fourth of the entire real estate) will be divided among your brothers and sisters (and their descendants) who survive. If there are no surviving brothers and sisters and their descendants, then the one surviving parent inherits the full one-half. Where no parent survives, but there are brothers and sisters and descendants, the full one-half is divided among these survivors.

And, if there are no parents and sisters (and their descendants) surviving, then the surviving husband or wife inherits all of the real estate. (This column, based on Texas law, is written to inform — not to advise. No person should ever apply or interpret any law without the aid of an attorney who is fully advised concerning the facts involved, because a slight variance in facts may change the application of the law.)

First Figures On Results of Ranch Testing of Beef Cattle Released

COLLEGE STATION — A fear expressed by some Texas cattlemen that selecting replacements for breeding herds on the basis of weaning weight would tend to lower the quality or grade of the herd has not proved true in initial reports from cooperating cattle producers.

On the contrary, Texas A&M College System Animal Husbandmen, L. D. Wythe, L. A. Maddox, Jr., and J. K. Riggs, report a definite relationship between high weaning weight and high grade among the 929 Hereford and Angus calves processed in the first studies. All calves grading Fancy had an average weaning weight of 442 pounds as compared with 413 pounds for all calves grading good.

They also found that heifer calves tended to grade higher than bull calves of the same age with 19.5 percent of the heifers grading Fancy compared to 12.6 percent for all bull calves graded.

Another finding was that cows two to three years of age and over 10 years at the time their calves were dropped, weaned lighter calves than cows four to nine years of age. Also that in a herd where replacement heifers had been selected on the basis of weaning weight and yearling gain as well as grade since 1953, 20 calves from two-year old heifers sired by known high-gaining bulls weighed only three pounds less

than those from cows in the same herd ranging in age from four to eight years of age.

Calves from a herd participating in the Extension Service cattle improvement program for the first time in 1955 weighed seven percent less than those from cows of the same age in the herd which had been under the program since 1953.

The animal husbandmen say the early results are a strong indication that rapid progress can be made in both weaning weight and conformation grade when a program as outlined in Texas Bulletin 809 is put into practice.

The initial results of the beef cattle improvement program are carried in Progress Report 1880 released jointly by the Texas Agricultural Experiment Station and Extension Service. It is available from the Agricultural Information Office, College Station, Texas.

CALL 601 FOR CLASSIFIEDS

MAYTAG AUTOMATIC AND CONVENTIONAL WASHERS - GAS RANGES

"We Service What We Sell"

Hamner Appliance Store

205 S. Lamar

Phone 623

Capades Star



Hazel Franklin, the great English star, has the plum of all roles in show business as the Peter Pan of Ice Capades, opening Oct. 6 at the Dallas Ice arena for the State fair of Texas. The show runs through Oct. 12.

CALL 601 FOR CLASSIFIED AD SERVICE

Overseas Veterans Welcome Karl and Boyd Tanner Post No. 4136 VETERANS OF FOREIGN WARS Meets 2nd and 4th Thursday 8:00 p.m.

COMPLETE BODY-FENDER Repair



KING MOTOR CO.

Phone 42

Direct Factory Ford Dealer NE Corner Square

WRECKER SERVICE DAY AND NIGHT Ph. 42

Expert Body Work and Painting Choice of Colors

Advertisement for Humble Credit Card and Humble-Matic printing device. Includes images of the card and printer, and text: 'Humble is FIRST again! Humble is first among petroleum marketers in Texas to provide this newly designed, all-plastic Humble-matic credit card holder to its customers.' Features: 'it's thin', 'it's light', 'it's accurate', 'it's speedy'.

Something NEW for Humble Customers!

Humble credit card customers will soon receive a new all-plastic credit card holder that's thinner, lighter, more compact, more durable, more flexible and easier to carry and handle. This new credit card fits right into your wallet or purse.

In the Humble-matic printing device, your name and credit card number are printed in big, bold type that reduces the chance of an error to a minimum—and it does it in a second!

This new plastic credit card holder is typical of the conveniences that Humble provides its customers—Humble-matic printing to cut time in the station and to assure accuracy of the charge; interchange arrangements under which Humble customers may charge their purchases when they travel beyond Humble's marketing area into every other state and Canada; a system that checks each invoice several times for accuracy before a statement is mailed; duplicate cards for family or business use are issued when needed.

HUMBLE OIL & REFINING COMPANY



Advertisement for Lone Star Gas Company featuring a family in a living room. Text: 'LIVE MODERN THIS WINTER ... enjoy healthful conditioned-air gas heating! SAVE! up to \$35.00 TRADE-IN ALLOWANCE for your old space heater on a NEW MODERN BRILLIANT FIRE WALL FURNACE. Compact, flush wall installation saves valuable floor area. Economical to own and operate. Perfect for main room, game room, every room! See the Brilliant Fire today! ONLY \$1 DOWN! 36 Months to Pay! No Payments 'Til October! Take 48 months to pay on two or more units.' Includes image of a wall furnace.

Your entire family will love the comfort and warmth... and you'll love the low price!

Now! Enjoy special pre-season savings on the newest, most modern Wall Furnaces... give your family all the comforts of conditioned-air heating — clean, wholesome, healthful heating.

Fully automatic, too! Just set and forget. Automatically starts itself. Automatically shuts itself off. Maintains that "just right" temperature without attention. Positive circulation helps keep floors toast-warm... helps maintain even wall-to-wall, ceiling-to-floor temperatures... helps end drafts, wall-sweating, "hot spots" and "chill zones."



Come in today! Get the finest in heating at

LONE STAR GAS COMPANY