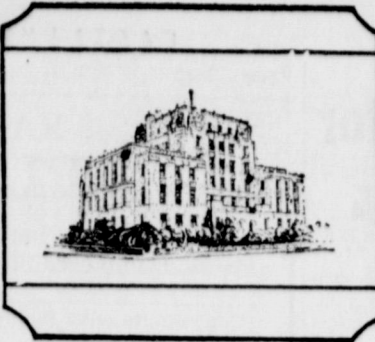


Heavenly Father know... have need of all things.—Matthew 6:32.



# EASTLAND TELEGRAM



A Day's Pay  
The UNITED Way!  
Say 'Yes' Generously

## Commissioners Pursue Airport Paving Plan

State monies allocated for airport improvement in Eastland City... Commissioner Bill Hart reported on his study of the state aeronautical board's proposal that the city cooperate in sharing the cost of paving the runways at the local airport.

Commissioner Bill Hart reported on his study of the state aeronautical board's proposal that the city cooperate in sharing the cost of paving the runways at the local airport. Labeling the suggestion "generous," Hart opposed the measure on three counts, he stated.

In making the motion that the city not make application before the Oct. 31 deadline this year, Hart stated that in his opinion, there are too many other projects in town that needs the city's attention. Mayor Frank Deaton echoed the thought that the city should know what it is doing before going into such a project.

## RHS Gets Paper Nod In Eastland Battle, But 'Tain't Necessarily So!

The Ranger High Bulldogs hold a "paper edge" over the Eastland High Mavericks, but pre-game predictions and prognostications usually have little bearing on the outcome of the annual football battle between these rival District 10-A teams. In season play, the Bulldogs have faced six opponents — won five, lost one. They've

scored 188 offensive points while limiting their foes to 59 points. Their only setback was to Dublin of District 7-AA. In conference play, the Bulldogs have played two 10-A duels against Baird and Clyde and scored 89 points to the opponents' 26. In district action, the Mavericks also have played two games against the same foes — Baird and Clyde — and scored 58 points to those two opponents' 12.

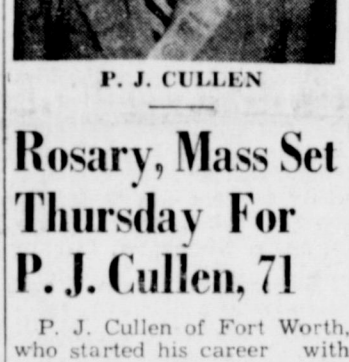
# Eastland, Ranger Elevens in Annual Tilt Friday Night

C o a c h Millard Glasses' 1965 Eastland High Mavericks collide with their traditional rivals — the Ranger Bulldogs — Friday night at Maverick Stadium in Eastland in an all-important and crucial District 10-A conference game.

The Bulldog's secondary standouts—Quarterback Johnny McGee, 190-pound senior quarterback who suffered a knee injury in the non-conference clash with the Rising Star Wildcats at Rising Star Friday night.

Word from the Maverick war camp indicates that Eastland's No. 1 quarterback—Jerry McCullough, 165-pound senior—is only a possible starter for the Friday night grudgefest. McCullough has a bad knee which kept him benched a portion of last season and which has also plagued him this fall. The ailing knee was jolted in the Friday night tilt with the Clyde High Bulldogs which the Mavericks won, 14-6.

## 13 Charged In Liquor Roundup



Months of undercover work and seven raids Monday has netted 20 cases of possession and sales charges against 13 Eastland County bootleggers, County Sheriff L. E. Sublett reported to this newspaper.

Charges were still being drawn in County Court Tuesday afternoon and bonds set at \$500 each for each of the suspects, he said. His department, Texas Liquor Control Board officials and local police departments in Ranger, Cisco and Eastland were instrumental in the raids.



DANA EDWARDS SHARYN GIST DONNA VIERGEVER  
... band sweet heart nominees

## Band Sweetheart To Be Announced At Game

Three Eastland High School Seniors will vie for Band Sweetheart of the Maverick Band. The sweetheart will be announced at half-time Friday night at the Ranger-Eastland game.

The second candidate is Sharyn Gist, daughter of Mr. and Mrs. A. O. Gist. Sharyn has played in the band all four years in high school and plays the clarinet.

## Graveside Rites Held Monday For R. L. Vanaman, 18

Graveside services for R. L. Vanaman, Jr., 18, were conducted at 3 p.m. Monday, Oct. 18, in the Eastland Cemetery with Rev. J. Lester Davenport, pastor of the First Methodist Church officiating.

# Eastland To Go Up to AA

The Interscholastic League in Austin announced early in the week that Eastland will move into District 7-AA, as will Clyde High School of Calhoun County.

"In making the assignments, the state executive committee was guided by three factors: 1. enrollment (Continued on page 4)

## Rosary, Mass Set Thursday For P. J. Cullen, 71

P. J. Cullen of Fort Worth, who started his career with Texas Electric Service Company at Leon power plant in 1929, died Tuesday in a Houston hospital. He had been in ill health for some time and underwent an operation Oct. 14.

Rosary was said at Harverson-Cole Funeral Home Wednesday at 7:30 p.m. Mass will be said at St. Mary's Catholic Church Thursday at 9 a.m. and burial will be in Eastland Memorial Cemetery. Cullen lived here until 1950 when he was transferred to Texas Electric's Morgan Creek power plant near Colorado City.

## Freyschlag INSURANCE weather report

THURSDAY—Unsettled. Sun rises 7:13, sets 6:16. Moon rises 2:53 a.m. Fishing fair. FRIDAY—Possible showers. Sun rises 7:14, sets 6:14. Moon rises 3:57 a.m. Fishing poor. SATURDAY—Clear. Sun rises 7:15, sets 6:13. Moon rises 5:07 a.m. Fishing poor.

## Ticket Sale QB Pancake Feed Nov. 4

The Quarterback Club will sponsor a pancake supper on Thursday, Nov. 4, at the Elementary School cafeteria from 5 until 10 p.m., according to Bill Bass, president of the club.

## Band Booster A(u)ction Sale Is Saturday

The Band Booster Club of Eastland will hold an auction sale at the Wagon Yard, one block off the square, on Saturday, Oct. 23, beginning at 2:30 p.m.

## Graveside Rites For Mrs. Tucker Held In Eastland

Graveside services for Mrs. Ben (Tiny) Tucker of Odessa were held at Eastland Cemetery last Saturday afternoon with the Rev. Ray Hartline, pastor of East Cisco Baptist Church, officiating.

## Mr. M. S. McDaniel Leases Village Hotel Coffee Shop

M. S. McDaniel, native of this county and veteran food service manager, has leased the Village Hotel Coffee Shop, according to an announcement made jointly this week by Mr. McDaniel and Mrs. Robie Robinson, manager of the Village Hotel.

## Drawing Is Saturday

An Old Rip Scrip Drawing will be held at 2 p.m. Saturday, Oct. 23, on the west side of the square. Prizes to be given will include \$50 in scrip cash to the first winner, \$30 to the second lucky number called and \$10 to each of the last two winners.

Ticket stubs may be deposited in the hopper located at the World of Music Record Shop.



BAND LEADERS — Pictured are the Eastland High School Band majorettes with Drum Major Donna Viergever, standing. They are, from left to right, Jeanne Freyschlag, Treva Wilson, Jeannie Wright, Sandra Mueller and Donna Seabourn. These girls will lead the Eastland Band in the performance at Maverick Stadium Friday night at half-time of the Eastland-Ranger game, when the Band Sweetheart will be announced.

## Freyschlag INSURANCE weather report

THURSDAY—Unsettled. Sun rises 7:13, sets 6:16. Moon rises 2:53 a.m. Fishing fair. FRIDAY—Possible showers. Sun rises 7:14, sets 6:14. Moon rises 3:57 a.m. Fishing poor. SATURDAY—Clear. Sun rises 7:15, sets 6:13. Moon rises 5:07 a.m. Fishing poor.

## Mr. M. S. McDaniel Leases Village Hotel Coffee Shop

M. S. McDaniel, native of this county and veteran food service manager, has leased the Village Hotel Coffee Shop, according to an announcement made jointly this week by Mr. McDaniel and Mrs. Robie Robinson, manager of the Village Hotel.

## Mrs. J. Bowland Buried In Carbon

Graveside services for Mrs. Jim Bowland were conducted at 4 p.m. Wednesday in the Murray Cemetery in Carbon. Mrs. Bowland passed away in Teague, Tex., where she resided.

MOSELEY, local agent of the Farm Bureau Insurance Co. in Eastland for the past four and a half years, has resigned Nov. 1st to enter private business, it has been reported by Mrs. John Love. (Continued on page 6)

AMERICAN Junior Boy Scouts unit is being organized at Fiesta Bowl and youngsters will find J.B.C. offers good instruction and a lot of fun. Talk to manager, Mr. Stiller.

SATURDAY IS FELT HAT night in Eastland — as well as Old Rip Scrip drawing. There's all kinds of re-visit our town that day.

10-10 C-B CLUB will meet Monday evening at Camp Union, on Highway 80 and Mrs. True reports special civic defense talk for the 7:30

FOOTBALL—WISE, Friday THE night, when the backs take on the Ranger. Rumors are that the No. One and Two QBs, and Johnny McGee and Watson, will be out of their fullback, Larry Well, has gained honor week as a leader scorer. Ends at Maverick Stadium undoubtedly be packed with the Scrampy Mavericks to unseat the powerful visitors.

## Mr. M. S. McDaniel Leases Village Hotel Coffee Shop

M. S. McDaniel, native of this county and veteran food service manager, has leased the Village Hotel Coffee Shop, according to an announcement made jointly this week by Mr. McDaniel and Mrs. Robie Robinson, manager of the Village Hotel.

## Mrs. J. Bowland Buried In Carbon

Graveside services for Mrs. Jim Bowland were conducted at 4 p.m. Wednesday in the Murray Cemetery in Carbon. Mrs. Bowland passed away in Teague, Tex., where she resided.

## Graveside Rites For Mrs. Tucker Held In Eastland

Graveside services for Mrs. Ben (Tiny) Tucker of Odessa were held at Eastland Cemetery last Saturday afternoon with the Rev. Ray Hartline, pastor of East Cisco Baptist Church, officiating.

66 AUTO LOANS, See National Bank EASTLAND, TEXAS

66 AUTO LOANS, See National Bank EASTLAND, TEXAS

66 AUTO LOANS, See National Bank EASTLAND, TEXAS

66 AUTO LOANS, See National Bank EASTLAND, TEXAS

66 AUTO LOANS, See National Bank EASTLAND, TEXAS

66 AUTO LOANS, See National Bank EASTLAND, TEXAS

66 AUTO LOANS, See National Bank EASTLAND, TEXAS

66 AUTO LOANS, See National Bank EASTLAND, TEXAS



## Wright To Be Represented Wright Dinner Saturday

Approximately 15 persons from Eastland County will attend the Jim Wright dinner in Fort Worth Saturday, it has been announced here.

The non-partisan dinner, at \$10 the plate, will be held in the commercial exhibit building at Will Rogers Memorial Center beginning at 7 p. m.

Amos Carter Jr. is general chairman for the event and Mike Collins of Eastland has served on the 100-man steering committee as an appointee of Carter's.

Most towns in Eastland County will be represented at the dinner.

Carter has pointed to Wright's "Years of productive work almost unparalleled in congressional annals — leadership in water resource developments for Texas, in Latin American relations, in highway programs, in national defense. He has grown increasingly effective in his labors for his constituents yet without neglect of his responsibility to the nation as a whole."

The dinner Saturday will come significantly near congressional approval of Wright-sponsored Trinity River Canal project for Fort Worth, which is expected to be signed into law this week.

## Olden FFA Gets Sears Pig Money

The Olden F. F. A. Chapter has been awarded money from Sears Roebuck Foundation to begin an animal chain within the chapter, with the agreement that each member who is given one of these animals will return one of the same sex, age and in the same condition to the chapter, or return the value in cash.

Members receiving pigs are Freddie Thomas, Tommy Underwood, Terry Collins, Johnny Williamson, Donnie Buckmaster, Bobby Cagle and Dickie Herrell.

These animals will be shown in the county livestock show in March.

## Wright Dinner Saturday

Approximately 15 persons from Eastland County will attend the Jim Wright dinner in Fort Worth Saturday, it has been announced here.

## Wright Dinner Saturday

Approximately 15 persons from Eastland County will attend the Jim Wright dinner in Fort Worth Saturday, it has been announced here.

## Wright Dinner Saturday

Approximately 15 persons from Eastland County will attend the Jim Wright dinner in Fort Worth Saturday, it has been announced here.

## Wright Dinner Saturday

Approximately 15 persons from Eastland County will attend the Jim Wright dinner in Fort Worth Saturday, it has been announced here.

## Wright Dinner Saturday

Approximately 15 persons from Eastland County will attend the Jim Wright dinner in Fort Worth Saturday, it has been announced here.

## Wright Dinner Saturday

Approximately 15 persons from Eastland County will attend the Jim Wright dinner in Fort Worth Saturday, it has been announced here.

## Wright Dinner Saturday

Approximately 15 persons from Eastland County will attend the Jim Wright dinner in Fort Worth Saturday, it has been announced here.

## Wright Dinner Saturday

Approximately 15 persons from Eastland County will attend the Jim Wright dinner in Fort Worth Saturday, it has been announced here.

## Wright Dinner Saturday

Approximately 15 persons from Eastland County will attend the Jim Wright dinner in Fort Worth Saturday, it has been announced here.

## Wright Dinner Saturday

Approximately 15 persons from Eastland County will attend the Jim Wright dinner in Fort Worth Saturday, it has been announced here.

## Wright Dinner Saturday

Approximately 15 persons from Eastland County will attend the Jim Wright dinner in Fort Worth Saturday, it has been announced here.

## Wright Dinner Saturday

Approximately 15 persons from Eastland County will attend the Jim Wright dinner in Fort Worth Saturday, it has been announced here.

## Wright Dinner Saturday

Approximately 15 persons from Eastland County will attend the Jim Wright dinner in Fort Worth Saturday, it has been announced here.

## Eastland ACS Workers Attend State Meeting

Mrs. Austin Flint of Cisco was the delegate of the Eastland County unit of the American Cancer Society at the annual meeting of the Texas Division held in Dallas Oct. 13-14.

Mrs. Flint was accompanied by Mrs. D. E. Pulley of Ranger alternate delegate.

Highlights of meeting were special addresses by Doctor George Pack, renowned cancer surgeon from New York, and Doctor B. L. Aronoff, outgoing President of the Texas Division.

The appointment of Dan Blocker (TV's "Boss Cartwright") as State Crusade Chairman was announced by L. E. Ross of Quanah, Vice-Chairman for the 1966 Crusade.

Four physicians conducted a case presentation session on cured cancer patients for the more than 350 delegates and guests at the meeting.

Ben Jonson, English poet laureate, is buried in an upright position in Westminster Abbey.

## FREE BREAKFAST IS PLANNED FOR FOREIGN VETS NOV. 11

A free breakfast for all veterans of foreign wars will be held on Nov. 11 at the White Elephant, according to Post Quartermaster Al Gaeta.

The new VFW clubhouse is expected to be finished by the end of this month, with new furniture moved in and drapes hung this weekend, Gaeta said. Work remaining to be done includes the laying of curbs and slate; also a new road to the clubhouse will be constructed.

In the Peanut Bowl Parade Saturday, the float built by the V. F. W. Post 4136 and the Ladies Auxiliary won third place.

Alexander the Great wept because he had no more worlds to conquer.

The United States flag had 15 stripes from May 1, until April 1, 1912.

## JUNIOR BOWLING

AT  
**FIESTA BOWL, Eastland**

Starting Saturday, Oct. 23, 9:30 to 12:30  
Bowling 25c per game — shoes free

Join your A.J.B.C. Junior League  
Have your own team.

### FREE INSTRUCTIONS

## JRB SUPER MARKETS

MEMBER AFFILIATED S&H GREEN STAMPS

RANGER — EASTLAND — CISCO  
We Reserve the Right to Limit Quantities — No Sales to Dealers

- SUPREME SALTINE Crackers 1-LB. BOX 35¢
- SUGARY SAM CUT SWEET Potatoes 2 1/2 CAN 29c
- IRELAND'S CHIPPED or SLICED Barbecue 300 CAN 65¢
- LIQUID Lux 22-OZ. BOTTLE 67¢
- GIANT SIZE Rinso 69¢
- GIANT SIZE Surf 64¢
- LIQUID Swan 12-OZ. BOTTLE 39¢
- SILVER DUST LARGE BOX 38¢

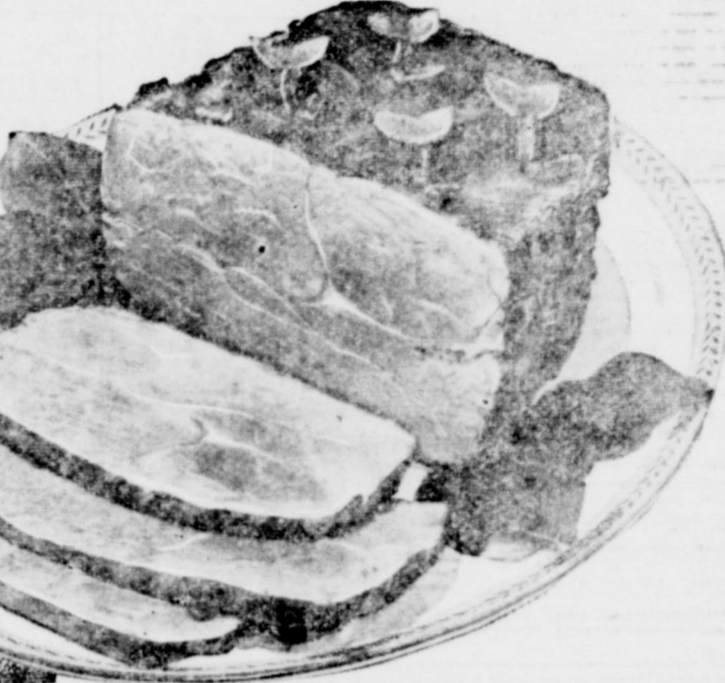
PRICES EFFECTIVE OCT. 21 - 22 - 23

## AF BRAND BACON... 75¢

## MOHAWK HAMS

# 3 \$2.79

ARMOUR'S Bologna, Olive or Pickle Loaf Sliced Meats 6 oz. Pkg. 29¢



## PORK CHOPS

FIRST CUT 55¢ CENTER CUT RIB 75¢

PORK ROAST BOSTON BUT. STYLE 49¢

ALL MEAT FRANKS SWIFT'S PREMIUM 59¢

CHICKEN HENS SWIFT'S PREMIUM 4 TO 6 LB. AVG. 43¢

MRS. TUCKER'S SHORTENING 3-LB. CAN 75¢

FOOD KING — 1-Lb. Pkgs. MARGARINE 5 for \$1

SHURFINE MIXED VEGETABLES 2 303 CANS 39¢

PILLSBURY or BALLARD BISCUITS 3 8-OZ. CANS 29¢

WISK LIQUID QUART 81¢

SCOTT TOILET TISSUE 2 1,000 Sheet Rolls 29¢

## GERBER

Strained Baby Food 10 REG. JARS 99¢

- FINAL TOUCH REG. SIZE 45¢
- DOVE LIQUID 22-OZ. SIZE 67¢
- LIBBY'S TOMATO JUICE 46-oz. Can 35¢
- SHURFINE 3-SIEVE CUT GREEN BEANS 6 303 CANS \$1
- SHURFINE R.S.P. CHERRIES 5 303 CANS \$1
- ENERGY LIQUID DETERGENT 3 22-OZ. BOTS \$1
- LIBBY'S VIENNA SAUSAGE 5 4-OZ. CANS \$1
- SHURFINE 3-SIEVE WAX BEANS 6 303 CANS \$1
- SHURFINE PEAS EARLY HARVEST 5 300 CANS \$1
- ROXIE DOG FOOD 14 300 CANS \$1

## LUNCH MEAT

SHURFINE 12-OZ. CAN 39¢

## ENERGY

ALL PURPOSE DETERGENT GIANT BOX 49¢

### DRUG FEATURES

- DRY DETERGENT, HAND PACQUIN CREAMS REG. SIZE 49¢
- WOODBURY PINK LOTION \$1.00 Size 49¢
- SOFTIQUE BATH OIL—2 1/2-OZ. \$1.09
- MUM CREAM DEODORANT MEDIUM—5 1/2 Size 39¢
- LILT PUSH-BUTTON HOME PERMANENT \$2.60 Size \$1.99

### FROZEN FOOD SPECIALS

- BOOTH BREADED SHRIMP EXTRA LARGE 2 Lb. Pkg. \$1.99
- MEAT PIES SHURFINE BEEF CHICKEN, TURKEY 5 8-OZ. PKGS. \$1
- BOOTH PERCH 1-Lb. Pkg. 49¢
- SHURFINE VEGETABLES Cut Corn, Mixed Veg., Cut Okra, Blackeyes 10-OZ. 6 PKGS. \$1



## IMPERIAL PURE CANE SUGAR

# 5 LB. BAG 39¢

WITH PURCHASE OF \$5.00 OR MORE

### PRODUCE DEPARTMENT

- POTATOES RUSSETS 10 lb. bag 49¢
- K-Y GREEN BEANS Lb. 19¢
- RUBY RED GRAPEFRUIT 5-lb. bag 49¢
- FRESH TOMATOES Carton 19¢
- ROME BEAUTY APPLES 2 Lbs. 29¢

## DELCO Dri-Charged BATTERIES

Can't get old before it's sold  
Gives extra starts at no extra cost

## HORTON TIRE SERVICE

EASTLAND 403 E. Main

<b>J.R.B. BONUS STAMP COUPON</b> 50 Free S&H Green Stamps with purchase 13 1/2-oz. Can Tom Scott Mixed Nuts Void After Oct. 23, 1965 America's Most Valuable Stamps	<b>J.R.B. BONUS STAMP COUPON</b> 50 Free S&H Green Stamps with purchase 3 cans Del Monte Tuna Void After Oct. 23, 1965 America's Most Valuable Stamps	<b>J.R.B. BONUS STAMP COUPON</b> 50 Free S&H Green Stamps with purchase 4 pkgs. Shurfine Frozen Vegetables Void After Oct. 23, 1965 America's Most Valuable Stamps	<b>J.R.B. BONUS STAMP COUPON</b> 50 Free S&H Green Stamps with purchase No. 2 can CHILI Void After Oct. 23, 1965 America's Most Valuable Stamps
<b>J.R.B. BONUS STAMP COUPON</b> 50 Free S&H Green Stamps with purchase 16-oz. jar Pal PEANUT BUTTER Void After Oct. 23, 1965 America's Most Valuable Stamps	<b>J.R.B. BONUS STAMP COUPON</b> 50 Free S&H Green Stamps with purchase 3 No. 2 1/2 cans Del Monte Peaches Void After Oct. 23, 1965 America's Most Valuable Stamps	<b>J.R.B. BONUS STAMP COUPON</b> 25 Free S&H Green Stamps with purchase 15-oz. Nu Pine PINE OIL Void After Oct. 23, 1965 America's Most Valuable Stamps	<b>J.R.B. BONUS STAMP COUPON</b> 25 Free S&H Green Stamps with purchase 12-oz. Borden's Cottage Cheese Void After Oct. 23, 1965 America's Most Valuable Stamps

**FOR A LIMITED TIME**  
**FORT WORTH STAR-TELEGRAM**  
**TOPS IN TEXAS**

**REDUCED Mail Rates**  
 Morning With Sunday  
 Reg. \$21.00  
**you save \$5.05**

**US MAIL**  
 Morning Except Sunday  
 Reg. \$15.00  
**you save \$1.50**

BY MAIL IN TEXAS, OKLA., ARK., N. MEX. & LA. ONLY  
 More state news . . . more regional news . . . more national news than any other Texas newspaper. Reading enjoyment for every member of the family. The Star-Telegram is a great STATE newspaper. Subscribe now and save.  
 (Evening Addition Available at Full Rate)

Fill out and mail to the Star-Telegram today,  
 or See Your Hometown Agent.

FORT WORTH STAR-TELEGRAM  
 400 W. 7th, Fort Worth, Texas 76102

Send Attached in check or money order for \$ \_\_\_\_\_  
 Morning With Sunday  Morning Without Sunday

NAME \_\_\_\_\_  
 ADDRESS \_\_\_\_\_  
 CITY \_\_\_\_\_  
 STATE \_\_\_\_\_ ZIP NO. \_\_\_\_\_

**M. S. McDANIEL** — (Continued from page One)

Eastland in about ten days, from San Antonio, where she has been affiliated with the public schools. The couple has one daughter, Ruby, 10.

A catering service and other features including a char-broiler are planned according to Mr. McDaniel. To better serve the downtown lunch trade, special wholesome lunches at 85 cents each, and five-cent coffee are being offered immediately. New breakfast menus are being added with expanded choices and reduced prices, he said. "We will not sacrifice quality for price," Mr. McDaniel pointed out.

Mr. Frank Miller is chef for the Village Hotel Coffee Shop.

**13 CHARGED** — (Continued from page One)

paid a fine in two counts. Undercover work included actual "buys" by LCB agents in most of the cases, the sheriff said.

**VISITS PARENTS**

Visiting in the home of Mr. and Mrs. D. B. Perdue this week has been their daughter, Mrs. Doris Beard of Big Spring.

**FROM MIDLAND**

Guests recently in the home of Mr. and Mrs. H. J. Tanner were a daughter, Mrs. Nanette Spencer, and her son, Gregg, of Midland.

**FROM MIAMI**

Mr. and Mrs. Stanley Reed and children of Miami were weekend visitors in the home of his parents, Mr. and Mrs. L. B. Reed.

**UP TO AA** — (Continued from page One)

in the last four high school grades: 2. the geographical location of the school; and 3. arranging schools, in such a manner as to have approximately 32 districts in the state, thus assuring an orderly state championship playoff for the Conference AA members.

"All schools with an enrollment from 225 to 450 have been placed in the most accessible district to their school. Schools shall be assigned for a period of two years in the same district and conference in football and, with the exception of newly created schools and consolidated schools, there will be no change in the district and conference membership during the 1966-67 and 1967-68 school years."

Supt. Siebert said that local average membership for the two year prior was 229.45, "so with 225 being the dividing spot, we are just inside the line."

The districts are required to be organized by Dec. 15, it was reported. First date that any high school team in conference AA can play a game is Sept. 9, 1966, and the last date for certifying district champions in this conference is Nov. 12, it was reported.

The six-team 7-AA conference teams are relatively close together with the possible exception of Granbury which is located south of Fort Worth.

**WEEKEND GUESTS**

Guests last weekend in the home of Mr. and Mrs. Otto Morren and Jeane, a student at Cisco Junior College, were Jeane's friends, Linda and Cathy Moore of Albany.

**YOUNG FARMERS MEET**

Eastland County young farmers will meet at 7:30 p.m. Monday, Oct. 25, in Carbon. Virgil Seaberry Jr. will present a program on "Farm Law."

All farmers and interested persons are invited to attend.

**HAS RETURNED**

Mrs. Harry E. Wood returned last week from Bay St. Louis, Miss., where she visited her son and family. Mr. and Mrs. Glen D. Wood, Ronnie and Pat.

Enroute home, Mrs. Wood, accompanied by her son and family, visited in Alexandria, La. with Mr. and Mrs. H. D. Roberts Jr.

**Look Who's New**

**Lana Parks Is Jr.-Hi. Majorette**

Mr. and Mrs. Charles Wolford of Merced, Calif. announce the arrival of a baby boy.

The baby, whom they named Charles David, Jr., weighed eight and a half pounds when he was born on Oct. 5.

Grandmothers are Mrs. Alene Durham of Eastland and Mrs. Betty Craig of Ranger.

**VISITORS**

Gracie Tankersley and Darena Wilhite of Fort Worth spent last weekend with Miss Tankersley's parents, Mr. and Mrs. W. E. Tankersley.

**IN DALLAS**

Mr. and Mrs. Jeff Laughlin visited last week in Dallas and attended the State Fair. They were brought home Saturday by Mr. and Mrs. Shelton Smith.

**IN SAN ANTONIO**

Mrs. Roy Mayfield and Mrs. Charles Black visited in San Antonio recently with Mrs. Black's daughter, Mr. and Mrs. Pete McFarland.

**VISIT IN GARLAND**

Misses Glenda and Sandra Gibson visited over the weekend in Garland with an aunt and uncle, Mr. and Mrs. George Wellwood. They also attended the Dallas Fair.

**VISITS LAYTONS**

Visiting in the home of Mr. and Mrs. E. E. Layton recently were their son and family, Mr. and Mrs. Charles Layton and sons of Fort Worth.

**VISITING**

Mrs. Charles Brockman and Mrs. Floyd Hacher and daughters are visiting in the home of Miss Ethel Manning.

**WINTERIZE YOUR CAR!**

**Get a SAFETY CHECK-UP!**

**GET A WINTER LUBRICATION**

BE PREPARED FOR WINTER DRIVING AND TRUST YOUR CAR TO THE MAN WHO KNOWS THE STAR

Your TEXACO Dealers in Eastland

- A. L. ALDRIDGE SERVICE STATION**  
East Main
- EDDIE'S TEXACO SERVICE**  
503 W. Main
- LANGLITZ TEXACO SERVICE**  
702 W. Main

**HARELIKS**

**VALUE-PACKED DOLLAR DAYS**  
 THURS. — FRI. — SAT. ONLY

**FEATHER PILLOWS** Reg. 1.29 **87c**

**HEAVY BATH TOWEL** Reg. 98c **67c**

**MORGAN-JONES INSULAIRE Blanket** Reg. 9.98 **\$7.99**

**MENS — Reg. 2.98 Flannel Shirts** **\$2.57**

**MENS WHITE — Reg. 1.00 Handkerchiefs 13 for \$1**

**REG. 10c Dish Cloths 13 for 70c**

**GIRLS WHITE — Reg. 49c Crew Socks 2 for 80c**

**CANNON — Reg. 59c Hand Towels 3 for \$1**

**MENS — Reg. 1.00 Banlon Socks 7 for \$1**

**WALKING Blanket Reg. 3.98 \$2.98**

SEE OUR LARGE SELECTION OF HATS FOR **FELT HAT DAY SATURDAY**

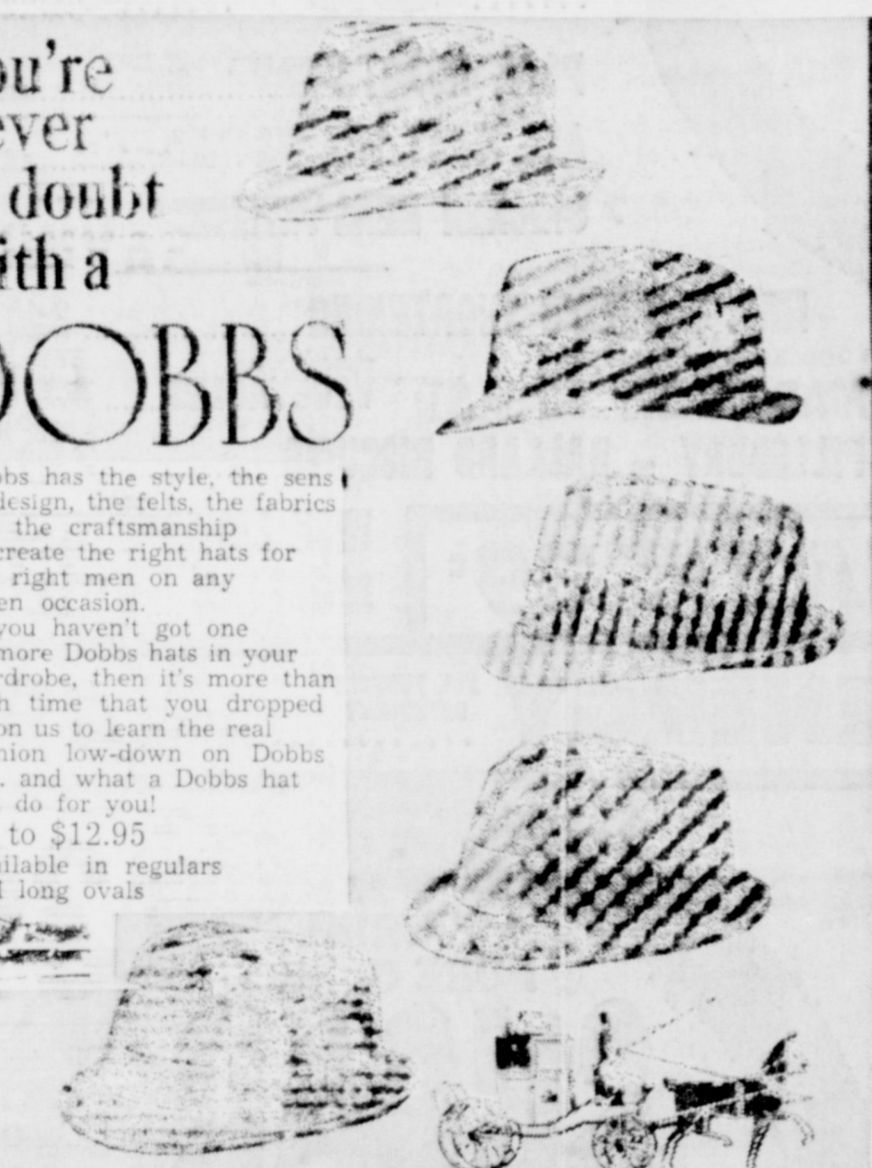
**\$5 THIS COUPON WORTH \$5.00 ON PURCHASE OF LADIES COAT 14.98 OR BETTER \$5**

HAVE YOU SHOPPED **HARELIKS** LATELY??

EASTLAND

**SATURDAY IS FELT HAT DAY**

You're never in doubt with a **DOBBS**



Dobbs has the style, the sense of design, the felts, the fabrics and the craftsmanship to create the right hats for the right men on any given occasion.

If you haven't got one or more Dobbs hats in your wardrobe, then it's more than high time that you dropped in on us to learn the real fashion low-down on Dobbs . . . and what a Dobbs hat can do for you!

\$5 to \$12.95 Available in regulars and long ovals

ALSO— Westerns, 2 3/4-in. and 3 1/2-in. Brims . . . Large selection Stetsons

**THE MEN'S SHOP**  
EASTLAND

Let Yourself Go **PLYMOUTH**



The 1966 **PLYMOUTHS** Are Here Now!  
**PLUS: Strictly BANK-RATE FINANCING**

See for Yourself at **RUSHING MOTOR CO.**

215 S. SEAMAN EASTLAND MA 9-2430

**READ THE CLASSIFIEDS**



may we introduce new management: **M. S. McDANIEL** (35 years food experience) new menus just for you:

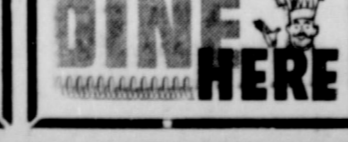
**Thursday Special Lunch 85c**  
 Choice of entrees:  
 Meat Balls & Spaghetti  
 Boiled Ham Hock—Limas  
 Beef Stew—Vegetables  
 Fried Trout—Tarter Sauce  
 Choice of Two Vegetables  
 Lima Beans—Fresh Squash  
 Parsley Butter Potatoes  
 Dessert: Spice cake, sauce rolls—Corn bread—coffee, tea

**Friday Special Lunch—85c**  
 Choice of Entrees:  
 Fried Chicken—Pan Gravy  
 Salmon Croquettes—Sauce  
 Beef stew—vegetables  
 Fried Trout—Tarter sauce  
 Choice Two Vegetables  
 June Peas—Spanish Macaroni  
 Mashed potatoes  
 Dessert: Coconut Pudding  
 rolls—Corn bread—coffee, tea

**Saturday Special Lunch—85c**  
 Choice of entrees:  
 Smothered veal steak—gravy  
 Fried Link Sausage—gravy  
 Beef Stew—Vegetables  
 Fried Trout—Tarter sauce  
 Choice of Two Vegetables  
 North. Beans—Fresh Greens  
 Au gratin Potatoes  
 Dessert: Rice Custard  
 Rolls—Corn bread—coffee, tea

**Deluxe Dinner—Every Day**  
 Choice of entrees:  
 Fresh Vegetable Soup or pickle, beet, onion salad  
 Fried Jumbo Shrimp—1.35  
 Broiled pork chops—1.25  
 Fried Catfish Steak—1.25  
 Broiled Chicken Livers—1.25  
 South. Fried Chicken—1.10  
 Hamburger Steak—1.10  
 Chicken-Fried Steak—1.10  
 Fried Calf Liver—Ons.—1.10  
 Served with the Above

**VILLAGE HOTEL COFFEE SHOP**  
 EASTLAND  
 Just off the Square



**WHY WORRY ABOUT WEATHER? LET US JO THE LAUNDRY**

**FREE PICK-UP AND DELIVERY SERVICE**

**CISCO STEAM LAUNDRY**  
 HI 2-2151



**ABEL ALLEY CAT** says "I'm Not Being Catty. But My Offer Good Only Until I Join the Witch October 31"

CALL ME TODAY FOR **FREE HOOK UP AND 30 DAYS FREE SERVICE** ON ABEL CABLE Absolutely No Obligation

Get Better Looking With a Cable Connection!

**SOUTHERN TV SYSTEMS CORP.**  
 PHONE MA 9-1580 EASTLAND

# Wranglers Whip Rangers In Annual Peanut Bowl Tilt Saturday Night

Wranglers of Cisco Junior League scored in the first period to win a victory over Ranger College's Rangers in the annual Peanut Bowl football game at Eastland stadium last Saturday night. The game climaxed a day of activities dedicated to the peanut industry of Eastland County. A crowd of more than 2,000 turned out for the football game, which was a thrilling affair, from beginning to end. The win for Cisco was their fifth straight in the Peanut Bowl. It also was Cisco's first conference victory, while Ranger was suffering a sixth defeat.

Quarterback Robert Pearce, 180-pound freshman from Hamlin, threw a 40-yard pass to End Volley Murphy of Marlin for the first Cisco score in the opening quarter. It was a bomb type pass that Sprinter Murphy gathered in on the dead run.

The other score was in the final period when Isaac Barnes, speedy halfback, ran 33 yards to score, climaxing a 75-yard march that took ten plays.

The first score took five plays with Cisco starting from their 42-yard line. Pearce passed to End Danny Potts for 20 yards, James Smith drove for nine yards, and Pearce swept right for four. After a 15-yard clipping pen-

alty, Murphy raced down the right sideline and gathered in the perfect pass from Pearce.

The other score started from the Cisco 27. It took nine plays to reach the Ranger 33. Pearce then handed off to Barnes, who broke over left tackle, slipped back to his right and outran the Ranger secondary. Ranger Safety Danny Prater hit Barnes at the goal line.

Pearce, who took over the quarterback job due to injuries keeping the two Cisco field generals out of uniform, completed three of 15 passes for 133 yards. He had three interceptions.

Ranger's defense was pretty rugged when it needed to be. They held Cisco six times inside their 27-yard line. The Rangers drove into Cisco scoring territory three times. They were on the Wrangler six when the final whistle blew.

Henry Smith, Marlin, was the night's big gainer. The Cisco halfback had 104 yards in 18 carries. Joe Fitzgerald, Ranger QB, had a good night passing, hitting 13 times in 22 tosses for 175 yards. Howard Fisher was on the catching end most of the time.

Cisco	Ranger
18 First downs	12
286 Yards rushing	72
133 Yards passing	175
5 of 15 Passes	13 of 22
2 Intercepted by	4
2 for 49 Punts	8 for 26
10 for 110 Penalties	2 for 20
1 Fumbles lost	3
Score by quarter:	
Cisco	6 0 0 6-12
Ranger	0 0 0 0-0

**COMMISSIONERS** (Continued from page One) Commerce, spoke briefly to the commissioners, pointing out the importance of an adequate airport for industrial prospects. In citing good schools, good churches, good doctors, medical facilities and recreational facilities, Arrington pointed out the importance of good aircraft landing facilities.

Texas Highway Department Employe and Surveyor Tommy Magness, who was at the Monday night meeting on another matter, was asked about engineering requirements for the airport development. He said that he assumed that state or federal specifications are laid down and no particular problem could be seen in engineering, but that it might be possible that the city does not have the type of heavy equipment necessary to prepare the runway for paving, and in that event, might have to contract the preparatory work.

A lengthy discussion of bases and materials followed. Finally Mayor Deaton asked: "What does the commission want to do about this? (Agree to application for the assistance or not).

Commissioner Curtis Koen said, "I'd like to see the field improved but we have a lot of other work cut out for us. We've got streets that need to be paved."

"Do we want to wait on the application," the Mayor asked.

Commissioner Dr. M. A. Treadwell Jr. said that if the city had to contract for heavy equipment, it could be a big outlay of money, and "We need to do first things first."

Hart entered his motion that the application be held until next year and plan for next year's goals. Dr. Treadwell seconded the motion. The mayor suggested that

maybe a committee could go to Austin and find out definitely what all is involved in the agreement to cooperate.

Commissioner James Reid, who had remained silent throughout the discussion, suggested that maybe since this is a new program of the state's within six months if things next year it might be harder to get money "Once all the other towns find out how easy it is to get the money that has been appropriated."

In around-the-table banter, the commissioners agreed that there are still 12 days left to file the application, and that since a provision is provided wherein the city could pull out of the agreement develop that it cannot fulfill its part of the obligation, that perhaps more study is needed.

Magness was asked to commission to determine the check the runways and report back (presumably at a special called meeting) on what would be needed, and a representative is to contact the exact requirements.

Hart withdrew his motion. Magness sought and received permission for the city to accept a quit claim deed for southwest corner of the Hillcrest addition when R. P. (Buddy) Haun plans to build a home on an extension of Blair St. A sub-division in that area is anticipated, it was reported.

Commissioners also: Accepted a contract from T&P Railway for a lease of City Park Hill for three years in the amount of \$25. Agreed to cut the Rebecca Lodge's water bill of \$33. to \$15 because of a leak. Agreed to provide four parking spaces on the west side of the court house for construction crews who are revamping the 11th Court of Civil Appeal.

Agreed to begin parallel parking on the south side of the 200 block of W. Commerce St. to help a bad traffic condition.

Heard a suggestion that the city and school tax offices being combined to cut down expenses.

Heard more complaints about dust on S. Daugherty St. Verbally decided after the meeting to hold monthly luncheon meetings for workshop discussions rather than hold two meetings a month.

**VISIT MAYNARDS** Visiting recently in the home of Mr. and Mrs. Walter Maynard were her sister and a family, Mr. and Mrs. Charles Carson and children of Dallas; and his brother, Pvt. Gene Maynard of Fort Sill, Okla.

**SINGER CO., ABILENE REMOVAL SALE**  
MOVING TO A NEW LOCATION  
All Machines Reduced **BIG SAVINGS.**  
New and Repossessed automatic machines. Repair on all makes  
Call in Eastland Doris Morton MA 9-2084 for appointments.

**WEEK OF REVIVAL**



OCTOBER 24-31, 1965  
WEDNESDAYS — 10:50 and 7:00 o'clock.  
THURSDAY through FRIDAY — 7:00 a. m. and 7:15 p. m.  
Eye-Opener — Coffee and doughnuts: 6:30 a. m.  
Dr. S. Wayne Reynolds, Guest Speaker  
J. Lester Davenport, Pastor and Song Leader  
"The Gospel with Methodist Flavor" — A Hearty Welcome to All  
**FIRST METHODIST CHURCH**  
215 S. Mulberry — EASTLAND — MA 9-1022

**FOR FALL ... AND FOR TRADE'S DAY --**

ANNOUNCING ... our 1st reduction on Fall Dresses  
Transition Cottons  
Acetates - Nylons  
FASHION - VALUE

**Trades Day Special COSTUME JEWELRY**  
Wide Assortment Values to \$2.95  
**special 50c**

**SPECIAL GROUPINGS TOO:**  
SPORTSWEAR  
COATS  
SUITS

Visit Altman's Trades Day & Every Day For Quality at Reasonable Prices

YOU'LL FIND in visiting our shop that really good wearing apparel isn't expensive — it's smart. Quality name brands that you know and can trust for long-wearing comfort and good looks are really good investments. Now in this fall season, imagine yourself in a brand new cashmere coat with fur collar, topped off with a stylish new hat. It'll be a lovelier new you, and your loved ones will appreciate your good taste and the fashion-right figure you cut.



**Altman's**  
STYLE SHOP  
EASTLAND

**GUARANTEED ELECTRIC SERVICE**  
**BOND**  
ELECTRIC  
808 W. Commerce  
MAIn 9-1724

Major & Minor  
**ENGINE TUNEUPS**  
COMPLETE BRAKE SERVICE  
WHEEL BALANCING & ALIGNING  
**VIC'S AUTO REPAIR**  
306 W. Main  
MAIn 9-2111  
Eastland

## WE GIVE GOLD BOND STAMPS

**MARYLAND CLUB COFFEE** 75¢  
**GOLDEN NIP ORANGE JUICE** 15¢  
**WHITE SWAN COFFEE** 67¢  
**GEORGIA BOY PEACHES** 25¢  
**ZEE NAPKINS** 25¢  
**EVAPORATED MILK** 45¢  
**COFFEE MATE** 29¢  
**CARNATION MALT** 47¢

**GOOCH BLUE RIBBON**  
BEEF CUTLETS lb. 69c  
GOOCH BLUE RIBBON Beef Chuck BLADE ROAST lb. 39c  
GOOCH BLUE RIBBON Beef Club Steak lb. 79c  
RATH RACORN SLICED BACON lb. 69c  
GOOCH BLUE RIBBON Fully Cooked — Ready-to-Eat PICNIC 3 lb. can \$2.29

**SUPER SAVE**  
VIENNA FINGERS 35¢  
ONION SOUP 37¢  
NOODLE SOUP 31¢  
WHIP & CHILL 45¢  
CHEESE PIZZA 47¢  
SAUSAGE PIZZA 57¢

**PEPSI-COLA** 39¢  
King Size 6-Bottle Ctn.  
BREEZE 35¢  
COND. ALL 75¢  
SILVER DUST 35¢  
WISK 43¢  
W-P 49¢  
LIFEBUOY 39¢  
LIFEBUOY 27¢  
DOVE LIQUID 67¢

**GOLD MEDAL FLOUR** 5-lb. Bag 59¢  
**SWEET POTATOES** 25¢  
**PEANUT BUTTER** 39¢  
**BREMNER'S SALTINE CRACKERS** 19¢  
**SLICED BACON** lb. 59¢  
**FRESH GROUND BEEF** lb. 39¢  
**MACMOYS SUPER SAVE**  
RUSSETT POTATOES 10 lbs. 49¢  
Mild YELLOW ONIONS lb. 5c

**IT'S GAS... IT'S TERRIFIC!**

Yes, the Dearborn Deluxe is a terrific gas heater... gives you instant heat, even heat from wall to wall. Millions of happy users. Pick the size you need today.



Dearborn  
**COATS FURNITURE CO.**  
305 S. Seaman EASTLAND MA 9-2614



# Rising Star News

Star's newest citizen Weldon Hill, son of Mrs. Weldon Hill. He was born on Oct. 5 at Memorial Hospital in Brownwood. Hill has two daughters, Pamela, age six, and Angela, age four. Mr. Hill is a teacher at Rising Star High School.

There will be a community get-together at the Sipe Springs Community Center on Thursday night, Oct. 21, according to members of the Community Club.

A western barbecue supper will be served and a program

of music will follow. This is an annual event and the public is invited to come and enjoy the evening.

Rising Star folk were privileged to view an unusual display of a collection of rare rocks and petrified specimens at the high school on Saturday. The collection belonged to Mr. M. O. Walker of George West, a geologist and "rock hound" who has one of the finest collections in the country. Only a portion could be shown. No admission was charged.

Mr. and Mrs. Walker were in Rising Star visiting Mr. and Mrs. M. E. Vise for a few days.

Col. David G. Alford, a career Air Force man of Rising Star, has been selected to head the Department of Public Safety of the City of Wichita Falls.

Col. Alford, son of Mr. and Mrs. Carl Alford, has commanded the 375th Air Base

group at Sheppard Field. He has been in the Air Force for the past 27 years, with duties overseas in England, Newfoundland, North Korea and Athens, Greece. He has asked a release from the Air Force in order to accept his new position, effective on Dec. 1.

The Colonel and his wife, daughter of Mr. and Mrs. Ruby Miller of Cisco, have two children. Mike, 18, is a student at North Texas State University, and Patty is a student at Burkburnett High School.

A Rising Star area farmer has shown that diversification in farming operations pays off in the long run. He is Troy Mitchell, who lives three miles south of Rising Star in Brown County. A tour of his farm last week included F. H. A. personnel of Brown County, Bob Gist of Zephyr, Frank Madison of Williams Community, Vernon Pittman

of Owens and John Lee, Rising Star Soil Conservation Chief; also, Joe Scasta, S. C. S. technician, members of the press and business men from the surrounding area.

Mr. Mitchell's farming practices are supervised by the Rising Star office of the Great Plains Soil Conservation Service program.

Mrs. Clara Burkhead underwent surgery on her foot Thursday of last week to remove a couple of cysts which had become infected.

**HERE FOR WEEKEND**  
Mr. and Mrs. Gordon Goldston and family of Idabel, Okla., and formerly of Eastland spent the weekend with Mr. and Mrs. Johnson Smith and family to attend the Peanut Bowl activities. The Smiths and Goldstons had Sunday lunch with the Dr. J. O. Jolly family.

READ THE CLASSIFIEDS



# Play BONUS BINGO at Safeway

## And Win Up to \$1000.00!

### 96 WAYS TO WIN!

Start playing "Bonus Bingo" today. Anyone 16 or over may pick up the "Bonus Bingo" slip at your Safeway Store. No purchase required. Secure your slip at either end of the checkstand or from any store employee except in the Meat Department. Save all slips, play on the game specified on the slip. You may win horizontally, vertically, or diagonally. Win from \$1 to \$1000.

CLIP THESE SLIPS TO HELP YOU WIN!



Win One or More Prizes of \$1000 \$500 \$100 \$50 \$20 \$10 \$5 \$1

Over 40,000 Cash Winners!  
Over \$83,000 in Cash Prizes!  
Winners!

- Lula Phillips
- Joe Morris
- Jewel Caldwell
- Mildred Sherril
- L. B. Reed

**Frozen Favorites!**

- CREAM PIES** 3 for \$1
- Ice Cream** Snow Star, Assorted Flavors, 1/2 Gallon Carton 49¢
- Shrimp Chunk-ees** Thunderbolt, For Salads, 2 lb. \$1.59
- French Fries** Best of Crinkle Cut, Quick & Easy—7-oz. Pkg. 5 for \$1
- Ice Cream Cake** 79¢
- Coffee Cake** 79¢

**Crisco** Shortening, (4¢ Off Label), 3 Lb. Can 77¢  
[Royal Satin Shortening (10¢ Off Label)—3-Lb. Can—71¢]

**Detergent** White Magic, Regular or Low Sudsing, (10¢ Off Label), For cleaner washes—Giant Box 49¢

**Sliced Peaches** Or Halves, Highway, Yellow Cling, No. 2 1/2-Can 4 for 89¢

**Canned Milk** Lucerne, Evaporated—1 1/2-oz. Can 8 for \$1

- Garden Peas** 4 for 89¢
- Chunk Tuna** 3 for 89¢
- Heinz Ketchup** 2 for 59¢
- Cake Mixes** 2 for 69¢
- Orange Drink** 3 for 89¢

**Safeway's Fresh Produce!**

- APPLES** Golden Delicious, Jonathan, Kraft Caramels—Lb. 39¢
- Fresh Tomatoes** Ripe. Perfect slicers for sandwiches, Bulk
- Cucumbers** Delicious in salads—Each
- Pumpkins** Sugar, 2 1/2 Lb. to 5-Lb. Avg.—Lb. 6¢
- Rutabagas** Firm and heavy—Lb. 10¢
- Green Onions** Fresh and tender, Bunch 2 for 25¢
- Carrots** The perfect garnish, 2 lb. 29¢
- Collard Greens** High in food value—Bunch 2 for 29¢
- Cauliflower** Serve often—Each 29¢
- Romaine Lettuce** Perfect for salads—Each 29¢



**Plus Gold Bond Stamps!**

- Crackers** Wortz, Ten-Der-Rist—1-Lb. Box 39¢
- Biscuits** Betty Crocker Homestyle or Buttermilk, Fulla Sweetmilk or Buttermilk—8-oz. Can 3 for 29¢
- Bisquick** Biscuit Mix—10-oz. Box 53¢
- Dog Food** Wilson, Ideal—1-Lb. Can 2 for 33¢
- Mexican Dinner** El Chico, Frozen, 16-oz. Pkg. 49¢
- Enchilada Dinner** El Chico, Frozen, 12-oz. Pkg. 49¢
- Johnston's Pies** Frozen Custard and Dutch Apple, Pecan, Blackberry—3-inch Size 75¢

**Dairy-Delicatessen!**

- Chocolate Milk** Lucerne, An all-time favorite—1/2-Gallon Carton 39¢
- Lucerne Milk** Homogenized—1/2-Gallon Carton 53¢
- Sour Cream** Lucerne—8-oz. Carton 30¢
- Cheddar Cheese** Safeway, Mild—Lb. 65¢
- Sharp Cheese** Safeway Wisconsin—Lb. 77¢
- Extra Sharp Cheese** Safeway Wisconsin—Lb. 85¢

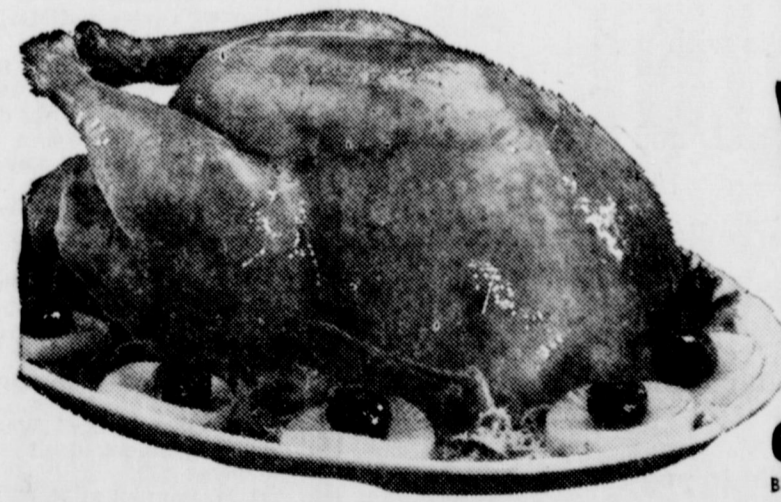
- French Bread** 19¢
- Cinnamon Rolls** Mrs. Wright's, (2¢ off), 8-Count—1 1/2-oz. Pkg. 27¢
- Hot Dog Rolls** 27¢
- Whole Wheat Bread** Sliced—1/2-Lb. Loaf 27¢
- Margarine** Meadowdale—1-Lb. Carton 27¢
- Metrecal** Liquid Diet, Coffee, Double Fudge, French Vanilla, Rum Funch—8-oz. Can 3 for 89¢

**For Ghosts and Goblins!**

- Apple Cider** Town House—1-Gallon 79¢
- Cookies** Busy Baker, Vanilla, Devils Food and Fudge Sandwiches—1-Lb. Bag 2 for 75¢
- Marshmallows** Fluf-Puff—10-oz. Pkg. 2 for 45¢
- Mixed Nuts** Tom Scott—13 1/4-oz. Can 49¢
- Sandy Treats** Roxbury, Halloween, Regular Package 49¢
- Strapped Treats** Roxbury, Halloween, Regular Package 49¢
- Trigley Gum** Doublemint, Juicy Fruit, Spearmint—20-Count Box 78¢

**Plus Gold Bond Stamps...**

- Palmolive** Bath Size, (Regular Size—2 for 23¢) 2 for 35¢
- Beauty Bar** Val—Bath Size, (Regular Size—2 for 39¢) 2 for 49¢
- Liquid Detergent** Val Rose Lotion, 32-oz. Plastic Bottle 95¢
- Fab Detergent** With Borax, Large Box 35¢
- Floriant** Colgate, Air Freshener, Orchard Blossom, Bathroom, Touch of Spice—7-oz. Can 59¢
- Lima Beans** Stokley, Fordhook—No. 303 Can 29¢
- Shellie Beans** Stokley—No. 303 Can 4 for \$1
- Green Beans** Stokley, French Style Sliced, No. 303 Can 27¢
- Yum Yum Cookies** Sunshine, 12-oz. Cello Bag 49¢



**Safeway Quality Meats!**

# Young Turkeys

Hens or Toms, U.S.D.A. Inspected Grade A, Tender, Meaty and Ready-to-Cook. 10 to 24 Lb. Avg.

## Lb. 39¢

**Health and Beauty Aids!**

- Air Spray** Wonderful—13-oz. Can 66¢
- Acricin** Johnson & Johnson, Oral Antiseptic 12-oz. Bottle 79¢
- Air Spray** Hidden Magic, Regular or Extra Control, (15¢ off)—7-oz. Can \$1.09
- Aspirin** Tablets, For headache relief, 36-count bottle 55¢

- Boneless Hams** Armour's Star Easy-Cut, Half or Whole—Lb. 95¢
- Boneless Hams** Armour's Star Easy-Cut, Sliced or Quarters—Lb. \$1.09
- Game Hens** Cornish, USDA Grade A—20-oz. 69¢
- Cube Steaks** Manor House Beef—20-oz. Pkg. 98¢
- Beef Sausage** 2 lb. 89¢
- Pork Roast** Boston Butt, Delicious with Yams—Lb. 49¢
- Braunschweiger** Safeway Smoked, (Chunk)—Lb. 55¢
- Hormel Sausage** 59¢
- Sliced Ham** Danolia—5 1/4-oz. Pkg. 67¢
- Cervelat** Armour, Texas Style—Lb. 59¢

- Chuck Roast** Blade Cut—U.S.D.A. Choice Grade Heavy Beef—Lb. 43¢
- Seven Roast** Bone Cut—U.S.D.A. Choice Grade Heavy Beef—Lb. 49¢
- Arm Roast** U.S.D.A. Choice Grade Heavy Beef—Lb. 59¢
- Chuck Steak** U.S.D.A. Choice Grade Heavy Beef—Lb. 59¢
- Canned Picnic** Armour Star 3 Lb. \$1.99
- Bacon** Armour Star, Sliced—1-Lb. Pkg. (Safeway—1-Lb. Pkg. 75¢) 79¢
- Franks** Armour Star, Plump and Juicy—12-oz. Pkg. 49¢

**SAVE at SAFEWAY**  
It takes less books to Get More Gifts with GOLD BOND STAMPS

**This Coupon Worth 25 Free Gold Bond Stamps**  
Plus your regularly earned Gold Bond Stamps with the purchase of 10-Lb. Bag **RUSSET POTATOES**  
Coupon Expires October 23, 1965.

**This Coupon Worth 100 Free Gold Bond Stamps**  
Plus your regularly earned Gold Bond Stamps with the purchase of ANY Half or Whole **SMOKED PICNIC**  
Coupon Expires October 23, 1965.

**This Coupon Worth 50 Free Gold Bond Stamps**  
Plus your regularly earned Gold Bond Stamps with the purchase of TWO—15-oz. Cartons Lucerne Assorted **FRUIT GELATINS**  
Coupon Expires October 23, 1965.

**This Coupon Worth 75 Free Gold Bond Stamps**  
Plus your regularly earned Gold Bond Stamps with the purchase of TWO—1-Lb. Cartons **CHIFFON MARGARINE**  
Coupon Expires October 23, 1965.

**This Coupon Worth 50 Free Gold Bond Stamps**  
Plus your regularly earned Gold Bond Stamps with the purchase of 20-oz. Pkg. Hereford Heavens Broasted **BEEF STEAKS, VEAL STEAKS or CHICKEN FRY STEAKS**  
Coupon Expires October 23, 1965.

Prices and Coupons Effective Thurs., Fri. and Sat., October 21, 22 and 23 in Eastland  
We Reserve the Right to Limit Quantities. No Sales to Dealers.



Now! New Chevelle

# SUPER SPORT 396



New Chevelle SS 396 Sport Coupe—  
with clean-scripted all-new Body by Fisher.

## by Chevrolet

Two new Super Sport beauties for '66—a hardtop and convertible—propelled by nothing less than the new Turbo-Jet 396 V8.

This remarkably efficient power plant, with aircraft-type valves, deep-breathing ports and other design advances, develops 325 hp in the standard version. And you're welcome to order more—in a 360-hp version—if you're so inclined.

Both Chevelle SS 396 models ride on a special flat-cornering chassis. A fully synchronized 3-speed transmission with floor-mounted stick shift is standard. Or you can order a 4-speed or Powerglide—also Strato-bucket front seats, center console and full SS instrumentation.

Your Chevrolet dealer's is the place to see how all this feels from behind the wheel. He's a great believer in letting the customers handle the merchandise.



See the new '66 Chevrolet, Chevelle, Chevy II, Corvair and Corvette at your dealer's

## FULLEN MOTOR COMPANY INC.

305 E. Main

Eastland

### ATTENTION!

## MR. PEANUT FARMER

Market your Peanuts with us.

TOP PRICES paid for both SACKED and BULK peanuts

Ninety (90) Drying Bins and large lighted parking lot available for your use

It will pay you to check with us before selling

Latest information available to you covering recommended level for combining and drying to preserve best quality

PROMPT - EFFICIENT - COURTEOUS SERVICE



## GORMAN PEANUTS

A DIVISION OF AMERICAN COLD STORAGE CORPORATION

Gorman, Texas

Telephone Area Code 817 RE 4-2266

### Courthouse Records

- Marriage Licenses
- Oil & Gas Leases
- Court Proceedings
- Property Transfers

#### CAR REGISTRATIONS

E. A. Kingsley, Chevrolet pickup, Ranger.  
 O. E. Hise, Chevrolet pickup, Ranger.  
 J. B. O'Shields, Chevrolet, DeLeon.  
 W. L. Swafford, house trailer, Ranger.  
 H. S. Packwood, Plymouth, Ranger.  
 Fehrman Lund, Oldsmobile, Eastland.  
 E. D. McCollum, Chevrolet pickup, Eastland.  
 R. C. Abbott, Chevrolet, Carbon.  
 Joseph Cohn, Ford, Eastland.  
 Bernice Mitchell, Chevrolet pickup, Cisco.  
 Robert Wilson, Chevrolet, Cisco.  
 Arno Raggenstein, Chevrolet pickup, Cisco.  
 Raymond Reames - Marion Reames, Chevrolet sports coupe, Cisco.  
 Bascom Harris, Chevrolet, Cisco.  
 Anton White, Chevrolet pickup, Cisco.  
 Hugh Sweil, Chevrolet, Cisco.  
 West Texas Poultry and Egg Co., Chevrolet van, Cisco.  
 Moran National Bank, Chevrolet, Eastland.  
 Mrs. A. E. Bendy, Ford, Eastland.  
 Frank Weise, Ford, Cisco.  
 Breckenridge Ready Mix, Inc., Chevrolet pickup, Eastland.  
 Joe Daniels, Ford pickup, Ranger.  
 Larry Farrow, Chevrolet, Ranger.  
 David Rogers, Chevrolet, Ranger.  
 Oldsmobile Division GMC, Oldsmobile, Dallas.  
 Gardenhire Oil Co., Chevrolet truck tractor, Cisco.  
 Jerry Anderson, Chevrolet, Cisco.  
 H. M. Bassett, Chevrolet pickup, Cisco.  
 W. A. Griffin, Chevrolet pickup, Cisco.  
 Edgar Witherspoon, Chevrolet, Cisco.  
 Verda Ward, Chevrolet coupe, Ranger.  
 Raymond Beck, Oldsmobile, Eastland.  
 W. A. Kelly, Dilly two-wheel, Ranger.  
 Glenn Justice, Chevrolet, Gorman.  
 B. R. Christmas - Dorothy Christmas, Chevrolet, Gorman.  
 Thornton Feed Mill, Chevrolet crain red, Cisco.  
 Troy Wright, Chevrolet pickup, Gorman.  
 H. E. Williams, Oldsmobile, Eastland.  
 Willie Langford, Ford, Cisco.  
 Lone Star Producing Co., Ford pickup, Dallas.

Pat McGough, assignment contract of sale and purchase.  
 Eastland National Bank to C. R. Benton release of deed of trust.  
 J. R. Files to James Mears release of vendors lien.  
 First Federal Savings and Loan Ass'n., Ranger, to L. J. Maloney, et ux, release of deed of trust.  
 Phenia Mae Flippin to Higginbotham Bros. & Co. to Southern Savings and Loan Assn., mechanic v. materialman's lien and assignment.  
 S. W. Foster, Jr., et ux, to Otis Wright warranty deed.  
 Durwood Fussell et ux to Rutherford & Steel Co. warranty deed.  
 Durwood Fussell et ux to Assn., deed of trust.  
 Fullen Motor Co. to W. F. Deaton, warranty deed.  
 Mrs. J. E. Gilbert to Texas Electric Service Co., easement and right of way.  
 M. L. Gilbert et ux to Texas Electric Service Co., easement and right of way.  
 Tom Haley, et ux, to R. P. Haun, Jr., et ux, warranty deed.  
 Milbert Helm, et ux, to Darrell Dossey, et ux, assignment contract of sale and purchase.  
 T. H. Hennington, Jr., et ux,

to Pat McGough, assignment contract of sale and purchase.  
 R. J. Holmes to A. W. Strickland et ux, warranty deed.  
 Bessie Hart, et al. to British American Oil Producing Co., surface lease.  
 Bessie Hart to British American Oil Producing Co., water lease.  
 L. B. Harris et al to Ollie Morris et al deed of trust.  
 L. Hale to D. F. Rush et ux release of vendors lien.  
 Mittie Hunt to Ida Henderson correction deed.  
 J. R. Hunt to Reed Campbell quit claim deed.  
 J. R. Hunt to Reed Campbell warranty deed.  
 Gerald Ingram to O.L. Light, warranty deed.  
 Gerald Ingram et ux to First National Bank, Cisco deed of trust.  
 Kenneth Jameson et vir to Texas Electric Service Co. easement and right of way.  
 O. L. Light, et ux, to Gerald Ingram et ux warranty deed.  
 Floyd Lassiter et ux to Rex Townsend et al warranty deed.  
 Life Insurance Company of Virginia to Thomas Hallmark, et ux, release of deed of trust.  
 James Mears, et ux to

First Federal Savings and Loan Assn. Ranger deed of trust.  
 James Mears et ux, to H. C. Whitlock, et ux, warranty deed.  
 Melvin McGough, et ux, to Mrs. Addie Mann, warranty deed.  
 L. L. McIlvain to M. G. Key, warranty deed.  
 Bonnie Wayne McCleskey to United Southern Contractors, Inc. to Investors Syndicate Credit Corp. mechanic v. materialman's lien.  
 Conley McGuire et ux to Higginbotham Bros. & Co., Rising Star, deed of trust.  
 Conley McGuire et ux to Higginbotham Bros. & Co., Rising Star, mechanic v. materialman's lien.  
 E. R. Overstreet et ux to B. W. Martin warranty deed.  
 Hulon Pullig to David Munn et ux bill of sale.  
 E. A. Rice et ux to J. L. Seaburn warranty deed.  
 Ranger Allied Underwriters to the public, assumed name.  
 Southwestern Life Insurance Co. to United Pentecostal Church of Cisco, release of deed of trust.  
 Cecil Self et ux to Electric Service Co. ment and right of way.  
 Jack Sayles et ux to Raymond Bryan, et ux, deed.  
 George Steel et ux to wood Fussell et ux deed.  
 United States to Davis, et al, Cisco release of tax lien.  
 United States to King et ux federal Veterans Land Board.  
 Howard MacMoy et ux to Veterans Administration Travis Wheat et ux of deed of trust.  
 Ross Wilson to R. strong et ux, warranty deed.  
 H. C. Whitlock, et ux, to First Federal Savings and Loan Association, deed of trust.  
 Lillian Watson Smallwood, power of attorney.  
 Mrs. T. H. Weidner Texas Electric Service et ux, release of tax lien.  
 O. C. Warden to general Savings and Loan, agreement.  
 Howard Waters to the public certificate of probate.

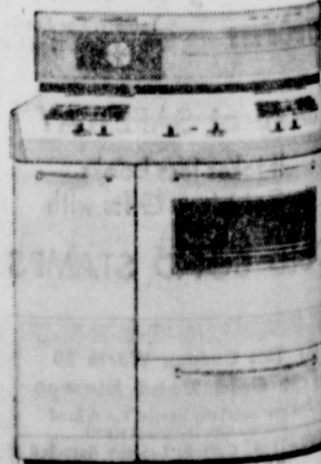
# BOWLING Halloween Party

PRIZES FOR COSTUMES - FAVORS FOR ALL  
 LATE-HOUR BUFFET SNACK  
 SCOTCH DOUBLES - JACKPOT BOWLING  
 FUN FOR COUPLES AND SOLOS AND ALL  
 NO ADMISSION CHARGE  
 FRIDAY, OCT. 29 - 8:30 - 12:30  
**FIESTA BOWL**  
 Highway 80 East EASTLAND MA 9-2641



## Uncommonly good cooks use automatic, modern gas

It's so easy to use a modern gas range. You just set it and forget it. The Burner-with-a-Brain makes every pot and pan automatic. The Cook 'n' Keep Oven not only cooks perfectly every time—it will keep foods serving-hot for hours without over-cooking or drying out. Modern gas ranges also have automatic griddles, double ovens, self-basting rotisseries, meat thermometers and infra-red gas broilers. Uncommonly good suggestion: see the modern gas ranges now on sale at your favorite Gas Appliance Dealers—or Lone Star Gas. Super Chef Gas Range Sale





**ETHEL KEITH**  
community was saddened Friday evening when it was received that Matt Jr. had been accidentally killed when his tractor rolled and pinned him to death. Funeral services conducted at the First Baptist Church Sunday afternoon and burial was in Alameda Cemetery.

Emma Quinn has returned home from an extended stay with her sons and families.

and Mrs. Earl Lane in Beeville this week to the funeral of a friend, M. Sumners.

with Mrs. W. H. Davison were Mr. and Mrs. Shorty Bratton.

Ollie Fein returned following a visit with her mother, Mrs. Bonnie Wood, and a visit in Fort Worth with a son, H. O. Fair.

S. Eldridge spent last week in Lubbock with his wife, June Frank, and family.

al Keith entertained quite a group Tuesday of last week with a Stanley party.

te a large crowd was present Monday night of last week when the P-TF met for the second meeting of the new year.

First Baptist Church purchased the parsonage on Robinson Springs Church. It will be used for Sunday school rooms.

Robert Brown and family spent the weekend here with his parents, Mr. and Mrs. A. Brown.

Ms. Omata Lewis has sold her home here and moved to Midland.

Mr. Darrell Blankenship, of Mr. and Mrs. Bryant Blankenship, was home recently for a few days visit. He is a student at the children's school in Mexia.

ong the ladies of the Baptist Church who attended the annual W. M. U. meeting at the First Baptist Church at Eastland last night were Mes. Leota Moore, C. E. Ragland, Myrtle Moore, Bonnie Watkins, June Wright and Hattie

Mrs. Julia Carter is a patient in the Eastland hospital.

Mr. Leroy Burleson remains a bed patient at his home. He has a heart condition.

Miss Mary Catherine Stacy and William Curtis Whitt were married Saturday night, Oct. 2, in the home of the bride's parents, with Rev. Payne Hatton reading the vows.

Parents of the couple are Mr. and Mrs. G. C. Stacy of Route One, Desdemona, and Mr. and Mrs. Bill Whitt of Stephenville.

Mrs. Charlene Bruton and Cathy were the bride's attendants. Each wore blue lace trimmed dresses. Mrs. Charlene Morgon played the wedding march and Mrs. Cheryl Stacy presided over the bride's book.

Mr. Stacy gave his daughter in marriage and her brother, Carlton, lighted the candles. Mr. Charles Ratliff of Stephenville was best man.

The bride carried out the tradition of something old, something new, something borrowed, something blue and a penny in her shoe. For something old, she wore her mother's bracelet, which was a gift from the bride's father 30 years ago.

The bride wore a street length gown of brocade satin with a scalloped neckline, long hand pointed sleeves and a veil attached to a rhinestone tiara. She carried a bouquet of white carnations.

A reception was given after the wedding ceremony, carrying out the bride's colors of blue and white. The table was covered with a white lace table cloth with a blue background and center arrangement was blue and white with crystal and silver. Refreshments, including the usual bride and groom wedding cake were served by Mrs. Bobbie McMillip, Mrs. Charlene Bruton and Mrs. Carlton Stacy.

The bridegroom left for Long Beach, Calif. on Oct. 4, from where he will leave for Vietnam soon.

The bridegroom was a graduate of Stephenville High School in 1964. She is a senior student of Desdemona High School.

"Roll Call Sunday" was observed on Oct. 3 at the First Baptist Church with all day services and "dinner on the ground."

The Kendricks family of Eastland had charge of the afternoon song service.

It was an enjoyable day for all who attended and it is hoped that the Kendricks family can come our way again soon.

Mr. and Mrs. T. R. Wilcoxson, Jr. and their granddaughter Sabrina Dawn of Odessa spent the weekend here visiting her mother, Mrs. Ethel Keith; his father, Mr. Maburn Wilcoxson; and a daughter, Miss Judy Wilcoxson.

Mr. and Mrs. Reid returned home Sunday after a week's visit in Wichita Falls with relatives.

Miss Catherine Stacy, daughter of Mr. and Mrs. Buddy Stacy, became the bride of Curtis Witt of Stephenville Saturday night. The wedding took place in the home of her parents, in Desdemona. Curtis will return to his duties with the U. S. Navy this

next week. He will go to Vietnam soon.

Mrs. Omata Lewis has sold her home here and moved to Midland.

Mr. and Mrs. Horace Lane and Mrs. Earl Lane Mr. Fos Walker in Dublin Sunday afternoon.

Visiting in Pampa this week with Mr. and Mrs. Roy McMillian were her parents, Mr. and Mrs. C. S. Eldridge.

Mrs. Nora Lane, Dory Williams and Myrtle Reid were shopping in Stephenville Monday.

The community regrets the loss of Mr. and Mrs. Johnny Majors, who have moved to Cleburne.

Mrs. Iora Abel spent one day last week in Comanche visiting a sister-in-law, Mrs. Myrtle Collins.

Returned from a fishing trip to South Texas are Mr. and Mrs. John Arnold. While gone, they also visited with some of their children.

Mrs. Gladys Griffith has returned home after spending several months in the state home in Wichita Falls.

Revival services closed Sunday night at the First Baptist Church with several additions to the church. Evangelists were Rev. Jim Murray of Abilene and Rev. Fred McDowell of Breckenridge. Mrs. June Dossey was pianist.

Mr. and Mrs. Sam Powers

returned Sunday after a trip to Texas City, where they visited their son and family.

A recent guests in the Horace Lane home was a World War I buddy of Mr. Lane, Mr. Stacy McCasland of Goldthwaite whom Mr. Lane had not seen since 1918.

Mr. and Mrs. Minton Hanna, Marsha and Julia of Eastland visited Sunday with her parents, Mr. and Mrs. H. T. Lane.

Mr. John Webb, Jr. was in Desdemona recently visiting his parents, Mr. and Mrs. John Webb, enroute to San Antonio to attend a short course of schooling on extensive training in child care and welfare.

Mr. and Mrs. Horace Lane

and Mr. and Mrs. Earl Lane were in Gorman Monday at the home of a niece, Mrs. Arda Pittman, who was entertaining her grandmother, Mrs. Beulah Lane on her 90th birthday.

Mr. and Mrs. Melvin Abernathy of San Angelo are visiting his mother, Mrs. Bona Abernathy, while Mr. and Mrs. Jesse Sparkman are on vacation.

Little Darrell Cotouri, was struck by a car last Sunday while playing front of his grandparents home, Mr. and Mrs. H. M. Rainey. He spent Sunday night in a hospital but is home now, reportedly doing fine.

His mother is the former Ruth Rainey of Desdemona. Mr. Joe Merrell is home after spending several days in the Gorman Hospital.



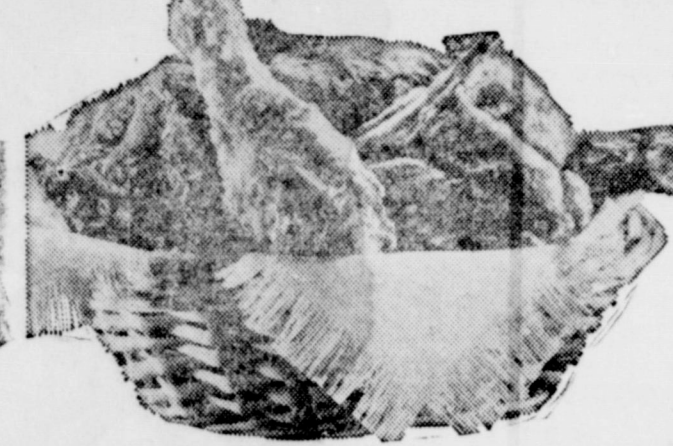
**106<sup>th</sup> ANNIVERSARY JUBILEE**

**THRIFTY WAY TO GET GIFTS!**

**PLAID STAMPS**

PRICES GOOD THRU OCT. 23, 1965

# FRYERS



**27¢**

U.S.D.A. GRADE A WHOLE LB. ....

**Spare Ribs** Fresh Pork 3 lbs. and Down. **49¢**

**BACON** Roth's Sliced Black Hawk 1-lb. **79¢**

**BEEF LIVER** Sliced, Skinned 1-lb. **39¢**

**SHRIMP** Peeled & Deveined Fresh Frozen 3-lb. bag **3<sup>99</sup>**

**BRISKET** "Super-Right" Corned Beef 2 1/2-3-lb. Pieces **69¢**

**PORK SAUSAGE** Pure Pork 2-lb. Bag **99¢**

## Sunnybrook Grade "A" Large EGGS dozen 49¢

### PRODUCE FEATURES

**FLORIDA**

**Navel Oranges** doz. **59¢**

**WHITE**

**Grapefruit** Large 4 for **49¢**

**EAST TEXAS**

**YAMS** Lb. **10¢**

**GOLDEN RIPE**

**BANANAS** 2 Lbs. **25¢**

**CARROTS** 1-lb. bag 2 for **19¢**

PLUS 25 EXTRA STAMPS ON 2 PACKS

**50 PRUNE JUICE** 1-qt. 8-oz. Btl. **65¢**

**50 GOLD CORN** 4 1-lb. Cans **70¢**

**50 DOG FOOD** 12 1-lb. Cans **\$1.05**

**50 PICKLES** 1-lb. 6-oz. Jar **33¢**

**50 MEL-O-BIT** 2 6-oz. Pkgs. **49¢**

## A&P FROZEN FLORIDA ORANGE JUICE 3 12-oz. Cans 89¢

**25 GUM CANDIES** 1-lb. 7-oz. Pkg. **33¢**

**50 CHILI** 1-lb. 7-oz. **79¢**

**25 JELLY** 12-oz. Jar **35¢**

**25 SYRUP** Brown Label 1-lb. 7-oz. **57¢**

**25 TEA** 1-lb. 7-oz. **63¢**

**50 CHIFFON CAKE** 1-lb. **59¢**

**LIQUID BLEACH 2¢ OFF**

**CLOROX** 1/2-Gal. Plastic **29¢**

**VERMONT MAID SYRUP** 1 1/2-lb. Btl. **59¢**

**DEL MONTE TOMATO CATSUP** 1-lb. 4-oz. Bottle **29¢**

**NESTLE'S CHOC. DRINK MIX**

**QUIK** 2-lb. 6-oz. Package **69¢**

LIQUID CLEANER <b>TOP JOB</b> 15-oz. Size <b>39¢</b>	FABRIC SOFTENER <b>DOWNY</b> 1-qt. 1-oz. Size <b>45¢</b>	CLEANSER <b>COMET</b> 2 1/4-oz. Size <b>33¢</b>	DETERGENT <b>RINSO</b> "10c Oil" Gt. Size <b>69¢</b>
DISHWASHER DET. <b>CASCADE</b> 1-lb. 4-oz. Size <b>45¢</b>	DETERGENT TABLETS <b>SALVO</b> 2-lb. 14-oz. Size <b>79¢</b>	AUTOMATIC WASHER DETERGENT <b>DASH</b> 9-lb. 19-oz. Size <b>\$2.35</b>	DETERGENT <b>CHEER</b> Gt. Size <b>79¢</b>

**JANE PARKER**

**LEMON PIE** 1 1/2-lb. Ea. **39¢**

**Whip'n Chill** Assorted Dessert 2 3 3/4-oz. Pkgs. **45¢**

**CAKE MIX** Duncan Hines Assorted Flavors Pkg. **43¢**

**CRISCO** Vegetable Shortening 3-lb. Tin **85¢**

SEE  
YOU  
IN  
EASTLAND

**COMPLETE AUTO SERVICE CENTER**

GET YOUR AUTO WINTER FOR READY NOW!

**24 HOUR TOWING SERVICE**

24 HOUR WRECKER SERVICE

Complete Auto Repairs Safety Inspection Center

Allen Auto Repair  
AT RUSHING MOTOR CO.  
215 SOUTH SEAMAN

Phones  
MA 9-2270  
Night  
MA 9-2224

**TO THE MAVERICKS . . . WE'RE BEHIND YOU ALL THE WAY**

**EASTLAND vs. RANGER**

**FRIDAY NIGHT, 7:30 p. m. HERE**

**MAVERICK 1965 SCHEDULE**

Sept. 3 — Eastland 7, Comanche 6.  
 Sept. 10 — Eastland 14, Rising Star 6.  
 Sept. 17 — Eastland 14, Cisco 8.  
 Sept. 24 — Dublin 32, Eastland 0.  
 \*Oct. 1 — Albany 26, Eastland 0.  
 \*Oct. 8 — Eastland 44, Baird 6.  
 \*Oct. 15 — Eastland 14, Clyde 6.  
 \*Oct. 22 — Ranger, here.  
 Oct. 29 — Open Date.  
 \*Nov. 5 — DeLeon, there.  
 \*Nov. 12 — Cross Plains, here.

\*District Games.



The 10-10 C.B. Club will furnish emergency communication facilities to the Stadium — and may be contacted for the transmission of messages to and from Maverick Stadium. TELEPHONE NUMBER IS MAIn 9-1678



**MAVERICK ROSTER**

No.	Name	Pos.	Class	Weight
12	McCullough, Jerry	QB	Senior	165
20	Wilson, Gene	QB	Junior	130
40	Moylan, John	FB	Senior	165
42	Gregory, Layne	FB	Senior	160
22	Fuller, James	HB	Senior	155
24	Martin, Ted	E	Senior	135
25	Bass, Bill	WB	Sophomore	155
14	Daniels, Jay	WB	Sophomore	155
80	Wilson, Larry	E	Senior	150
86	McKenzie, James	E	Junior	125
82	Miller, Jim Pat	E	Senior	150
69	McCoy, Rodney	T	Senior	165
73	Keith, Fred	T	Sophomore	225
70	Porter, Boyd	T	Sophomore	195
75	Lowrance, Tony	T	Sophomore	165
65	Hazard, David	G	Senior	160
50	Boles, Bill	G	Senior	155
67	West, James	G	Senior	150
51	Terrell, Rodger	C	Senior	150
52	McCullough, Tommy	C	Junior	185
84	Emfinger, Greg	FB	Freshman	155
10	Lund, Steve	QB	Sophomore	150
66	Holt, Sidney	T	Sophomore	180

Bond Electric Co.  
 Phone MA 9-1724

- Sunshine Laundry and Dry Cleaning**  
 Pearson Grimes  
 106 East Plummer — MA 9-8812
- White Food Store**  
 Mr. and Mrs. G. A. White  
 1102 West Main — MA 9-8857
- Pool's Dry Cleaners**  
 Mr. and Mrs. Lester R. Smith  
 209 South Lamar — MA 9-2055
- C. M. Cox Dirt Contractor**  
 Highway 80 West — MA 9-2670
- Otis Coleman Humble Service Station**  
 Complete Car Service  
 400 East Main — MA 9-2545
- Howard Bookkeeping Service**  
 Mr. and Mrs. Veon Howard
- Alma's Beauty Parlor**  
 An Invitation to Greater Beauty  
 211 West Main — MA 9-1151
- The Hairdresser**  
 Let Us Style Your Hair to Flatter Your Face  
 1302 South Seaman — MA 9-1430
- M. L. Terrell Real Estate and Robert Kincaid**  
 Farms — Ranches — City Property  
 311½ West Main — Phone MA 9-1725
- Hood King Motor Co.**  
 Ford and Mercury — Sales and Service  
 On the Square — MA 9-1786
- Webb's 7-11 Grocery**  
 George and Wanda — Staples and Fancy Groceries, Fresh & Cured Meats  
 1006 W. Main — MA 9-8897

- Buck Wheat Ranch and Farm Service**  
 City Property  
 New FHA and GI Homes  
 301 North Seaman — MA 9-2131
- Eastland Truck Stop Service Station**  
 A. O. Gist — Highway 80 West  
 Premier Gasoline  
 All Brands Motor Oil  
 Quick Service
- Bray's DEPARTMENT STORE EASTLAND**
- Eastland Truck Stop Cafe**  
 Highway 80 West  
 Venna Justice — Gyrun Simmons  
 Serving Delicious Plate Lunches  
 Steaks — Chops — Homemade Pies
- Mr. & Mrs. Paul McFarland**
- Eastland Auction Company**  
 Located on Highway 80 East  
 Ph. MA 9-1760
- Texas Lightweight Aggregate Company**  
 Producers of Concrete Aggregates  
 C. W. Martin, Manager — MAIn 9-2060
- Eddie Pevehouse Texaco**  
 503 W. Main — MA 9-8895
- JRB Super Market**  
 Carey Hightower, Mgr.
- Obie's Humble Station**  
 802 W. Main — MA 9-8866

- City Garage**  
 J. J. Finley, Proprietor  
 Engine, Starter, and Generator Work  
 103 White Street — Ph. MA 9-1709
- Hillcrest Food Market**  
 When You Run Out — Run In  
 1101 W. Main — Ph. MA 9-1600
- Western Auto Associate Store**  
 J. L. Pittman, Owner  
 Ph. MA 9-2011  
 Corner of Lamar and Commerce
- Majestic Theatre**
- Toombs and Richardson Drug Store**  
 108 S. Seaman — MA 9-1475  
 Free Delivery
- Harelik's Department Store**  
 212 W. Main
- Mr. & Mrs. Victor Cornelius**
- Central Drug**
- Altman's "Smart Women's Wear"**  
 North Side of the Square
- Freyschlag Insurance Agency**  
 North Side of the Square  
 Ph. MA 9-2275
- Texas Electric Service Co.**  
 F. N. Sayre, Manager  
 MA 9-2651
- Eastland Iron & Metal Co.**  
 Henry, Tillie and Saul Pullman
- Petroleum Corp. of Texas**  
 Walter E. Ruby, Mgr.
- Judge & Mrs. Wells Dalton**

- Eastland National Bank**  
 "On The Square" — Member FDIC
- Modern Village Barber Shop**  
 George Carter
- Graham's Trim Shop**  
 709 W. Main — Ph. 9-2266
- Goodyear Service Store**  
 Don Pop, Manager  
 306 East Main — Ph. MA 9-2662
- Dr. and Mrs. M. A. Treadwell Jr.**
- Eastland Memorial Hospital**
- Chamber of Commerce of Eastland**
- Hamilton Fruit Market**  
 Fresh Fruit and Vegetables
- Pete Tucker**
- Fina Service Station**  
 Washing — Greasing — Tire Repairing  
 207 East Main Street
- Phagan Oil Co.**  
 L. C. Phagan, Distributor  
 Premier Oil Co.
- Quality Shoe Service**  
 Longer Wear by Shoe Repair  
 103 South Lamar Street
- George Van Lines**  
 Moving — Storage
- B&W Clinic**  
 H. J. Bulgerin, M. D.  
 B. B. Alexander, M. D.  
 310-30 Petroleum Bldg.
- Judge & Mrs. Frank Sparks**

- Horton Tire Service**  
 Seiberling Tires — Batteries  
 East Main
- Allen's Auto Repair**  
 215 South Lamar — Phone MA 9-2270  
 24 Hour Repair Service
- Kellar's Fix-It Shop**  
 206 South Seaman — Phone MA 9-1393
- Dale Langlitz Texaco Service**  
 Washing — Greasing — Tire Repairing  
 702 West Main — Phone 9-8850
- Green Acres Nursing Home**  
 111 North Daugherty — Ph. MA 9-2624
- Sunrise Manor Nursing Home**  
 411 West Moss
- R. M. Sneed**  
 Contractor  
 Highway 80 East — Phone MA 9-1756
- Safeway Store**
- Foremost Dairies**  
 Clyde Manning, Manager  
 410 West Commerce — MA 9-1701
- Vic's Auto Repair**  
 306 West Main — MA 9-2111
- Hanna Hardware and Lumber Co.**
- Standlee McCracken**  
 Consignee, Mobil Oil Co.  
 MAIn 9-2145
- Romco Eastland Mfg. Co.**  
 Pottery, Wholesale and Retail  
 411 E. Main — MA 9-2121
- Judge & Mrs. Scott Bailey**

**SOUTHERN TELEVISION SYSTEMS CORPORATION**

Cisco - Eastland - Ranger . . . Inviting You to Watch All of

the Games — NCAA - AFL - NFL