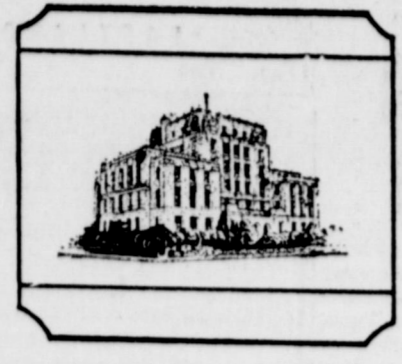


**of Life**  
 lowliness and  
 with long suffering  
 one another  
 Ept. 4:2.  
 and the happiest  
 in the hon  
 Lon Horn  
 ave been  
 ng every day they  
 mily, Mr.  
 d of Odes  
 perhaps forgive.



# EASTLAND TELEGRAM



*A Day's Pay*  
**The UNITED Way!**  
 Say 'Yes' Generously

99, NUMBER 87

EASTLAND, TEXAS 76448, SUNDAY, OCTOBER 31, 1965

10 Cents

**Bits**  
 H.V.O.  
 we've heard  
 er 11 FE  
 tarts 7:15  
 ILL BE  
 DAY NI  
 MBER  
 God's forgiving  
 wasn't just to o  
 n is. The well-  
 er patiently ex-  
 sin is when some-  
 wrong. The little  
 laugh and laugh  
 her mother asked  
 le tyke exclaim-  
 are going to have  
 Grandma. She  
 ss on backwards  
 nd that was all

## Mavs Eye DeLeon For 10-A Title Bid

The Eastland Mavericks, who do battle with the DeLeon Bearcats in DeLeon Friday night, and their fans were particularly interested in the duel between the 'Cats and Ranger Bulldogs in Ranger this past Friday night.

Right now the Mavs and the Bearcats are tied for second place behind the leading 'Cats and the Mavericks will be working to unseat the potent DeLeon force. Guesses here are that a fired-up club such as when the Mavs undid Ranger and some others, could do it Friday night.

Workouts this week are expected to be brisk for the Mavs after a weeks rest and a big crowd of local fans will make the trip to DeLeon to see the top 10-A battle.

(Reprinted from The Ranger Times.)

## Undeclared 7th Graders Meet Cisco

The Eastland Junior High 7th grade Dogies, who doubtfully each average 100 lbs., have a perfect record for this year. Their record now stand 6-0 after defeating Ranger Thursday night by an overwhelming score of 44-0.

The team will end its slate of games this coming Thursday night at Cisco when they will meet the Cisco team for the third time.

This year's team consists of Jerry Doyle, William Edwards, Wayne Sharp, Rocky Maynard, Tommy Ford, Gary Thomas, Tony Harrison, Larry Thompson, Randy Forgey, Pat Campbell, Phillip Harrison, Randall Treadwell, Roger Sosebee, Wallace Greiger, Delbert Biggs, Albert Biggs, Steve Beck, Phillip Smith, Brett Archer, and Richard Sancillo.

The team is coached this year by Coach Millard Glass who says the team is little, but has lots of desire.

## Chamber Welcomes New Directors, Officers

Bouquets of praise and appreciation were prevalent Thursday as the Eastland Chamber of Commerce welcomed new directors and officers at the 1st meeting of the fiscal year.

Retiring President Don Vieregger presided and welcomed new directors and expressed his appreciation to the retiring directors.

During an Industrial Foundation report by President Tom Wilson, all members and citizens were urged to be conscious of the need to pursue industrial prospects when they arise. He also stressed the importance of developing "home-grown" industries.

Vieregger echoed Wilson's comments, urging a sense of urgency in pursuing industry for the town.

Director A. D. Taylor suggested that Eastland should exploit the town as an ideal place for retired persons, and how important these people are for the economy of the area. Directors agreed that this is an area that needs attention.

Brief discussions were held on delinquent members and manner of clearing up these few such accounts. It was also agreed not to join the Highway 80 Association.

At the request of Vieregger, and upon a motion by Mrs. Jarene Johnson, it was voted to have the chamber's books audited.

A brief discussion of Christmas plans included the possibility of free kiddie shows at the theater on two Saturdays, at a cost of \$100 per day, and Mrs. Johnson reported briefly on her "Santa Town" project in which the town will be decorated with Santas by clubs and organizations, vying for prizes to be given following a judging.

Taylor recommended to the incoming vice president, Jay Staggs, that a letter of appreciation be forwarded to the Munsingwear Corp. expressing the directors' appreciation for the fine job that Mr. Vieregger, manager of the Hollywood - Vassarette plant here, has done for the chamber during his tenure as president. Directors were unanimous in their approval for this.

Present for the luncheon meet at the White Elephant were Vieregger, Mrs. Johnson, Staggs, James Smith, Bob King, Don Kinnaird Jr., Jack Germany, Everett Plowman, M. H. Perry, Truitt Gregory, Clint Bray, A. D. Taylor, B. W. Robertson, Frank Crowell, Bernard Hanna, Tom Wilson and H. V. O'Brien.

**DISTRICT STANDINGS**

Team	W	L	Pts.	Opp.
DeLeon	5	0	184	13
Eastland	3	1	76	48
Albany	3	1	86	34
Ranger	2	2	89	75
Clyde	1	3	34	110
Cross Plains	1	3	54	109
Baird	0	5	40	198

## Filmed 'La Boheme' Opens 2-Day Majestic Appearance

Hard on the heels of "An Evening with the Royal Ballet" and "Help" (with the Beatles), comes grand opera to the Majestic Theater Wednesday and Thursday, in a filmed production of "La Boheme."

Official hostesses will be members of the Eastland Music Study Club for the premier performances.

The Majestic will be among the 1,050 movie houses in the country showing the Warner Brothers-produced opera film. Starred will be Mirella Freni, a young Italian soprano, and Baritone Rolando Panerai.

According to Emily Coleman, free-lance critic, the La Scala production of Boheme is spirited, zestful, and touchingly poignant as it recreates the Parisian lives, in the 1830's, of a poet, a painter, and a singer.

## Heavier, But Not 'Heavy' Vote Expected Tuesday

More voters are expected to turn out for the Tuesday Constitutional Amendment election simply because there are more propositions to be voted on—but a "heavy" vote isn't forecasted.

Polls at the Courthouse Bldg. will be open from 8 a. m. until 7 p. m.

Only 608 Eastland Countians voted in the September amendment election when there was only one proposition to be decided. The county then helped the state defeat the amendment, voting 367 against and 241 for increasing the size of the Texas Senate.

(Details pertaining to the Tuesday amendments appear in stories on this page.)

Balloting will begin at 8 a. m. Tuesday at the 12 polls in the county and continue until 7 p. m. Physical make-up of the ballot will probably result in a difficult count, so early voting is urged, and quick reports recommended by election judges so that results may be reported as soon as possible to the Texas Election Bureau.

Polls and judges are as follows:

- Gorman, W. G. Baker, at the Fire Hall.
- Carbon, H. M. Gilbert, at the insurance office.
- Desdemona, L. E. Clark, at the school.
- Kokomo, John C. Donaldson, at the community center.
- Eastland, Mrs. Mertie Richardson, at the Courthouse.
- Ranger, Calvin Brown, at the City Hall.
- Olden, Mrs. Jim Everett, at the community center.
- Cisco, J. V. Heyser, Jr., chamber of commerce.
- Nimrod, Ed Townsend, community center.
- Rising Star, Charles Bal- lew, city hall.
- Pioneer, Doss Alexander, community center.

**SEE AMENDMENTS PAGE 3**



**THE NATIONAL BETA CLUB** of Eastland High School is a club and honor society composed of students from the senior, junior and sophomore classes. Fourteen new members were recently inducted into the group. Bottom row, left to right, are: Lela Lee, Mary Ann Turner, Clara June Smith, Tam Sosebee, Judy Robertson, Kathy Kincaid, Lois Ann Sims, Patty Pryor, Sherry Butler, Sandra Harp, Nita Bradford, and Doris Trout. Middle row, Cathy Lowrance, Carolyn Thomas, Becky Simms, Sally Perkins, Donna Vieregger, Sharon Spradling, Anna Huffman, Marsha Treadwell, Arlina Arnold, Jennifer Pryor, Vicki Trout, and Marilyn Huckabee. Top row: Sue Brewer, Connie Coan, James McKenzie, Keith Elliott, Dale Squiers, Randy Beskow, Steve Perdue, Steve Lund, Gary Spradling, Rhett Smith, Jimmy Jordan, and Sharon Harbin. (Photo by Cotton's)

## PANCAKE EATERS: TIME IS NEAR!

All Eastland pancake lovers are urged to buy tickets to the Quarterback Club's Pancake Supper to be held Thursday night at the Elementary School Cafeteria. Tickets are still on sale at Earl Bender's Insurance, Corner Drug Store, and The Men's Shop.

The time for the feast will be from 5 p. m. until 10 p. m. according to club prexy, Bill Bass.

The proceeds from the supper will go towards the Football Banquet, sponsored by the club.

## Quarterback Club To Hear Committee

The nominating committee will make a report to the Quarterback club Monday evening at 7:30 at the Elementary School Auditorium.

All members of the quarterback club boosters are urged to attend this meeting.

## VISITS MRS. FOX

Recent visitors in the home of Mrs. I. G. Fox were Mr. and Mrs. Alvis Bilberry and Joann of Spur and Lathe Taylor of Fort Worth.

# MONDAY IS EASTLAND DOLLAR DAY

MONDAY is DOLLAR DAY again in Eastland and local merchants have gone all out to provide the best values for early holiday shoppers (as advertisements inside this newspaper will attest.)

The FIRST MONDAY DOLLAR DAY habit has caught on like wild fire, and attracted visitors to town to sample the hospitality of Eastland folk and to take advantage of BARGAINS GALORE!

Holiday-shopping or just plain bargain hunting, Eastland is the place to be, come Monday morning. All around the square and up and down the streets, shoppers will find BIG VALUES, and a lot of extras too.

There are reasons WHY folks like to shop in Eastland. To name a few:

**LARGE SELECTIONS**  
 The merchandise stock is greater than ever before. Regardless of price, Eastland stores take pride and pleasure in showing wares that will please the most discriminating. You'll find ideas and suggestions that sparkle with splendor.

**COURTEOUS SALESPEOPLE**  
 Merchants pride themselves in serving YOU, the customers with the utmost courtesy. Their aim is to make each item, whether it is large or small, the (See Photo on Page 5)

## Young Farmer Meet Hears V.T. Seaberry

The Eastland County Young Farmer Chapter held its regular meeting Monday night at the Community Center in Olden.

Mr. Virgil T. Seaberry, Jr., Eastland attorney, presented a program entitled "Farm Law." He discussed various phases of farm law, including wills, abstracts, mineral rights, liability insurance, hospitalization insurance, oral and written leases, inheritance taxes and liabilities to farmers.

The program was termed "excellent" by all persons attending.

A new slate of officers elected for the coming year were the following: Jim Query of Eastland, president; Don Mas-sengale, Eastland, vice president; Danny Meazell, Olden, secretary; and Jerry Jones, Ranger, treasurer.

Advisors for the group are vocational agriculture teachers, B. S. Dudley of Ranger, Gilbert Copeland of Olden and Winford Parr, Eastland.

Among those attending the meeting were four members of the Cisco Youth Farmer Chapter.

## Local Teachers at Heritage Dinner In Abilene Oct. 26

Several members of the Eastland Public Schools faculty attended the West Texas Schools American Heritage Project dinner meeting in Abilene at the Abilene Christian College Cafeteria Oct. 26.

Attending were High School Supt. Wendell Siebert; Principal Charles Marshall; Coaches Millard Glass, Shirley Frazier, and Harold Price; Kenneth Watkins; and Elementary Principal Rayneal Baze.

Supt. Siebert lead the meeting in the pledge of allegiance.

## 6 Army-Bound, 31 Due Physicals

Called for induction on Nov. 17 have been six Eastland and Stephens County men, according to Mrs. Jewell Reeves, local draft board clerk.

Called for Armed Forces physical examinations on Nov. 17 have been 31 men from this county.

Married men without children will report for pre-induction physicals on this call, Mrs. Reeves stated.

## 5th Sunday Singing at Long Branch Church

The regular fifth Sunday afternoon singing is scheduled to begin at 2 p. m. Sunday, Oct. 31, at Long Branch Baptist Church, according to Henry Carter.

All singers in the area are cordially invited to attend.

## County HD Clubs Achievement Day Scheduled Wednesday, Nov. 3

The Eastland County home demonstration clubs will conduct their annual Achievement Day Wednesday, Nov. 3, in the First Christian Church annex, Eastland, it has been announced by Mrs. Beverly Nicholson, county home demonstration agent.

During the morning, cakes, pies and coffee will be sold and exhibits by clubs and individuals will be on display from 9 a. m. until noon.

Each club will have an individual exhibit based on home demonstration yearbook programs during the past year. These exhibits will include reporter's books, needlework (sewing, knitting, crochet and handwork), baked goods (pies and cookies), crafts. These will be judged and awards given to winners.

A luncheon will be held at noon for all H. D. club women and their invited guests, after which the H. D. club woman of the year will be presented.

A style show and the presenting of awards will be the special program during the afternoon.

**CHARLIE CHUCKLES says:**

Let's all help our city to grow  
 Our money like seeds we can sow  
 The shopping here done  
 Should embrace everyone  
 The harvest will work to and fro.

Whether you shop here or not —  
 when we buy locally we are helping our city to grow.

**FULLEN MOTOR CO.**  
 305 E. Main St. Eastland MA 9-2676

**of Life**  
 last week  
 r. and M  
 id Jenni  
 frs. Ted  
 it.  
 ITS HOR  
 in the hon  
 Lon Horn  
 ave been  
 ng every day they  
 mily, Mr.  
 d of Odes  
 perhaps forgive.

# and Fall Bargains in Eastland Monday - Save!

BUY  
SELL

CALL MA 9-1707

# CLASSIFIED ADS

TRADE  
LEASE

### Announcements

**MASONIC LODGE NO. 467**  
Meets second Thursday of each month at 7:30 p.m. in the Masonic Hall, Call B. K. Drake, W. M., MA 9-2250 or L. E. Huckabay, Sec., MA 9-1391 for information.

### EASTLAND ROTARY CLUB

Meets each Monday noon at White Elephant Restaurant in Eastland.  
A. D. Taylor, President

### Notice

**HUNTERS DRIVE IN DAIRY**  
Fresh whole milk 70¢ per gallon. Highway 80, South of Olden.

NOTICE: Authorized Firestone sales and adjustments. Horton Tire Service, Eastland.

NOTICE: FHA and GI home financing. Valley View Estates, Kinnaid Real Estate.

NOTICE: Own your own home. Valley View Estates, Kinnaid Real Estate.

NOTICE: for custom breaking and sowing of land, call Harold Courtney, MA 9-1340.

NOTICE: Why rent? See Valley View Estates, Kinnaid Real Estate.

NOTICE: Close to schools. Valley View Estates, Kinnaid Real Estate.

NOTICE: For home repairs, call R. C. Turner, Home Services, Eastland, MA 9-2286. No job too small. Free estimates.

NOTICE: See Horton Tire Service, Eastland, for new rear tractor tires and vulcanizing and repair. A tire to fit every wheel — a price to fit every pocket book.

NOTICE: Get your new Seiberling tires mounted and balanced at Horton Tire Service, Eastland.

NOTICE: Daffern's Hydraulic Jack repair, 417 N. Green St., Eastland. Phone MA 9-1603.

FOR SALE: 600/920/15 Seiberling four ply nylon tires, \$22.50 each. Horton Tire Service, Eastland.

NOTICE — Call or see us for rubber stamps. The Eastland Telegram.

**WILL TRADE** — 14' boat, motor, and trailer, for livestock, farm equipment. Call HI 2-3639.

NOTICE: Just arrived: modern design, rigid constructed attaché cases, with dividers inside and locking feature. Ideal for work and/or school. Assorted colors. Only \$10.95. Telegram office.

**C. E. PAUL, D. C.**  
Complete  
Chiropractic  
Health Service  
Ave. I at 8th St.—(Hwy. 80)  
Cisco, Texas  
Phone HI 2-1677

● SEIBERLING  
● FIRESTONE  
● COOPER  
The Reliable One  
**HORTON**  
Tire Service  
Eastland

124 acres Olden, lots pecan & fruit. Plenty shallow water. some coastal Bermuda. Lge house, good 4 per cent loan.  
215 acres Carbon area shallow water 40 acres peanuts. 3 bdrm house. 1-2 min. go. 29 per cent dn. 5 per cent on balance.  
40 acres land. S. Cisco, all minerals. House, well & pressure system. \$6500. Will G.I. 50 acres land & house close to Eastland well located.  
80 acres mostly bottom land lots pecans well located.  
160 acres Extra nice modern home on pavement. Close in.  
870 acres good grass land on Eastland-Stephen Co. line 1-2 min. go. \$79.00 Loan avl. 1,000 acres 105 Coastal, 45 peanuts. Home, barns, good fences, & well watered. 29 per cent dn. Bal 5 per cent int.  
We have several good peanut farms from 100 up to 600 acres.  
We have Ranches in this area up to 4,000 acres, let us know your needs. All listings appreciated.  
311½ West Main  
Eastland, Texas  
Off. Phone MA 9-1723  
**M. L. TERRELL**  
MA 9-1926  
**ROBERT KINCAID**  
MA 9-2721

**JOE SAYS:**  
The object of oratory alone is not truth, but persuasiveness.  
**JOE CULPEPPER**  
of Hood King Motor Co., also says: "See me for the best automobile deal."

NOTICE: Now's the time to stock up on office supplies before the busy fall season begins. Telegram office.

### For Sale

**FOR SALE:** Good solid used tires, \$3.00 — up. Horton Tire Service, Eastland.

**FOR SALE:** World Bibles, King James Version. Nice for Christmas gifts. Eastland Telegram, MA 9-1707.

**FOR SALE:** Five room frame dwelling in Carbon, four lots. Henry Collins, Box 548, Phone 2531, Carbon.

**FOR SALE:** Three bedroom house, good condition, two lots, 300 N. Ammerman, \$6,500. Mrs. W. E. Goode, MA 9-1179.

**FOR SALE:** Newest edition "Old Rip" on sale at the Telegram Office. Includes many pictures, including color cover.

**FOR SALE:** '53 model Pontiac, good tires, runs good, \$125. See at 303 South Connellee between 9:30 a. m. and 2:30 p. m.

**FOR SALE:** Two bedroom, enclosed sleeping porch, paneled kitchen. Den, living room, dining room, carpeted. 614 Gilmen. Call MA 9-1896 88

**FOR SALE:** 1964 Chevrolet Impala, fardor hardtop. Power, air, automatic, white with red interior, 16,000 miles, extra clean. \$2,395.00 Wyndle Armstrong at bank during day or at 404 S. Hillcrest after 5 p. m.

**FOR SALE:** 320 acres north Eastland, 45 acres cultivation, six room modern house, new goat wire, wells and surface water, \$105 per acre. See Monroe Walker, 306 N. Dixie.

**FOR SALE:** Craftsman metal turning lathe 12" swing, 24" center, I universal chuck. I adjustable Chuck, milling machine attachment, drill chucks and other tools with instruction book. \$400.00 C. M. Rodgers, Ranger Texas. Phone MI 7-1739.

**FOR SALE:** 700 x 14 white-walls. New takeoff, \$15 each. Horton Tire Service, Eastland.

**FOR SALE:** 600x16 Special Triple Rib Nylon tube-type 4-ply tires, \$12 plus tax. 550x16 at \$10 plus tax. Goodyear Service Store, Eastland.

**FOR SALE:** Two bedroom house, 100x100 lot, new roof, plenty of closet space. Call MA 9-1568 after 2 p. m., 108 East Conner.

**FOR SALE:** Beauty shop, good location, reasonable rent, 311 W. Main, Eastland. Phone MA 9-1060 or MA 9-1926.

**FOR SALE:** 1957 Chevrolet station wagon, four-door. Phone MA 9-1626, or see at 201 W. Burkett.

**FOR SALE:** Eastland's newest Addition. Valley View Estates, Kinnaid Real Estate.

**FOR SALE:** All sizes re-treads. \$5.99 plus tax and re-cappable c a r c u s . Goodyear Service Store, Eastland.

**FOR SALE:** All sizes re-treads. \$5.99 plus tax and re-cappable c a r c u s . Goodyear Service Store, Eastland.

**FOR SALE:** All sizes re-treads. \$5.99 plus tax and re-cappable c a r c u s . Goodyear Service Store, Eastland.

**FOR SALE:** All sizes re-treads. \$5.99 plus tax and re-cappable c a r c u s . Goodyear Service Store, Eastland.

**FOR SALE:** All sizes re-treads. \$5.99 plus tax and re-cappable c a r c u s . Goodyear Service Store, Eastland.

**FOR SALE:** All sizes re-treads. \$5.99 plus tax and re-cappable c a r c u s . Goodyear Service Store, Eastland.

**FOR SALE:** All sizes re-treads. \$5.99 plus tax and re-cappable c a r c u s . Goodyear Service Store, Eastland.

**FOR SALE:** All sizes re-treads. \$5.99 plus tax and re-cappable c a r c u s . Goodyear Service Store, Eastland.

**FOR SALE:** All sizes re-treads. \$5.99 plus tax and re-cappable c a r c u s . Goodyear Service Store, Eastland.

**FOR SALE:** All sizes re-treads. \$5.99 plus tax and re-cappable c a r c u s . Goodyear Service Store, Eastland.

**FOR SALE:** All sizes re-treads. \$5.99 plus tax and re-cappable c a r c u s . Goodyear Service Store, Eastland.

**FOR SALE:** All sizes re-treads. \$5.99 plus tax and re-cappable c a r c u s . Goodyear Service Store, Eastland.

**FOR SALE:** All sizes re-treads. \$5.99 plus tax and re-cappable c a r c u s . Goodyear Service Store, Eastland.

**FOR SALE:** All sizes re-treads. \$5.99 plus tax and re-cappable c a r c u s . Goodyear Service Store, Eastland.

**FOR SALE:** All sizes re-treads. \$5.99 plus tax and re-cappable c a r c u s . Goodyear Service Store, Eastland.

**FOR SALE:** All sizes re-treads. \$5.99 plus tax and re-cappable c a r c u s . Goodyear Service Store, Eastland.

**FOR SALE:** All sizes re-treads. \$5.99 plus tax and re-cappable c a r c u s . Goodyear Service Store, Eastland.

**FOR SALE:** All sizes re-treads. \$5.99 plus tax and re-cappable c a r c u s . Goodyear Service Store, Eastland.

**FOR SALE:** All sizes re-treads. \$5.99 plus tax and re-cappable c a r c u s . Goodyear Service Store, Eastland.

**FOR SALE:** All sizes re-treads. \$5.99 plus tax and re-cappable c a r c u s . Goodyear Service Store, Eastland.

**FOR SALE:** All sizes re-treads. \$5.99 plus tax and re-cappable c a r c u s . Goodyear Service Store, Eastland.

**FOR SALE:** All sizes re-treads. \$5.99 plus tax and re-cappable c a r c u s . Goodyear Service Store, Eastland.

**FOR SALE:** All sizes re-treads. \$5.99 plus tax and re-cappable c a r c u s . Goodyear Service Store, Eastland.

### For Sale

**FOR SALE:** Headquarters for famous Cedar Crest work shoes and boots. Black, brown, tan rawhide, and rough out slip on Wellington boots. Several styles of lace up high top work and hunting boots. Also, steel toe and insulated boots from \$5.95 to \$12.95. Army Surplus Store, Eastland, Texas.

**FOR SALE:** 750 x 14 recaps. \$7.95 each. Horton Tire Service, Eastland.

**FOR SALE:** Coin books, 35¢ each or 3 for \$1, while they last. Telegram office.

**FOR SALE:** One 12 cubic feet freezer, trade-in, \$135. Goodyear Service Store, Eastland.

**FOR SALE:** All sizes re-treads. \$5.99 plus tax and re-cappable c a r c u s . Goodyear Service Store, Eastland.

**FOR SALE:** All sizes re-treads. \$5.99 plus tax and re-cappable c a r c u s . Goodyear Service Store, Eastland.

**FOR SALE:** All sizes re-treads. \$5.99 plus tax and re-cappable c a r c u s . Goodyear Service Store, Eastland.

**FOR SALE:** All sizes re-treads. \$5.99 plus tax and re-cappable c a r c u s . Goodyear Service Store, Eastland.

**FOR SALE:** All sizes re-treads. \$5.99 plus tax and re-cappable c a r c u s . Goodyear Service Store, Eastland.

**FOR SALE:** All sizes re-treads. \$5.99 plus tax and re-cappable c a r c u s . Goodyear Service Store, Eastland.

**FOR SALE:** All sizes re-treads. \$5.99 plus tax and re-cappable c a r c u s . Goodyear Service Store, Eastland.

**FOR SALE:** All sizes re-treads. \$5.99 plus tax and re-cappable c a r c u s . Goodyear Service Store, Eastland.

**FOR SALE:** All sizes re-treads. \$5.99 plus tax and re-cappable c a r c u s . Goodyear Service Store, Eastland.

**FOR SALE:** All sizes re-treads. \$5.99 plus tax and re-cappable c a r c u s . Goodyear Service Store, Eastland.

**FOR SALE:** All sizes re-treads. \$5.99 plus tax and re-cappable c a r c u s . Goodyear Service Store, Eastland.

**FOR SALE:** All sizes re-treads. \$5.99 plus tax and re-cappable c a r c u s . Goodyear Service Store, Eastland.

**FOR SALE:** All sizes re-treads. \$5.99 plus tax and re-cappable c a r c u s . Goodyear Service Store, Eastland.

**FOR SALE:** All sizes re-treads. \$5.99 plus tax and re-cappable c a r c u s . Goodyear Service Store, Eastland.

**FOR SALE:** All sizes re-treads. \$5.99 plus tax and re-cappable c a r c u s . Goodyear Service Store, Eastland.

**FOR SALE:** All sizes re-treads. \$5.99 plus tax and re-cappable c a r c u s . Goodyear Service Store, Eastland.

**FOR SALE:** All sizes re-treads. \$5.99 plus tax and re-cappable c a r c u s . Goodyear Service Store, Eastland.

**FOR SALE:** All sizes re-treads. \$5.99 plus tax and re-cappable c a r c u s . Goodyear Service Store, Eastland.

**FOR SALE:** All sizes re-treads. \$5.99 plus tax and re-cappable c a r c u s . Goodyear Service Store, Eastland.

**FOR SALE:** All sizes re-treads. \$5.99 plus tax and re-cappable c a r c u s . Goodyear Service Store, Eastland.

**FOR SALE:** All sizes re-treads. \$5.99 plus tax and re-cappable c a r c u s . Goodyear Service Store, Eastland.

**FOR SALE:** All sizes re-treads. \$5.99 plus tax and re-cappable c a r c u s . Goodyear Service Store, Eastland.

**FOR SALE:** All sizes re-treads. \$5.99 plus tax and re-cappable c a r c u s . Goodyear Service Store, Eastland.

**FOR SALE:** All sizes re-treads. \$5.99 plus tax and re-cappable c a r c u s . Goodyear Service Store, Eastland.

**FOR SALE:** All sizes re-treads. \$5.99 plus tax and re-cappable c a r c u s . Goodyear Service Store, Eastland.

**FOR SALE:** All sizes re-treads. \$5.99 plus tax and re-cappable c a r c u s . Goodyear Service Store, Eastland.

**FOR SALE:** All sizes re-treads. \$5.99 plus tax and re-cappable c a r c u s . Goodyear Service Store, Eastland.

**FOR SALE:** All sizes re-treads. \$5.99 plus tax and re-cappable c a r c u s . Goodyear Service Store, Eastland.

**FOR SALE:** All sizes re-treads. \$5.99 plus tax and re-cappable c a r c u s . Goodyear Service Store, Eastland.

**FOR SALE:** All sizes re-treads. \$5.99 plus tax and re-cappable c a r c u s . Goodyear Service Store, Eastland.

**FOR SALE:** All sizes re-treads. \$5.99 plus tax and re-cappable c a r c u s . Goodyear Service Store, Eastland.

**FOR SALE:** All sizes re-treads. \$5.99 plus tax and re-cappable c a r c u s . Goodyear Service Store, Eastland.

**FOR SALE:** All sizes re-treads. \$5.99 plus tax and re-cappable c a r c u s . Goodyear Service Store, Eastland.

**FOR SALE:** All sizes re-treads. \$5.99 plus tax and re-cappable c a r c u s . Goodyear Service Store, Eastland.

**FOR SALE OR TRADE:** Cushman motor scooter. New tires and runs good. Phone MA 9-2210. Elton Falk, 303 S. Madera.

### Rentals

**FOR RENT:** Small unfurnished house, close in. Double garage. Apply 210 East Valley after 6 p.m. or any time Sunday morning.

**FOR RENT:** Four room apartment, walk-in closet, two beds. Call MA 9-2186.

**FOR RENT:** House, elderly couple preferred. Phone MA 9-2649. After 5, MA 9-2147.

**FOR RENT:** Five room unfurnished house with bath. Adjoining car port. 1400 West Commerce.

**FOR RENT:** Three room furnished apartment. Bills paid. Walk-in closets. Adults only. 1400 W. Commerce.

**FOR RENT:** Two bedroom house. Apply at 507 S. Madera.

**FOR SALE:** Three bedroom home, reasonably priced, 1205 W. Commerce. Phone MA 9-2117.

**FOR SALE:** 1952 one-half ton pickup. Rebuilt motor and transmission, five good tires and good cattle frames, \$250. See at Sport Center. Phone MA 9-1640.

**NOTICE:** Peanut hay baled. 25 cents per bale. I. B. Walker, Olden, Phone 2501.

**FOR SALE:** 670 x 15 four ply black tires, \$10.95 plus tax. Horton Tire Service, Eastland.

**FOR SALE:** All sizes re-treads. \$5.99 plus tax and re-cappable c a r c u s . Goodyear Service Store, Eastland.

**FOR SALE:** All sizes re-treads. \$5.99 plus tax and re-cappable c a r c u s . Goodyear Service Store, Eastland.

**FOR SALE:** All sizes re-treads. \$5.99 plus tax and re-cappable c a r c u s . Goodyear Service Store, Eastland.

**FOR SALE:** All sizes re-treads. \$5.99 plus tax and re-cappable c a r c u s . Goodyear Service Store, Eastland.

**FOR SALE:** All sizes re-treads. \$5.99 plus tax and re-cappable c a r c u s . Goodyear Service Store, Eastland.

**FOR SALE:** All sizes re-treads. \$5.99 plus tax and re-cappable c a r c u s . Goodyear Service Store, Eastland.

**FOR SALE:** All sizes re-treads. \$5.99 plus tax and re-cappable c a r c u s . Goodyear Service Store, Eastland.

**FOR SALE:** All sizes re-treads. \$5.99 plus tax and re-cappable c a r c u s . Goodyear Service Store, Eastland.

**FOR SALE:** All sizes re-treads. \$5.99 plus tax and re-cappable c a r c u s . Goodyear Service Store, Eastland.

**FOR SALE:** All sizes re-treads. \$5.99 plus tax and re-cappable c a r c u s . Goodyear Service Store, Eastland.

**FOR SALE:** All sizes re-treads. \$5.99 plus tax and re-cappable c a r c u s . Goodyear Service Store, Eastland.

**FOR SALE:** All sizes re-treads. \$5.99 plus tax and re-cappable c a r c u s . Goodyear Service Store, Eastland.

**FOR SALE:** All sizes re-treads. \$5.99 plus tax and re-cappable c a r c u s . Goodyear Service Store, Eastland.

**FOR SALE:** All sizes re-treads. \$5.99 plus tax and re-cappable c a r c u s . Goodyear Service Store, Eastland.

**FOR SALE:** All sizes re-treads. \$5.99 plus tax and re-cappable c a r c u s . Goodyear Service Store, Eastland.

**FOR SALE:** All sizes re-treads. \$5.99 plus tax and re-cappable c a r c u s . Goodyear Service Store, Eastland.

**FOR SALE:** All sizes re-treads. \$5.99 plus tax and re-cappable c a r c u s . Goodyear Service Store, Eastland.

**FOR SALE:** All sizes re-treads. \$5.99 plus tax and re-cappable c a r c u s . Goodyear Service Store, Eastland.

**FOR SALE:** All sizes re-treads. \$5.99 plus tax and re-cappable c a r c u s . Goodyear Service Store, Eastland.

**FOR SALE:** All sizes re-treads. \$5.99 plus tax and re-cappable c a r c u s . Goodyear Service Store, Eastland.

**FOR SALE:** All sizes re-treads. \$5.99 plus tax and re-cappable c a r c u s . Goodyear Service Store, Eastland.

**FOR SALE:** All sizes re-treads. \$5.99 plus tax and re-cappable c a r c u s . Goodyear Service Store, Eastland.

**FOR SALE:** All sizes re-treads. \$5.99 plus tax and re-cappable c a r c u s . Goodyear Service Store, Eastland.

**FOR SALE:** All sizes re-treads. \$5.99 plus tax and re-cappable c a r c u s . Goodyear Service Store, Eastland.

**FOR SALE:** All sizes re-treads. \$5.99 plus tax and re-cappable c a r c u s . Goodyear Service Store, Eastland.

**FOR SALE:** All sizes re-treads. \$5.99 plus tax and re-cappable c a r c u s . Goodyear Service Store, Eastland.

**FOR SALE:** All sizes re-treads. \$5.99 plus tax and re-cappable c a r c u s . Goodyear Service Store, Eastland.

**FOR SALE:** All sizes re-treads. \$5.99 plus tax and re-cappable c a r c u s . Goodyear Service Store, Eastland.

**FOR RENT:** Small unfurnished house, close in. Double garage. Apply 210 East Valley after 6 p.m. or any time Sunday morning.

### Laundry

**CISCO STEAM LAUNDRY**  
HI 2-2151

**ROLLINS & SONS MOBILE SERVICE**  
Call for Appointments on Wash - Grease Oil Changes  
601 W. MAIN  
Main 9-8816

**Eastland Memorial Hospital**  
The following persons were listed as patients in Eastland Memorial Hospital Saturday:  
Hugh Armstrong, medical.  
Mrs. Thomas Lockhart, medical.  
Susie Naylor, medical.  
Edwin Boone, Cisco, medical.  
W. F. Reagan, medical.  
Mrs. L. L. Wragg, Cisco, medical.  
Mrs. C. W. Boles, medical.  
Owen Hamilton, medical.  
Arthur Preslor, medical.  
Etta Hill, Cisco, medical.  
Kenita Joyce, Comanche, medical.  
A. D. Stewart, medical.  
Daisy Motley, Ranger, medical.  
Mrs. George Bennett, medical.  
J. N. Jordan, medical.  
Jimmy St. Clair, Stephenville, medical.  
Floyd Nichols, medical.  
Mrs. J. N. Chesshir, Cross Plains, medical.  
Robert Liverett, Rising Star, medical.  
Mrs. Robert Nealy, medical.  
Ben Stovall, Rising Star, medical.  
Mrs. C. W. McCahan, Cisco, medical.  
Flora Turner, medical.  
Myrtle Biles, Carbon, medical.  
Mrs. W. S. McCann, Cross Plains, medical.  
Chris Franklin, surgical.  
H. A. Freeman, medical.  
James Poe, surgical.  
Linda Graham, medical.  
Mrs. Gail Whitley, OB.  
Mrs. C. F. Huffman, Ranger, medical.  
Mrs. Joe Moore, Moran, accident.  
Mrs. Lupe Herrera, Fort Worth, OB.  
Cindy Baggett, Breckenridge, surgical.  
Zula Collie, medical.  
Viola Groves, surgical.  
Mrs. W. L. Whorton, medical.  
Jeannie Wright, medical.  
Ennice Clemmer, Cisco, medical.  
A. R. Somerford, surgical.  
Gerald Wingate, medical.  
Becky Smith, Cisco, surgical.

**Try This Car Quiz!**  
Do you get speedy automotive service? ( ) ( )  
Do you get friendly, courteous treatment? ( ) ( )  
Do you get complete satisfaction in every way? ( ) ( )  
If your answers are yes, you must already be one of our customers!  
On the other hand, if one or more of your answers are "no," we invite you to try our service. You see, we've studied the book on customer satisfaction and how to achieve it. Our facilities are clean and modern, our equipment is the finest.

**FREE**  
Estimates on RE-ROOFING  
Or Repair of Your Old Roof.  
Residential and Commercial  
**Eastland Roofing Co.**  
Noble Squiers  
Phone MA 9-2370

**See ahead with**  
M.H. PERRY  
MA 9-1095  
Ph. MA 9-2275  
FAMILY PROTECTION  
Let him show you how little it costs to see ahead — and be sure.  
**Southland Life**  
INSURANCE COMPANY  
Home Office — Southland Center — Dallas

# Amendments On Tuesday Ballot

Proposals to the Texas constitution will be put before voters on Tuesday, November 2, 1965. The proposals include amendments to the governor's term, the lieutenant governor's term, the state treasurer's term, the state comptroller's term, the state auditor's term, the state judge's term, the state attorney general's term, the state secretary of state's term, the state commissioner of agriculture's term, the state commissioner of education's term, the state commissioner of health's term, the state commissioner of labor's term, the state commissioner of public safety's term, the state commissioner of transportation's term, the state commissioner of welfare's term, the state commissioner of mental health's term, the state commissioner of corrections's term, the state commissioner of parks and recreation's term, the state commissioner of conservation's term, the state commissioner of natural resources's term, the state commissioner of economic development's term, the state commissioner of community development's term, the state commissioner of housing's term, the state commissioner of public works's term, the state commissioner of public utility's term, the state commissioner of public safety's term, the state commissioner of transportation's term, the state commissioner of welfare's term, the state commissioner of mental health's term, the state commissioner of corrections's term, the state commissioner of parks and recreation's term, the state commissioner of conservation's term, the state commissioner of natural resources's term, the state commissioner of economic development's term, the state commissioner of community development's term, the state commissioner of housing's term, the state commissioner of public works's term, the state commissioner of public utility's term.

**MAJESTIC**  
SUNDAY - MONDAY  
Shows 1:30 - 5:45 - 9:30  
Open 5:15 - Shows 5:40 and 9:30

**SEX and STEALING!**  
see the best of both!

**EVER ON SUNDAY**  
Topkapi

**DISTANT TRUMPET**

**JOY DRIVE-IN**  
CISCO - EASTLAND HIGHWAY  
Opens 6:45 - Stars 7 p.m.

**LAST NIGHT TWO BIG FEATURES**  
This Feature At 7:00  
**ROAR OF THE CROWD**  
HOWARD DUFF - CINECOLOR  
This Feature At 8:30

**SUZANNE PLESHETTE - DIANE MCBAIN**

**SANDRA DEE BOBBY DARIN DONALD O'CONNOR**  
**That Funny Feeling**

Opponents also say that a four year term could lead to political domination by one man or a machine which could gain more power by a long series of appointments to boards and agencies.

Amendment 10 proposes four year terms for members of the state House of Representatives. Members of the House would be divided into two "classes" so that one-half of the membership would face election every two years, which is the plan now in use by the Texas Senate where terms are four years.

Advocates of the measure claim that its adoption would relieve representatives from frequent and expensive campaigns, would remove them from the influence of lobbyists in the capital, and would strengthen state government by increasing continuity in office.

Opponents say that elections every two years keep the House members closer to the wishes of the people, and that

four year terms would not give the people an opportunity to make their wishes known. They also say that history has shown that long tenure in office and political corruption often go hand in hand. In addition, they point out that only four other states have given such terms to state representatives.

Amendment 1 increases the state ad valorem tax by 5 cents and changes the method of allocation to a projected enrollment basis to provide an additional source of revenue for state college facilities.

The administration of the Texas Teacher Retirement Fund would be clarified by Amendment 5, and Amendment 6 would authorize the sale of as much as \$85 million of general obligation bonds by the state to provide loans to needy college students, which would be repaid with interest.

Welfare proposals include Amendments 2, 3, and 7. Amendment 2 would increase the Veterans Land Fund by

**Amendments At a Glance**

**Constitutional Amendments at a glance:**

**Amendment No. 1—College Building Fund (a new tax arrangement)**

**Amendment No. 2—Veterans Land Fund (a continuation and extension)**

**Amendment No. 3—Medical Care (eligibility of aged extended)**

**Amendment No. 4—Four year Term for Governor and Other Statewide Officials**

**Amendment No. 5—Teacher Retirement Fund**

**Amendment No. 6—College Student Loan Fund**

**Amendment No. 7—Hospital Tax Exemption**

**Amendment No. 8—Automatic Retirement of Judges (at age 75)**

**Amendment No. 9—Salary Increase for Lieutenant Governor and Speaker**

**Amendment No. 10—Four year Term for State Representatives**

**Nov. Surplus Food Dates Are Announced**

Dates for the distribution of USDA Surplus Foods for Eastland County for the month of November to be distributed at the Eastland County Welfare Center, 301 South Mulberry, have been announced by J. W. Elder, representative, as follows:

Monday, Nov. 8—Eastland, Olden and Ranger.  
Tuesday, Nov. 9—Pioneer, Rising Star, Okra, Carbon, Gorman and Desdemona.  
Wednesday, Nov. 10—Cisco, Scranton and Nimrod.

**Don't Miss JRB's Carnival Sale!**

**Shurfresh BISCUITS** 8-oz. Cans **6 FOR 39c**

**SHURFINE — No. 303**

APPLE SAUCE	can	10c
SHURFINE CREAM STYLE OR WHOLE KERNEL CORN No. 303	6 cans	\$1
SHURFINE FROZEN — 12-oz. ORANGE JUICE	3 cans	89c
SHURFINE MILK	Tall Can	10c
SHURFINE SALAD DRESSING	quart	39c

**Shurfine COFFEE** 1-Lb. Can **59c**

**CRACKERS** SHURFRESH SALTINES - 1-lb. Box **19c**

SHURFINE — No. 303 ENGLISH PEAS	2 cans	35c
SHURFINE — All Flavors CAKE MIX	4 boxes	\$1
ENERGY LIQUID DETERGENT	22-oz. bottle	29c
SHURFINE LUNCHEON MEAT	12-oz. can	39c
SHURFINE — 46-oz. TOMATO JUICE	can	29c
SHURFINE — 14-oz. Bottles CATSUP	2 FOR	39c
SHURFINE — 24-oz. GRAPE JUICE	3 bottles	\$1
SHURFINE CUT — No. 303 GREEN BEANS	2 cans	35c
SHURFINE — No. 303 TURNIP GREENS	can	10c
SHURFINE No. 300 CRANBERRY SAUCE	2 cans	39c

**Shurfine TUNA** 6 1/2-oz. Tins **4 FOR \$1**

**Shurfine ALL-PURPOSE ENRICHED FLOUR** 5-Lb. Bag **29c**

**— JRB MARKET FEATURES —**

**GROUND BEEF** lb. **39c**

PURE PORK — 1-lb. Cellos SAUSAGE	2 lbs.	89c
AF BRAND SLICED BACON	lb.	69c
SLICED CALF LIVER	lb.	39c
AF BRAND FRANKS	12-oz. Pkg.	39c

**CHUCK ROAST** lb. **49c**

PRICES EFFECTIVE NOV. 1 - 2 - 3

**JRB SUPER MARKETS** AFFILIATED  
S&H GREEN STAMPS WITH EVERY PURCHASE  
RANGER — EASTLAND — CISCO

We Reserve the Right to Limit Quantities — No Sales to Dealers

**DOUBLE Green Stamps**  
on Wednesday  
With Purchase of \$2.50 or More

**J.R.B. BONUS STAMP COUPON**

**50 Free S&H Green Stamps** with purchase of 1/2-gal. AF ICE CREAM  
Void After Nov. 3, 1965  
America's Most Valuable Stamps

**J.R.B. BONUS STAMP COUPON**

**50 Free S&H Green Stamps** with purchase 2 lbs. any brand THICK SLICED BACON  
Void After Nov. 3, 1965  
America's Most Valuable Stamps

**J.R.B. BONUS STAMP COUPON**

**50 S&H GREEN STAMPS** with purchase Vicks Form. 44 COUGH SYRUP  
Void After Nov. 3, 1965  
America's Most Valuable Stamps

**J.R.B. BONUS STAMP COUPON**

**50 Free S&H Green Stamps** with purchase \$1 size Right Guard DEODORANT  
Void After Nov. 3, 1965  
America's Most Valuable Stamps

**J.R.B. BONUS STAMP COUPON**

**100 Free S&H Green Stamps** with purchase 14-oz. Listerine ANTISEPTIC  
Void After Nov. 3, 1965  
America's Most Valuable Stamps

**J.R.B. BONUS STAMP COUPON**

**100 Free S&H Green Stamps** with purchase of Aqua Net HAIR SPRAY  
Void After Nov. 3, 1965  
America's Most Valuable Stamps

**SHURFINE FOODS TV HOUR**

MONDAY, NOV. 1  
Abilene KPAR-TV (Ch. 12) — 9 to 10 p. m.  
Dallas WFAA-TV (Ch. 8) — 7:30 to 8:30 p. m.

**GRAPEFRUIT** 5-lb. Bag **39c**

**THE BEST IN Country Music** Each **\$1**

RECORD WITH TOP WESTERN FAVORITE — WITH \$5 PURCHASE THIS WEEK!

**ATTENTION!**

**MR. PEANUT FARMER**

Market your Peanuts with us.

PRICES paid for both SACKED and BULK peanuts

ety (90) Drying Bins and large lighted parking lot available for your use

**DRYING CHARGES FOR 1965 SEASON** EFFECTIVE SEPTEMBER 1

Per Ton Basis Gross Weight — Green Weight	
Level	
ough 17%	\$10.00 Per Ton
ough 24%	\$16.00 Per Ton
ough 29%	\$18.00 Per Ton
	\$23.00 Per Ton

**CLEANING CHARGES** Per Ton Basis Gross Weight before Cleaning **\$8.00 Per Ton**

uts to be cleaned and dried add \$3.00 per ton Gross Weight per ton to the applicable drying charge.

Will Pay You to Check With Us Before Selling

Latest information available to you covering recommended level for combining and drying to preserve best quality

**OMPT — EFFICIENT — COURTEOUS SERVICE**

**GORMAN PEANUTS**

VISION OF AMERICAN COLD STORAGE CORPORATION

Gorman, Texas

Telephone Area Code 817 RE 4-2266

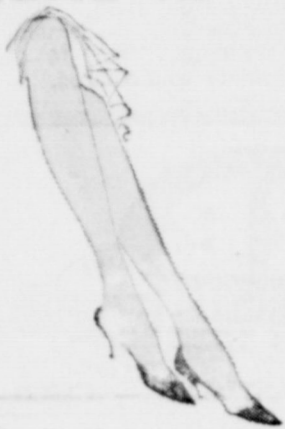
# DOLLAR DAY PARADE OF VALUES

## Bray's

DEPARTMENT STORE

EASTLAND COUNTY'S FAMILY STORE  
Eastland, Texas Phone MA 9-1789

## \$ DAY VALUES



**BACHELOR GIRL SEAMLESS HOSE**

The Popular Brand of Long Wearing Seamless Hose  
Sizes 8 1/2 to 11  
FALL SHADES  
Reg. 2 for \$1.25

**2 PR. \$1**



**WOMENS NYLON GOWNS AND SLEEP COATS**

NYLON LACE TRIM  
Makes a Perfect Gift.

Gift Boxed  
ALL SIZES

Pink Blue Beige  
Reg. 3.99  
**\$3**



**WOMENS COTTON DRESSES**

ASSORTED PATTERNS  
FALL SHADES  
MOST ALL SIZES  
WASH 'N' WEAR

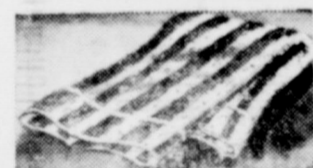
Reg. 6.99 7.99  
**\$6**



**WOMENS HALF SLIP AND BRIEF SET**

RAYON ACETATE  
GIFT BOXED  
ALL SIZES

Cherry Red Beige Blue  
Reg. 2.99  
**\$2**



**CONE MILLS**

**FACE TOWELS**  
Cotton Dots On Terry Cloth

Large Generous Size  
Fringed Trim  
Reg. 59c - 69c

**4 FOR \$1**

**UNBLEACHED MUSLIN**

64x60 Count  
45" Wide

5 yds. .... **\$1**

**Printed Cotton Crash DISH CLOTHS**

Assorted Colors

**10 FOR \$1**

**CANNON WASH CLOTHS**

100% Cotton  
Assorted Colors

**10 FOR \$1**



**Girls Cinderella DRESSES**

Many Styles  
All Sizes  
Assorted Colors  
Reg. 3.99, 4.99, 5.99

**\$3, \$4 & \$5**



**Entire Stock BOY'S SHIRTS**

Checks, Plaids, Stripes.  
Regular and Button  
Down Collars

Reg. 1.99 - 2.99

**2 FOR \$3**



**MENS WARM FLANNEL SHIRTS**

Assorted Plaids  
Sizes SM, Med, Lge.  
Reg. 1.99

**2 FOR \$3**



**MENS**

**FLEECE-LINED SWEAT SHIRTS**

Grey Only

Sizes SM, Med, Lge.

**2 FOR \$3**

## PERRY'S PRE-CHRISTMAS SALE

**SPECIAL**

**3-Piece Luggage**

**SET — Only**



Reg. 16.95 **\$11.88**

CHOICE: BLUE OR RED

**TEFLON 10-in. FRY PAN**

Now, no-stick cooking with the convenience of no-scor cleanup! Available at a low, low price you'd expect to pay for an ordinary fry pan. Amazing Teflon resists sticking, makes cleaning a breeze.

• HEAT-PROOF HANDLE ONLY

**\$1.99**



**1st QUALITY SEAMLESS SHEER NYLONS**

Come early because these Excellent Quality Nylons will go in a hurry at this very low price. 400 needle, 15 Denier Seamless with Run Guard welt and toe. Colors: Frisley Honey, Mist and Platina.

SIZES 8 1/2 TO 11

**2 PAIRS IN PKG. 57c**

2 Reg. 57c

**IPANA TOOTH PASTE**

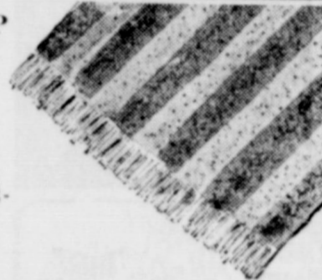


BOTH IN ONE PKG.  
REG. \$1.14 VALUE

30 X 50" HI-LO LOOP

**RUGS**

\* Cotton Textured  
\* Catey Backs  
\* Diamond or Block Patterns  
\* Choice Colors



**SPECIAL**

**\$1.77**

**SPECIAL VALUES TO 89c BIG ASSORTMENT HAIR GOODS**

Sensational special purchase of Hair goods. Barrettes, Head Bands, Ring Combs, Glamour Bobs, Bows and many other popular items. Don't miss these wonderful values. You'll save a lot.



Reg. 11.95 Insta-Flash CAMERA KIT

SPECIAL: all this

FOR JUST **\$5.97**

- Takes 12 pictures on 126 Kodapak film
- Black and white, color slides, color prints.
- Clear sharp jumbo pictures every time.
- Built-in flip-up flash unit.
- Built-in flash bulb ejector.
- Light trapped slide-on back.
- Convenient wrist strap.

**PYREX 9-INCH PIE PLATE SPECIAL**

REG. 49c EACH

**2 FOR 77c**

**PERRY'S**  
KNOWN FOR BETTER VALUES

**SENSATIONAL Portrait Special**

GET A BEAUTIFUL 10x13 CAMEO PORTRAIT

FOR JUST

**99c**



WE HAVE ARRANGED TO HAVE A LEADING PHOTOGRAPHER IN OUR STORE ON THESE DATES

Photography BY *Perrin-Pix*

ANY AGE, ANY MEMBER OF A FAMILY, CAN GET The 10x13 Cameo at the Low Price of 99c

Wed., Thurs., Fri. & Sat. Nov. 3, 4, 5 & 6

Select from finished portraits, not proofs! Finished 10x13's and wallet size will be shown at unbelievably low prices for your approval. Example: Wallet size less than 50c each in groups of 4 same pose.

SATISFACTION GUARANTEED

**PERRY'S**

# MONDAY IS DOLLAR DAY!

**DOLLAR DAY...**  
 (Continued from Page 1.)  
 can be obtained to  
 get. They are al-  
 ly to show a variety  
 and to suggest those  
 please.  
**AL GUARANTEE**  
 ly advertised brand  
 is guaranteed by  
 and this is most im-  
 lasting satisfaction.  
**AL GUARANTEE**  
 ion to the national  
 sed manufacturers'  
 Eastland shop own-  
 er personal guaran-  
 teed. Their mer-  
 chants give satisfaction  
 all personally make

good for any defect. Their rep-  
 utation has been built on "Sat-  
 isfaction." They are proud of  
 this reputation and intend to  
 keep it through the years  
 ahead.  
**LOW, LOW PRICES**  
 No need to shop from pic-  
 tures. Local merchants offer  
 you the opportunity to see  
 what you are getting and com-  
 pare prices. In addition there  
 is no long wait and perhaps the  
 notation that "we're out of  
 this item." You are assured  
 that what you buy in Eastland  
 is priced as low as possible,  
 consistent with quality mer-  
 chandise. In fact, local mer-  
 chants invite price comparison

quality is considered. They  
 feature brand names you know  
 in Eastland. And you pay  
 nothing extra for layaway.  
**CHRISTMAS LAY-AWAY**  
 A small deposit of \$1 will  
 confirm most lay-away items.  
 Early shopping is your safe-  
 guard at choosing while selec-  
 tions are at their best. This  
 small deposit holds your choice  
 until you are ready to pick  
 them up. This service costs  
 you nothing extra.  
**GIFT WRAPPING**  
 Your purchases will be gift-  
 wrapped at most merchants at  
 little or no charge. Your gift  
 will be wrapped with beauty,  
 suitable for the occasion for  
 which it is intended.  
**EASY CREDIT PLANS**  
 For larger purchases, East-  
 land merchants offer most lib-  
 eral payment plans that fit  
 most budgets and enable shop-  
 pers to purchase the items they  
 need for better living.  
 Anyway you spell it, you're  
 dollars ahead, when you shop  
 Eastland, DOLLAR DAY...  
**MONDAY!**

**MAVERICKS...**  
 (Continued from Page 1)  
 After the halftime inter-  
 mission the Bearcats opened  
 action in the third quarter by  
 taking the opening kickoff  
 and marching 71 yards to  
 paydirt. The drive was cap-  
 ped with Donny Sharp, quar-  
 terback, scoring on a keep-  
 er. Lamb's kick for the extra  
 point was good to hike the  
 score to 25-0.  
 On the return kickoff, De  
 Leon recovered an on-side  
 kick on the Ranger 47 and  
 scored eight plays later from  
 the 1-yard line with Smith  
 plunging through the middle.  
 The kick for the point was  
 blocked.  
 Ailing Johnny McGee, Ran-  
 ger first strong quarterback,  
 was in for a few plays in the  
 first half, but couldn't get  
 set on his passing and his  
 knee injury made it impos-  
 sible for him to attempt any  
 running moves.  
 Quarterback Jerry Watson,  
 Fullback Larry Blackwell, and  
 Halfbacks Mike Landtroop  
 and Phil Brown looked good  
 for Ranger on occasions.  
 Blackwell's performance was  
 good in the last half. The  
 Bulldog defense, although far  
 from what it was a few weeks  
 ago before injuries hit the  
 club, looked good, too, on  
 occasions.

## FIRST MONDAY SALE

### COAT SALE

FUR TRIMS...

Coats Drastically Reduced.  
Tailored — Special Group  
by famous maker. One group  
all wools. Good styles and colors.

### SUIT SALE

One group drastically reduced.

### DRESS CLEARANCE

GROUP DARK COTTONS,  
BLENDS, JERSEYS, WOOLS

### SPORTSWEAR SALE

Special Group BLOUSES, SWEATERS,  
SKIRTS, PANTS... reduced

SHOP ALTMAN'S AND SAVE!

## ALTMAN'S Style Shop

## GAS... TERRIFIC!

The Dearborn Deluxe is  
 the gas heater... gives  
 instant heat, even heat  
 wall to wall. Millions of  
 users. Pick the size  
 need today.



Priced from **\$2.95**

### DEARBORN

**COATS FURNITURE CO.**

EASTLAND MA 9-2614

### 'LA BOHEME'...

(Continued from page One)

a musician, a philosopher,  
 and their two lights-of-love,  
 the Fragile Mimi (Miss Fre-  
 ni) and the gold-digging Mu-  
 setta.

"Although the action has on  
 the whole been kept to the  
 staged production of La Sca-  
 la... use of the camera is so  
 imaginative that one almost  
 forgets that this proscenium-  
 type approach to filming op-  
 era really allows very little  
 cinematic variation from  
 straight long, medium, close-  
 up and overhead shots," Miss  
 Coleman says of the film.

Performances are at 2 and  
 8 p. m. Wednesday and Thurs-  
 day.

**SHOP EASTLAND FIRST!**

**EASTLAND TELEGRAM**  
 Sunday, October 31, 1965 Page Five

## Celebrating the 65th ANNIVERSARY of FIRESTONE!

# Firestone Champion Nylons

Built with Firestone speedway proved SUP-R-TUF  
 rubber for EXTRA mileage, safety and durability

Limited Time  
OFFER!

SIZE	Tubeless BLACKWALLS		Tubeless WHITEWALLS	
	1st Tire*	2nd Tire*	1st Tire*	2nd Tire*
6.00-13	\$15.80	\$ 7.90	\$18.65	\$ 9.32
6.50-13	17.15	8.57	20.05	10.02
7.00-13 (4.75-13)	20.45	10.22	23.20	11.60
7.50-13 (5.75-13)	23.10	11.55	25.90	12.95
8.00-13 (6.75-13)	25.35	12.67	28.10	14.05
8.50-13 (7.75-13)	28.85	14.42	31.50	15.75

\*All prices plus tax. No trade-in needed

## THERE IS NO PLACE LIKE HOME

During this busy and important shopping sea-  
 son, shoppers often fall victim to crafty out-of-town  
 salesmen who promise to save them enough to  
 enjoy their Christmas.

Prices are so enticing to Mom and Dad that  
 they get into the family car and drive to the big  
 shopping centers.

They pick up the "hot items"... quantities  
 limited, of course. Then they browse around for  
 bargains.

Look, says Mom, "Here's the item we want  
 for Christmas. But surely this price can't be right.  
 I can get the same thing in an Eastland store for less."

So the shoppers leave the article. When the  
 checkout counter is reached the cart has only a  
 few "special" items in it and there's a beaten ex-  
 pression on the face. After all, the saving on these  
 small items didn't pay for the trip.

This is an awakening for many to the fact  
 that there is "no place like home" to do their shop-  
 ping.

The home merchant in most instances knows  
 what you want to be a satisfied customer. And  
 merchandise needs to be exchanged, or an  
 item returned, you don't have to drive miles to  
 a store that doesn't care whether you ever come  
 back.

**HERE IS NO PLACE LIKE HOME  
FOR GOOD SHOPPING!**

Especially on Dollar Day — Monday)

★ ★ ★

## EASTLAND NATIONAL BANK

On the Square — Member FDIC

## RCA VICTOR MARK XI *New Vista*

Color Television features the new  
 RCA HI-LITE COLOR TUBE for  
 brighter pictures...brightest ever  
 from RCA Victor.

All models include RCA Solid  
 Copper Circuits for Space Age  
 dependability, better performance.



The SUFFOLK  
 Mark XI Series GG-649  
 21" tube (overall diameter)  
 265 sq. in. picture

### RCA VICTOR Colonial Console

- Super-powerful 25,000-volt New Vista Color Chassis with power transformer, three I.F. signal-boosting stages.
- New Vista VHF tuner for unsurpassed VHF reception, even in the most difficult signal areas.
- Ultra-sensitive RCA Solid State tuner pulls in UHF channels with amazing clarity.
- RCA Automatic Color Purifier "cancels" magnetism that may cause color impurities in the picture

## \$519.95 WITH TRADE

MORE PEOPLE OWN RCA VICTOR THAN ANY OTHER TELEVISION  
 ... BLACK AND WHITE OR COLOR

THE MOST TRUSTED NAME IN ELECTRONICS

## ROBERTSON TV SALES & SERVICE

100 W. Commerce MA 9-1625

## Get the 2nd TIRE for 1/2-PRICE

Buy the 1st Firestone Champion or Safety Champion at price listed  
 ... get the 2nd tire for ONE-HALF THAT PRICE!

# Firestone Safety Champion Nylons

Deeper tread and 10% more traction edges give  
 you 25% MORE MILEAGE than the Firestone Champion

SIZE	Tubeless BLACKWALLS		Tubeless WHITEWALLS	
	1st Tire*	2nd Tire*	1st Tire*	2nd Tire*
6.00-13	\$19.85	\$ 9.92	\$23.15	\$11.57
6.50-13	21.00	10.50	24.35	12.17
7.00-13 (4.75-13)	23.35	11.67	26.65	13.32
7.50-13 (5.75-13)	23.80	11.90	27.05	13.52
8.00-13 (6.75-13)	27.25	13.62	30.50	15.25
8.50-13 (7.75-13)	29.90	14.95	33.05	16.52
9.00-13 (8.75-13)	33.30	16.65	36.45	18.22

\*All prices plus tax. No trade-in needed

NO MONEY DOWN

Charge	Pay Only
\$50.00	\$5 Per Mo.
\$75.00	\$7 Per Mo.
\$95.00	\$9 Per Mo.

Priced as shown at Firestone Stores; competitively priced at Firestone Dealers and at all service stations displaying the Firestone sign.

## Buy Now... At Less Than Passenger Tire Prices!



### Firestone TRANSPORT NYLON TRUCK TIRES

Pick-up and Delivery

- Shock-Fortified Nylon, 6-Ply Rating
- Sup-R-Tuf Long Mileage Rubber
- Famous Gear-Grip, Non Skid Tread Design

\*Comparable size—original equipment quality.

## 2 FOR \$28.90\*

Size 6.00-16  
Plus tax and  
2 tires off  
your truck

Low, Low Prices  
On All Other Sizes

## HORTON TIRE SERVICE

403 East Main — EASTLAND — MA 9-1420